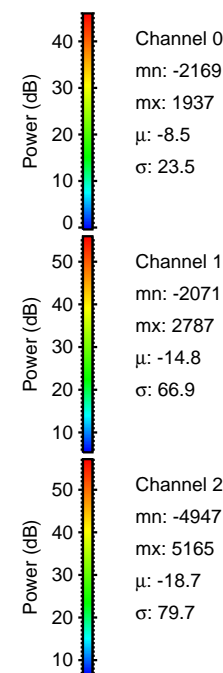
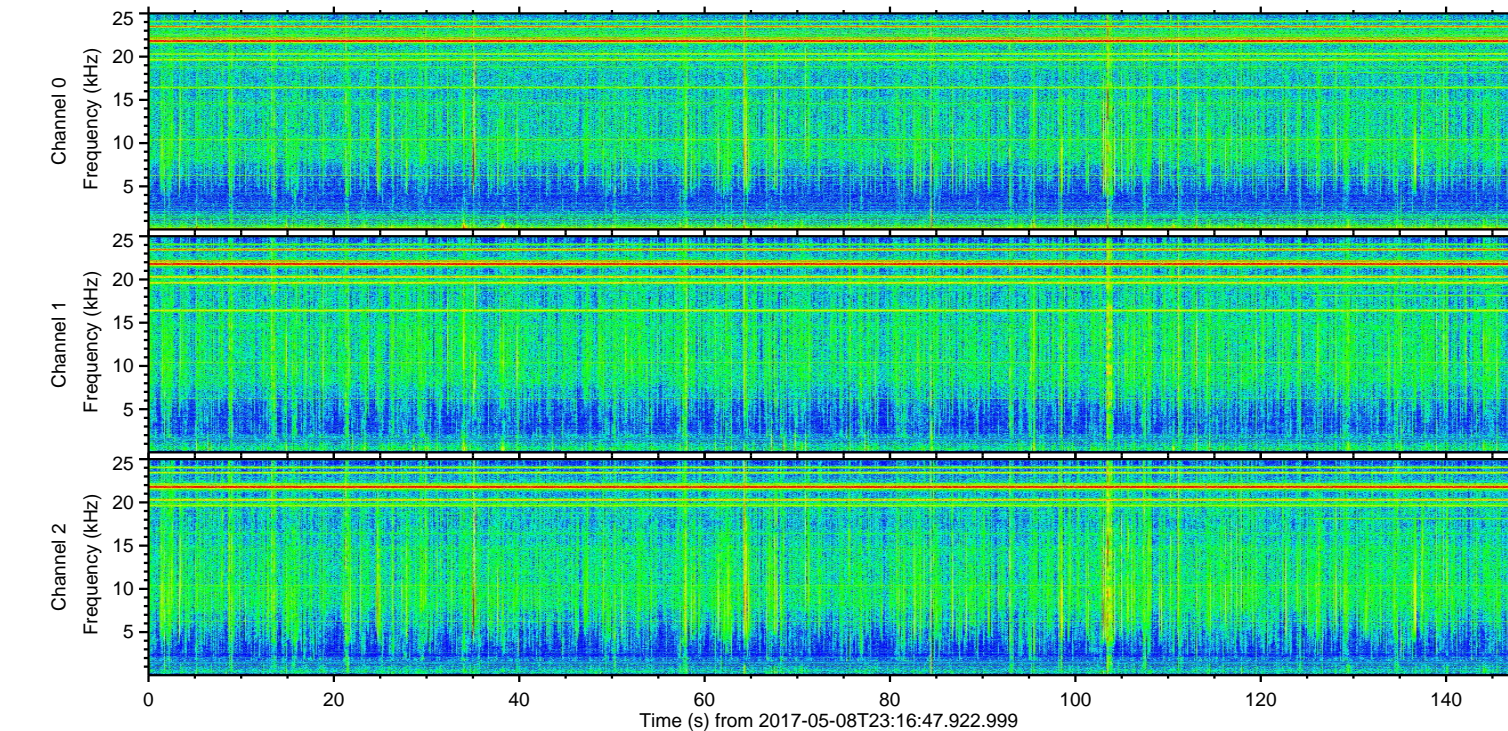
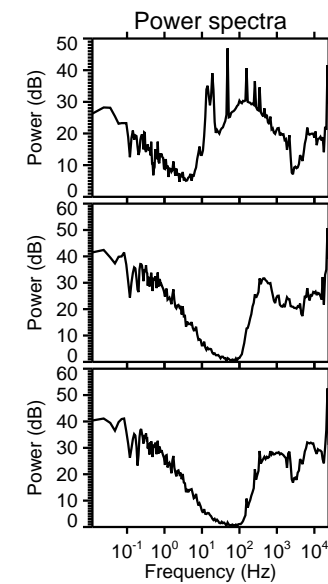
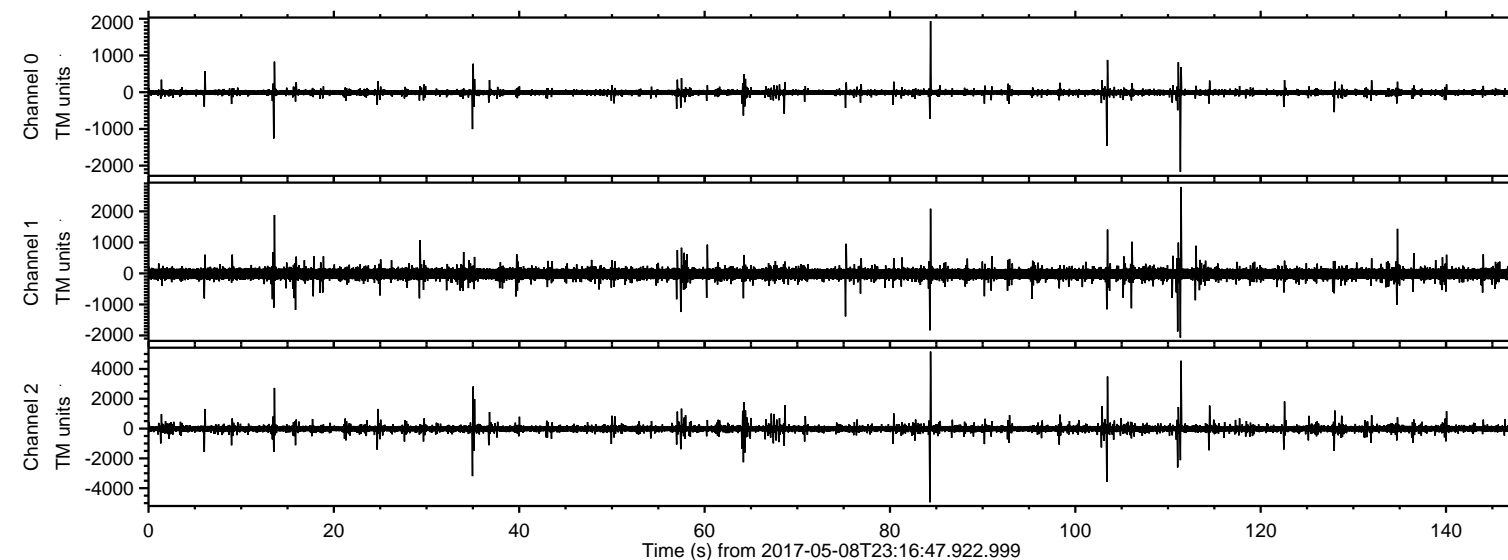
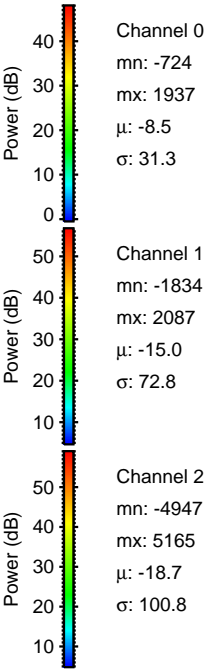
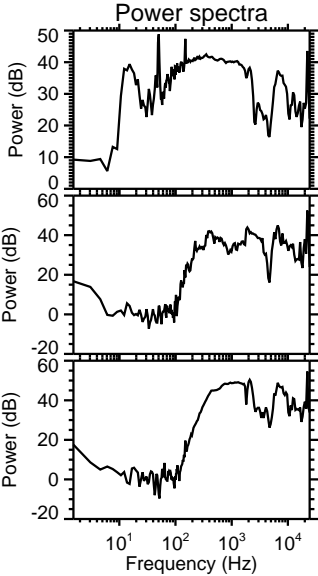
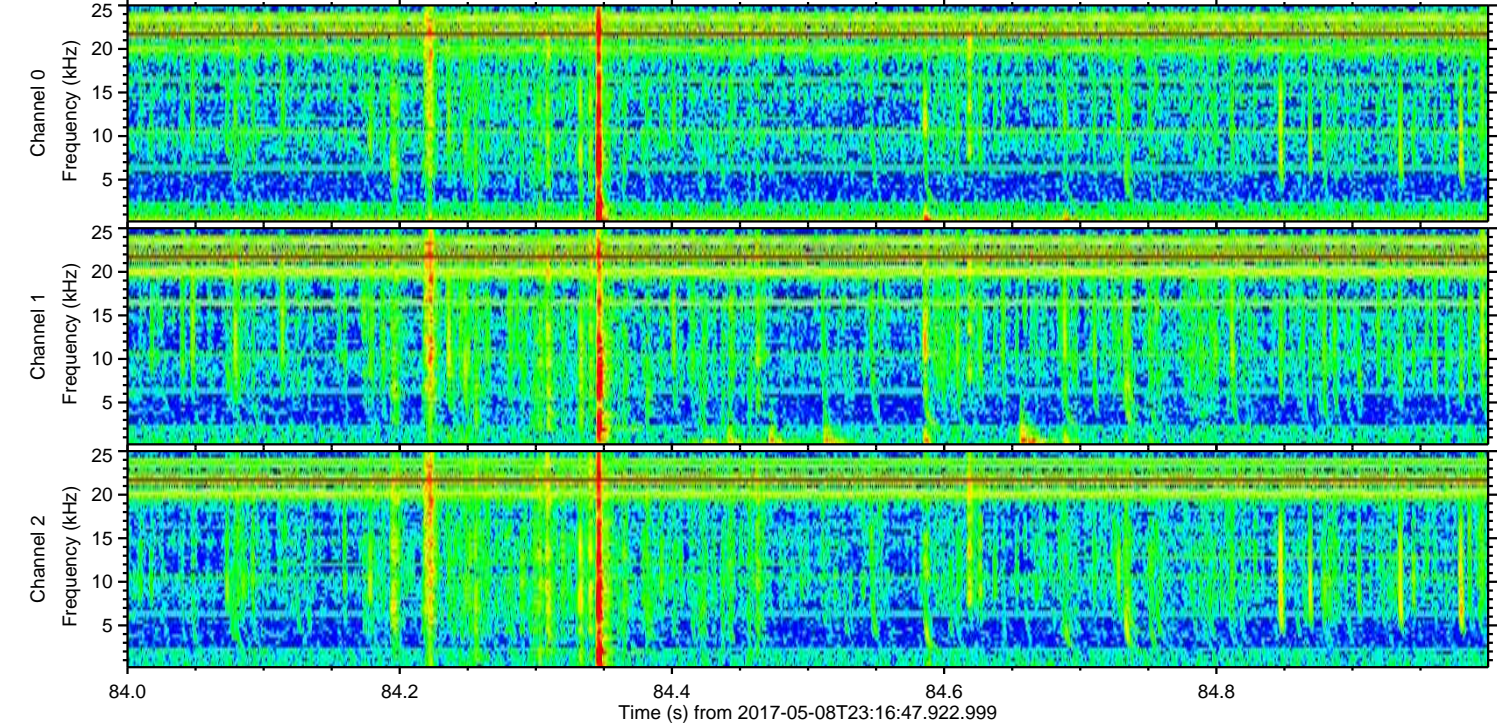
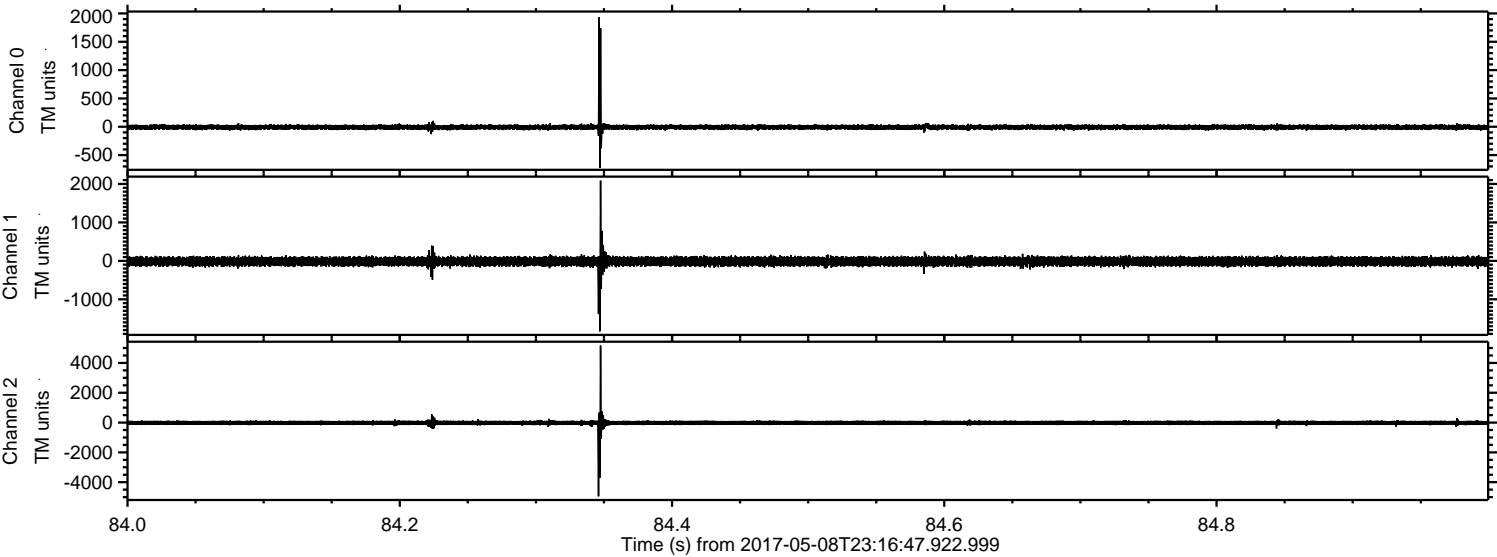


ELMAVAN 3D WAVEFORMS (Measured data sampled at 50 kHz) 51000 packets of 144 samples from 2017-05-08T23:16:47.922.999.

Processed Tue May 9 01:25:09 2017 by ELM ver.2012-10-06 from 001__elm20170508_231646__dat00.bin

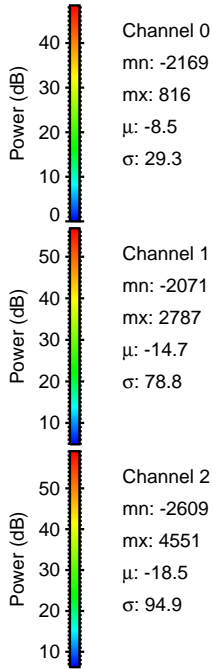
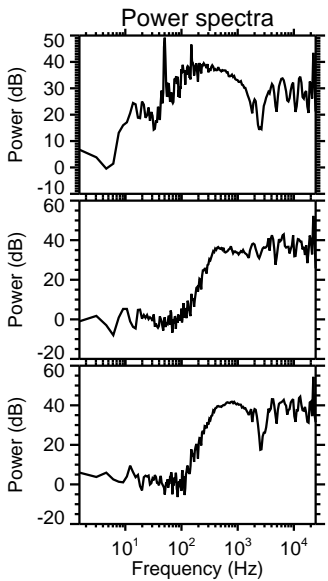
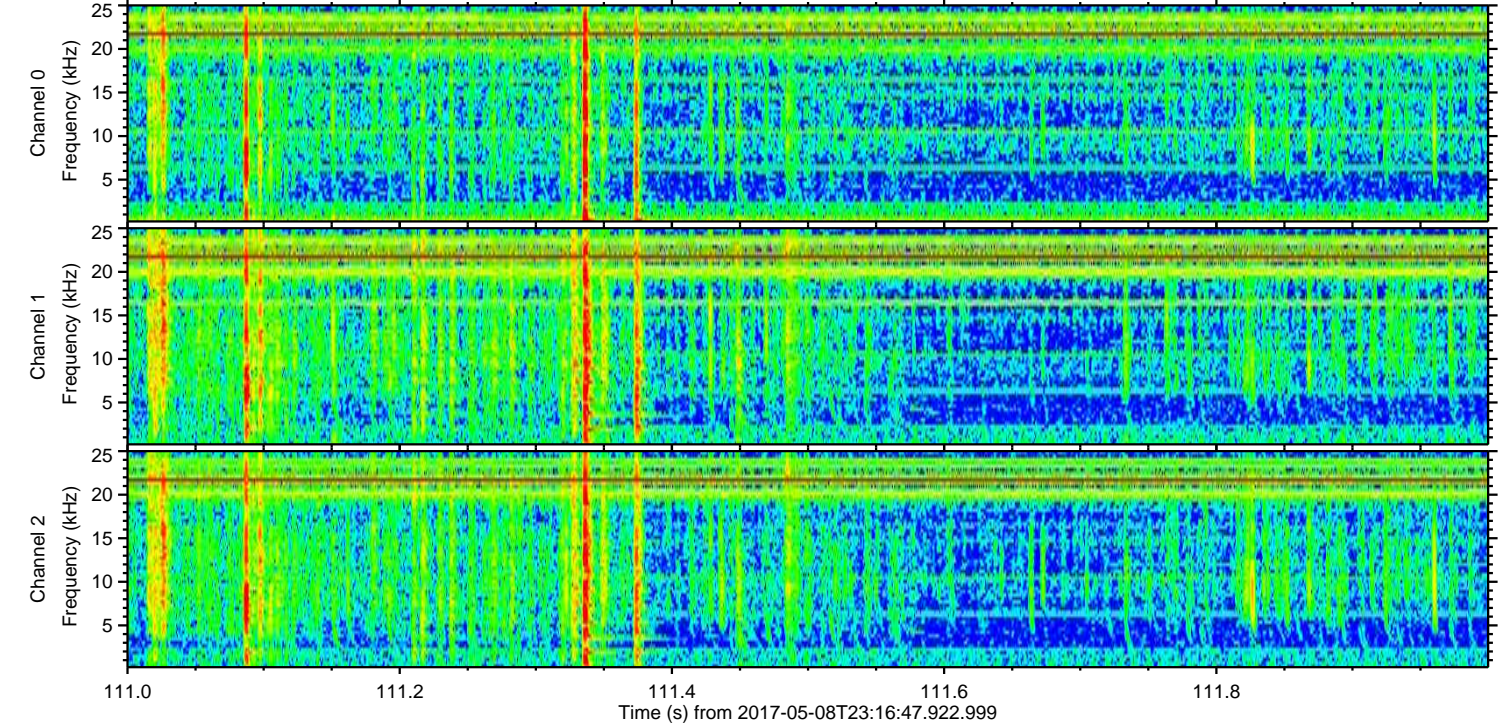
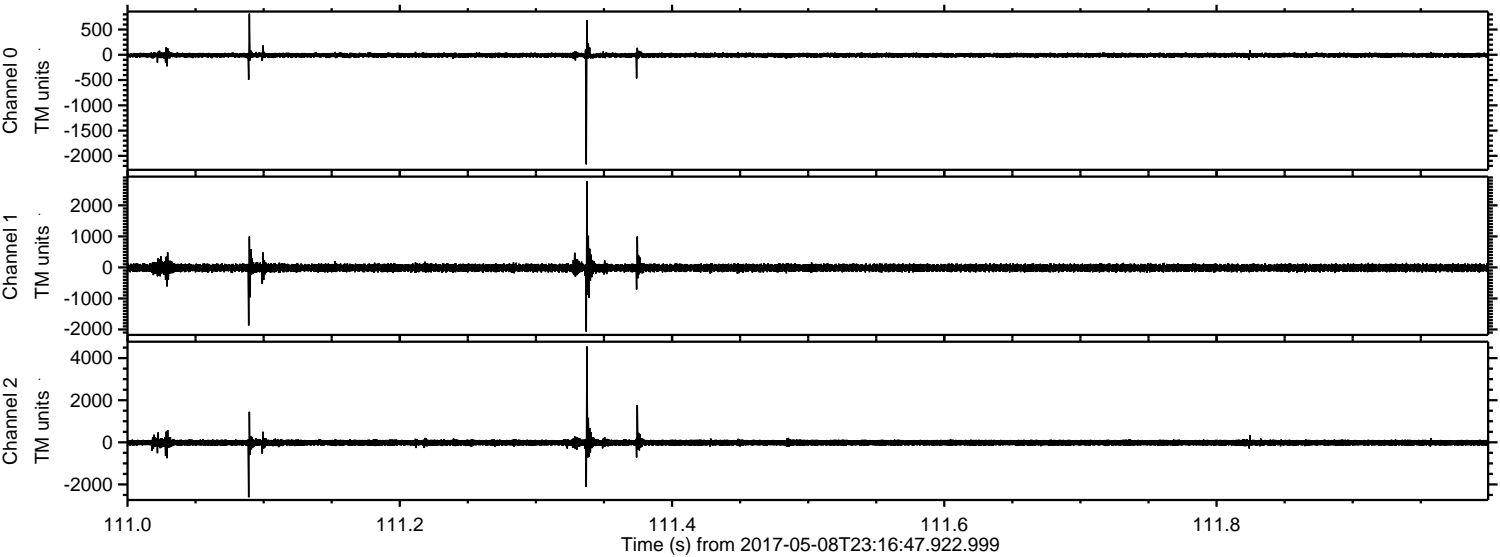


Processed Tue May 9 01:25:21 2017 by ELM ver.2012-10-06 from 001__elm20170508_231646__dat00.bin



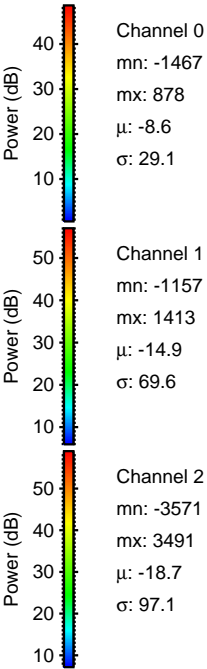
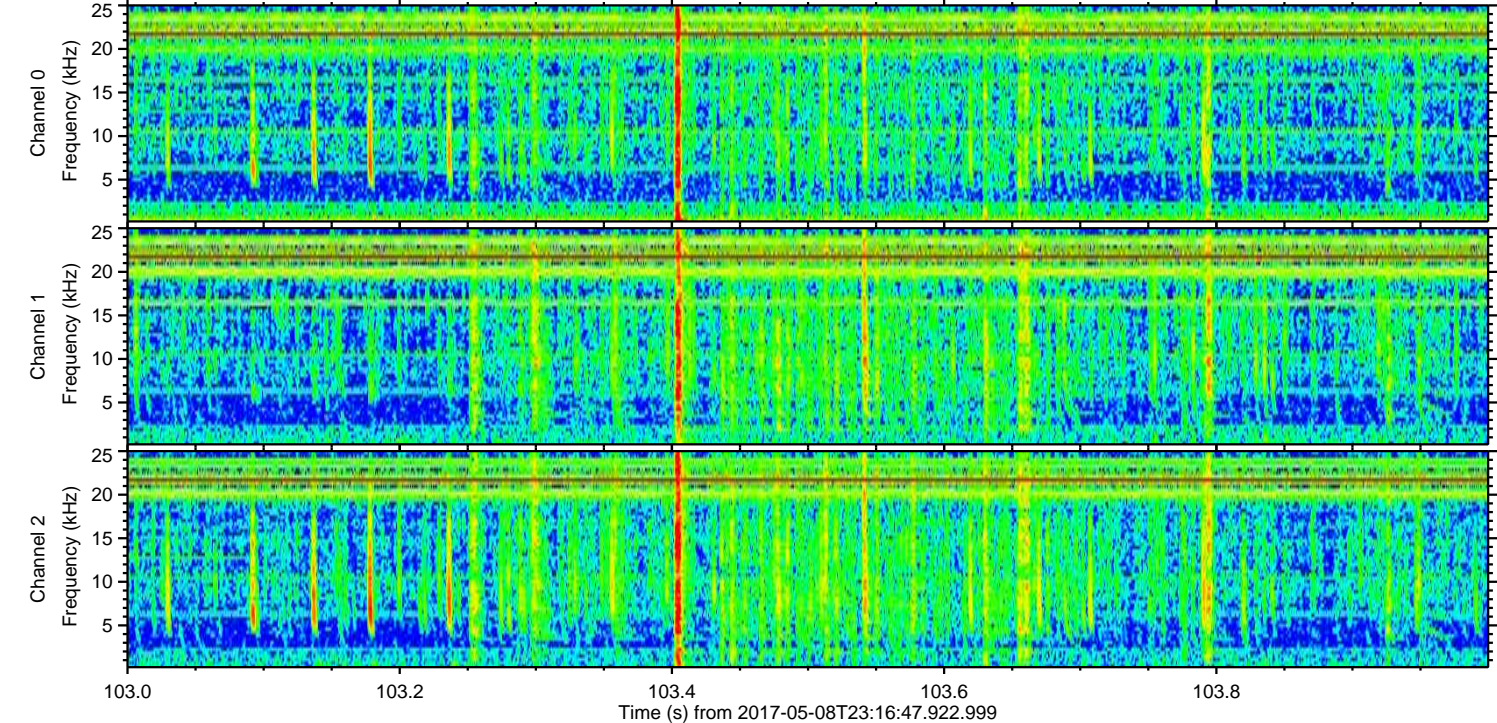
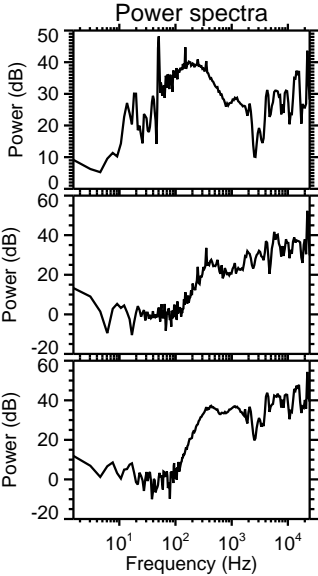
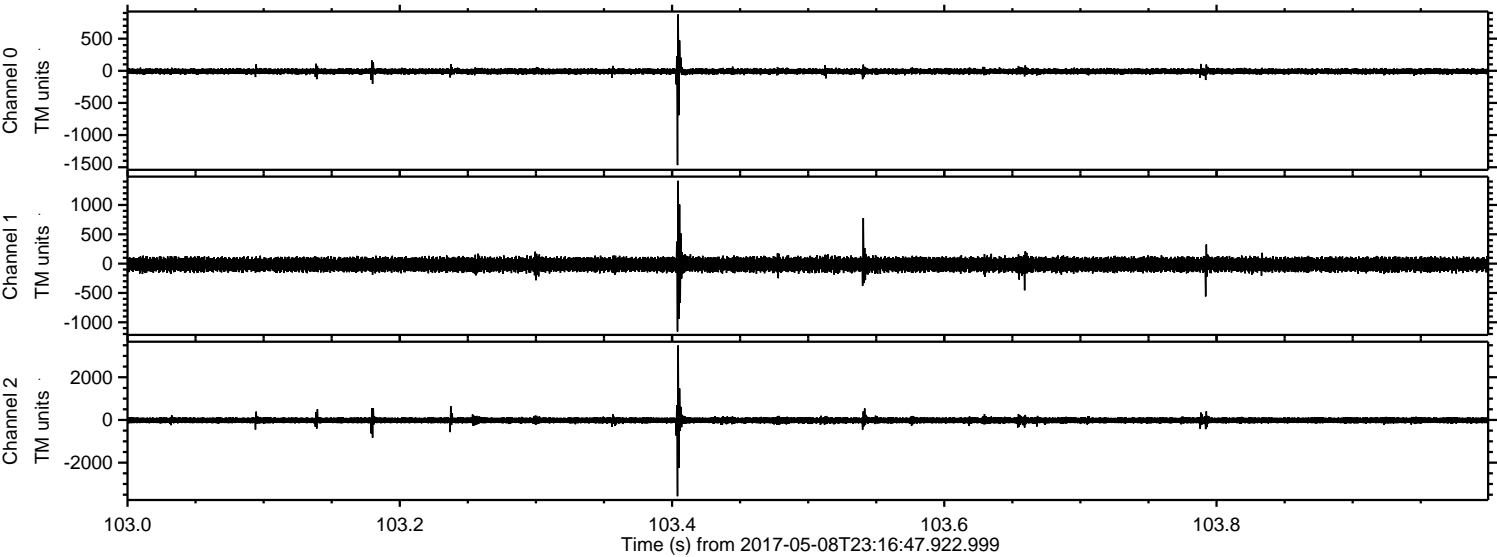
ELMAVAN 3D WAVEFORMS (Measured data sampled at 50 kHz) 51000 packets of 144 samples from 2017-05-08T23:16:47.922.999. Part 112/147

Processed Tue May 9 01:25:22 2017 by ELM ver.2012-10-06 from 001__elm20170508_231646__dat00.bin

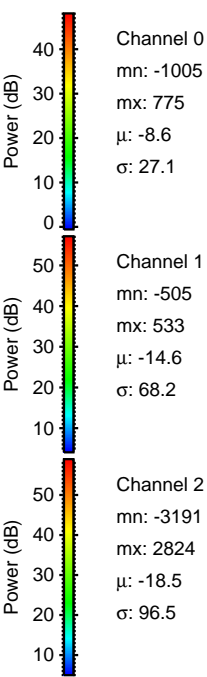
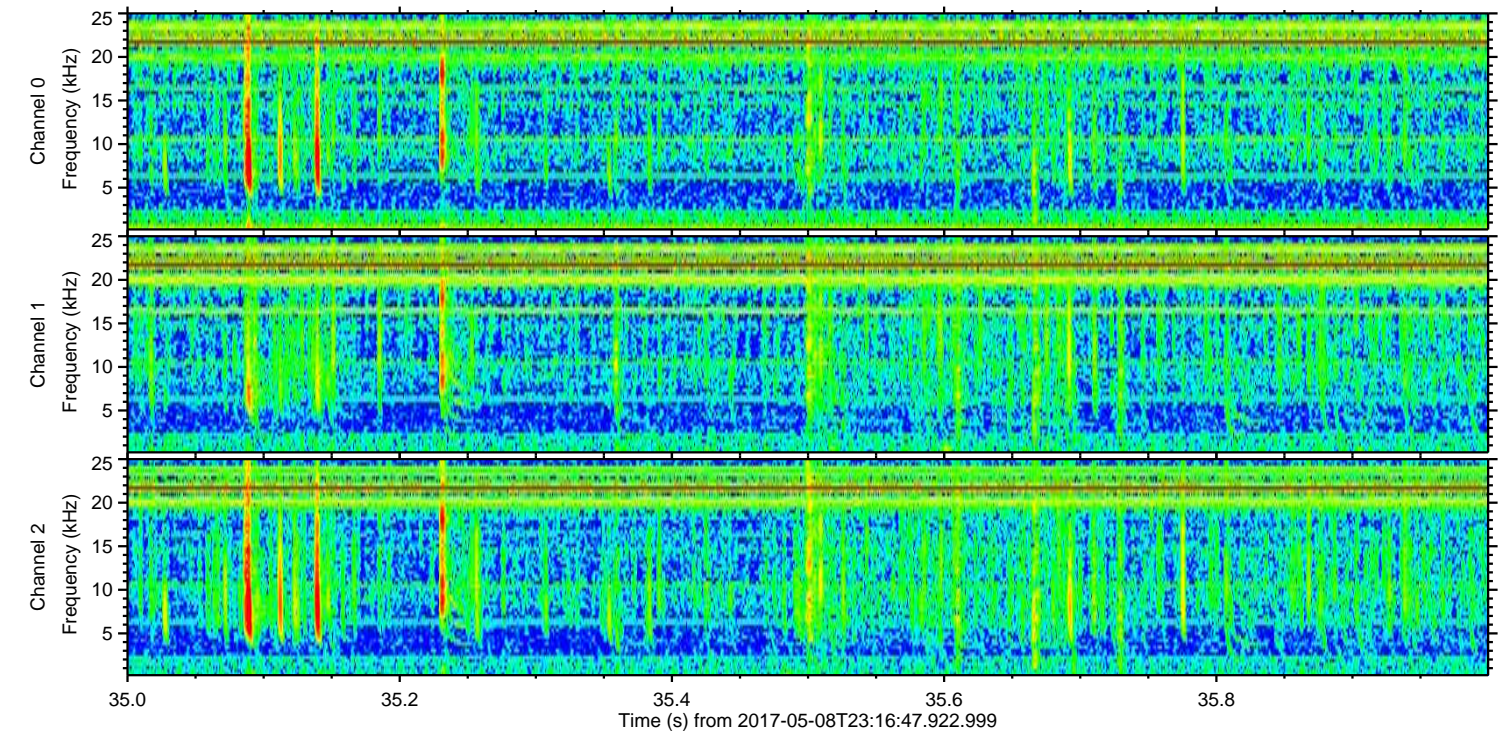
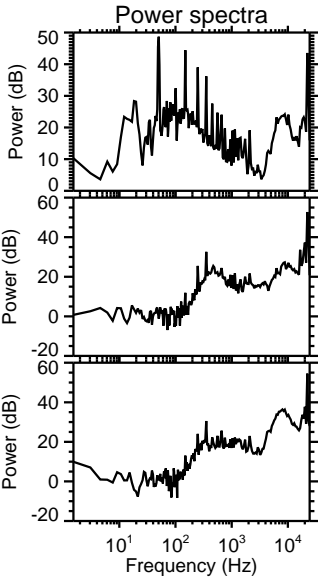
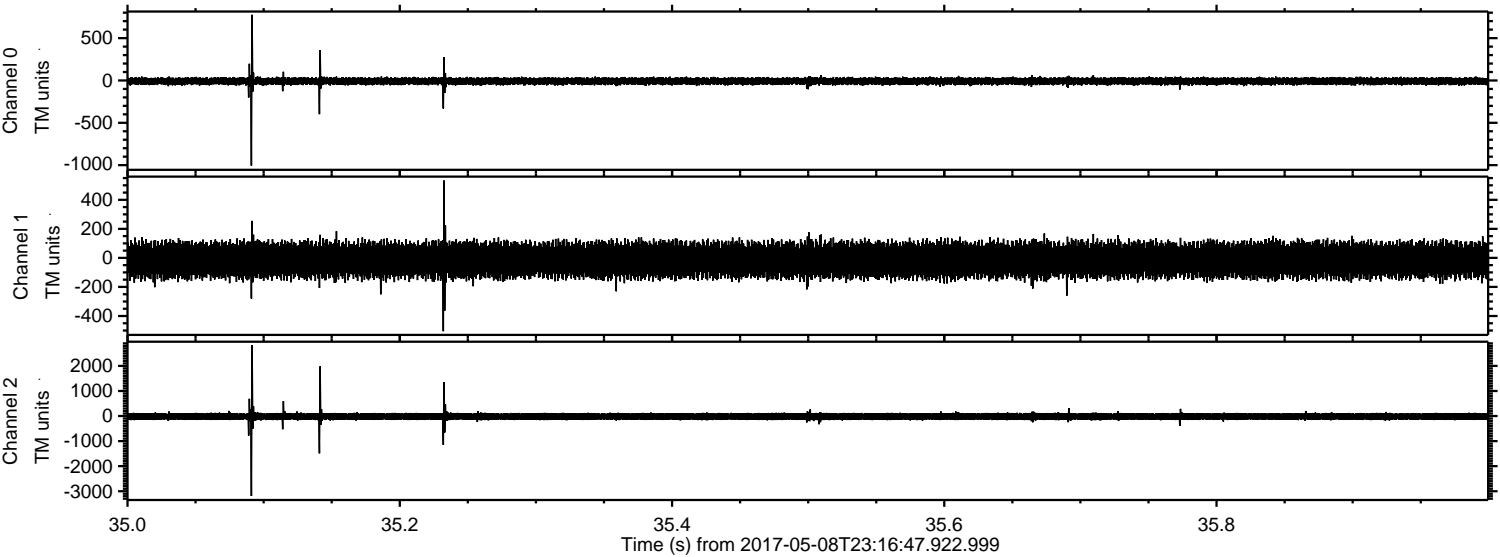


ELMAVAN 3D WAVEFORMS (Measured data sampled at 50 kHz) 51000 packets of 144 samples from 2017-05-08T23:16:47.922.999. Part 104/147

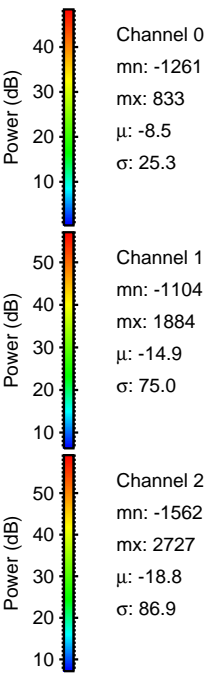
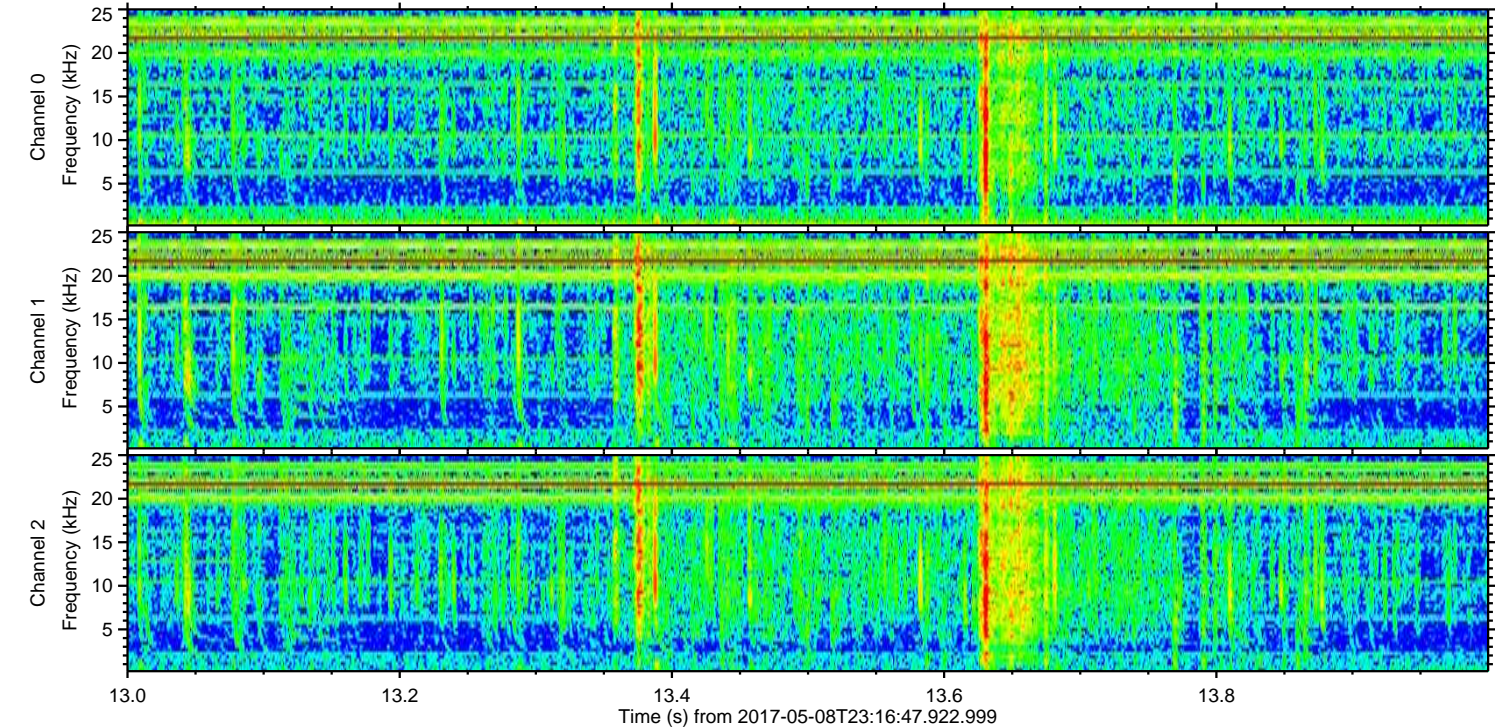
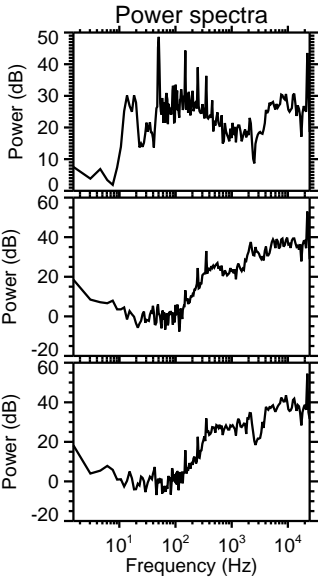
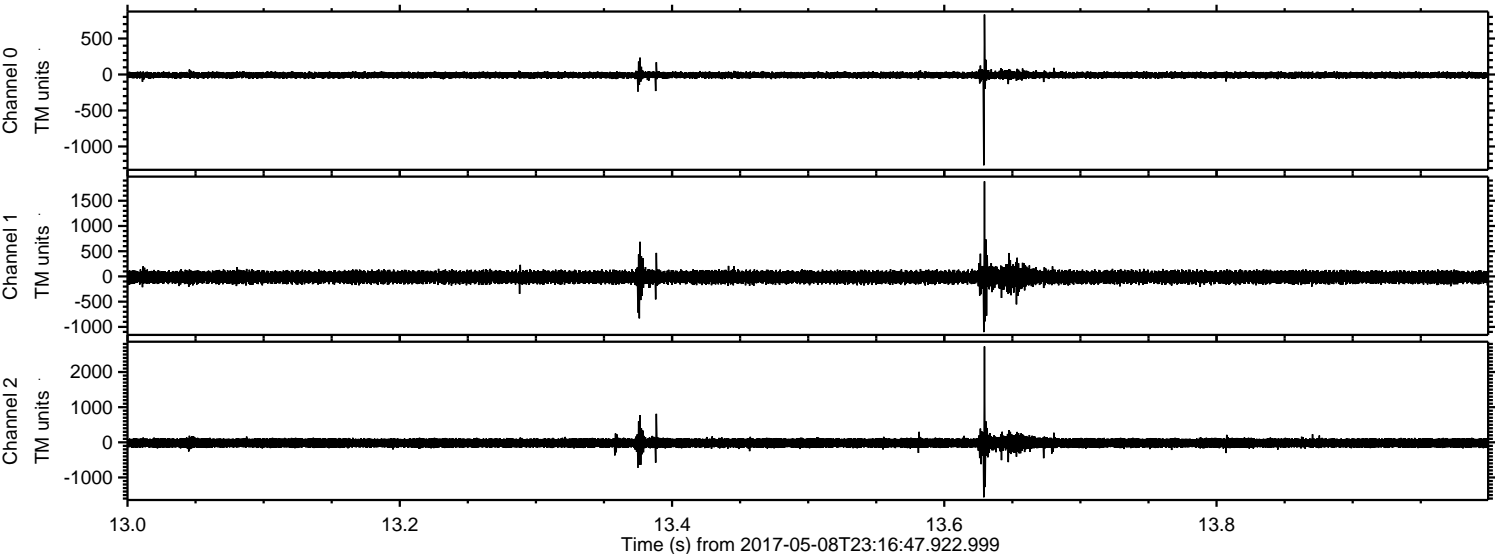
Processed Tue May 9 01:25:23 2017 by ELM ver.2012-10-06 from 001__elm20170508_231646__dat00.bin



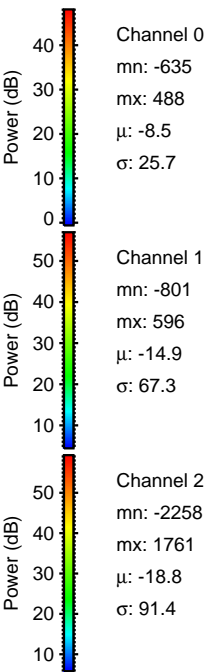
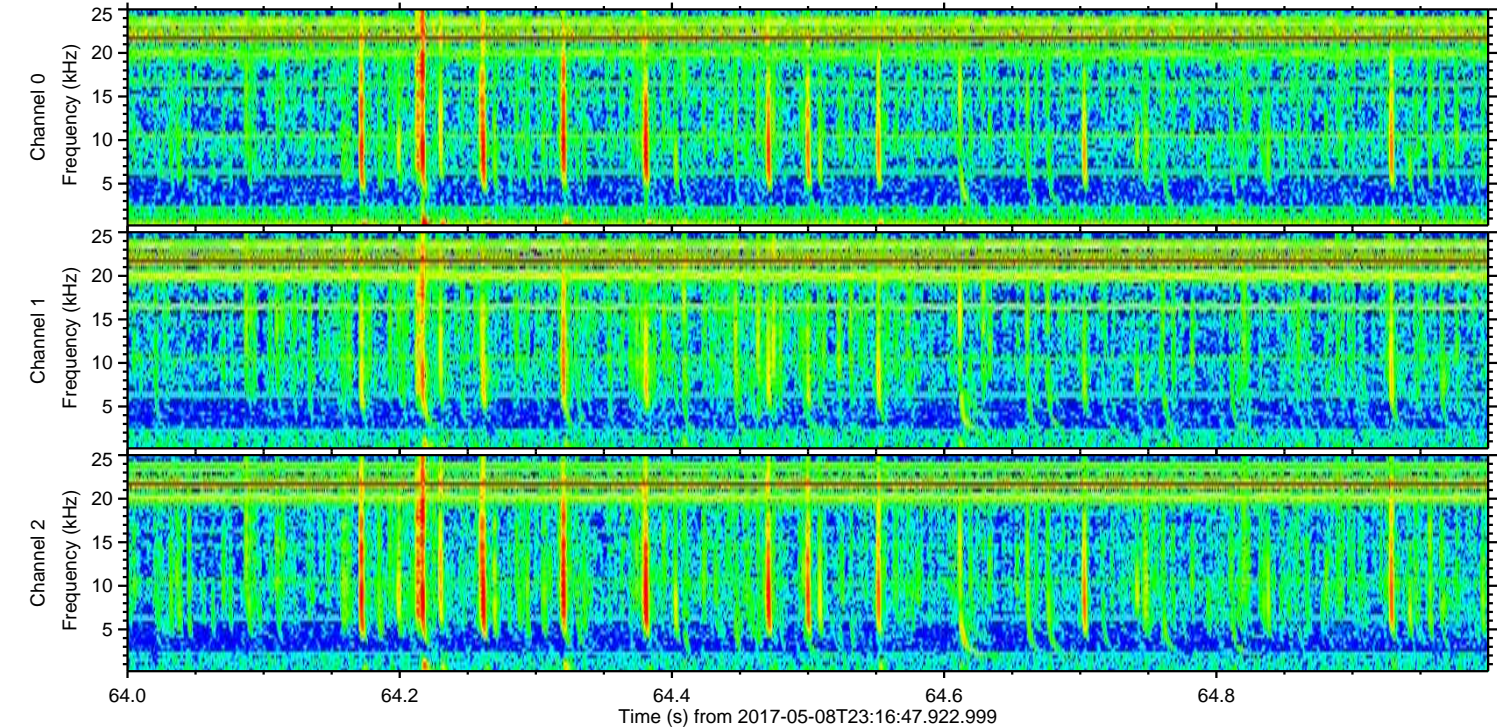
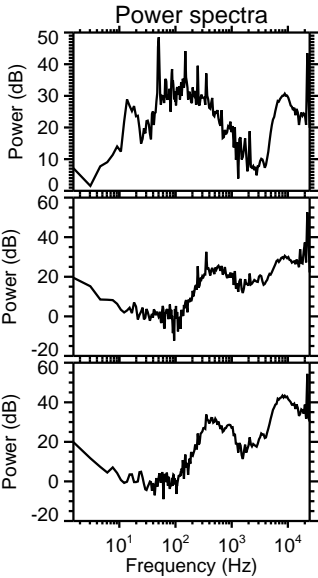
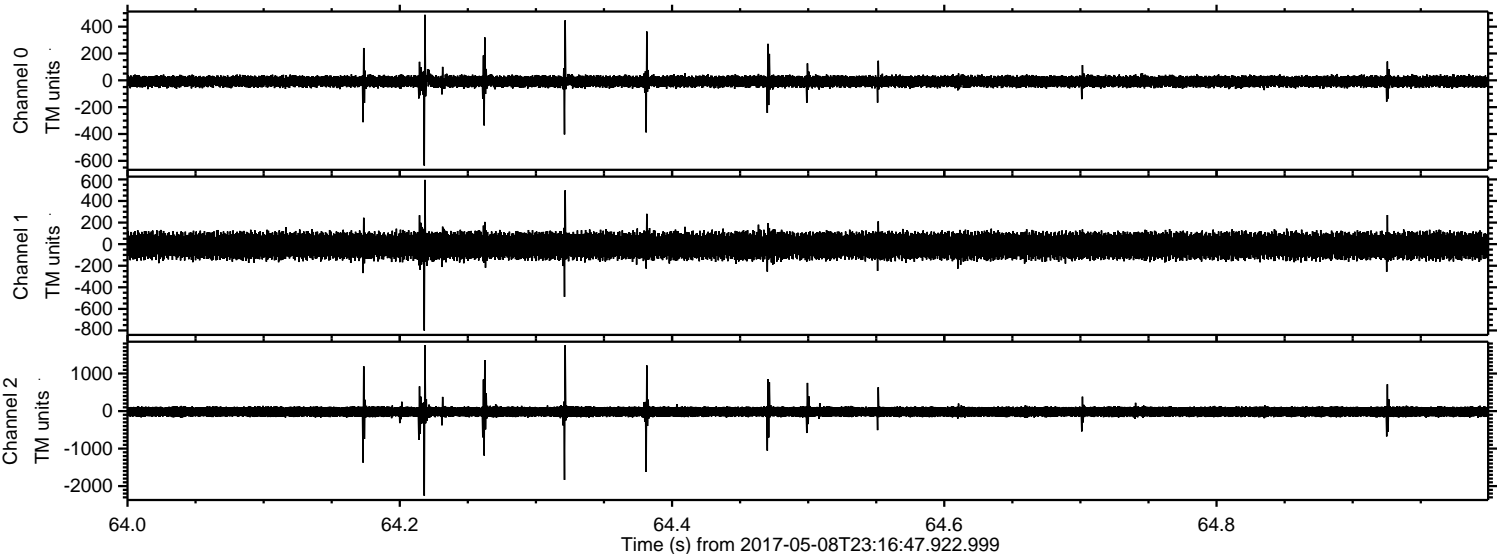
Processed Tue May 9 01:25:24 2017 by ELM ver.2012-10-06 from 001__elm20170508_231646__dat00.bin



Processed Tue May 9 01:25:25 2017 by ELM ver.2012-10-06 from 001__elm20170508_231646__dat00.bin

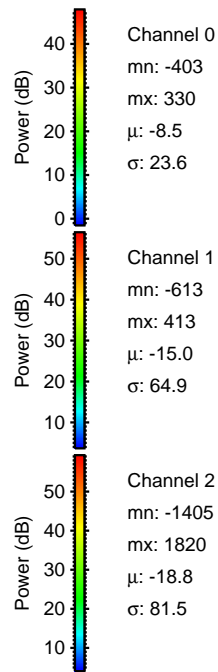
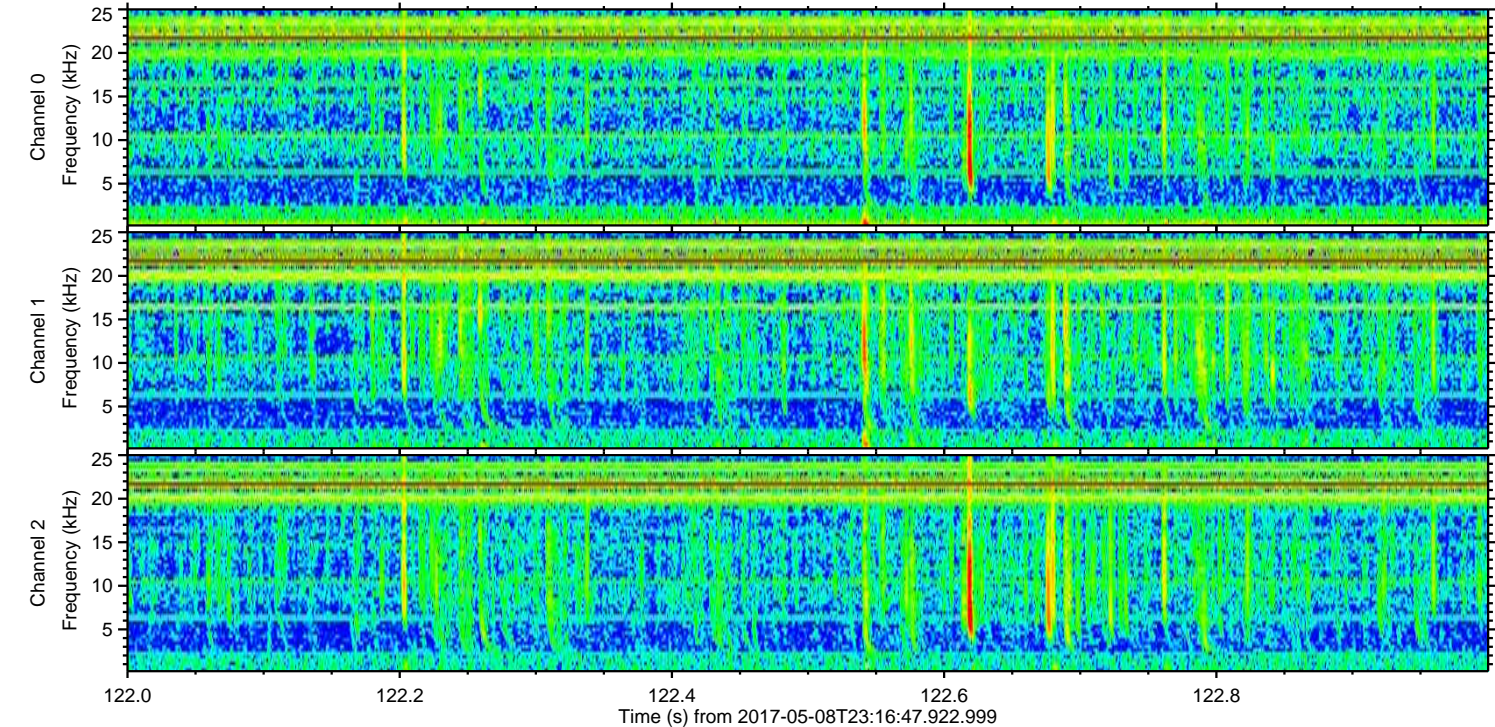
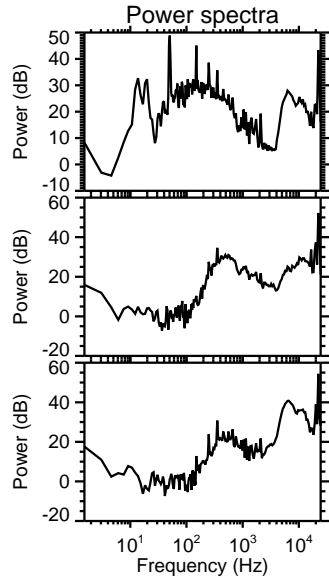
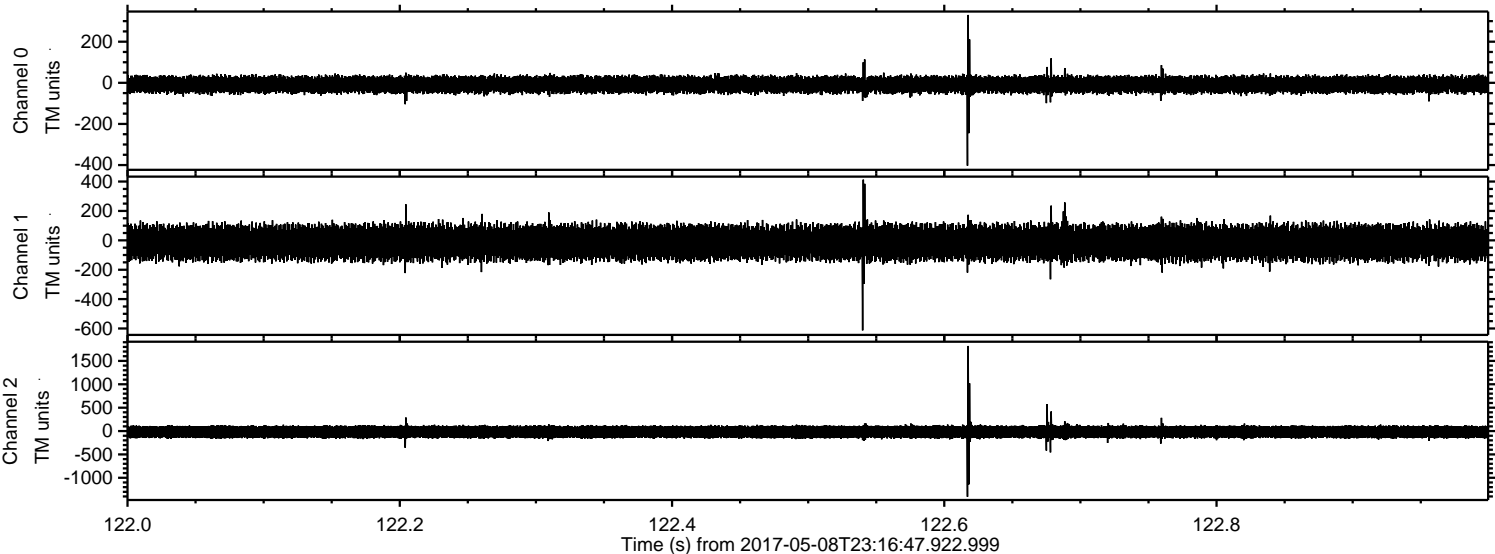


Processed Tue May 9 01:25:25 2017 by ELM ver.2012-10-06 from 001__elm20170508_231646__dat00.bin



ELMAVAN 3D WAVEFORMS (Measured data sampled at 50 kHz) 51000 packets of 144 samples from 2017-05-08T23:16:47.922.999. Part 123/147

Processed Tue May 9 01:25:26 2017 by ELM ver.2012-10-06 from 001__elm20170508_231646__dat00.bin

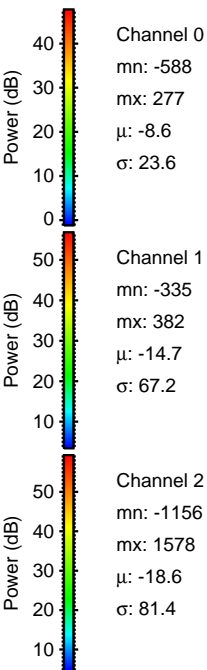
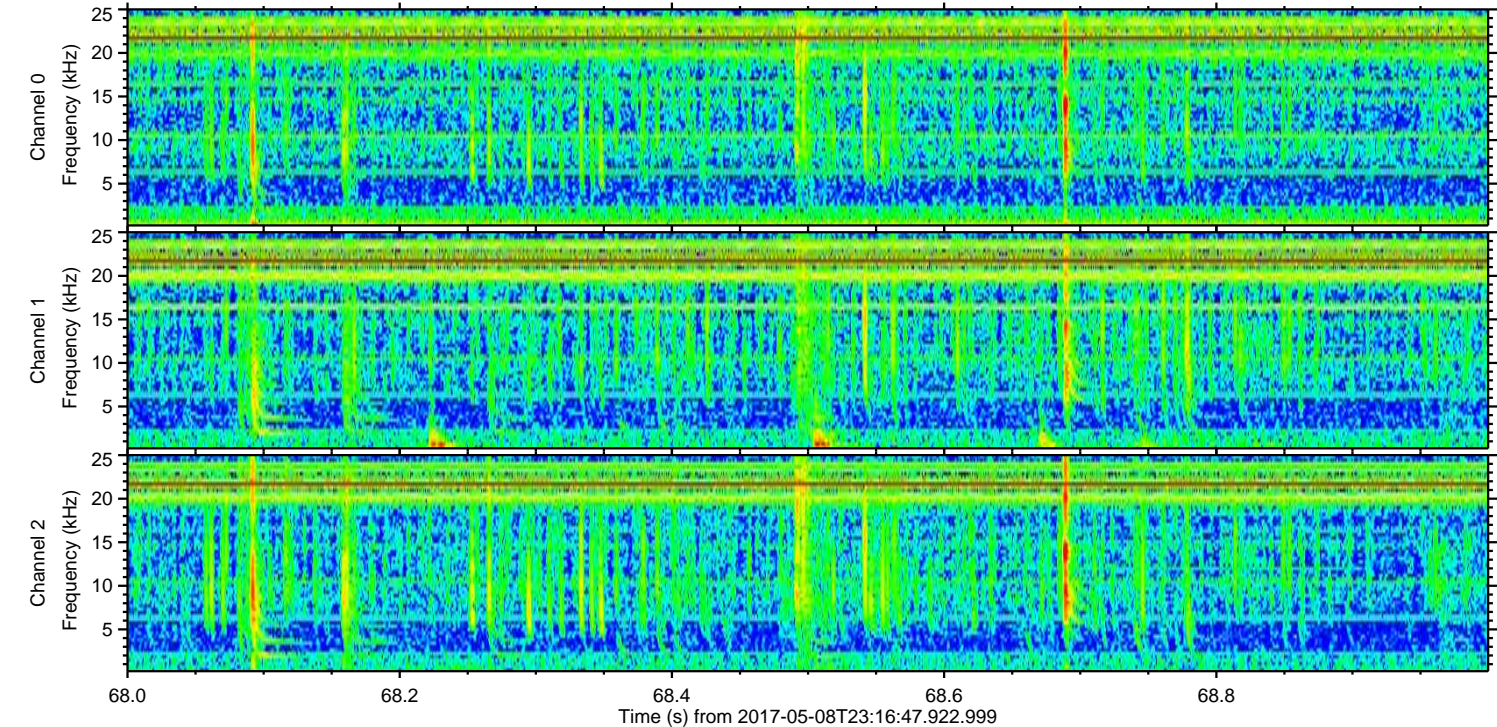
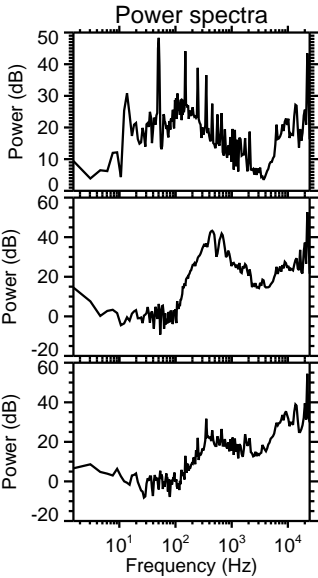
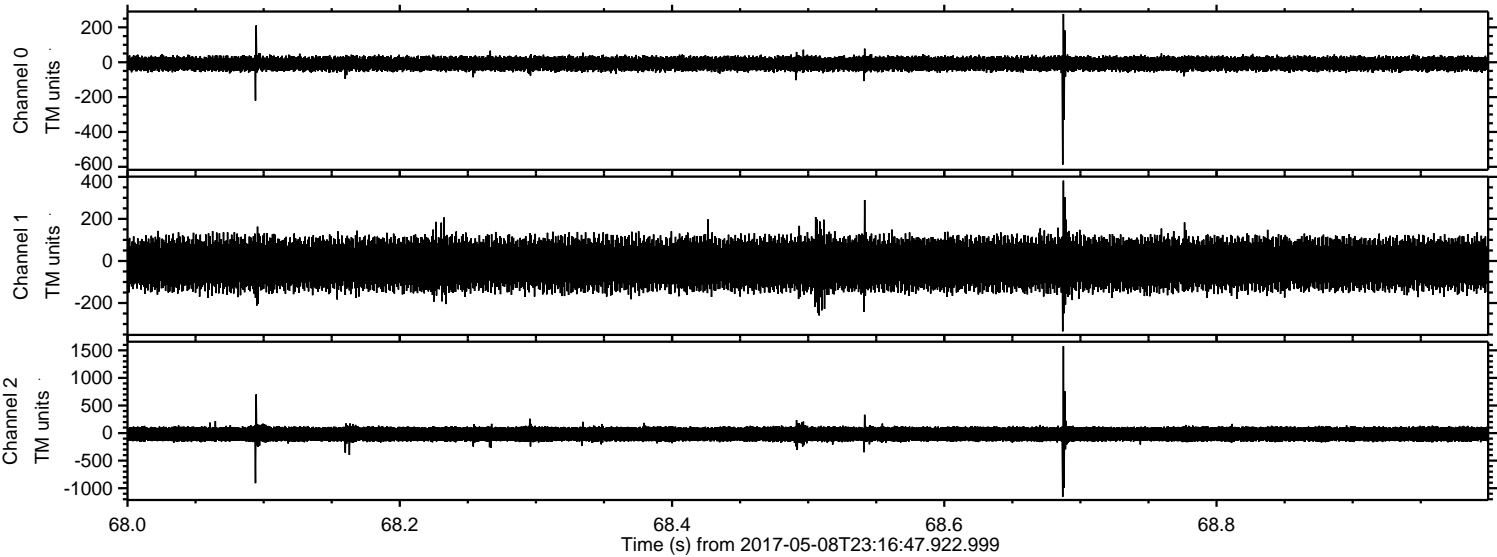


Channel 0
mn: -403
mx: 330
 μ : -8.5
 σ : 23.6

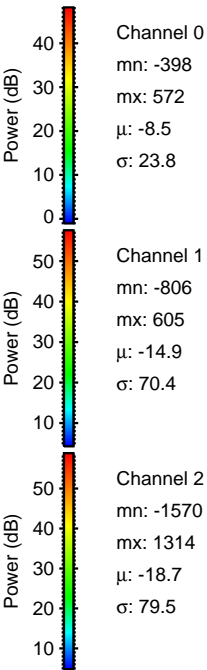
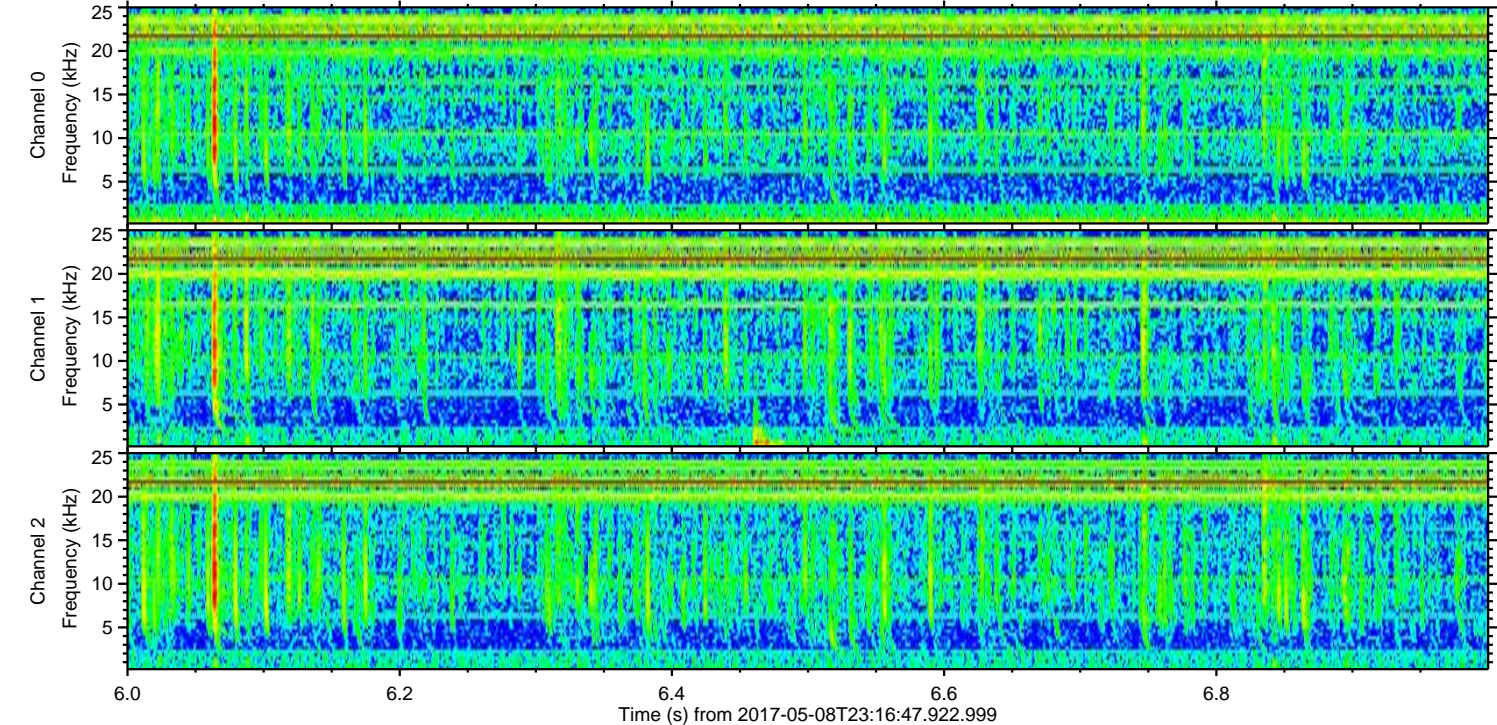
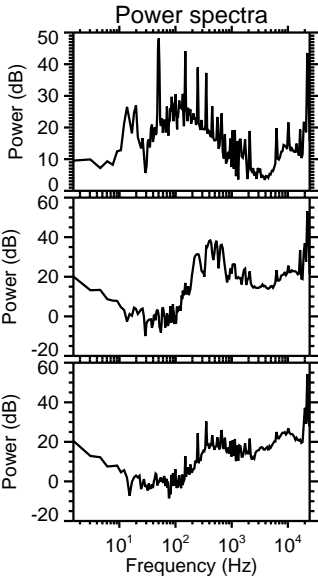
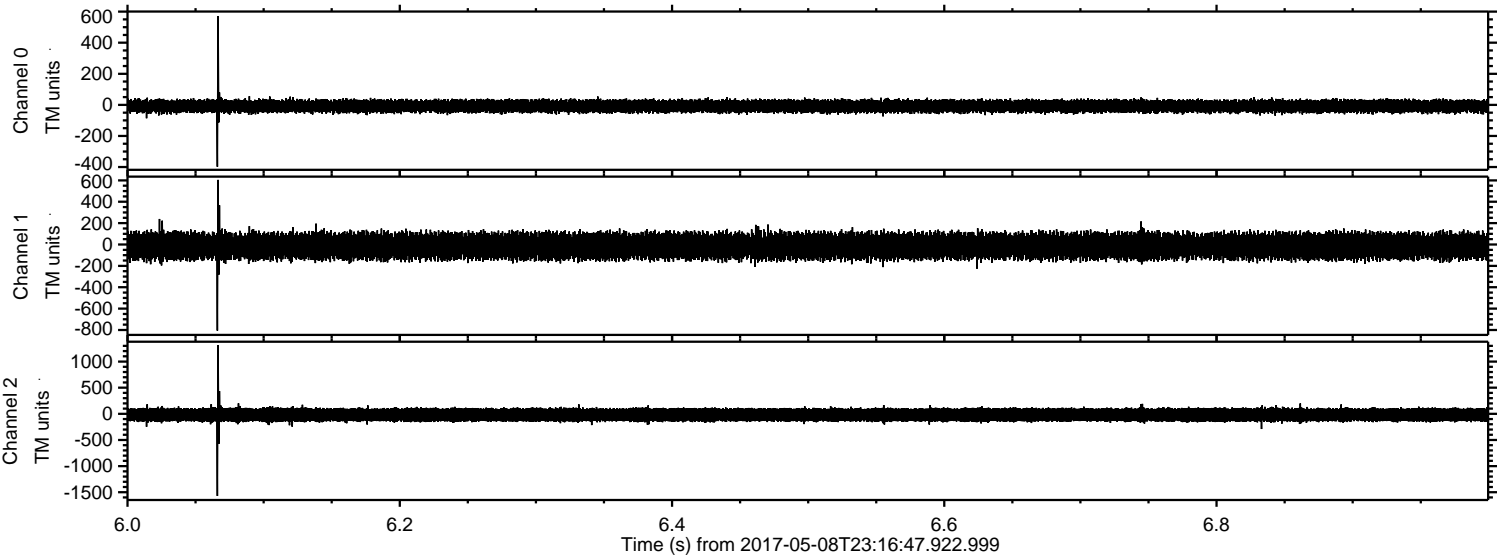
Channel 1
mn: -613
mx: 413
 μ : -15.0
 σ : 64.9

Channel 2
mn: -1405
mx: 1820
 μ : -18.8
 σ : 81.5

Processed Tue May 9 01:25:27 2017 by ELM ver.2012-10-06 from 001__elm20170508_231646__dat00.bin



Processed Tue May 9 01:25:28 2017 by ELM ver.2012-10-06 from 001__elm20170508_231646__dat00.bin



Processed Tue May 9 01:25:29 2017 by ELM ver.2012-10-06 from 001__elm20170508_231646__dat00.bin

