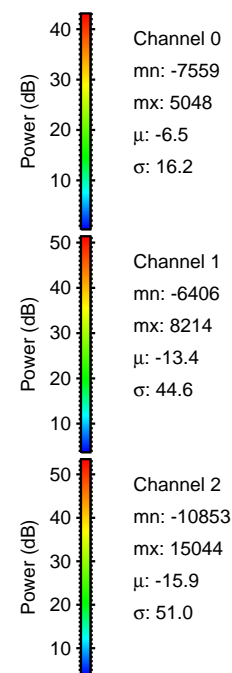
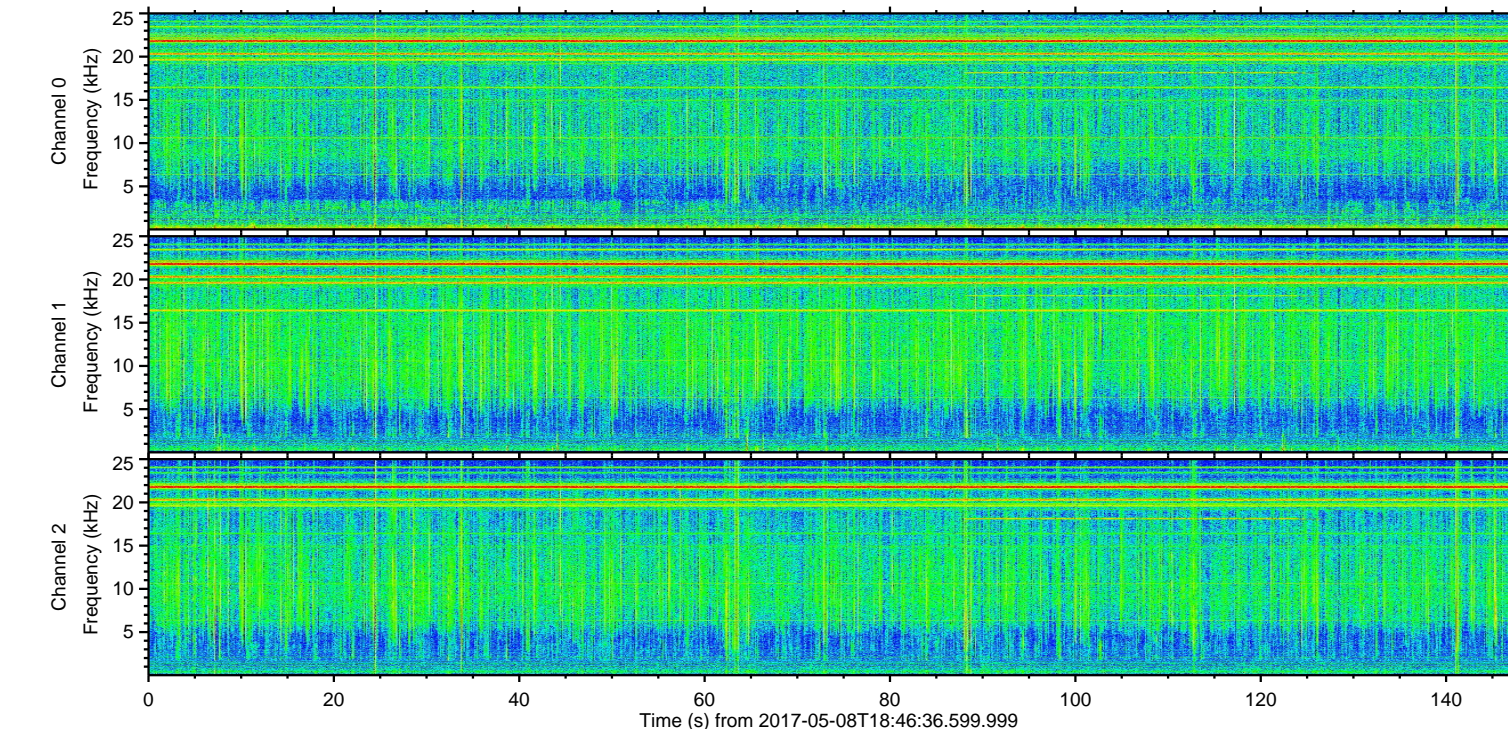
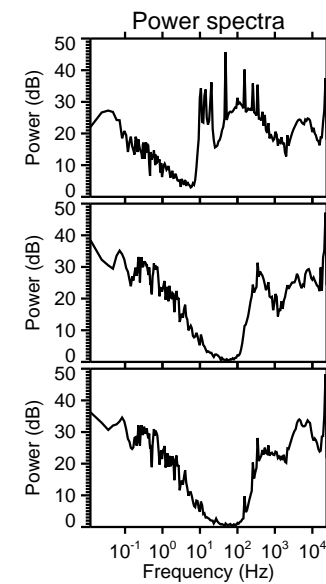
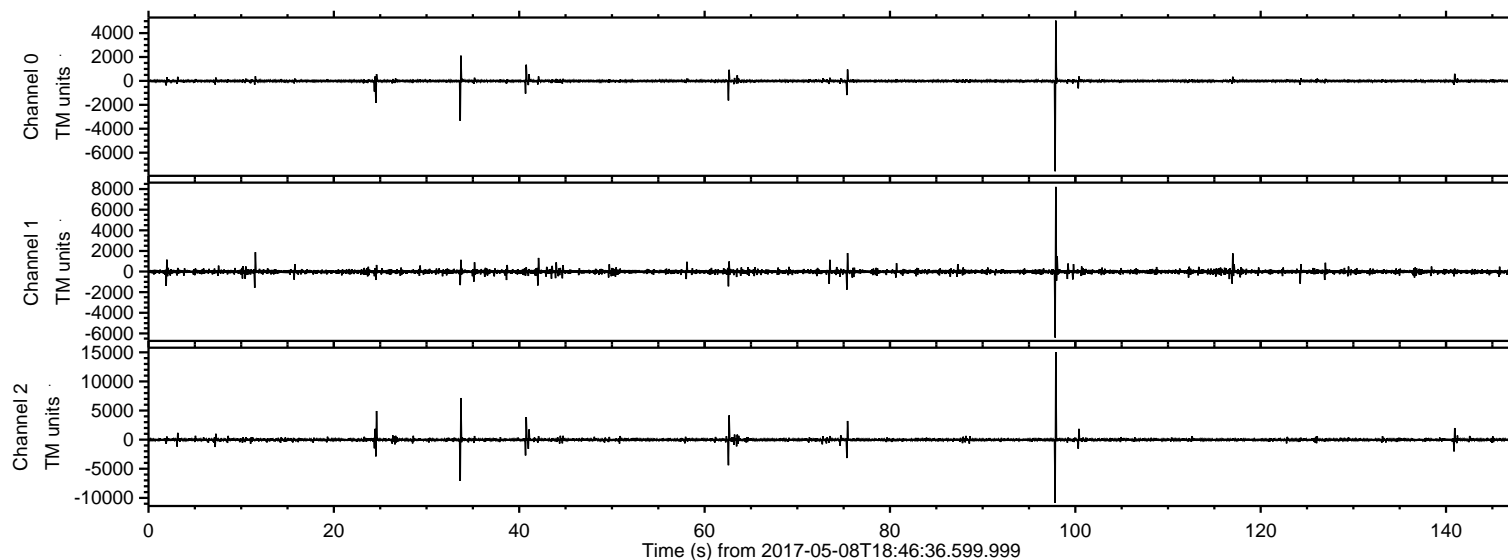


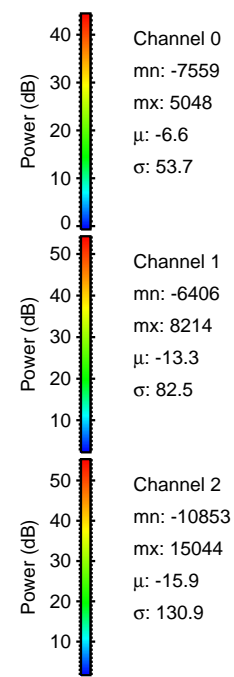
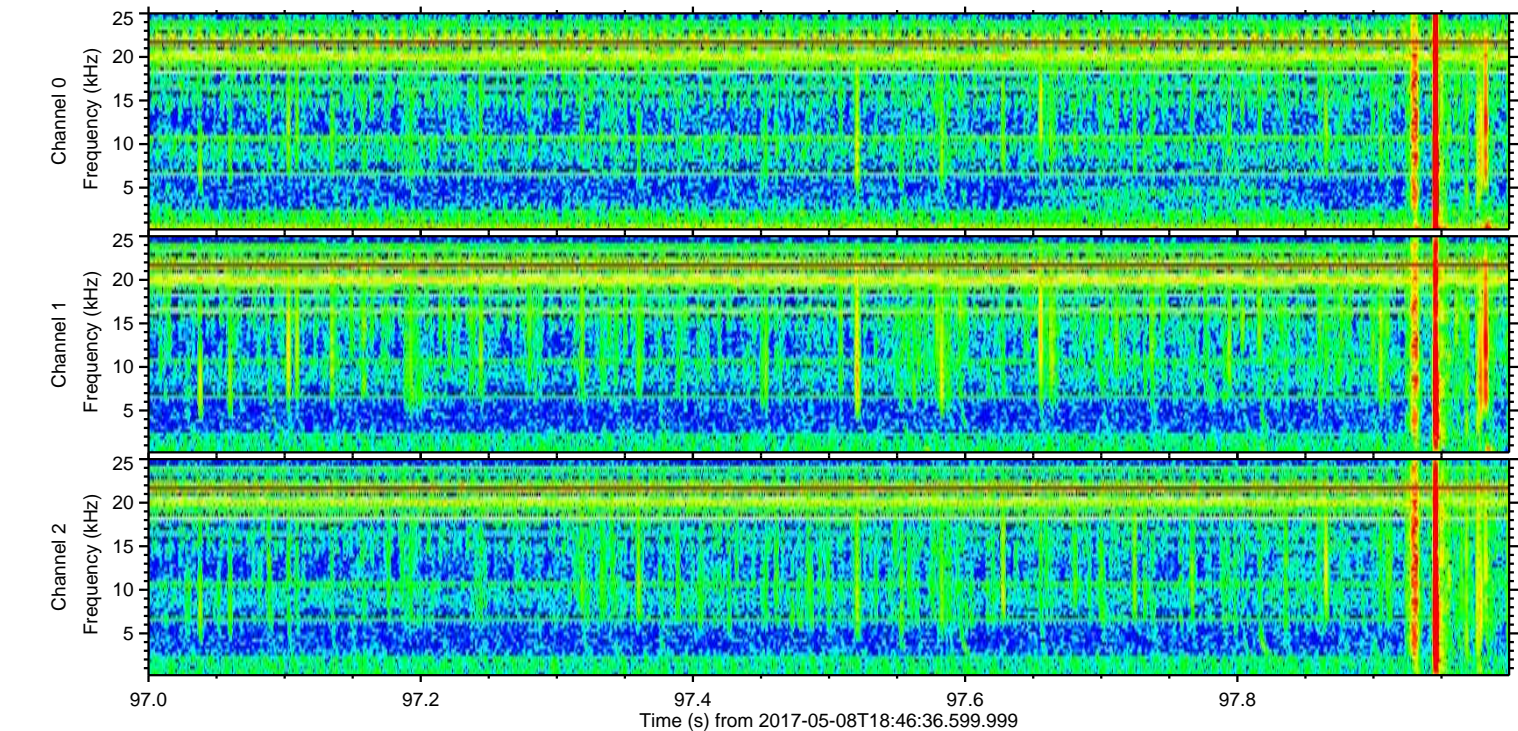
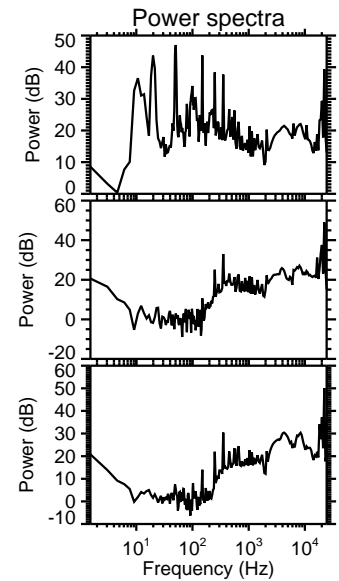
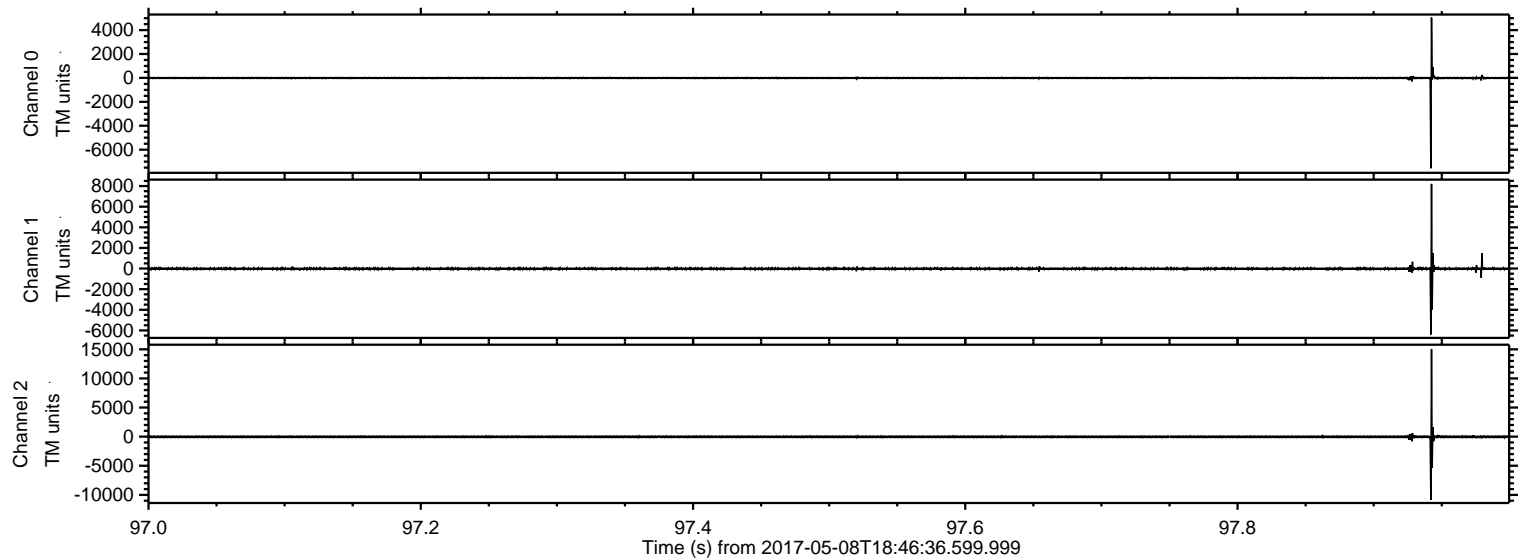
# ELMAVAN 3D WAVEFORMS (Measured data sampled at 50 kHz) 51000 packets of 144 samples from 2017-05-08T18:46:36.599.999.

Processed Mon May 8 20:54:52 2017 by ELM ver.2012-10-06 from 001\_\_elm20170508\_184635\_\_dat00.bin



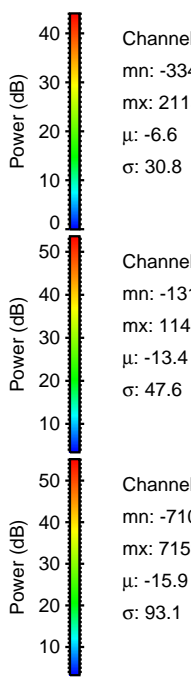
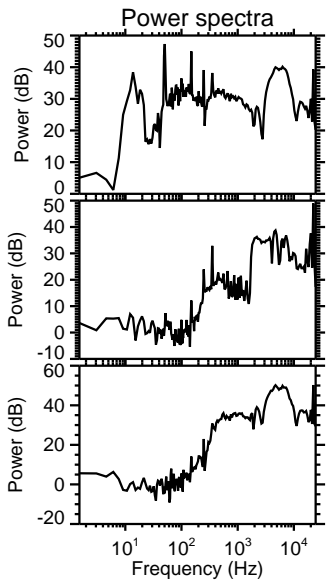
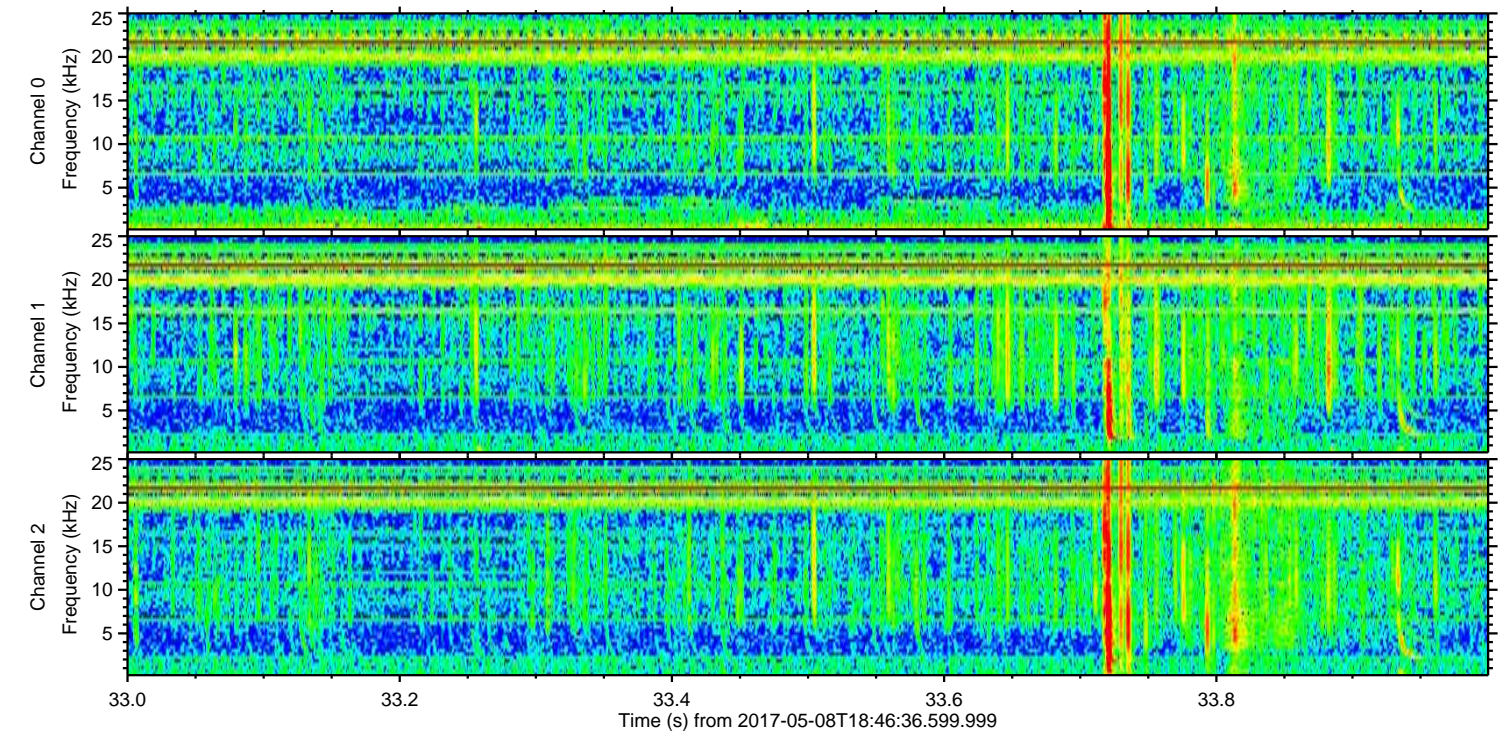
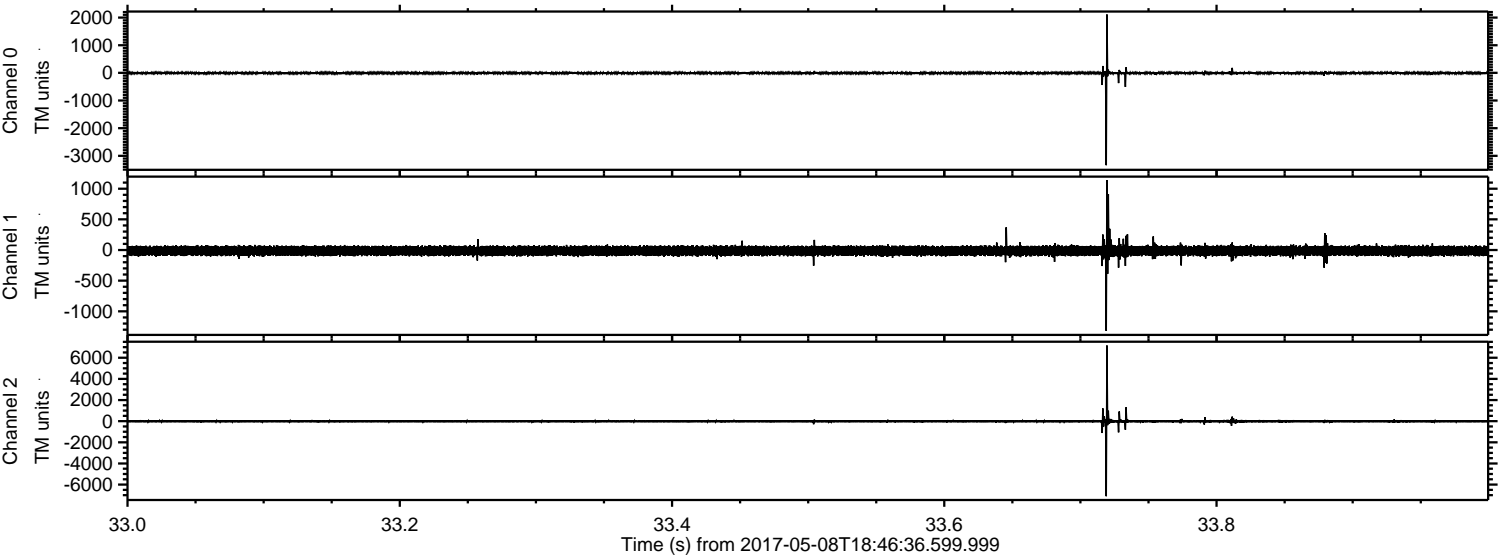


Processed Mon May 8 20:55:03 2017 by ELM ver.2012-10-06 from 001\_\_elm20170508\_184635\_\_dat00.bin



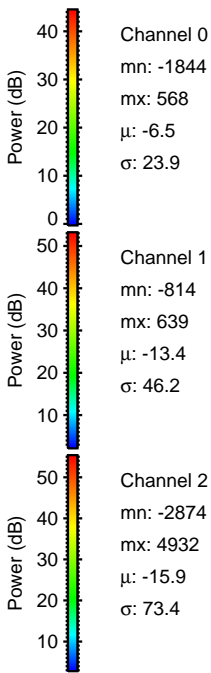
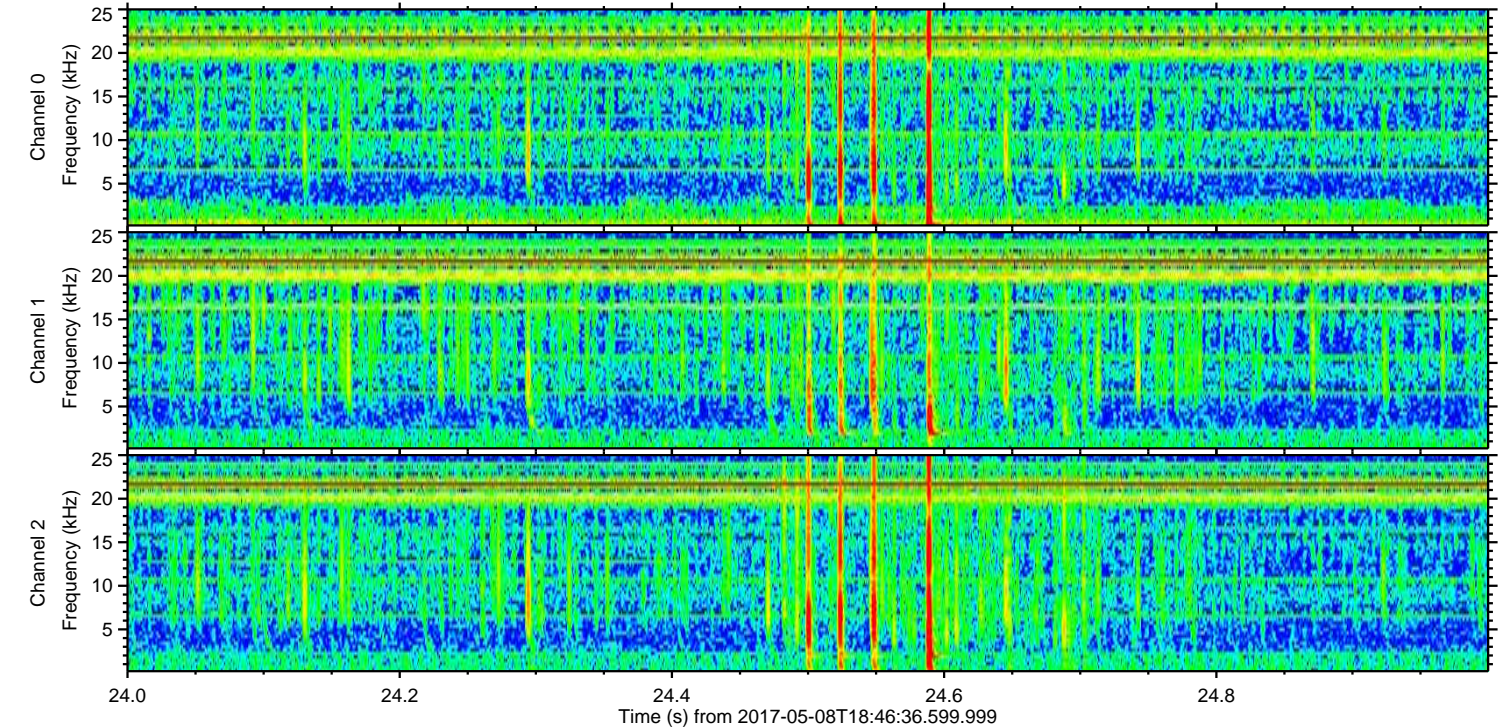
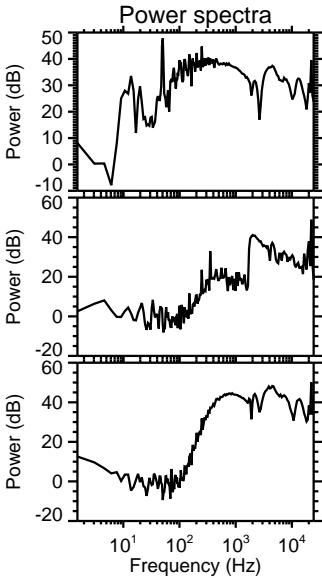
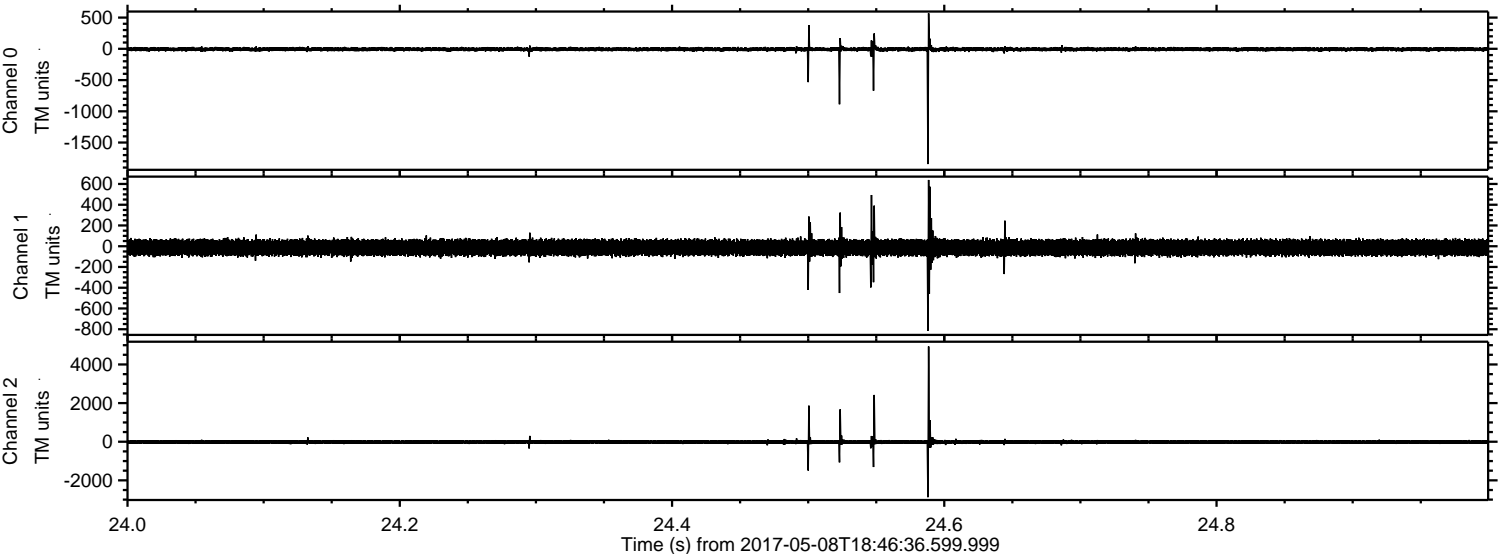


Processed Mon May 8 20:55:04 2017 by ELM ver.2012-10-06 from 001\_\_elm20170508\_184635\_\_dat00.bin



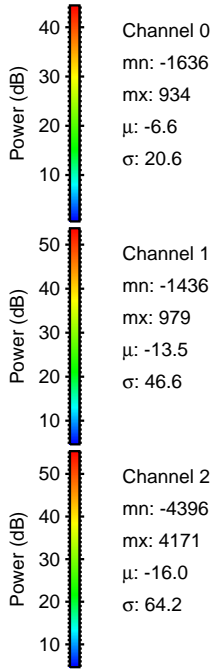
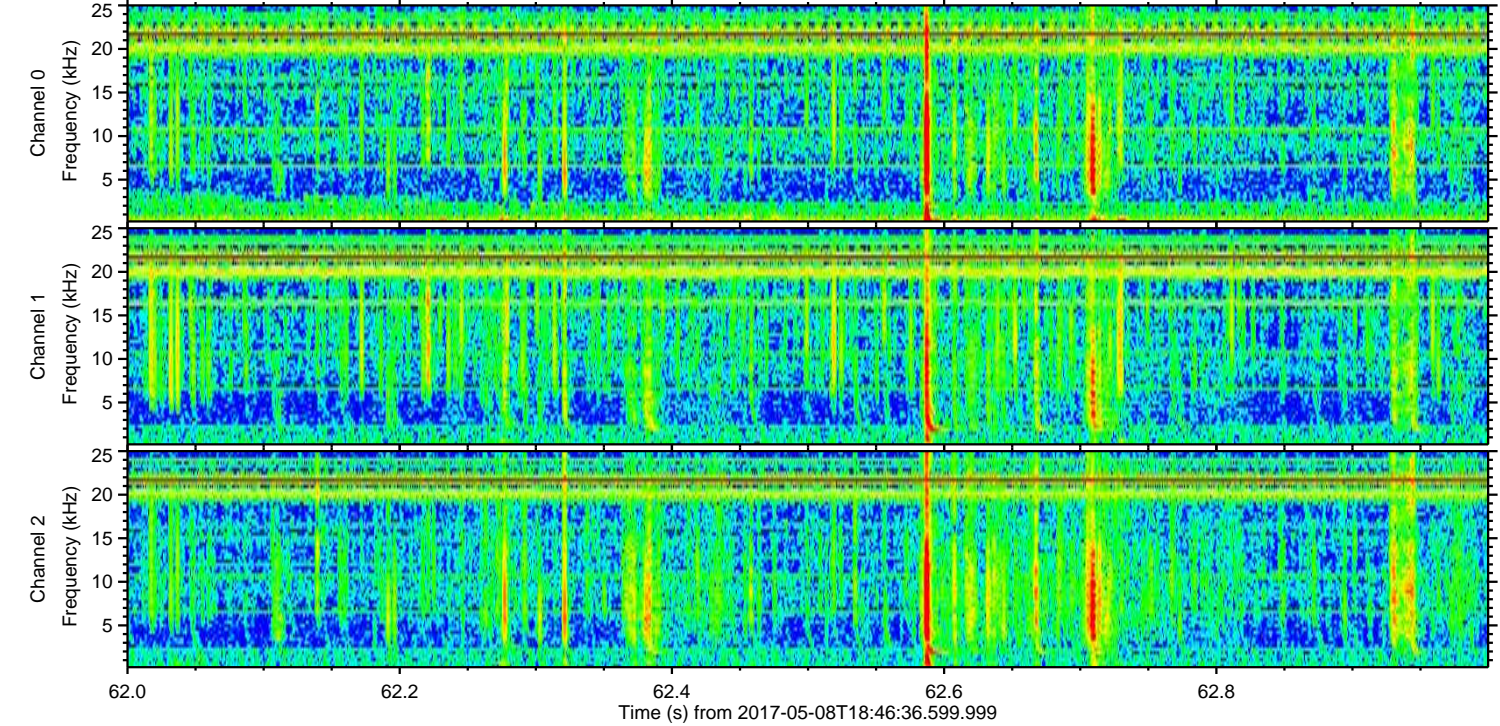
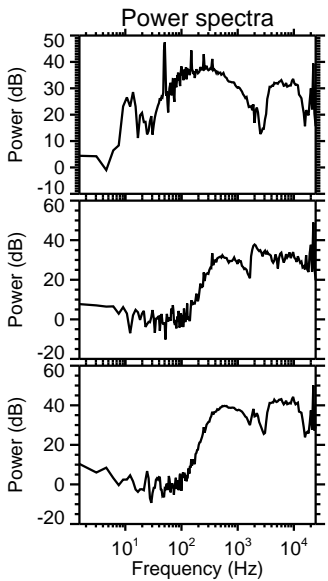
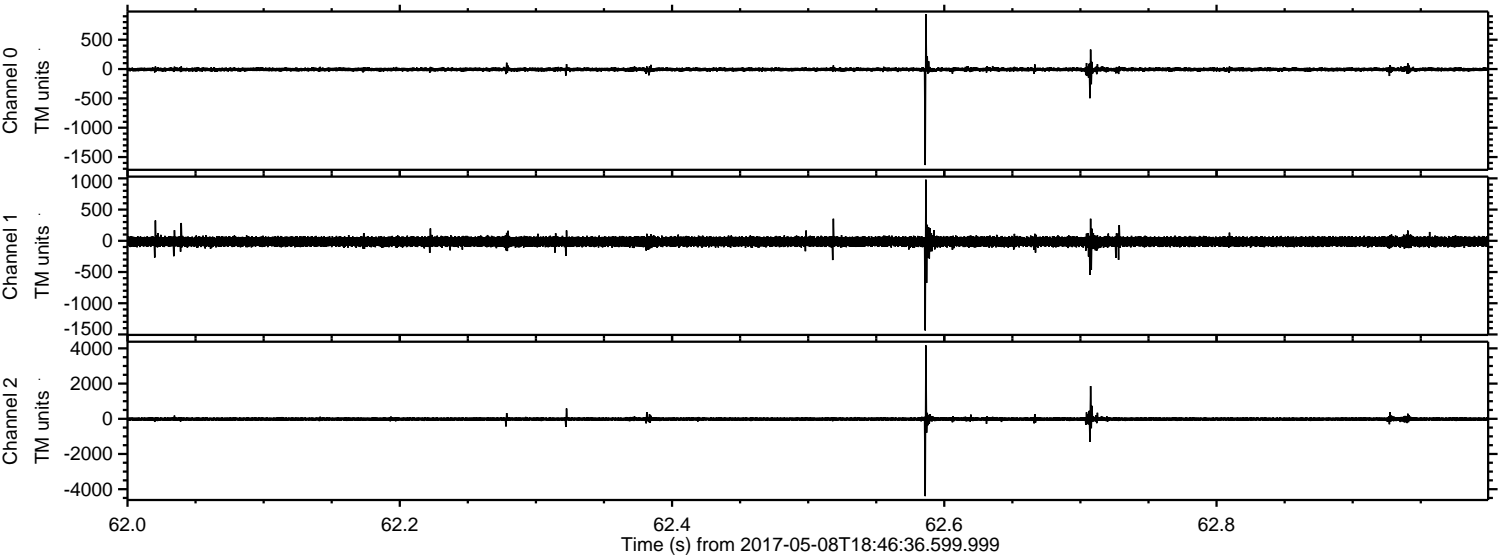


Processed Mon May 8 20:55:05 2017 by ELM ver.2012-10-06 from 001\_\_elm20170508\_184635\_\_dat00.bin



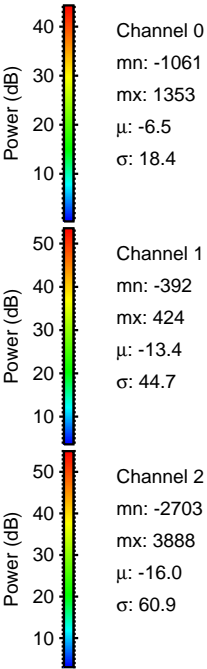
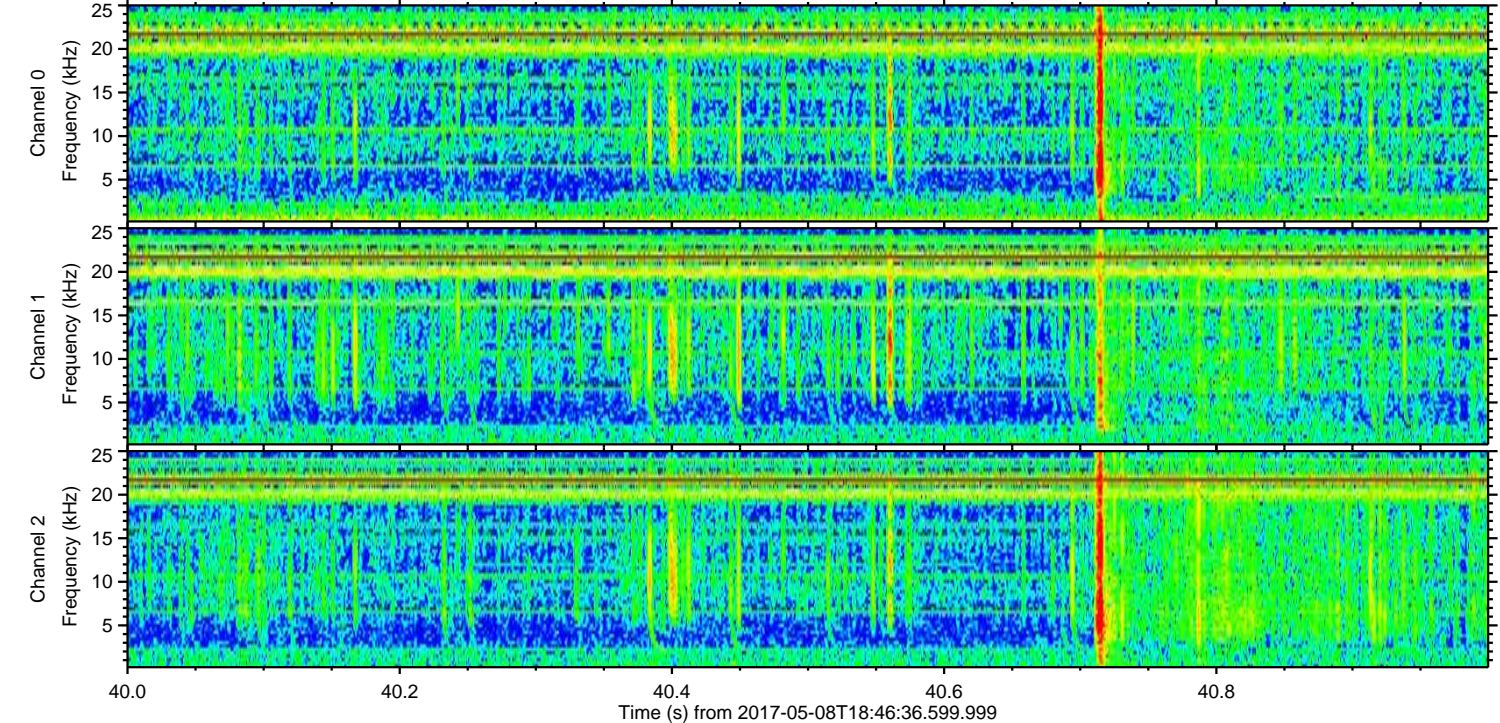
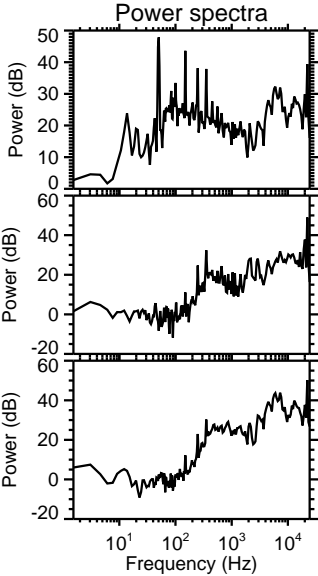
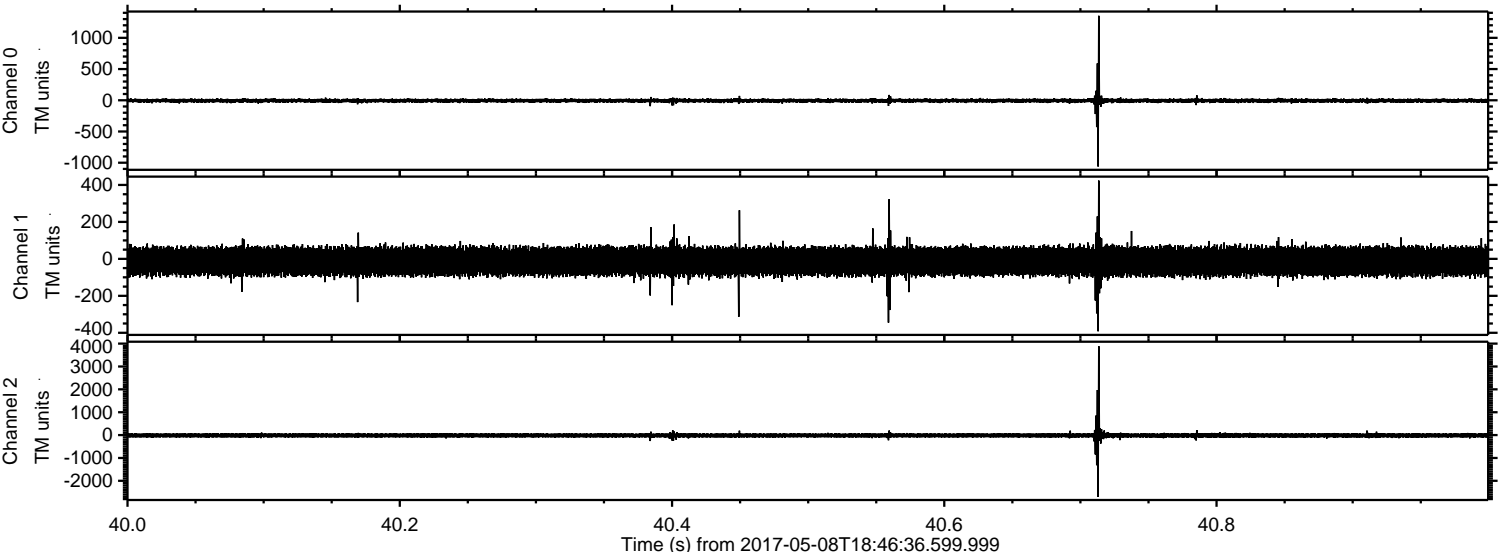


Processed Mon May 8 20:55:06 2017 by ELM ver.2012-10-06 from 001\_\_elm20170508\_184635\_\_dat00.bin



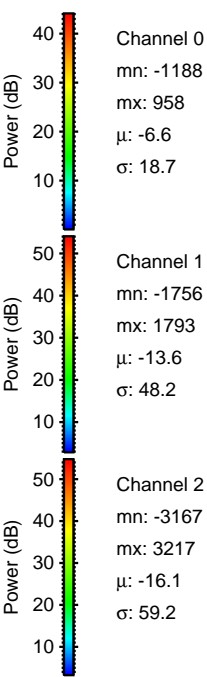
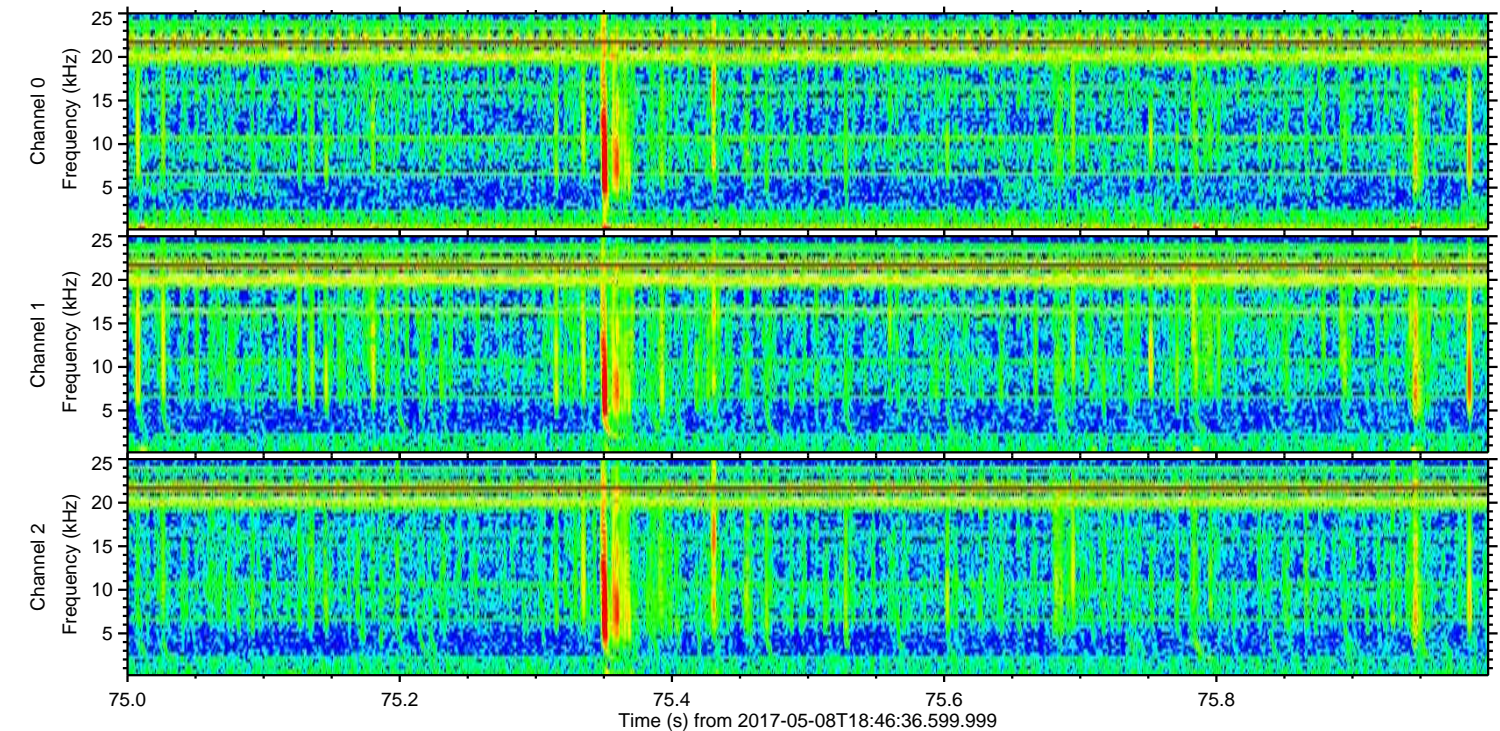
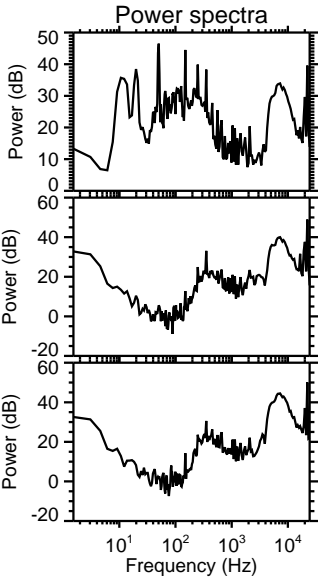
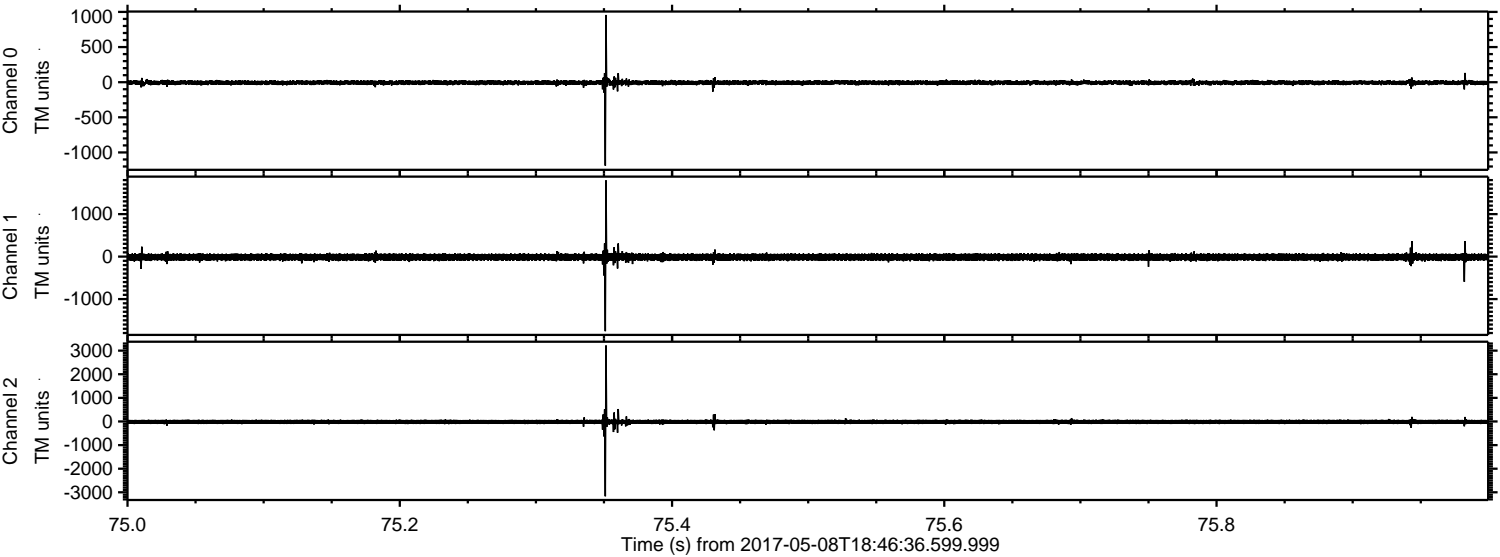


Processed Mon May 8 20:55:07 2017 by ELM ver.2012-10-06 from 001\_\_elm20170508\_184635\_\_dat00.bin





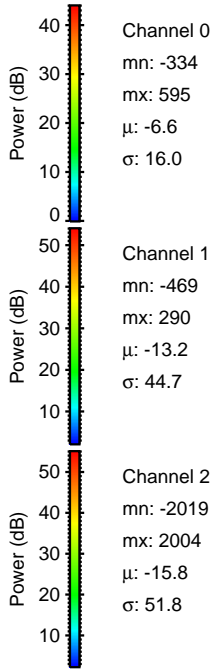
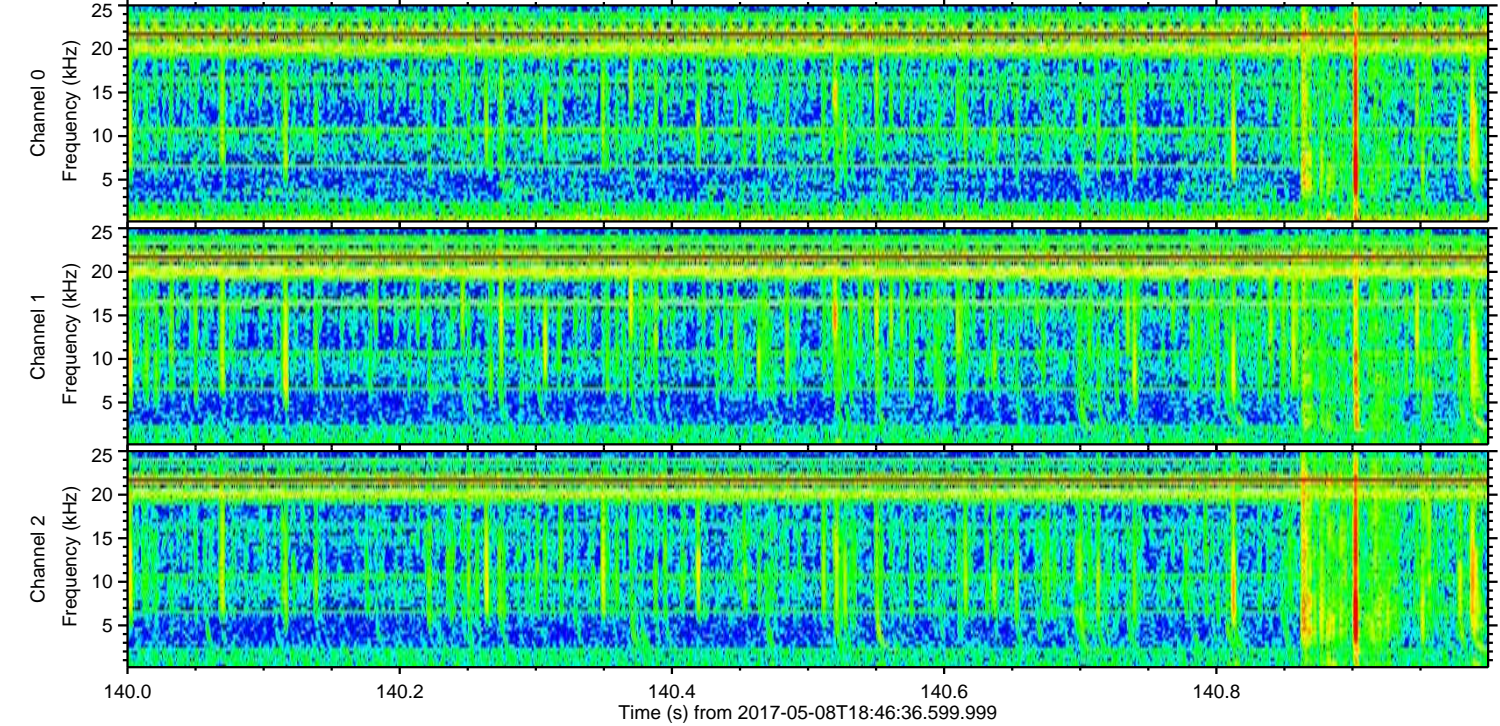
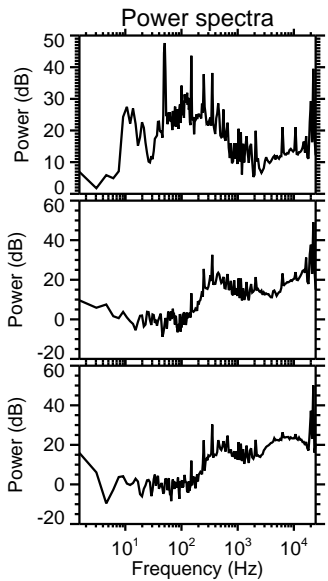
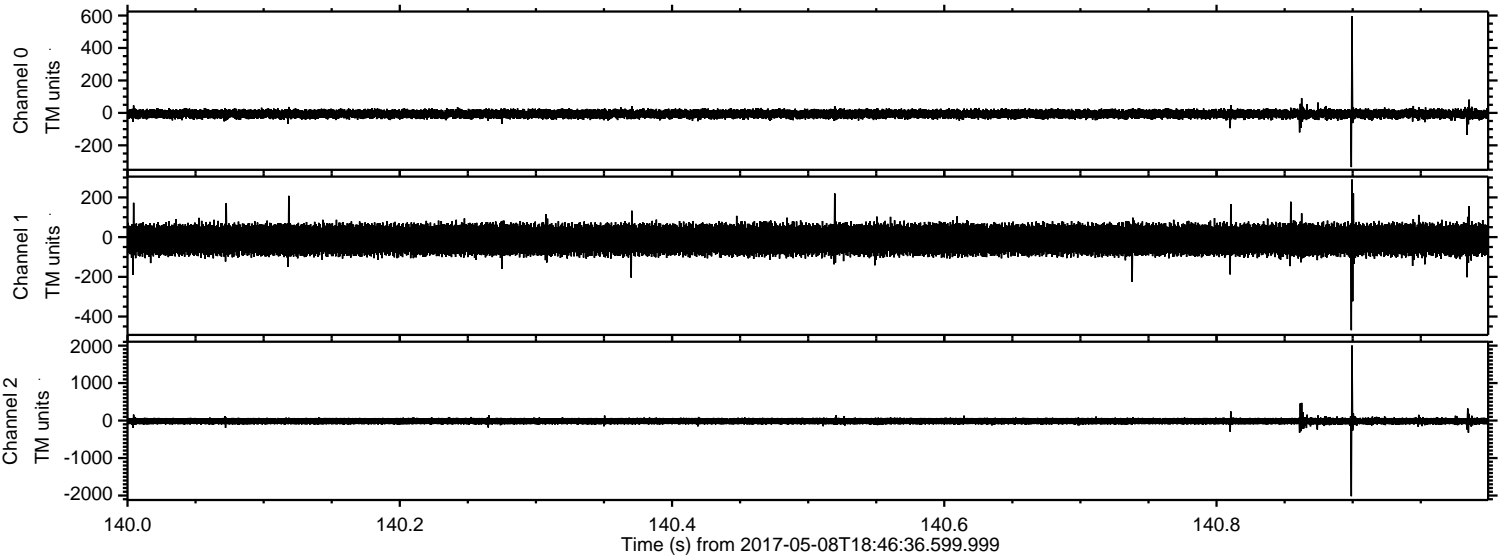
Processed Mon May 8 20:55:08 2017 by ELM ver.2012-10-06 from 001\_\_elm20170508\_184635\_\_dat00.bin





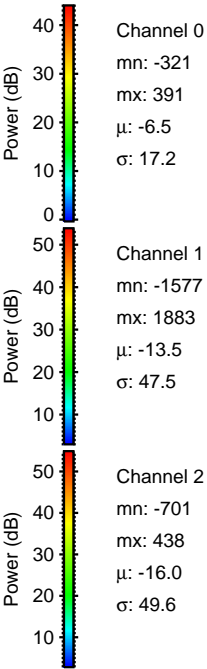
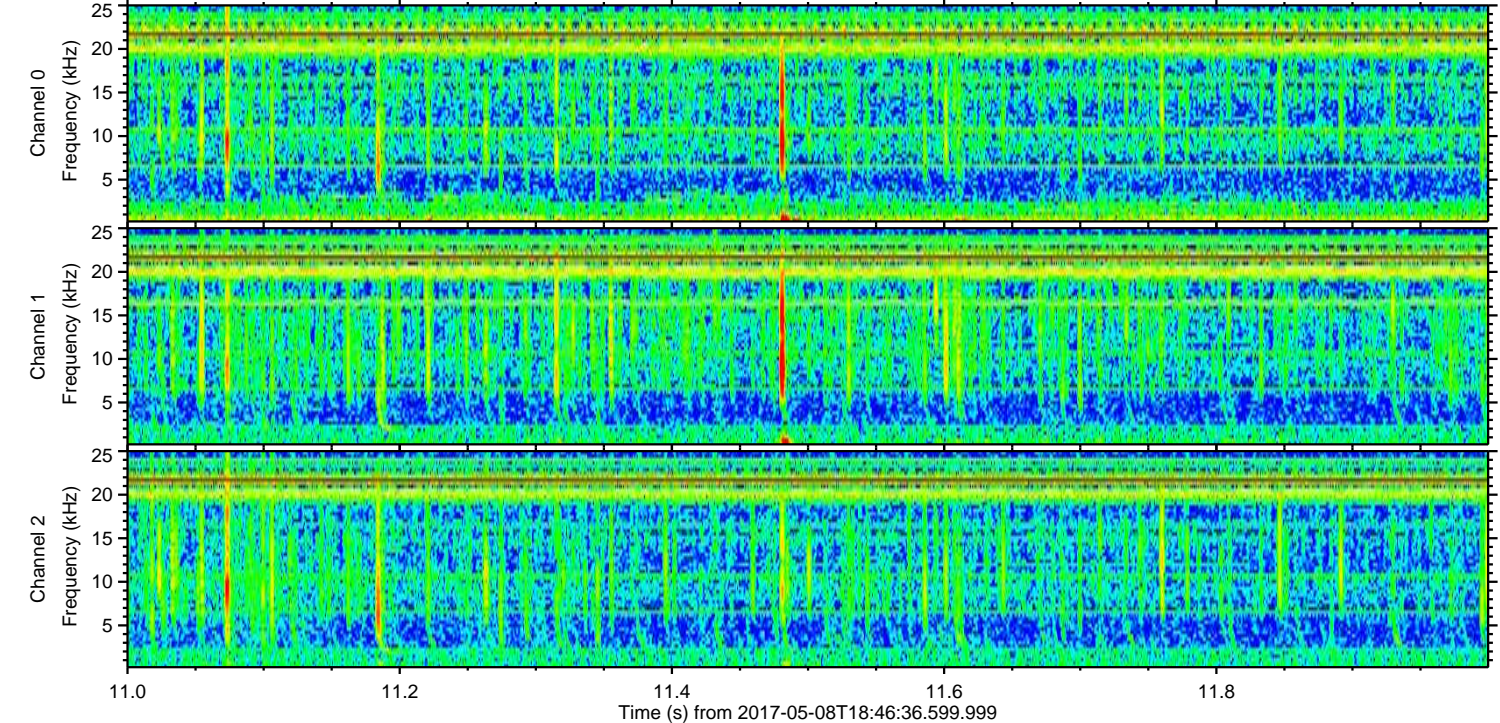
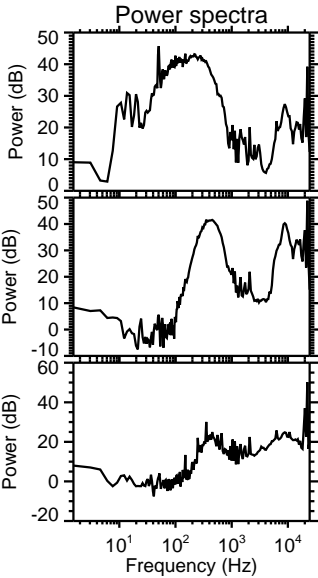
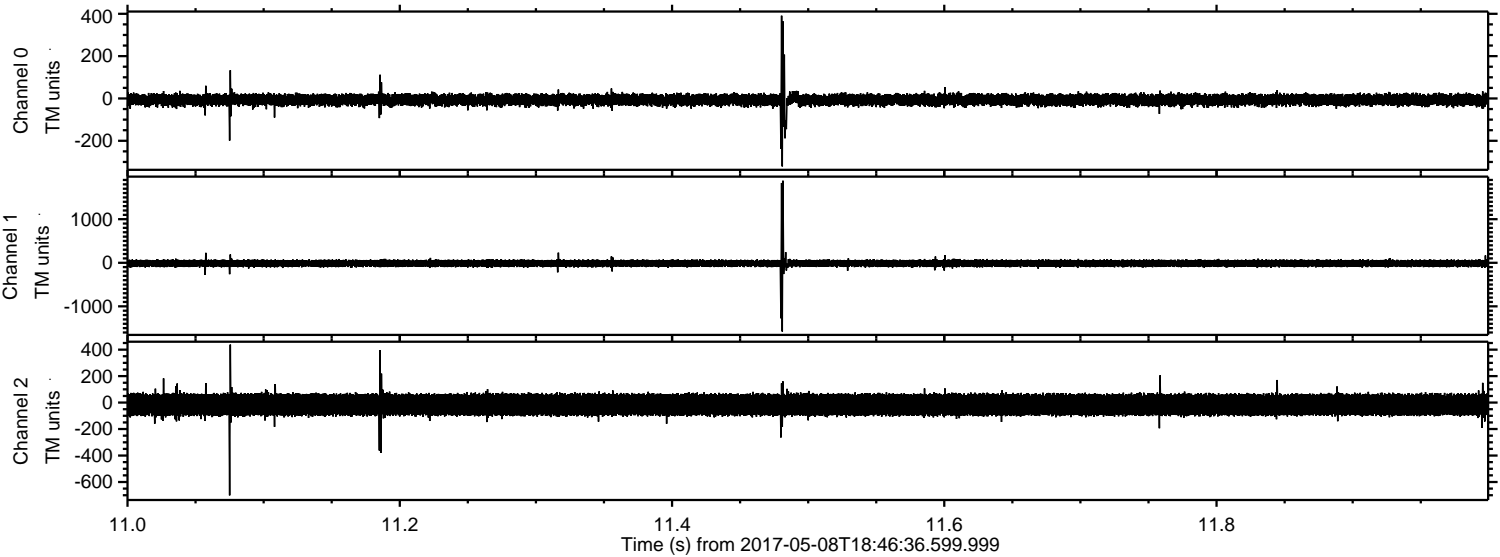
ELMAVAN 3D WAVEFORMS (Measured data sampled at 50 kHz) 51000 packets of 144 samples from 2017-05-08T18:46:36.599.999. Part 141/147

Processed Mon May 8 20:55:09 2017 by ELM ver.2012-10-06 from 001\_\_elm20170508\_184635\_\_dat00.bin





Processed Mon May 8 20:55:10 2017 by ELM ver.2012-10-06 from 001\_\_elm20170508\_184635\_\_dat00.bin





ELMAVAN 3D WAVEFORMS (Measured data sampled at 50 kHz) 51000 packets of 144 samples from 2017-05-08T18:46:36.599.999. Part 101/147

Processed Mon May 8 20:55:11 2017 by ELM ver.2012-10-06 from 001\_\_elm20170508\_184635\_\_dat00.bin

