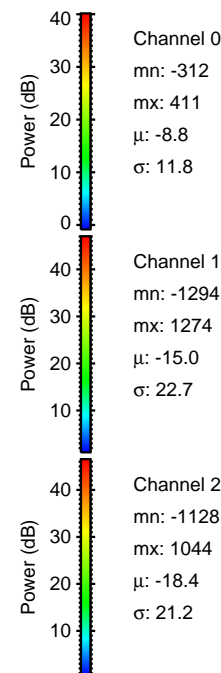
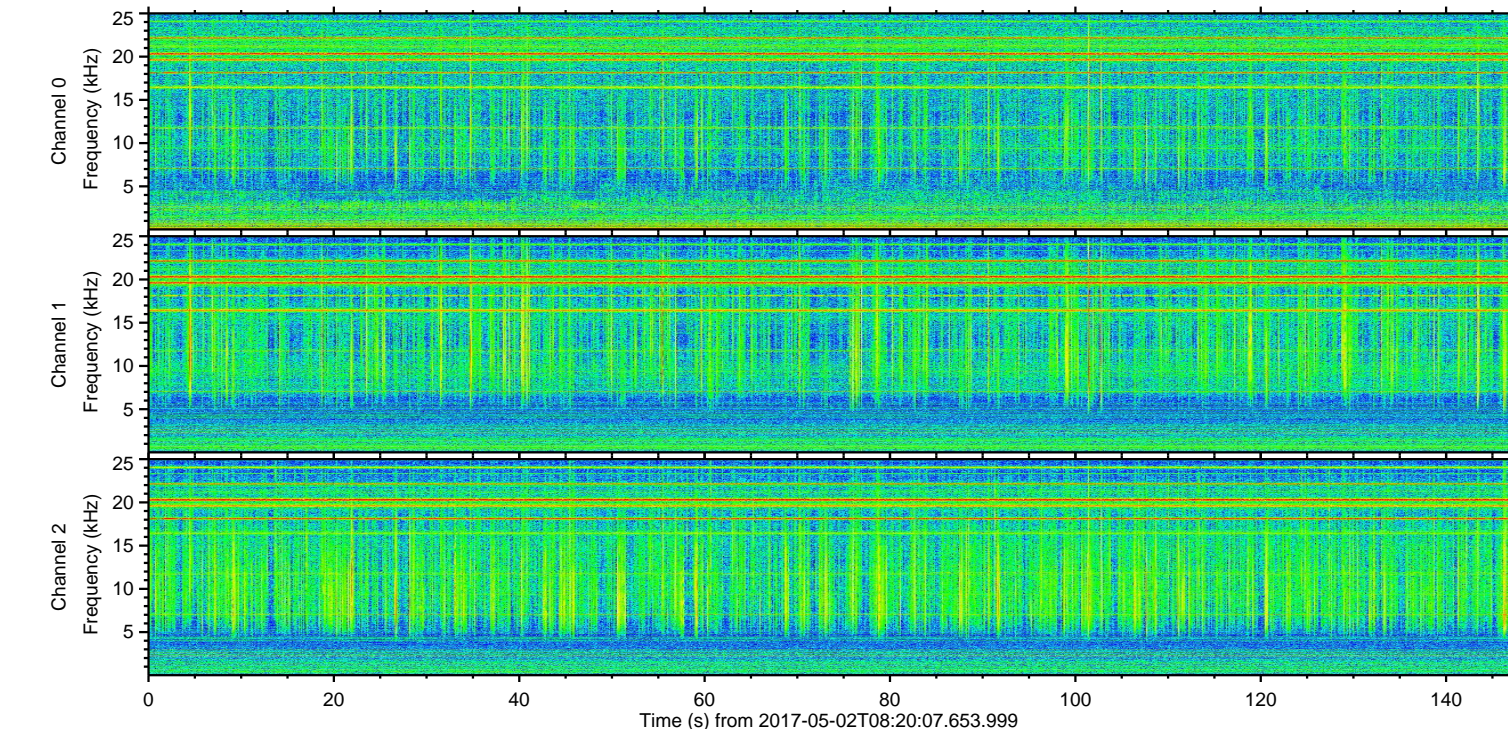
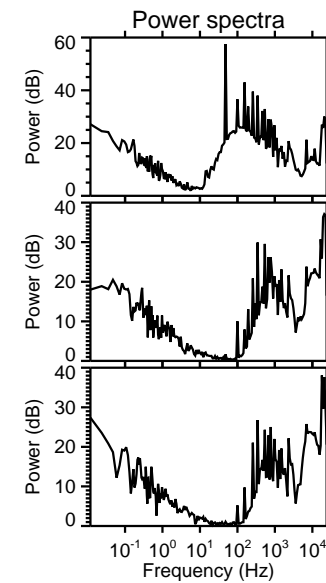
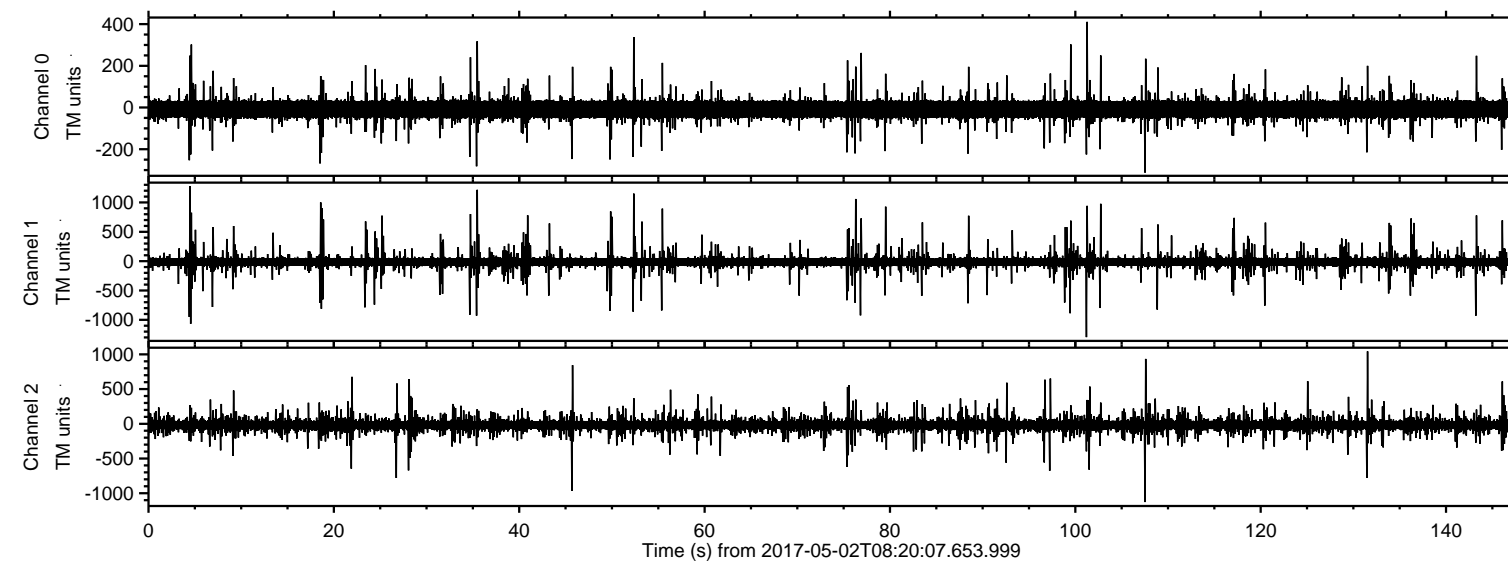


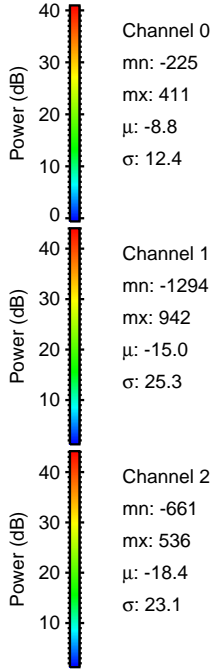
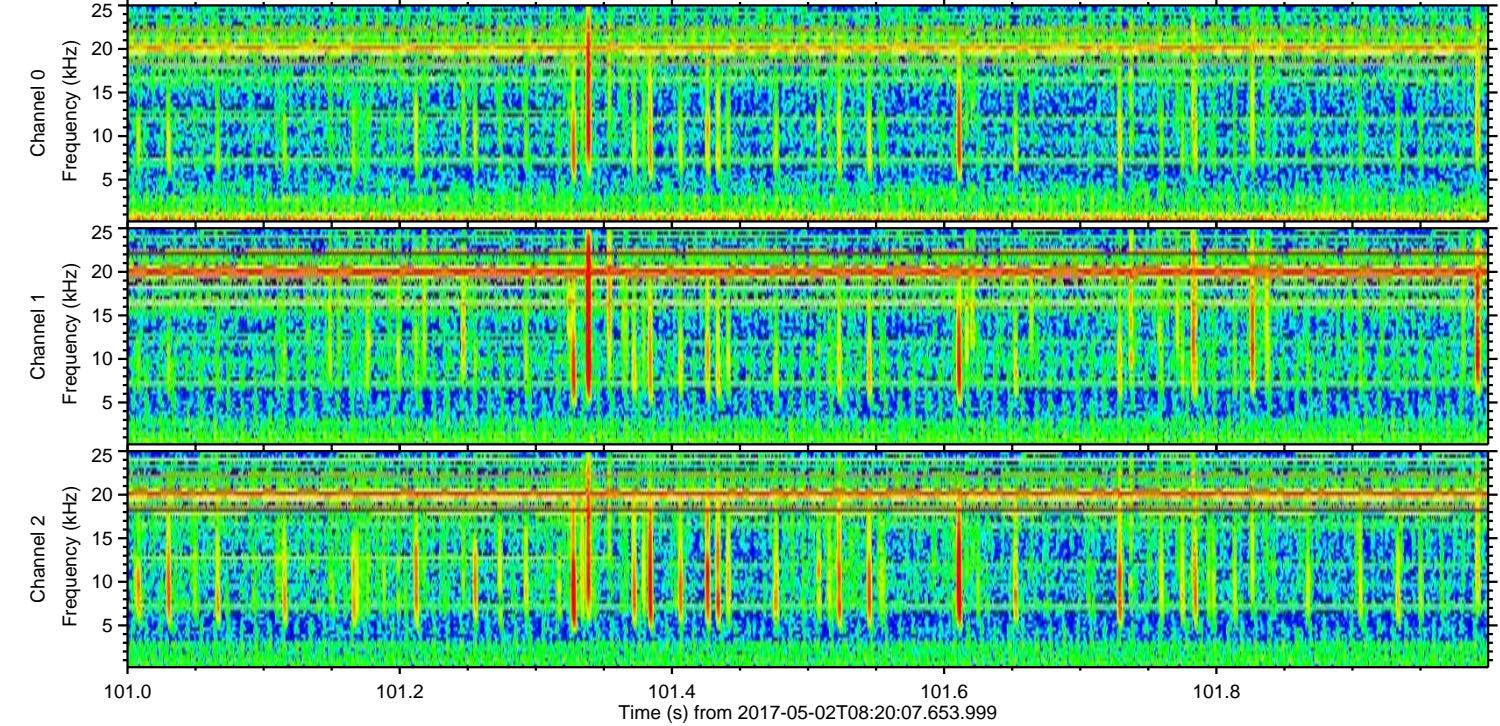
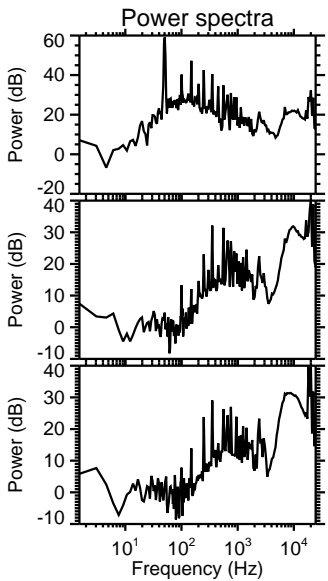
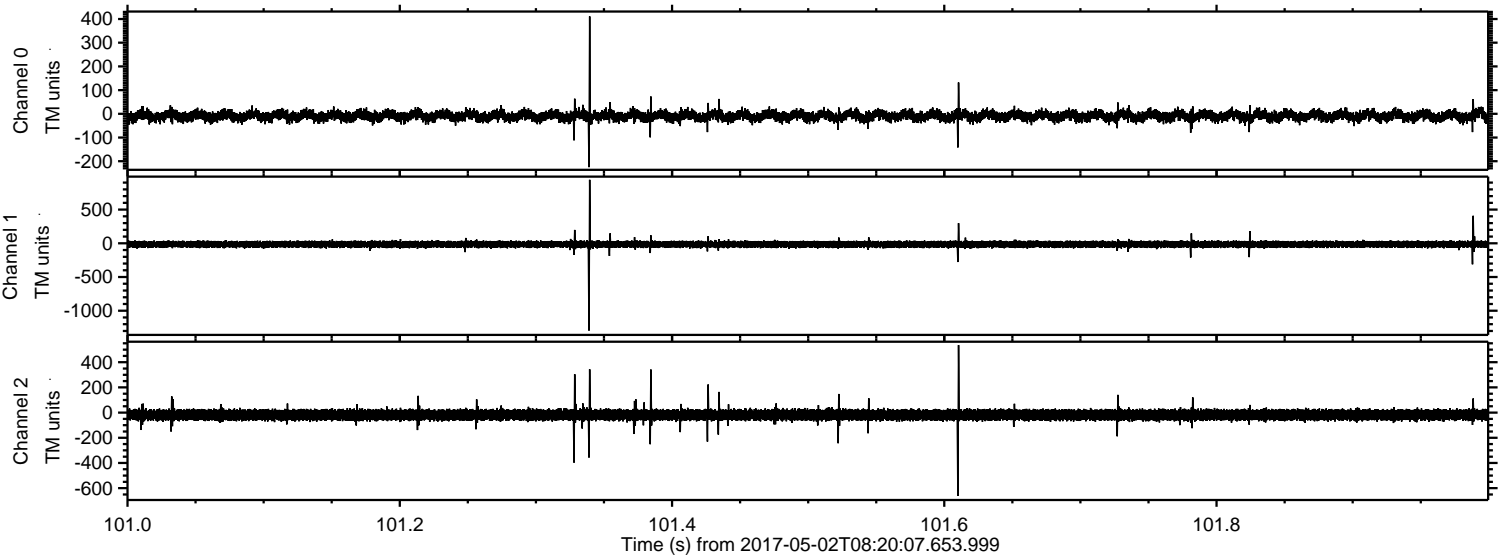
ELMAVAN 3D WAVEFORMS (Measured data sampled at 50 kHz) 51000 packets of 144 samples from 2017-05-02T08:20:07.653.999.

Processed Tue May 2 10:28:18 2017 by ELM ver.2012-10-06 from 001__elm20170502_082006__dat00.bin

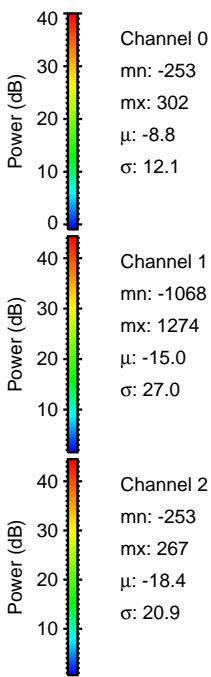
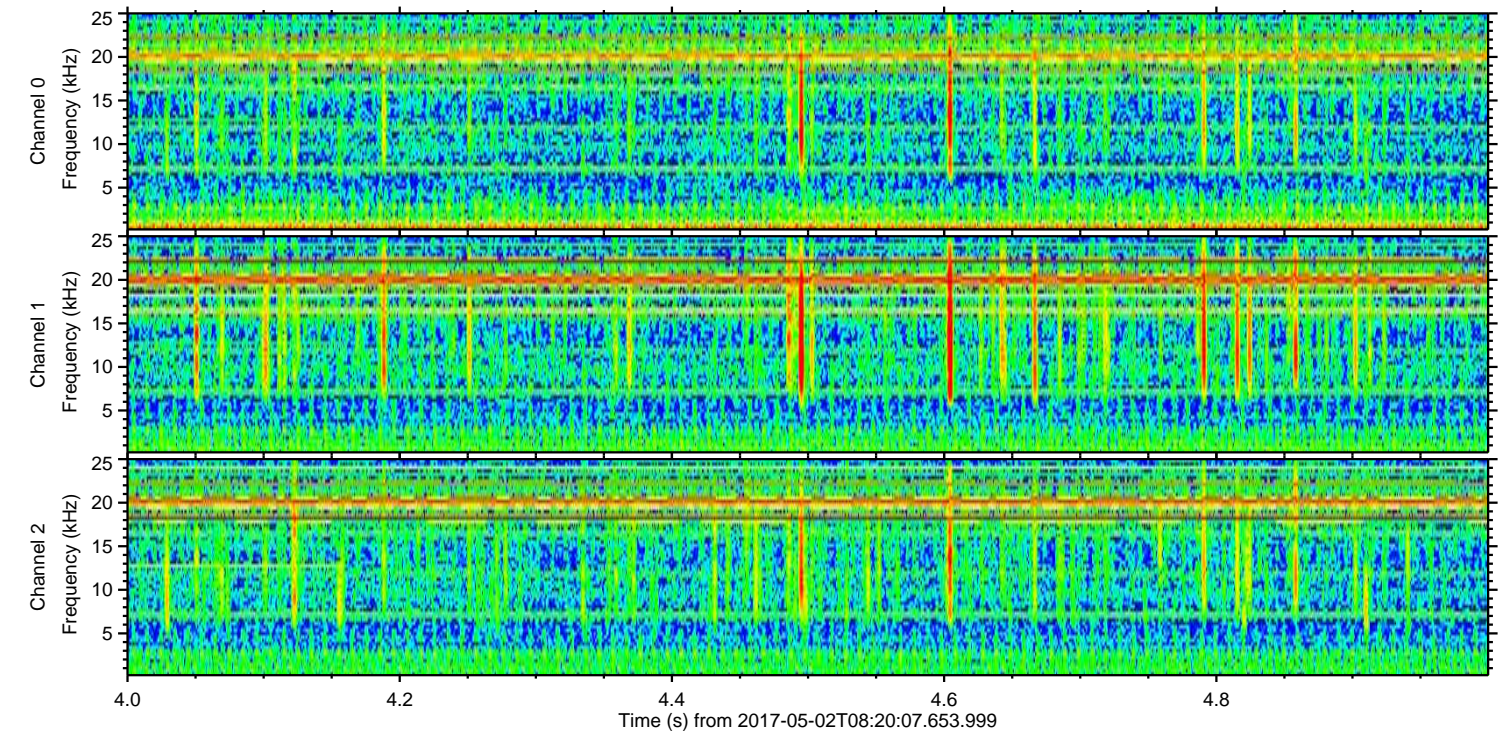
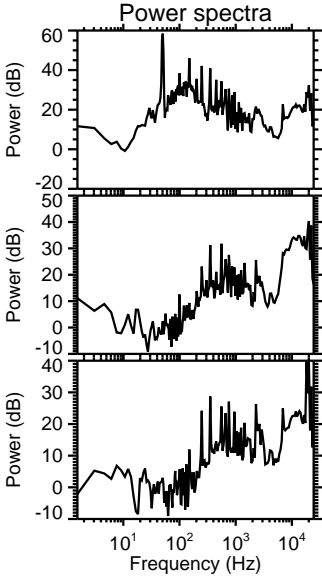
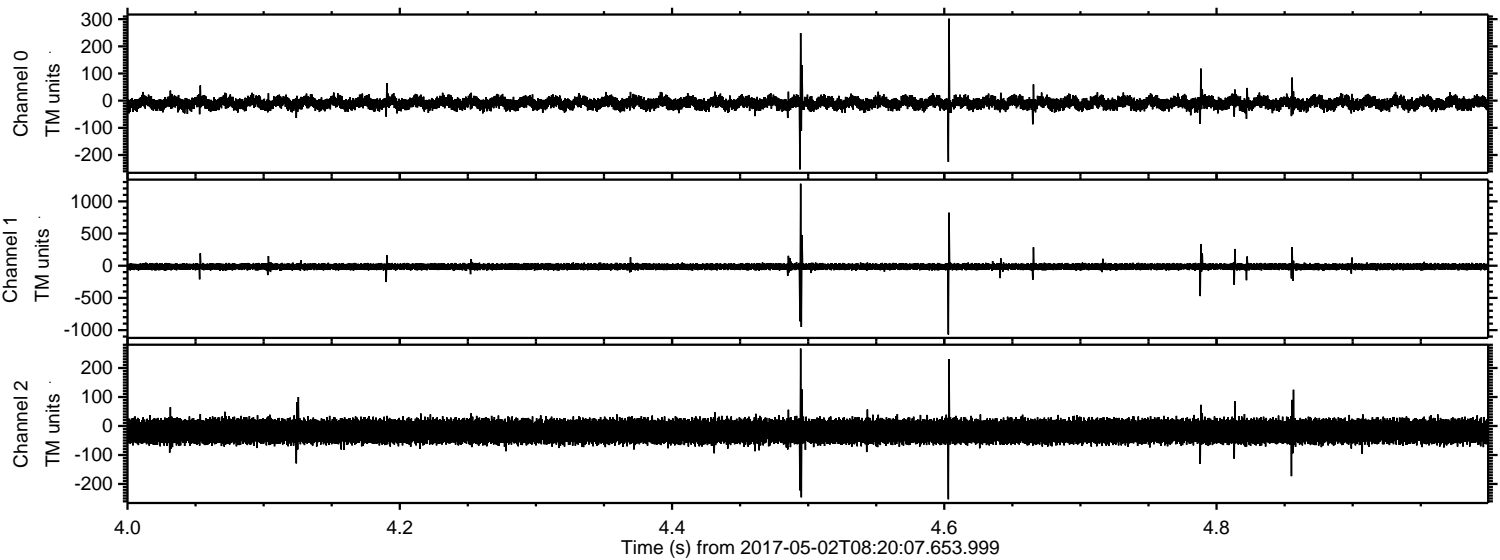


ELMAVAN 3D WAVEFORMS (Measured data sampled at 50 kHz) 51000 packets of 144 samples from 2017-05-02T08:20:07.653.999. Part 102/147

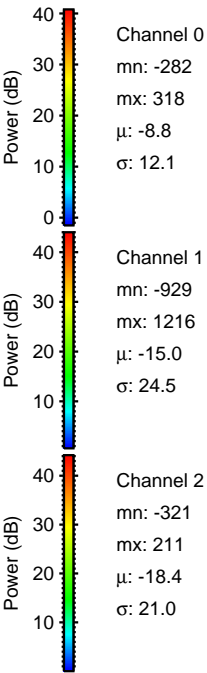
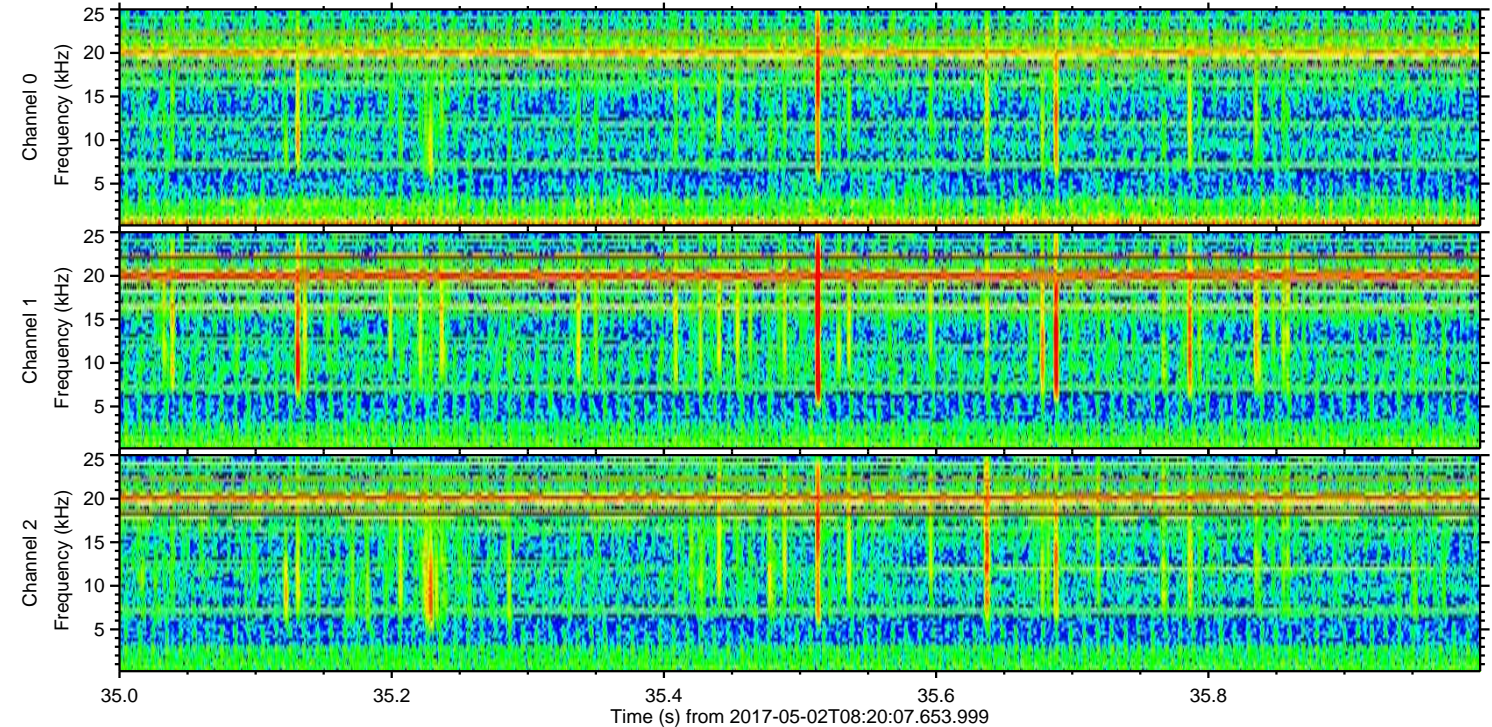
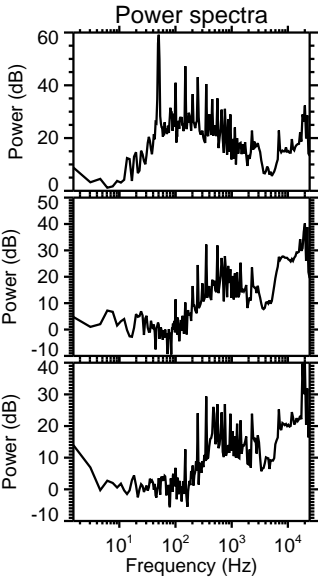
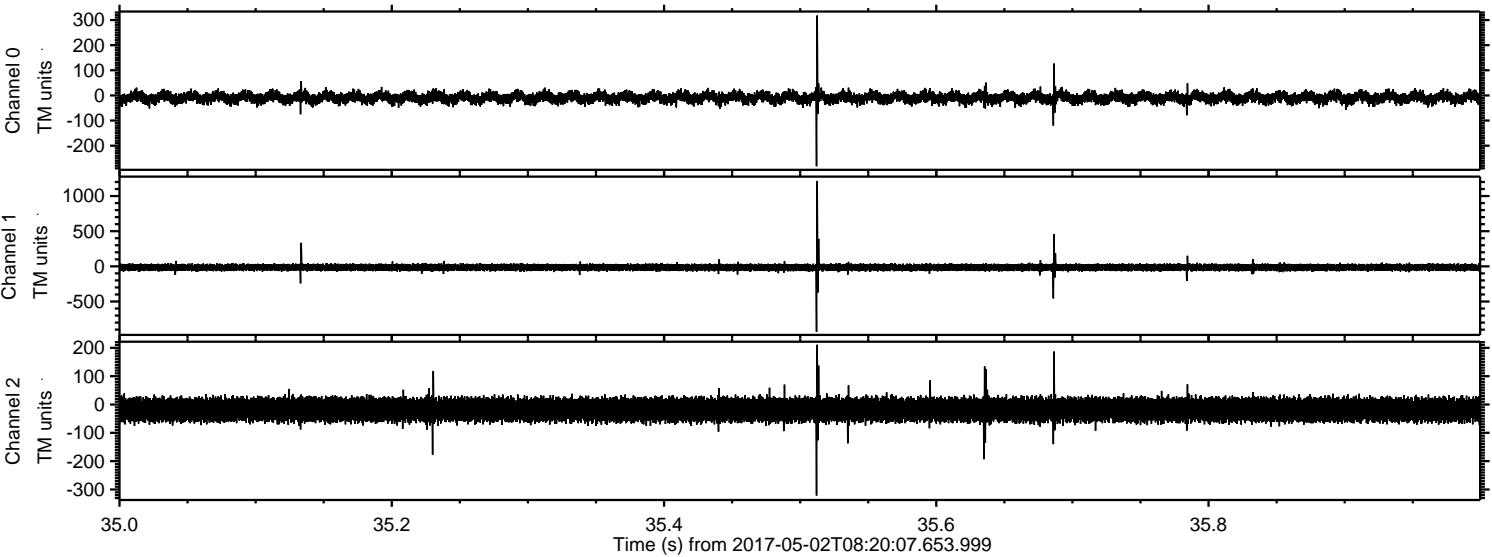
Processed Tue May 2 10:28:29 2017 by ELM ver.2012-10-06 from 001__elm20170502_082006__dat00.bin



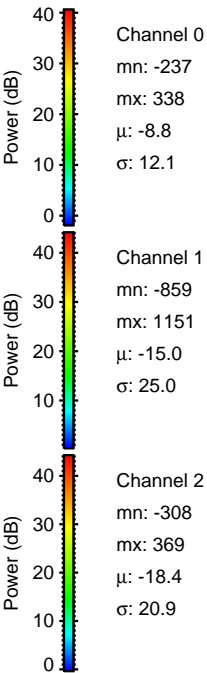
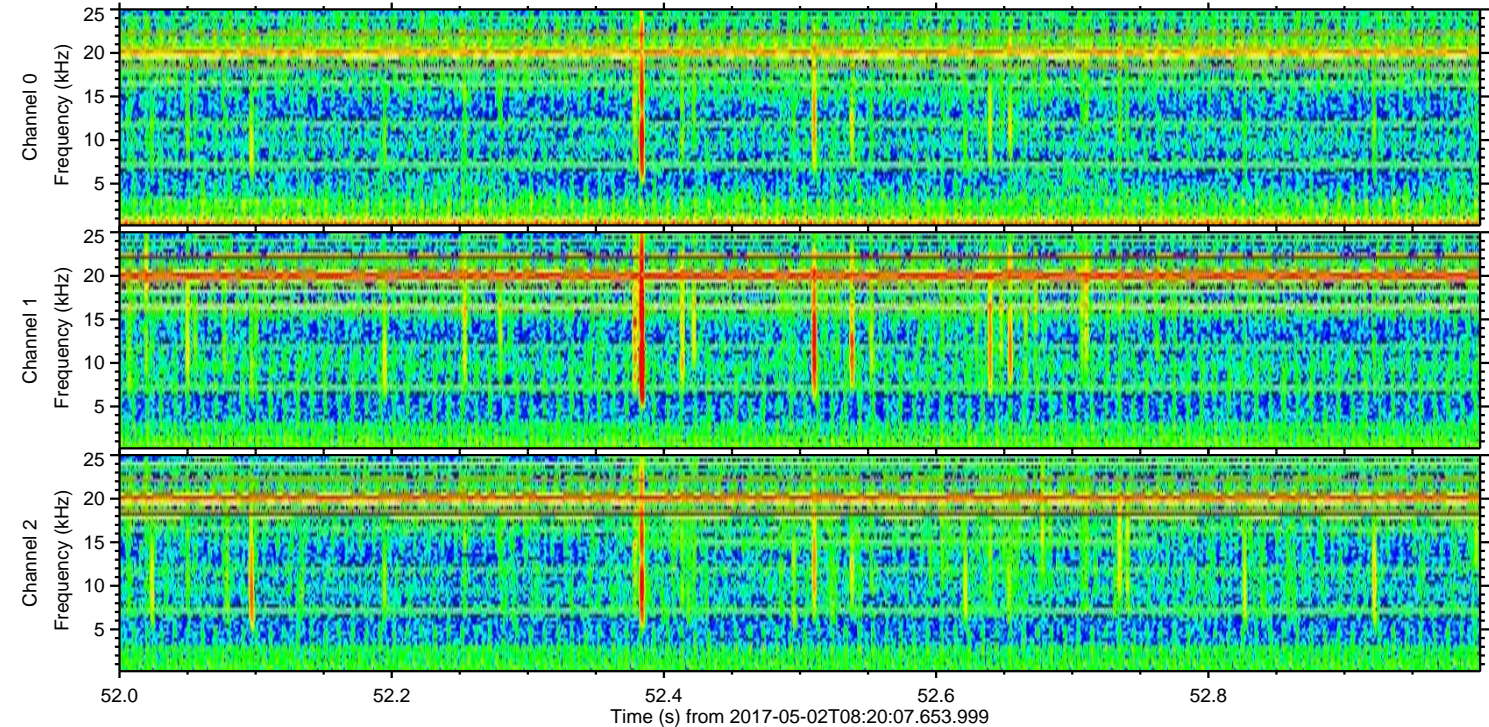
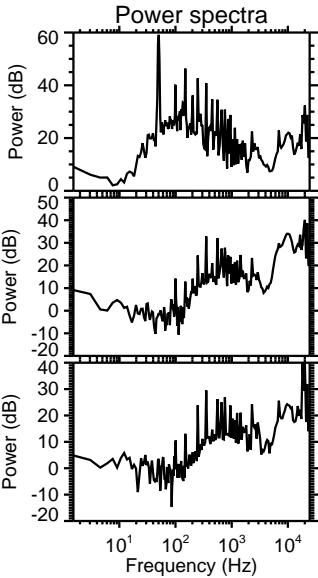
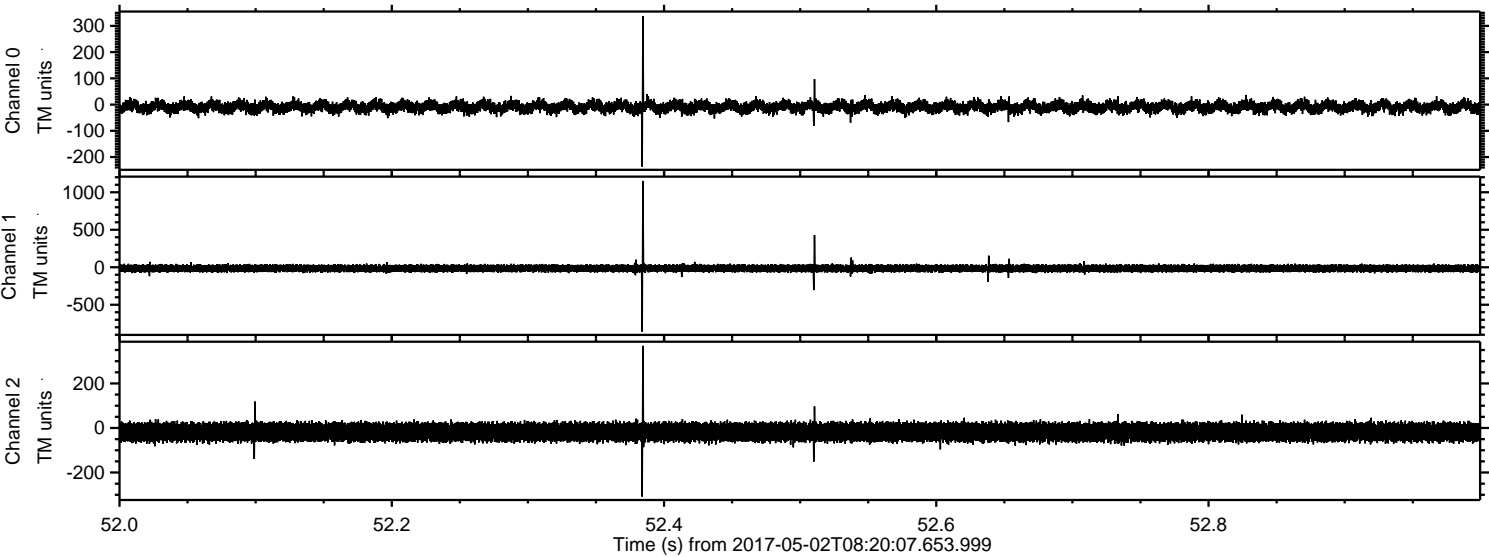
Processed Tue May 2 10:28:30 2017 by ELM ver.2012-10-06 from 001__elm20170502_082006__dat00.bin



Processed Tue May 2 10:28:31 2017 by ELM ver.2012-10-06 from 001__elm20170502_082006__dat00.bin

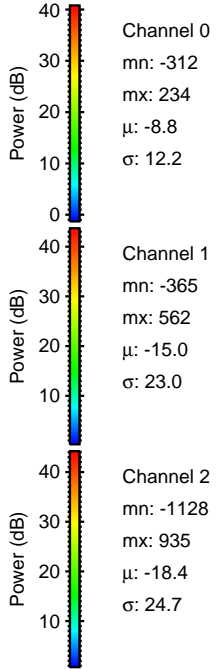
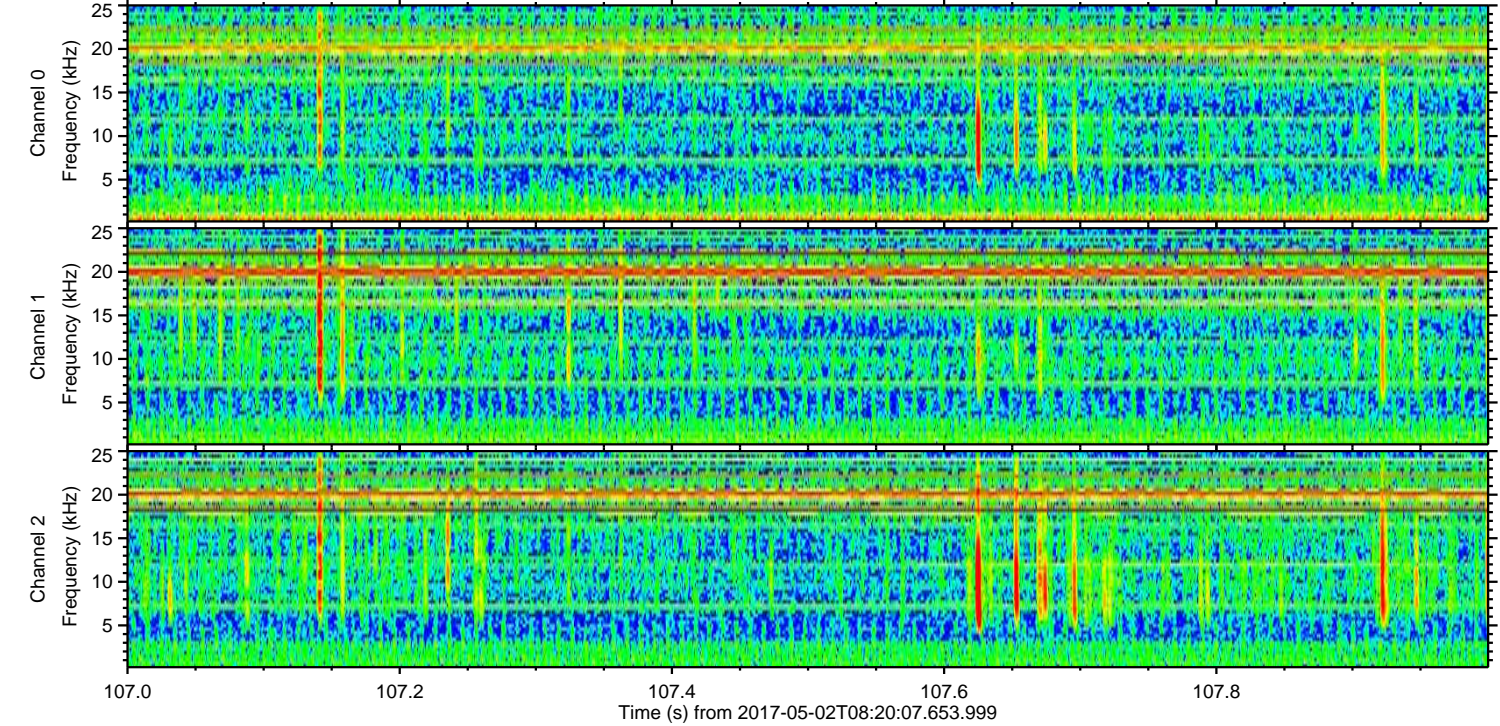
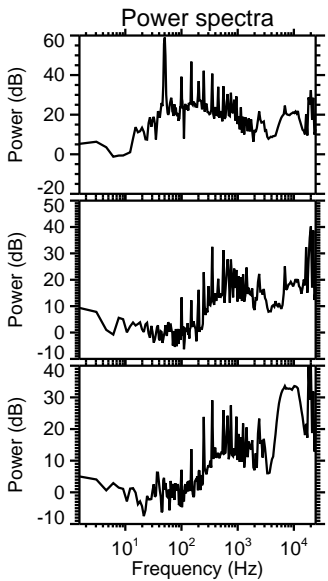
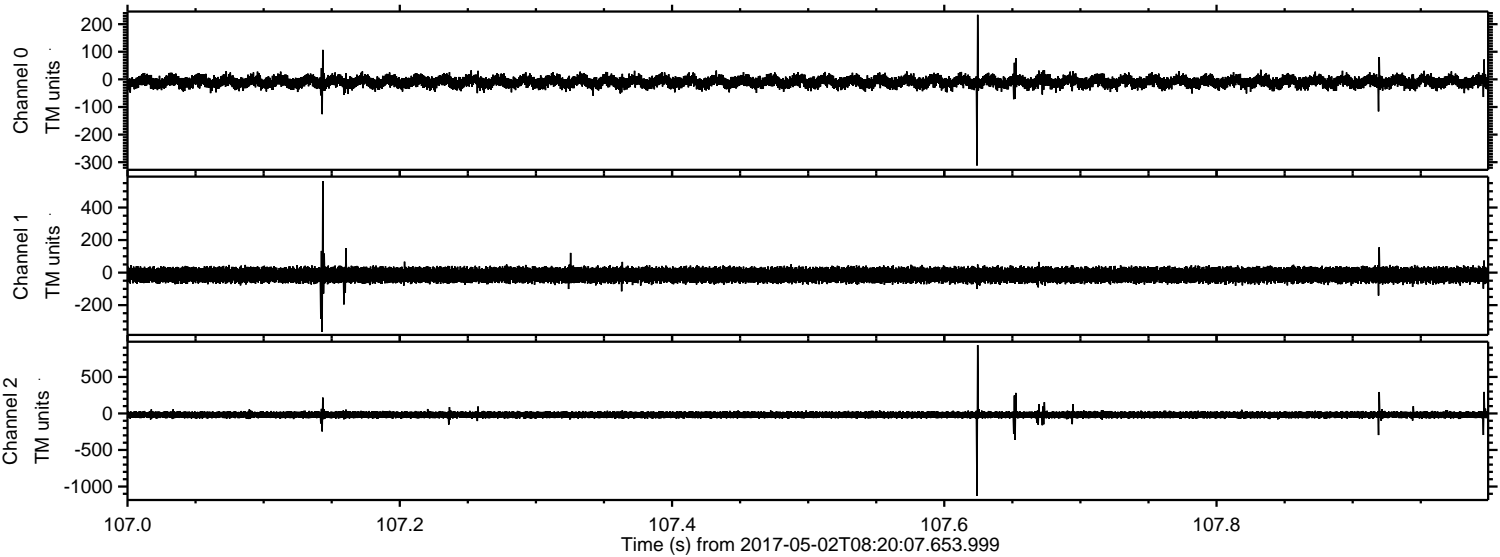


Processed Tue May 2 10:28:32 2017 by ELM ver.2012-10-06 from 001__elm20170502_082006__dat00.bin

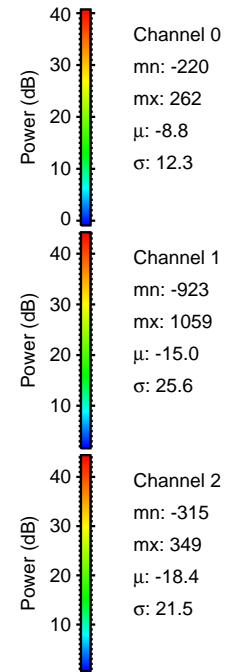
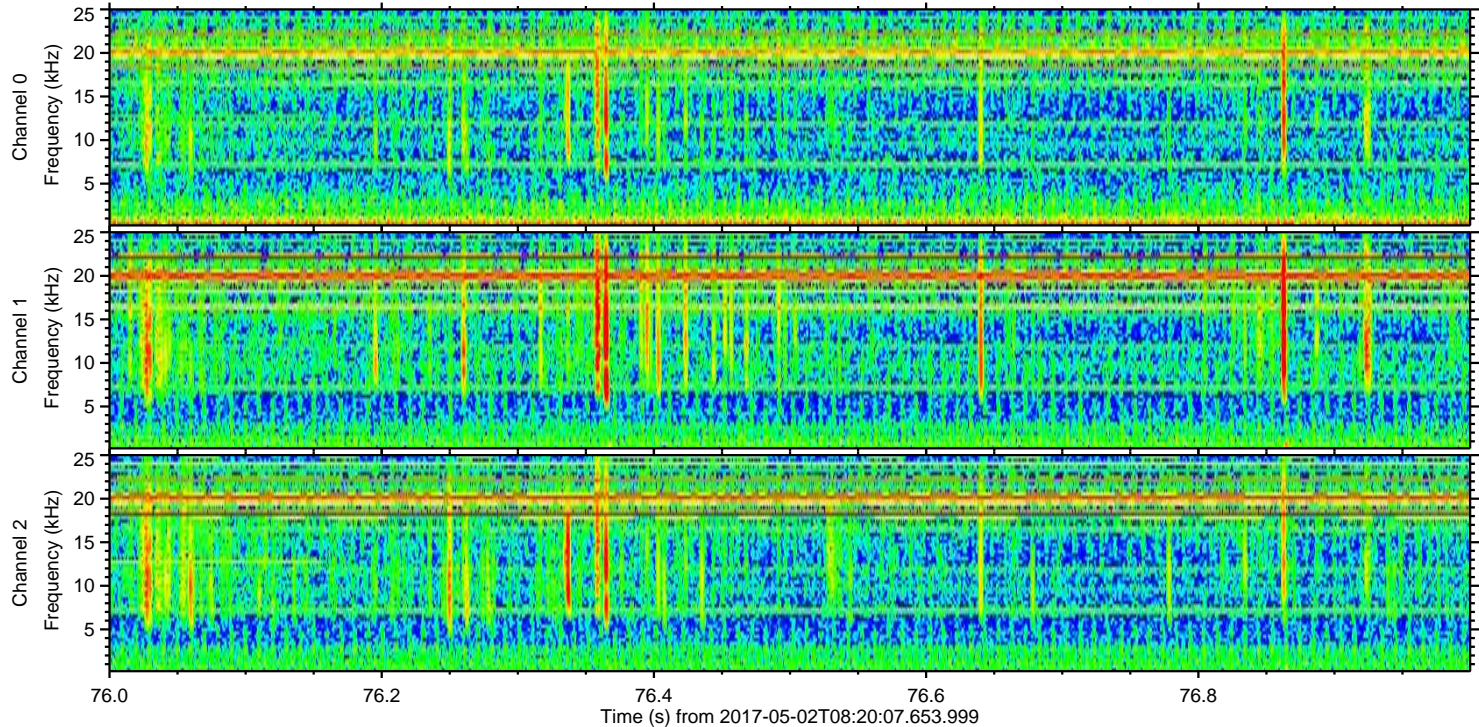
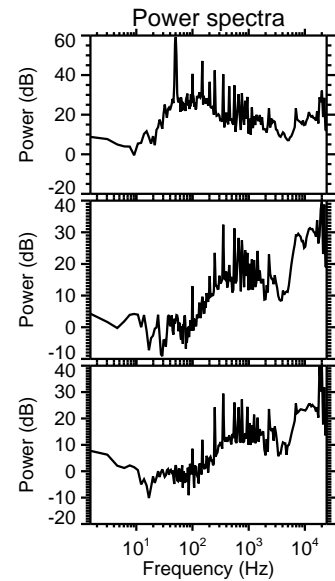
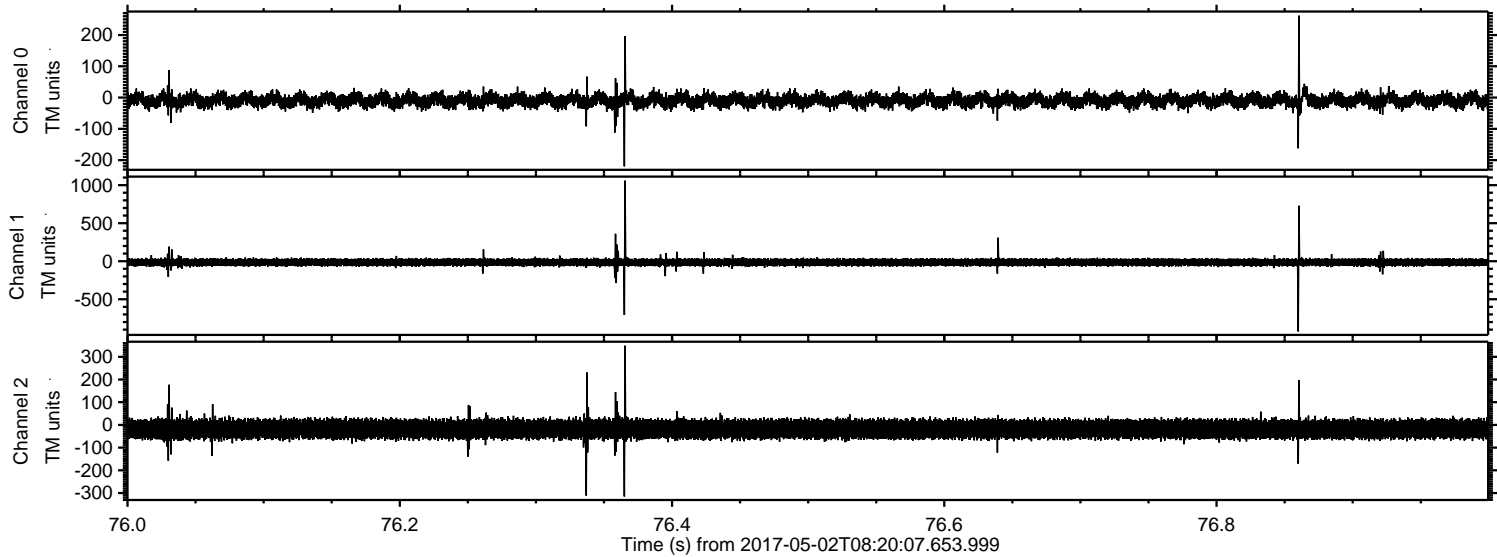


ELMAVAN 3D WAVEFORMS (Measured data sampled at 50 kHz) 51000 packets of 144 samples from 2017-05-02T08:20:07.653.999. Part 108/147

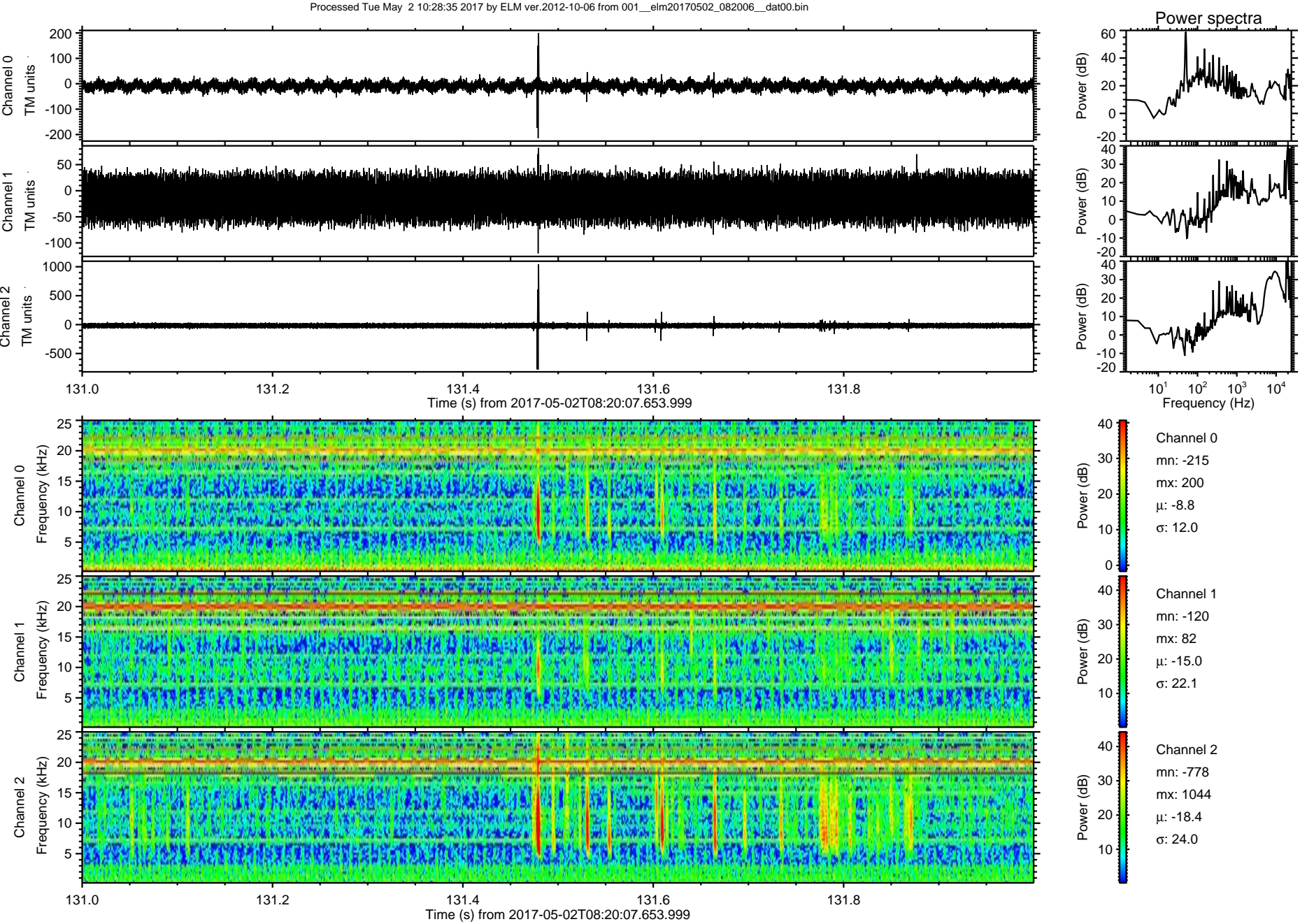
Processed Tue May 2 10:28:33 2017 by ELM ver.2012-10-06 from 001__elm20170502_082006__dat00.bin



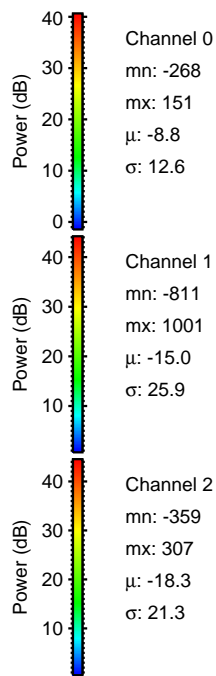
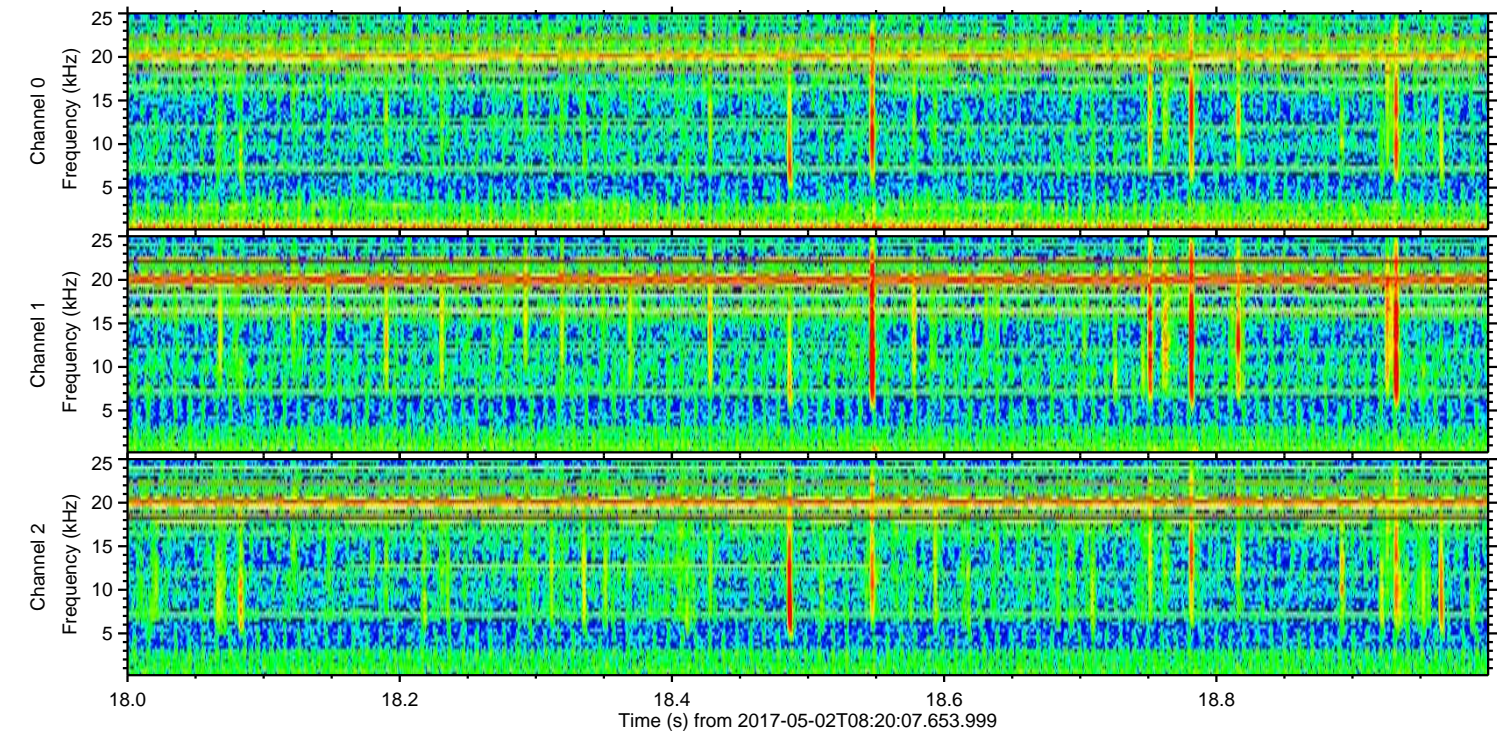
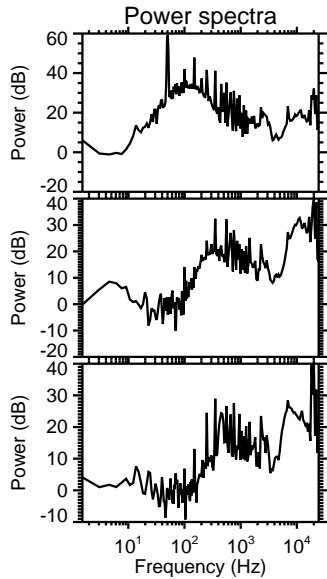
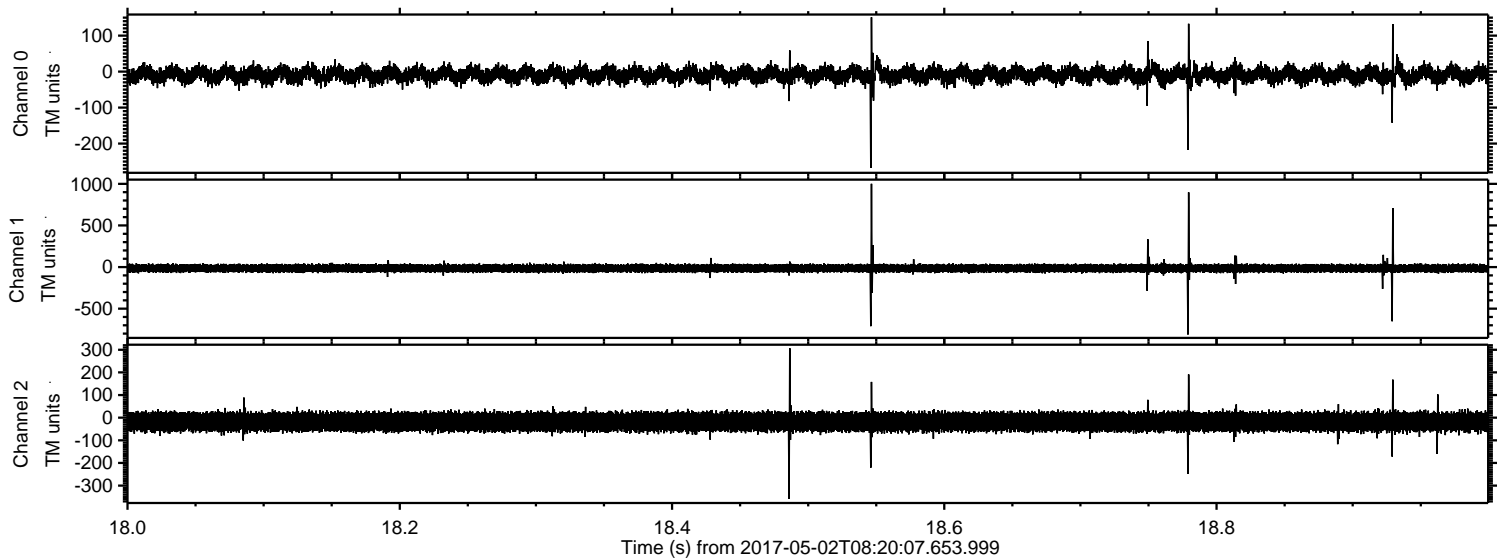
Processed Tue May 2 10:28:34 2017 by ELM ver.2012-10-06 from 001__elm20170502_082006__dat00.bin



ELMAVAN 3D WAVEFORMS (Measured data sampled at 50 kHz) 51000 packets of 144 samples from 2017-05-02T08:20:07.653.999. Part 132/147

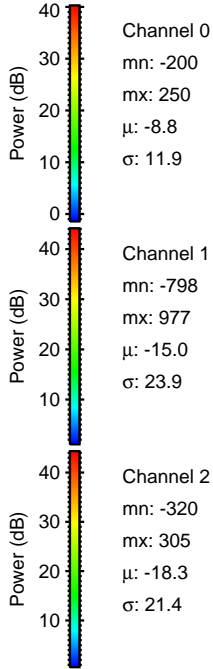
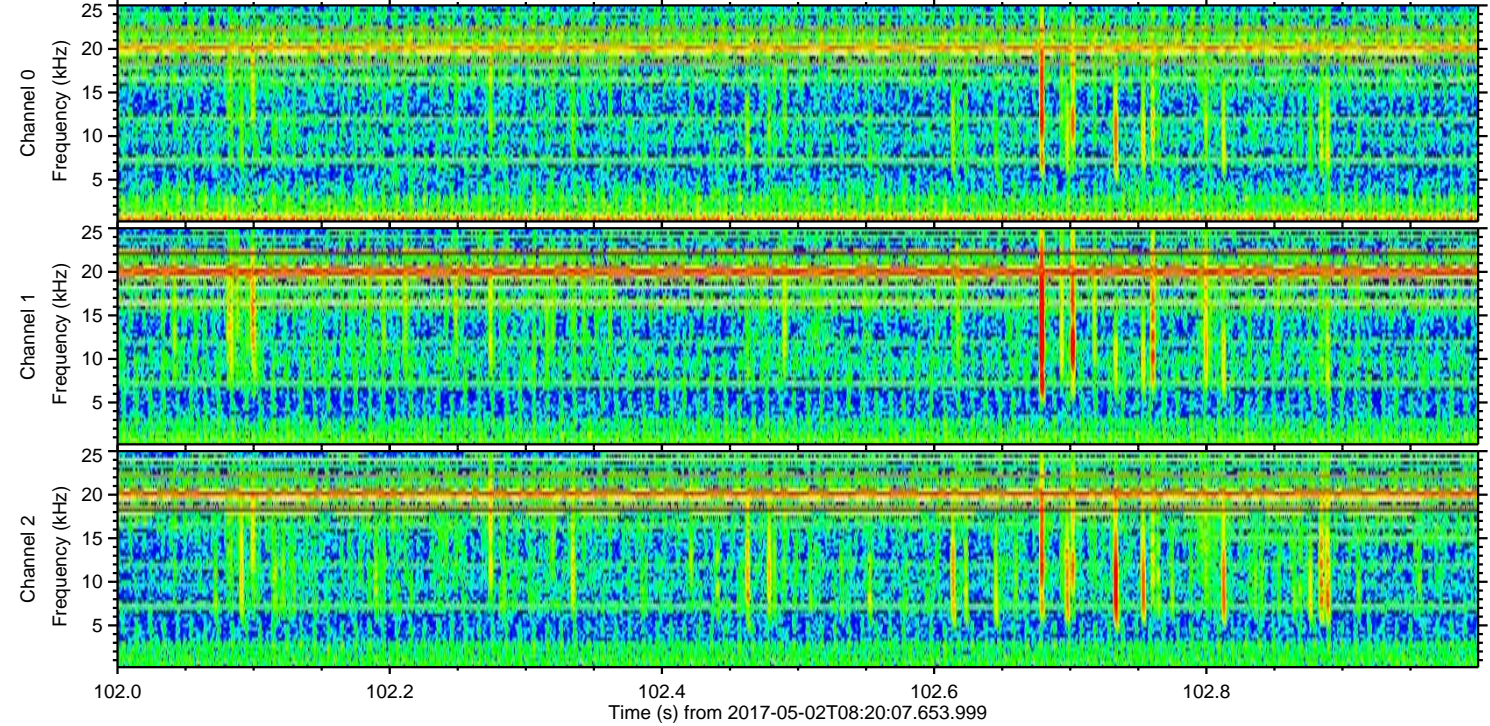
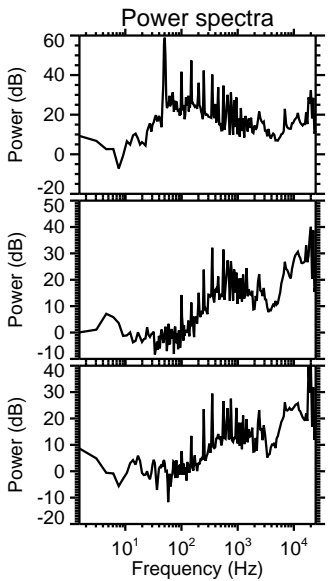
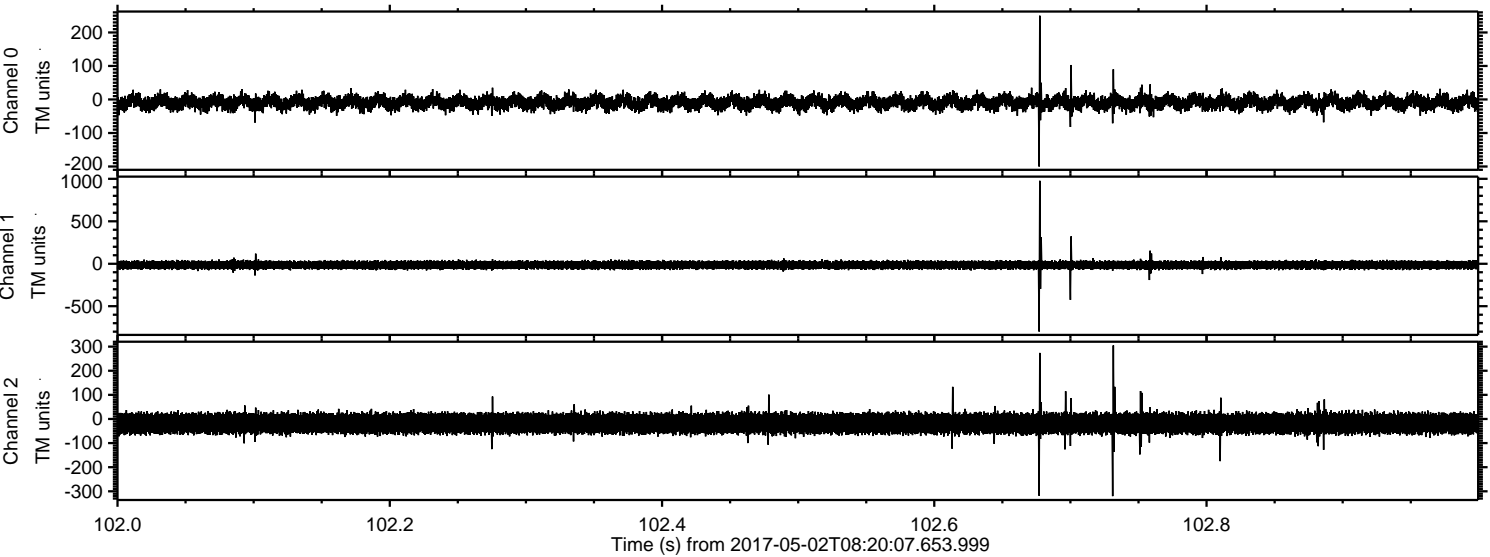


Processed Tue May 2 10:28:36 2017 by ELM ver.2012-10-06 from 001__elm20170502_082006__dat00.bin



ELMAVAN 3D WAVEFORMS (Measured data sampled at 50 kHz) 51000 packets of 144 samples from 2017-05-02T08:20:07.653.999. Part 103/147

Processed Tue May 2 10:28:37 2017 by ELM ver.2012-10-06 from 001__elm20170502_082006__dat00.bin



Channel 0
mn: -200
mx: 250
 μ : -8.8
 σ : 11.9

Channel 1
mn: -798
mx: 977
 μ : -15.0
 σ : 23.9

Channel 2
mn: -320
mx: 305
 μ : -18.3
 σ : 21.4

Processed Tue May 2 10:28:38 2017 by ELM ver.2012-10-06 from 001__elm20170502_082006__dat00.bin

