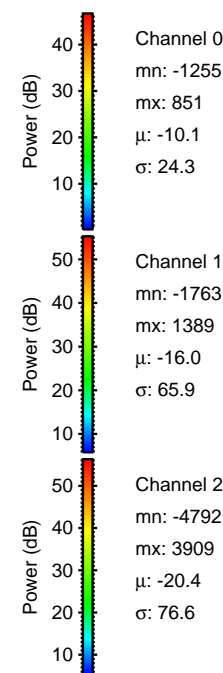
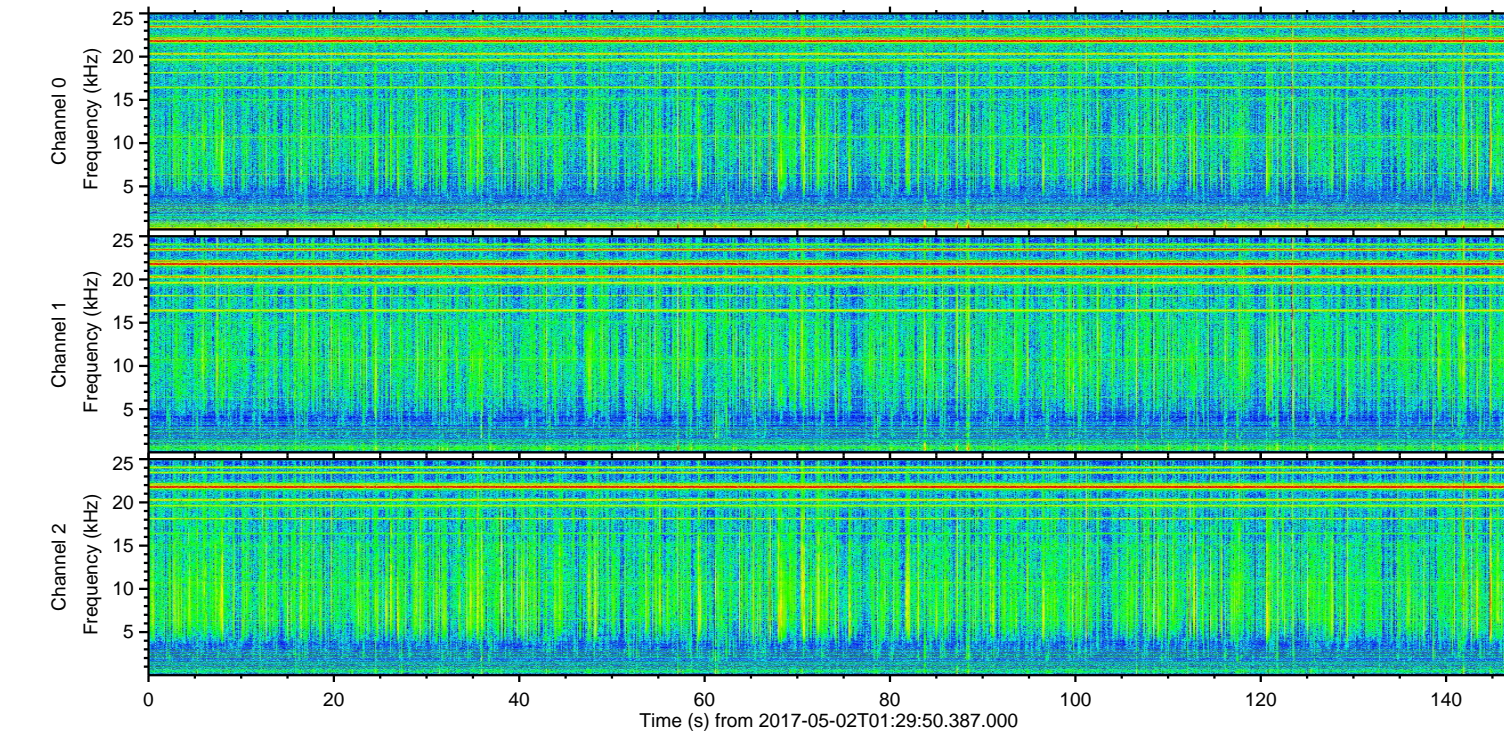
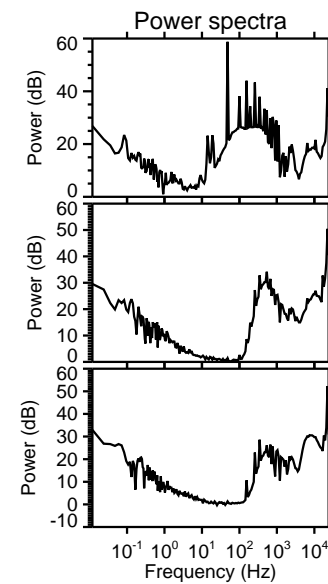
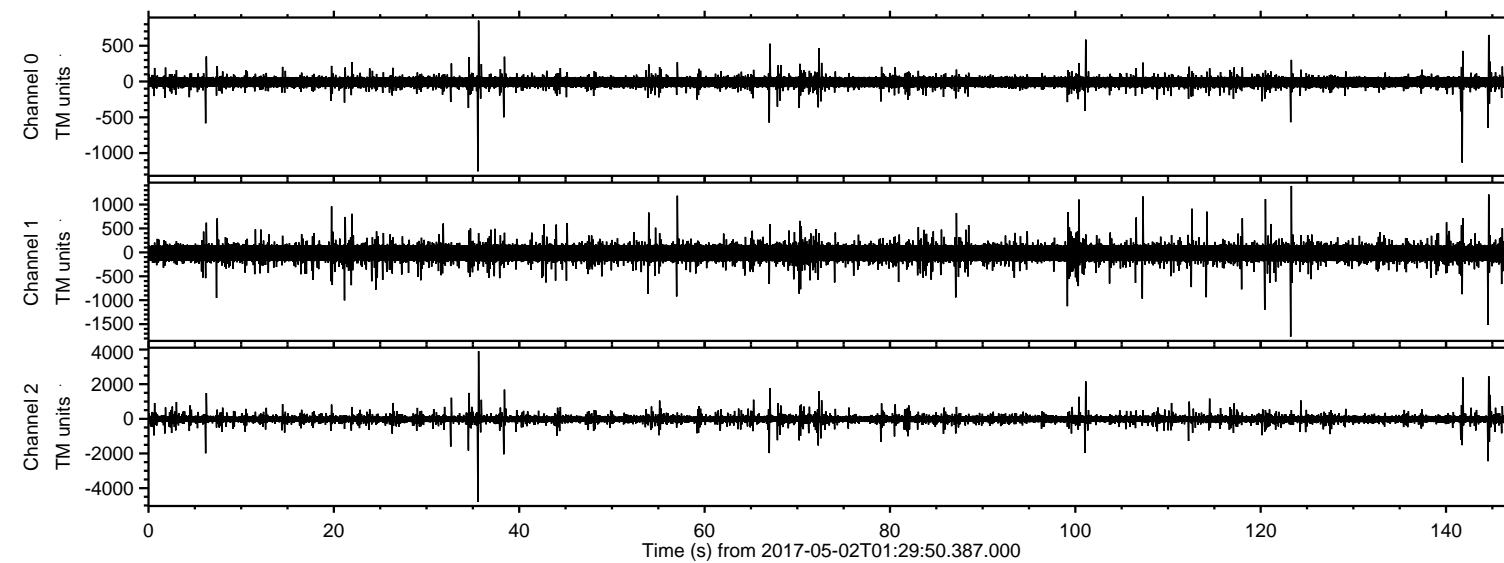


# ELMAVAN 3D WAVEFORMS (Measured data sampled at 50 kHz) 51000 packets of 144 samples from 2017-05-02T01:29:50.387.000.

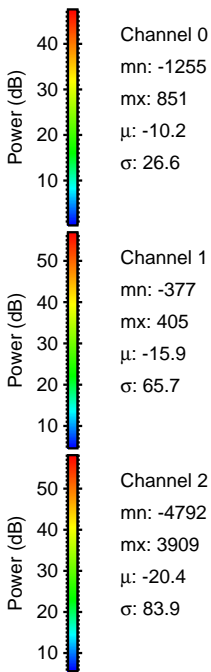
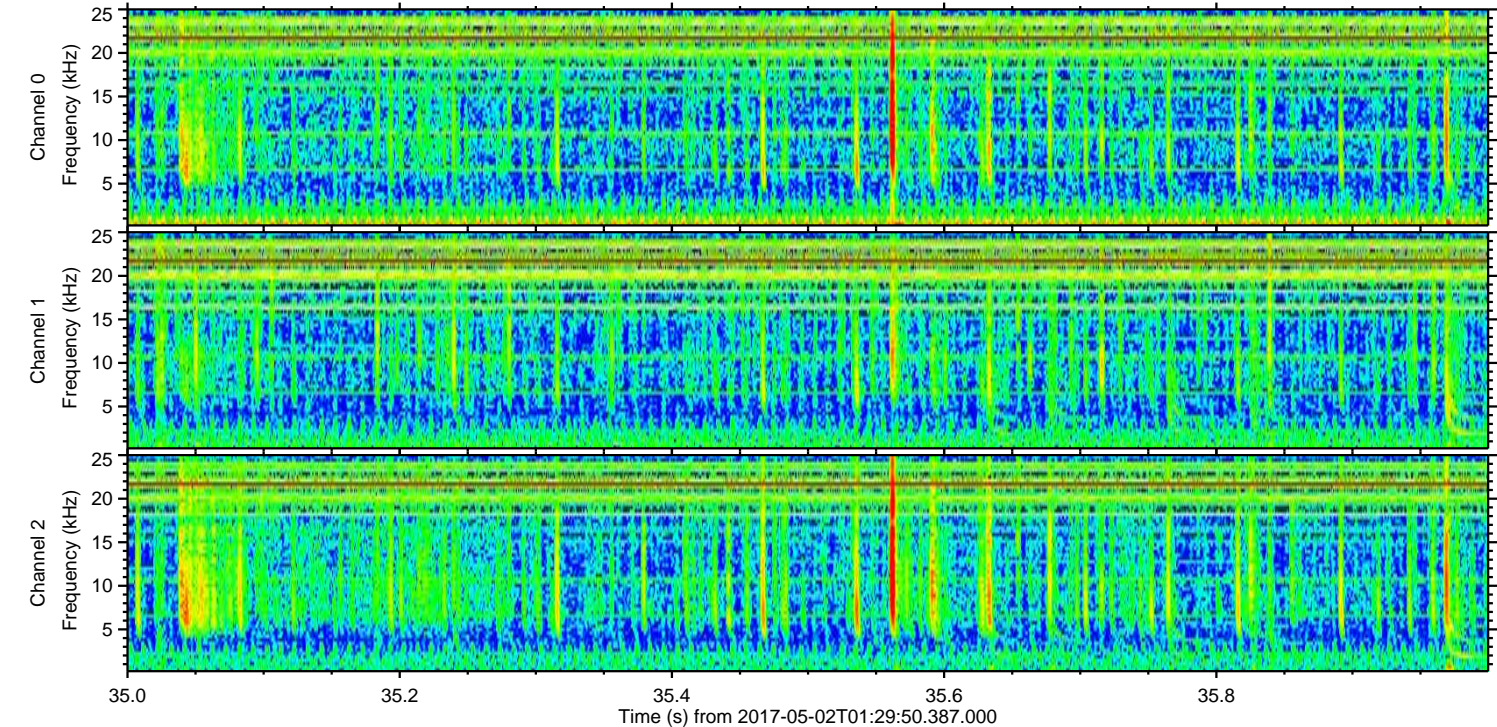
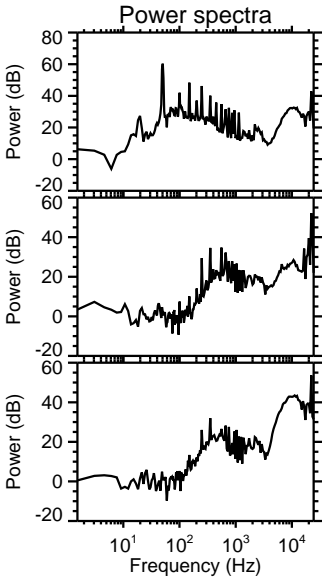
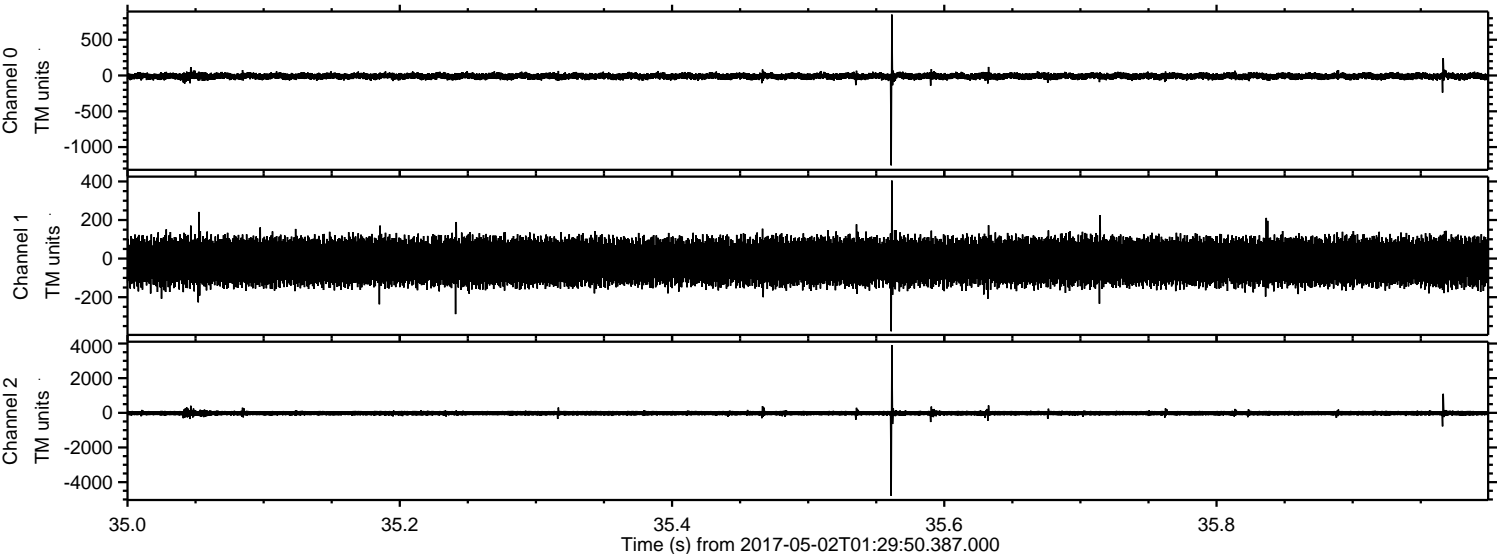
Processed Tue May 2 03:37:34 2017 by ELM ver.2012-10-06 from 001\_\_elm20170502\_012949\_\_dat00.bin





ELMAVAN 3D WAVEFORMS (Measured data sampled at 50 kHz) 51000 packets of 144 samples from 2017-05-02T01:29:50.387.000. Part 36/147

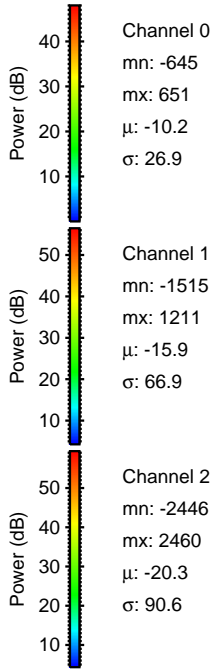
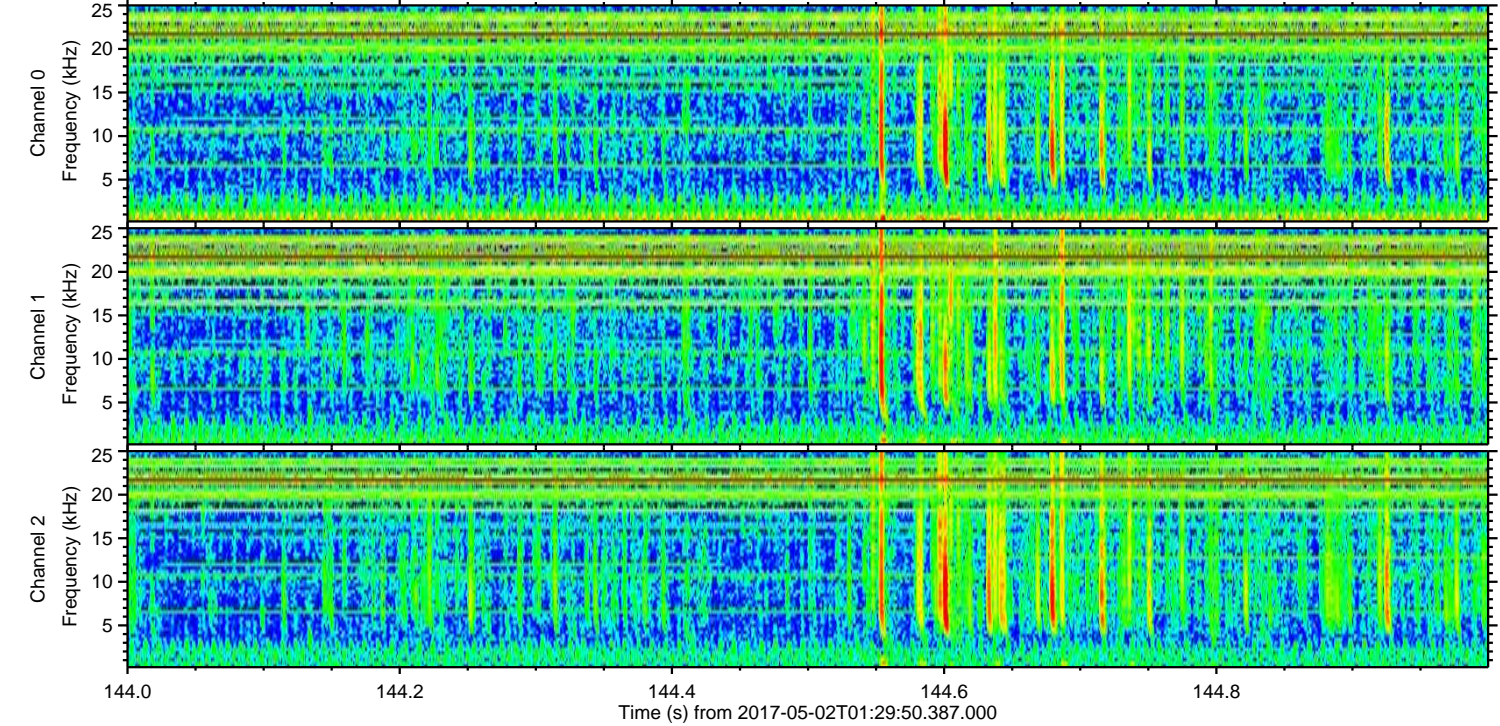
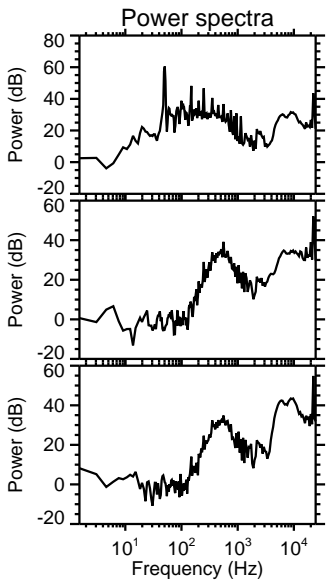
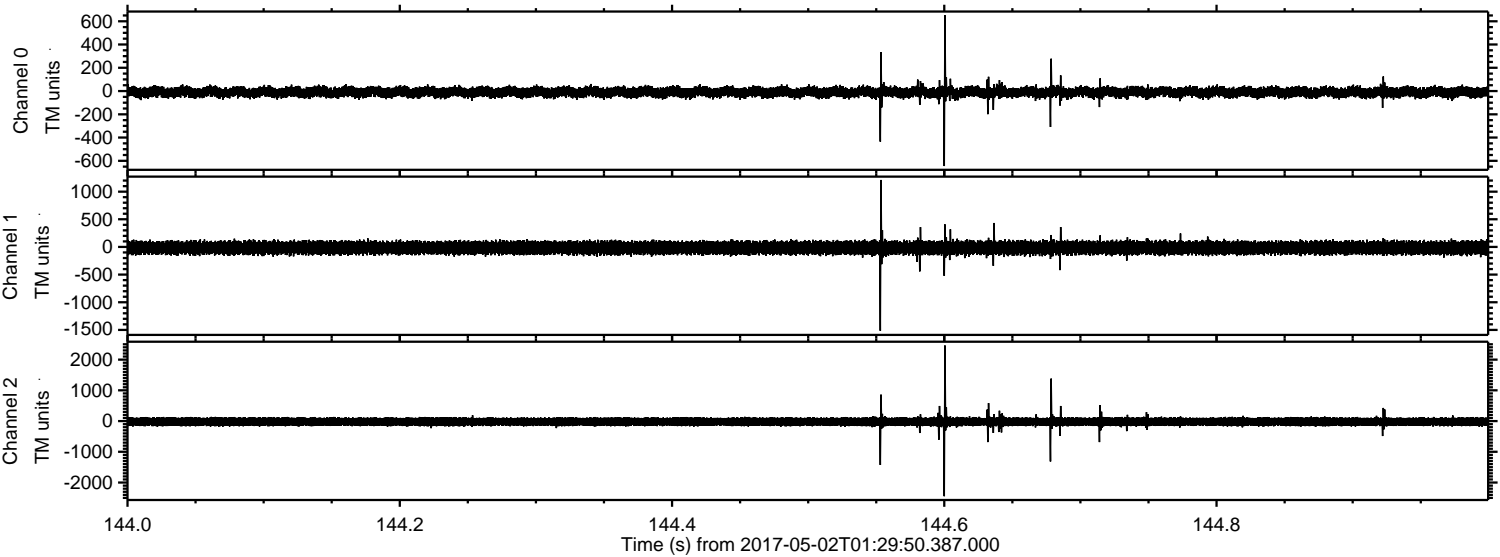
Processed Tue May 2 03:37:45 2017 by ELM ver.2012-10-06 from 001\_\_elm20170502\_012949\_\_dat00.bin





ELMAVAN 3D WAVEFORMS (Measured data sampled at 50 kHz) 51000 packets of 144 samples from 2017-05-02T01:29:50.387.000. Part 145/147

Processed Tue May 2 03:37:46 2017 by ELM ver.2012-10-06 from 001\_\_elm20170502\_012949\_\_dat00.bin



Channel 0  
mn: -645  
mx: 651  
 $\mu$ : -10.2  
 $\sigma$ : 26.9

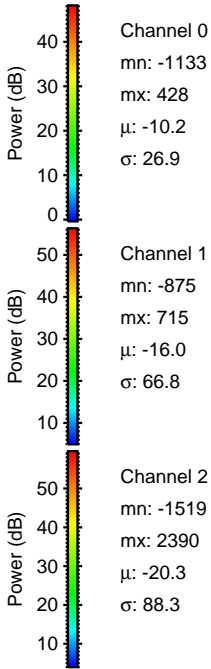
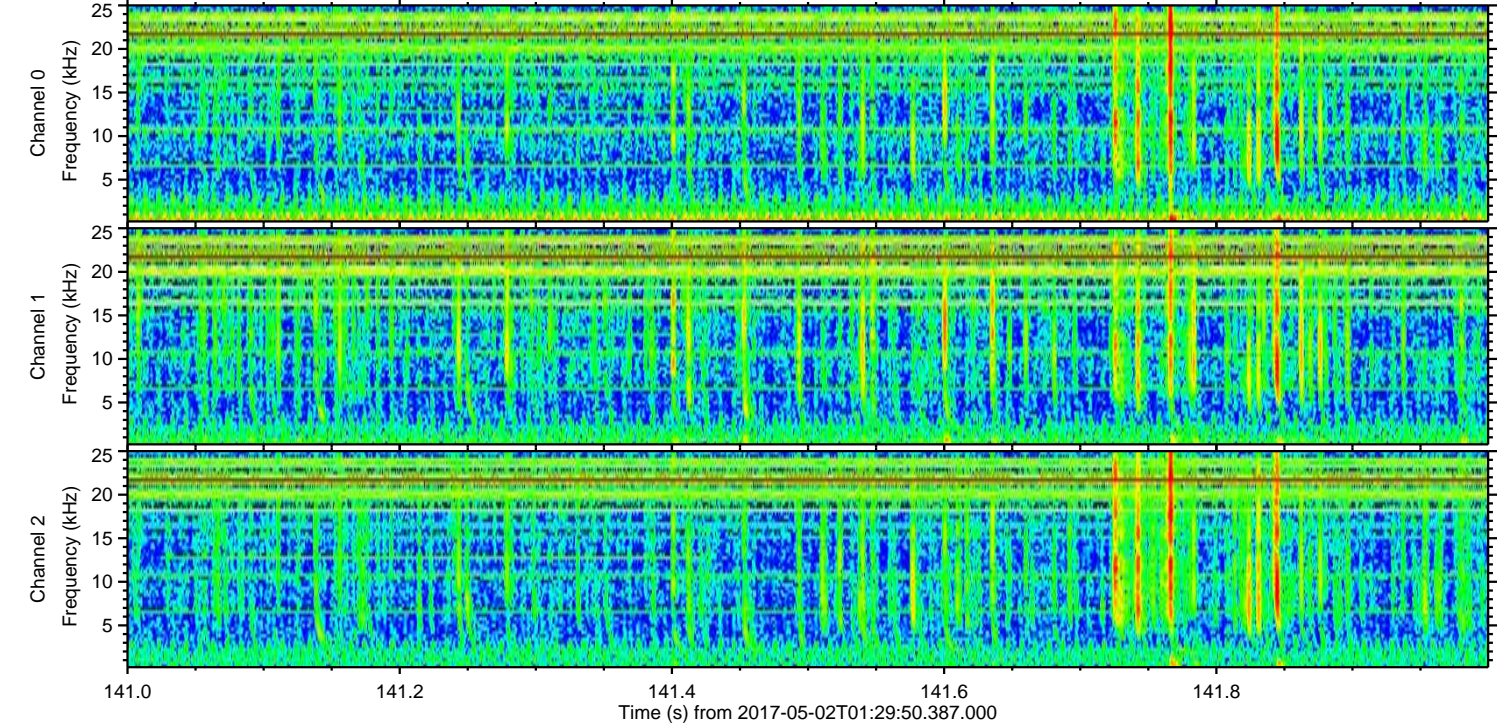
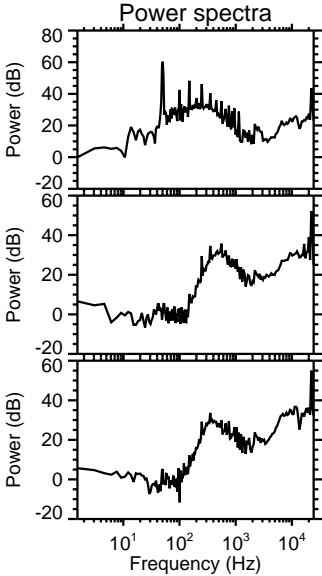
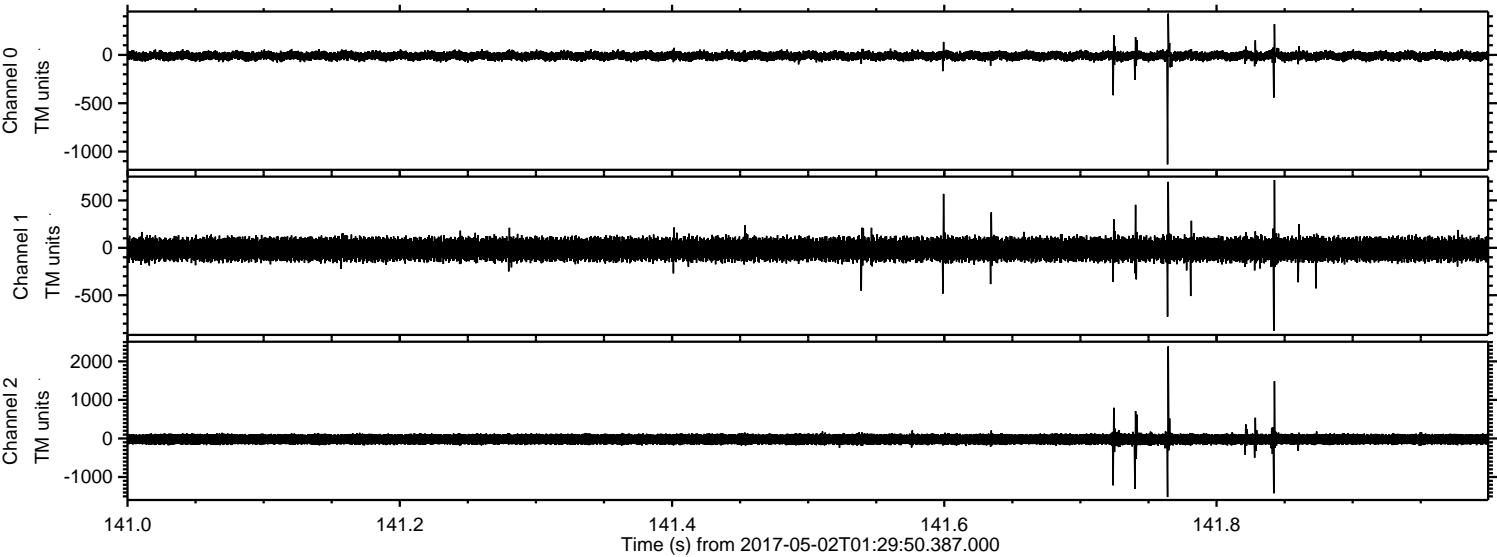
Channel 1  
mn: -1515  
mx: 1211  
 $\mu$ : -15.9  
 $\sigma$ : 66.9

Channel 2  
mn: -2446  
mx: 2460  
 $\mu$ : -20.3  
 $\sigma$ : 90.6



ELMAVAN 3D WAVEFORMS (Measured data sampled at 50 kHz) 51000 packets of 144 samples from 2017-05-02T01:29:50.387.000. Part 142/147

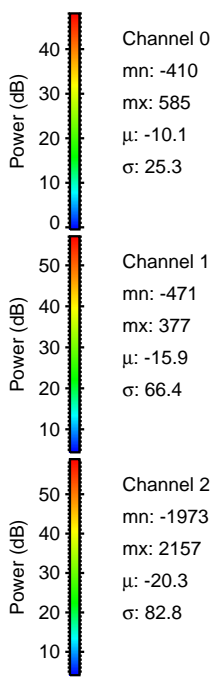
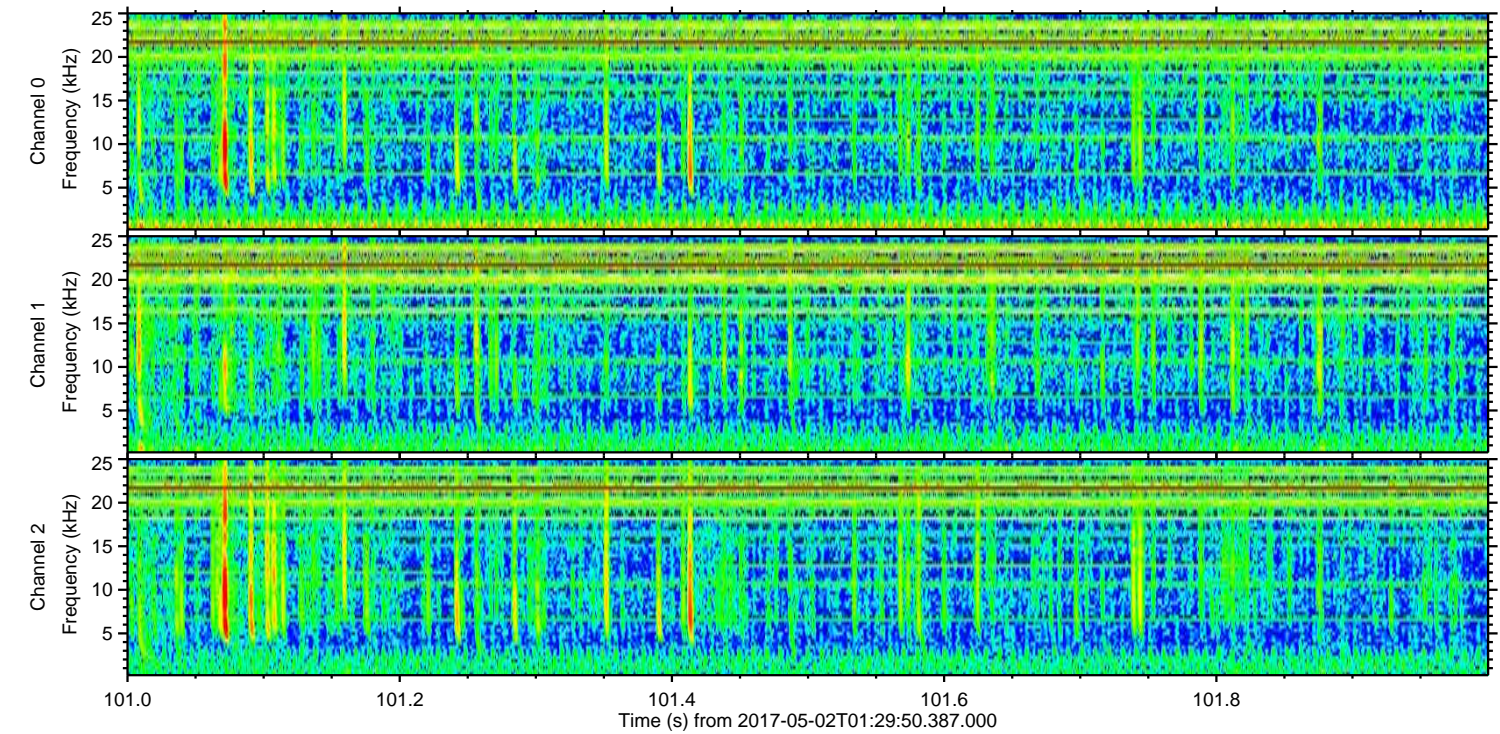
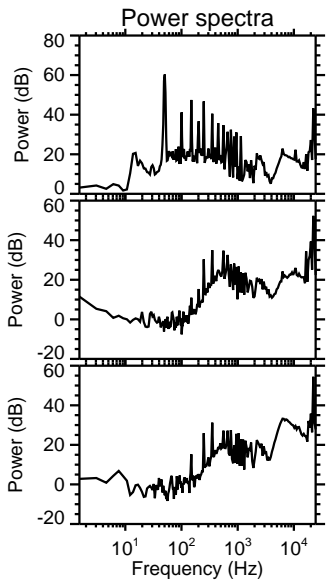
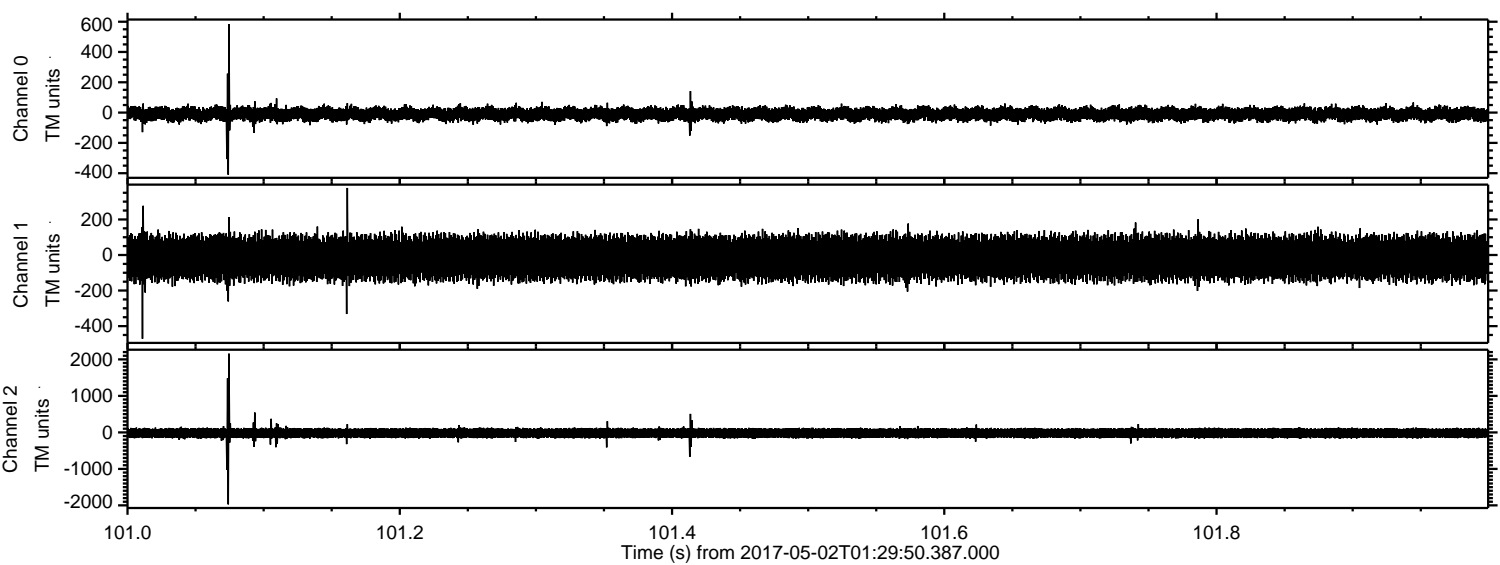
Processed Tue May 2 03:37:47 2017 by ELM ver.2012-10-06 from 001\_\_elm20170502\_012949\_\_dat00.bin





ELMAVAN 3D WAVEFORMS (Measured data sampled at 50 kHz) 51000 packets of 144 samples from 2017-05-02T01:29:50.387.000. Part 102/147

Processed Tue May 2 03:37:48 2017 by ELM ver.2012-10-06 from 001\_\_elm20170502\_012949\_\_dat00.bin



Channel 0  
mn: -410  
mx: 585  
 $\mu$ : -10.1  
 $\sigma$ : 25.3

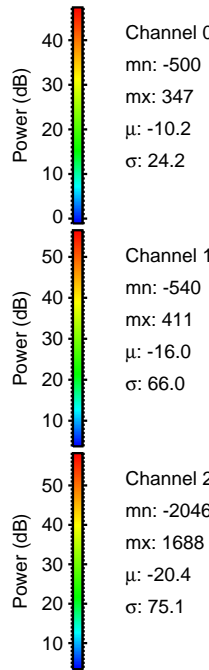
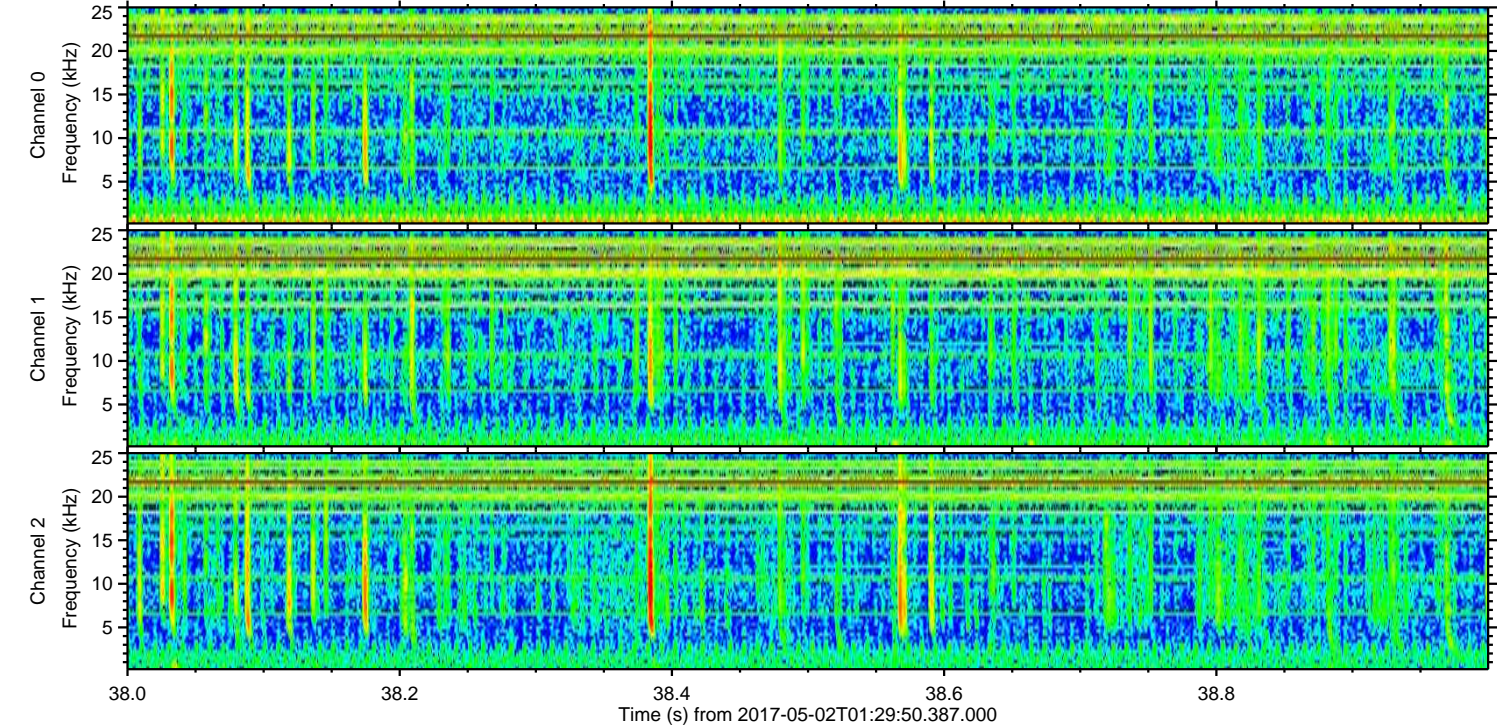
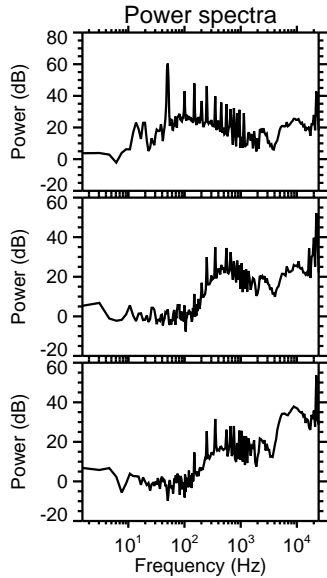
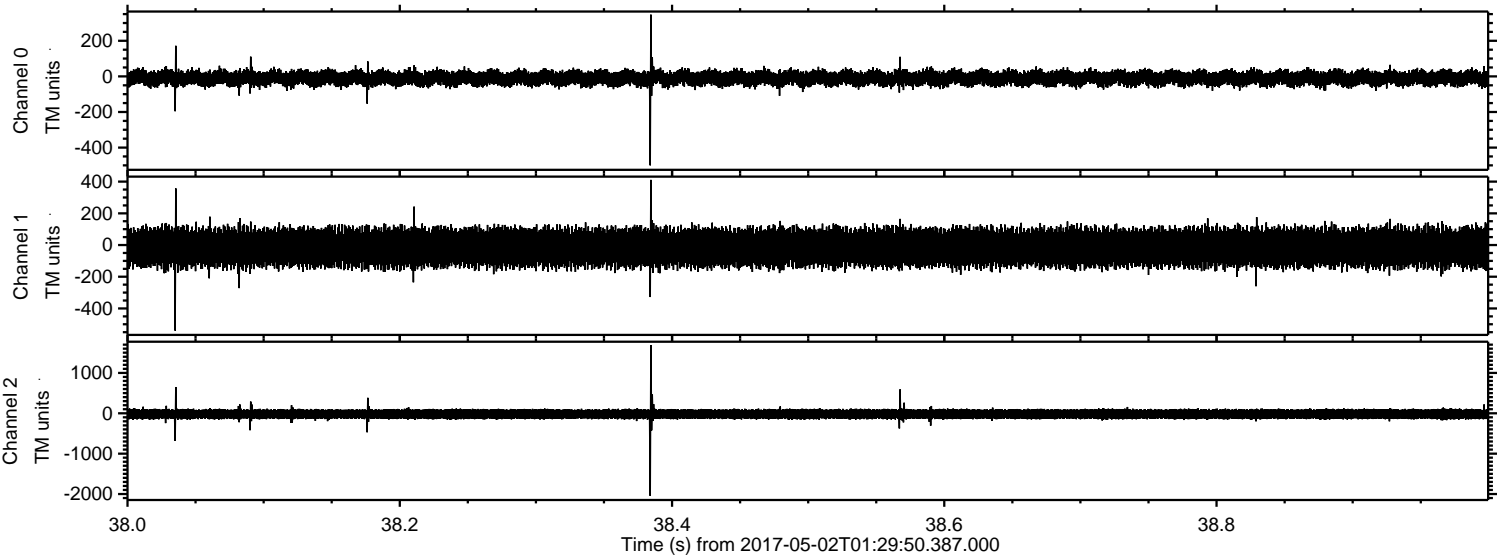
Channel 1  
mn: -471  
mx: 377  
 $\mu$ : -15.9  
 $\sigma$ : 66.4

Channel 2  
mn: -1973  
mx: 2157  
 $\mu$ : -20.3  
 $\sigma$ : 82.8



ELMAVAN 3D WAVEFORMS (Measured data sampled at 50 kHz) 51000 packets of 144 samples from 2017-05-02T01:29:50.387.000. Part 39/147

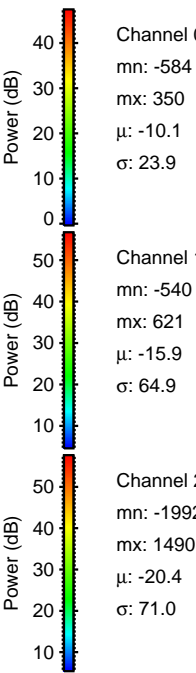
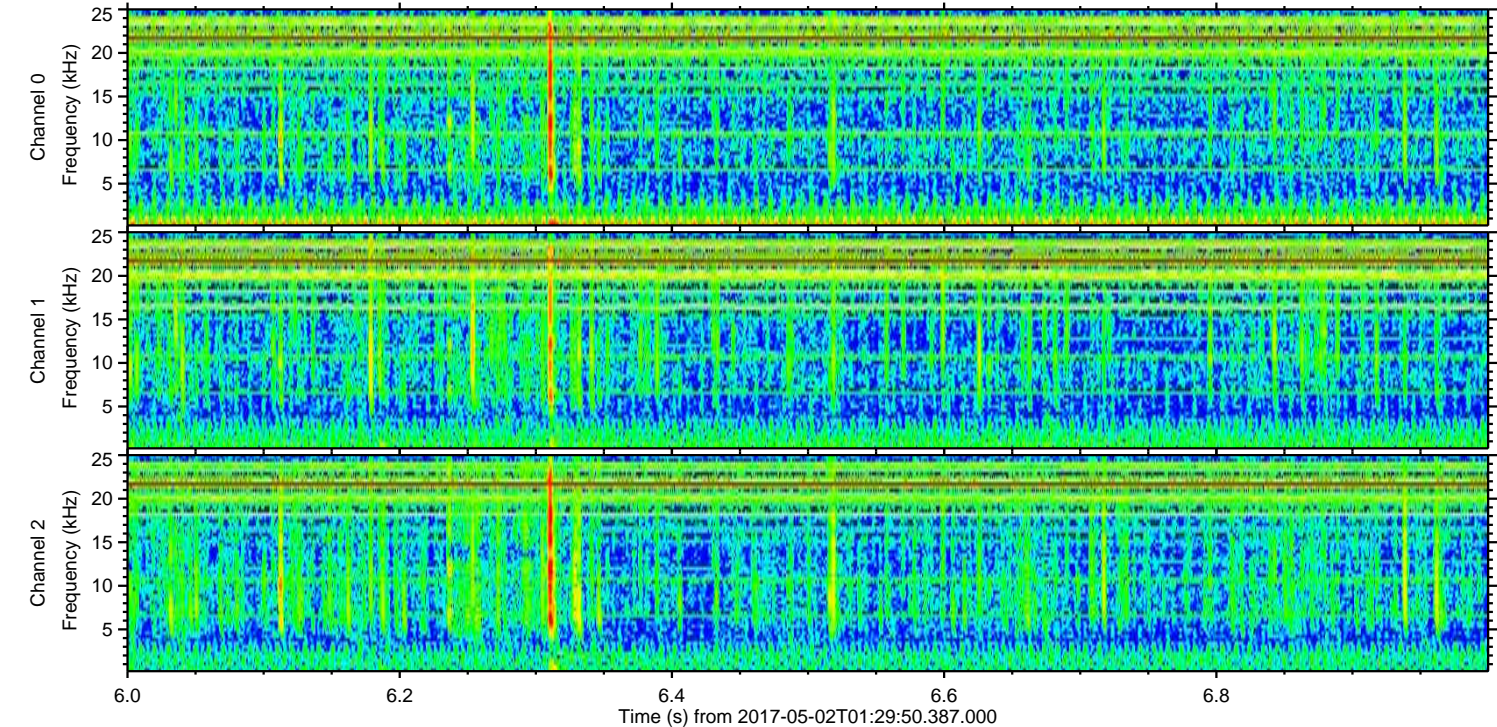
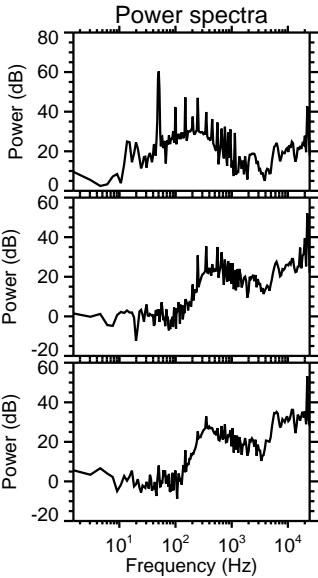
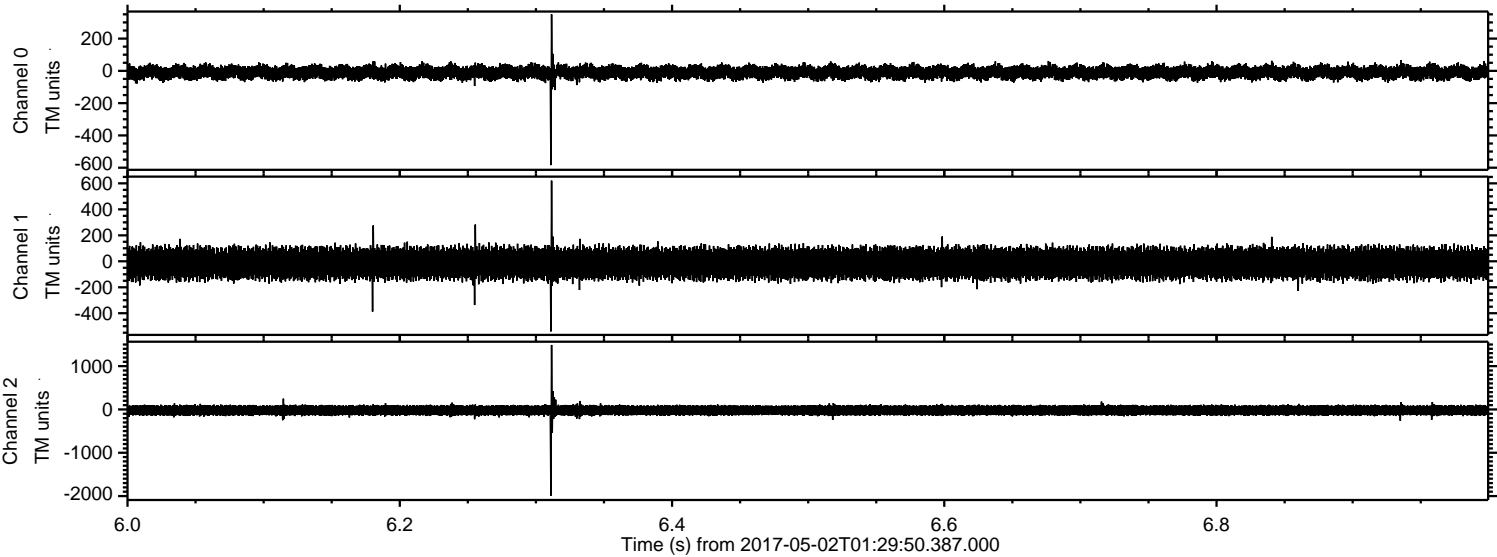
Processed Tue May 2 03:37:49 2017 by ELM ver.2012-10-06 from 001\_\_elm20170502\_012949\_\_dat00.bin





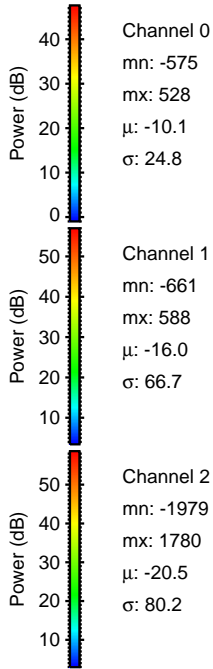
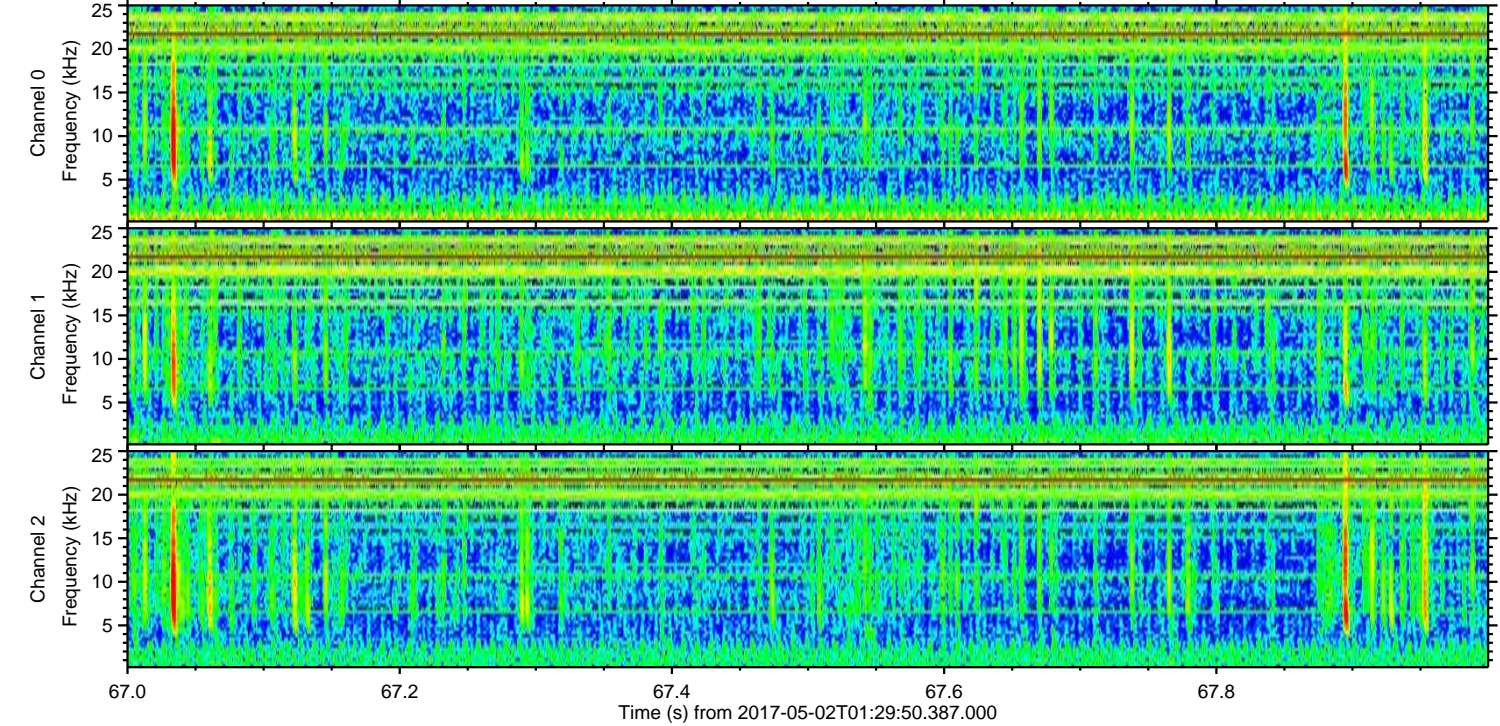
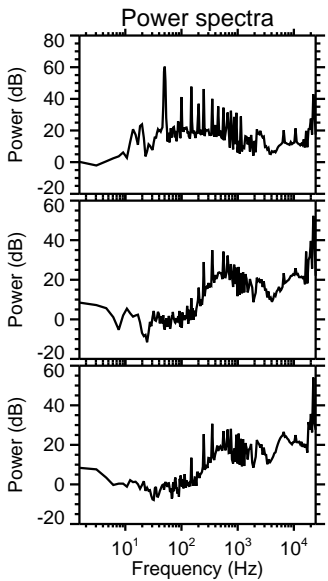
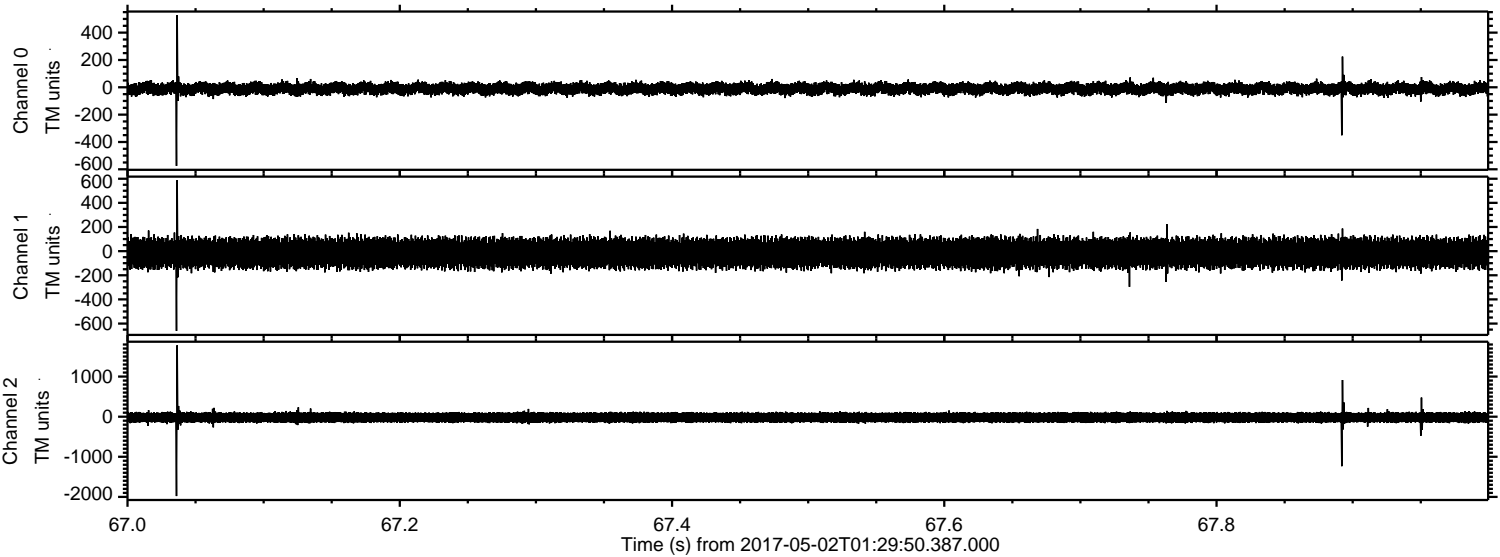
ELMAVAN 3D WAVEFORMS (Measured data sampled at 50 kHz) 51000 packets of 144 samples from 2017-05-02T01:29:50.387.000. Part 7/147

Processed Tue May 2 03:37:50 2017 by ELM ver.2012-10-06 from 001\_\_elm20170502\_012949\_\_dat00.bin





Processed Tue May 2 03:37:51 2017 by ELM ver.2012-10-06 from 001\_\_elm20170502\_012949\_\_dat00.bin



Channel 0  
mn: -575  
mx: 528  
 $\mu$ : -10.1  
 $\sigma$ : 24.8

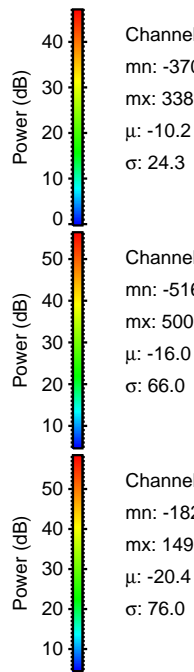
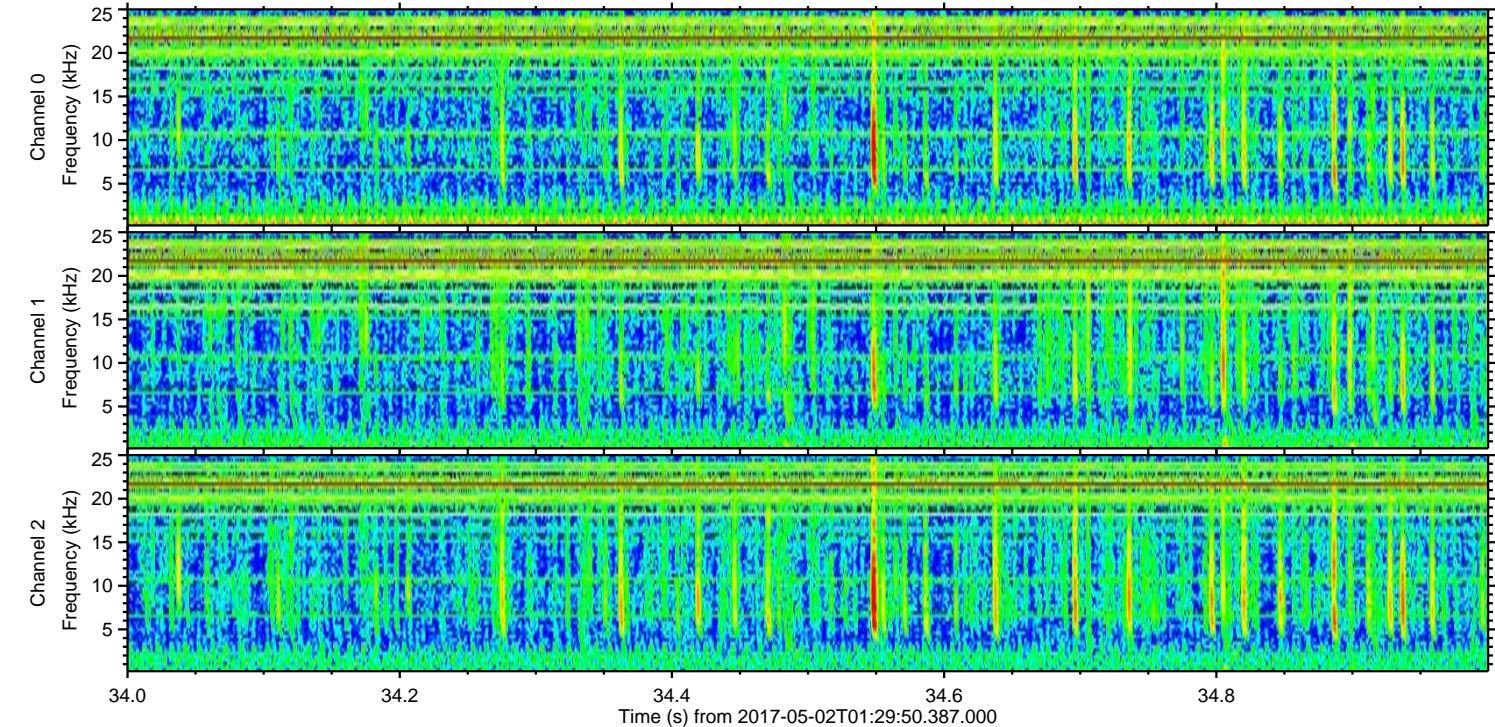
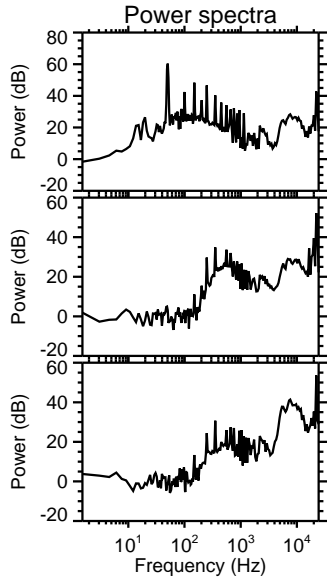
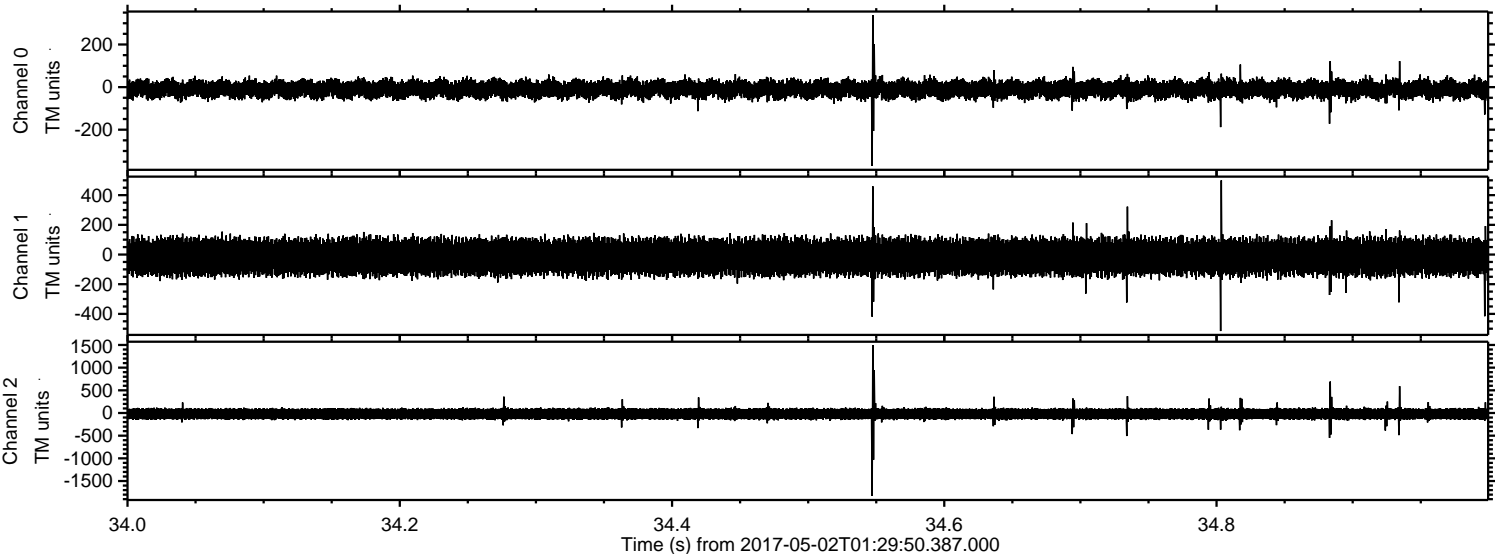
Channel 1  
mn: -661  
mx: 588  
 $\mu$ : -16.0  
 $\sigma$ : 66.7

Channel 2  
mn: -1979  
mx: 1780  
 $\mu$ : -20.5  
 $\sigma$ : 80.2



ELMAVAN 3D WAVEFORMS (Measured data sampled at 50 kHz) 51000 packets of 144 samples from 2017-05-02T01:29:50.387.000. Part 35/147

Processed Tue May 2 03:37:52 2017 by ELM ver.2012-10-06 from 001\_\_elm20170502\_012949\_\_dat00.bin



Channel 0  
mn: -370  
mx: 338  
 $\mu$ : -10.2  
 $\sigma$ : 24.3

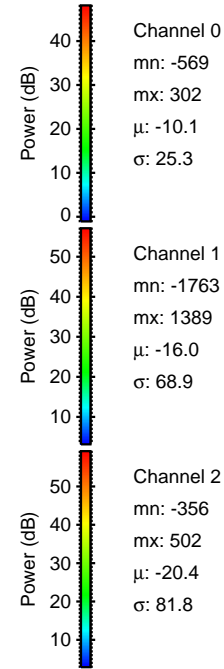
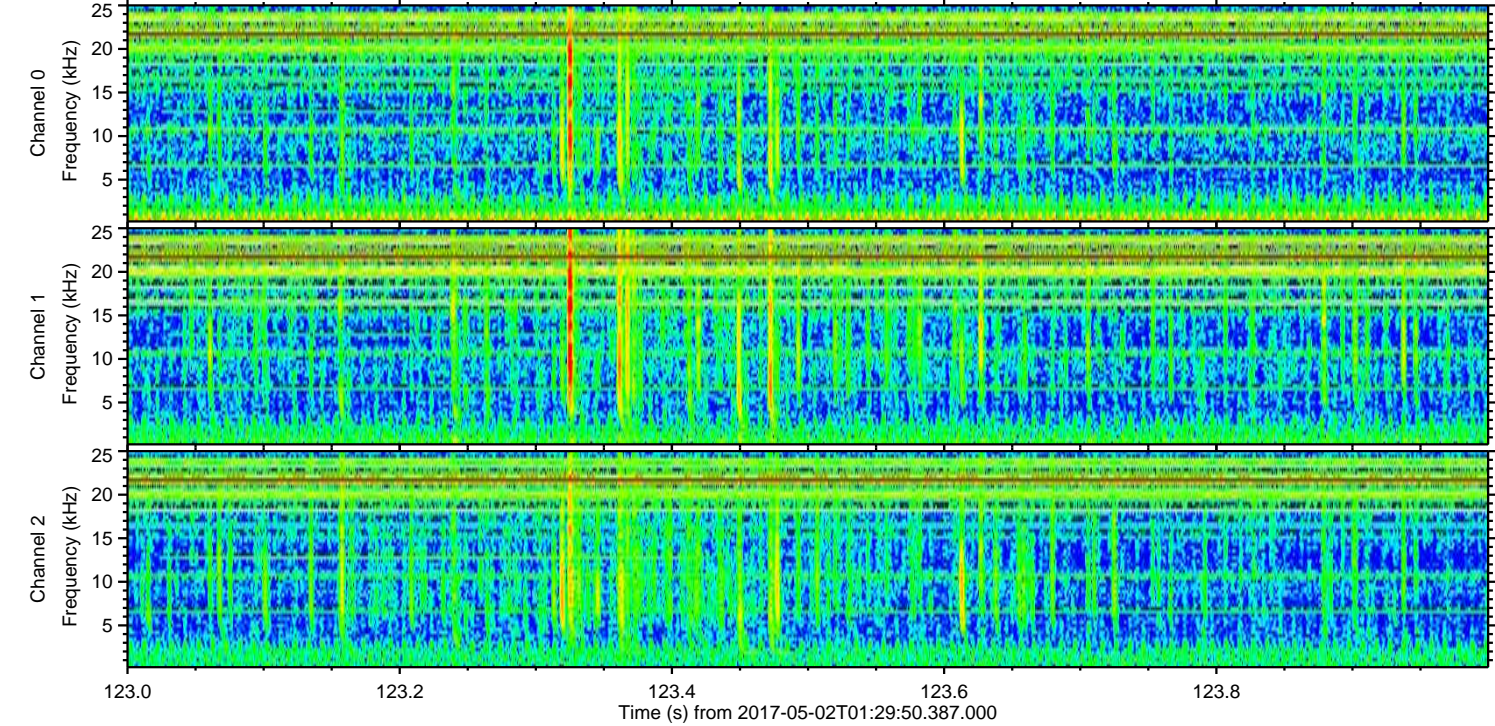
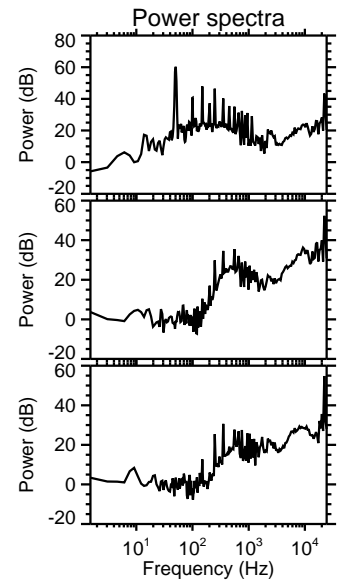
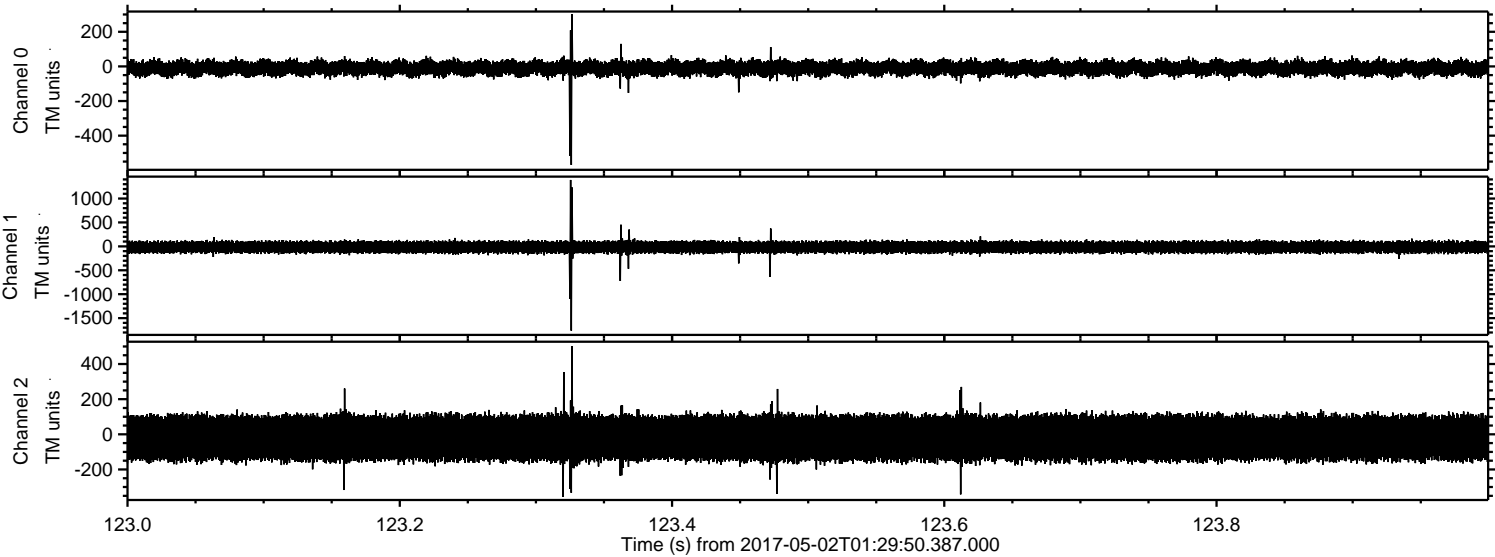
Channel 1  
mn: -516  
mx: 500  
 $\mu$ : -16.0  
 $\sigma$ : 66.0

Channel 2  
mn: -1827  
mx: 1497  
 $\mu$ : -20.4  
 $\sigma$ : 76.0



ELMAVAN 3D WAVEFORMS (Measured data sampled at 50 kHz) 51000 packets of 144 samples from 2017-05-02T01:29:50.387.000. Part 124/147

Processed Tue May 2 03:37:53 2017 by ELM ver.2012-10-06 from 001\_\_elm20170502\_012949\_\_dat00.bin





Processed Tue May 2 03:37:54 2017 by ELM ver.2012-10-06 from 001\_\_elm20170502\_012949\_\_dat00.bin

