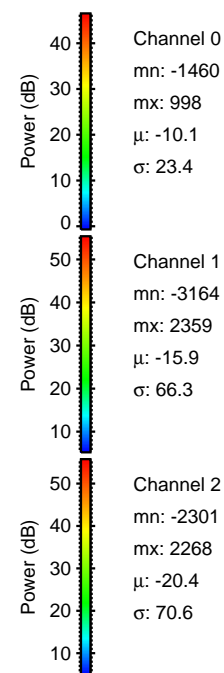
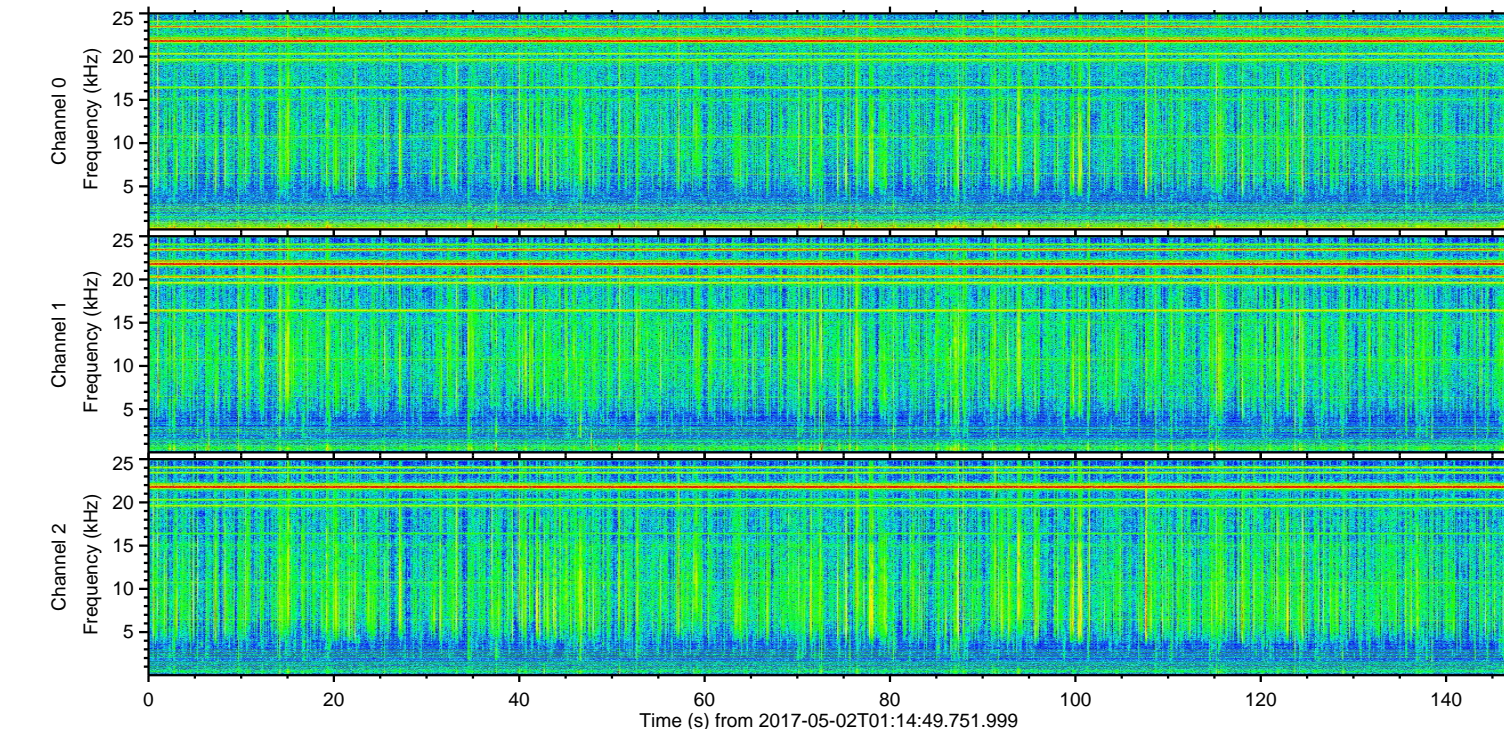
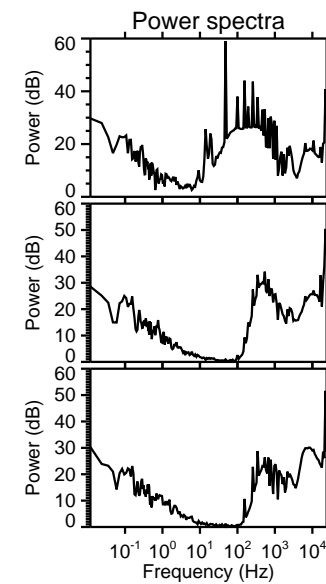
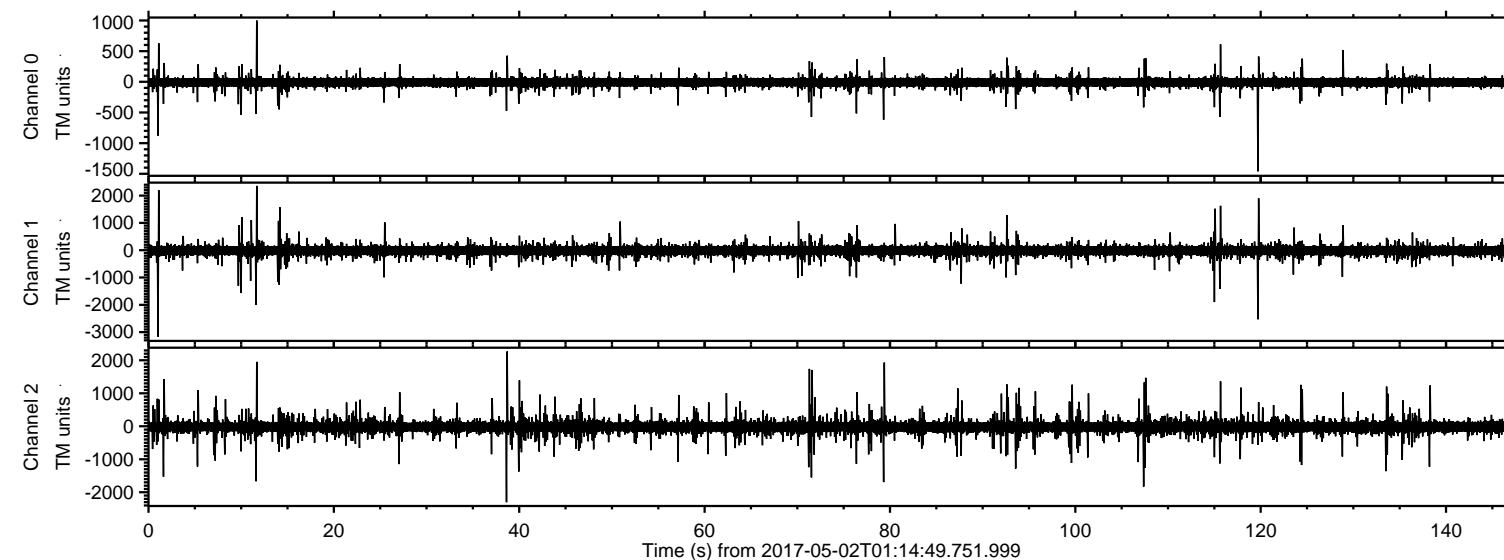


# ELMAVAN 3D WAVEFORMS (Measured data sampled at 50 kHz) 51000 packets of 144 samples from 2017-05-02T01:14:49.751.999.

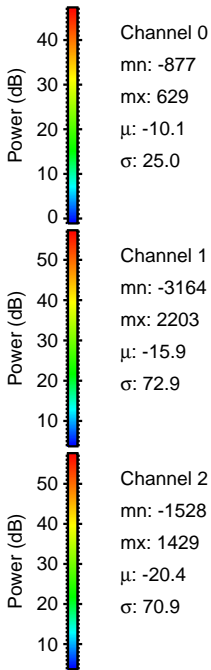
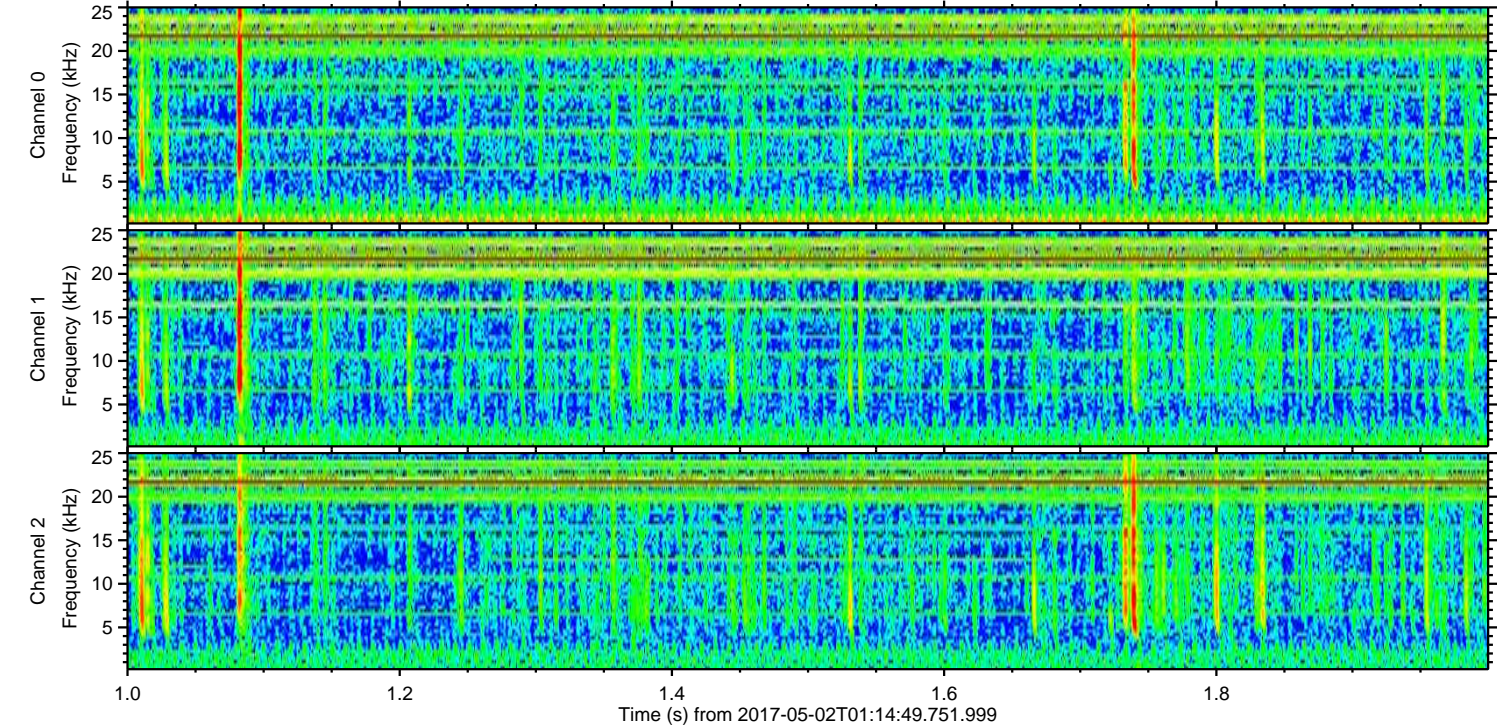
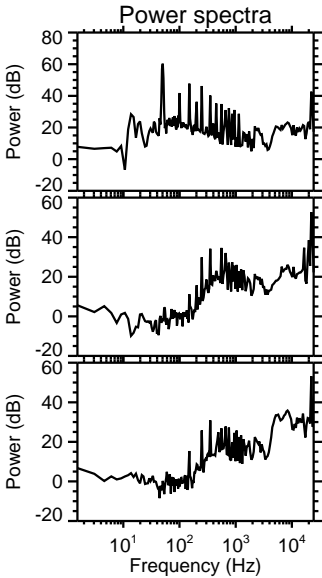
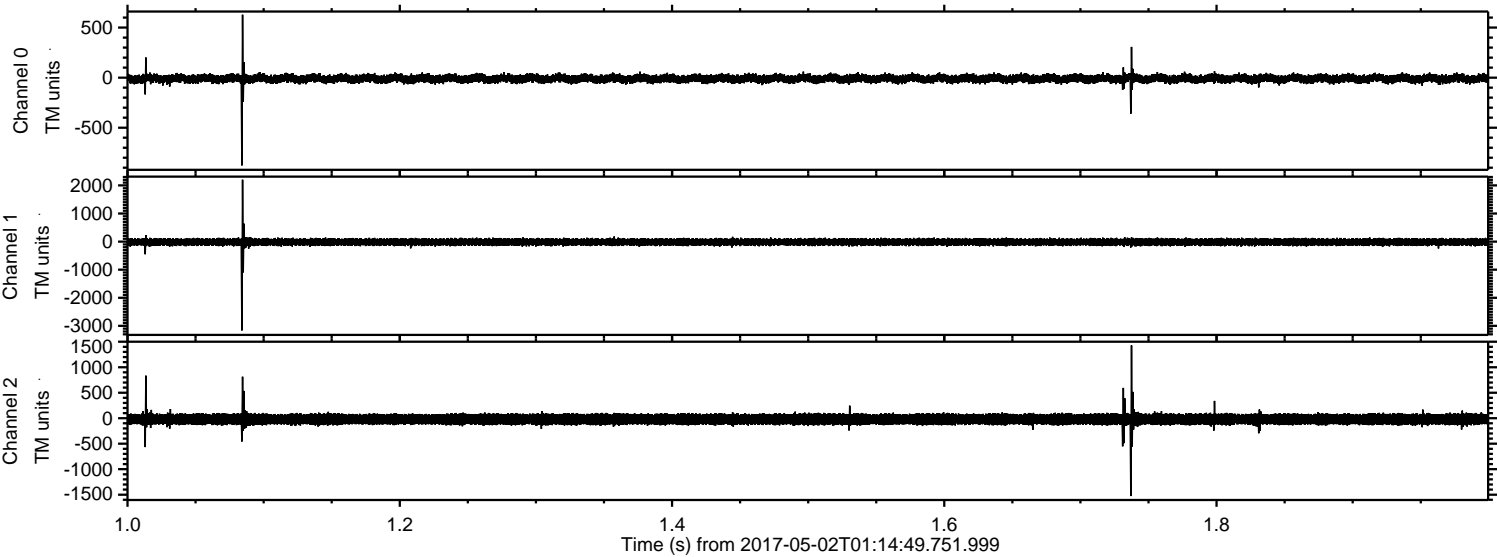
Processed Tue May 2 03:22:53 2017 by ELM ver.2012-10-06 from 001\_\_elm20170502\_011448\_\_dat00.bin





ELMAVAN 3D WAVEFORMS (Measured data sampled at 50 kHz) 51000 packets of 144 samples from 2017-05-02T01:14:49.751.999. Part 2/147

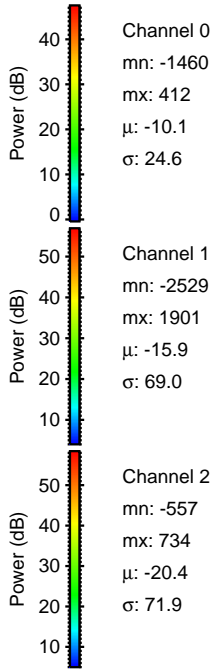
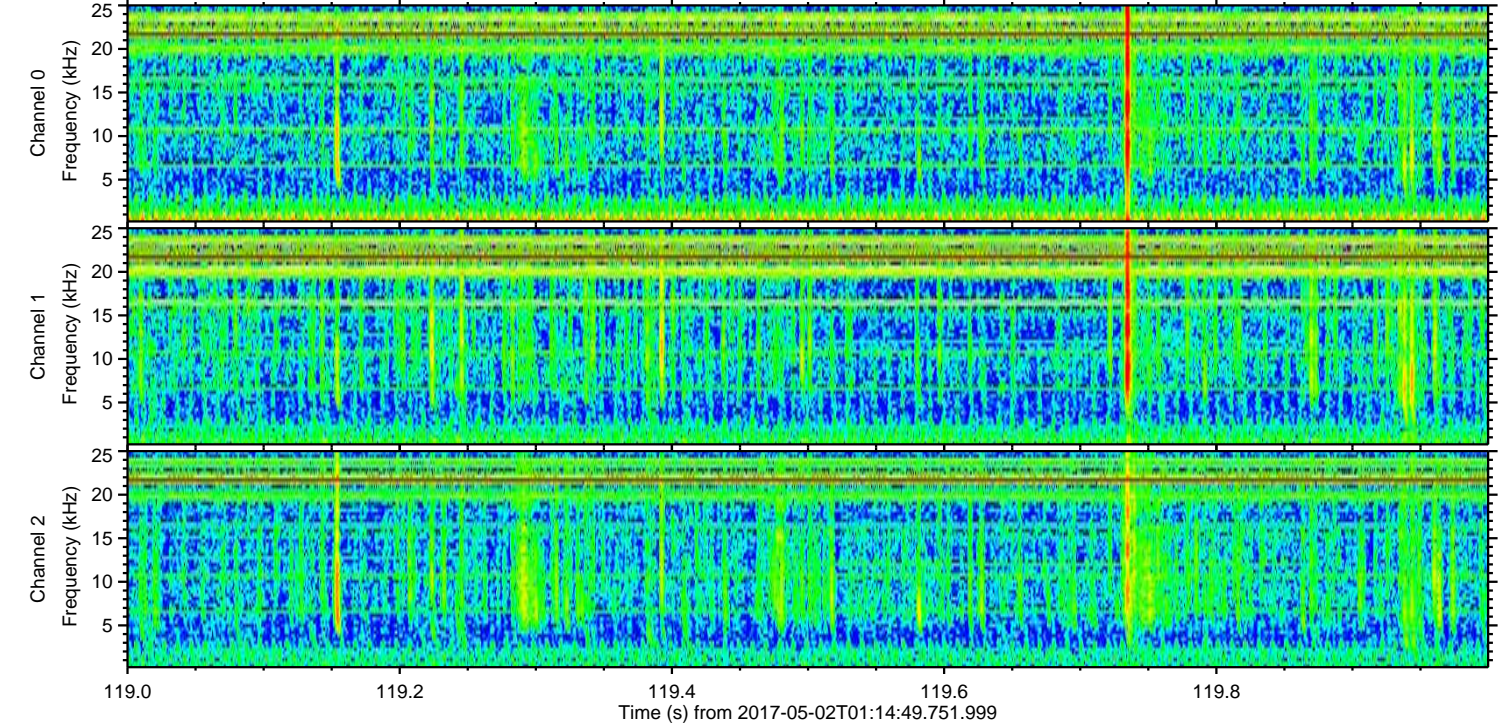
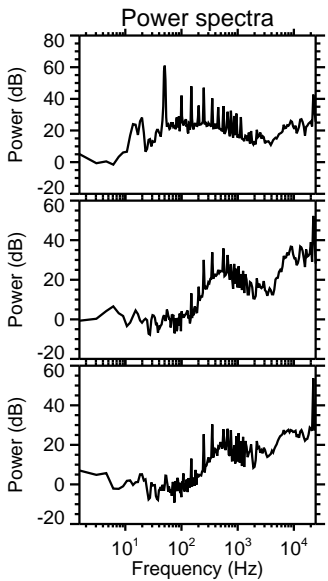
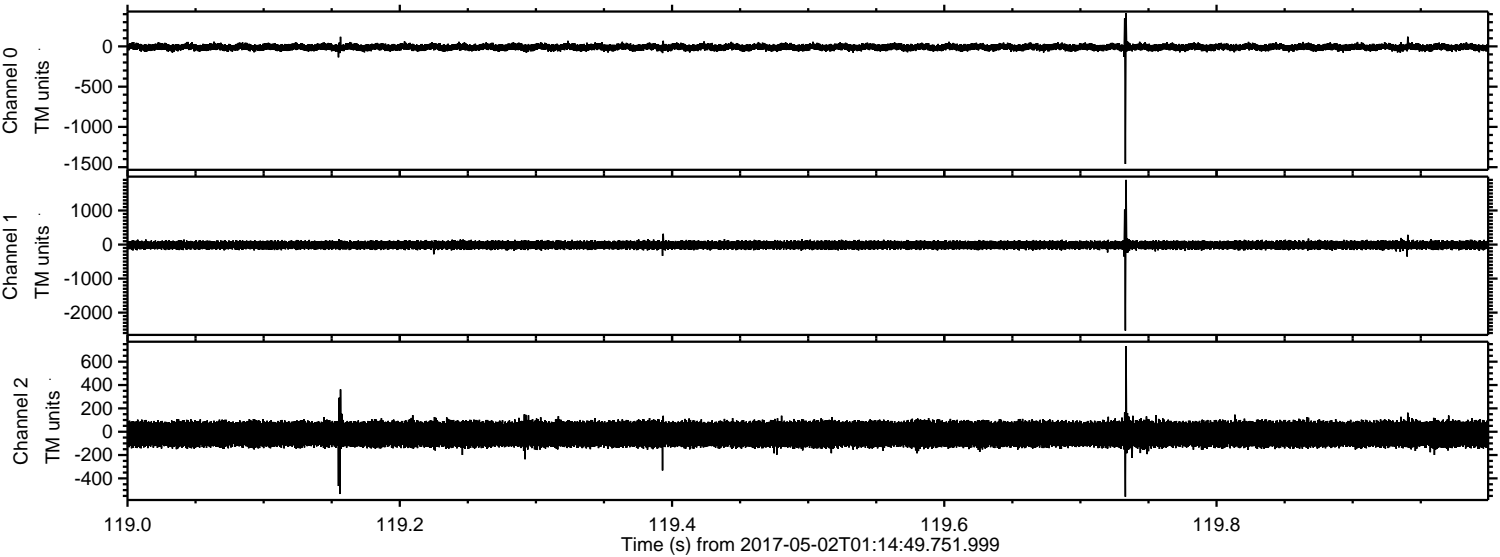
Processed Tue May 2 03:23:04 2017 by ELM ver.2012-10-06 from 001\_\_elm20170502\_011448\_\_dat00.bin





ELMAVAN 3D WAVEFORMS (Measured data sampled at 50 kHz) 51000 packets of 144 samples from 2017-05-02T01:14:49.751.999. Part 120/147

Processed Tue May 2 03:23:05 2017 by ELM ver.2012-10-06 from 001\_\_elm20170502\_011448\_\_dat00.bin



Channel 0  
mn: -1460  
mx: 412  
 $\mu$ : -10.1  
 $\sigma$ : 24.6

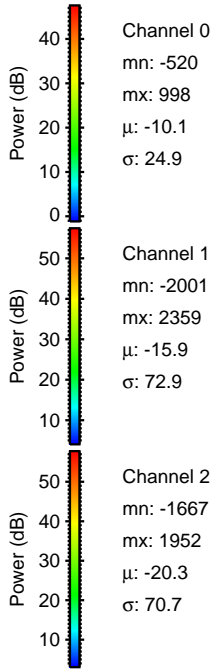
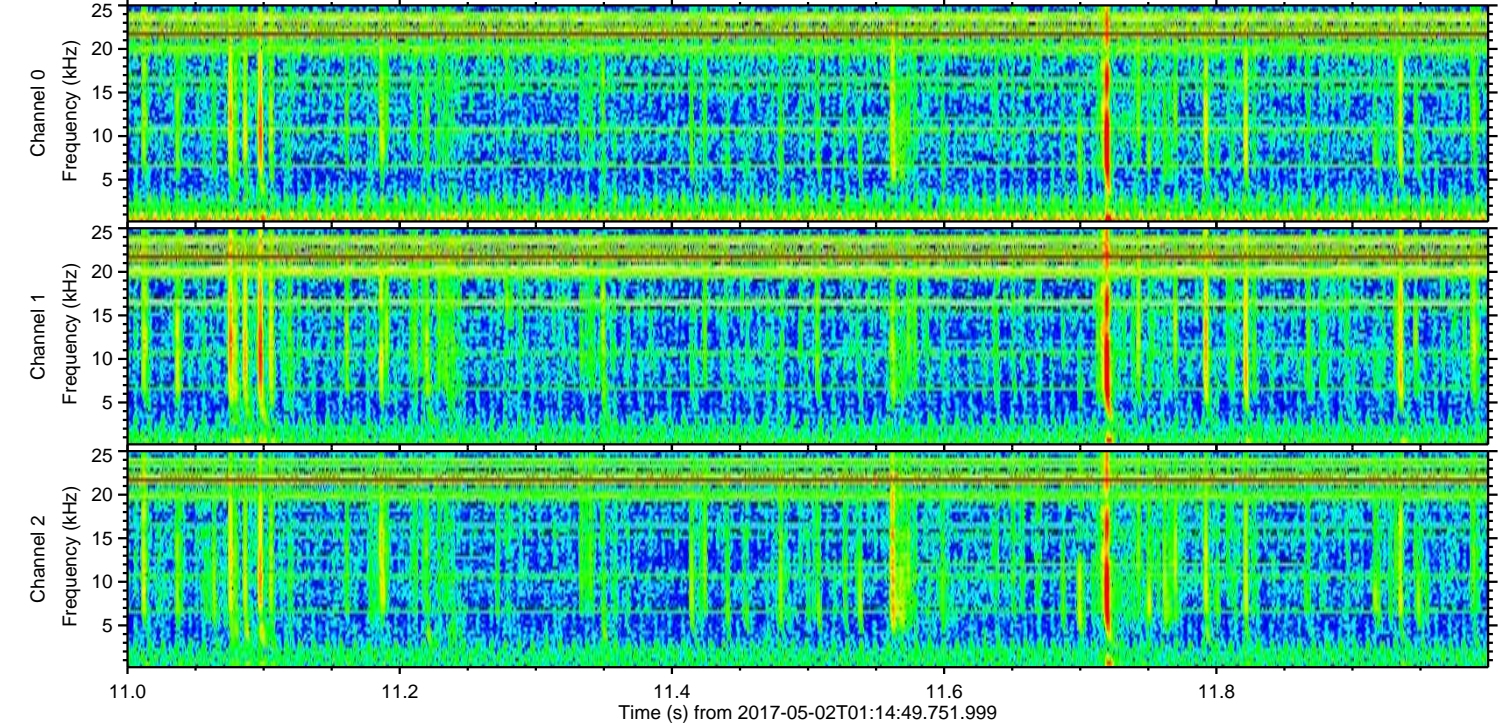
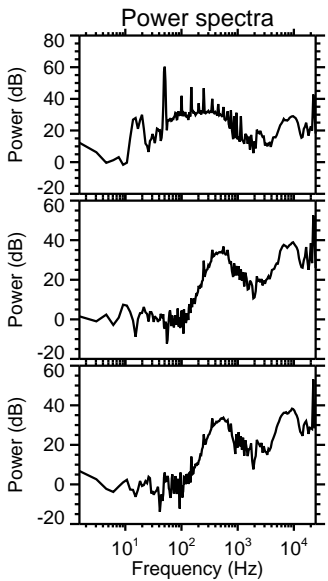
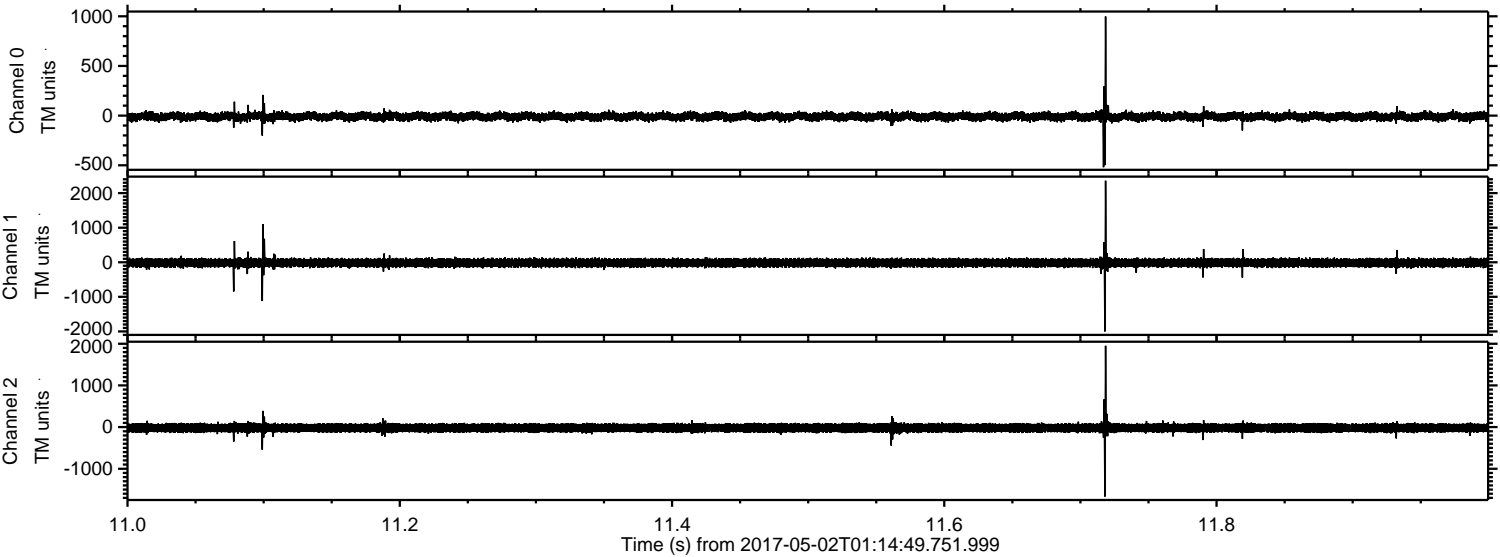
Channel 1  
mn: -2529  
mx: 1901  
 $\mu$ : -15.9  
 $\sigma$ : 69.0

Channel 2  
mn: -557  
mx: 734  
 $\mu$ : -20.4  
 $\sigma$ : 71.9



ELMAVAN 3D WAVEFORMS (Measured data sampled at 50 kHz) 51000 packets of 144 samples from 2017-05-02T01:14:49.751.999. Part 12/147

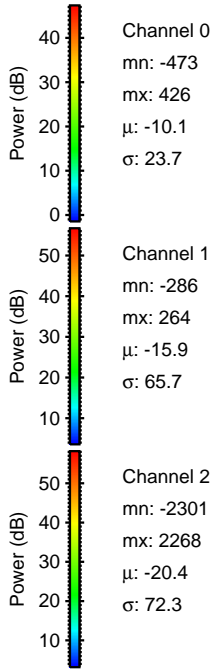
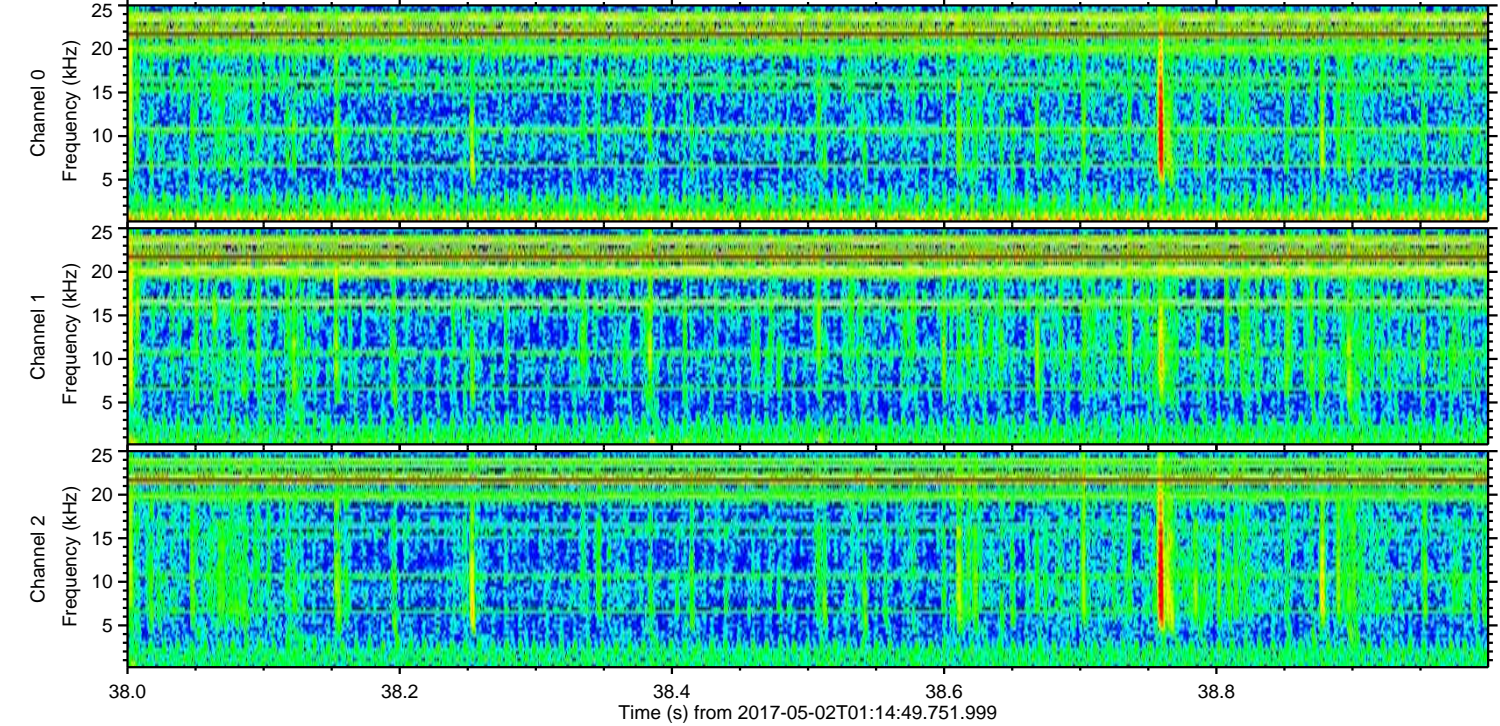
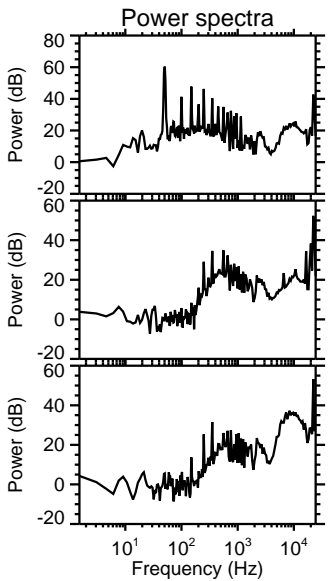
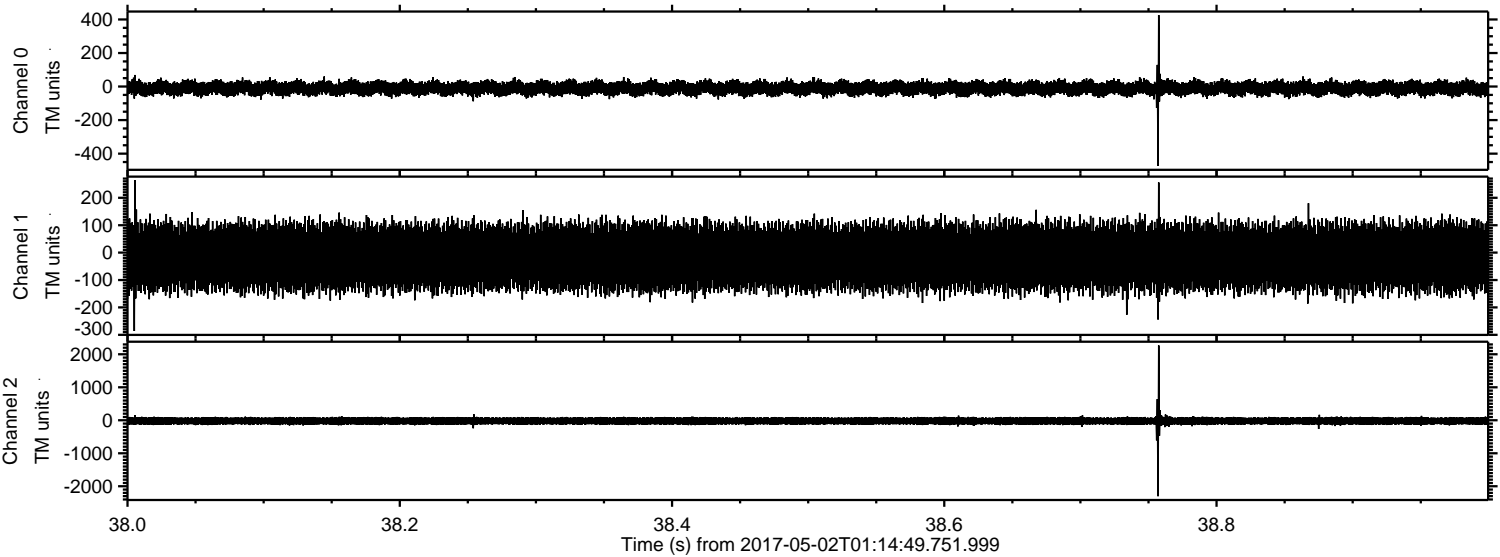
Processed Tue May 2 03:23:06 2017 by ELM ver.2012-10-06 from 001\_\_elm20170502\_011448\_\_dat00.bin





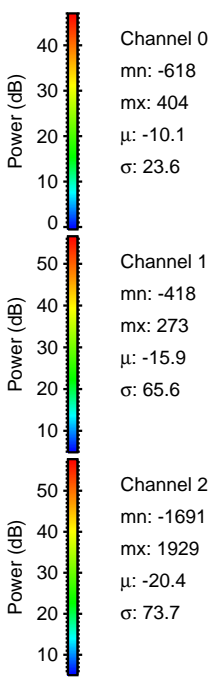
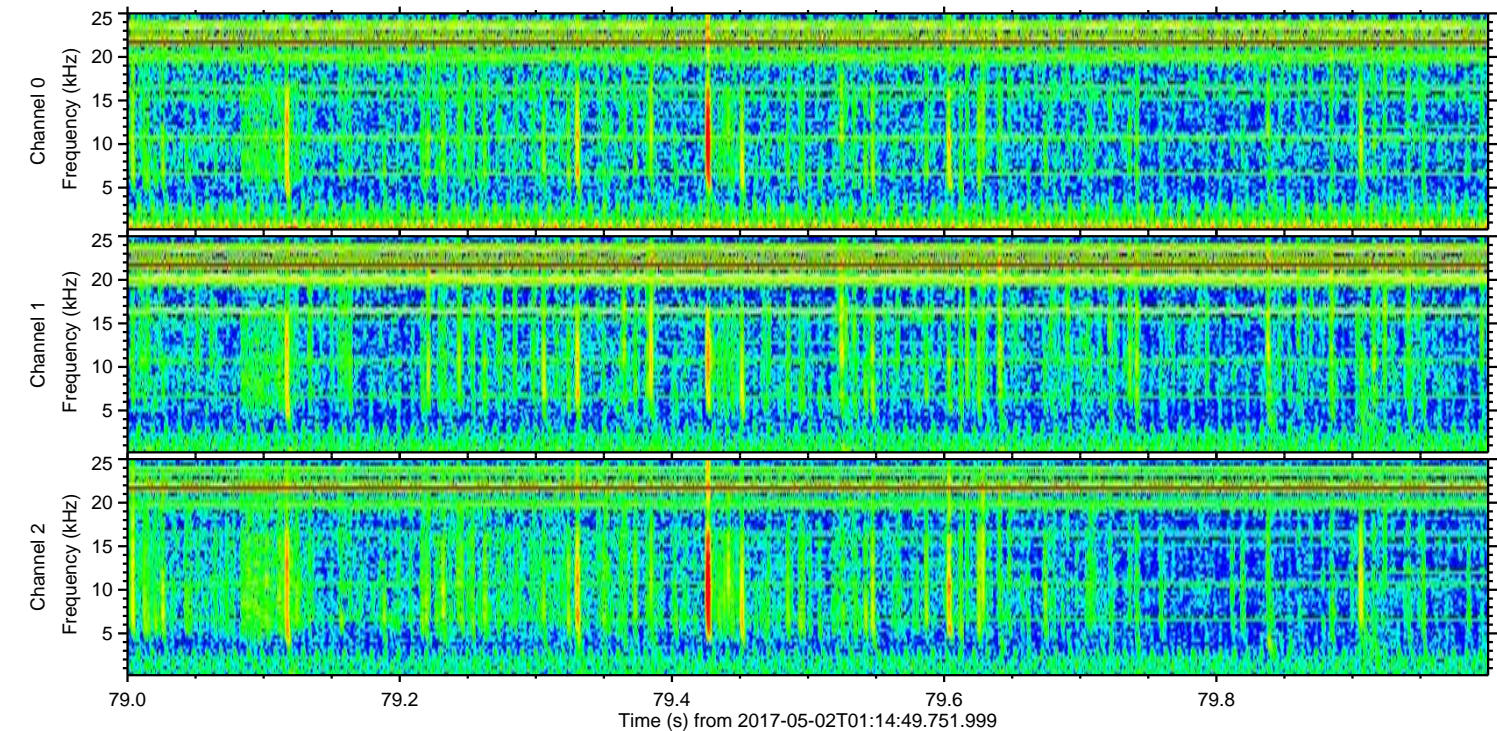
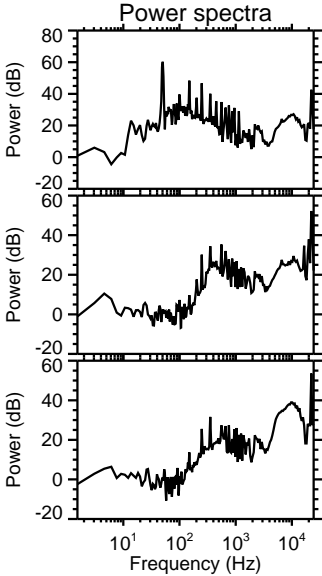
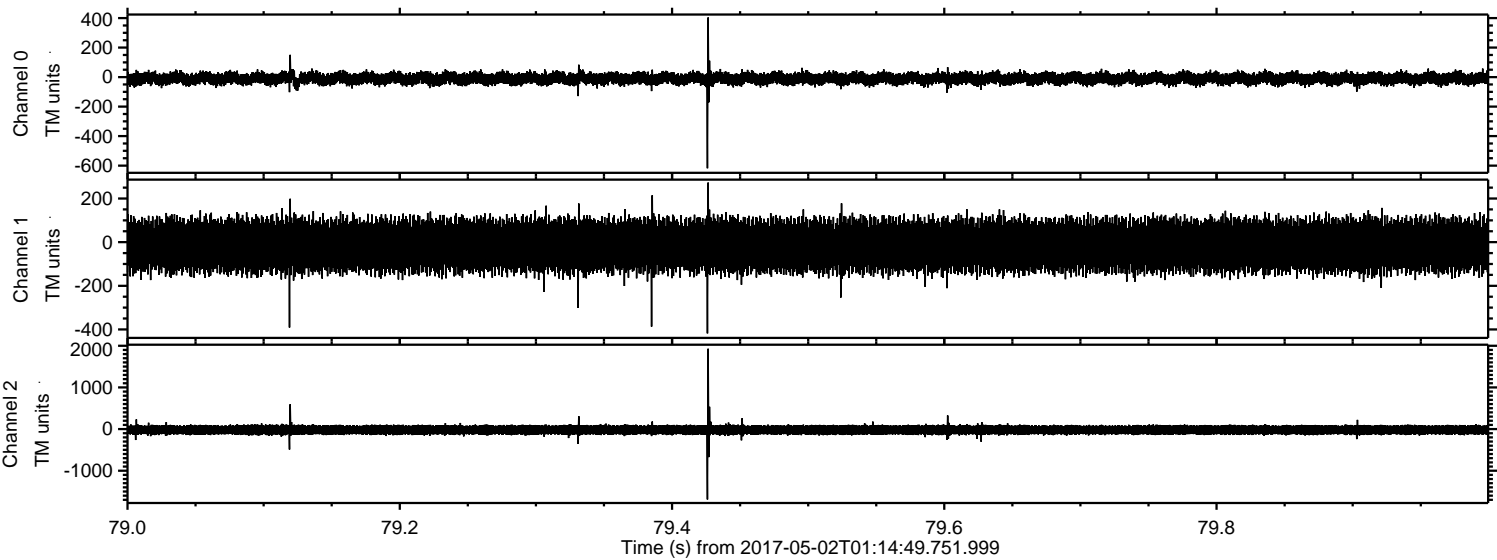
ELMAVAN 3D WAVEFORMS (Measured data sampled at 50 kHz) 51000 packets of 144 samples from 2017-05-02T01:14:49.751.999. Part 39/147

Processed Tue May 2 03:23:07 2017 by ELM ver.2012-10-06 from 001\_\_elm20170502\_011448\_\_dat00.bin





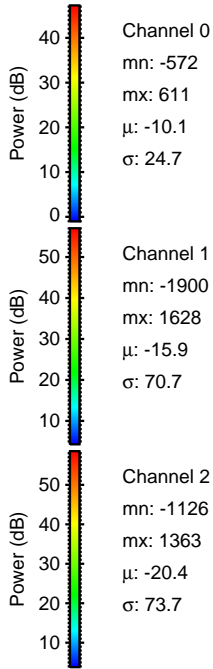
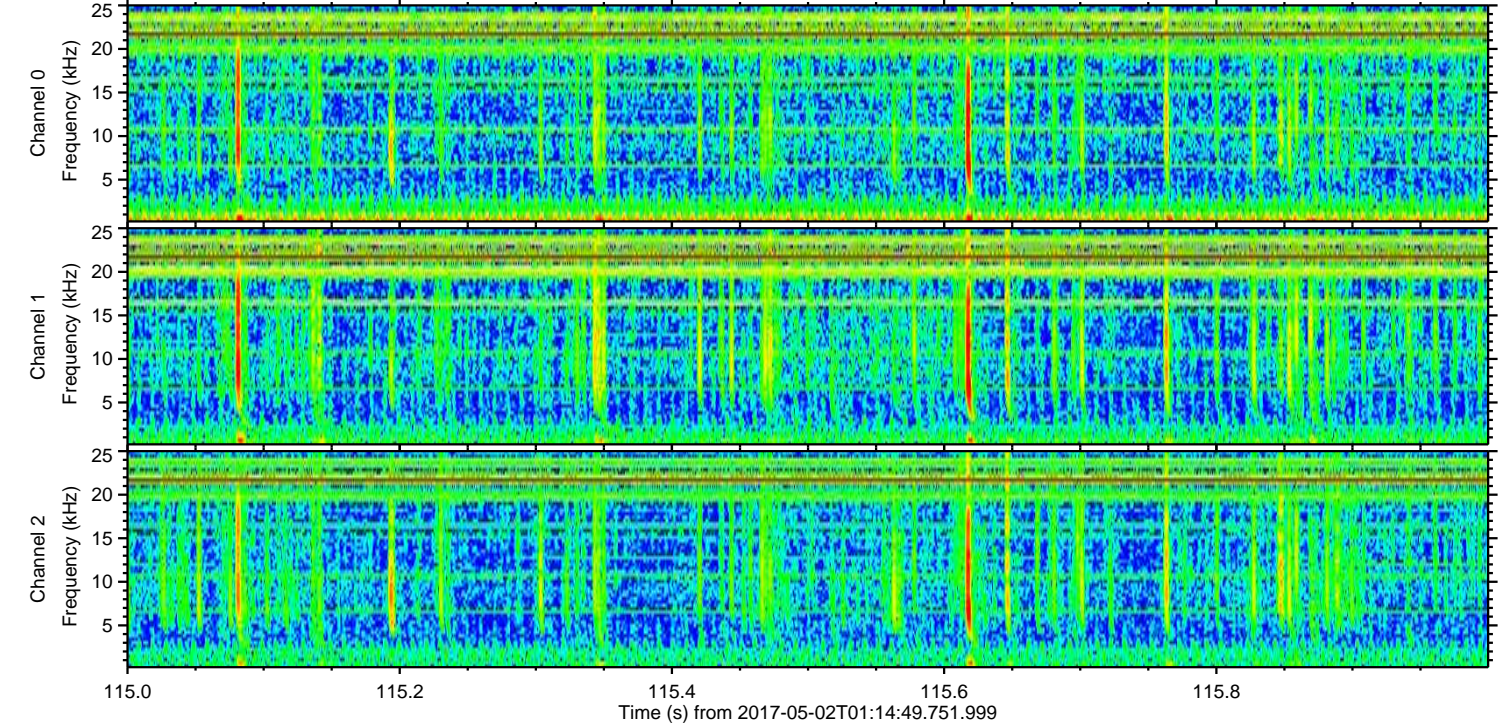
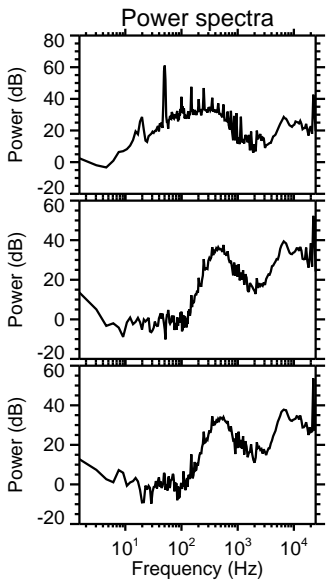
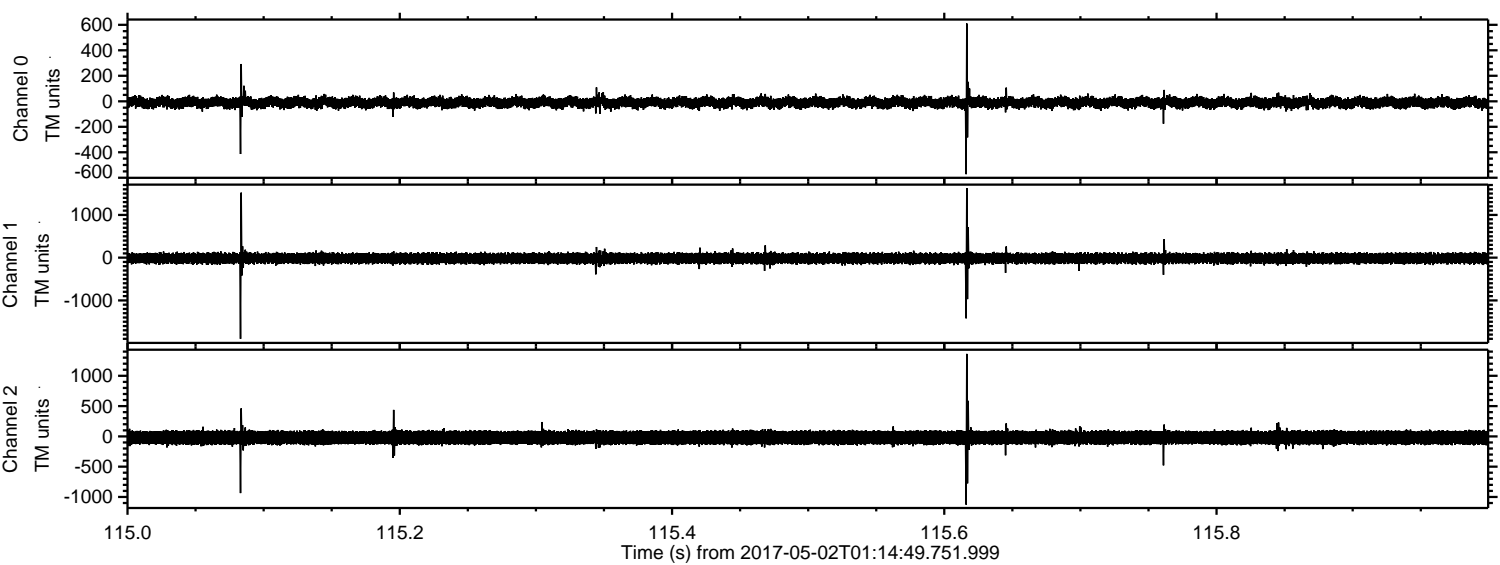
Processed Tue May 2 03:23:08 2017 by ELM ver.2012-10-06 from 001\_\_elm20170502\_011448\_\_dat00.bin





ELMAVAN 3D WAVEFORMS (Measured data sampled at 50 kHz) 51000 packets of 144 samples from 2017-05-02T01:14:49.751.999. Part 116/147

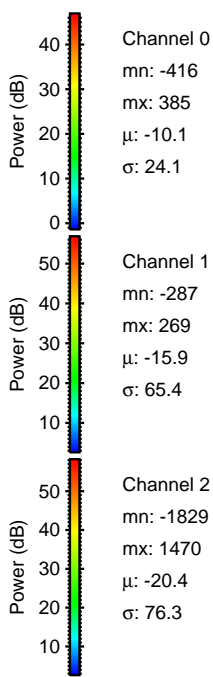
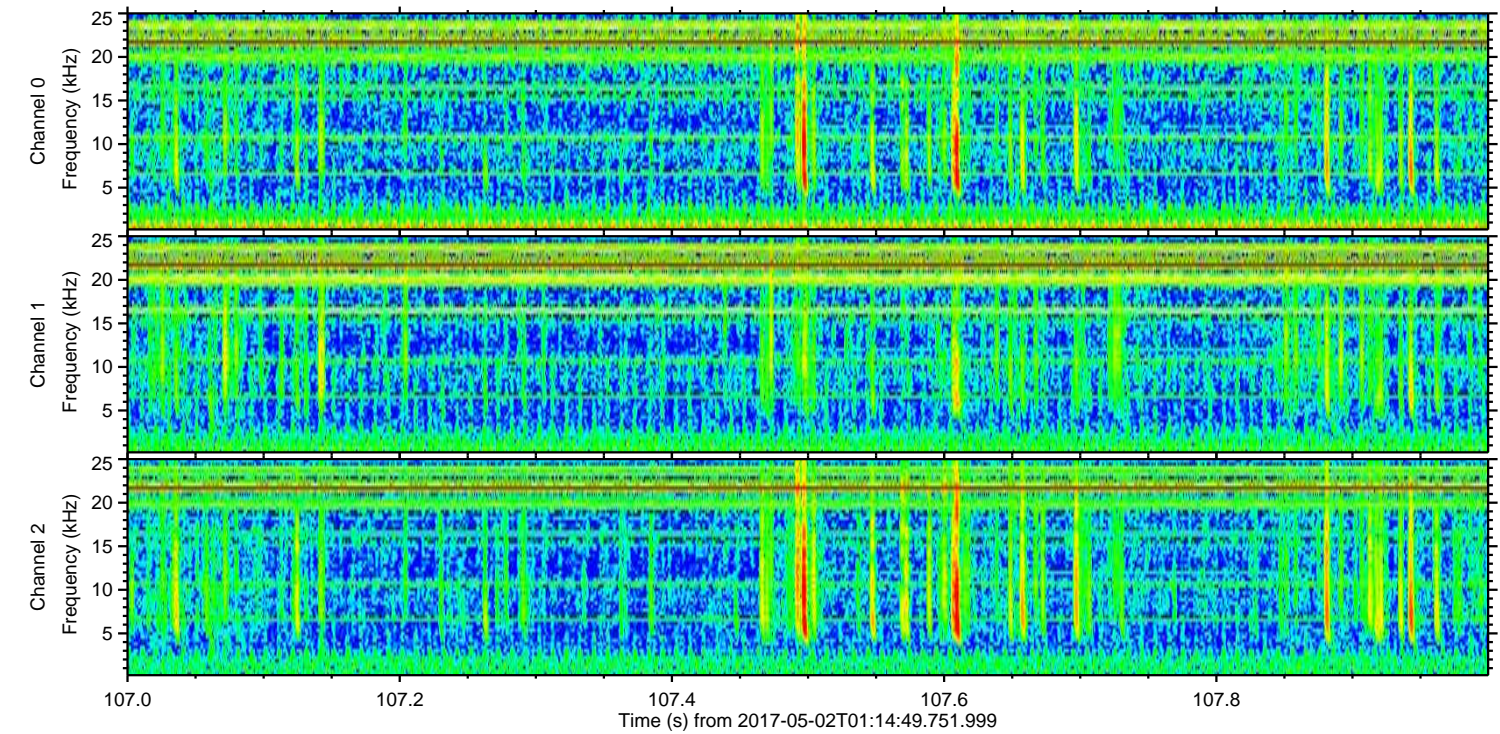
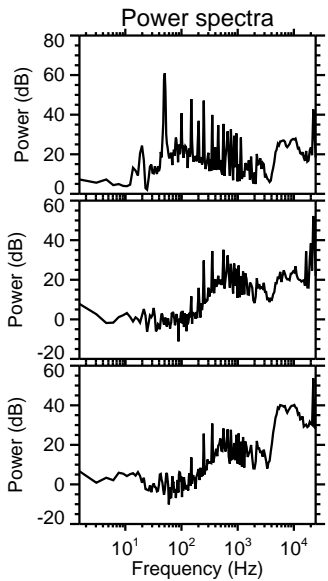
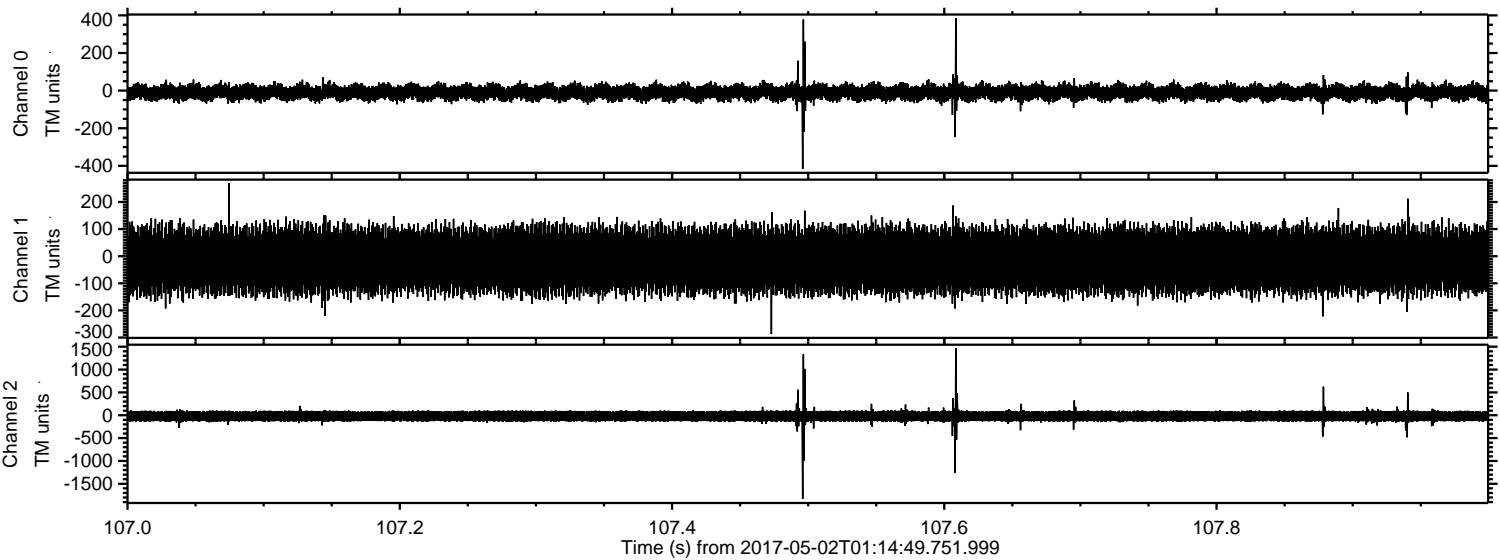
Processed Tue May 2 03:23:09 2017 by ELM ver.2012-10-06 from 001\_\_elm20170502\_011448\_\_dat00.bin





ELMAVAN 3D WAVEFORMS (Measured data sampled at 50 kHz) 51000 packets of 144 samples from 2017-05-02T01:14:49.751.999. Part 108/147

Processed Tue May 2 03:23:10 2017 by ELM ver.2012-10-06 from 001\_\_elm20170502\_011448\_\_dat00.bin



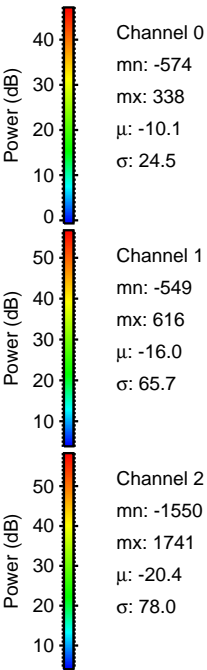
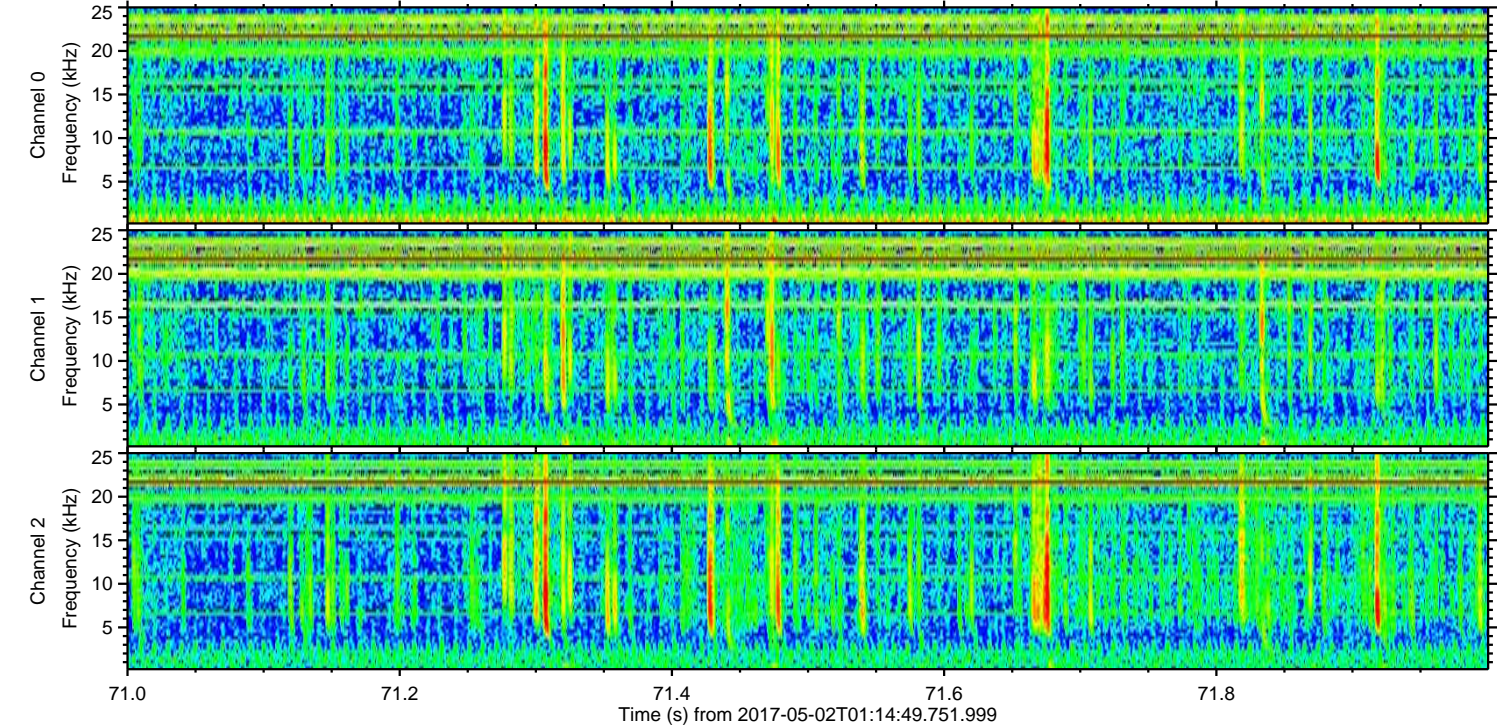
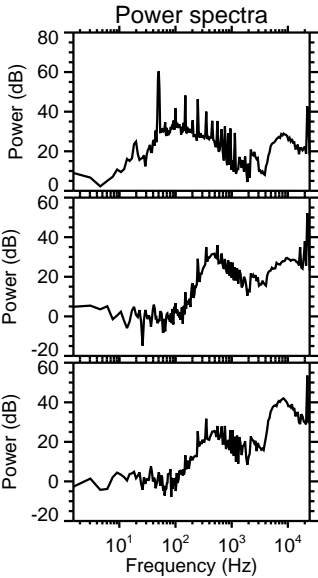
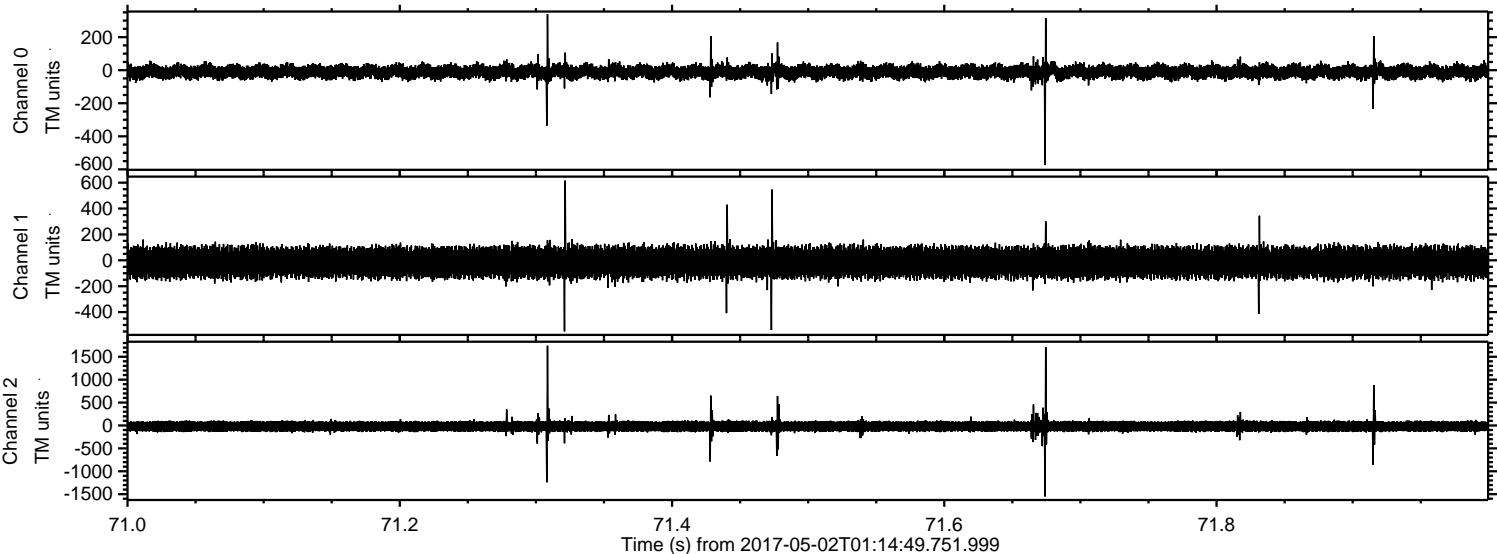
Channel 0  
mn: -416  
mx: 385  
 $\mu$ : -10.1  
 $\sigma$ : 24.1

Channel 1  
mn: -287  
mx: 269  
 $\mu$ : -15.9  
 $\sigma$ : 65.4

Channel 2  
mn: -1829  
mx: 1470  
 $\mu$ : -20.4  
 $\sigma$ : 76.3



Processed Tue May 2 03:23:11 2017 by ELM ver.2012-10-06 from 001\_\_elm20170502\_011448\_\_dat00.bin



Channel 0  
mn: -574  
mx: 338  
 $\mu$ : -10.1  
 $\sigma$ : 24.5

Channel 1  
mn: -549  
mx: 616  
 $\mu$ : -16.0  
 $\sigma$ : 65.7

Channel 2  
mn: -1550  
mx: 1741  
 $\mu$ : -20.4  
 $\sigma$ : 78.0



ELMAVAN 3D WAVEFORMS (Measured data sampled at 50 kHz) 51000 packets of 144 samples from 2017-05-02T01:14:49.751.999. Part 15/147

Processed Tue May 2 03:23:12 2017 by ELM ver.2012-10-06 from 001\_\_elm20170502\_011448\_\_dat00.bin

