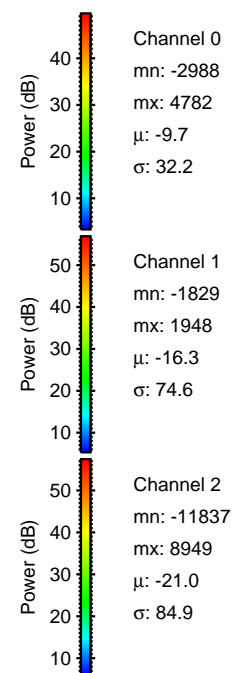
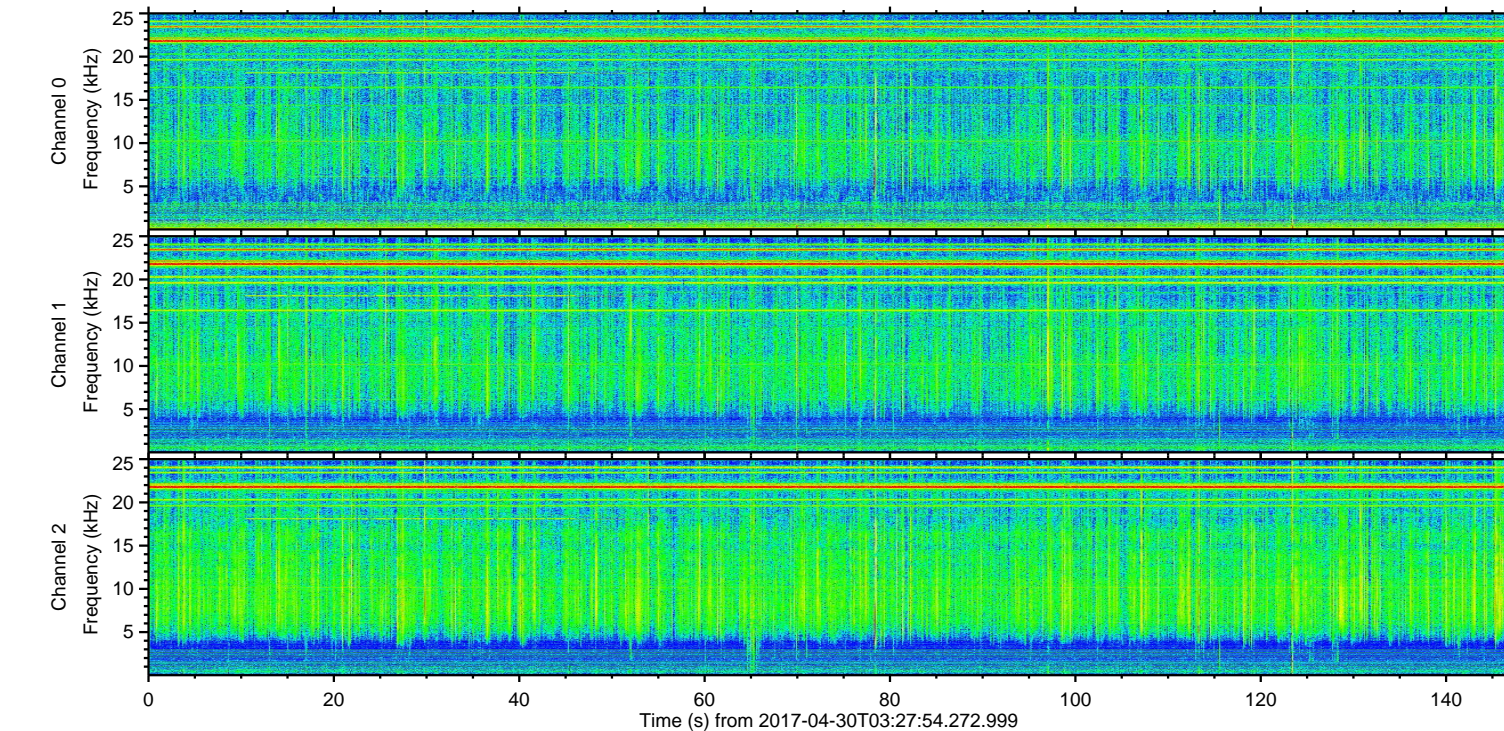
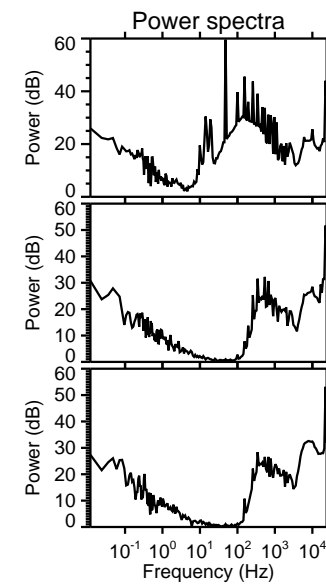
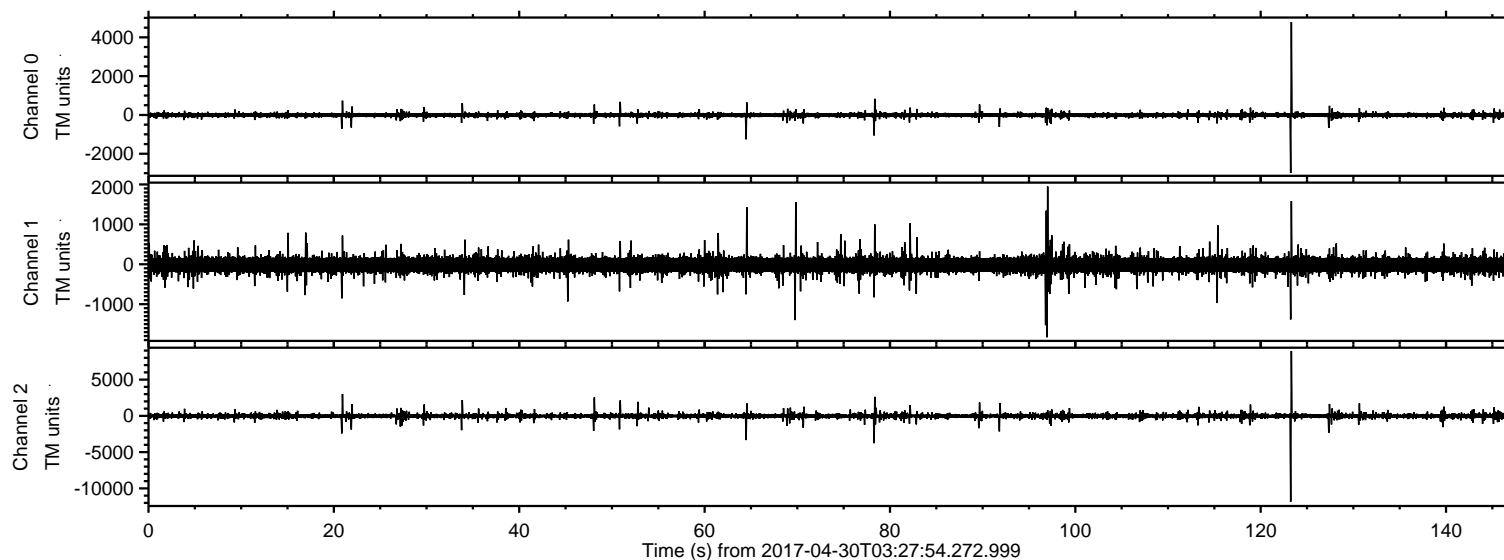


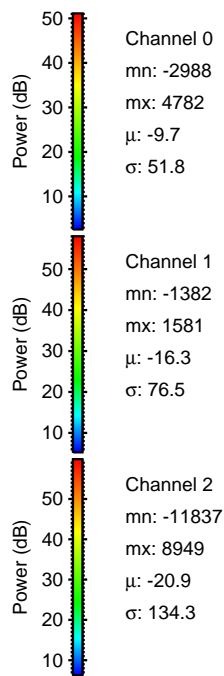
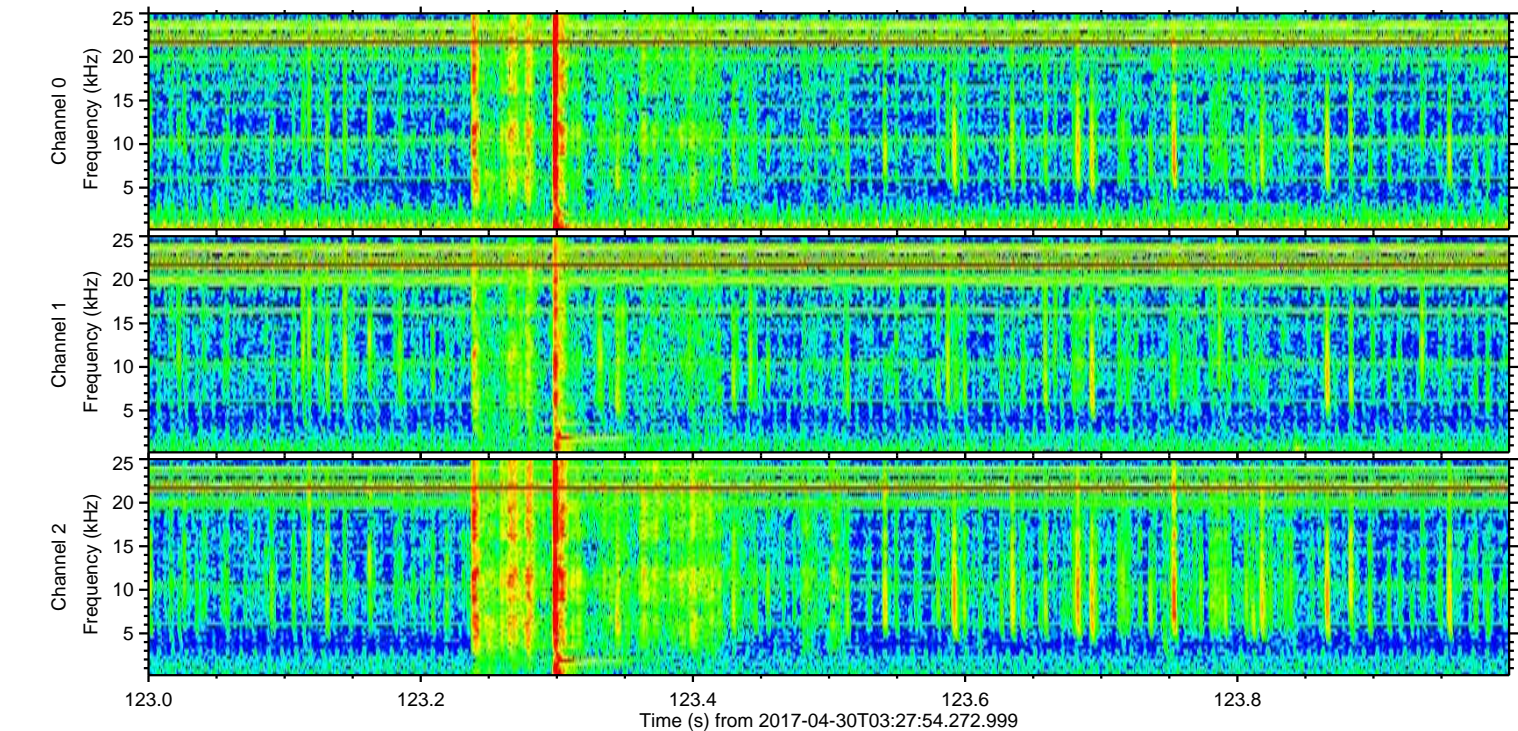
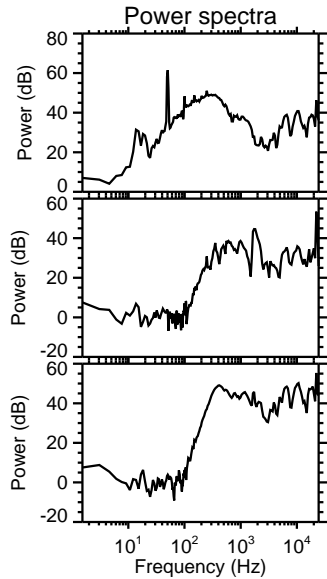
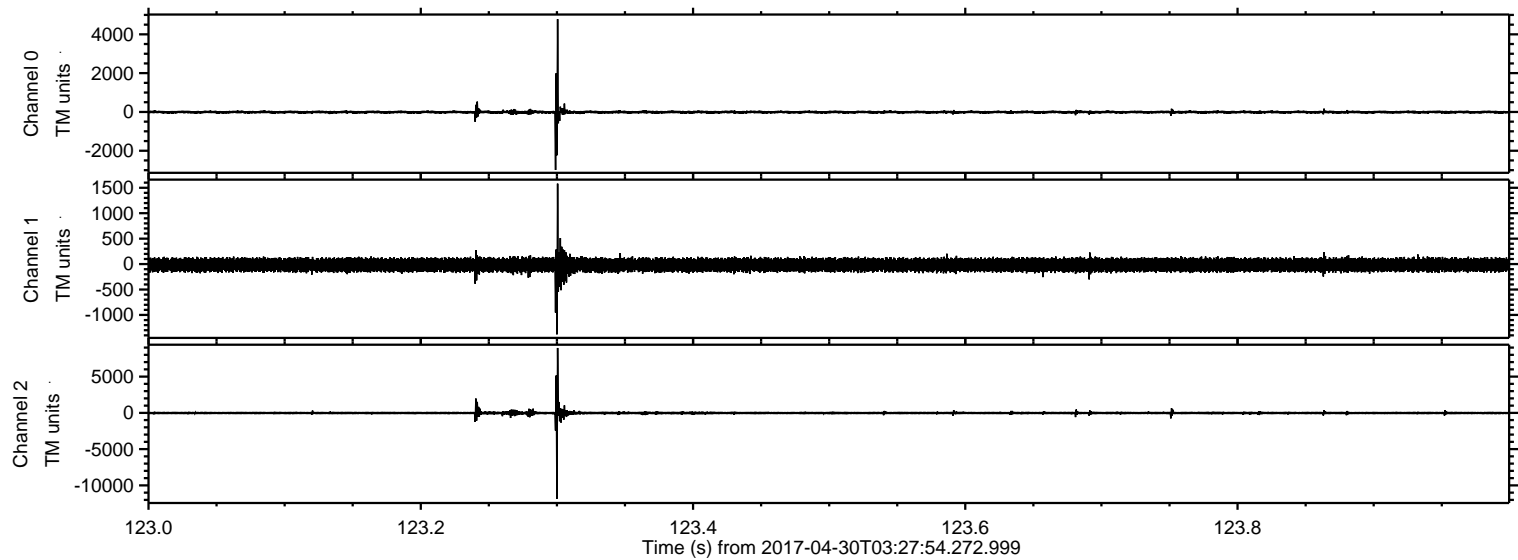
ELMAVAN 3D WAVEFORMS (Measured data sampled at 50 kHz) 51000 packets of 144 samples from 2017-04-30T03:27:54.272.999.

Processed Sun Apr 30 05:35:43 2017 by ELM ver.2012-10-06 from 001__elm20170430_032753__dat00.bin



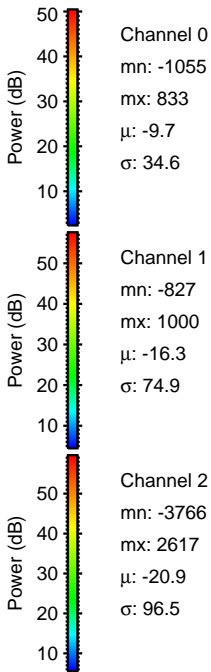
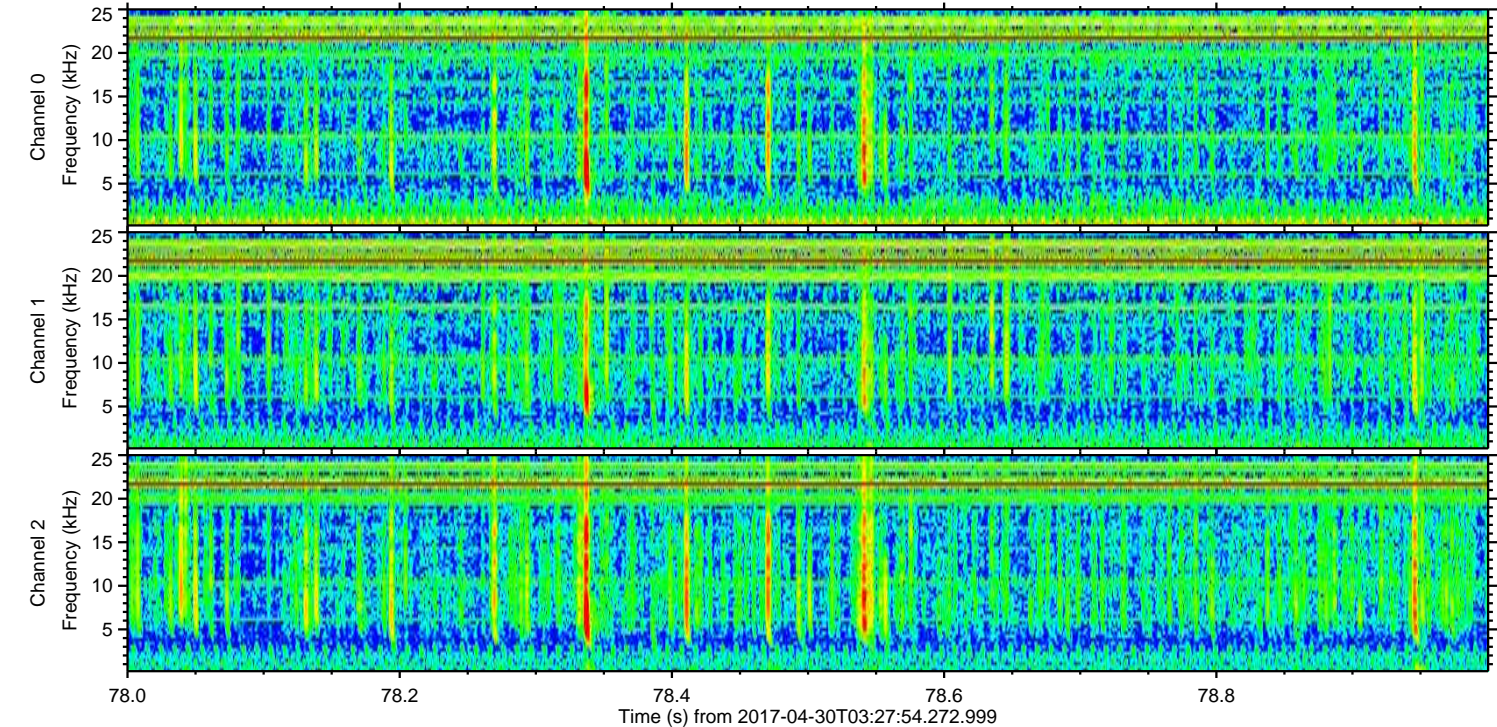
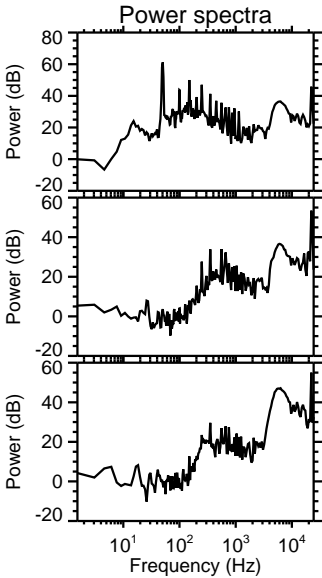
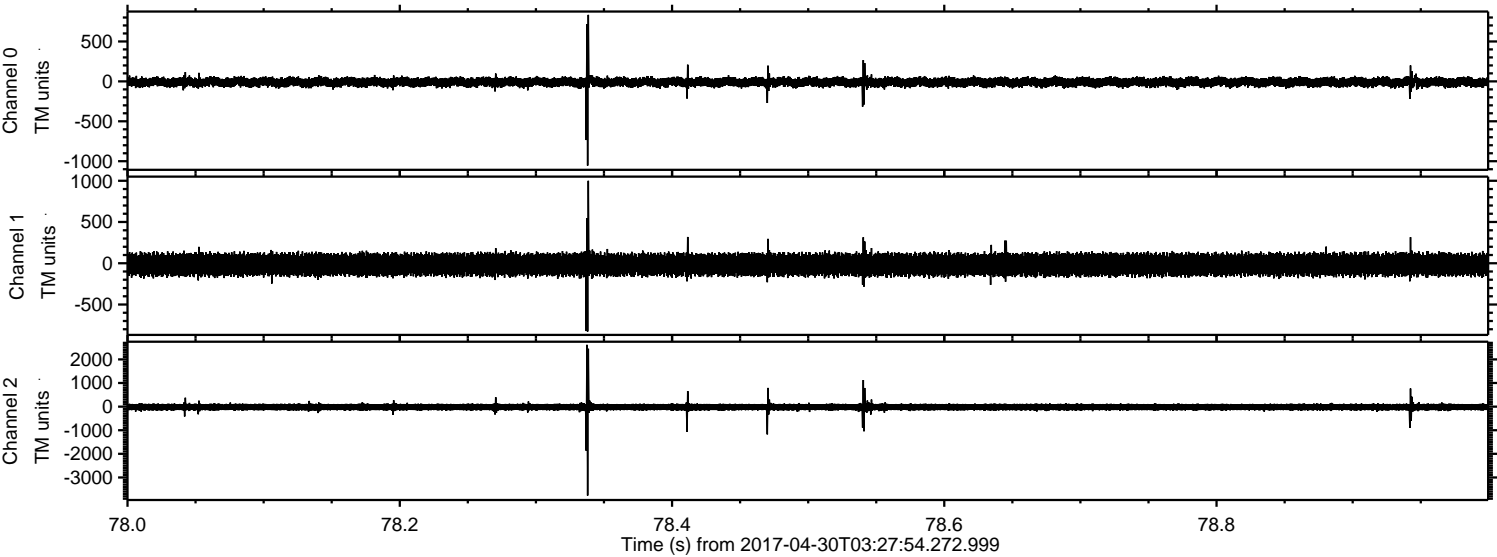
ELMAVAN 3D WAVEFORMS (Measured data sampled at 50 kHz) 51000 packets of 144 samples from 2017-04-30T03:27:54.272.999. Part 124/147

Processed Sun Apr 30 05:35:54 2017 by ELM ver.2012-10-06 from 001__elm20170430_032753__dat00.bin



ELMAVAN 3D WAVEFORMS (Measured data sampled at 50 kHz) 51000 packets of 144 samples from 2017-04-30T03:27:54.272.999. Part 79/147

Processed Sun Apr 30 05:35:55 2017 by ELM ver.2012-10-06 from 001__elm20170430_032753__dat00.bin

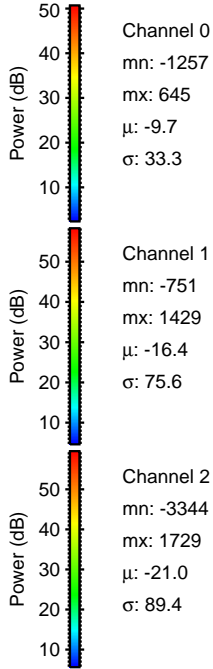
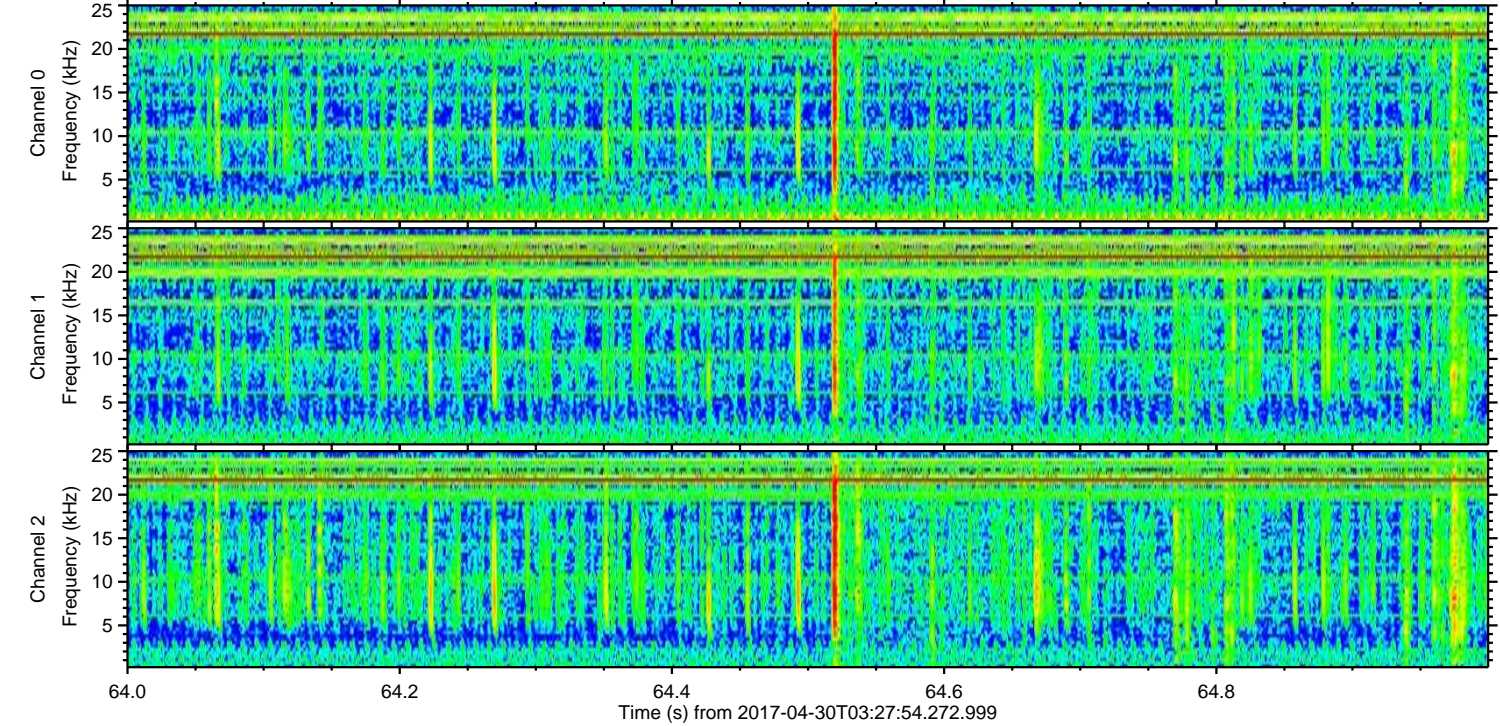
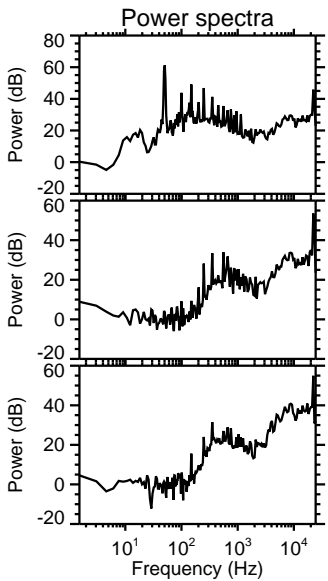
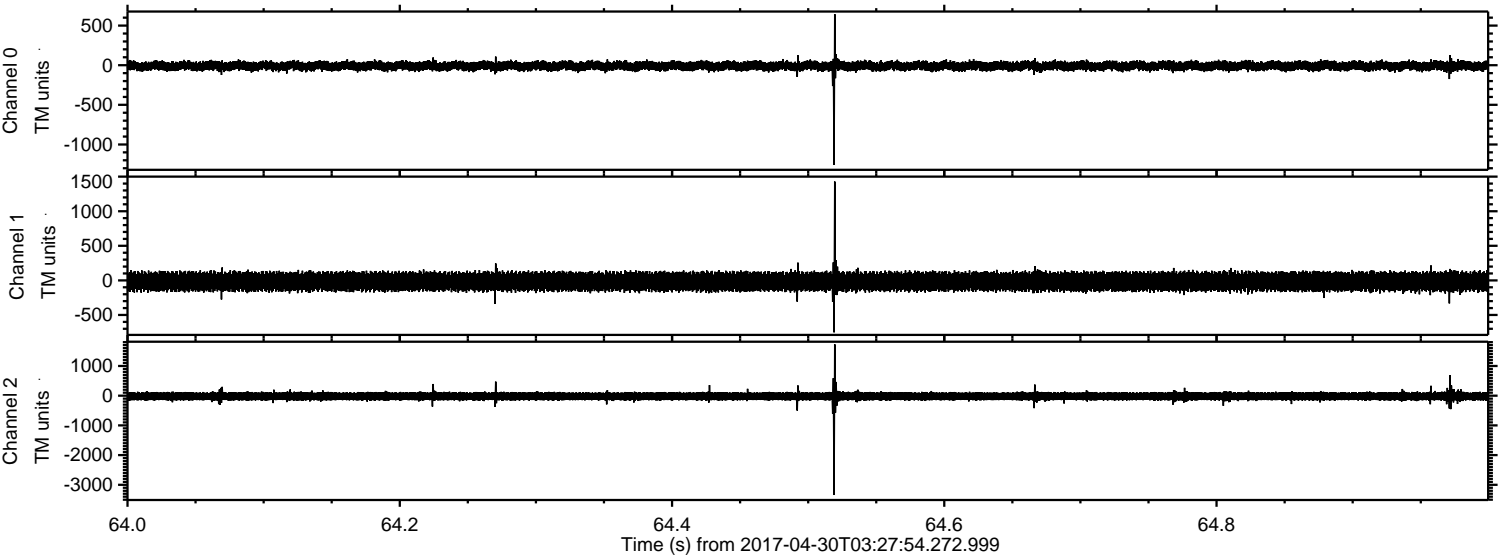


Channel 0
mn: -1055
mx: 833
 μ : -9.7
 σ : 34.6

Channel 1
mn: -827
mx: 1000
 μ : -16.3
 σ : 74.9

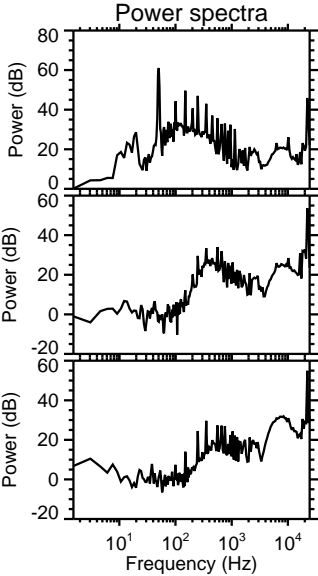
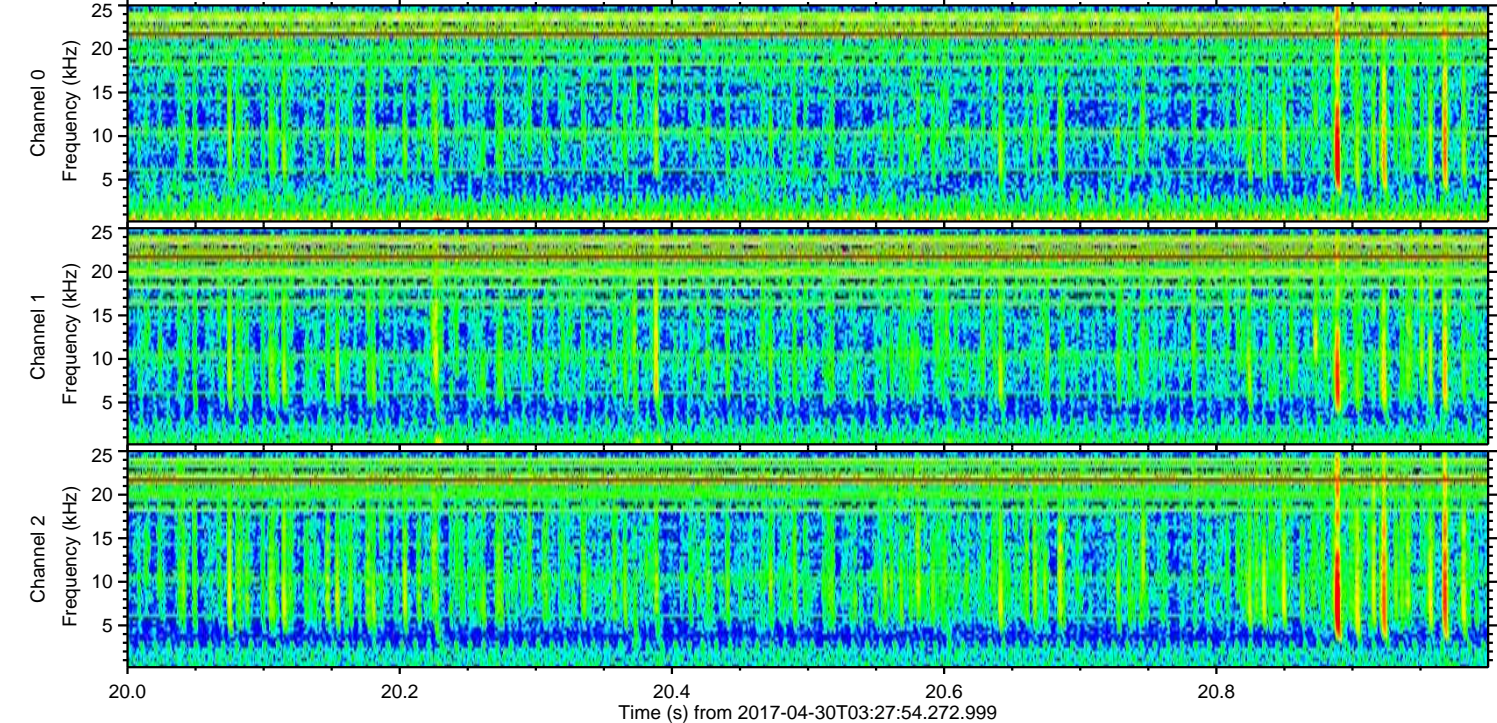
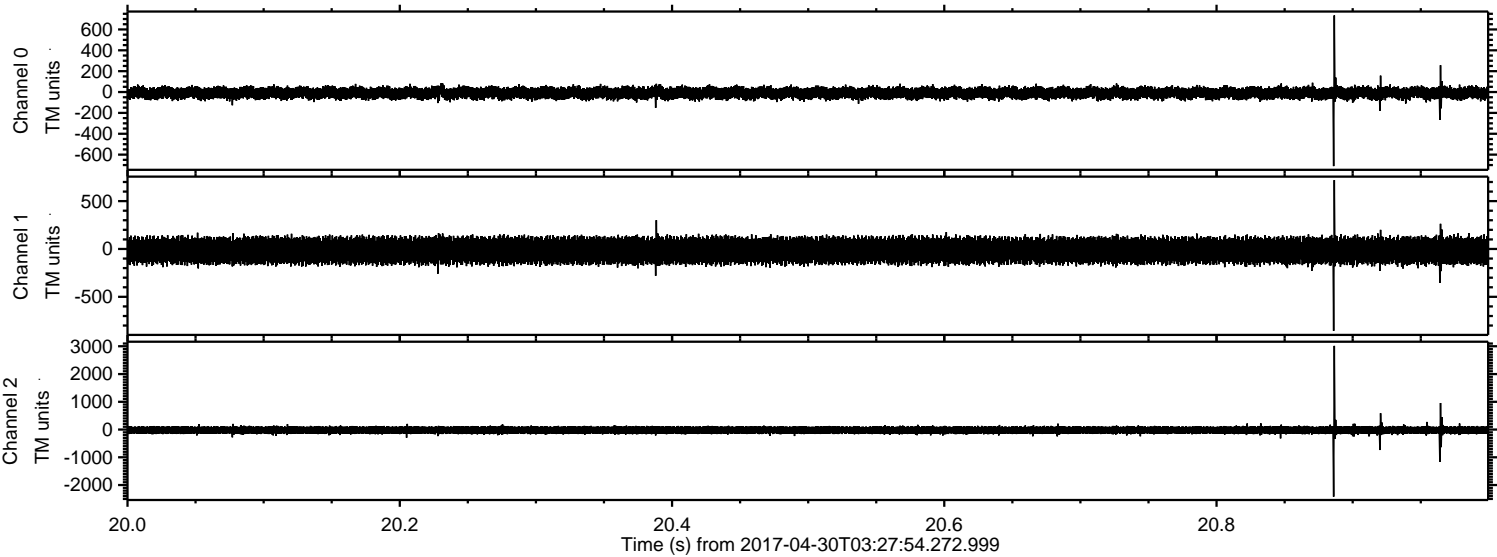
Channel 2
mn: -3766
mx: 2617
 μ : -20.9
 σ : 96.5

Processed Sun Apr 30 05:35:56 2017 by ELM ver.2012-10-06 from 001__elm20170430_032753__dat00.bin



ELMAVAN 3D WAVEFORMS (Measured data sampled at 50 kHz) 51000 packets of 144 samples from 2017-04-30T03:27:54.272.999. Part 21/147

Processed Sun Apr 30 05:35:57 2017 by ELM ver.2012-10-06 from 001__elm20170430_032753__dat00.bin



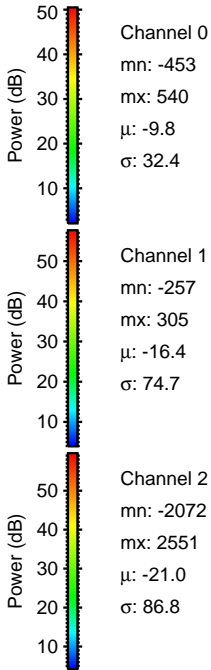
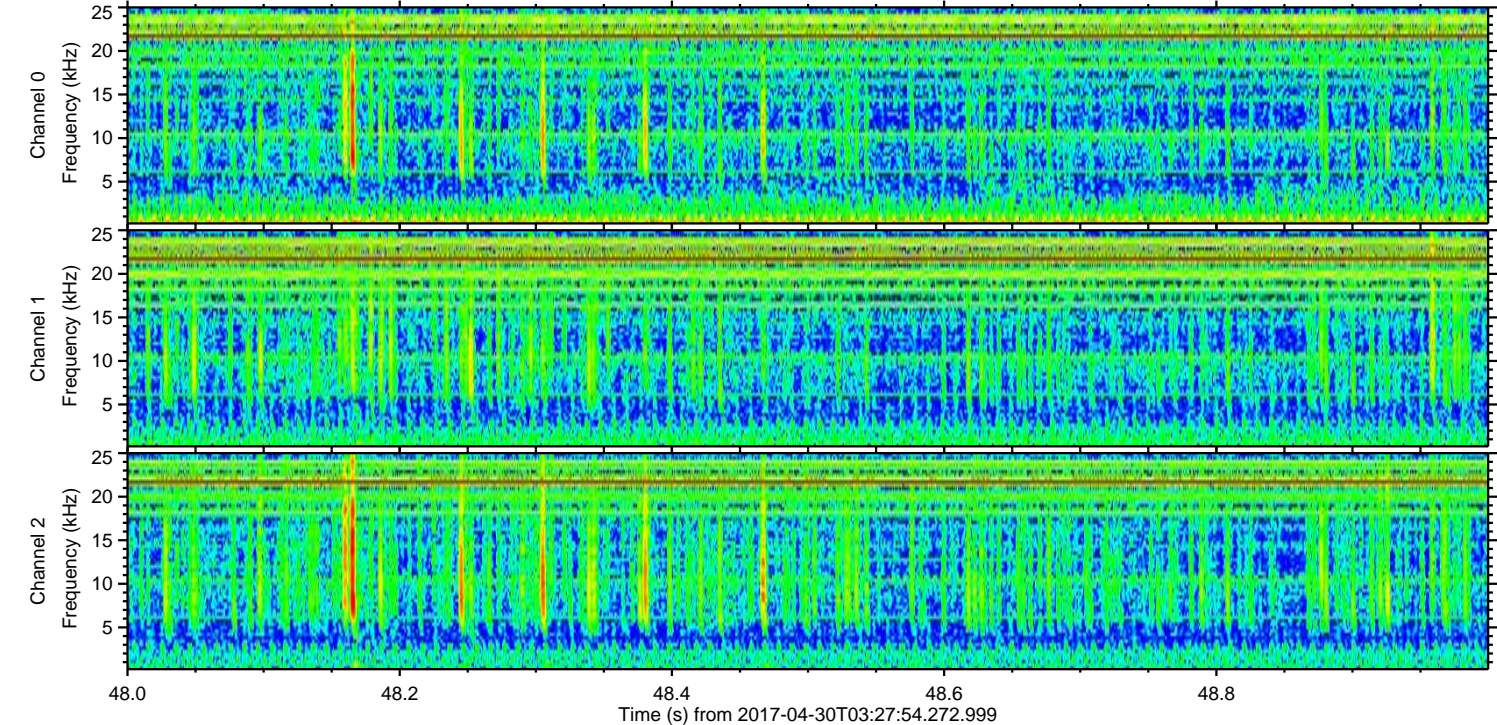
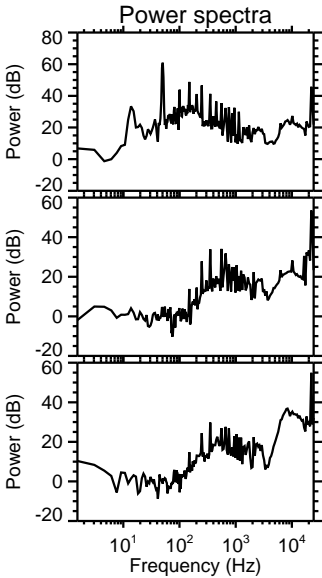
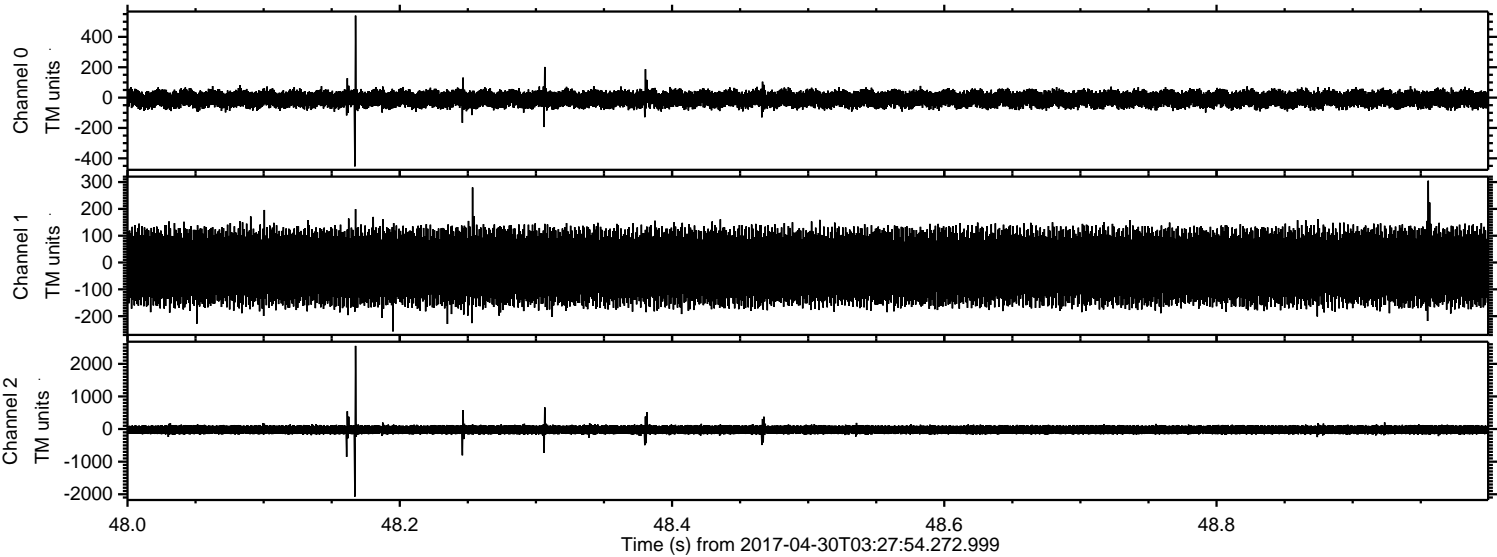
Channel 0
mn: -710
mx: 735
 μ : -9.7
 σ : 33.6

Channel 1
mn: -855
mx: 720
 μ : -16.4
 σ : 76.1

Channel 2
mn: -2418
mx: 3014
 μ : -21.0
 σ : 89.7

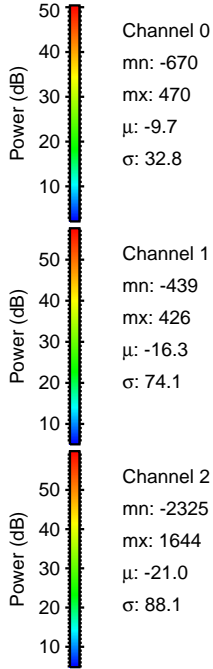
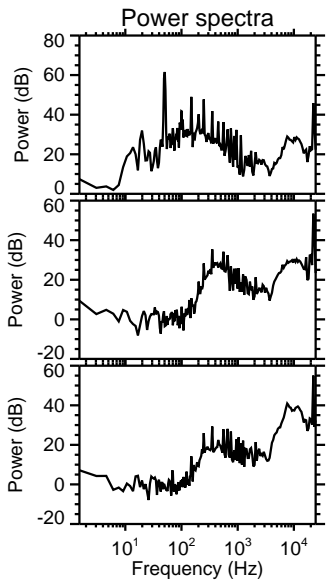
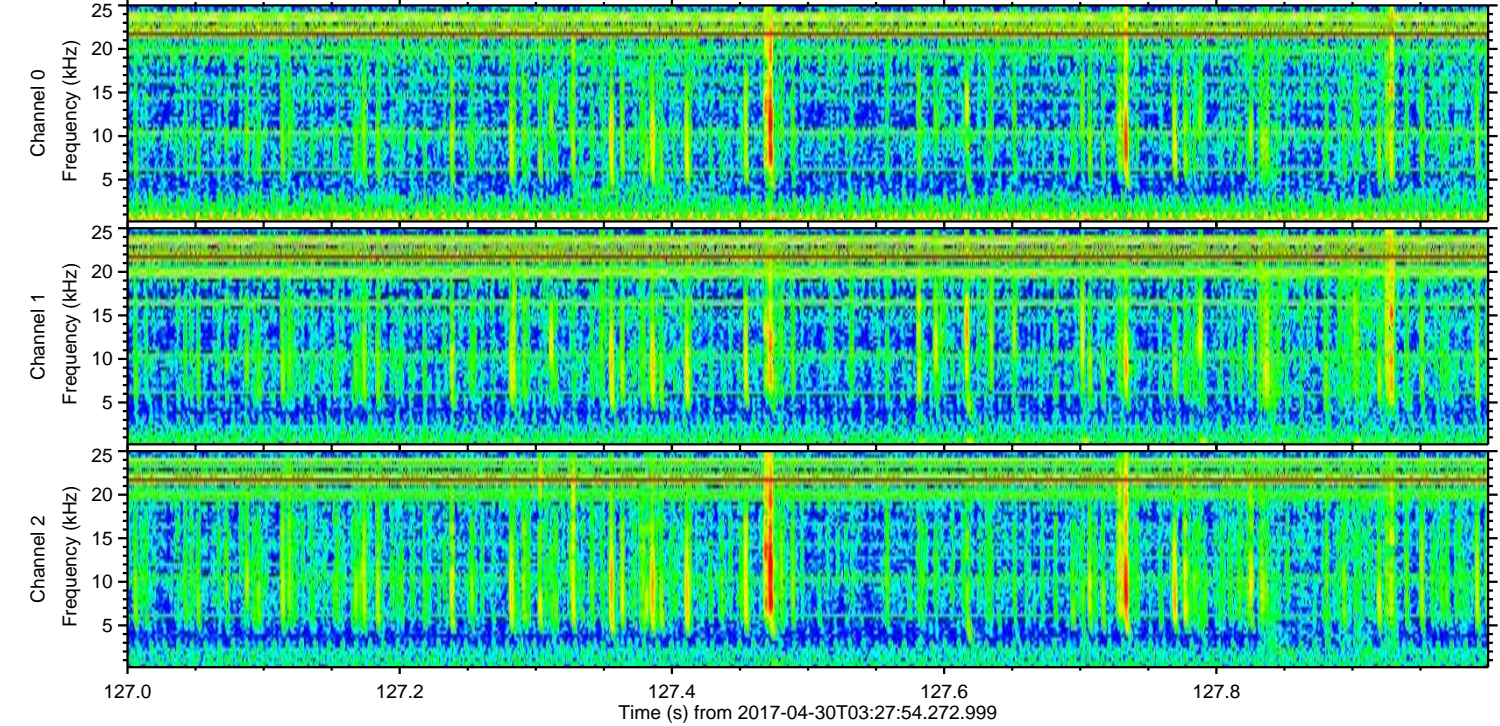
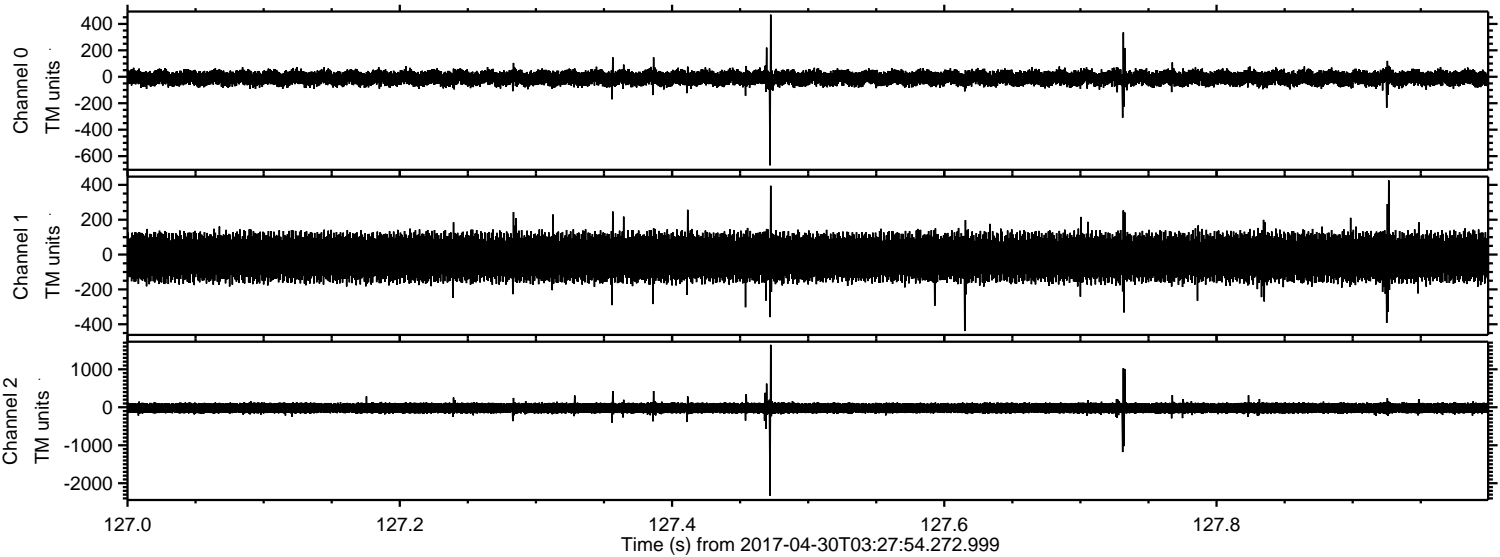
ELMAVAN 3D WAVEFORMS (Measured data sampled at 50 kHz) 51000 packets of 144 samples from 2017-04-30T03:27:54.272.999. Part 49/147

Processed Sun Apr 30 05:35:58 2017 by ELM ver.2012-10-06 from 001__elm20170430_032753__dat00.bin



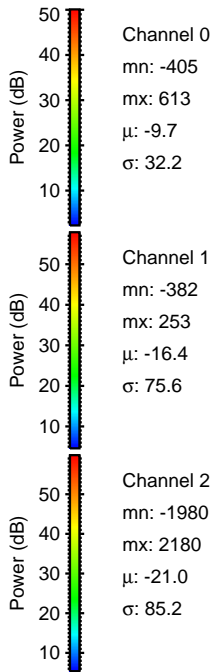
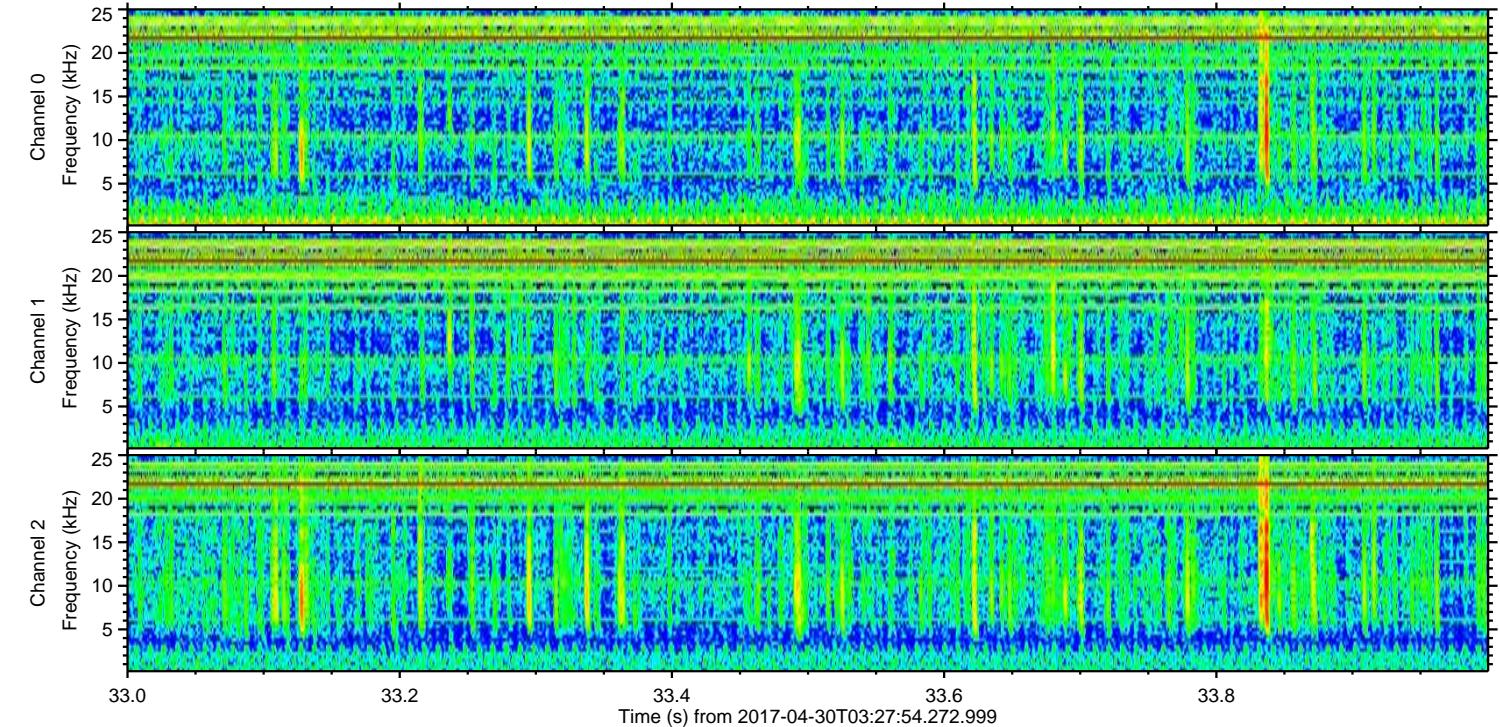
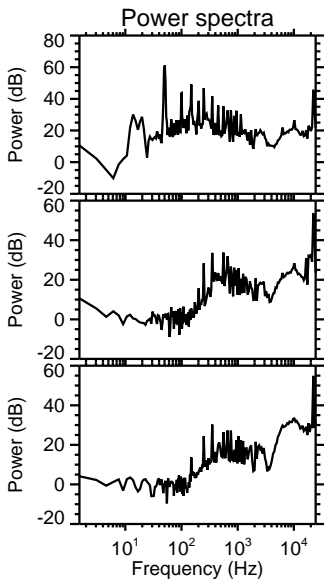
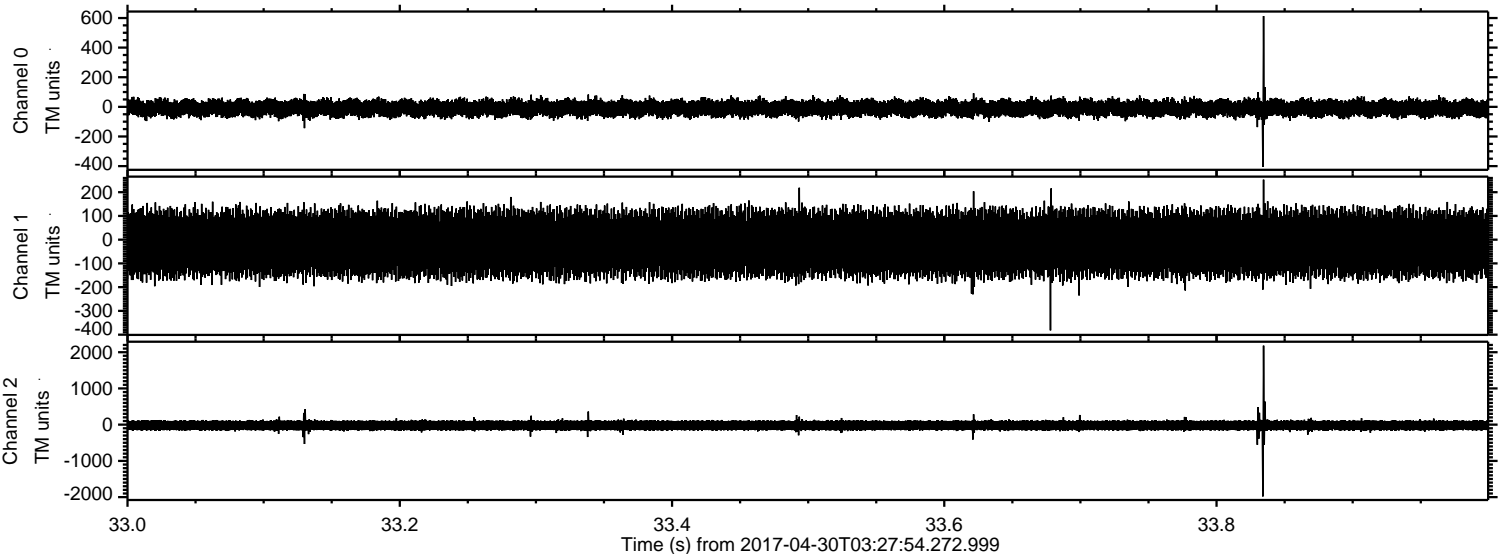
ELMAVAN 3D WAVEFORMS (Measured data sampled at 50 kHz) 51000 packets of 144 samples from 2017-04-30T03:27:54.272.999. Part 128/147

Processed Sun Apr 30 05:35:59 2017 by ELM ver.2012-10-06 from 001__elm20170430_032753__dat00.bin

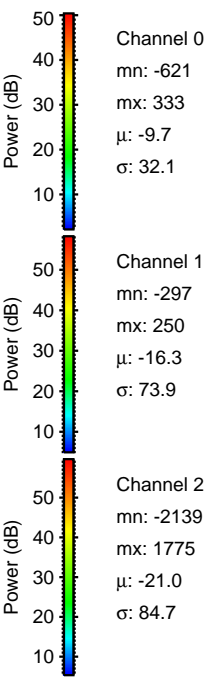
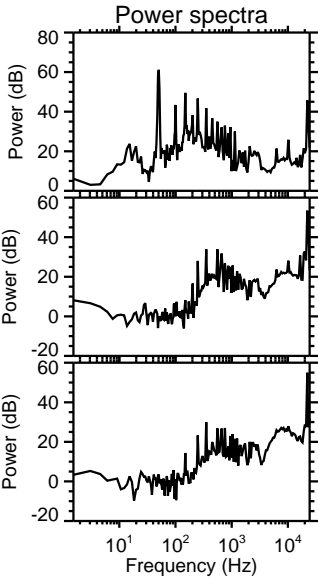
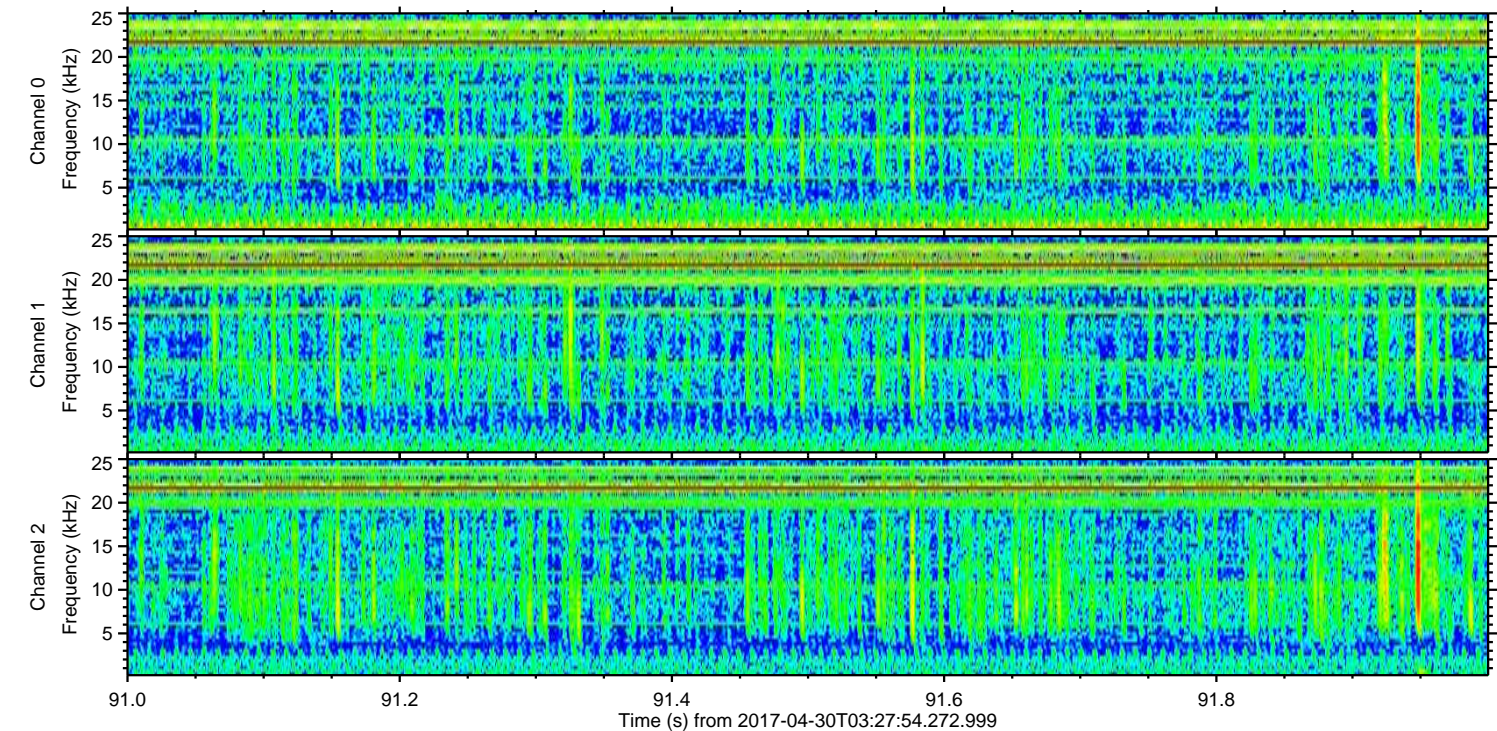
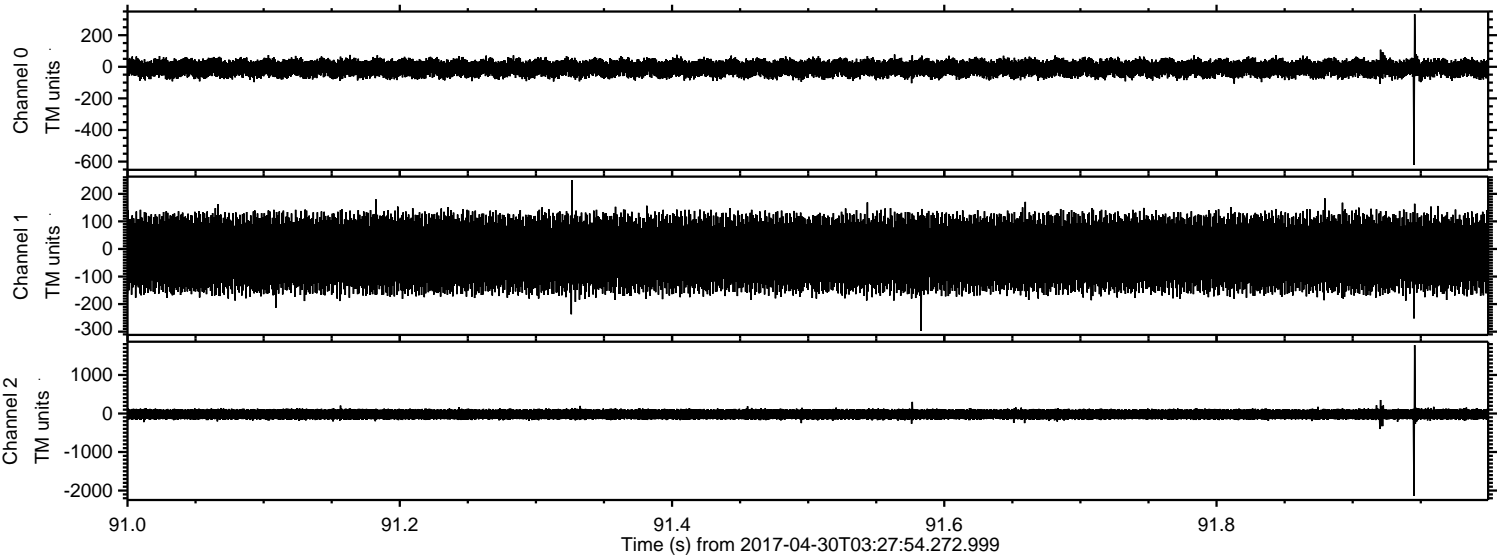


ELMAVAN 3D WAVEFORMS (Measured data sampled at 50 kHz) 51000 packets of 144 samples from 2017-04-30T03:27:54.272.999. Part 34/147

Processed Sun Apr 30 05:36:00 2017 by ELM ver.2012-10-06 from 001__elm20170430_032753__dat00.bin



Processed Sun Apr 30 05:36:01 2017 by ELM ver.2012-10-06 from 001__elm20170430_032753__dat00.bin



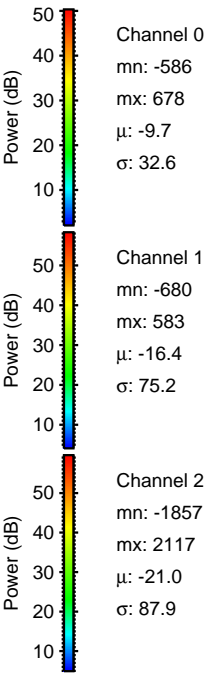
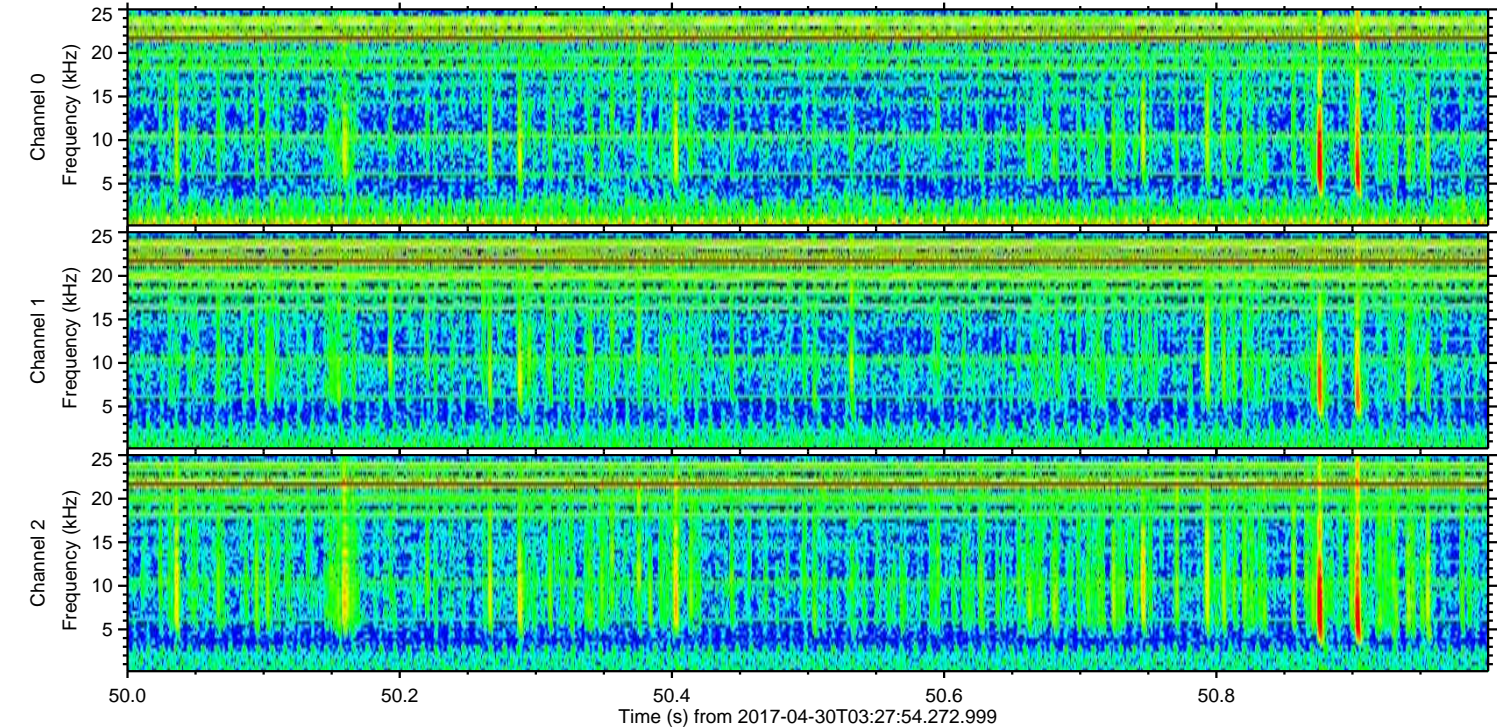
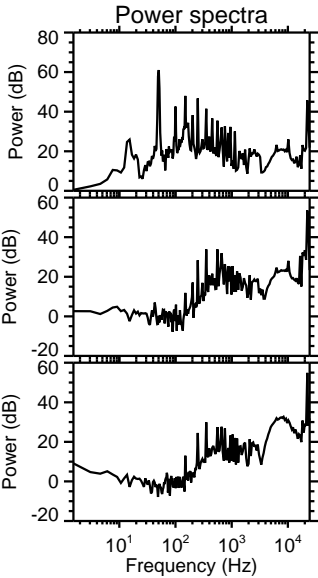
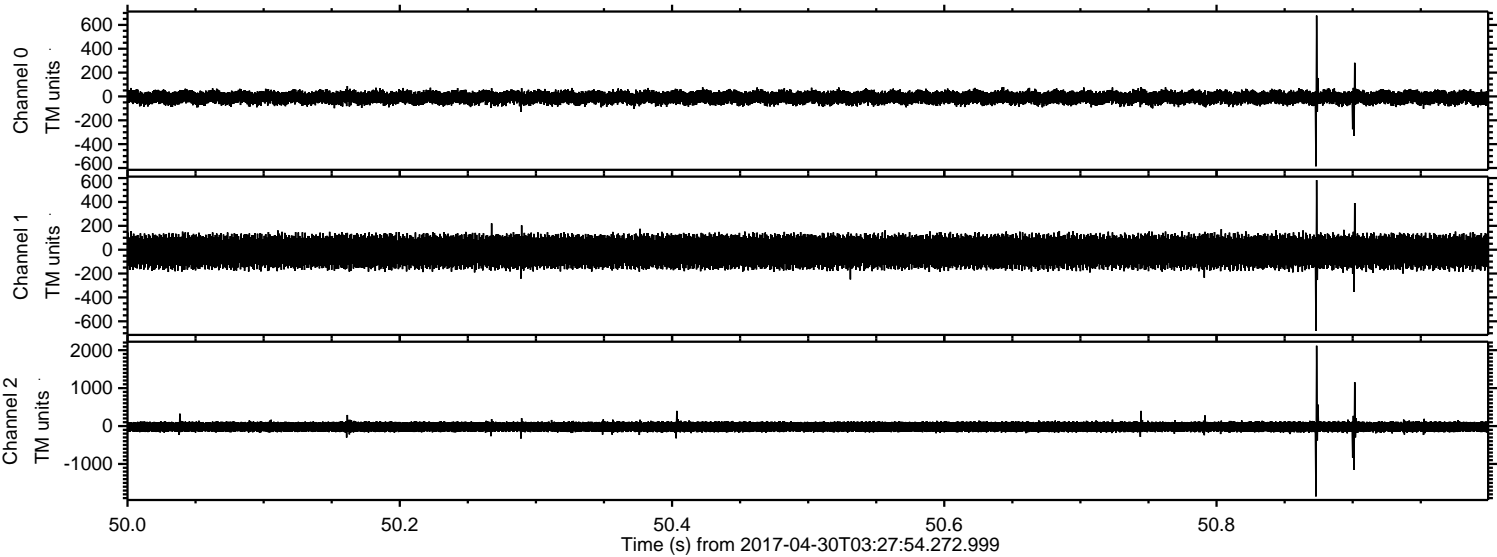
Channel 0
mn: -621
mx: 333
 μ : -9.7
 σ : 32.1

Channel 1
mn: -297
mx: 250
 μ : -16.3
 σ : 73.9

Channel 2
mn: -2139
mx: 1775
 μ : -21.0
 σ : 84.7

ELMAVAN 3D WAVEFORMS (Measured data sampled at 50 kHz) 51000 packets of 144 samples from 2017-04-30T03:27:54.272.999. Part 51/147

Processed Sun Apr 30 05:36:02 2017 by ELM ver.2012-10-06 from 001__elm20170430_032753__dat00.bin



ELMAVAN 3D WAVEFORMS (Measured data sampled at 50 kHz) 51000 packets of 144 samples from 2017-04-30T03:27:54.272.999. Part 101/147

Processed Sun Apr 30 05:36:03 2017 by ELM ver.2012-10-06 from 001__elm20170430_032753__dat00.bin

