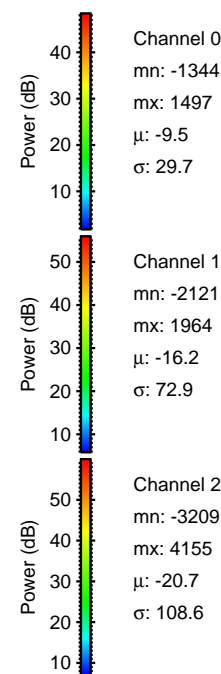
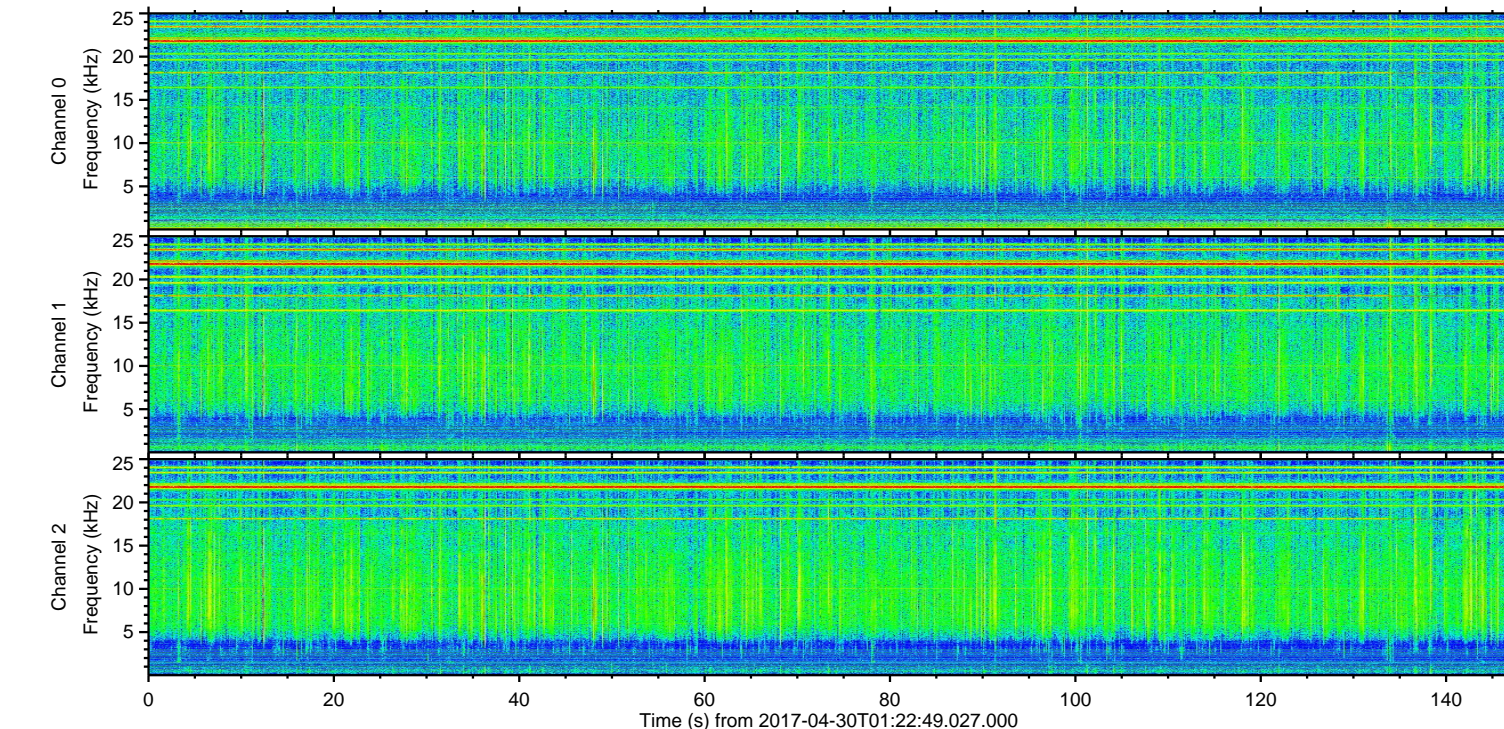
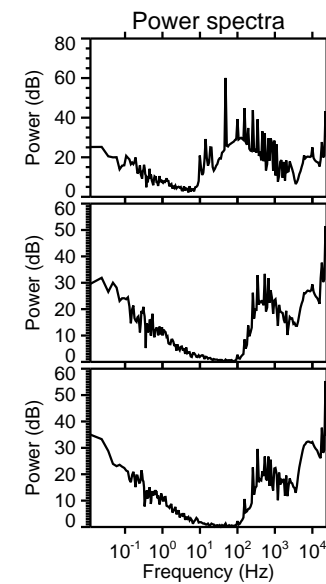
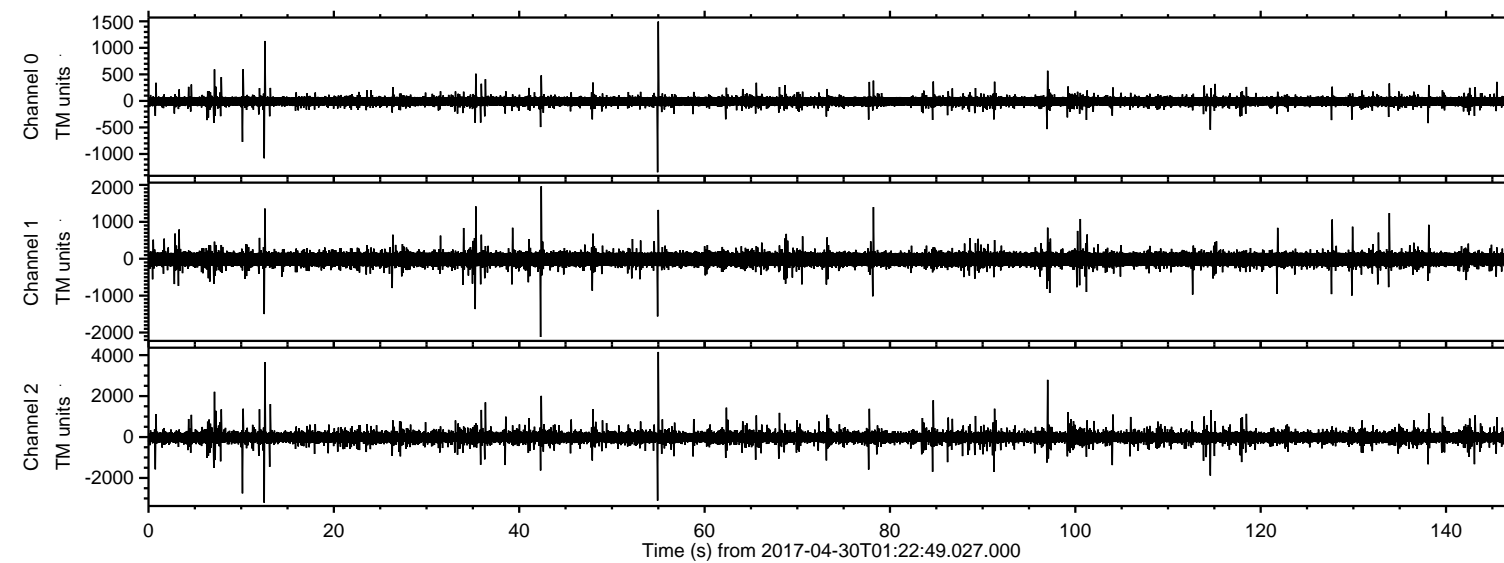
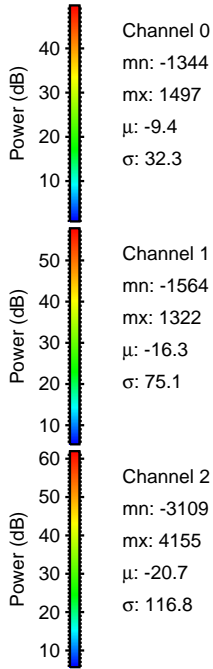
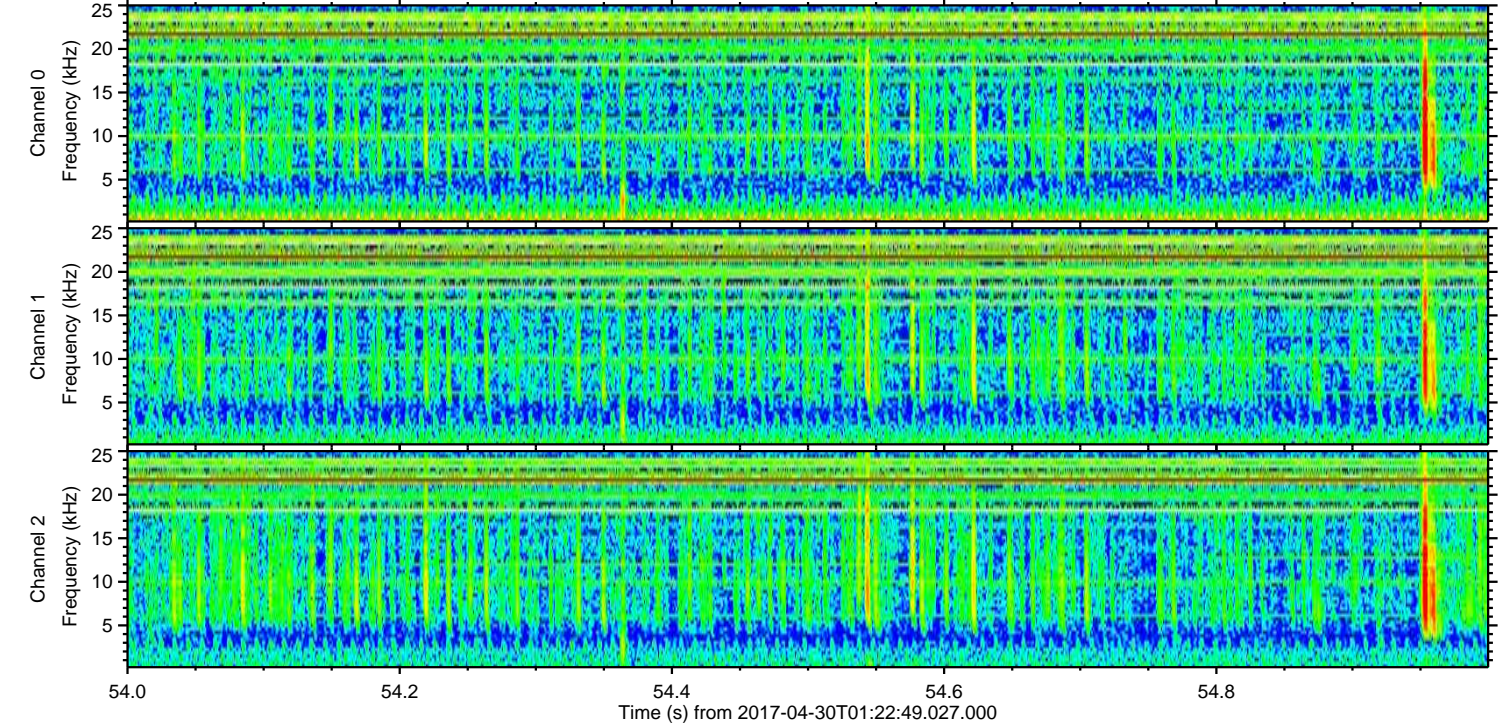
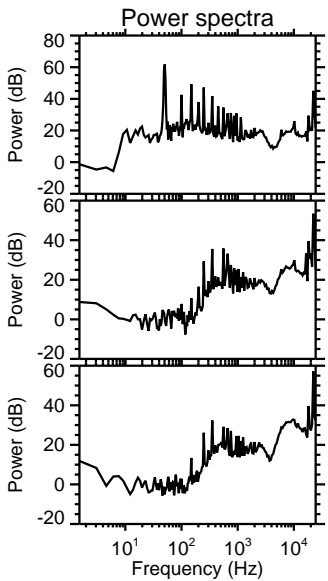
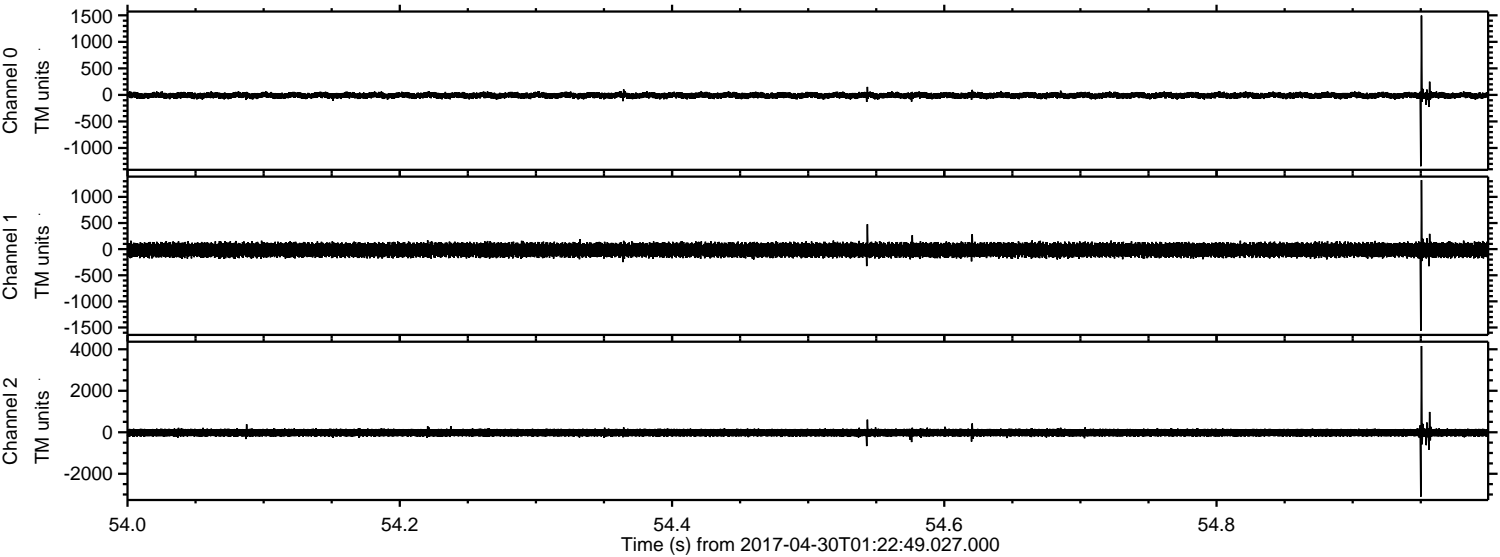


ELMAVAN 3D WAVEFORMS (Measured data sampled at 50 kHz) 51000 packets of 144 samples from 2017-04-30T01:22:49.027.000.

Processed Sun Apr 30 03:30:38 2017 by ELM ver.2012-10-06 from 001__elm20170430_012248__dat00.bin

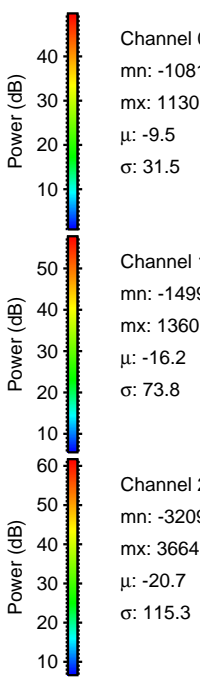
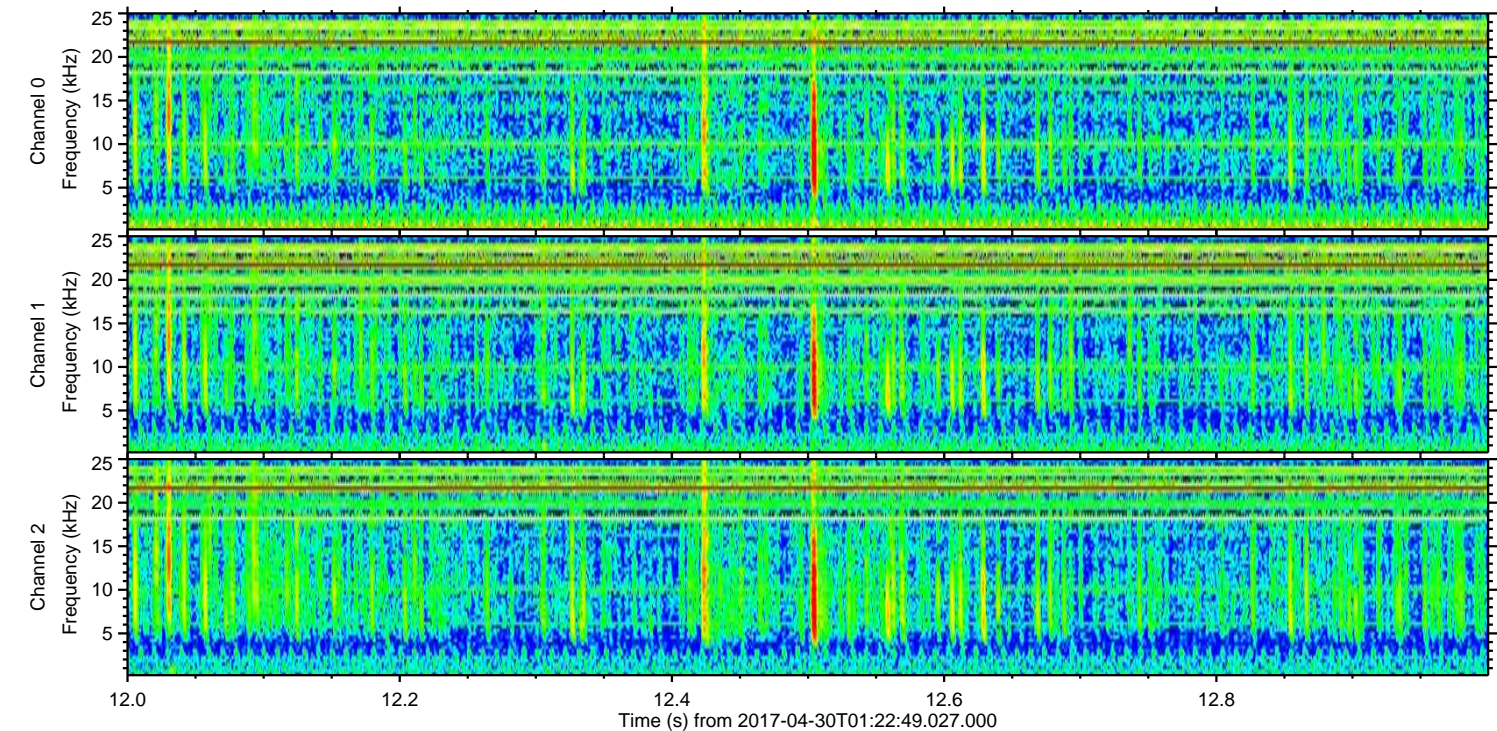
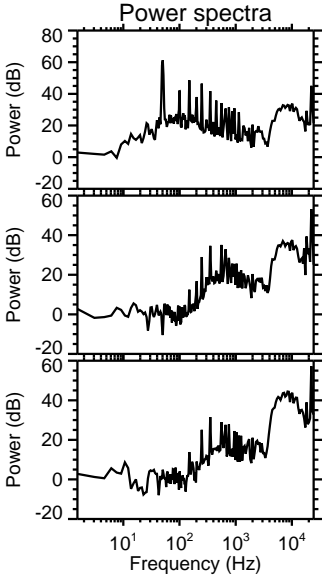
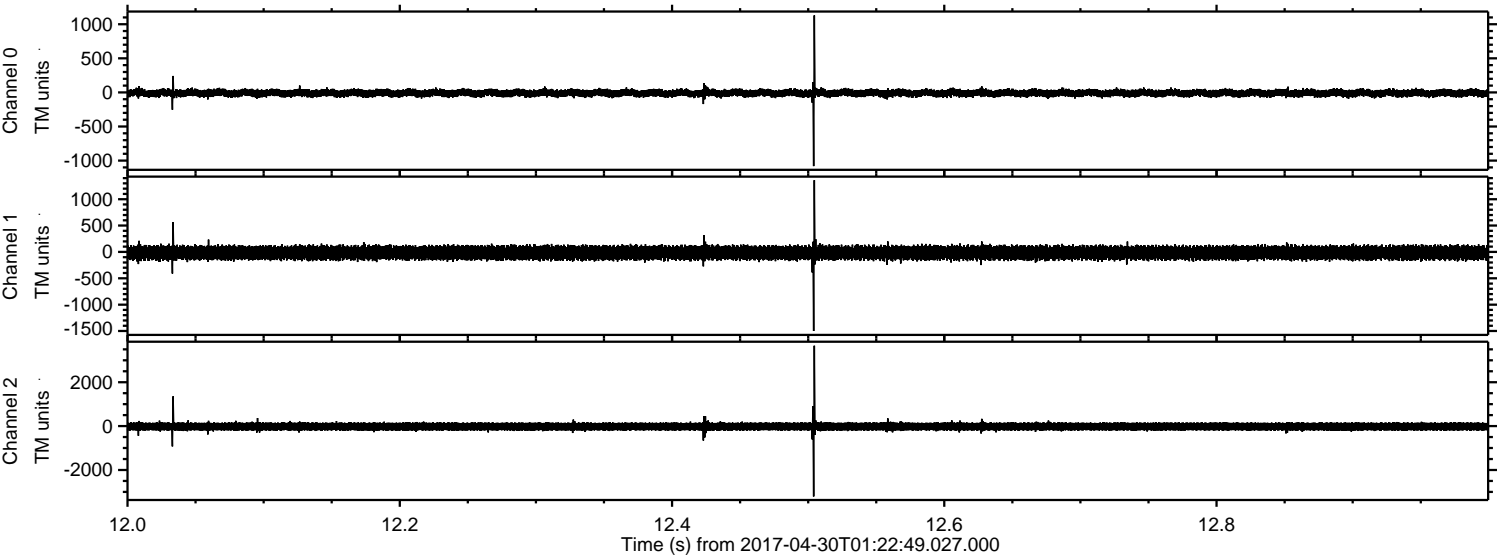


Processed Sun Apr 30 03:30:50 2017 by ELM ver.2012-10-06 from 001__elm20170430_012248__dat00.bin

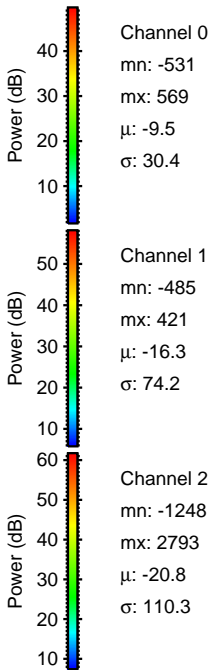
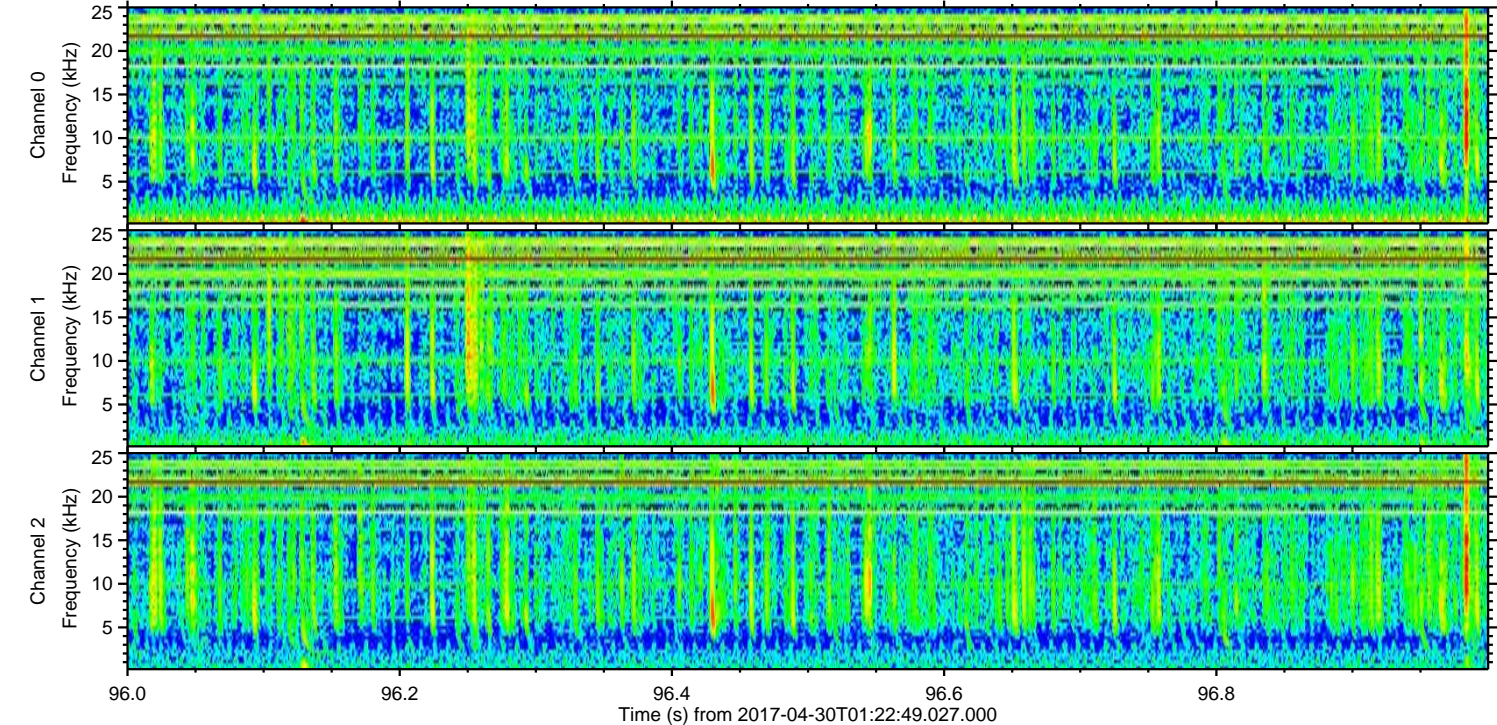
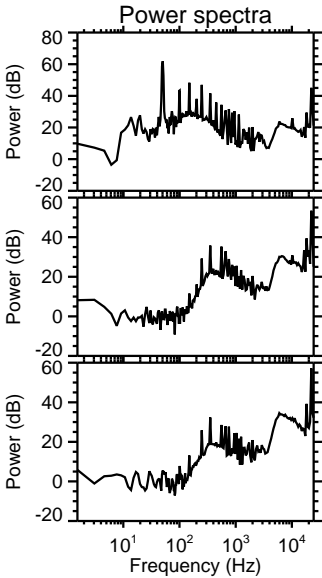
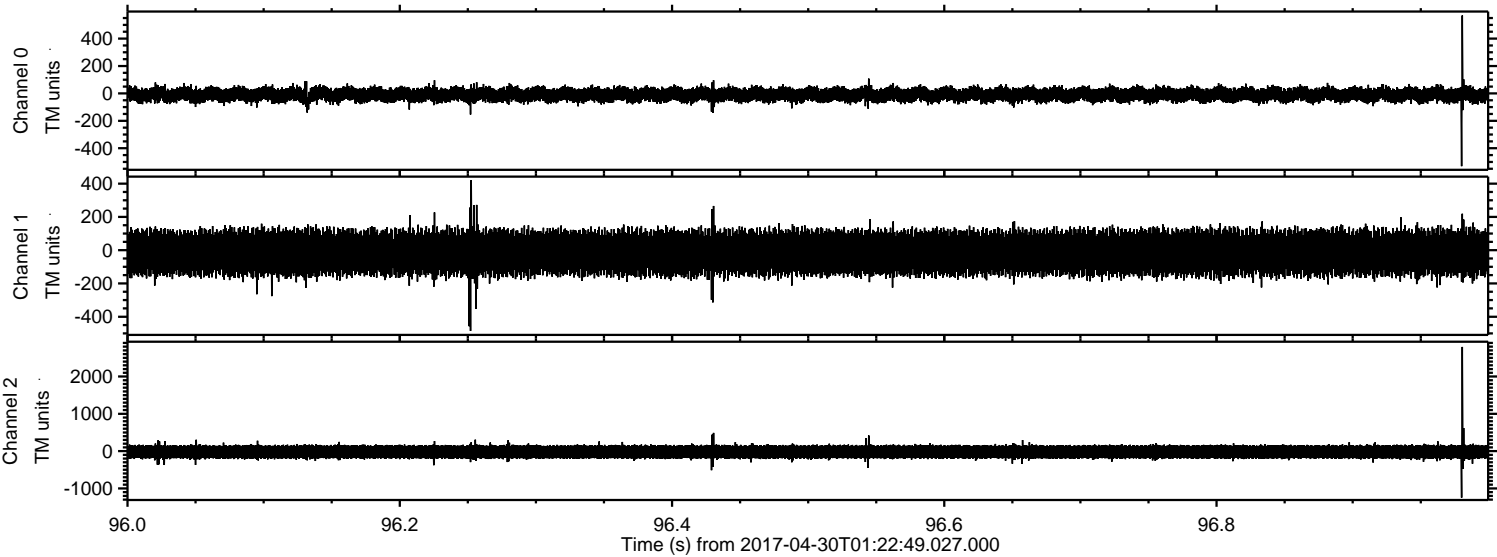


ELMAVAN 3D WAVEFORMS (Measured data sampled at 50 kHz) 51000 packets of 144 samples from 2017-04-30T01:22:49.027.000. Part 13/147

Processed Sun Apr 30 03:30:51 2017 by ELM ver.2012-10-06 from 001__elm20170430_012248__dat00.bin

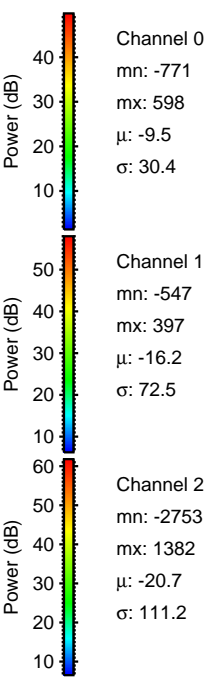
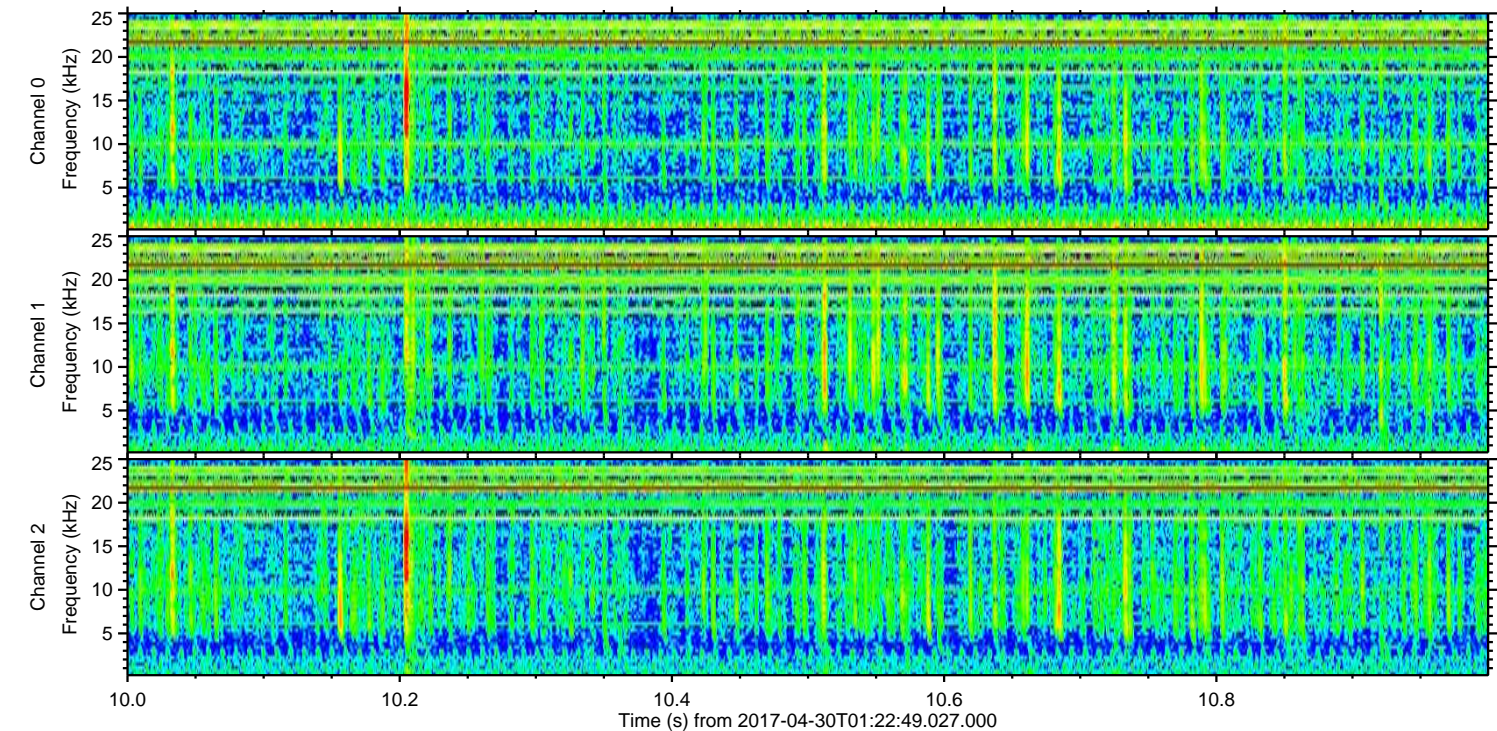
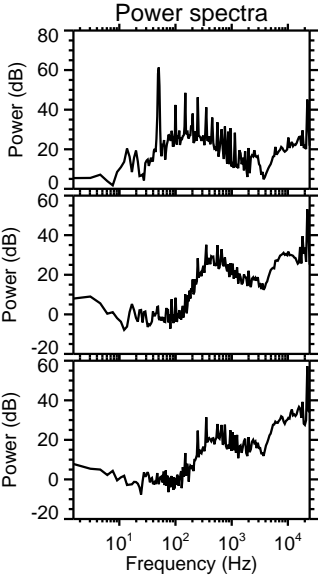
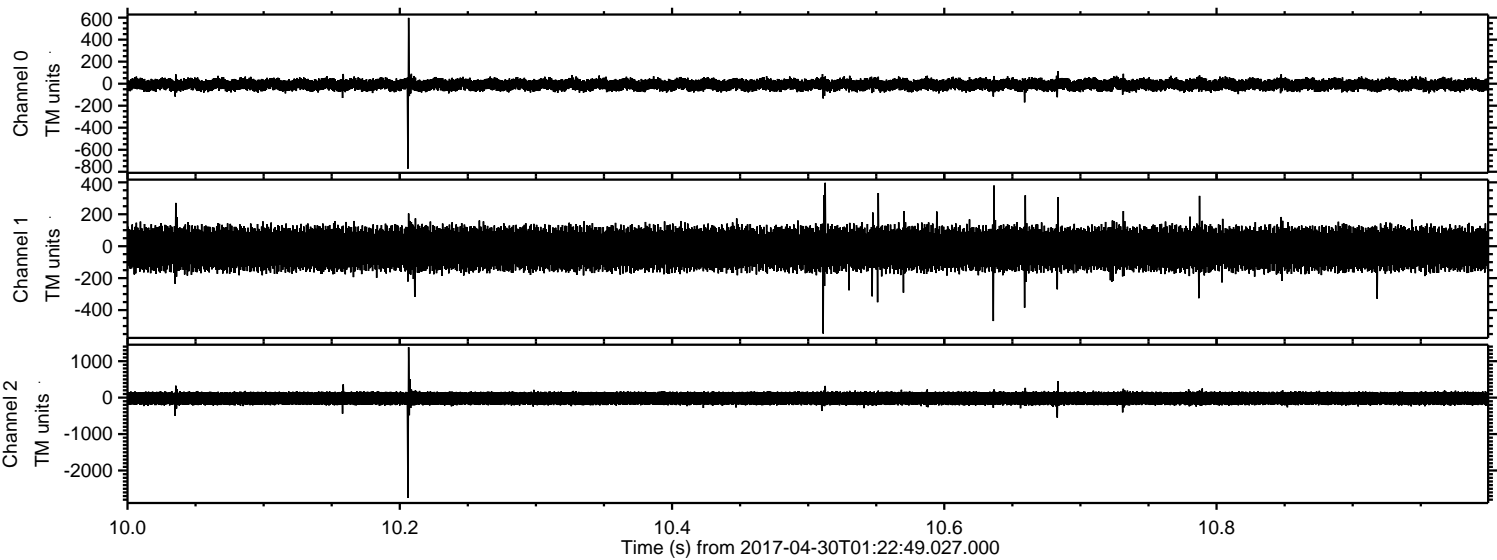


Processed Sun Apr 30 03:30:52 2017 by ELM ver.2012-10-06 from 001__elm20170430_012248__dat00.bin

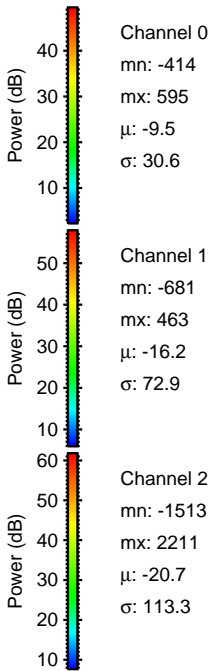
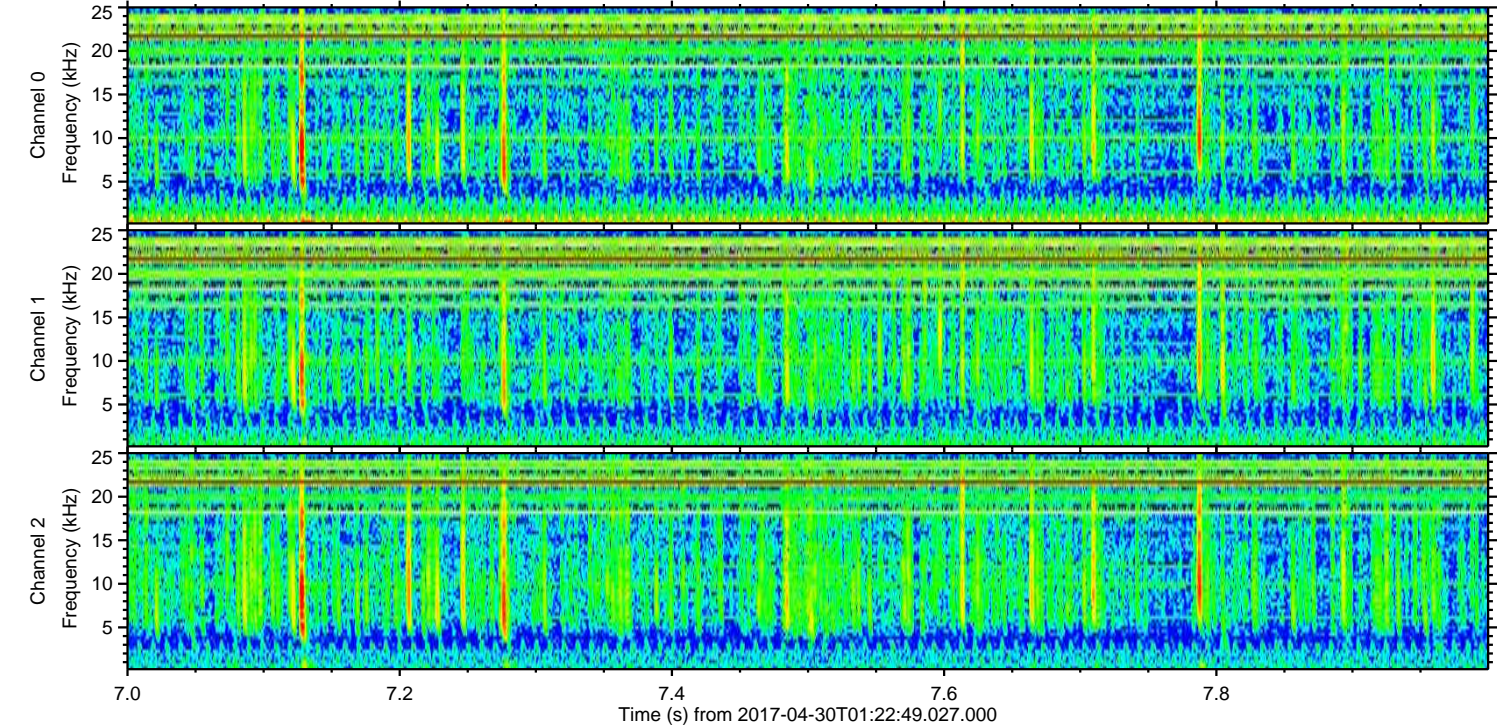
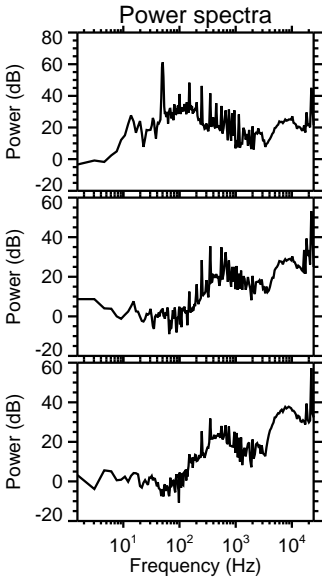
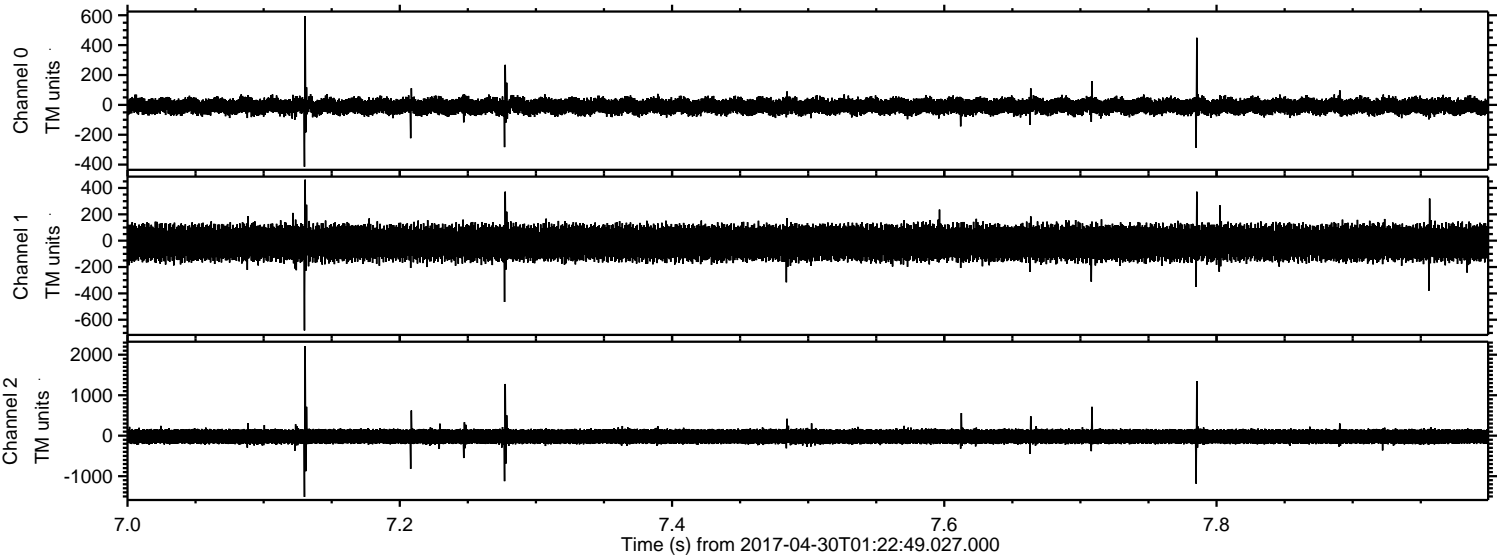


ELMAVAN 3D WAVEFORMS (Measured data sampled at 50 kHz) 51000 packets of 144 samples from 2017-04-30T01:22:49.027.000. Part 11/147

Processed Sun Apr 30 03:30:53 2017 by ELM ver.2012-10-06 from 001__elm20170430_012248__dat00.bin

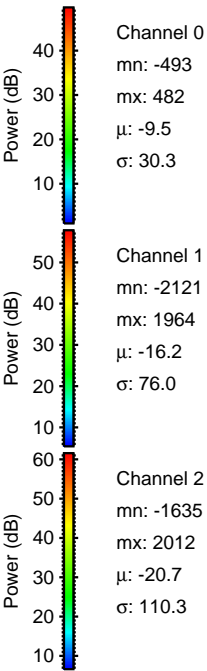
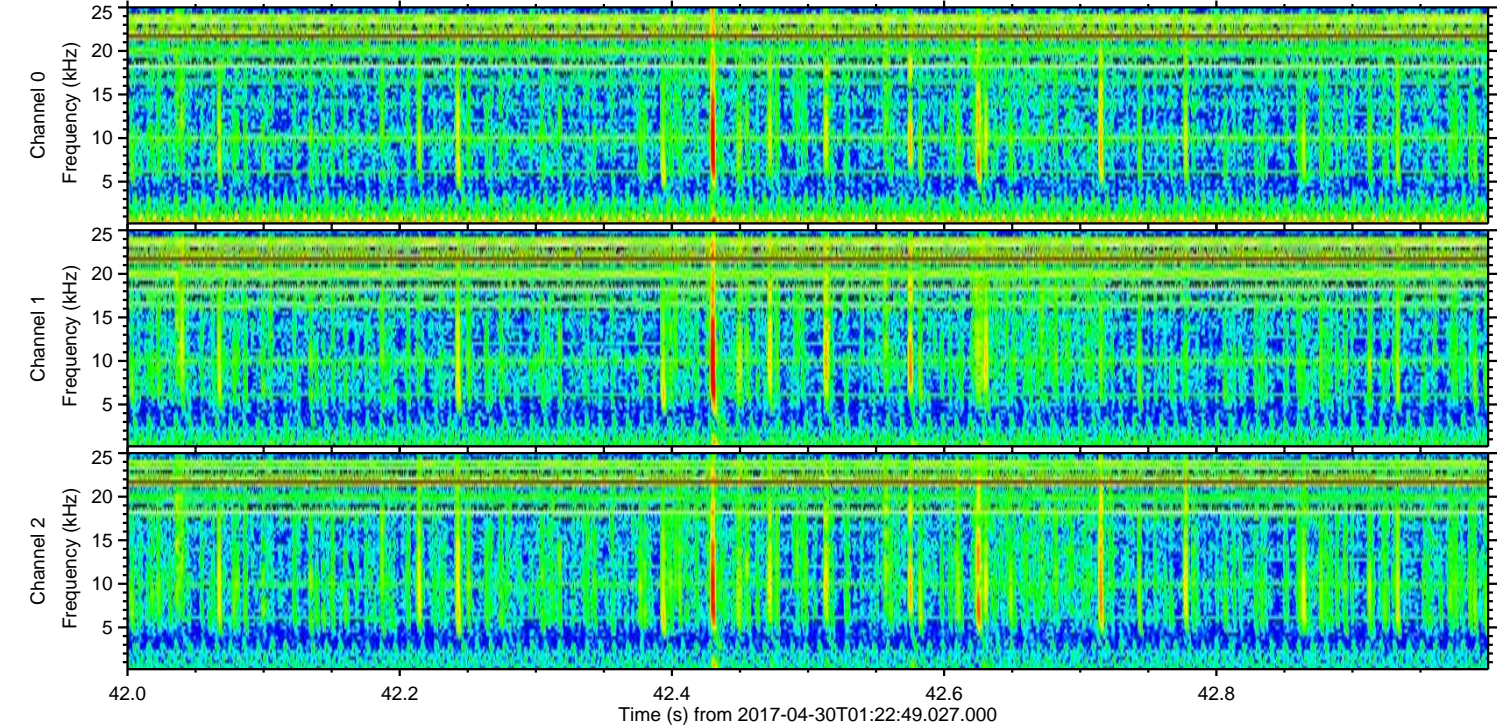
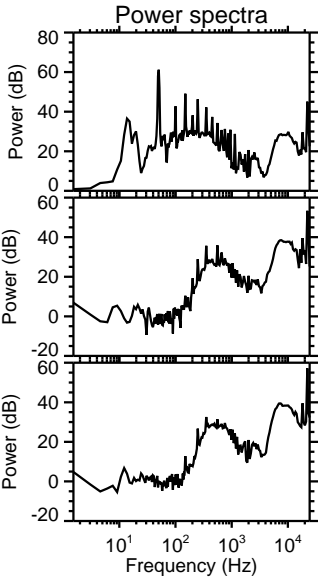
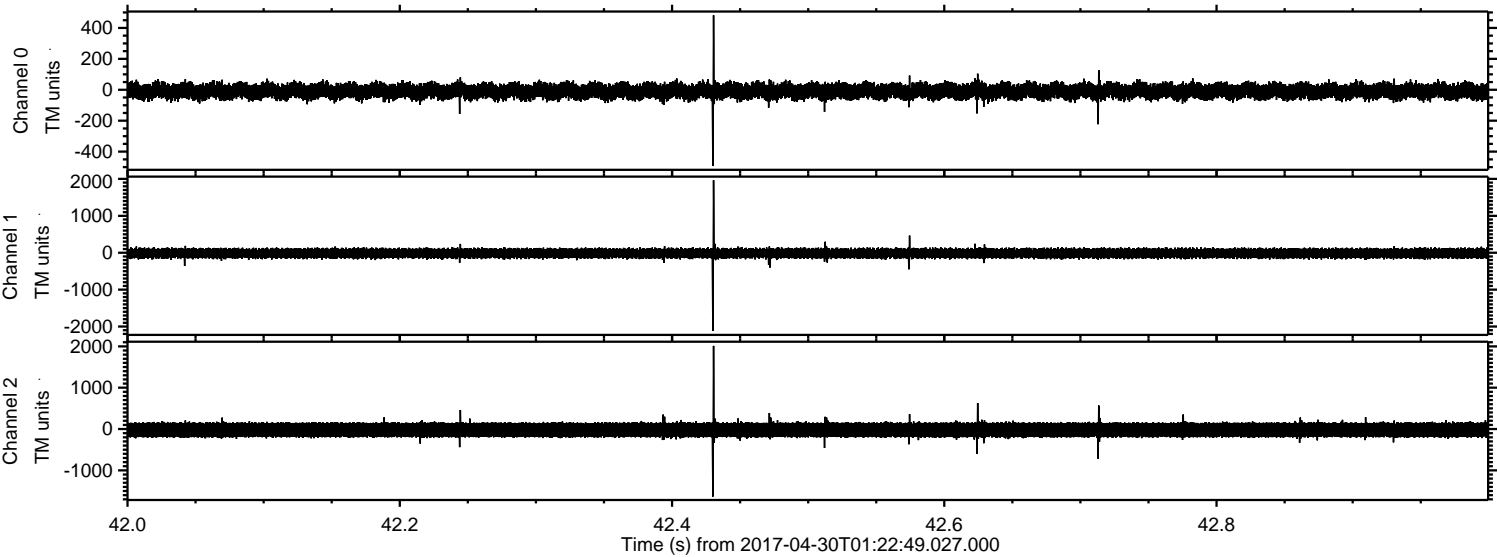


Processed Sun Apr 30 03:30:54 2017 by ELM ver.2012-10-06 from 001__elm20170430_012248__dat00.bin



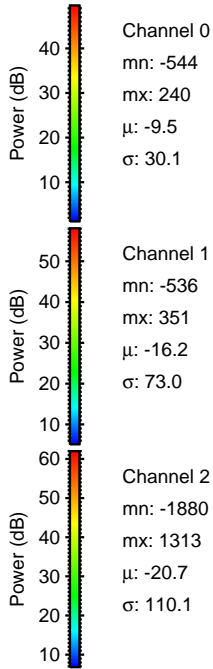
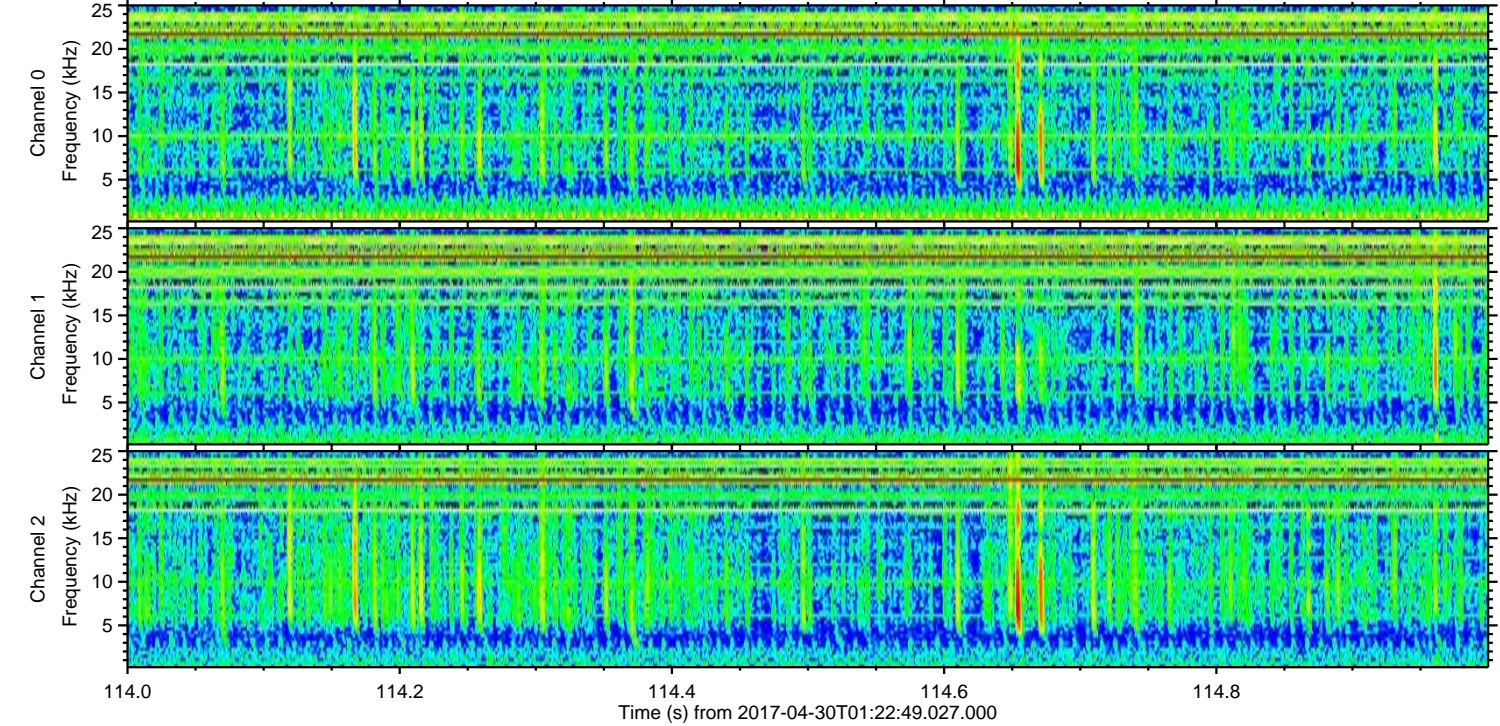
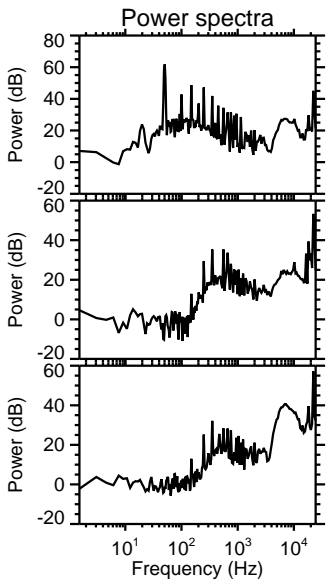
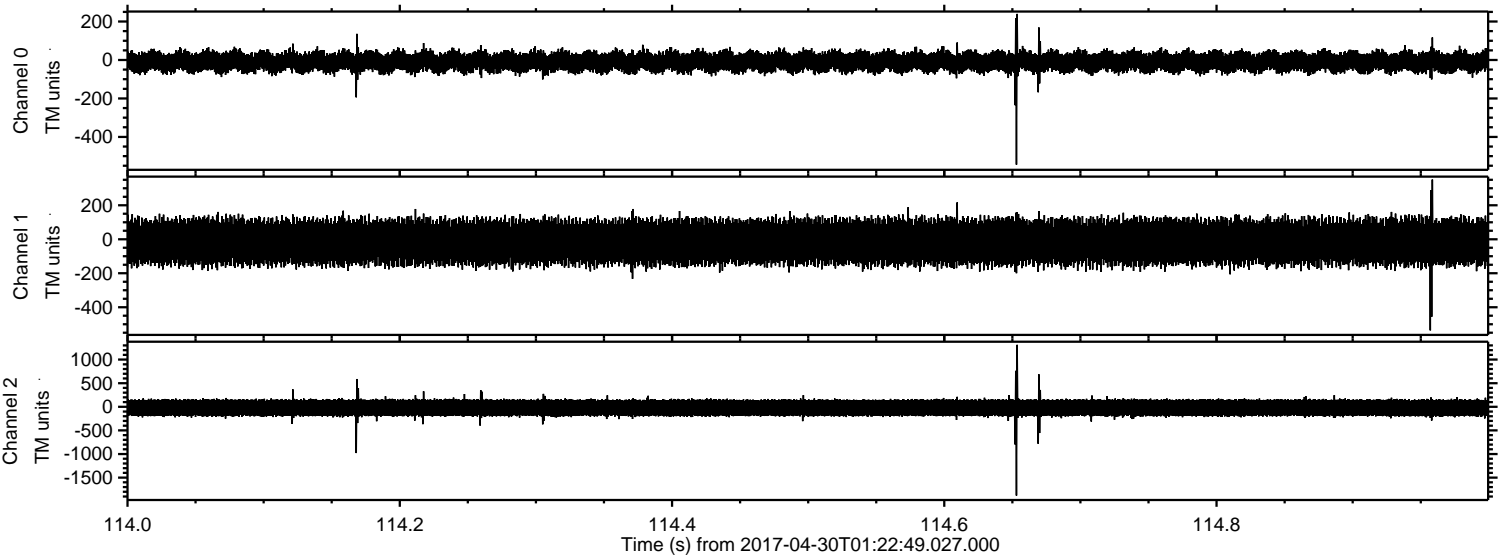
ELMAVAN 3D WAVEFORMS (Measured data sampled at 50 kHz) 51000 packets of 144 samples from 2017-04-30T01:22:49.027.000. Part 43/147

Processed Sun Apr 30 03:30:55 2017 by ELM ver.2012-10-06 from 001__elm20170430_012248__dat00.bin



ELMAVAN 3D WAVEFORMS (Measured data sampled at 50 kHz) 51000 packets of 144 samples from 2017-04-30T01:22:49.027.000. Part 115/147

Processed Sun Apr 30 03:30:55 2017 by ELM ver.2012-10-06 from 001__elm20170430_012248__dat00.bin

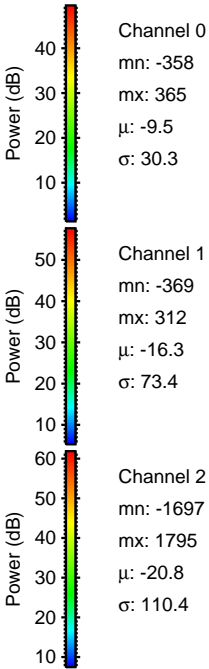
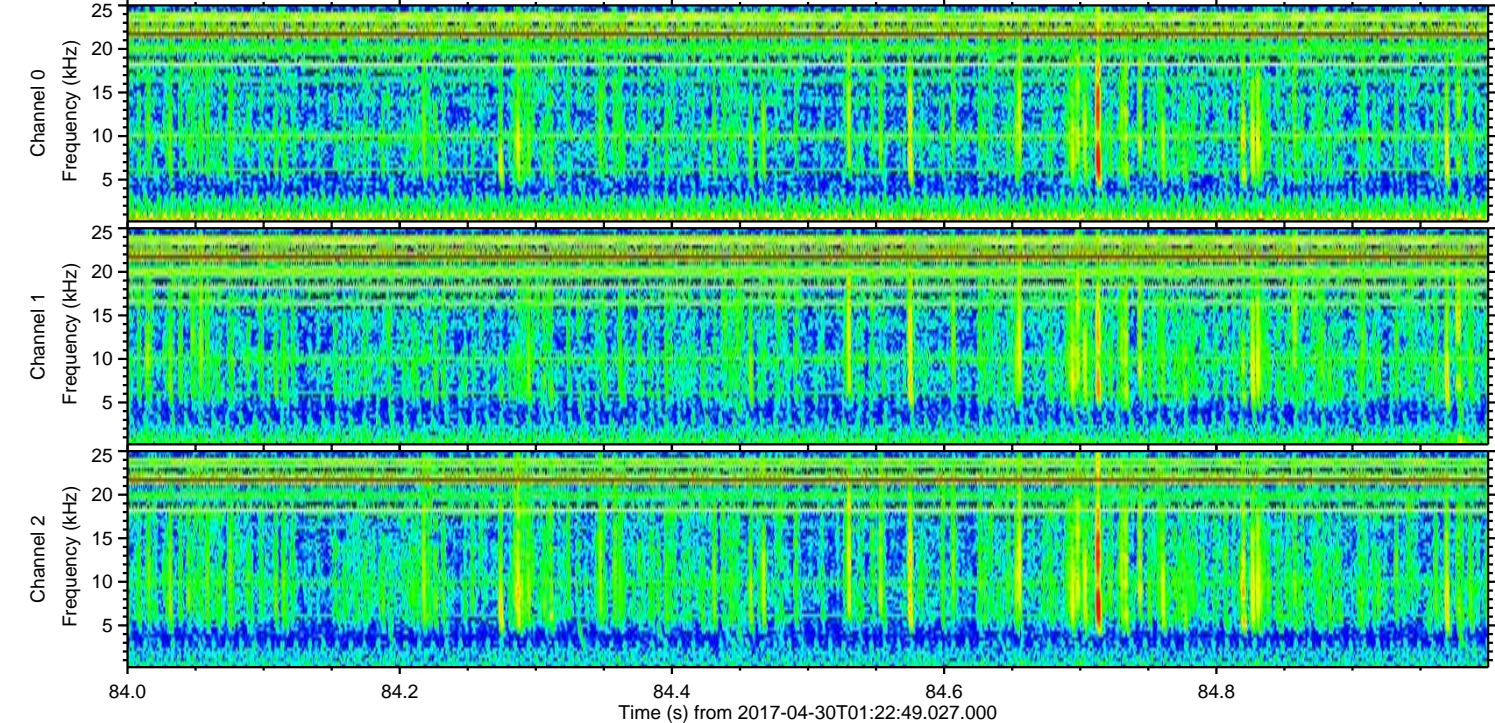
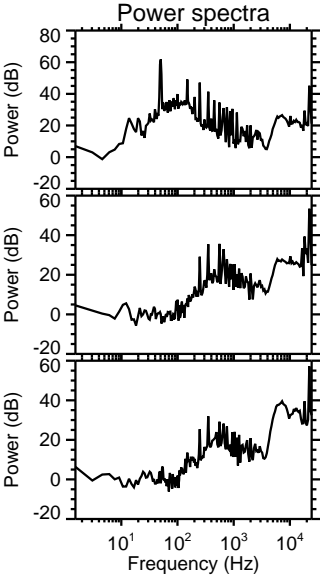
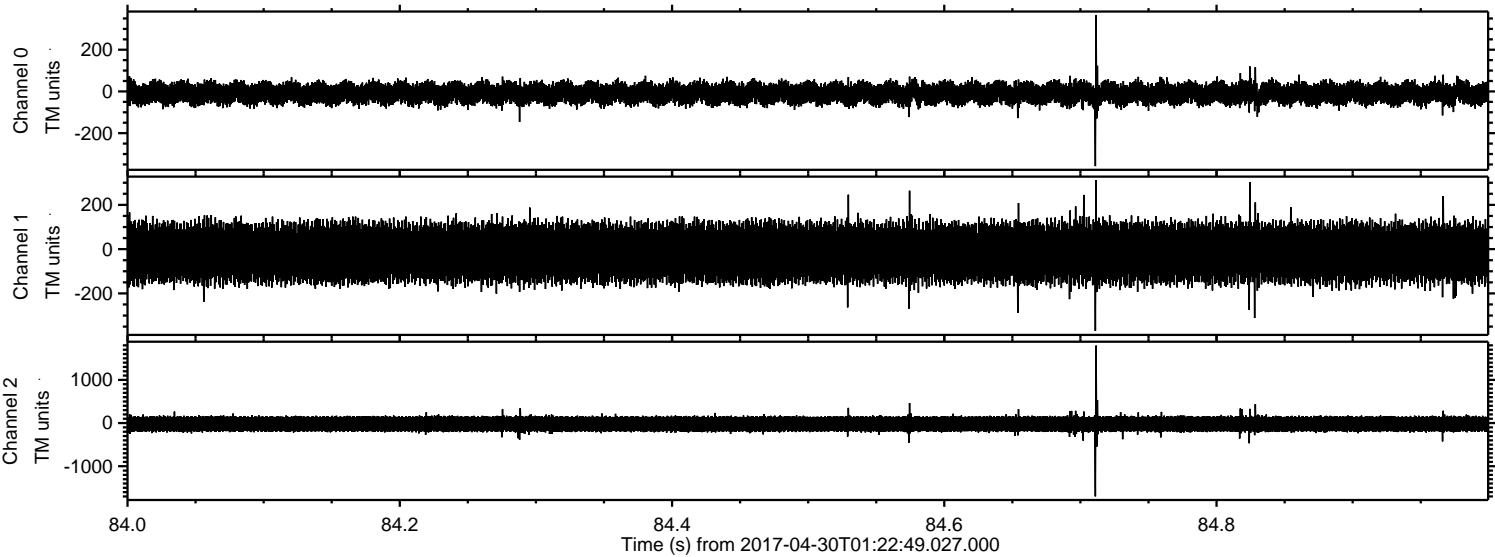


Channel 0
mn: -544
mx: 240
 μ : -9.5
 σ : 30.1

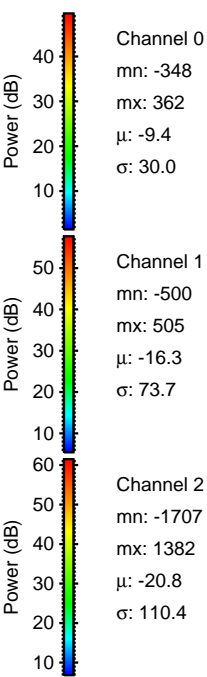
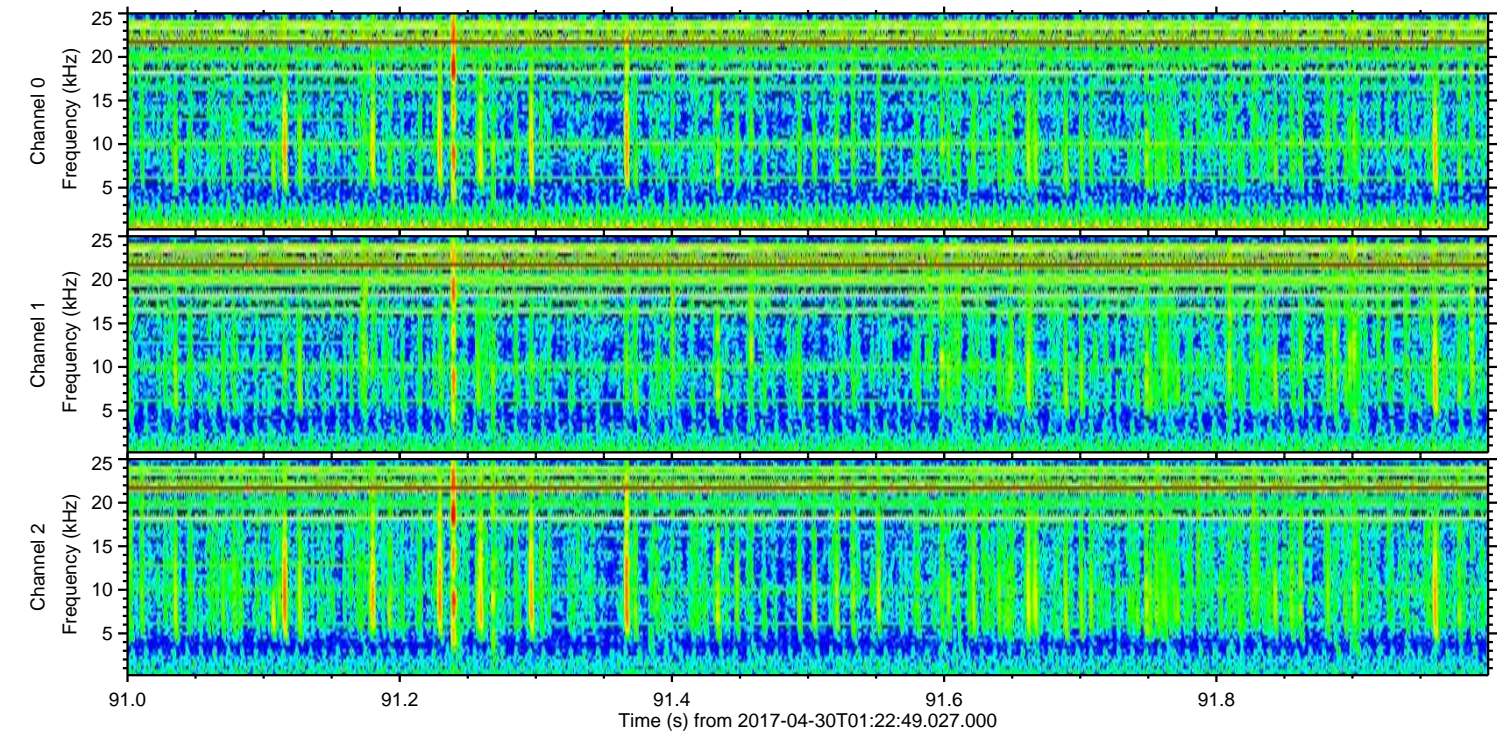
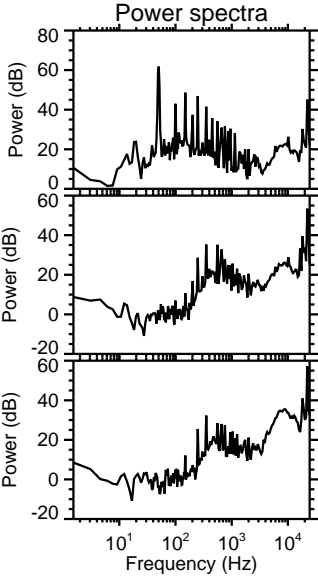
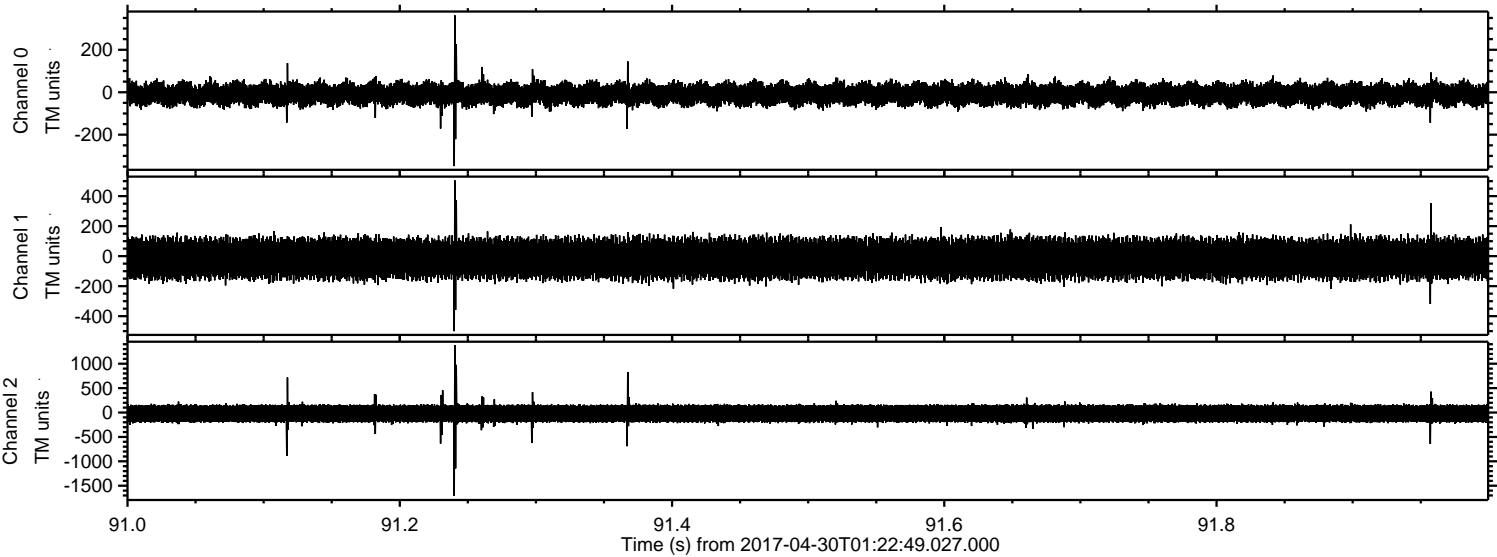
Channel 1
mn: -536
mx: 351
 μ : -16.2
 σ : 73.0

Channel 2
mn: -1880
mx: 1313
 μ : -20.7
 σ : 110.1

Processed Sun Apr 30 03:30:56 2017 by ELM ver.2012-10-06 from 001__elm20170430_012248__dat00.bin



Processed Sun Apr 30 03:30:57 2017 by ELM ver.2012-10-06 from 001__elm20170430_012248__dat00.bin



Channel 0
mn: -348
mx: 362
 μ : -9.4
 σ : 30.0

Channel 1
mn: -500
mx: 505
 μ : -16.3
 σ : 73.7

Channel 2
mn: -1707
mx: 1382
 μ : -20.8
 σ : 110.4

Processed Sun Apr 30 03:30:58 2017 by ELM ver.2012-10-06 from 001__elm20170430_012248__dat00.bin

