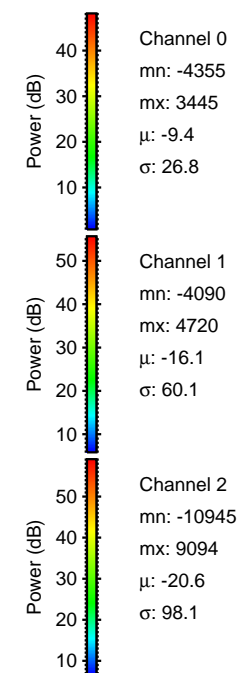
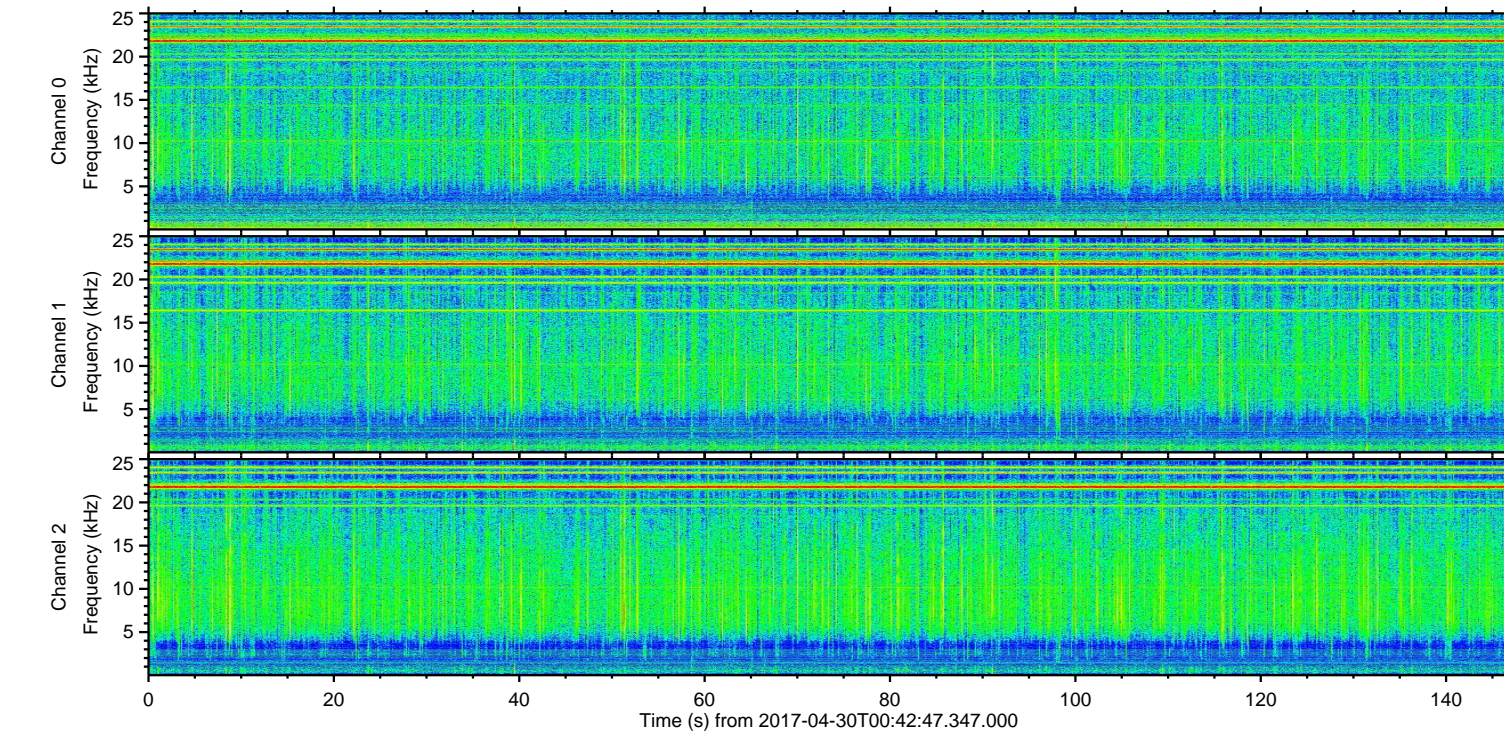
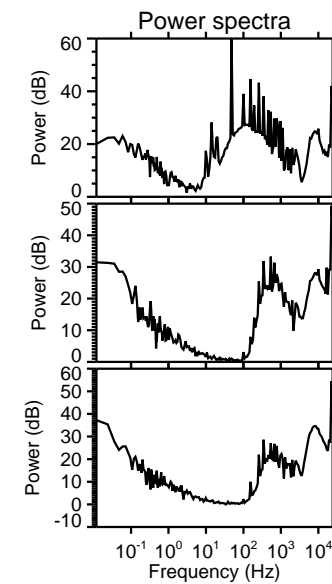
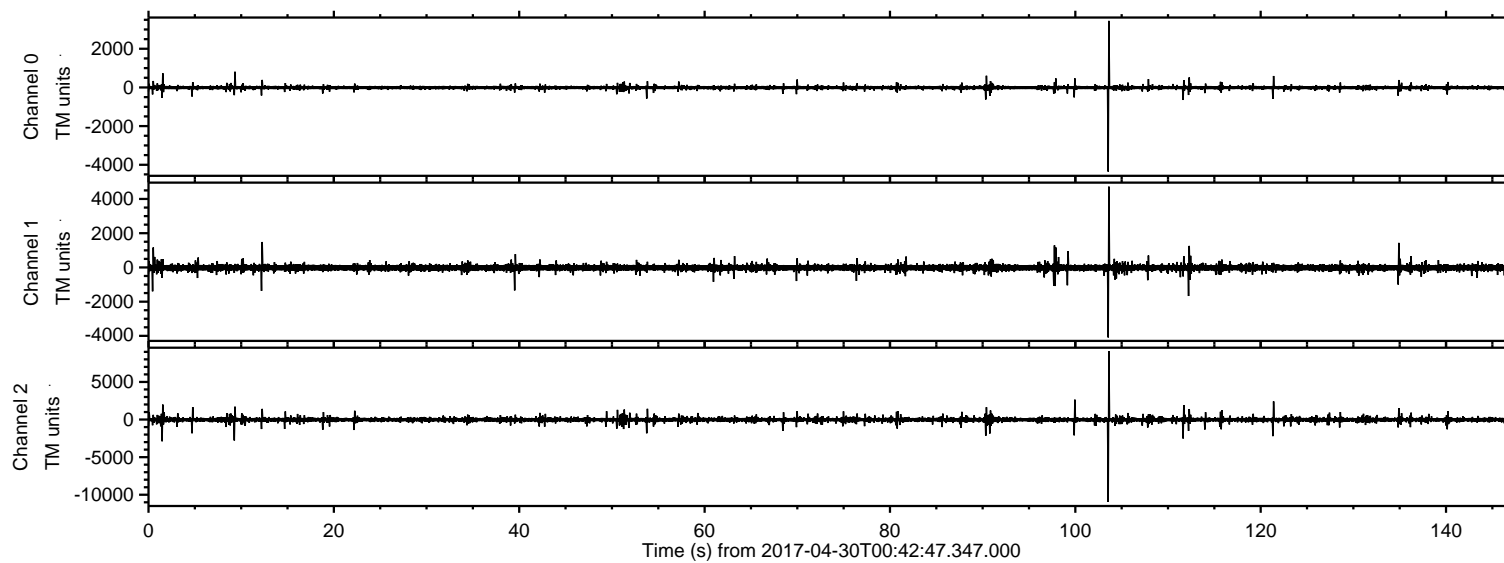


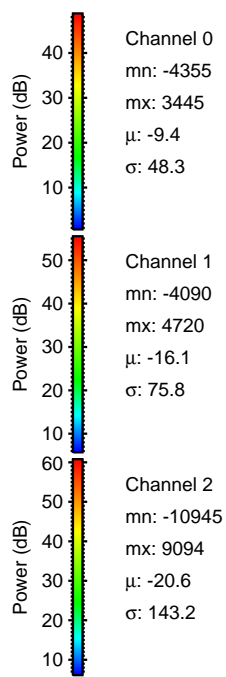
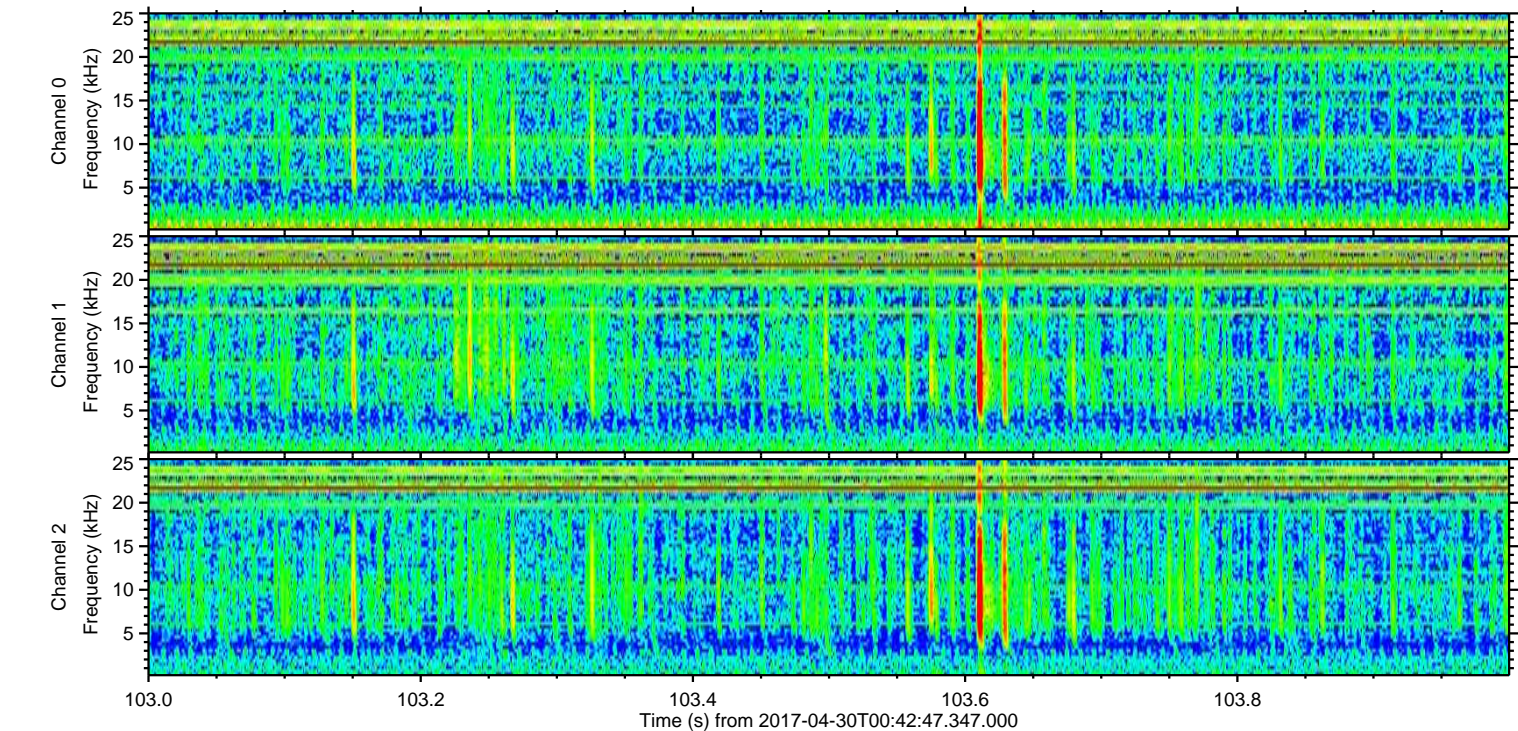
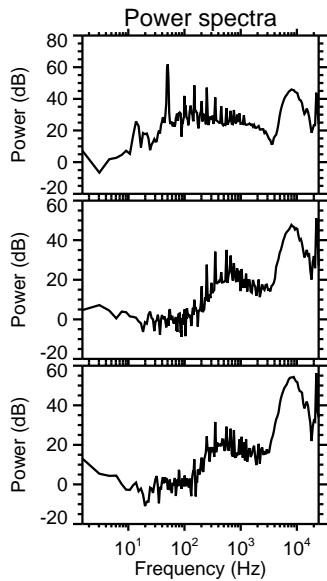
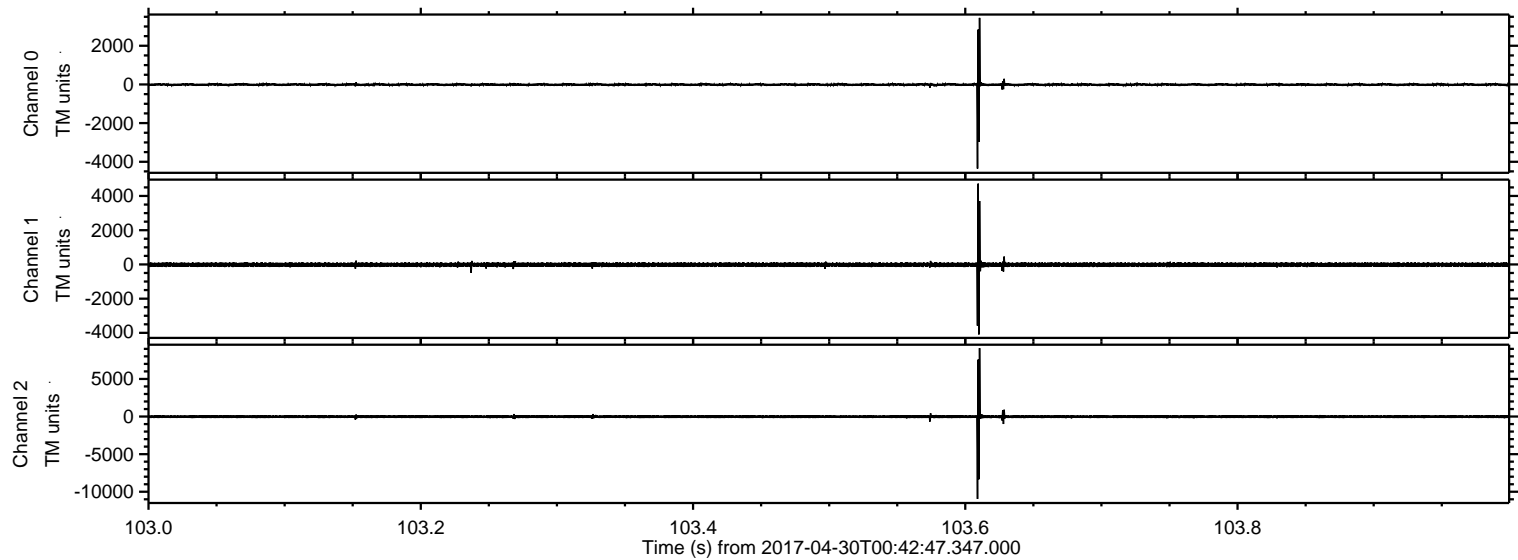
ELMAVAN 3D WAVEFORMS (Measured data sampled at 50 kHz) 51000 packets of 144 samples from 2017-04-30T00:42:47.347.000.

Processed Sun Apr 30 02:50:47 2017 by ELM ver.2012-10-06 from 001__elm20170430_004246__dat00.bin

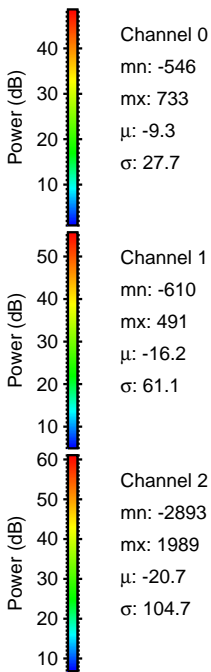
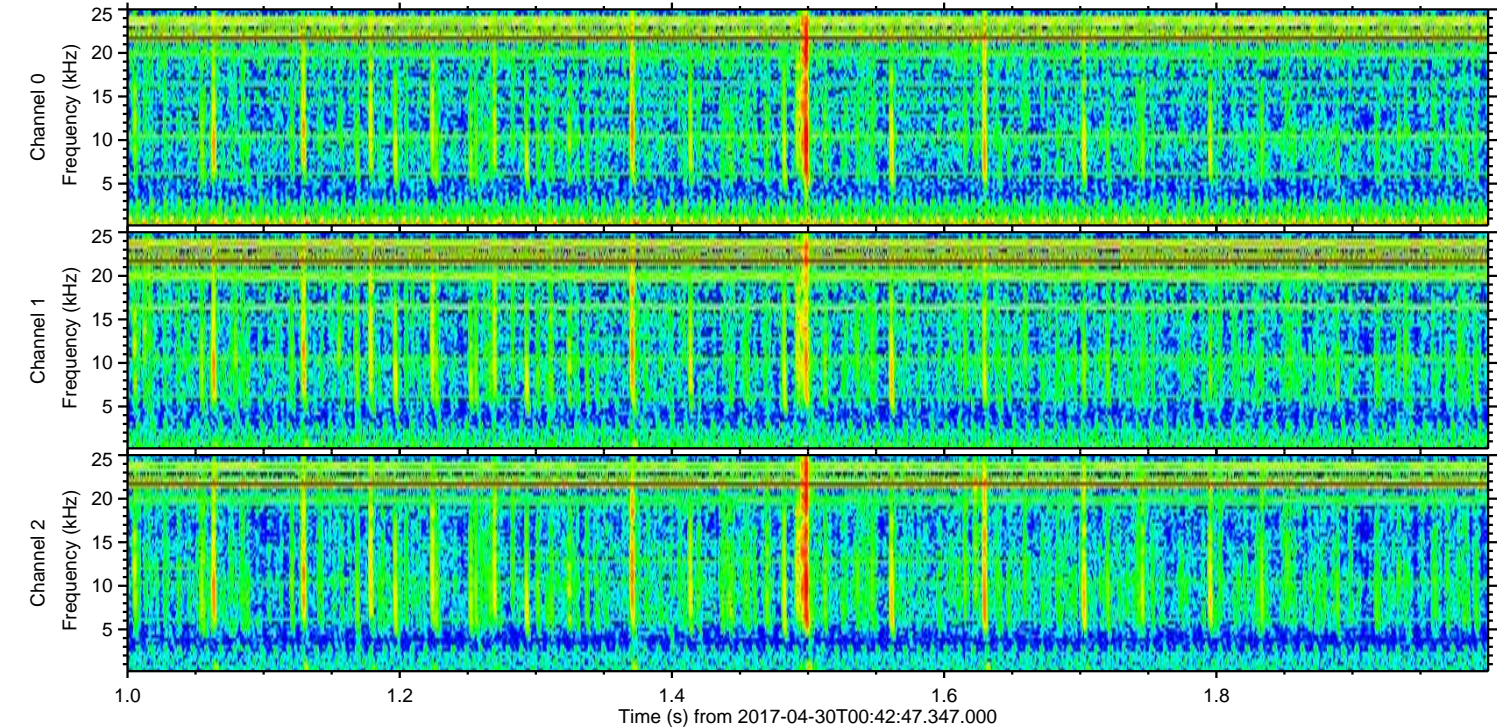
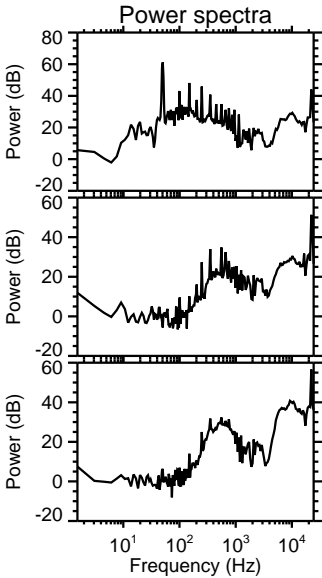
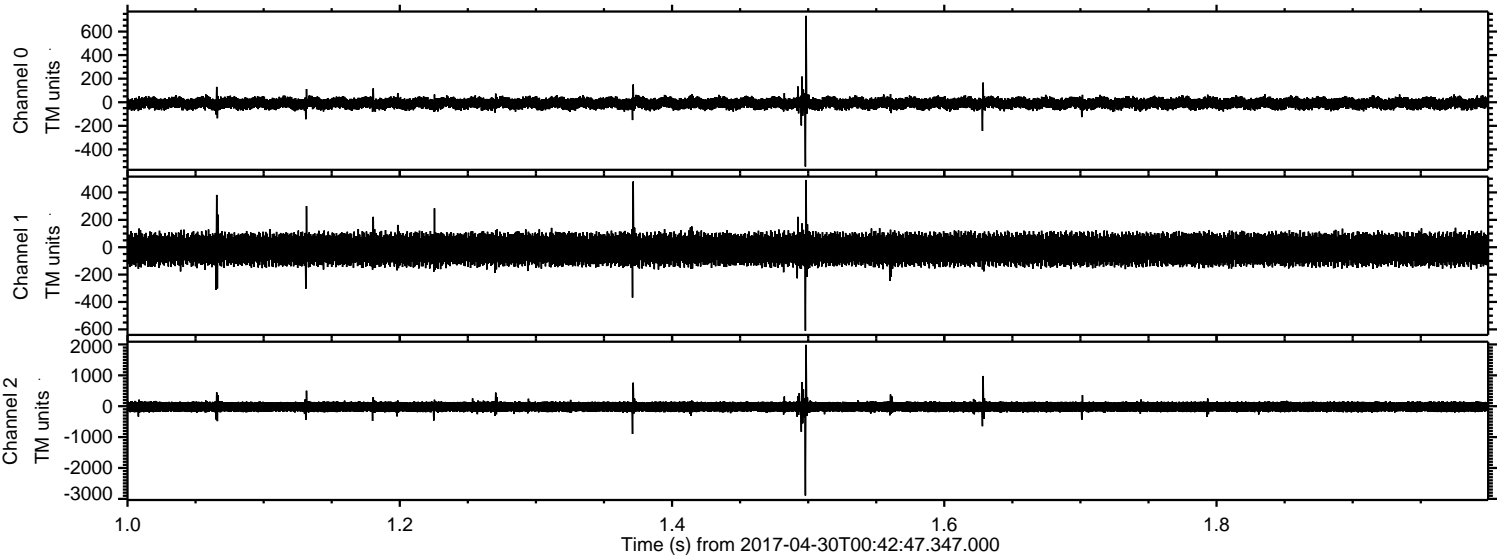


ELMAVAN 3D WAVEFORMS (Measured data sampled at 50 kHz) 51000 packets of 144 samples from 2017-04-30T00:42:47.347.000. Part 104/147

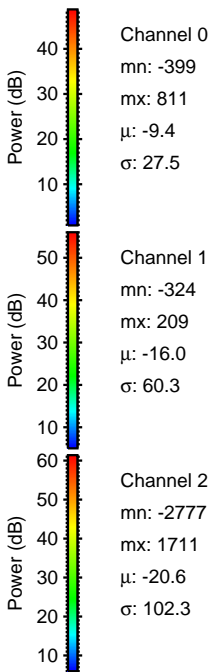
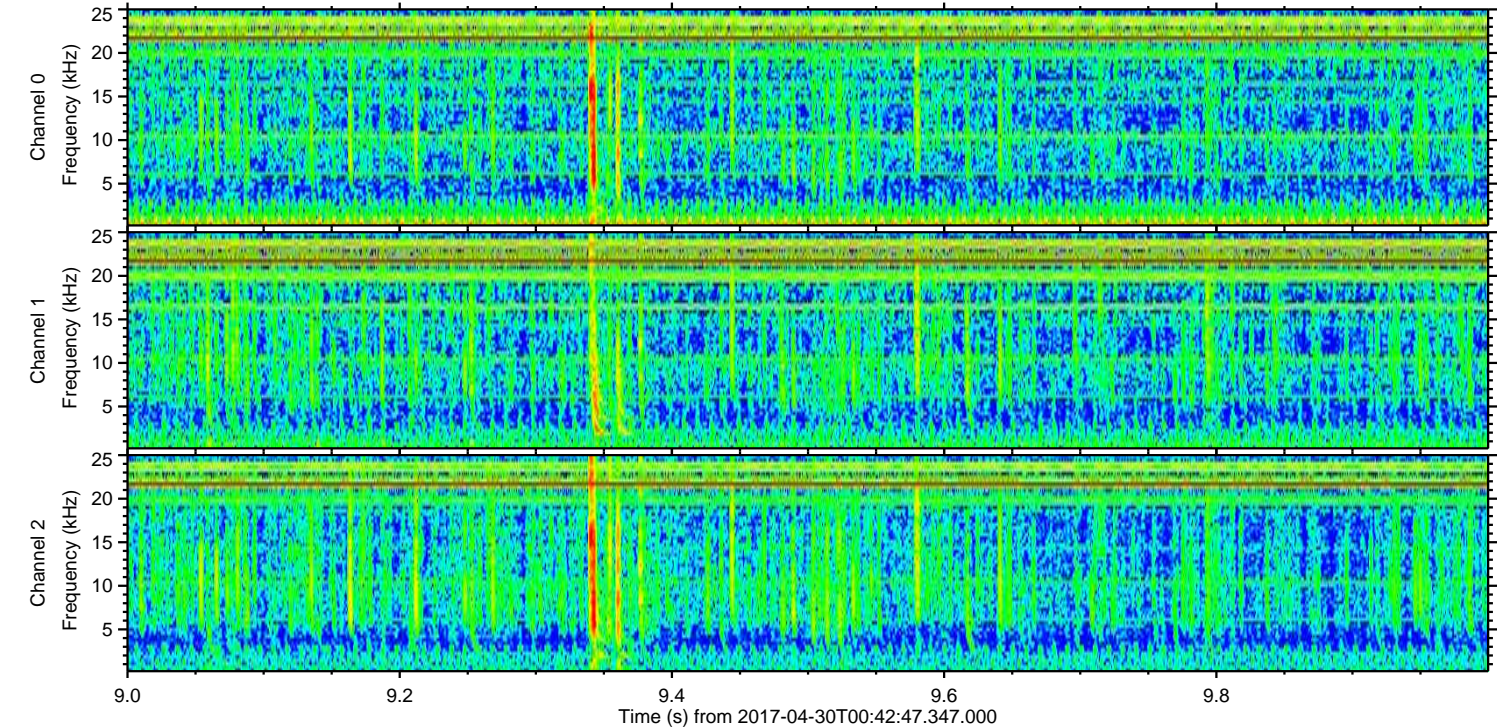
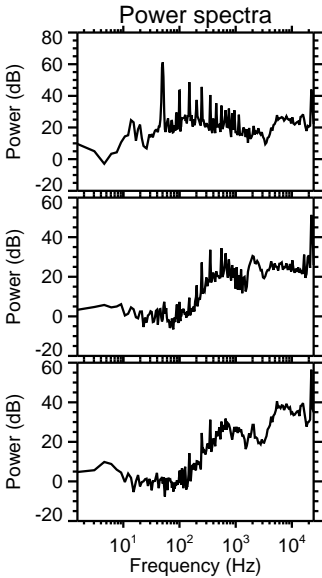
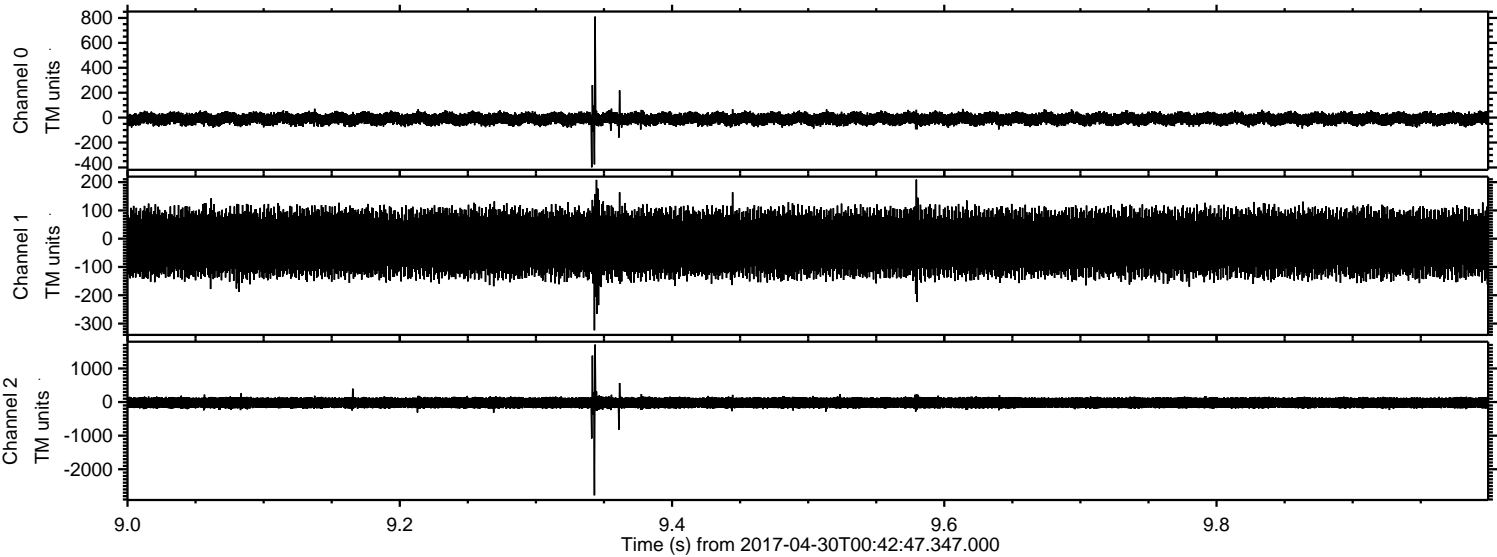
Processed Sun Apr 30 02:50:59 2017 by ELM ver.2012-10-06 from 001__elm20170430_004246__dat00.bin



Processed Sun Apr 30 02:51:00 2017 by ELM ver.2012-10-06 from 001__elm20170430_004246__dat00.bin

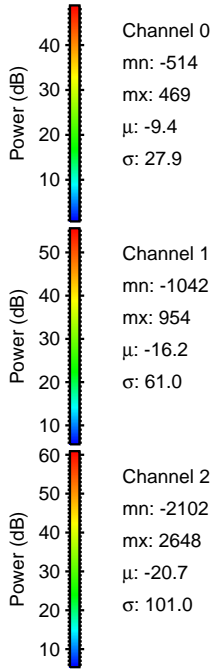
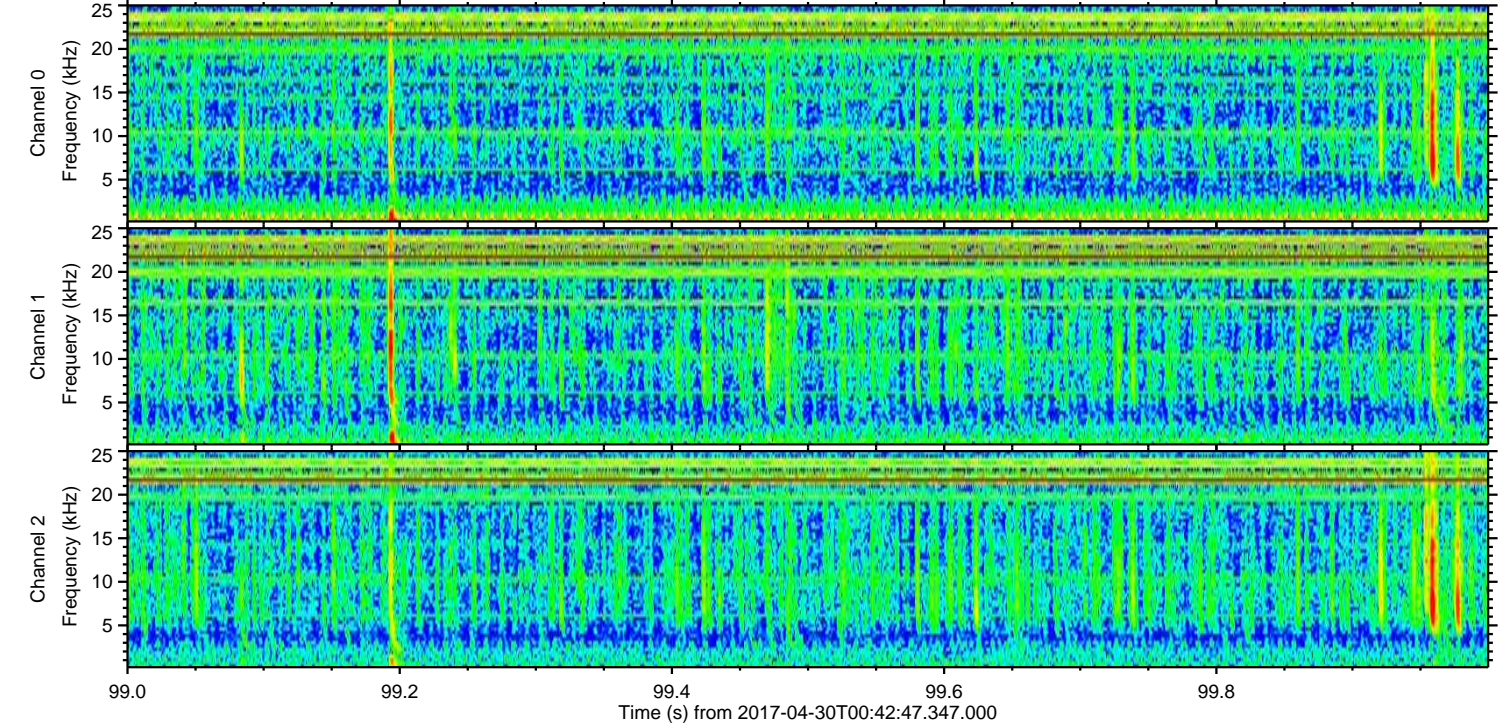
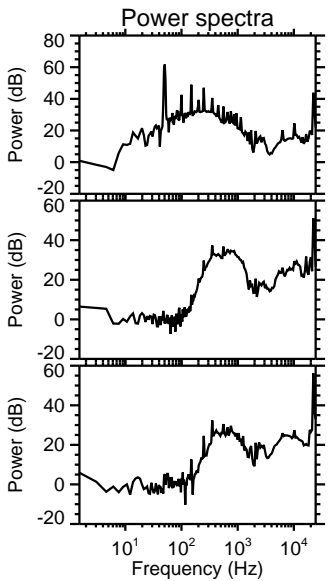
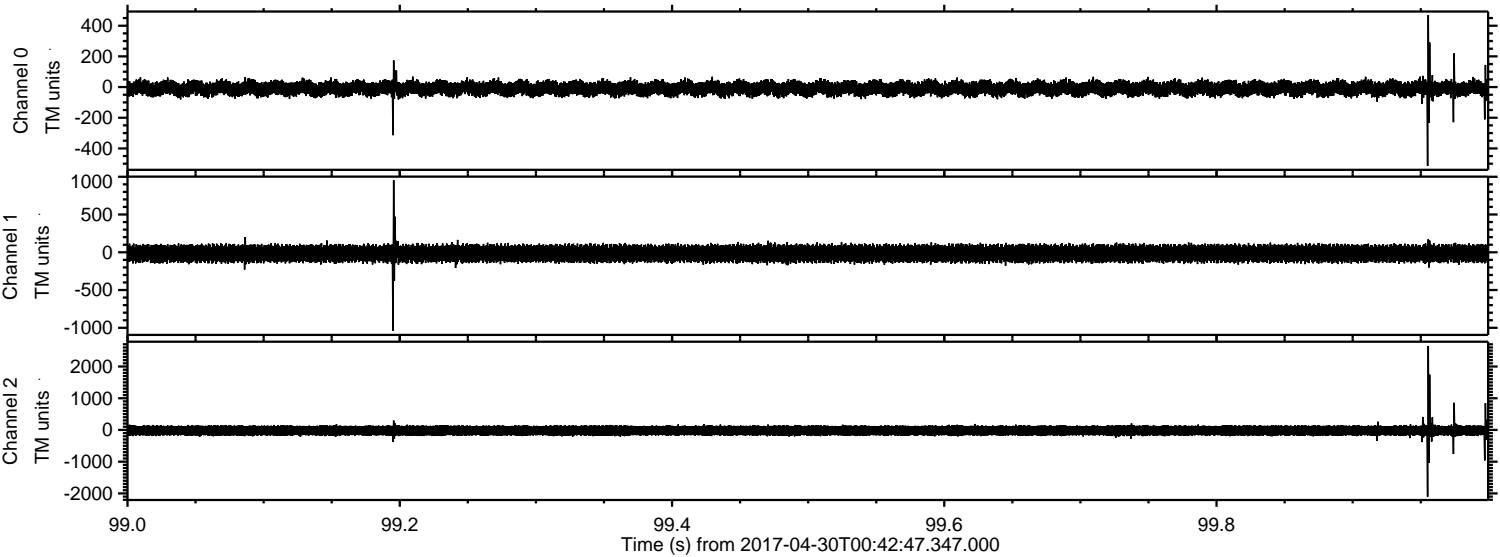


Processed Sun Apr 30 02:51:01 2017 by ELM ver.2012-10-06 from 001__elm20170430_004246__dat00.bin



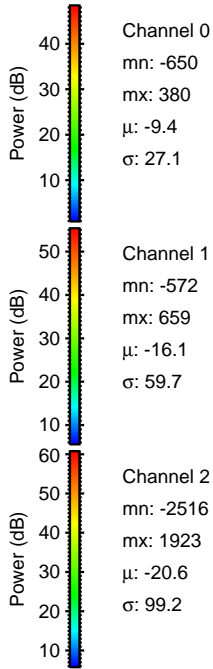
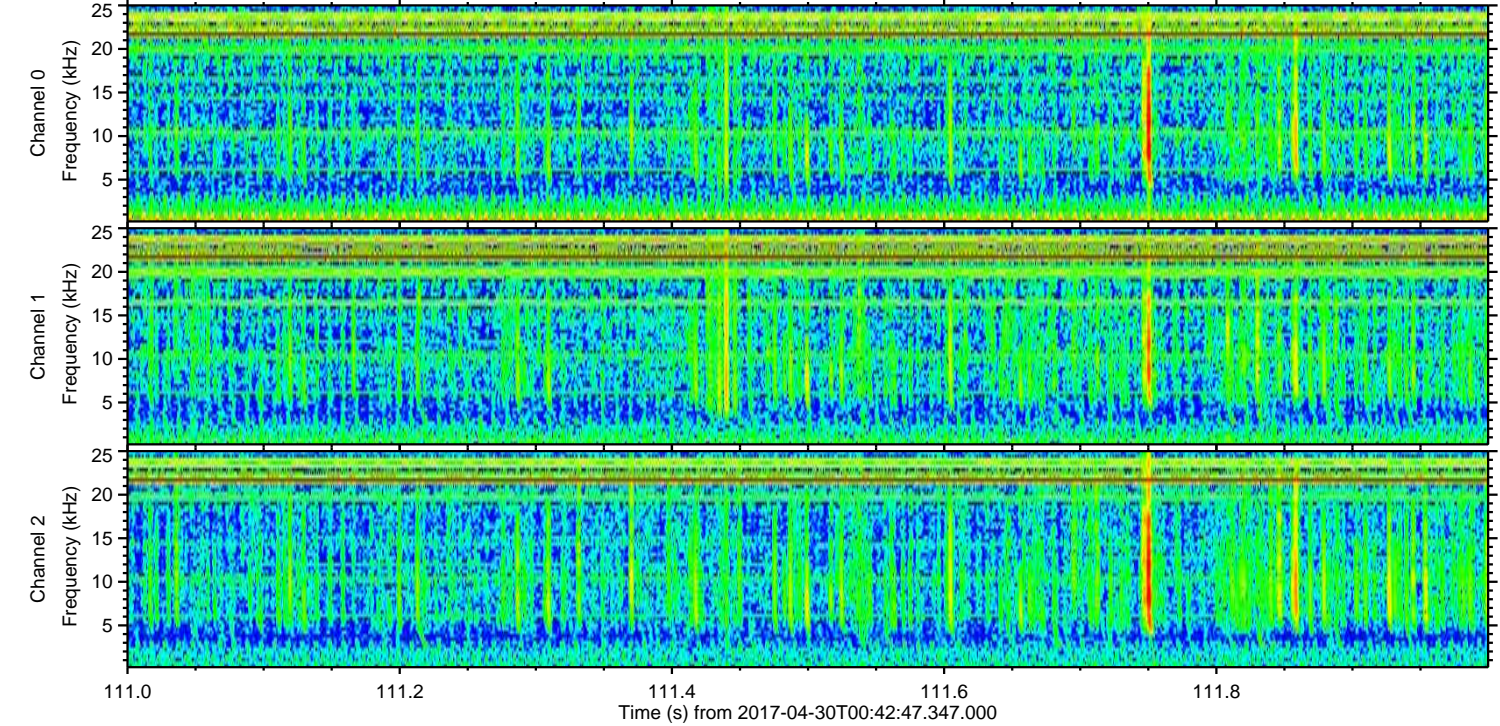
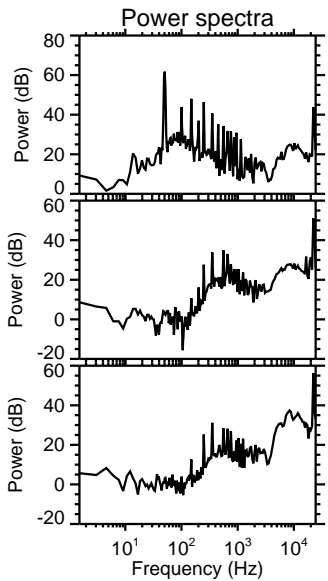
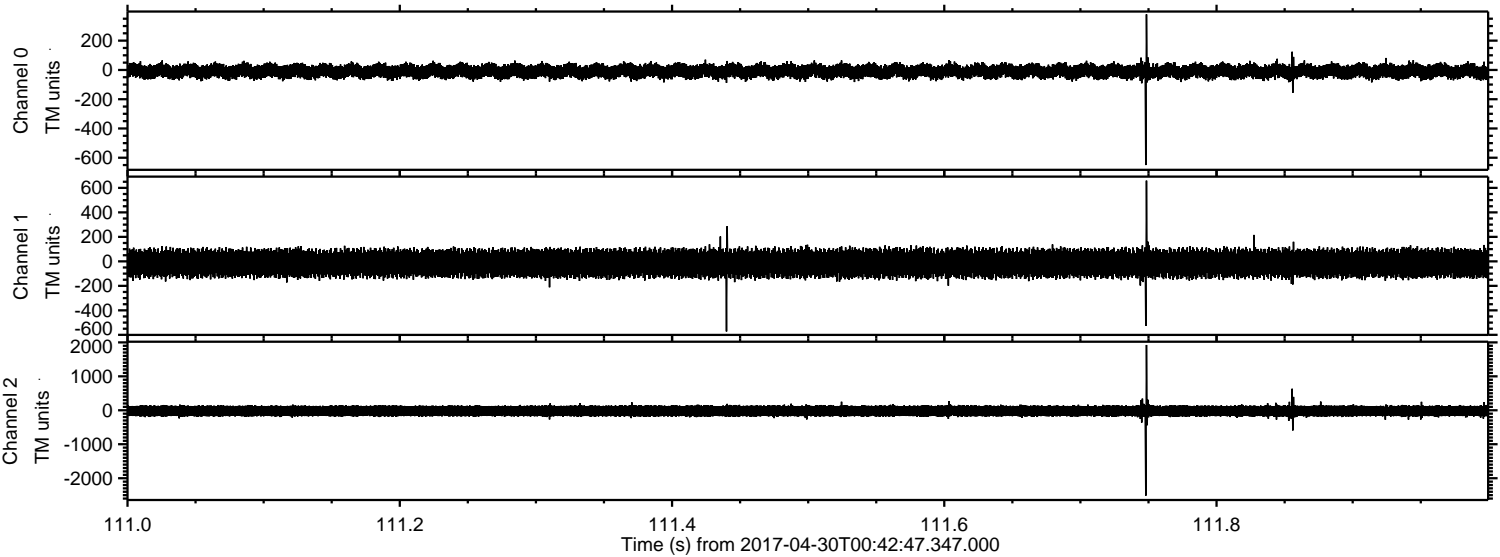
ELMAVAN 3D WAVEFORMS (Measured data sampled at 50 kHz) 51000 packets of 144 samples from 2017-04-30T00:42:47.347.000. Part 100/147

Processed Sun Apr 30 02:51:02 2017 by ELM ver.2012-10-06 from 001__elm20170430_004246__dat00.bin



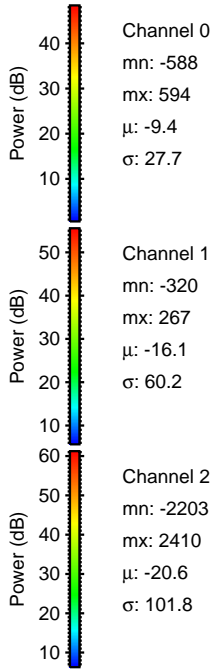
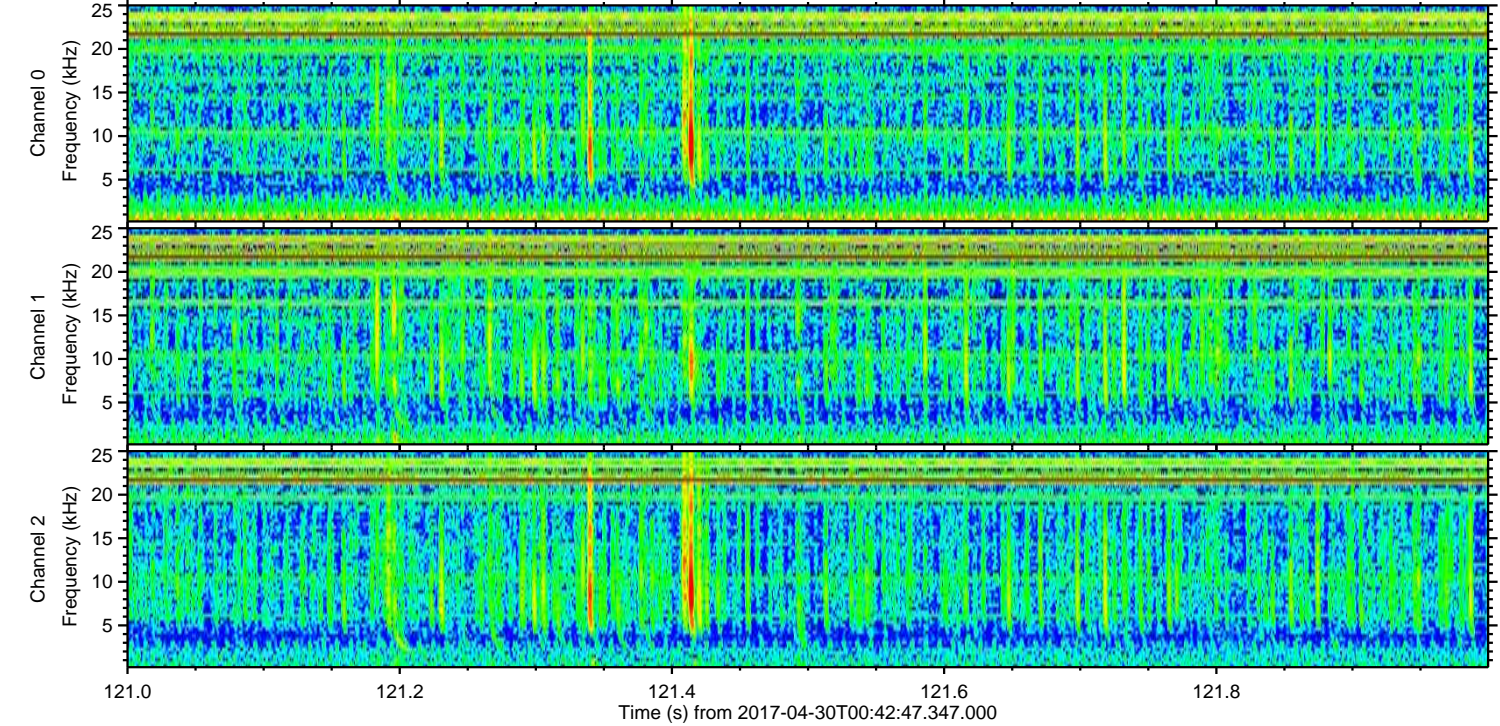
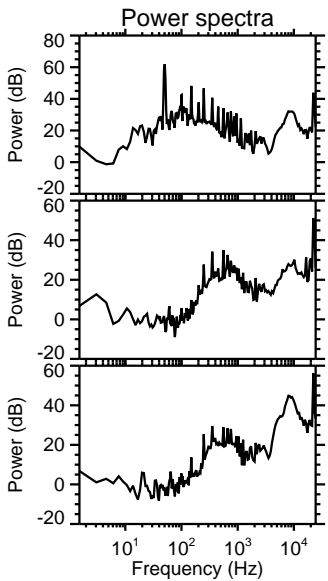
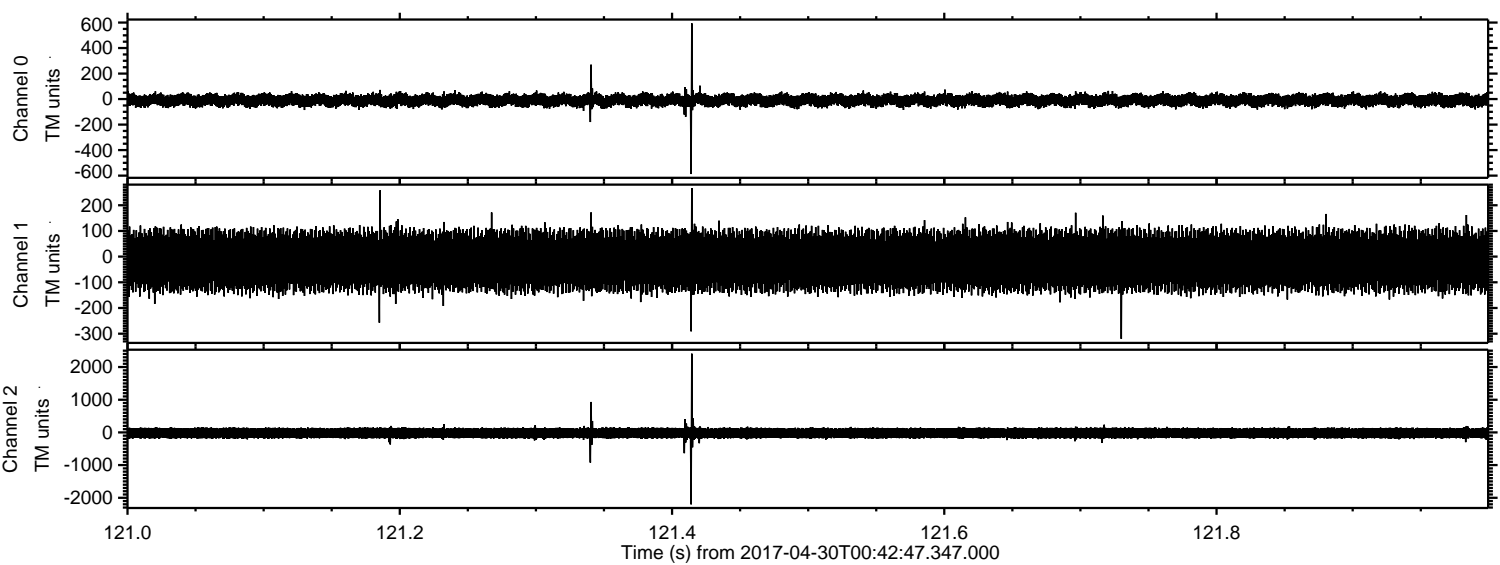
ELMAVAN 3D WAVEFORMS (Measured data sampled at 50 kHz) 51000 packets of 144 samples from 2017-04-30T00:42:47.347.000. Part 112/147

Processed Sun Apr 30 02:51:03 2017 by ELM ver.2012-10-06 from 001__elm20170430_004246__dat00.bin



ELMAVAN 3D WAVEFORMS (Measured data sampled at 50 kHz) 51000 packets of 144 samples from 2017-04-30T00:42:47.347.000. Part 122/147

Processed Sun Apr 30 02:51:04 2017 by ELM ver.2012-10-06 from 001__elm20170430_004246__dat00.bin

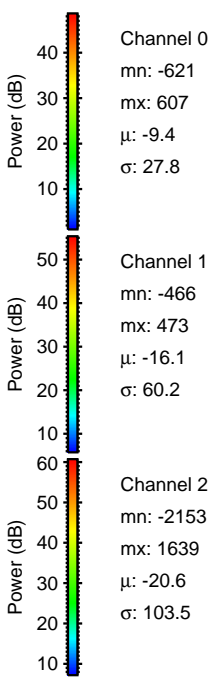
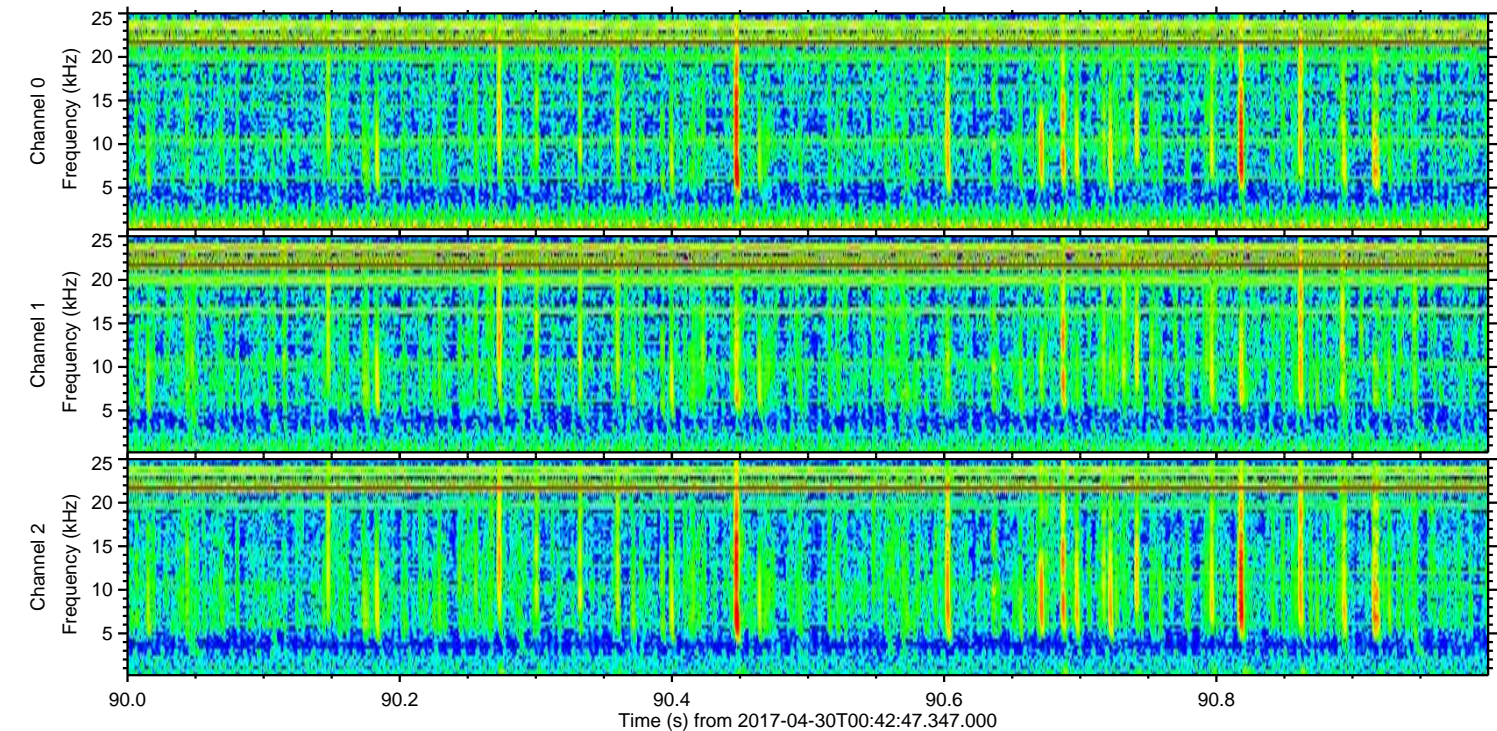
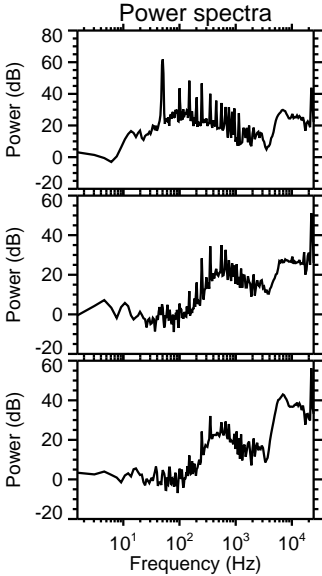
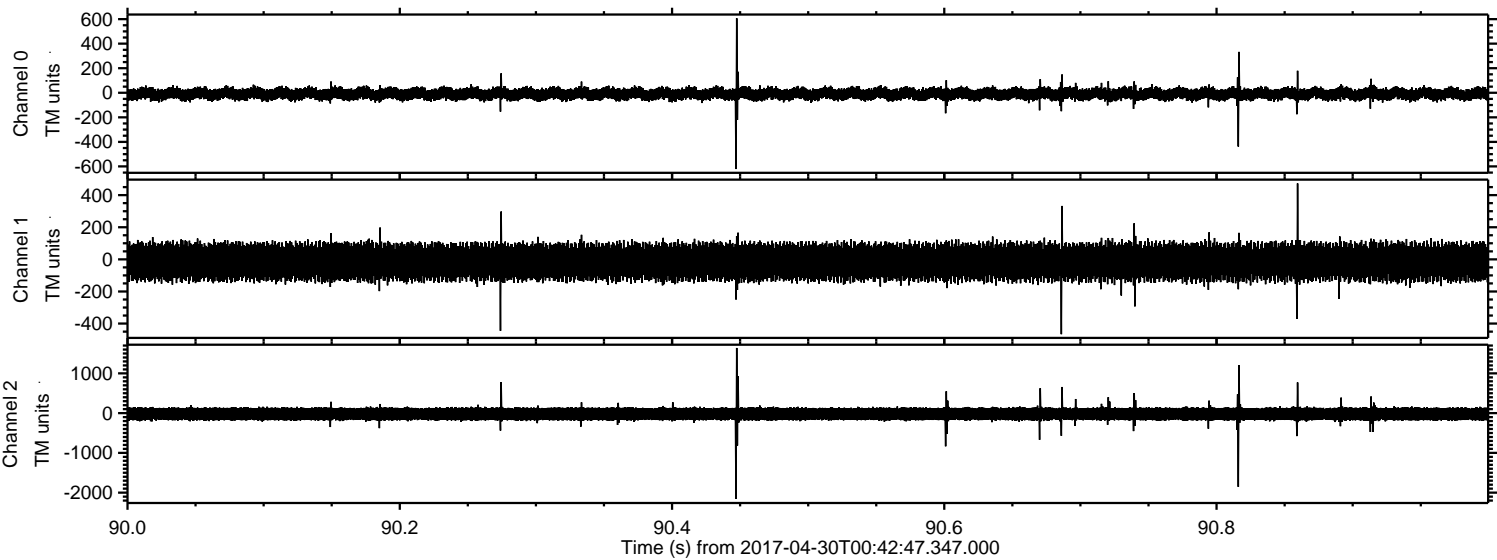


Channel 0
mn: -588
mx: 594
 μ : -9.4
 σ : 27.7

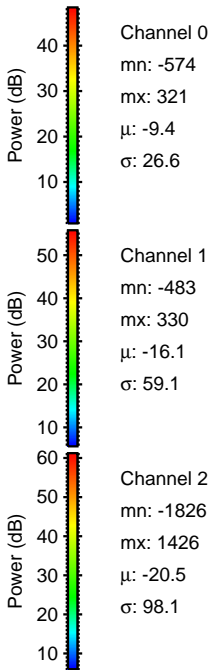
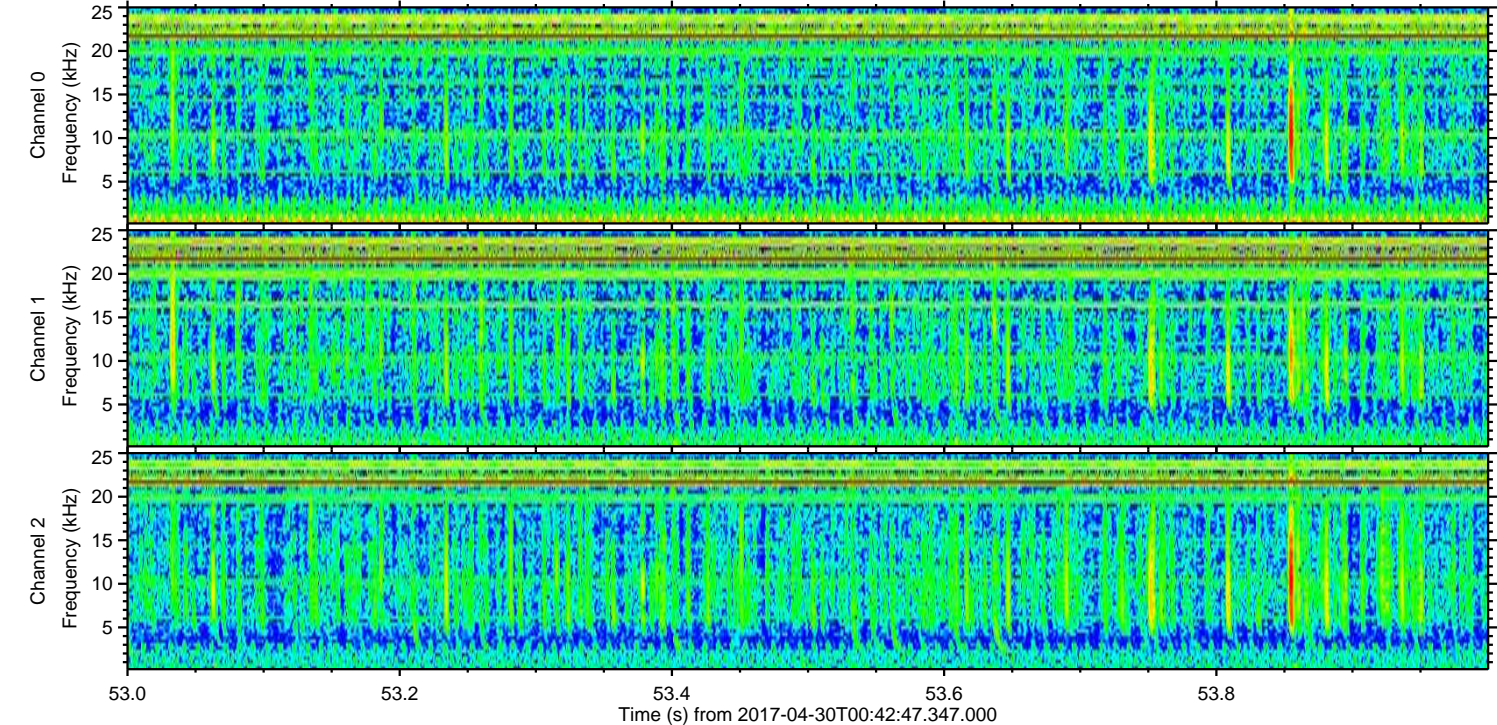
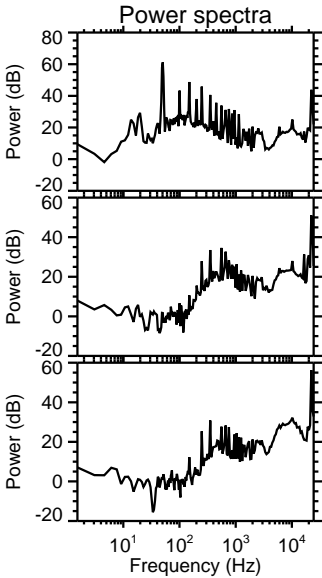
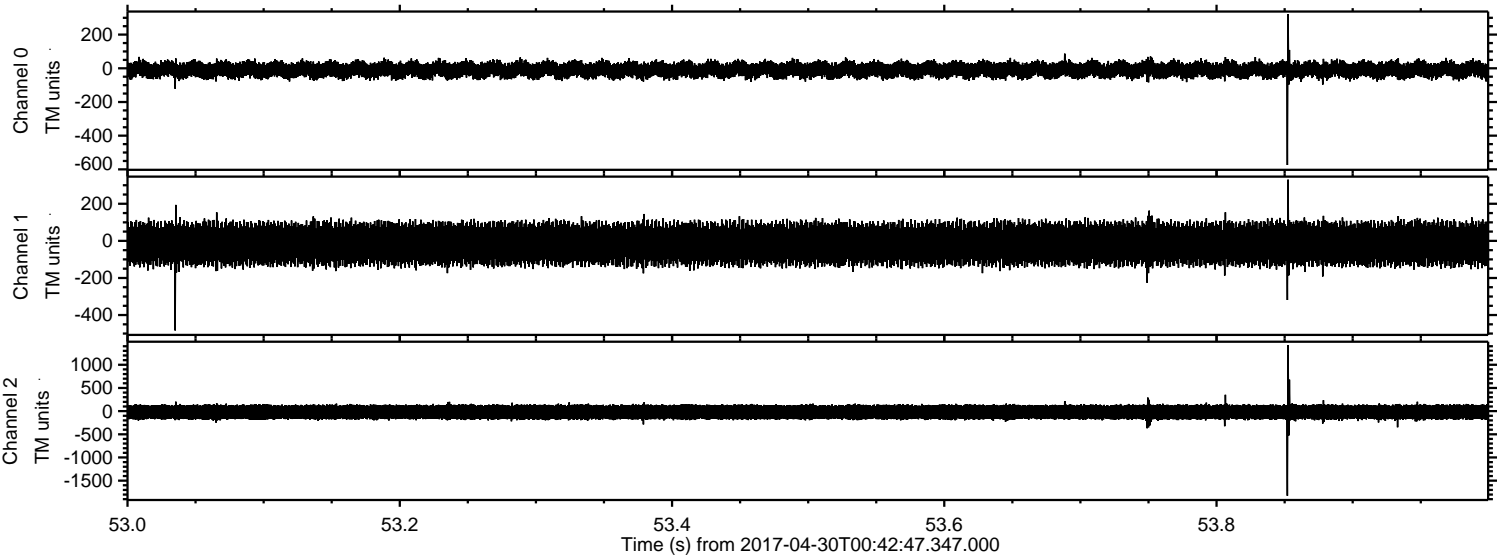
Channel 1
mn: -320
mx: 267
 μ : -16.1
 σ : 60.2

Channel 2
mn: -2203
mx: 2410
 μ : -20.6
 σ : 101.8

Processed Sun Apr 30 02:51:05 2017 by ELM ver.2012-10-06 from 001__elm20170430_004246__dat00.bin



Processed Sun Apr 30 02:51:05 2017 by ELM ver.2012-10-06 from 001__elm20170430_004246__dat00.bin



Processed Sun Apr 30 02:51:06 2017 by ELM ver.2012-10-06 from 001__elm20170430_004246__dat00.bin

