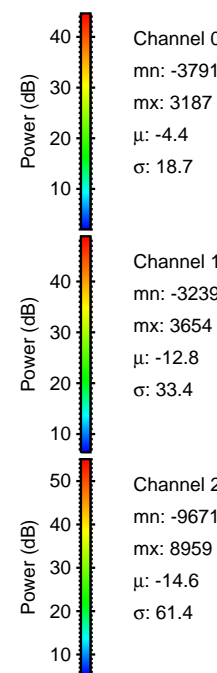
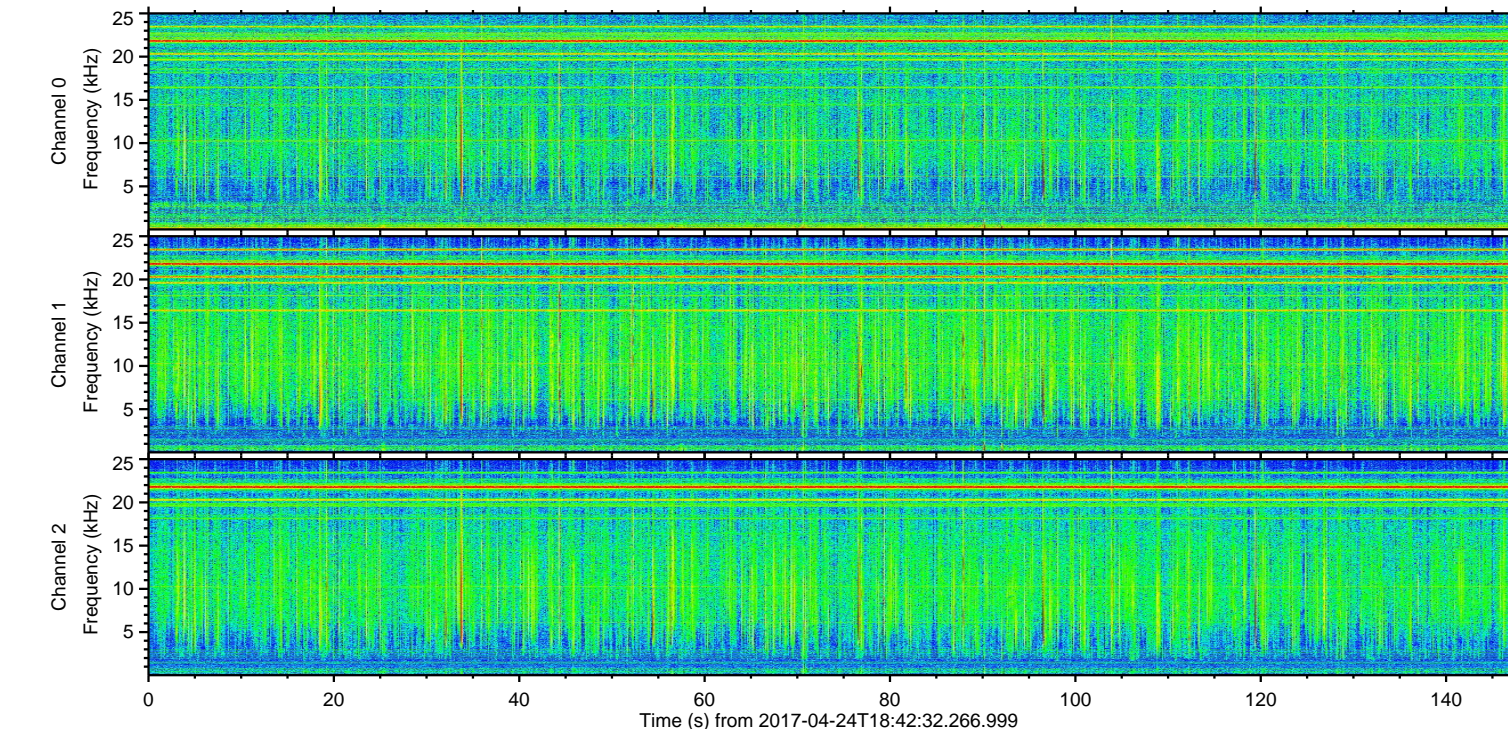
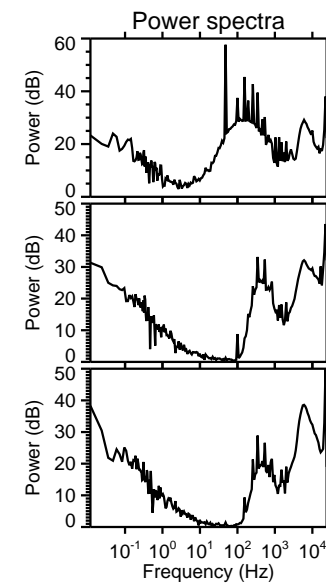
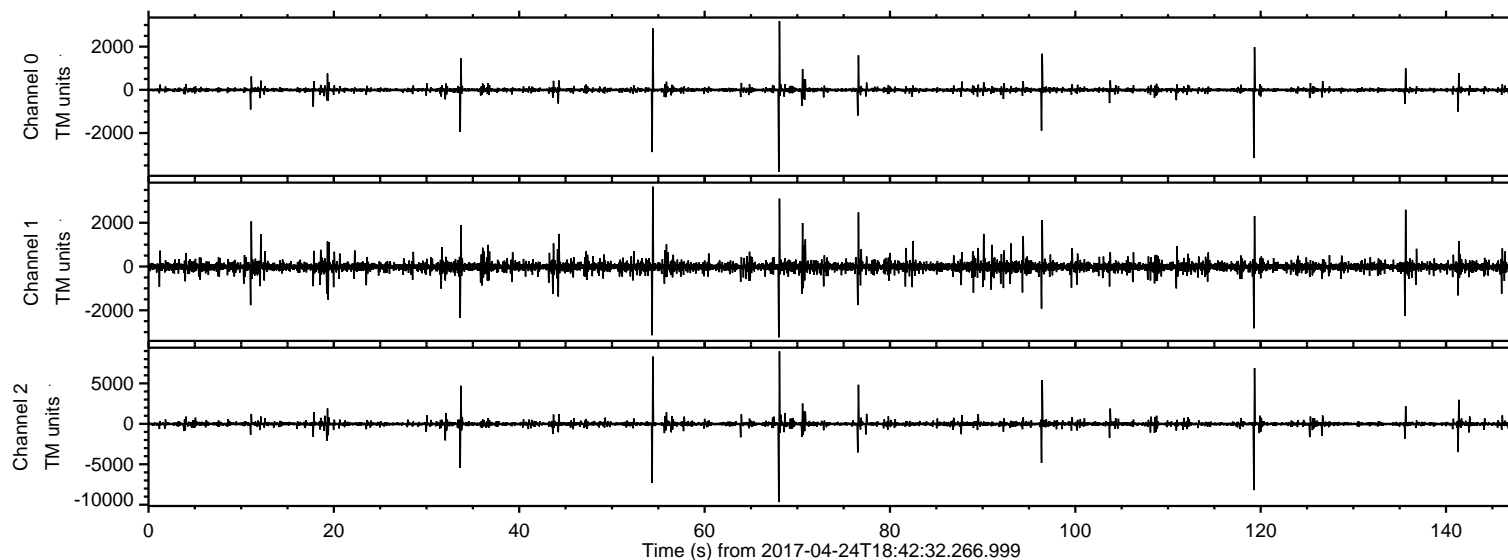
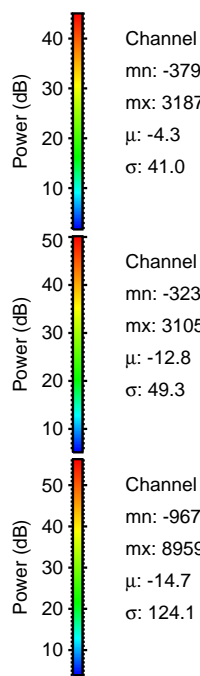
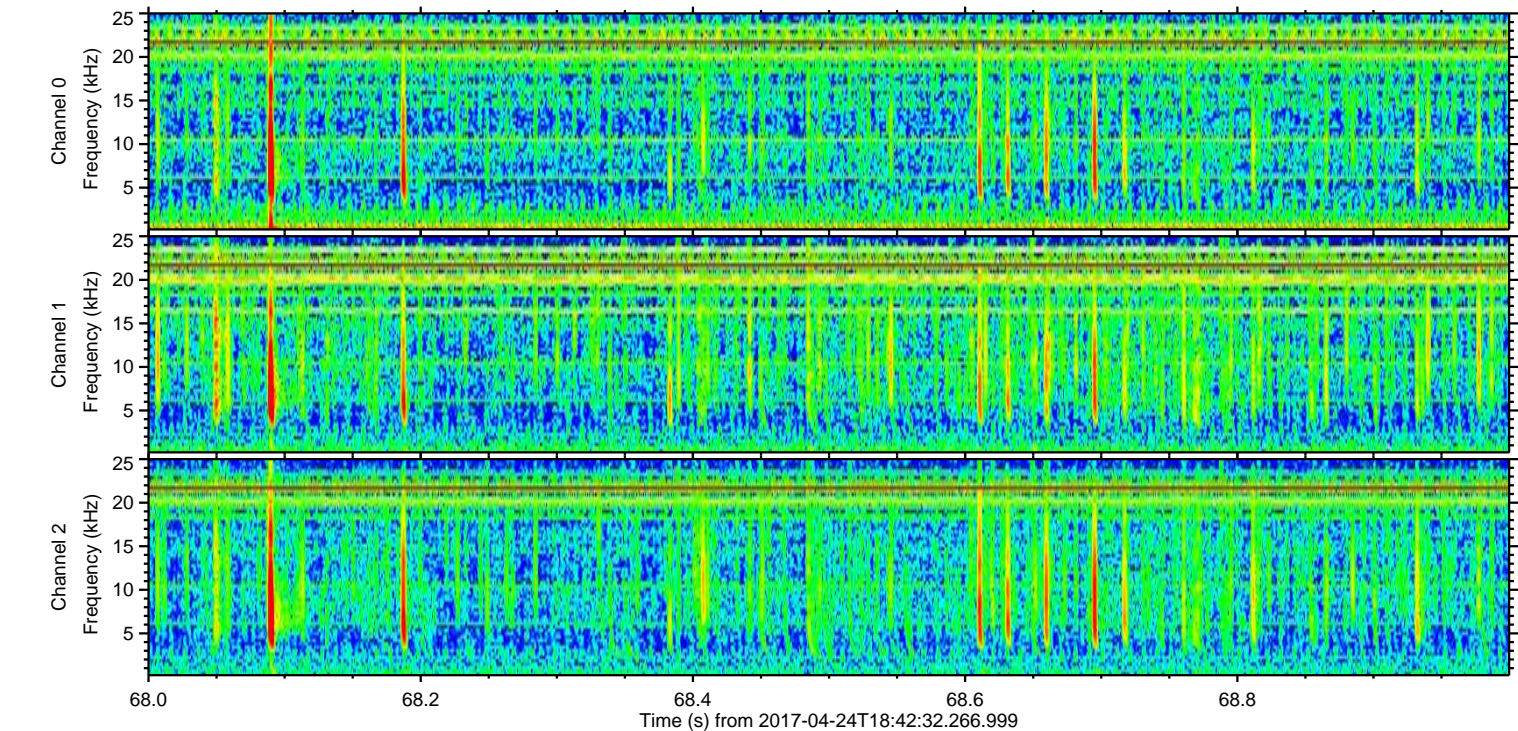
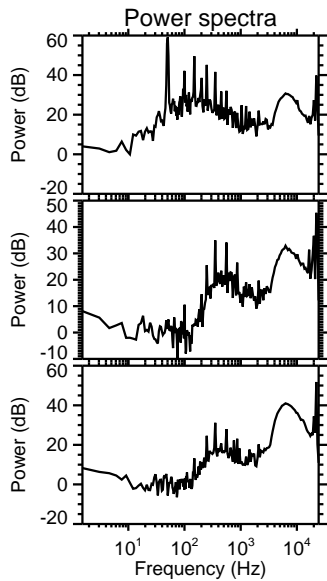
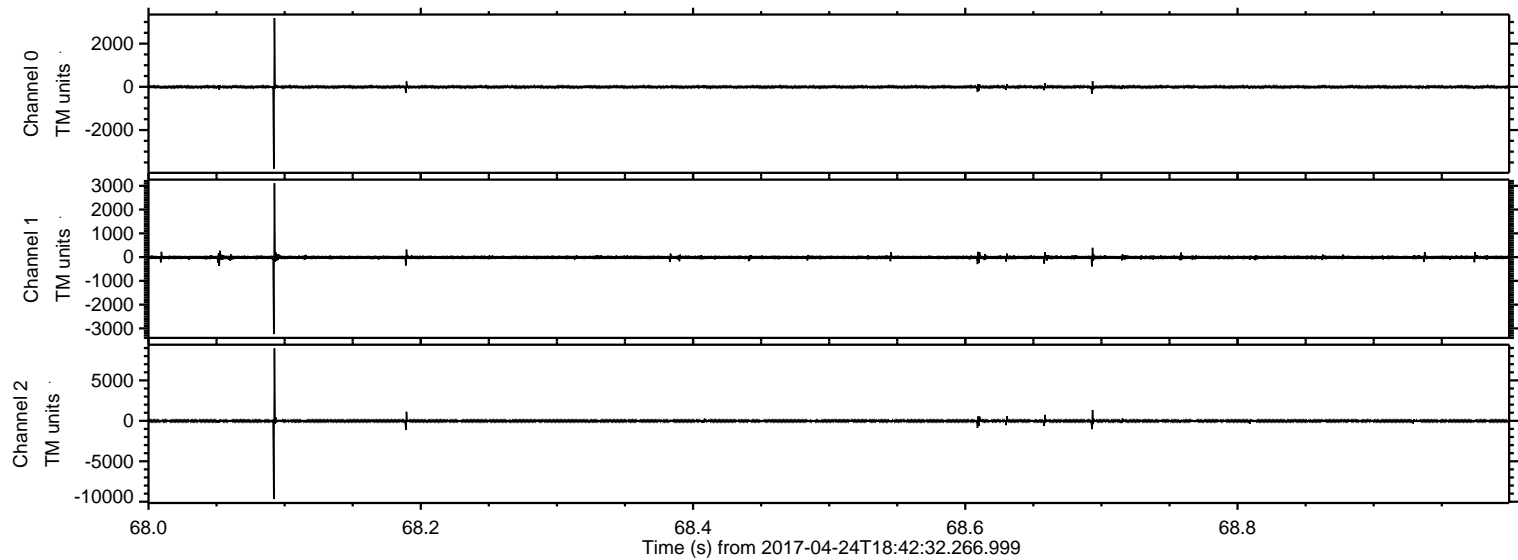


ELMAVAN 3D WAVEFORMS (Measured data sampled at 50 kHz) 51000 packets of 144 samples from 2017-04-24T18:42:32.266.999.

Processed Mon Apr 24 20:50:05 2017 by ELM ver.2012-10-06 from 001__elm20170424_184231__dat00.bin



Processed Mon Apr 24 20:50:16 2017 by ELM ver.2012-10-06 from 001__elm20170424_184231__dat00.bin

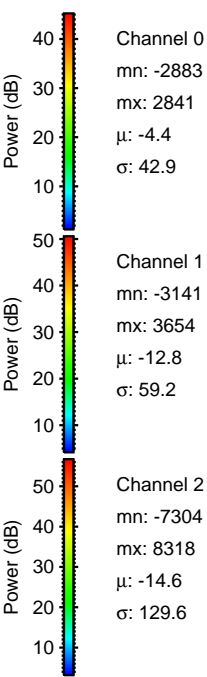
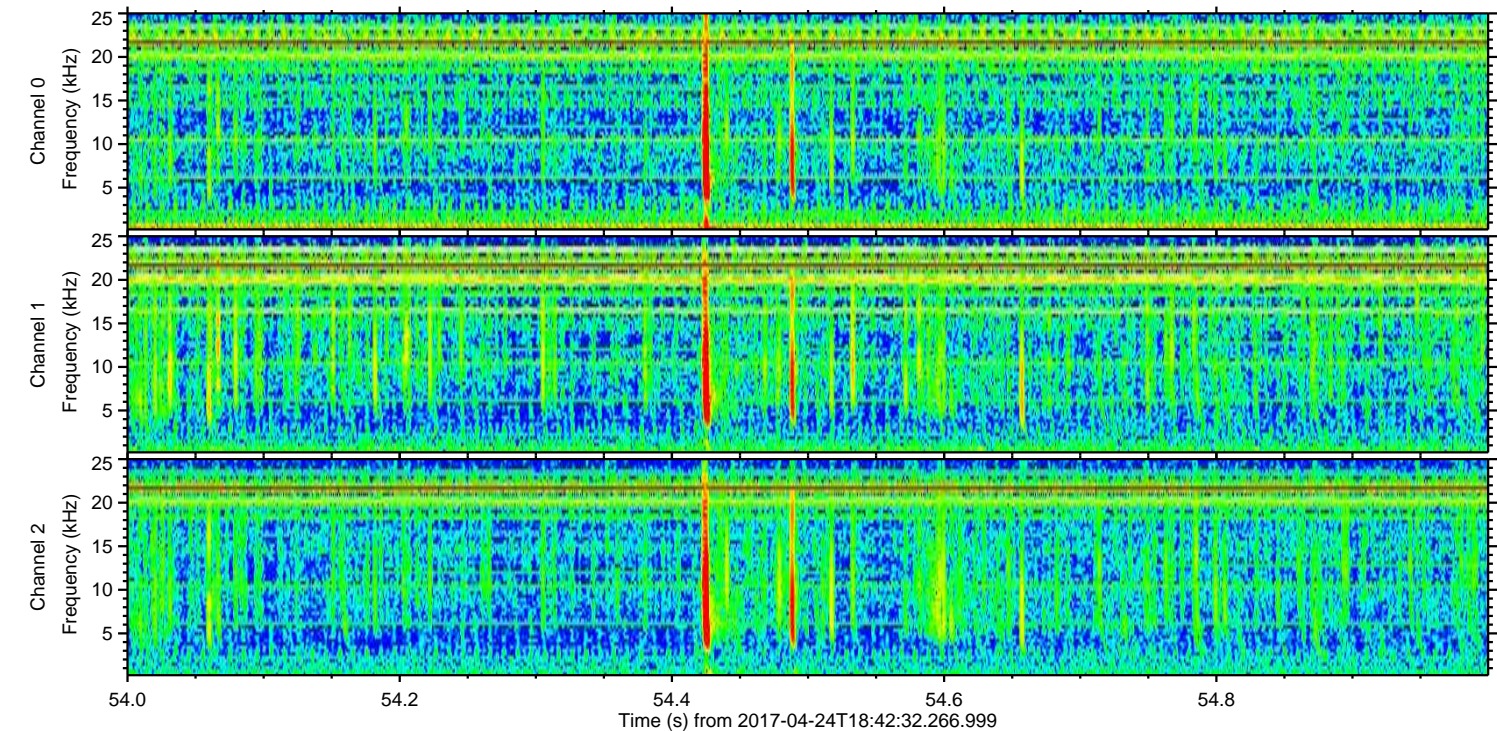
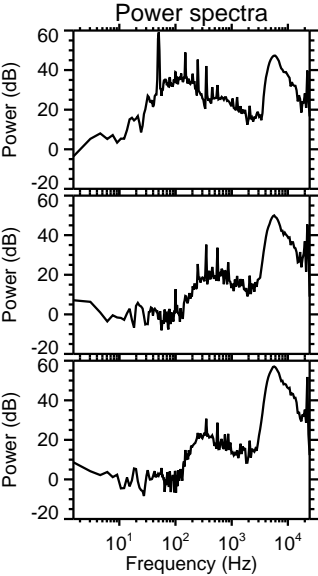
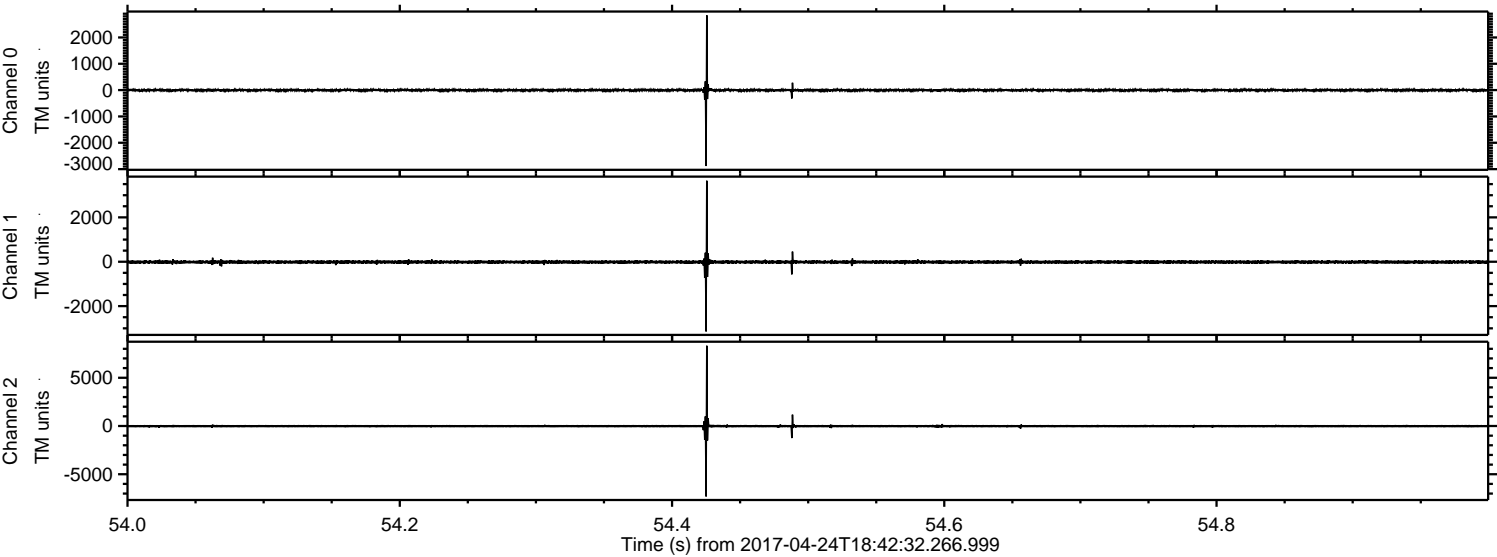


Channel 0
mn: -37.91
mx: 31.87
 μ : -4.3
 σ : 41.0

Channel 1
mn: -32.39
mx: 31.05
 μ : -12.8
 σ : 49.3

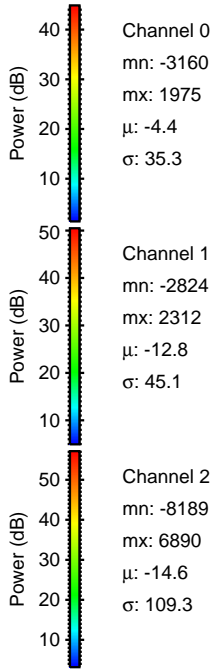
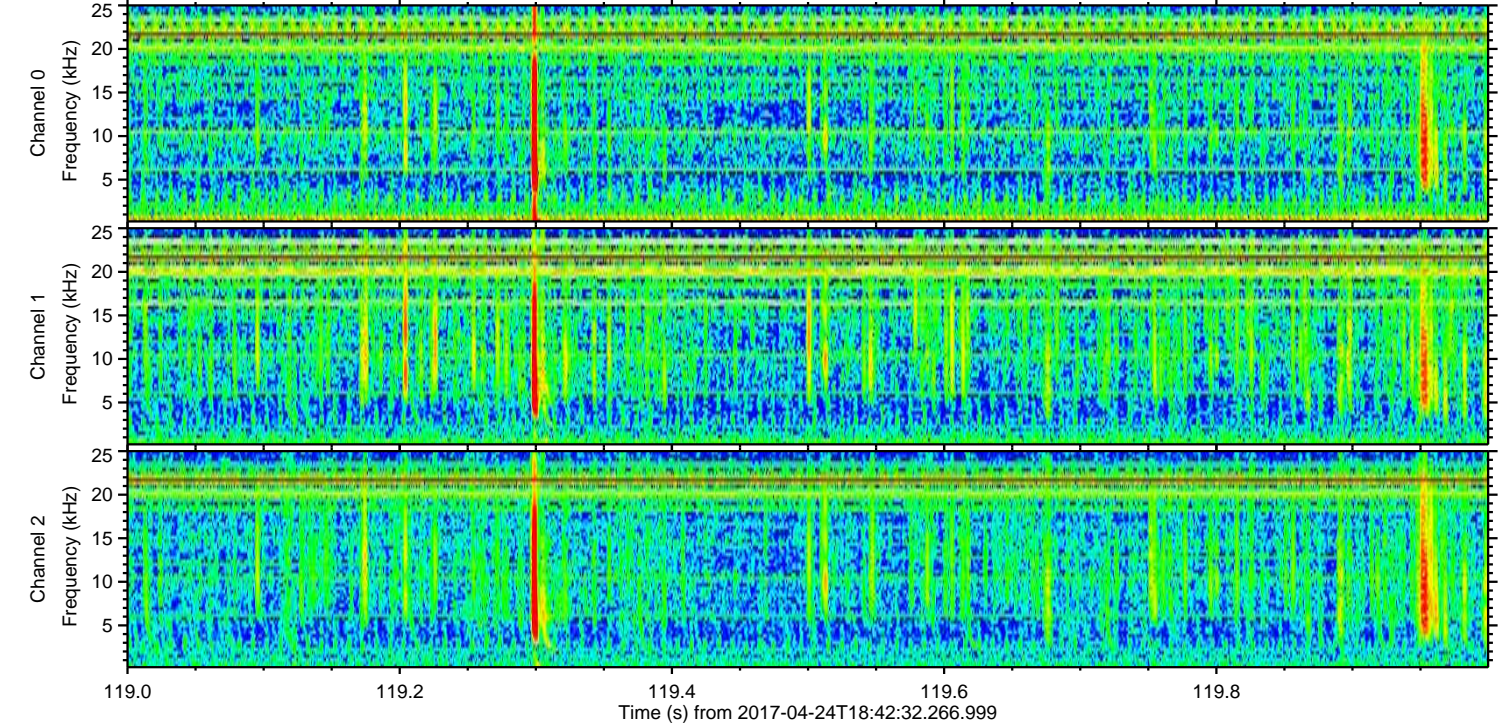
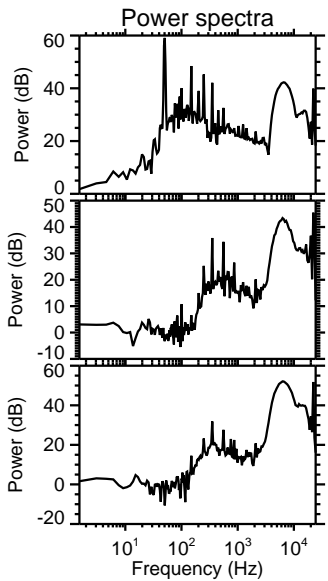
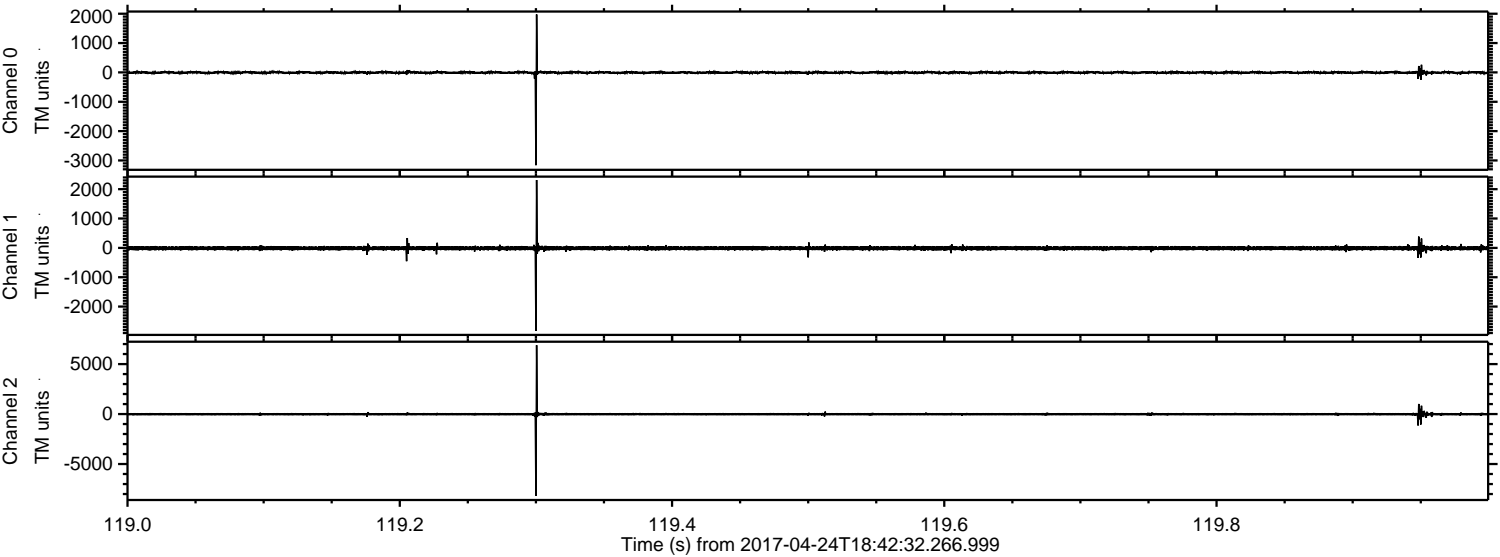
Channel 2
mn: -9.671
mx: 8.959
 μ : -14.7
 σ : 124.1

Processed Mon Apr 24 20:50:17 2017 by ELM ver.2012-10-06 from 001__elm20170424_184231__dat00.bin

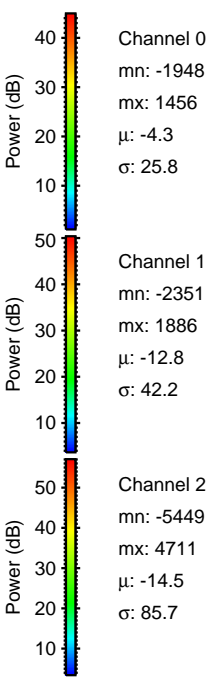
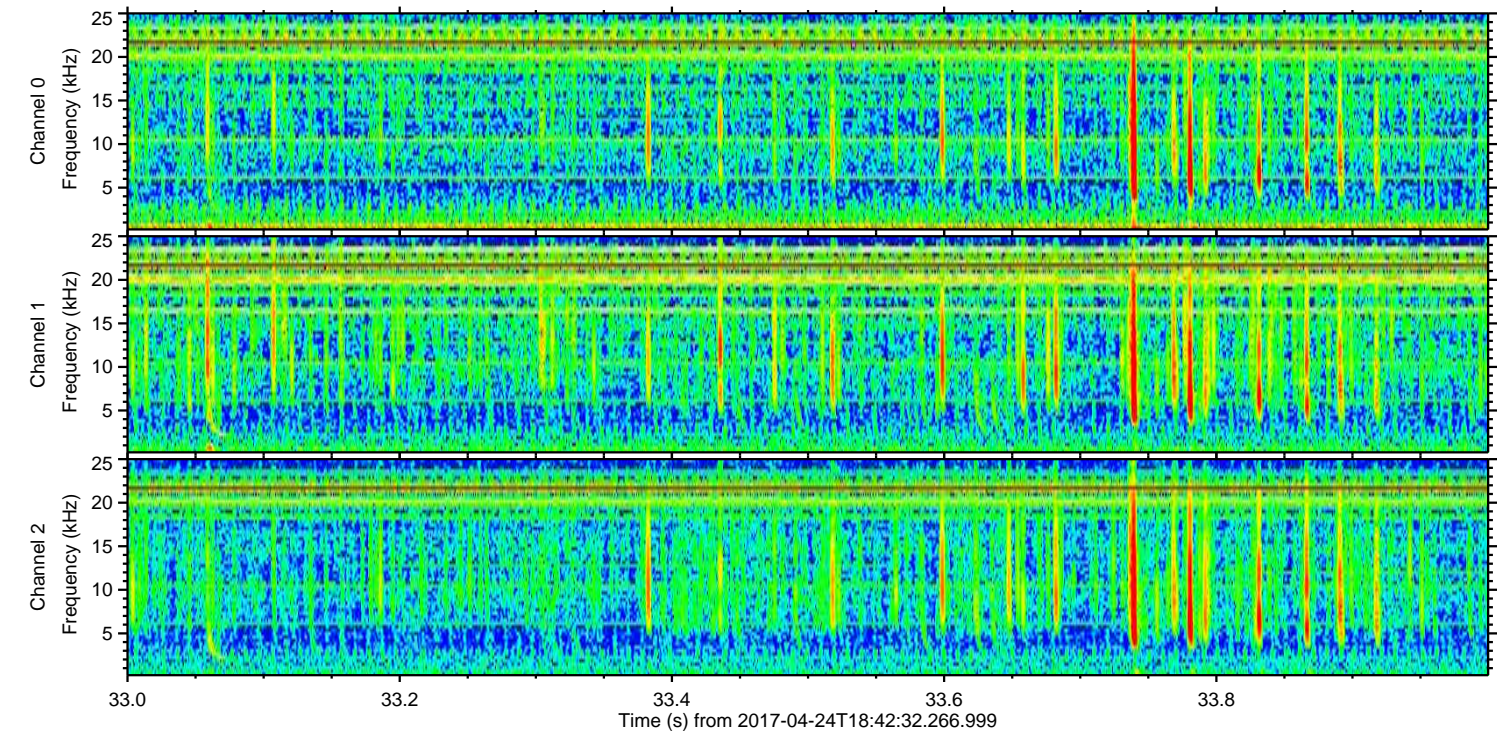
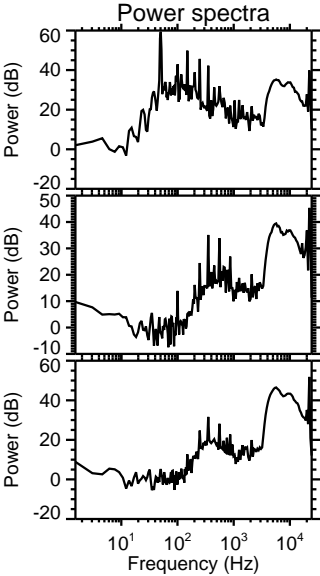
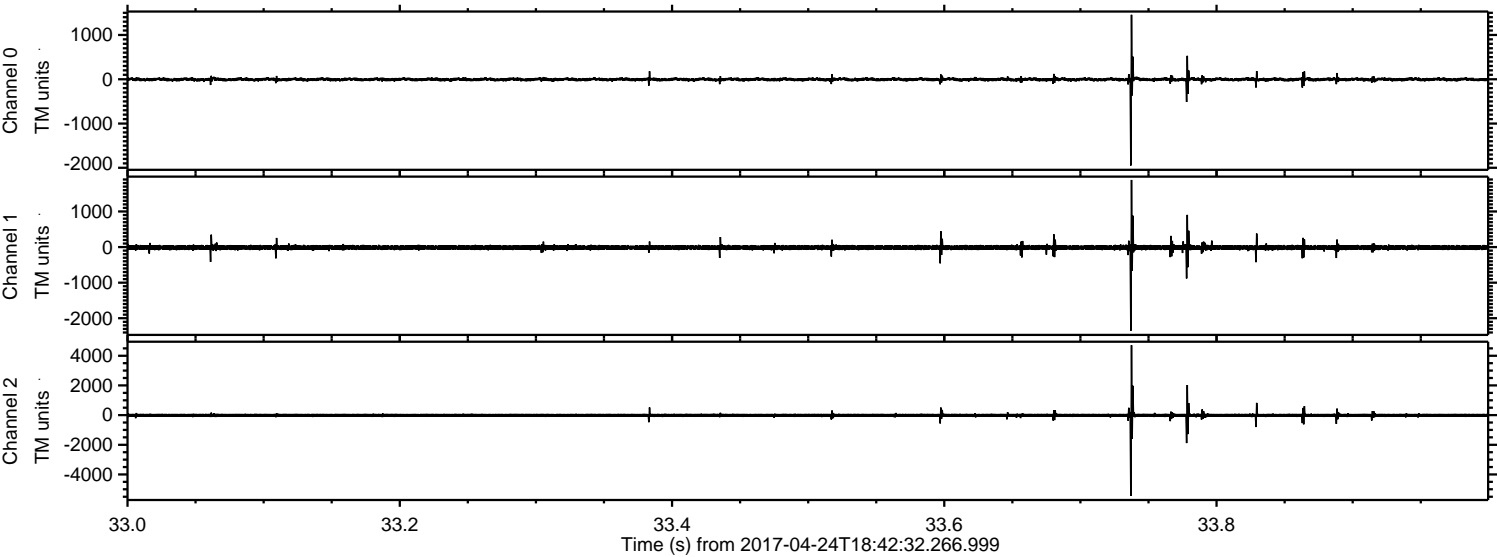


ELMAVAN 3D WAVEFORMS (Measured data sampled at 50 kHz) 51000 packets of 144 samples from 2017-04-24T18:42:32.266.999. Part 120/147

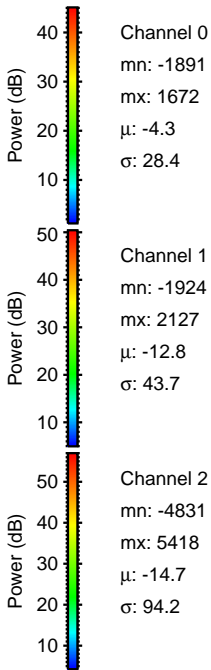
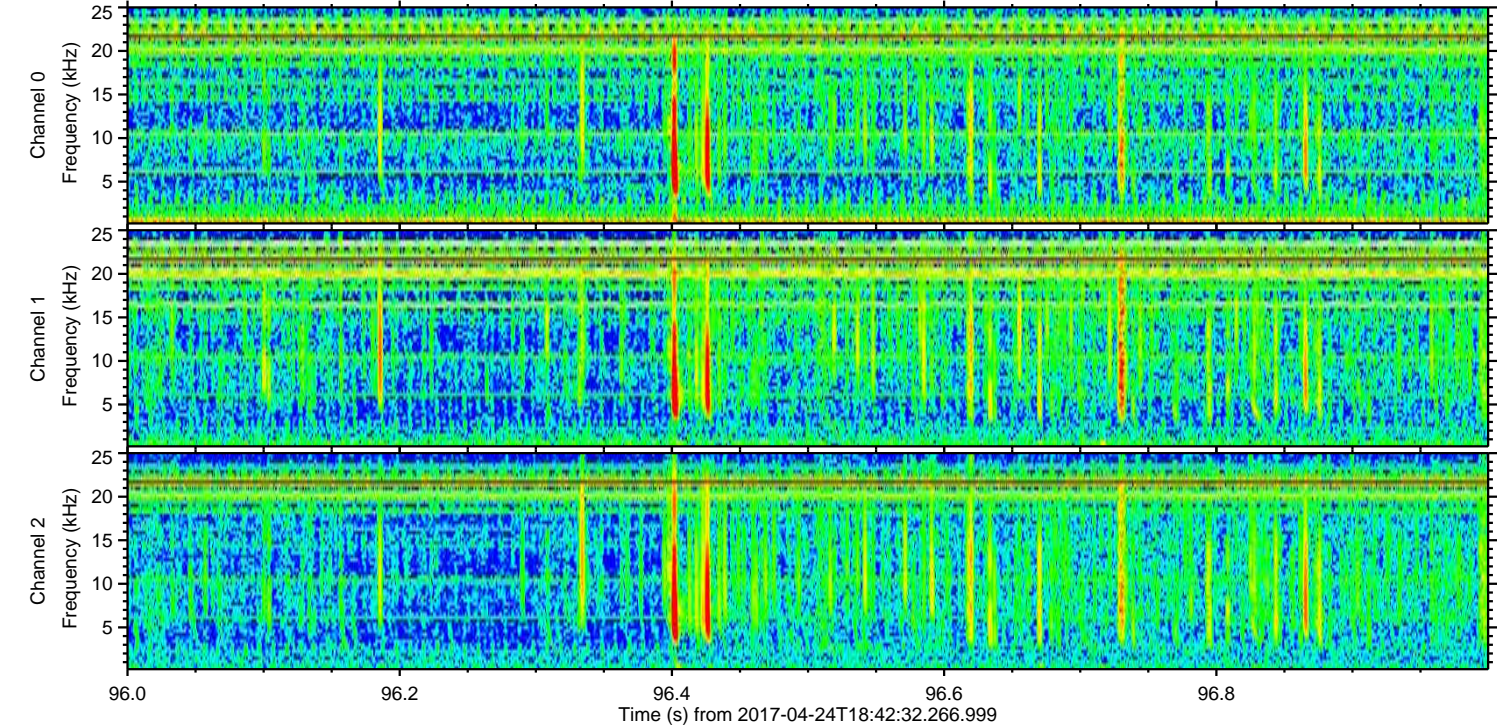
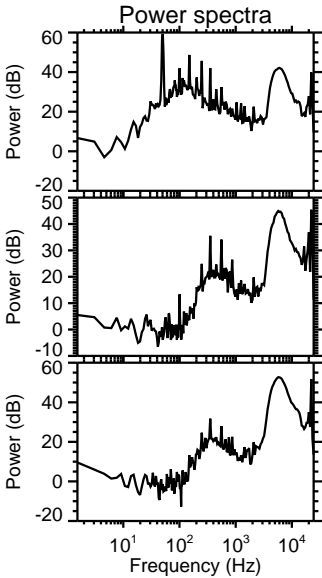
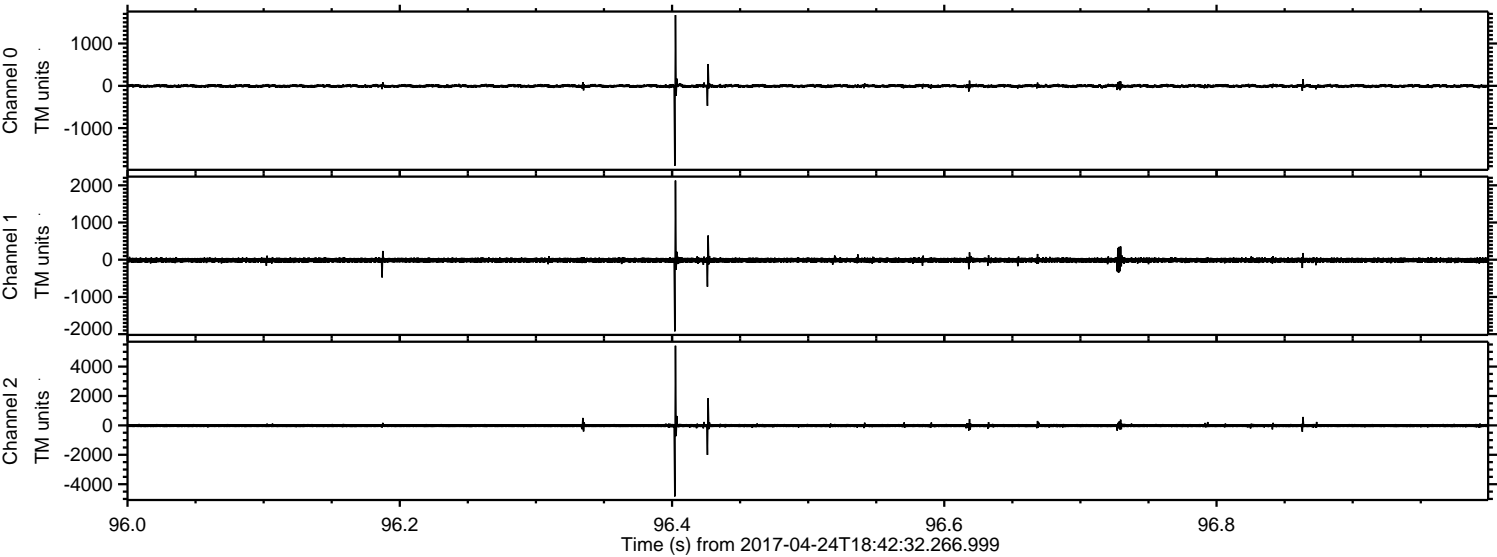
Processed Mon Apr 24 20:50:18 2017 by ELM ver.2012-10-06 from 001__elm20170424_184231__dat00.bin



Processed Mon Apr 24 20:50:19 2017 by ELM ver.2012-10-06 from 001__elm20170424_184231__dat00.bin

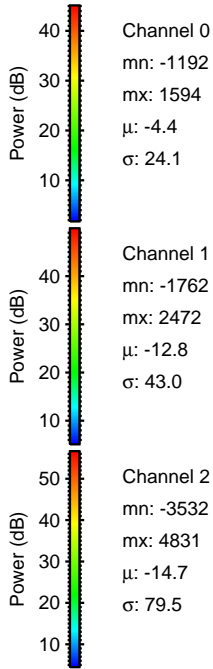
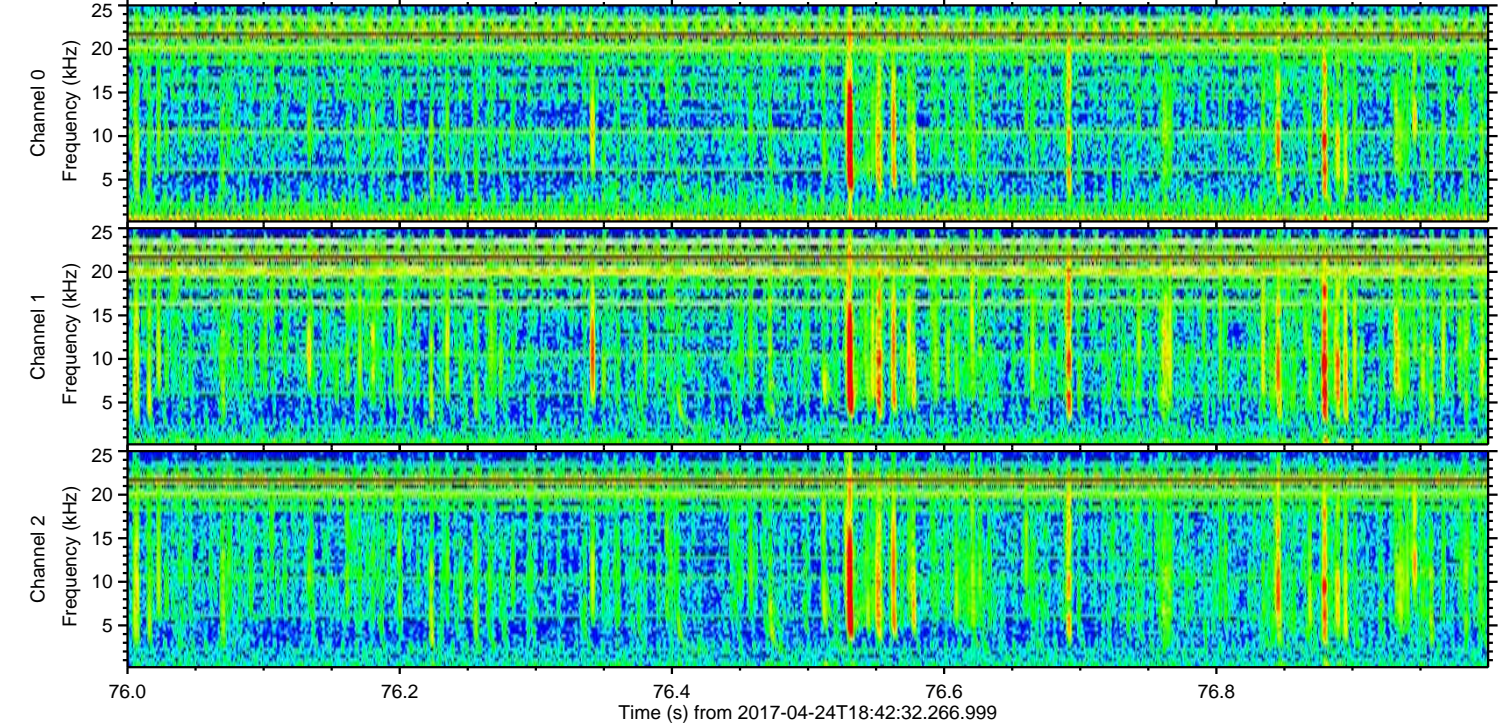
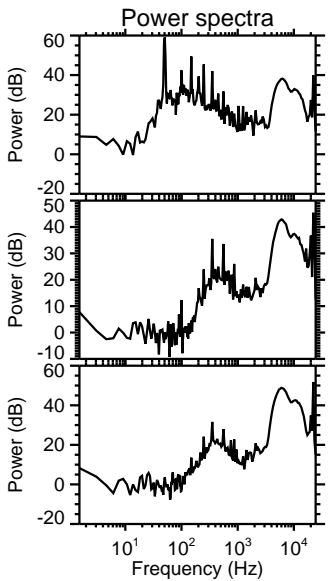
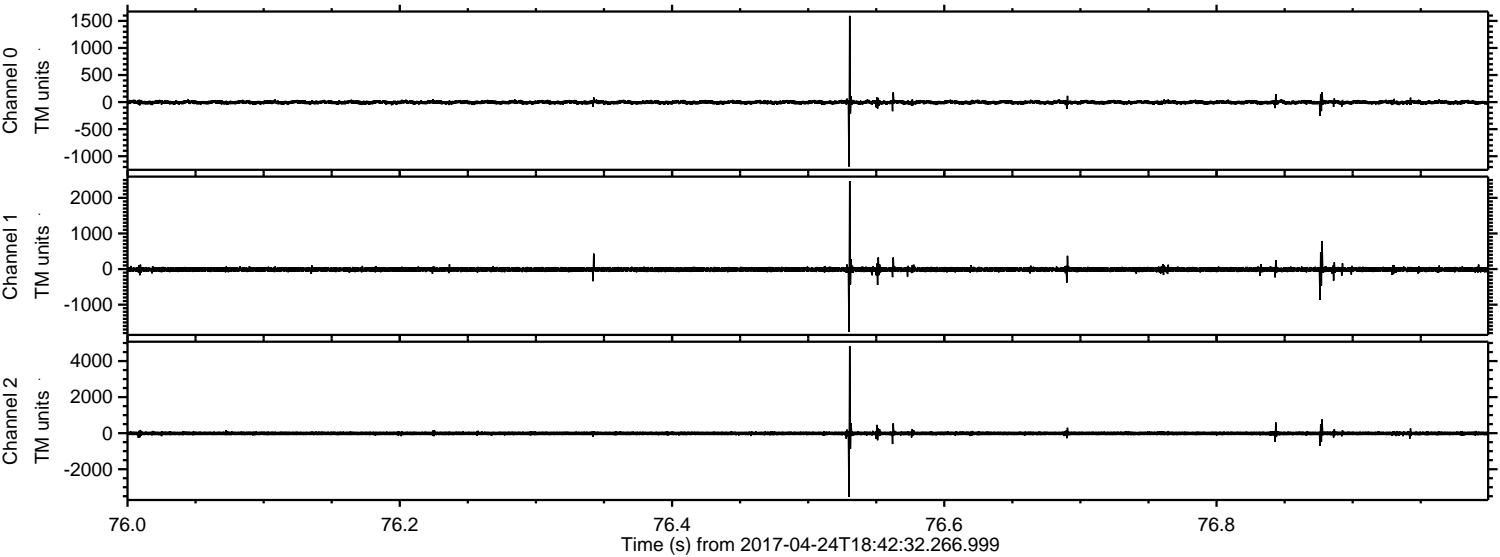


Processed Mon Apr 24 20:50:20 2017 by ELM ver.2012-10-06 from 001__elm20170424_184231__dat00.bin



ELMAVAN 3D WAVEFORMS (Measured data sampled at 50 kHz) 51000 packets of 144 samples from 2017-04-24T18:42:32.266.999. Part 77/147

Processed Mon Apr 24 20:50:21 2017 by ELM ver.2012-10-06 from 001__elm20170424_184231__dat00.bin



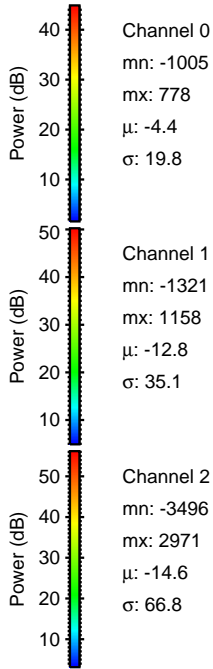
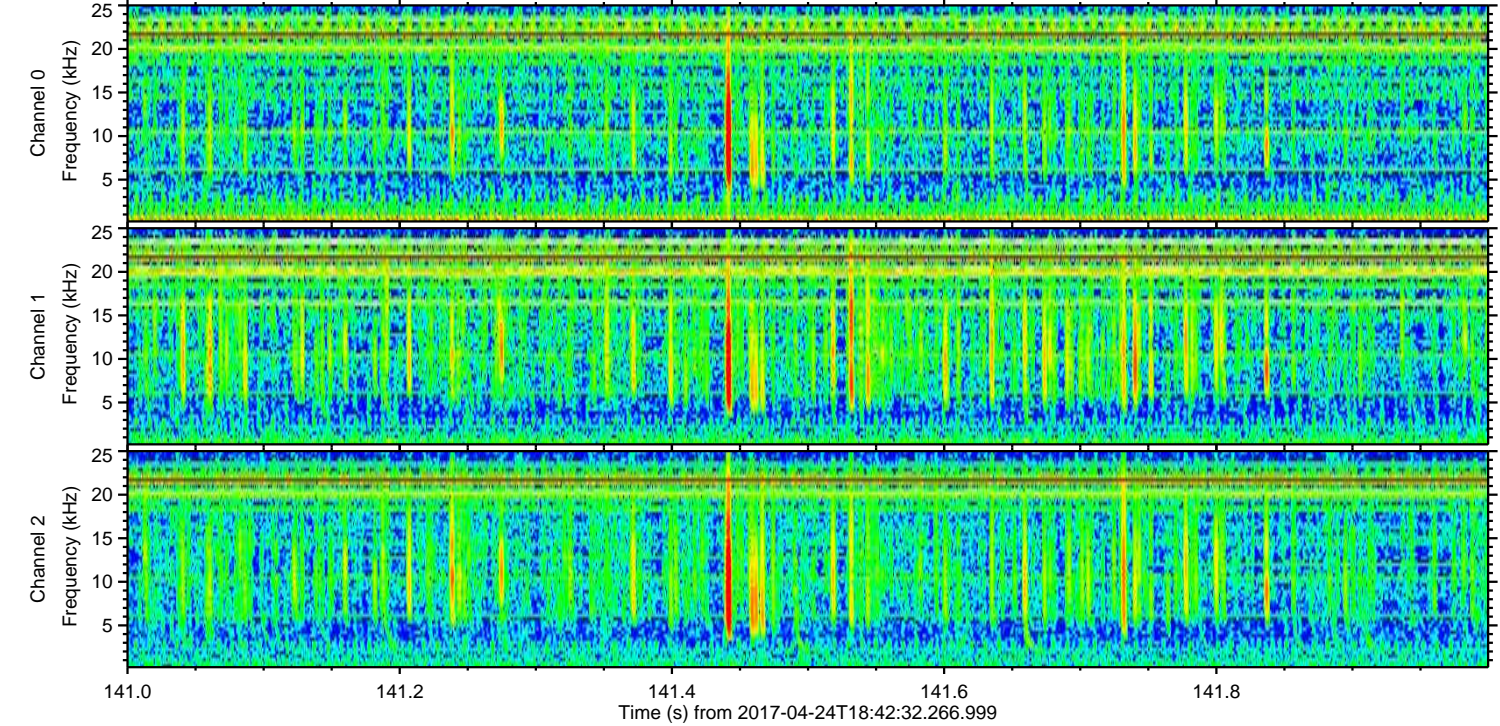
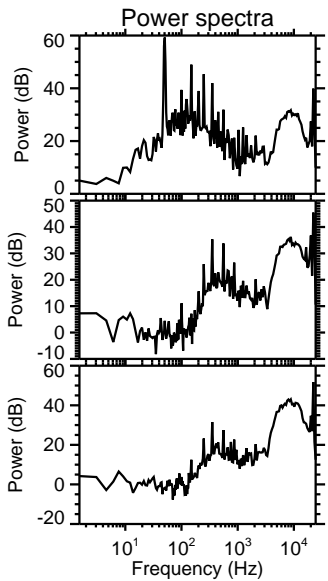
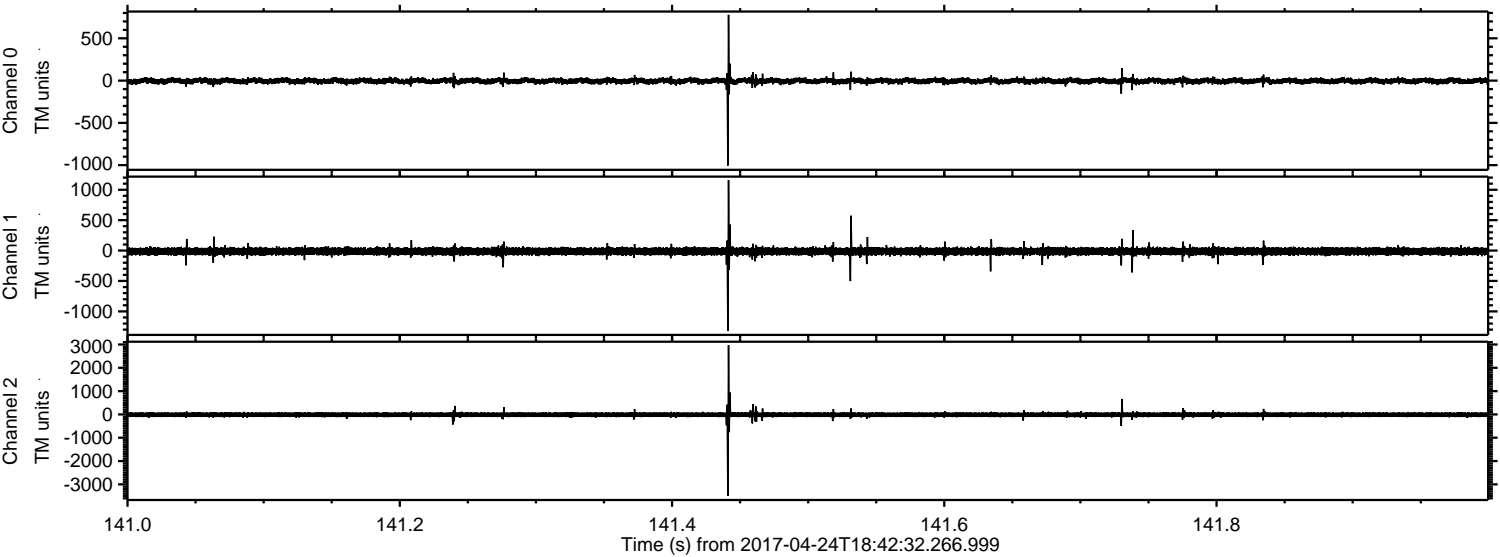
Channel 0
mn: -1192
mx: 1594
 μ : -4.4
 σ : 24.1

Channel 1
mn: -1762
mx: 2472
 μ : -12.8
 σ : 43.0

Channel 2
mn: -3532
mx: 4831
 μ : -14.7
 σ : 79.5

ELMAVAN 3D WAVEFORMS (Measured data sampled at 50 kHz) 51000 packets of 144 samples from 2017-04-24T18:42:32.266.999. Part 142/147

Processed Mon Apr 24 20:50:22 2017 by ELM ver.2012-10-06 from 001__elm20170424_184231__dat00.bin



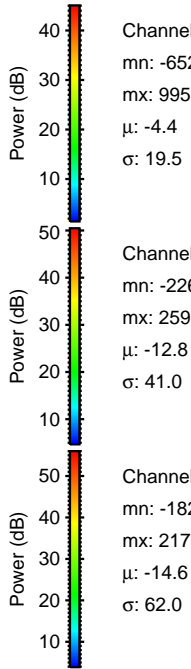
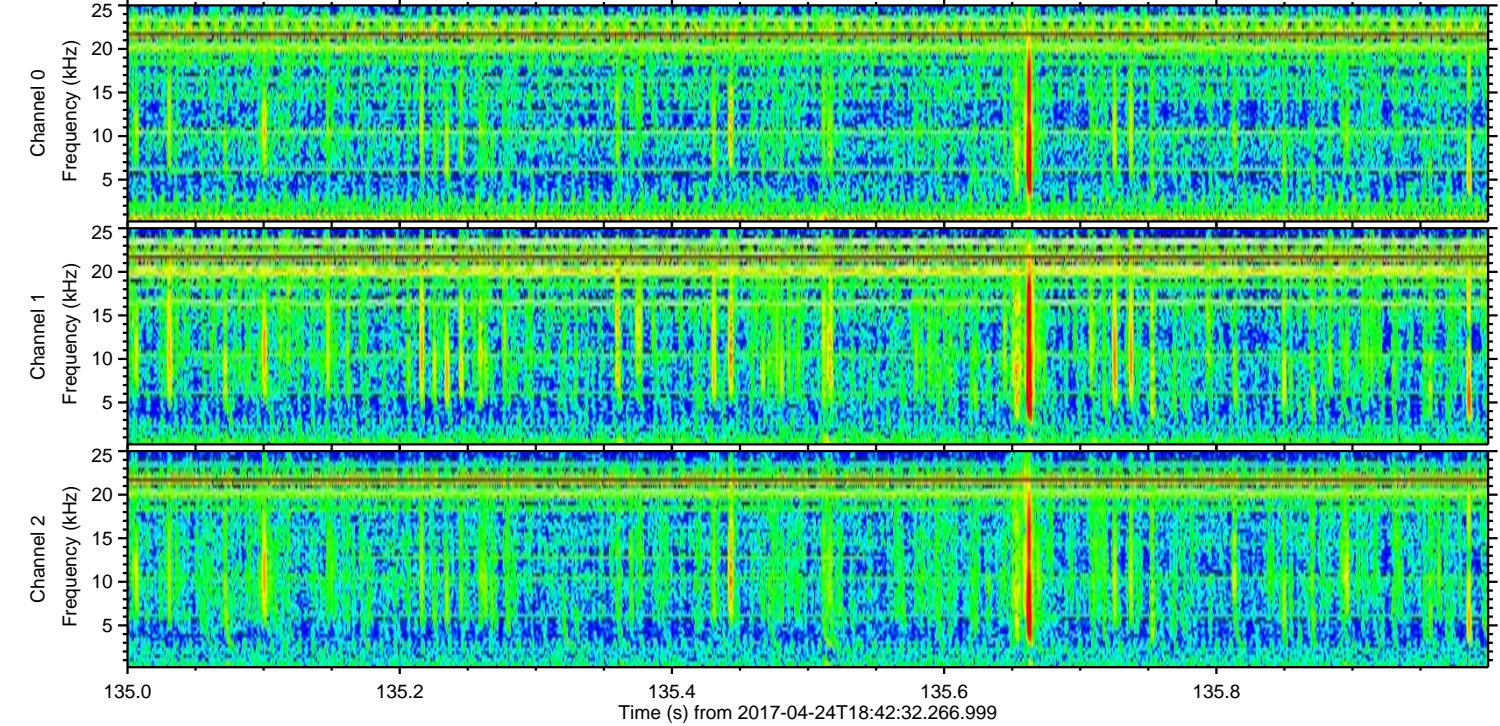
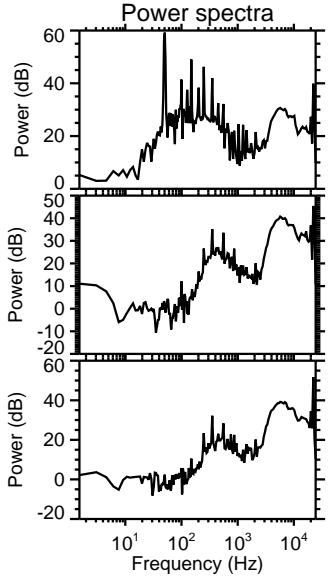
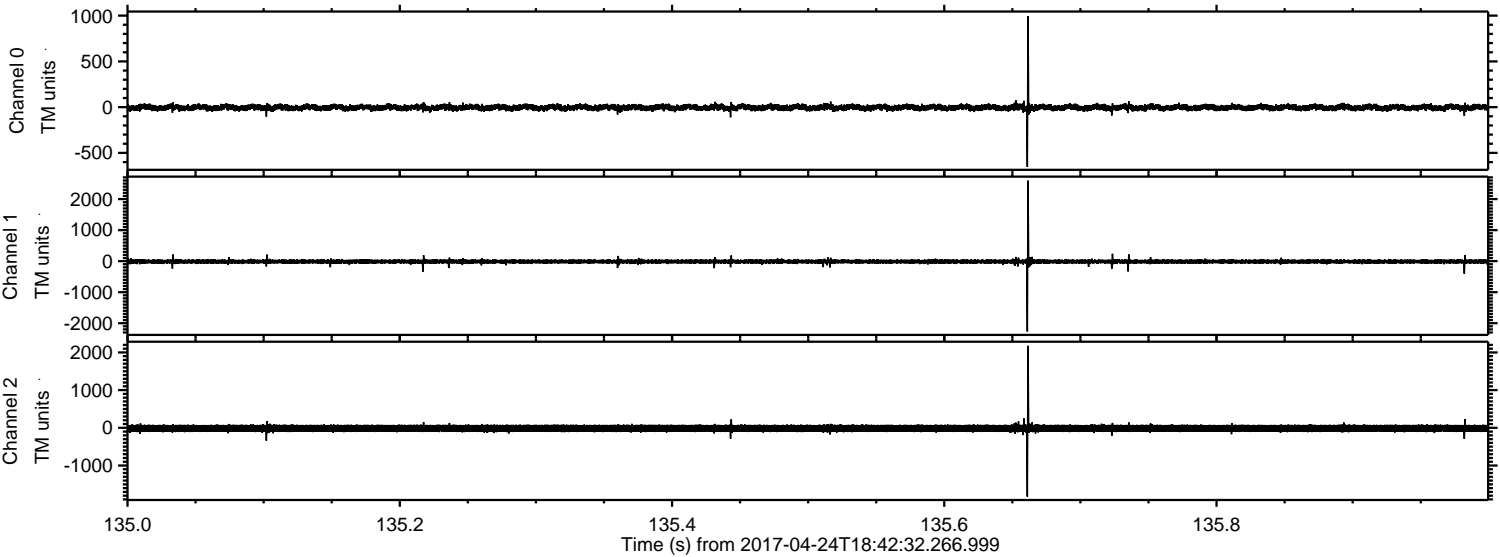
Channel 0
mn: -1005
mx: 778
 μ : -4.4
 σ : 19.8

Channel 1
mn: -1321
mx: 1158
 μ : -12.8
 σ : 35.1

Channel 2
mn: -3496
mx: 2971
 μ : -14.6
 σ : 66.8

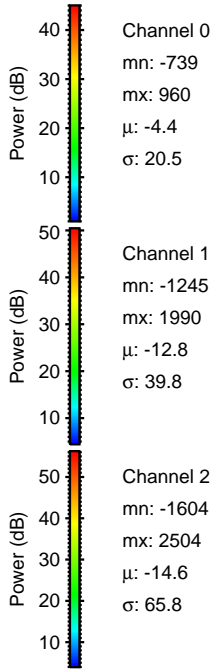
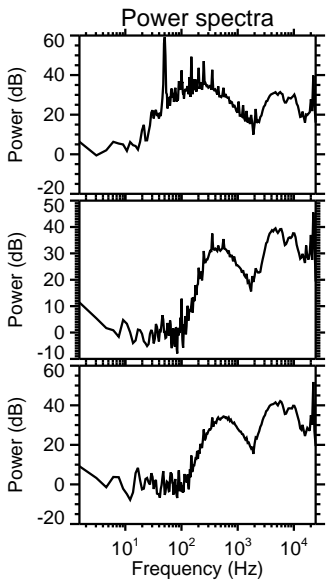
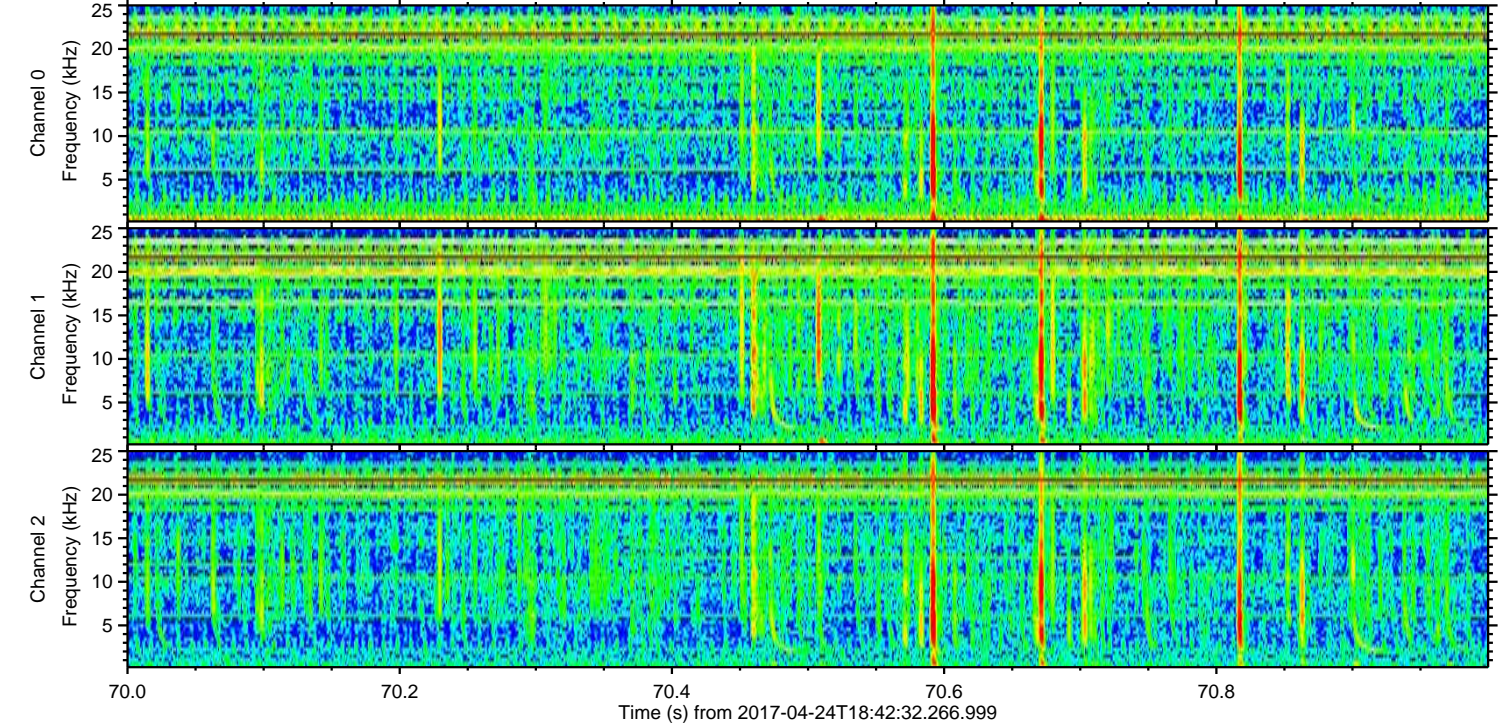
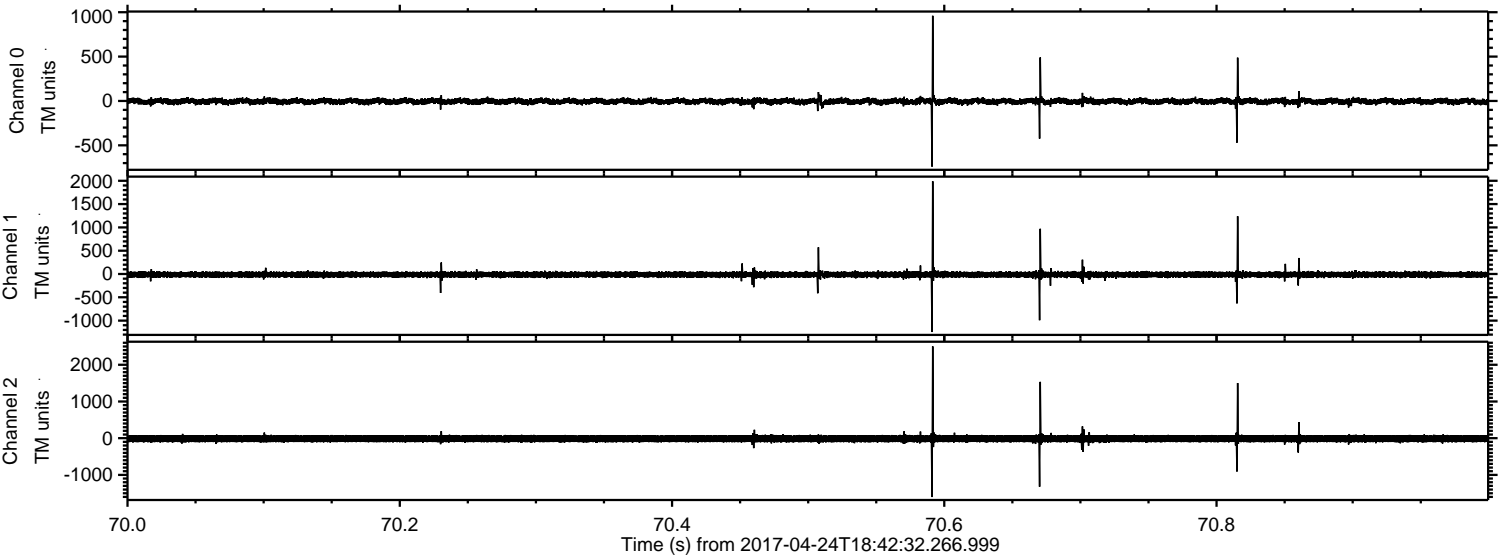
ELMAVAN 3D WAVEFORMS (Measured data sampled at 50 kHz) 51000 packets of 144 samples from 2017-04-24T18:42:32.266.999. Part 136/147

Processed Mon Apr 24 20:50:23 2017 by ELM ver.2012-10-06 from 001__elm20170424_184231__dat00.bin



ELMAVAN 3D WAVEFORMS (Measured data sampled at 50 kHz) 51000 packets of 144 samples from 2017-04-24T18:42:32.266.999. Part 71/147

Processed Mon Apr 24 20:50:24 2017 by ELM ver.2012-10-06 from 001__elm20170424_184231__dat00.bin



ELMAVAN 3D WAVEFORMS (Measured data sampled at 50 kHz) 51000 packets of 144 samples from 2017-04-24T18:42:32.266.999. Part 16/147

Processed Mon Apr 24 20:50:25 2017 by ELM ver.2012-10-06 from 001__elm20170424_184231__dat00.bin

