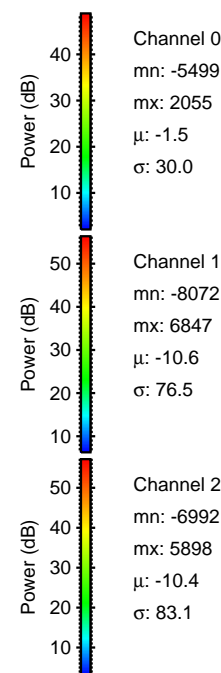
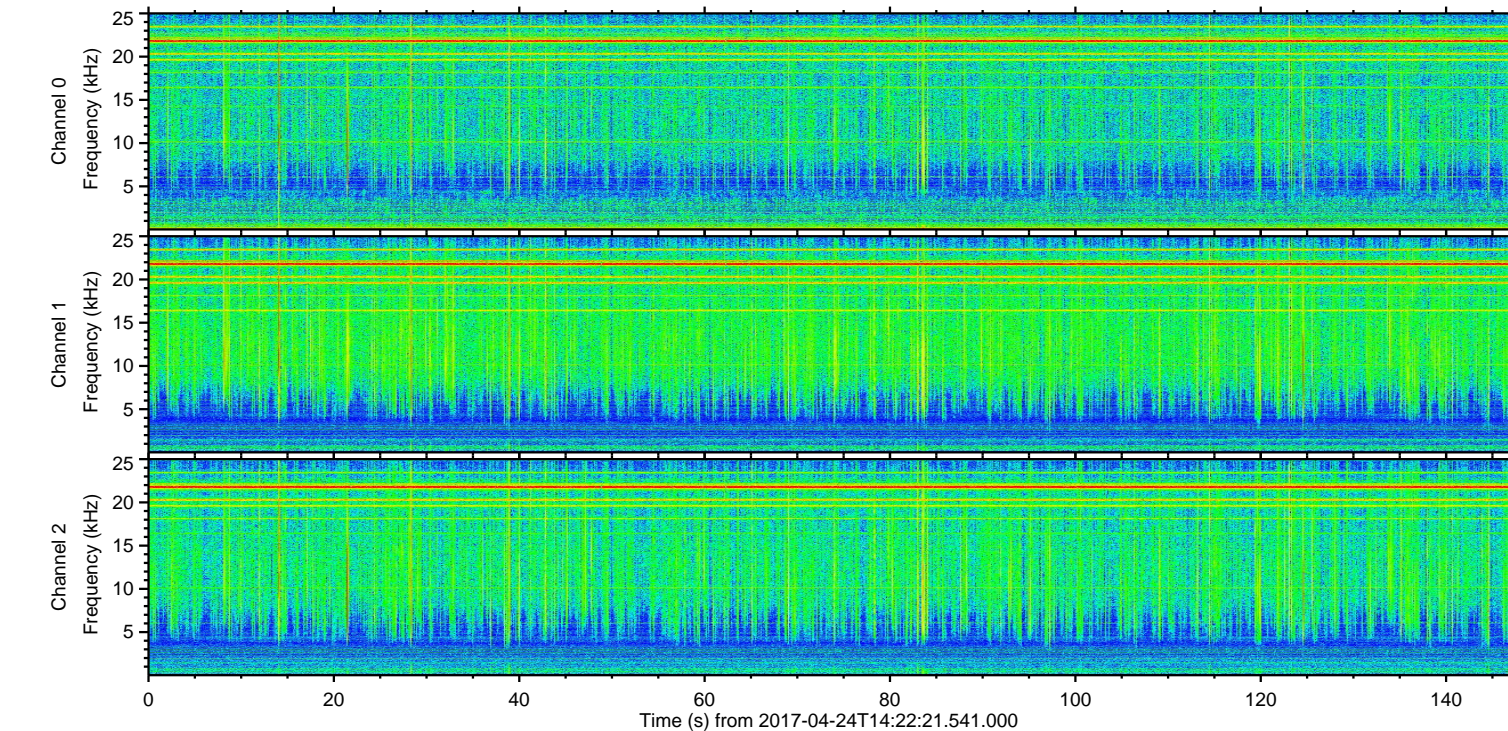
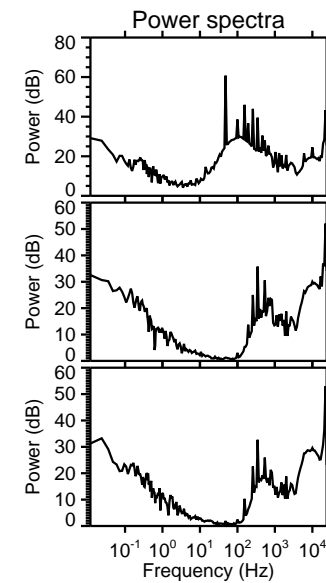
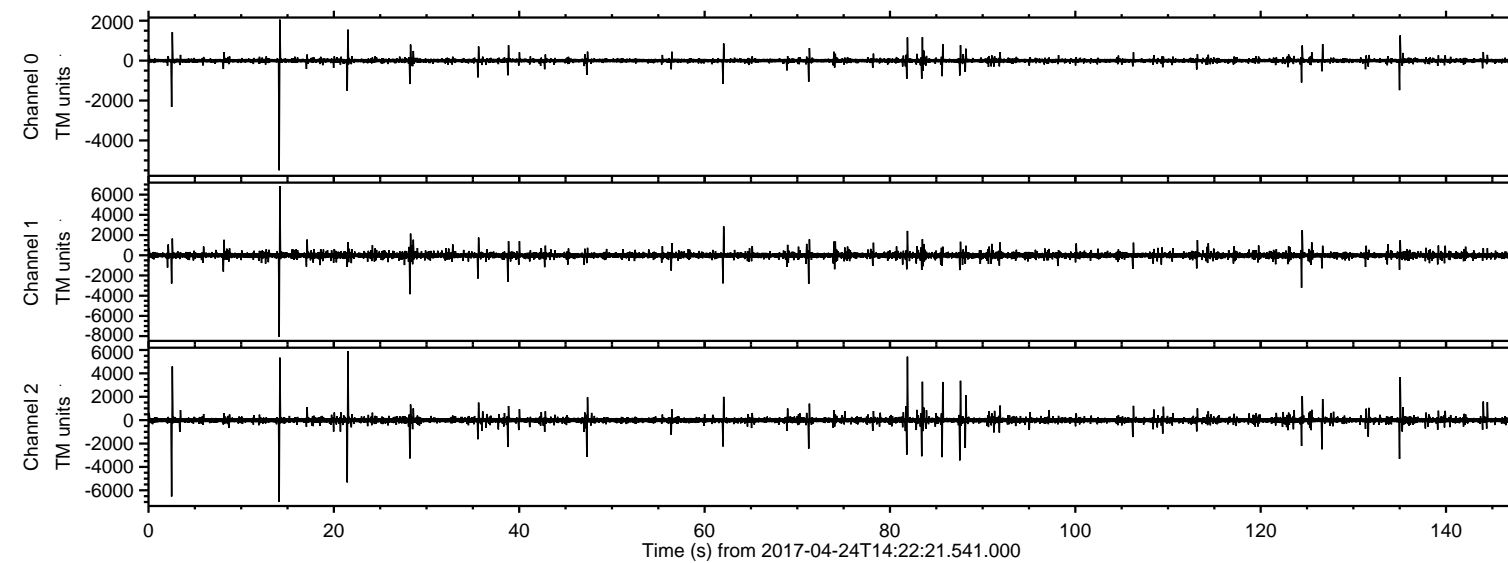


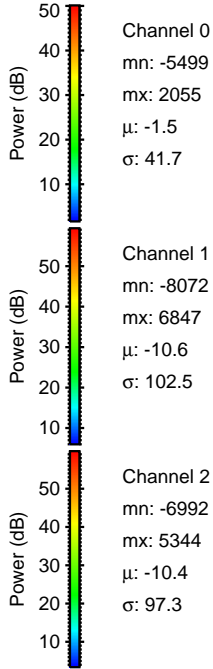
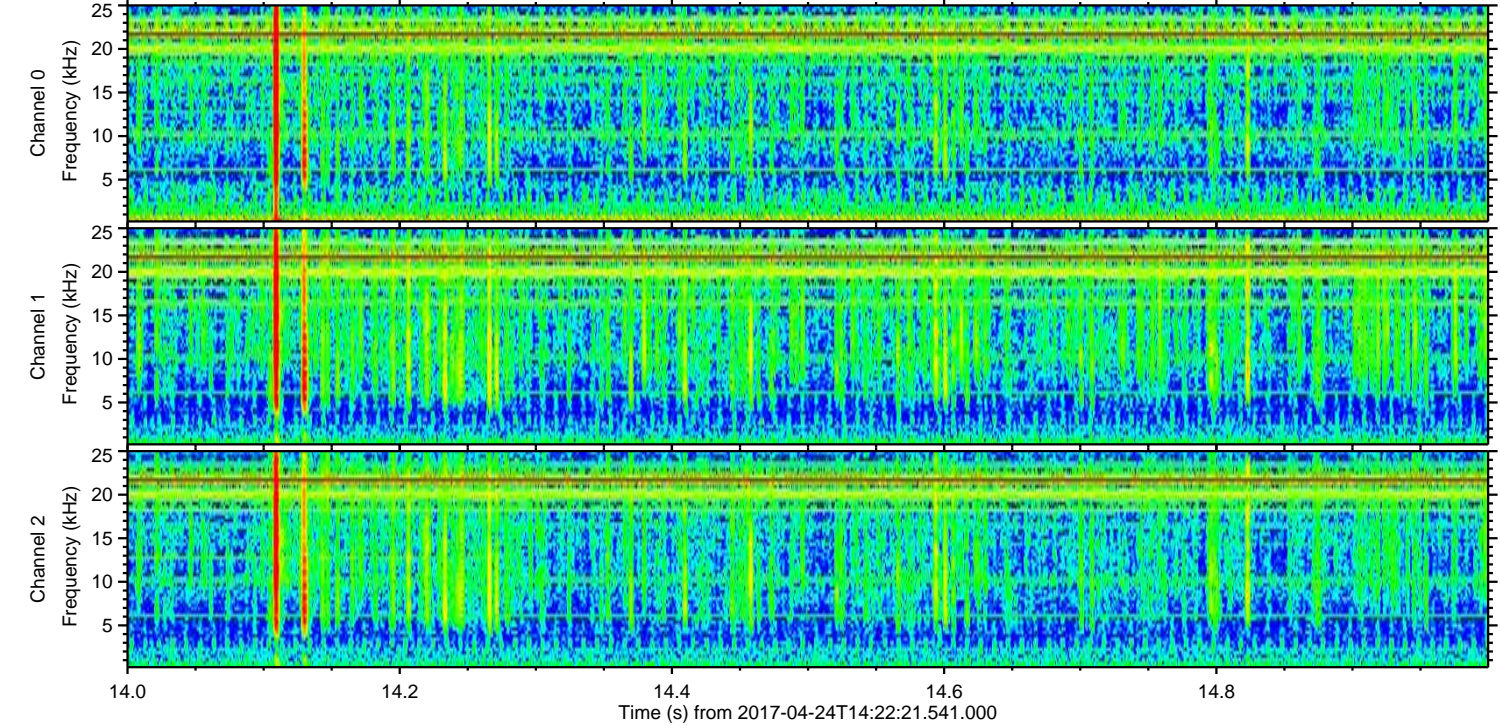
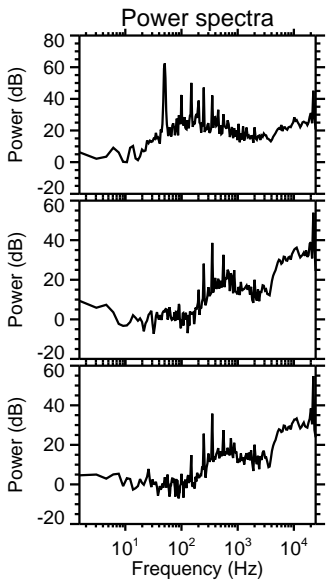
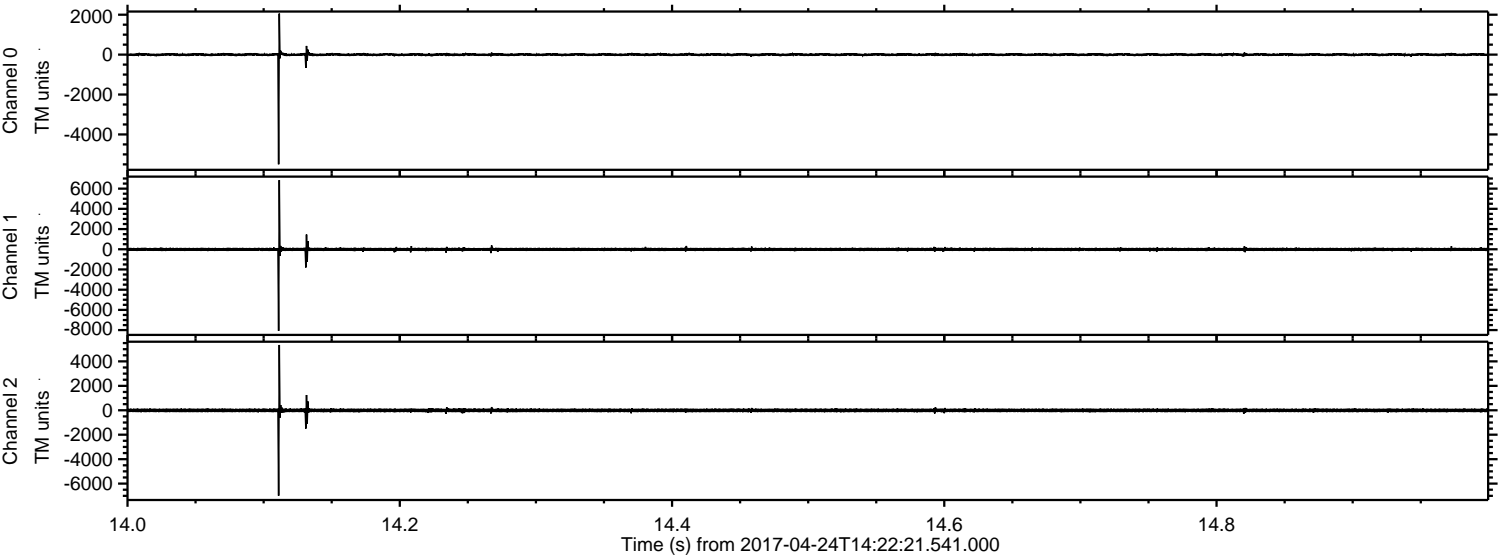
# ELMAVAN 3D WAVEFORMS (Measured data sampled at 50 kHz) 51000 packets of 144 samples from 2017-04-24T14:22:21.541.000.

Processed Mon Apr 24 16:29:41 2017 by ELM ver.2012-10-06 from 001\_\_elm20170424\_142220\_\_dat00.bin





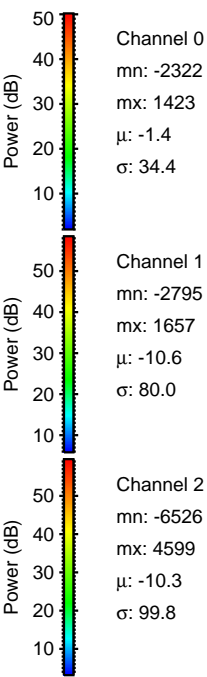
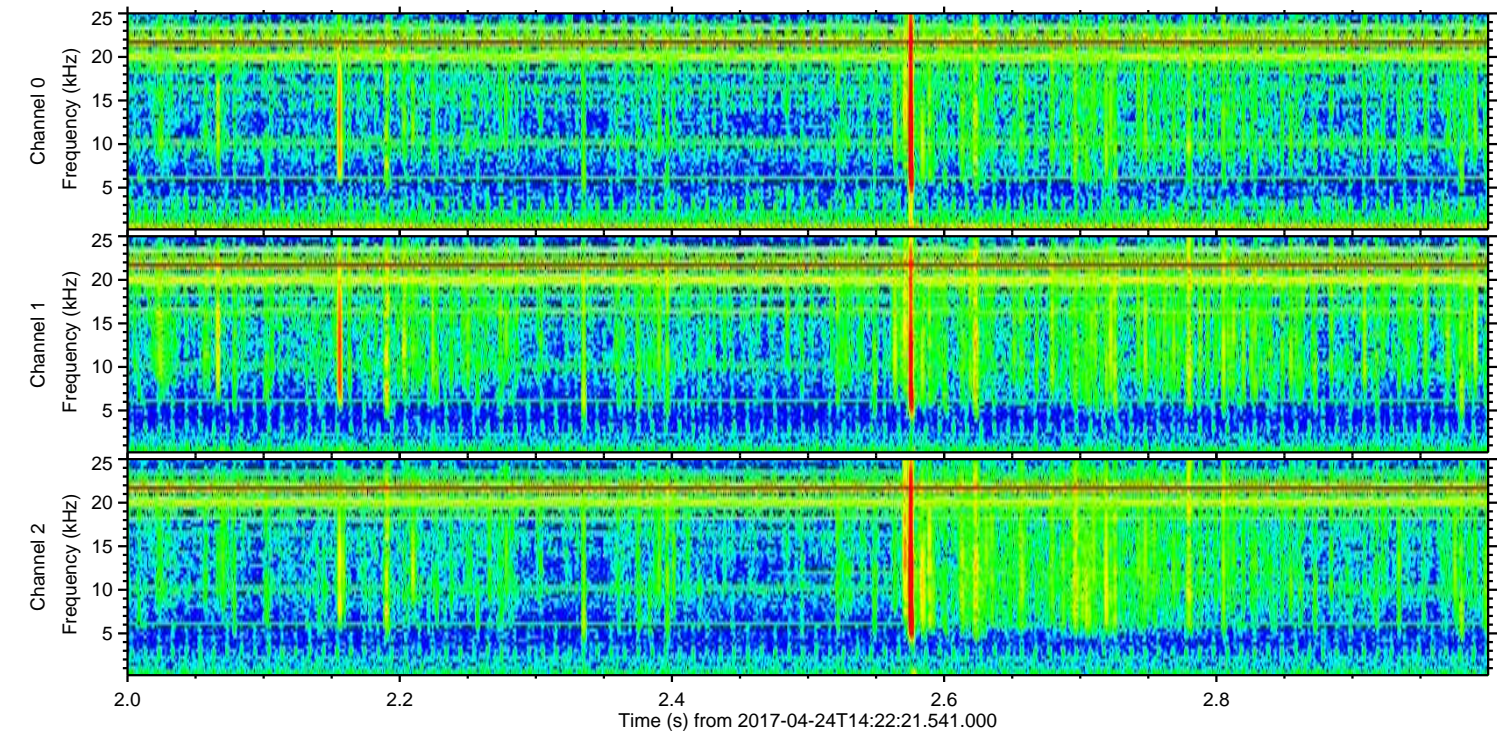
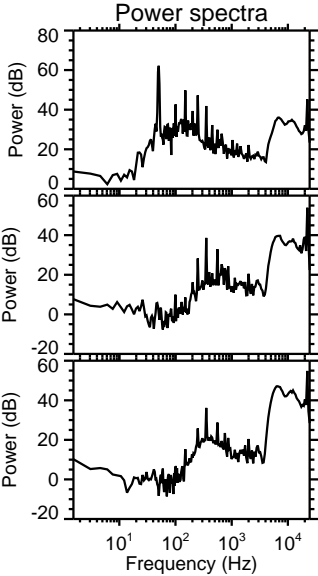
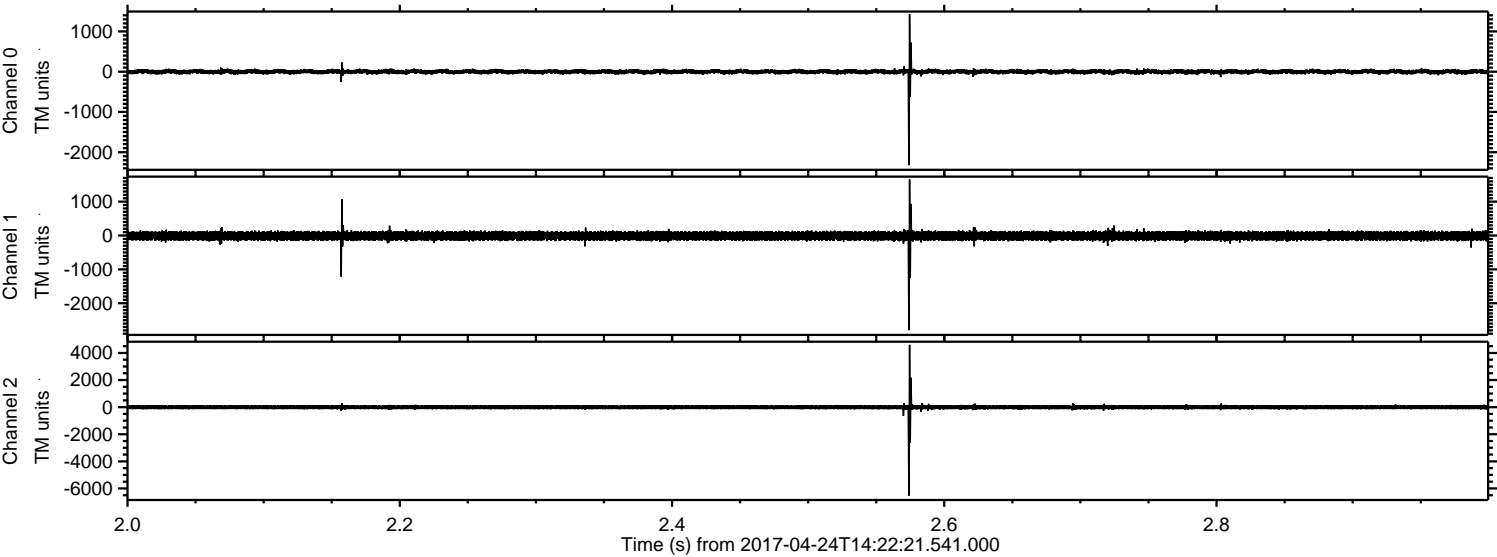
Processed Mon Apr 24 16:29:57 2017 by ELM ver.2012-10-06 from 001\_\_elm20170424\_142220\_\_dat00.bin





ELMAVAN 3D WAVEFORMS (Measured data sampled at 50 kHz) 51000 packets of 144 samples from 2017-04-24T14:22:21.541.000. Part 3/147

Processed Mon Apr 24 16:29:58 2017 by ELM ver.2012-10-06 from 001\_\_elm20170424\_142220\_\_dat00.bin



Channel 0  
mn: -2322  
mx: 1423  
 $\mu$ : -1.4  
 $\sigma$ : 34.4

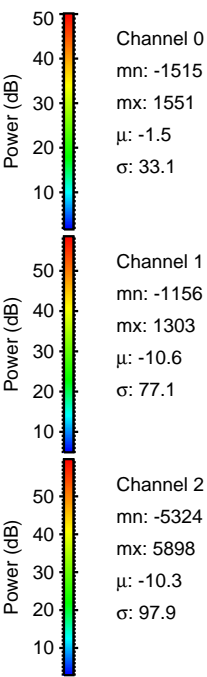
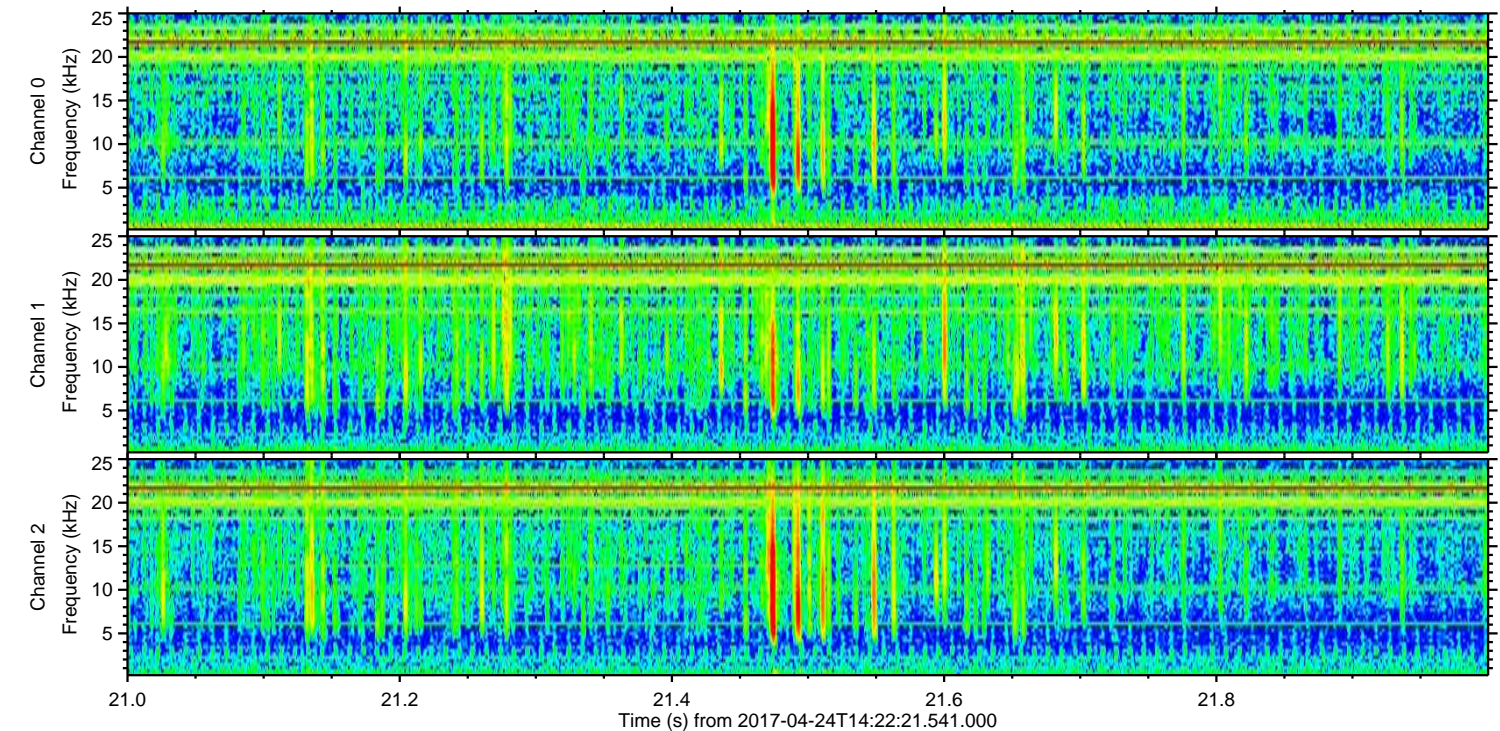
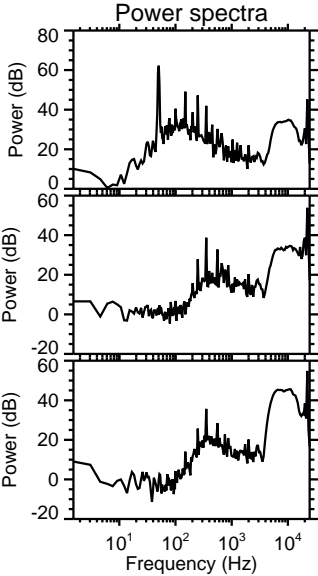
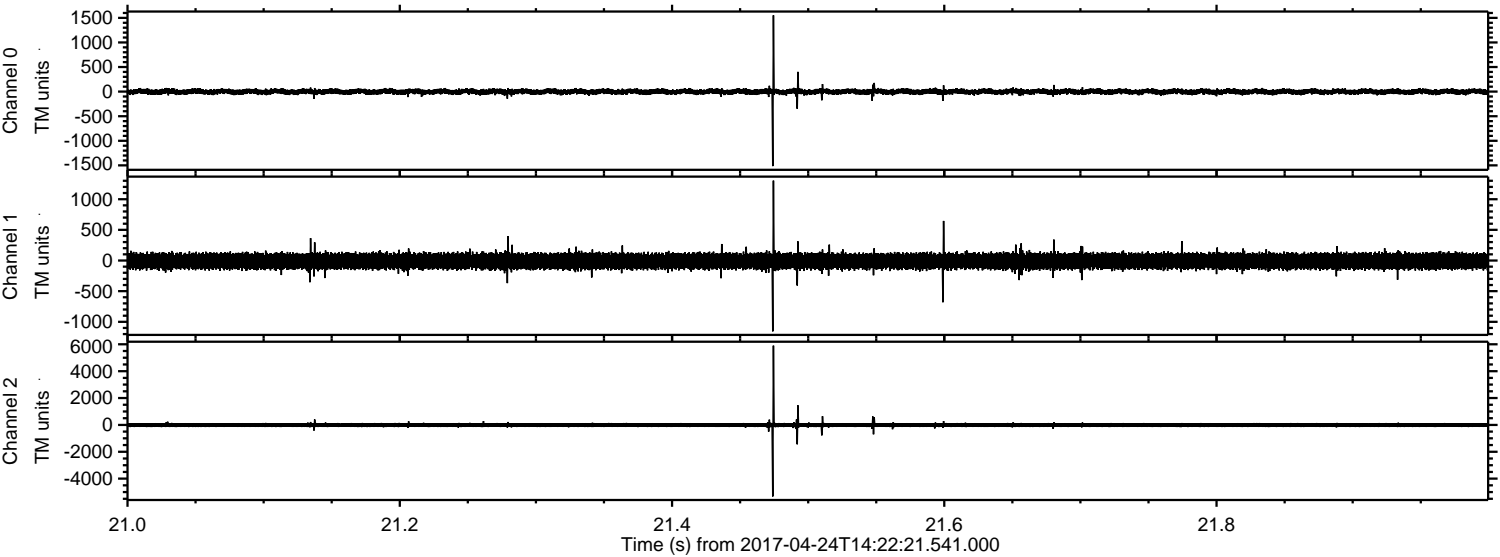
Channel 1  
mn: -2795  
mx: 1657  
 $\mu$ : -10.6  
 $\sigma$ : 80.0

Channel 2  
mn: -6526  
mx: 4599  
 $\mu$ : -10.3  
 $\sigma$ : 99.8



ELMAVAN 3D WAVEFORMS (Measured data sampled at 50 kHz) 51000 packets of 144 samples from 2017-04-24T14:22:21.541.000. Part 22/147

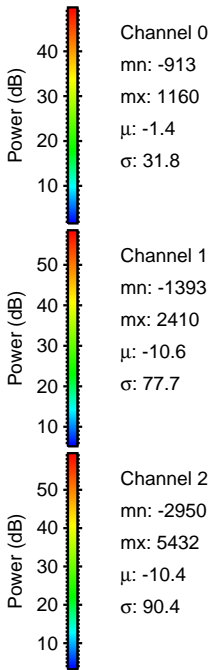
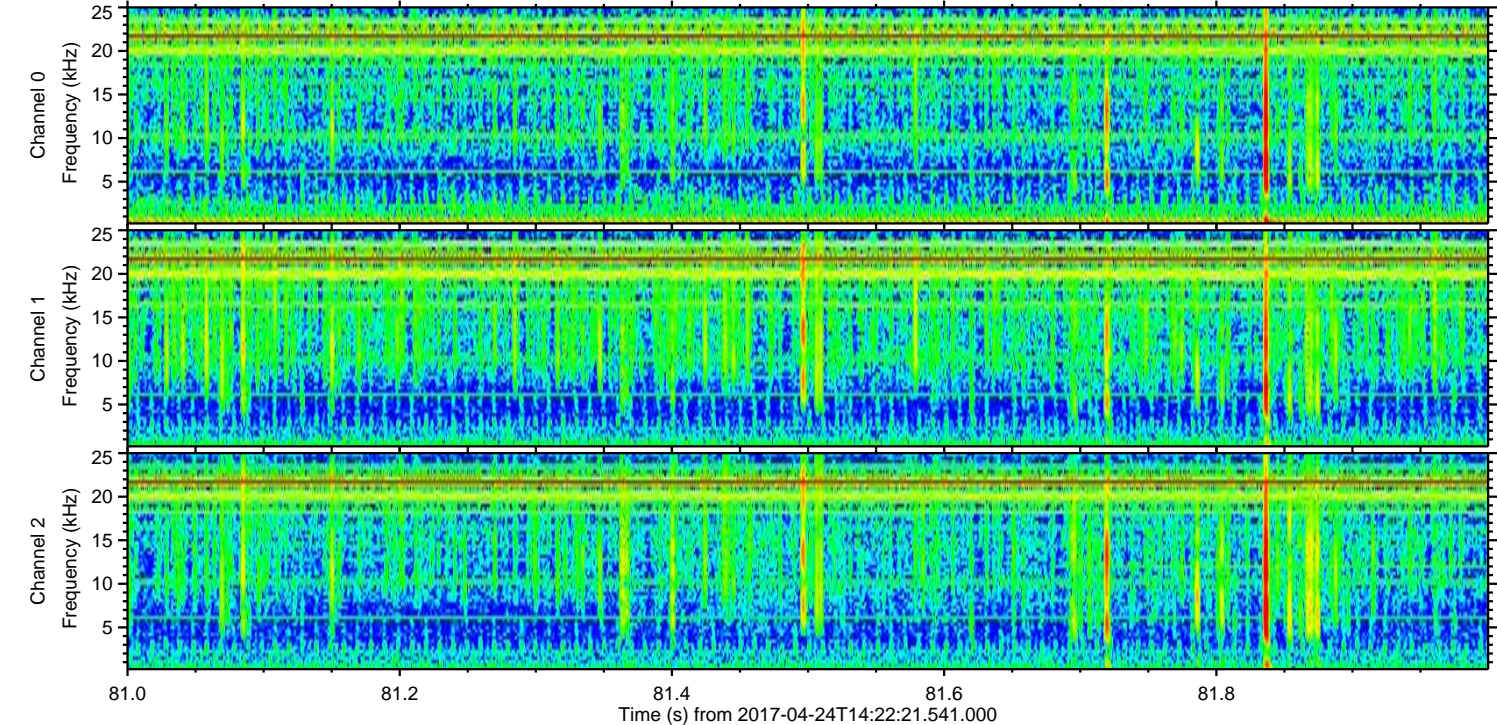
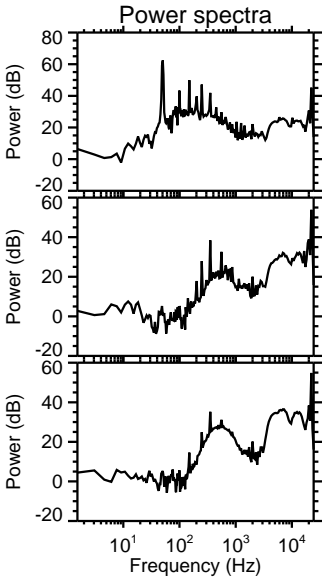
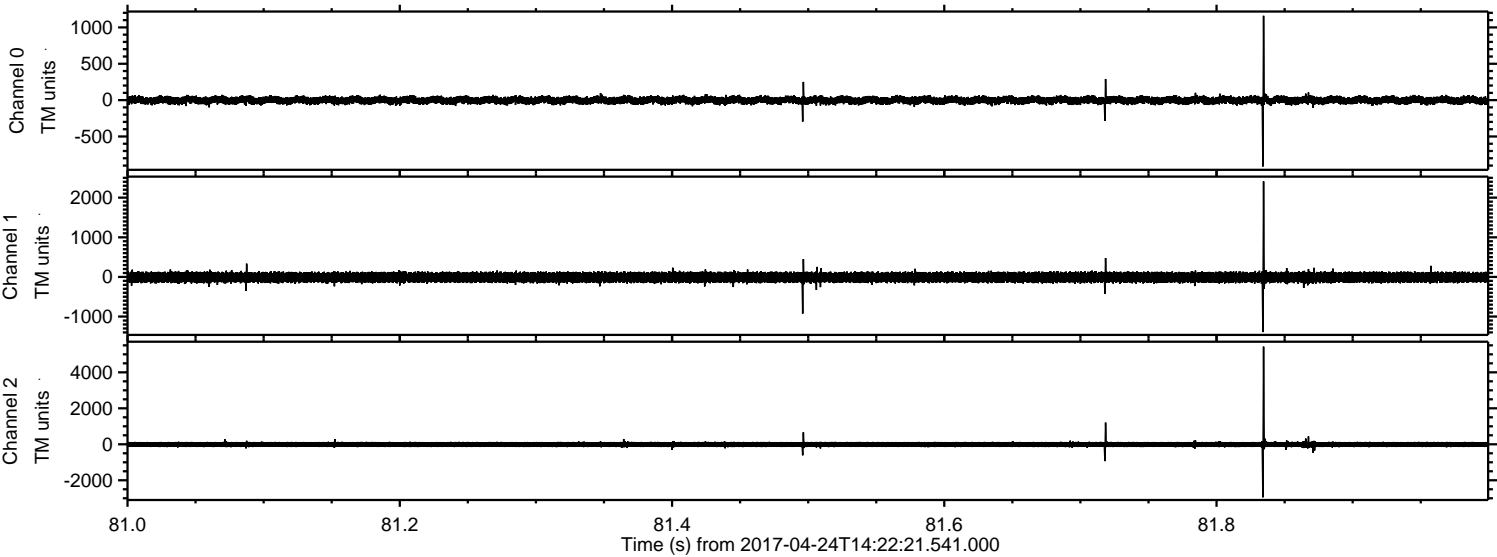
Processed Mon Apr 24 16:29:59 2017 by ELM ver.2012-10-06 from 001\_\_elm20170424\_142220\_\_dat00.bin





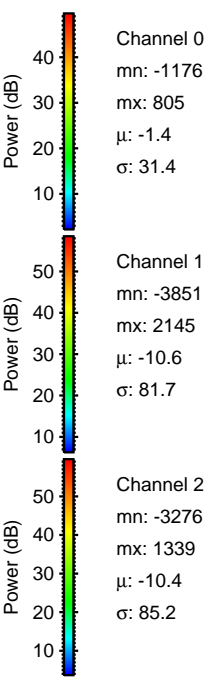
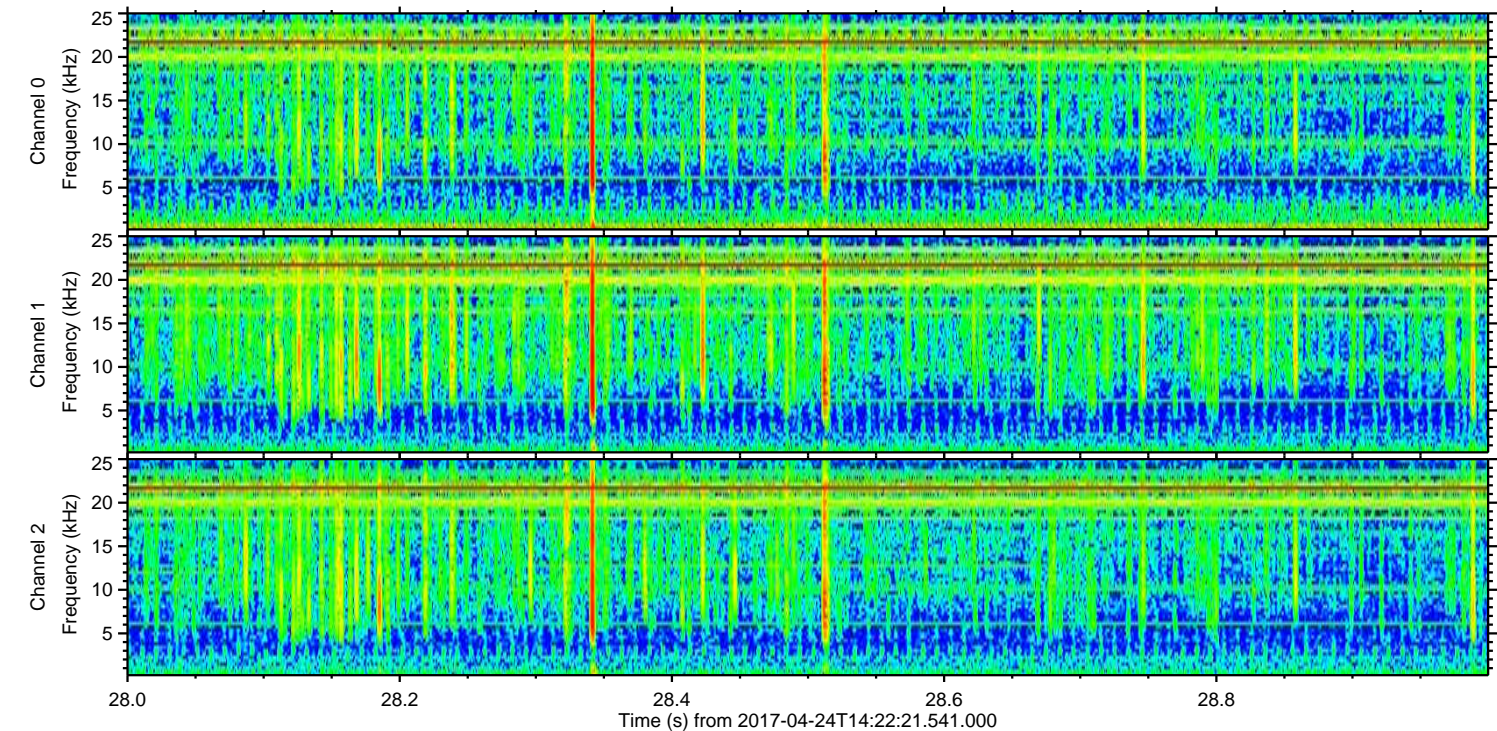
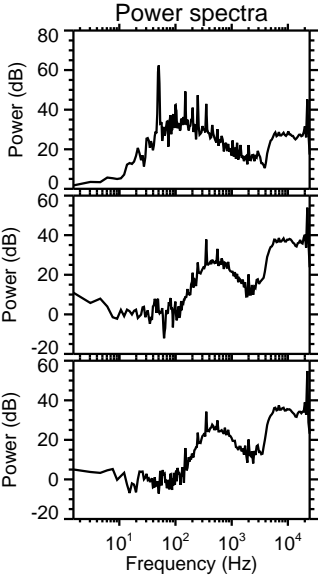
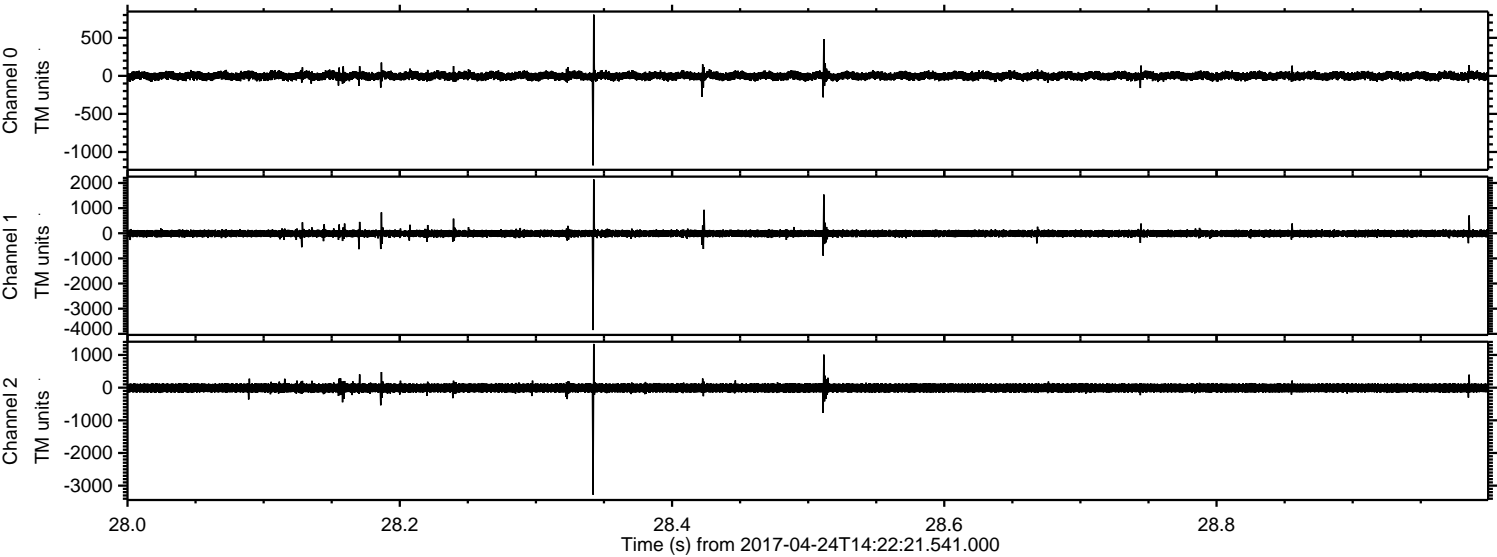
ELMAVAN 3D WAVEFORMS (Measured data sampled at 50 kHz) 51000 packets of 144 samples from 2017-04-24T14:22:21.541.000. Part 82/147

Processed Mon Apr 24 16:30:00 2017 by ELM ver.2012-10-06 from 001\_\_elm20170424\_142220\_\_dat00.bin





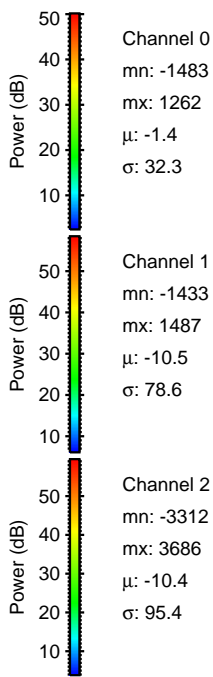
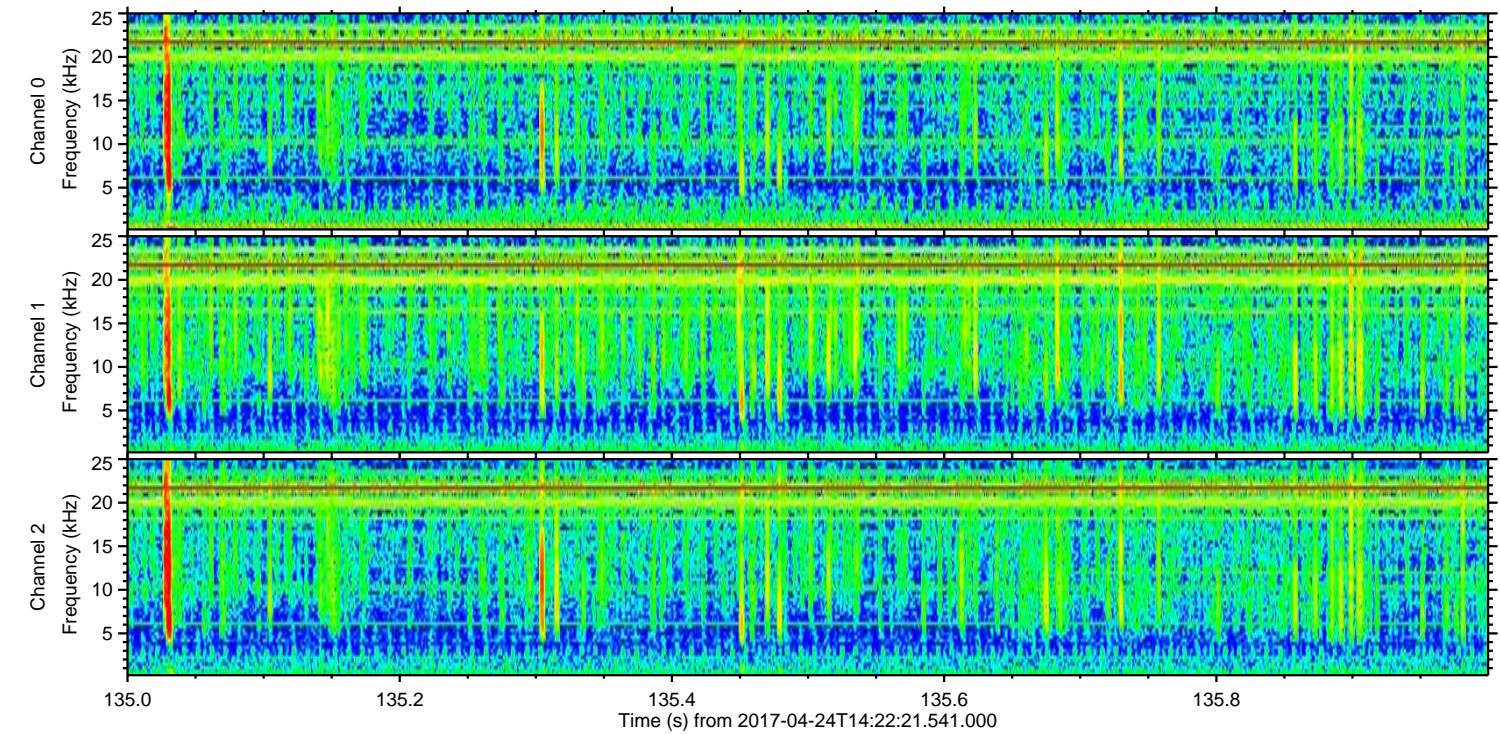
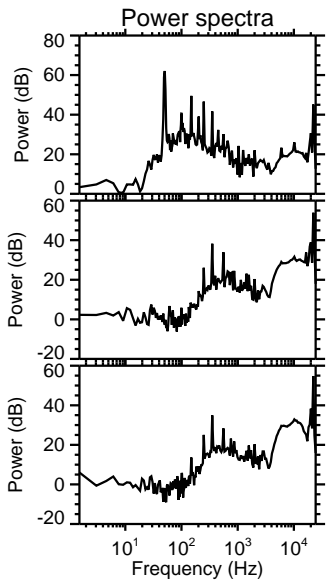
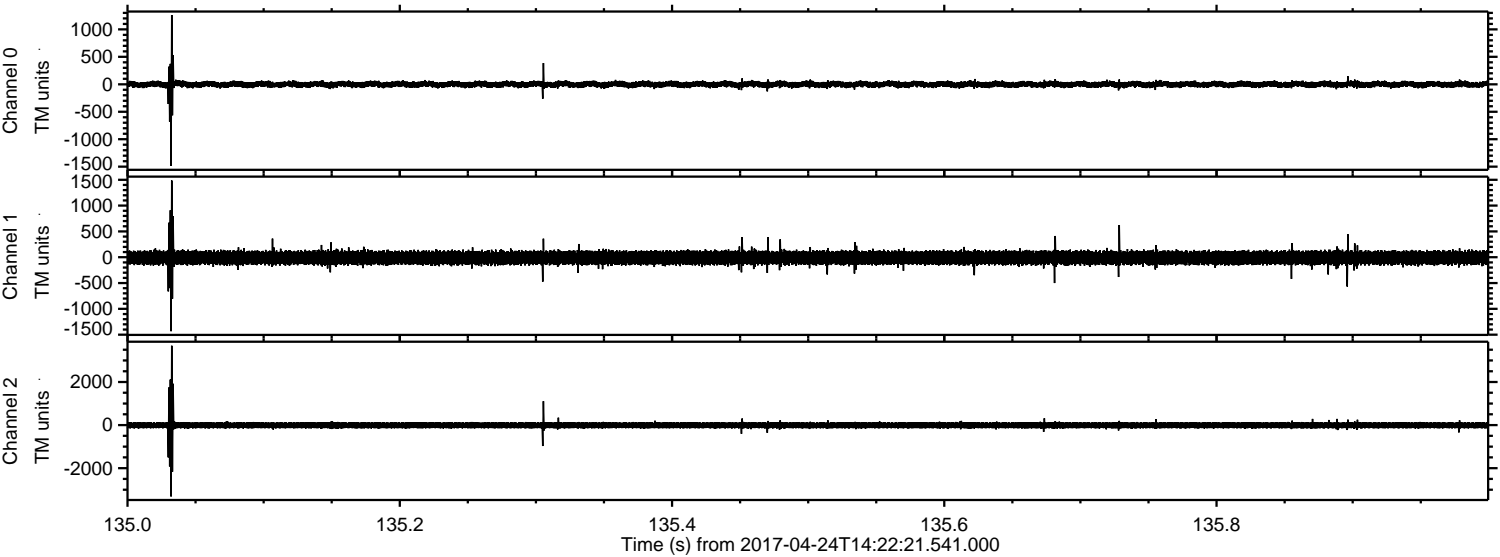
Processed Mon Apr 24 16:30:01 2017 by ELM ver.2012-10-06 from 001\_\_elm20170424\_142220\_\_dat00.bin





ELMAVAN 3D WAVEFORMS (Measured data sampled at 50 kHz) 51000 packets of 144 samples from 2017-04-24T14:22:21.541.000. Part 136/147

Processed Mon Apr 24 16:30:02 2017 by ELM ver.2012-10-06 from 001\_\_elm20170424\_142220\_\_dat00.bin



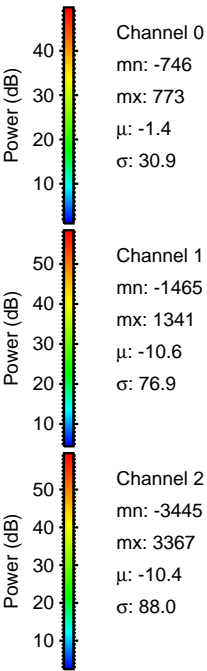
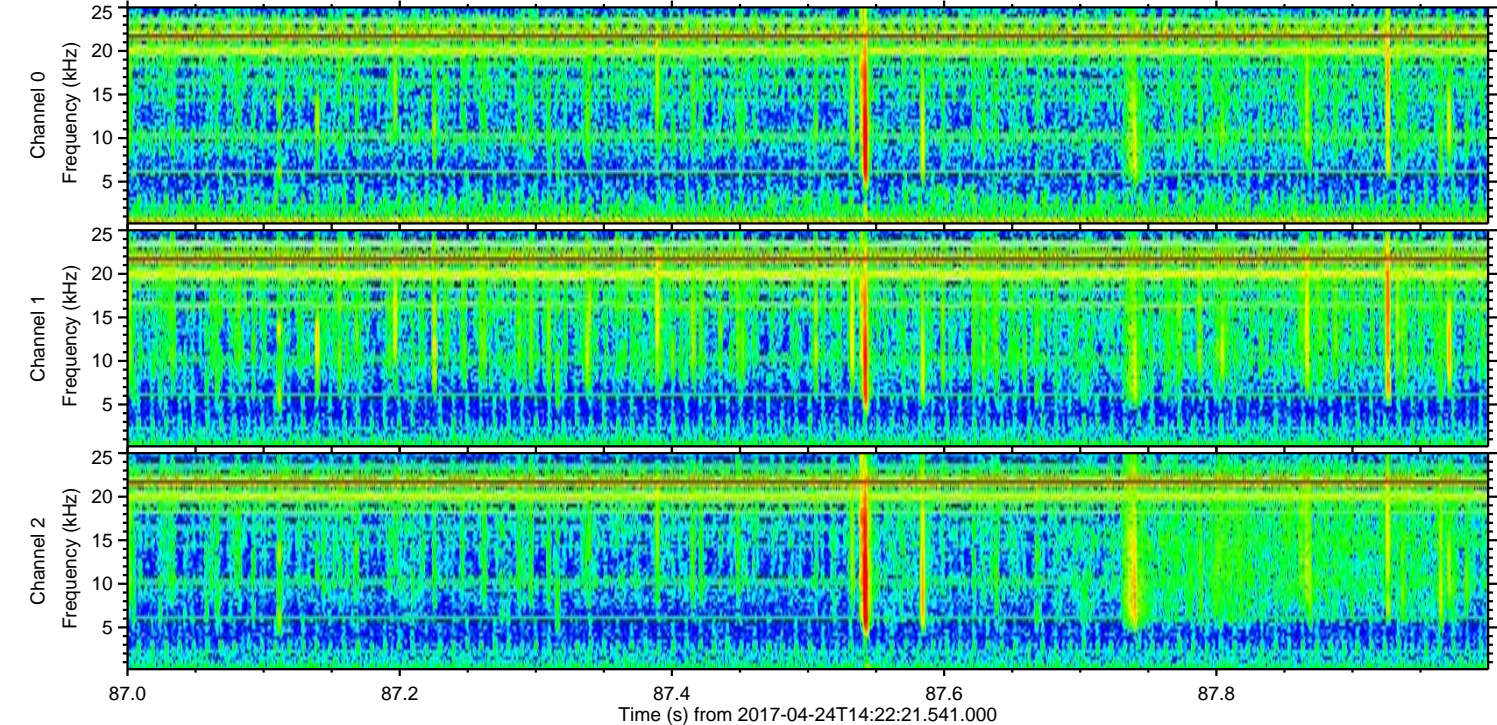
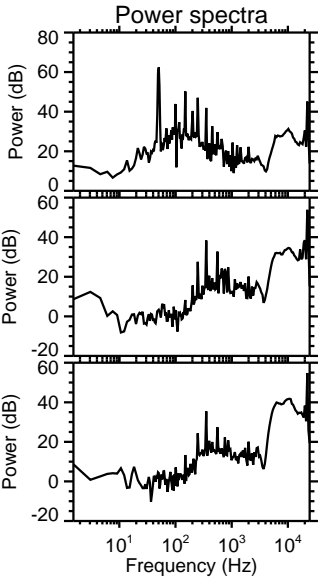
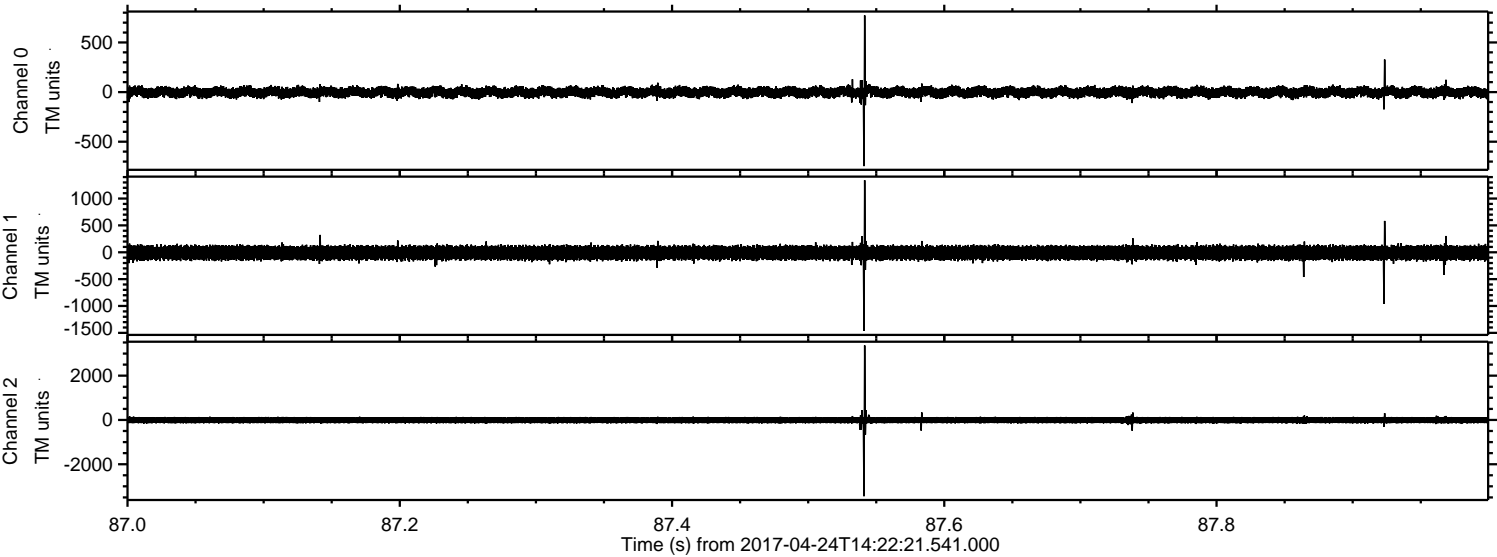
Channel 0  
mn: -1483  
mx: 1262  
 $\mu$ : -1.4  
 $\sigma$ : 32.3

Channel 1  
mn: -1433  
mx: 1487  
 $\mu$ : -10.5  
 $\sigma$ : 78.6

Channel 2  
mn: -3312  
mx: 3686  
 $\mu$ : -10.4  
 $\sigma$ : 95.4



Processed Mon Apr 24 16:30:03 2017 by ELM ver.2012-10-06 from 001\_\_elm20170424\_142220\_\_dat00.bin



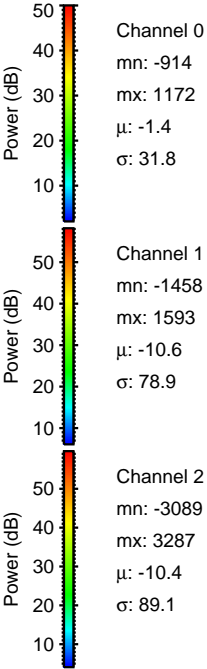
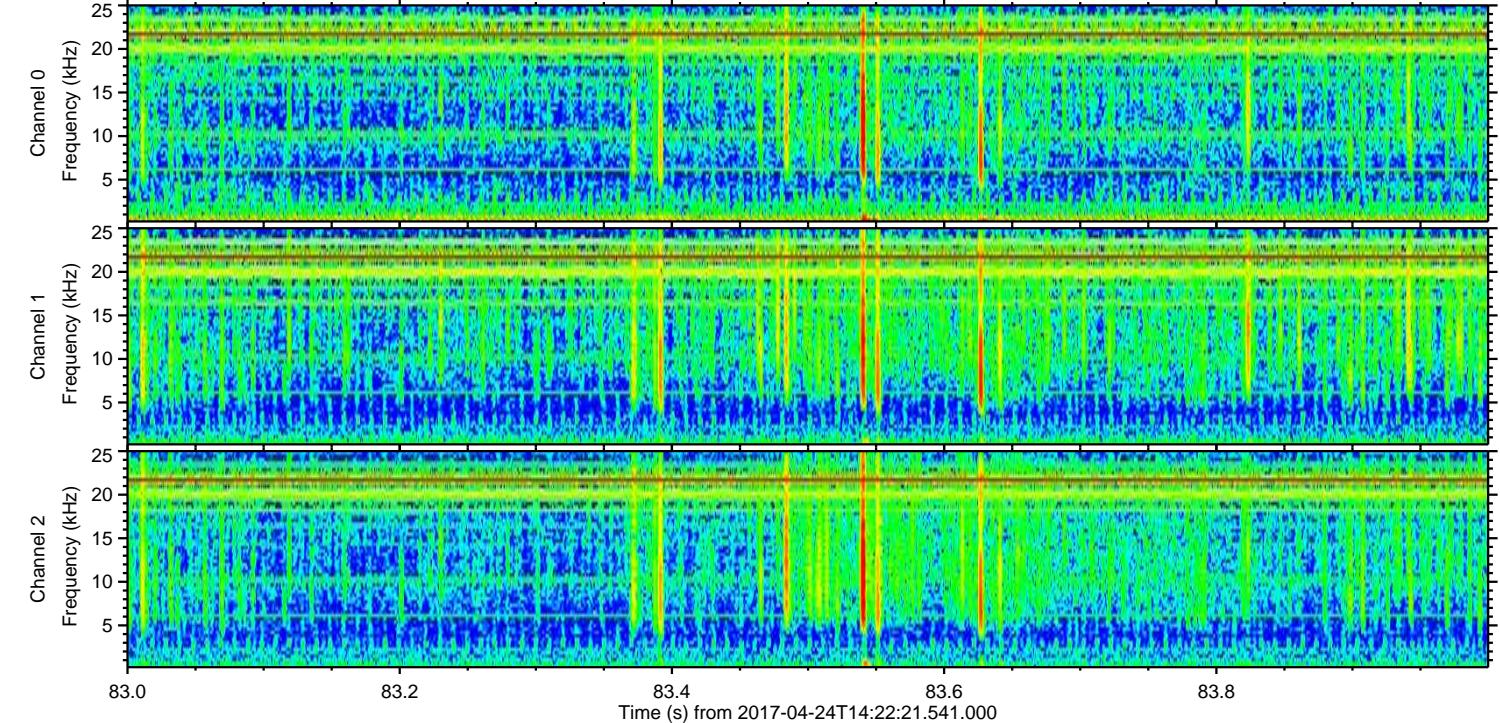
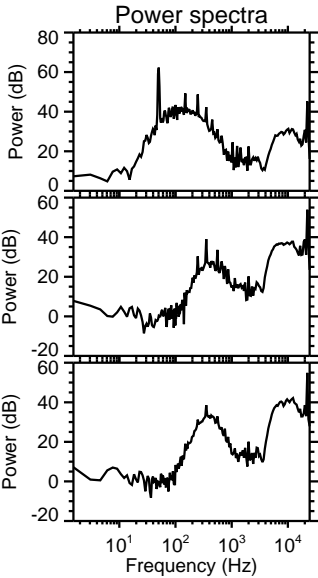
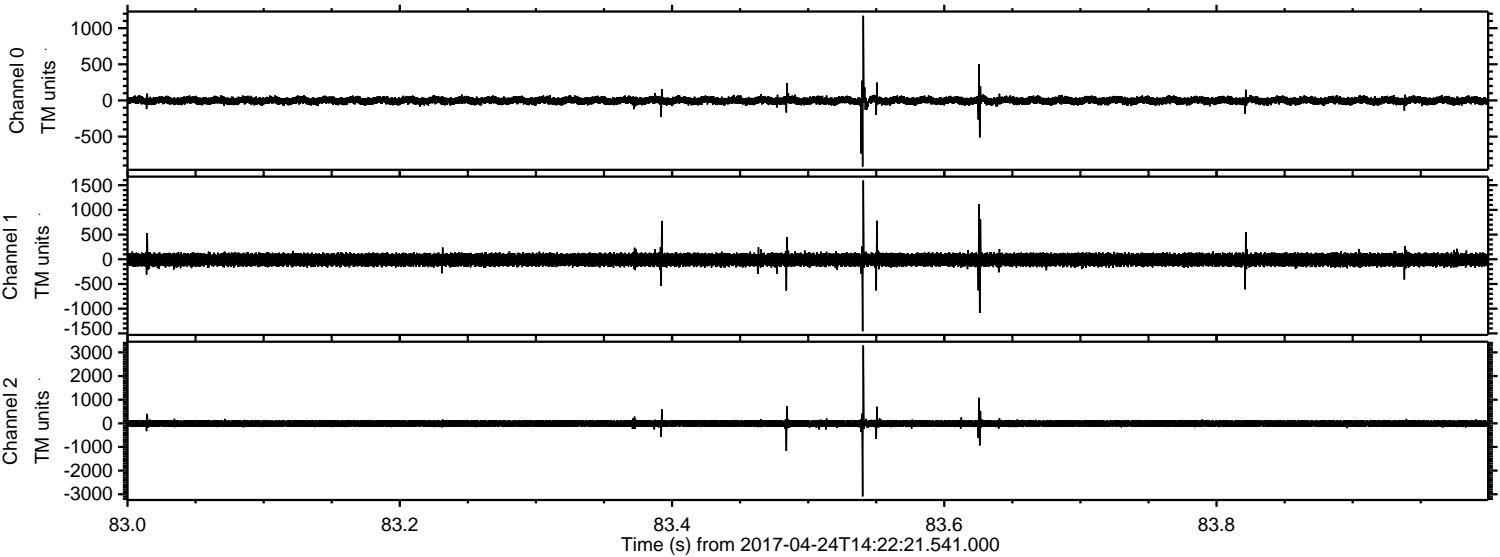
Channel 0  
mn: -746  
mx: 773  
 $\mu$ : -1.4  
 $\sigma$ : 30.9

Channel 1  
mn: -1465  
mx: 1341  
 $\mu$ : -10.6  
 $\sigma$ : 76.9

Channel 2  
mn: -3445  
mx: 3367  
 $\mu$ : -10.4  
 $\sigma$ : 88.0

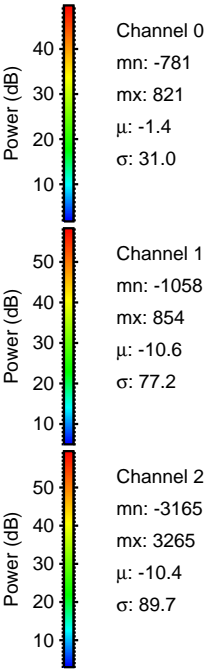
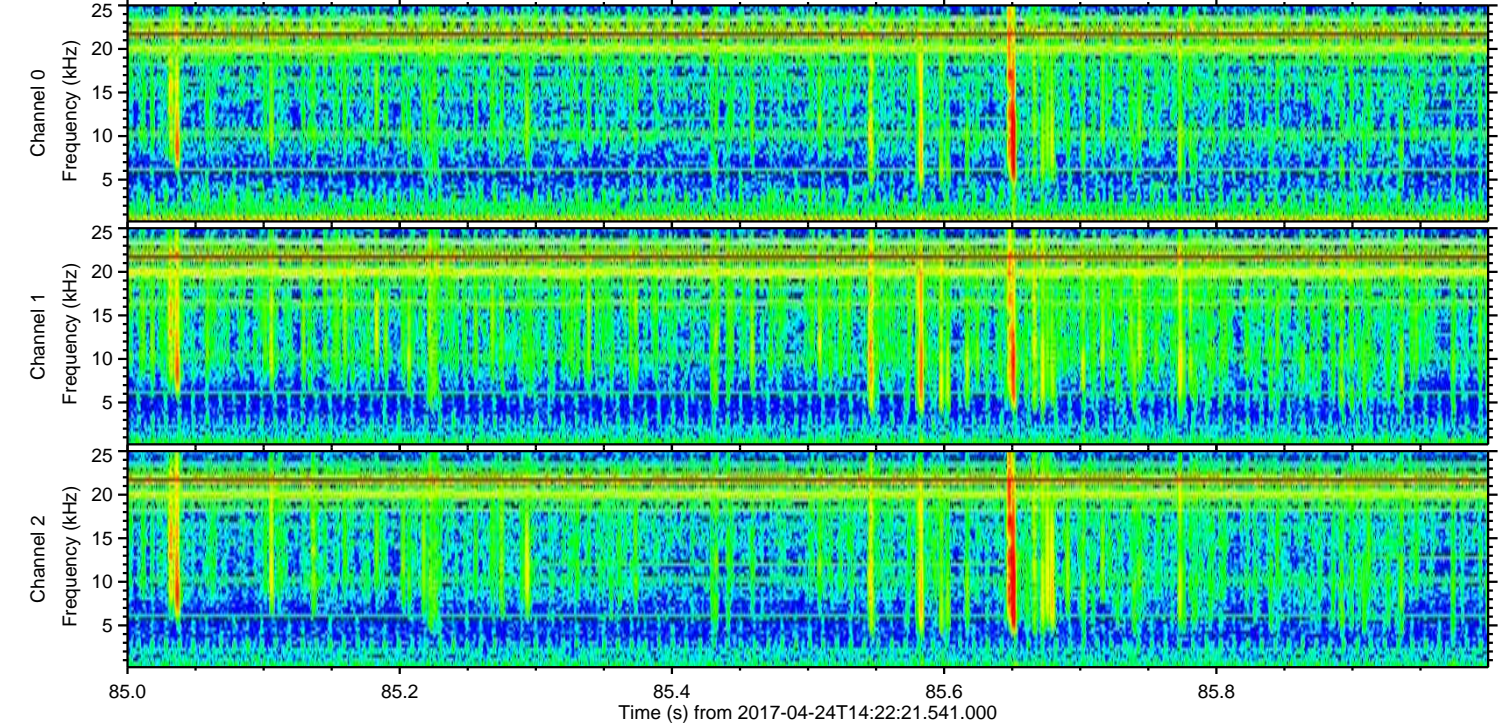
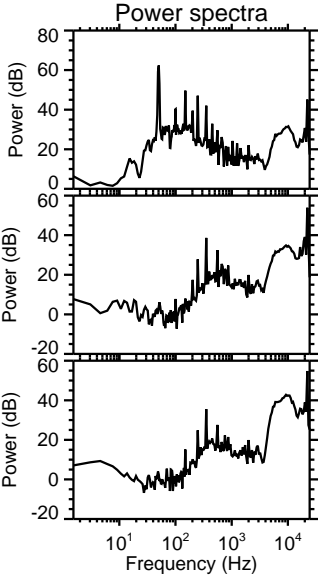
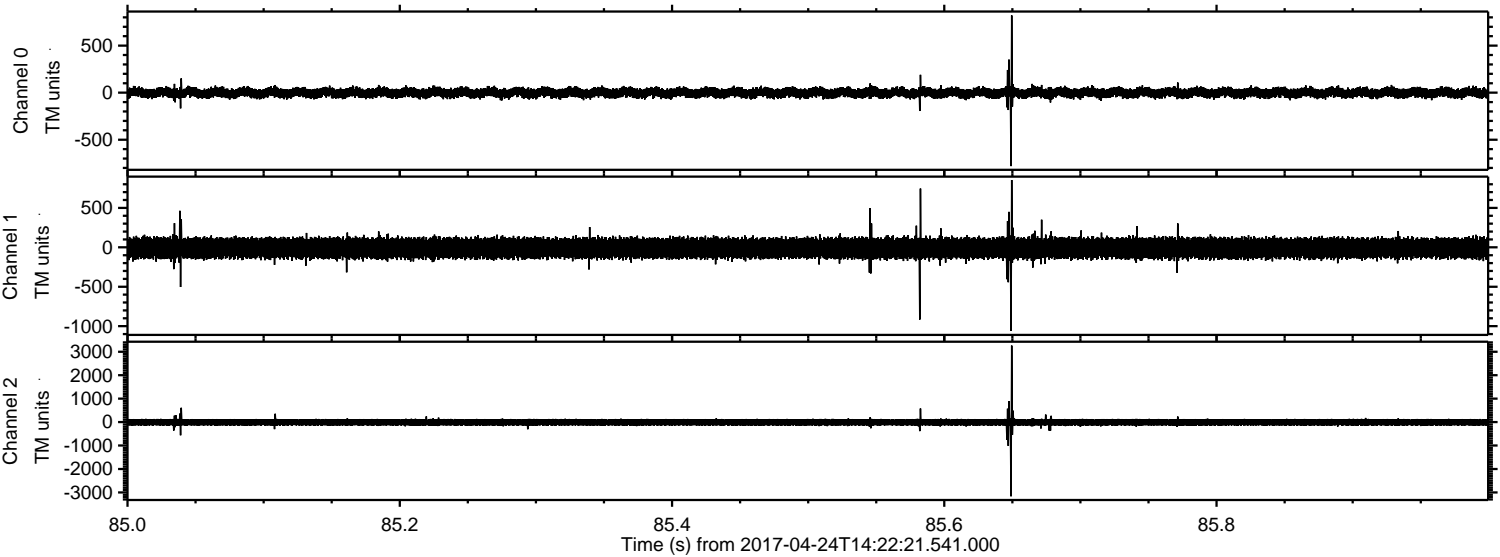


Processed Mon Apr 24 16:30:04 2017 by ELM ver.2012-10-06 from 001\_\_elm20170424\_142220\_\_dat00.bin





Processed Mon Apr 24 16:30:05 2017 by ELM ver.2012-10-06 from 001\_\_elm20170424\_142220\_\_dat00.bin





Processed Mon Apr 24 16:30:06 2017 by ELM ver.2012-10-06 from 001\_\_elm20170424\_142220\_\_dat00.bin

