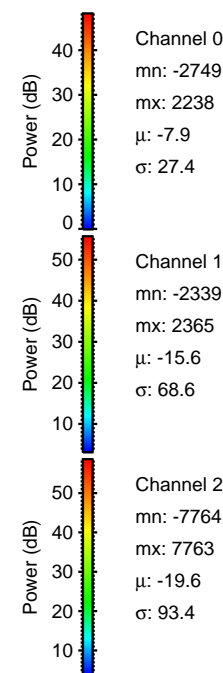
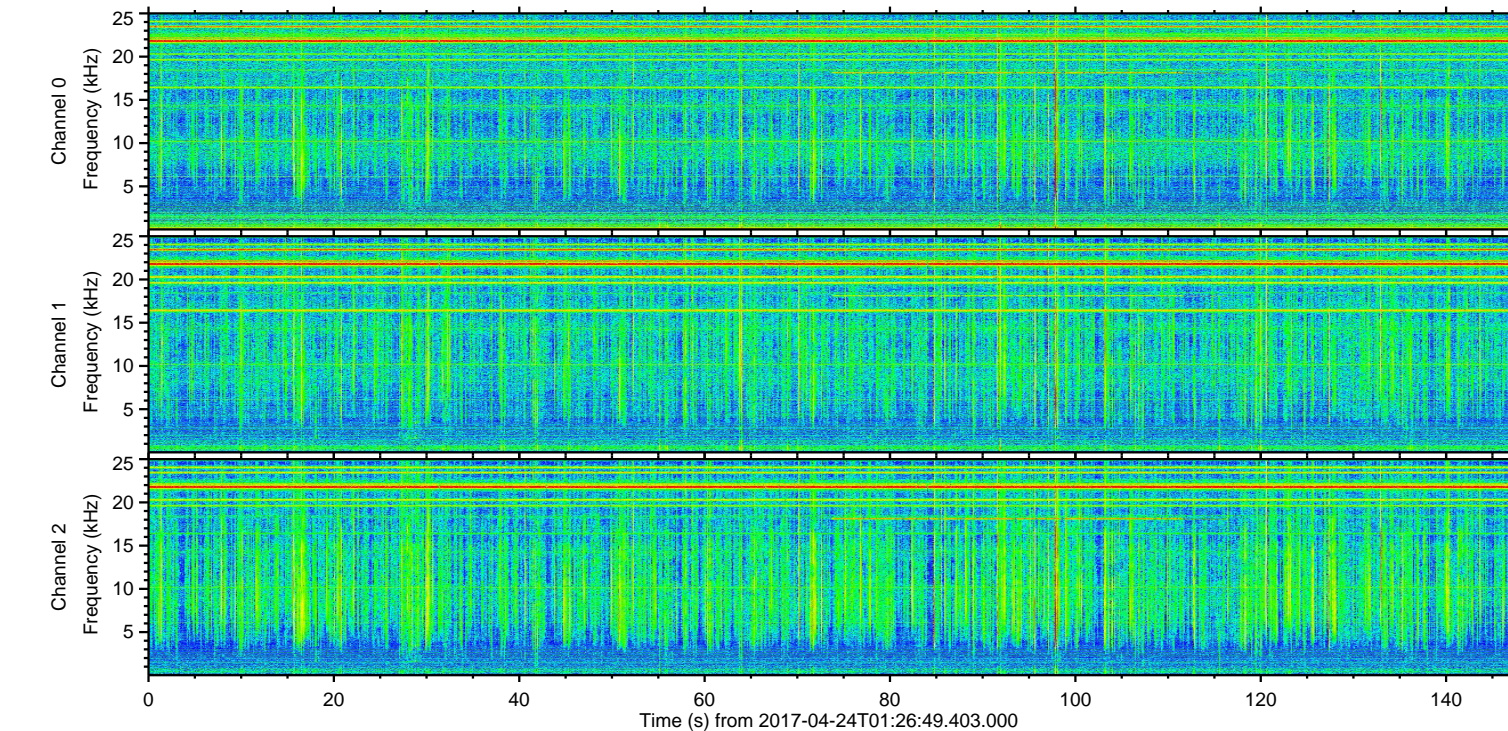
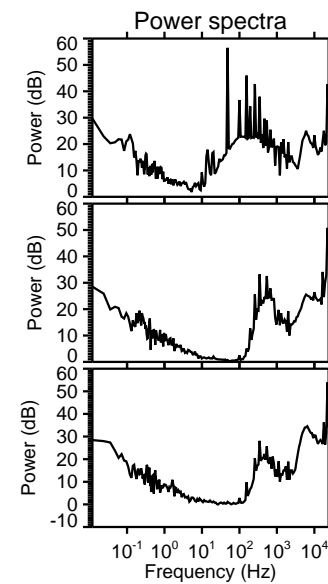
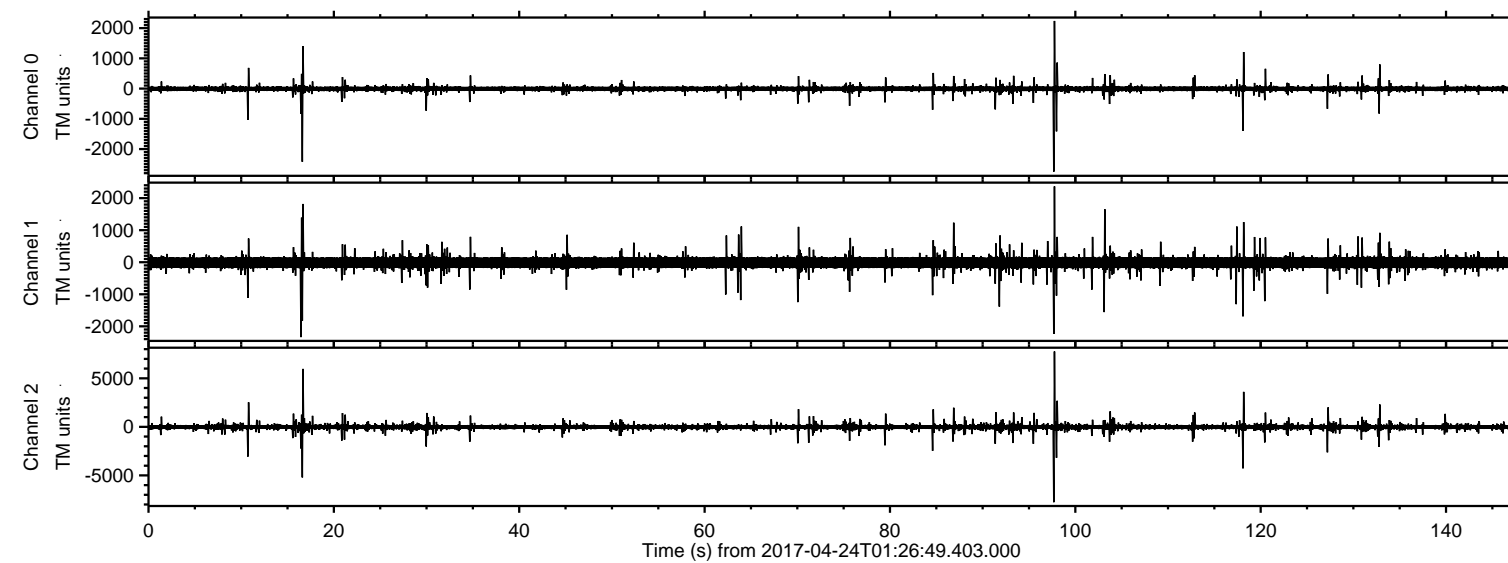


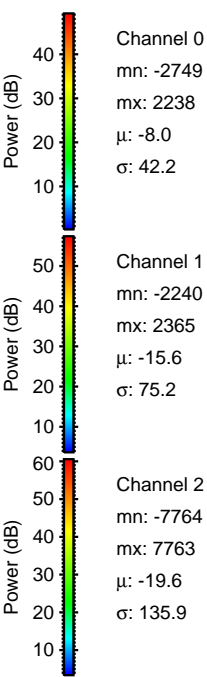
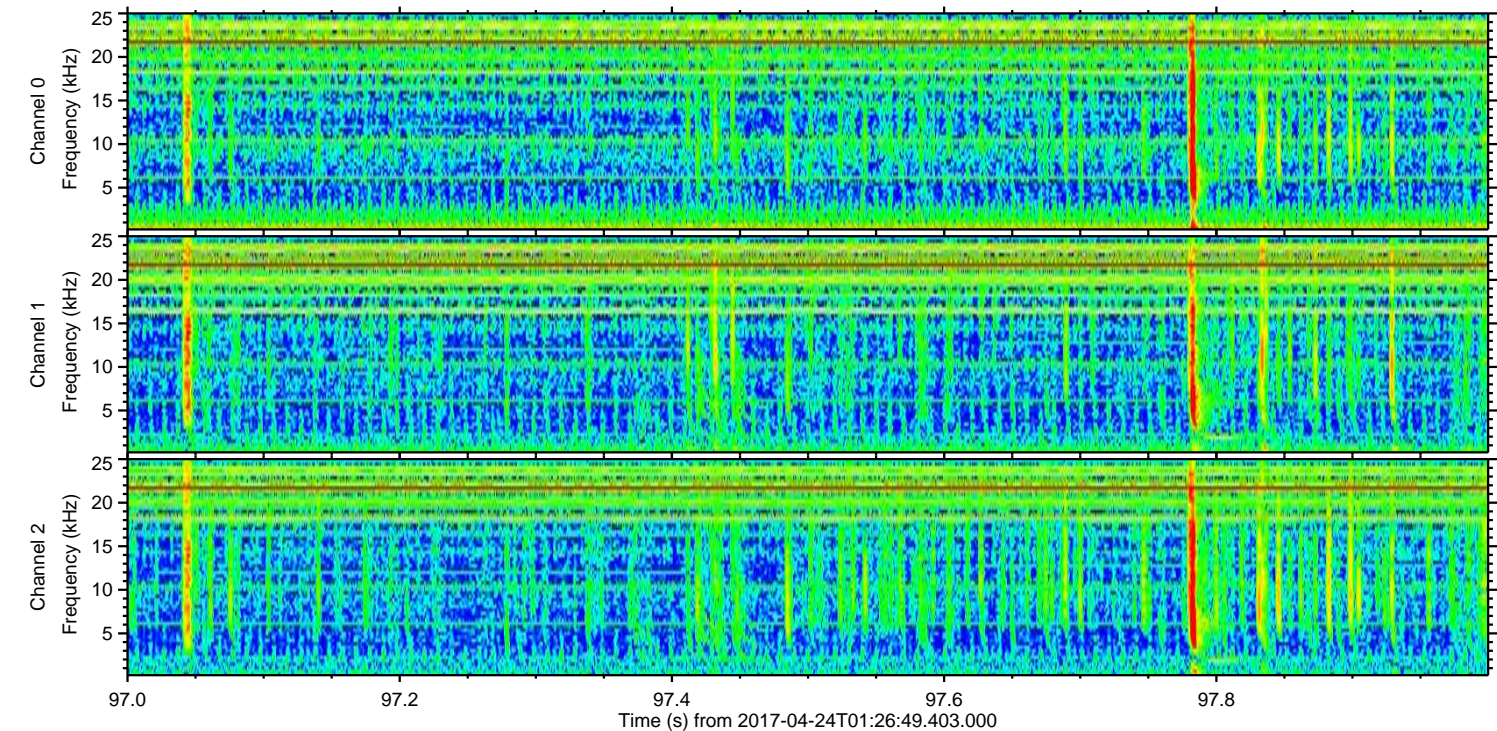
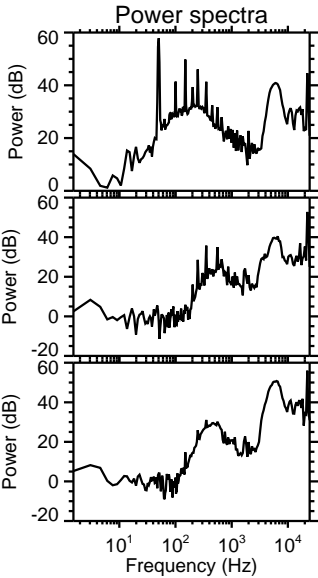
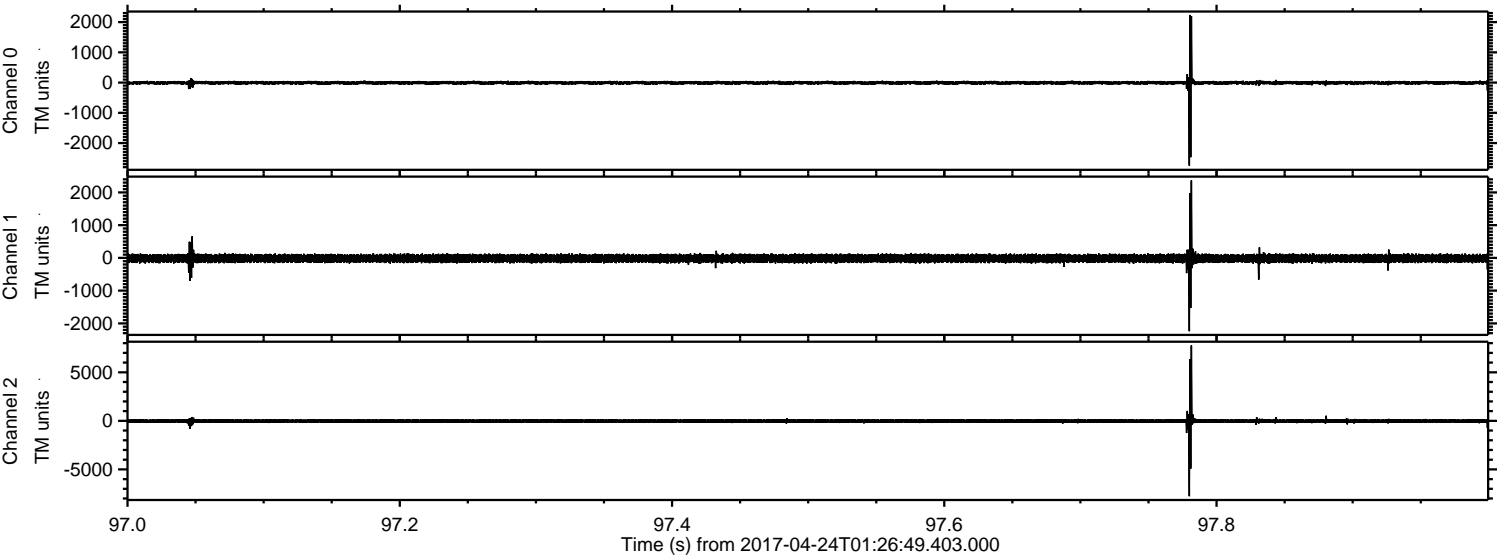
# ELMAVAN 3D WAVEFORMS (Measured data sampled at 50 kHz) 51000 packets of 144 samples from 2017-04-24T01:26:49.403.000.

Processed Mon Apr 24 03:34:18 2017 by ELM ver.2012-10-06 from 001\_\_elm20170424\_012648\_\_dat00.bin





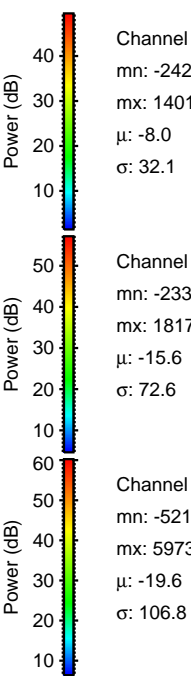
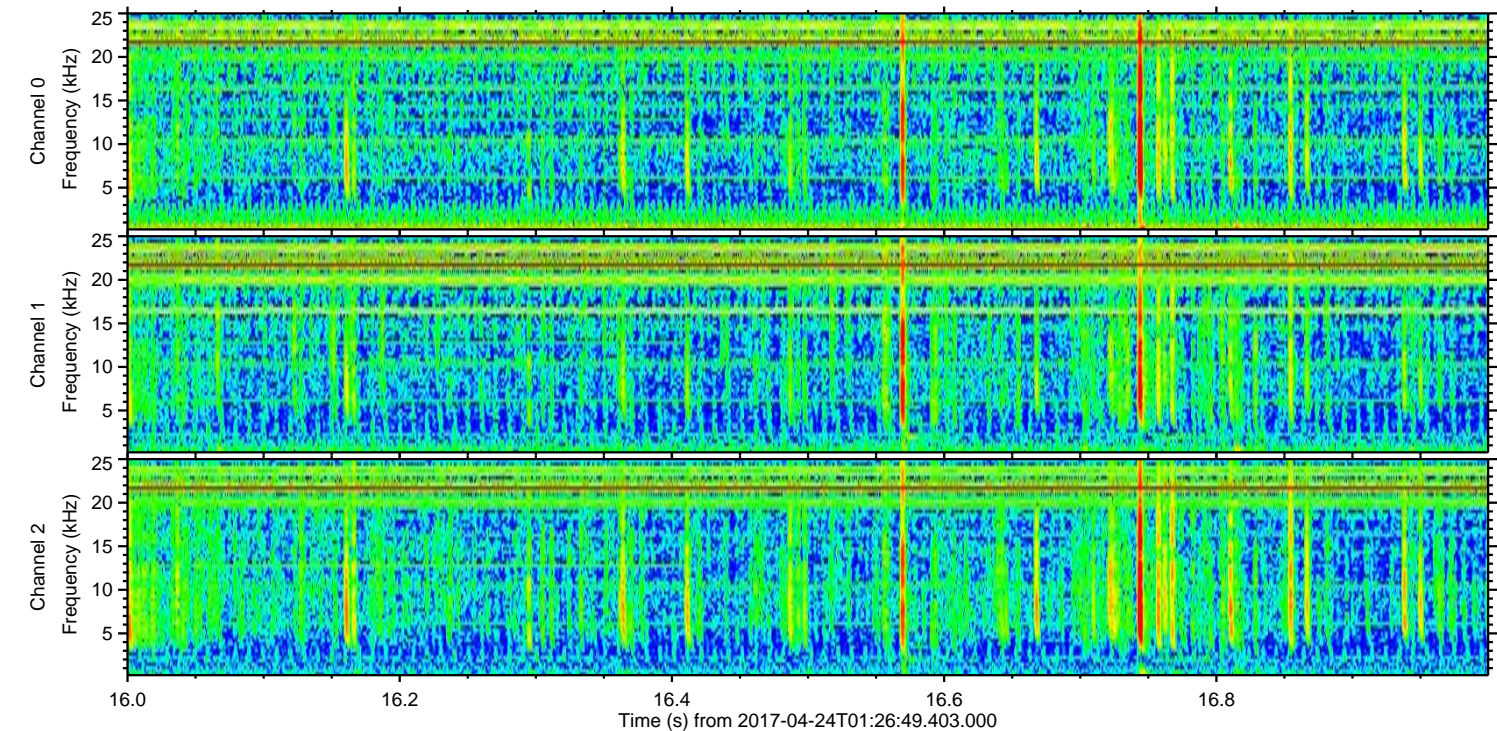
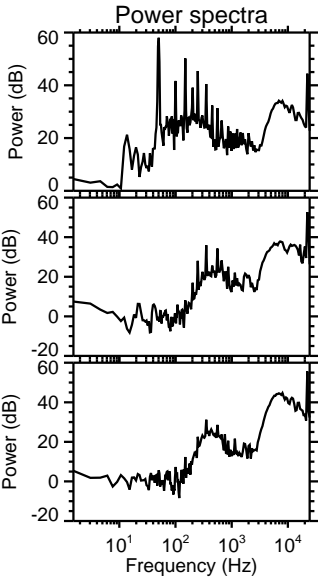
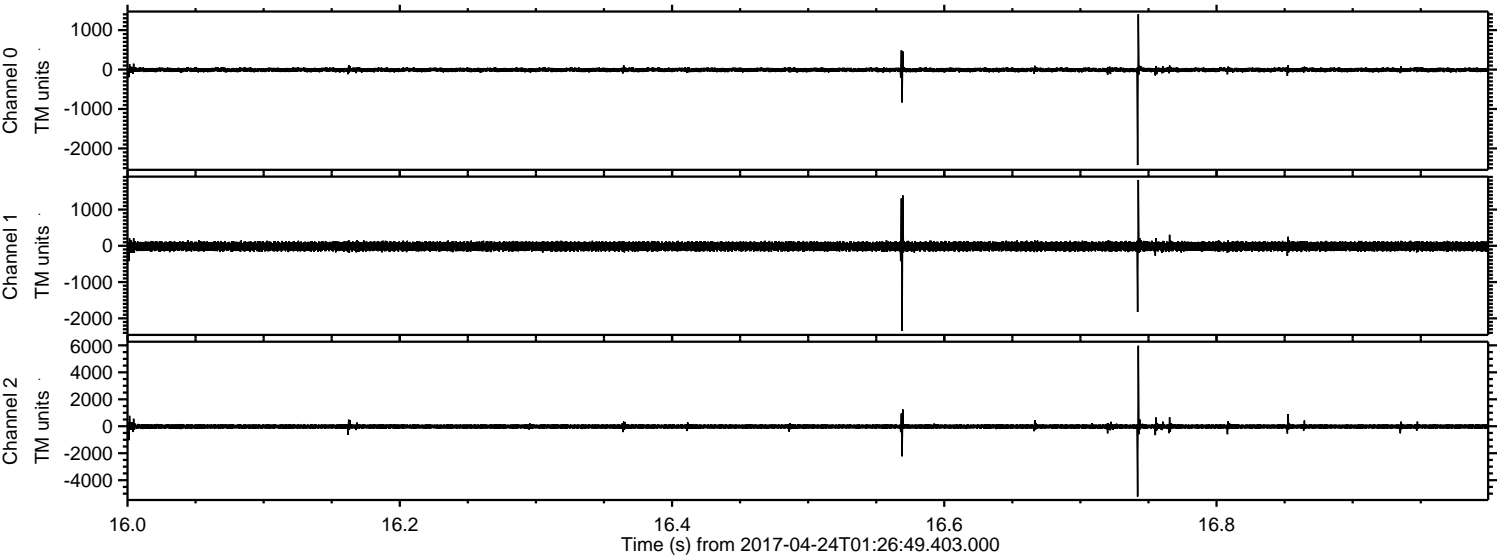
Processed Mon Apr 24 03:34:33 2017 by ELM ver.2012-10-06 from 001\_\_elm20170424\_012648\_\_dat00.bin





ELMAVAN 3D WAVEFORMS (Measured data sampled at 50 kHz) 51000 packets of 144 samples from 2017-04-24T01:26:49.403.000. Part 17/147

Processed Mon Apr 24 03:34:34 2017 by ELM ver.2012-10-06 from 001\_\_elm20170424\_012648\_\_dat00.bin



Channel 0  
mn: -2421  
mx: 1401  
 $\mu$ : -8.0  
 $\sigma$ : 32.1

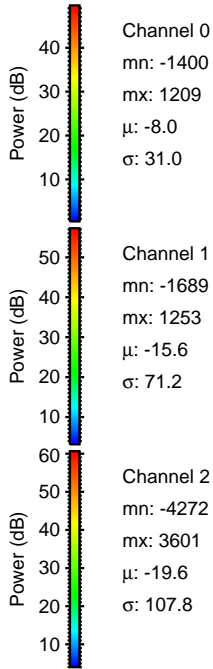
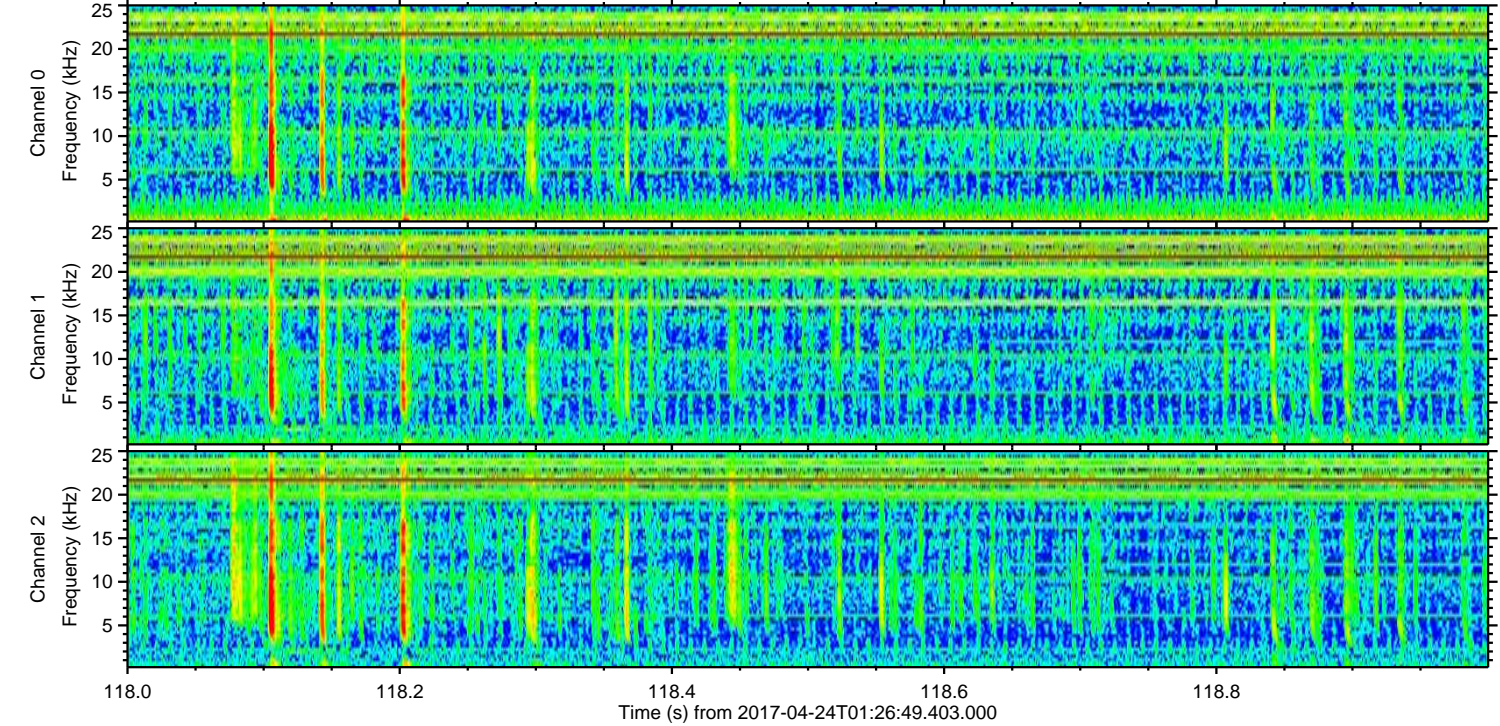
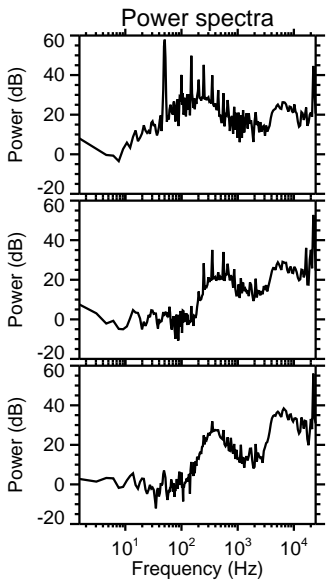
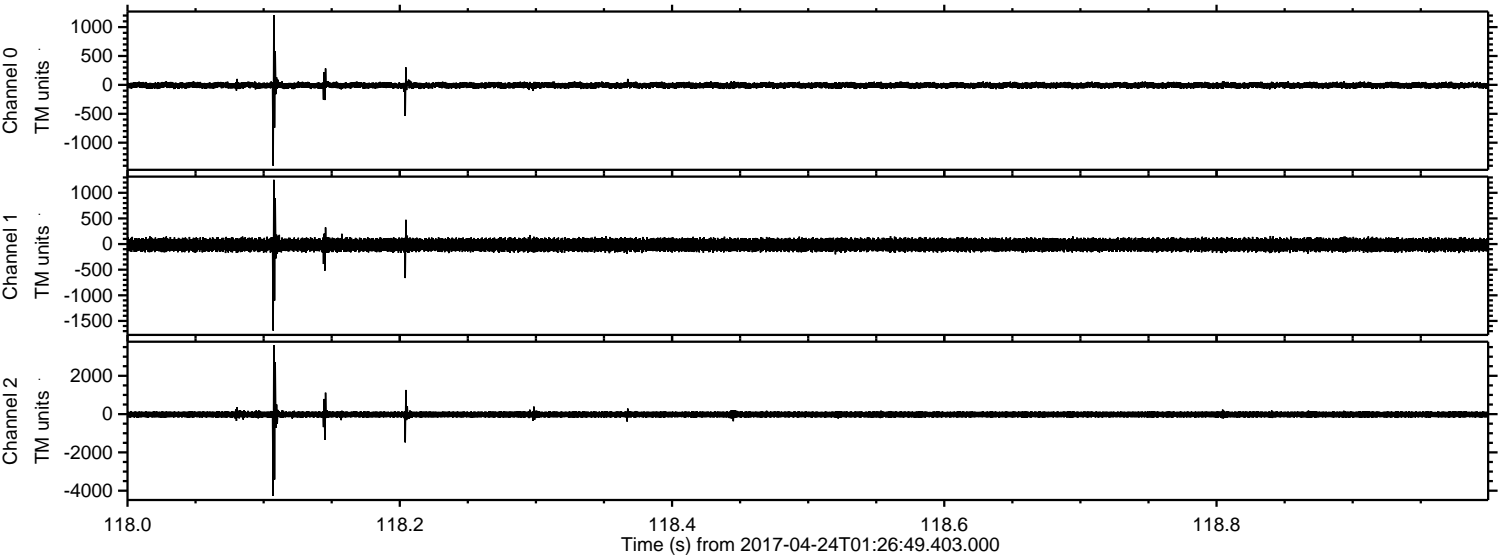
Channel 1  
mn: -2339  
mx: 1817  
 $\mu$ : -15.6  
 $\sigma$ : 72.6

Channel 2  
mn: -5211  
mx: 5973  
 $\mu$ : -19.6  
 $\sigma$ : 106.8



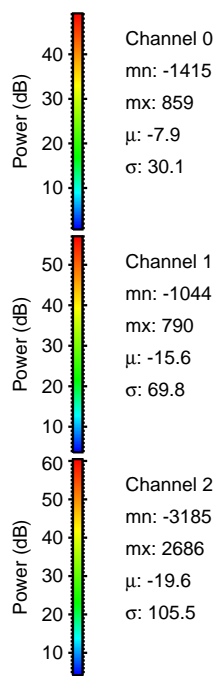
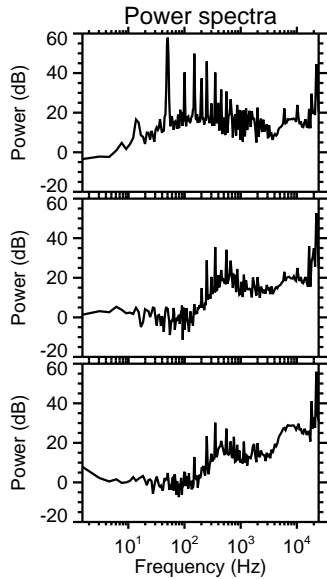
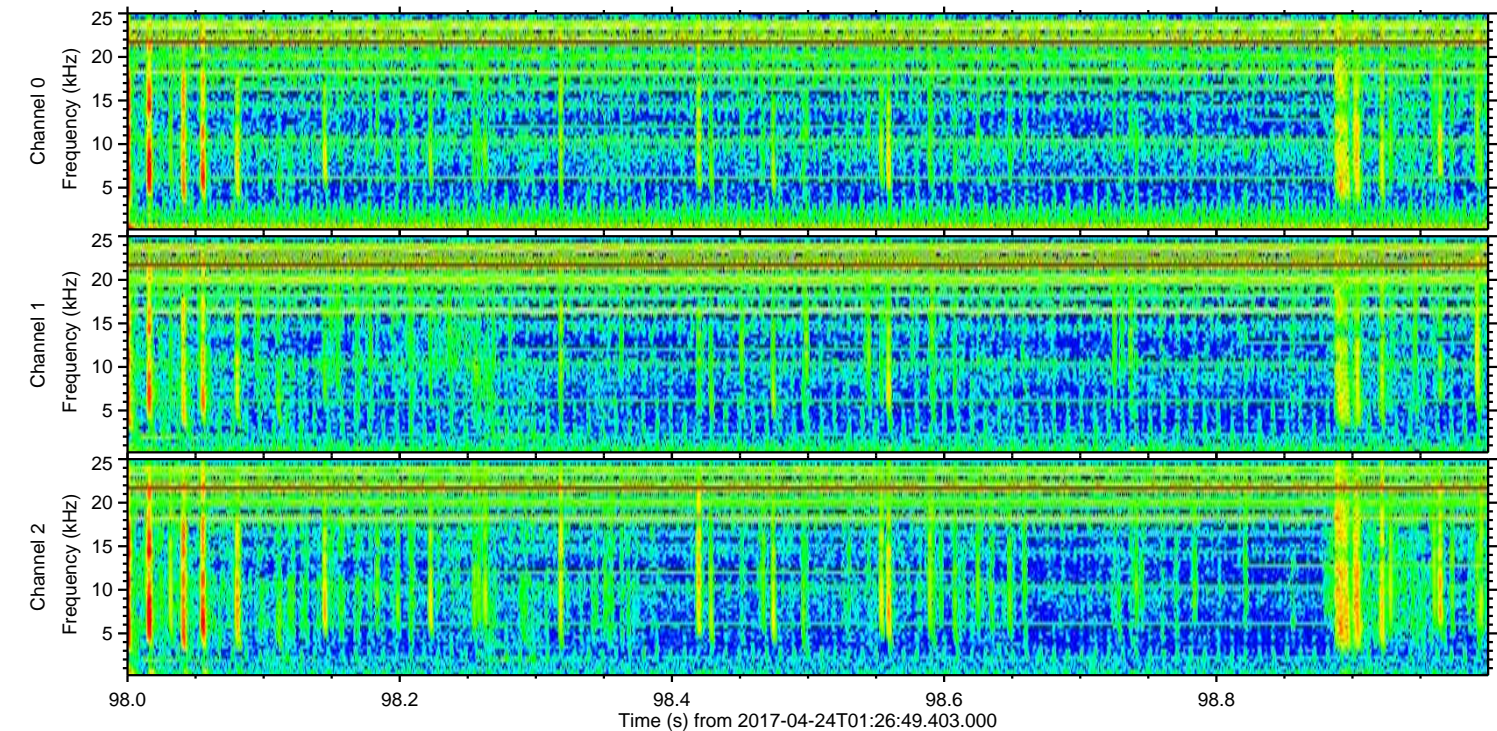
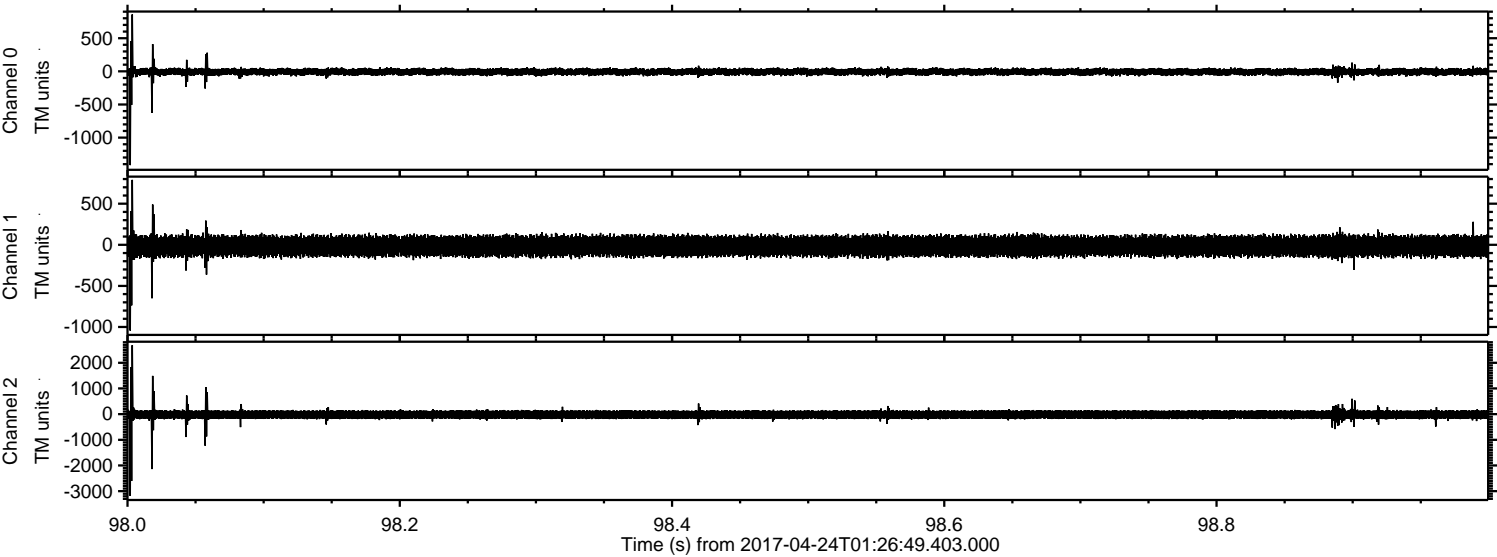
ELMAVAN 3D WAVEFORMS (Measured data sampled at 50 kHz) 51000 packets of 144 samples from 2017-04-24T01:26:49.403.000. Part 119/147

Processed Mon Apr 24 03:34:35 2017 by ELM ver.2012-10-06 from 001\_\_elm20170424\_012648\_\_dat00.bin





Processed Mon Apr 24 03:34:36 2017 by ELM ver.2012-10-06 from 001\_\_elm20170424\_012648\_\_dat00.bin



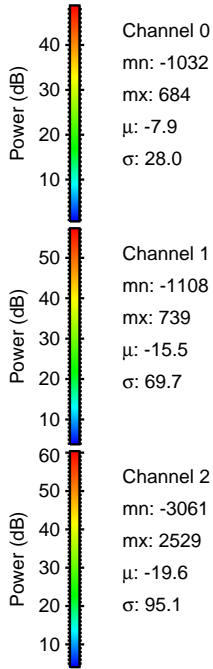
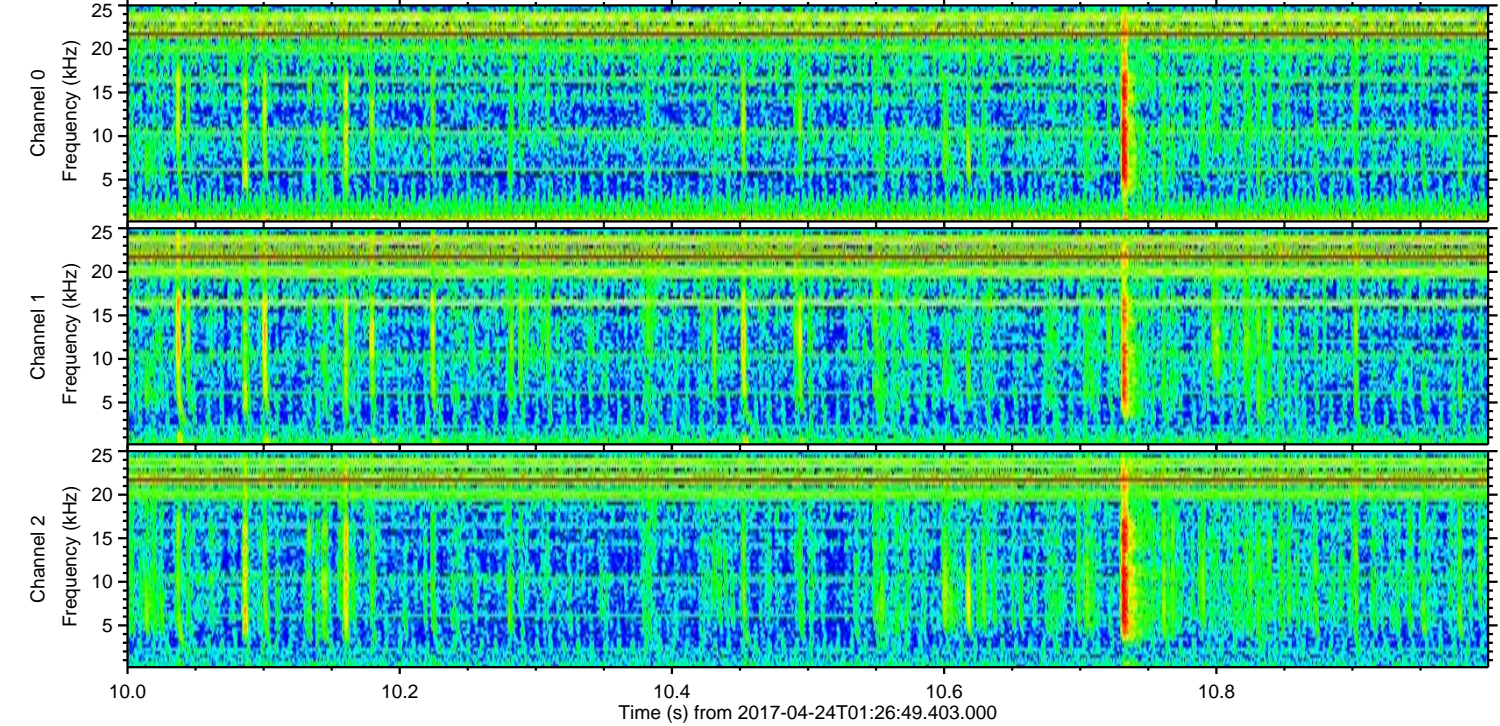
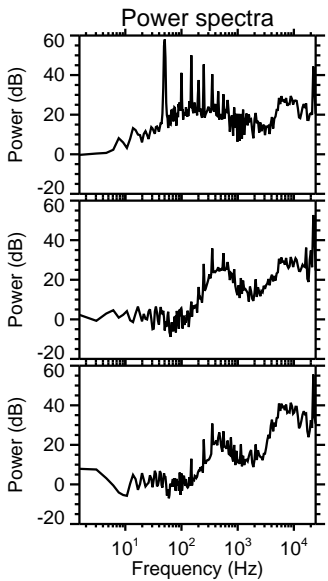
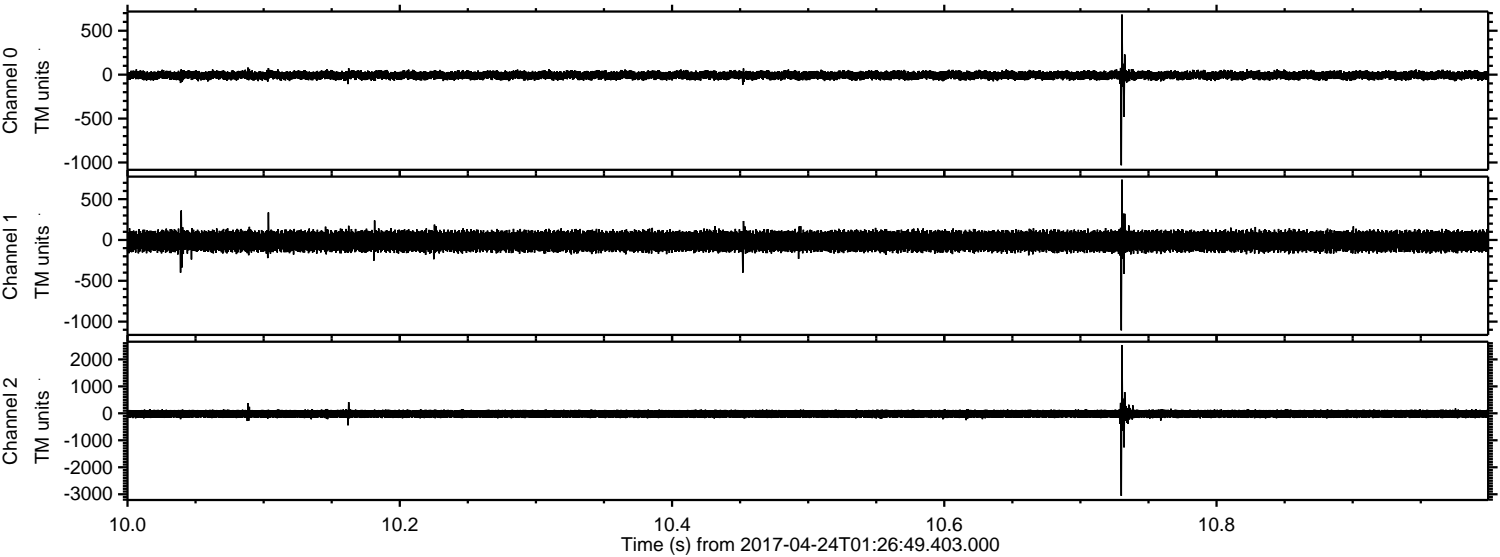
Channel 0  
mn: -1415  
mx: 859  
 $\mu$ : -7.9  
 $\sigma$ : 30.1

Channel 1  
mn: -1044  
mx: 790  
 $\mu$ : -15.6  
 $\sigma$ : 69.8

Channel 2  
mn: -3185  
mx: 2686  
 $\mu$ : -19.6  
 $\sigma$ : 105.5



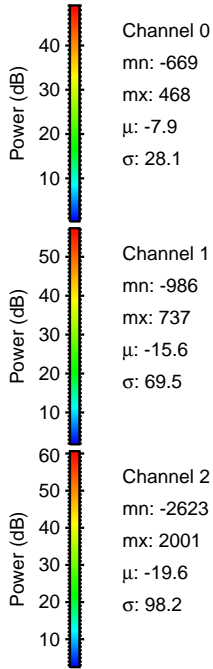
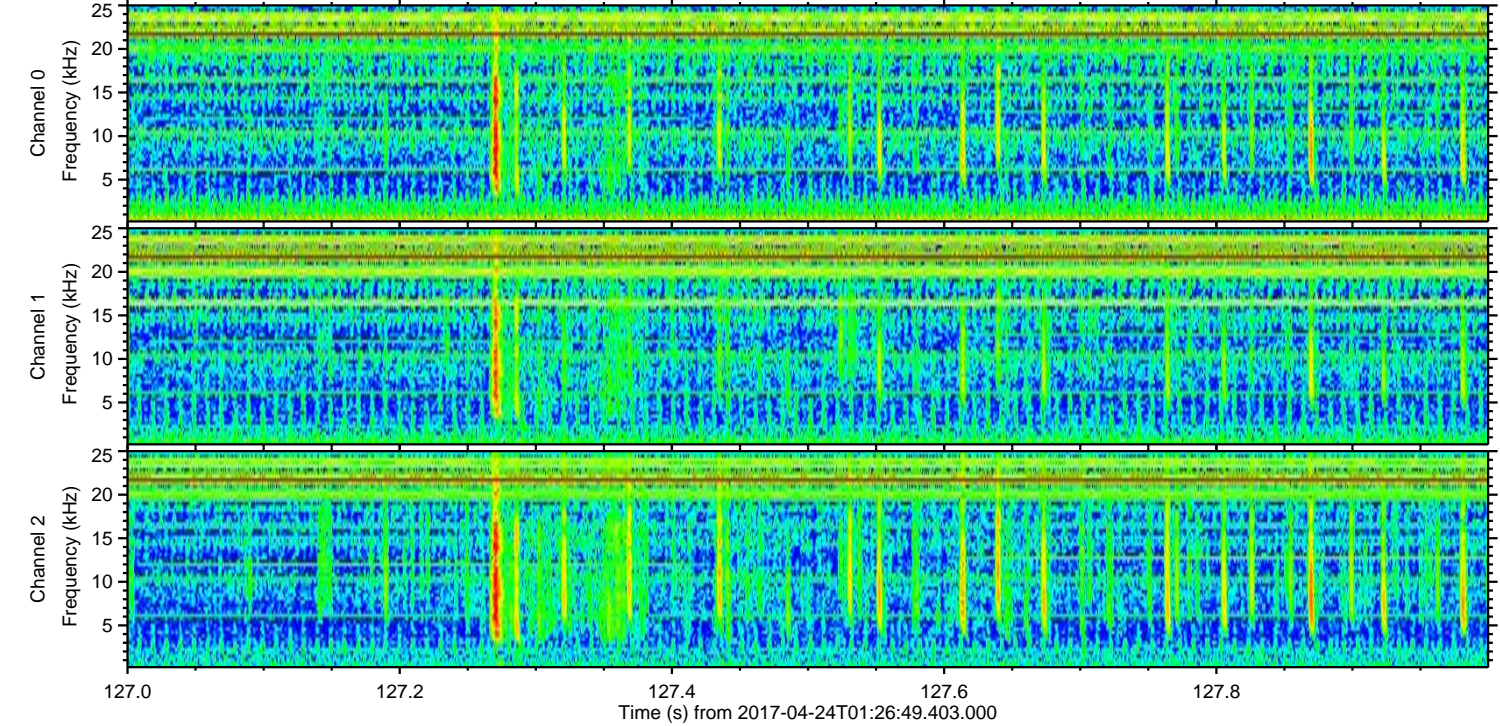
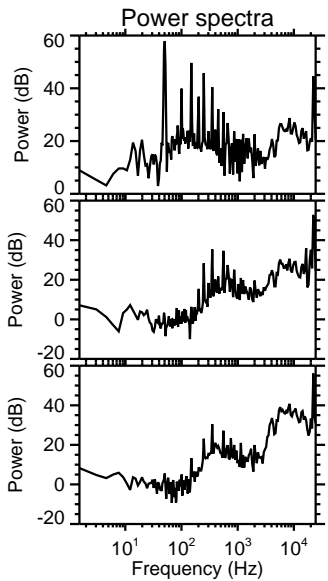
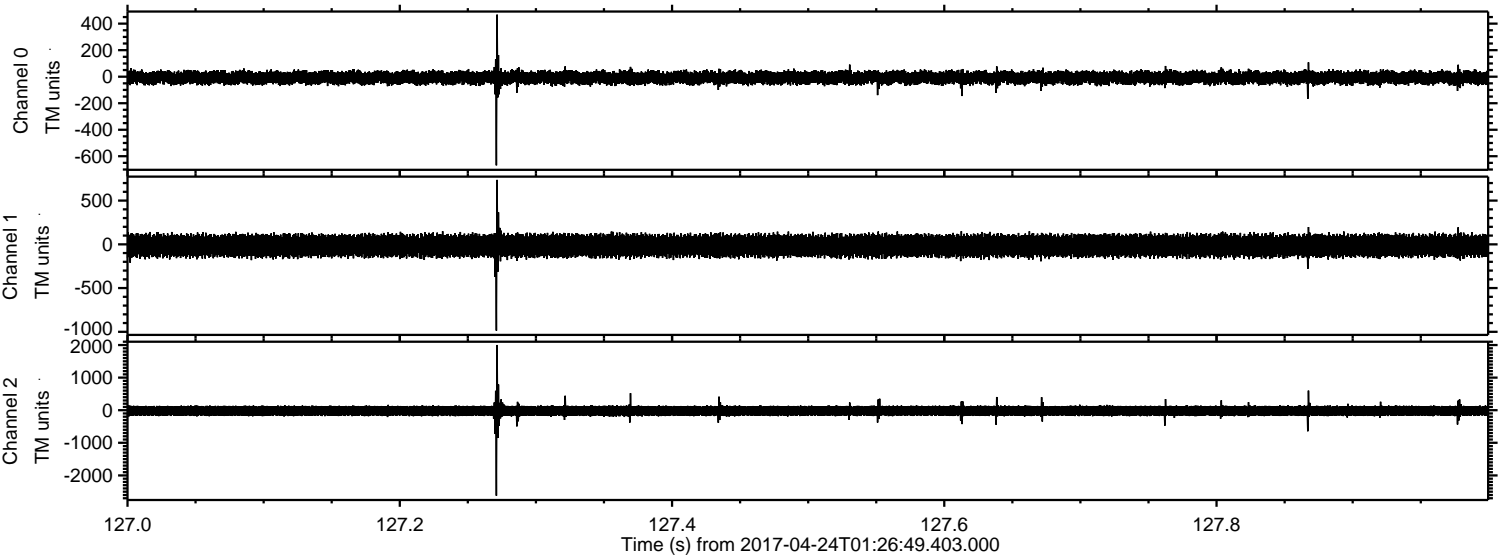
Processed Mon Apr 24 03:34:37 2017 by ELM ver.2012-10-06 from 001\_\_elm20170424\_012648\_\_dat00.bin





ELMAVAN 3D WAVEFORMS (Measured data sampled at 50 kHz) 51000 packets of 144 samples from 2017-04-24T01:26:49.403.000. Part 128/147

Processed Mon Apr 24 03:34:38 2017 by ELM ver.2012-10-06 from 001\_\_elm20170424\_012648\_\_dat00.bin



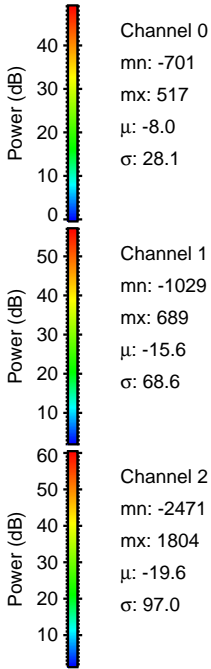
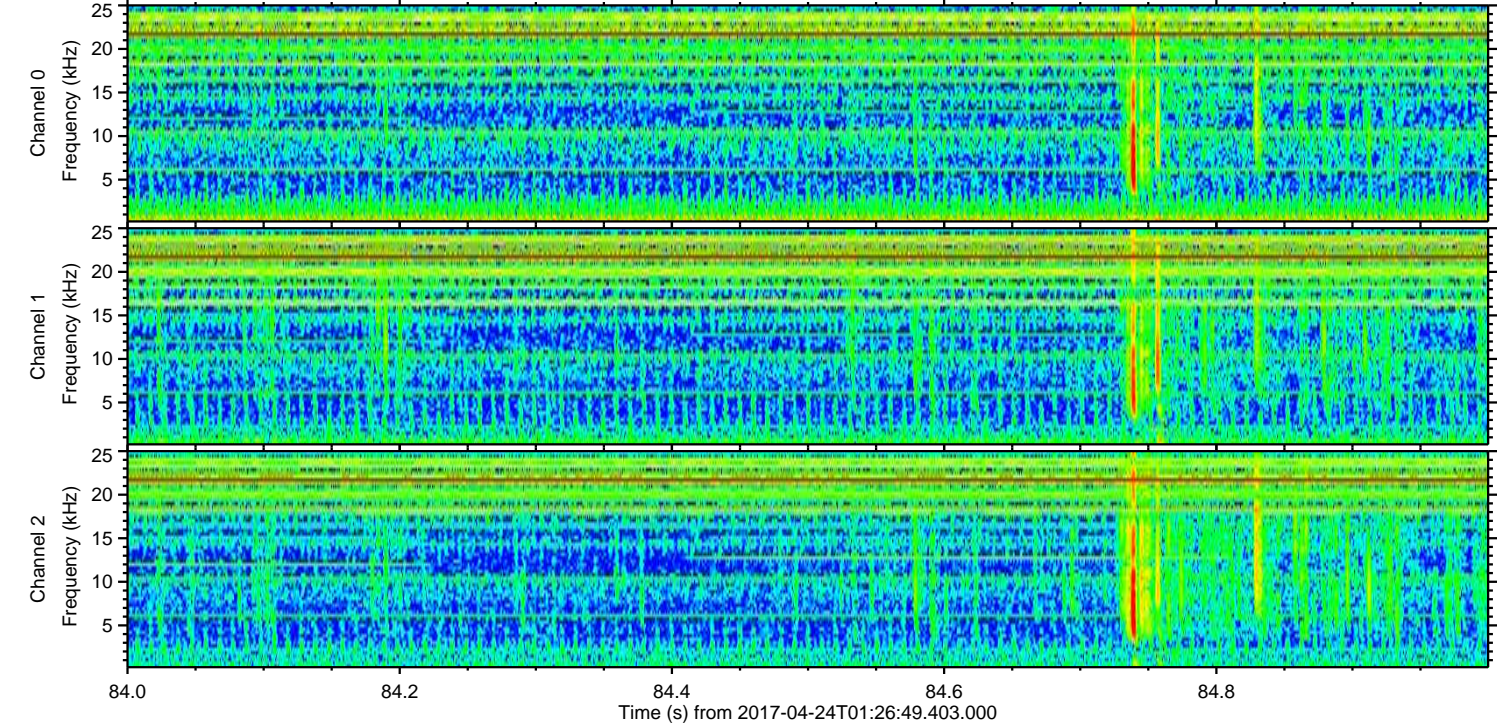
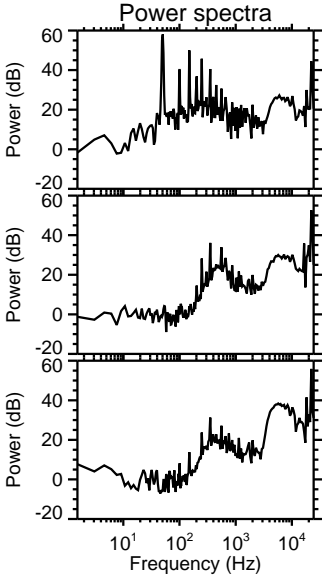
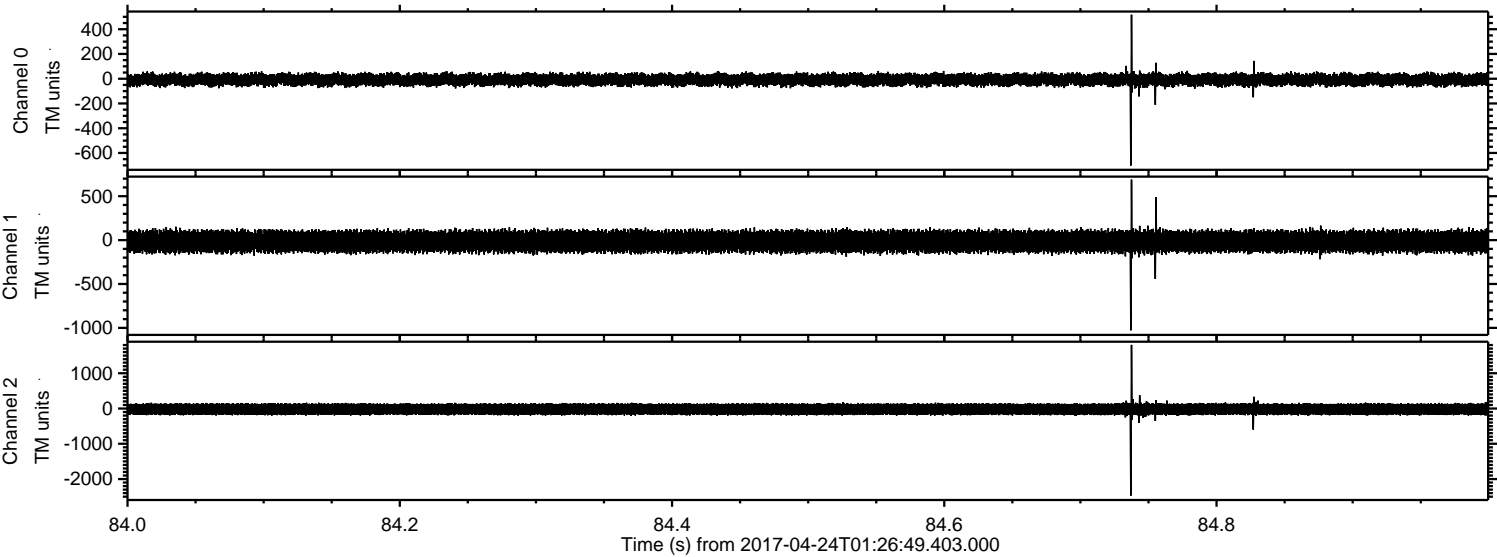
Channel 0  
mn: -669  
mx: 468  
 $\mu$ : -7.9  
 $\sigma$ : 28.1

Channel 1  
mn: -986  
mx: 737  
 $\mu$ : -15.6  
 $\sigma$ : 69.5

Channel 2  
mn: -2623  
mx: 2001  
 $\mu$ : -19.6  
 $\sigma$ : 98.2



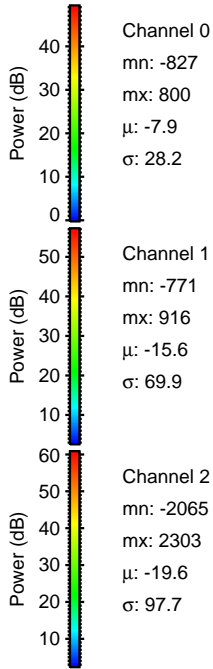
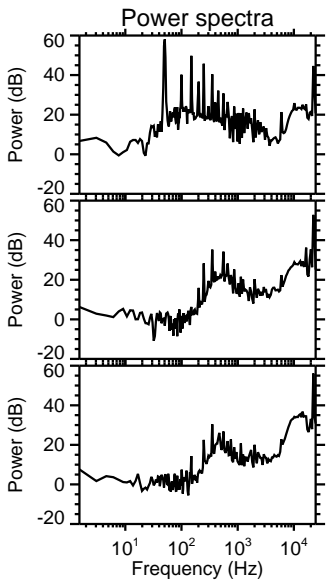
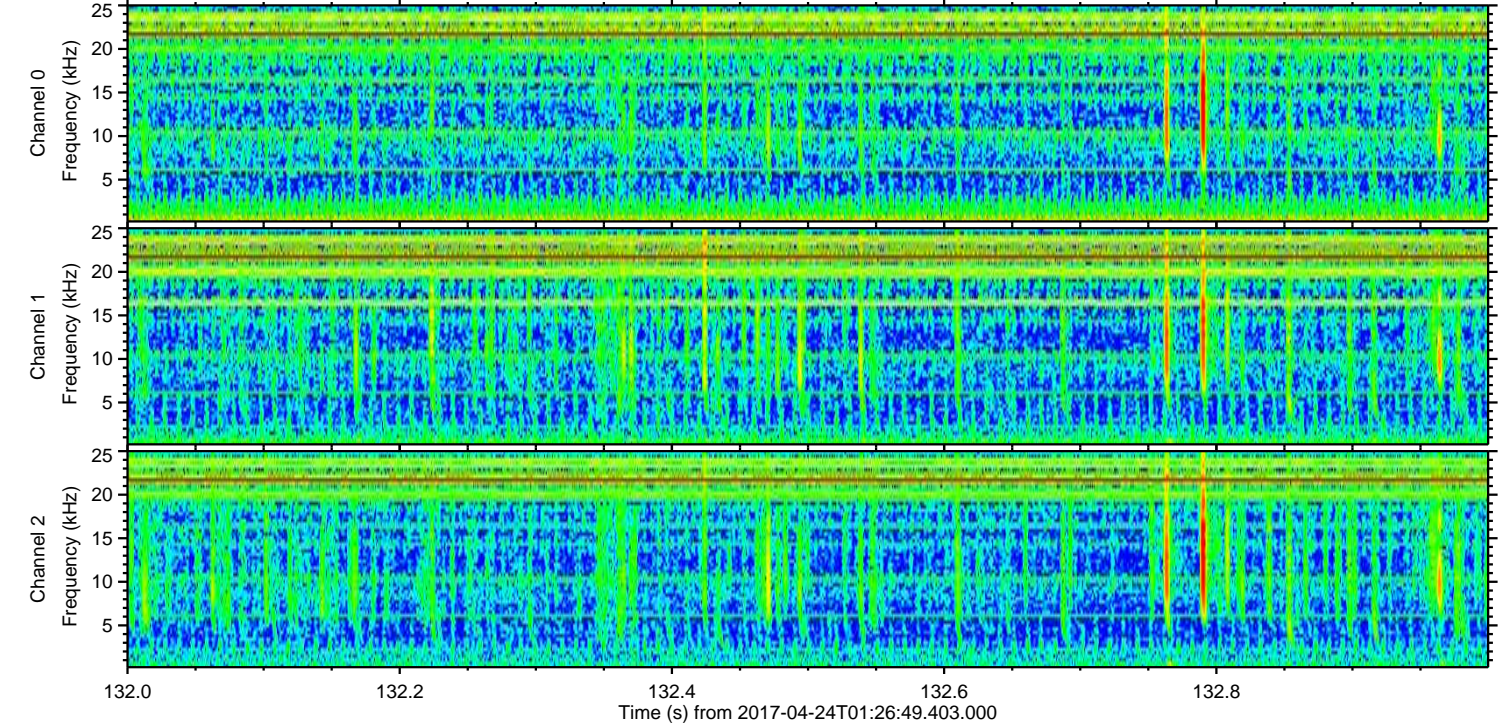
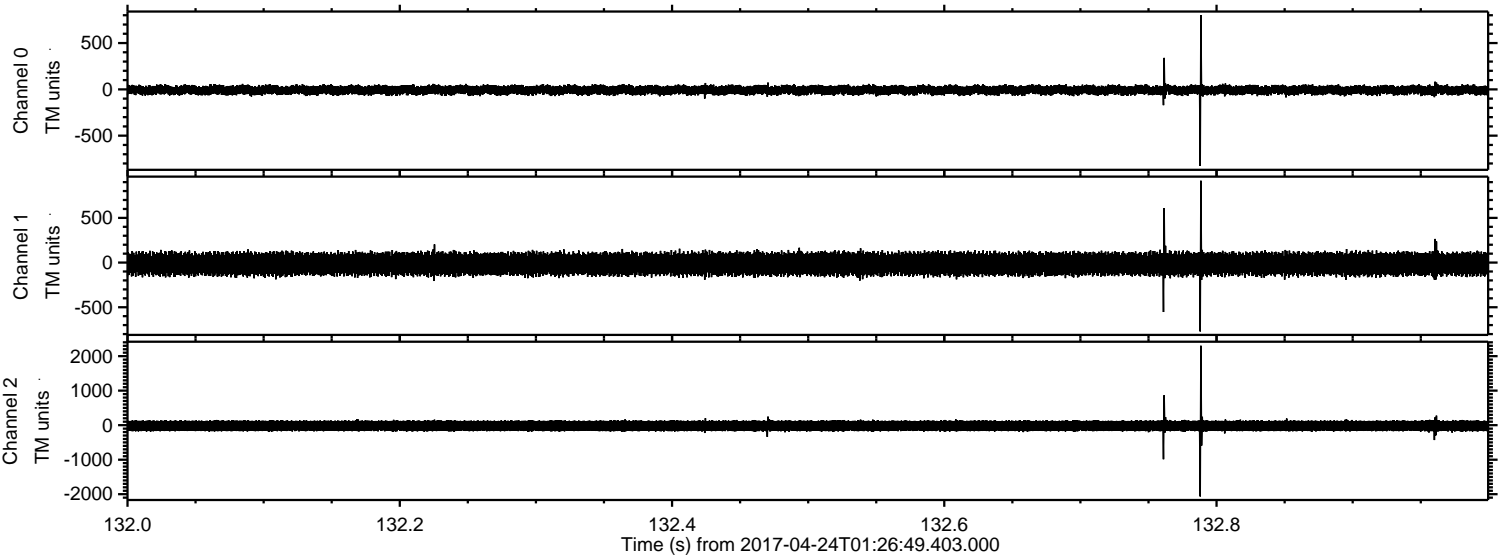
Processed Mon Apr 24 03:34:40 2017 by ELM ver.2012-10-06 from 001\_\_elm20170424\_012648\_\_dat00.bin





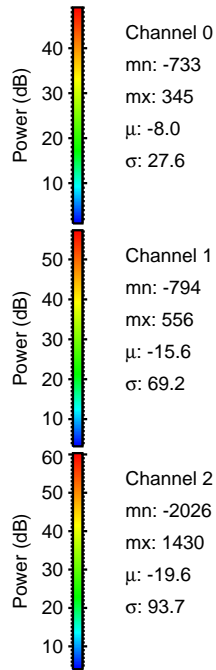
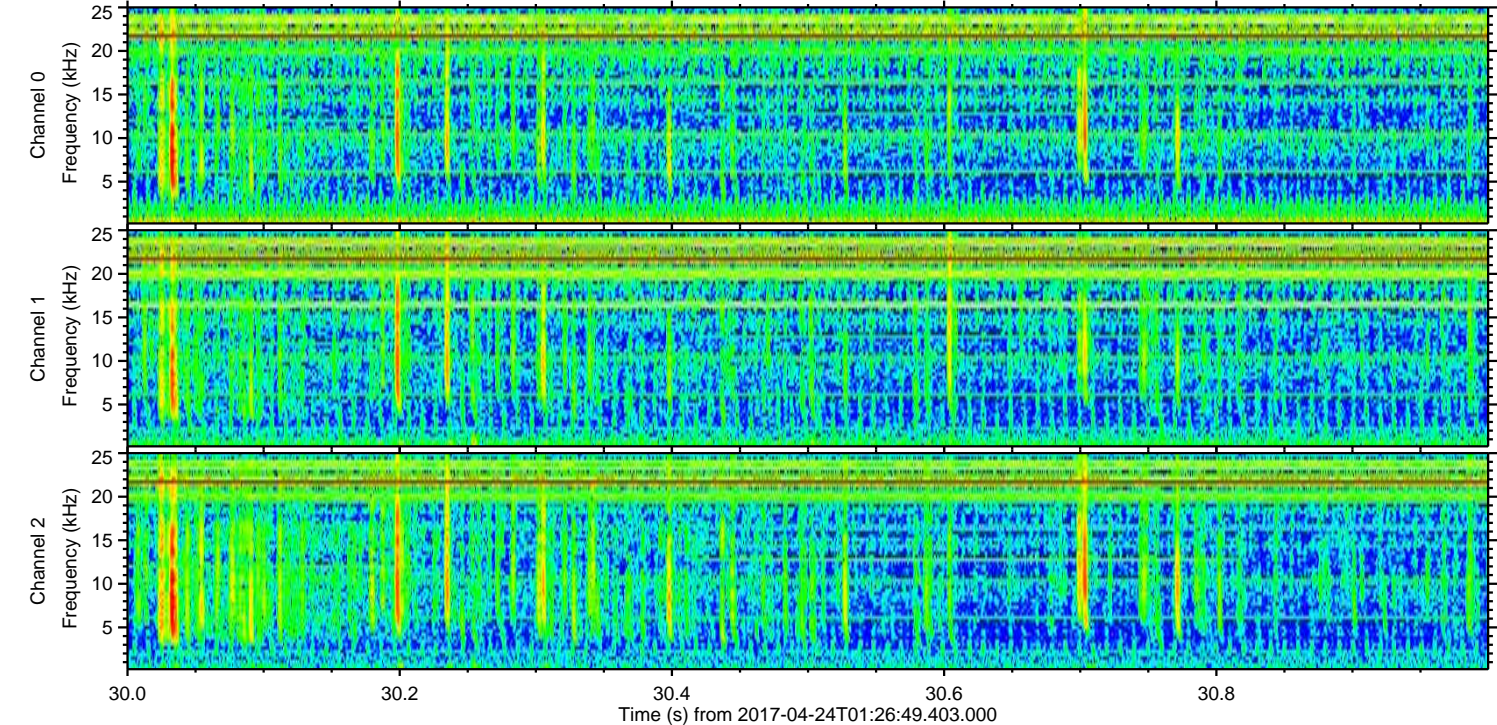
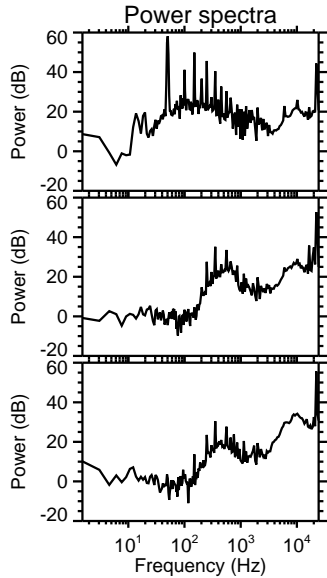
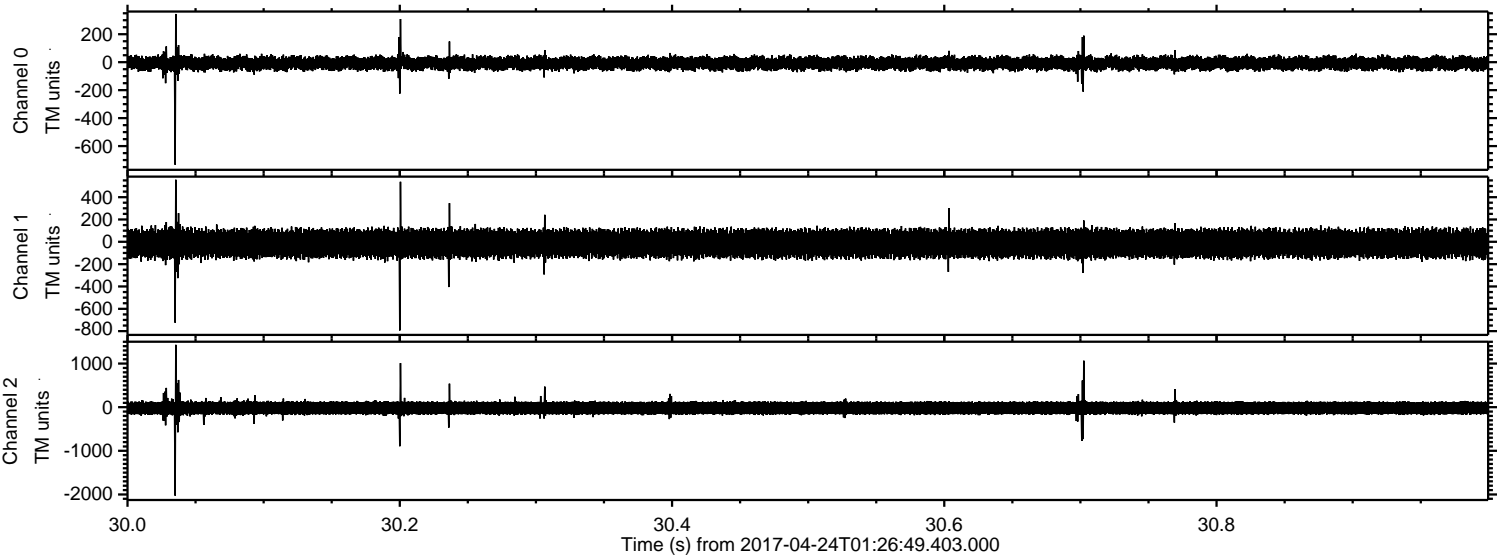
ELMAVAN 3D WAVEFORMS (Measured data sampled at 50 kHz) 51000 packets of 144 samples from 2017-04-24T01:26:49.403.000. Part 133/147

Processed Mon Apr 24 03:34:41 2017 by ELM ver.2012-10-06 from 001\_\_elm20170424\_012648\_\_dat00.bin





Processed Mon Apr 24 03:34:42 2017 by ELM ver.2012-10-06 from 001\_\_elm20170424\_012648\_\_dat00.bin





Processed Mon Apr 24 03:34:43 2017 by ELM ver.2012-10-06 from 001\_\_elm20170424\_012648\_\_dat00.bin

