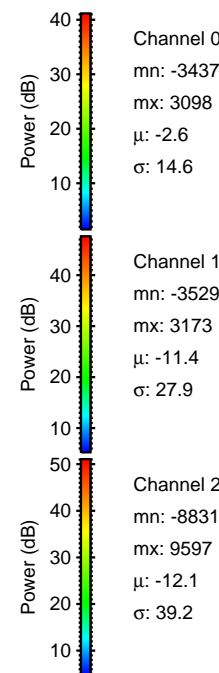
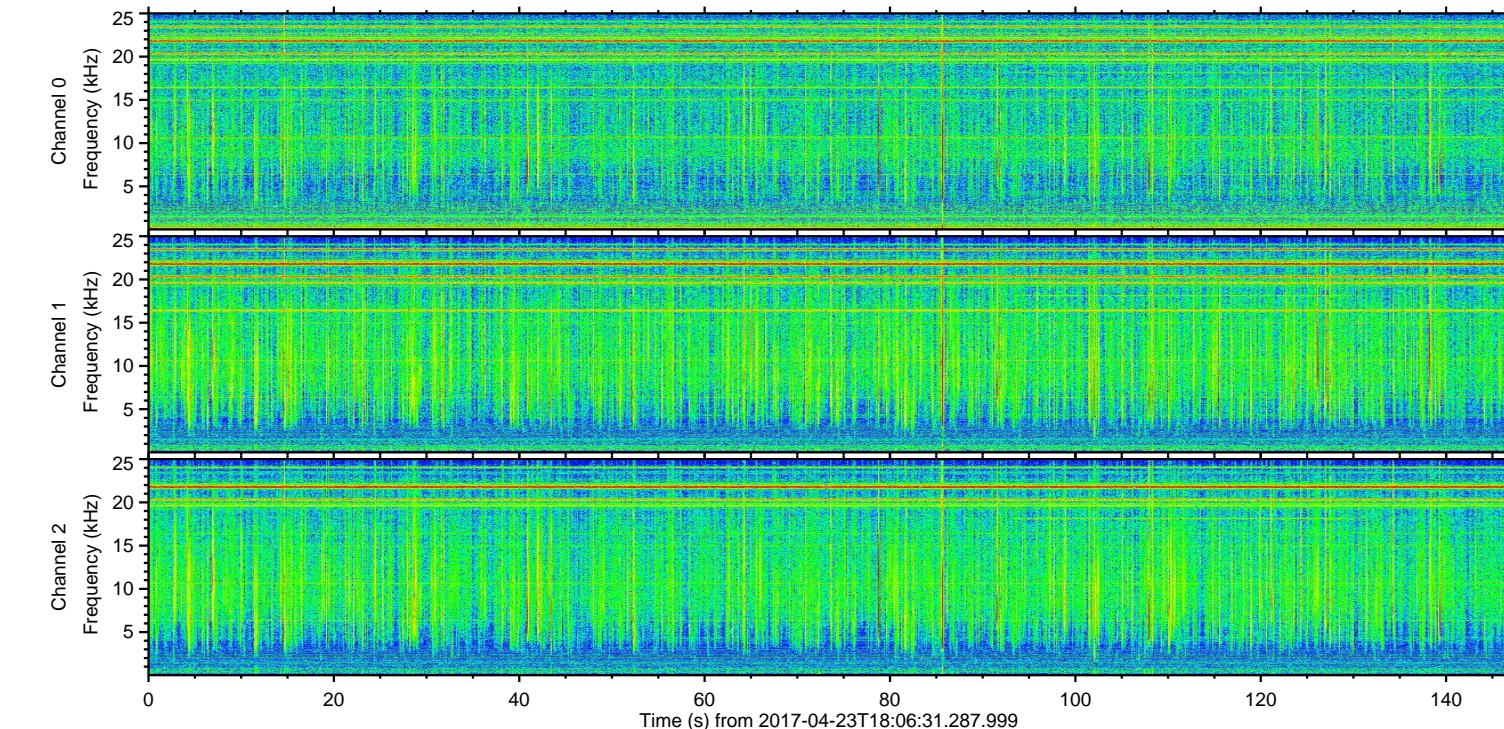
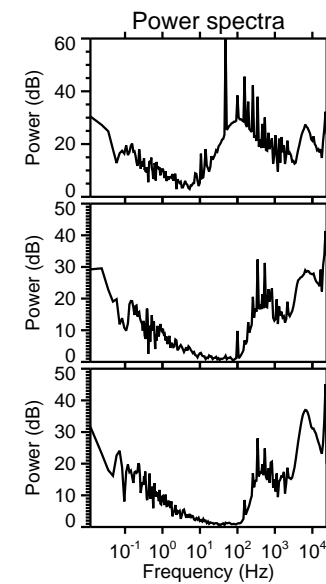
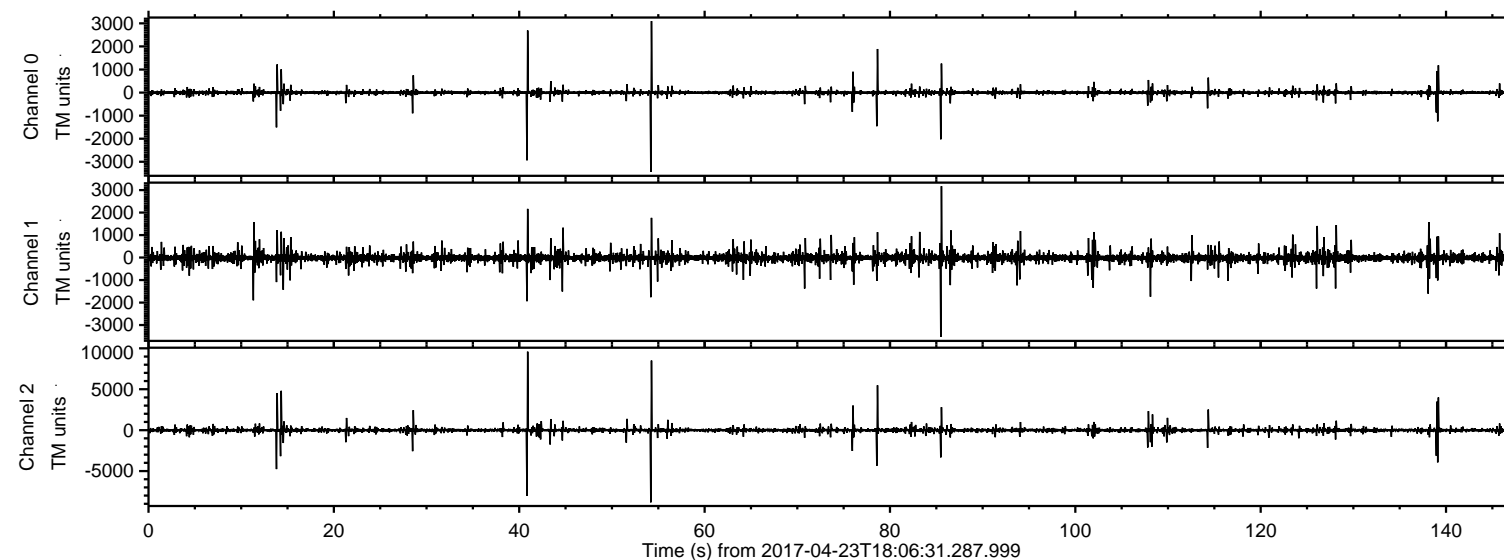
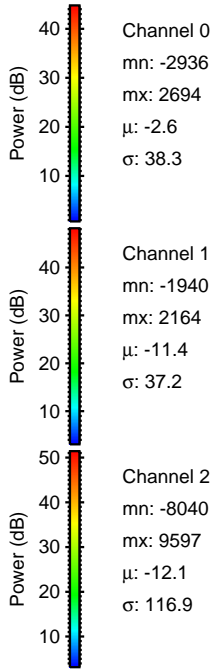
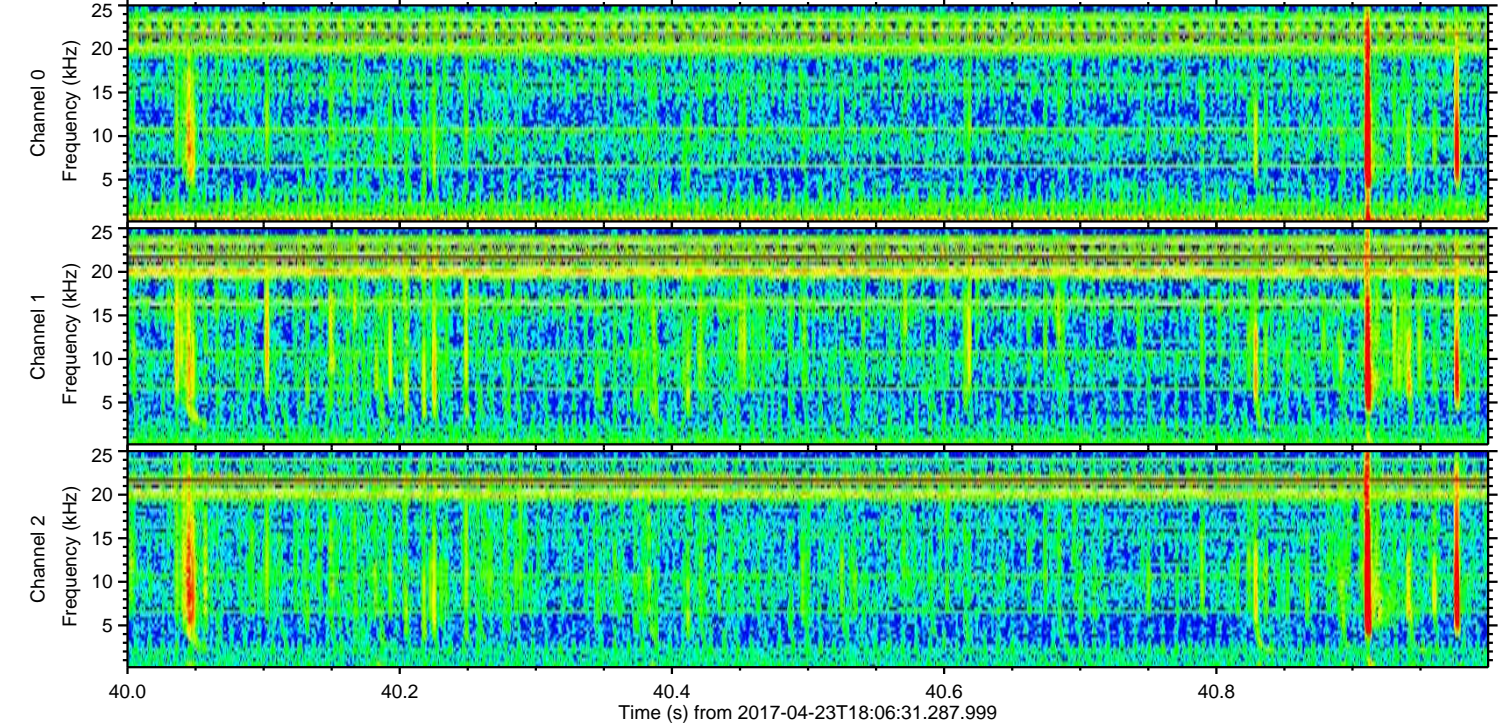
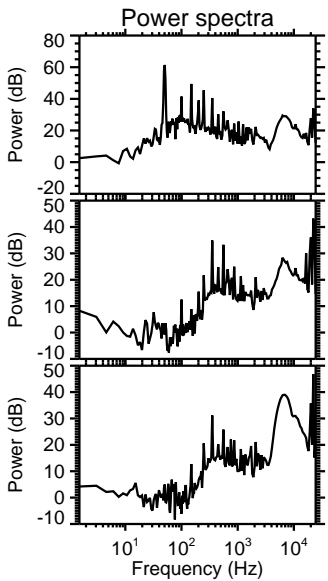
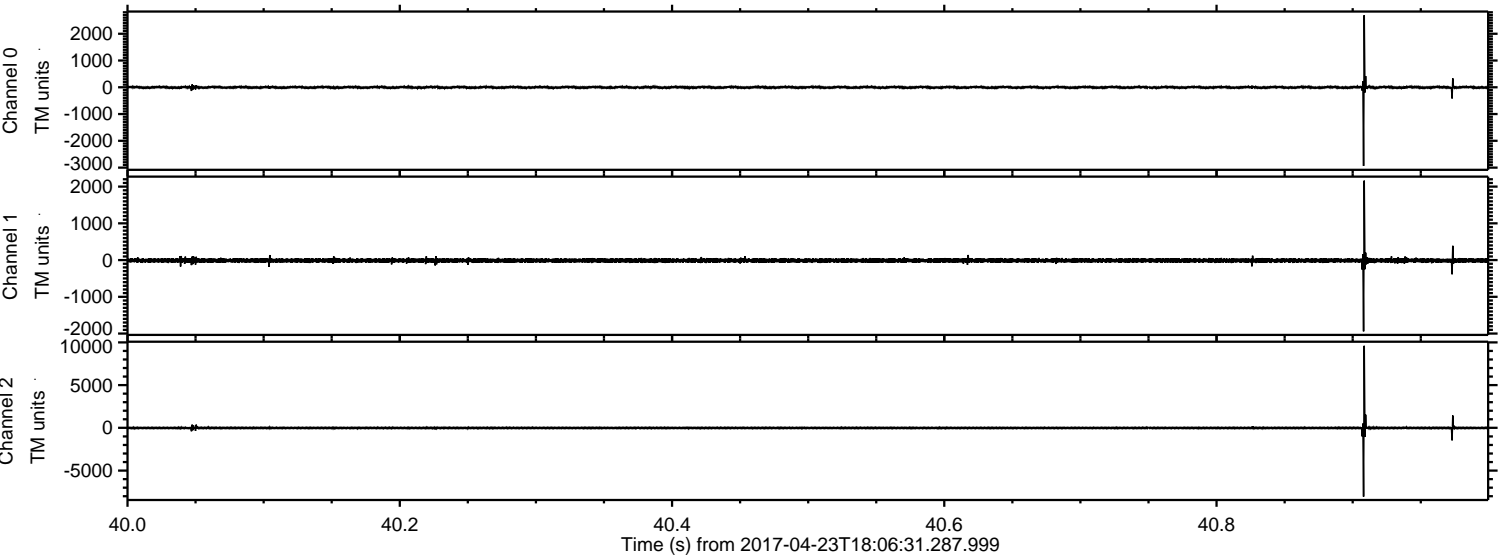


ELMAVAN 3D WAVEFORMS (Measured data sampled at 50 kHz) 51000 packets of 144 samples from 2017-04-23T18:06:31.287.999.

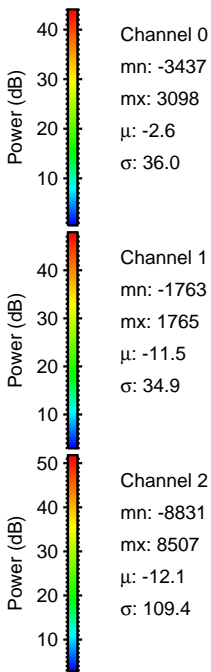
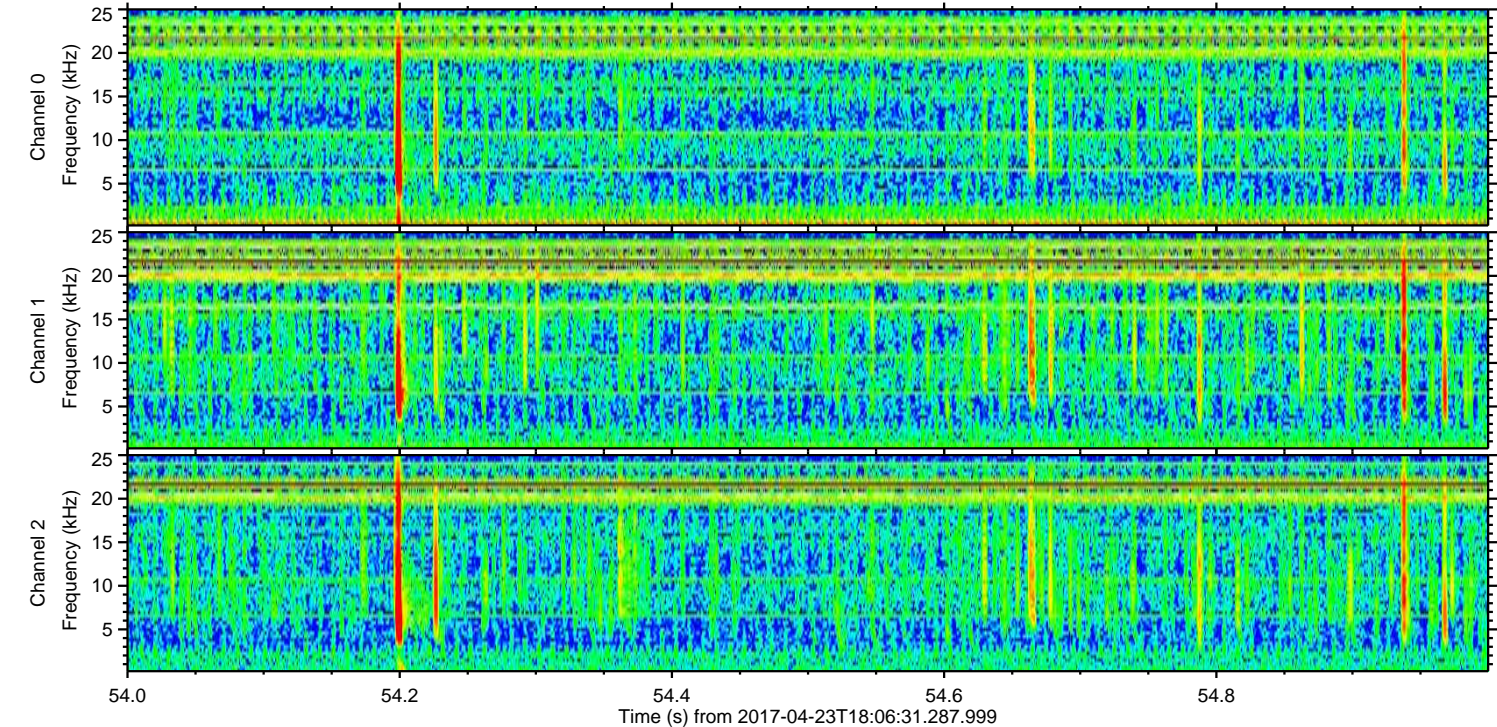
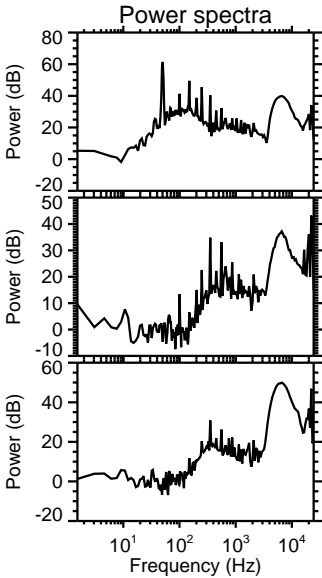
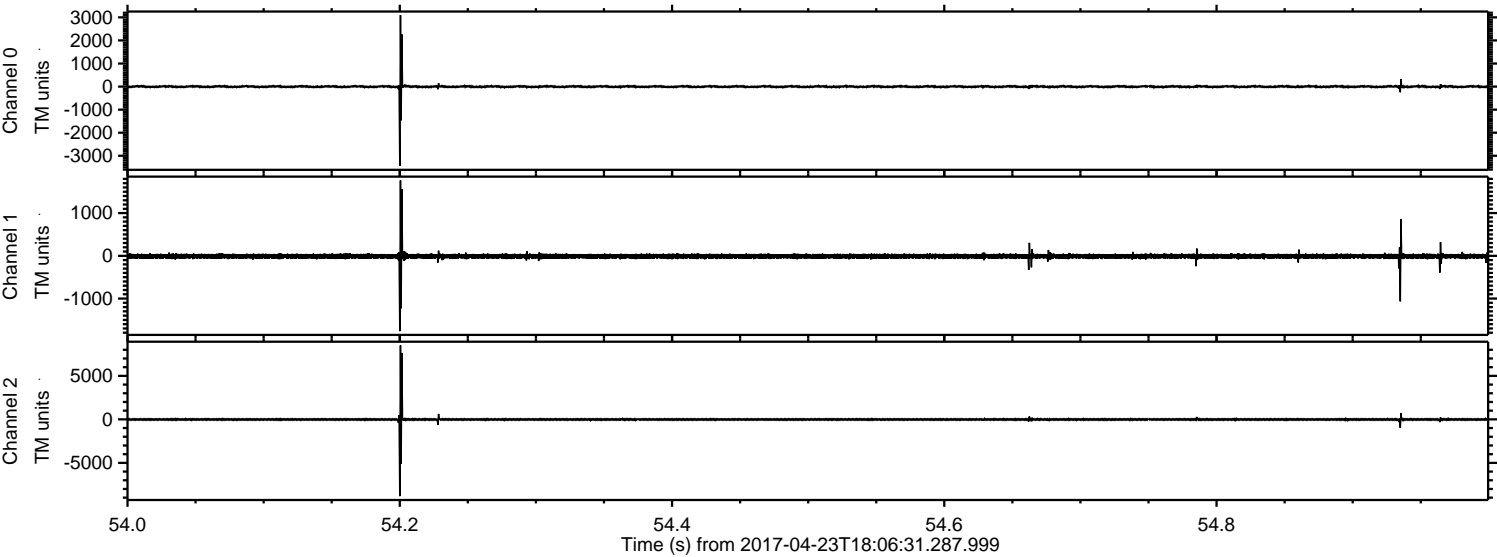
Processed Sun Apr 23 20:14:36 2017 by ELM ver.2012-10-06 from 001__elm20170423_180630__dat00.bin



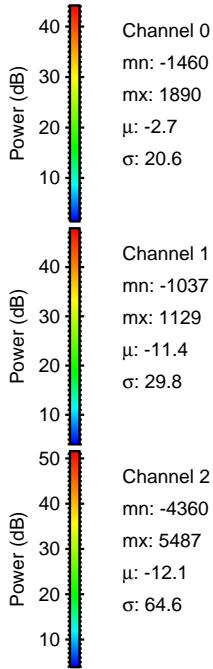
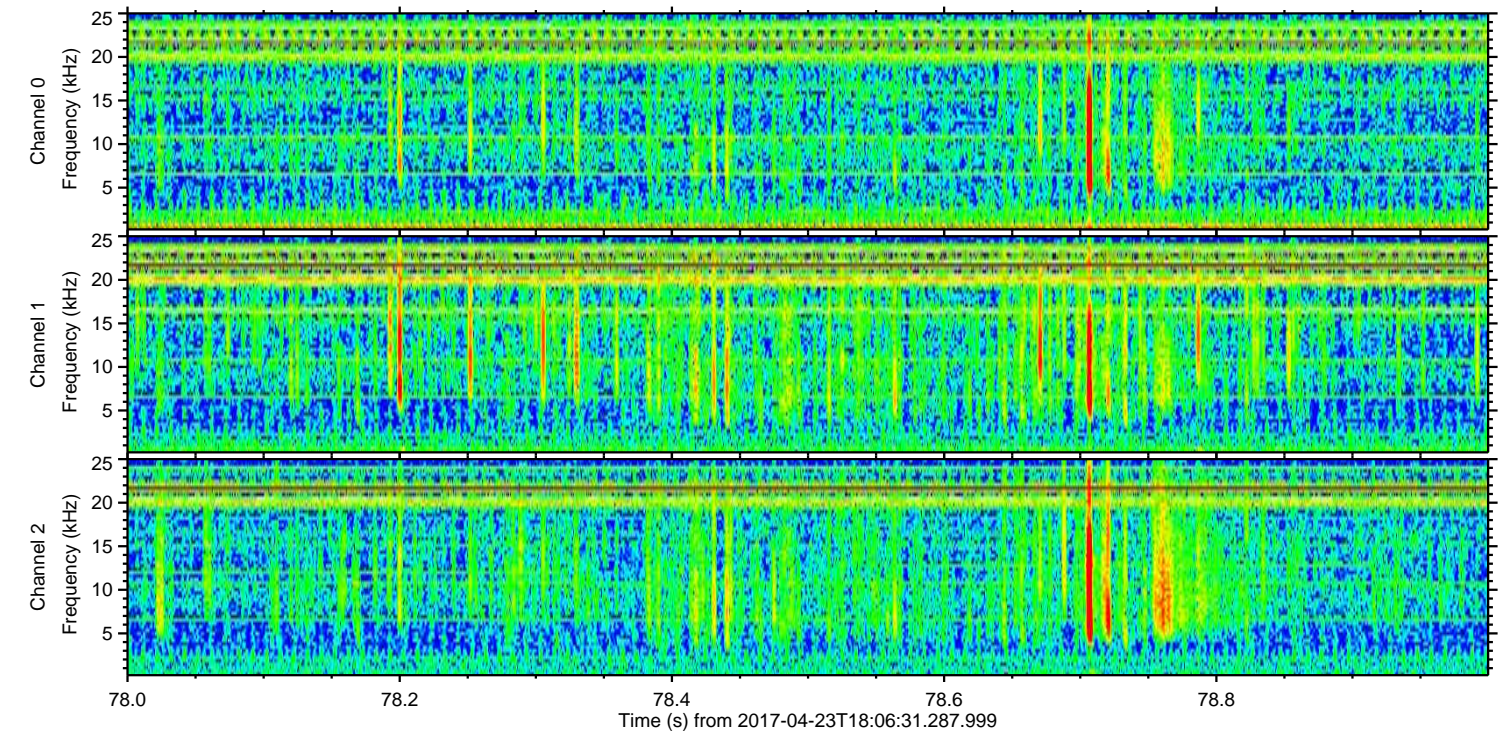
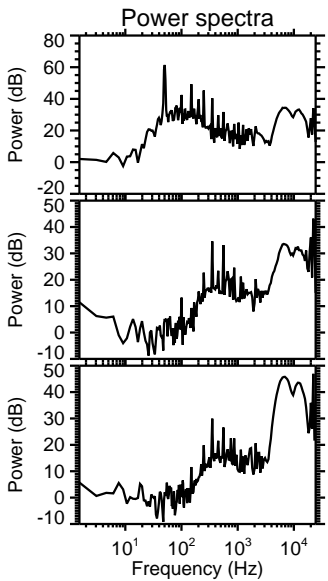
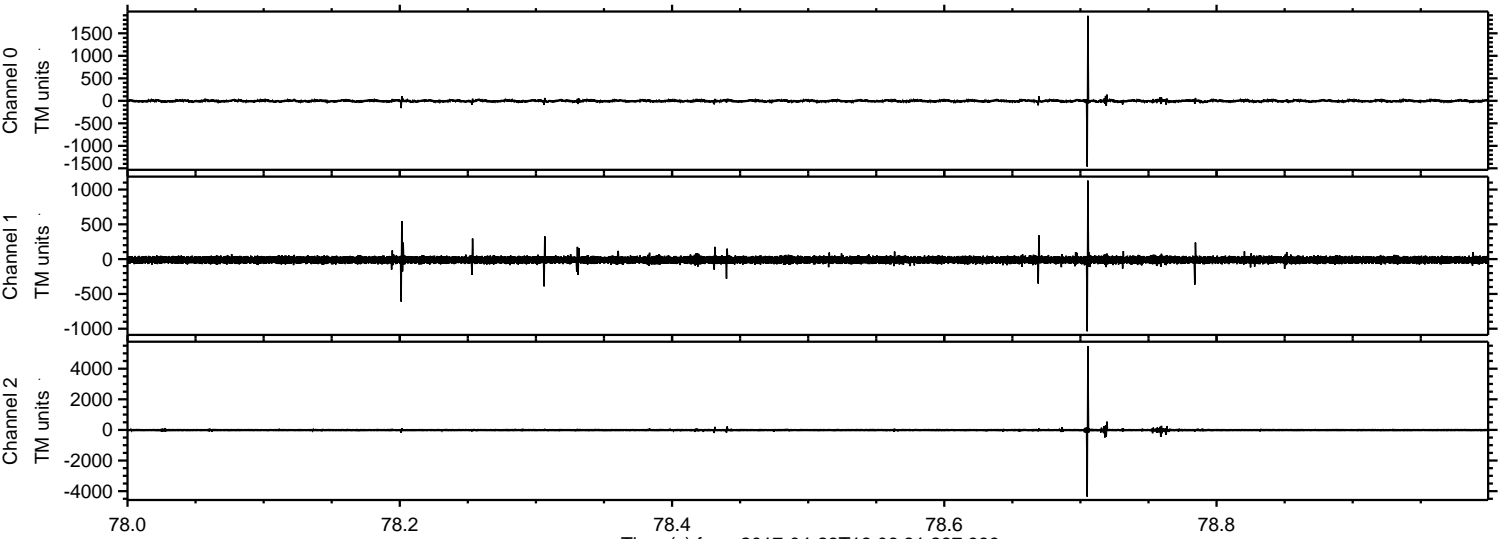
Processed Sun Apr 23 20:14:48 2017 by ELM ver.2012-10-06 from 001__elm20170423_180630__dat00.bin



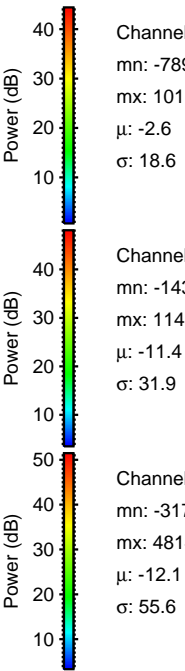
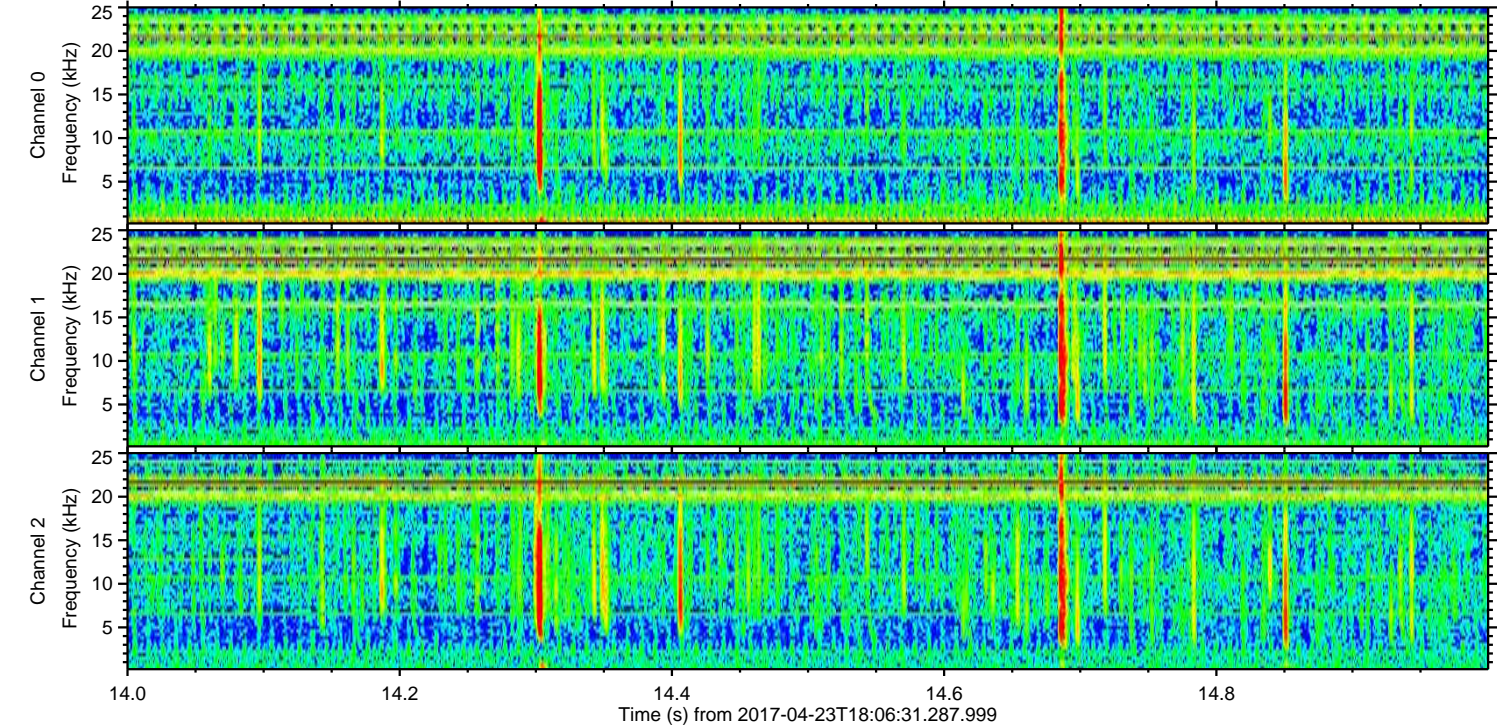
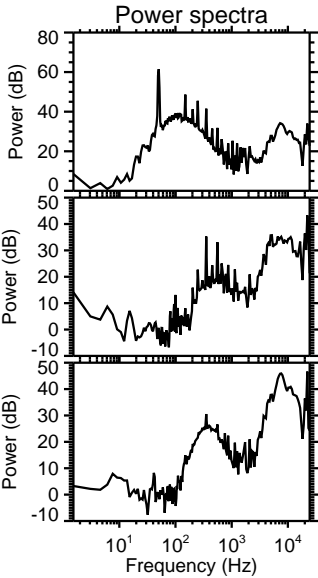
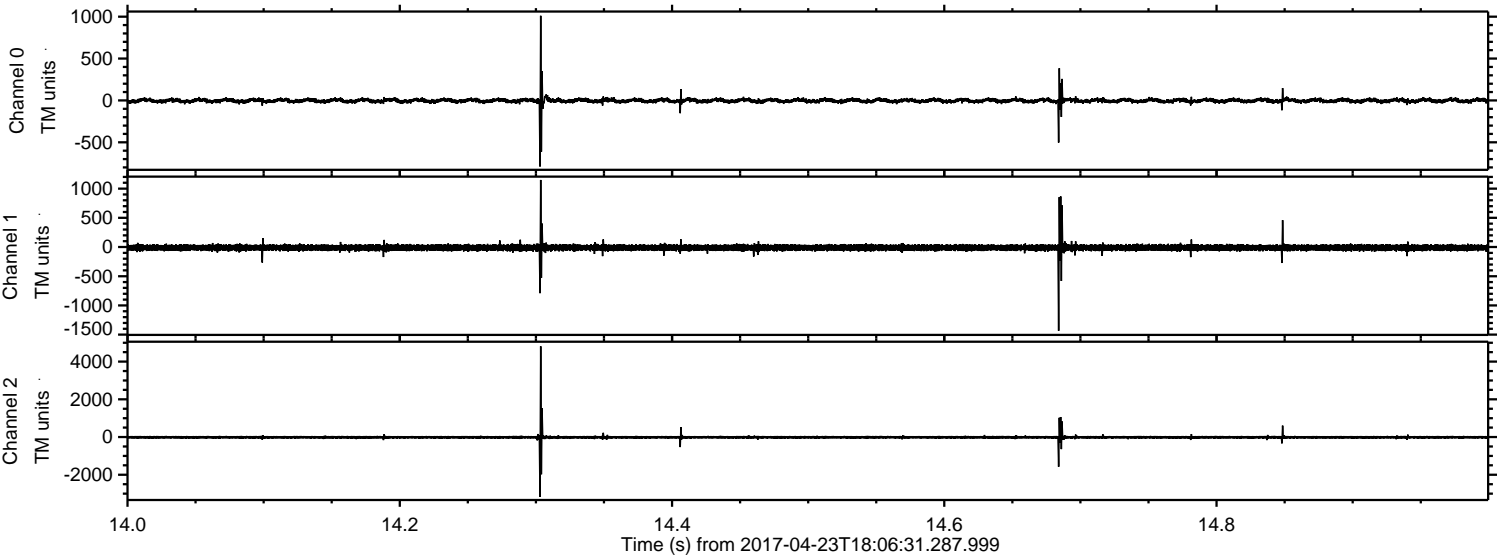
Processed Sun Apr 23 20:14:49 2017 by ELM ver.2012-10-06 from 001__elm20170423_180630__dat00.bin



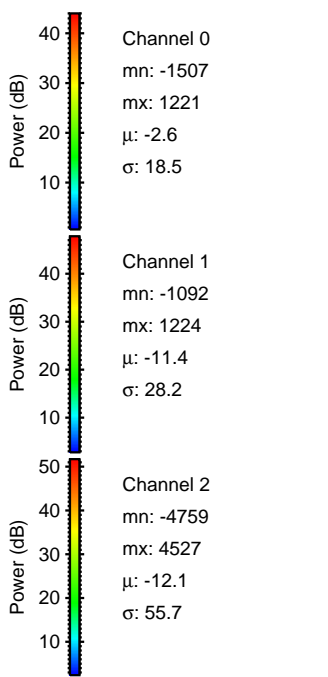
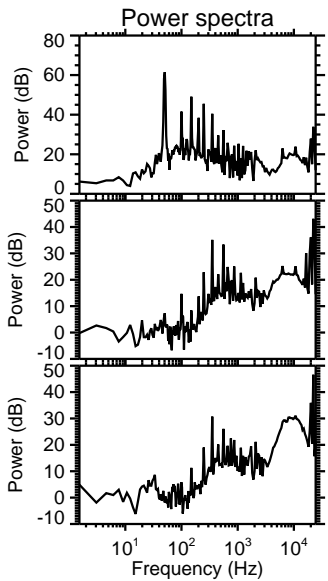
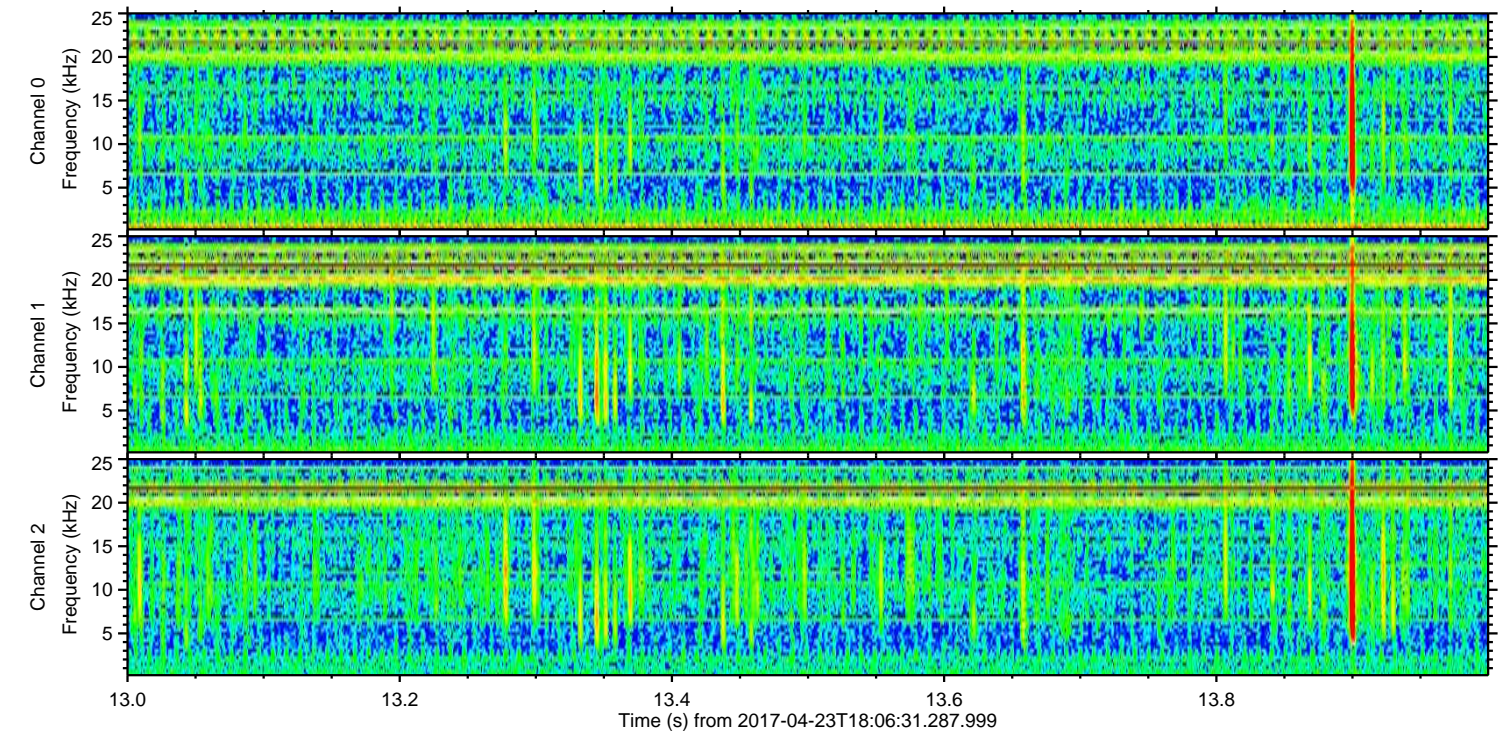
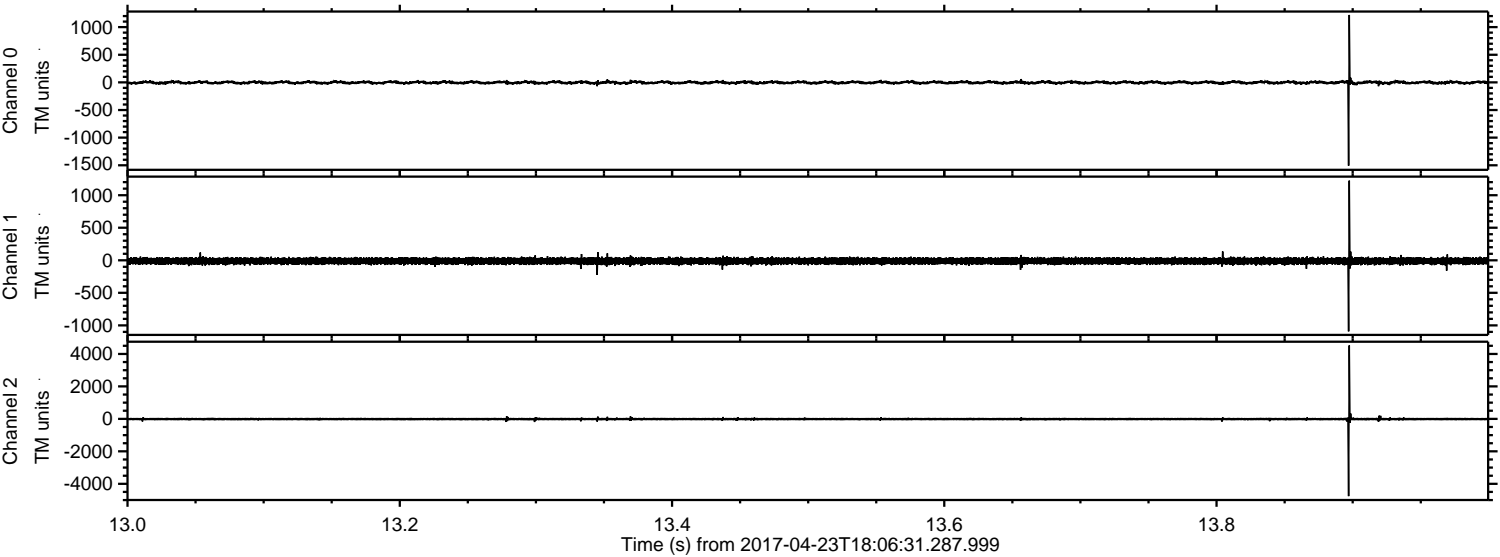
Processed Sun Apr 23 20:14:50 2017 by ELM ver.2012-10-06 from 001__elm20170423_180630__dat00.bin



Processed Sun Apr 23 20:14:51 2017 by ELM ver.2012-10-06 from 001__elm20170423_180630__dat00.bin



Processed Sun Apr 23 20:14:52 2017 by ELM ver.2012-10-06 from 001__elm20170423_180630__dat00.bin



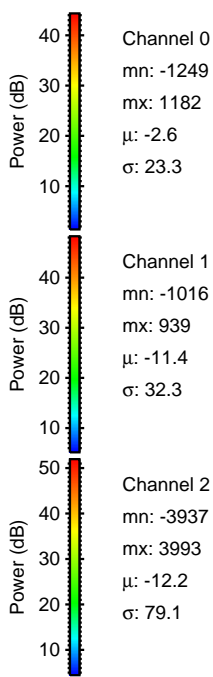
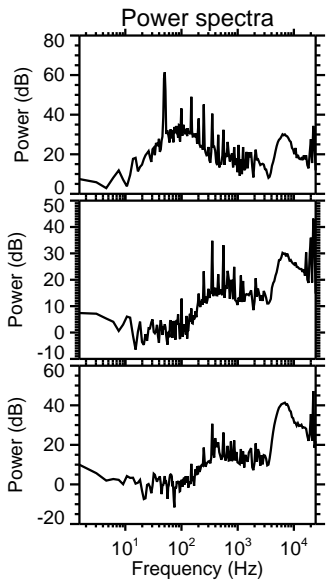
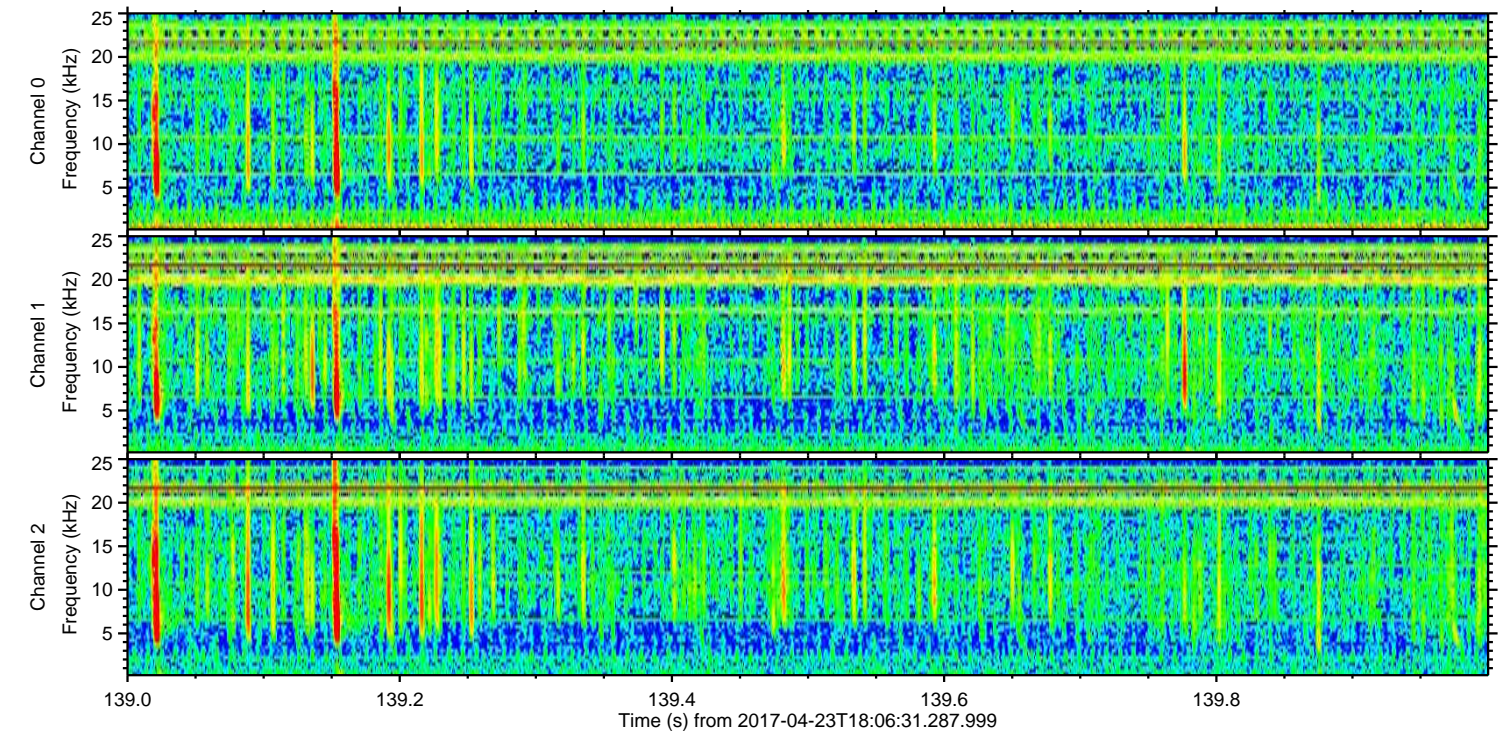
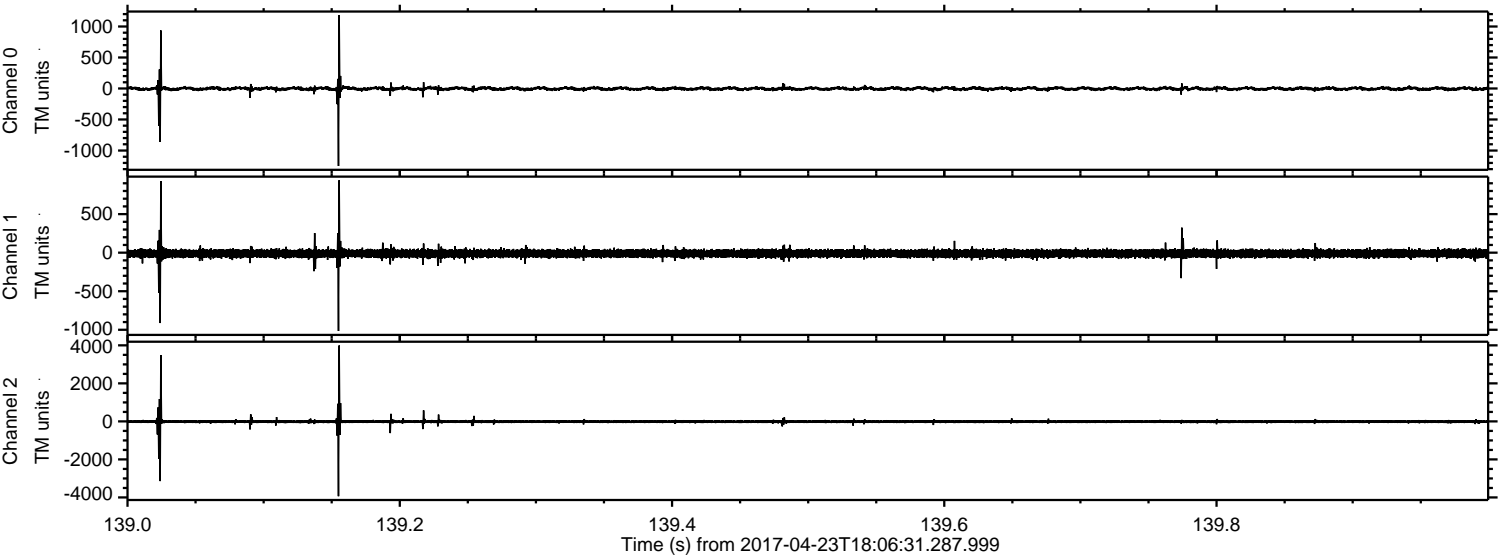
Channel 0
mn: -1507
mx: 1221
 μ : -2.6
 σ : 18.5

Channel 1
mn: -1092
mx: 1224
 μ : -11.4
 σ : 28.2

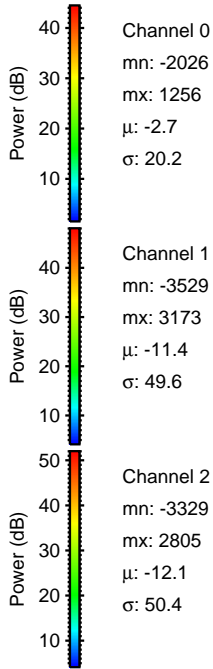
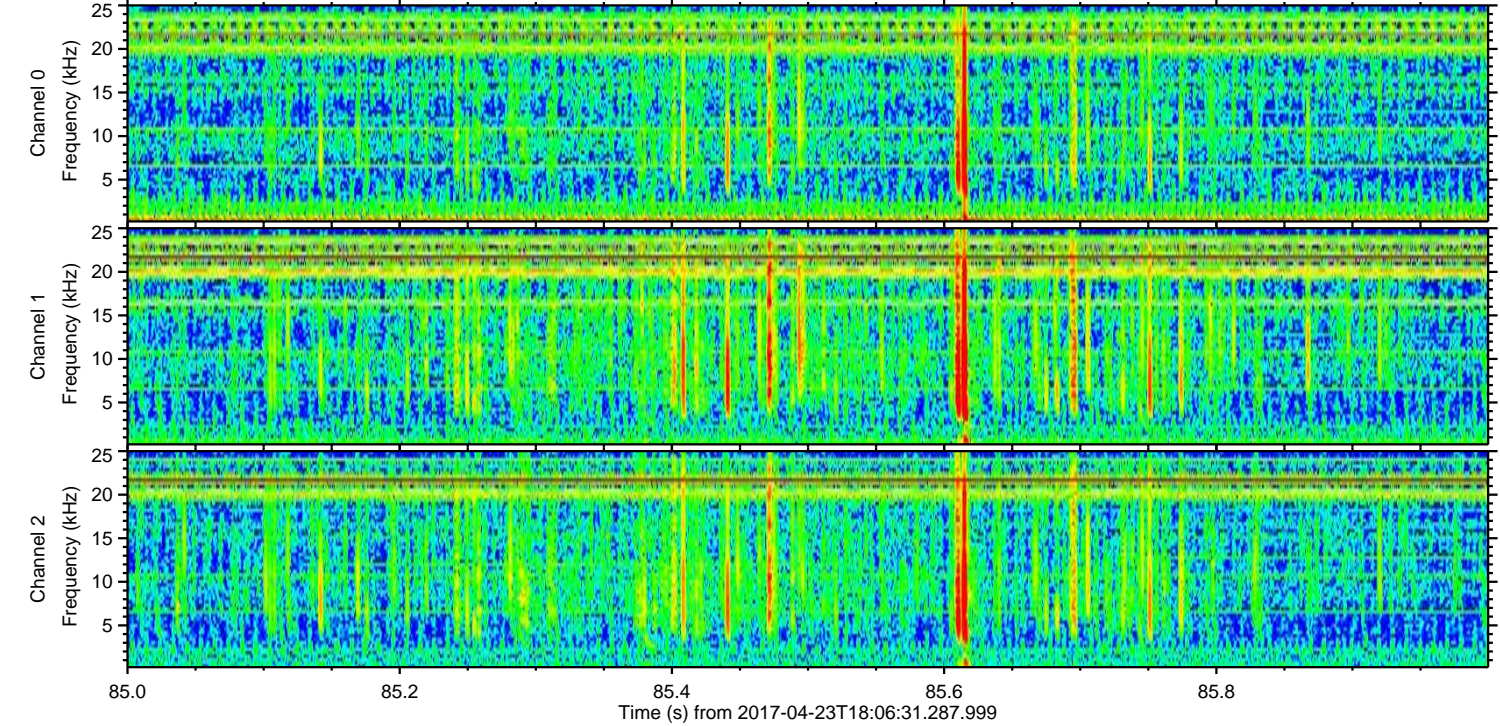
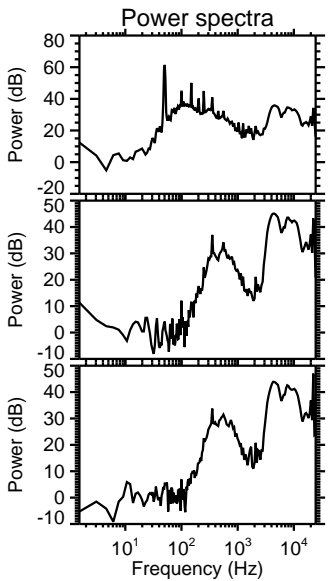
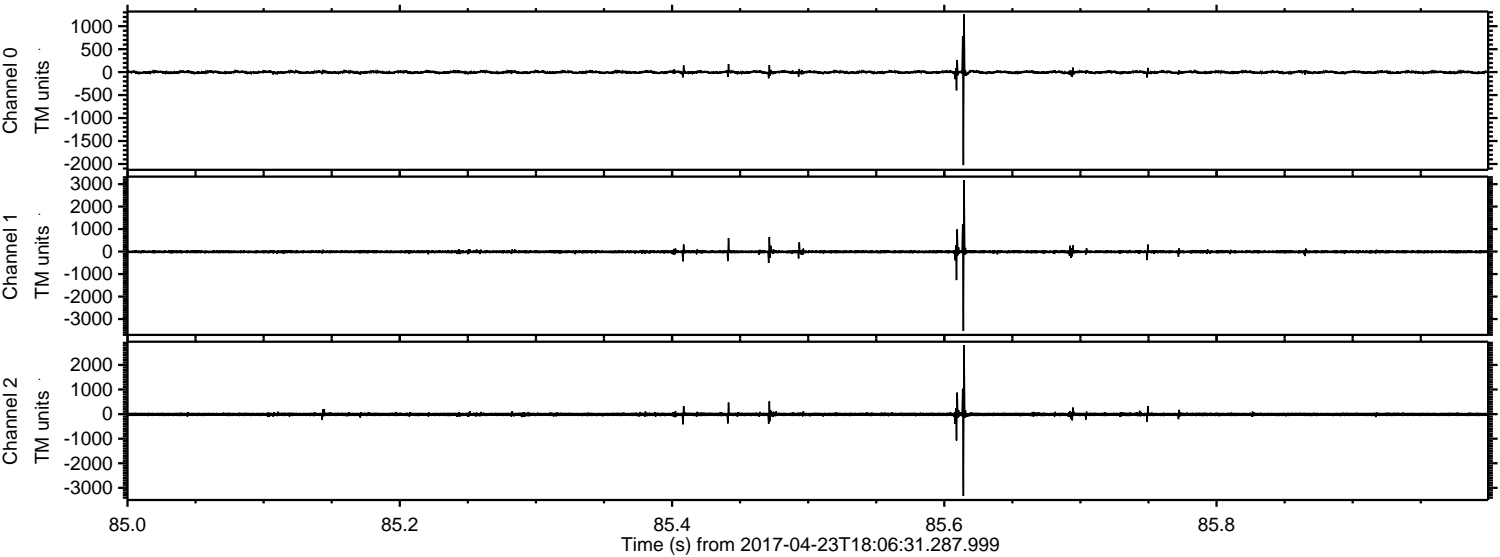
Channel 2
mn: -4759
mx: 4527
 μ : -12.1
 σ : 55.7

ELMAVAN 3D WAVEFORMS (Measured data sampled at 50 kHz) 51000 packets of 144 samples from 2017-04-23T18:06:31.287.999. Part 140/147

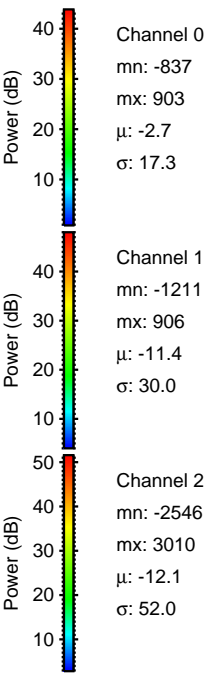
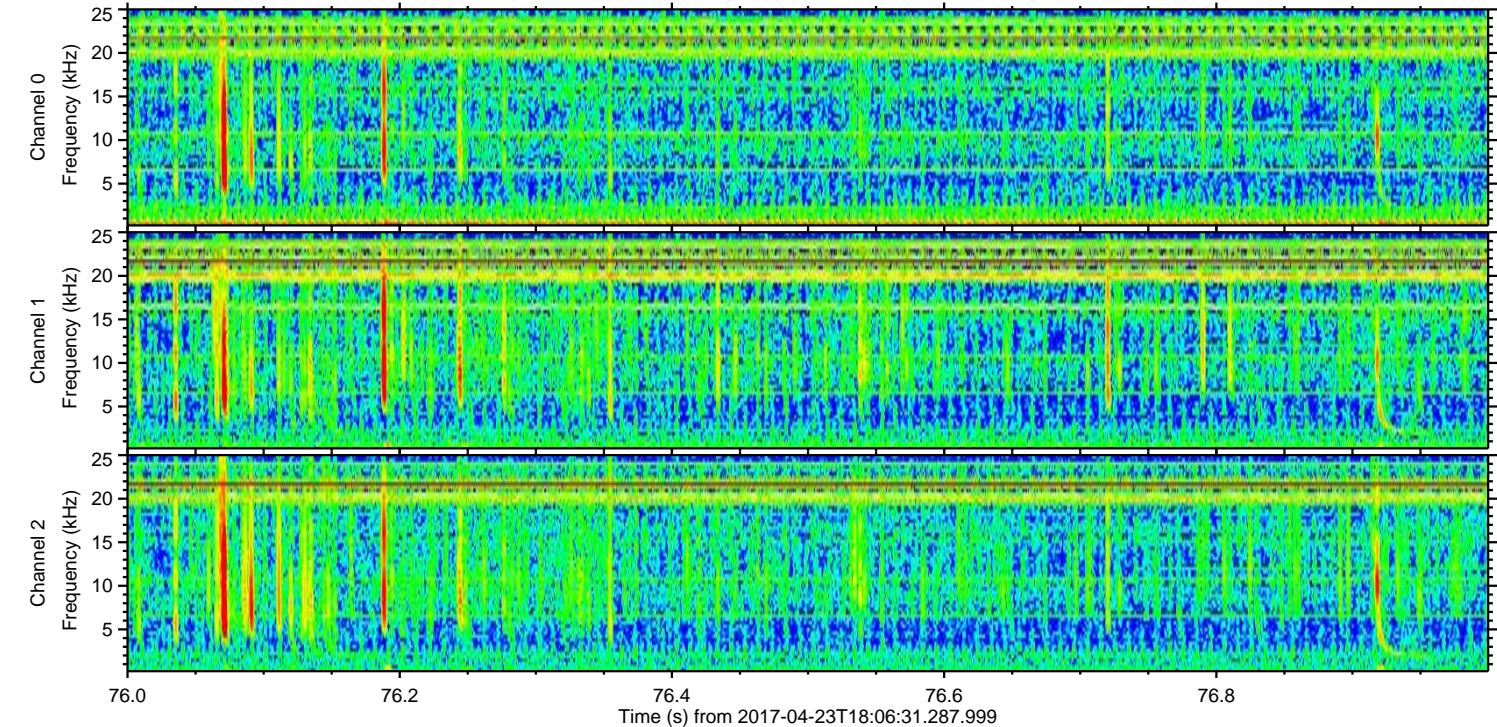
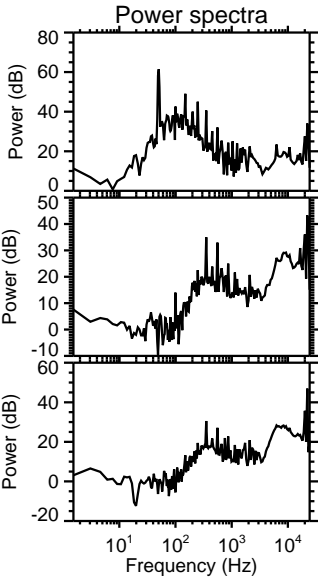
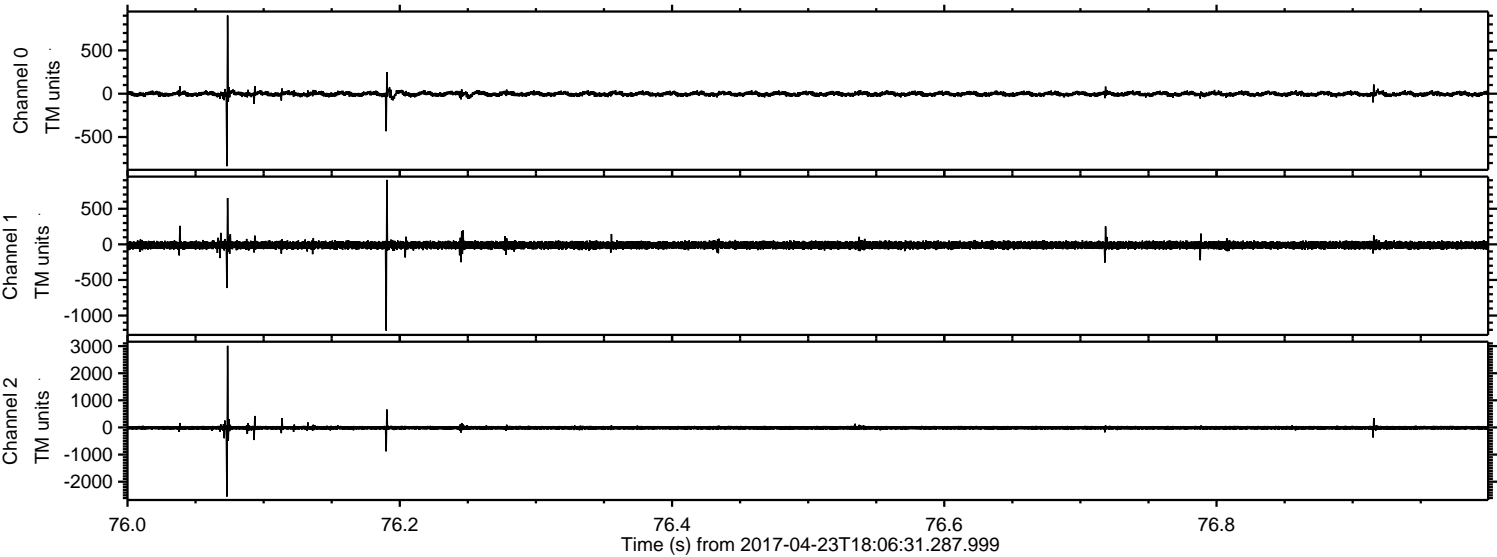
Processed Sun Apr 23 20:14:53 2017 by ELM ver.2012-10-06 from 001__elm20170423_180630__dat00.bin



Processed Sun Apr 23 20:14:54 2017 by ELM ver.2012-10-06 from 001__elm20170423_180630__dat00.bin



Processed Sun Apr 23 20:14:55 2017 by ELM ver.2012-10-06 from 001__elm20170423_180630__dat00.bin

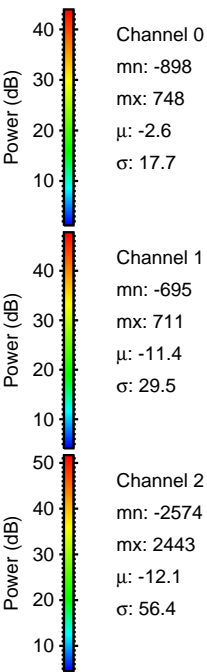
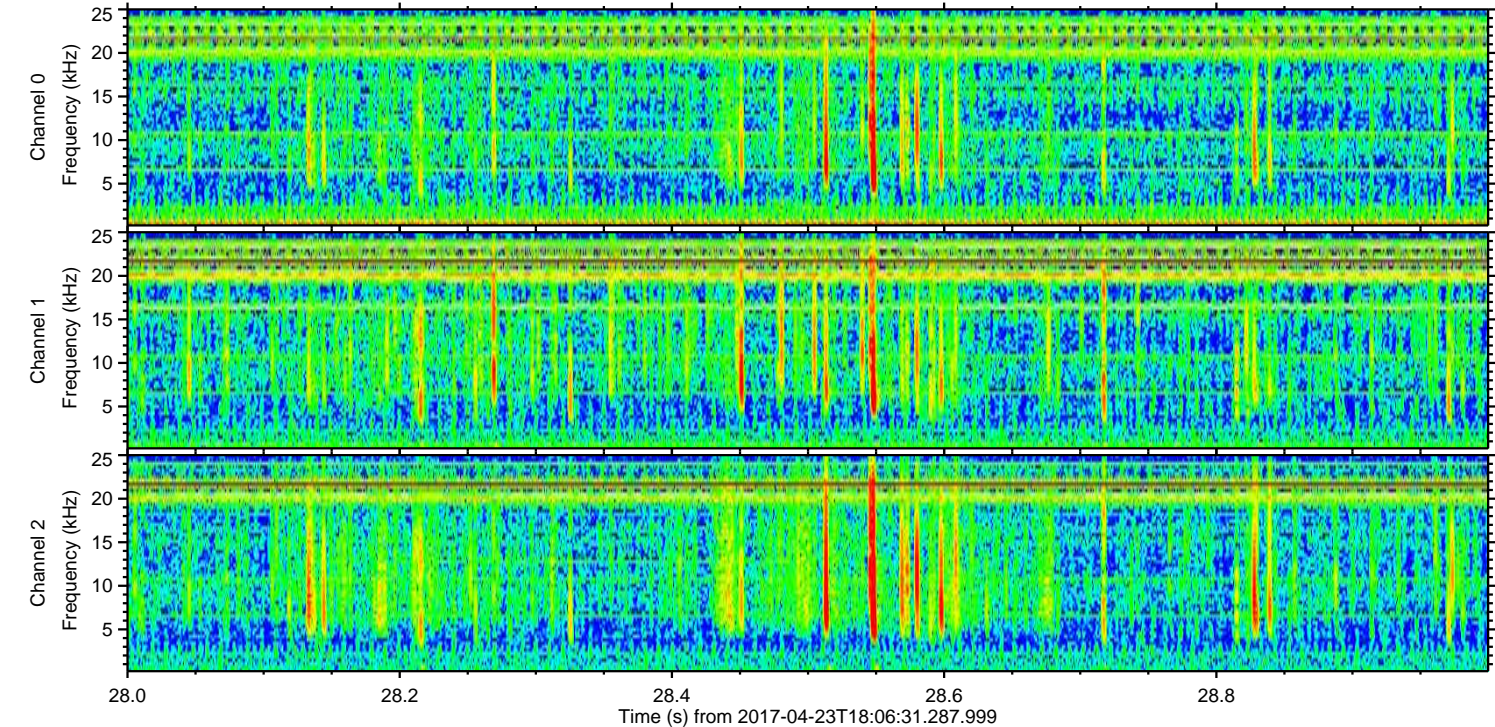
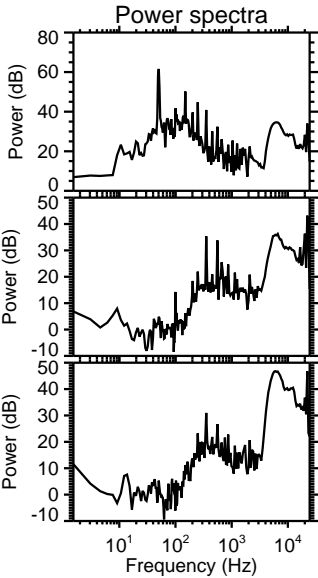
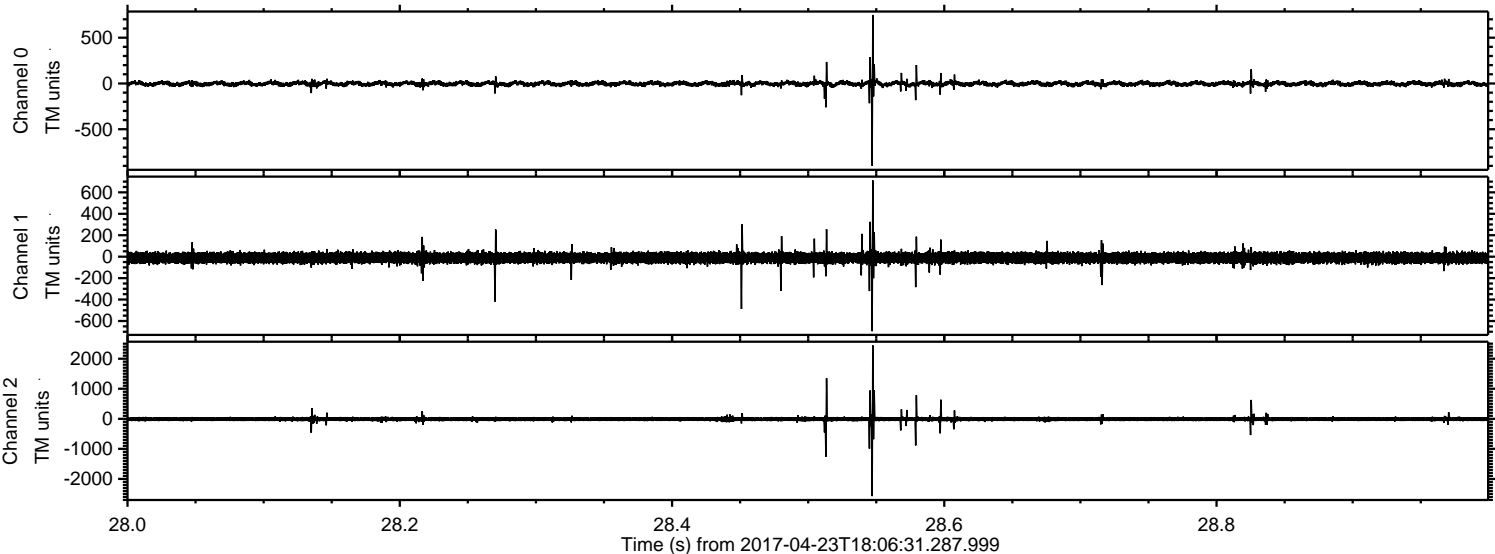


Channel 0
mn: -837
mx: 903
 μ : -2.7
 σ : 17.3

Channel 1
mn: -1211
mx: 906
 μ : -11.4
 σ : 30.0

Channel 2
mn: -2546
mx: 3010
 μ : -12.1
 σ : 52.0

Processed Sun Apr 23 20:14:56 2017 by ELM ver.2012-10-06 from 001__elm20170423_180630__dat00.bin



Channel 0
mn: -898
mx: 748
 μ : -2.6
 σ : 17.7

Channel 1
mn: -695
mx: 711
 μ : -11.4
 σ : 29.5

Channel 2
mn: -2574
mx: 2443
 μ : -12.1
 σ : 56.4

ELMAVAN 3D WAVEFORMS (Measured data sampled at 50 kHz) 51000 packets of 144 samples from 2017-04-23T18:06:31.287.999. Part 134/147

