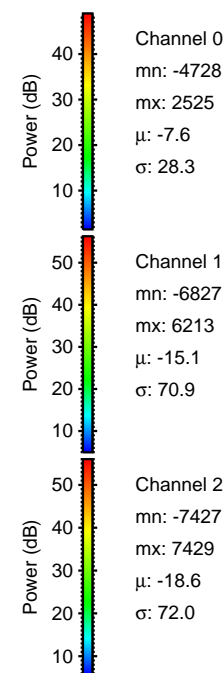
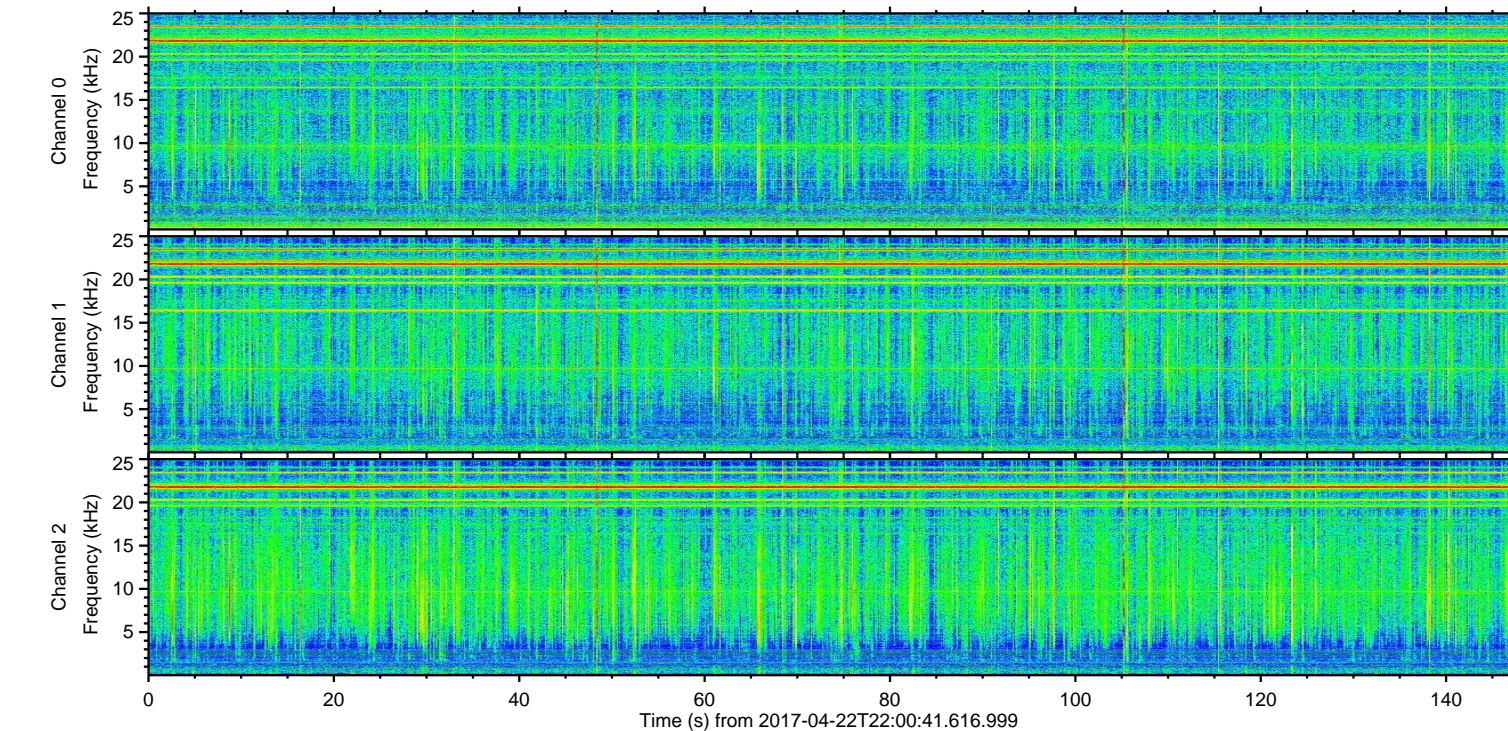
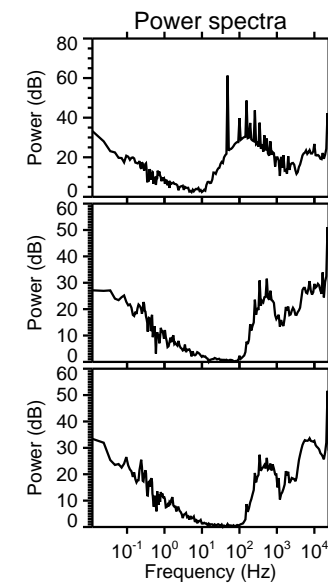
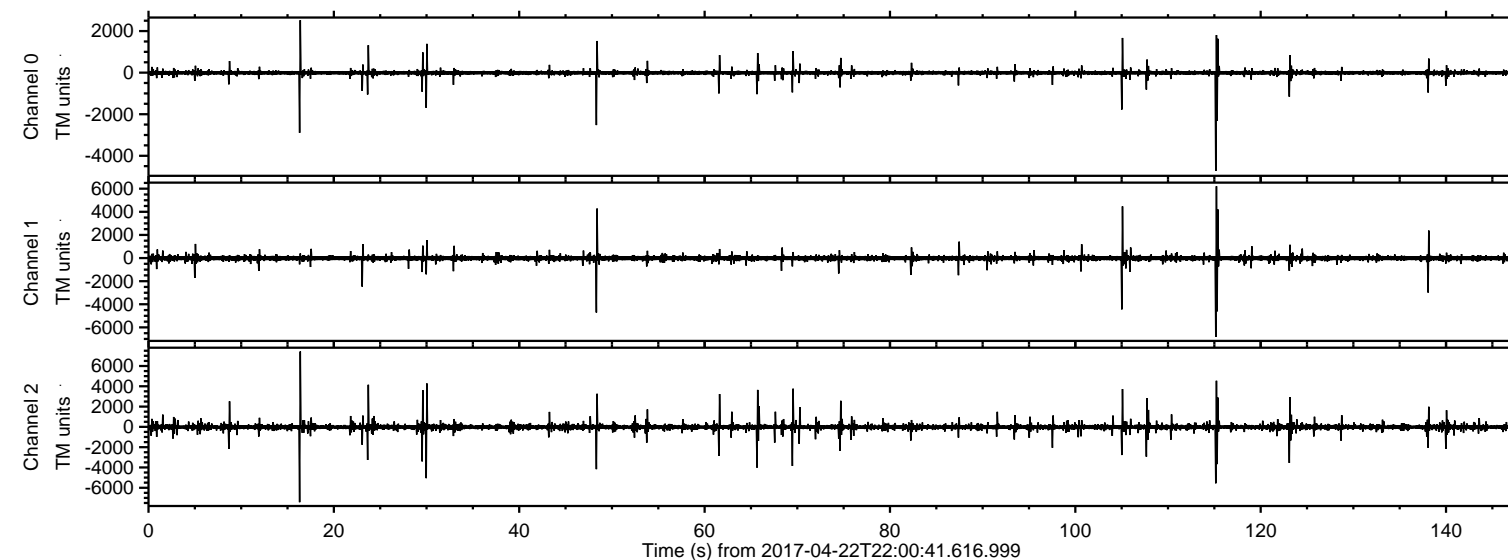
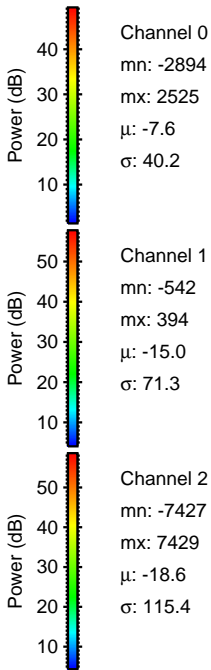
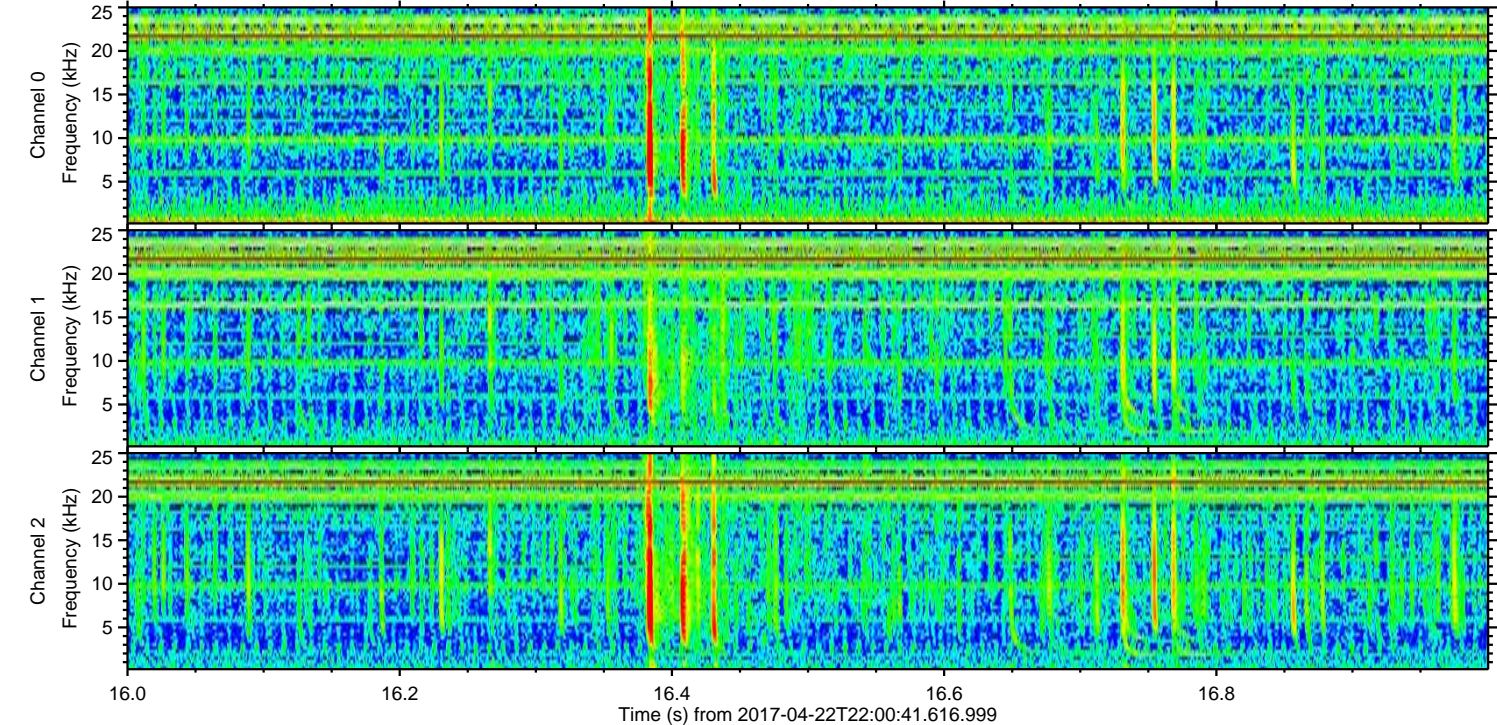
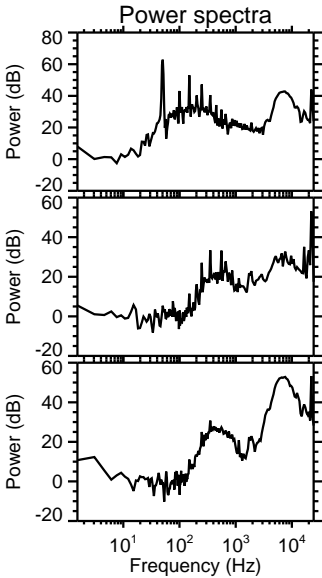
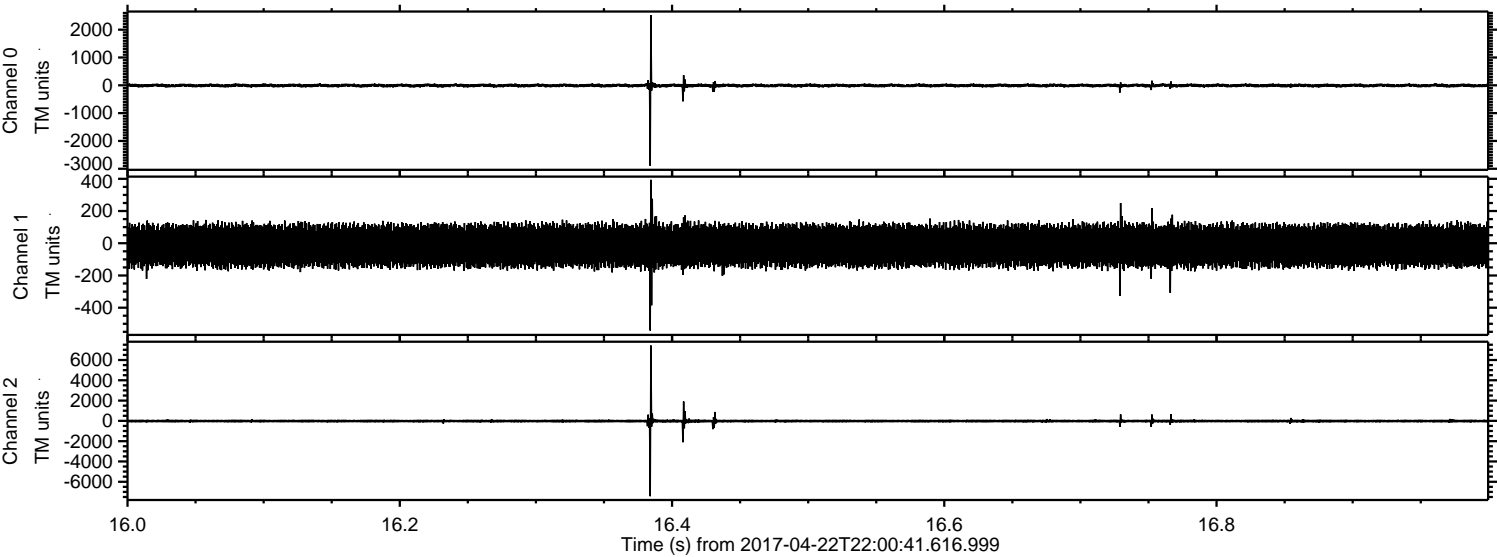


ELMAVAN 3D WAVEFORMS (Measured data sampled at 50 kHz) 51000 packets of 144 samples from 2017-04-22T22:00:41.616.999.

Processed Sun Apr 23 00:08:08 2017 by ELM ver.2012-10-06 from 001__elm20170422_220040__dat00.bin

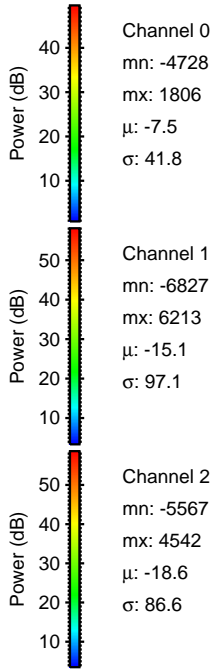
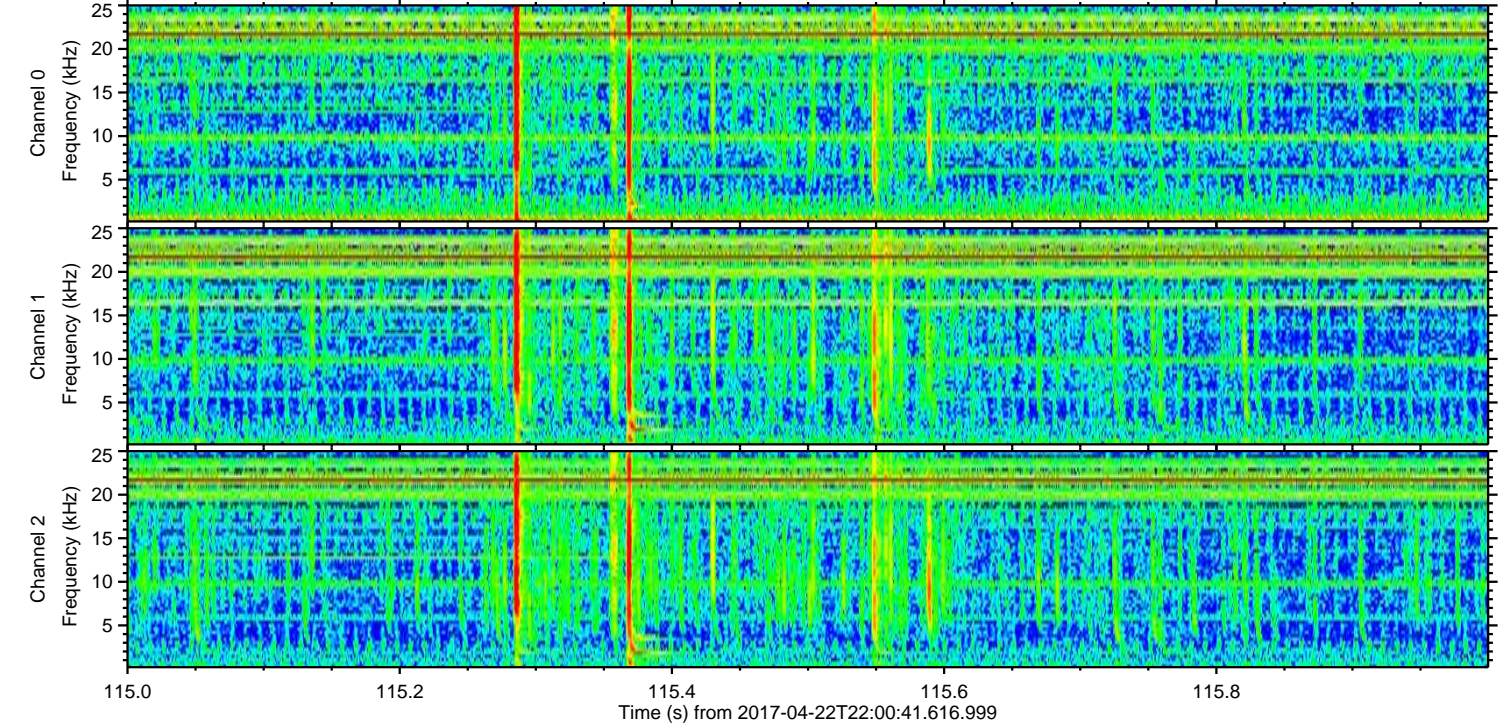
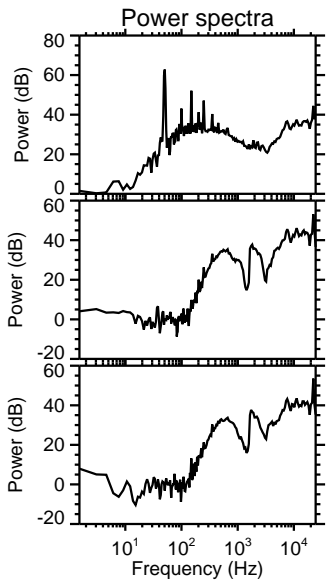
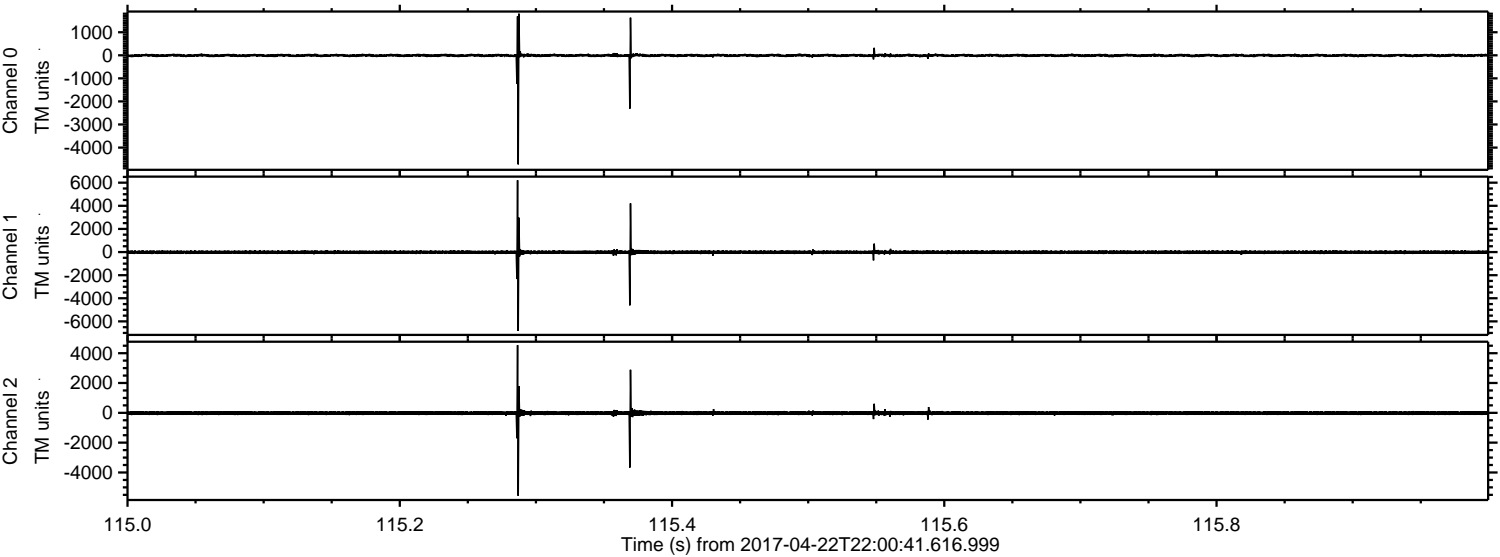


Processed Sun Apr 23 00:08:20 2017 by ELM ver.2012-10-06 from 001__elm20170422_220040__dat00.bin

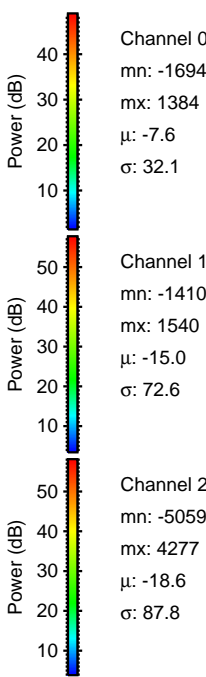
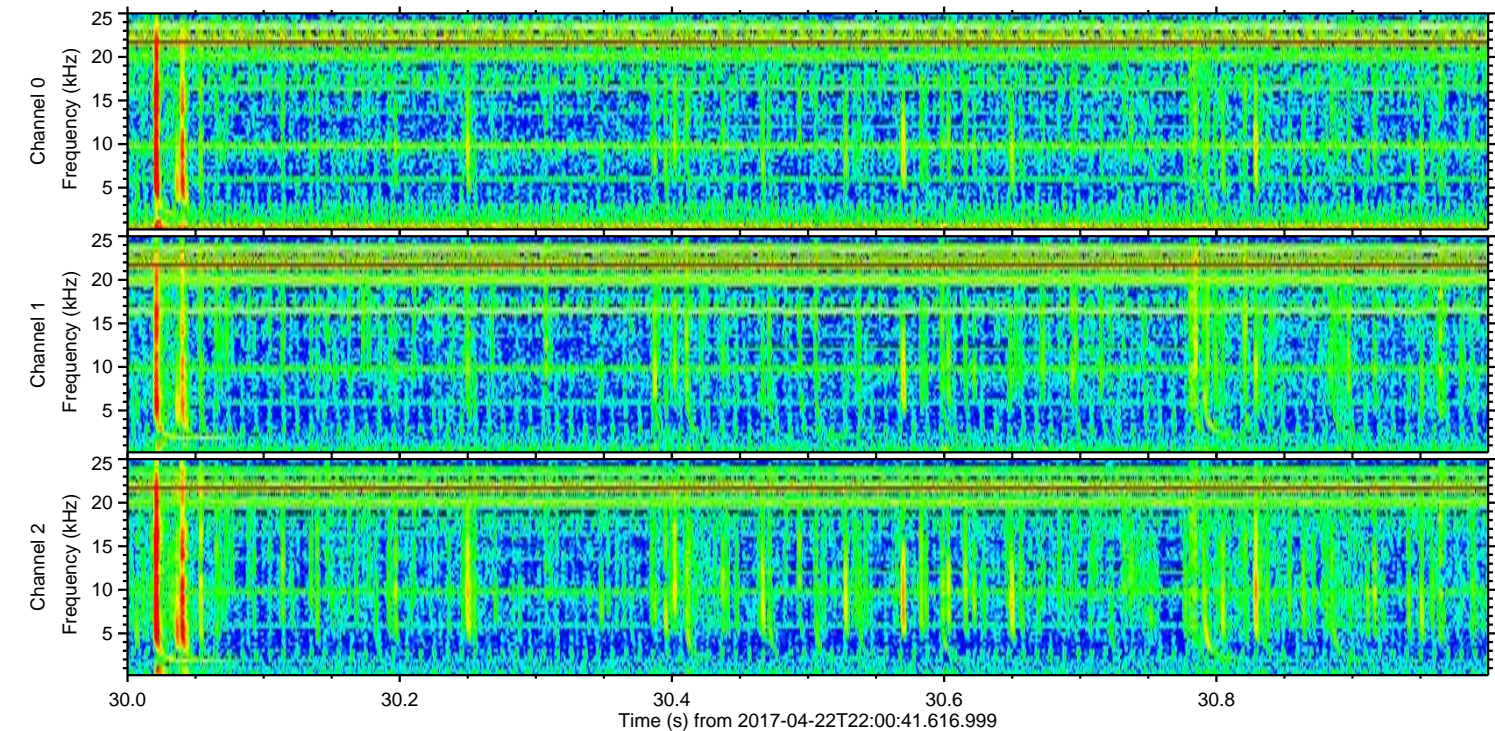
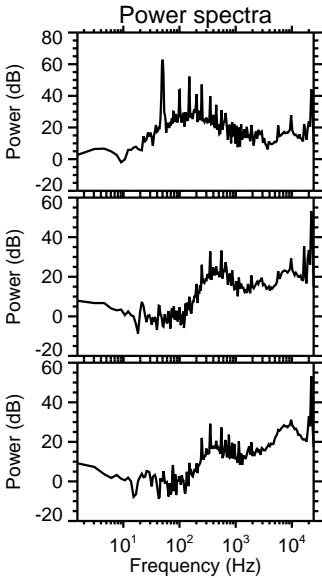
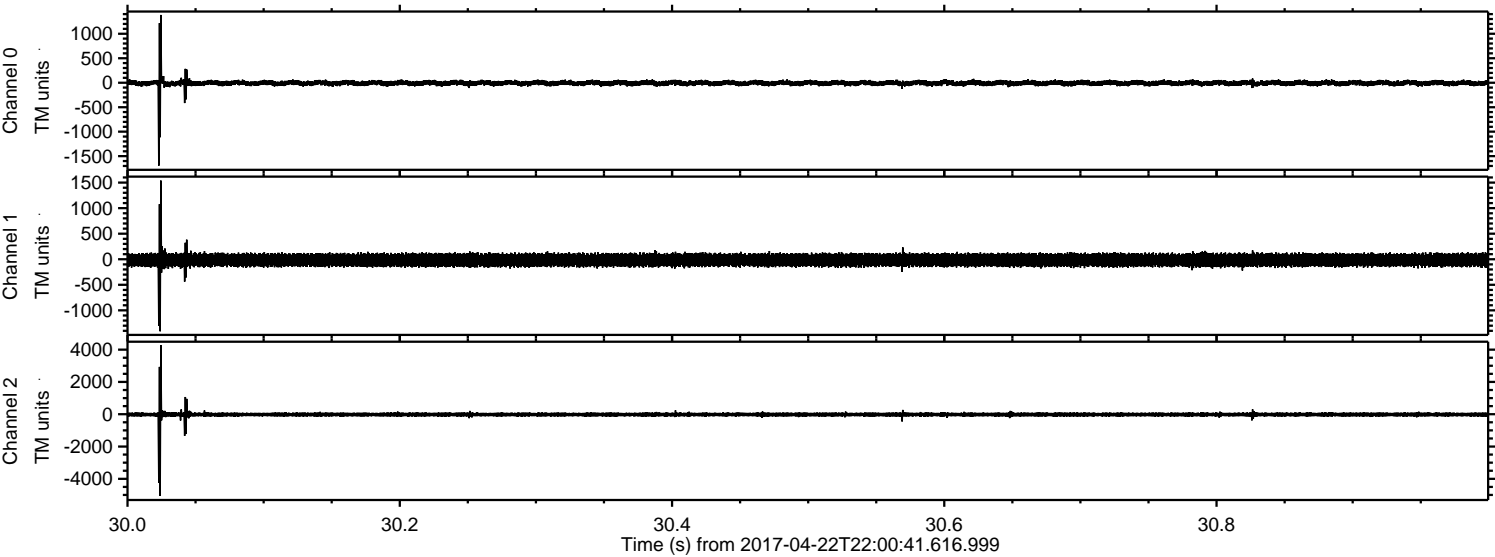


ELMAVAN 3D WAVEFORMS (Measured data sampled at 50 kHz) 51000 packets of 144 samples from 2017-04-22T22:00:41.616.999. Part 116/147

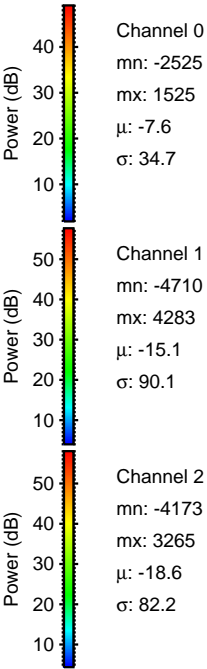
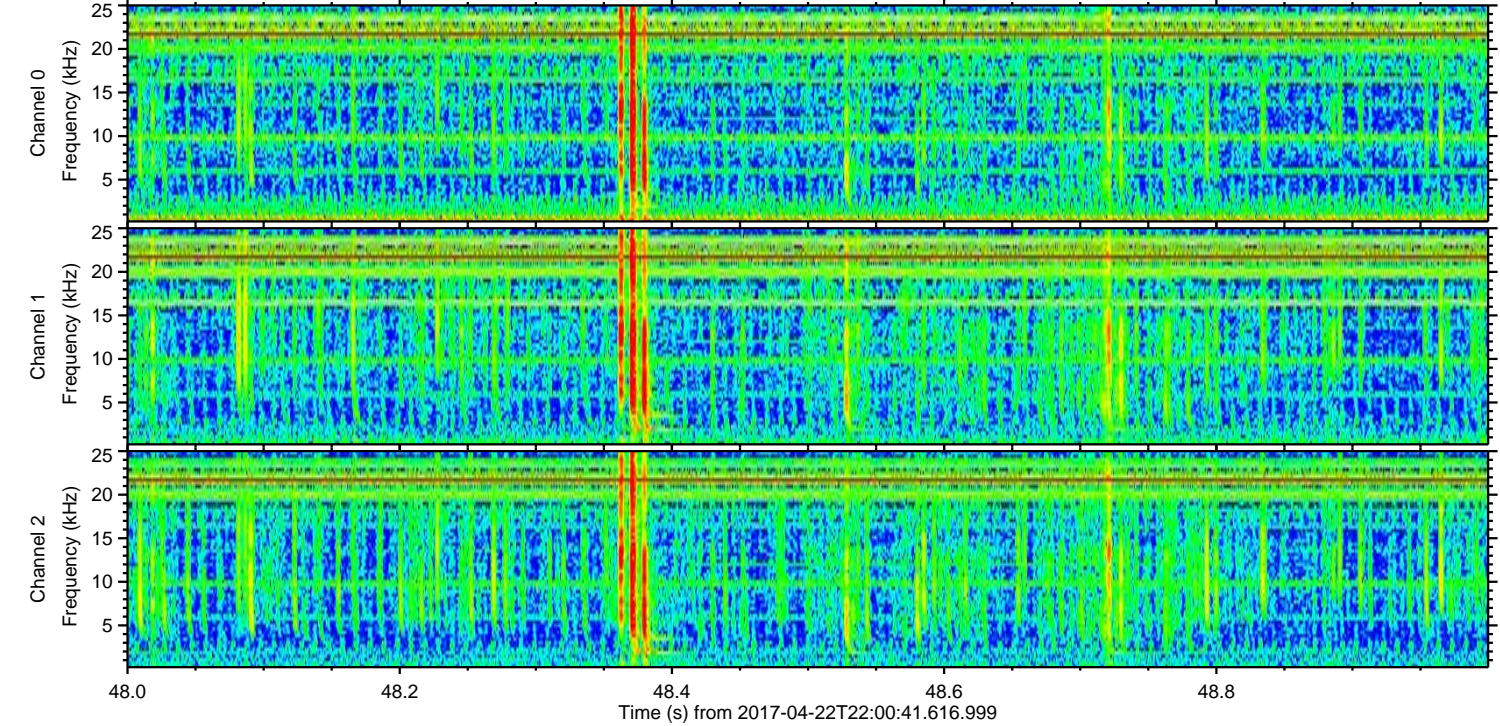
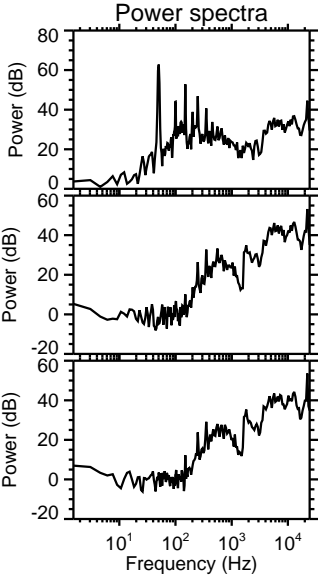
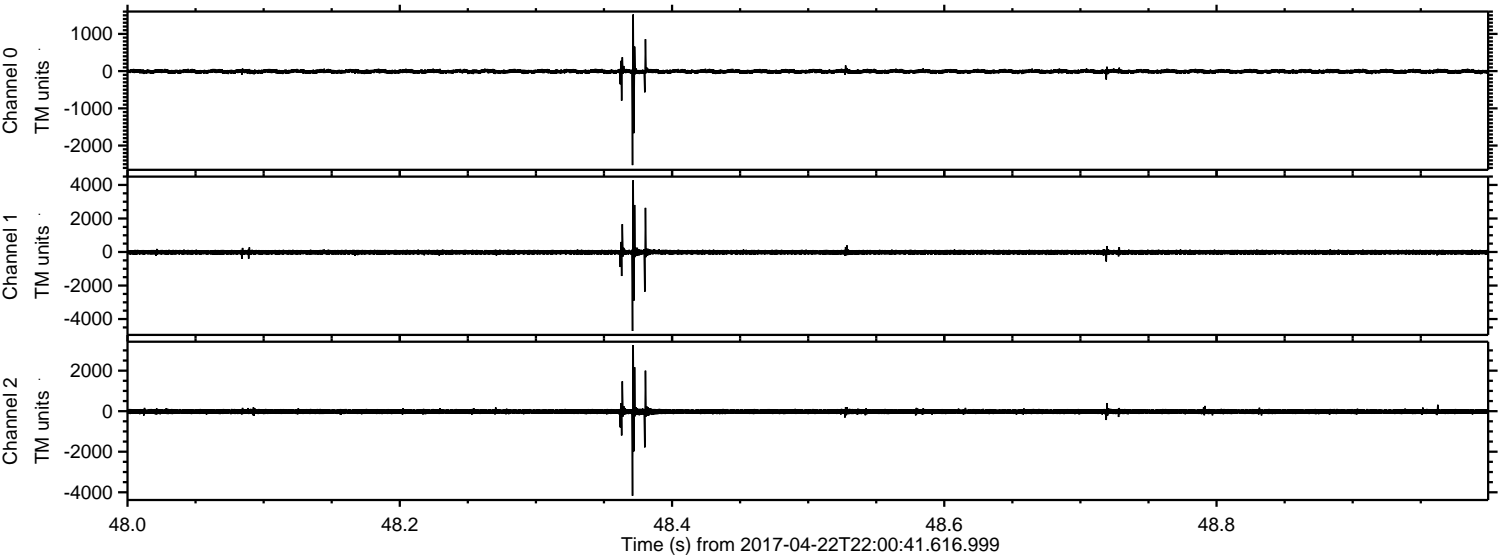
Processed Sun Apr 23 00:08:21 2017 by ELM ver.2012-10-06 from 001__elm20170422_220040__dat00.bin



Processed Sun Apr 23 00:08:22 2017 by ELM ver.2012-10-06 from 001__elm20170422_220040__dat00.bin

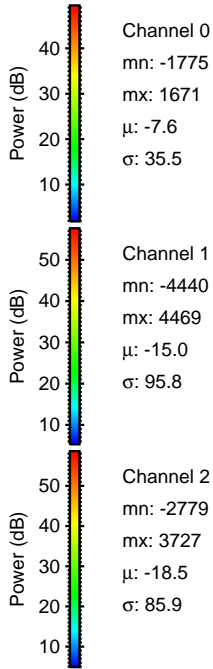
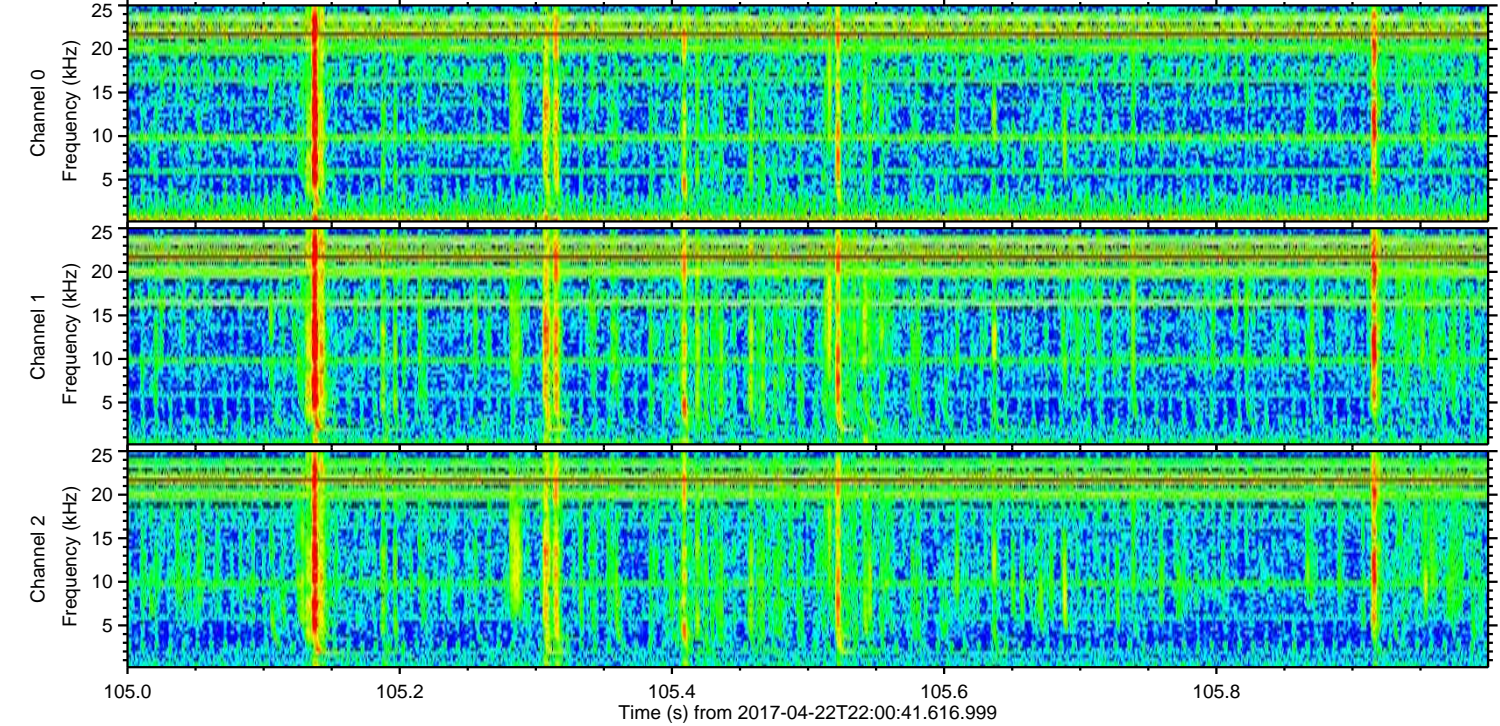
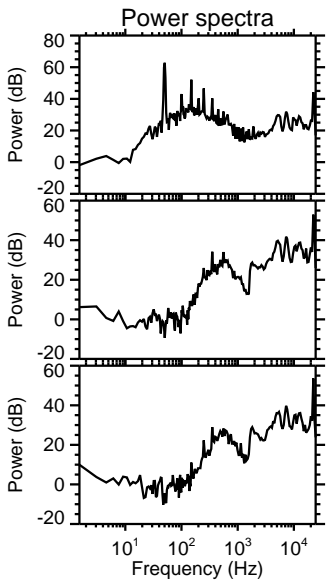
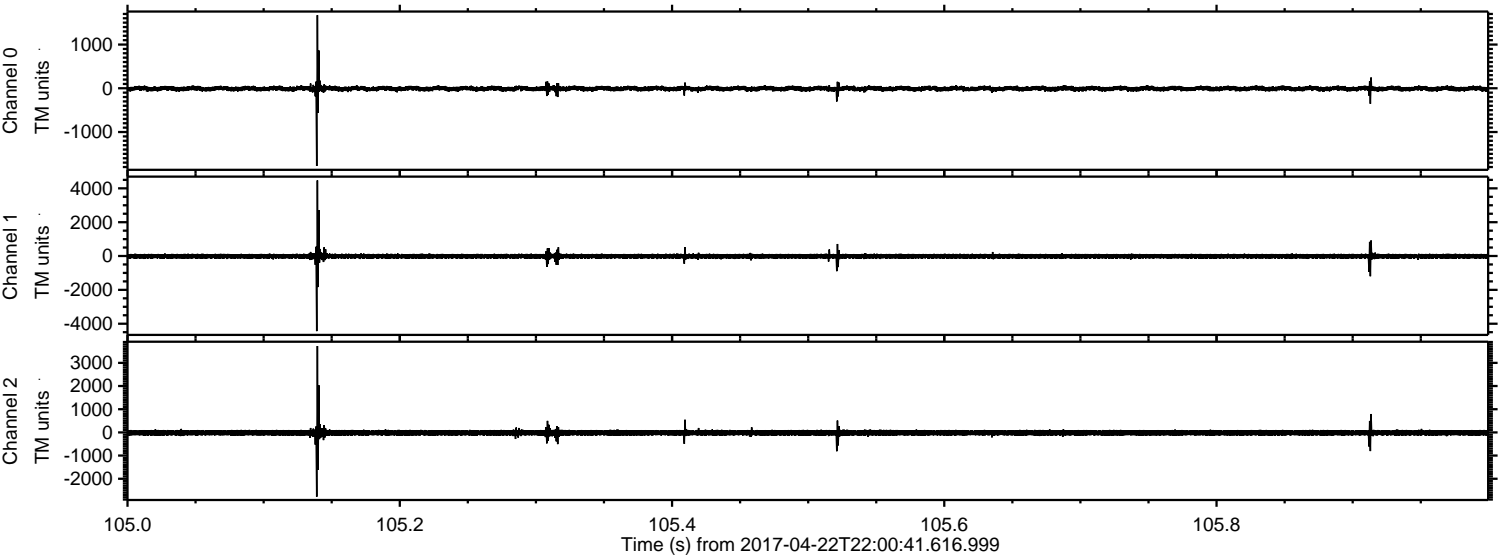


Processed Sun Apr 23 00:08:23 2017 by ELM ver.2012-10-06 from 001__elm20170422_220040__dat00.bin

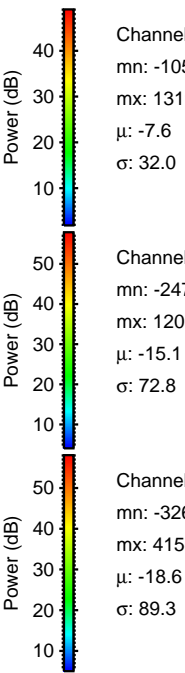
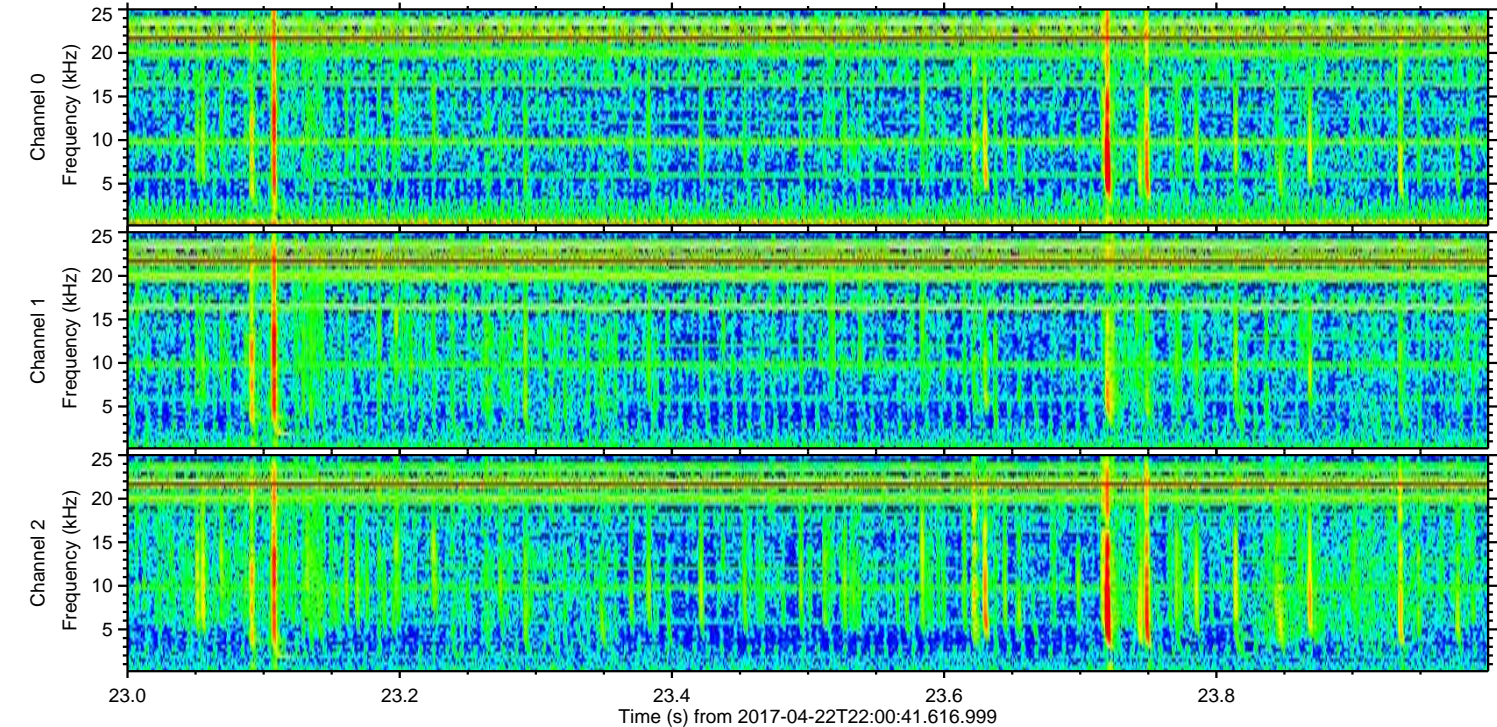
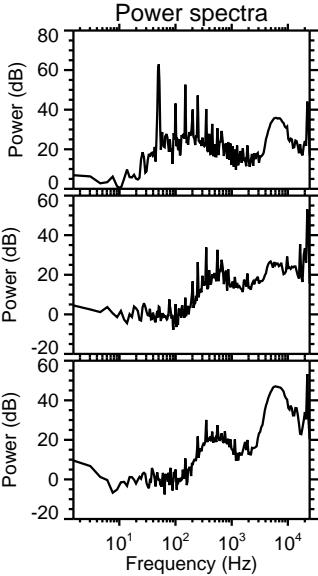
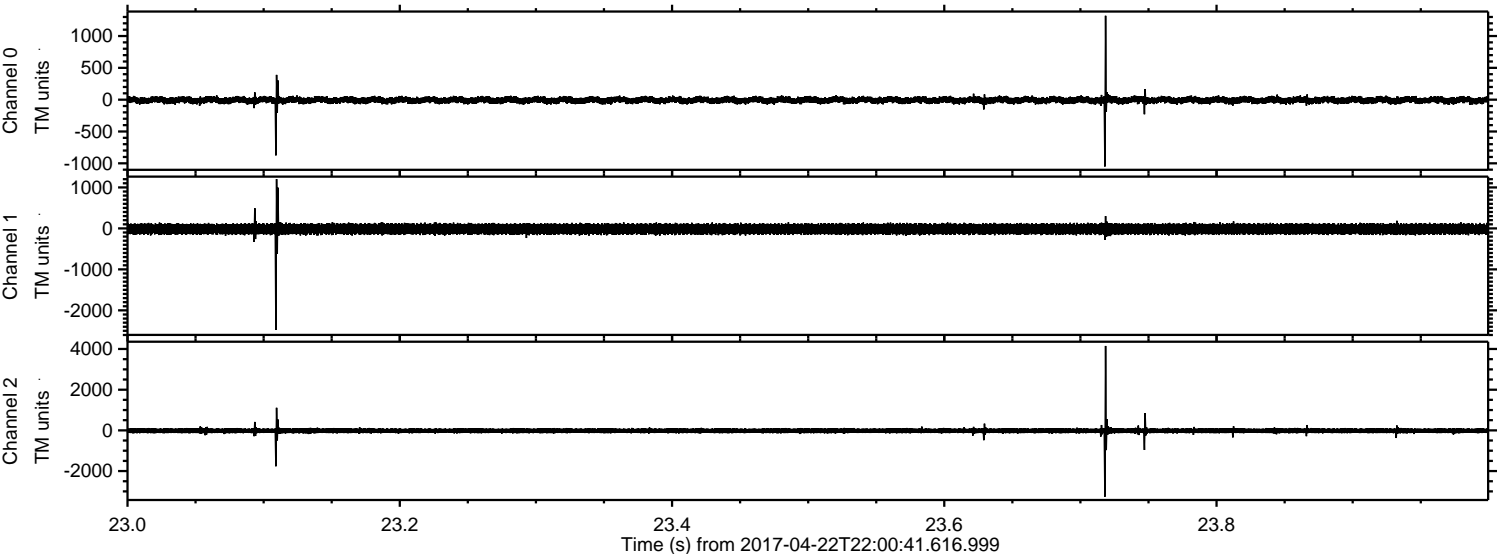


ELMAVAN 3D WAVEFORMS (Measured data sampled at 50 kHz) 51000 packets of 144 samples from 2017-04-22T22:00:41.616.999. Part 106/147

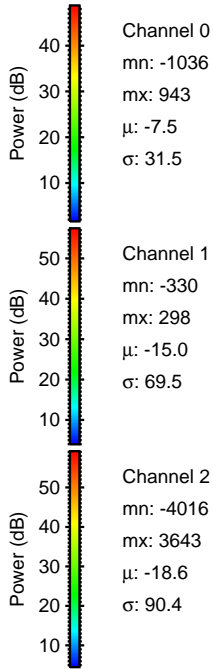
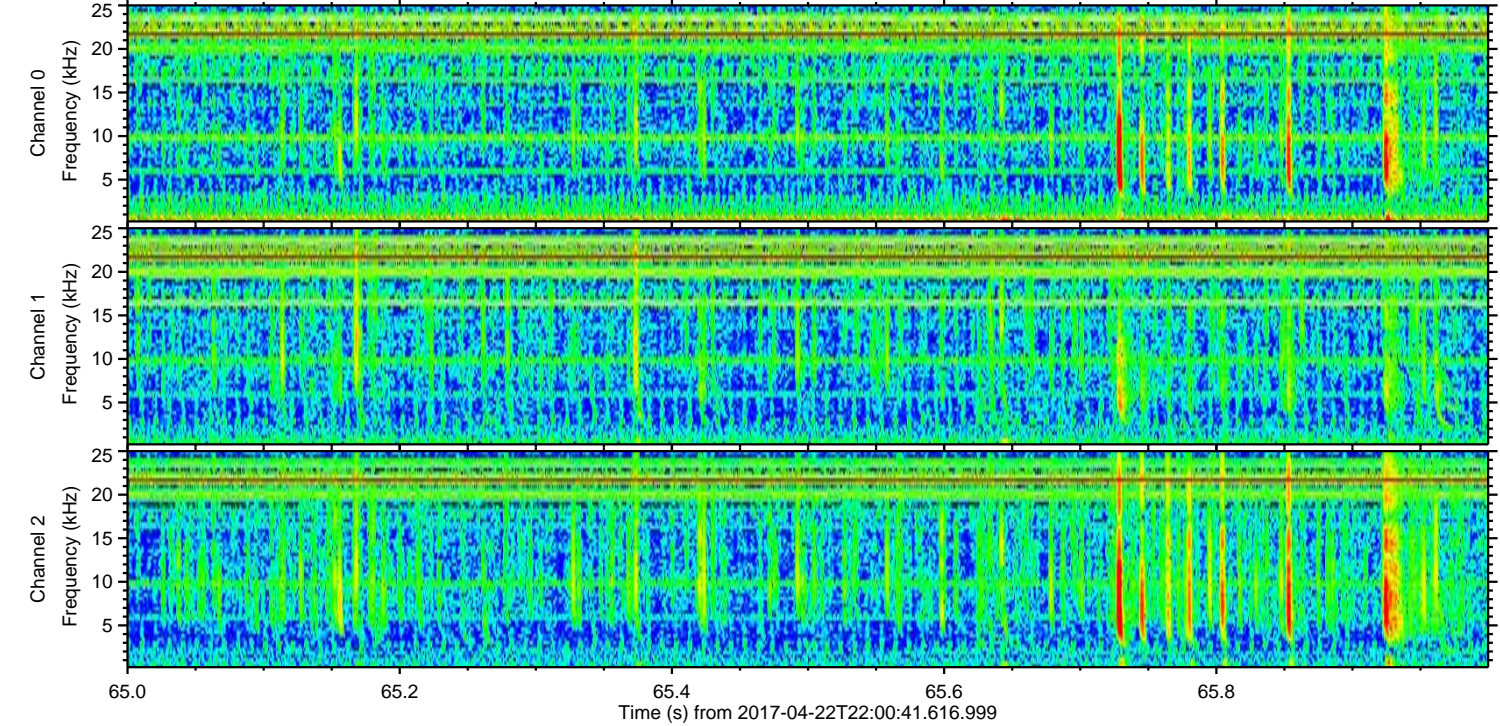
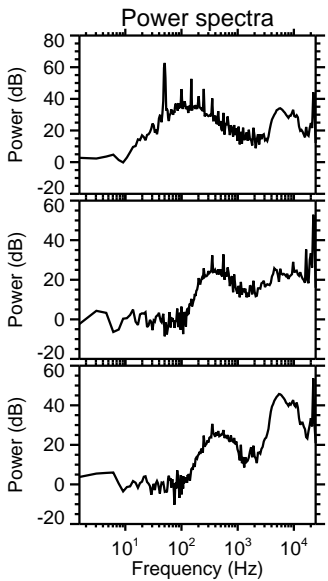
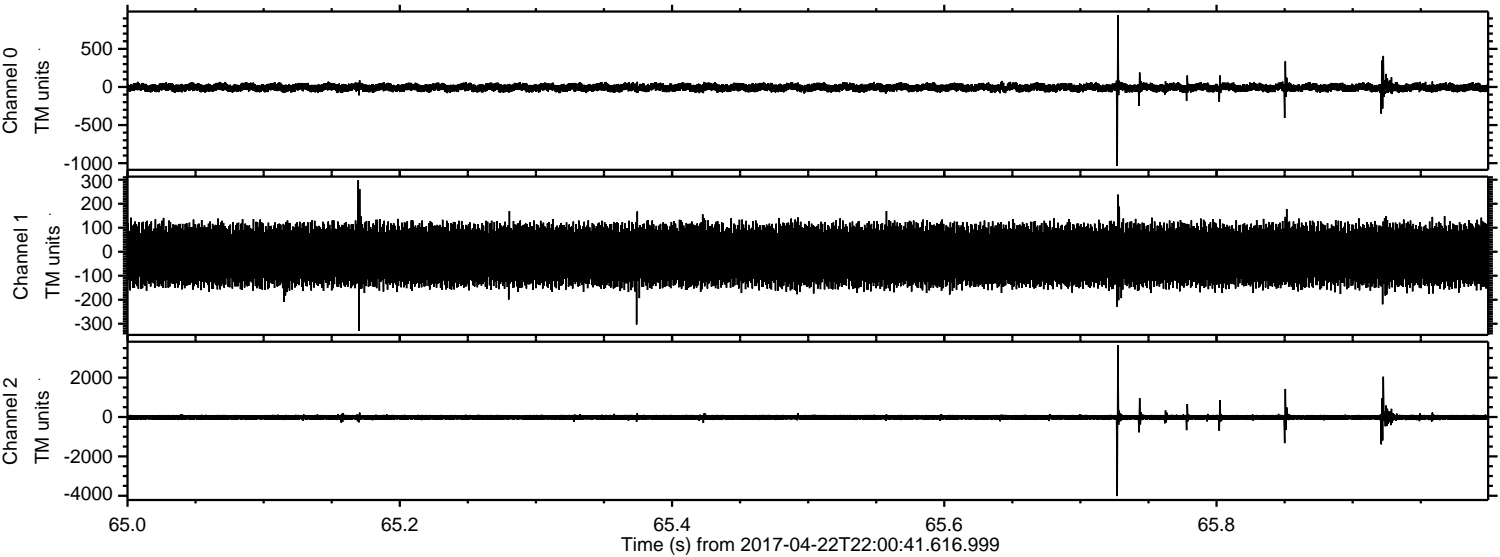
Processed Sun Apr 23 00:08:24 2017 by ELM ver.2012-10-06 from 001__elm20170422_220040__dat00.bin



Processed Sun Apr 23 00:08:25 2017 by ELM ver.2012-10-06 from 001__elm20170422_220040__dat00.bin

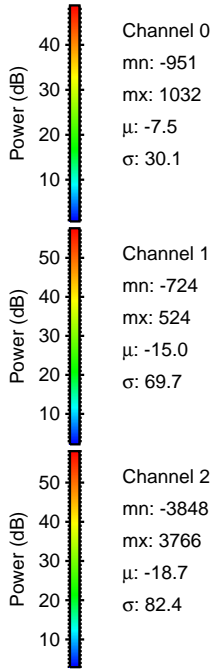
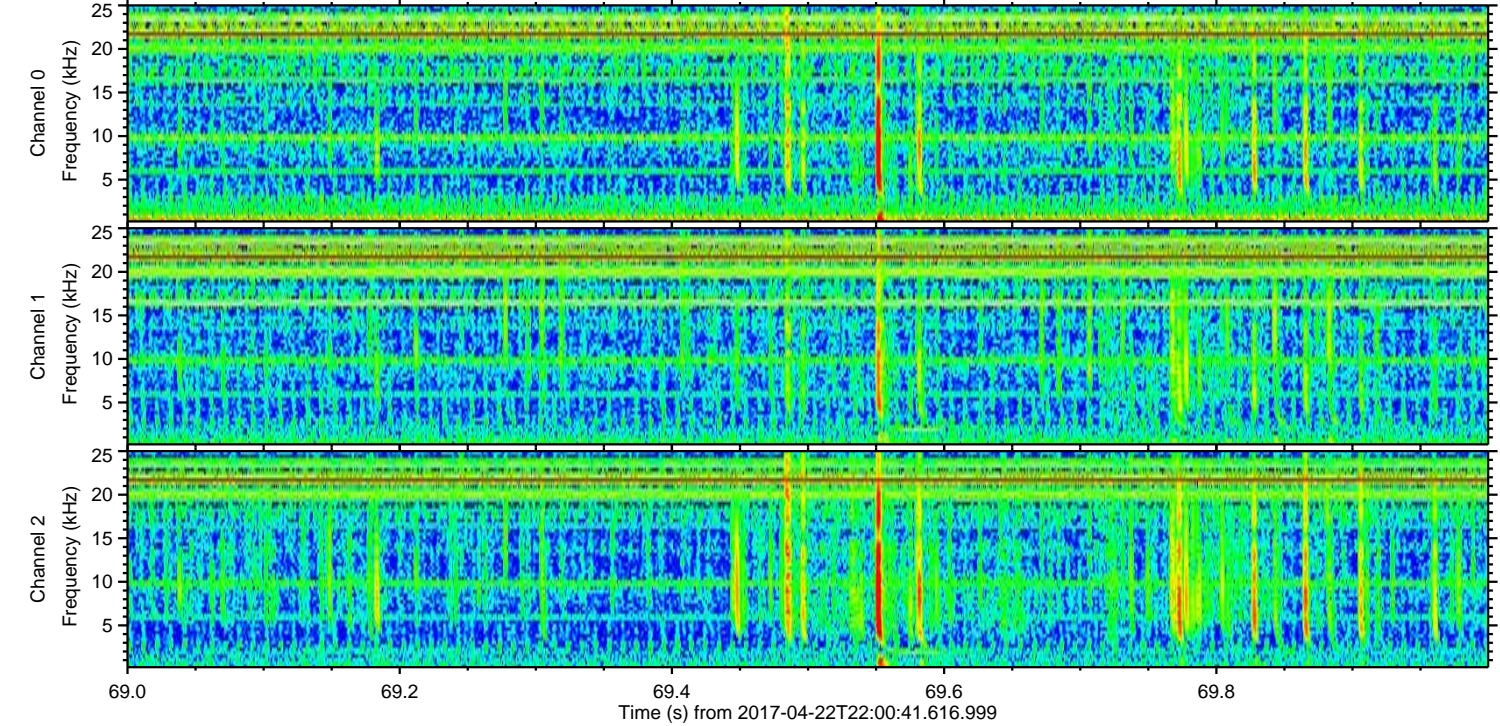
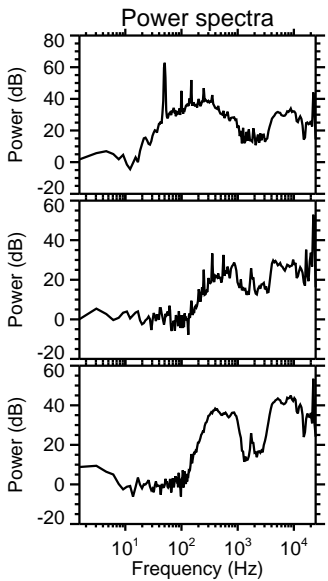
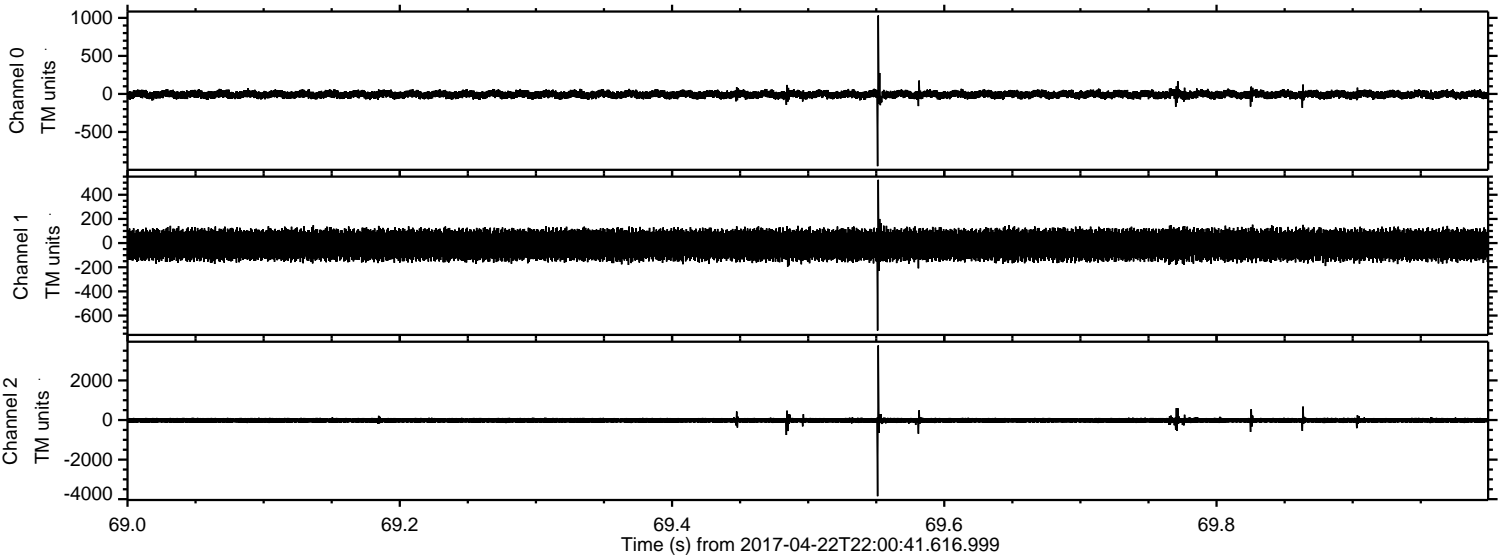


Processed Sun Apr 23 00:08:26 2017 by ELM ver.2012-10-06 from 001__elm20170422_220040__dat00.bin



ELMAVAN 3D WAVEFORMS (Measured data sampled at 50 kHz) 51000 packets of 144 samples from 2017-04-22T22:00:41.616.999. Part 70/147

Processed Sun Apr 23 00:08:27 2017 by ELM ver.2012-10-06 from 001__elm20170422_220040__dat00.bin



Channel 0
mn: -951
mx: 1032
 μ : -7.5
 σ : 30.1

Channel 1
mn: -724
mx: 524
 μ : -15.0
 σ : 69.7

Channel 2
mn: -3848
mx: 3766
 μ : -18.7
 σ : 82.4

Processed Sun Apr 23 00:08:27 2017 by ELM ver.2012-10-06 from 001__elm20170422_220040__dat00.bin

