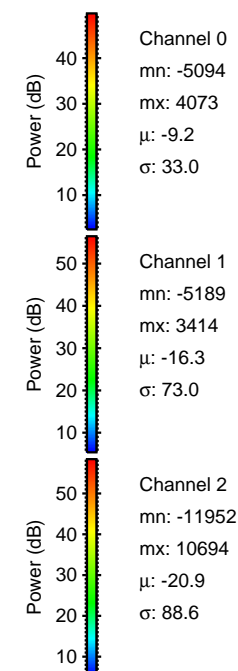
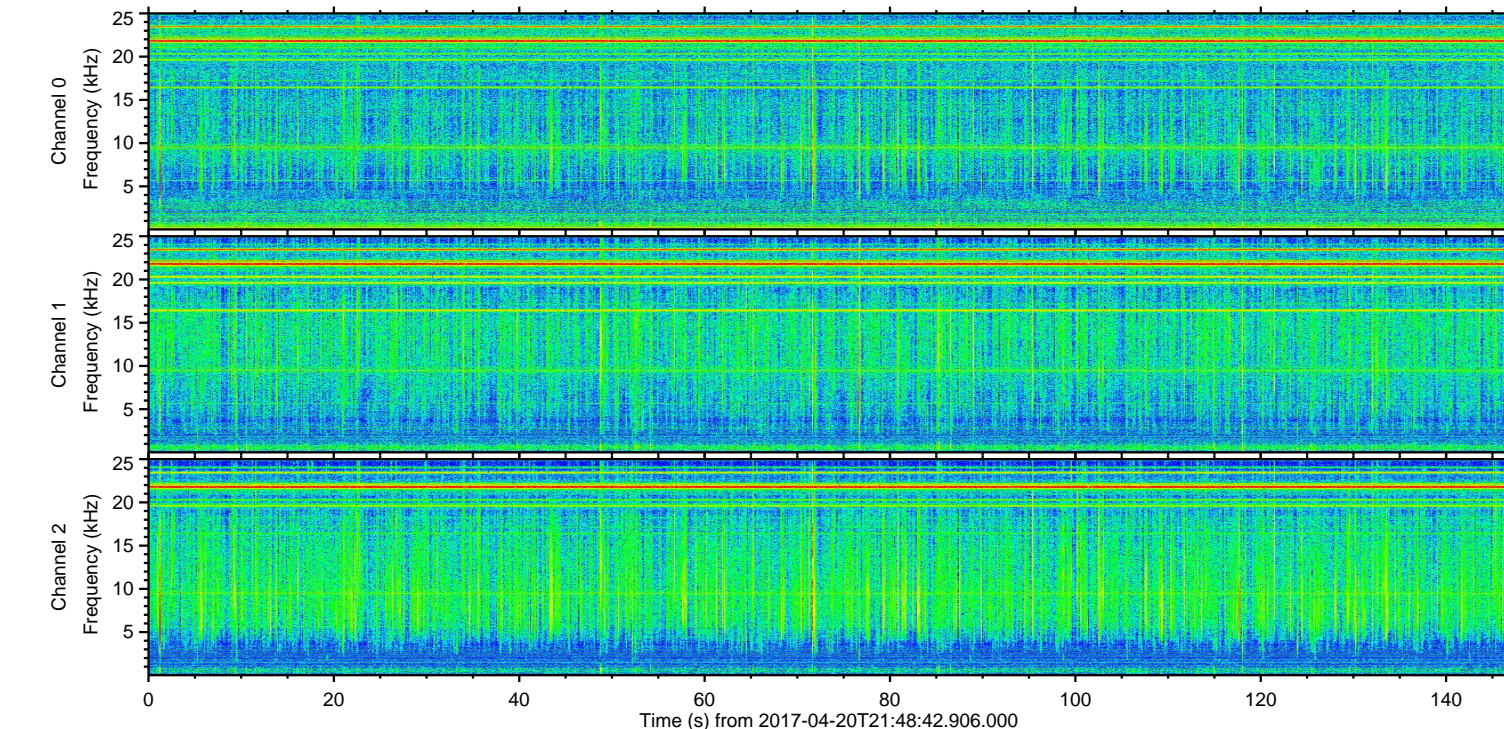
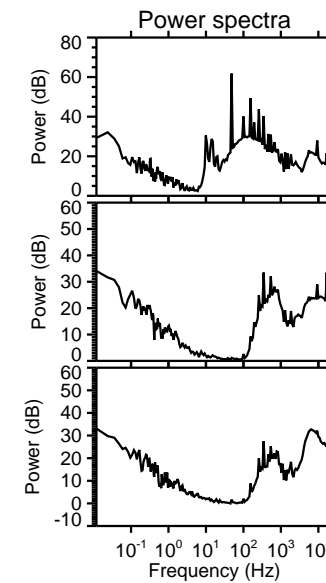
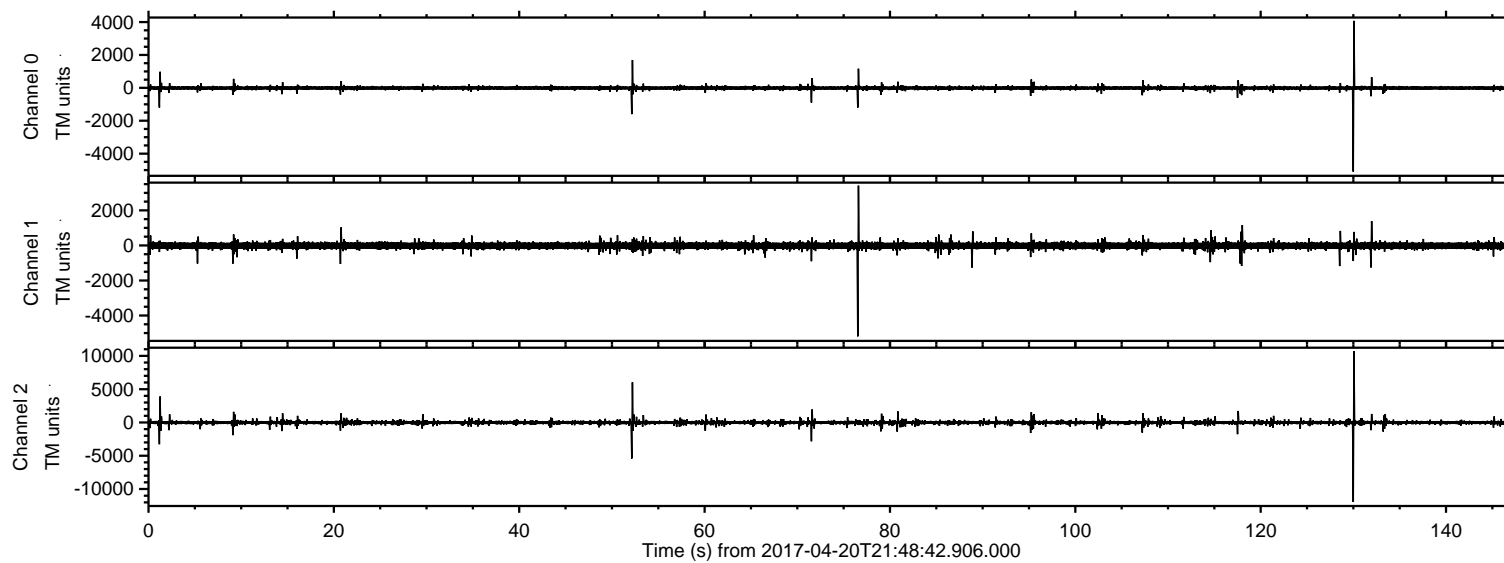


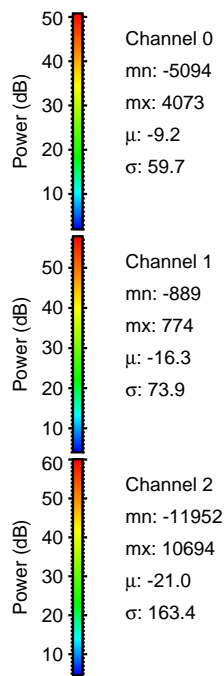
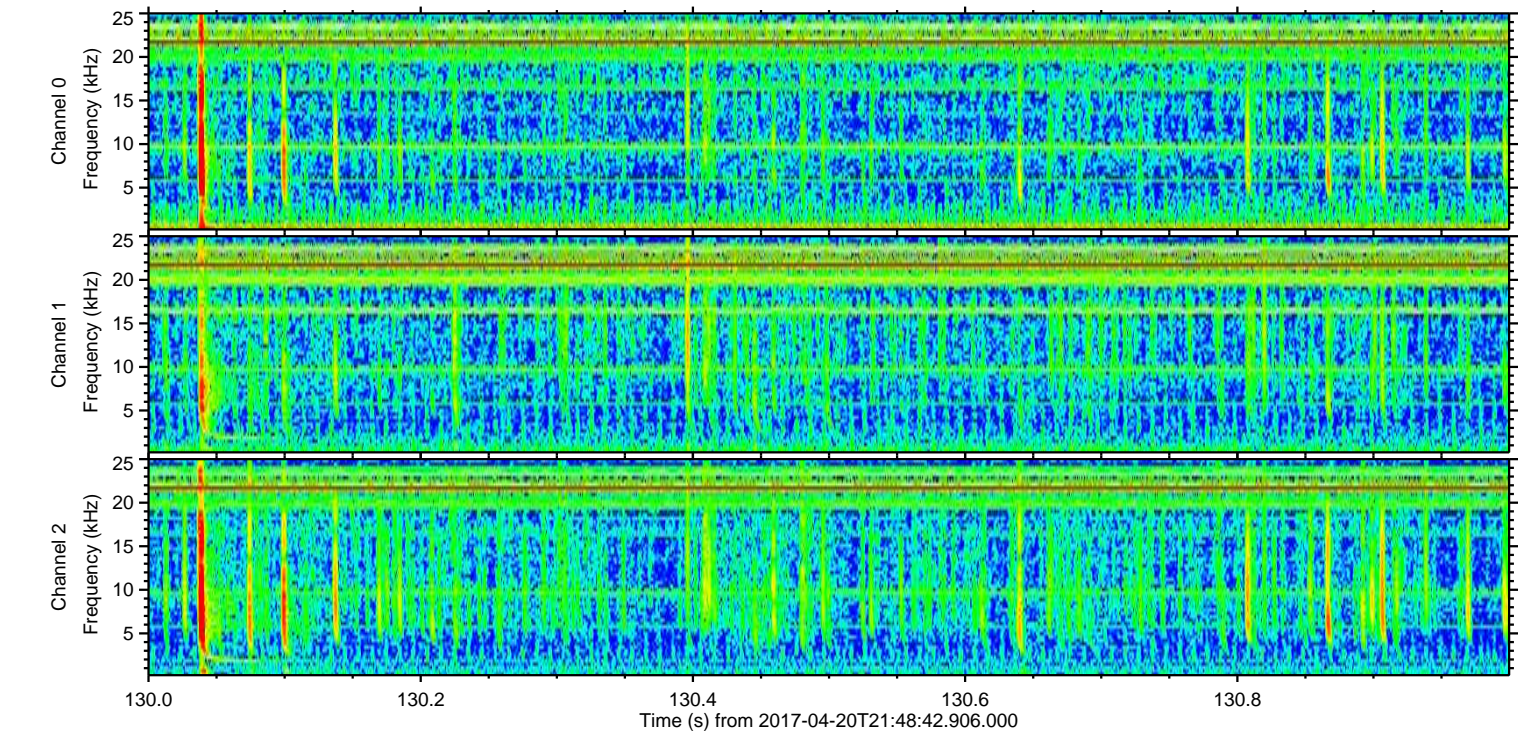
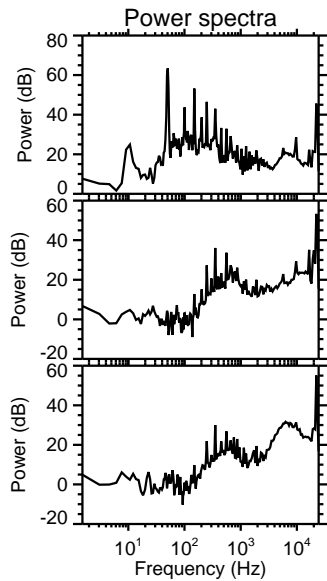
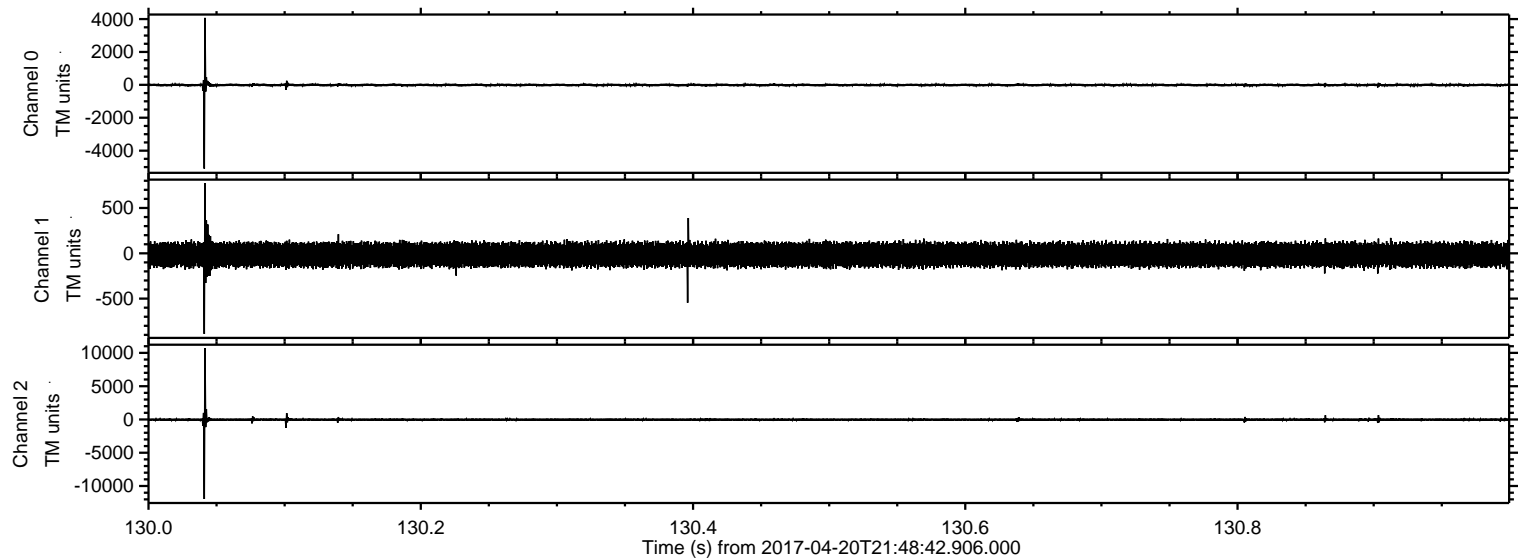
ELMAVAN 3D WAVEFORMS (Measured data sampled at 50 kHz) 51000 packets of 144 samples from 2017-04-20T21:48:42.906.000.

Processed Thu Apr 20 23:56:12 2017 by ELM ver.2012-10-06 from 001__elm20170420_214841__dat00.bin

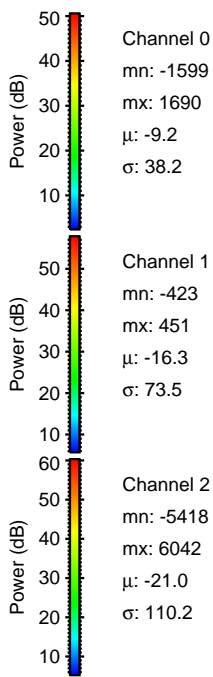
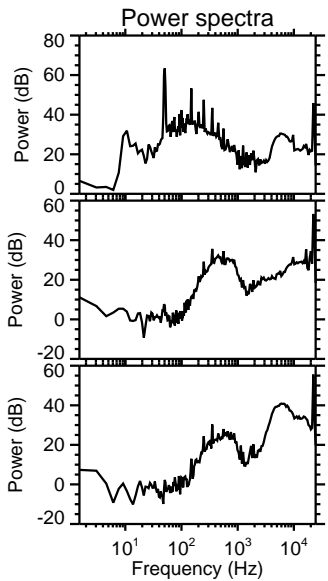
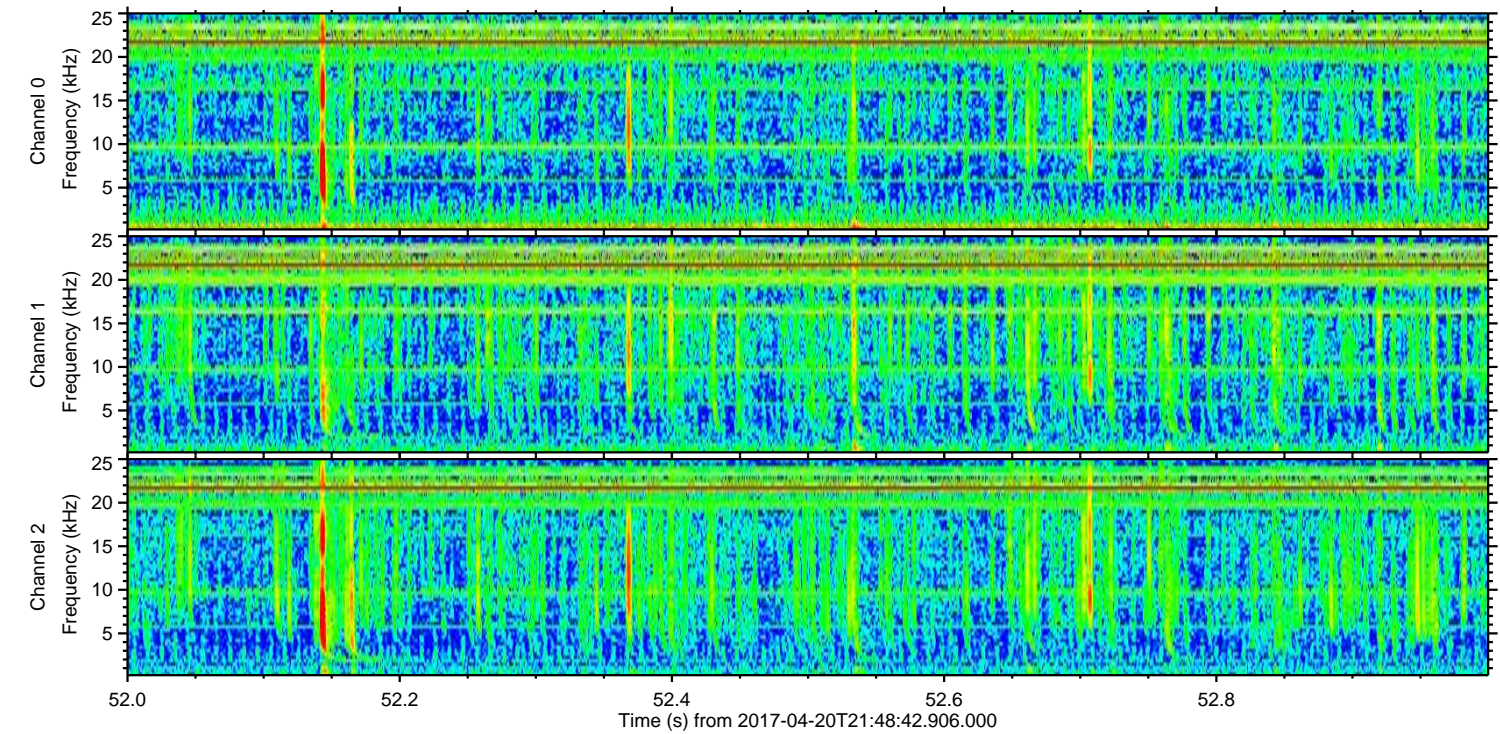
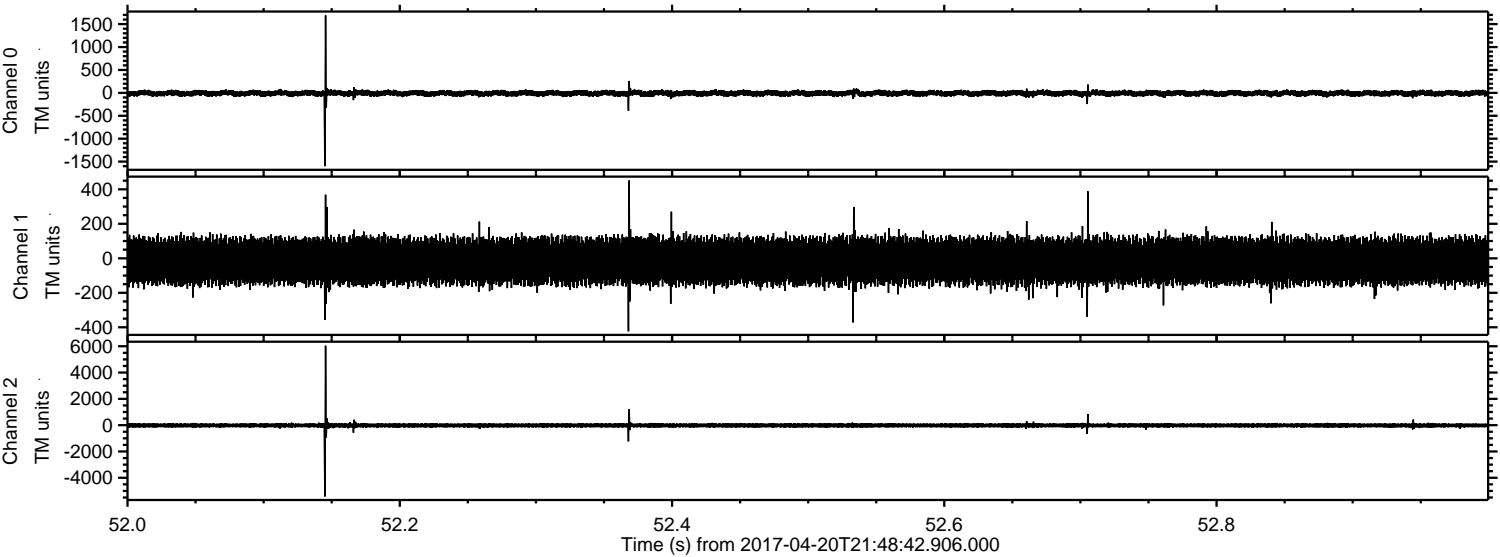


ELMAVAN 3D WAVEFORMS (Measured data sampled at 50 kHz) 51000 packets of 144 samples from 2017-04-20T21:48:42.906.000. Part 131/147

Processed Thu Apr 20 23:56:23 2017 by ELM ver.2012-10-06 from 001__elm20170420_214841__dat00.bin

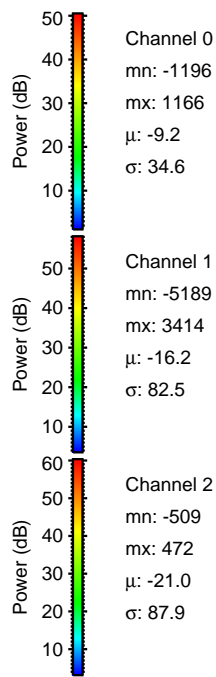
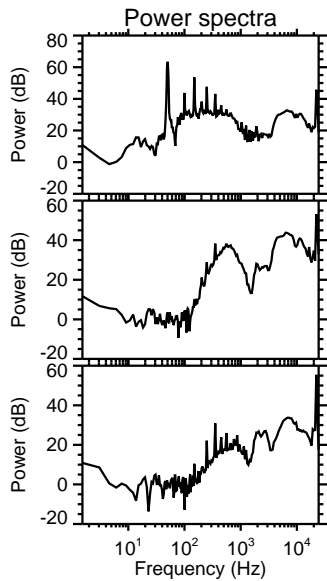
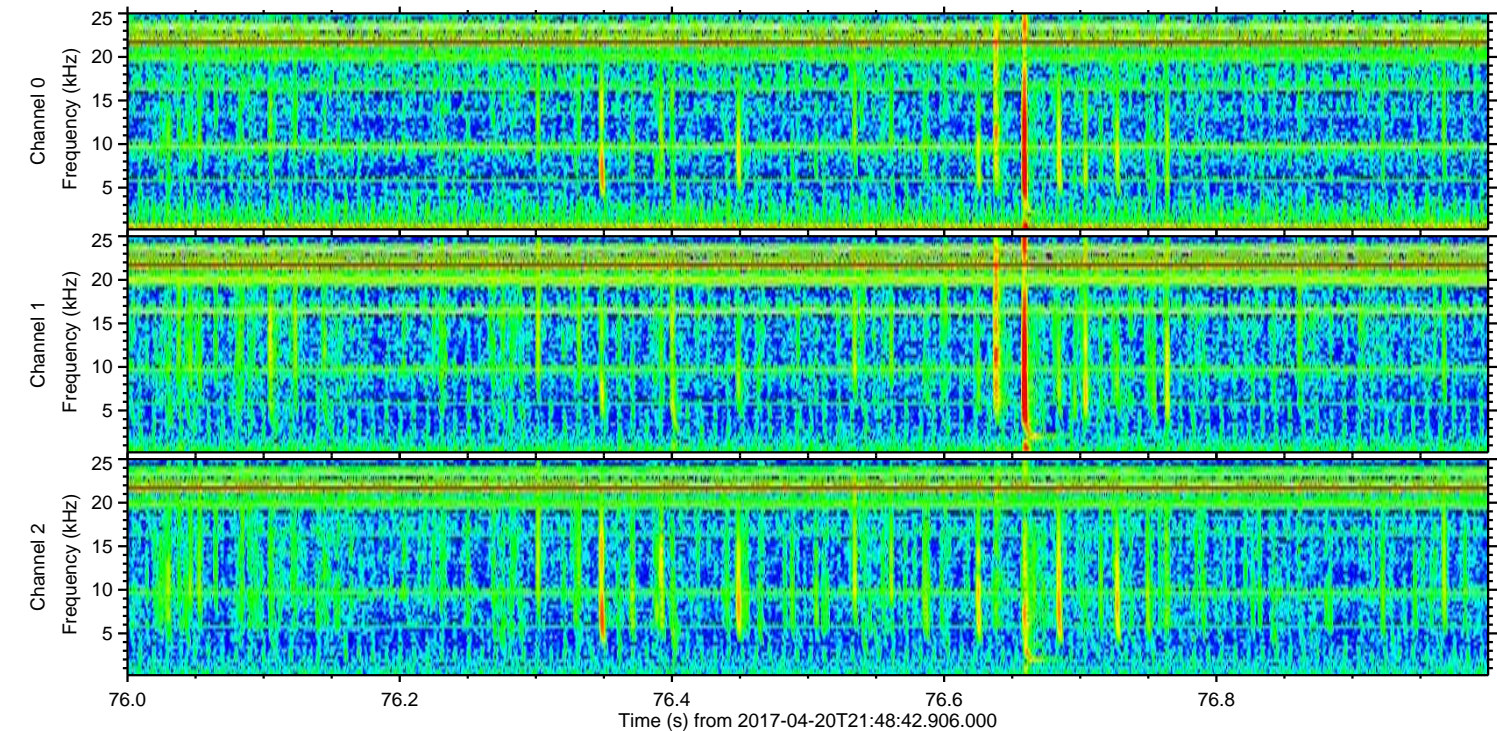
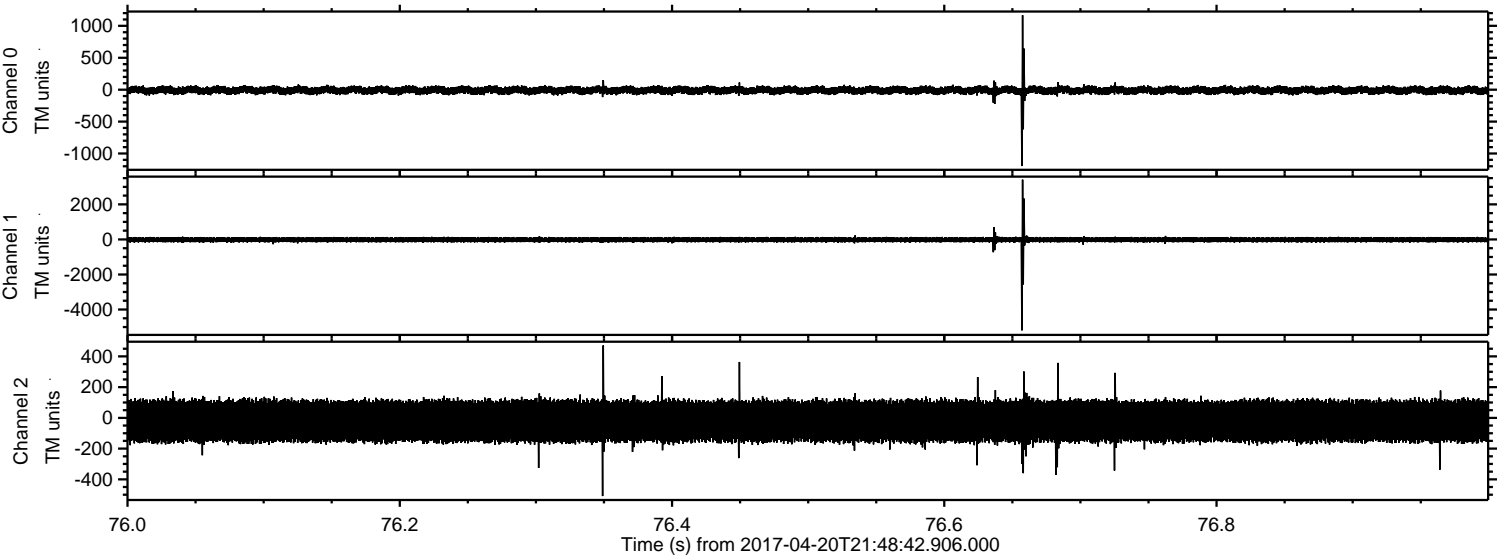


Processed Thu Apr 20 23:56:24 2017 by ELM ver.2012-10-06 from 001__elm20170420_214841__dat00.bin

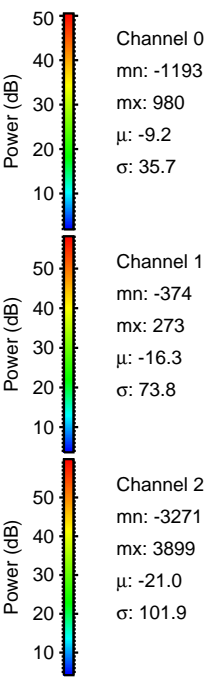
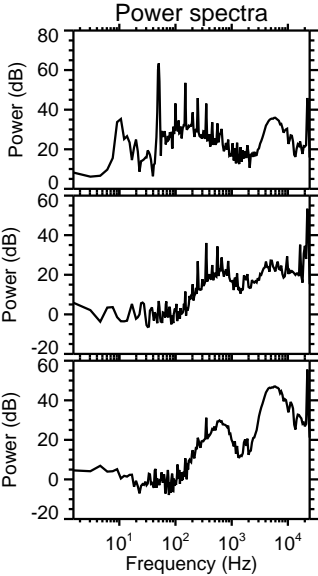
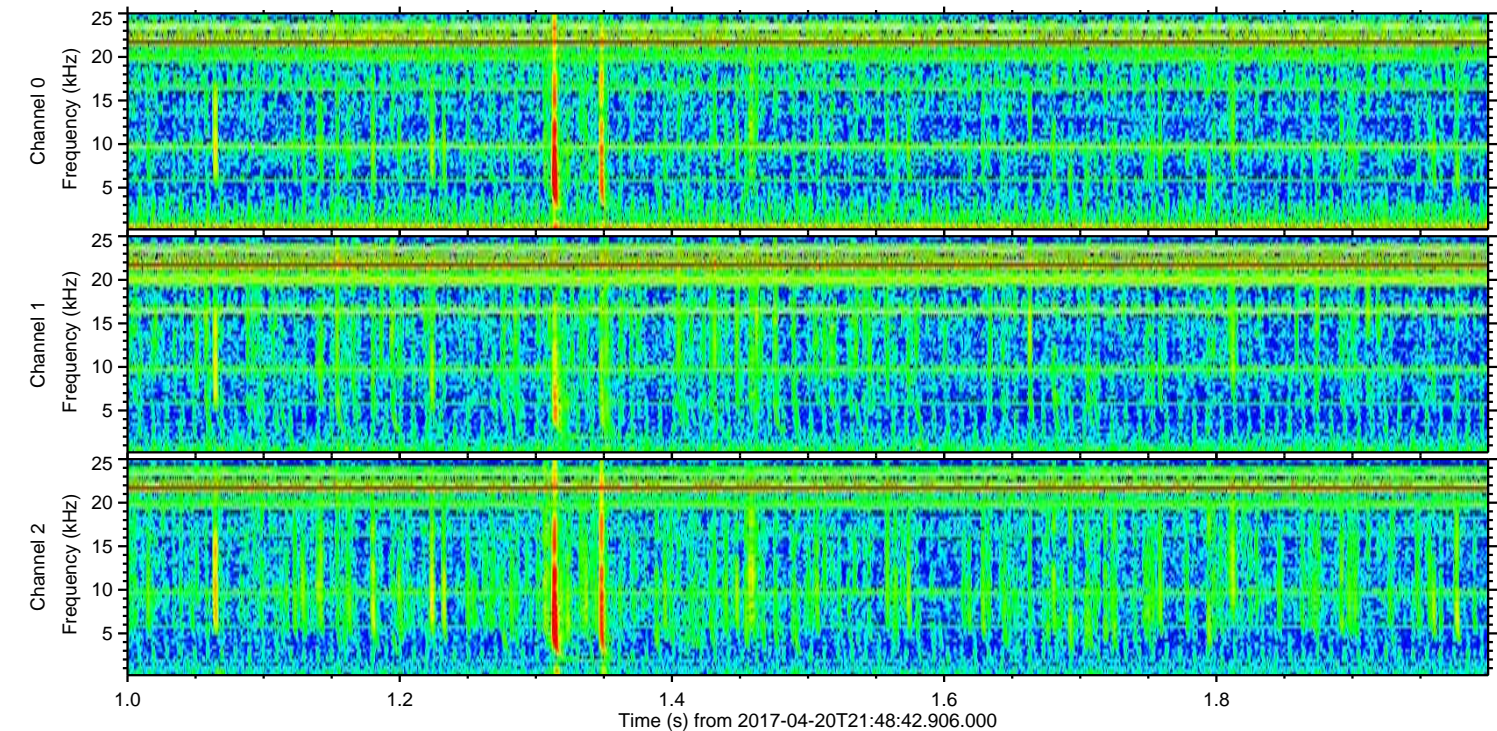
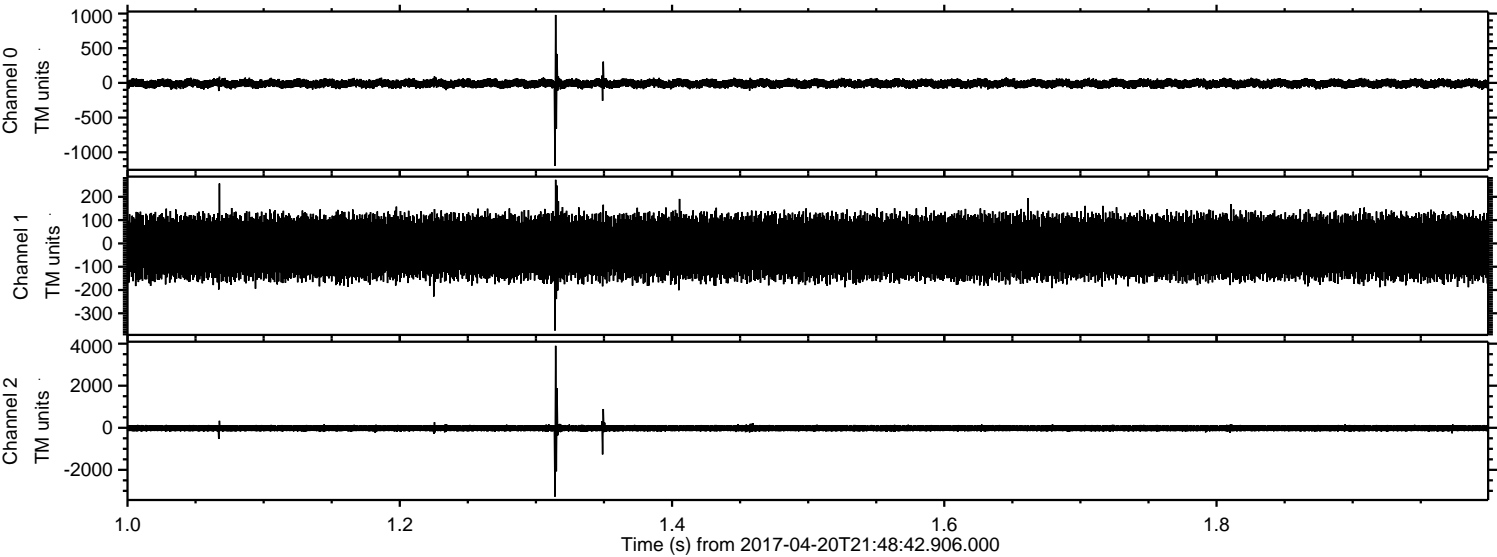


ELMAVAN 3D WAVEFORMS (Measured data sampled at 50 kHz) 51000 packets of 144 samples from 2017-04-20T21:48:42.906.000. Part 77/147

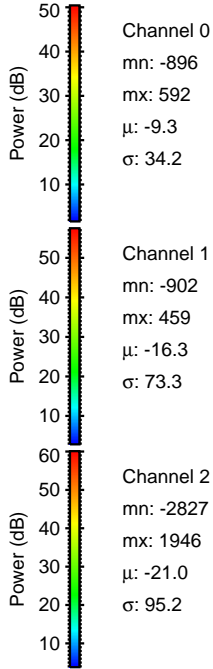
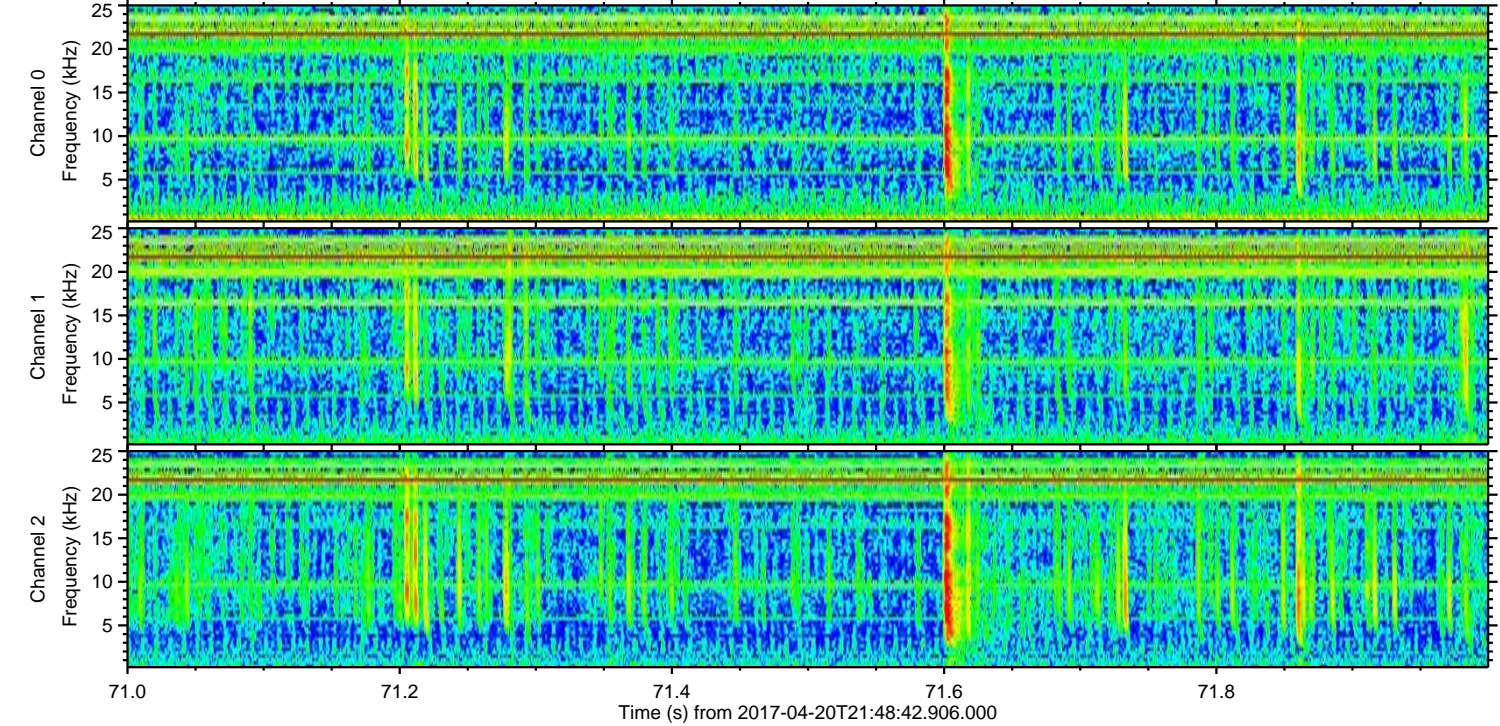
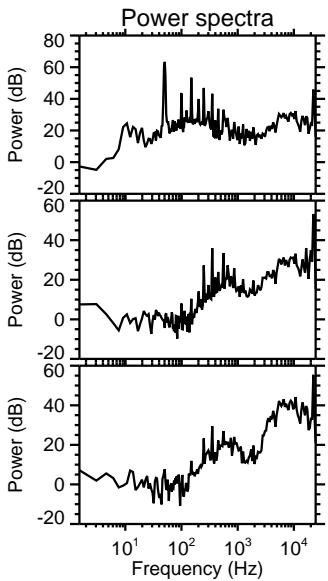
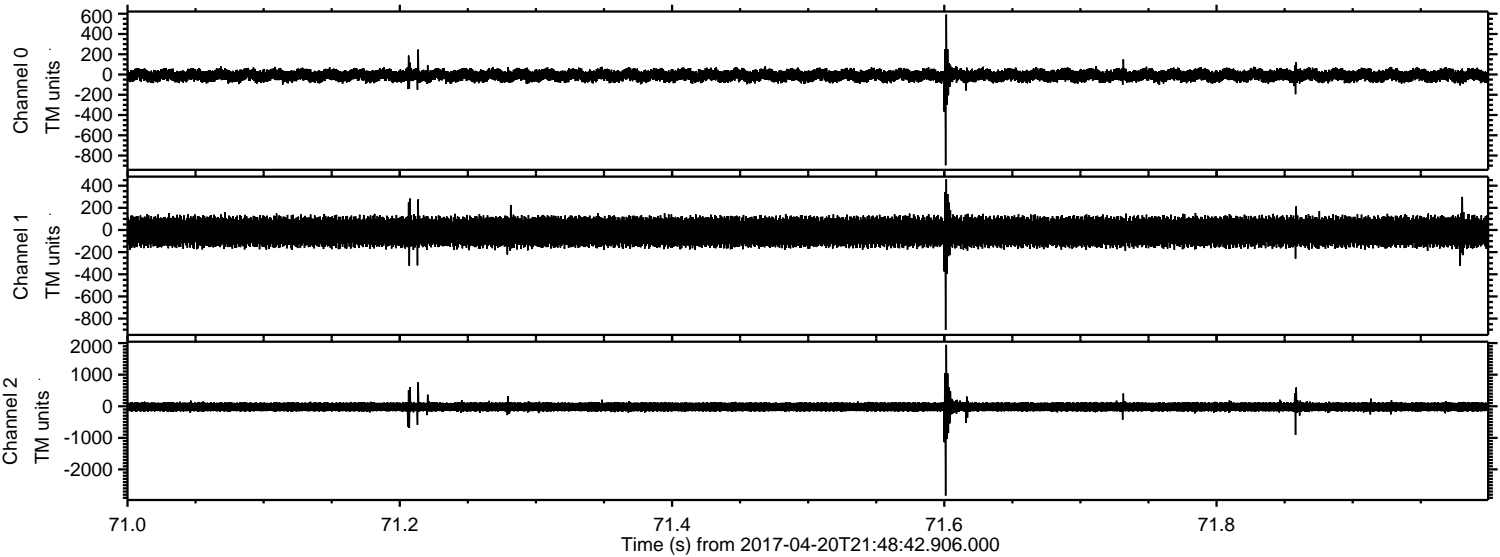
Processed Thu Apr 20 23:56:25 2017 by ELM ver.2012-10-06 from 001__elm20170420_214841__dat00.bin



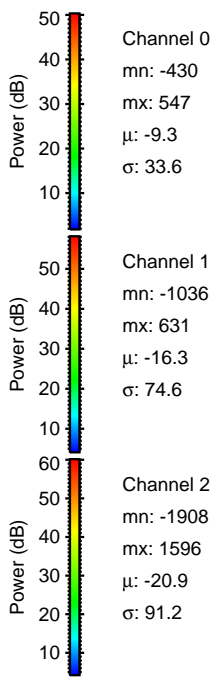
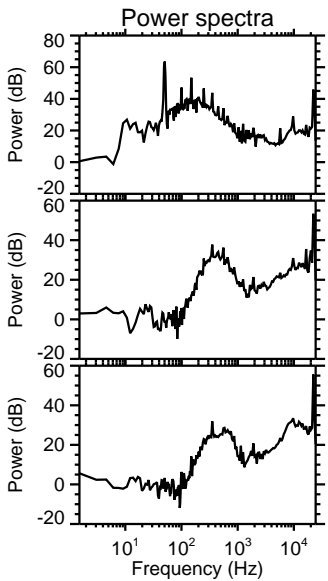
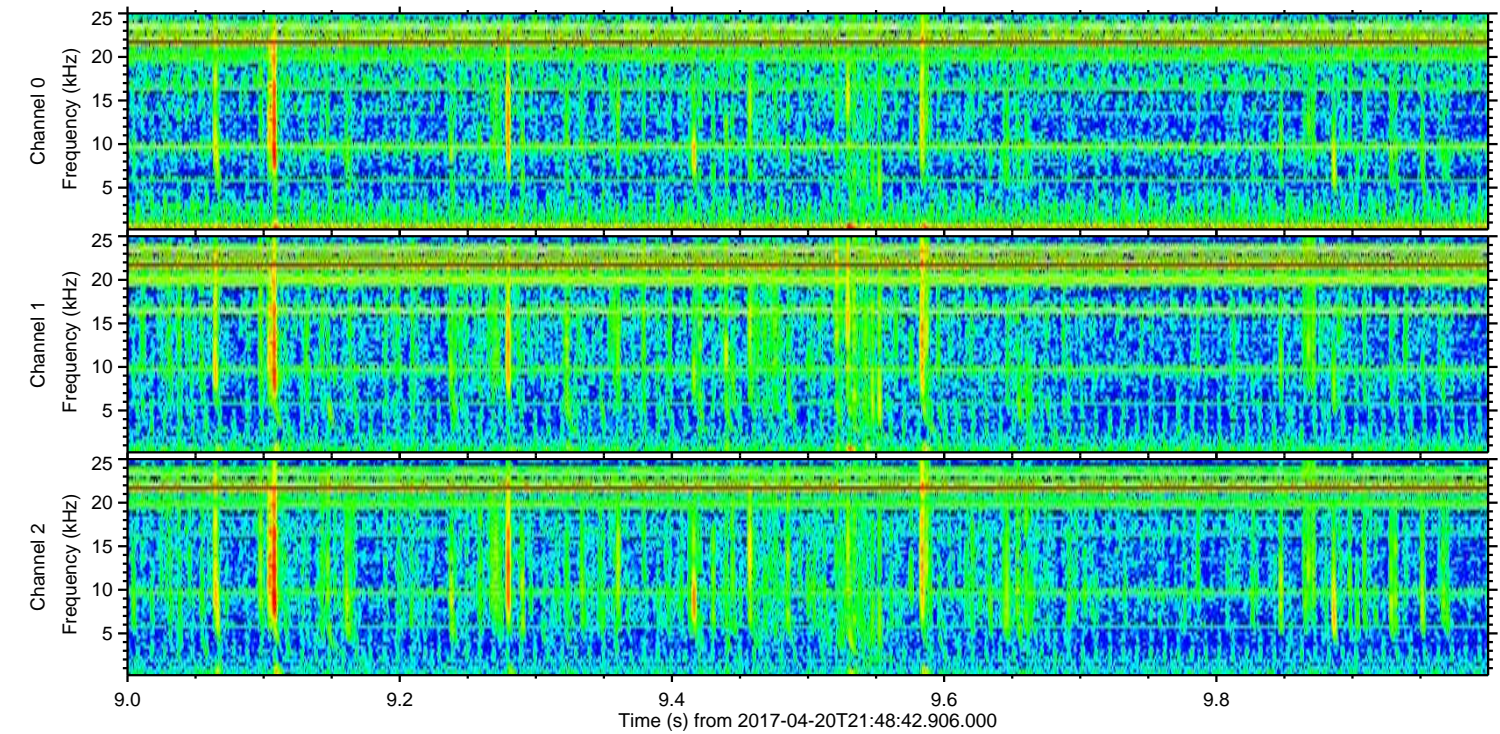
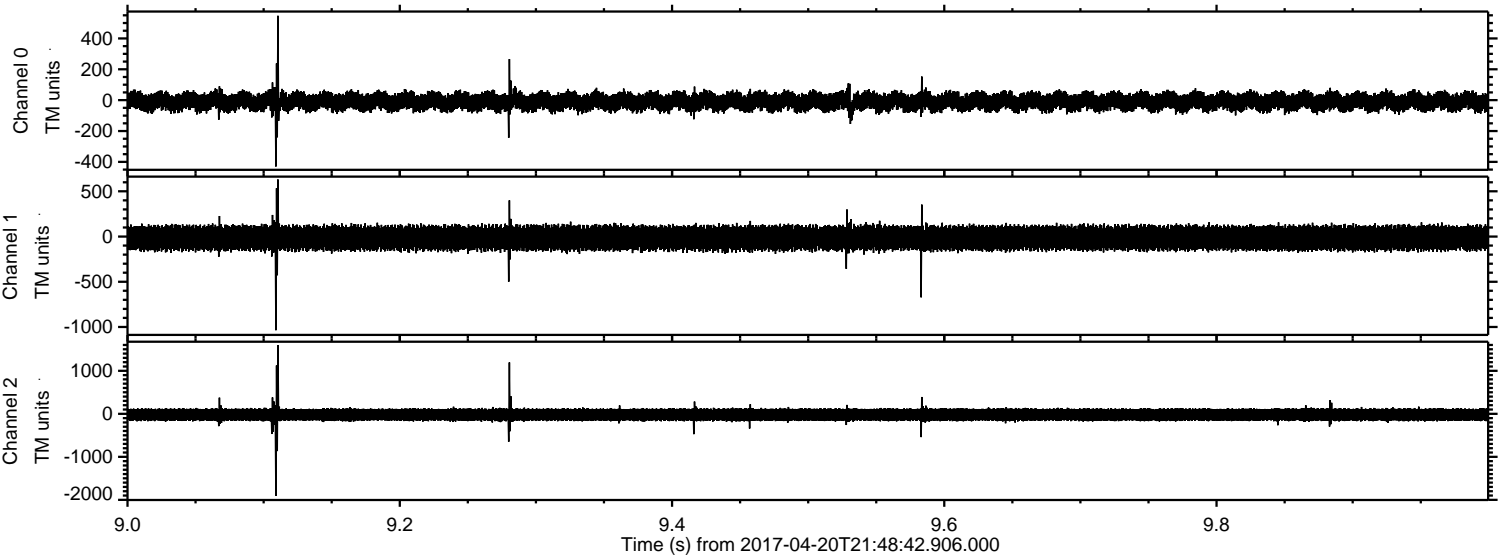
Processed Thu Apr 20 23:56:26 2017 by ELM ver.2012-10-06 from 001__elm20170420_214841__dat00.bin



Processed Thu Apr 20 23:56:27 2017 by ELM ver.2012-10-06 from 001__elm20170420_214841__dat00.bin

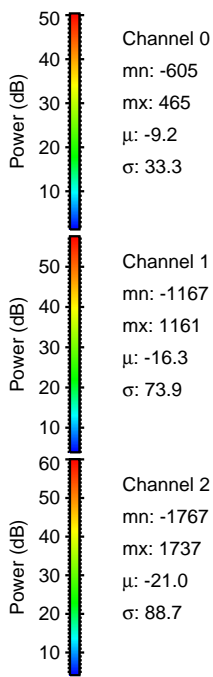
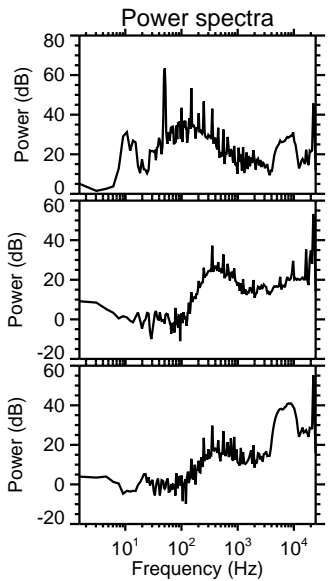
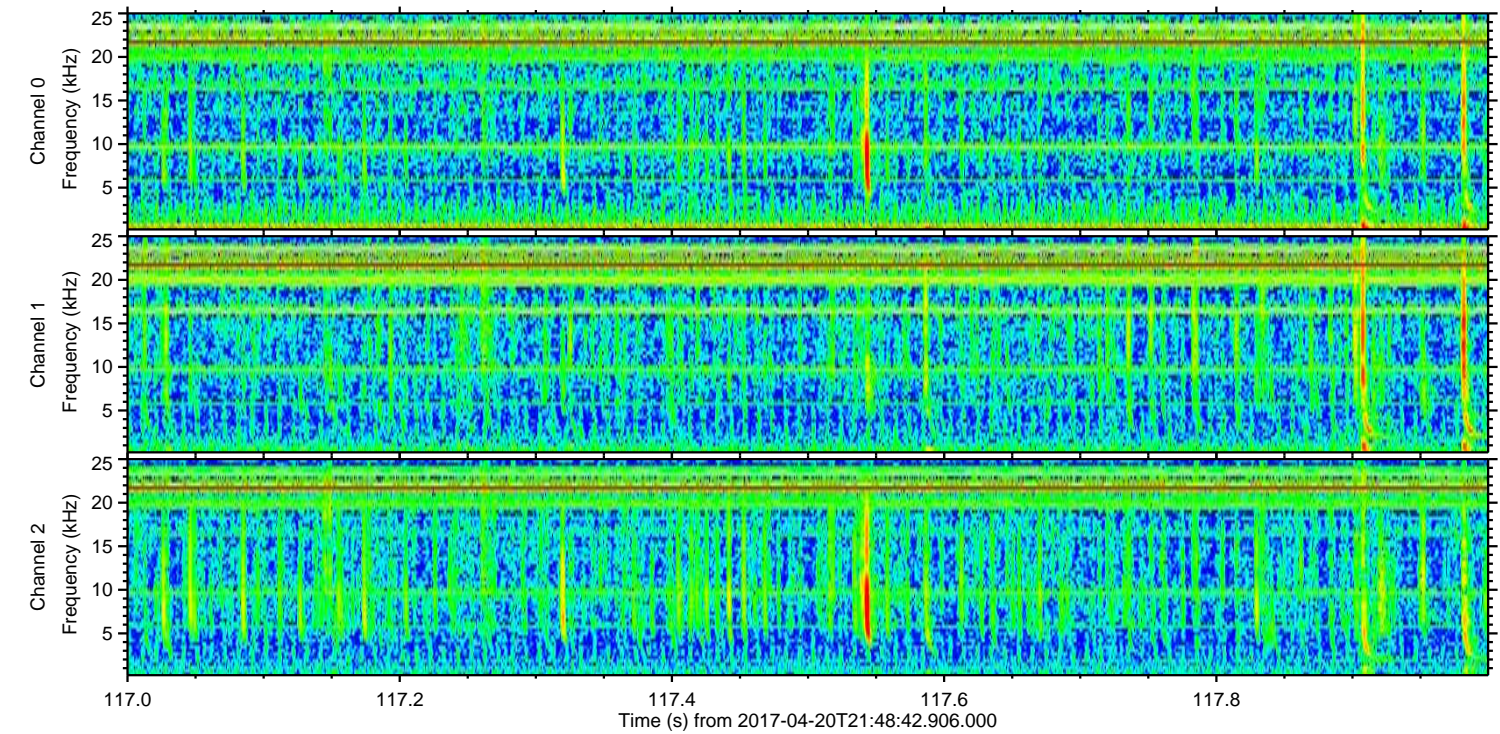
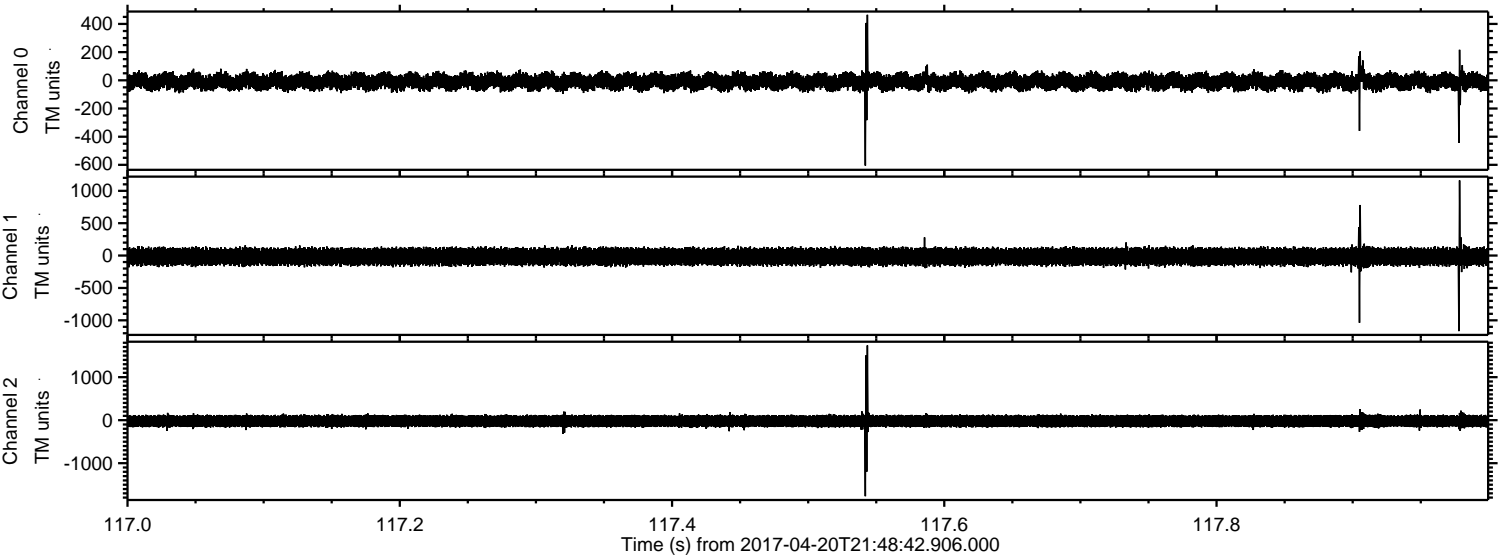


Processed Thu Apr 20 23:56:28 2017 by ELM ver.2012-10-06 from 001__elm20170420_214841__dat00.bin



ELMAVAN 3D WAVEFORMS (Measured data sampled at 50 kHz) 51000 packets of 144 samples from 2017-04-20T21:48:42.906.000. Part 118/147

Processed Thu Apr 20 23:56:29 2017 by ELM ver.2012-10-06 from 001__elm20170420_214841__dat00.bin

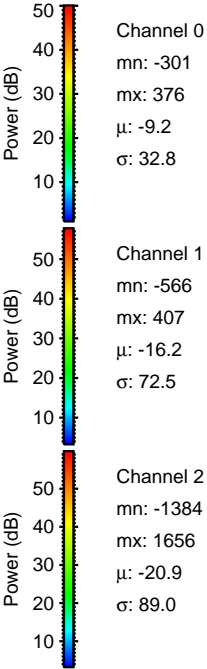
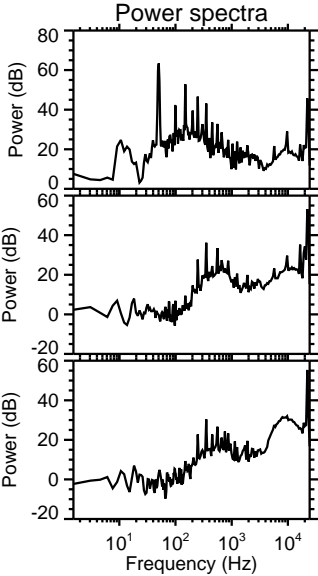
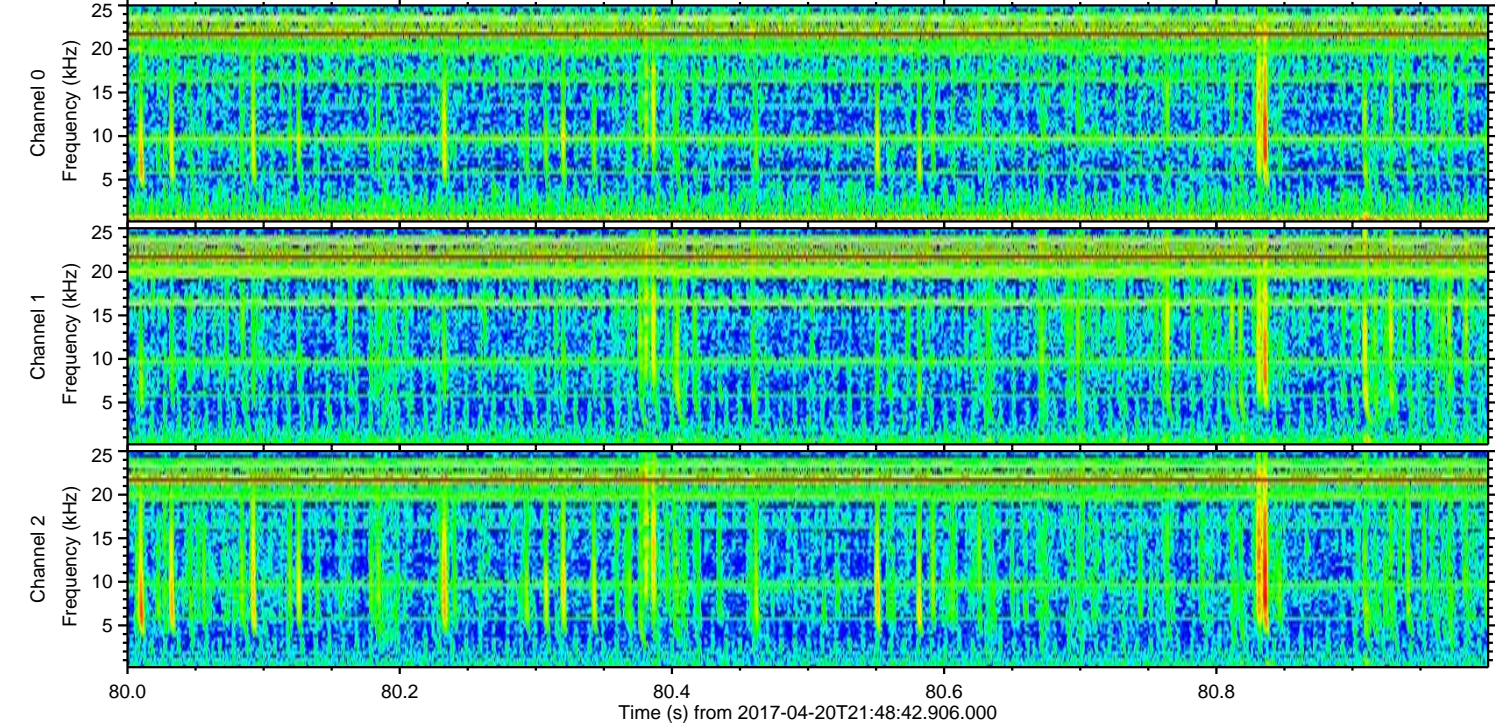
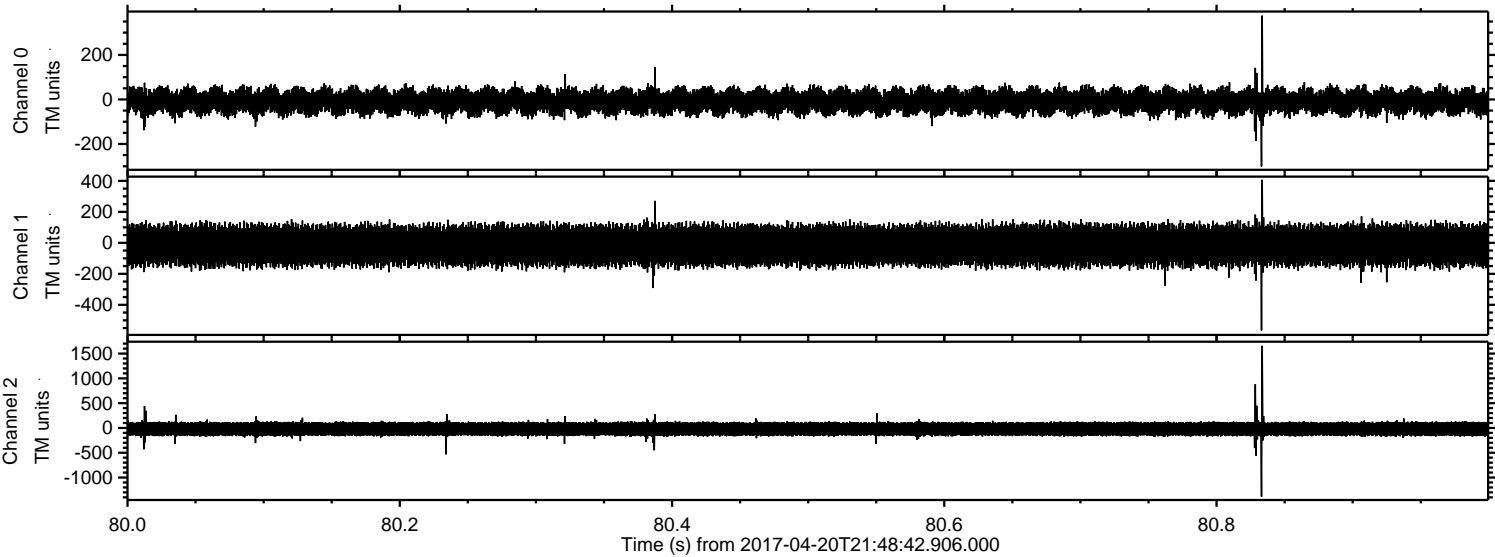


Channel 0
mn: -605
mx: 465
 μ : -9.2
 σ : 33.3

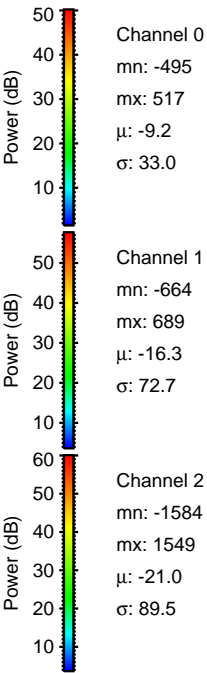
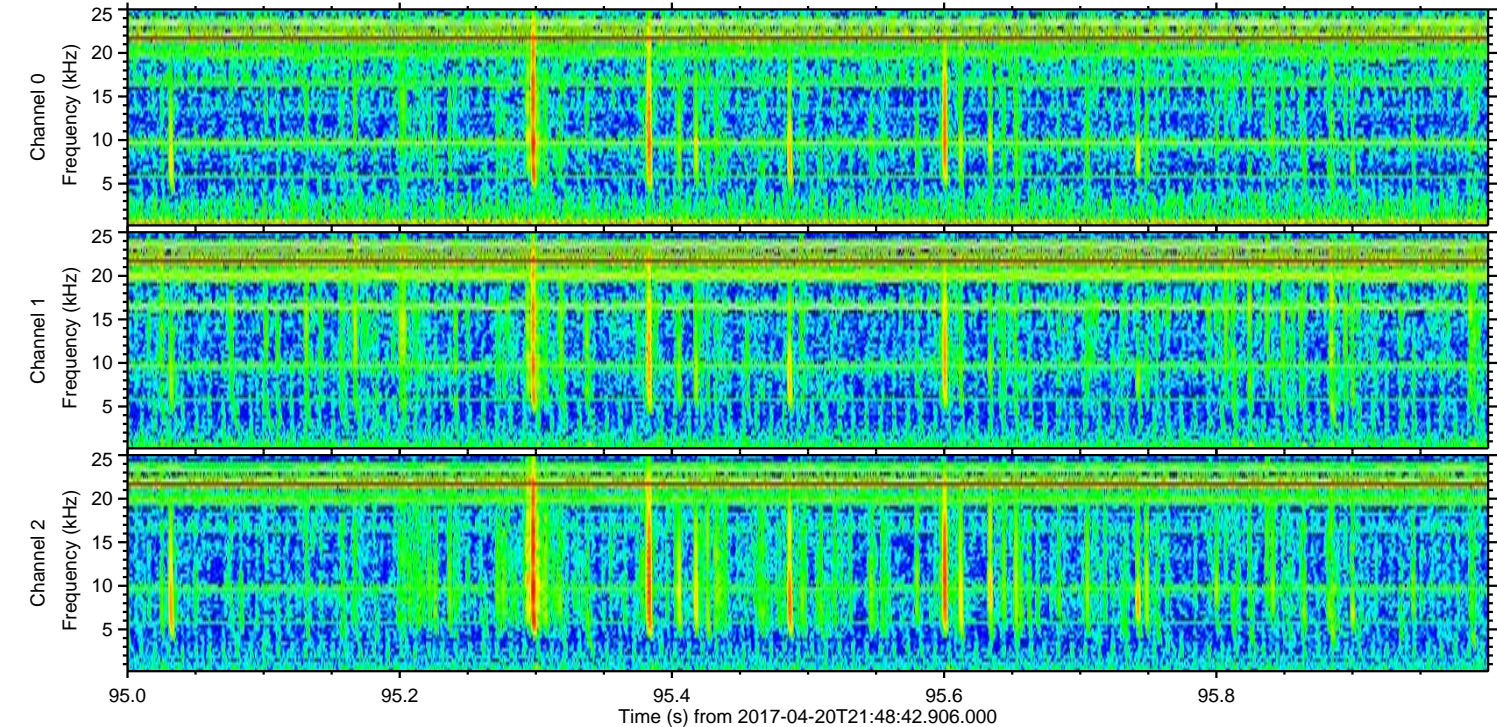
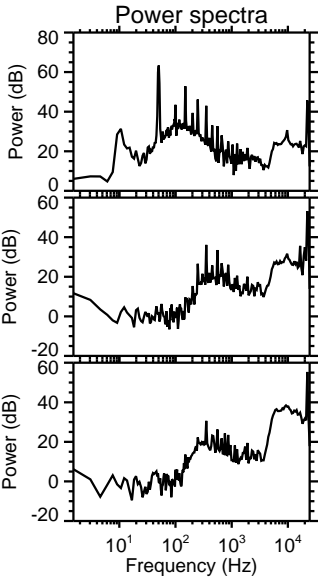
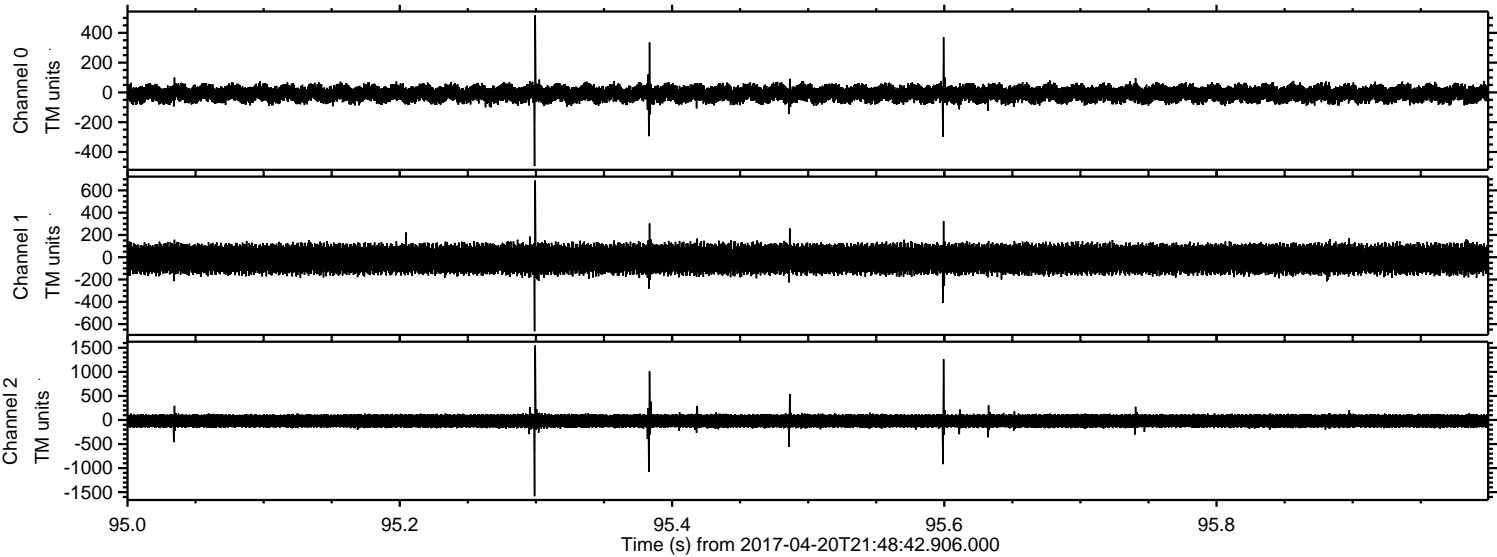
Channel 1
mn: -1167
mx: 1161
 μ : -16.3
 σ : 73.9

Channel 2
mn: -1767
mx: 1737
 μ : -21.0
 σ : 88.7

Processed Thu Apr 20 23:56:30 2017 by ELM ver.2012-10-06 from 001__elm20170420_214841__dat00.bin



Processed Thu Apr 20 23:56:30 2017 by ELM ver.2012-10-06 from 001__elm20170420_214841__dat00.bin



Processed Thu Apr 20 23:56:31 2017 by ELM ver.2012-10-06 from 001__elm20170420_214841__dat00.bin

