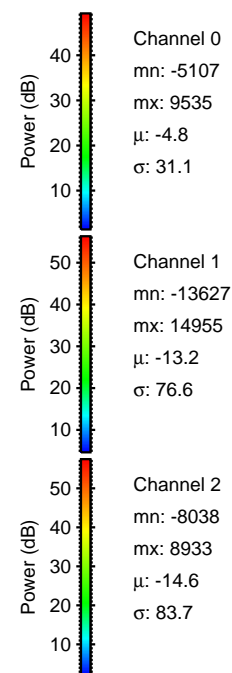
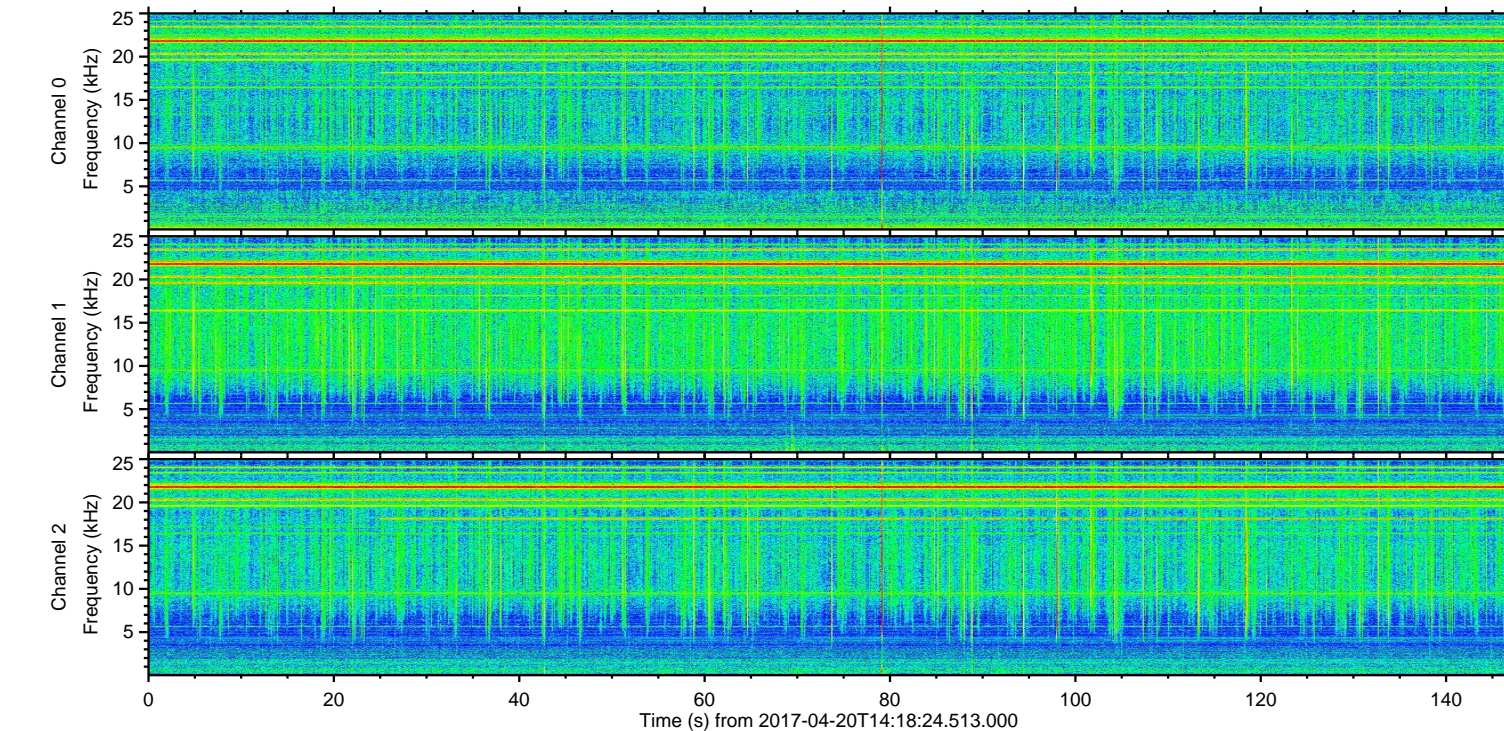
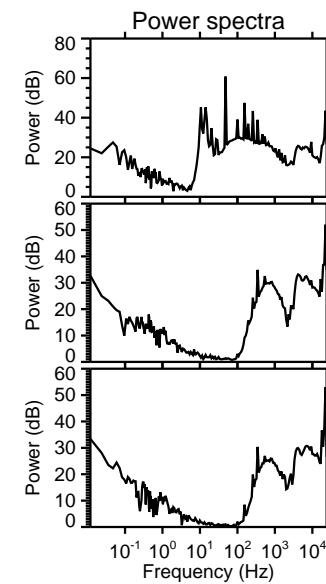
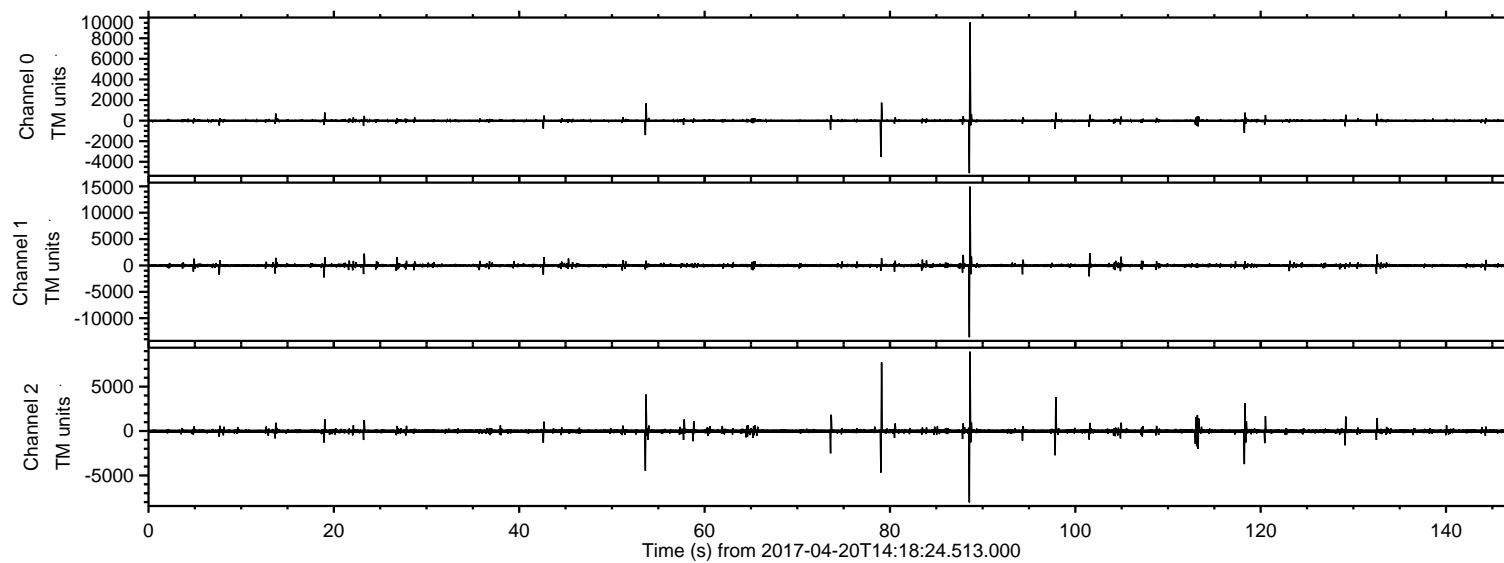
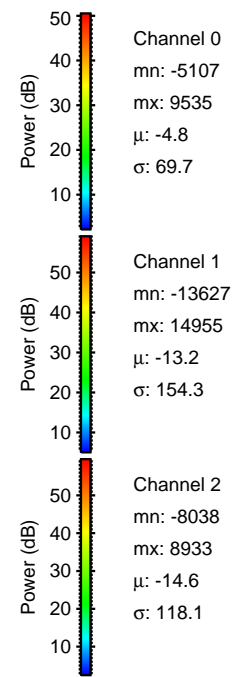
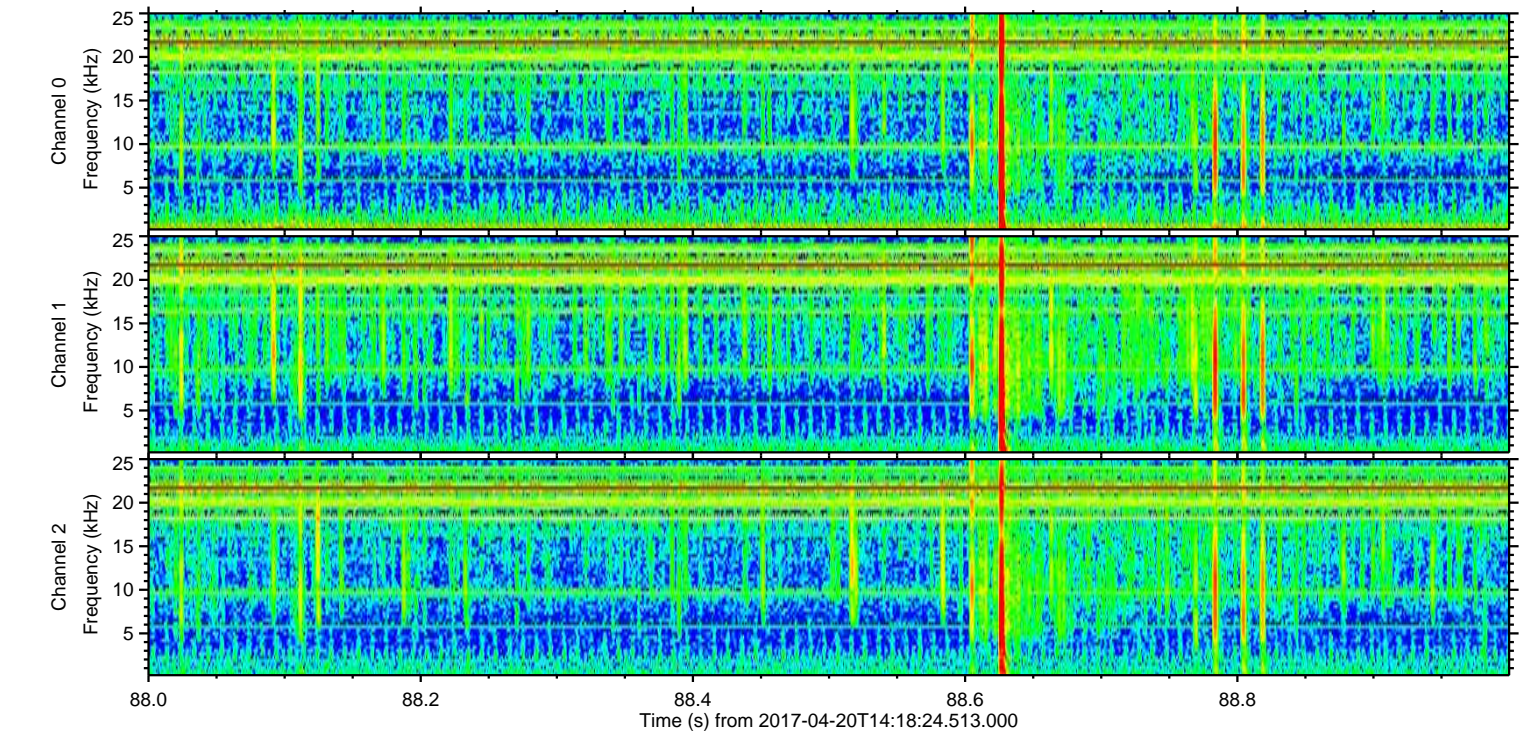
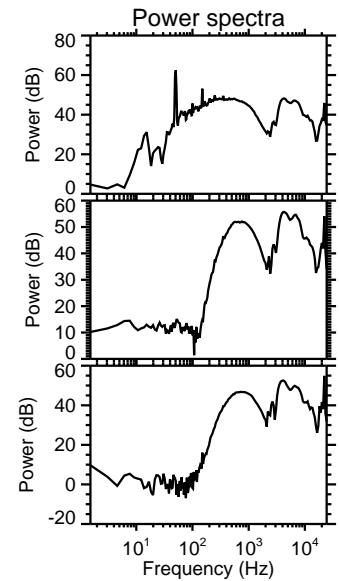
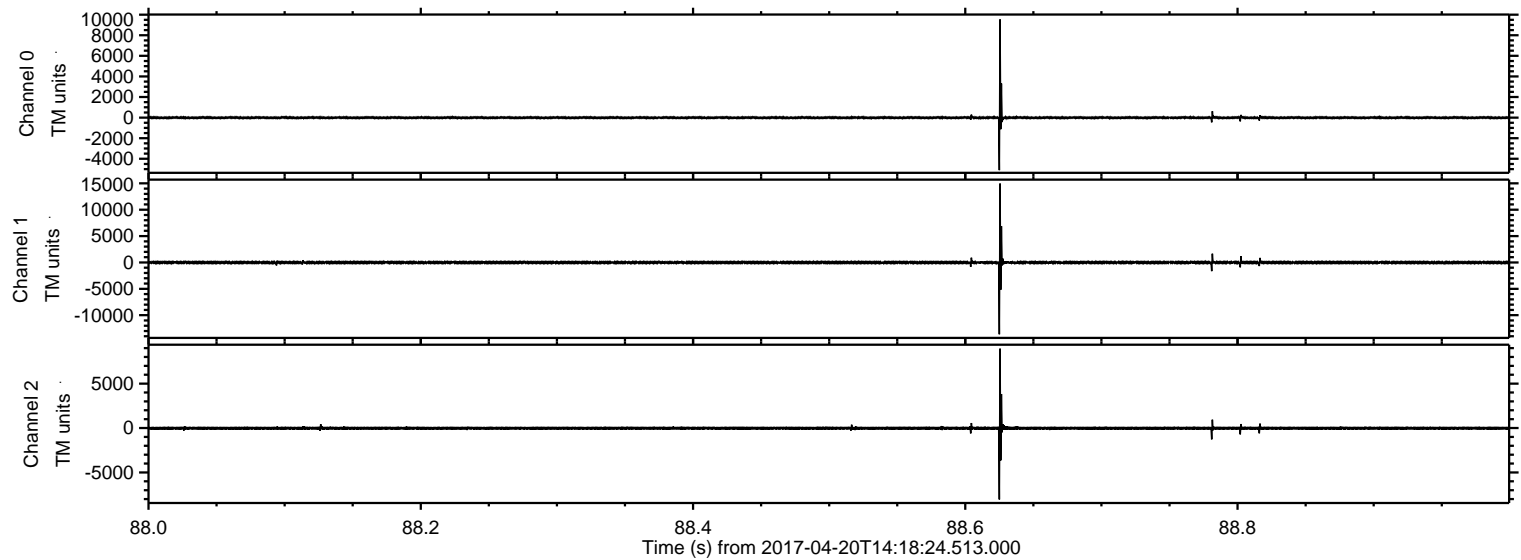


ELMAVAN 3D WAVEFORMS (Measured data sampled at 50 kHz) 51000 packets of 144 samples from 2017-04-20T14:18:24.513.000.

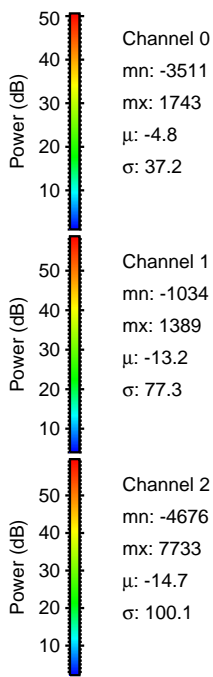
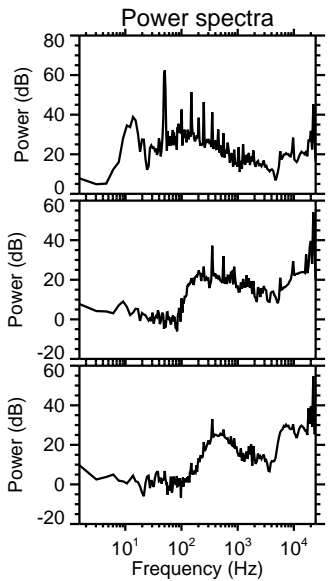
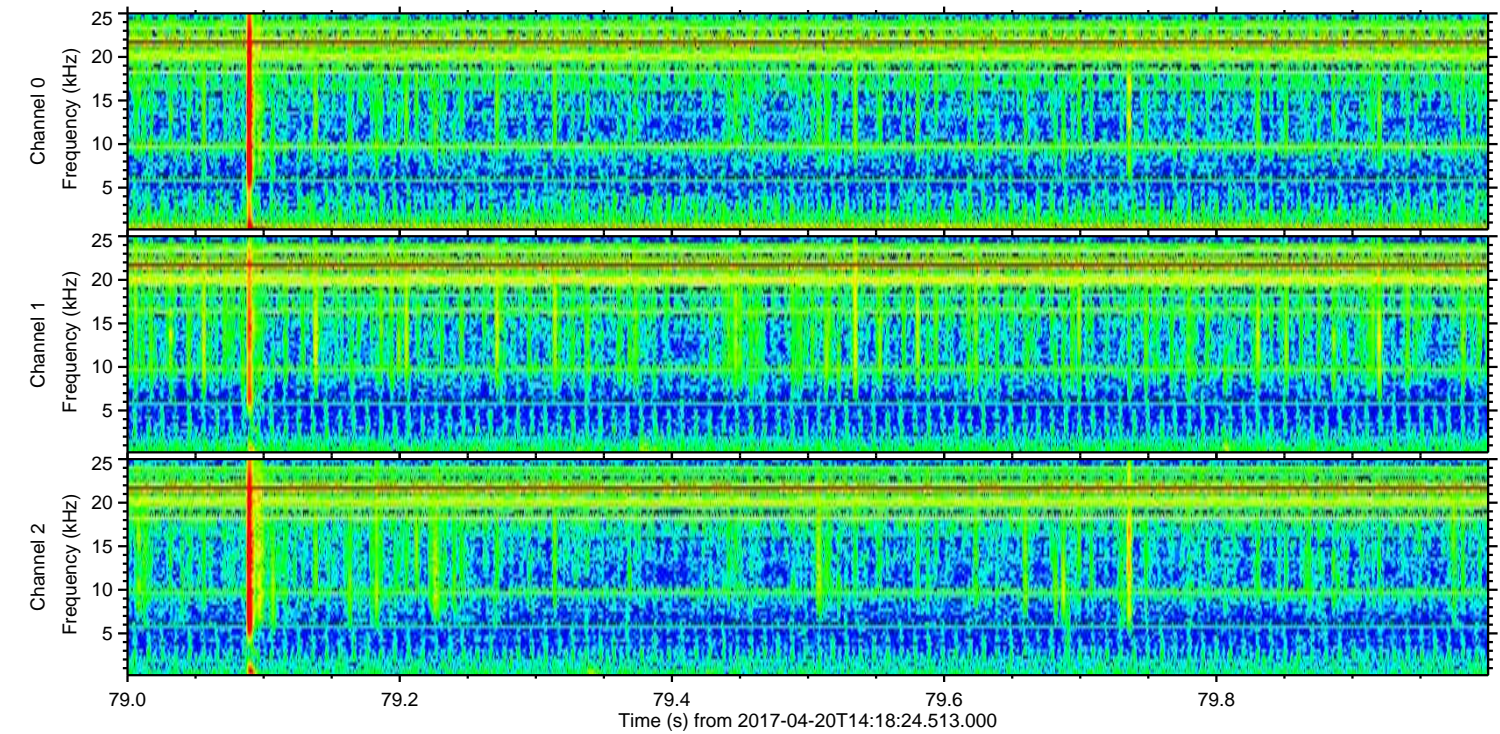
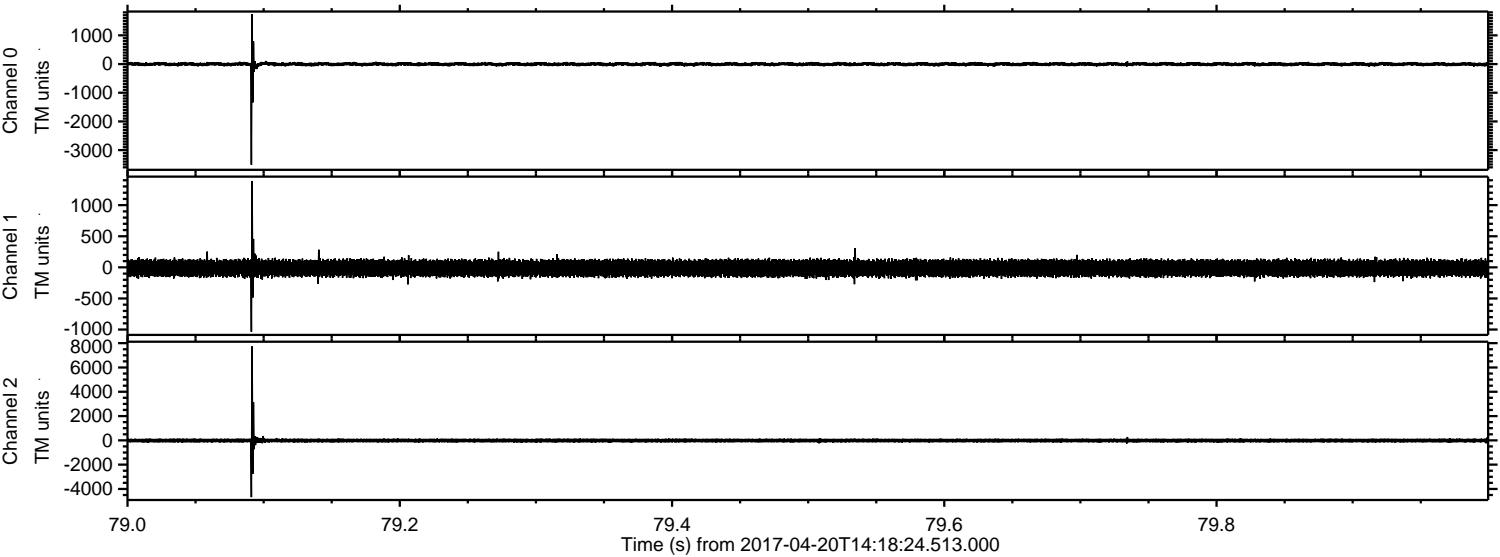
Processed Thu Apr 20 16:25:56 2017 by ELM ver.2012-10-06 from 001__elm20170420_141823__dat00.bin



Processed Thu Apr 20 16:26:08 2017 by ELM ver.2012-10-06 from 001__elm20170420_141823__dat00.bin

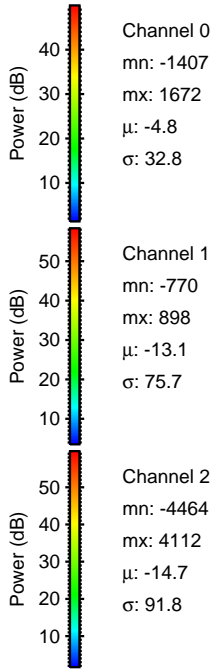
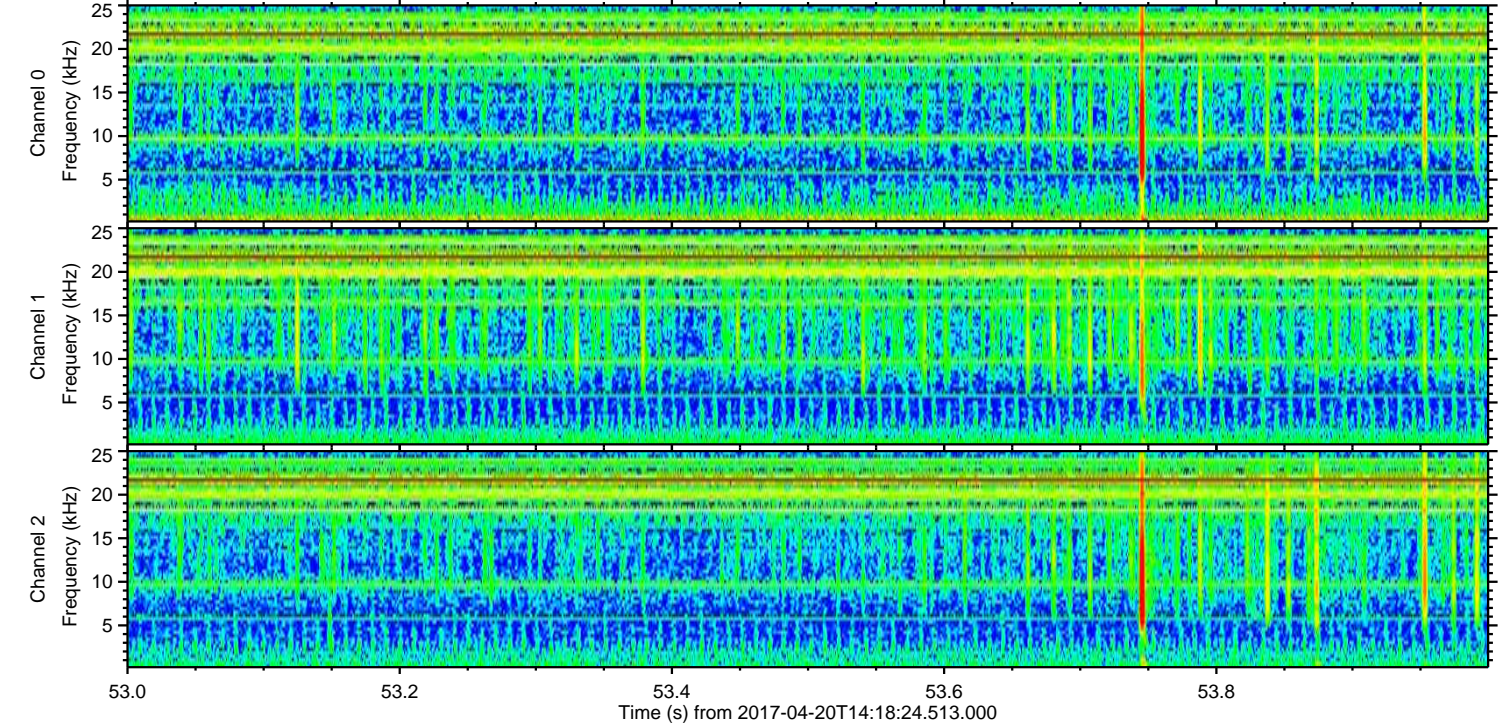
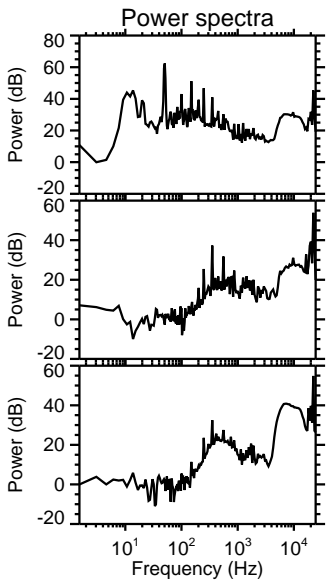
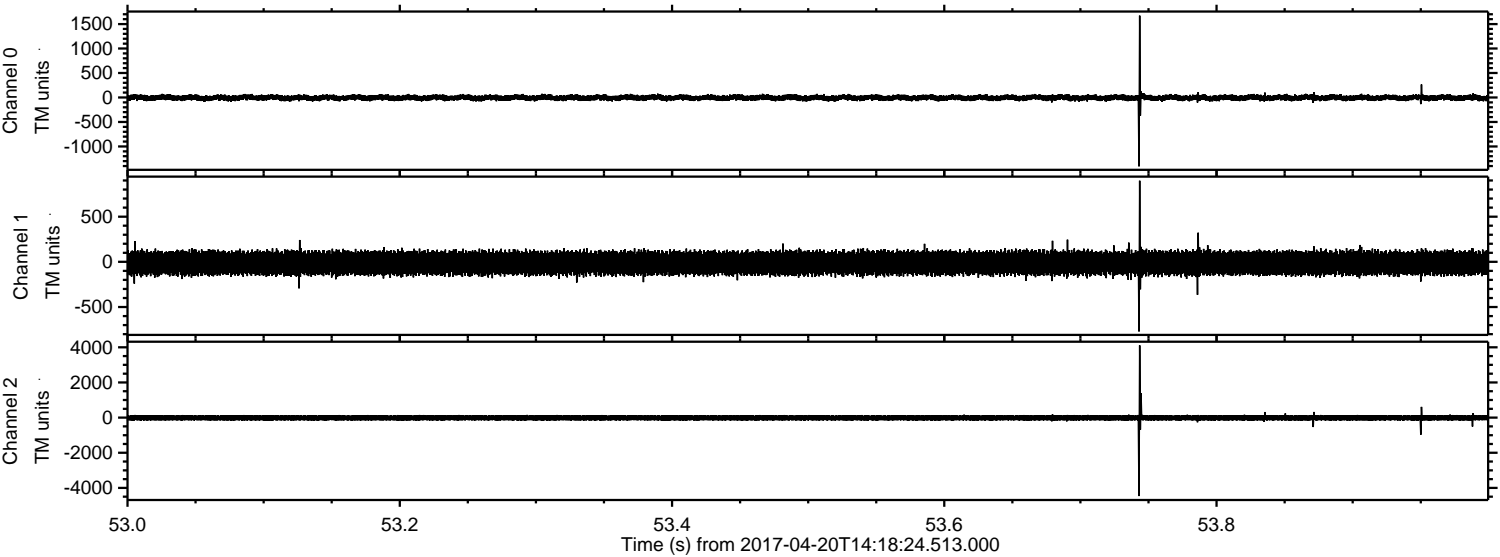


Processed Thu Apr 20 16:26:09 2017 by ELM ver.2012-10-06 from 001__elm20170420_141823__dat00.bin

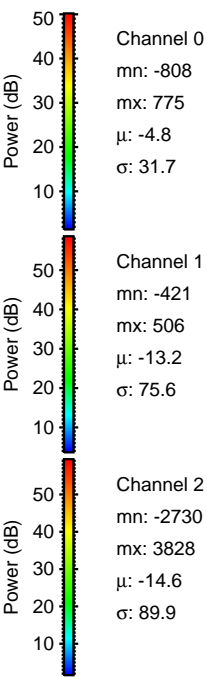
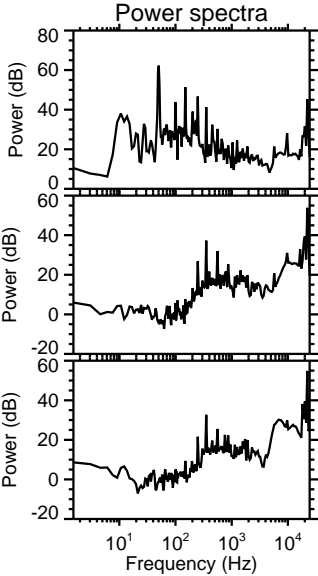
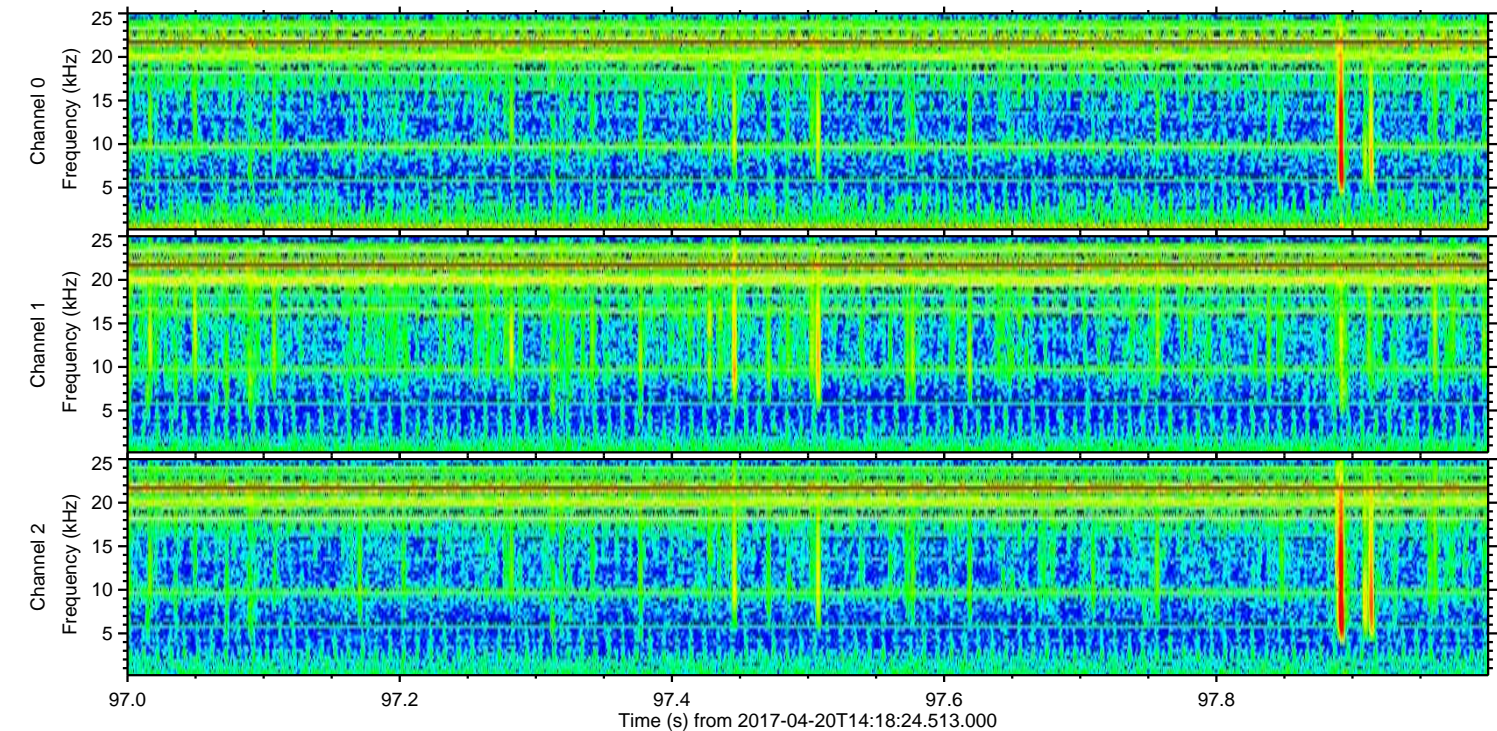
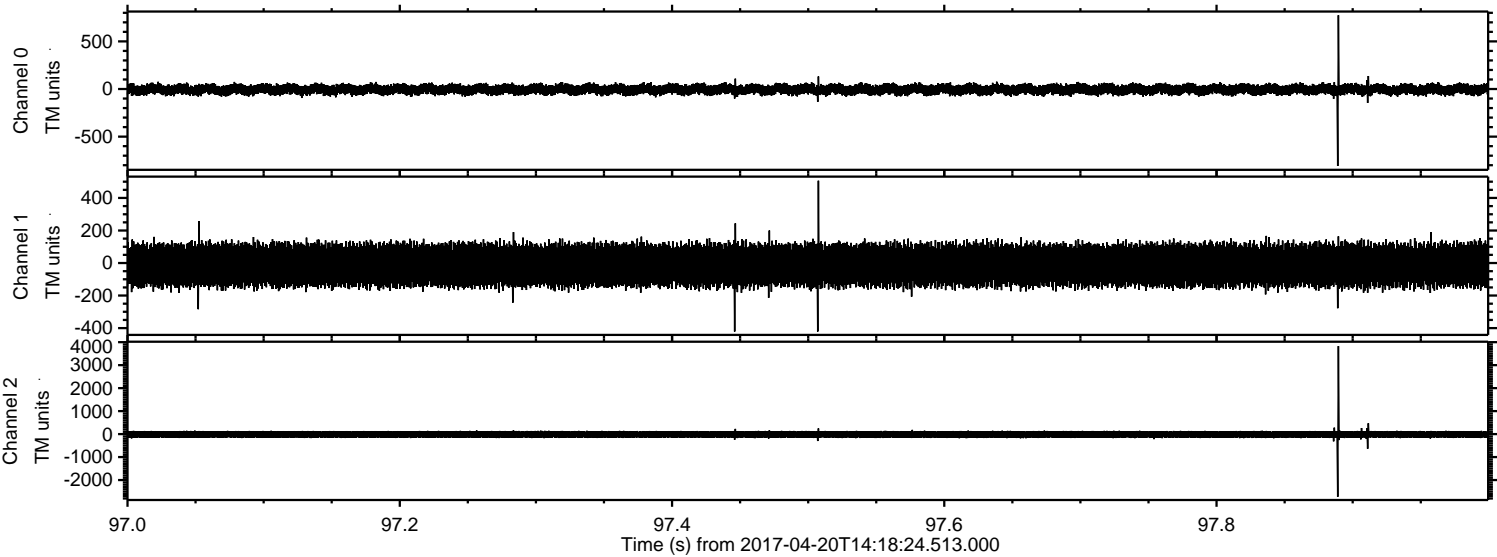


ELMAVAN 3D WAVEFORMS (Measured data sampled at 50 kHz) 51000 packets of 144 samples from 2017-04-20T14:18:24.513.000. Part 54/147

Processed Thu Apr 20 16:26:10 2017 by ELM ver.2012-10-06 from 001__elm20170420_141823__dat00.bin

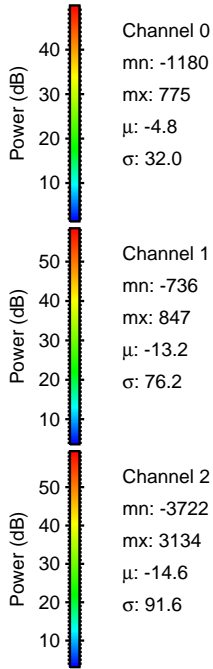
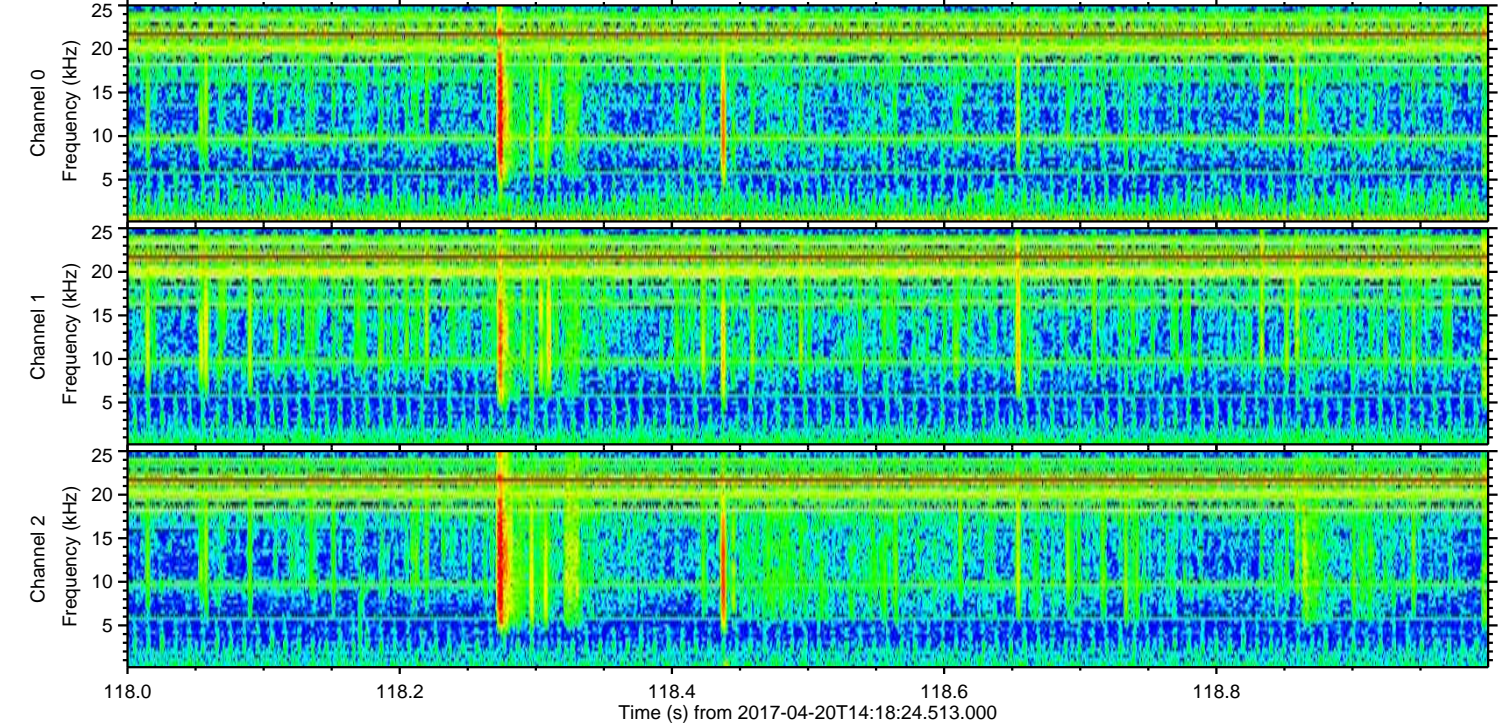
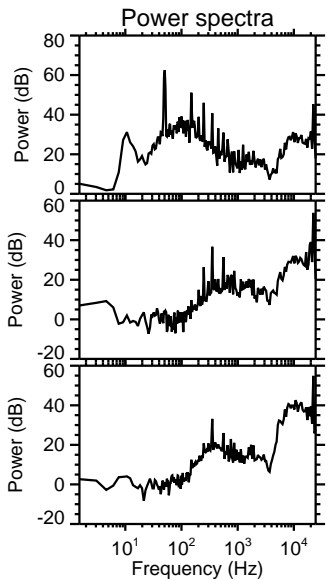
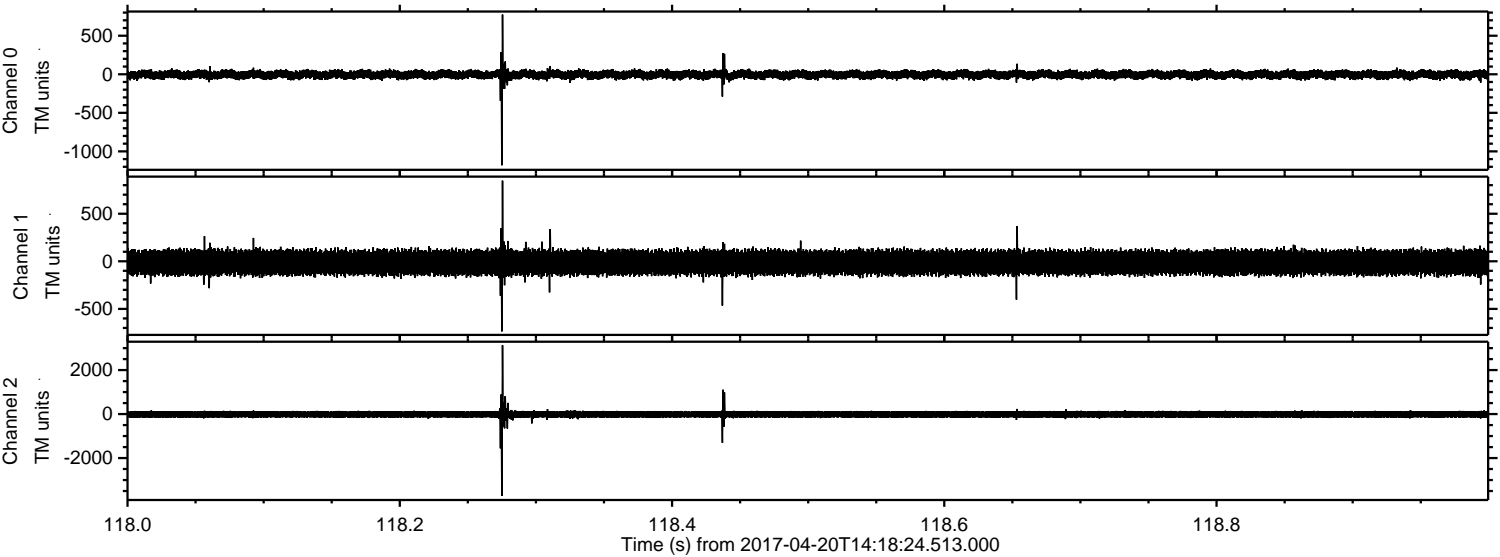


Processed Thu Apr 20 16:26:11 2017 by ELM ver.2012-10-06 from 001__elm20170420_141823__dat00.bin



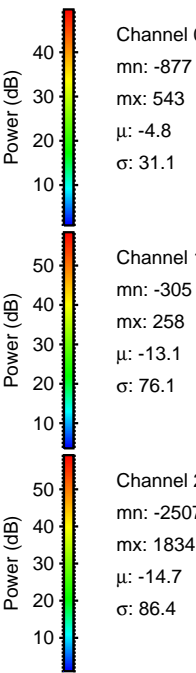
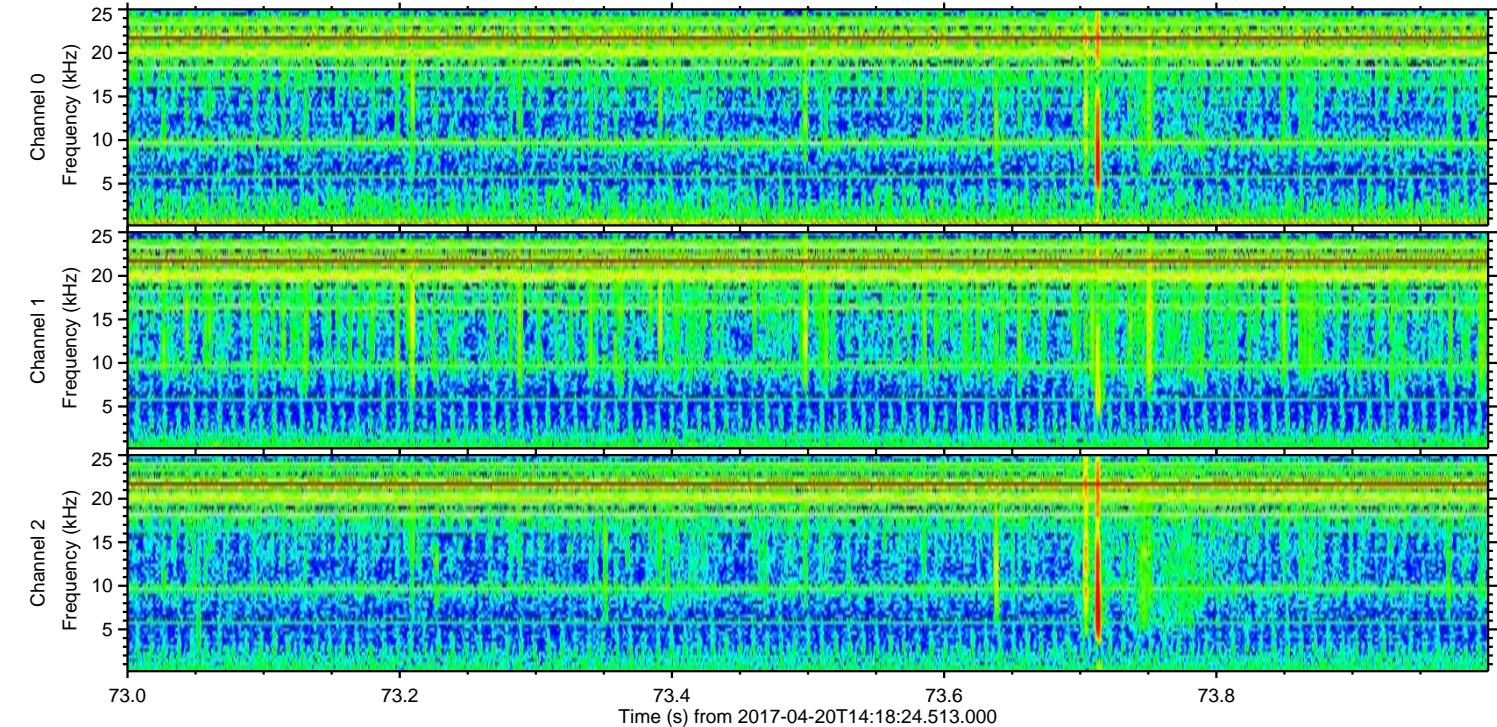
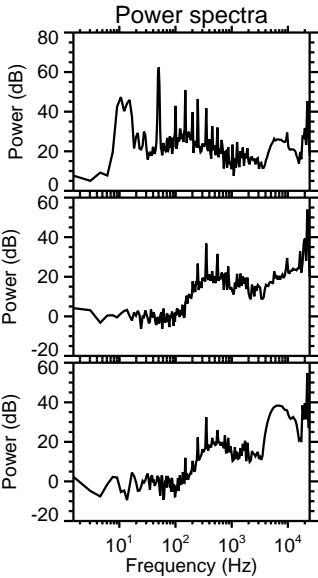
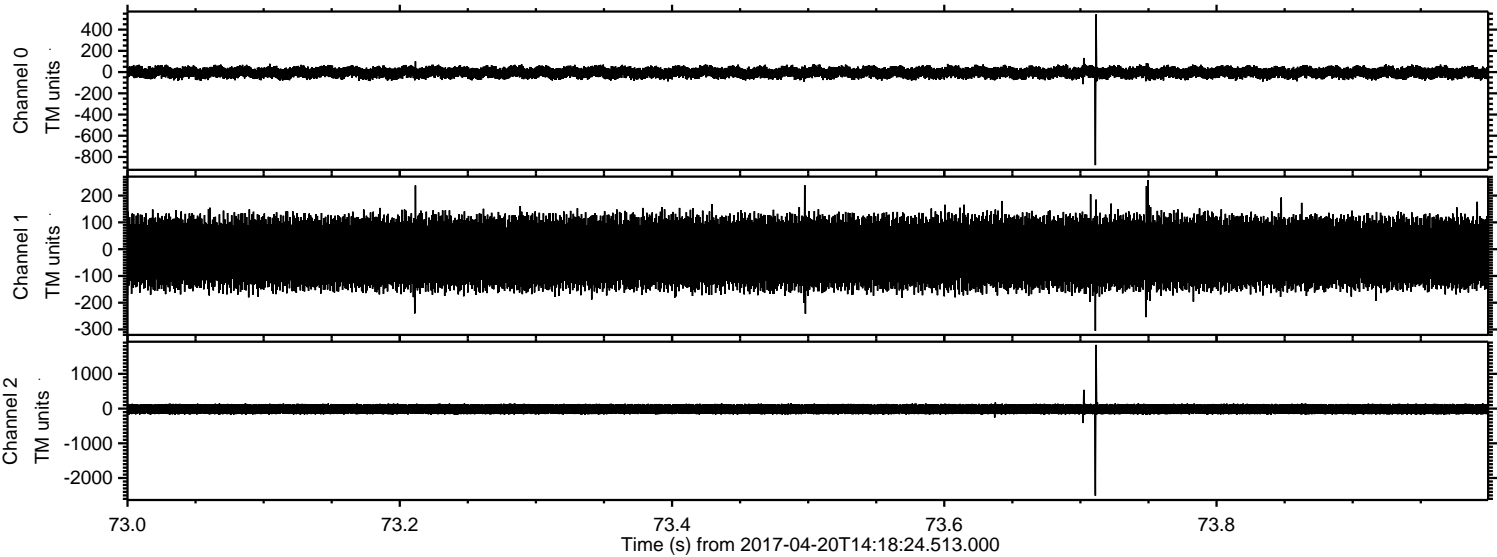
ELMAVAN 3D WAVEFORMS (Measured data sampled at 50 kHz) 51000 packets of 144 samples from 2017-04-20T14:18:24.513.000. Part 119/147

Processed Thu Apr 20 16:26:11 2017 by ELM ver.2012-10-06 from 001__elm20170420_141823__dat00.bin



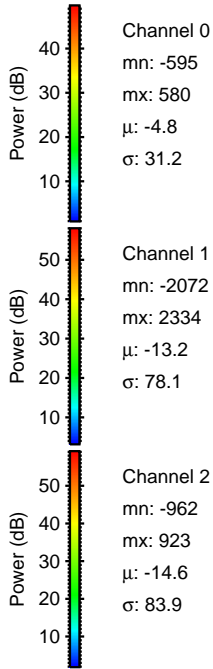
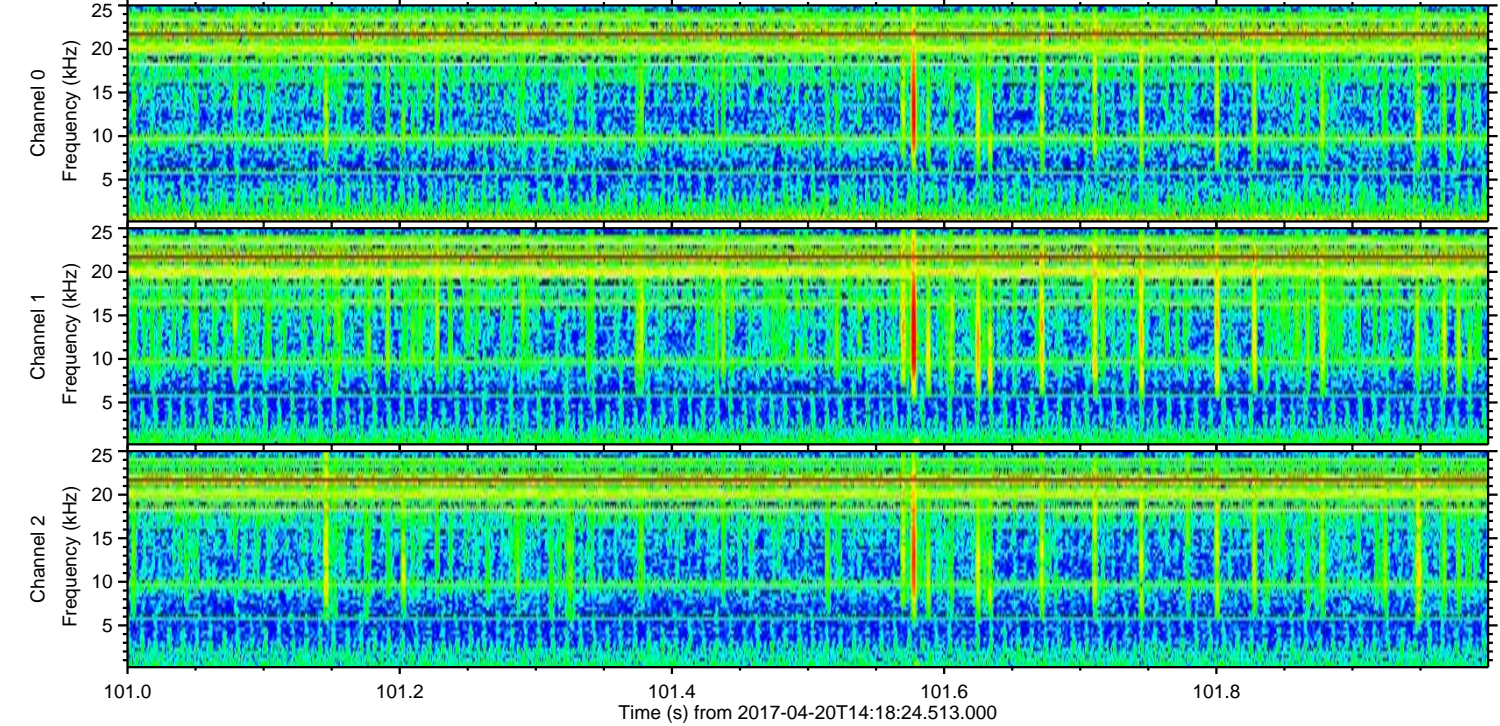
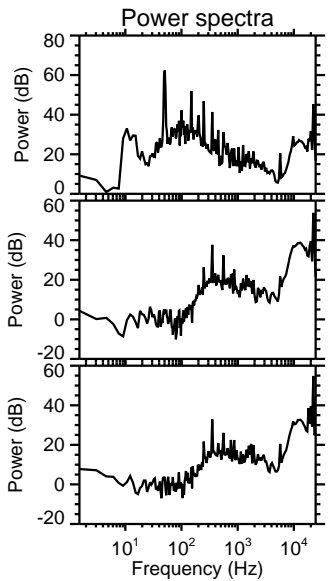
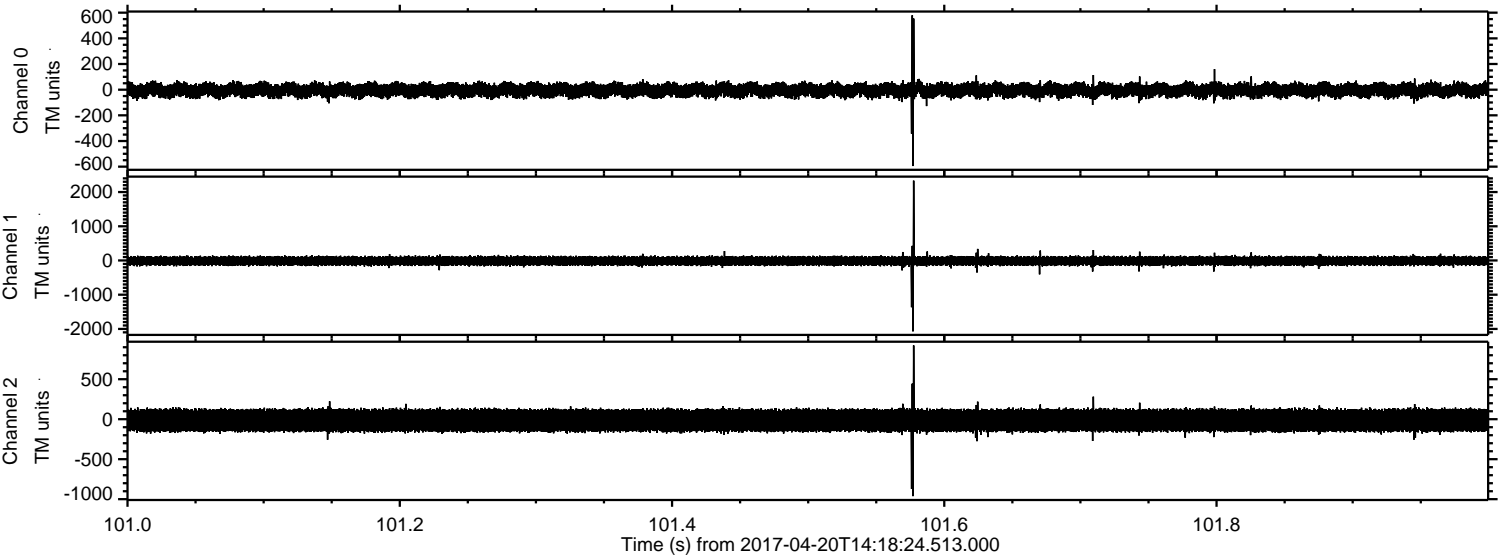
ELMAVAN 3D WAVEFORMS (Measured data sampled at 50 kHz) 51000 packets of 144 samples from 2017-04-20T14:18:24.513.000. Part 74/147

Processed Thu Apr 20 16:26:12 2017 by ELM ver.2012-10-06 from 001__elm20170420_141823__dat00.bin



ELMAVAN 3D WAVEFORMS (Measured data sampled at 50 kHz) 51000 packets of 144 samples from 2017-04-20T14:18:24.513.000. Part 102/147

Processed Thu Apr 20 16:26:13 2017 by ELM ver.2012-10-06 from 001__elm20170420_141823__dat00.bin

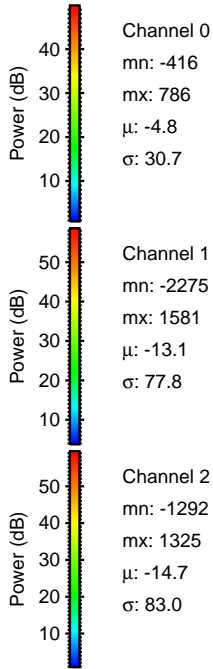
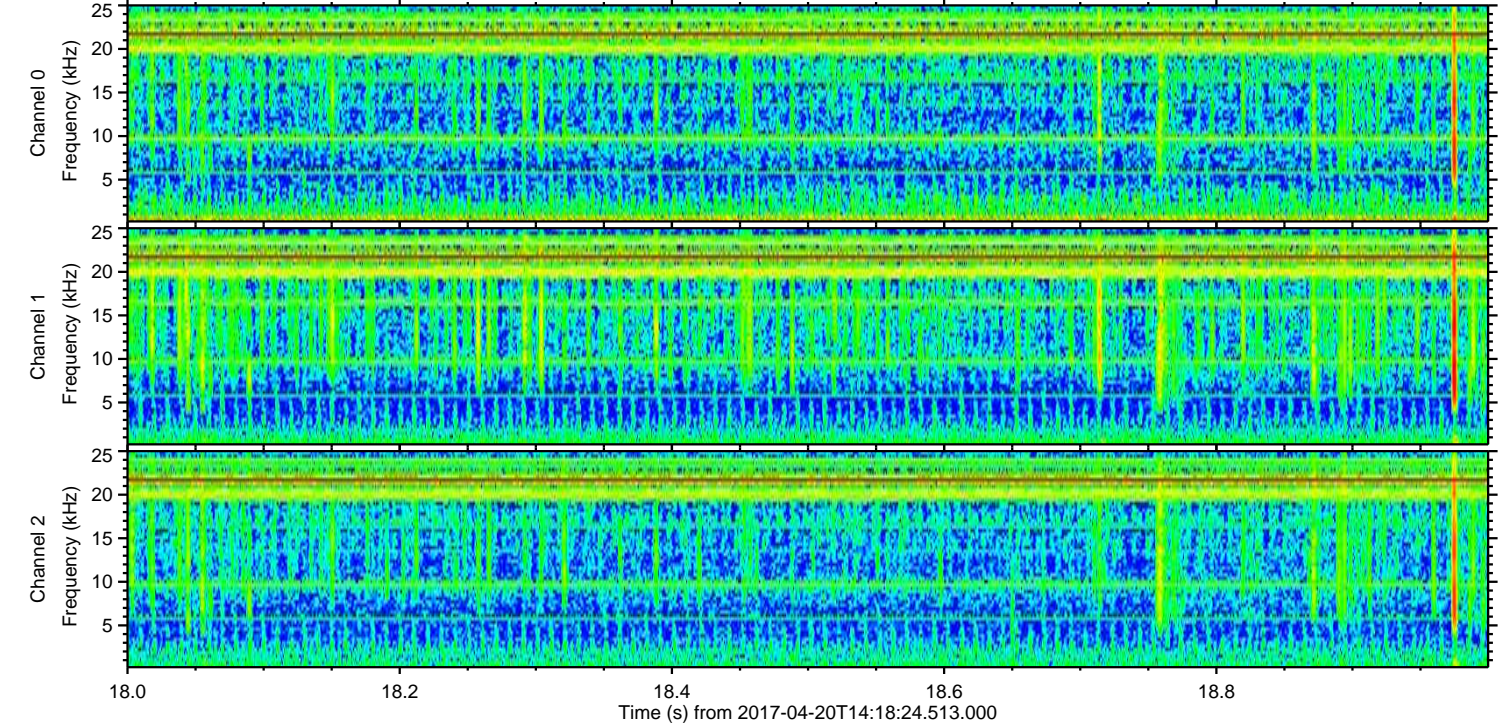
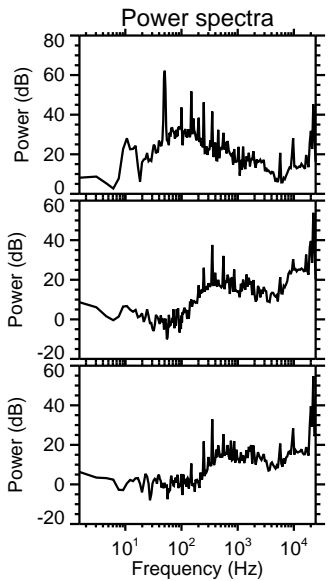
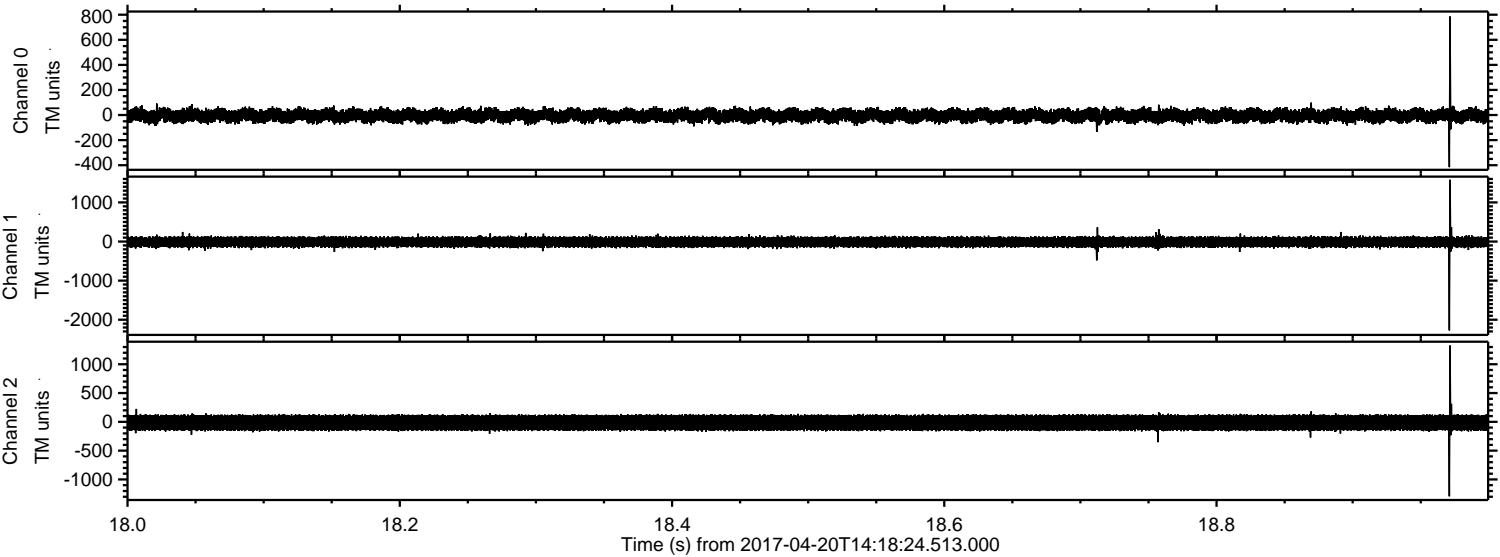


Channel 0
mn: -595
mx: 580
 μ : -4.8
 σ : 31.2

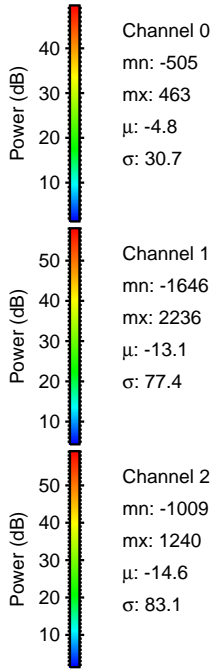
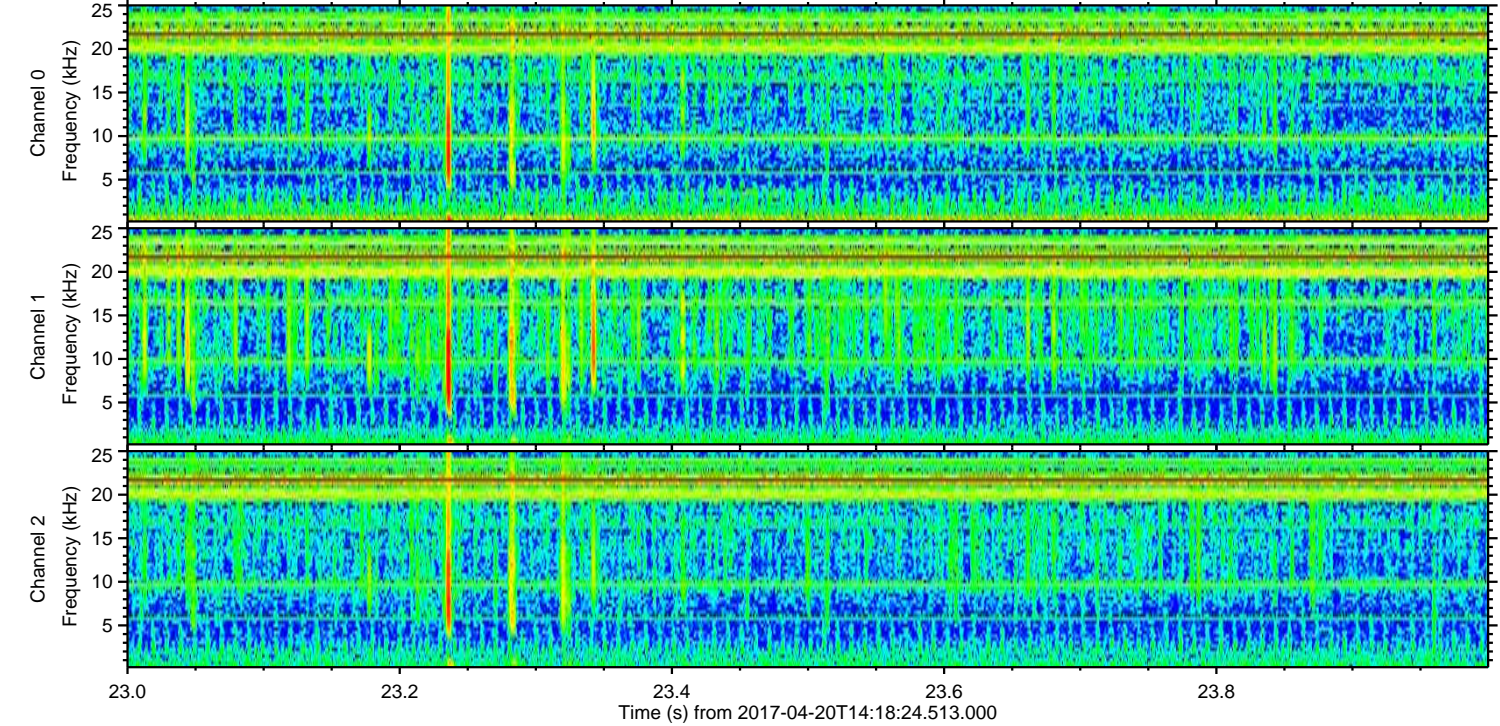
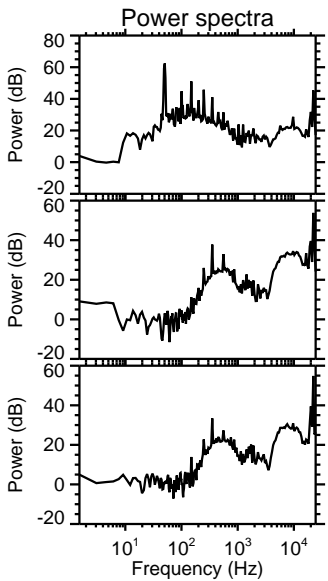
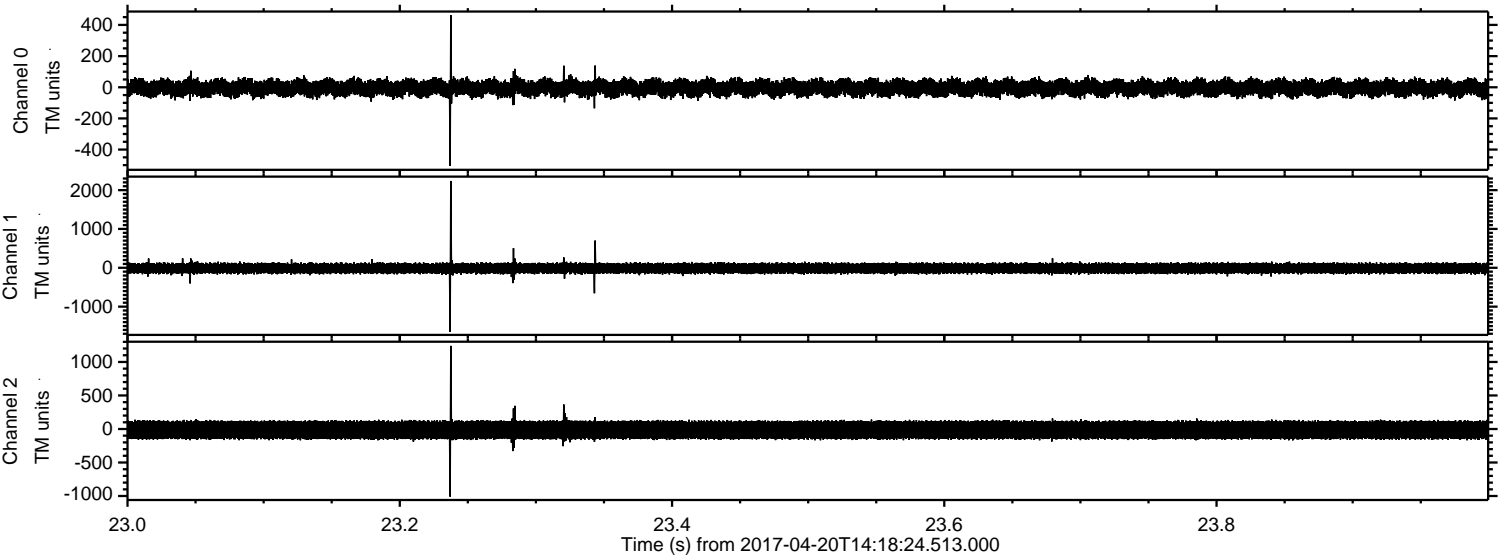
Channel 1
mn: -2072
mx: 2334
 μ : -13.2
 σ : 78.1

Channel 2
mn: -962
mx: 923
 μ : -14.6
 σ : 83.9

Processed Thu Apr 20 16:26:14 2017 by ELM ver.2012-10-06 from 001__elm20170420_141823__dat00.bin



Processed Thu Apr 20 16:26:15 2017 by ELM ver.2012-10-06 from 001__elm20170420_141823__dat00.bin



Channel 0
mn: -505
mx: 463
 μ : -4.8
 σ : 30.7

Channel 1
mn: -1646
mx: 2236
 μ : -13.1
 σ : 77.4

Channel 2
mn: -1009
mx: 1240
 μ : -14.6
 σ : 83.1

Processed Thu Apr 20 16:26:16 2017 by ELM ver.2012-10-06 from 001__elm20170420_141823__dat00.bin

