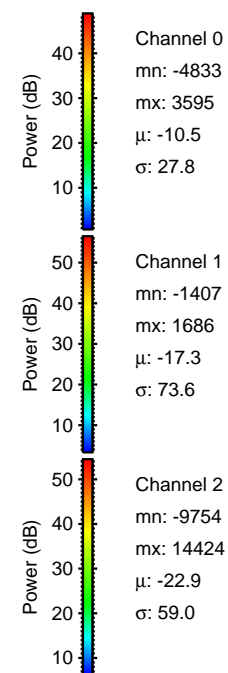
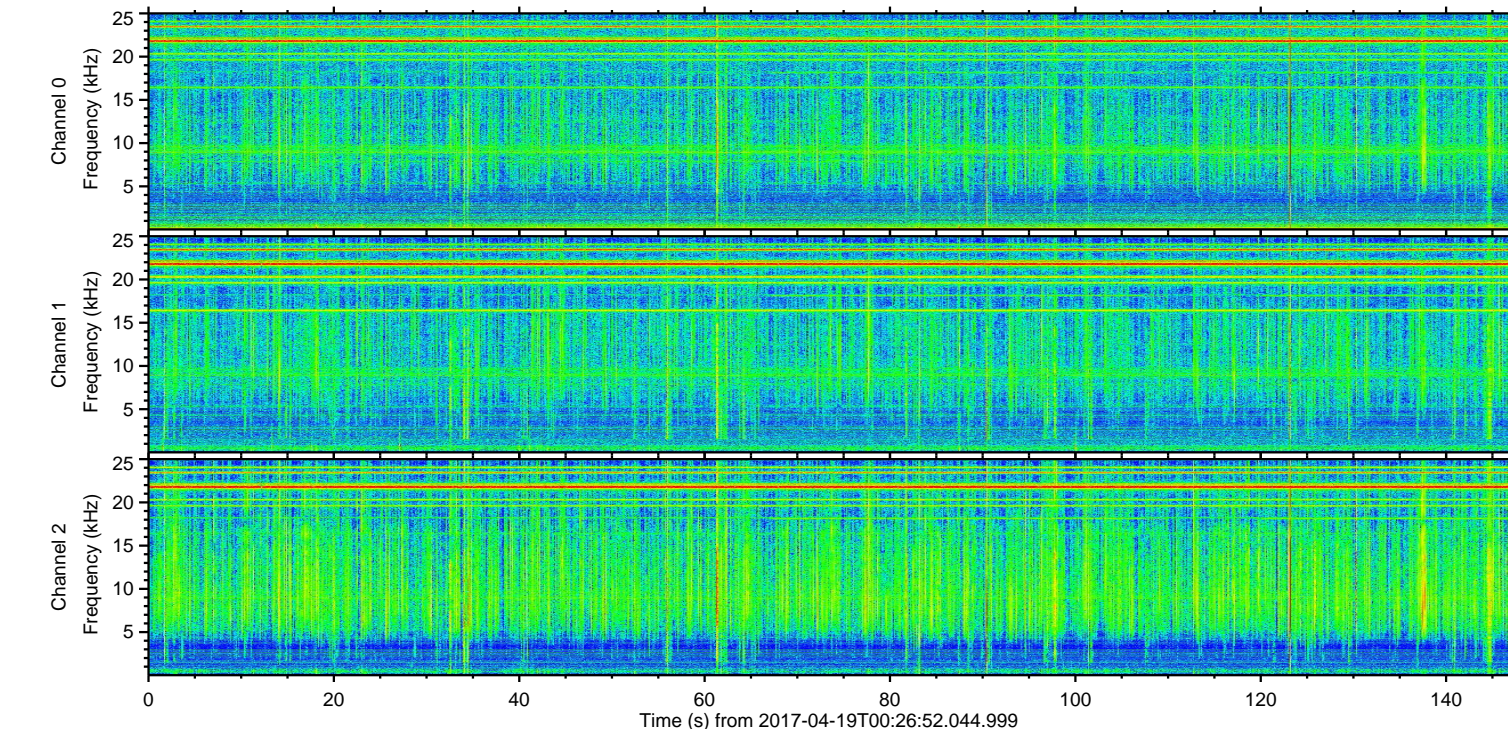
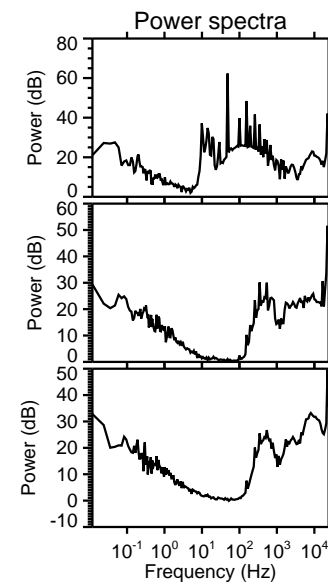
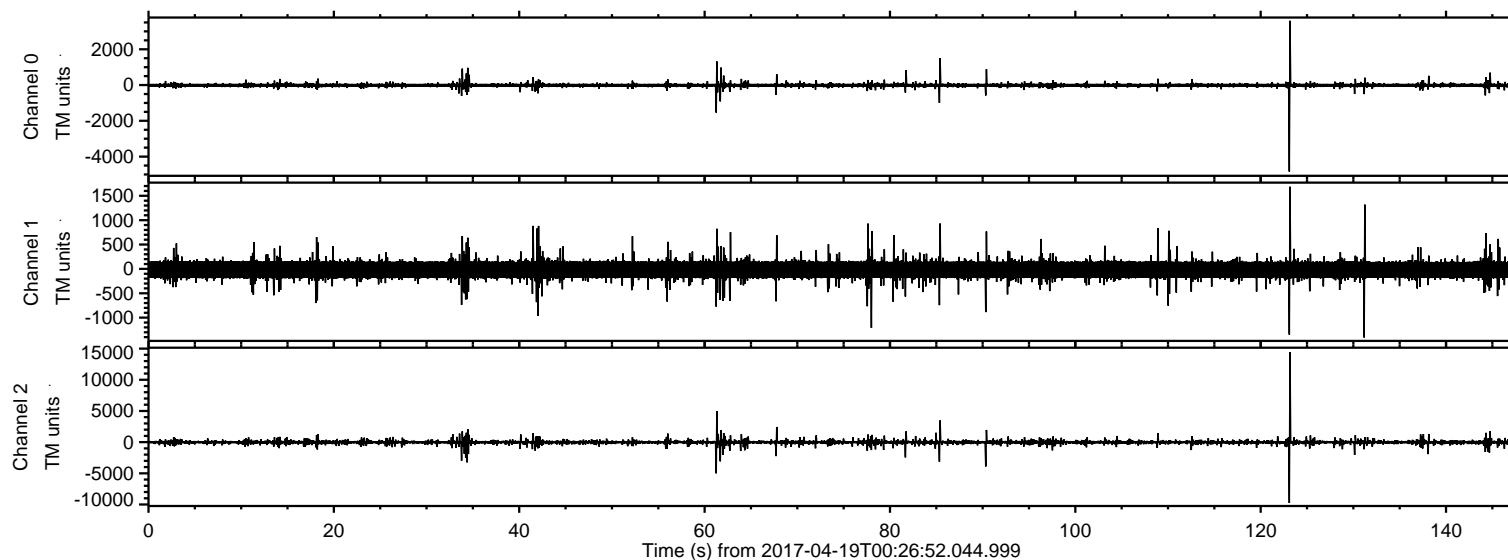


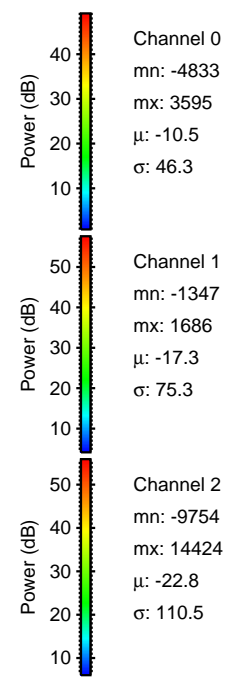
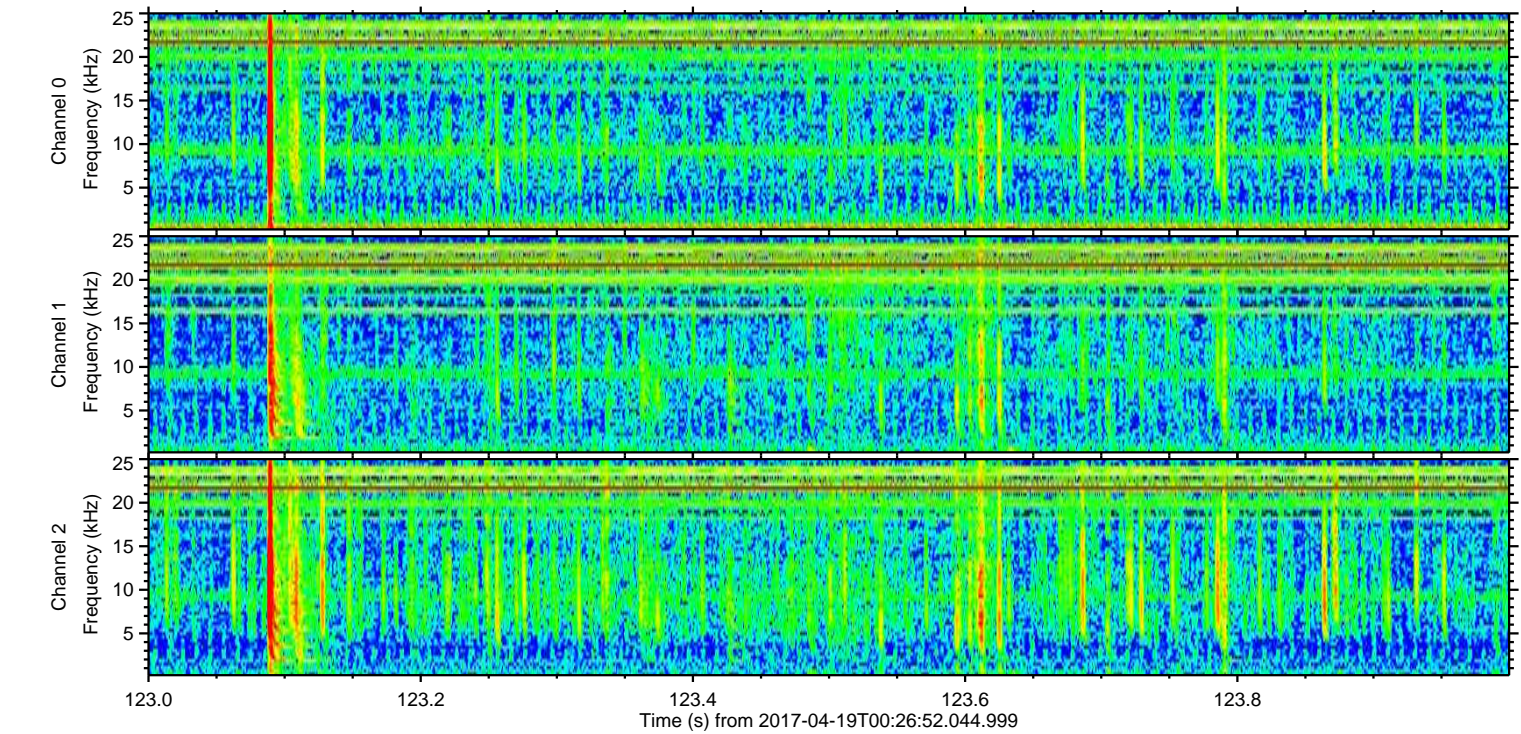
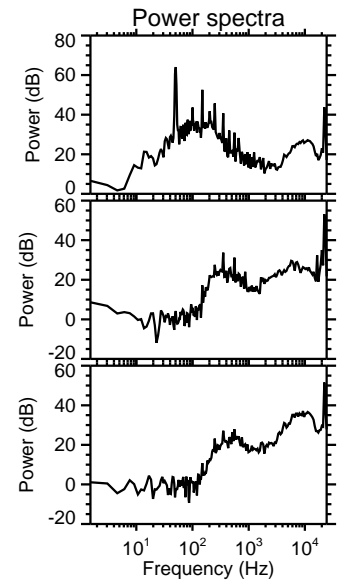
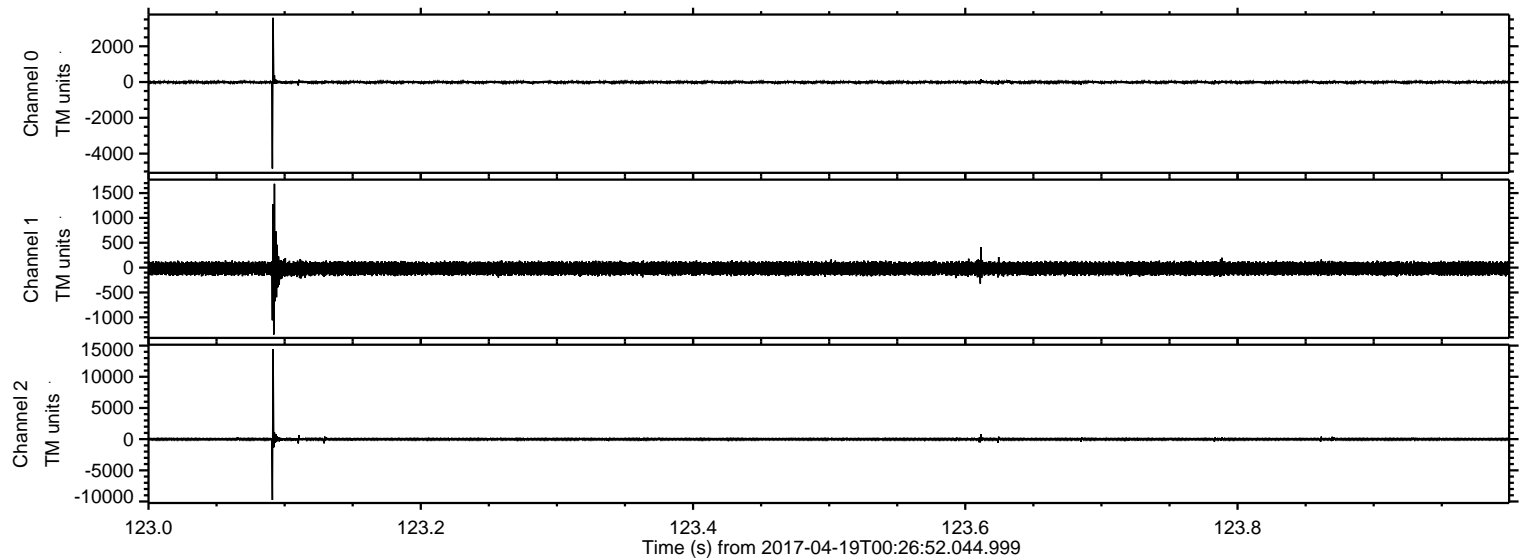
ELMAVAN 3D WAVEFORMS (Measured data sampled at 50 kHz) 51000 packets of 144 samples from 2017-04-19T00:26:52.044.999.

Processed Wed Apr 19 02:34:09 2017 by ELM ver.2012-10-06 from 001__elm20170419_002651__dat00.bin

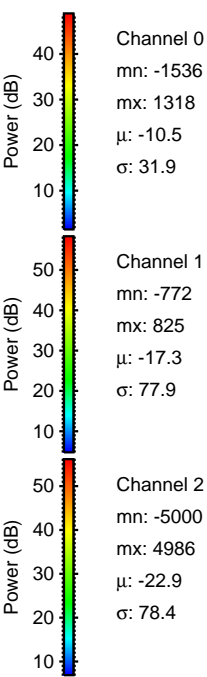
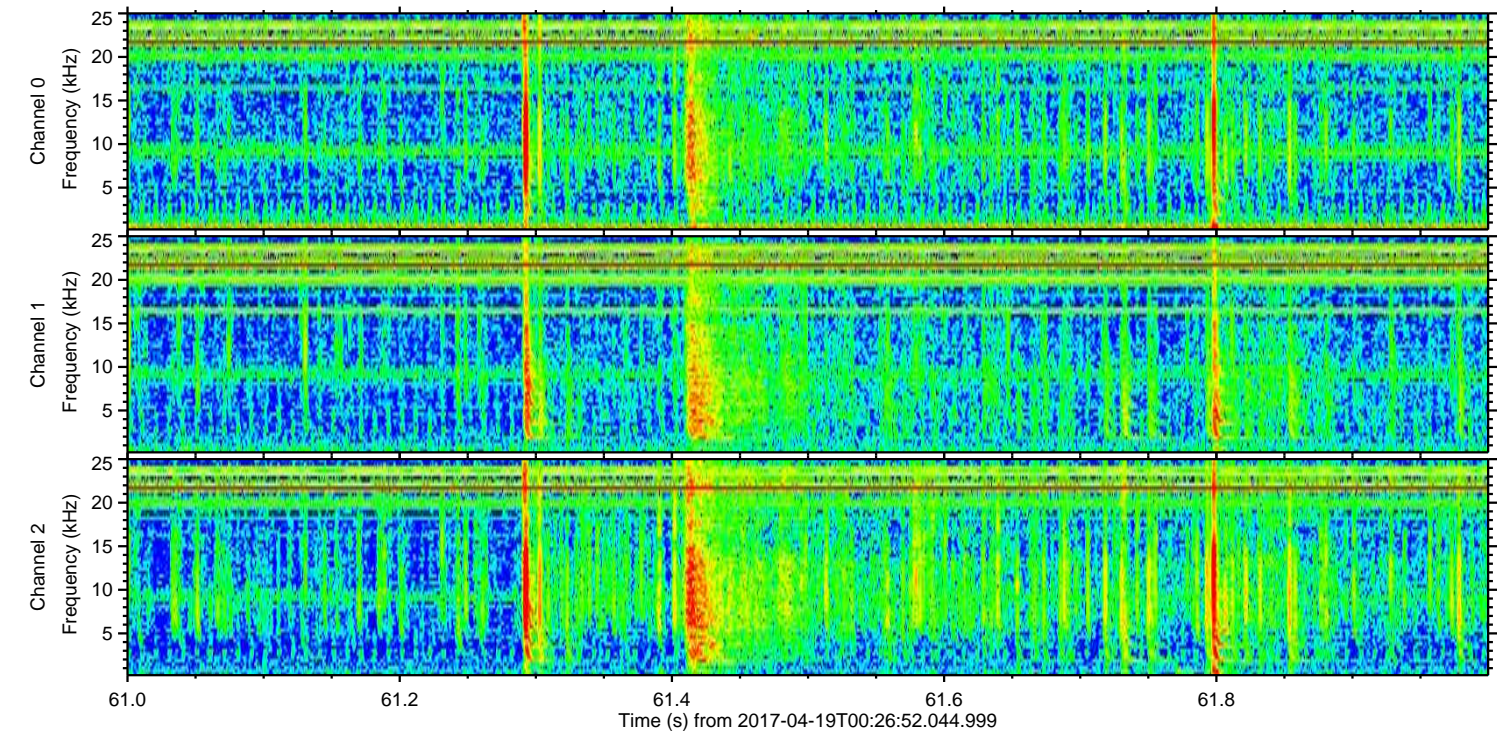
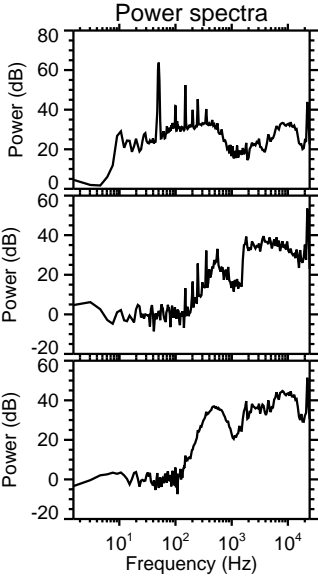
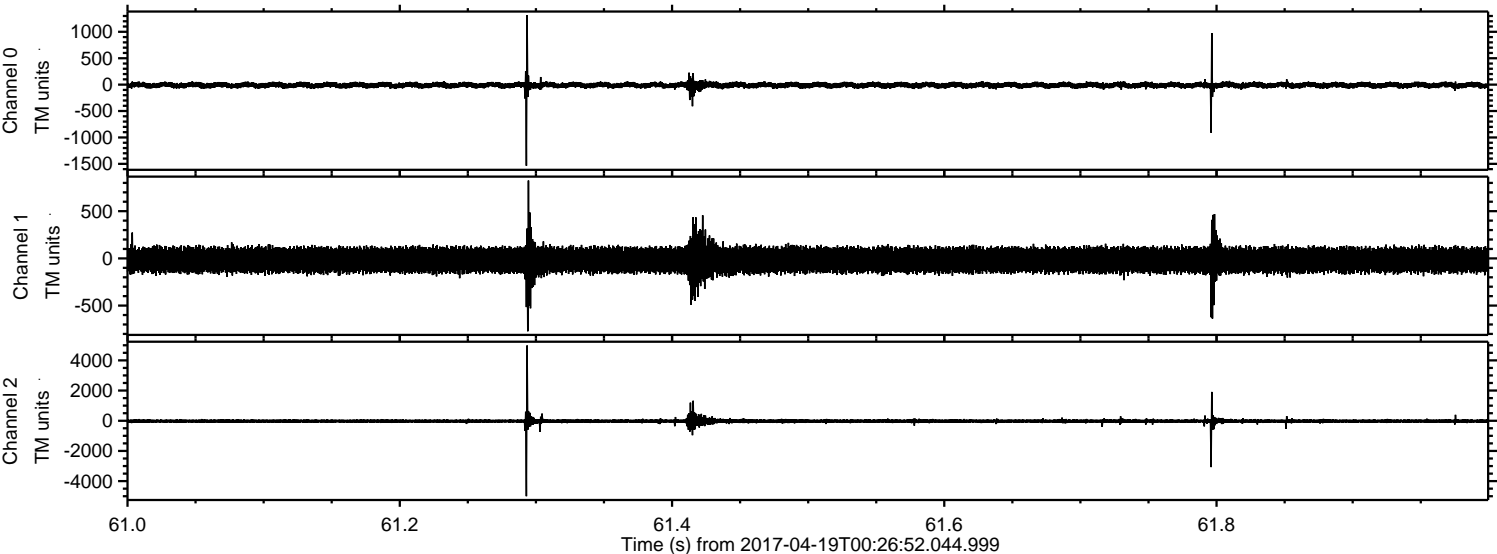


ELMAVAN 3D WAVEFORMS (Measured data sampled at 50 kHz) 51000 packets of 144 samples from 2017-04-19T00:26:52.044.999. Part 124/147

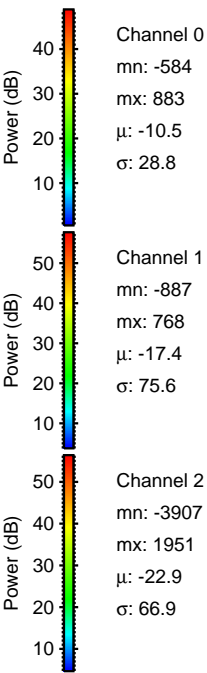
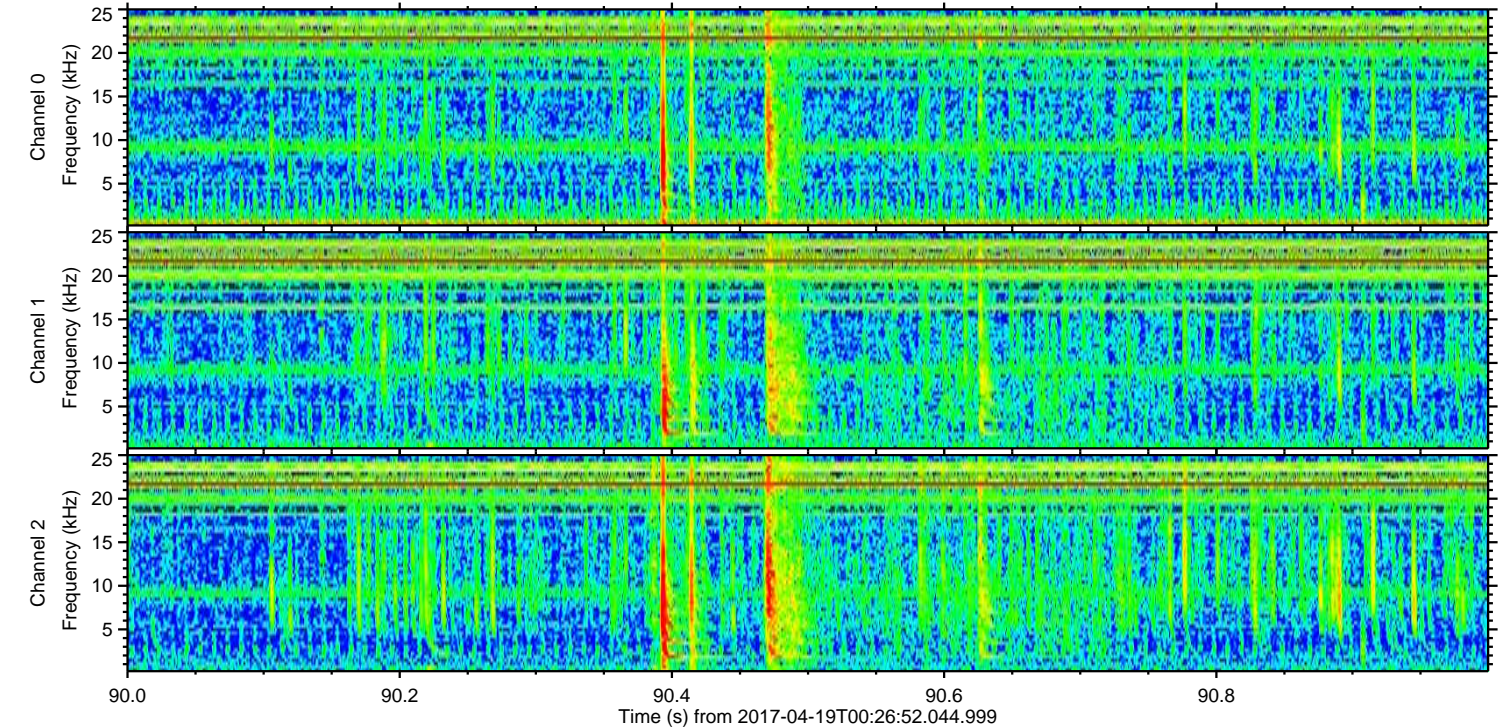
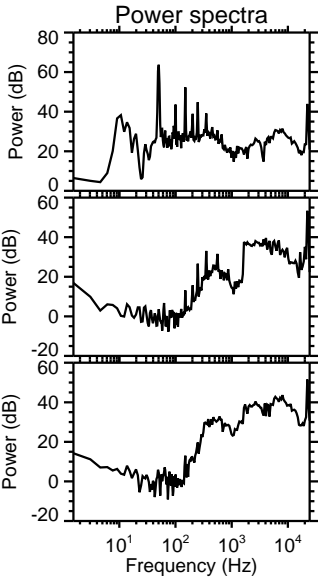
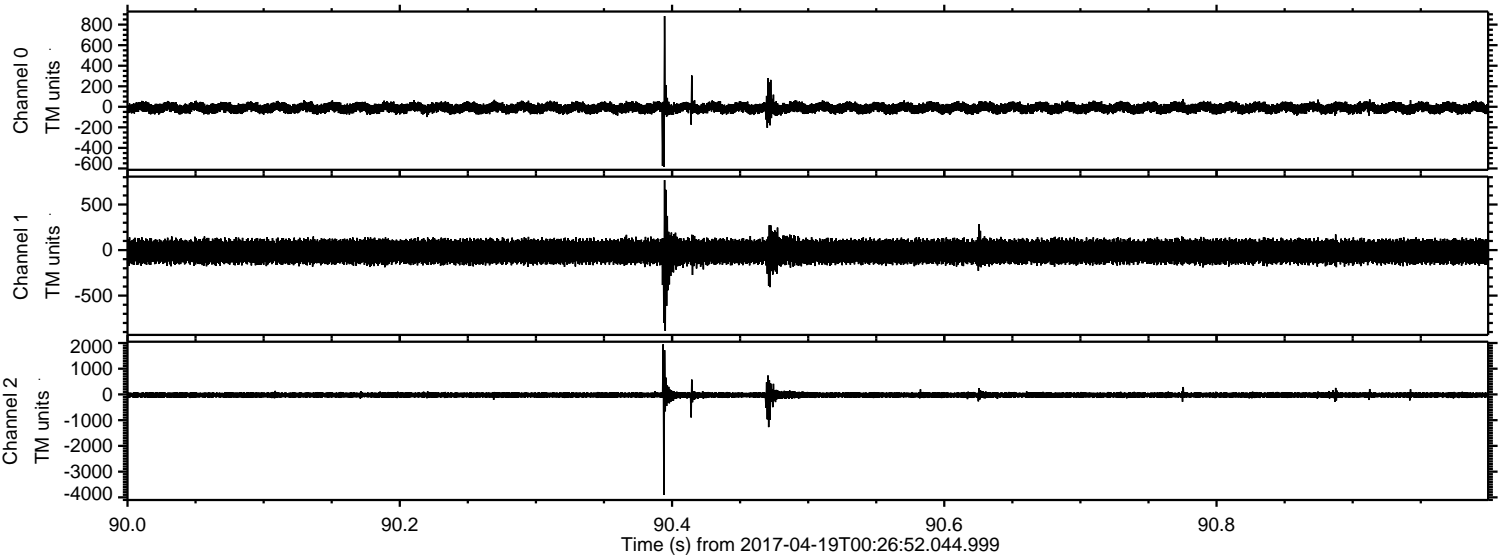
Processed Wed Apr 19 02:34:20 2017 by ELM ver.2012-10-06 from 001__elm20170419_002651__dat00.bin



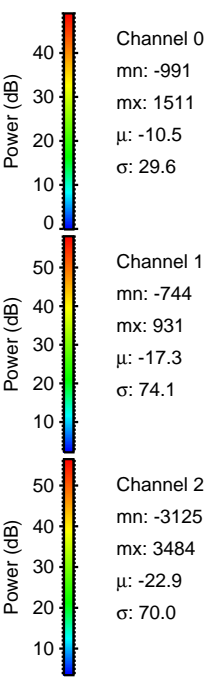
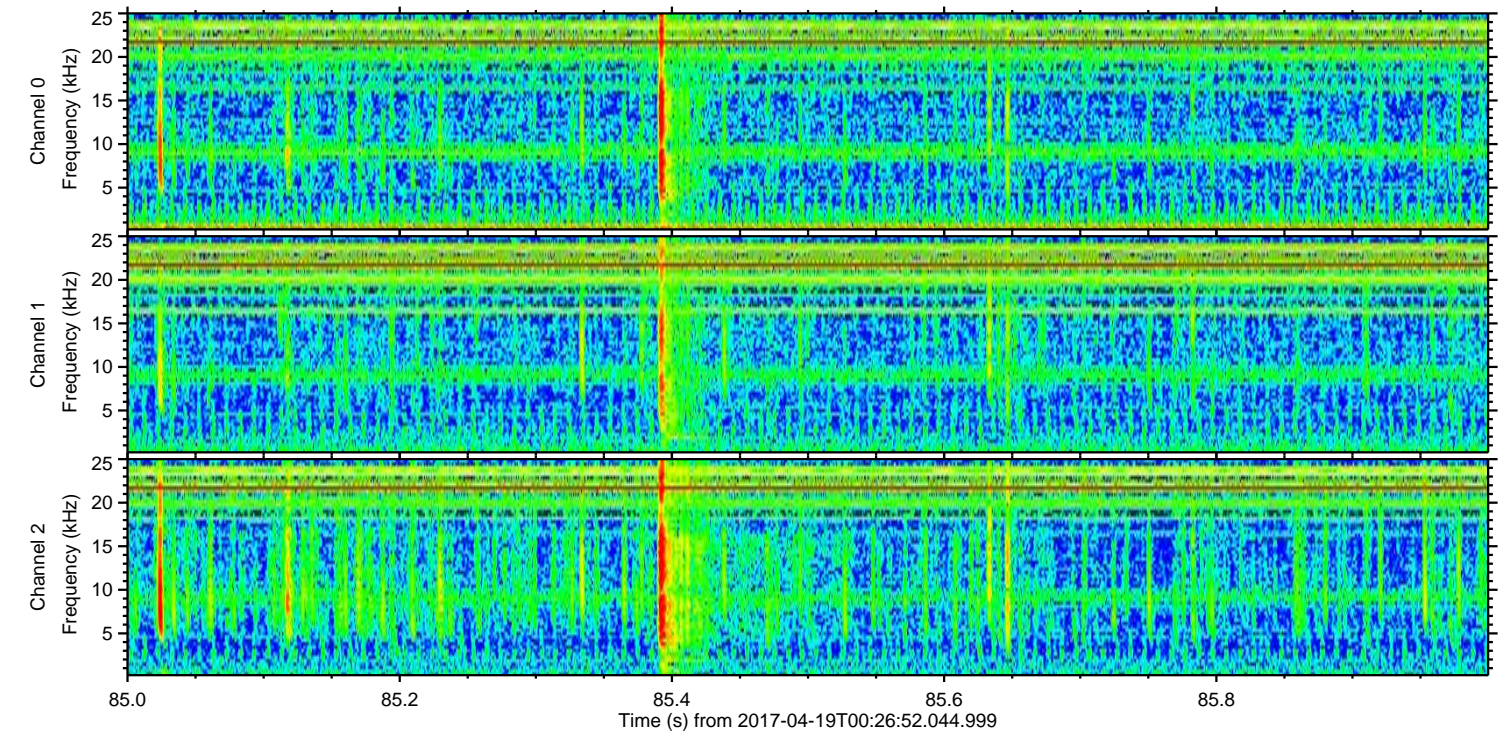
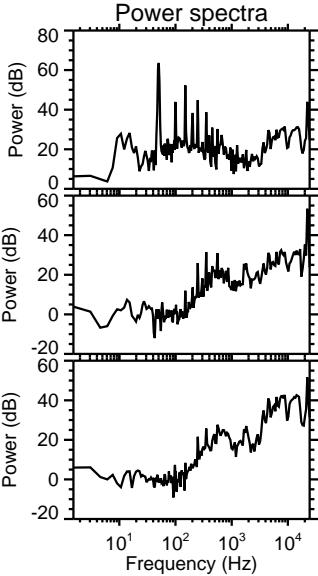
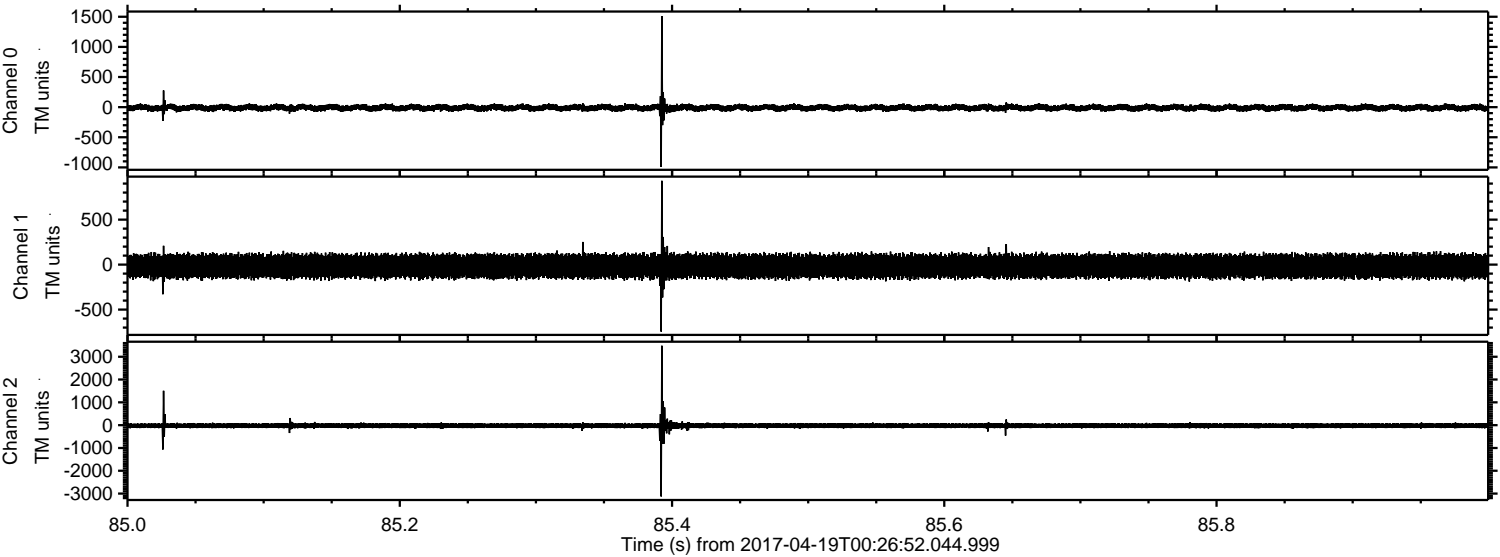
Processed Wed Apr 19 02:34:21 2017 by ELM ver.2012-10-06 from 001__elm20170419_002651__dat00.bin



Processed Wed Apr 19 02:34:22 2017 by ELM ver.2012-10-06 from 001__elm20170419_002651__dat00.bin



Processed Wed Apr 19 02:34:23 2017 by ELM ver.2012-10-06 from 001__elm20170419_002651__dat00.bin

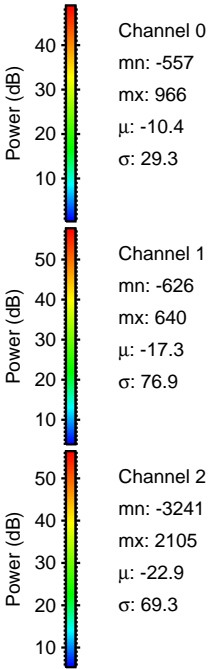
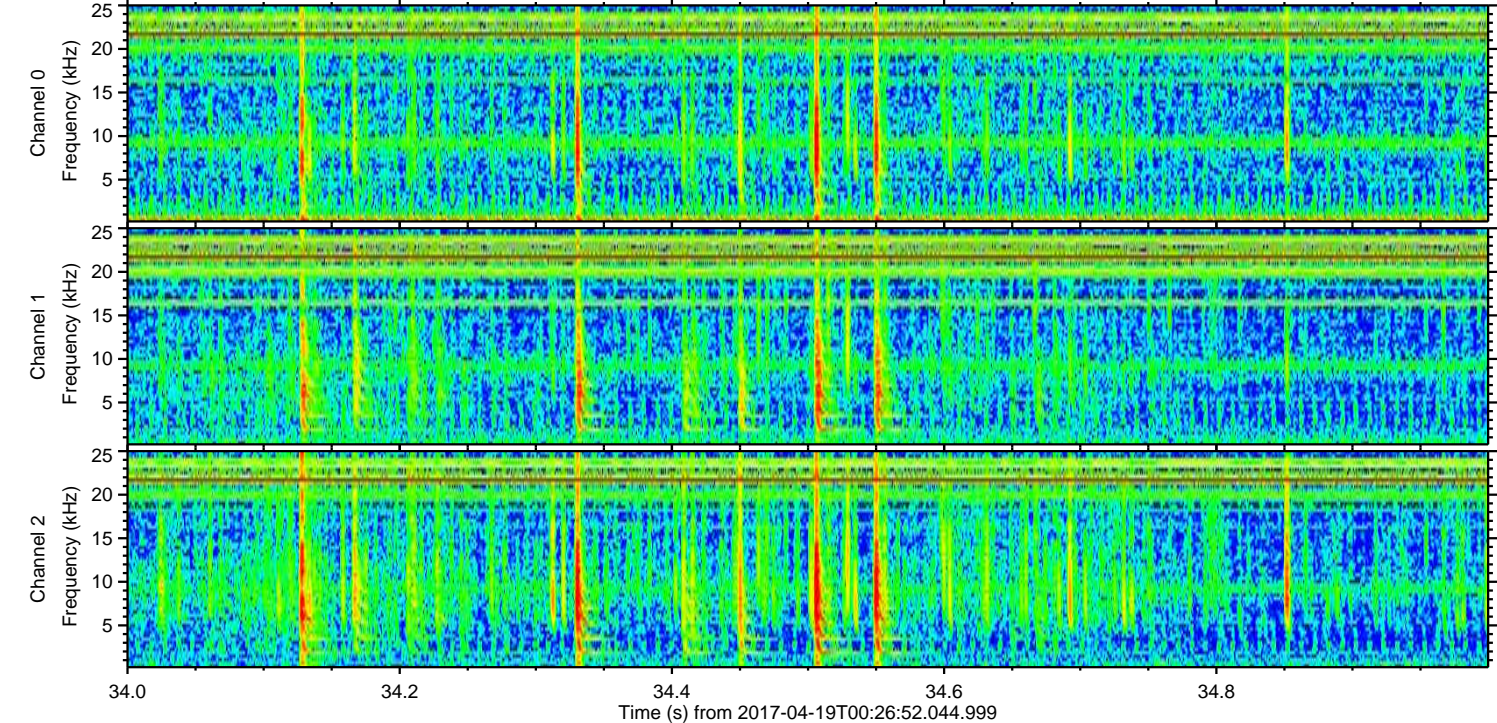
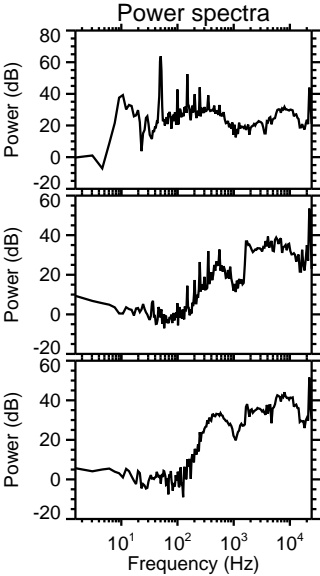
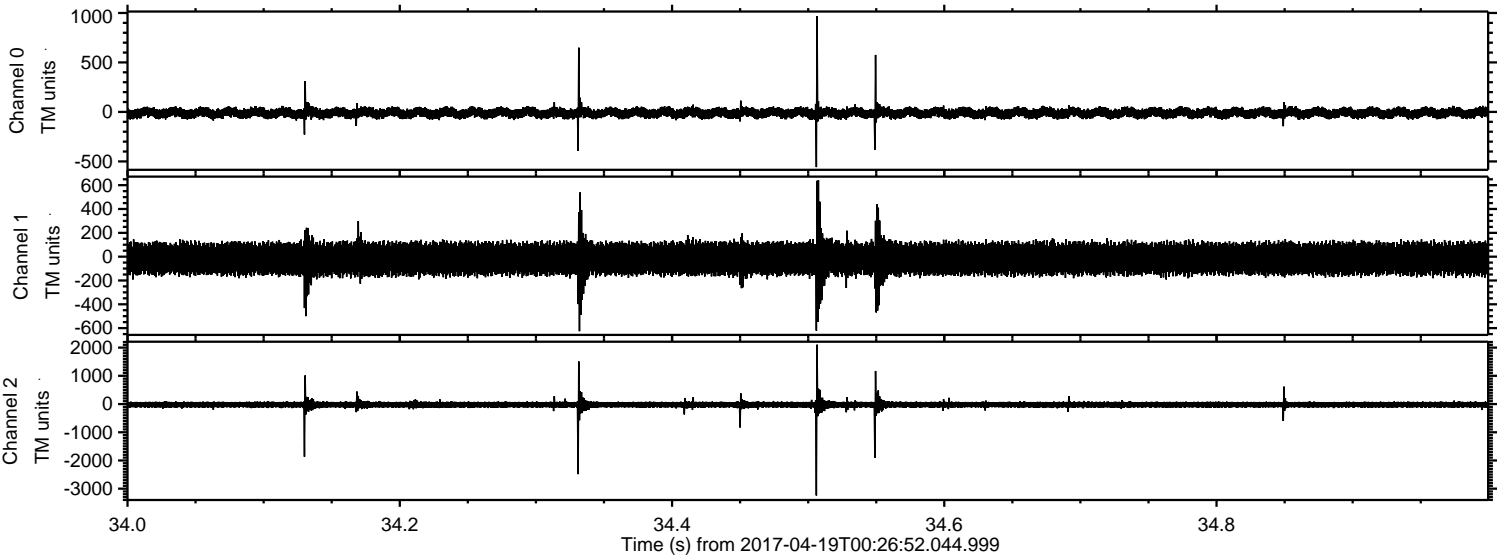


Channel 0
mn: -991
mx: 1511
 μ : -10.5
 σ : 29.6

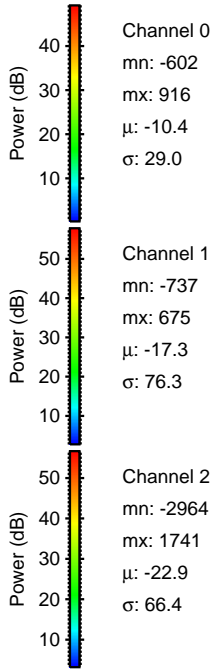
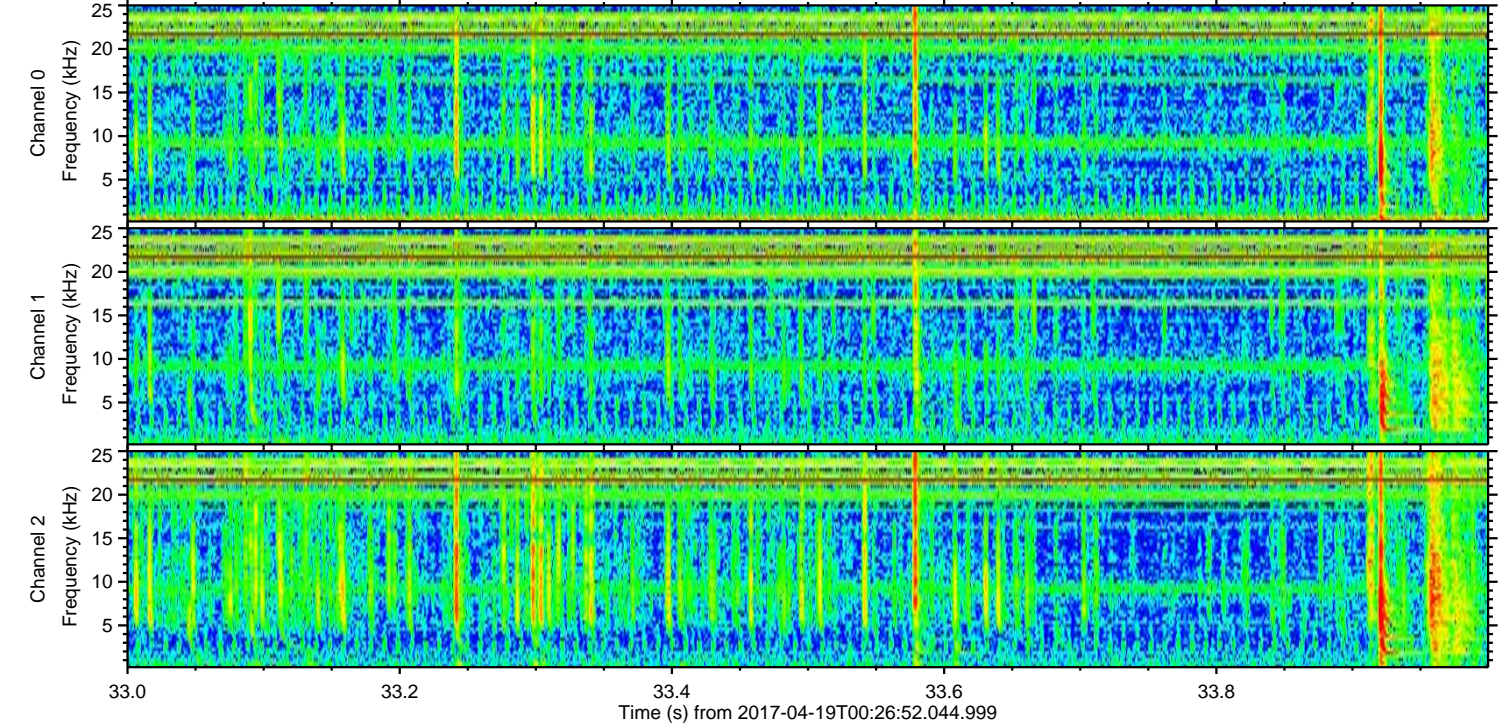
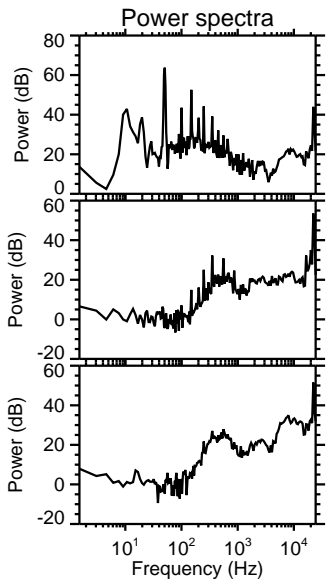
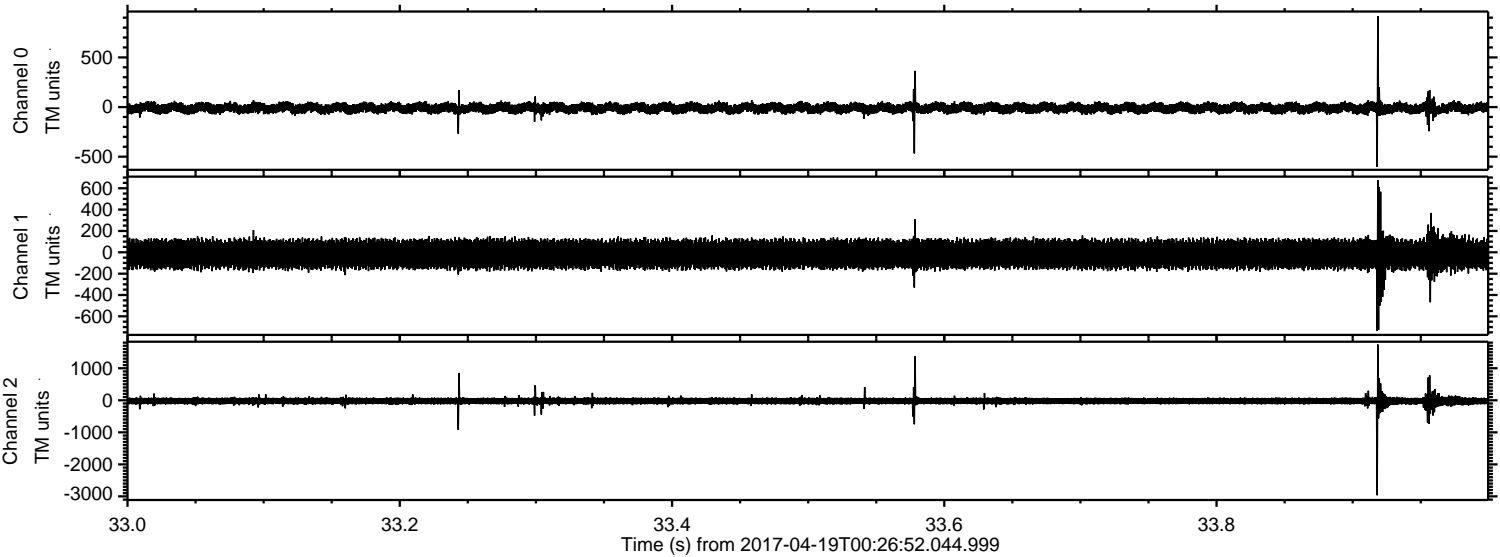
Channel 1
mn: -744
mx: 931
 μ : -17.3
 σ : 74.1

Channel 2
mn: -3125
mx: 3484
 μ : -22.9
 σ : 70.0

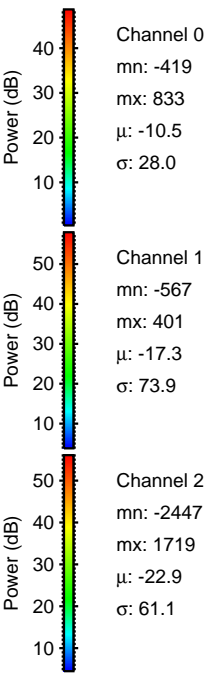
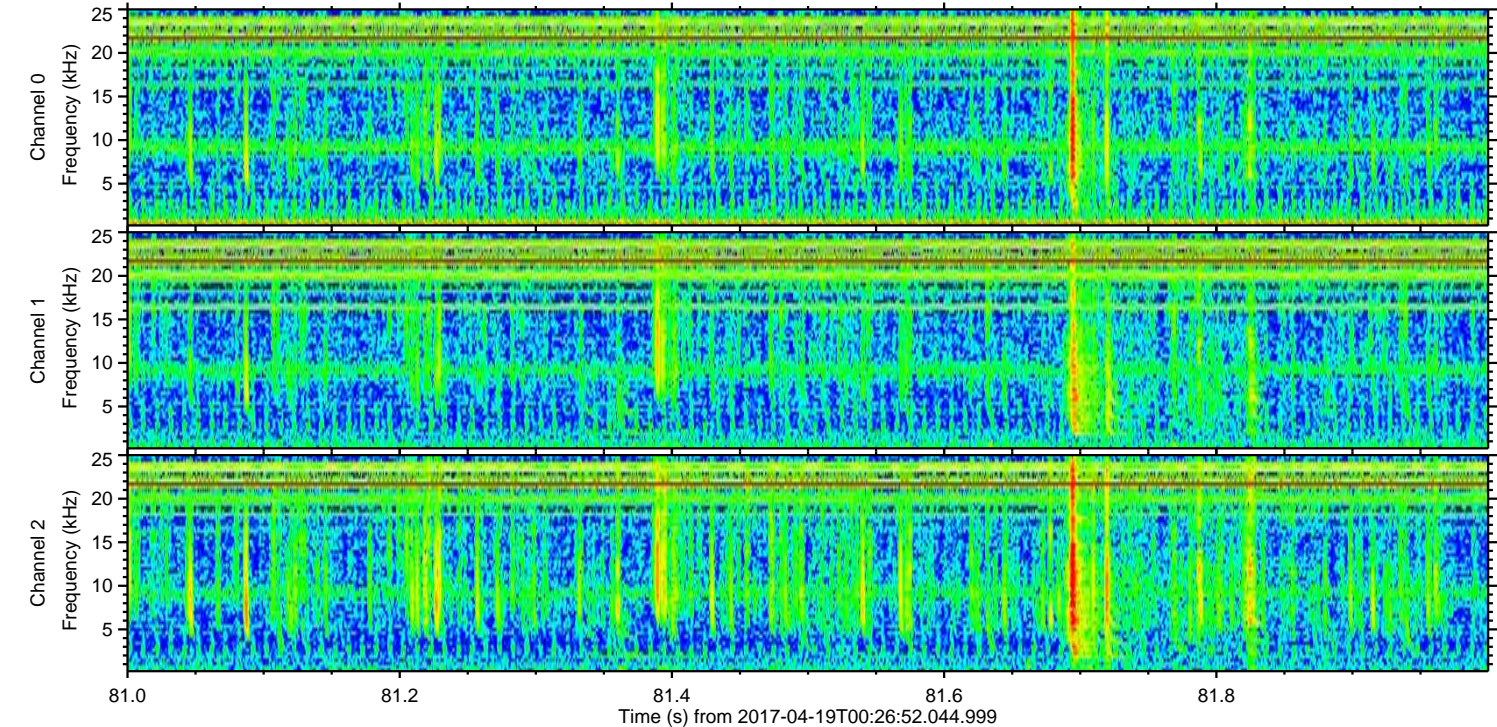
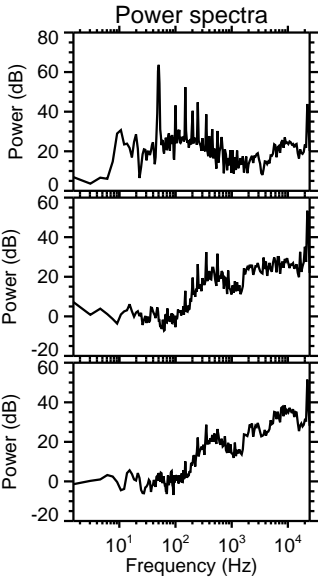
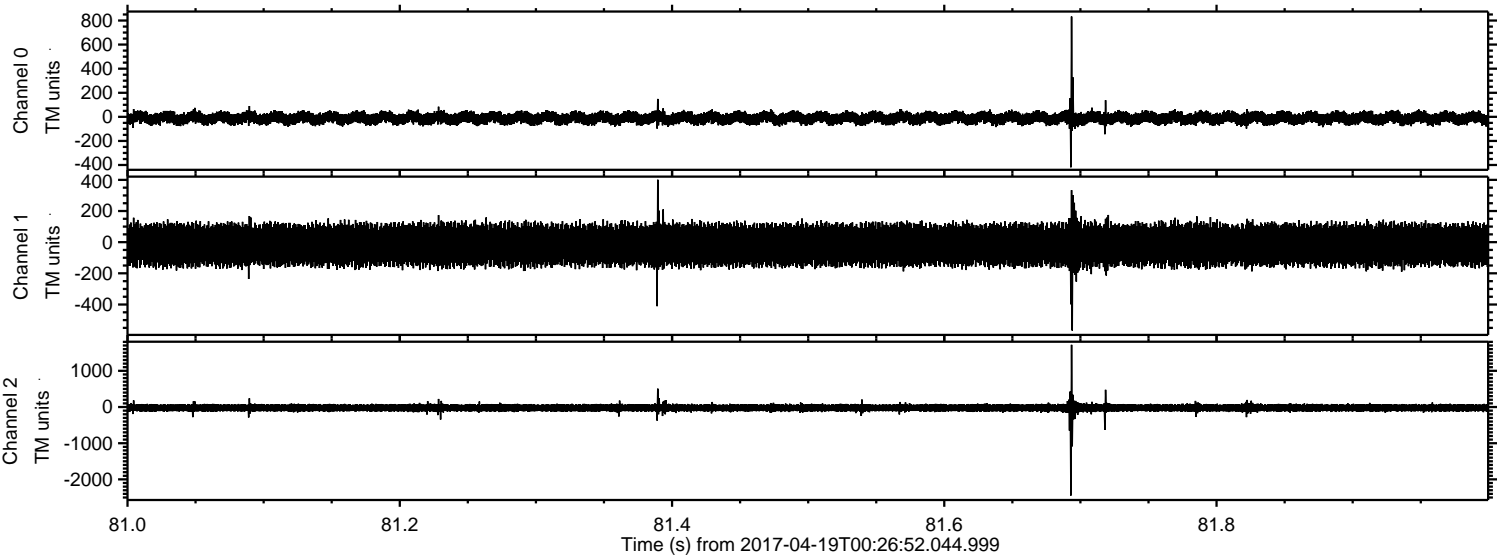
Processed Wed Apr 19 02:34:24 2017 by ELM ver.2012-10-06 from 001__elm20170419_002651__dat00.bin



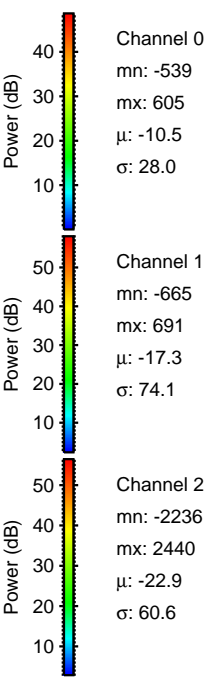
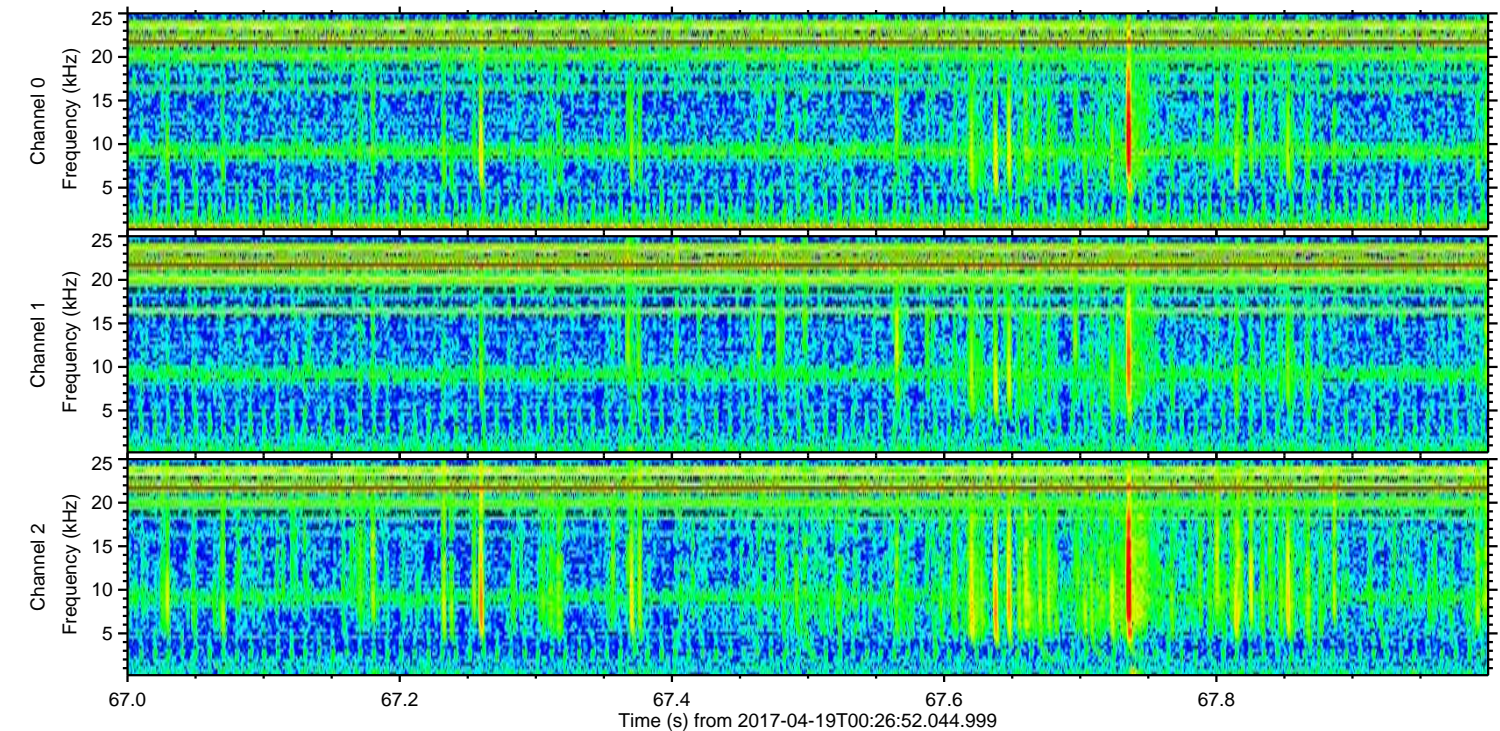
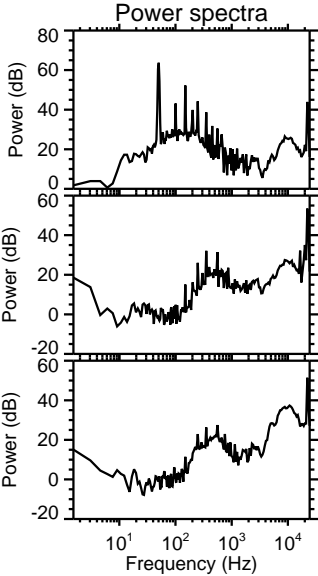
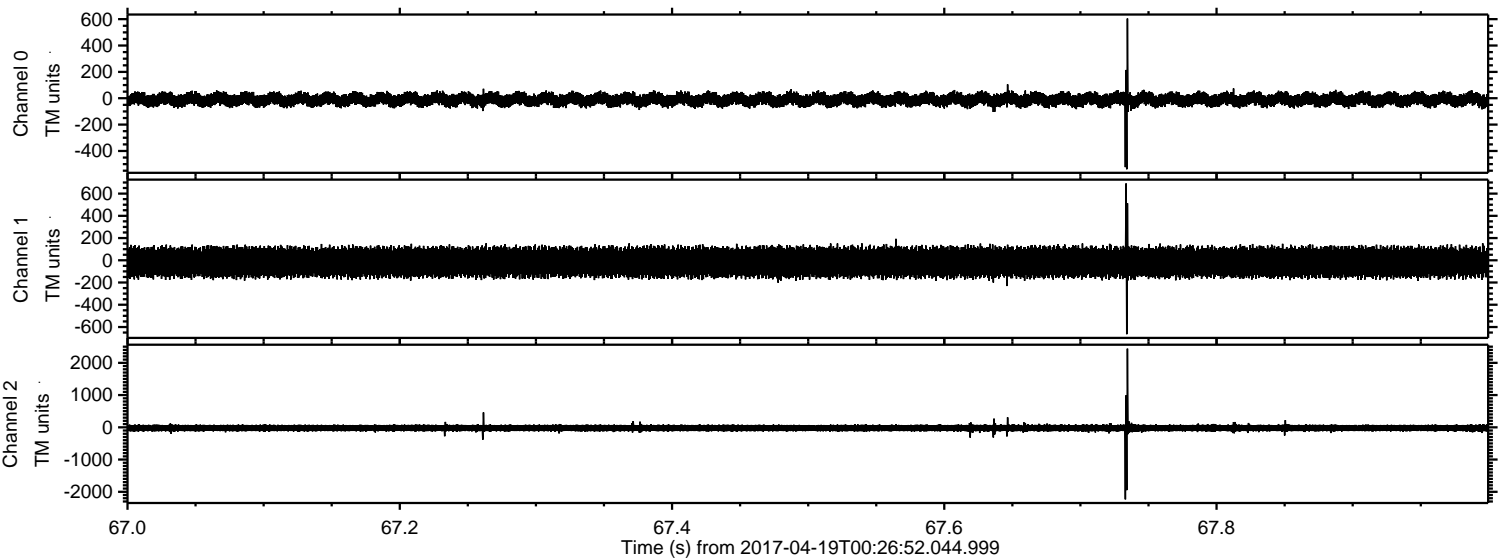
Processed Wed Apr 19 02:34:25 2017 by ELM ver.2012-10-06 from 001__elm20170419_002651__dat00.bin



Processed Wed Apr 19 02:34:26 2017 by ELM ver.2012-10-06 from 001__elm20170419_002651__dat00.bin

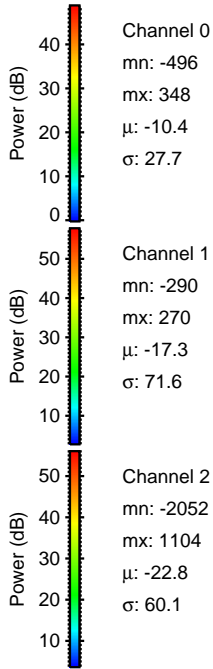
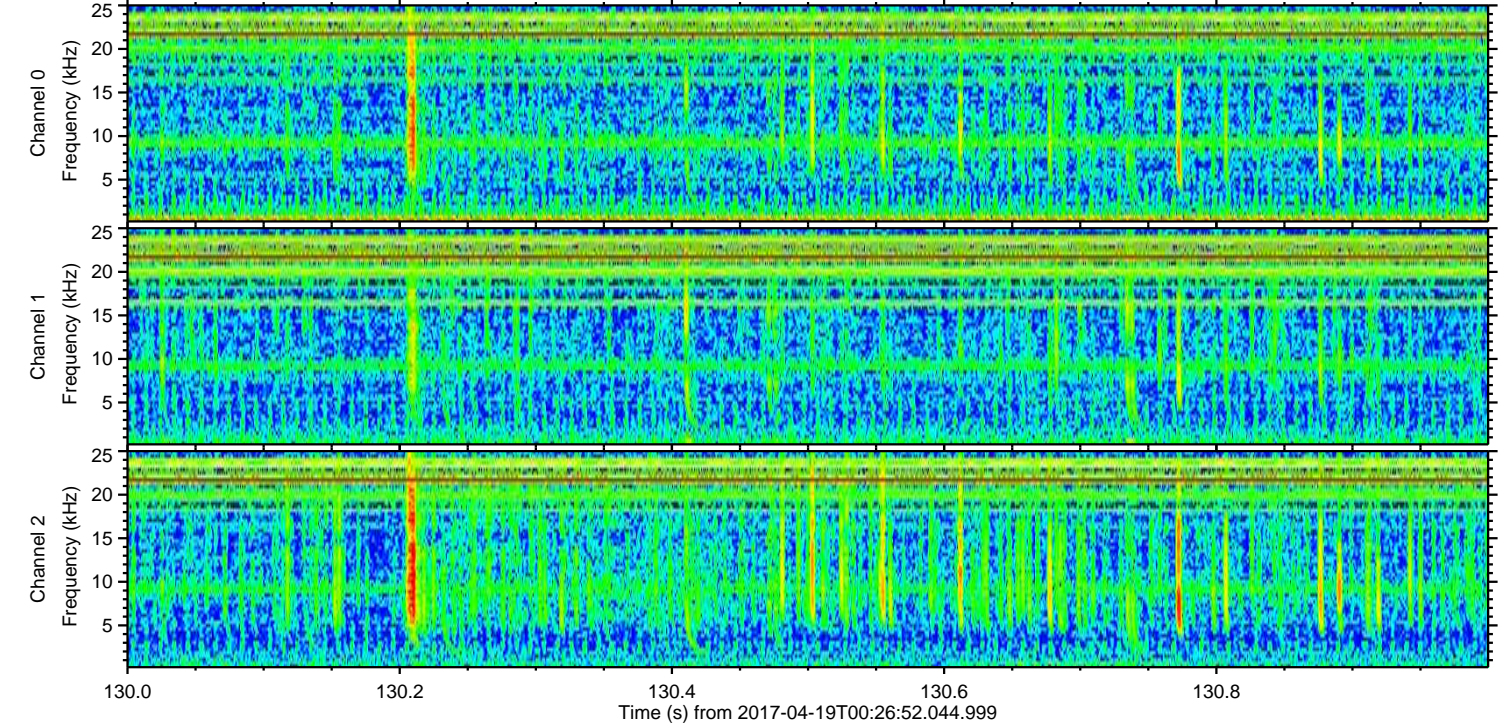
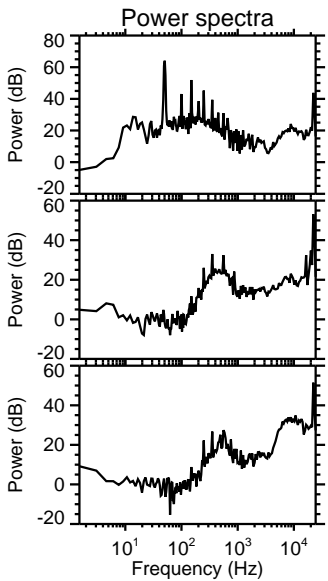
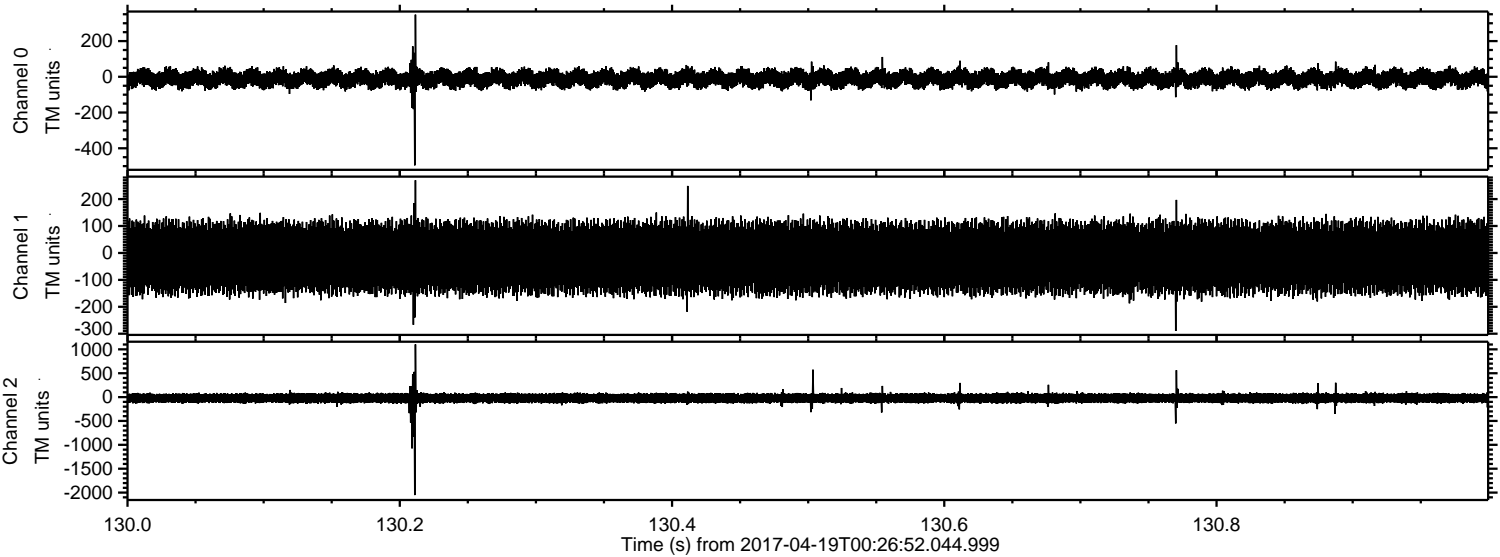


Processed Wed Apr 19 02:34:27 2017 by ELM ver.2012-10-06 from 001__elm20170419_002651__dat00.bin



ELMAVAN 3D WAVEFORMS (Measured data sampled at 50 kHz) 51000 packets of 144 samples from 2017-04-19T00:26:52.044.999. Part 131/147

Processed Wed Apr 19 02:34:28 2017 by ELM ver.2012-10-06 from 001__elm20170419_002651__dat00.bin



Processed Wed Apr 19 02:34:29 2017 by ELM ver.2012-10-06 from 001__elm20170419_002651__dat00.bin

