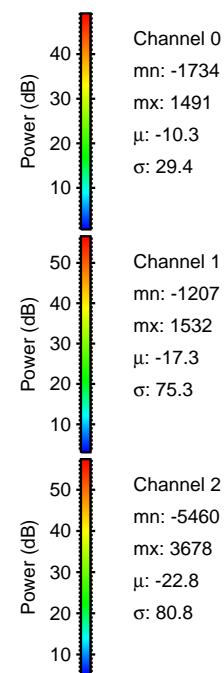
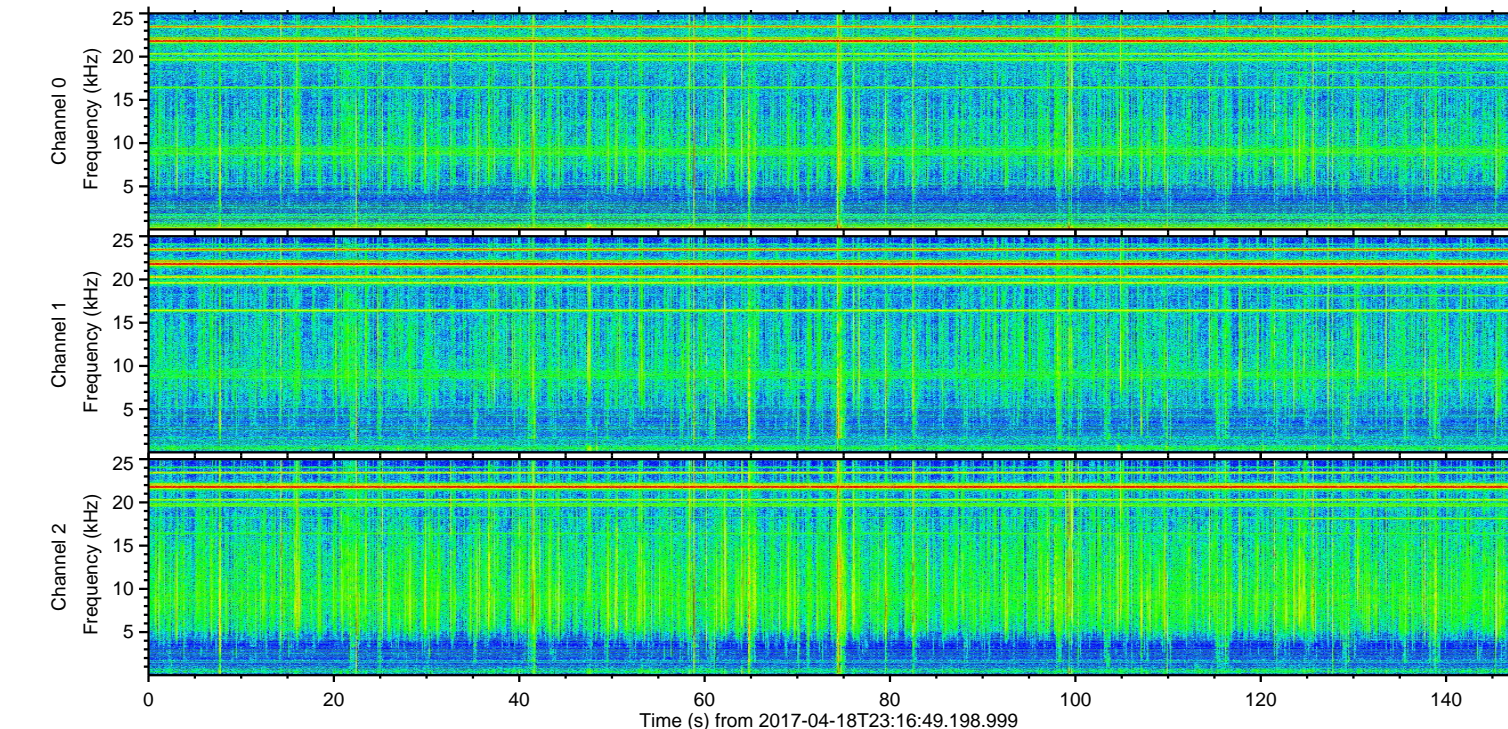
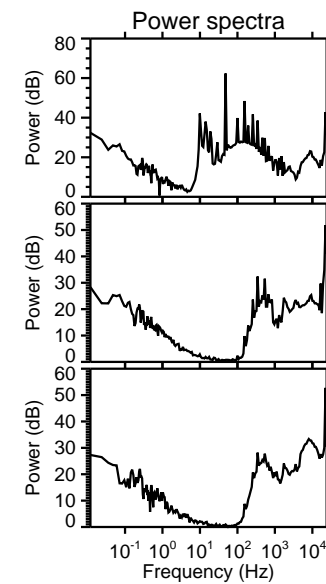
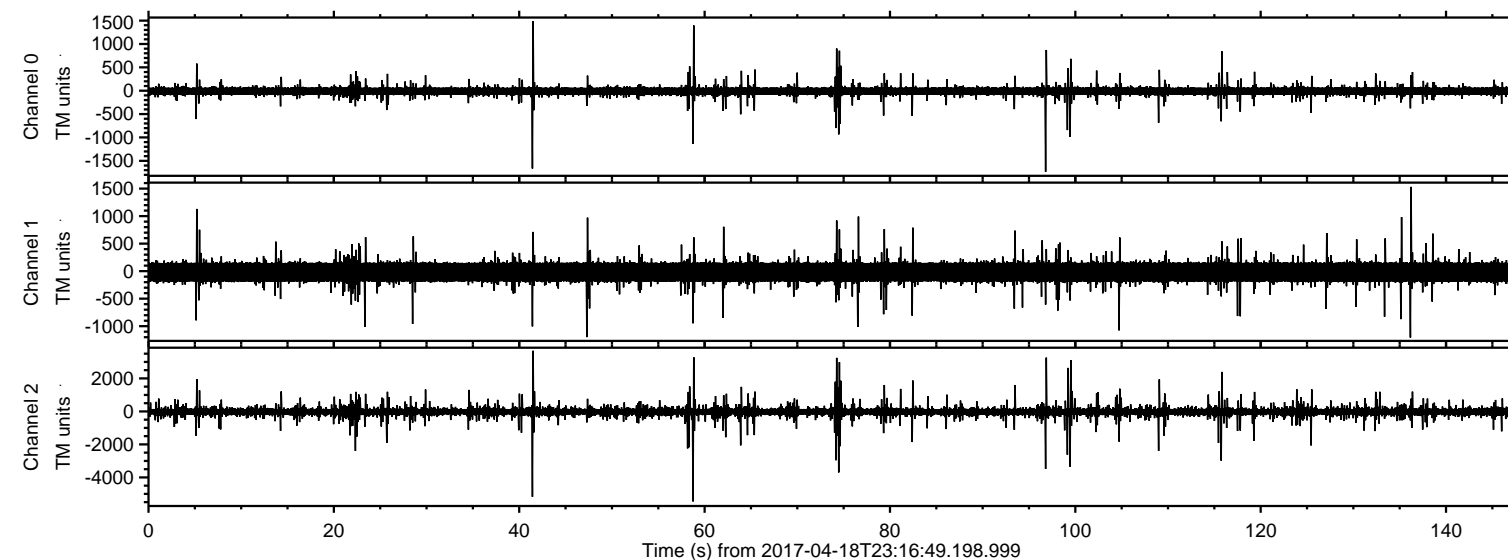


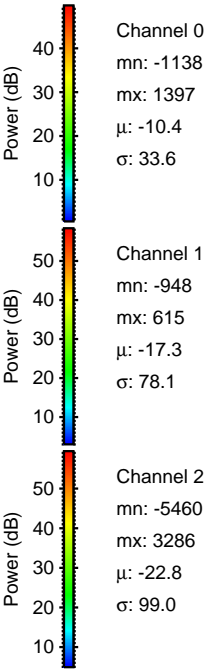
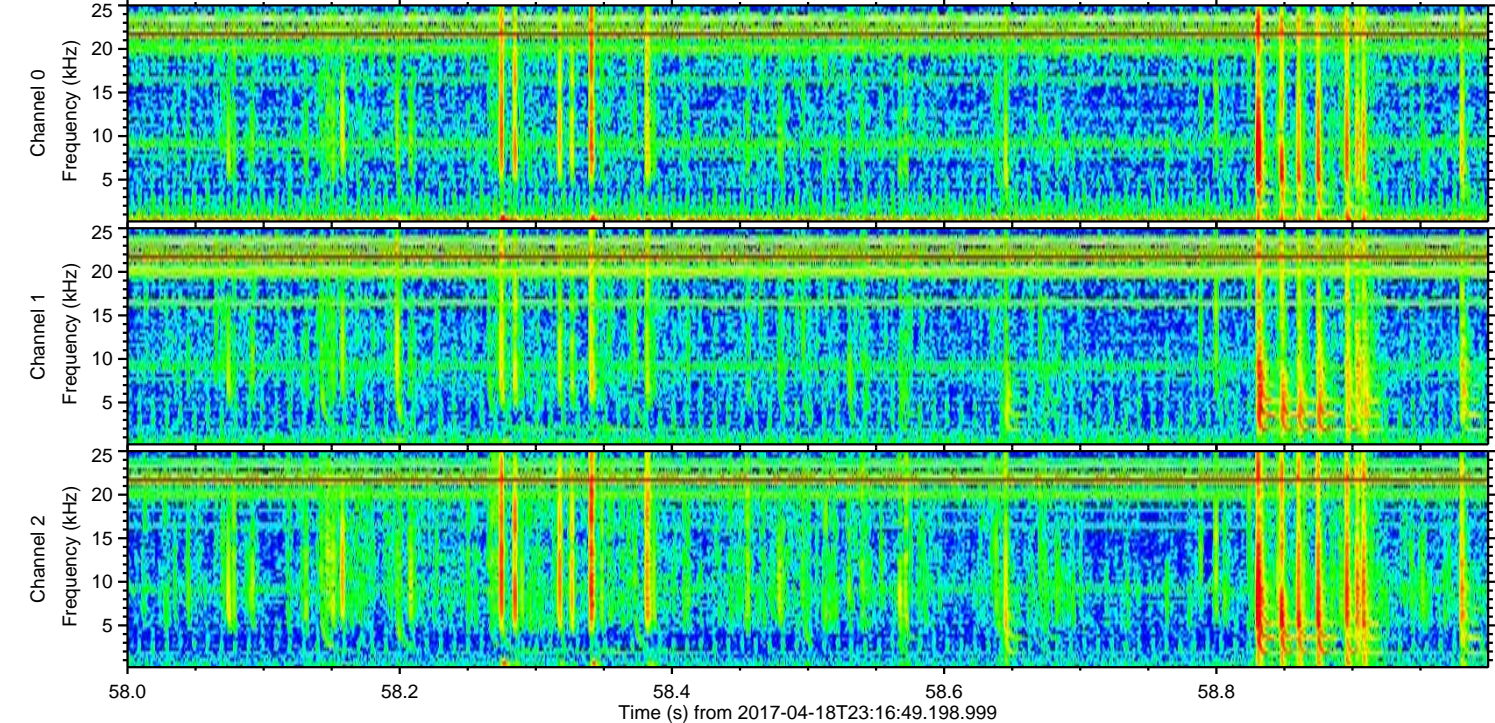
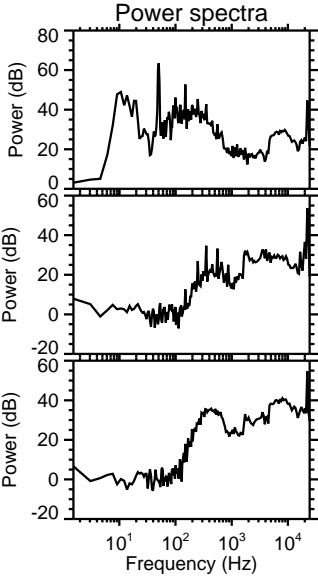
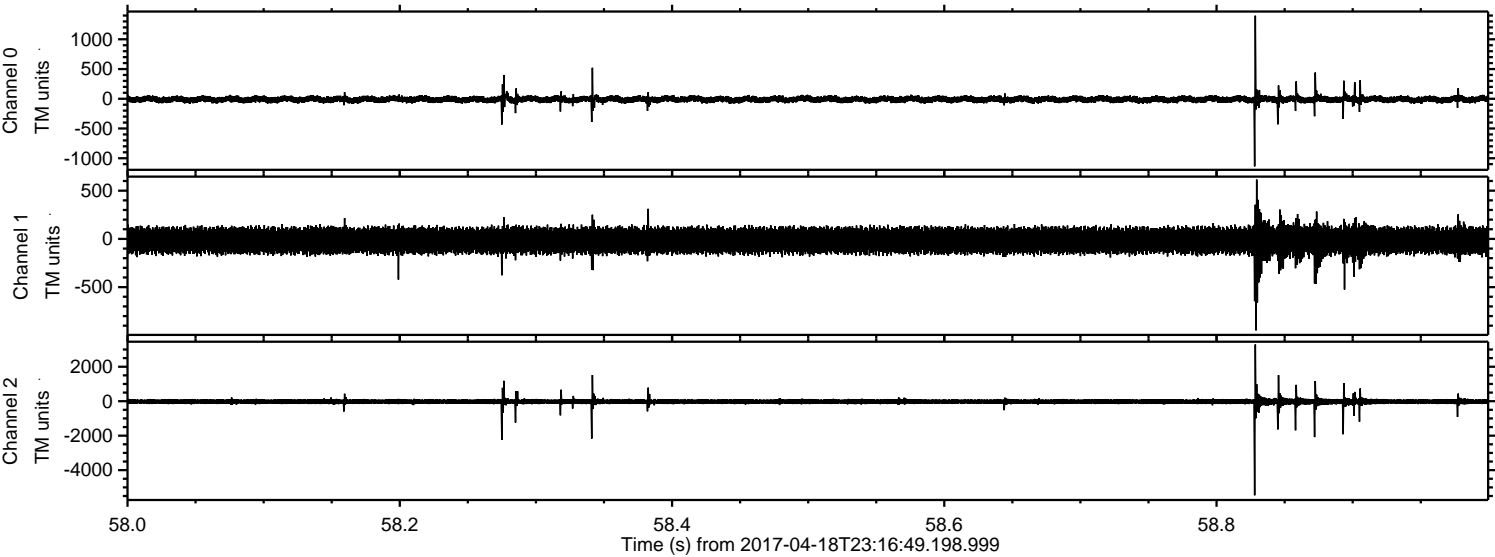
ELMAVAN 3D WAVEFORMS (Measured data sampled at 50 kHz) 51000 packets of 144 samples from 2017-04-18T23:16:49.198.999.

Processed Wed Apr 19 01:24:46 2017 by ELM ver.2012-10-06 from 001__elm20170418_231648__dat00.bin



ELMAVAN 3D WAVEFORMS (Measured data sampled at 50 kHz) 51000 packets of 144 samples from 2017-04-18T23:16:49.198.999. Part 59/147

Processed Wed Apr 19 01:24:58 2017 by ELM ver.2012-10-06 from 001__elm20170418_231648__dat00.bin



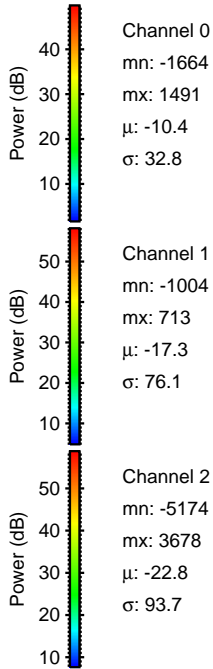
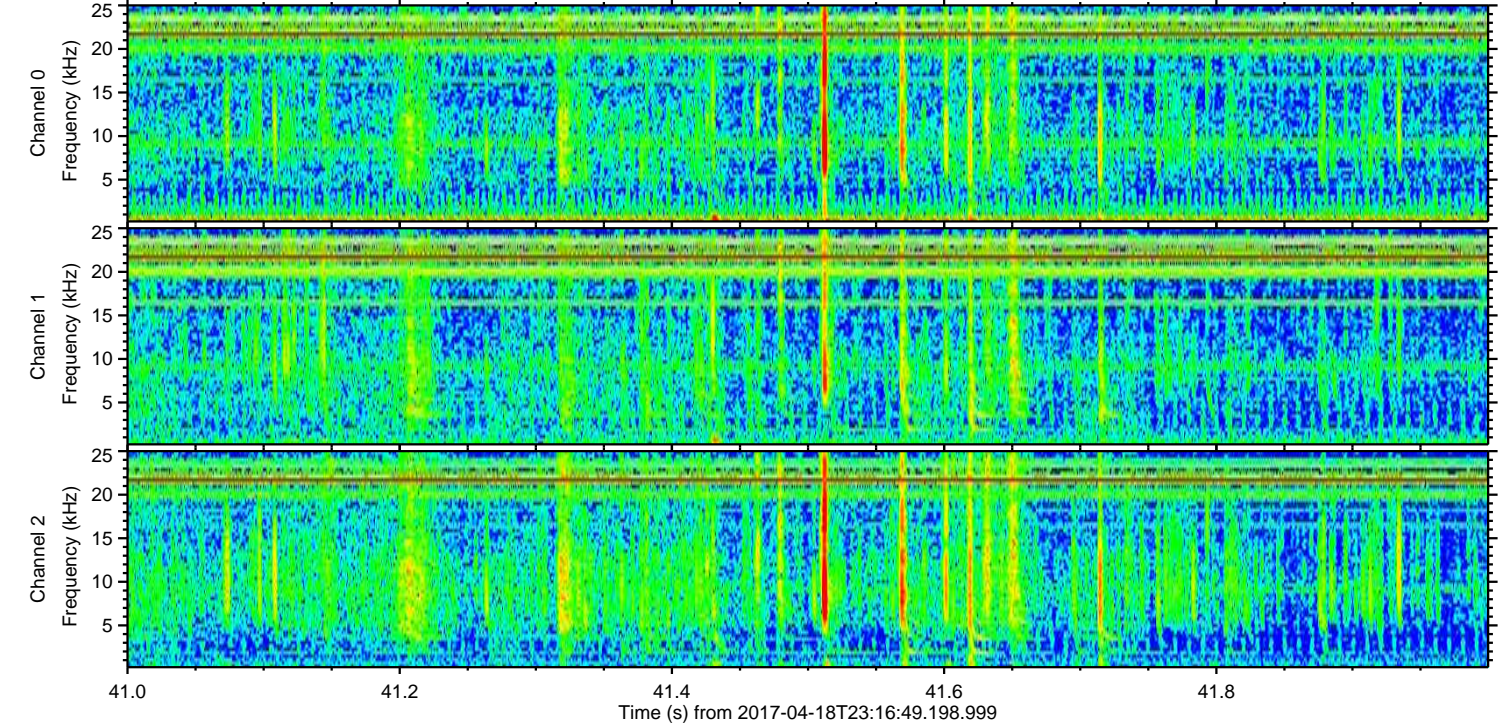
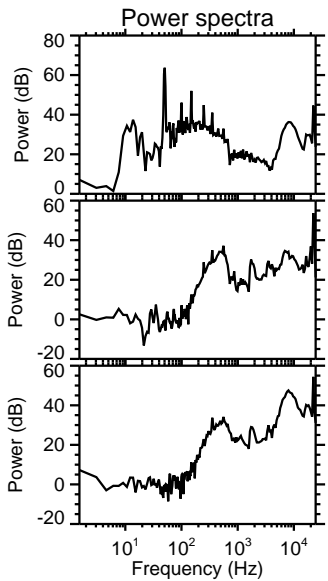
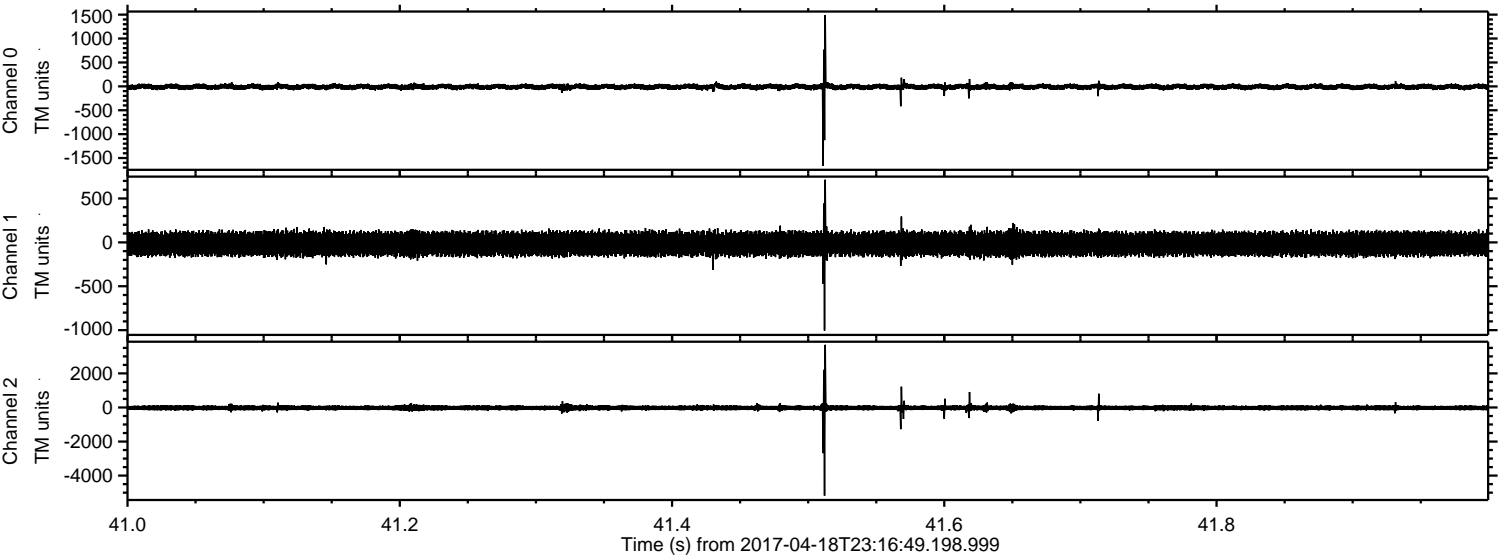
Channel 0
mn: -1138
mx: 1397
 μ : -10.4
 σ : 33.6

Channel 1
mn: -948
mx: 615
 μ : -17.3
 σ : 78.1

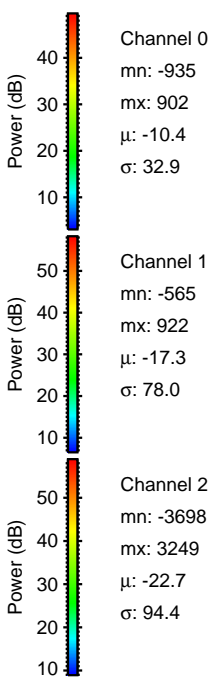
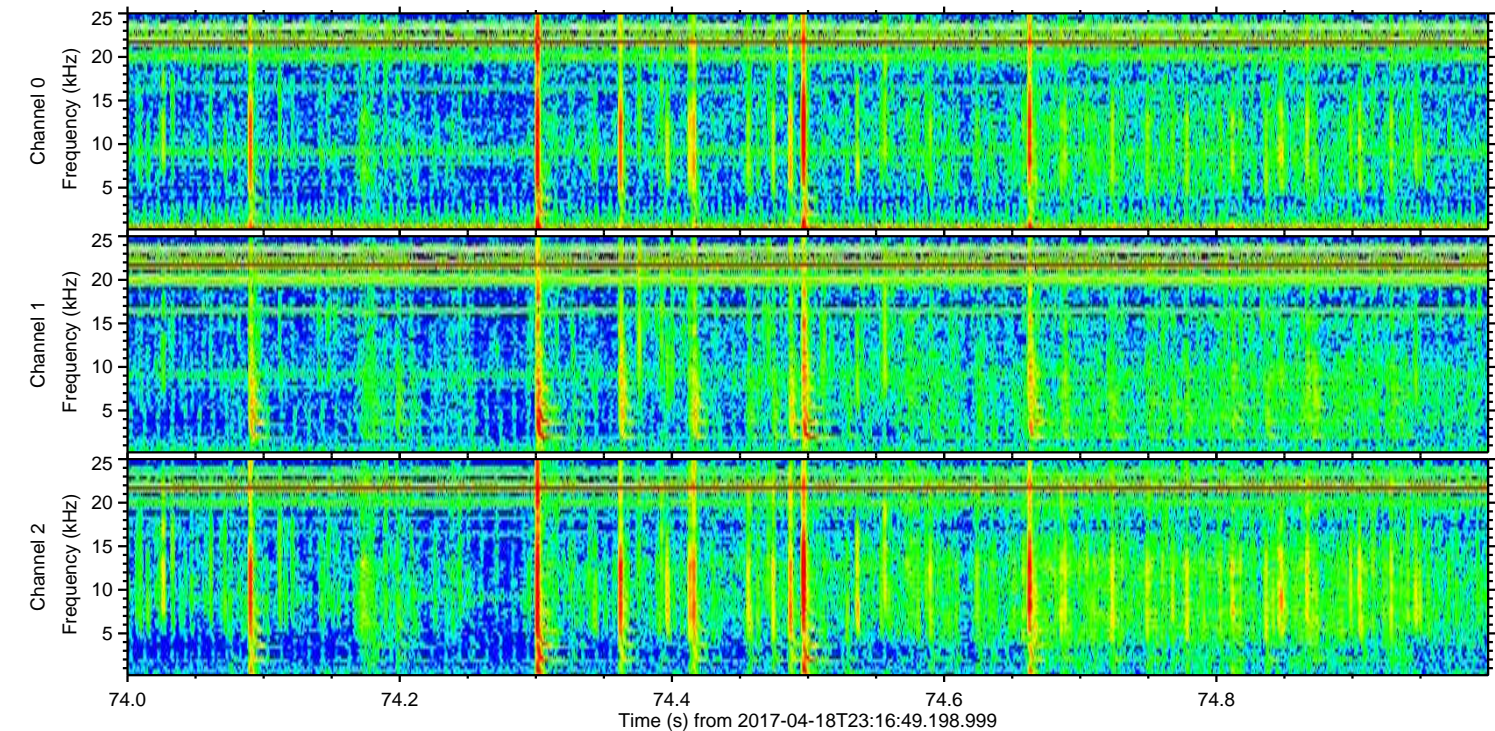
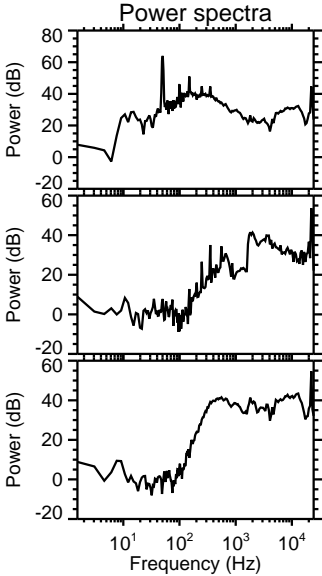
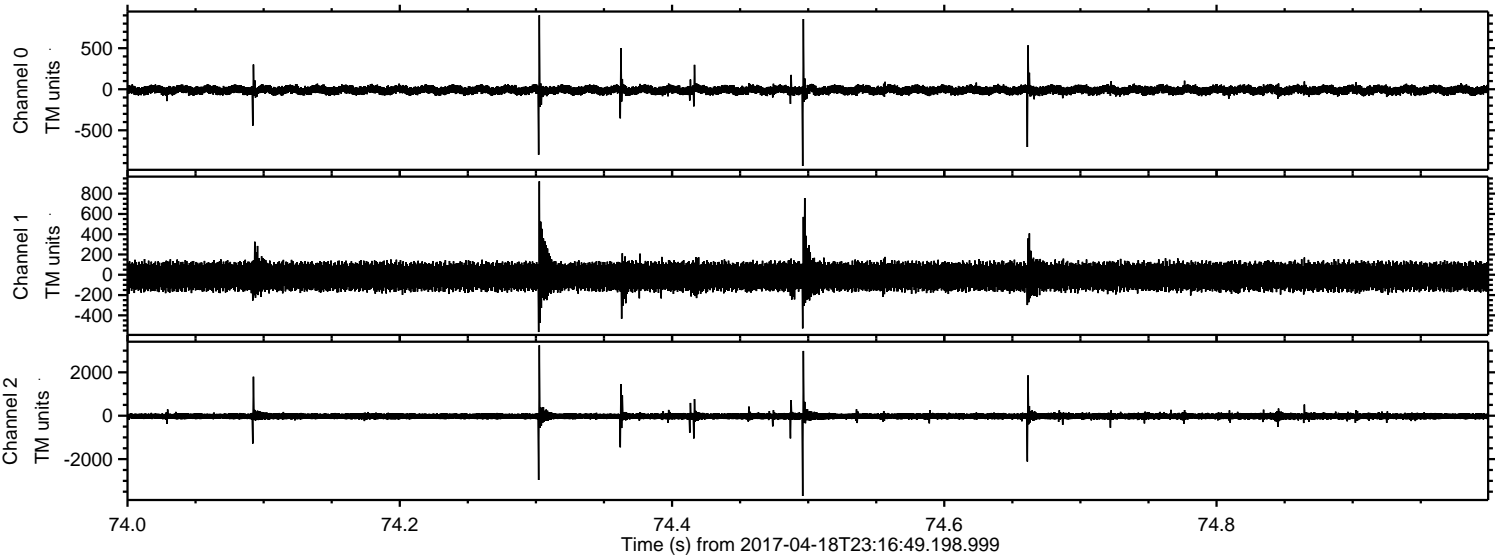
Channel 2
mn: -5460
mx: 3286
 μ : -22.8
 σ : 99.0

ELMAVAN 3D WAVEFORMS (Measured data sampled at 50 kHz) 51000 packets of 144 samples from 2017-04-18T23:16:49.198.999. Part 42/147

Processed Wed Apr 19 01:24:58 2017 by ELM ver.2012-10-06 from 001__elm20170418_231648__dat00.bin

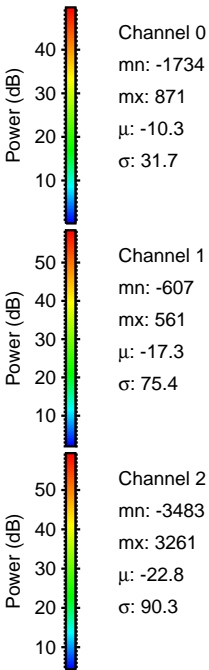
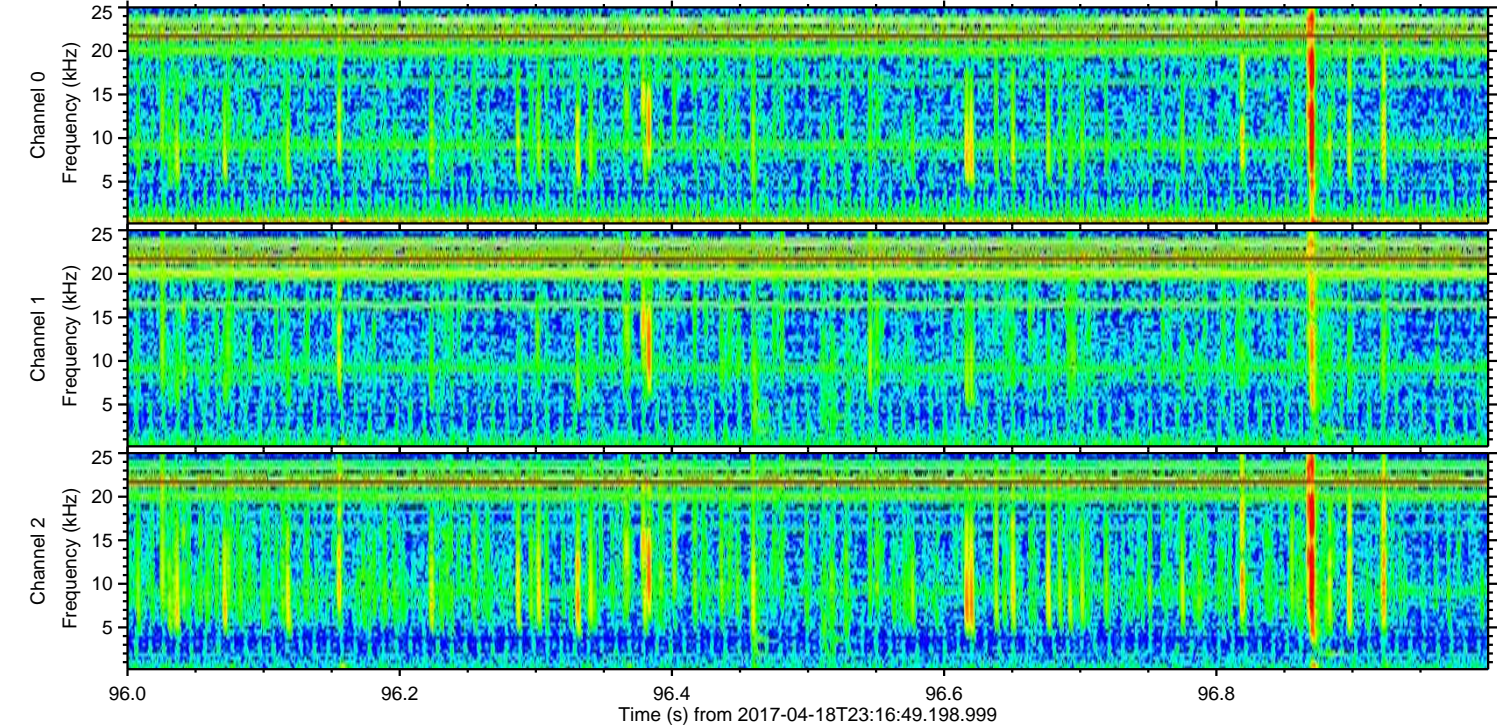
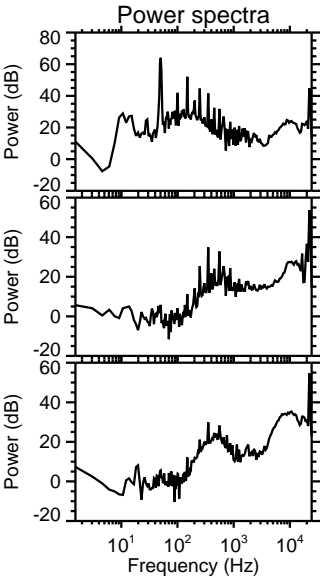
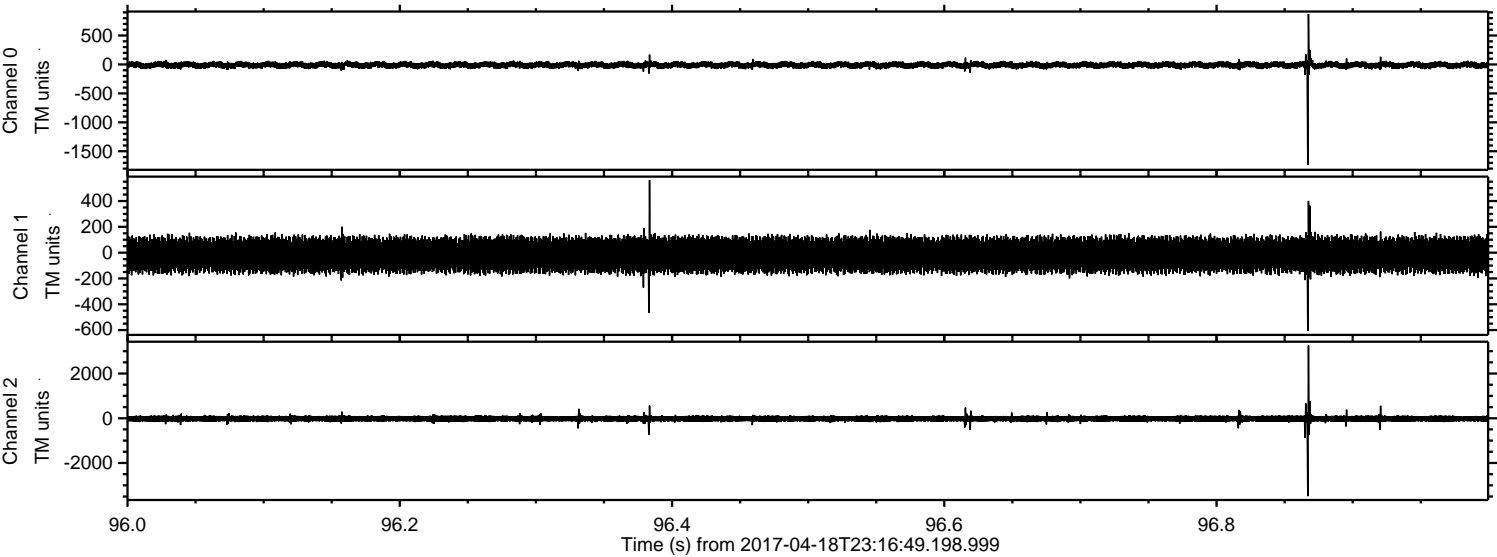


Processed Wed Apr 19 01:24:59 2017 by ELM ver.2012-10-06 from 001__elm20170418_231648__dat00.bin



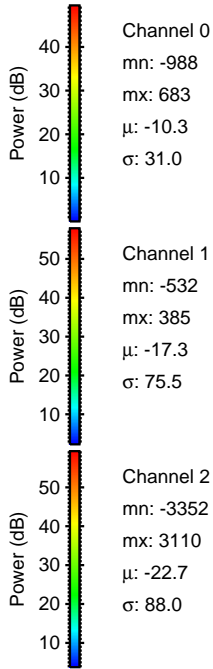
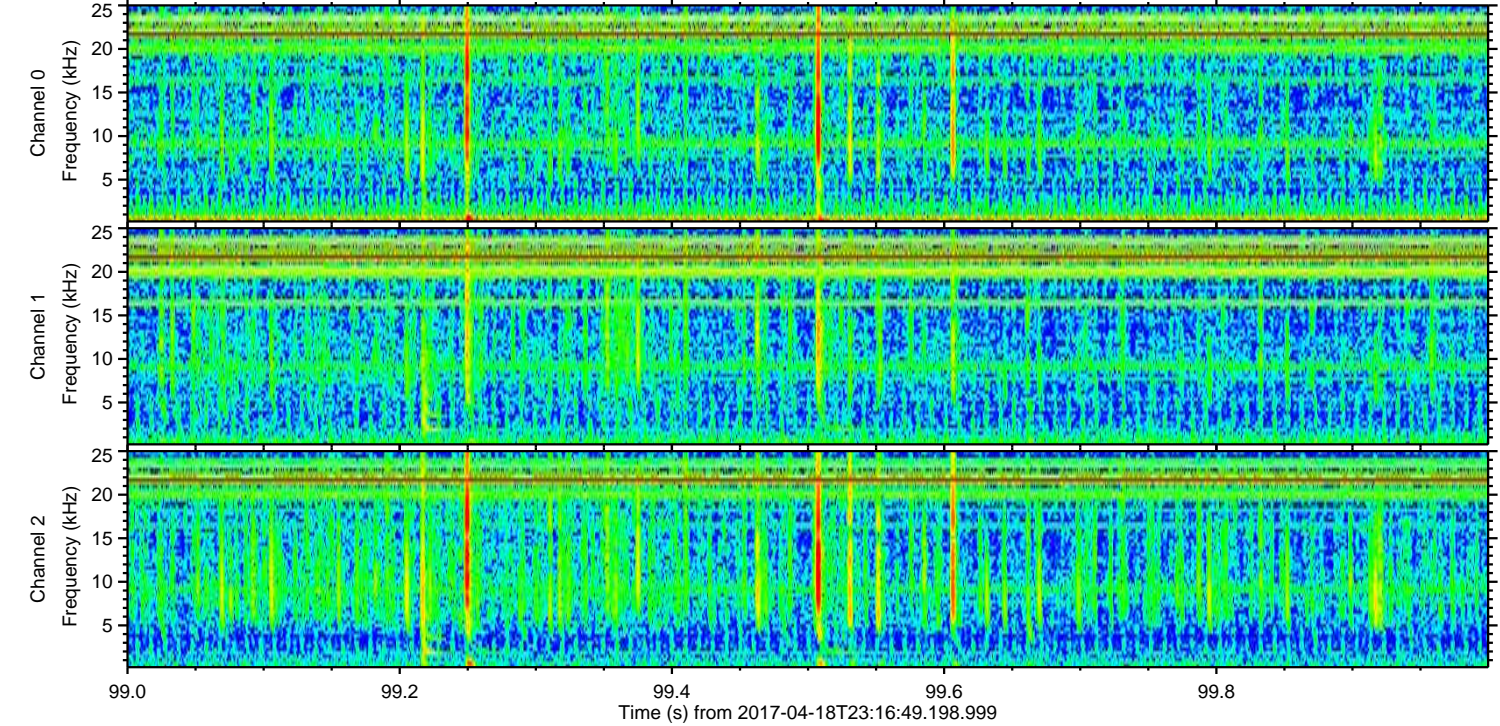
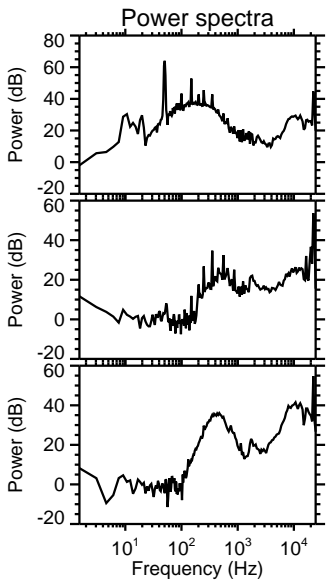
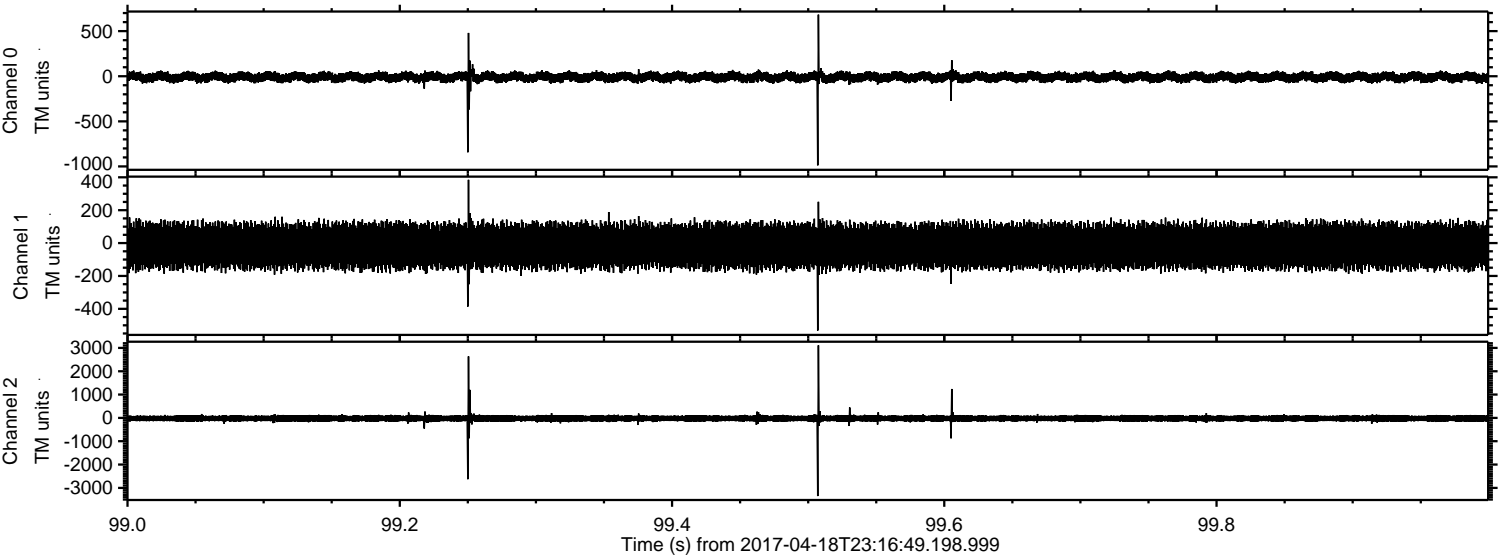
ELMAVAN 3D WAVEFORMS (Measured data sampled at 50 kHz) 51000 packets of 144 samples from 2017-04-18T23:16:49.198.999. Part 97/147

Processed Wed Apr 19 01:25:00 2017 by ELM ver.2012-10-06 from 001__elm20170418_231648__dat00.bin



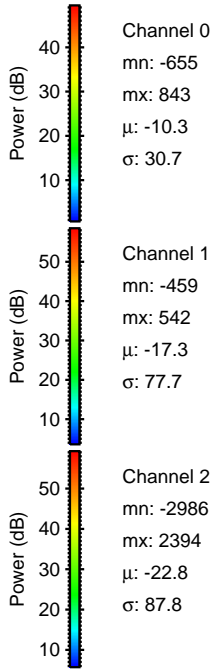
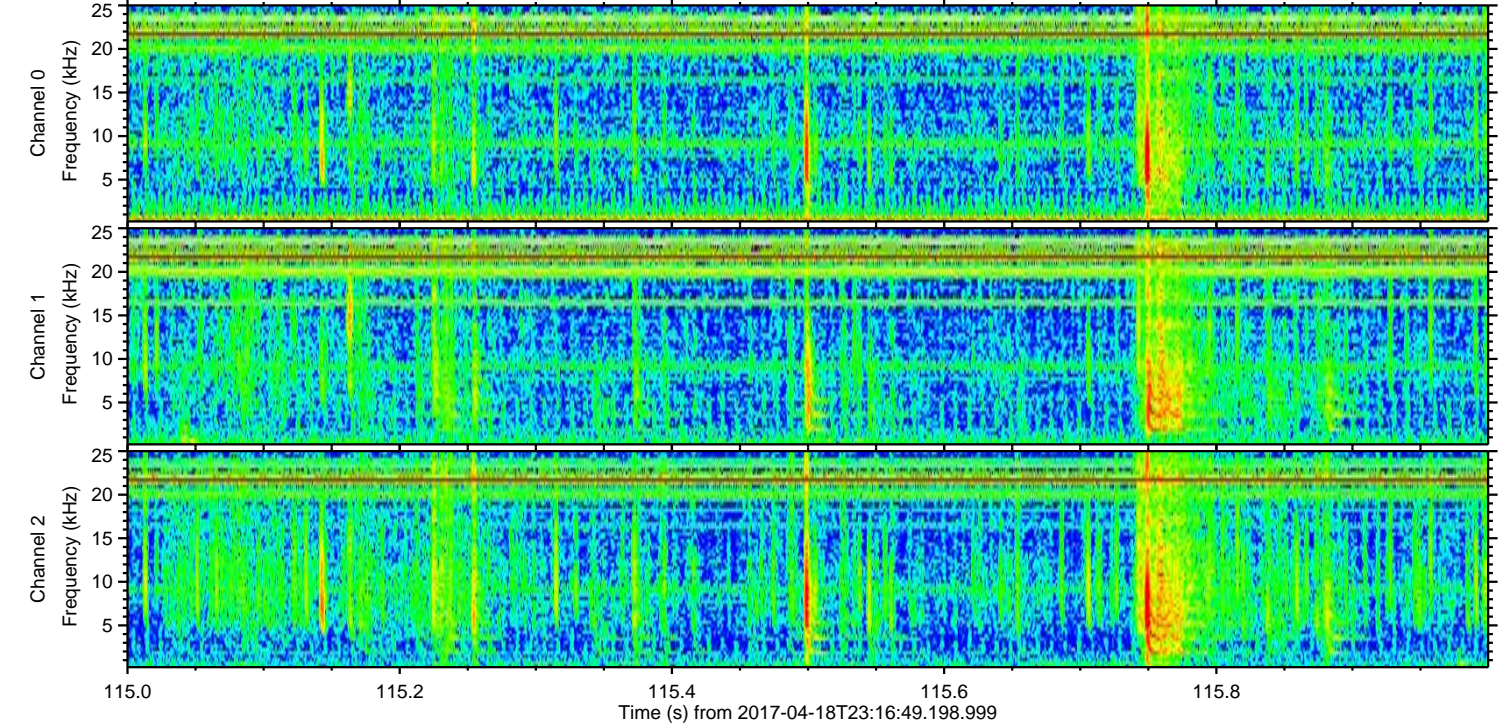
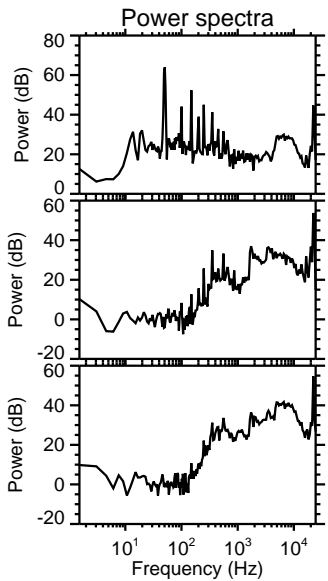
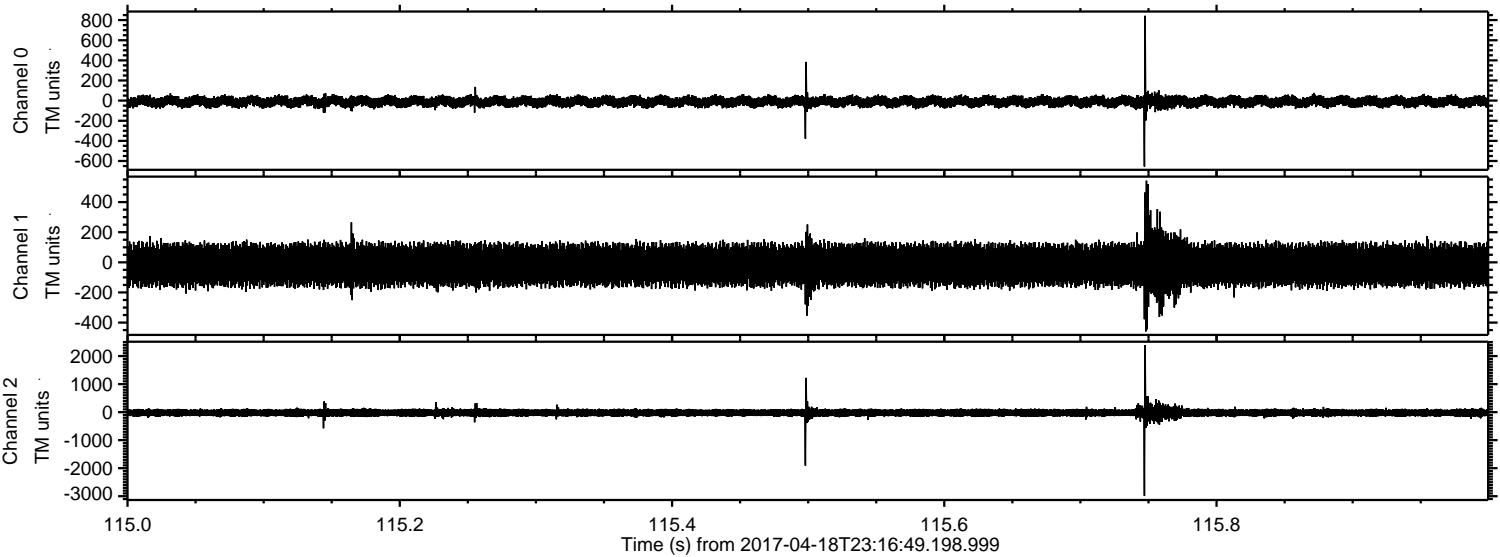
ELMAVAN 3D WAVEFORMS (Measured data sampled at 50 kHz) 51000 packets of 144 samples from 2017-04-18T23:16:49.198.999. Part 100/147

Processed Wed Apr 19 01:25:01 2017 by ELM ver.2012-10-06 from 001__elm20170418_231648__dat00.bin



ELMAVAN 3D WAVEFORMS (Measured data sampled at 50 kHz) 51000 packets of 144 samples from 2017-04-18T23:16:49.198.999. Part 116/147

Processed Wed Apr 19 01:25:02 2017 by ELM ver.2012-10-06 from 001__elm20170418_231648__dat00.bin

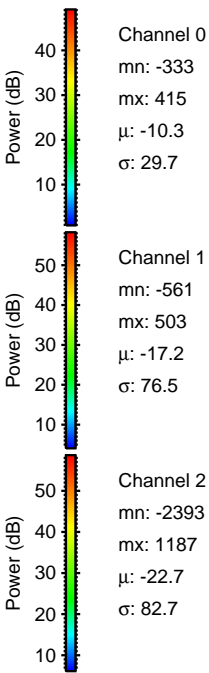
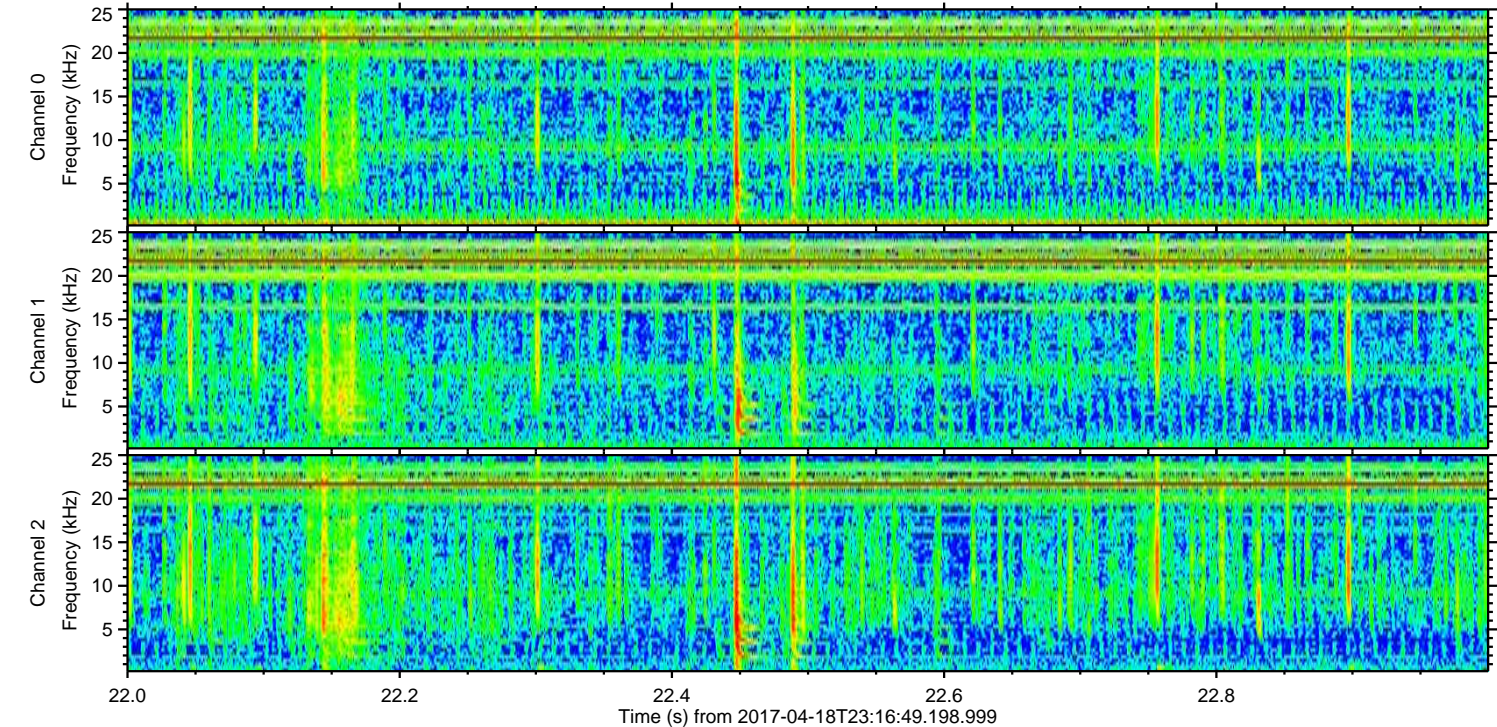
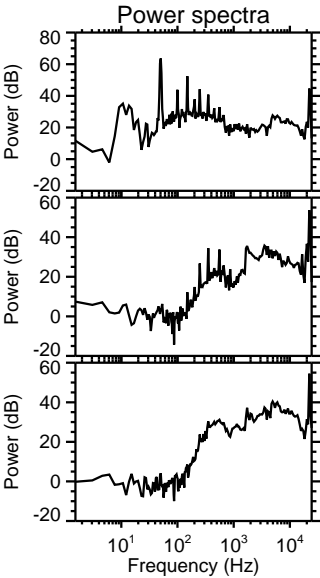
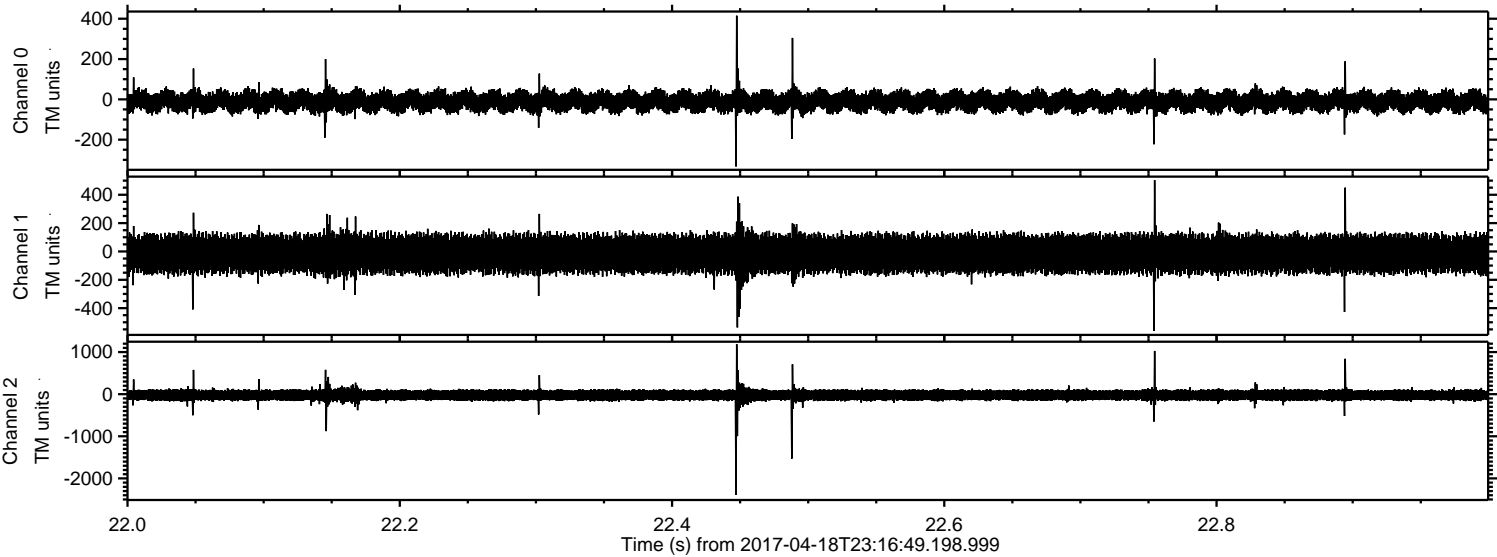


Channel 0
mn: -655
mx: 843
 μ : -10.3
 σ : 30.7

Channel 1
mn: -459
mx: 542
 μ : -17.3
 σ : 77.7

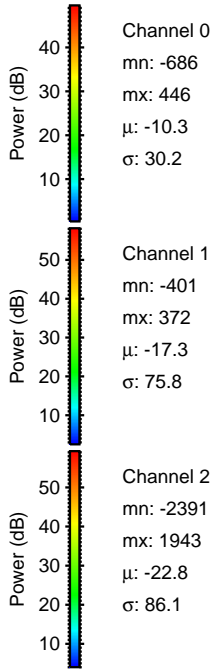
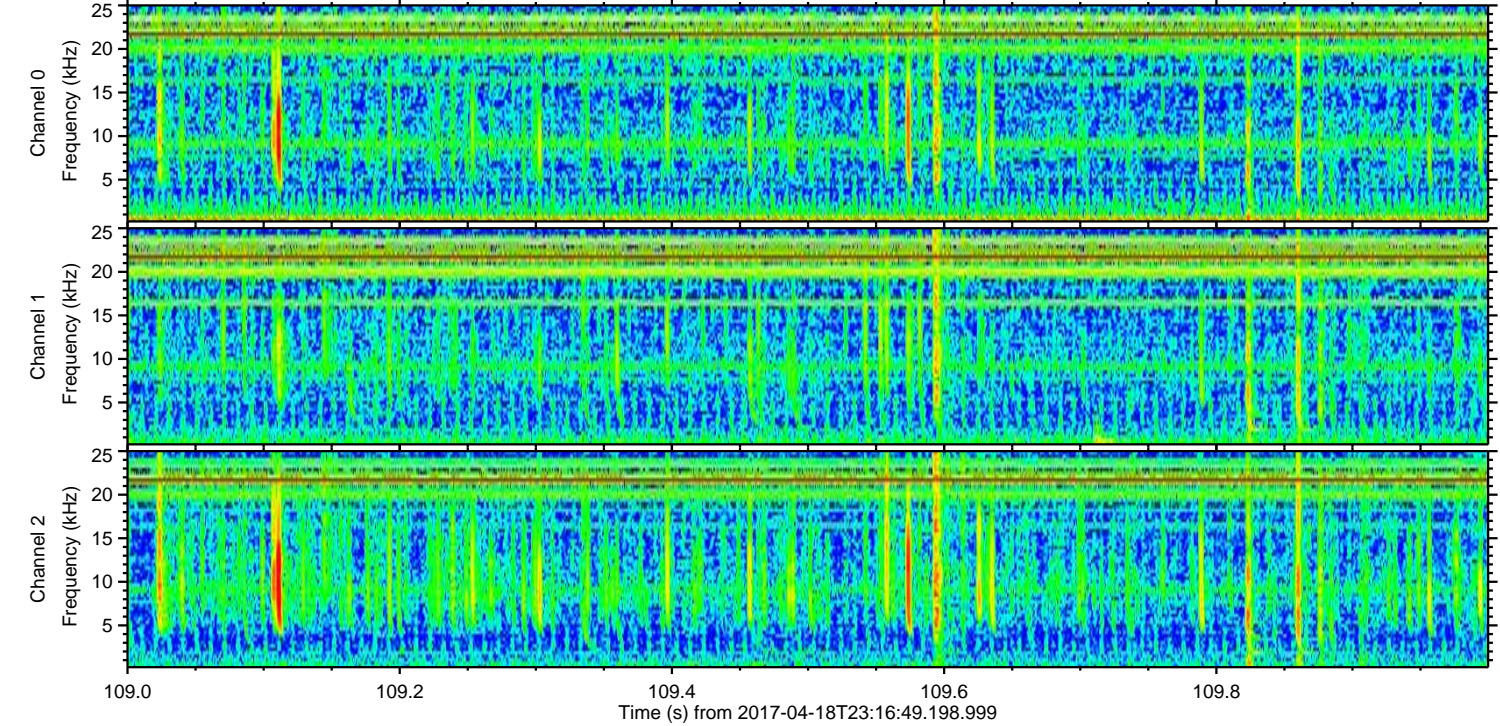
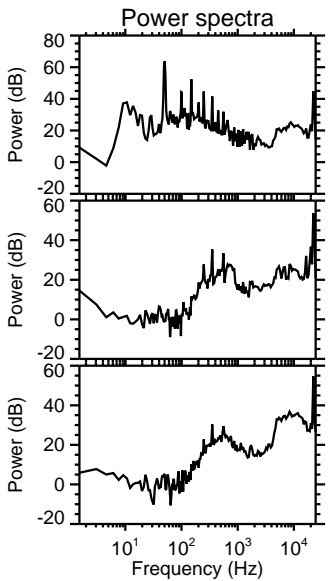
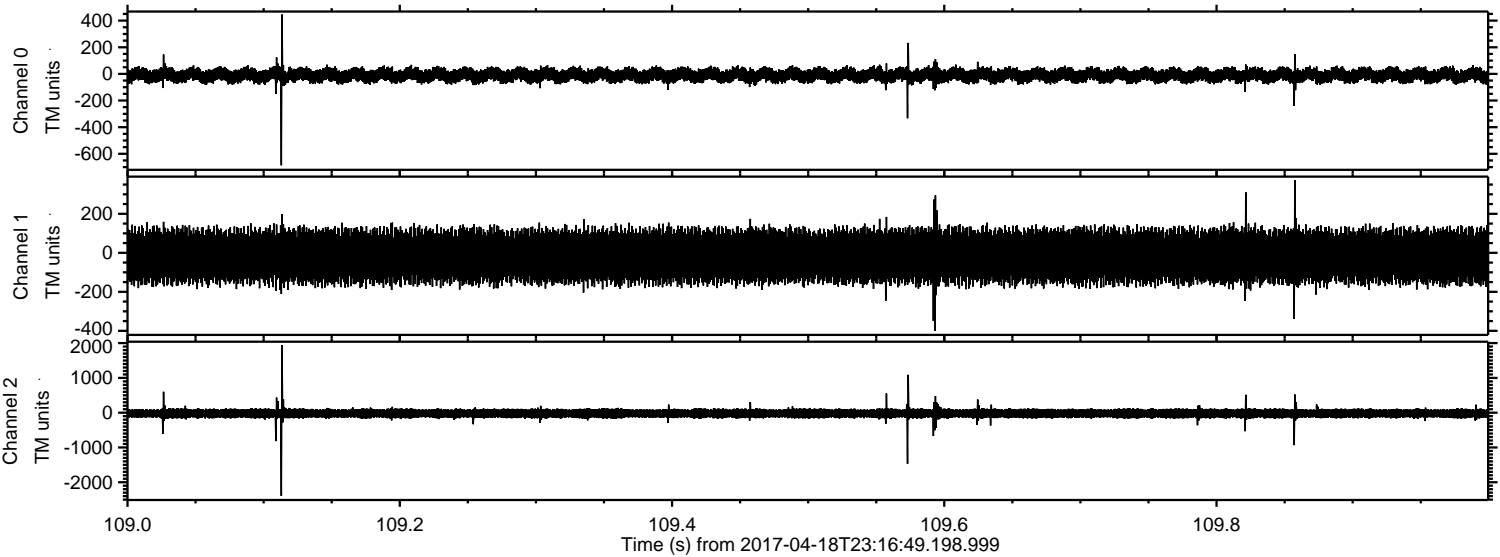
Channel 2
mn: -2986
mx: 2394
 μ : -22.8
 σ : 87.8

Processed Wed Apr 19 01:25:03 2017 by ELM ver.2012-10-06 from 001__elm20170418_231648__dat00.bin



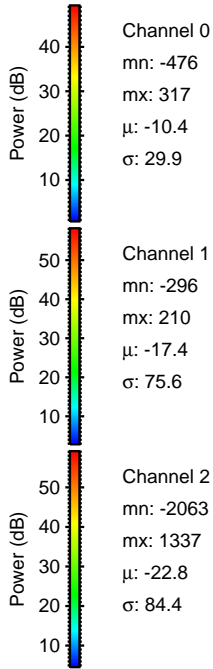
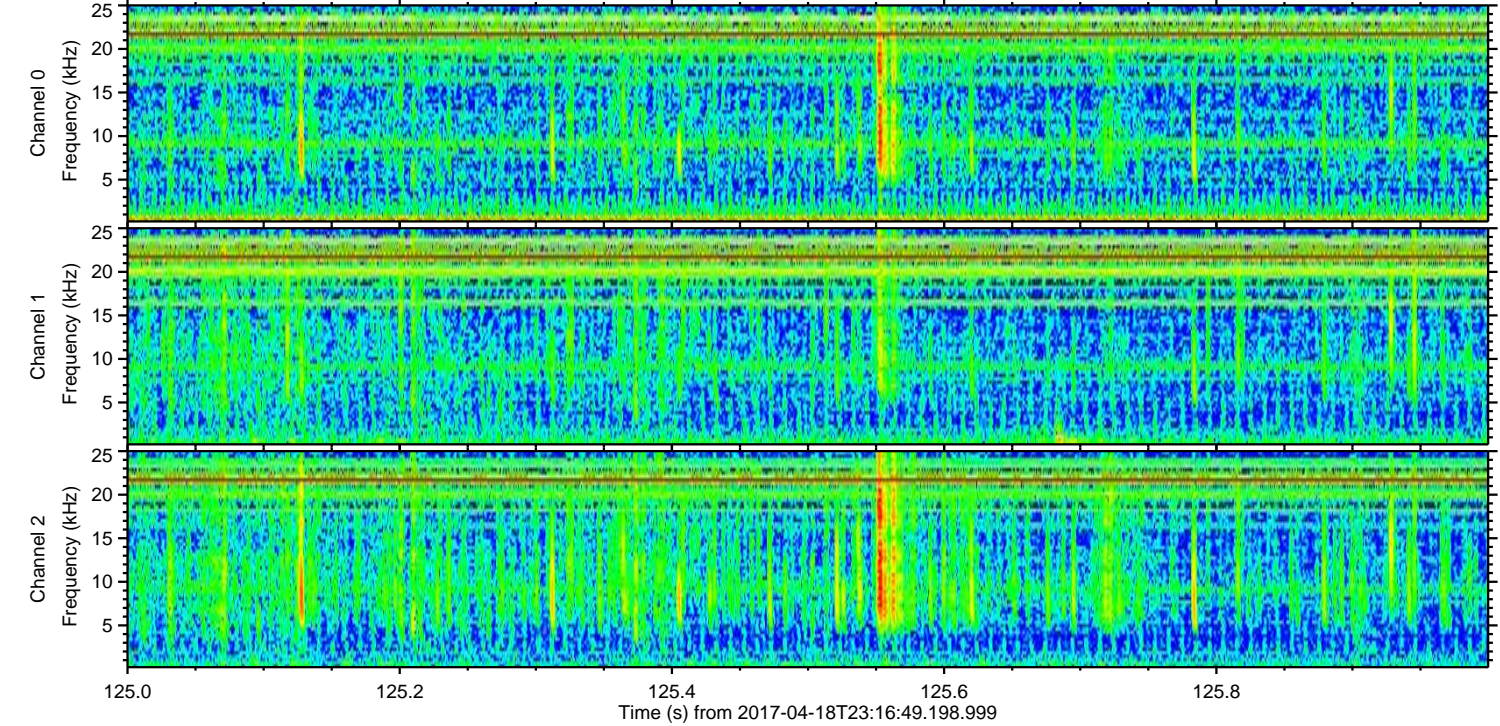
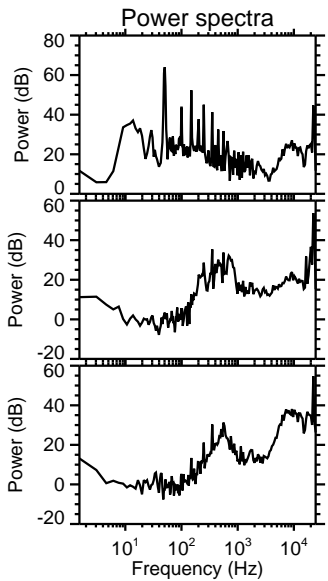
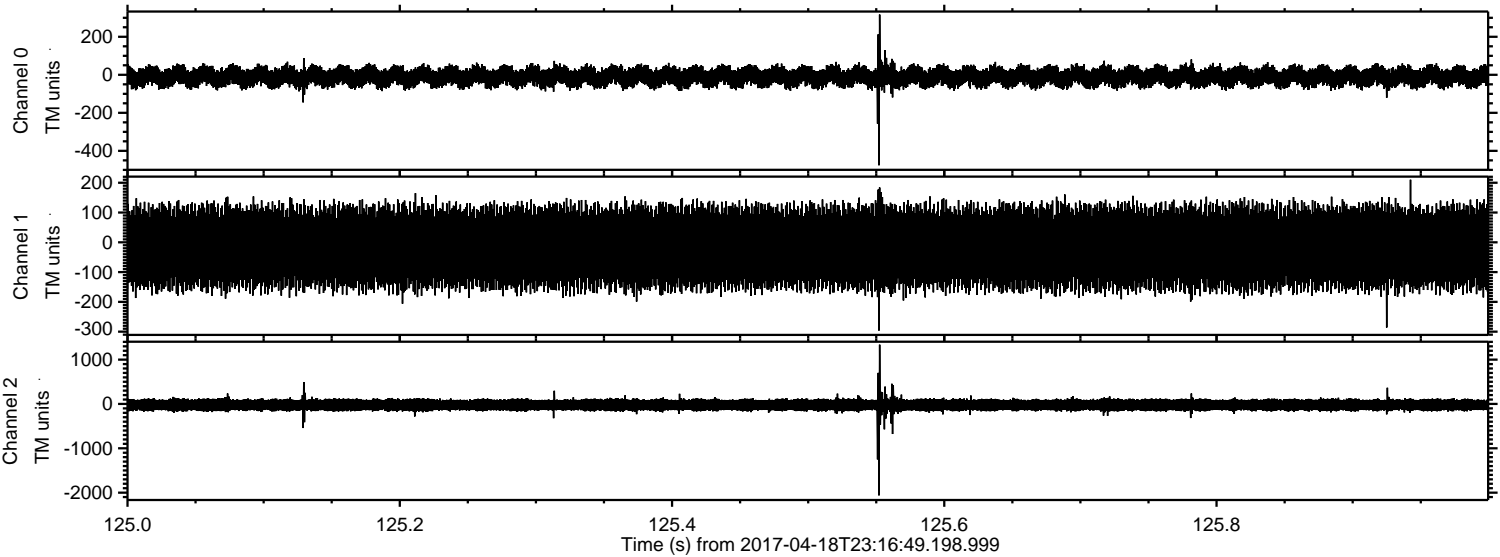
ELMAVAN 3D WAVEFORMS (Measured data sampled at 50 kHz) 51000 packets of 144 samples from 2017-04-18T23:16:49.198.999. Part 110/147

Processed Wed Apr 19 01:25:04 2017 by ELM ver.2012-10-06 from 001__elm20170418_231648__dat00.bin



ELMAVAN 3D WAVEFORMS (Measured data sampled at 50 kHz) 51000 packets of 144 samples from 2017-04-18T23:16:49.198.999. Part 126/147

Processed Wed Apr 19 01:25:05 2017 by ELM ver.2012-10-06 from 001__elm20170418_231648__dat00.bin



Channel 0
mn: -476
mx: 317
 μ : -10.4
 σ : 29.9

Channel 1
mn: -296
mx: 210
 μ : -17.4
 σ : 75.6

Channel 2
mn: -2063
mx: 1337
 μ : -22.8
 σ : 84.4

Processed Wed Apr 19 01:25:06 2017 by ELM ver.2012-10-06 from 001__elm20170418_231648__dat00.bin

