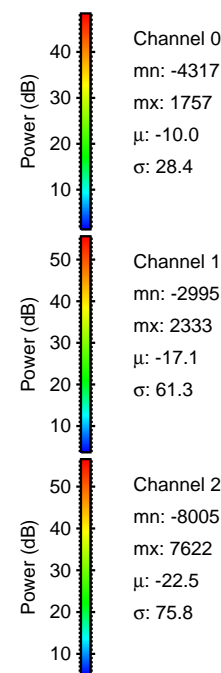
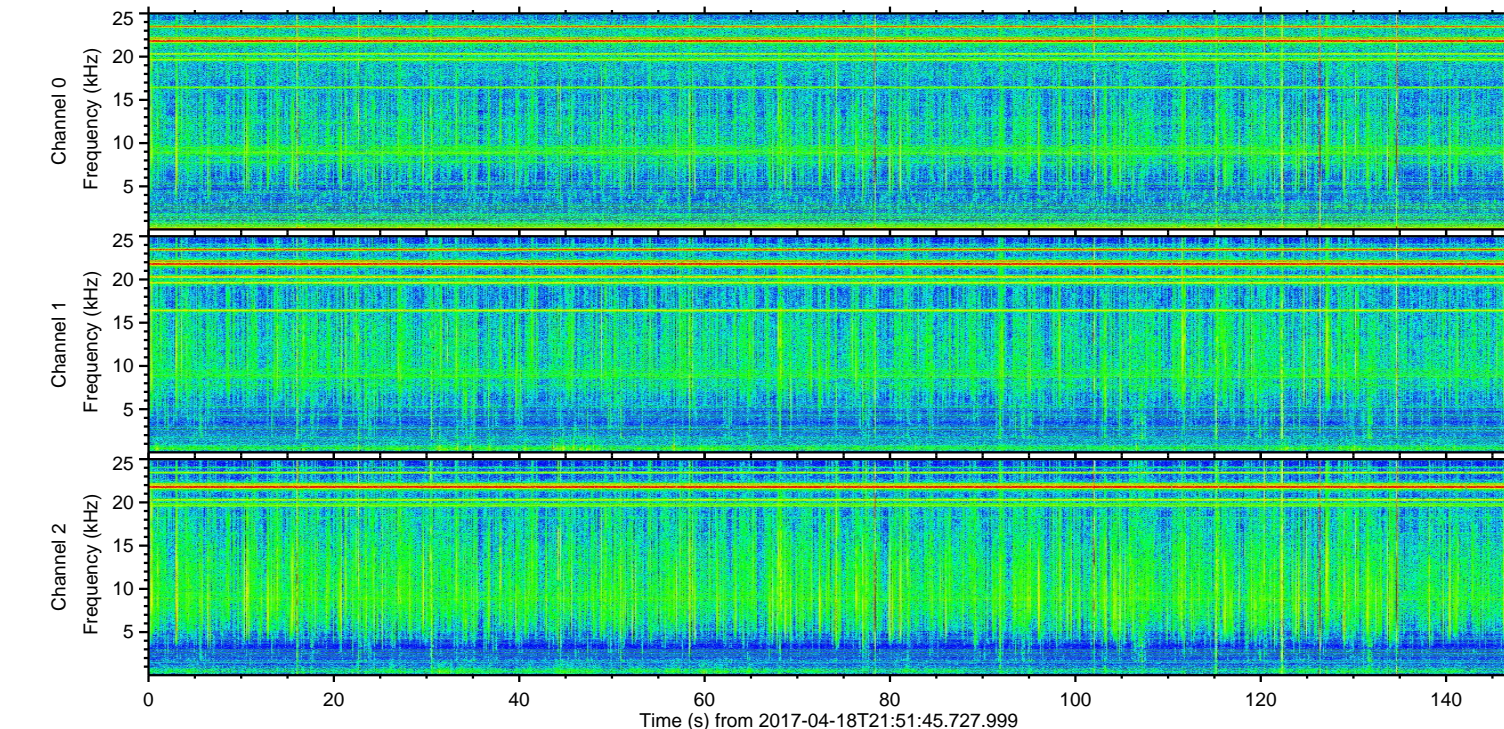
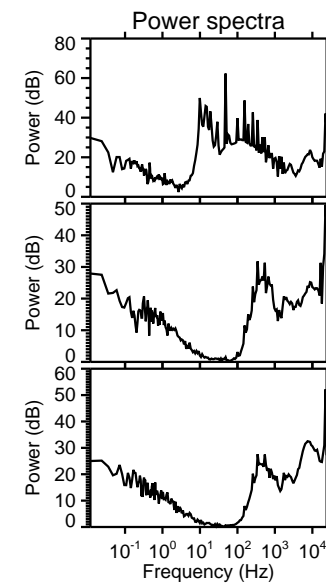
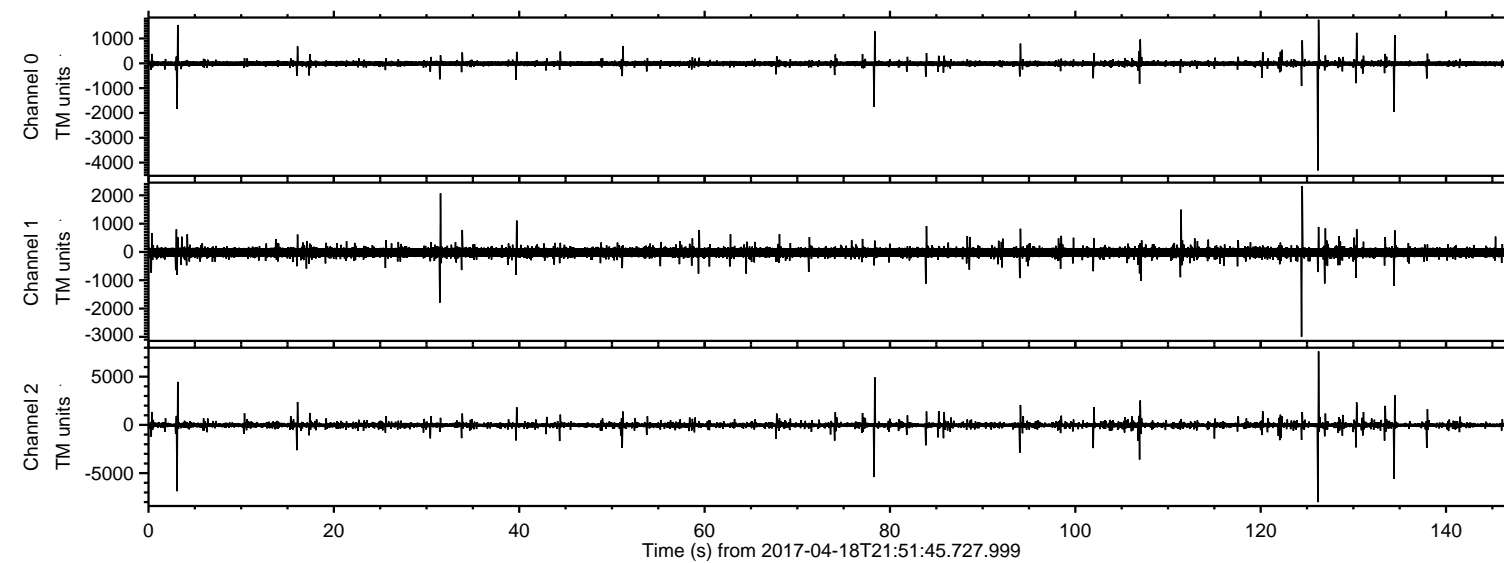


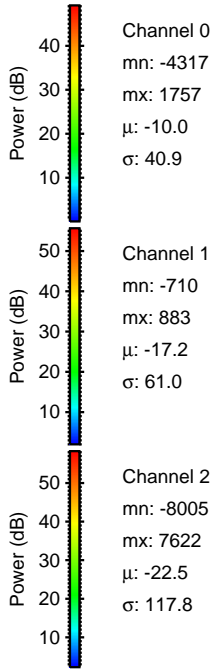
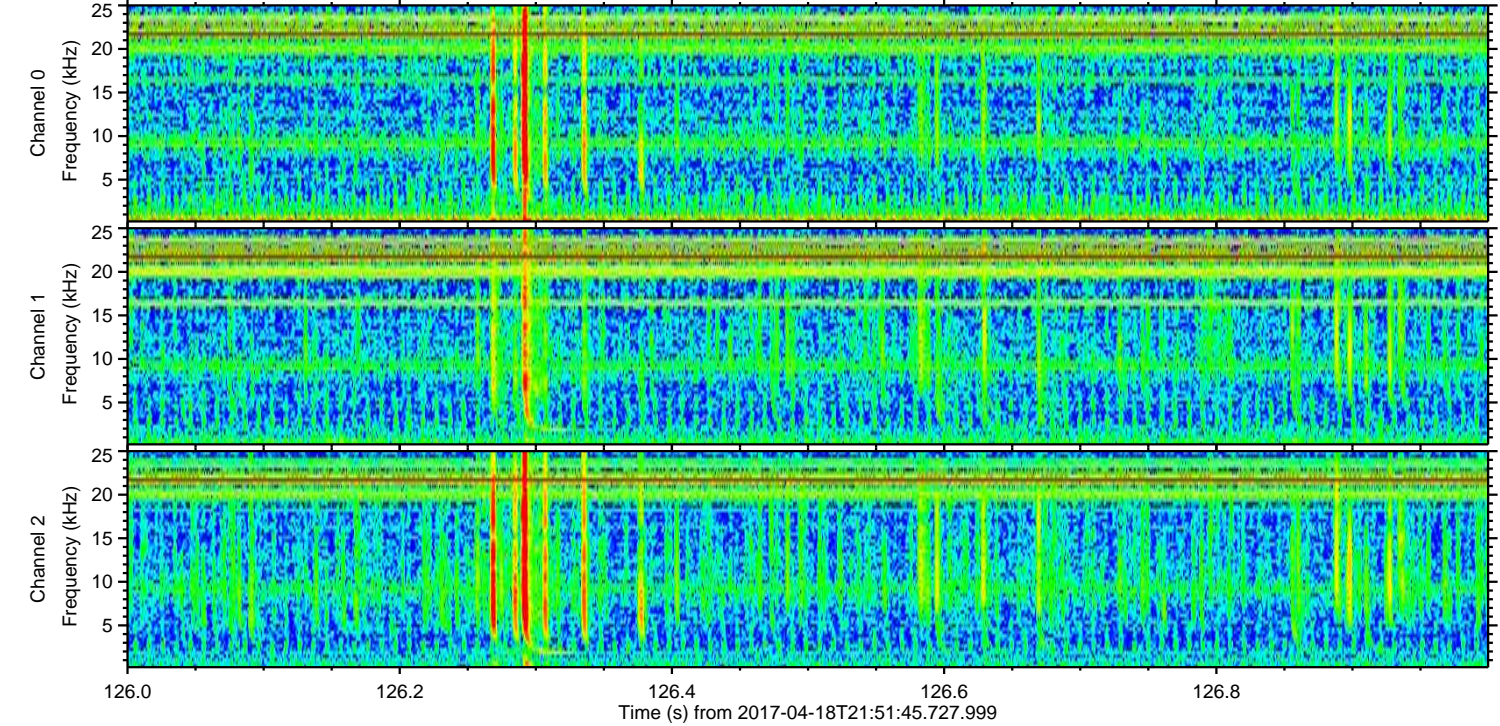
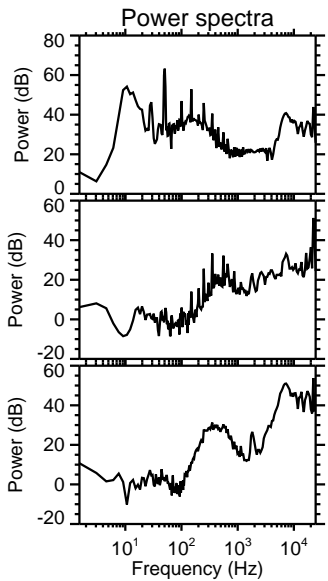
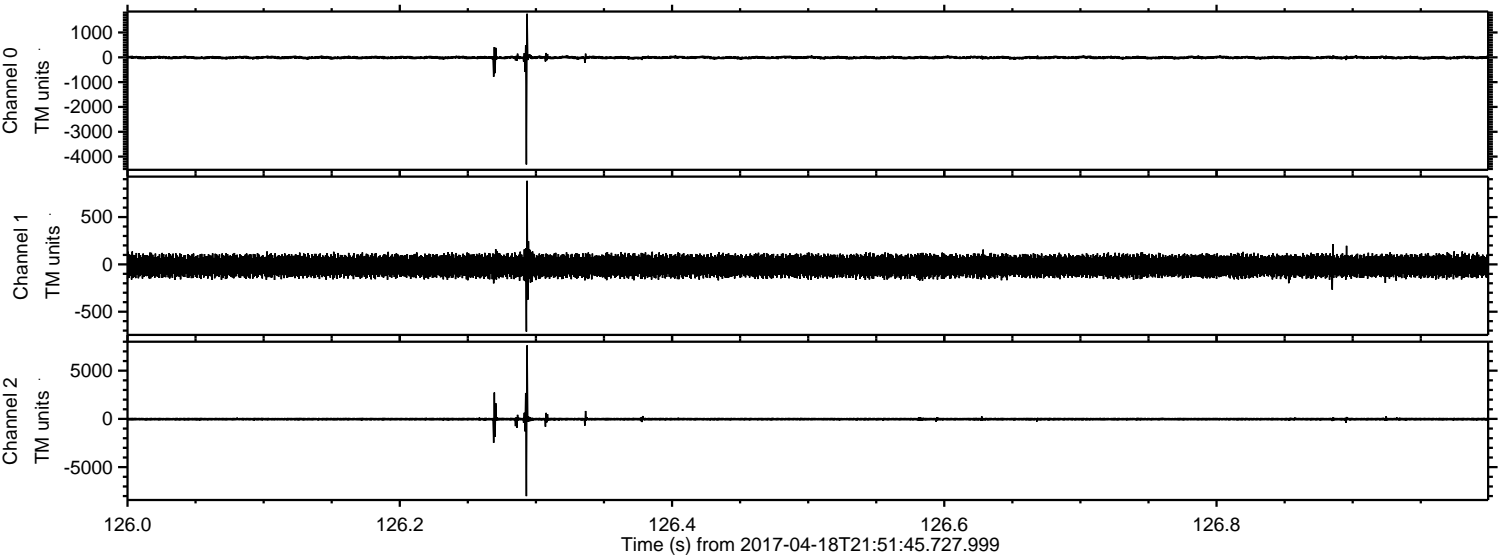
ELMAVAN 3D WAVEFORMS (Measured data sampled at 50 kHz) 51000 packets of 144 samples from 2017-04-18T21:51:45.727.999.

Processed Tue Apr 18 23:59:45 2017 by ELM ver.2012-10-06 from 001__elm20170418_215144__dat00.bin



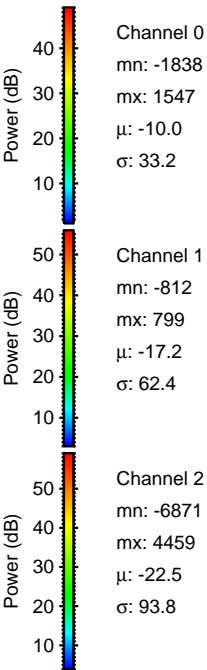
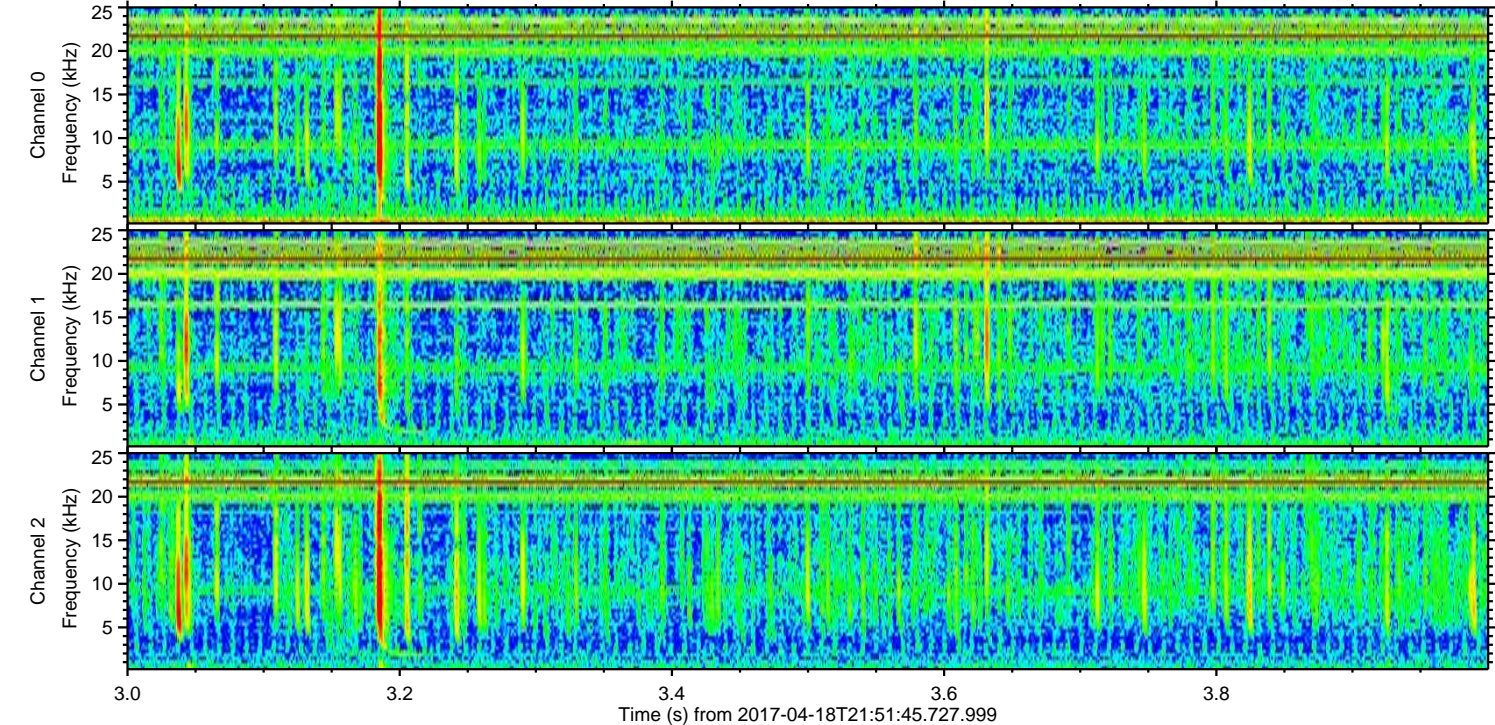
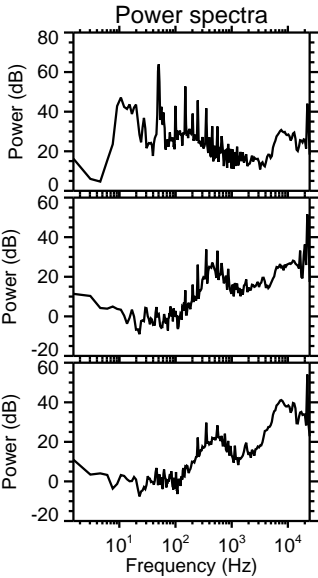
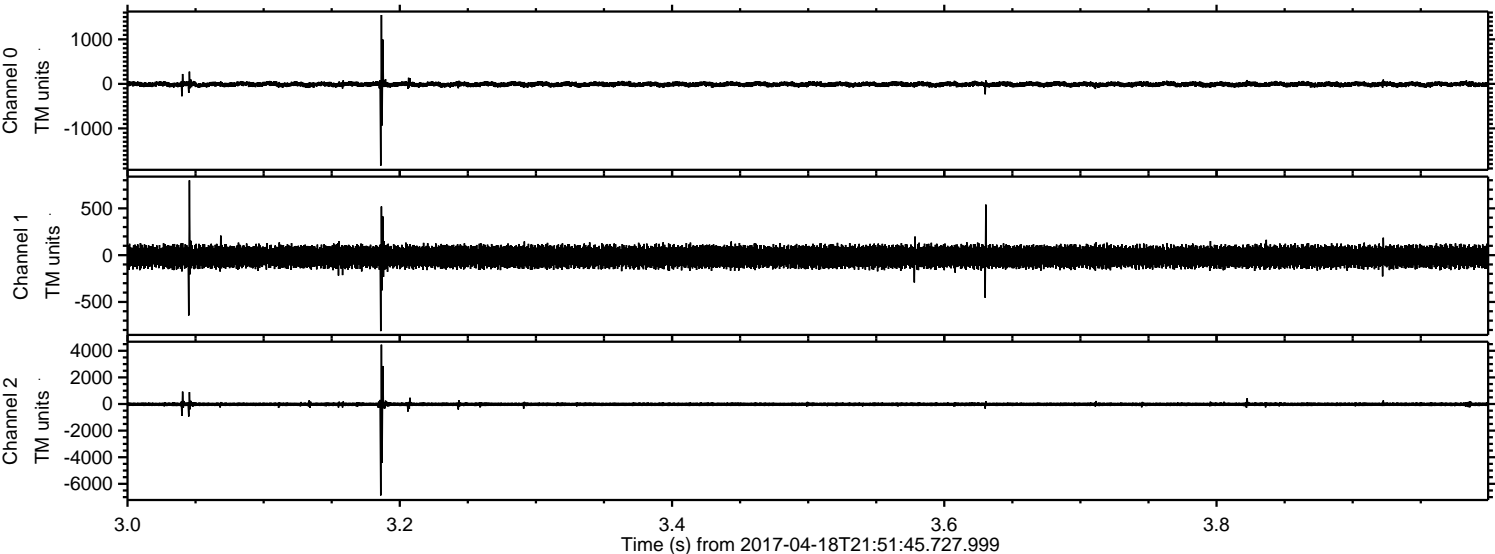
ELMAVAN 3D WAVEFORMS (Measured data sampled at 50 kHz) 51000 packets of 144 samples from 2017-04-18T21:51:45.727.999. Part 127/147

Processed Tue Apr 18 23:59:57 2017 by ELM ver.2012-10-06 from 001__elm20170418_215144__dat00.bin



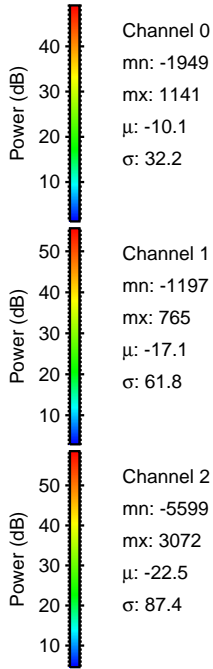
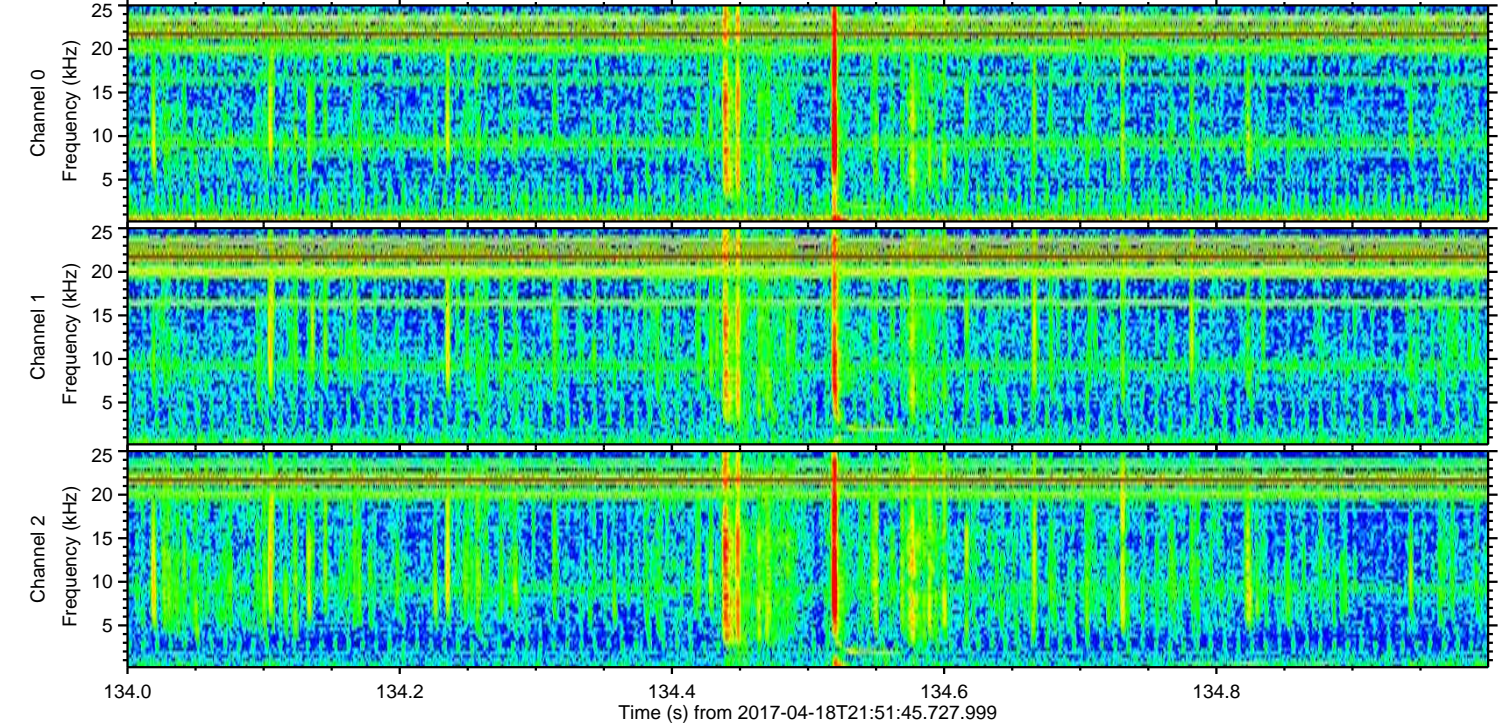
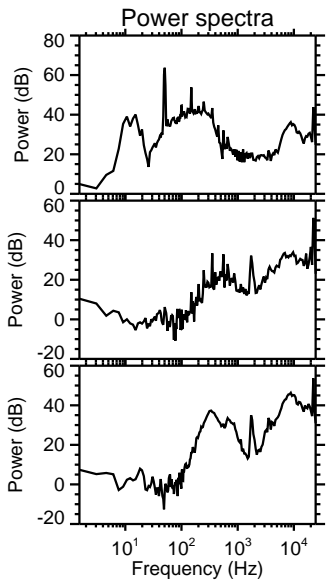
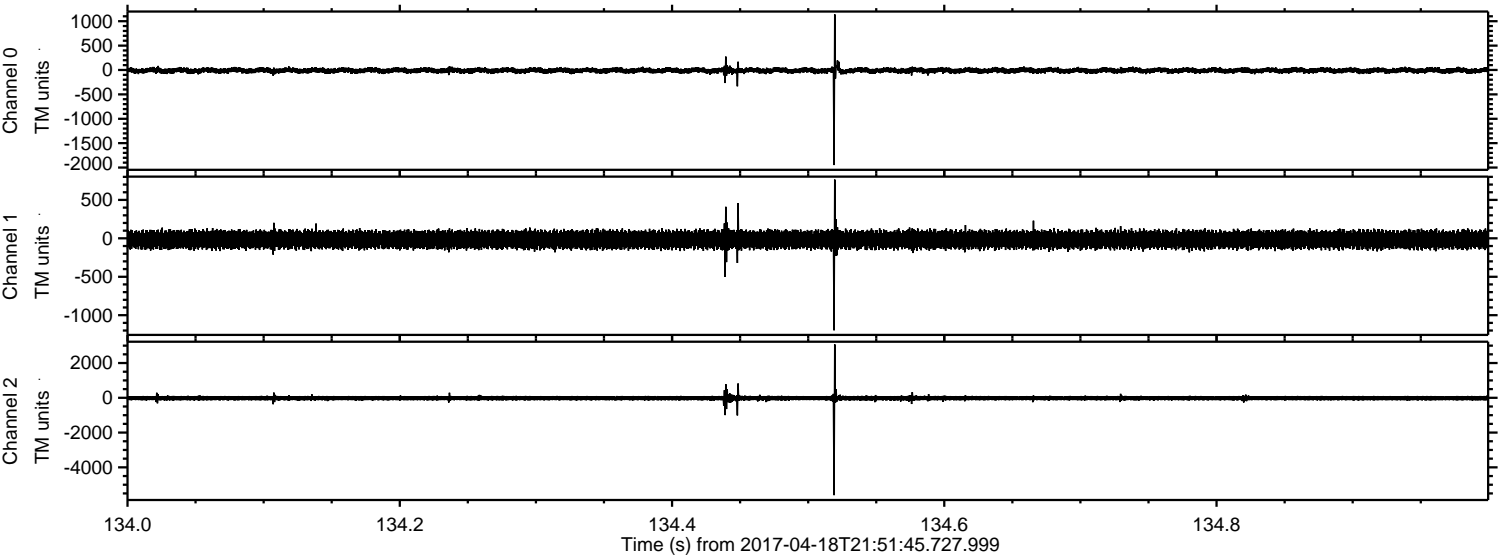
ELMAVAN 3D WAVEFORMS (Measured data sampled at 50 kHz) 51000 packets of 144 samples from 2017-04-18T21:51:45.727.999. Part 4/147

Processed Tue Apr 18 23:59:58 2017 by ELM ver.2012-10-06 from 001__elm20170418_215144__dat00.bin

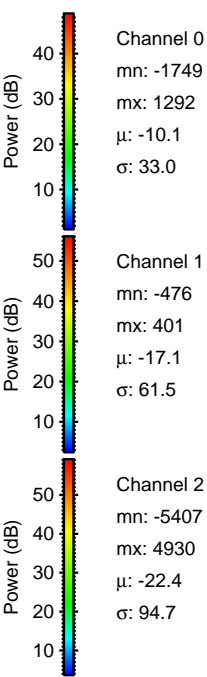
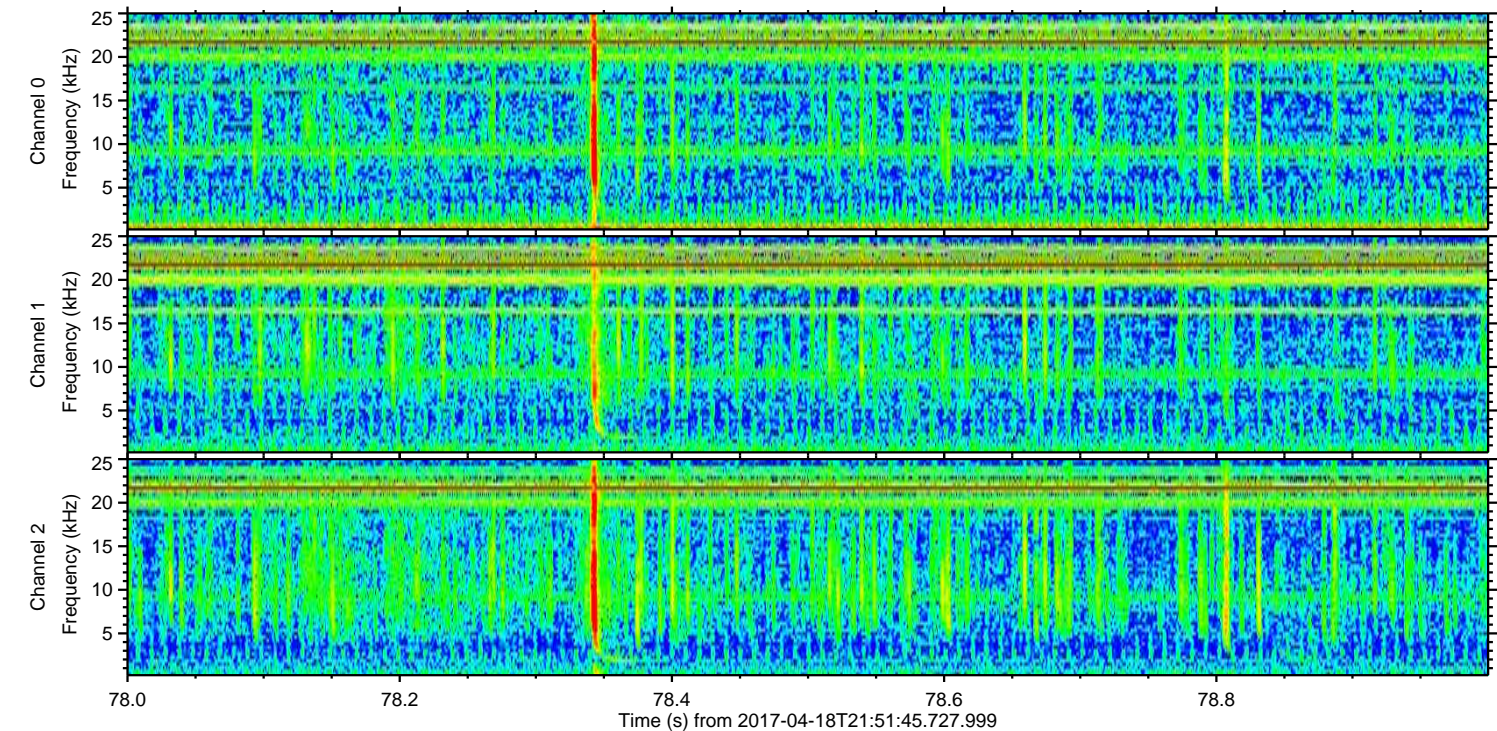
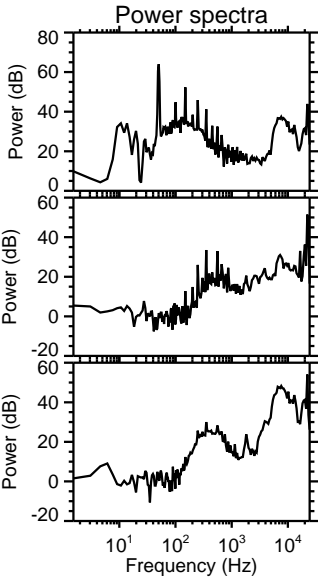
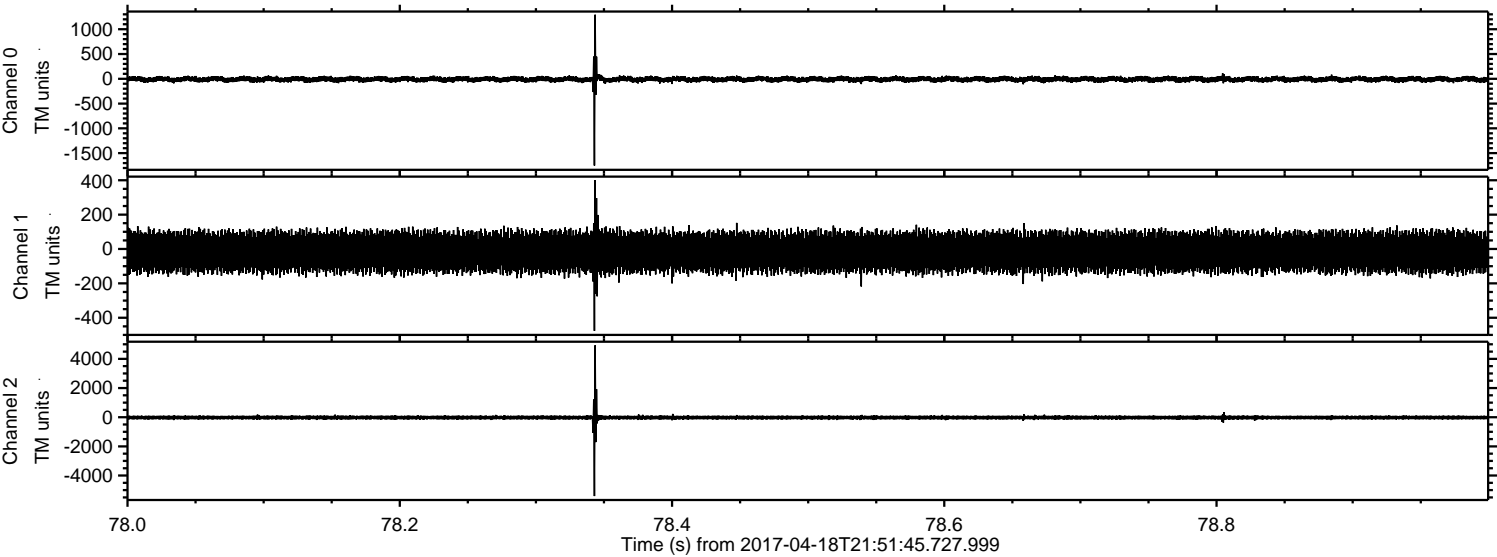


ELMAVAN 3D WAVEFORMS (Measured data sampled at 50 kHz) 51000 packets of 144 samples from 2017-04-18T21:51:45.727.999. Part 135/147

Processed Tue Apr 18 23:59:59 2017 by ELM ver.2012-10-06 from 001__elm20170418_215144__dat00.bin



Processed Wed Apr 19 00:00:00 2017 by ELM ver.2012-10-06 from 001__elm20170418_215144__dat00.bin



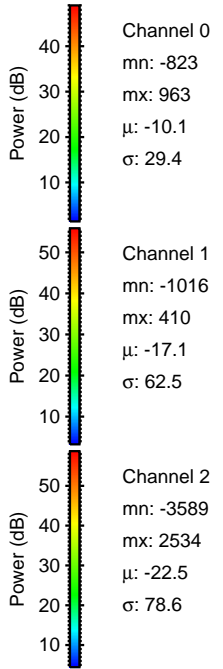
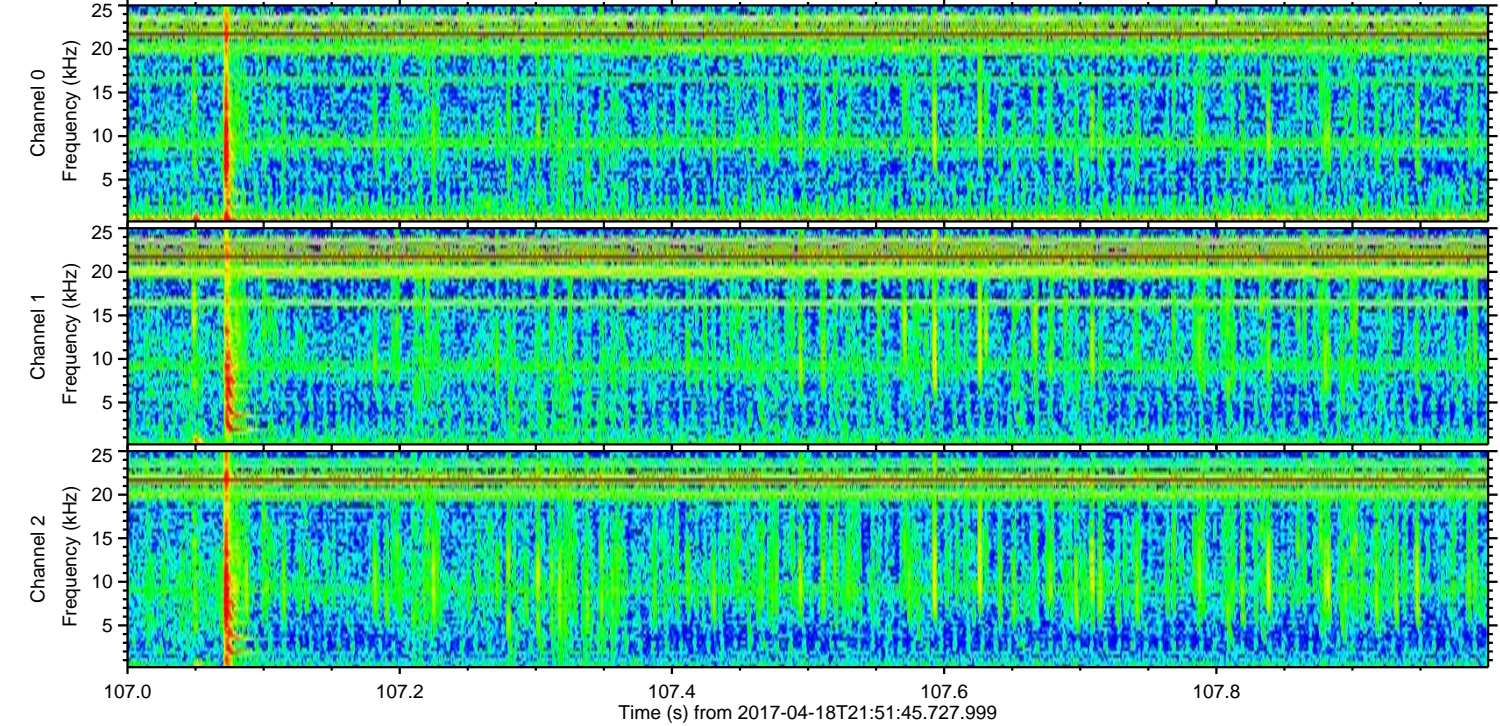
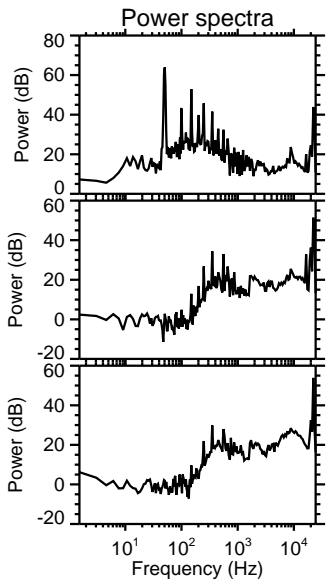
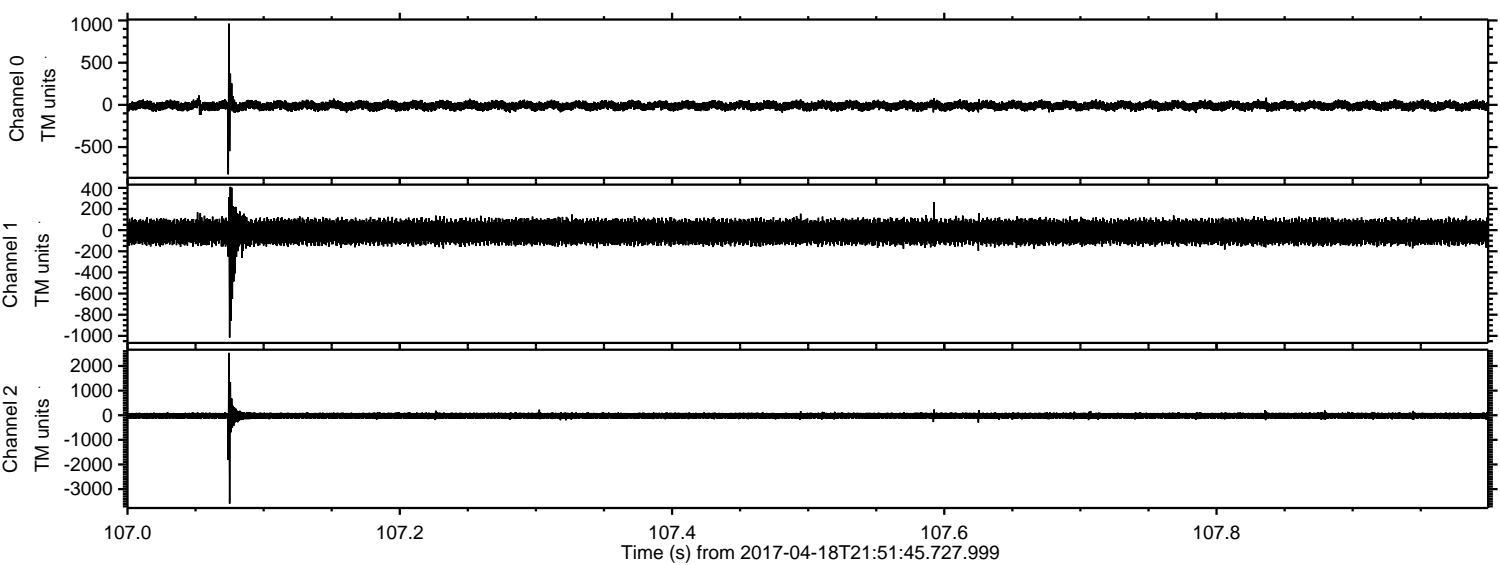
Channel 0
mn: -1749
mx: 1292
 μ : -10.1
 σ : 33.0

Channel 1
mn: -476
mx: 401
 μ : -17.1
 σ : 61.5

Channel 2
mn: -5407
mx: 4930
 μ : -22.4
 σ : 94.7

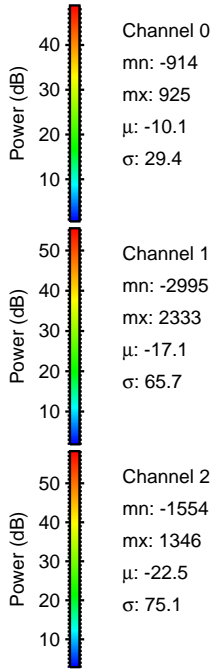
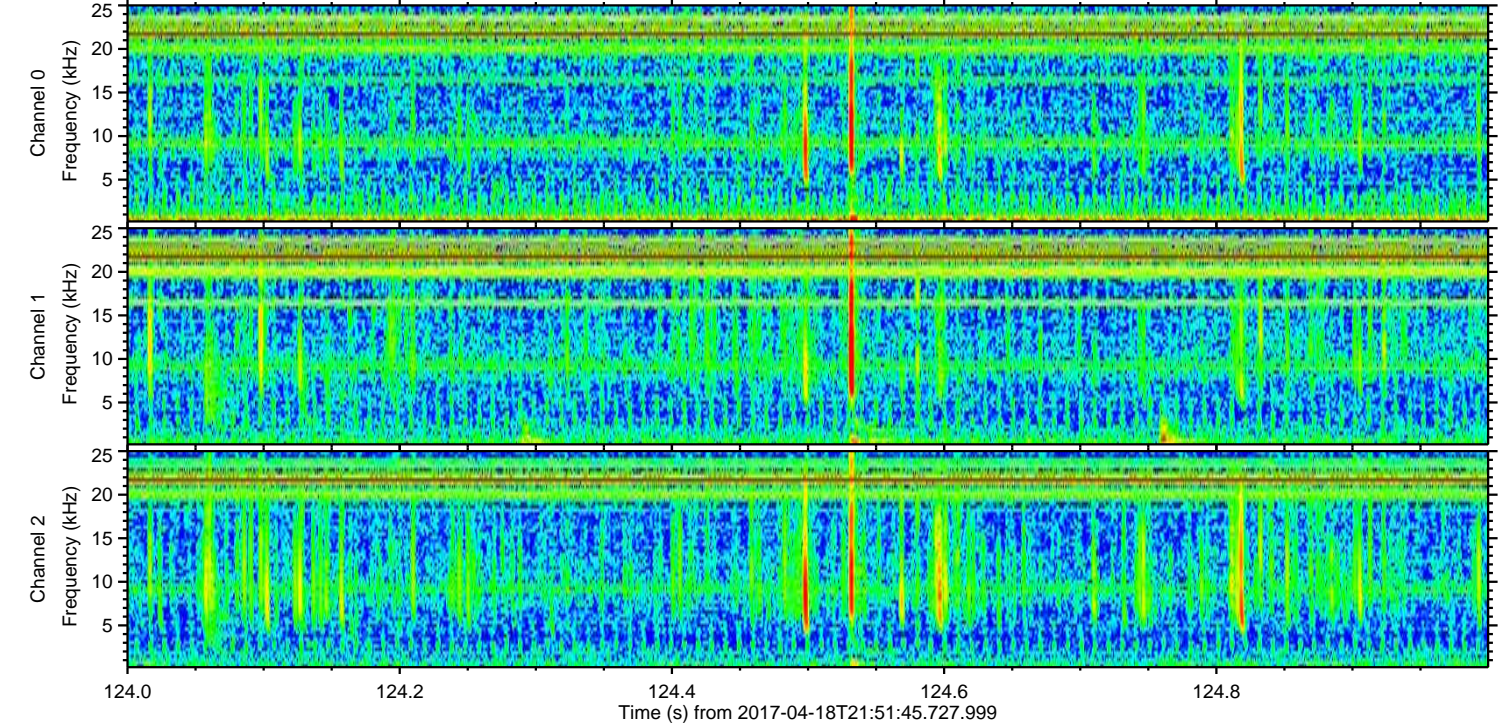
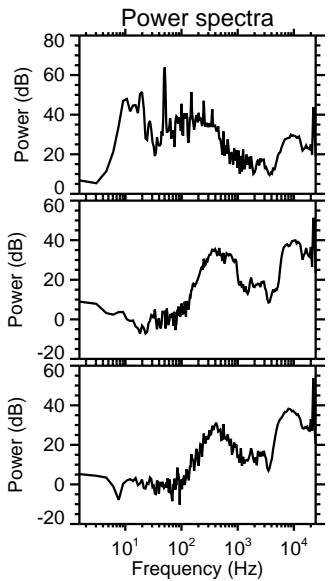
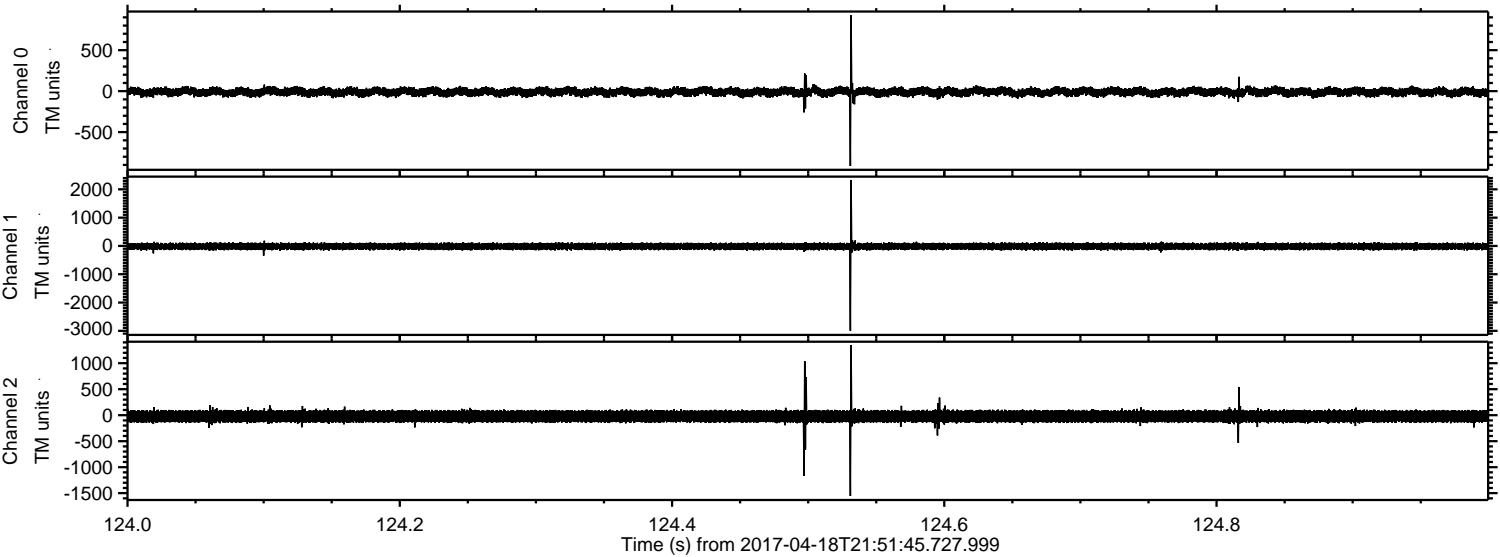
ELMAVAN 3D WAVEFORMS (Measured data sampled at 50 kHz) 51000 packets of 144 samples from 2017-04-18T21:51:45.727.999. Part 108/147

Processed Wed Apr 19 00:00:00 2017 by ELM ver.2012-10-06 from 001__elm20170418_215144__dat00.bin



ELMAVAN 3D WAVEFORMS (Measured data sampled at 50 kHz) 51000 packets of 144 samples from 2017-04-18T21:51:45.727.999. Part 125/147

Processed Wed Apr 19 00:00:01 2017 by ELM ver.2012-10-06 from 001__elm20170418_215144__dat00.bin

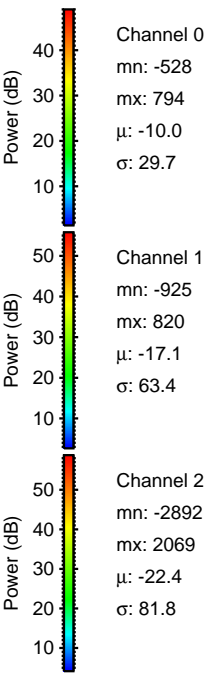
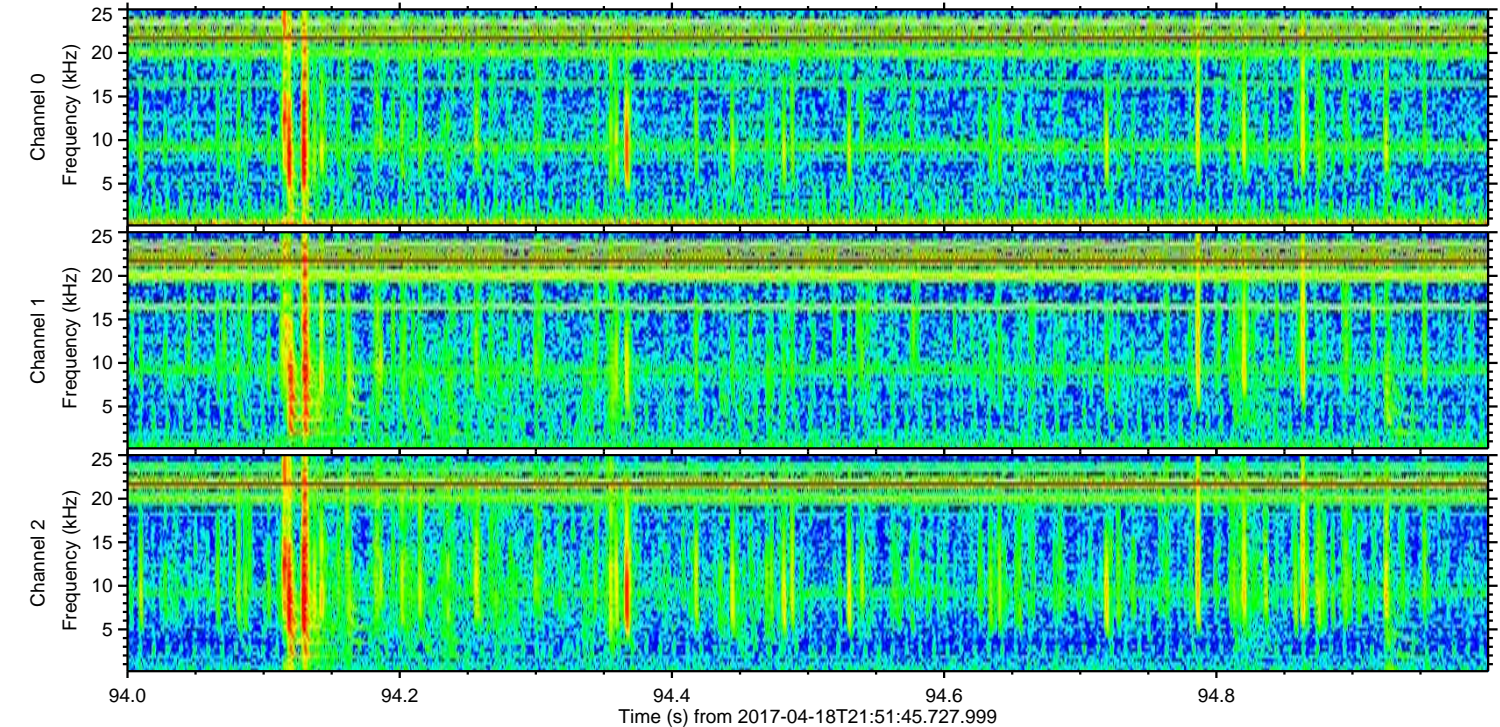
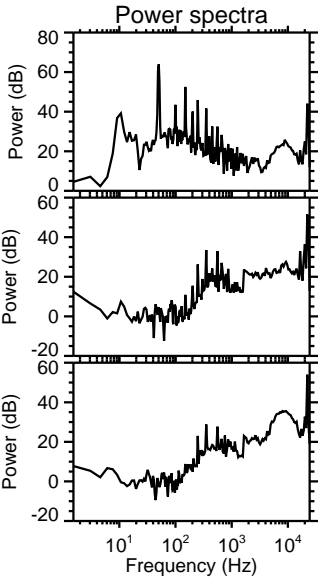
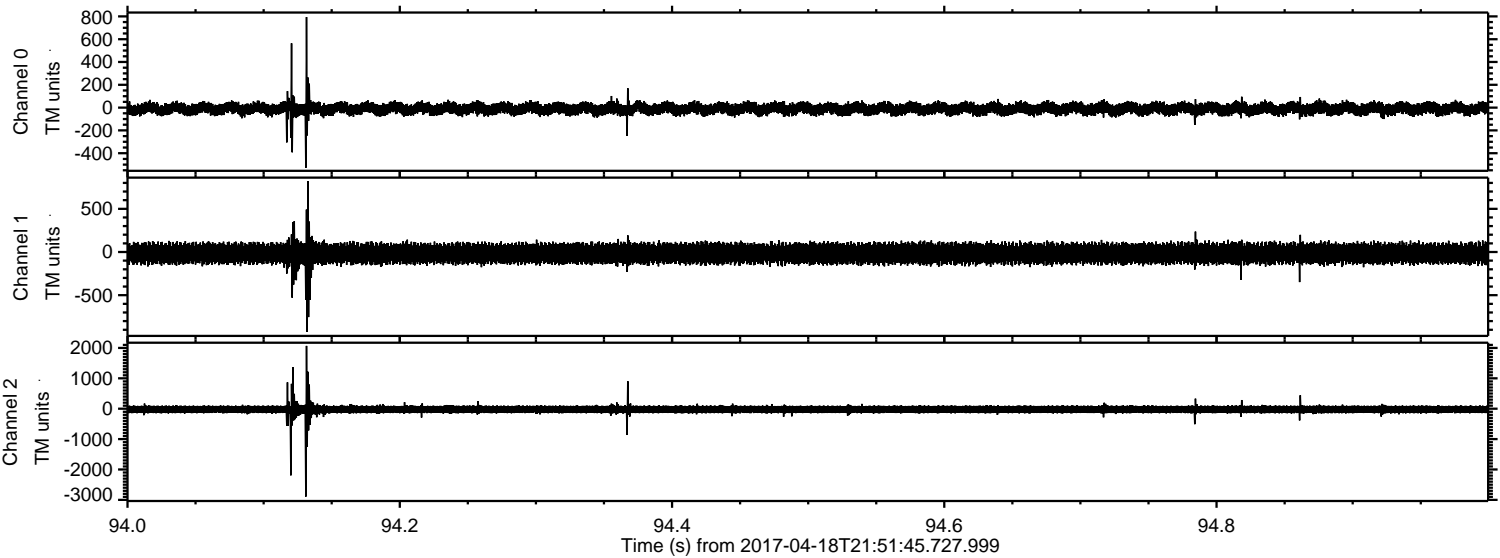


Channel 0
mn: -914
mx: 925
 μ : -10.1
 σ : 29.4

Channel 1
mn: -2995
mx: 2333
 μ : -17.1
 σ : 65.7

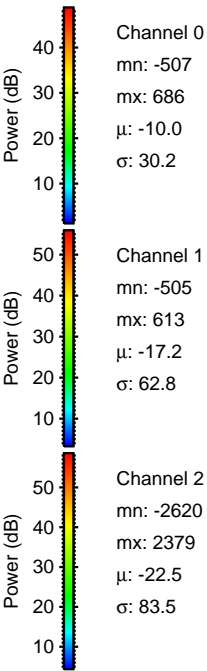
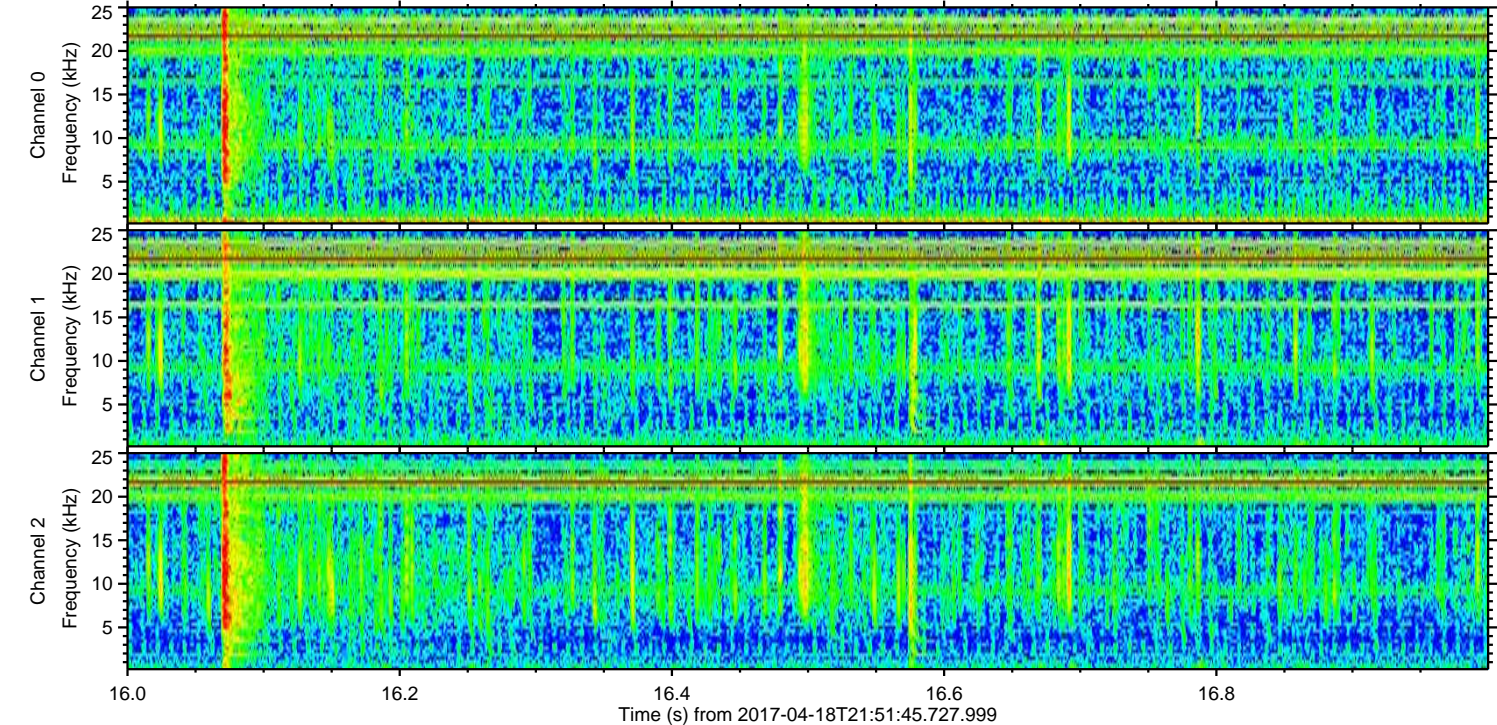
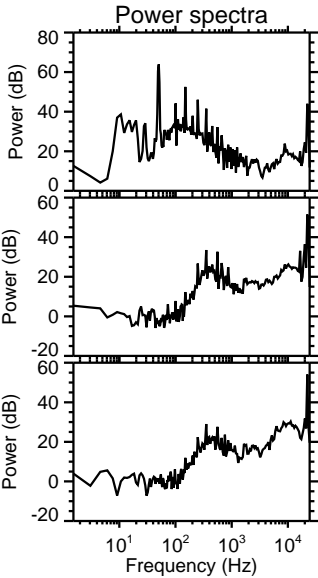
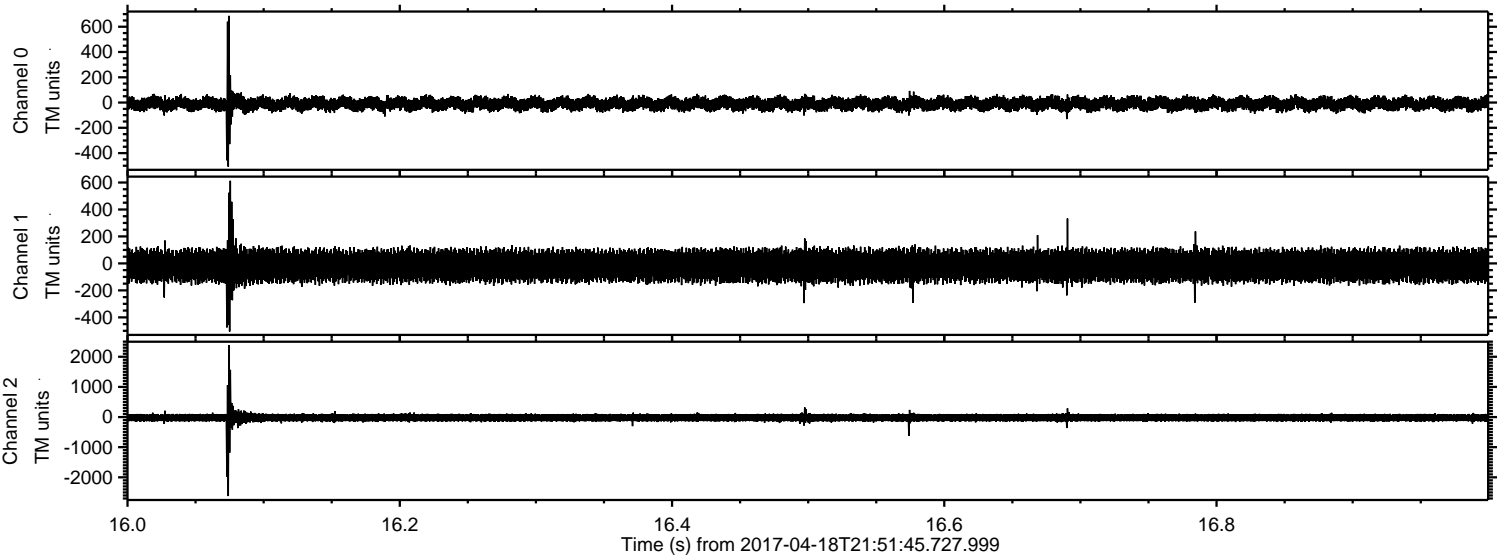
Channel 2
mn: -1554
mx: 1346
 μ : -22.5
 σ : 75.1

Processed Wed Apr 19 00:00:02 2017 by ELM ver.2012-10-06 from 001__elm20170418_215144__dat00.bin



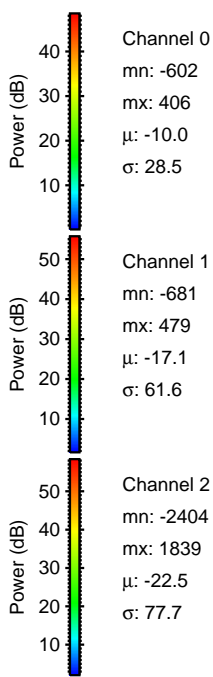
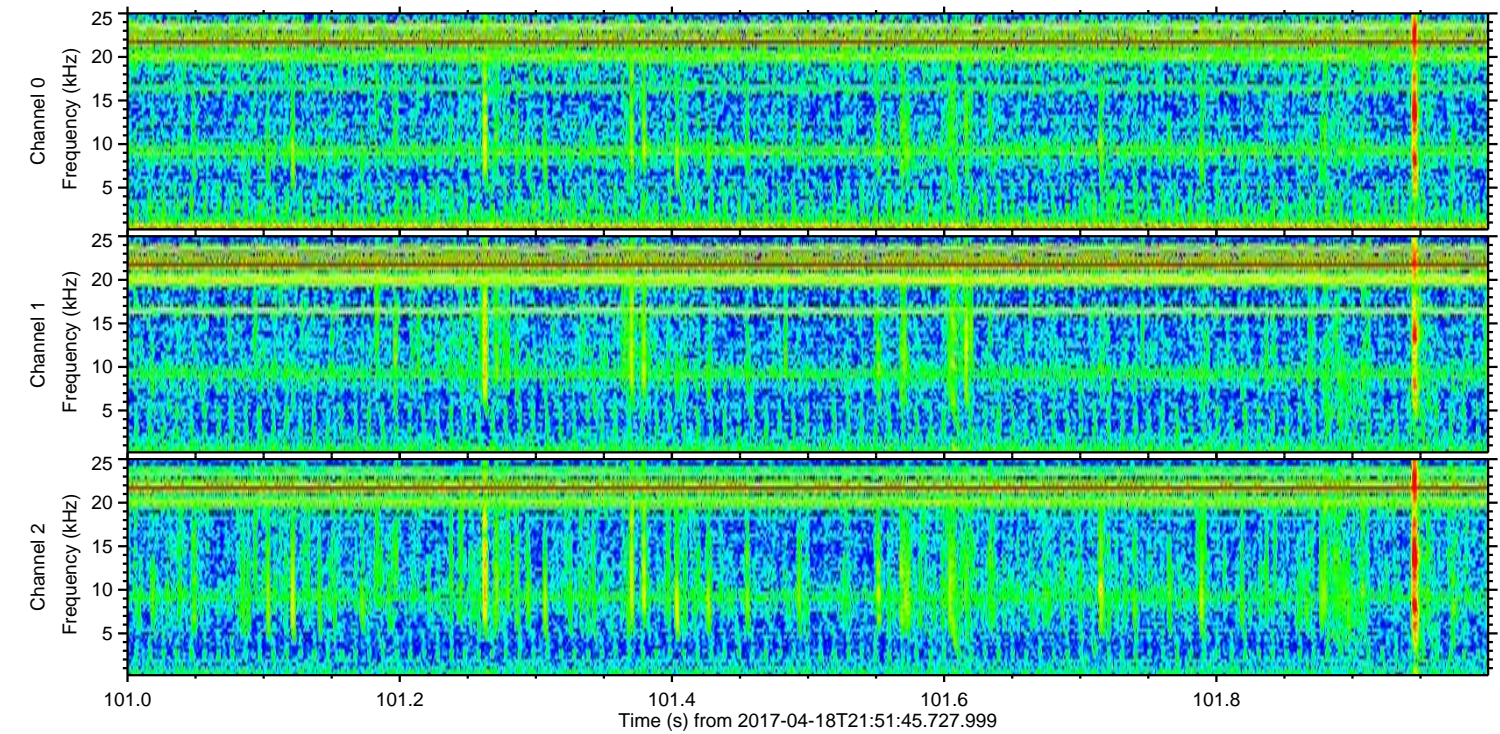
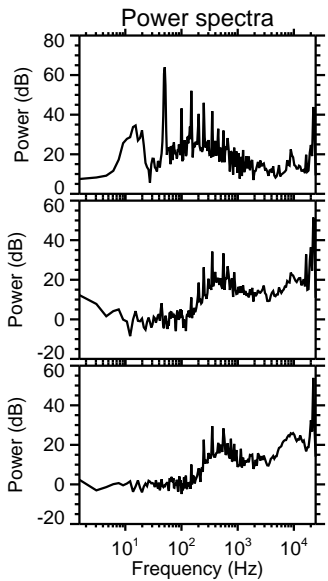
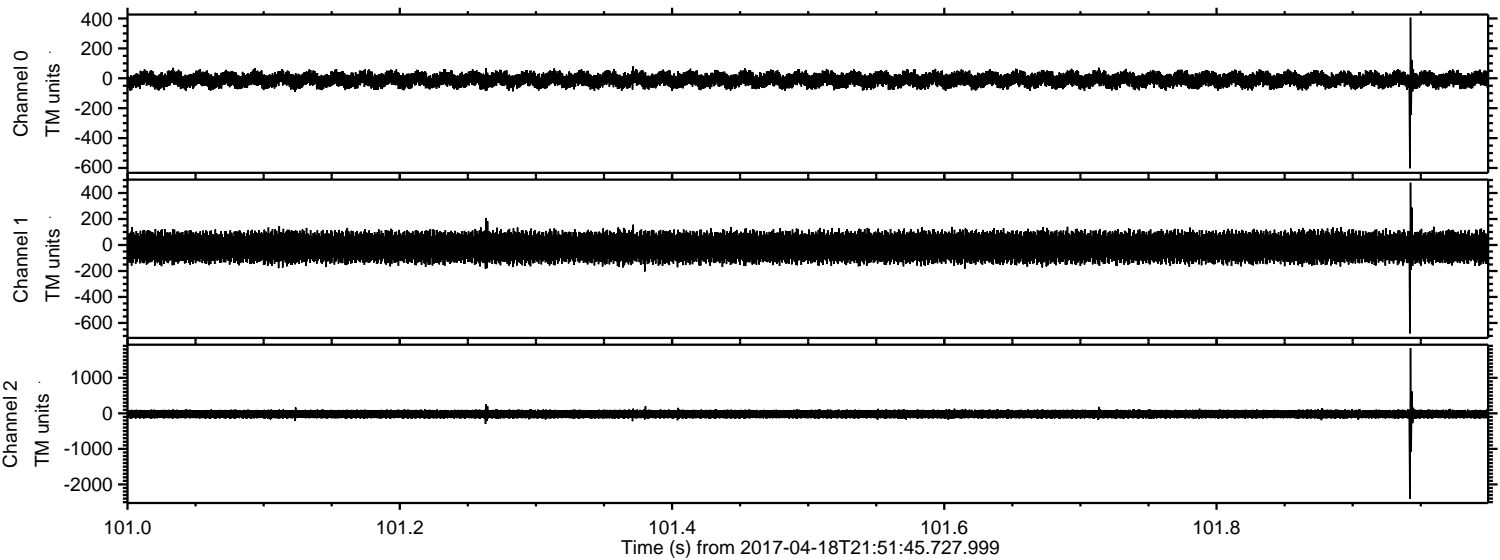
ELMAVAN 3D WAVEFORMS (Measured data sampled at 50 kHz) 51000 packets of 144 samples from 2017-04-18T21:51:45.727.999. Part 17/147

Processed Wed Apr 19 00:00:03 2017 by ELM ver.2012-10-06 from 001__elm20170418_215144__dat00.bin



ELMAVAN 3D WAVEFORMS (Measured data sampled at 50 kHz) 51000 packets of 144 samples from 2017-04-18T21:51:45.727.999. Part 102/147

Processed Wed Apr 19 00:00:04 2017 by ELM ver.2012-10-06 from 001__elm20170418_215144__dat00.bin



ELMAVAN 3D WAVEFORMS (Measured data sampled at 50 kHz) 51000 packets of 144 samples from 2017-04-18T21:51:45.727.999. Part 47/147

Processed Wed Apr 19 00:00:05 2017 by ELM ver.2012-10-06 from 001__elm20170418_215144__dat00.bin

