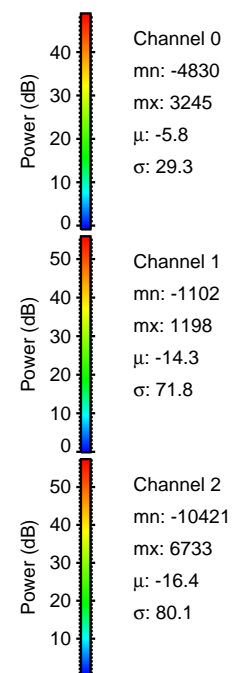
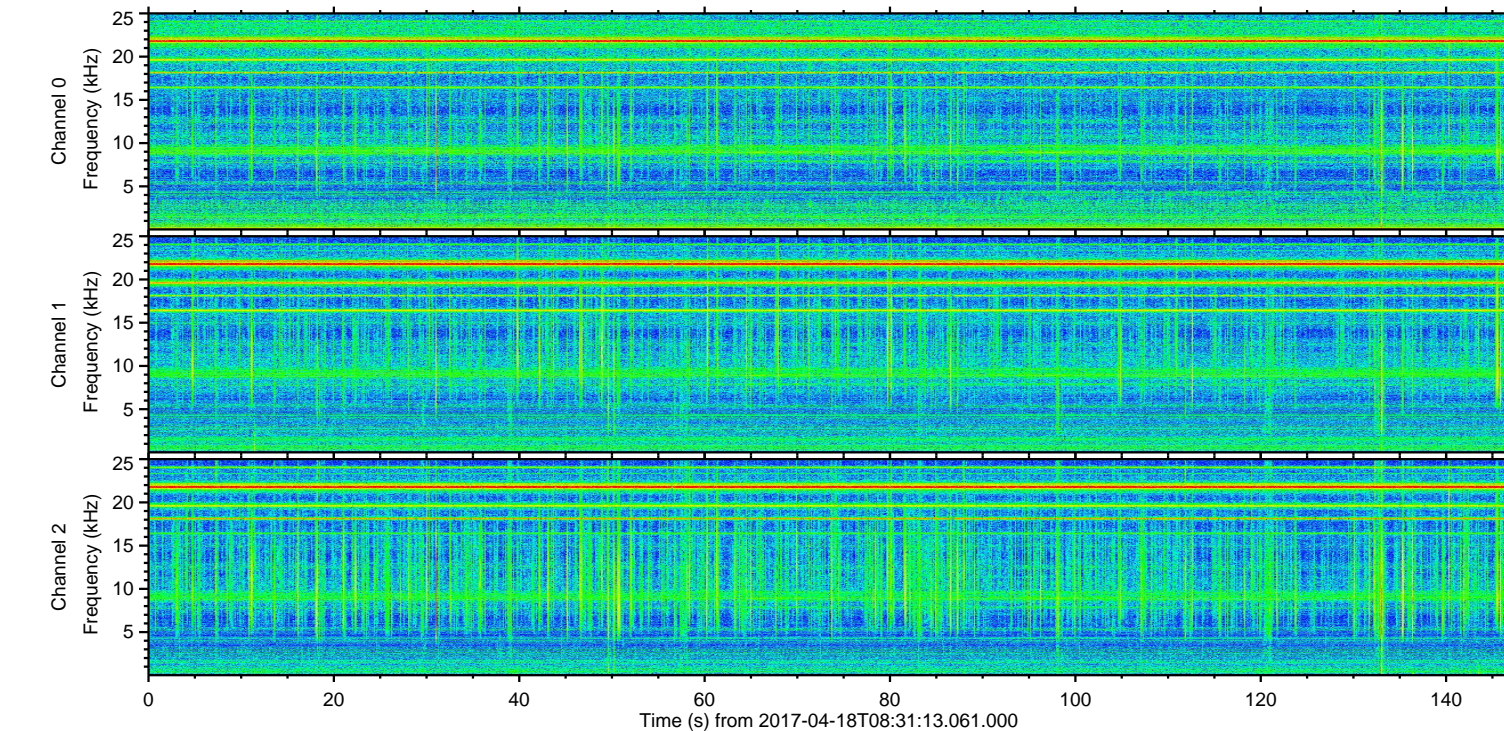
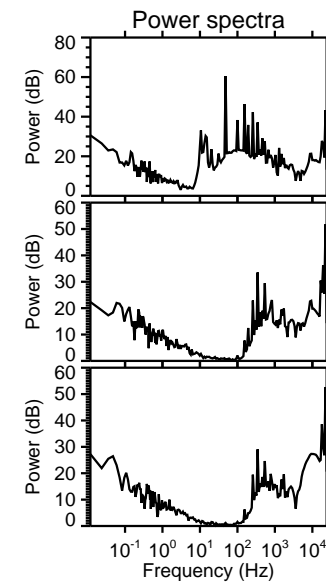
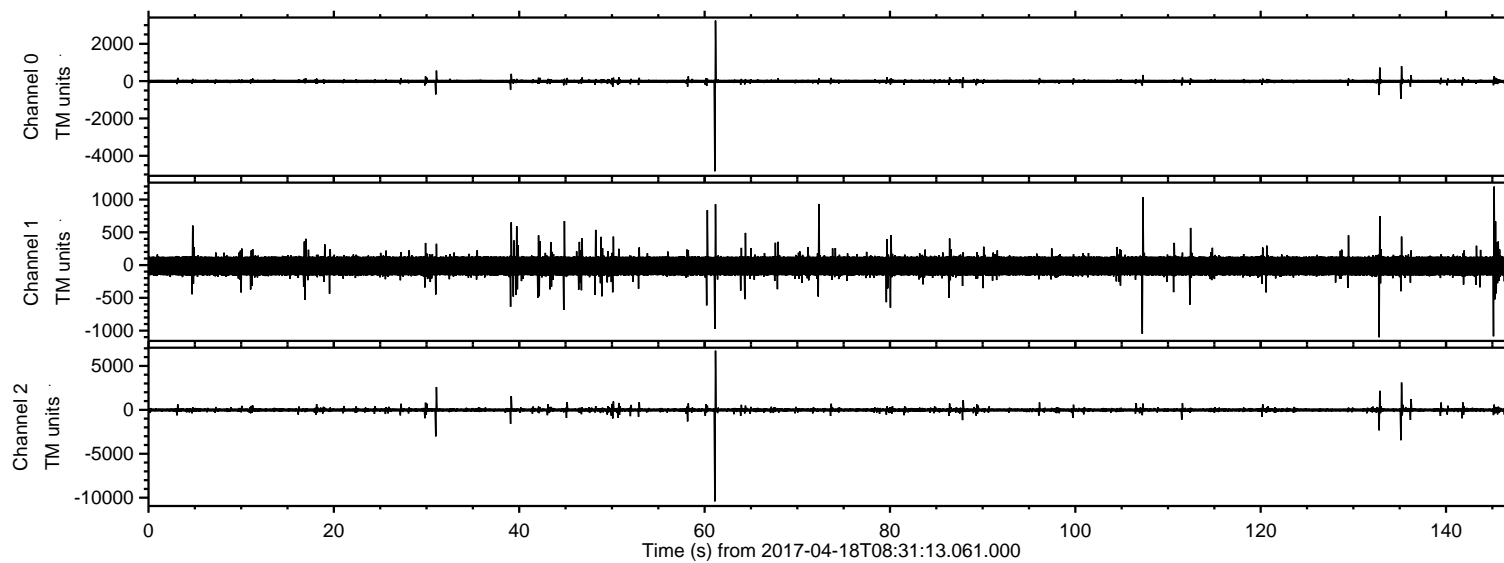


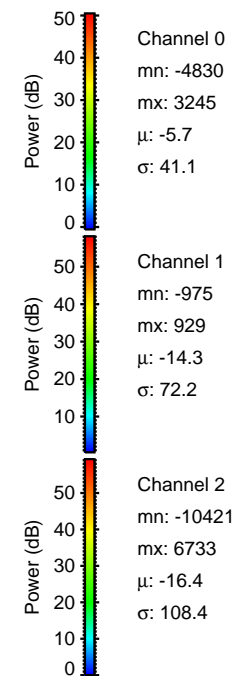
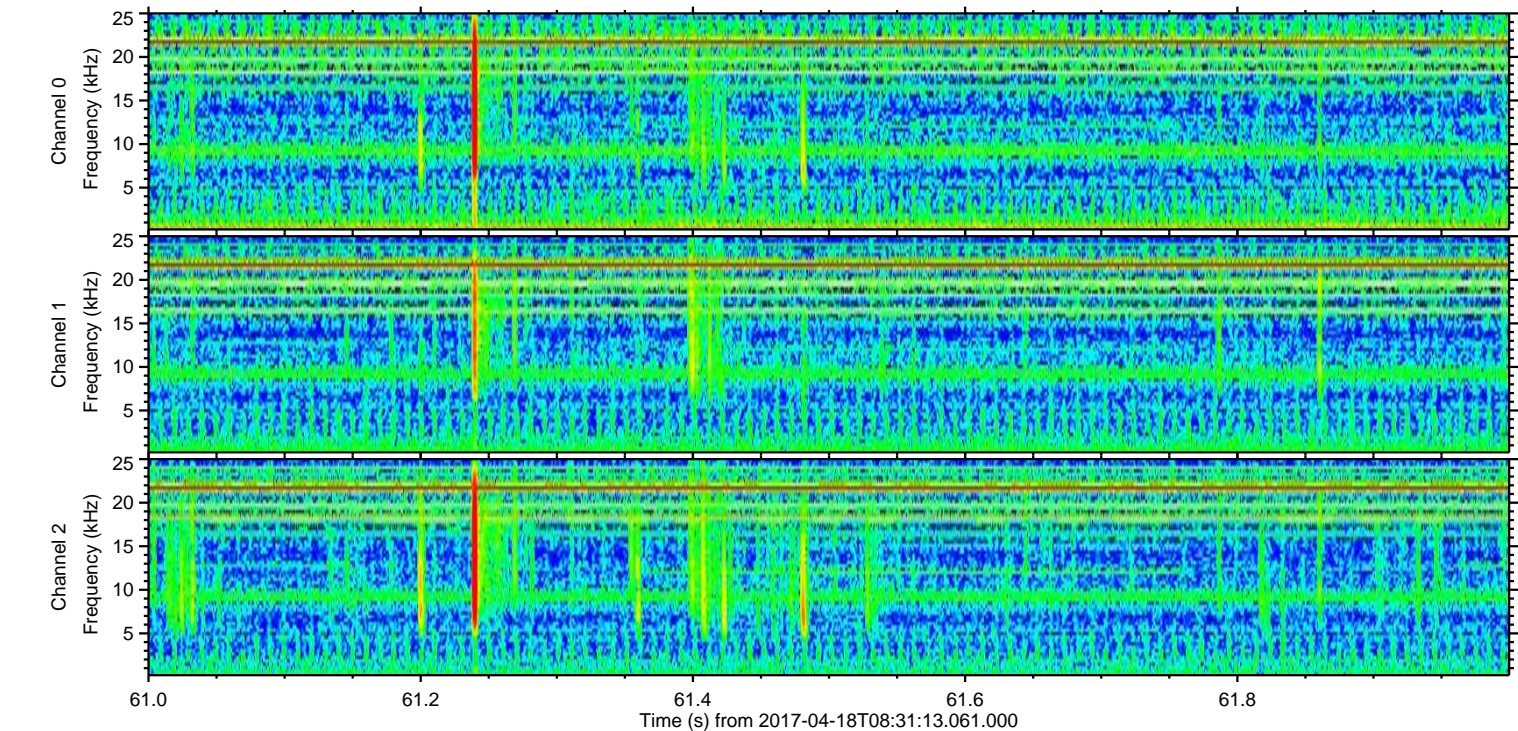
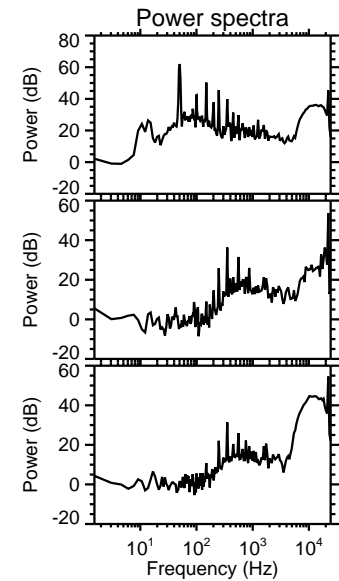
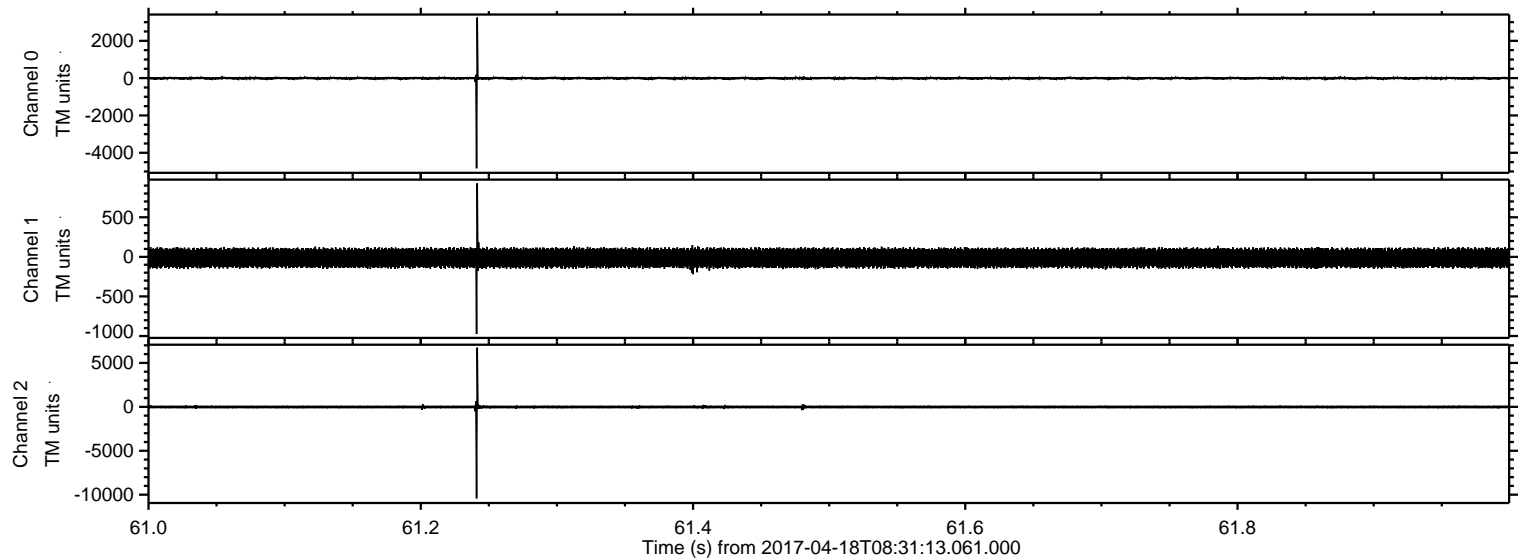
# ELMAVAN 3D WAVEFORMS (Measured data sampled at 50 kHz) 51000 packets of 144 samples from 2017-04-18T08:31:13.061.000.

Processed Tue Apr 18 10:38:53 2017 by ELM ver.2012-10-06 from 001\_\_elm20170418\_083112\_\_dat00.bin





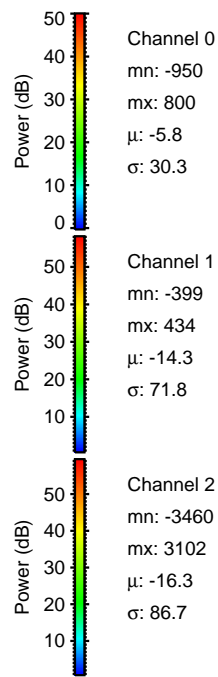
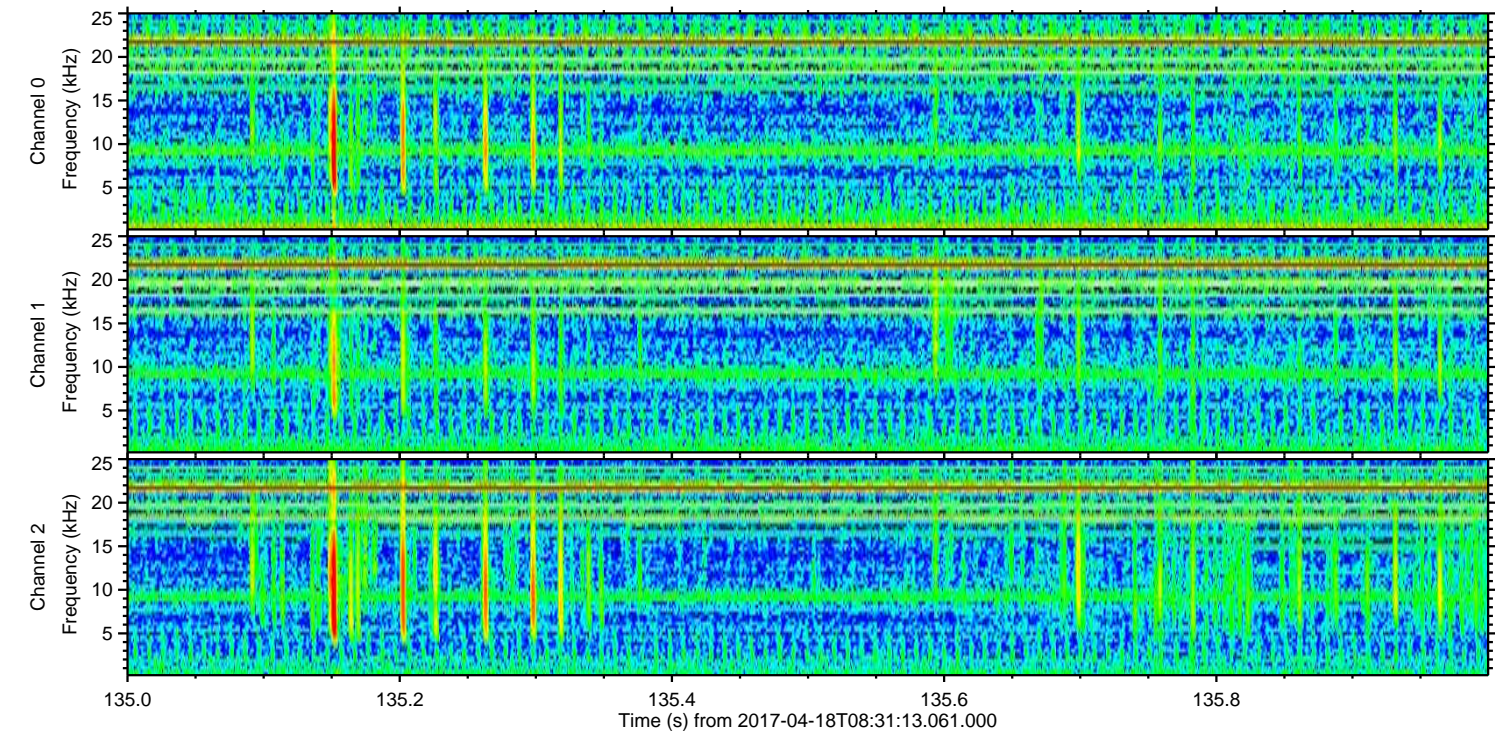
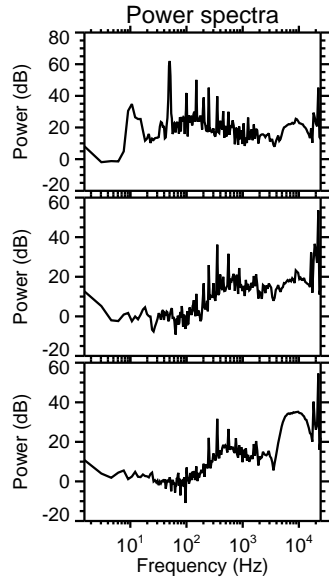
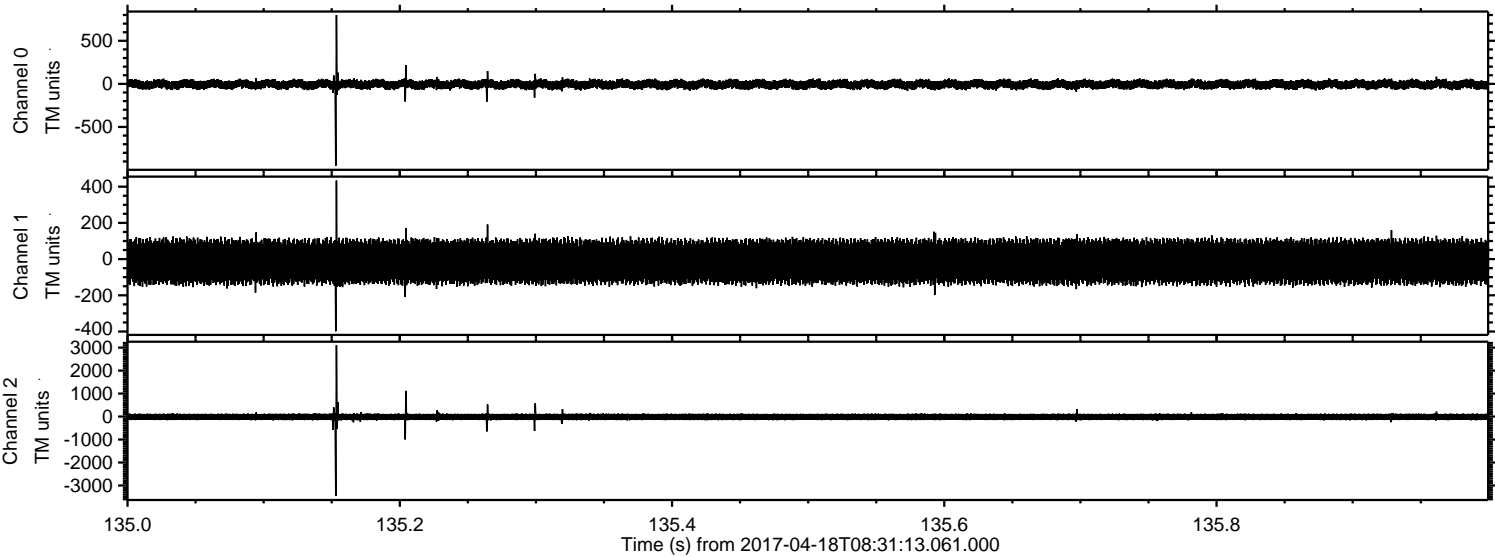
Processed Tue Apr 18 10:39:04 2017 by ELM ver.2012-10-06 from 001\_\_elm20170418\_083112\_\_dat00.bin





ELMAVAN 3D WAVEFORMS (Measured data sampled at 50 kHz) 51000 packets of 144 samples from 2017-04-18T08:31:13.061.000. Part 136/147

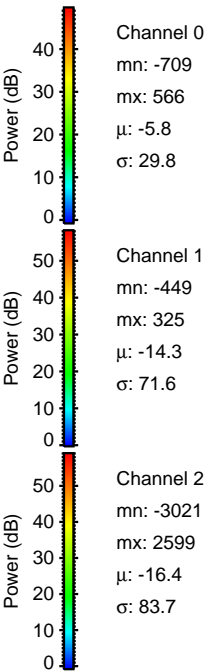
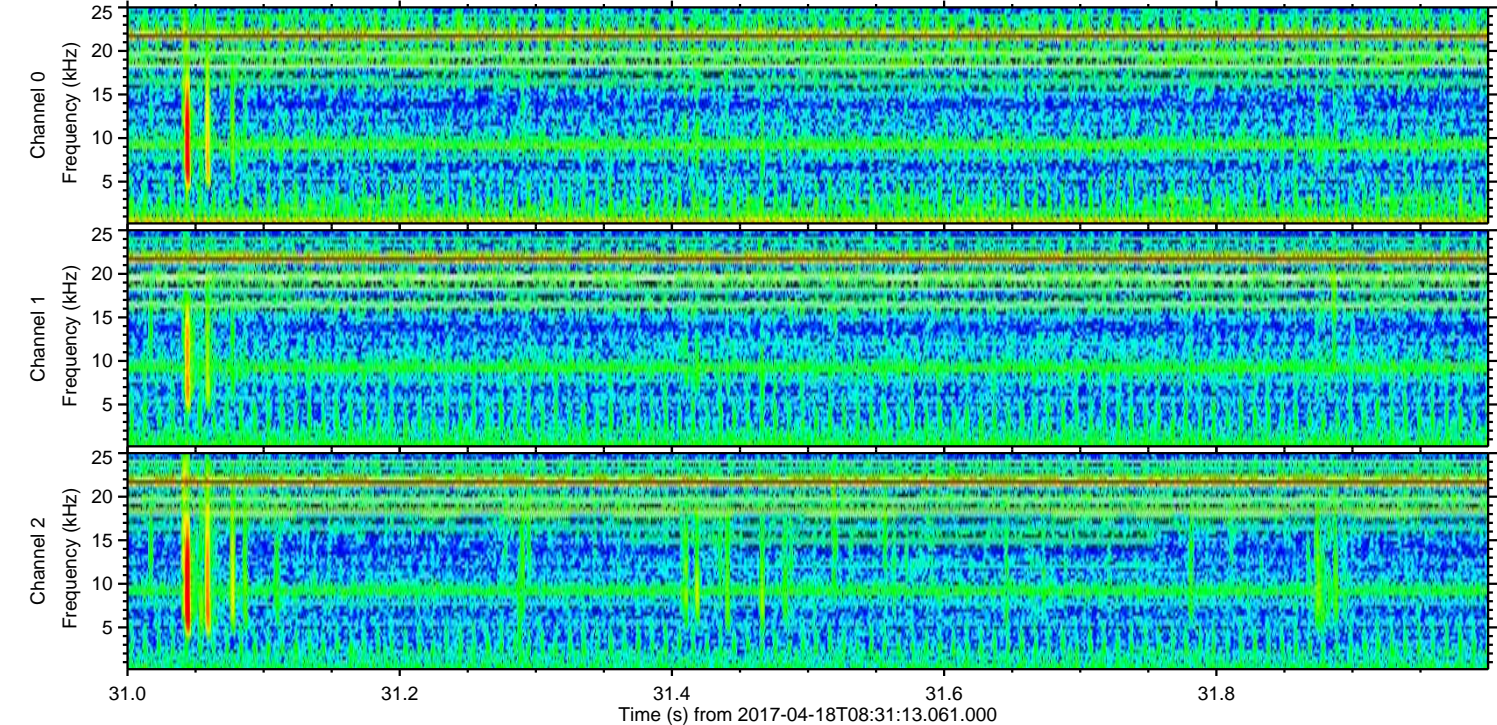
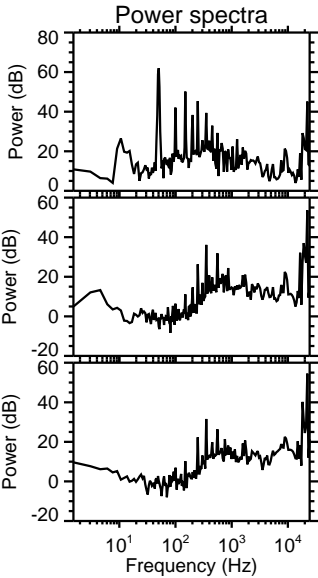
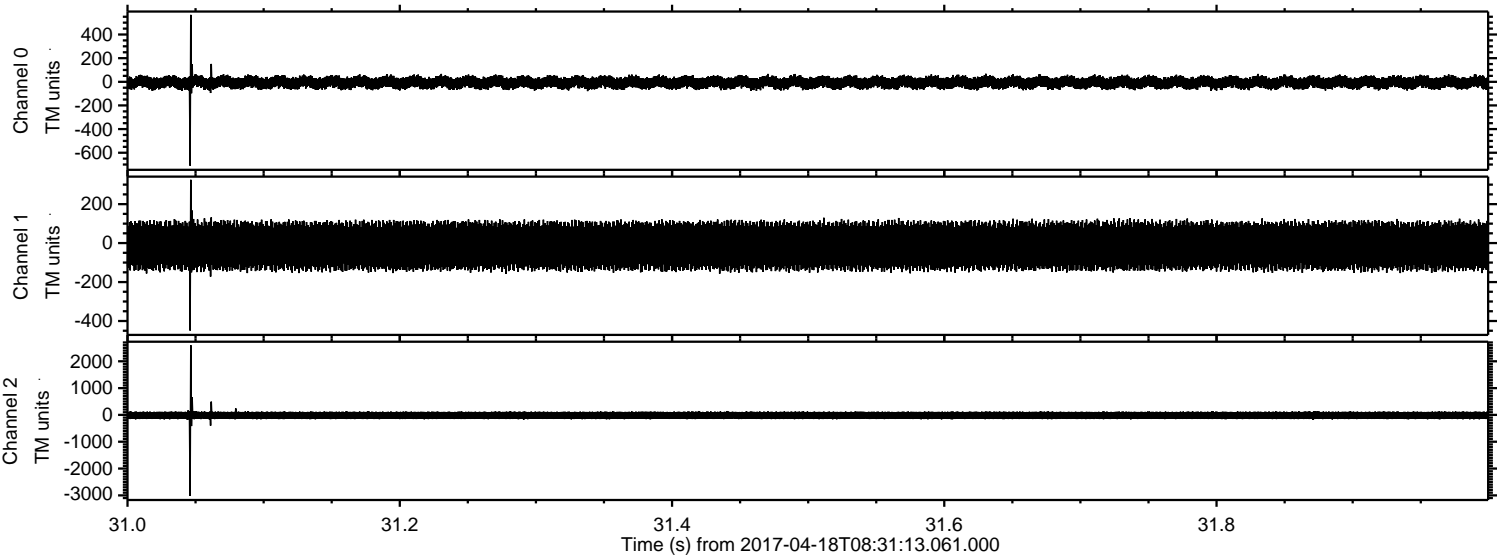
Processed Tue Apr 18 10:39:05 2017 by ELM ver.2012-10-06 from 001\_\_elm20170418\_083112\_\_dat00.bin





ELMAVAN 3D WAVEFORMS (Measured data sampled at 50 kHz) 51000 packets of 144 samples from 2017-04-18T08:31:13.061.000. Part 32/147

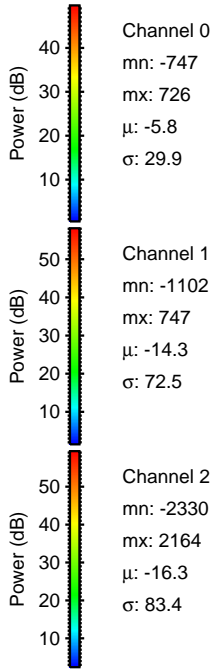
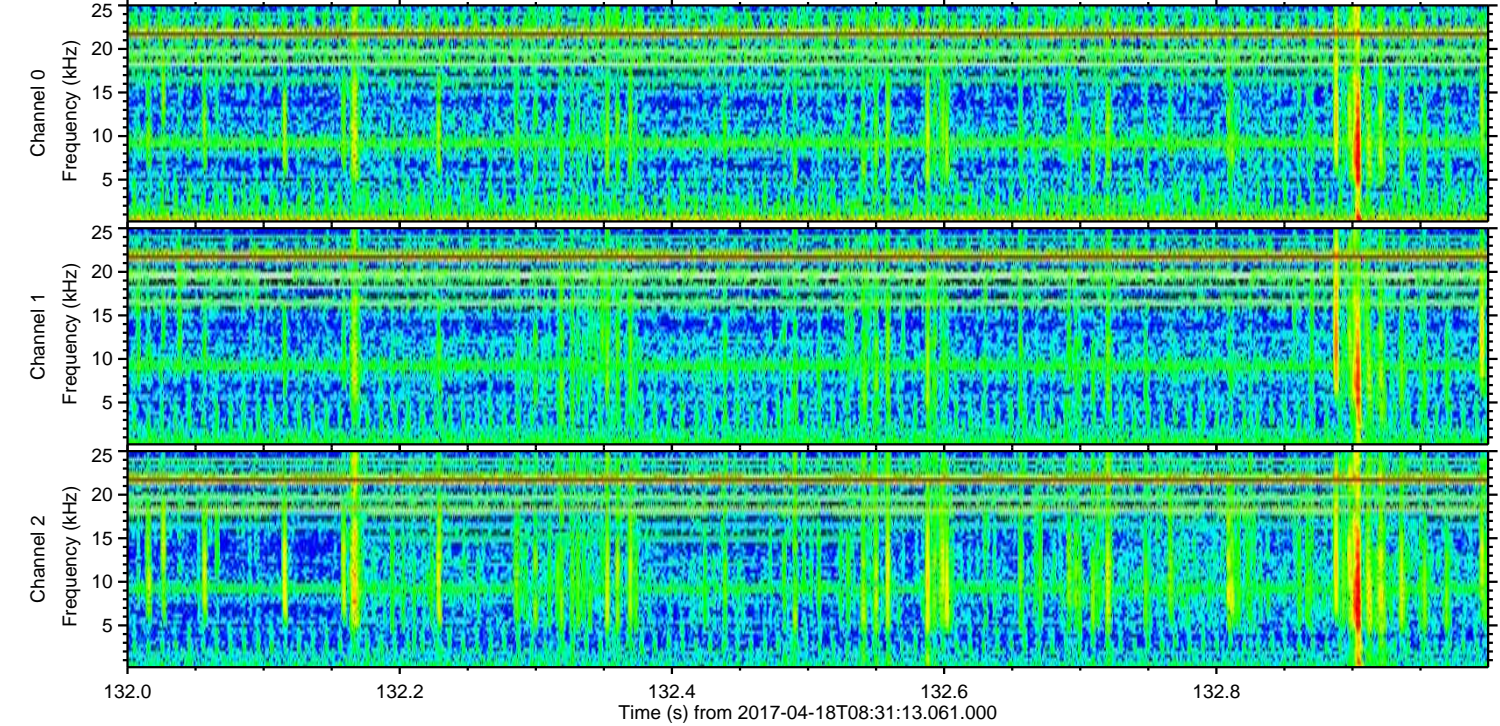
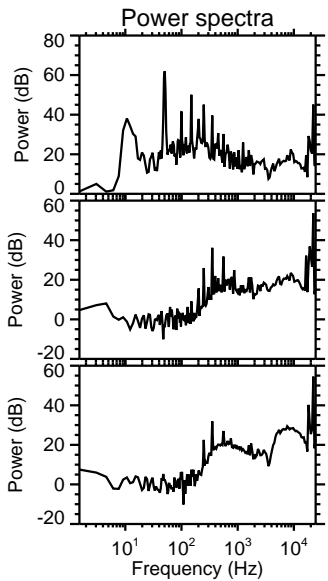
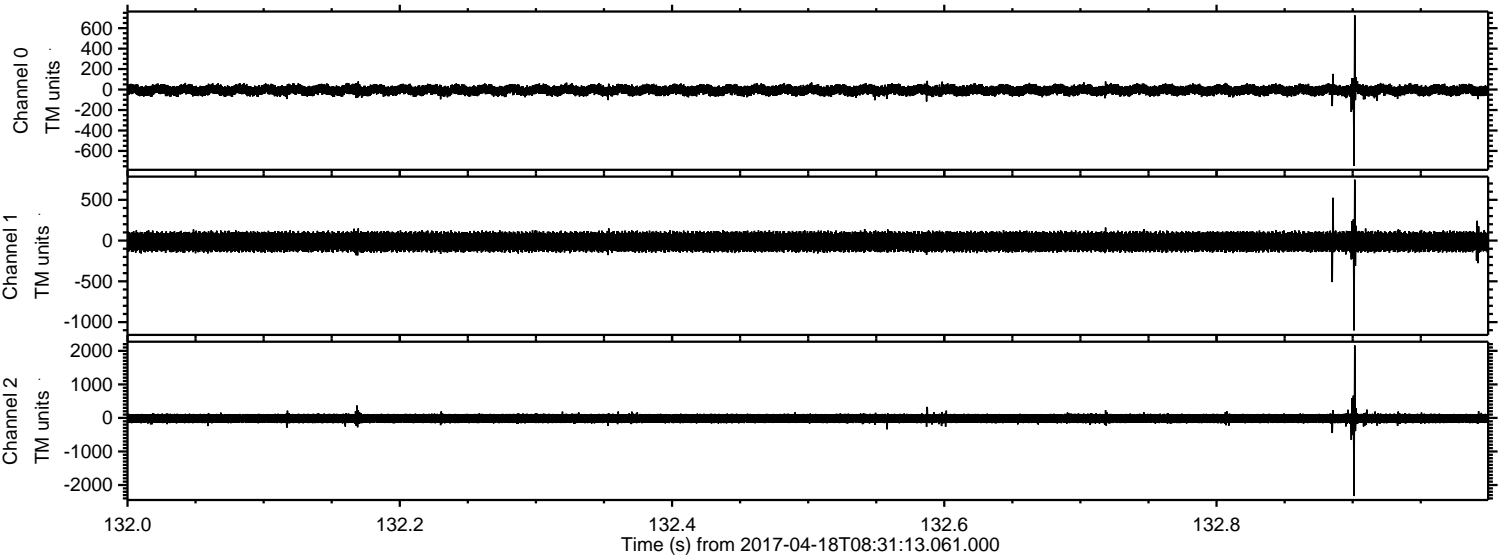
Processed Tue Apr 18 10:39:06 2017 by ELM ver.2012-10-06 from 001\_\_elm20170418\_083112\_\_dat00.bin





ELMAVAN 3D WAVEFORMS (Measured data sampled at 50 kHz) 51000 packets of 144 samples from 2017-04-18T08:31:13.061.000. Part 133/147

Processed Tue Apr 18 10:39:07 2017 by ELM ver.2012-10-06 from 001\_\_elm20170418\_083112\_\_dat00.bin



Channel 0  
mn: -747  
mx: 726  
 $\mu$ : -5.8  
 $\sigma$ : 29.9

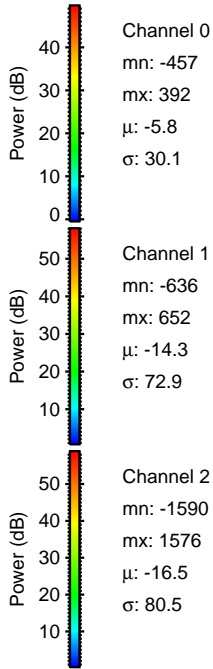
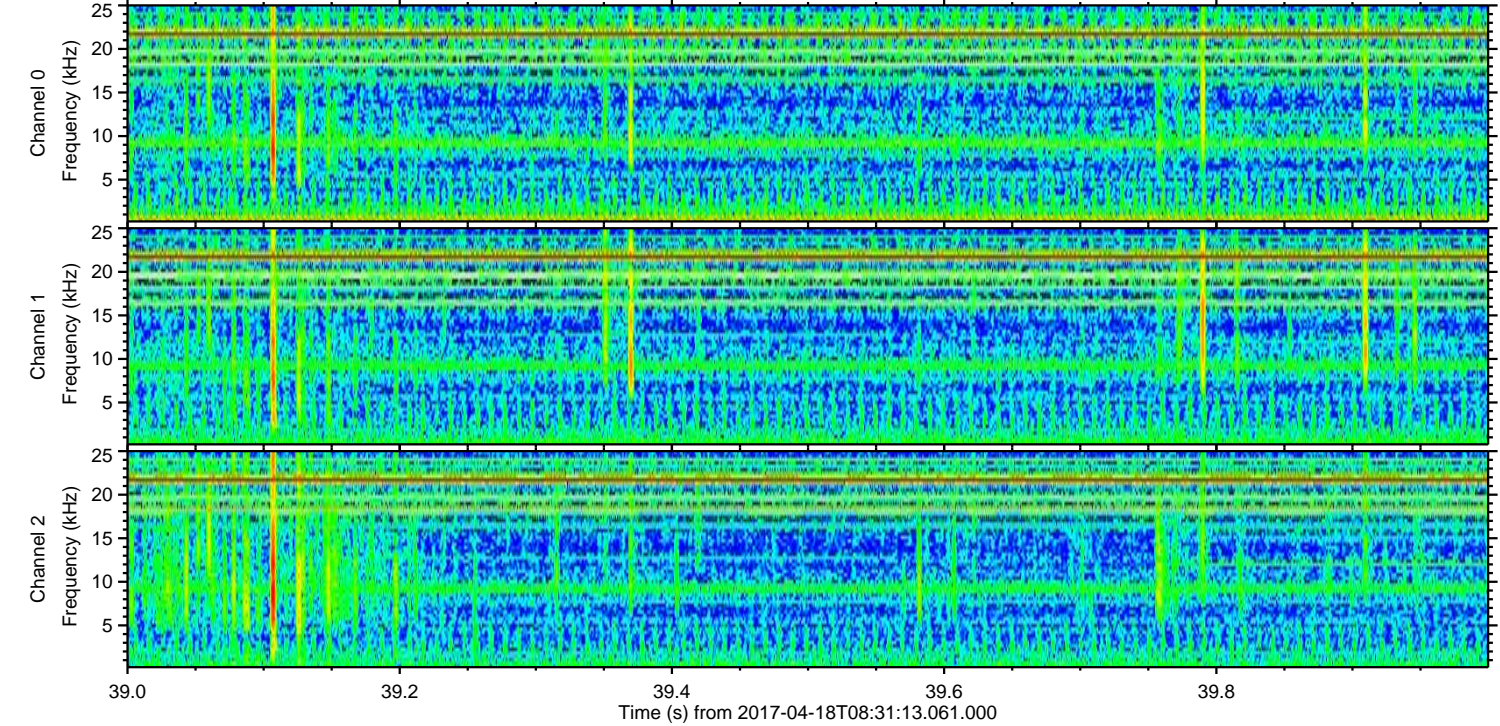
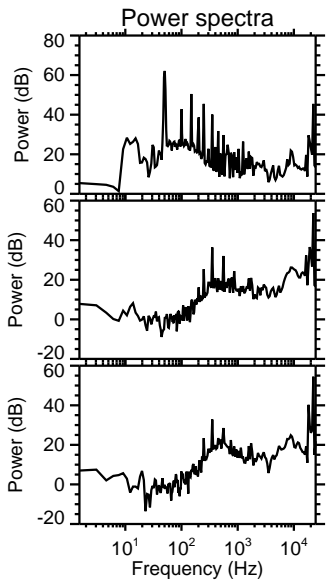
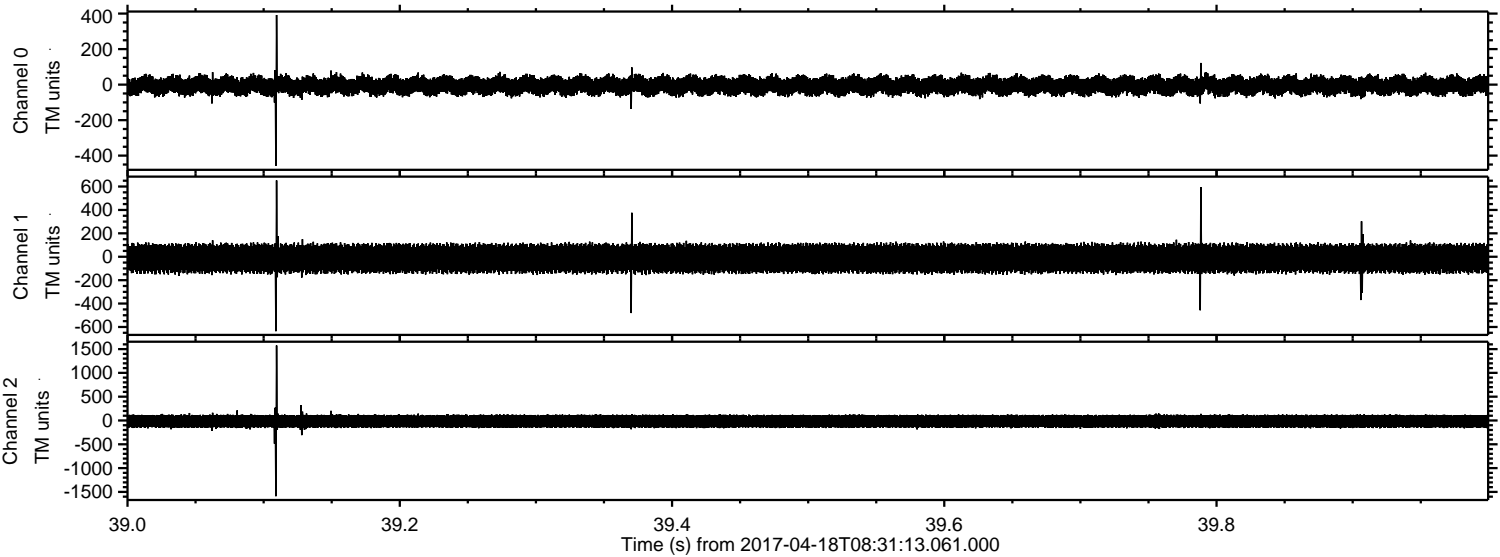
Channel 1  
mn: -1102  
mx: 747  
 $\mu$ : -14.3  
 $\sigma$ : 72.5

Channel 2  
mn: -2330  
mx: 2164  
 $\mu$ : -16.3  
 $\sigma$ : 83.4



ELMAVAN 3D WAVEFORMS (Measured data sampled at 50 kHz) 51000 packets of 144 samples from 2017-04-18T08:31:13.061.000. Part 40/147

Processed Tue Apr 18 10:39:08 2017 by ELM ver.2012-10-06 from 001\_\_elm20170418\_083112\_\_dat00.bin



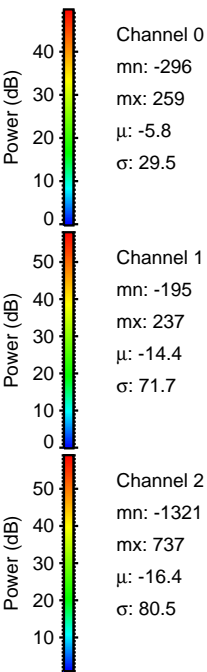
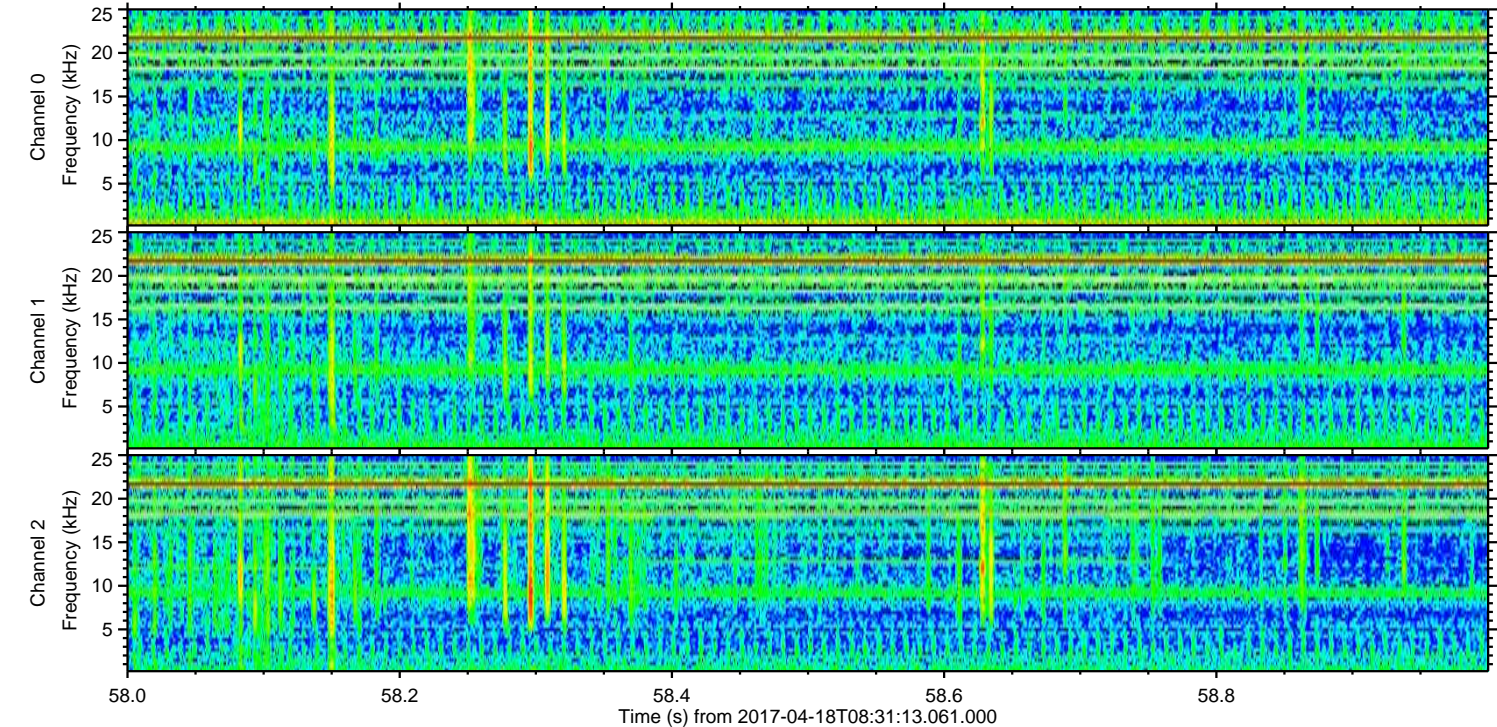
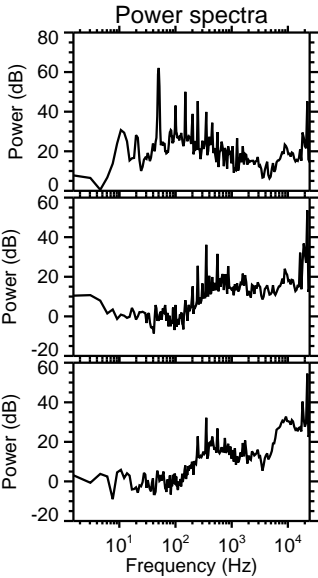
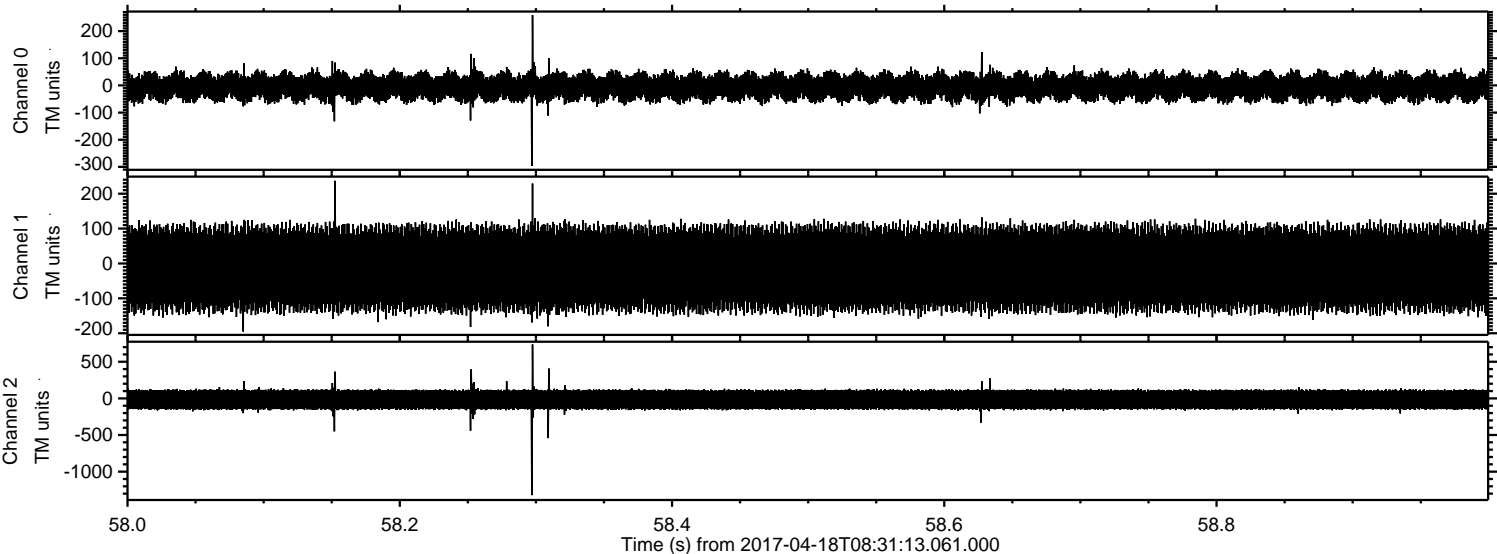
Channel 0  
mn: -457  
mx: 392  
 $\mu$ : -5.8  
 $\sigma$ : 30.1

Channel 1  
mn: -636  
mx: 652  
 $\mu$ : -14.3  
 $\sigma$ : 72.9

Channel 2  
mn: -1590  
mx: 1576  
 $\mu$ : -16.5  
 $\sigma$ : 80.5



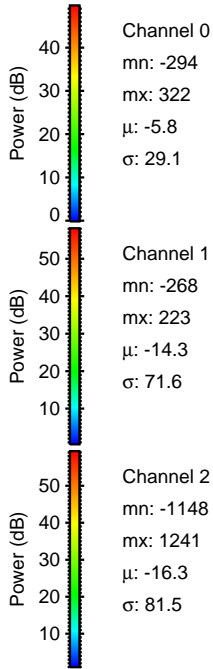
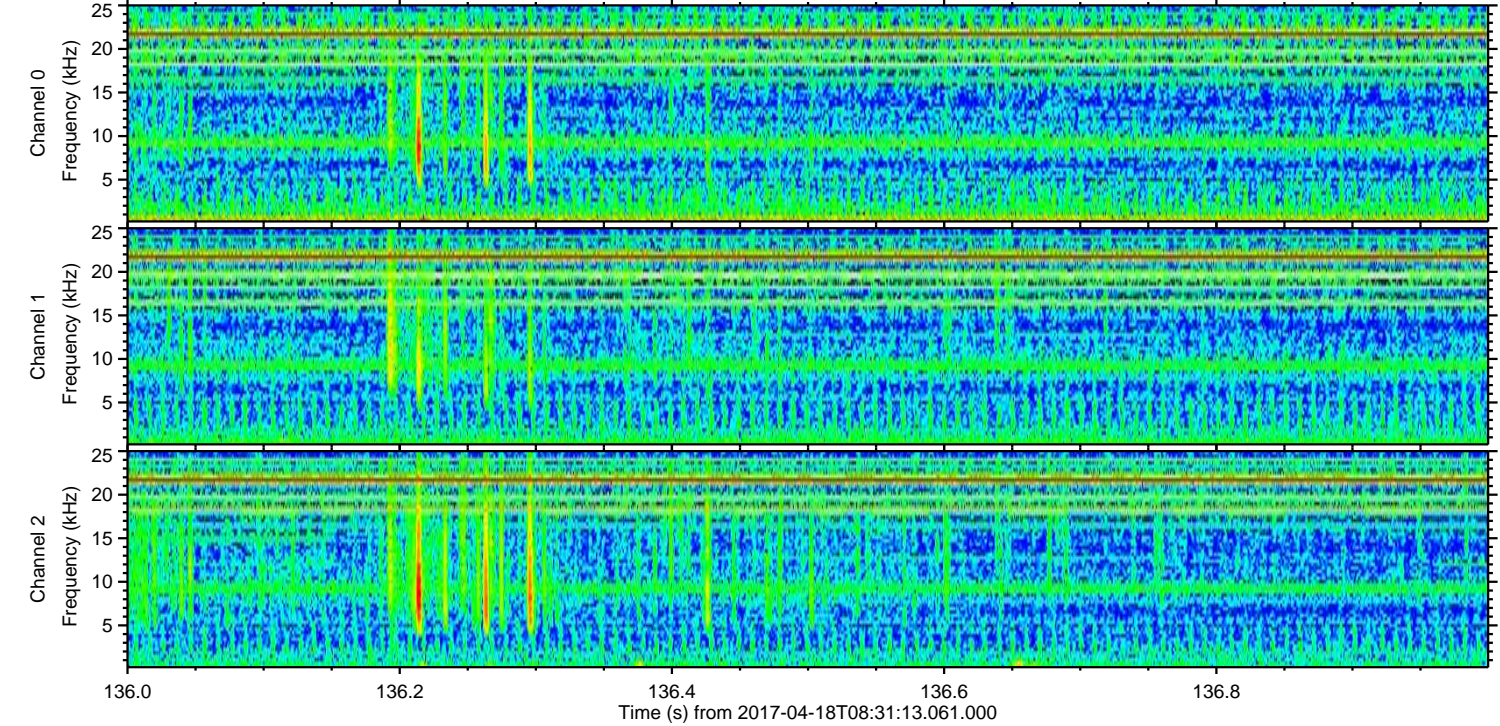
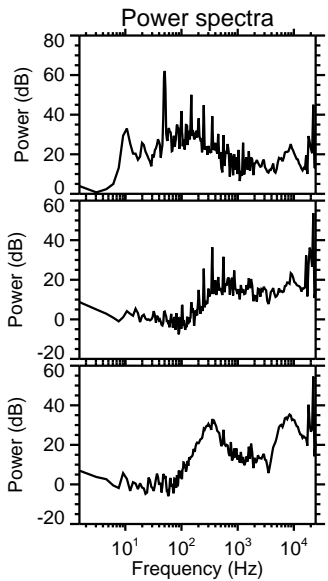
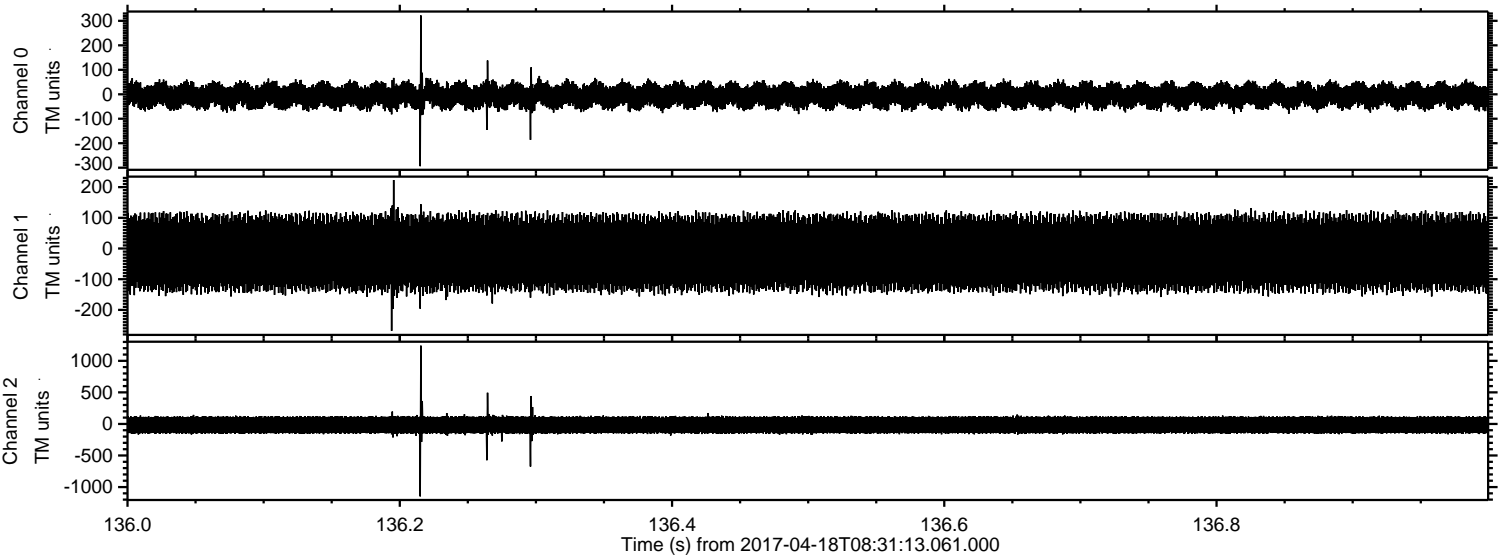
Processed Tue Apr 18 10:39:09 2017 by ELM ver.2012-10-06 from 001\_\_elm20170418\_083112\_\_dat00.bin





ELMAVAN 3D WAVEFORMS (Measured data sampled at 50 kHz) 51000 packets of 144 samples from 2017-04-18T08:31:13.061.000. Part 137/147

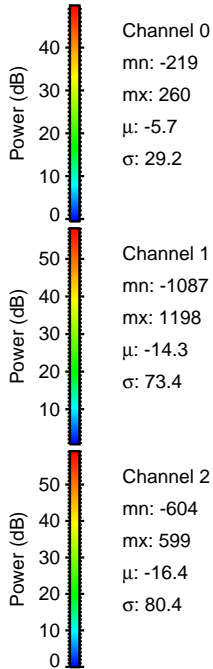
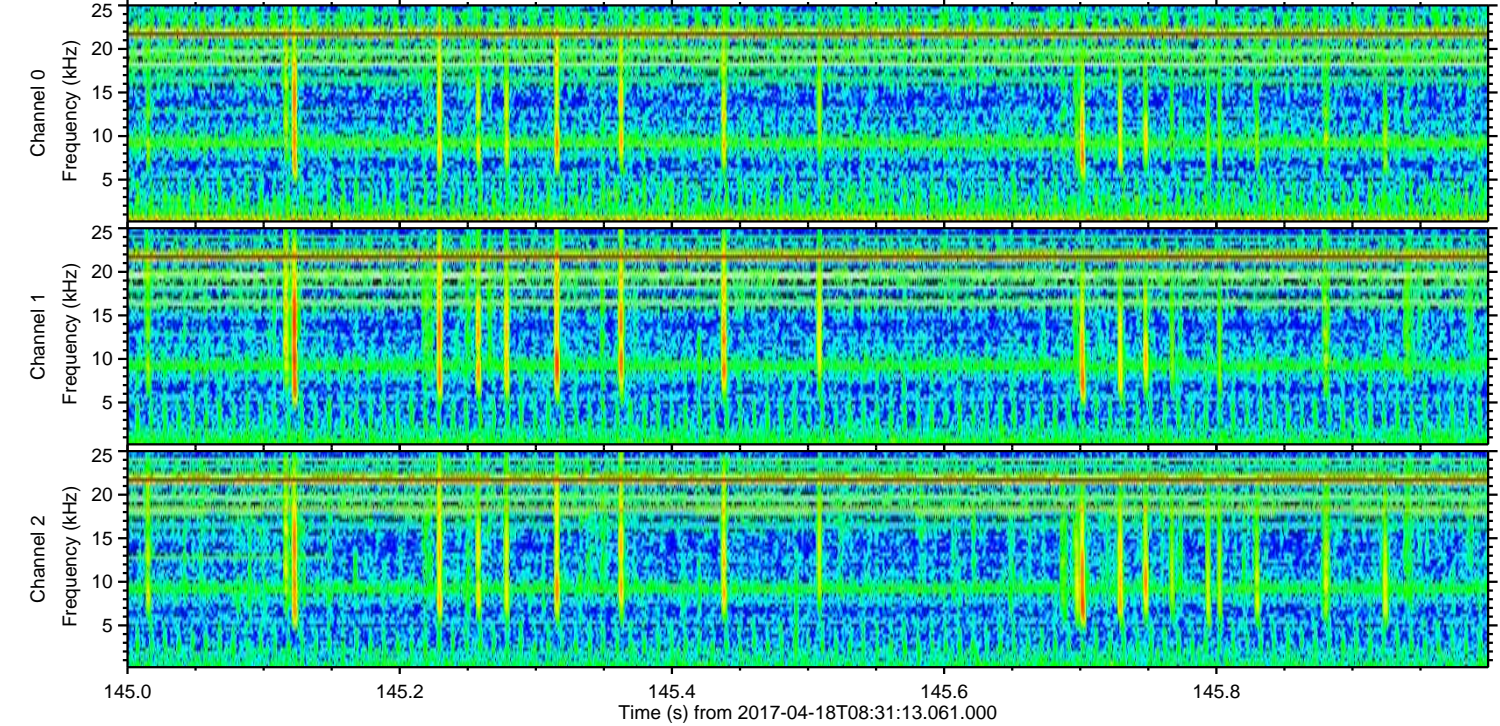
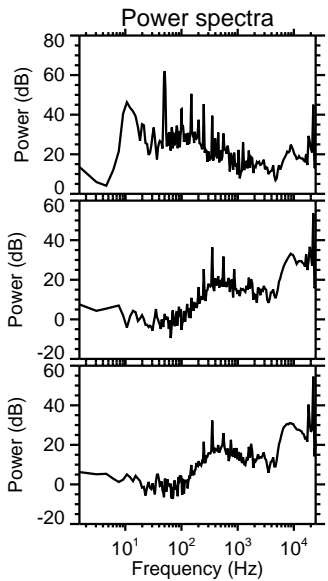
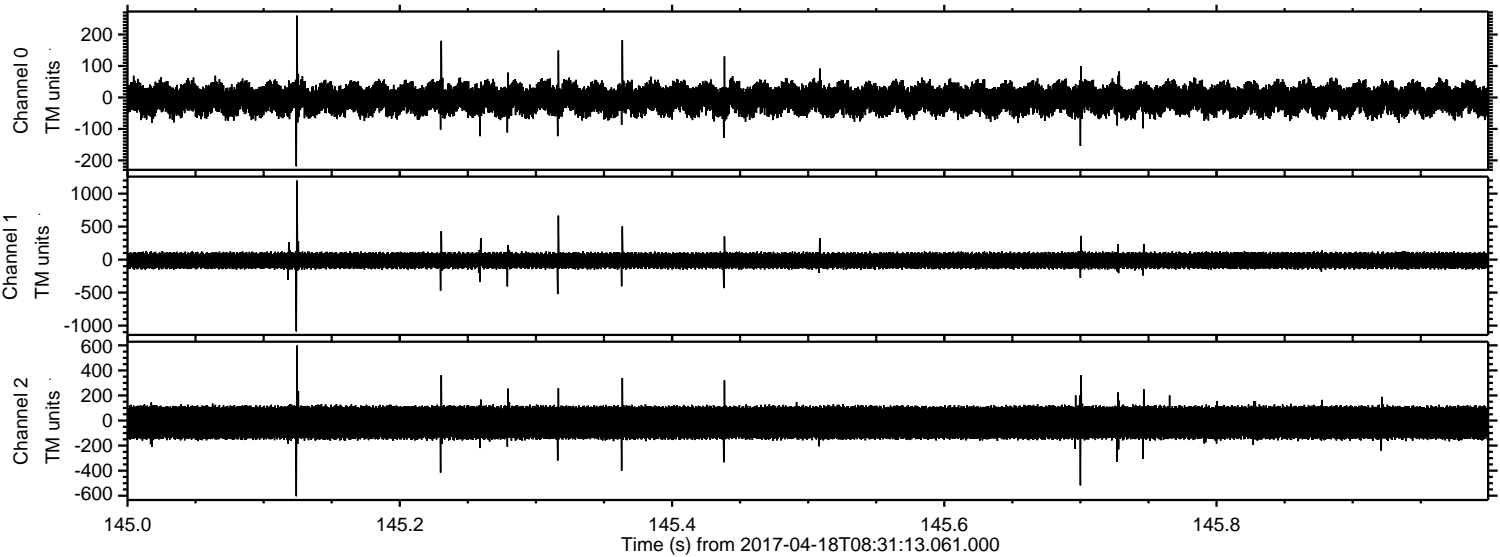
Processed Tue Apr 18 10:39:10 2017 by ELM ver.2012-10-06 from 001\_\_elm20170418\_083112\_\_dat00.bin





ELMAVAN 3D WAVEFORMS (Measured data sampled at 50 kHz) 51000 packets of 144 samples from 2017-04-18T08:31:13.061.000. Part 146/147

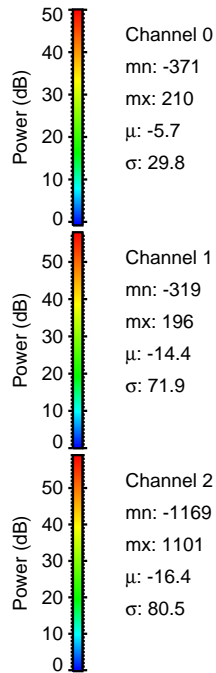
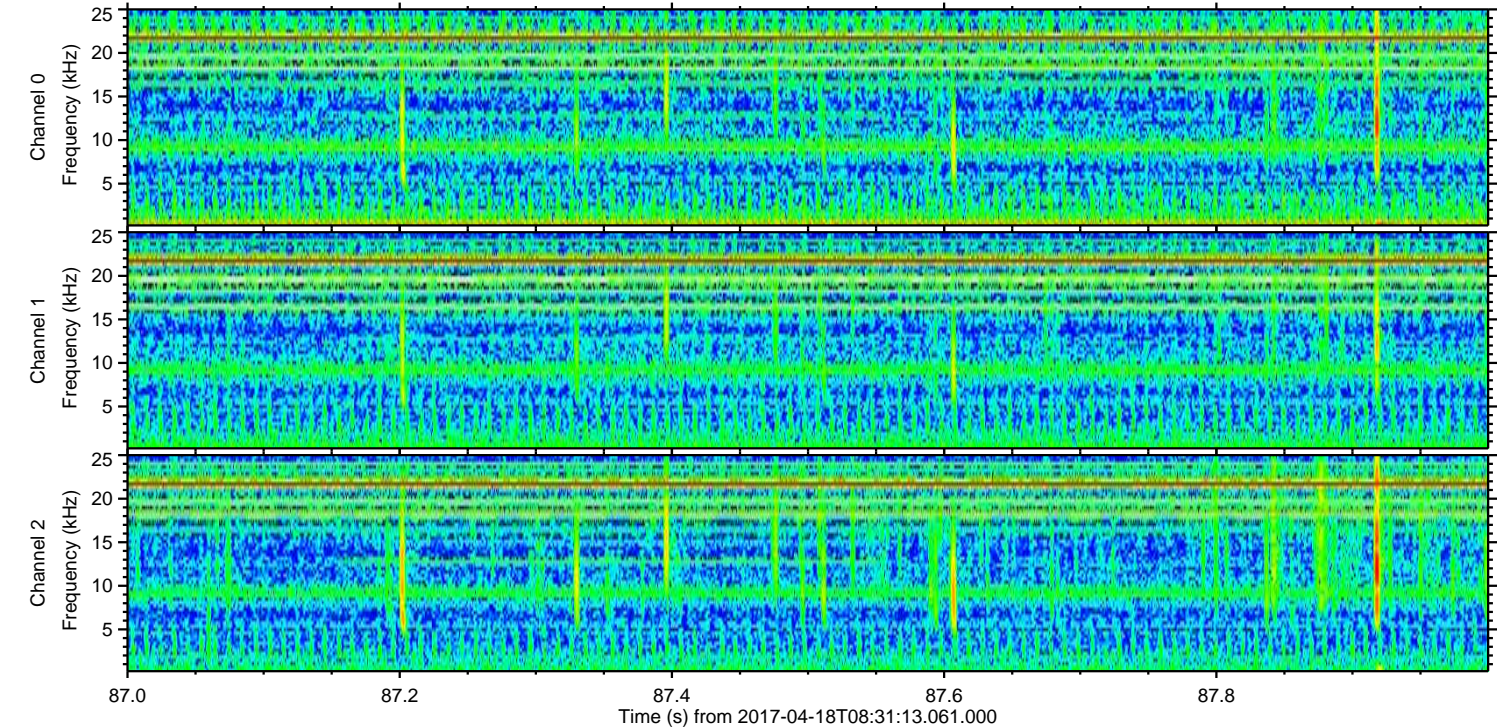
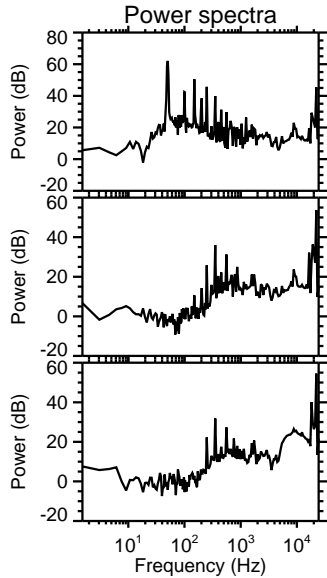
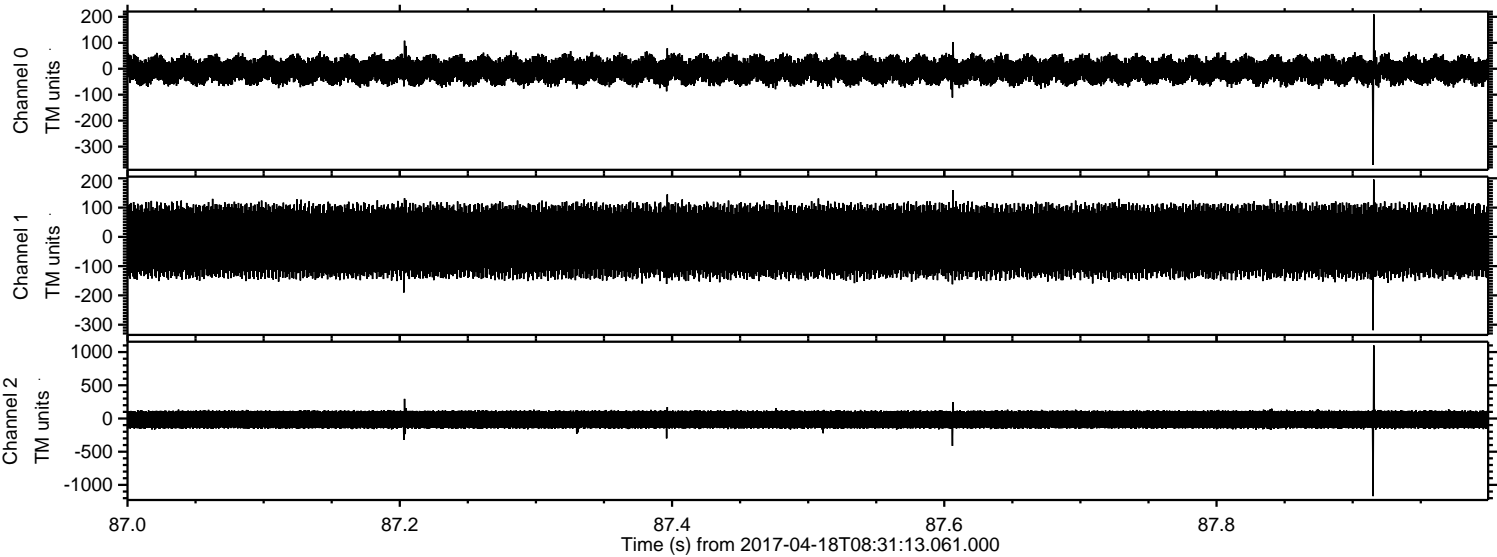
Processed Tue Apr 18 10:39:11 2017 by ELM ver.2012-10-06 from 001\_\_elm20170418\_083112\_\_dat00.bin





ELMAVAN 3D WAVEFORMS (Measured data sampled at 50 kHz) 51000 packets of 144 samples from 2017-04-18T08:31:13.061.000. Part 88/147

Processed Tue Apr 18 10:39:12 2017 by ELM ver.2012-10-06 from 001\_\_elm20170418\_083112\_\_dat00.bin





ELMAVAN 3D WAVEFORMS (Measured data sampled at 50 kHz) 51000 packets of 144 samples from 2017-04-18T08:31:13.061.000. Part 114/147

