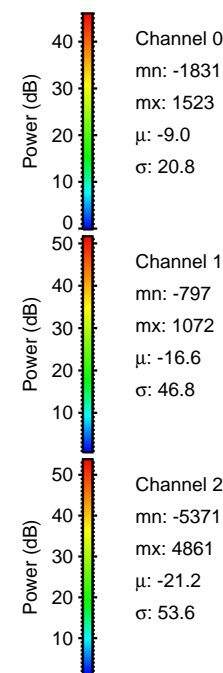
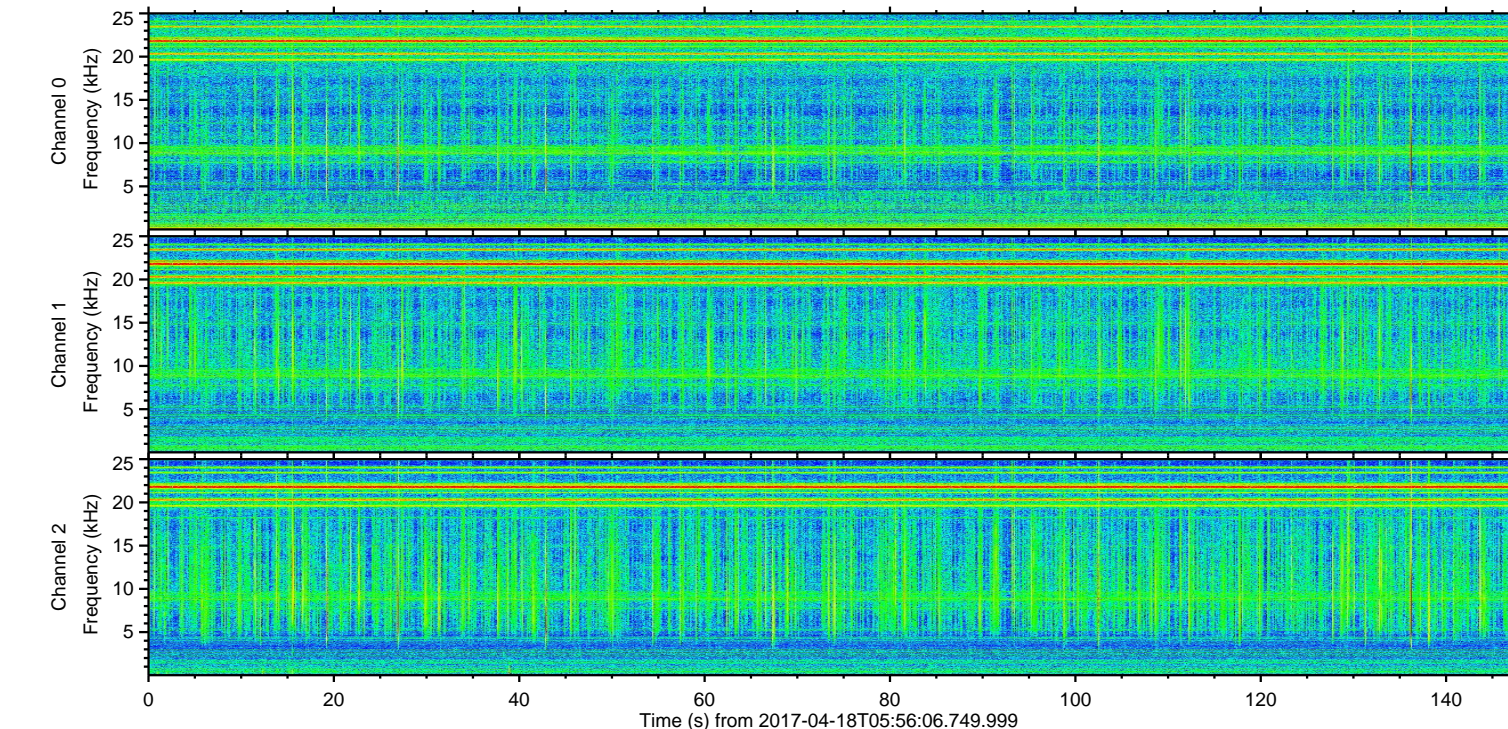
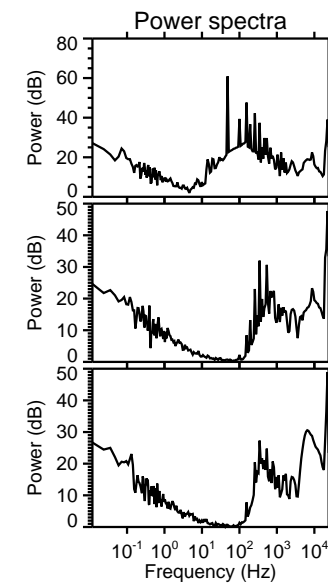
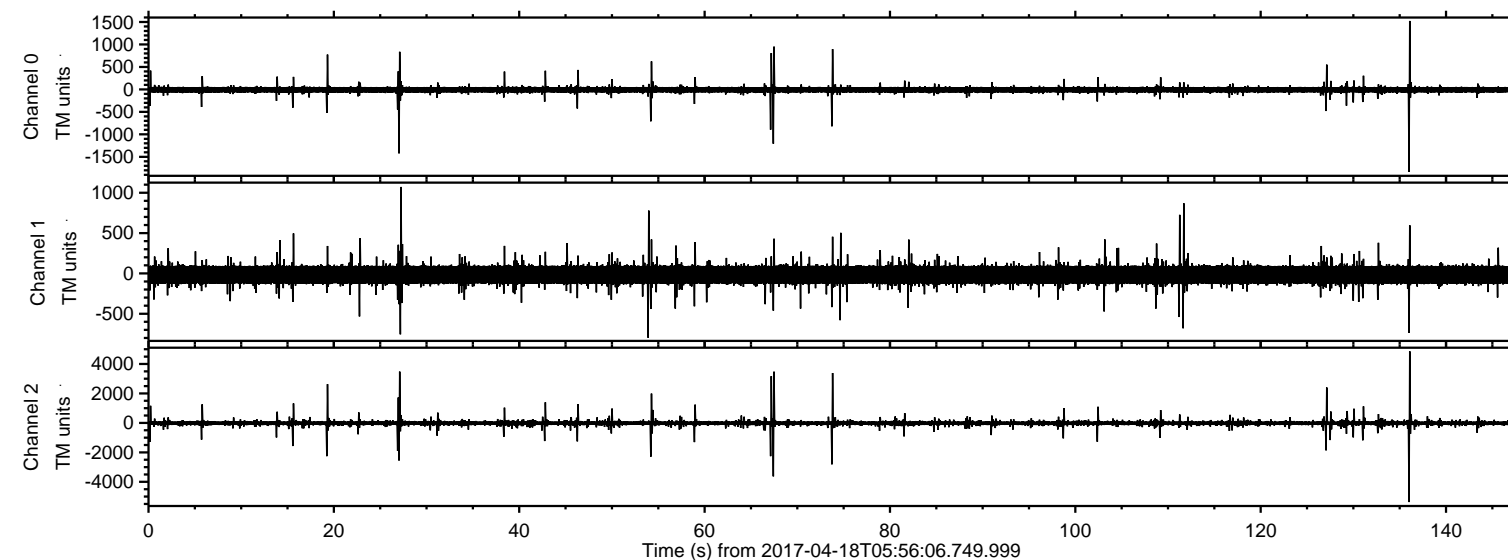


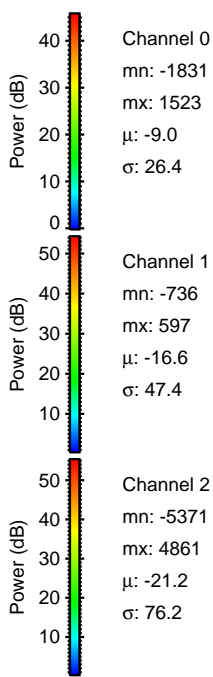
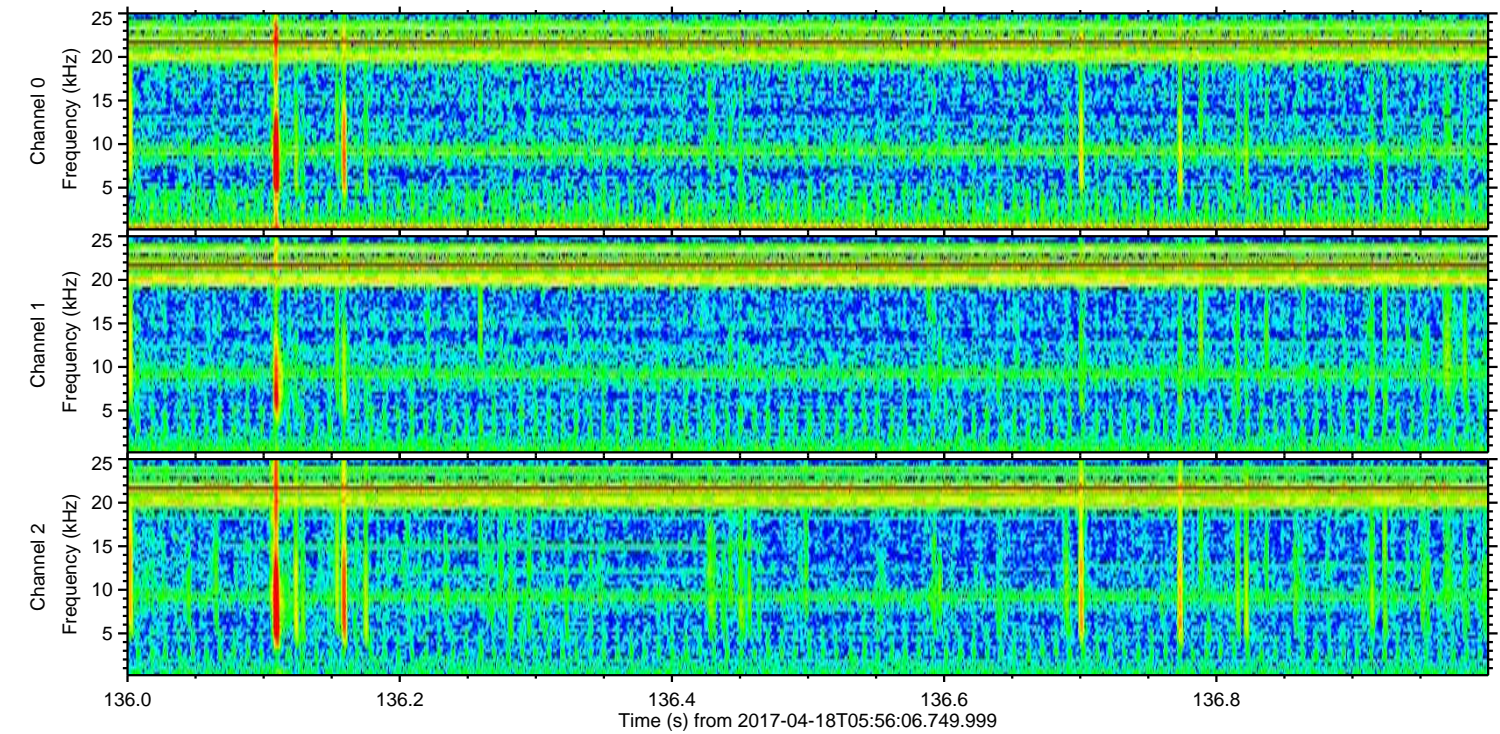
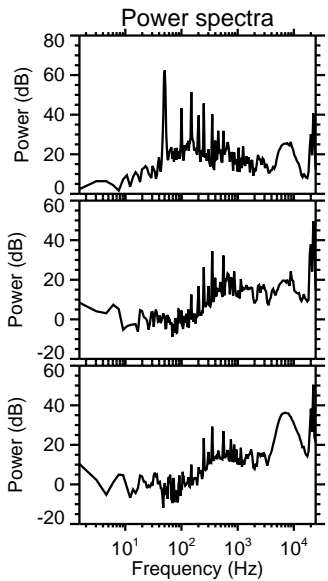
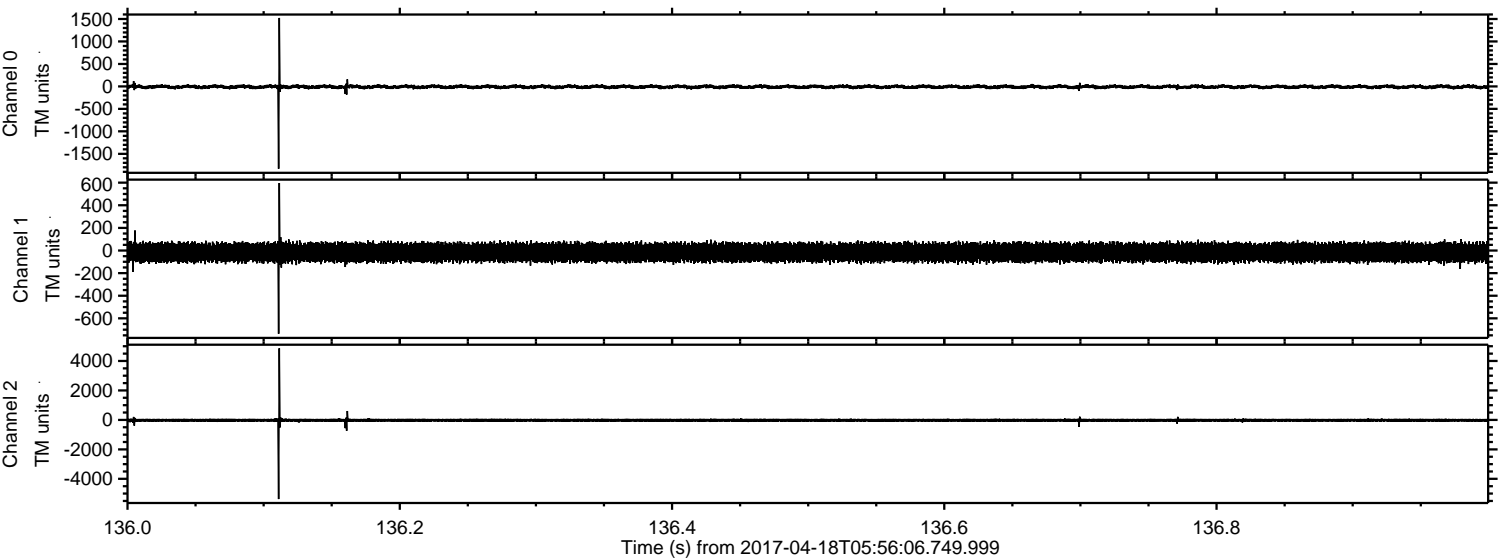
ELMAVAN 3D WAVEFORMS (Measured data sampled at 50 kHz) 51000 packets of 144 samples from 2017-04-18T05:56:06.749.999.

Processed Tue Apr 18 08:03:25 2017 by ELM ver.2012-10-06 from 001__elm20170418_055605__dat00.bin

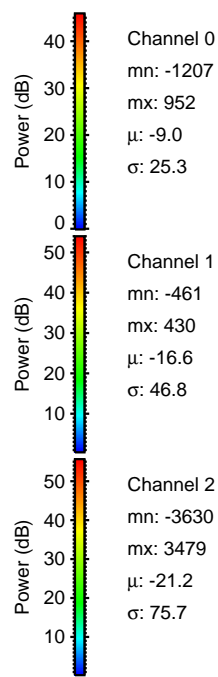
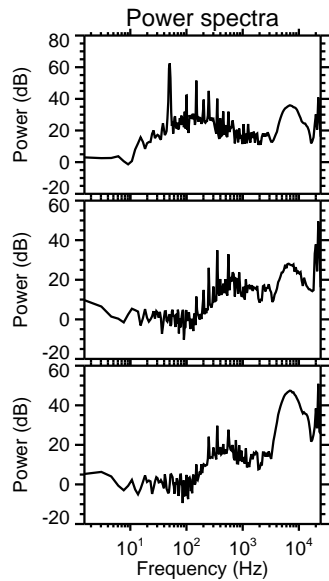
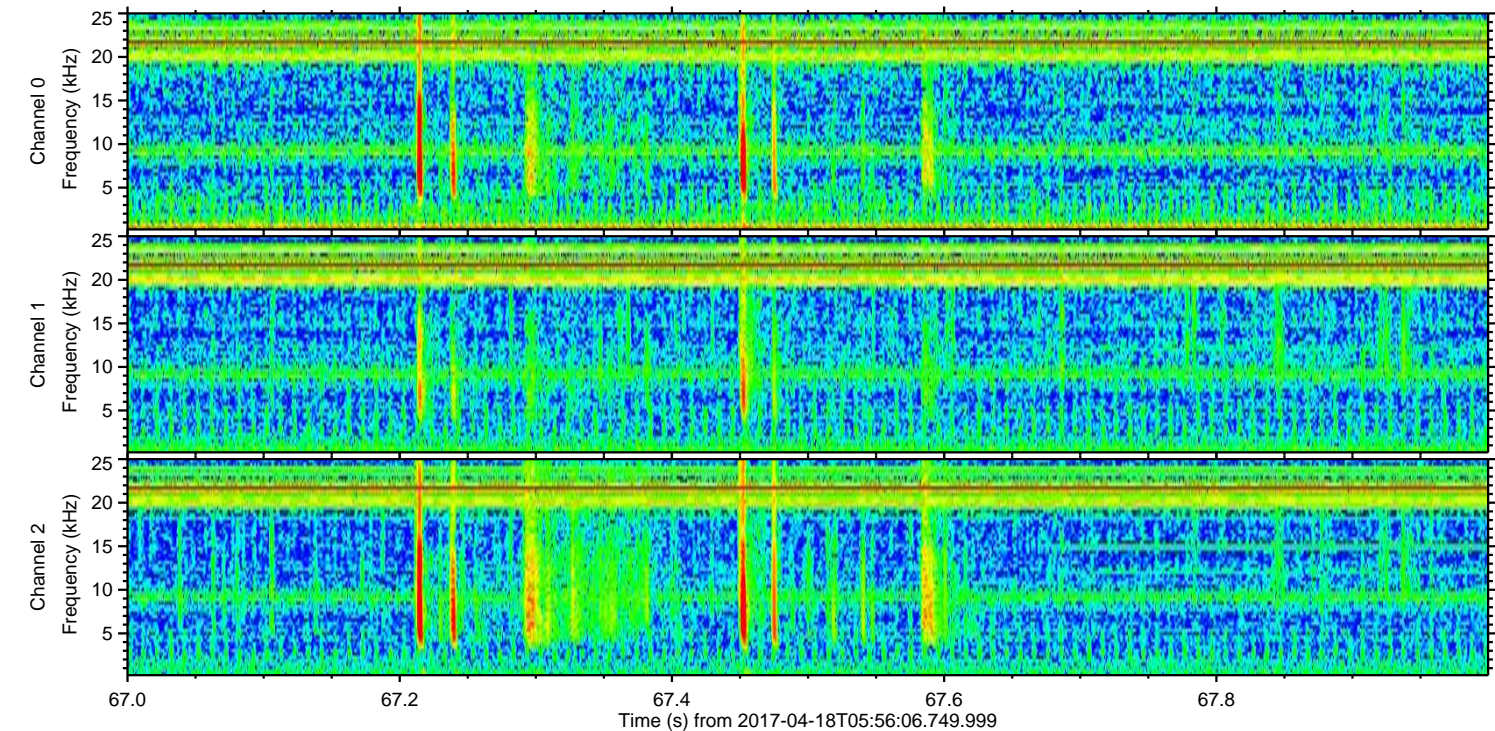
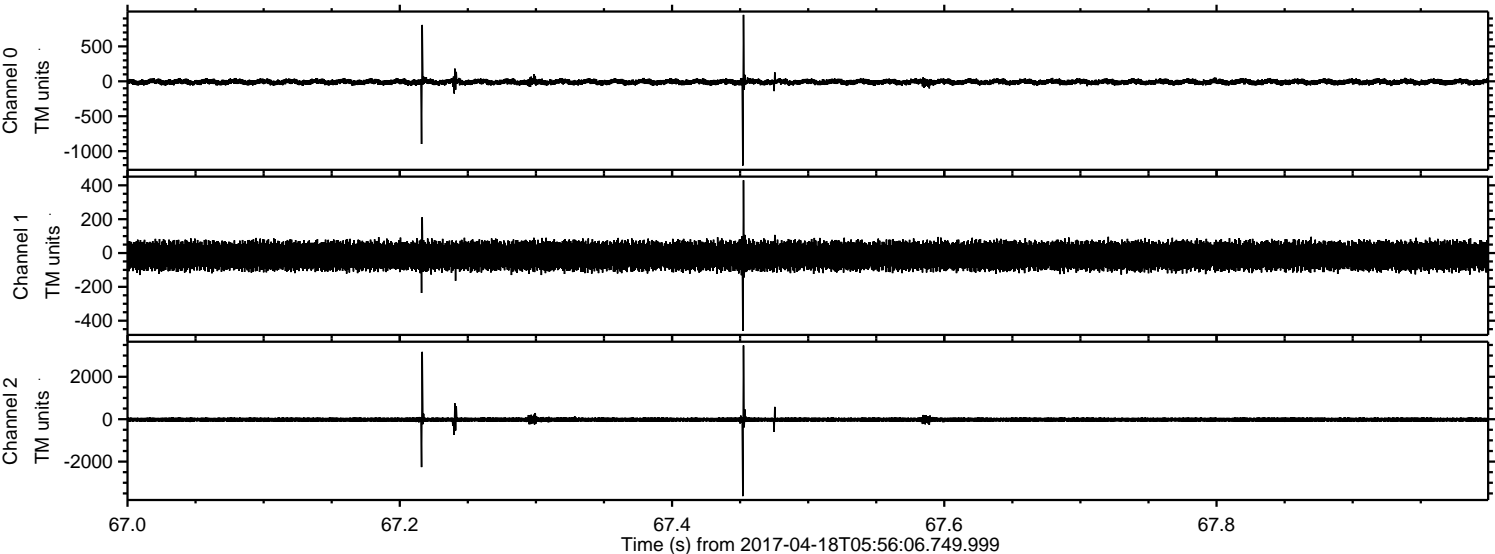


ELMAVAN 3D WAVEFORMS (Measured data sampled at 50 kHz) 51000 packets of 144 samples from 2017-04-18T05:56:06.749.999. Part 137/147

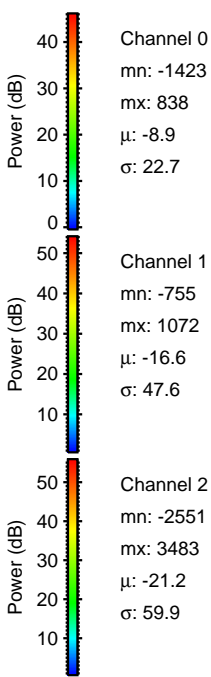
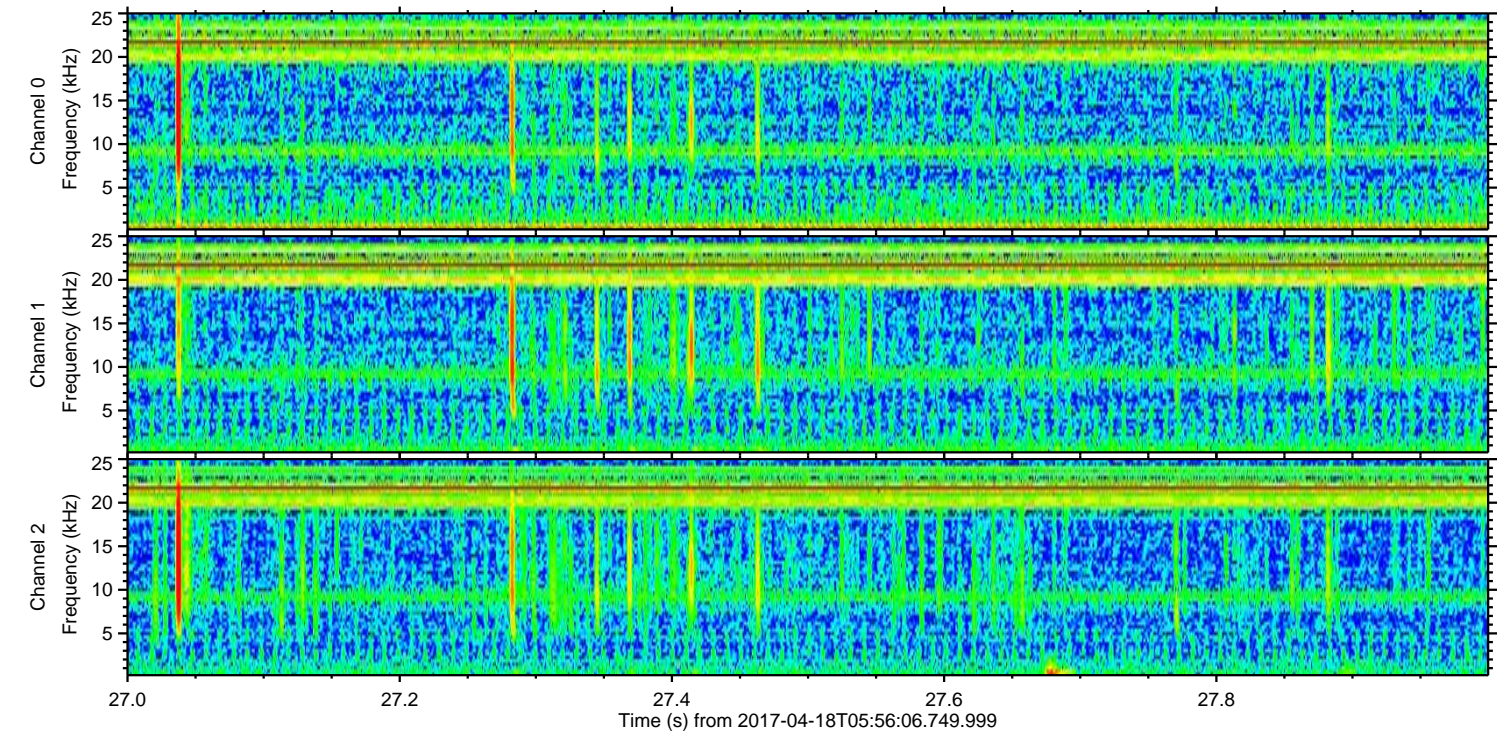
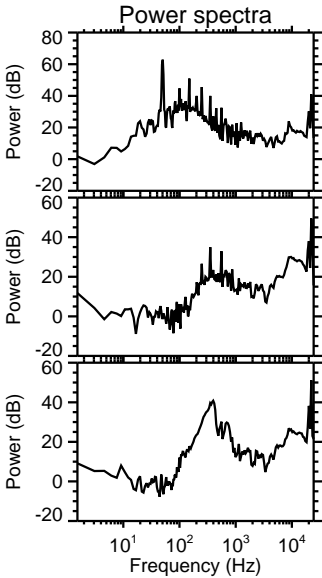
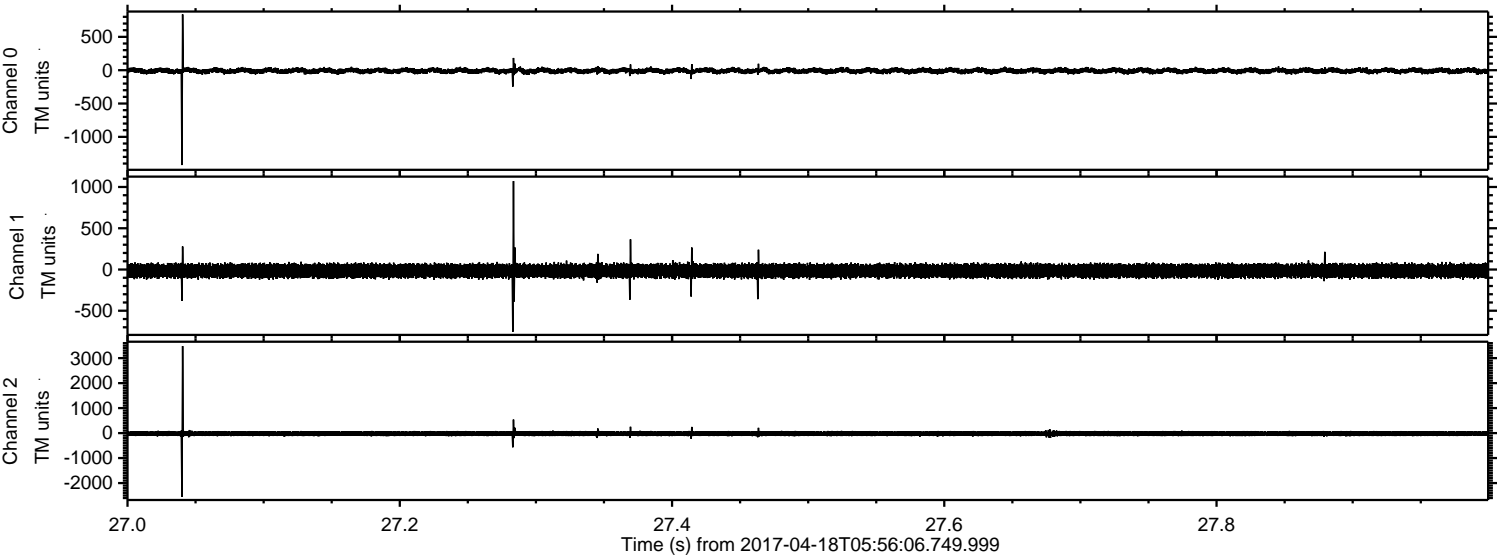
Processed Tue Apr 18 08:03:36 2017 by ELM ver.2012-10-06 from 001__elm20170418_055605__dat00.bin



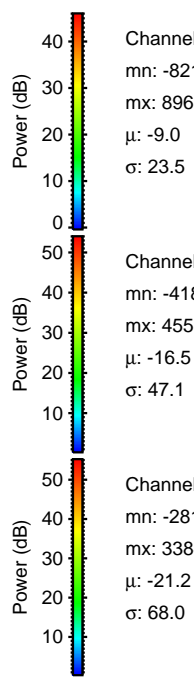
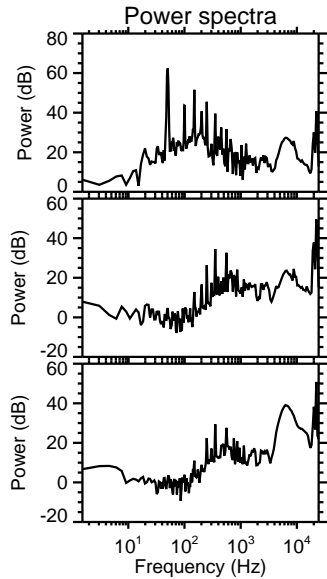
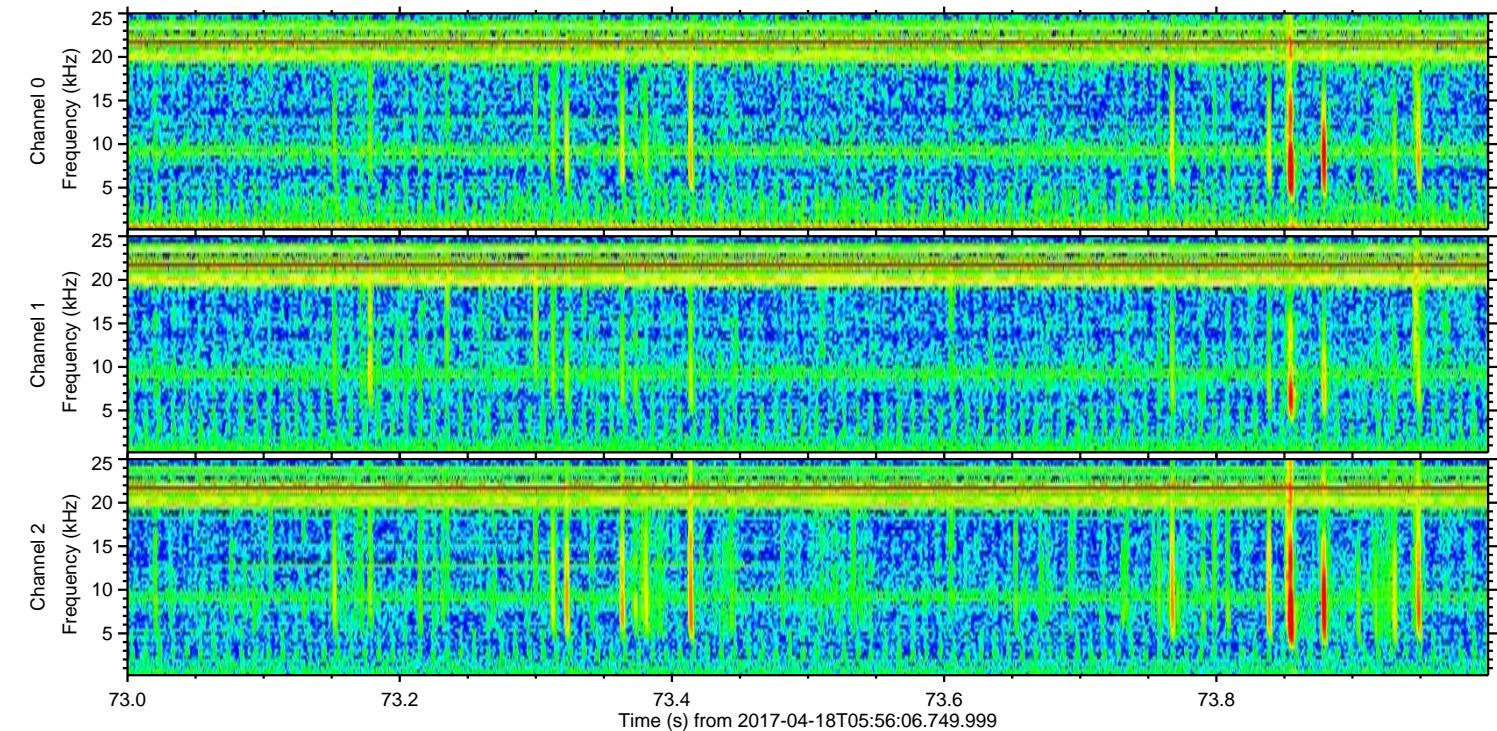
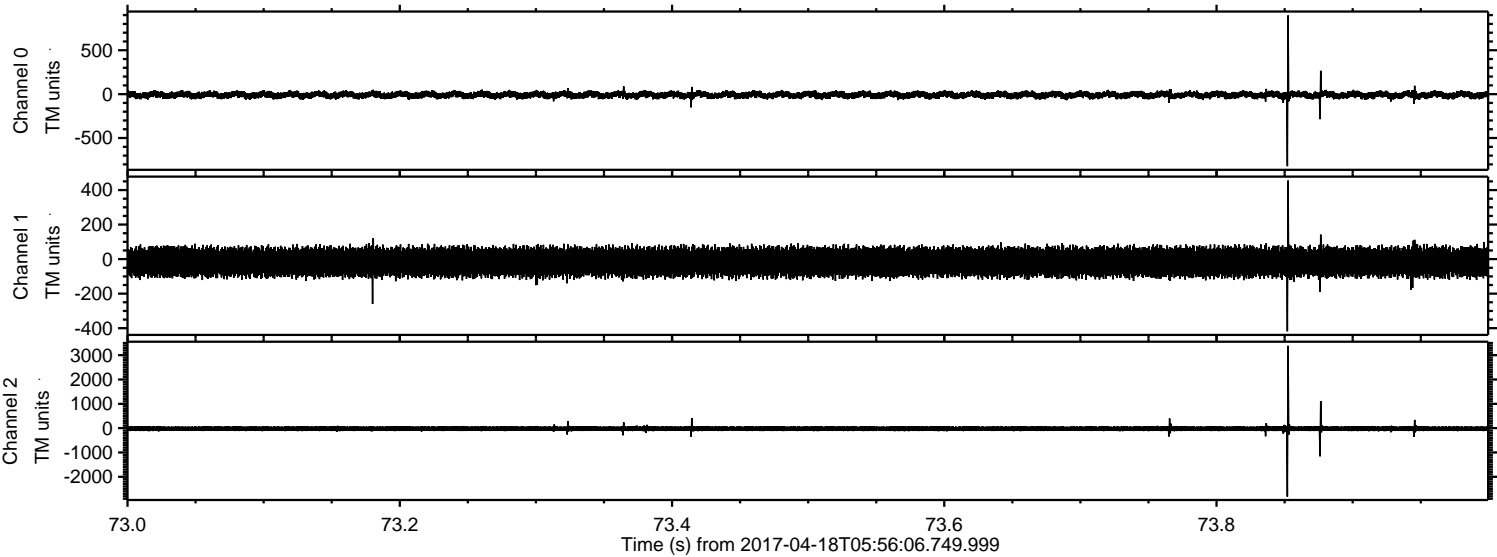
Processed Tue Apr 18 08:03:37 2017 by ELM ver.2012-10-06 from 001__elm20170418_055605__dat00.bin



Processed Tue Apr 18 08:03:38 2017 by ELM ver.2012-10-06 from 001__elm20170418_055605__dat00.bin



Processed Tue Apr 18 08:03:39 2017 by ELM ver.2012-10-06 from 001__elm20170418_055605__dat00.bin

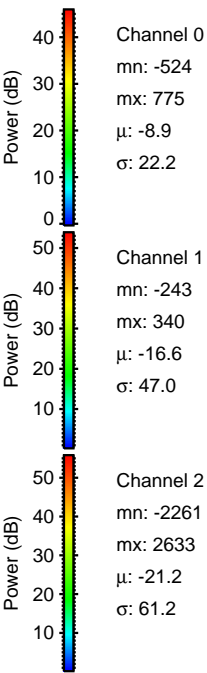
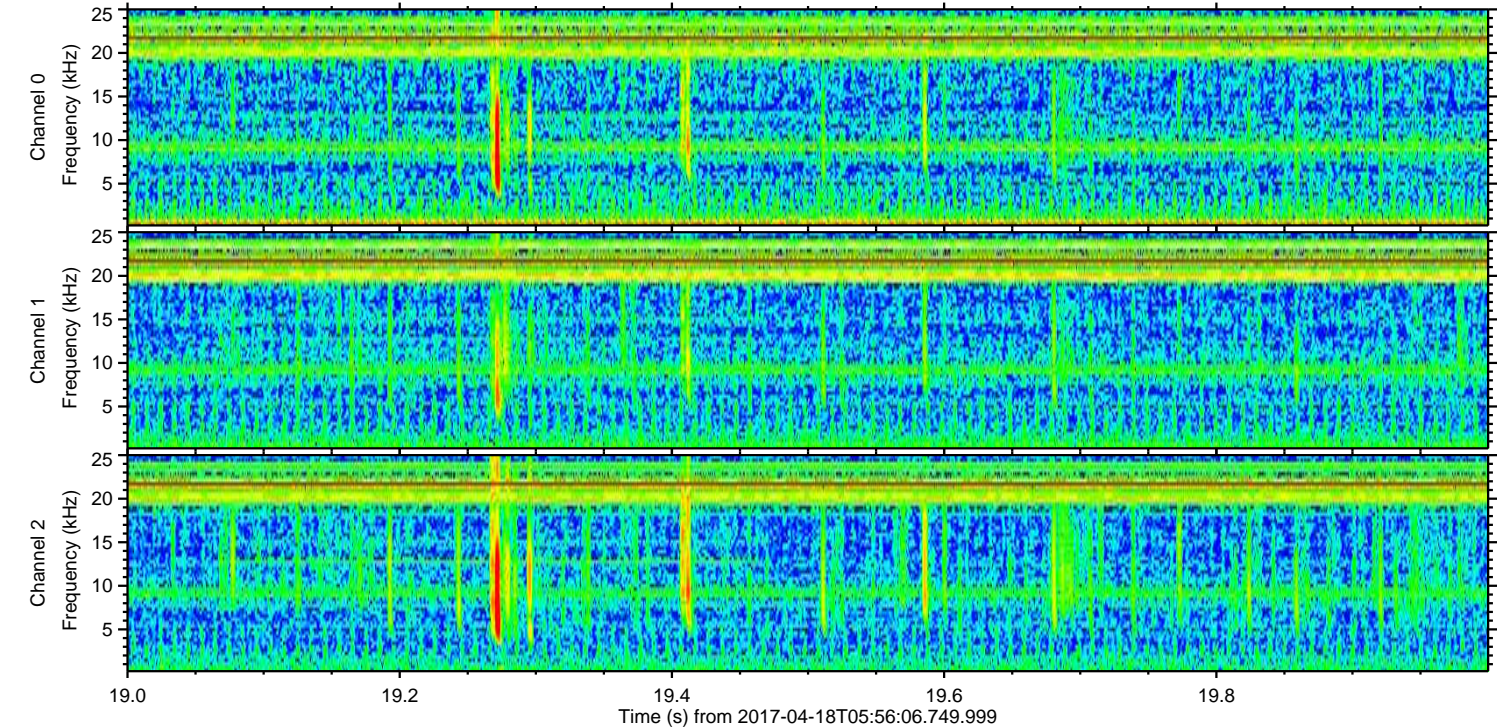
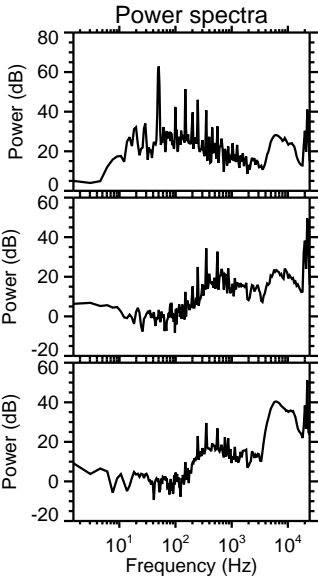
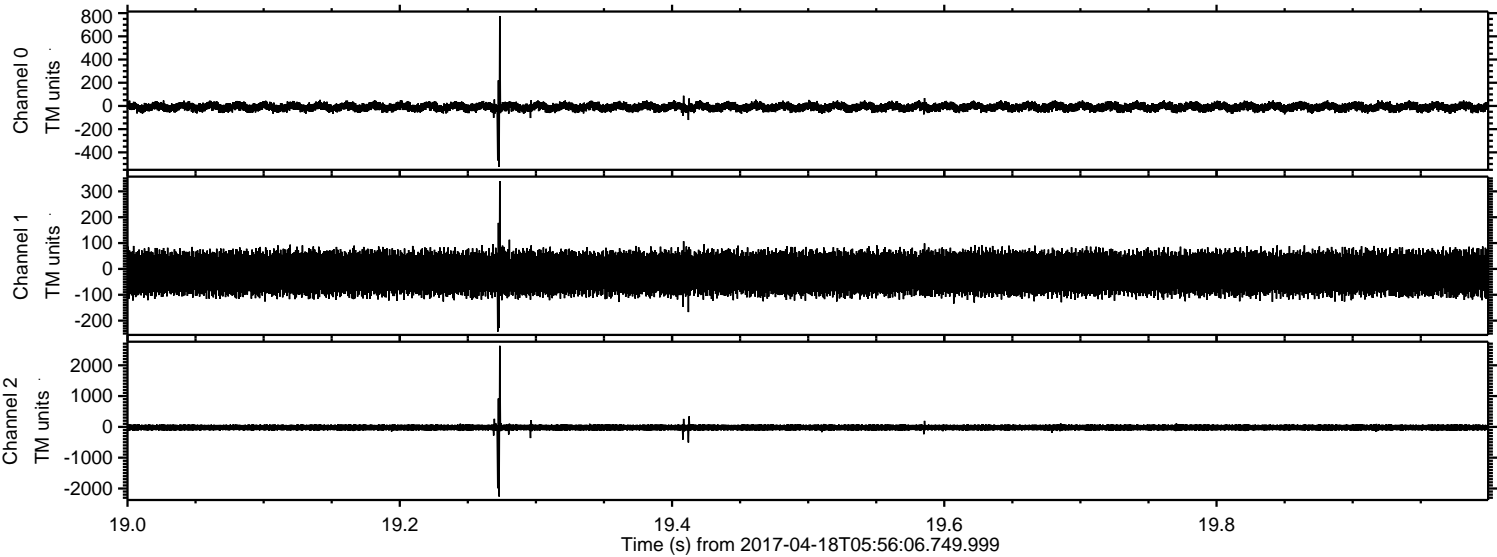


Channel 0
mn: -821
mx: 896
 μ : -9.0
 σ : 23.5

Channel 1
mn: -418
mx: 455
 μ : -16.5
 σ : 47.1

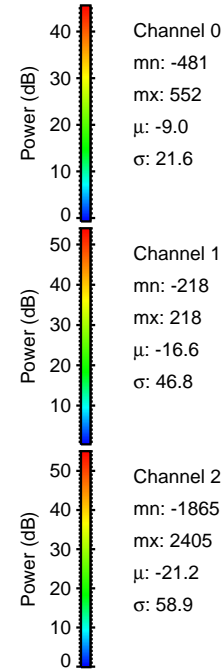
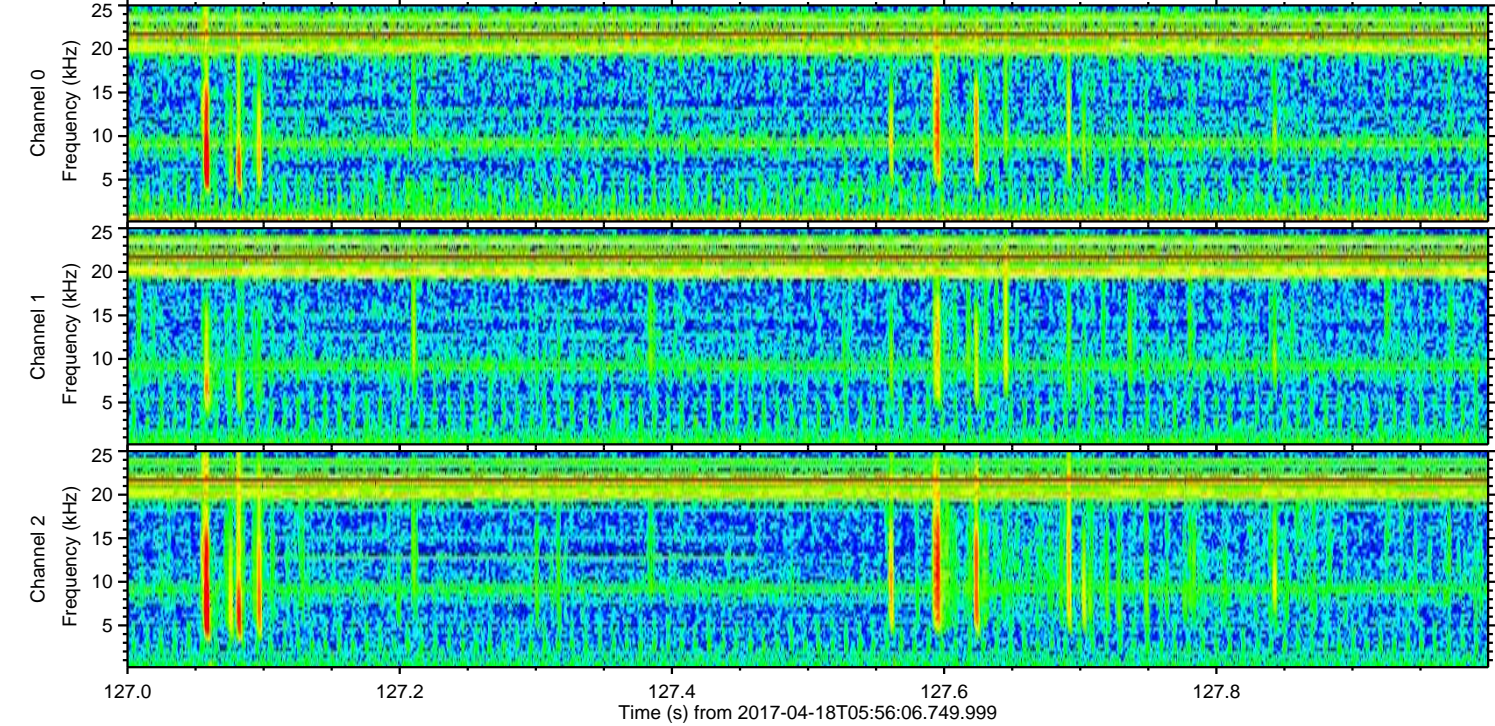
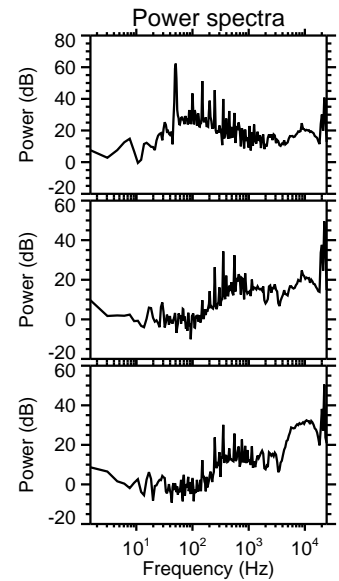
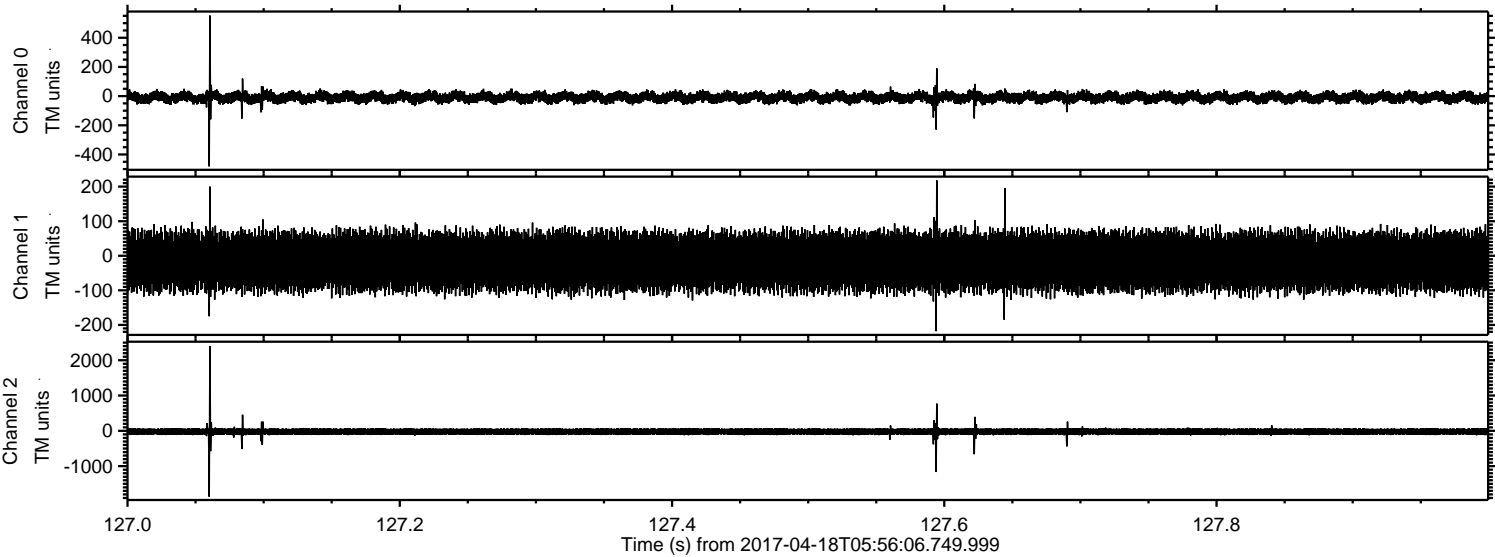
Channel 2
mn: -2813
mx: 3384
 μ : -21.2
 σ : 68.0

Processed Tue Apr 18 08:03:40 2017 by ELM ver.2012-10-06 from 001__elm20170418_055605__dat00.bin

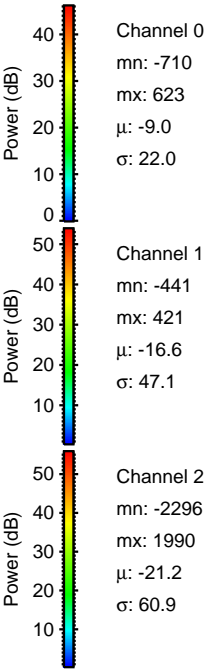
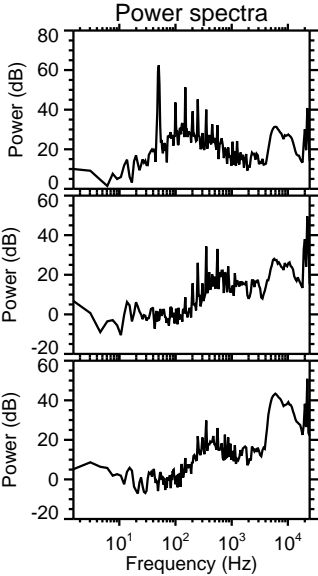
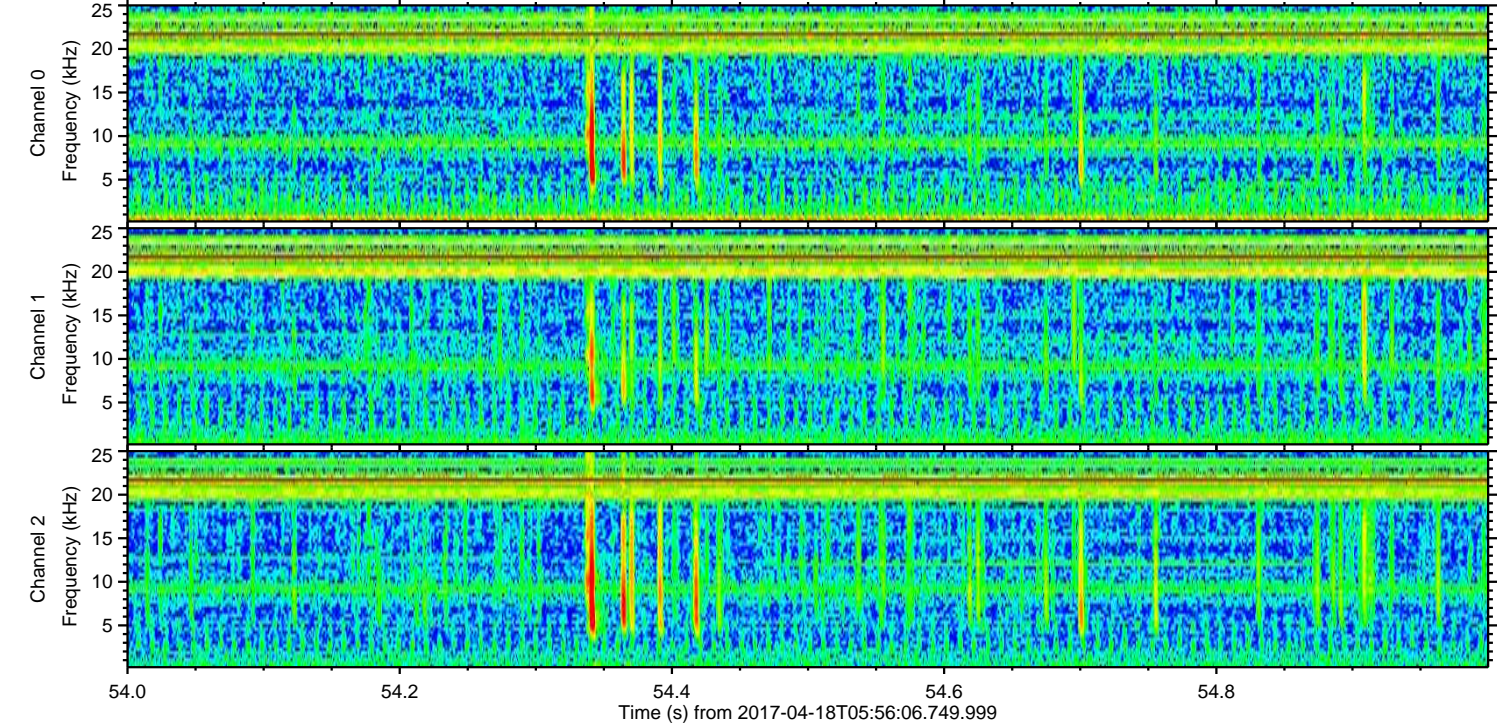
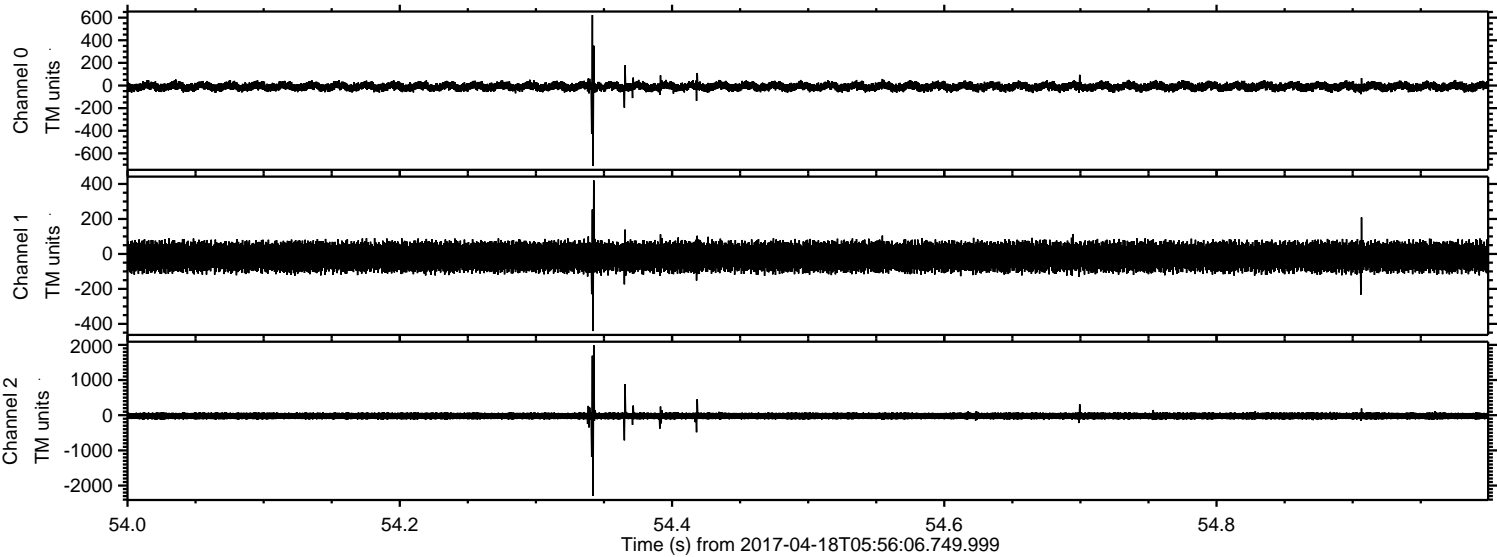


ELMAVAN 3D WAVEFORMS (Measured data sampled at 50 kHz) 51000 packets of 144 samples from 2017-04-18T05:56:06.749.999. Part 128/147

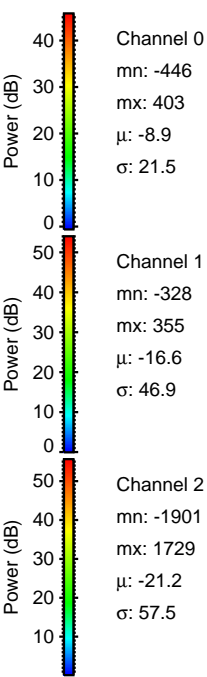
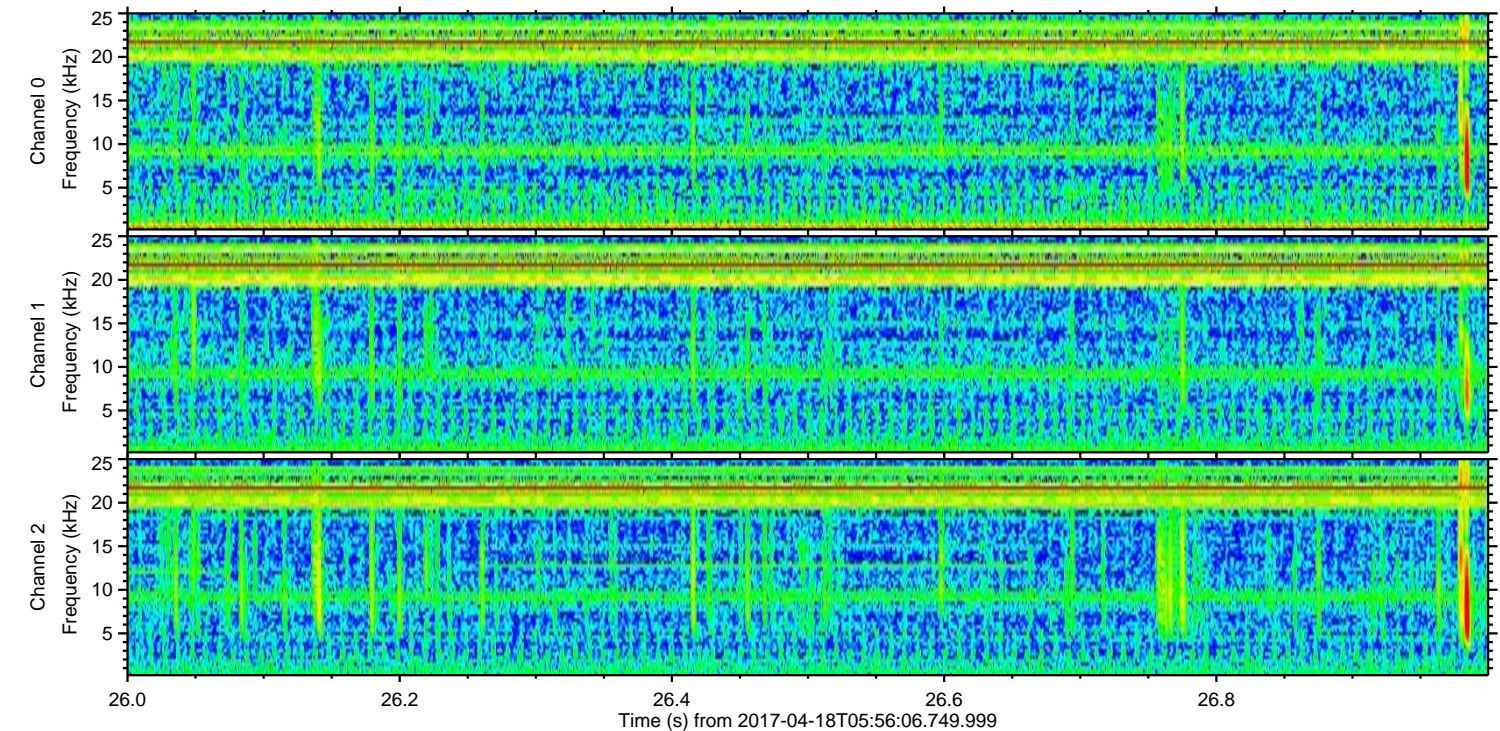
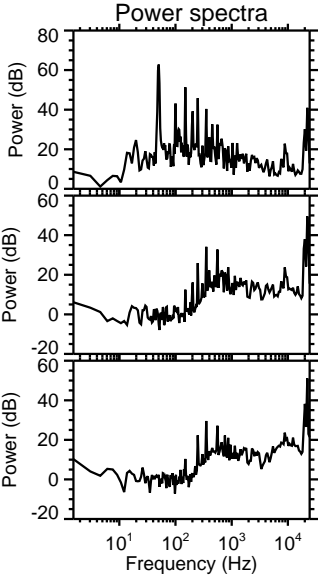
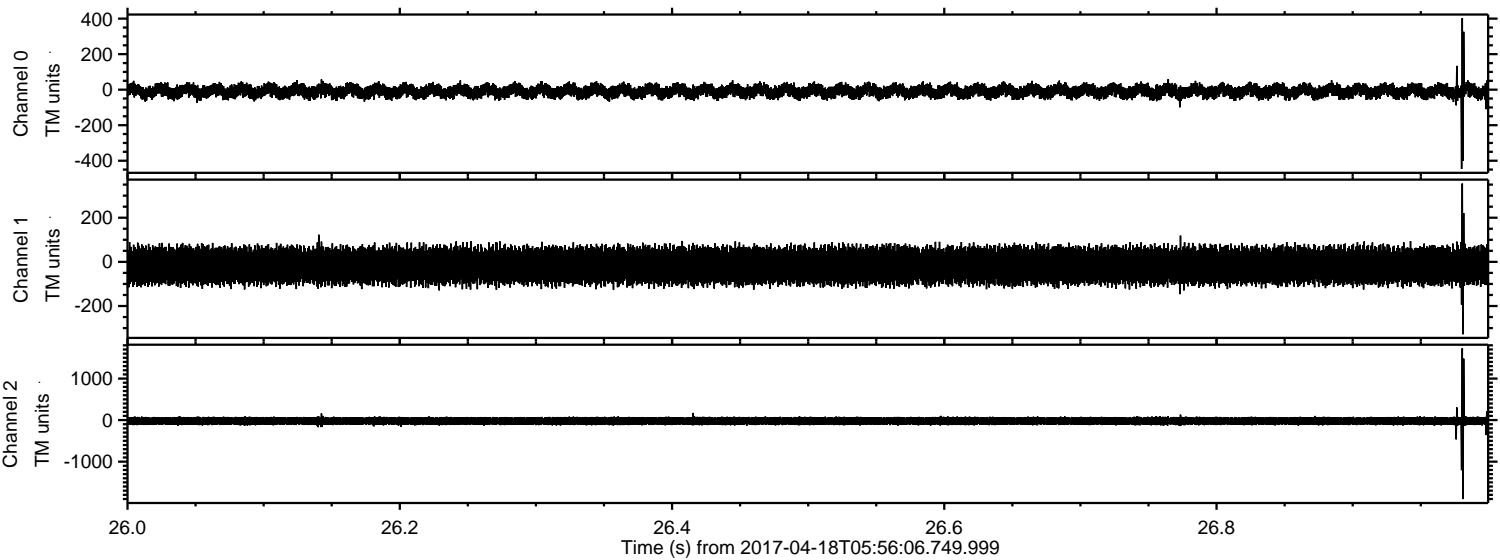
Processed Tue Apr 18 08:03:41 2017 by ELM ver.2012-10-06 from 001__elm20170418_055605__dat00.bin



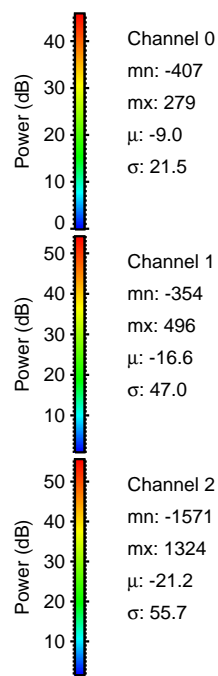
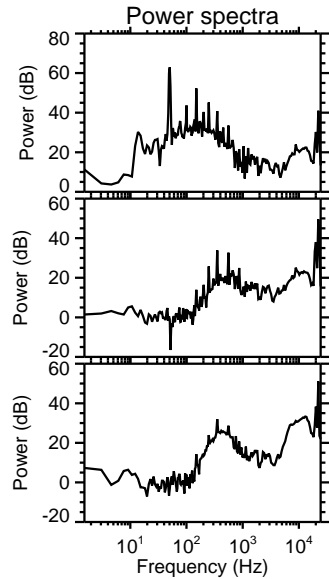
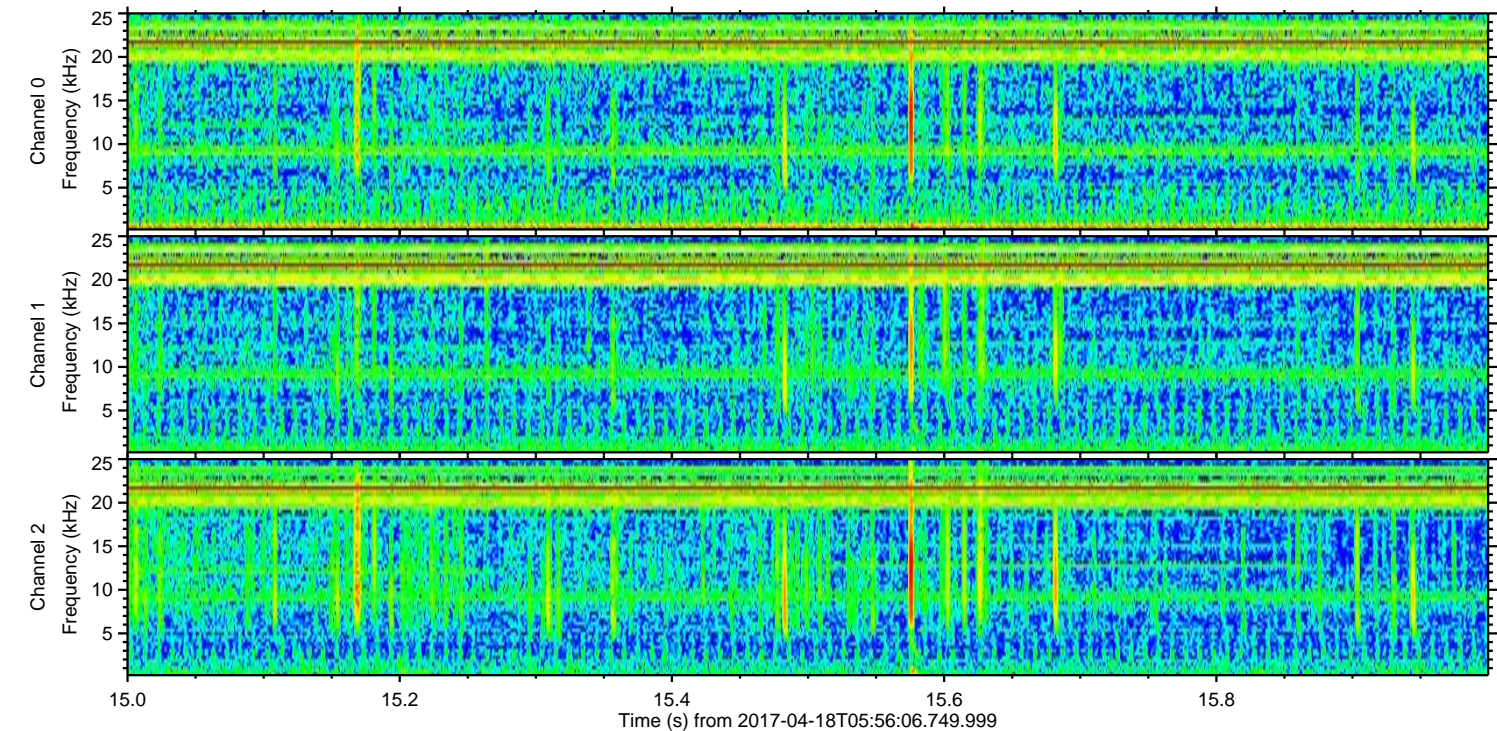
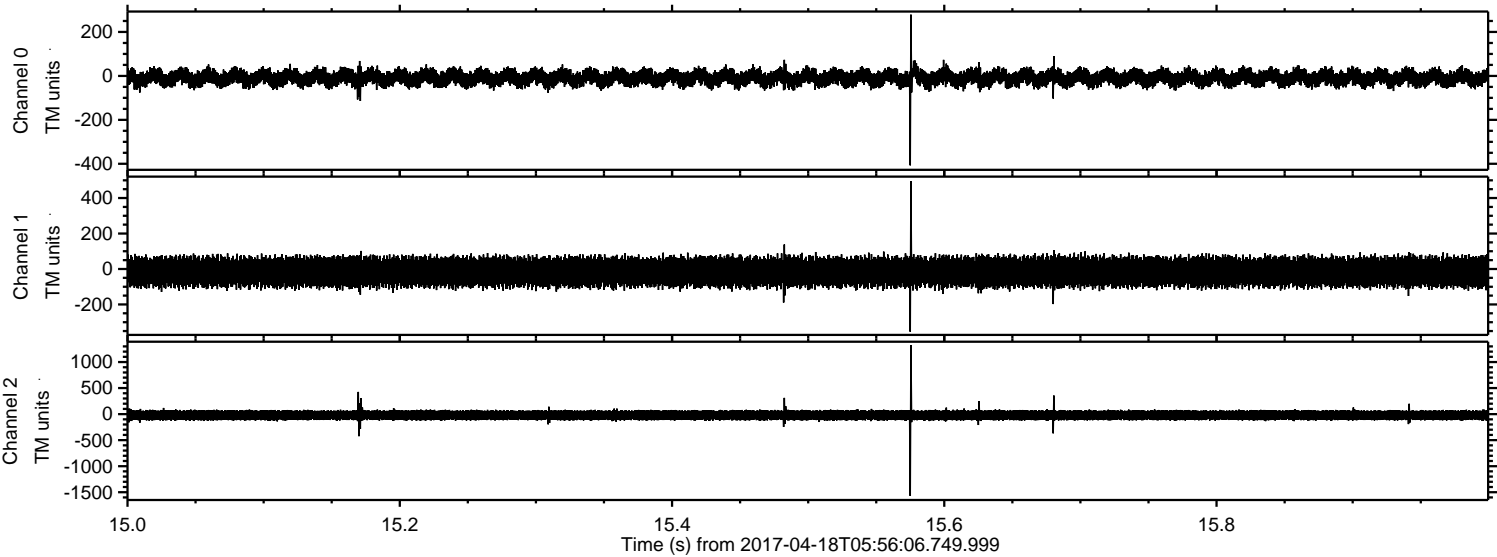
Processed Tue Apr 18 08:03:42 2017 by ELM ver.2012-10-06 from 001__elm20170418_055605__dat00.bin



Processed Tue Apr 18 08:03:43 2017 by ELM ver.2012-10-06 from 001__elm20170418_055605__dat00.bin



Processed Tue Apr 18 08:03:44 2017 by ELM ver.2012-10-06 from 001__elm20170418_055605__dat00.bin



Channel 0
mn: -407
mx: 279
 μ : -9.0
 σ : 21.5

Channel 1
mn: -354
mx: 496
 μ : -16.6
 σ : 47.0

Channel 2
mn: -1571
mx: 1324
 μ : -21.2
 σ : 55.7

Processed Tue Apr 18 08:03:44 2017 by ELM ver.2012-10-06 from 001__elm20170418_055605__dat00.bin

