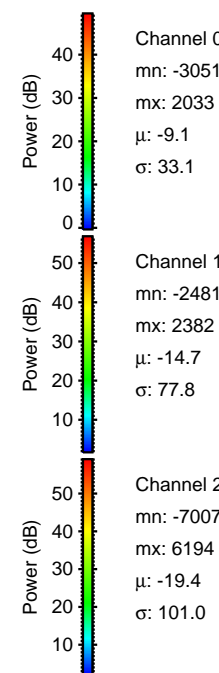
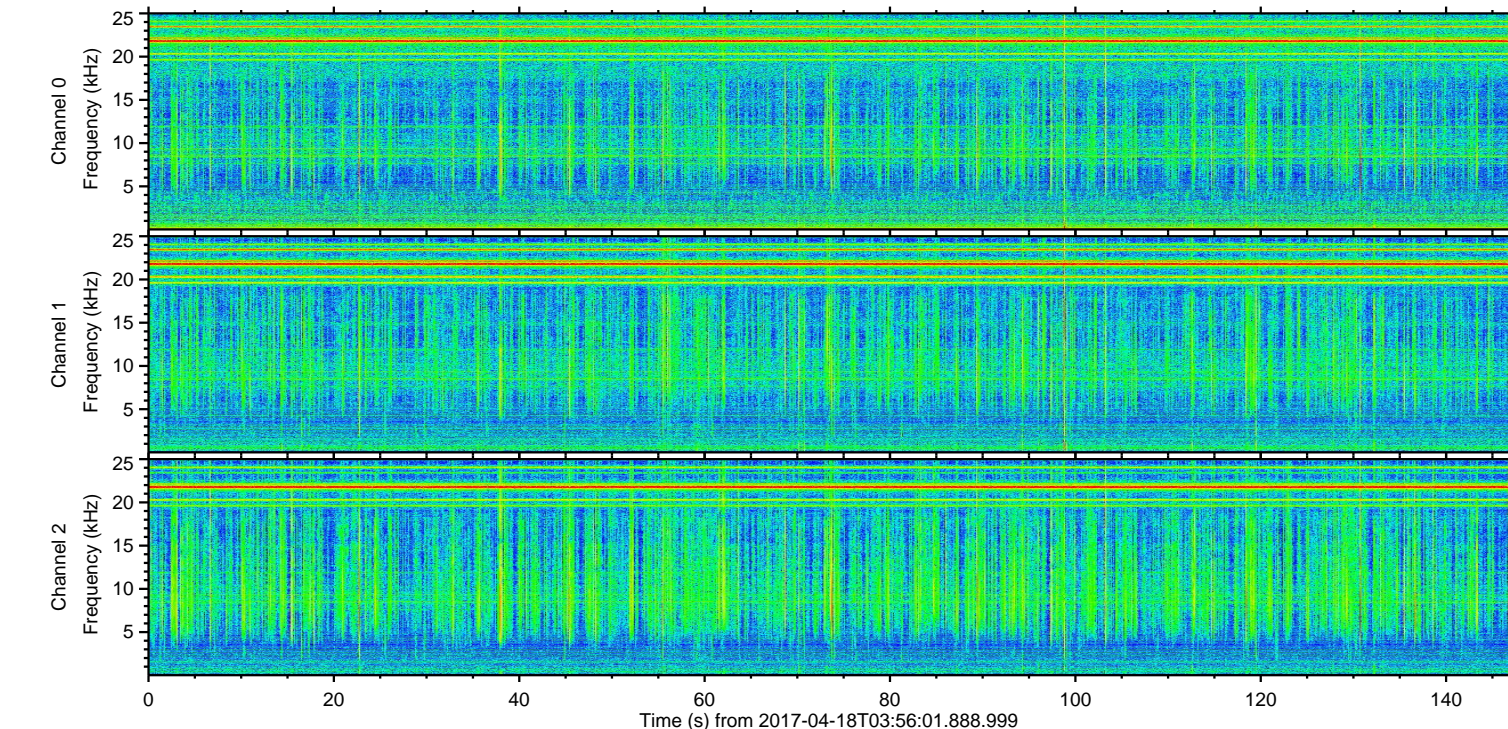
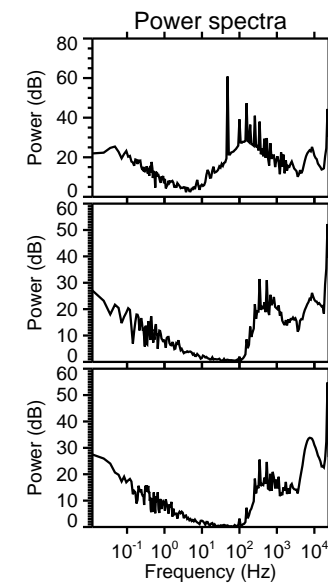
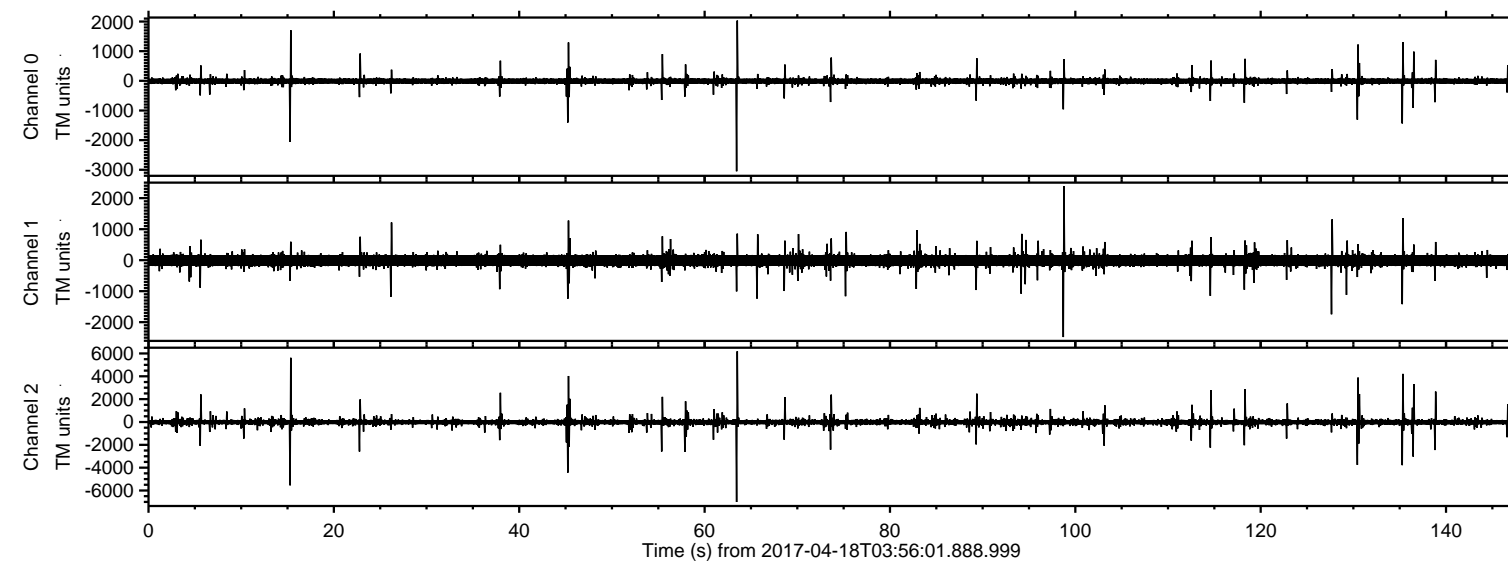


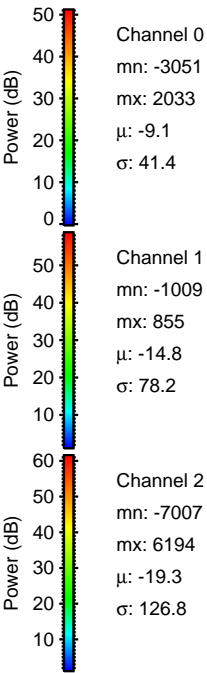
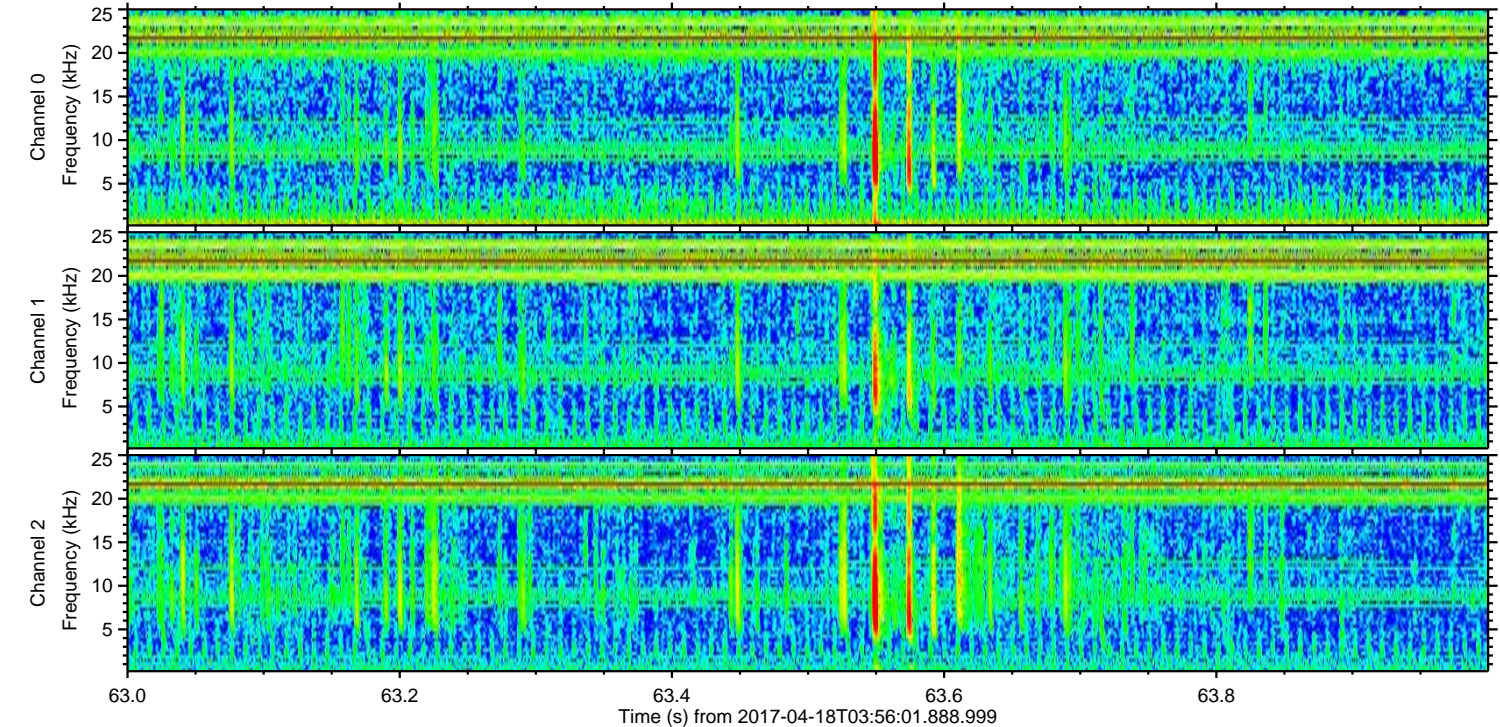
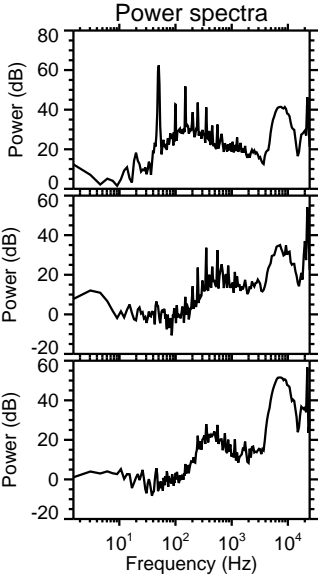
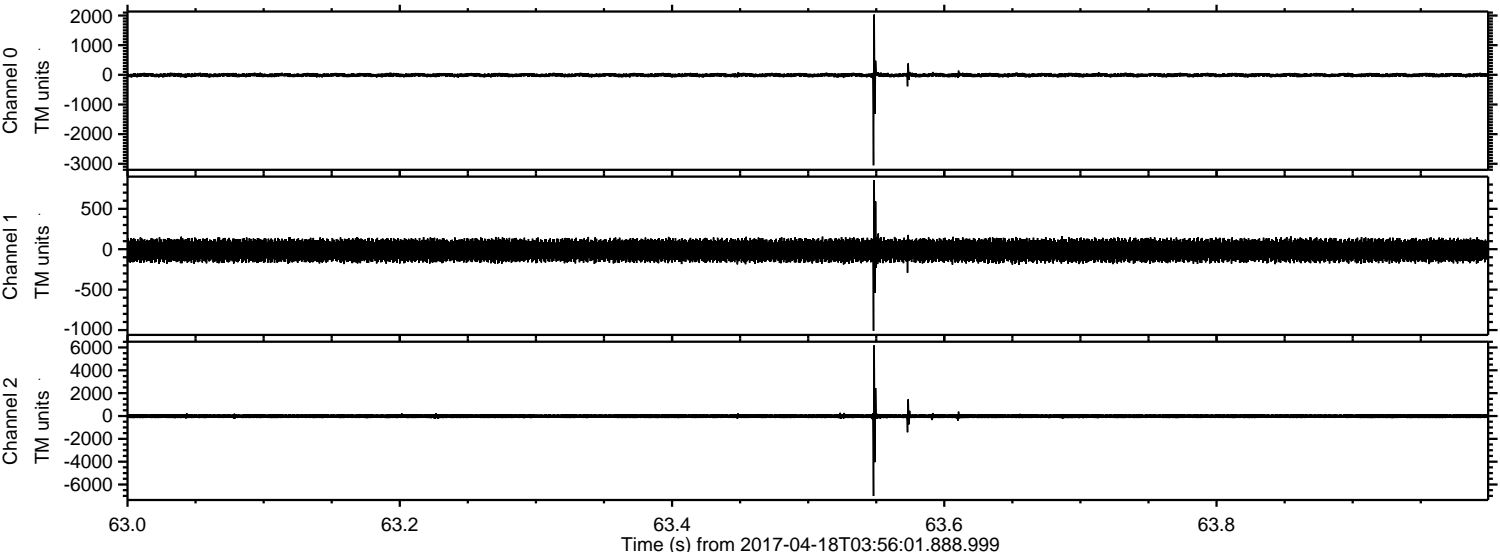
ELMAVAN 3D WAVEFORMS (Measured data sampled at 50 kHz) 51000 packets of 144 samples from 2017-04-18T03:56:01.888.999.

Processed Tue Apr 18 06:04:01 2017 by ELM ver.2012-10-06 from 001__elm20170418_035600__dat00.bin

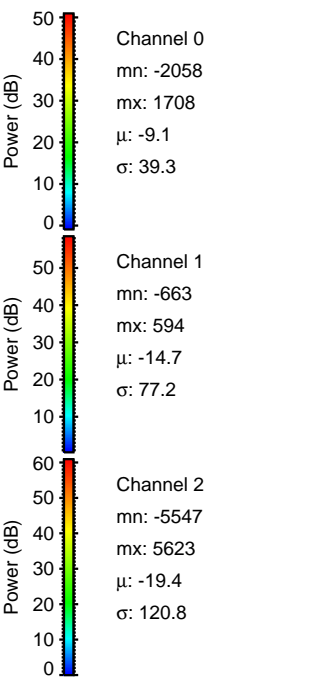
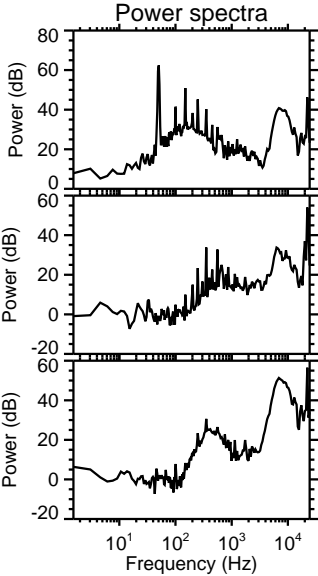
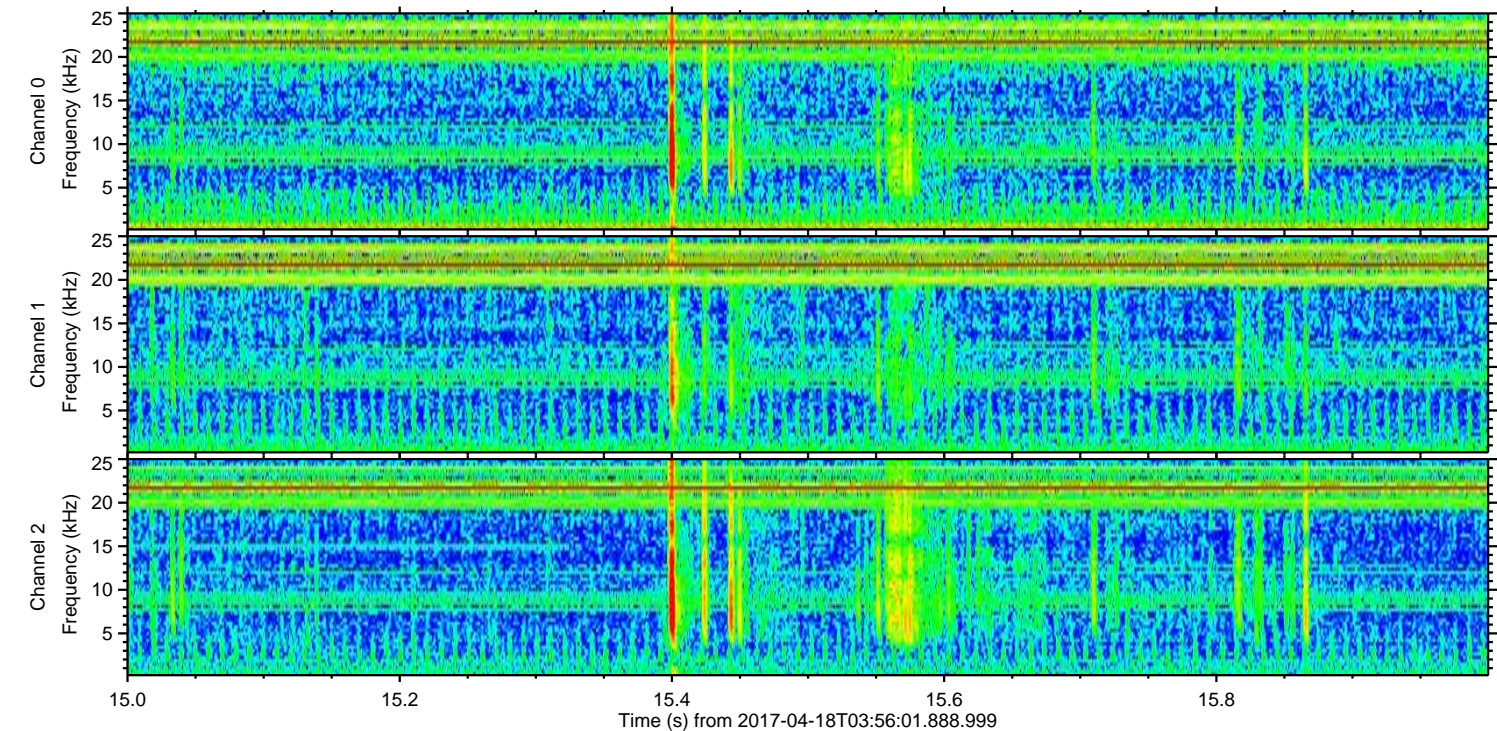
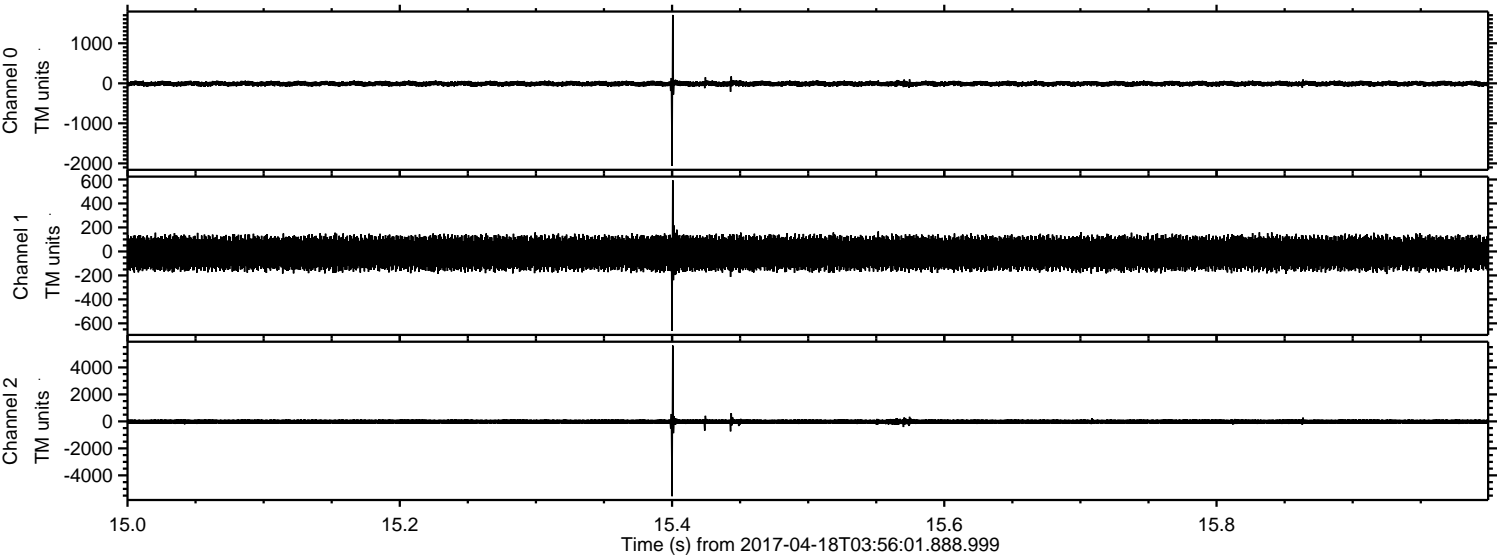


ELMAVAN 3D WAVEFORMS (Measured data sampled at 50 kHz) 51000 packets of 144 samples from 2017-04-18T03:56:01.888.999. Part 64/147

Processed Tue Apr 18 06:04:12 2017 by ELM ver.2012-10-06 from 001__elm20170418_035600__dat00.bin

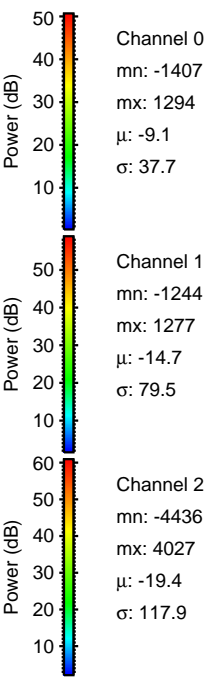
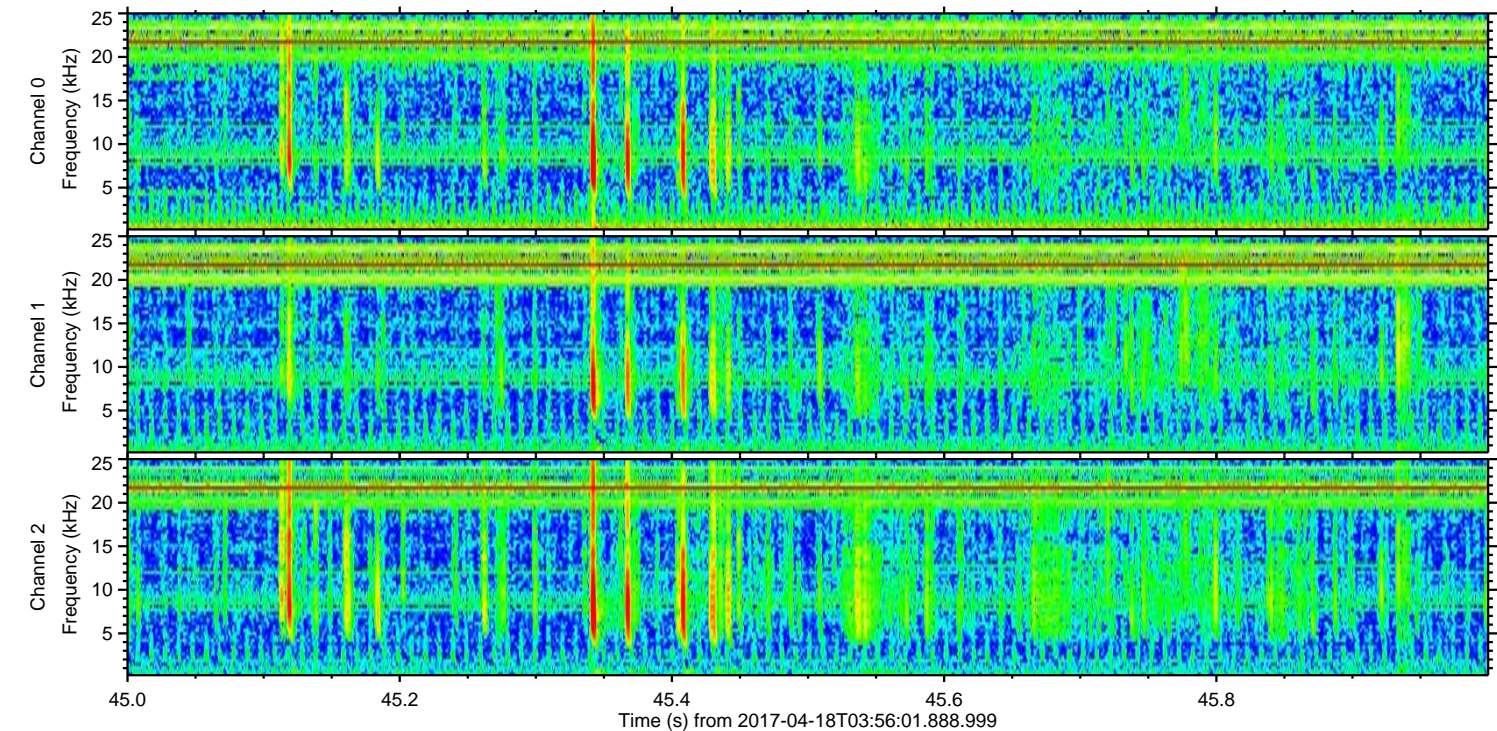
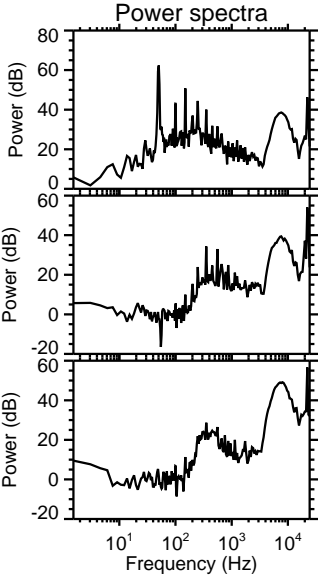
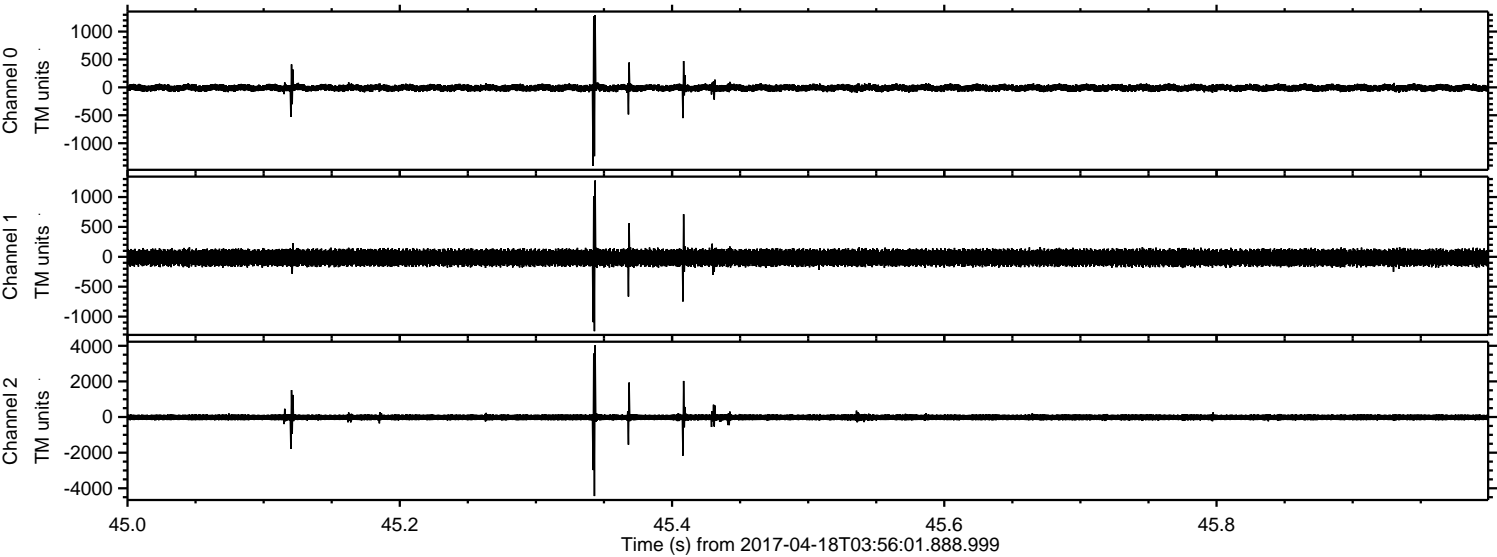


Processed Tue Apr 18 06:04:13 2017 by ELM ver.2012-10-06 from 001__elm20170418_035600__dat00.bin



ELMAVAN 3D WAVEFORMS (Measured data sampled at 50 kHz) 51000 packets of 144 samples from 2017-04-18T03:56:01.888.999. Part 46/147

Processed Tue Apr 18 06:04:14 2017 by ELM ver.2012-10-06 from 001__elm20170418_035600__dat00.bin



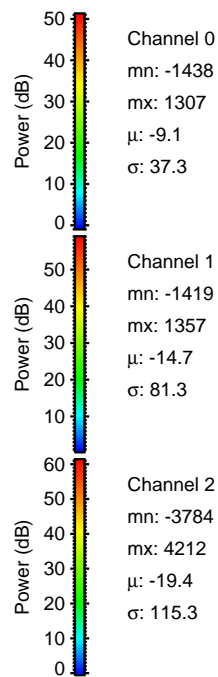
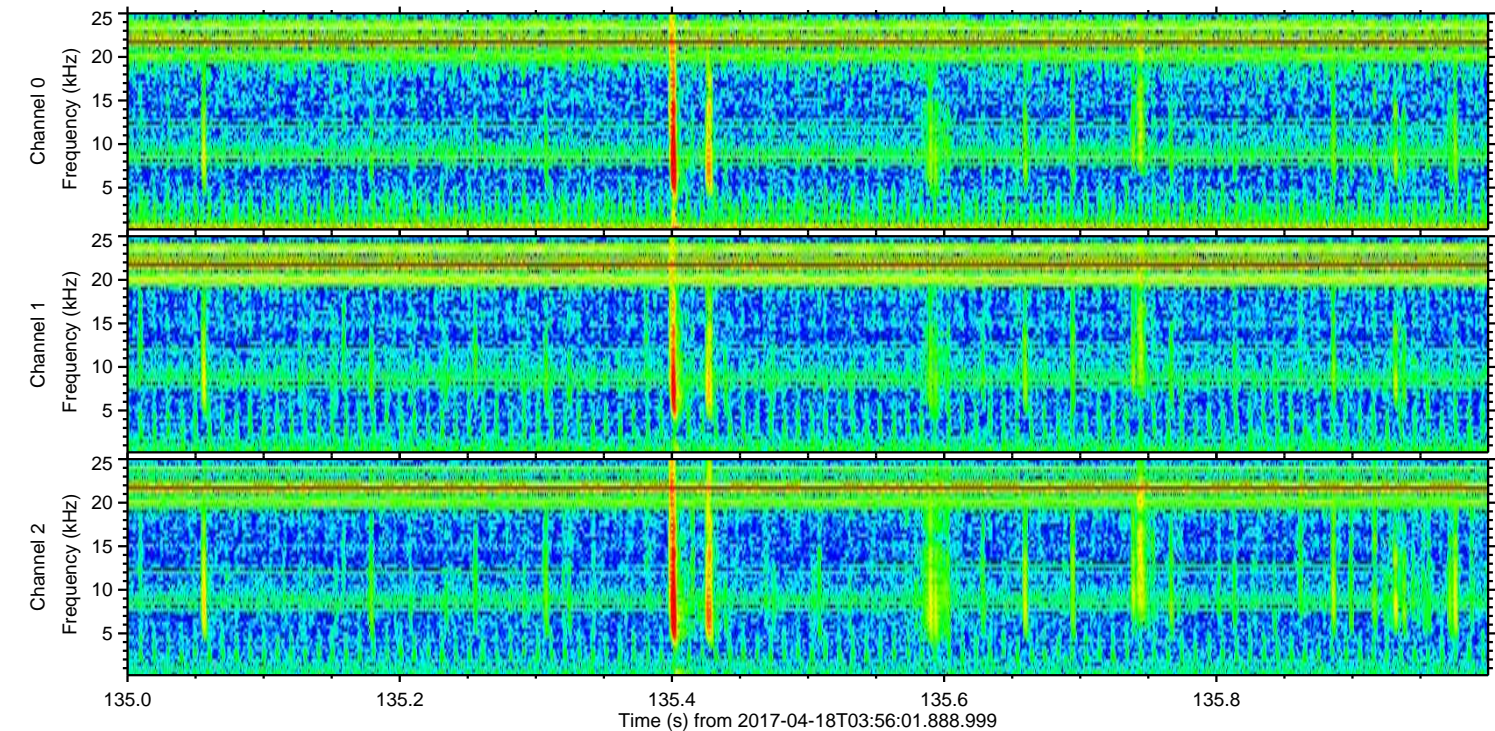
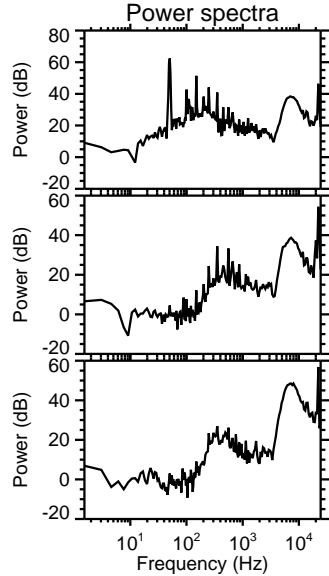
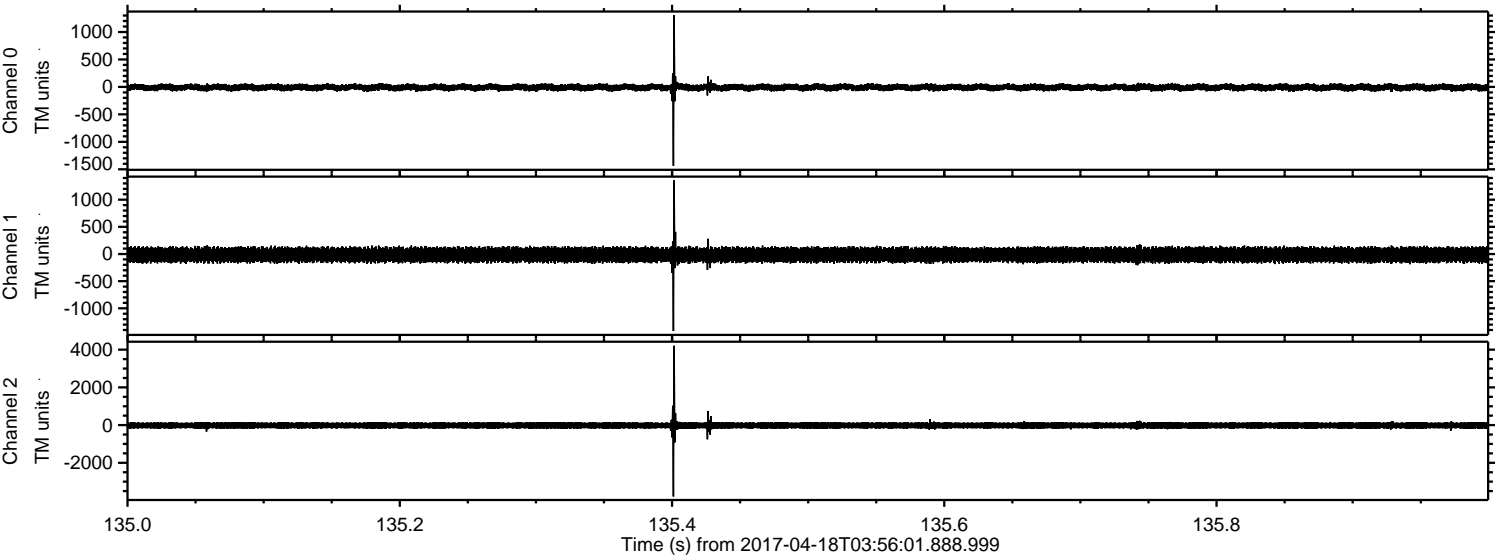
Channel 0
mn: -1407
mx: 1294
 μ : -9.1
 σ : 37.7

Channel 1
mn: -1244
mx: 1277
 μ : -14.7
 σ : 79.5

Channel 2
mn: -4436
mx: 4027
 μ : -19.4
 σ : 117.9

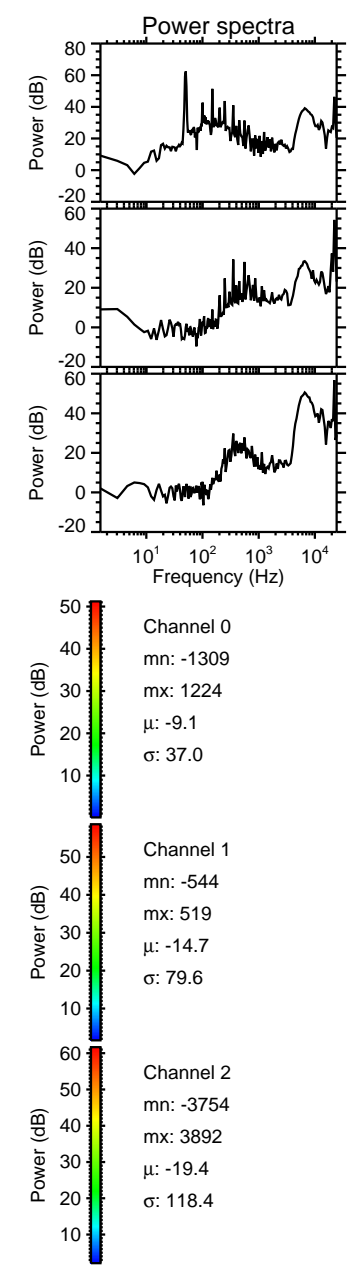
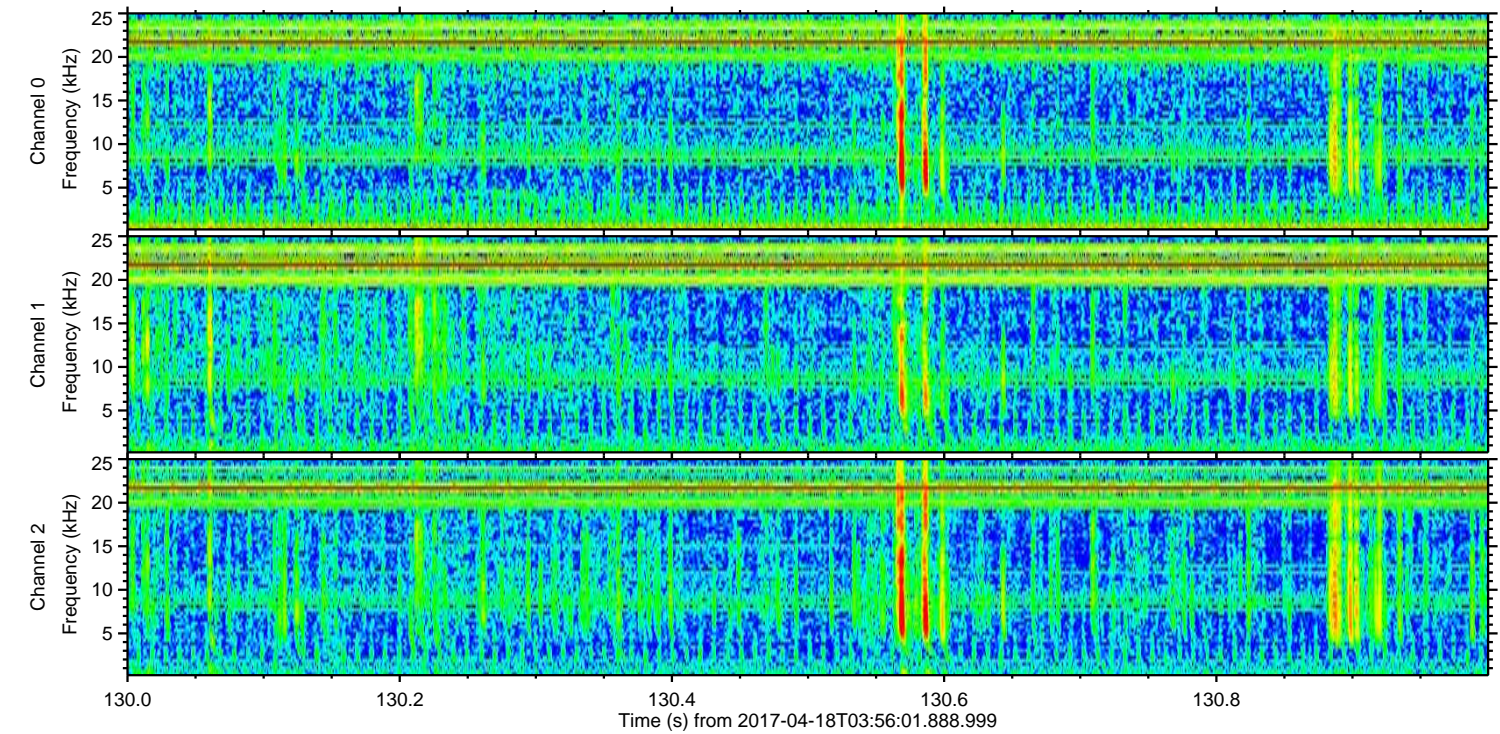
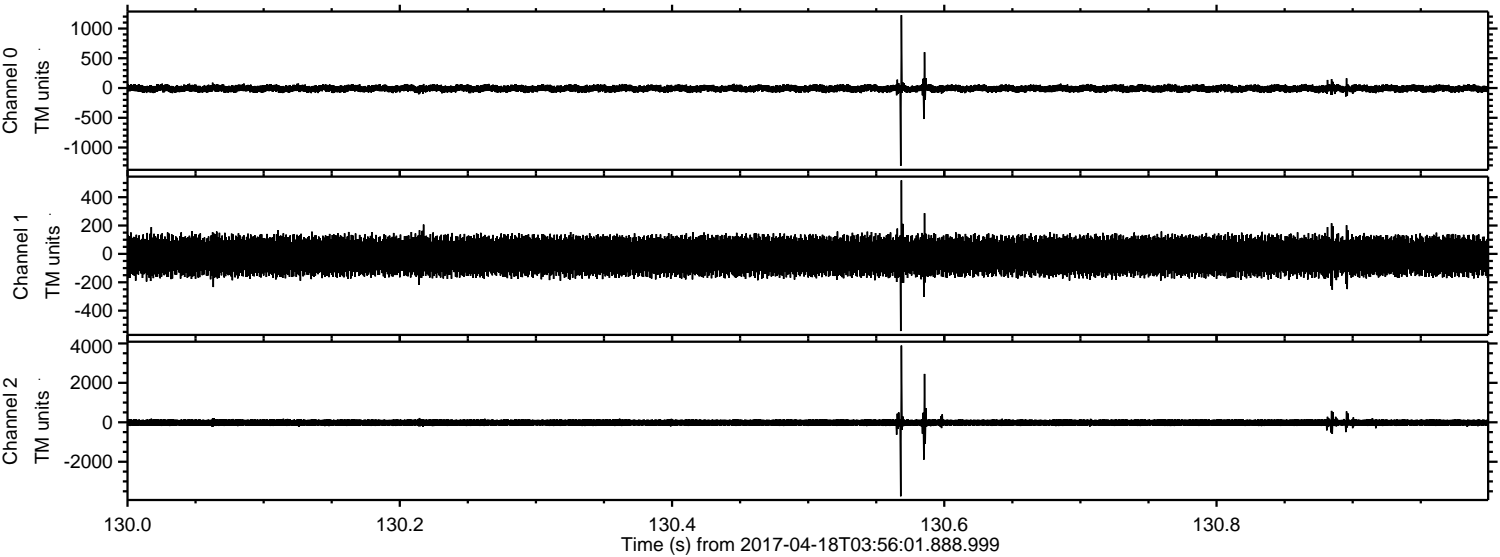
ELMAVAN 3D WAVEFORMS (Measured data sampled at 50 kHz) 51000 packets of 144 samples from 2017-04-18T03:56:01.888.999. Part 136/147

Processed Tue Apr 18 06:04:15 2017 by ELM ver.2012-10-06 from 001__elm20170418_035600__dat00.bin



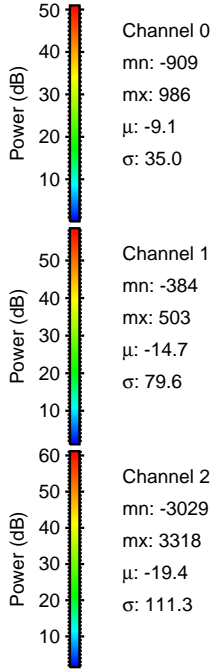
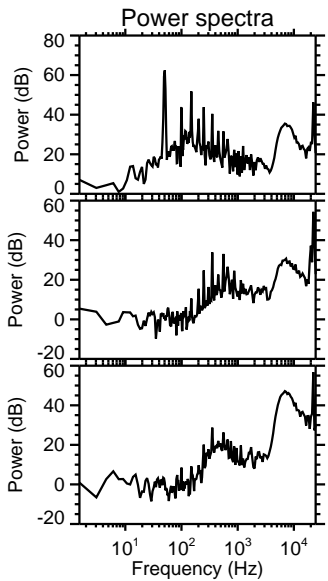
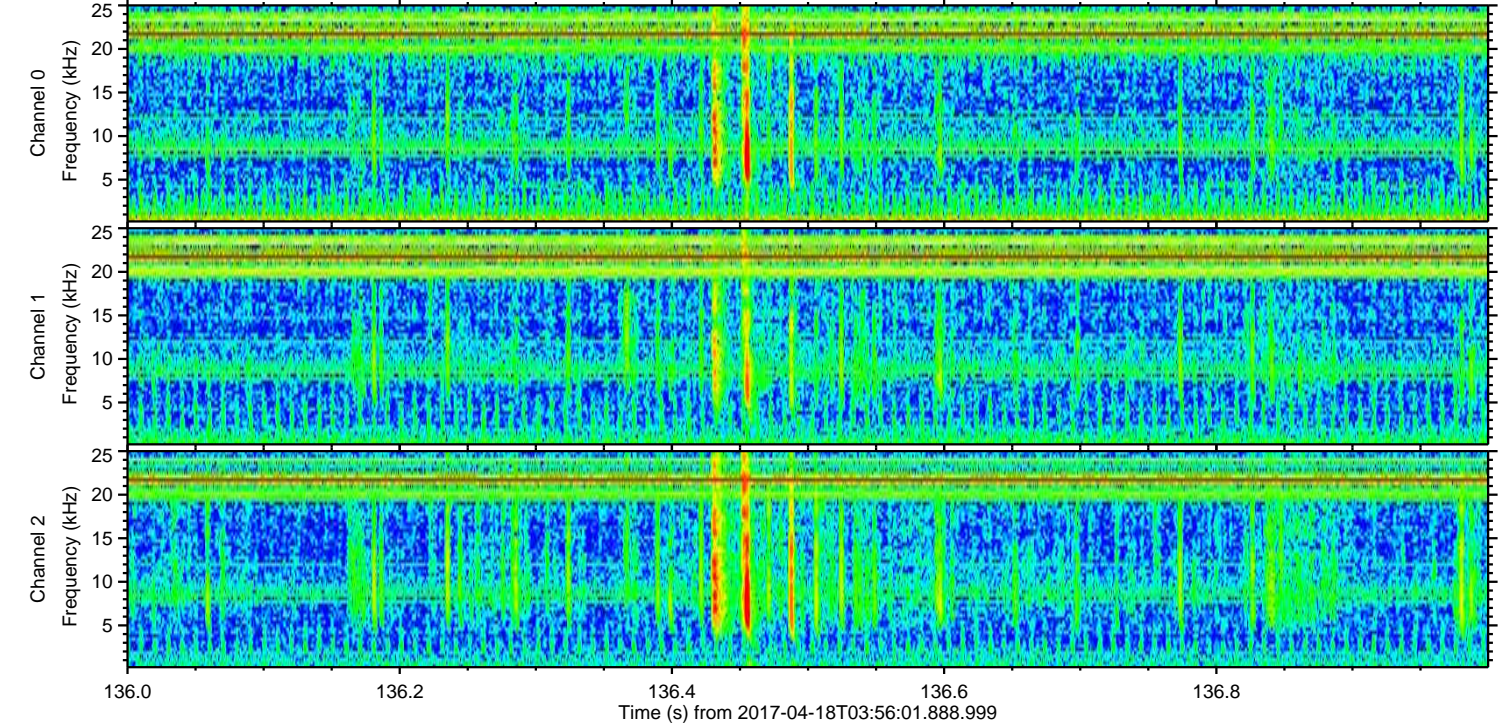
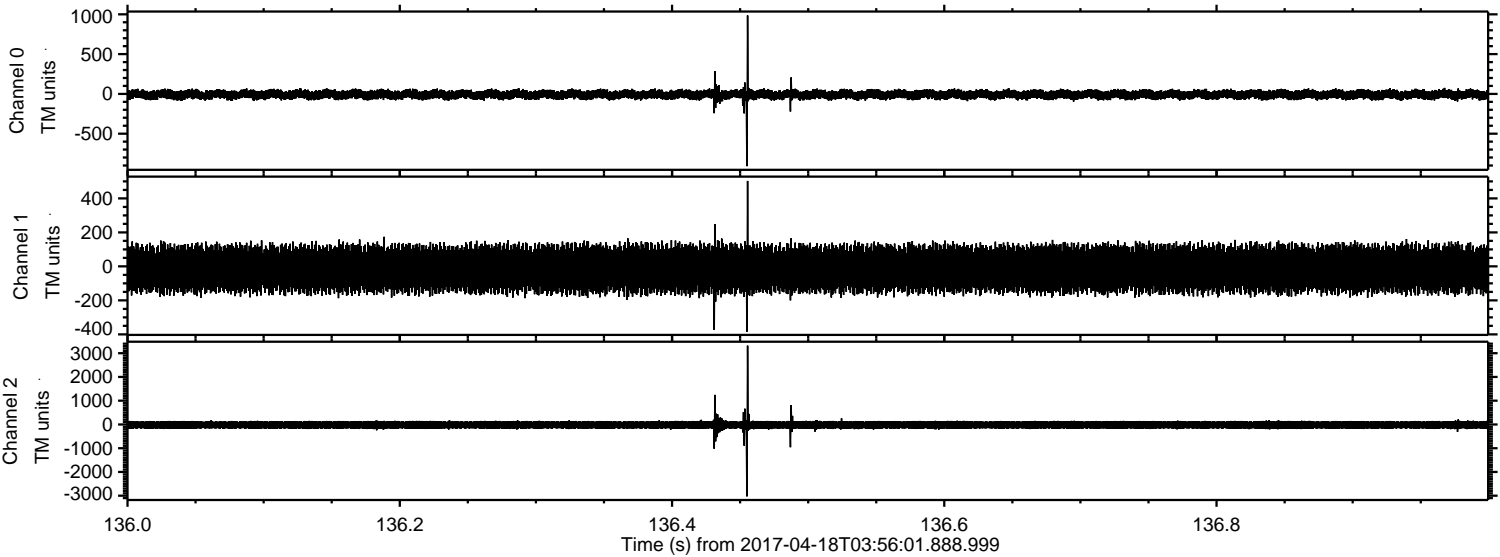
ELMAVAN 3D WAVEFORMS (Measured data sampled at 50 kHz) 51000 packets of 144 samples from 2017-04-18T03:56:01.888.999. Part 131/147

Processed Tue Apr 18 06:04:16 2017 by ELM ver.2012-10-06 from 001__elm20170418_035600__dat00.bin



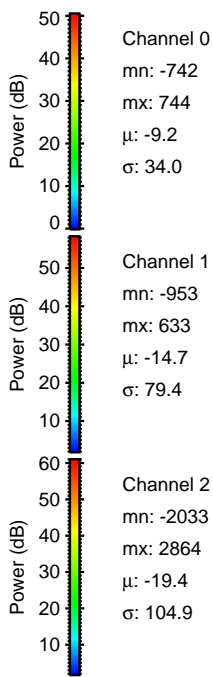
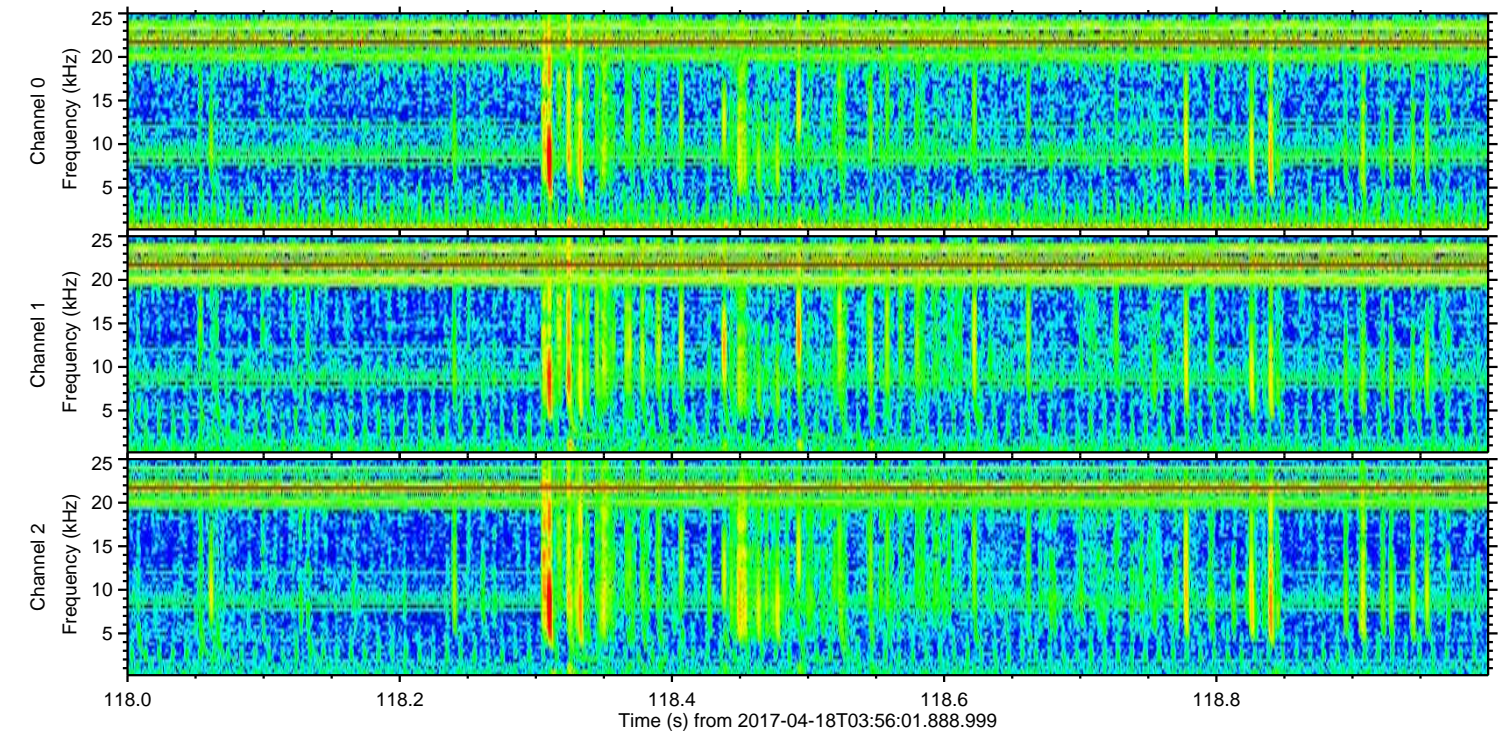
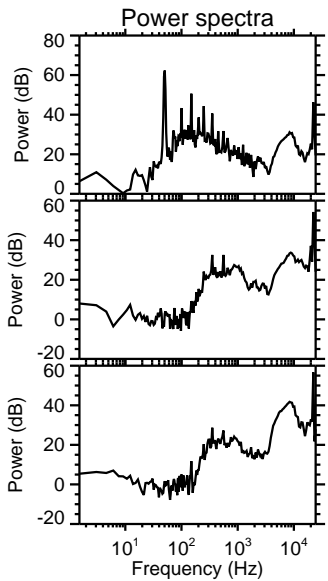
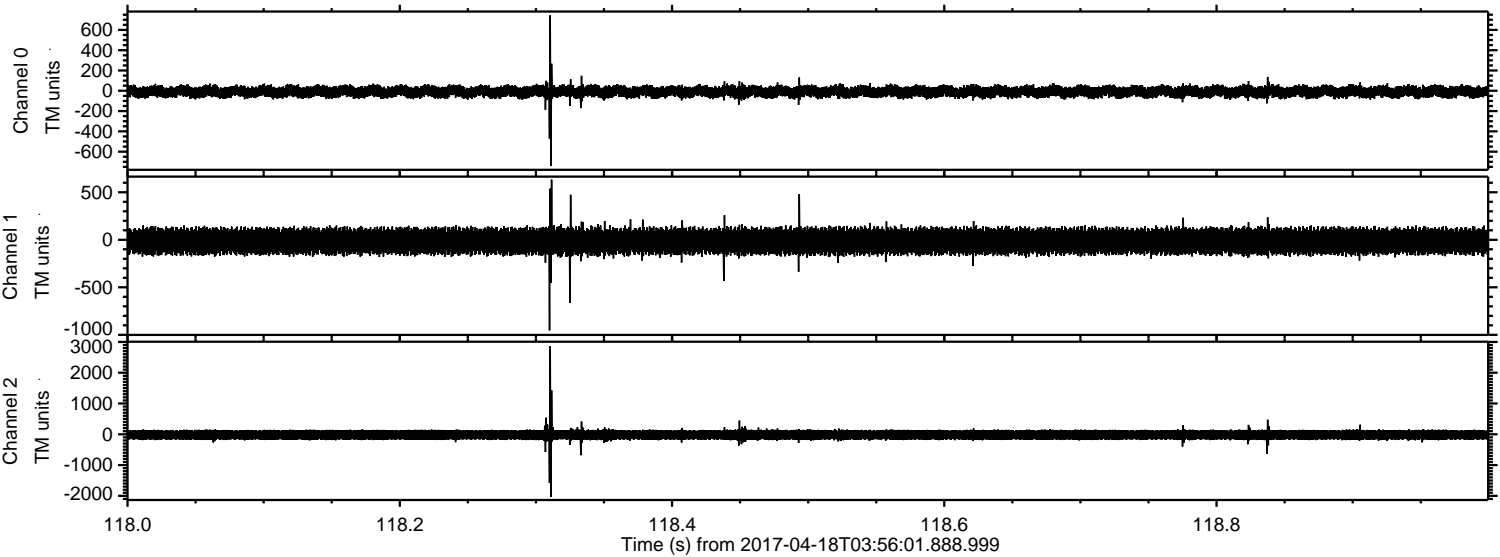
ELMAVAN 3D WAVEFORMS (Measured data sampled at 50 kHz) 51000 packets of 144 samples from 2017-04-18T03:56:01.888.999. Part 137/147

Processed Tue Apr 18 06:04:17 2017 by ELM ver.2012-10-06 from 001__elm20170418_035600__dat00.bin



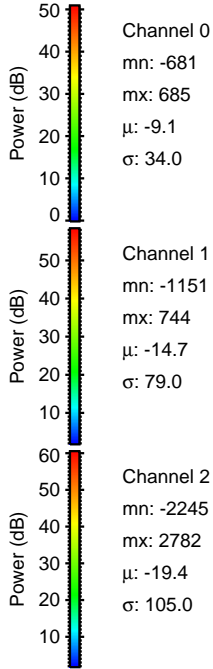
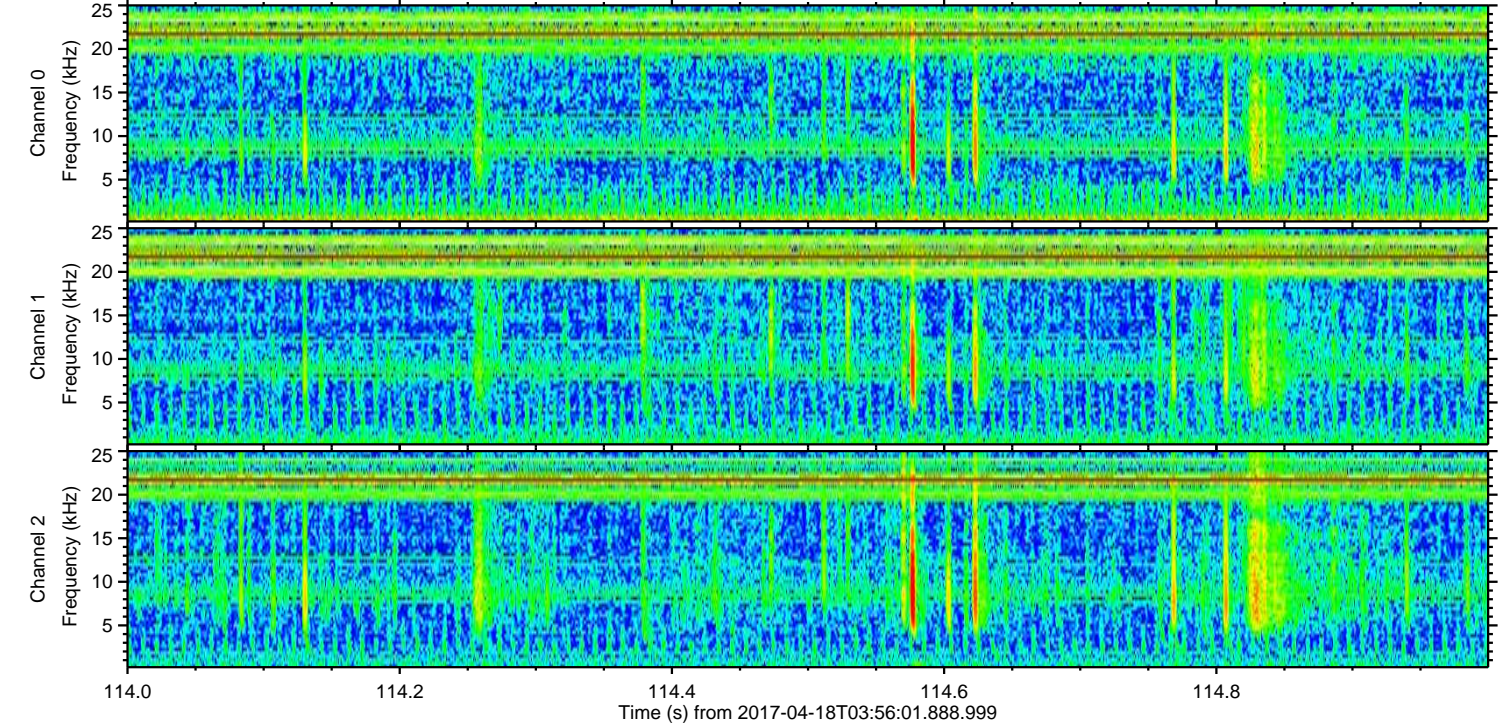
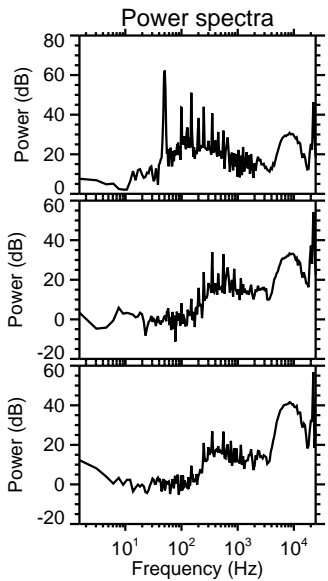
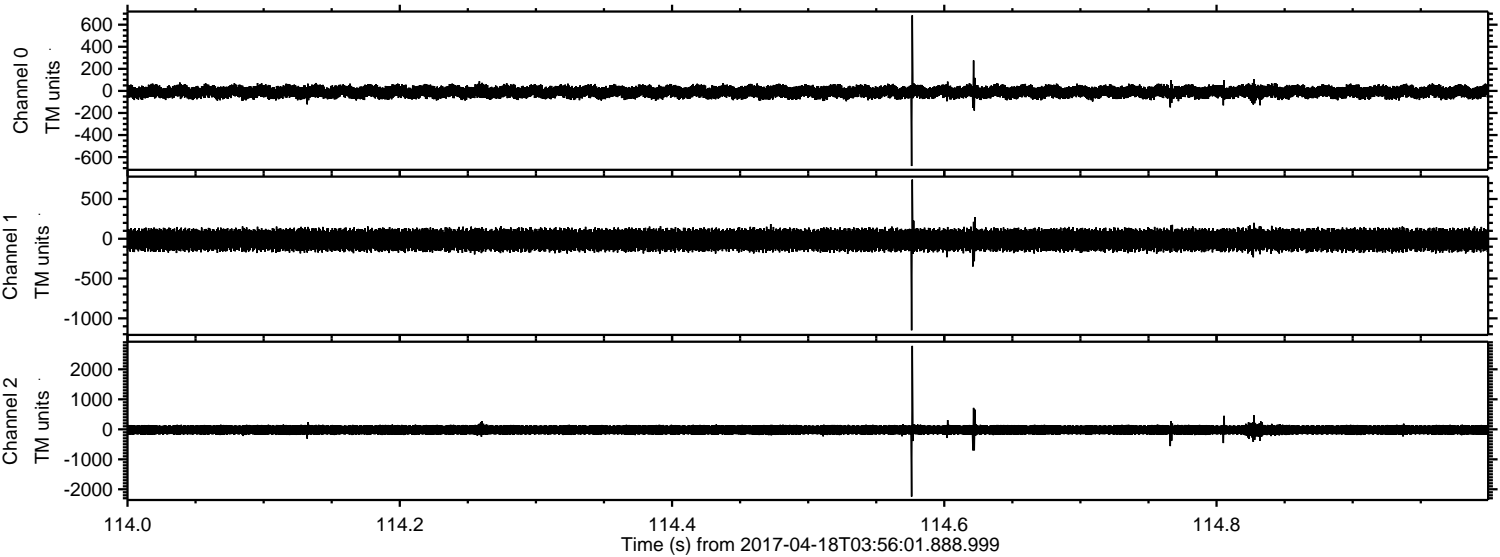
ELMAVAN 3D WAVEFORMS (Measured data sampled at 50 kHz) 51000 packets of 144 samples from 2017-04-18T03:56:01.888.999. Part 119/147

Processed Tue Apr 18 06:04:18 2017 by ELM ver.2012-10-06 from 001__elm20170418_035600__dat00.bin



ELMAVAN 3D WAVEFORMS (Measured data sampled at 50 kHz) 51000 packets of 144 samples from 2017-04-18T03:56:01.888.999. Part 115/147

Processed Tue Apr 18 06:04:19 2017 by ELM ver.2012-10-06 from 001__elm20170418_035600__dat00.bin



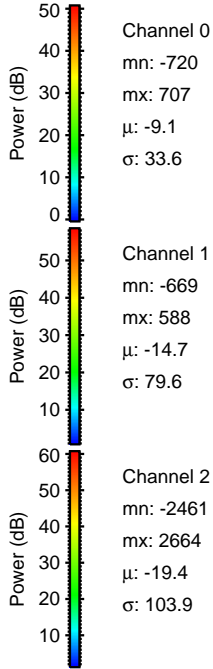
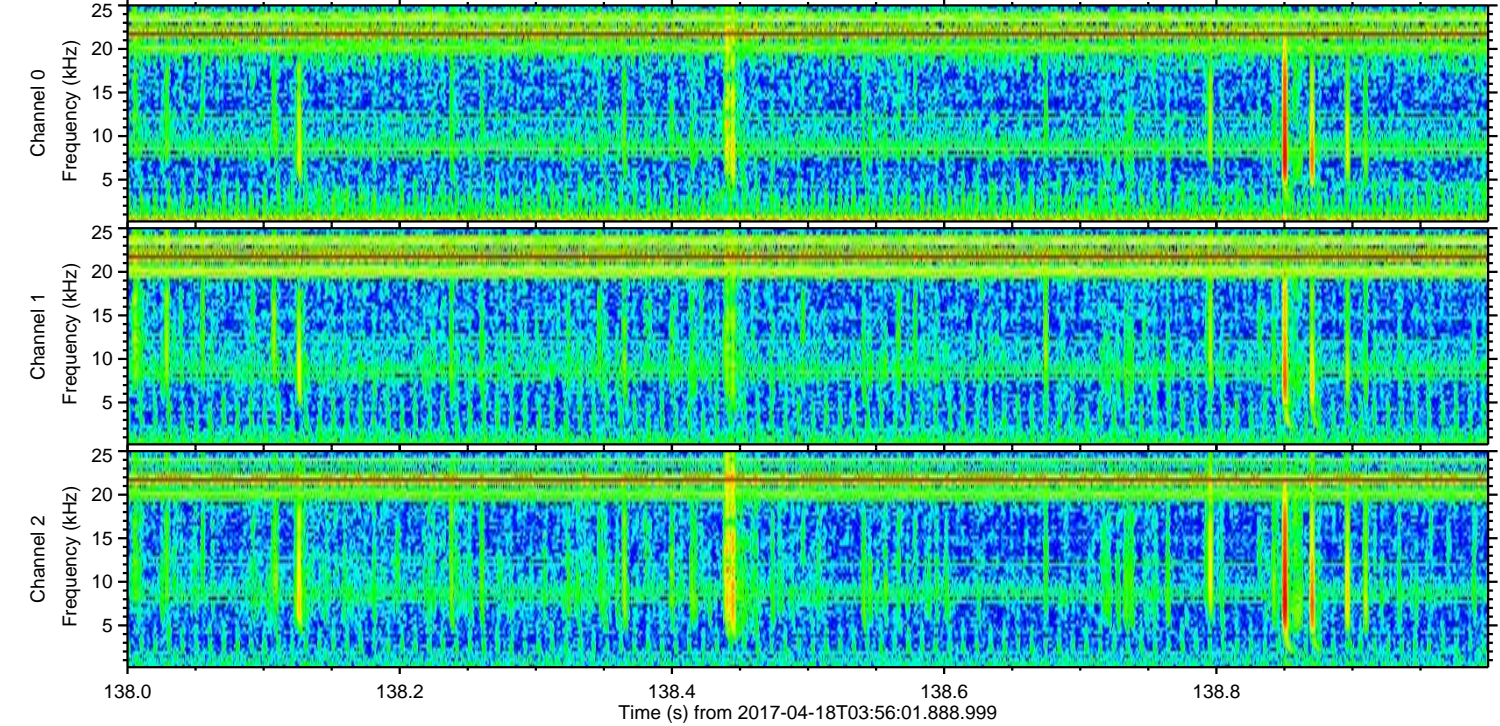
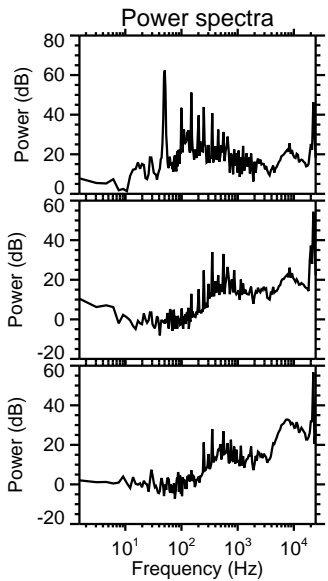
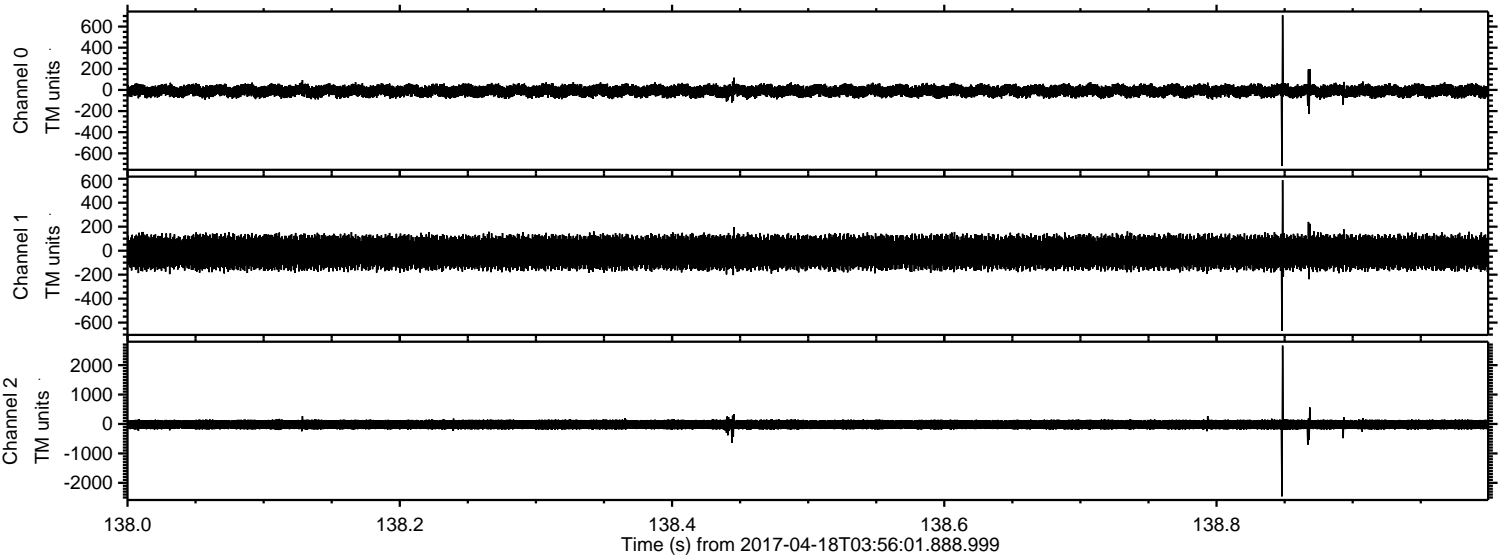
Channel 0
mn: -681
mx: 685
 μ : -9.1
 σ : 34.0

Channel 1
mn: -1151
mx: 744
 μ : -14.7
 σ : 79.0

Channel 2
mn: -2245
mx: 2782
 μ : -19.4
 σ : 105.0

ELMAVAN 3D WAVEFORMS (Measured data sampled at 50 kHz) 51000 packets of 144 samples from 2017-04-18T03:56:01.888.999. Part 139/147

Processed Tue Apr 18 06:04:20 2017 by ELM ver.2012-10-06 from 001__elm20170418_035600__dat00.bin



ELMAVAN 3D WAVEFORMS (Measured data sampled at 50 kHz) 51000 packets of 144 samples from 2017-04-18T03:56:01.888.999. Part 35/147

Processed Tue Apr 18 06:04:21 2017 by ELM ver.2012-10-06 from 001__elm20170418_035600__dat00.bin

