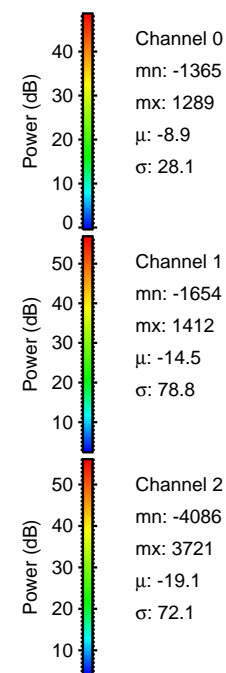
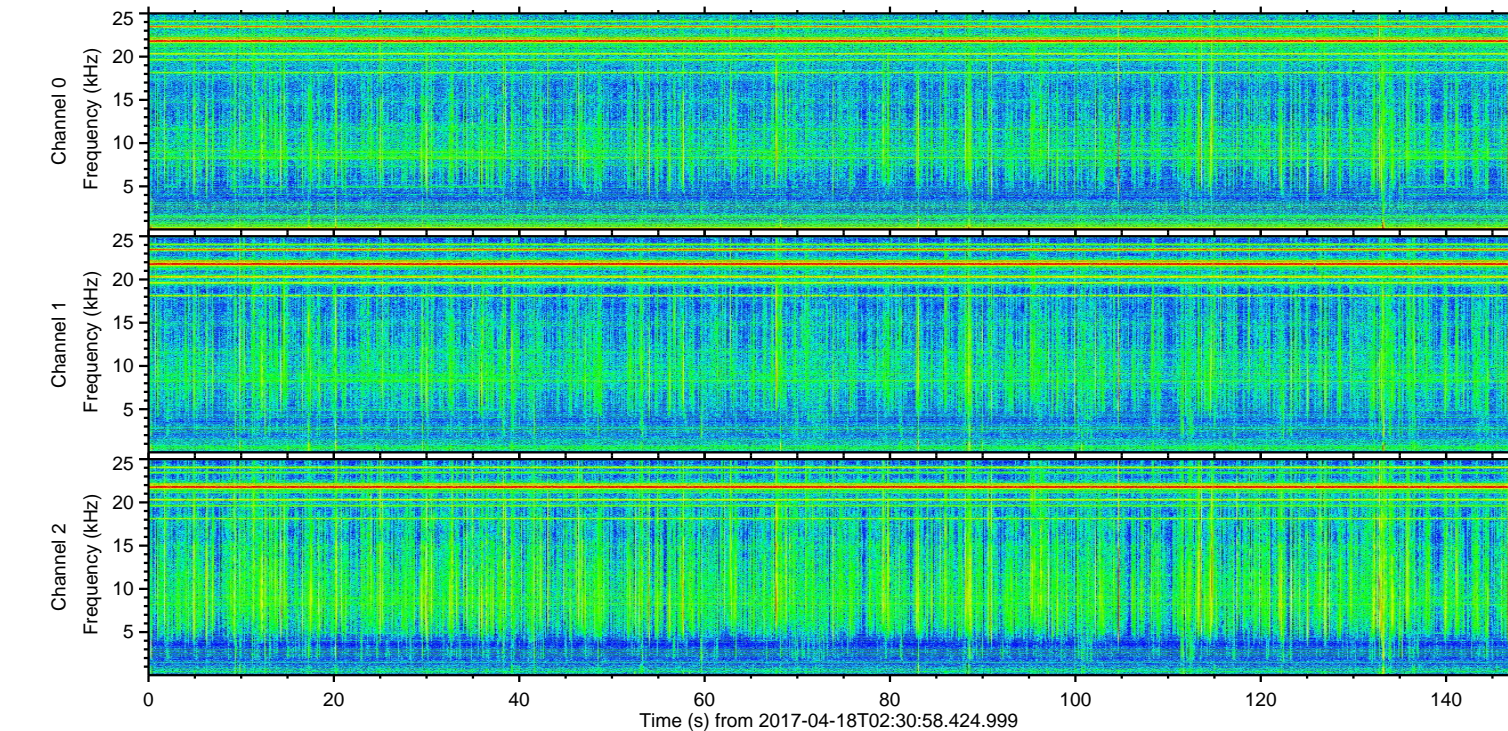
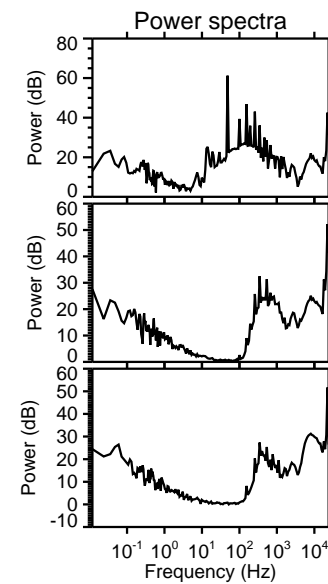
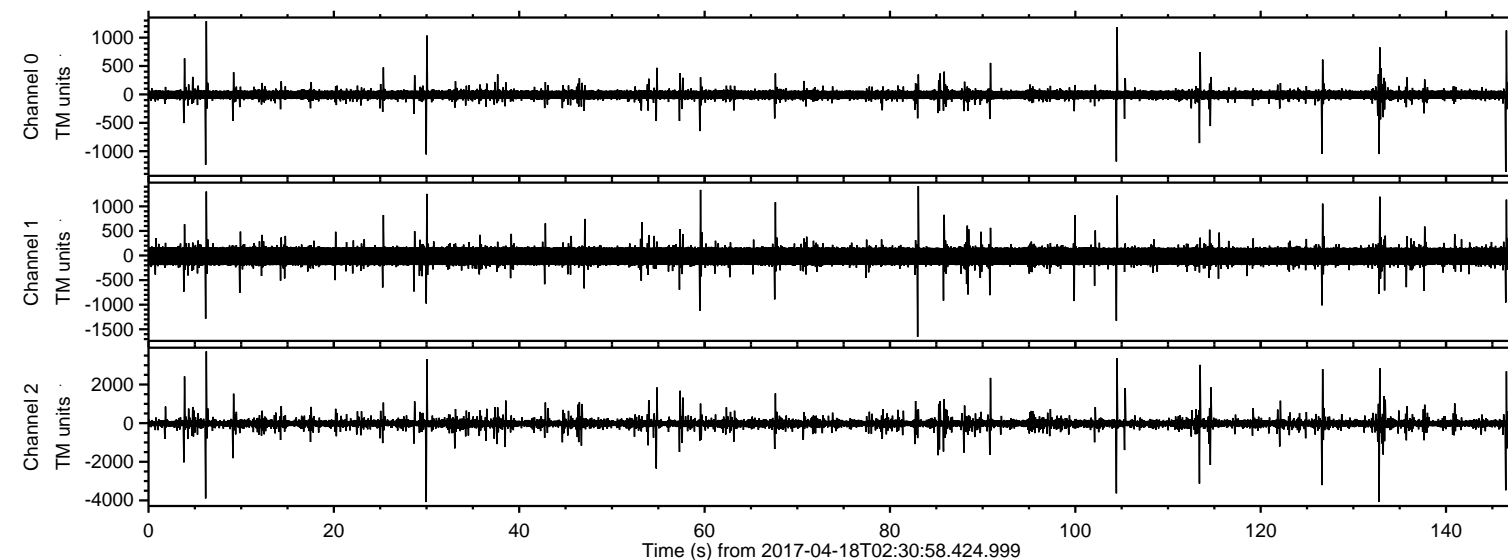


# ELMAVAN 3D WAVEFORMS (Measured data sampled at 50 kHz) 51000 packets of 144 samples from 2017-04-18T02:30:58.424.999.

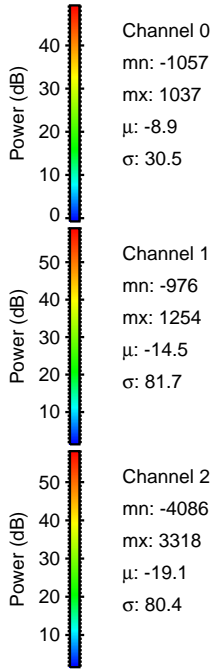
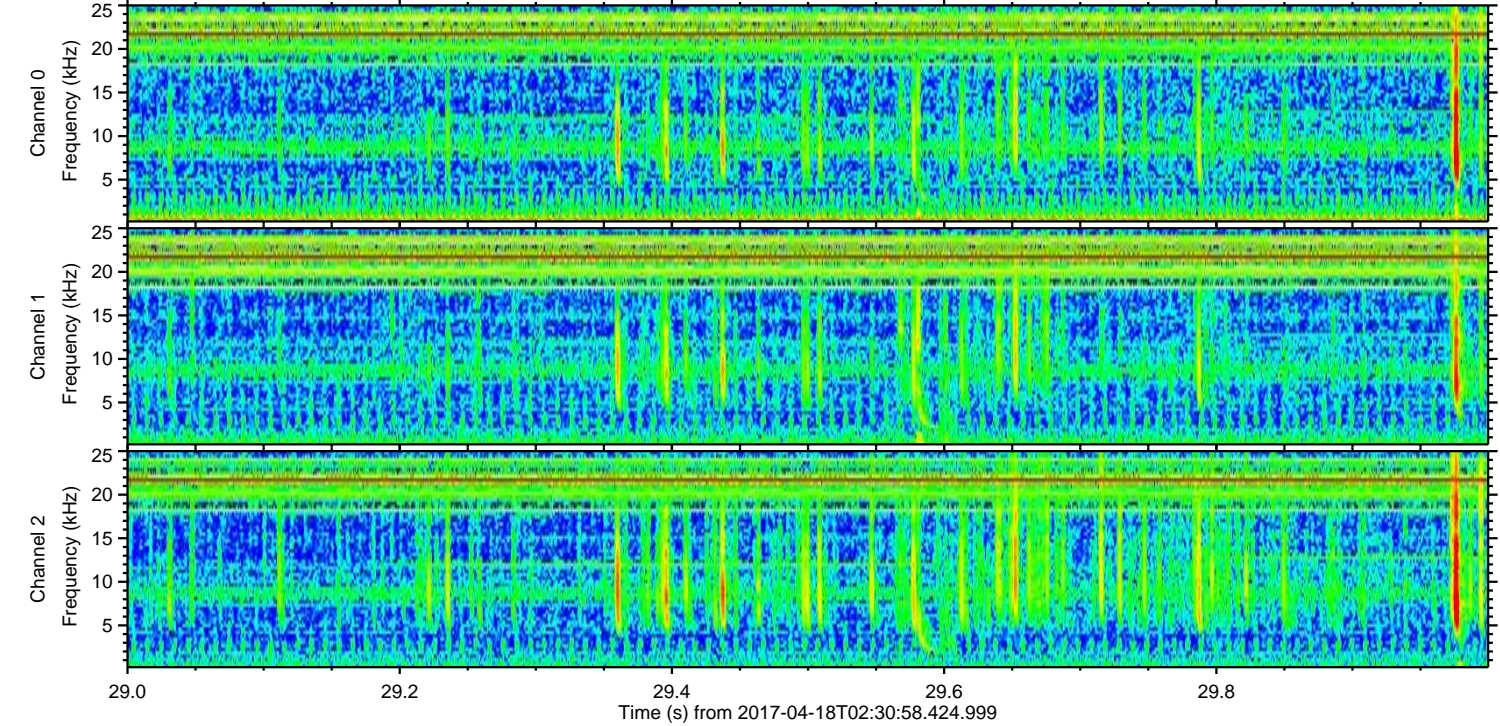
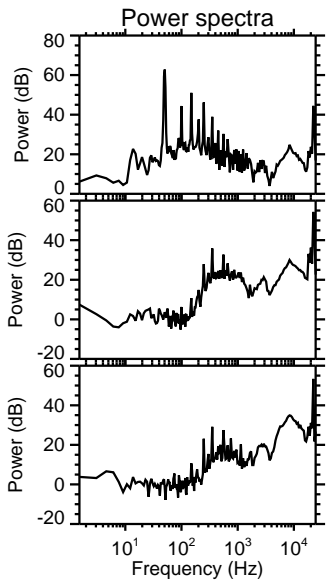
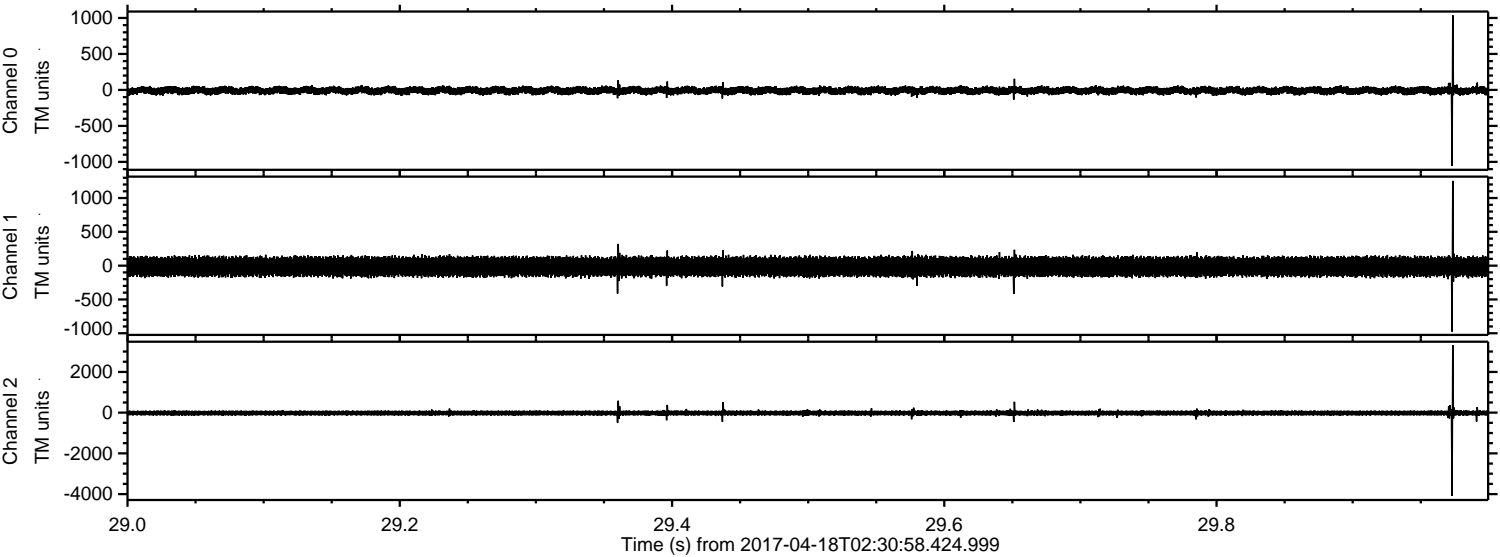
Processed Tue Apr 18 04:38:15 2017 by ELM ver.2012-10-06 from 001\_\_elm20170418\_023057\_\_dat00.bin





ELMAVAN 3D WAVEFORMS (Measured data sampled at 50 kHz) 51000 packets of 144 samples from 2017-04-18T02:30:58.424.999. Part 30/147

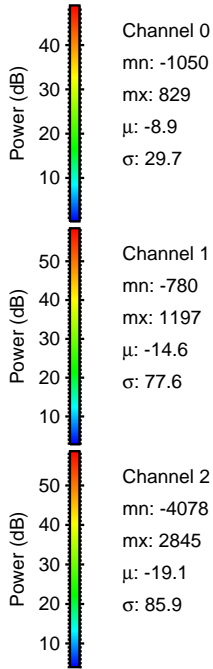
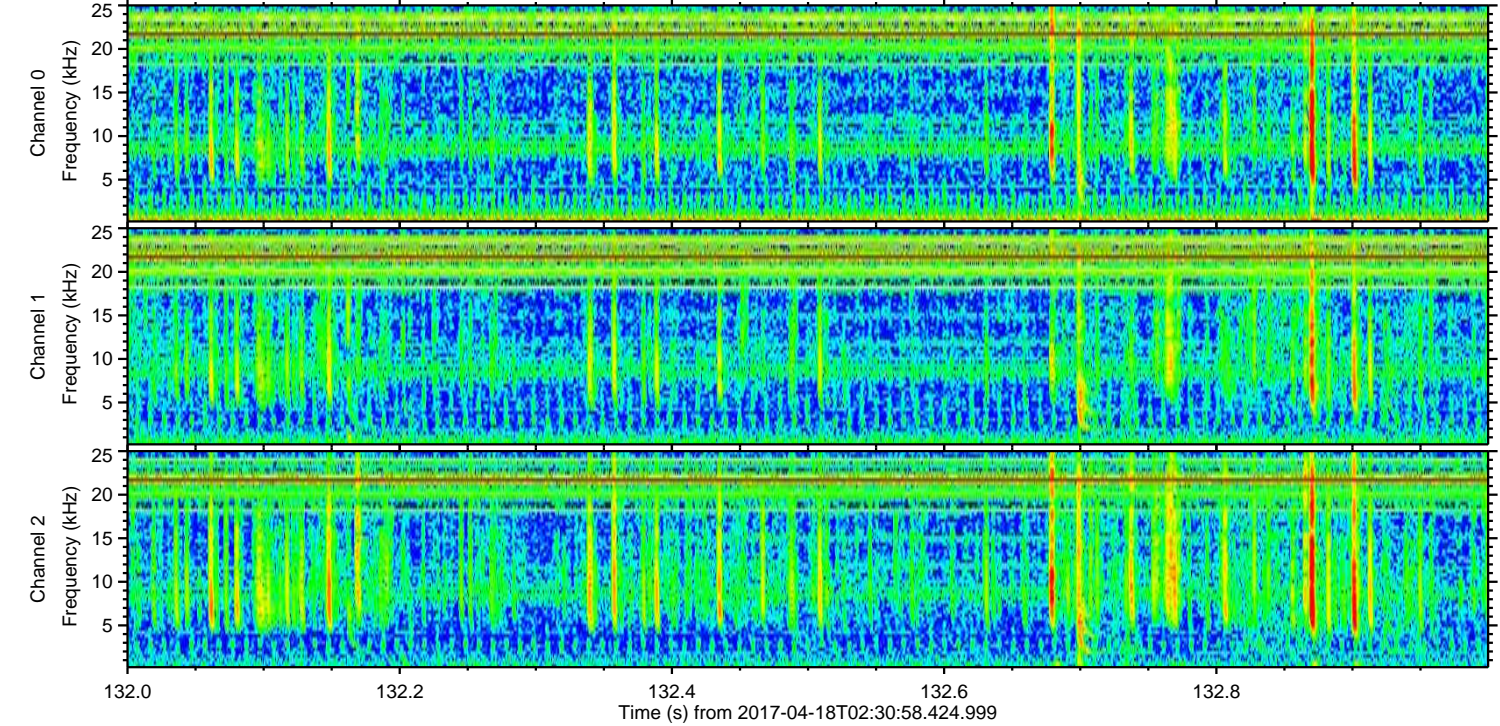
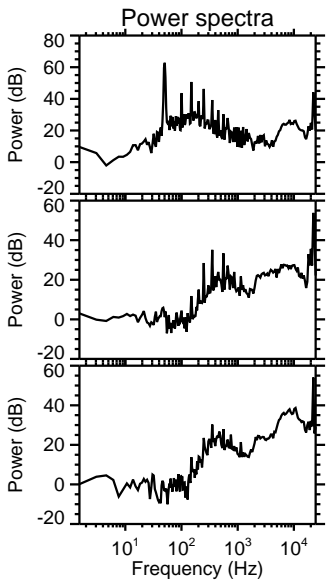
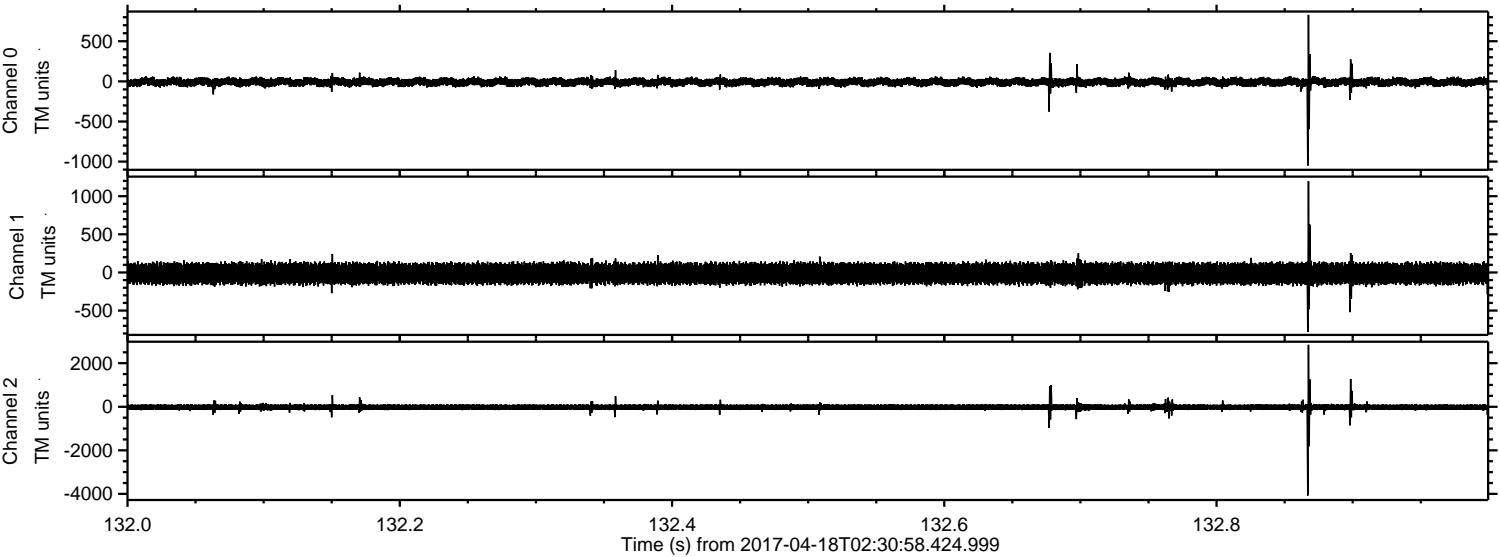
Processed Tue Apr 18 04:38:26 2017 by ELM ver.2012-10-06 from 001\_\_elm20170418\_023057\_\_dat00.bin





ELMAVAN 3D WAVEFORMS (Measured data sampled at 50 kHz) 51000 packets of 144 samples from 2017-04-18T02:30:58.424.999. Part 133/147

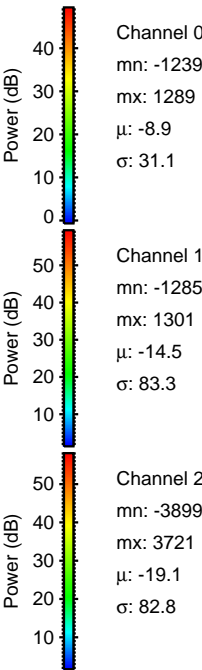
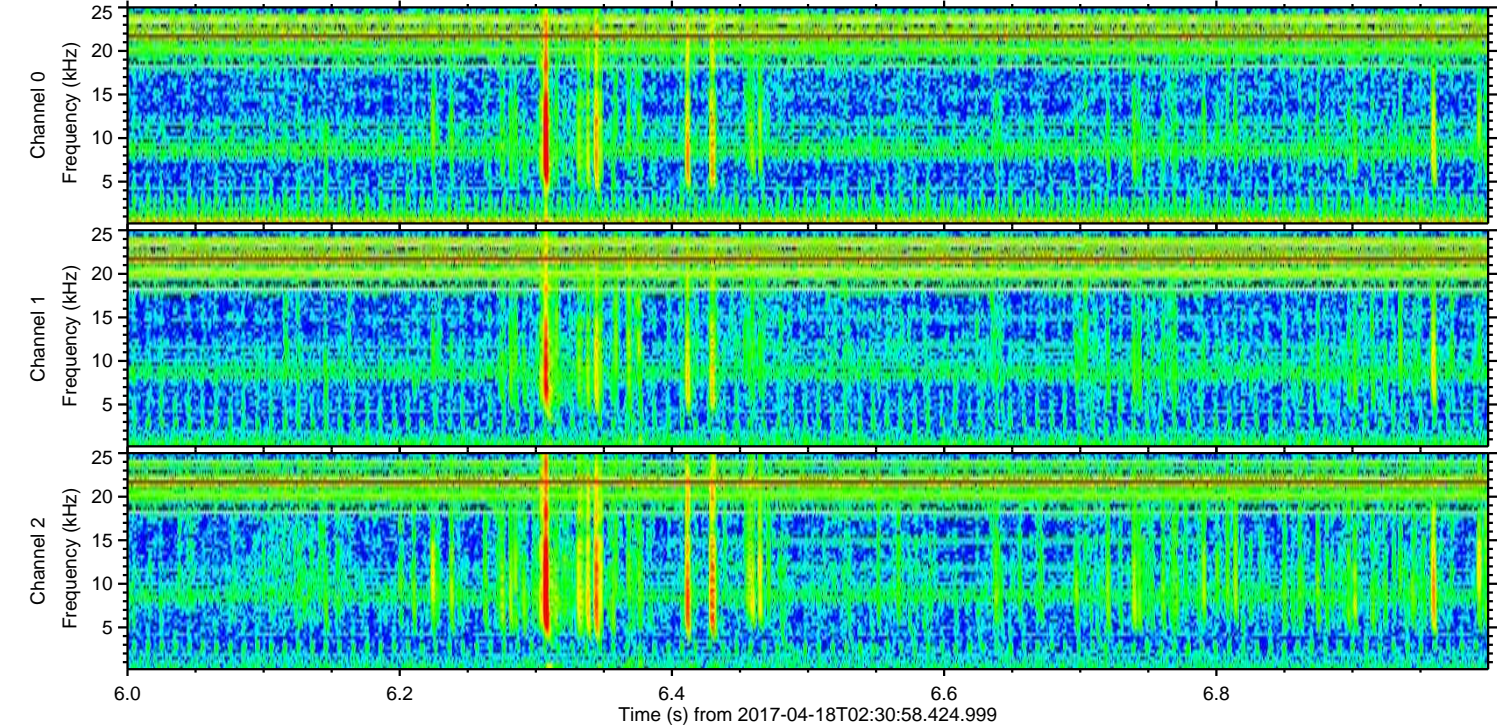
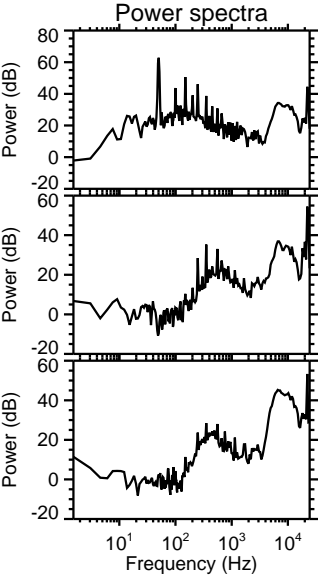
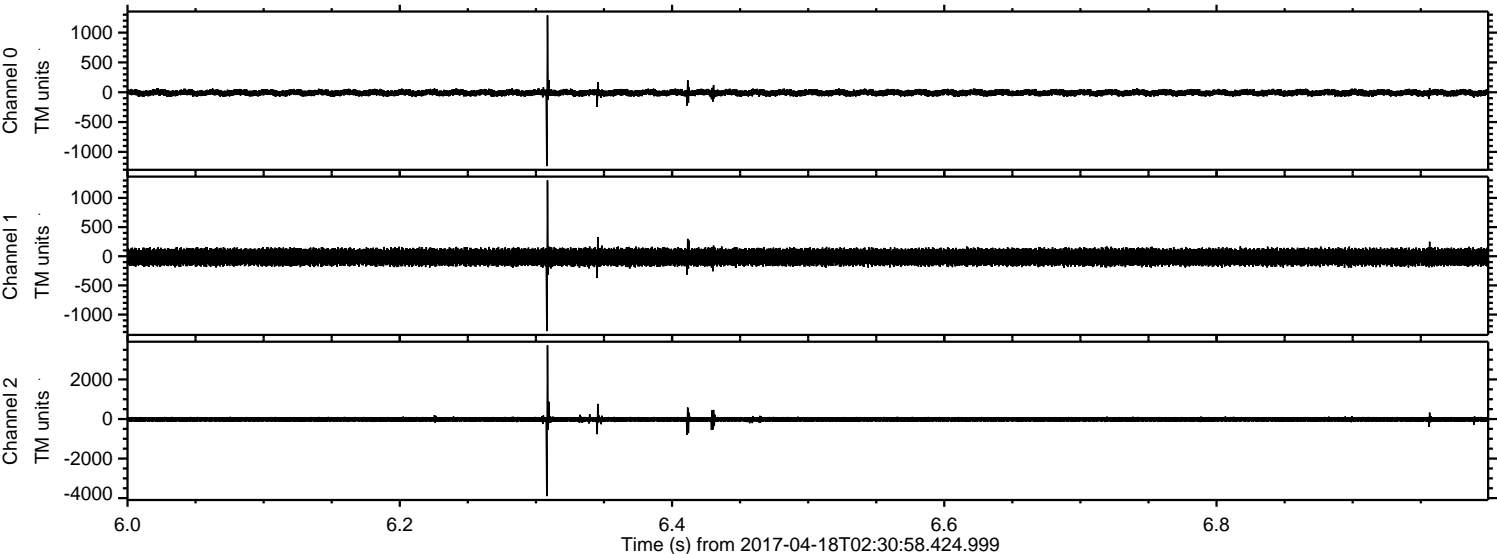
Processed Tue Apr 18 04:38:27 2017 by ELM ver.2012-10-06 from 001\_\_elm20170418\_023057\_\_dat00.bin





ELMAVAN 3D WAVEFORMS (Measured data sampled at 50 kHz) 51000 packets of 144 samples from 2017-04-18T02:30:58.424.999. Part 7/147

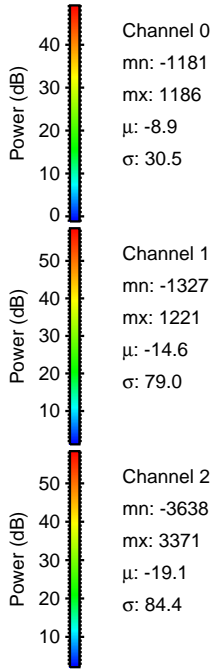
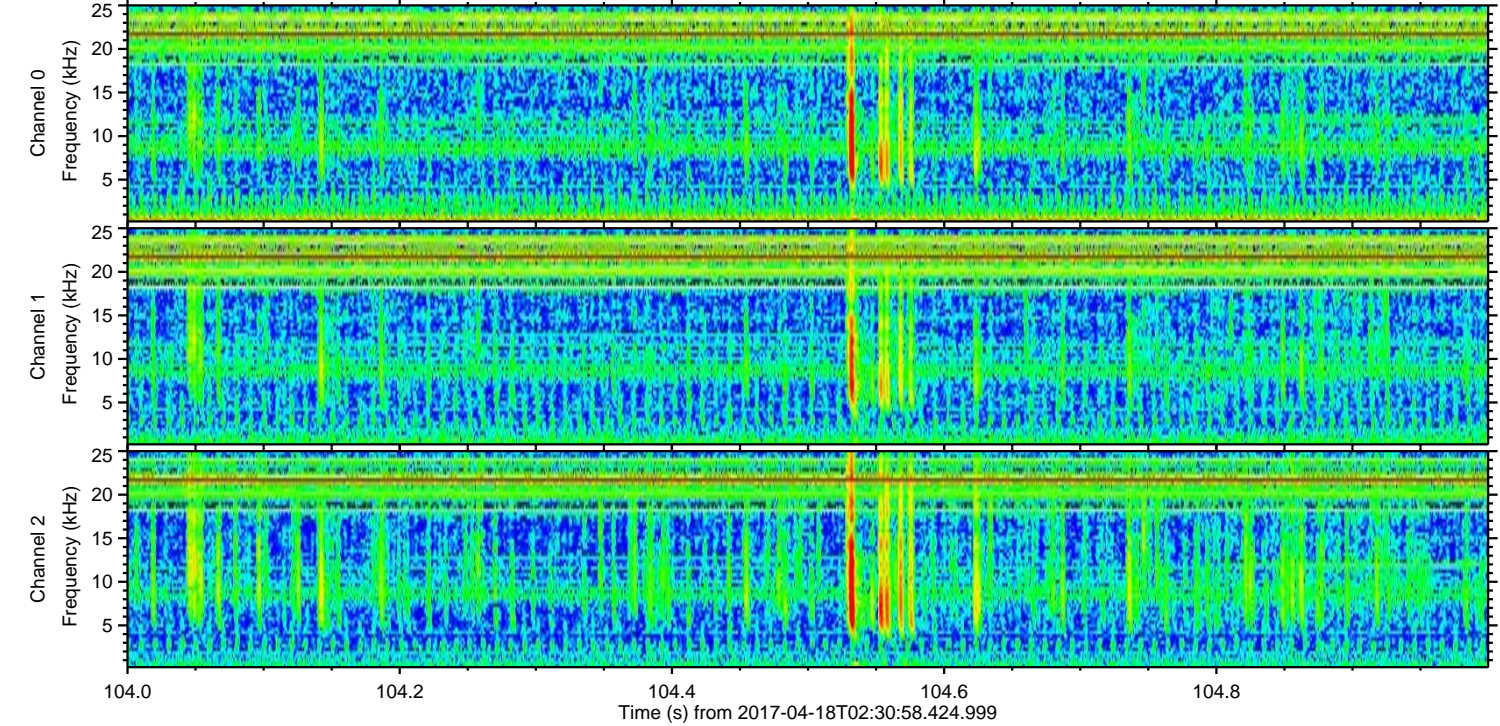
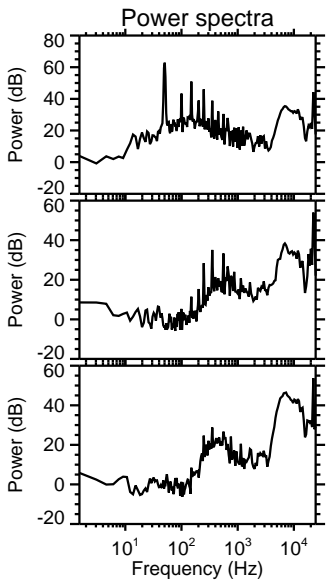
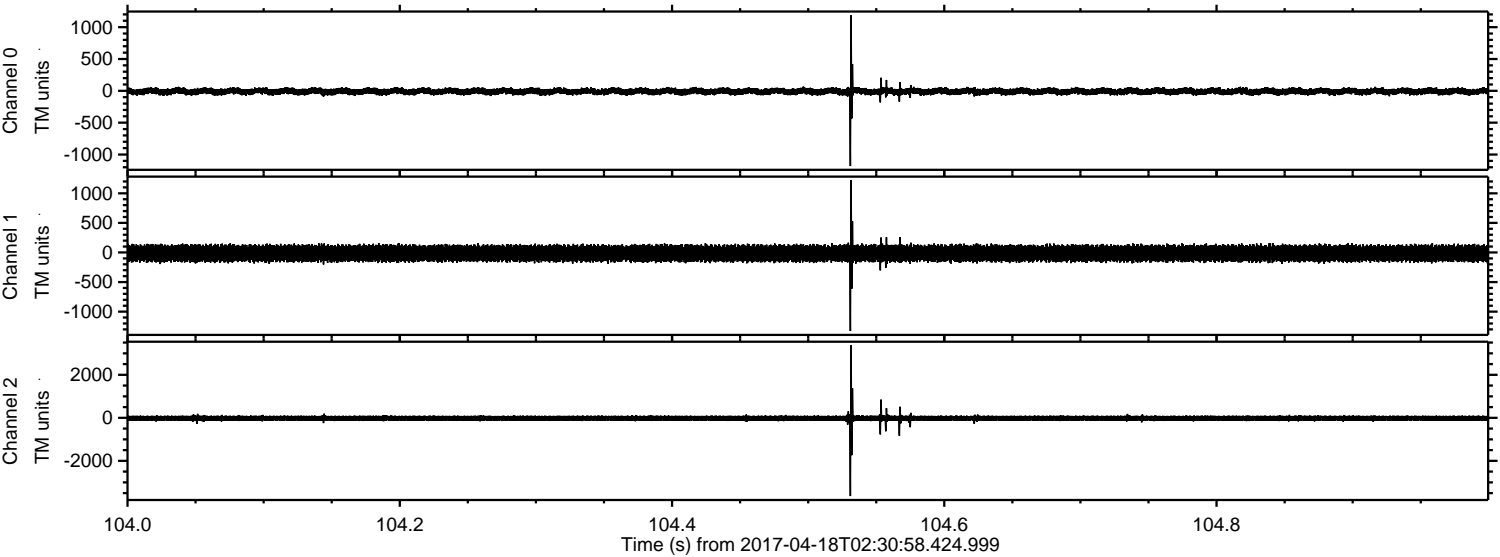
Processed Tue Apr 18 04:38:28 2017 by ELM ver.2012-10-06 from 001\_\_elm20170418\_023057\_\_dat00.bin





ELMAVAN 3D WAVEFORMS (Measured data sampled at 50 kHz) 51000 packets of 144 samples from 2017-04-18T02:30:58.424.999. Part 105/147

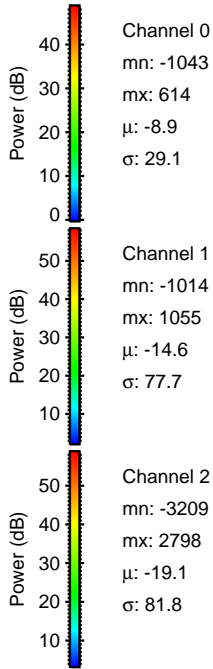
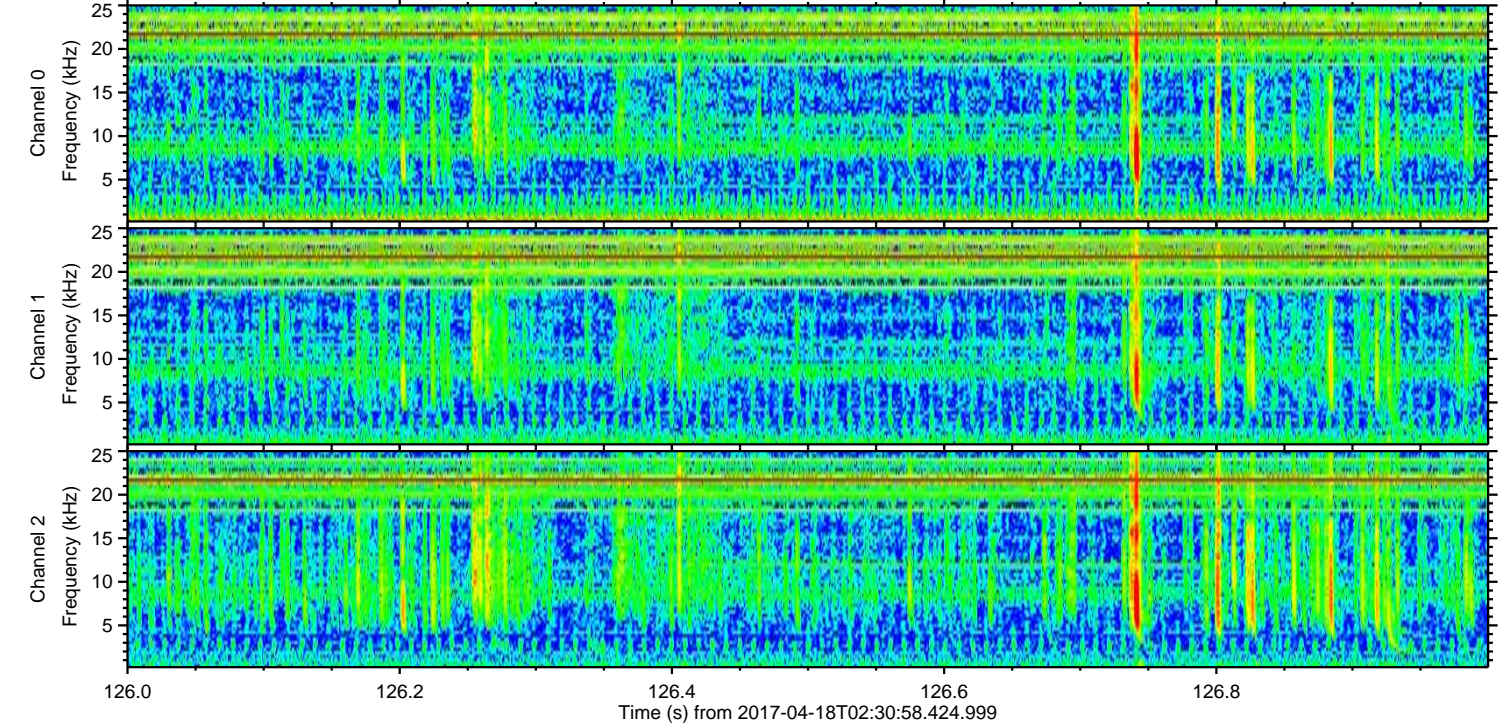
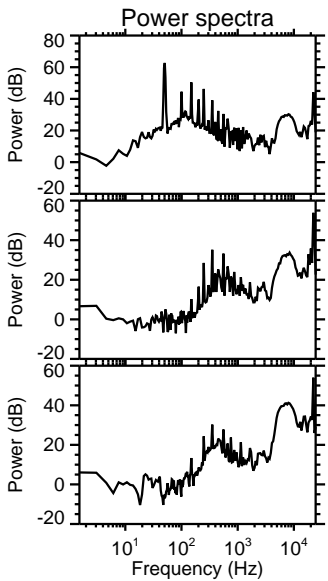
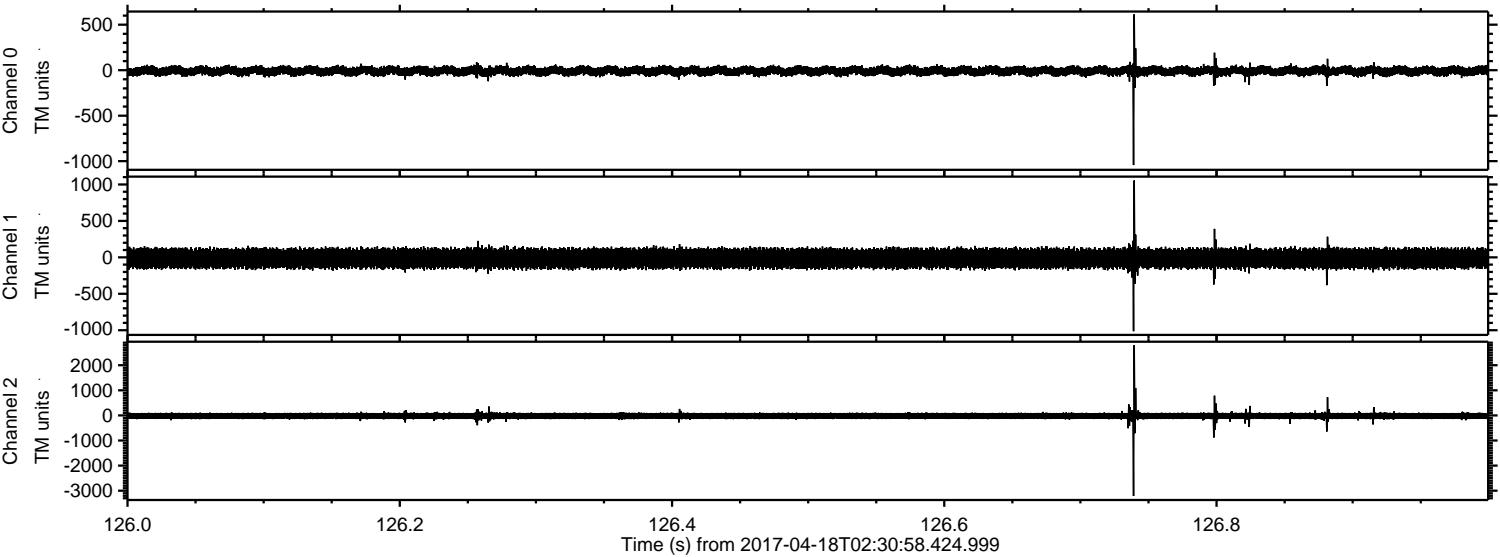
Processed Tue Apr 18 04:38:29 2017 by ELM ver.2012-10-06 from 001\_\_elm20170418\_023057\_\_dat00.bin





ELMAVAN 3D WAVEFORMS (Measured data sampled at 50 kHz) 51000 packets of 144 samples from 2017-04-18T02:30:58.424.999. Part 127/147

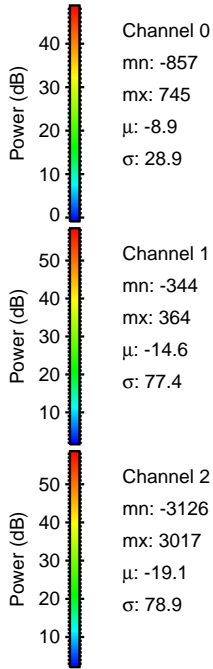
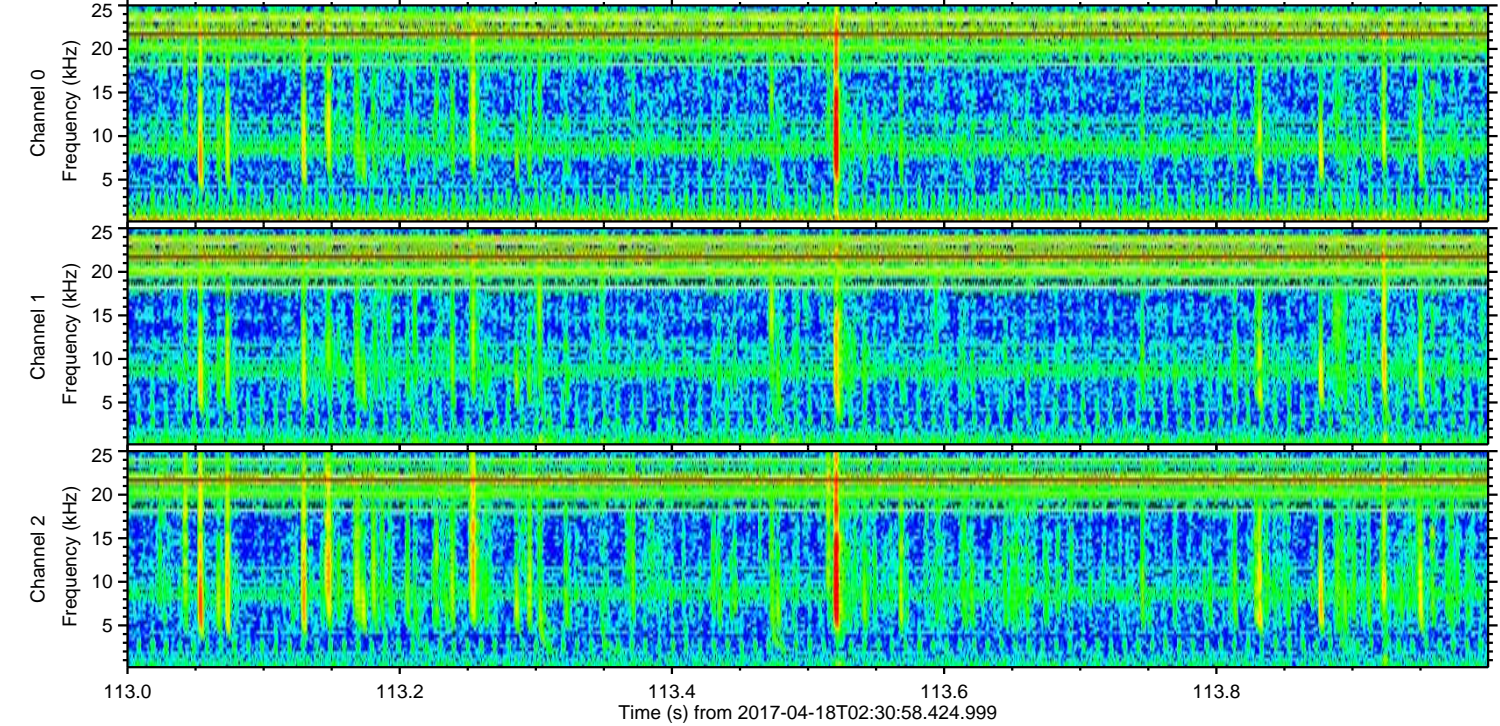
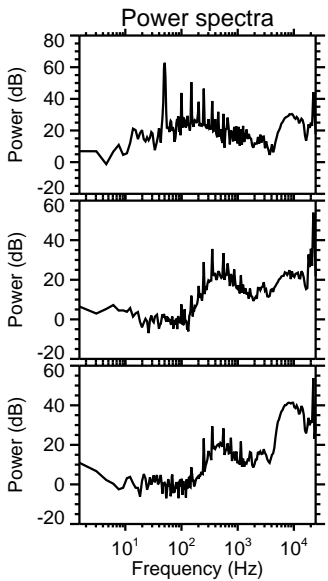
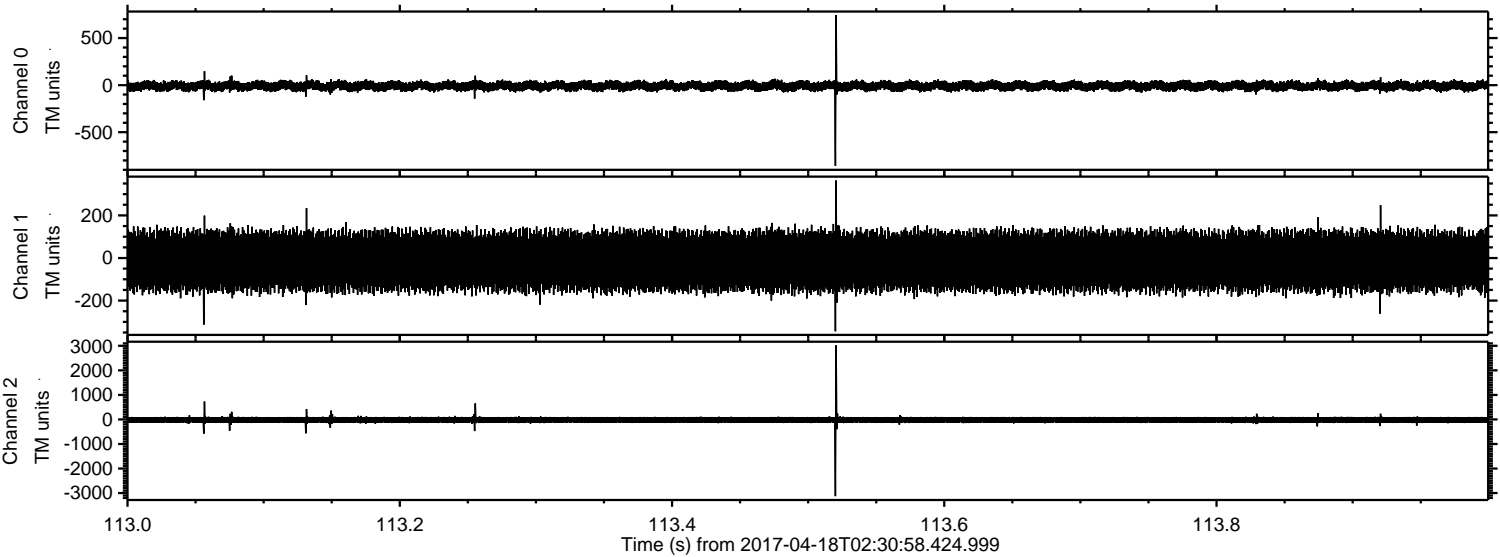
Processed Tue Apr 18 04:38:30 2017 by ELM ver.2012-10-06 from 001\_\_elm20170418\_023057\_\_dat00.bin





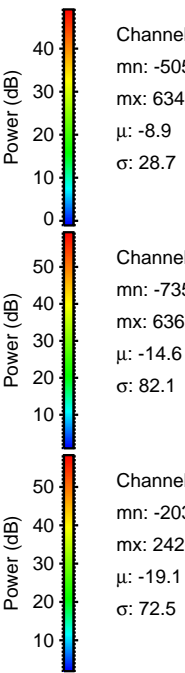
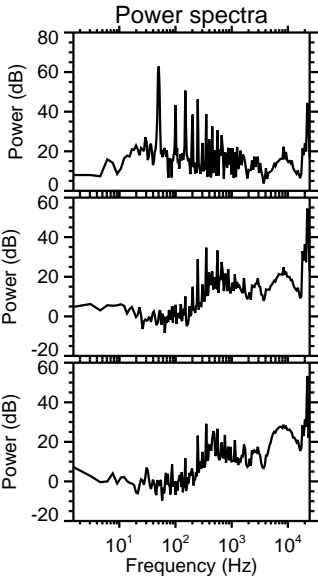
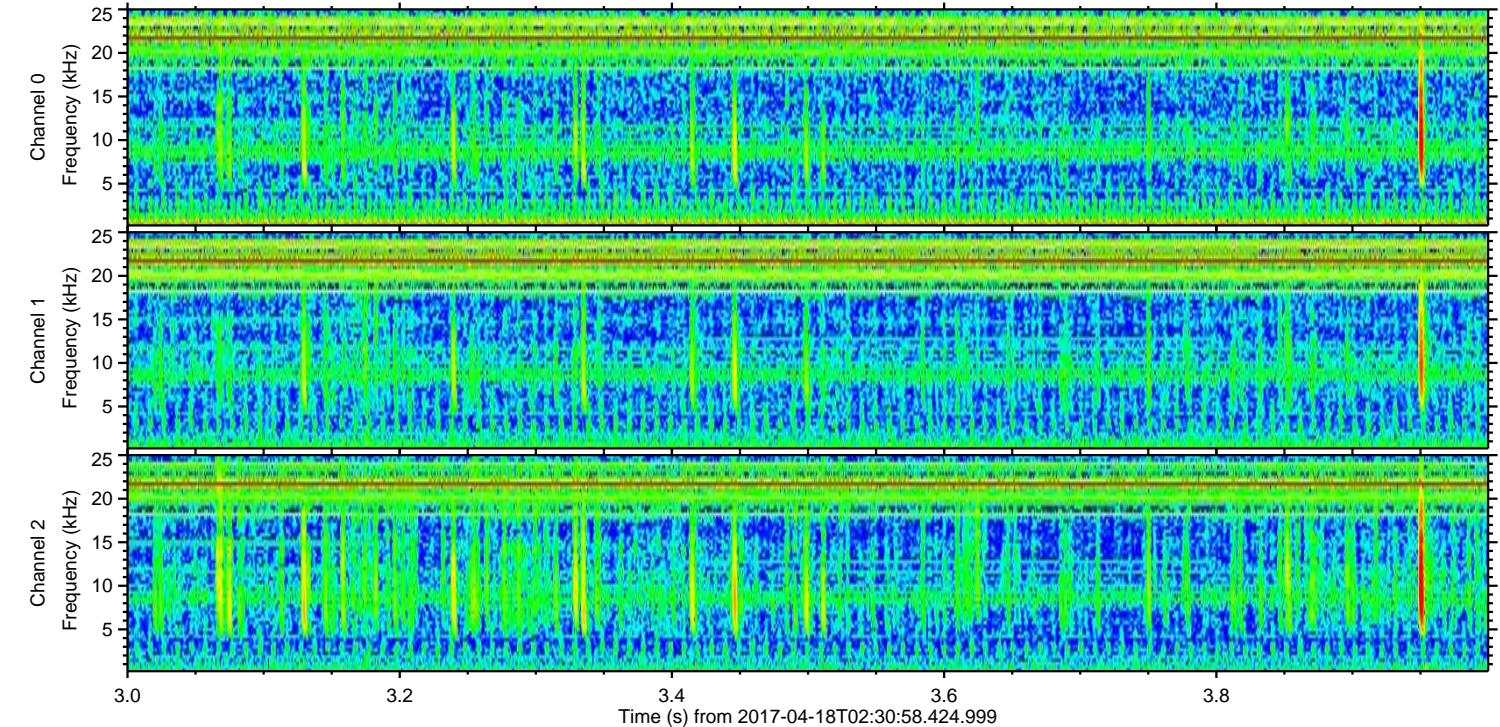
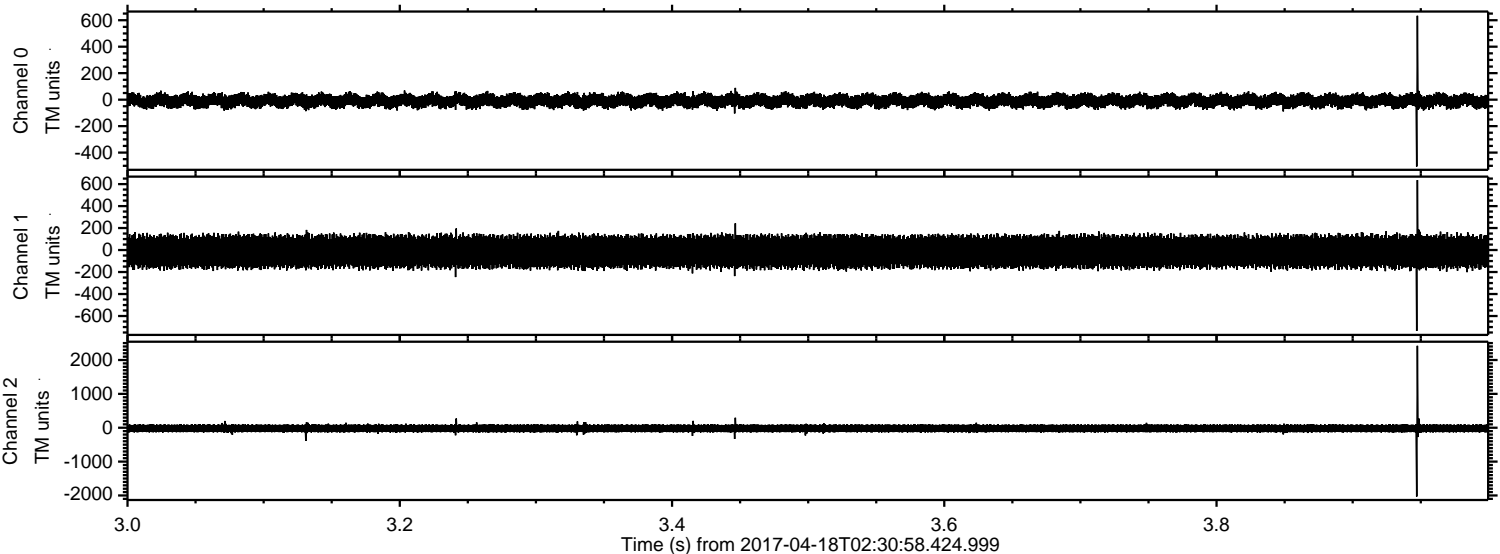
ELMAVAN 3D WAVEFORMS (Measured data sampled at 50 kHz) 51000 packets of 144 samples from 2017-04-18T02:30:58.424.999. Part 114/147

Processed Tue Apr 18 04:38:31 2017 by ELM ver.2012-10-06 from 001\_\_elm20170418\_023057\_\_dat00.bin





Processed Tue Apr 18 04:38:32 2017 by ELM ver.2012-10-06 from 001\_\_elm20170418\_023057\_\_dat00.bin



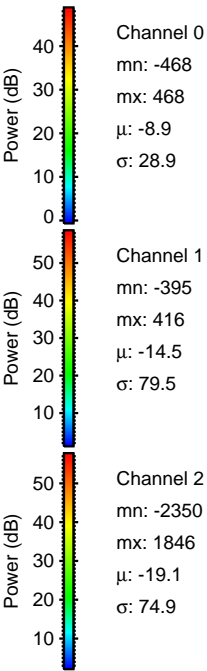
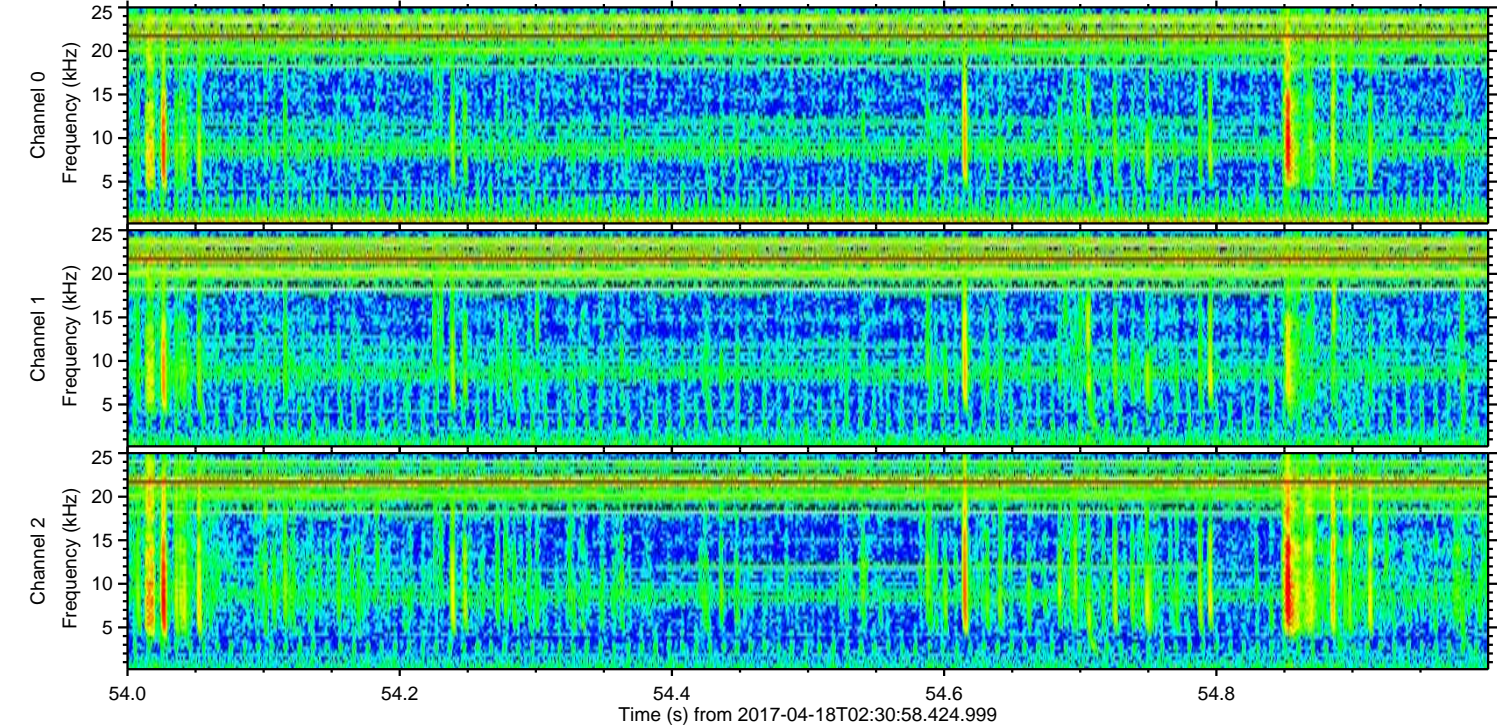
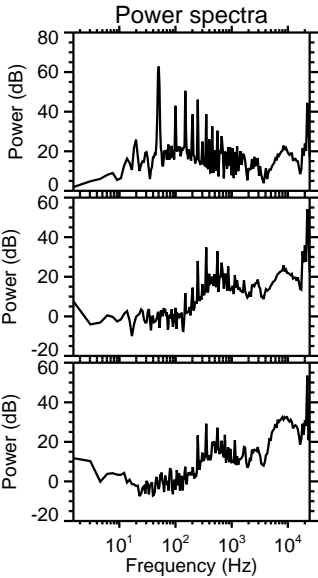
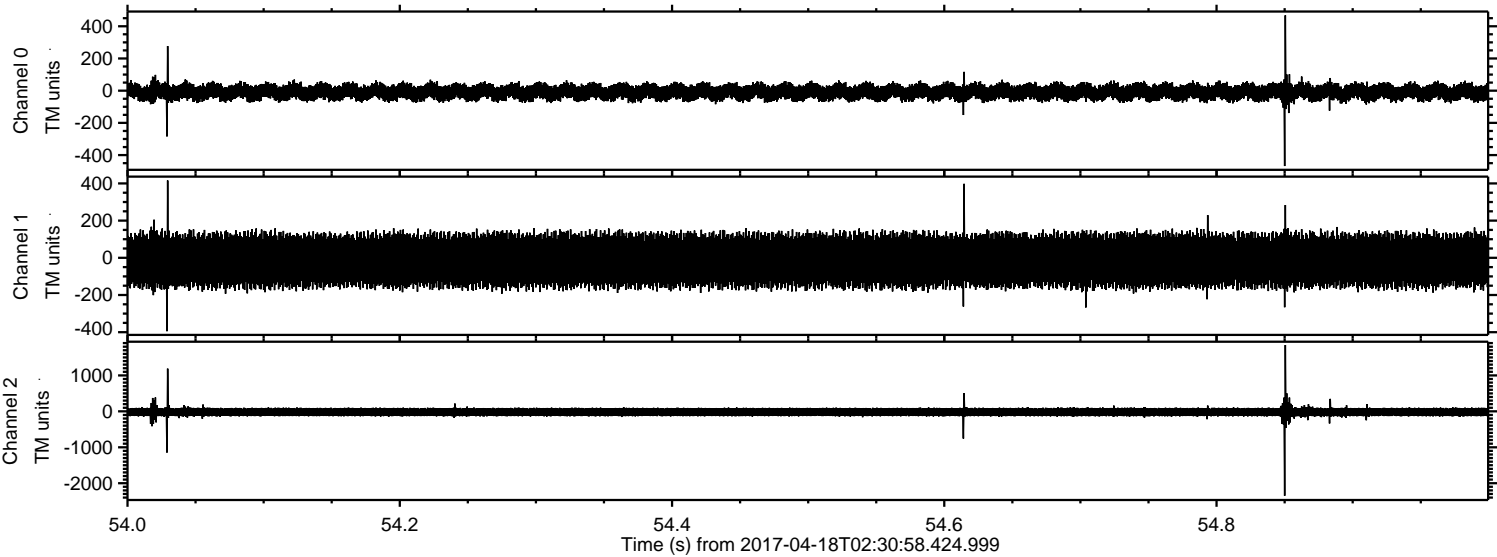
Channel 0  
mn: -505  
mx: 634  
 $\mu$ : -8.9  
 $\sigma$ : 28.7

Channel 1  
mn: -735  
mx: 636  
 $\mu$ : -14.6  
 $\sigma$ : 82.1

Channel 2  
mn: -2032  
mx: 2420  
 $\mu$ : -19.1  
 $\sigma$ : 72.5



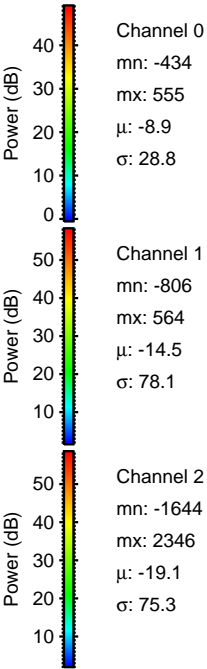
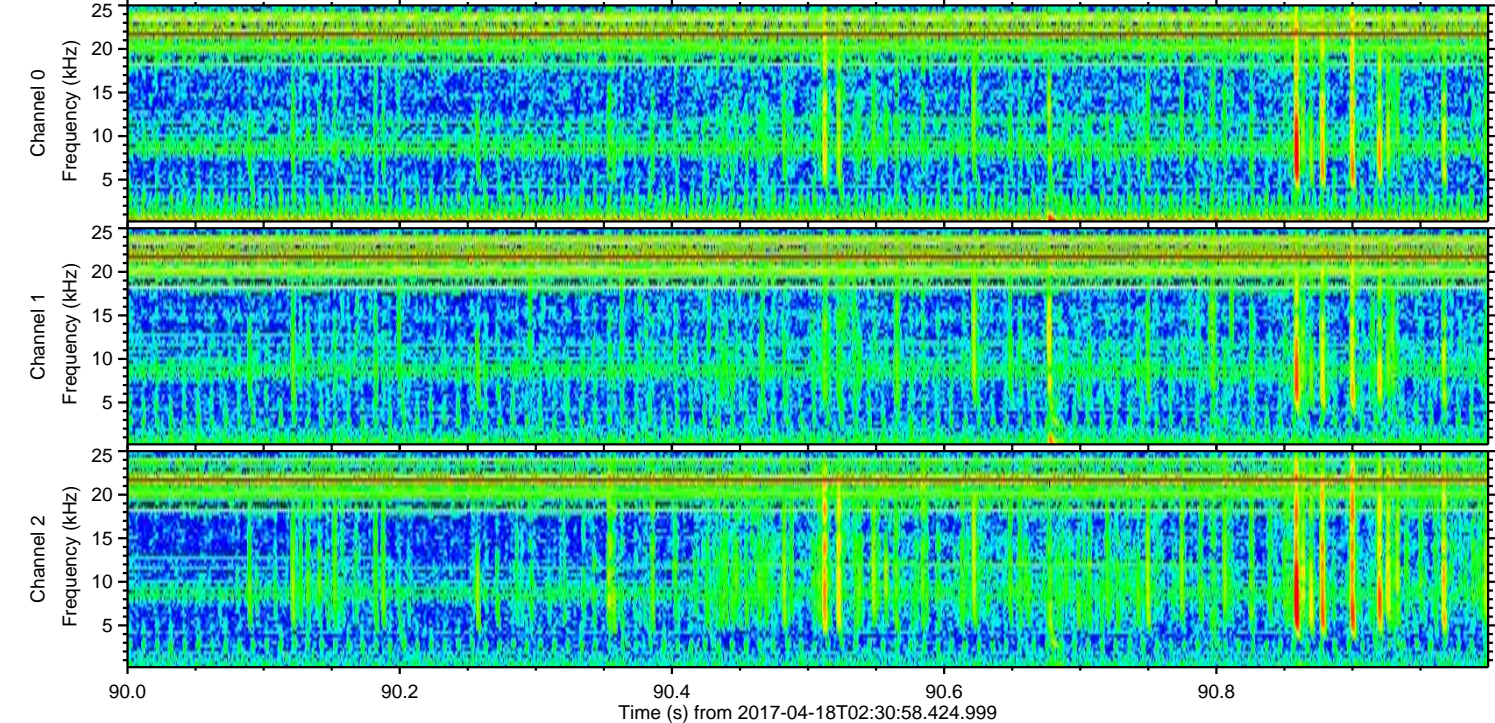
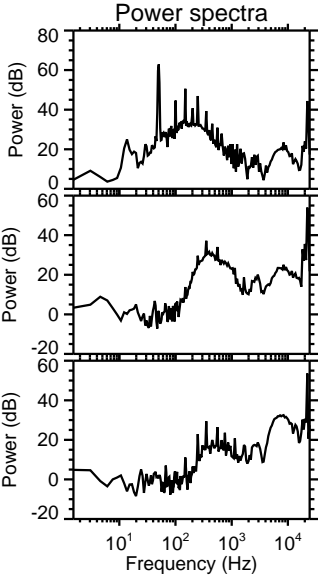
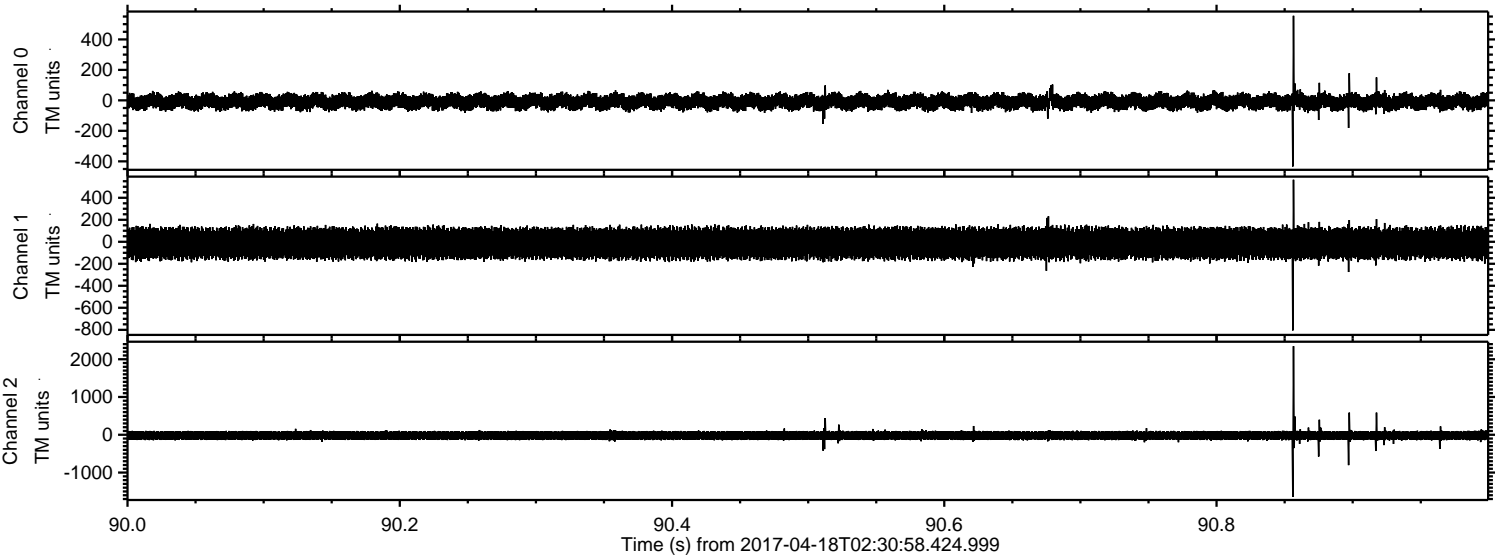
Processed Tue Apr 18 04:38:33 2017 by ELM ver.2012-10-06 from 001\_\_elm20170418\_023057\_\_dat00.bin





ELMAVAN 3D WAVEFORMS (Measured data sampled at 50 kHz) 51000 packets of 144 samples from 2017-04-18T02:30:58.424.999. Part 91/147

Processed Tue Apr 18 04:38:34 2017 by ELM ver.2012-10-06 from 001\_\_elm20170418\_023057\_\_dat00.bin





ELMAVAN 3D WAVEFORMS (Measured data sampled at 50 kHz) 51000 packets of 144 samples from 2017-04-18T02:30:58.424.999. Part 131/147

