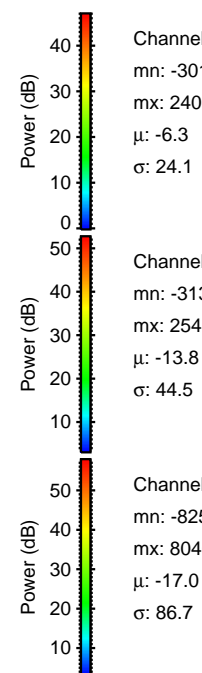
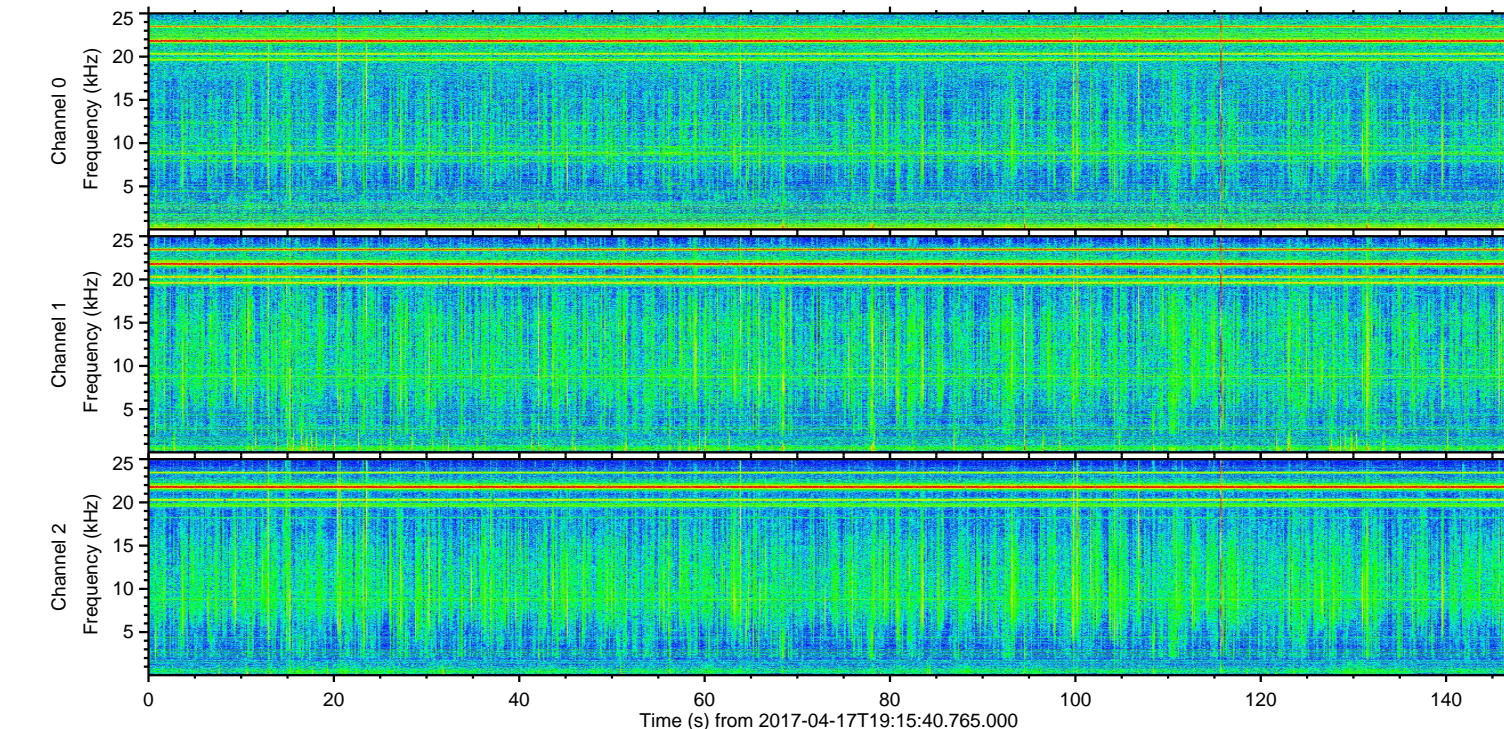
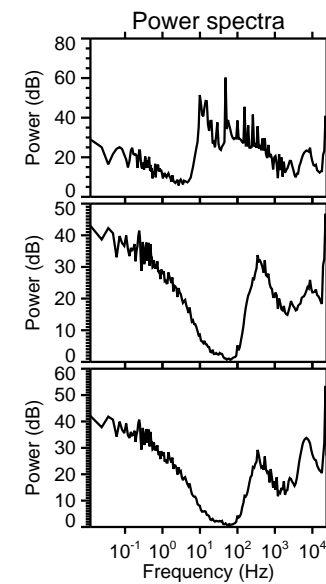
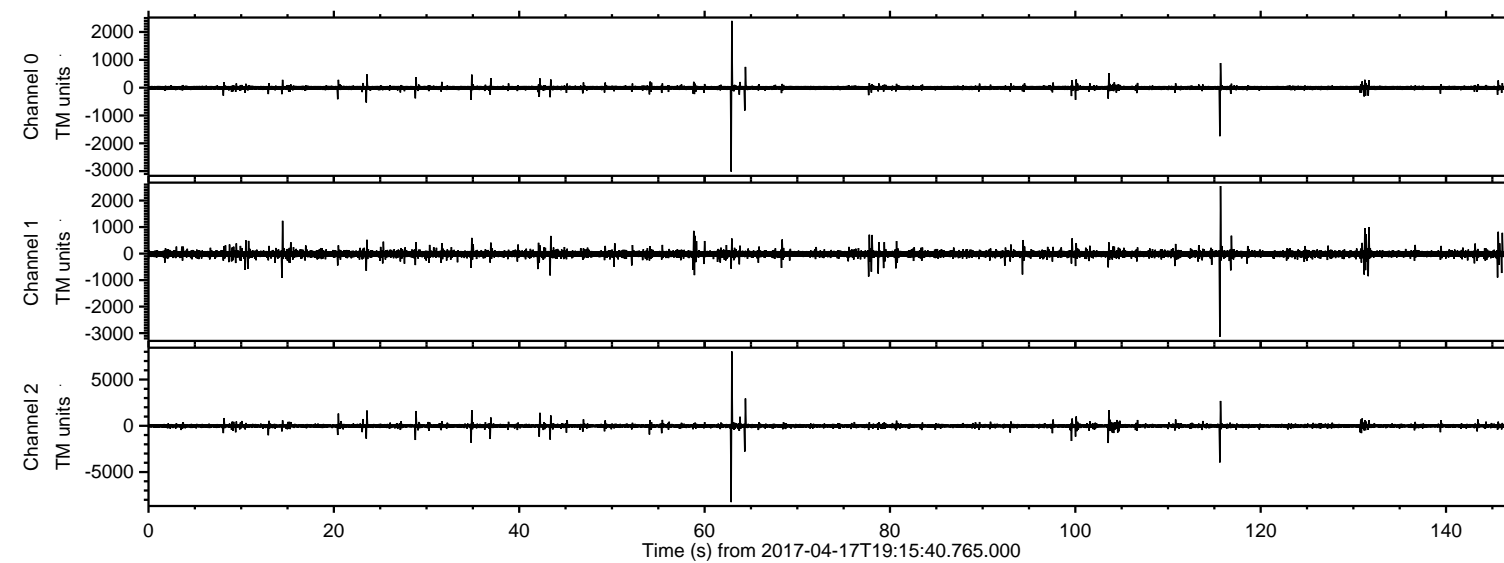
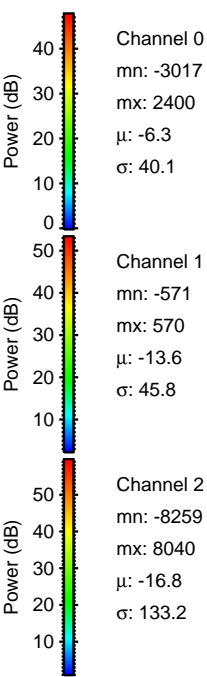
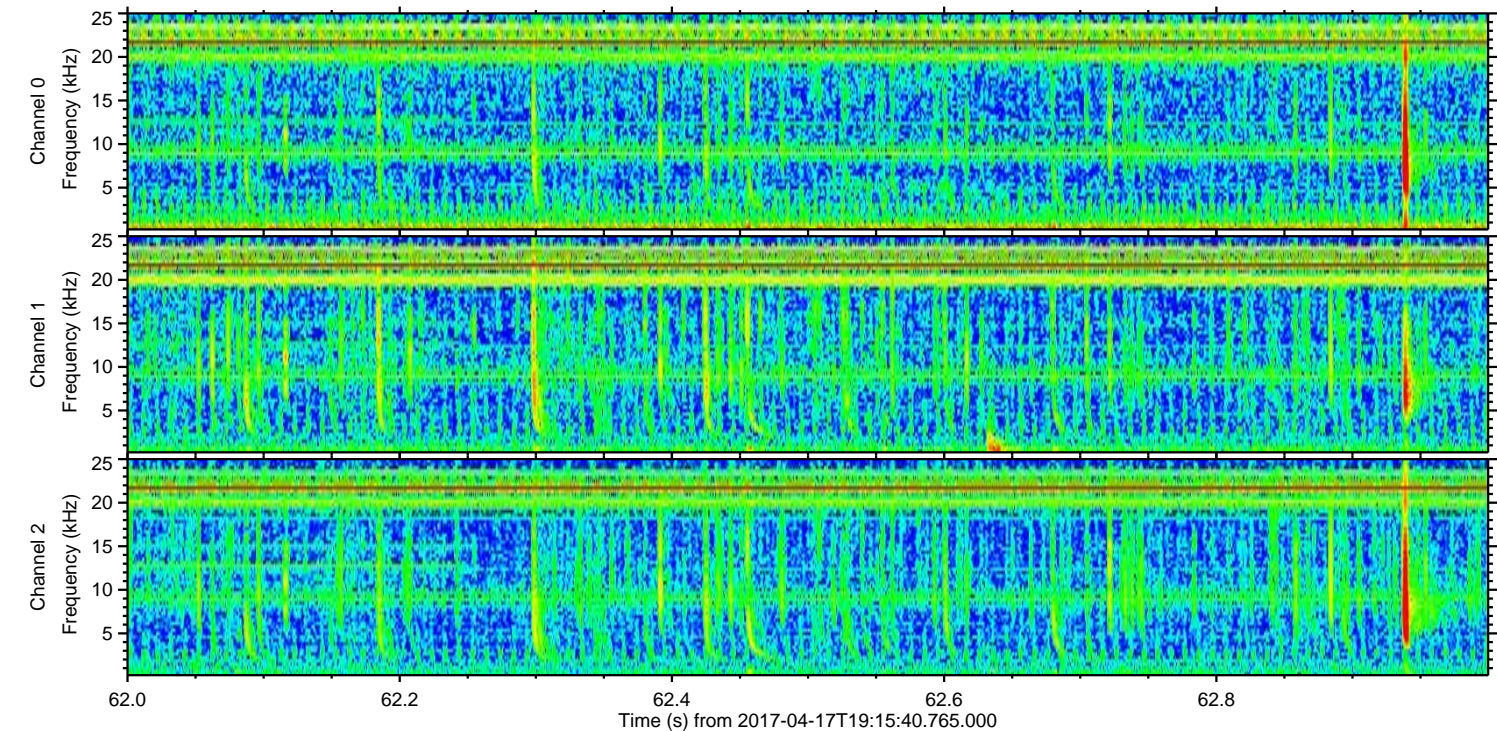
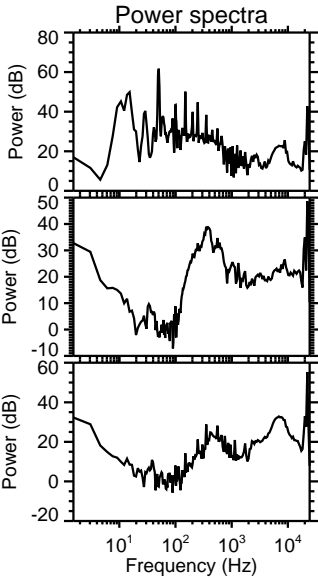
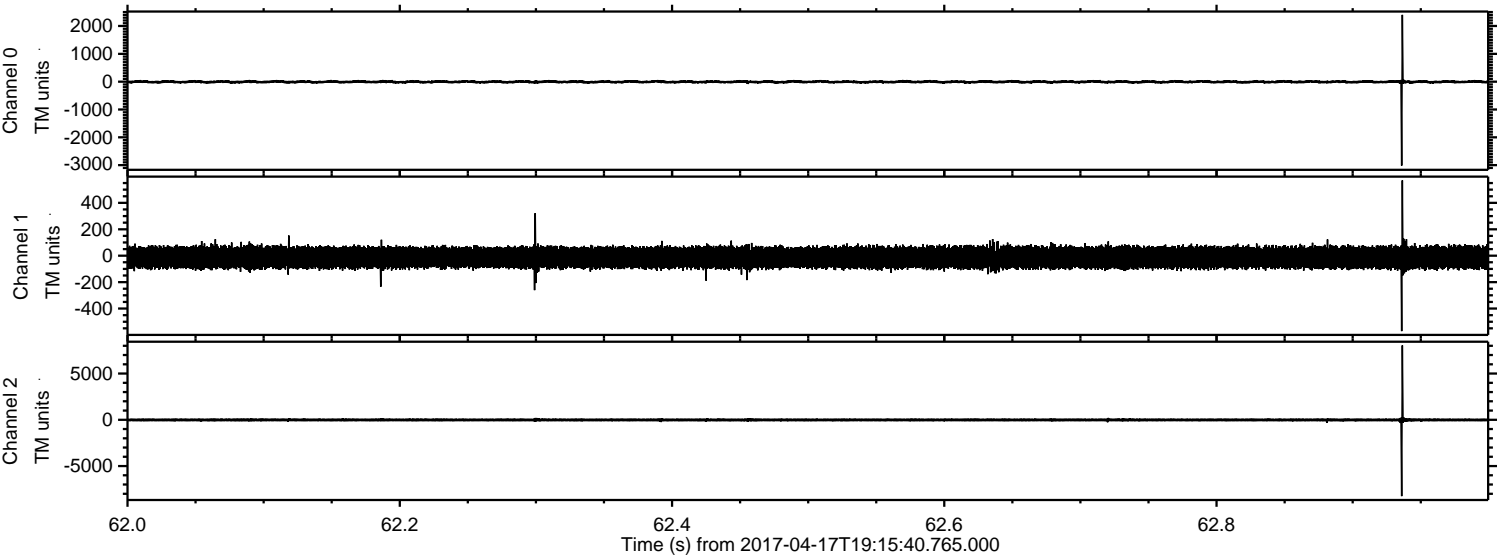


ELMAVAN 3D WAVEFORMS (Measured data sampled at 50 kHz) 51000 packets of 144 samples from 2017-04-17T19:15:40.765.000.

Processed Mon Apr 17 21:23:30 2017 by ELM ver.2012-10-06 from 001__elm20170417_191539__dat00.bin

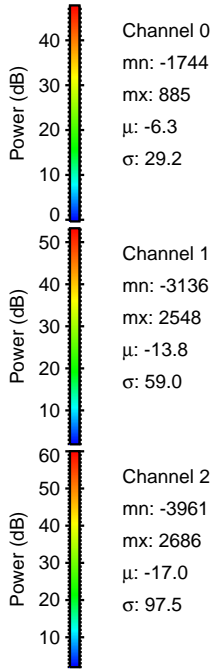
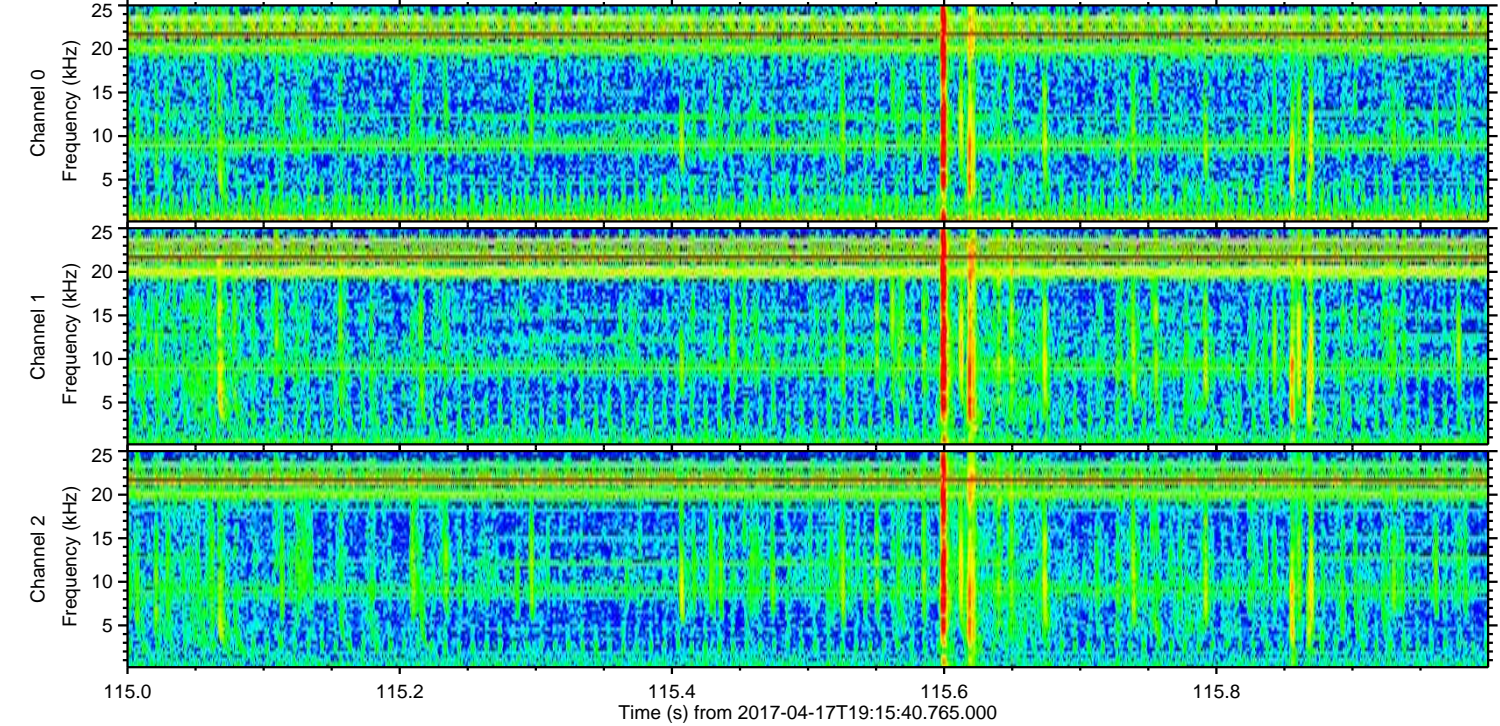
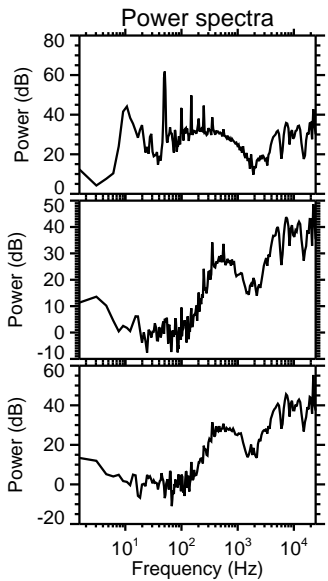
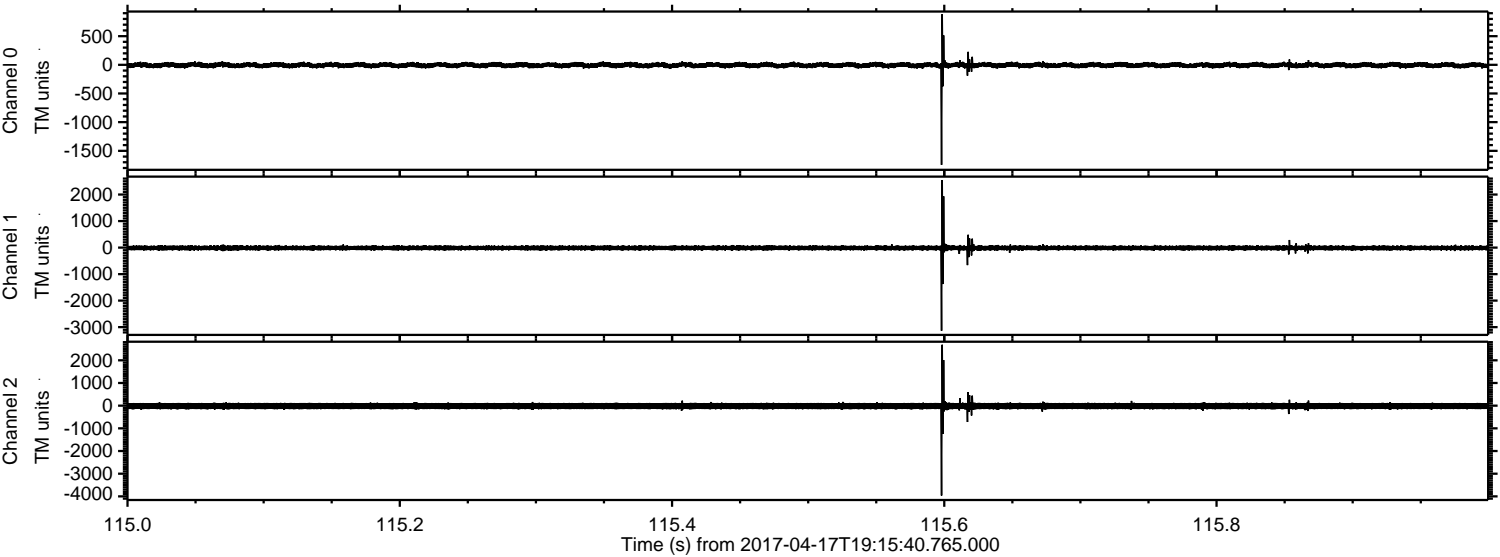


Processed Mon Apr 17 21:23:42 2017 by ELM ver.2012-10-06 from 001__elm20170417_191539__dat00.bin

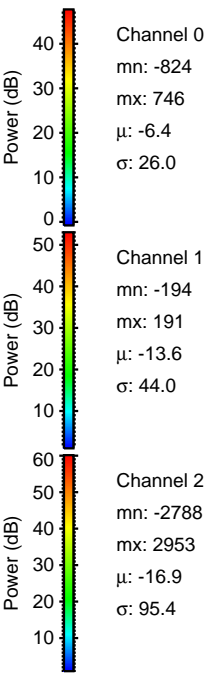
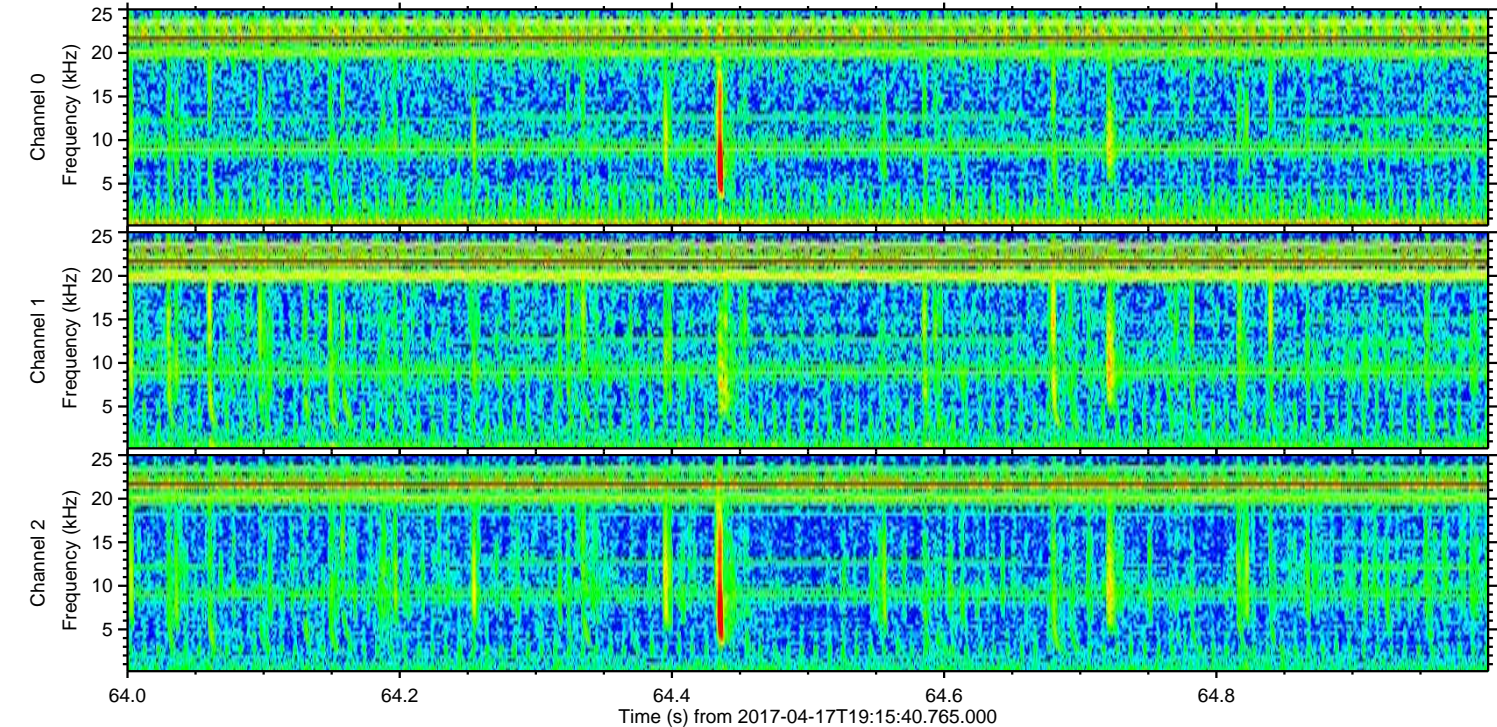
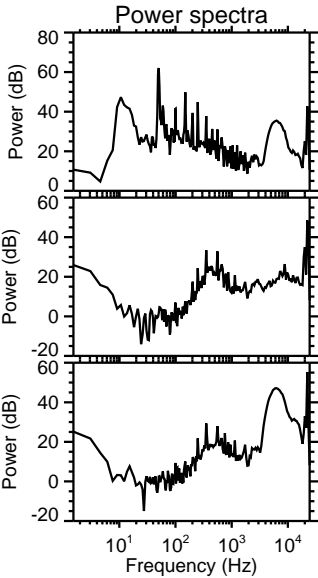
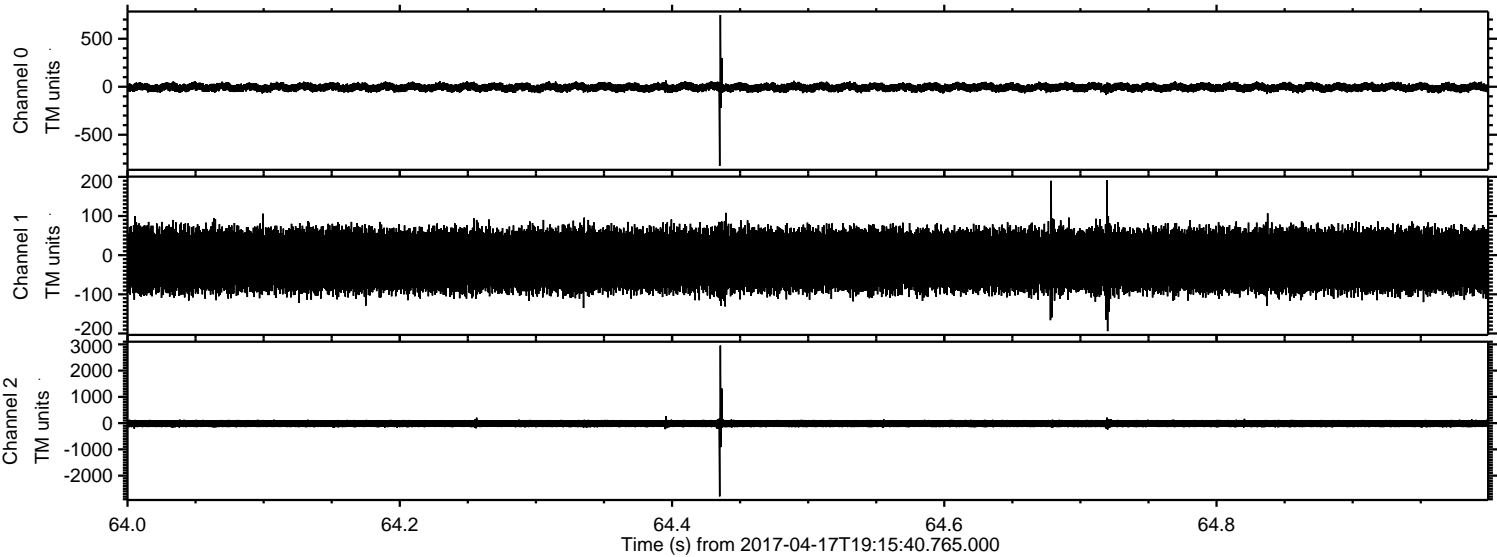


ELMAVAN 3D WAVEFORMS (Measured data sampled at 50 kHz) 51000 packets of 144 samples from 2017-04-17T19:15:40.765.000. Part 116/147

Processed Mon Apr 17 21:23:43 2017 by ELM ver.2012-10-06 from 001__elm20170417_191539__dat00.bin

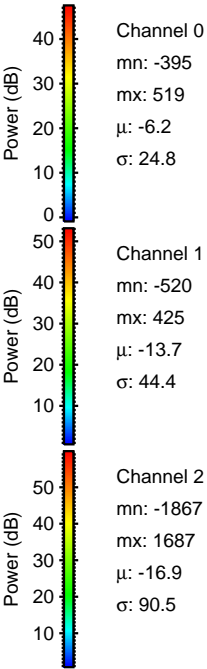
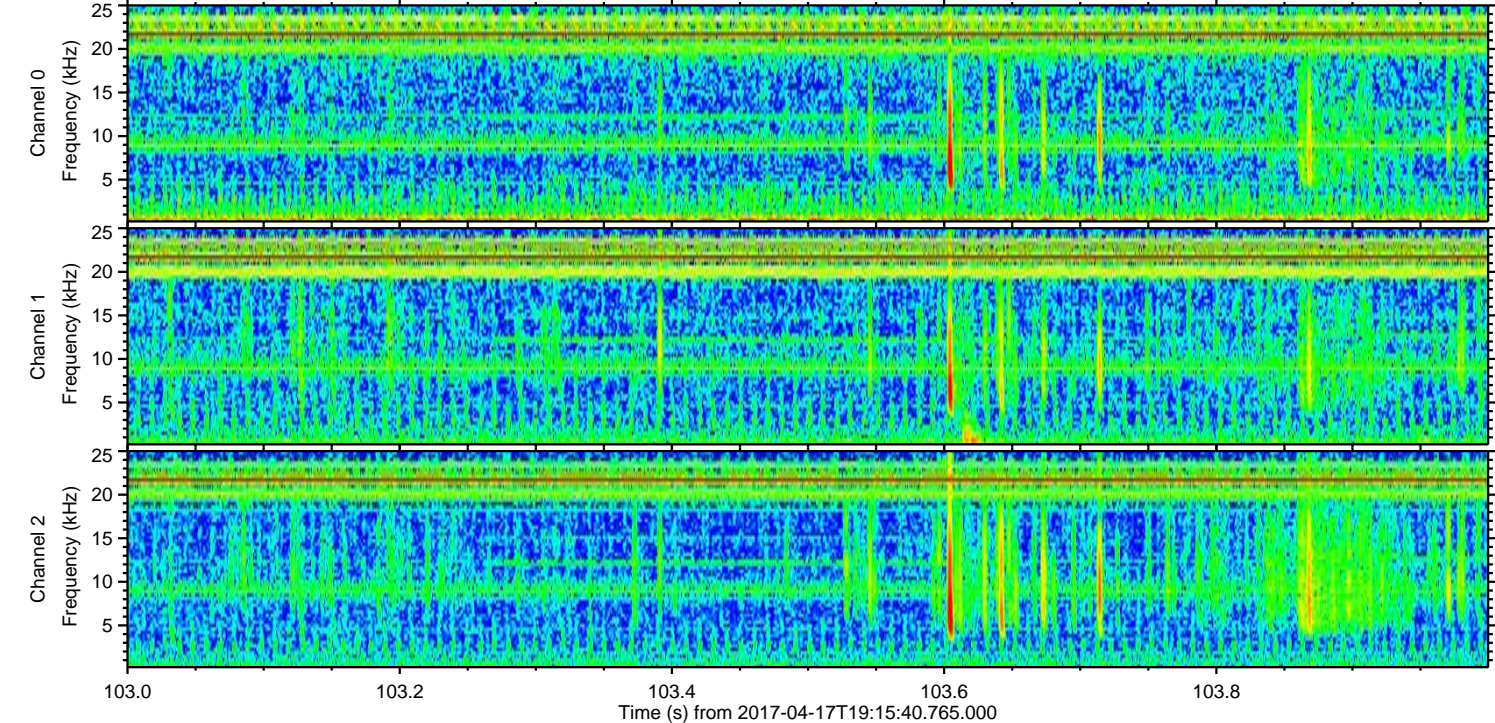
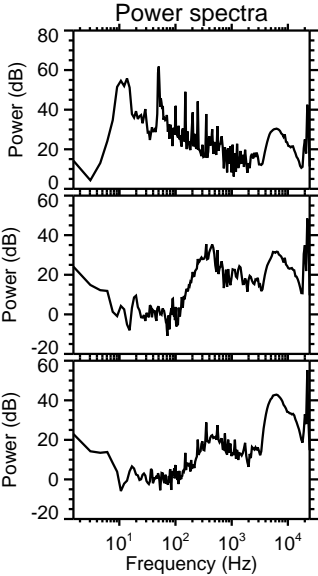
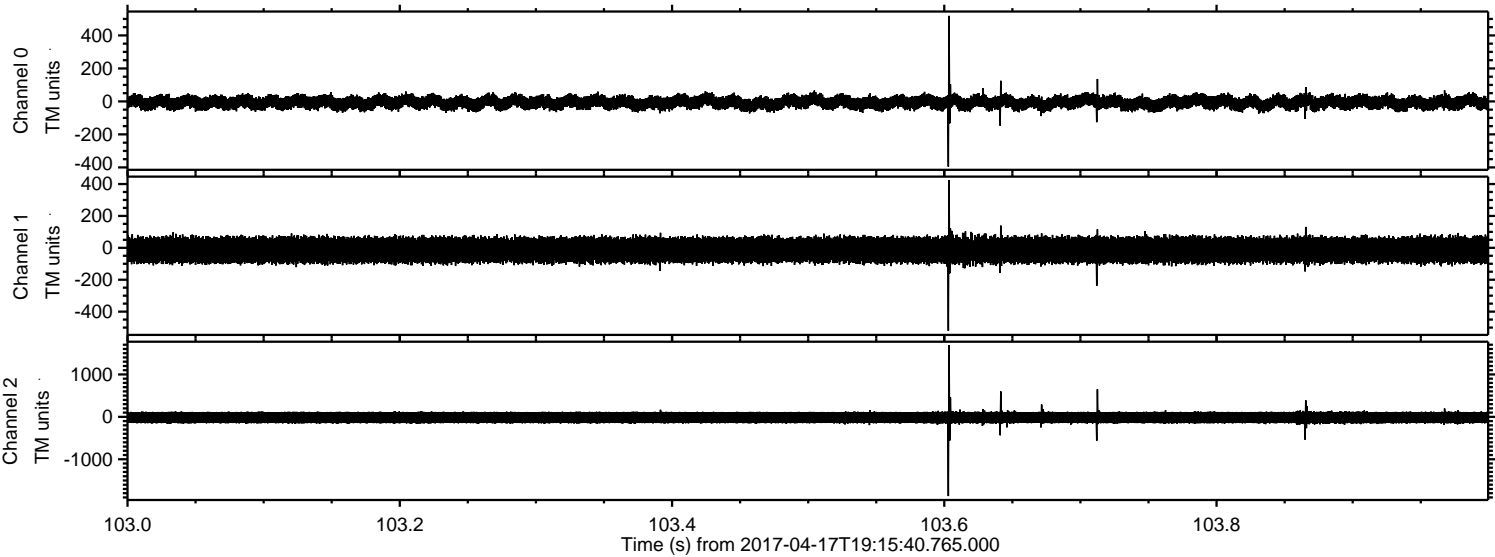


Processed Mon Apr 17 21:23:44 2017 by ELM ver.2012-10-06 from 001__elm20170417_191539__dat00.bin

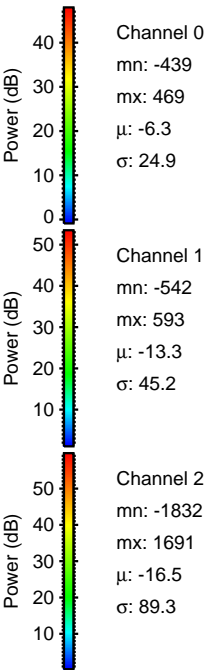
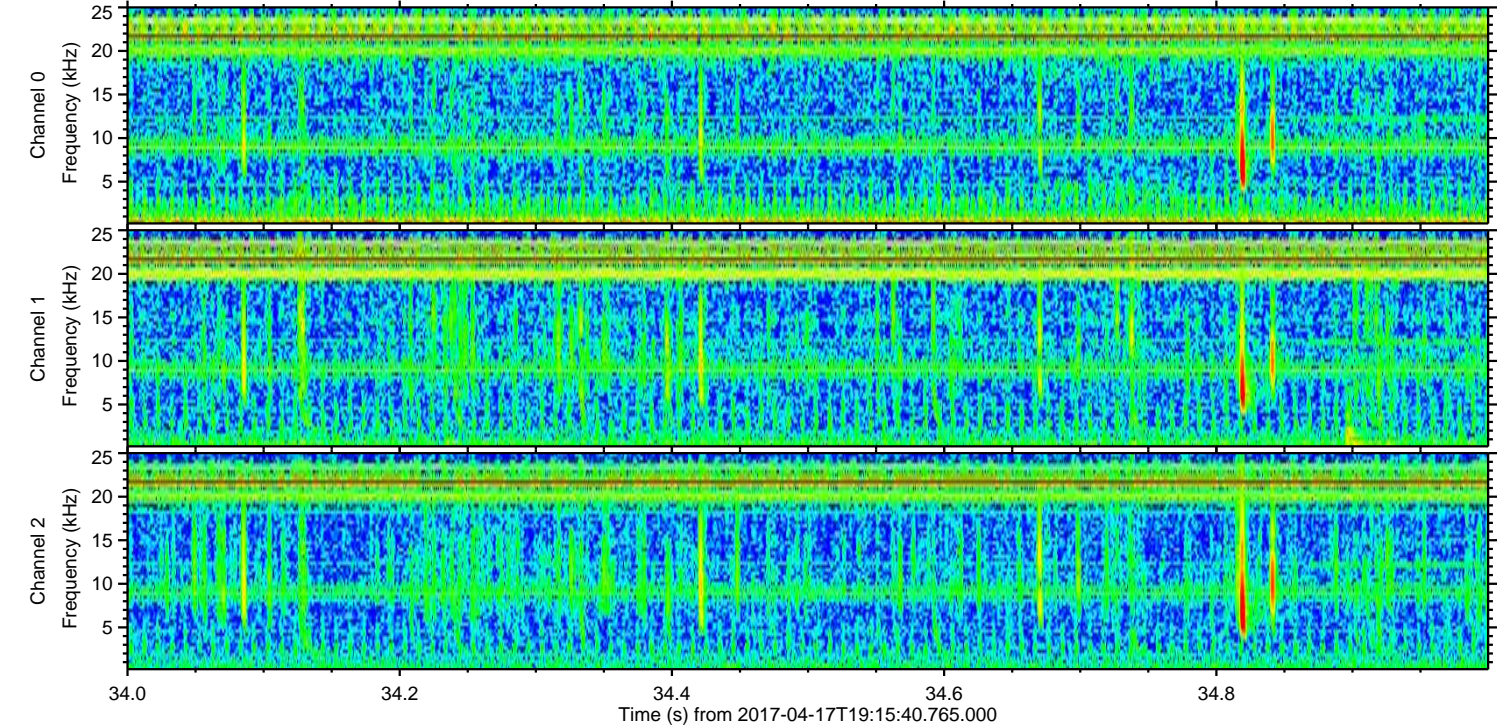
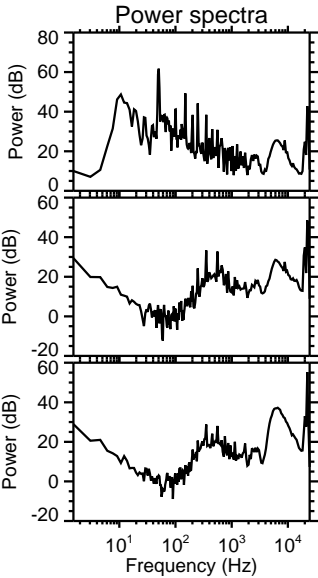
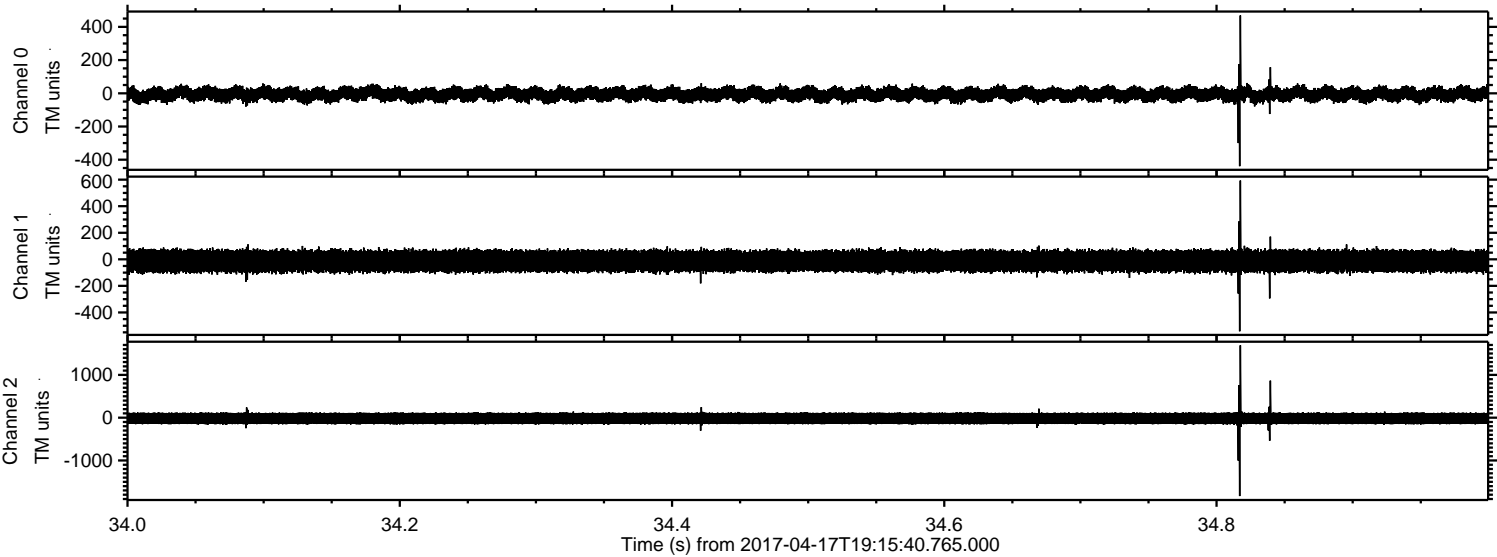


ELMAVAN 3D WAVEFORMS (Measured data sampled at 50 kHz) 51000 packets of 144 samples from 2017-04-17T19:15:40.765.000. Part 104/147

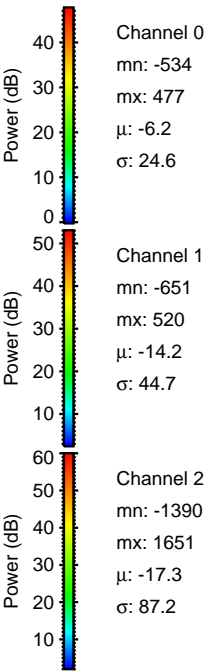
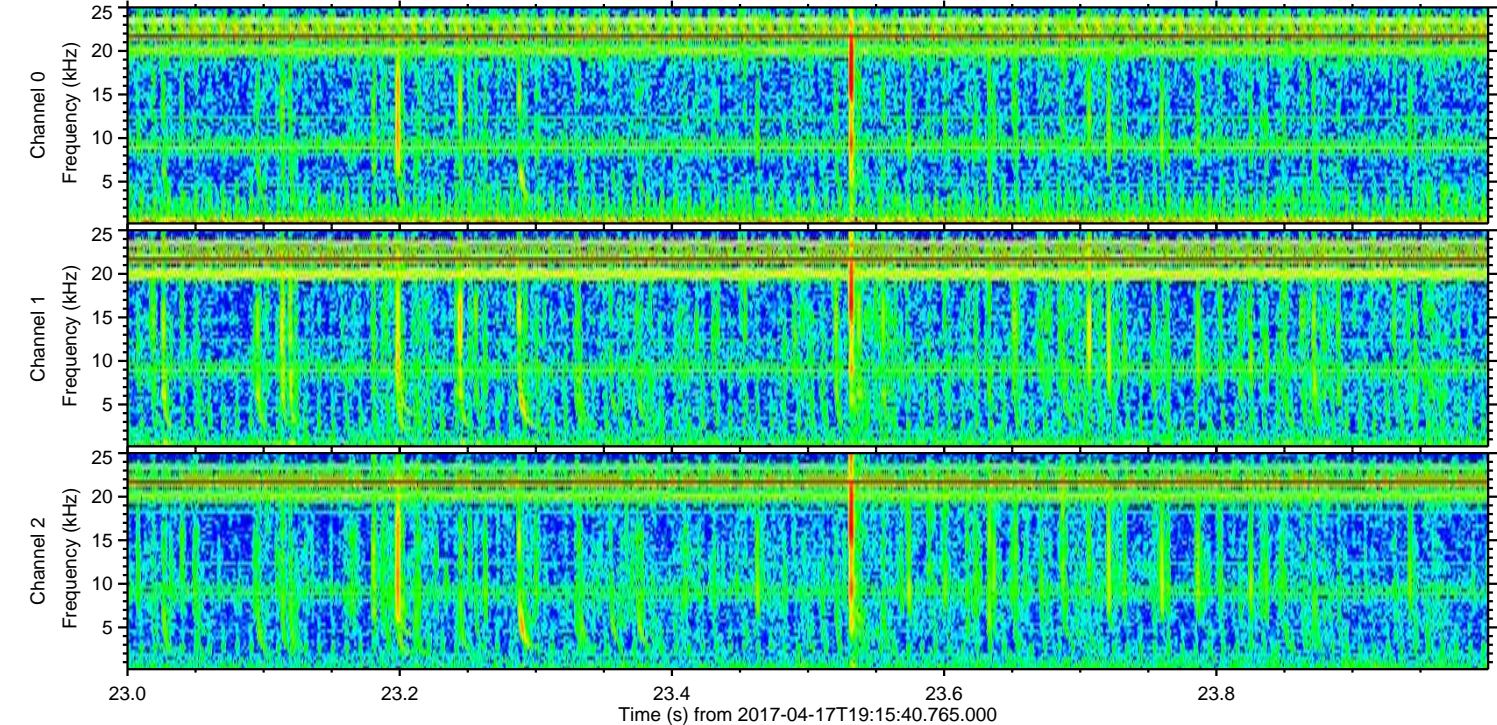
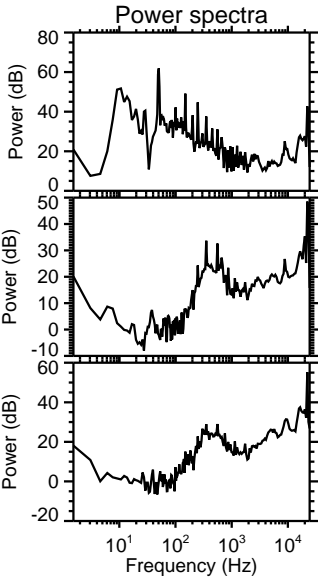
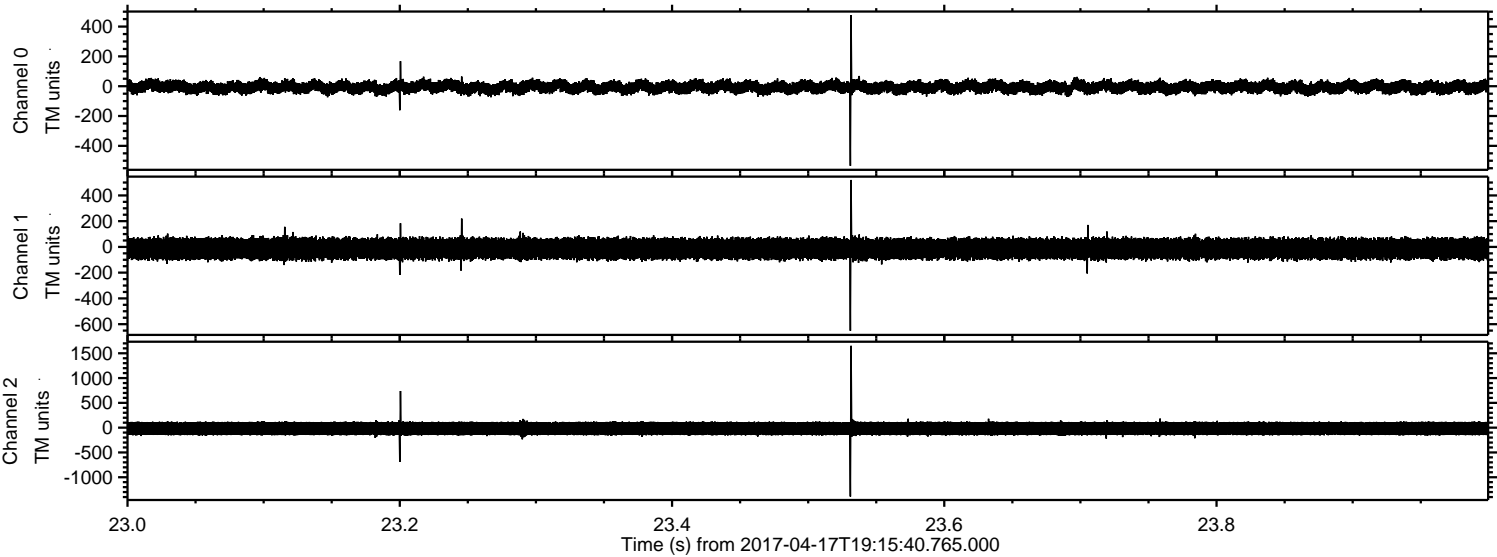
Processed Mon Apr 17 21:23:45 2017 by ELM ver.2012-10-06 from 001__elm20170417_191539__dat00.bin



Processed Mon Apr 17 21:23:46 2017 by ELM ver.2012-10-06 from 001__elm20170417_191539__dat00.bin

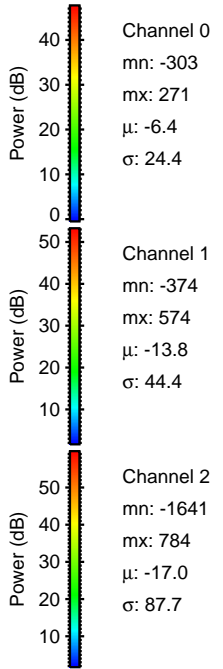
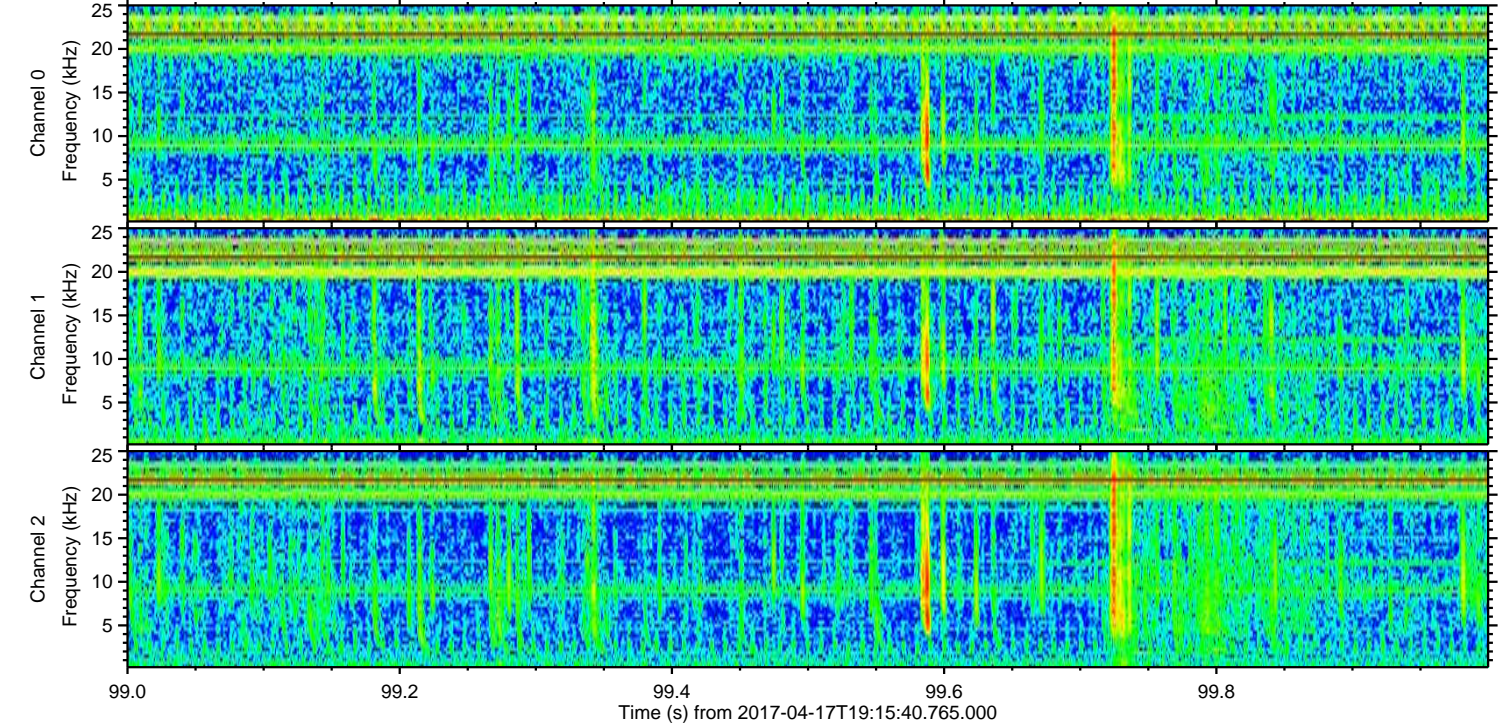
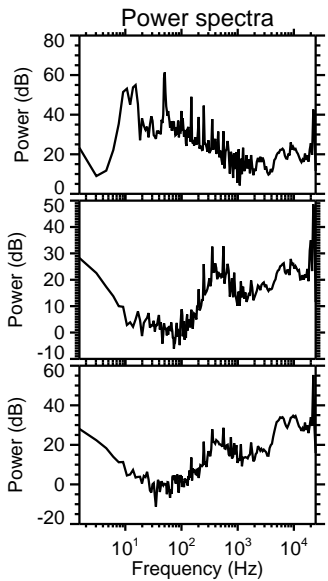
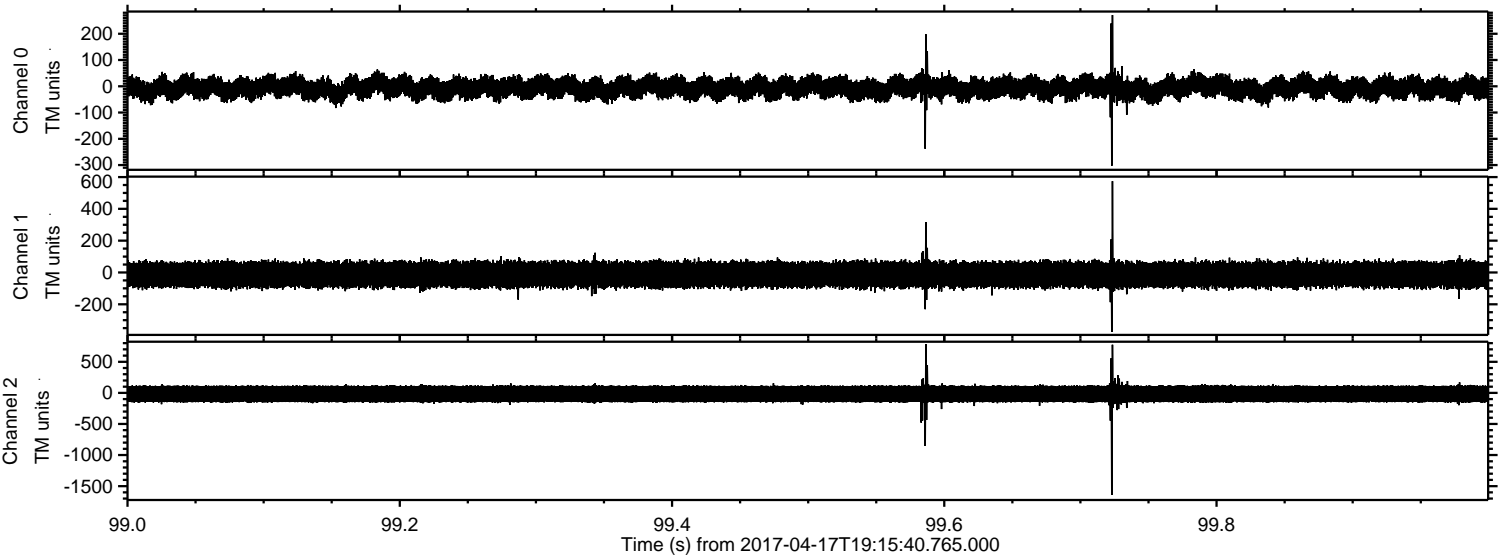


Processed Mon Apr 17 21:23:47 2017 by ELM ver.2012-10-06 from 001__elm20170417_191539__dat00.bin

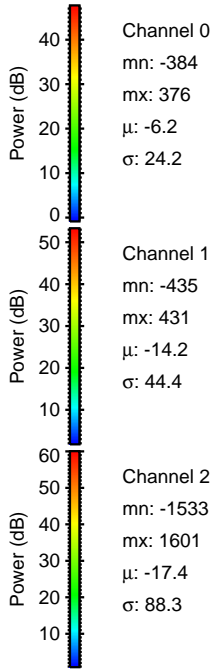
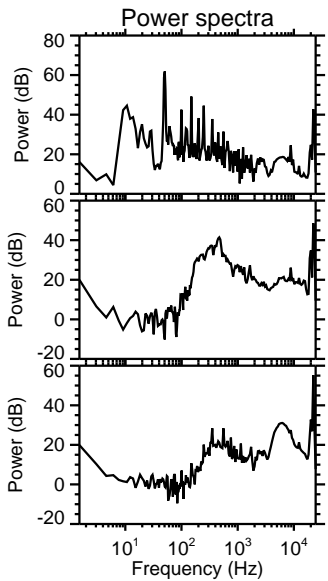
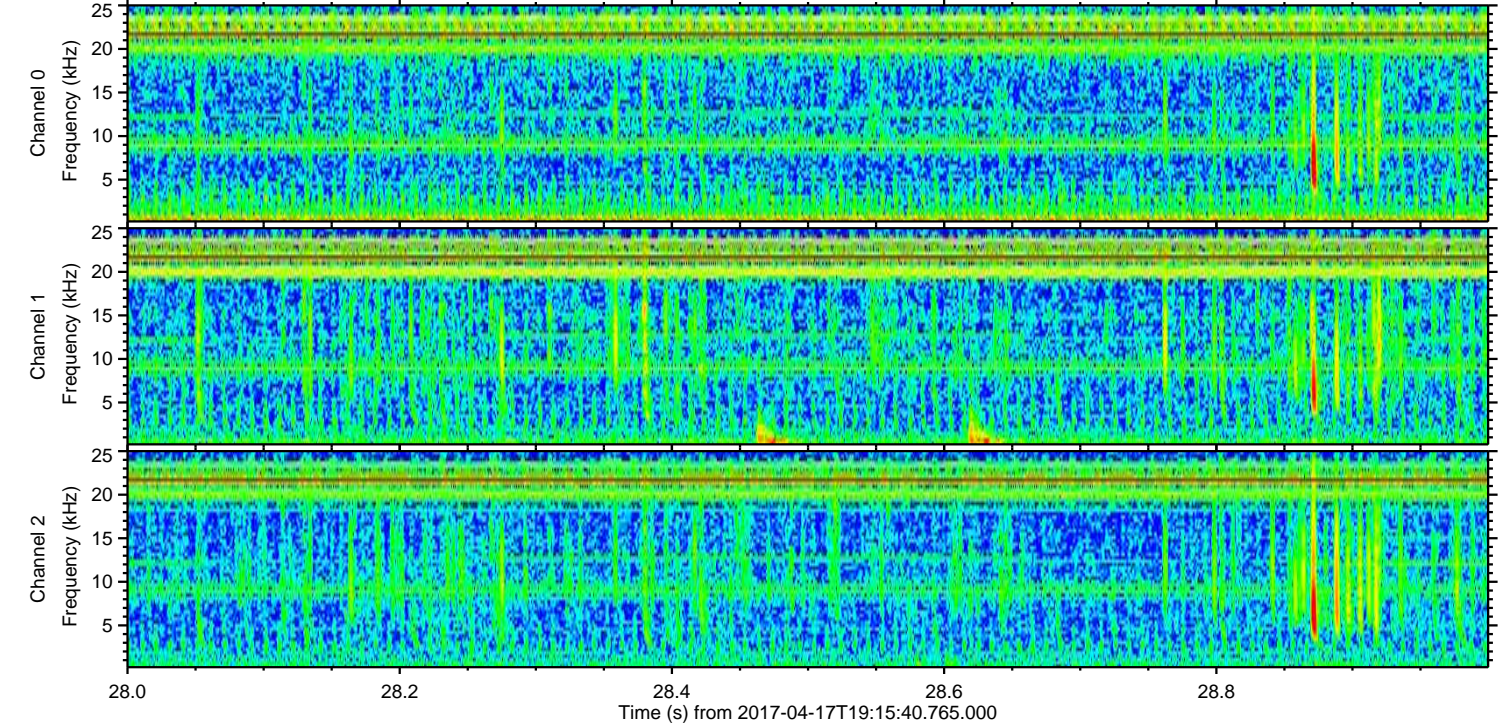
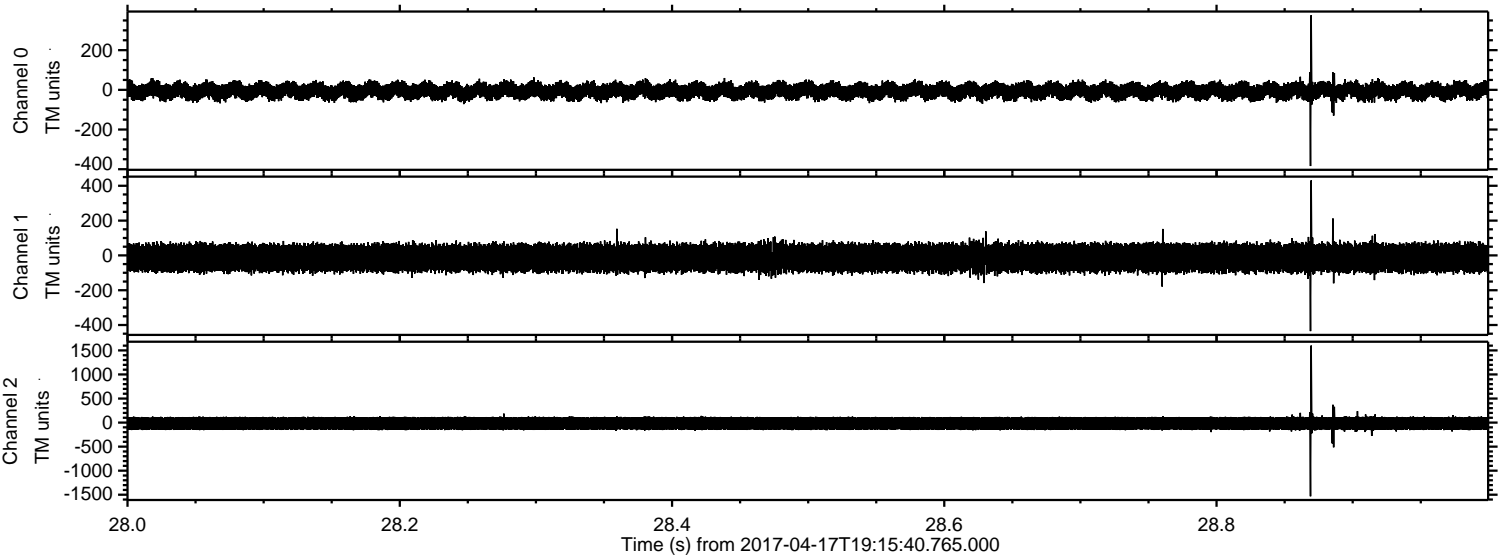


ELMAVAN 3D WAVEFORMS (Measured data sampled at 50 kHz) 51000 packets of 144 samples from 2017-04-17T19:15:40.765.000. Part 100/147

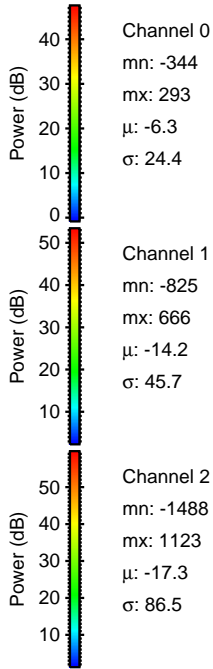
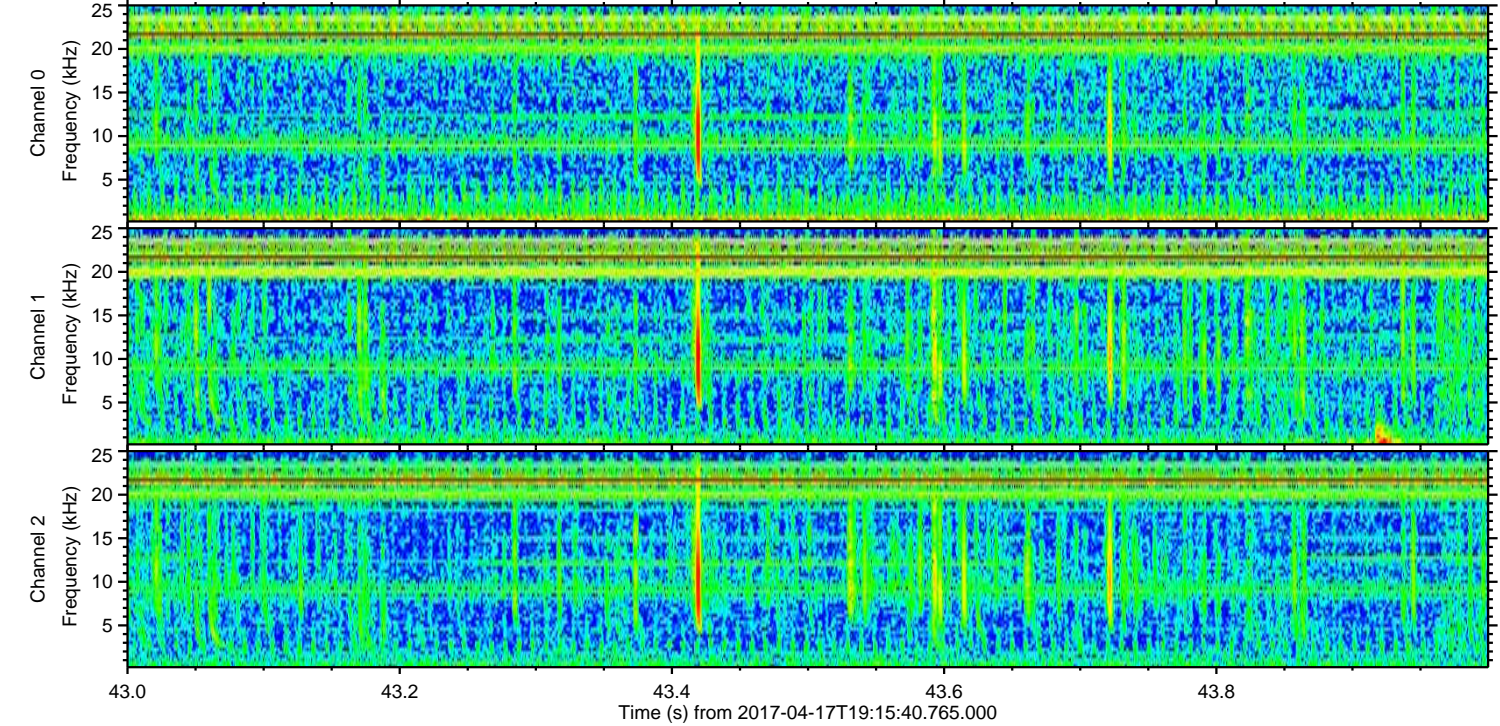
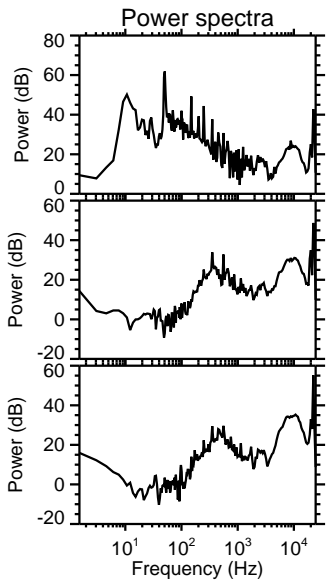
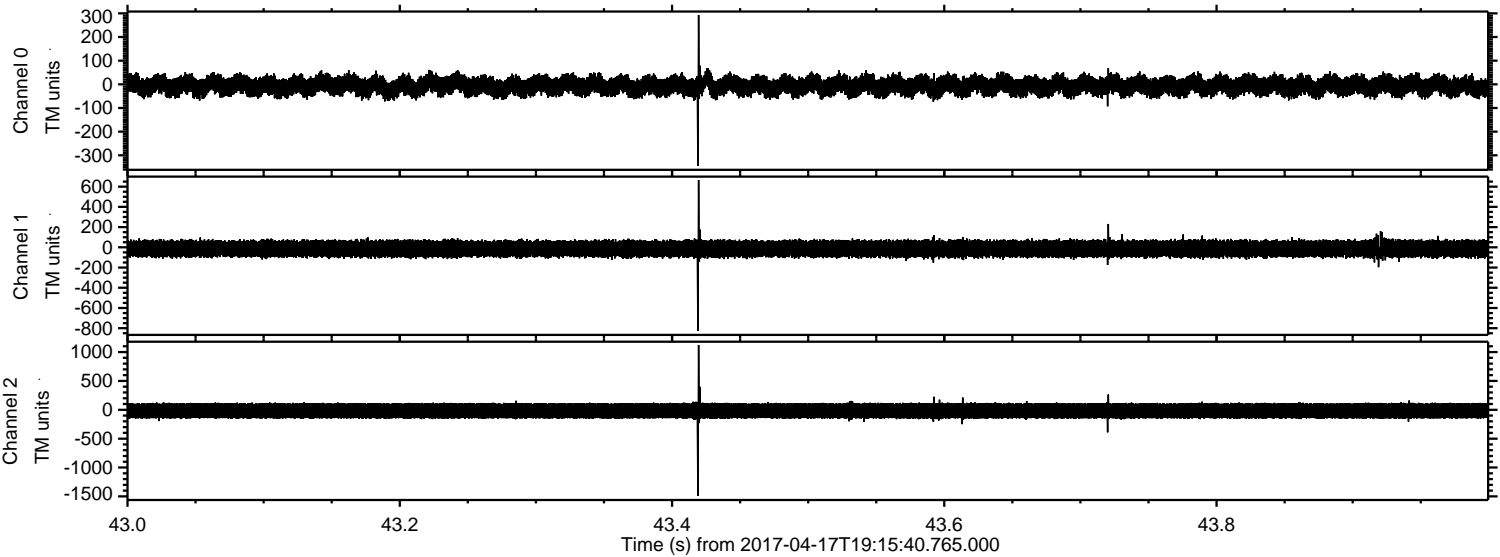
Processed Mon Apr 17 21:23:48 2017 by ELM ver.2012-10-06 from 001__elm20170417_191539__dat00.bin



Processed Mon Apr 17 21:23:48 2017 by ELM ver.2012-10-06 from 001__elm20170417_191539__dat00.bin



Processed Mon Apr 17 21:23:49 2017 by ELM ver.2012-10-06 from 001__elm20170417_191539__dat00.bin



Channel 0
mn: -344
mx: 293
 μ : -6.3
 σ : 24.4

Channel 1
mn: -825
mx: 666
 μ : -14.2
 σ : 45.7

Channel 2
mn: -1488
mx: 1123
 μ : -17.3
 σ : 86.5

