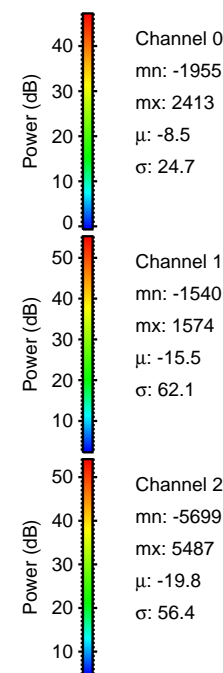
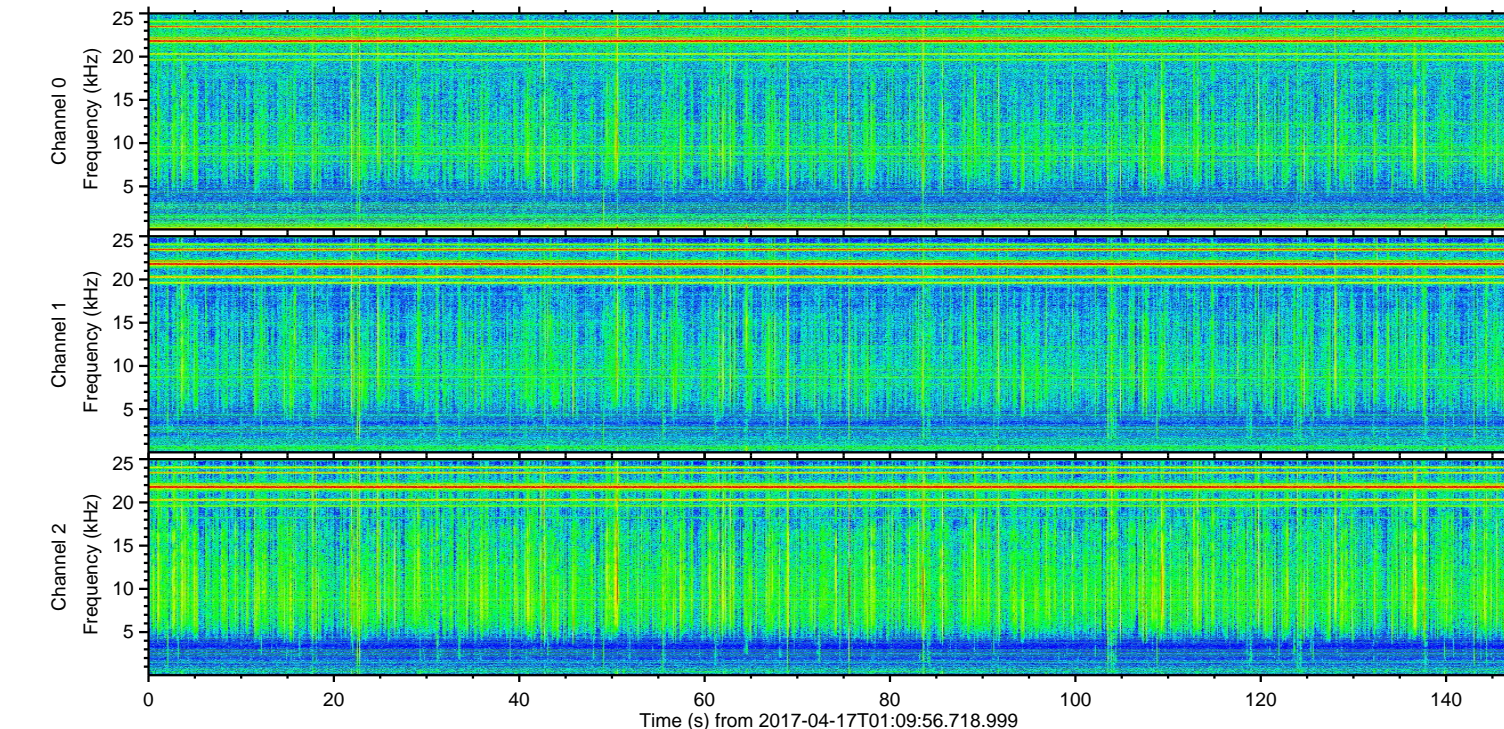
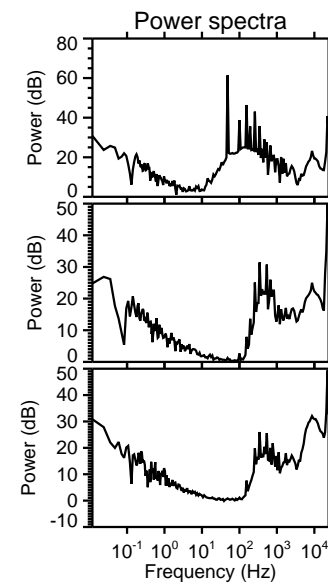
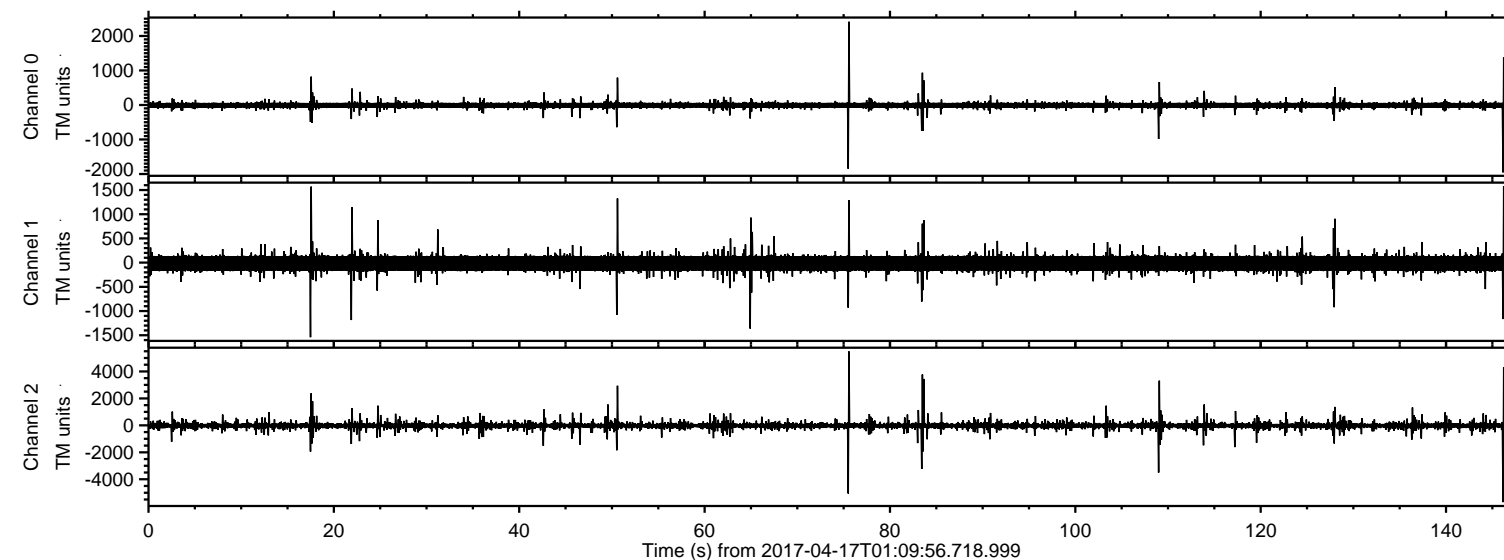


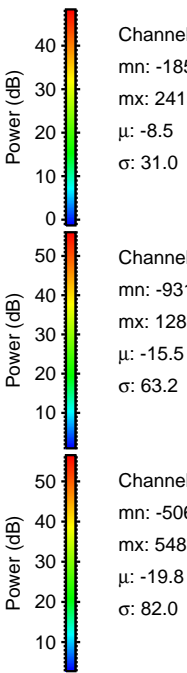
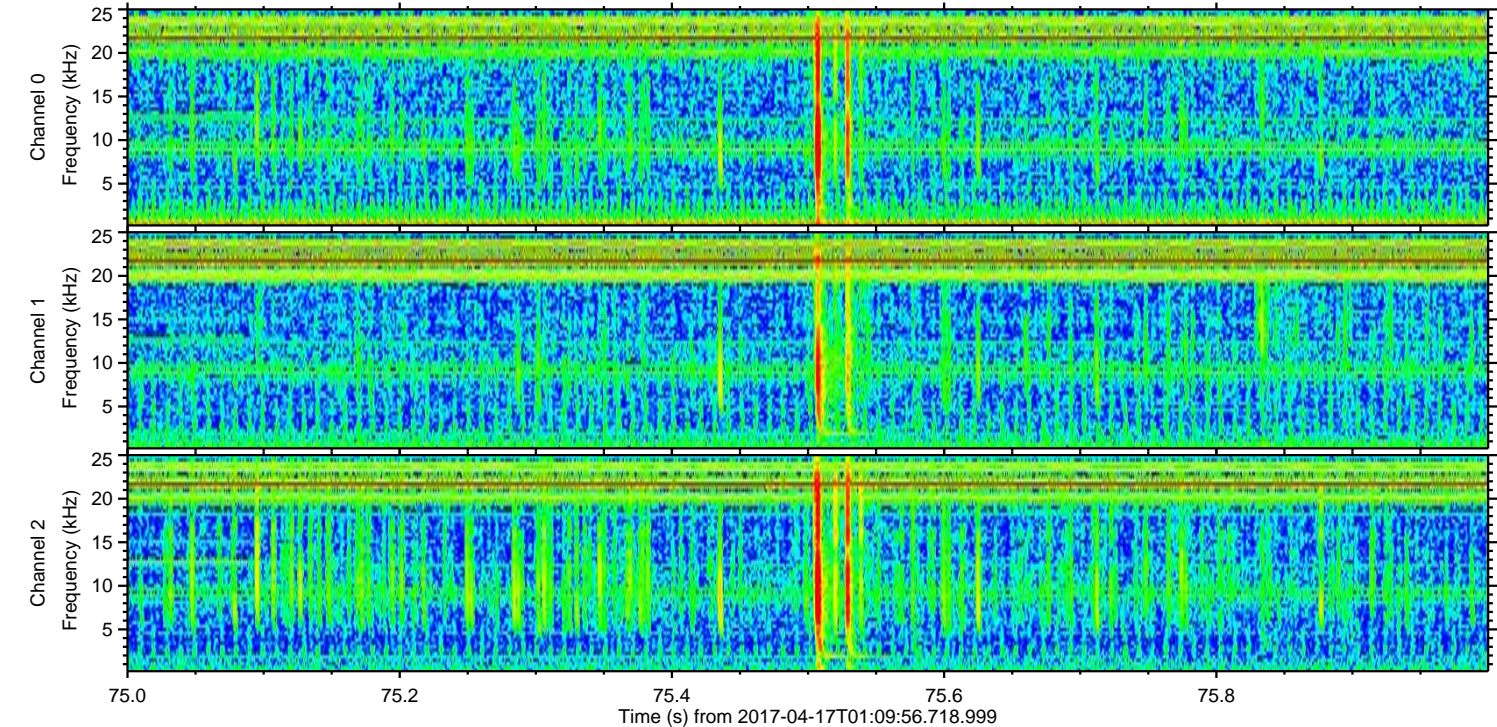
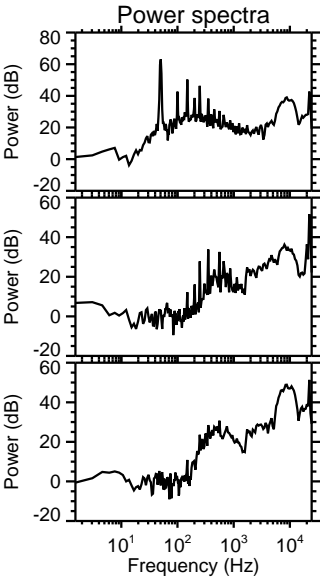
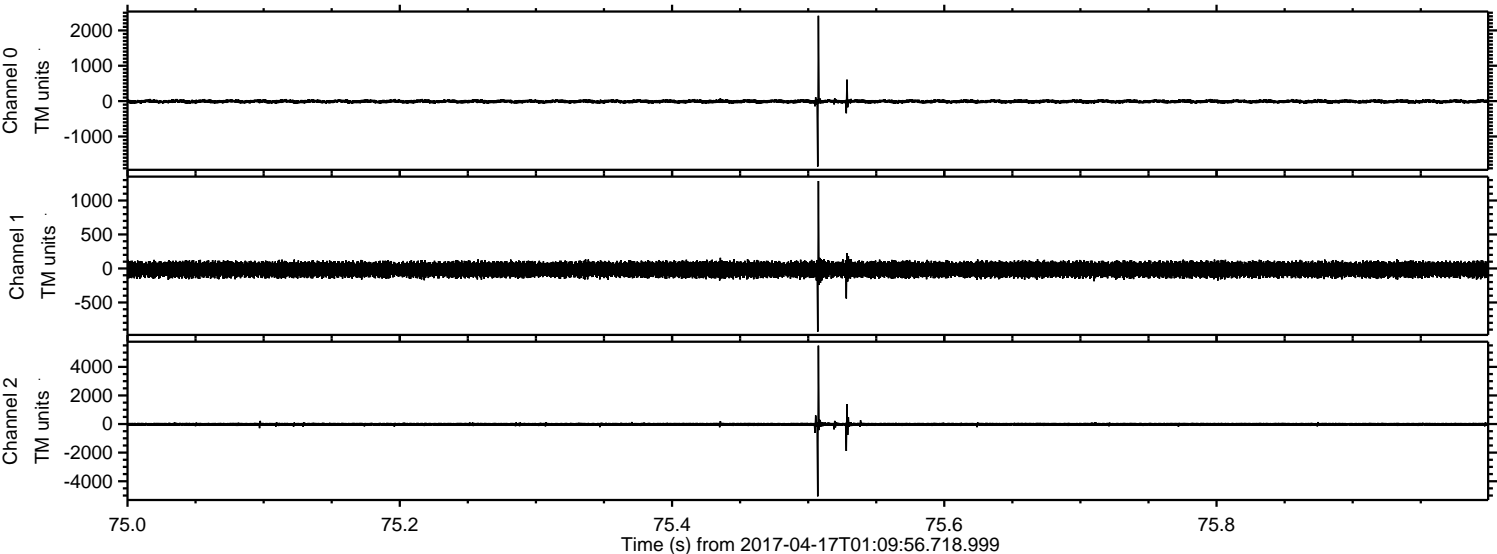
ELMAVAN 3D WAVEFORMS (Measured data sampled at 50 kHz) 51000 packets of 144 samples from 2017-04-17T01:09:56.718.999.

Processed Mon Apr 17 03:17:16 2017 by ELM ver.2012-10-06 from 001__elm20170417_010955__dat00.bin

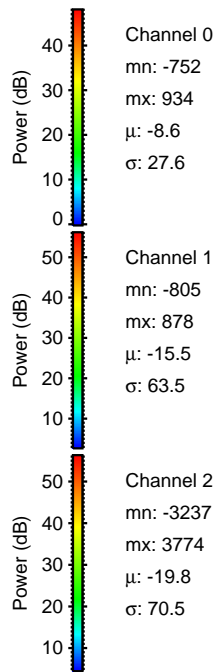
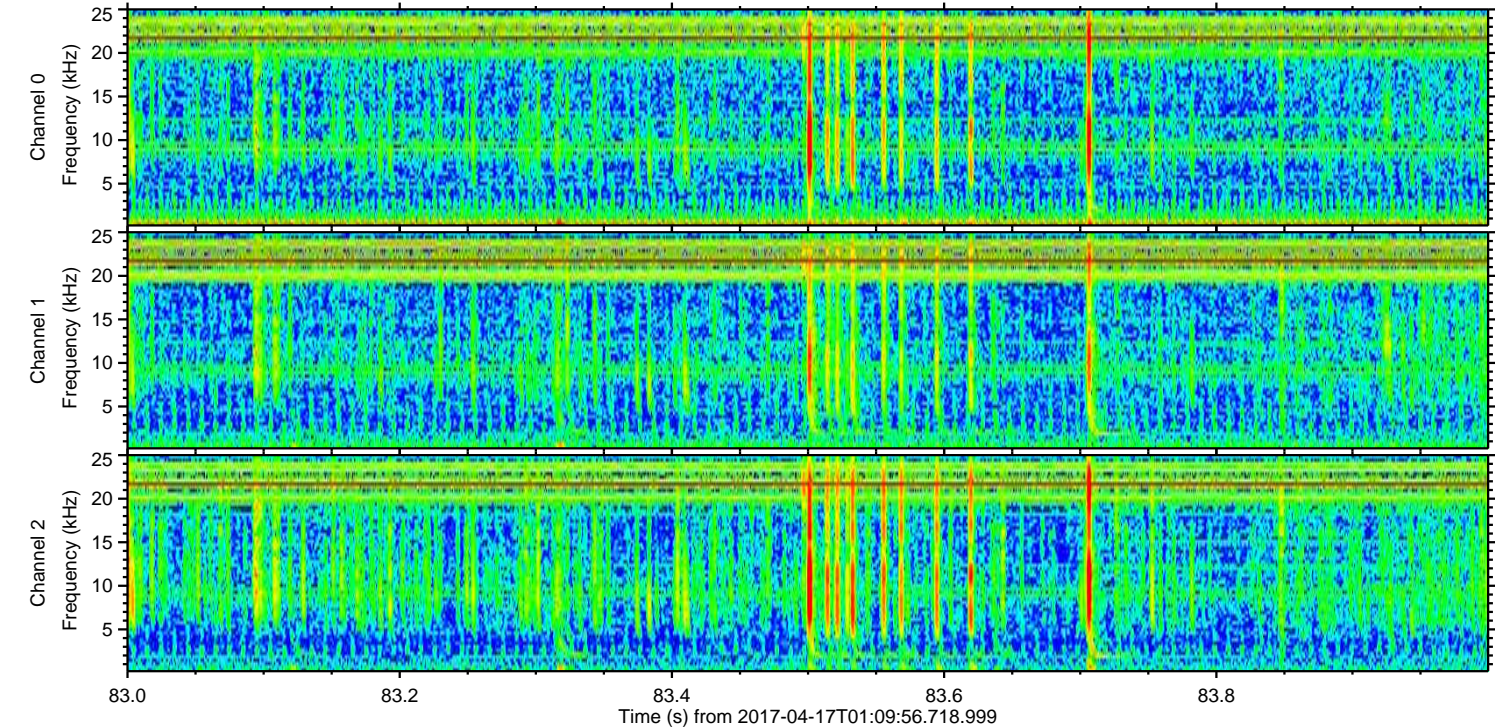
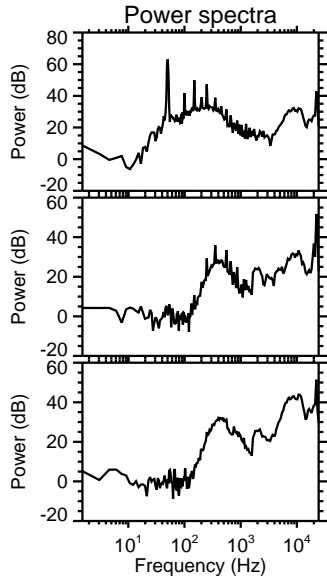
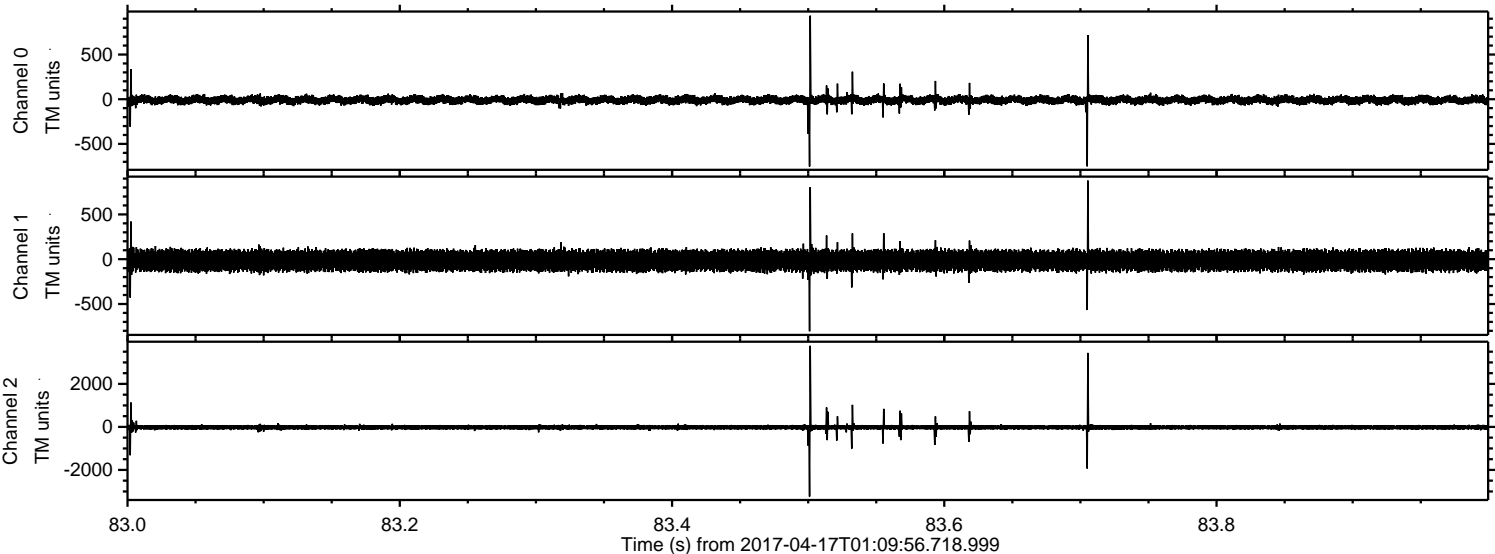


ELMAVAN 3D WAVEFORMS (Measured data sampled at 50 kHz) 51000 packets of 144 samples from 2017-04-17T01:09:56.718.999. Part 76/147

Processed Mon Apr 17 03:17:27 2017 by ELM ver.2012-10-06 from 001__elm20170417_010955__dat00.bin



Processed Mon Apr 17 03:17:28 2017 by ELM ver.2012-10-06 from 001__elm20170417_010955__dat00.bin



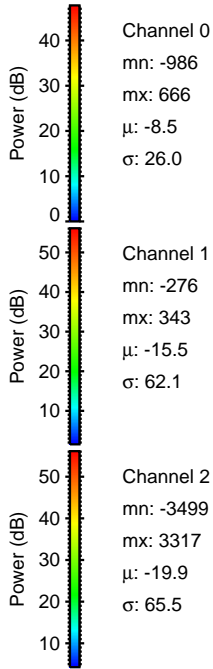
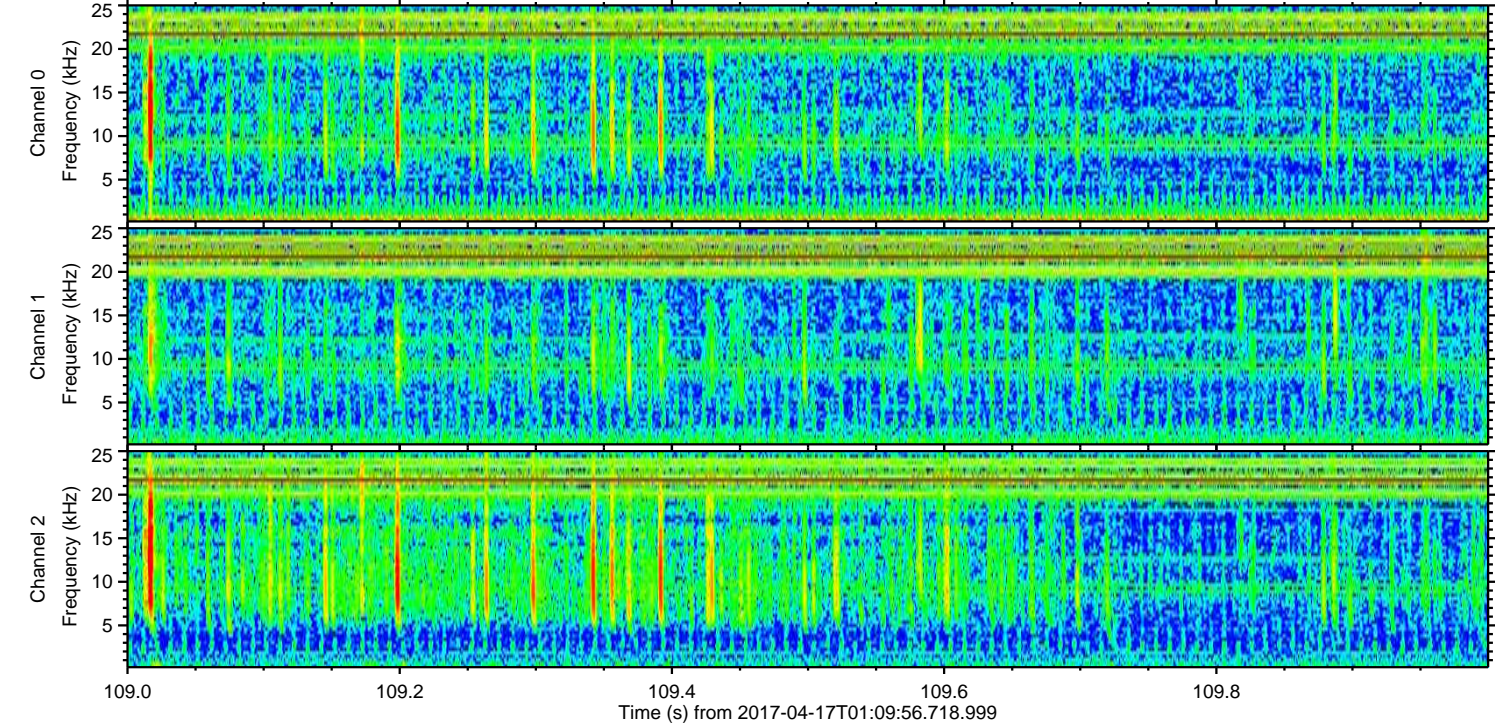
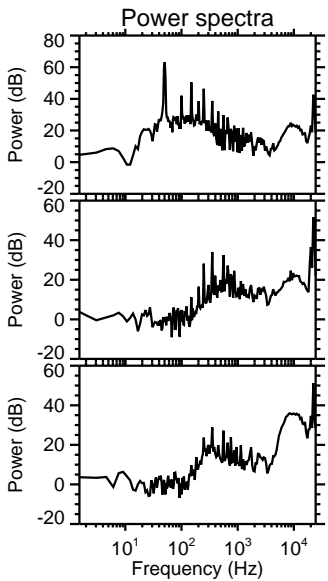
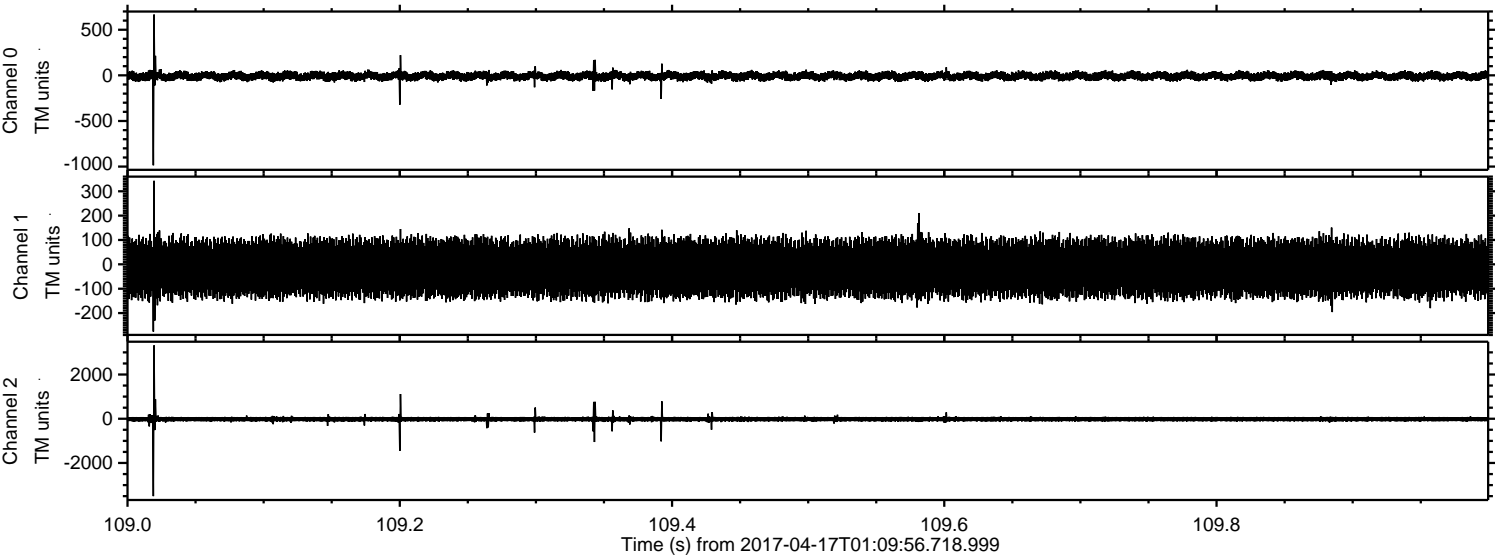
Channel 0
mn: -752
mx: 934
 μ : -8.6
 σ : 27.6

Channel 1
mn: -805
mx: 878
 μ : -15.5
 σ : 63.5

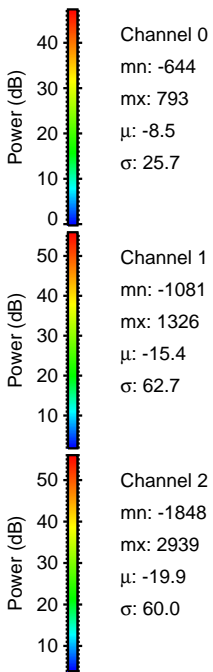
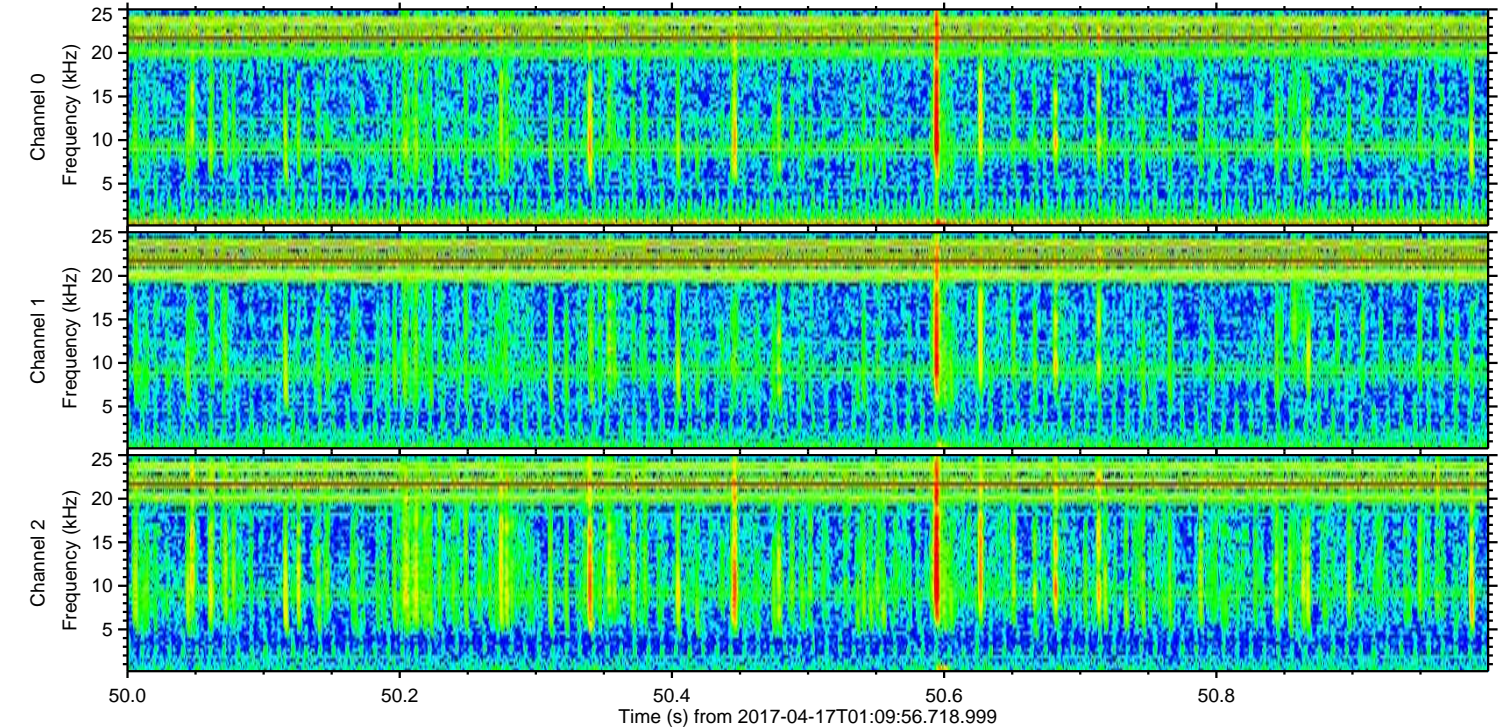
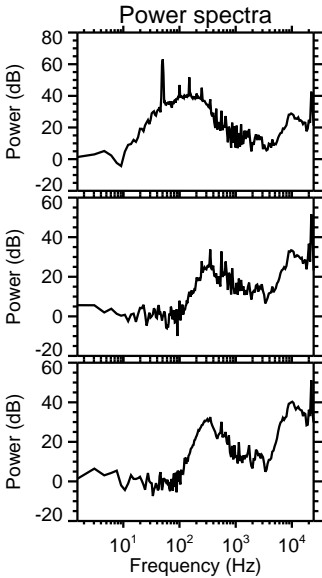
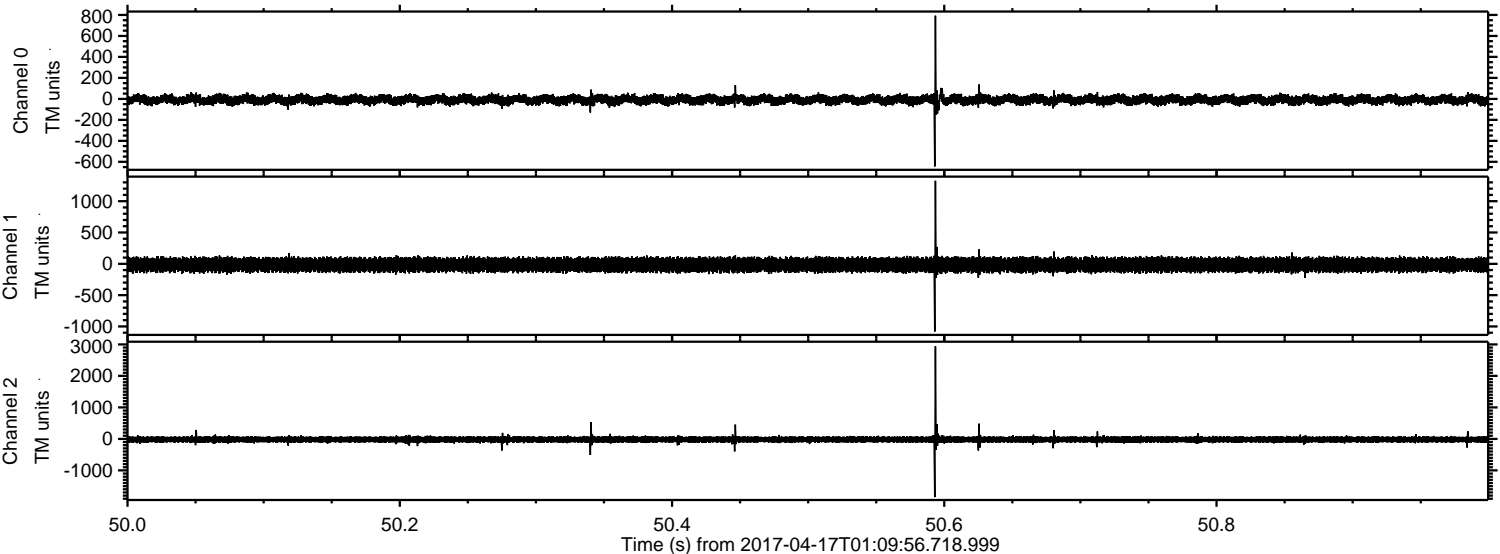
Channel 2
mn: -3237
mx: 3774
 μ : -19.8
 σ : 70.5

ELMAVAN 3D WAVEFORMS (Measured data sampled at 50 kHz) 51000 packets of 144 samples from 2017-04-17T01:09:56.718.999. Part 110/147

Processed Mon Apr 17 03:17:29 2017 by ELM ver.2012-10-06 from 001__elm20170417_010955__dat00.bin



Processed Mon Apr 17 03:17:30 2017 by ELM ver.2012-10-06 from 001__elm20170417_010955__dat00.bin



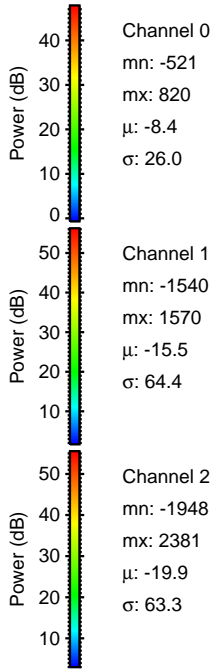
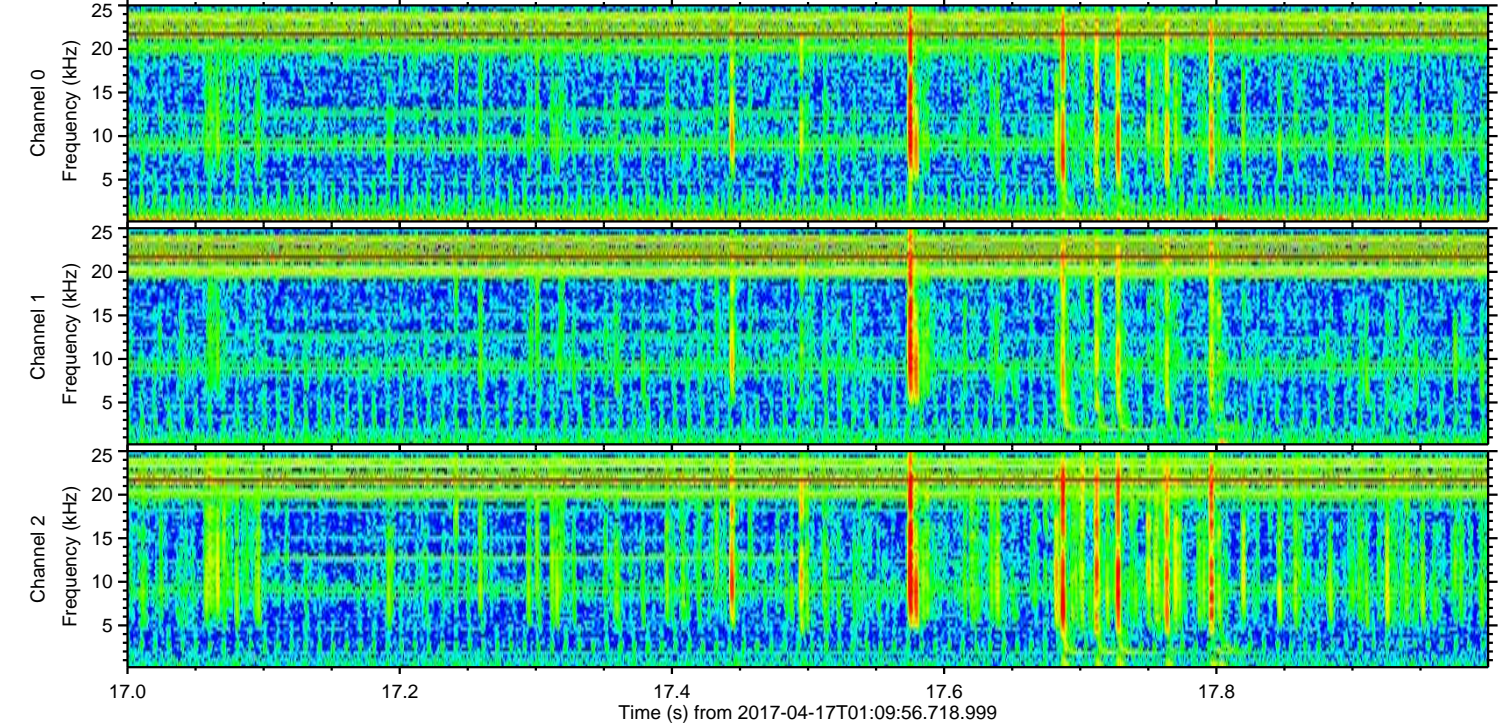
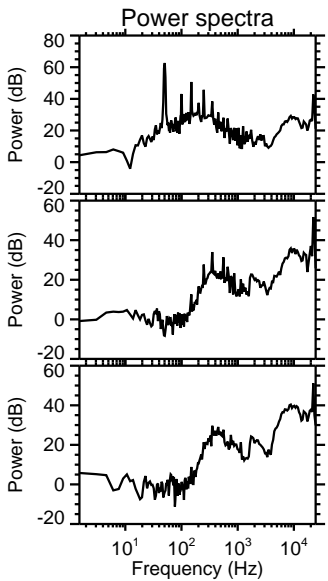
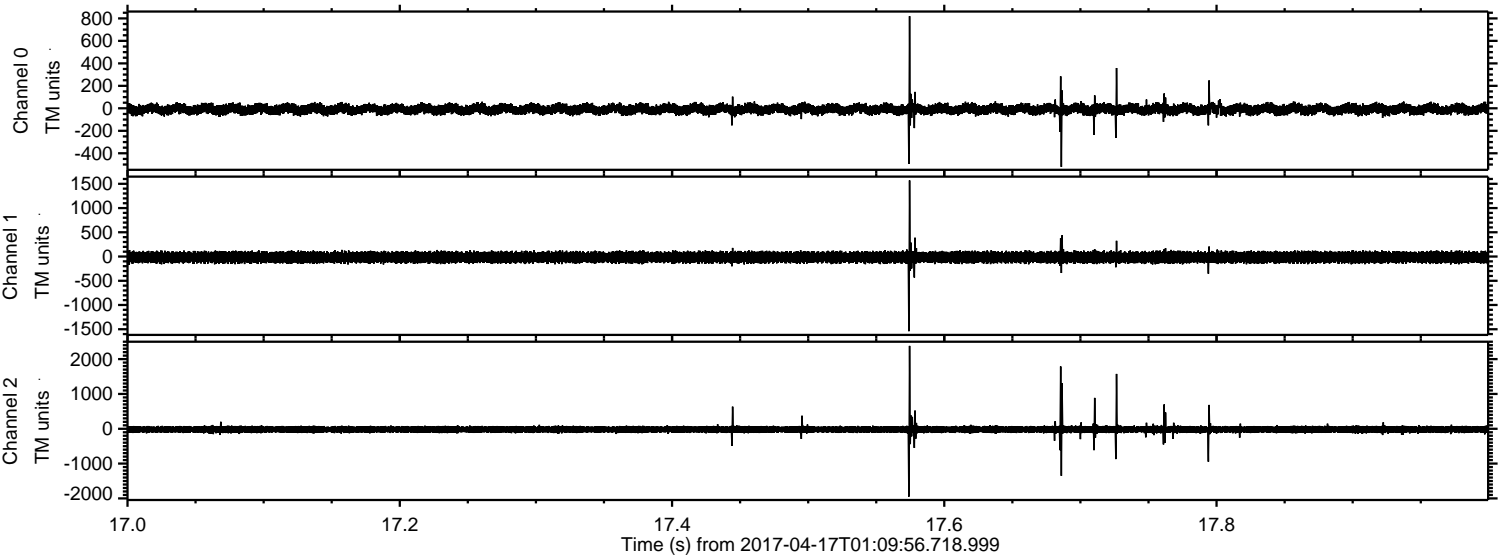
Channel 0
mn: -644
mx: 793
 μ : -8.5
 σ : 25.7

Channel 1
mn: -1081
mx: 1326
 μ : -15.4
 σ : 62.7

Channel 2
mn: -1848
mx: 2939
 μ : -19.9
 σ : 60.0

ELMAVAN 3D WAVEFORMS (Measured data sampled at 50 kHz) 51000 packets of 144 samples from 2017-04-17T01:09:56.718.999. Part 18/147

Processed Mon Apr 17 03:17:31 2017 by ELM ver.2012-10-06 from 001__elm20170417_010955__dat00.bin



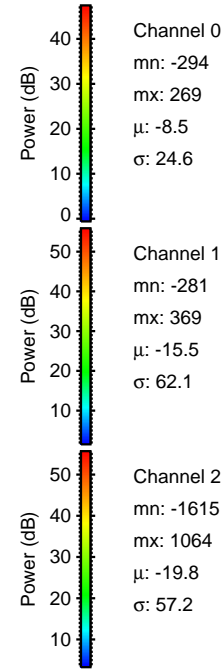
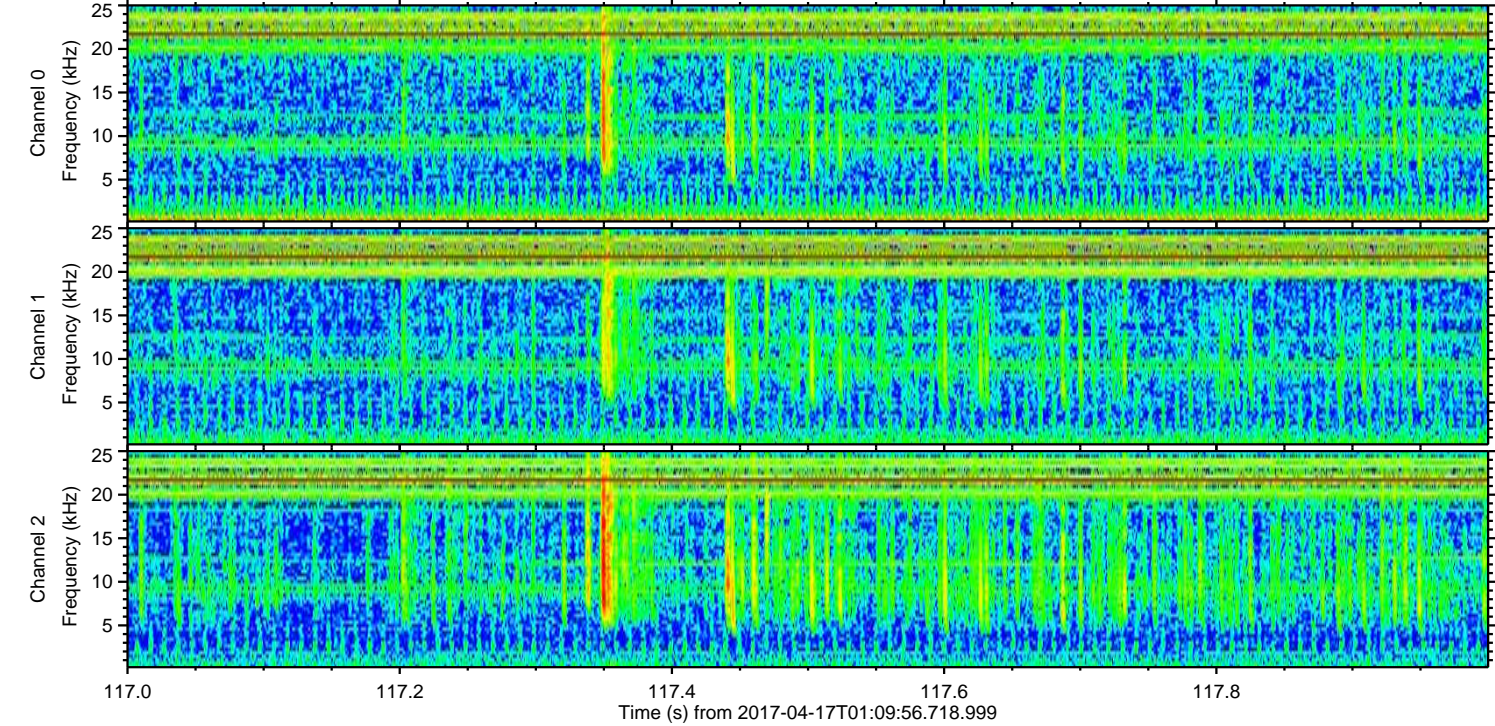
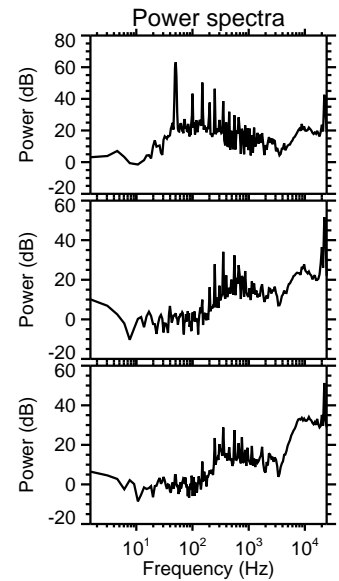
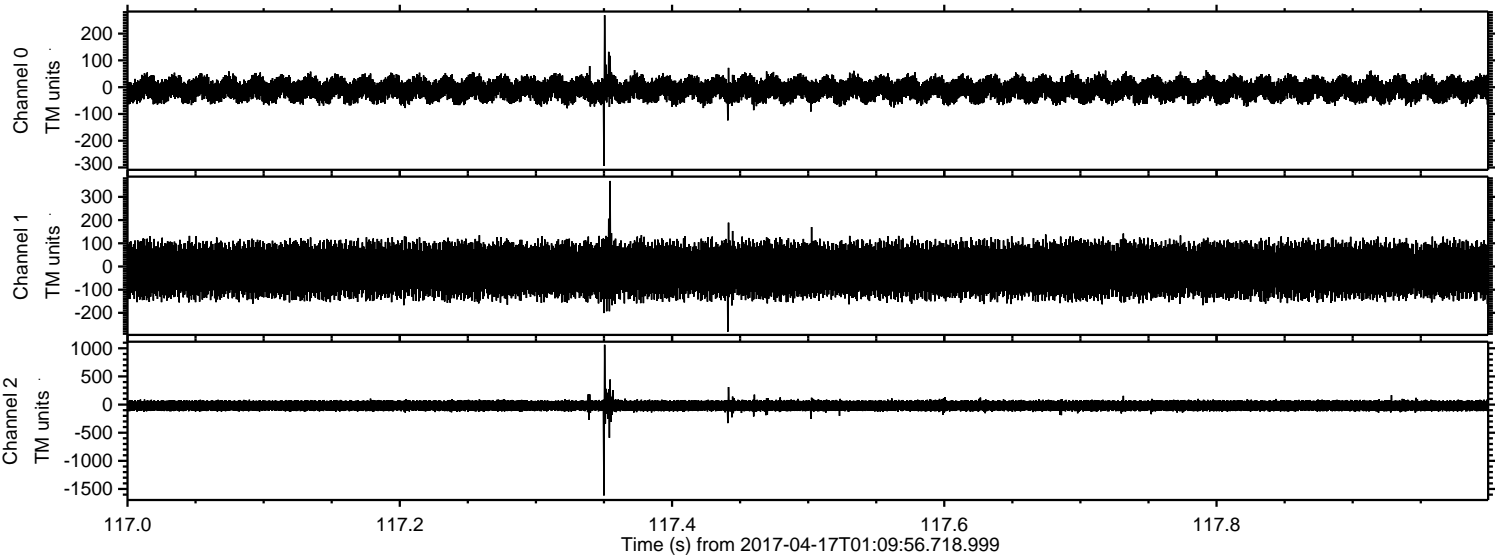
Channel 0
mn: -521
mx: 820
 μ : -8.4
 σ : 26.0

Channel 1
mn: -1540
mx: 1570
 μ : -15.5
 σ : 64.4

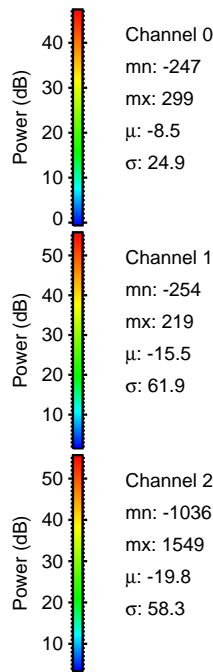
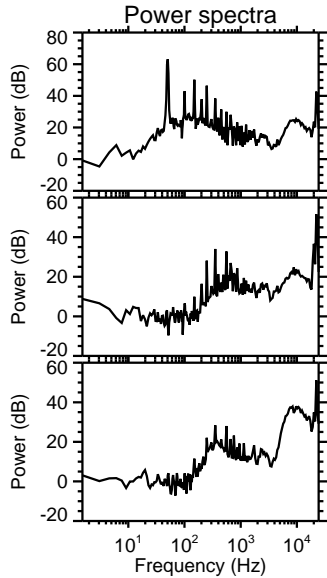
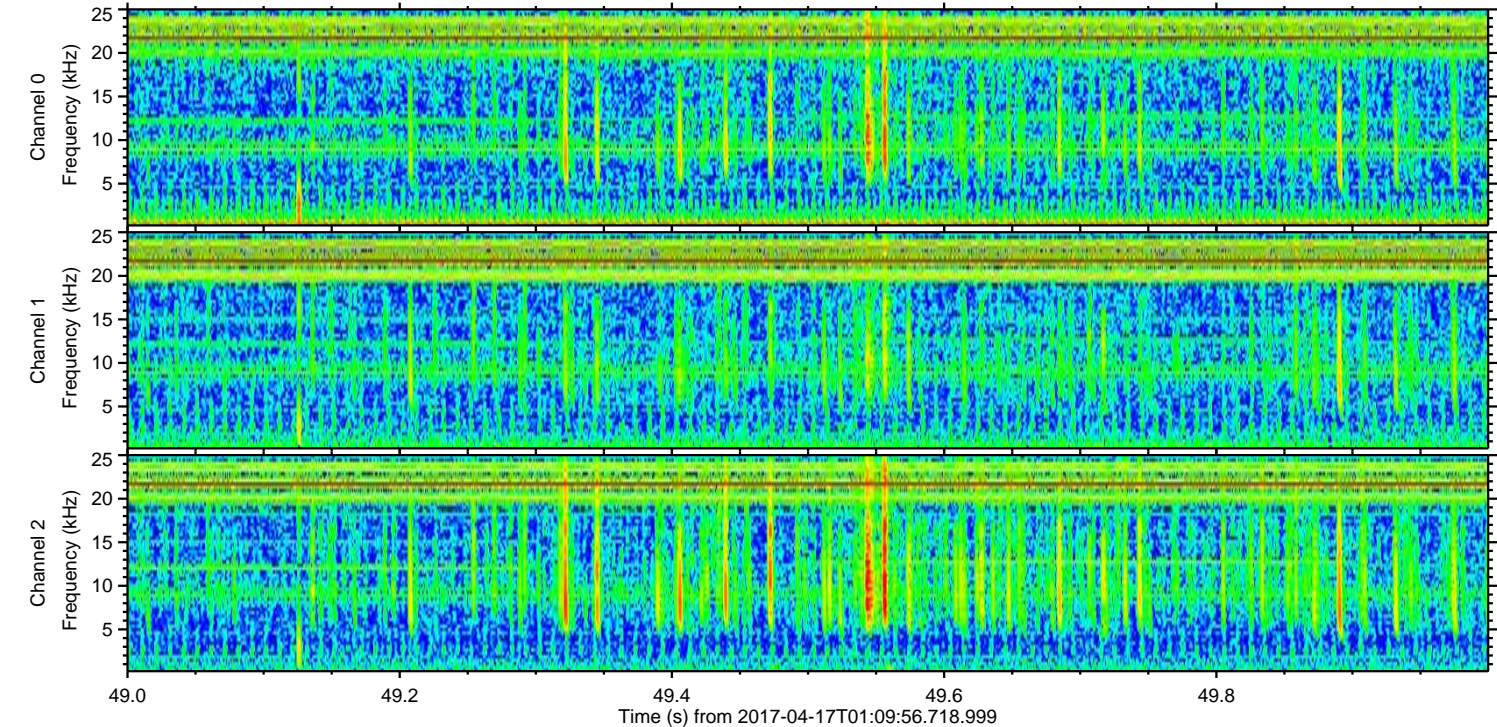
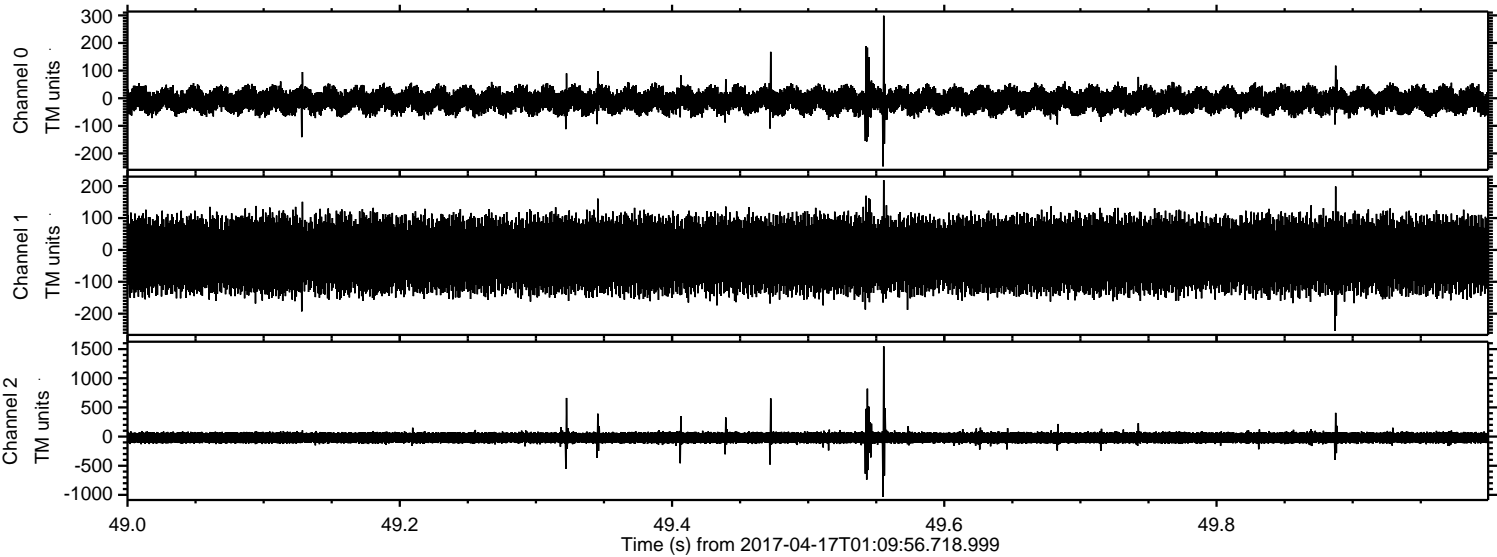
Channel 2
mn: -1948
mx: 2381
 μ : -19.9
 σ : 63.3

ELMAVAN 3D WAVEFORMS (Measured data sampled at 50 kHz) 51000 packets of 144 samples from 2017-04-17T01:09:56.718.999. Part 118/147

Processed Mon Apr 17 03:17:32 2017 by ELM ver.2012-10-06 from 001__elm20170417_010955__dat00.bin



Processed Mon Apr 17 03:17:33 2017 by ELM ver.2012-10-06 from 001__elm20170417_010955__dat00.bin



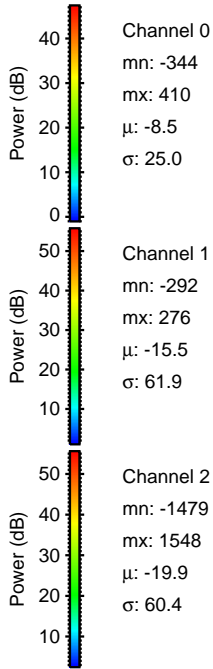
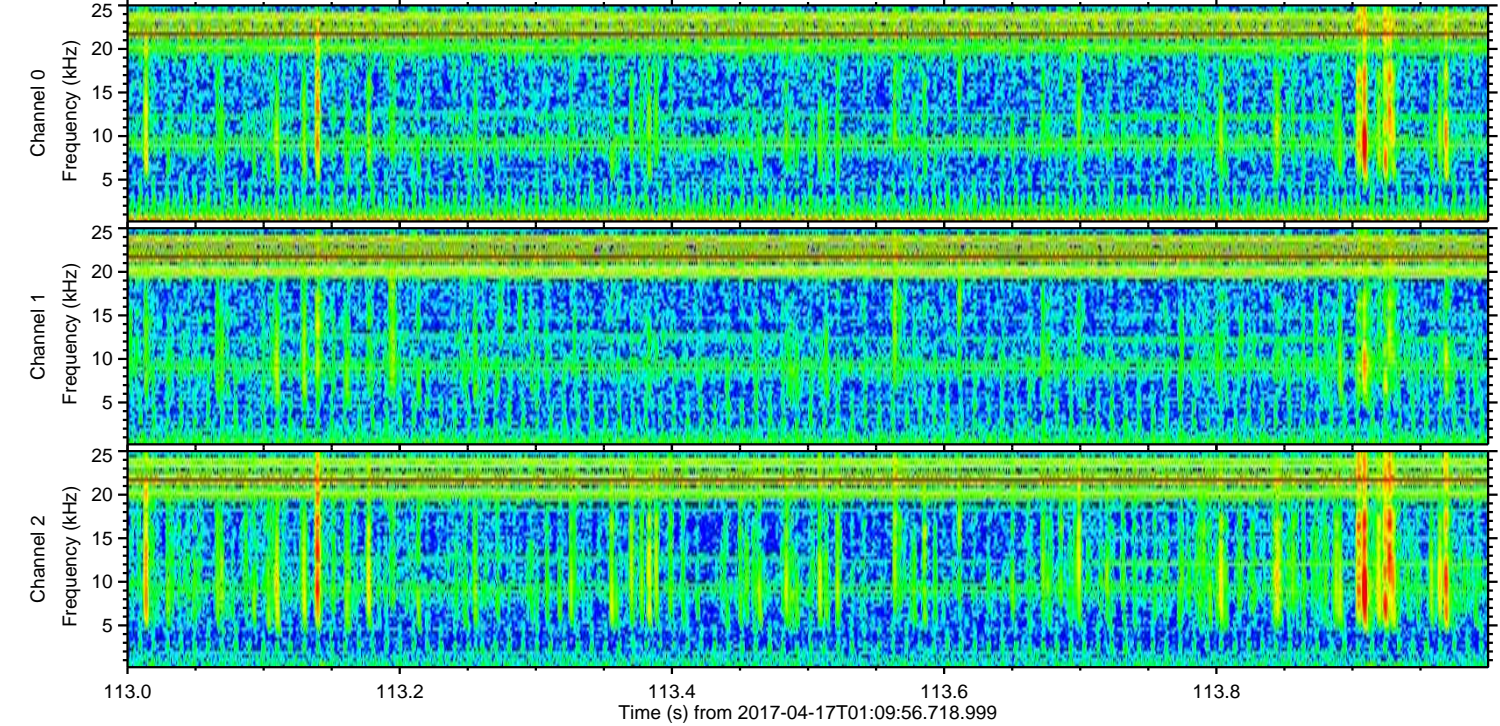
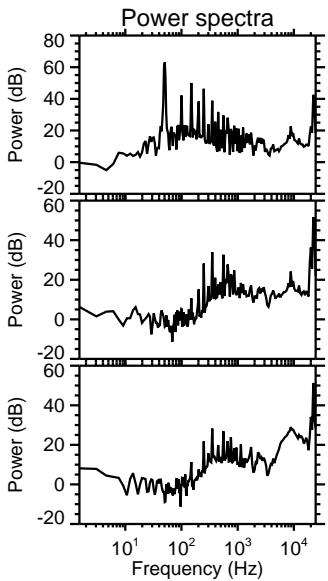
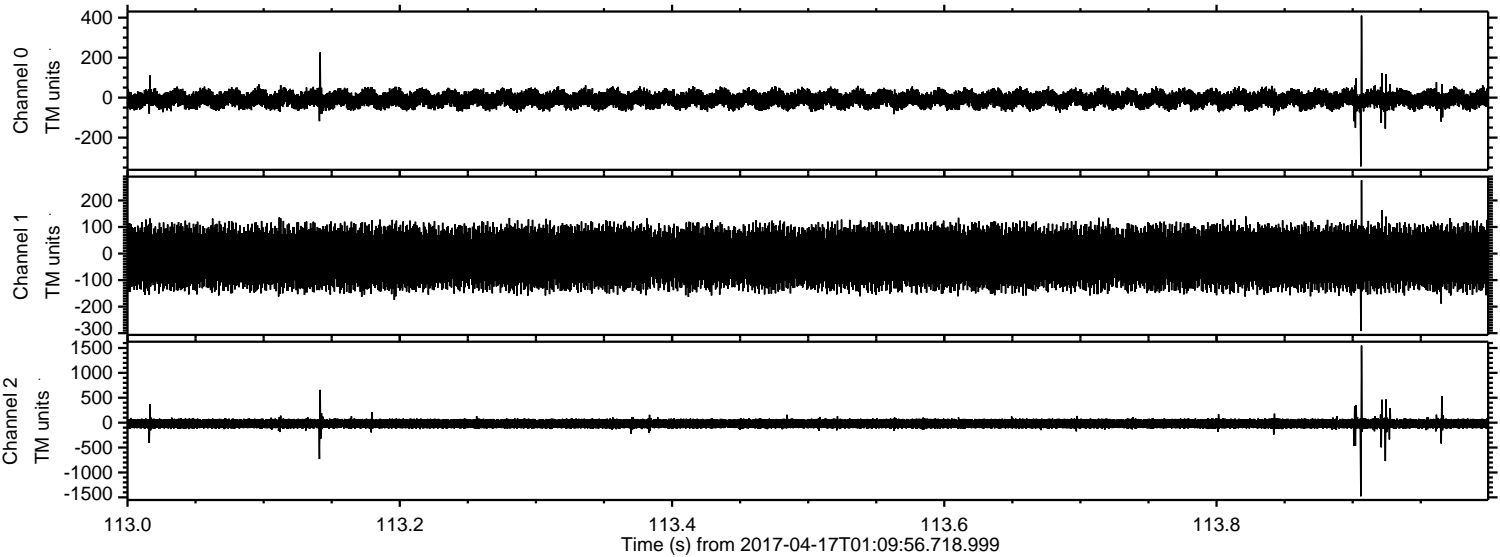
Channel 0
mn: -247
mx: 299
 μ : -8.5
 σ : 24.9

Channel 1
mn: -254
mx: 219
 μ : -15.5
 σ : 61.9

Channel 2
mn: -1036
mx: 1549
 μ : -19.8
 σ : 58.3

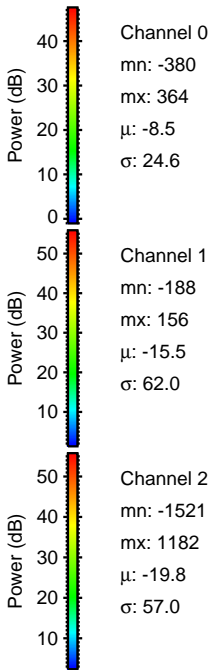
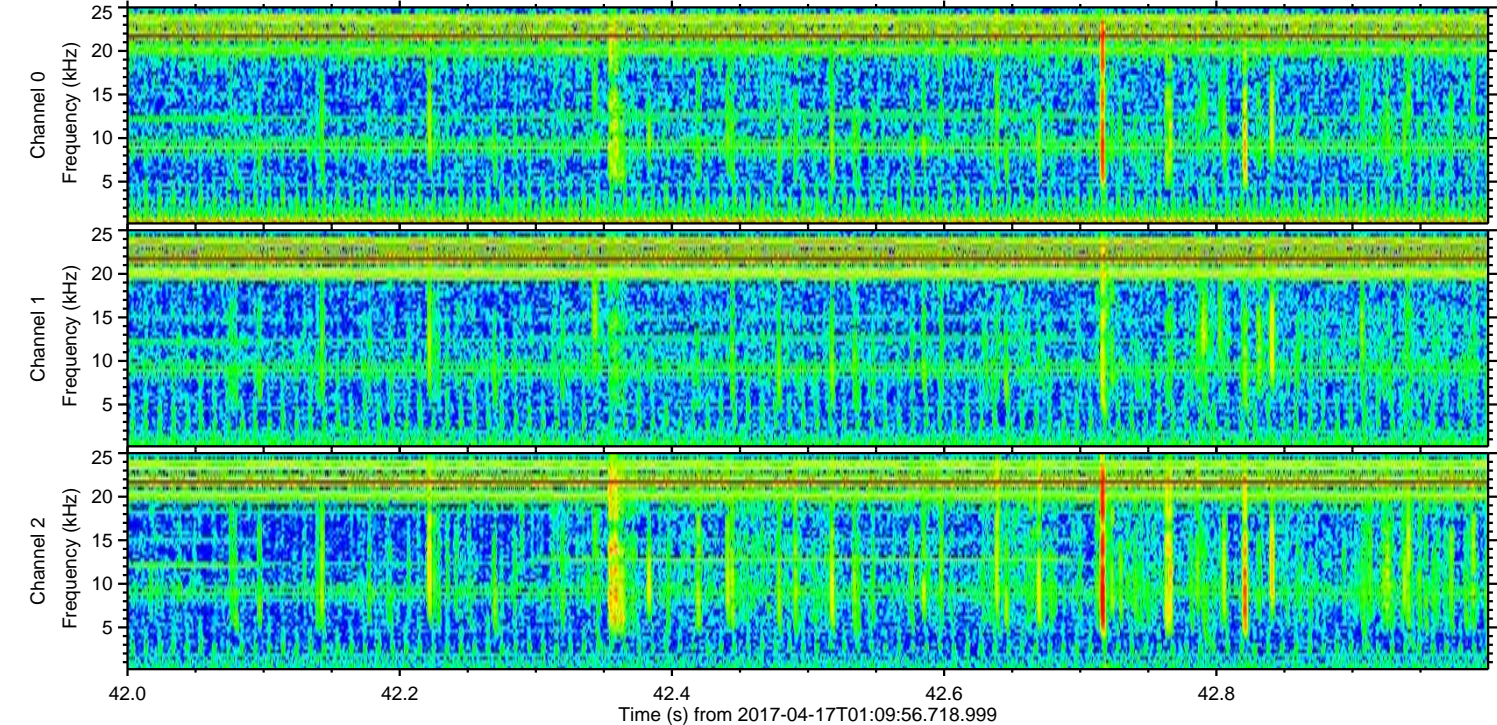
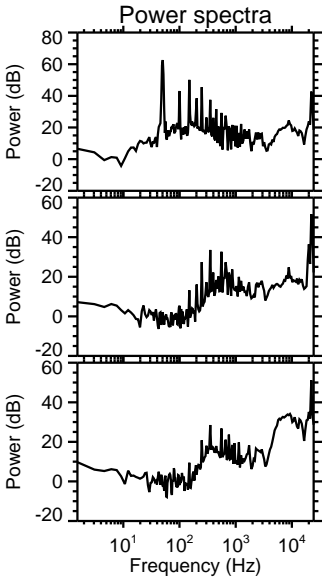
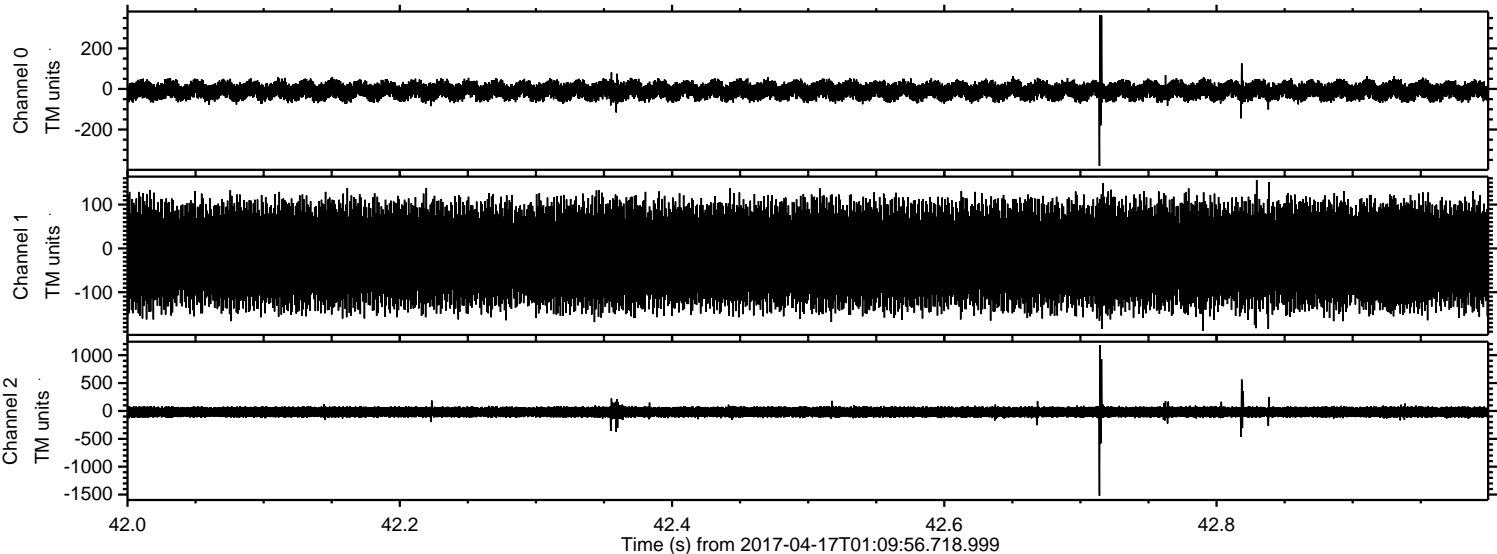
ELMAVAN 3D WAVEFORMS (Measured data sampled at 50 kHz) 51000 packets of 144 samples from 2017-04-17T01:09:56.718.999. Part 114/147

Processed Mon Apr 17 03:17:34 2017 by ELM ver.2012-10-06 from 001__elm20170417_010955__dat00.bin



ELMAVAN 3D WAVEFORMS (Measured data sampled at 50 kHz) 51000 packets of 144 samples from 2017-04-17T01:09:56.718.999. Part 43/147

Processed Mon Apr 17 03:17:35 2017 by ELM ver.2012-10-06 from 001__elm20170417_010955__dat00.bin



ELMAVAN 3D WAVEFORMS (Measured data sampled at 50 kHz) 51000 packets of 144 samples from 2017-04-17T01:09:56.718.999. Part 132/147

