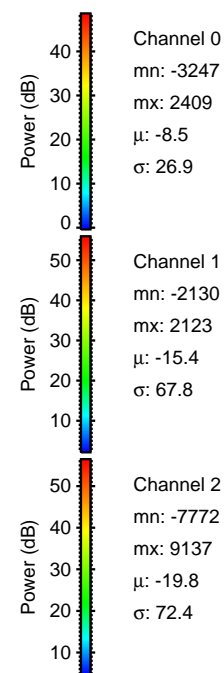
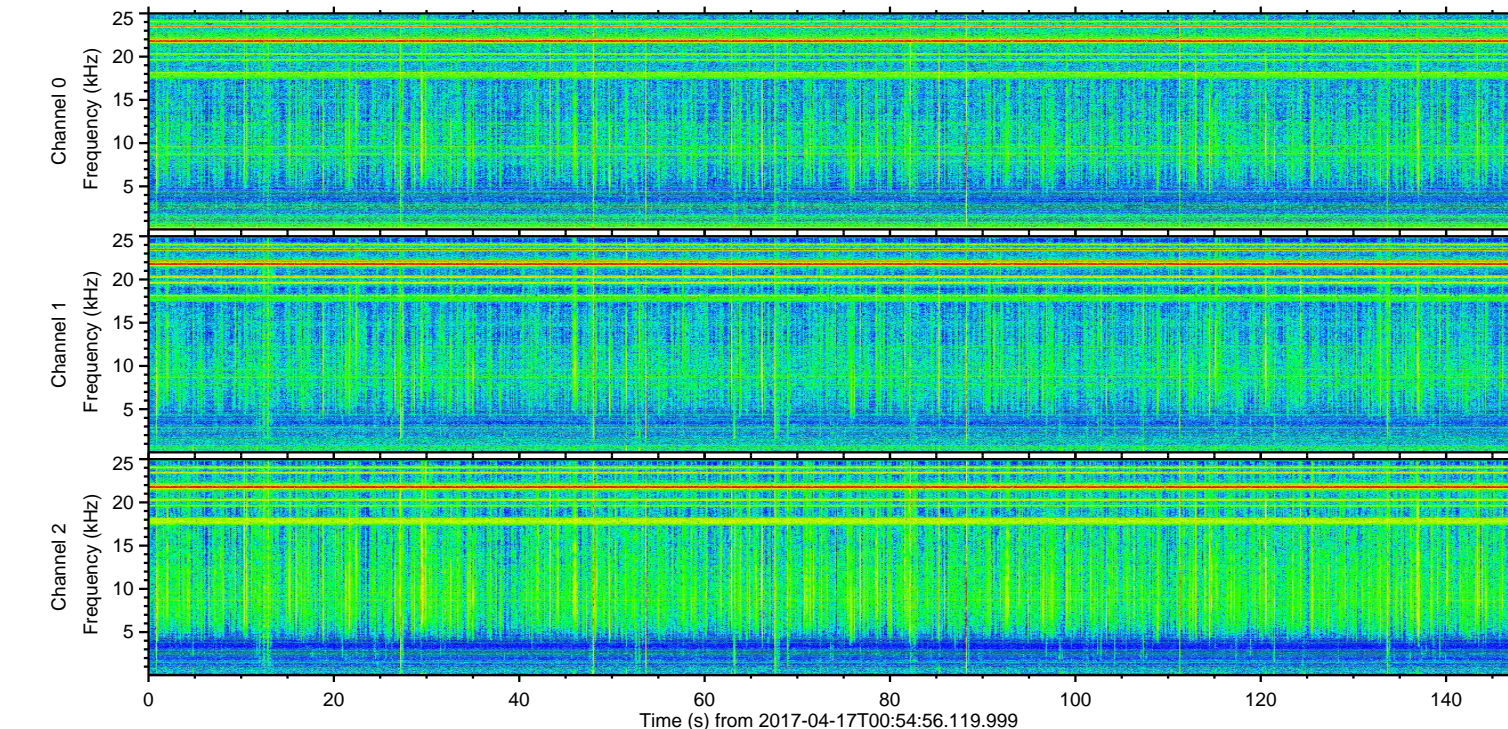
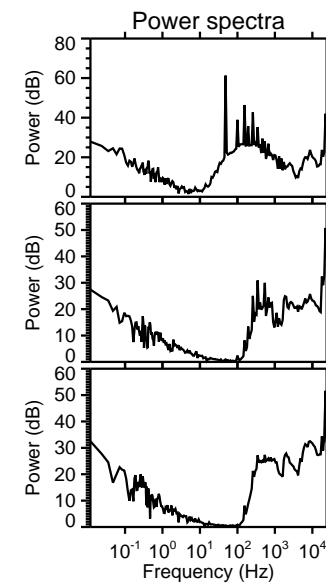
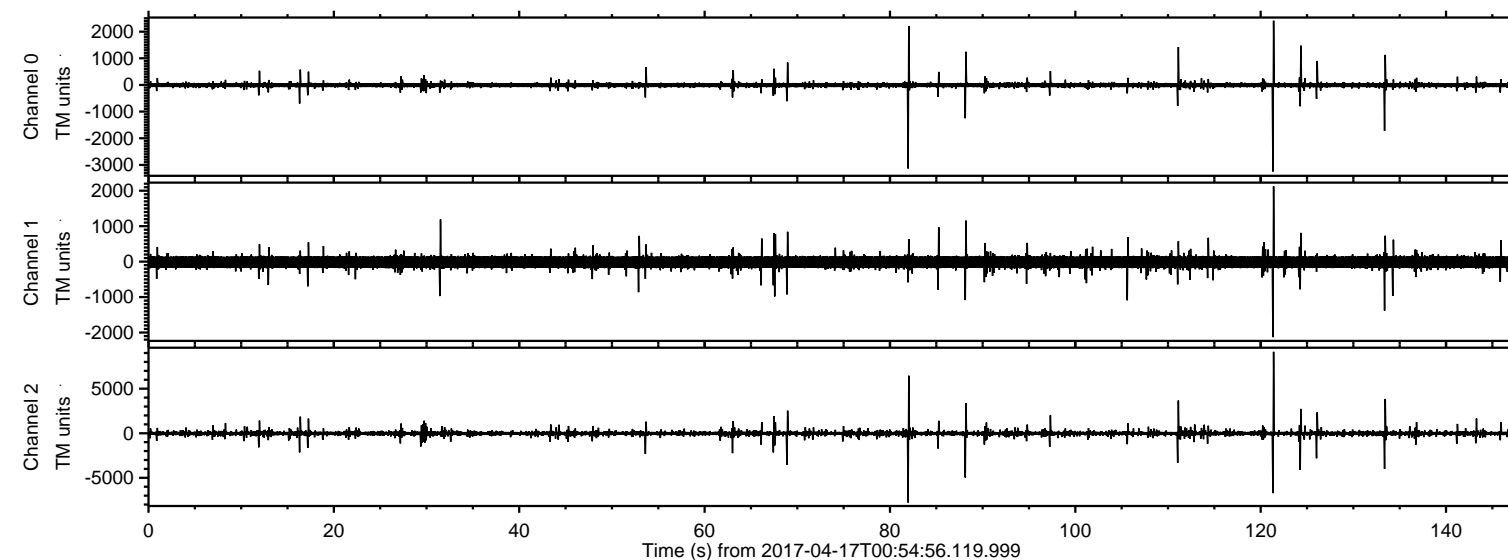


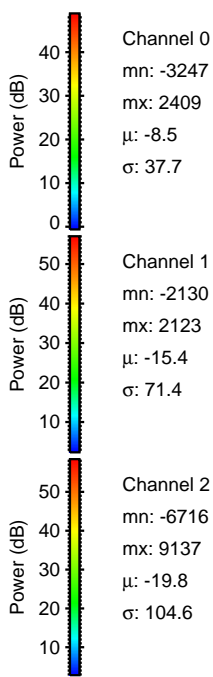
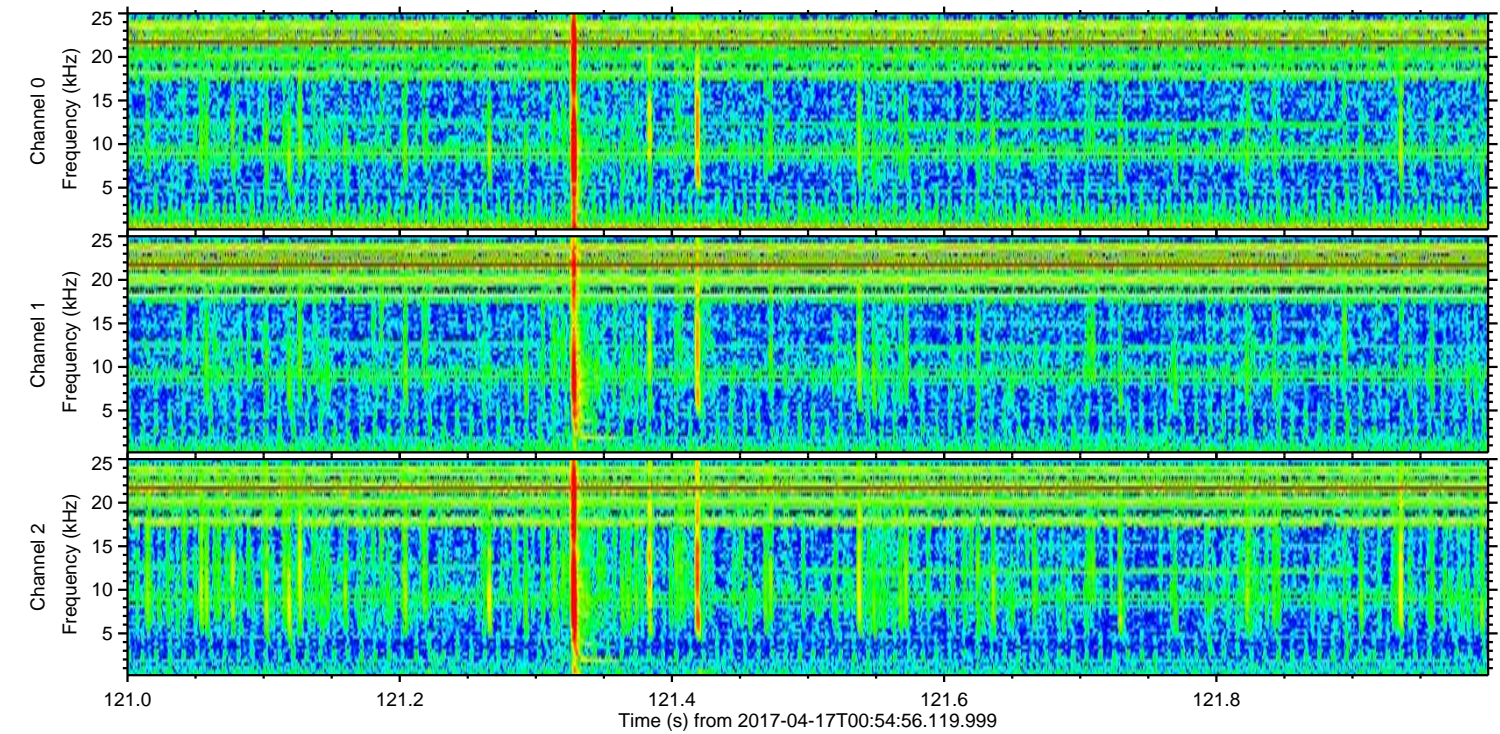
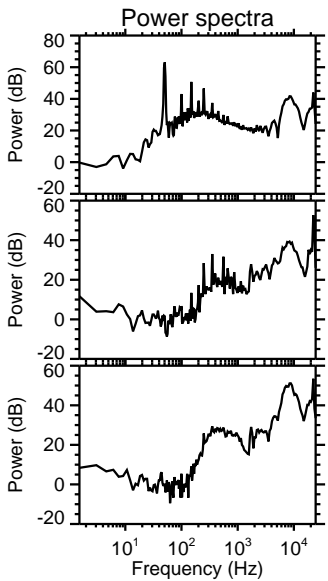
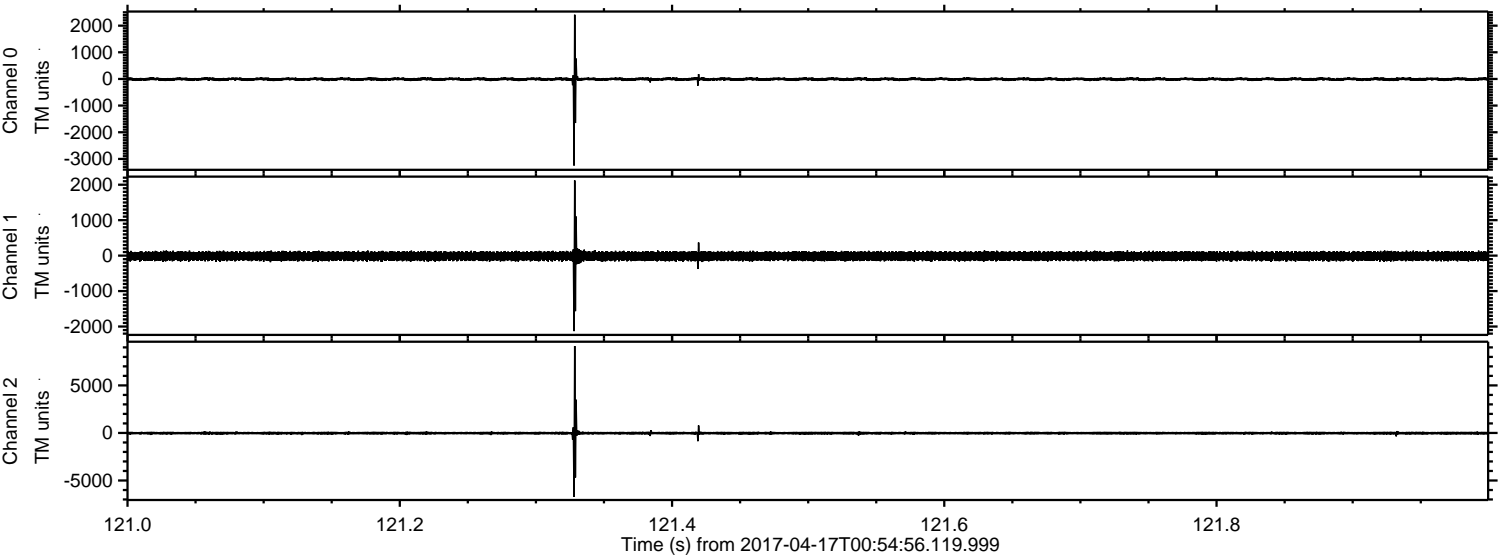
ELMAVAN 3D WAVEFORMS (Measured data sampled at 50 kHz) 51000 packets of 144 samples from 2017-04-17T00:54:56.119.999.

Processed Mon Apr 17 03:02:39 2017 by ELM ver.2012-10-06 from 001__elm20170417_005455__dat00.bin



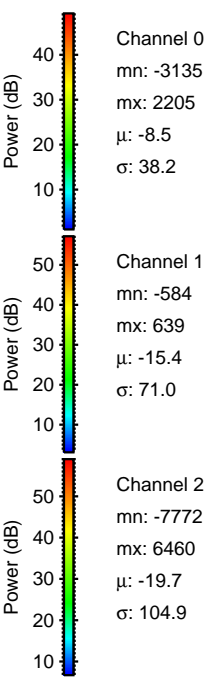
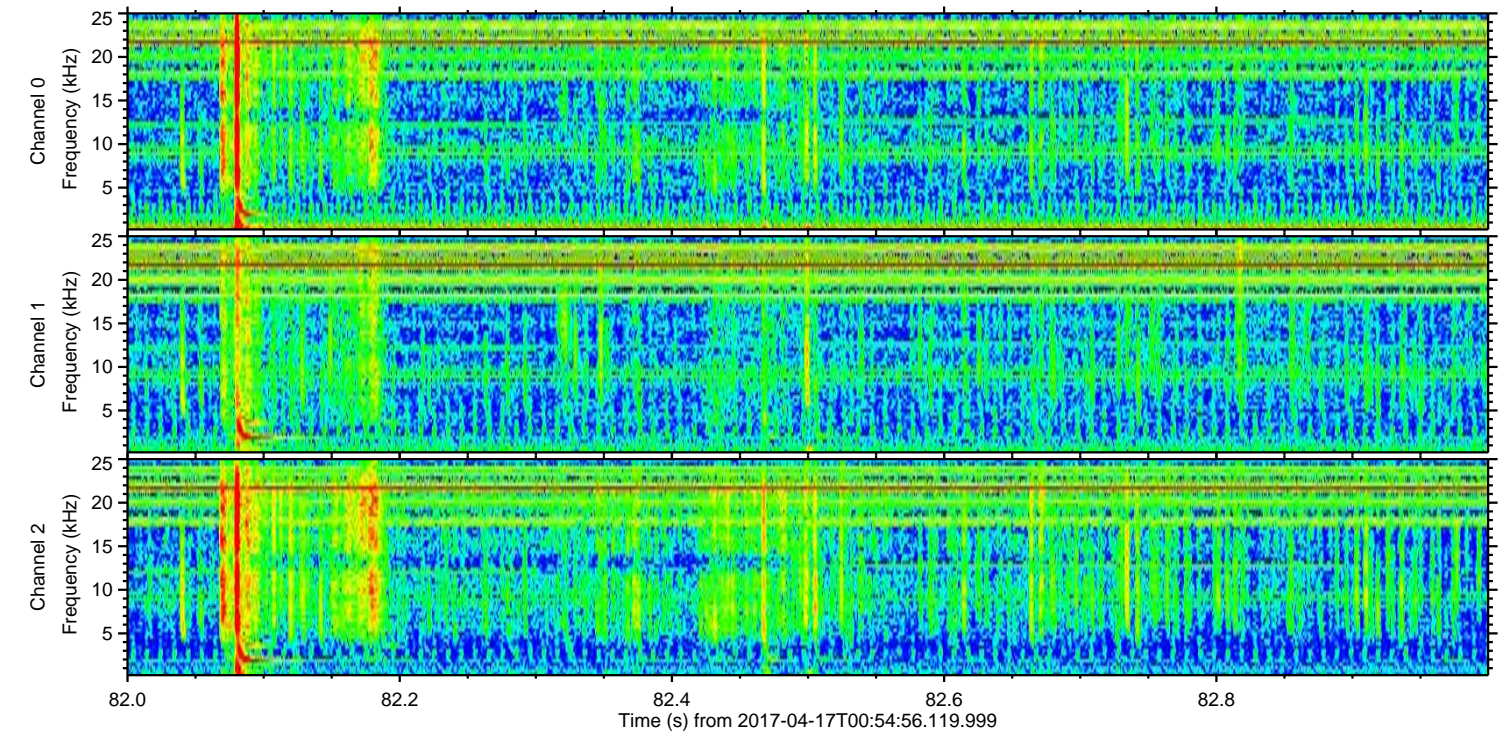
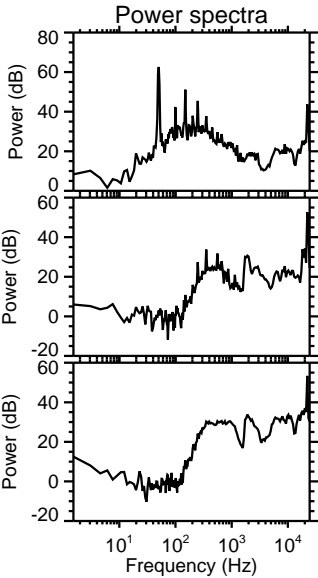
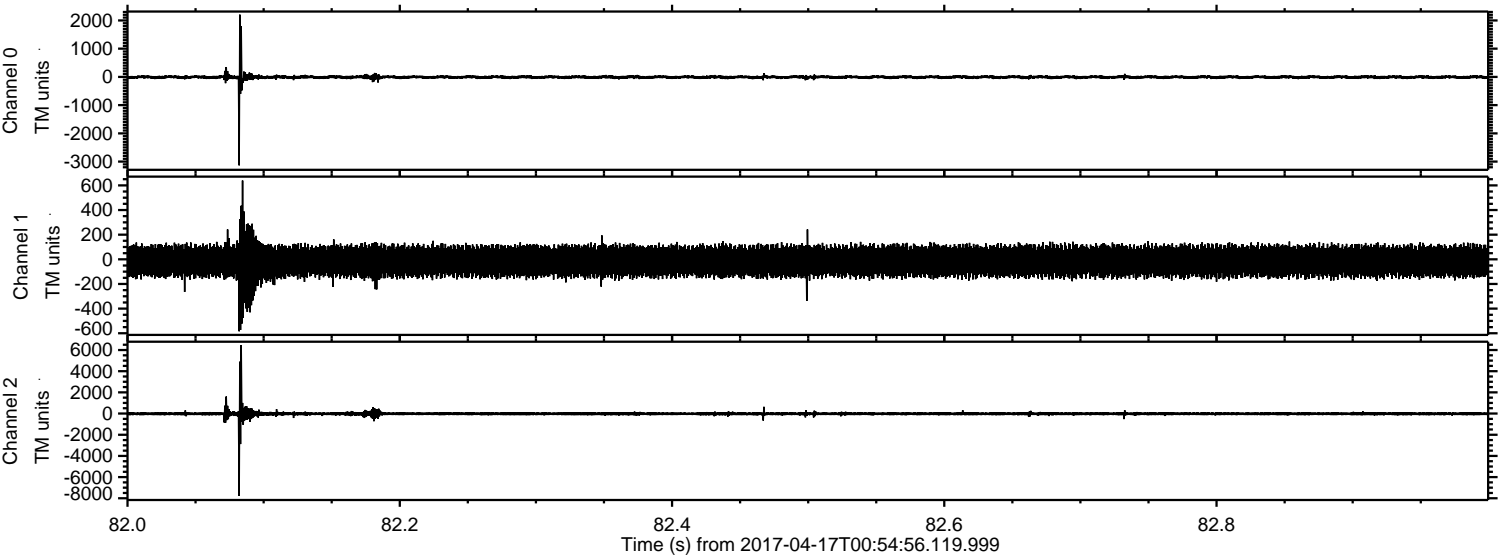
ELMAVAN 3D WAVEFORMS (Measured data sampled at 50 kHz) 51000 packets of 144 samples from 2017-04-17T00:54:56.119.999. Part 122/147

Processed Mon Apr 17 03:02:51 2017 by ELM ver.2012-10-06 from 001__elm20170417_005455__dat00.bin



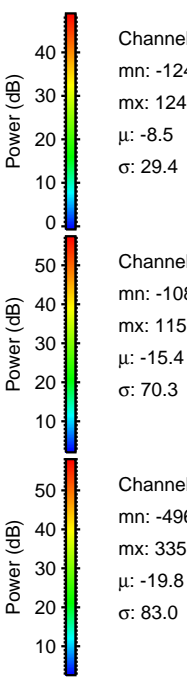
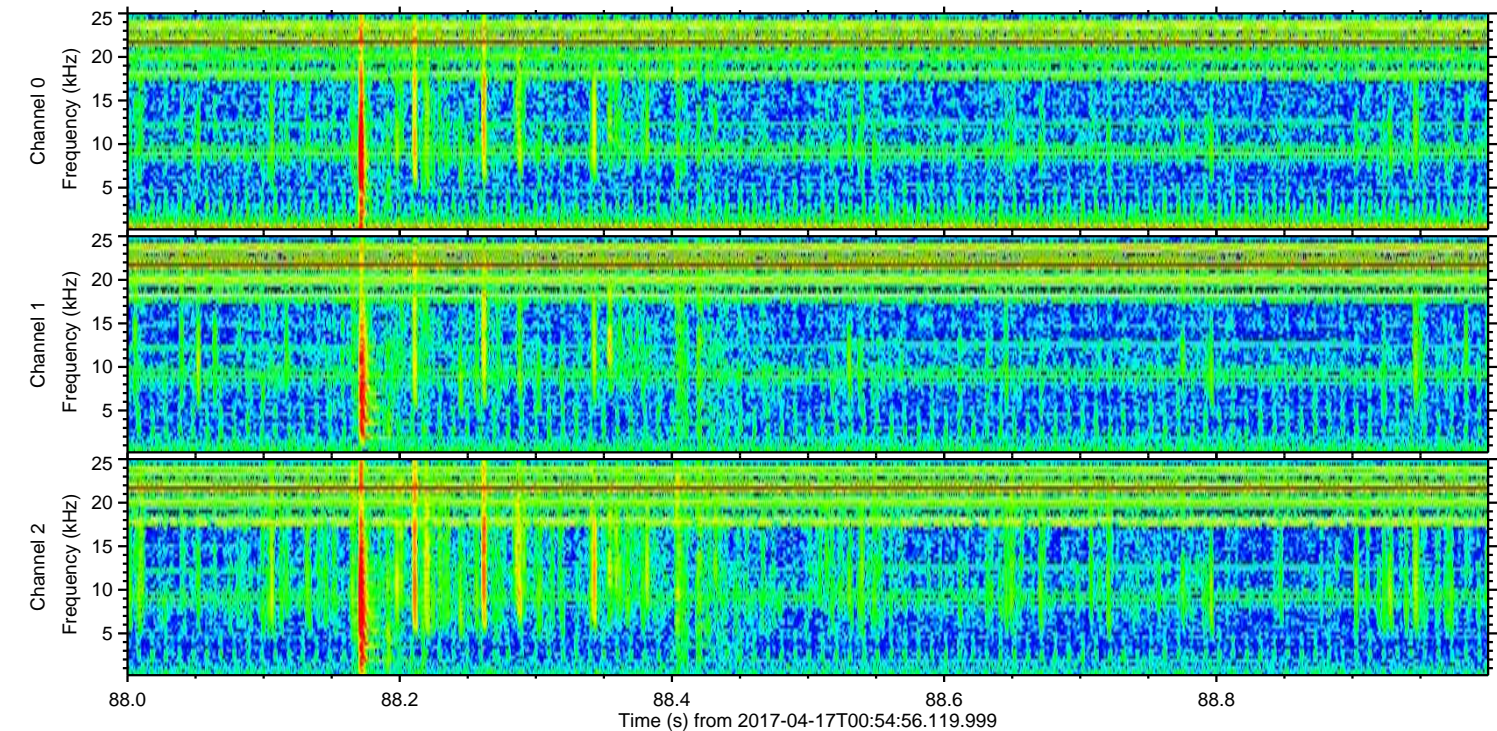
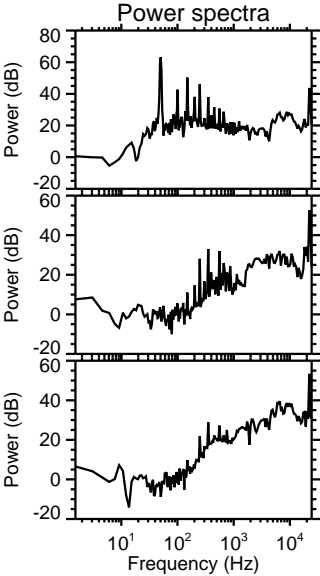
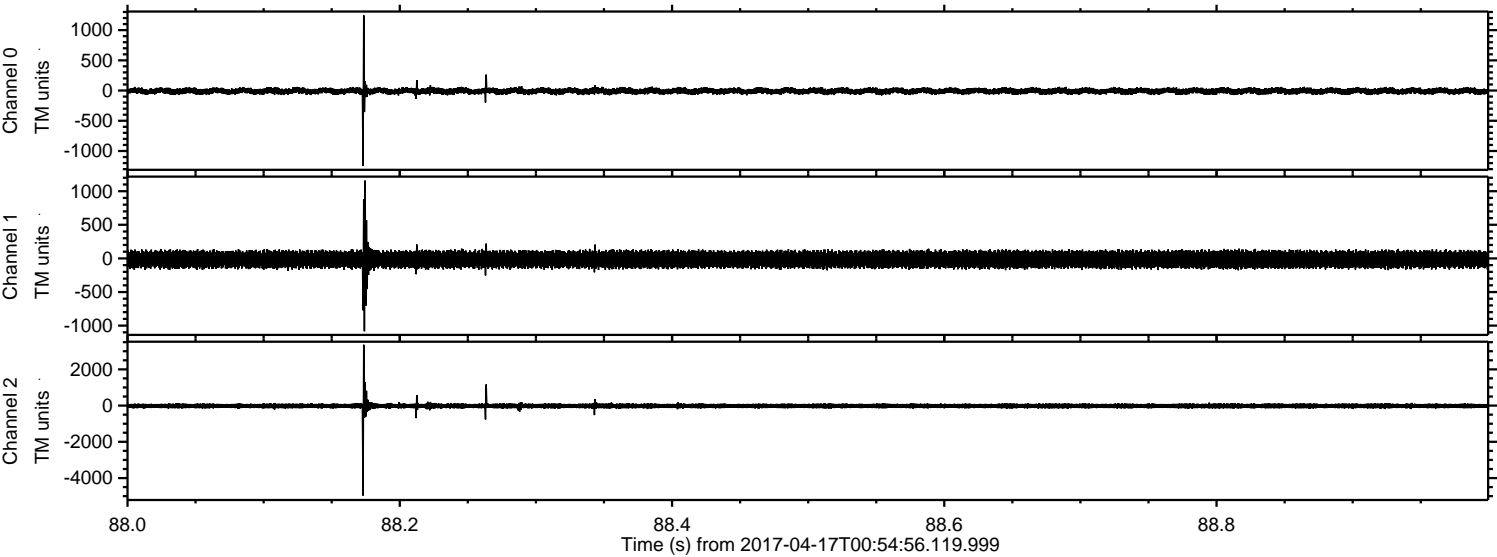
ELMAVAN 3D WAVEFORMS (Measured data sampled at 50 kHz) 51000 packets of 144 samples from 2017-04-17T00:54:56.119.999. Part 83/147

Processed Mon Apr 17 03:02:51 2017 by ELM ver.2012-10-06 from 001__elm20170417_005455__dat00.bin



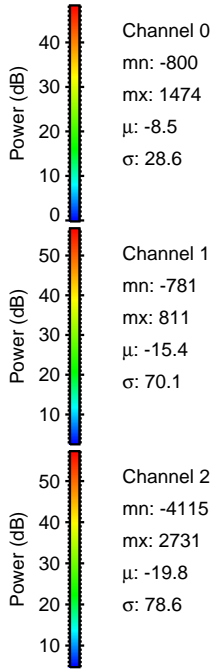
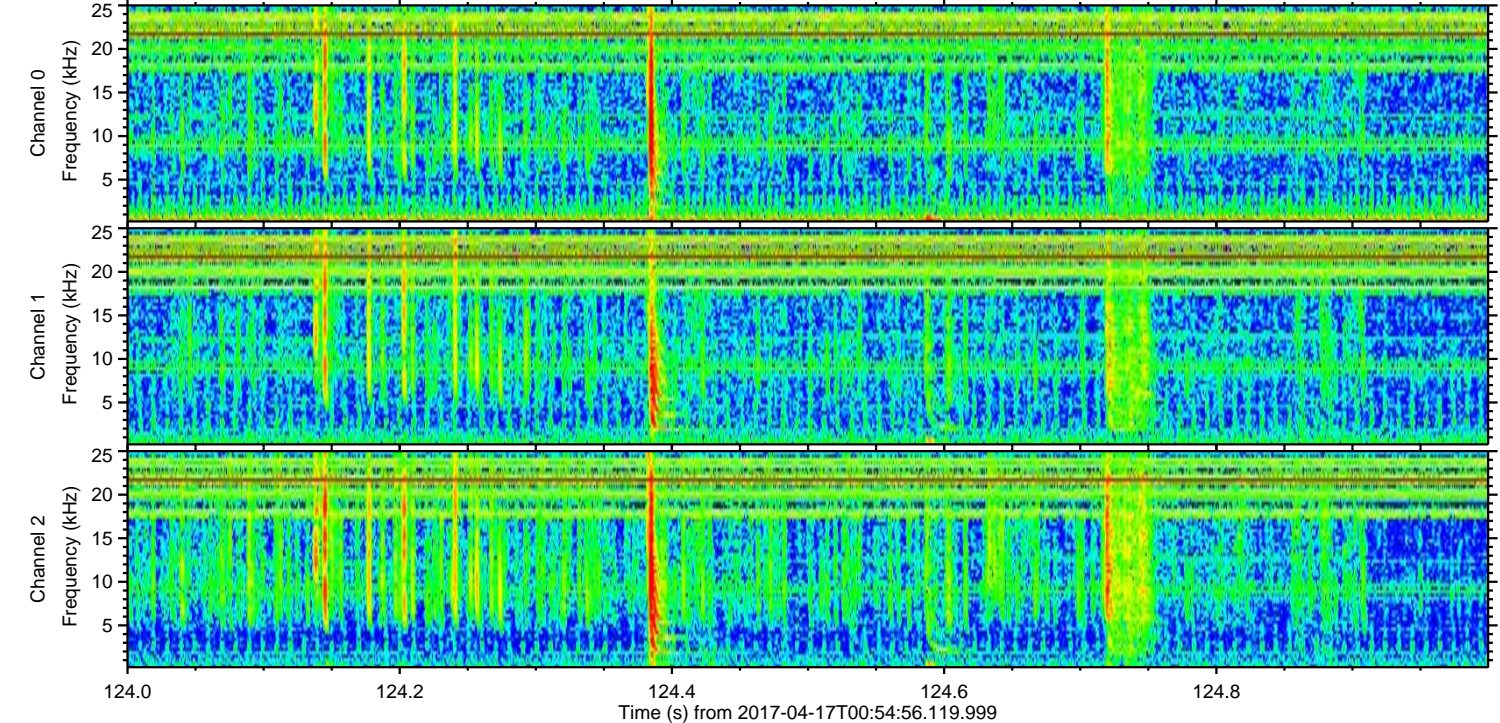
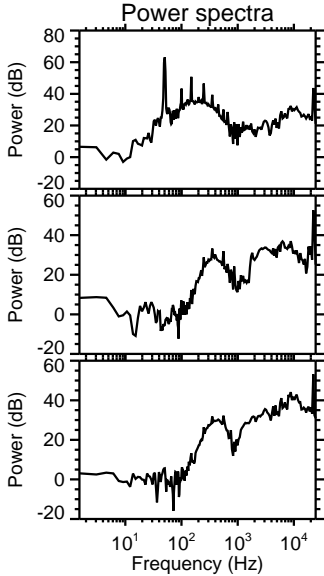
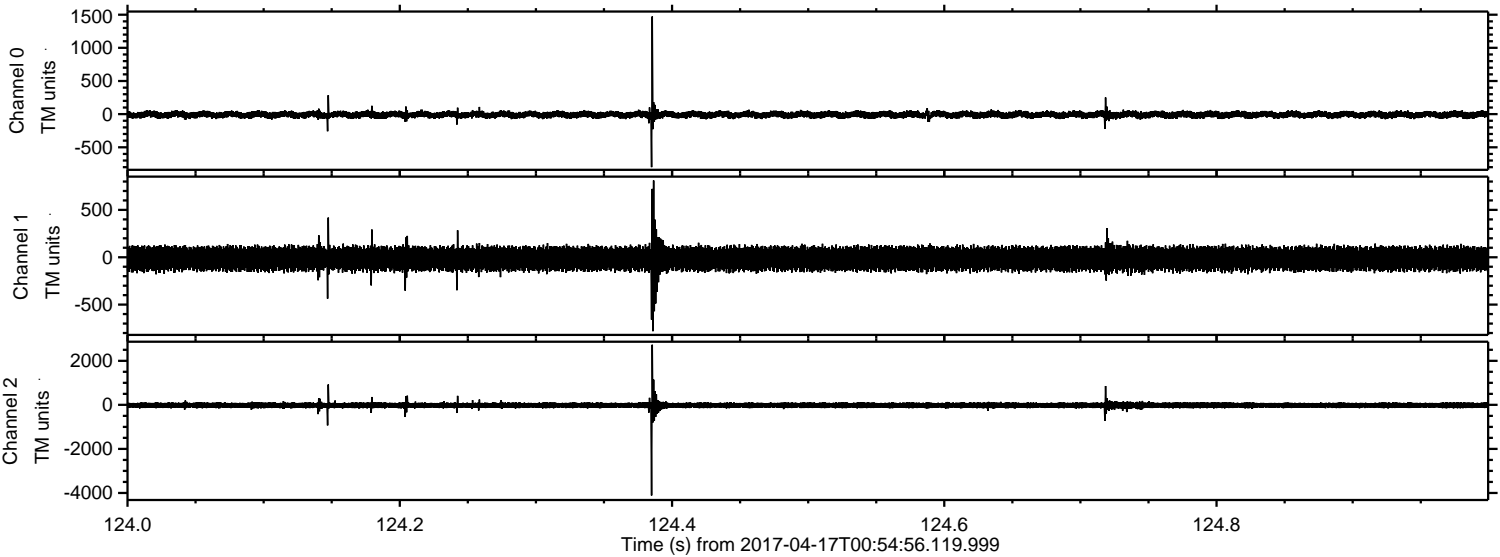
ELMAVAN 3D WAVEFORMS (Measured data sampled at 50 kHz) 51000 packets of 144 samples from 2017-04-17T00:54:56.119.999. Part 89/147

Processed Mon Apr 17 03:02:52 2017 by ELM ver.2012-10-06 from 001__elm20170417_005455__dat00.bin



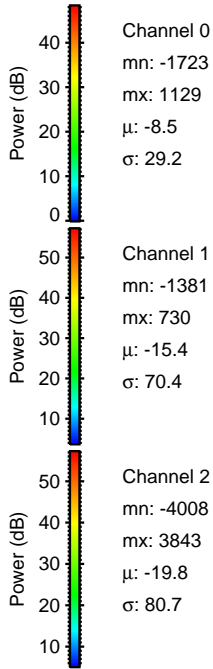
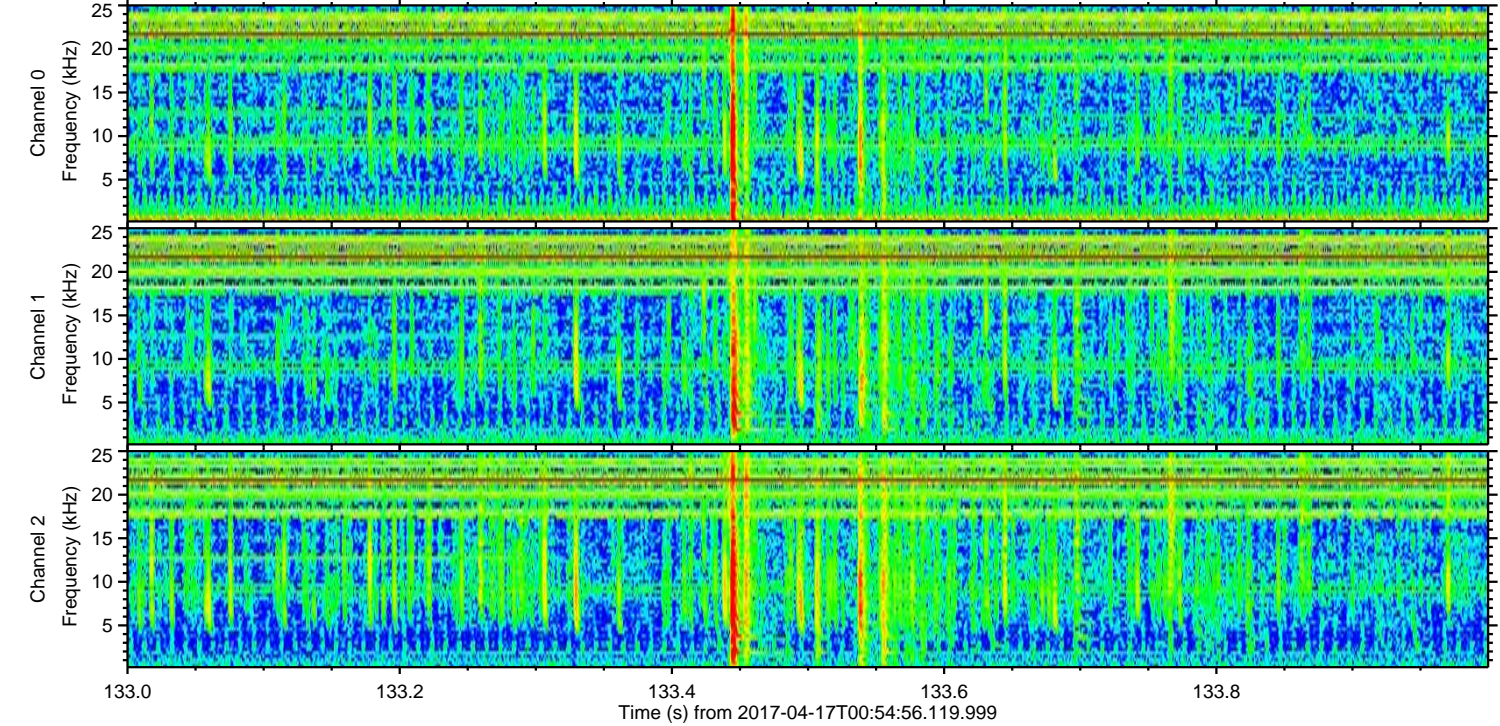
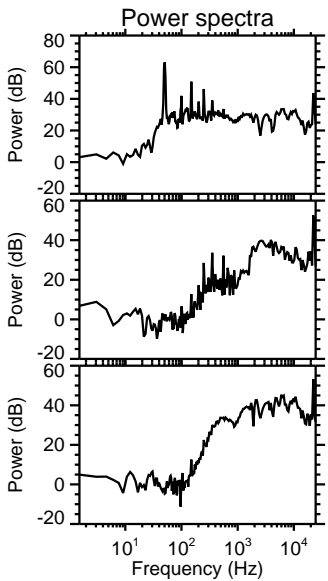
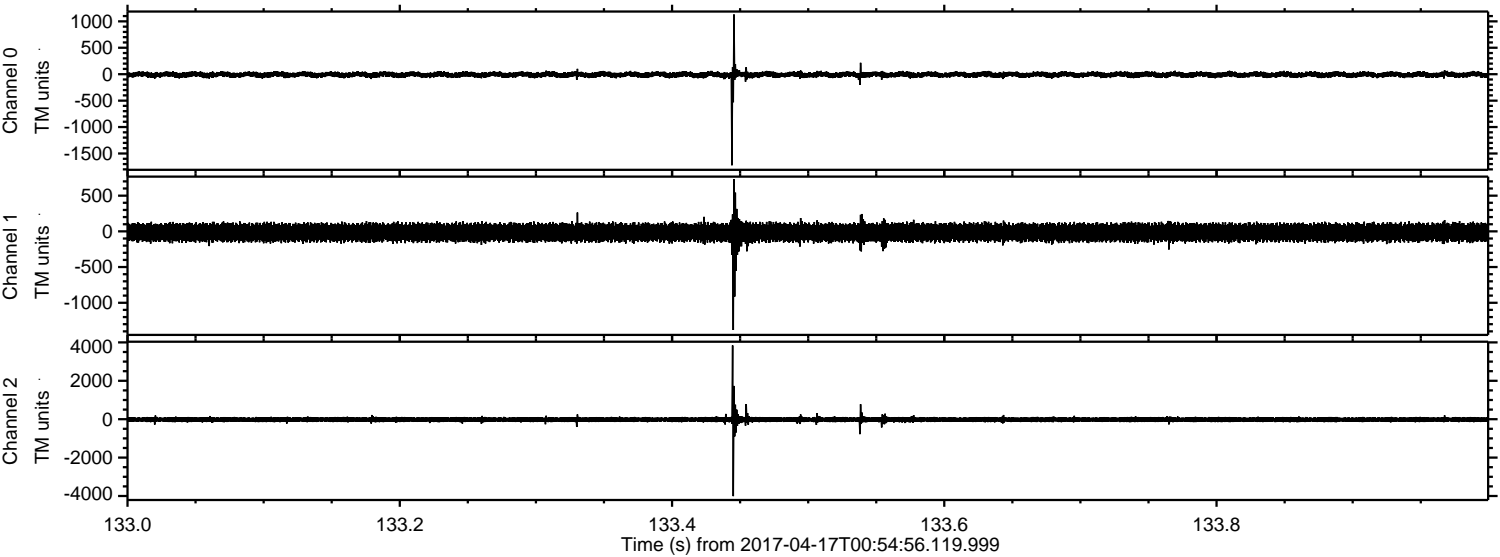
ELMAVAN 3D WAVEFORMS (Measured data sampled at 50 kHz) 51000 packets of 144 samples from 2017-04-17T00:54:56.119.999. Part 125/147

Processed Mon Apr 17 03:02:53 2017 by ELM ver.2012-10-06 from 001__elm20170417_005455__dat00.bin



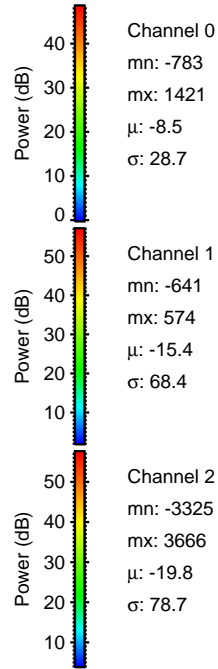
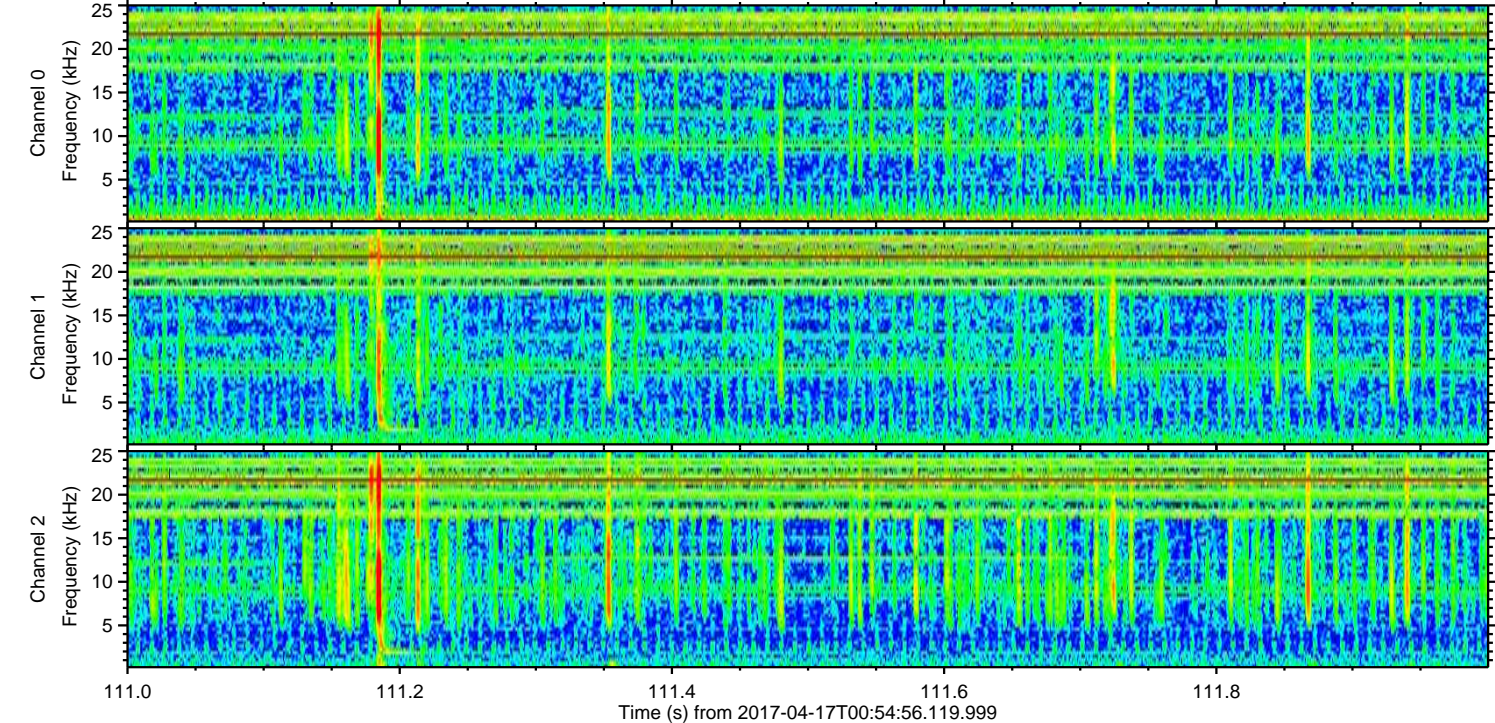
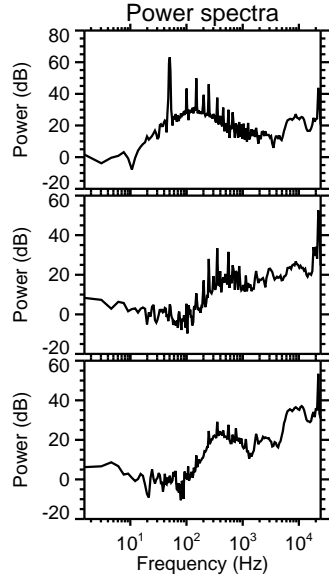
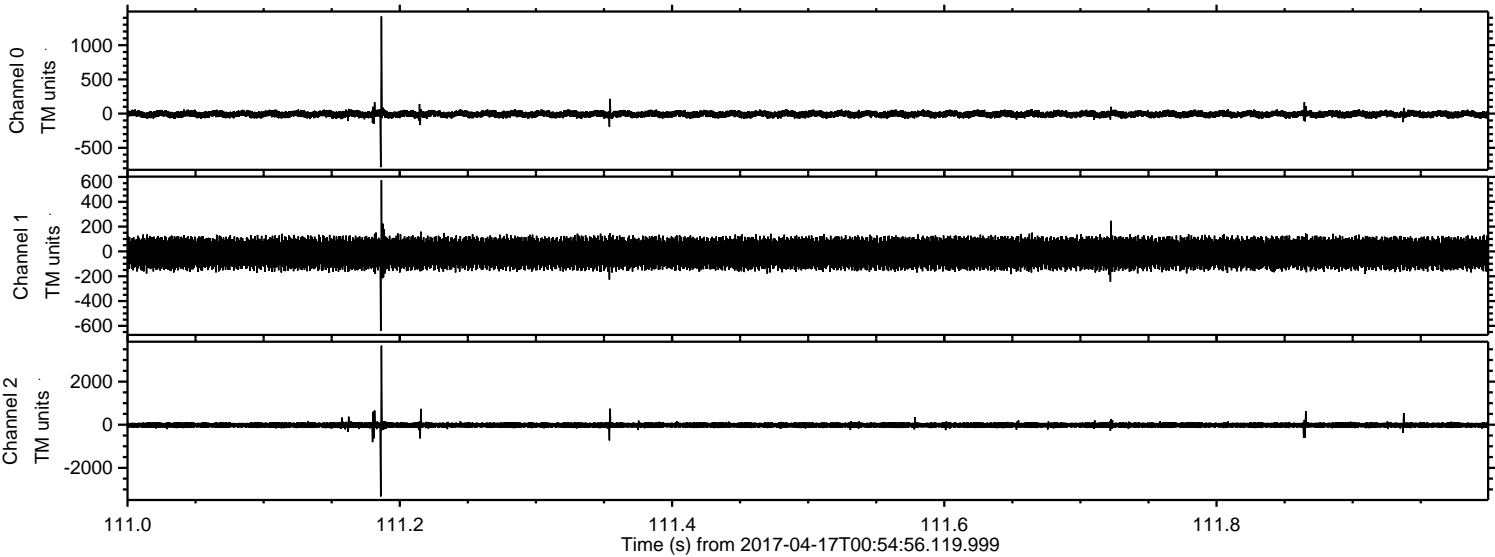
ELMAVAN 3D WAVEFORMS (Measured data sampled at 50 kHz) 51000 packets of 144 samples from 2017-04-17T00:54:56.119.999. Part 134/147

Processed Mon Apr 17 03:02:54 2017 by ELM ver.2012-10-06 from 001__elm20170417_005455__dat00.bin

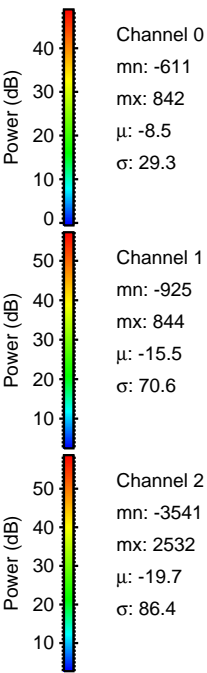
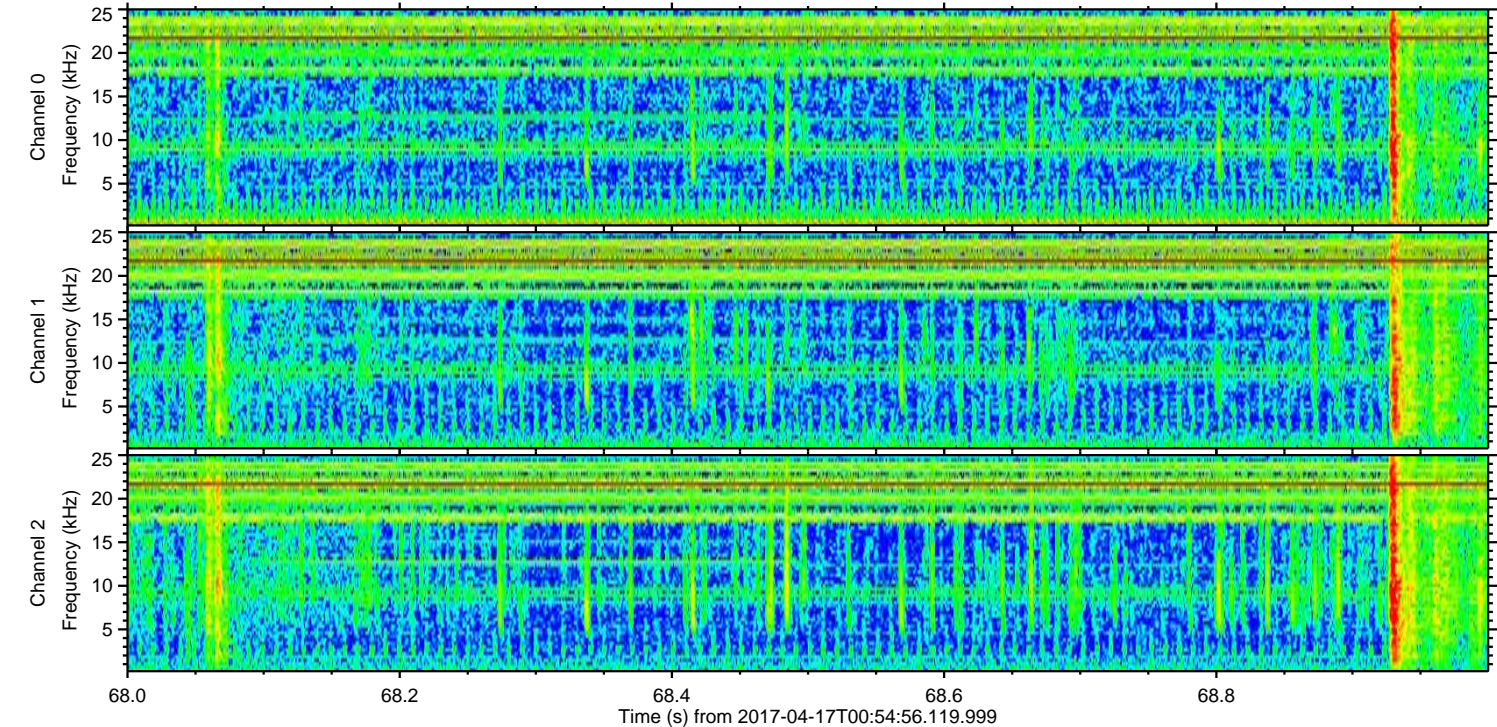
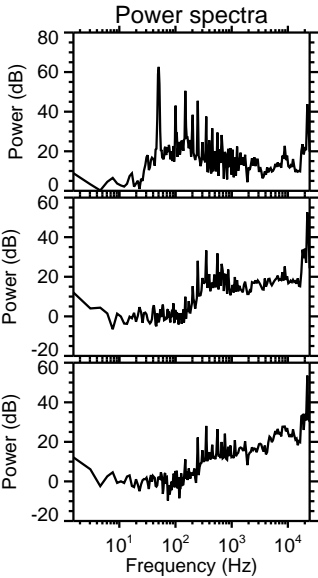
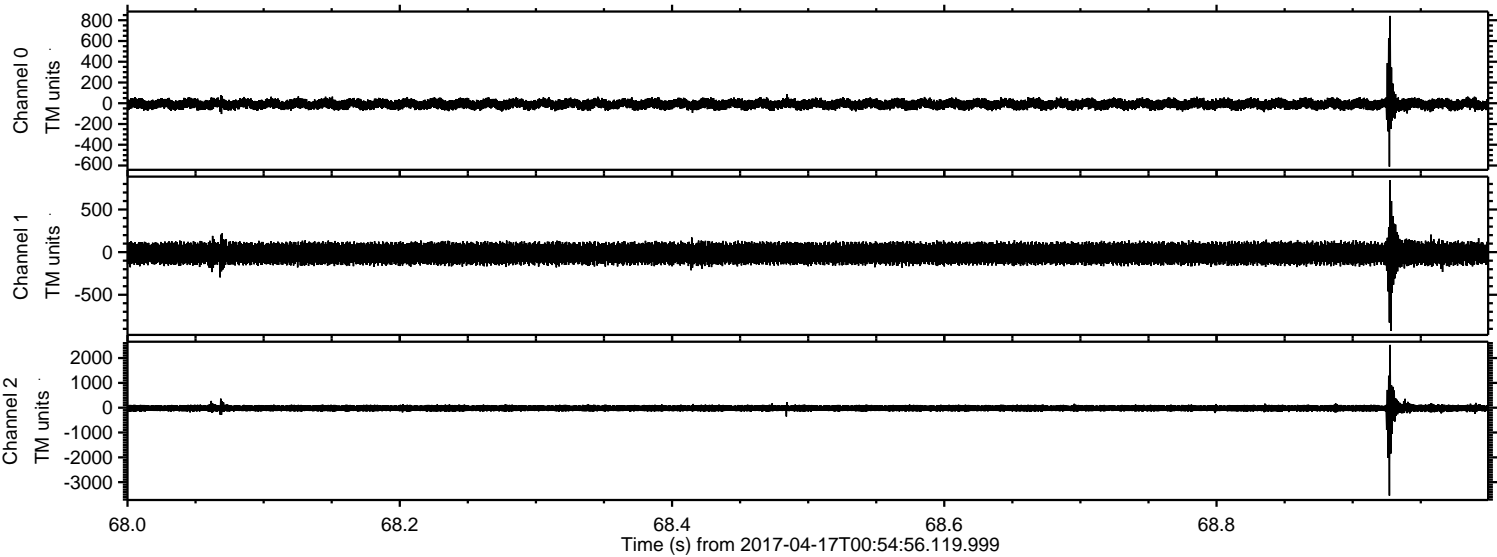


ELMAVAN 3D WAVEFORMS (Measured data sampled at 50 kHz) 51000 packets of 144 samples from 2017-04-17T00:54:56.119.999. Part 112/147

Processed Mon Apr 17 03:02:55 2017 by ELM ver.2012-10-06 from 001__elm20170417_005455__dat00.bin



Processed Mon Apr 17 03:02:56 2017 by ELM ver.2012-10-06 from 001__elm20170417_005455__dat00.bin



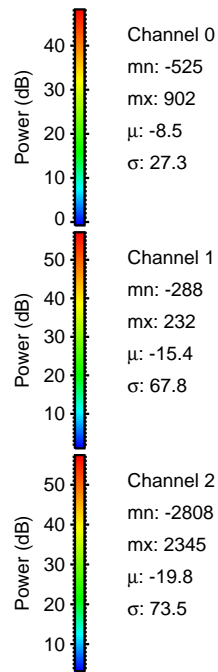
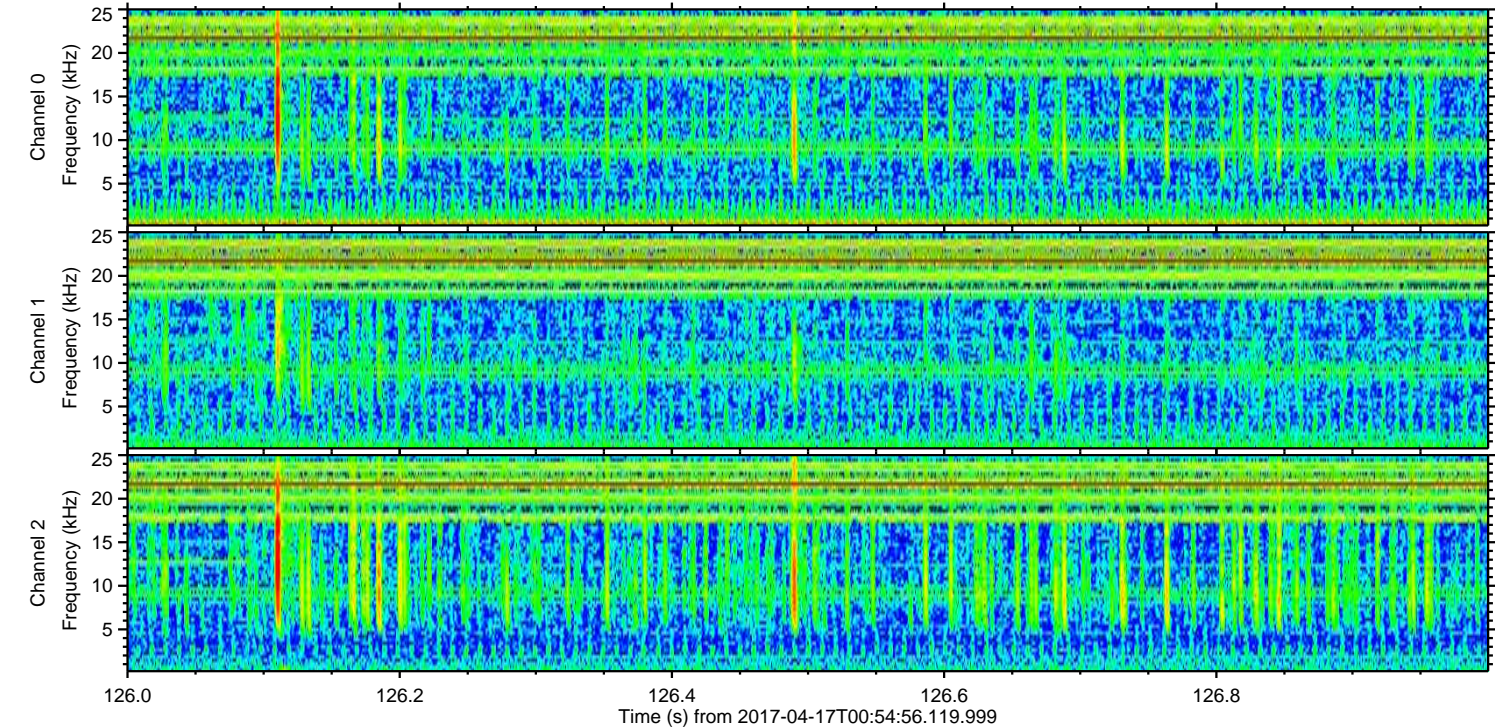
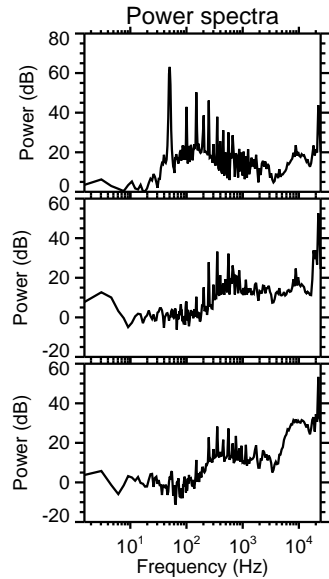
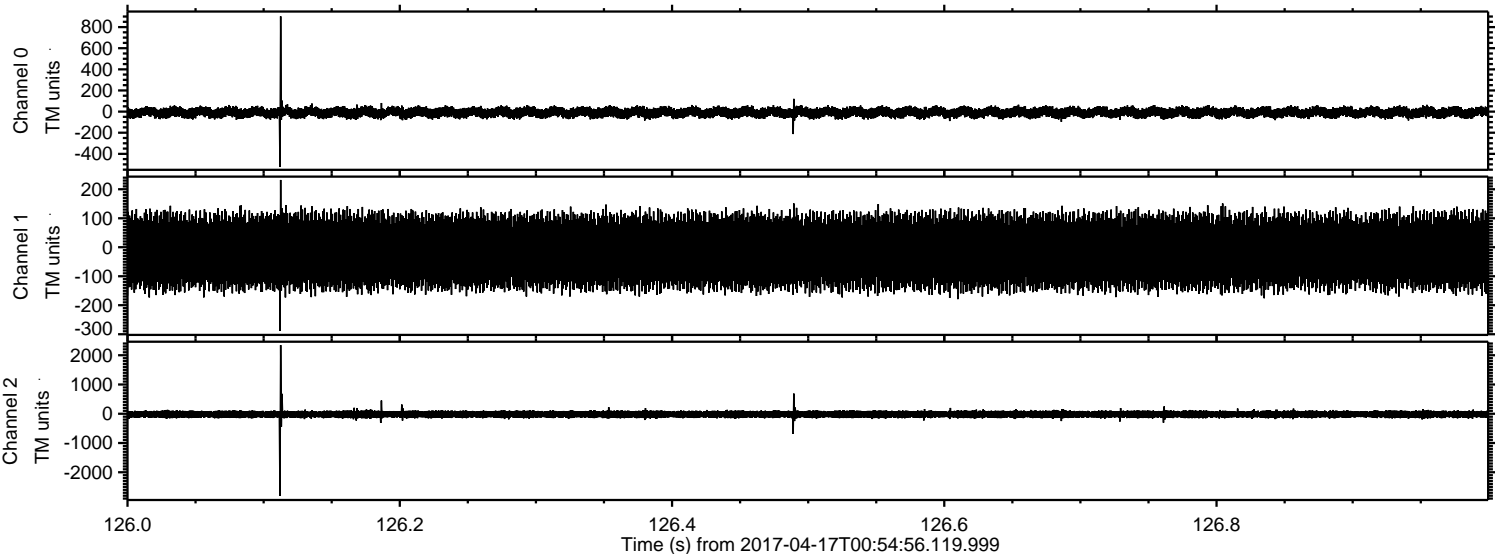
Channel 0
mn: -611
mx: 842
 μ : -8.5
 σ : 29.3

Channel 1
mn: -925
mx: 844
 μ : -15.5
 σ : 70.6

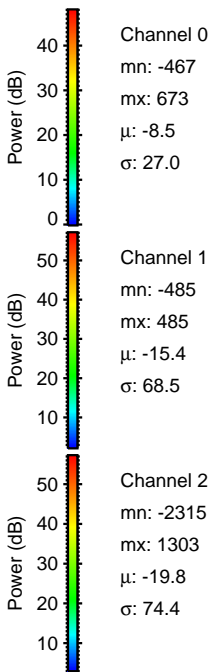
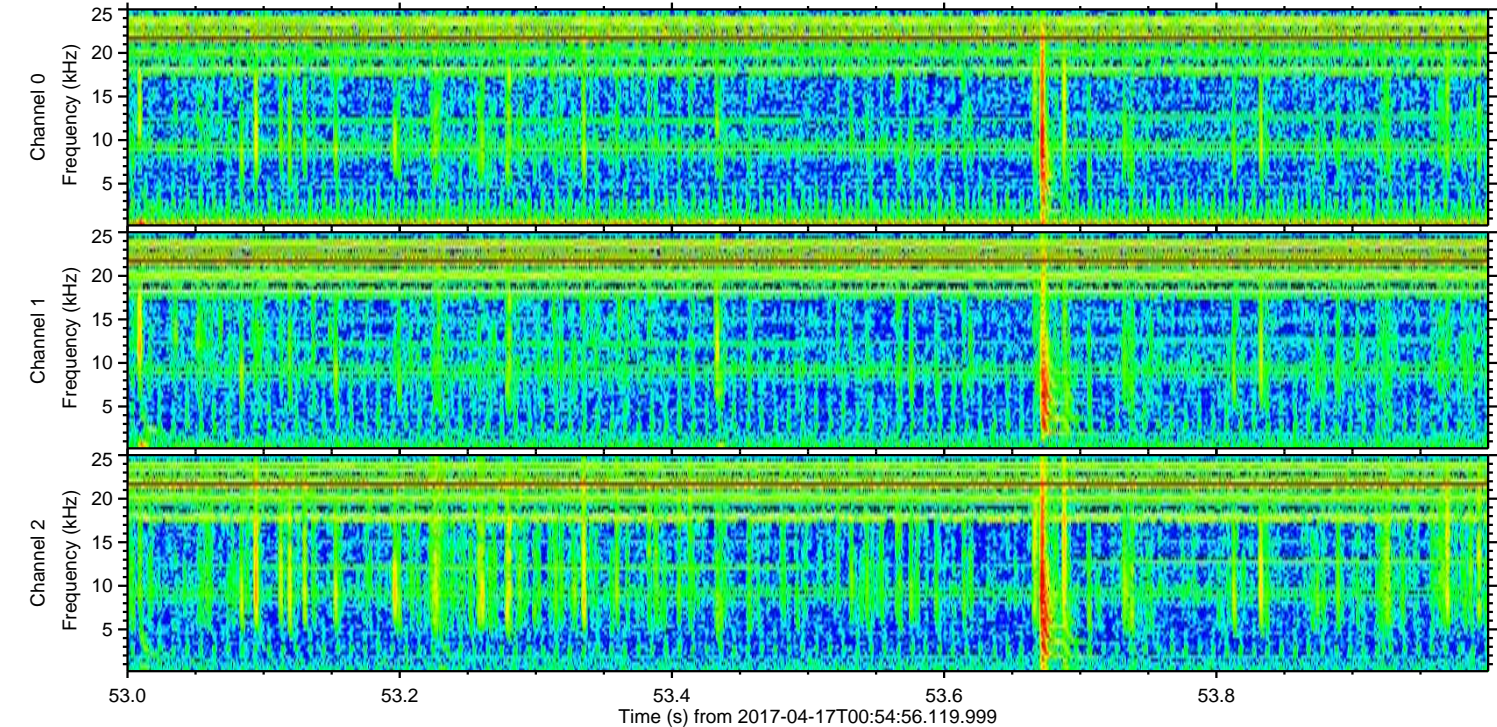
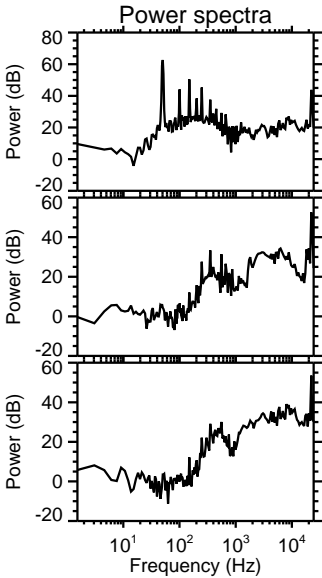
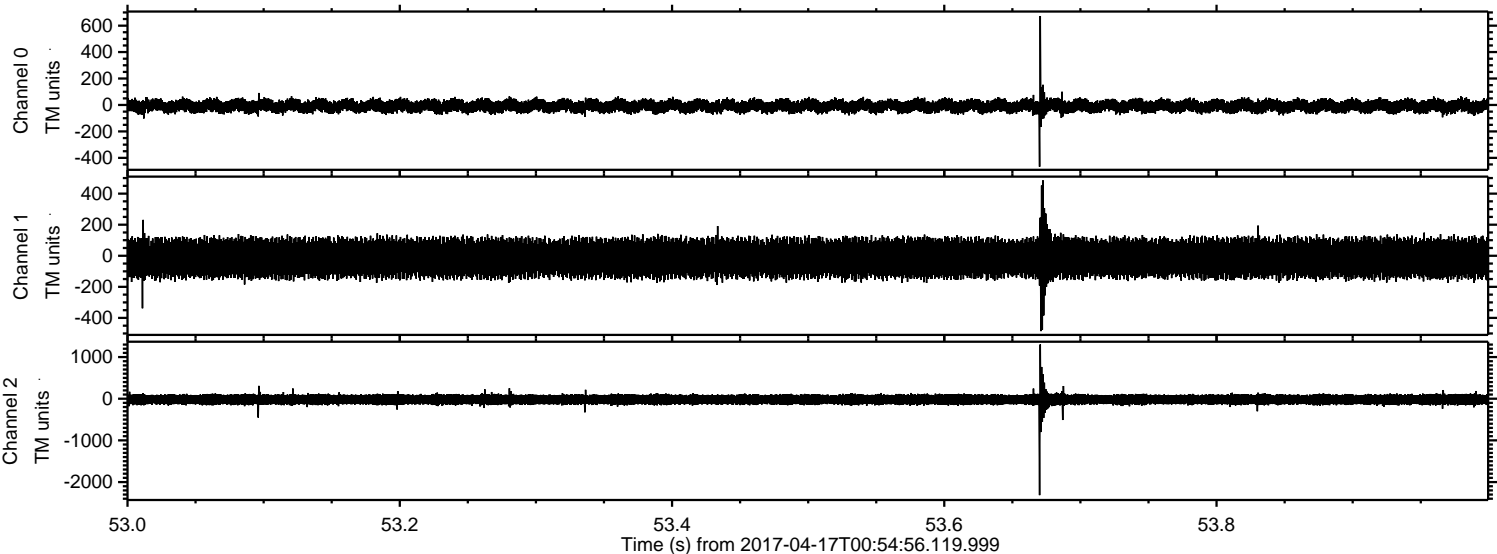
Channel 2
mn: -3541
mx: 2532
 μ : -19.7
 σ : 86.4

ELMAVAN 3D WAVEFORMS (Measured data sampled at 50 kHz) 51000 packets of 144 samples from 2017-04-17T00:54:56.119.999. Part 127/147

Processed Mon Apr 17 03:02:57 2017 by ELM ver.2012-10-06 from 001__elm20170417_005455__dat00.bin



Processed Mon Apr 17 03:02:58 2017 by ELM ver.2012-10-06 from 001__elm20170417_005455__dat00.bin



ELMAVAN 3D WAVEFORMS (Measured data sampled at 50 kHz) 51000 packets of 144 samples from 2017-04-17T00:54:56.119.999. Part 119/147

