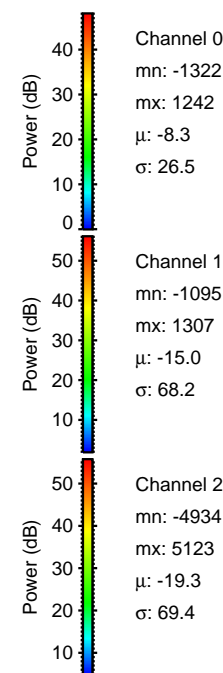
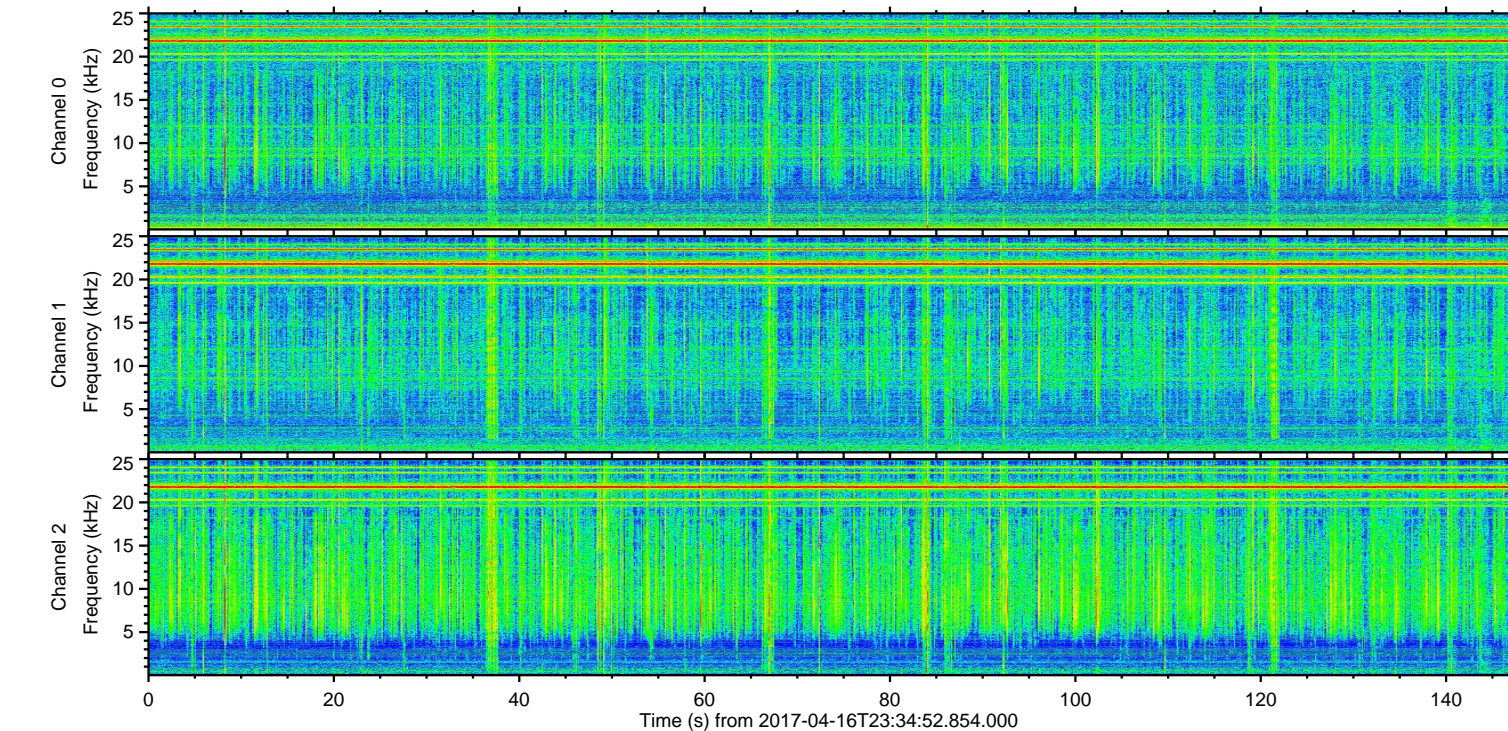
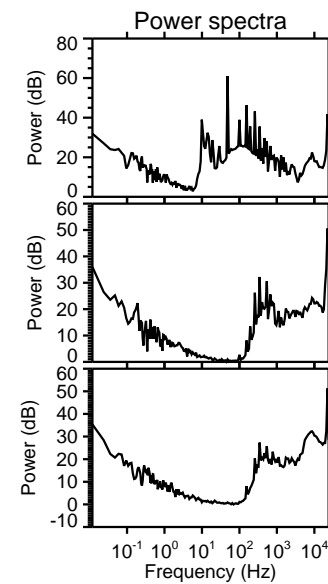
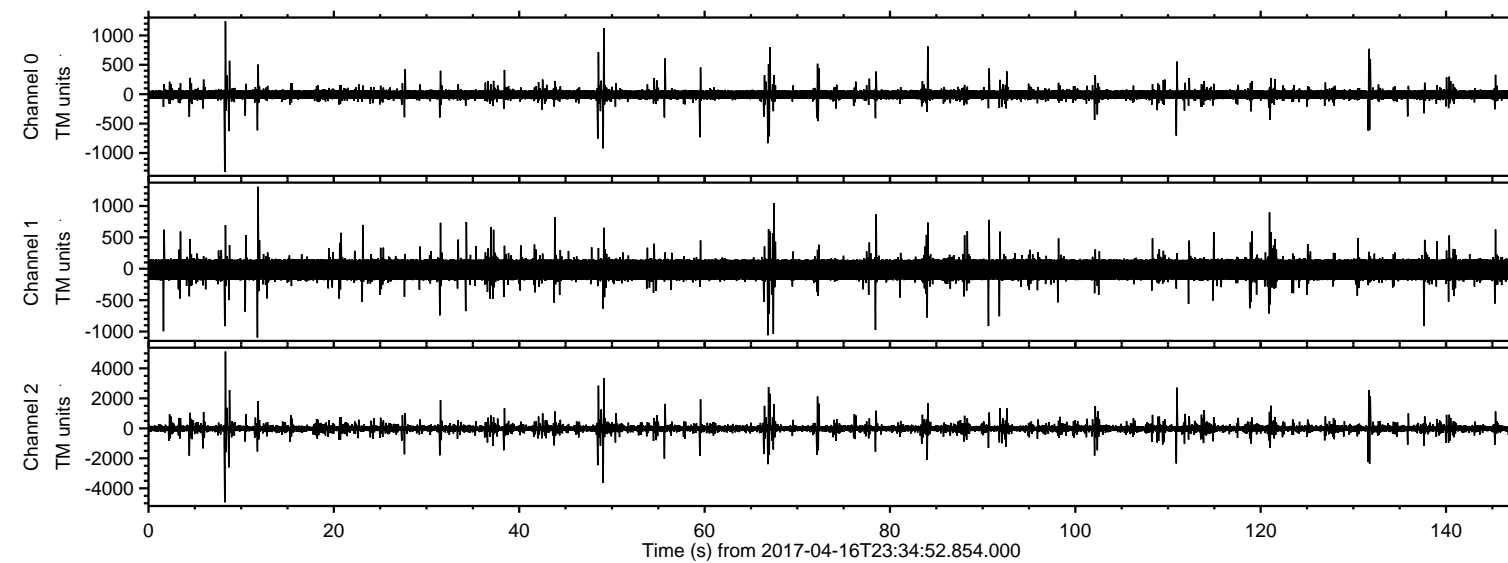
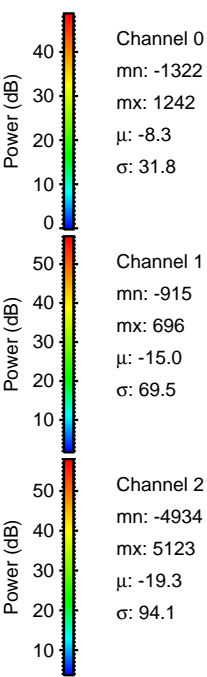
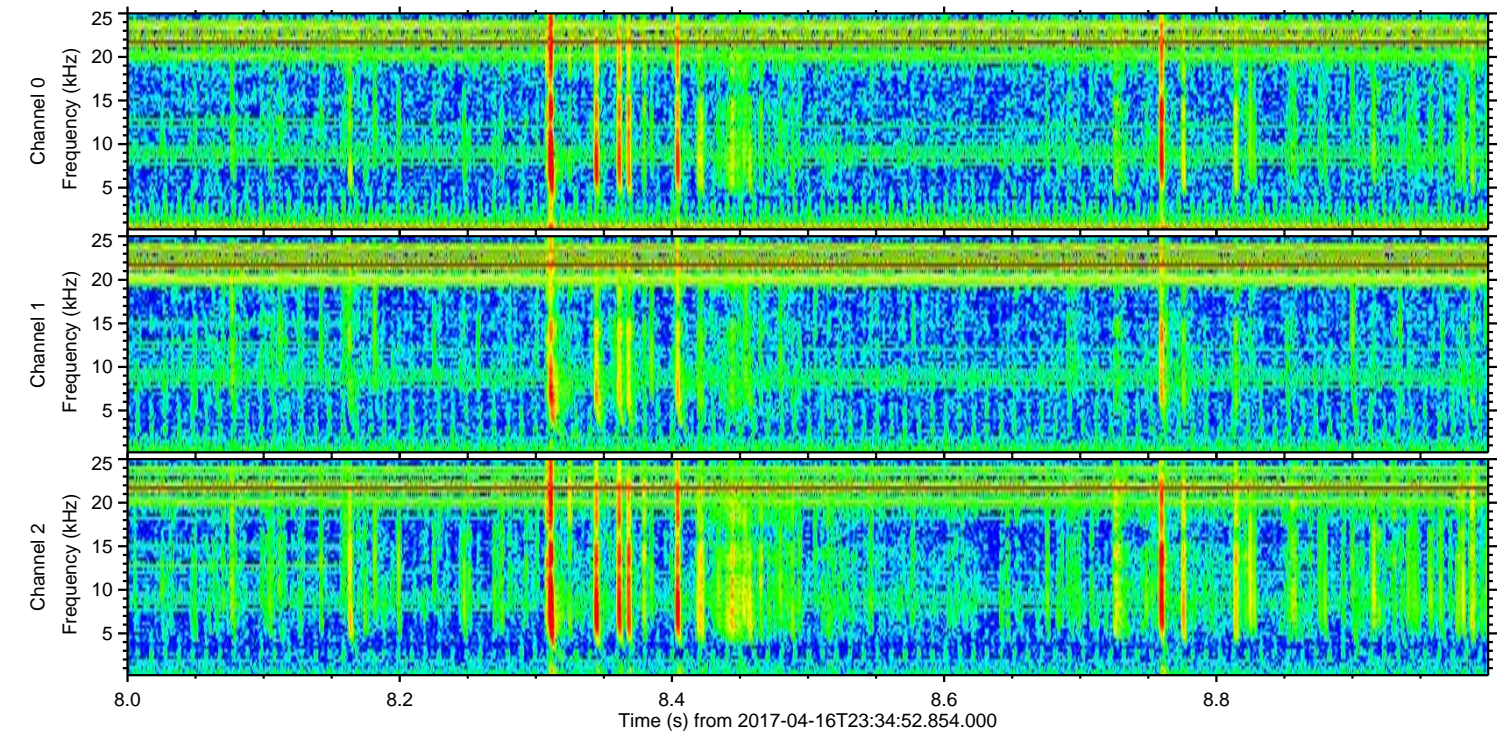
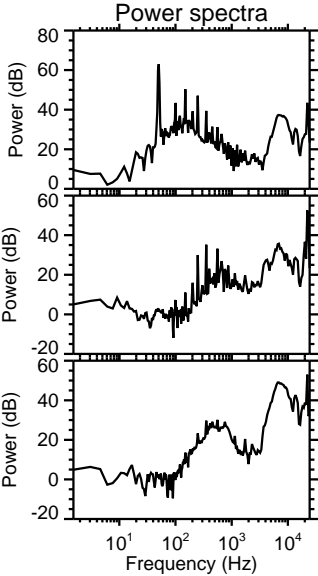
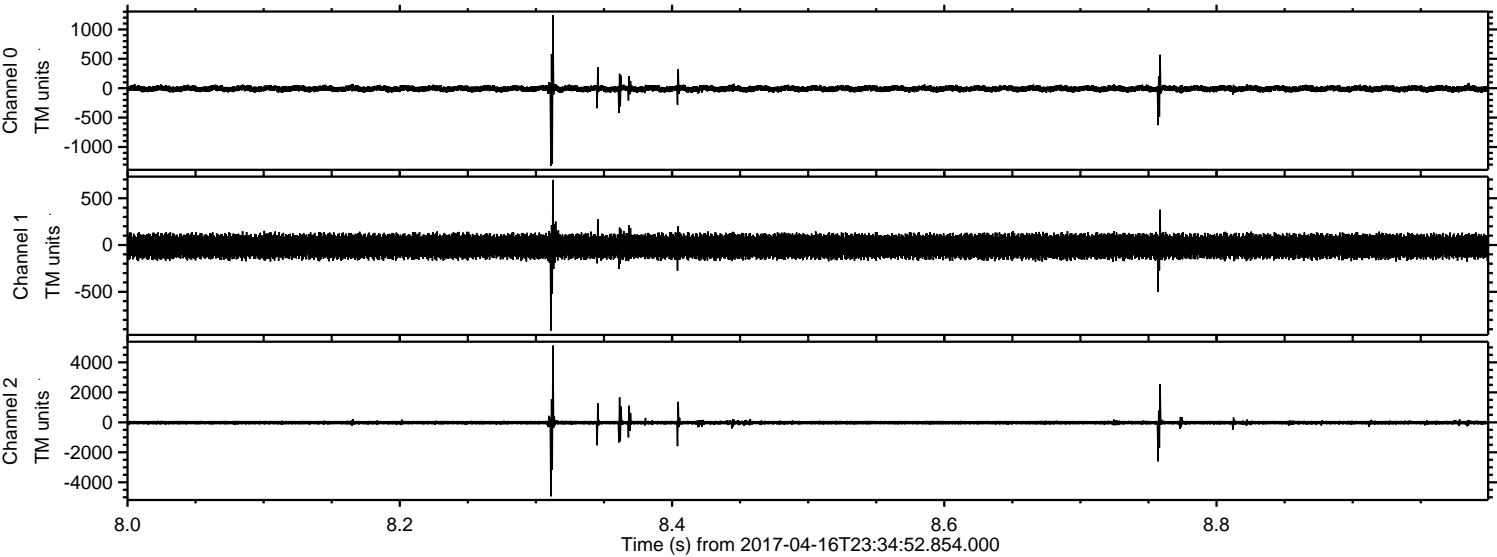


ELMAVAN 3D WAVEFORMS (Measured data sampled at 50 kHz) 51000 packets of 144 samples from 2017-04-16T23:34:52.854.000.

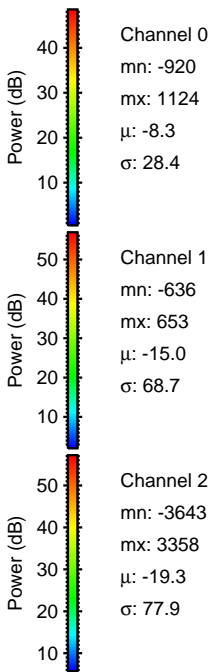
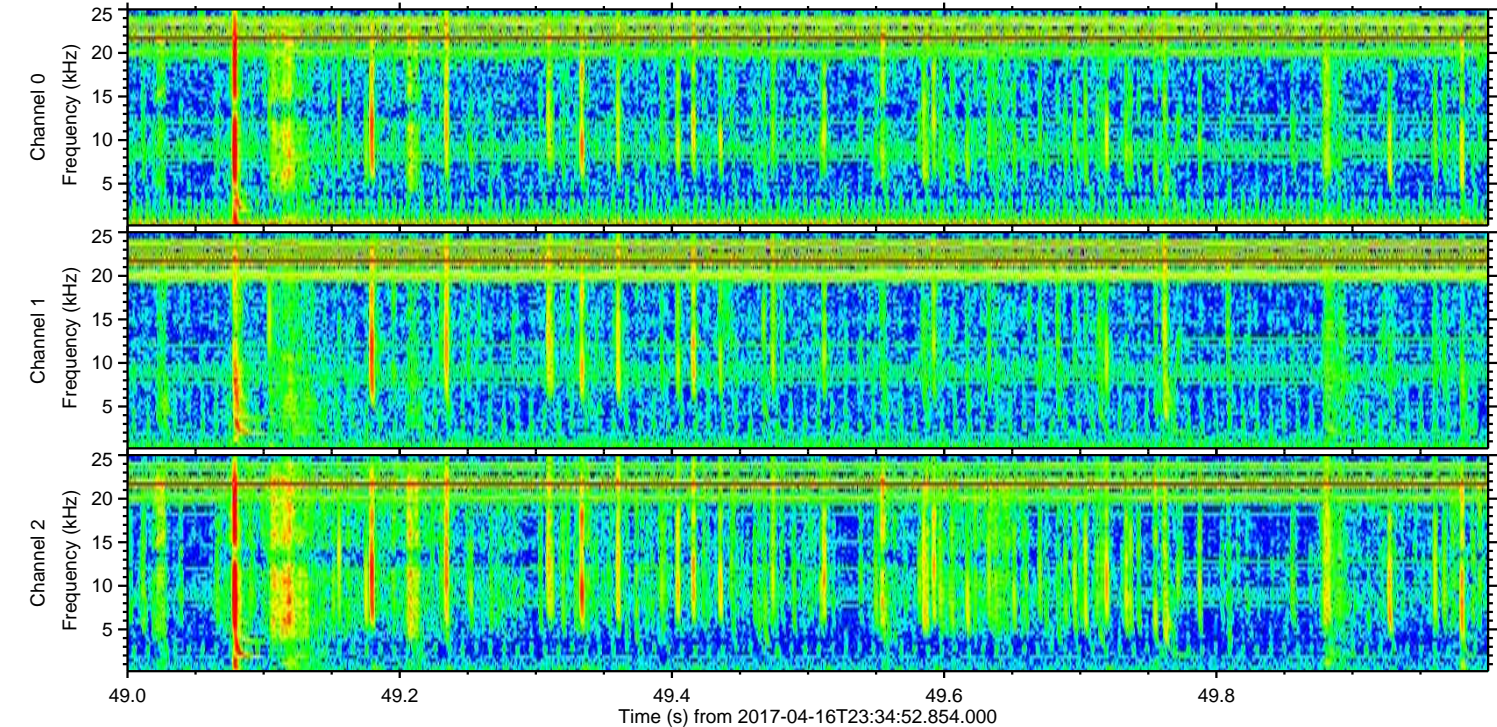
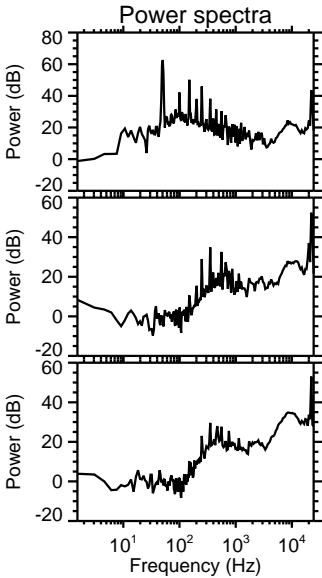
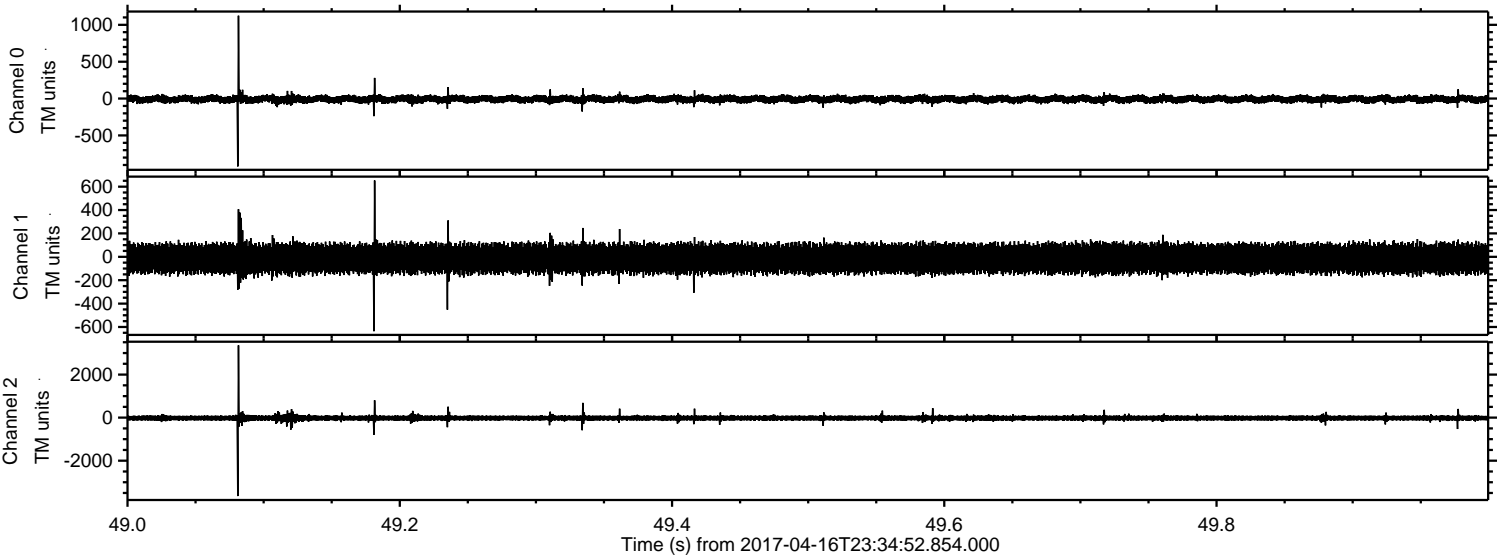
Processed Mon Apr 17 01:42:36 2017 by ELM ver.2012-10-06 from 001__elm20170416_233451__dat00.bin



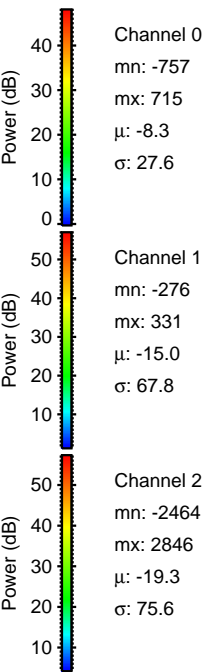
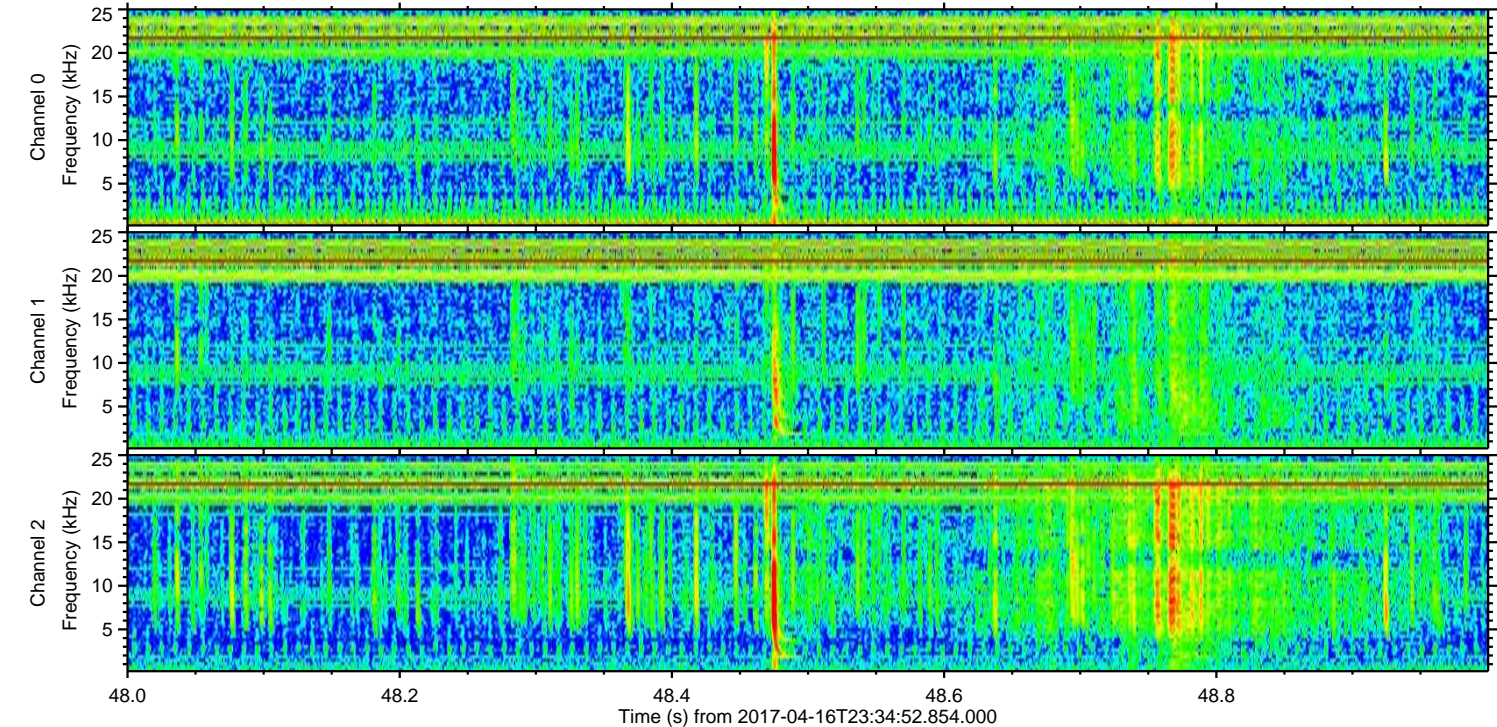
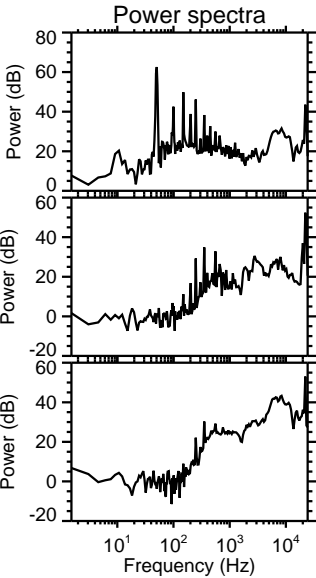
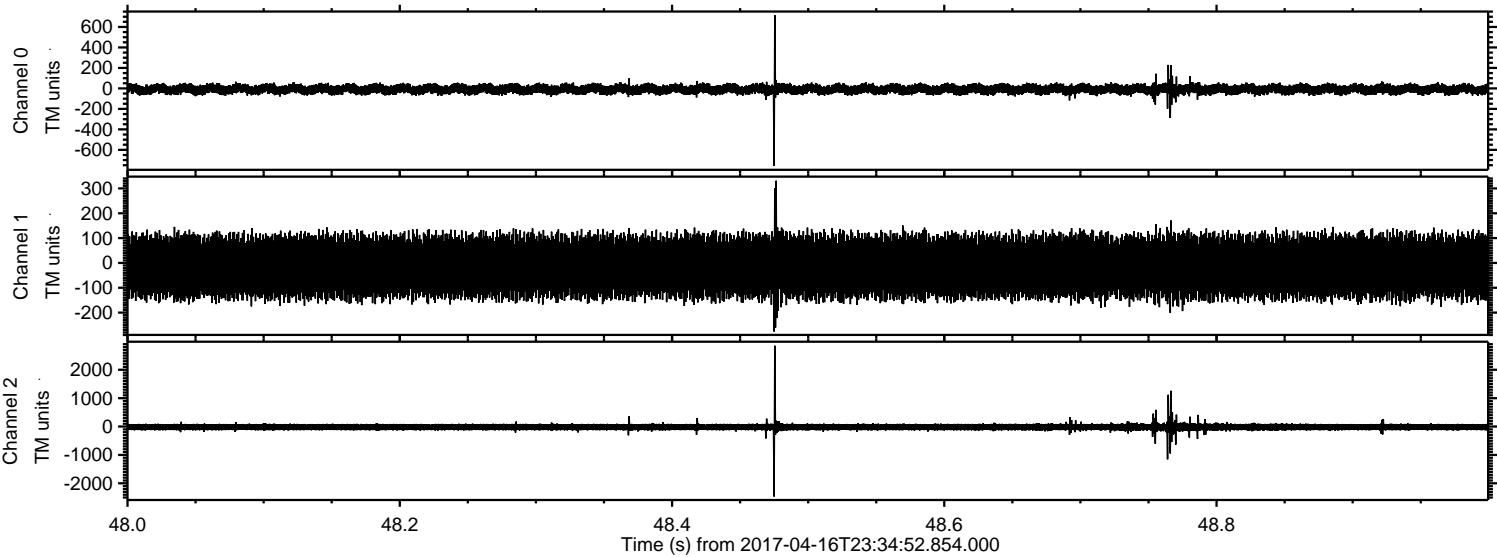
Processed Mon Apr 17 01:42:47 2017 by ELM ver.2012-10-06 from 001__elm20170416_233451__dat00.bin



Processed Mon Apr 17 01:42:48 2017 by ELM ver.2012-10-06 from 001__elm20170416_233451__dat00.bin

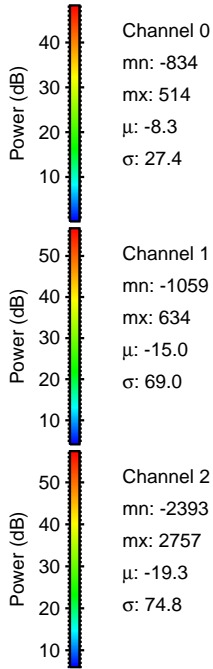
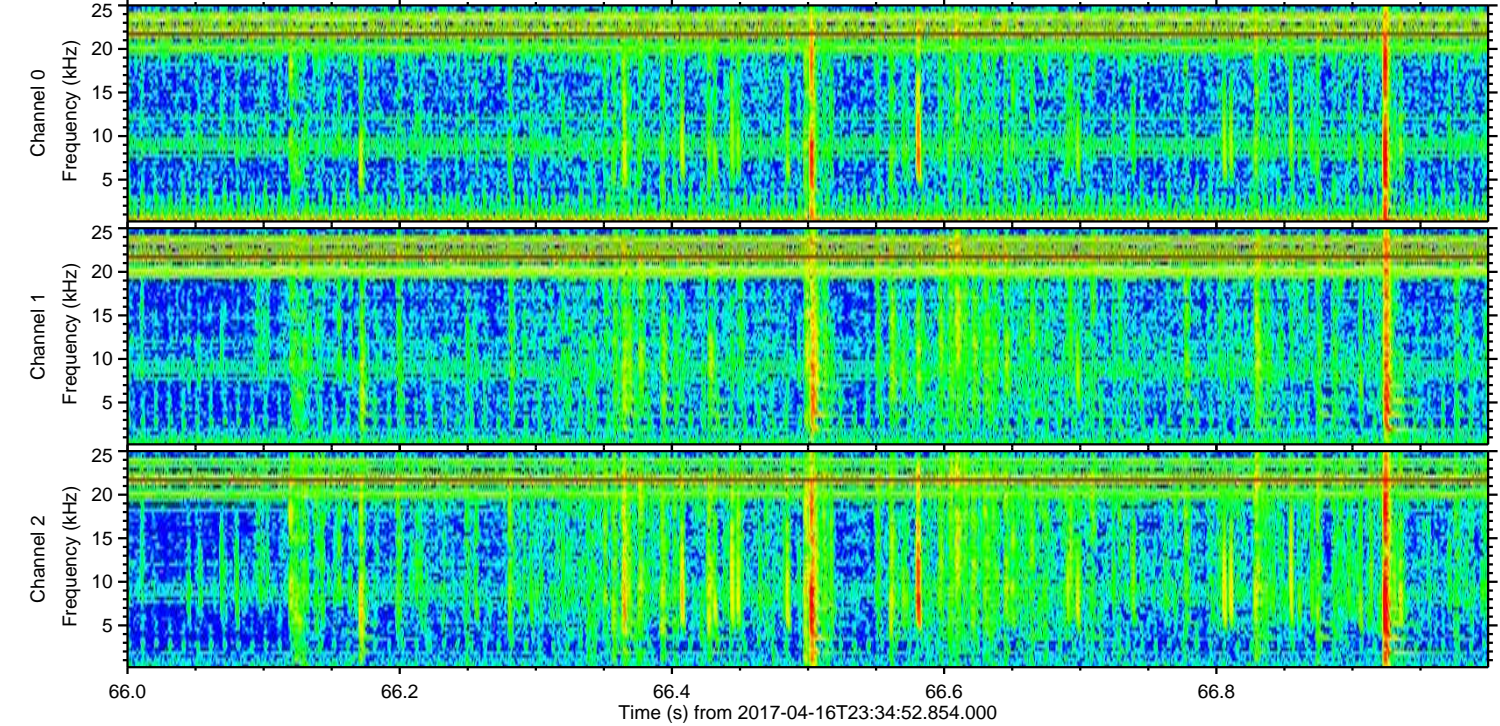
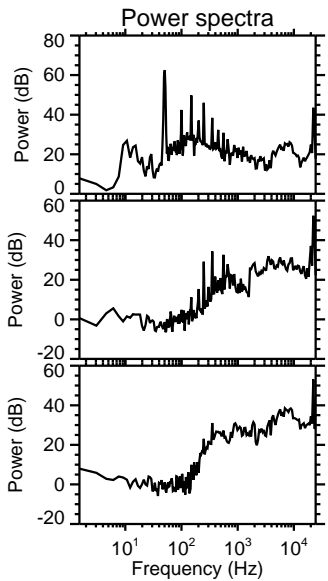
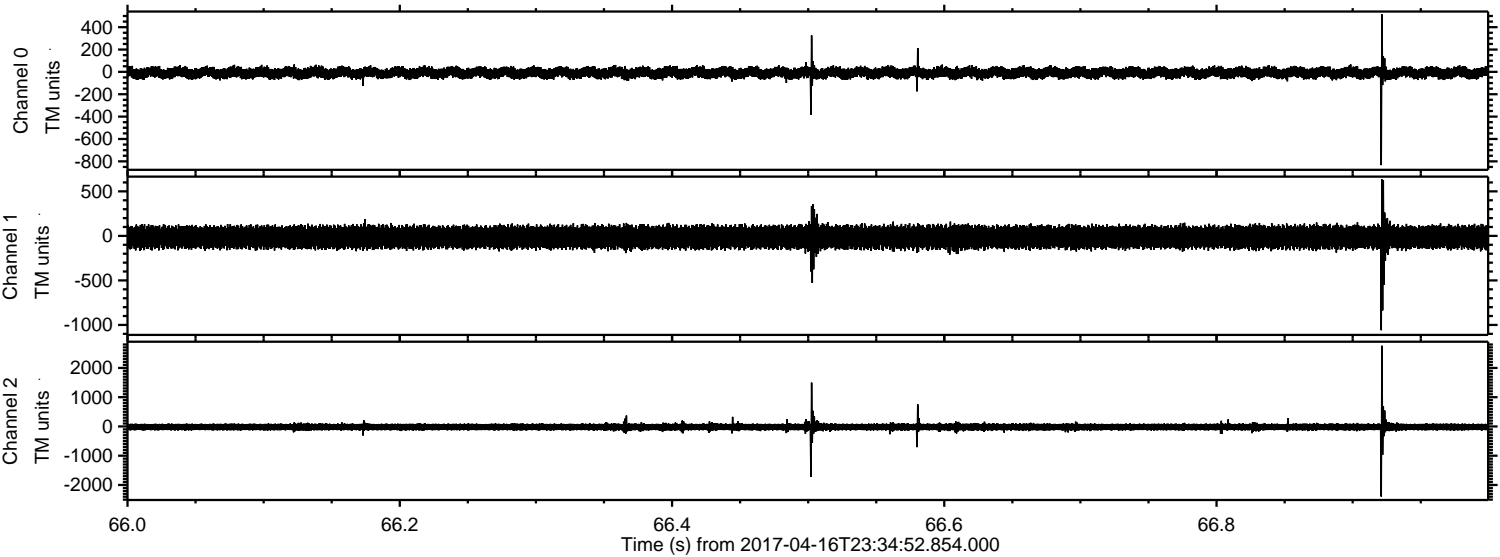


Processed Mon Apr 17 01:42:49 2017 by ELM ver.2012-10-06 from 001__elm20170416_233451__dat00.bin



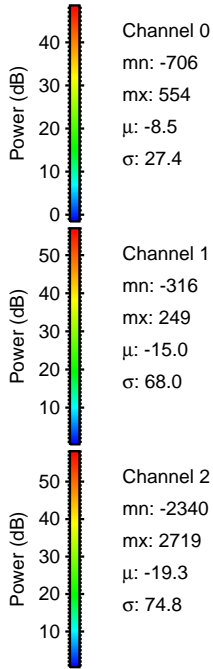
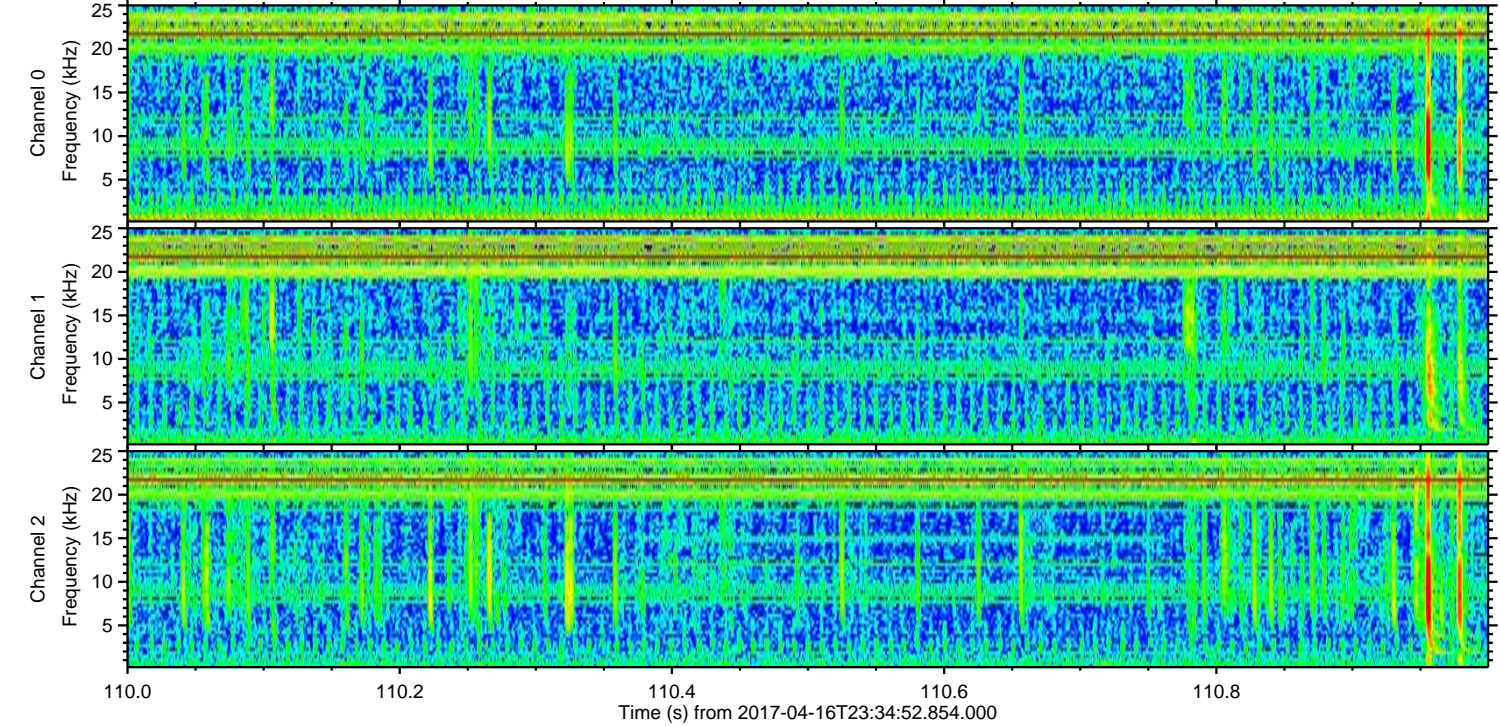
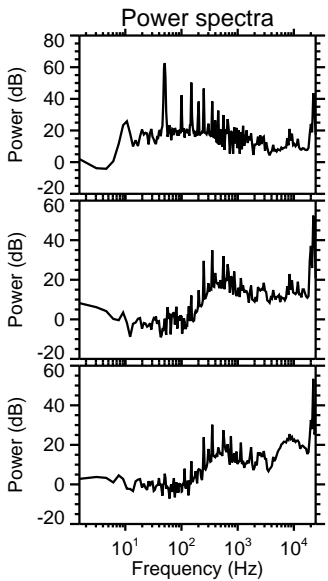
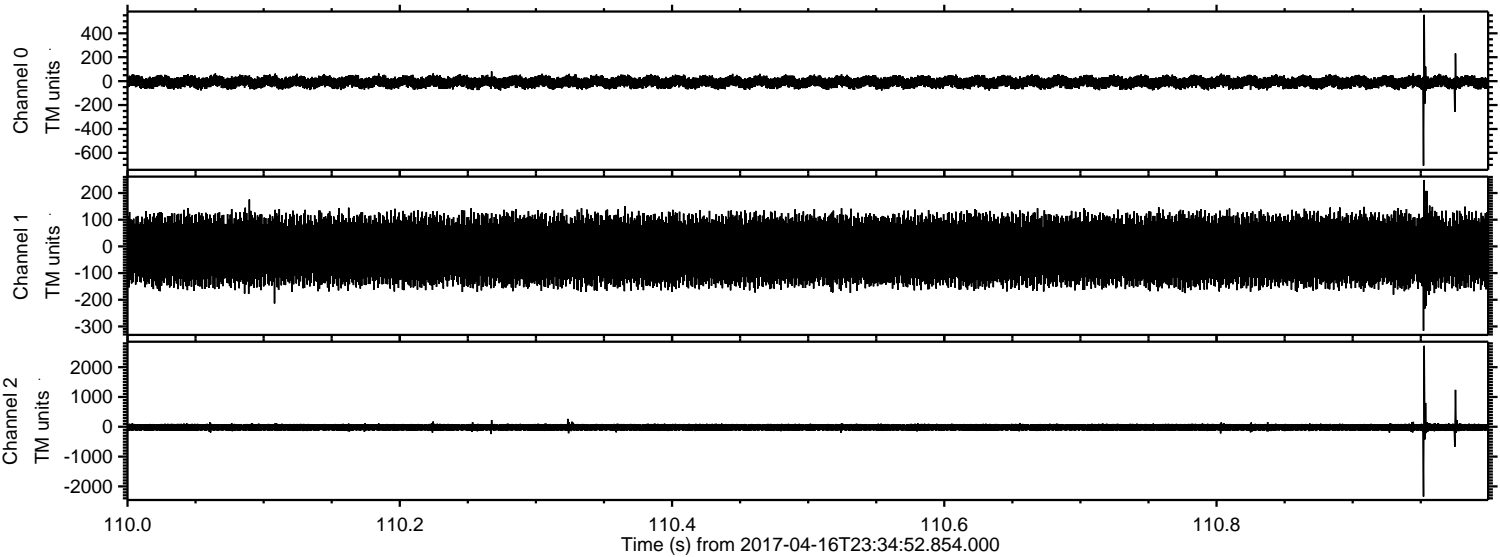
ELMAVAN 3D WAVEFORMS (Measured data sampled at 50 kHz) 51000 packets of 144 samples from 2017-04-16T23:34:52.854.000. Part 67/147

Processed Mon Apr 17 01:42:50 2017 by ELM ver.2012-10-06 from 001__elm20170416_233451__dat00.bin



ELMAVAN 3D WAVEFORMS (Measured data sampled at 50 kHz) 51000 packets of 144 samples from 2017-04-16T23:34:52.854.000. Part 111/147

Processed Mon Apr 17 01:42:51 2017 by ELM ver.2012-10-06 from 001__elm20170416_233451__dat00.bin



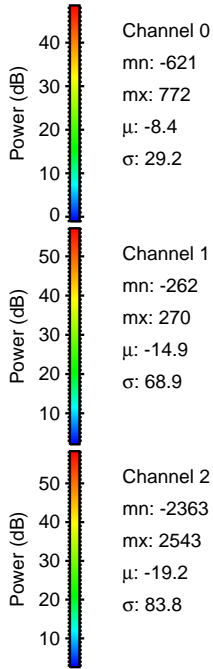
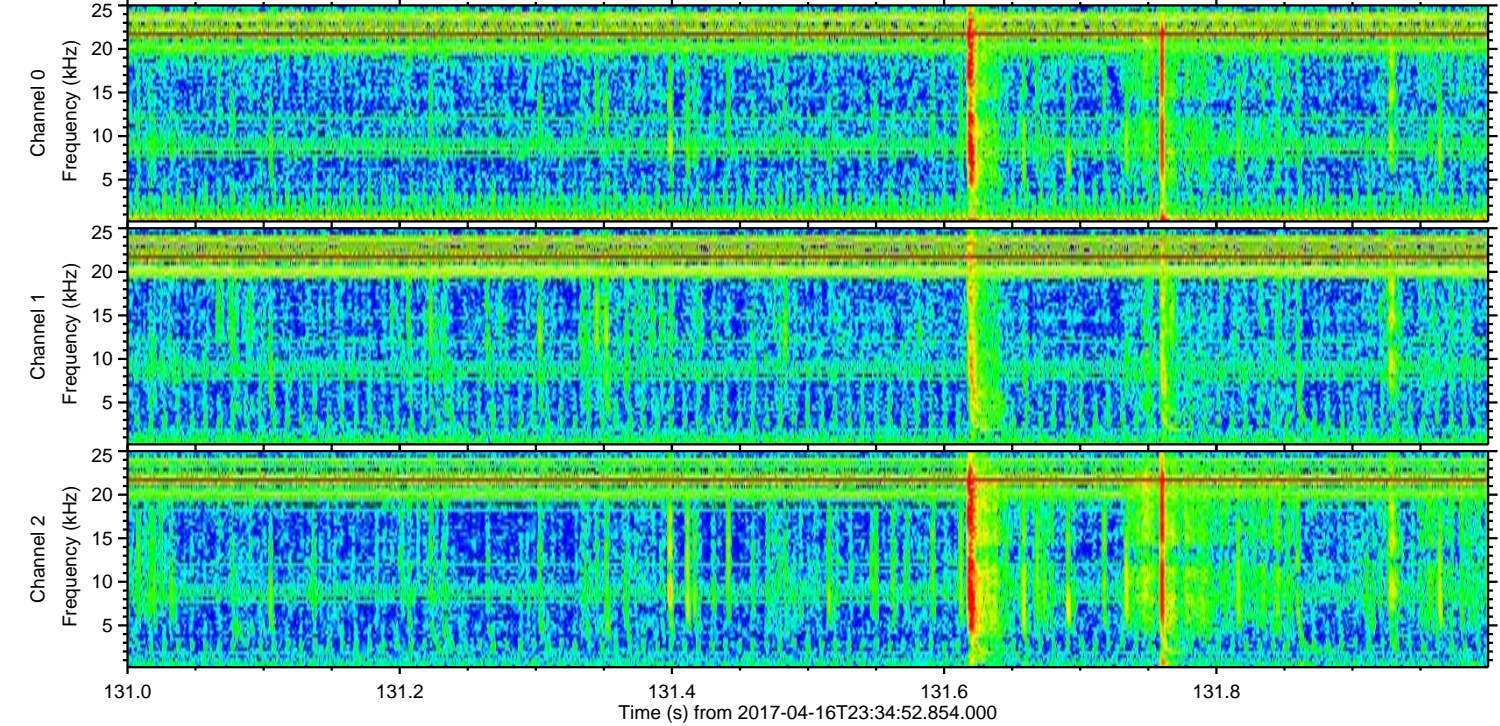
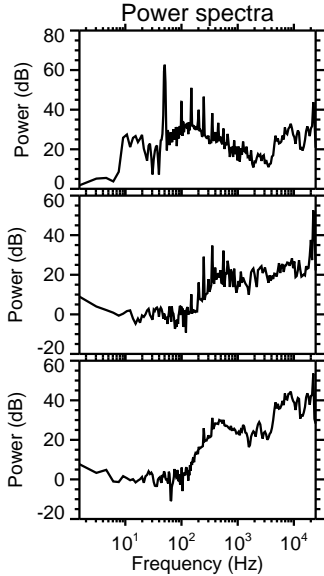
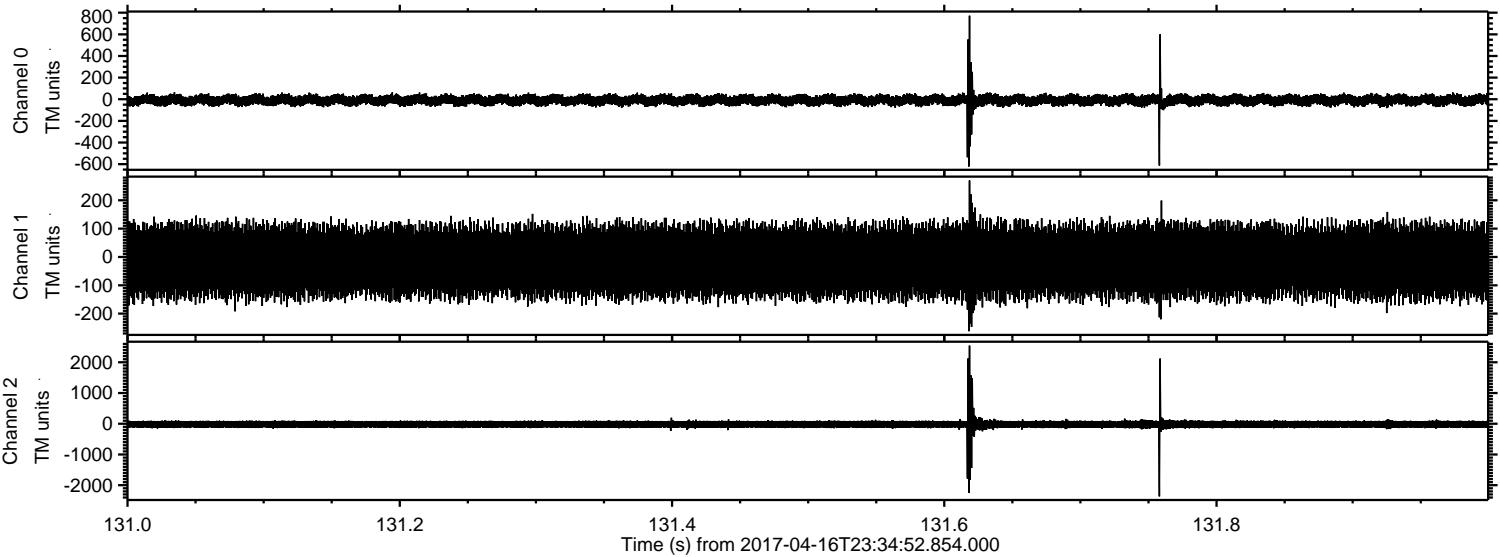
Channel 0
mn: -706
mx: 554
 μ : -8.5
 σ : 27.4

Channel 1
mn: -316
mx: 249
 μ : -15.0
 σ : 68.0

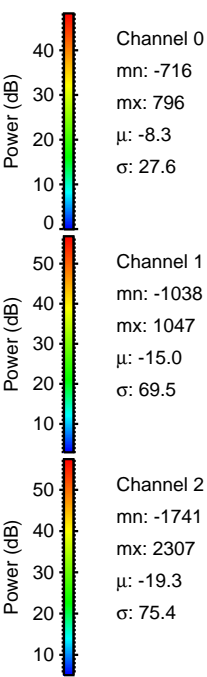
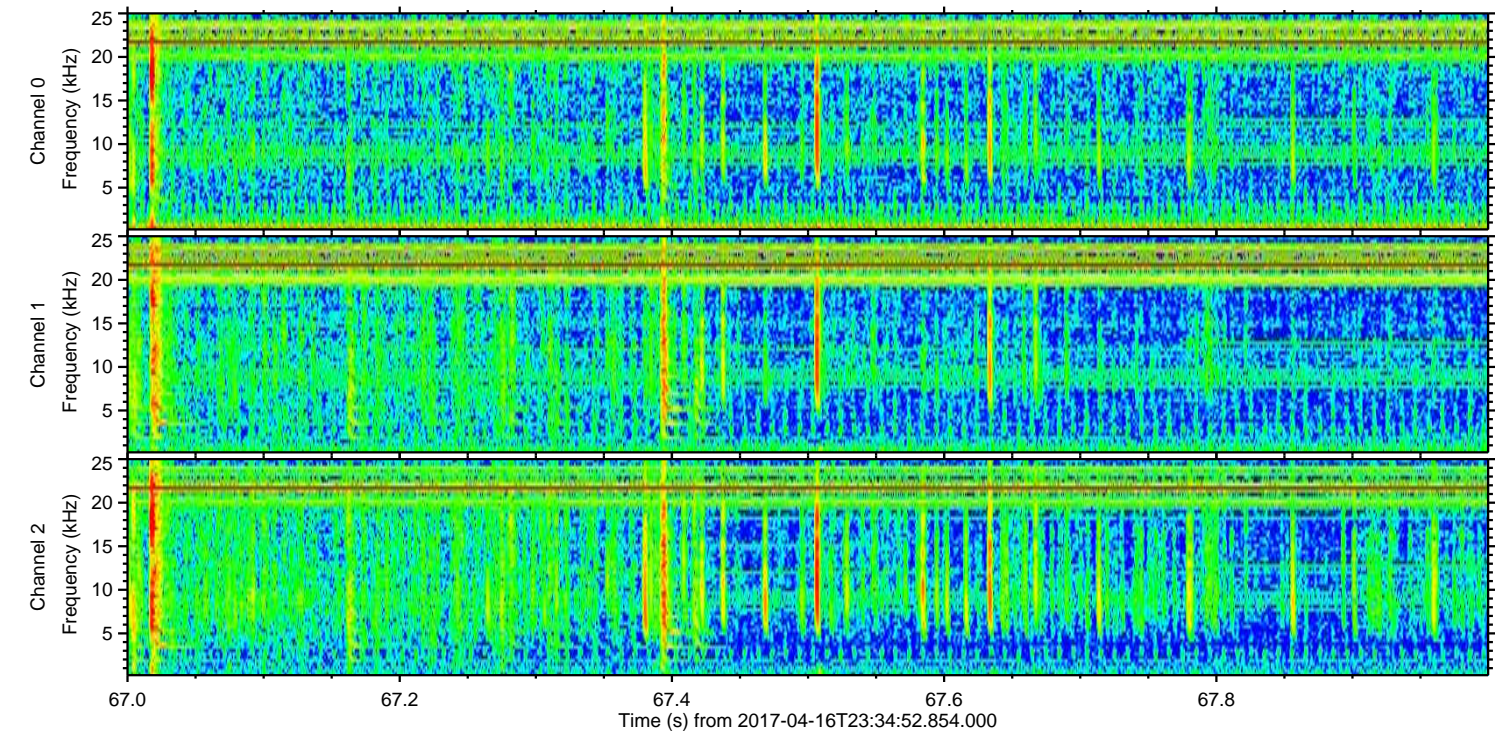
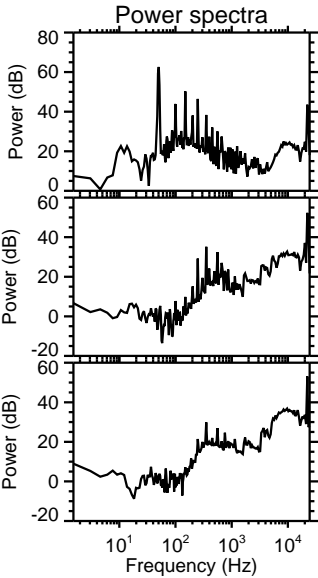
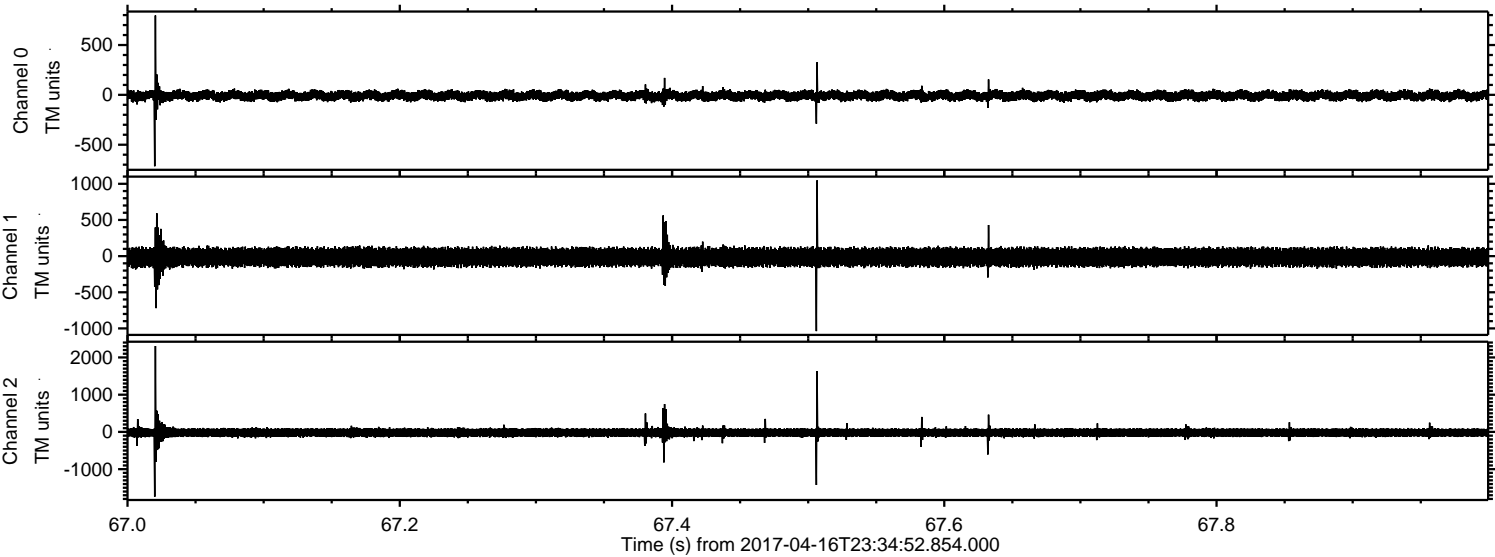
Channel 2
mn: -2340
mx: 2719
 μ : -19.3
 σ : 74.8

ELMAVAN 3D WAVEFORMS (Measured data sampled at 50 kHz) 51000 packets of 144 samples from 2017-04-16T23:34:52.854.000. Part 132/147

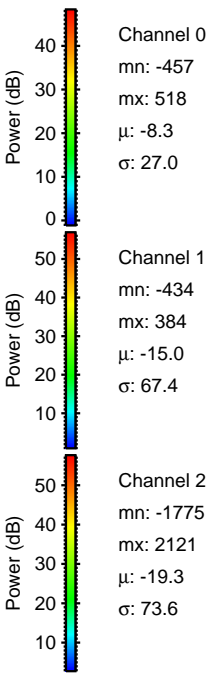
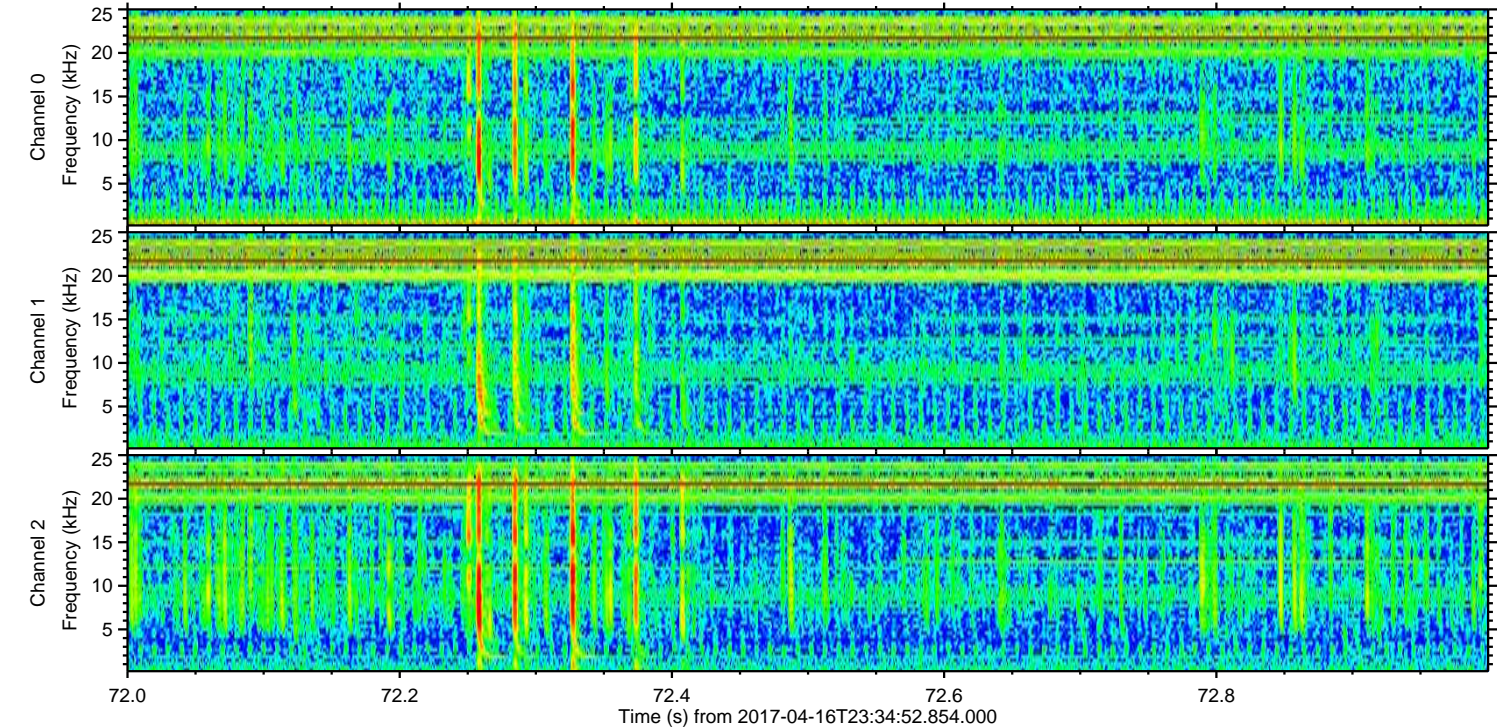
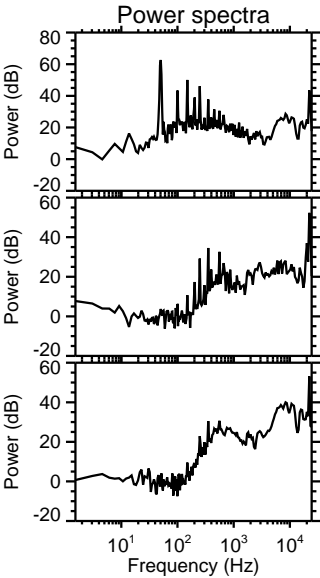
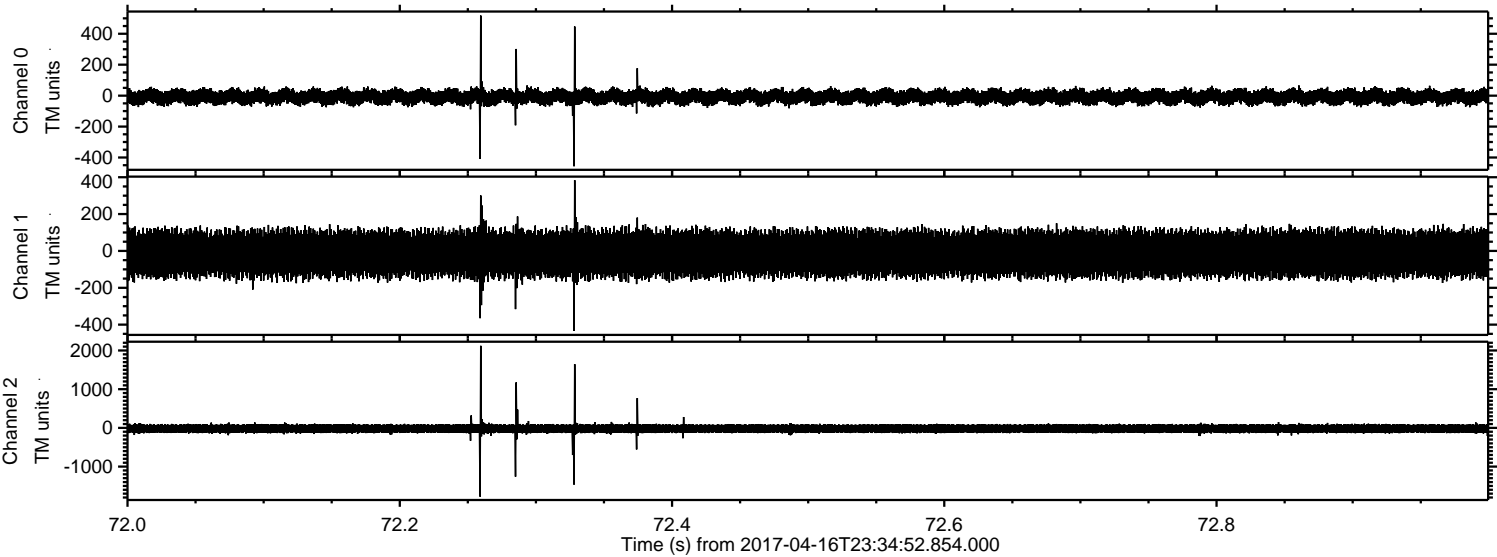
Processed Mon Apr 17 01:42:52 2017 by ELM ver.2012-10-06 from 001__elm20170416_233451__dat00.bin



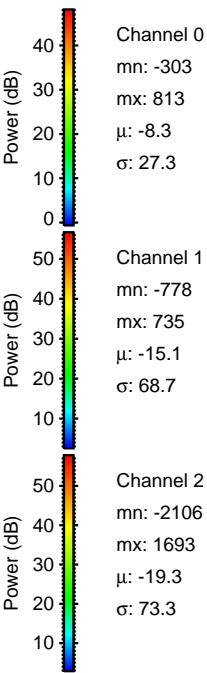
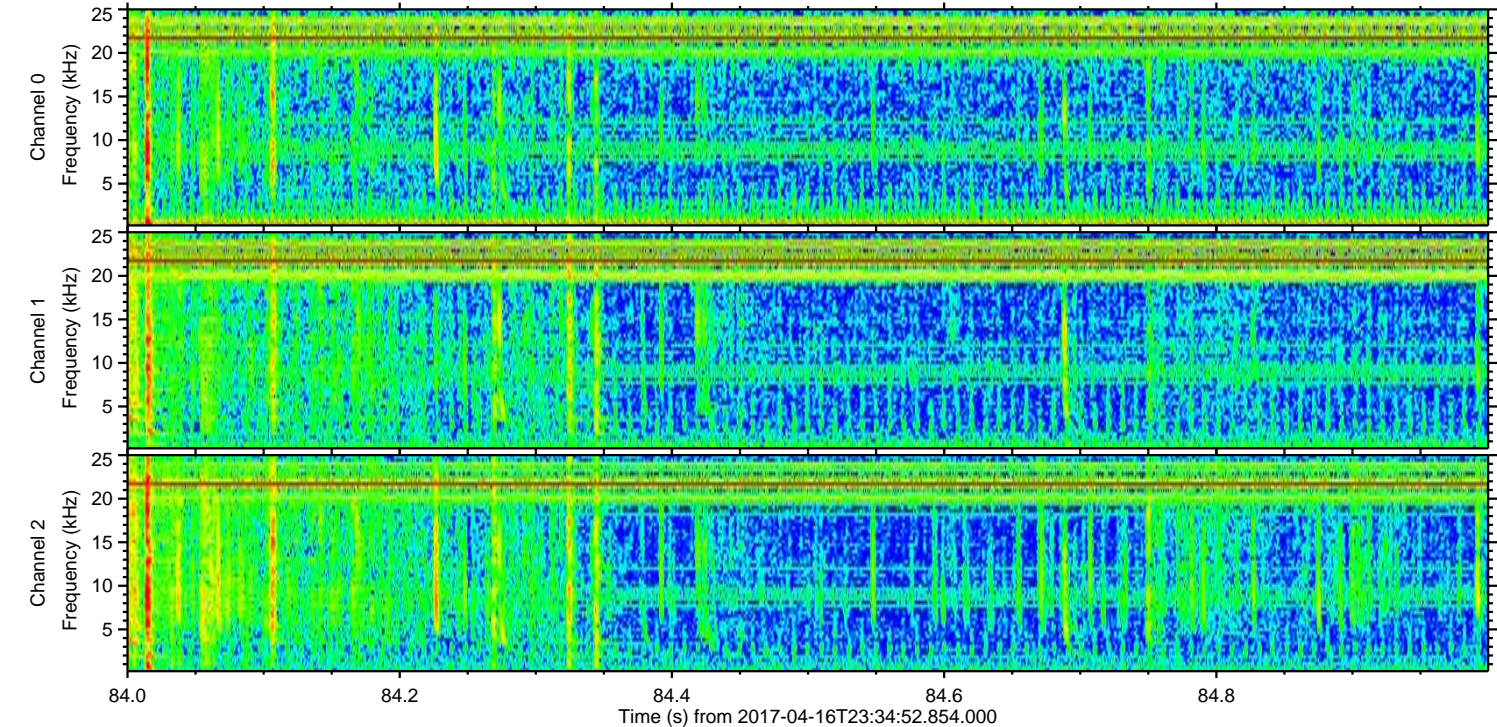
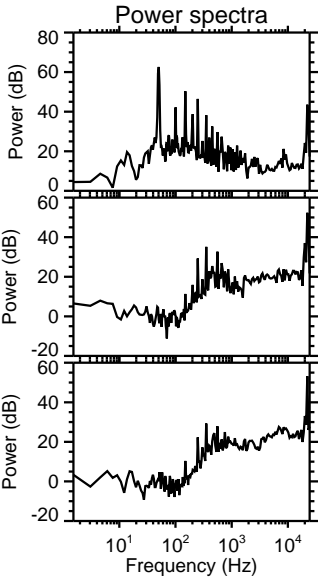
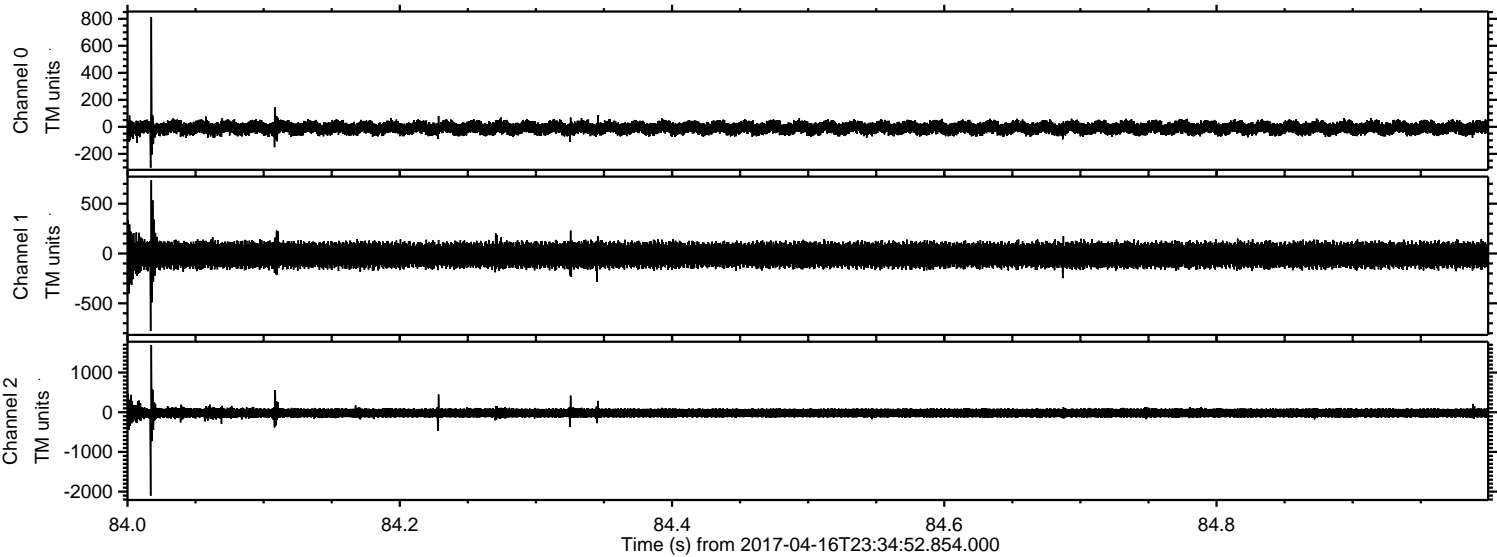
Processed Mon Apr 17 01:42:53 2017 by ELM ver.2012-10-06 from 001__elm20170416_233451__dat00.bin



Processed Mon Apr 17 01:42:54 2017 by ELM ver.2012-10-06 from 001__elm20170416_233451__dat00.bin



Processed Mon Apr 17 01:42:55 2017 by ELM ver.2012-10-06 from 001__elm20170416_233451__dat00.bin



Channel 0
mn: -303
mx: 813
 μ : -8.3
 σ : 27.3

Channel 1
mn: -778
mx: 735
 μ : -15.1
 σ : 68.7

Channel 2
mn: -2106
mx: 1693
 μ : -19.3
 σ : 73.3

