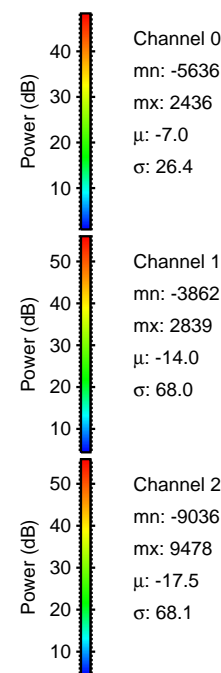
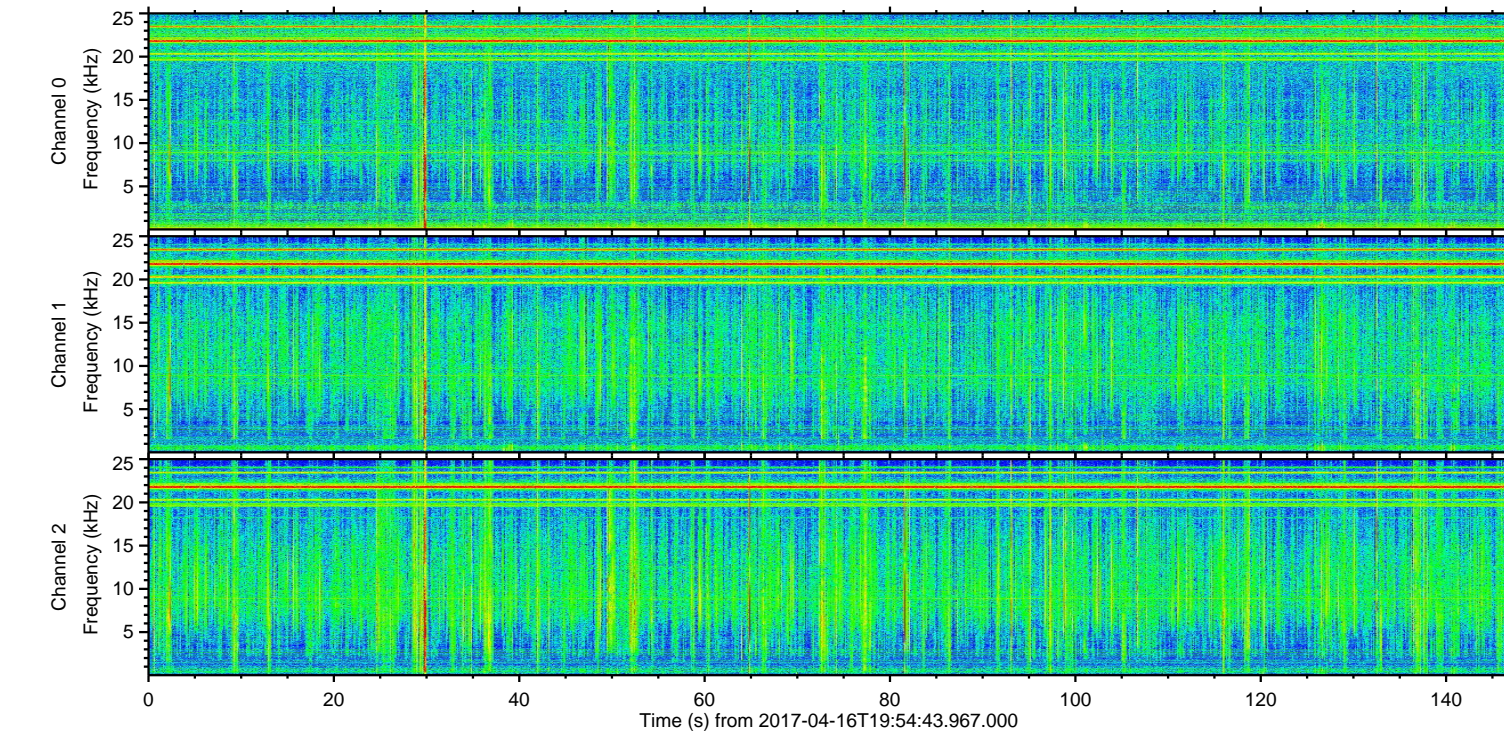
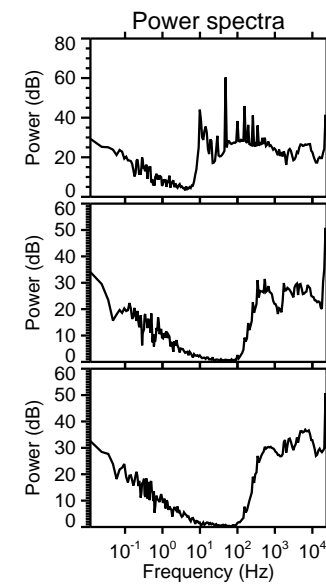
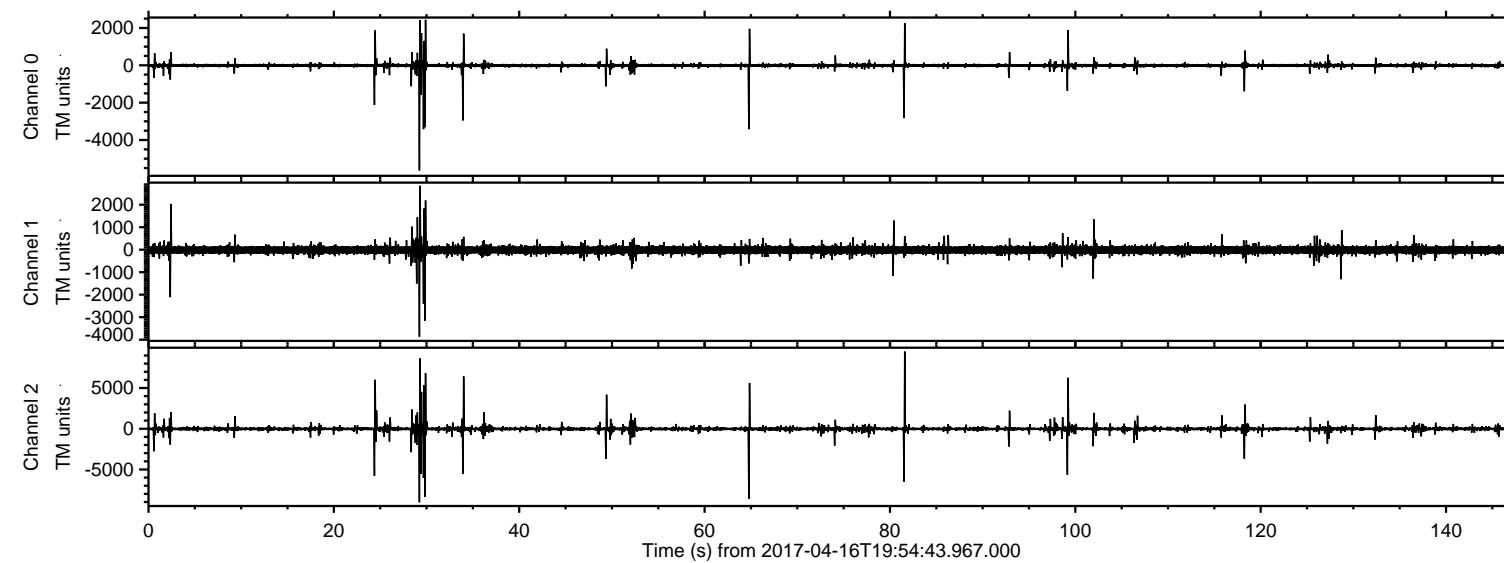
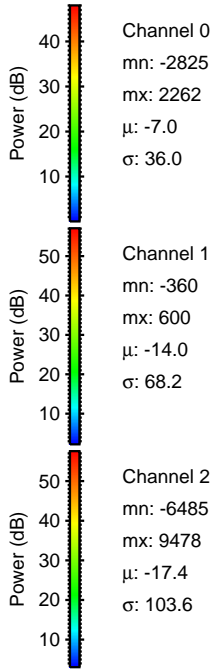
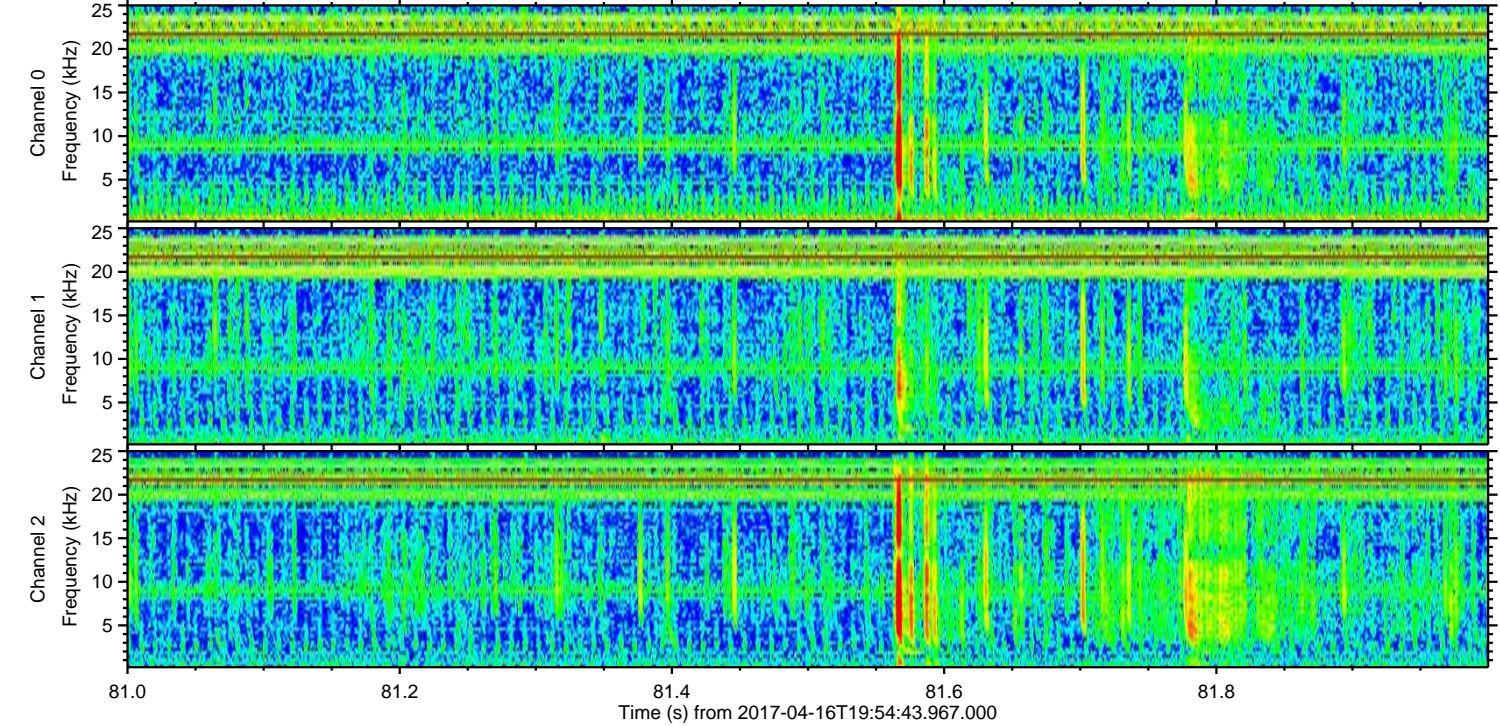
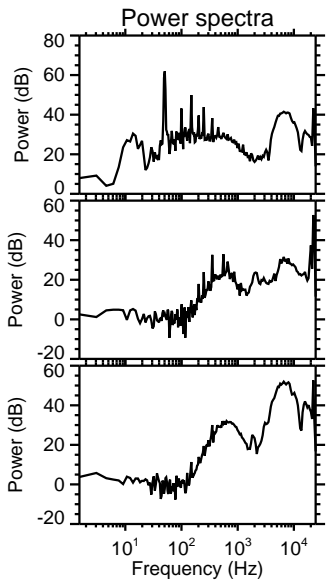
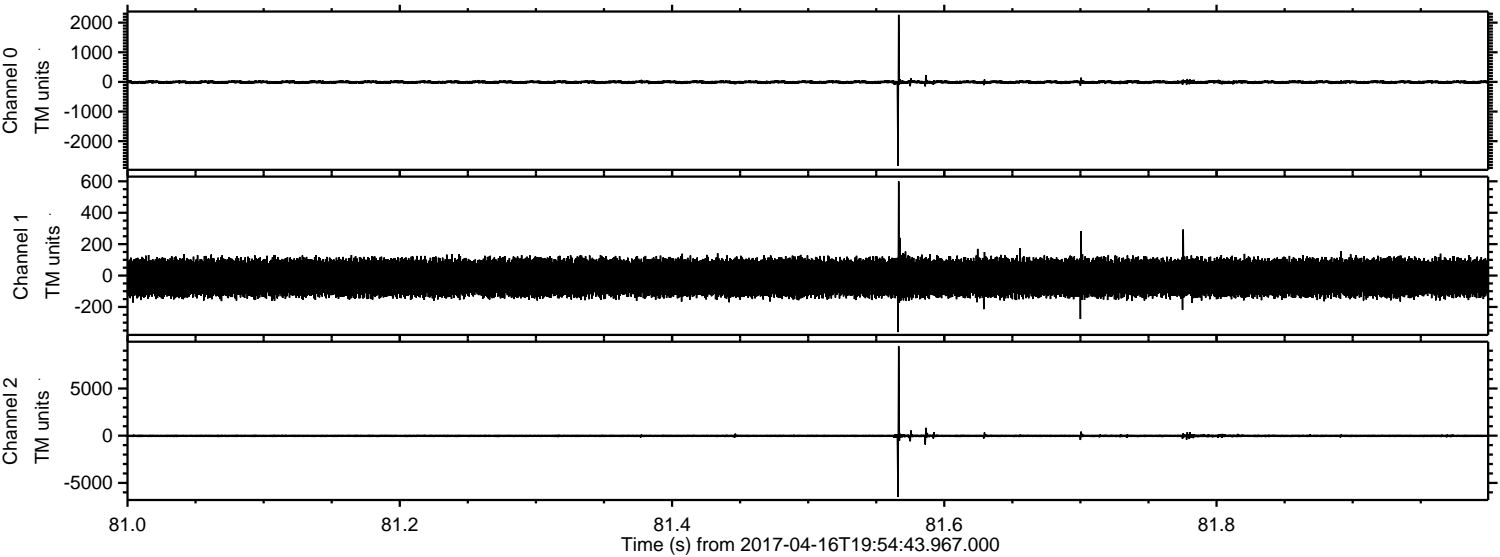


ELMAVAN 3D WAVEFORMS (Measured data sampled at 50 kHz) 51000 packets of 144 samples from 2017-04-16T19:54:43.967.000.

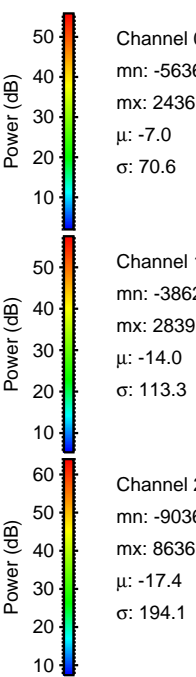
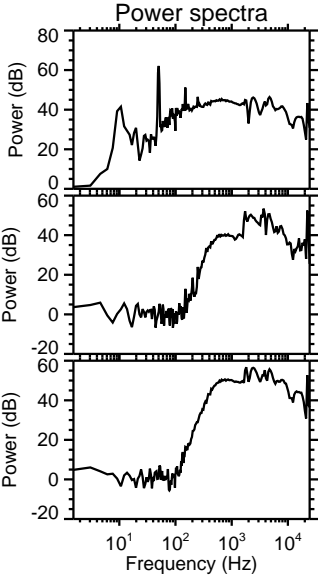
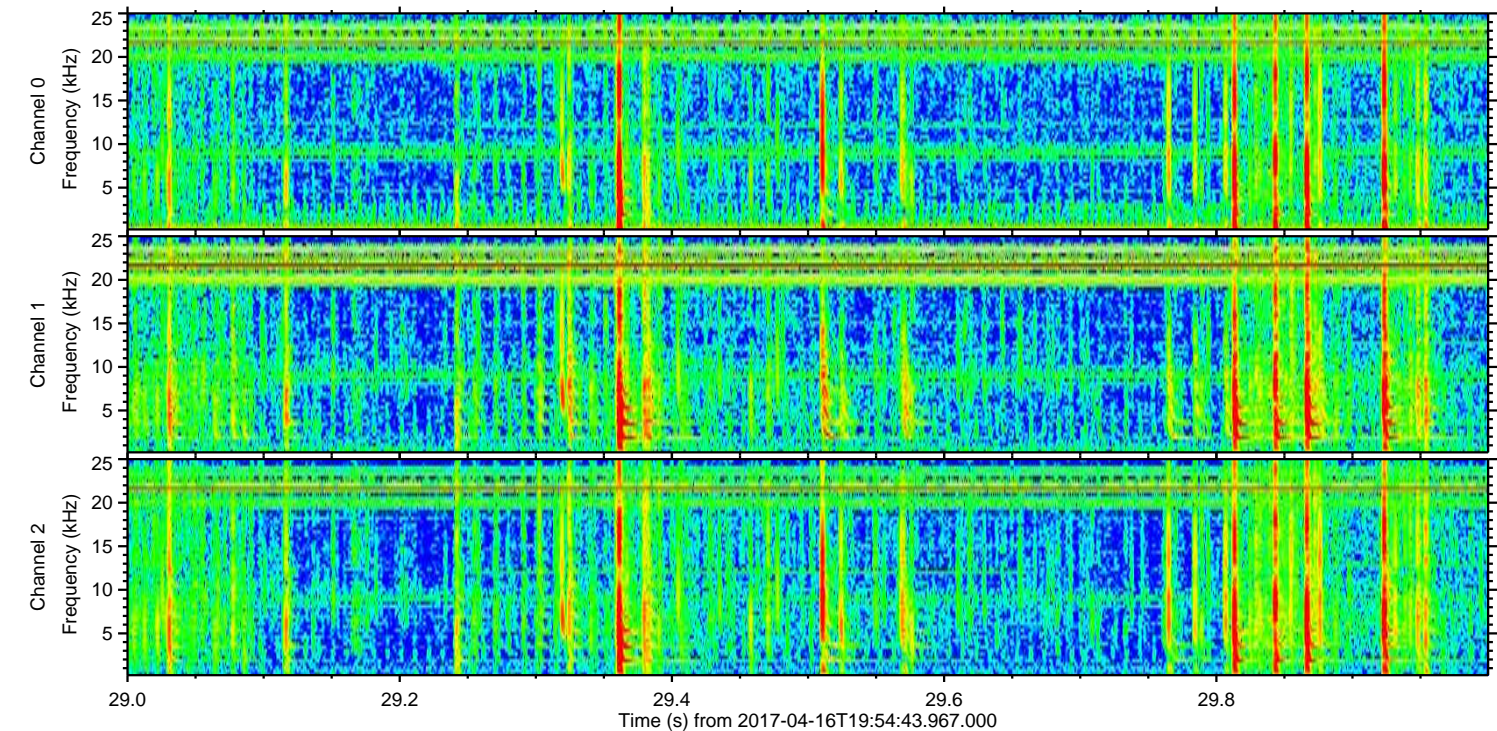
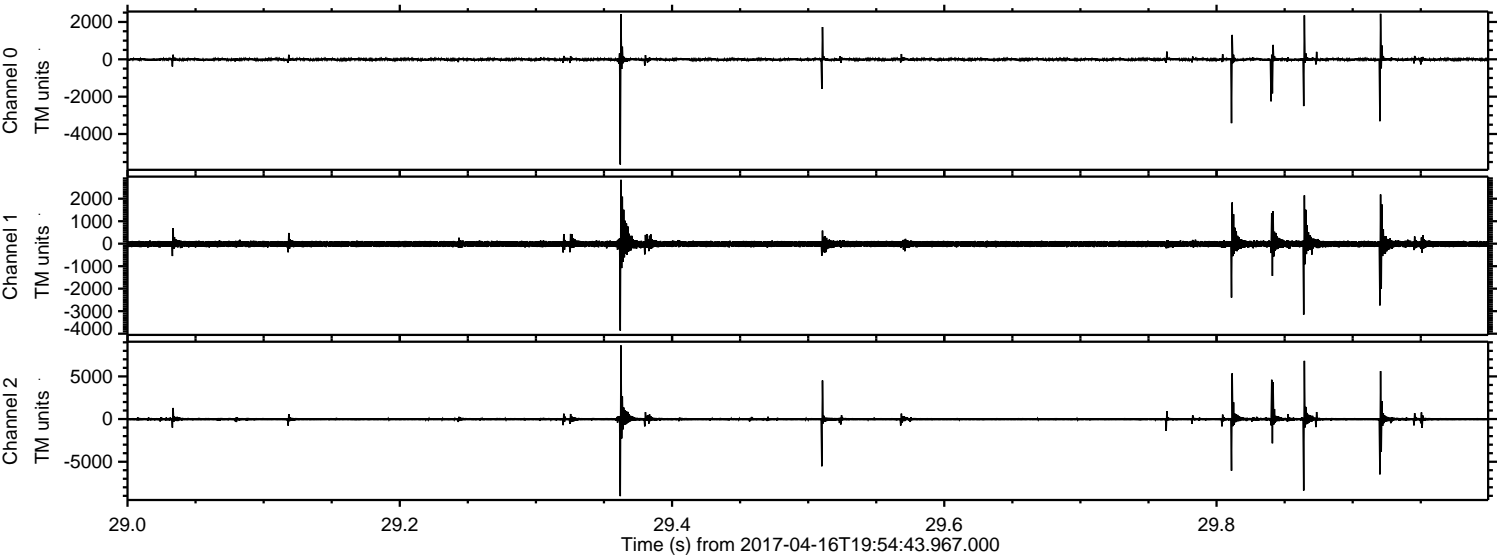
Processed Sun Apr 16 22:02:27 2017 by ELM ver.2012-10-06 from 001__elm20170416_195442__dat00.bin



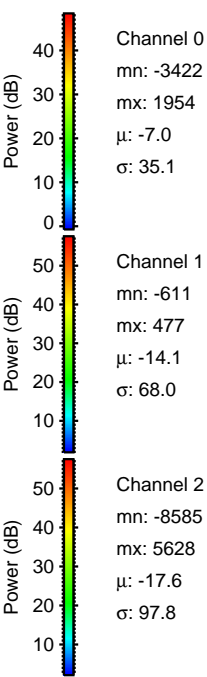
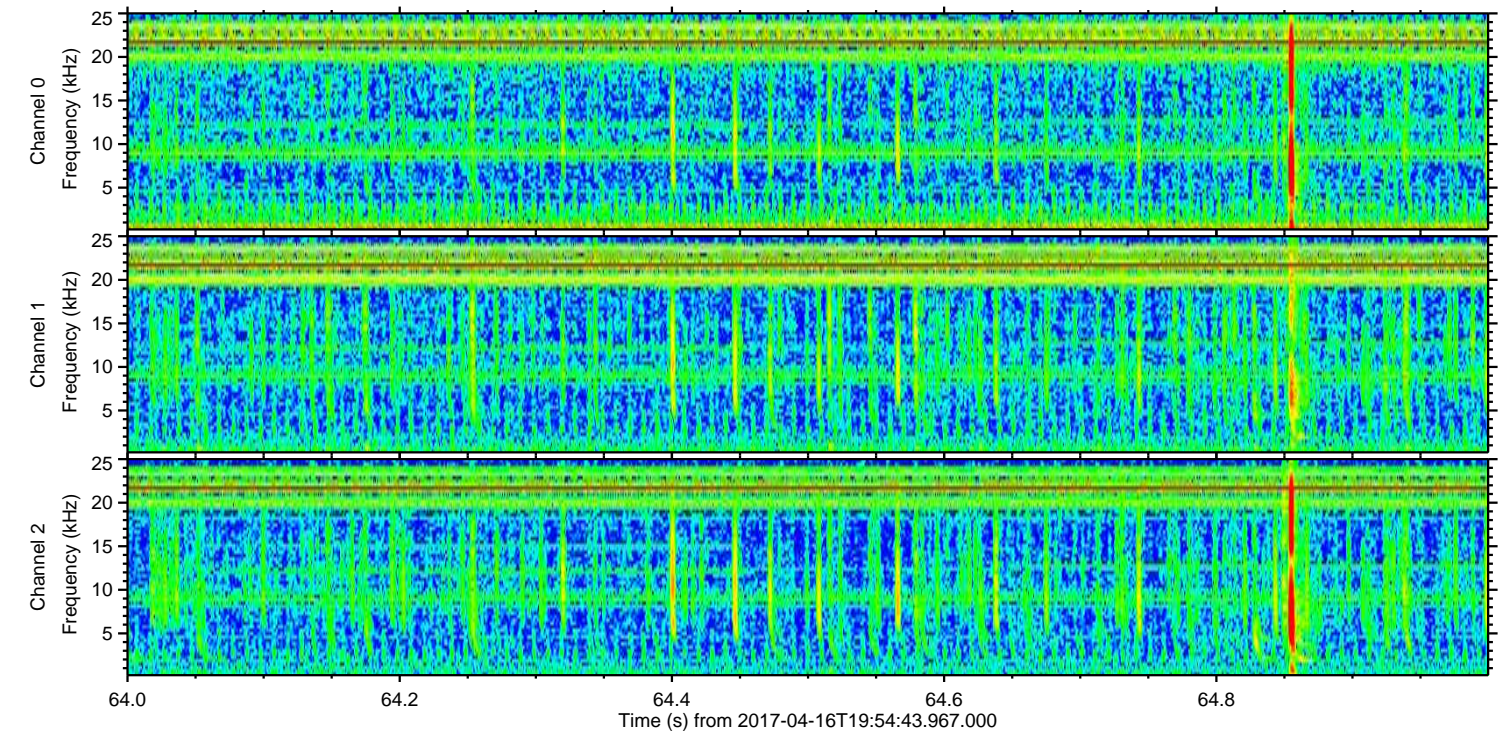
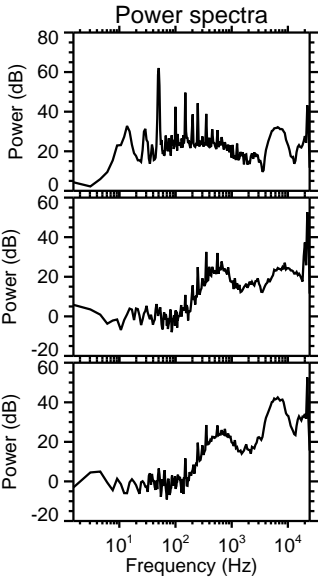
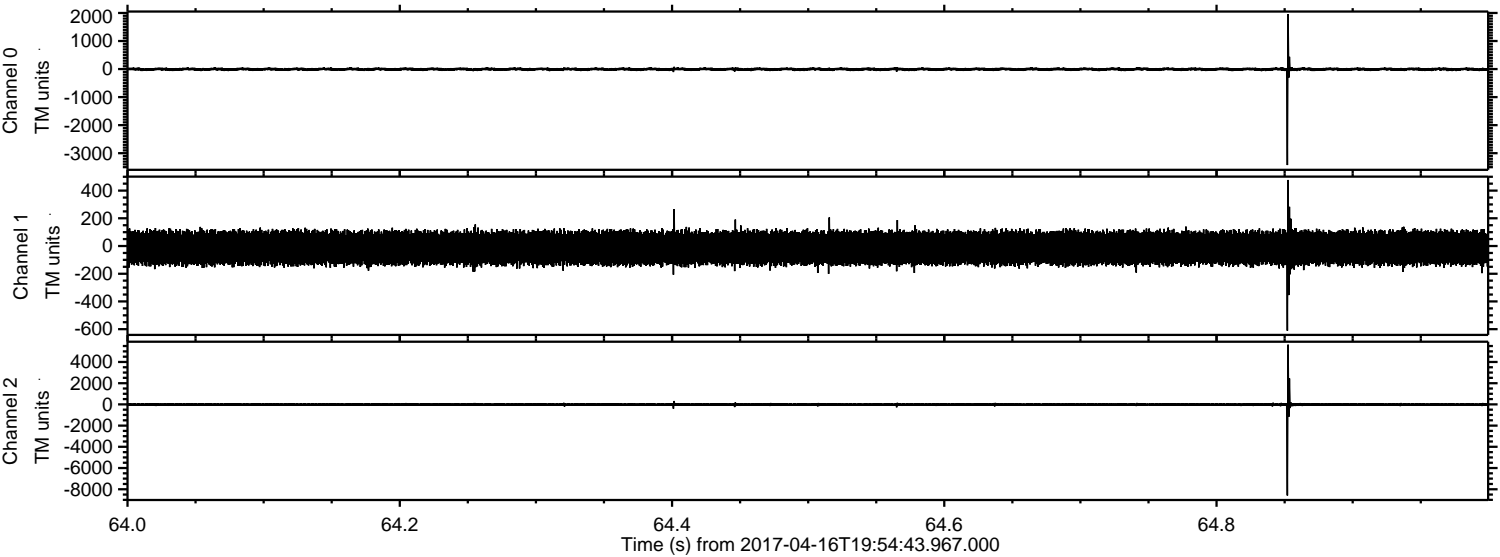
Processed Sun Apr 16 22:02:39 2017 by ELM ver.2012-10-06 from 001__elm20170416_195442__dat00.bin



Processed Sun Apr 16 22:02:40 2017 by ELM ver.2012-10-06 from 001__elm20170416_195442__dat00.bin



Processed Sun Apr 16 22:02:41 2017 by ELM ver.2012-10-06 from 001__elm20170416_195442__dat00.bin

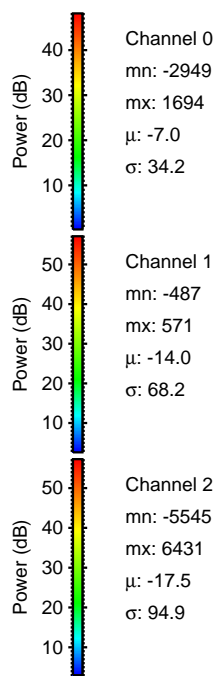
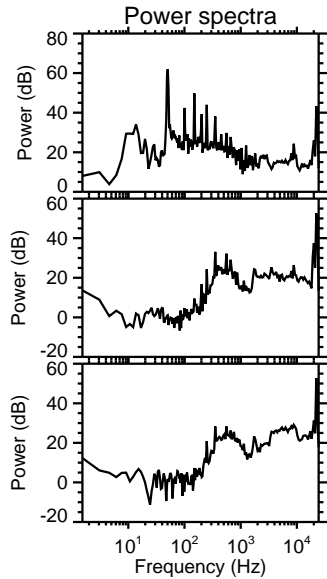
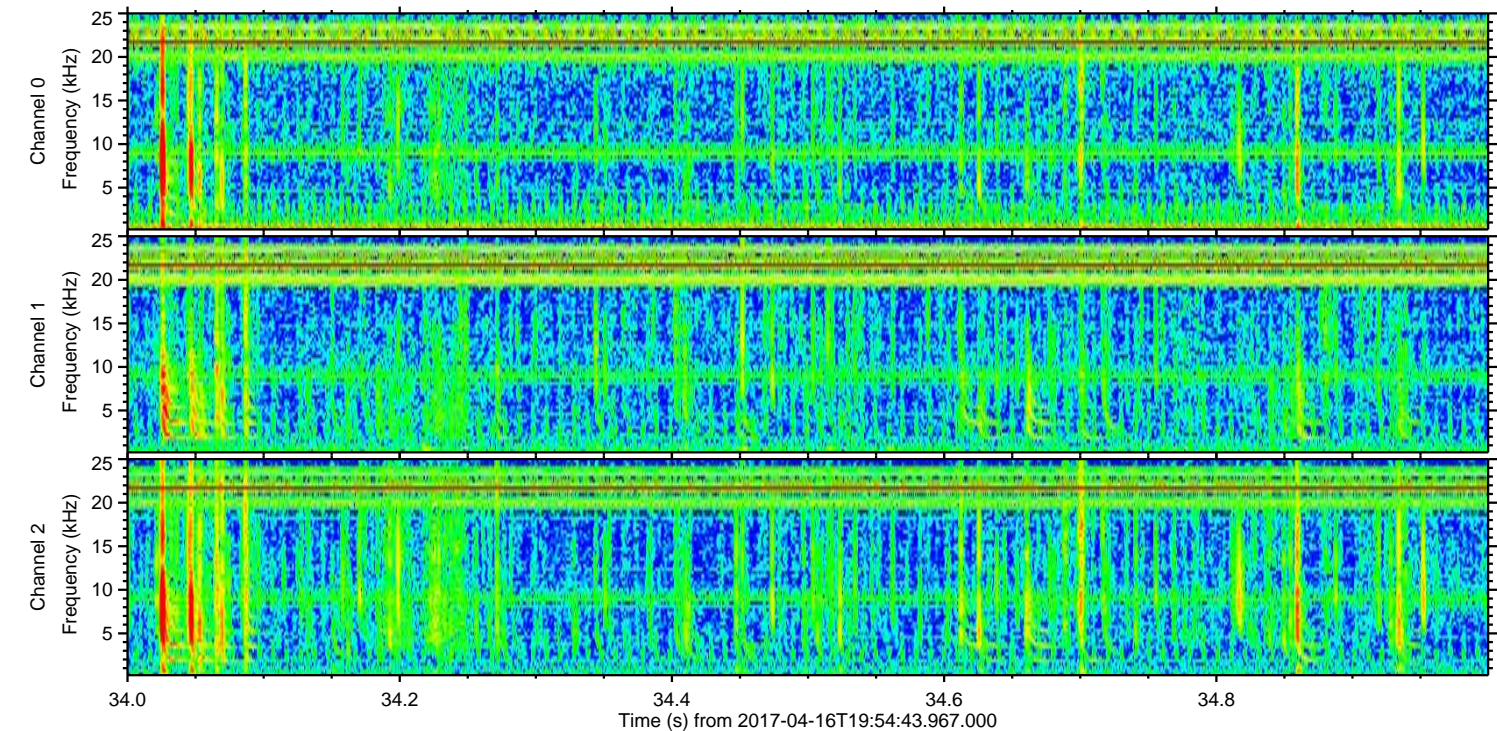
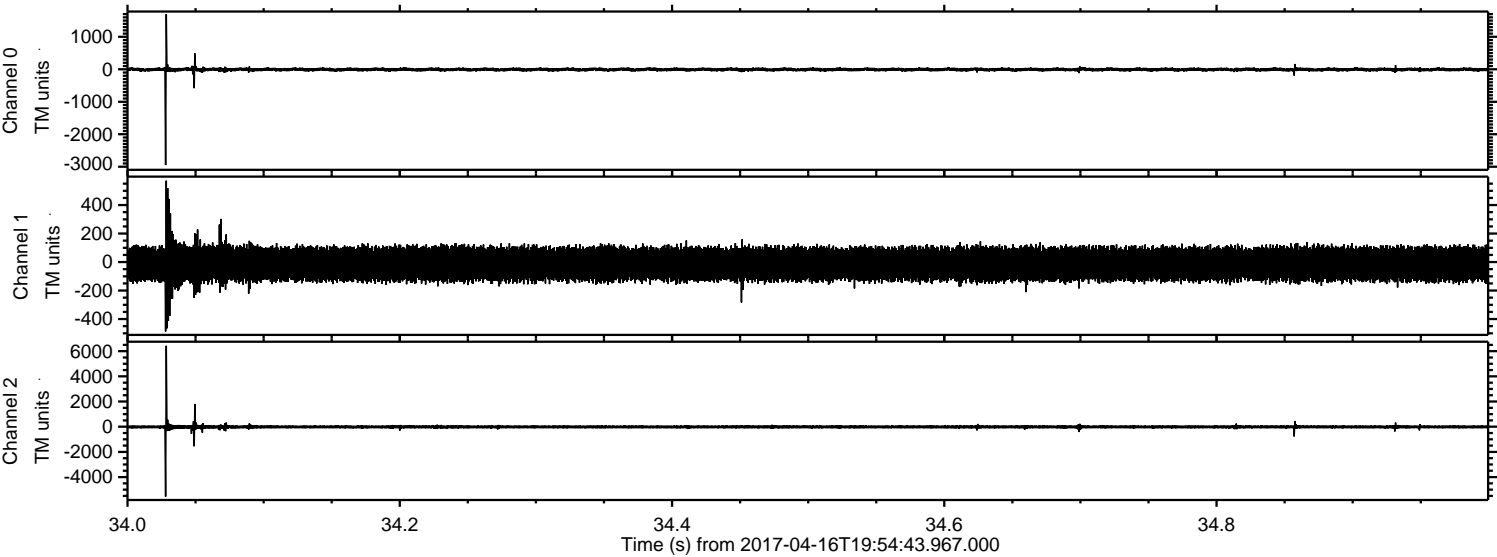


Channel 0
mn: -3422
mx: 1954
 μ : -7.0
 σ : 35.1

Channel 1
mn: -611
mx: 477
 μ : -14.1
 σ : 68.0

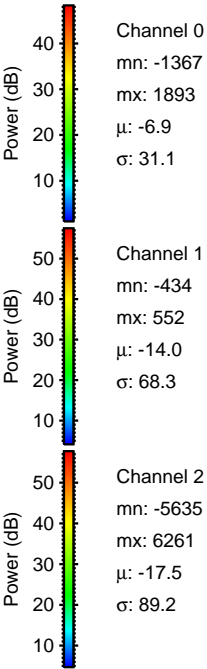
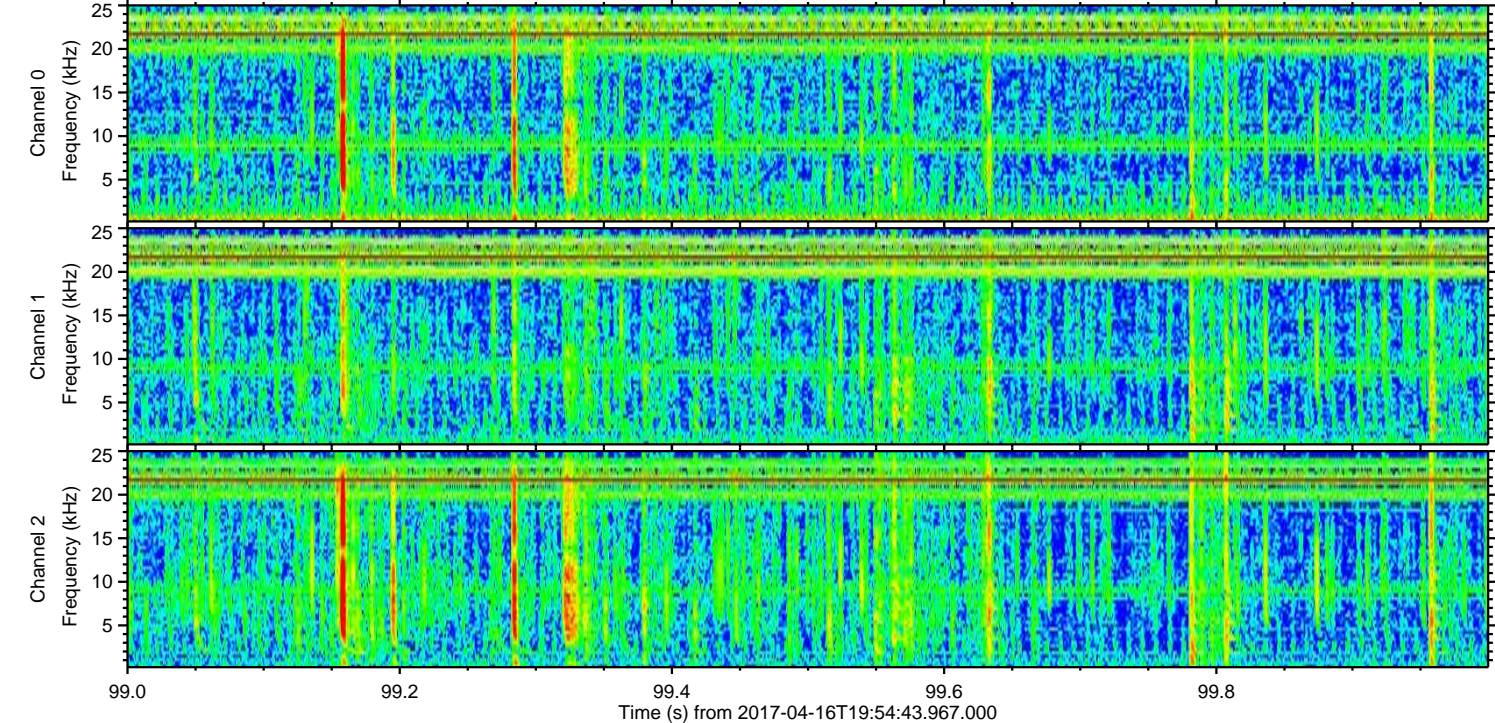
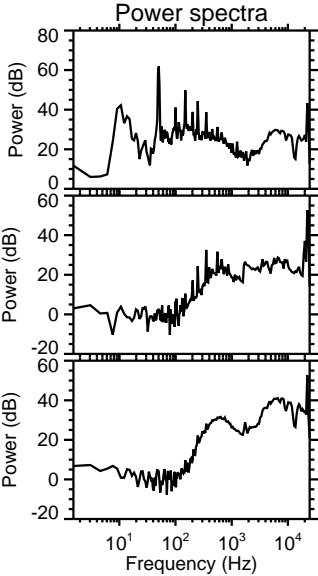
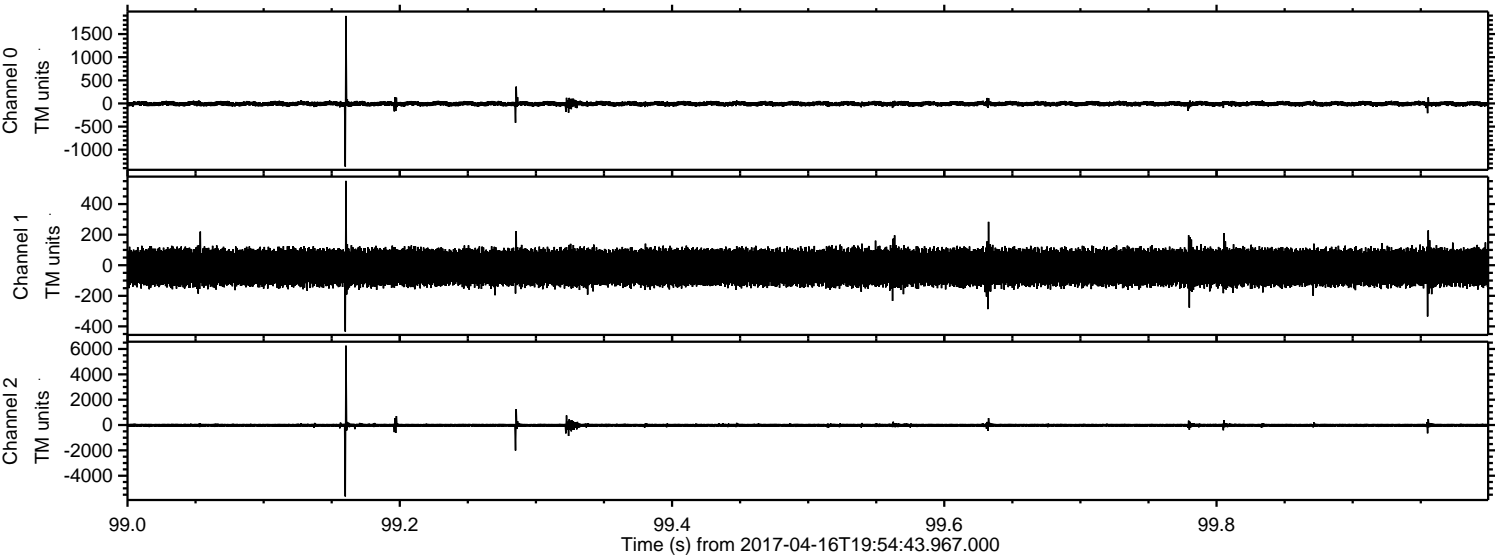
Channel 2
mn: -8585
mx: 5628
 μ : -17.6
 σ : 97.8

Processed Sun Apr 16 22:02:42 2017 by ELM ver.2012-10-06 from 001__elm20170416_195442__dat00.bin

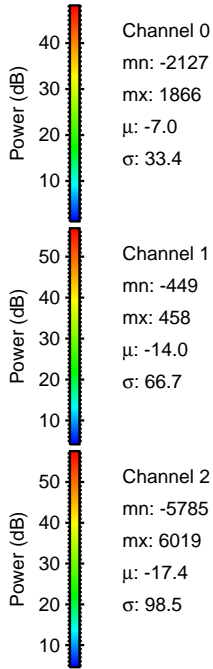
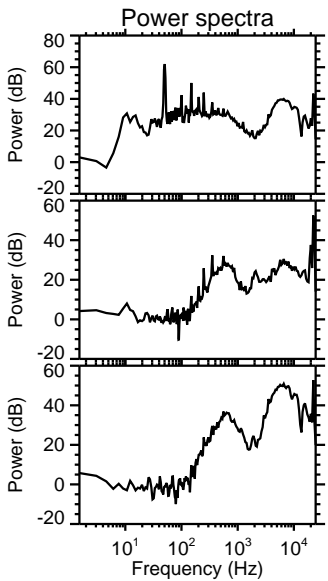
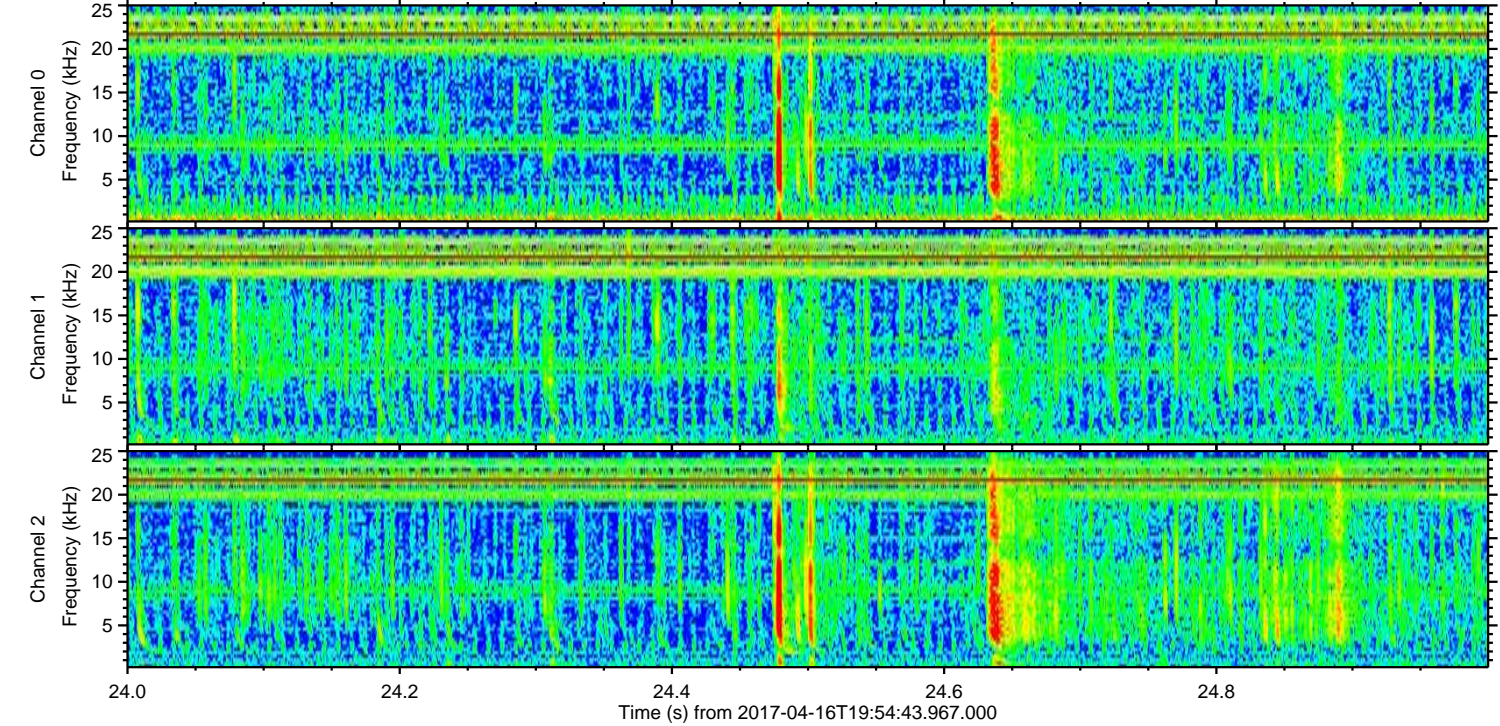
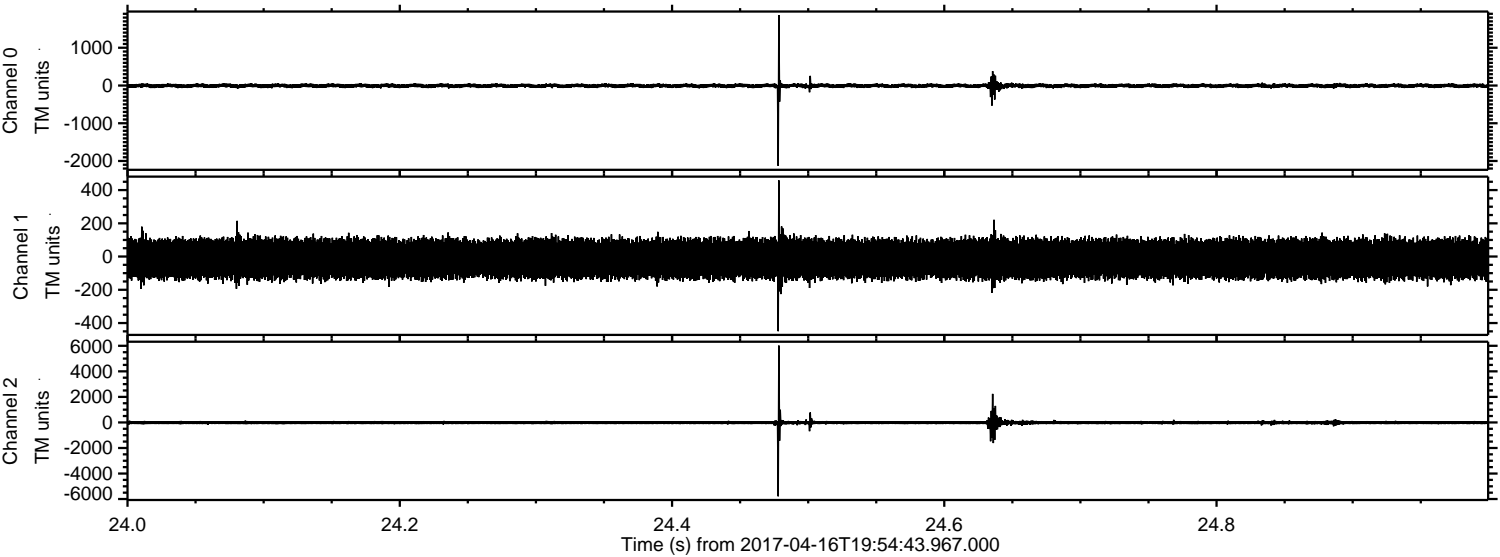


ELMAVAN 3D WAVEFORMS (Measured data sampled at 50 kHz) 51000 packets of 144 samples from 2017-04-16T19:54:43.967.000. Part 100/147

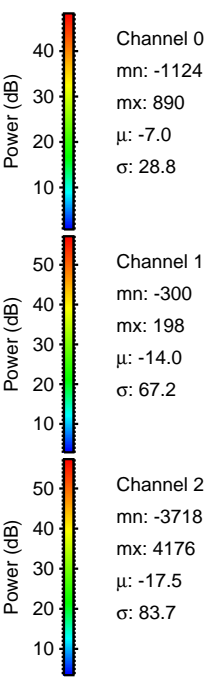
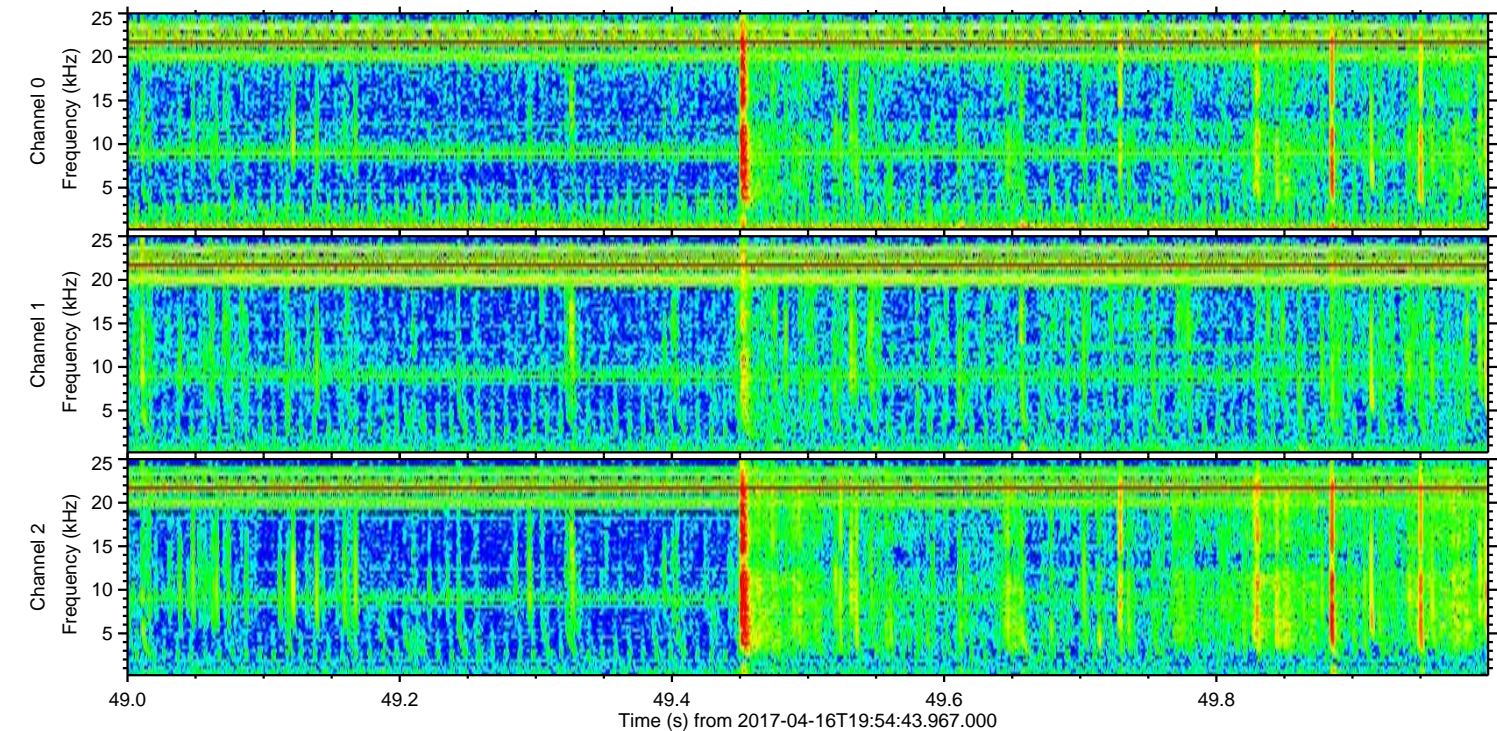
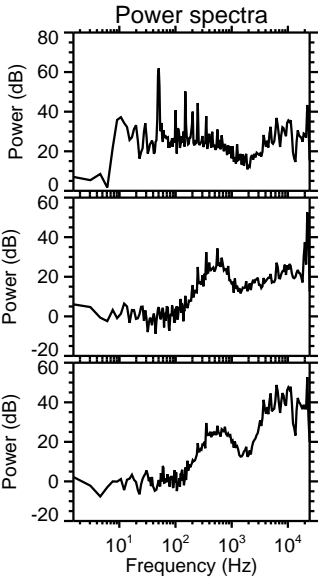
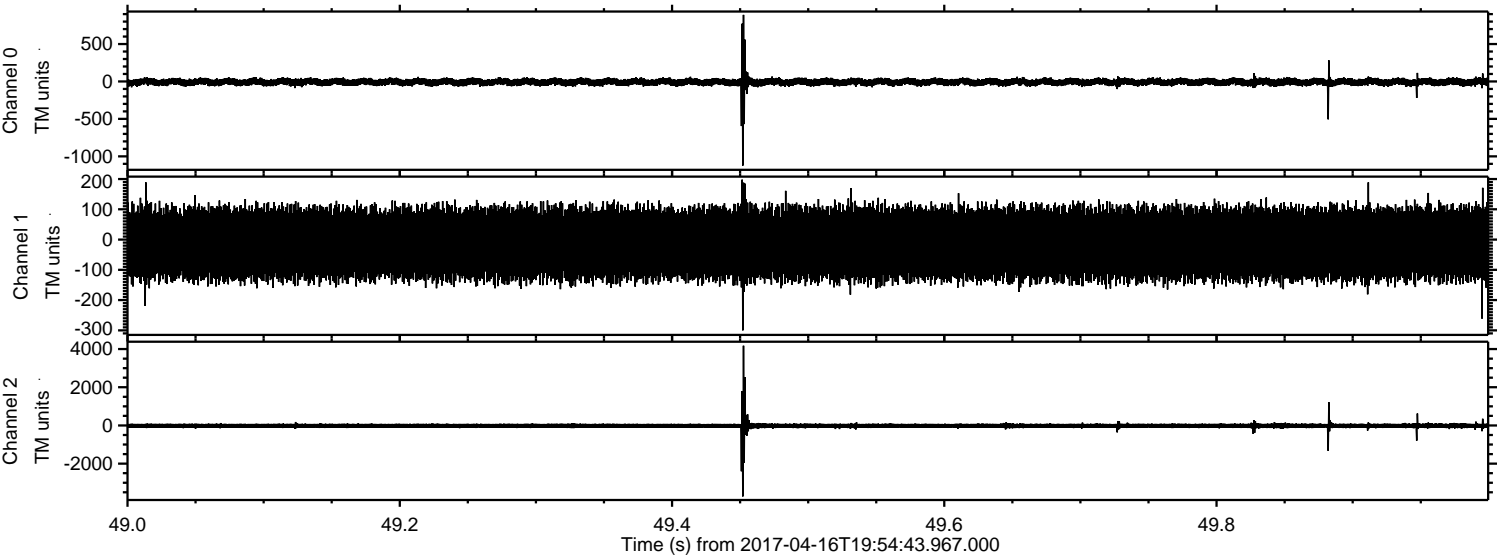
Processed Sun Apr 16 22:02:43 2017 by ELM ver.2012-10-06 from 001__elm20170416_195442__dat00.bin



Processed Sun Apr 16 22:02:44 2017 by ELM ver.2012-10-06 from 001__elm20170416_195442__dat00.bin

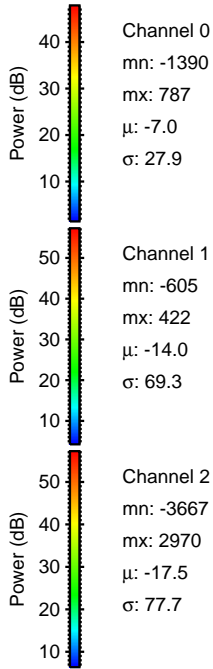
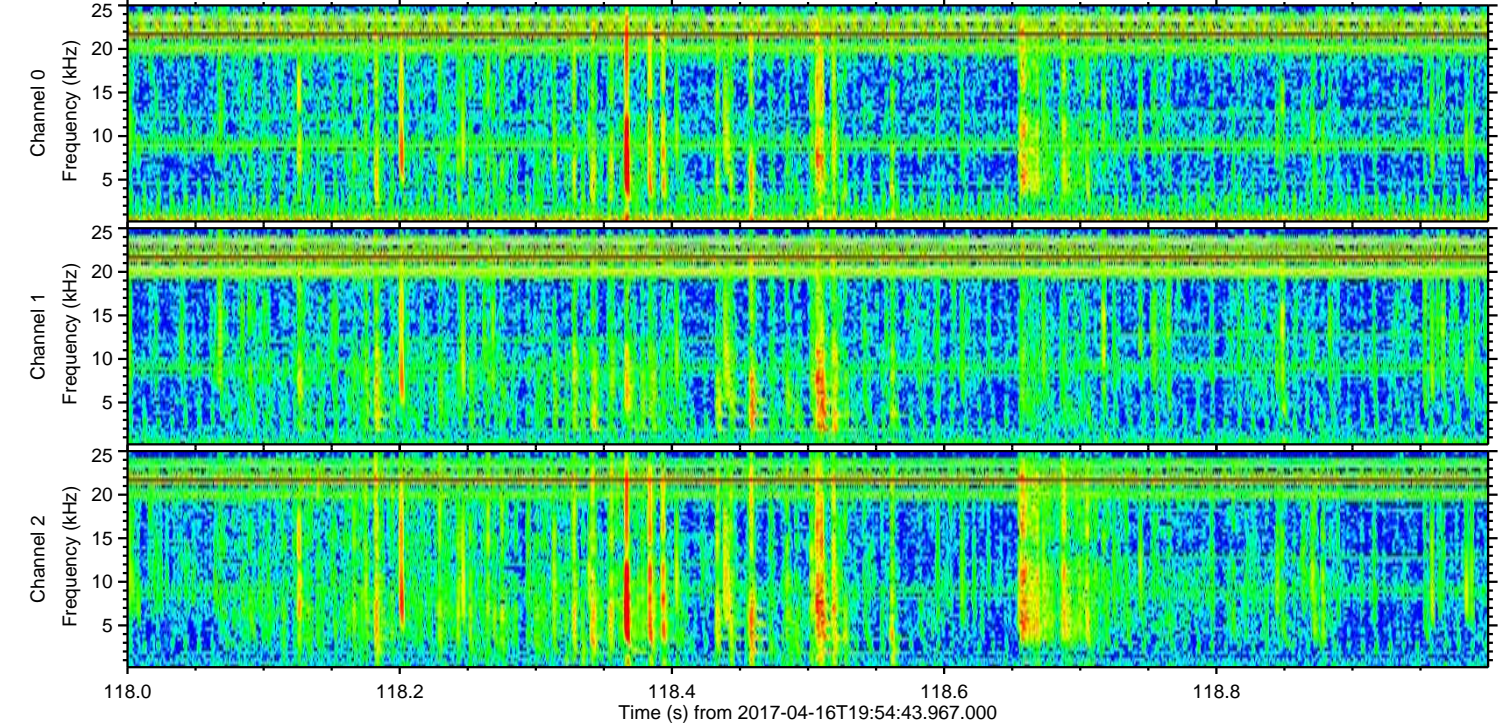
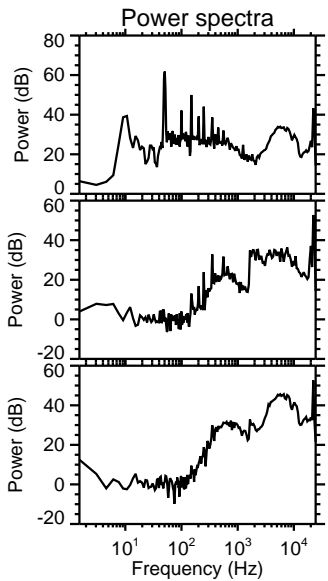
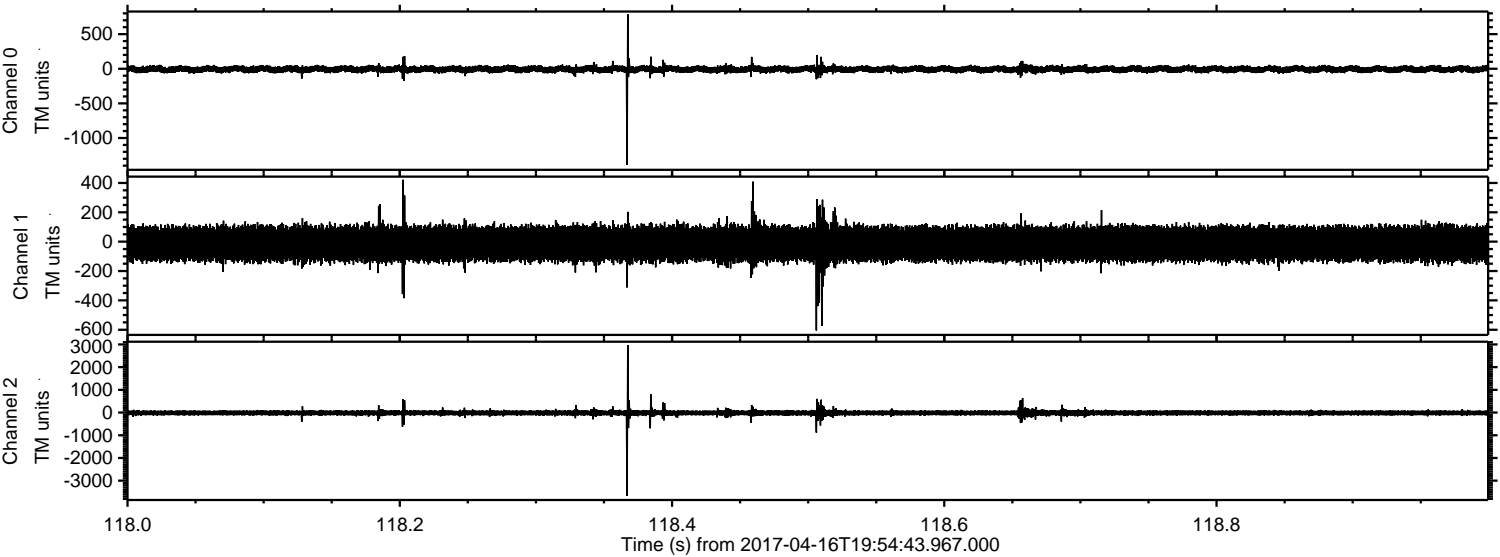


Processed Sun Apr 16 22:02:44 2017 by ELM ver.2012-10-06 from 001__elm20170416_195442__dat00.bin

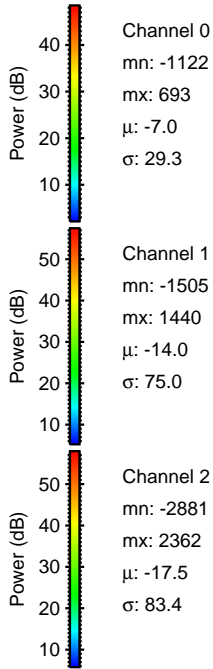
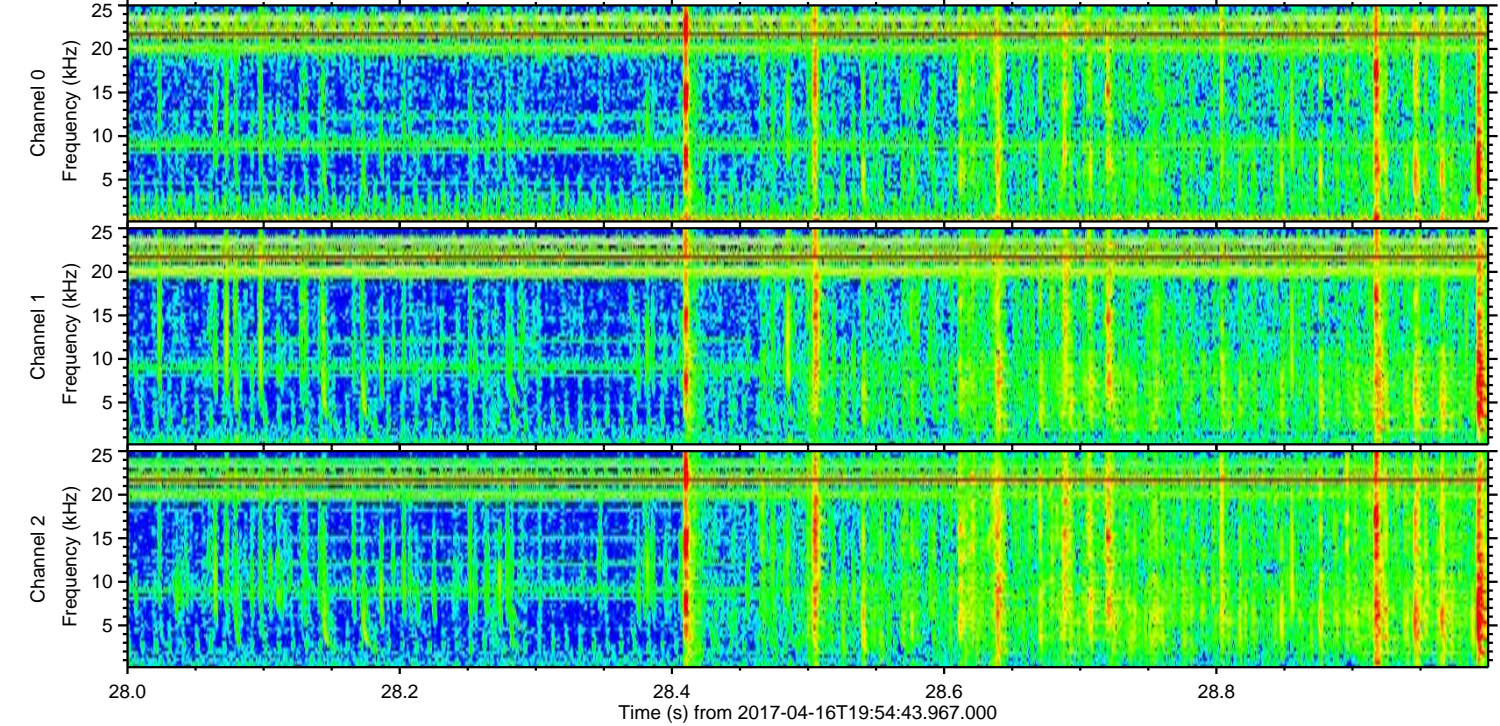
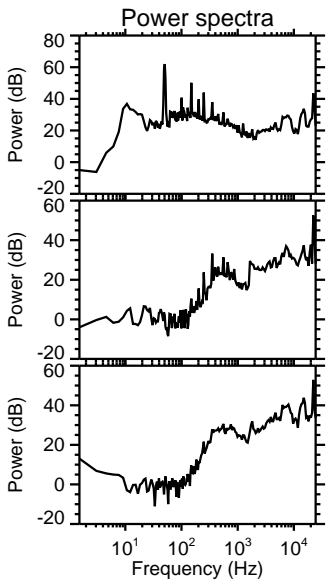
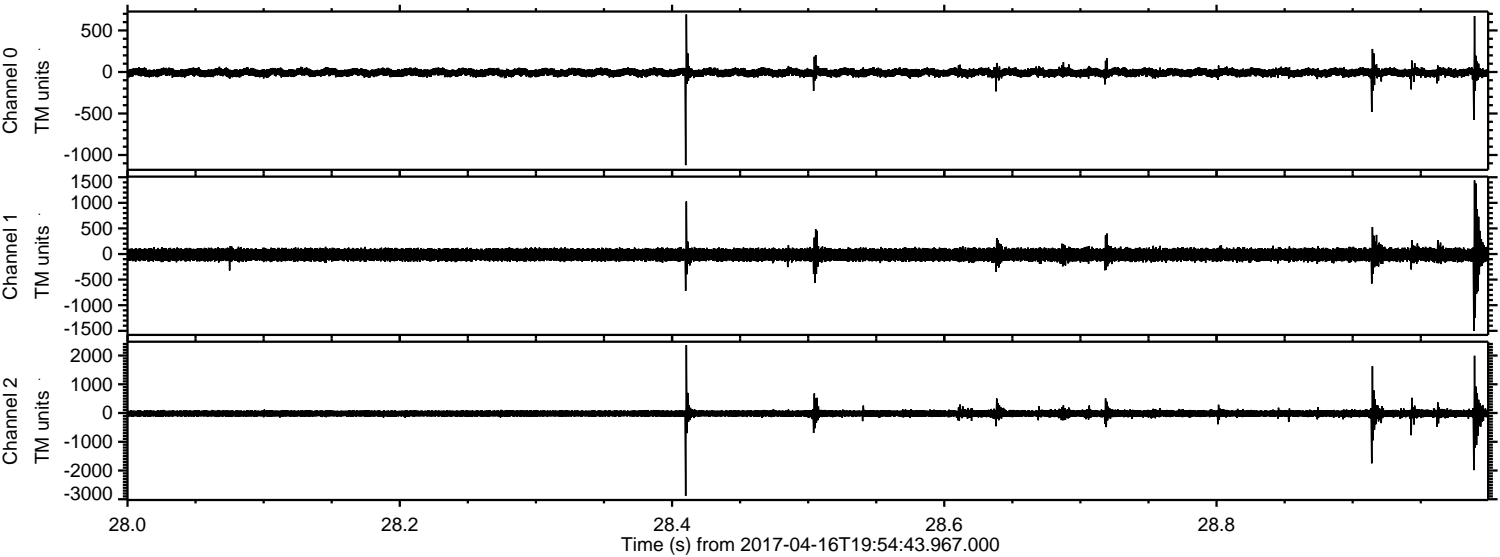


ELMAVAN 3D WAVEFORMS (Measured data sampled at 50 kHz) 51000 packets of 144 samples from 2017-04-16T19:54:43.967.000. Part 119/147

Processed Sun Apr 16 22:02:45 2017 by ELM ver.2012-10-06 from 001__elm20170416_195442__dat00.bin



Processed Sun Apr 16 22:02:46 2017 by ELM ver.2012-10-06 from 001__elm20170416_195442__dat00.bin



Channel 0
mn: -1122
mx: 693
 μ : -7.0
 σ : 29.3

Channel 1
mn: -1505
mx: 1440
 μ : -14.0
 σ : 75.0

Channel 2
mn: -2881
mx: 2362
 μ : -17.5
 σ : 83.4

