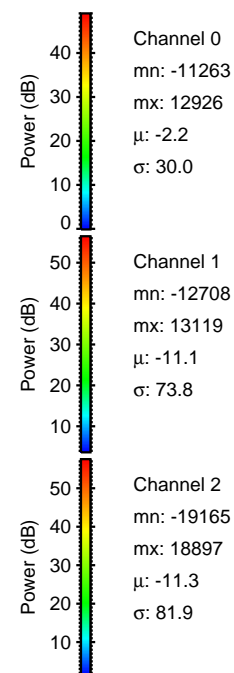
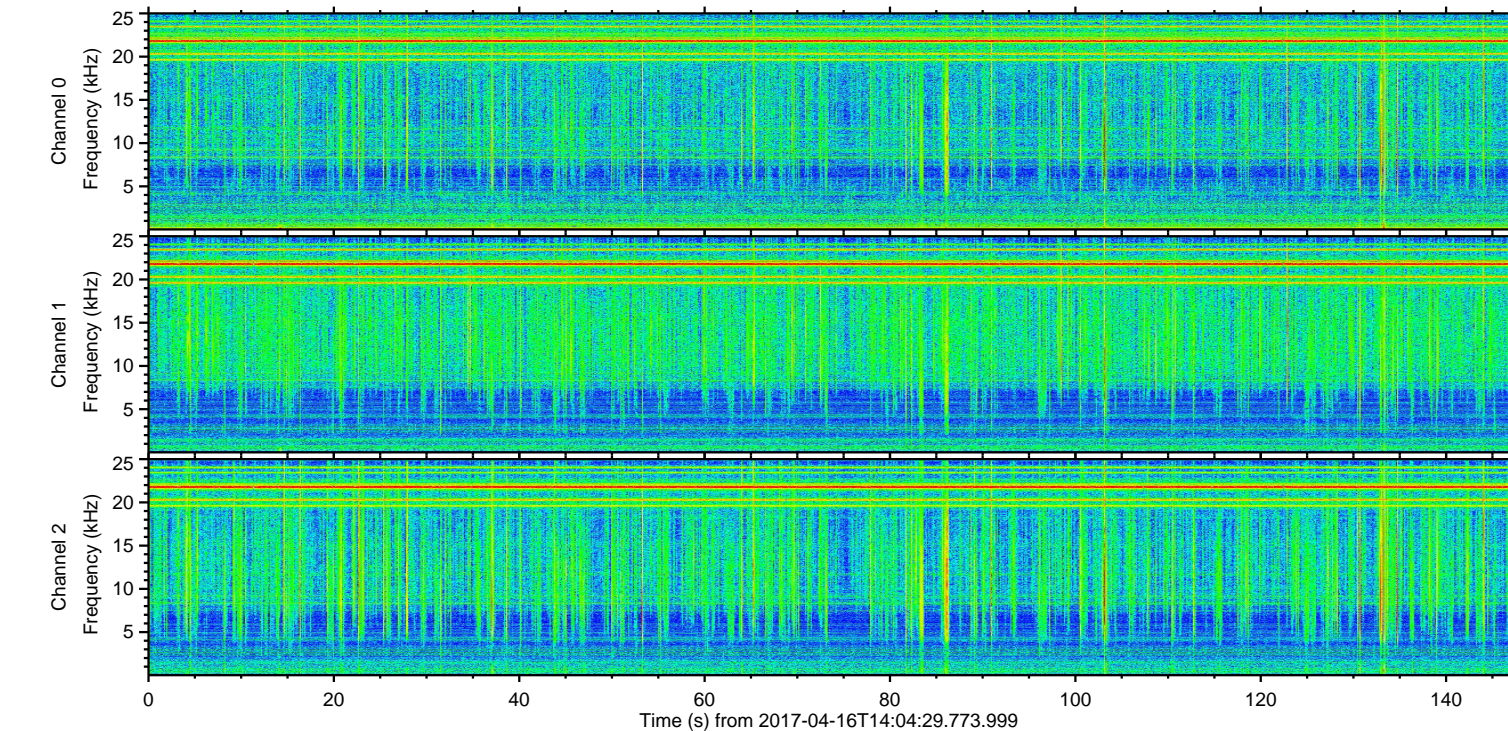
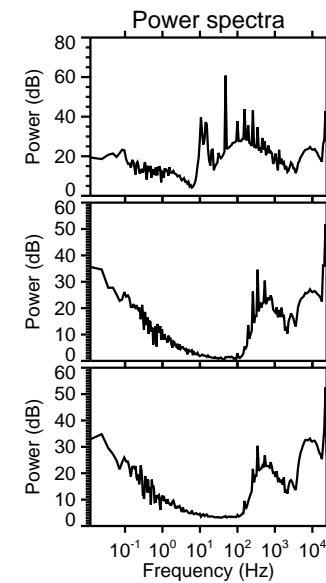
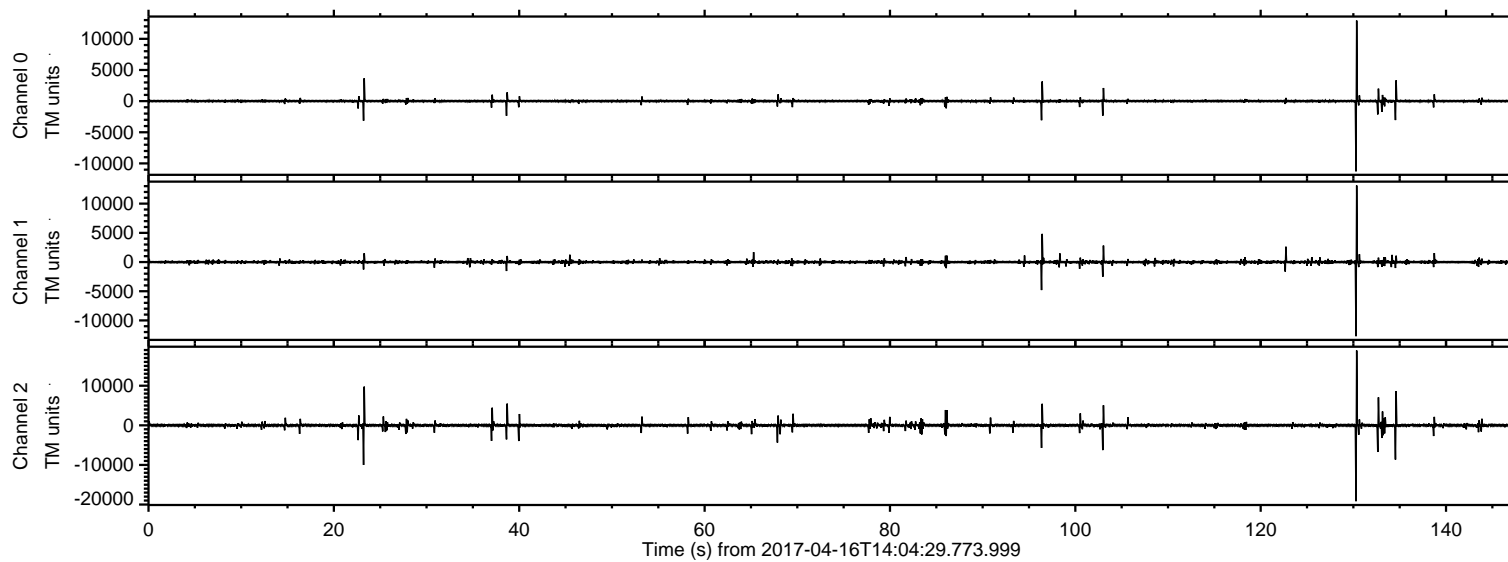


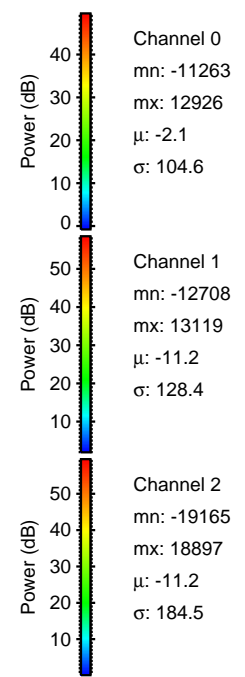
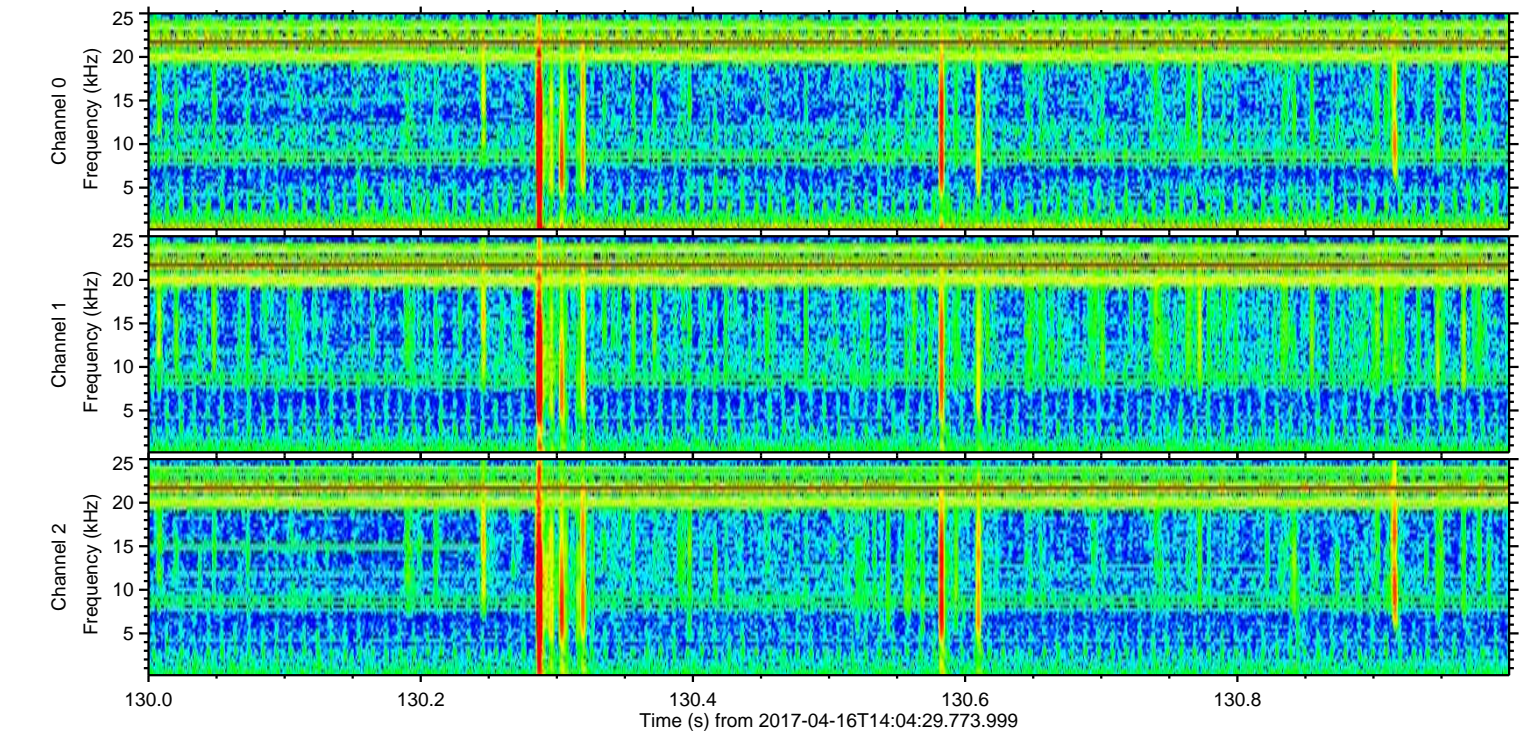
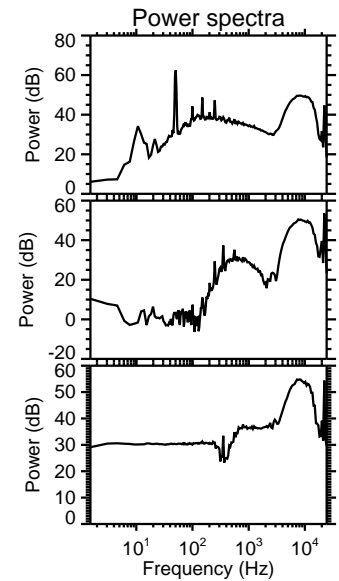
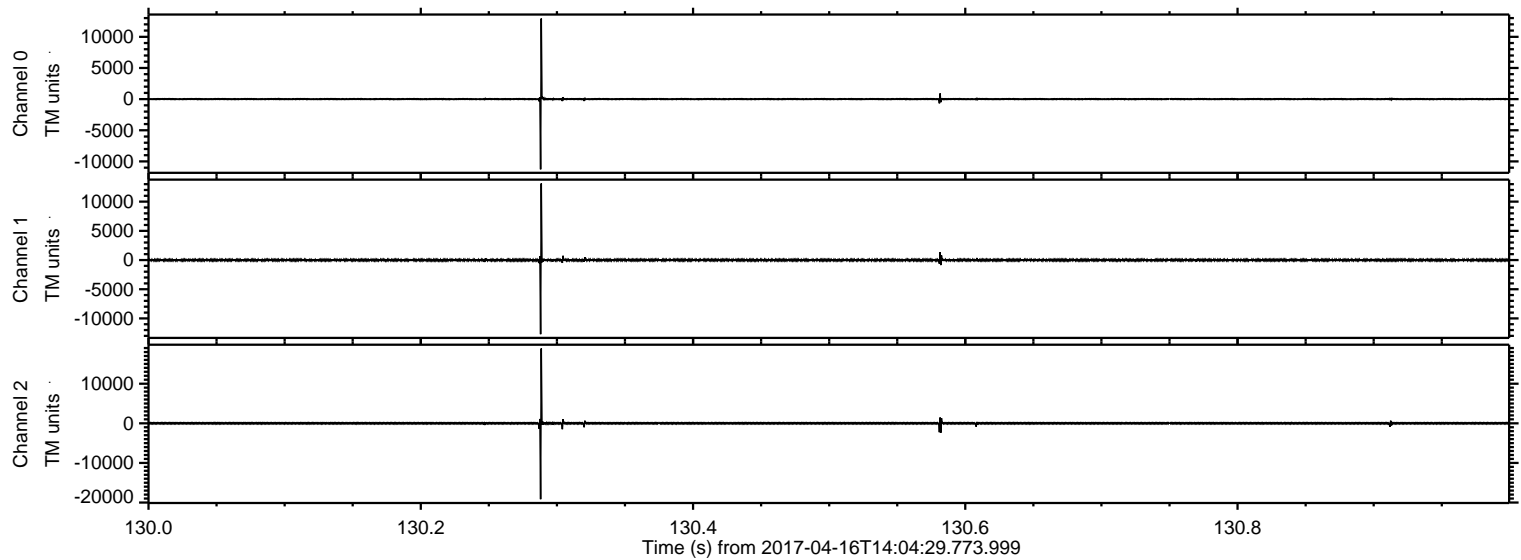
ELMAVAN 3D WAVEFORMS (Measured data sampled at 50 kHz) 51000 packets of 144 samples from 2017-04-16T14:04:29.773.999.

Processed Sun Apr 16 16:12:28 2017 by ELM ver.2012-10-06 from 001__elm20170416_140428__dat00.bin

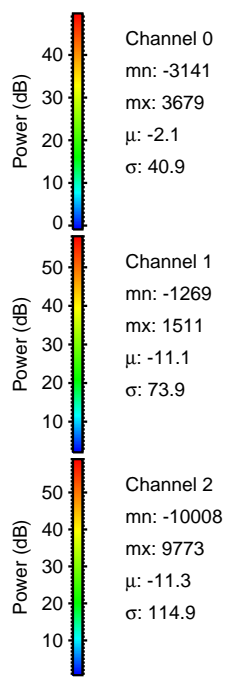
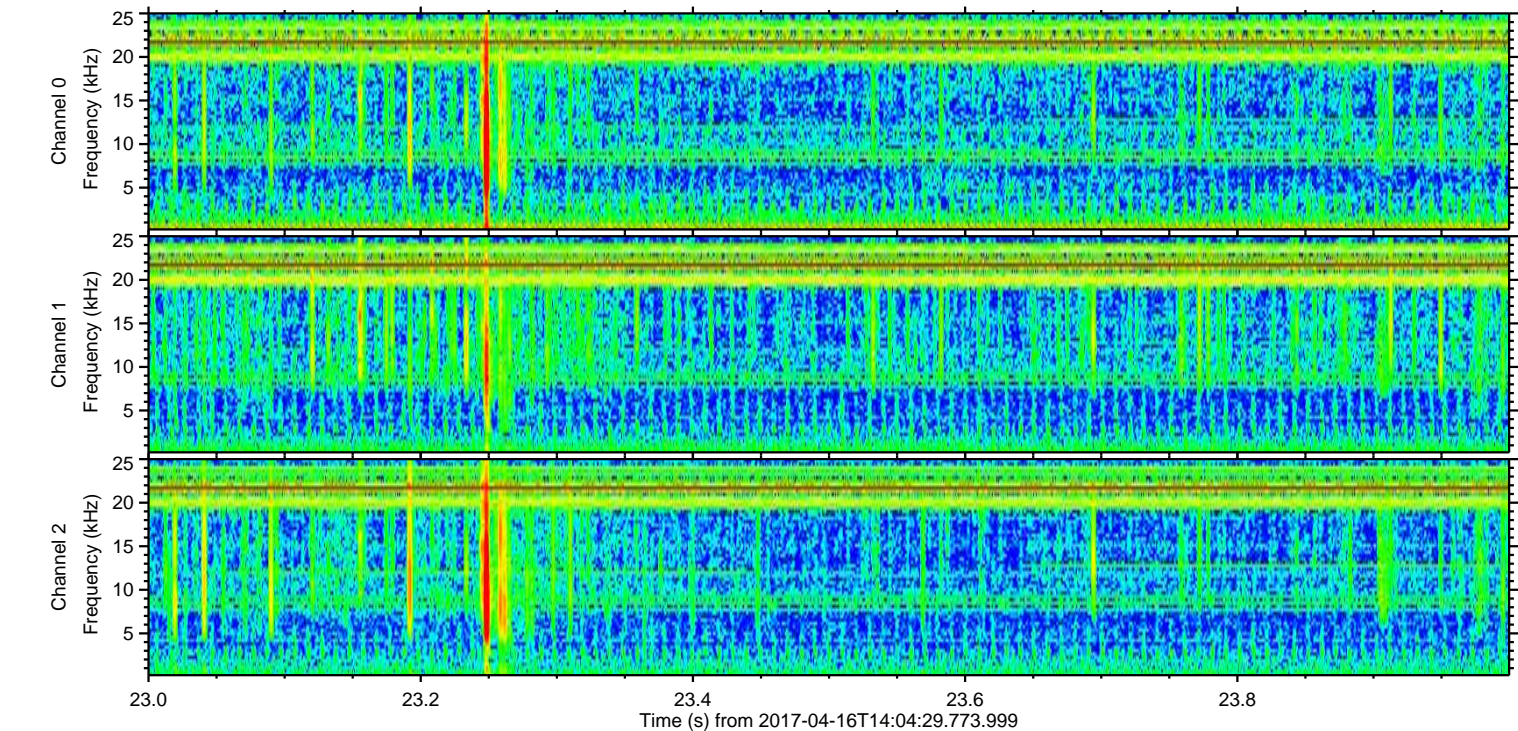
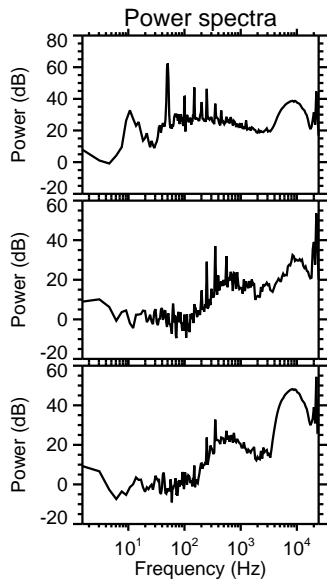
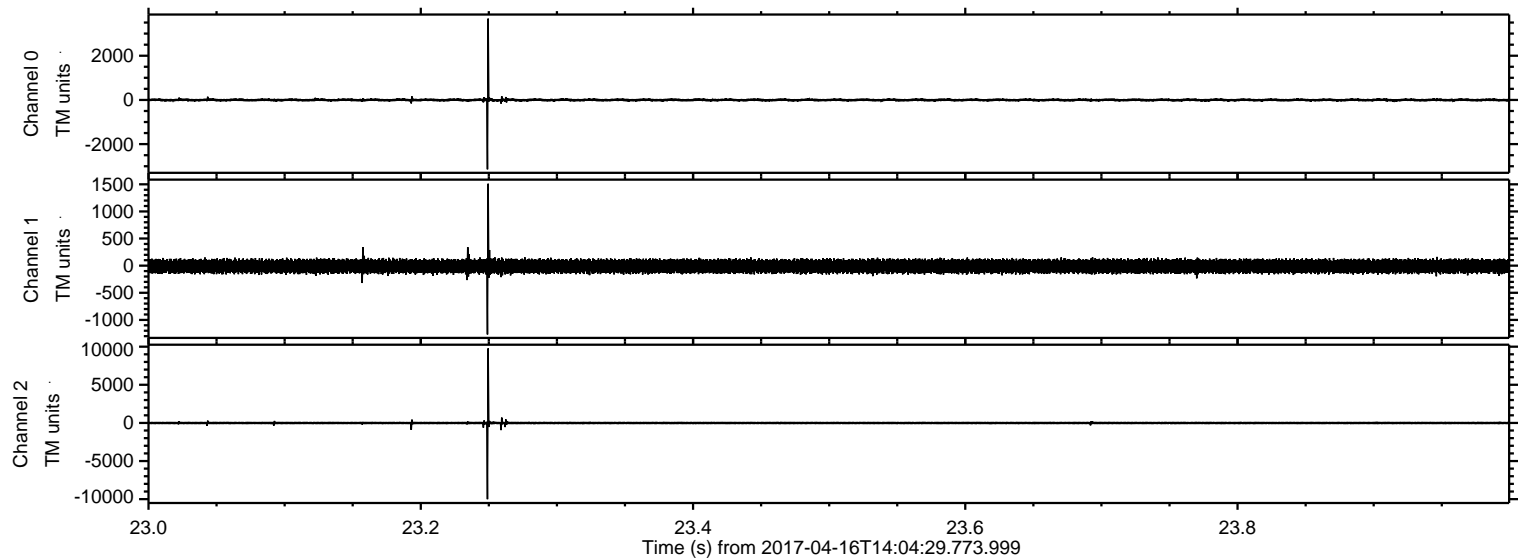


ELMAVAN 3D WAVEFORMS (Measured data sampled at 50 kHz) 51000 packets of 144 samples from 2017-04-16T14:04:29.773.999. Part 131/147

Processed Sun Apr 16 16:12:39 2017 by ELM ver.2012-10-06 from 001__elm20170416_140428__dat00.bin

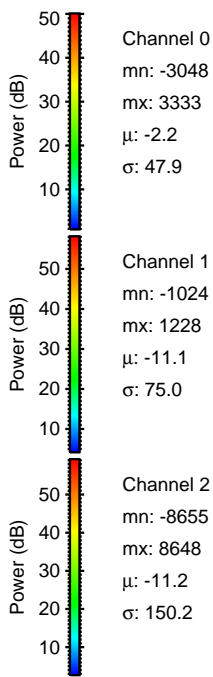
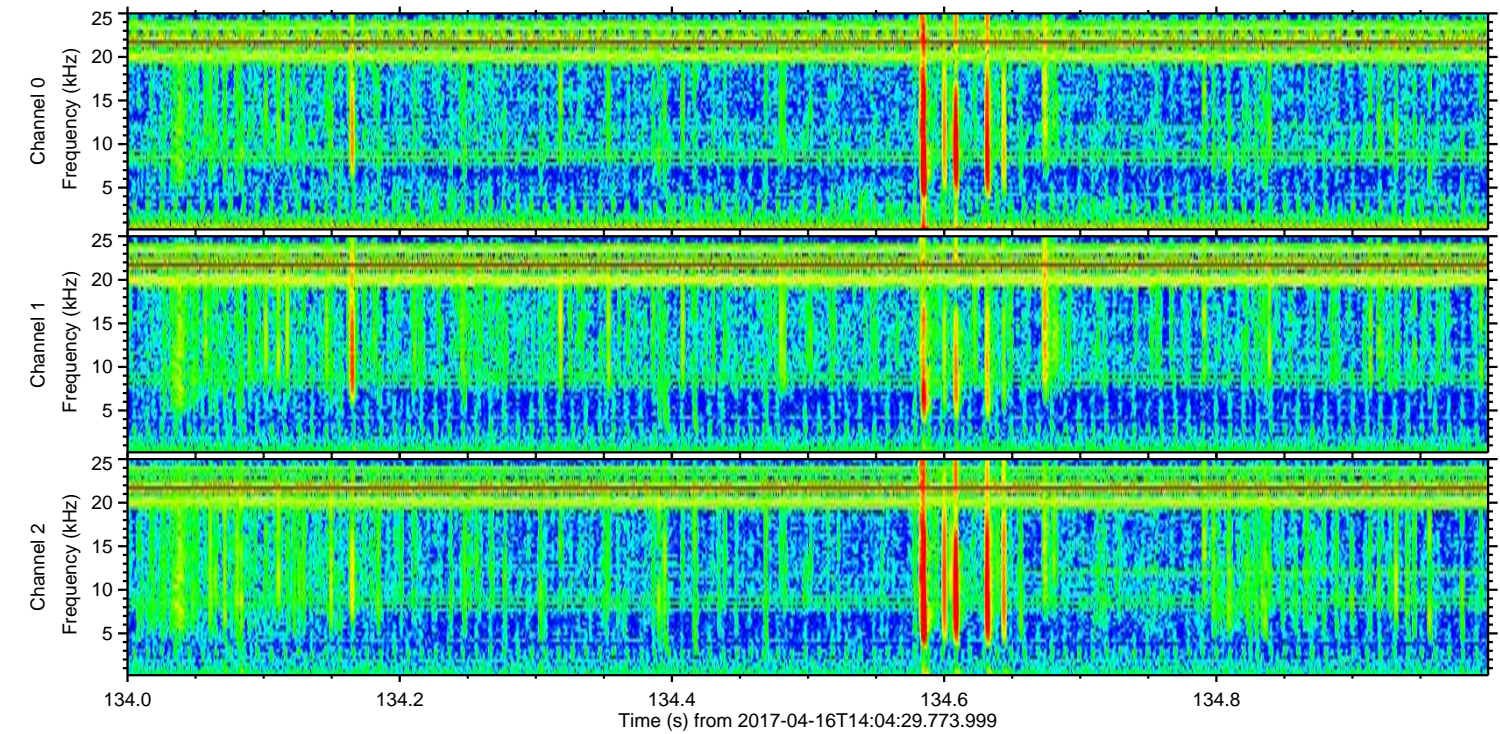
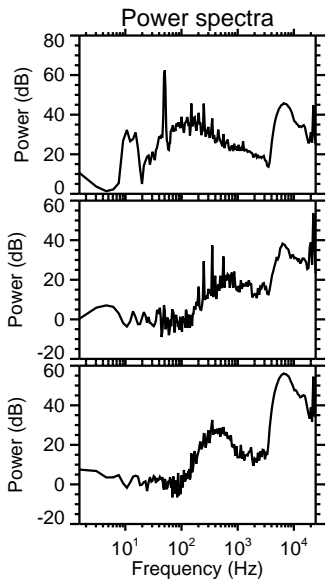
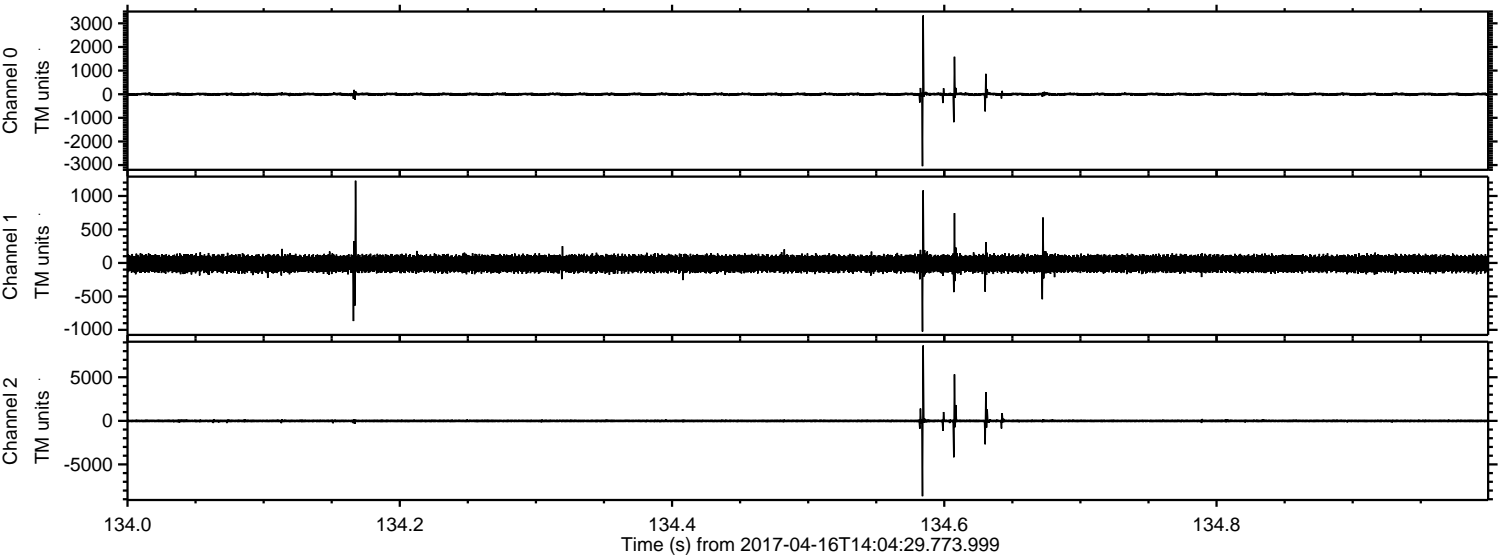


Processed Sun Apr 16 16:12:40 2017 by ELM ver.2012-10-06 from 001__elm20170416_140428__dat00.bin



ELMAVAN 3D WAVEFORMS (Measured data sampled at 50 kHz) 51000 packets of 144 samples from 2017-04-16T14:04:29.773.999. Part 135/147

Processed Sun Apr 16 16:12:41 2017 by ELM ver.2012-10-06 from 001__elm20170416_140428__dat00.bin



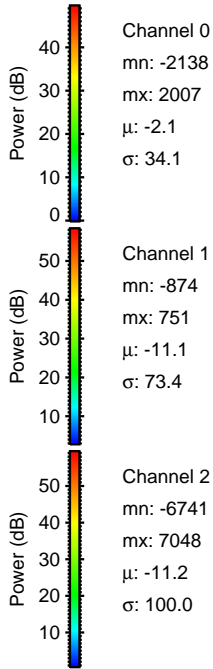
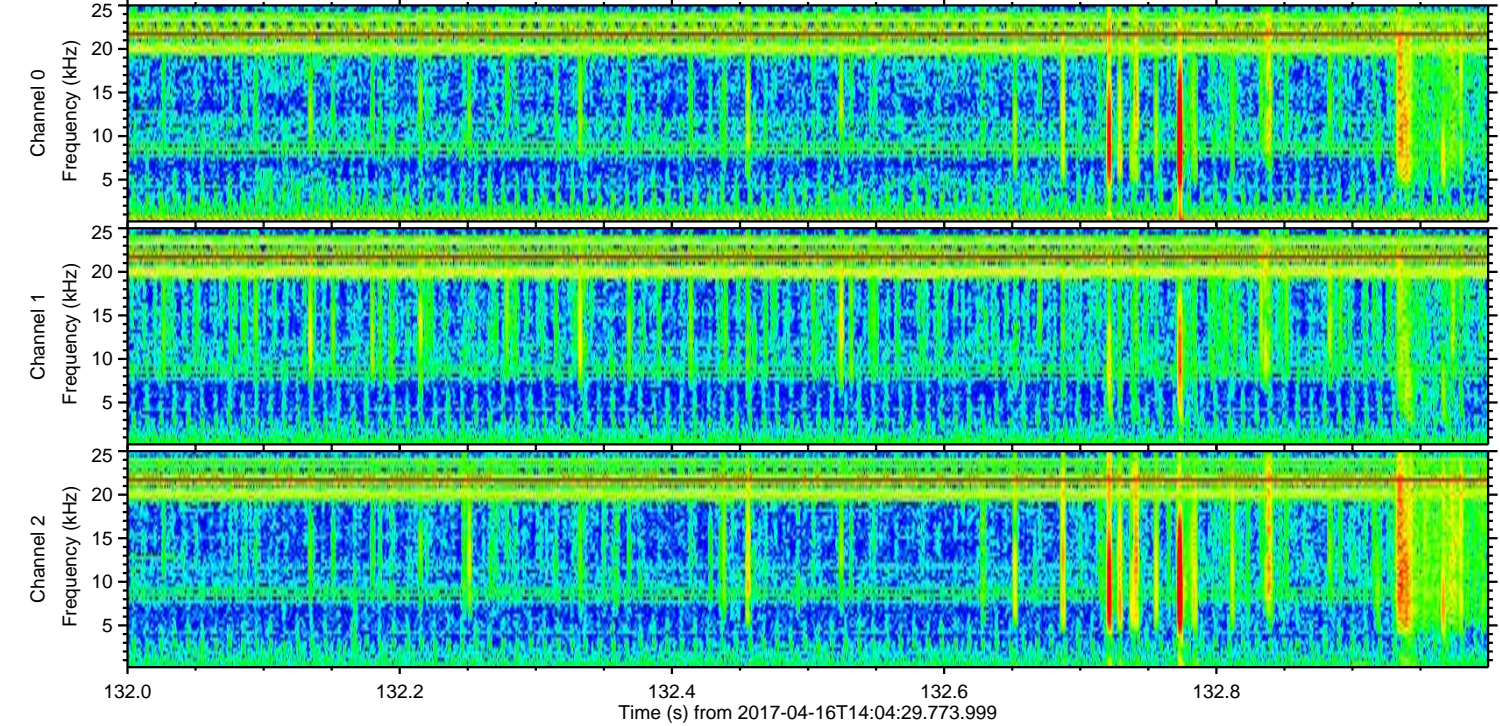
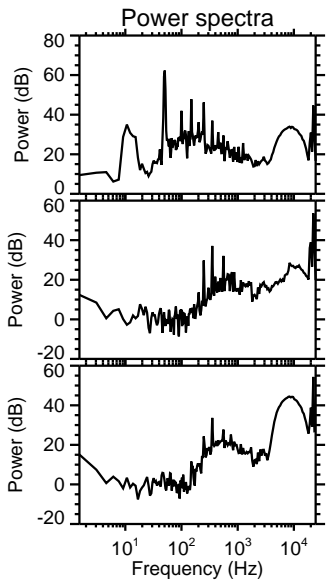
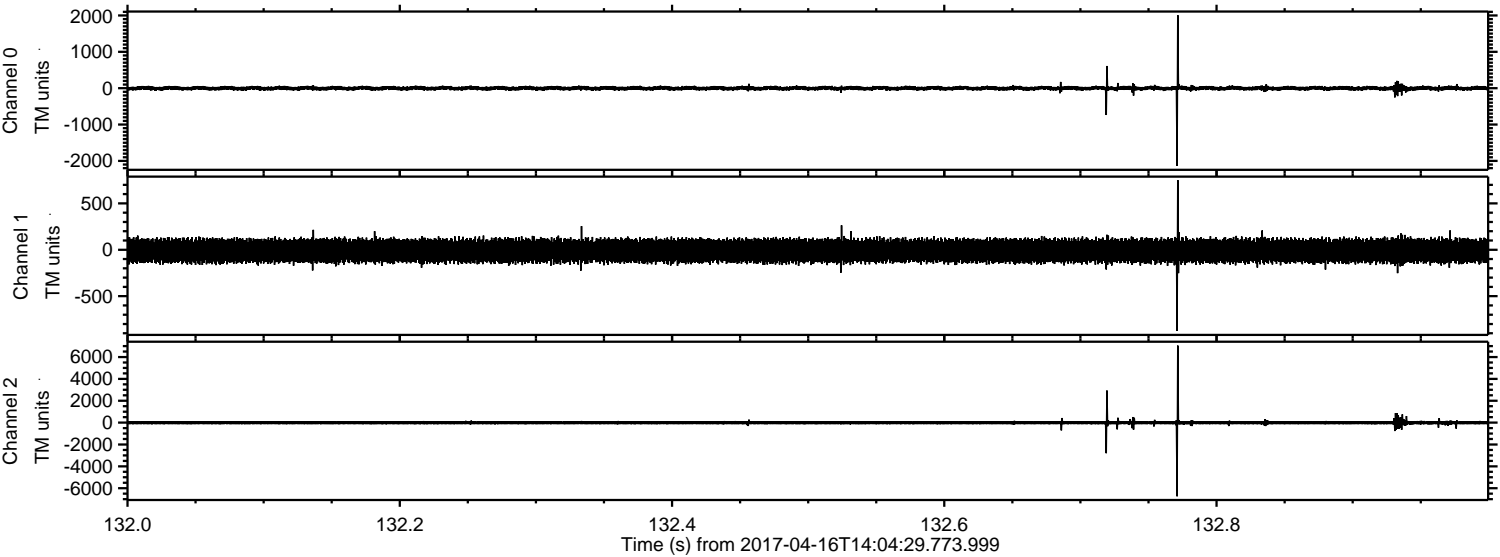
Channel 0
mn: -3048
mx: 3333
 μ : -2.2
 σ : 47.9

Channel 1
mn: -1024
mx: 1228
 μ : -11.1
 σ : 75.0

Channel 2
mn: -8655
mx: 8648
 μ : -11.2
 σ : 150.2

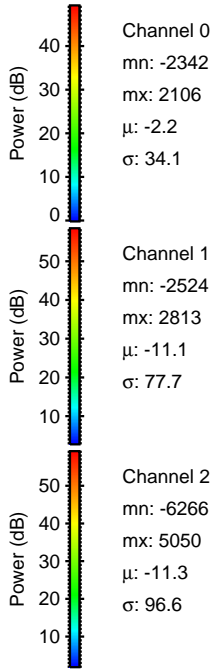
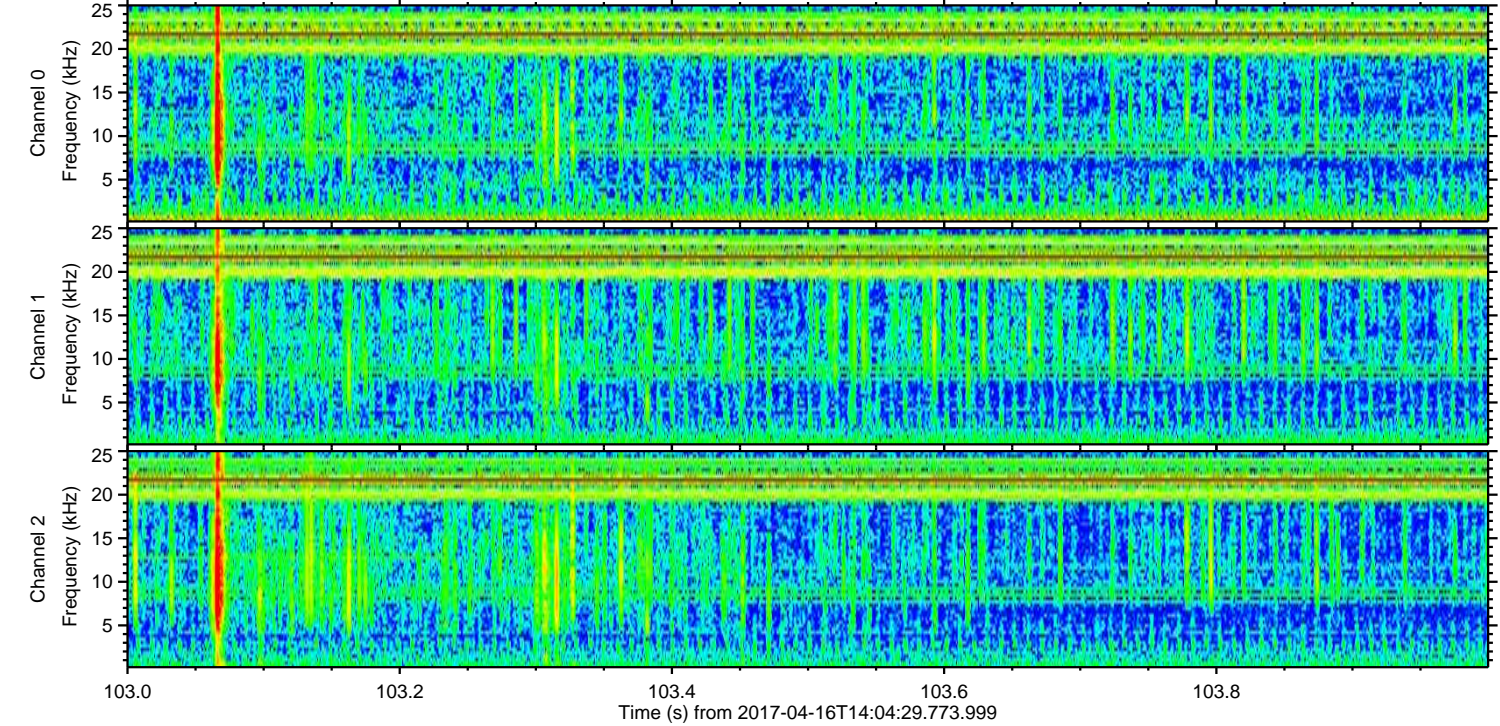
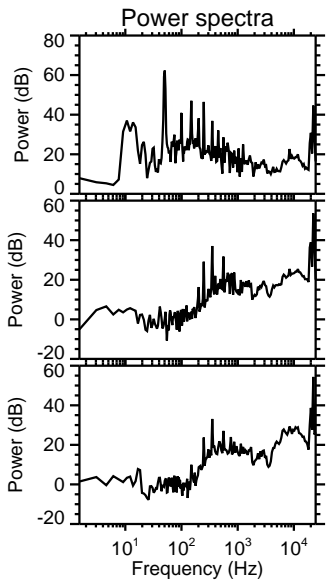
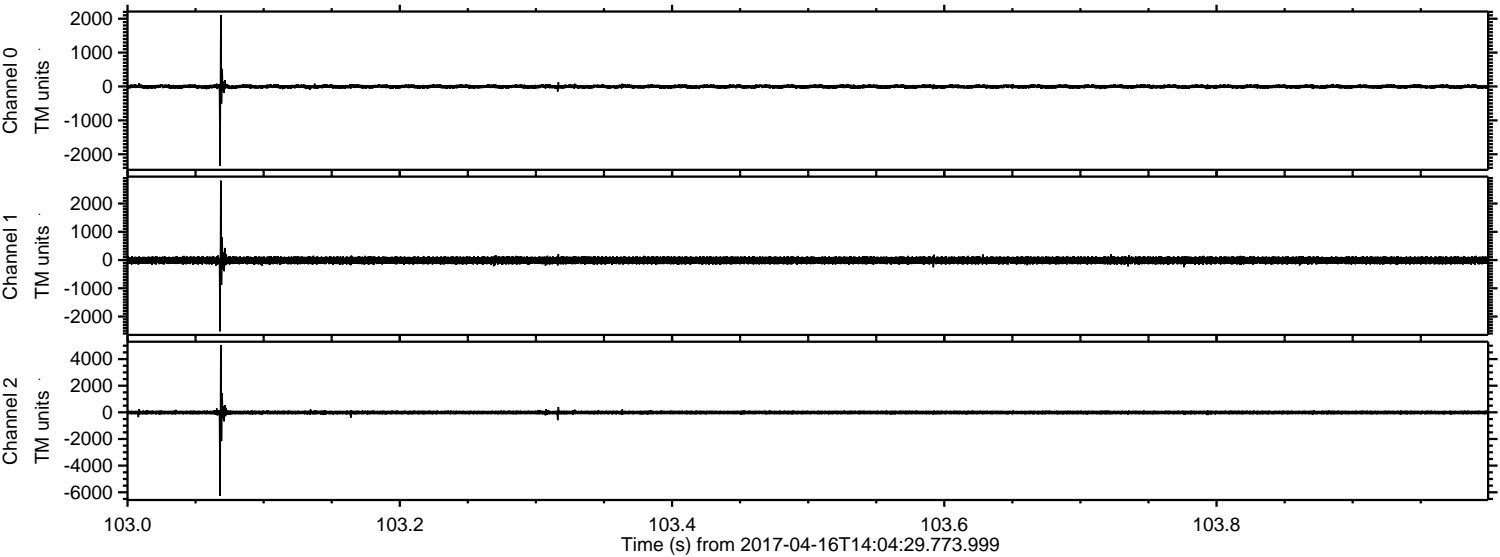
ELMAVAN 3D WAVEFORMS (Measured data sampled at 50 kHz) 51000 packets of 144 samples from 2017-04-16T14:04:29.773.999. Part 133/147

Processed Sun Apr 16 16:12:42 2017 by ELM ver.2012-10-06 from 001__elm20170416_140428__dat00.bin

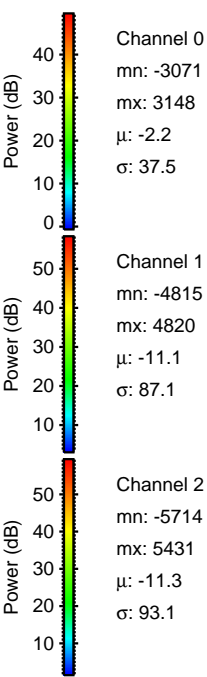
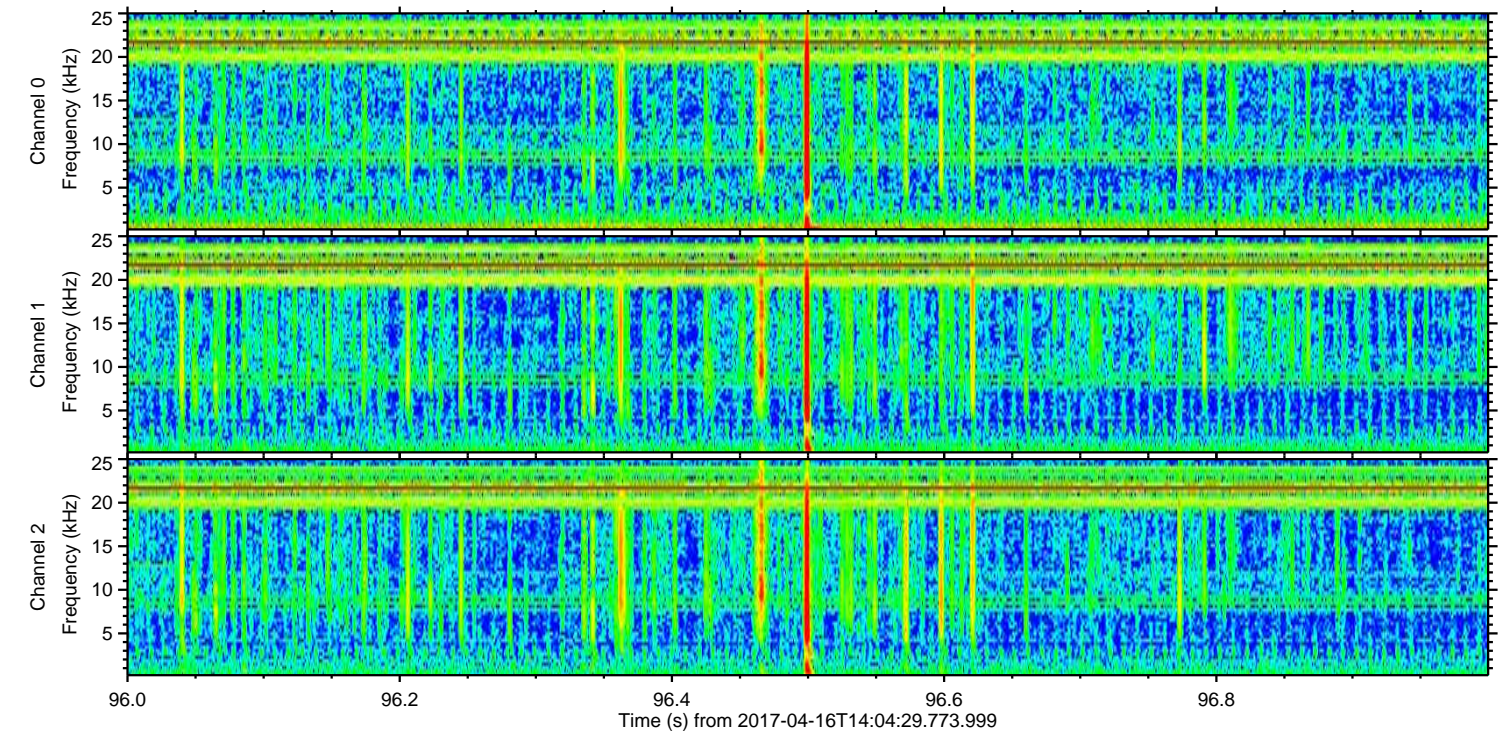
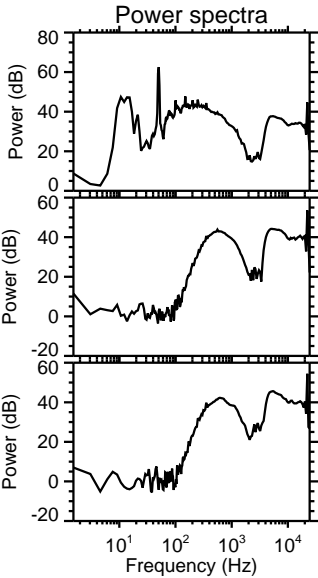
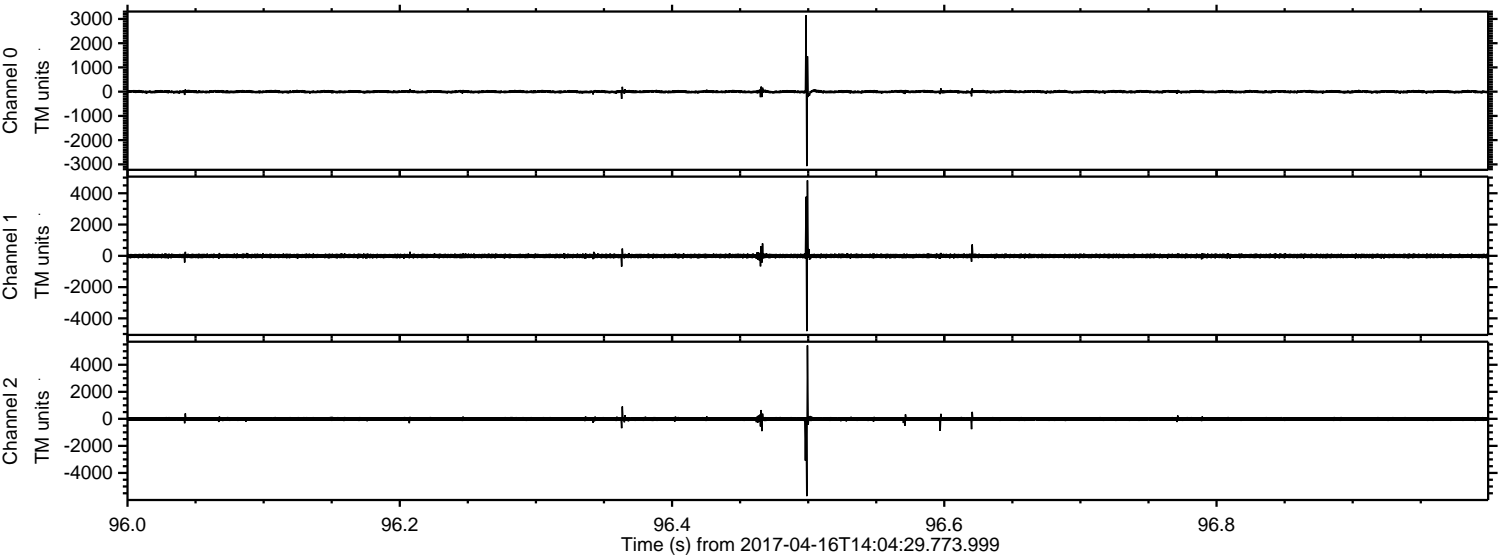


ELMAVAN 3D WAVEFORMS (Measured data sampled at 50 kHz) 51000 packets of 144 samples from 2017-04-16T14:04:29.773.999. Part 104/147

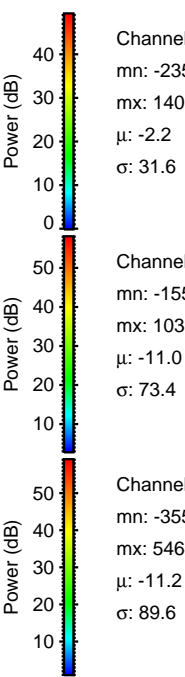
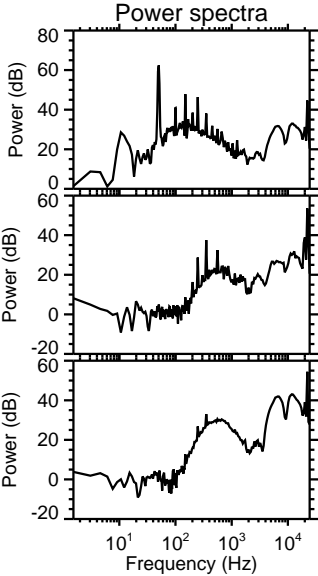
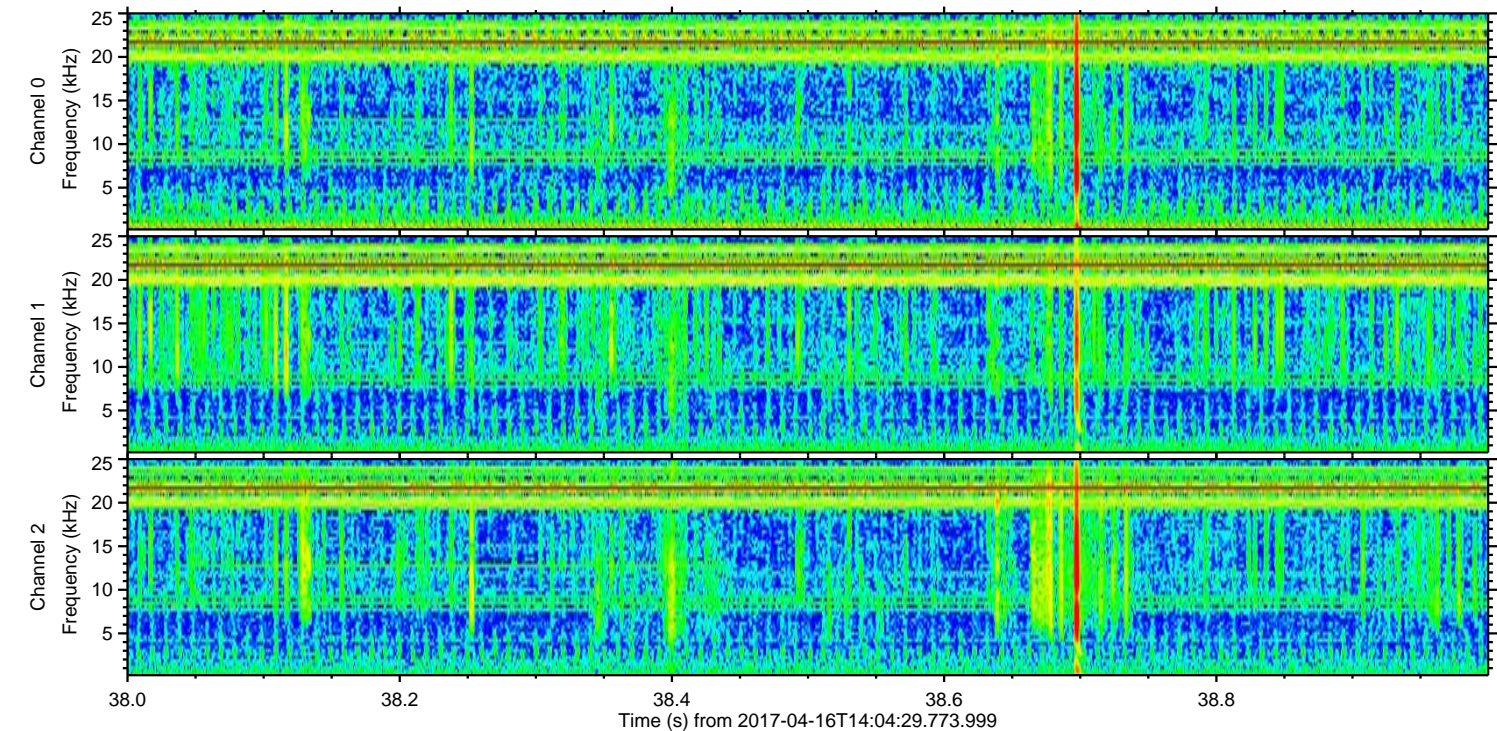
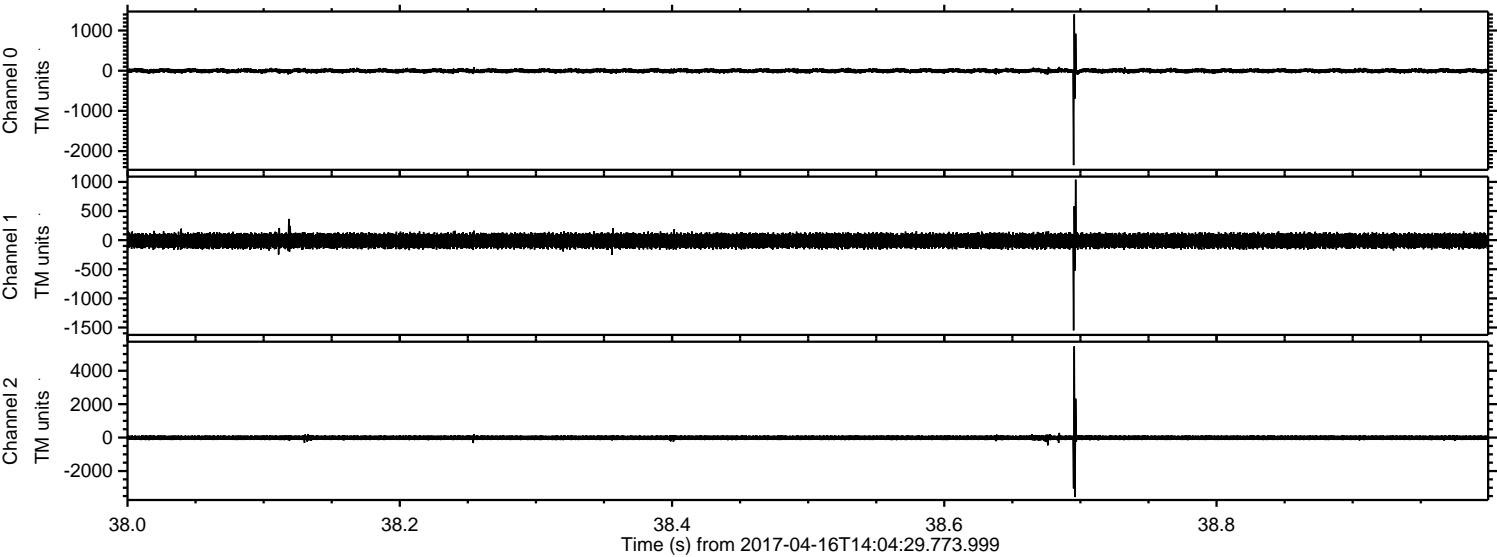
Processed Sun Apr 16 16:12:43 2017 by ELM ver.2012-10-06 from 001__elm20170416_140428__dat00.bin



Processed Sun Apr 16 16:12:44 2017 by ELM ver.2012-10-06 from 001__elm20170416_140428__dat00.bin



Processed Sun Apr 16 16:12:45 2017 by ELM ver.2012-10-06 from 001__elm20170416_140428__dat00.bin

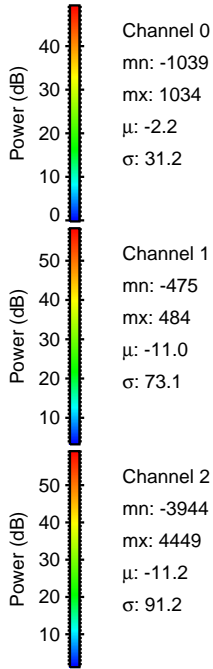
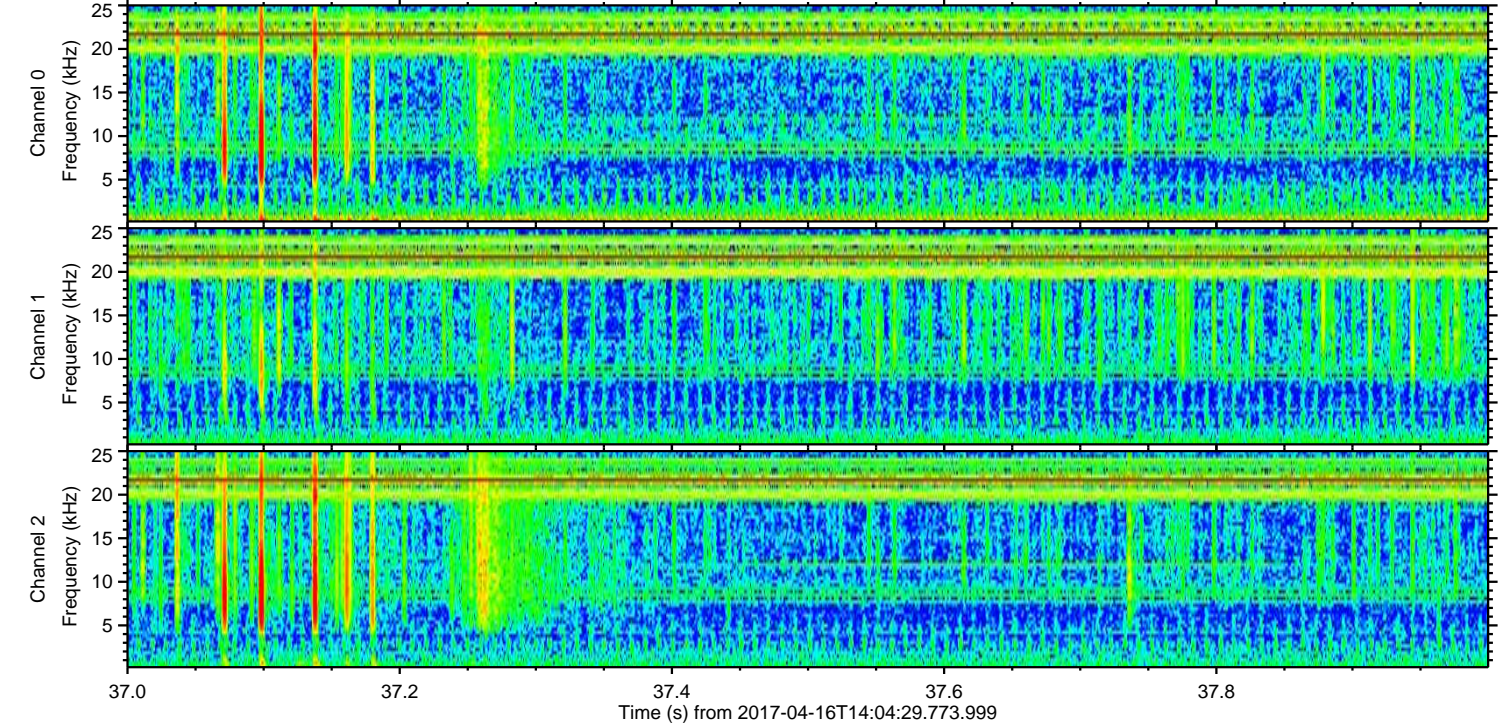
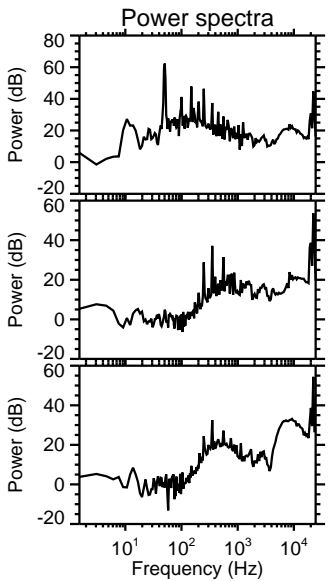
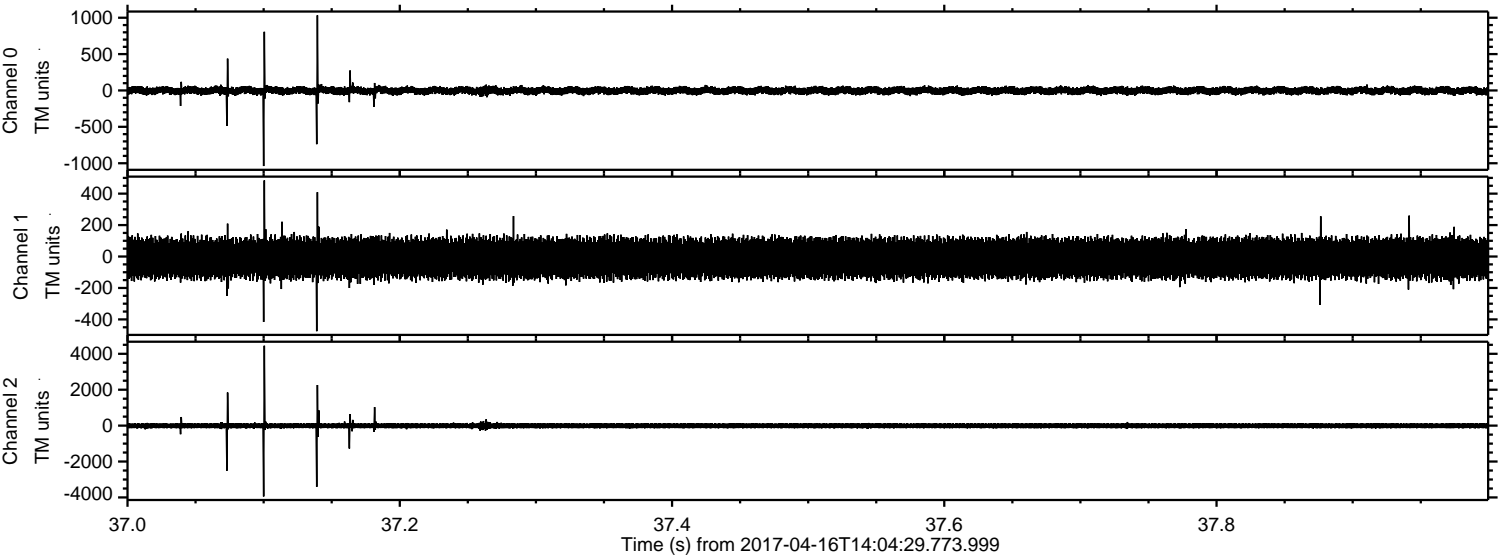


Channel 0
mn: -2350
mx: 1403
 μ : -2.2
 σ : 31.6

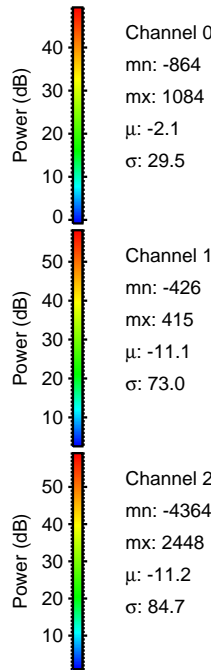
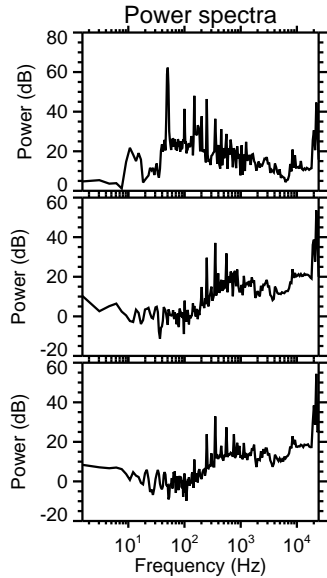
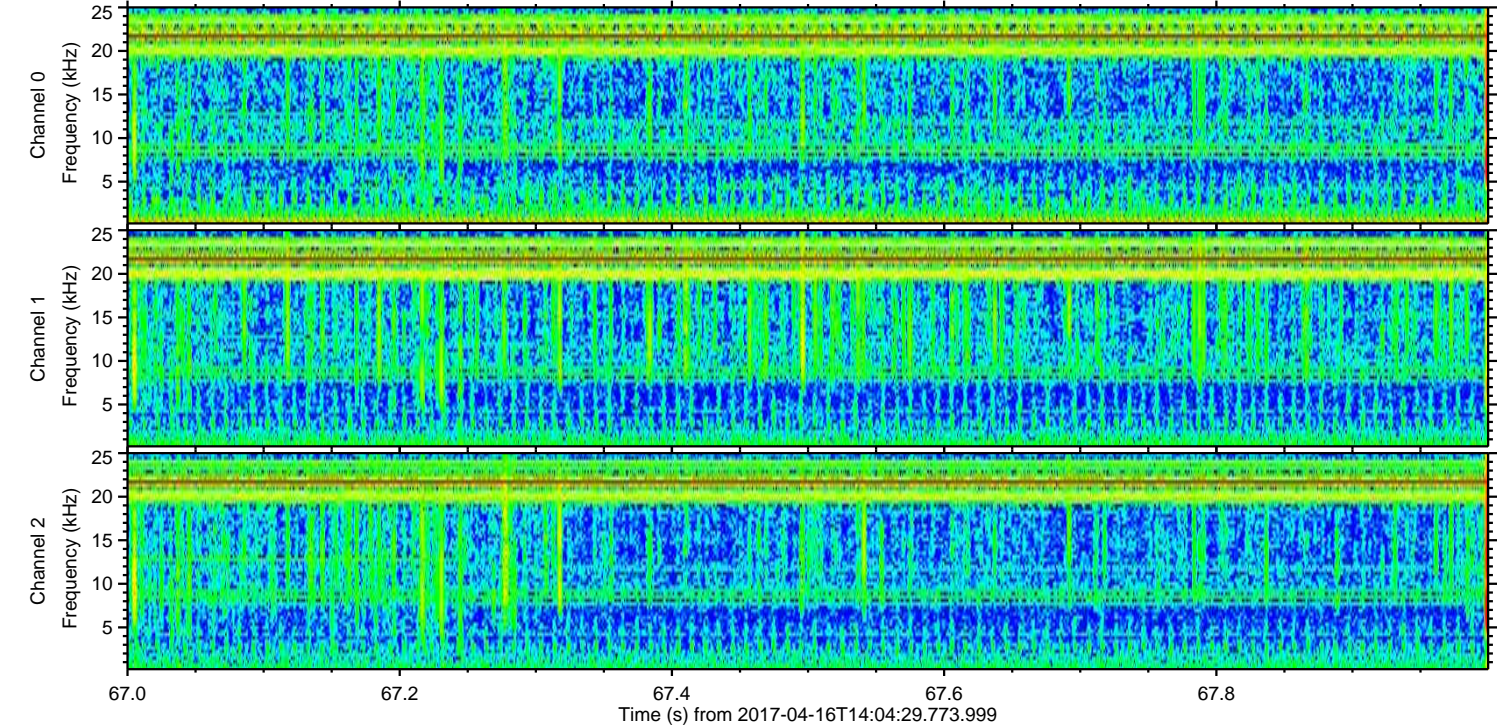
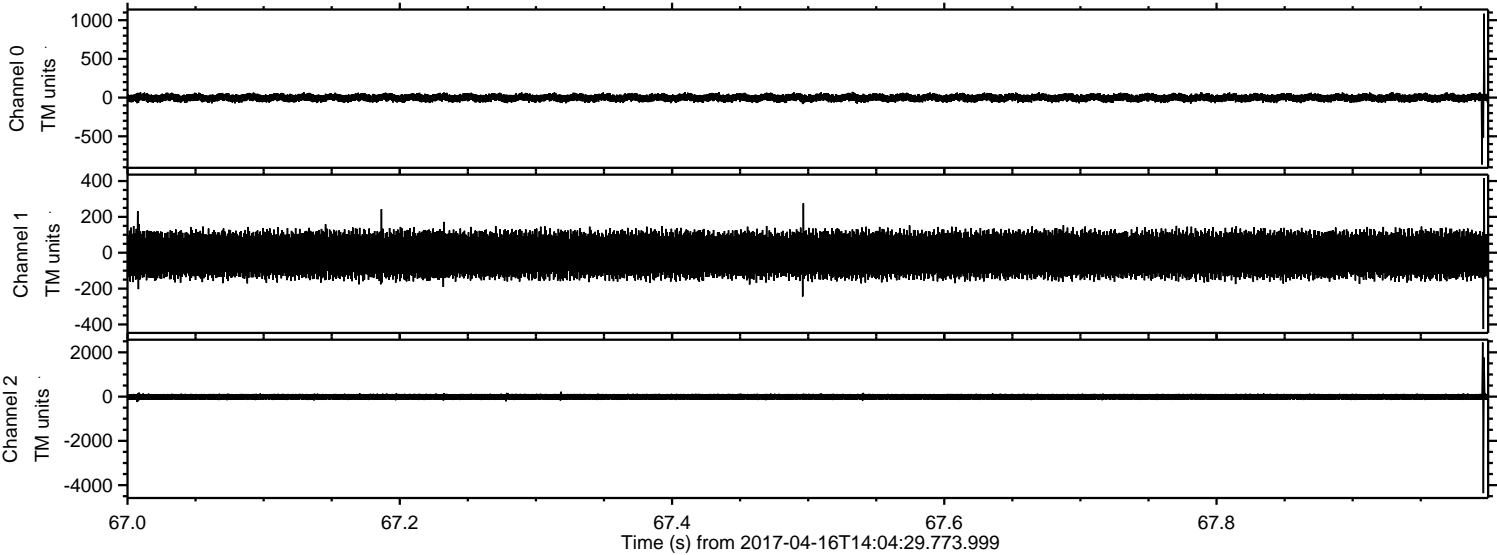
Channel 1
mn: -1550
mx: 1039
 μ : -11.0
 σ : 73.4

Channel 2
mn: -3556
mx: 5464
 μ : -11.2
 σ : 89.6

Processed Sun Apr 16 16:12:46 2017 by ELM ver.2012-10-06 from 001__elm20170416_140428__dat00.bin



Processed Sun Apr 16 16:12:47 2017 by ELM ver.2012-10-06 from 001__elm20170416_140428__dat00.bin



Processed Sun Apr 16 16:12:48 2017 by ELM ver.2012-10-06 from 001__elm20170416_140428__dat00.bin

