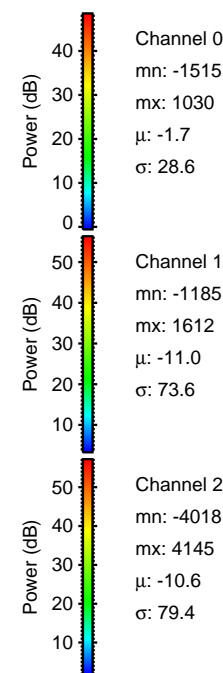
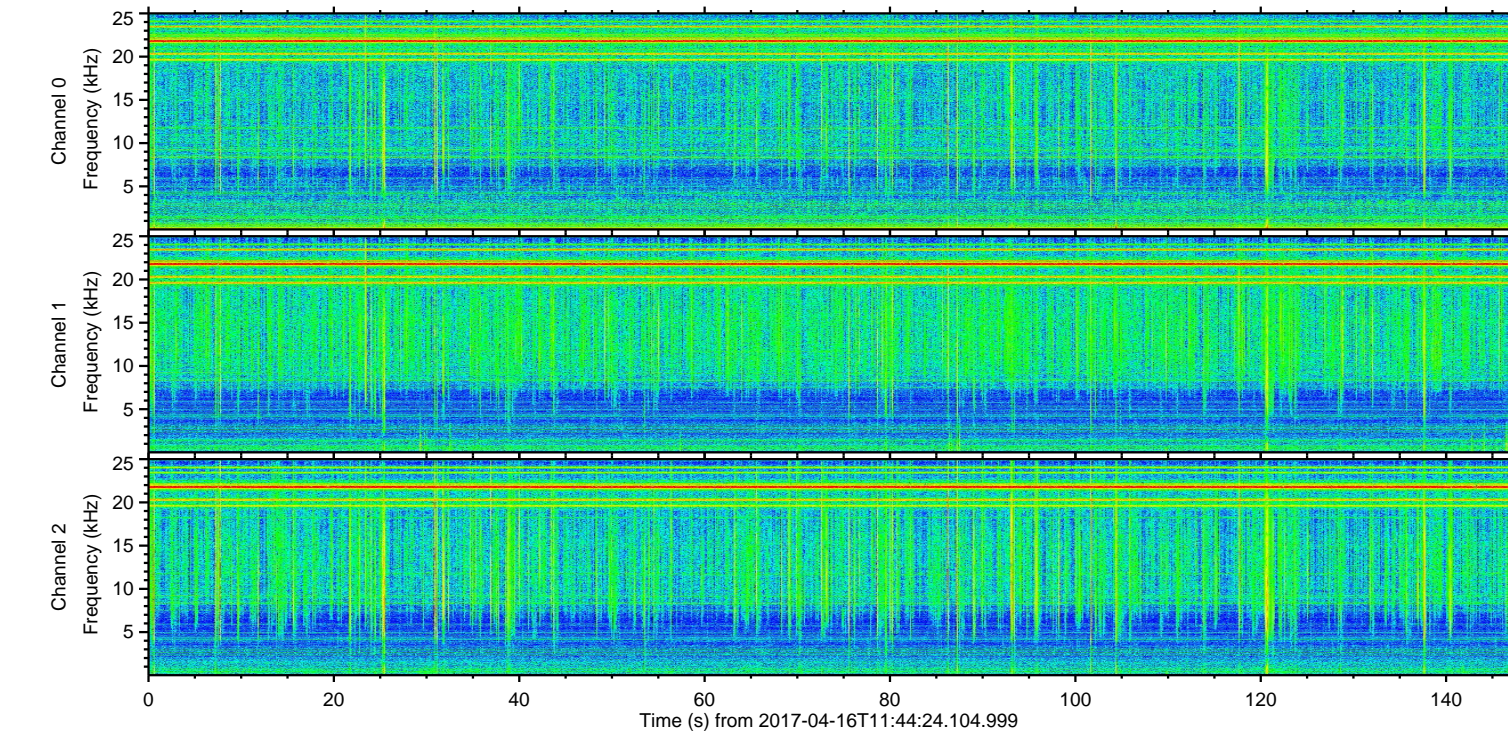
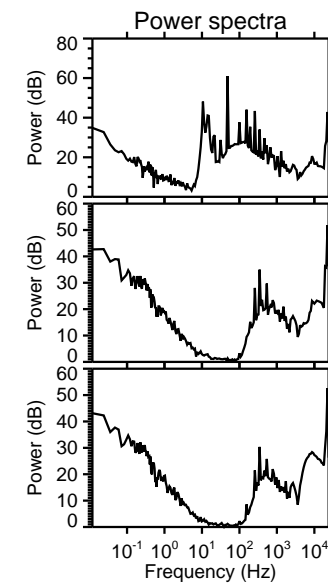
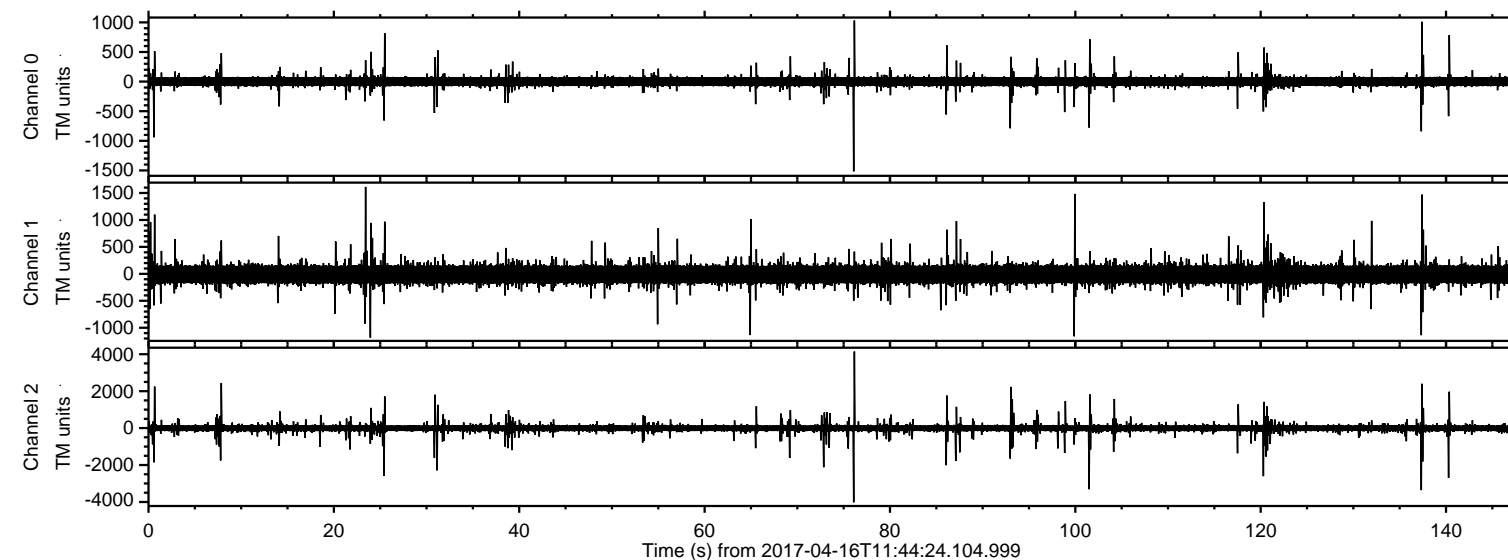
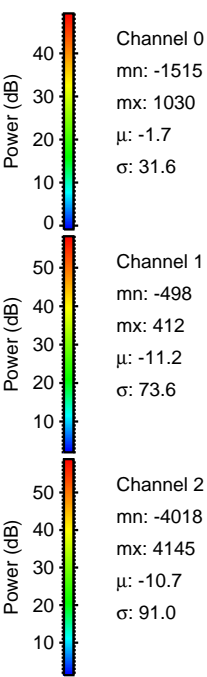
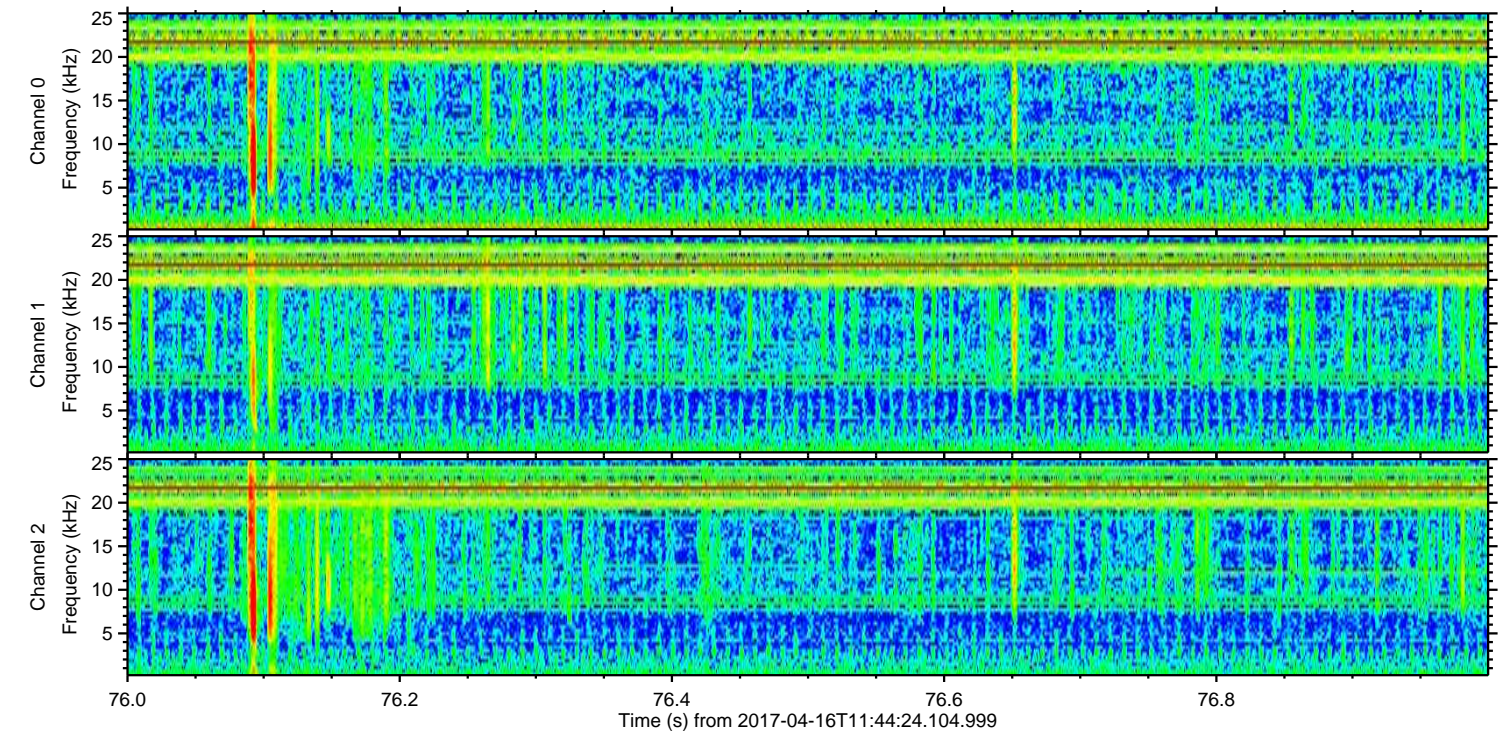
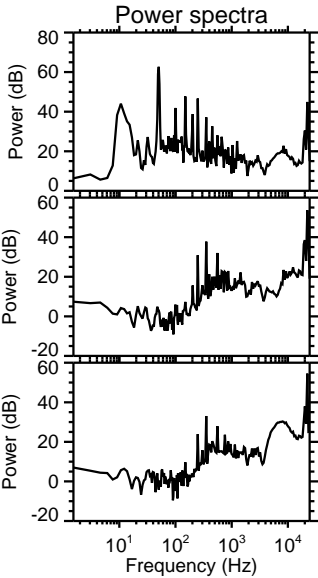
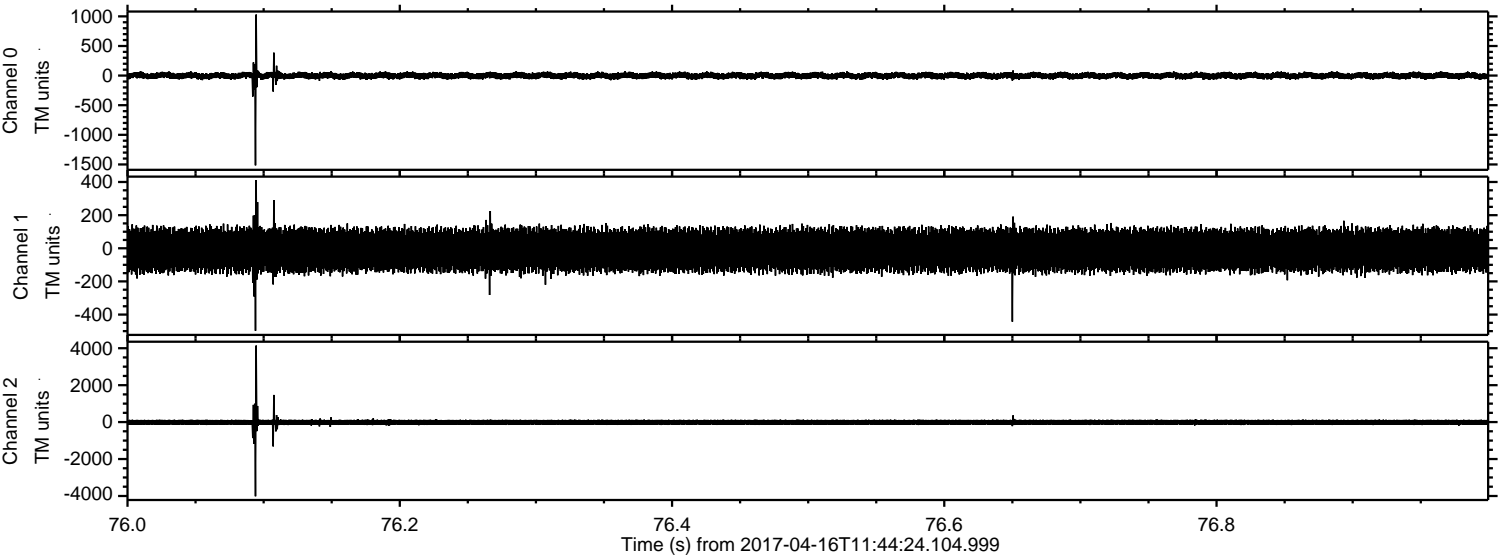


ELMAVAN 3D WAVEFORMS (Measured data sampled at 50 kHz) 51000 packets of 144 samples from 2017-04-16T11:44:24.104.999.

Processed Sun Apr 16 13:52:34 2017 by ELM ver.2012-10-06 from 001__elm20170416_114423__dat00.bin

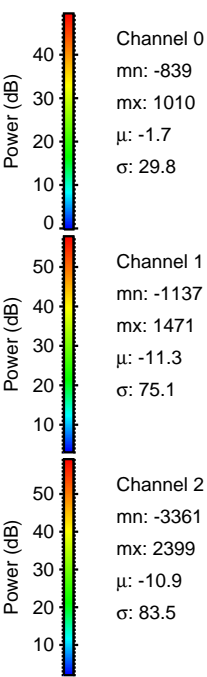
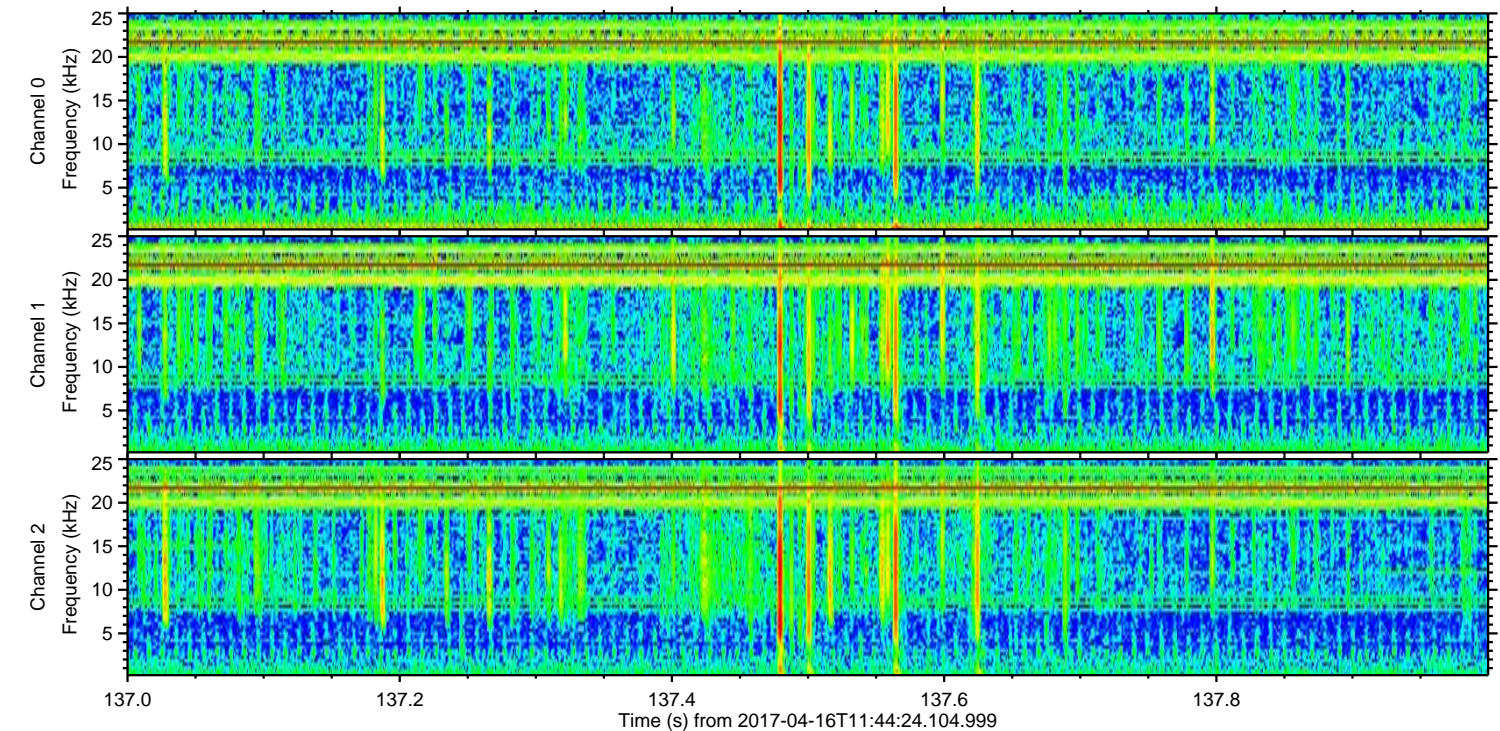
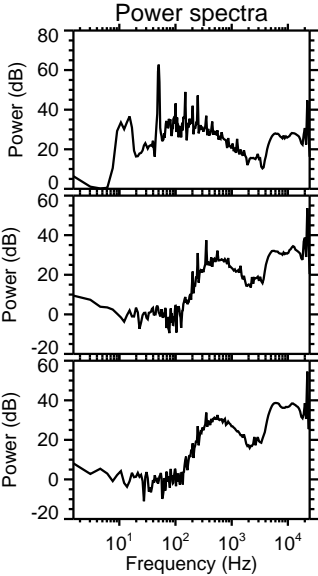
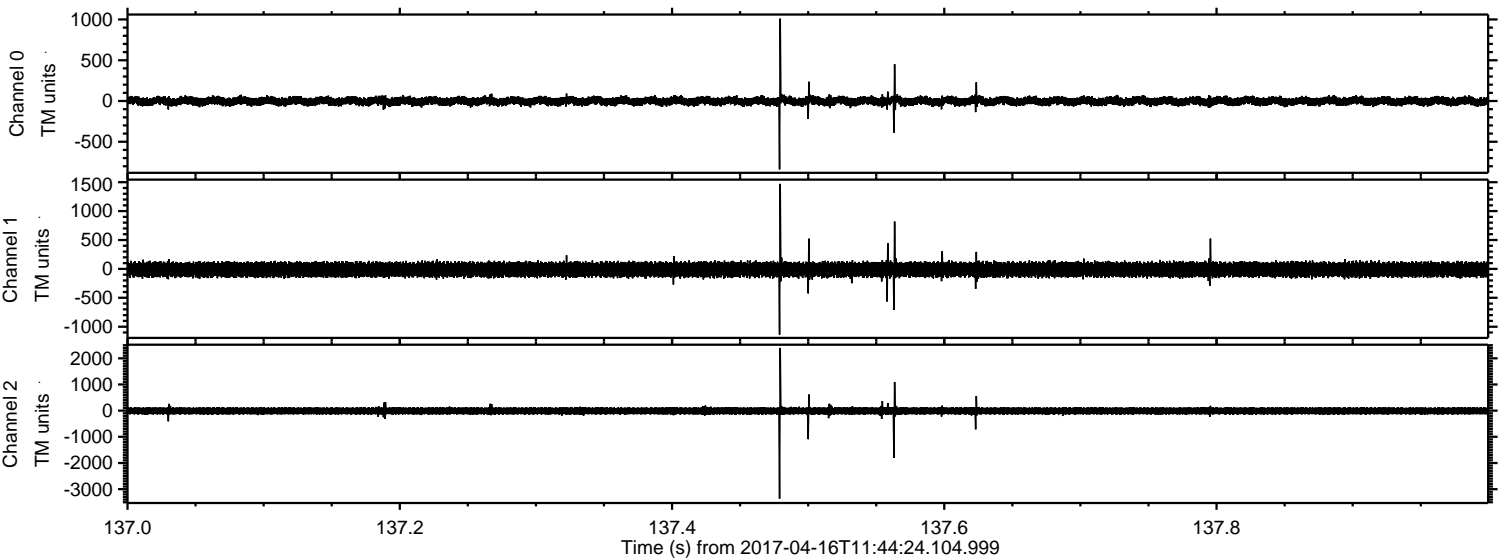


Processed Sun Apr 16 13:52:45 2017 by ELM ver.2012-10-06 from 001__elm20170416_114423__dat00.bin



ELMAVAN 3D WAVEFORMS (Measured data sampled at 50 kHz) 51000 packets of 144 samples from 2017-04-16T11:44:24.104.999. Part 138/147

Processed Sun Apr 16 13:52:46 2017 by ELM ver.2012-10-06 from 001__elm20170416_114423__dat00.bin



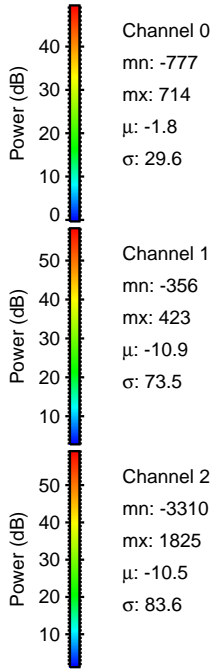
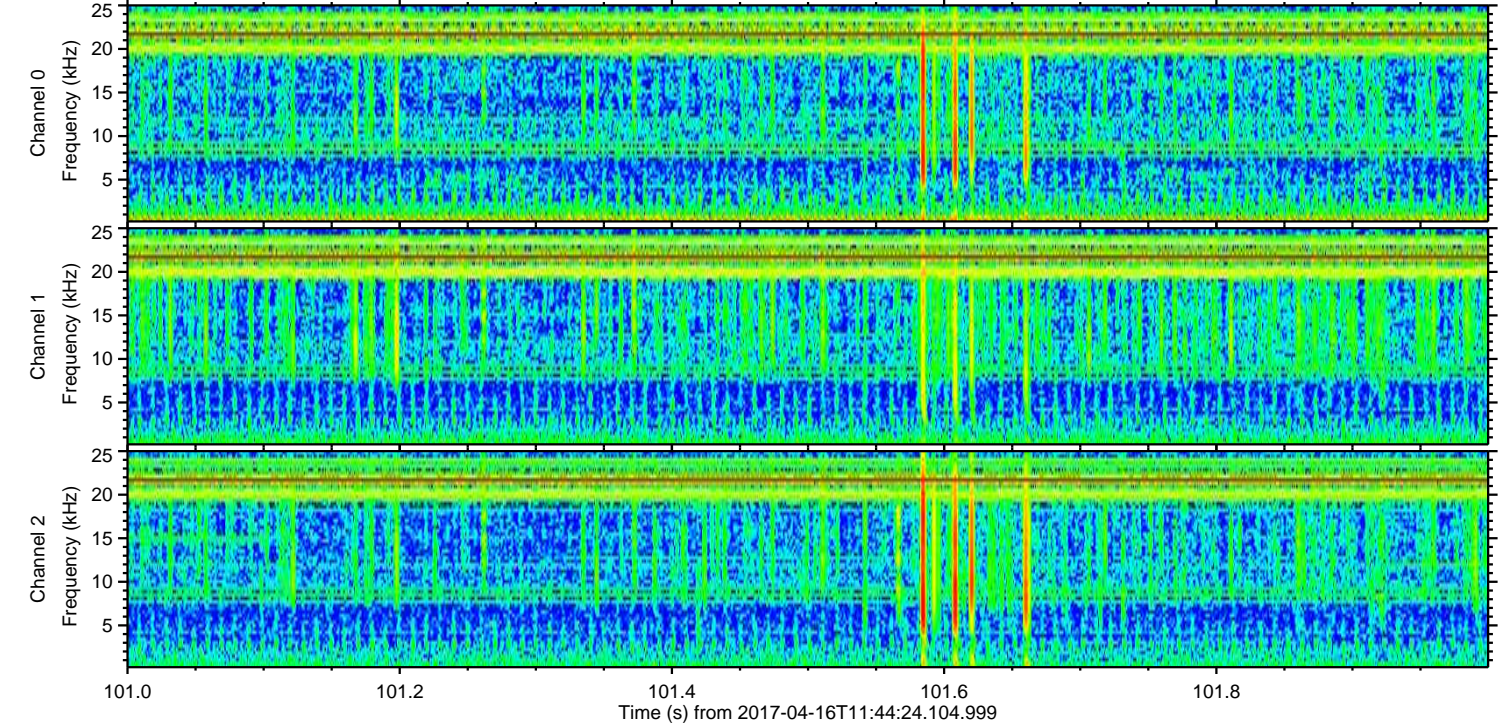
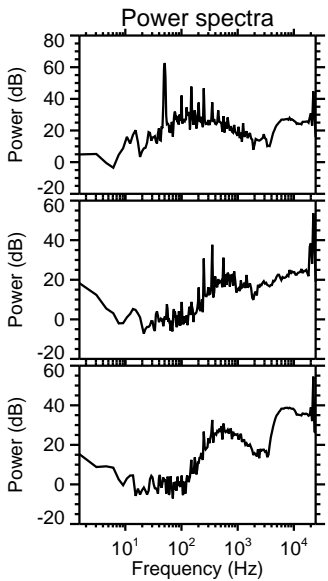
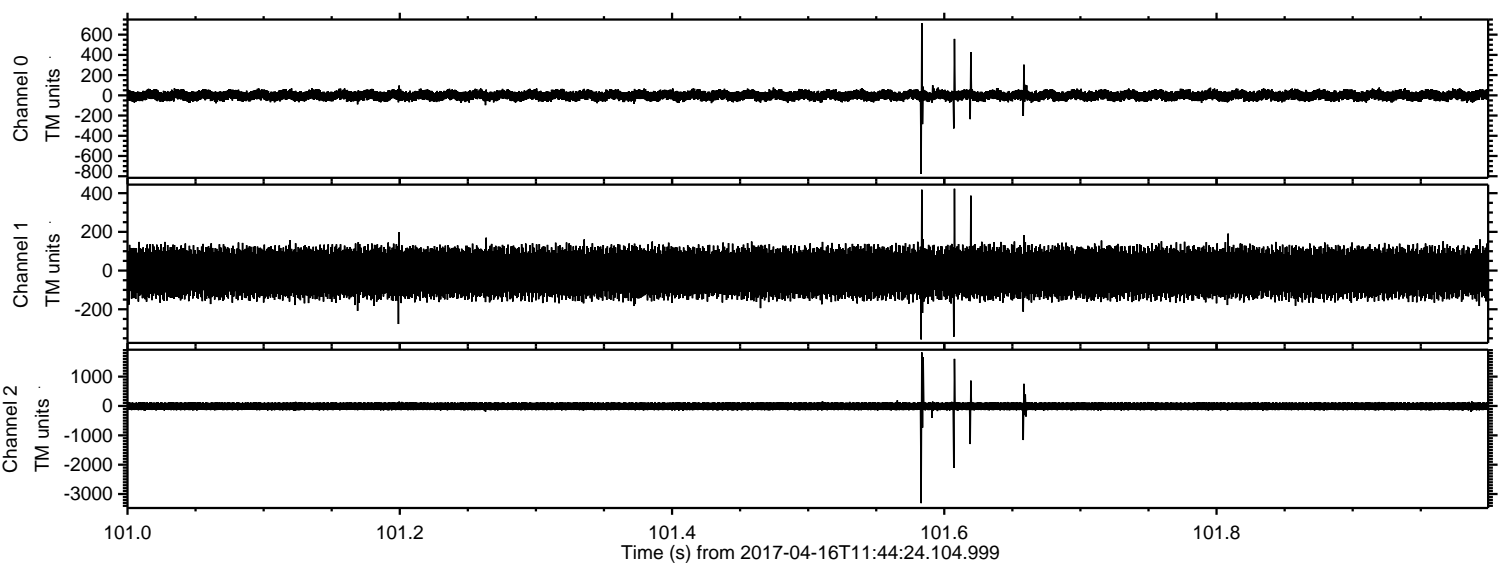
Channel 0
mn: -839
mx: 1010
 μ : -1.7
 σ : 29.8

Channel 1
mn: -1137
mx: 1471
 μ : -11.3
 σ : 75.1

Channel 2
mn: -3361
mx: 2399
 μ : -10.9
 σ : 83.5

ELMAVAN 3D WAVEFORMS (Measured data sampled at 50 kHz) 51000 packets of 144 samples from 2017-04-16T11:44:24.104.999. Part 102/147

Processed Sun Apr 16 13:52:47 2017 by ELM ver.2012-10-06 from 001__elm20170416_114423__dat00.bin



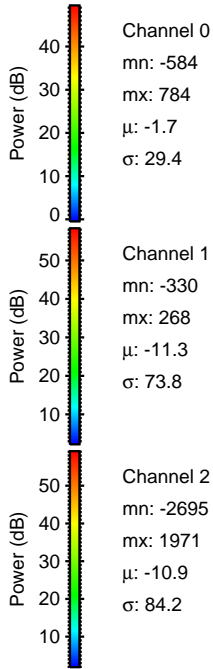
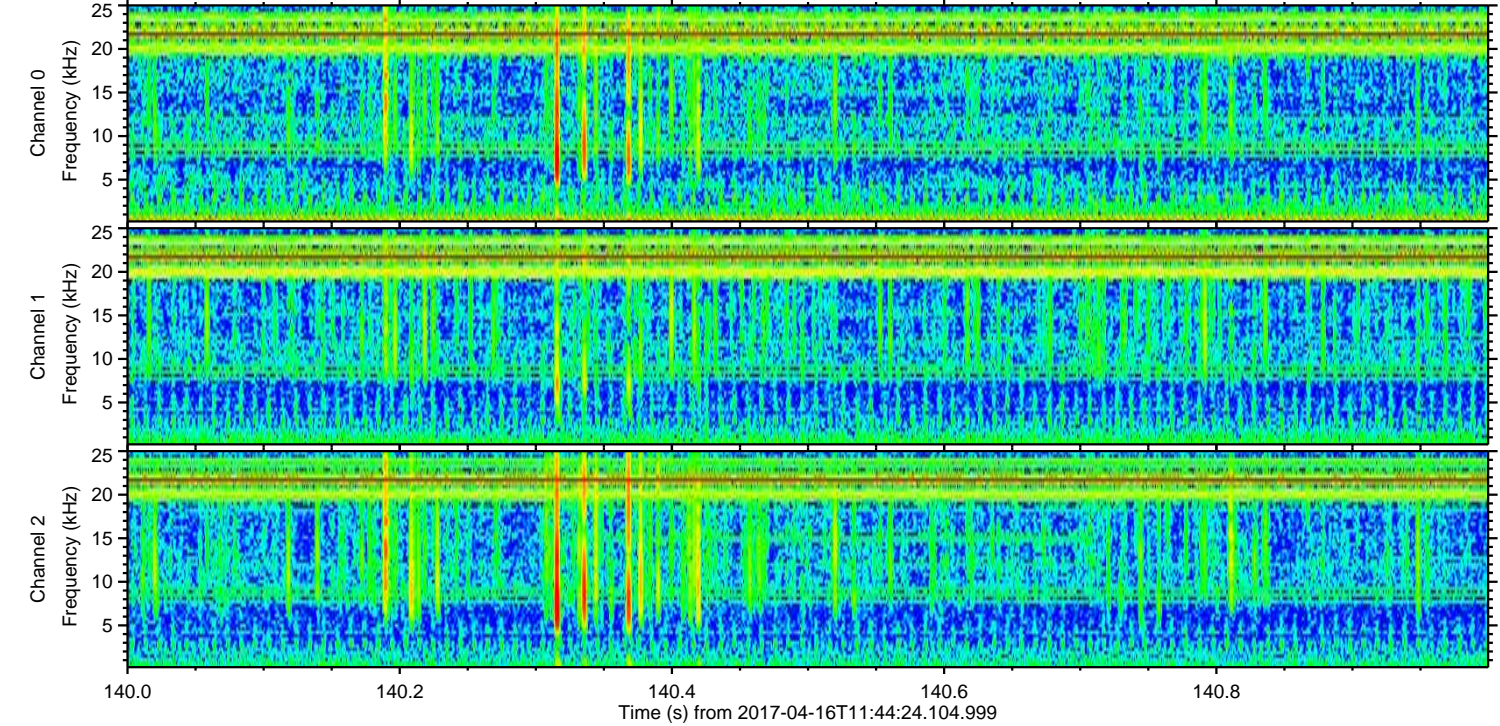
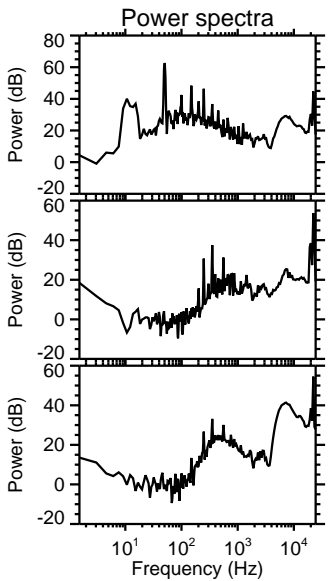
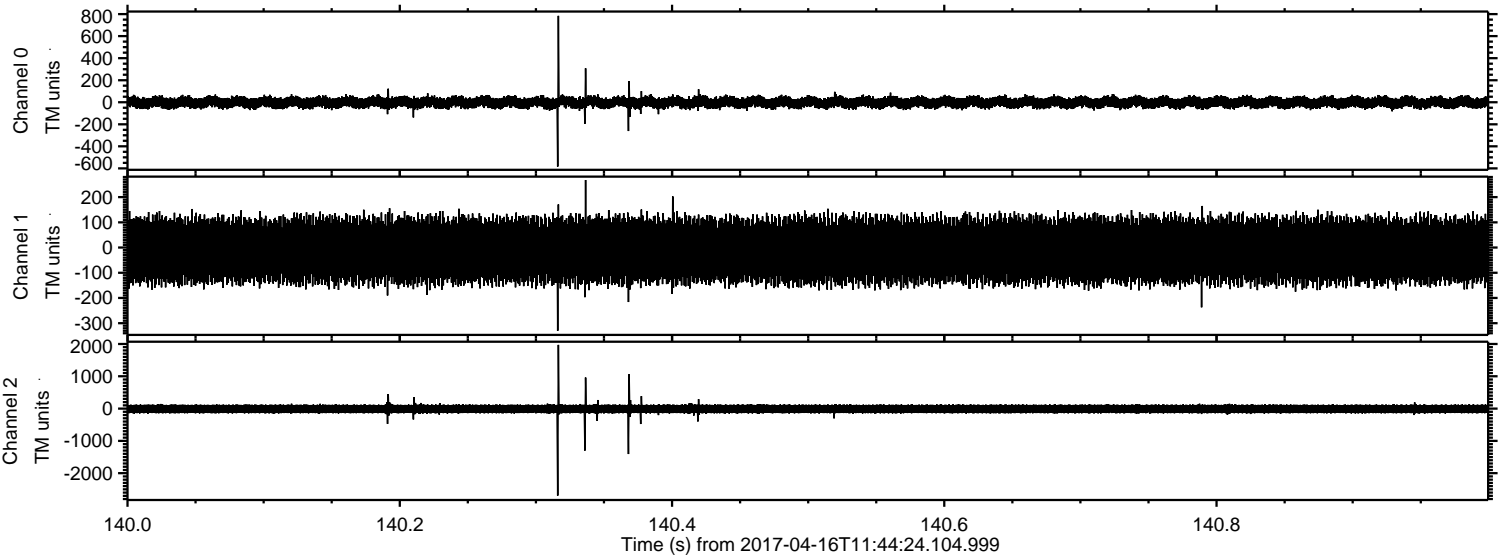
Channel 0
mn: -777
mx: 714
 μ : -1.8
 σ : 29.6

Channel 1
mn: -356
mx: 423
 μ : -10.9
 σ : 73.5

Channel 2
mn: -3310
mx: 1825
 μ : -10.5
 σ : 83.6

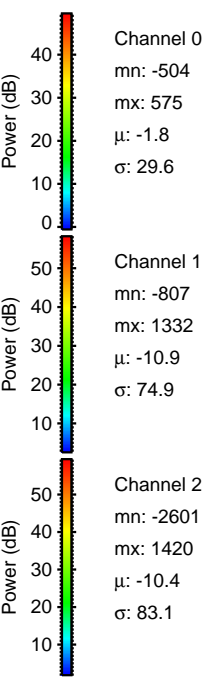
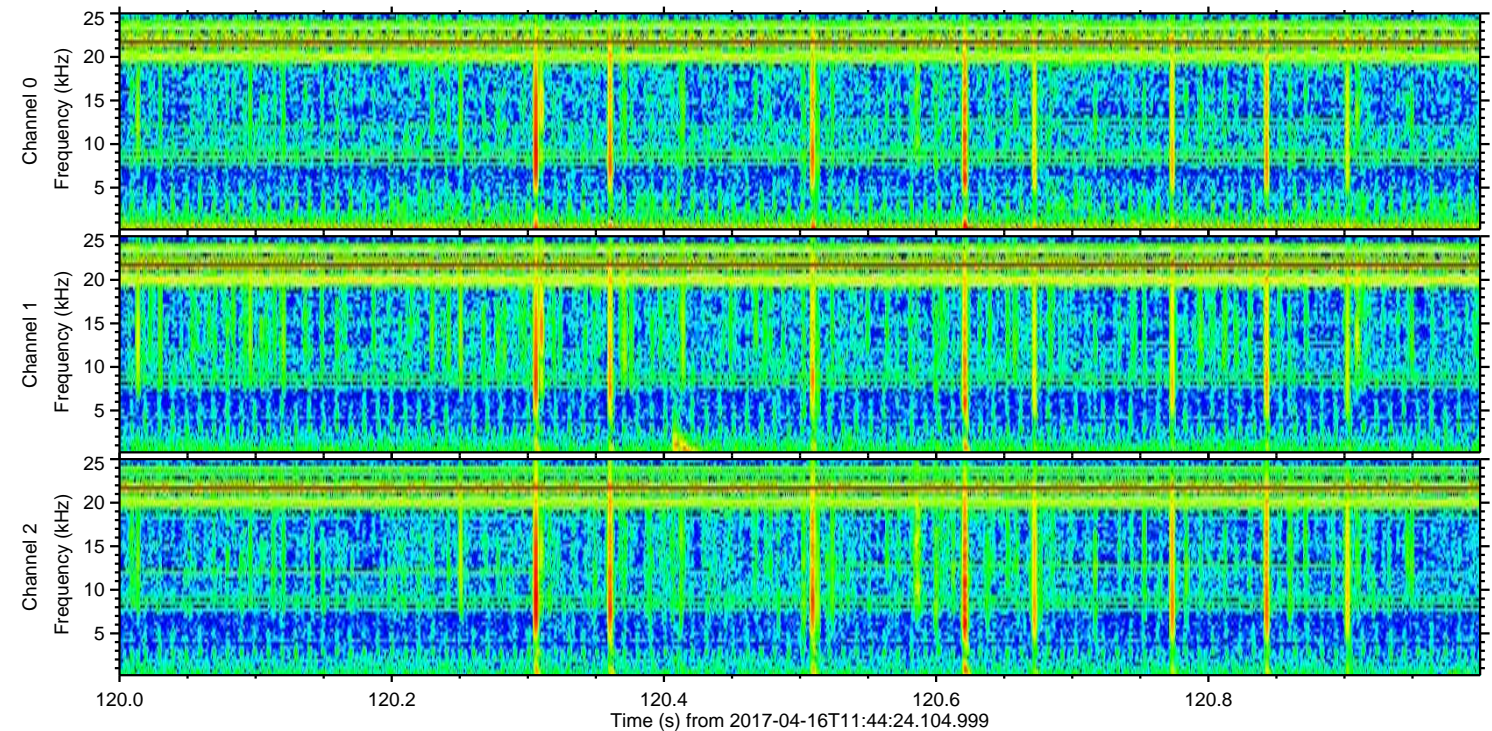
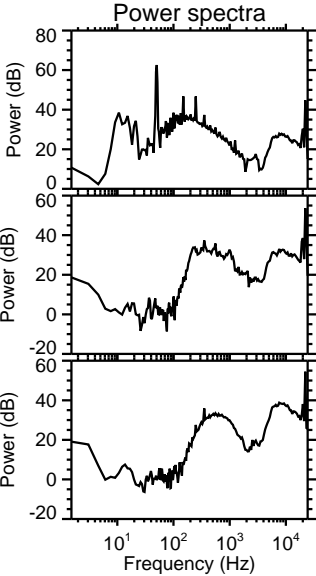
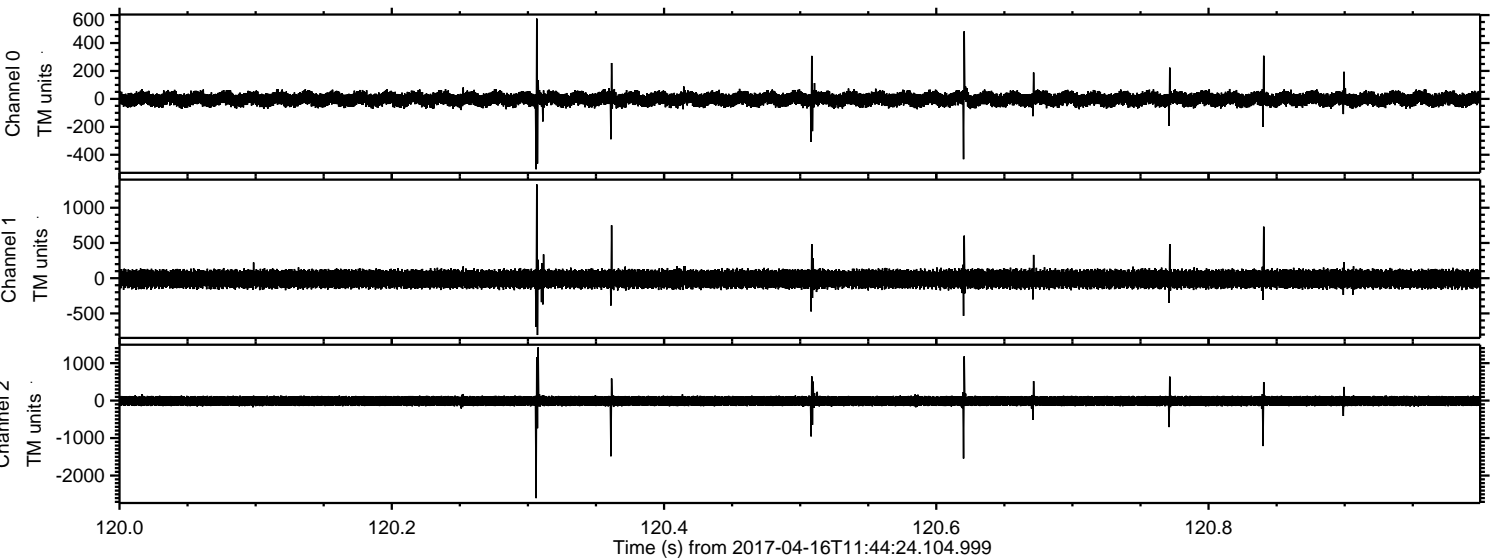
ELMAVAN 3D WAVEFORMS (Measured data sampled at 50 kHz) 51000 packets of 144 samples from 2017-04-16T11:44:24.104.999. Part 141/147

Processed Sun Apr 16 13:52:48 2017 by ELM ver.2012-10-06 from 001__elm20170416_114423__dat00.bin



ELMAVAN 3D WAVEFORMS (Measured data sampled at 50 kHz) 51000 packets of 144 samples from 2017-04-16T11:44:24.104.999. Part 121/147

Processed Sun Apr 16 13:52:49 2017 by ELM ver.2012-10-06 from 001__elm20170416_114423__dat00.bin

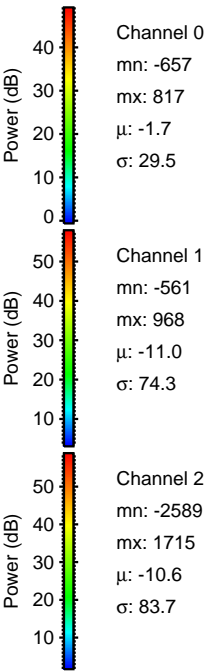
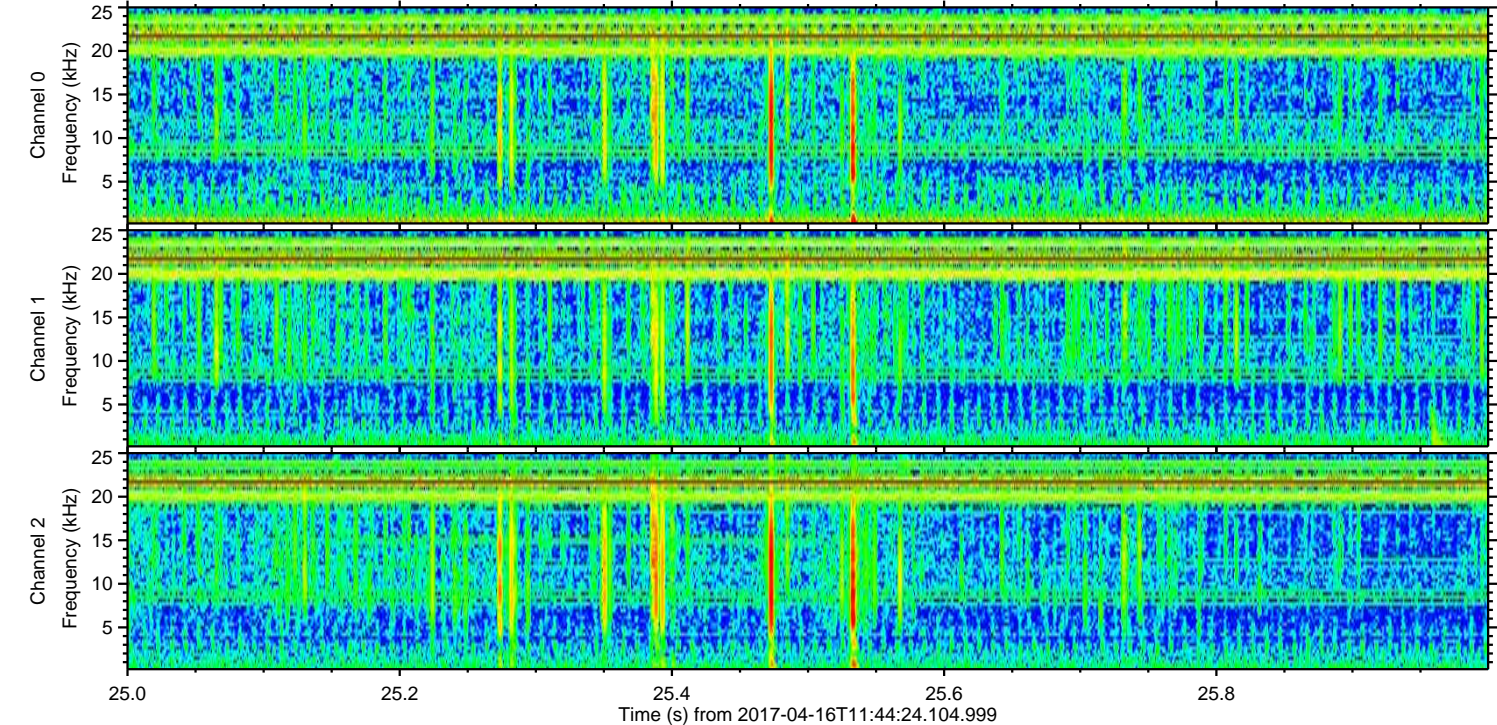
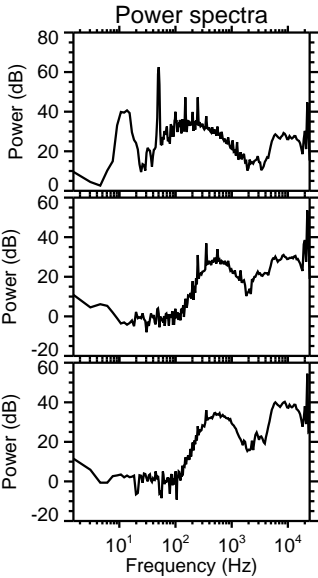
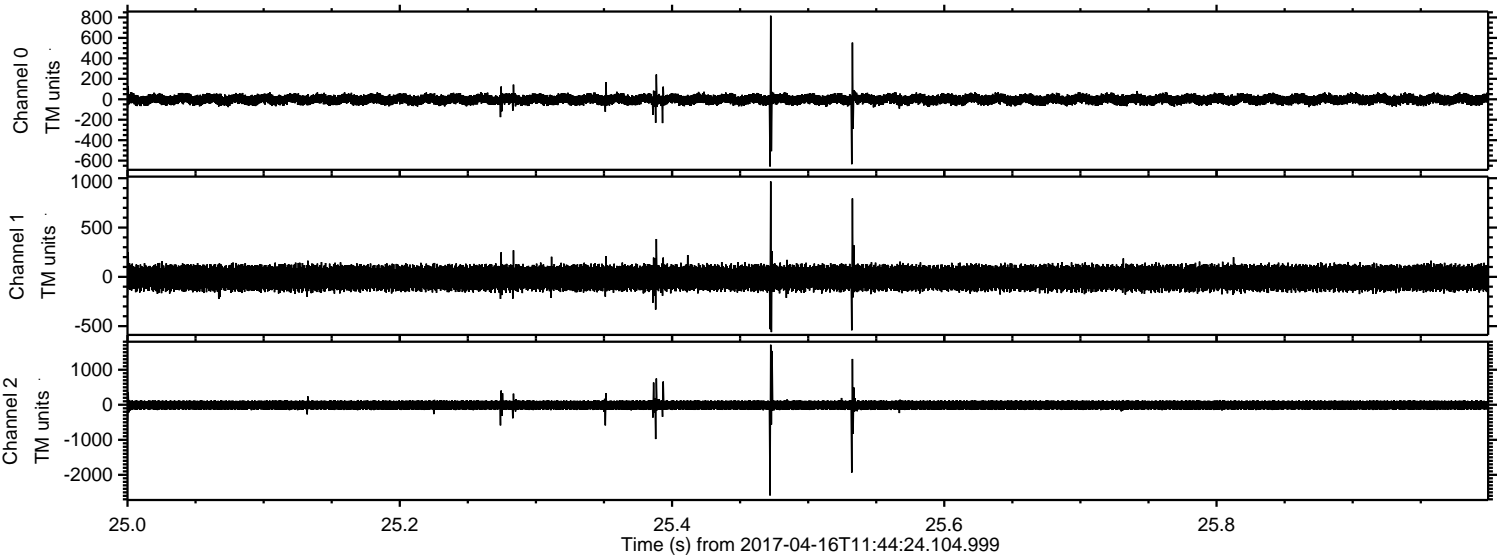


Channel 0
mn: -504
mx: 575
 μ : -1.8
 σ : 29.6

Channel 1
mn: -807
mx: 1332
 μ : -10.9
 σ : 74.9

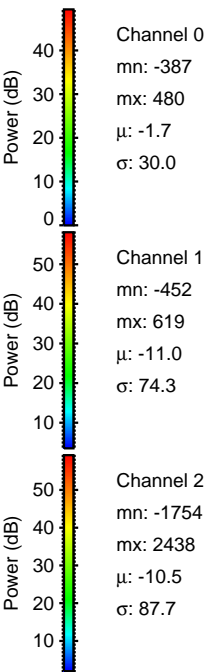
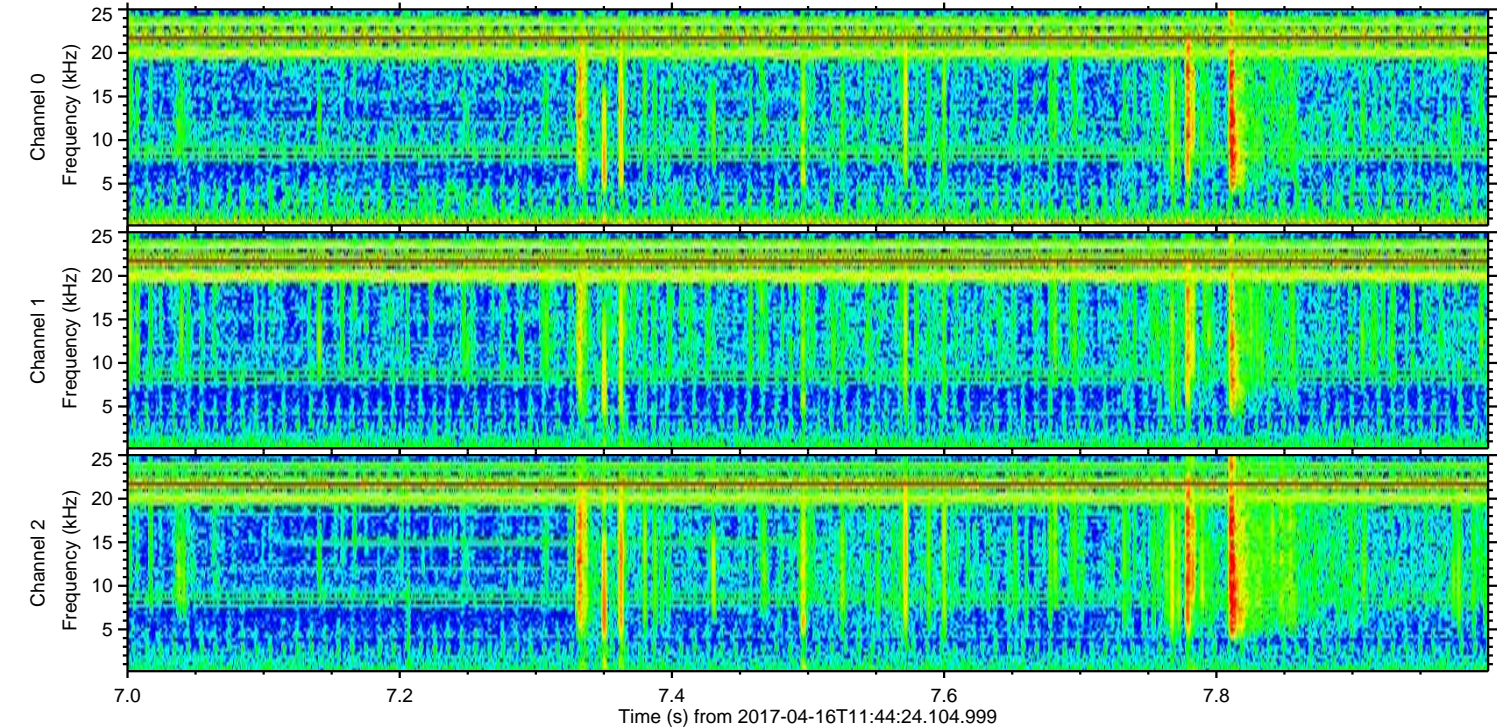
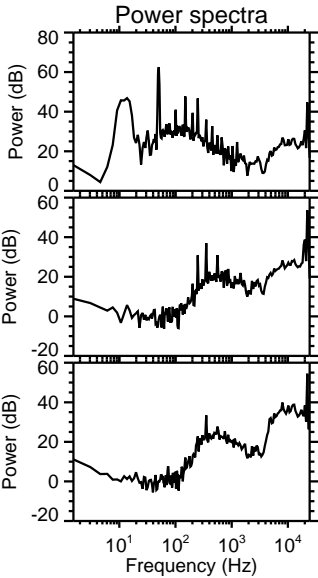
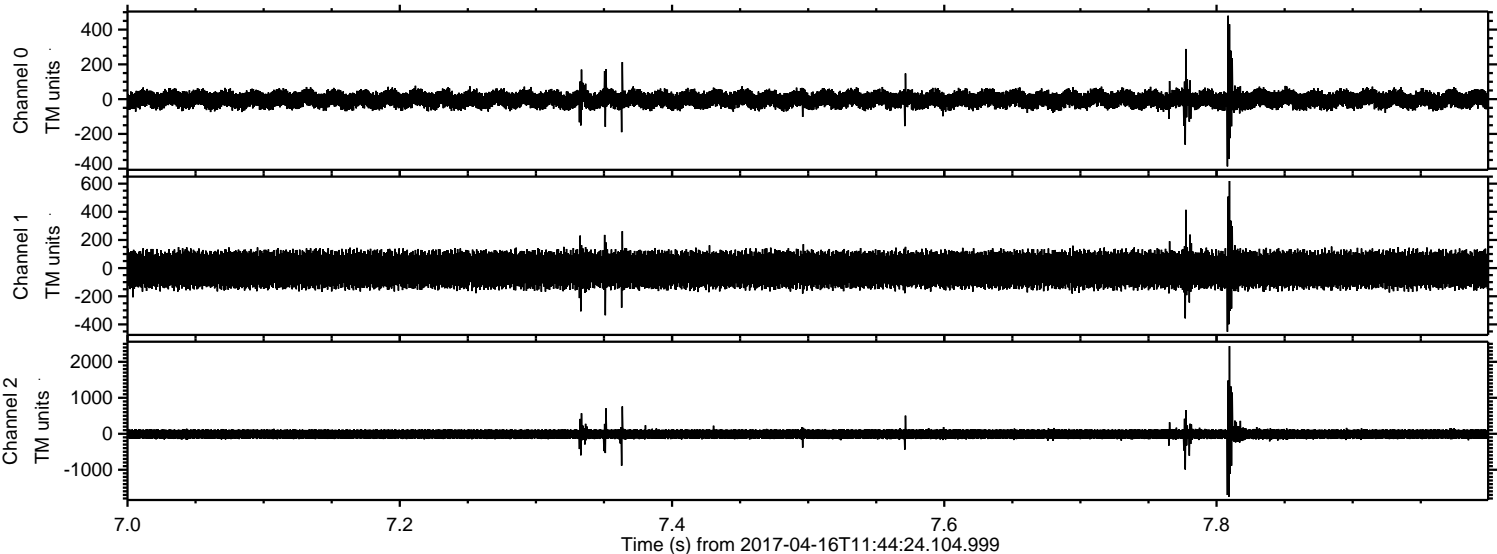
Channel 2
mn: -2601
mx: 1420
 μ : -10.4
 σ : 83.1

Processed Sun Apr 16 13:52:50 2017 by ELM ver.2012-10-06 from 001__elm20170416_114423__dat00.bin



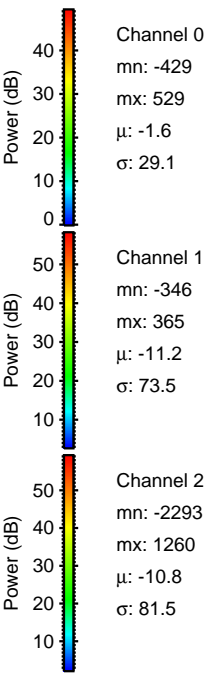
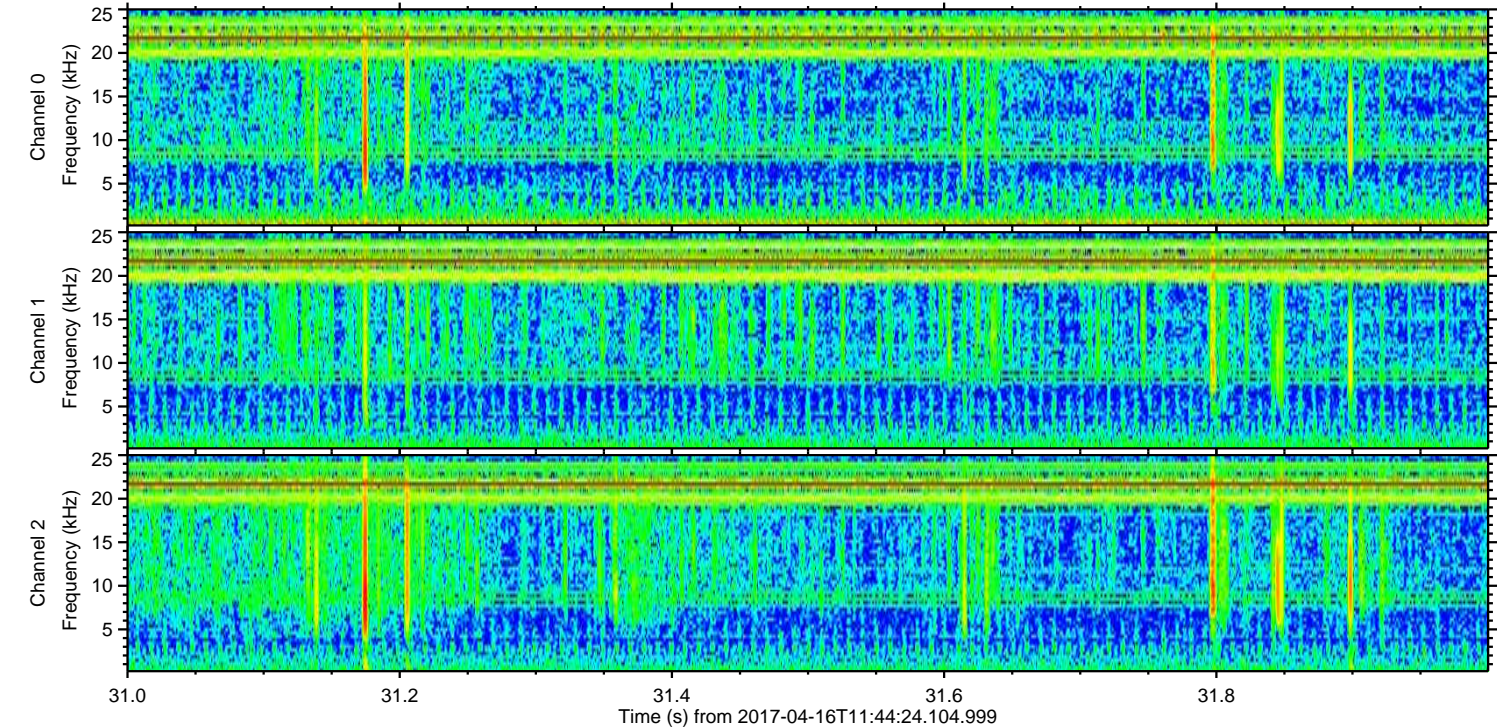
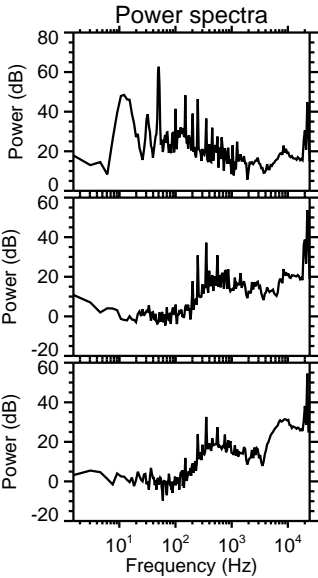
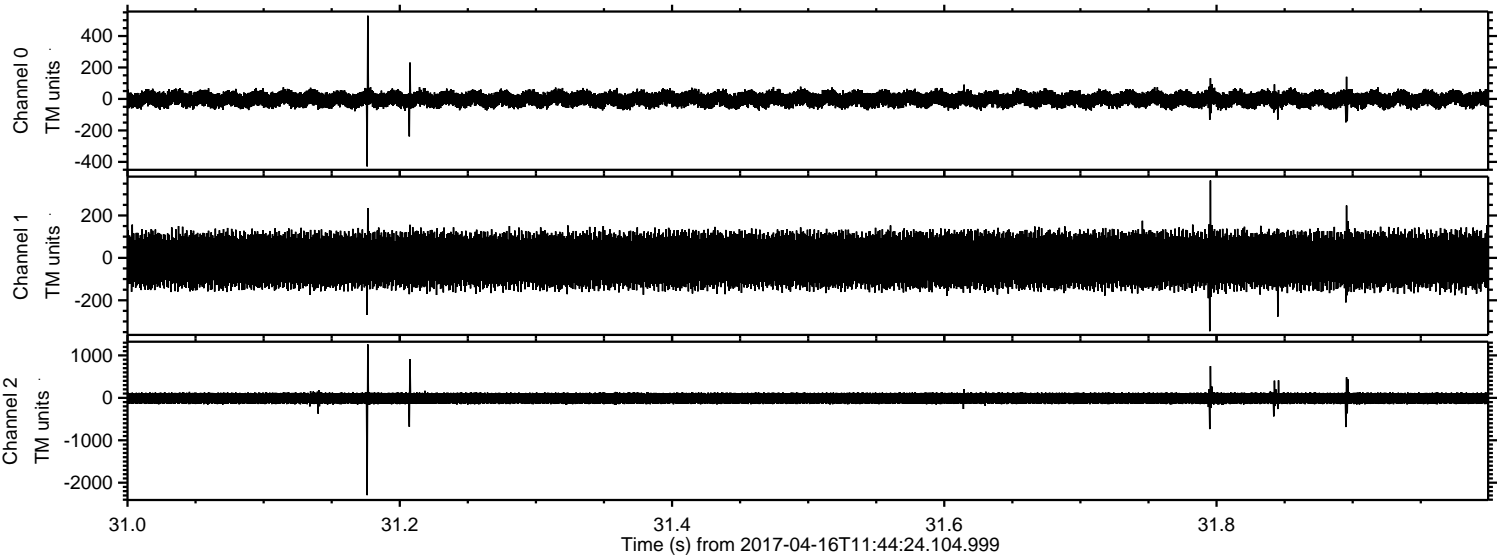
ELMAVAN 3D WAVEFORMS (Measured data sampled at 50 kHz) 51000 packets of 144 samples from 2017-04-16T11:44:24.104.999. Part 8/147

Processed Sun Apr 16 13:52:51 2017 by ELM ver.2012-10-06 from 001__elm20170416_114423__dat00.bin



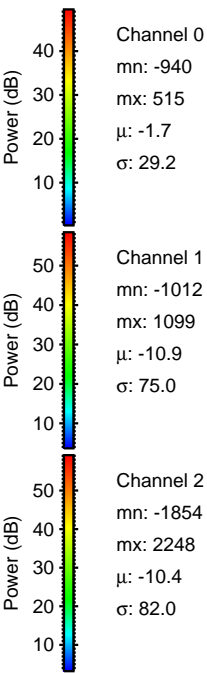
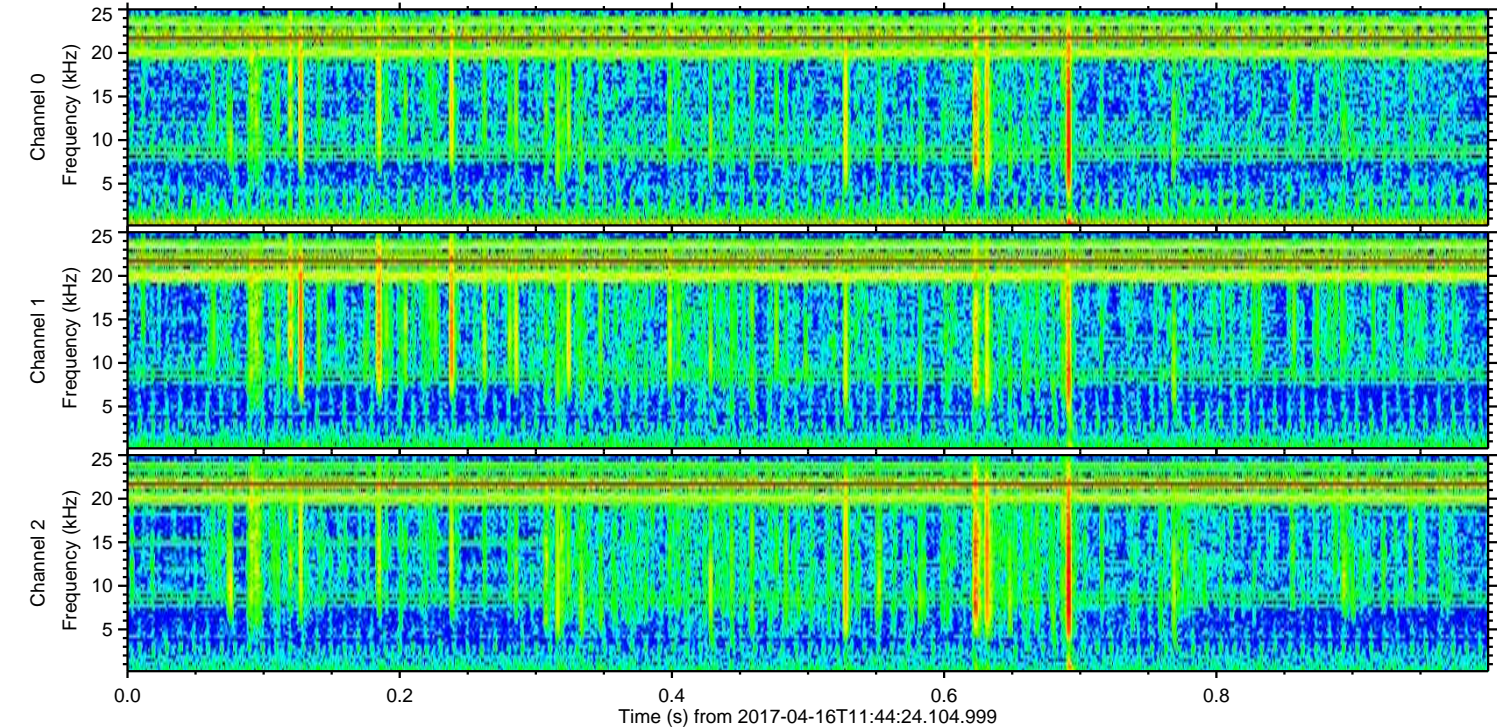
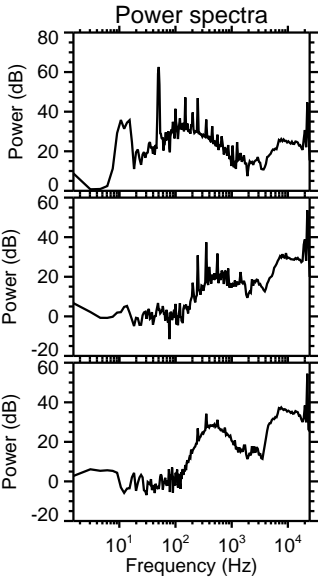
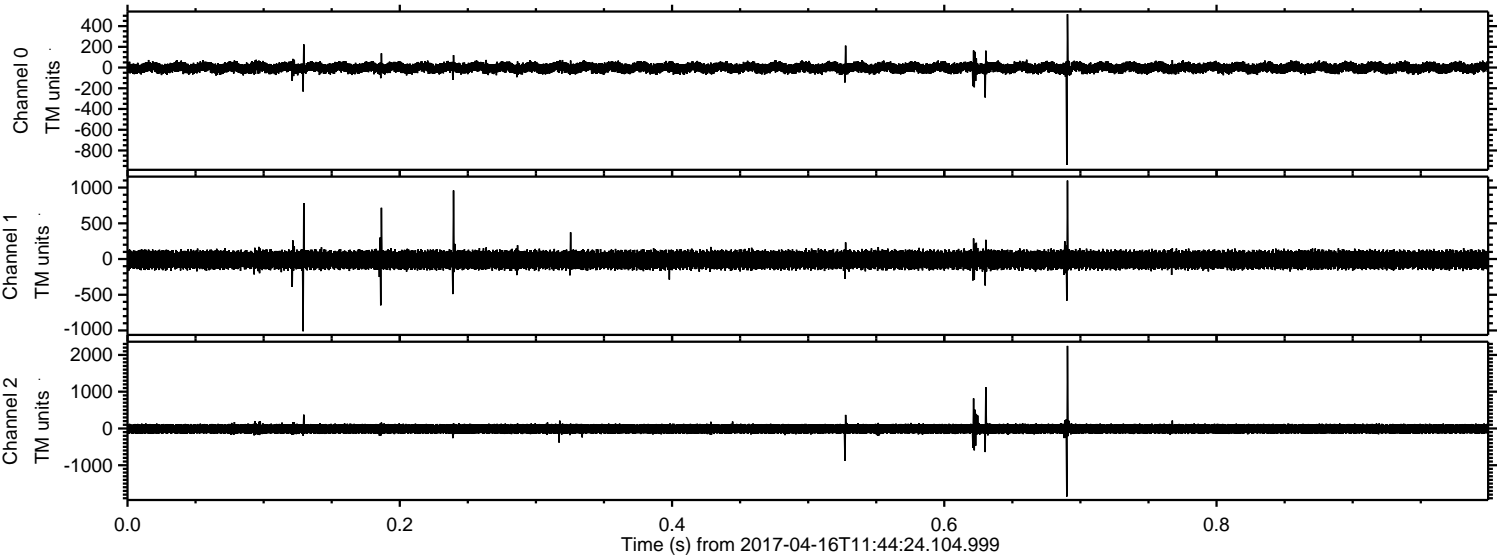
ELMAVAN 3D WAVEFORMS (Measured data sampled at 50 kHz) 51000 packets of 144 samples from 2017-04-16T11:44:24.104.999. Part 32/147

Processed Sun Apr 16 13:52:52 2017 by ELM ver.2012-10-06 from 001__elm20170416_114423__dat00.bin



ELMAVAN 3D WAVEFORMS (Measured data sampled at 50 kHz) 51000 packets of 144 samples from 2017-04-16T11:44:24.104.999. Part 1/147

Processed Sun Apr 16 13:52:53 2017 by ELM ver.2012-10-06 from 001__elm20170416_114423__dat00.bin



ELMAVAN 3D WAVEFORMS (Measured data sampled at 50 kHz) 51000 packets of 144 samples from 2017-04-16T11:44:24.104.999. Part 126/147

