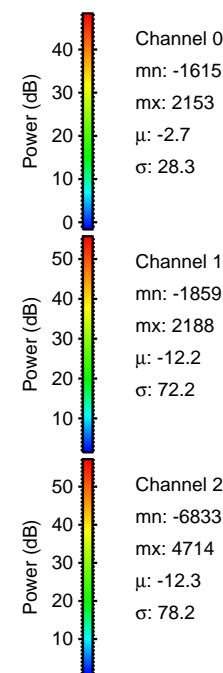
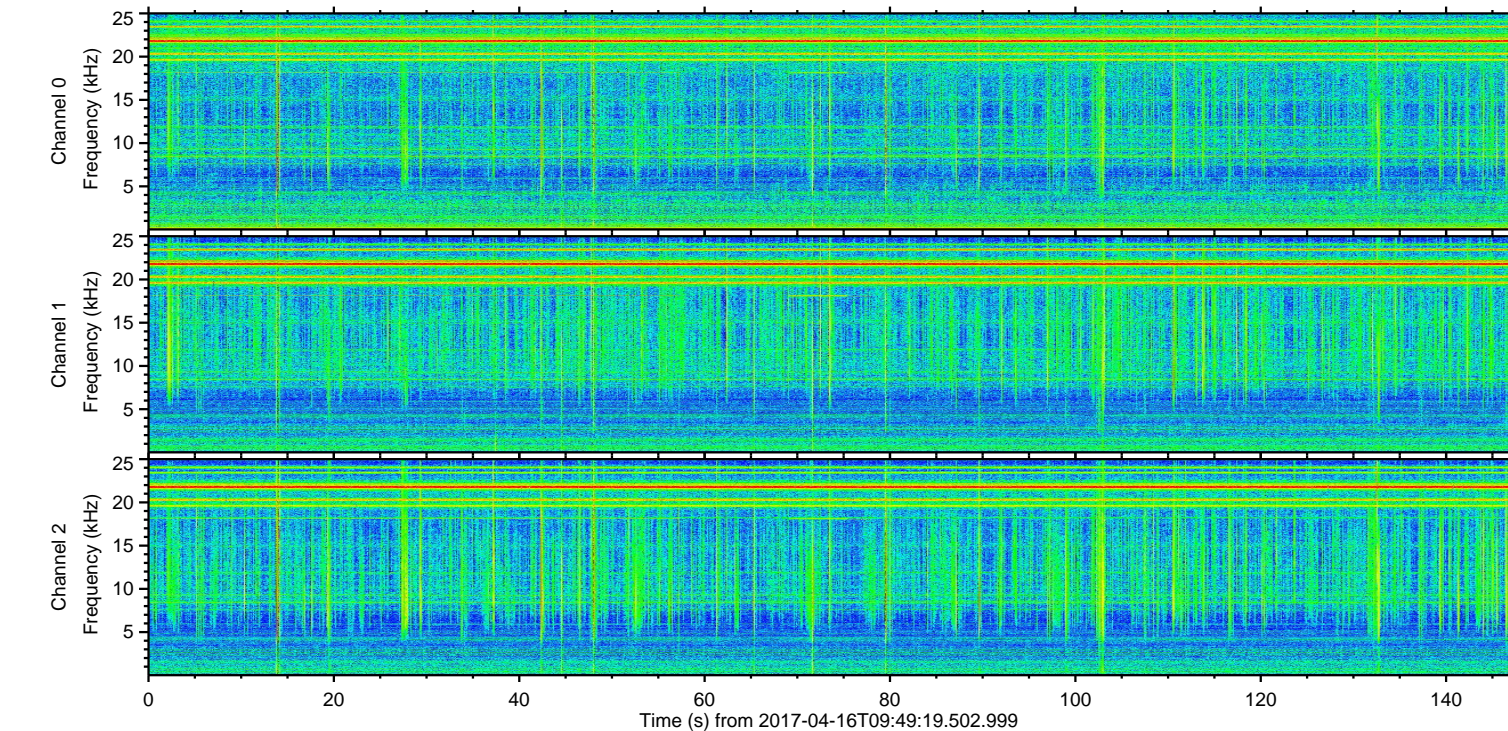
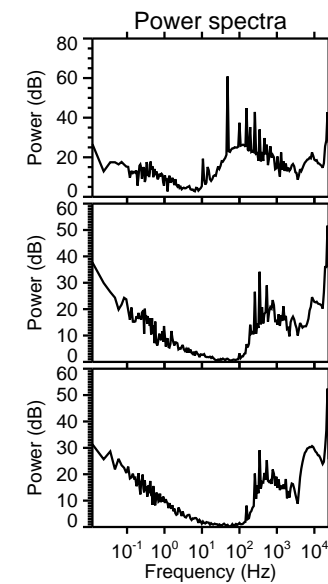
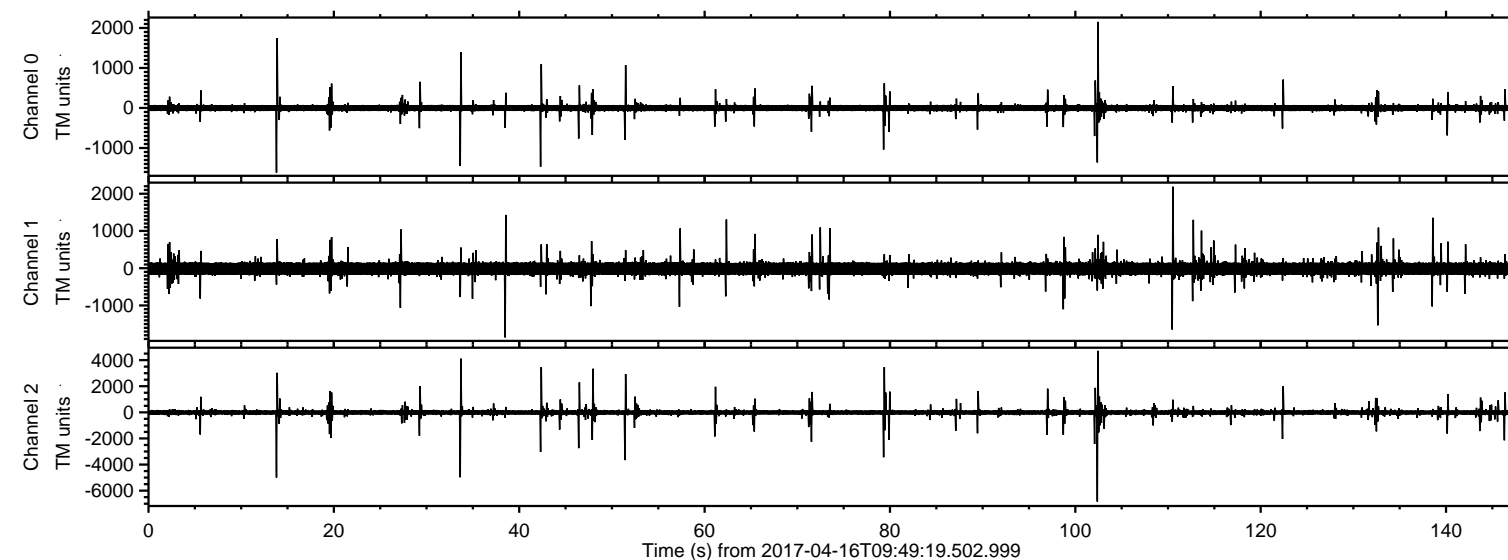


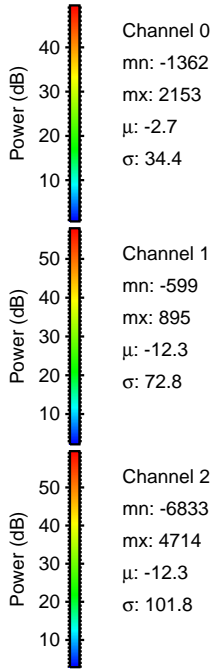
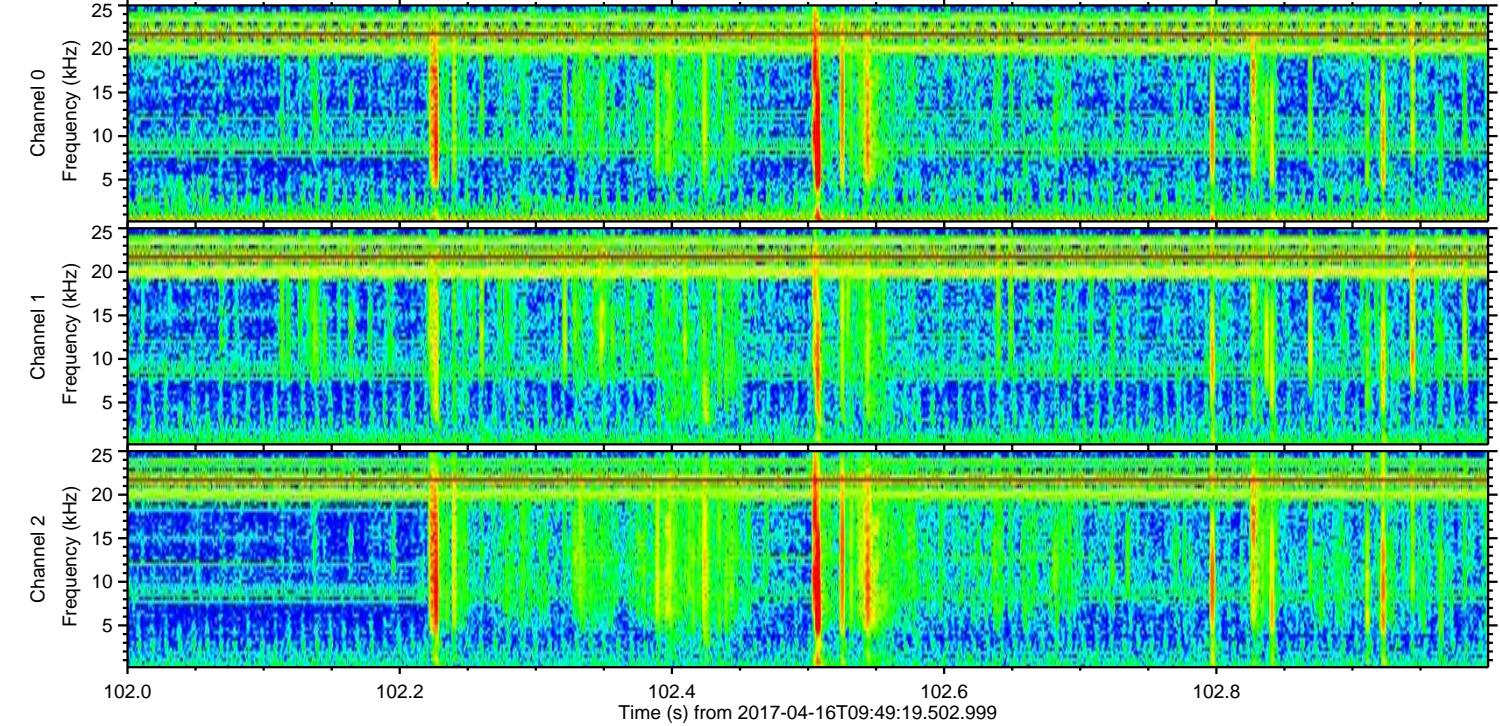
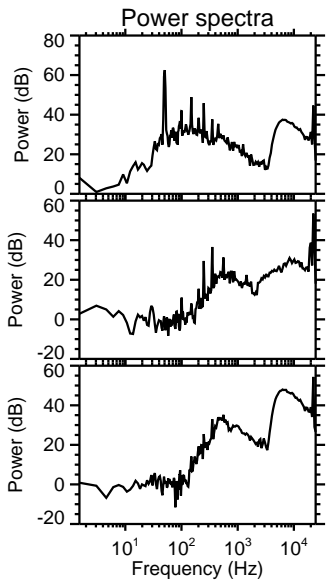
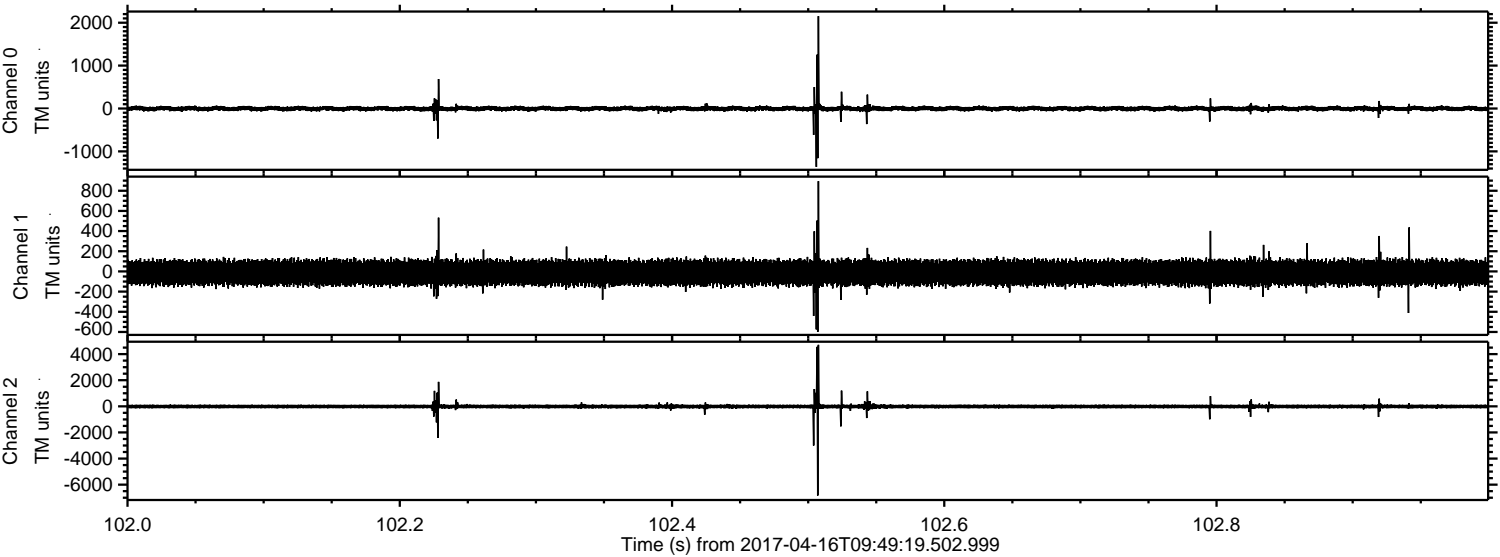
ELMAVAN 3D WAVEFORMS (Measured data sampled at 50 kHz) 51000 packets of 144 samples from 2017-04-16T09:49:19.502.999.

Processed Sun Apr 16 11:56:55 2017 by ELM ver.2012-10-06 from 001__elm20170416_094918__dat00.bin



ELMAVAN 3D WAVEFORMS (Measured data sampled at 50 kHz) 51000 packets of 144 samples from 2017-04-16T09:49:19.502.999. Part 103/147

Processed Sun Apr 16 11:57:07 2017 by ELM ver.2012-10-06 from 001__elm20170416_094918__dat00.bin



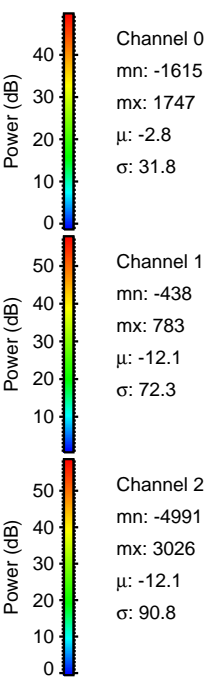
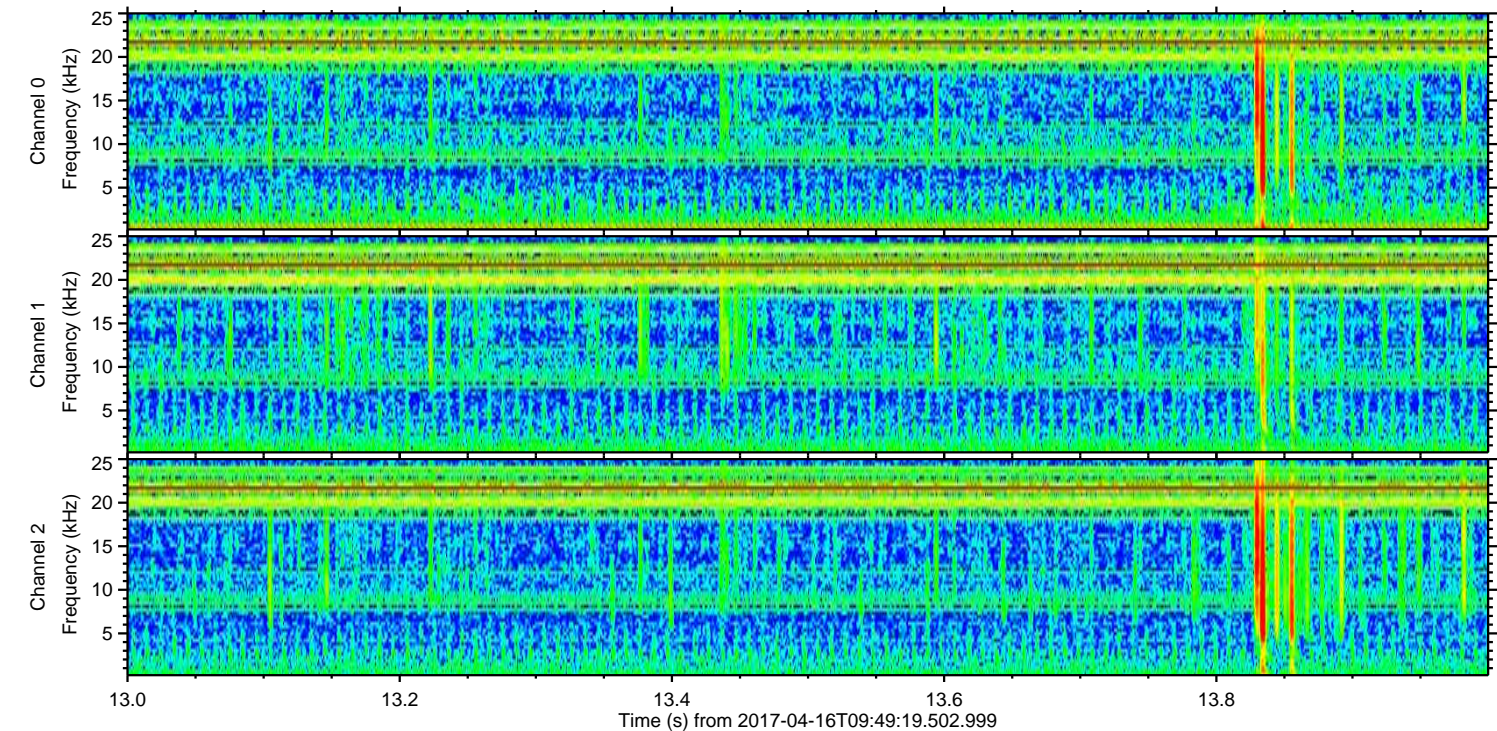
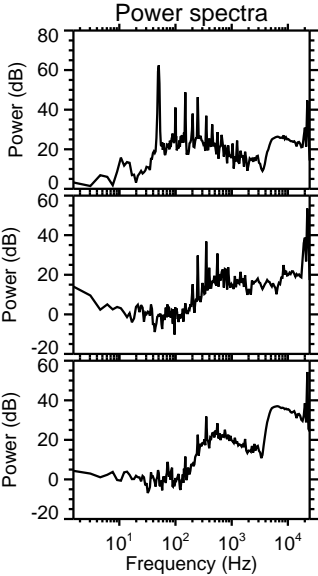
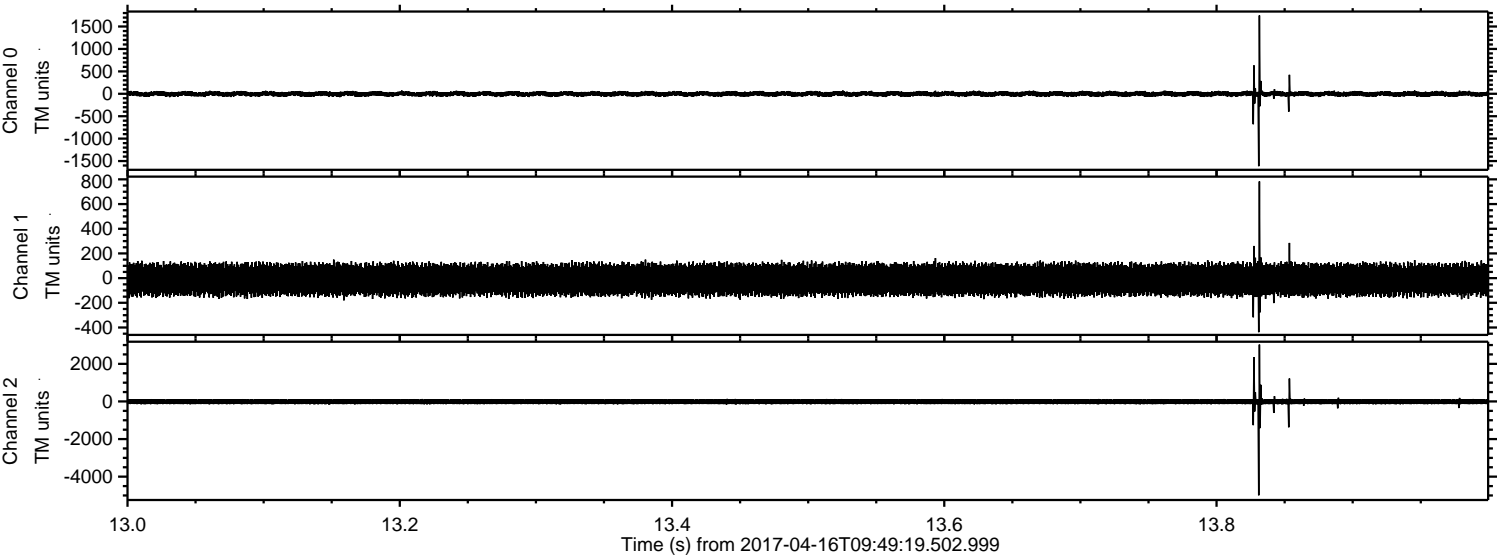
Channel 0
mn: -1362
mx: 2153
 μ : -2.7
 σ : 34.4

Channel 1
mn: -599
mx: 895
 μ : -12.3
 σ : 72.8

Channel 2
mn: -6833
mx: 4714
 μ : -12.3
 σ : 101.8

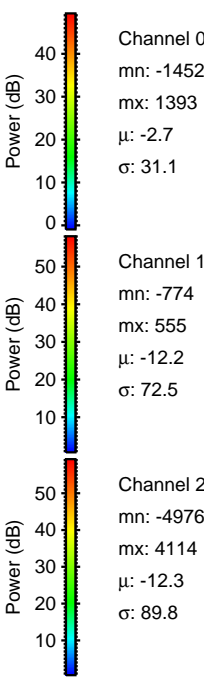
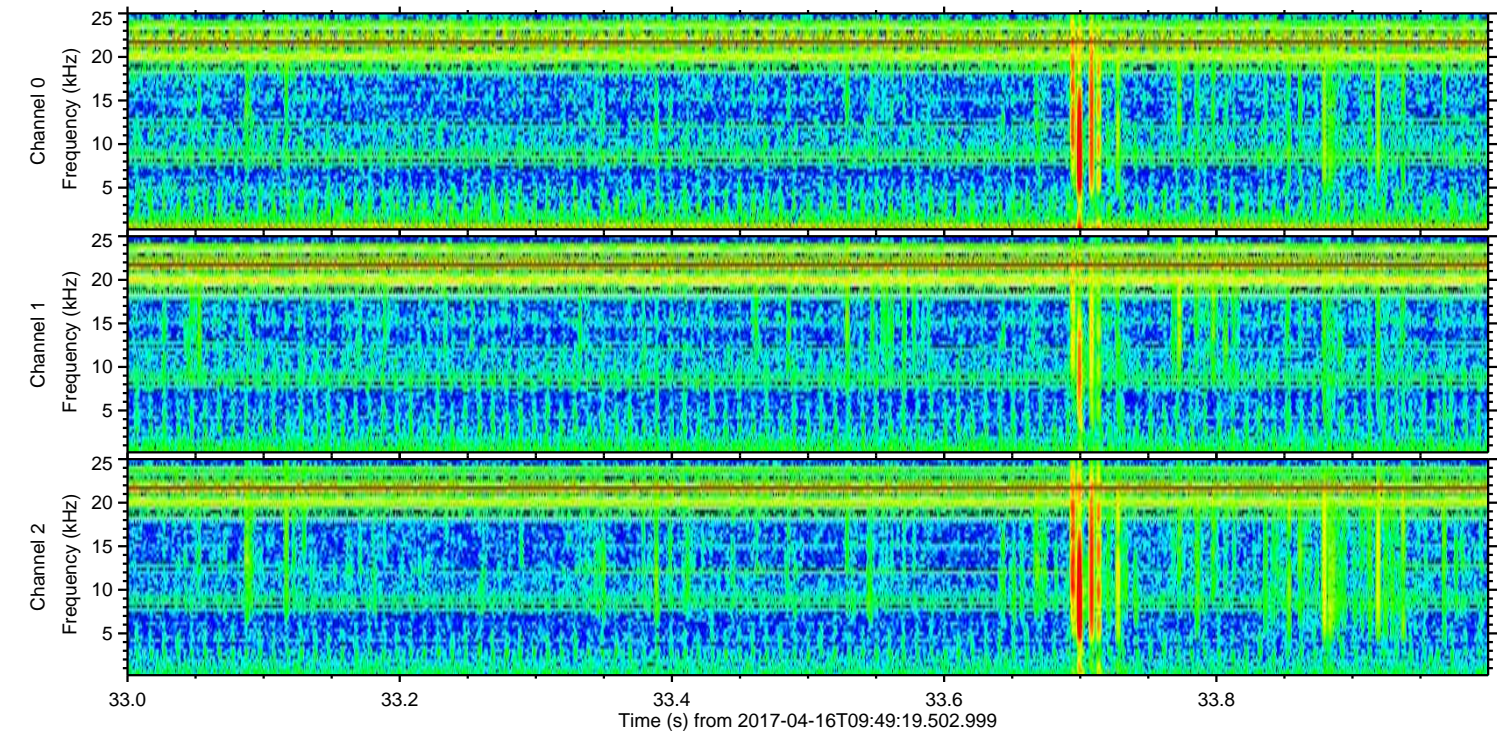
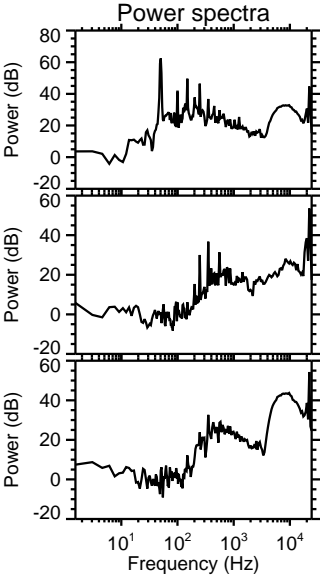
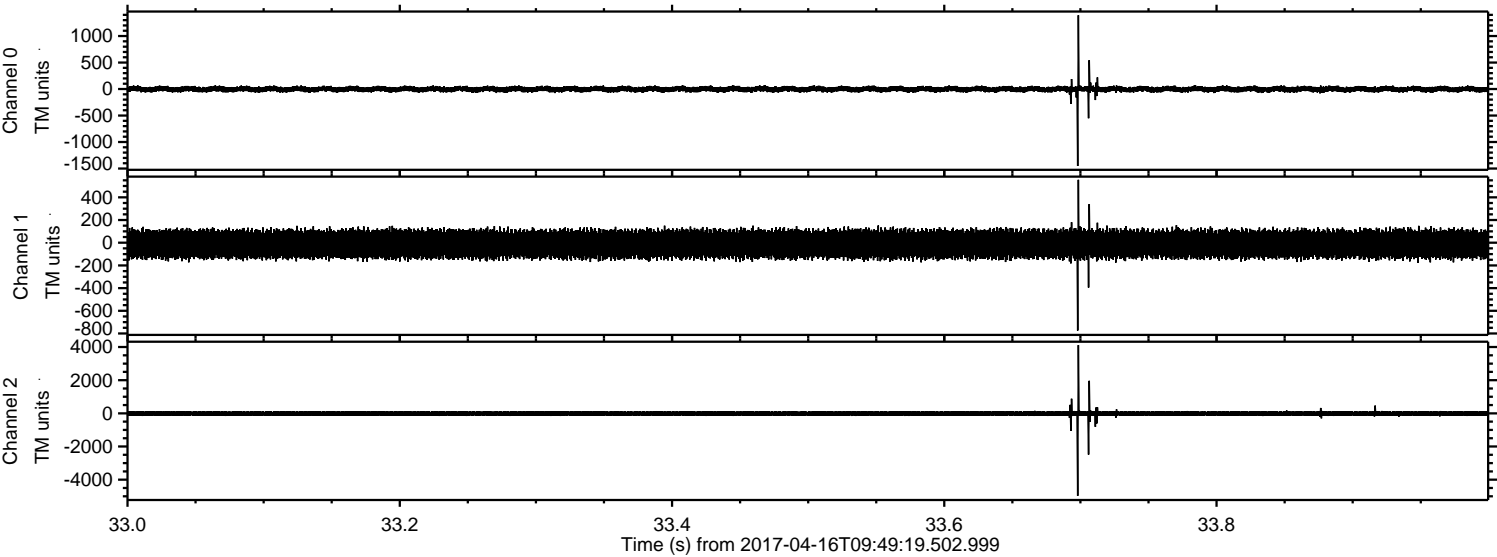
ELMAVAN 3D WAVEFORMS (Measured data sampled at 50 kHz) 51000 packets of 144 samples from 2017-04-16T09:49:19.502.999. Part 14/147

Processed Sun Apr 16 11:57:08 2017 by ELM ver.2012-10-06 from 001__elm20170416_094918__dat00.bin

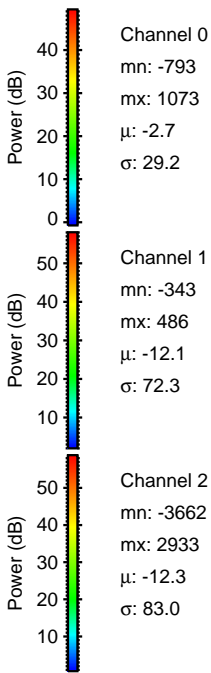
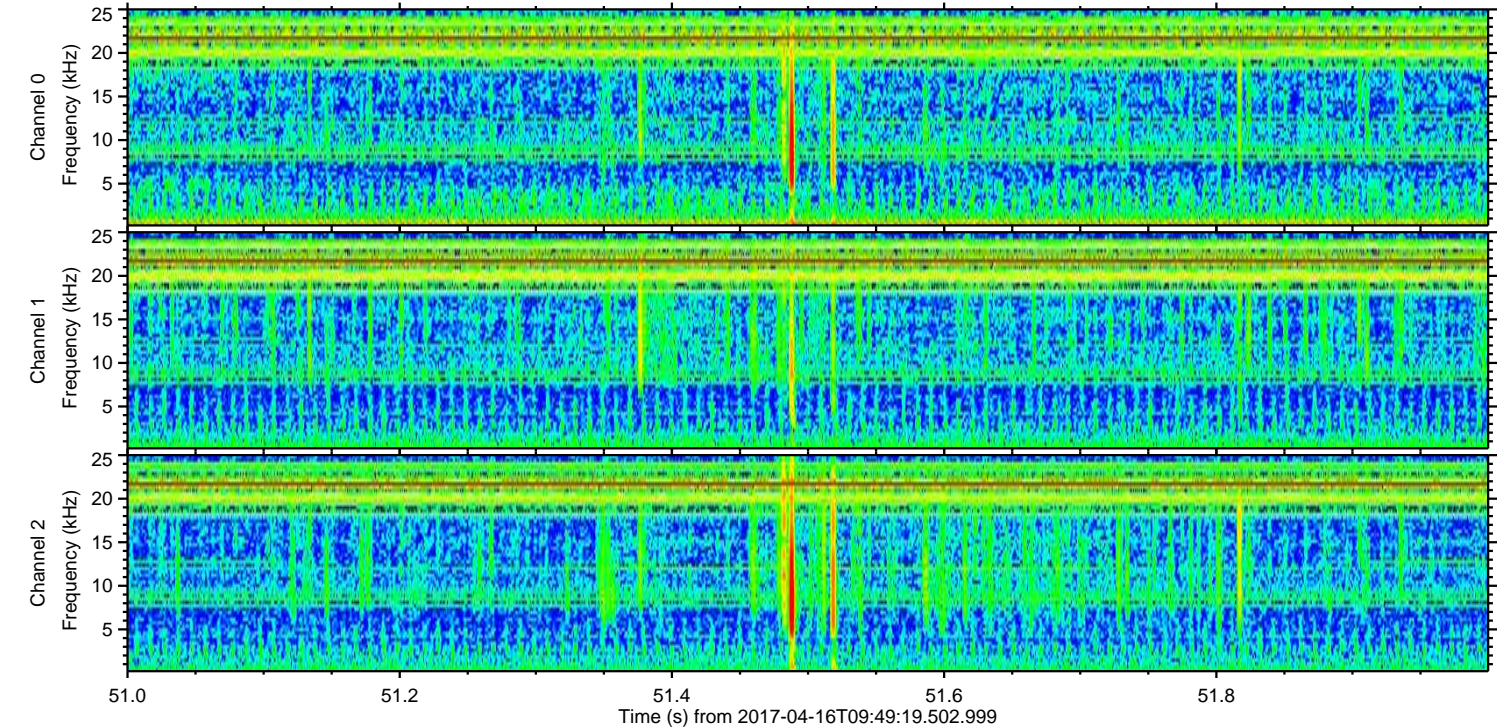
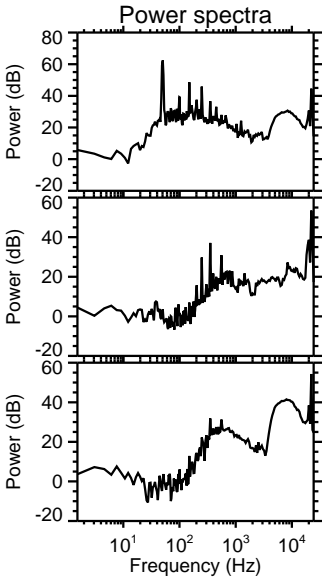
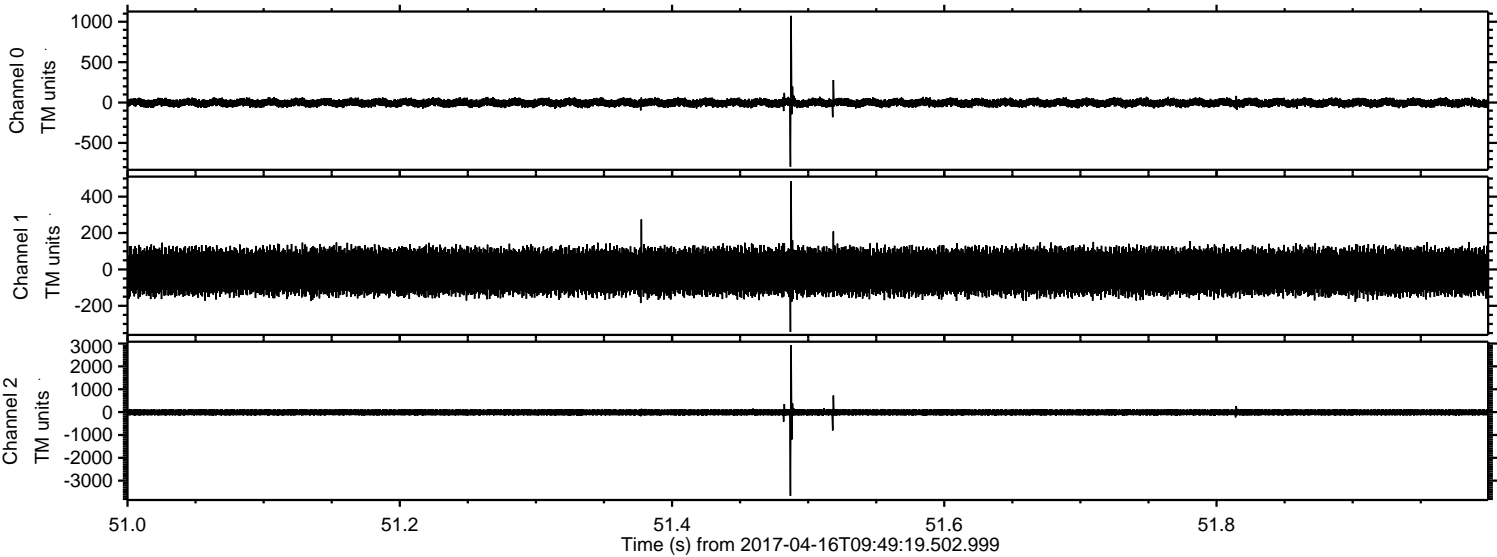


ELMAVAN 3D WAVEFORMS (Measured data sampled at 50 kHz) 51000 packets of 144 samples from 2017-04-16T09:49:19.502.999. Part 34/147

Processed Sun Apr 16 11:57:09 2017 by ELM ver.2012-10-06 from 001__elm20170416_094918__dat00.bin

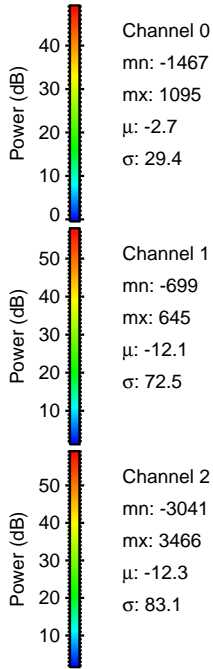
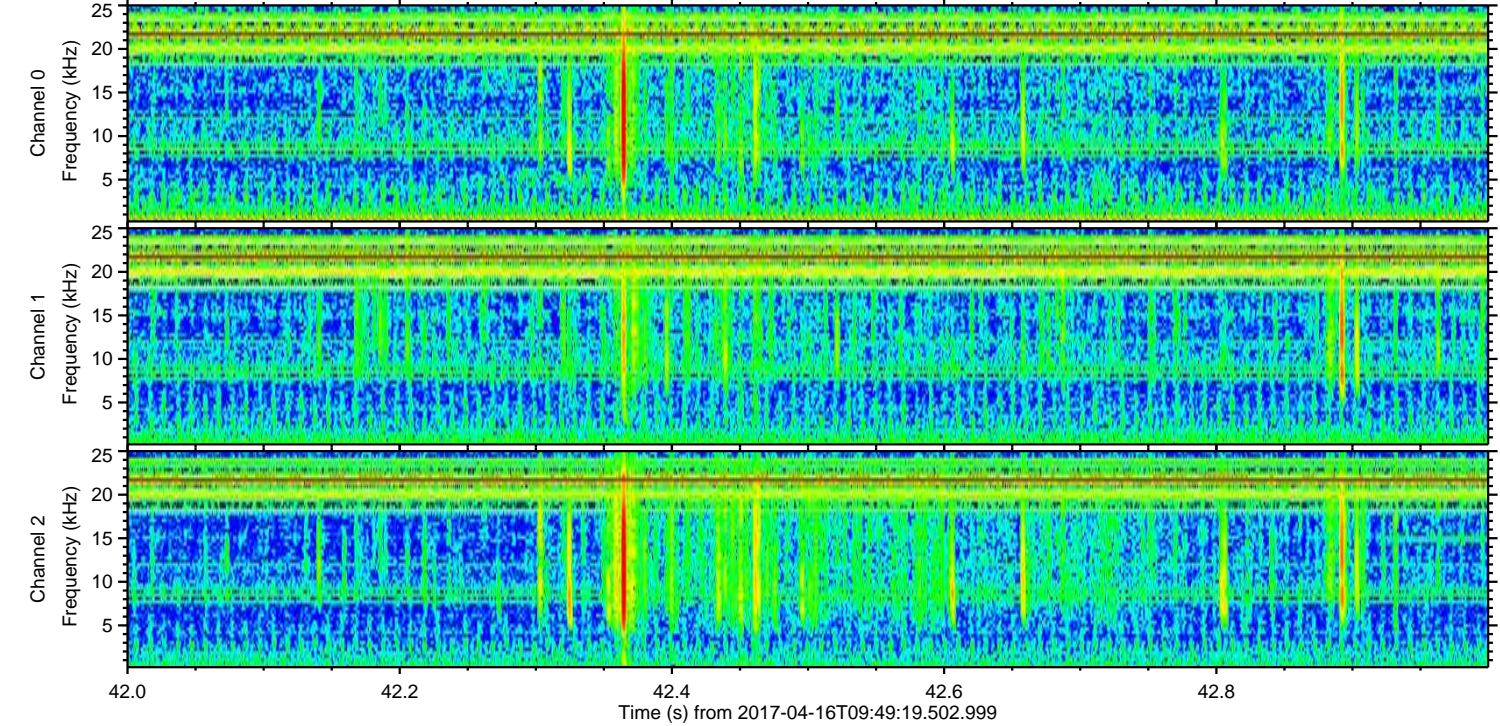
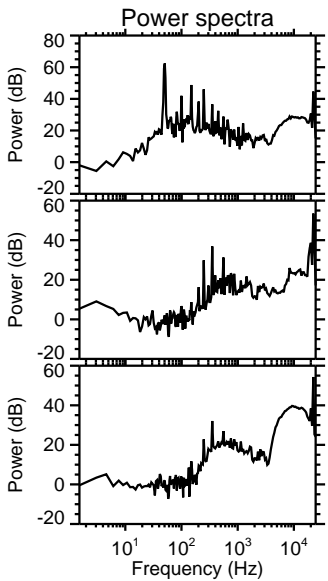
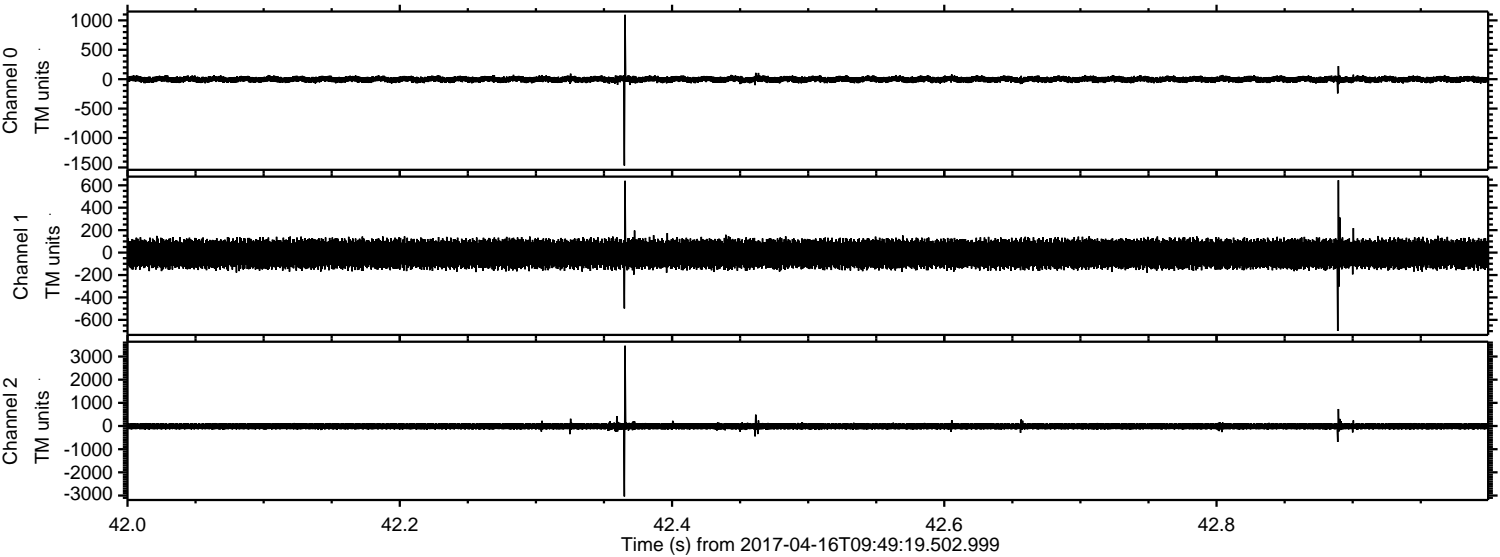


Processed Sun Apr 16 11:57:10 2017 by ELM ver.2012-10-06 from 001__elm20170416_094918__dat00.bin



ELMAVAN 3D WAVEFORMS (Measured data sampled at 50 kHz) 51000 packets of 144 samples from 2017-04-16T09:49:19.502.999. Part 43/147

Processed Sun Apr 16 11:57:10 2017 by ELM ver.2012-10-06 from 001__elm20170416_094918__dat00.bin

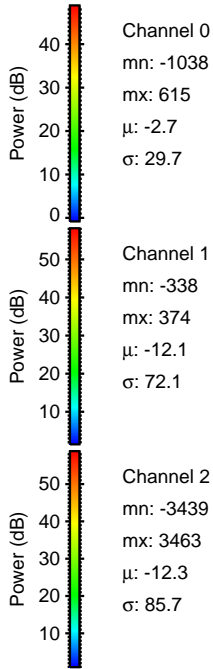
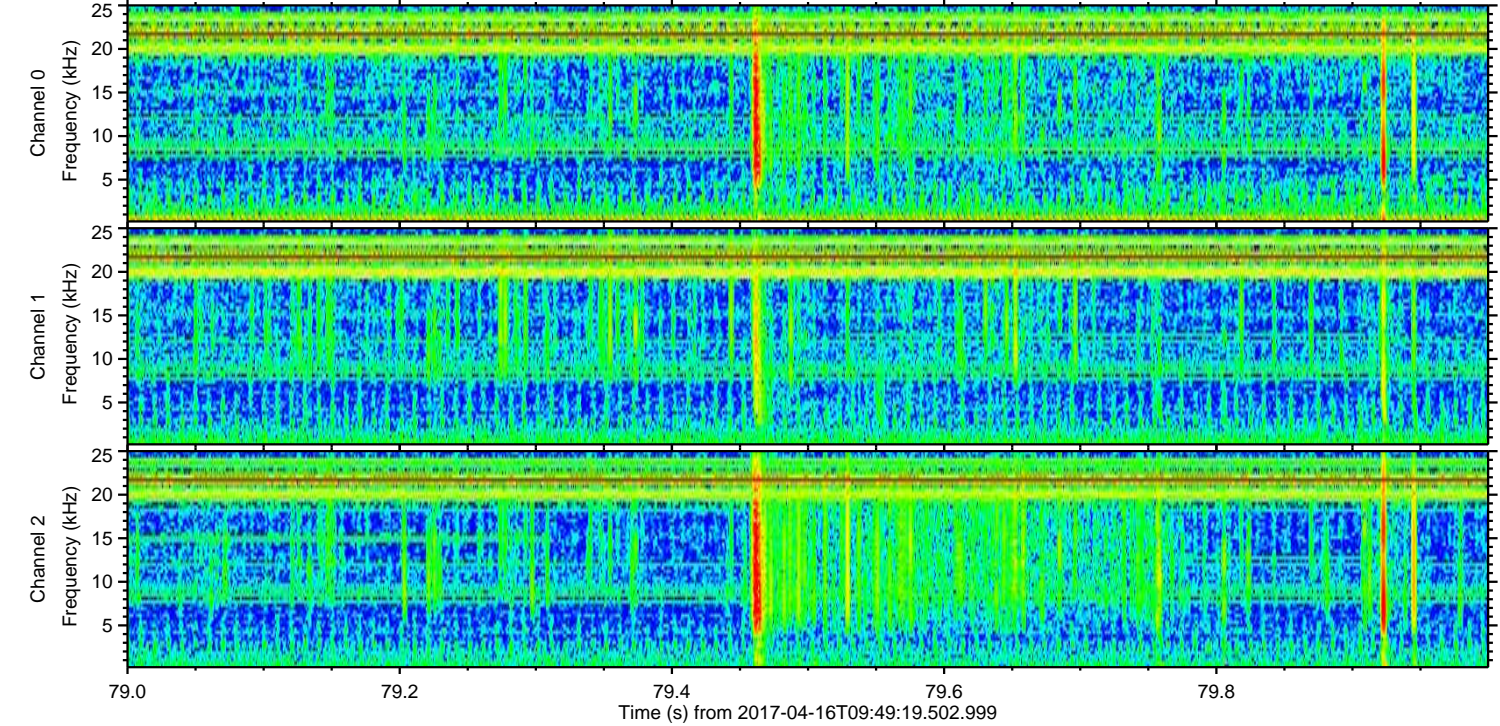
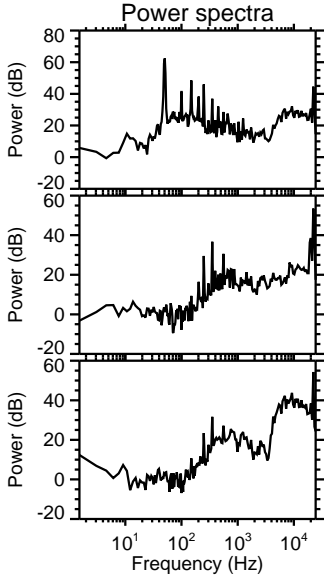
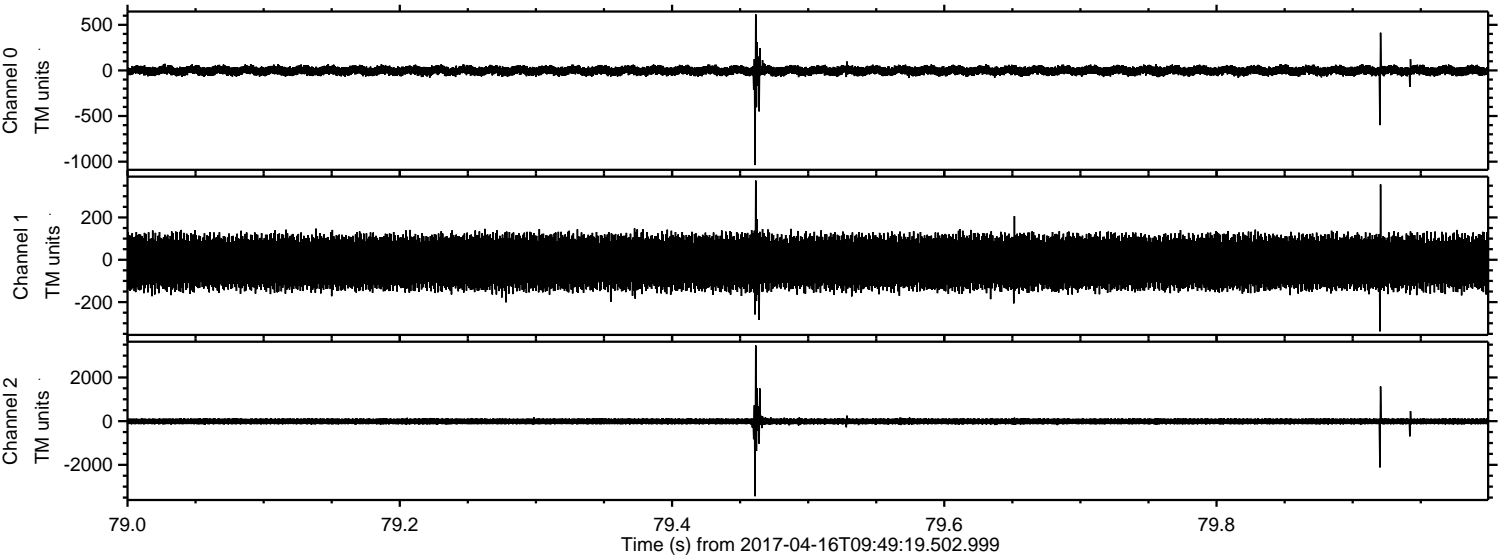


Channel 0
mn: -1467
mx: 1095
 μ : -2.7
 σ : 29.4

Channel 1
mn: -699
mx: 645
 μ : -12.1
 σ : 72.5

Channel 2
mn: -3041
mx: 3466
 μ : -12.3
 σ : 83.1

Processed Sun Apr 16 11:57:11 2017 by ELM ver.2012-10-06 from 001__elm20170416_094918__dat00.bin

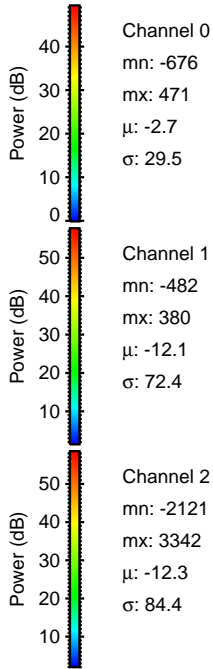
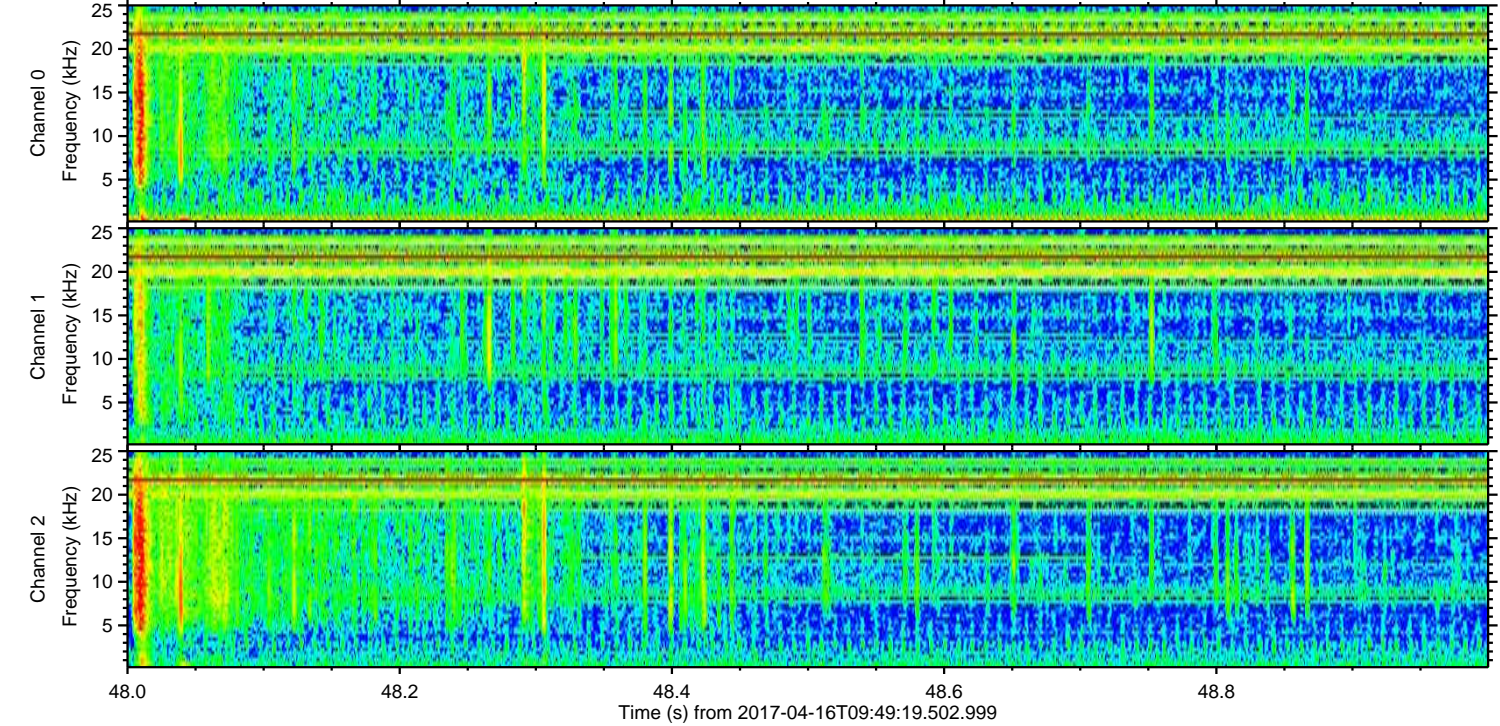
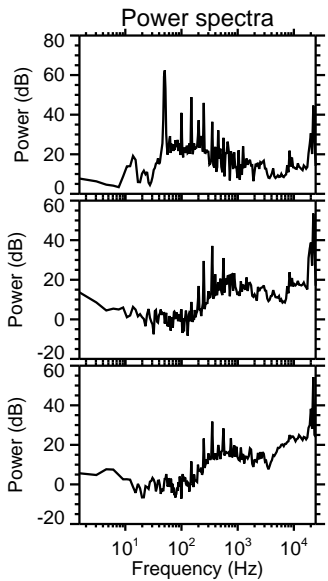
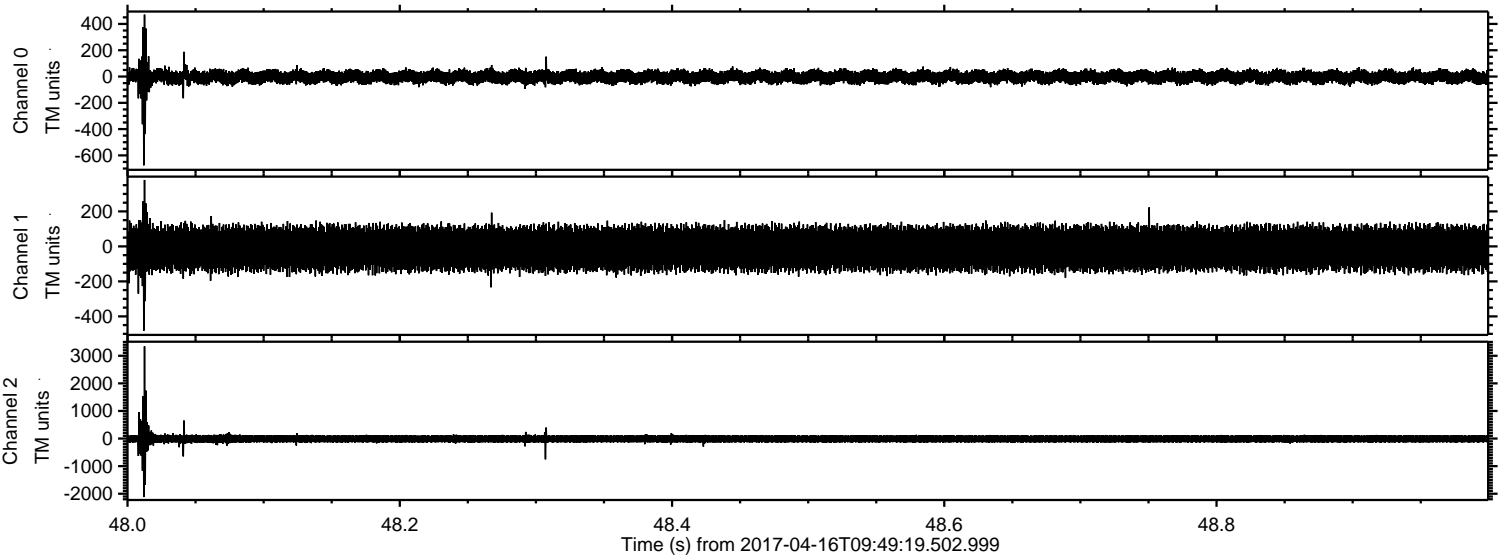


Channel 0
mn: -1038
mx: 615
 μ : -2.7
 σ : 29.7

Channel 1
mn: -338
mx: 374
 μ : -12.1
 σ : 72.1

Channel 2
mn: -3439
mx: 3463
 μ : -12.3
 σ : 85.7

Processed Sun Apr 16 11:57:12 2017 by ELM ver.2012-10-06 from 001__elm20170416_094918__dat00.bin



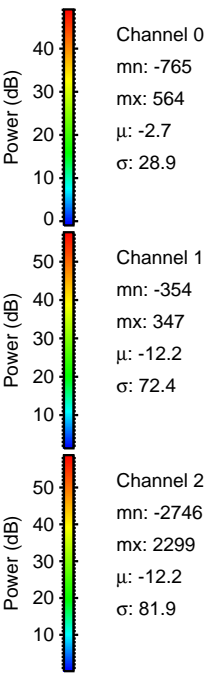
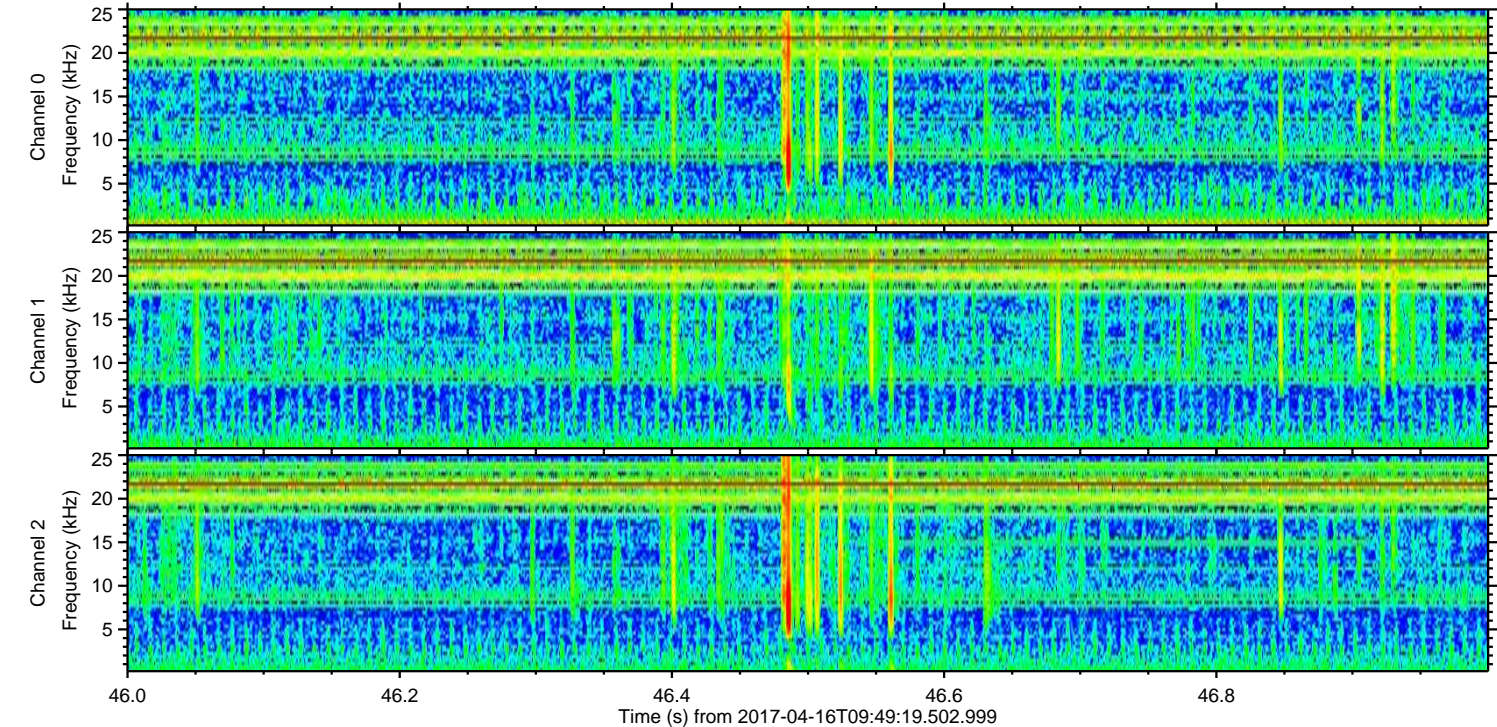
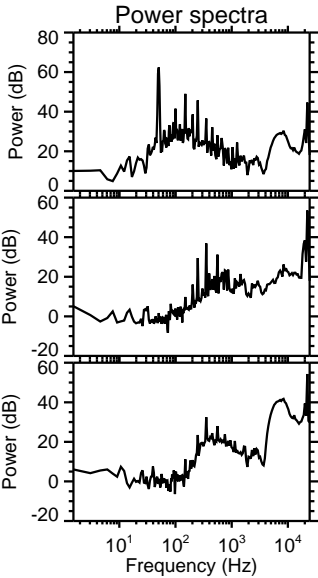
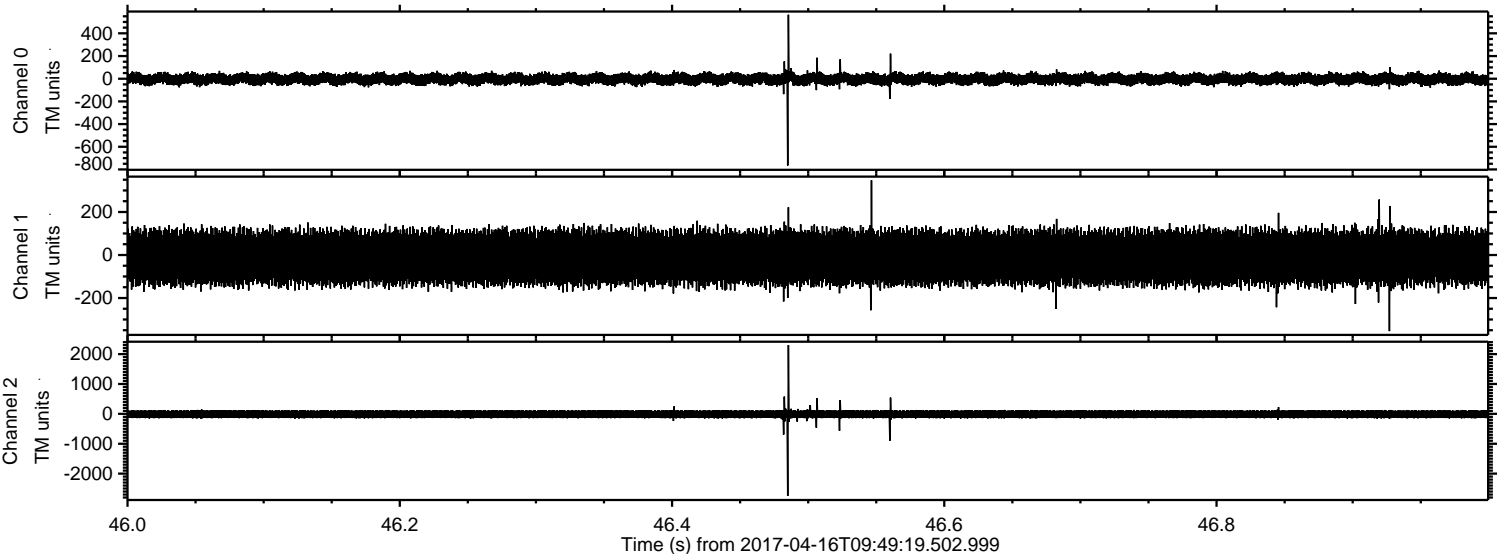
Channel 0
mn: -676
mx: 471
 μ : -2.7
 σ : 29.5

Channel 1
mn: -482
mx: 380
 μ : -12.1
 σ : 72.4

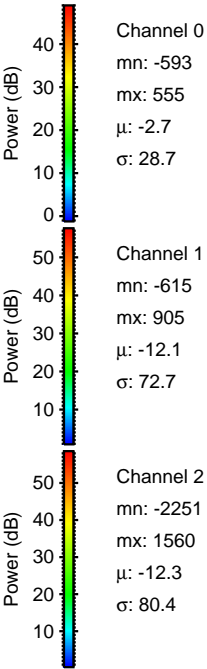
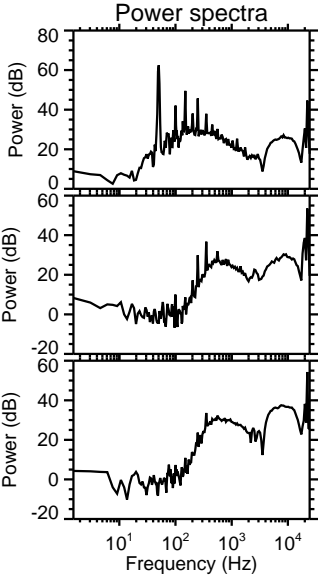
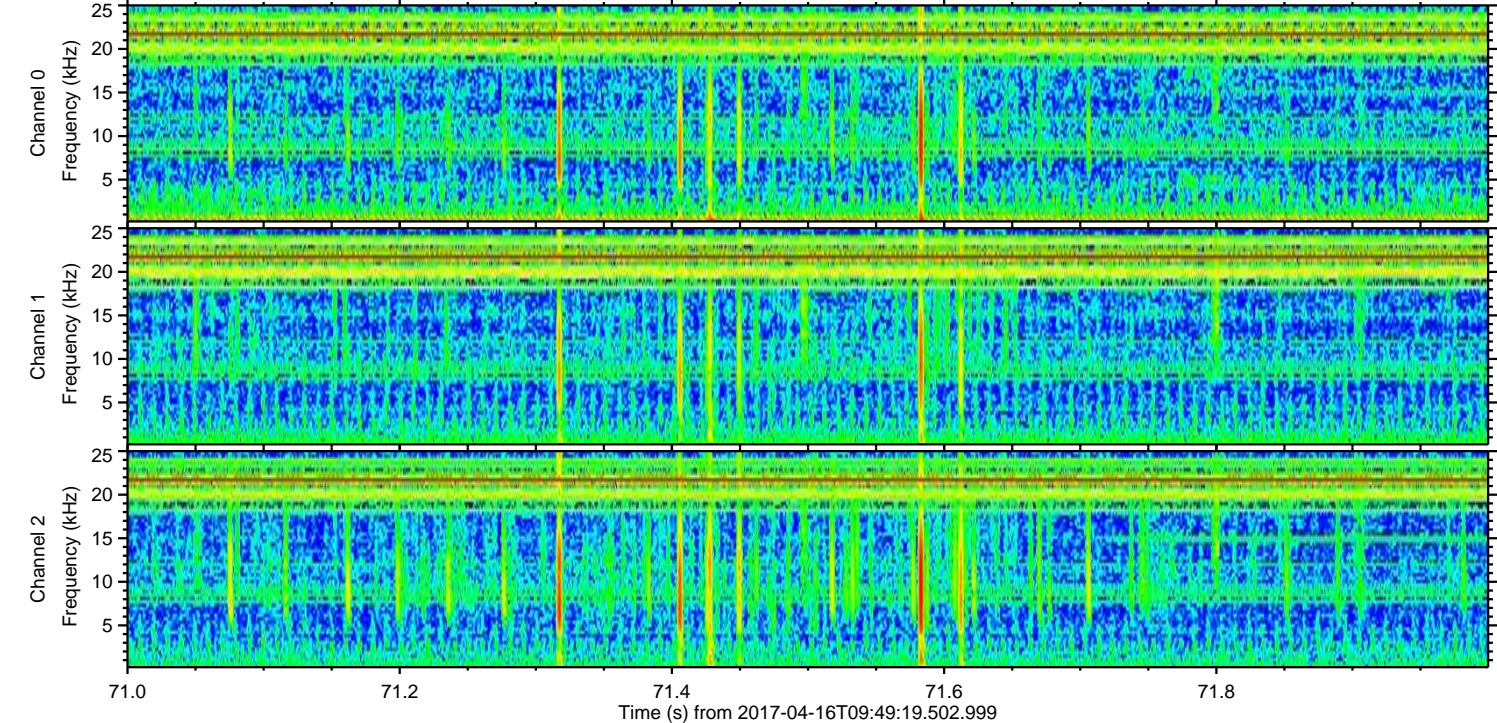
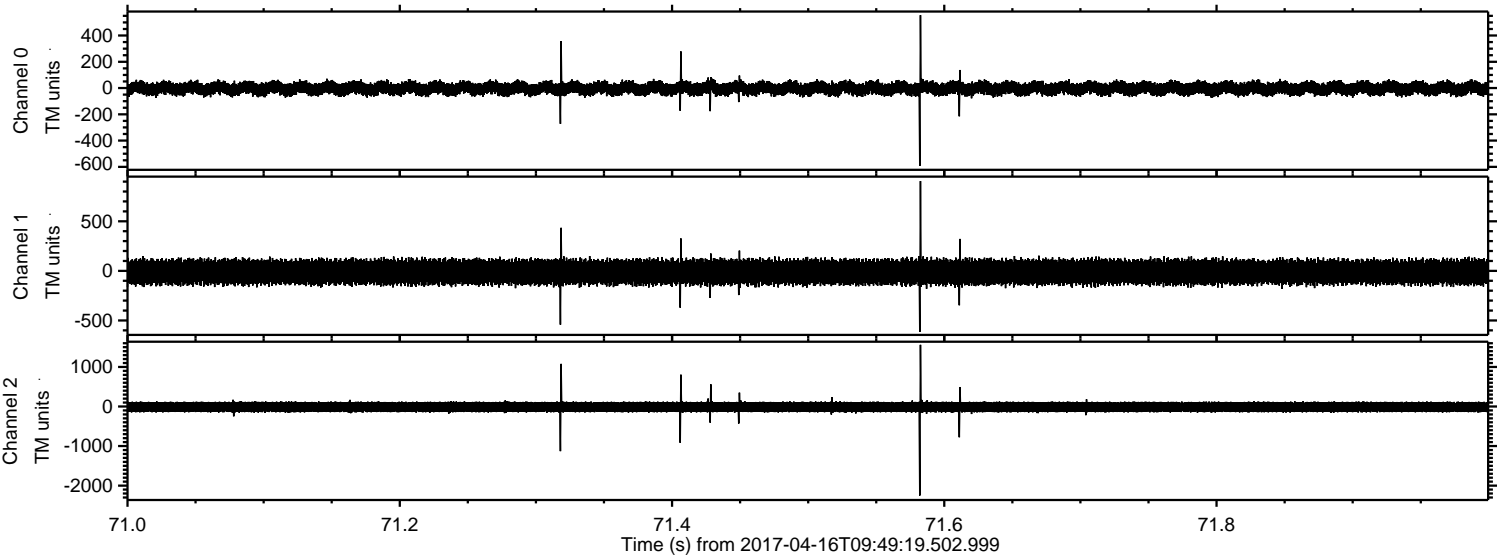
Channel 2
mn: -2121
mx: 3342
 μ : -12.3
 σ : 84.4

ELMAVAN 3D WAVEFORMS (Measured data sampled at 50 kHz) 51000 packets of 144 samples from 2017-04-16T09:49:19.502.999. Part 47/147

Processed Sun Apr 16 11:57:13 2017 by ELM ver.2012-10-06 from 001__elm20170416_094918__dat00.bin



Processed Sun Apr 16 11:57:14 2017 by ELM ver.2012-10-06 from 001__elm20170416_094918__dat00.bin



Processed Sun Apr 16 11:57:15 2017 by ELM ver.2012-10-06 from 001__elm20170416_094918__dat00.bin

