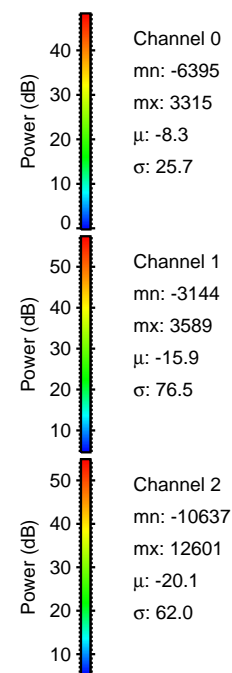
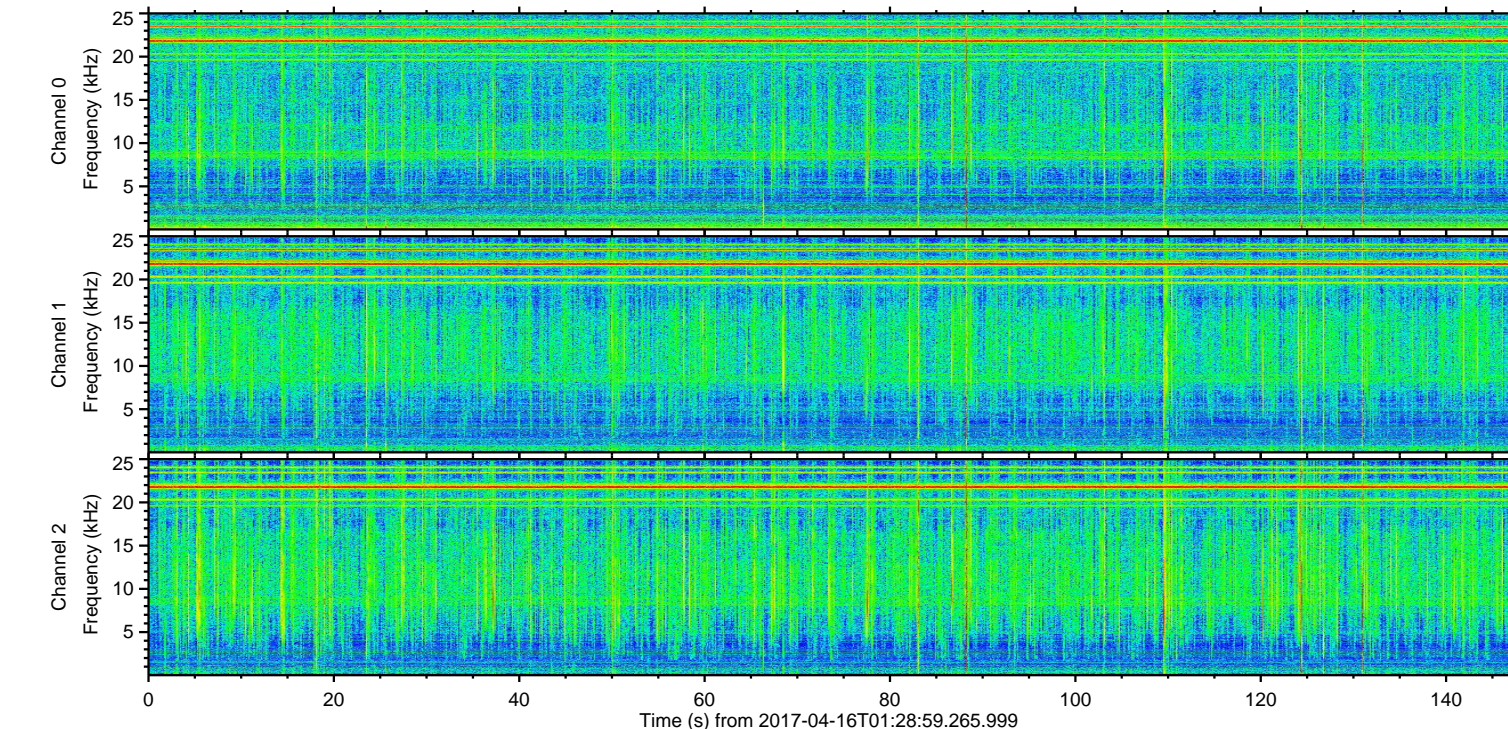
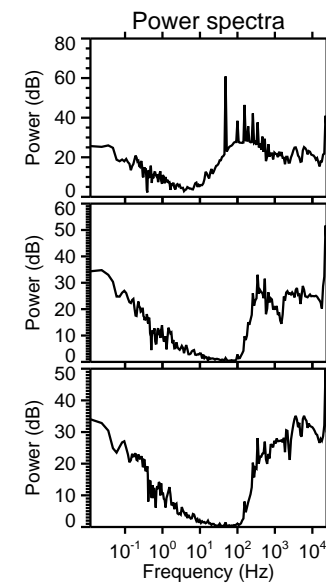
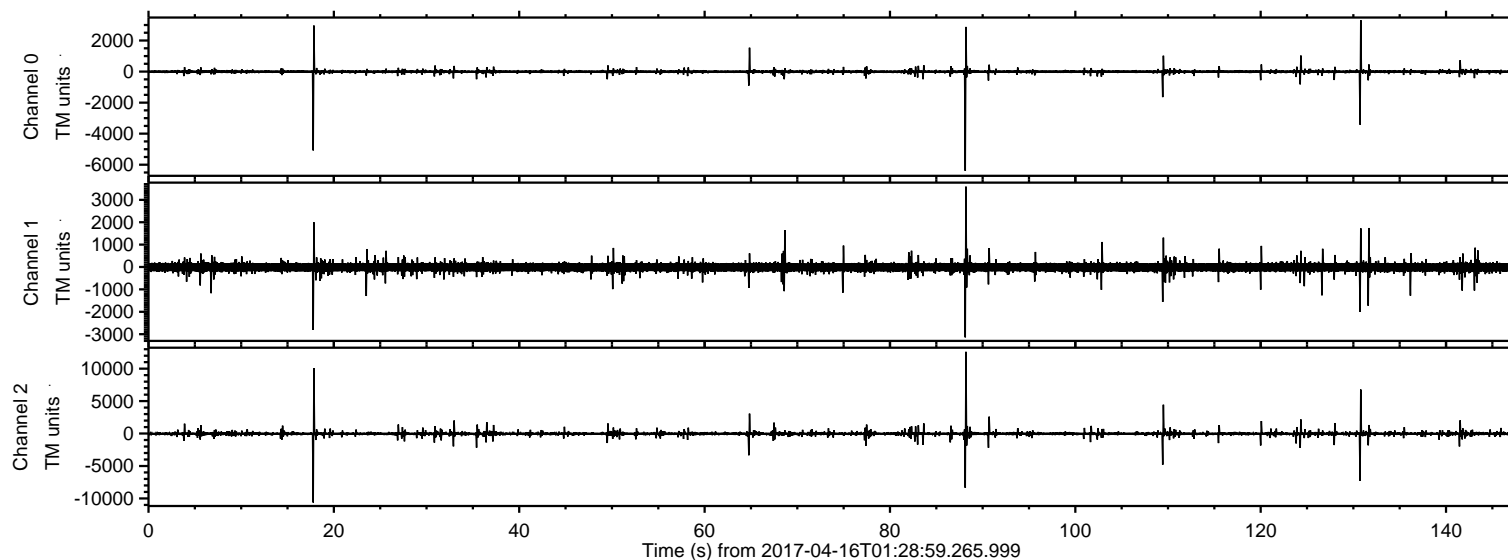
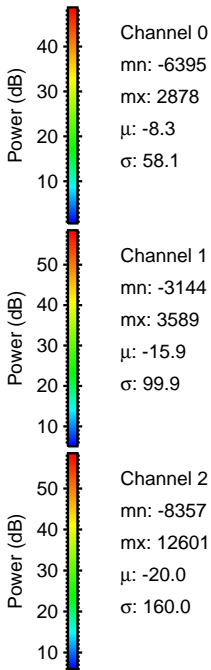
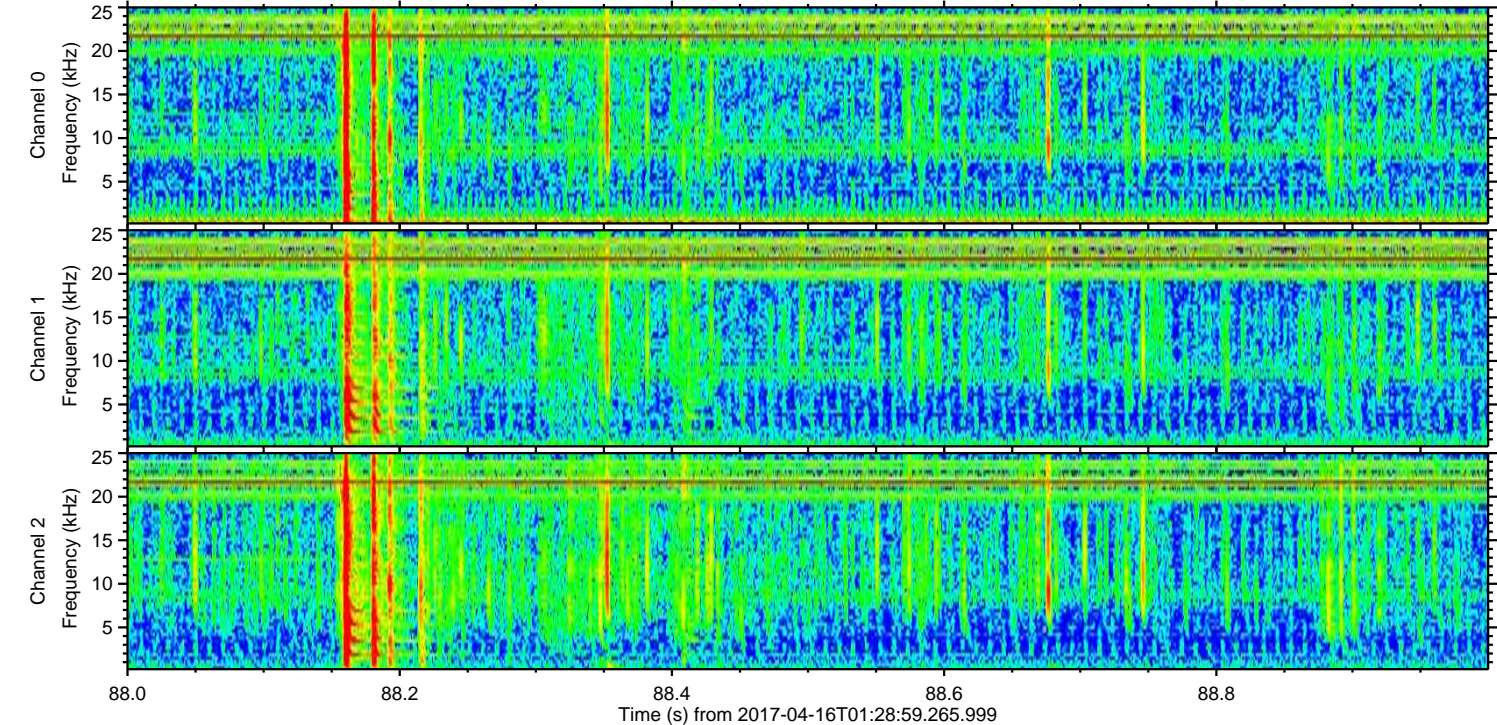
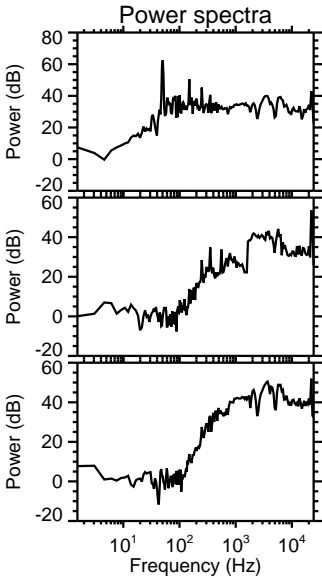
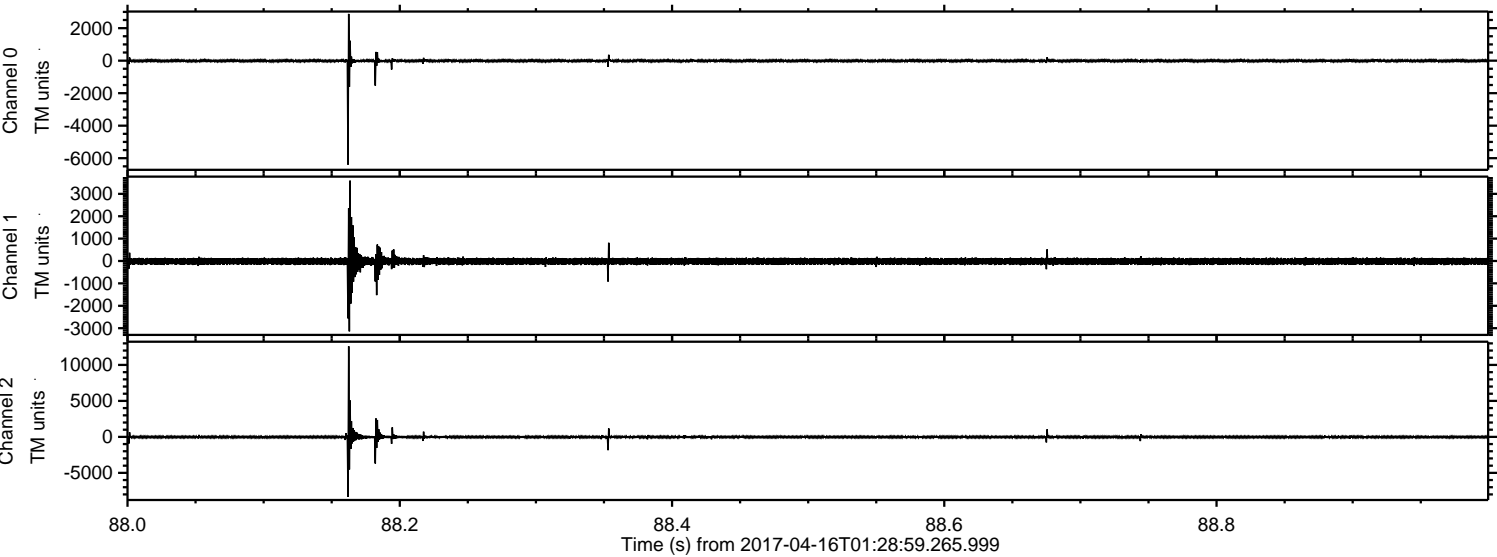


ELMAVAN 3D WAVEFORMS (Measured data sampled at 50 kHz) 51000 packets of 144 samples from 2017-04-16T01:28:59.265.999.

Processed Sun Apr 16 03:36:29 2017 by ELM ver.2012-10-06 from 001__elm20170416_012858__dat00.bin

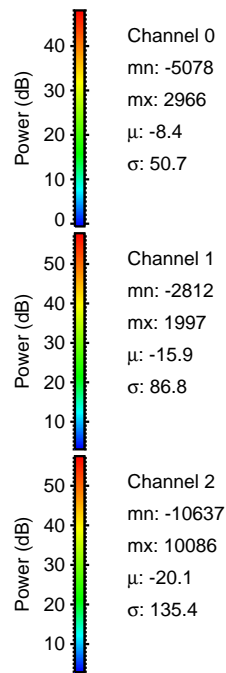
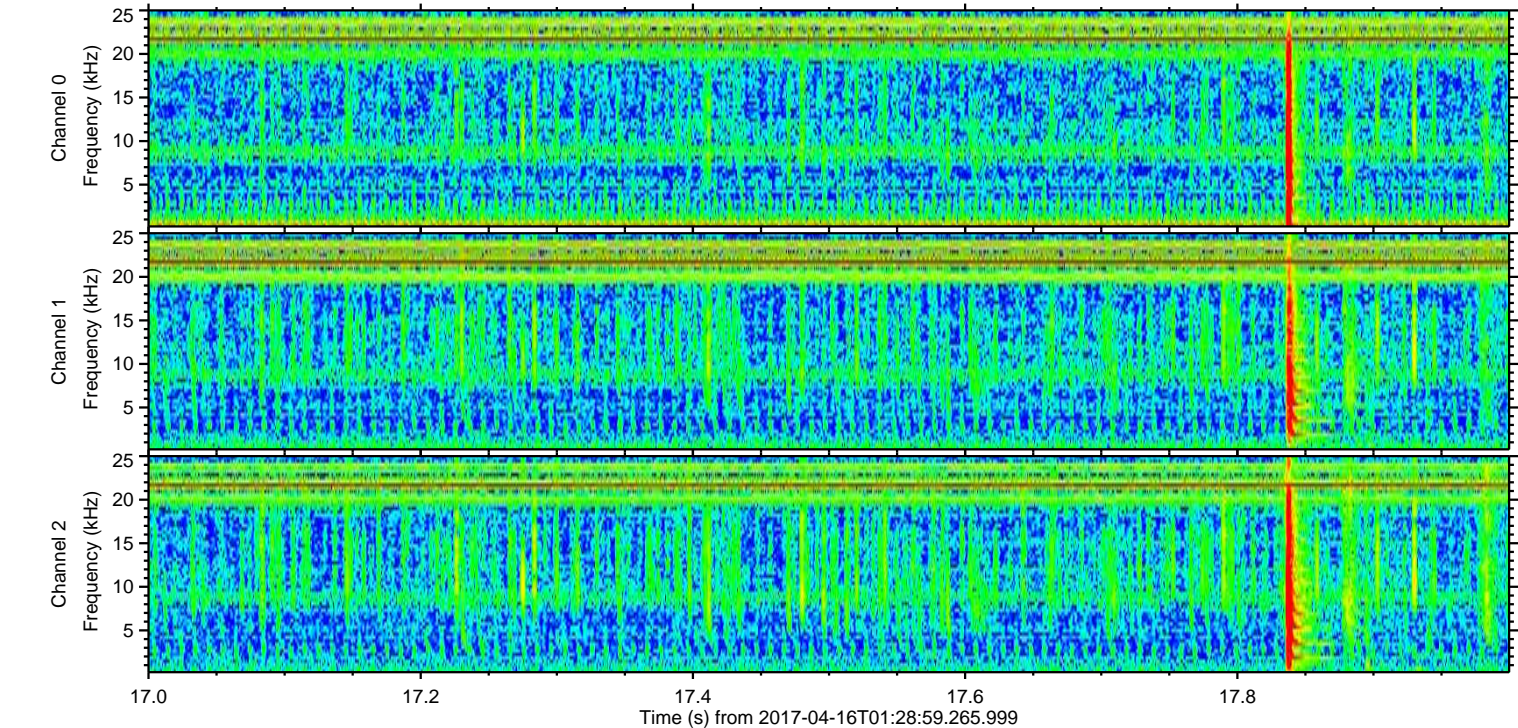
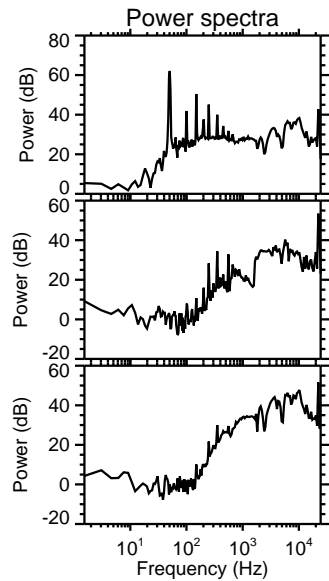
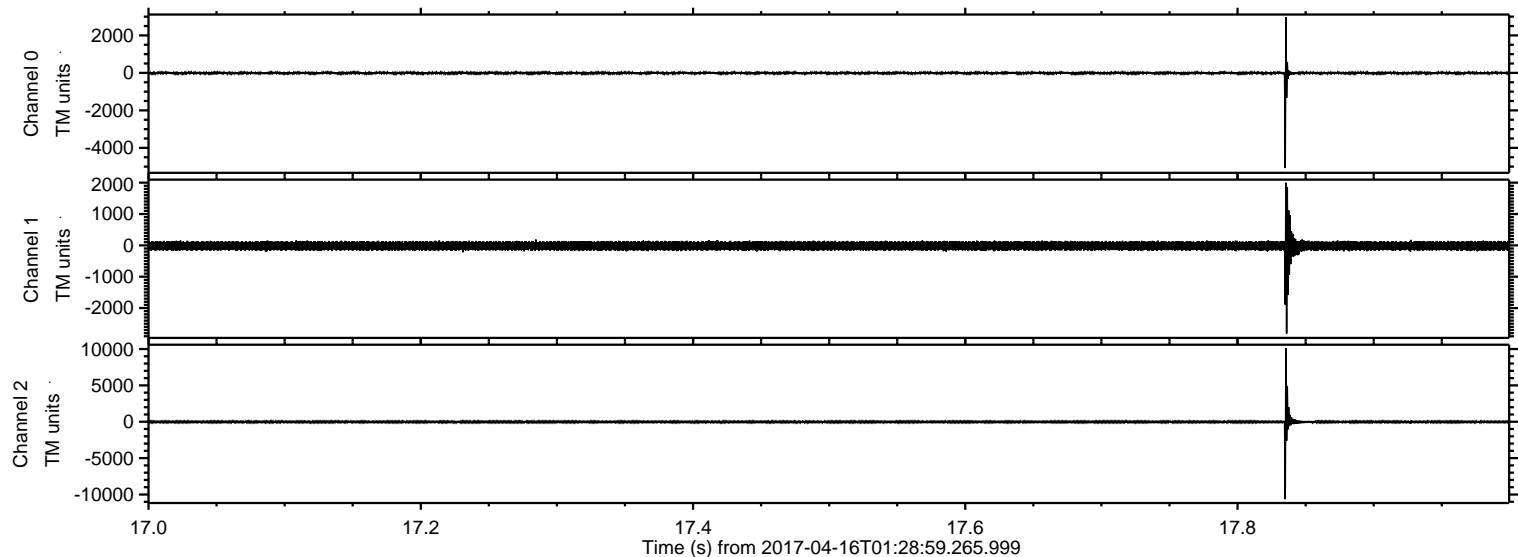


Processed Sun Apr 16 03:36:40 2017 by ELM ver.2012-10-06 from 001__elm20170416_012858__dat00.bin



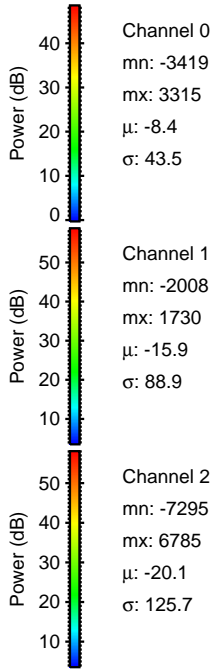
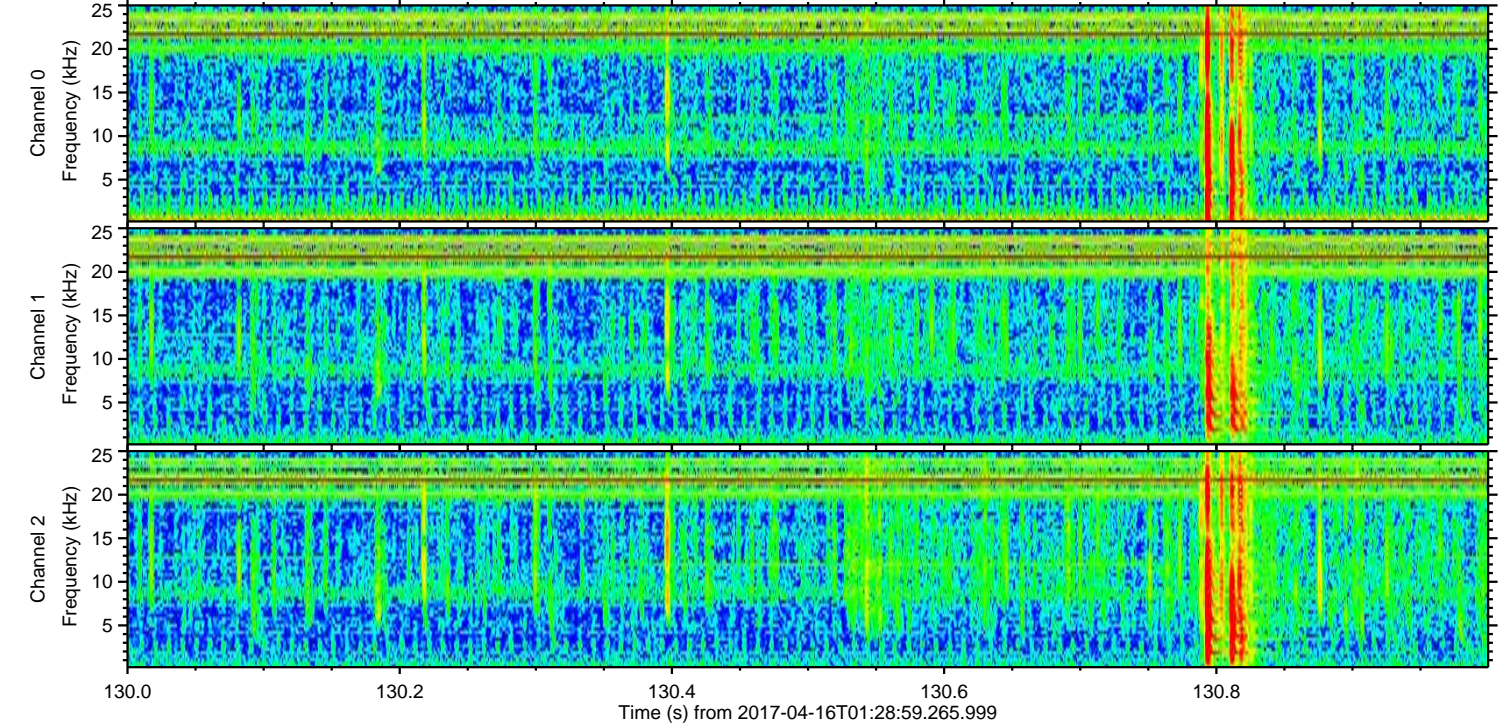
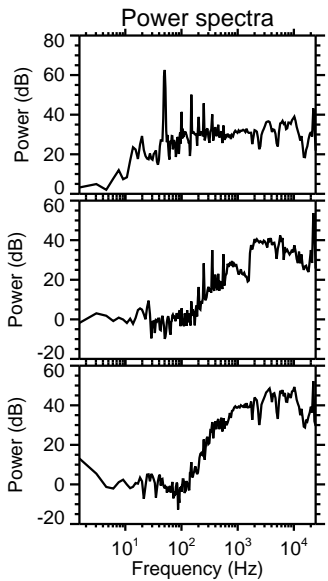
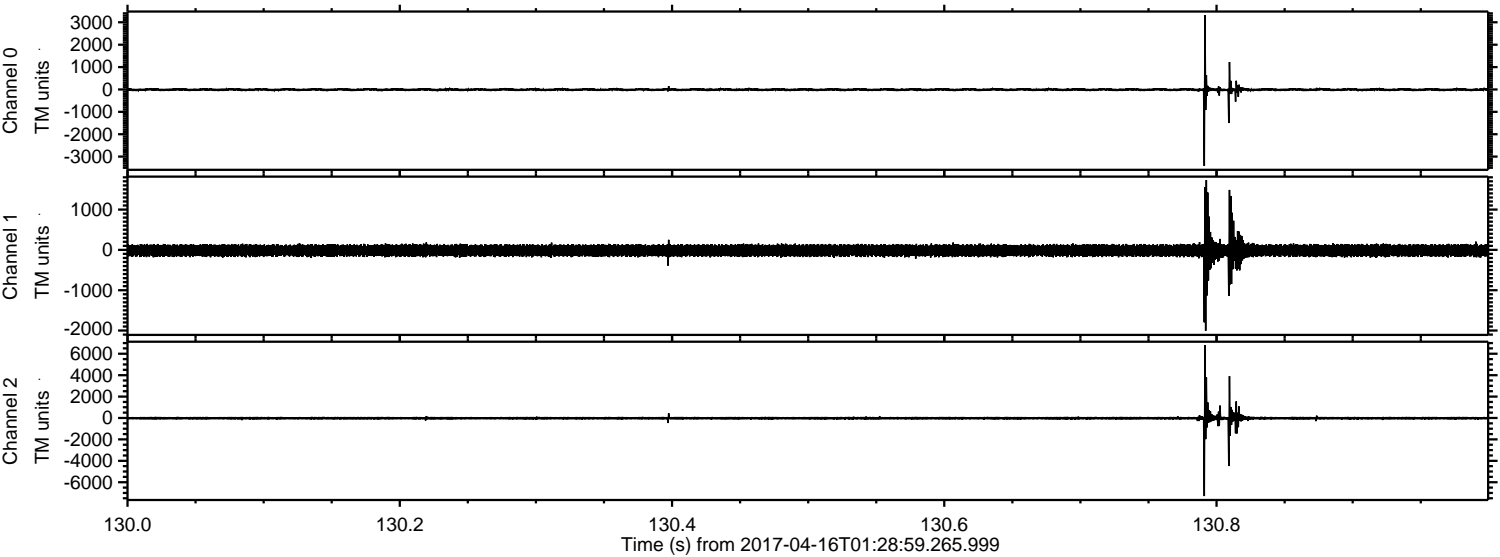
ELMAVAN 3D WAVEFORMS (Measured data sampled at 50 kHz) 51000 packets of 144 samples from 2017-04-16T01:28:59.265.999. Part 18/147

Processed Sun Apr 16 03:36:41 2017 by ELM ver.2012-10-06 from 001__elm20170416_012858__dat00.bin



ELMAVAN 3D WAVEFORMS (Measured data sampled at 50 kHz) 51000 packets of 144 samples from 2017-04-16T01:28:59.265.999. Part 131/147

Processed Sun Apr 16 03:36:42 2017 by ELM ver.2012-10-06 from 001__elm20170416_012858__dat00.bin



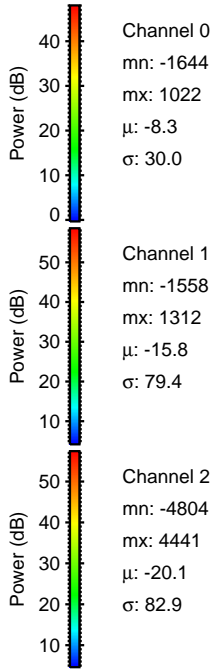
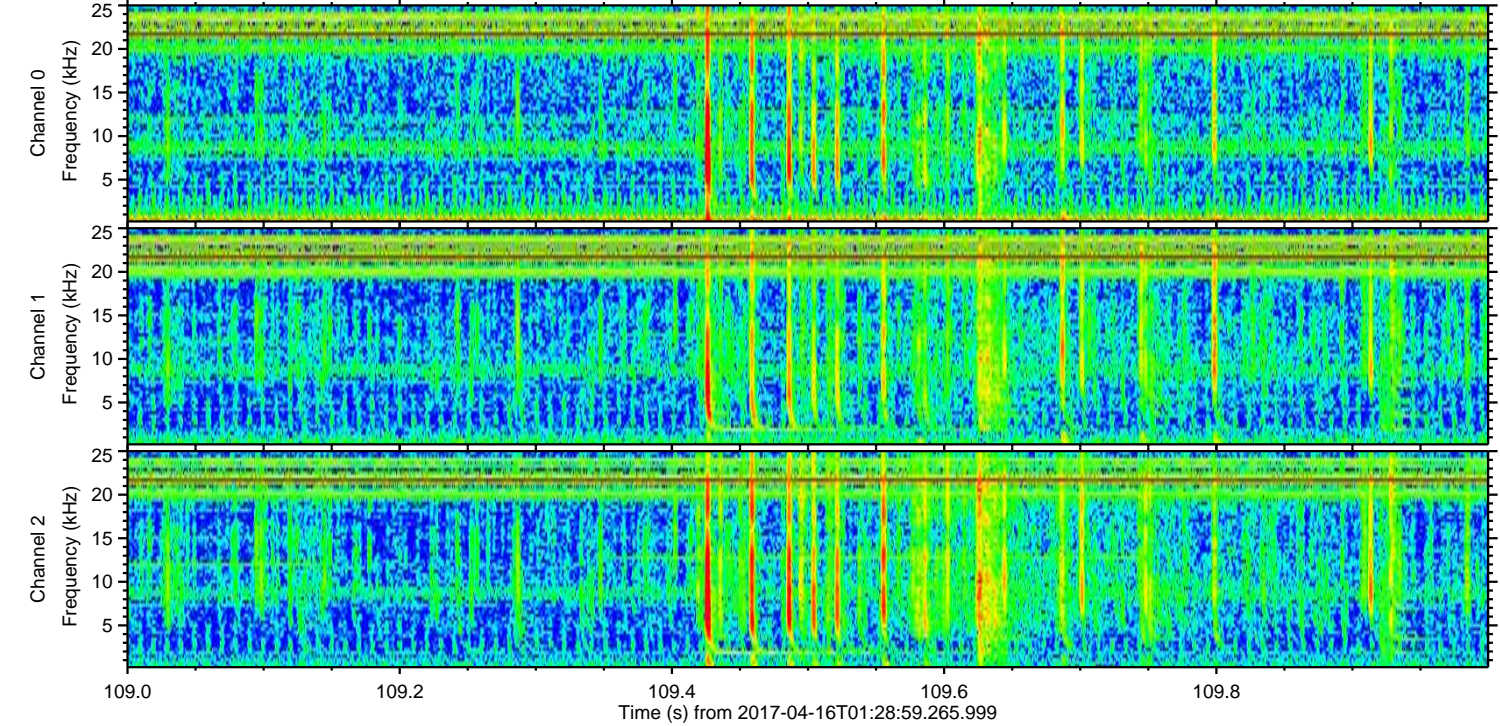
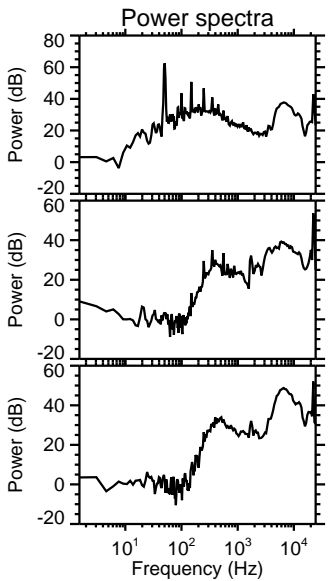
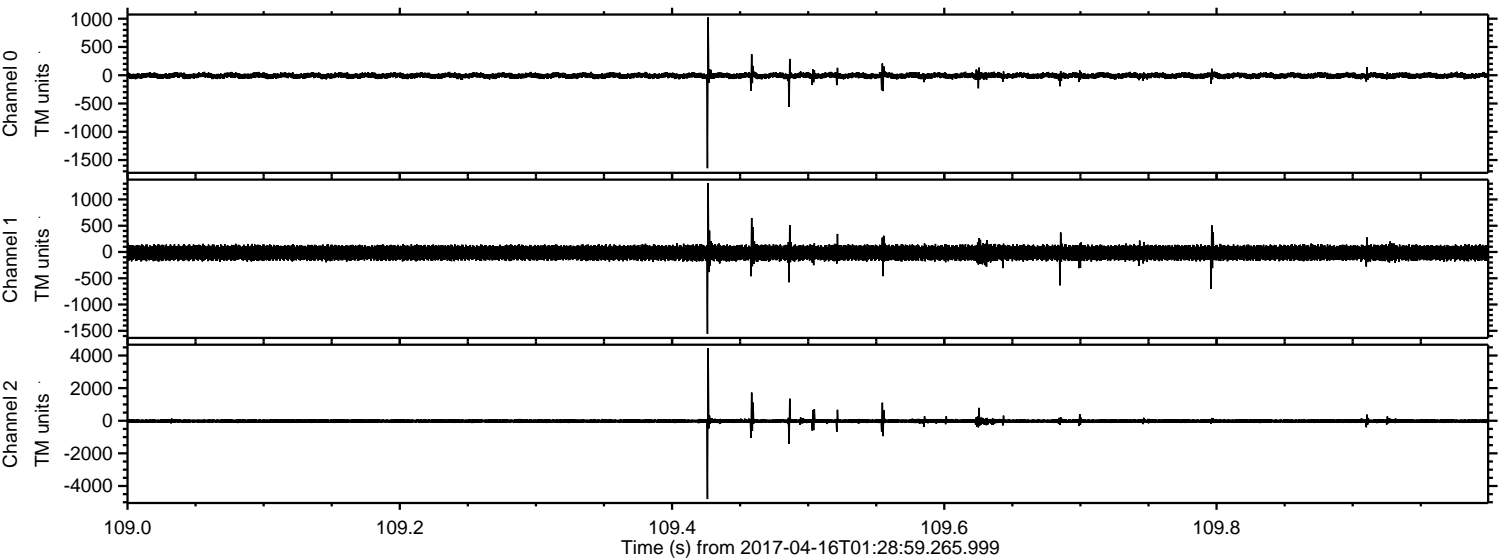
Channel 0
mn: -3419
mx: 3315
 μ : -8.4
 σ : 43.5

Channel 1
mn: -2008
mx: 1730
 μ : -15.9
 σ : 88.9

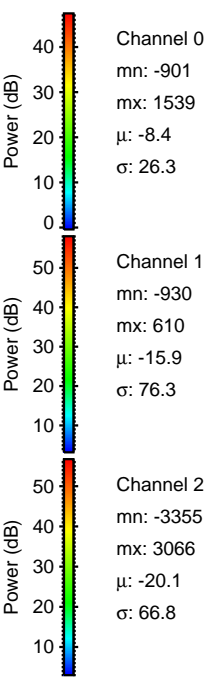
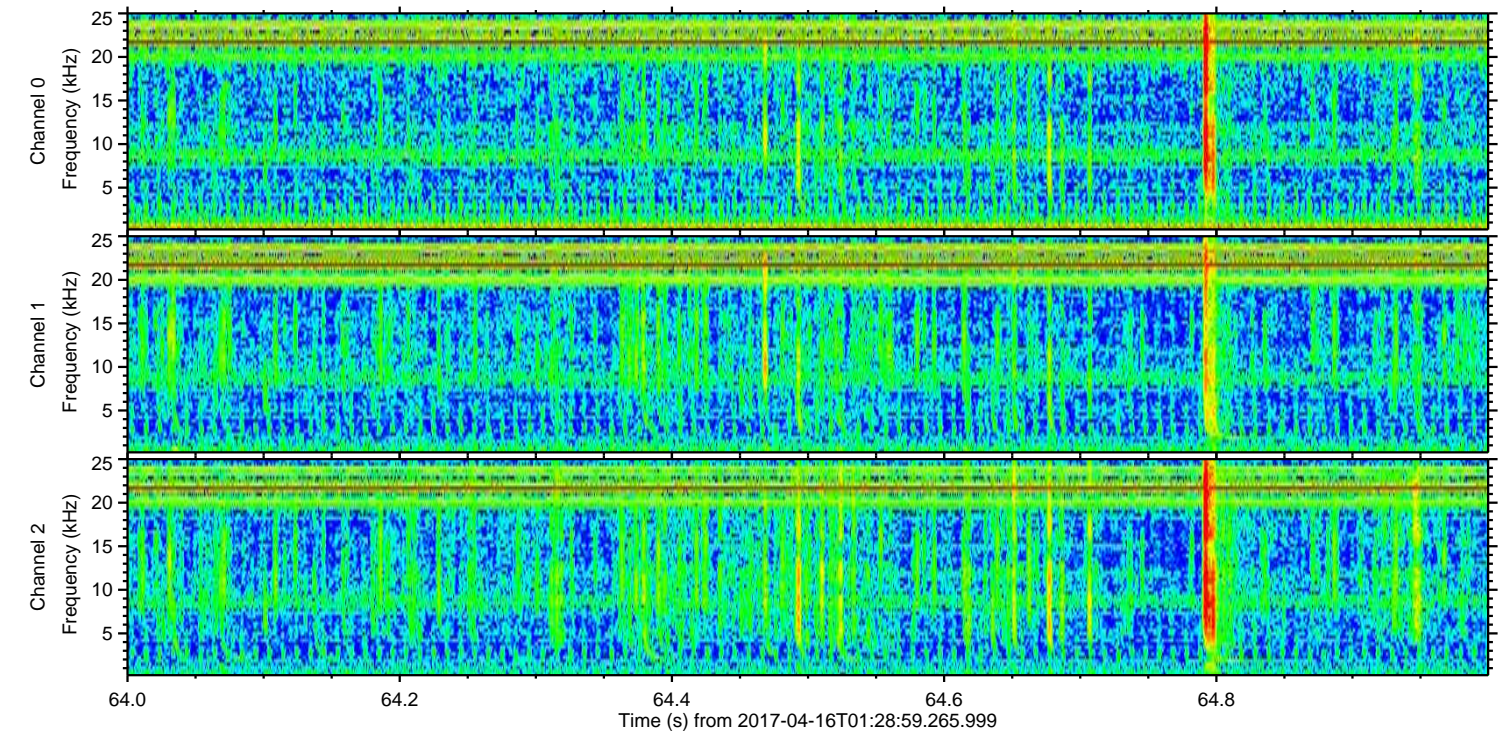
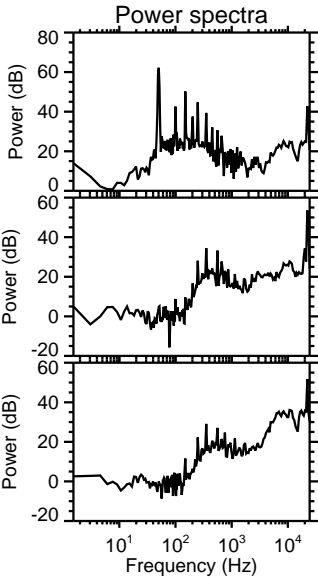
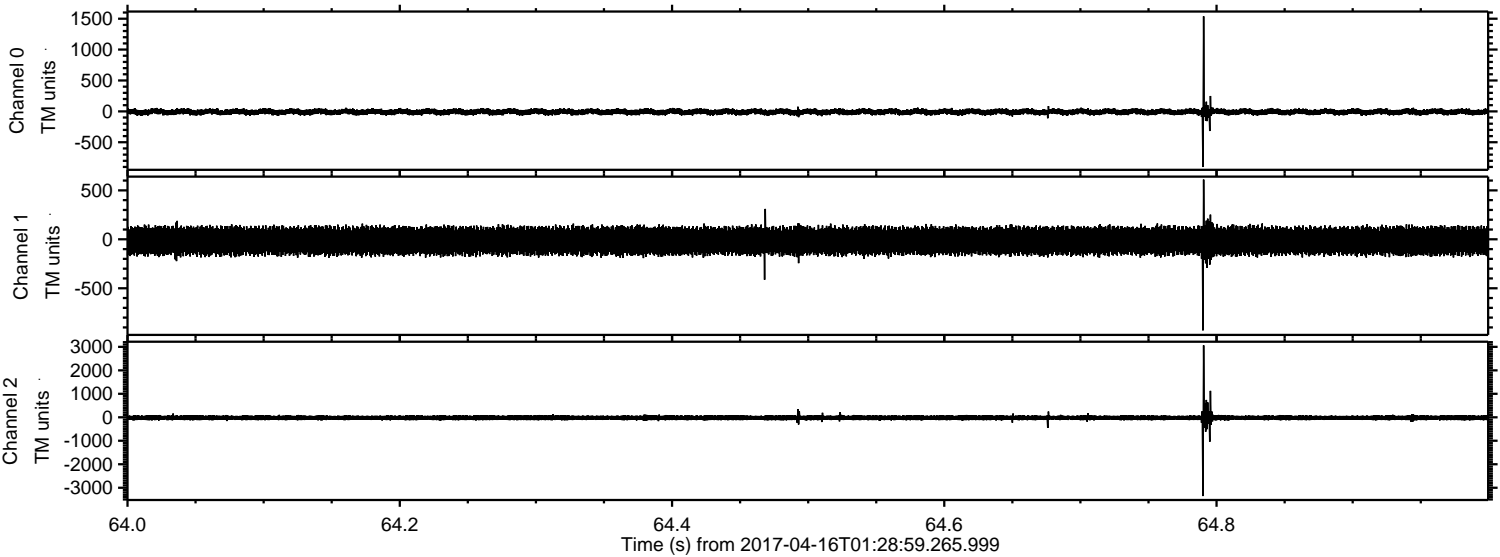
Channel 2
mn: -7295
mx: 6785
 μ : -20.1
 σ : 125.7

ELMAVAN 3D WAVEFORMS (Measured data sampled at 50 kHz) 51000 packets of 144 samples from 2017-04-16T01:28:59.265.999. Part 110/147

Processed Sun Apr 16 03:36:43 2017 by ELM ver.2012-10-06 from 001__elm20170416_012858__dat00.bin



Processed Sun Apr 16 03:36:44 2017 by ELM ver.2012-10-06 from 001__elm20170416_012858__dat00.bin



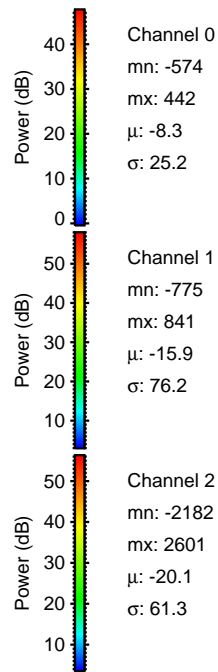
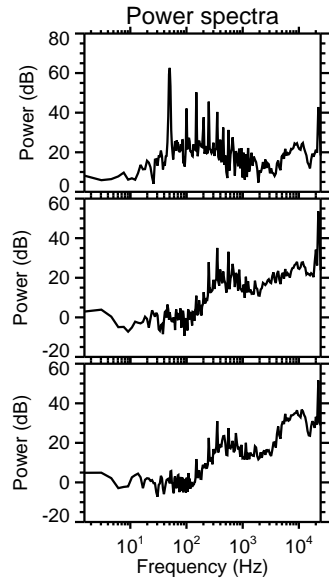
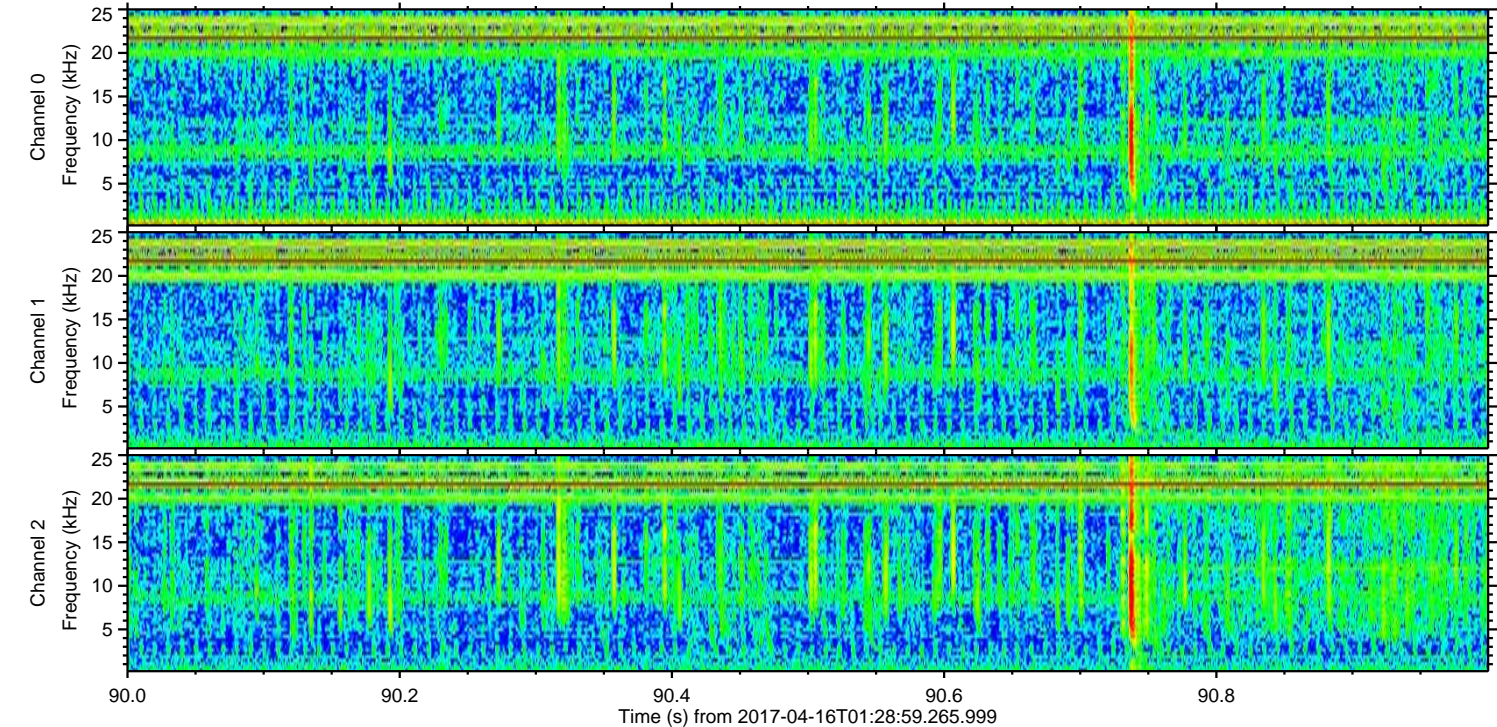
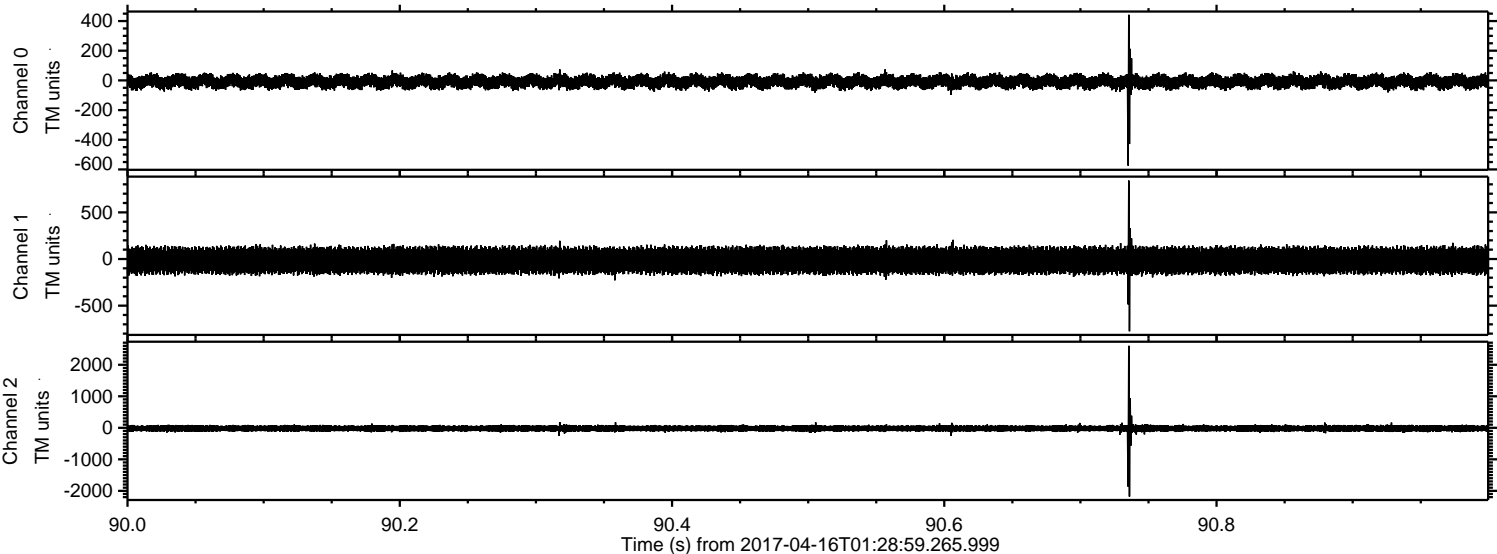
Channel 0
mn: -901
mx: 1539
 μ : -8.4
 σ : 26.3

Channel 1
mn: -930
mx: 610
 μ : -15.9
 σ : 76.3

Channel 2
mn: -3355
mx: 3066
 μ : -20.1
 σ : 66.8

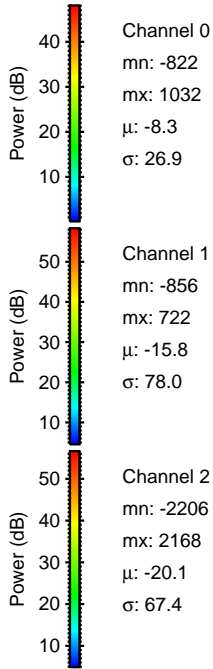
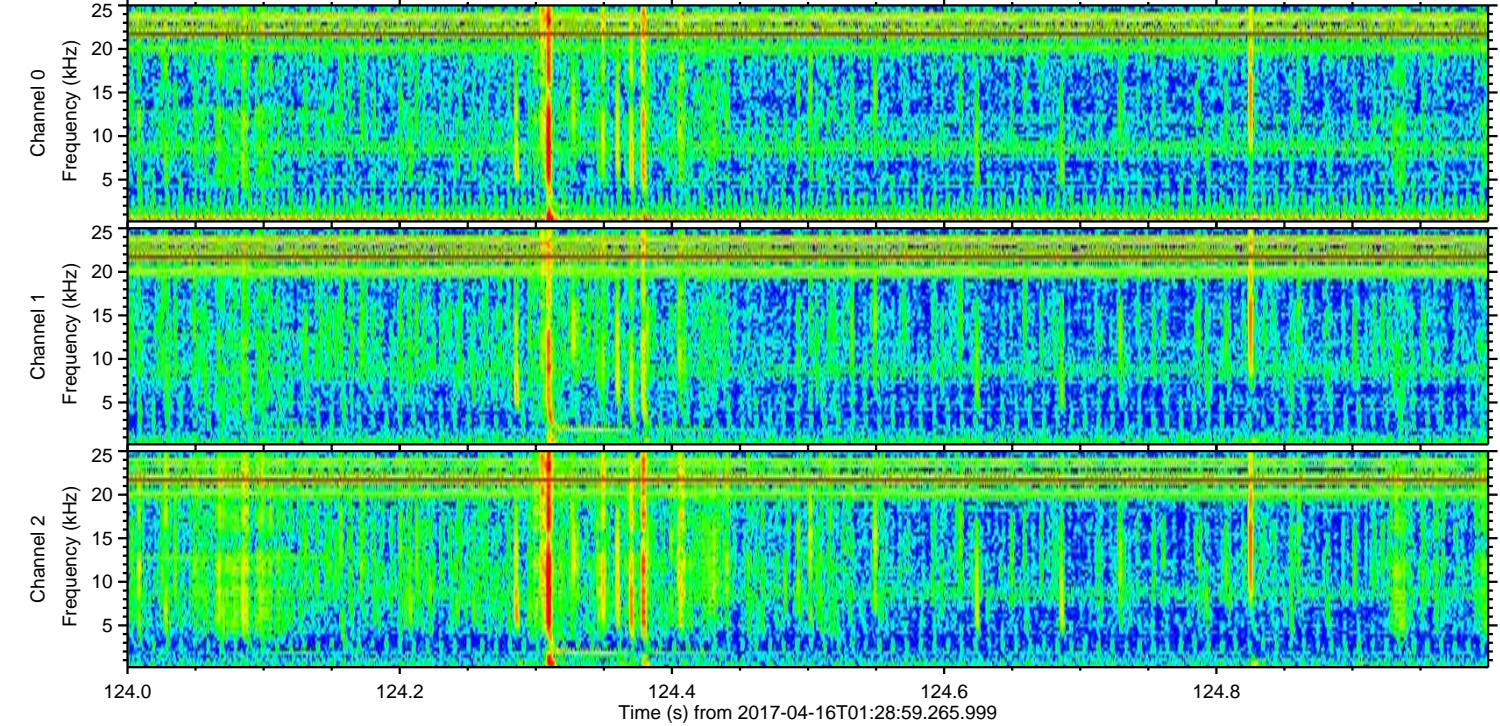
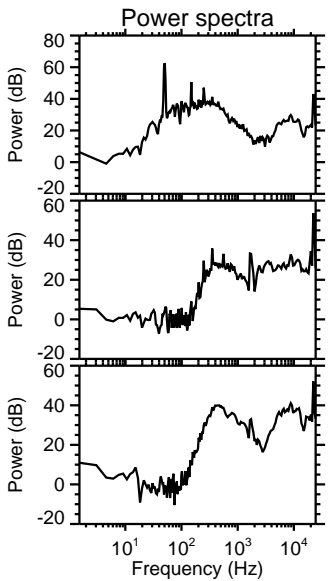
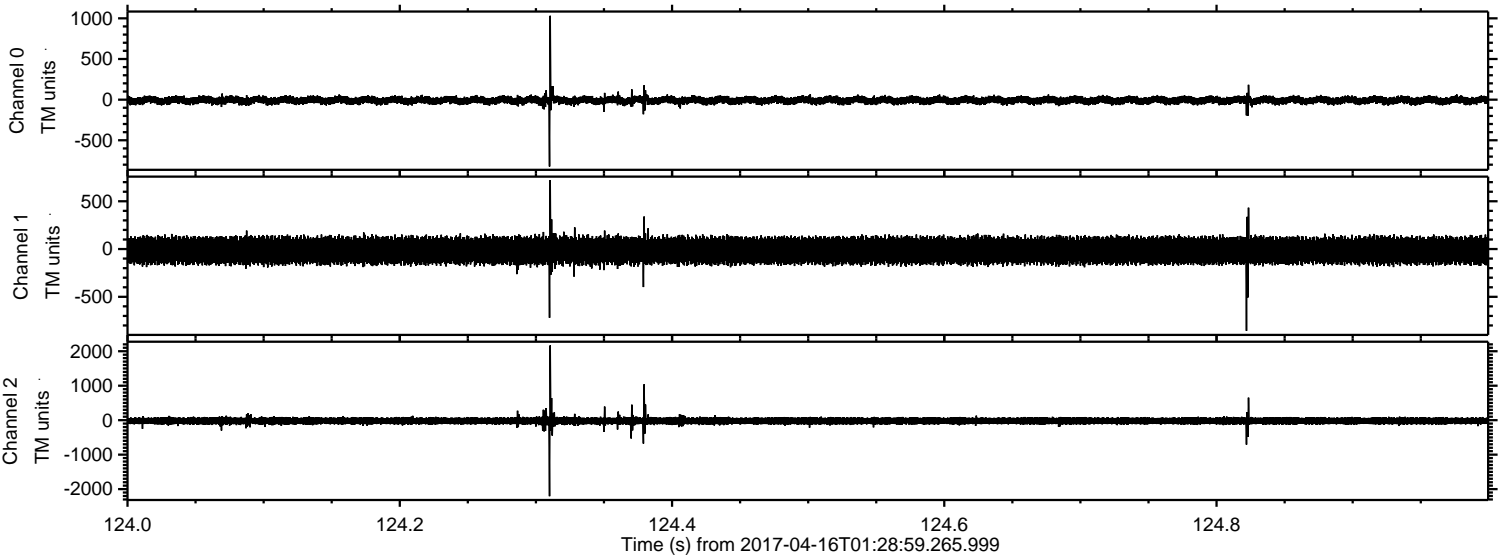
ELMAVAN 3D WAVEFORMS (Measured data sampled at 50 kHz) 51000 packets of 144 samples from 2017-04-16T01:28:59.265.999. Part 91/147

Processed Sun Apr 16 03:36:45 2017 by ELM ver.2012-10-06 from 001__elm20170416_012858__dat00.bin



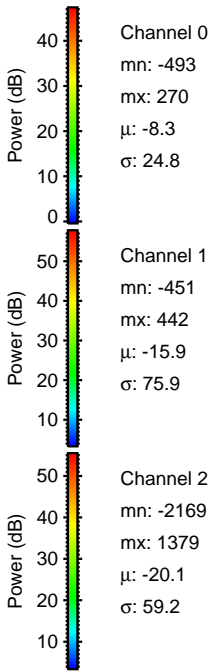
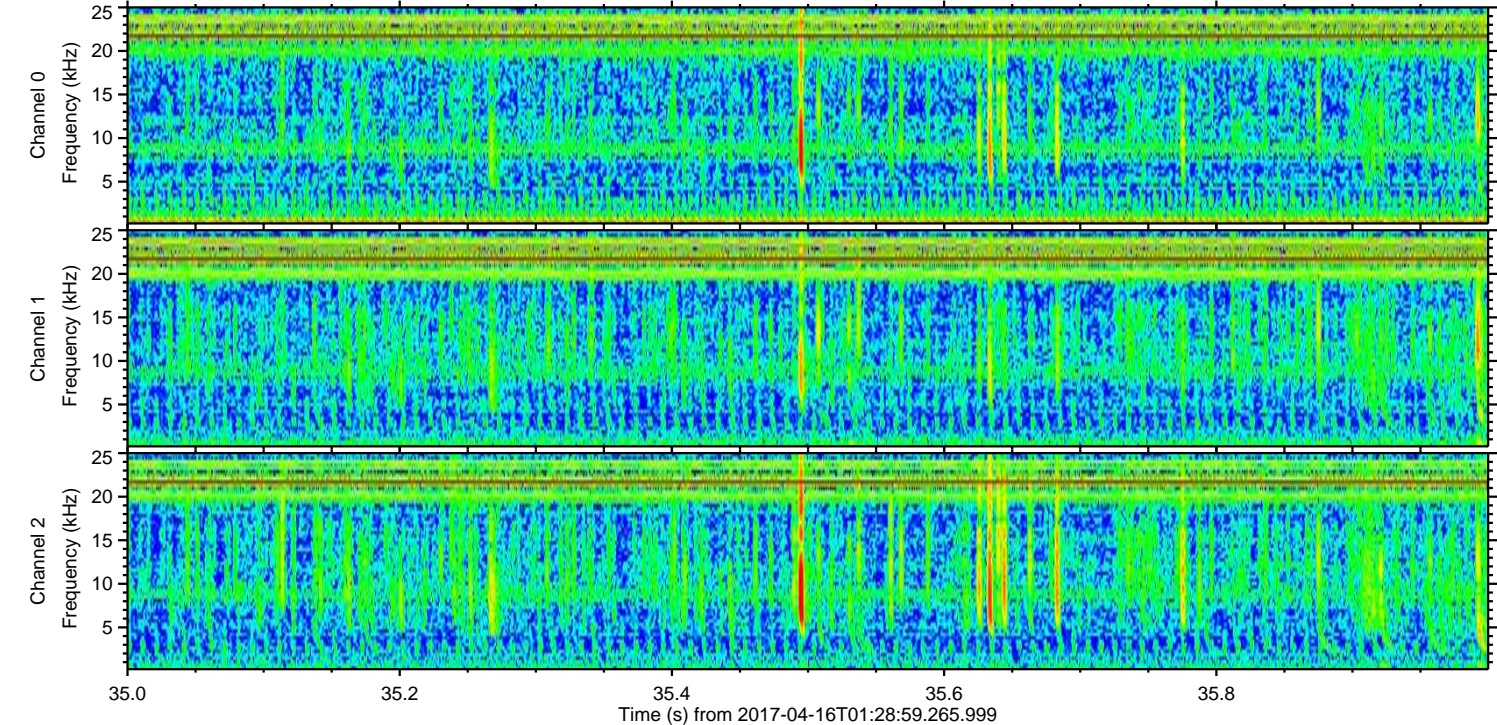
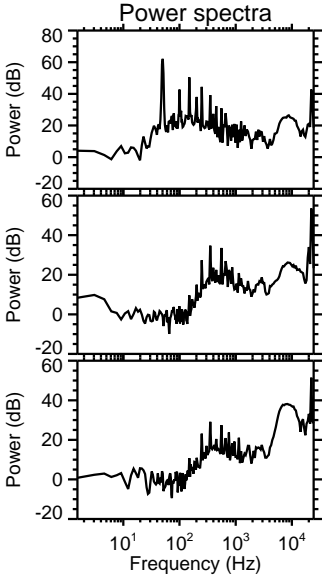
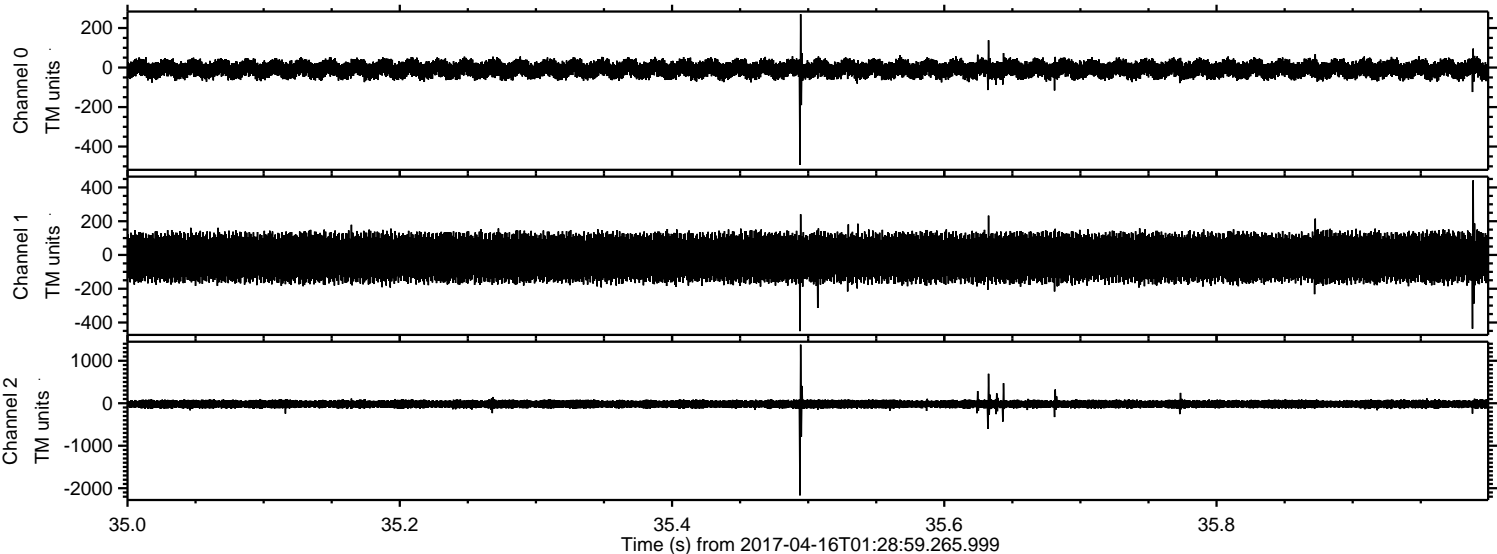
ELMAVAN 3D WAVEFORMS (Measured data sampled at 50 kHz) 51000 packets of 144 samples from 2017-04-16T01:28:59.265.999. Part 125/147

Processed Sun Apr 16 03:36:46 2017 by ELM ver.2012-10-06 from 001__elm20170416_012858__dat00.bin



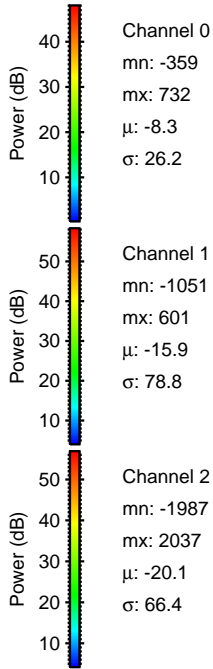
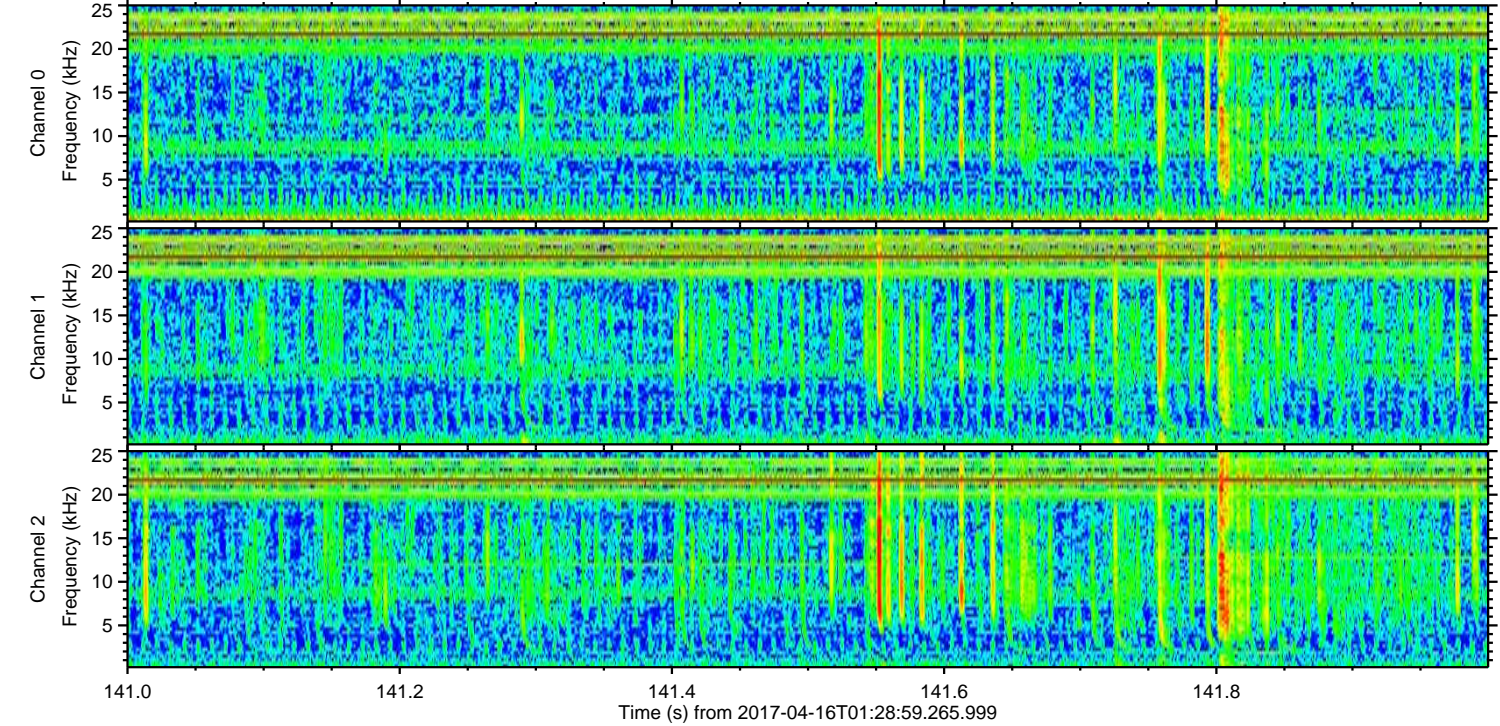
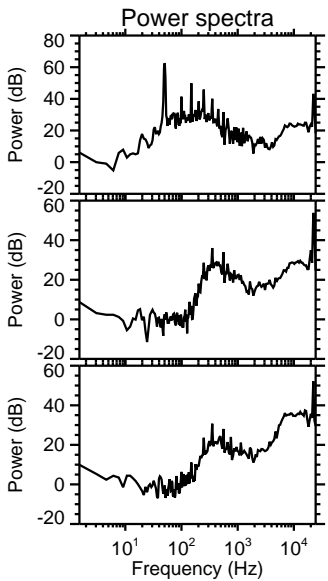
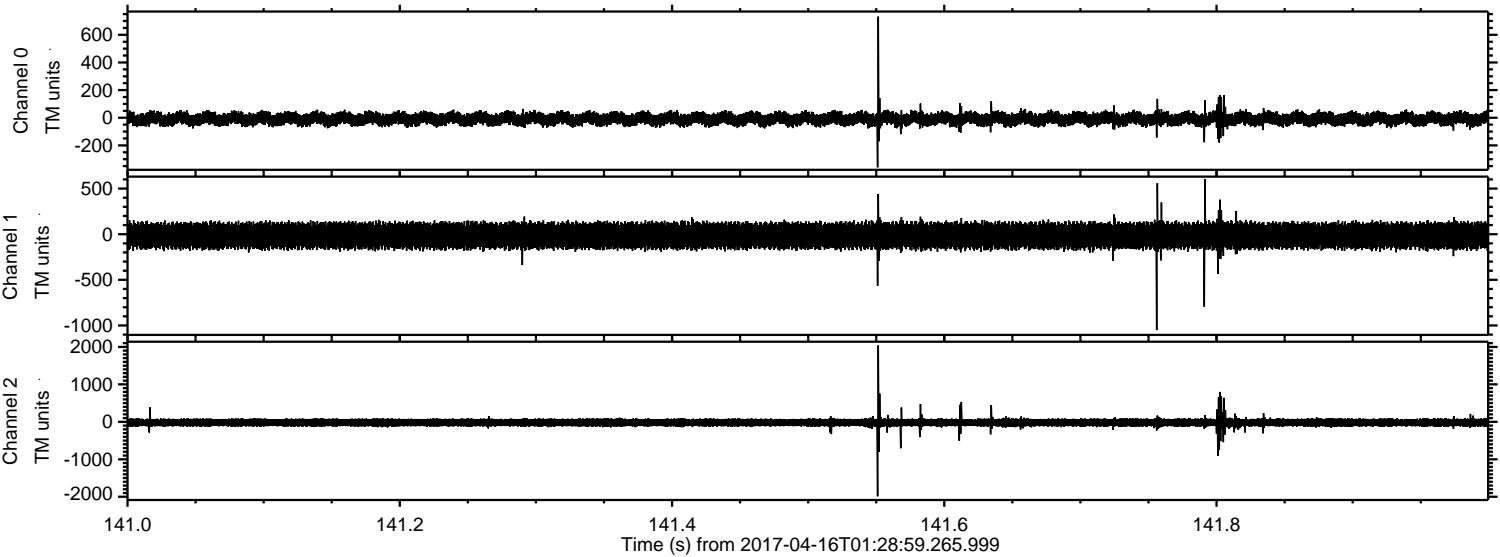
ELMAVAN 3D WAVEFORMS (Measured data sampled at 50 kHz) 51000 packets of 144 samples from 2017-04-16T01:28:59.265.999. Part 36/147

Processed Sun Apr 16 03:36:47 2017 by ELM ver.2012-10-06 from 001__elm20170416_012858__dat00.bin



ELMAVAN 3D WAVEFORMS (Measured data sampled at 50 kHz) 51000 packets of 144 samples from 2017-04-16T01:28:59.265.999. Part 142/147

Processed Sun Apr 16 03:36:48 2017 by ELM ver.2012-10-06 from 001__elm20170416_012858__dat00.bin



Power spectra

Channel 0
mn: -359
mx: 732
 μ : -8.3
 σ : 26.2

Channel 1
mn: -1051
mx: 601
 μ : -15.9
 σ : 78.8

Channel 2
mn: -1987
mx: 2037
 μ : -20.1
 σ : 66.4

ELMAVAN 3D WAVEFORMS (Measured data sampled at 50 kHz) 51000 packets of 144 samples from 2017-04-16T01:28:59.265.999. Part 120/147

