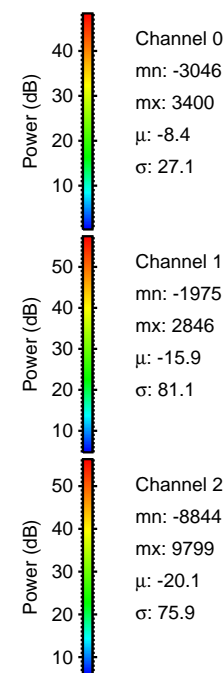
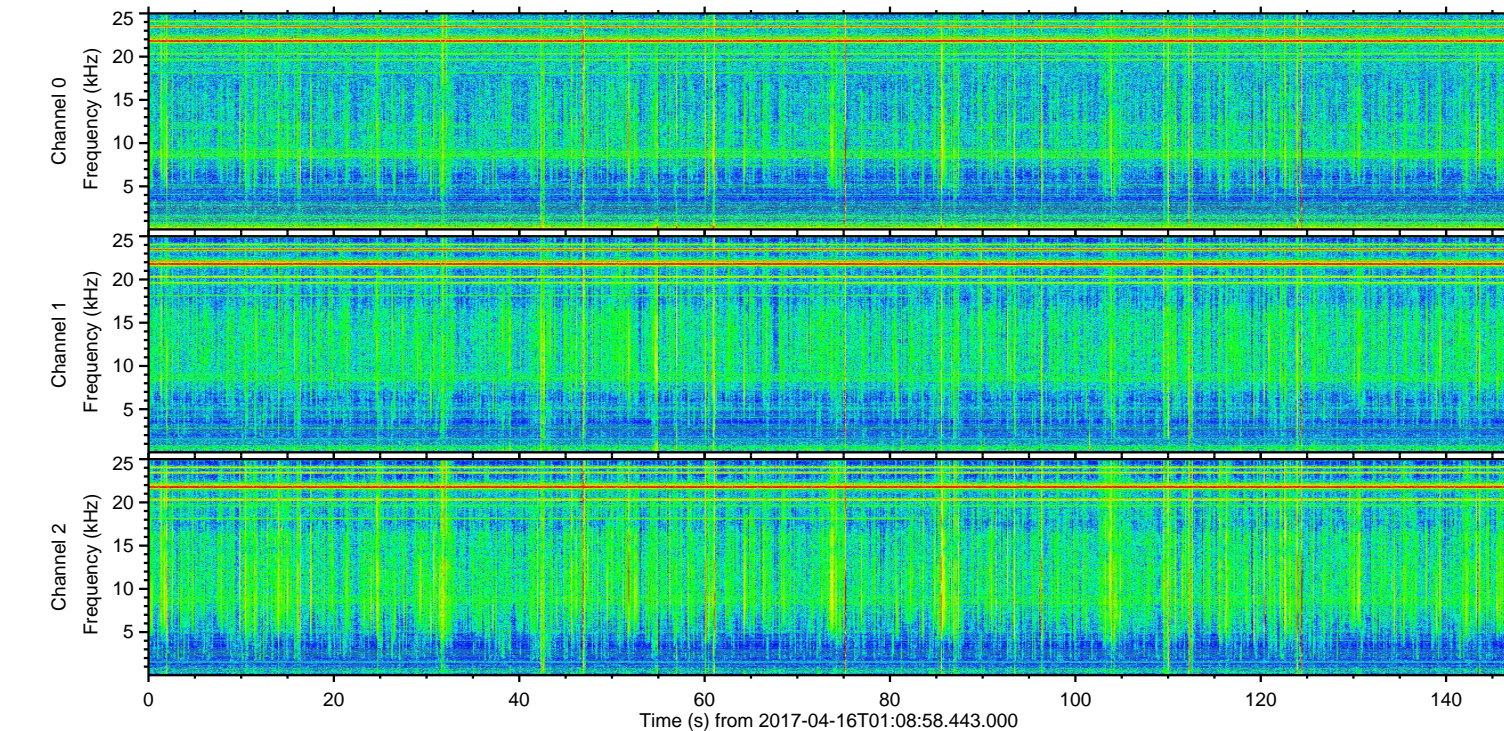
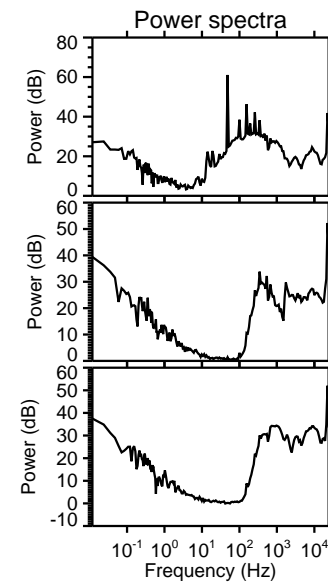
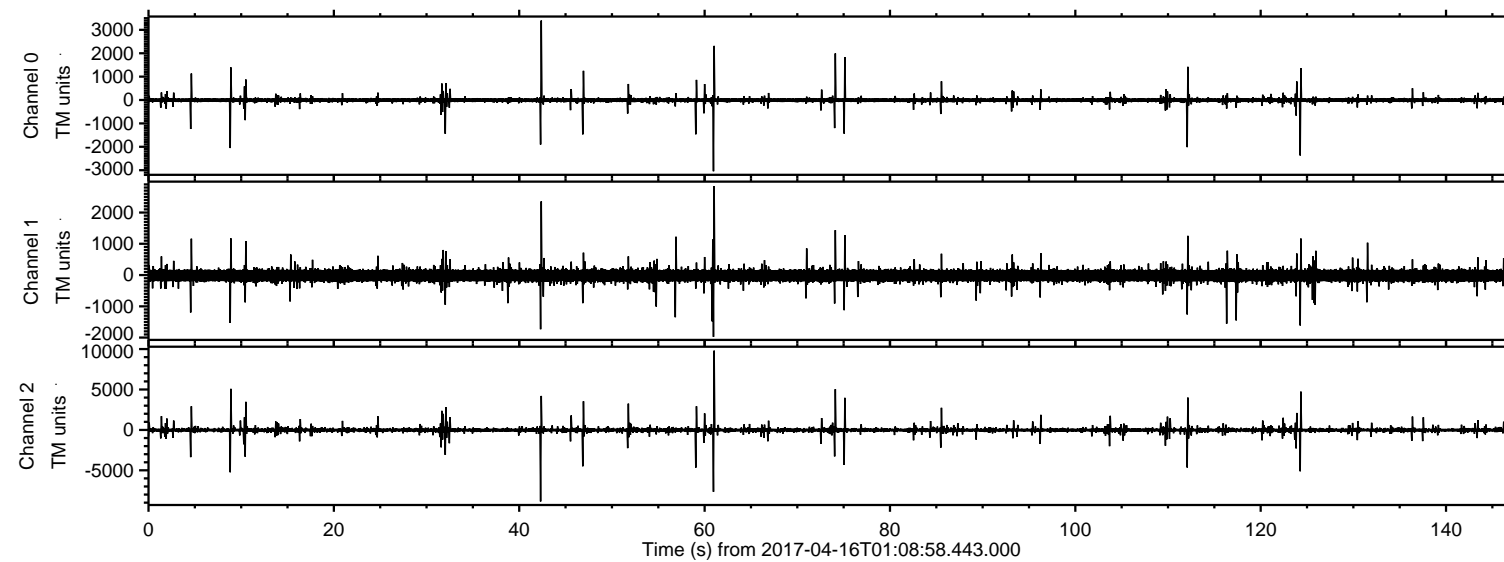


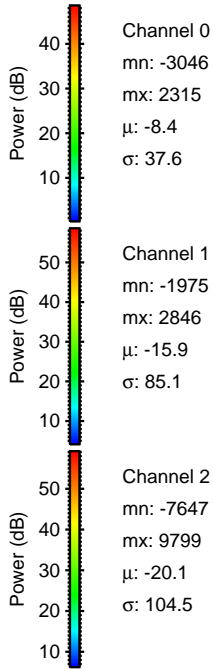
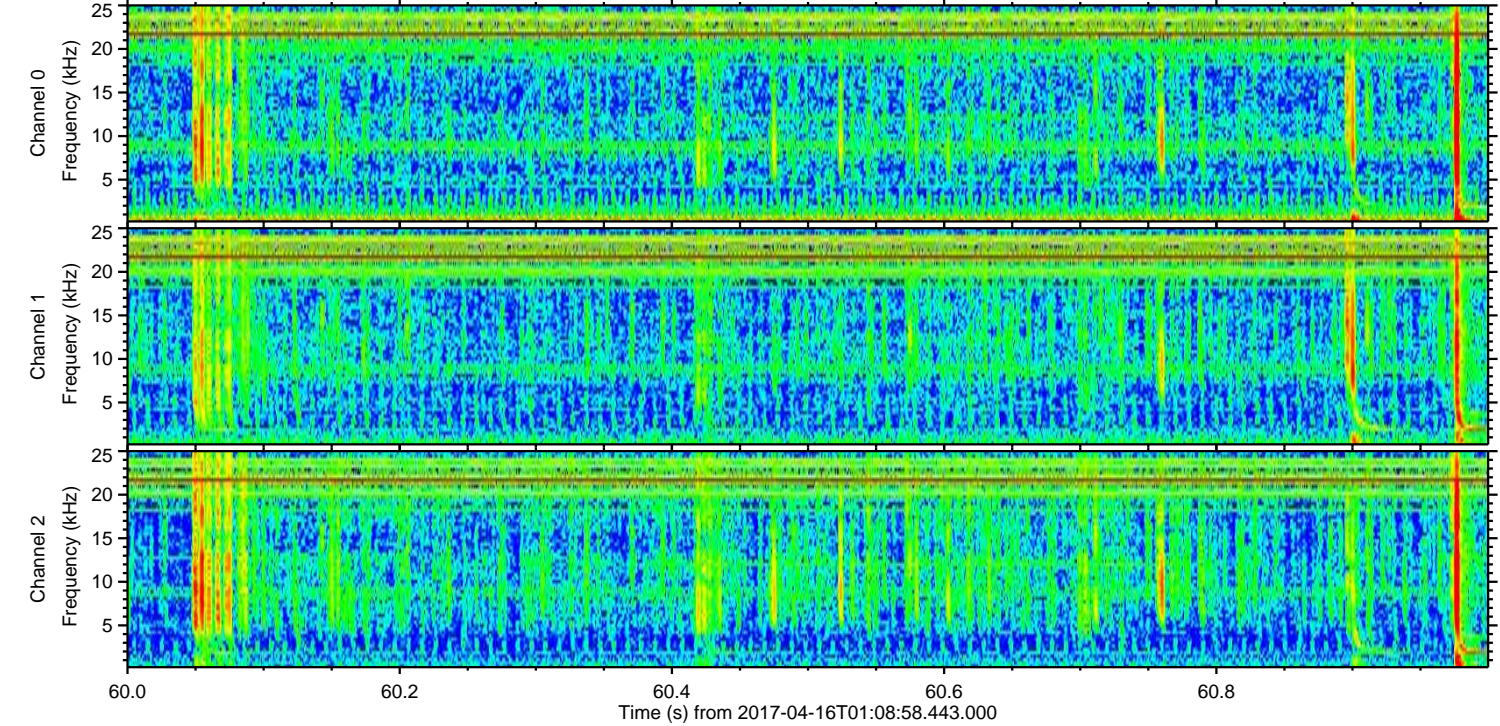
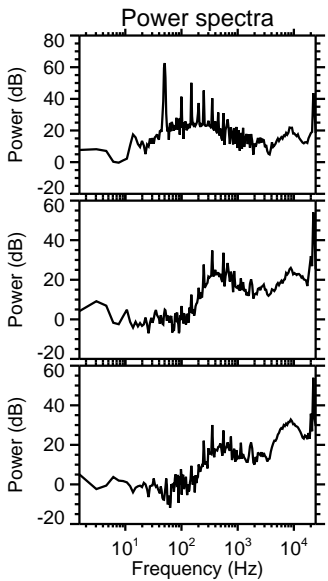
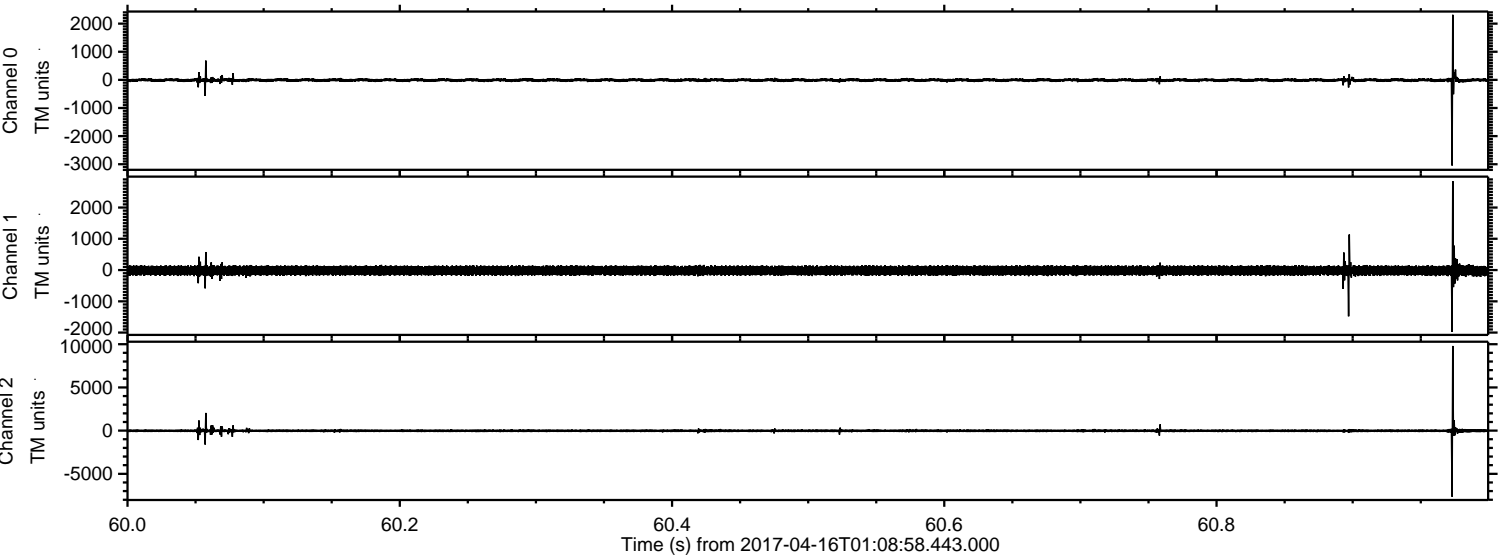
# ELMAVAN 3D WAVEFORMS (Measured data sampled at 50 kHz) 51000 packets of 144 samples from 2017-04-16T01:08:58.443.000.

Processed Sun Apr 16 03:16:41 2017 by ELM ver.2012-10-06 from 001\_\_elm20170416\_010857\_\_dat00.bin





Processed Sun Apr 16 03:16:53 2017 by ELM ver.2012-10-06 from 001\_\_elm20170416\_010857\_\_dat00.bin



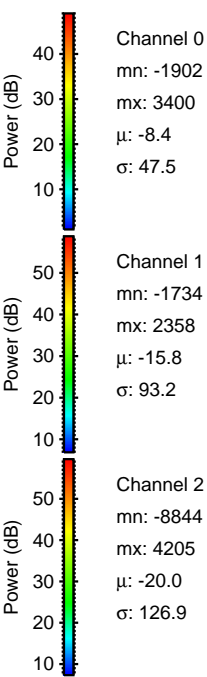
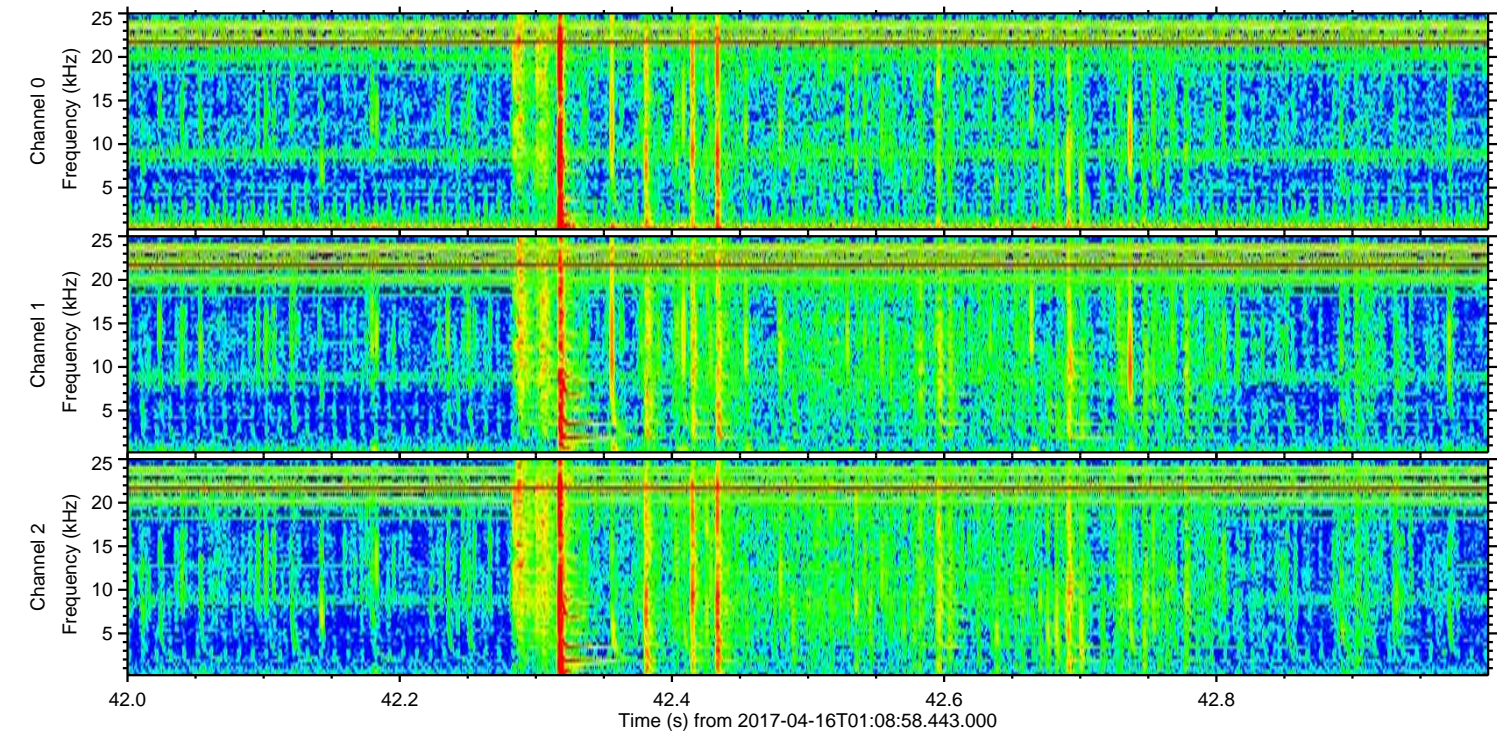
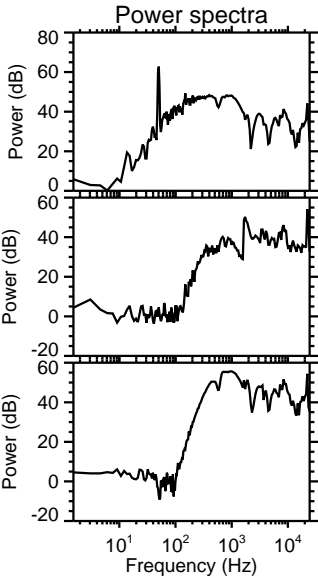
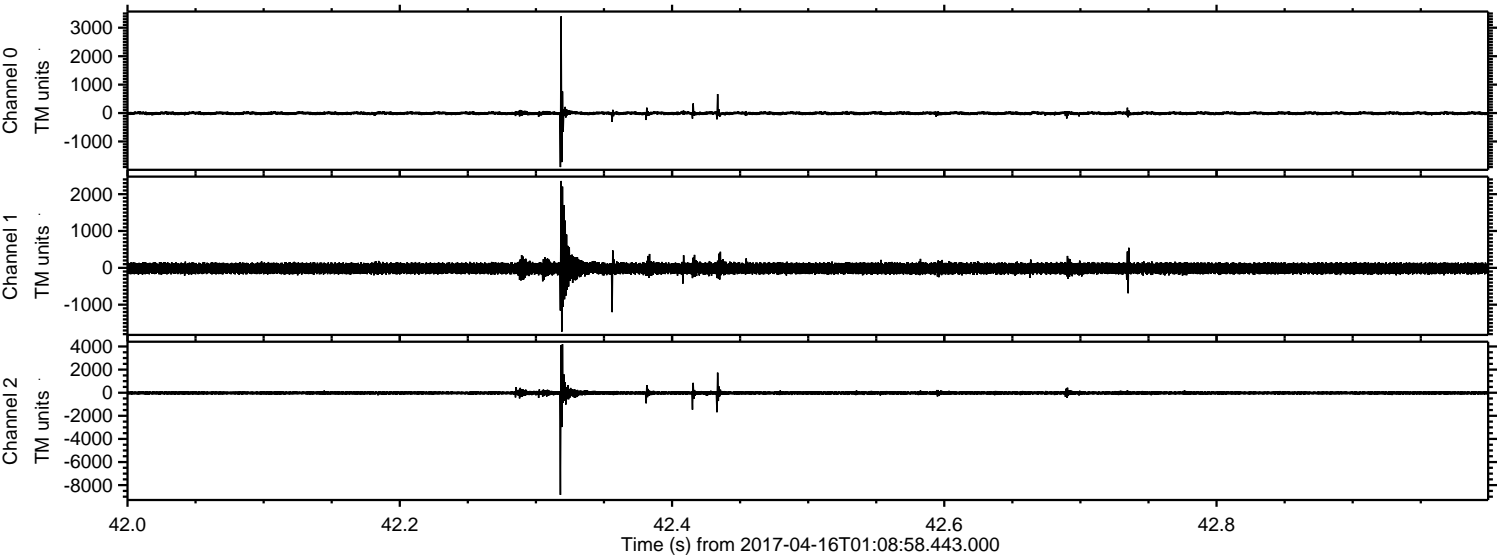
Channel 0  
mn: -3046  
mx: 2315  
 $\mu$ : -8.4  
 $\sigma$ : 37.6

Channel 1  
mn: -1975  
mx: 2846  
 $\mu$ : -15.9  
 $\sigma$ : 85.1

Channel 2  
mn: -7647  
mx: 9799  
 $\mu$ : -20.1  
 $\sigma$ : 104.5



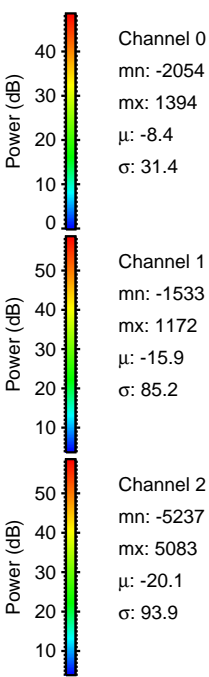
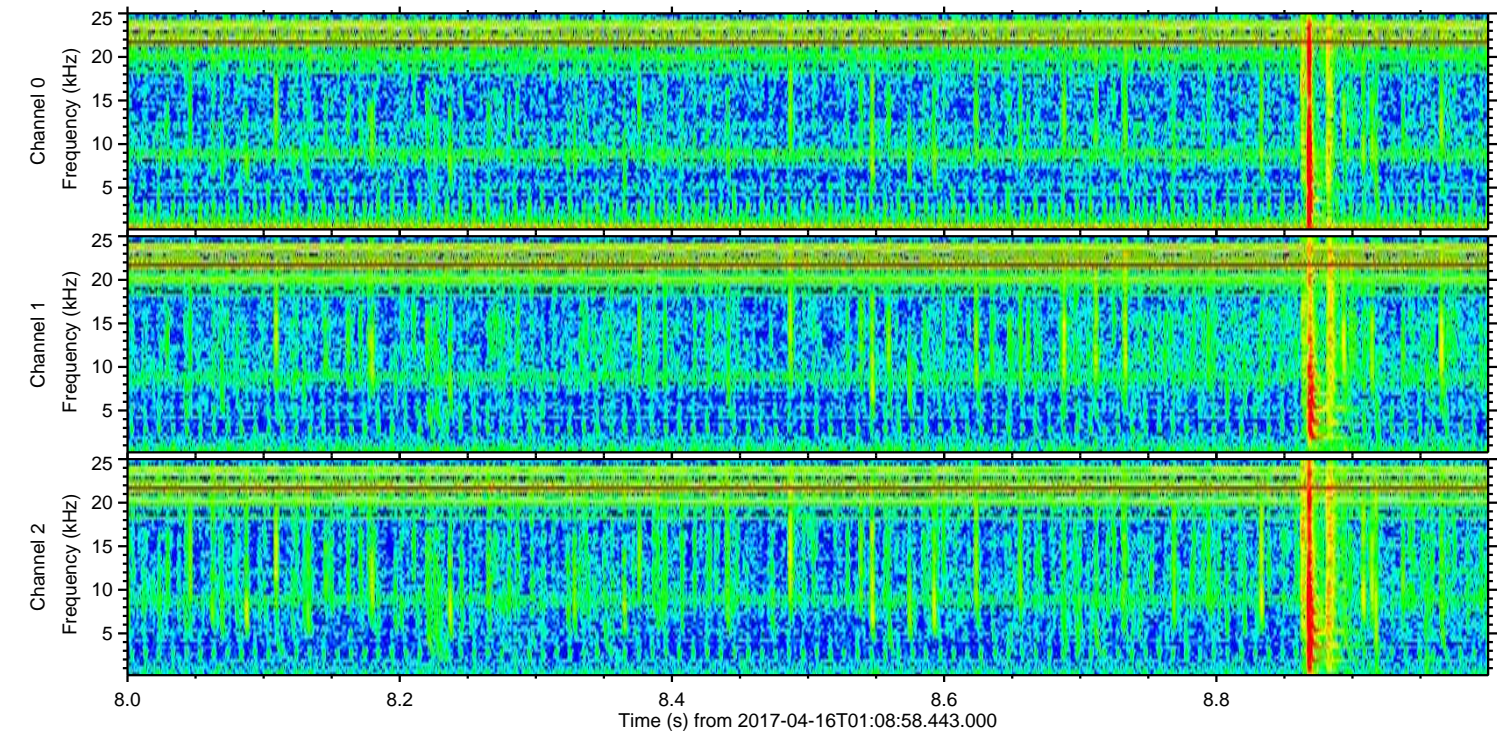
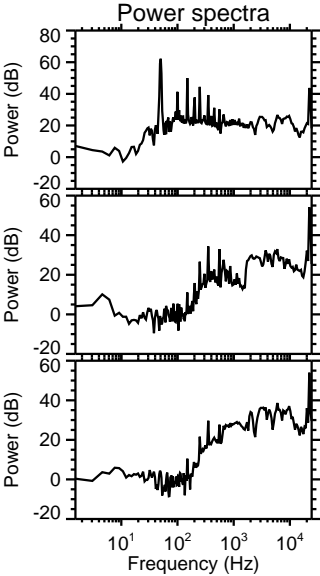
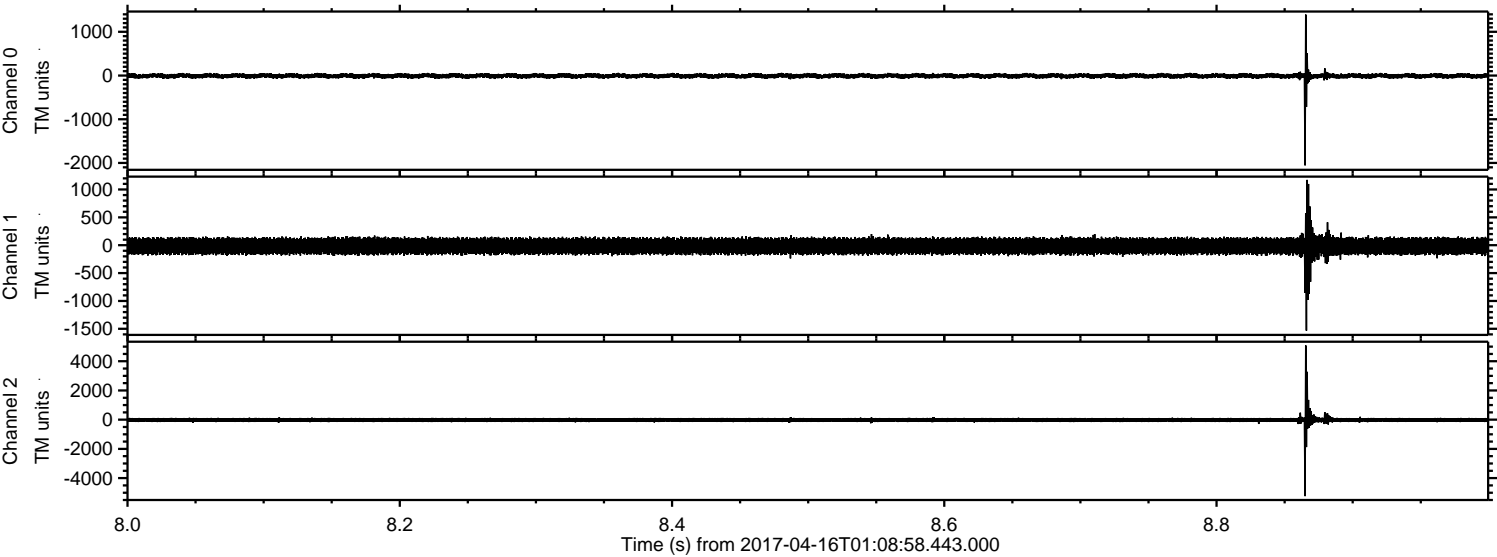
Processed Sun Apr 16 03:16:54 2017 by ELM ver.2012-10-06 from 001\_\_elm20170416\_010857\_\_dat00.bin





ELMAVAN 3D WAVEFORMS (Measured data sampled at 50 kHz) 51000 packets of 144 samples from 2017-04-16T01:08:58.443.000. Part 9/147

Processed Sun Apr 16 03:16:55 2017 by ELM ver.2012-10-06 from 001\_\_elm20170416\_010857\_\_dat00.bin



Channel 0  
mn: -2054  
mx: 1394  
 $\mu$ : -8.4  
 $\sigma$ : 31.4

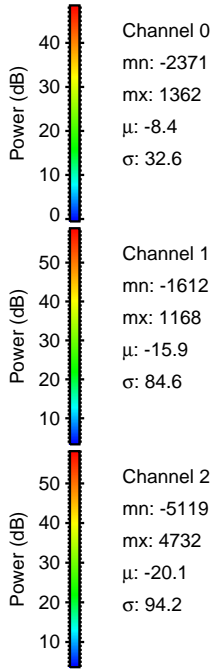
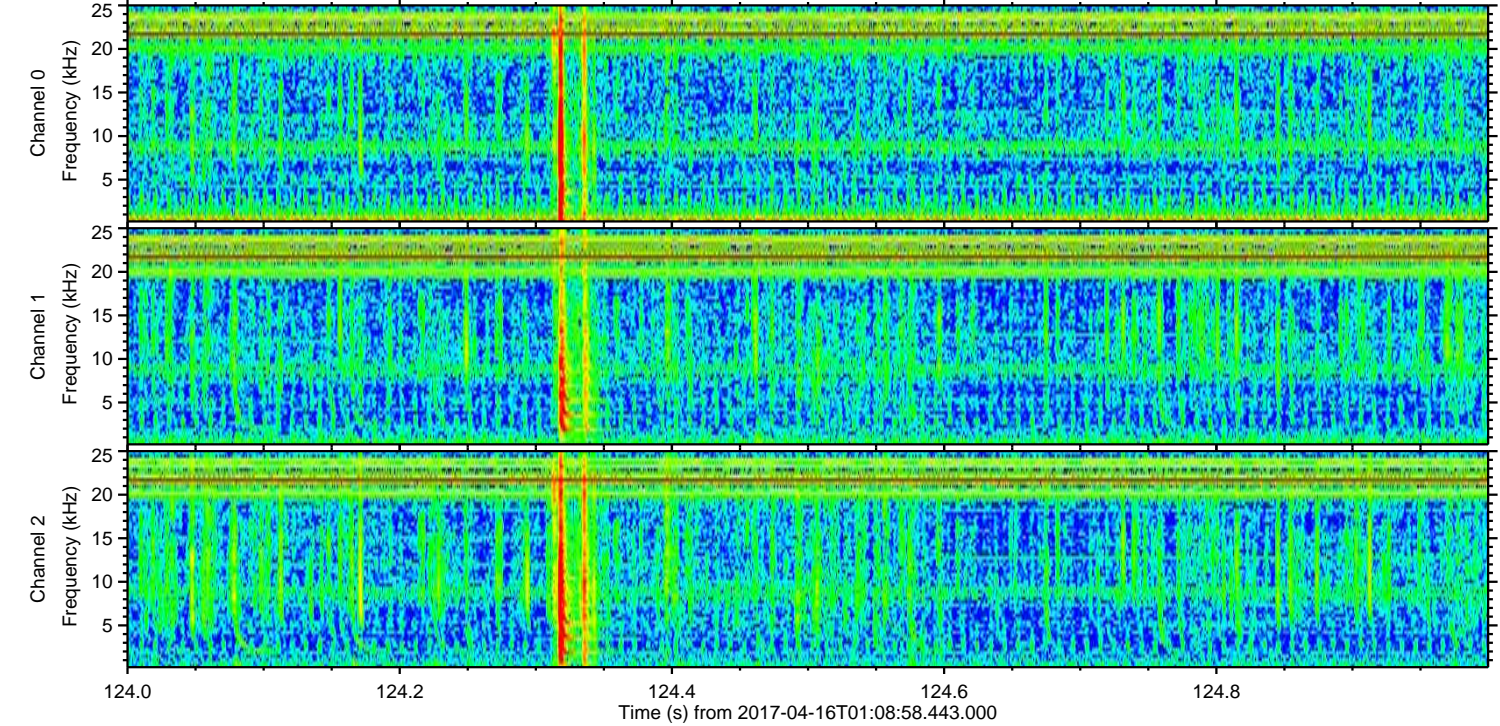
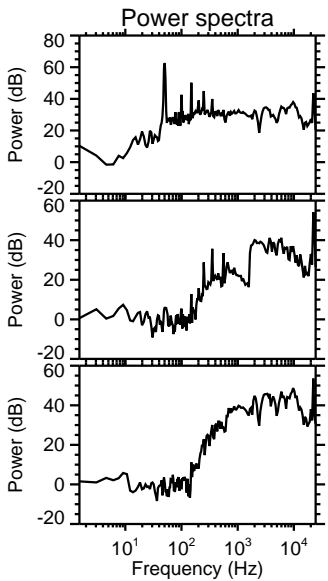
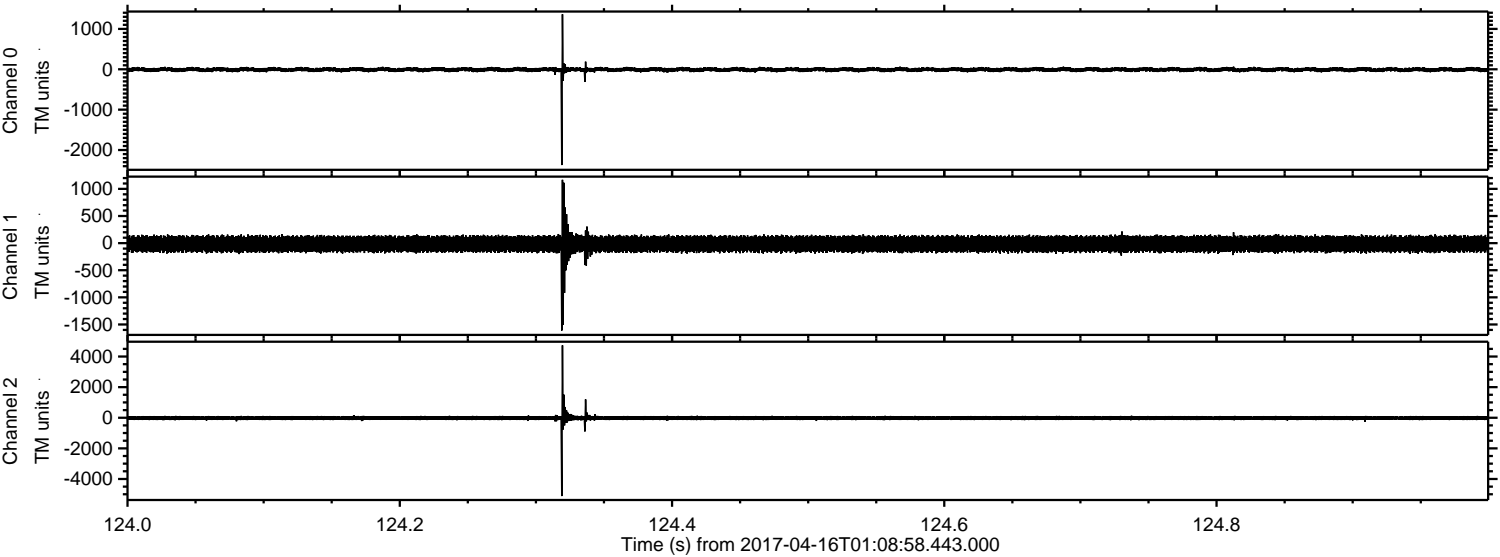
Channel 1  
mn: -1533  
mx: 1172  
 $\mu$ : -15.9  
 $\sigma$ : 85.2

Channel 2  
mn: -5237  
mx: 5083  
 $\mu$ : -20.1  
 $\sigma$ : 93.9



ELMAVAN 3D WAVEFORMS (Measured data sampled at 50 kHz) 51000 packets of 144 samples from 2017-04-16T01:08:58.443.000. Part 125/147

Processed Sun Apr 16 03:16:56 2017 by ELM ver.2012-10-06 from 001\_\_elm20170416\_010857\_\_dat00.bin



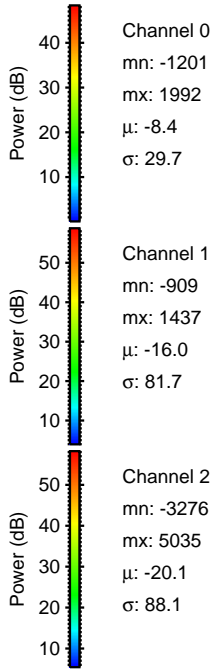
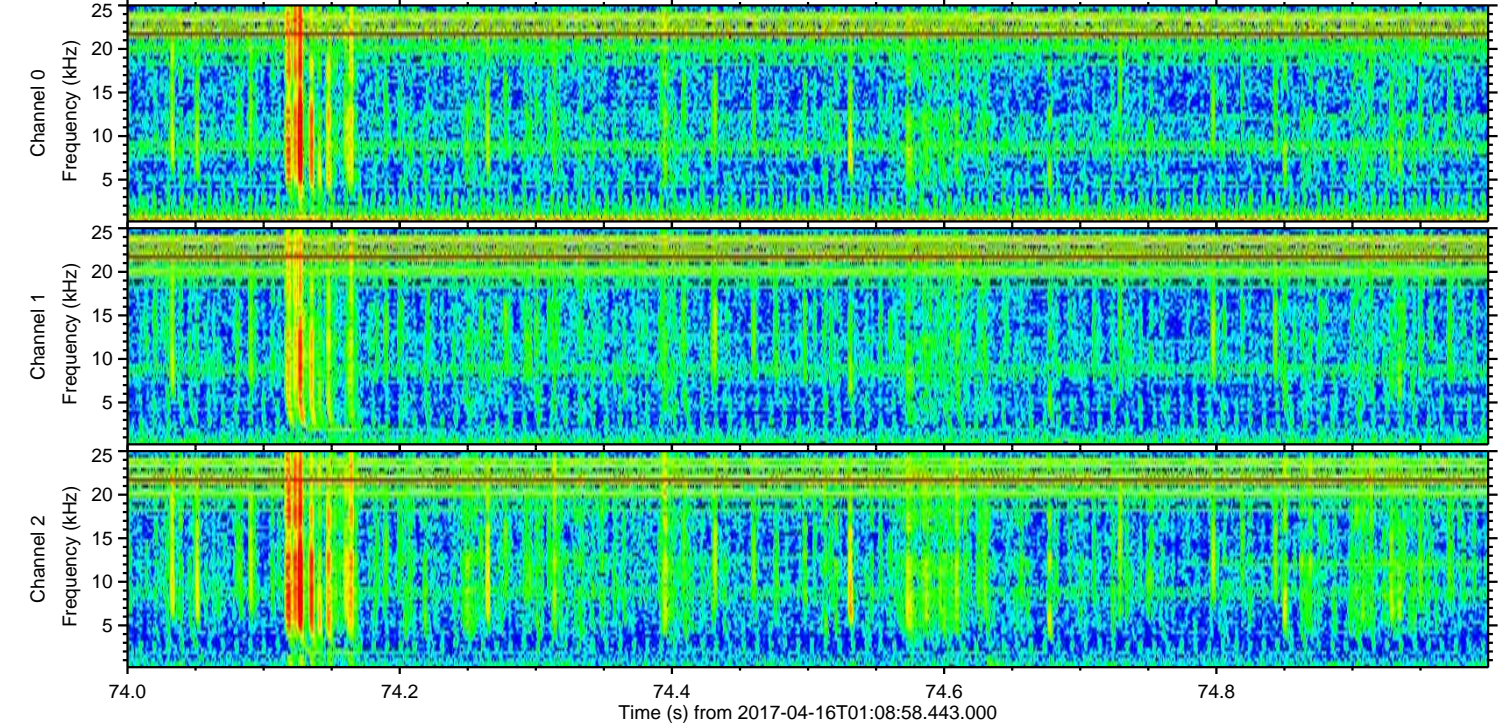
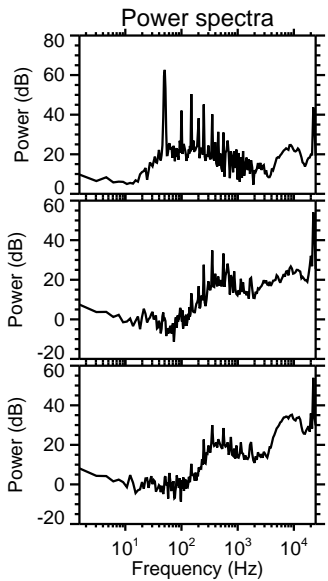
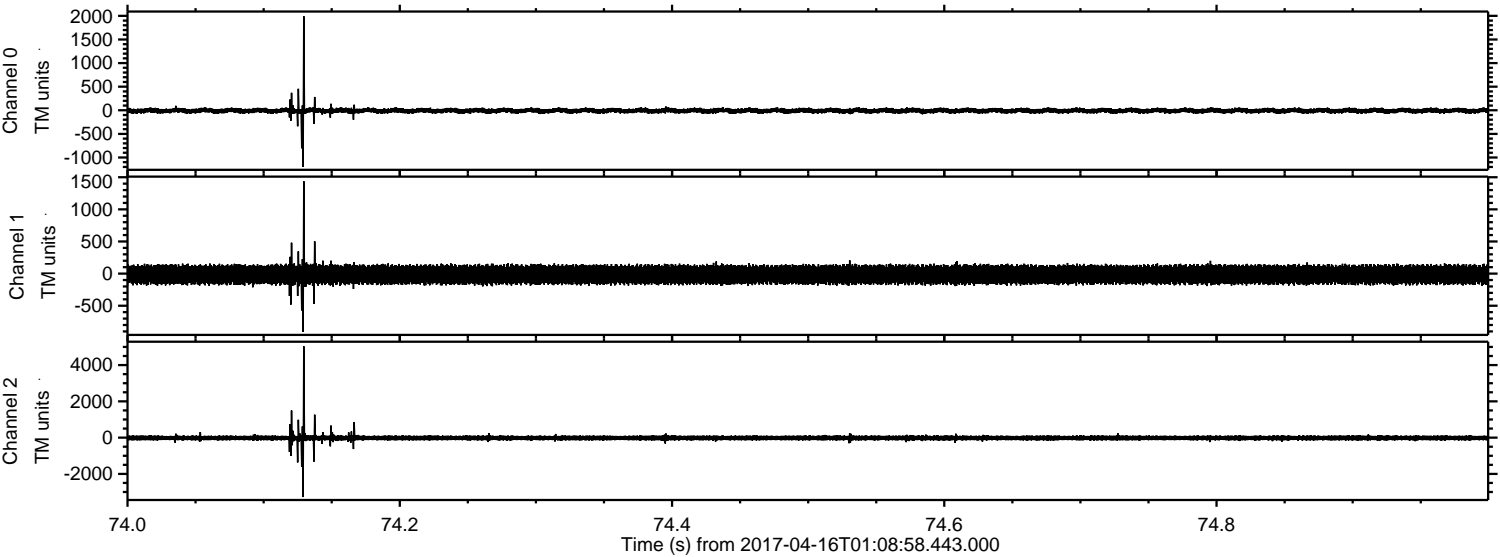
Channel 0  
mn: -2371  
mx: 1362  
 $\mu$ : -8.4  
 $\sigma$ : 32.6

Channel 1  
mn: -1612  
mx: 1168  
 $\mu$ : -15.9  
 $\sigma$ : 84.6

Channel 2  
mn: -5119  
mx: 4732  
 $\mu$ : -20.1  
 $\sigma$ : 94.2

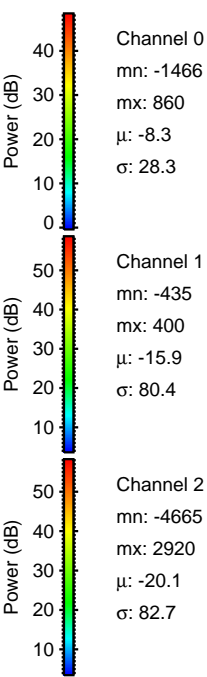
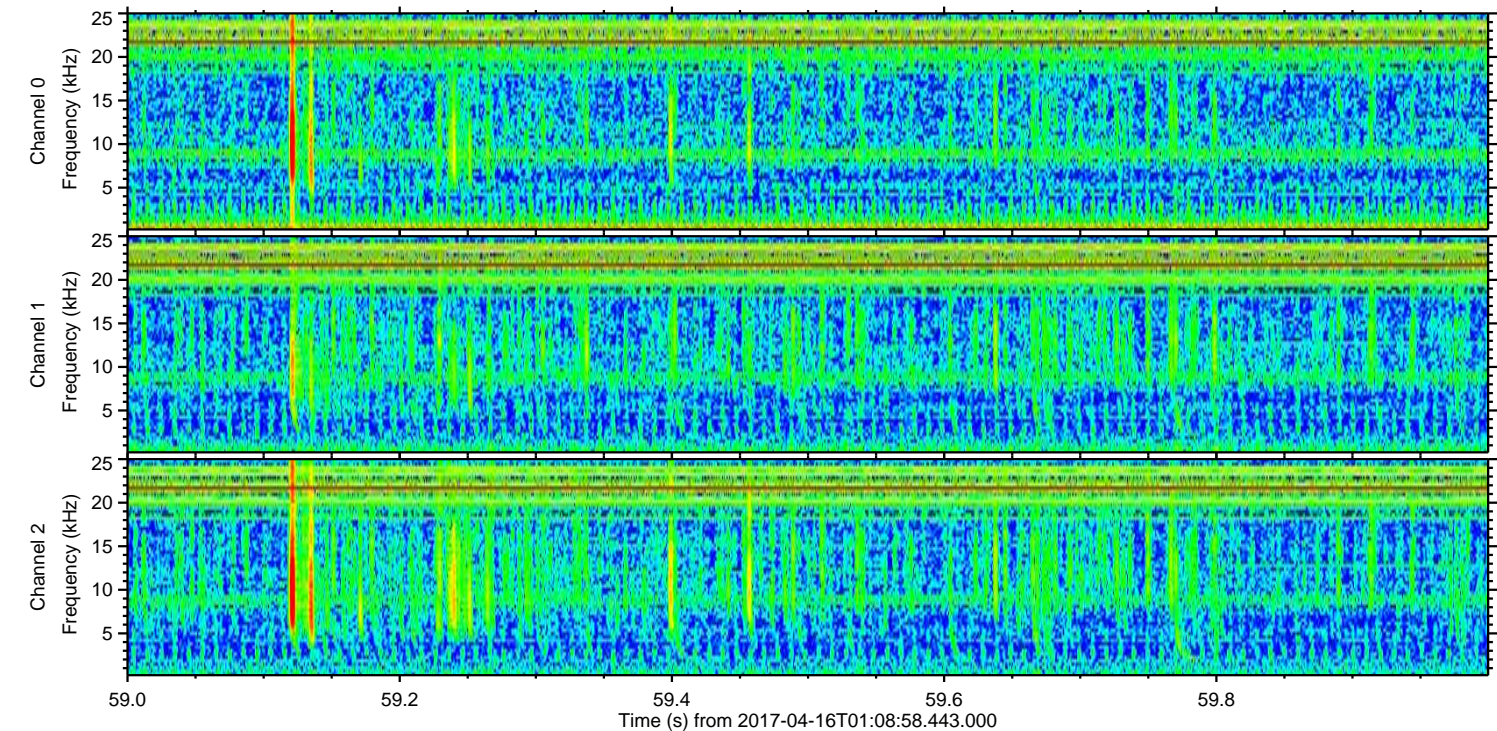
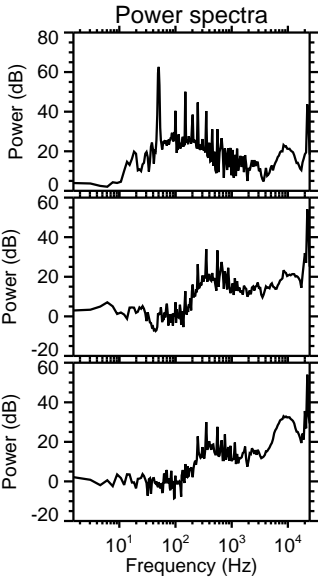
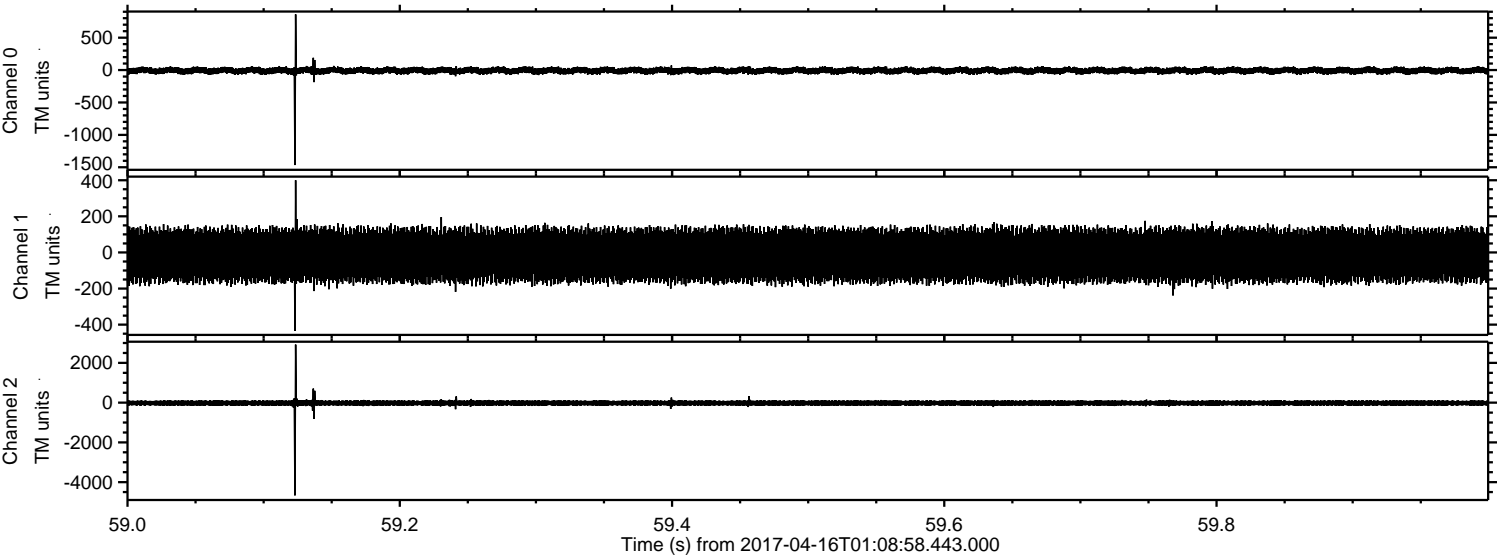


Processed Sun Apr 16 03:16:57 2017 by ELM ver.2012-10-06 from 001\_\_elm20170416\_010857\_\_dat00.bin





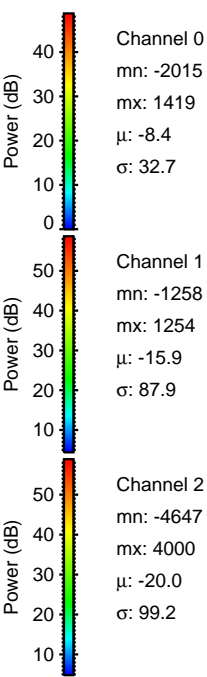
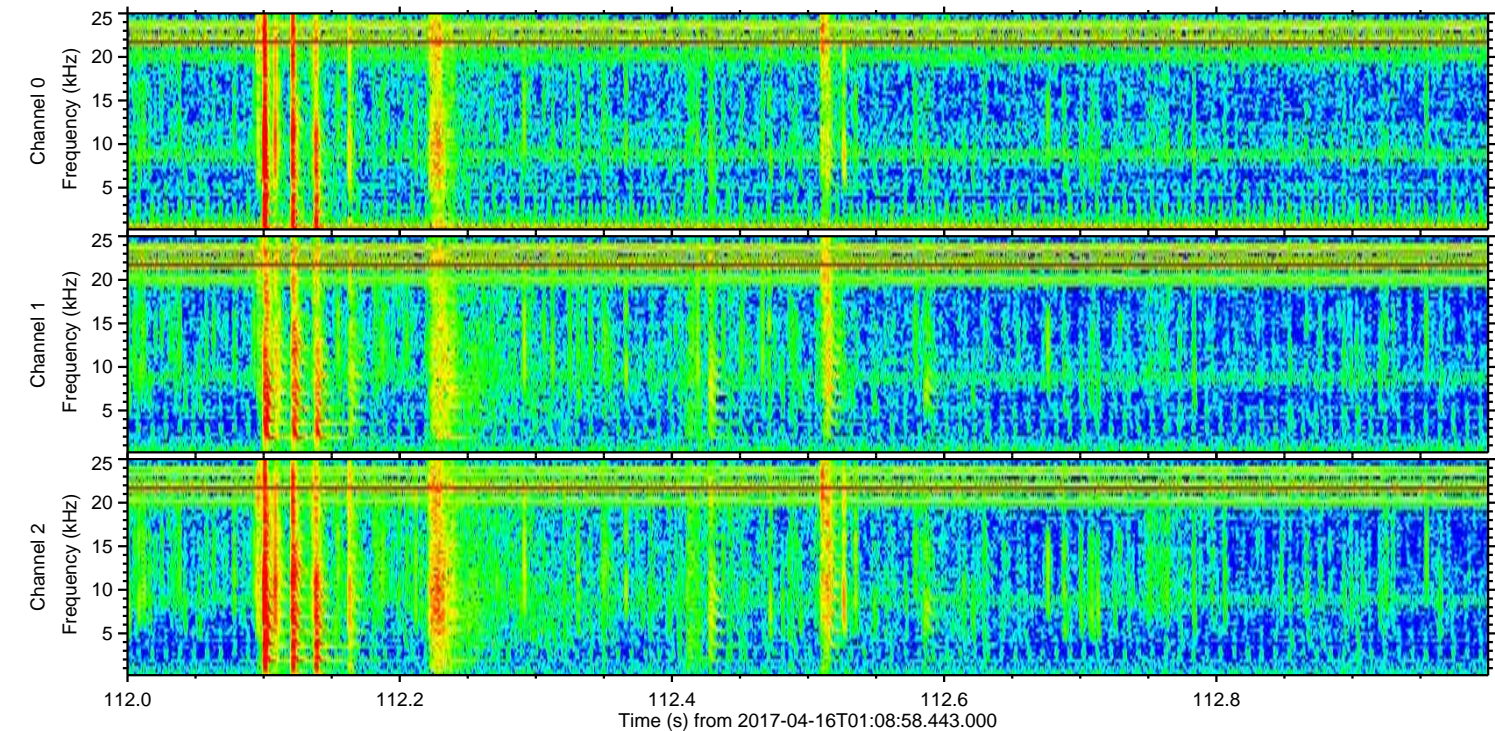
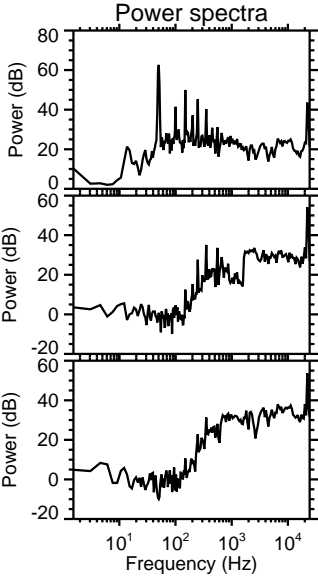
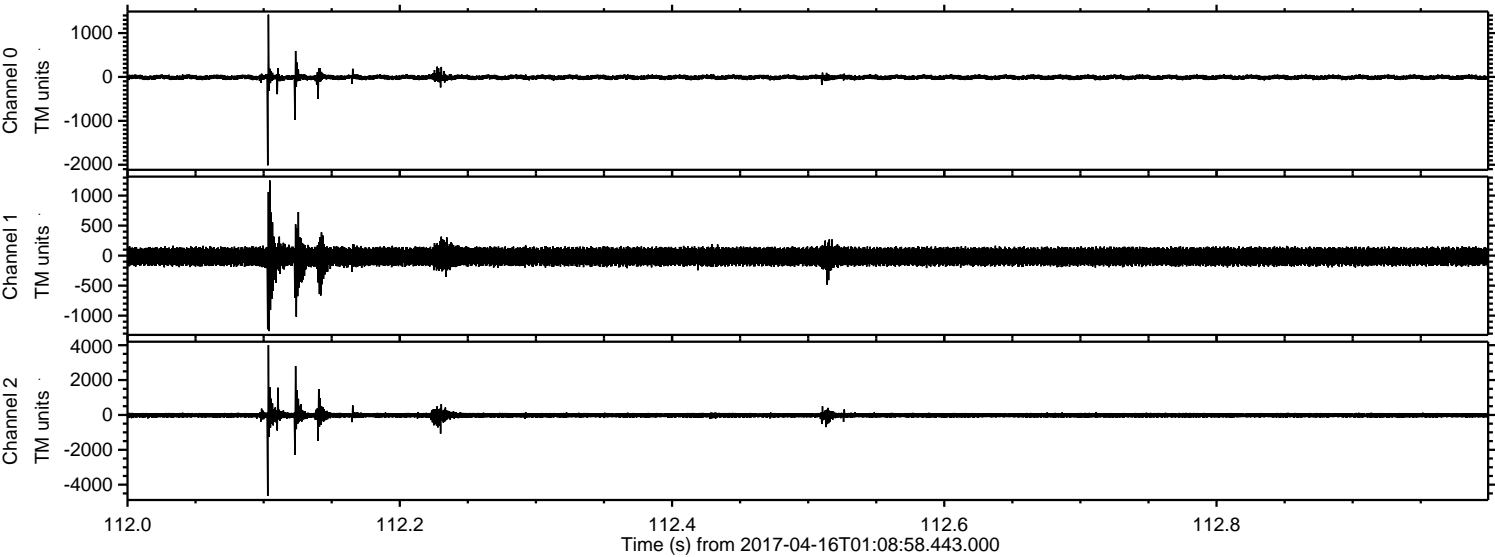
Processed Sun Apr 16 03:16:58 2017 by ELM ver.2012-10-06 from 001\_\_elm20170416\_010857\_\_dat00.bin





ELMAVAN 3D WAVEFORMS (Measured data sampled at 50 kHz) 51000 packets of 144 samples from 2017-04-16T01:08:58.443.000. Part 113/147

Processed Sun Apr 16 03:16:59 2017 by ELM ver.2012-10-06 from 001\_\_elm20170416\_010857\_\_dat00.bin



Channel 0  
mn: -2015  
mx: 1419  
 $\mu$ : -8.4  
 $\sigma$ : 32.7

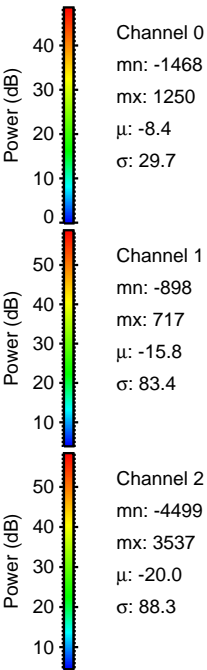
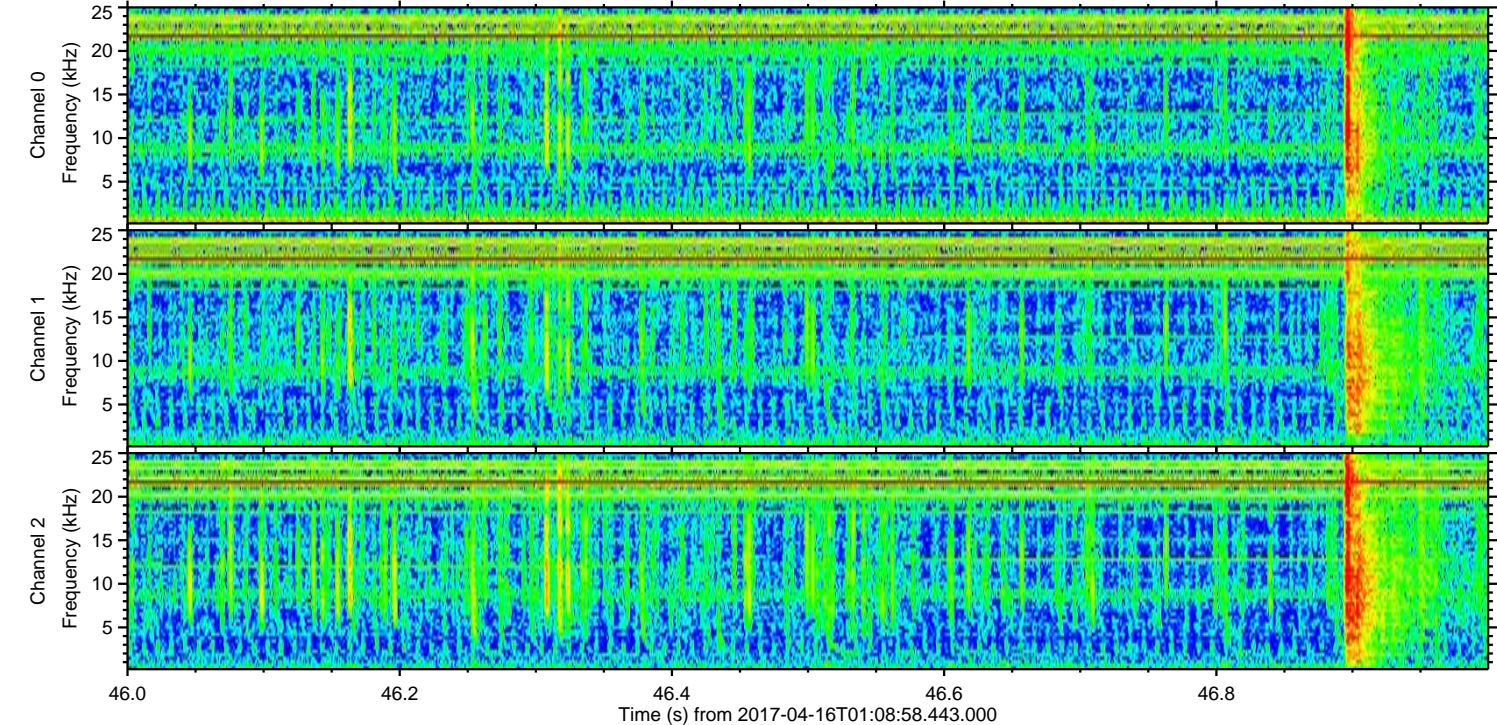
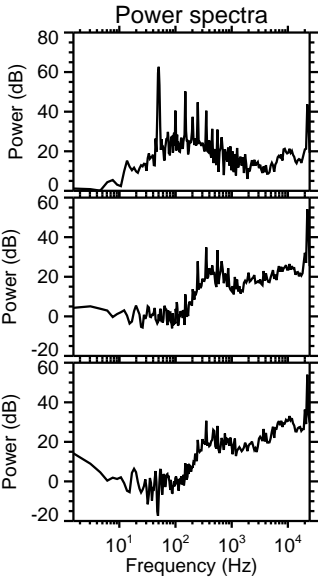
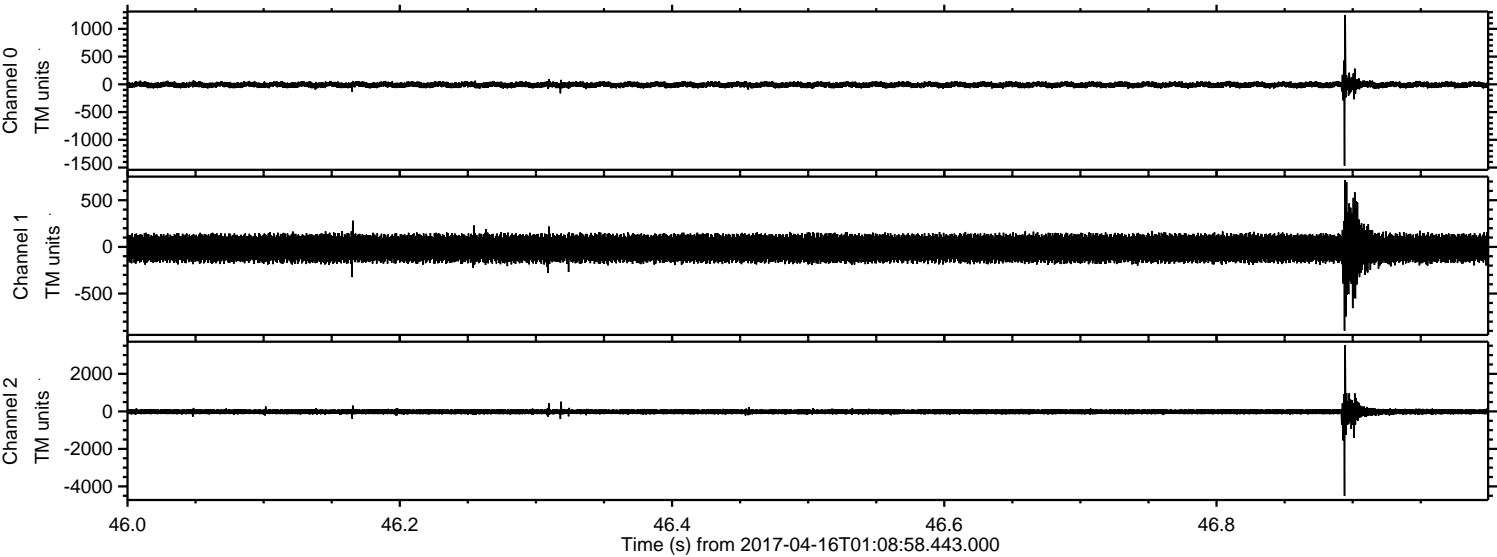
Channel 1  
mn: -1258  
mx: 1254  
 $\mu$ : -15.9  
 $\sigma$ : 87.9

Channel 2  
mn: -4647  
mx: 4000  
 $\mu$ : -20.0  
 $\sigma$ : 99.2



ELMAVAN 3D WAVEFORMS (Measured data sampled at 50 kHz) 51000 packets of 144 samples from 2017-04-16T01:08:58.443.000. Part 47/147

Processed Sun Apr 16 03:17:00 2017 by ELM ver.2012-10-06 from 001\_\_elm20170416\_010857\_\_dat00.bin



Channel 0  
mn: -1468  
mx: 1250  
 $\mu$ : -8.4  
 $\sigma$ : 29.7

Channel 1  
mn: -898  
mx: 717  
 $\mu$ : -15.8  
 $\sigma$ : 83.4

Channel 2  
mn: -4499  
mx: 3537  
 $\mu$ : -20.0  
 $\sigma$ : 88.3



ELMAVAN 3D WAVEFORMS (Measured data sampled at 50 kHz) 51000 packets of 144 samples from 2017-04-16T01:08:58.443.000. Part 76/147

Processed Sun Apr 16 03:17:01 2017 by ELM ver.2012-10-06 from 001\_\_elm20170416\_010857\_\_dat00.bin

