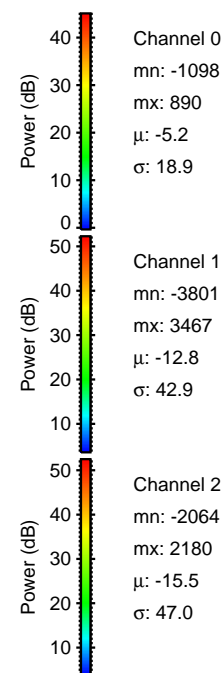
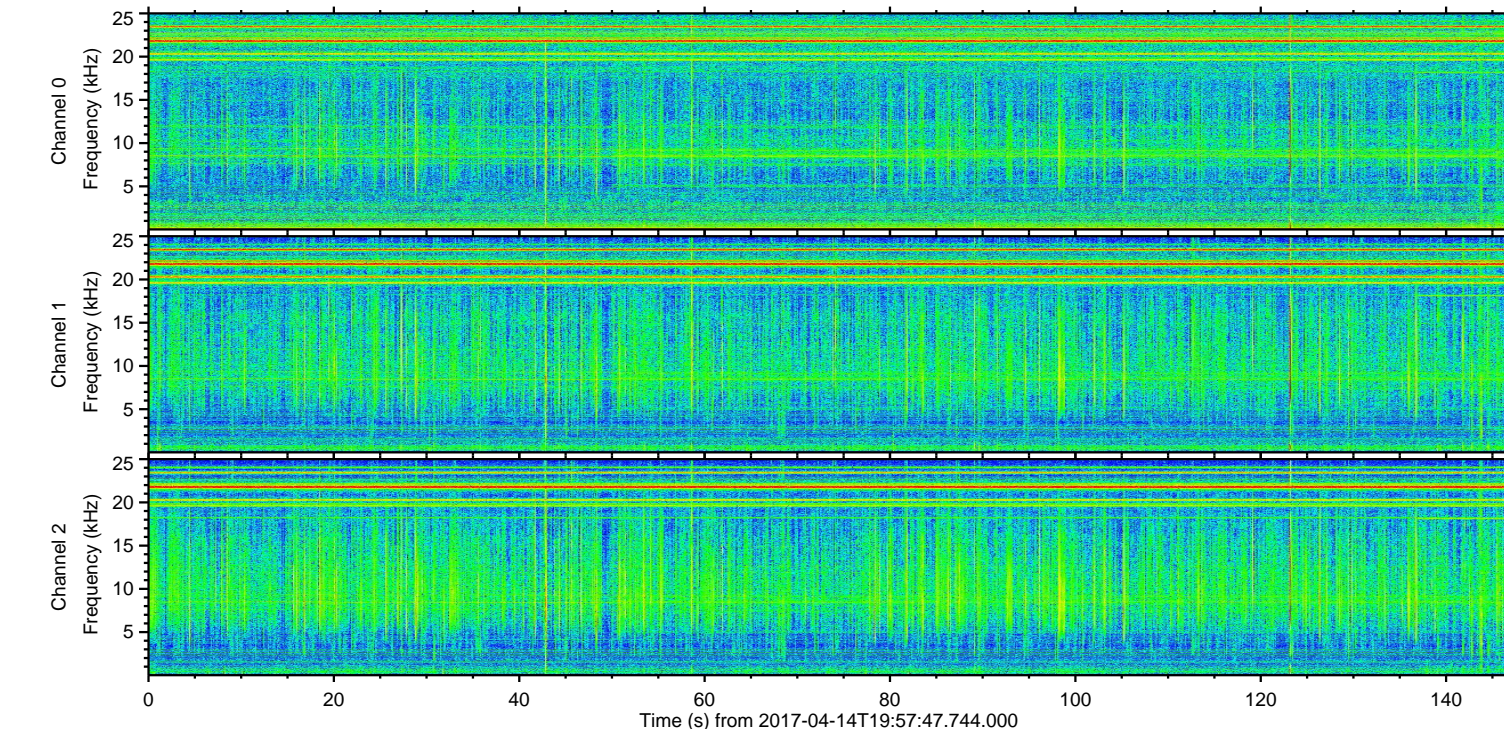
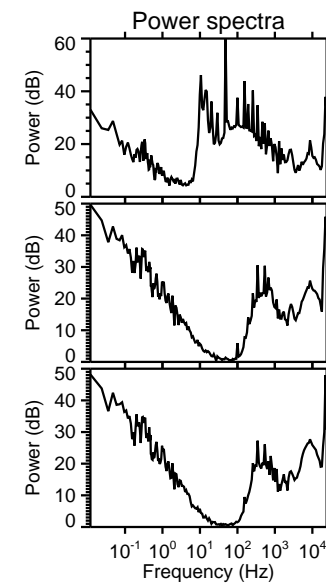
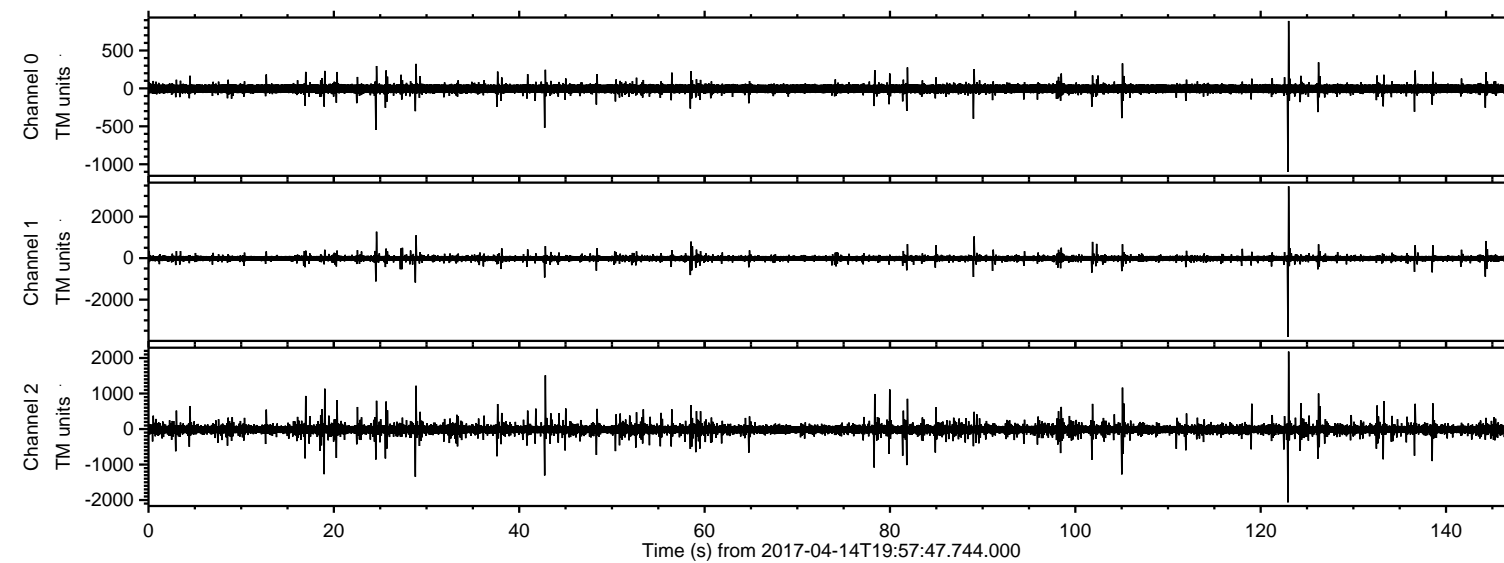


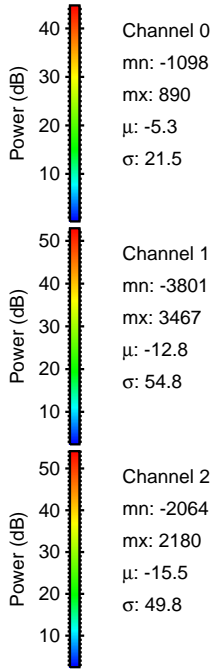
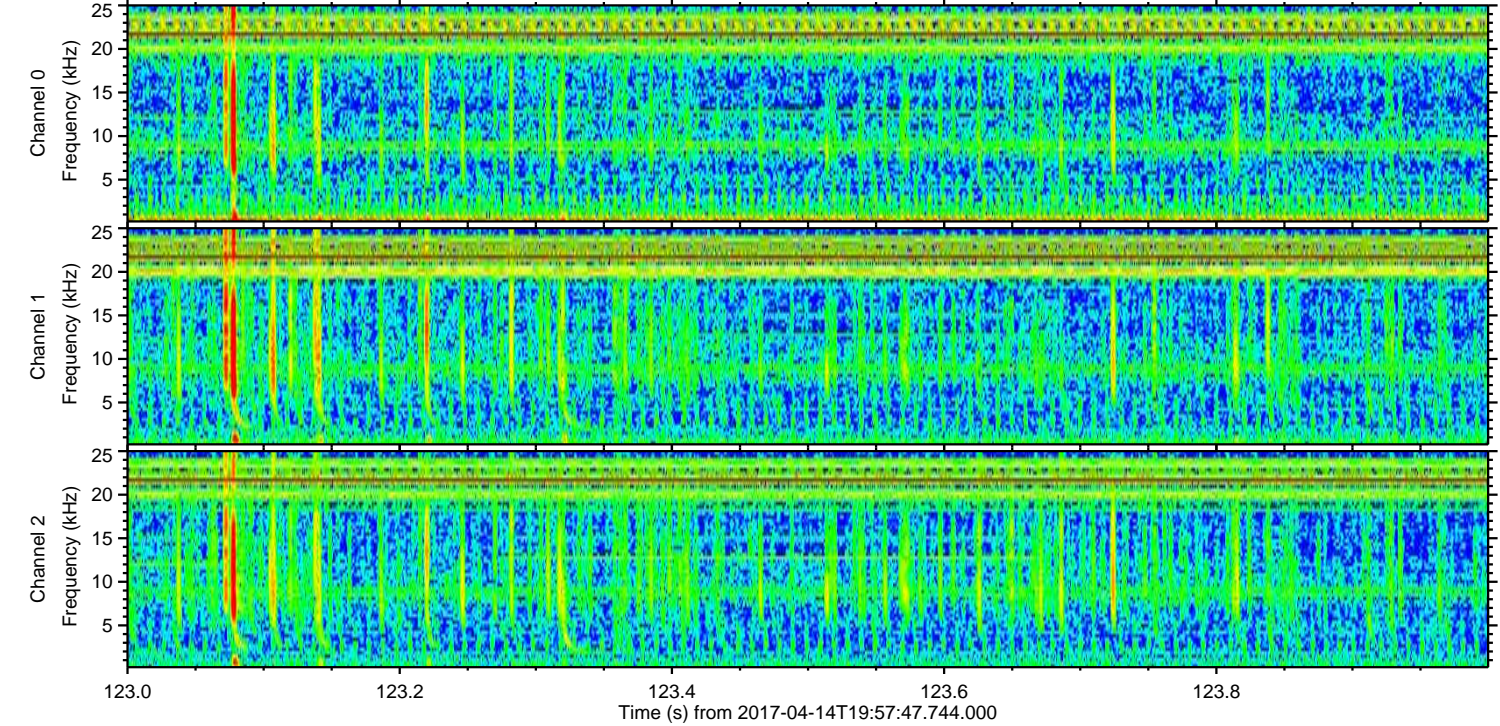
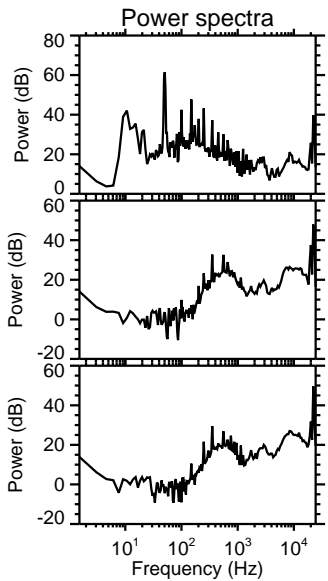
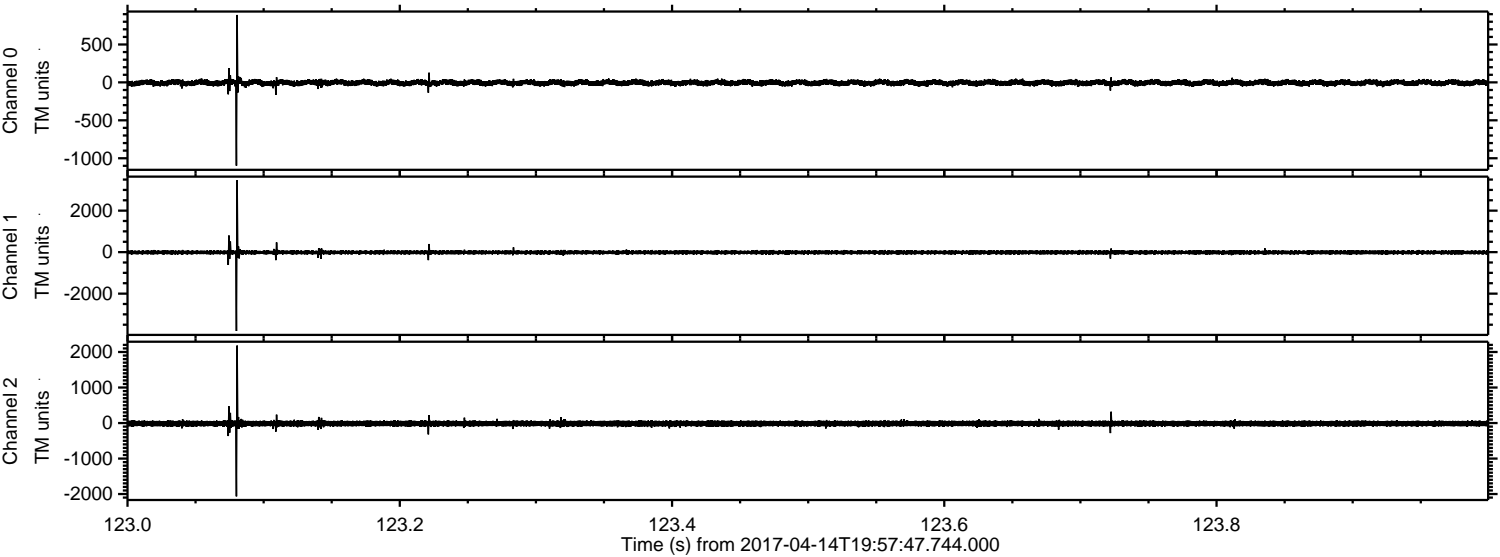
ELMAVAN 3D WAVEFORMS (Measured data sampled at 50 kHz) 51000 packets of 144 samples from 2017-04-14T19:57:47.744.000.

Processed Fri Apr 14 22:05:49 2017 by ELM ver.2012-10-06 from 001__elm20170414_195746__dat00.bin



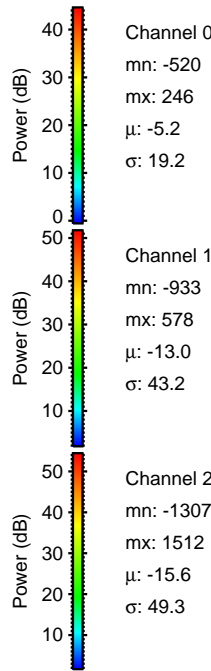
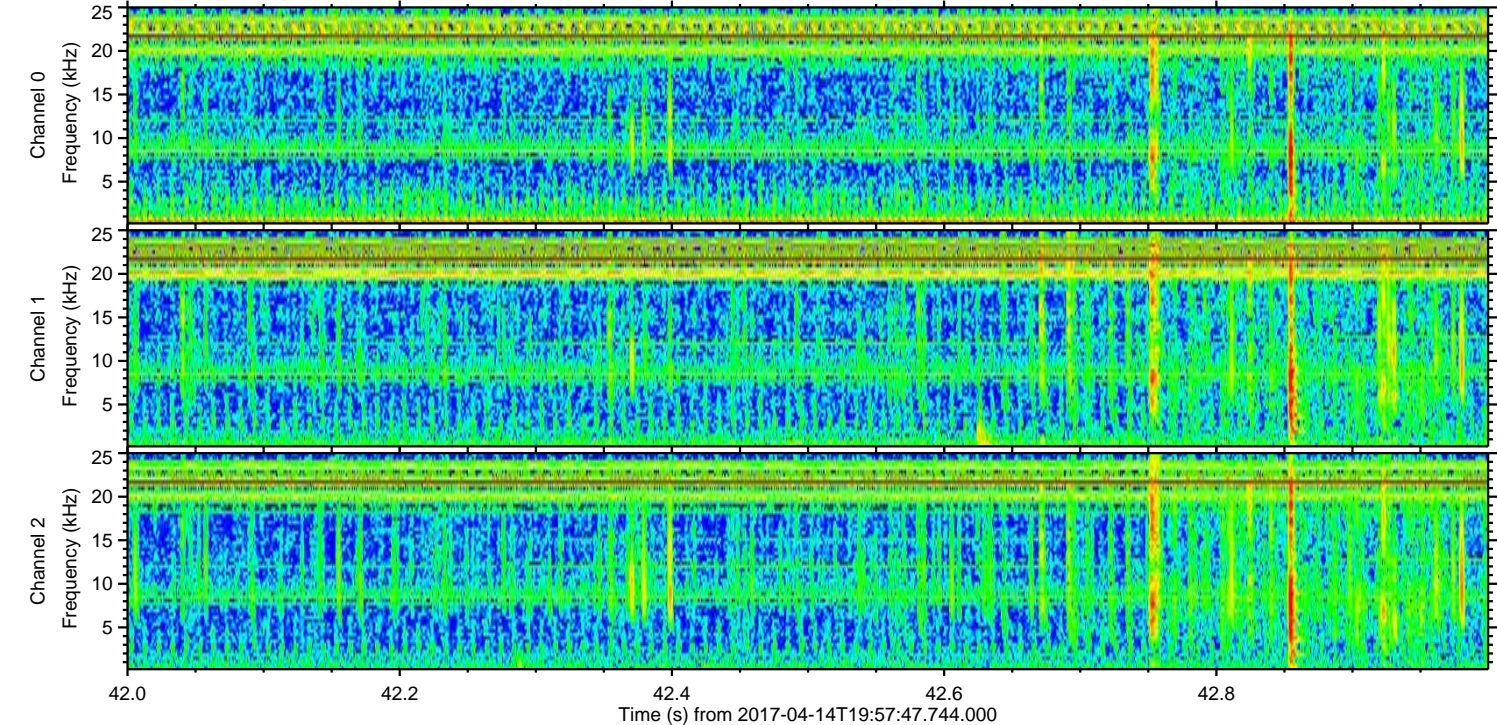
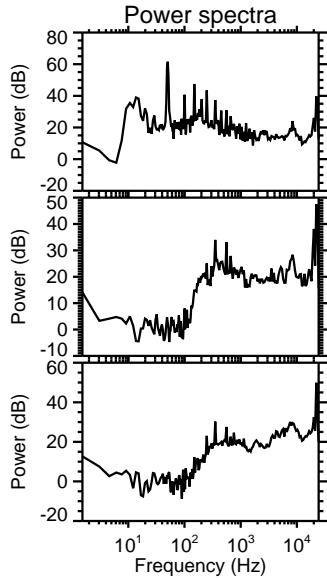
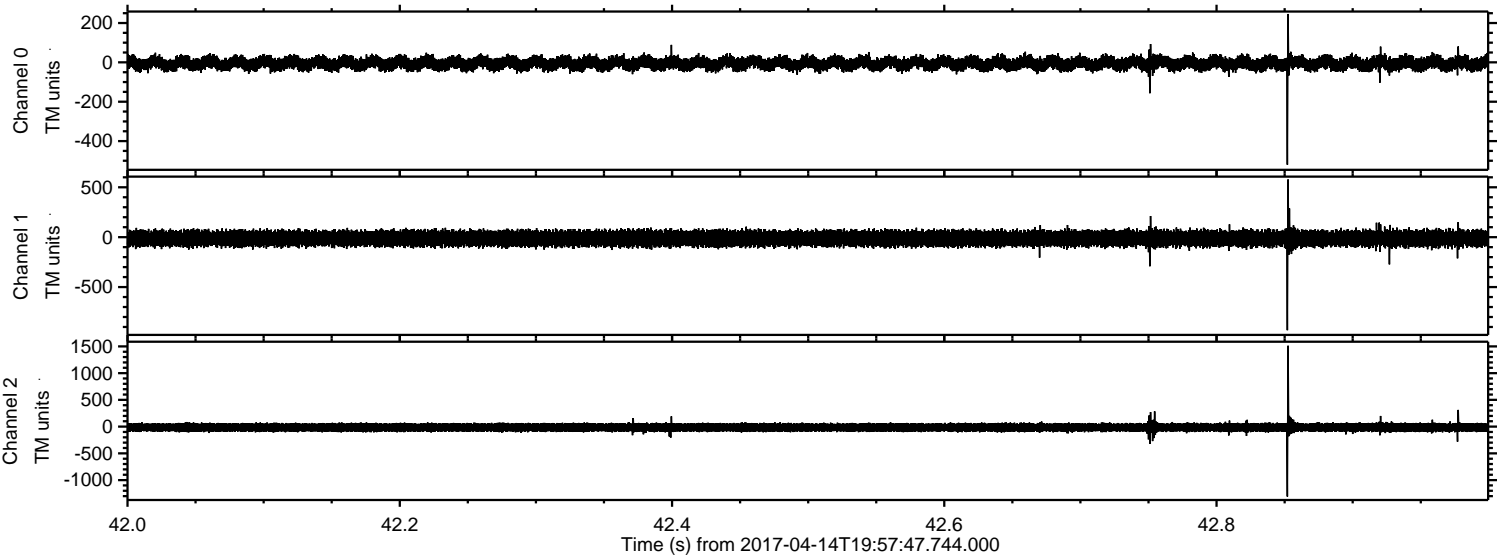
ELMAVAN 3D WAVEFORMS (Measured data sampled at 50 kHz) 51000 packets of 144 samples from 2017-04-14T19:57:47.744.000. Part 124/147

Processed Fri Apr 14 22:06:00 2017 by ELM ver.2012-10-06 from 001__elm20170414_195746__dat00.bin



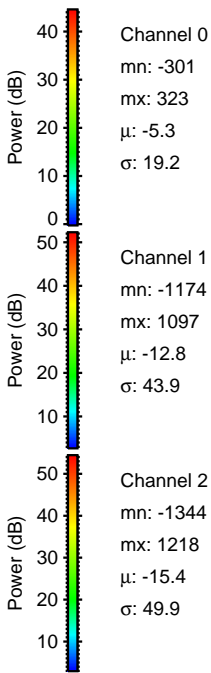
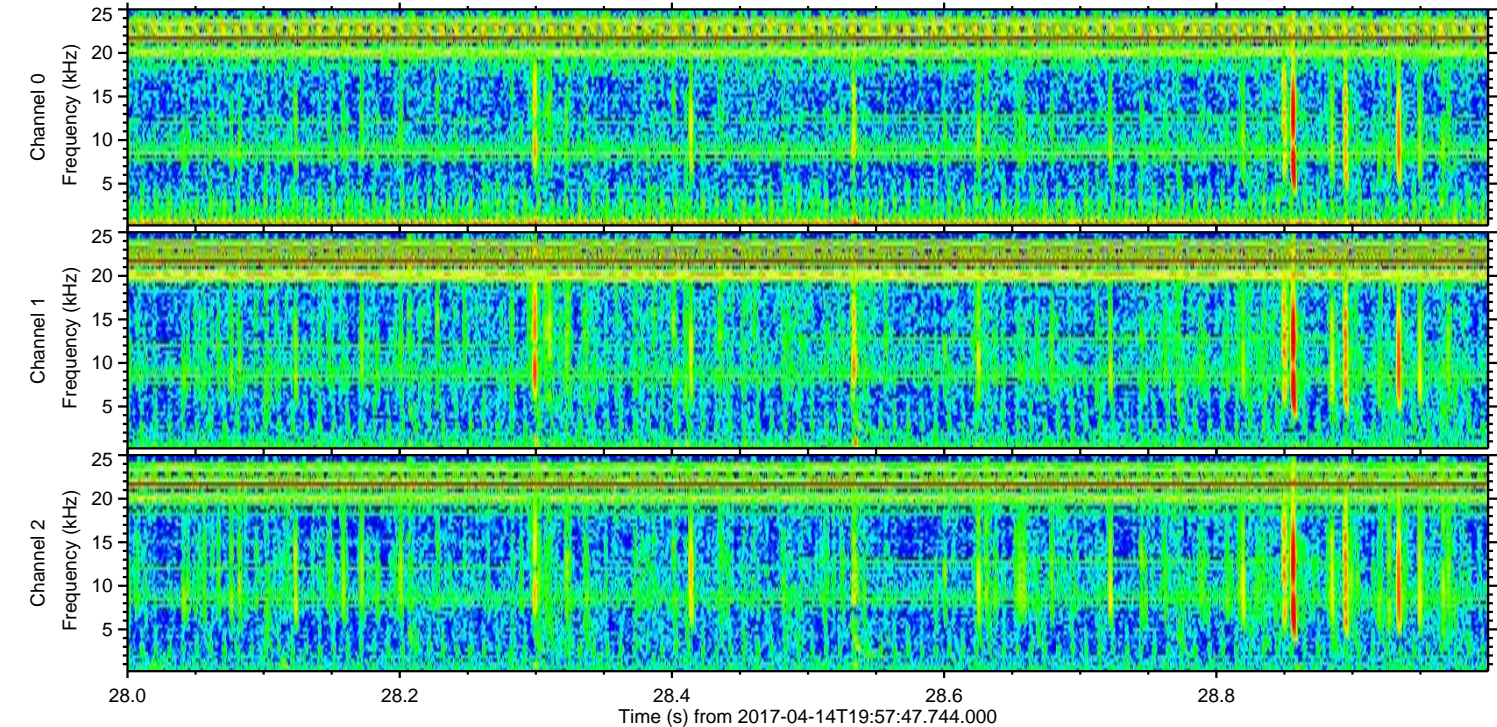
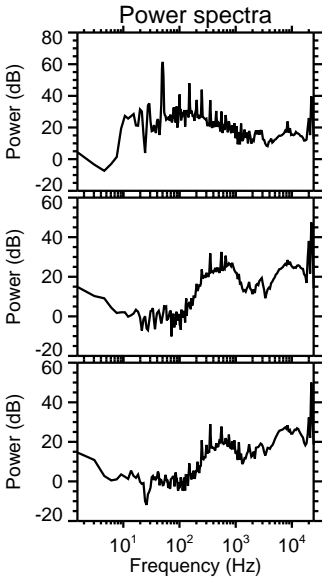
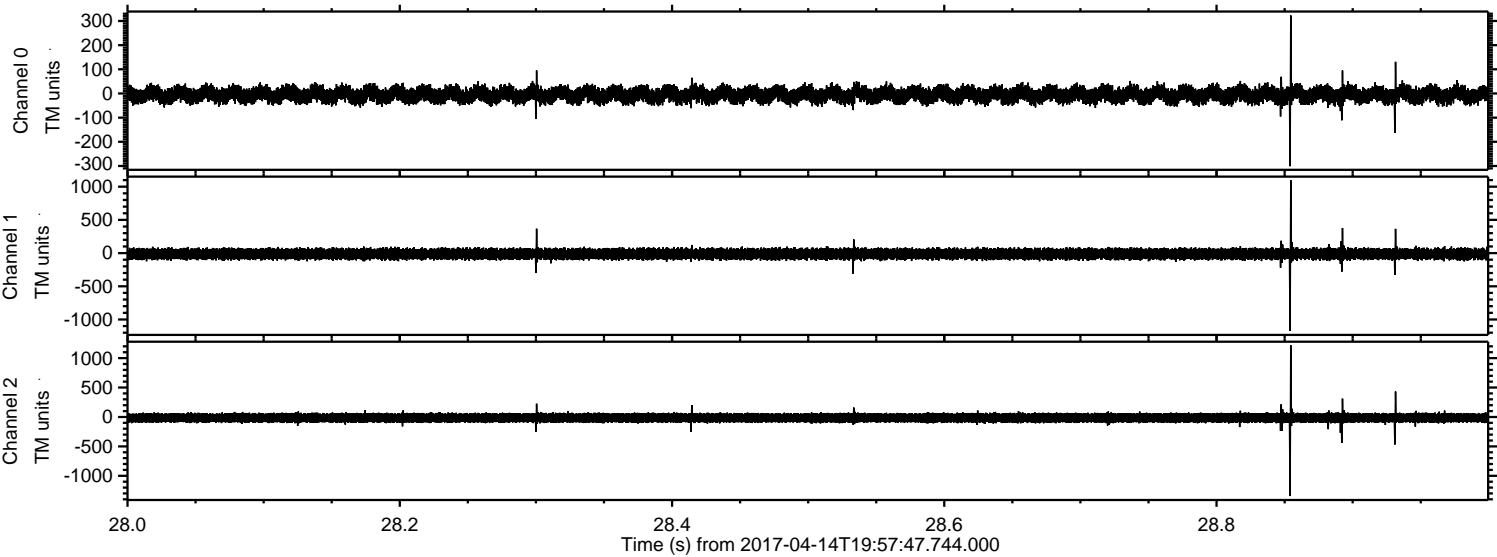
ELMAVAN 3D WAVEFORMS (Measured data sampled at 50 kHz) 51000 packets of 144 samples from 2017-04-14T19:57:47.744.000. Part 43/147

Processed Fri Apr 14 22:06:01 2017 by ELM ver.2012-10-06 from 001__elm20170414_195746__dat00.bin



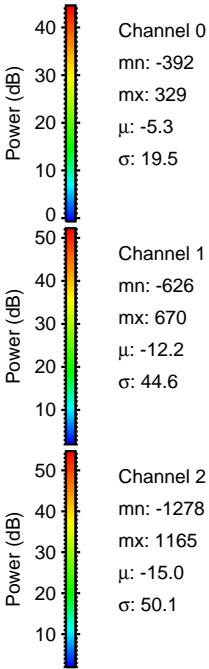
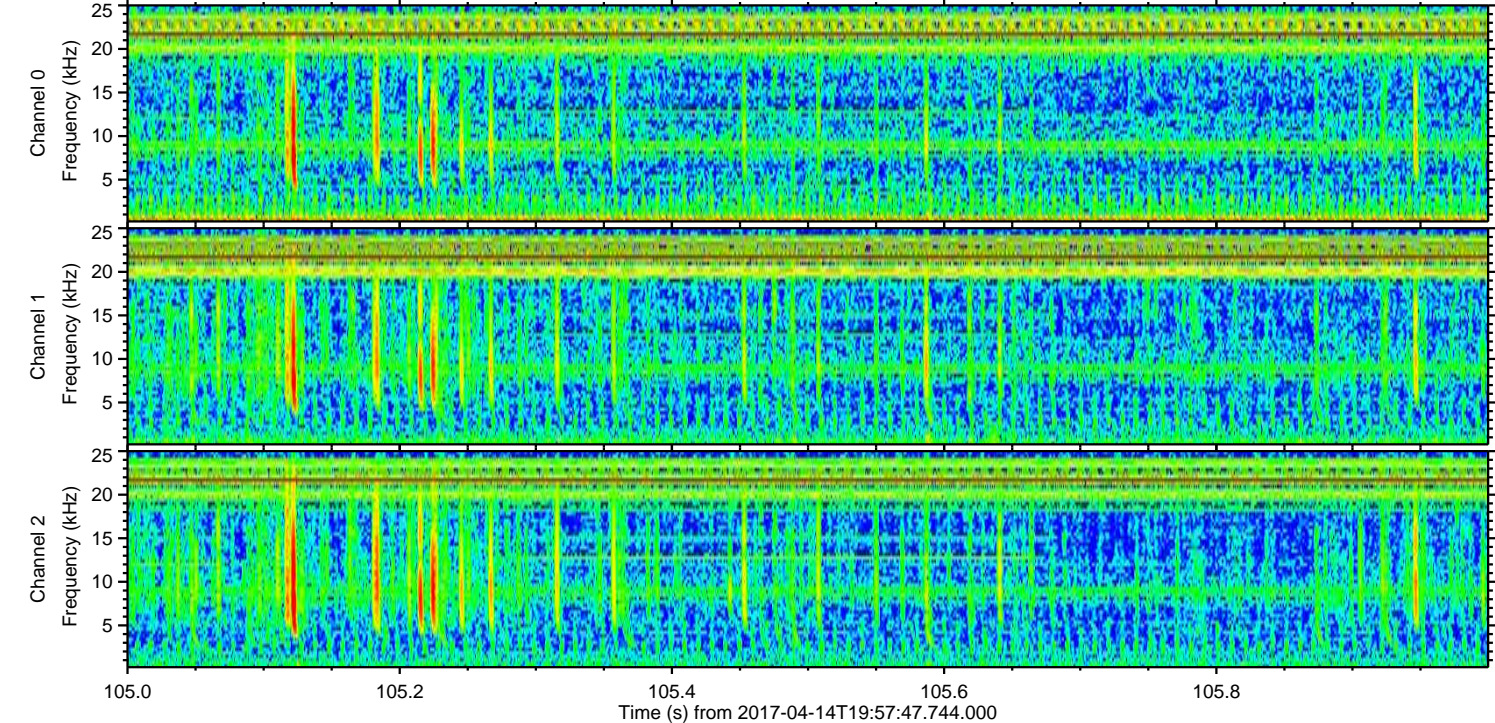
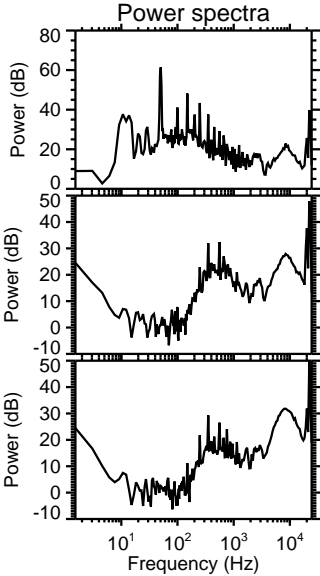
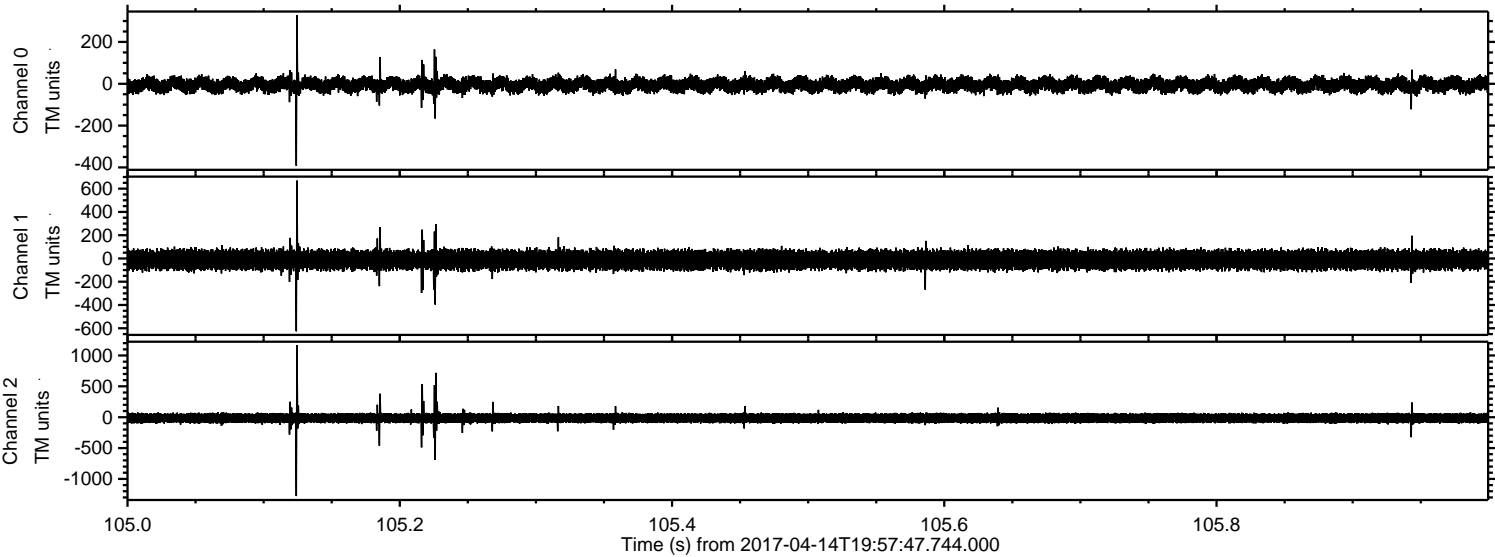
ELMAVAN 3D WAVEFORMS (Measured data sampled at 50 kHz) 51000 packets of 144 samples from 2017-04-14T19:57:47.744.000. Part 29/147

Processed Fri Apr 14 22:06:02 2017 by ELM ver.2012-10-06 from 001__elm20170414_195746__dat00.bin

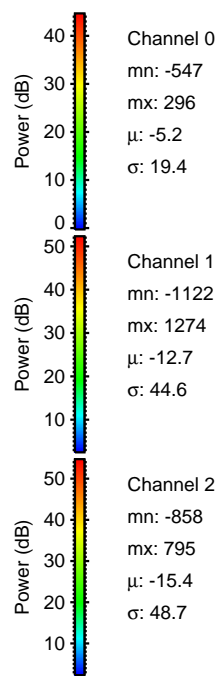
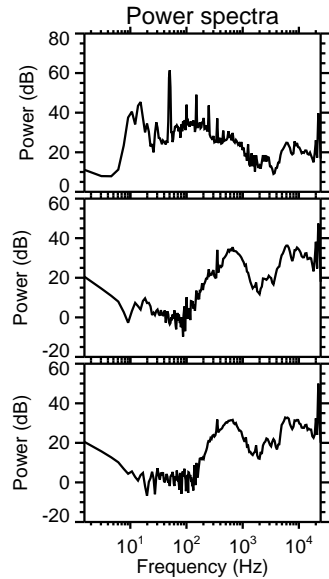
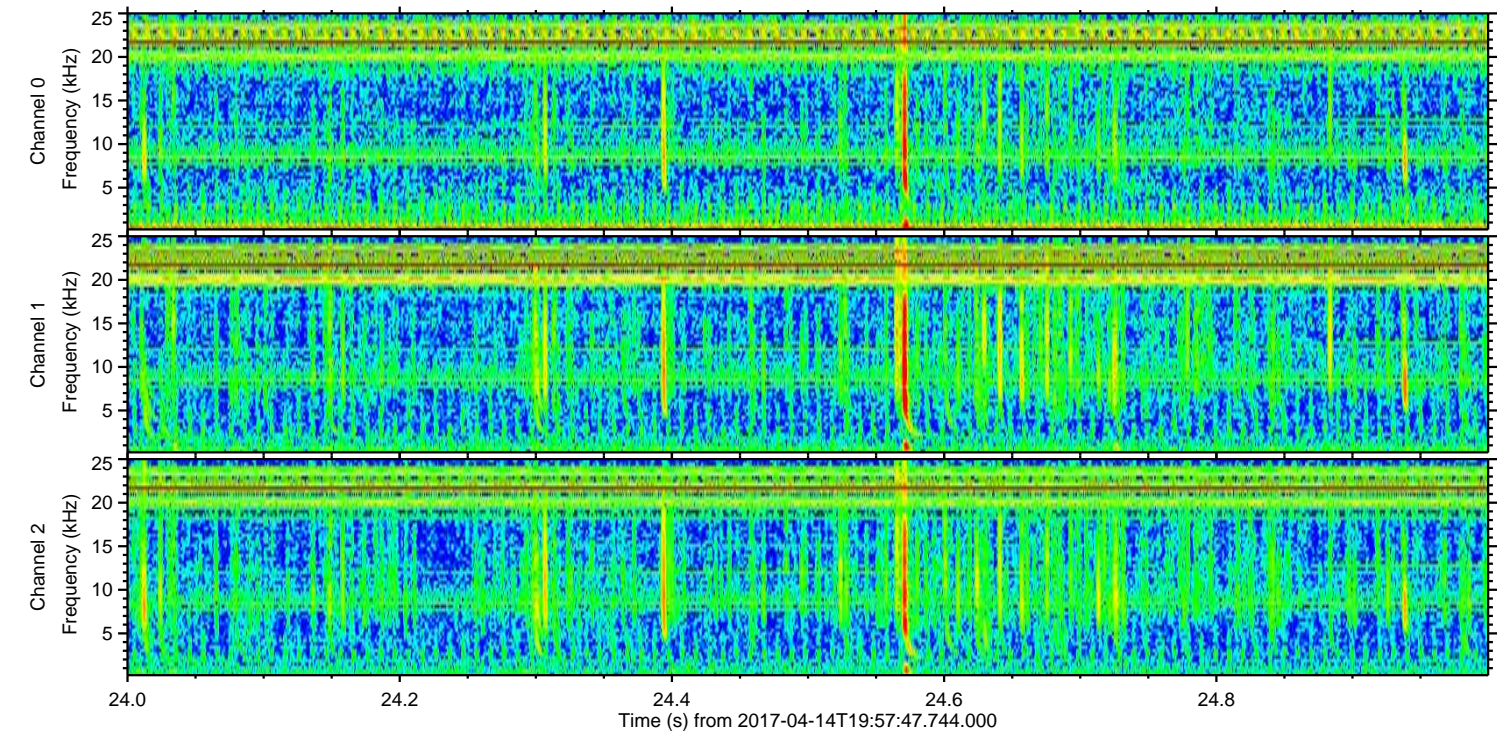
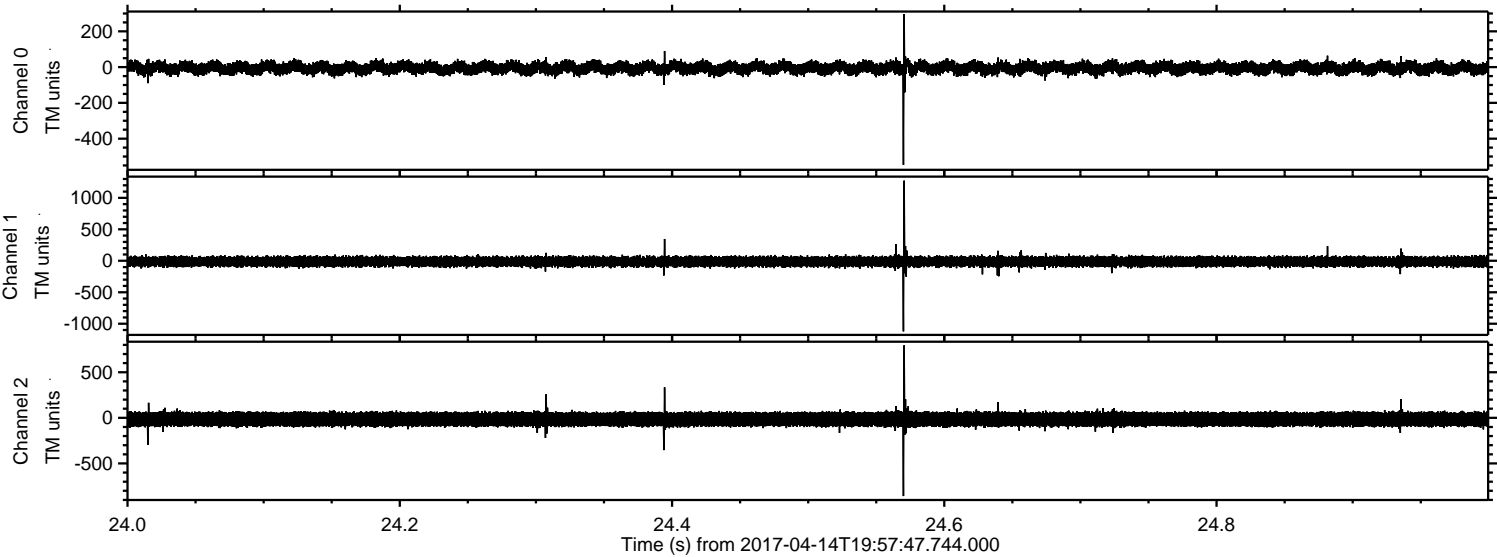


ELMAVAN 3D WAVEFORMS (Measured data sampled at 50 kHz) 51000 packets of 144 samples from 2017-04-14T19:57:47.744.000. Part 106/147

Processed Fri Apr 14 22:06:03 2017 by ELM ver.2012-10-06 from 001__elm20170414_195746__dat00.bin

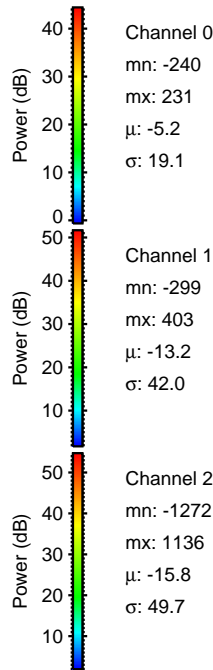
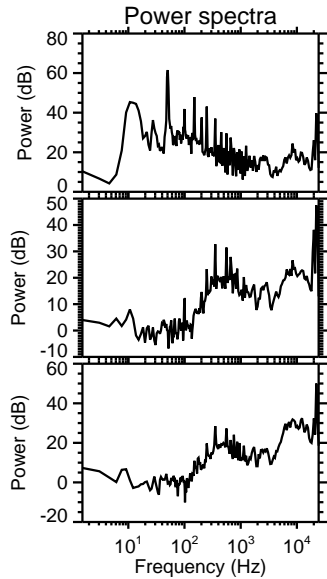
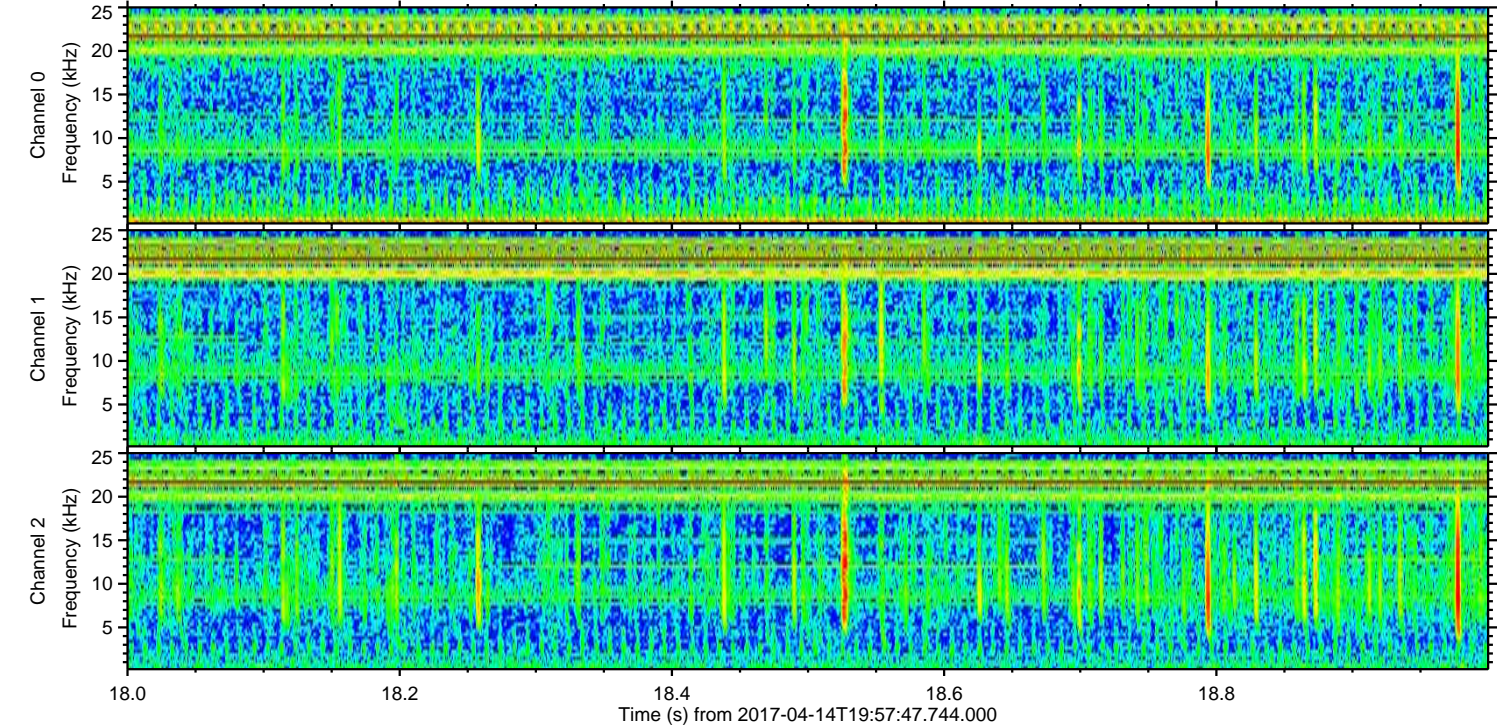
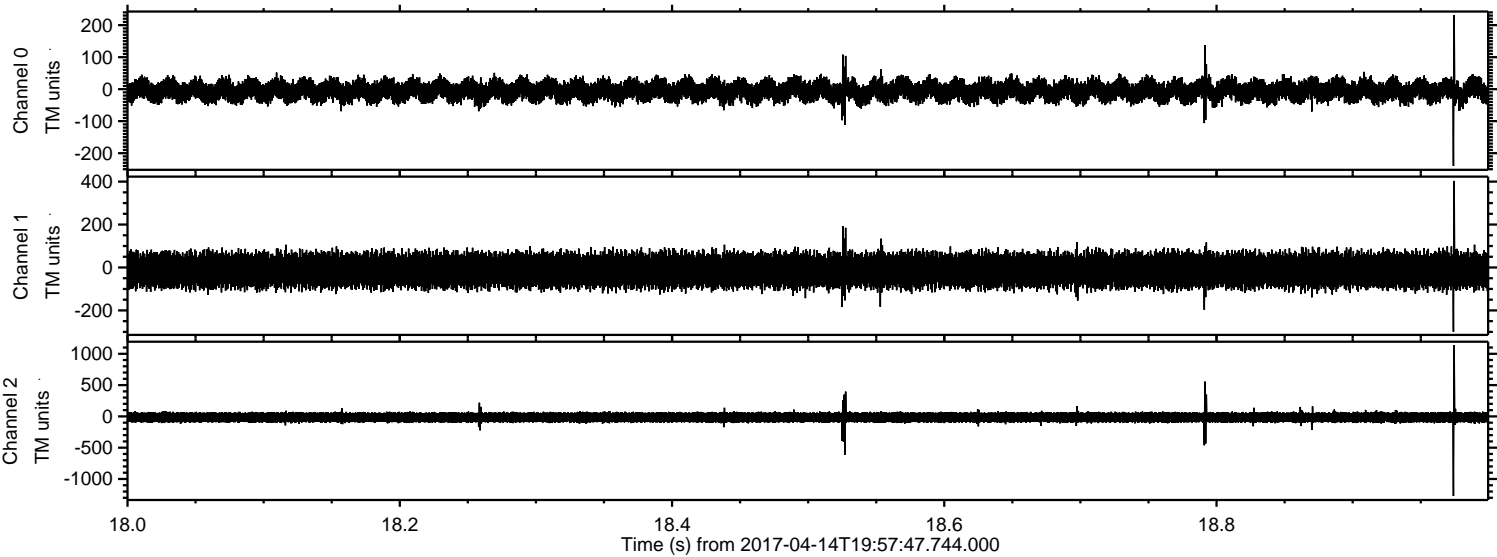


Processed Fri Apr 14 22:06:04 2017 by ELM ver.2012-10-06 from 001__elm20170414_195746__dat00.bin



ELMAVAN 3D WAVEFORMS (Measured data sampled at 50 kHz) 51000 packets of 144 samples from 2017-04-14T19:57:47.744.000. Part 19/147

Processed Fri Apr 14 22:06:05 2017 by ELM ver.2012-10-06 from 001__elm20170414_195746__dat00.bin

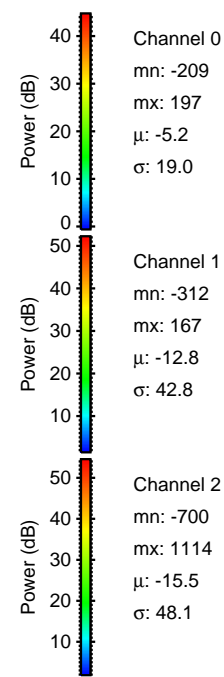
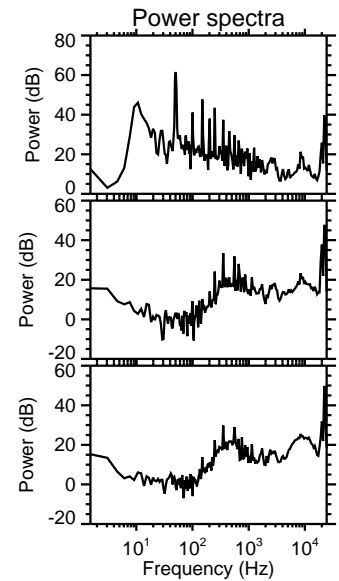
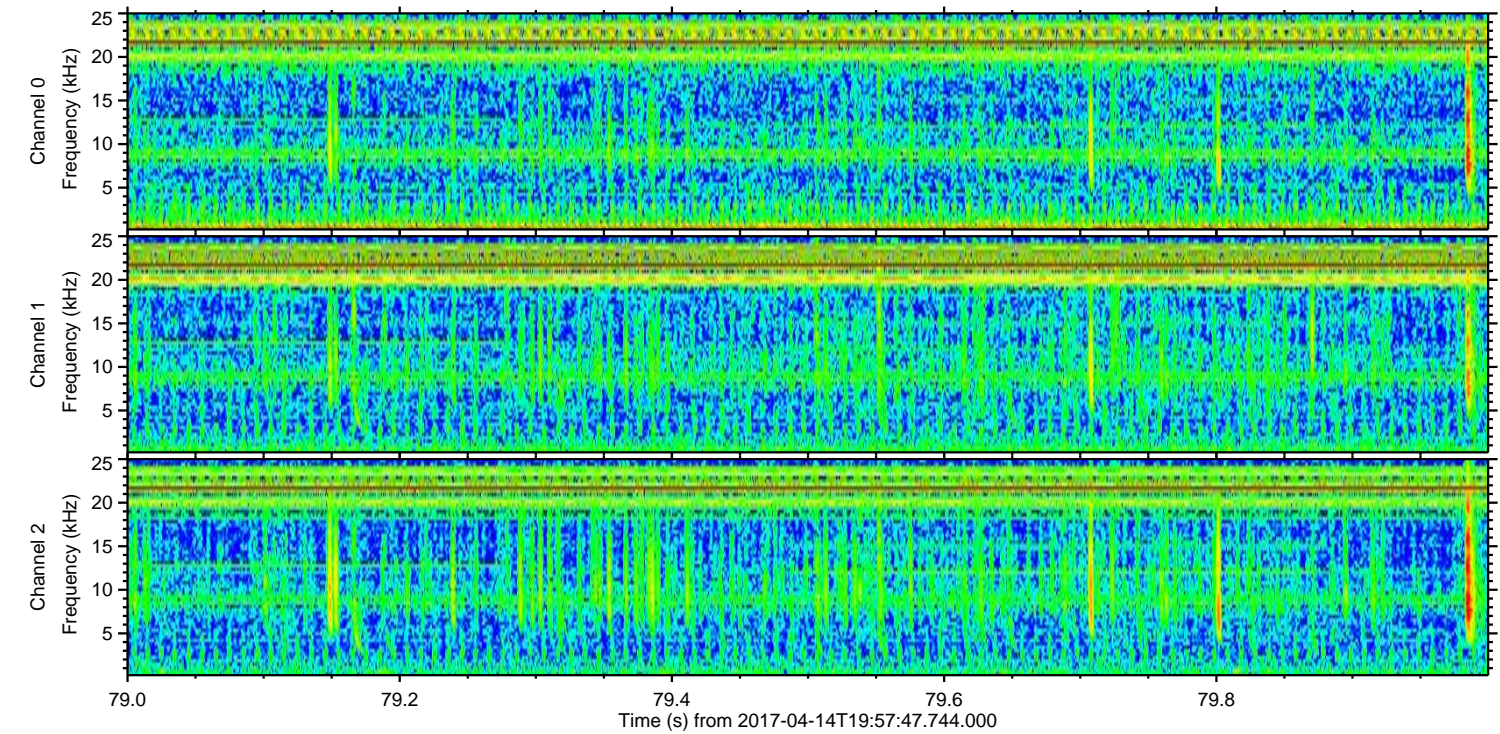
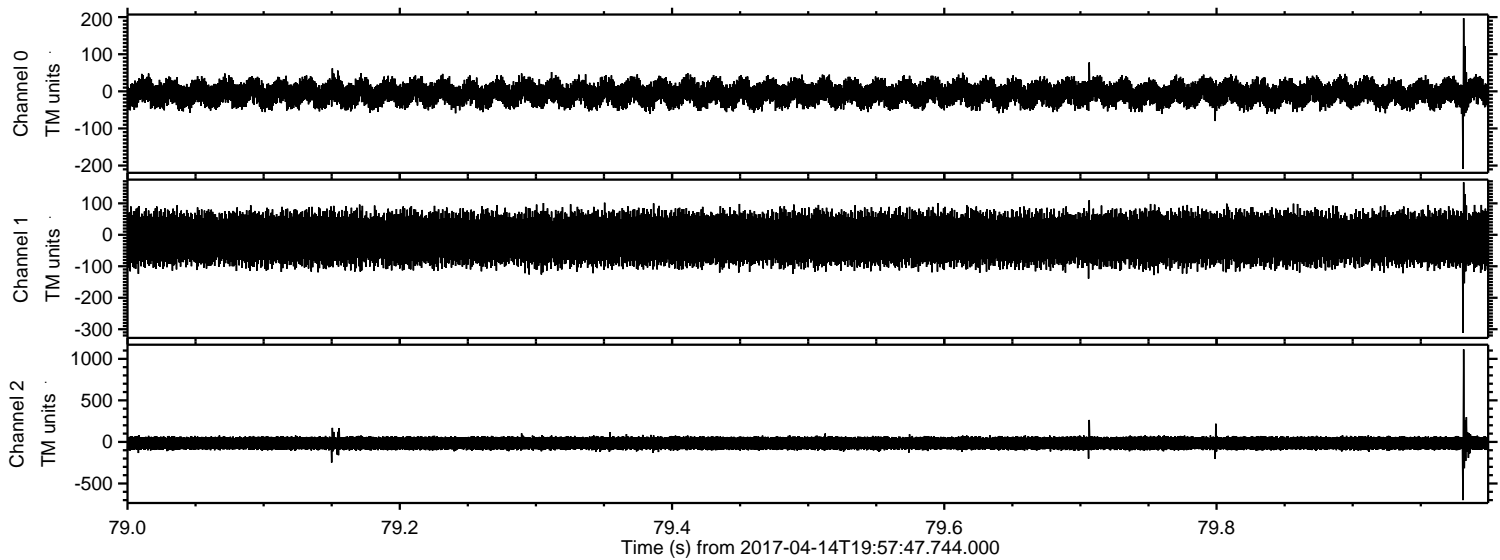


Channel 0
mn: -240
mx: 231
 μ : -5.2
 σ : 19.1

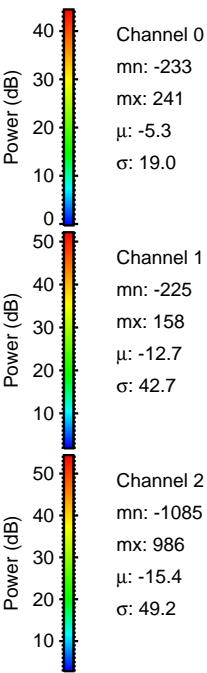
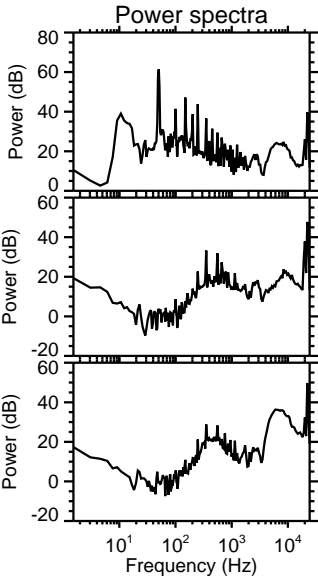
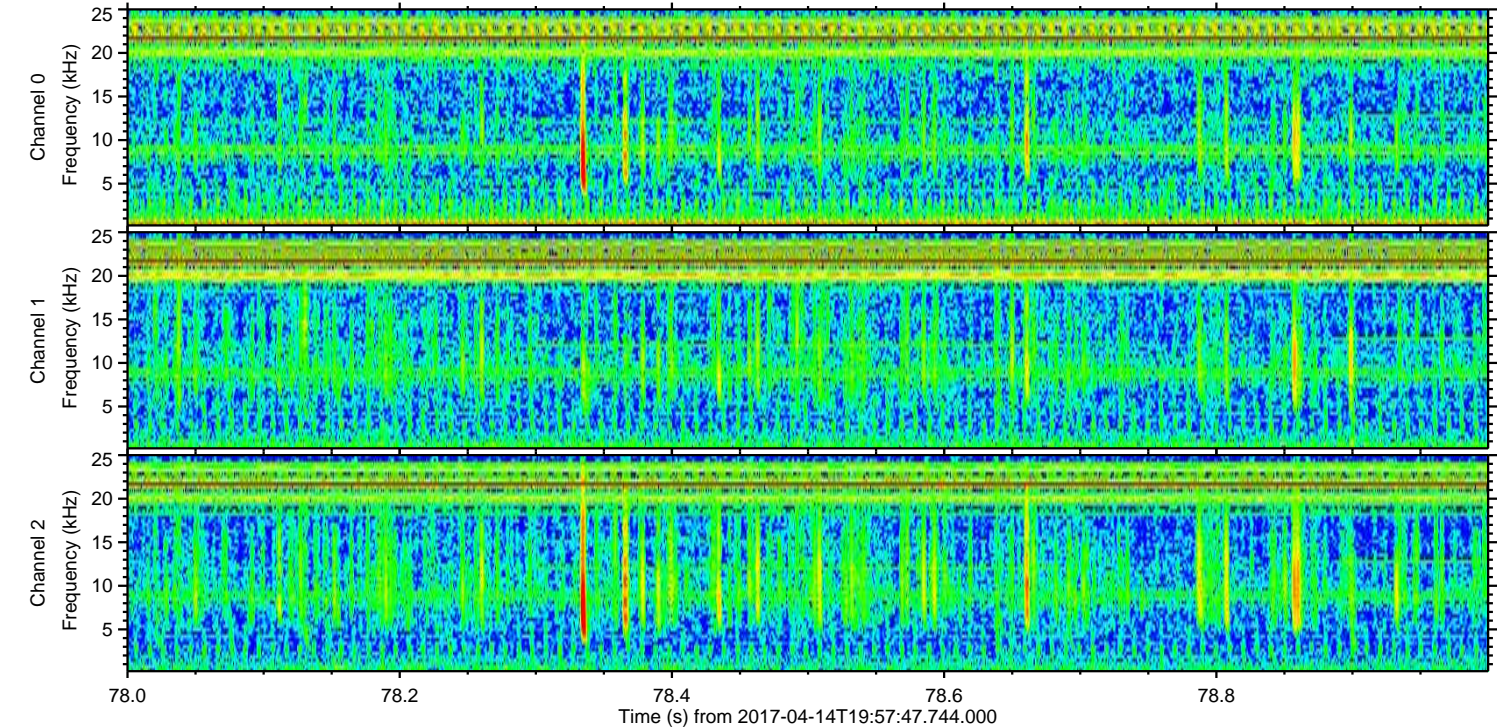
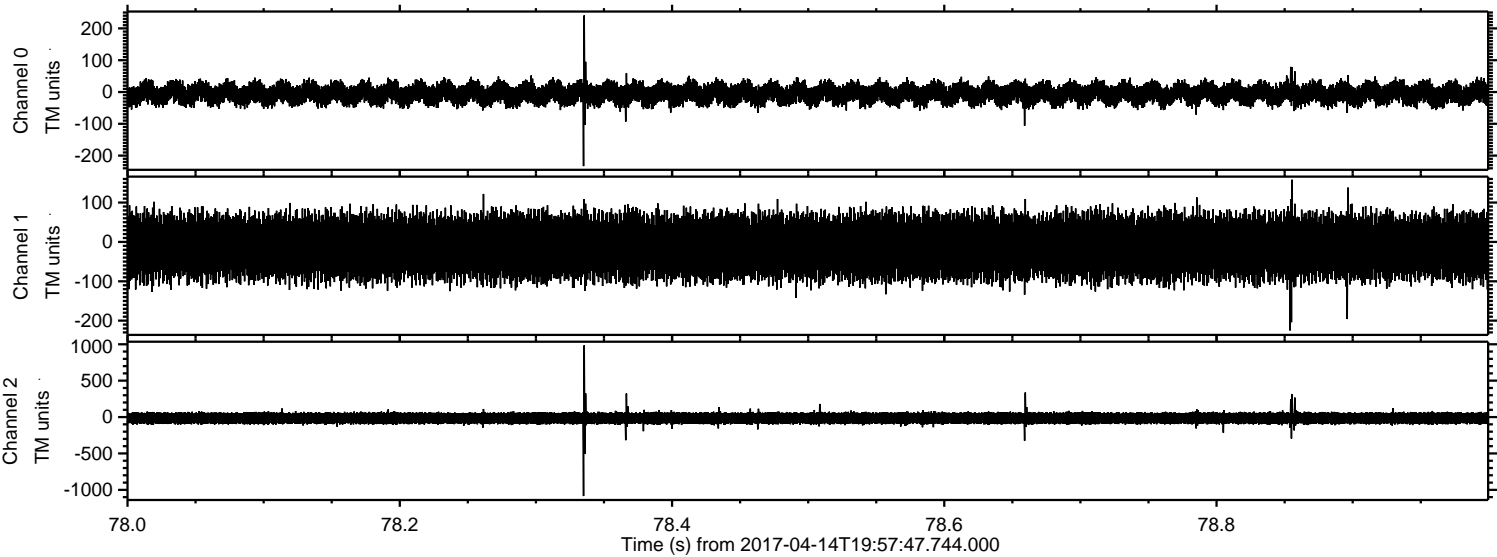
Channel 1
mn: -299
mx: 403
 μ : -13.2
 σ : 42.0

Channel 2
mn: -1272
mx: 1136
 μ : -15.8
 σ : 49.7

Processed Fri Apr 14 22:06:06 2017 by ELM ver.2012-10-06 from 001__elm20170414_195746__dat00.bin



Processed Fri Apr 14 22:06:07 2017 by ELM ver.2012-10-06 from 001__elm20170414_195746__dat00.bin



Processed Fri Apr 14 22:06:08 2017 by ELM ver.2012-10-06 from 001__elm20170414_195746__dat00.bin

