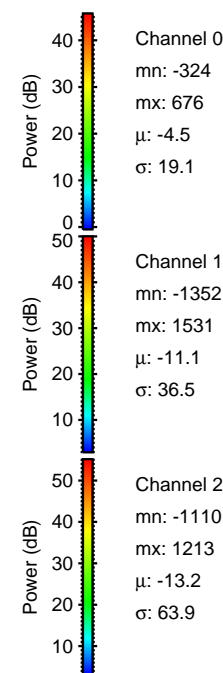
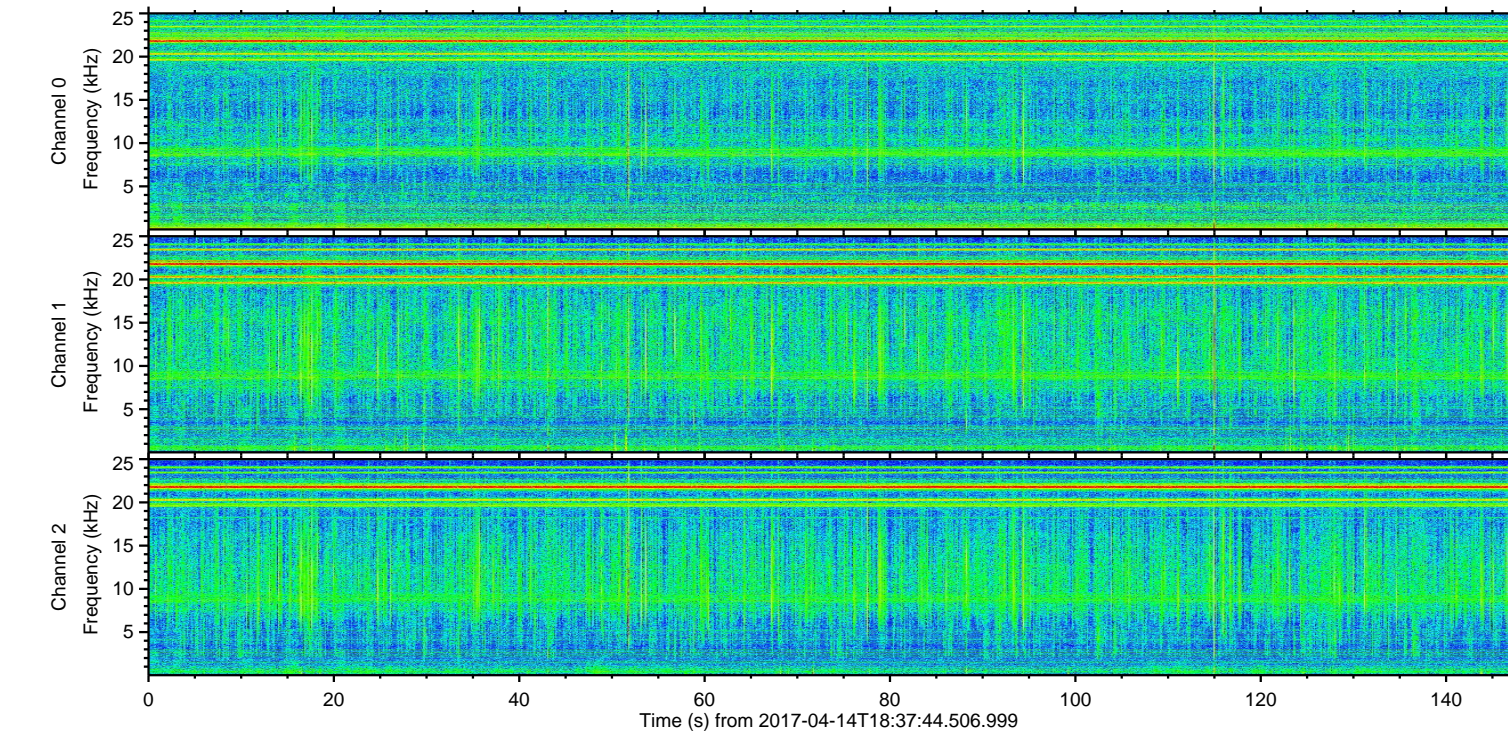
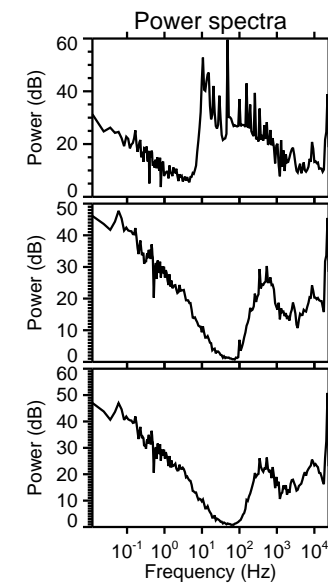
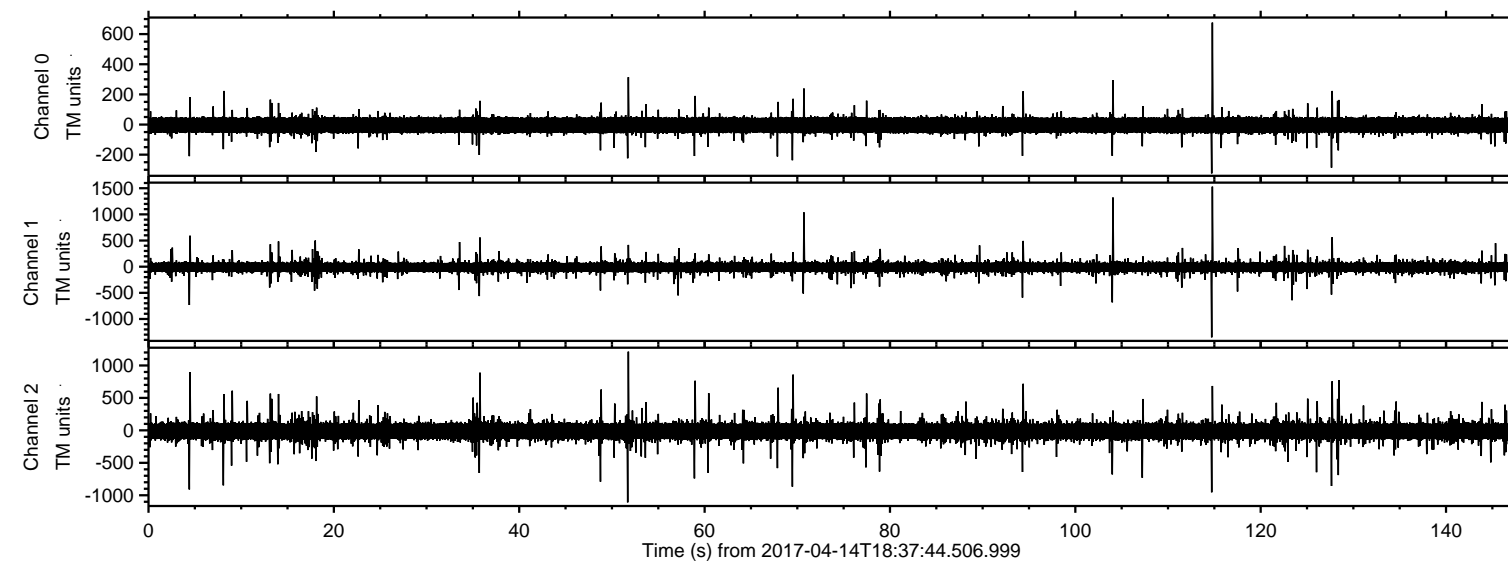


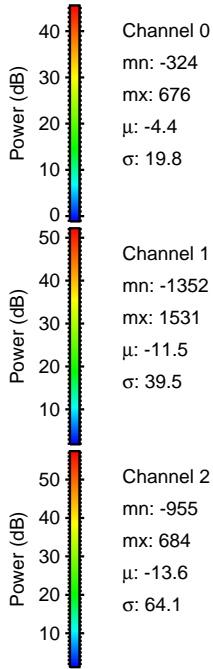
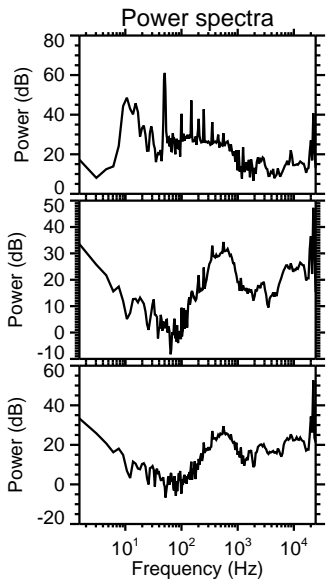
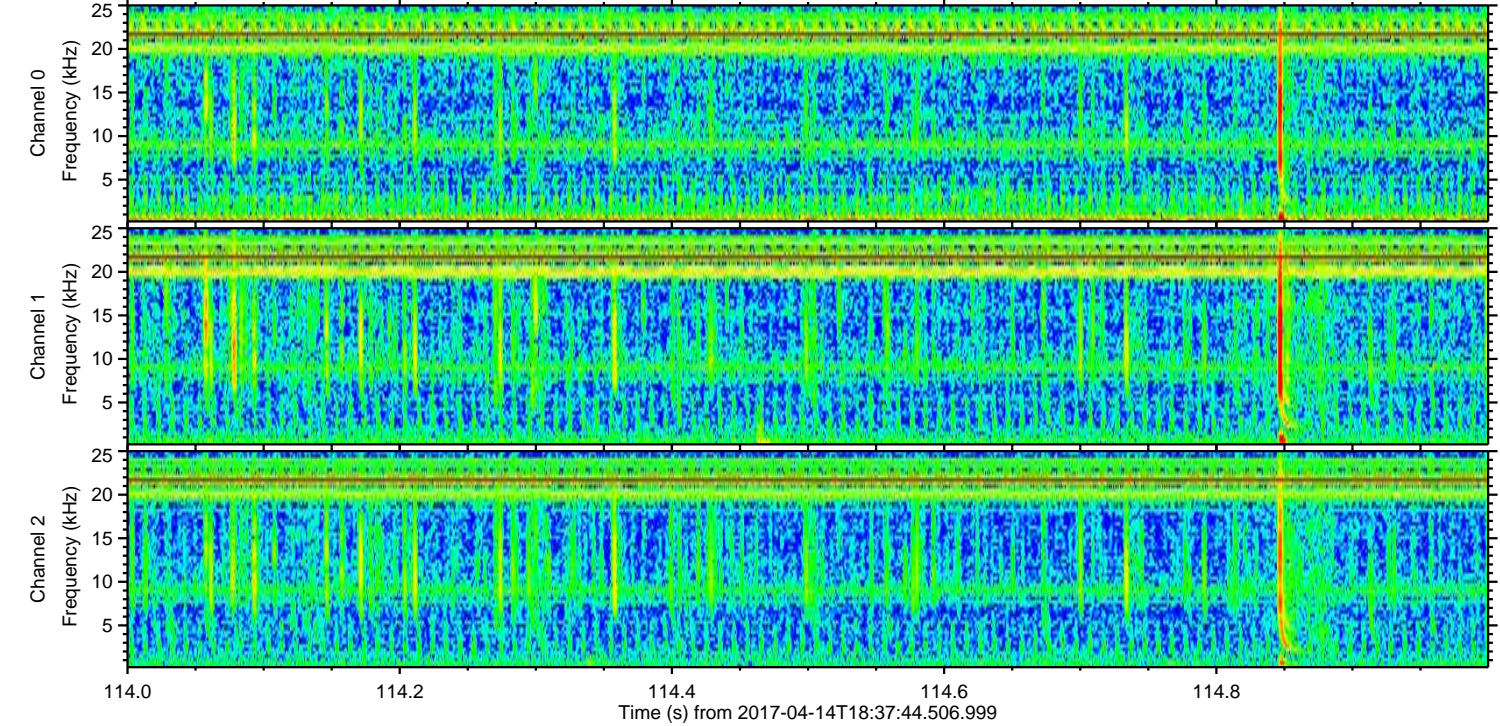
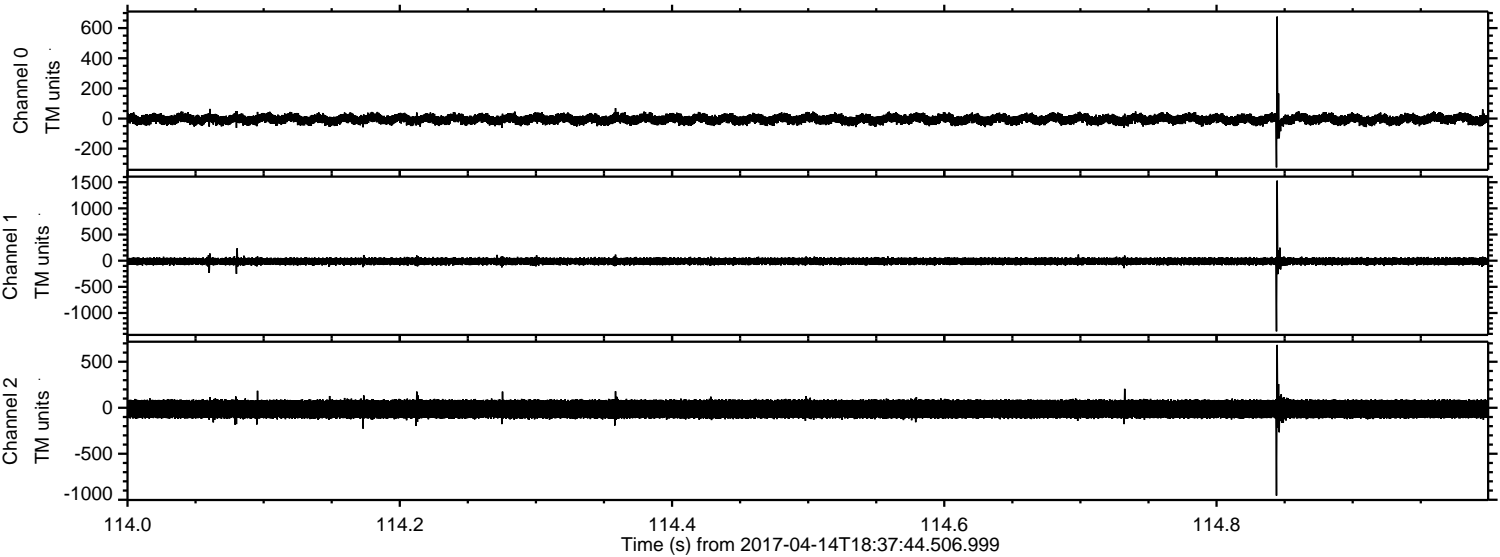
ELMAVAN 3D WAVEFORMS (Measured data sampled at 50 kHz) 51000 packets of 144 samples from 2017-04-14T18:37:44.506.999.

Processed Fri Apr 14 20:45:01 2017 by ELM ver.2012-10-06 from 001__elm20170414_183743__dat00.bin

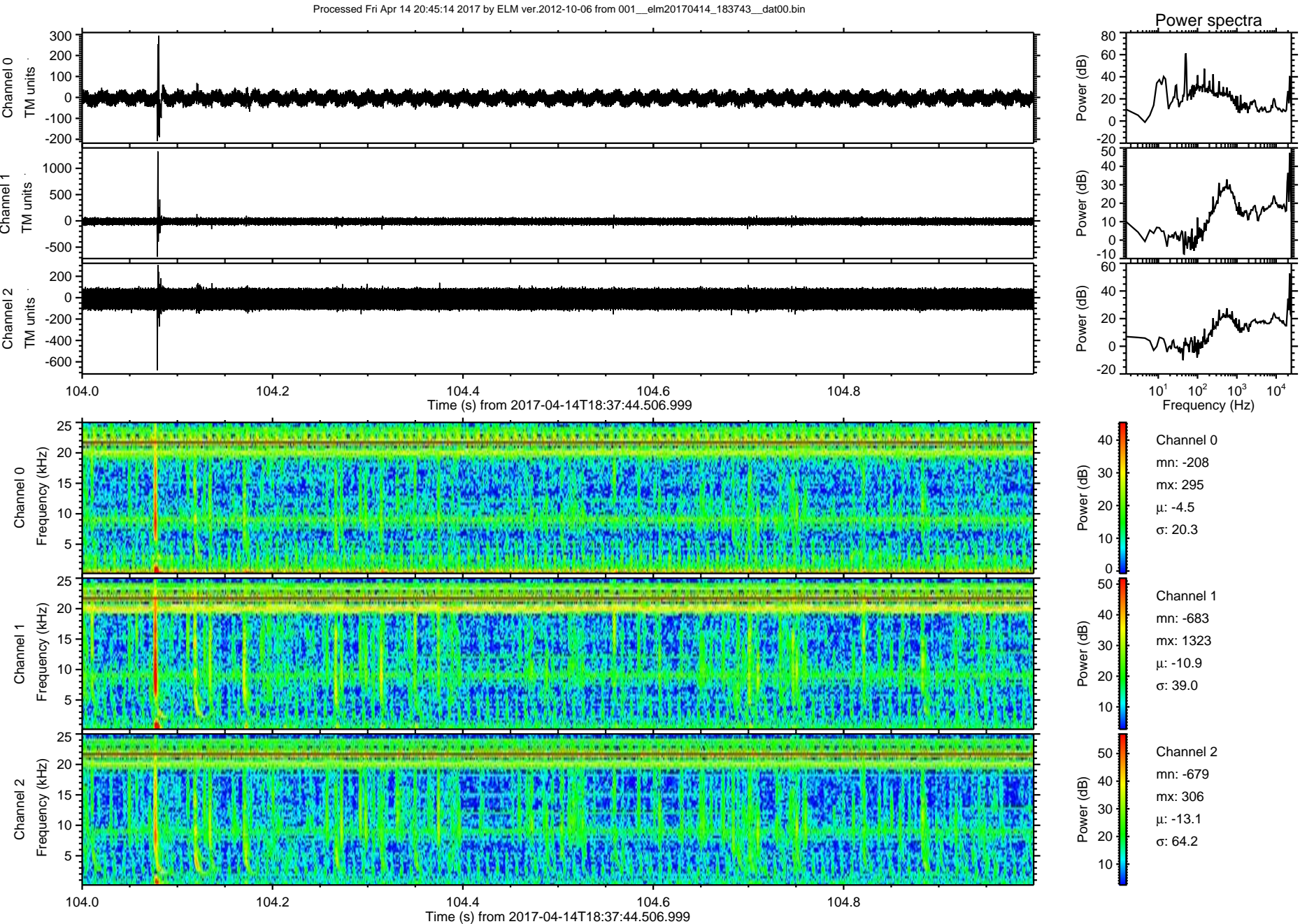


ELMAVAN 3D WAVEFORMS (Measured data sampled at 50 kHz) 51000 packets of 144 samples from 2017-04-14T18:37:44.506.999. Part 115/147

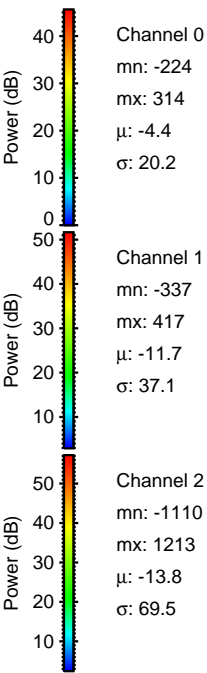
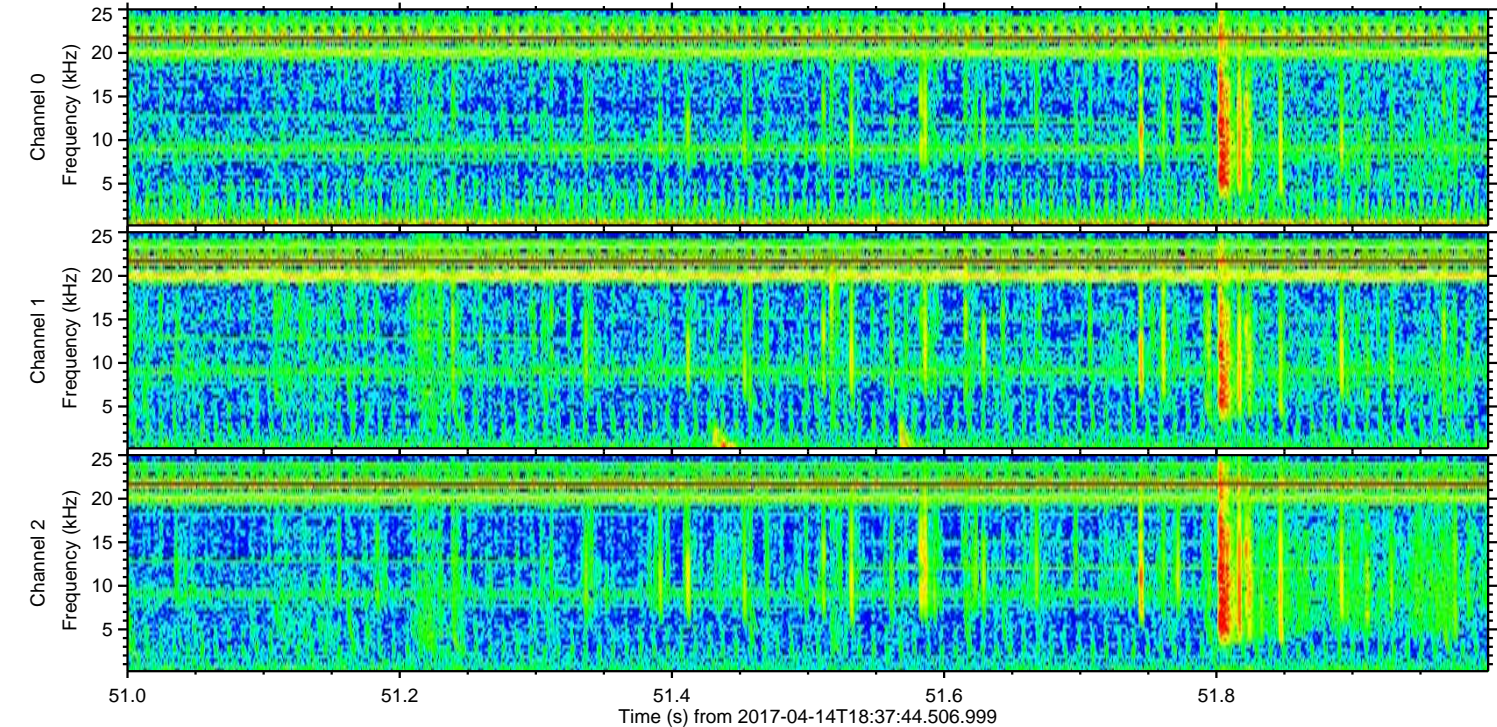
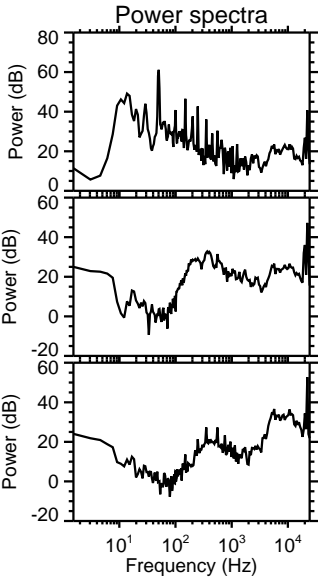
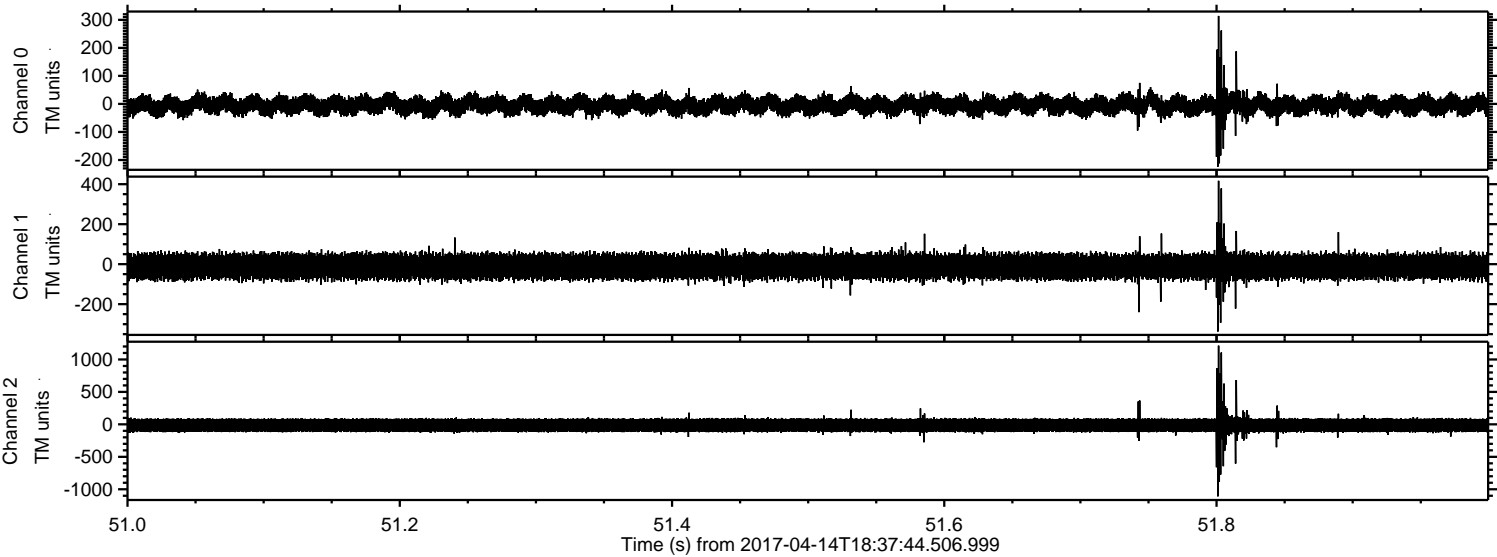
Processed Fri Apr 14 20:45:13 2017 by ELM ver.2012-10-06 from 001__elm20170414_183743__dat00.bin



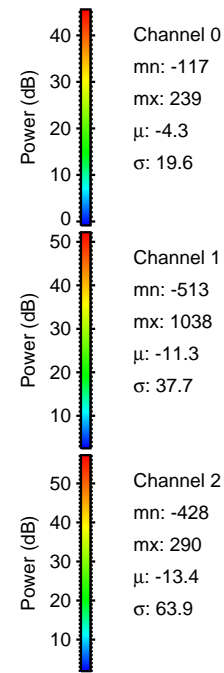
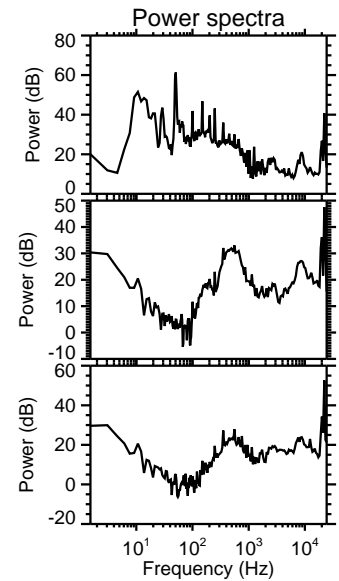
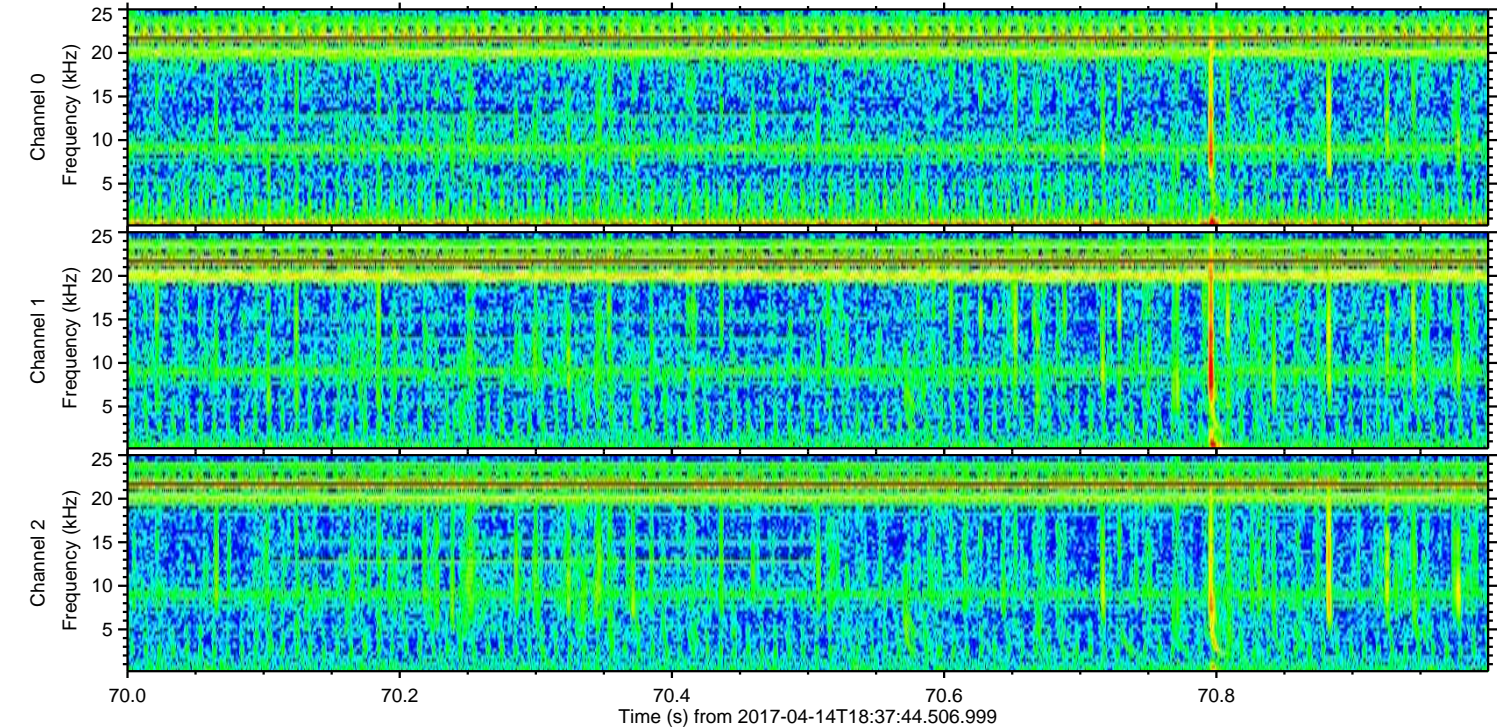
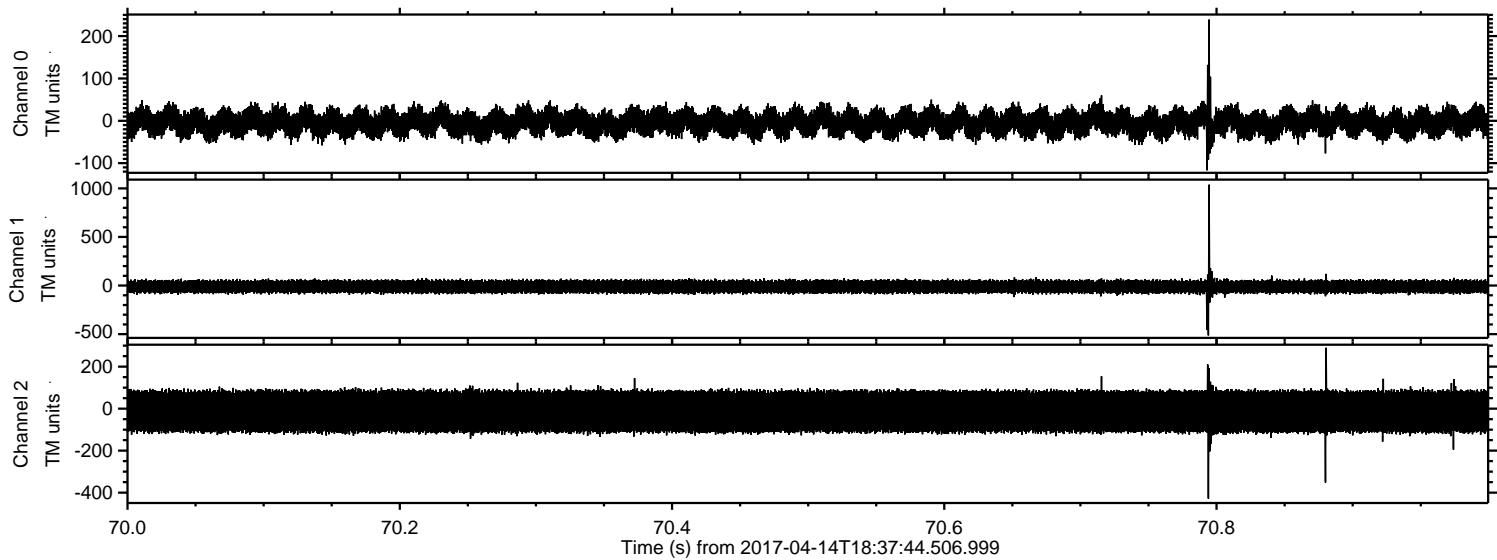
ELMAVAN 3D WAVEFORMS (Measured data sampled at 50 kHz) 51000 packets of 144 samples from 2017-04-14T18:37:44.506.999. Part 105/147



Processed Fri Apr 14 20:45:14 2017 by ELM ver.2012-10-06 from 001__elm20170414_183743__dat00.bin



Processed Fri Apr 14 20:45:15 2017 by ELM ver.2012-10-06 from 001__elm20170414_183743__dat00.bin



Power spectra

Channel 0

mn: -117
mx: 239
 μ : -4.3
 σ : 19.6

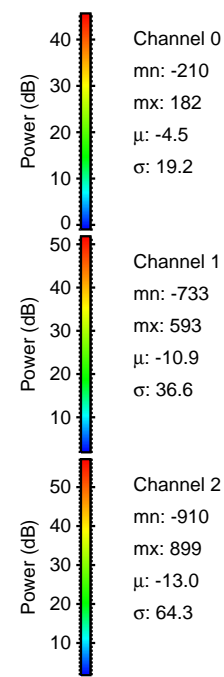
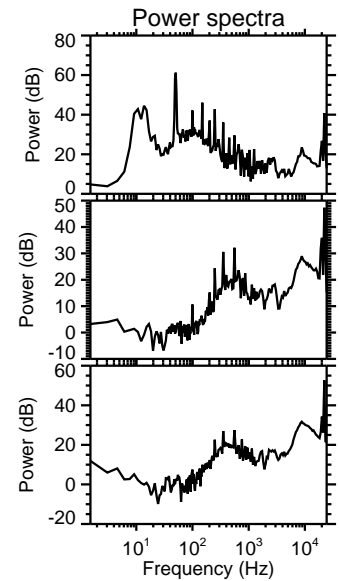
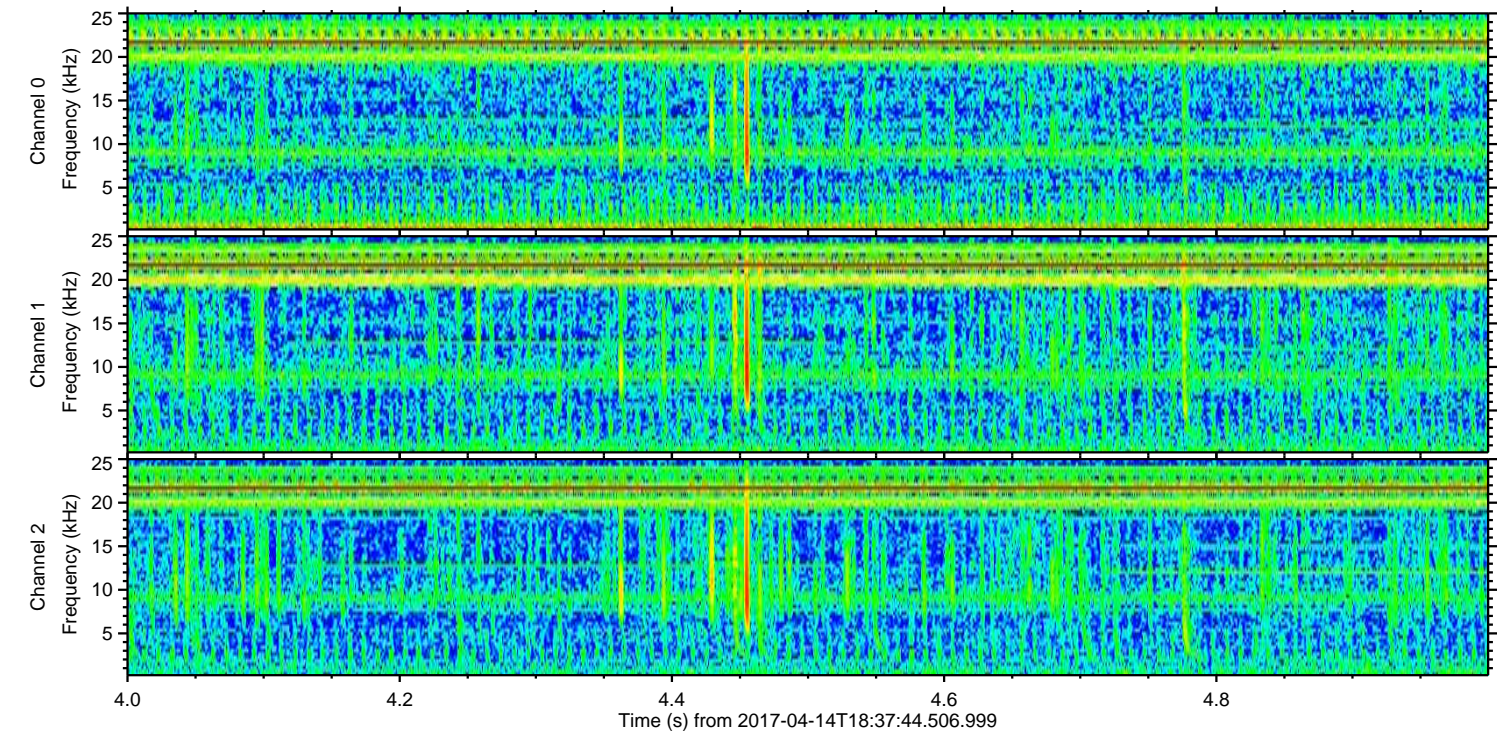
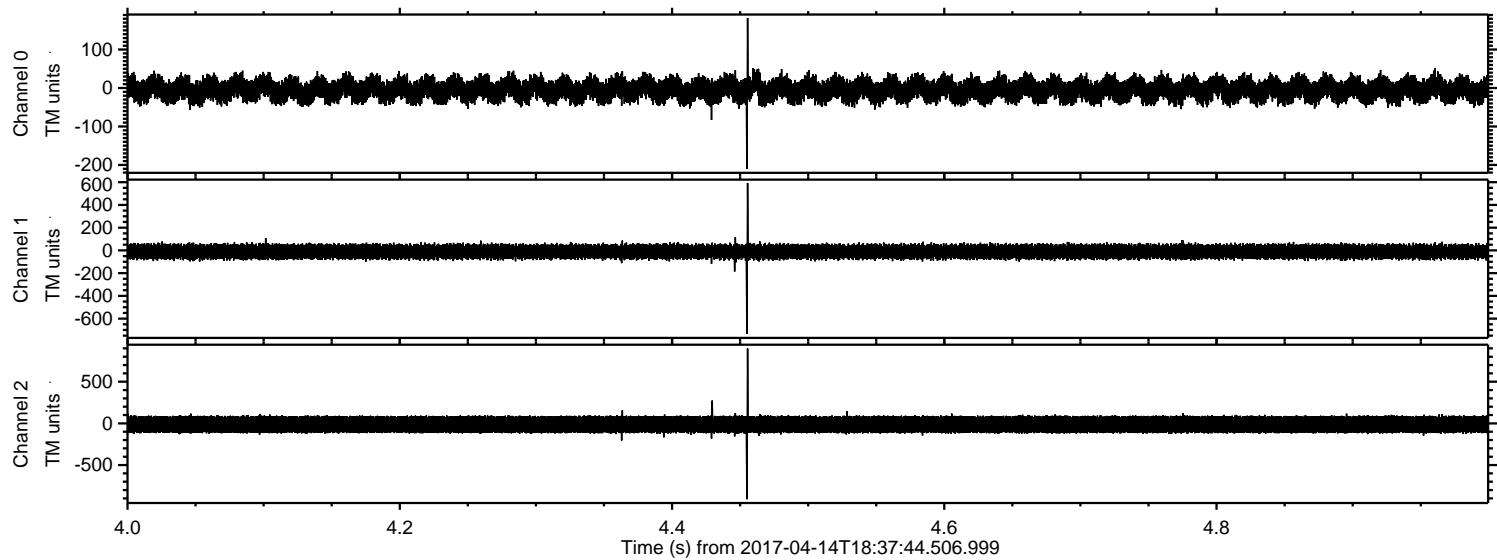
Channel 1

mn: -513
mx: 1038
 μ : -11.3
 σ : 37.7

Channel 2

mn: -428
mx: 290
 μ : -13.4
 σ : 63.9

Processed Fri Apr 14 20:45:16 2017 by ELM ver.2012-10-06 from 001__elm20170414_183743__dat00.bin

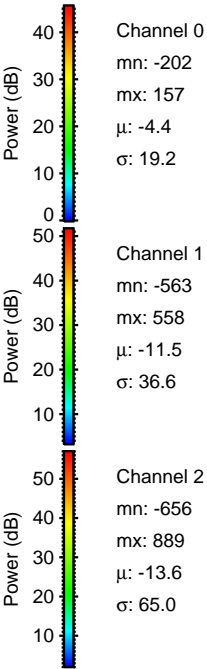
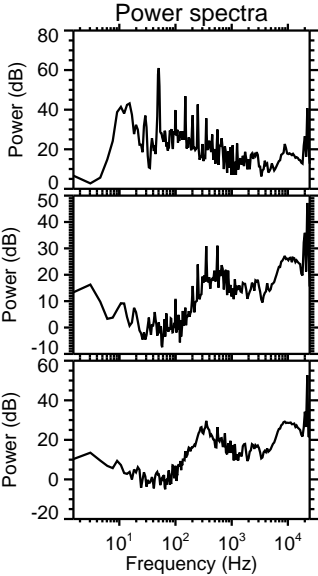
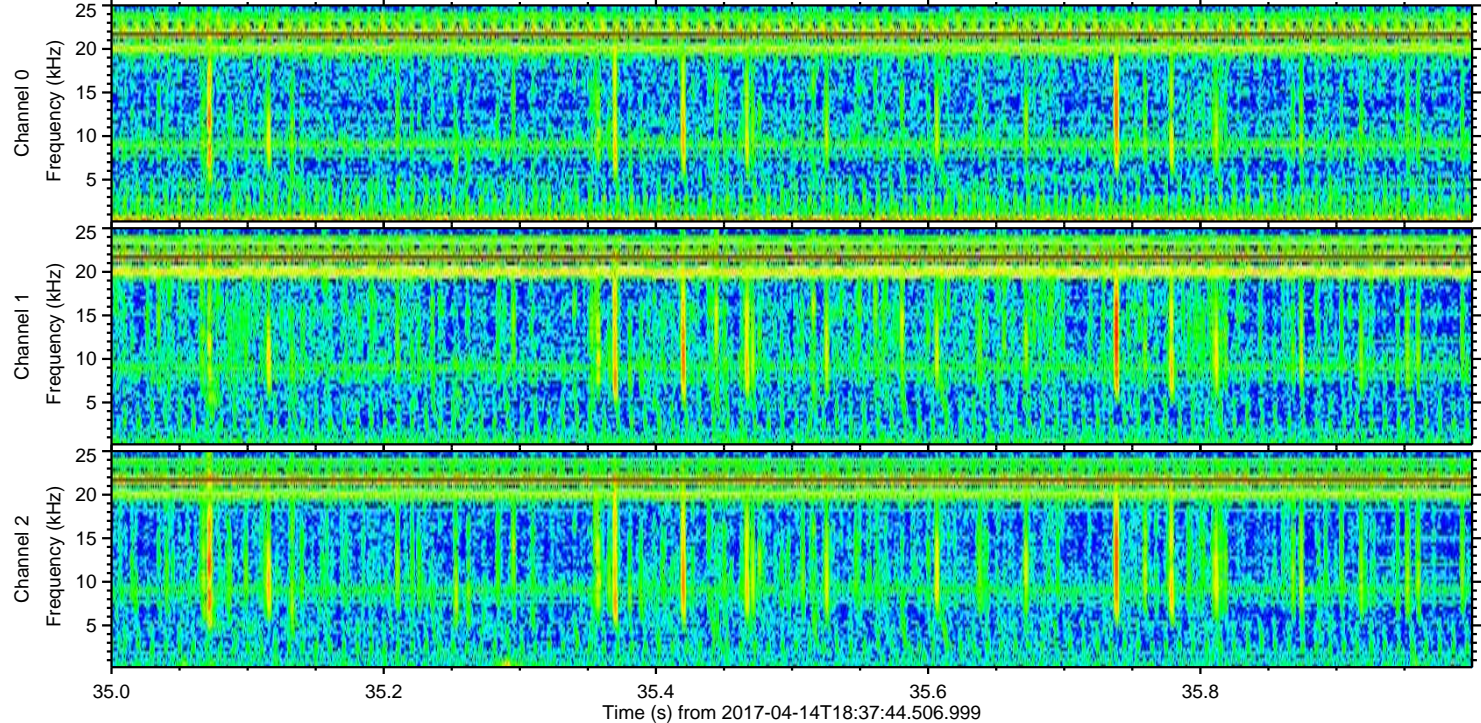
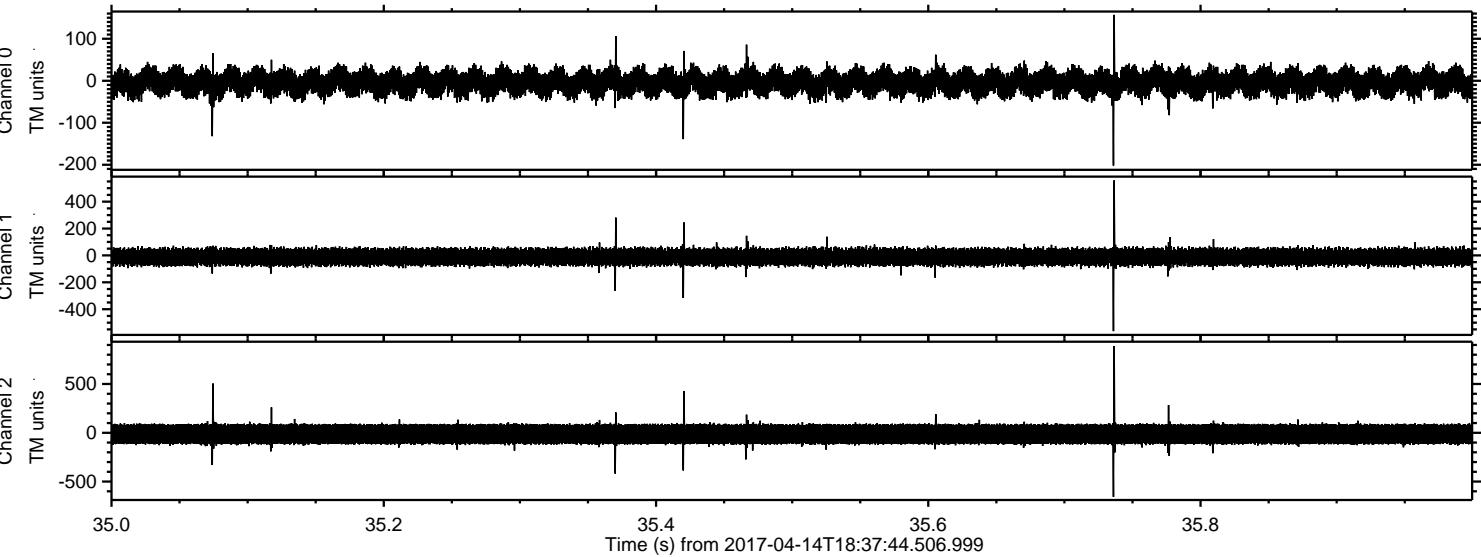


Channel 0
mn: -210
mx: 182
 μ : -4.5
 σ : 19.2

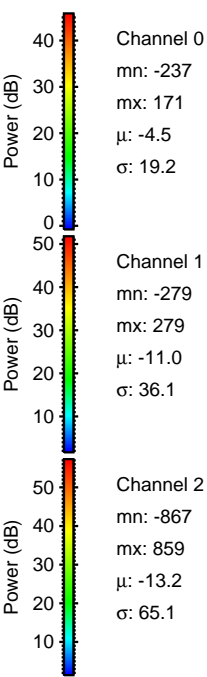
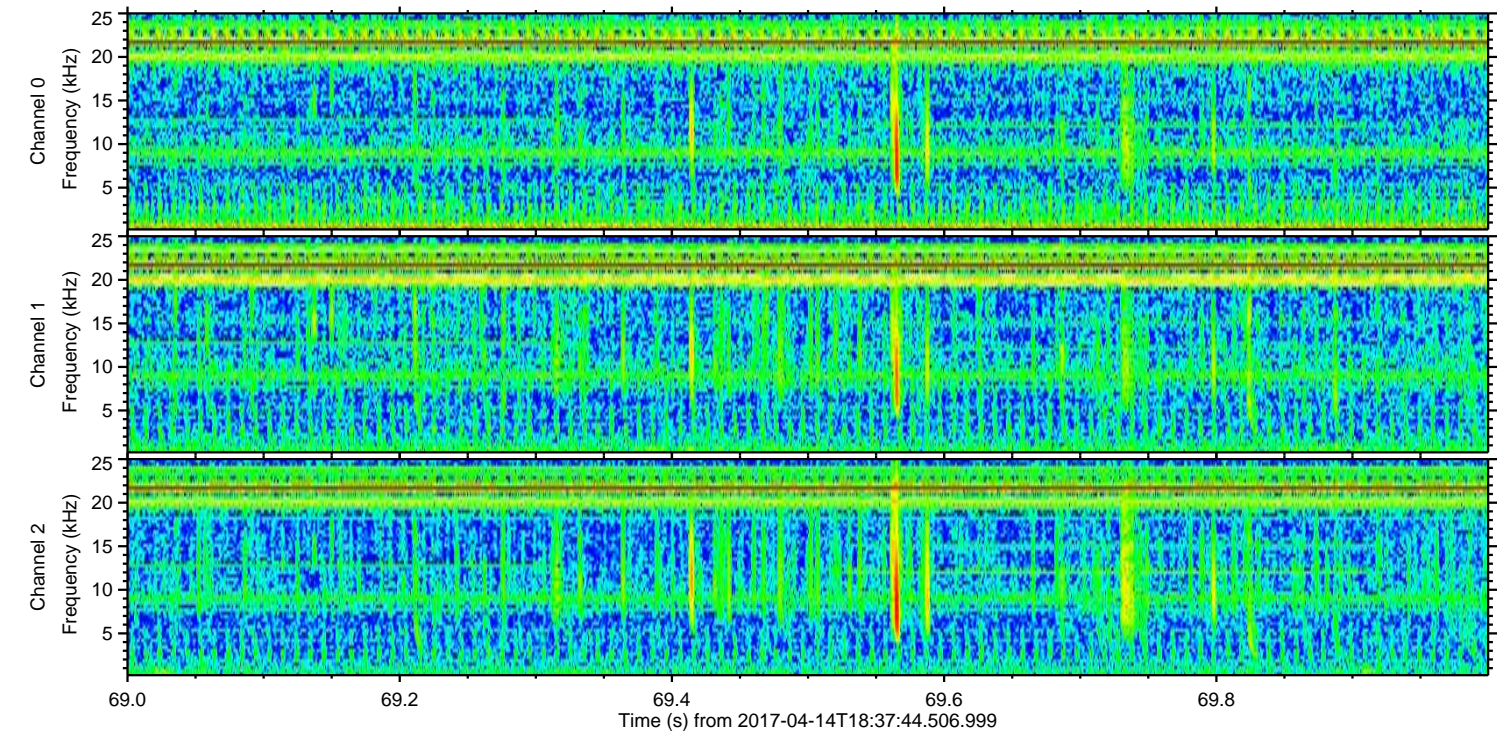
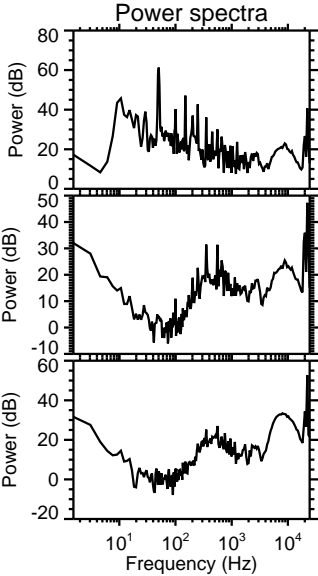
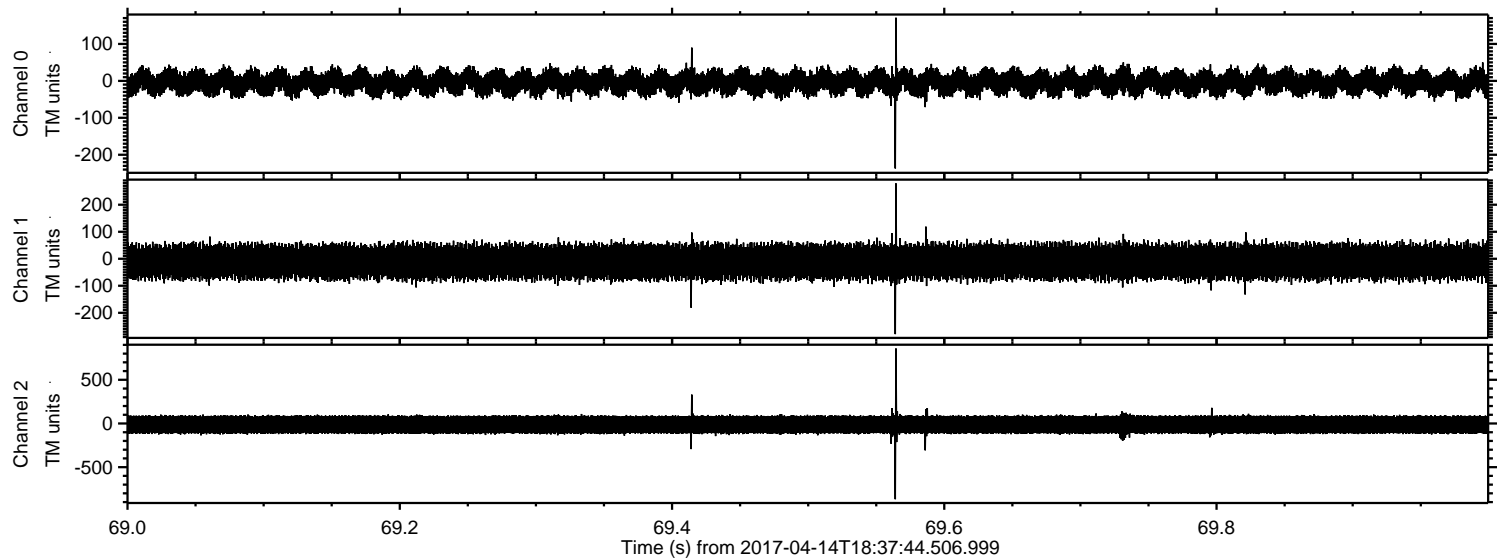
Channel 1
mn: -733
mx: 593
 μ : -10.9
 σ : 36.6

Channel 2
mn: -910
mx: 899
 μ : -13.0
 σ : 64.3

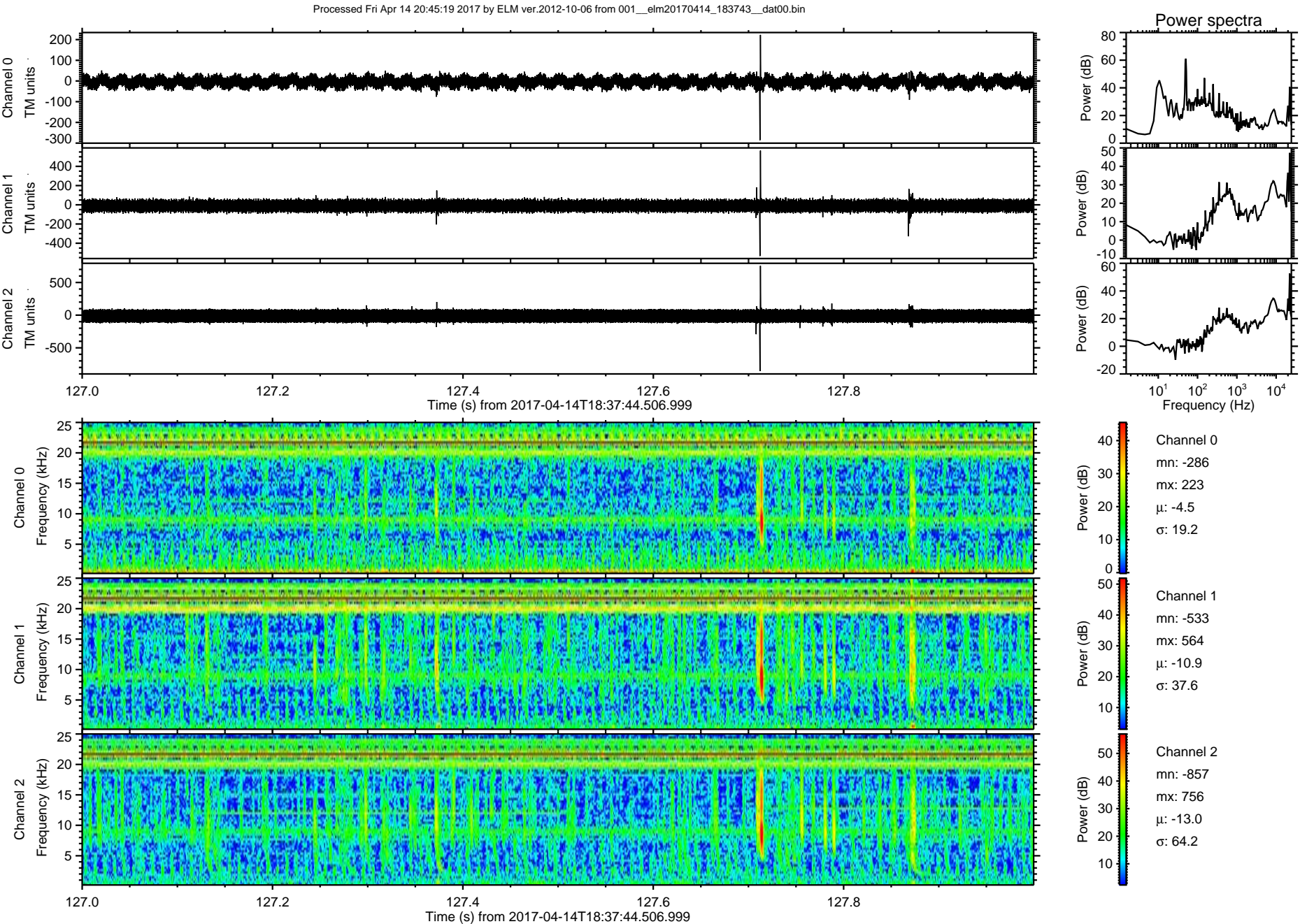
Processed Fri Apr 14 20:45:17 2017 by ELM ver.2012-10-06 from 001__elm20170414_183743__dat00.bin



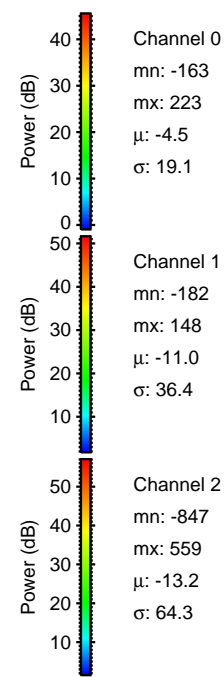
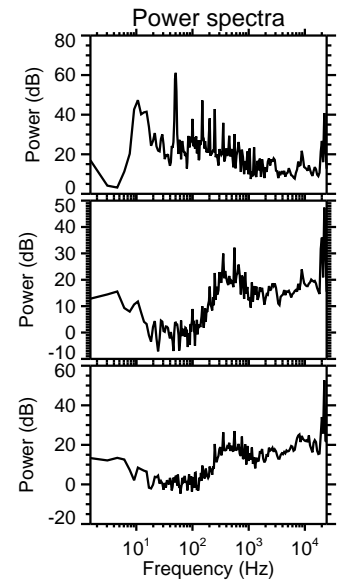
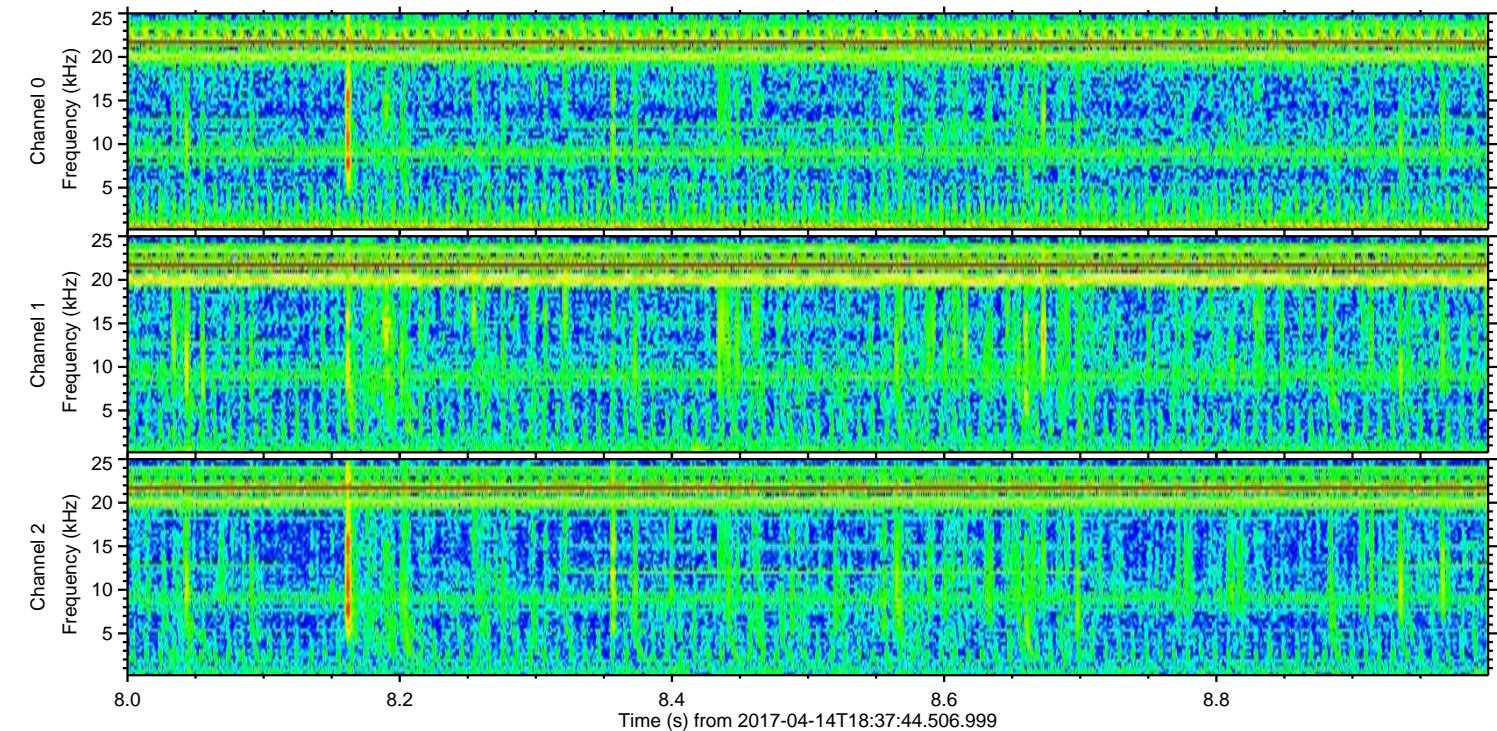
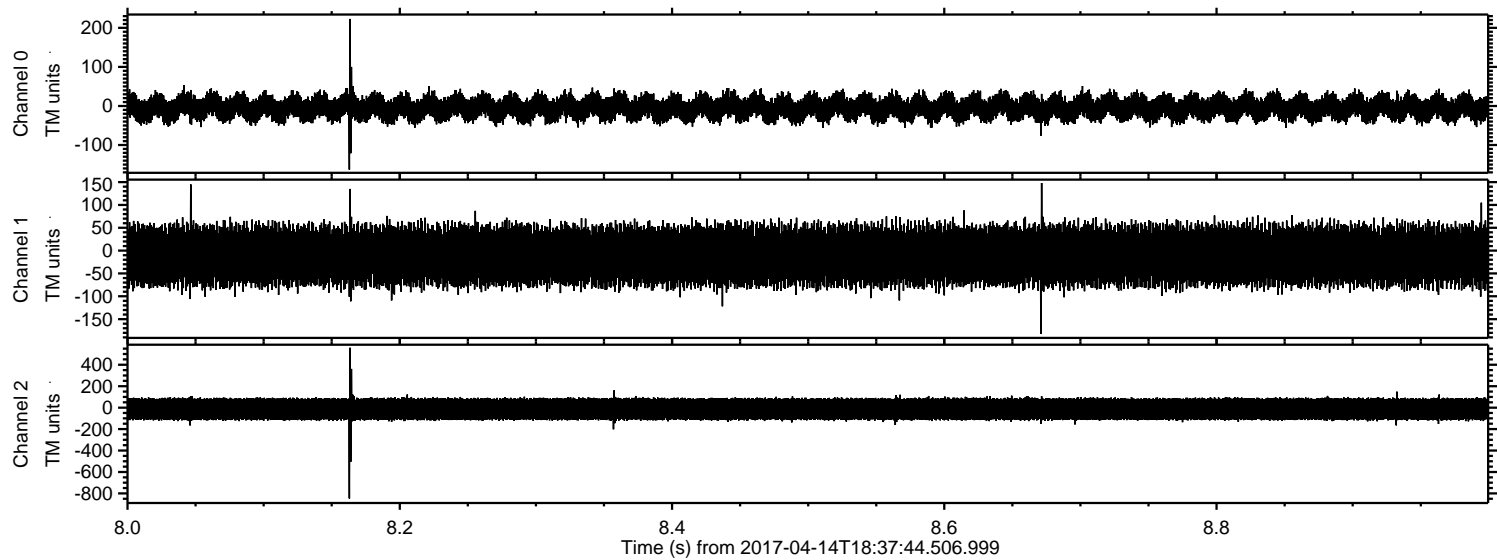
Processed Fri Apr 14 20:45:18 2017 by ELM ver.2012-10-06 from 001__elm20170414_183743__dat00.bin



ELMAVAN 3D WAVEFORMS (Measured data sampled at 50 kHz) 51000 packets of 144 samples from 2017-04-14T18:37:44.506.999. Part 128/147



Processed Fri Apr 14 20:45:20 2017 by ELM ver.2012-10-06 from 001__elm20170414_183743__dat00.bin



Channel 0
mn: -163
mx: 223
 μ : -4.5
 σ : 19.1

Channel 1
mn: -182
mx: 148
 μ : -11.0
 σ : 36.4

Channel 2
mn: -847
mx: 559
 μ : -13.2
 σ : 64.3

