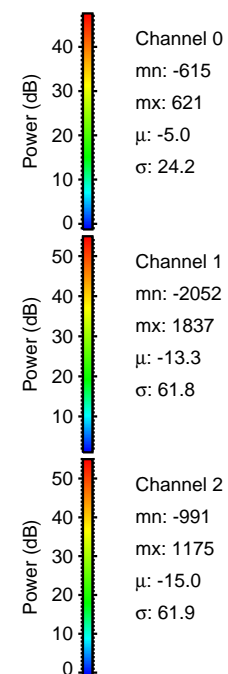
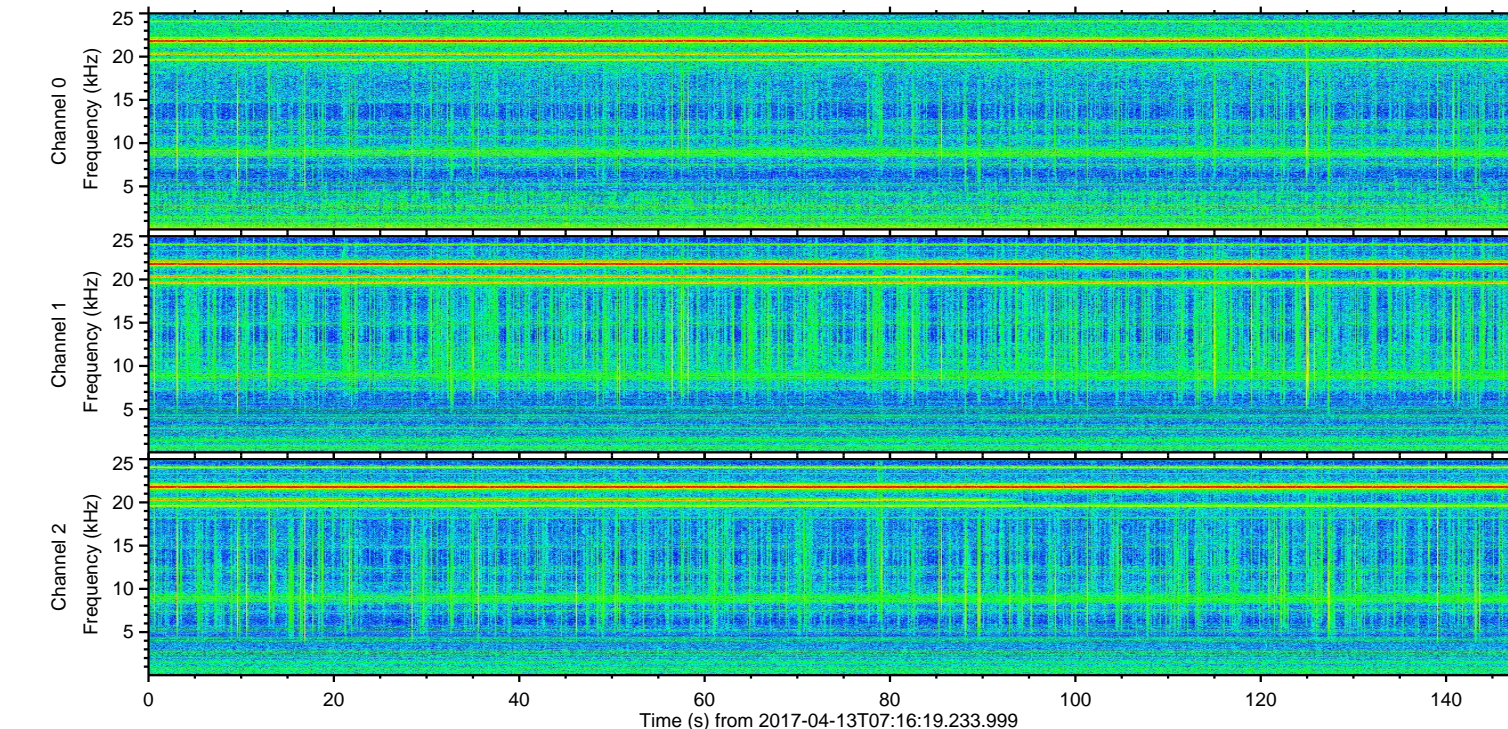
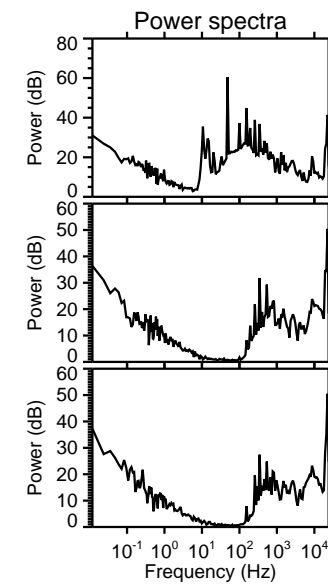
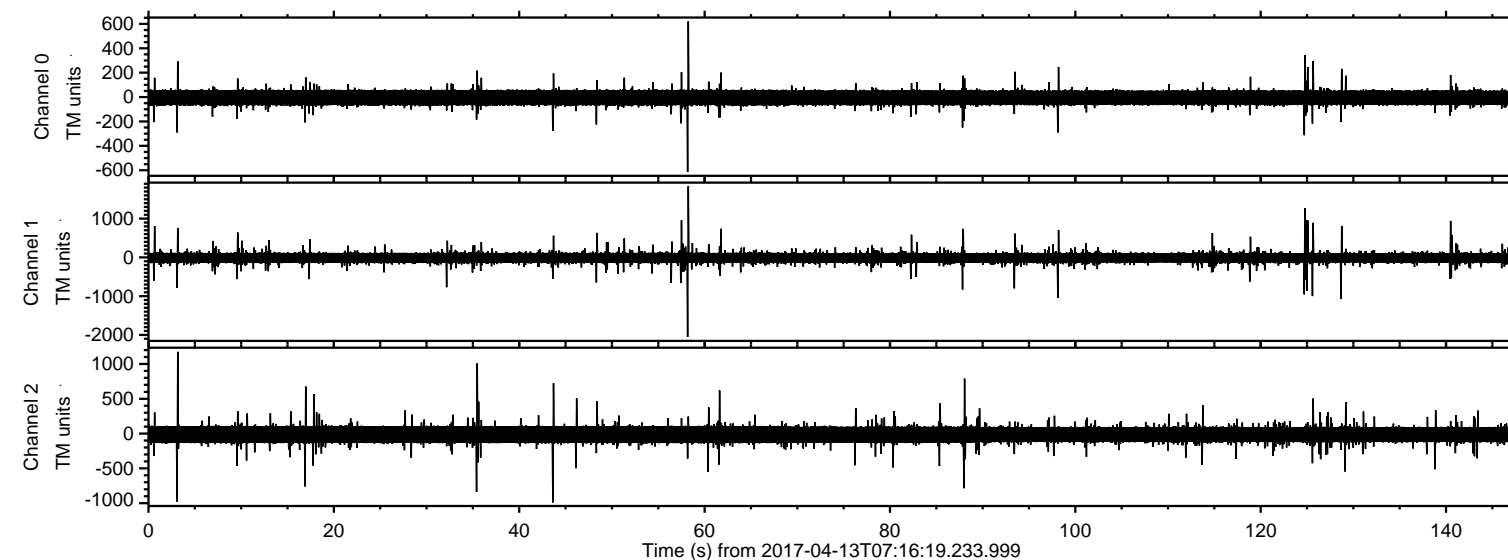
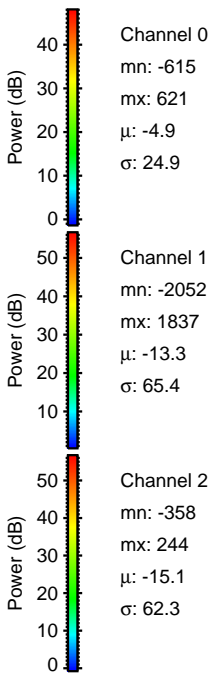
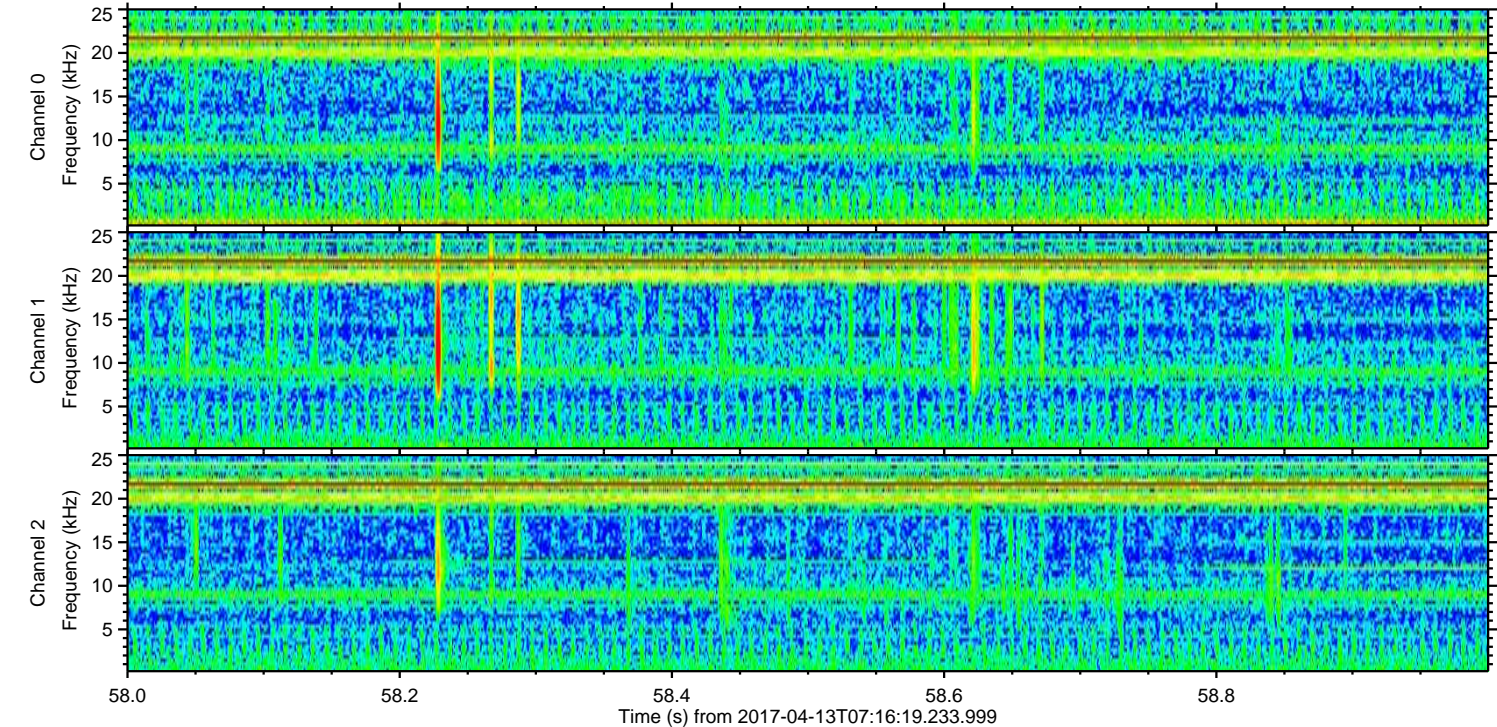
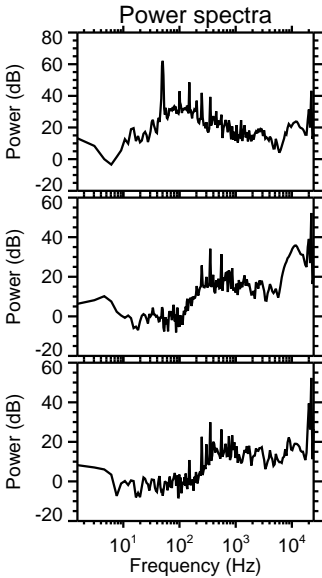
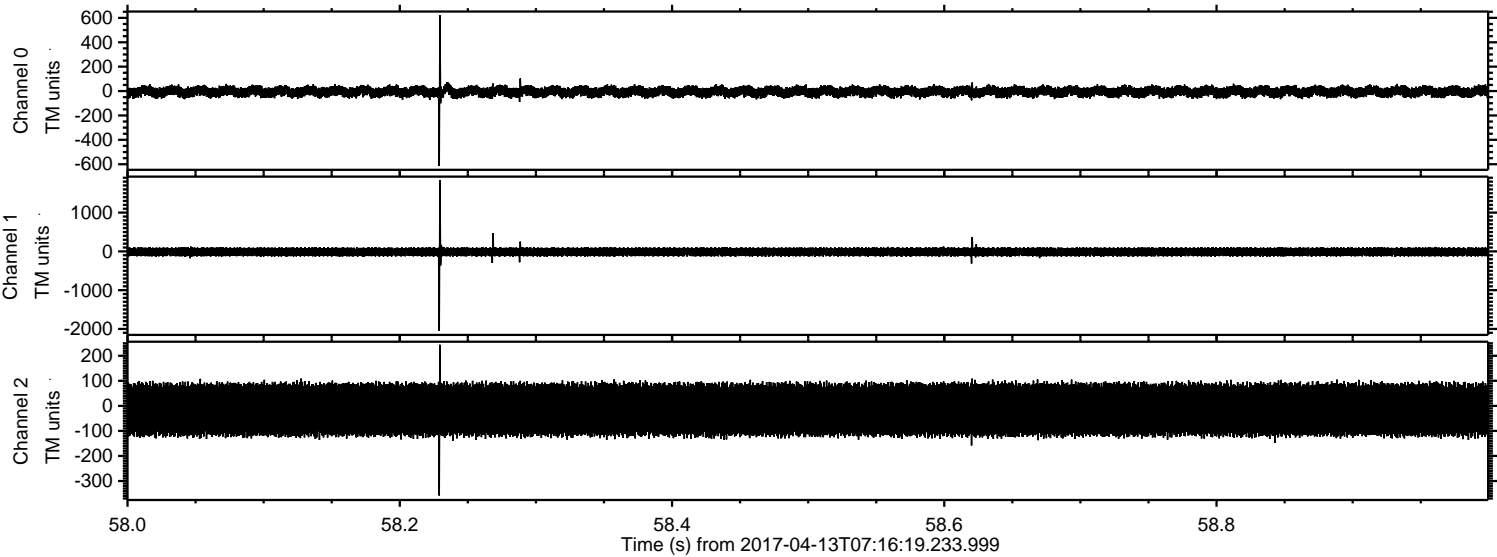


ELMAVAN 3D WAVEFORMS (Measured data sampled at 50 kHz) 51000 packets of 144 samples from 2017-04-13T07:16:19.233.999.

Processed Thu Apr 13 09:23:34 2017 by ELM ver.2012-10-06 from 001__elm20170413_071618__dat00.bin

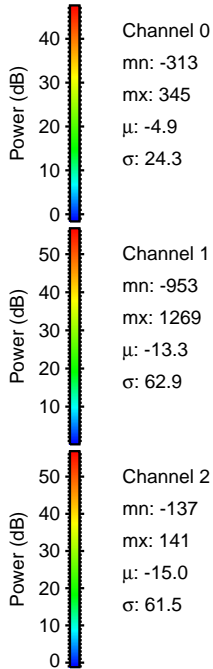
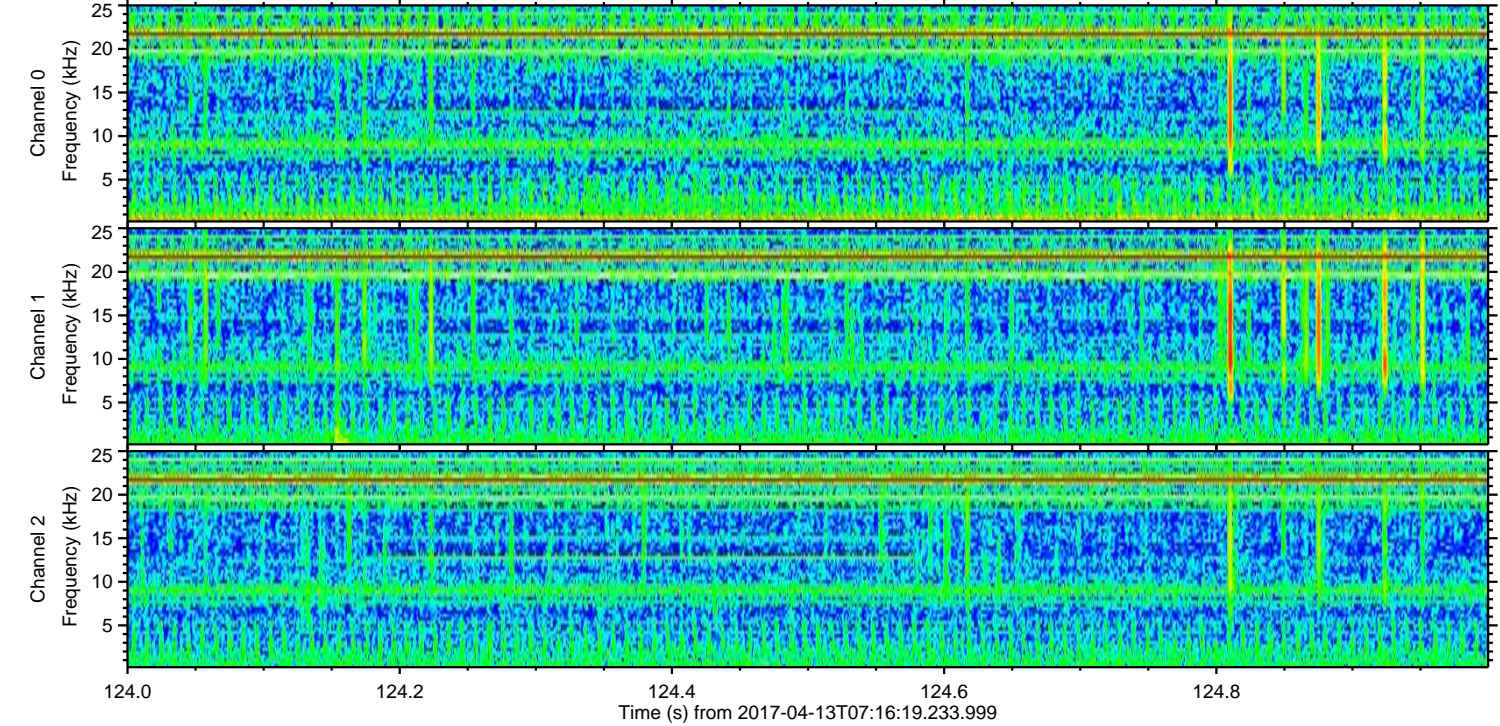
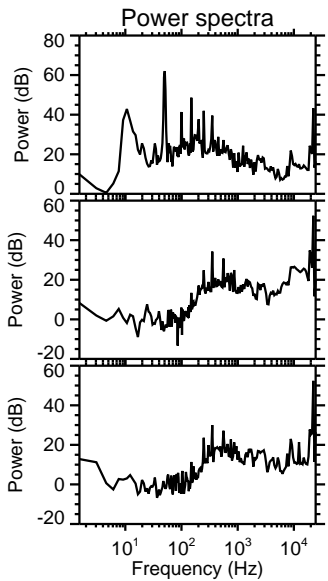
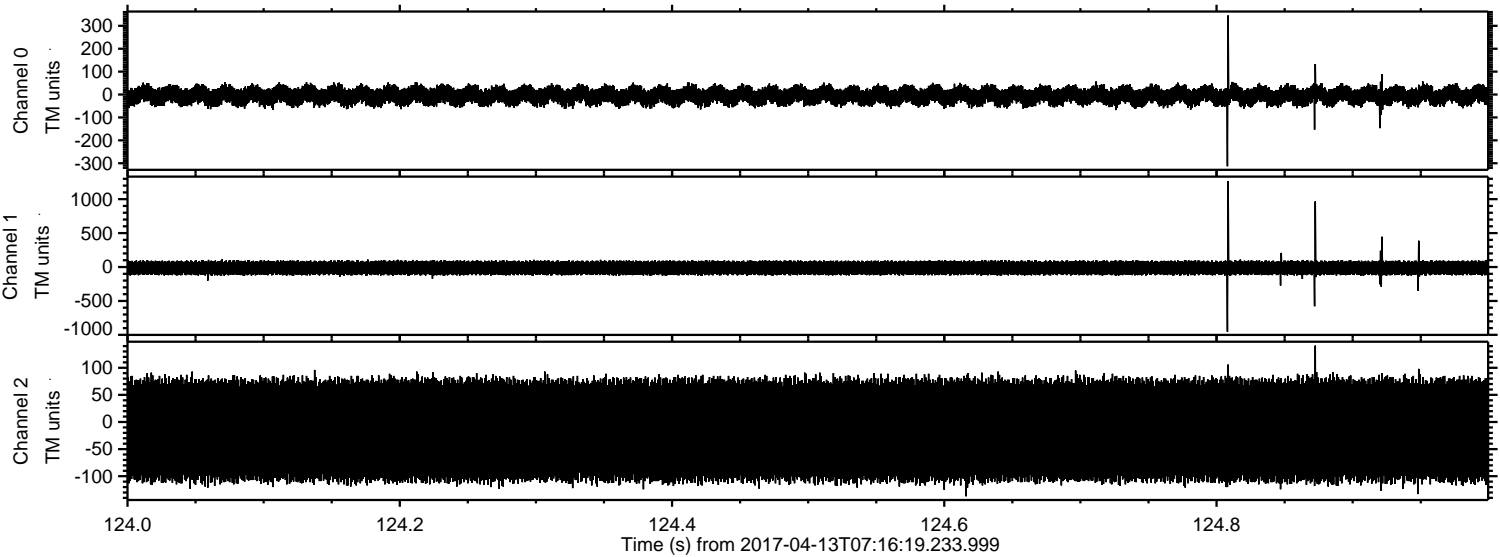


Processed Thu Apr 13 09:23:45 2017 by ELM ver.2012-10-06 from 001__elm20170413_071618__dat00.bin

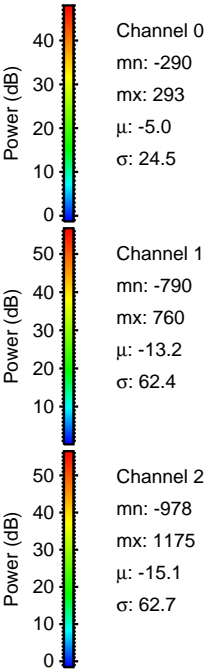
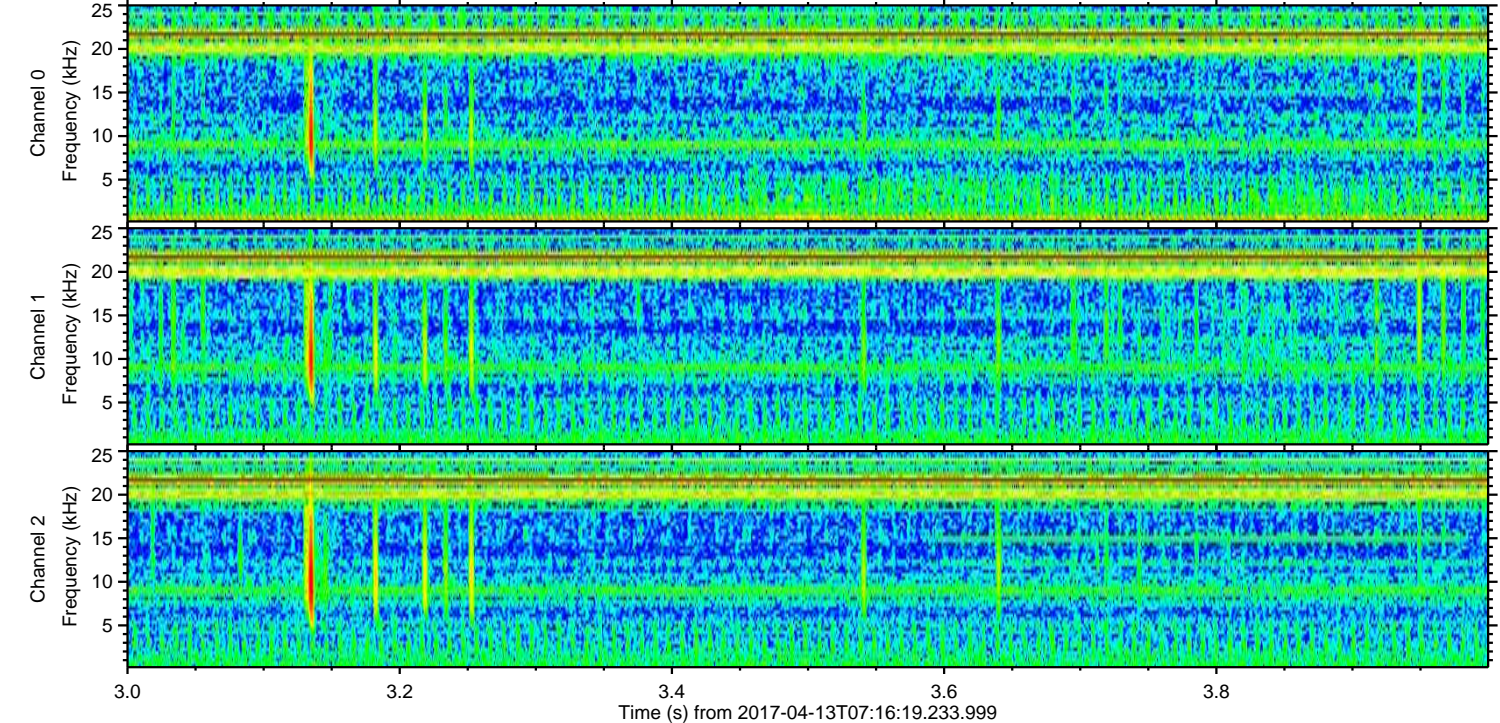
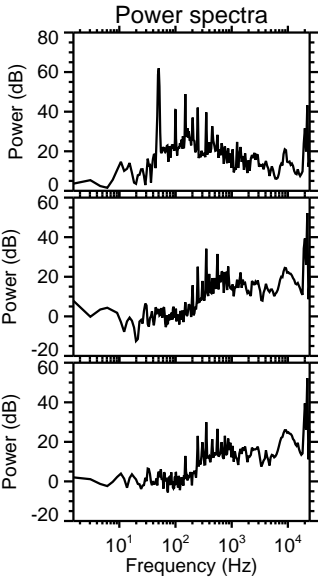
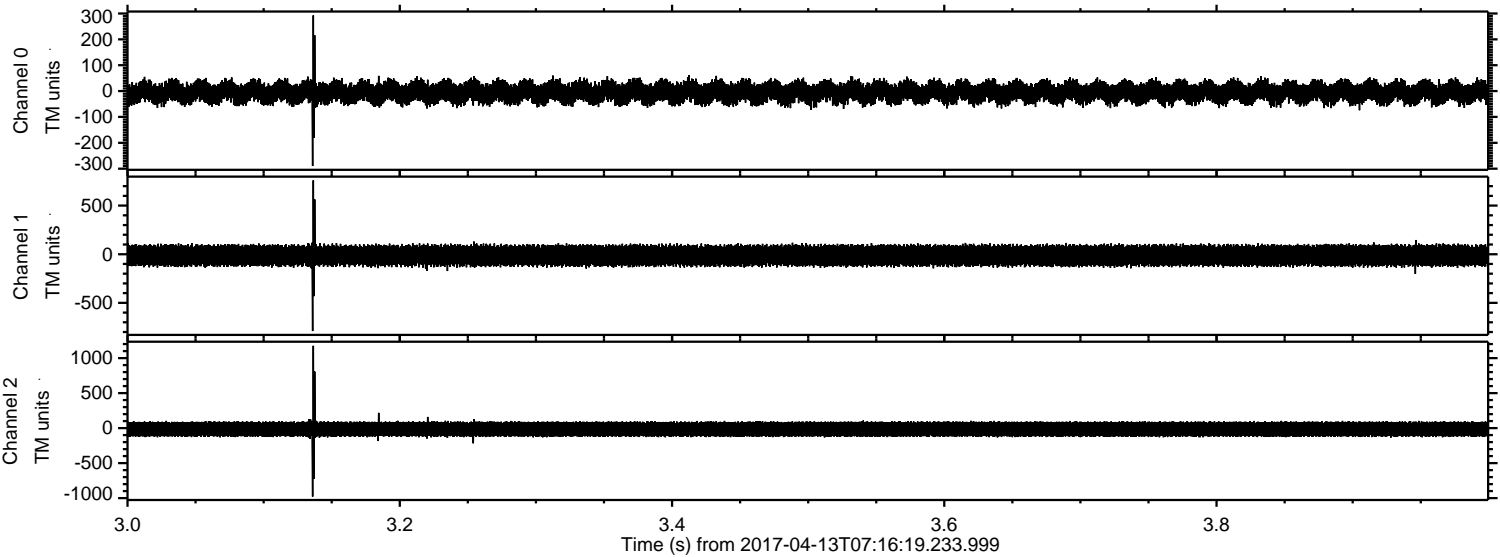


ELMAVAN 3D WAVEFORMS (Measured data sampled at 50 kHz) 51000 packets of 144 samples from 2017-04-13T07:16:19.233.999. Part 125/147

Processed Thu Apr 13 09:23:46 2017 by ELM ver.2012-10-06 from 001__elm20170413_071618__dat00.bin

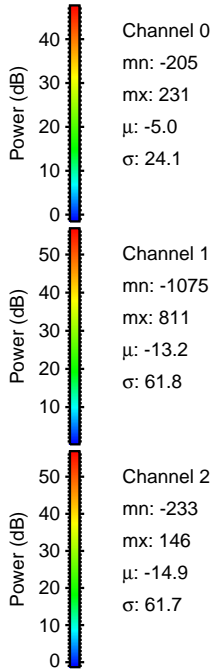
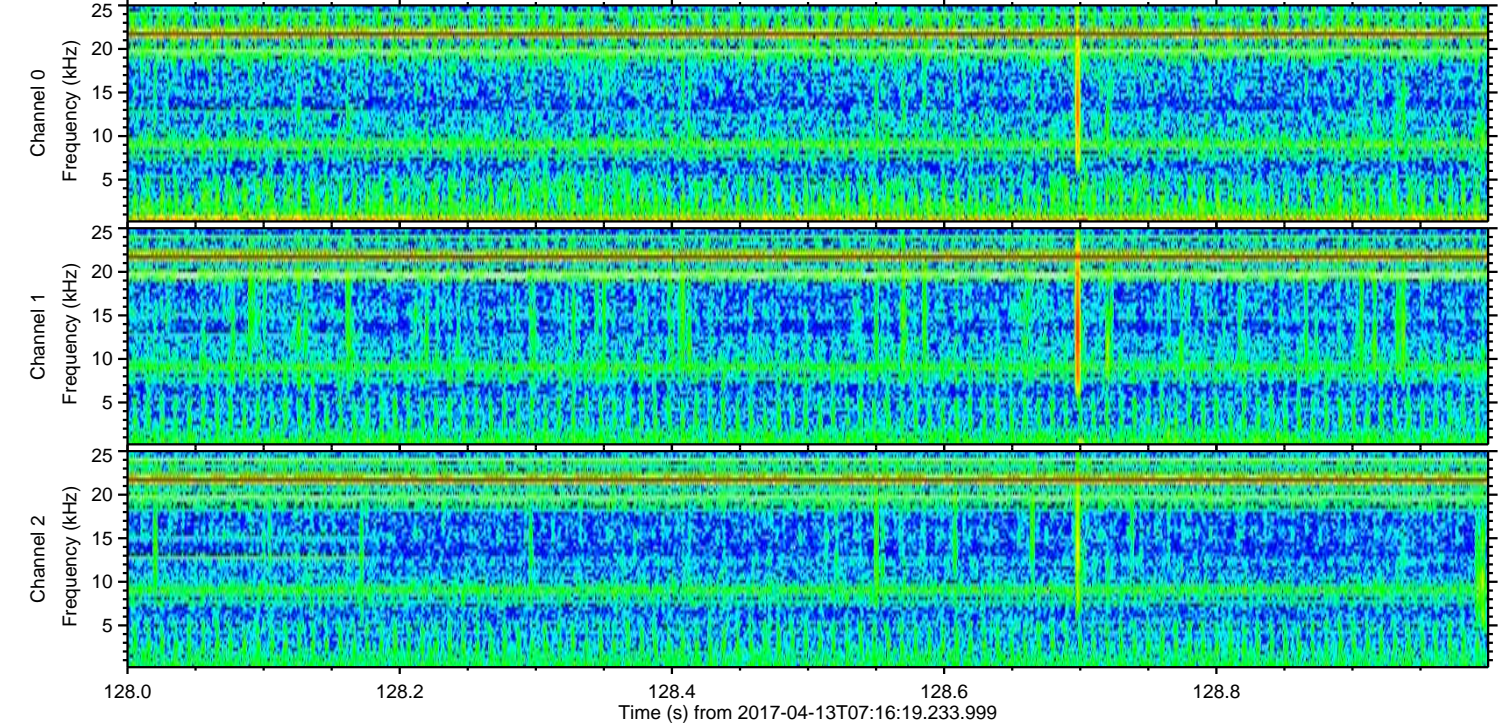
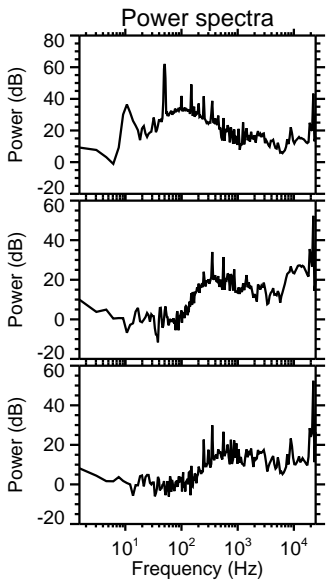
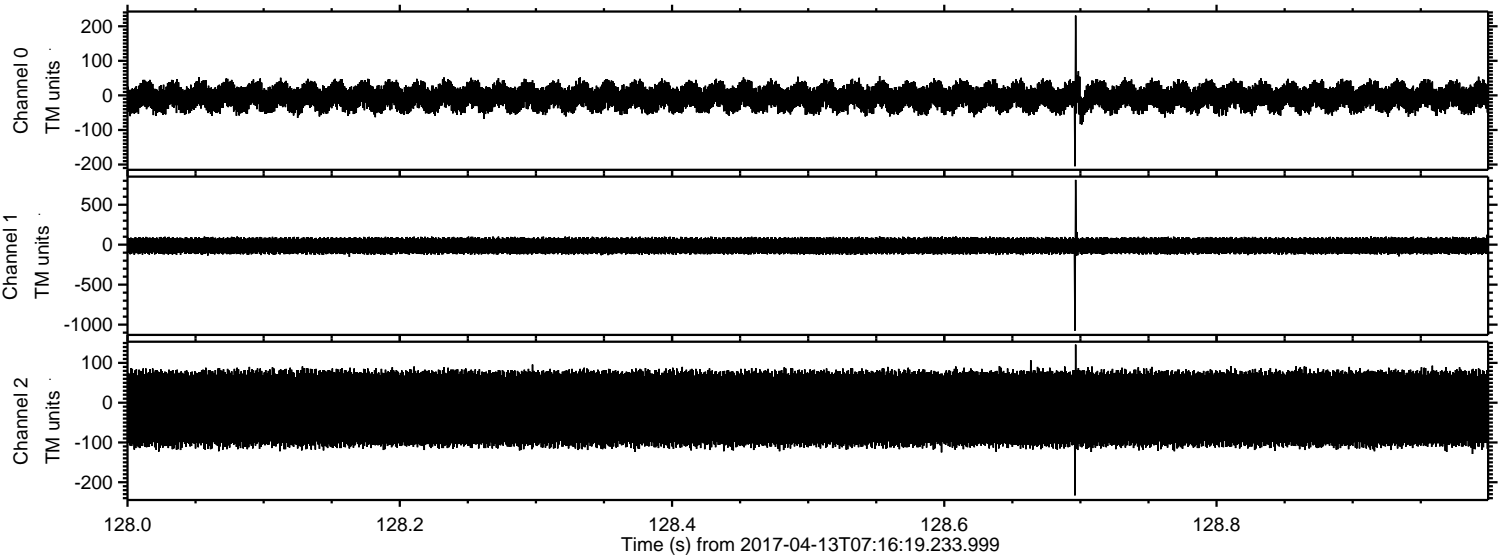


Processed Thu Apr 13 09:23:47 2017 by ELM ver.2012-10-06 from 001__elm20170413_071618__dat00.bin

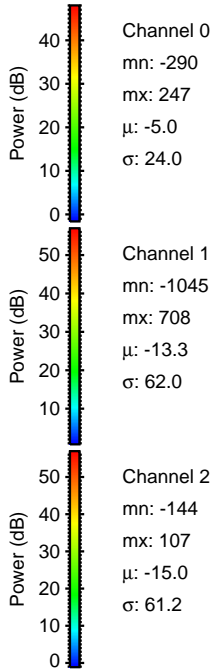
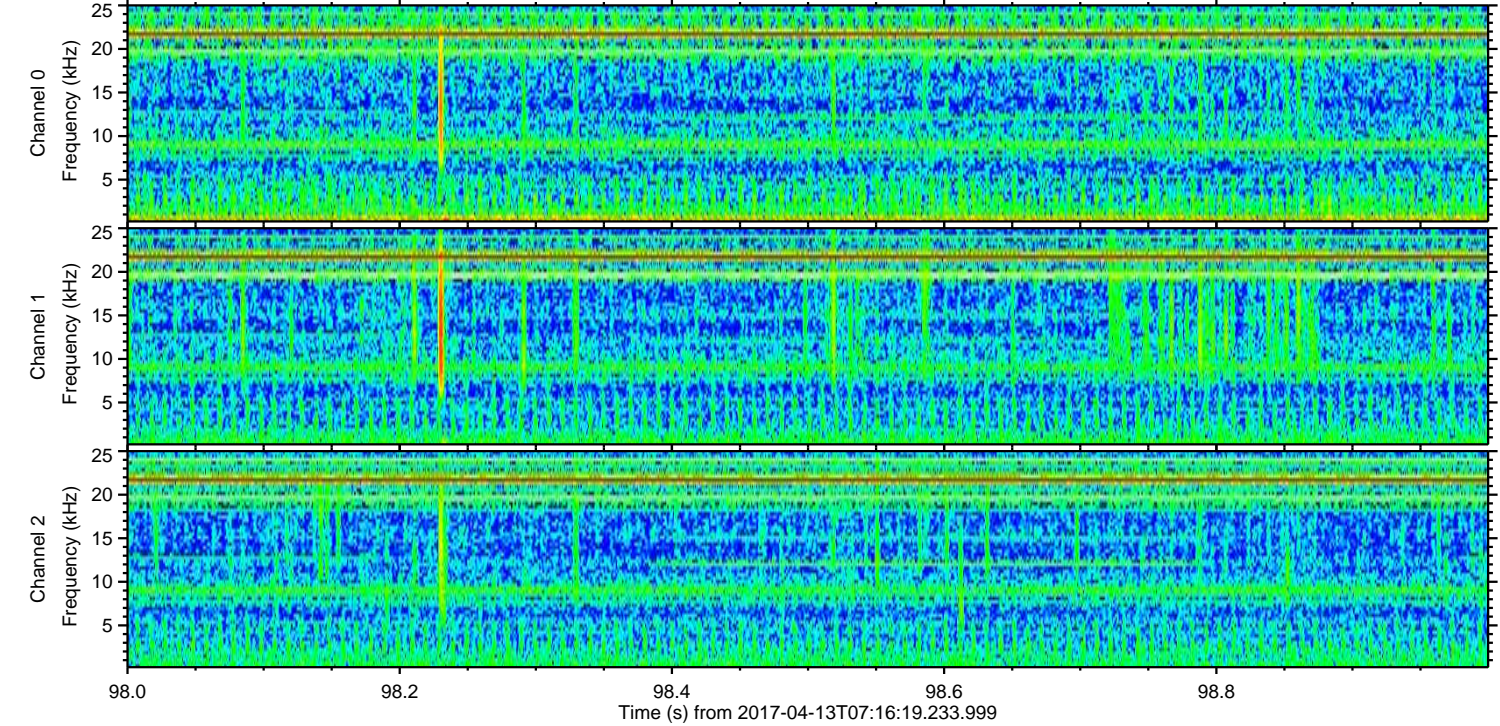
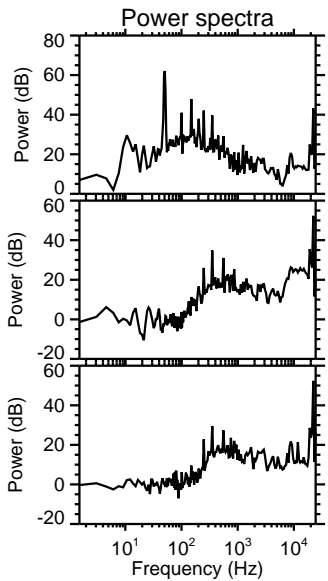
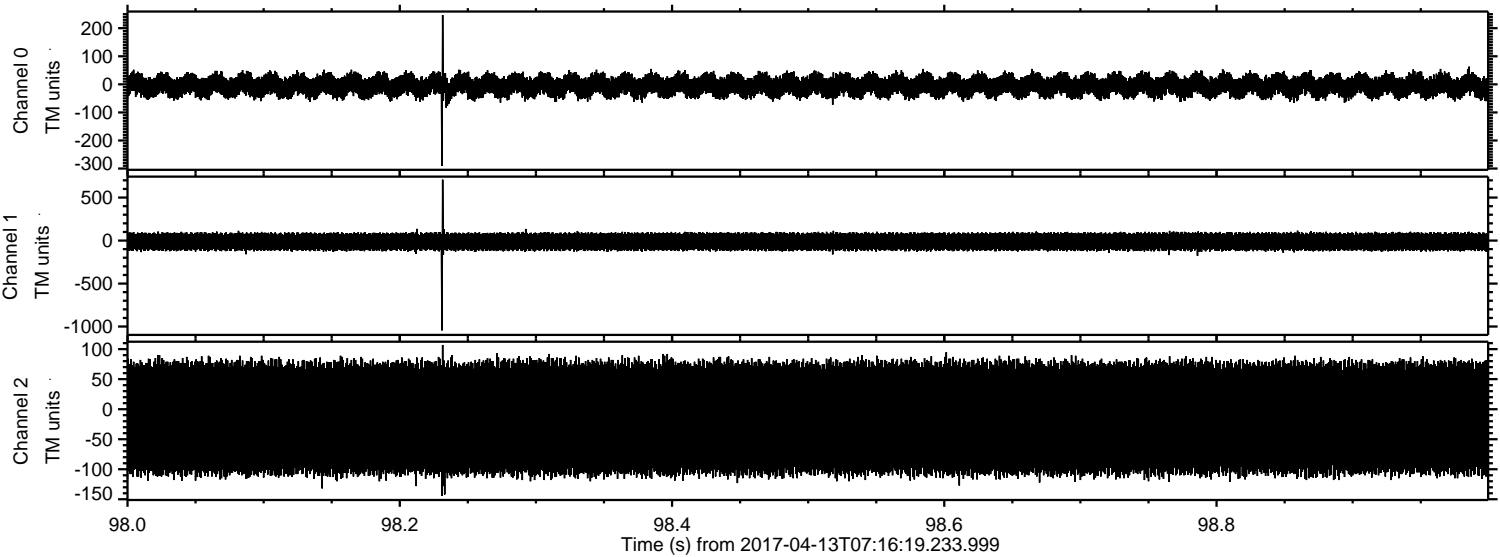


ELMAVAN 3D WAVEFORMS (Measured data sampled at 50 kHz) 51000 packets of 144 samples from 2017-04-13T07:16:19.233.999. Part 129/147

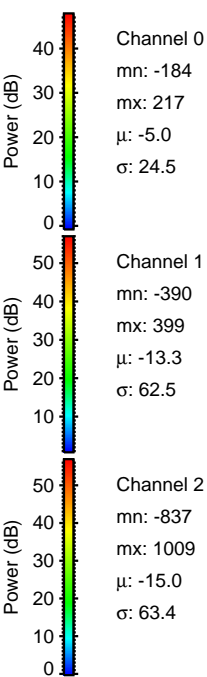
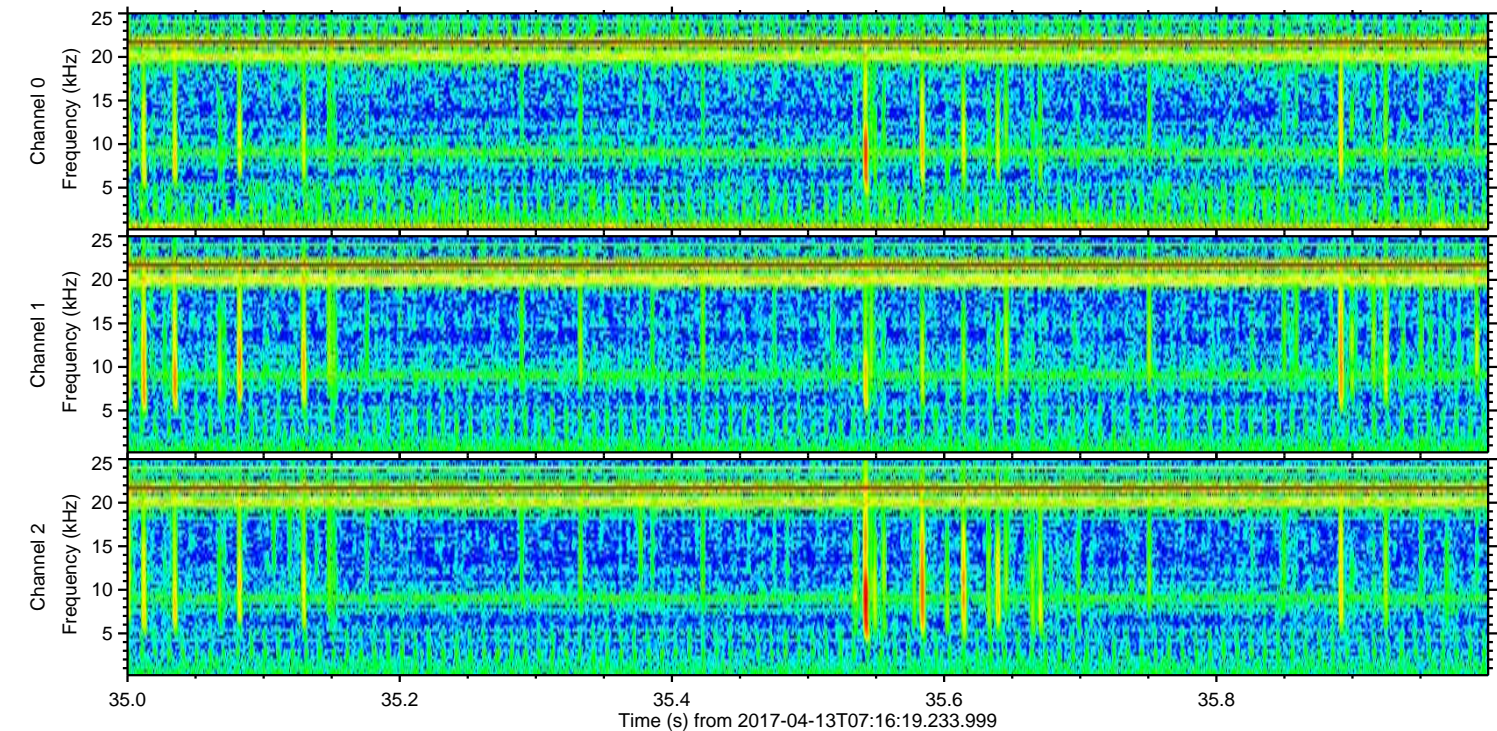
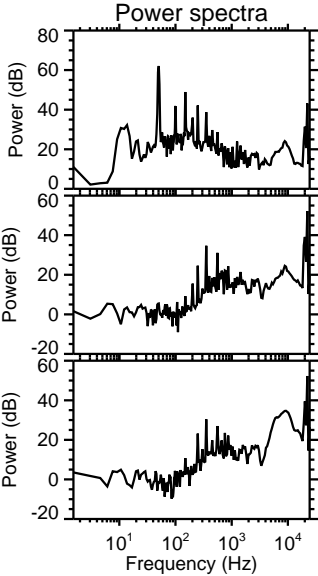
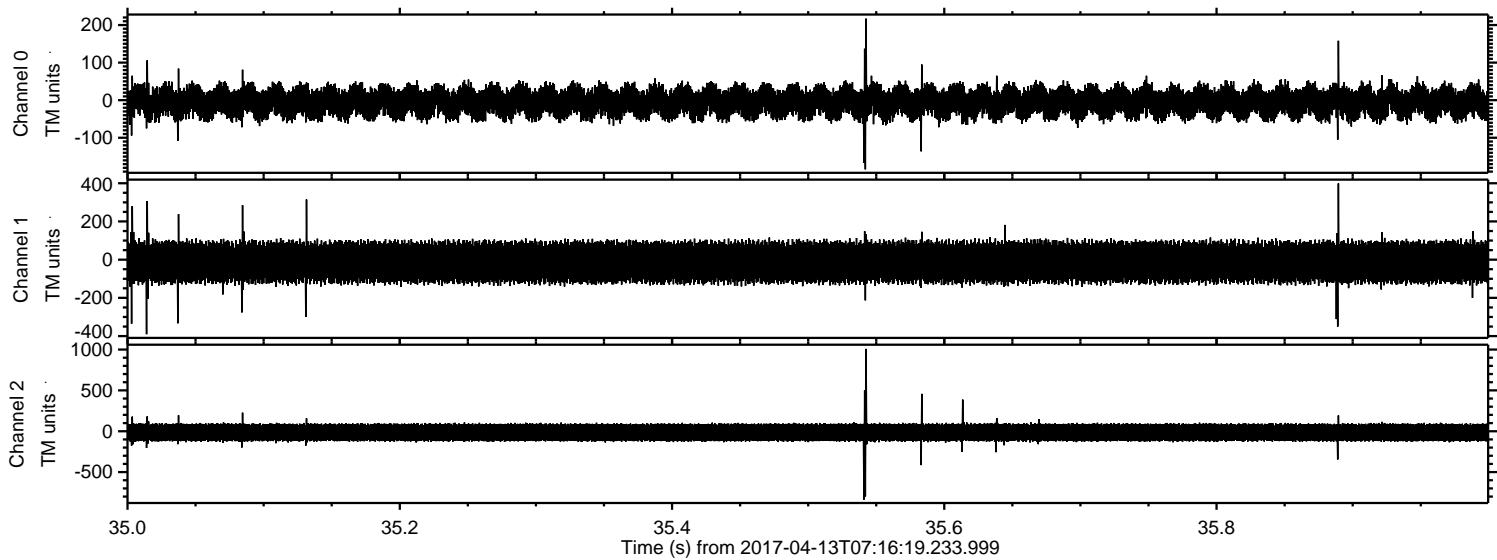
Processed Thu Apr 13 09:23:48 2017 by ELM ver.2012-10-06 from 001__elm20170413_071618__dat00.bin



Processed Thu Apr 13 09:23:49 2017 by ELM ver.2012-10-06 from 001__elm20170413_071618__dat00.bin

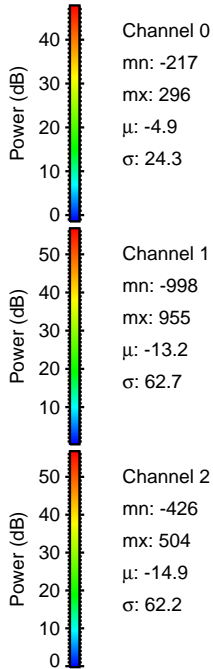
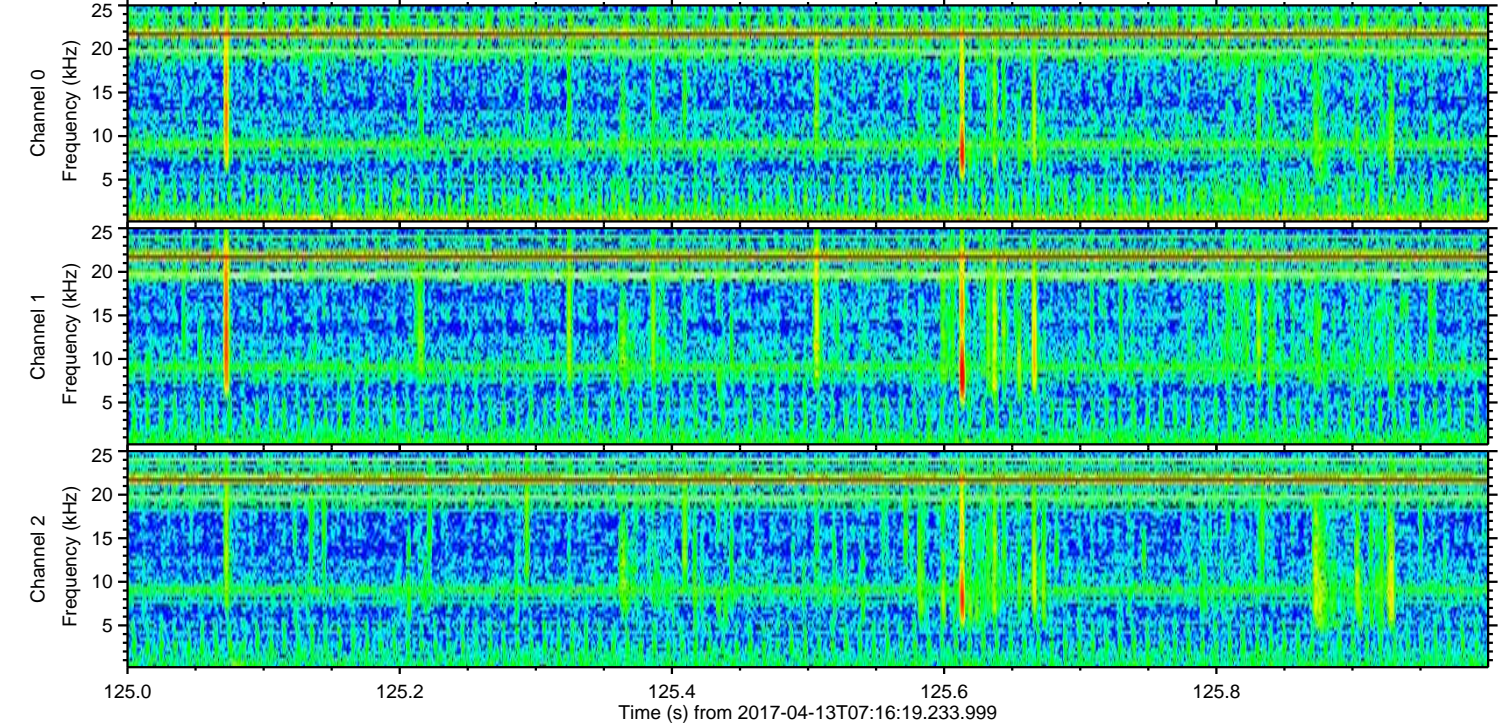
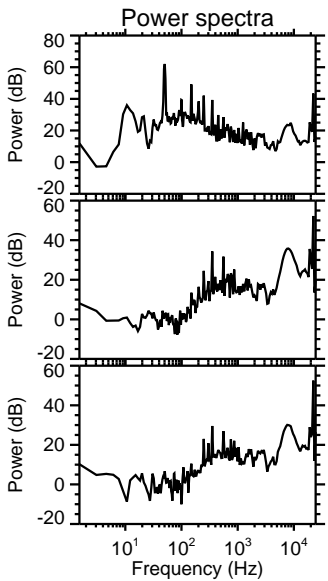
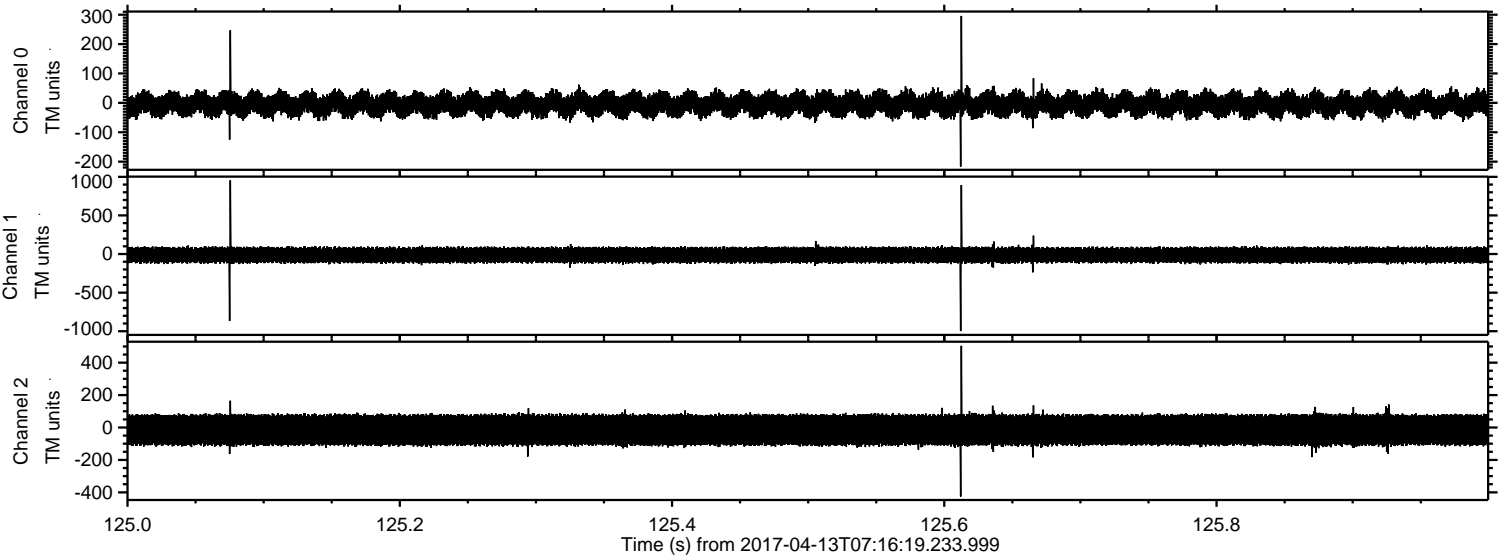


Processed Thu Apr 13 09:23:50 2017 by ELM ver.2012-10-06 from 001__elm20170413_071618__dat00.bin



ELMAVAN 3D WAVEFORMS (Measured data sampled at 50 kHz) 51000 packets of 144 samples from 2017-04-13T07:16:19.233.999. Part 126/147

Processed Thu Apr 13 09:23:51 2017 by ELM ver.2012-10-06 from 001__elm20170413_071618__dat00.bin

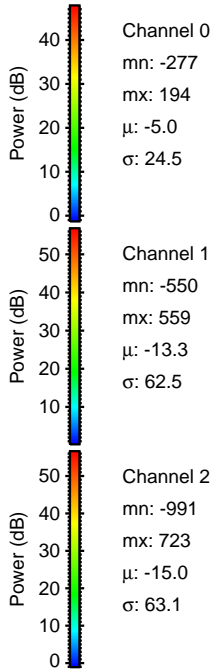
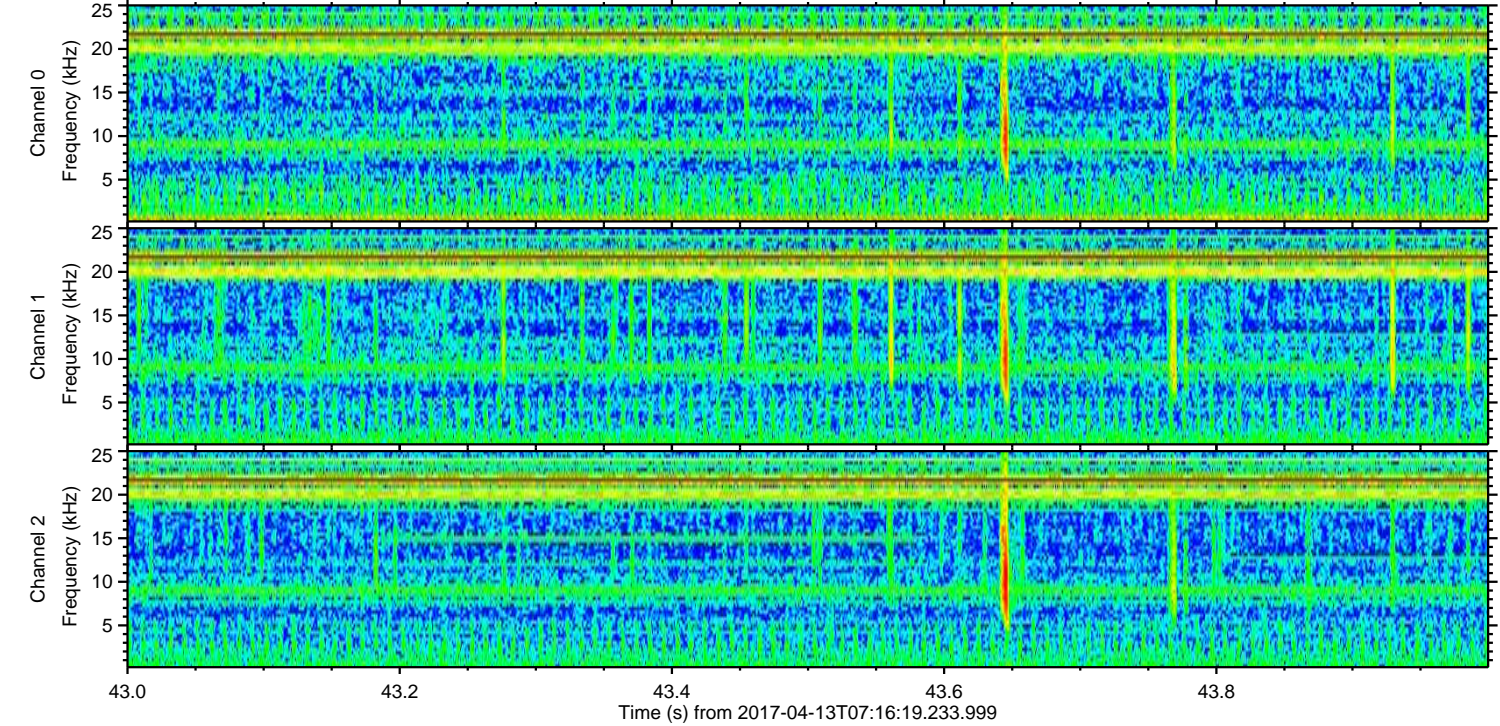
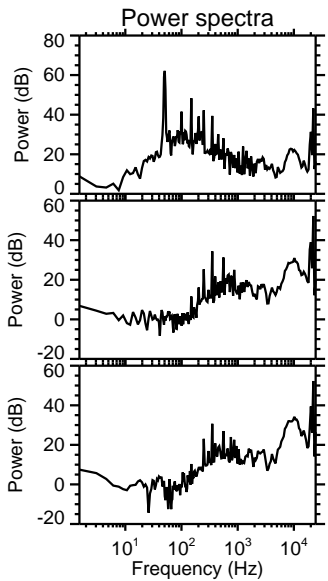
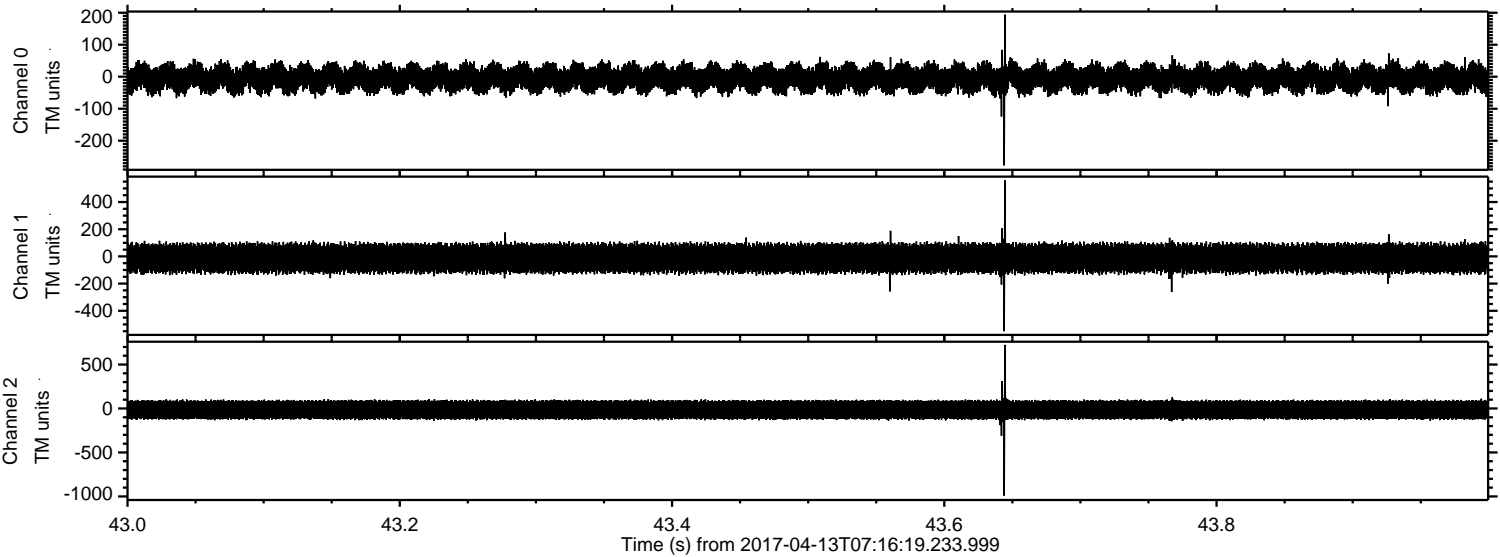


Channel 0
mn: -217
mx: 296
 μ : -4.9
 σ : 24.3

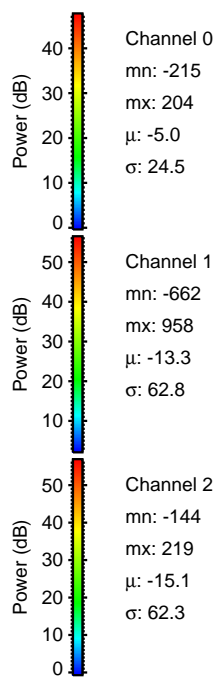
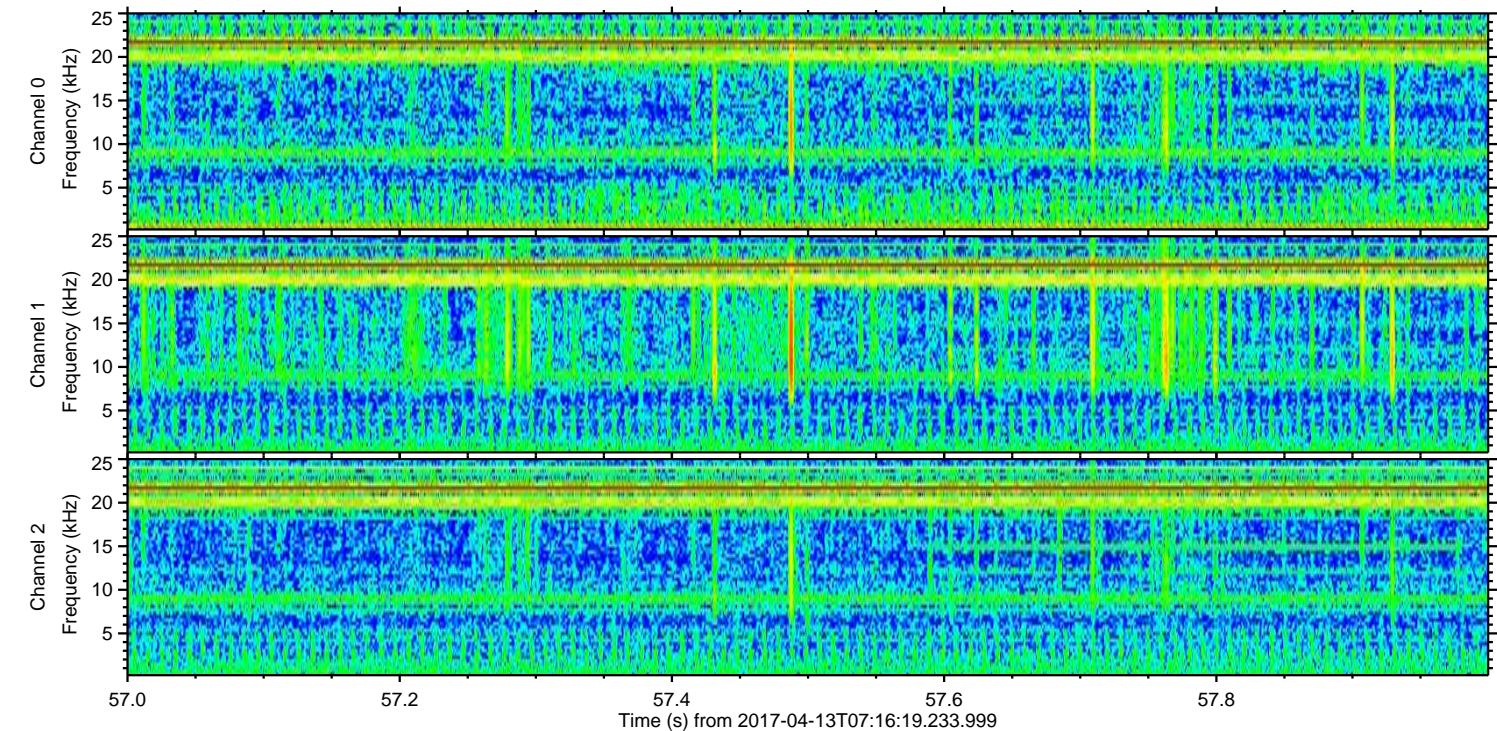
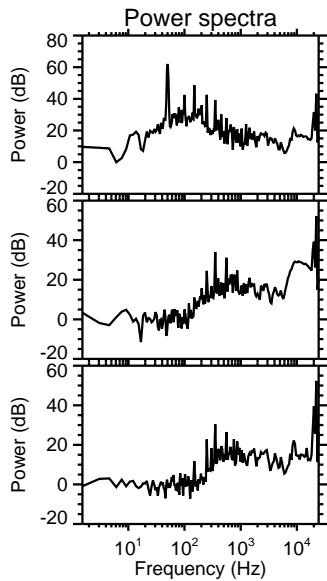
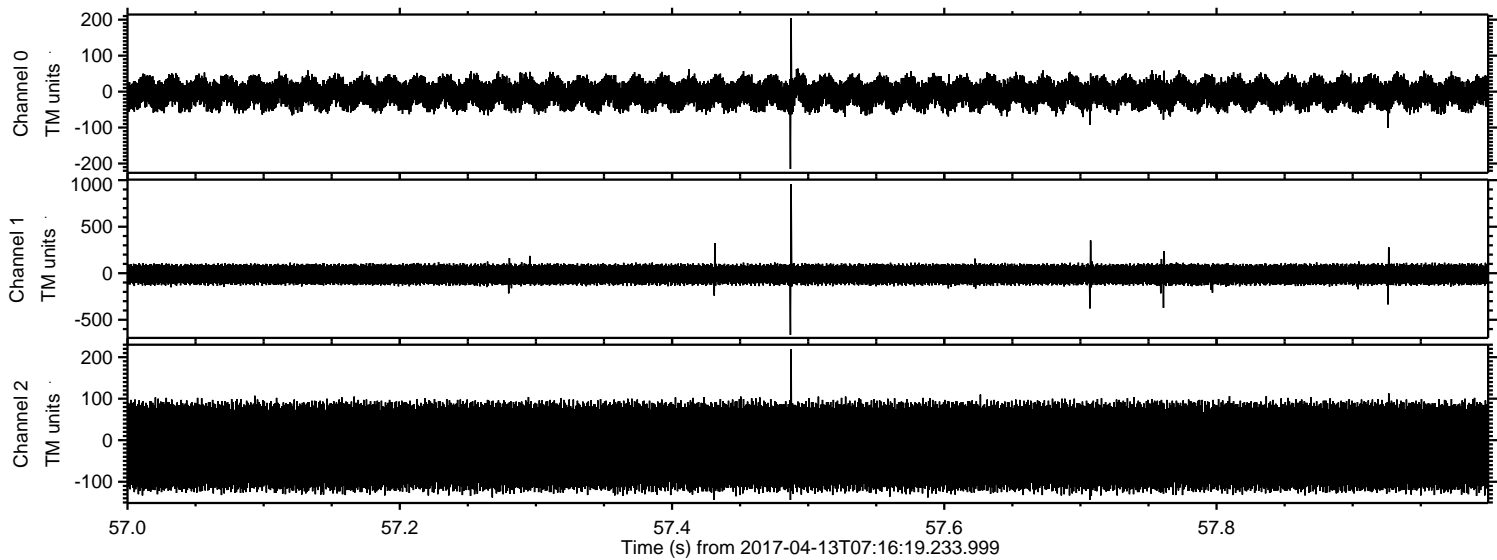
Channel 1
mn: -998
mx: 955
 μ : -13.2
 σ : 62.7

Channel 2
mn: -426
mx: 504
 μ : -14.9
 σ : 62.2

Processed Thu Apr 13 09:23:52 2017 by ELM ver.2012-10-06 from 001__elm20170413_071618__dat00.bin



Processed Thu Apr 13 09:23:53 2017 by ELM ver.2012-10-06 from 001__elm20170413_071618__dat00.bin



Processed Thu Apr 13 09:23:54 2017 by ELM ver.2012-10-06 from 001__elm20170413_071618__dat00.bin

