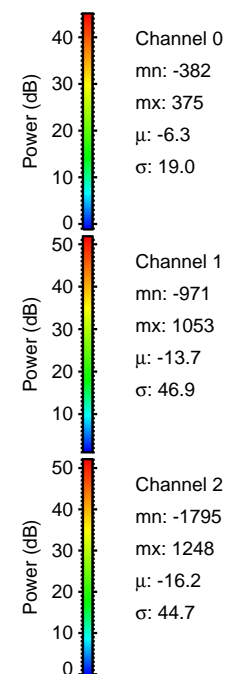
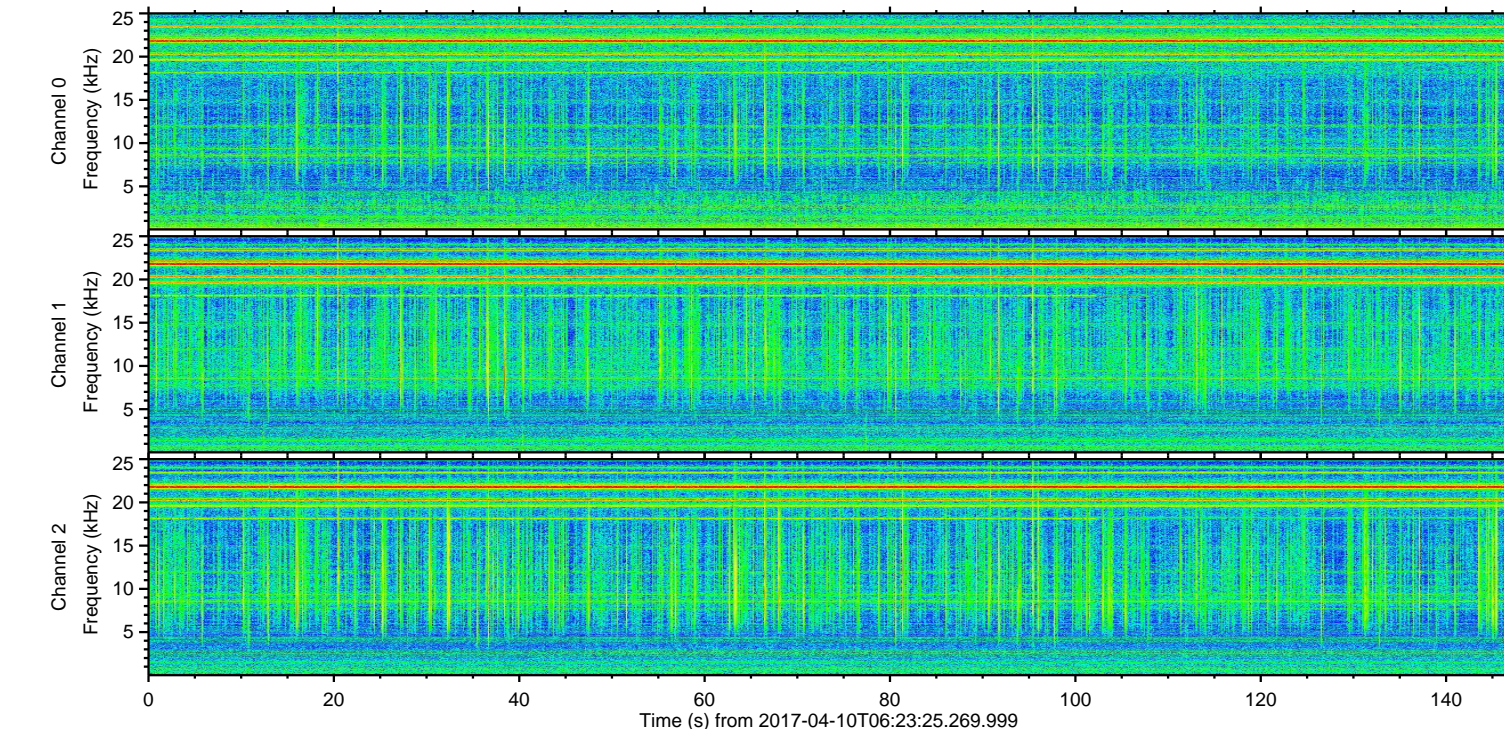
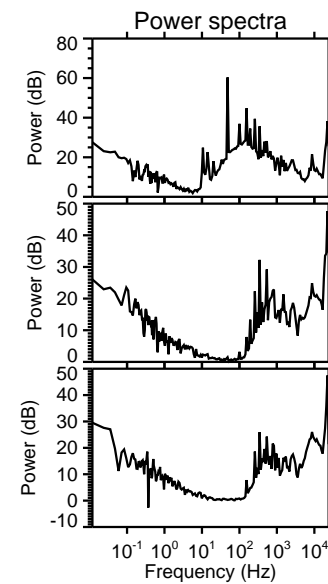
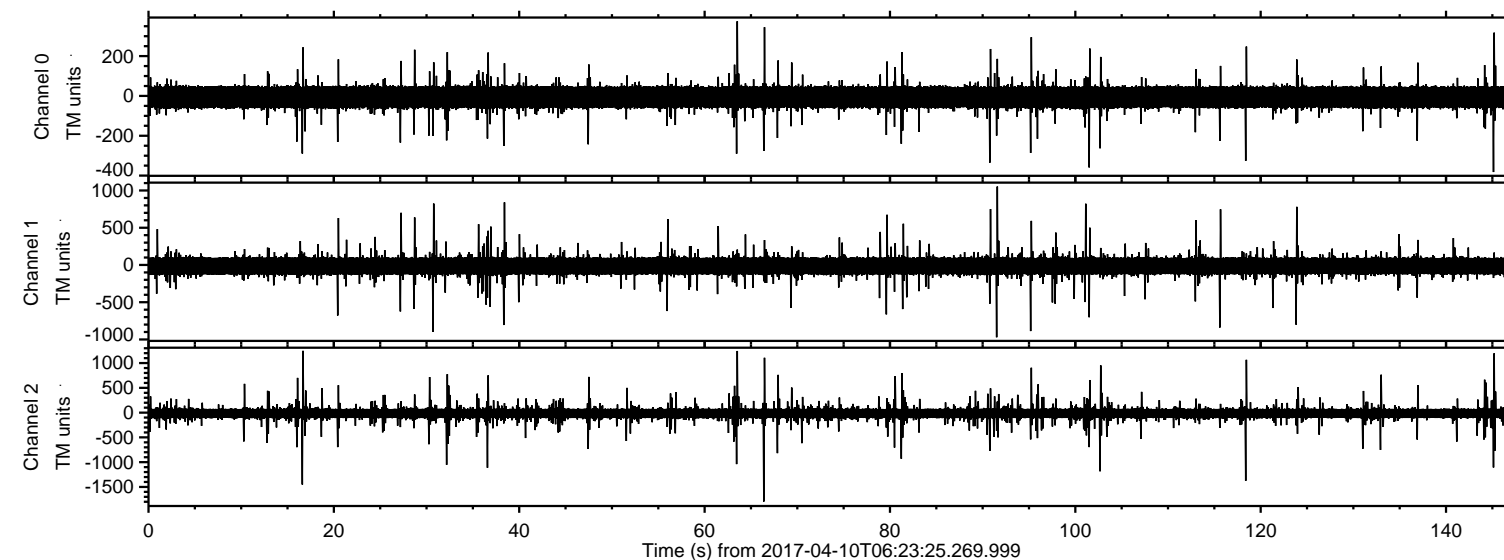


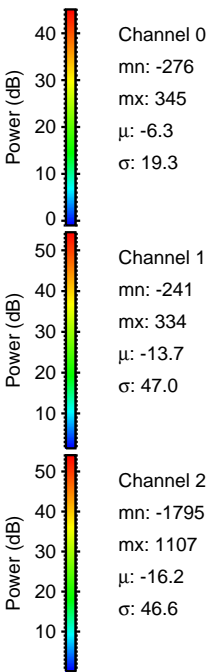
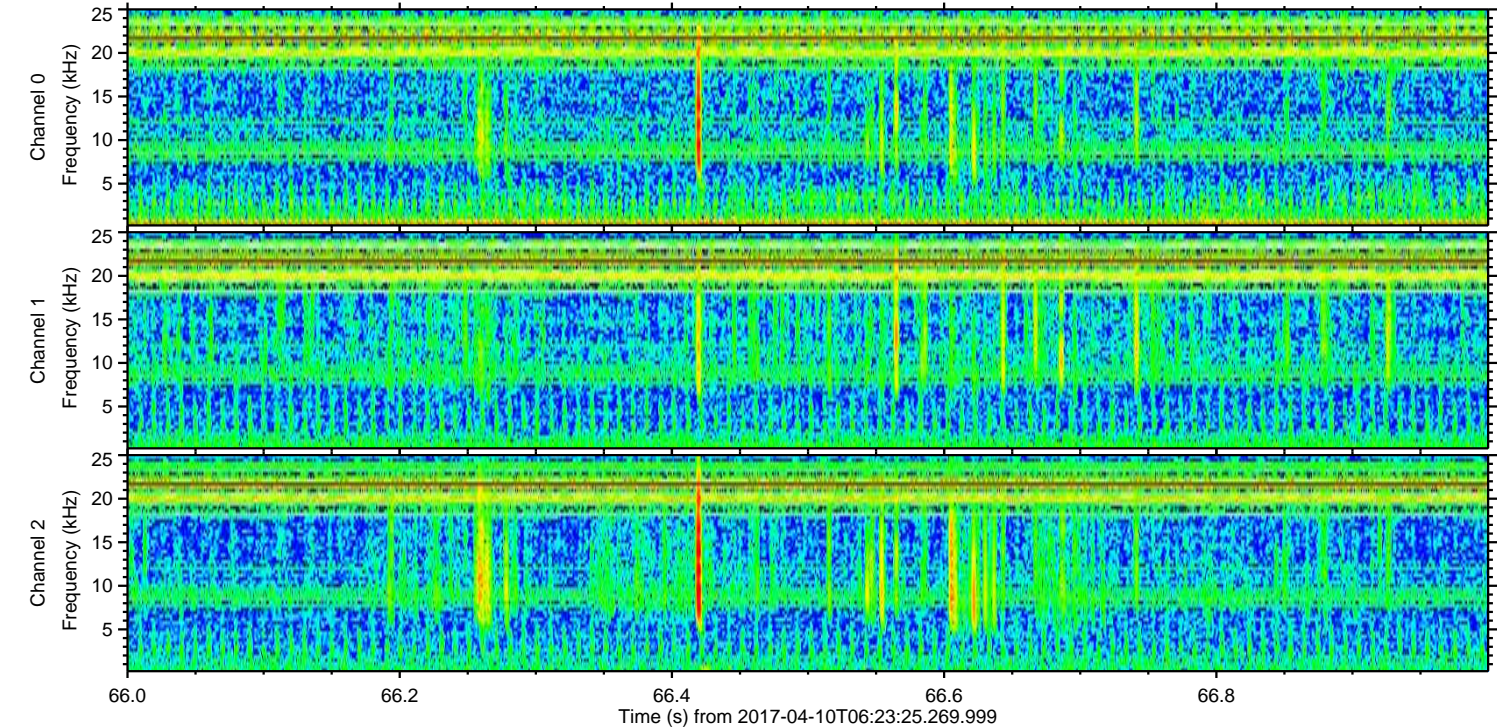
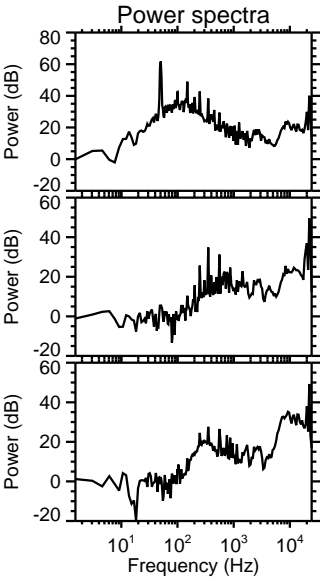
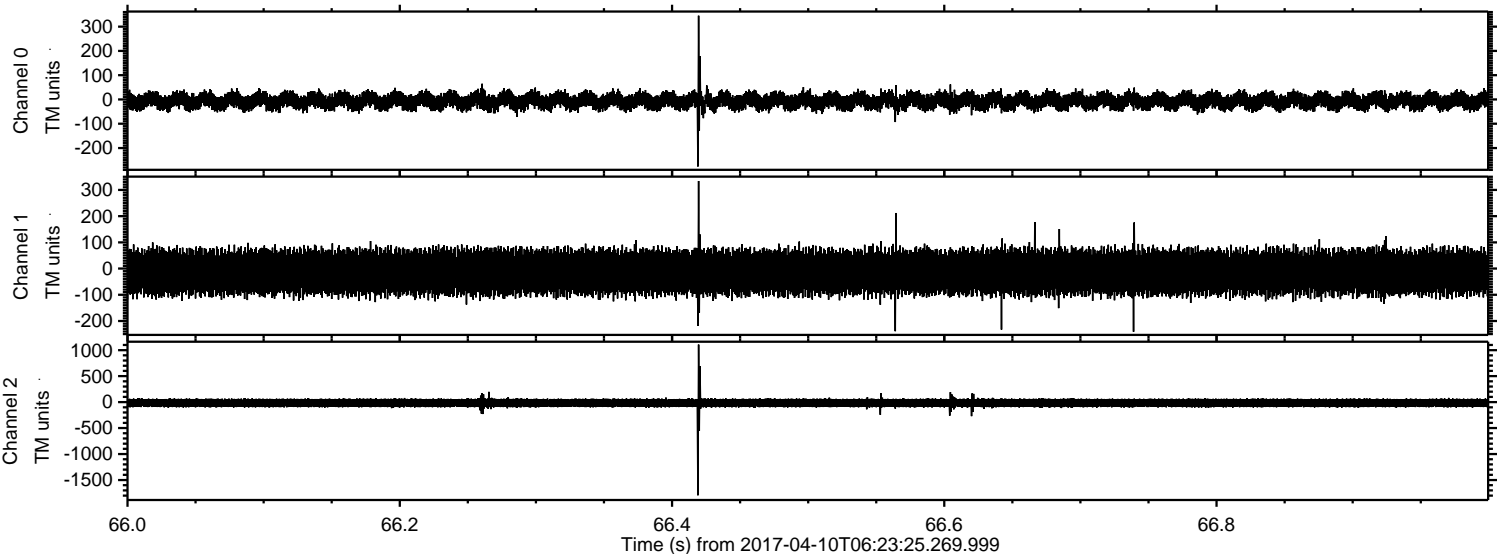
ELMAVAN 3D WAVEFORMS (Measured data sampled at 50 kHz) 51000 packets of 144 samples from 2017-04-10T06:23:25.269.999.

Processed Mon Apr 10 08:31:54 2017 by ELM ver.2012-10-06 from 001__elm20170410_062324__dat00.bin



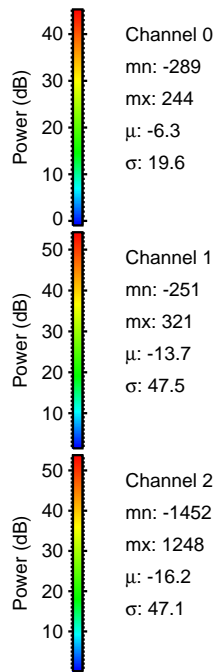
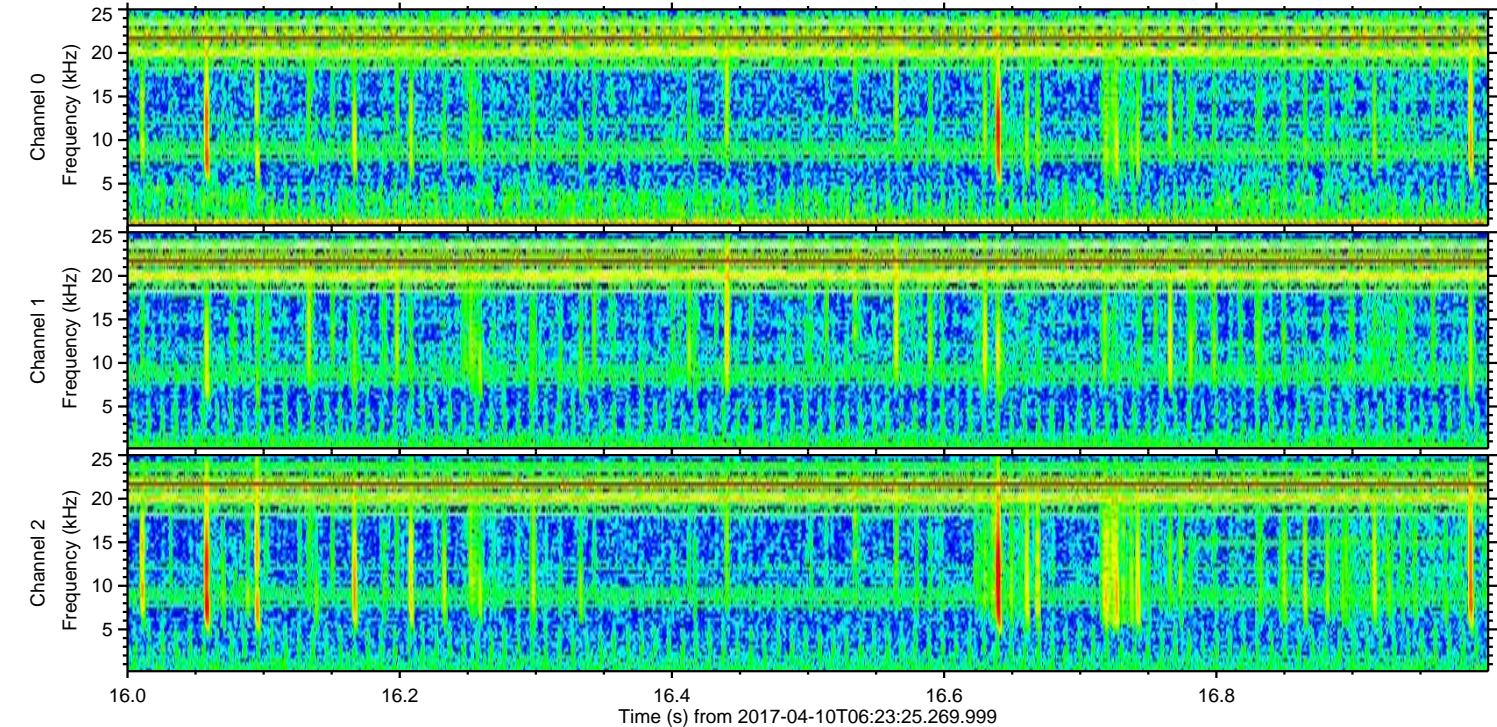
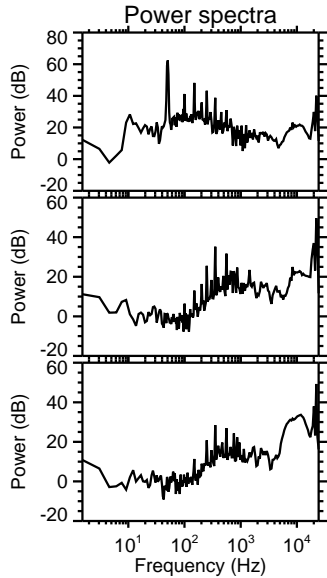
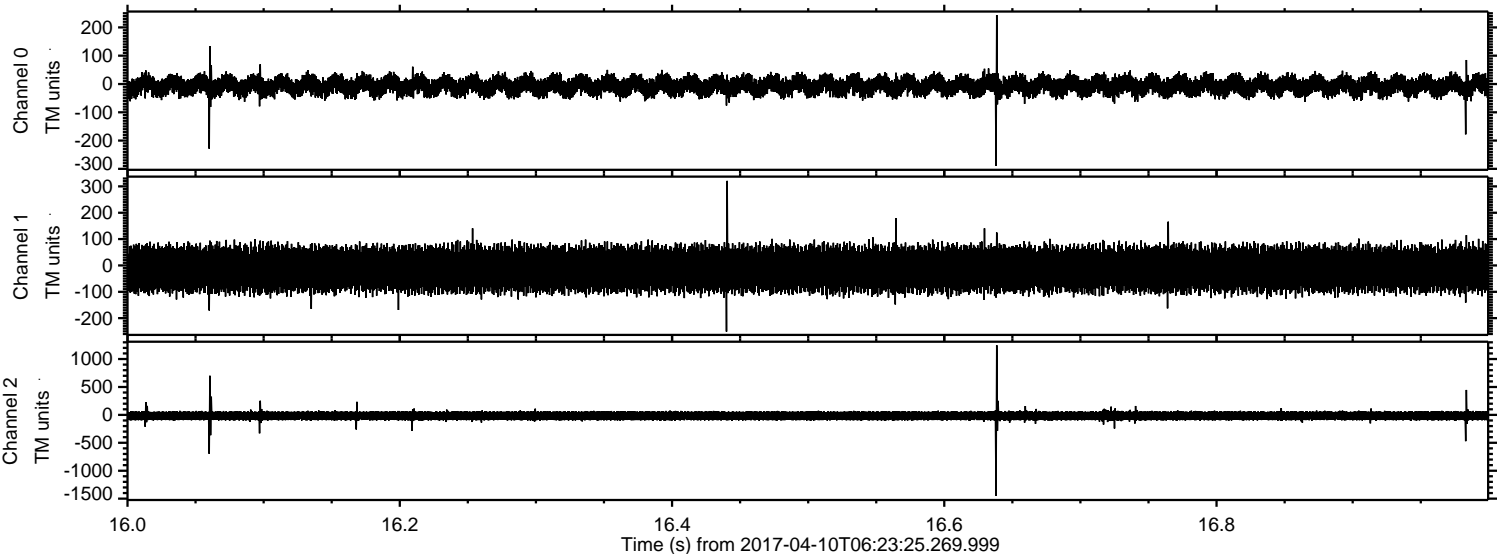
ELMAVAN 3D WAVEFORMS (Measured data sampled at 50 kHz) 51000 packets of 144 samples from 2017-04-10T06:23:25.269.999. Part 67/147

Processed Mon Apr 10 08:32:06 2017 by ELM ver.2012-10-06 from 001__elm20170410_062324__dat00.bin



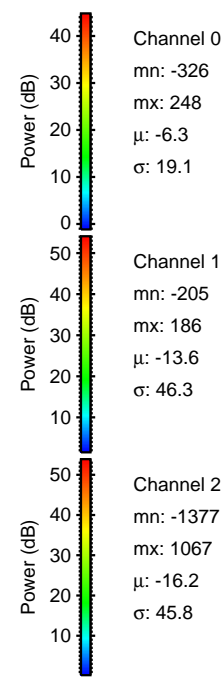
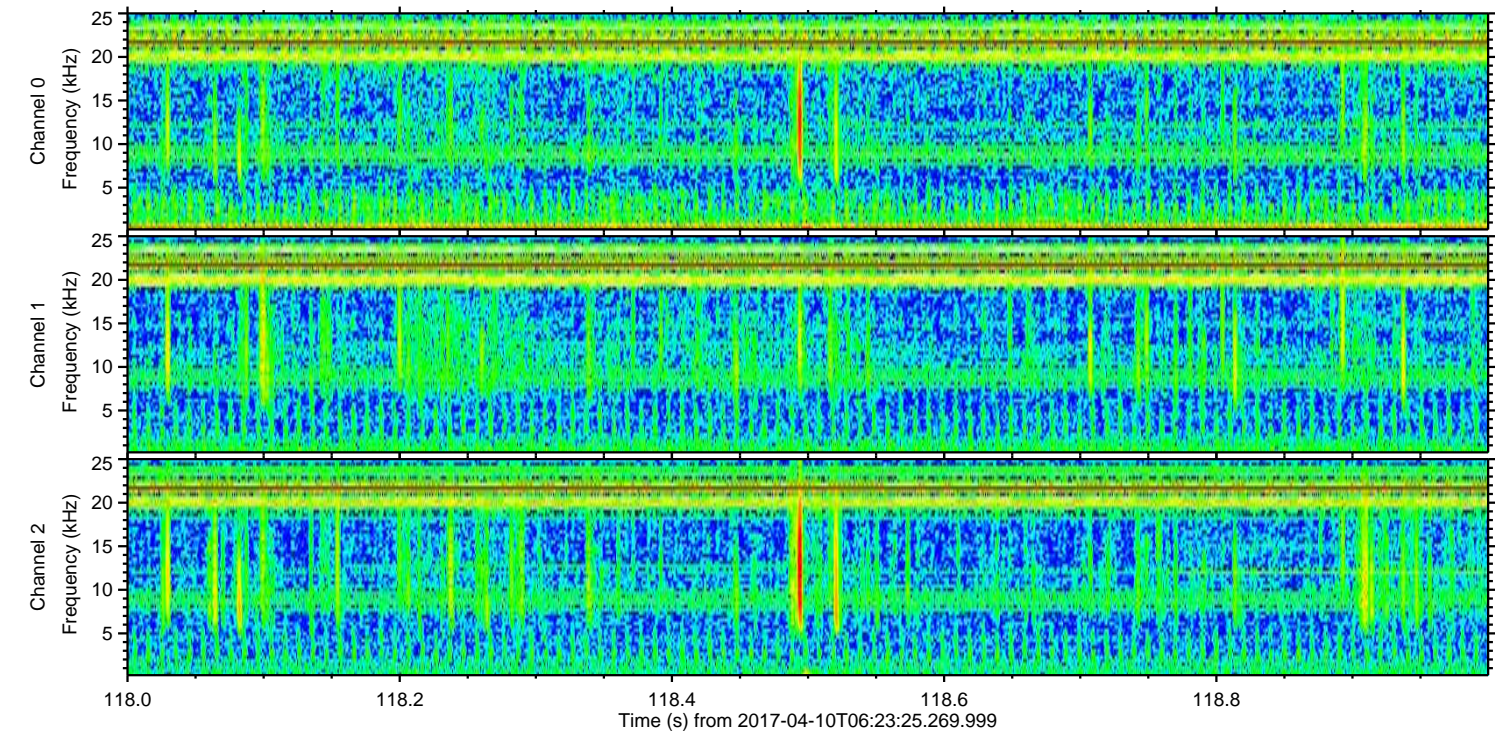
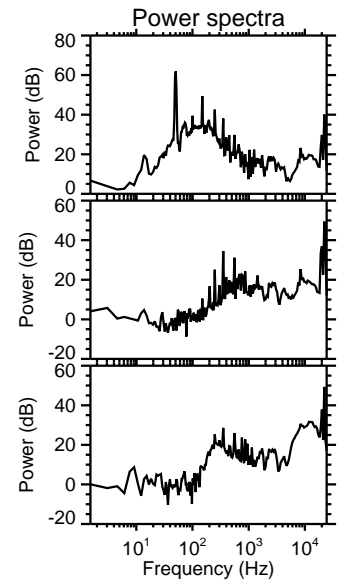
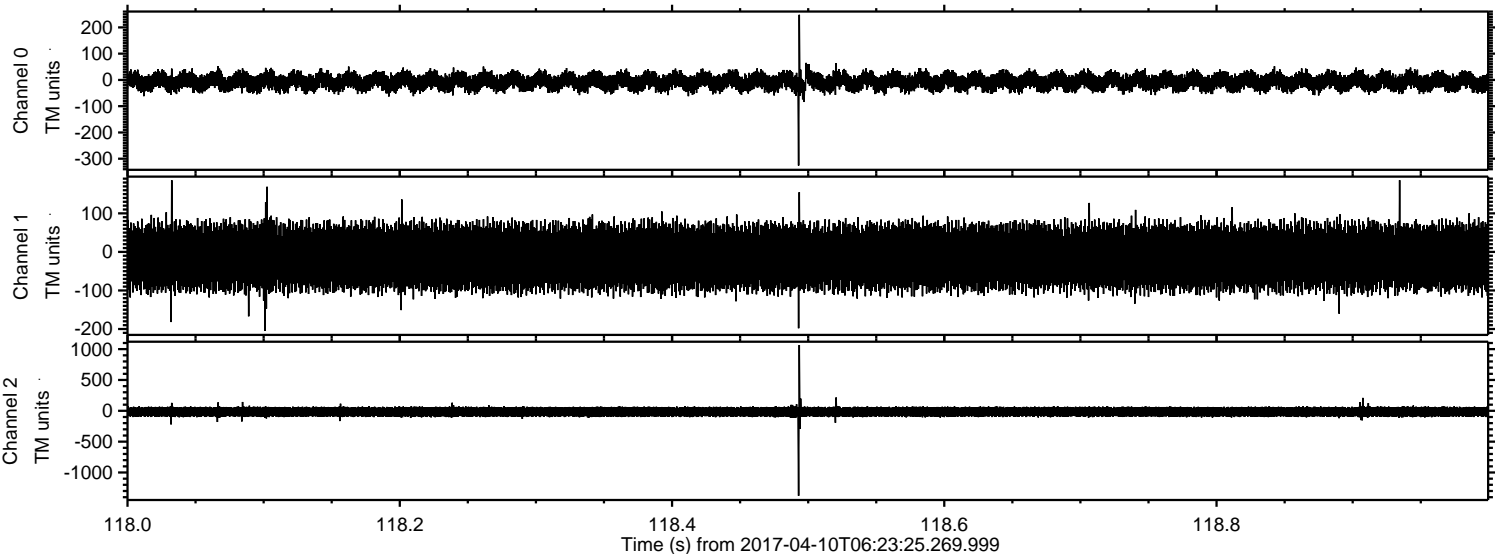
ELMAVAN 3D WAVEFORMS (Measured data sampled at 50 kHz) 51000 packets of 144 samples from 2017-04-10T06:23:25.269.999. Part 17/147

Processed Mon Apr 10 08:32:07 2017 by ELM ver.2012-10-06 from 001__elm20170410_062324__dat00.bin

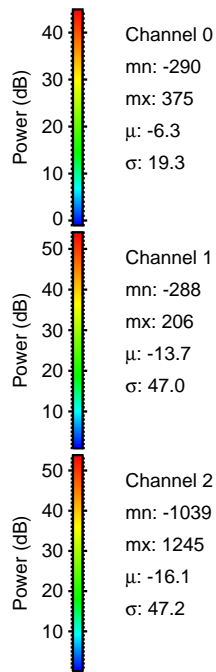
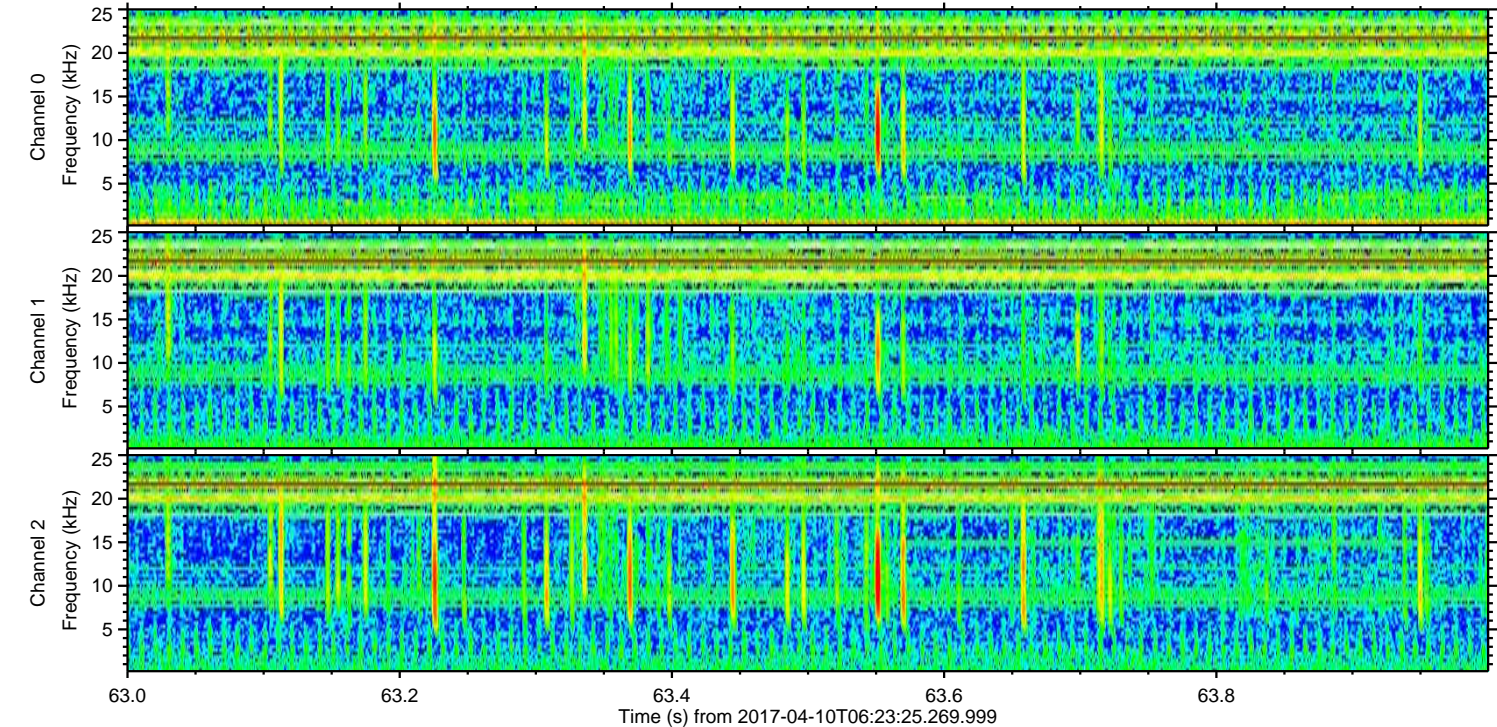
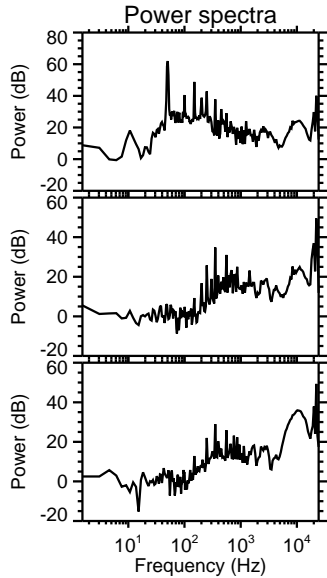
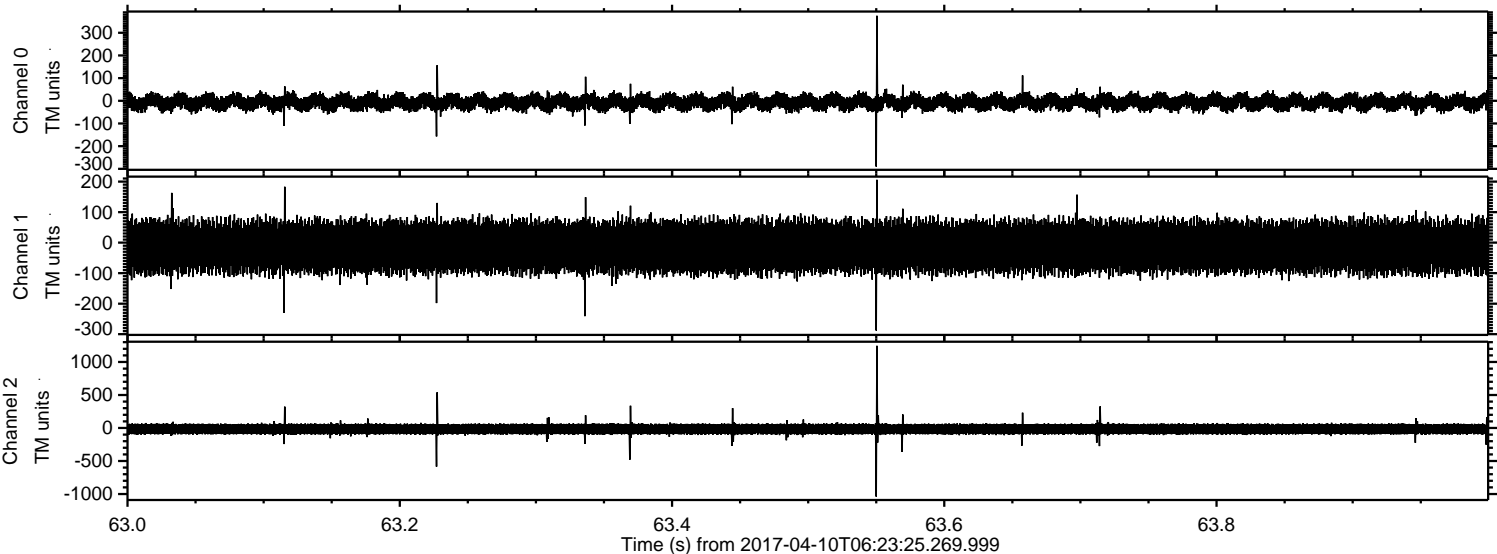


ELMAVAN 3D WAVEFORMS (Measured data sampled at 50 kHz) 51000 packets of 144 samples from 2017-04-10T06:23:25.269.999. Part 119/147

Processed Mon Apr 10 08:32:08 2017 by ELM ver.2012-10-06 from 001__elm20170410_062324__dat00.bin

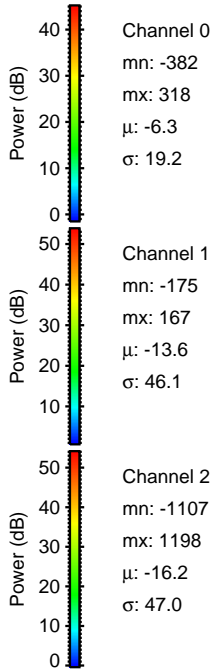
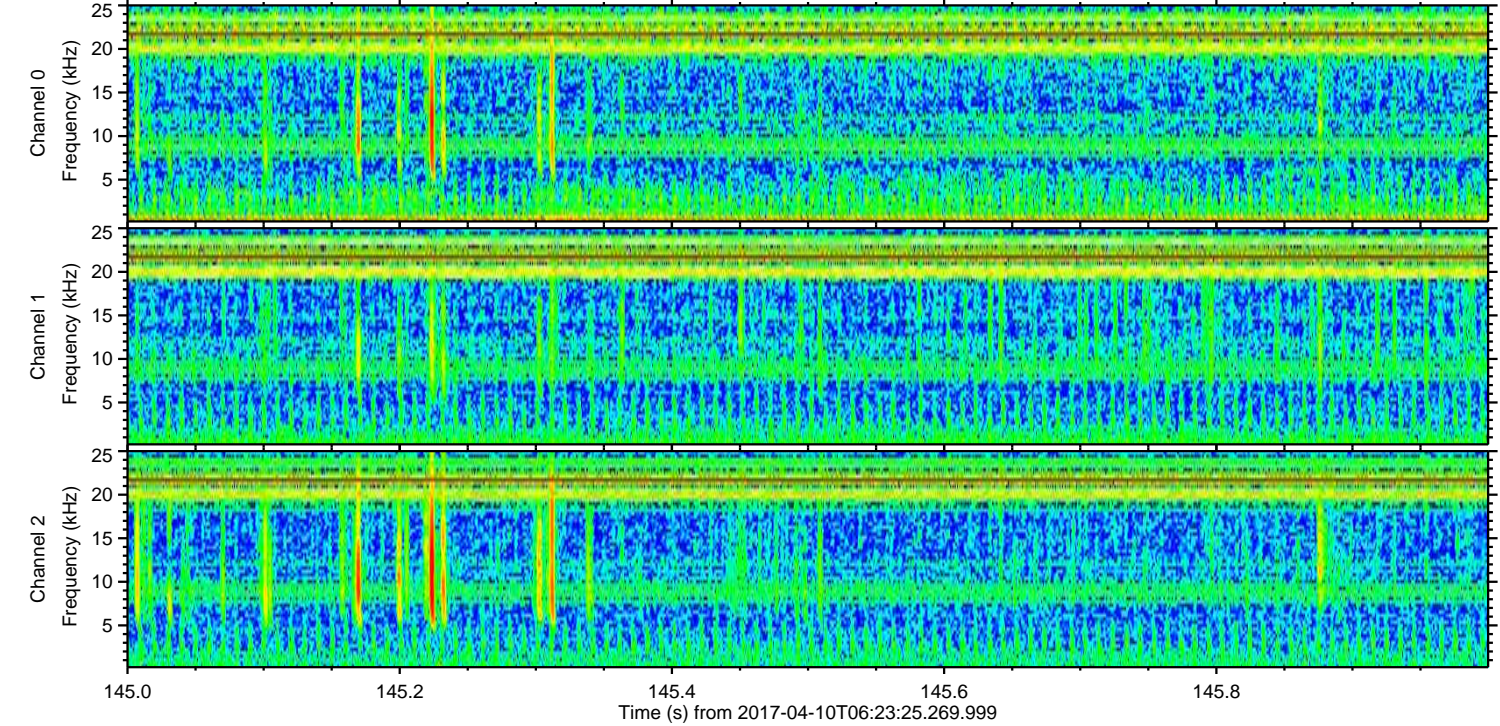
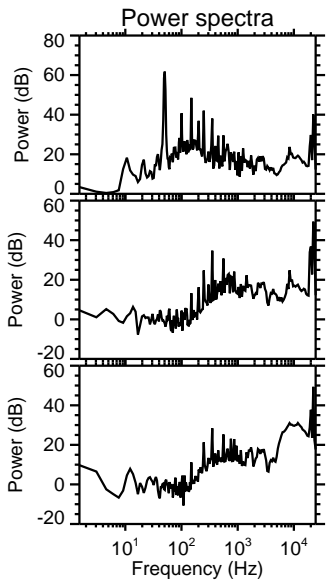
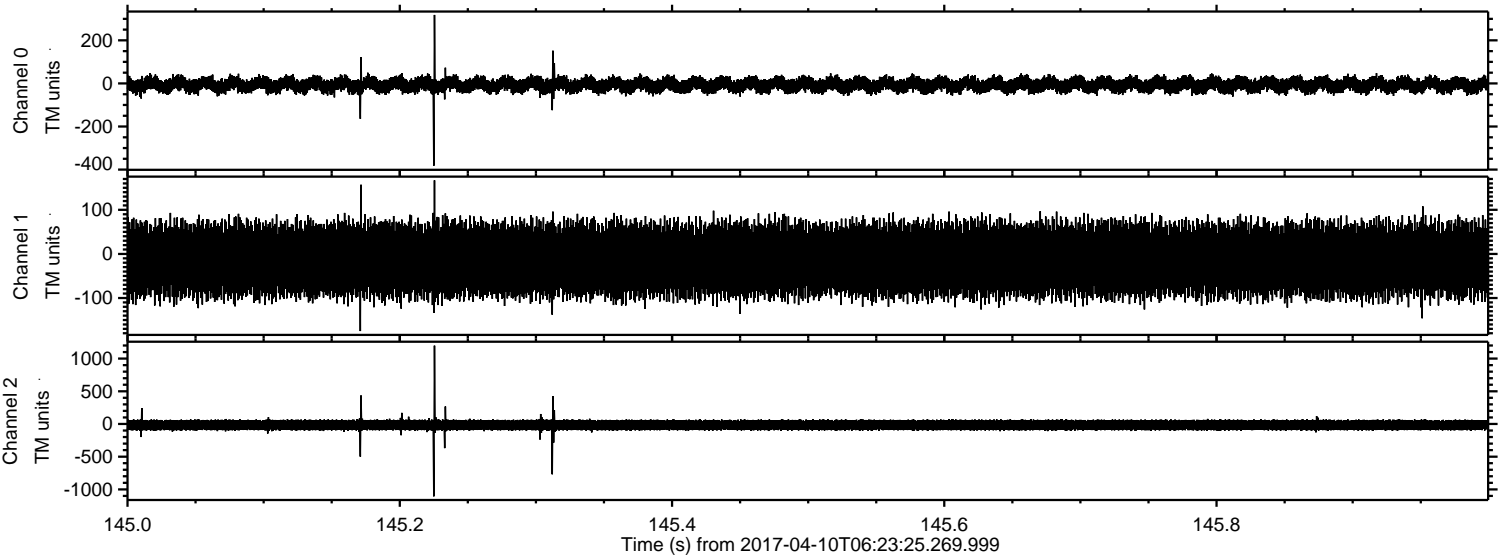


Processed Mon Apr 10 08:32:09 2017 by ELM ver.2012-10-06 from 001__elm20170410_062324__dat00.bin



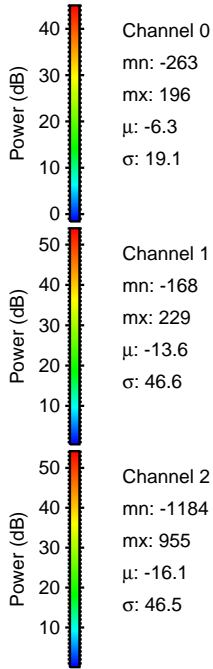
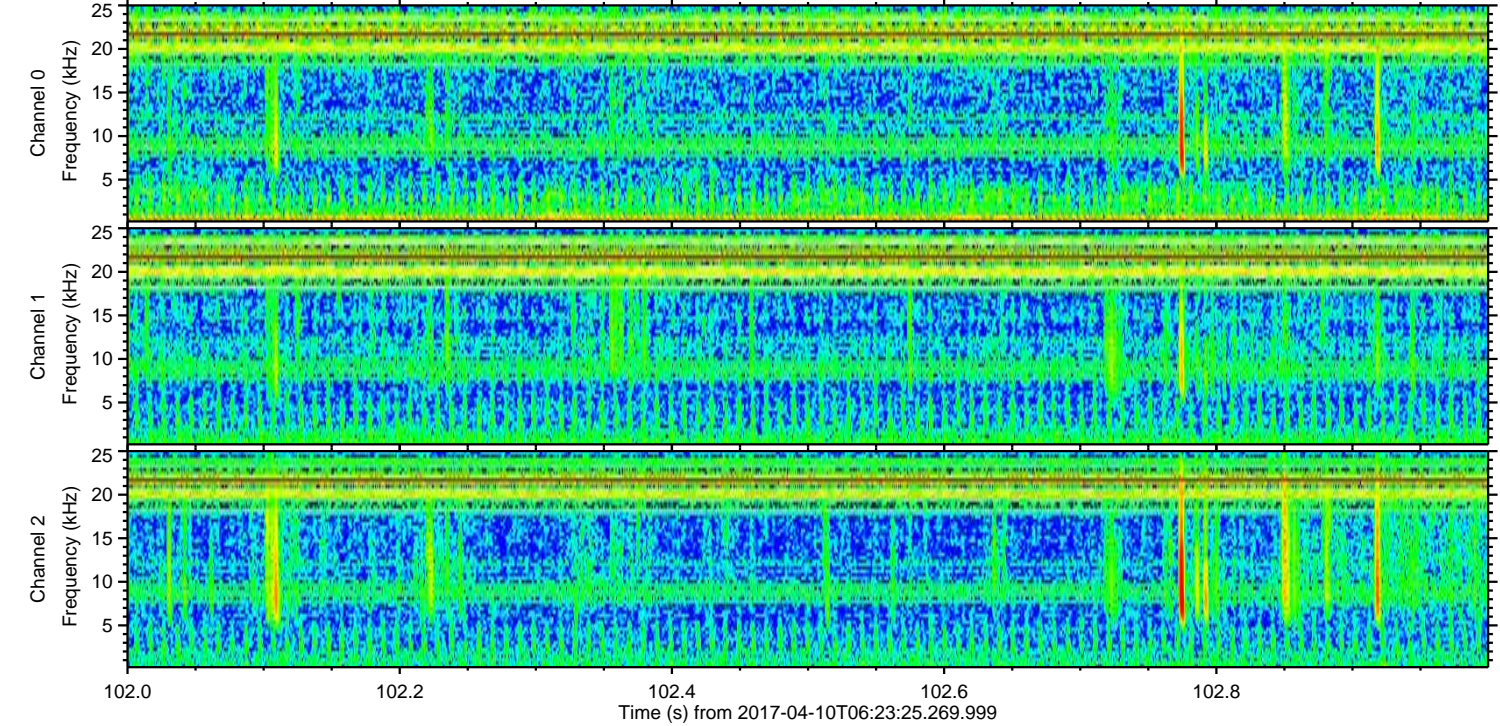
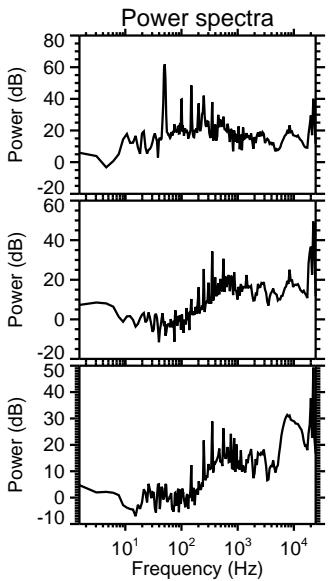
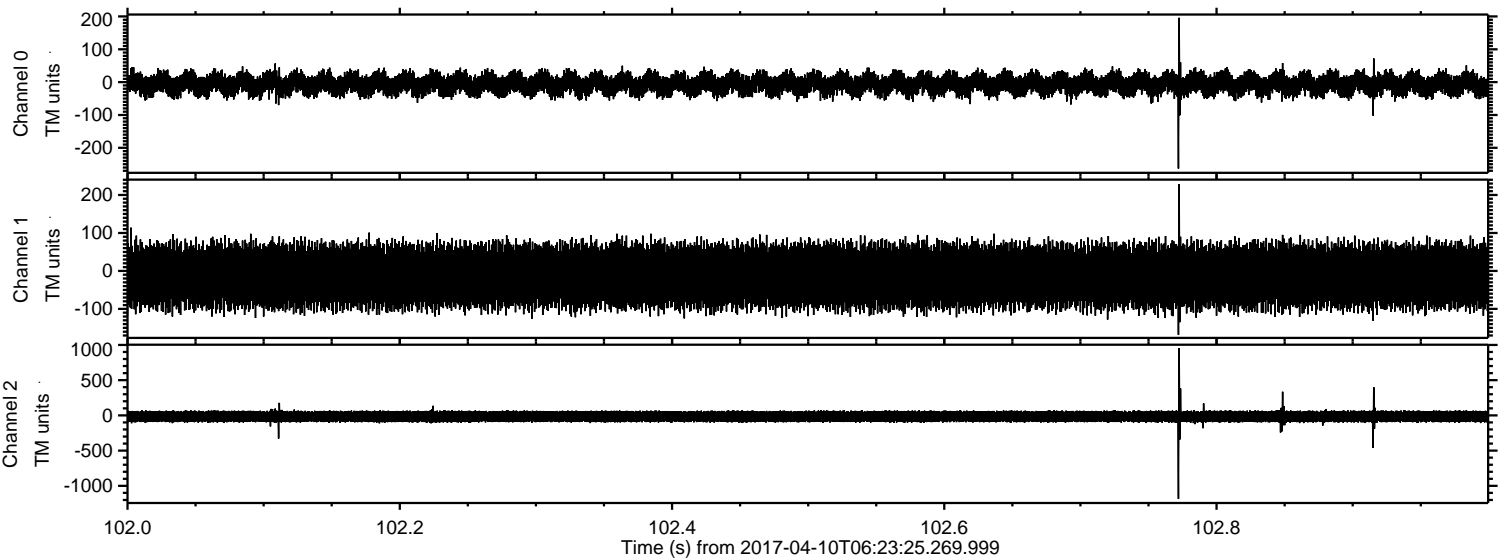
ELMAVAN 3D WAVEFORMS (Measured data sampled at 50 kHz) 51000 packets of 144 samples from 2017-04-10T06:23:25.269.999. Part 146/147

Processed Mon Apr 10 08:32:10 2017 by ELM ver.2012-10-06 from 001__elm20170410_062324__dat00.bin



ELMAVAN 3D WAVEFORMS (Measured data sampled at 50 kHz) 51000 packets of 144 samples from 2017-04-10T06:23:25.269.999. Part 103/147

Processed Mon Apr 10 08:32:11 2017 by ELM ver.2012-10-06 from 001__elm20170410_062324__dat00.bin

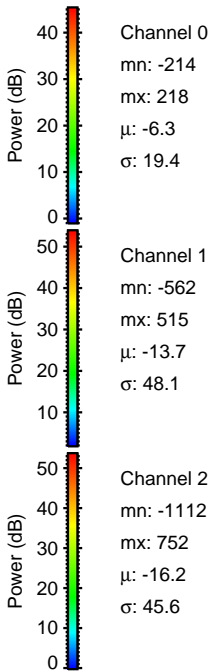
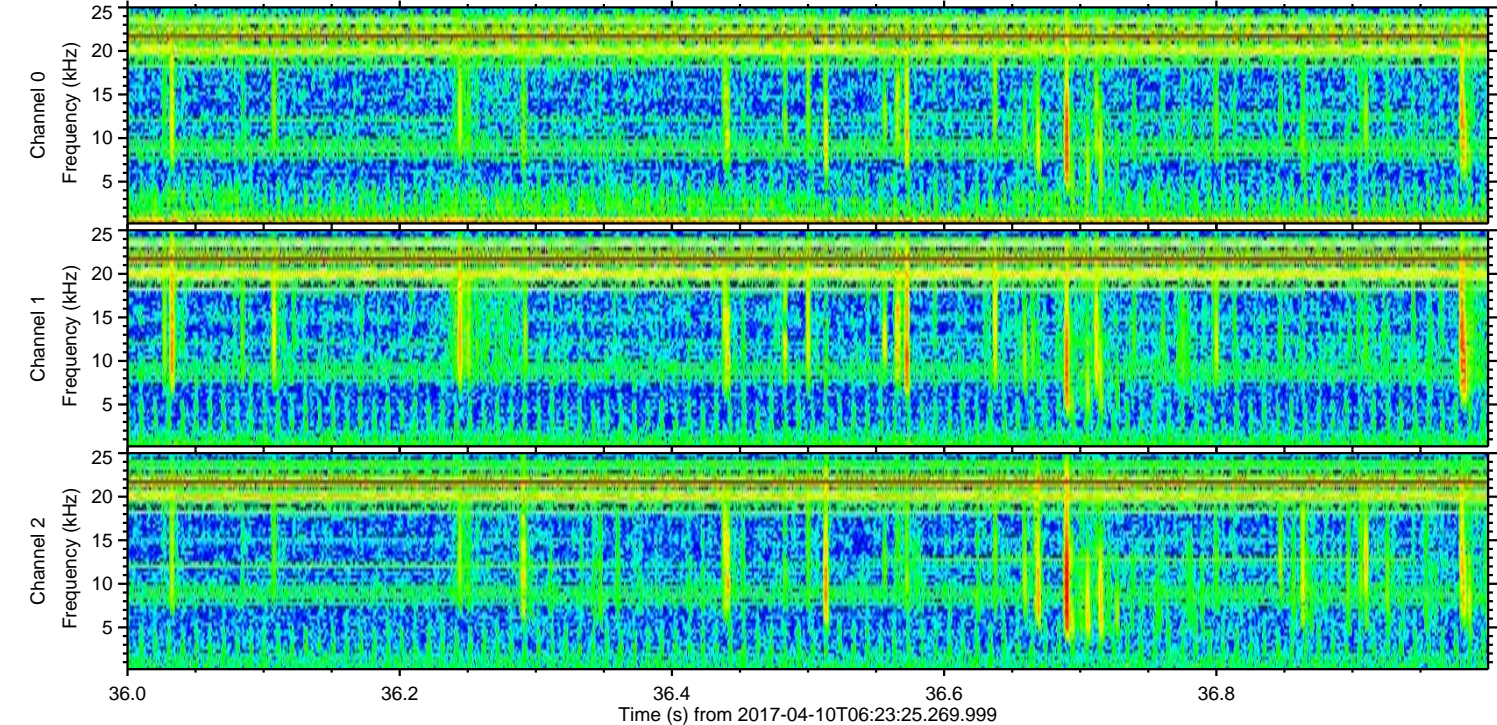
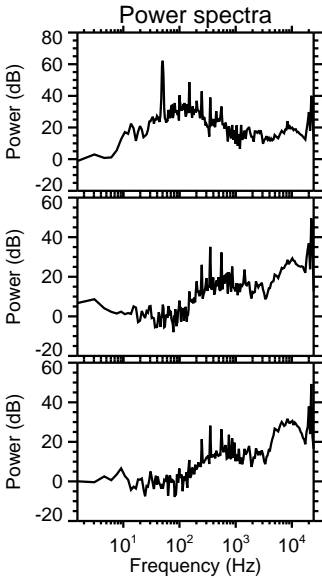
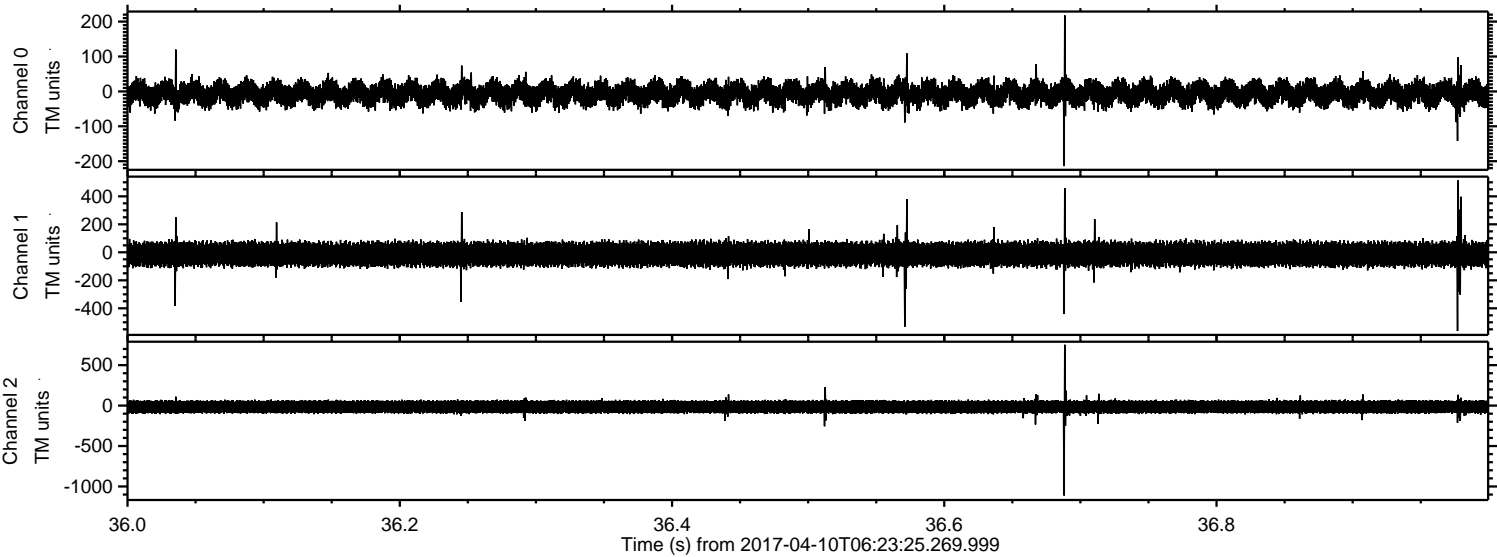


Channel 0
mn: -263
mx: 196
 μ : -6.3
 σ : 19.1

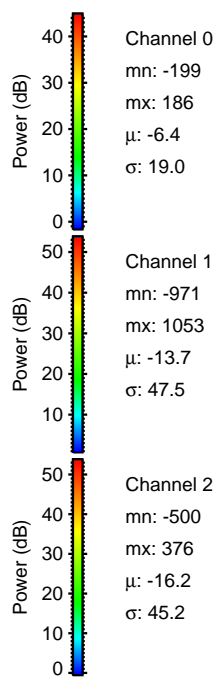
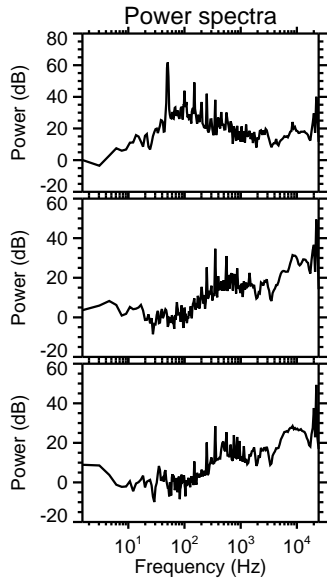
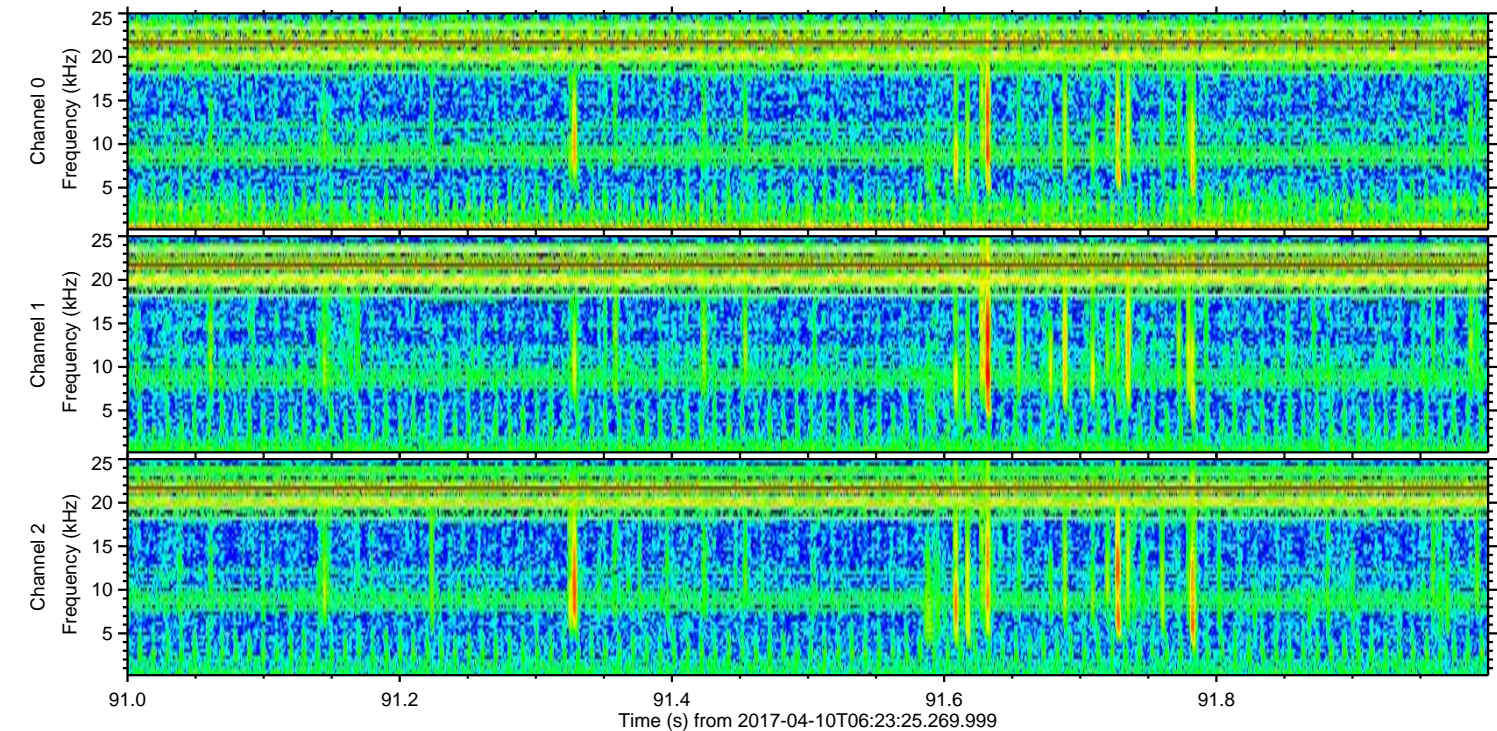
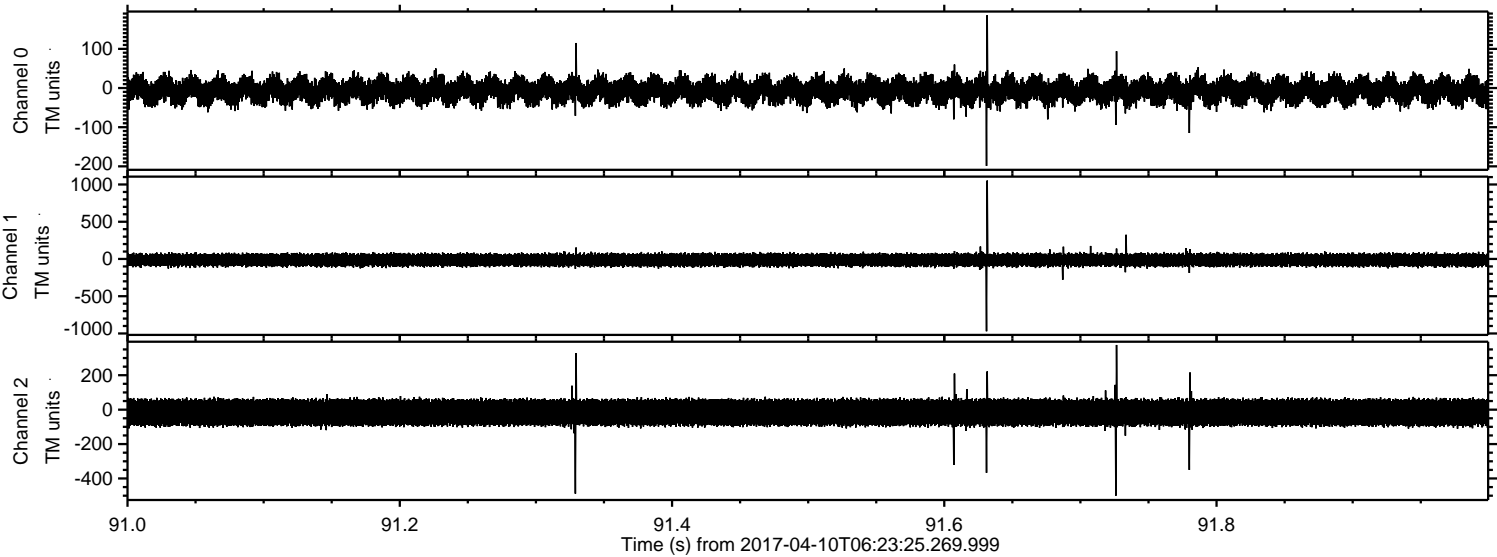
Channel 1
mn: -168
mx: 229
 μ : -13.6
 σ : 46.6

Channel 2
mn: -1184
mx: 955
 μ : -16.1
 σ : 46.5

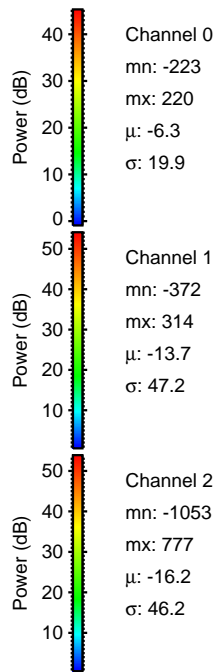
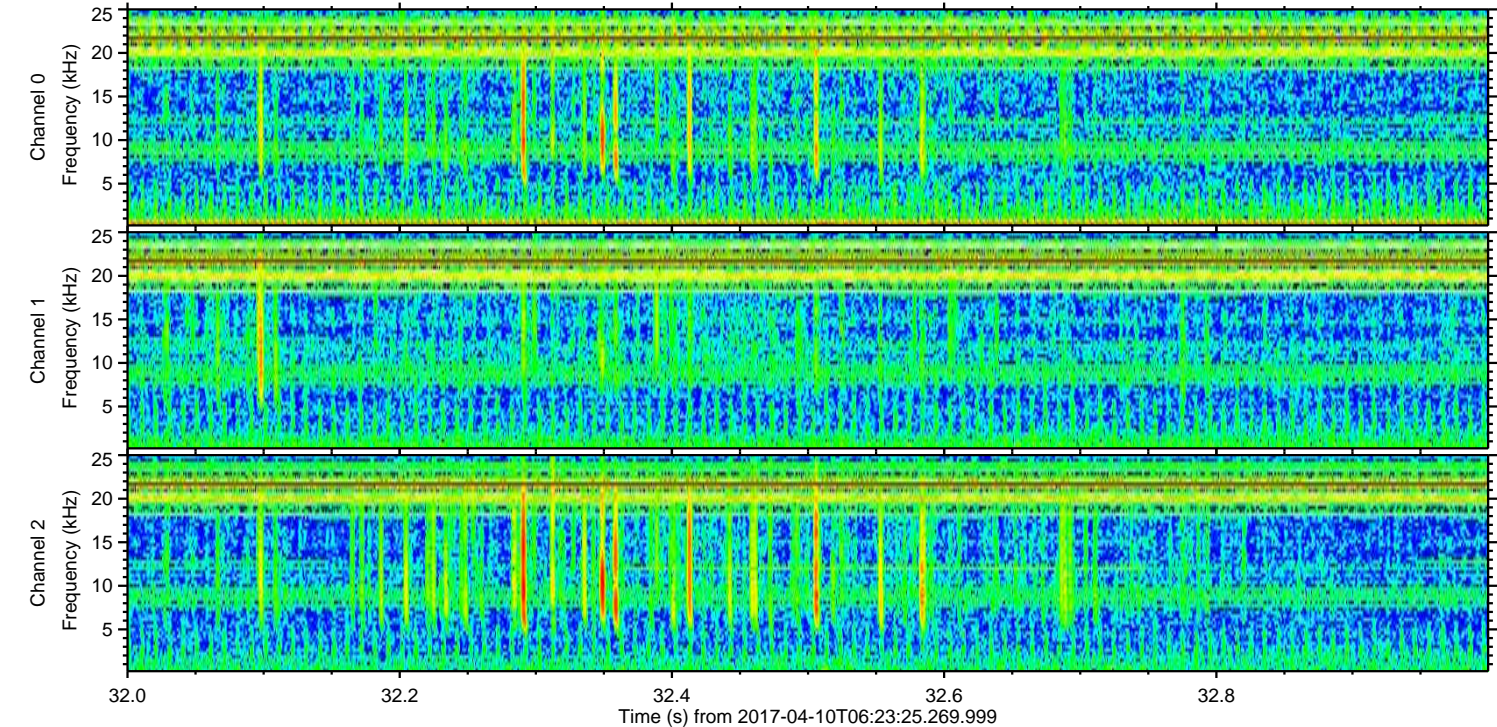
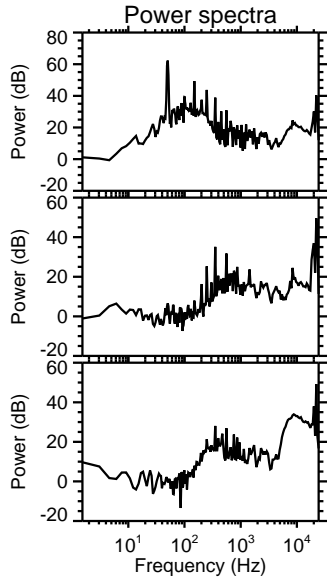
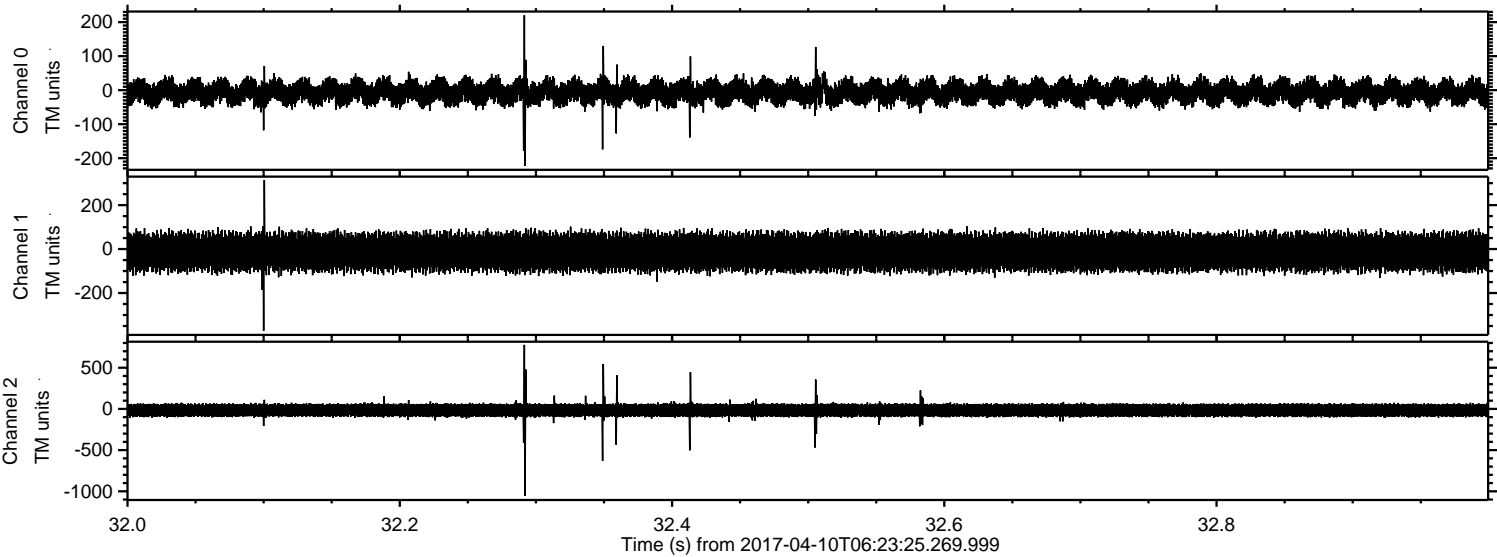
Processed Mon Apr 10 08:32:12 2017 by ELM ver.2012-10-06 from 001__elm20170410_062324__dat00.bin



Processed Mon Apr 10 08:32:13 2017 by ELM ver.2012-10-06 from 001__elm20170410_062324__dat00.bin



Processed Mon Apr 10 08:32:14 2017 by ELM ver.2012-10-06 from 001__elm20170410_062324__dat00.bin



Processed Mon Apr 10 08:32:15 2017 by ELM ver.2012-10-06 from 001__elm20170410_062324__dat00.bin

