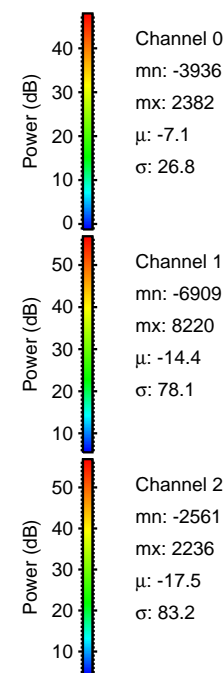
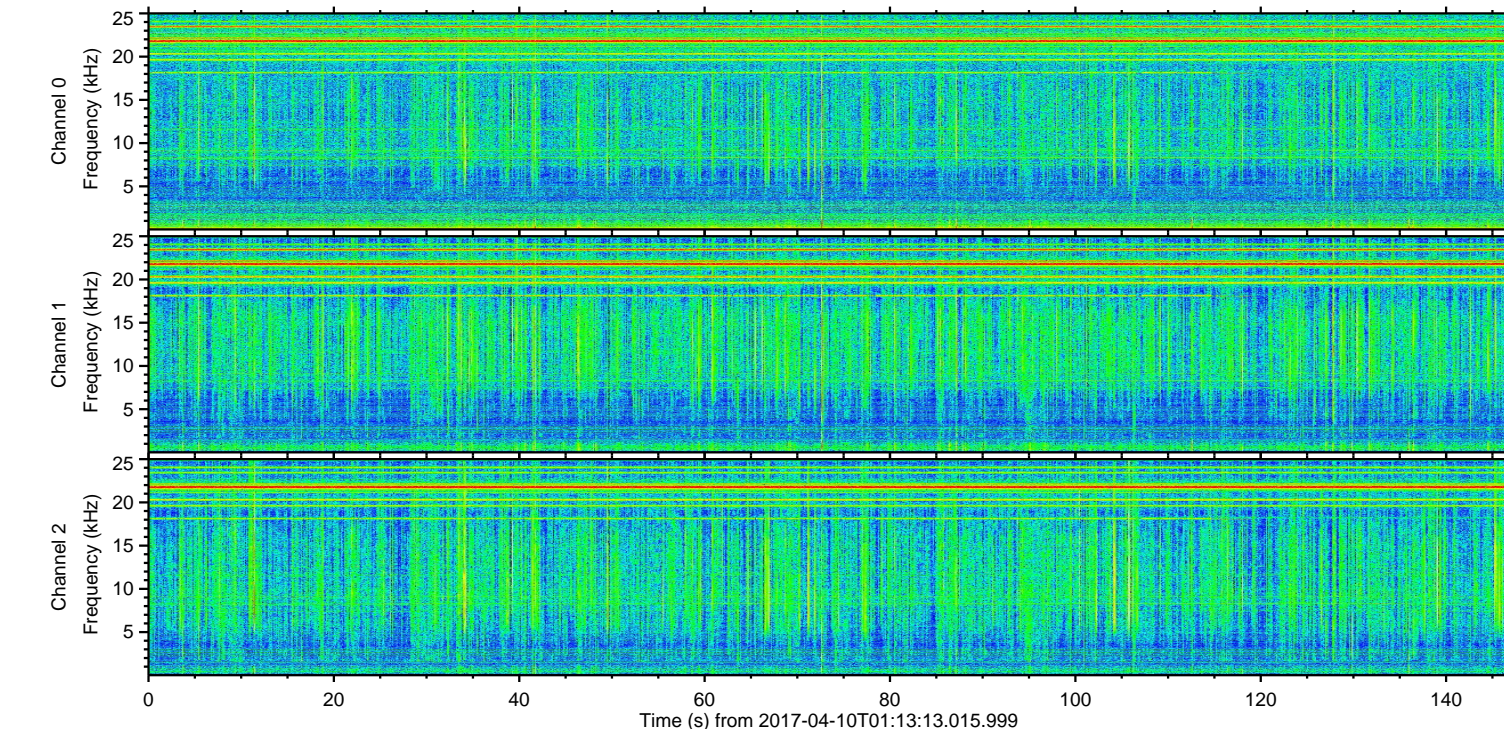
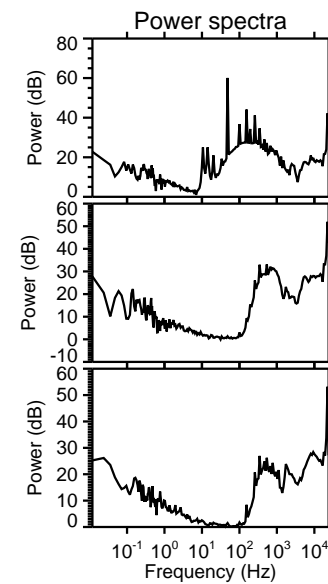
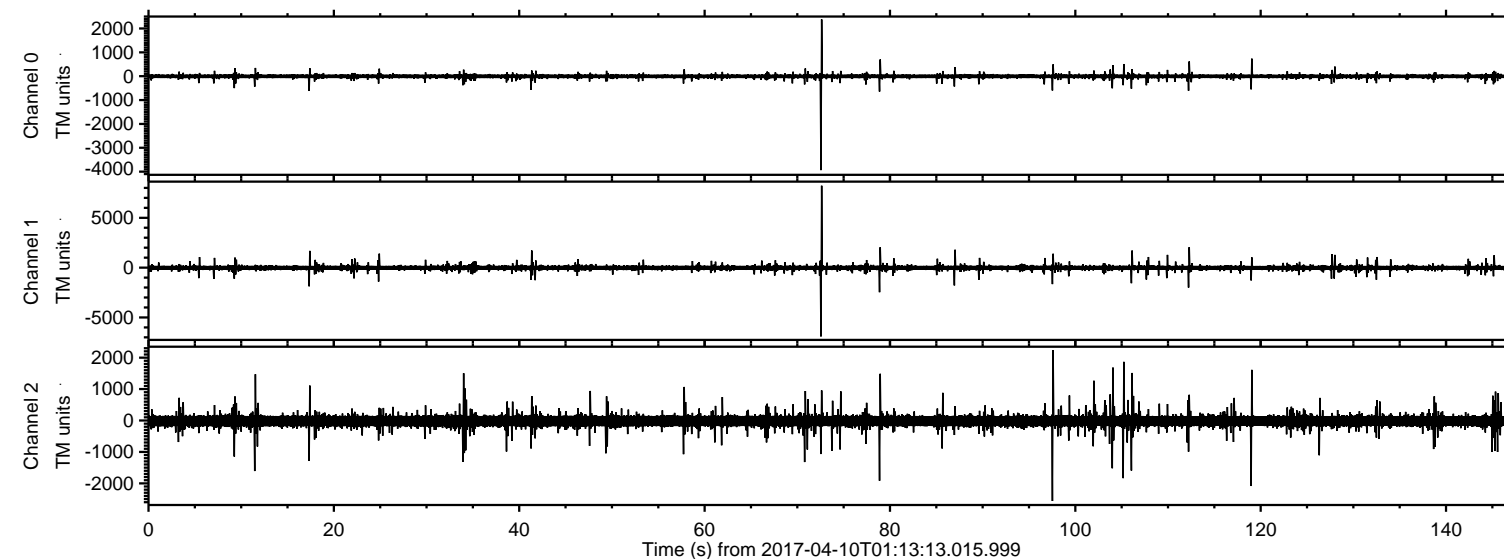


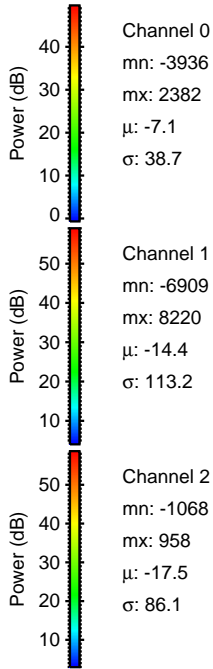
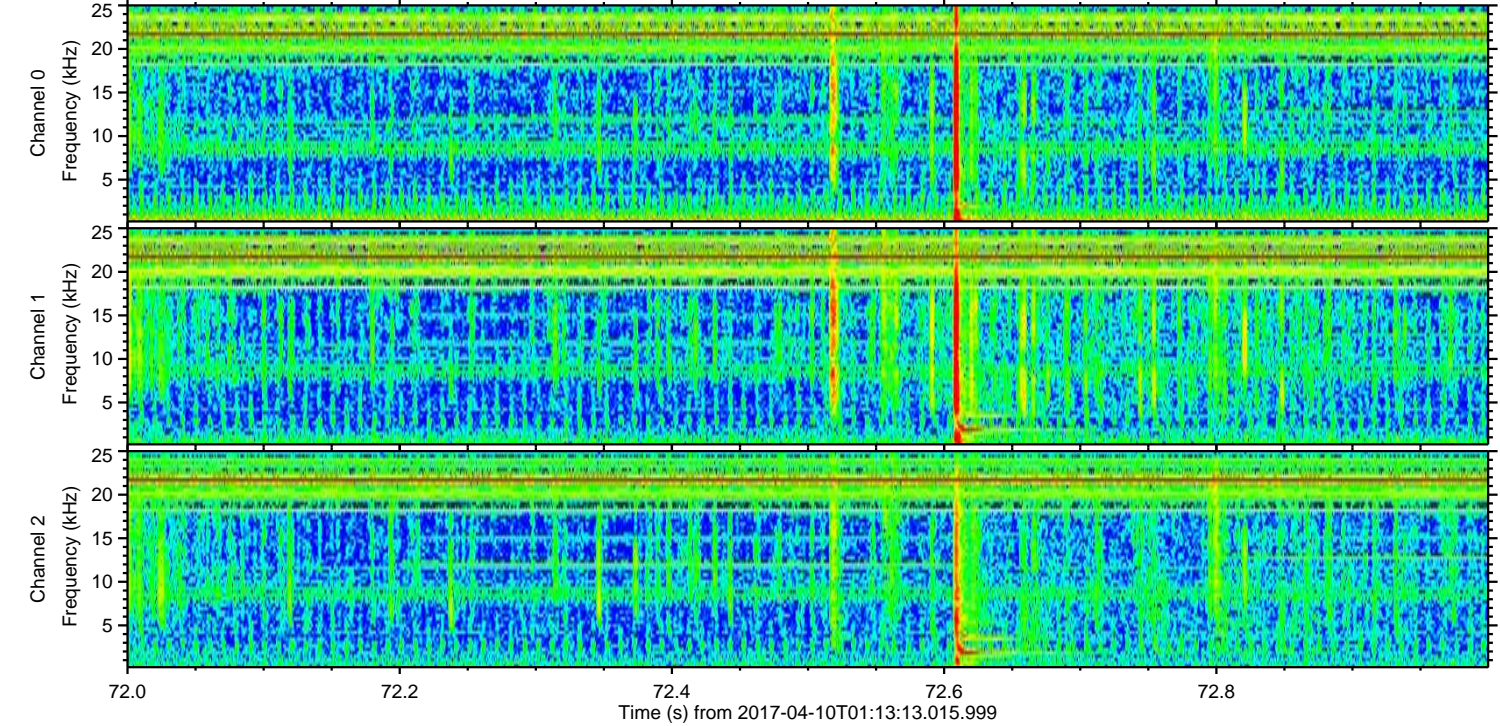
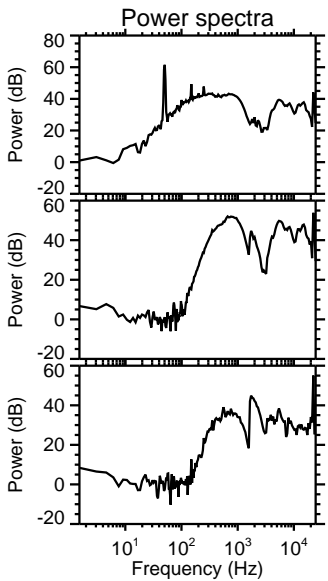
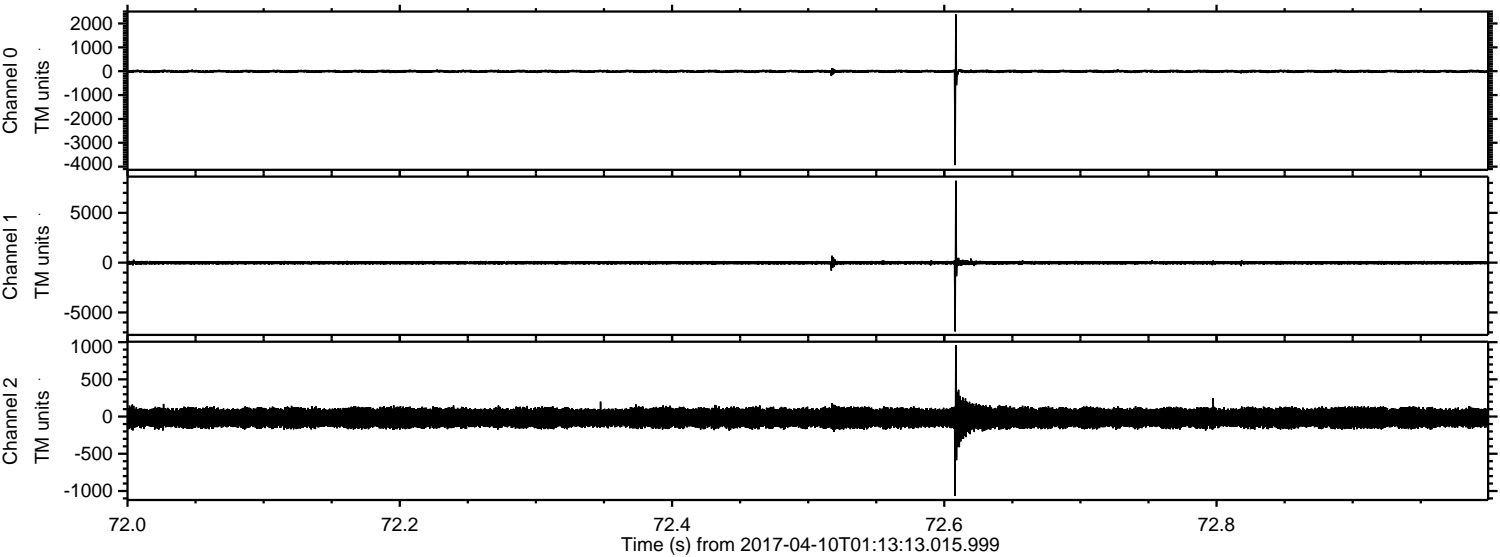
ELMAVAN 3D WAVEFORMS (Measured data sampled at 50 kHz) 51000 packets of 144 samples from 2017-04-10T01:13:13.015.999.

Processed Mon Apr 10 03:20:34 2017 by ELM ver.2012-10-06 from 001__elm20170410_011312__dat00.bin

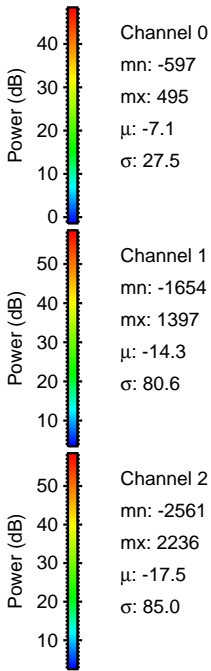
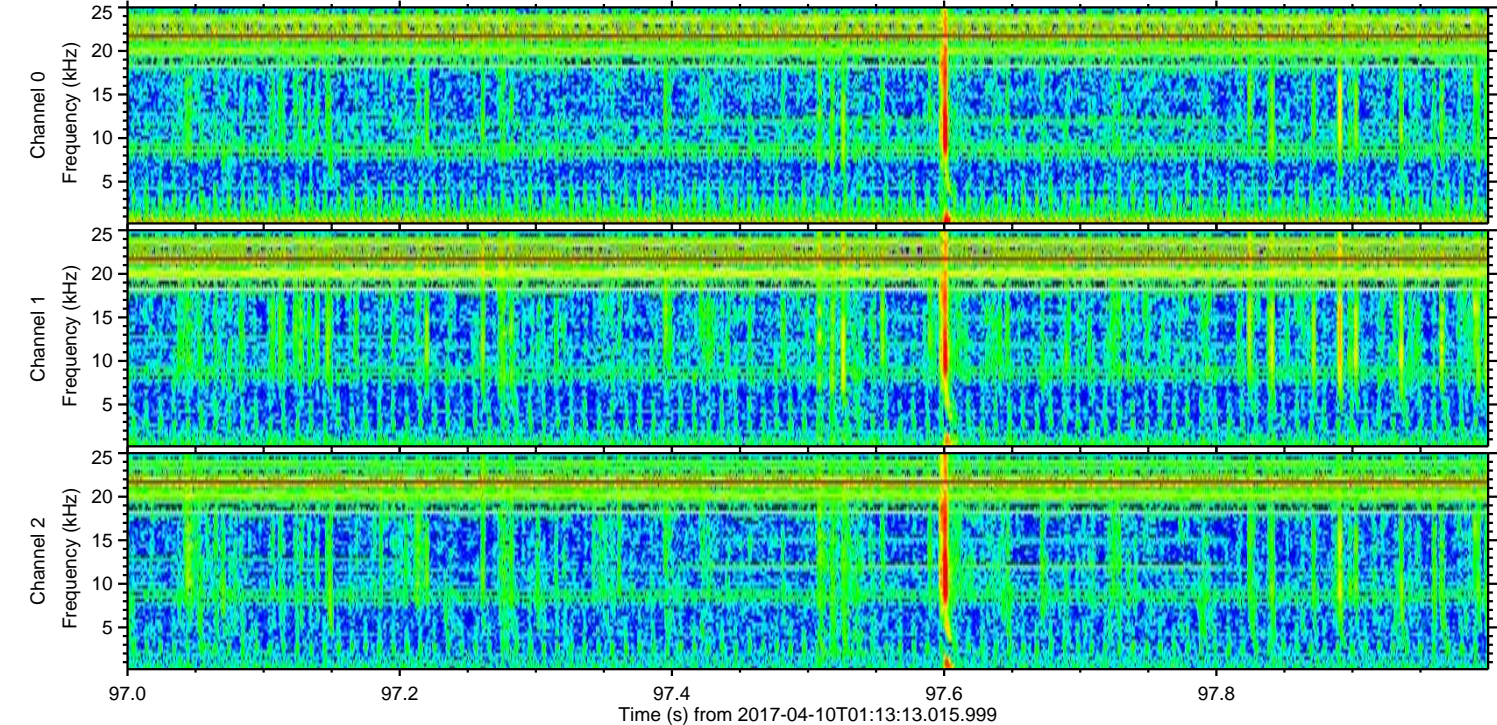
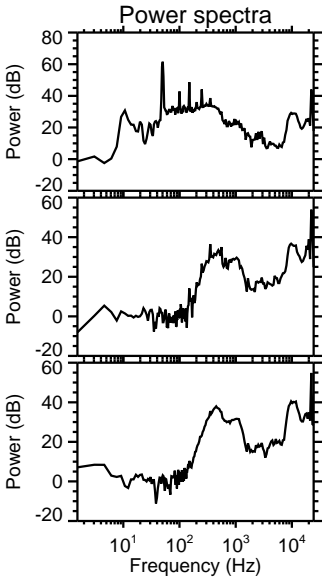
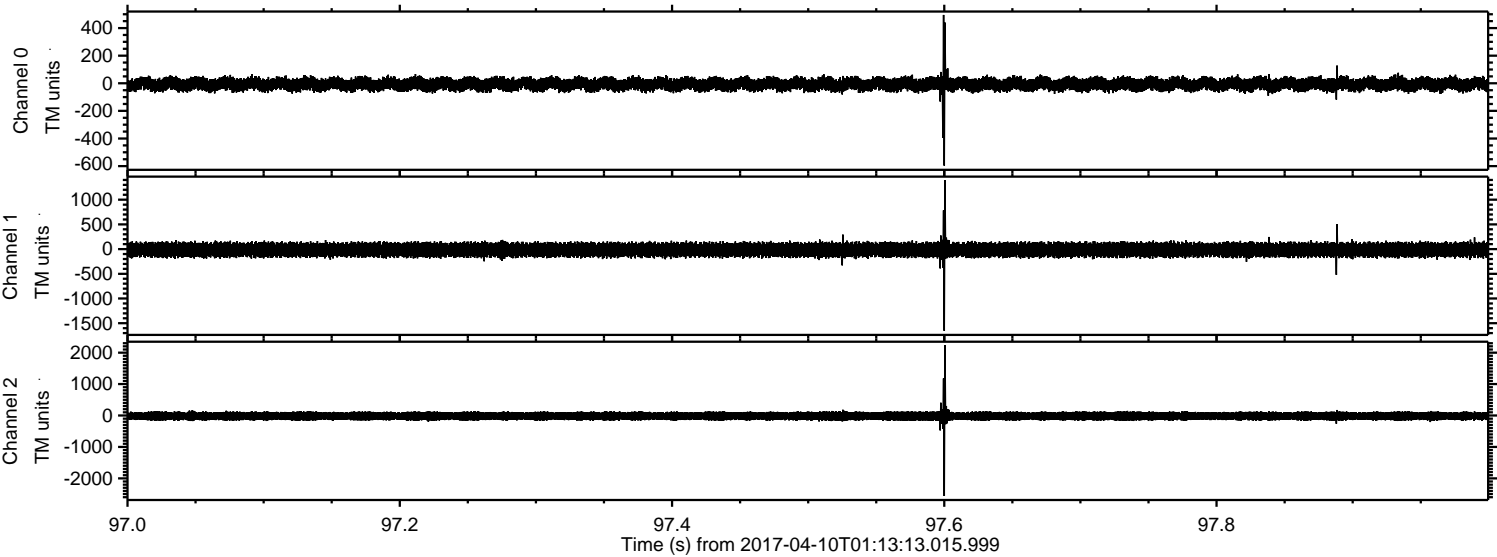


ELMAVAN 3D WAVEFORMS (Measured data sampled at 50 kHz) 51000 packets of 144 samples from 2017-04-10T01:13:13.015.999. Part 73/147

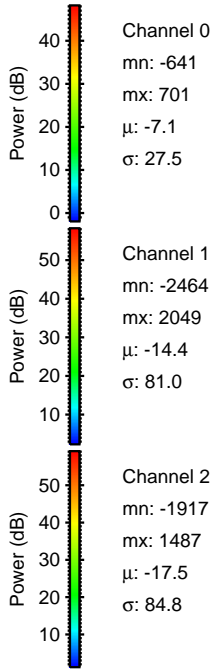
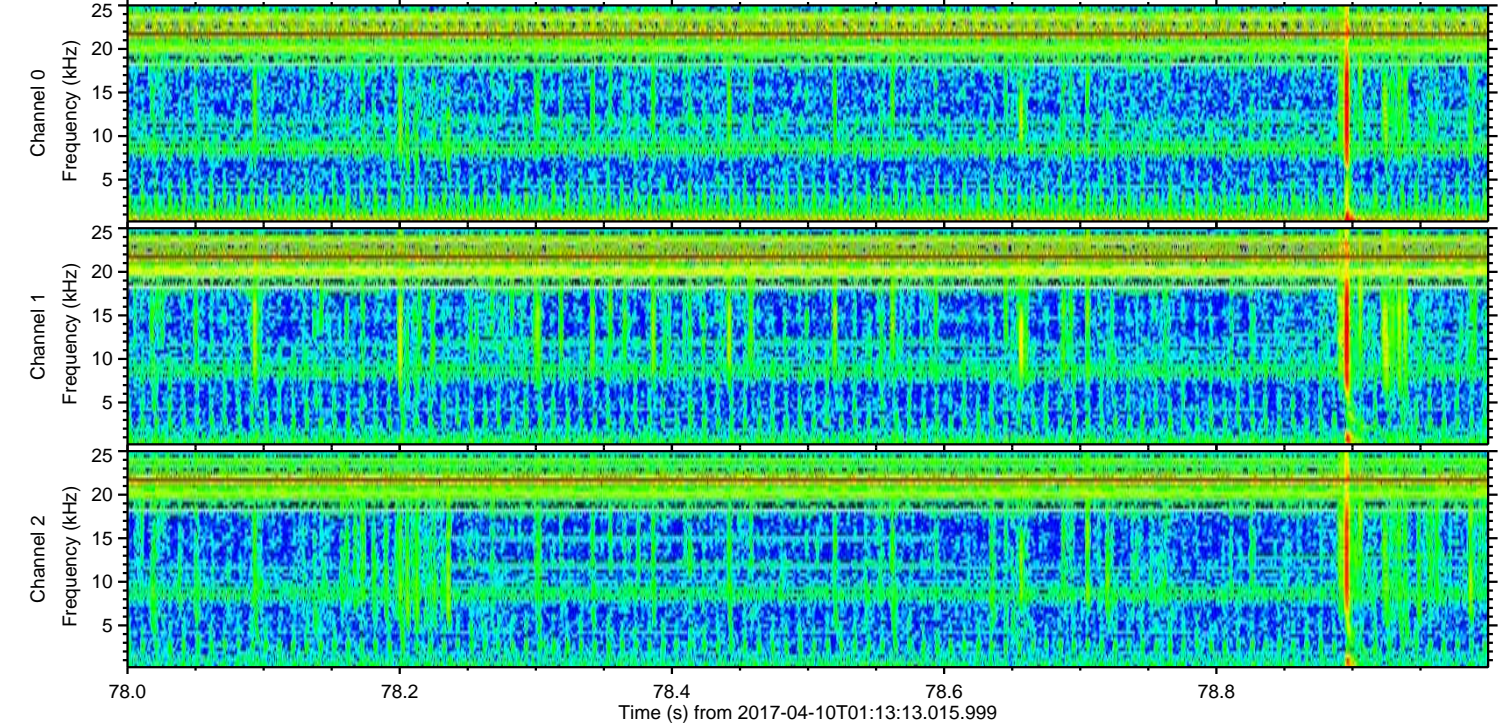
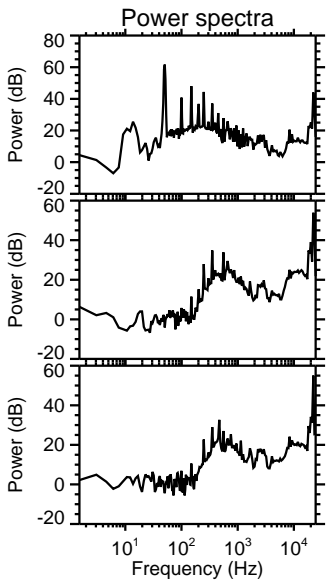
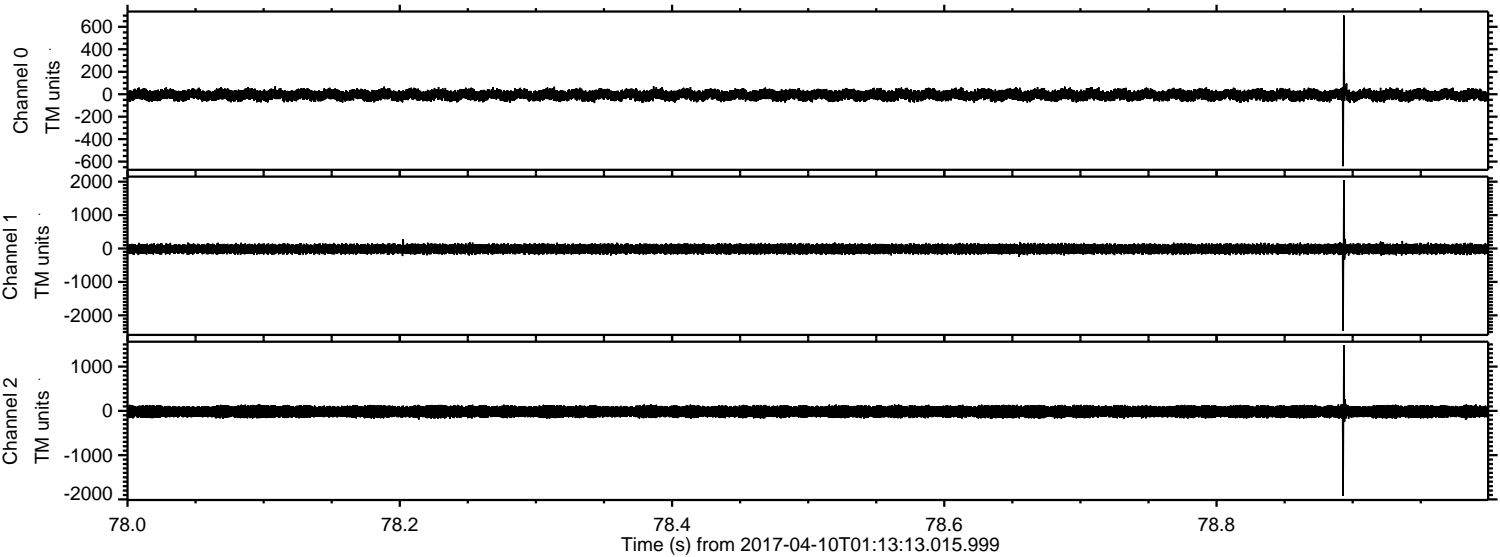
Processed Mon Apr 10 03:20:46 2017 by ELM ver.2012-10-06 from 001__elm20170410_011312__dat00.bin



Processed Mon Apr 10 03:20:46 2017 by ELM ver.2012-10-06 from 001__elm20170410_011312__dat00.bin

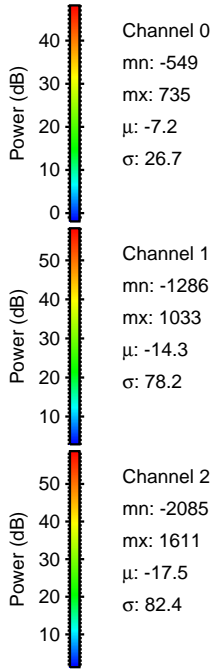
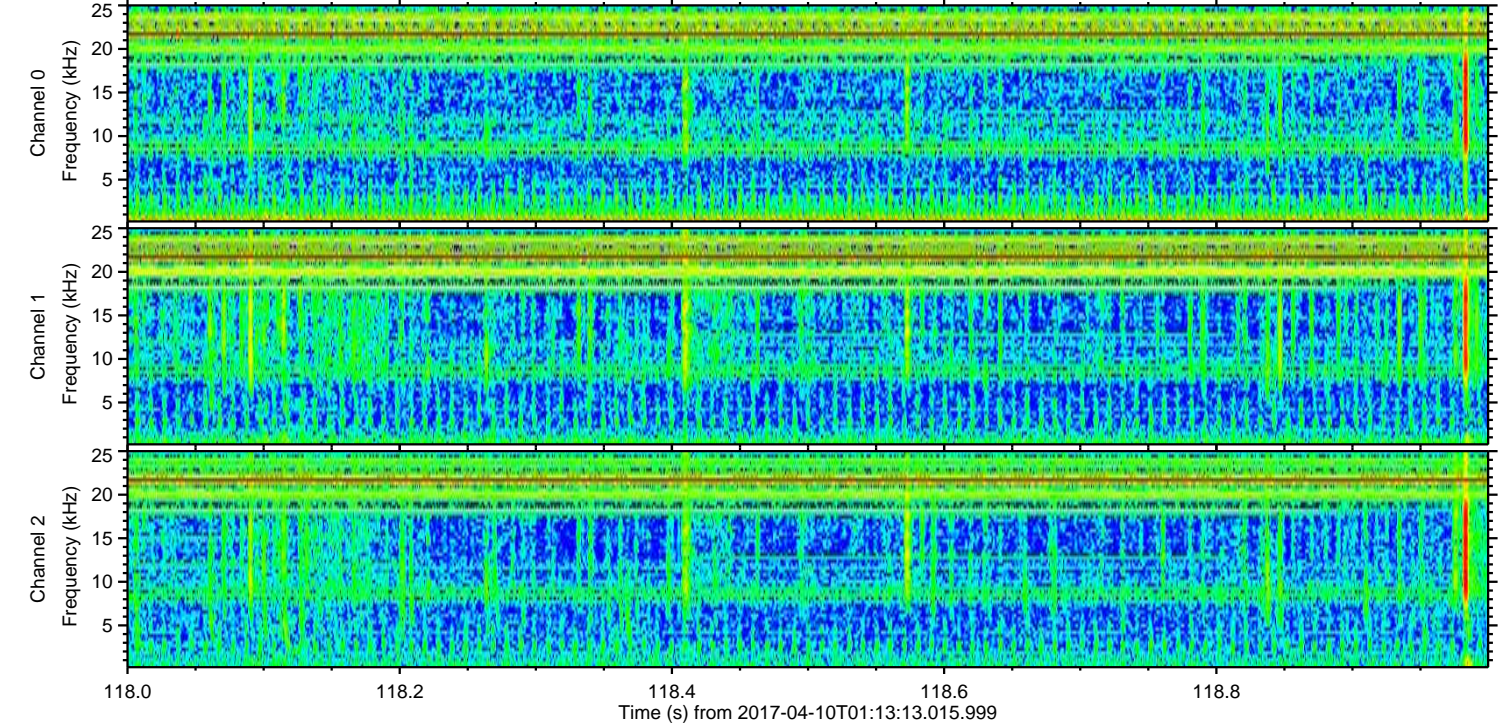
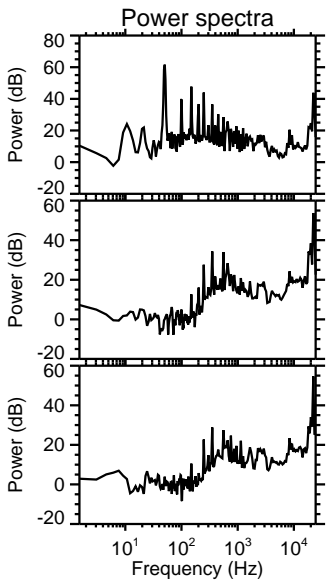
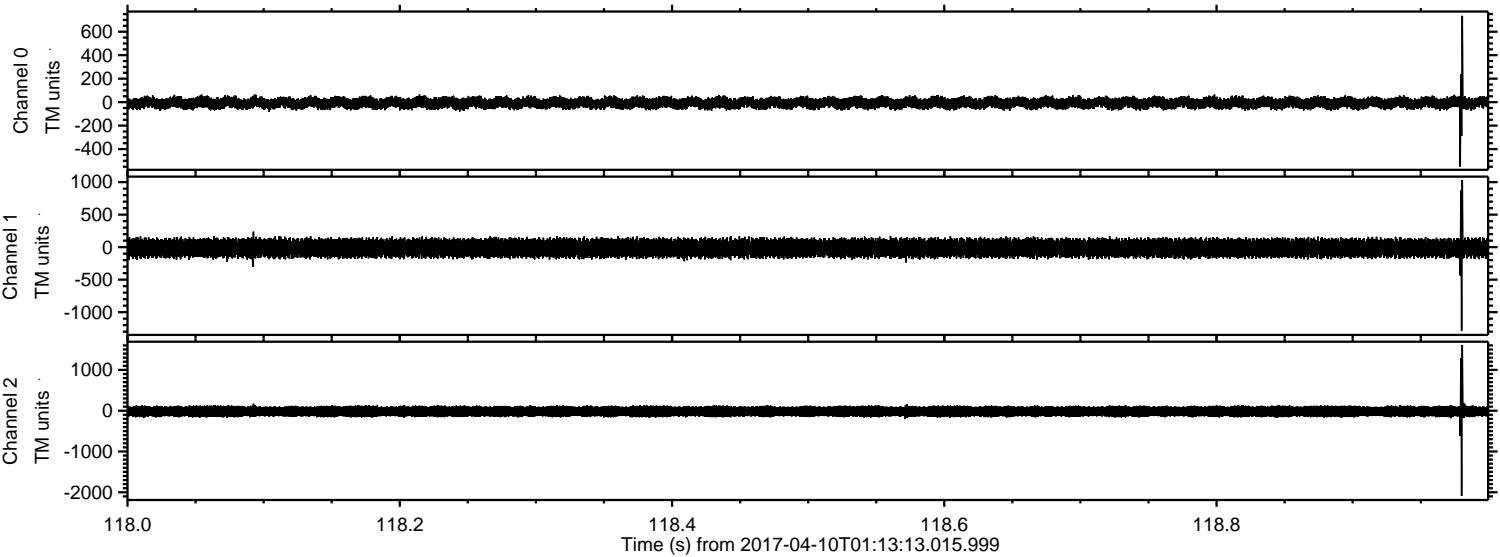


Processed Mon Apr 10 03:20:47 2017 by ELM ver.2012-10-06 from 001__elm20170410_011312__dat00.bin



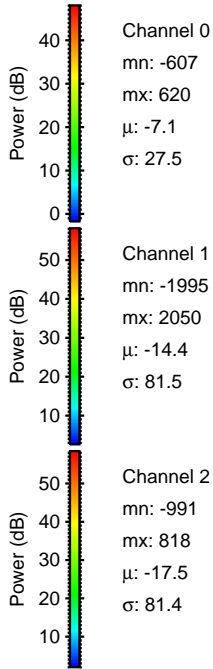
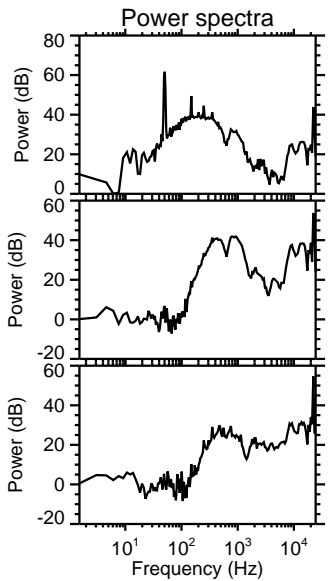
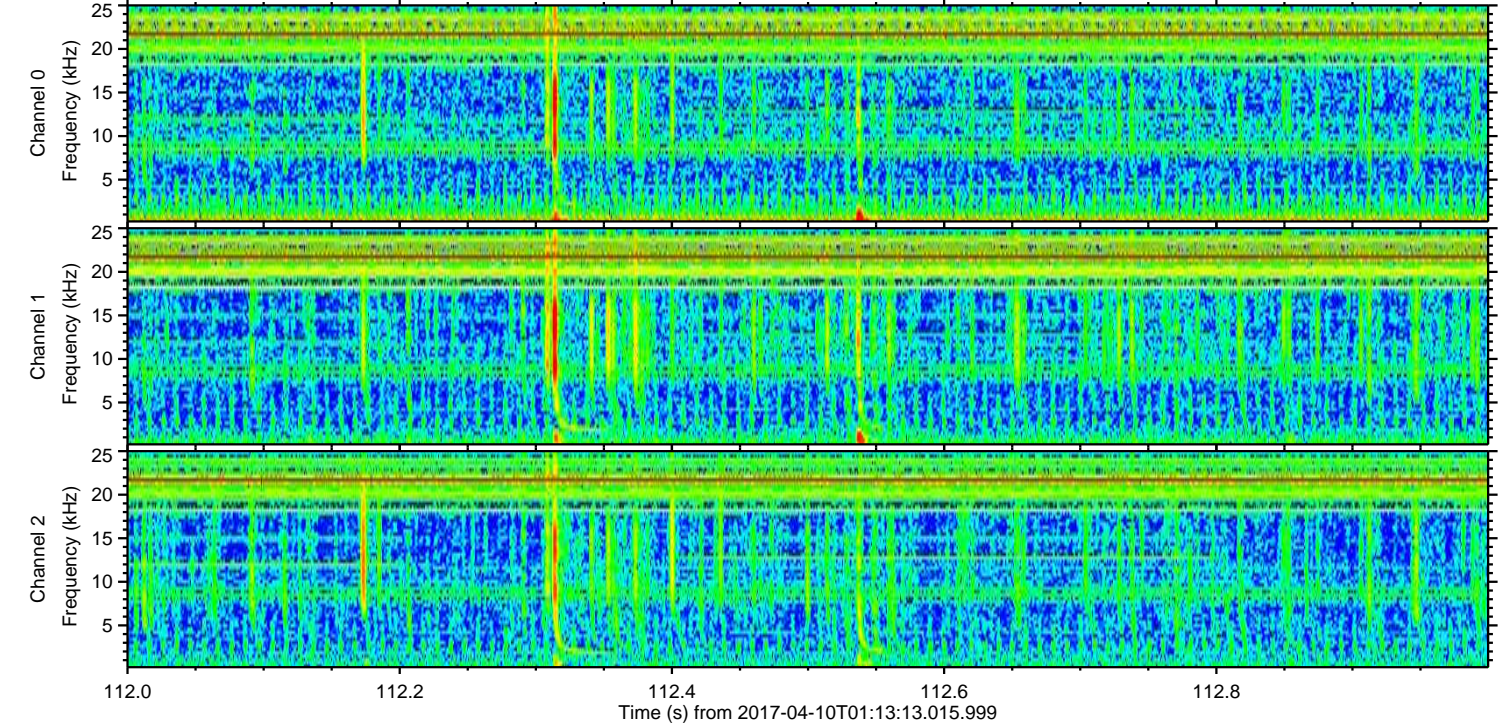
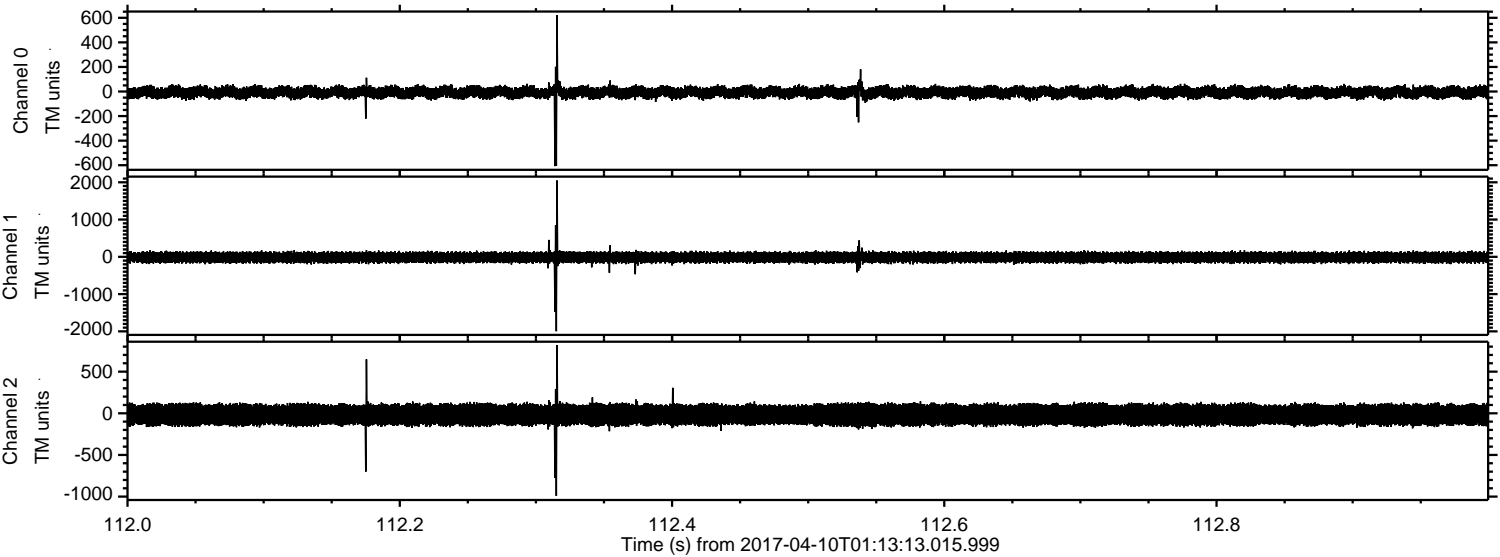
ELMAVAN 3D WAVEFORMS (Measured data sampled at 50 kHz) 51000 packets of 144 samples from 2017-04-10T01:13:13.015.999. Part 119/147

Processed Mon Apr 10 03:20:48 2017 by ELM ver.2012-10-06 from 001__elm20170410_011312__dat00.bin

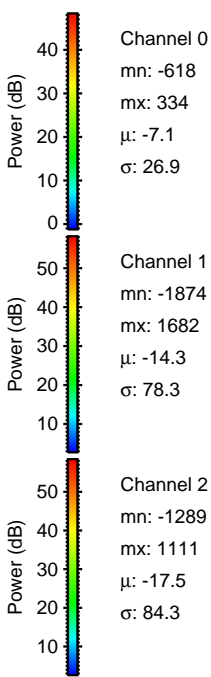
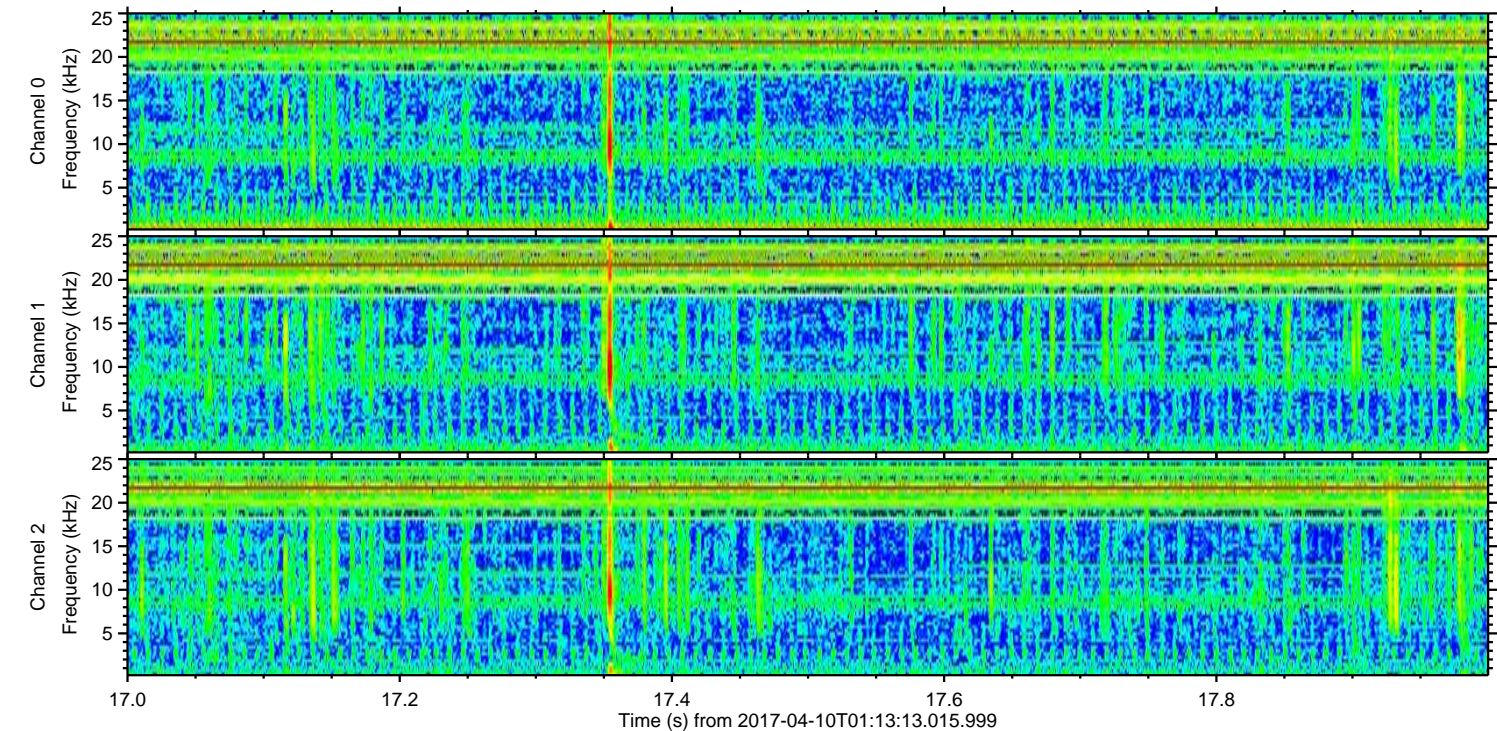
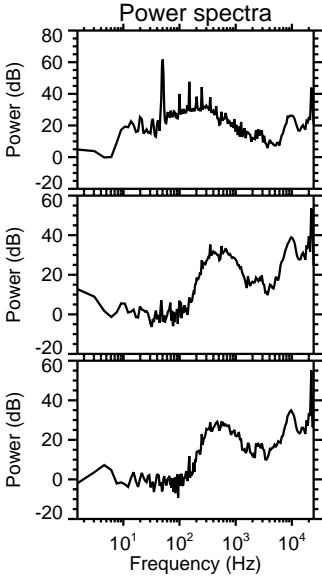
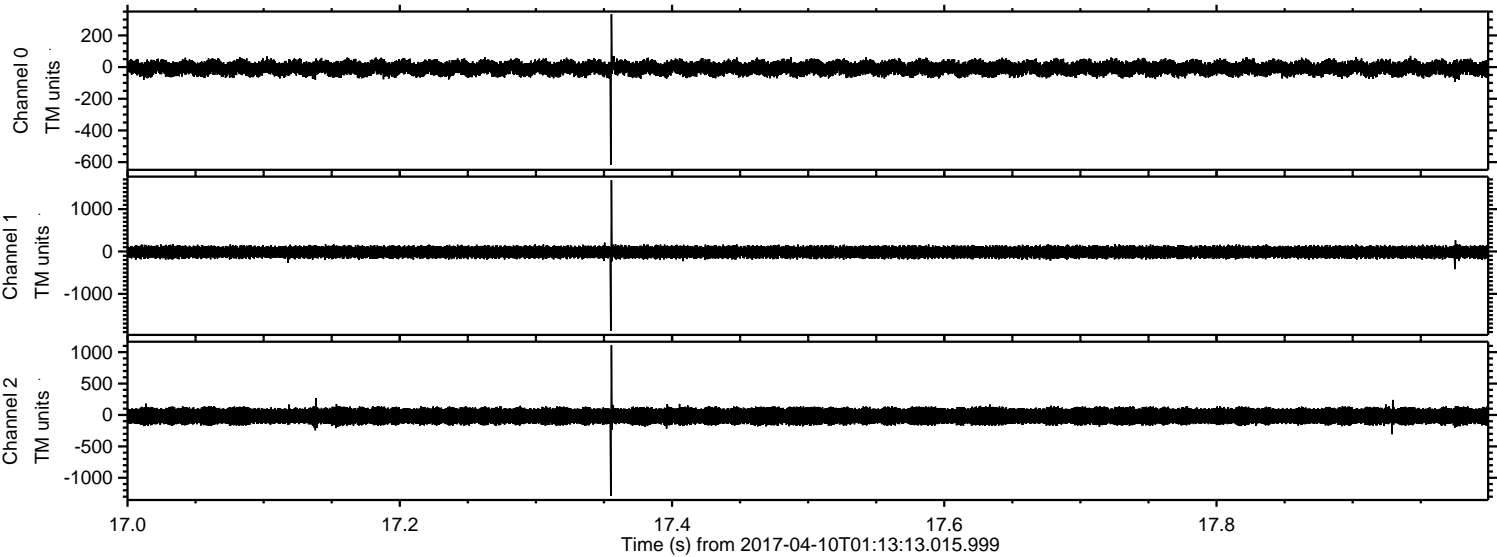


ELMAVAN 3D WAVEFORMS (Measured data sampled at 50 kHz) 51000 packets of 144 samples from 2017-04-10T01:13:13.015.999. Part 113/147

Processed Mon Apr 10 03:20:49 2017 by ELM ver.2012-10-06 from 001__elm20170410_011312__dat00.bin

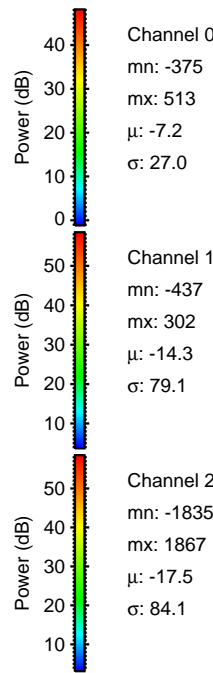
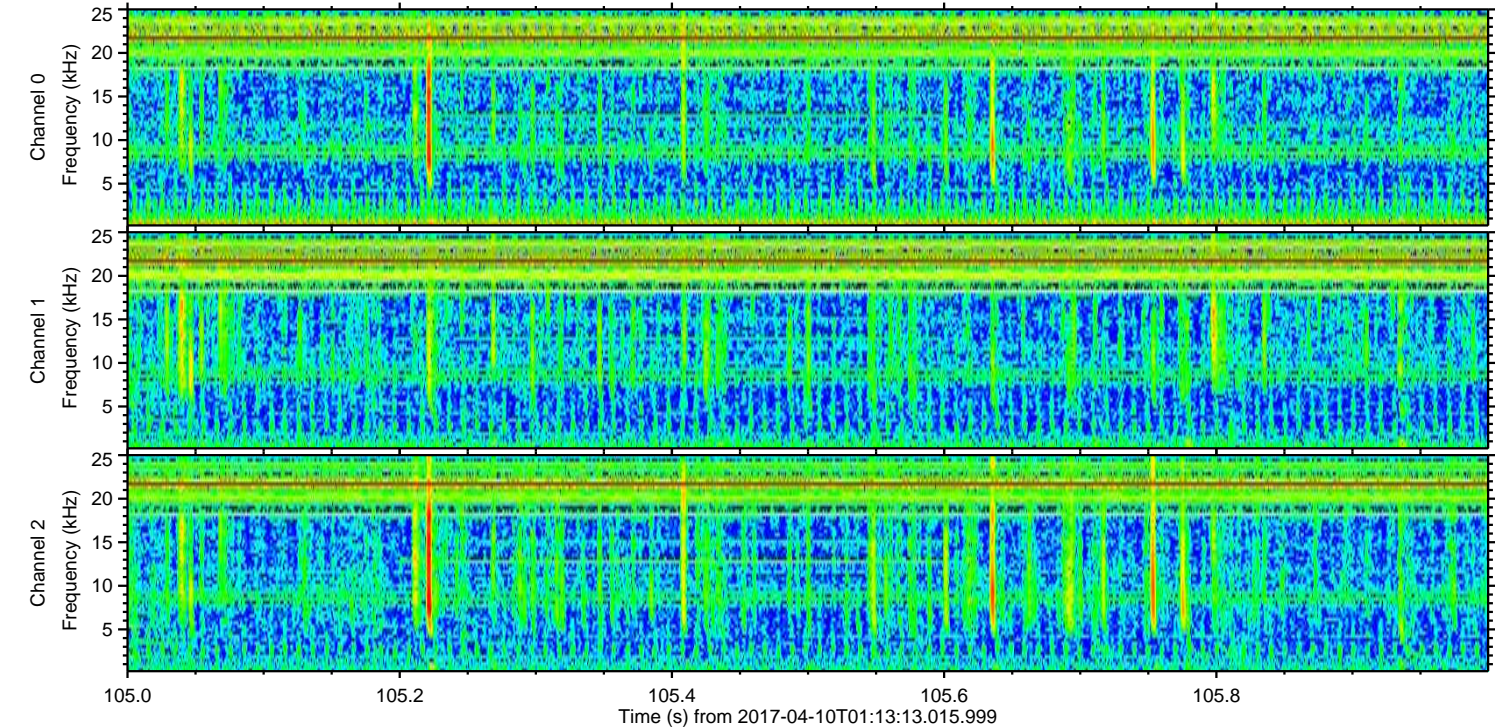
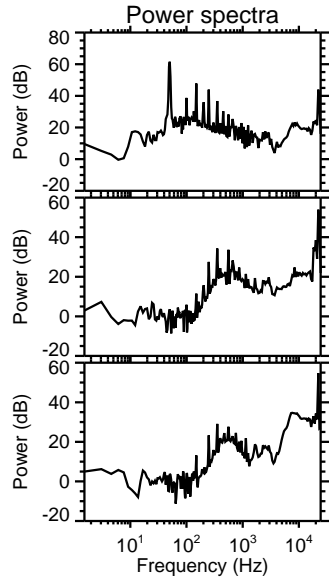
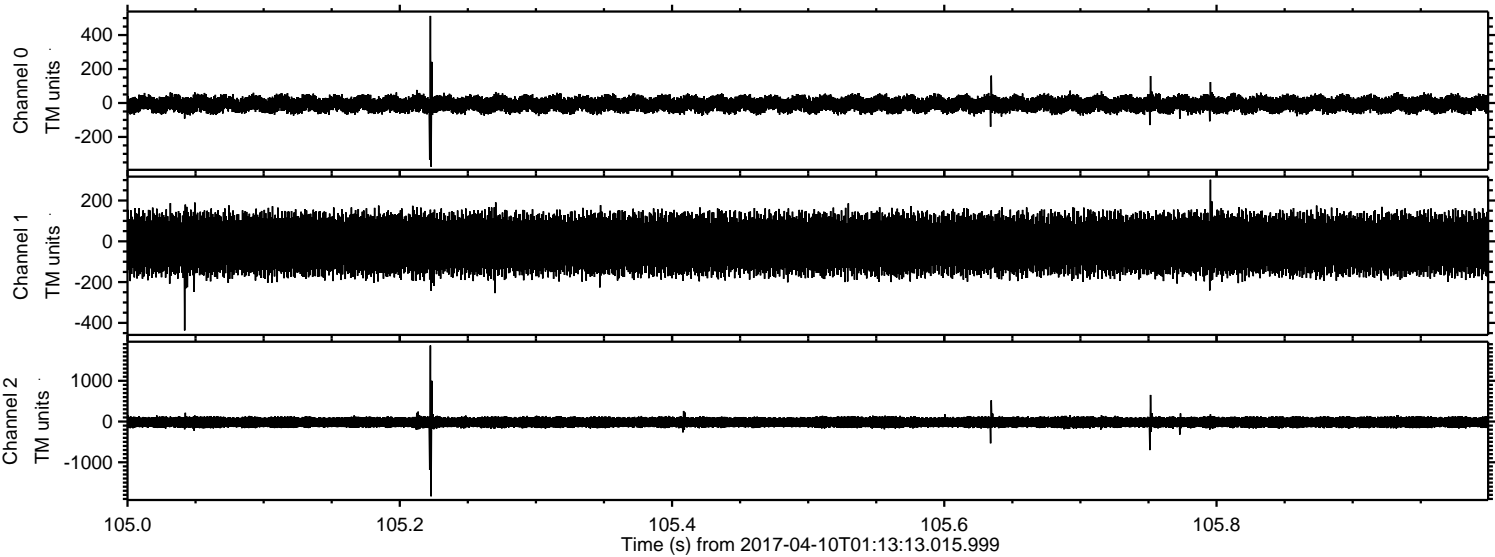


Processed Mon Apr 10 03:20:50 2017 by ELM ver.2012-10-06 from 001__elm20170410_011312__dat00.bin



ELMAVAN 3D WAVEFORMS (Measured data sampled at 50 kHz) 51000 packets of 144 samples from 2017-04-10T01:13:13.015.999. Part 106/147

Processed Mon Apr 10 03:20:51 2017 by ELM ver.2012-10-06 from 001__elm20170410_011312__dat00.bin

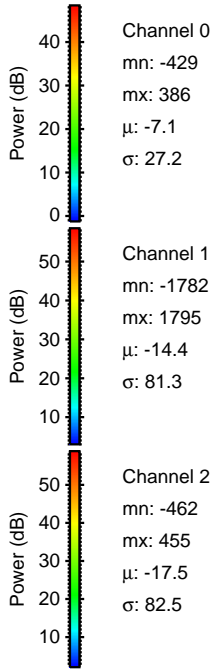
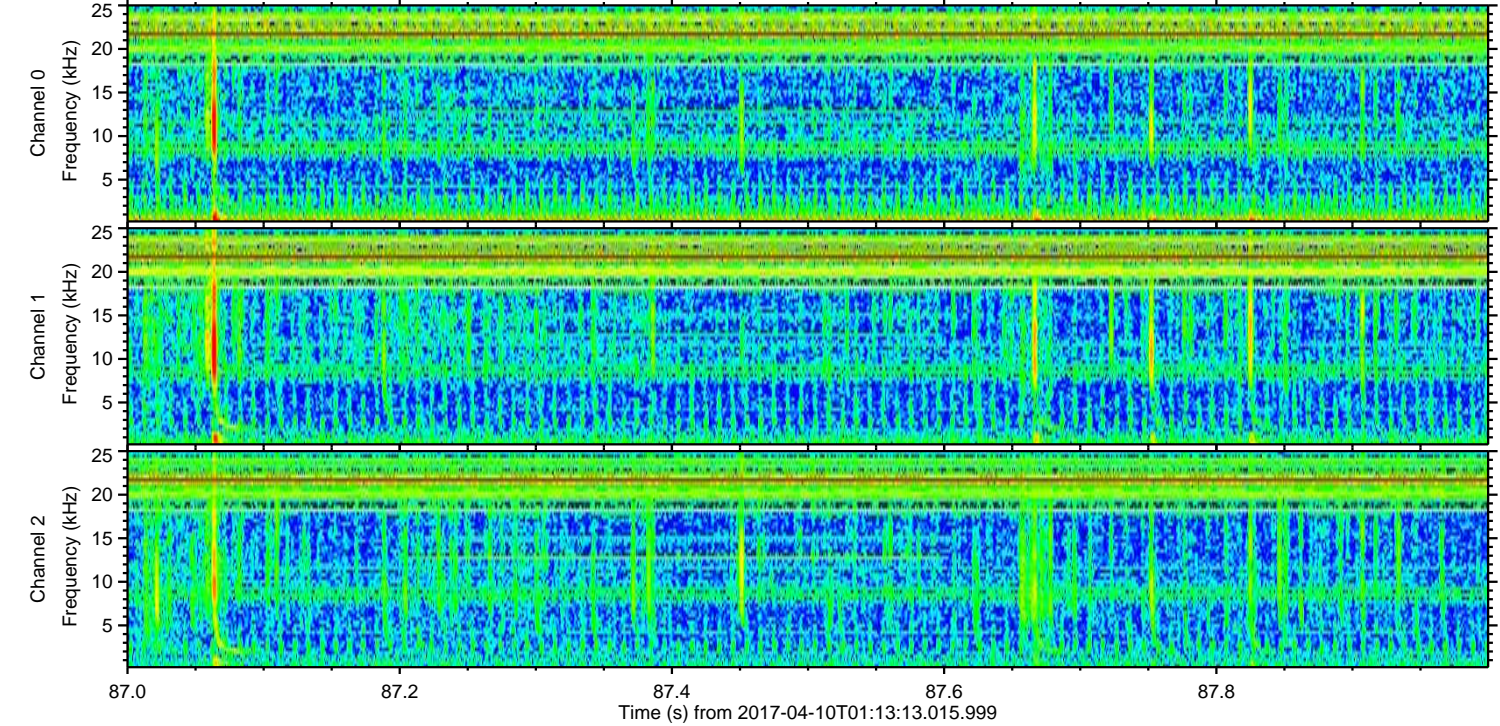
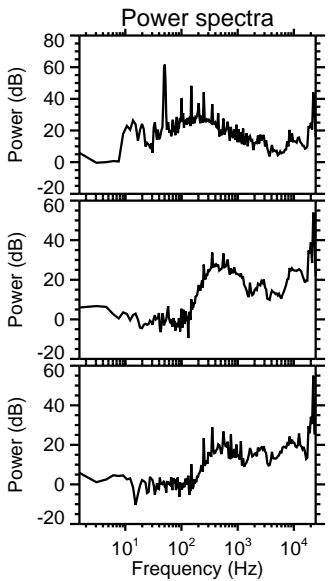
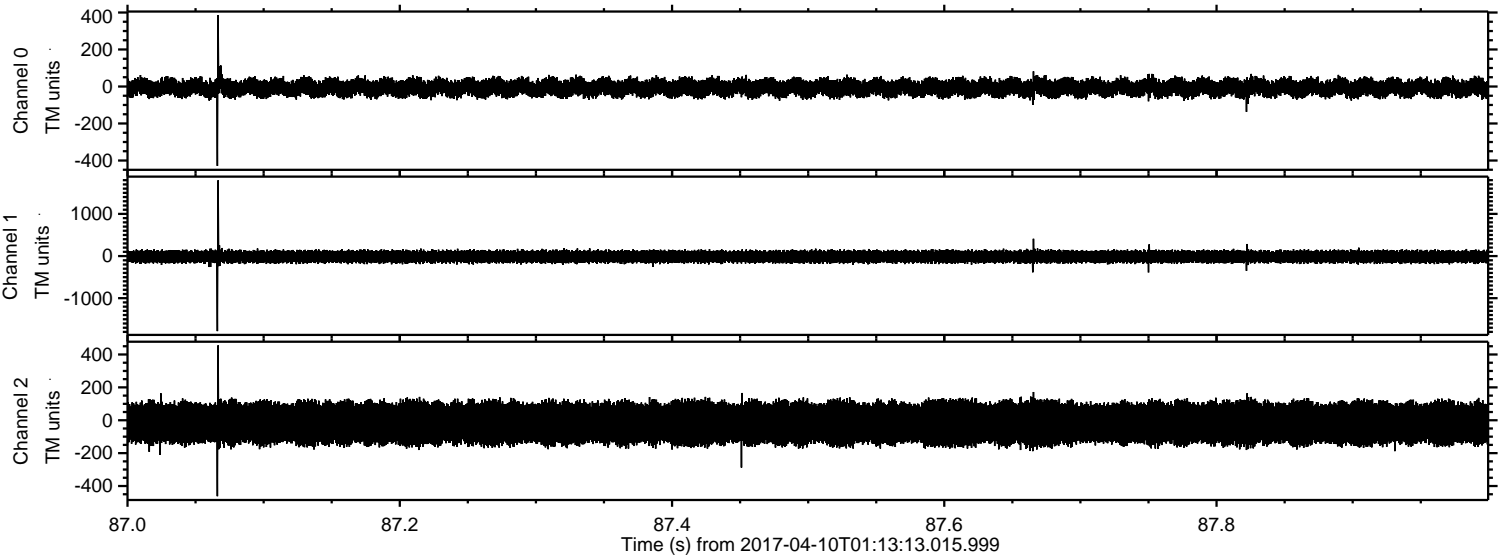


Channel 0
mn: -375
mx: 513
 μ : -7.2
 σ : 27.0

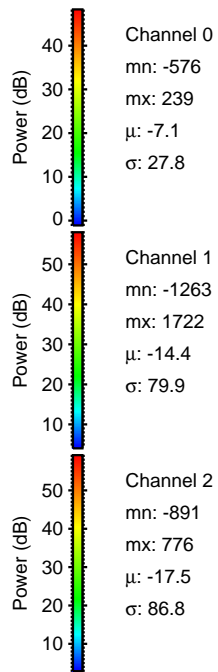
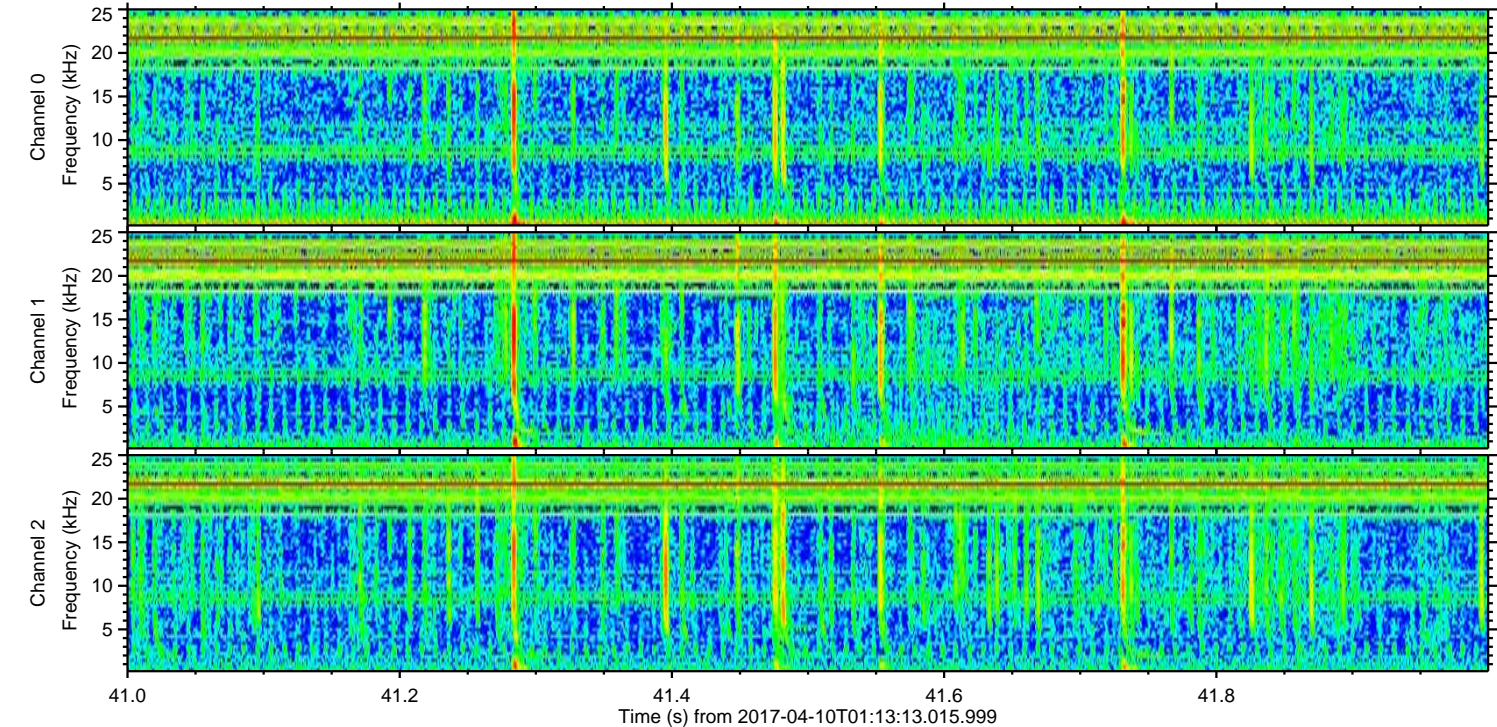
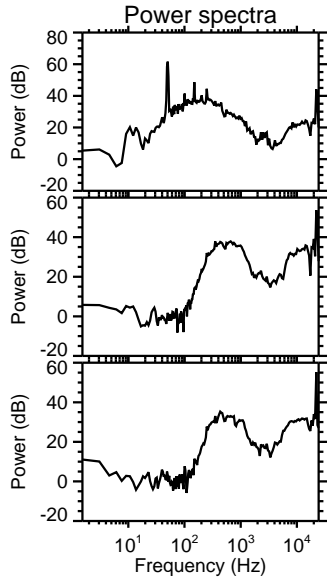
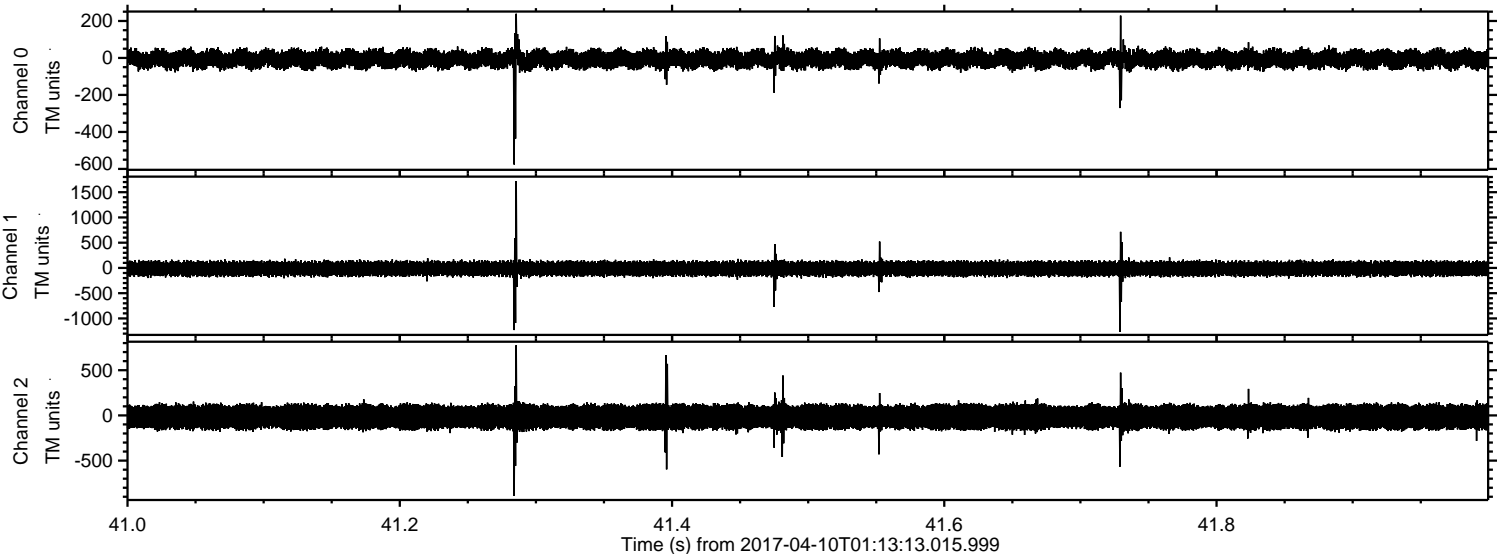
Channel 1
mn: -437
mx: 302
 μ : -14.3
 σ : 79.1

Channel 2
mn: -1835
mx: 1867
 μ : -17.5
 σ : 84.1

Processed Mon Apr 10 03:20:52 2017 by ELM ver.2012-10-06 from 001__elm20170410_011312__dat00.bin



Processed Mon Apr 10 03:20:53 2017 by ELM ver.2012-10-06 from 001__elm20170410_011312__dat00.bin



Processed Mon Apr 10 03:20:54 2017 by ELM ver.2012-10-06 from 001__elm20170410_011312__dat00.bin

