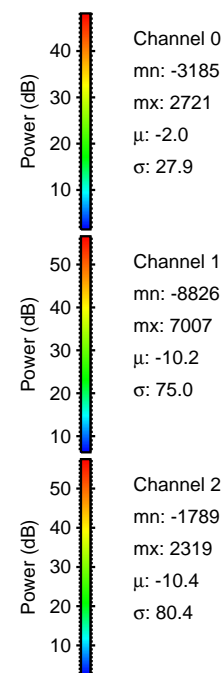
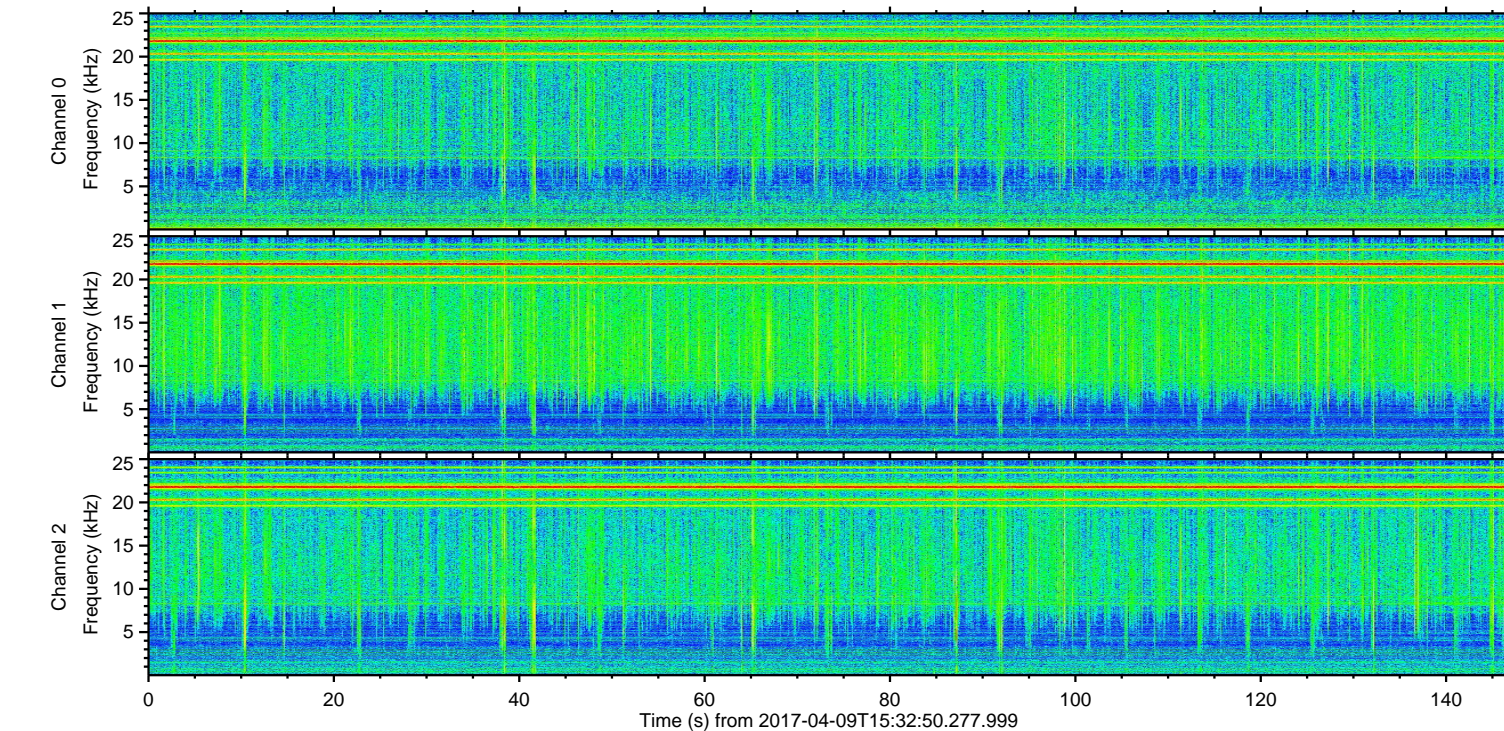
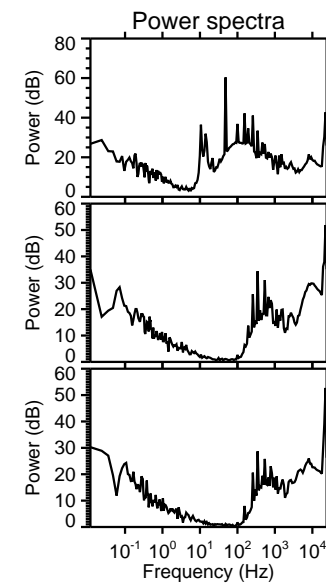
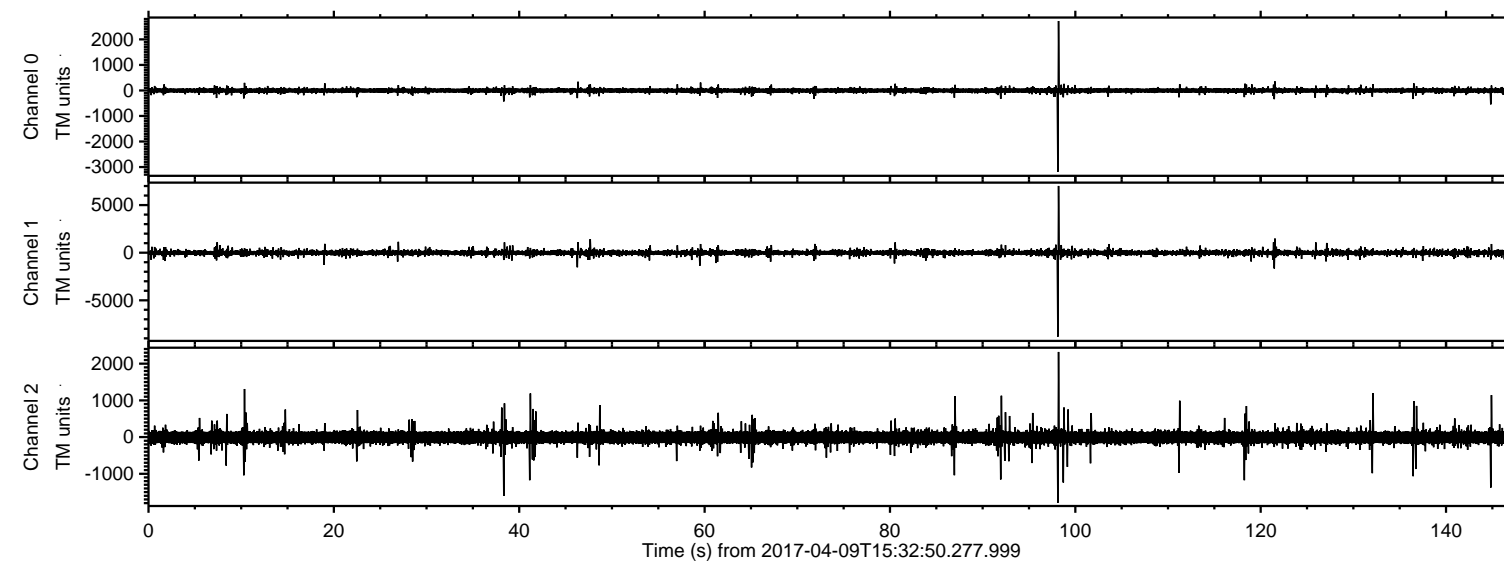


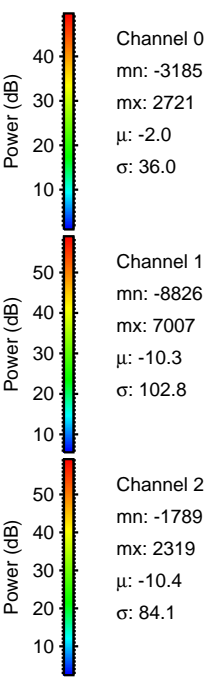
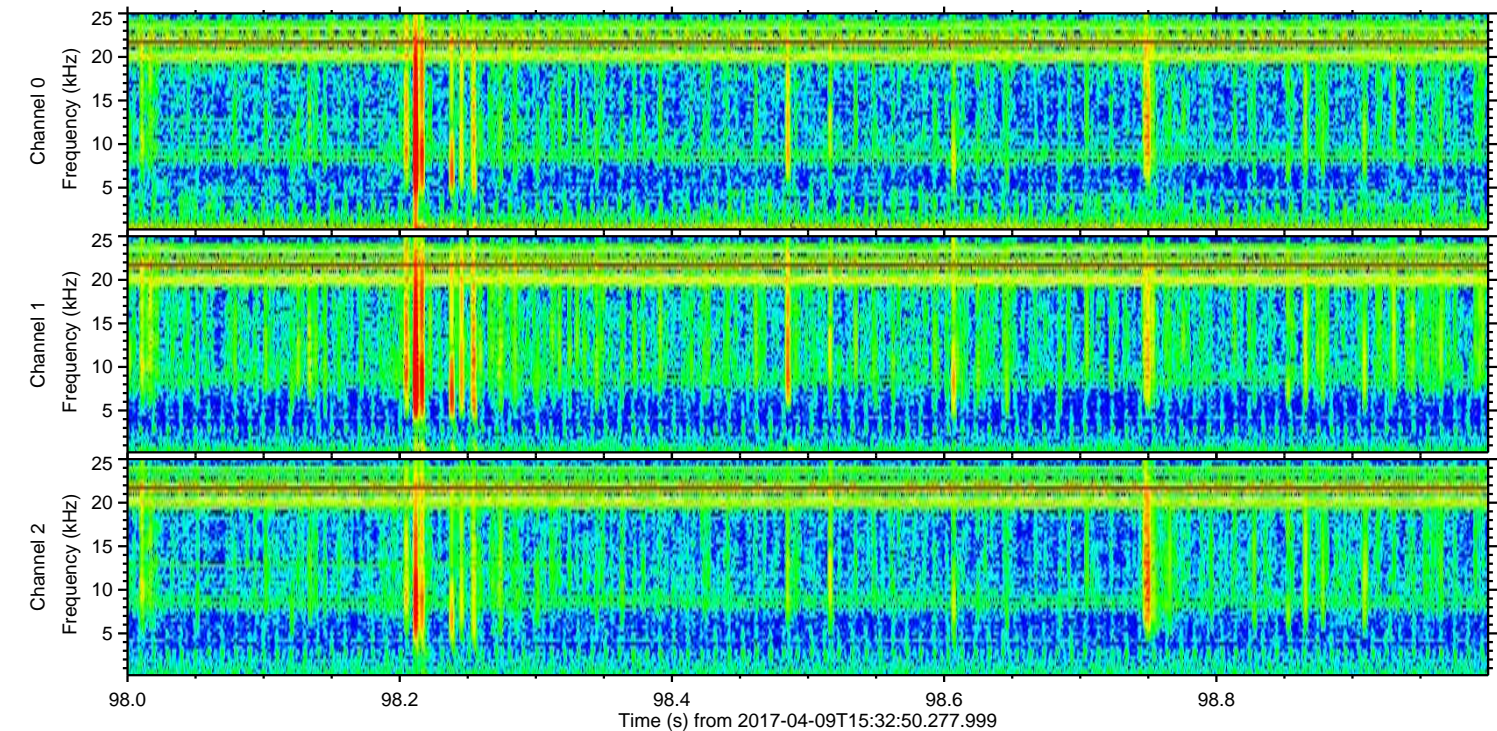
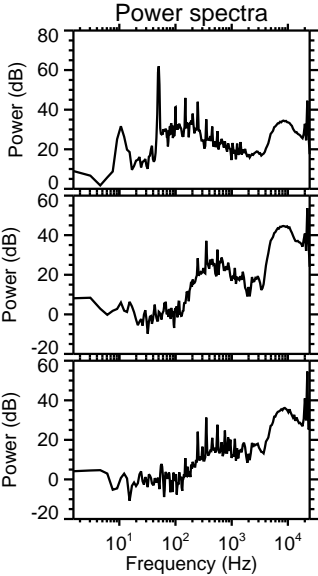
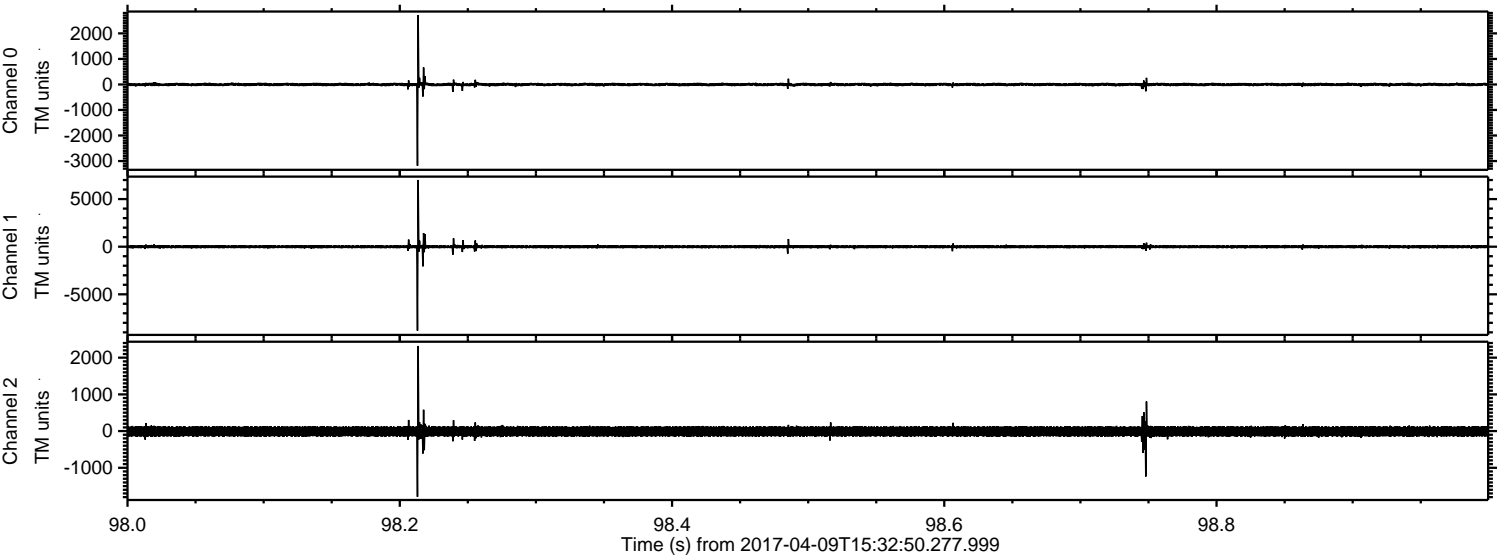
# ELMAVAN 3D WAVEFORMS (Measured data sampled at 50 kHz) 51000 packets of 144 samples from 2017-04-09T15:32:50.277.999.

Processed Sun Apr 9 17:40:41 2017 by ELM ver.2012-10-06 from 001\_\_elm20170409\_153249\_\_dat00.bin





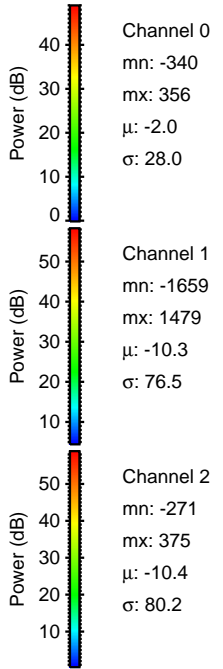
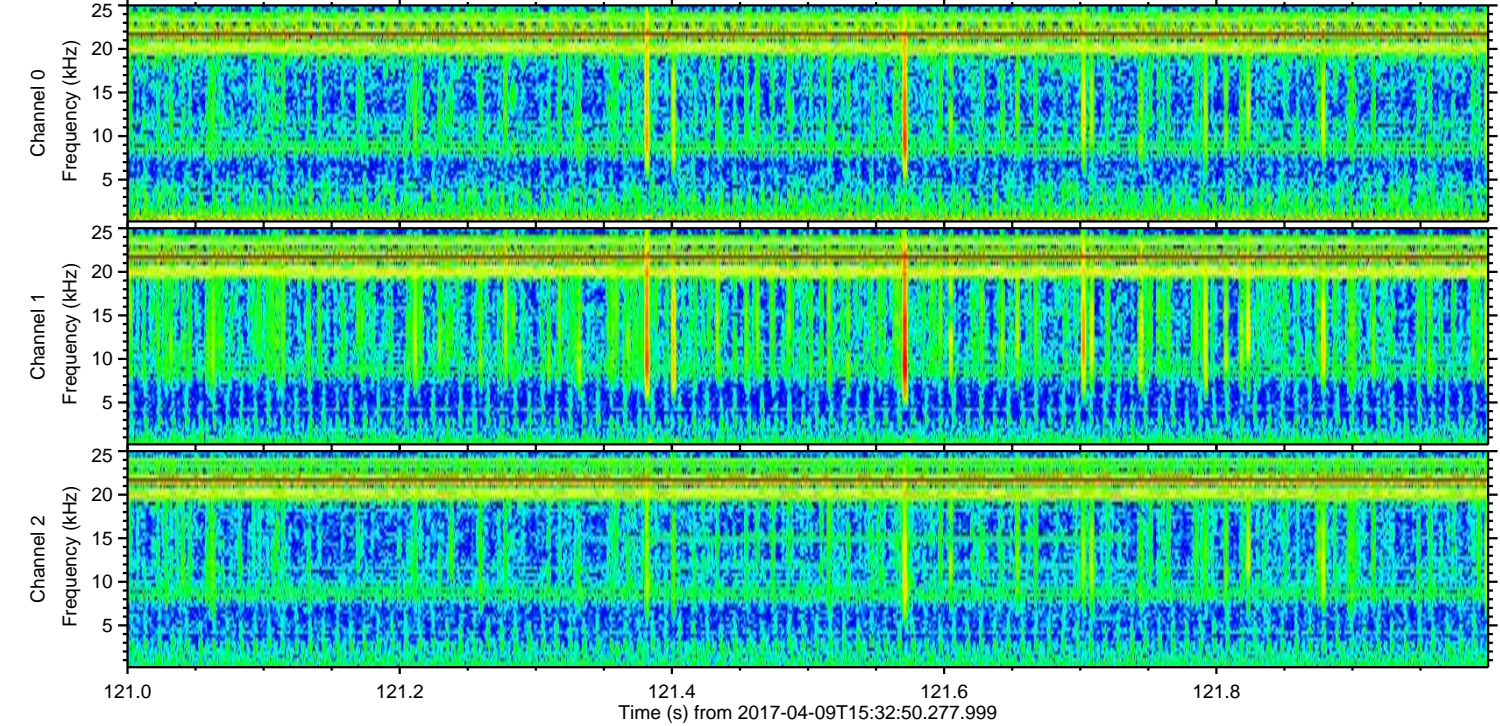
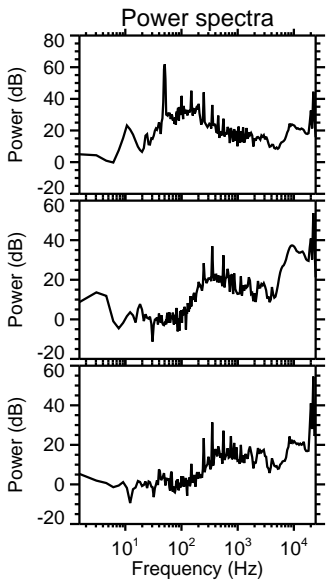
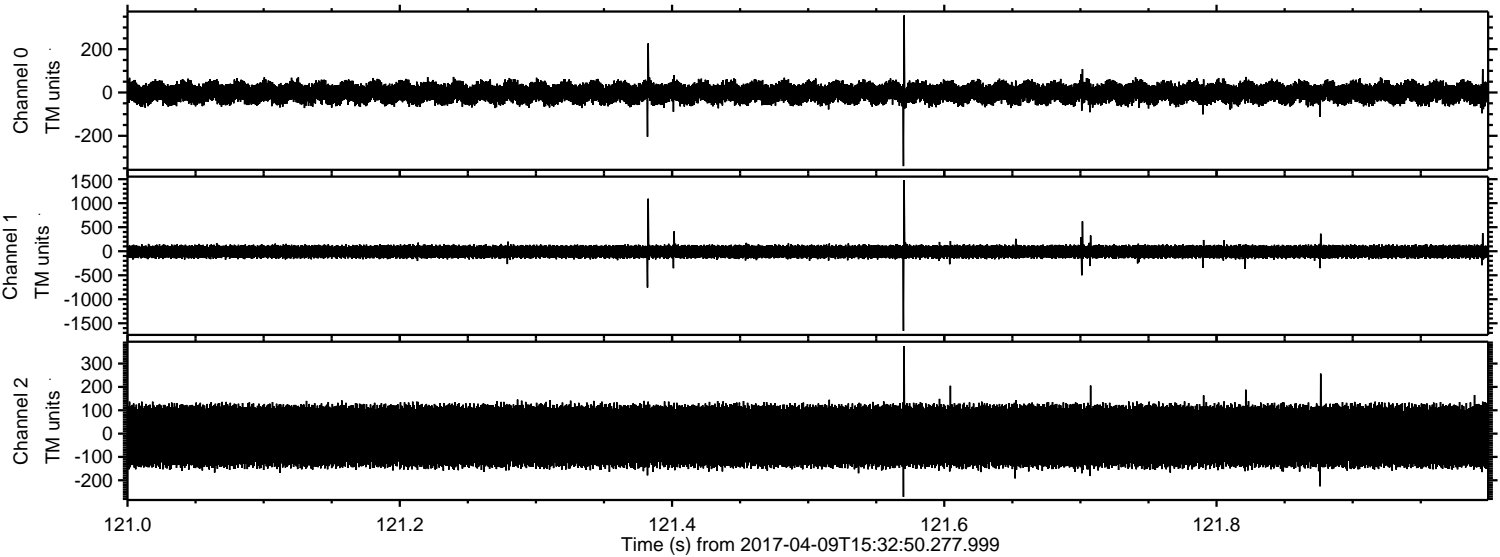
Processed Sun Apr 9 17:40:53 2017 by ELM ver.2012-10-06 from 001\_\_elm20170409\_153249\_\_dat00.bin





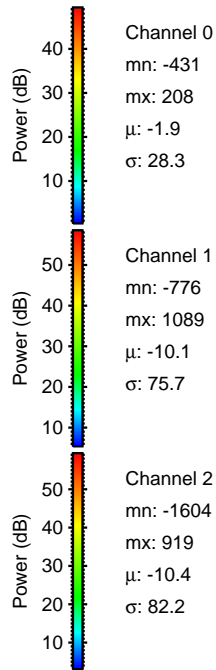
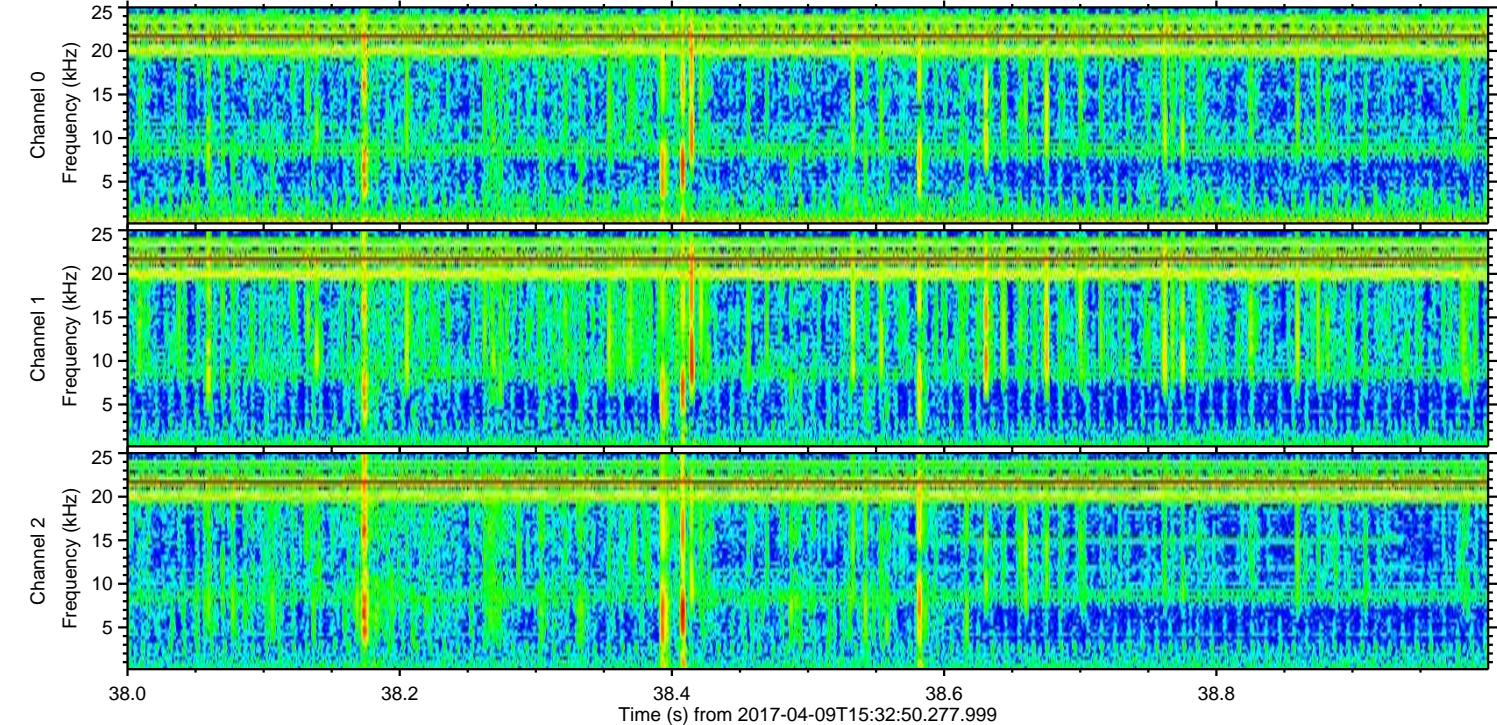
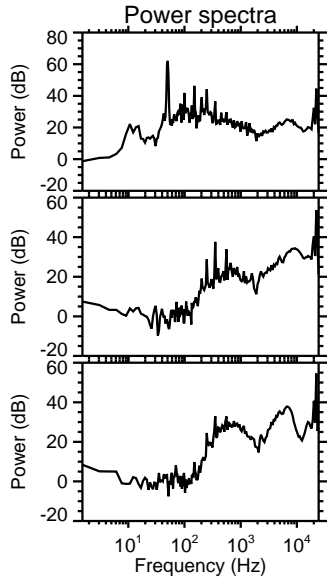
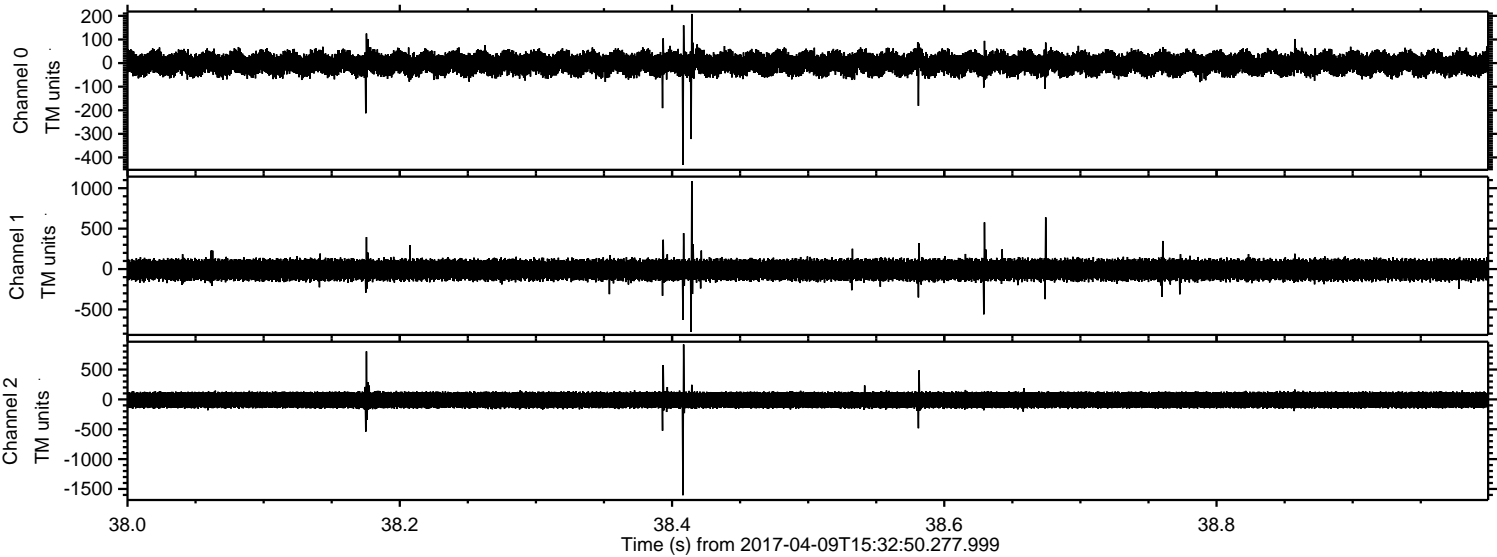
ELMAVAN 3D WAVEFORMS (Measured data sampled at 50 kHz) 51000 packets of 144 samples from 2017-04-09T15:32:50.277.999. Part 122/147

Processed Sun Apr 9 17:40:54 2017 by ELM ver.2012-10-06 from 001\_\_elm20170409\_153249\_\_dat00.bin



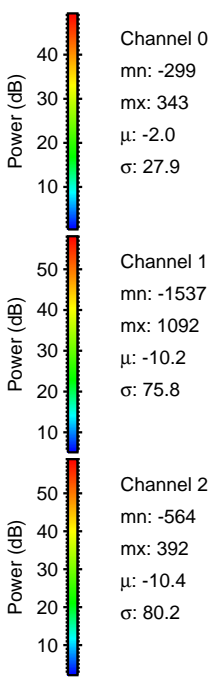
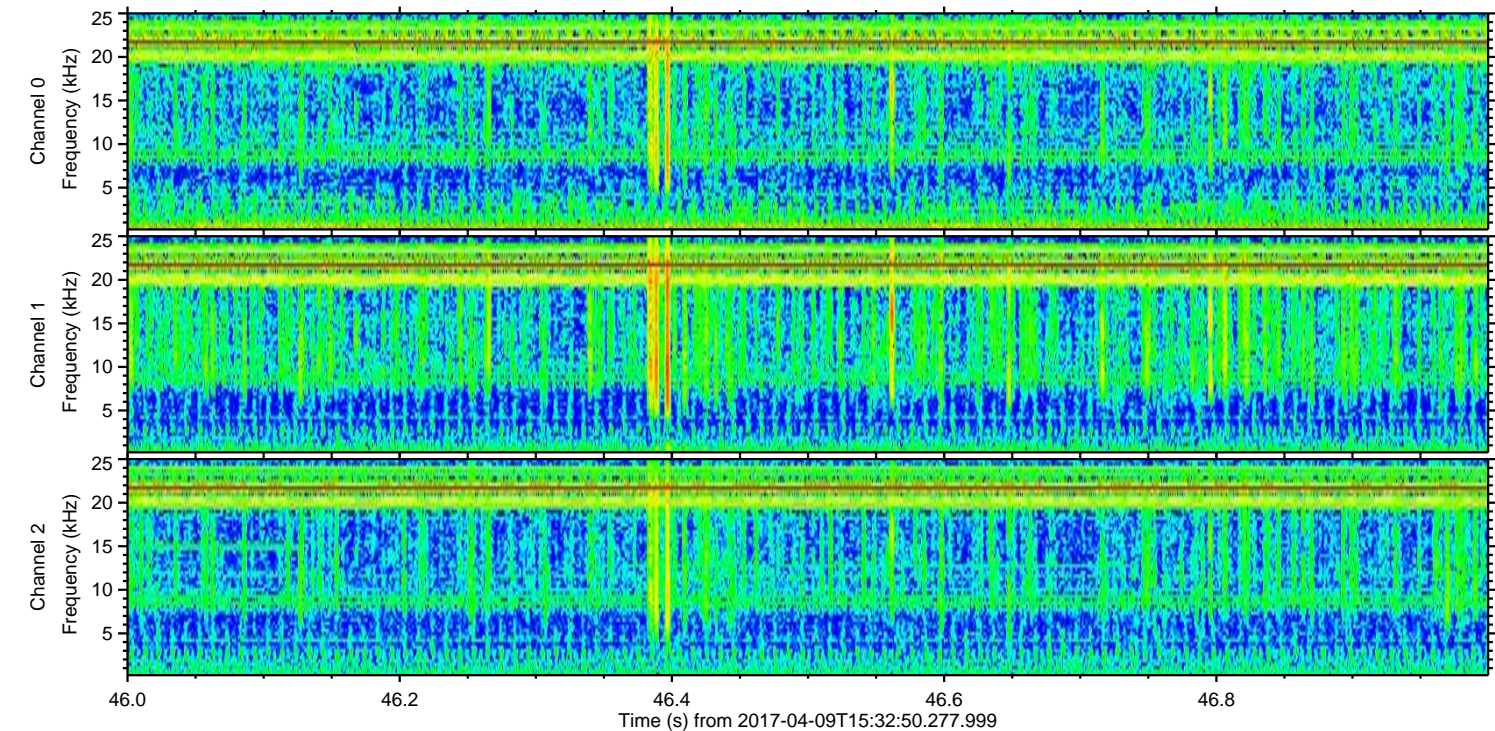
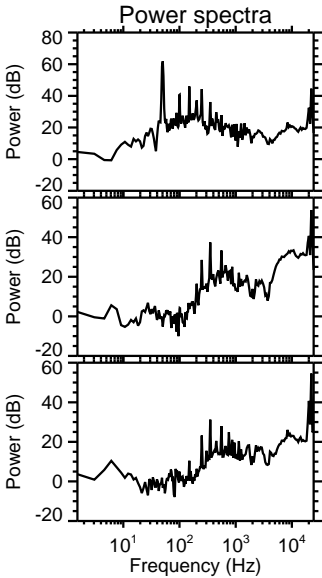
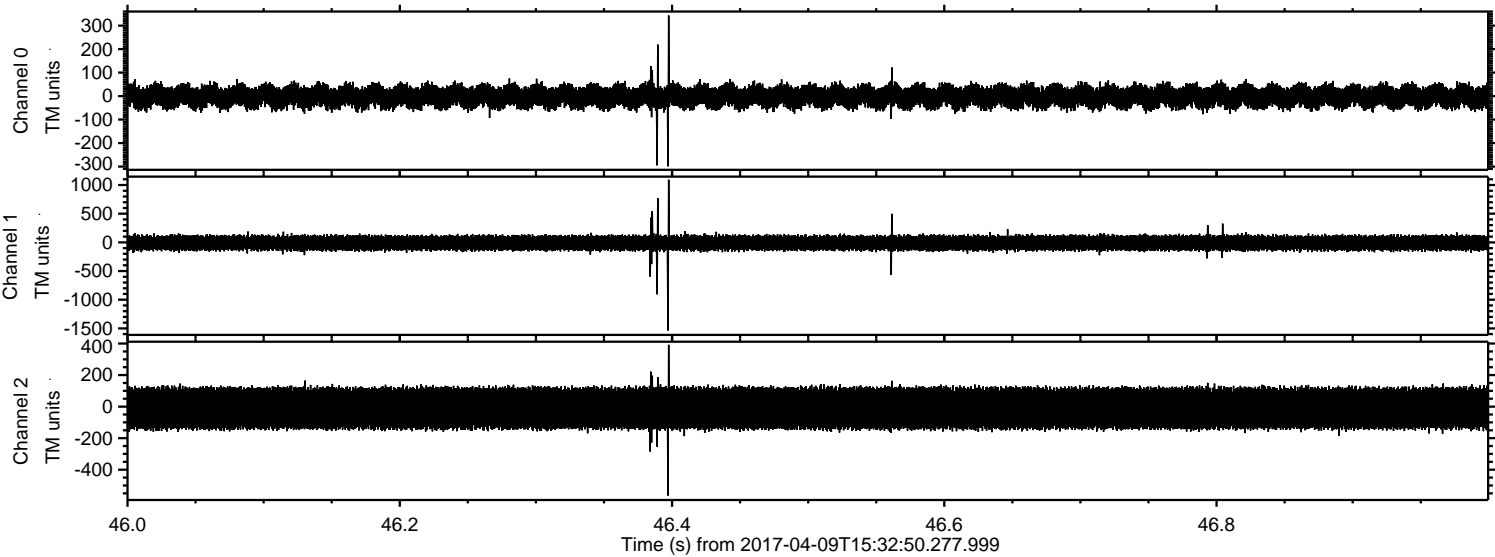


Processed Sun Apr 9 17:40:55 2017 by ELM ver.2012-10-06 from 001\_\_elm20170409\_153249\_\_dat00.bin



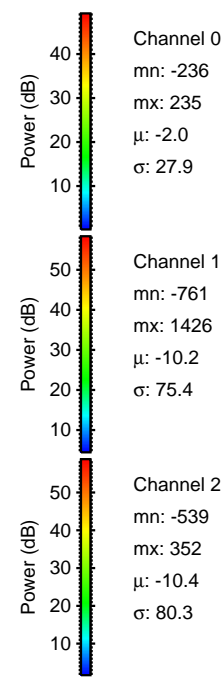
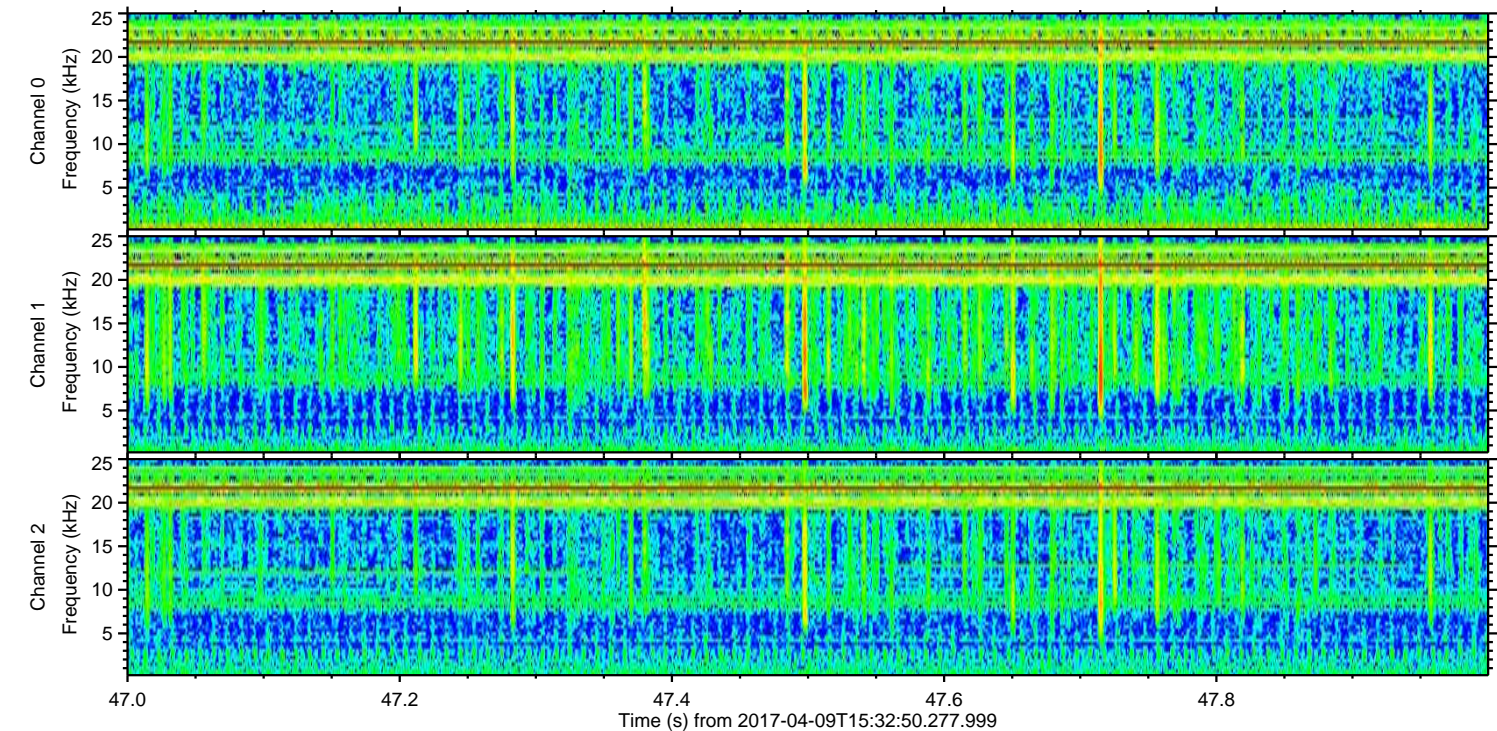
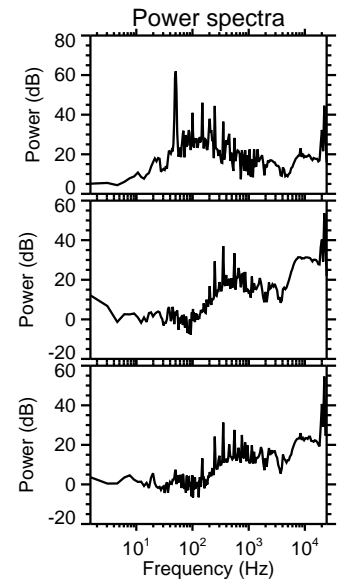
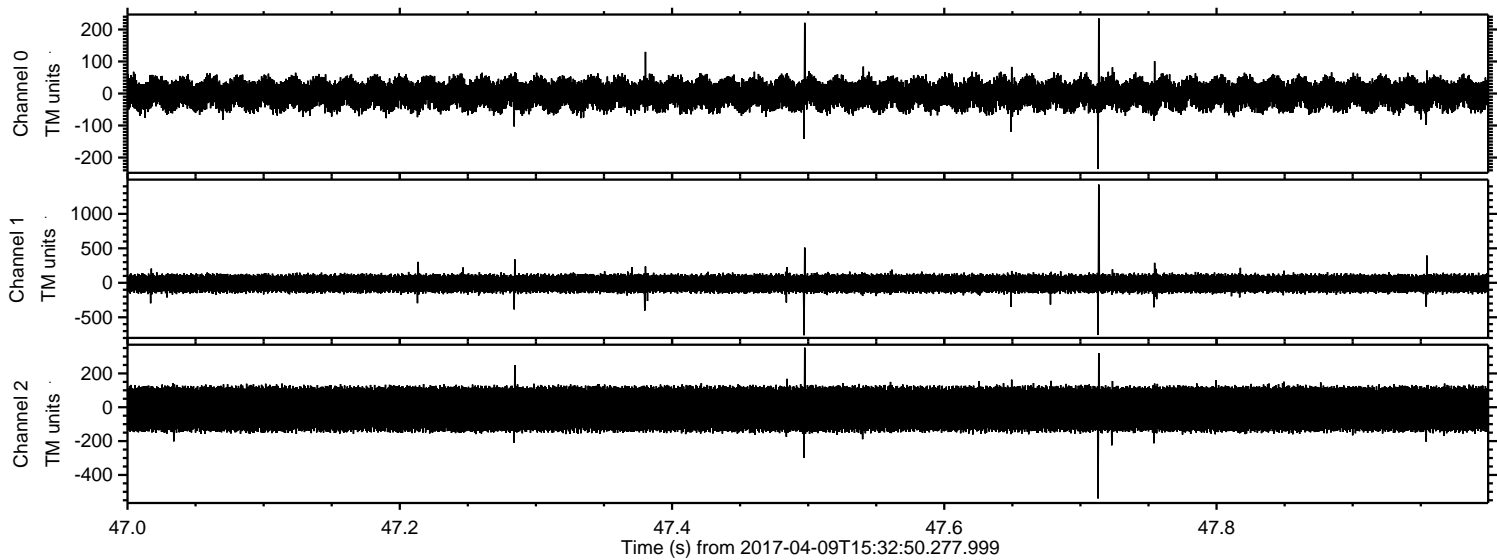


Processed Sun Apr 9 17:40:56 2017 by ELM ver.2012-10-06 from 001\_\_elm20170409\_153249\_\_dat00.bin





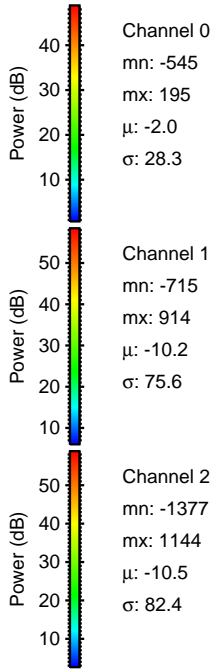
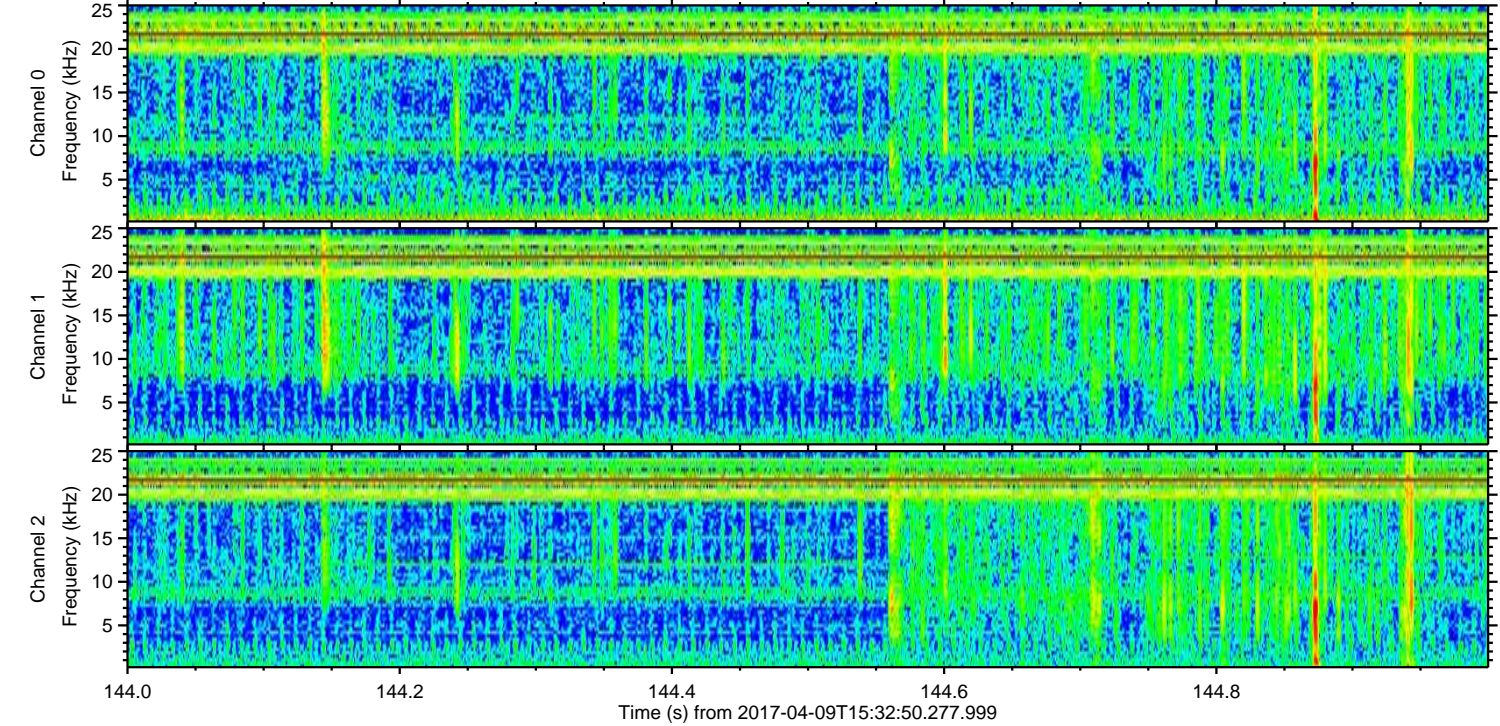
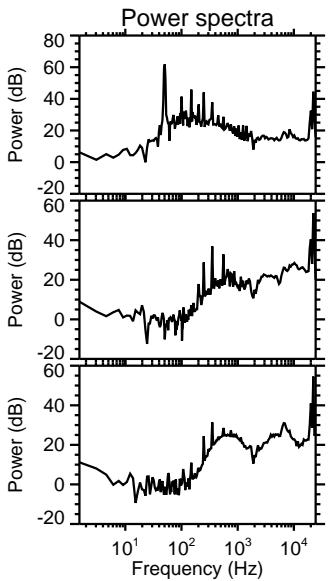
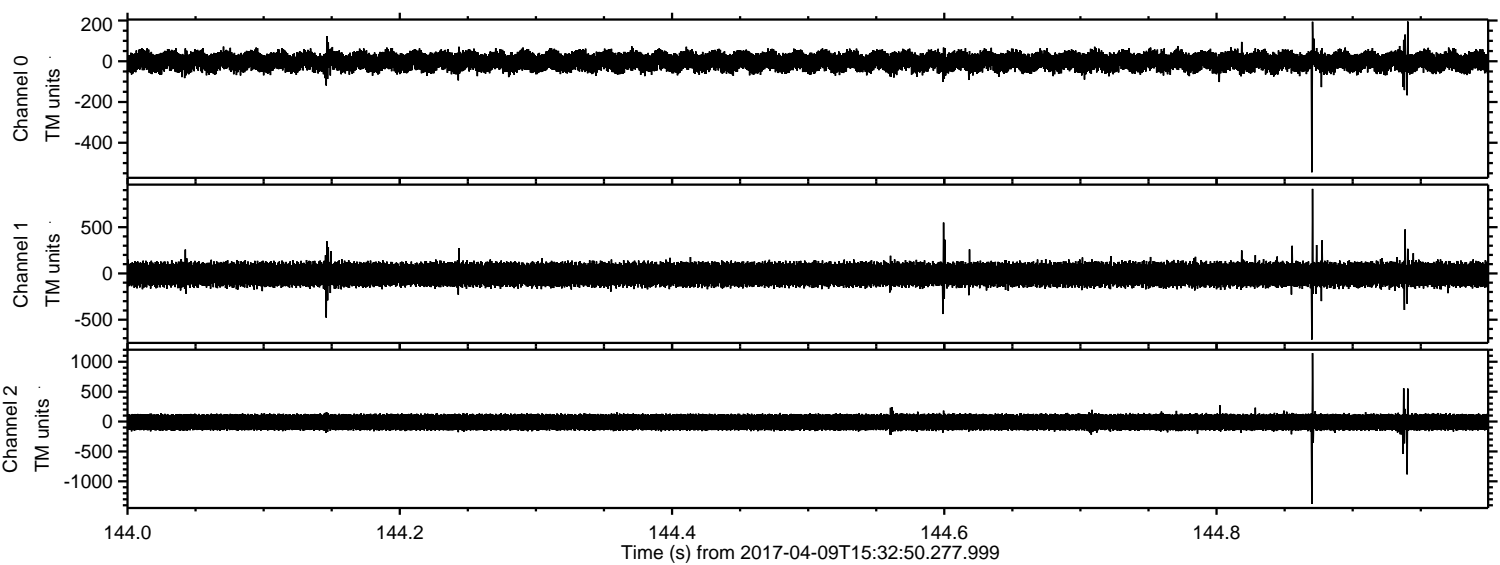
Processed Sun Apr 9 17:40:57 2017 by ELM ver.2012-10-06 from 001\_\_elm20170409\_153249\_\_dat00.bin





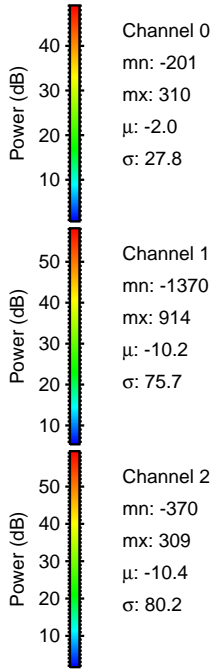
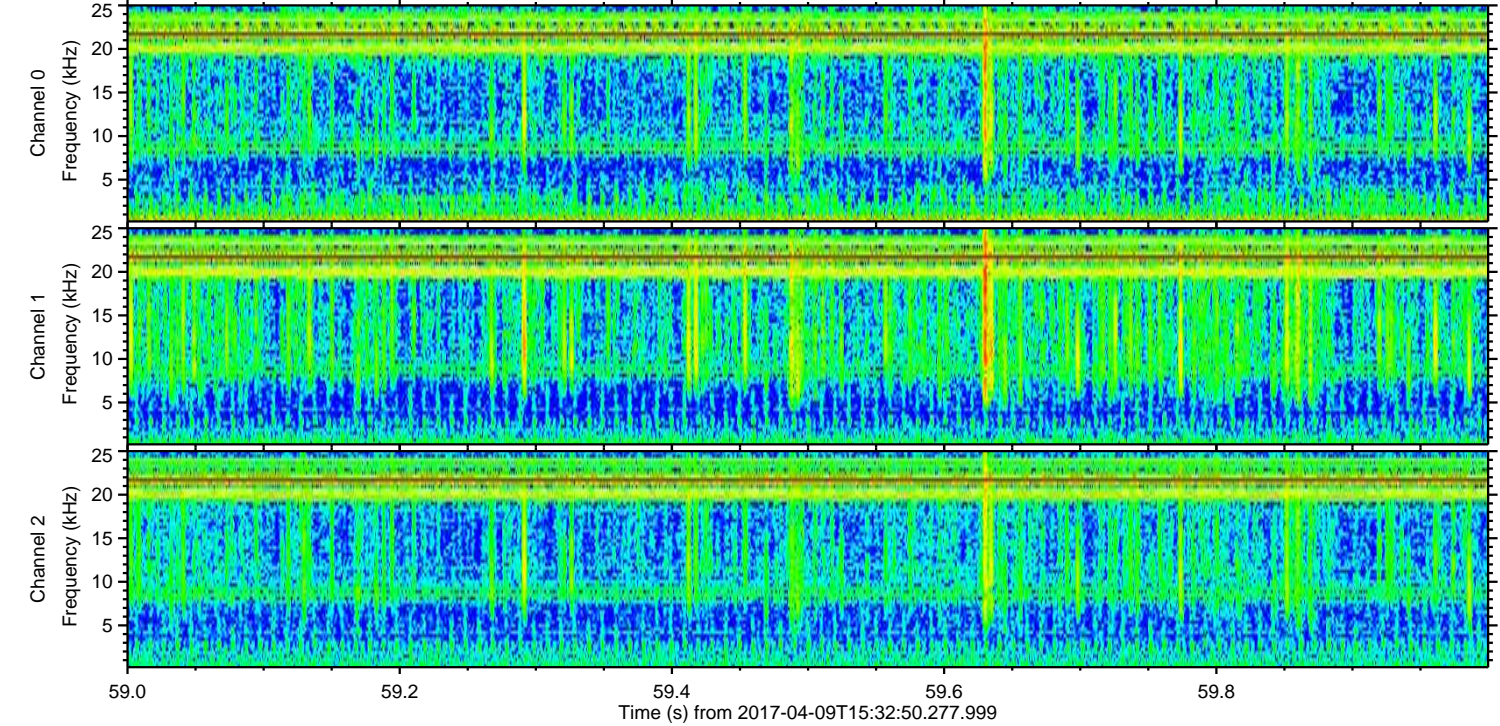
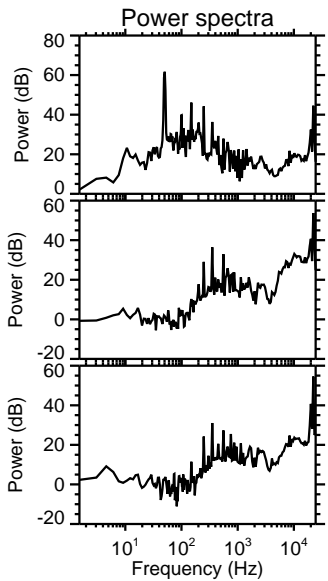
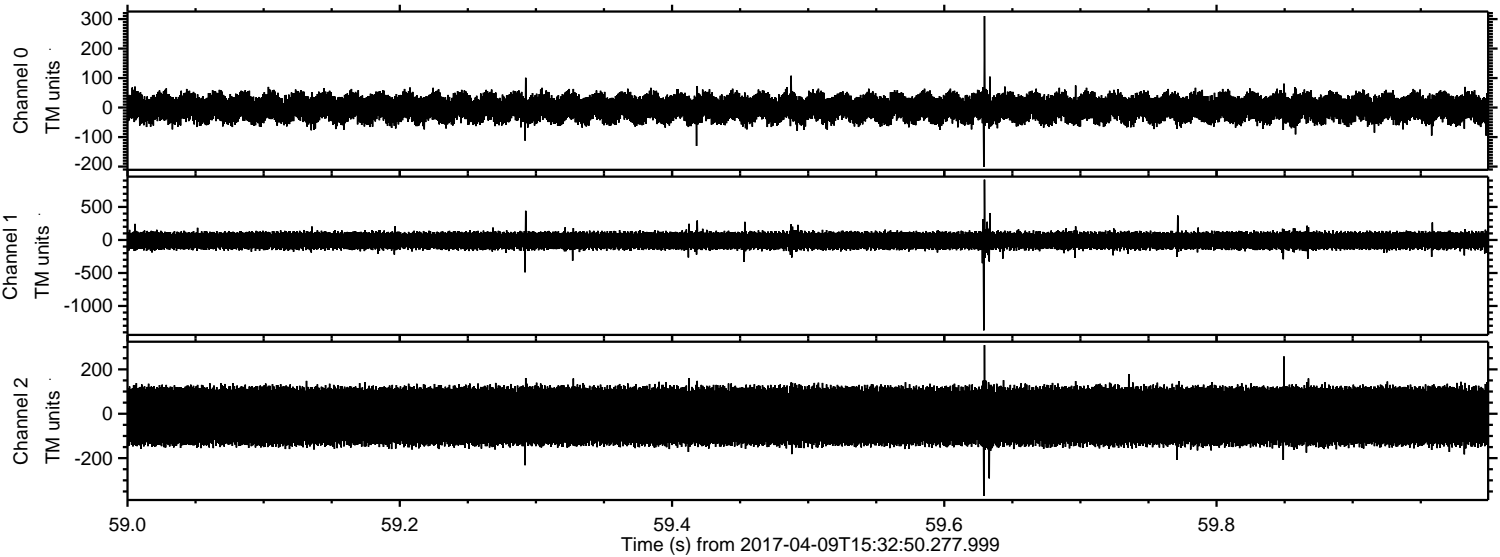
ELMAVAN 3D WAVEFORMS (Measured data sampled at 50 kHz) 51000 packets of 144 samples from 2017-04-09T15:32:50.277.999. Part 145/147

Processed Sun Apr 9 17:40:57 2017 by ELM ver.2012-10-06 from 001\_\_elm20170409\_153249\_\_dat00.bin



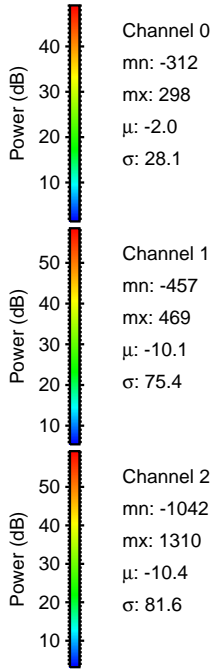
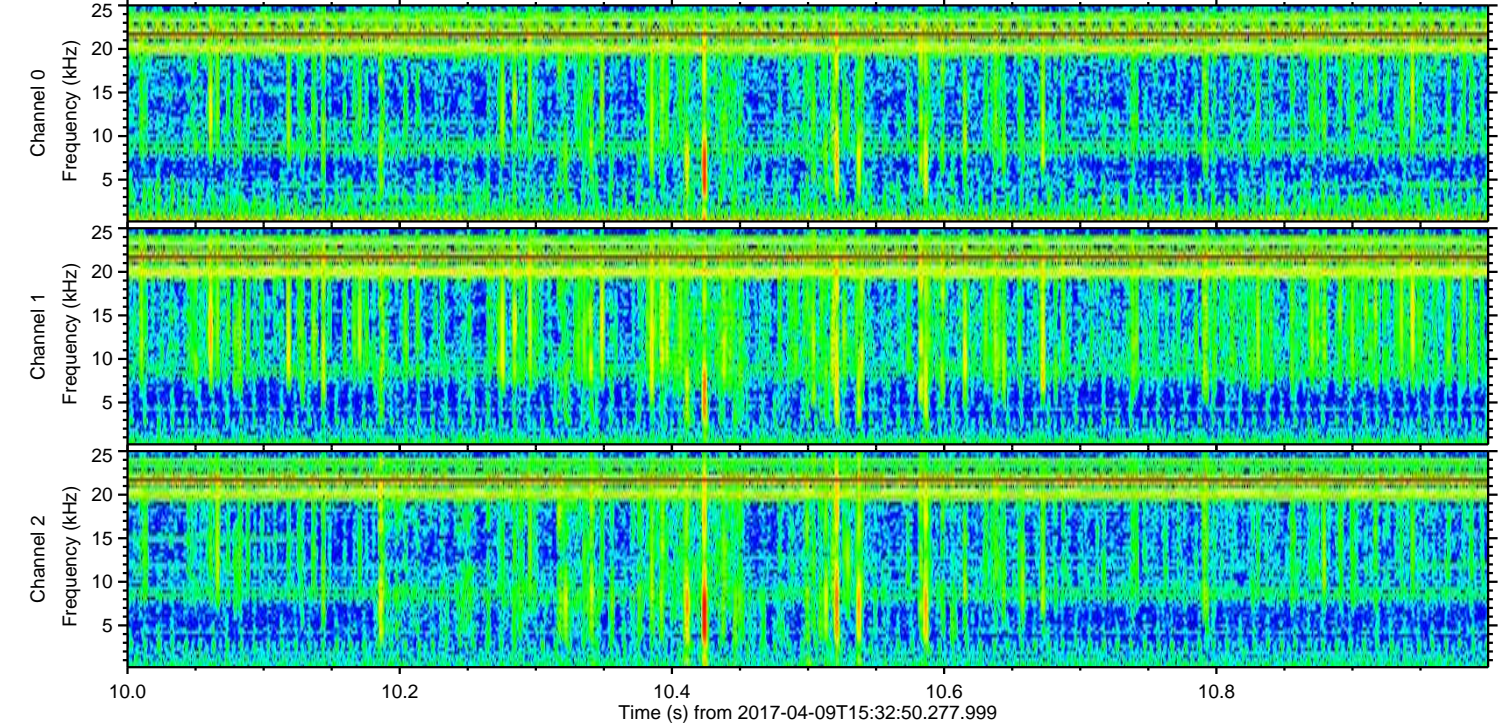
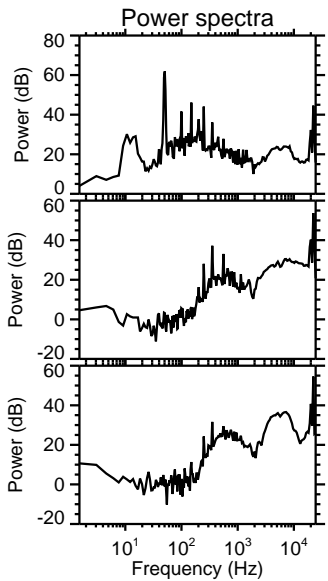
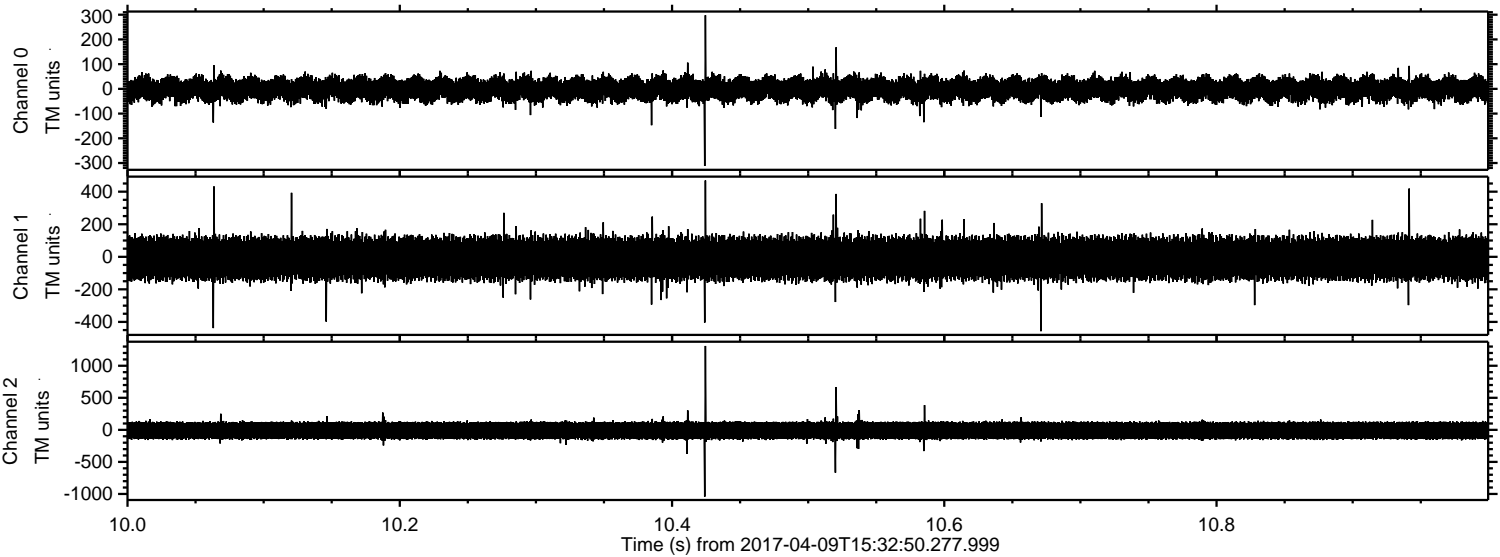


Processed Sun Apr 9 17:40:58 2017 by ELM ver.2012-10-06 from 001\_\_elm20170409\_153249\_\_dat00.bin





Processed Sun Apr 9 17:40:59 2017 by ELM ver.2012-10-06 from 001\_\_elm20170409\_153249\_\_dat00.bin





Processed Sun Apr 9 17:41:00 2017 by ELM ver.2012-10-06 from 001\_\_elm20170409\_153249\_\_dat00.bin

