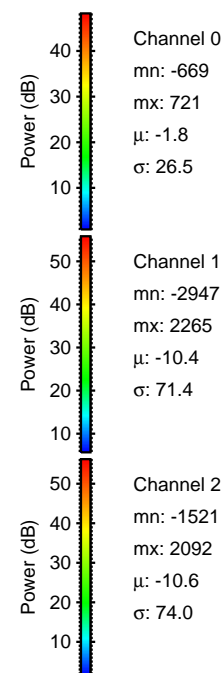
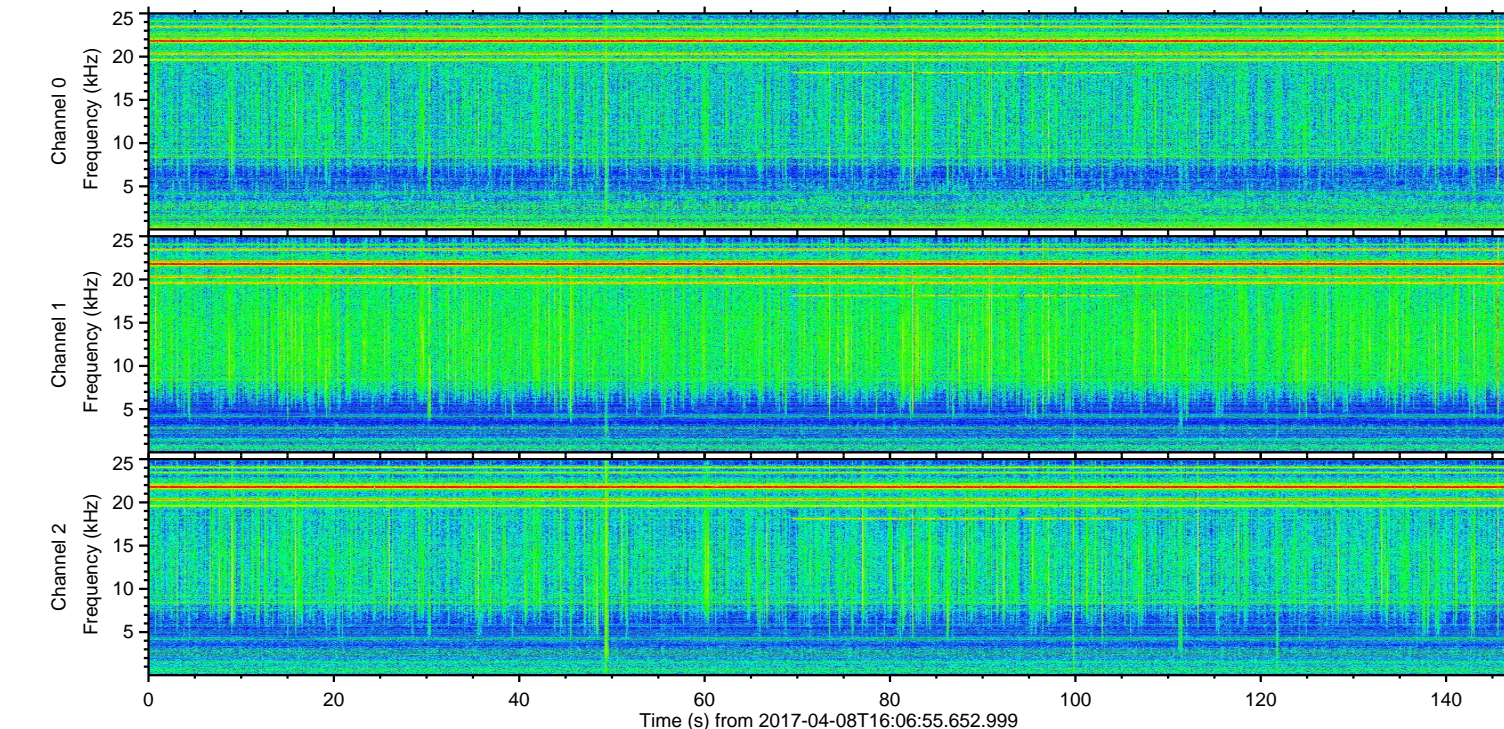
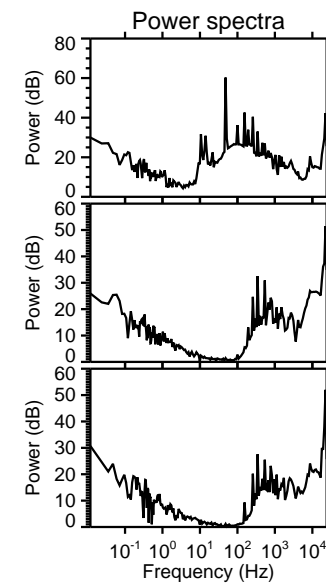
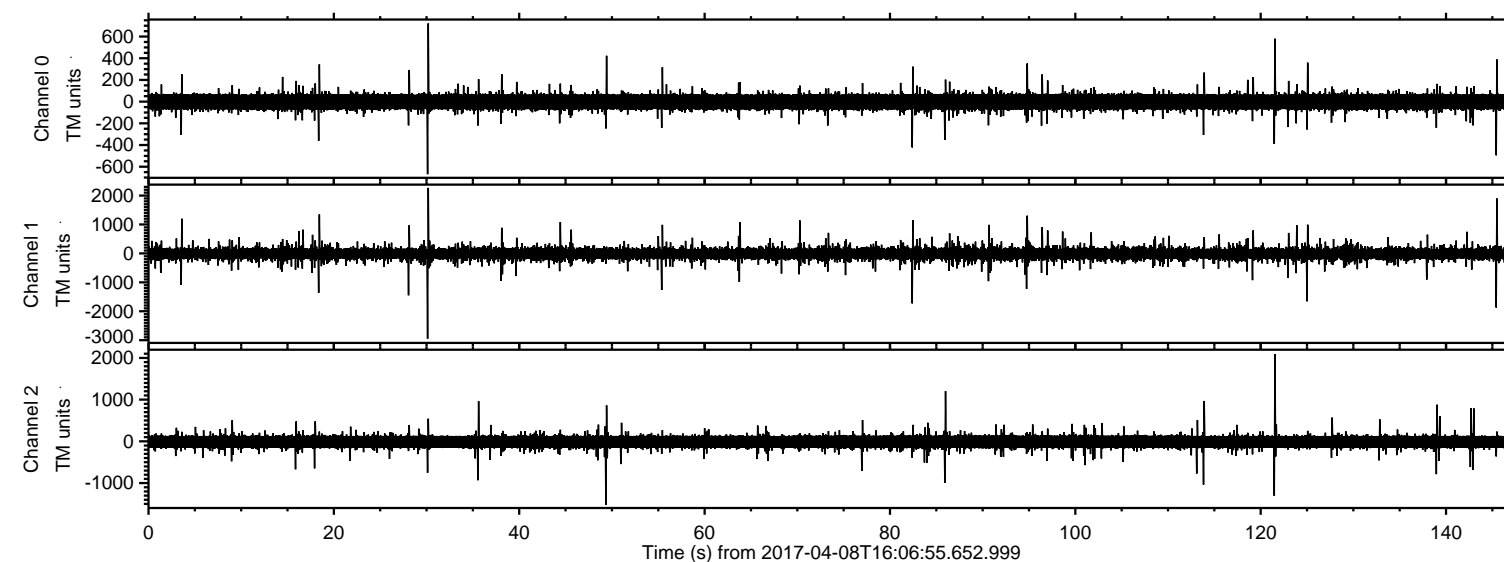


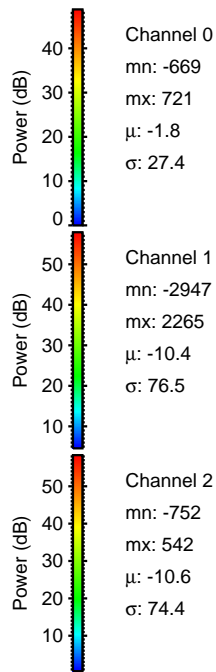
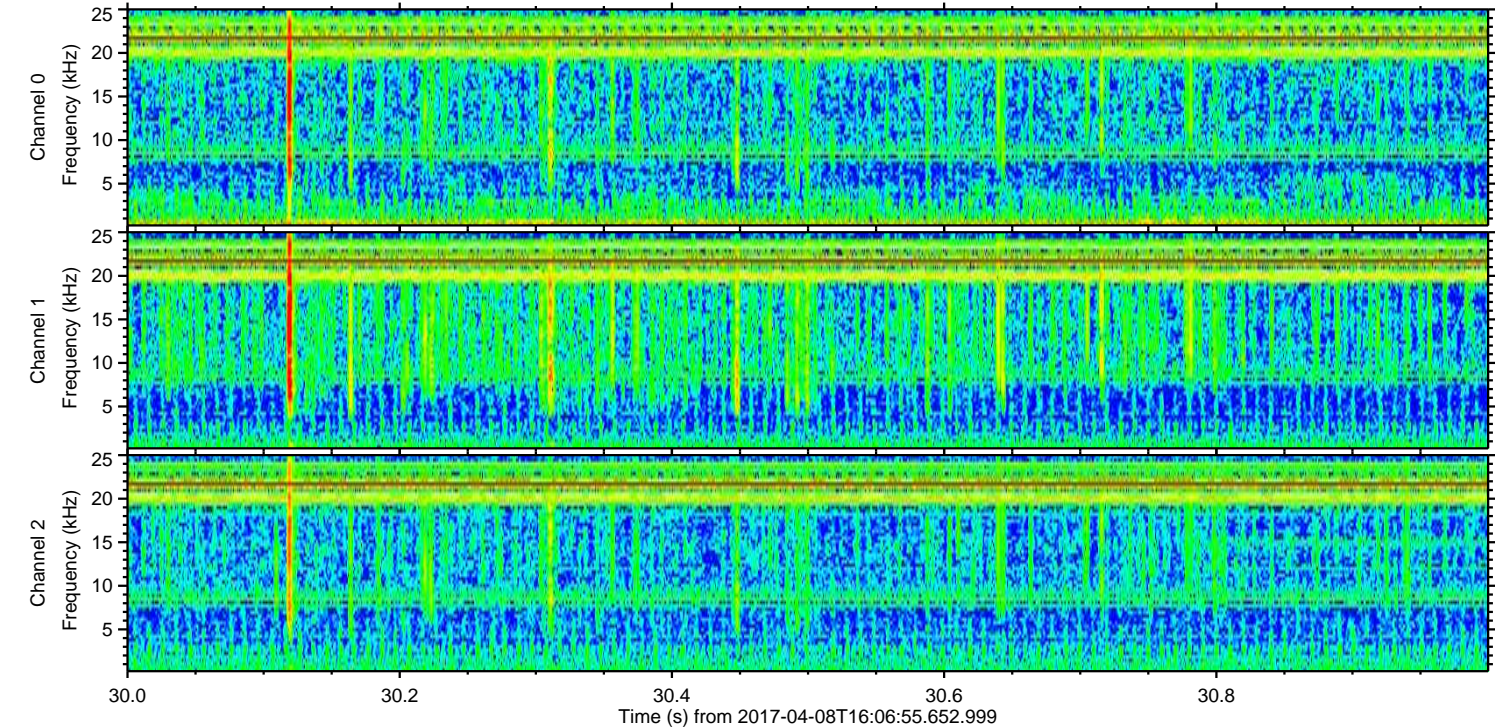
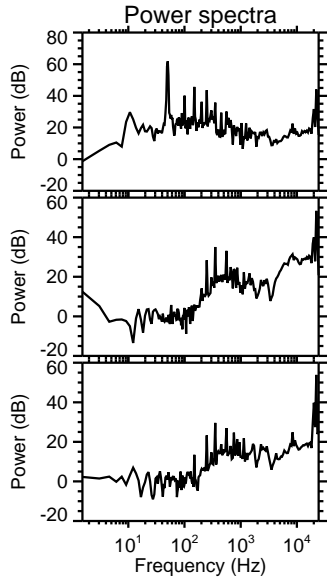
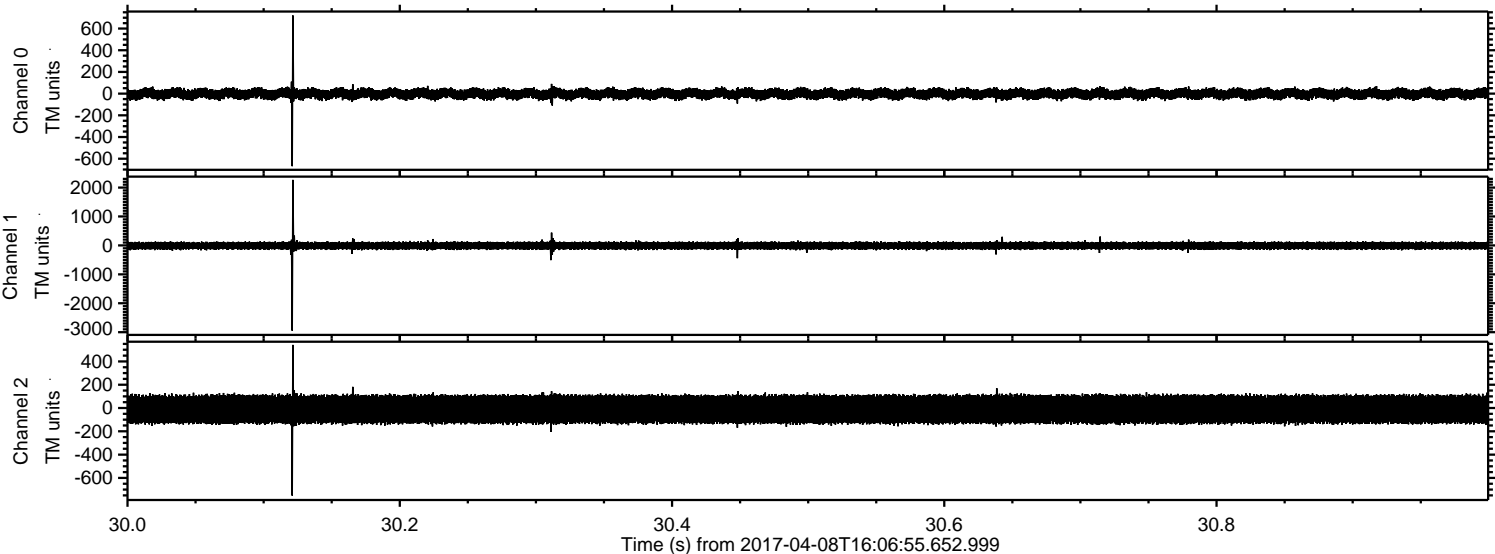
ELMAVAN 3D WAVEFORMS (Measured data sampled at 50 kHz) 51000 packets of 144 samples from 2017-04-08T16:06:55.652.999.

Processed Sat Apr 8 18:14:44 2017 by ELM ver.2012-10-06 from 001__elm20170408_160654__dat00.bin



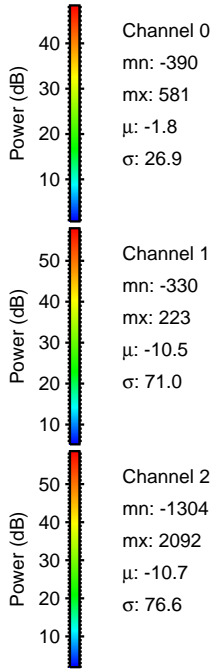
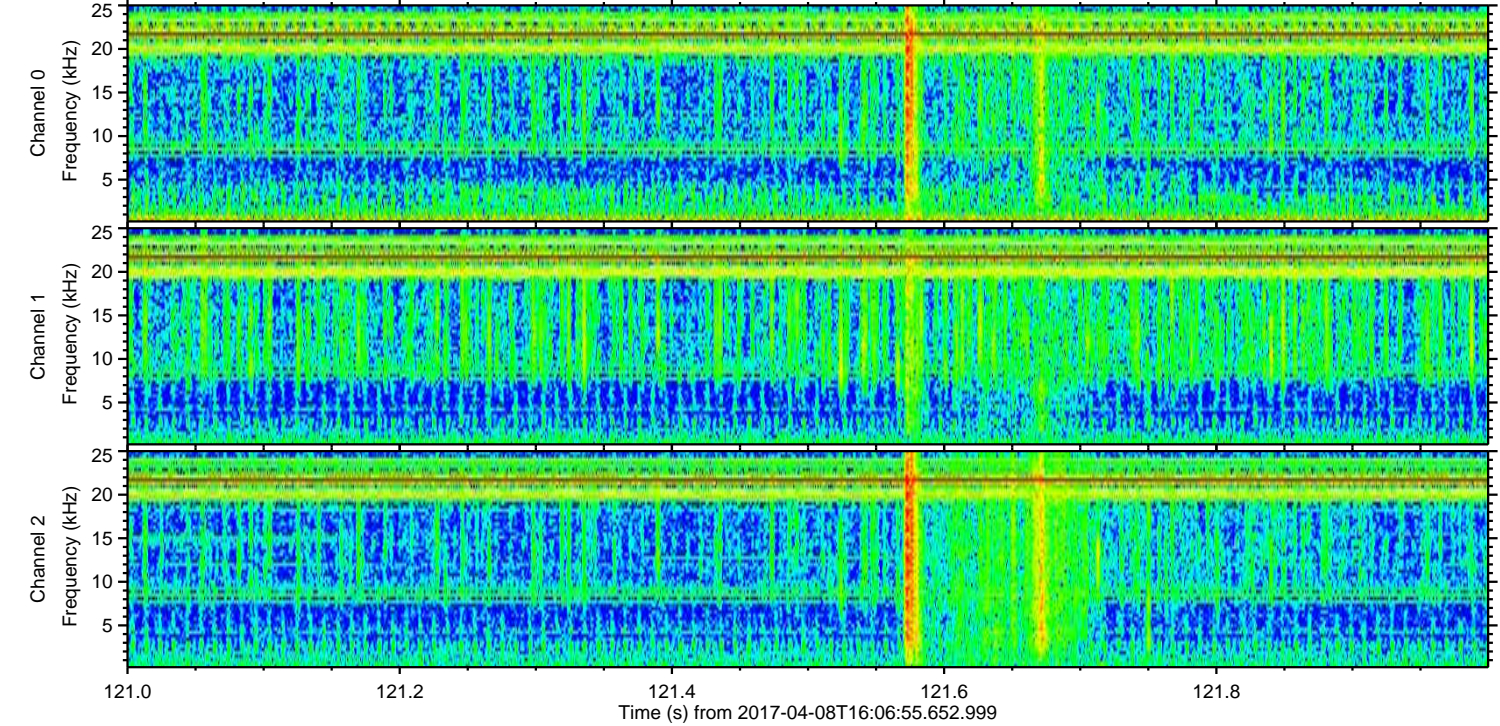
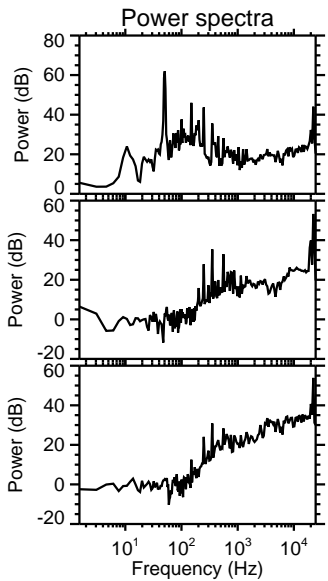
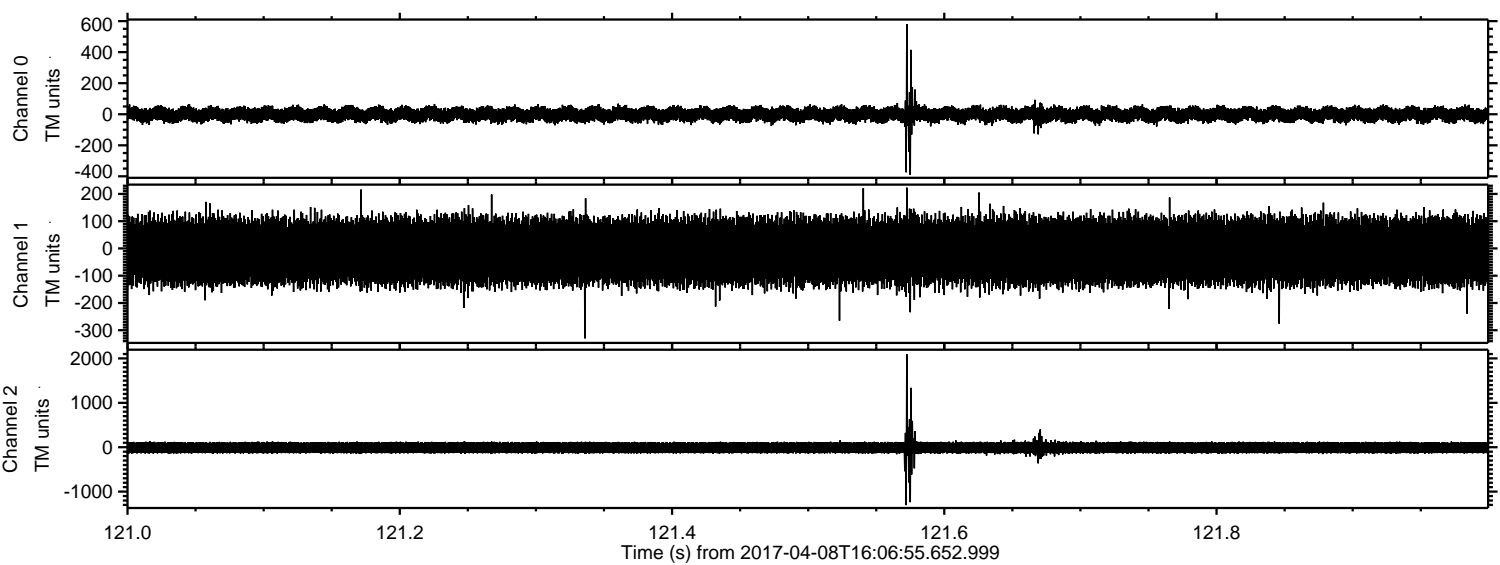
ELMAVAN 3D WAVEFORMS (Measured data sampled at 50 kHz) 51000 packets of 144 samples from 2017-04-08T16:06:55.652.999. Part 31/147

Processed Sat Apr 8 18:14:55 2017 by ELM ver.2012-10-06 from 001__elm20170408_160654__dat00.bin



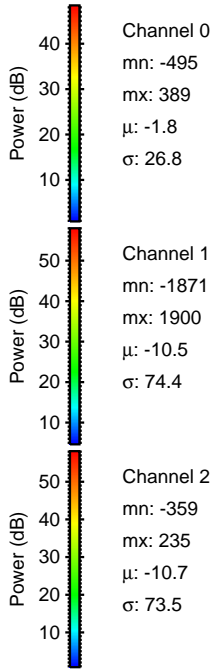
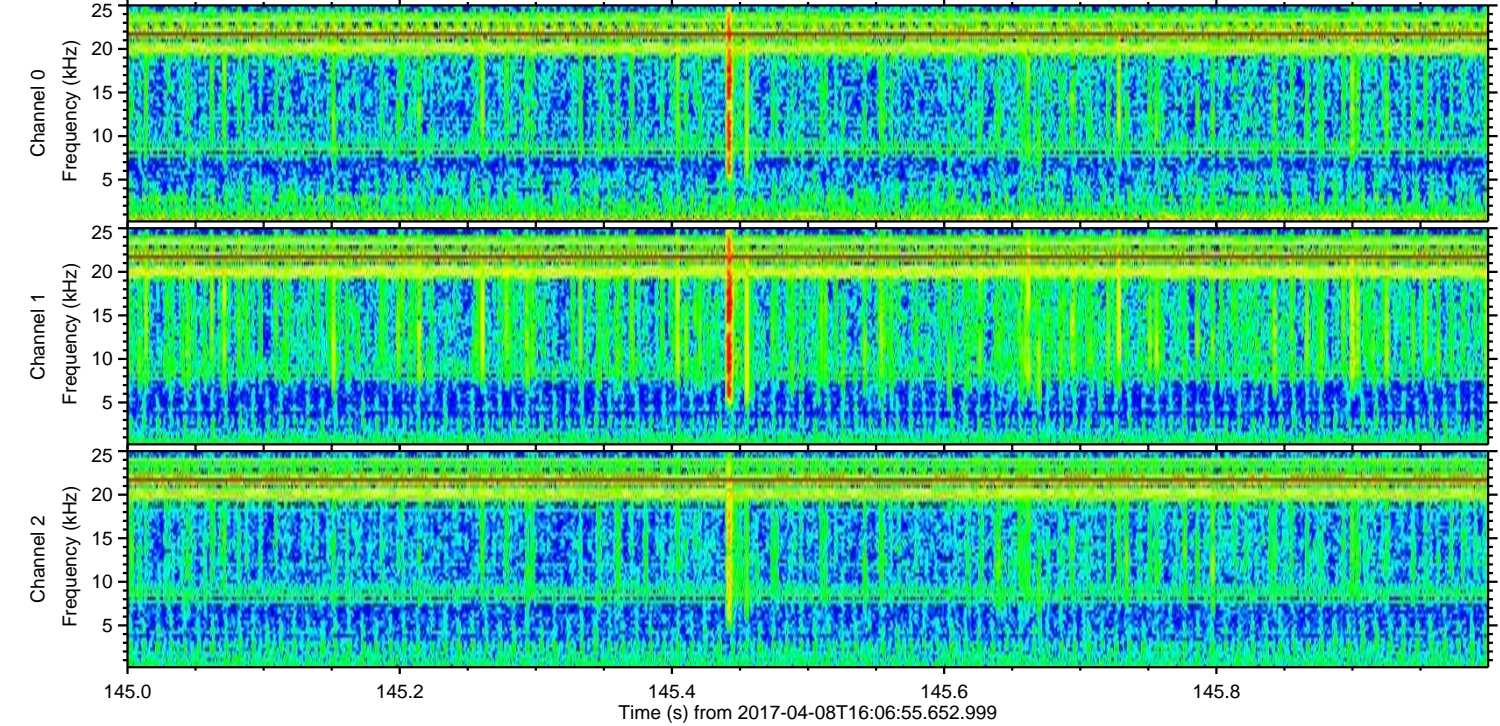
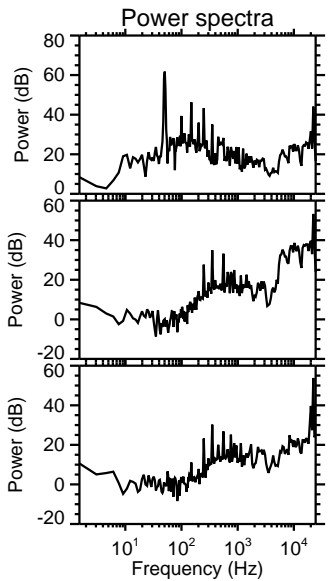
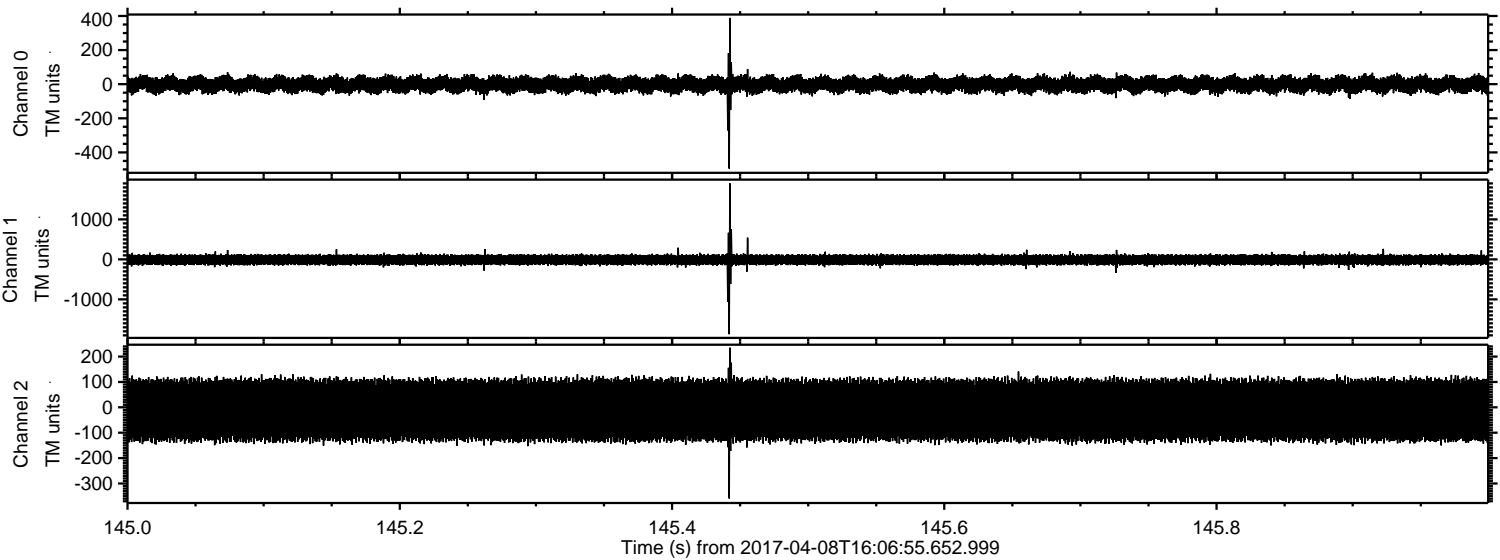
ELMAVAN 3D WAVEFORMS (Measured data sampled at 50 kHz) 51000 packets of 144 samples from 2017-04-08T16:06:55.652.999. Part 122/147

Processed Sat Apr 8 18:14:56 2017 by ELM ver.2012-10-06 from 001__elm20170408_160654__dat00.bin

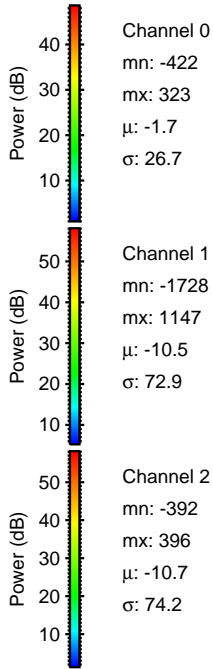
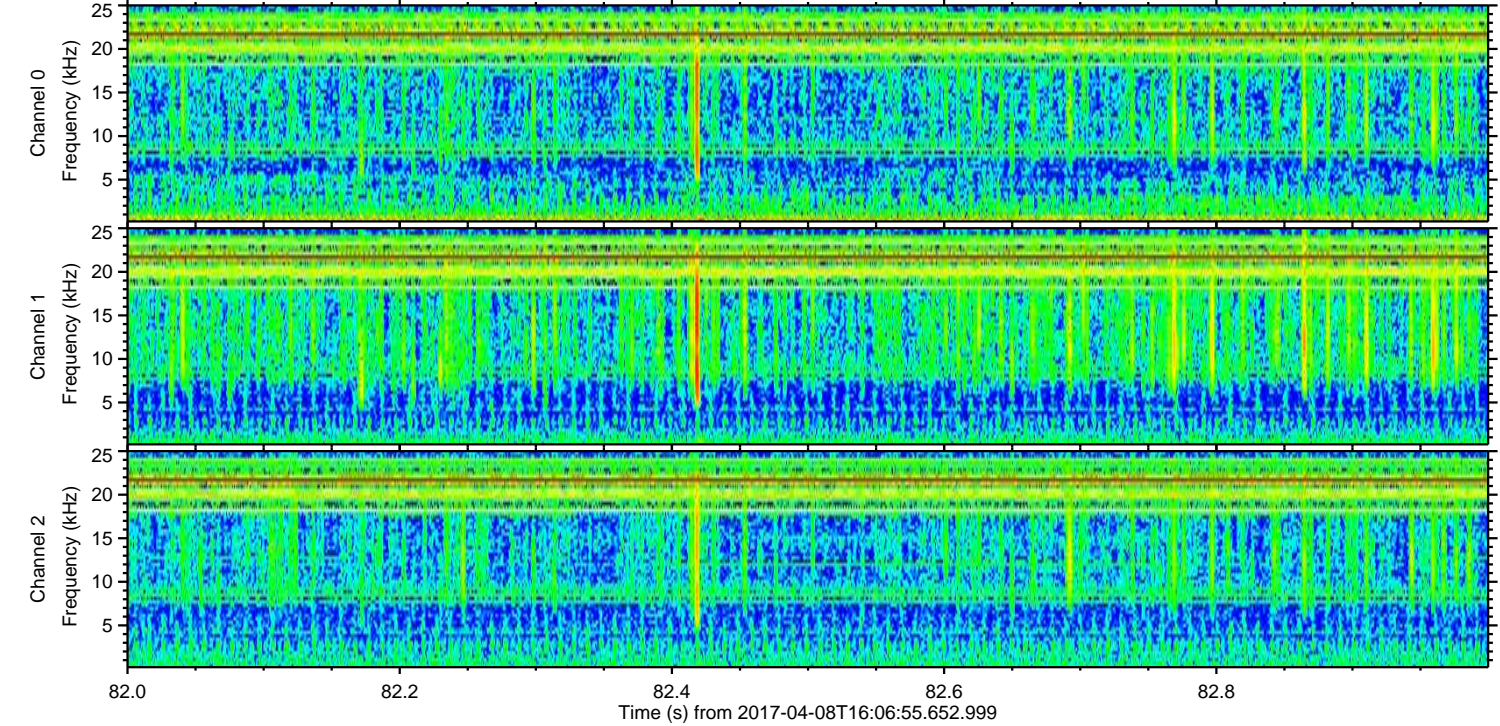
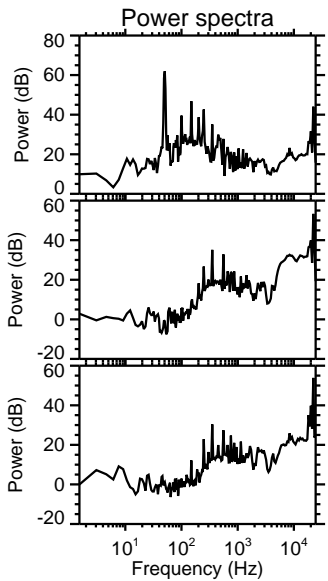
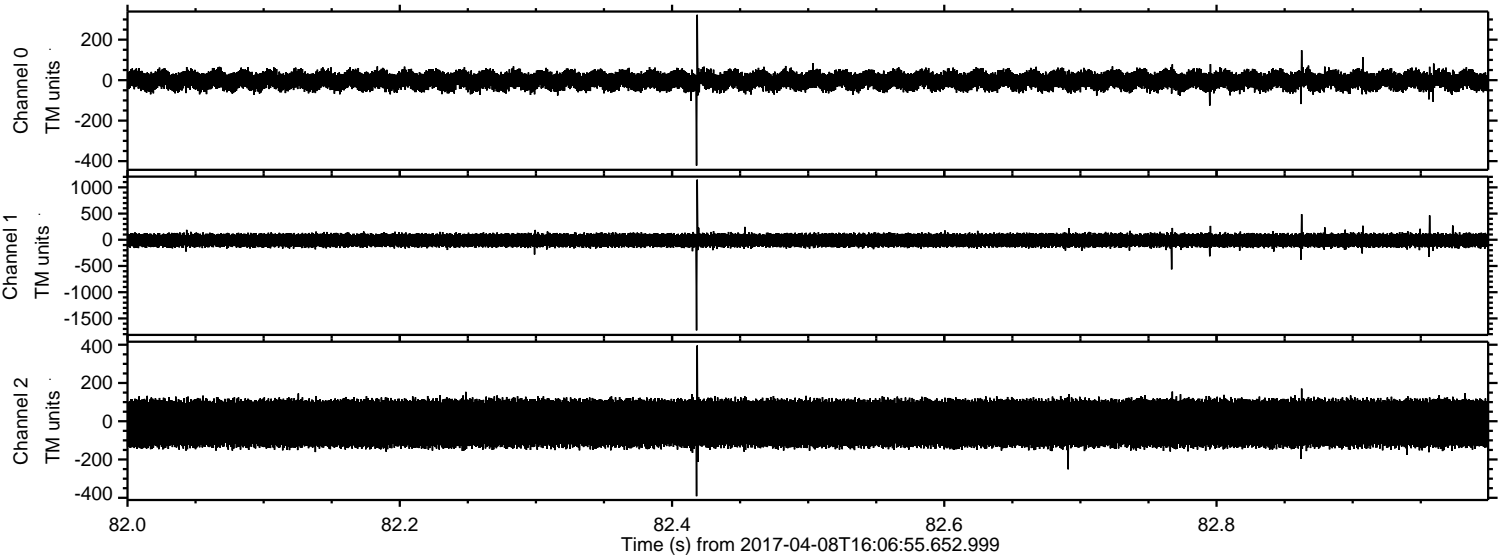


ELMAVAN 3D WAVEFORMS (Measured data sampled at 50 kHz) 51000 packets of 144 samples from 2017-04-08T16:06:55.652.999. Part 146/147

Processed Sat Apr 8 18:14:57 2017 by ELM ver.2012-10-06 from 001__elm20170408_160654__dat00.bin

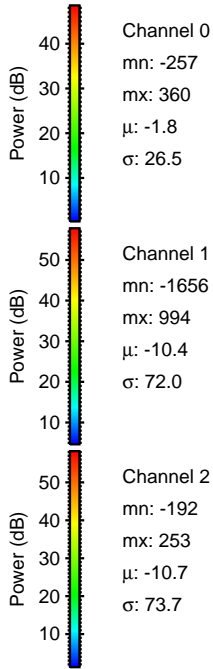
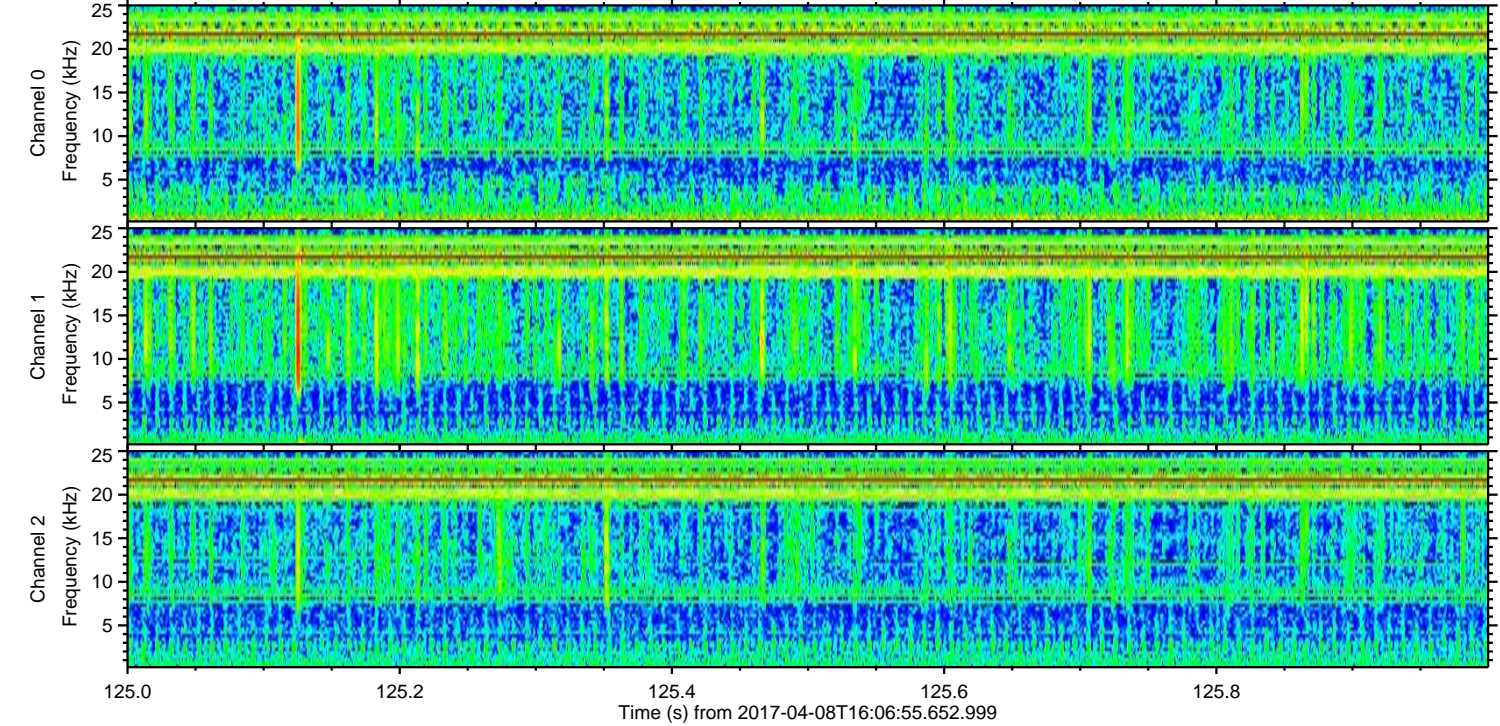
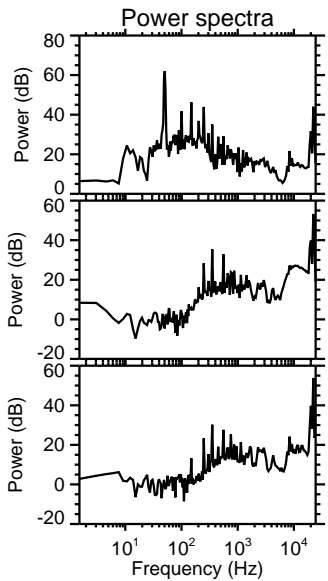
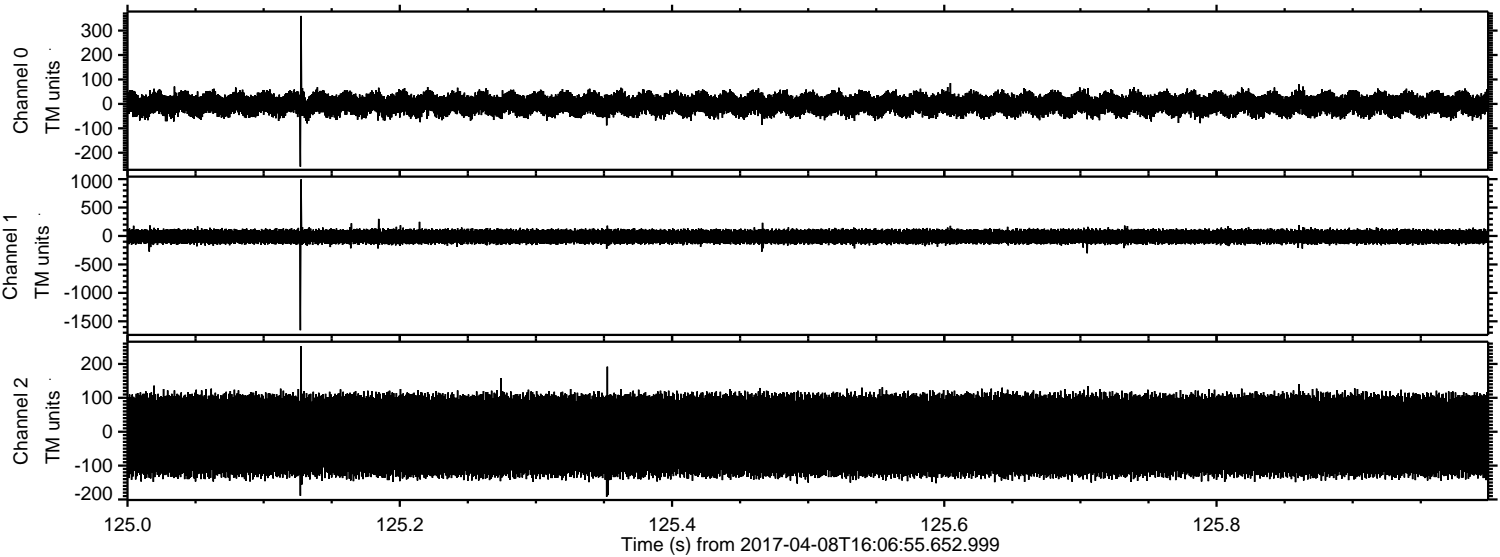


Processed Sat Apr 8 18:14:58 2017 by ELM ver.2012-10-06 from 001__elm20170408_160654__dat00.bin

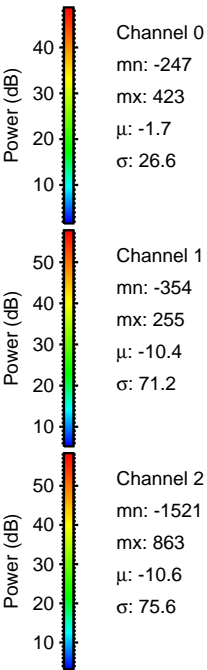
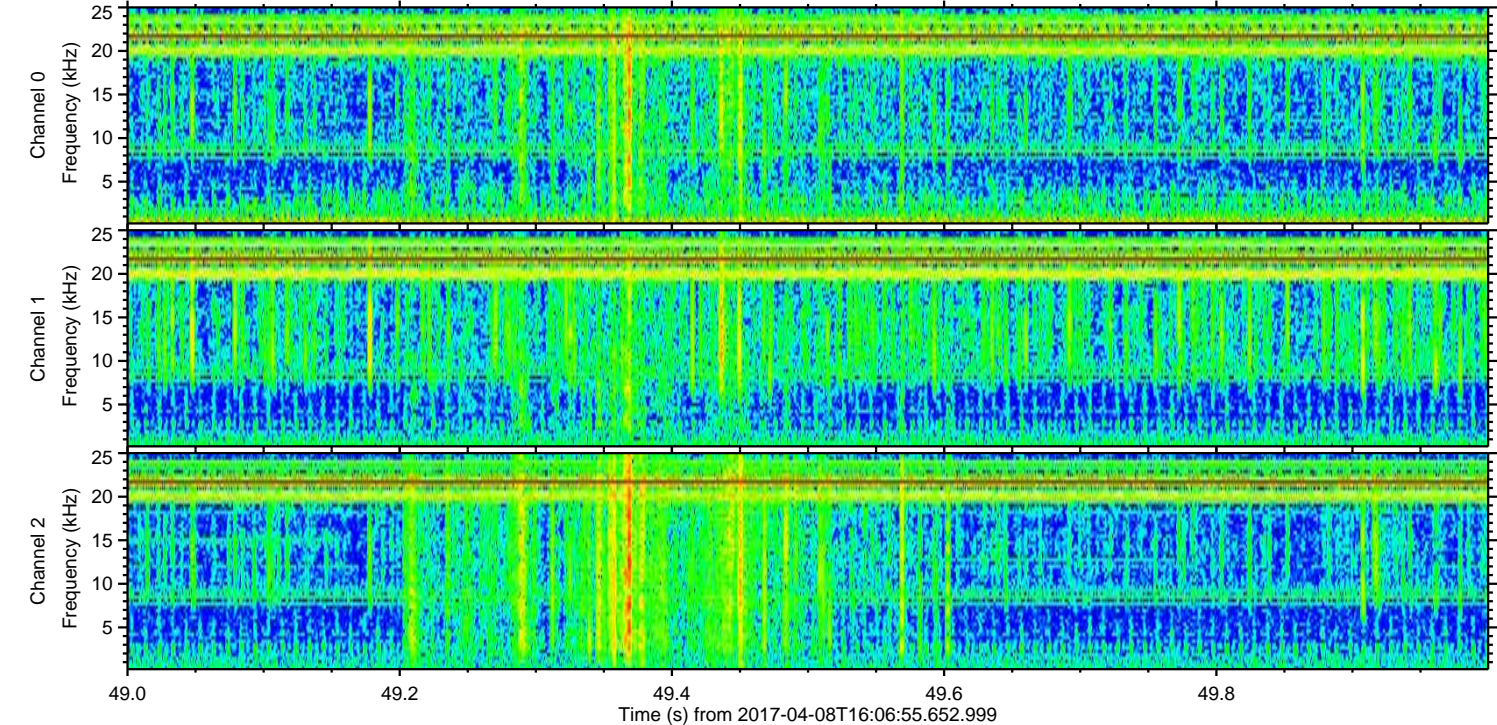
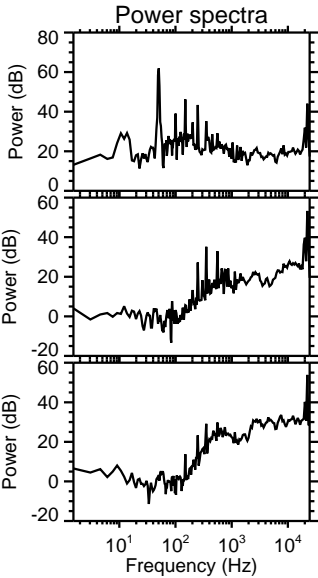
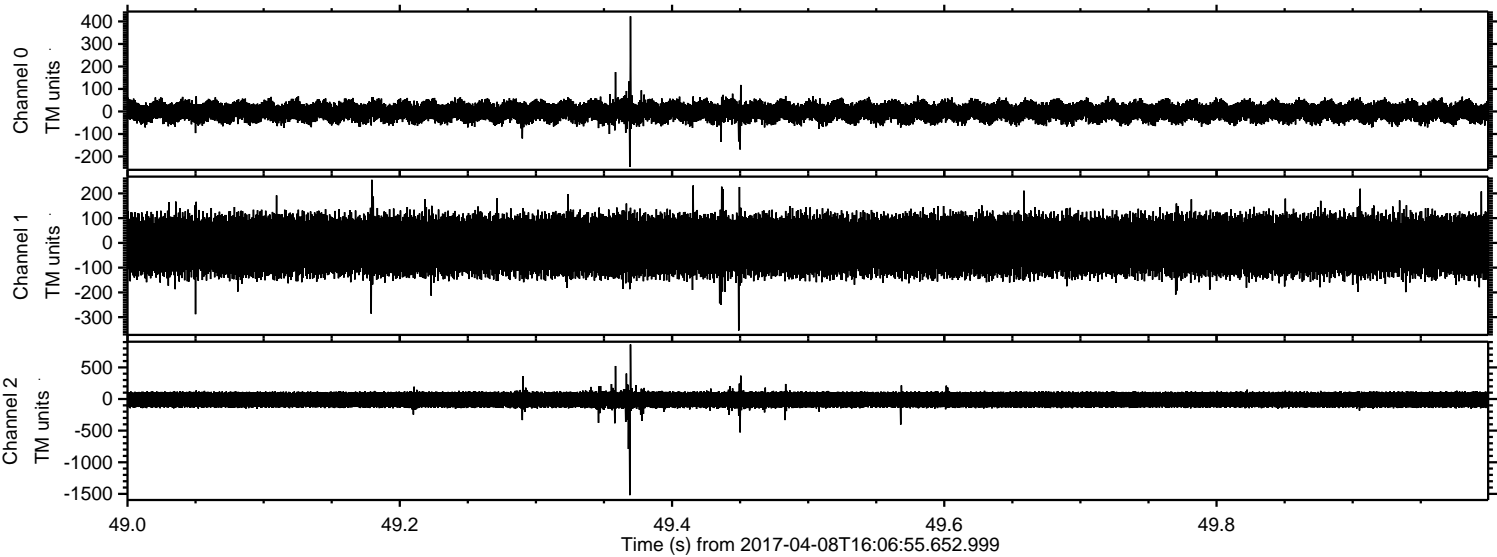


ELMAVAN 3D WAVEFORMS (Measured data sampled at 50 kHz) 51000 packets of 144 samples from 2017-04-08T16:06:55.652.999. Part 126/147

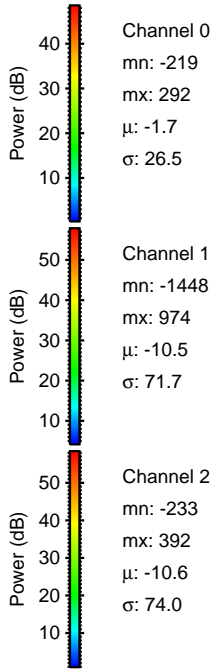
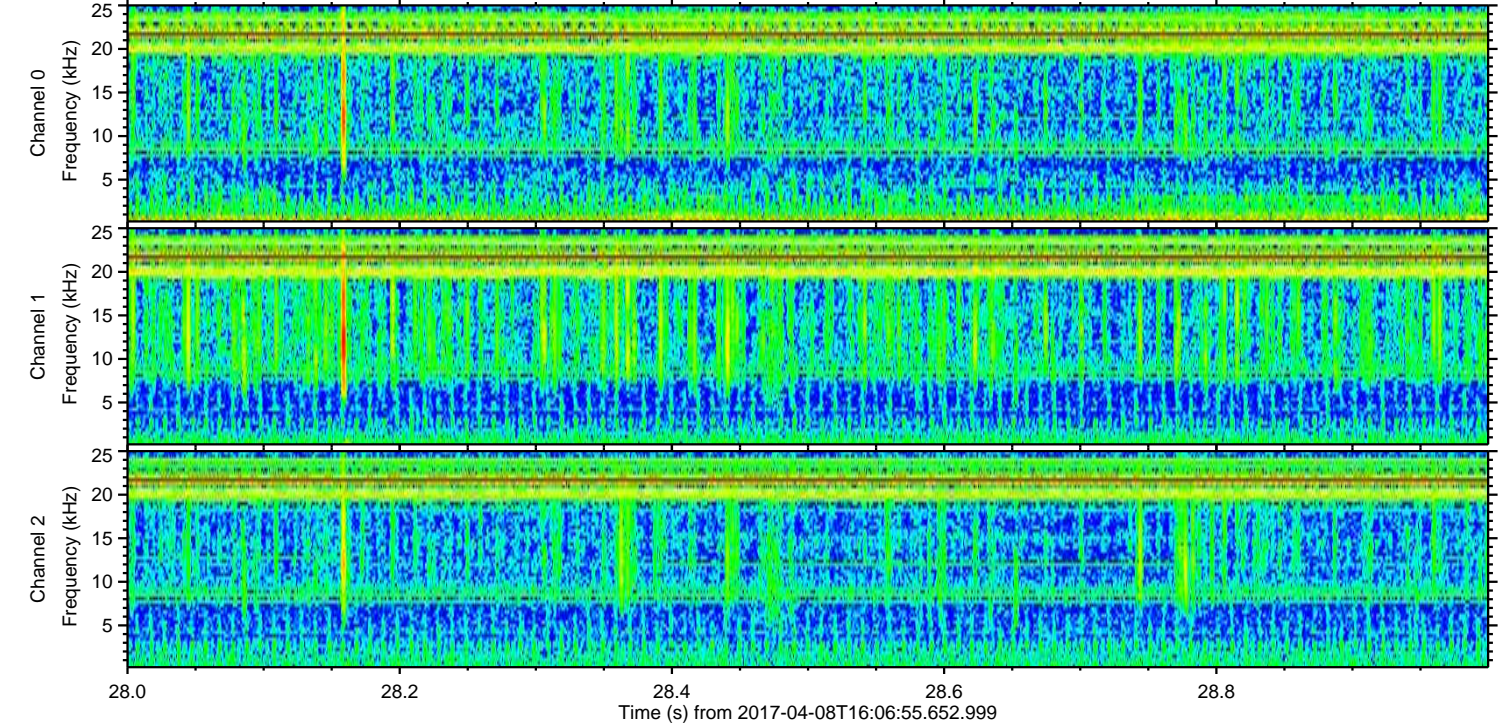
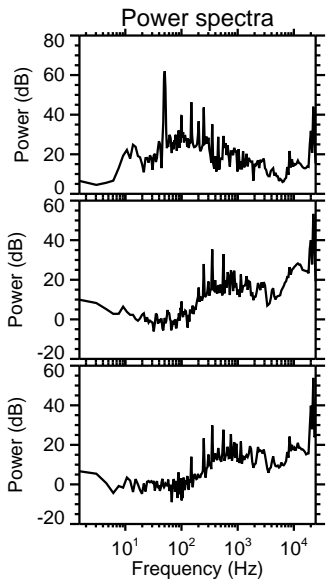
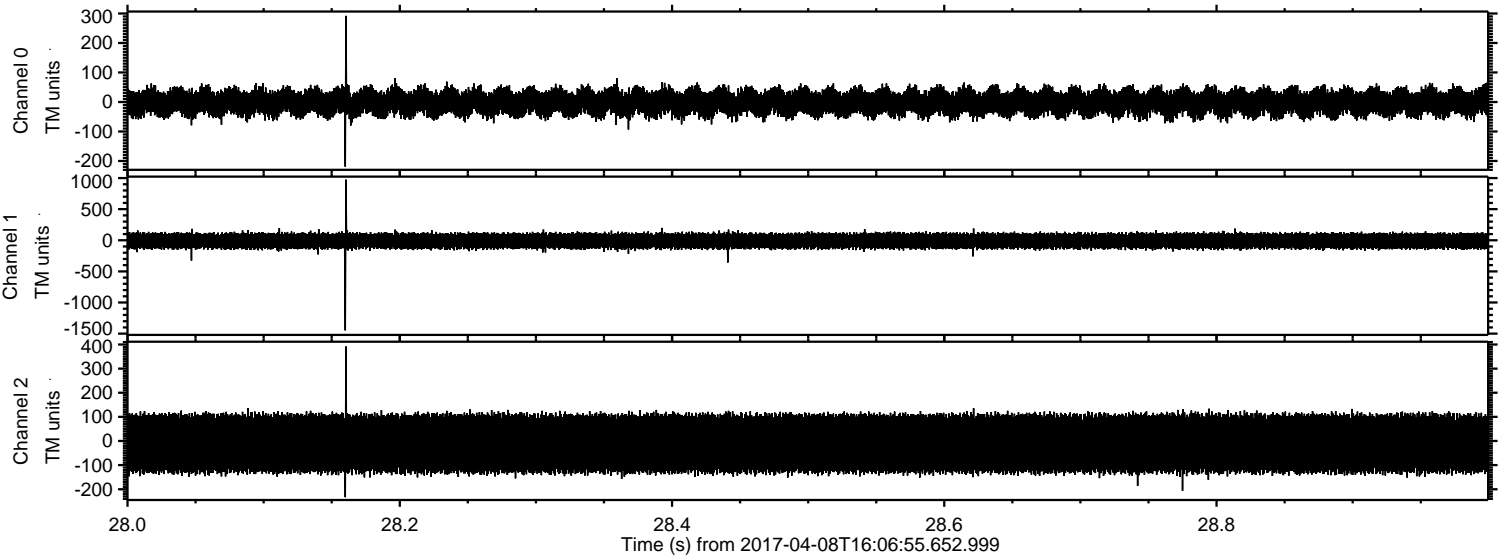
Processed Sat Apr 8 18:14:59 2017 by ELM ver.2012-10-06 from 001__elm20170408_160654__dat00.bin



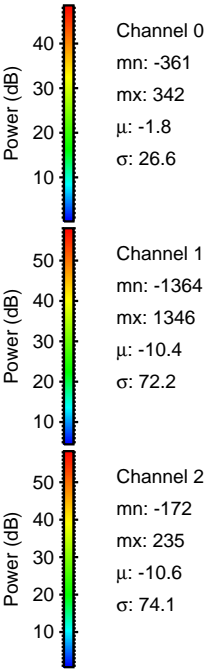
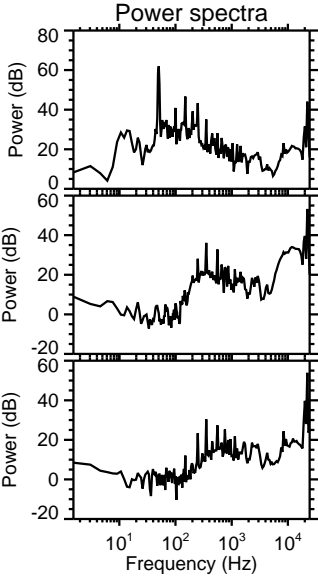
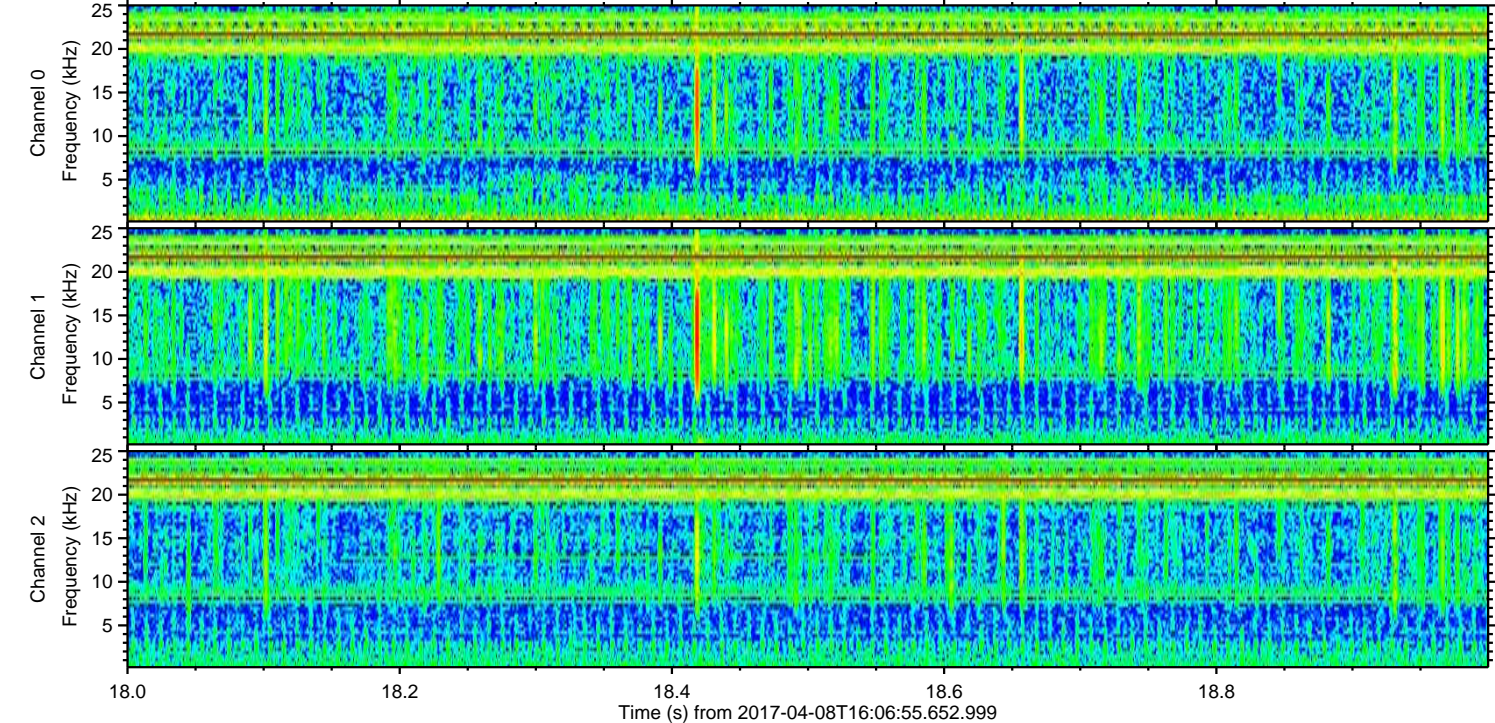
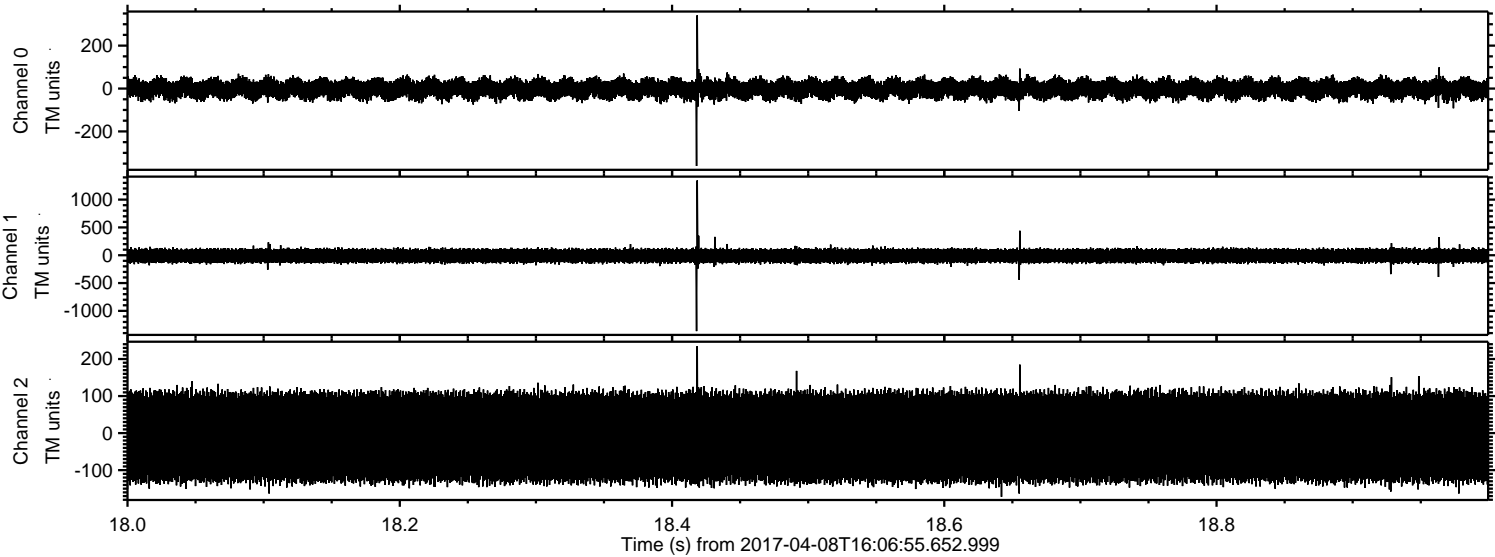
Processed Sat Apr 8 18:15:00 2017 by ELM ver.2012-10-06 from 001__elm20170408_160654__dat00.bin



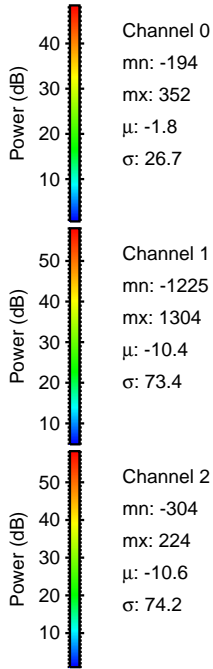
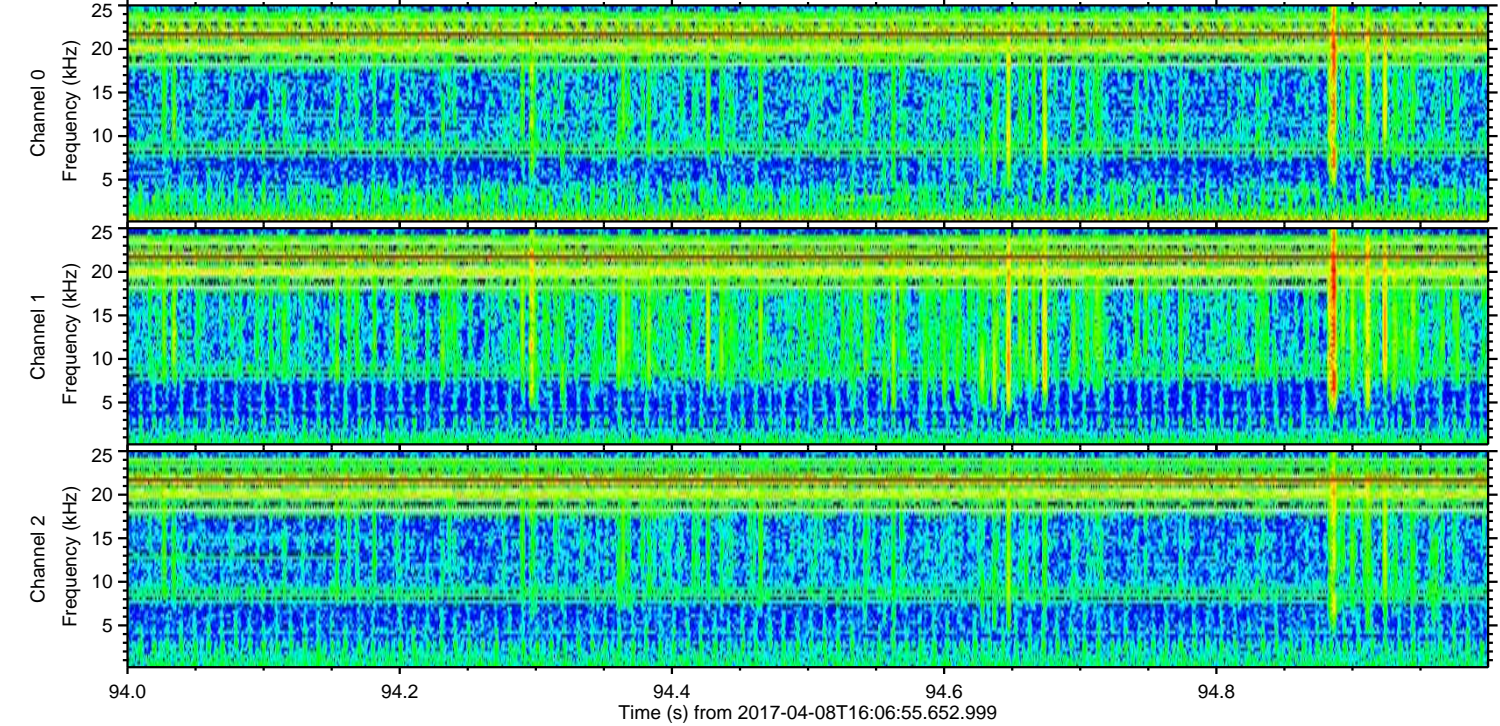
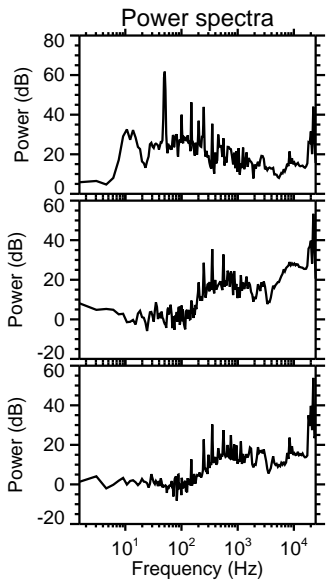
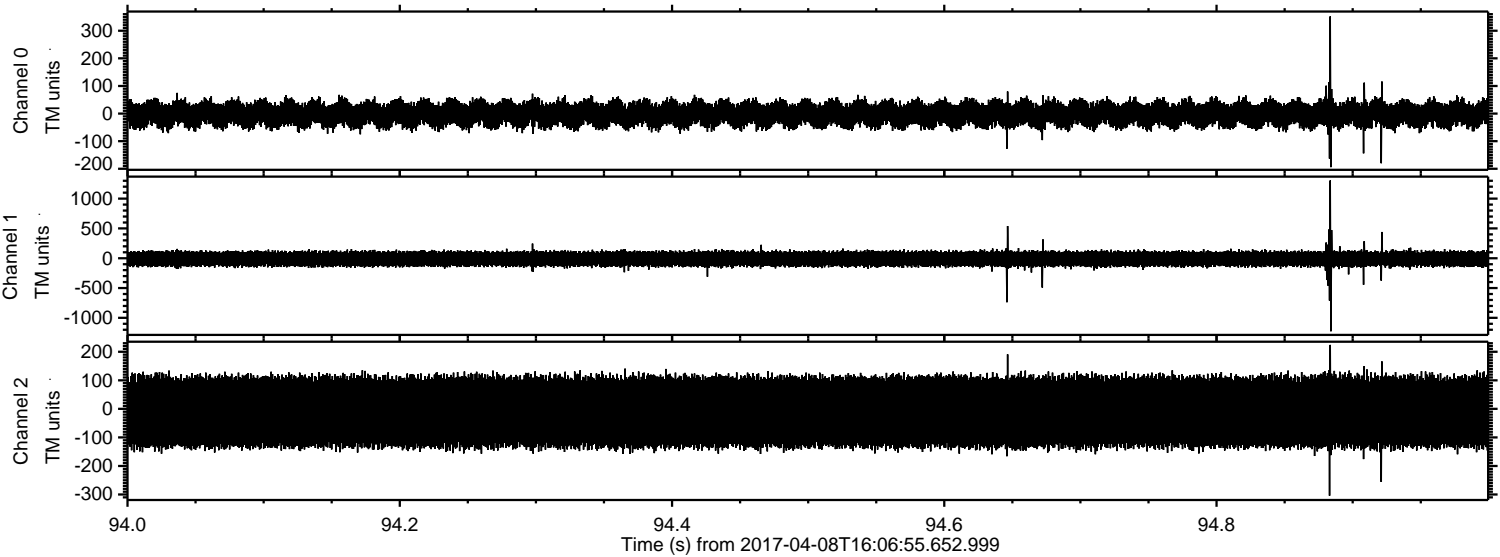
Processed Sat Apr 8 18:15:01 2017 by ELM ver.2012-10-06 from 001__elm20170408_160654__dat00.bin



Processed Sat Apr 8 18:15:02 2017 by ELM ver.2012-10-06 from 001__elm20170408_160654__dat00.bin



Processed Sat Apr 8 18:15:03 2017 by ELM ver.2012-10-06 from 001__elm20170408_160654__dat00.bin



Channel 0
mn: -194
mx: 352
 μ : -1.8
 σ : 26.7

Channel 1
mn: -1225
mx: 1304
 μ : -10.4
 σ : 73.4

Channel 2
mn: -304
mx: 224
 μ : -10.6
 σ : 74.2

