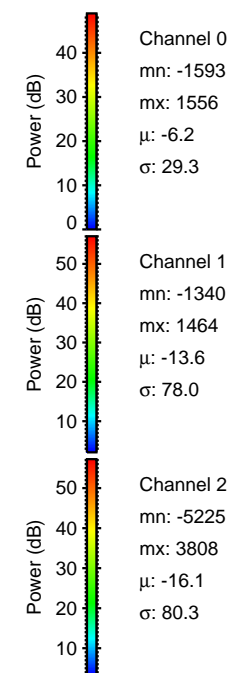
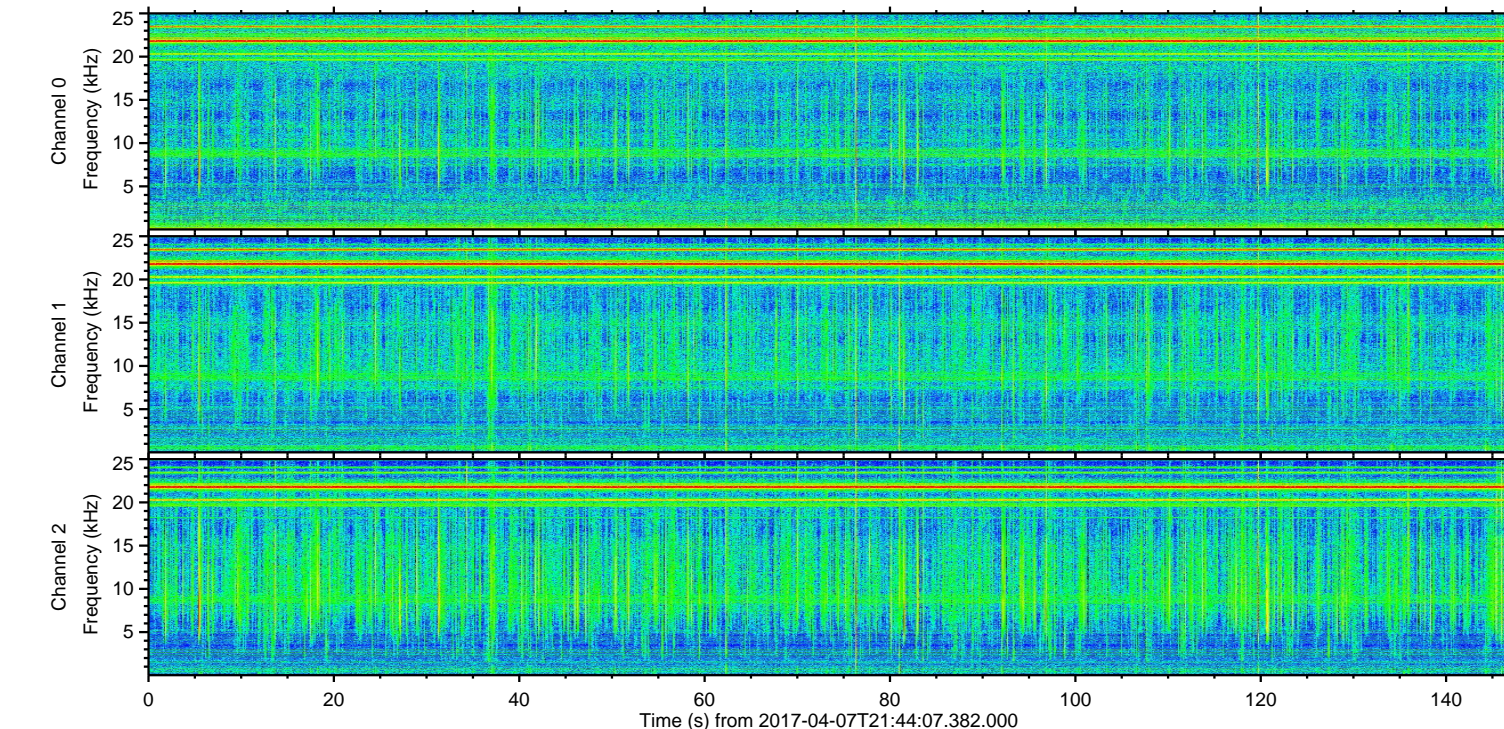
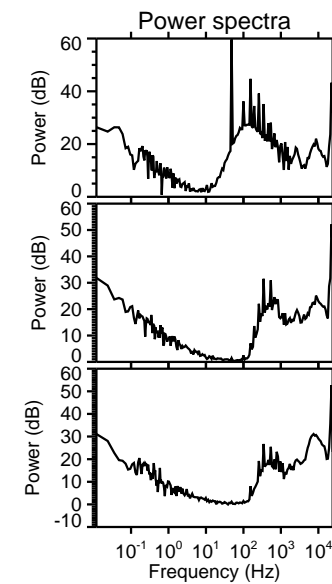
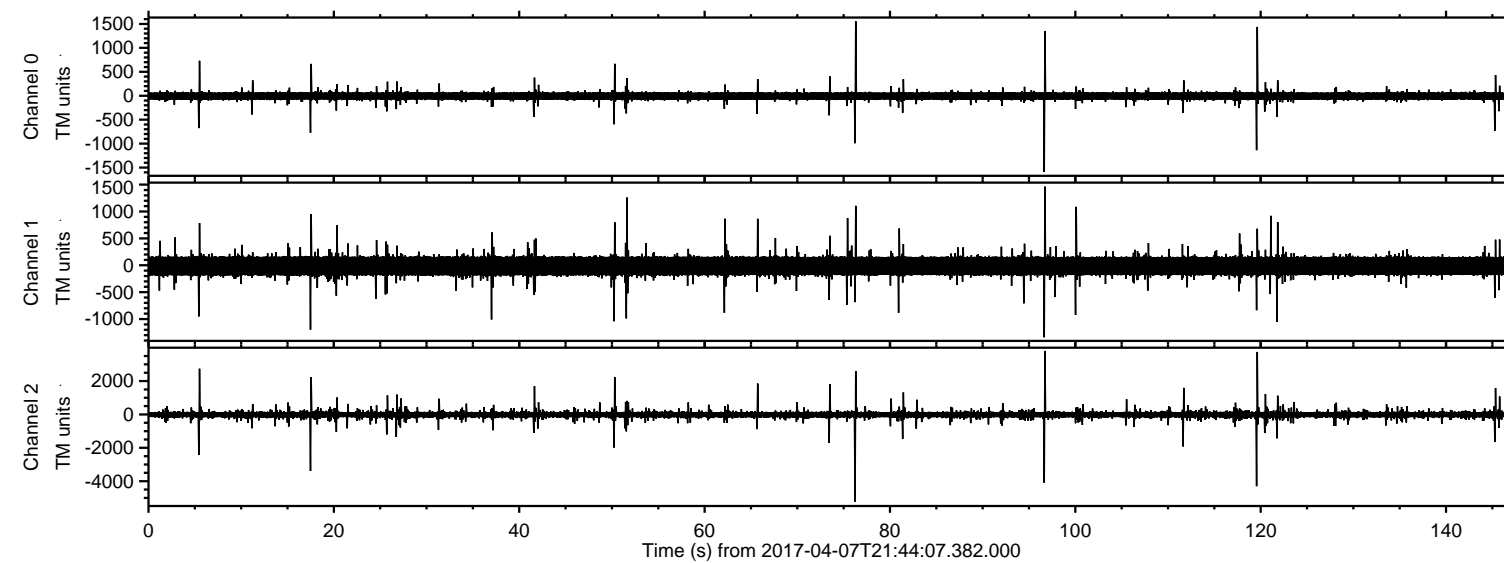


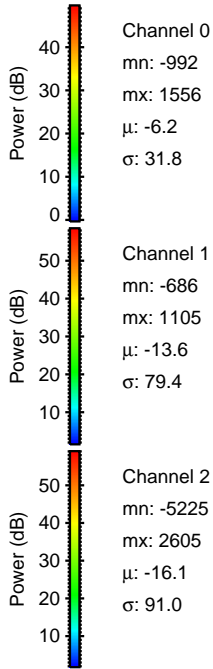
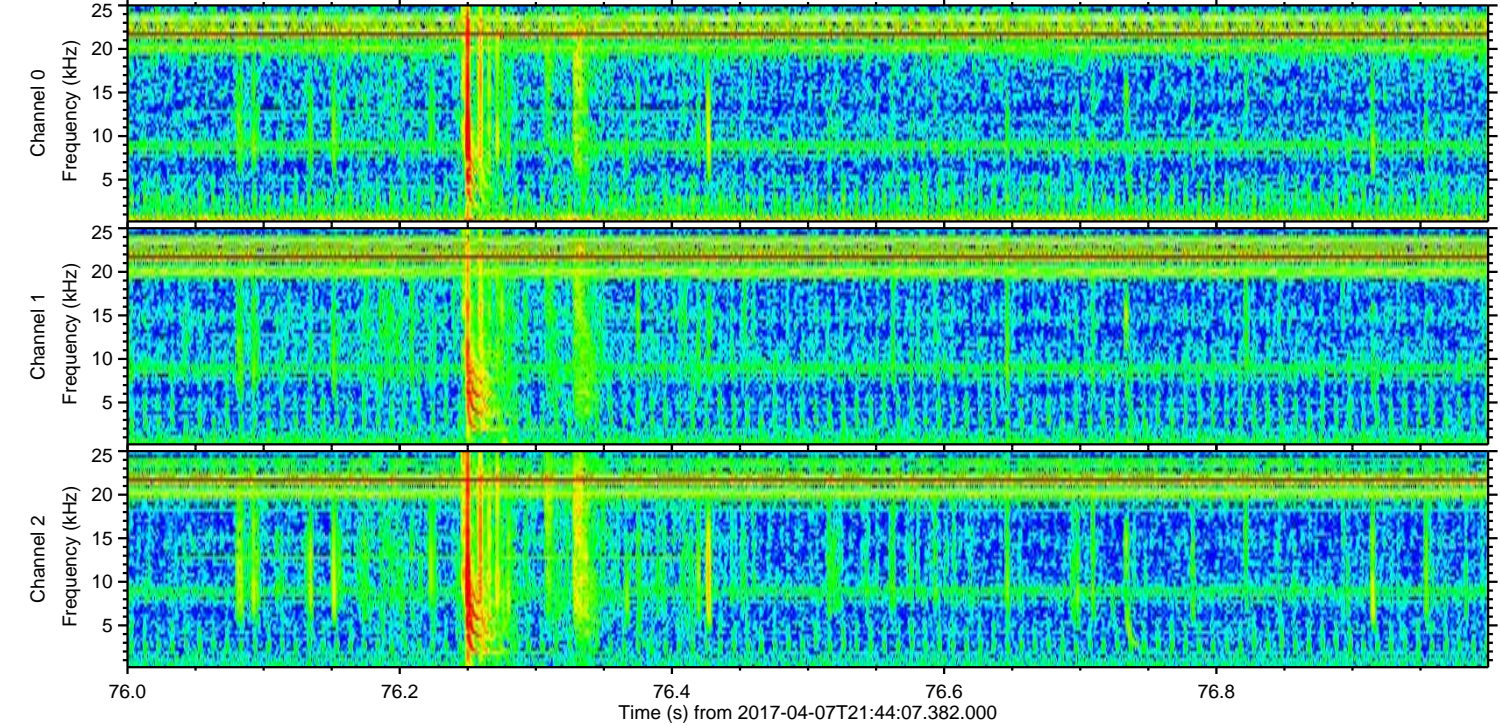
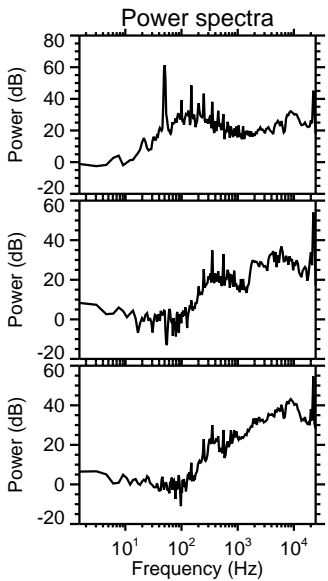
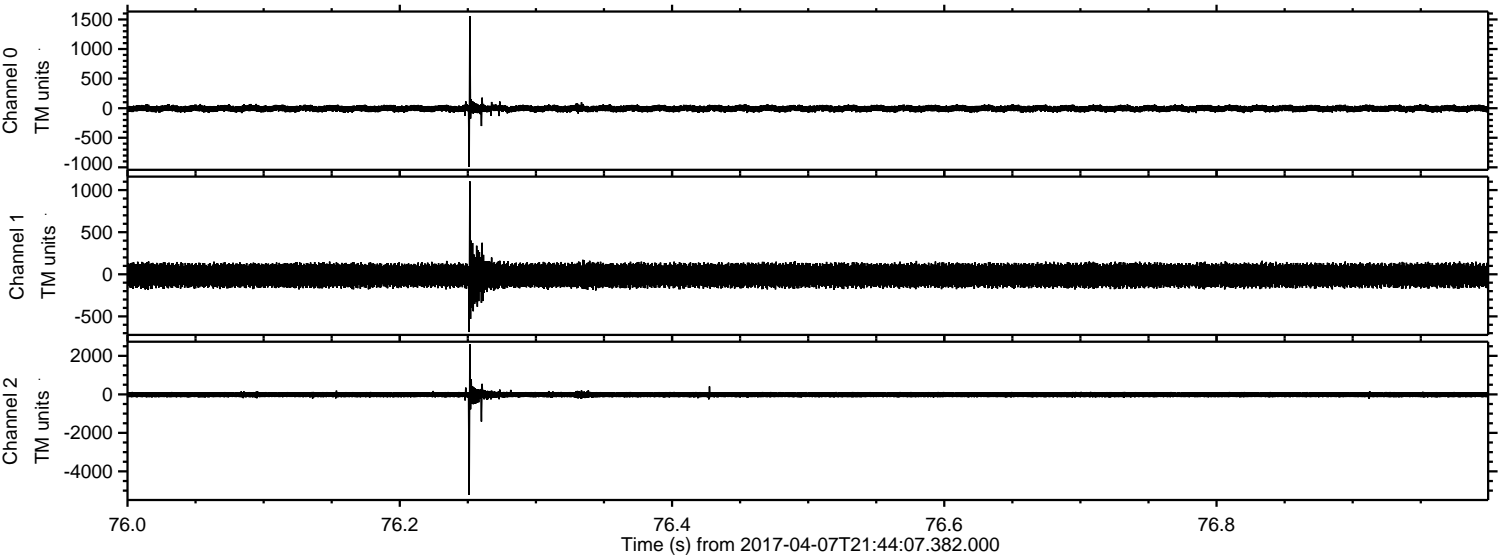
# ELMAVAN 3D WAVEFORMS (Measured data sampled at 50 kHz) 51000 packets of 144 samples from 2017-04-07T21:44:07.382.000.

Processed Fri Apr 7 23:52:02 2017 by ELM ver.2012-10-06 from 001\_\_elm20170407\_214406\_\_dat00.bin





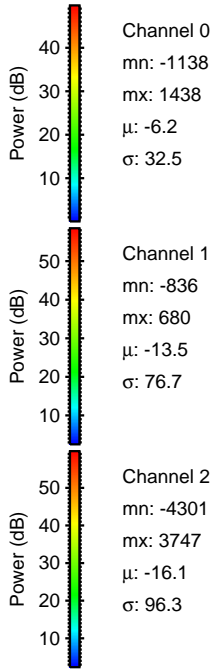
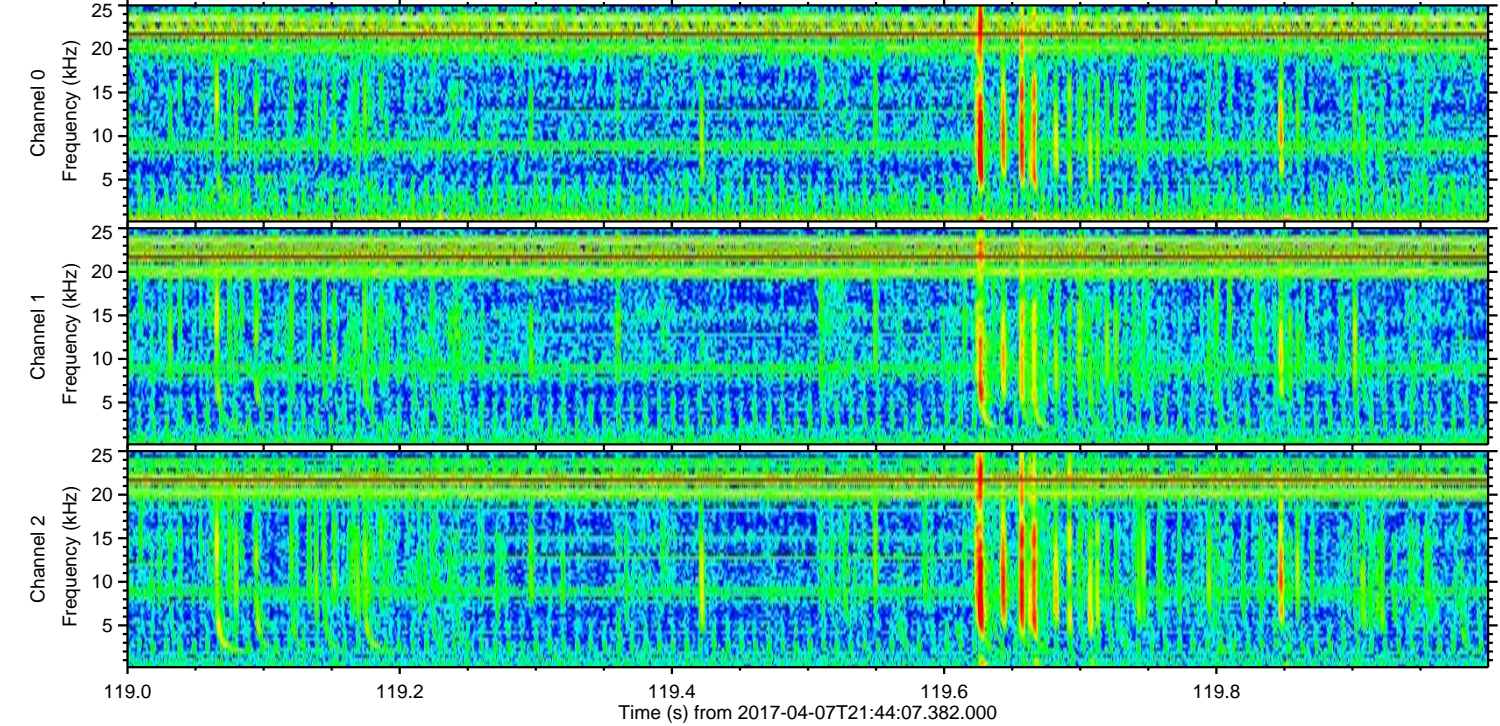
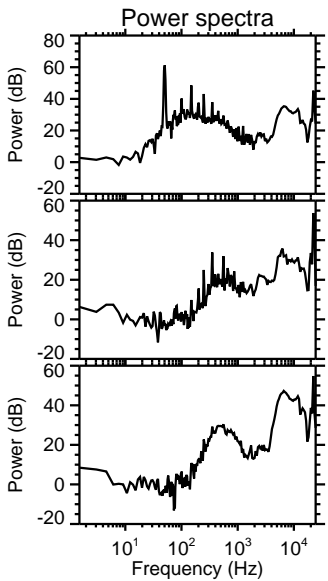
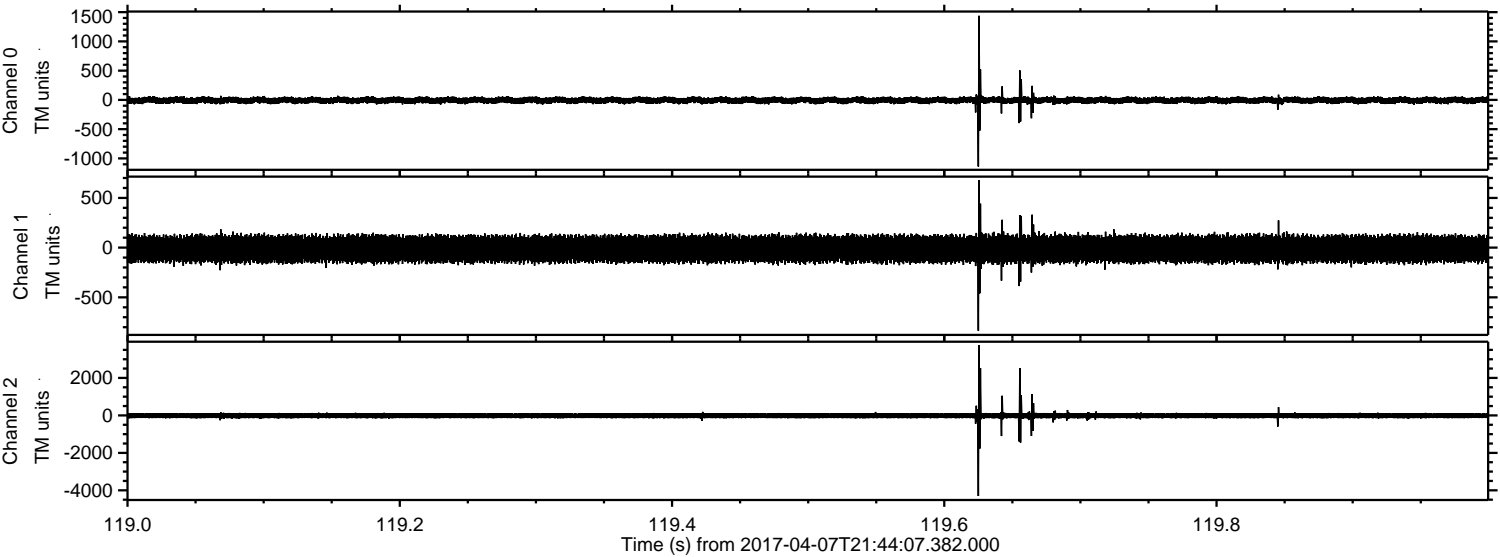
Processed Fri Apr 7 23:52:21 2017 by ELM ver.2012-10-06 from 001\_\_elm20170407\_214406\_\_dat00.bin





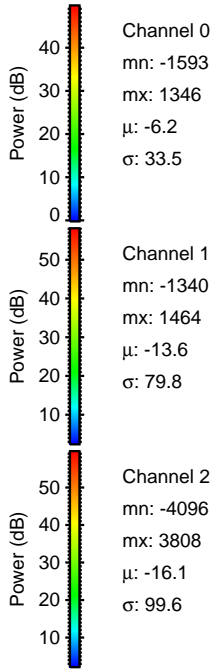
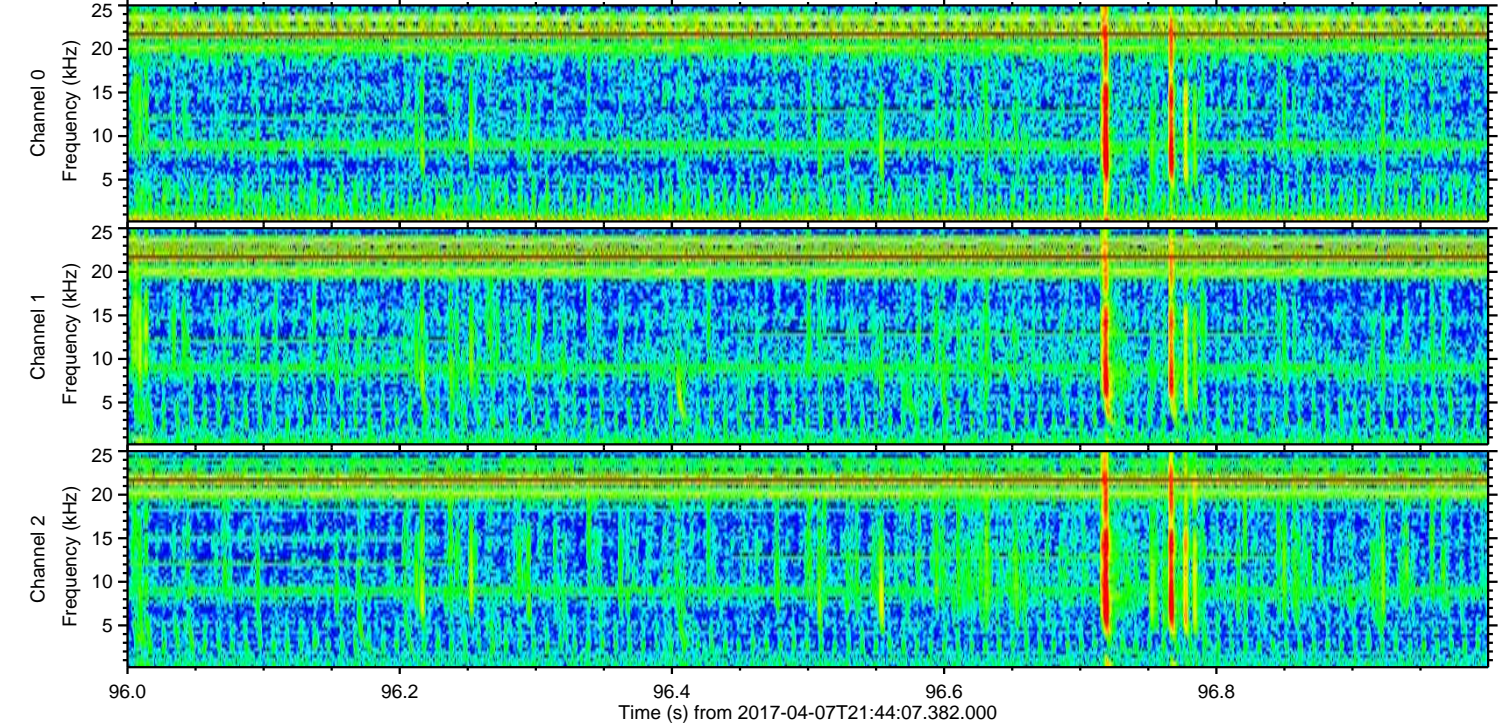
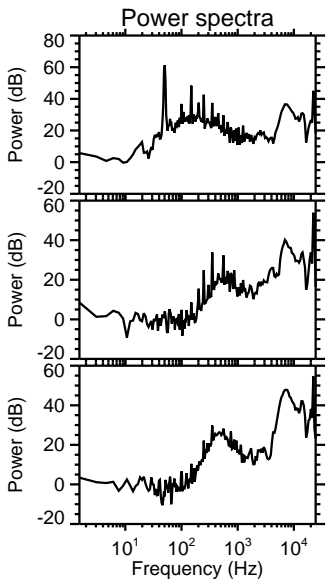
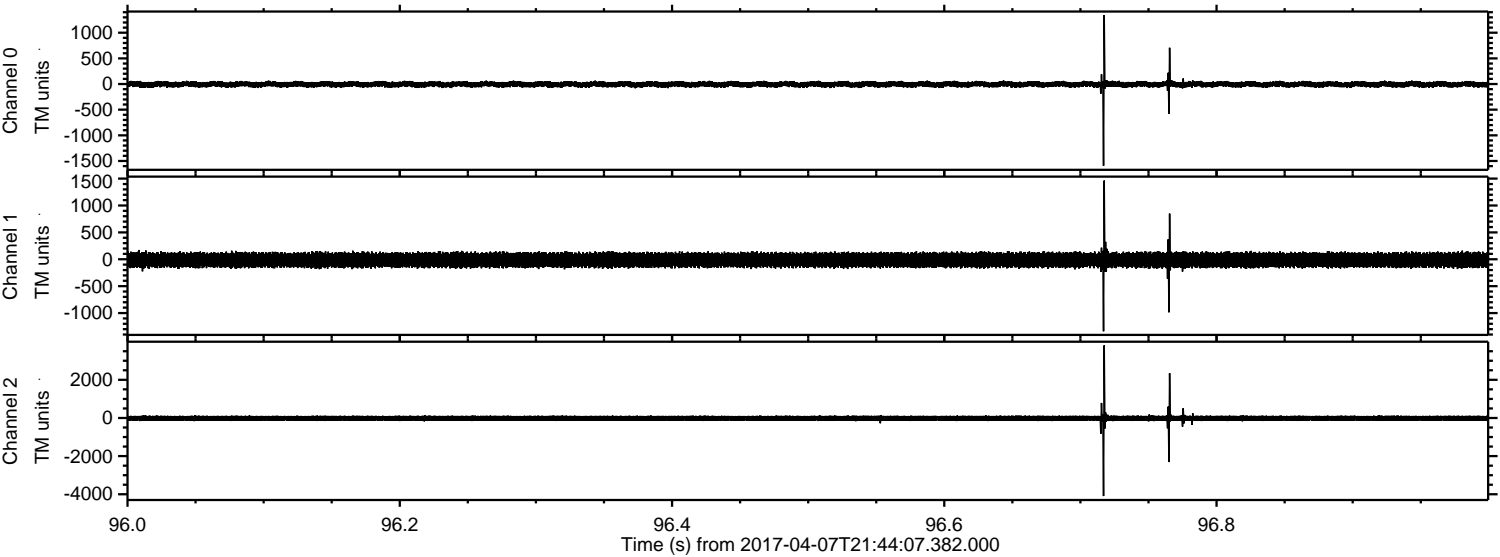
ELMAVAN 3D WAVEFORMS (Measured data sampled at 50 kHz) 51000 packets of 144 samples from 2017-04-07T21:44:07.382.000. Part 120/147

Processed Fri Apr 7 23:52:22 2017 by ELM ver.2012-10-06 from 001\_\_elm20170407\_214406\_\_dat00.bin



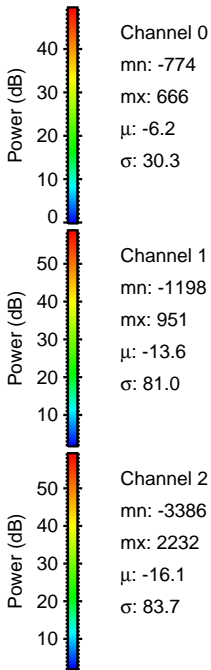
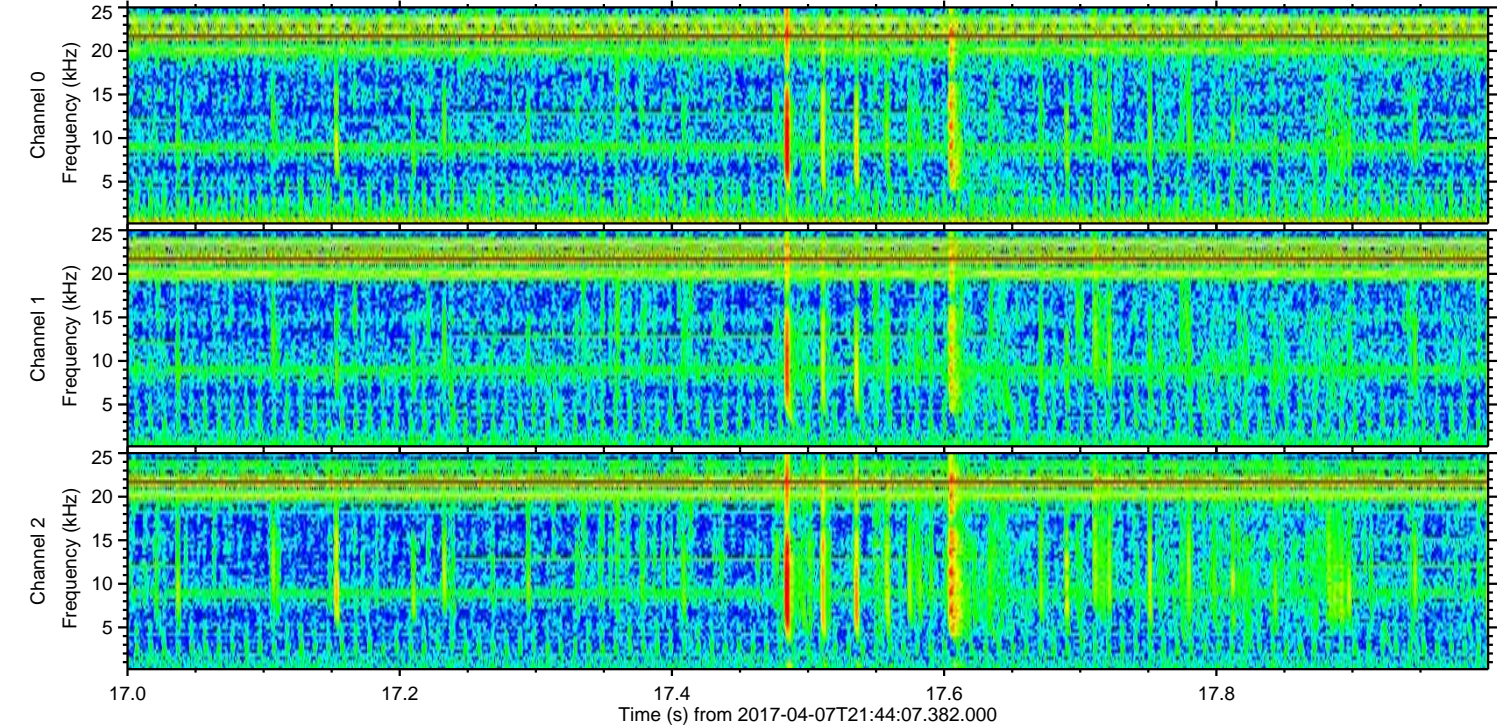
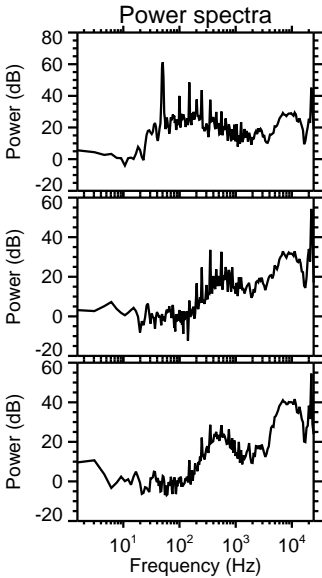
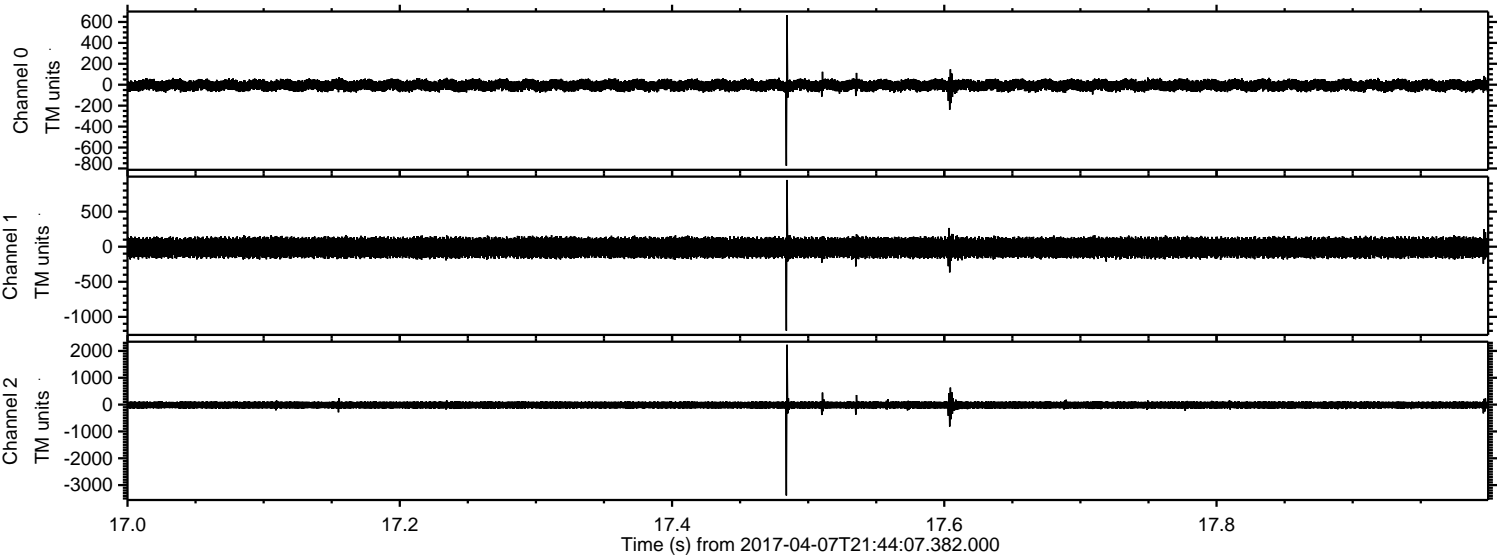


Processed Fri Apr 7 23:52:23 2017 by ELM ver.2012-10-06 from 001\_\_elm20170407\_214406\_\_dat00.bin



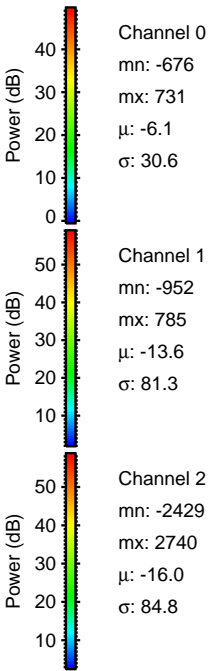
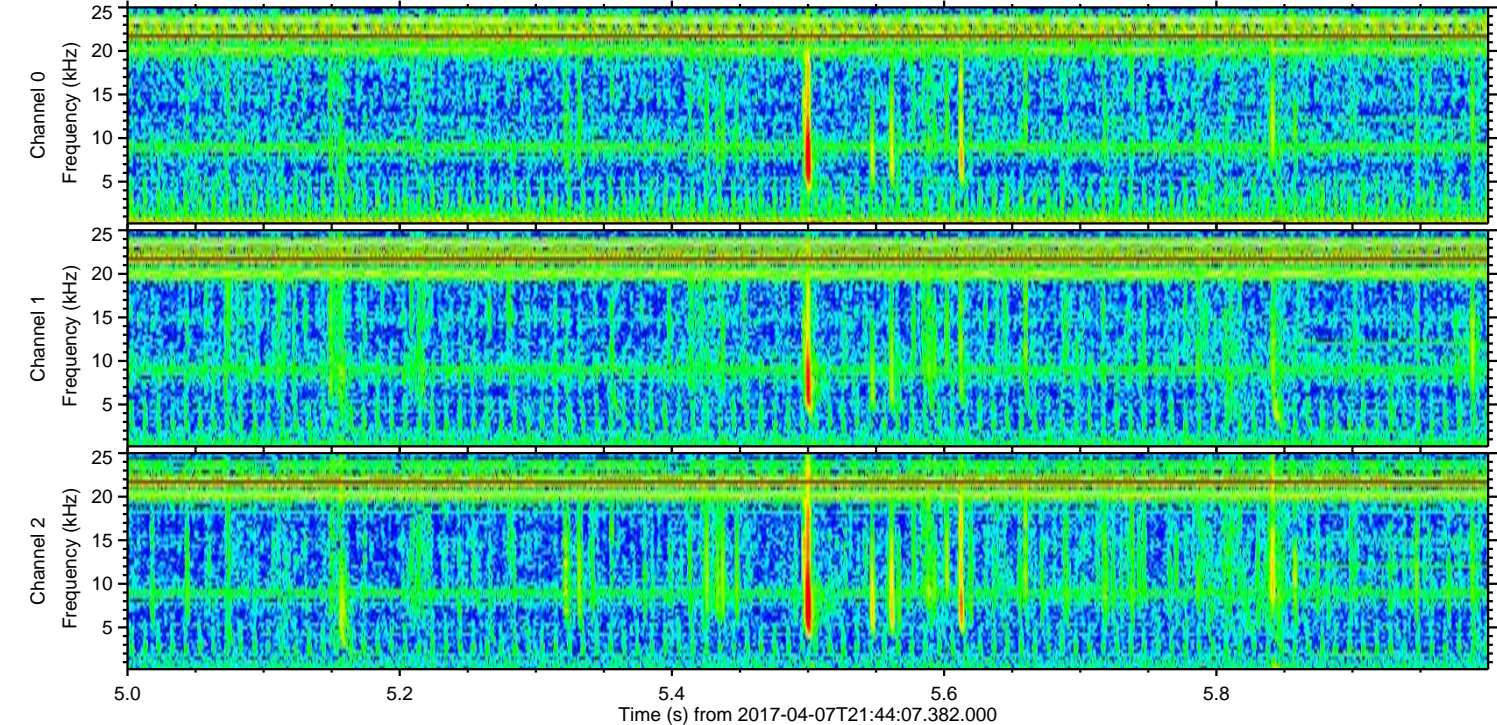
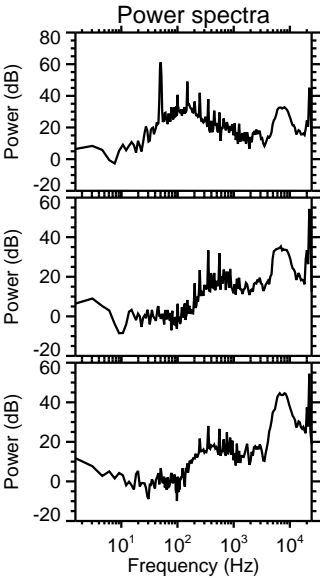
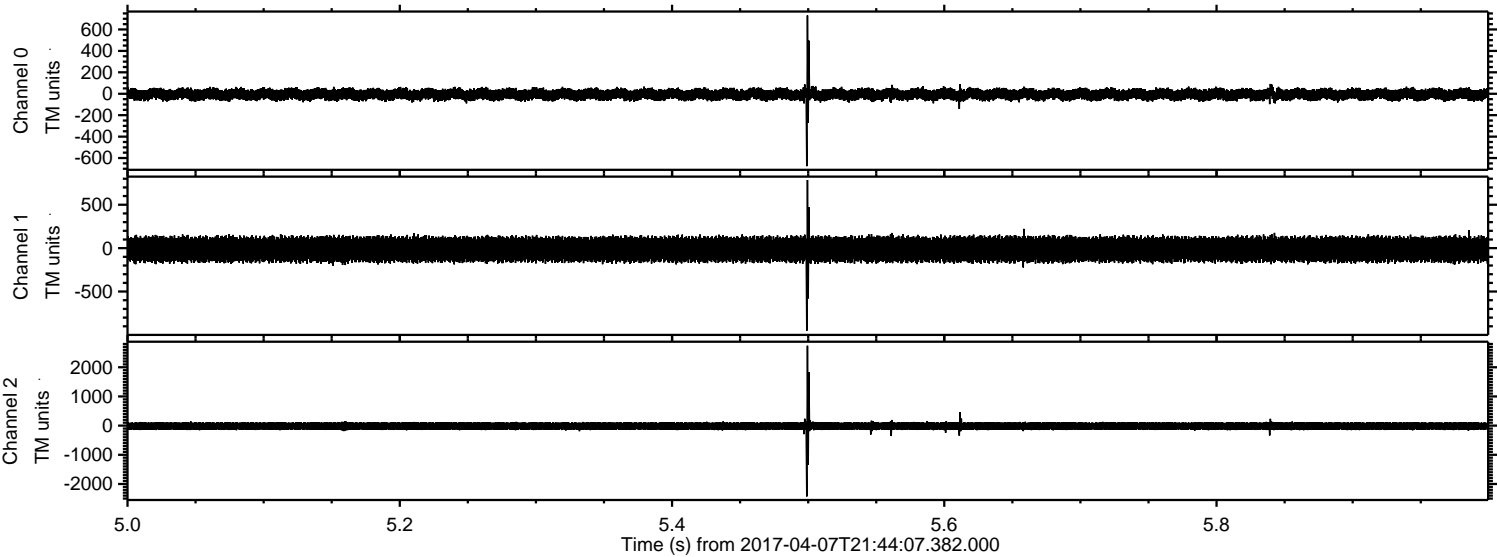


Processed Fri Apr 7 23:52:24 2017 by ELM ver.2012-10-06 from 001\_\_elm20170407\_214406\_\_dat00.bin



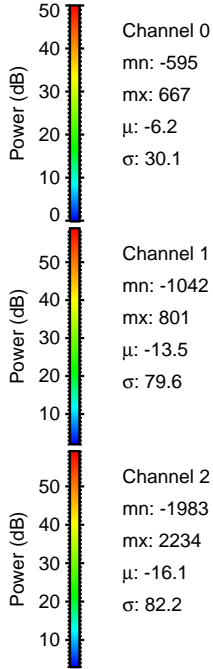
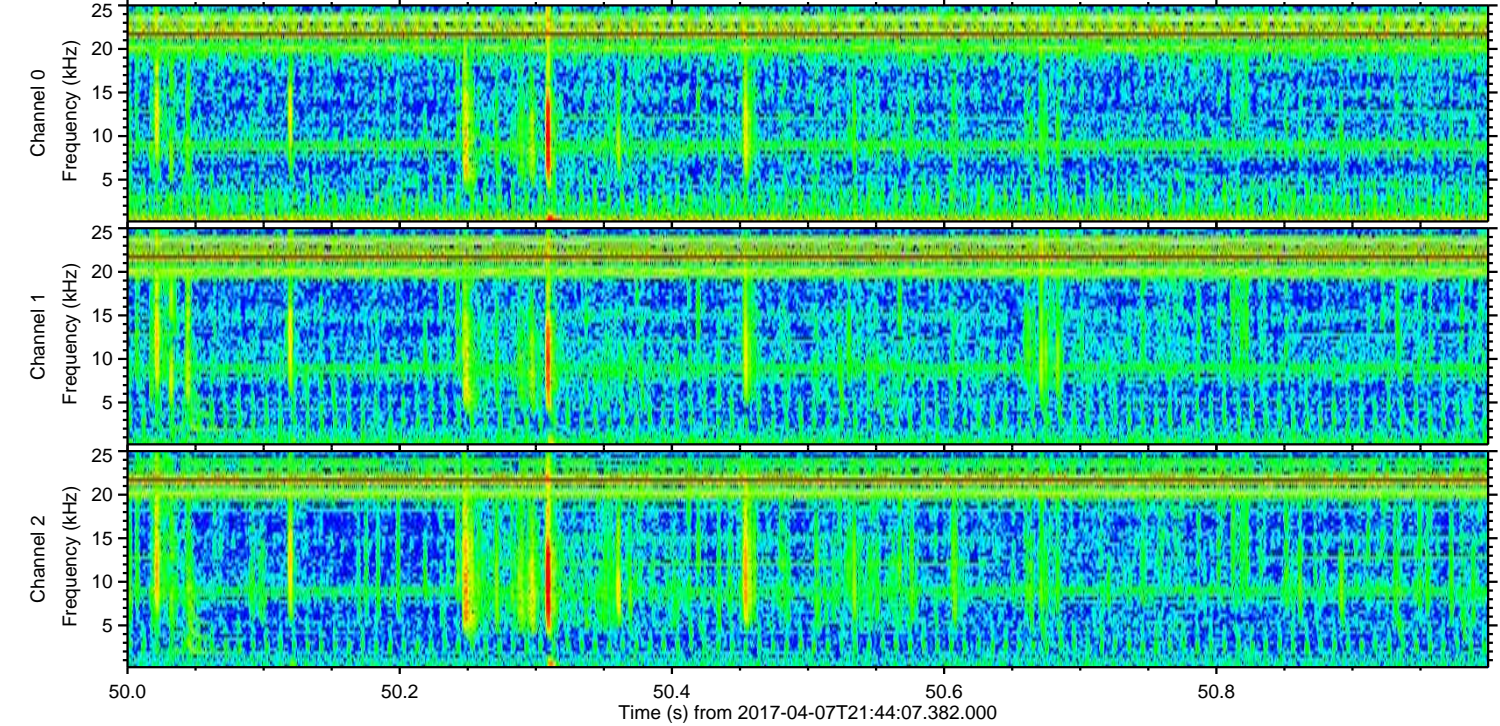
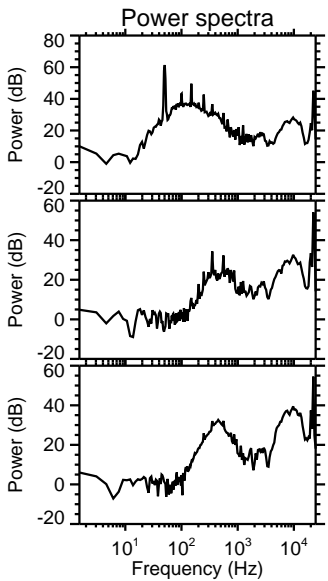
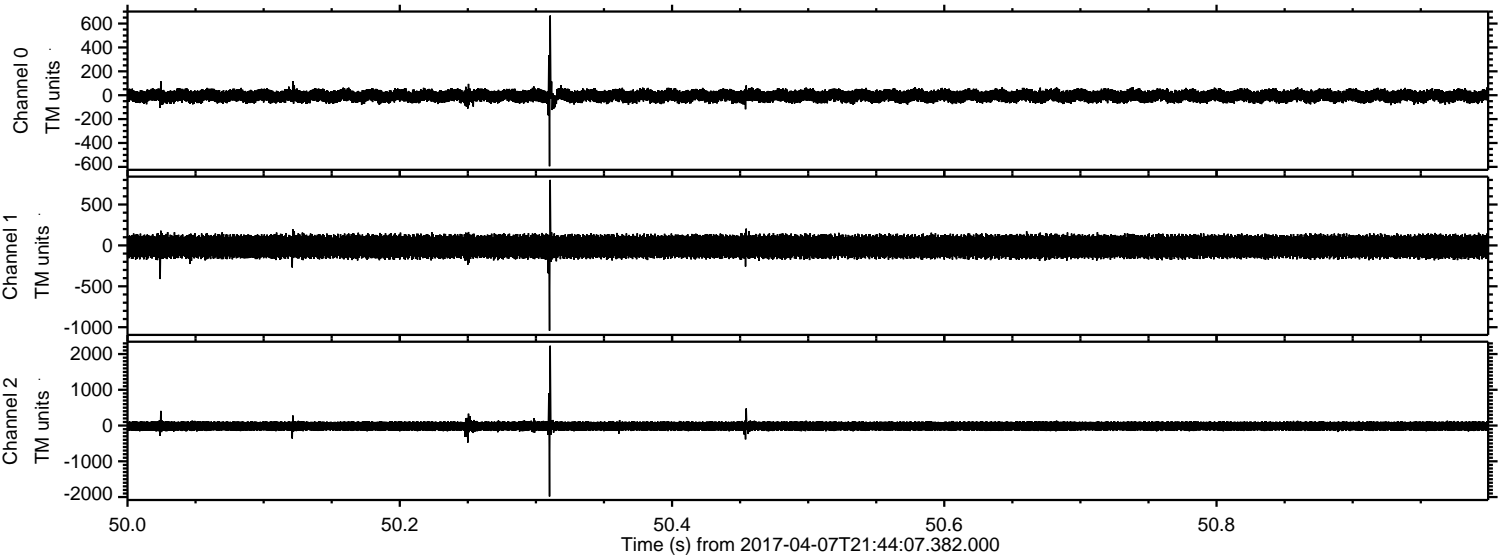


Processed Fri Apr 7 23:52:25 2017 by ELM ver.2012-10-06 from 001\_\_elm20170407\_214406\_\_dat00.bin





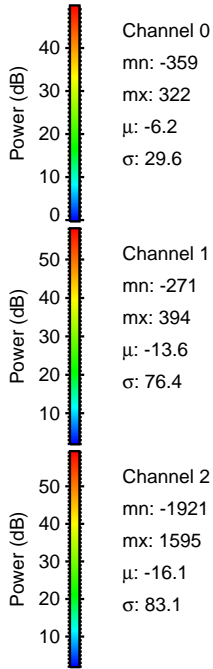
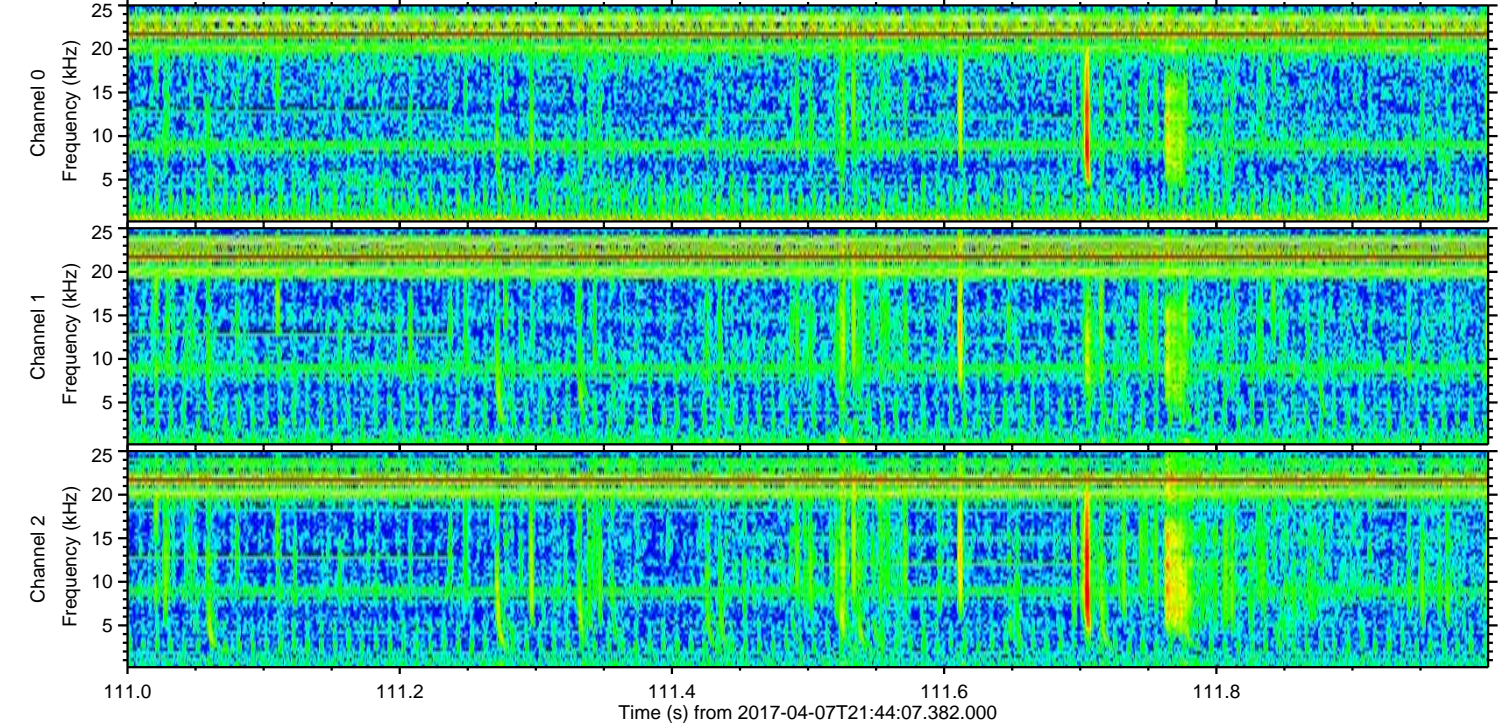
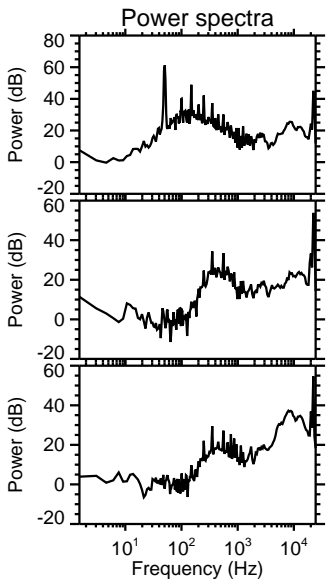
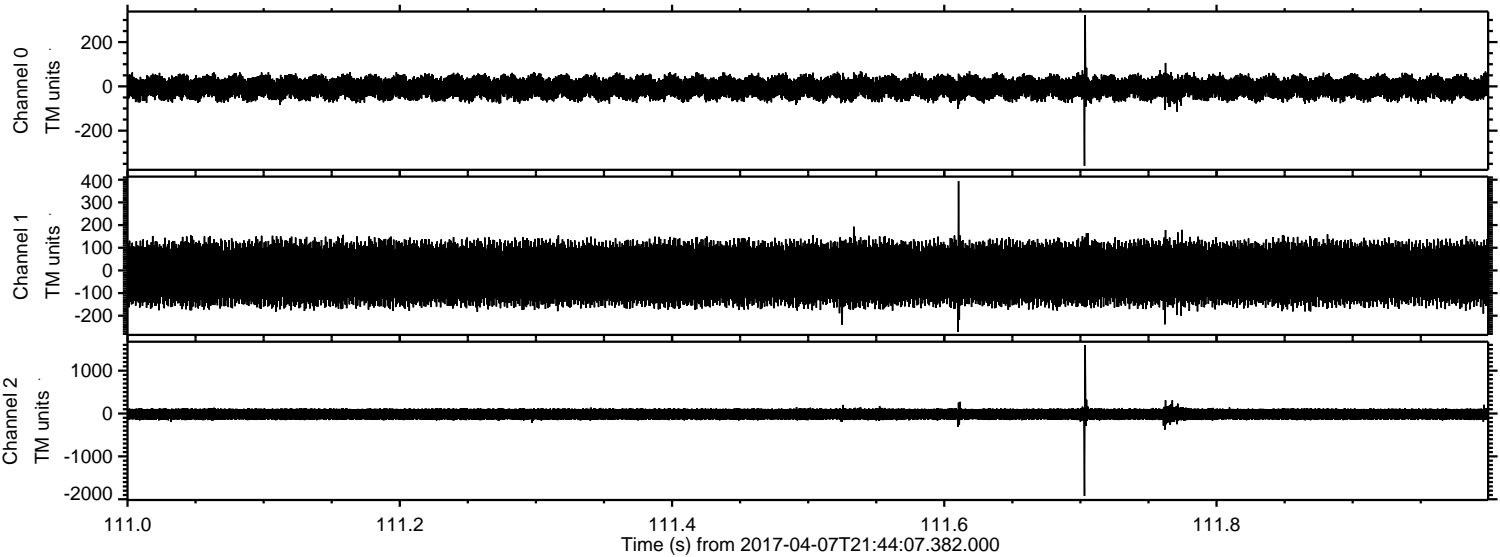
Processed Fri Apr 7 23:52:26 2017 by ELM ver.2012-10-06 from 001\_\_elm20170407\_214406\_\_dat00.bin





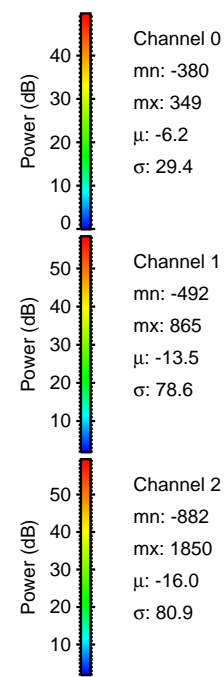
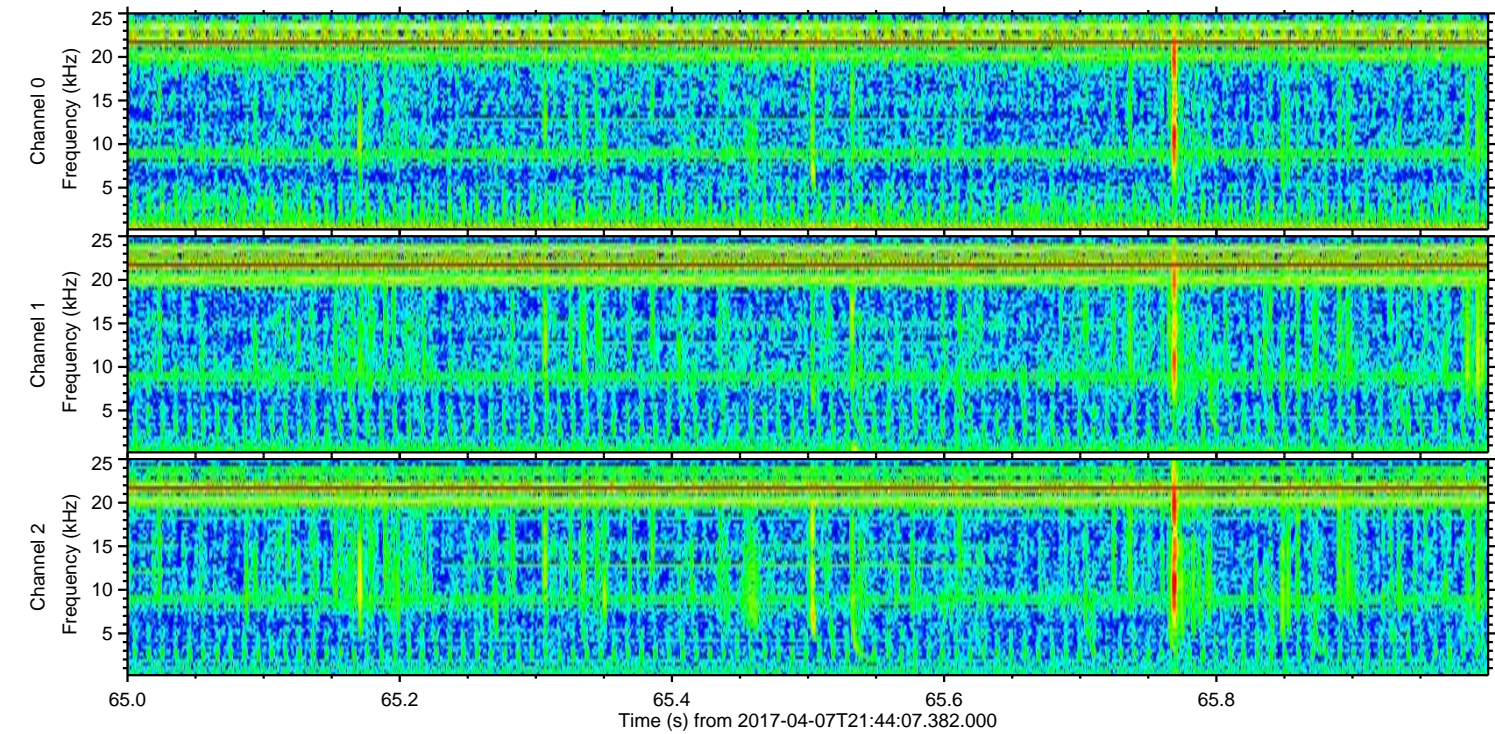
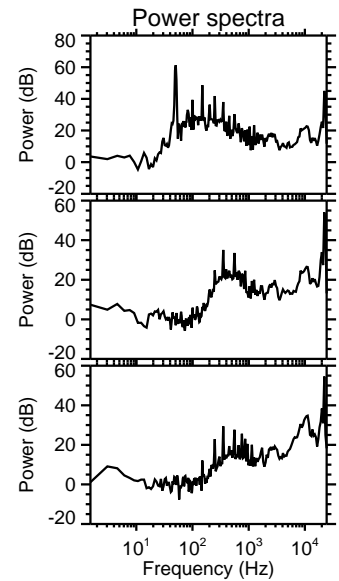
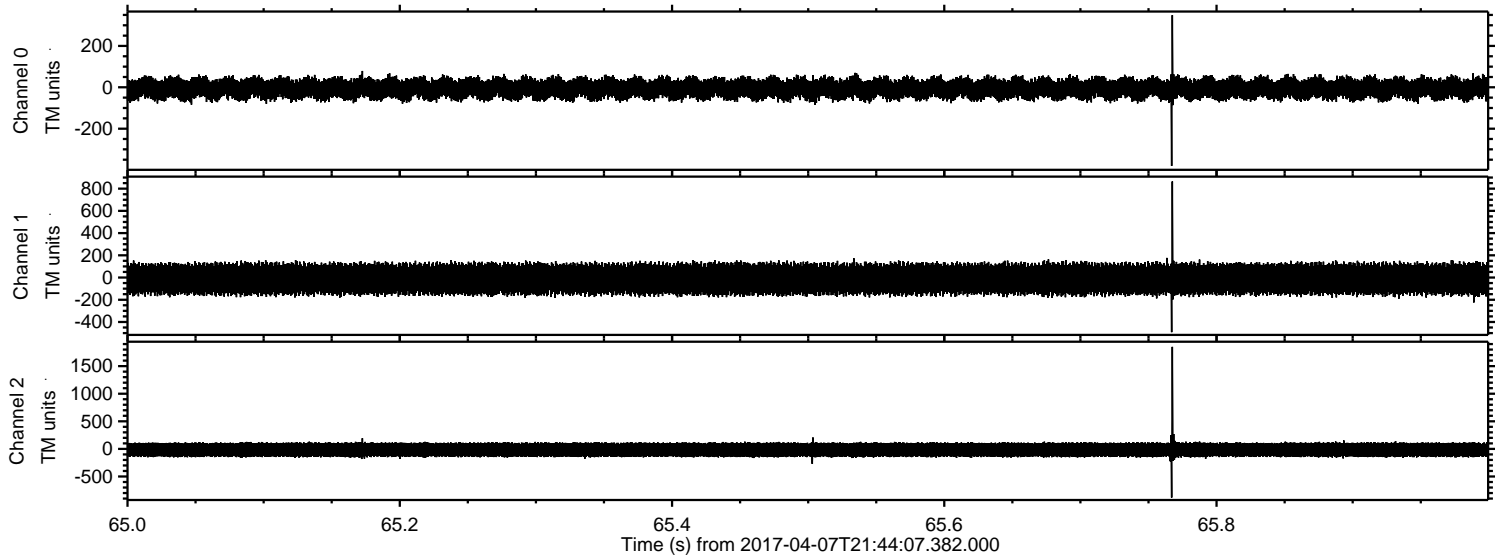
ELMAVAN 3D WAVEFORMS (Measured data sampled at 50 kHz) 51000 packets of 144 samples from 2017-04-07T21:44:07.382.000. Part 112/147

Processed Fri Apr 7 23:52:26 2017 by ELM ver.2012-10-06 from 001\_\_elm20170407\_214406\_\_dat00.bin





Processed Fri Apr 7 23:52:27 2017 by ELM ver.2012-10-06 from 001\_\_elm20170407\_214406\_\_dat00.bin





Processed Fri Apr 7 23:52:28 2017 by ELM ver.2012-10-06 from 001\_\_elm20170407\_214406\_\_dat00.bin

