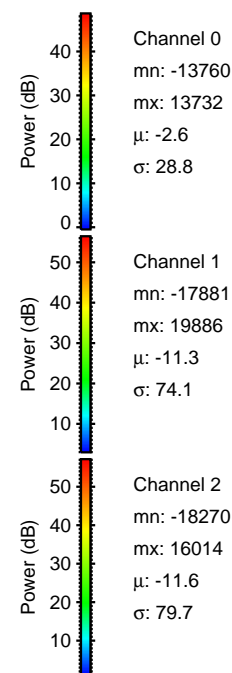
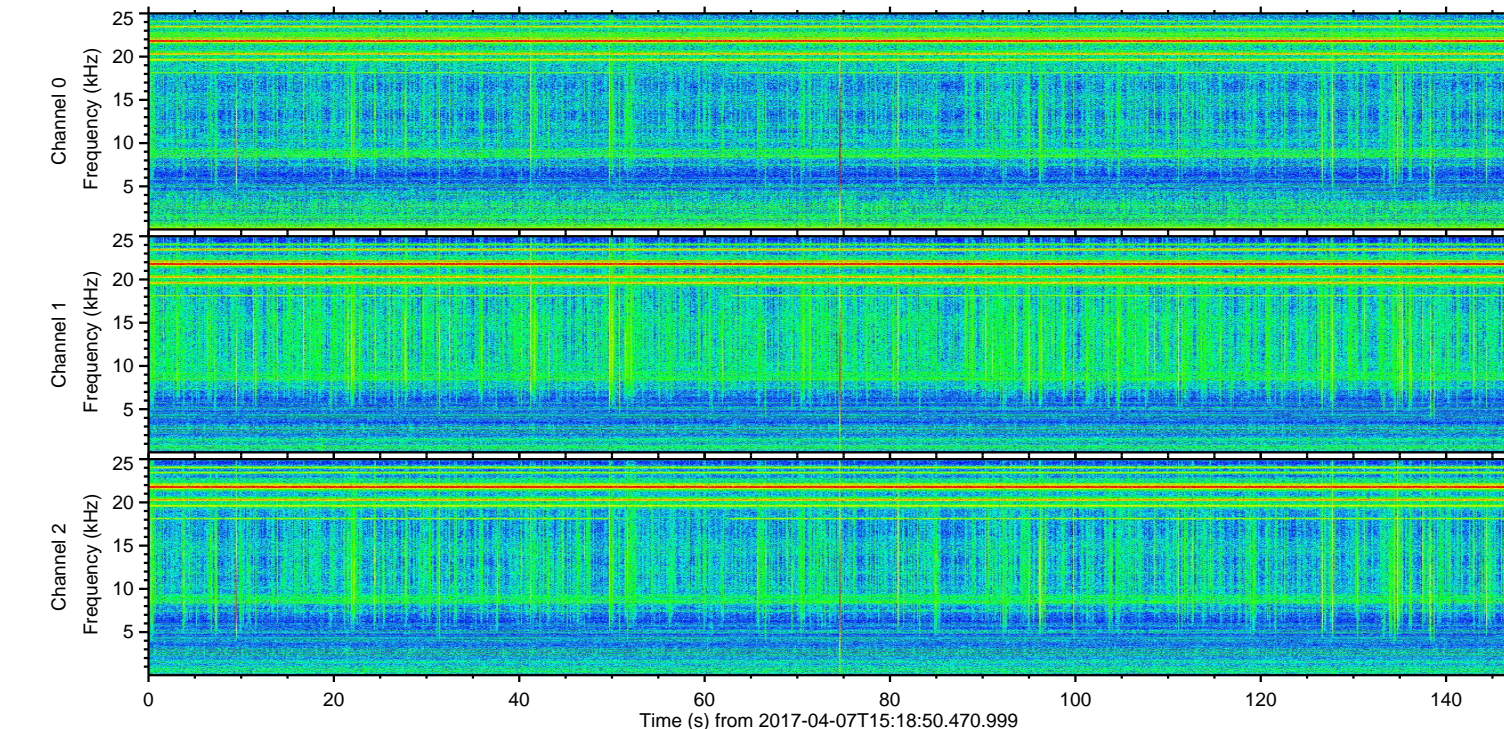
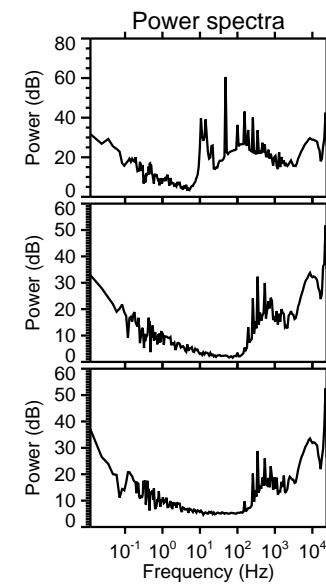
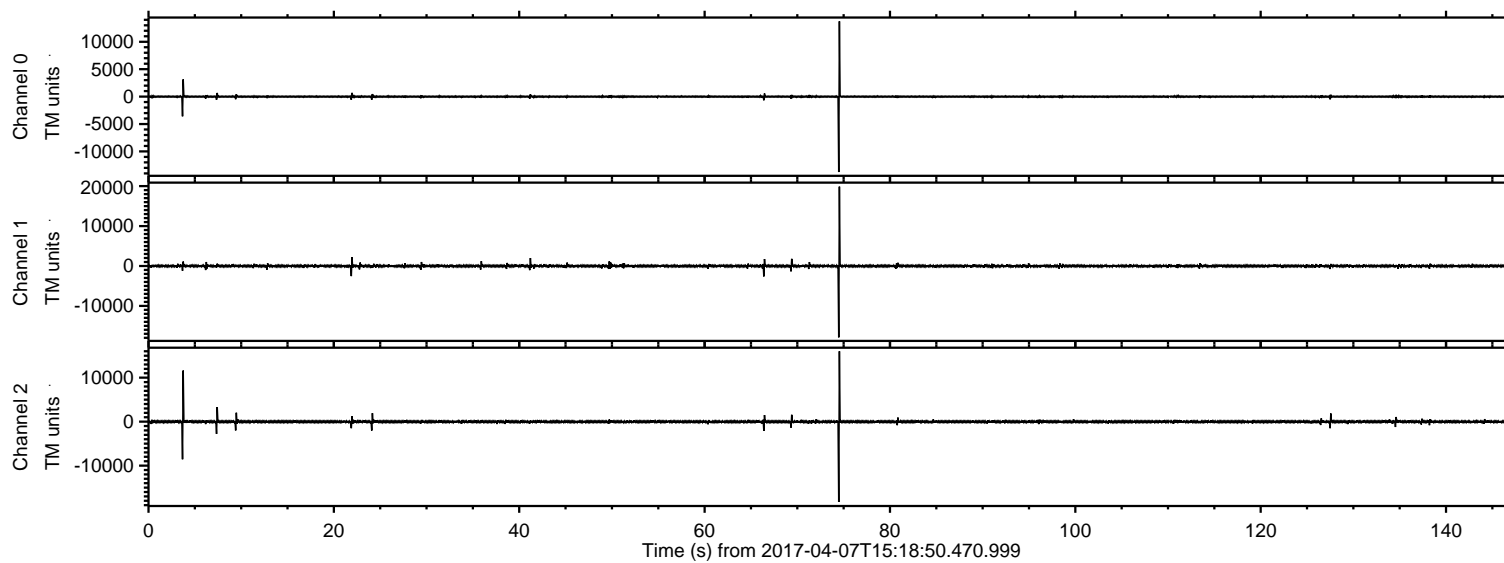


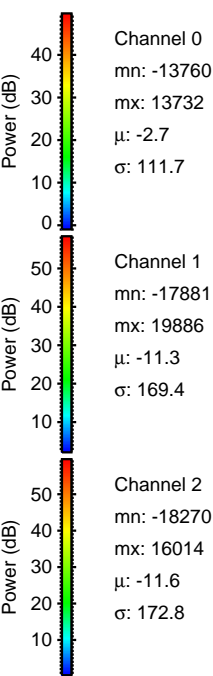
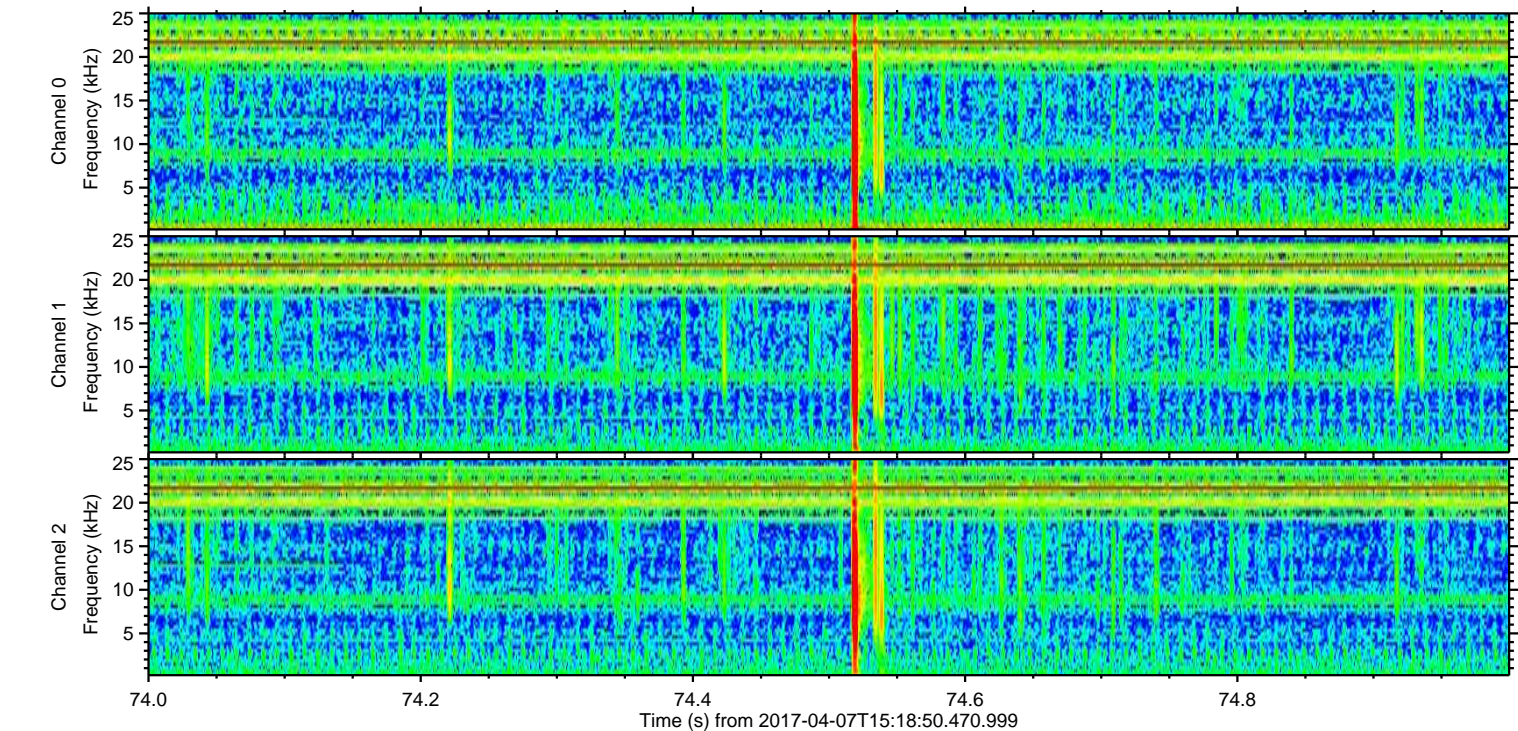
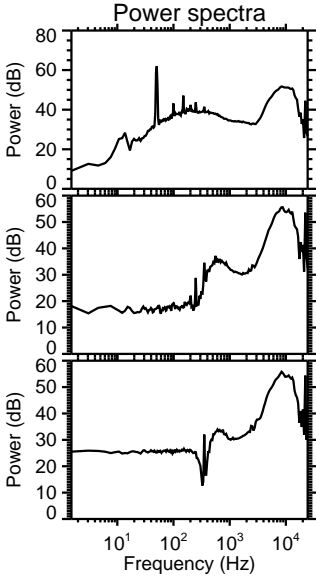
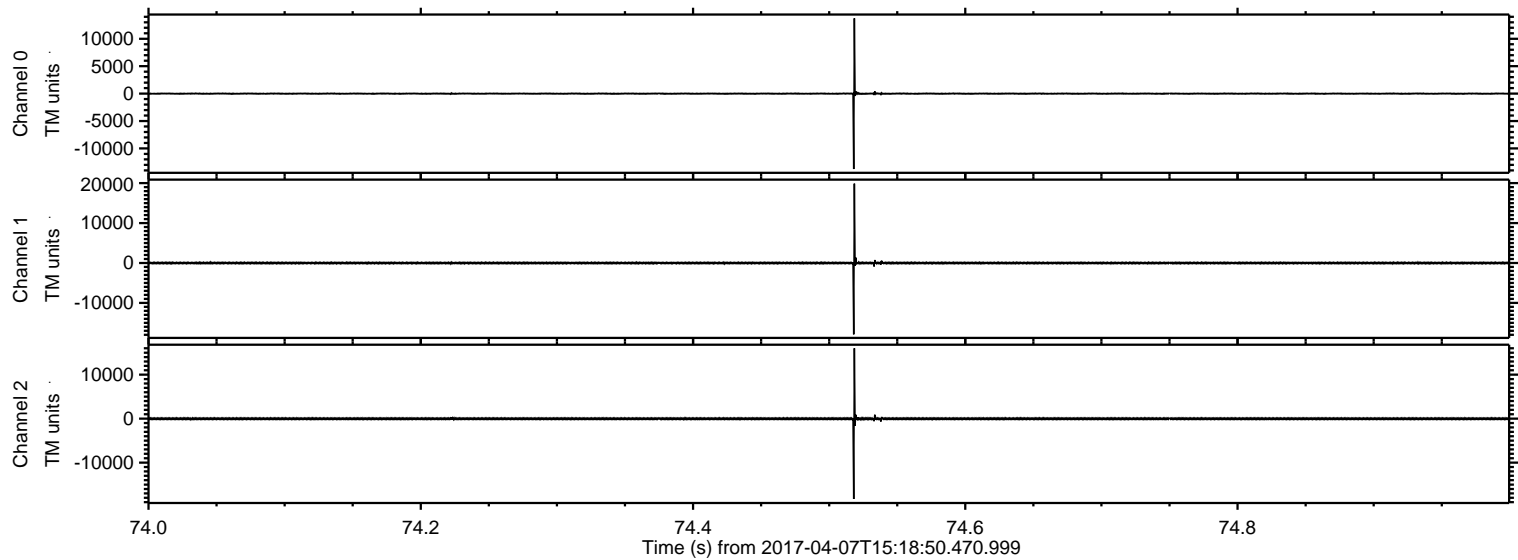
# ELMAVAN 3D WAVEFORMS (Measured data sampled at 50 kHz) 51000 packets of 144 samples from 2017-04-07T15:18:50.470.999.

Processed Fri Apr 7 17:26:46 2017 by ELM ver.2012-10-06 from 001\_\_elm20170407\_151849\_\_dat00.bin



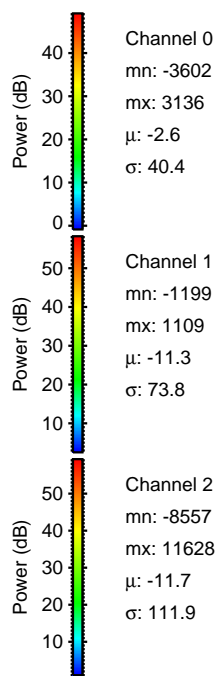
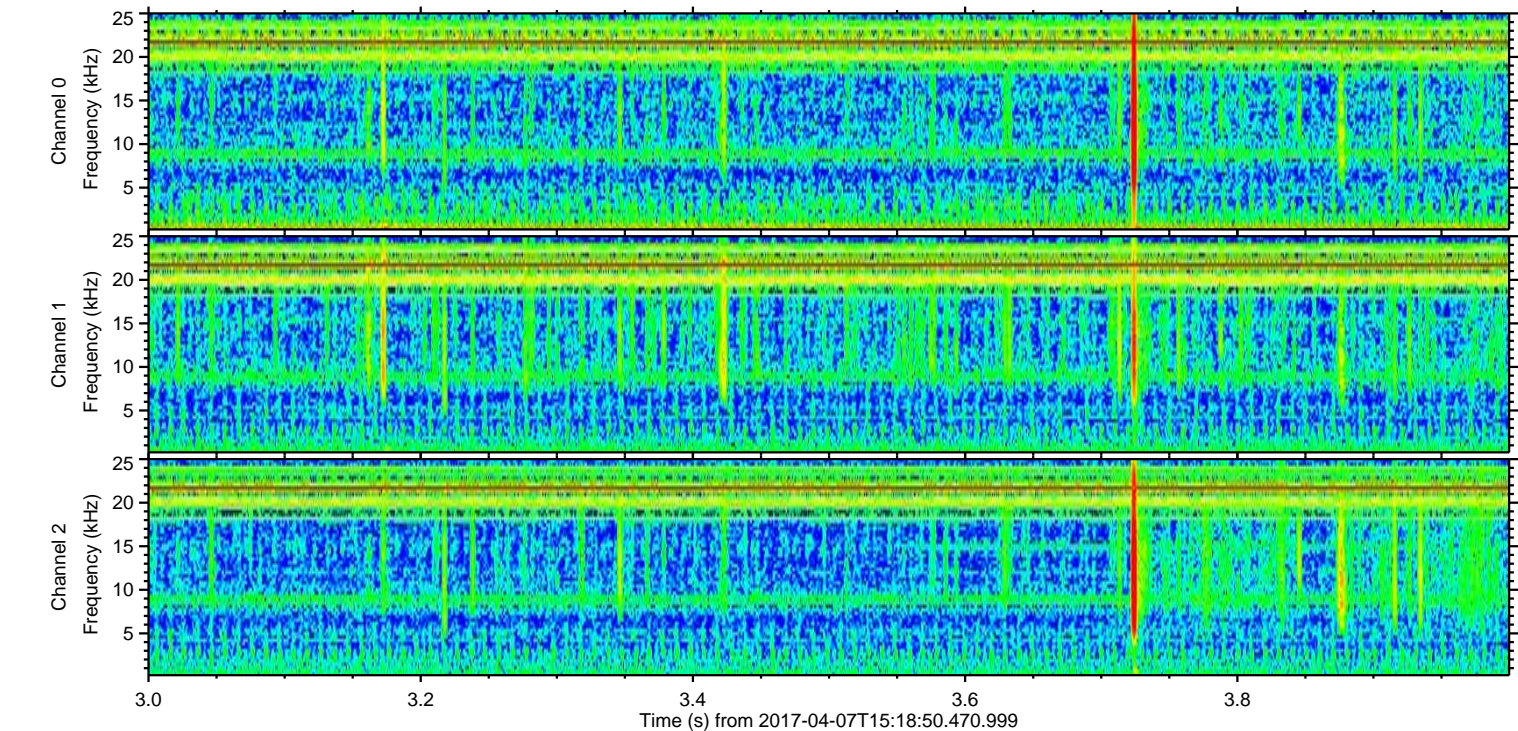
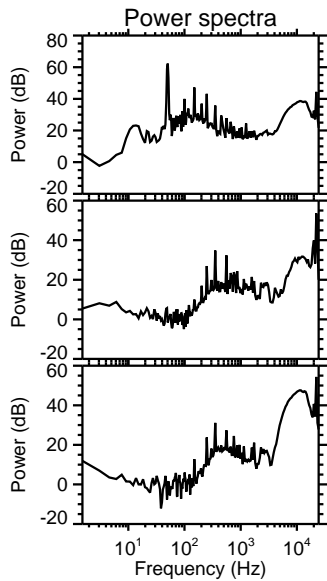
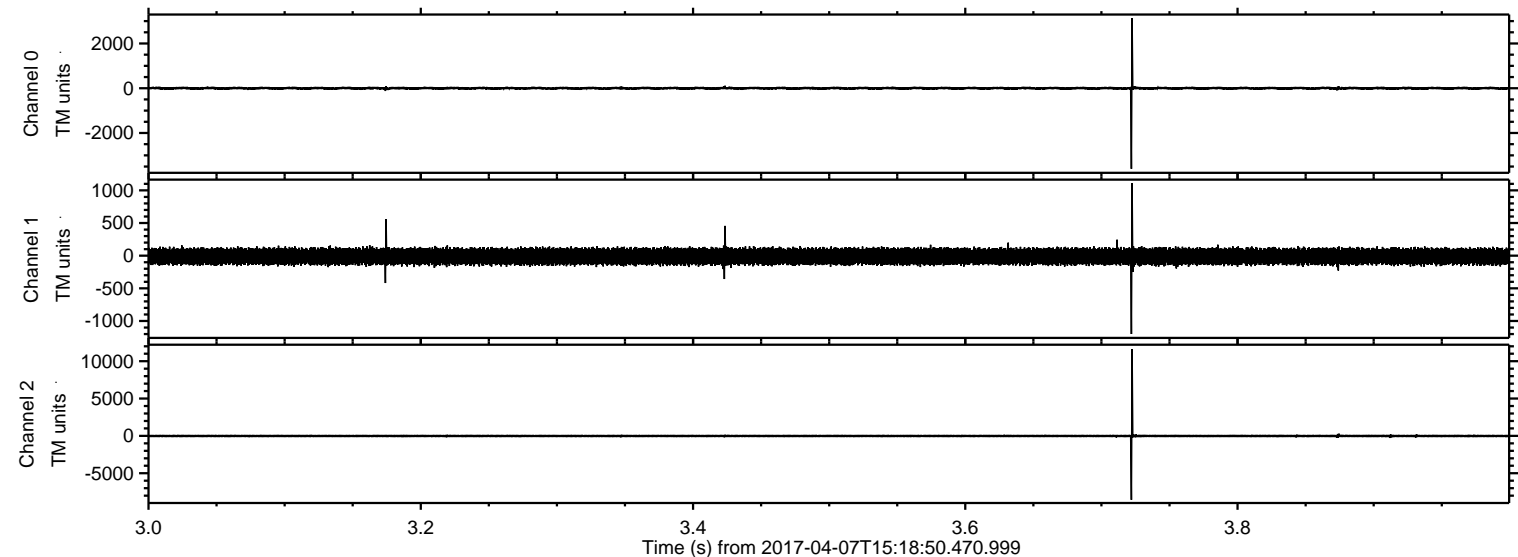


Processed Fri Apr 7 17:26:58 2017 by ELM ver.2012-10-06 from 001\_\_elm20170407\_151849\_\_dat00.bin





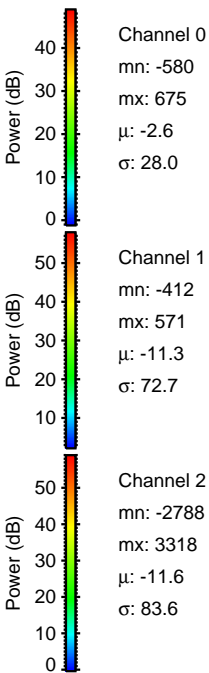
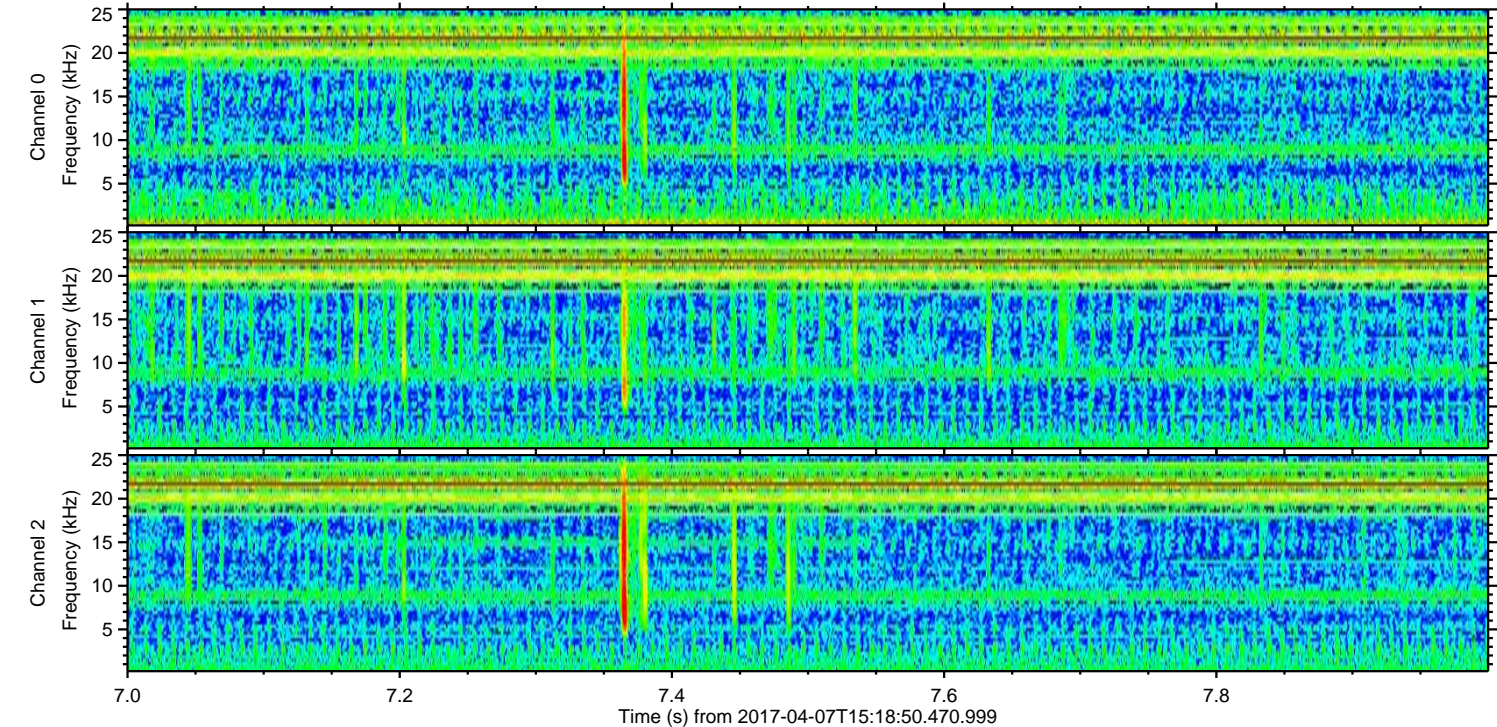
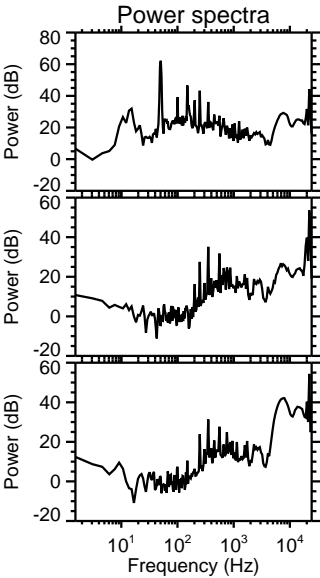
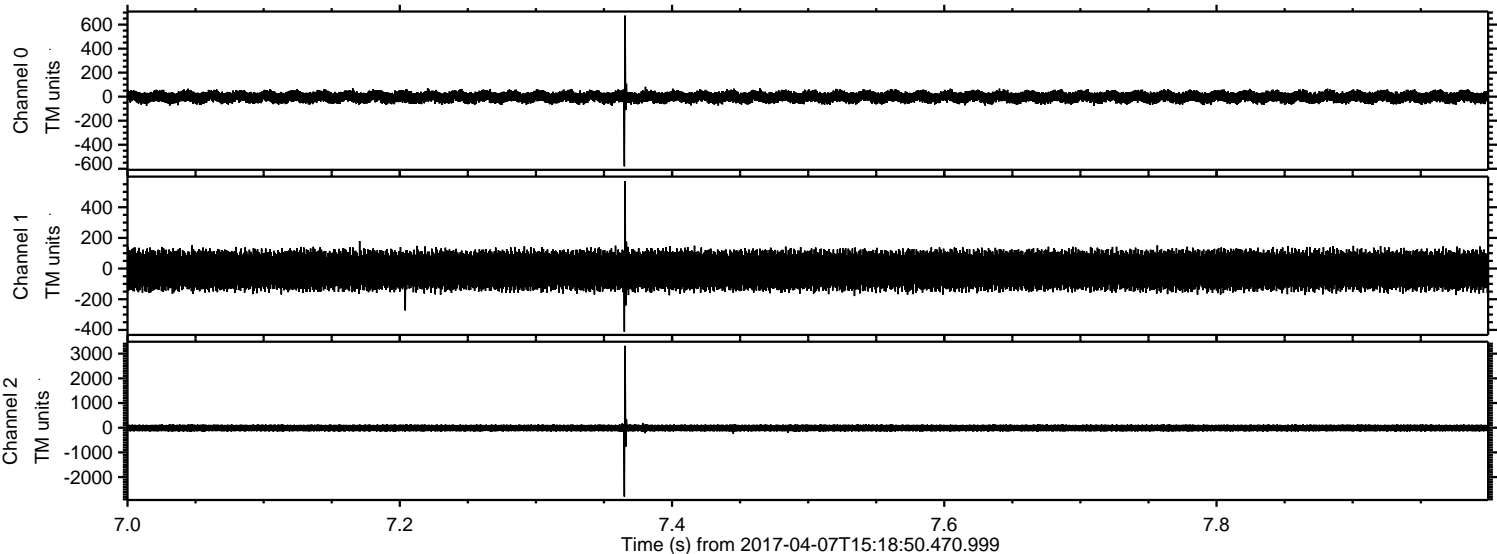
Processed Fri Apr 7 17:26:59 2017 by ELM ver.2012-10-06 from 001\_\_elm20170407\_151849\_\_dat00.bin





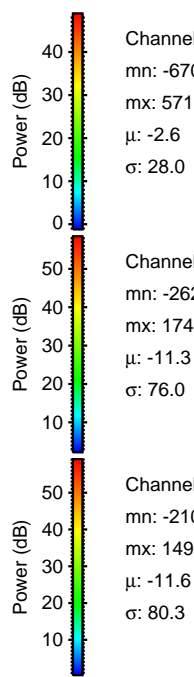
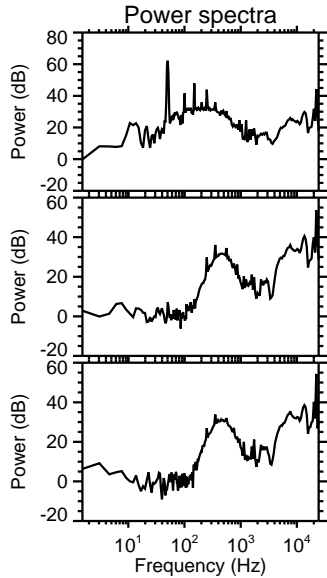
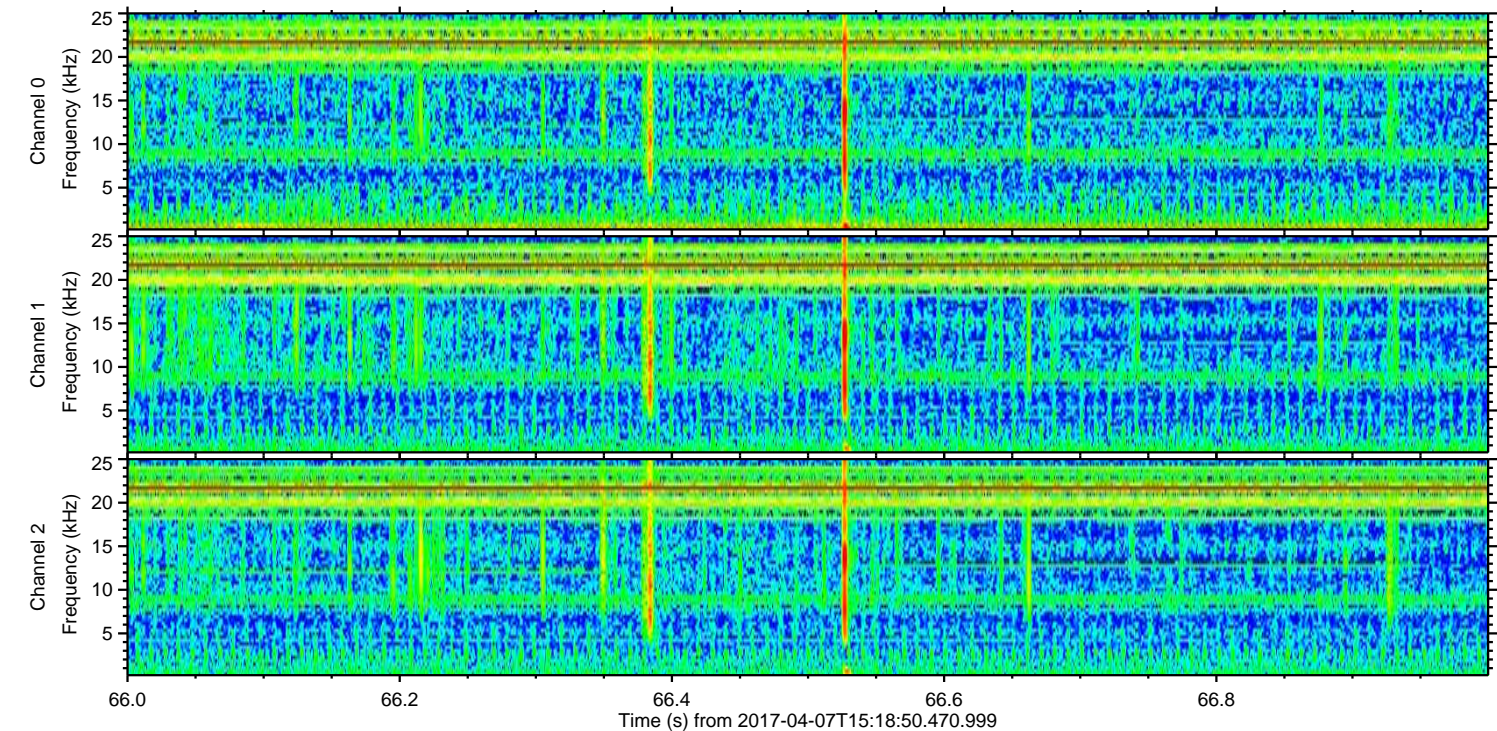
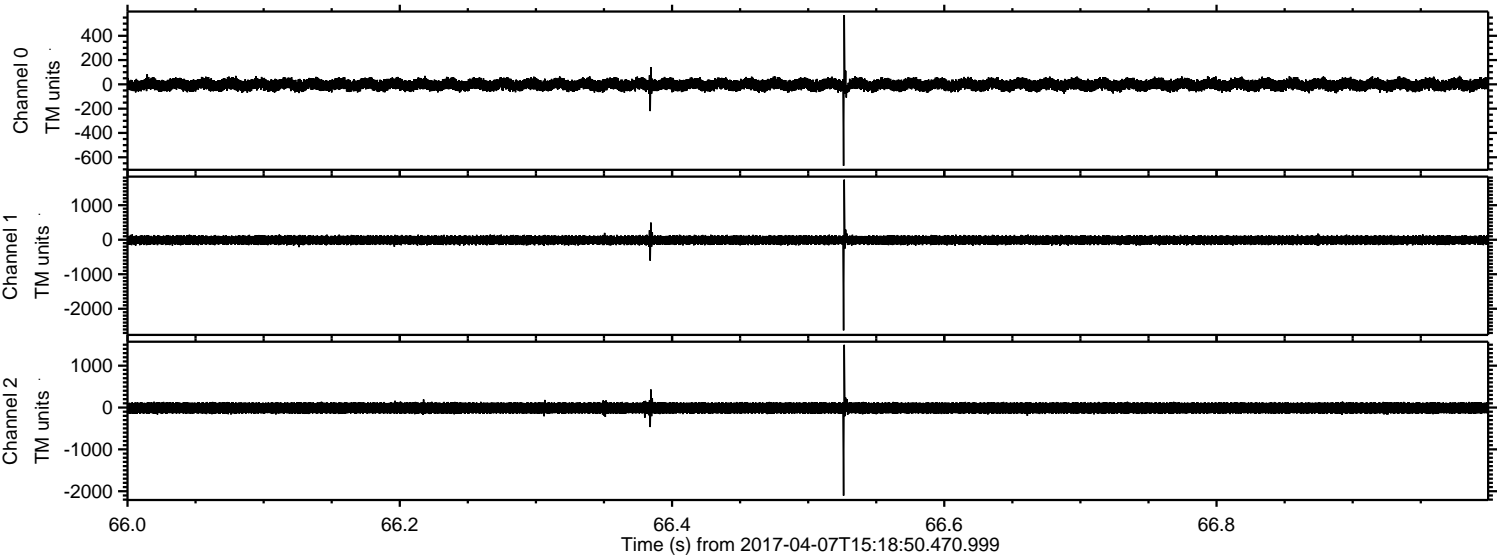
ELMAVAN 3D WAVEFORMS (Measured data sampled at 50 kHz) 51000 packets of 144 samples from 2017-04-07T15:18:50.470.999. Part 8/147

Processed Fri Apr 7 17:27:00 2017 by ELM ver.2012-10-06 from 001\_\_elm20170407\_151849\_\_dat00.bin



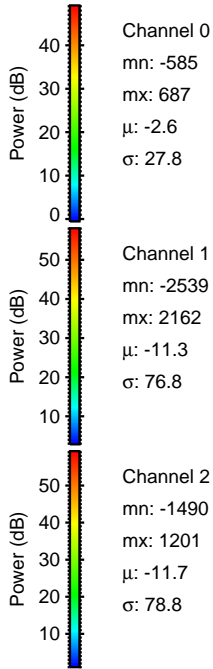
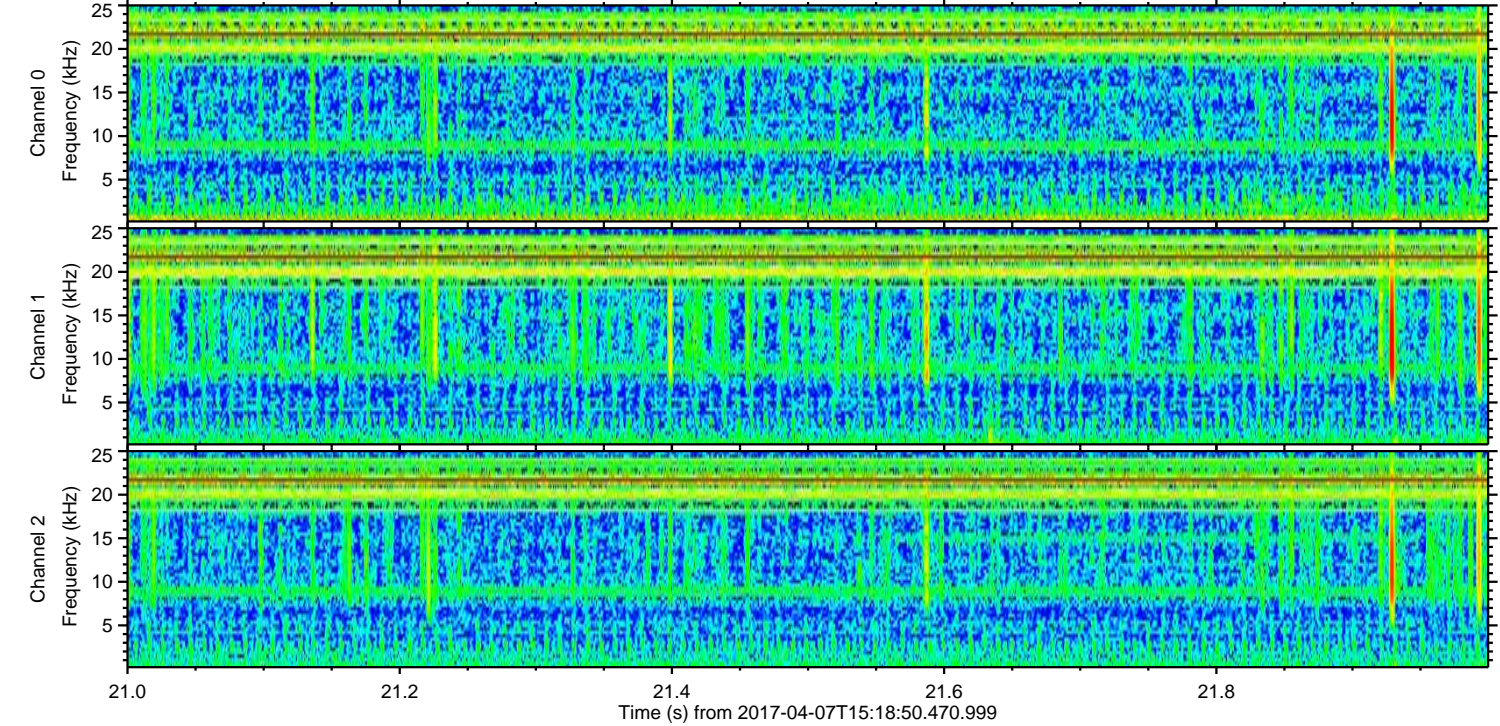
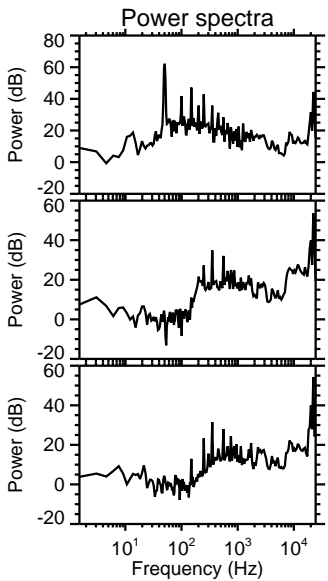
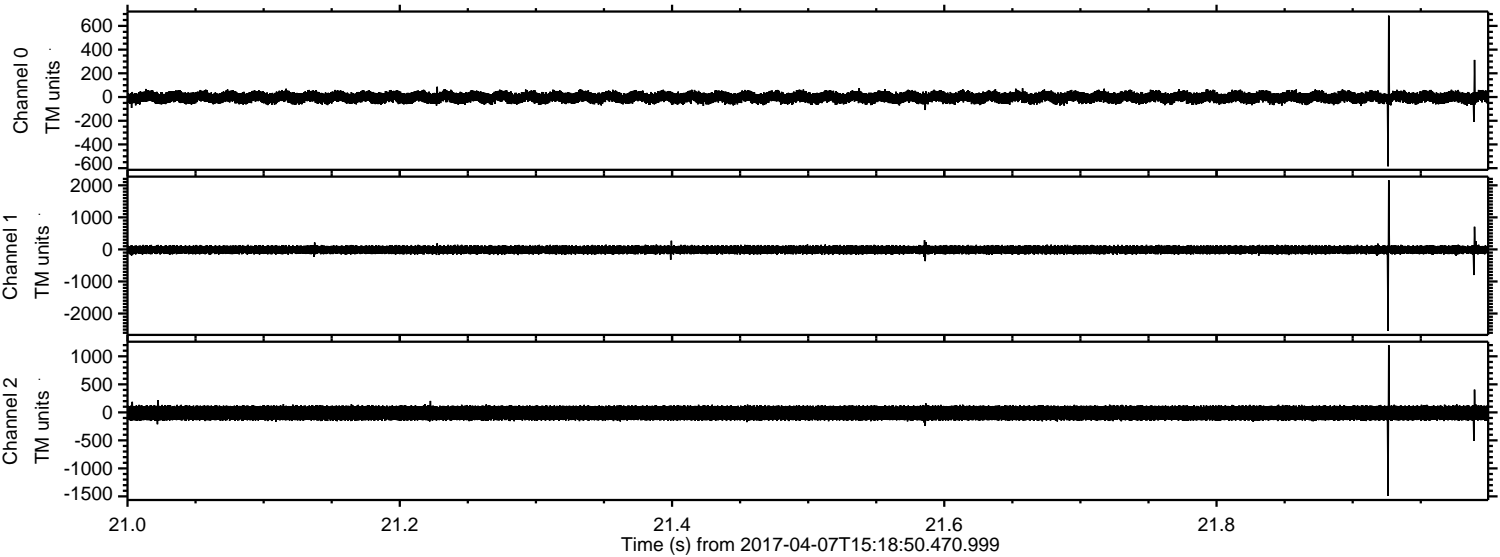


Processed Fri Apr 7 17:27:01 2017 by ELM ver.2012-10-06 from 001\_\_elm20170407\_151849\_\_dat00.bin



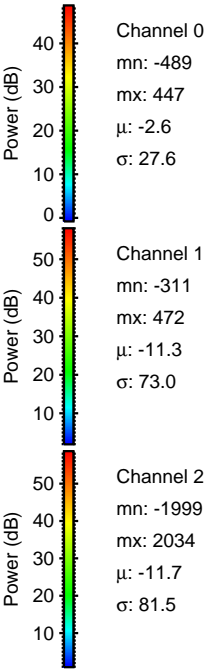
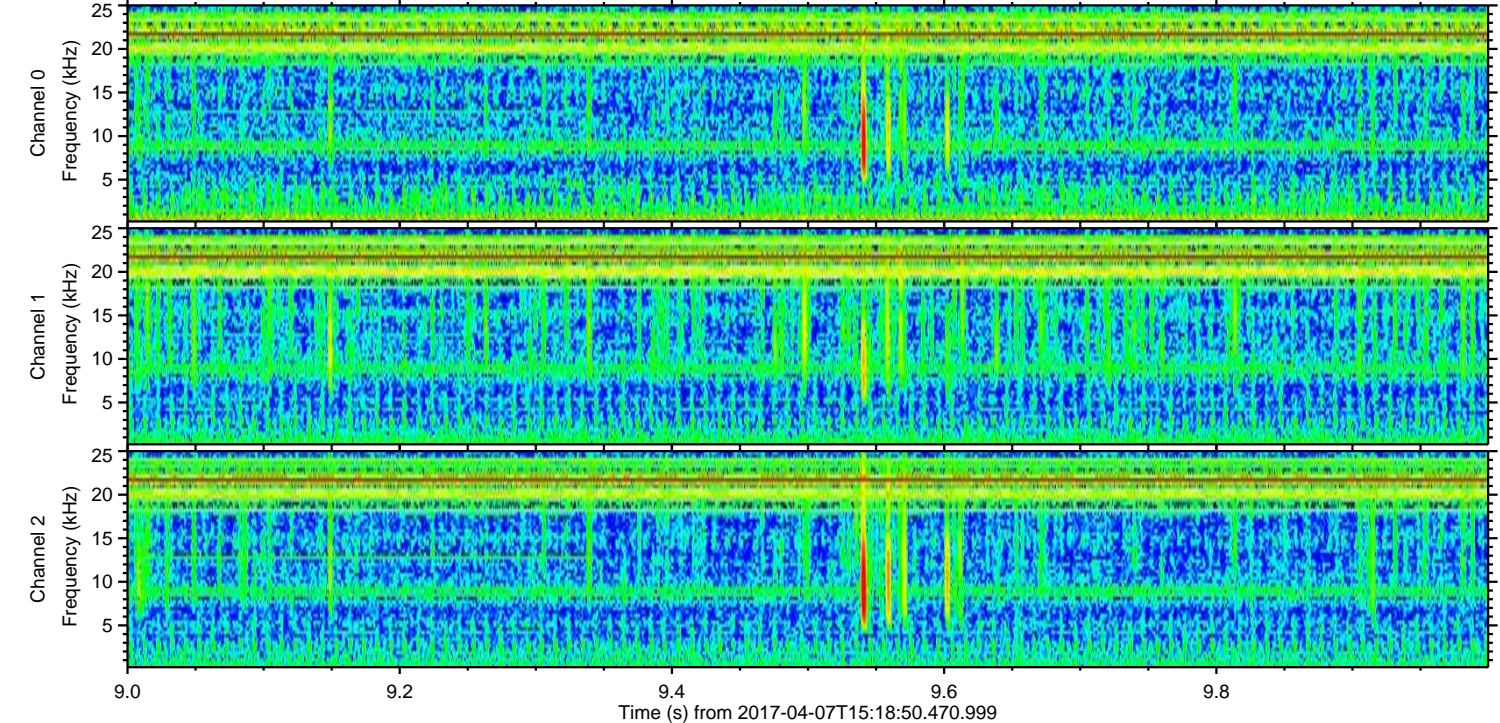
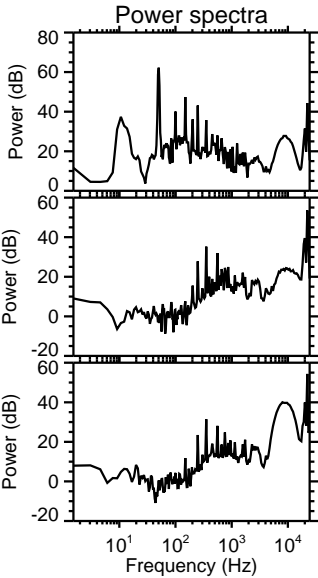
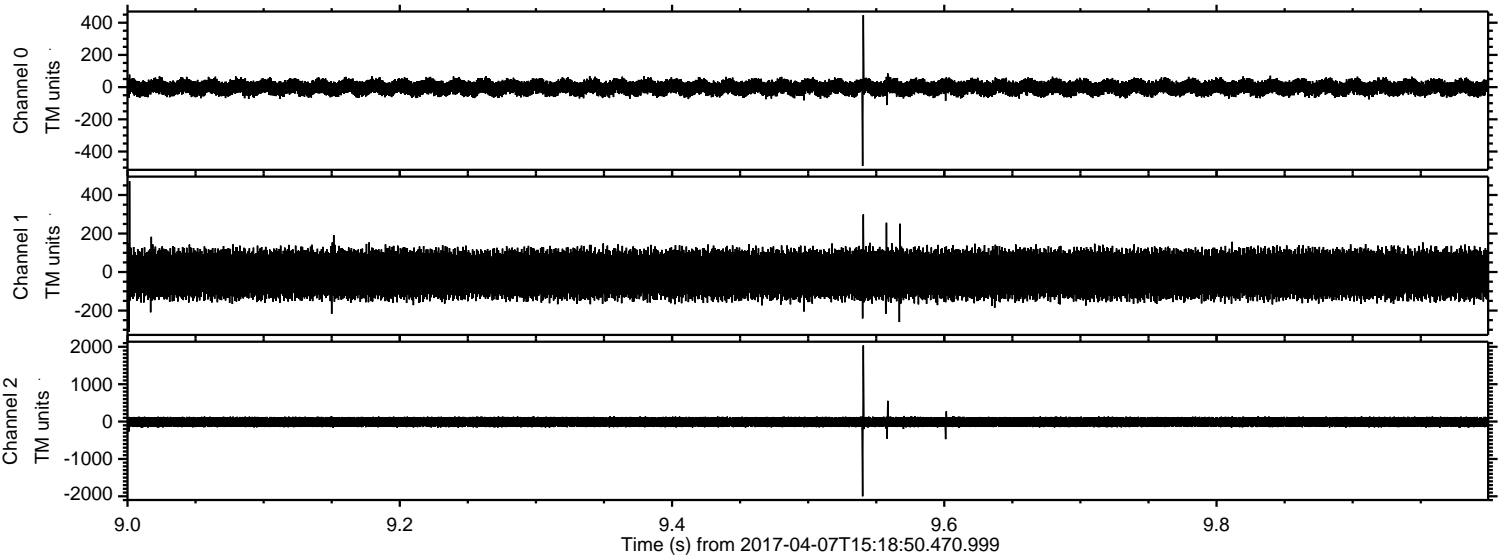


Processed Fri Apr 7 17:27:02 2017 by ELM ver.2012-10-06 from 001\_\_elm20170407\_151849\_\_dat00.bin



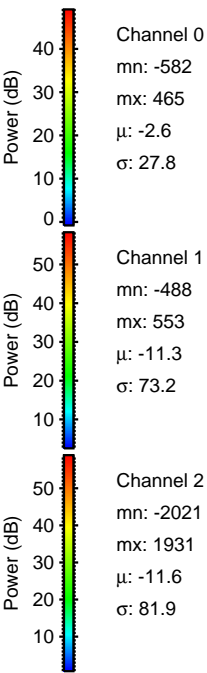
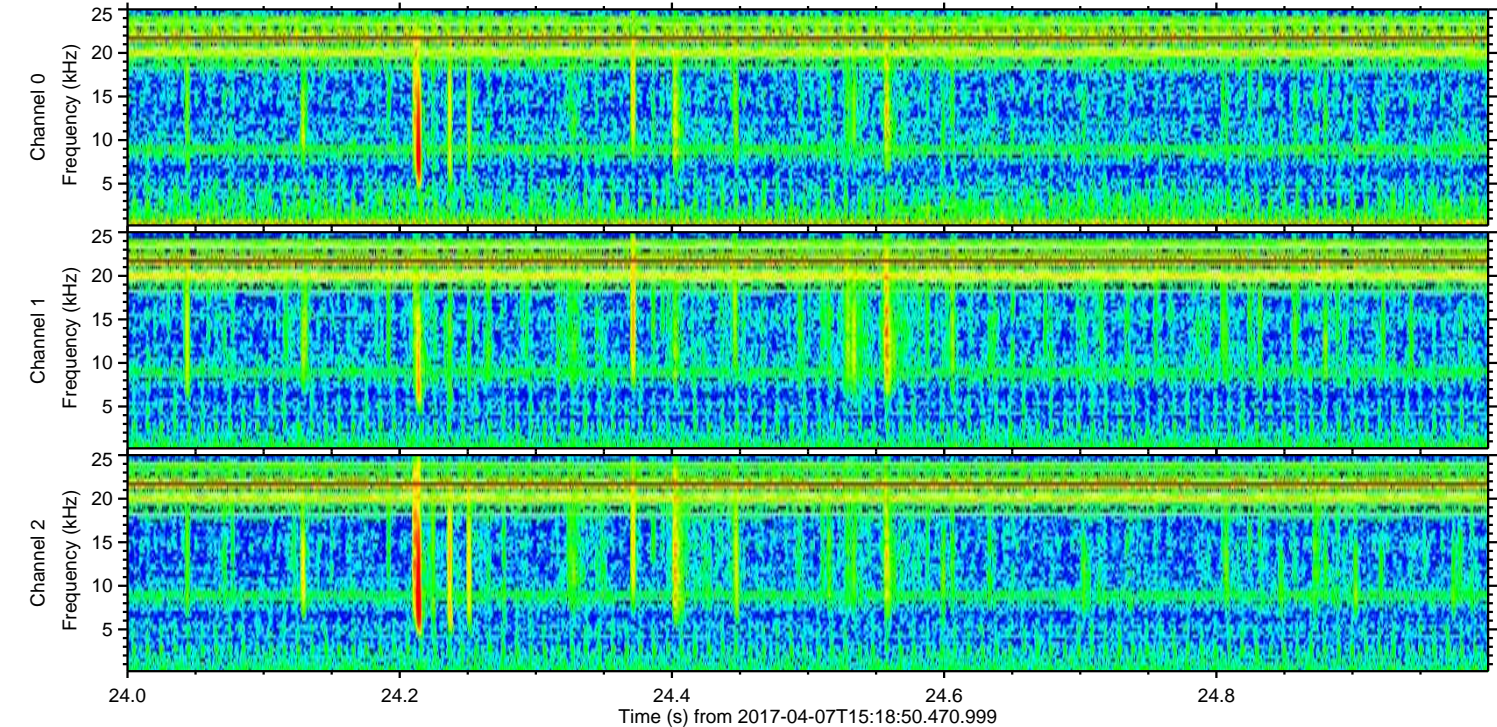
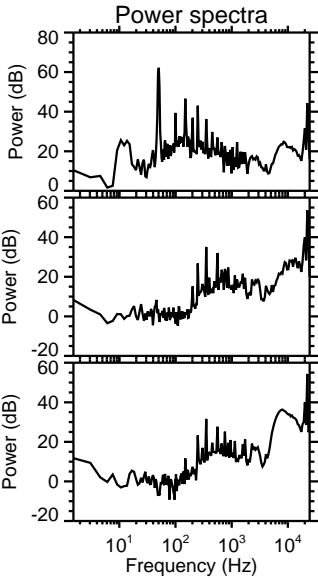
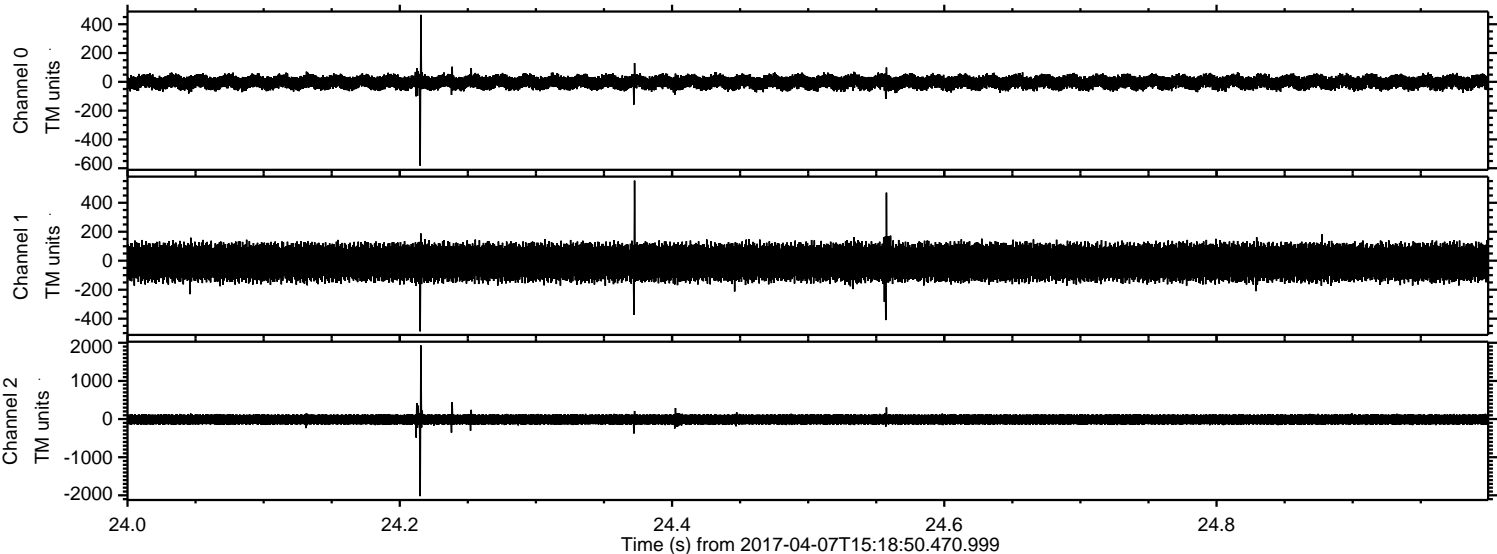


Processed Fri Apr 7 17:27:03 2017 by ELM ver.2012-10-06 from 001\_\_elm20170407\_151849\_\_dat00.bin



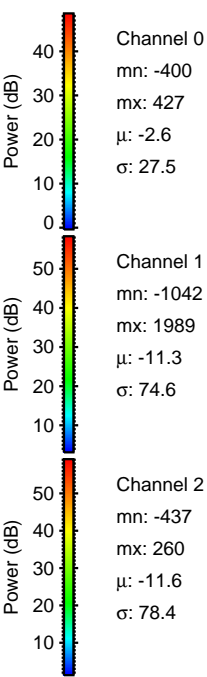
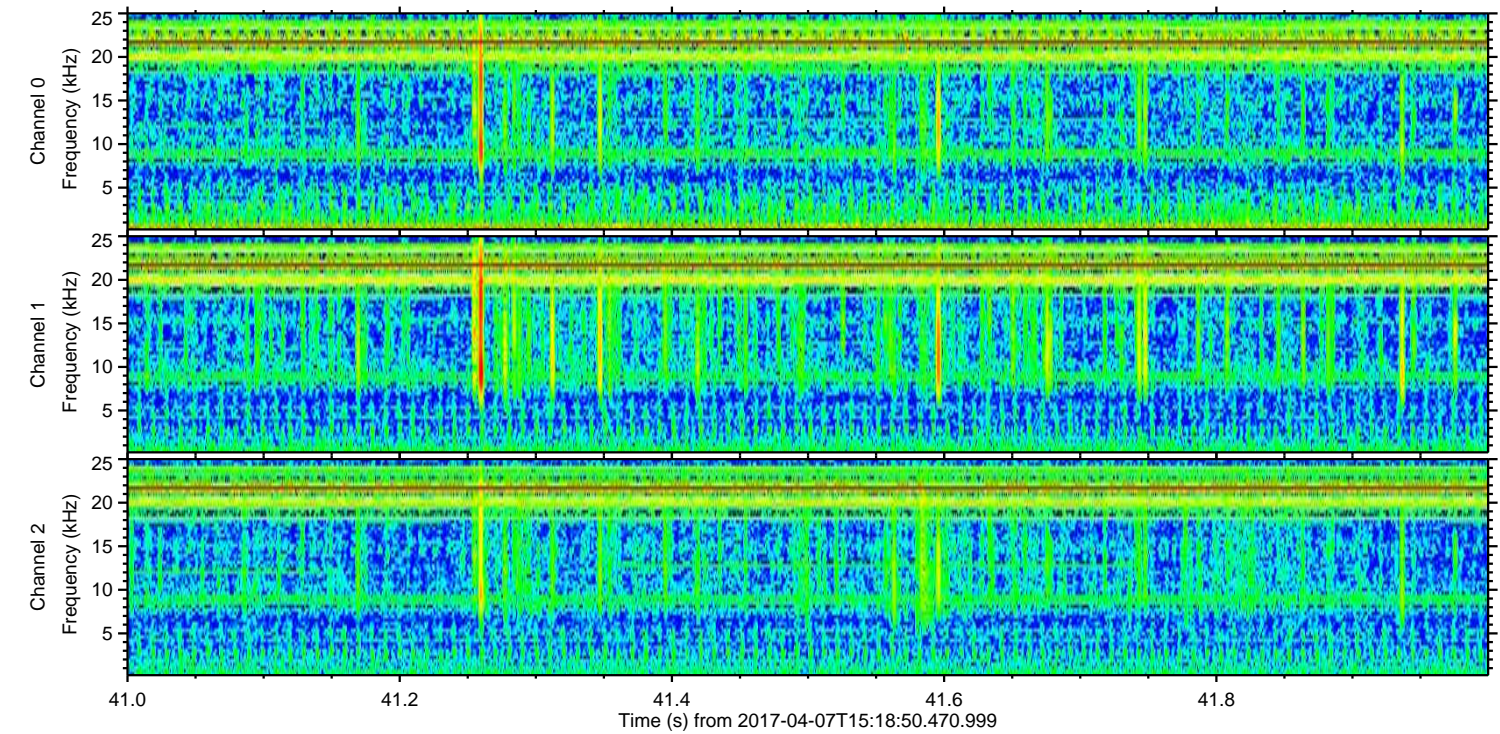
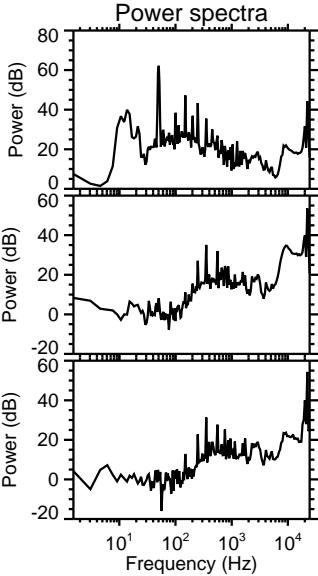
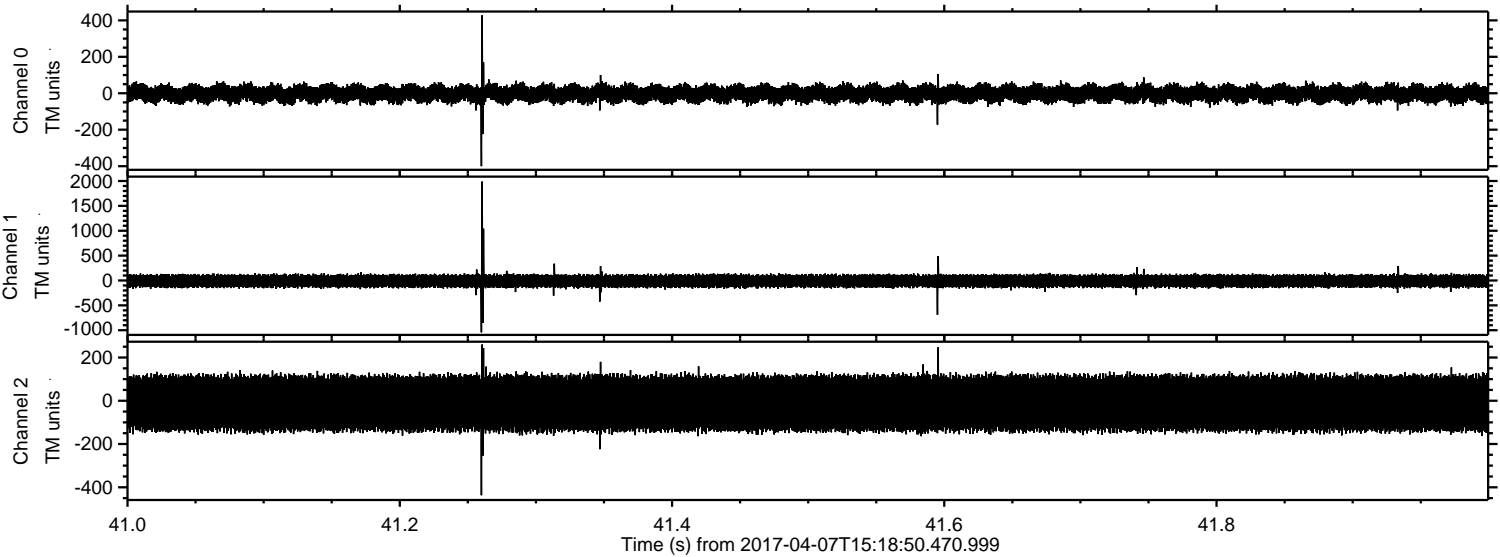


Processed Fri Apr 7 17:27:03 2017 by ELM ver.2012-10-06 from 001\_\_elm20170407\_151849\_\_dat00.bin





Processed Fri Apr 7 17:27:04 2017 by ELM ver.2012-10-06 from 001\_\_elm20170407\_151849\_\_dat00.bin





ELMAVAN 3D WAVEFORMS (Measured data sampled at 50 kHz) 51000 packets of 144 samples from 2017-04-07T15:18:50.470.999. Part 128/147

Processed Fri Apr 7 17:27:05 2017 by ELM ver.2012-10-06 from 001\_\_elm20170407\_151849\_\_dat00.bin

