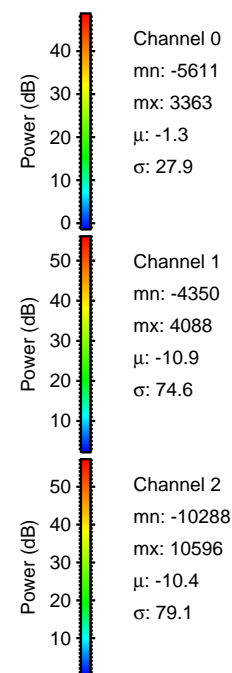
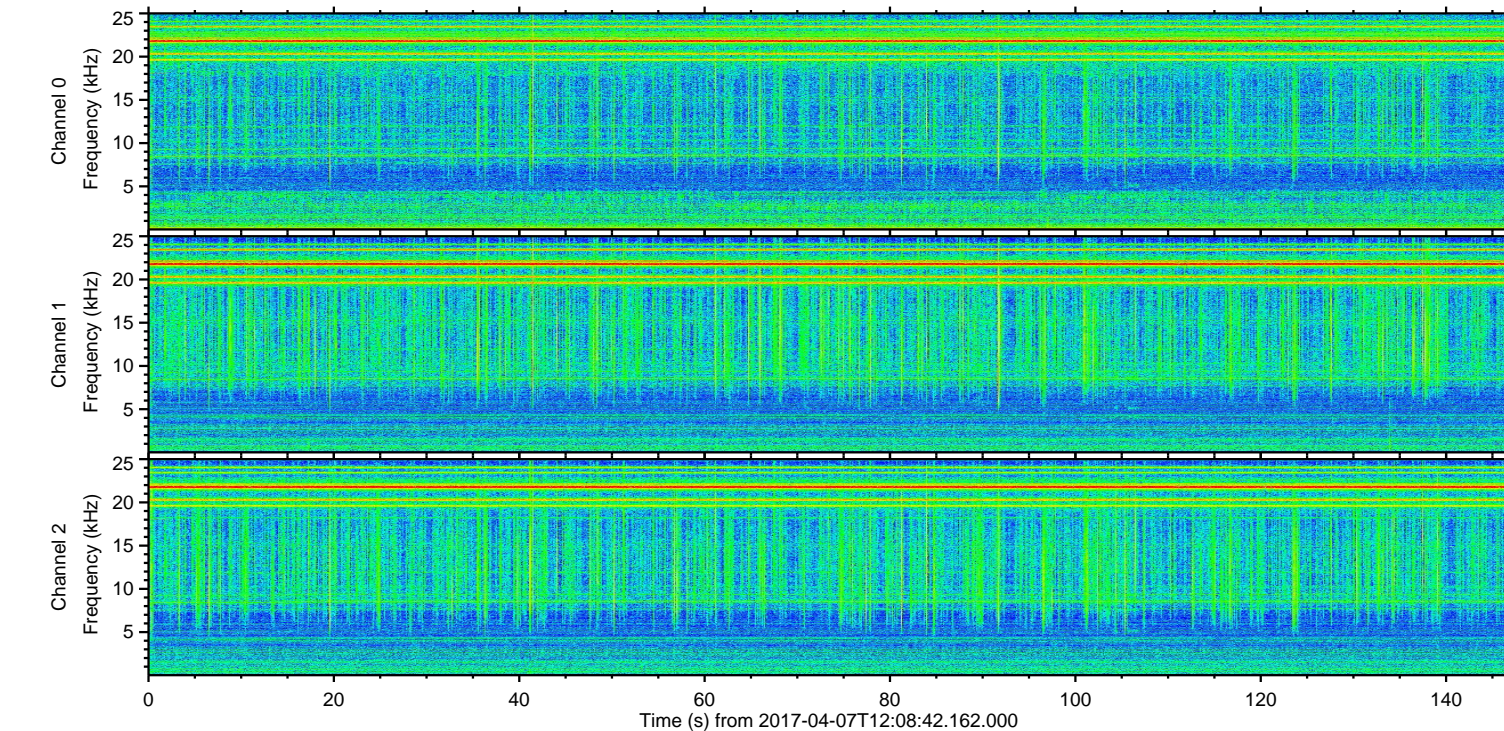
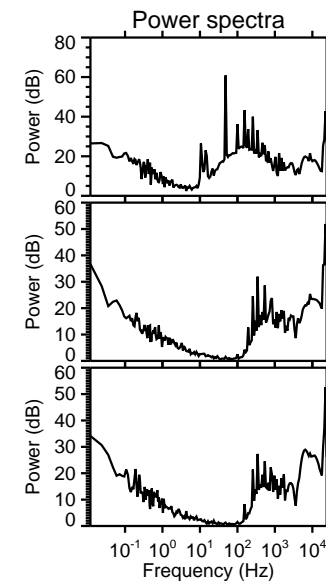
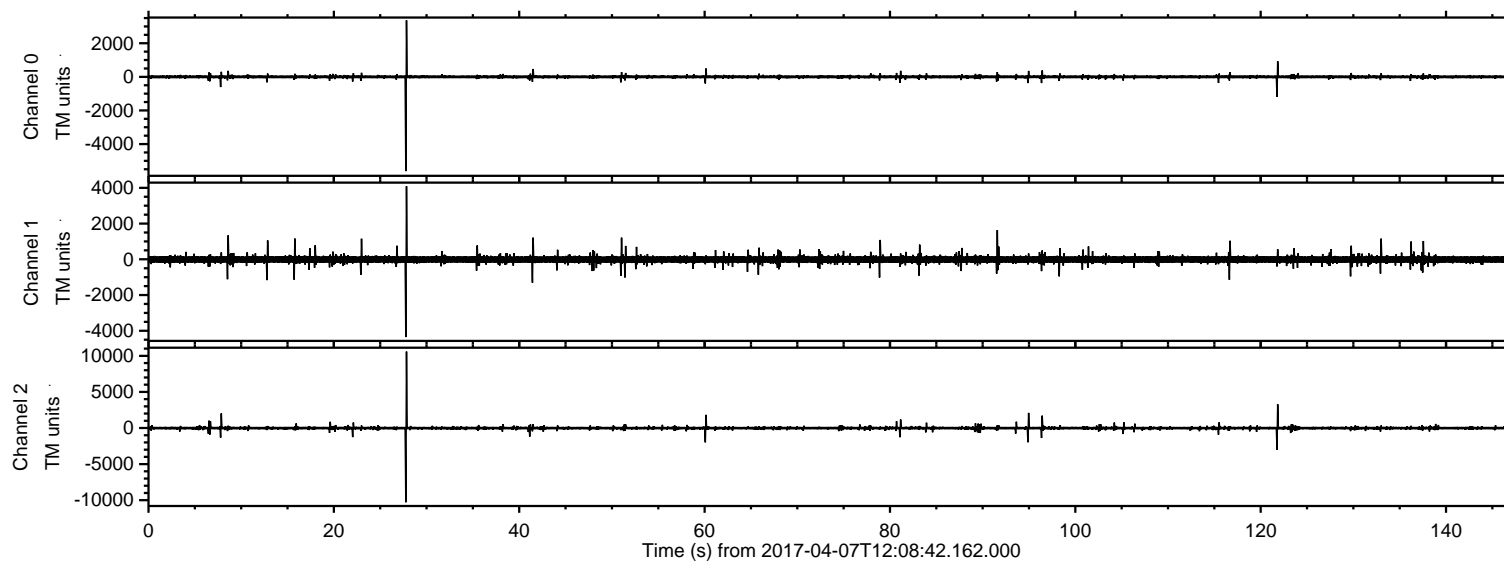


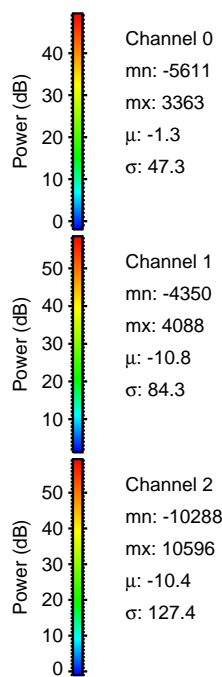
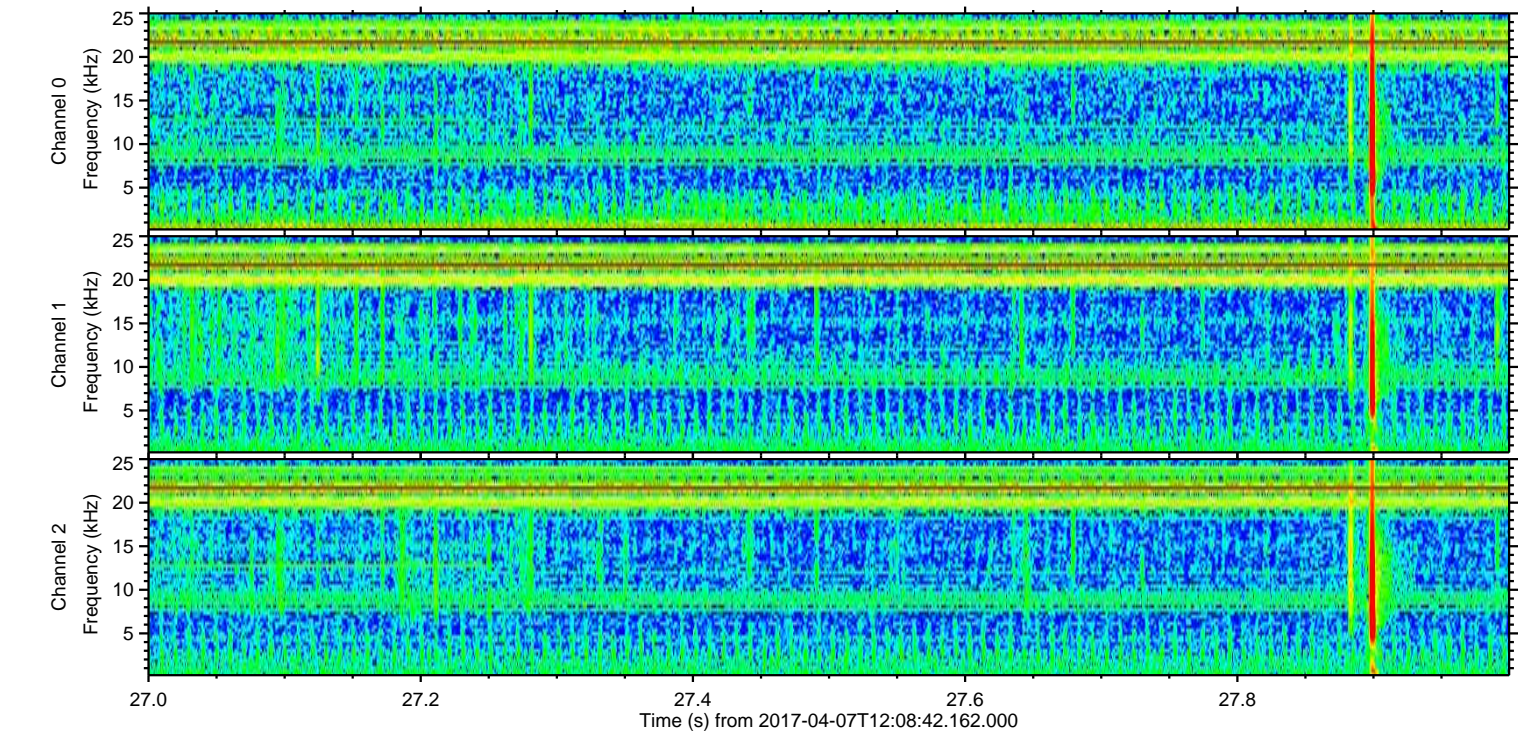
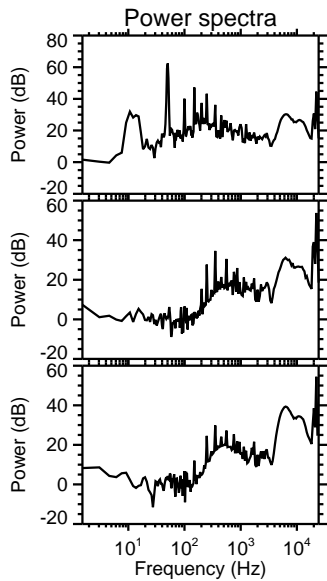
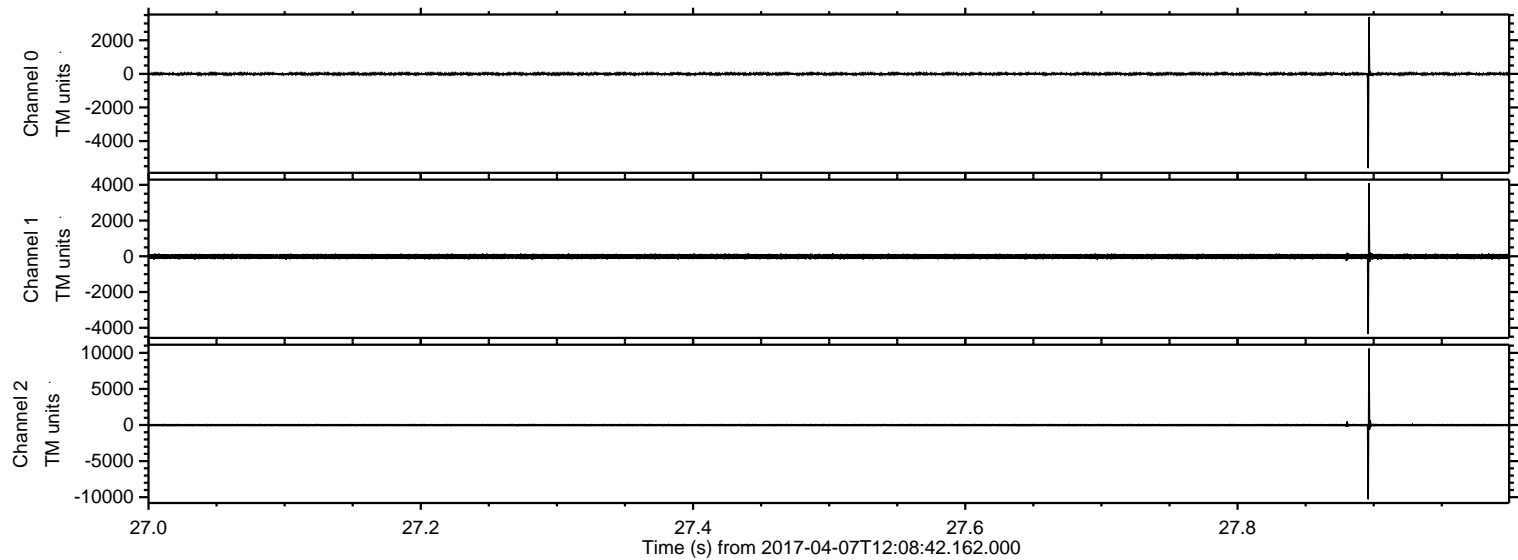
# ELMAVAN 3D WAVEFORMS (Measured data sampled at 50 kHz) 51000 packets of 144 samples from 2017-04-07T12:08:42.162.000.

Processed Fri Apr 7 14:16:48 2017 by ELM ver.2012-10-06 from 001\_\_elm20170407\_120841\_\_dat00.bin





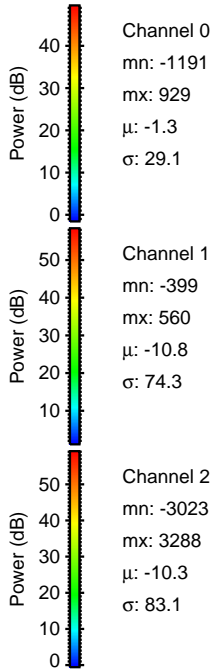
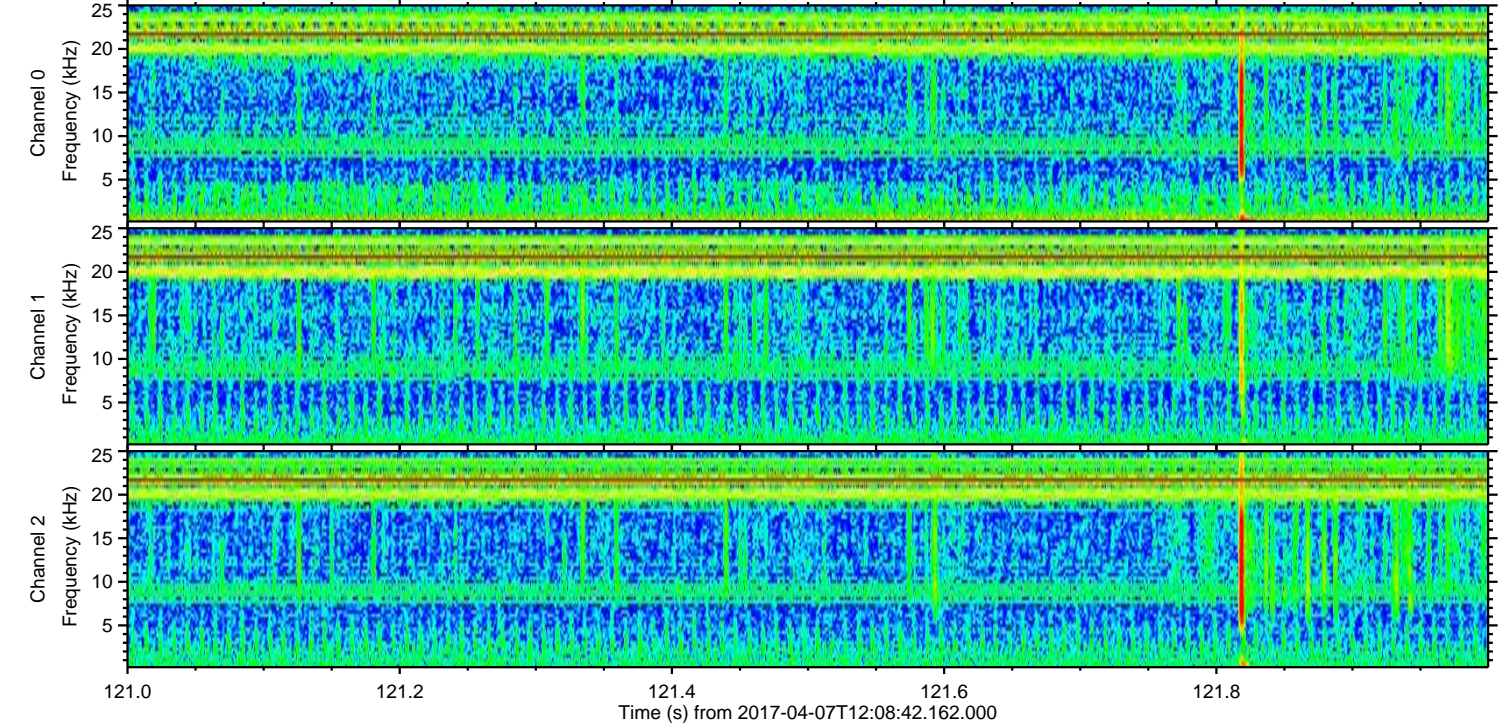
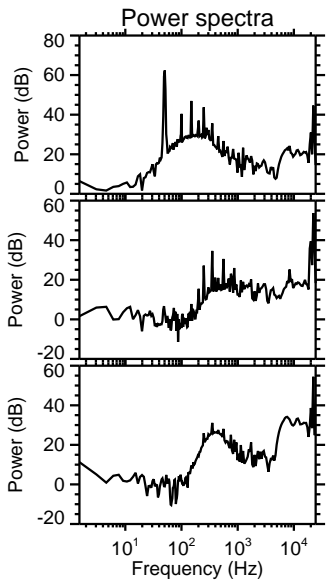
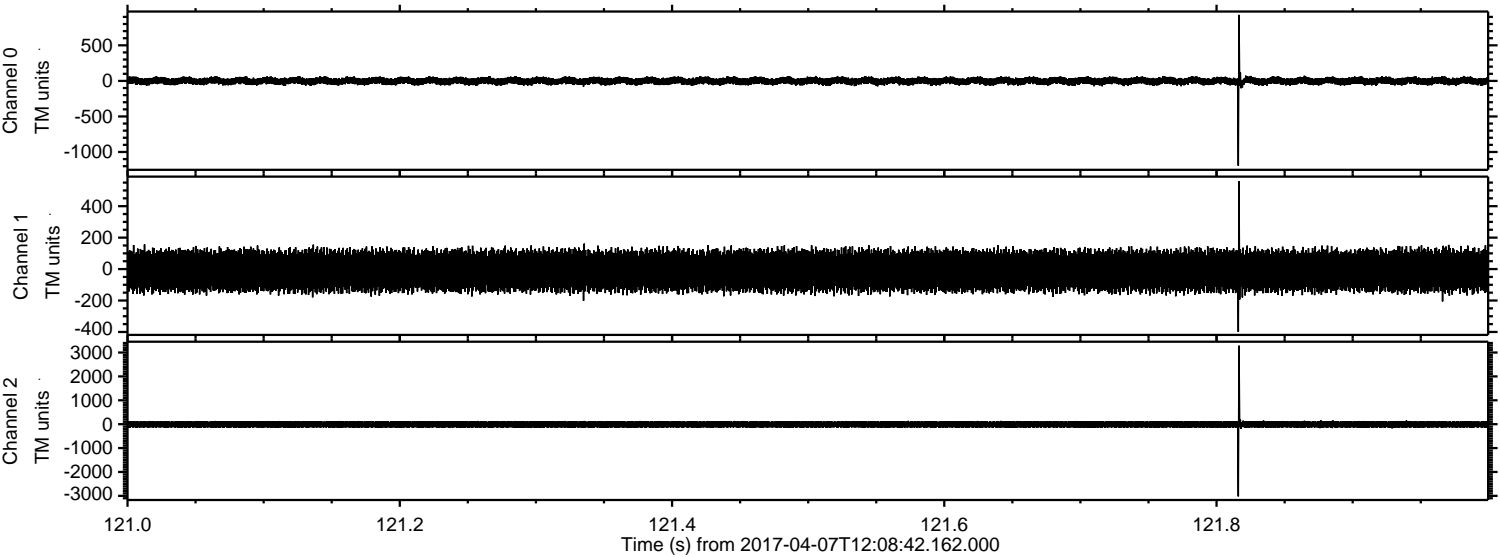
Processed Fri Apr 7 14:17:03 2017 by ELM ver.2012-10-06 from 001\_\_elm20170407\_120841\_\_dat00.bin





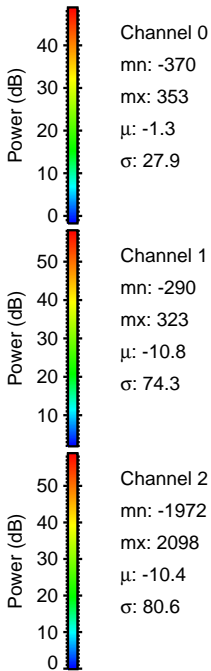
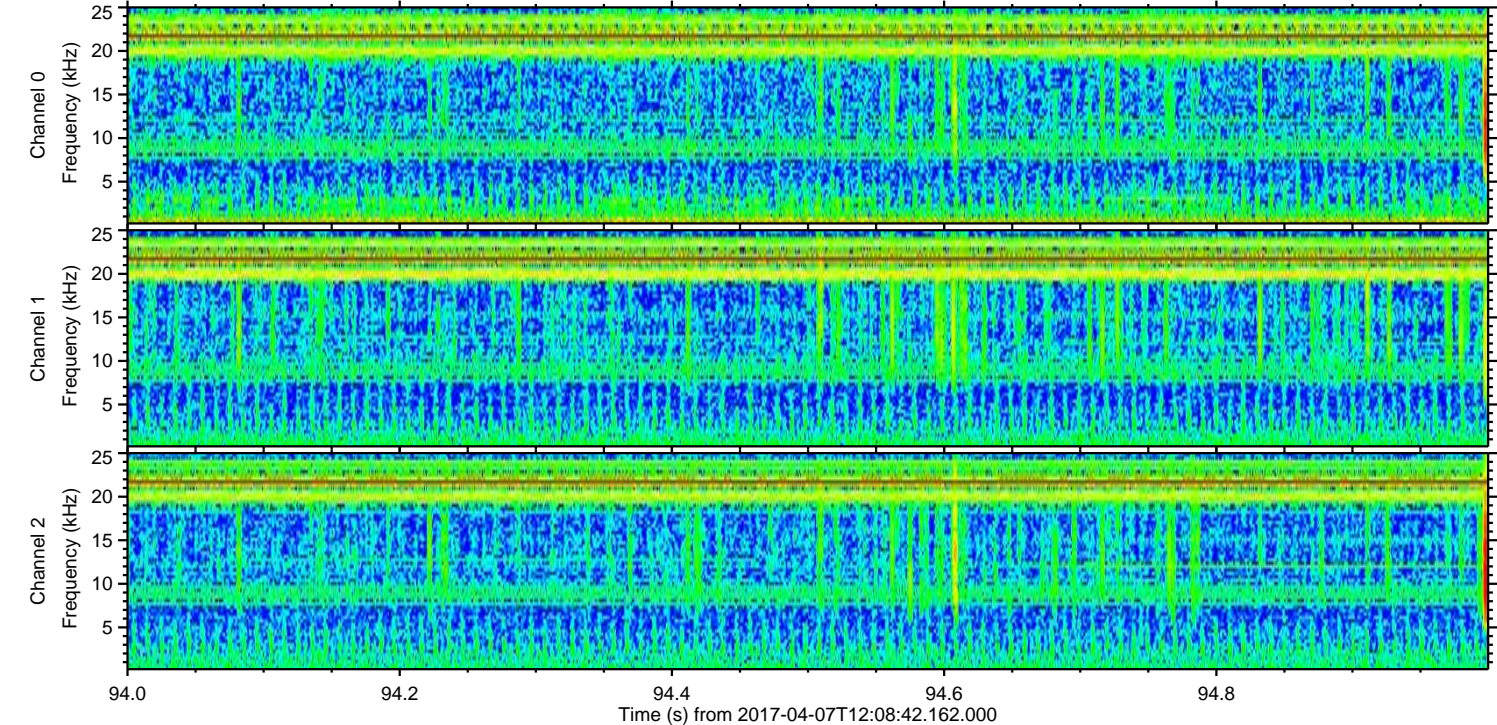
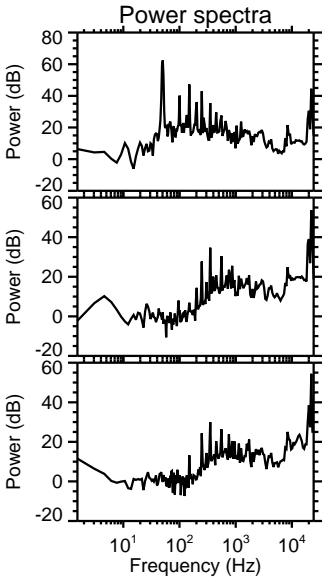
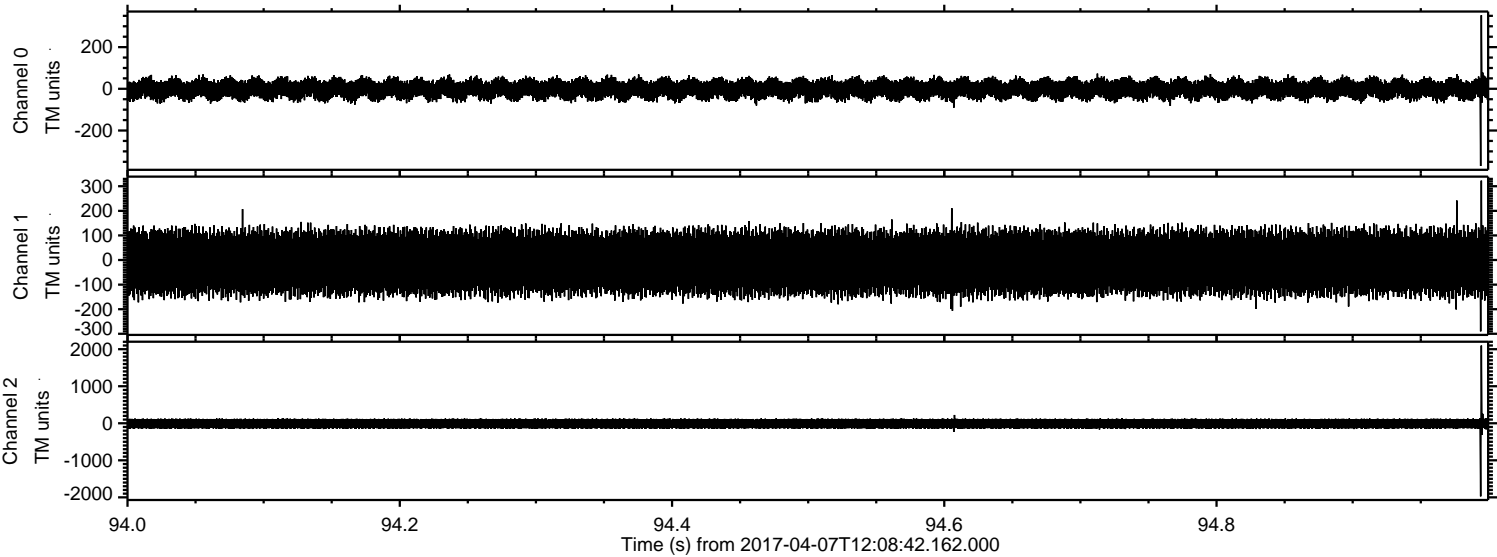
ELMAVAN 3D WAVEFORMS (Measured data sampled at 50 kHz) 51000 packets of 144 samples from 2017-04-07T12:08:42.162.000. Part 122/147

Processed Fri Apr 7 14:17:05 2017 by ELM ver.2012-10-06 from 001\_\_elm20170407\_120841\_\_dat00.bin



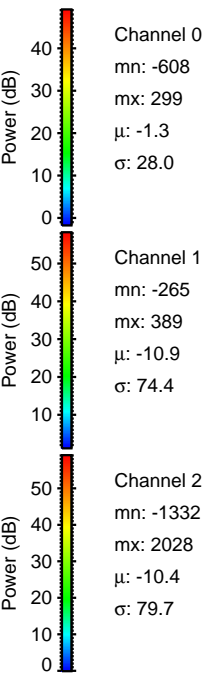
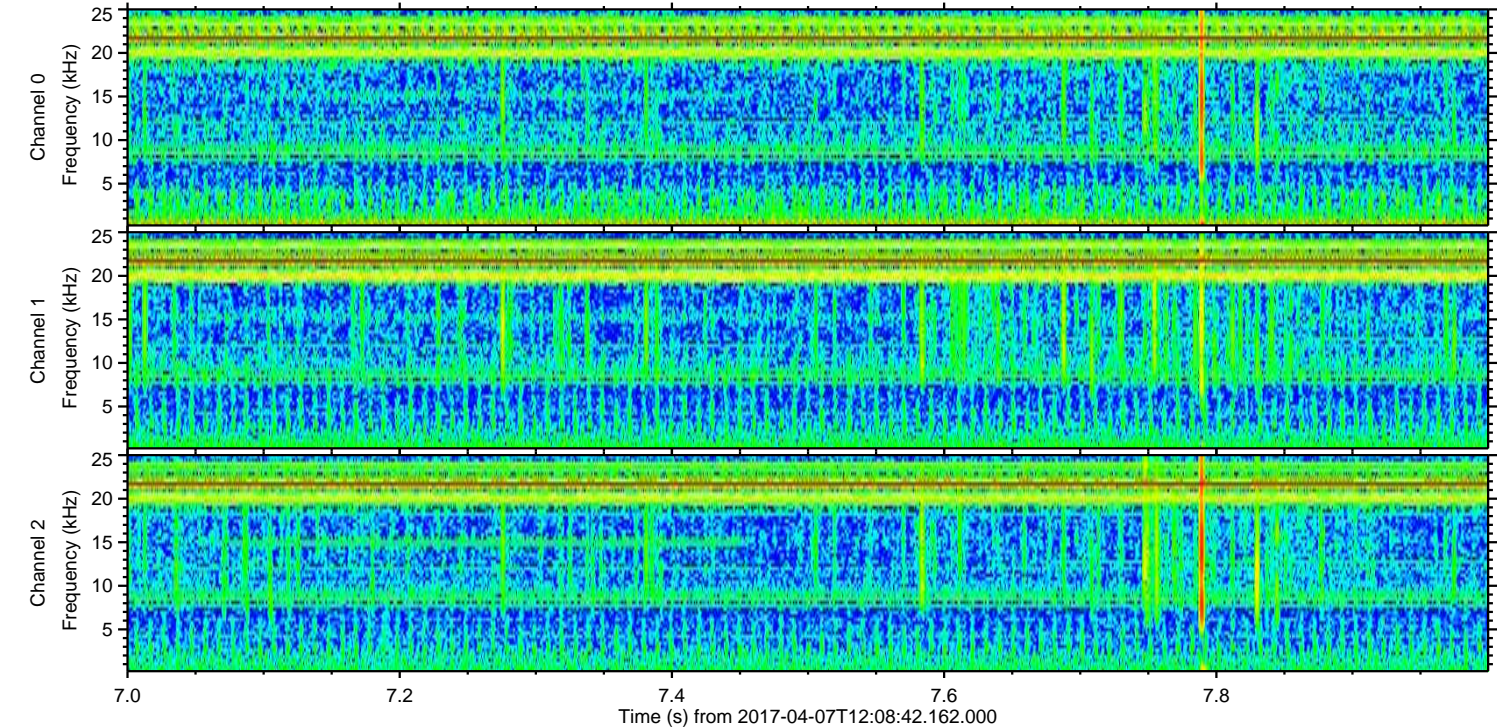
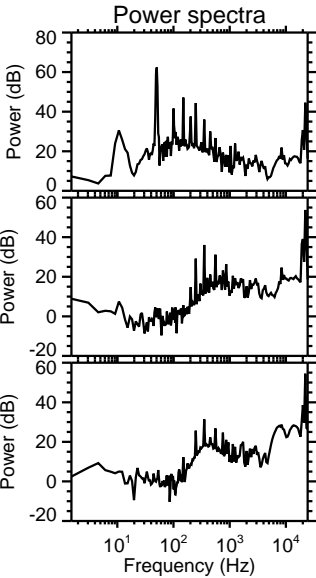
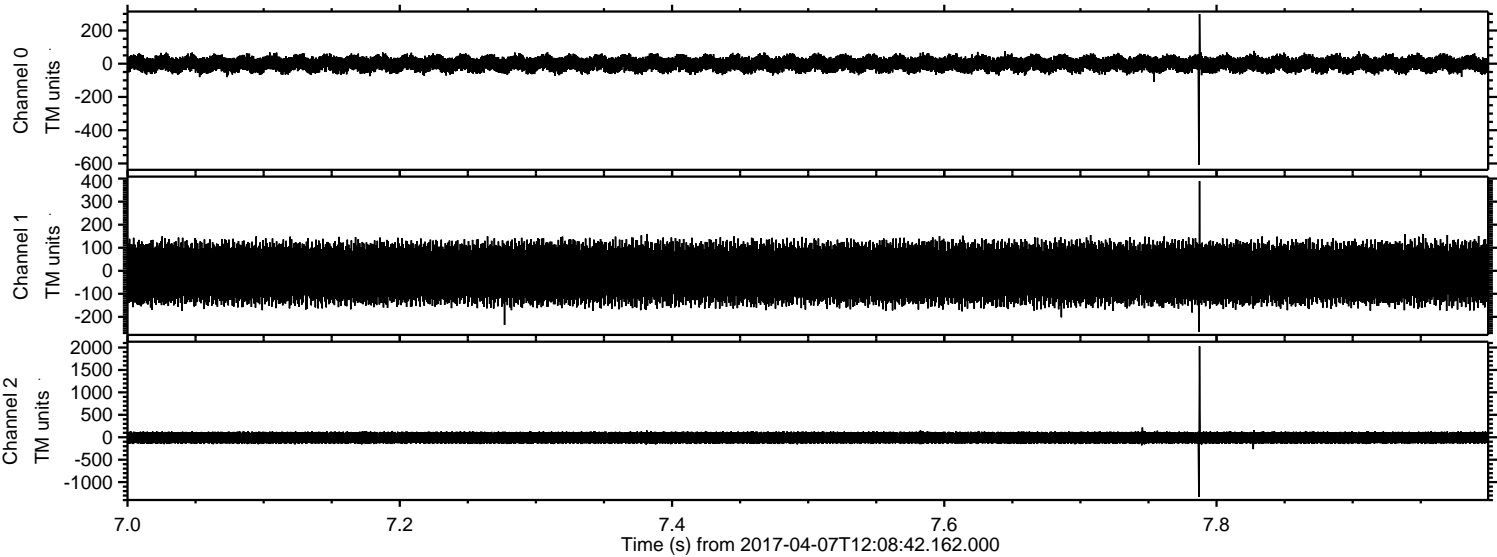


Processed Fri Apr 7 14:17:06 2017 by ELM ver.2012-10-06 from 001\_\_elm20170407\_120841\_\_dat00.bin



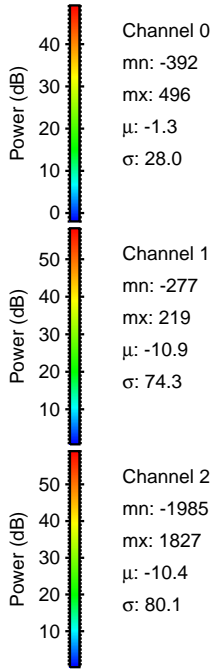
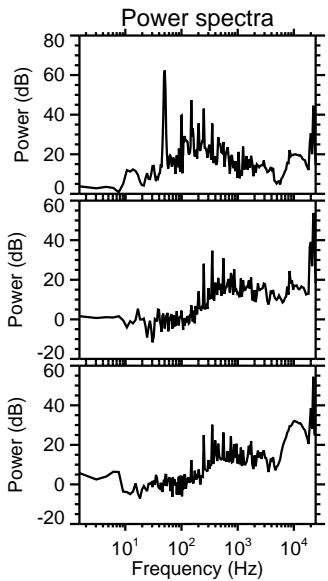
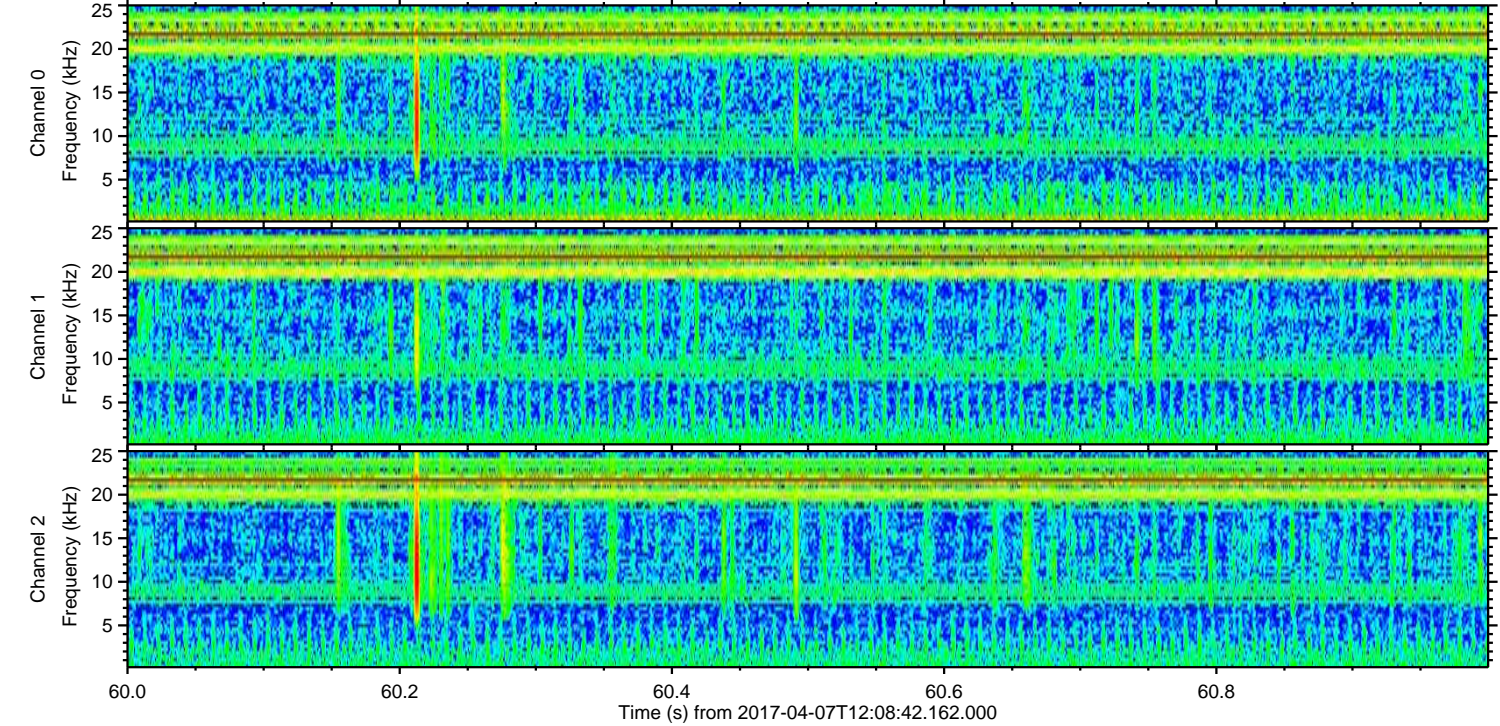
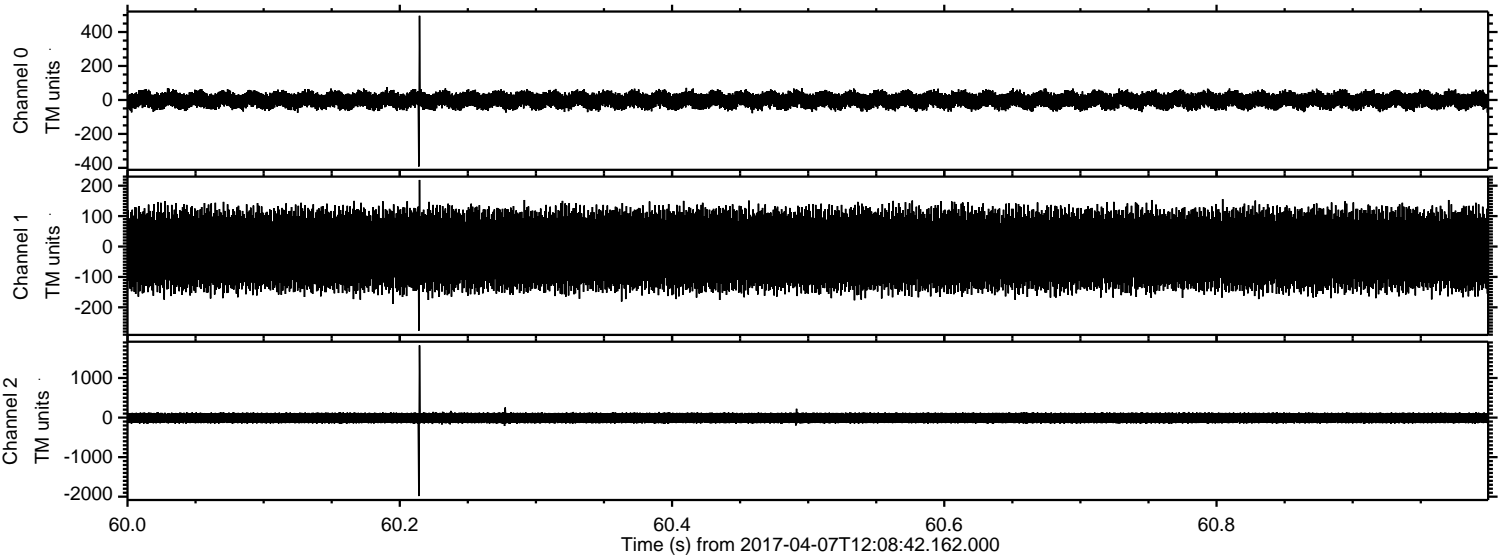


Processed Fri Apr 7 14:17:07 2017 by ELM ver.2012-10-06 from 001\_\_elm20170407\_120841\_\_dat00.bin





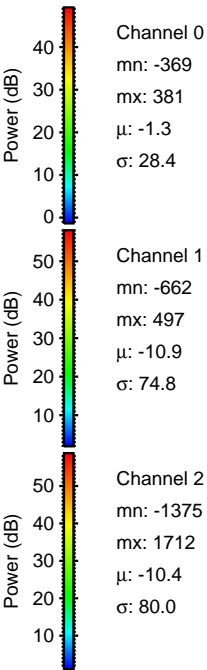
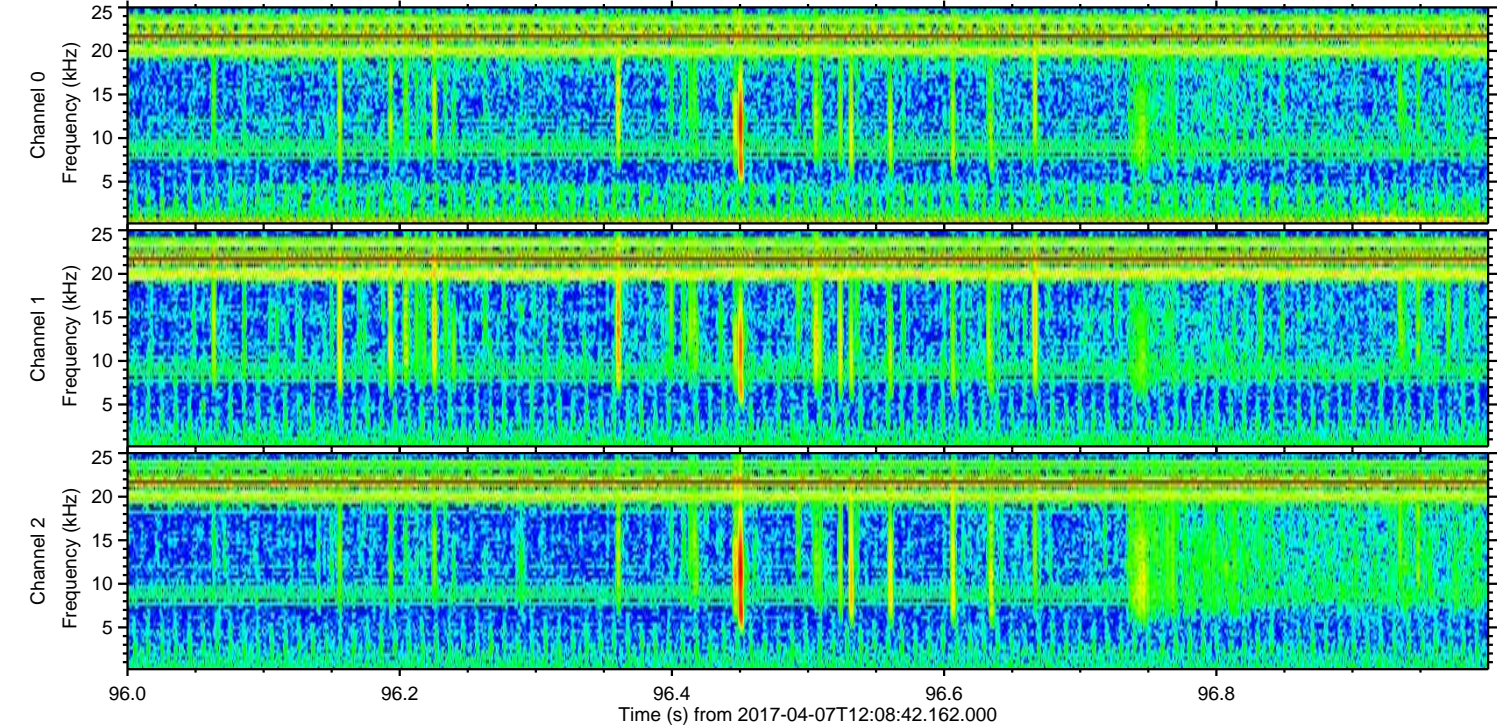
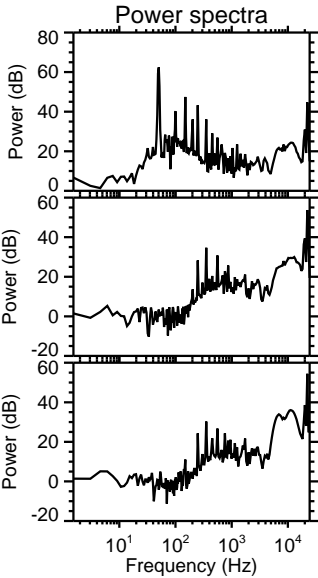
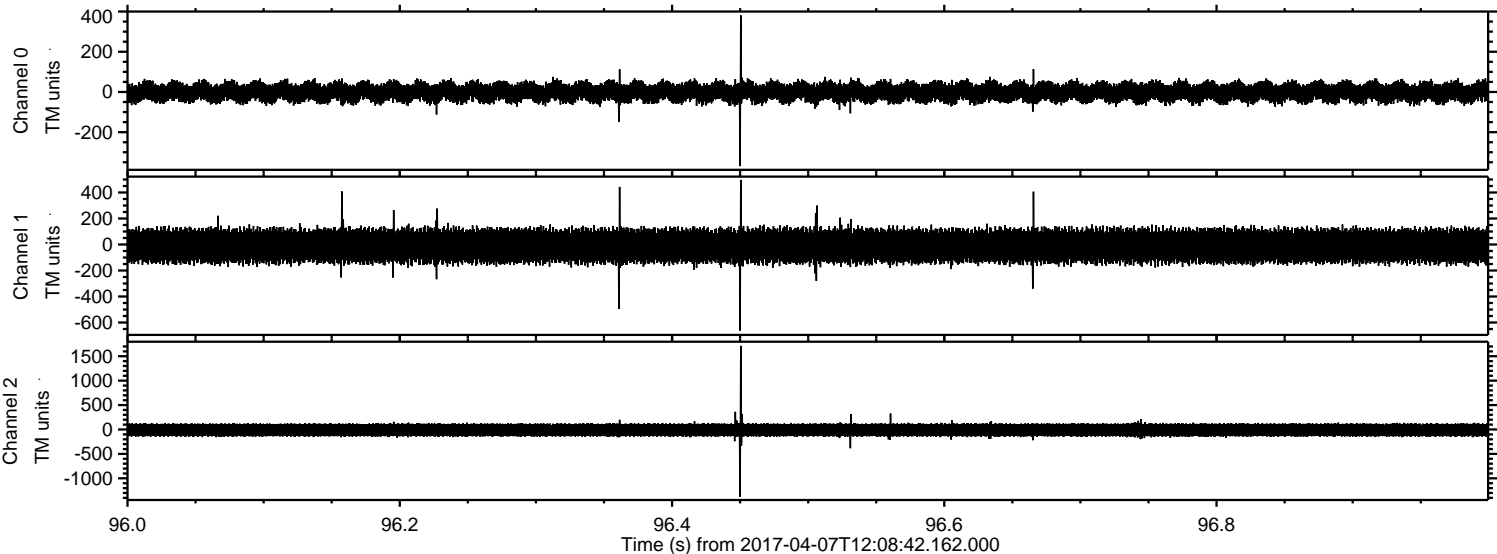
Processed Fri Apr 7 14:17:08 2017 by ELM ver.2012-10-06 from 001\_\_elm20170407\_120841\_\_dat00.bin





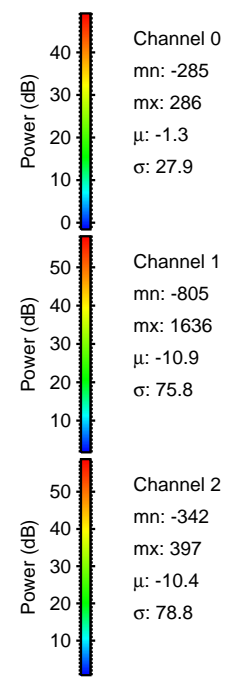
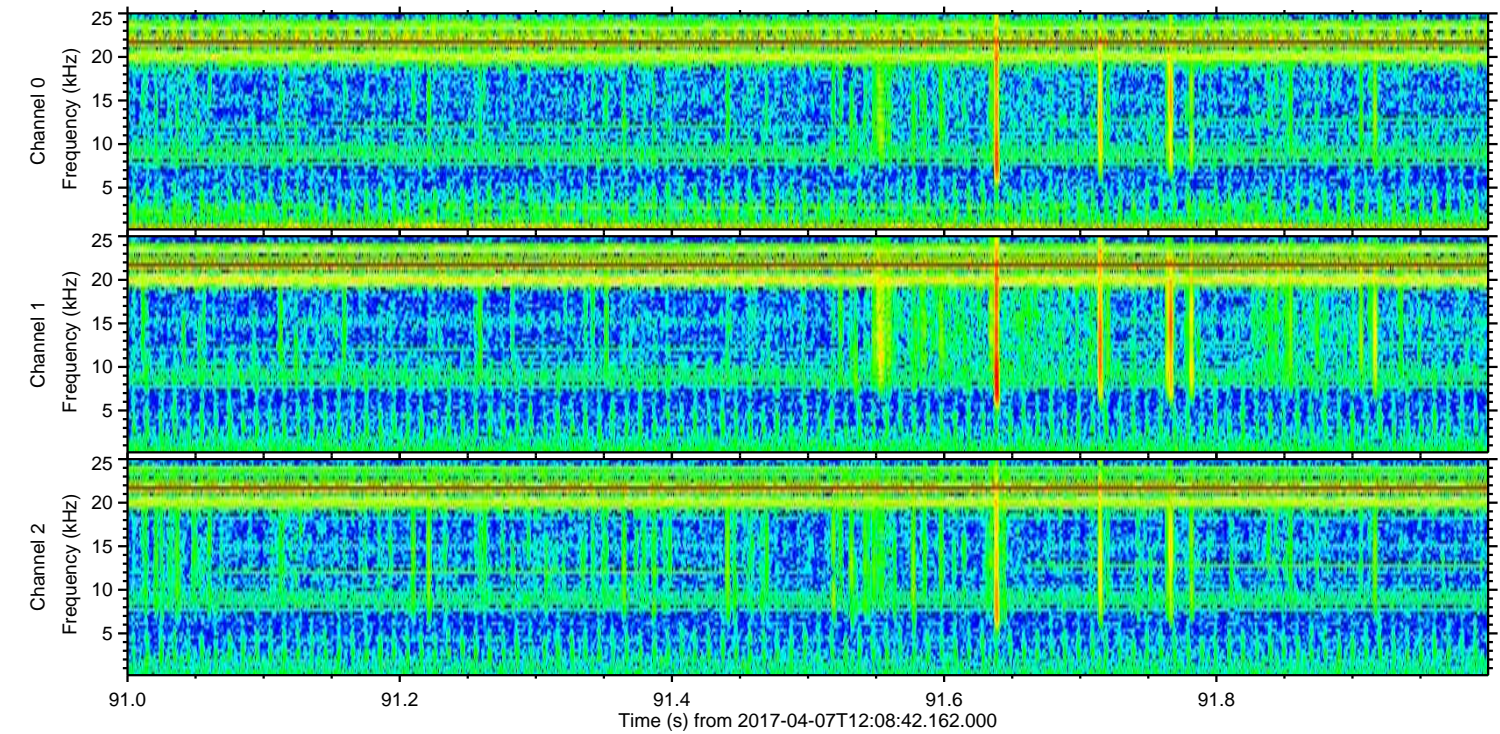
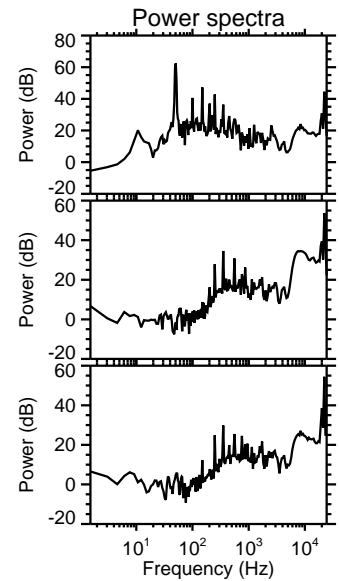
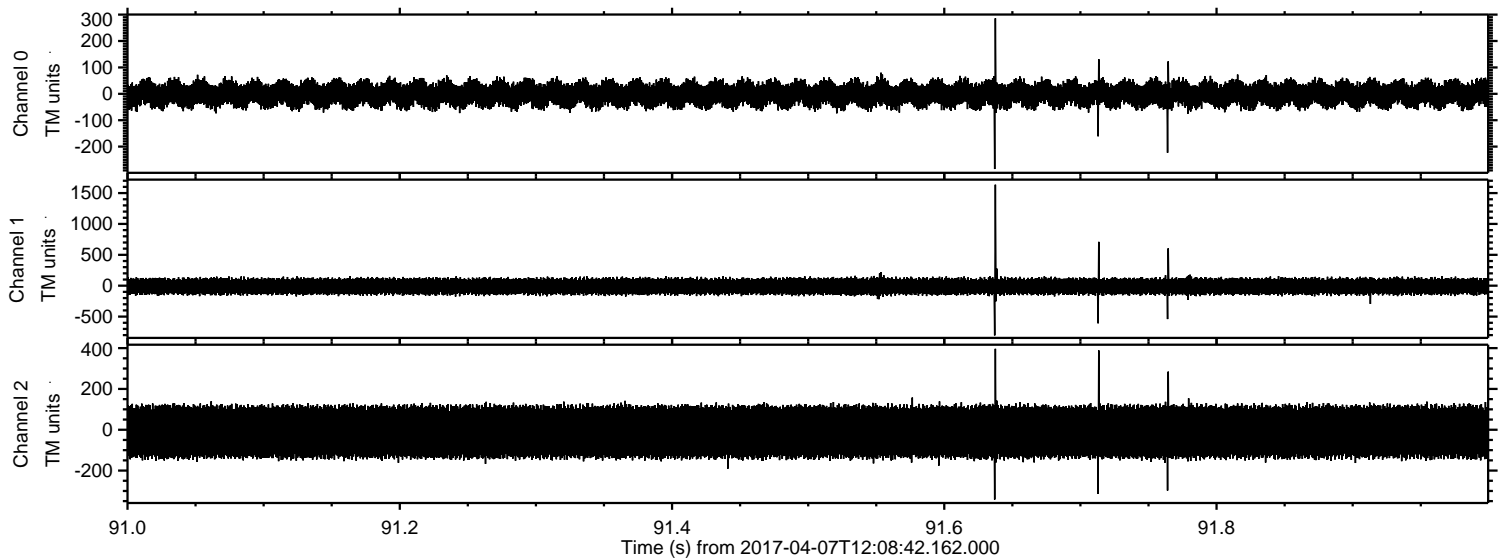
ELMAVAN 3D WAVEFORMS (Measured data sampled at 50 kHz) 51000 packets of 144 samples from 2017-04-07T12:08:42.162.000. Part 97/147

Processed Fri Apr 7 14:17:09 2017 by ELM ver.2012-10-06 from 001\_\_elm20170407\_120841\_\_dat00.bin



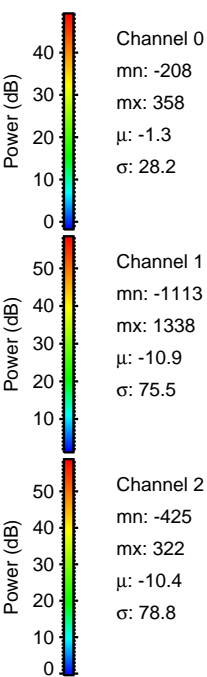
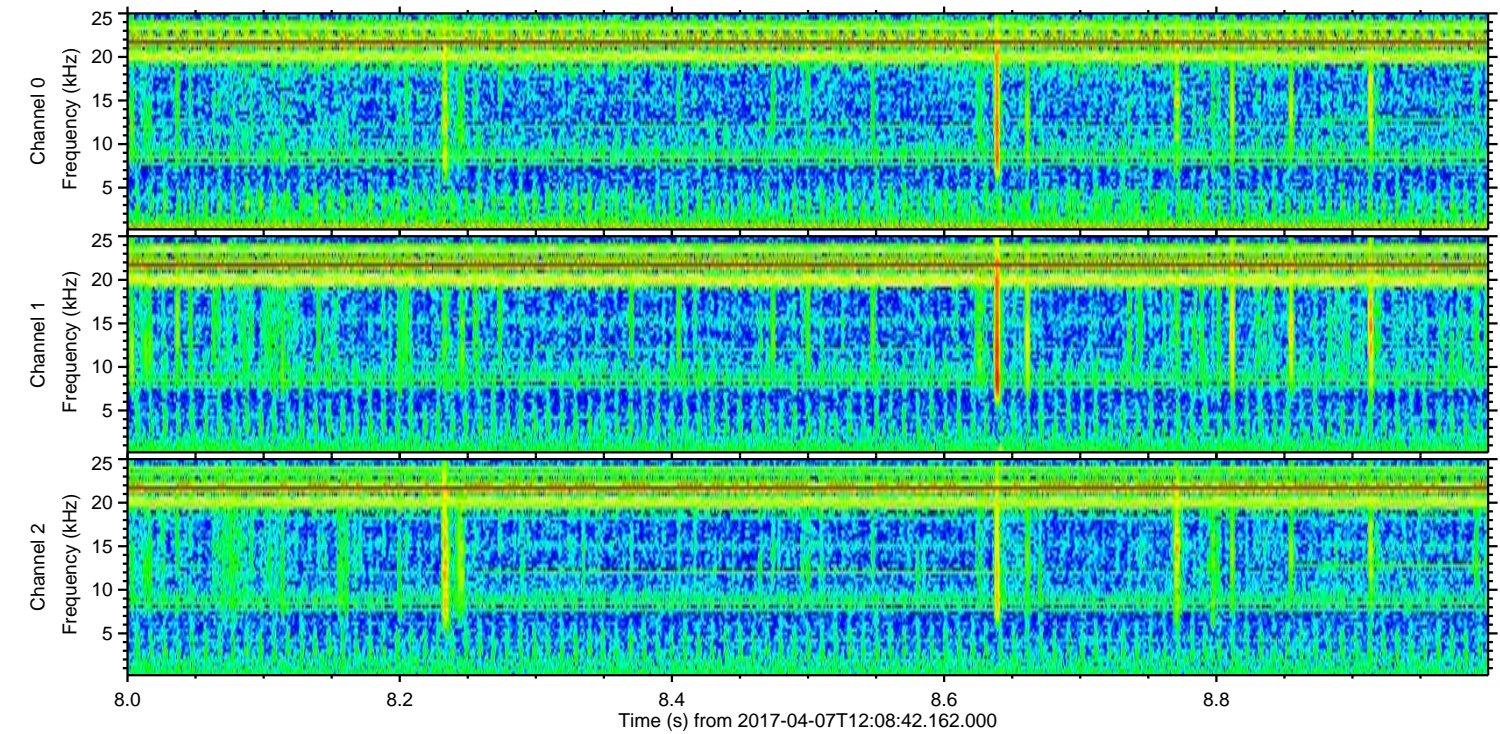
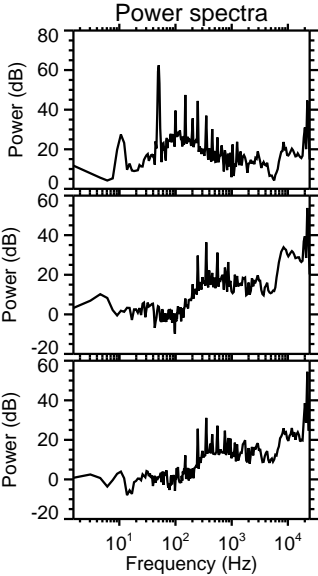
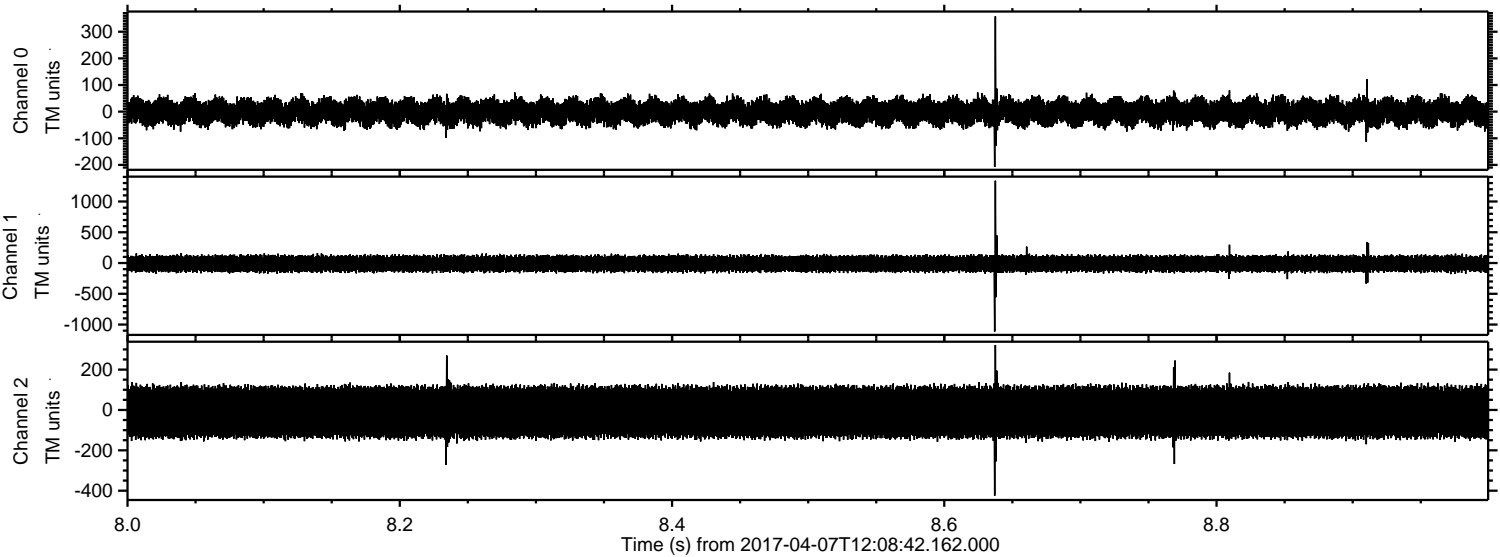


Processed Fri Apr 7 14:17:10 2017 by ELM ver.2012-10-06 from 001\_\_elm20170407\_120841\_\_dat00.bin





Processed Fri Apr 7 14:17:11 2017 by ELM ver.2012-10-06 from 001\_\_elm20170407\_120841\_\_dat00.bin





Processed Fri Apr 7 14:17:12 2017 by ELM ver.2012-10-06 from 001\_\_elm20170407\_120841\_\_dat00.bin

