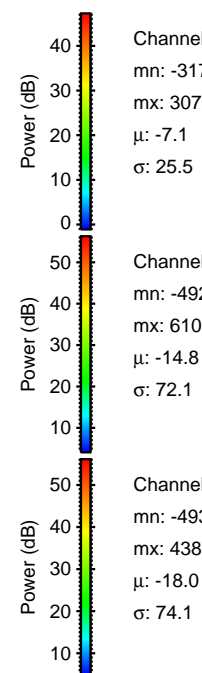
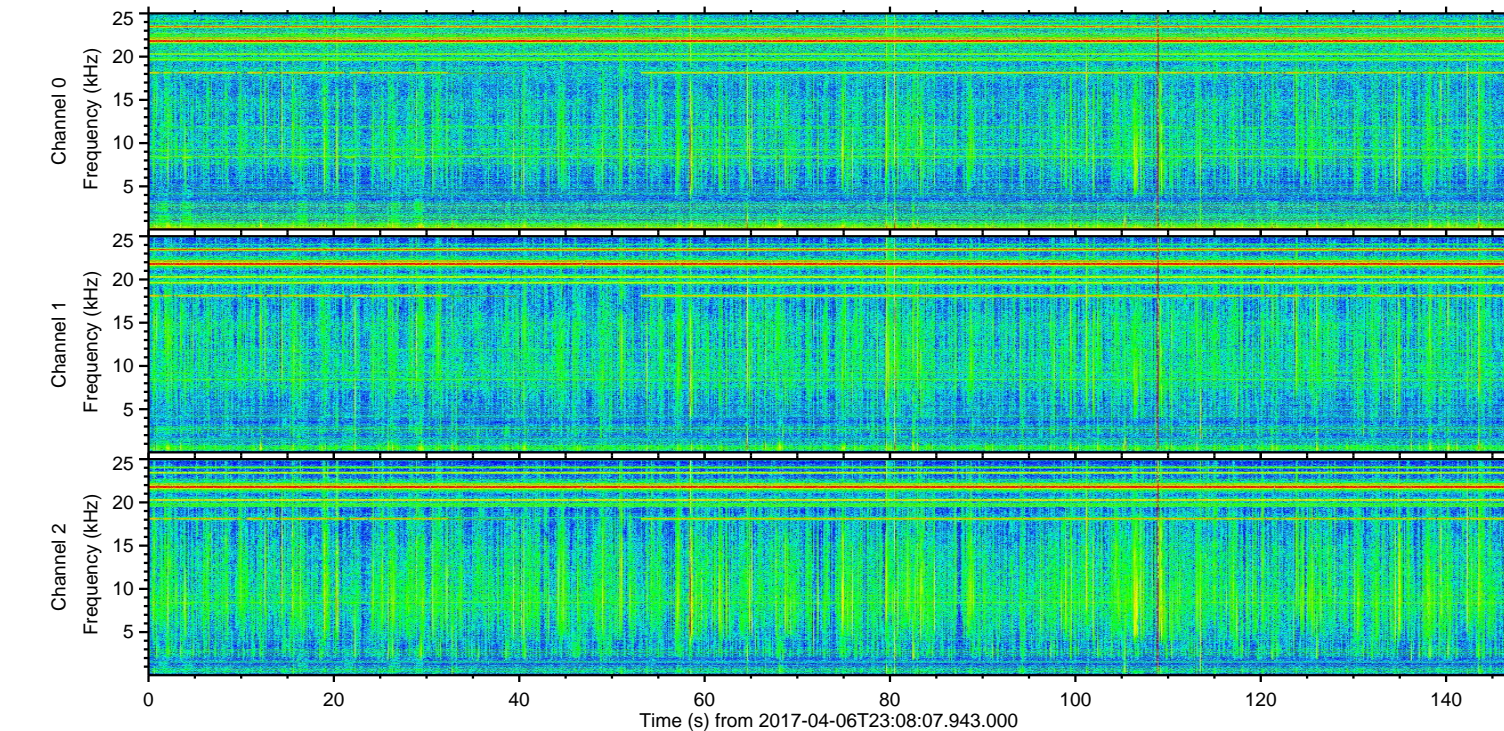
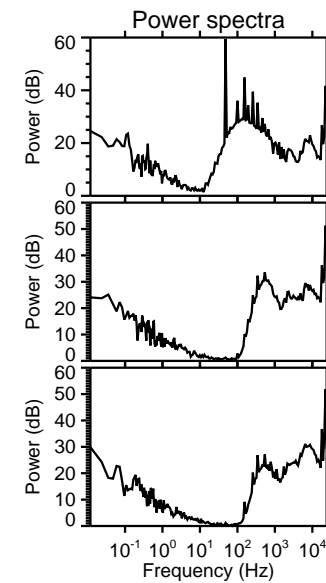
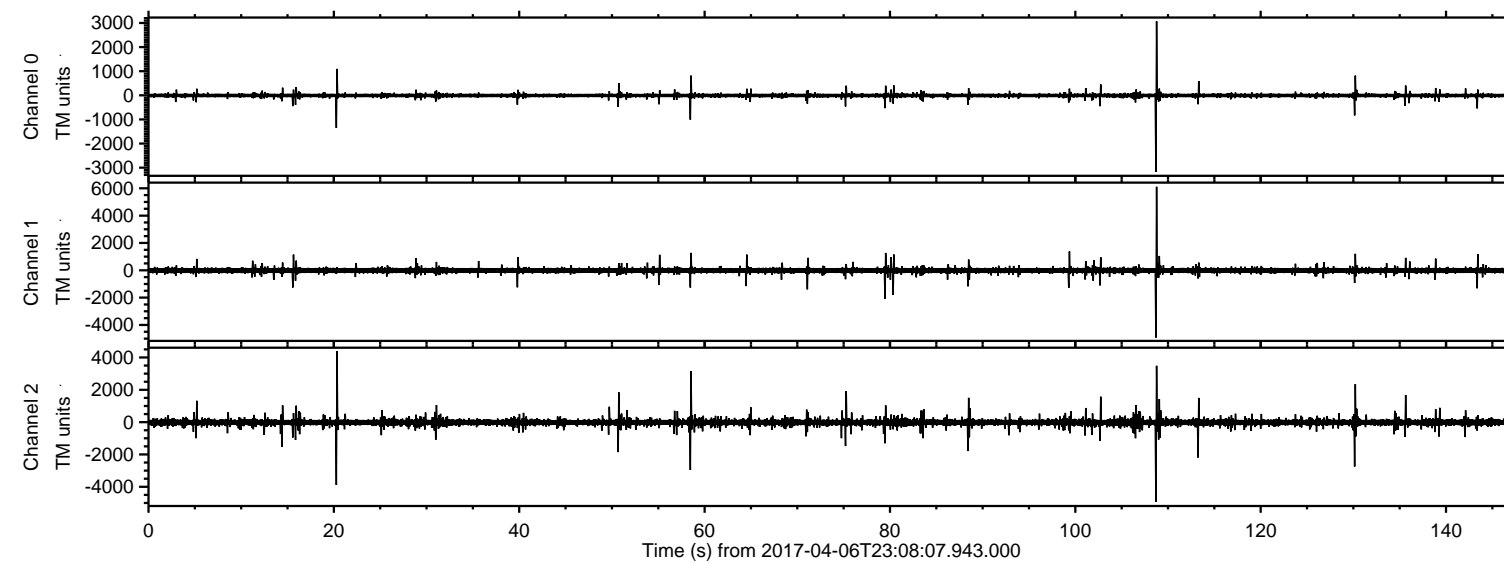


# ELMAVAN 3D WAVEFORMS (Measured data sampled at 50 kHz) 51000 packets of 144 samples from 2017-04-06T23:08:07.943.000.

Processed Fri Apr 7 01:16:21 2017 by ELM ver.2012-10-06 from 001\_\_elm20170406\_230806\_\_dat00.bin



Channel 0  
mn: -3179  
mx: 3073  
 $\mu$ : -7.1  
 $\sigma$ : 25.5

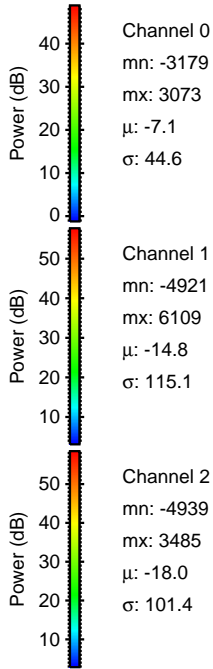
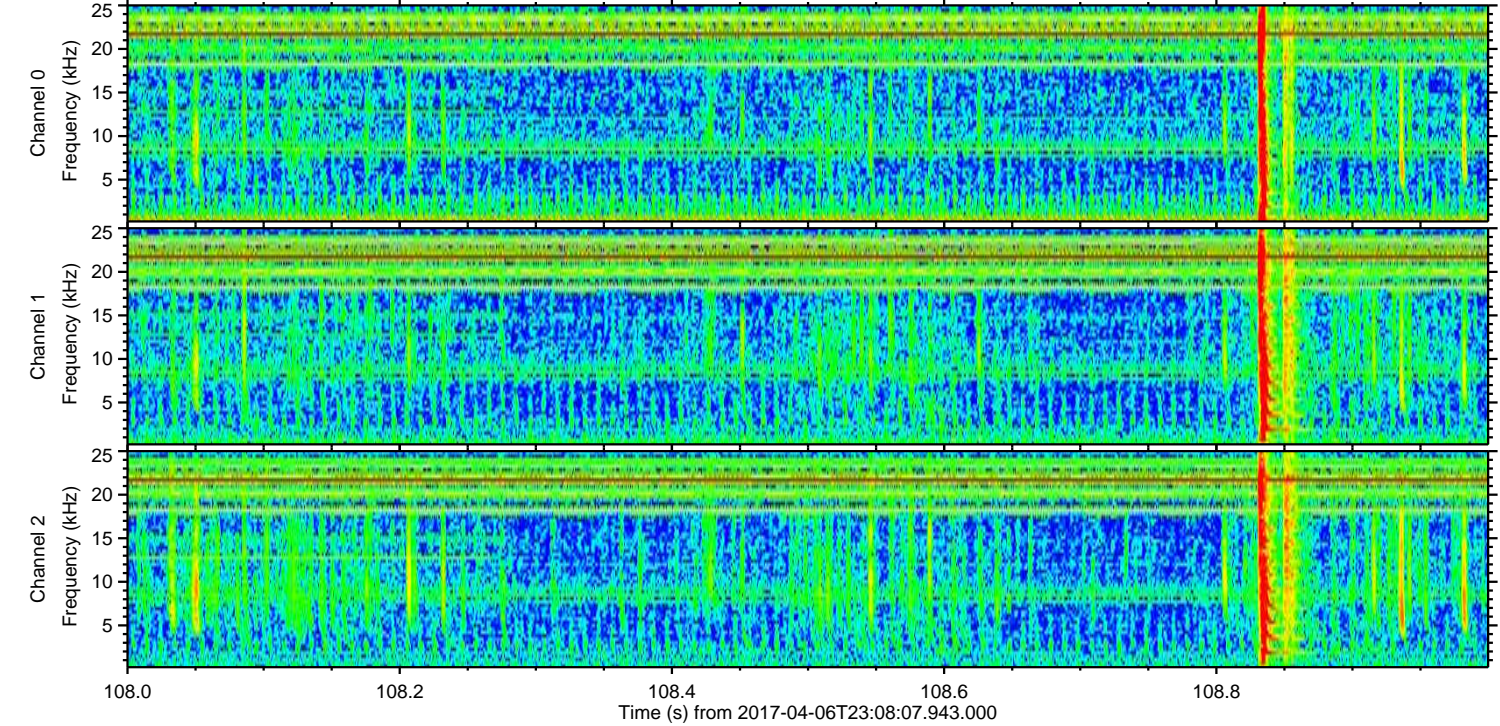
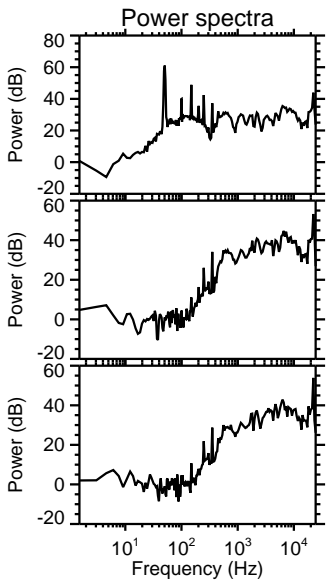
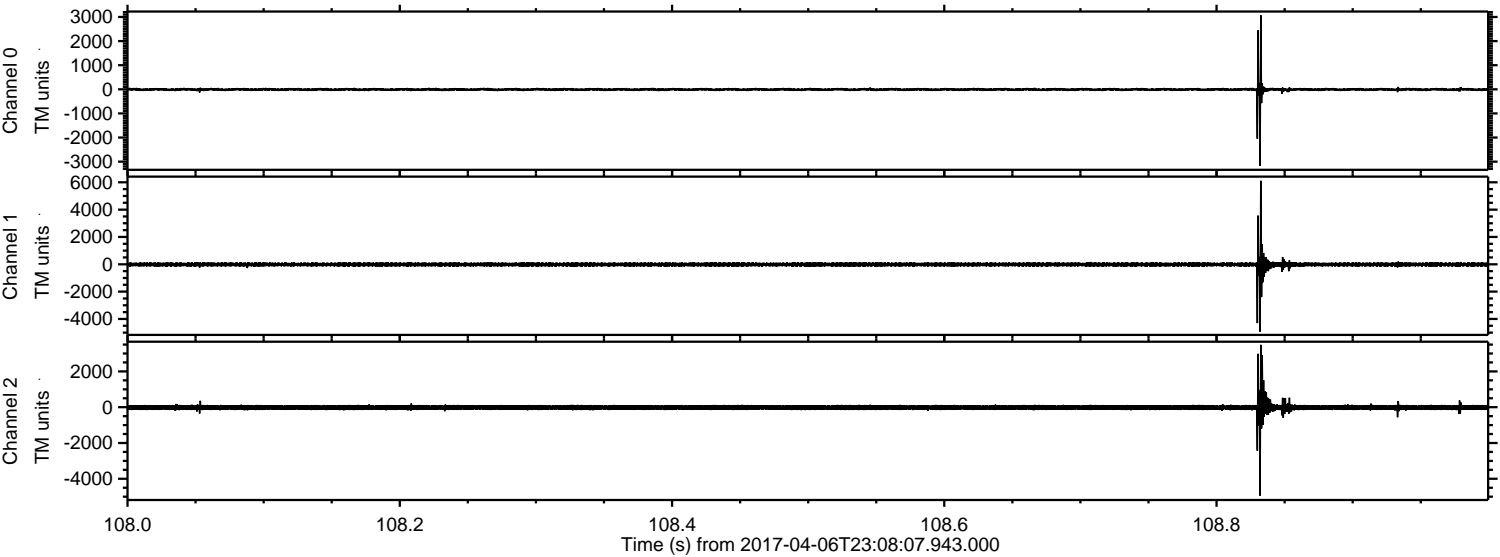
Channel 1  
mn: -4921  
mx: 6109  
 $\mu$ : -14.8  
 $\sigma$ : 72.1

Channel 2  
mn: -4939  
mx: 4383  
 $\mu$ : -18.0  
 $\sigma$ : 74.1



ELMAVAN 3D WAVEFORMS (Measured data sampled at 50 kHz) 51000 packets of 144 samples from 2017-04-06T23:08:07.943.000. Part 109/147

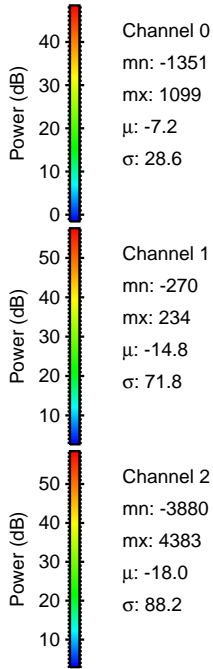
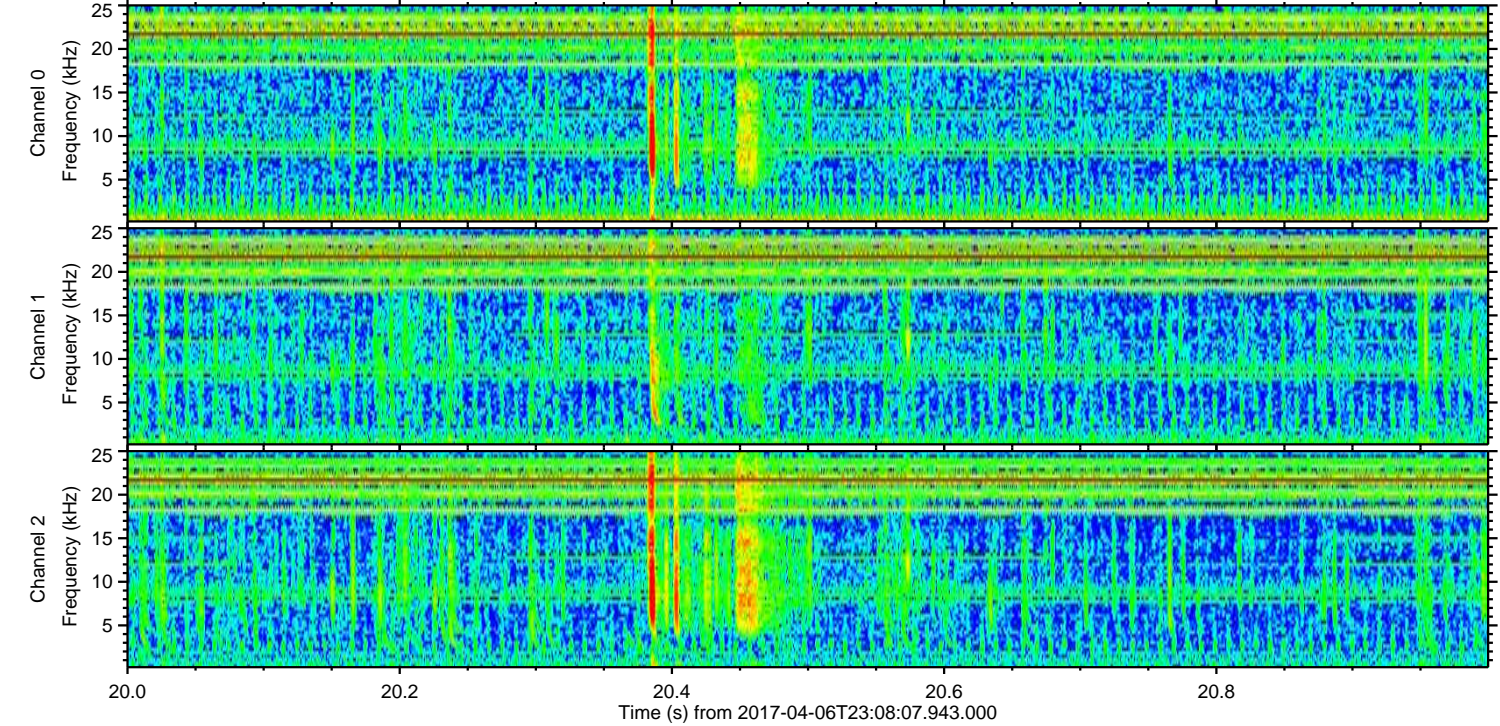
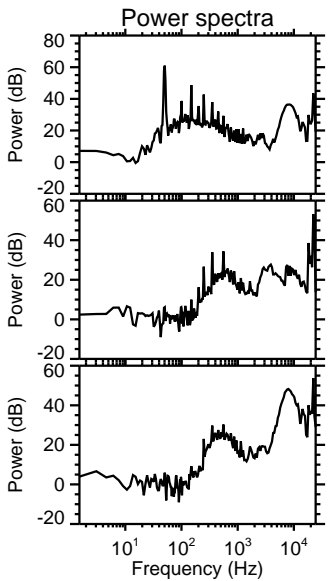
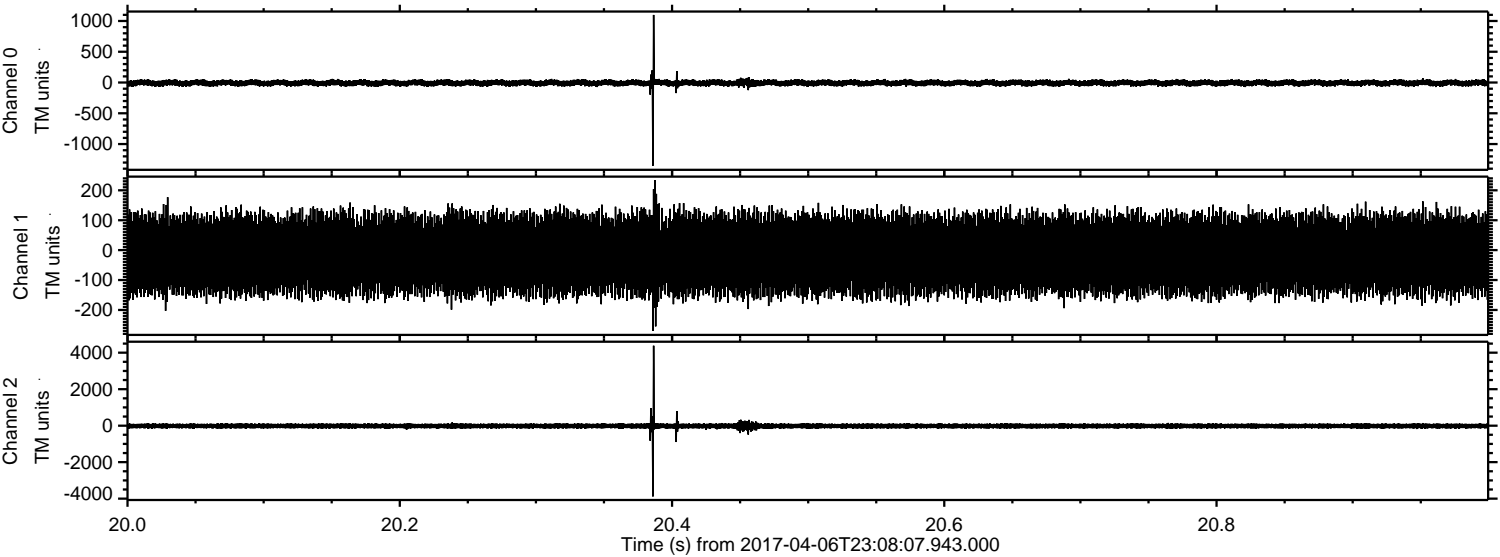
Processed Fri Apr 7 01:16:37 2017 by ELM ver.2012-10-06 from 001\_\_elm20170406\_230806\_\_dat00.bin





ELMAVAN 3D WAVEFORMS (Measured data sampled at 50 kHz) 51000 packets of 144 samples from 2017-04-06T23:08:07.943.000. Part 21/147

Processed Fri Apr 7 01:16:38 2017 by ELM ver.2012-10-06 from 001\_\_elm20170406\_230806\_\_dat00.bin



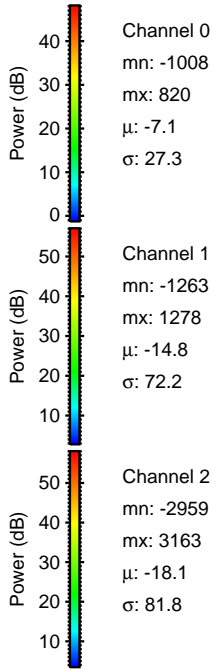
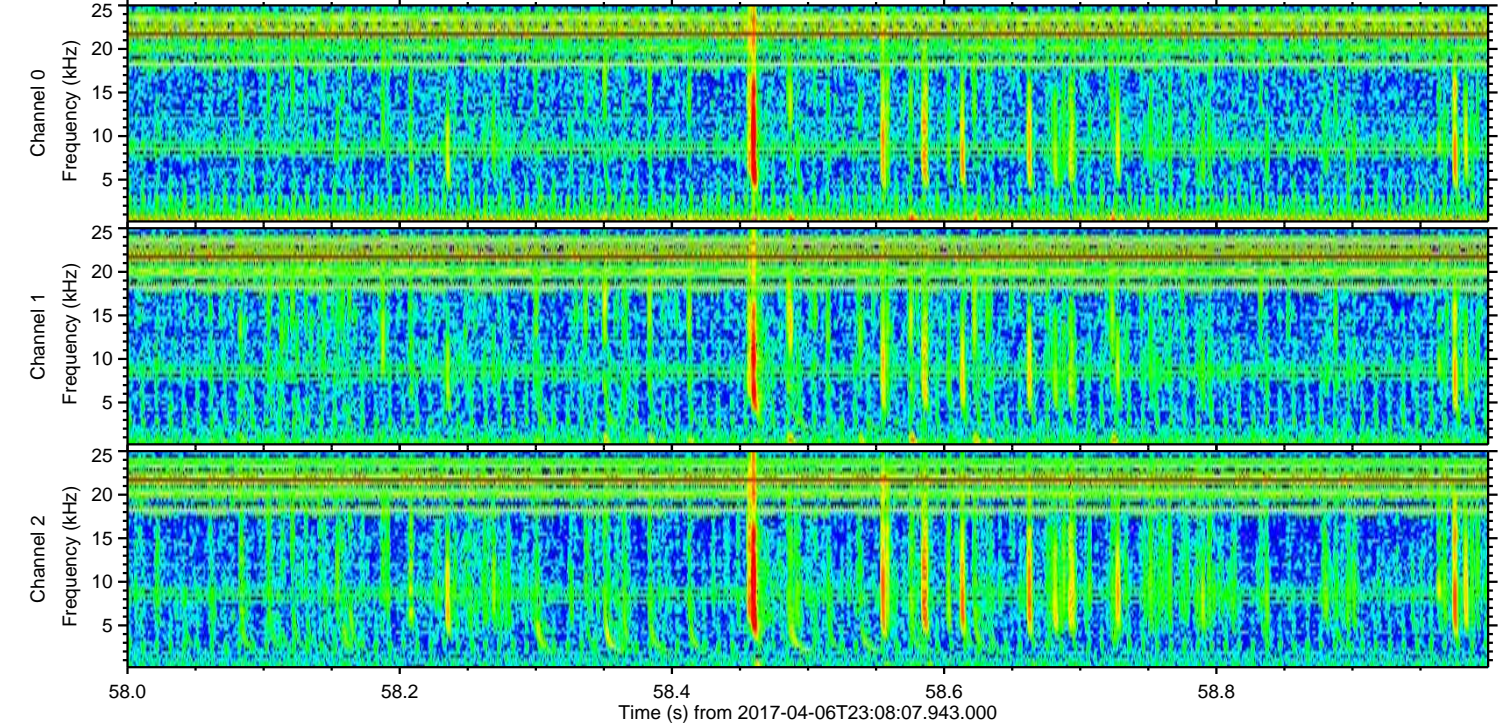
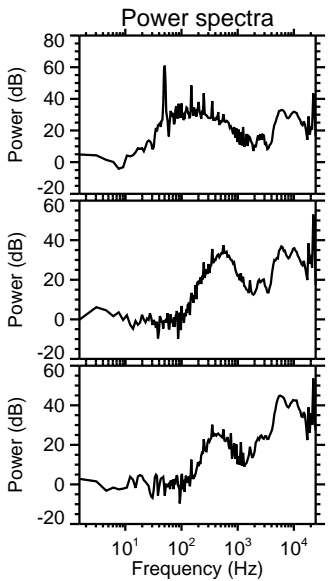
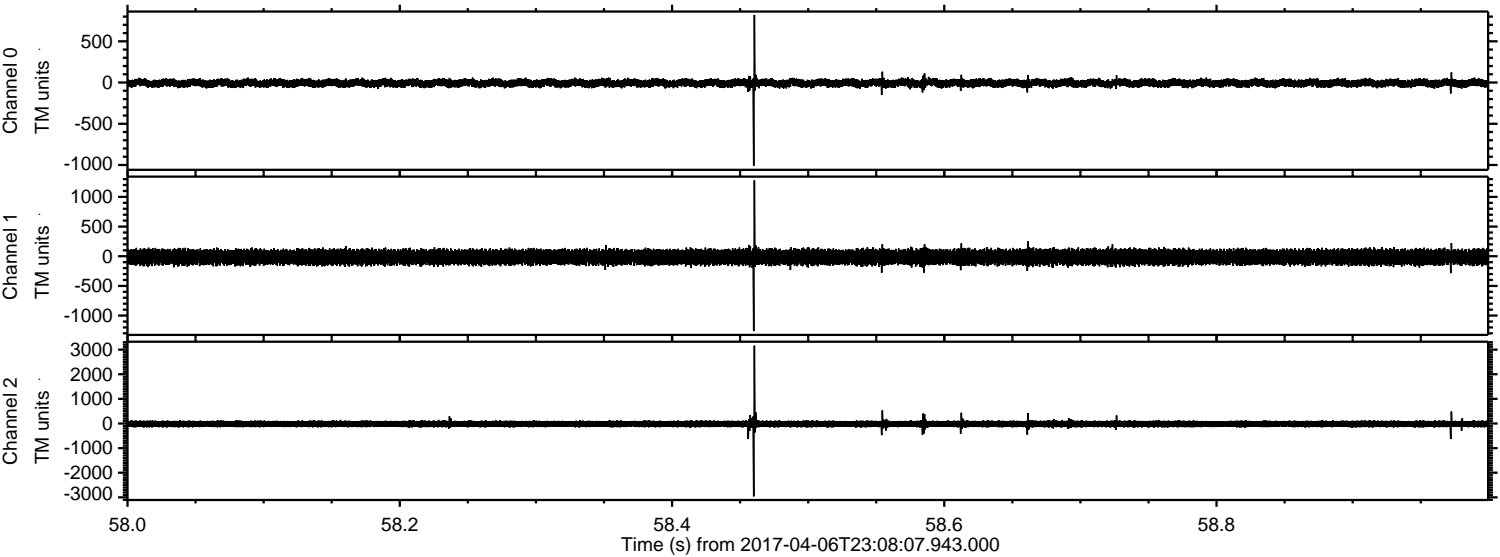
Channel 0  
mn: -1351  
mx: 1099  
 $\mu$ : -7.2  
 $\sigma$ : 28.6

Channel 1  
mn: -270  
mx: 234  
 $\mu$ : -14.8  
 $\sigma$ : 71.8

Channel 2  
mn: -3880  
mx: 4383  
 $\mu$ : -18.0  
 $\sigma$ : 88.2

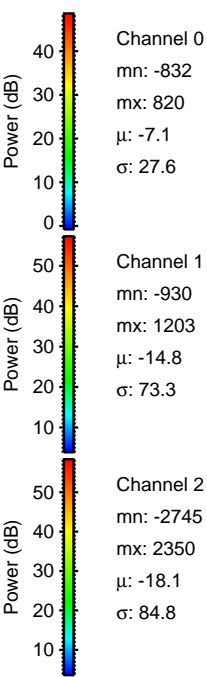
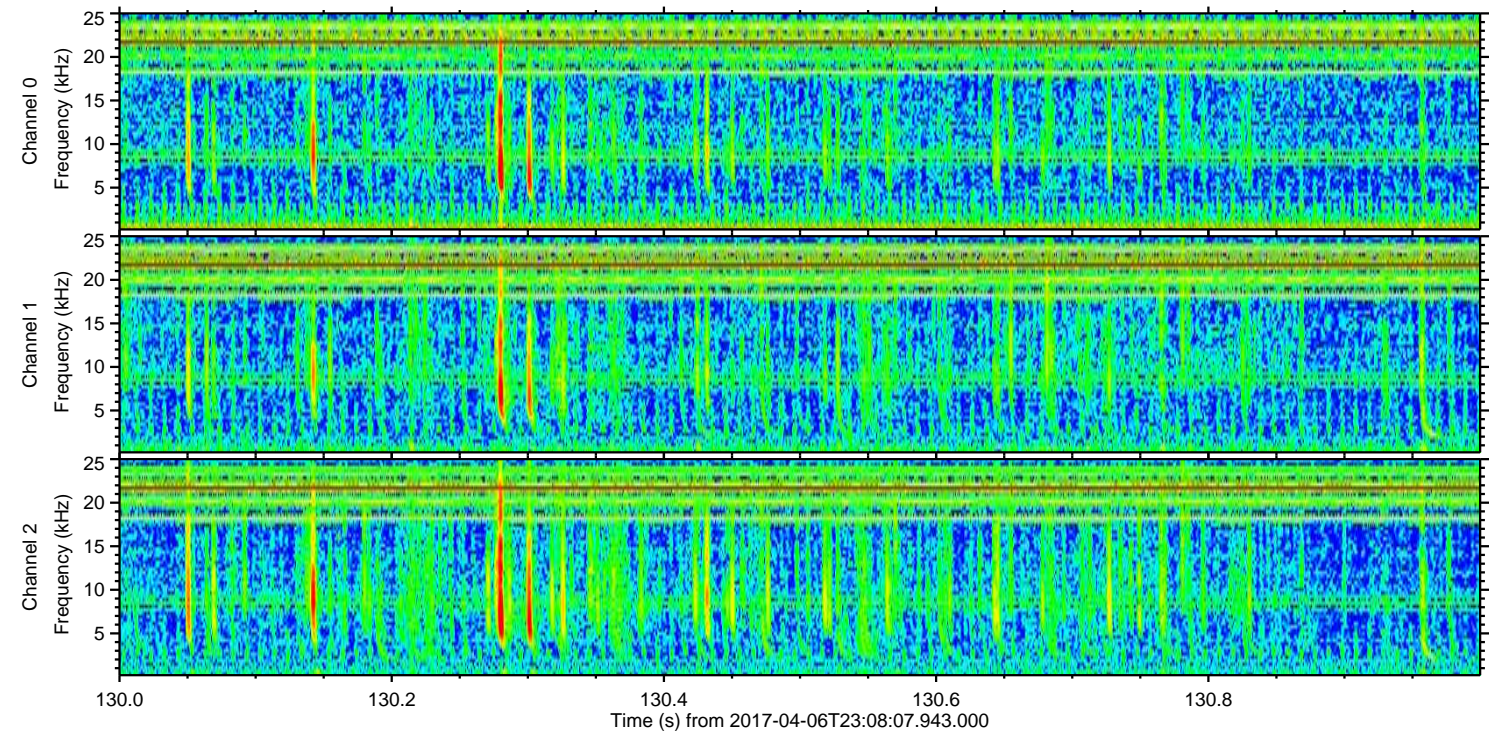
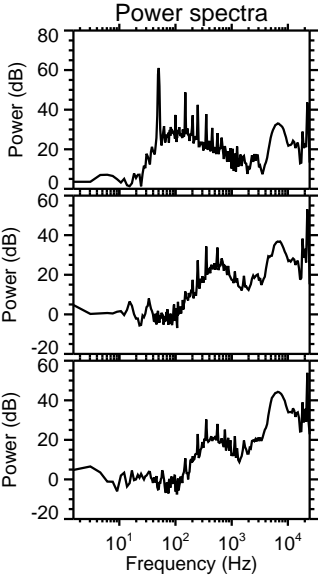
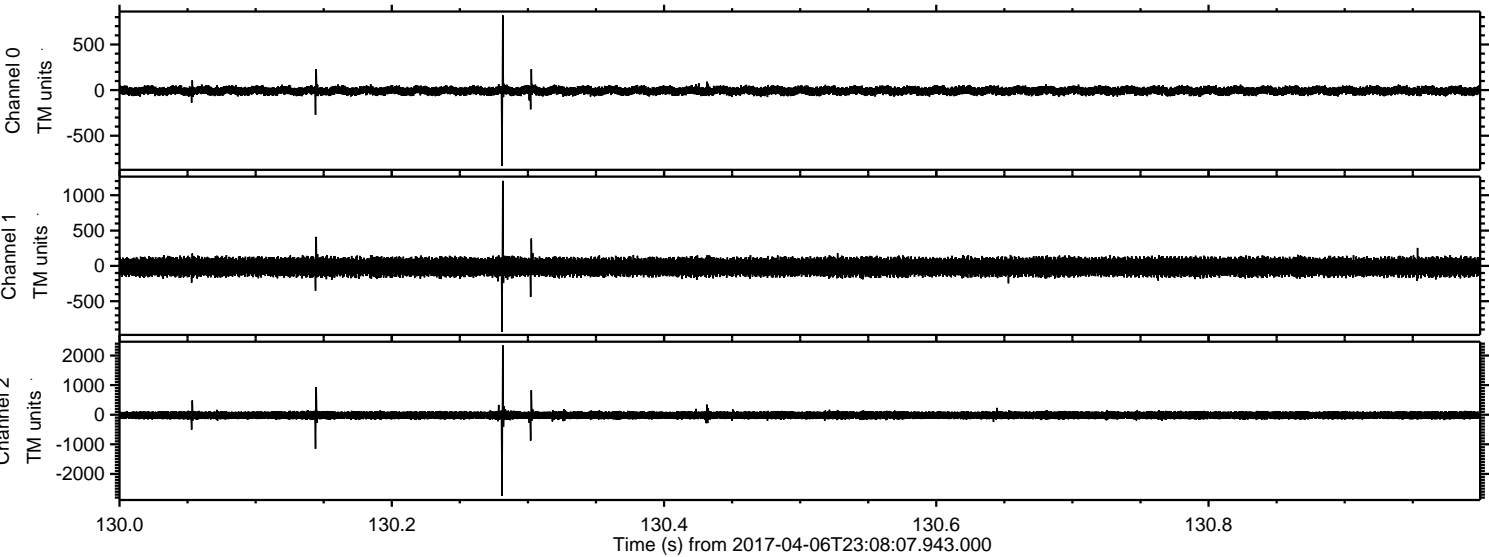


Processed Fri Apr 7 01:16:39 2017 by ELM ver.2012-10-06 from 001\_\_elm20170406\_230806\_\_dat00.bin





Processed Fri Apr 7 01:16:40 2017 by ELM ver.2012-10-06 from 001\_\_elm20170406\_230806\_\_dat00.bin



Channel 0  
mn: -832  
mx: 820  
 $\mu$ : -7.1  
 $\sigma$ : 27.6

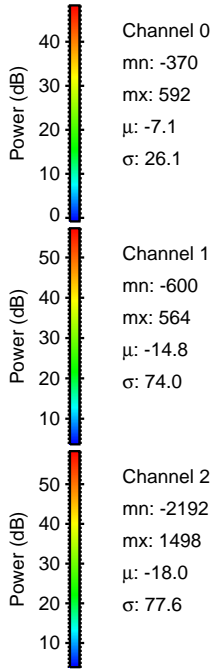
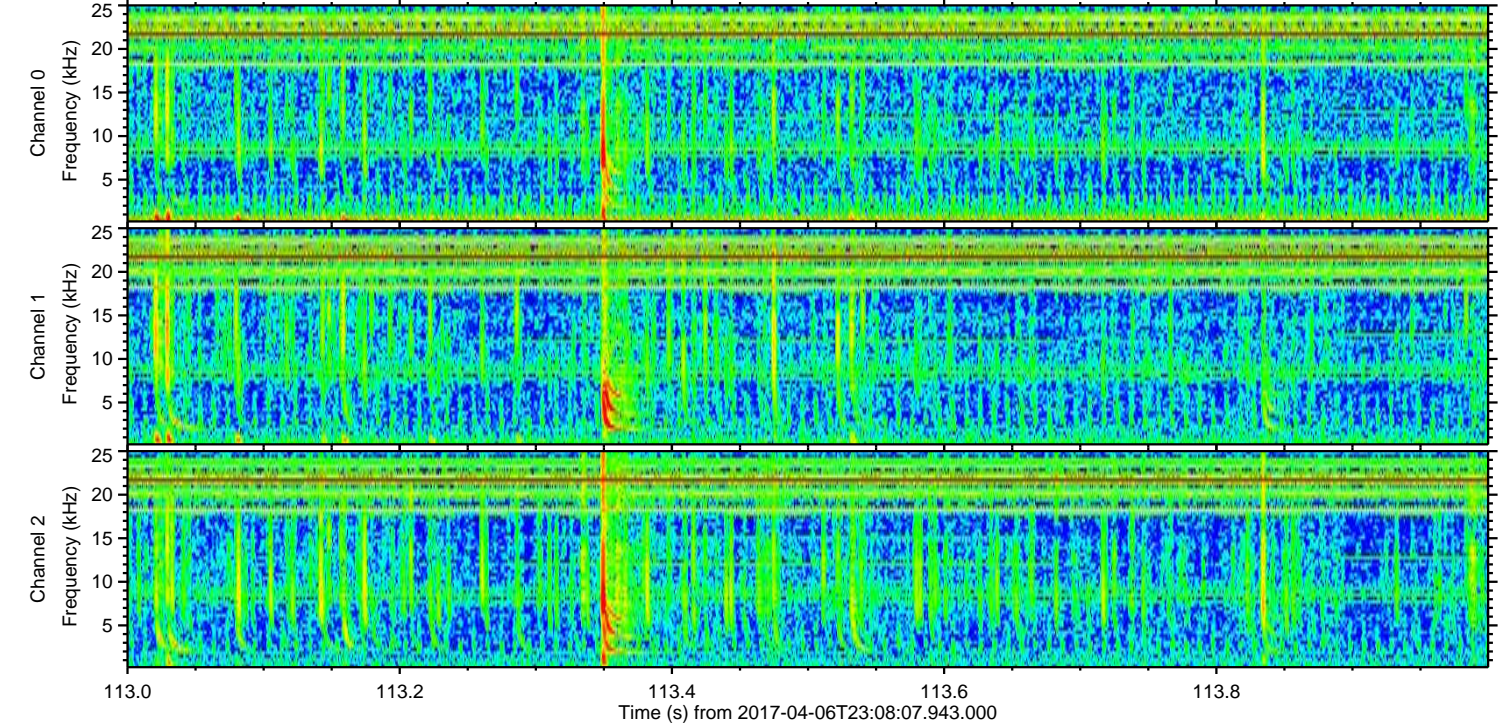
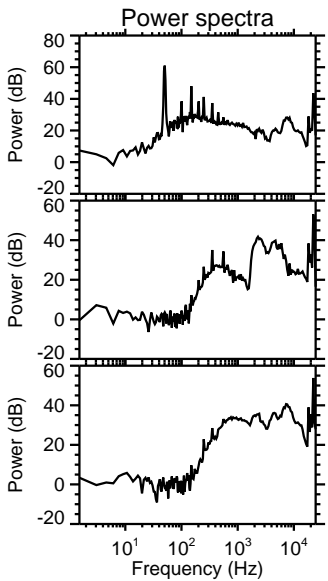
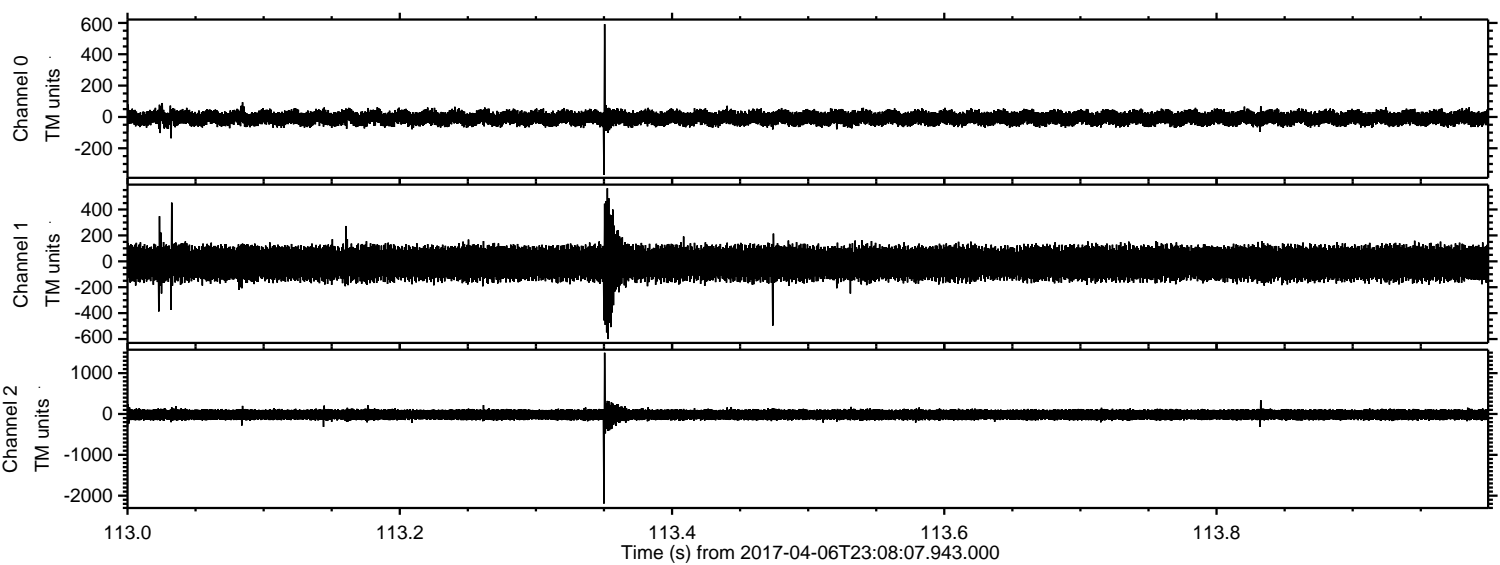
Channel 1  
mn: -930  
mx: 1203  
 $\mu$ : -14.8  
 $\sigma$ : 73.3

Channel 2  
mn: -2745  
mx: 2350  
 $\mu$ : -18.1  
 $\sigma$ : 84.8



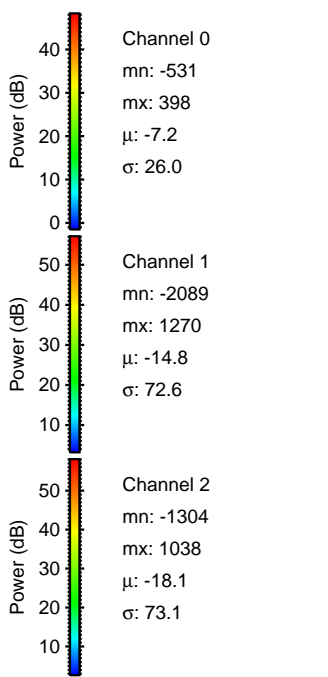
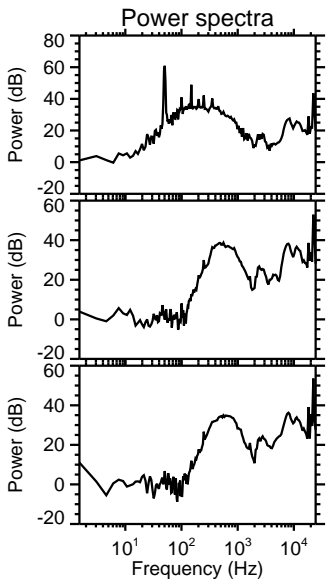
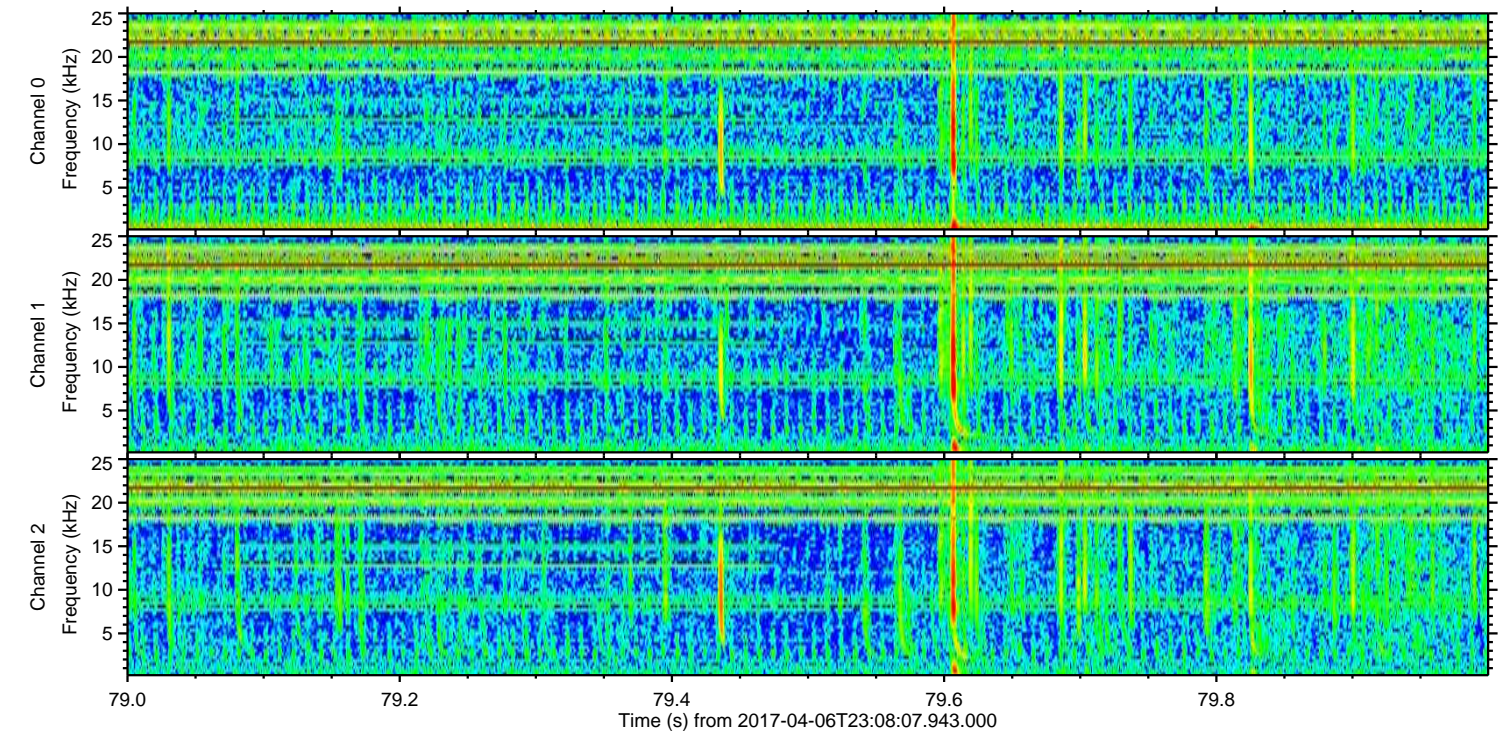
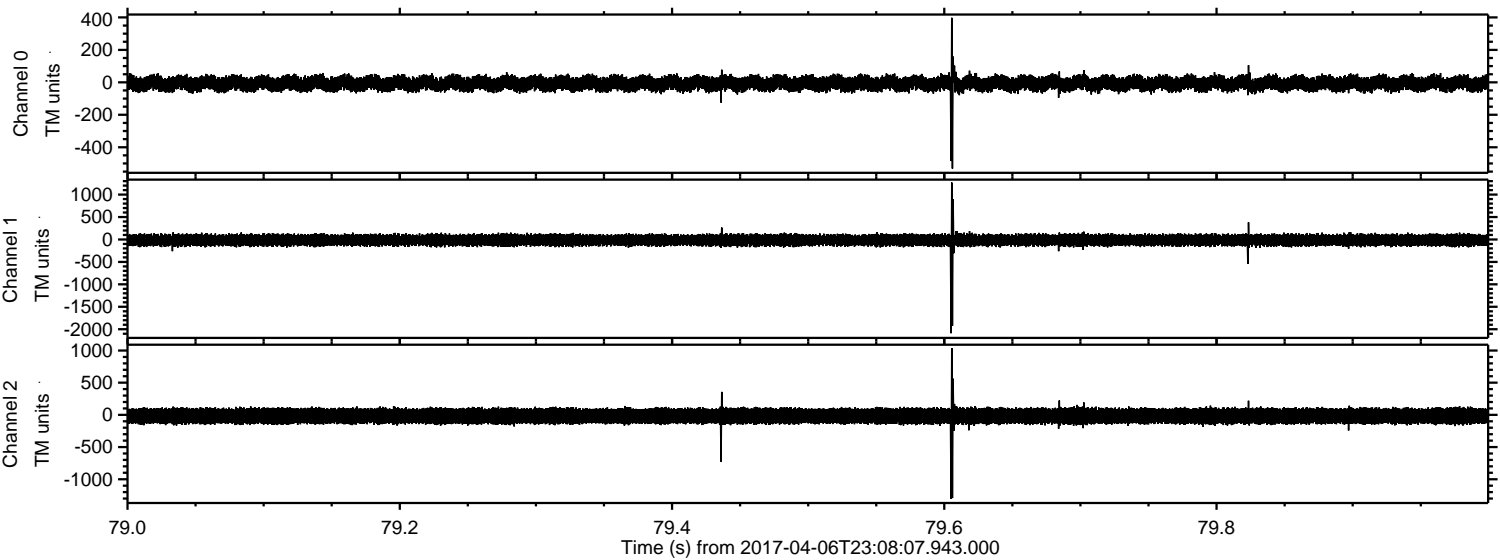
ELMAVAN 3D WAVEFORMS (Measured data sampled at 50 kHz) 51000 packets of 144 samples from 2017-04-06T23:08:07.943.000. Part 114/147

Processed Fri Apr 7 01:16:41 2017 by ELM ver.2012-10-06 from 001\_\_elm20170406\_230806\_\_dat00.bin



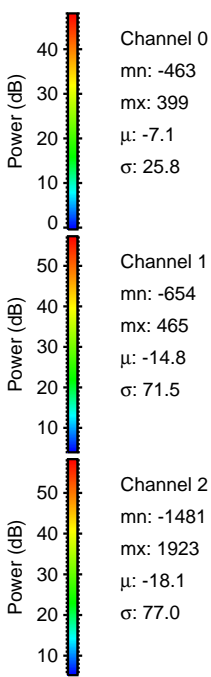
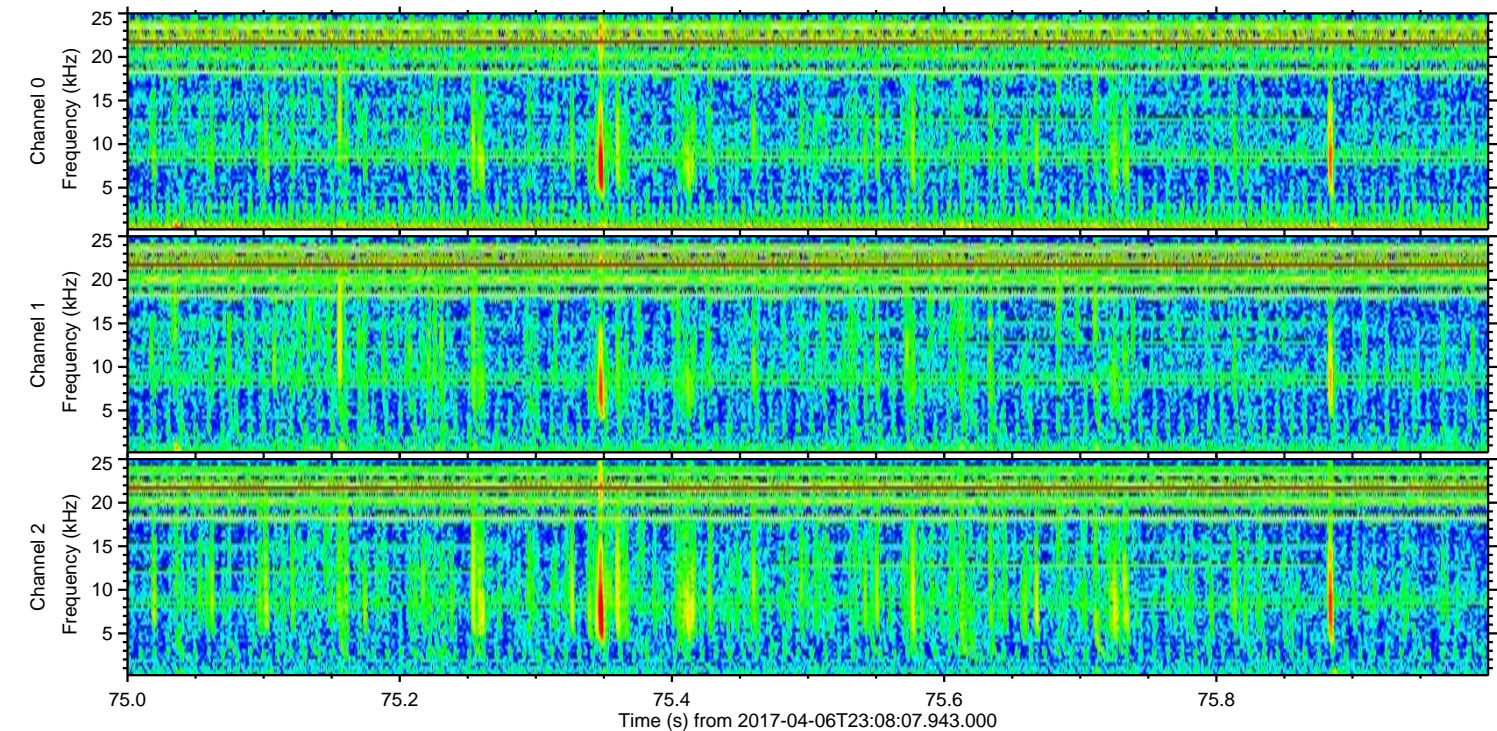
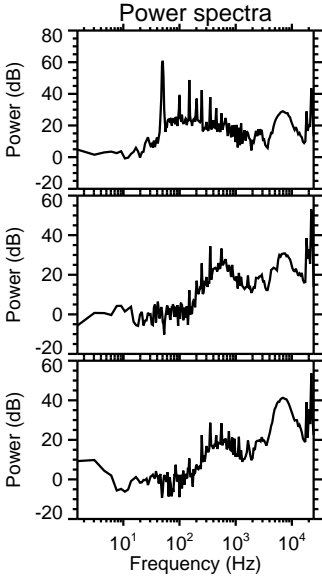
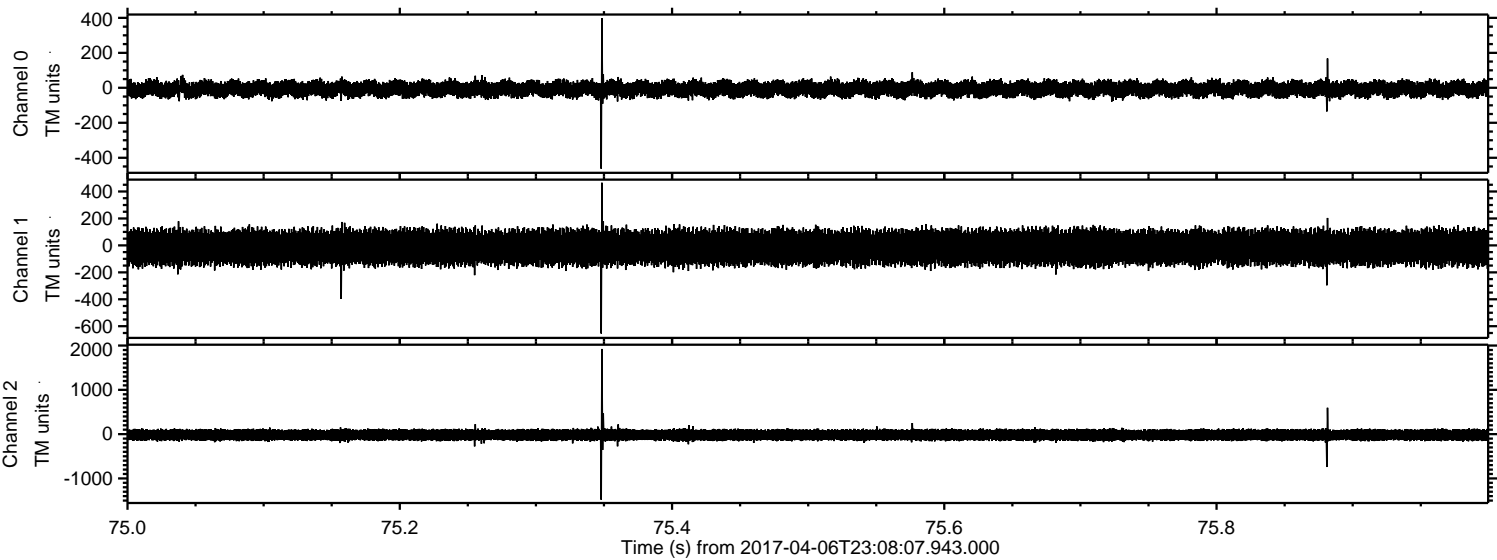


Processed Fri Apr 7 01:16:42 2017 by ELM ver.2012-10-06 from 001\_\_elm20170406\_230806\_\_dat00.bin



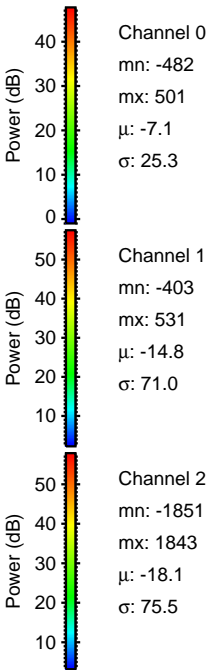
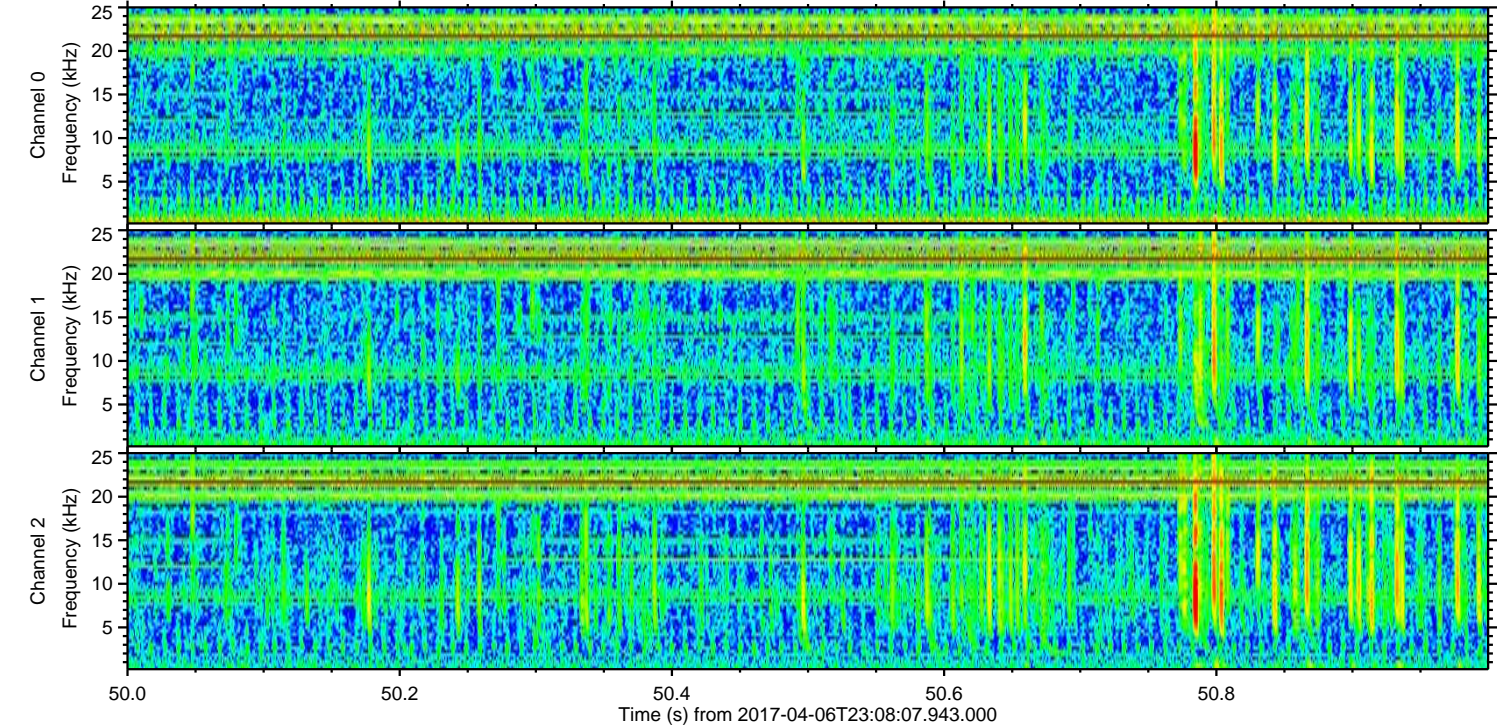
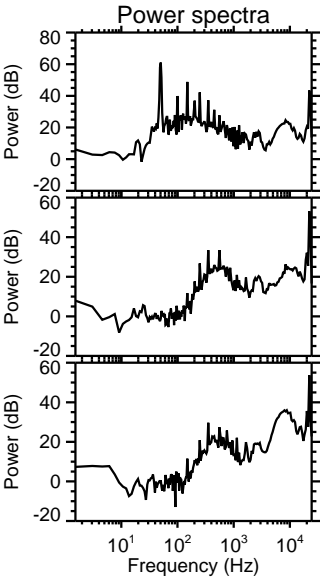
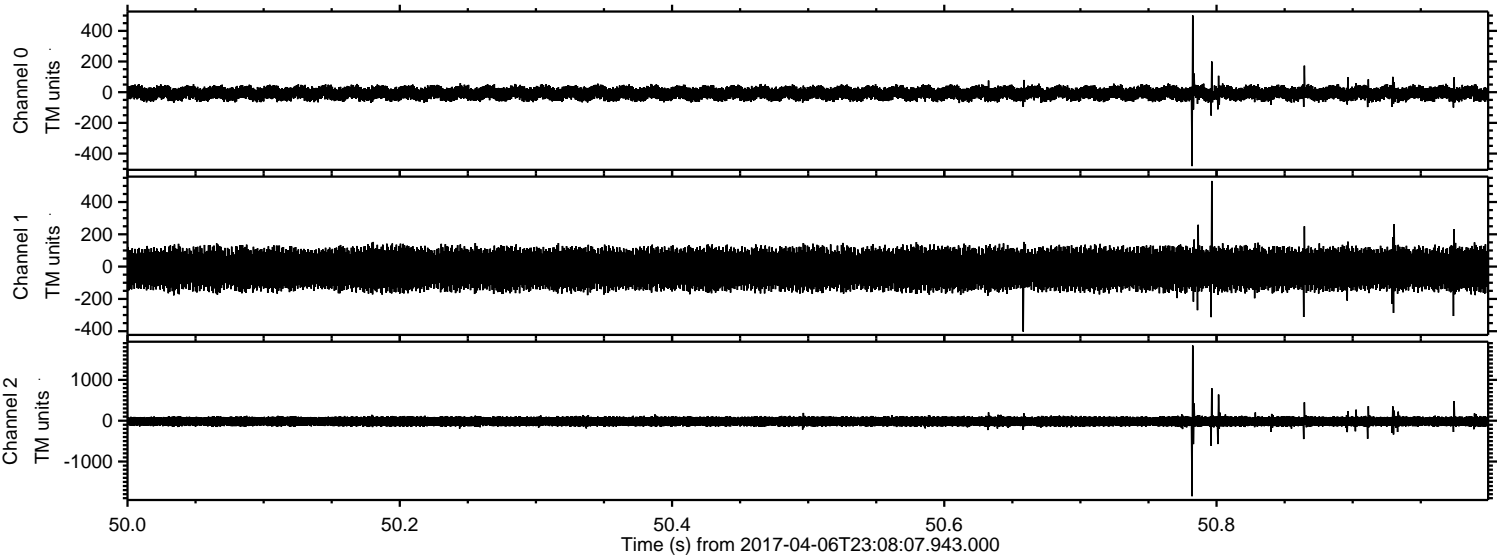


Processed Fri Apr 7 01:16:43 2017 by ELM ver.2012-10-06 from 001\_\_elm20170406\_230806\_\_dat00.bin





Processed Fri Apr 7 01:16:44 2017 by ELM ver.2012-10-06 from 001\_\_elm20170406\_230806\_\_dat00.bin





Processed Fri Apr 7 01:16:45 2017 by ELM ver.2012-10-06 from 001\_\_elm20170406\_230806\_\_dat00.bin

