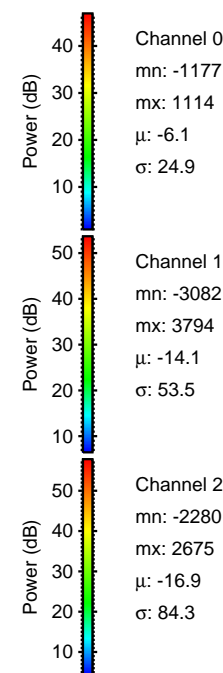
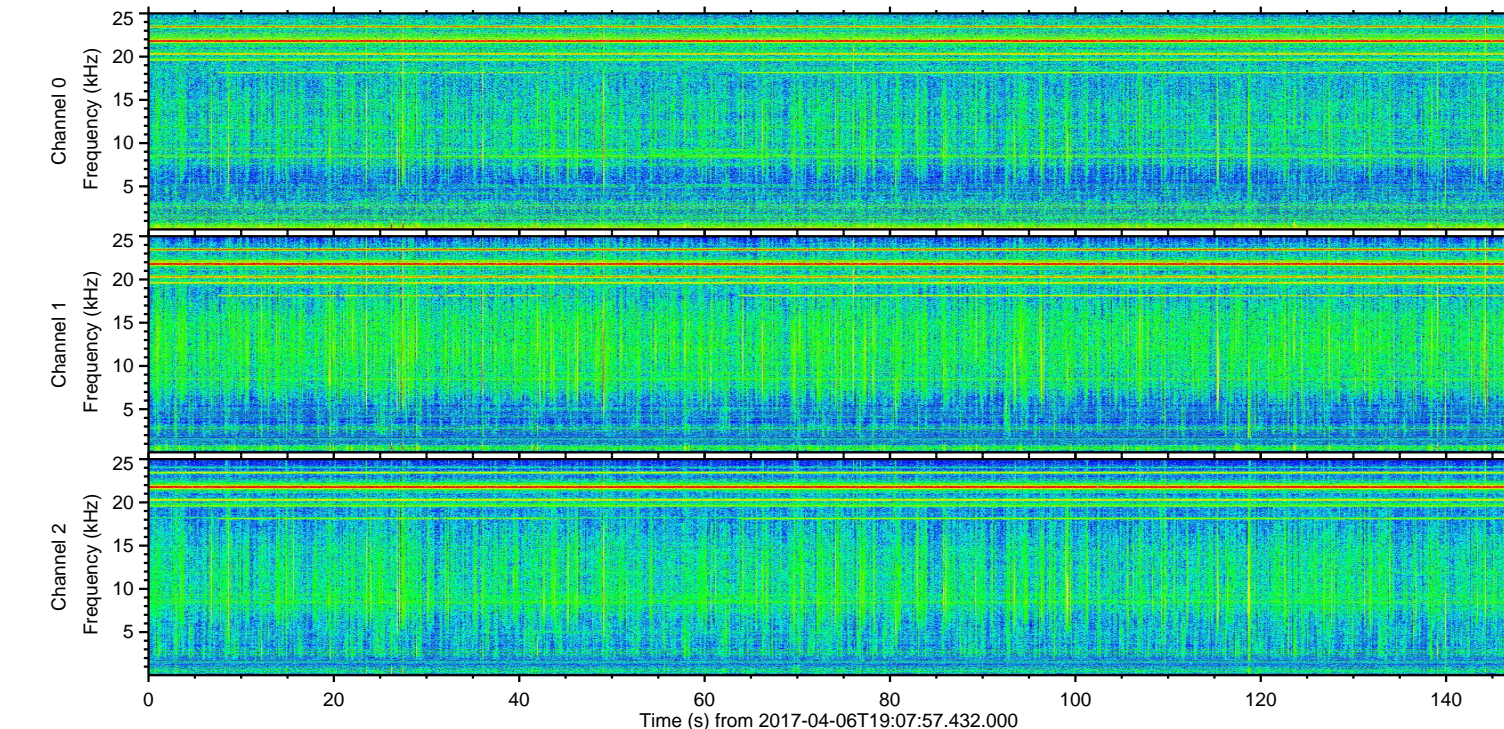
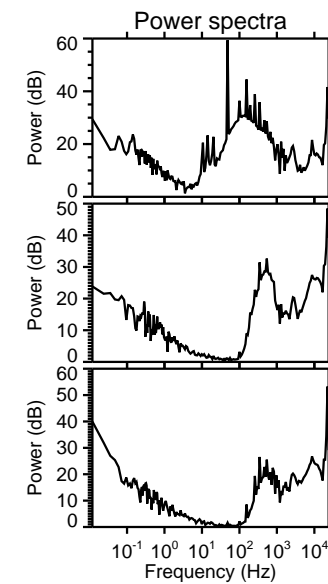
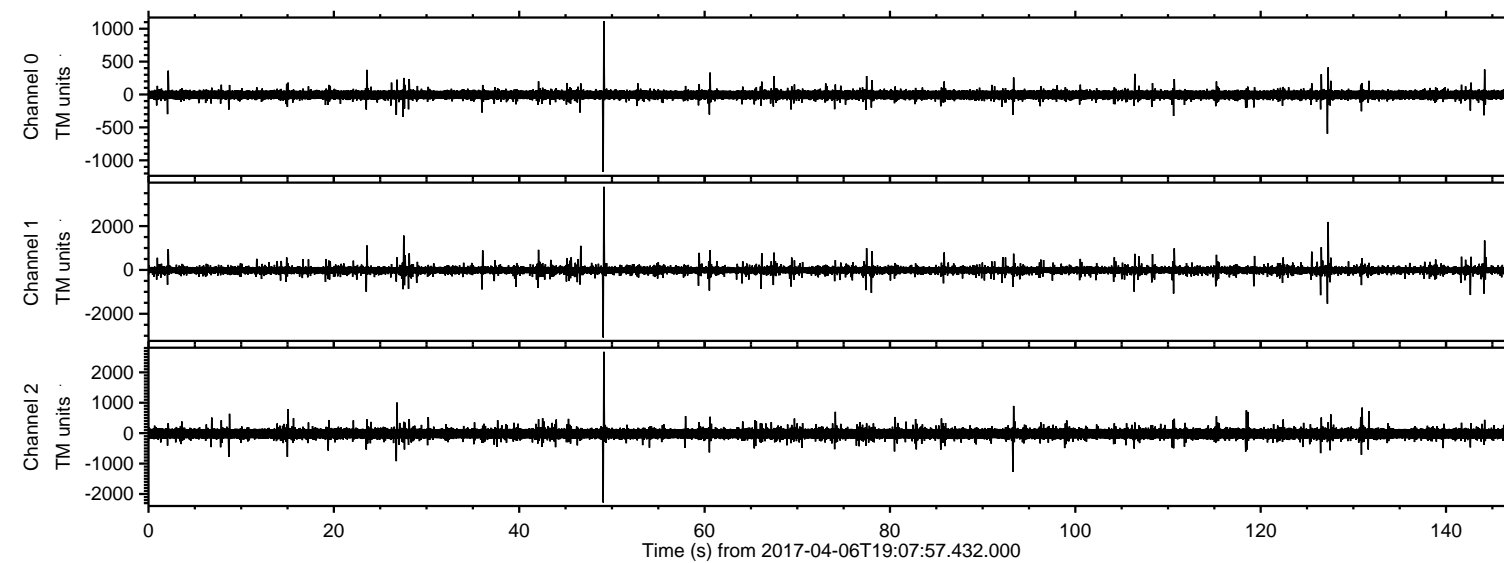
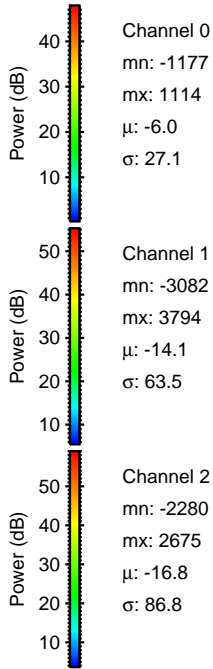
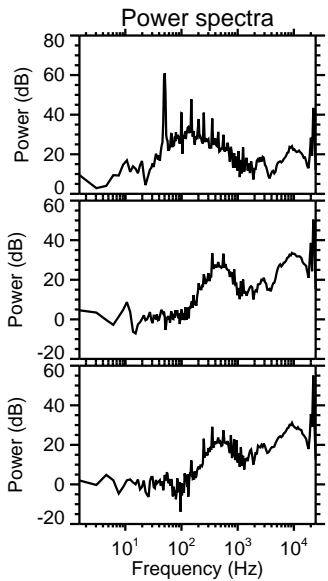
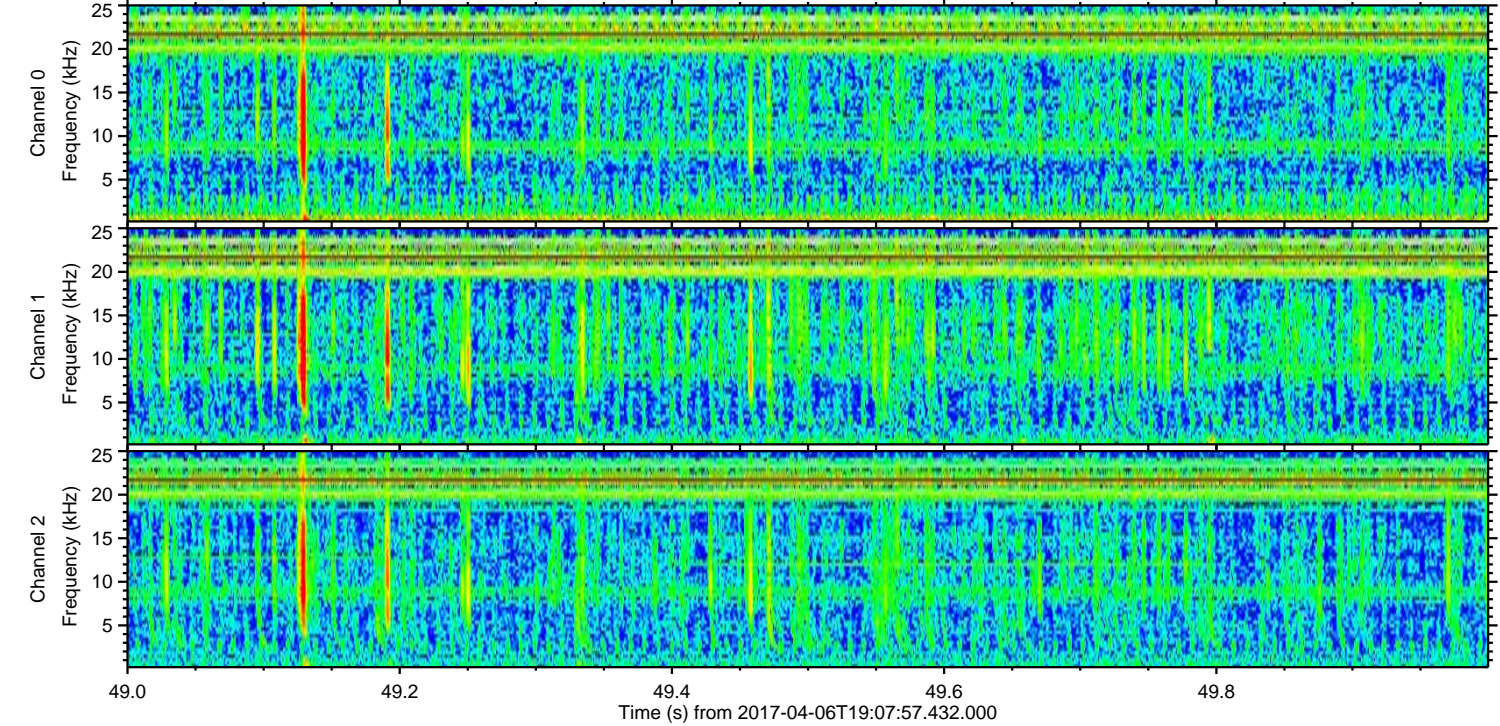
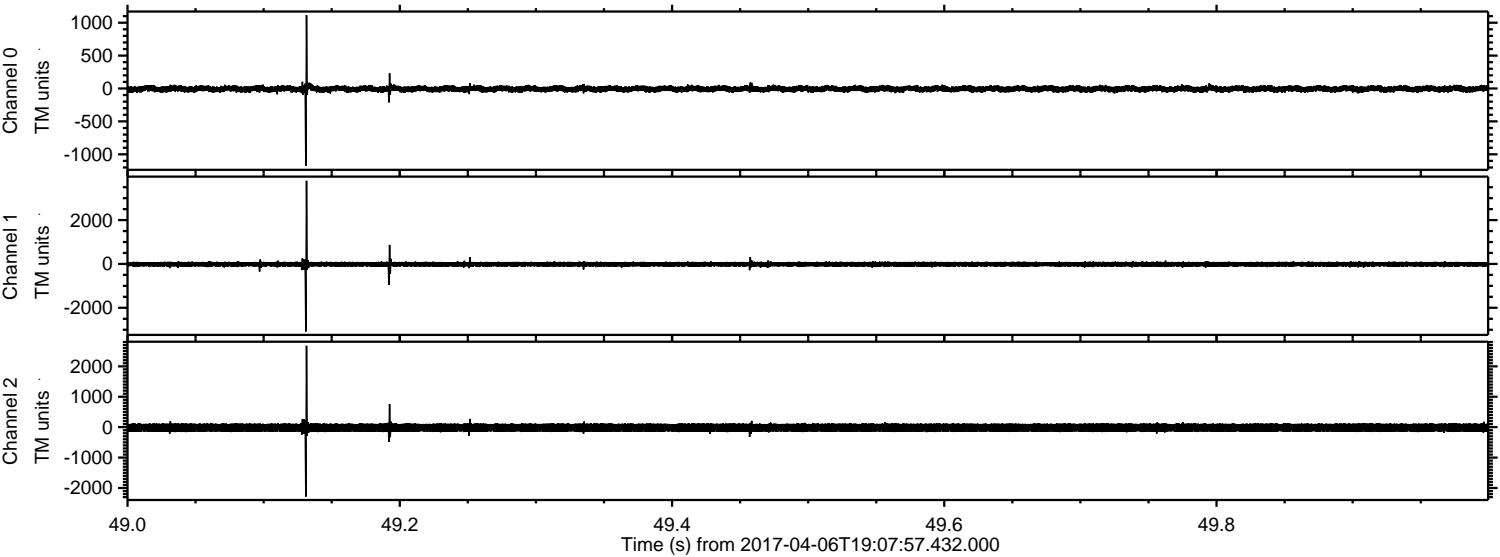


ELMAVAN 3D WAVEFORMS (Measured data sampled at 50 kHz) 51000 packets of 144 samples from 2017-04-06T19:07:57.432.000.

Processed Thu Apr 6 21:16:07 2017 by ELM ver.2012-10-06 from 001__elm20170406_190756__dat00.bin

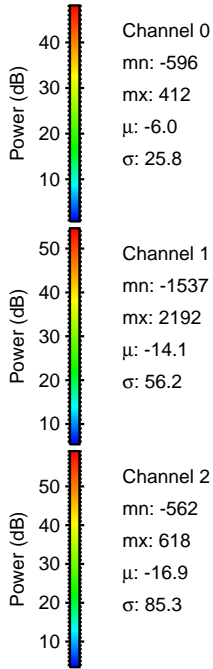
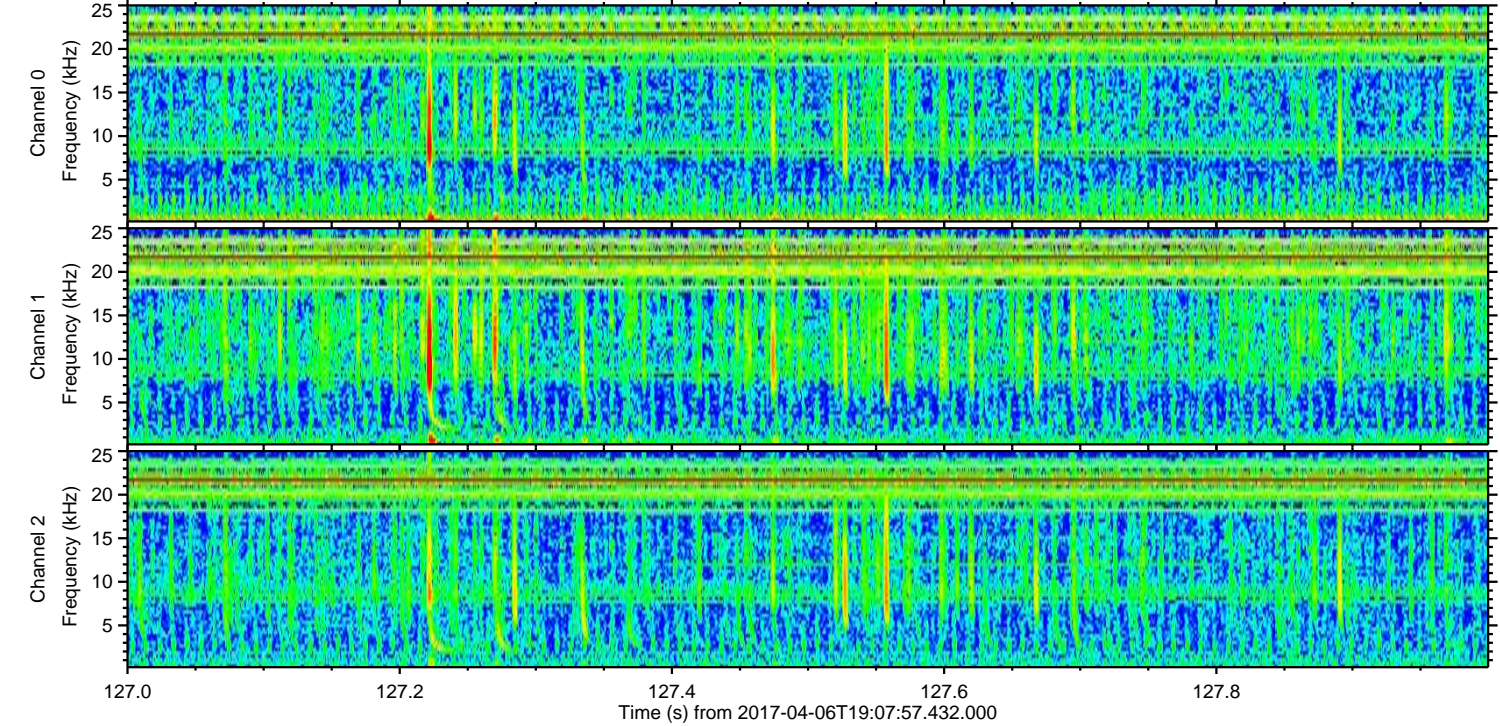
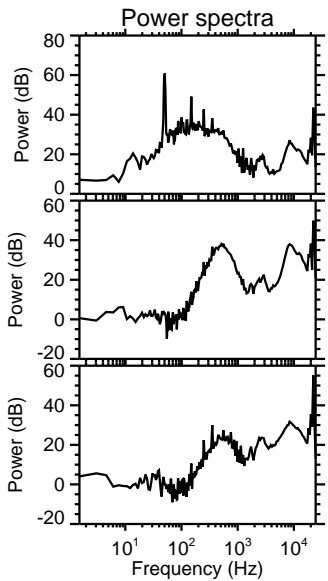
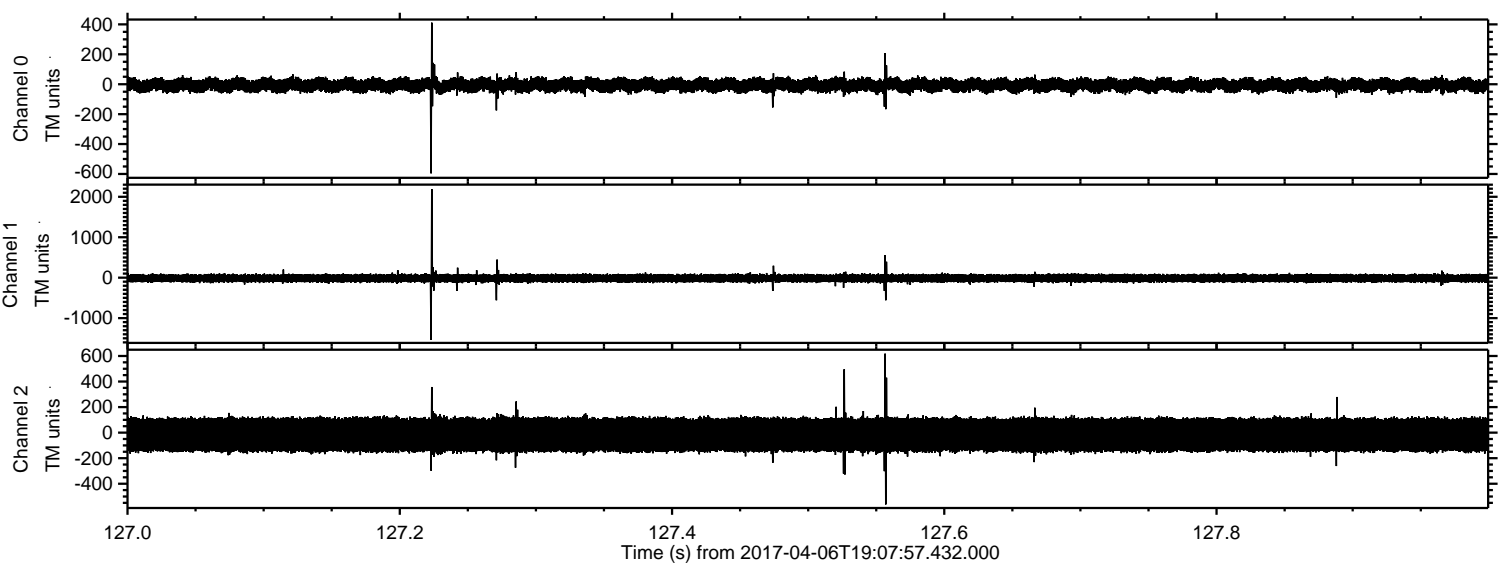


Processed Thu Apr 6 21:16:19 2017 by ELM ver.2012-10-06 from 001__elm20170406_190756__dat00.bin

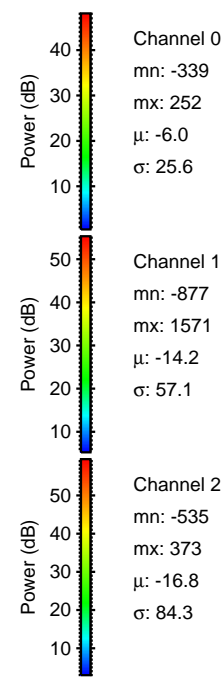
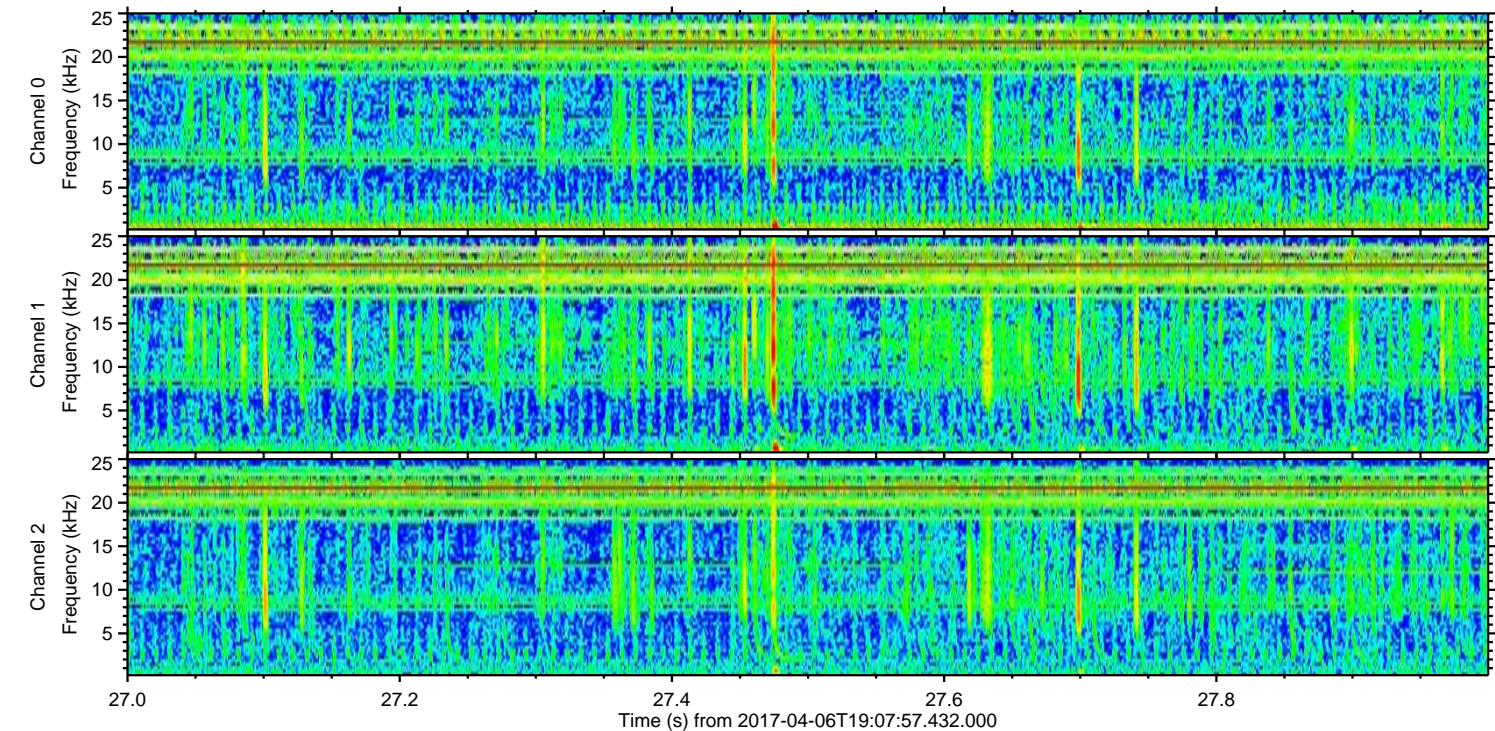
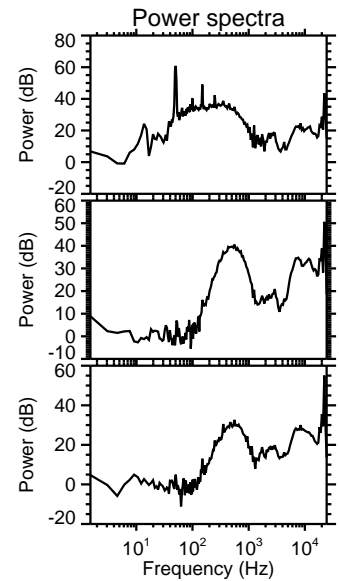
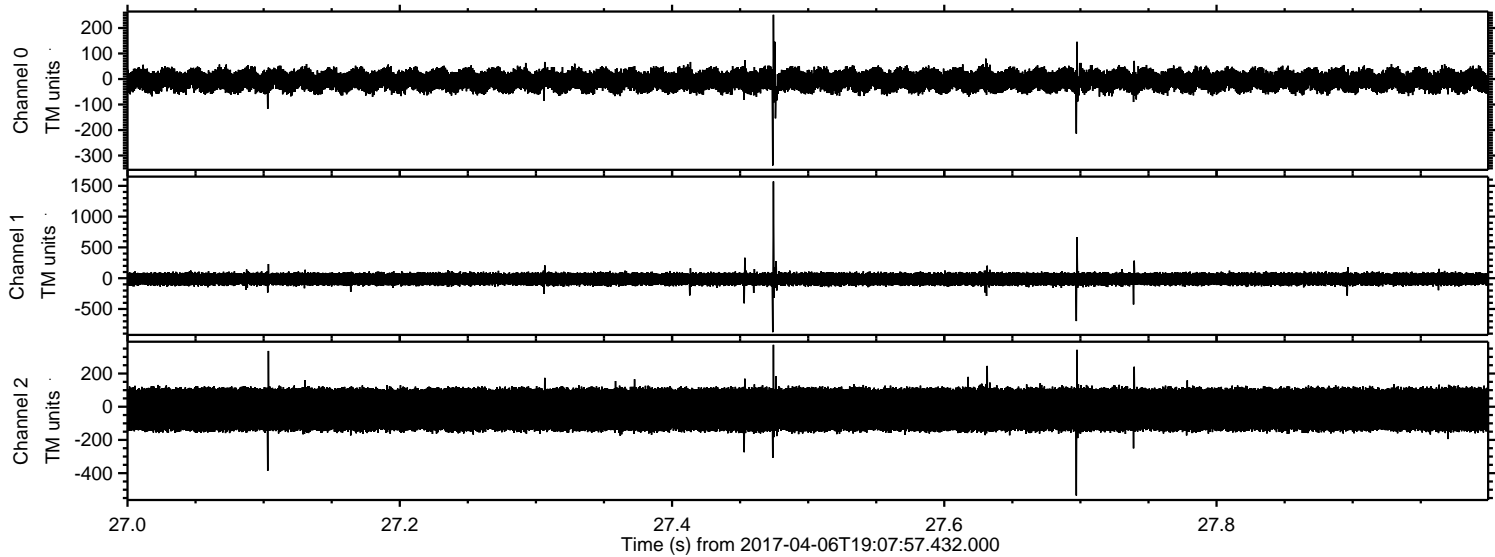


ELMAVAN 3D WAVEFORMS (Measured data sampled at 50 kHz) 51000 packets of 144 samples from 2017-04-06T19:07:57.432.000. Part 128/147

Processed Thu Apr 6 21:16:20 2017 by ELM ver.2012-10-06 from 001__elm20170406_190756__dat00.bin

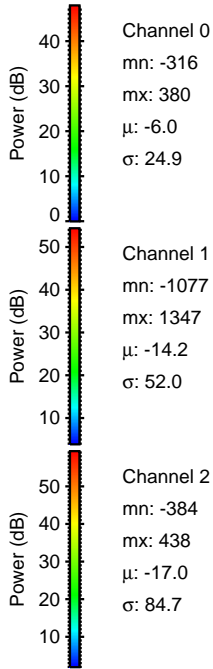
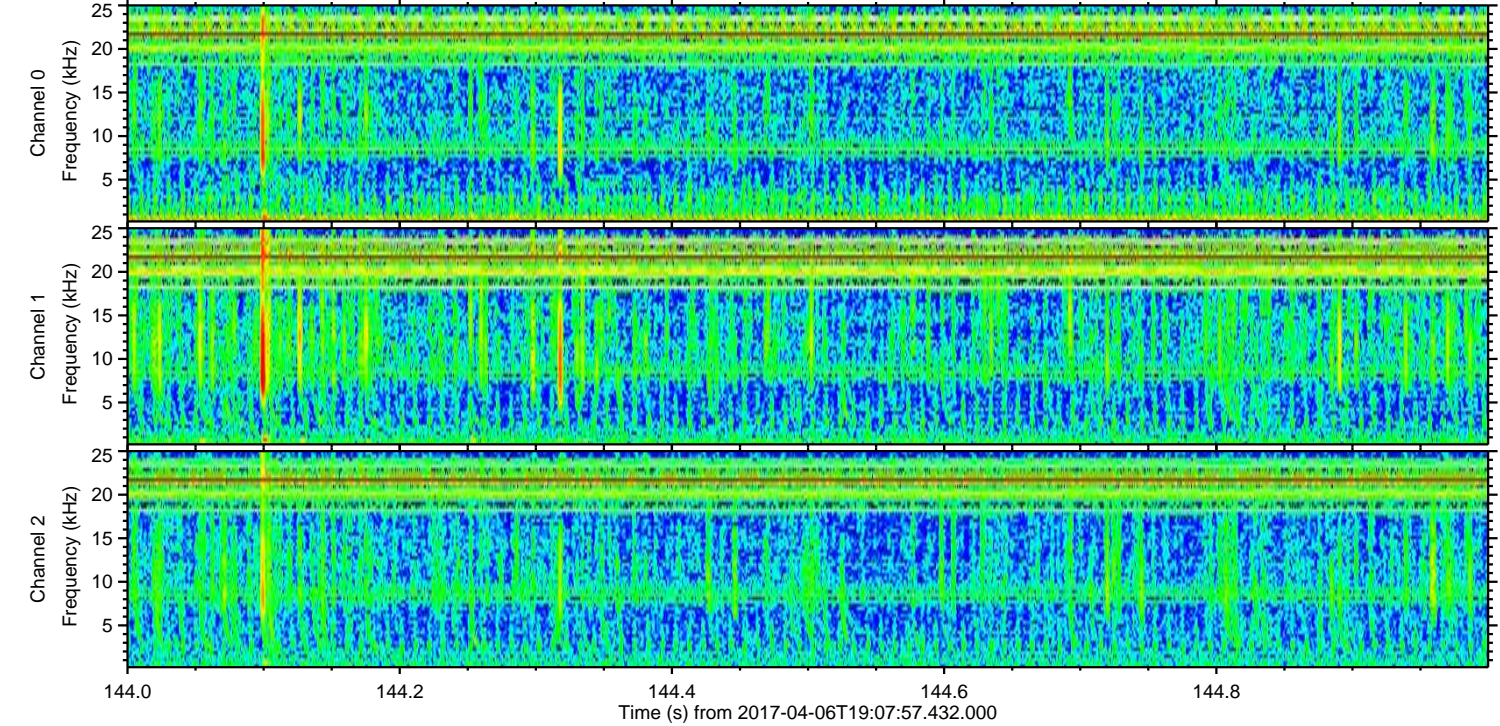
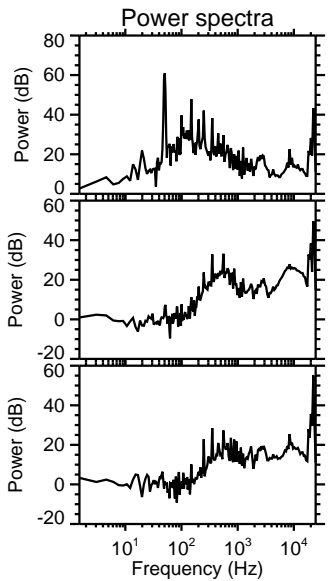
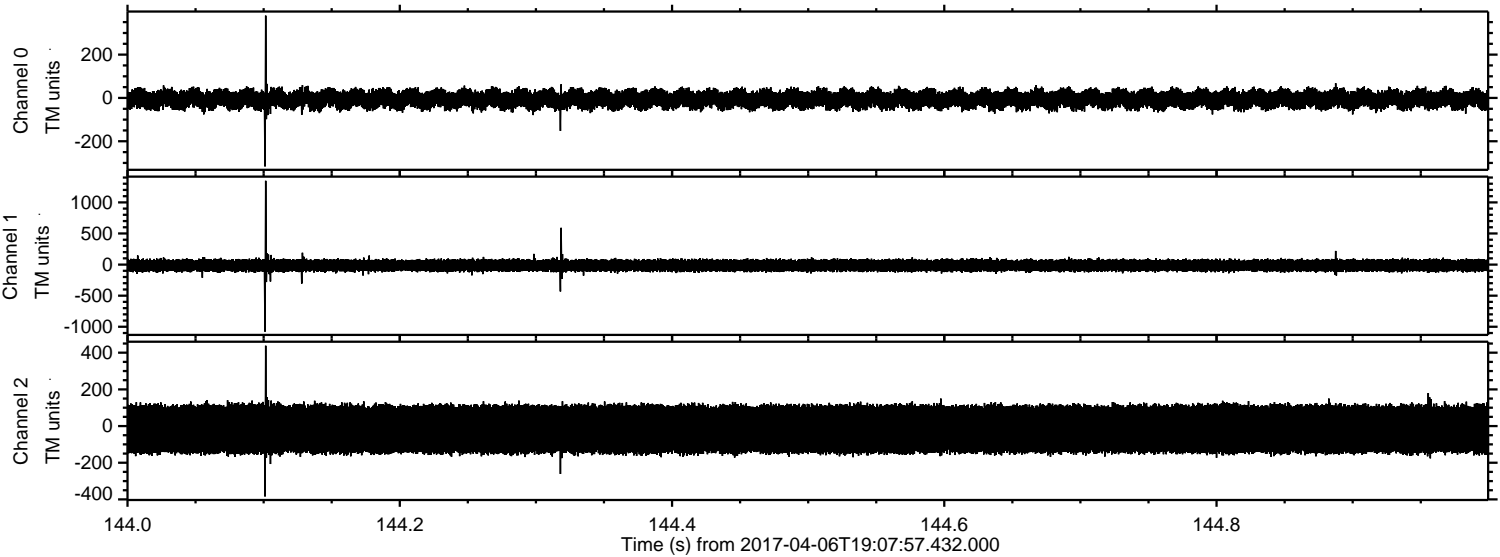


Processed Thu Apr 6 21:16:20 2017 by ELM ver.2012-10-06 from 001__elm20170406_190756__dat00.bin

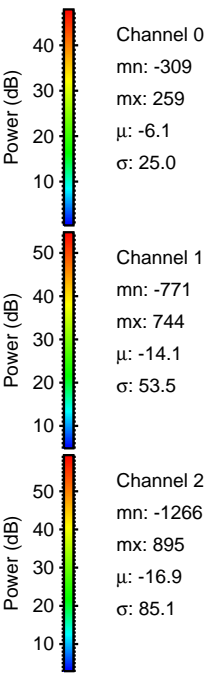
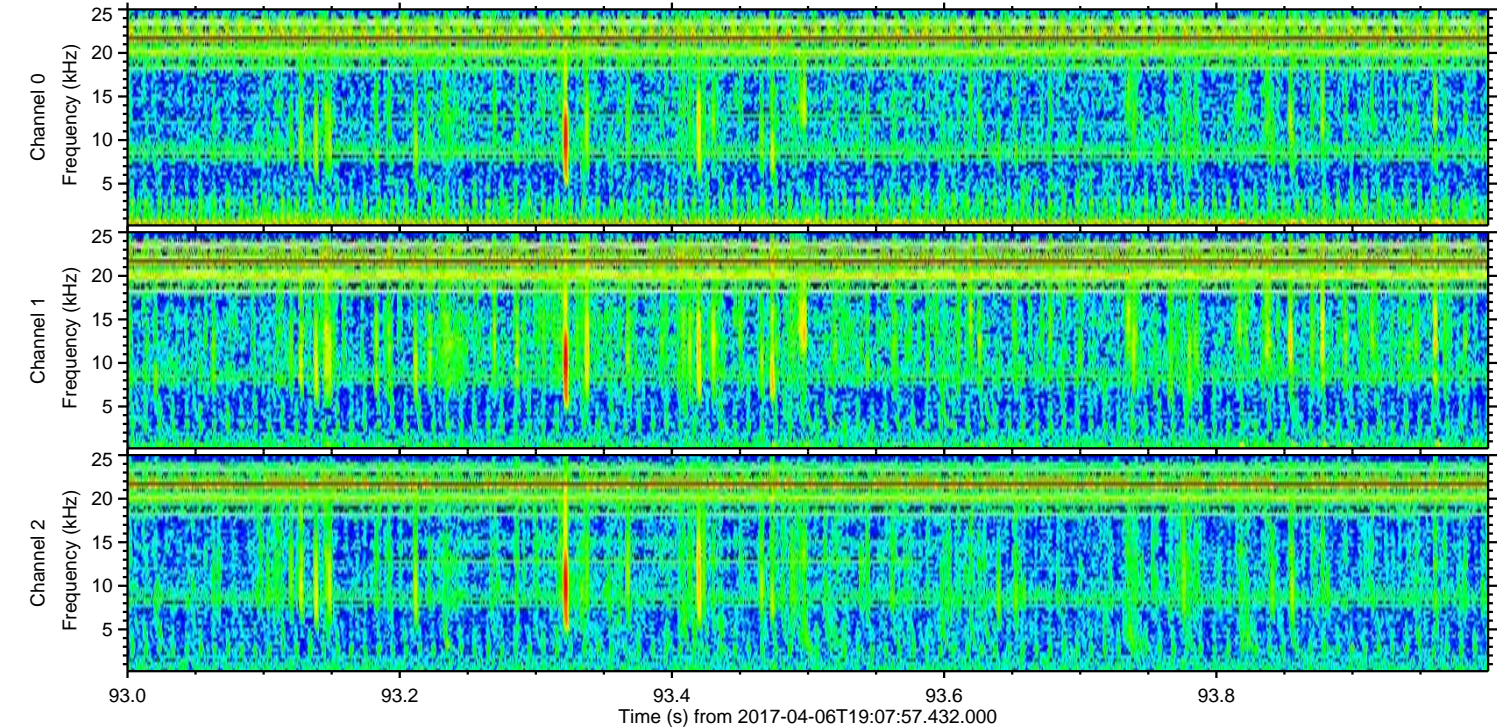
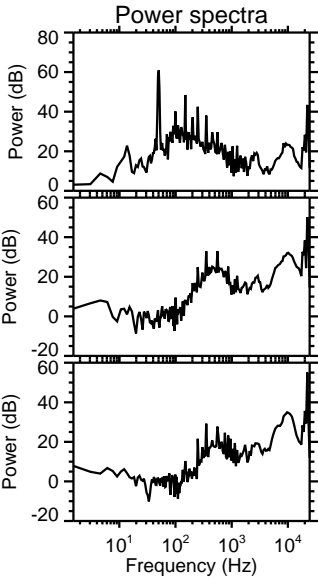
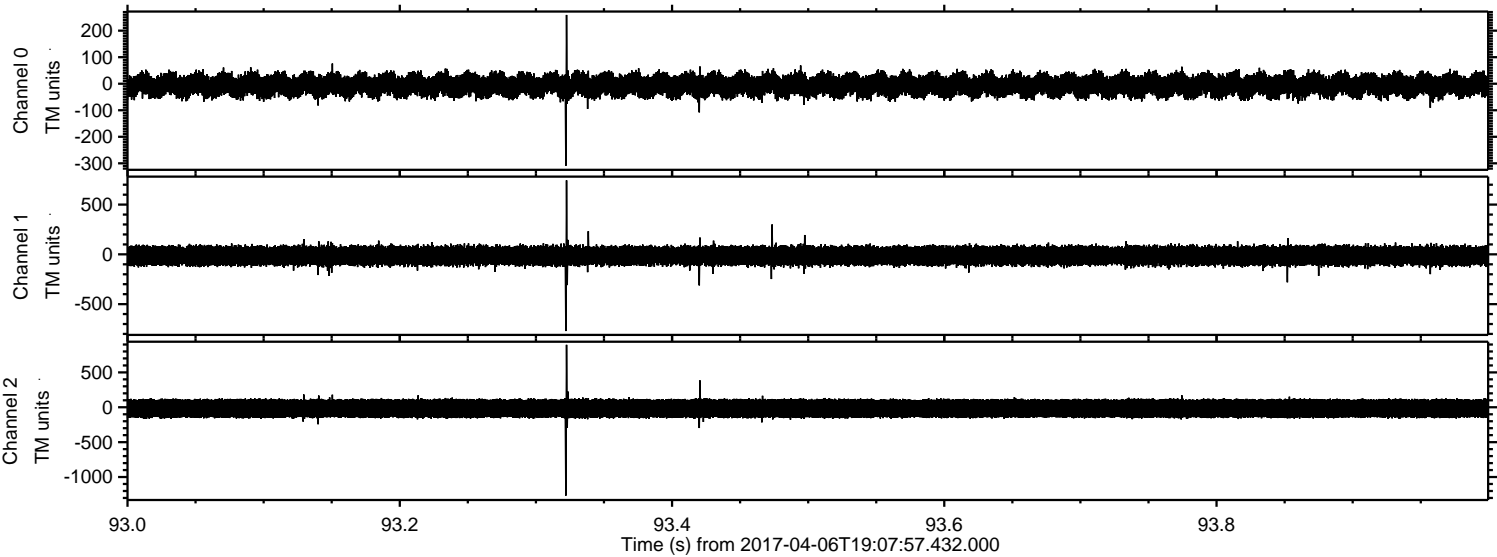


ELMAVAN 3D WAVEFORMS (Measured data sampled at 50 kHz) 51000 packets of 144 samples from 2017-04-06T19:07:57.432.000. Part 145/147

Processed Thu Apr 6 21:16:21 2017 by ELM ver.2012-10-06 from 001__elm20170406_190756__dat00.bin



Processed Thu Apr 6 21:16:22 2017 by ELM ver.2012-10-06 from 001__elm20170406_190756__dat00.bin



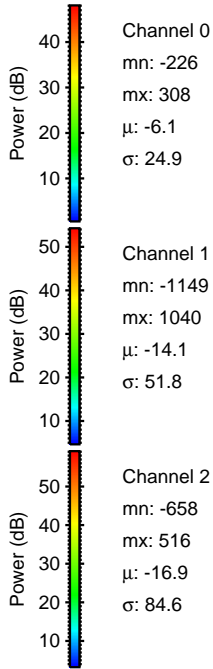
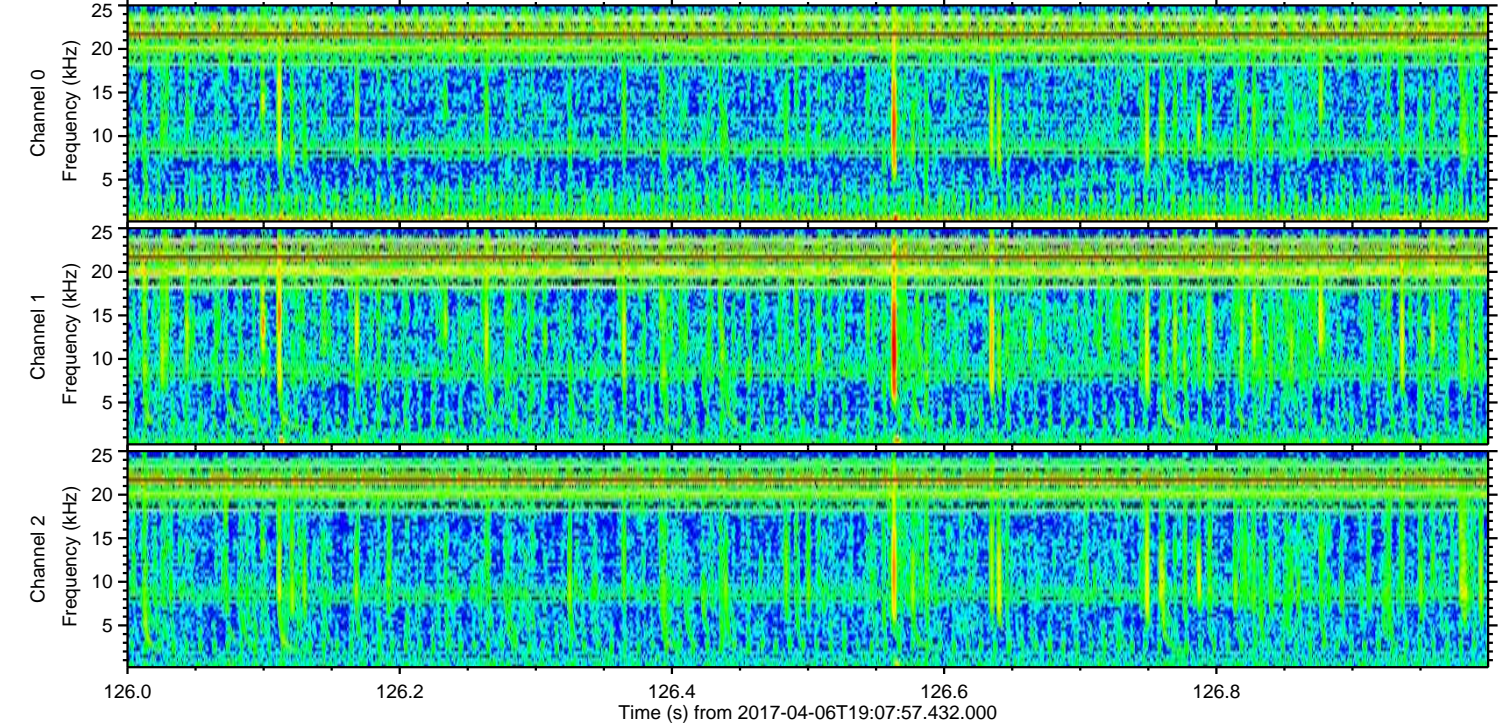
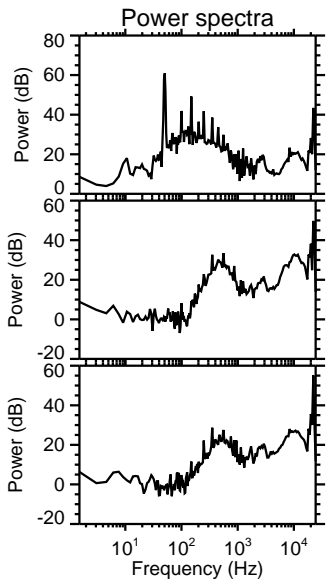
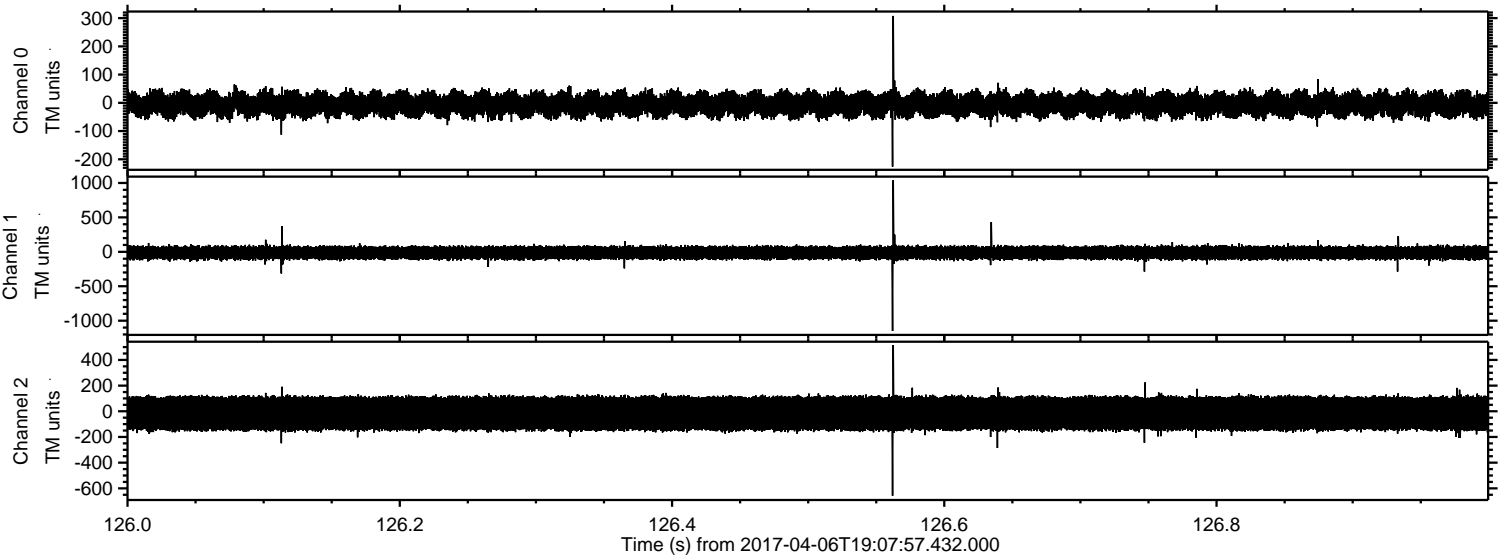
Channel 0
mn: -309
mx: 259
 μ : -6.1
 σ : 25.0

Channel 1
mn: -771
mx: 744
 μ : -14.1
 σ : 53.5

Channel 2
mn: -1266
mx: 895
 μ : -16.9
 σ : 85.1

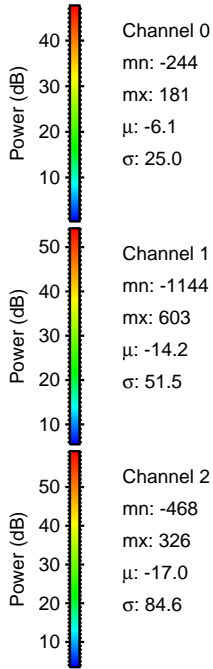
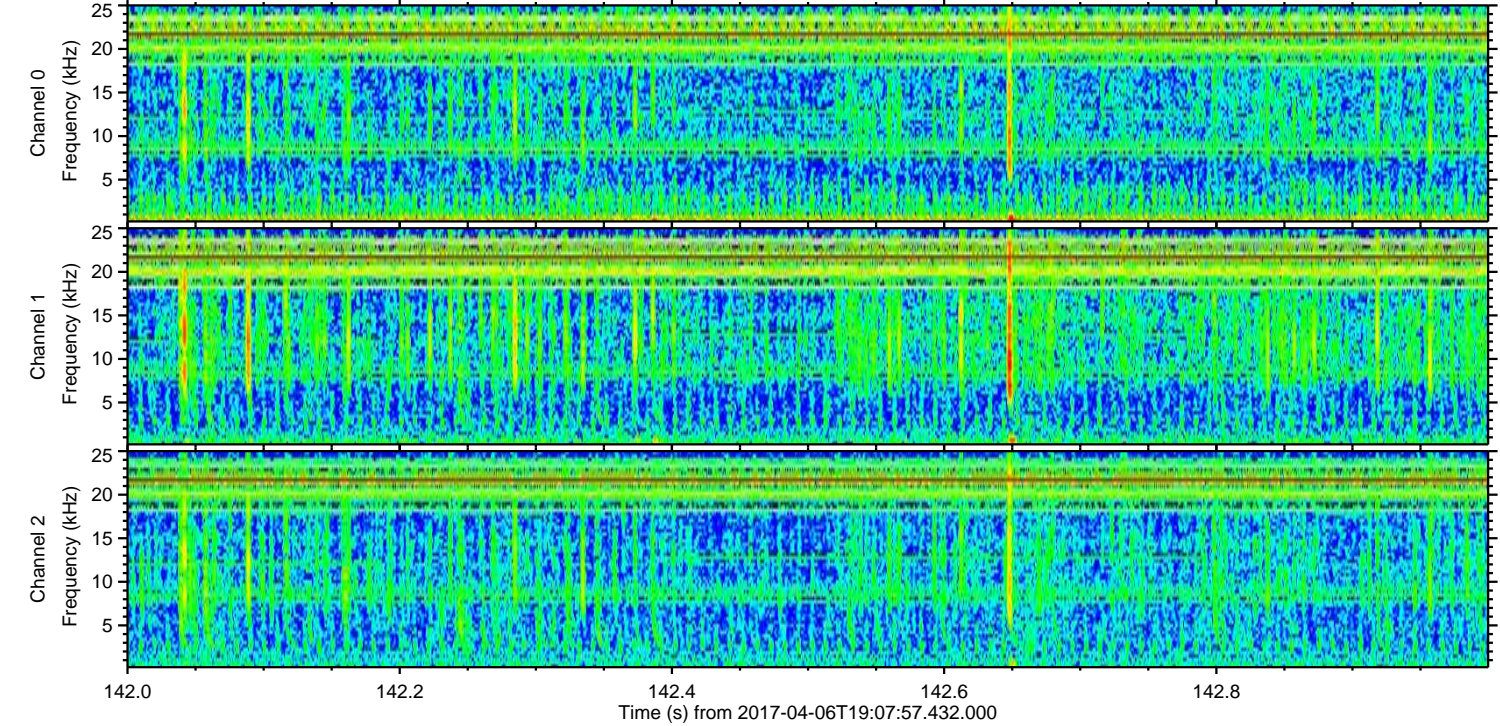
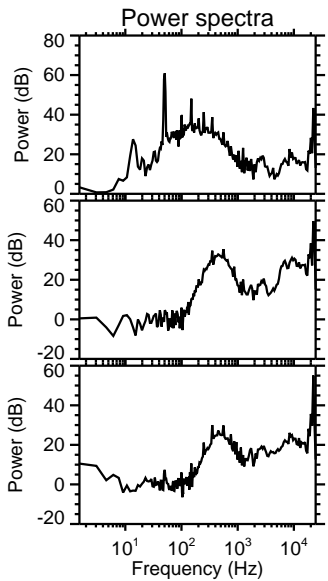
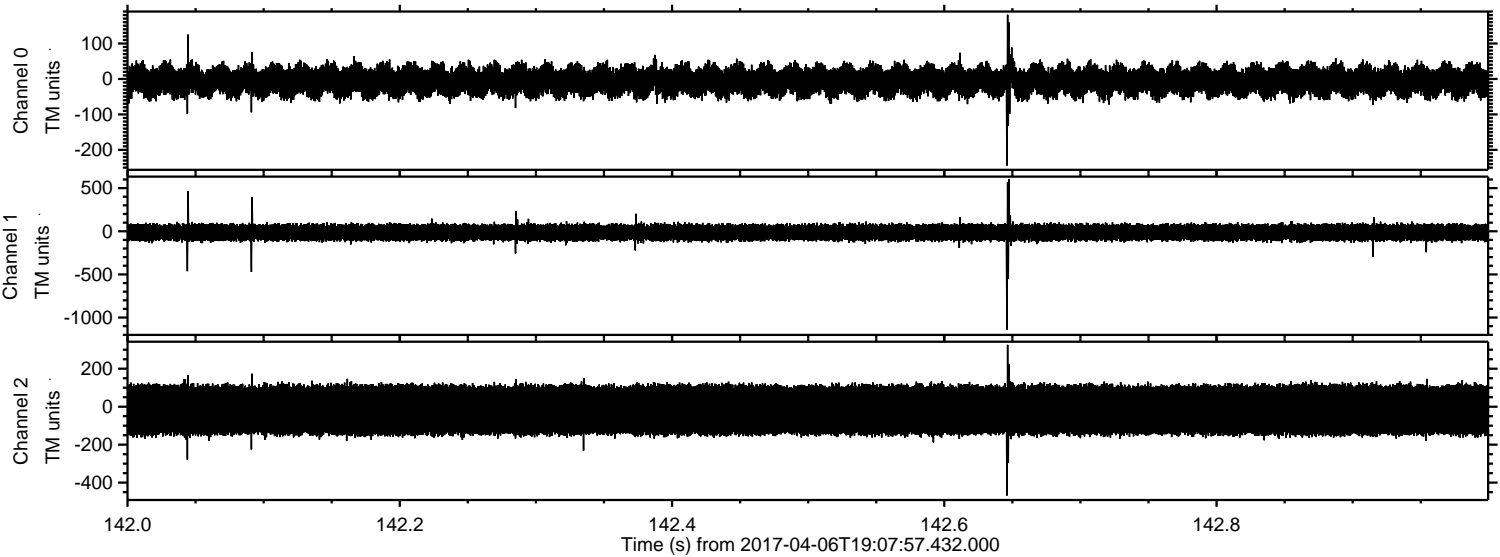
ELMAVAN 3D WAVEFORMS (Measured data sampled at 50 kHz) 51000 packets of 144 samples from 2017-04-06T19:07:57.432.000. Part 127/147

Processed Thu Apr 6 21:16:23 2017 by ELM ver.2012-10-06 from 001__elm20170406_190756__dat00.bin



ELMAVAN 3D WAVEFORMS (Measured data sampled at 50 kHz) 51000 packets of 144 samples from 2017-04-06T19:07:57.432.000. Part 143/147

Processed Thu Apr 6 21:16:24 2017 by ELM ver.2012-10-06 from 001__elm20170406_190756__dat00.bin

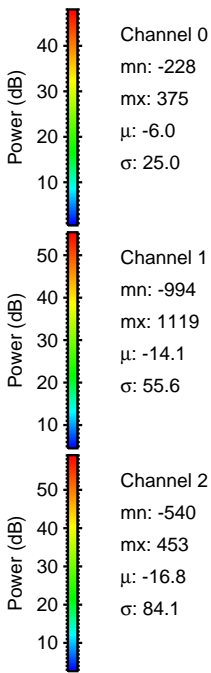
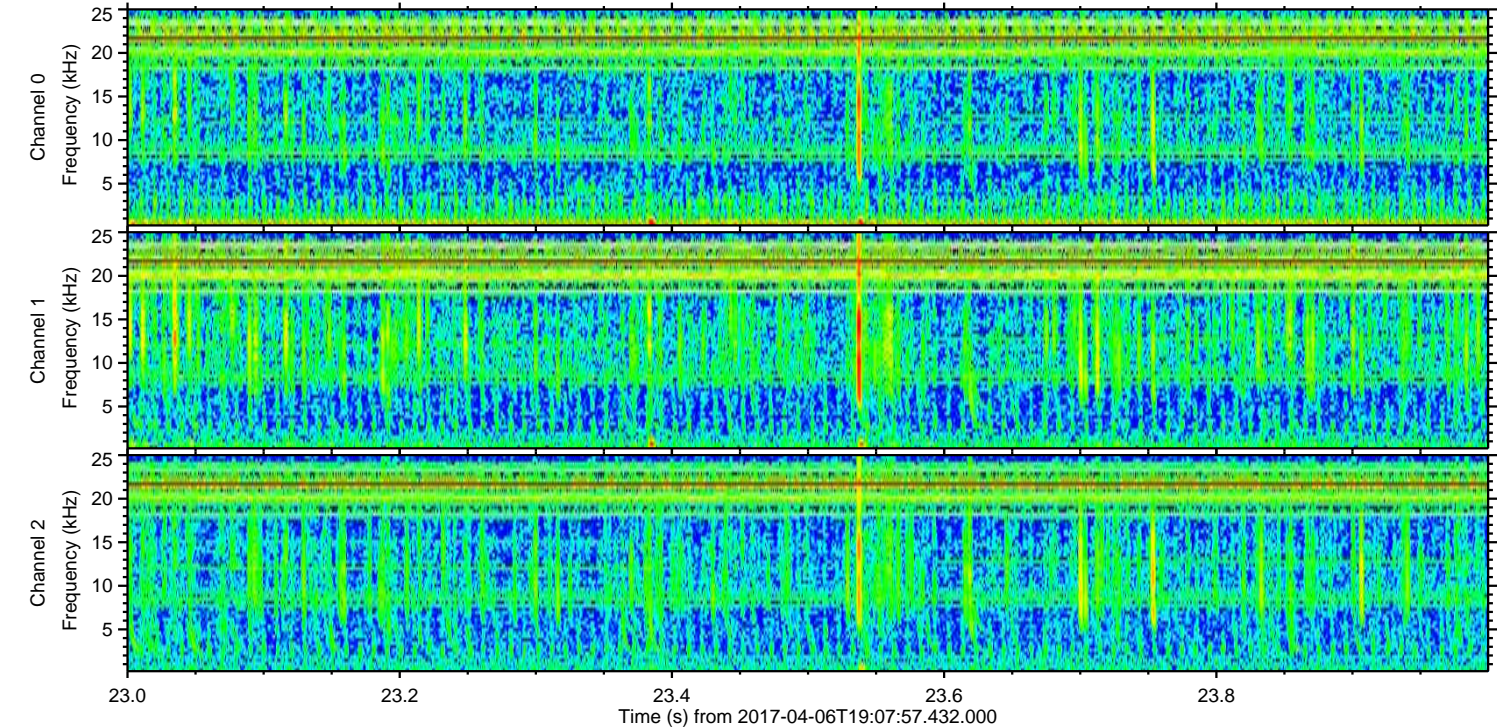
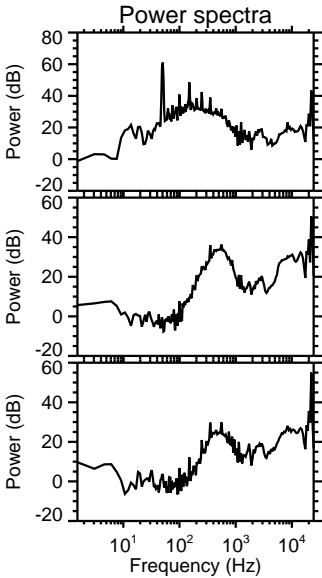
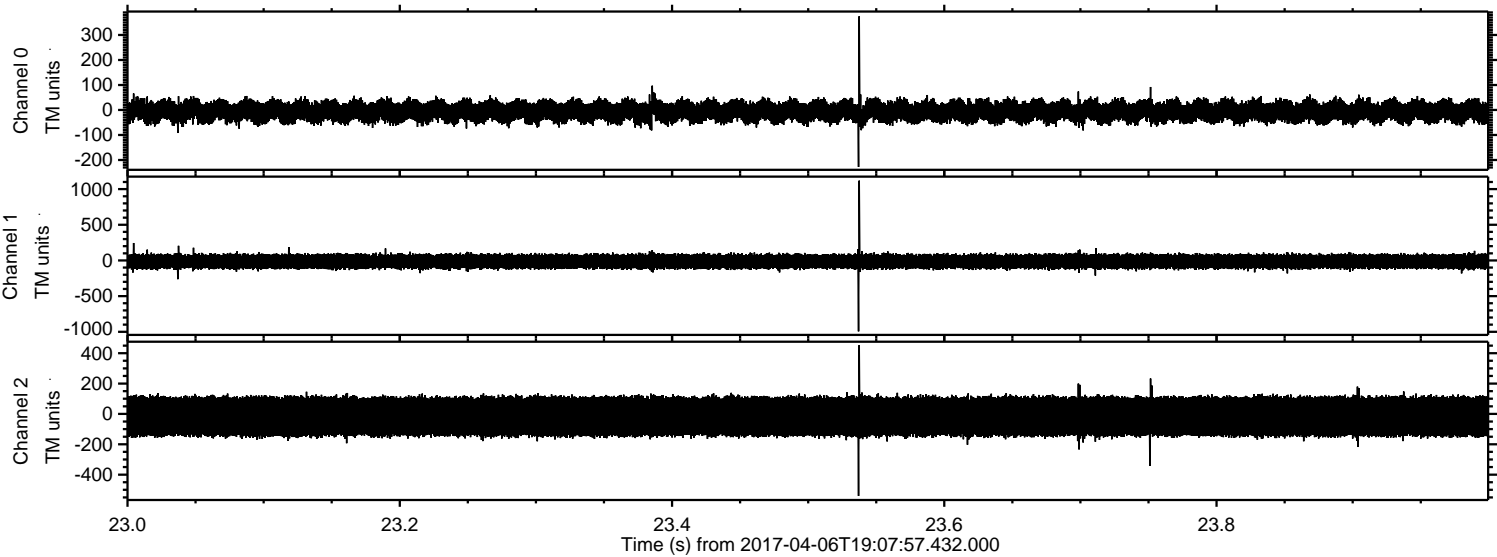


Channel 0
mn: -244
mx: 181
 μ : -6.1
 σ : 25.0

Channel 1
mn: -1144
mx: 603
 μ : -14.2
 σ : 51.5

Channel 2
mn: -468
mx: 326
 μ : -17.0
 σ : 84.6

Processed Thu Apr 6 21:16:25 2017 by ELM ver.2012-10-06 from 001__elm20170406_190756__dat00.bin



Processed Thu Apr 6 21:16:26 2017 by ELM ver.2012-10-06 from 001__elm20170406_190756__dat00.bin

