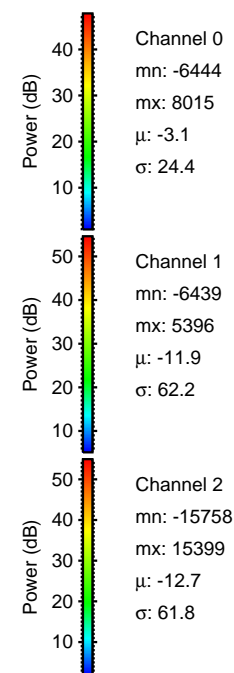
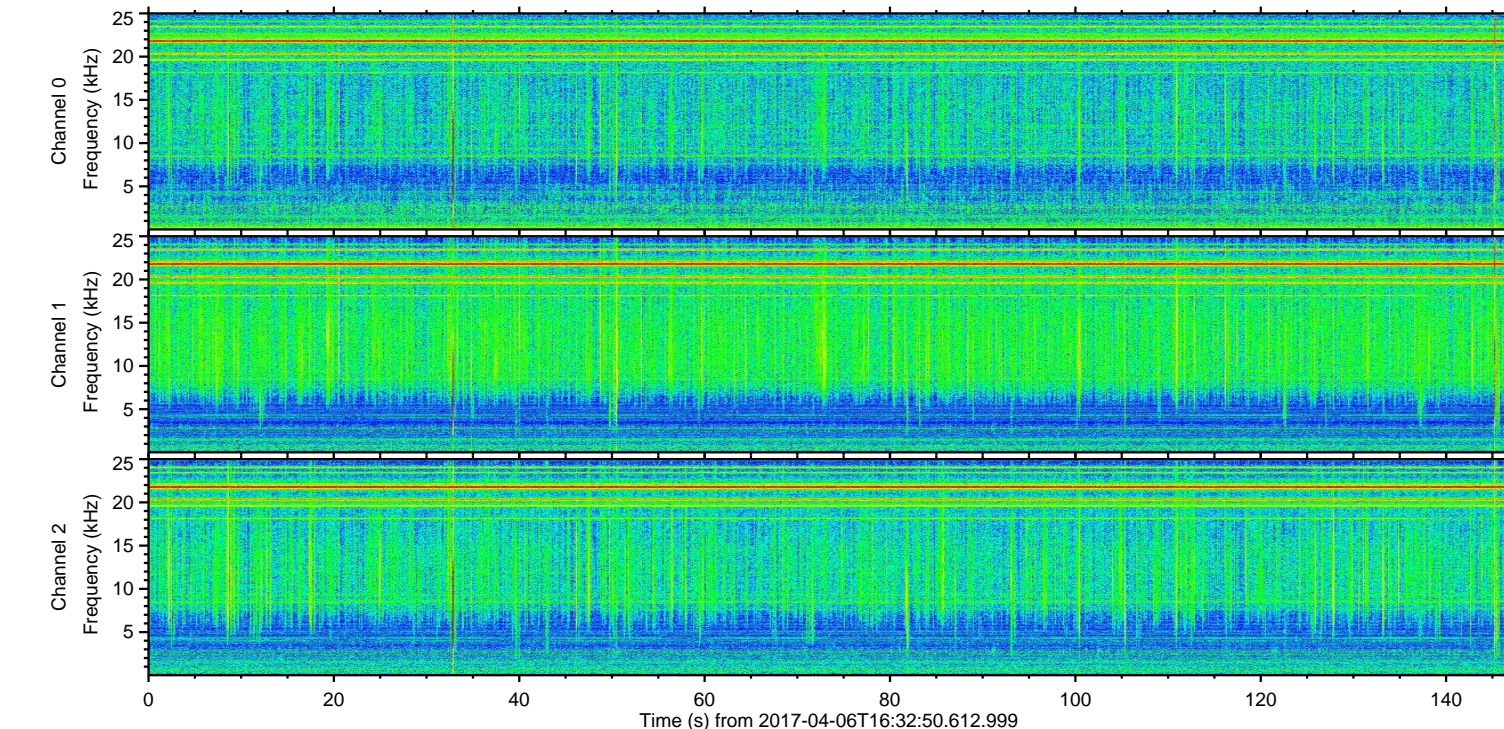
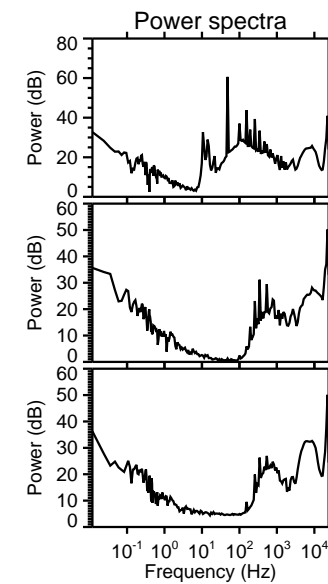
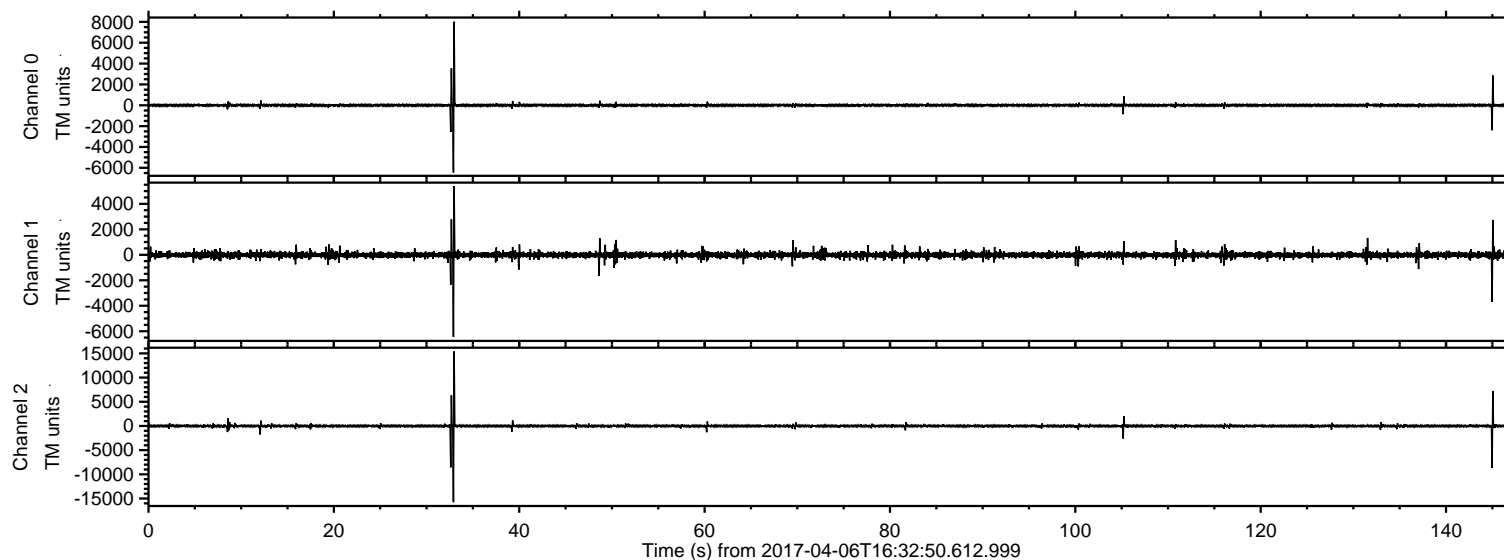
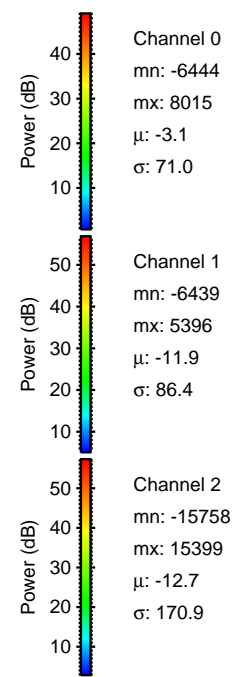
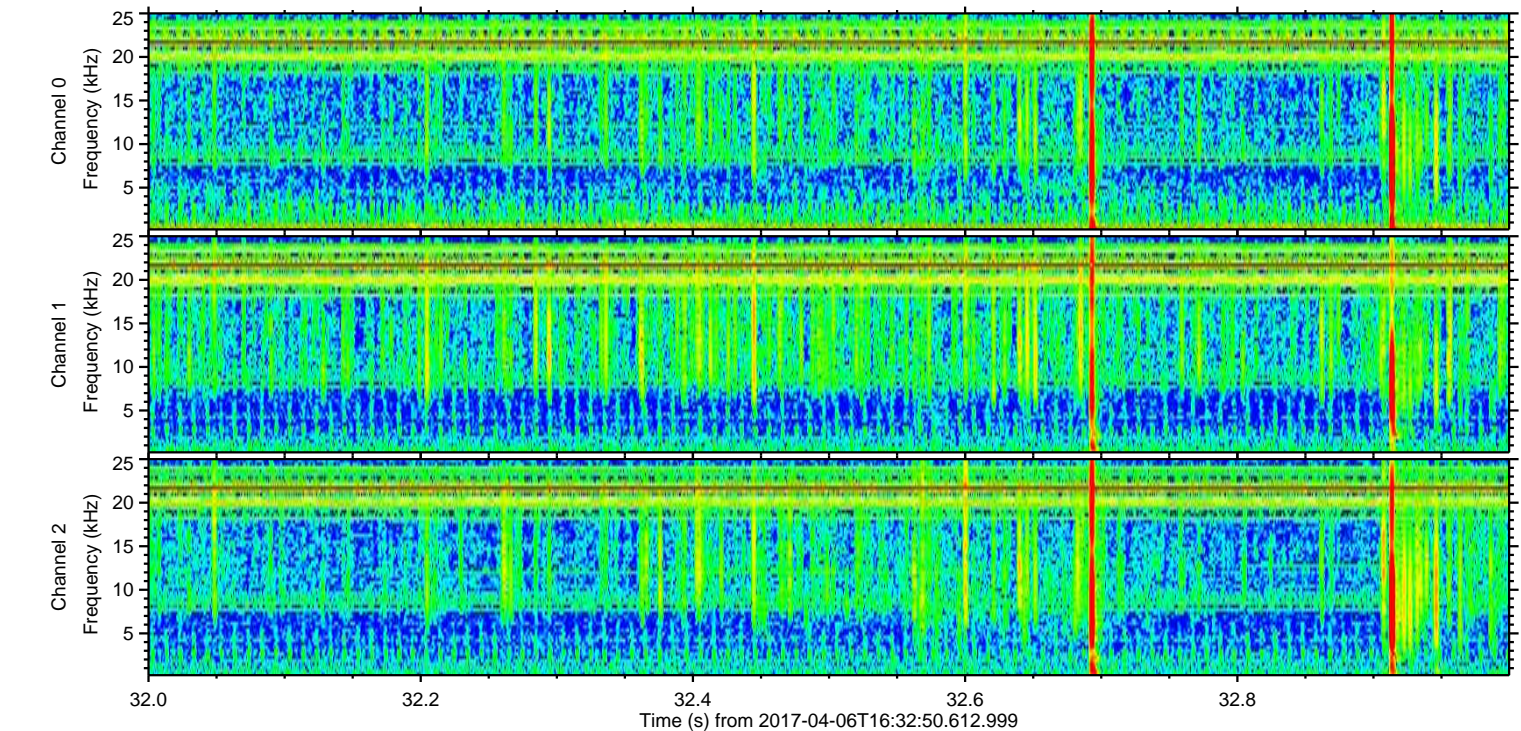
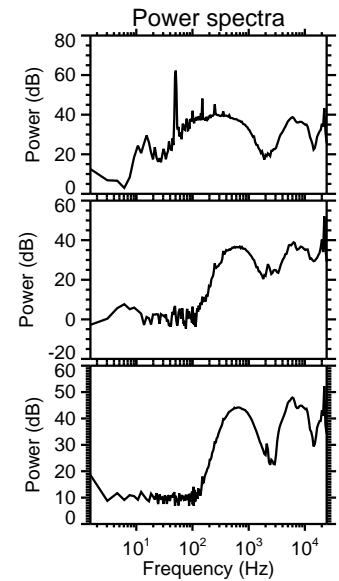
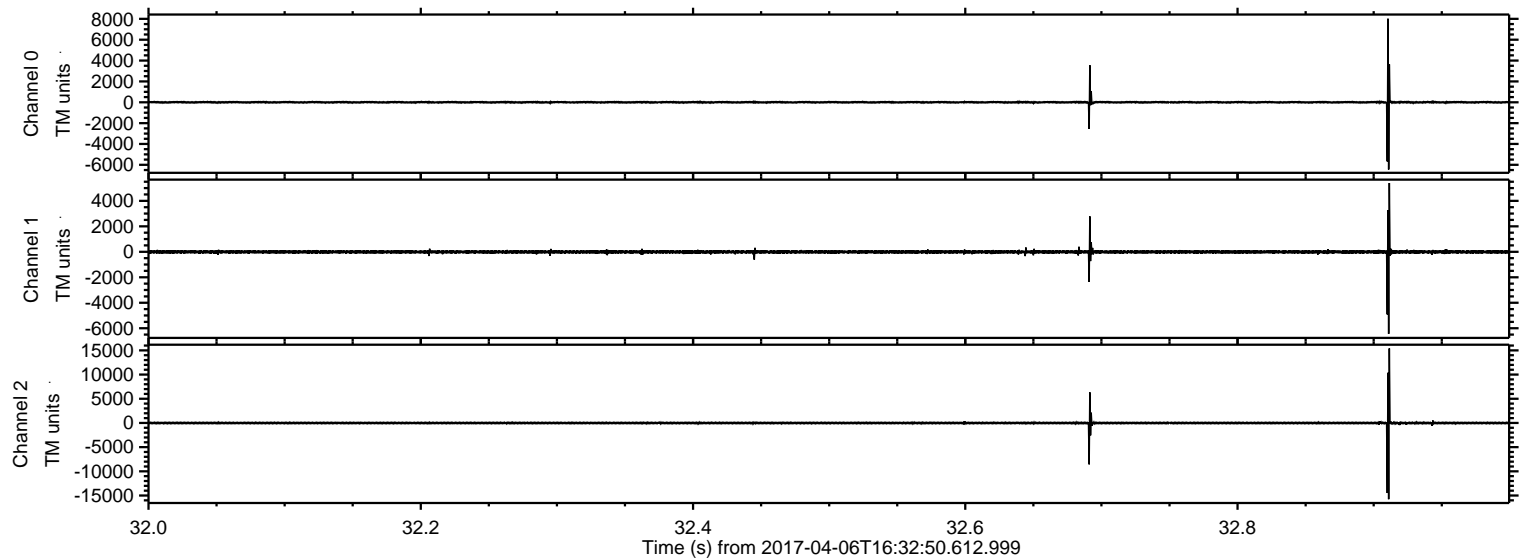


ELMAVAN 3D WAVEFORMS (Measured data sampled at 50 kHz) 51000 packets of 144 samples from 2017-04-06T16:32:50.612.999.

Processed Thu Apr 6 18:40:35 2017 by ELM ver.2012-10-06 from 001__elm20170406_163249__dat00.bin



Processed Thu Apr 6 18:40:50 2017 by ELM ver.2012-10-06 from 001__elm20170406_163249__dat00.bin



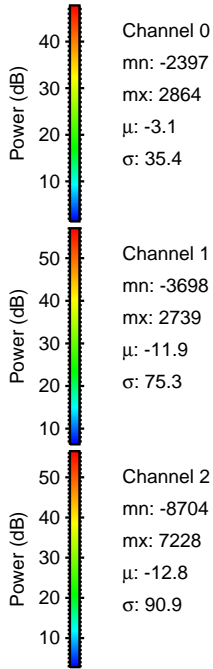
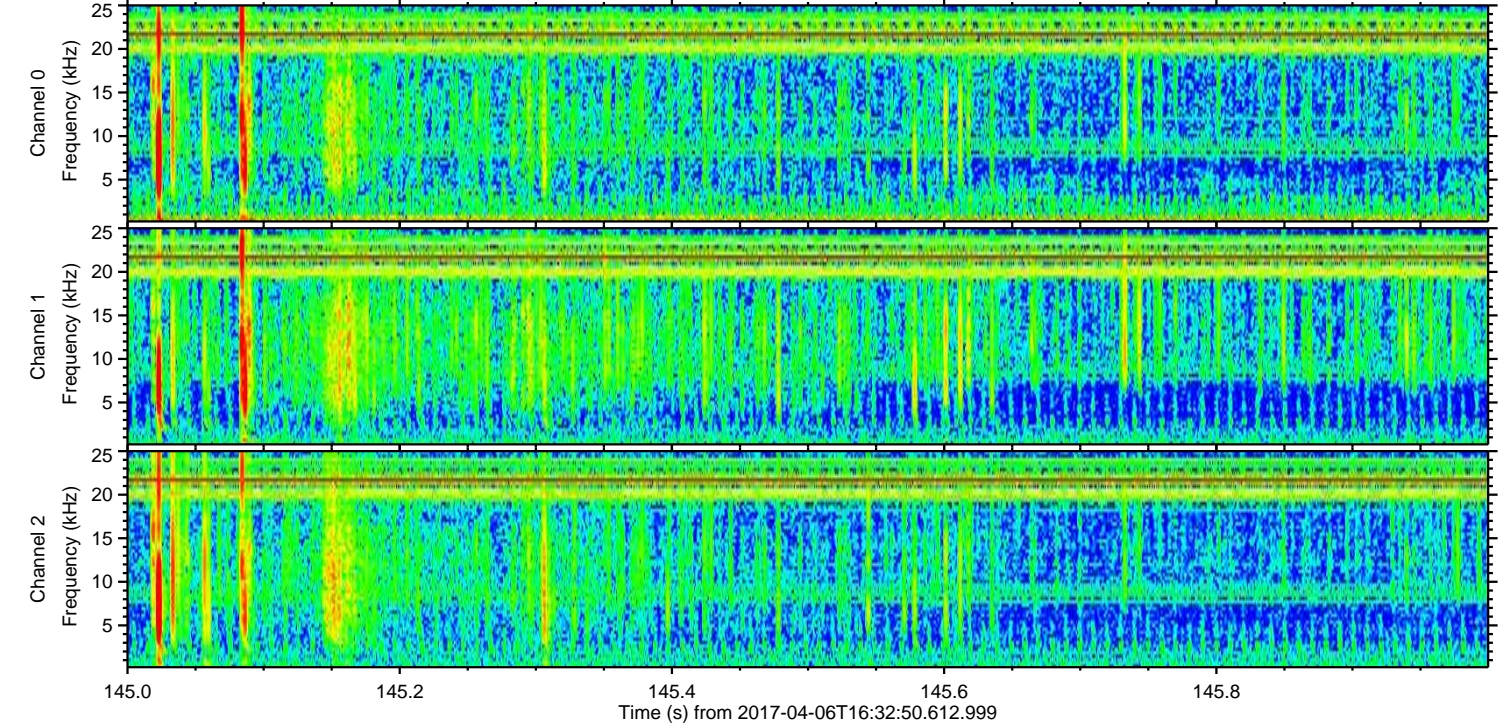
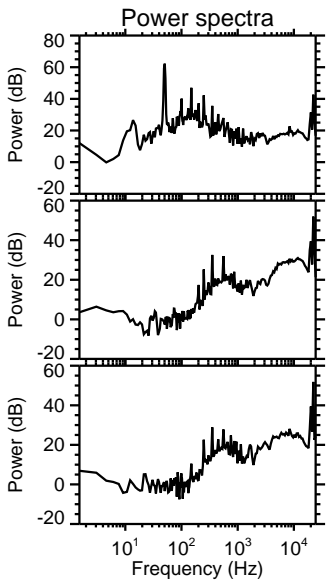
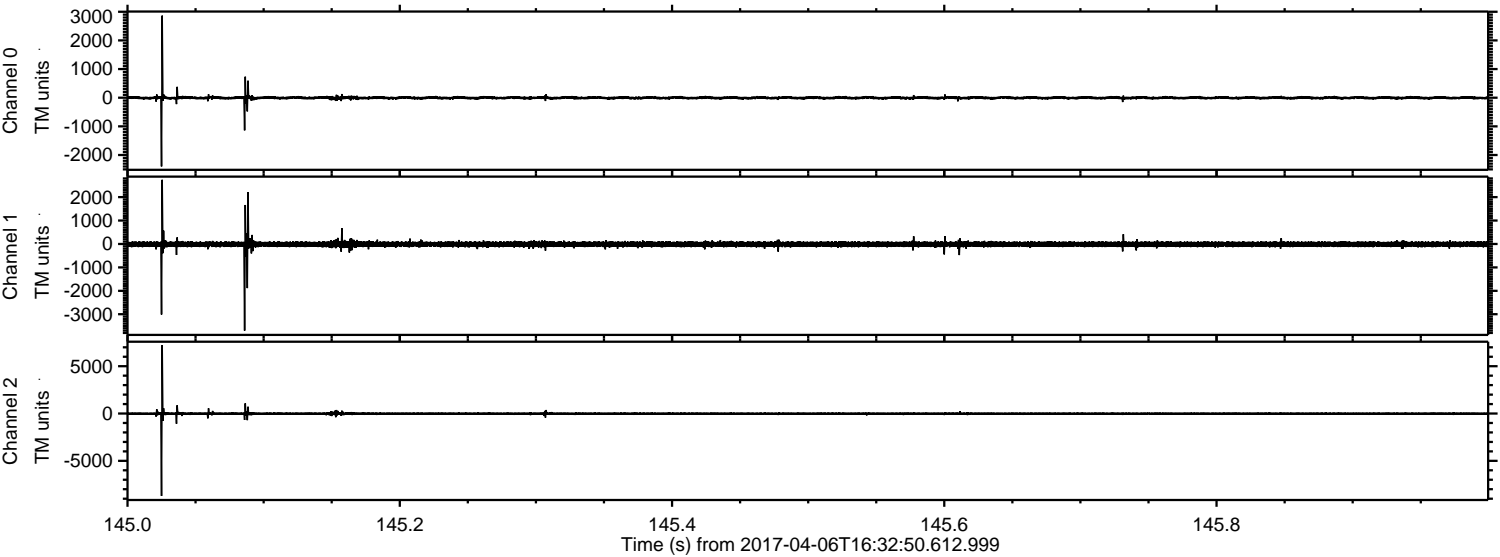
Channel 0
mn: -6444
mx: 8015
 μ : -3.1
 σ : 71.0

Channel 1
mn: -6439
mx: 5396
 μ : -11.9
 σ : 86.4

Channel 2
mn: -15758
mx: 15399
 μ : -12.7
 σ : 170.9

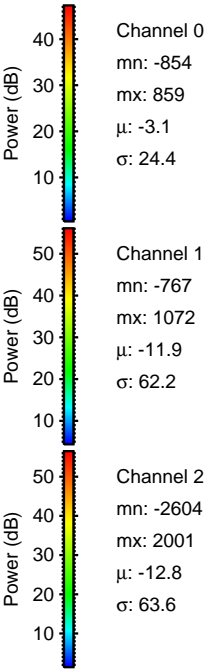
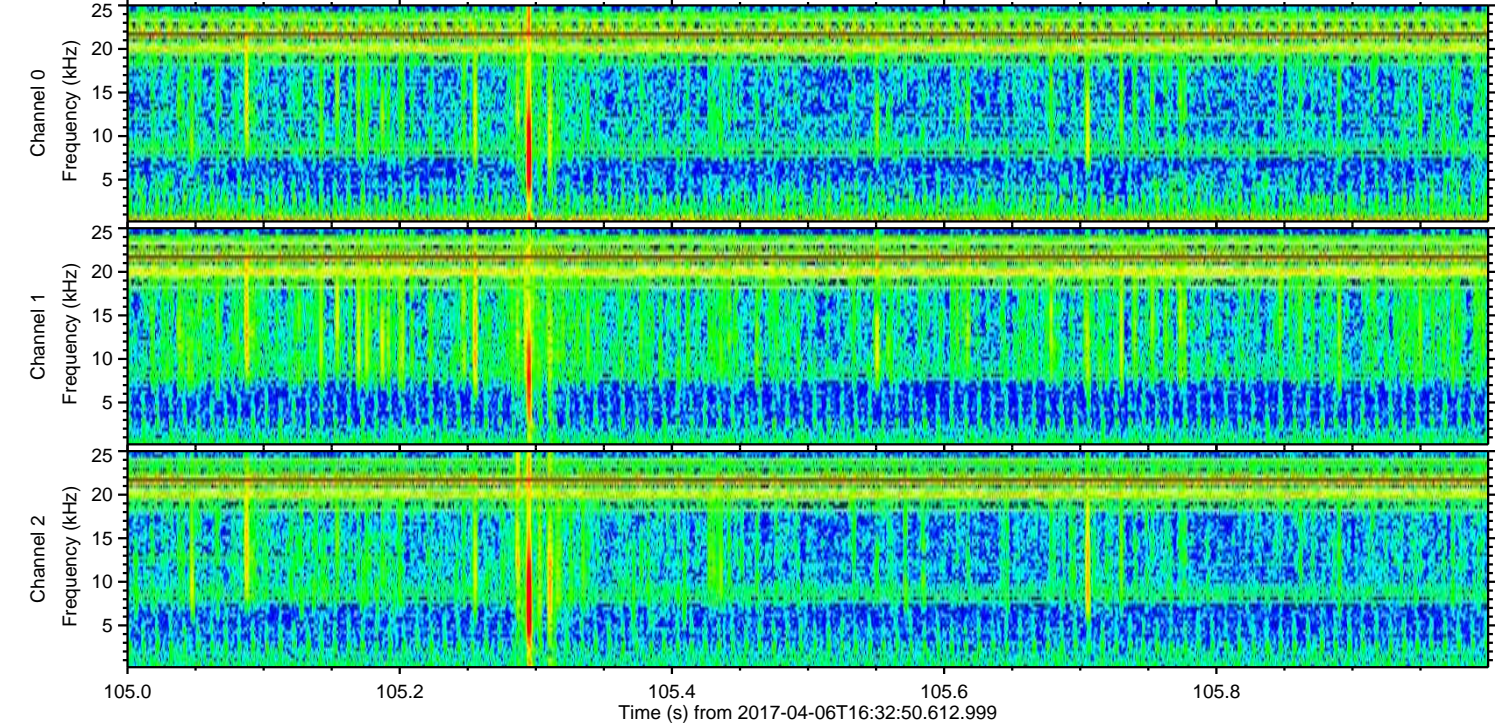
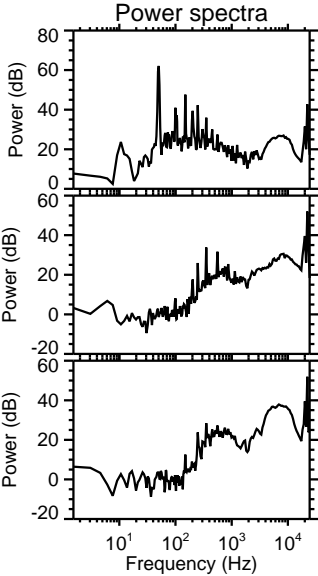
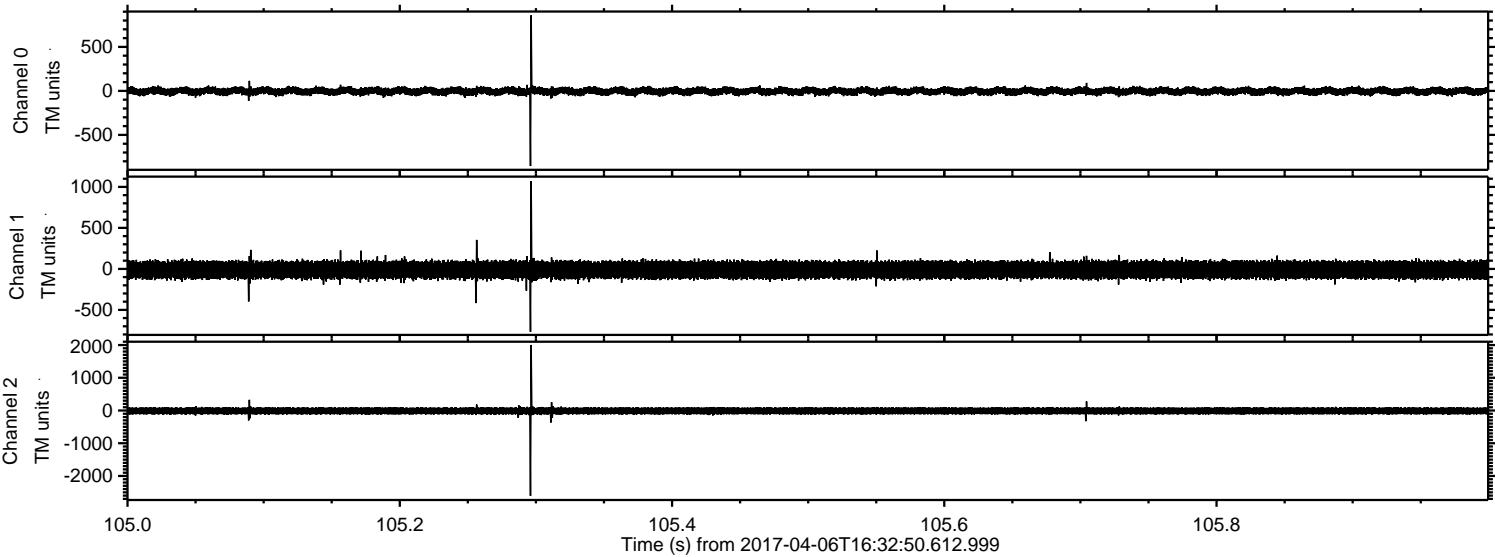
ELMAVAN 3D WAVEFORMS (Measured data sampled at 50 kHz) 51000 packets of 144 samples from 2017-04-06T16:32:50.612.999. Part 146/147

Processed Thu Apr 6 18:40:51 2017 by ELM ver.2012-10-06 from 001__elm20170406_163249__dat00.bin

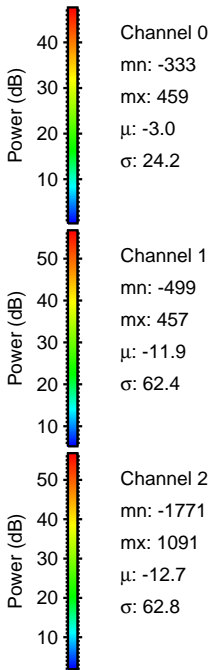
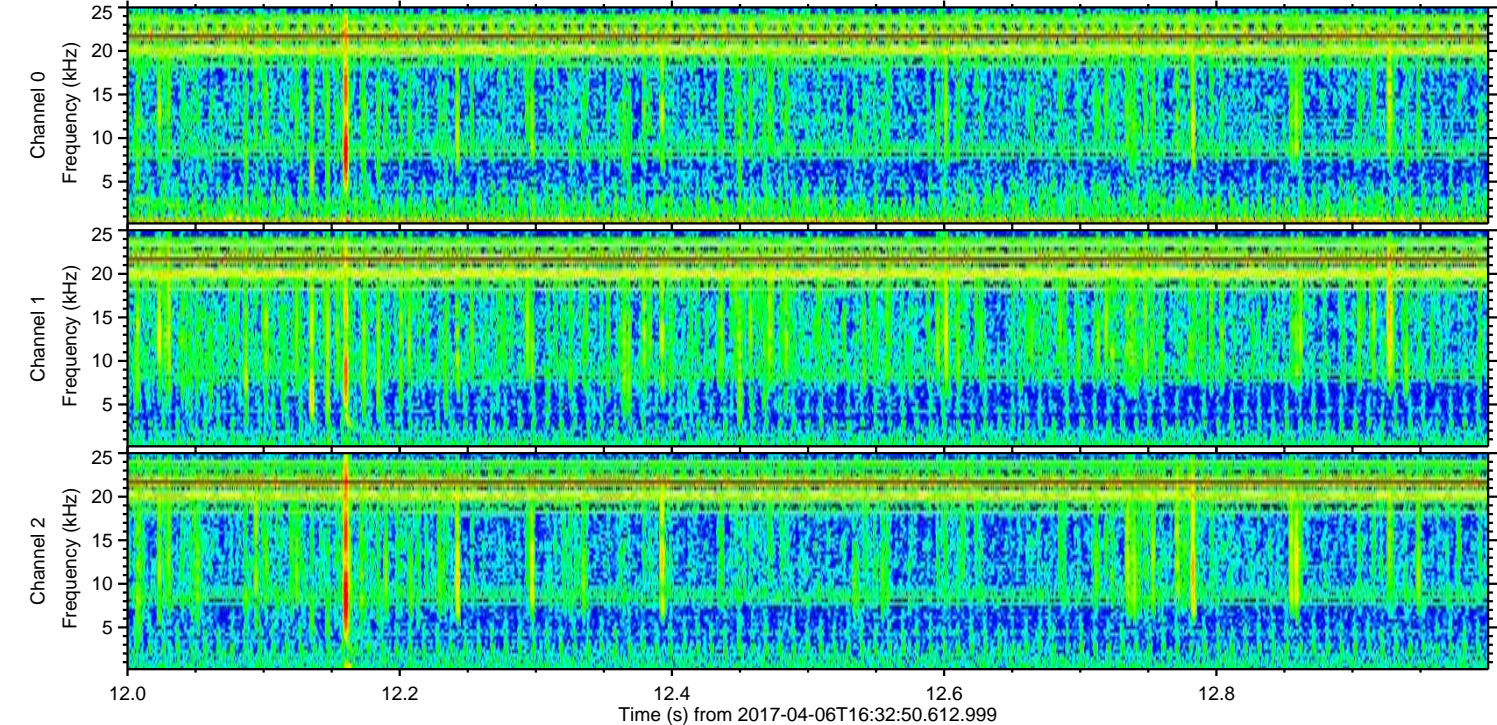
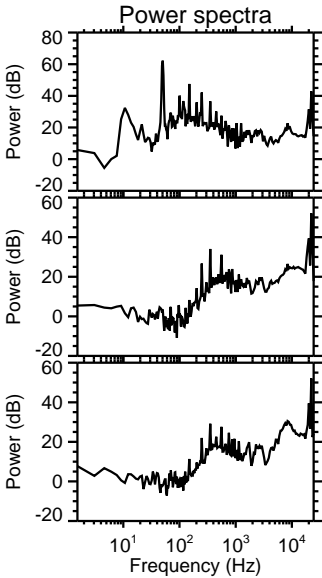
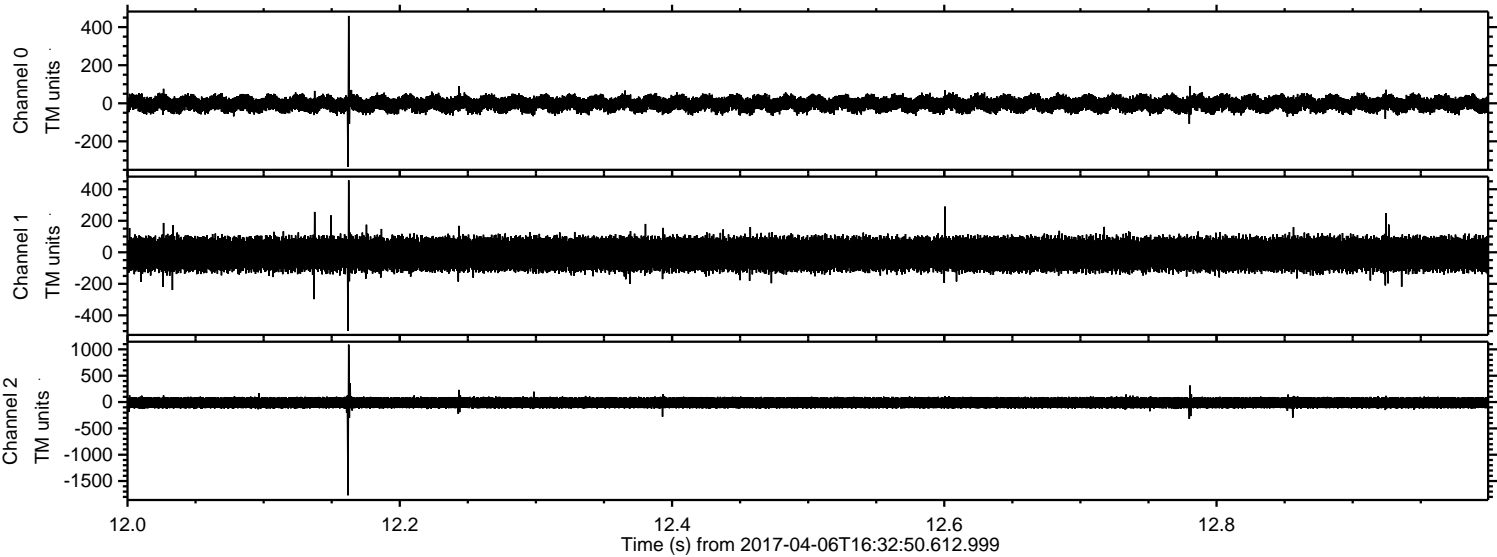


ELMAVAN 3D WAVEFORMS (Measured data sampled at 50 kHz) 51000 packets of 144 samples from 2017-04-06T16:32:50.612.999. Part 106/147

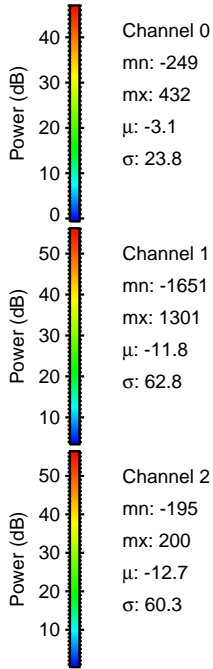
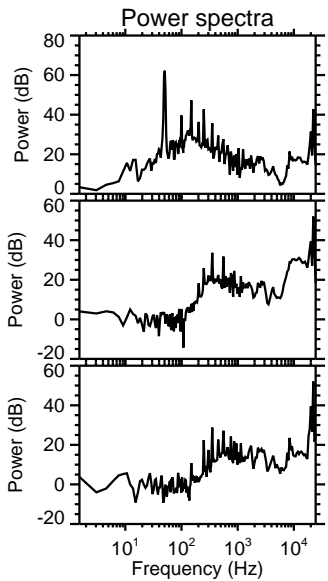
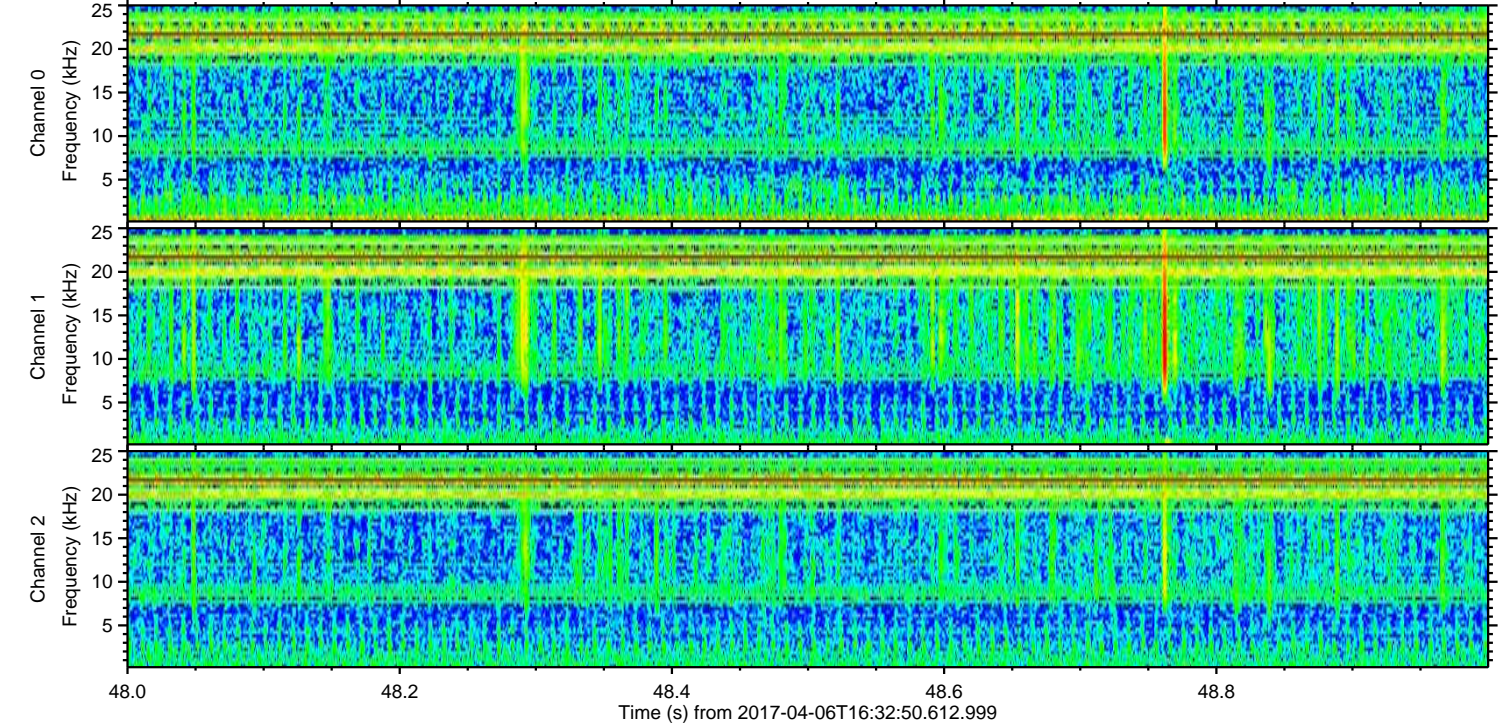
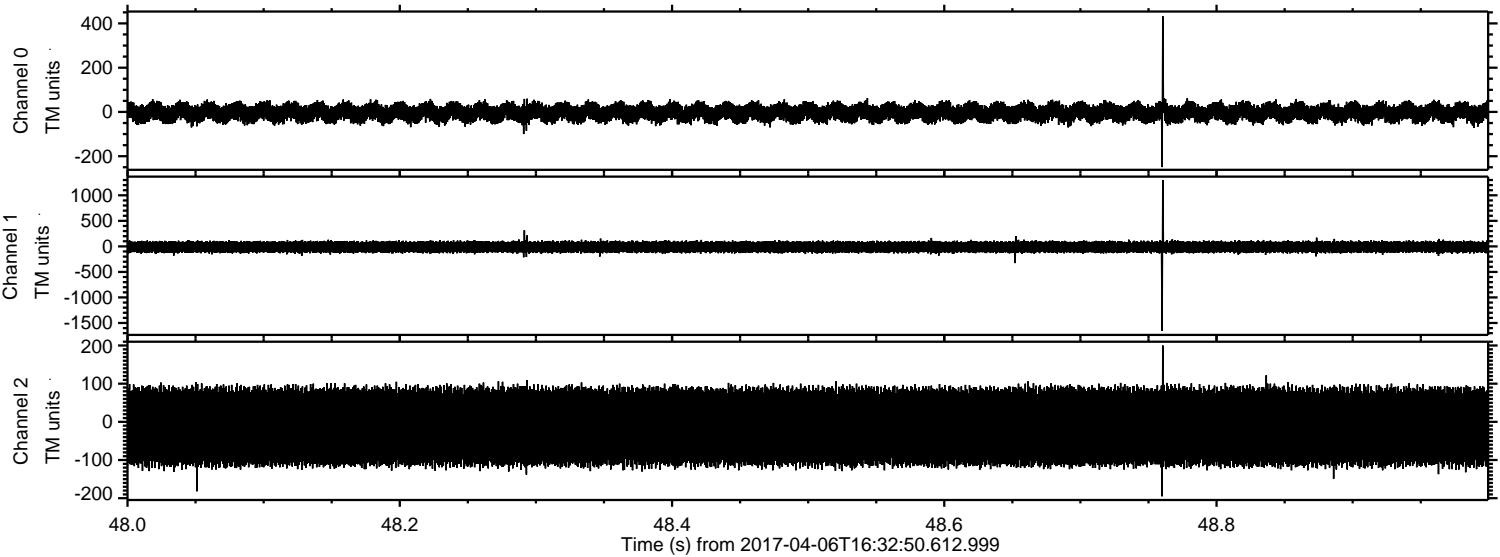
Processed Thu Apr 6 18:40:52 2017 by ELM ver.2012-10-06 from 001__elm20170406_163249__dat00.bin



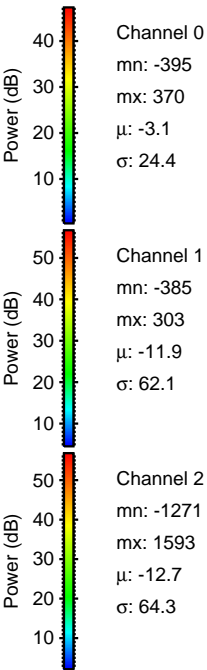
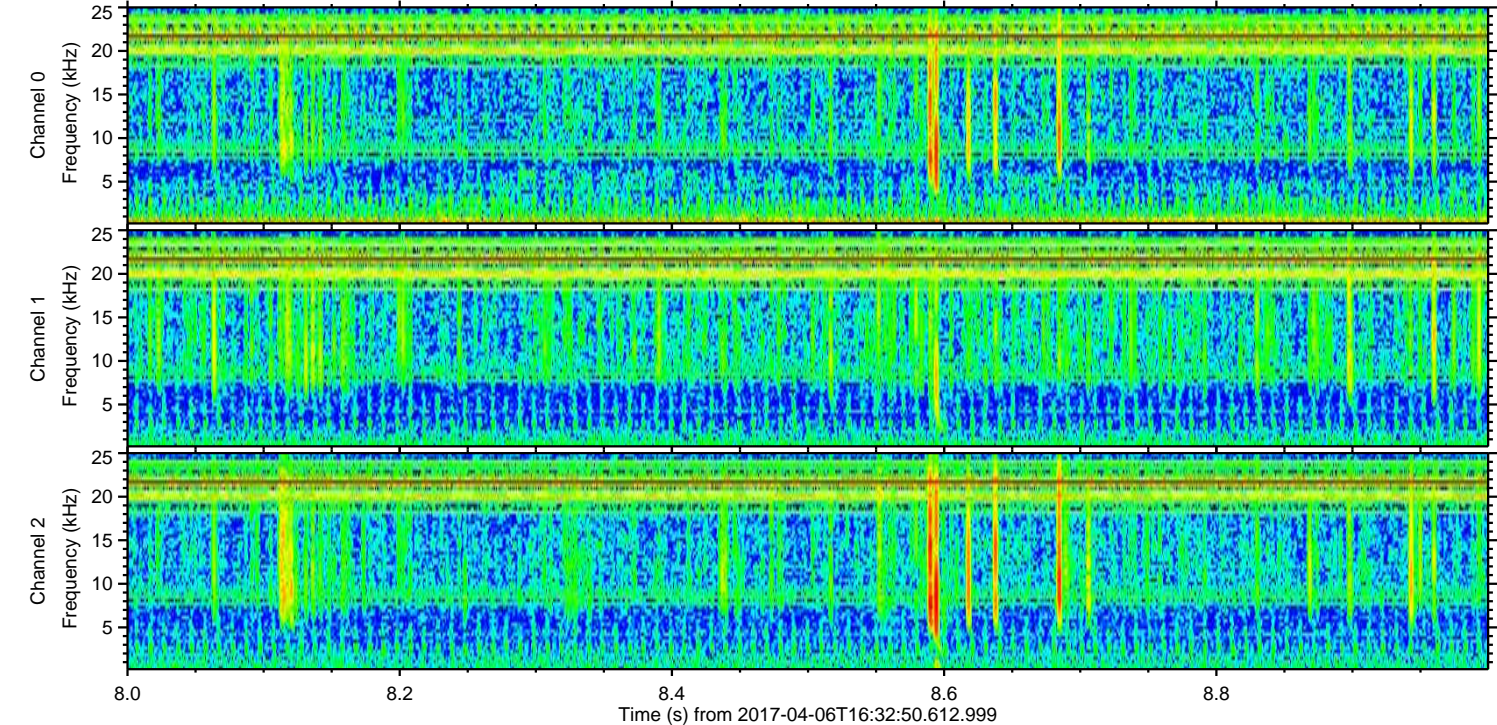
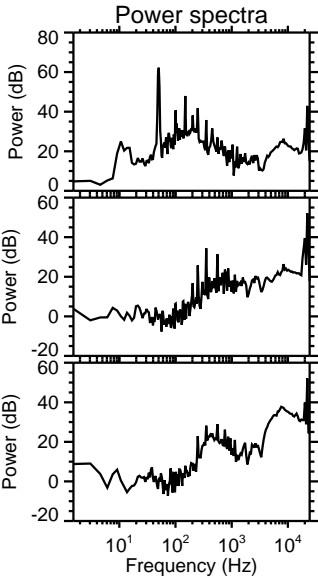
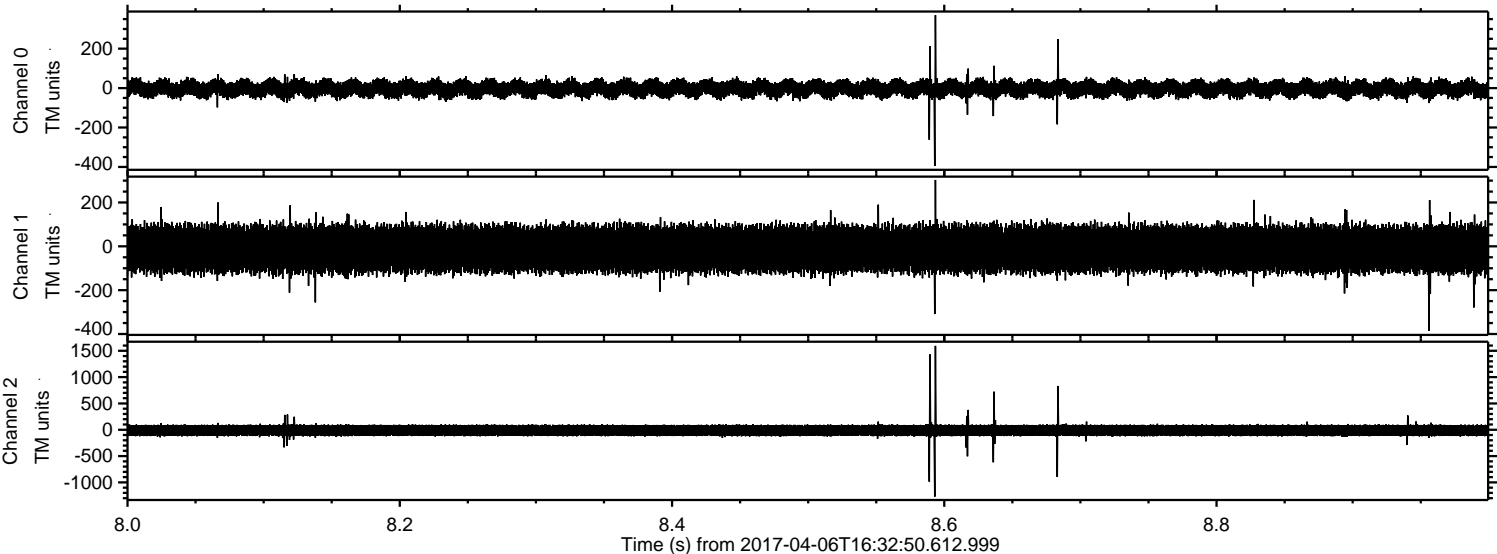
Processed Thu Apr 6 18:40:54 2017 by ELM ver.2012-10-06 from 001__elm20170406_163249__dat00.bin



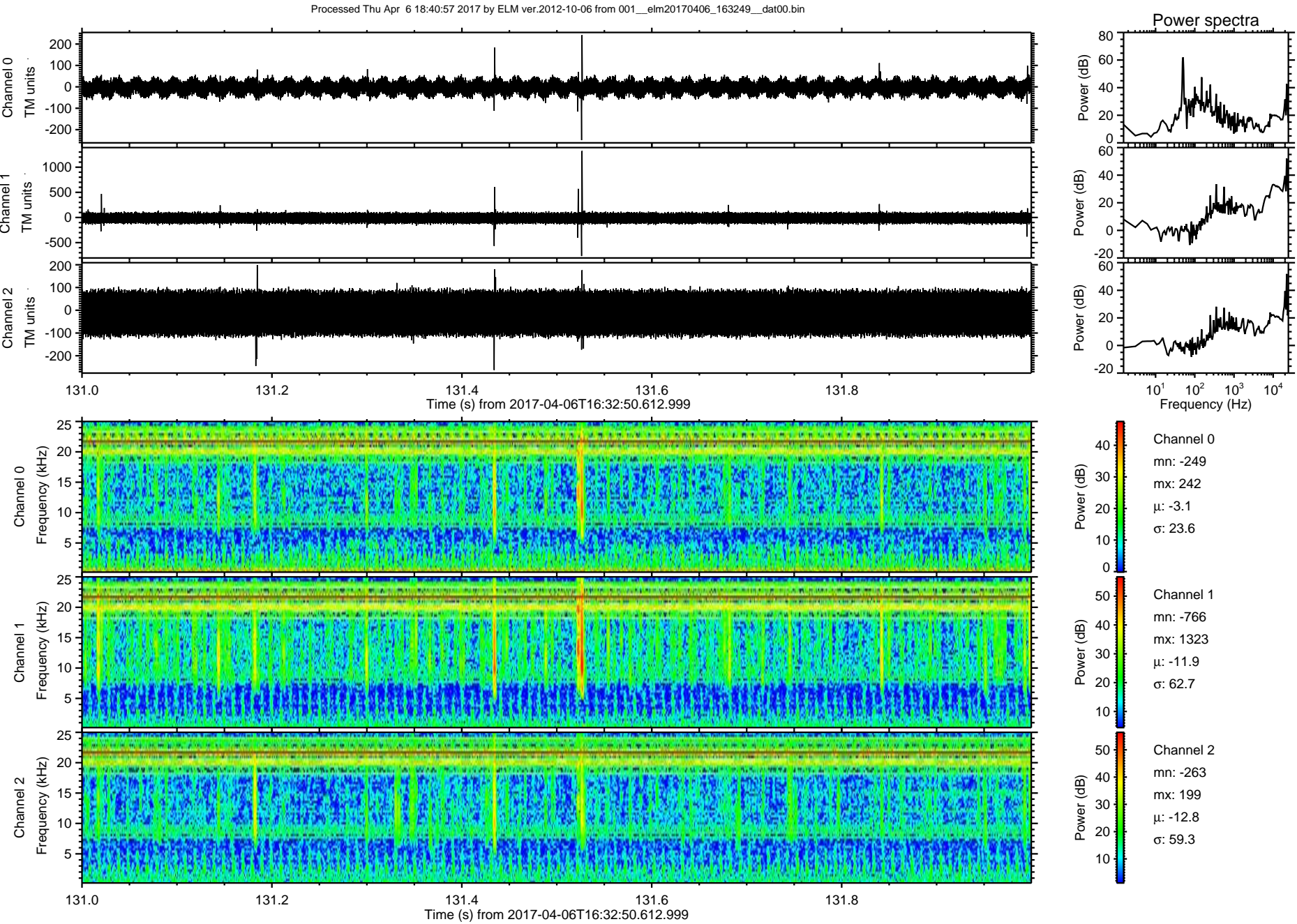
Processed Thu Apr 6 18:40:55 2017 by ELM ver.2012-10-06 from 001__elm20170406_163249__dat00.bin



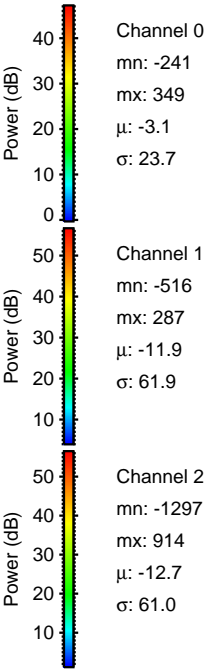
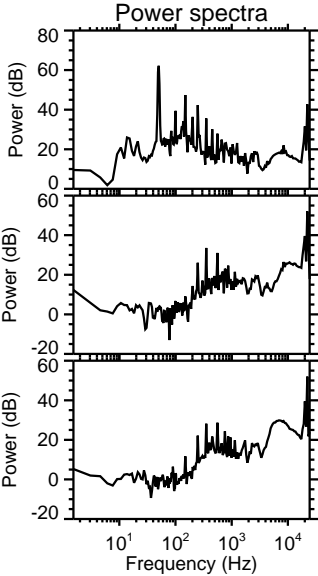
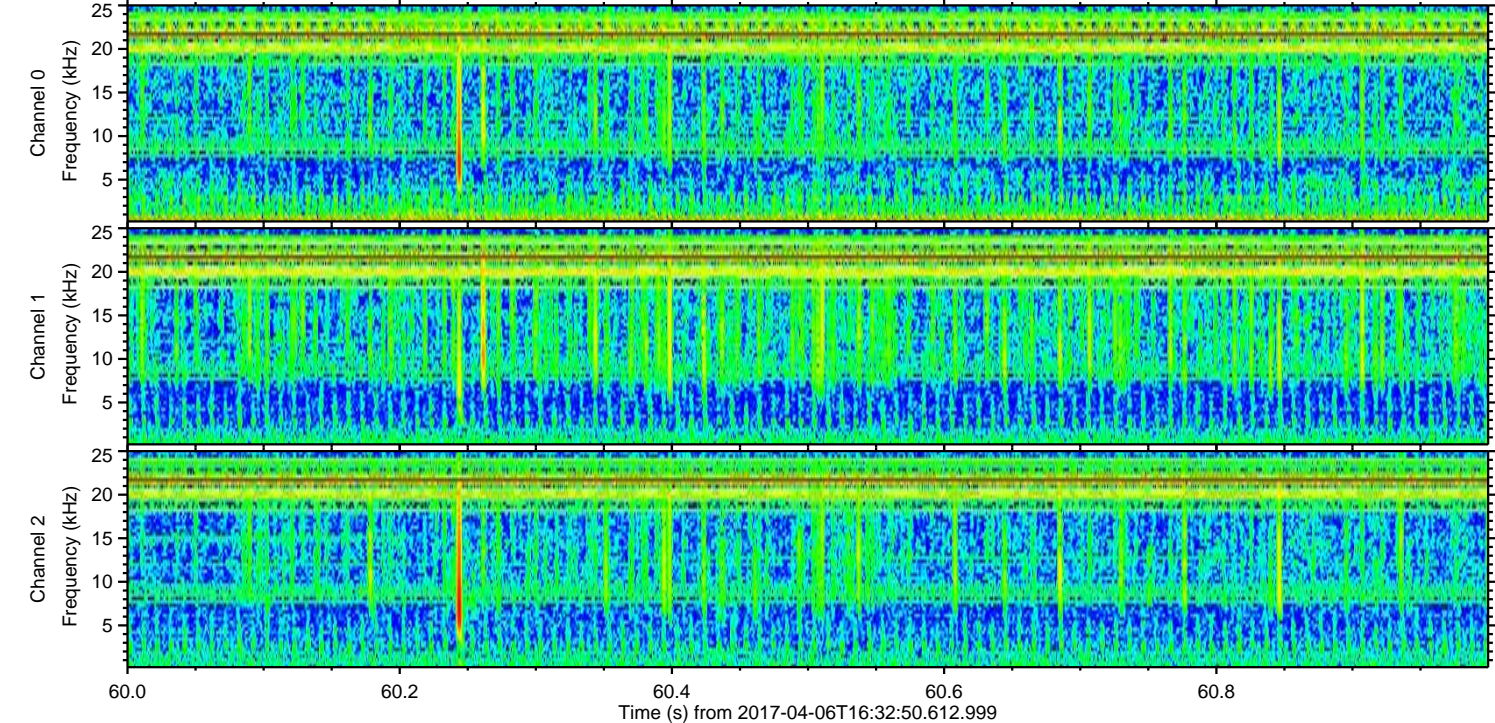
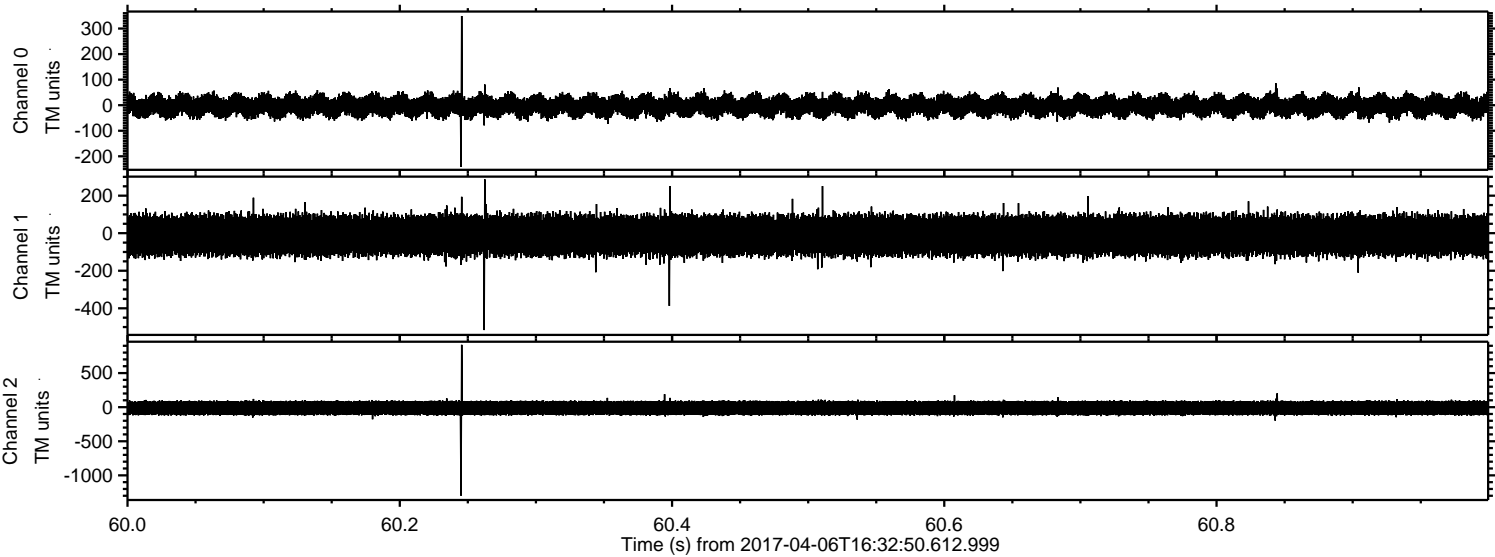
Processed Thu Apr 6 18:40:56 2017 by ELM ver.2012-10-06 from 001__elm20170406_163249__dat00.bin



ELMAVAN 3D WAVEFORMS (Measured data sampled at 50 kHz) 51000 packets of 144 samples from 2017-04-06T16:32:50.612.999. Part 132/147



Processed Thu Apr 6 18:40:58 2017 by ELM ver.2012-10-06 from 001__elm20170406_163249__dat00.bin

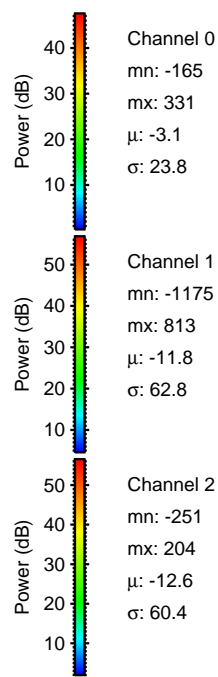
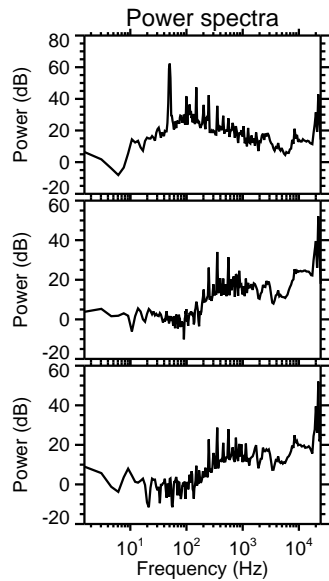
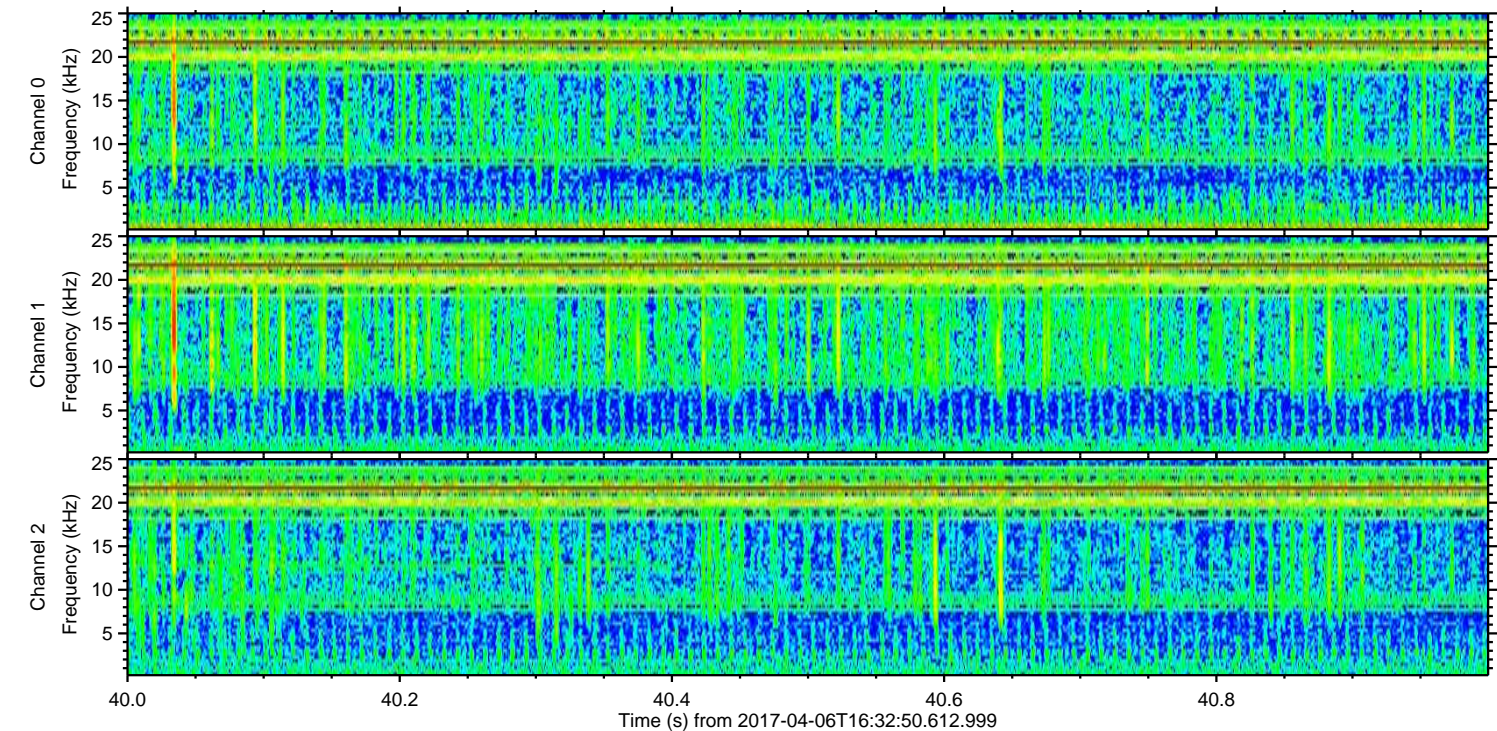
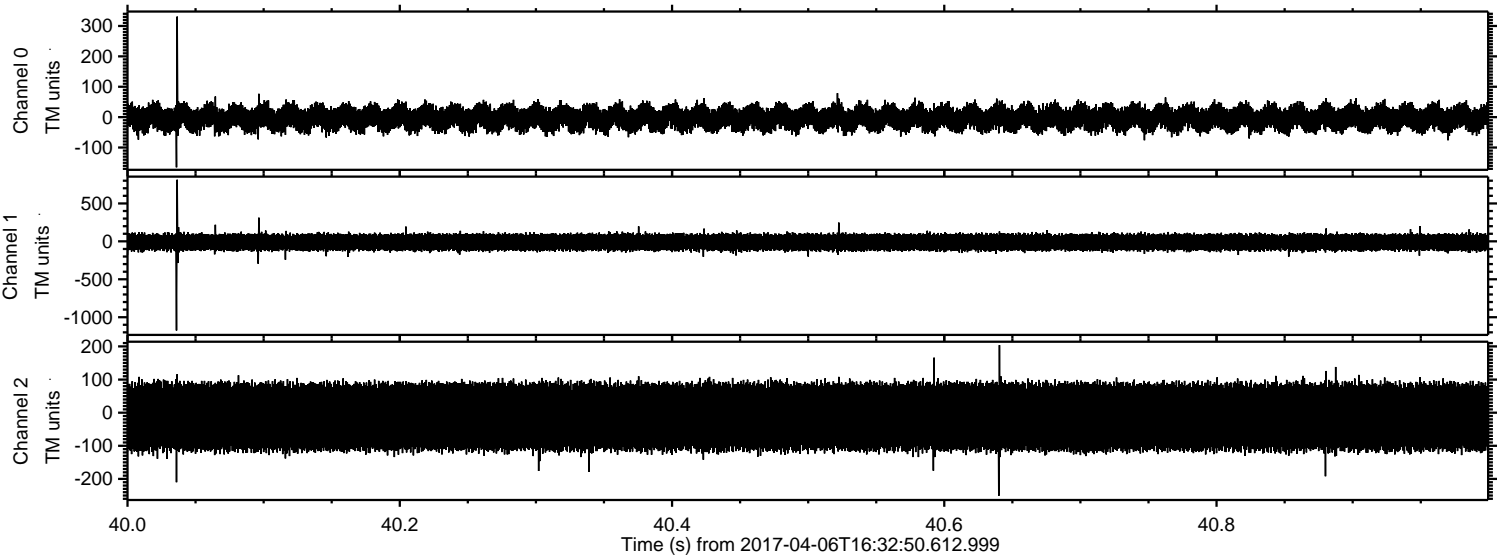


Channel 0
mn: -241
mx: 349
 μ : -3.1
 σ : 23.7

Channel 1
mn: -516
mx: 287
 μ : -11.9
 σ : 61.9

Channel 2
mn: -1297
mx: 914
 μ : -12.7
 σ : 61.0

Processed Thu Apr 6 18:40:59 2017 by ELM ver.2012-10-06 from 001__elm20170406_163249__dat00.bin



Channel 0
mn: -165
mx: 331
 μ : -3.1
 σ : 23.8

Channel 1
mn: -1175
mx: 813
 μ : -11.8
 σ : 62.8

Channel 2
mn: -251
mx: 204
 μ : -12.6
 σ : 60.4

Processed Thu Apr 6 18:41:00 2017 by ELM ver.2012-10-06 from 001__elm20170406_163249__dat00.bin

