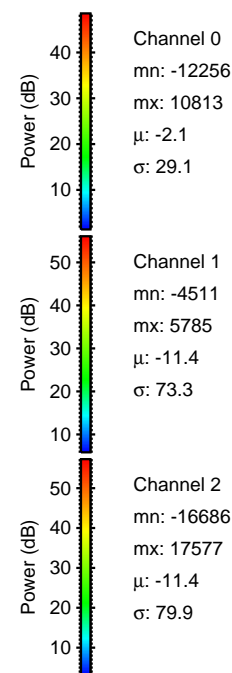
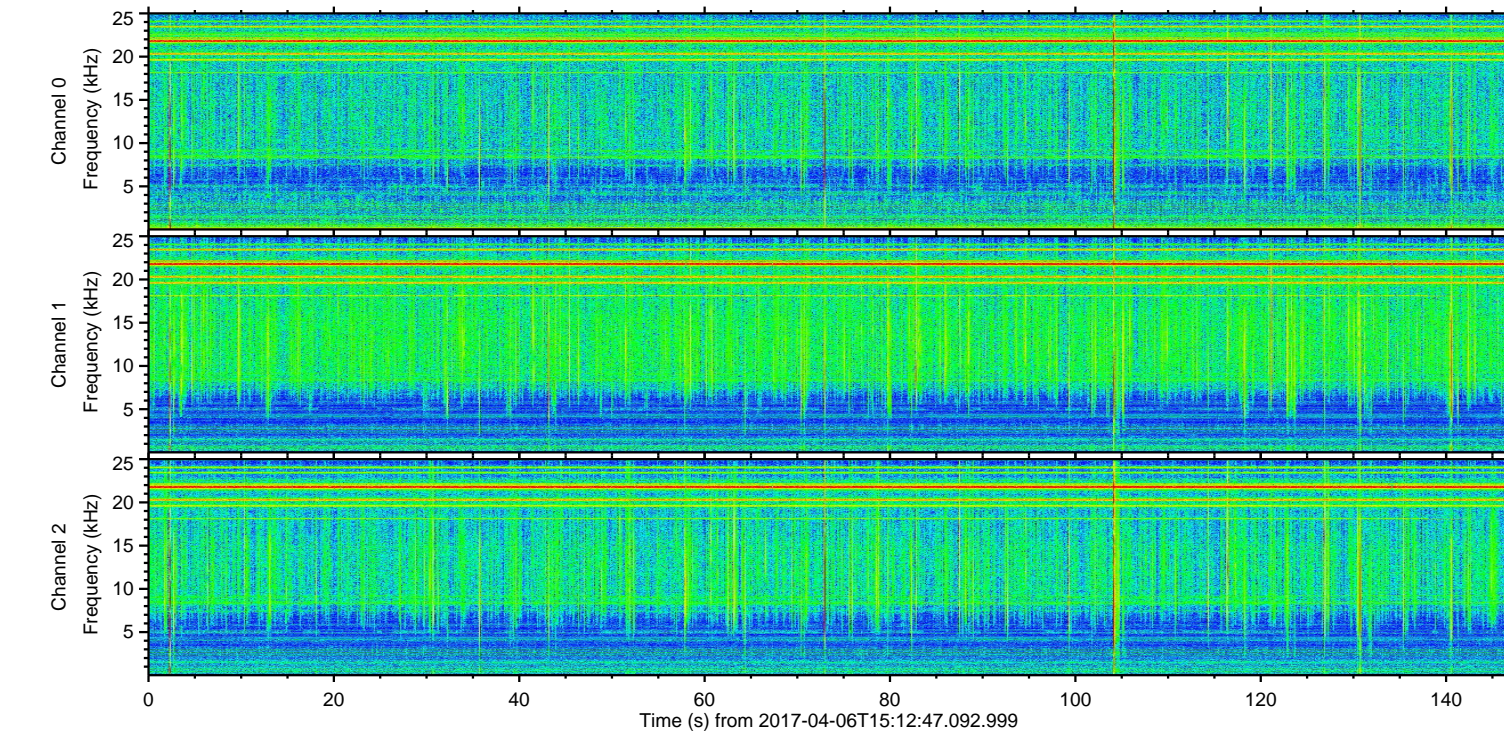
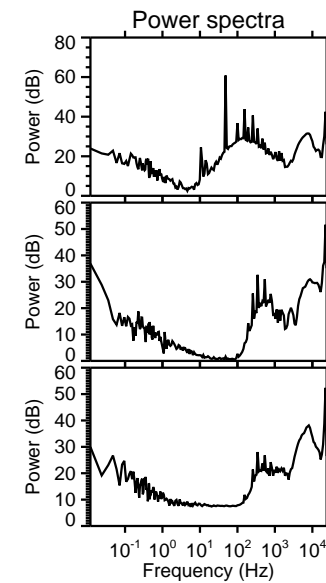
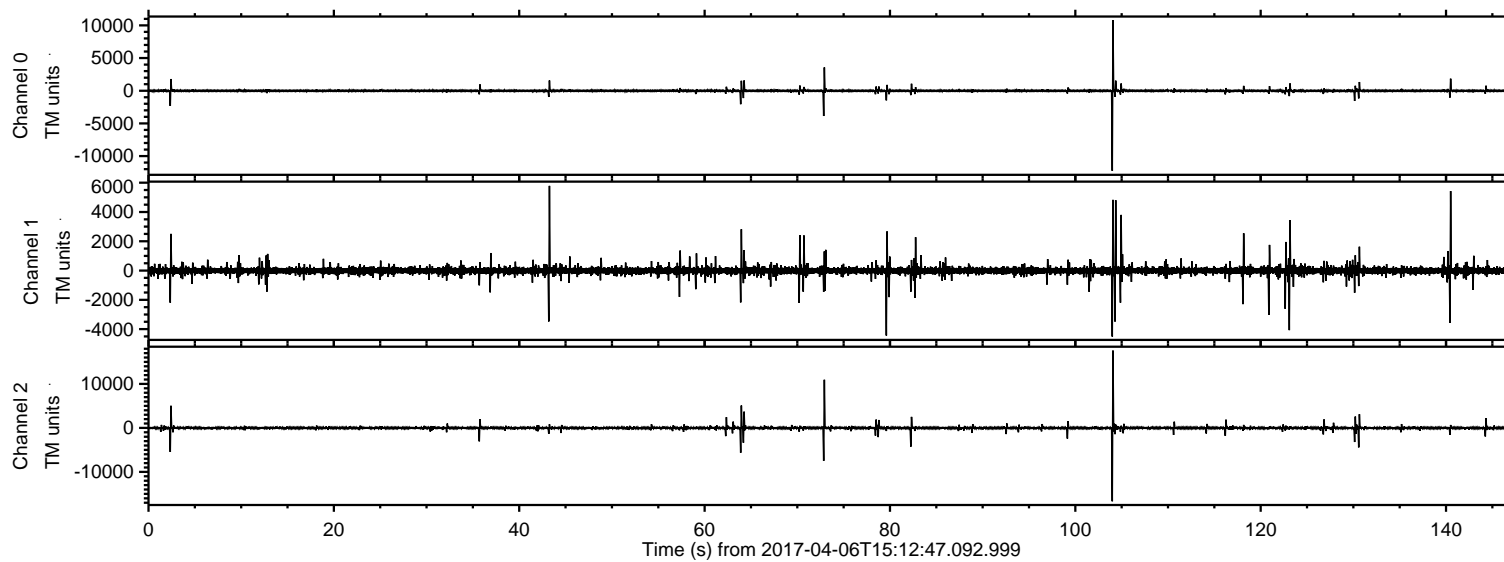


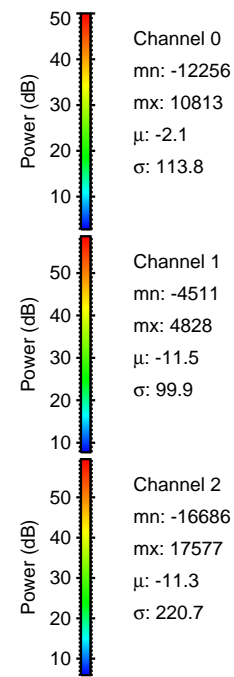
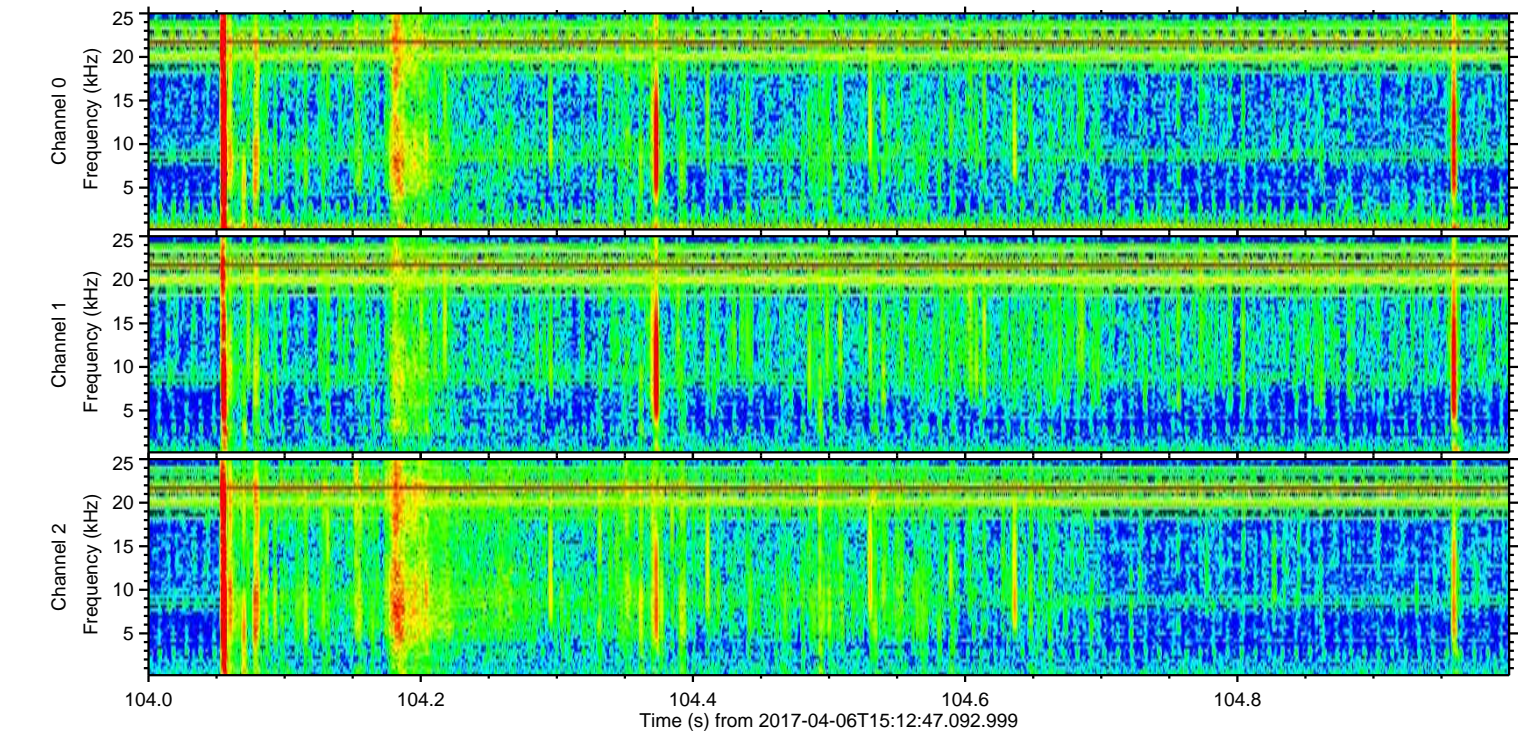
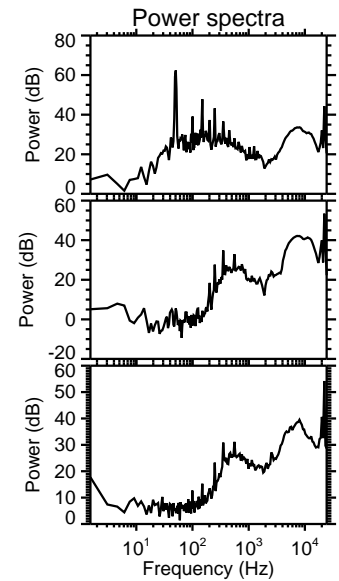
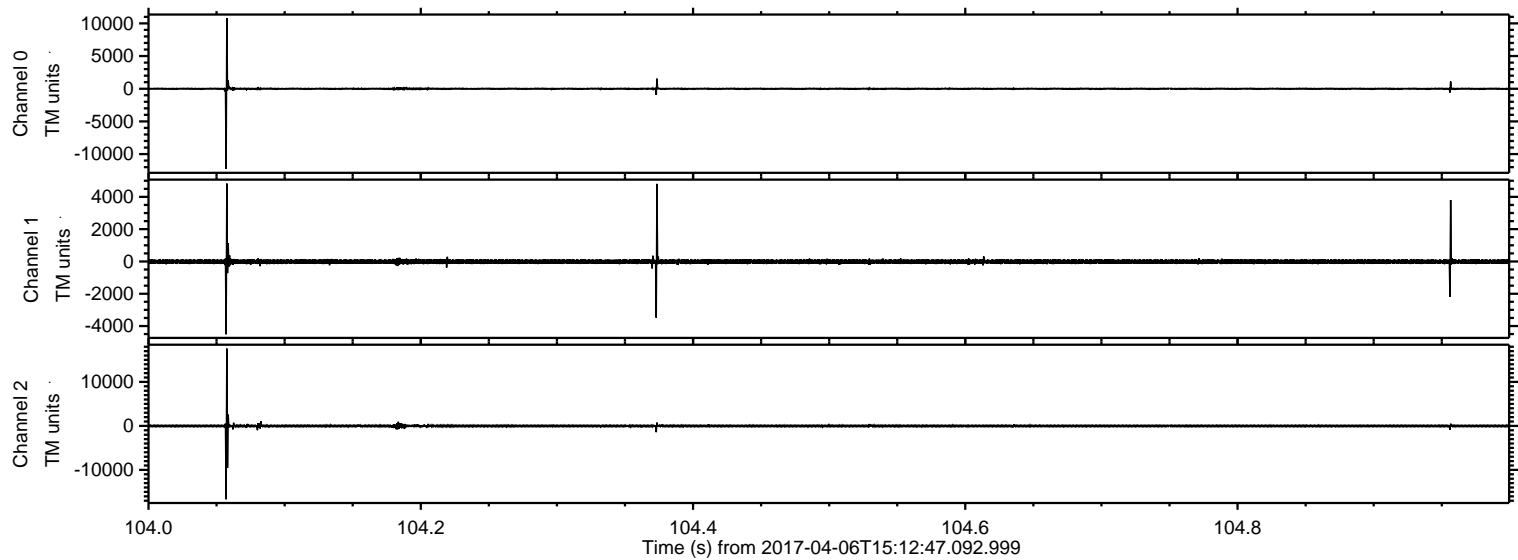
ELMAVAN 3D WAVEFORMS (Measured data sampled at 50 kHz) 51000 packets of 144 samples from 2017-04-06T15:12:47.092.999.

Processed Thu Apr 6 17:20:54 2017 by ELM ver.2012-10-06 from 001__elm20170406_151246__dat00.bin



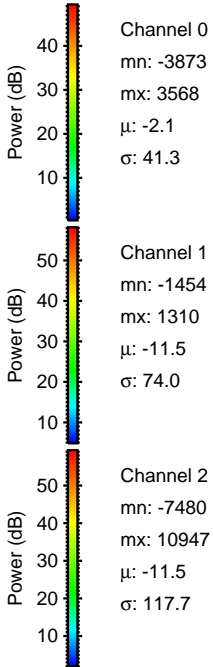
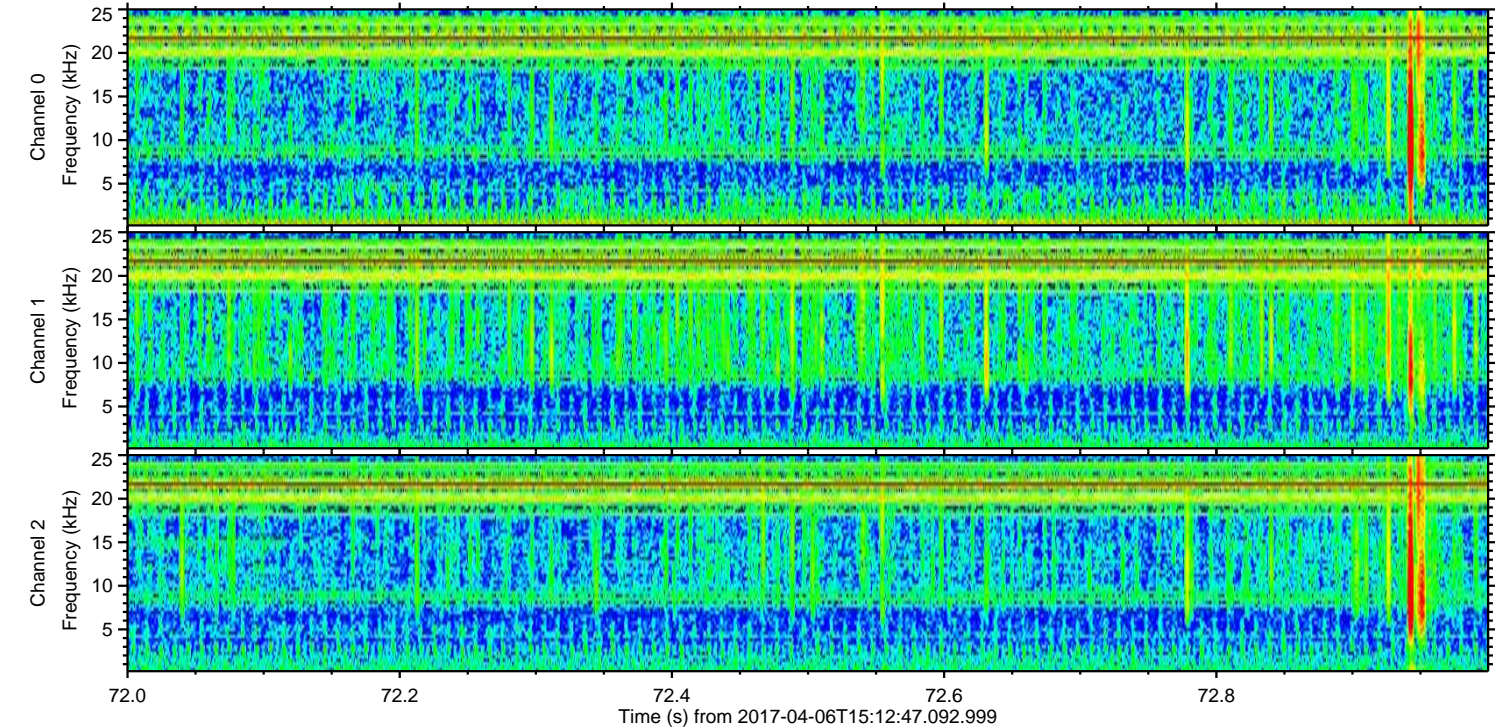
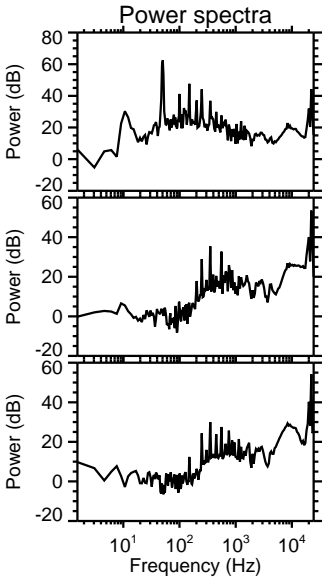
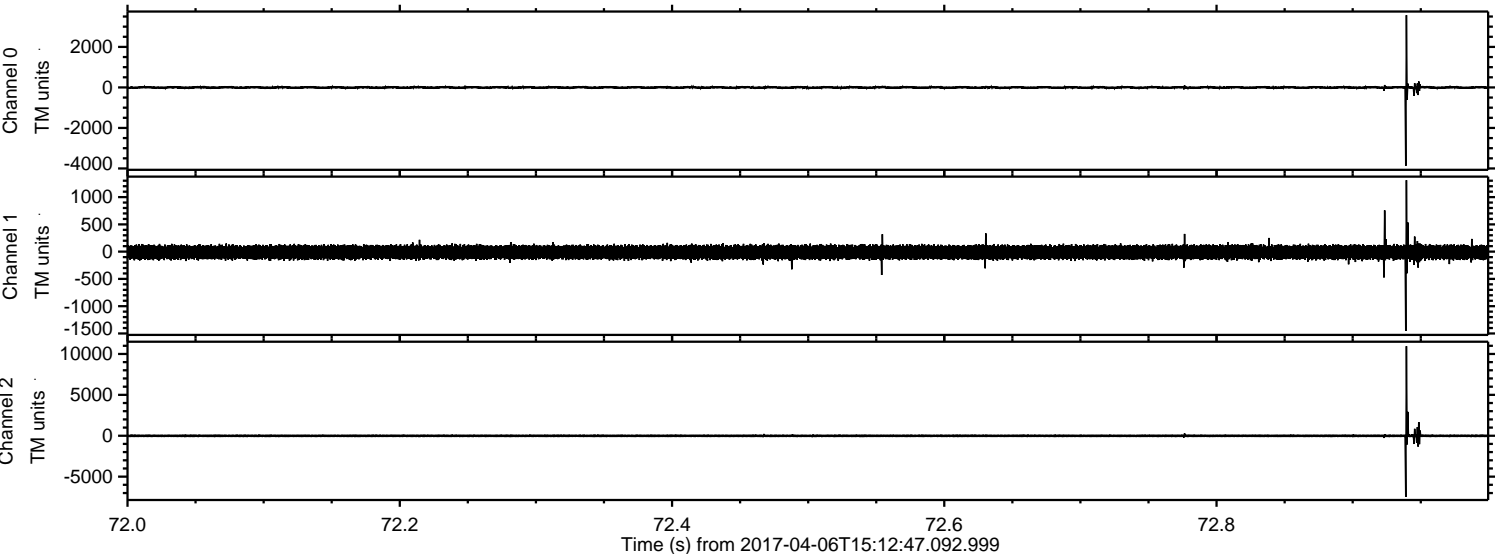
ELMAVAN 3D WAVEFORMS (Measured data sampled at 50 kHz) 51000 packets of 144 samples from 2017-04-06T15:12:47.092.999. Part 105/147

Processed Thu Apr 6 17:21:09 2017 by ELM ver.2012-10-06 from 001__elm20170406_151246__dat00.bin

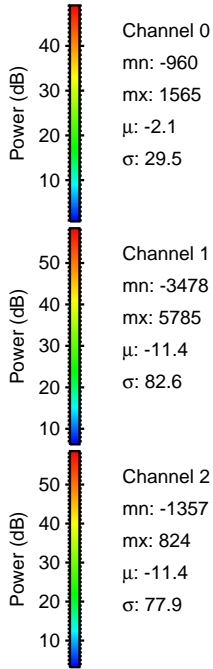
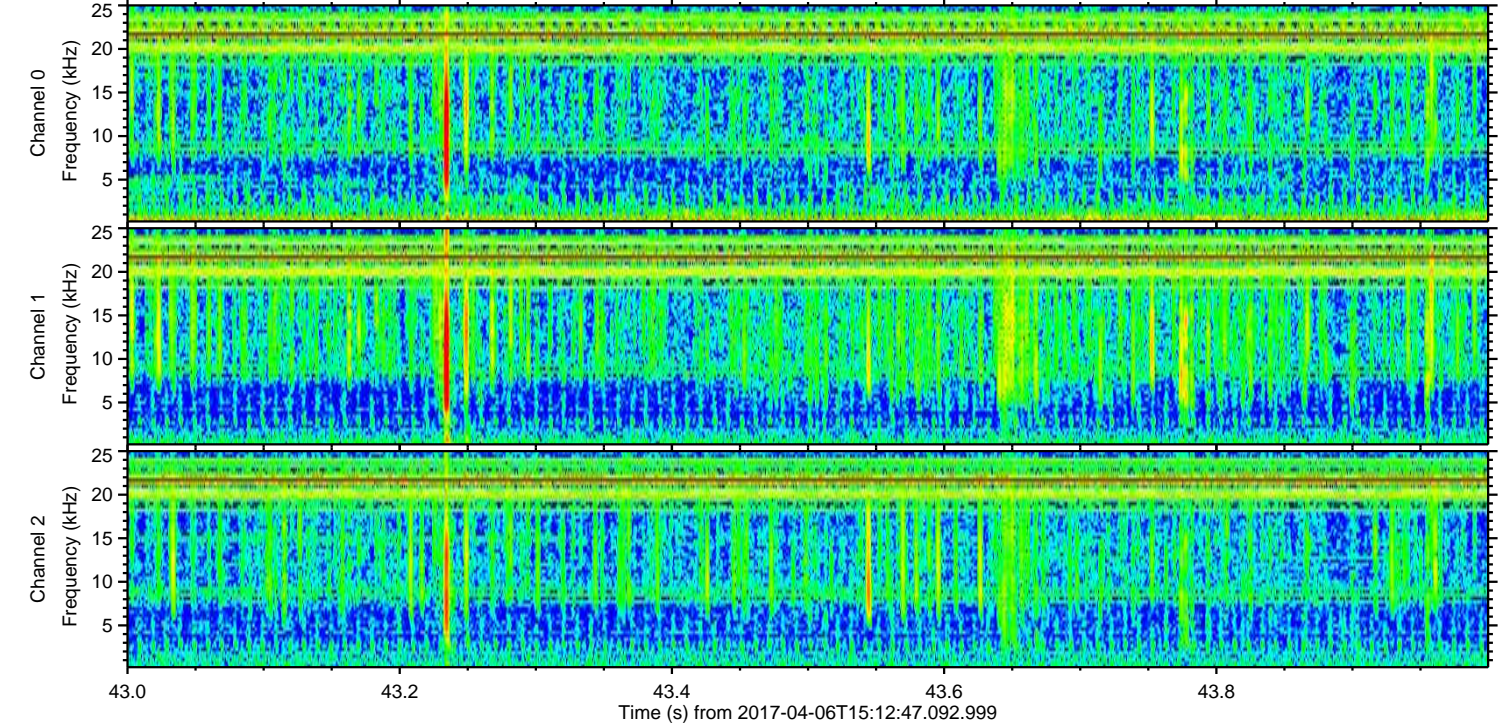
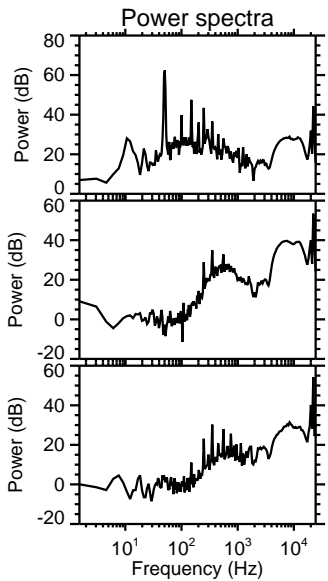
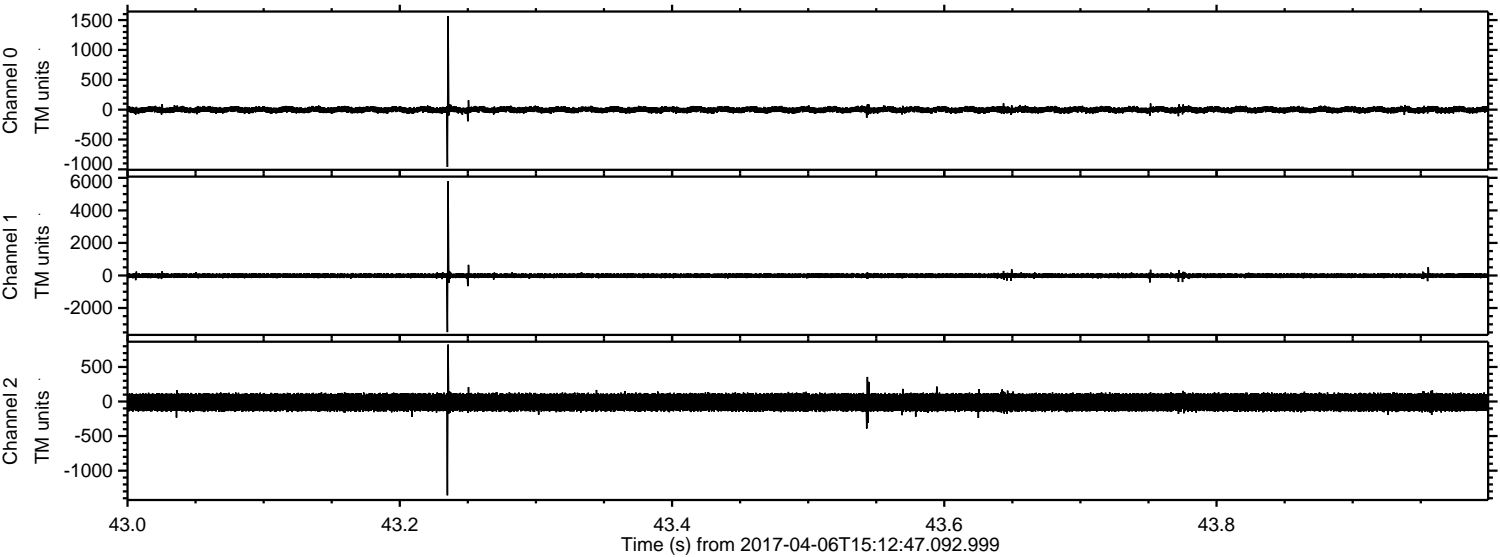


ELMAVAN 3D WAVEFORMS (Measured data sampled at 50 kHz) 51000 packets of 144 samples from 2017-04-06T15:12:47.092.999. Part 73/147

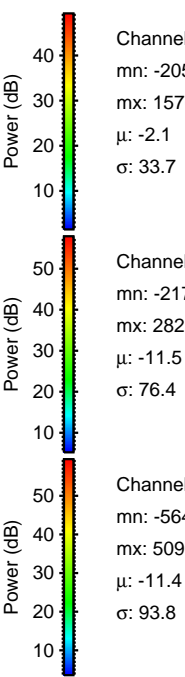
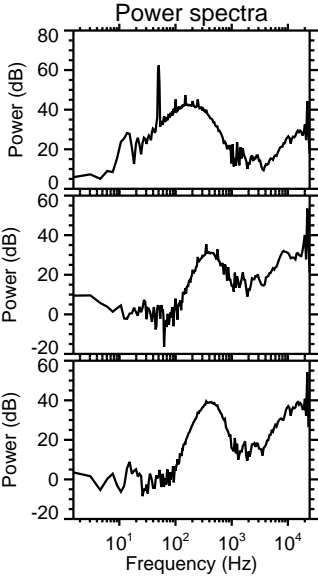
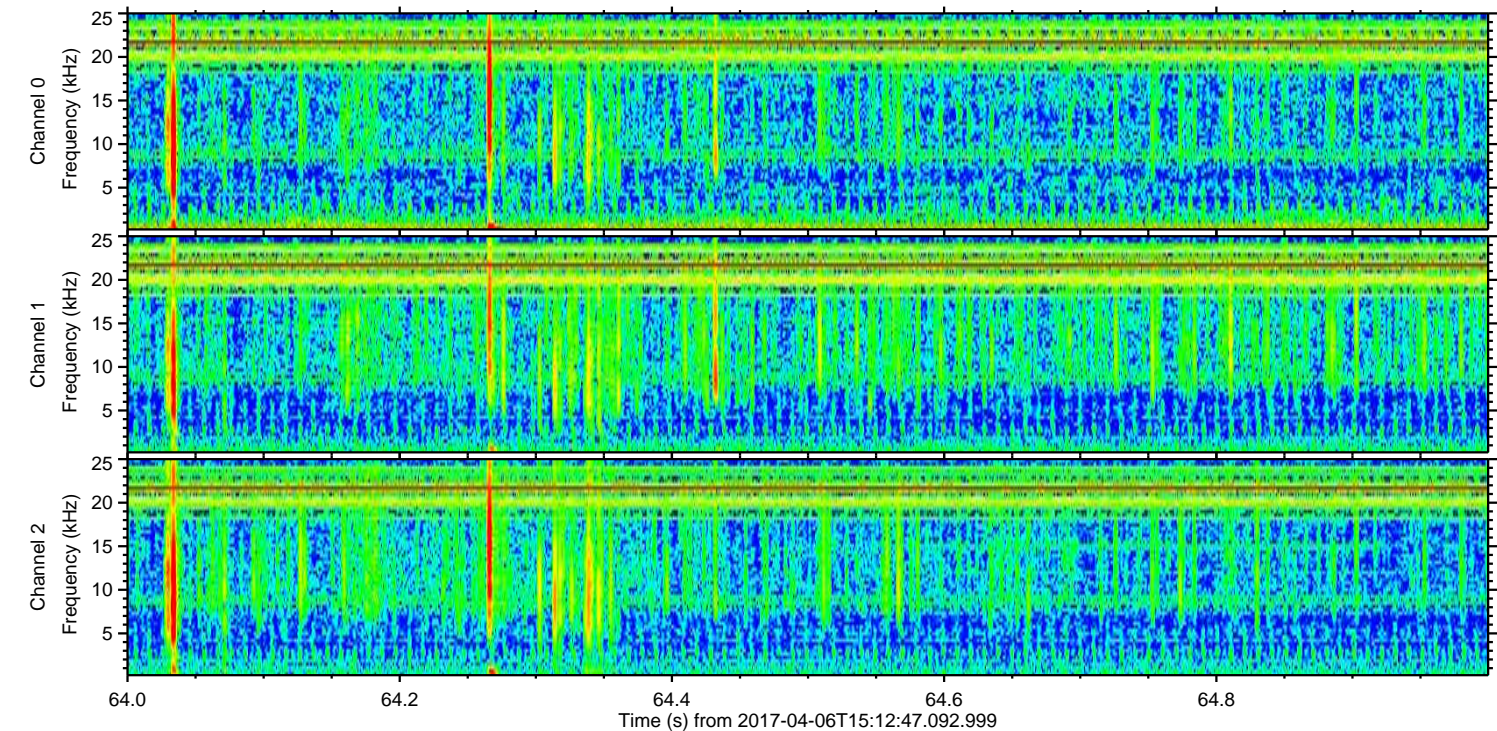
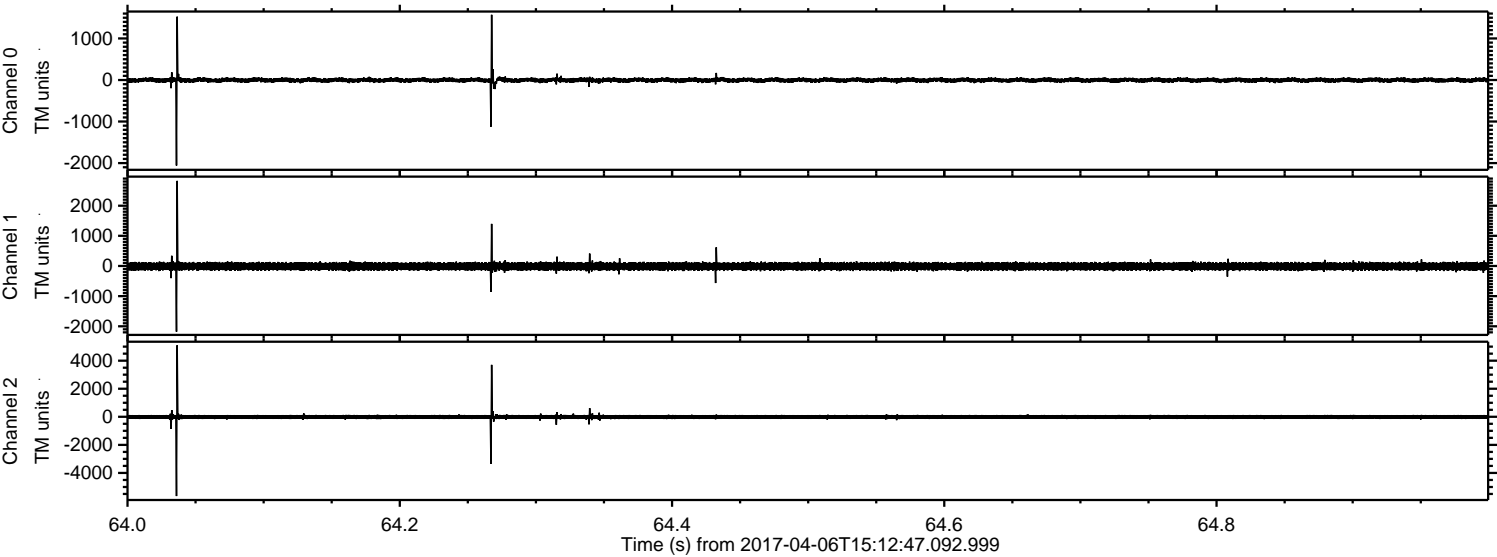
Processed Thu Apr 6 17:21:10 2017 by ELM ver.2012-10-06 from 001__elm20170406_151246__dat00.bin



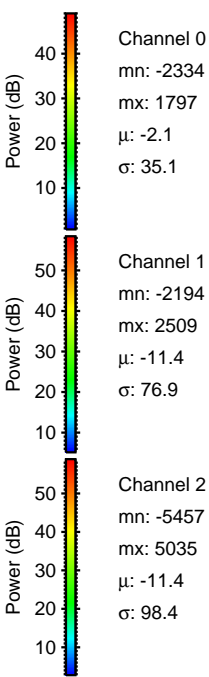
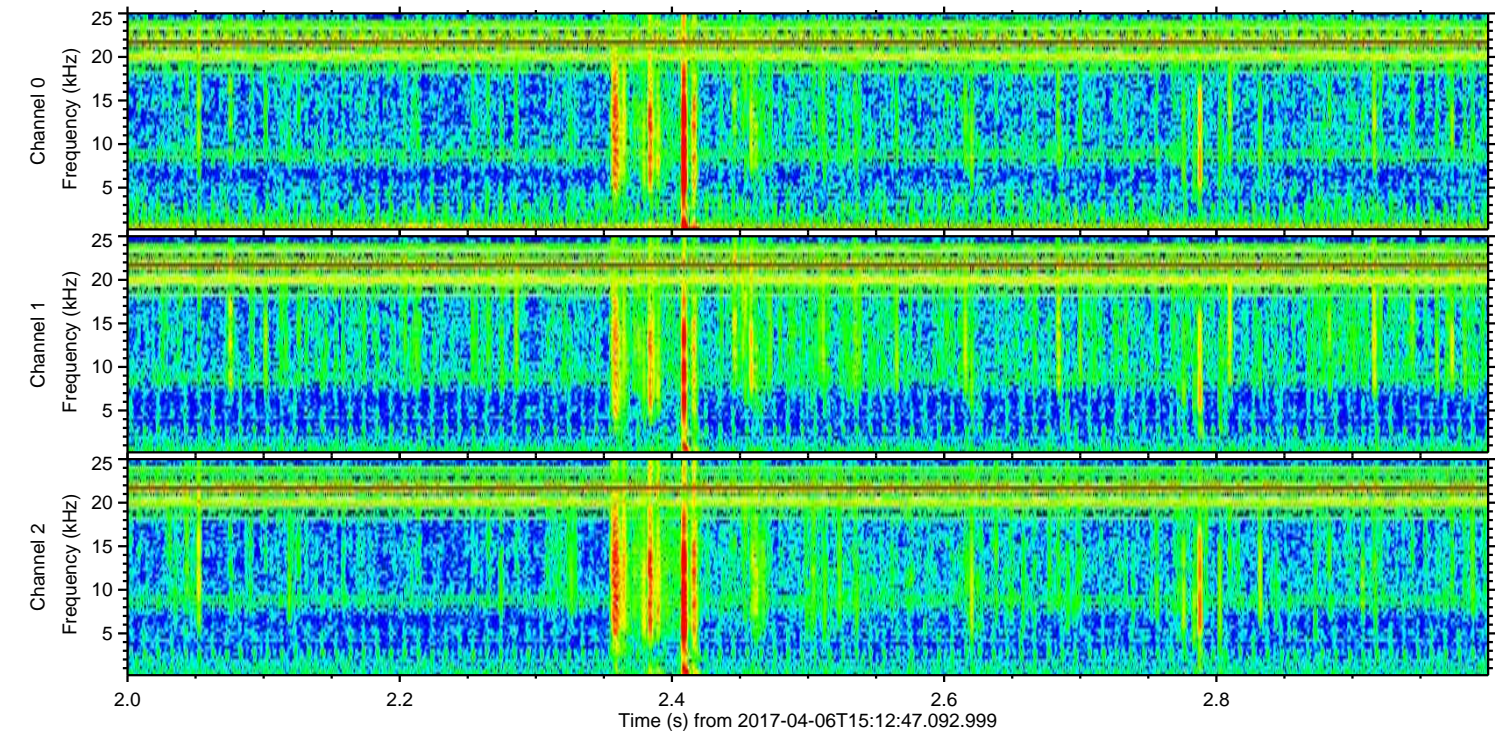
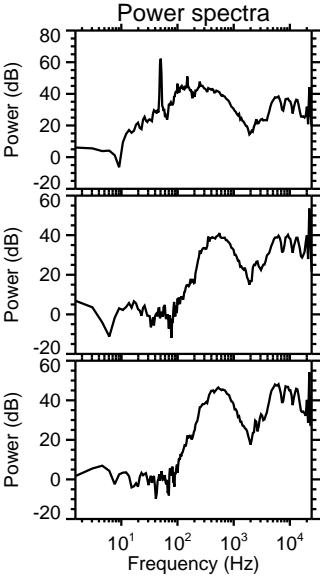
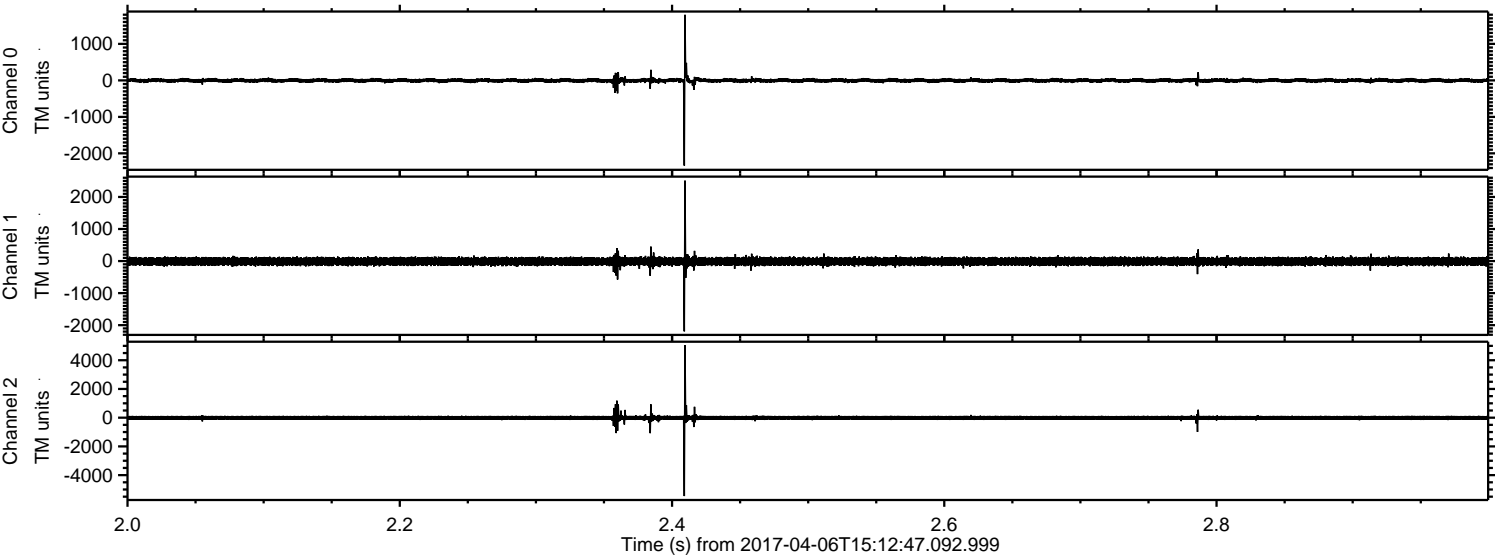
Processed Thu Apr 6 17:21:11 2017 by ELM ver.2012-10-06 from 001__elm20170406_151246__dat00.bin



Processed Thu Apr 6 17:21:12 2017 by ELM ver.2012-10-06 from 001__elm20170406_151246__dat00.bin

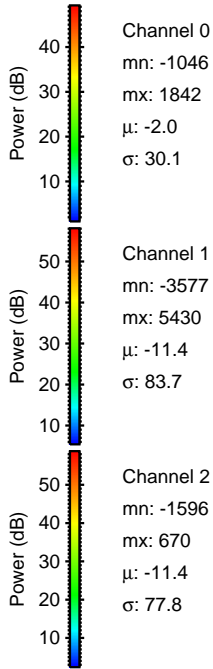
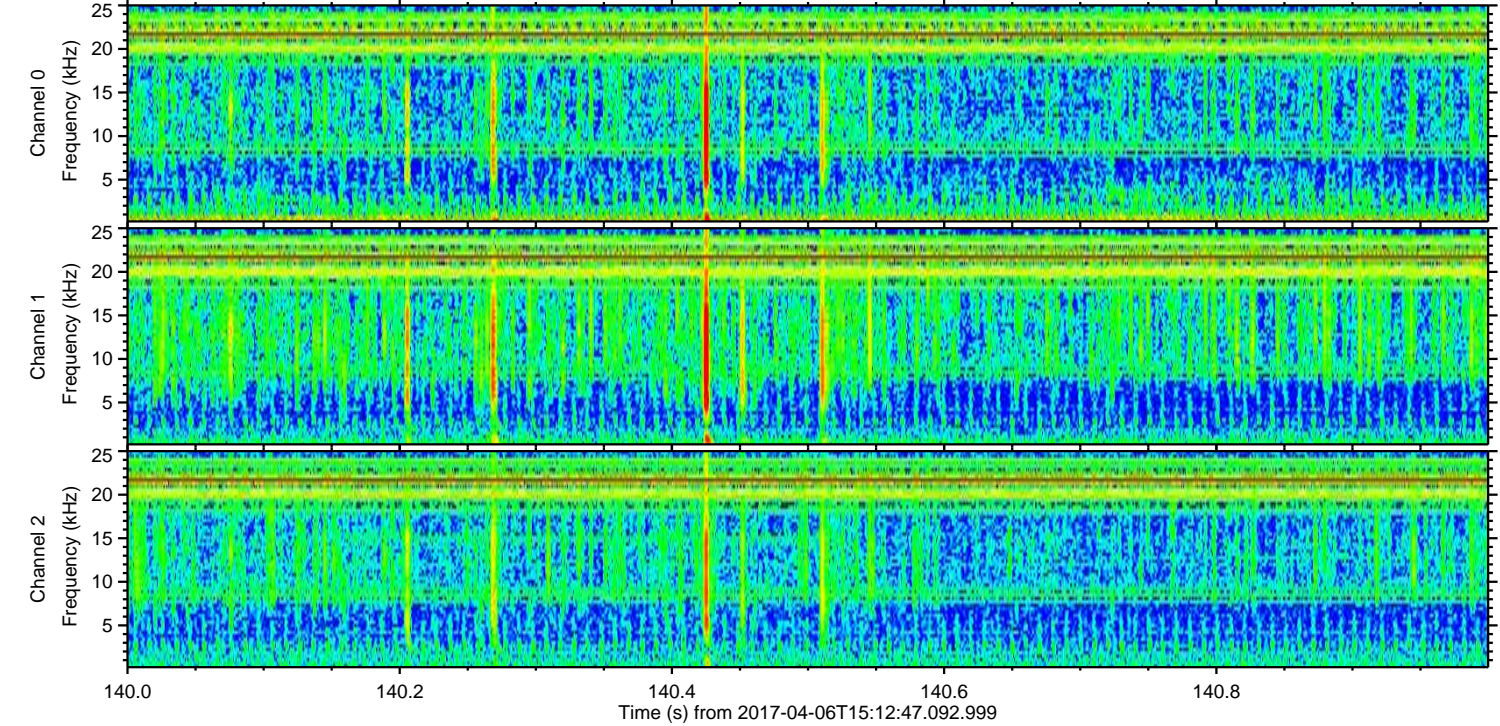
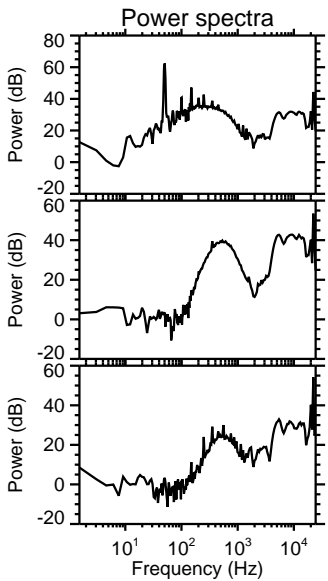
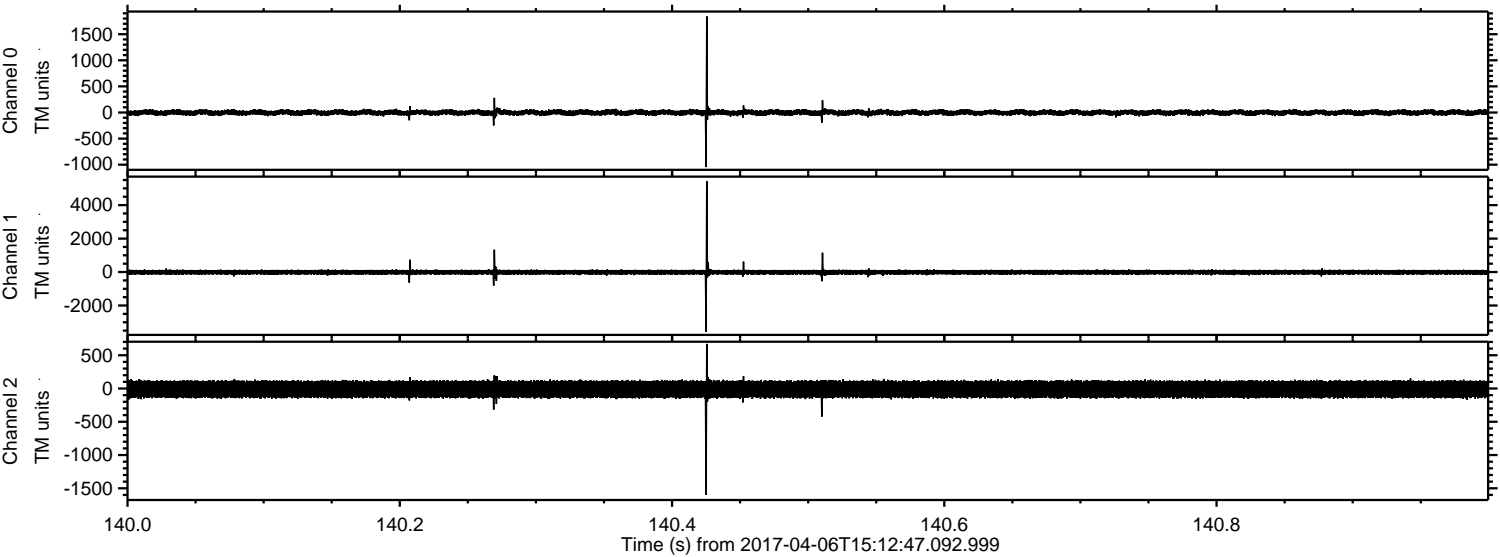


Processed Thu Apr 6 17:21:13 2017 by ELM ver.2012-10-06 from 001__elm20170406_151246__dat00.bin

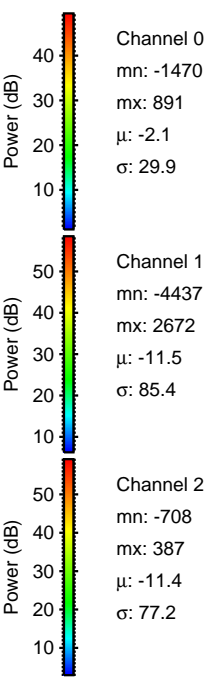
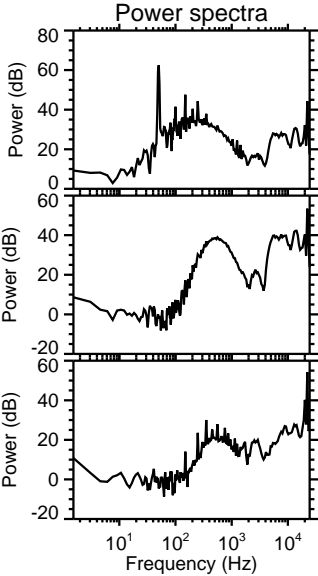
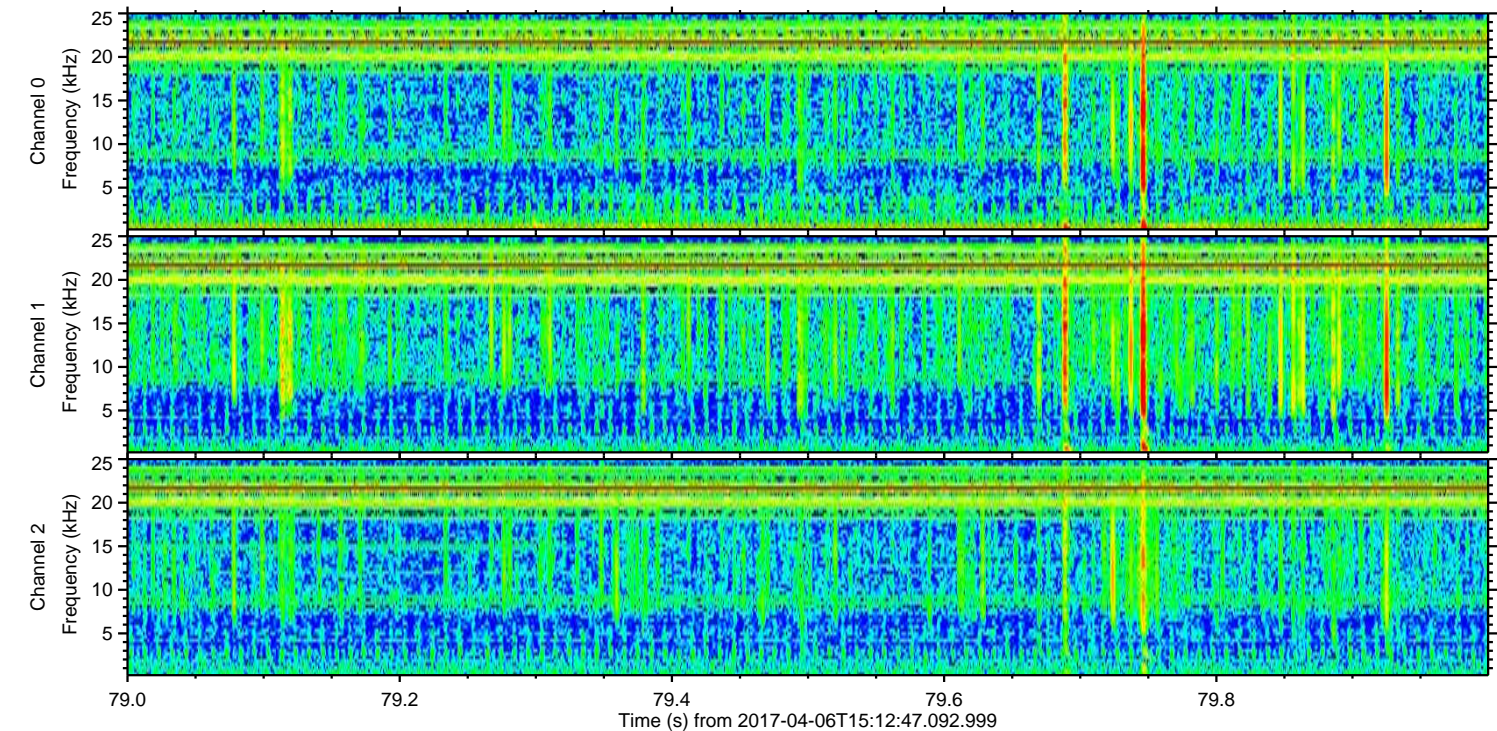
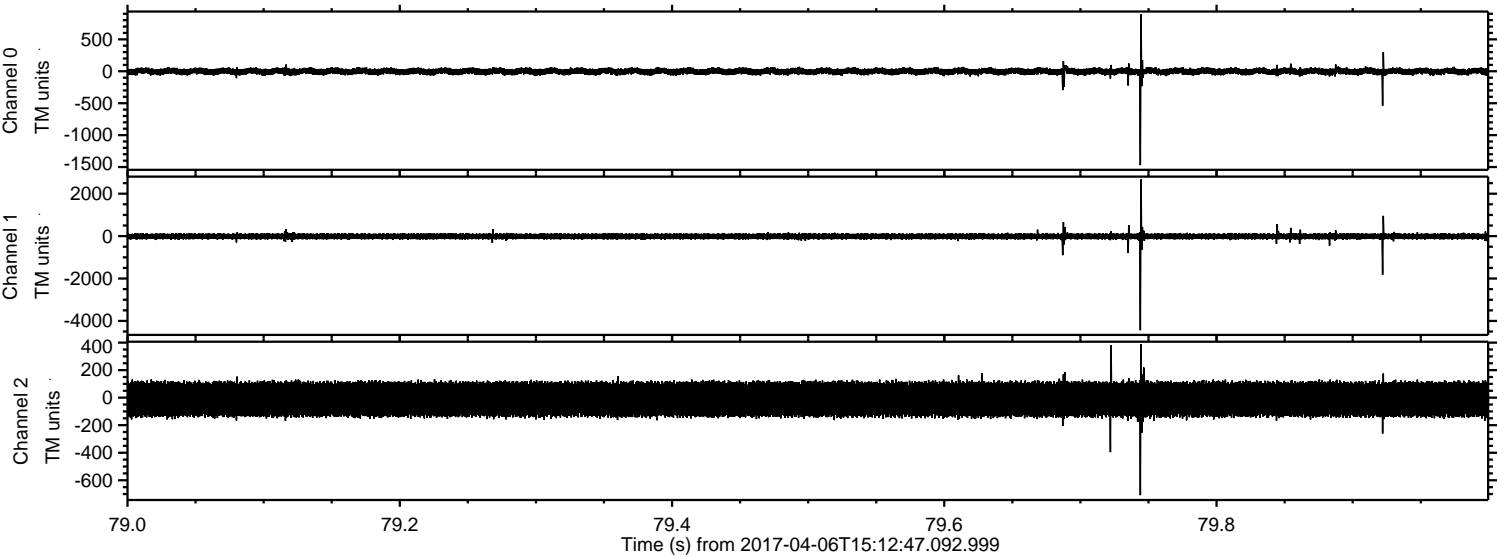


ELMAVAN 3D WAVEFORMS (Measured data sampled at 50 kHz) 51000 packets of 144 samples from 2017-04-06T15:12:47.092.999. Part 141/147

Processed Thu Apr 6 17:21:15 2017 by ELM ver.2012-10-06 from 001__elm20170406_151246__dat00.bin

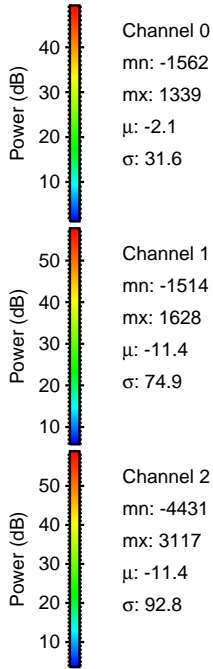
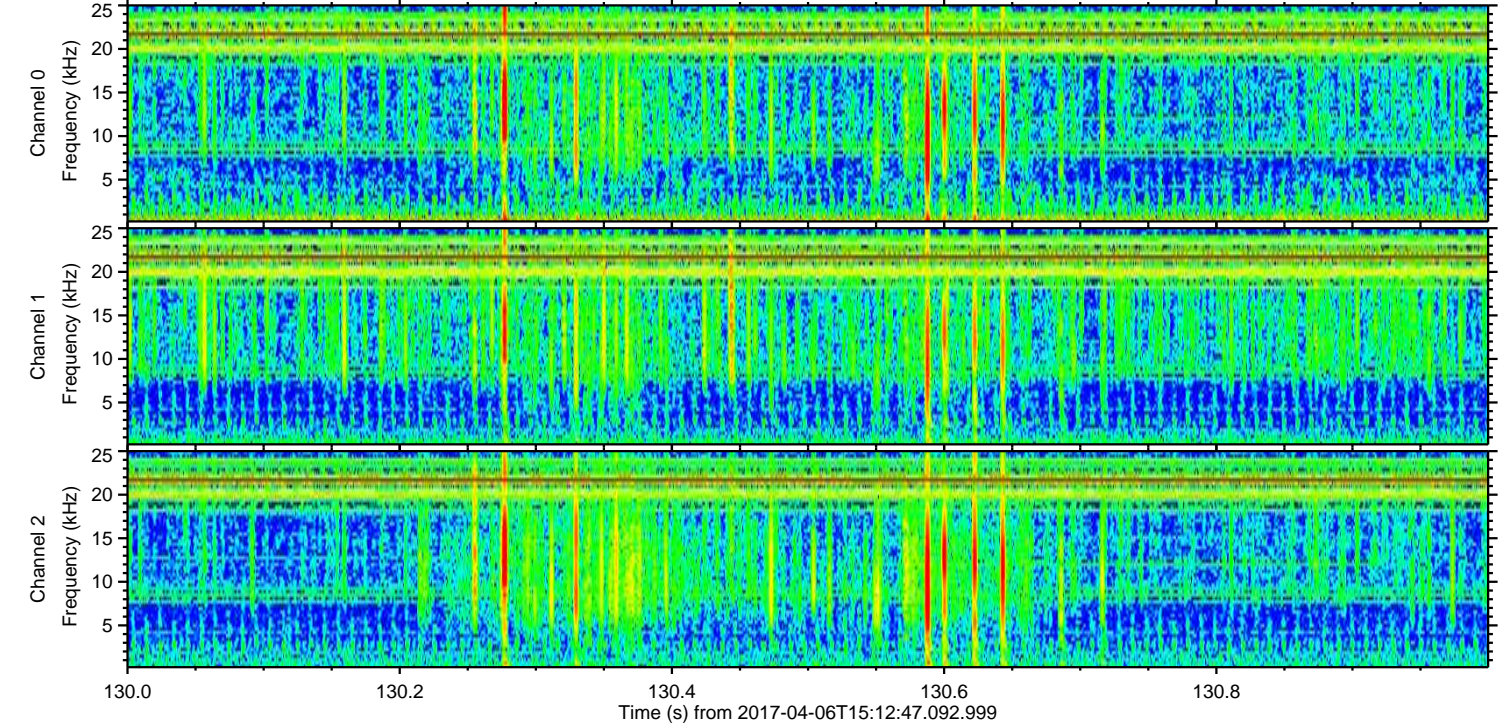
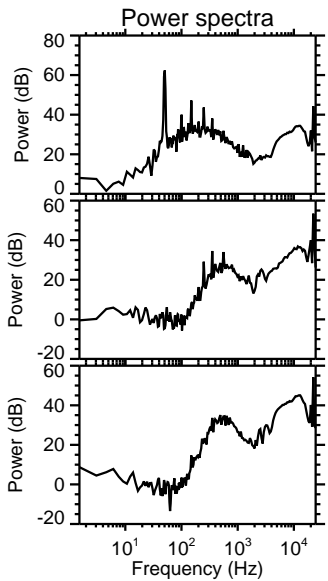
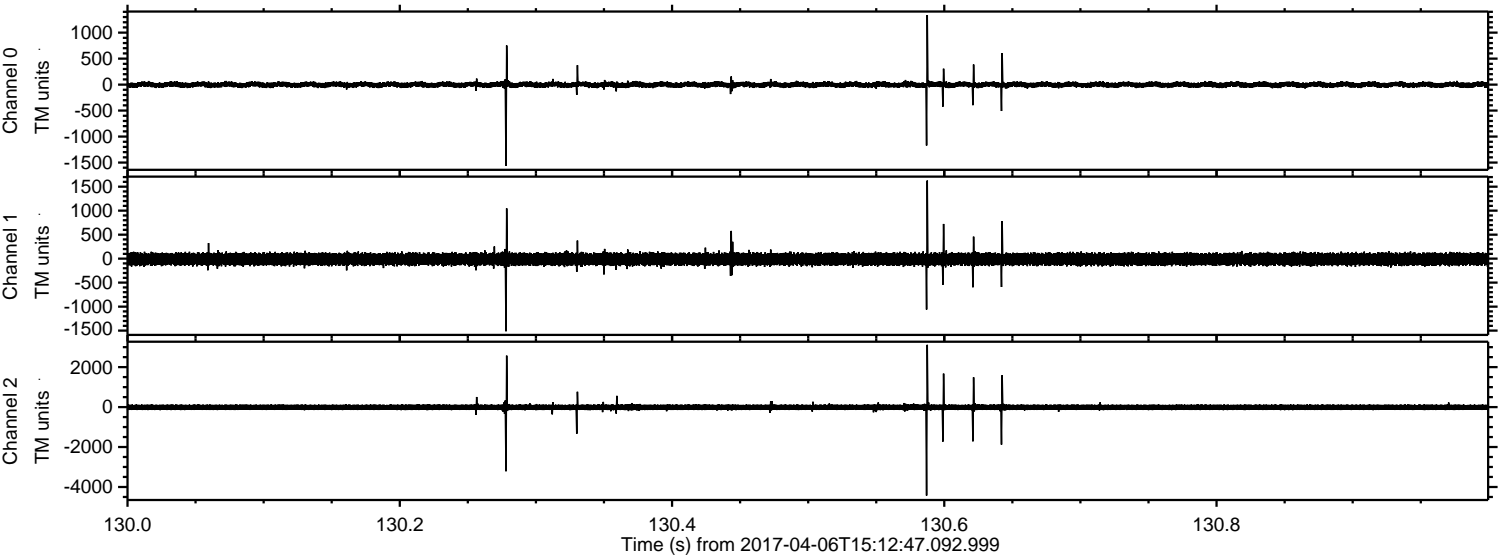


Processed Thu Apr 6 17:21:16 2017 by ELM ver.2012-10-06 from 001__elm20170406_151246__dat00.bin

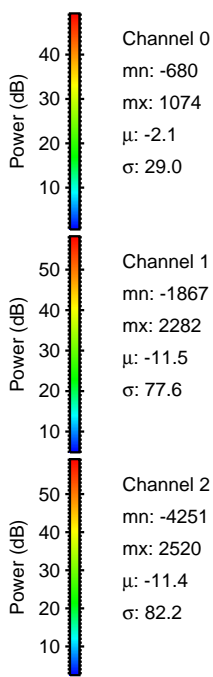
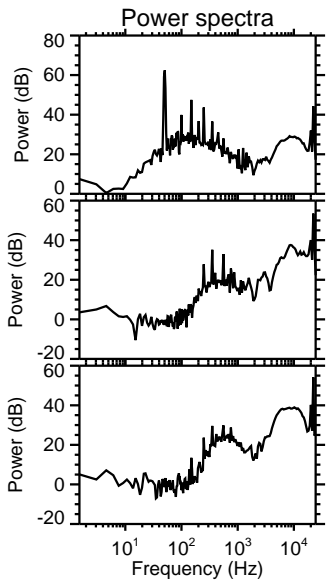
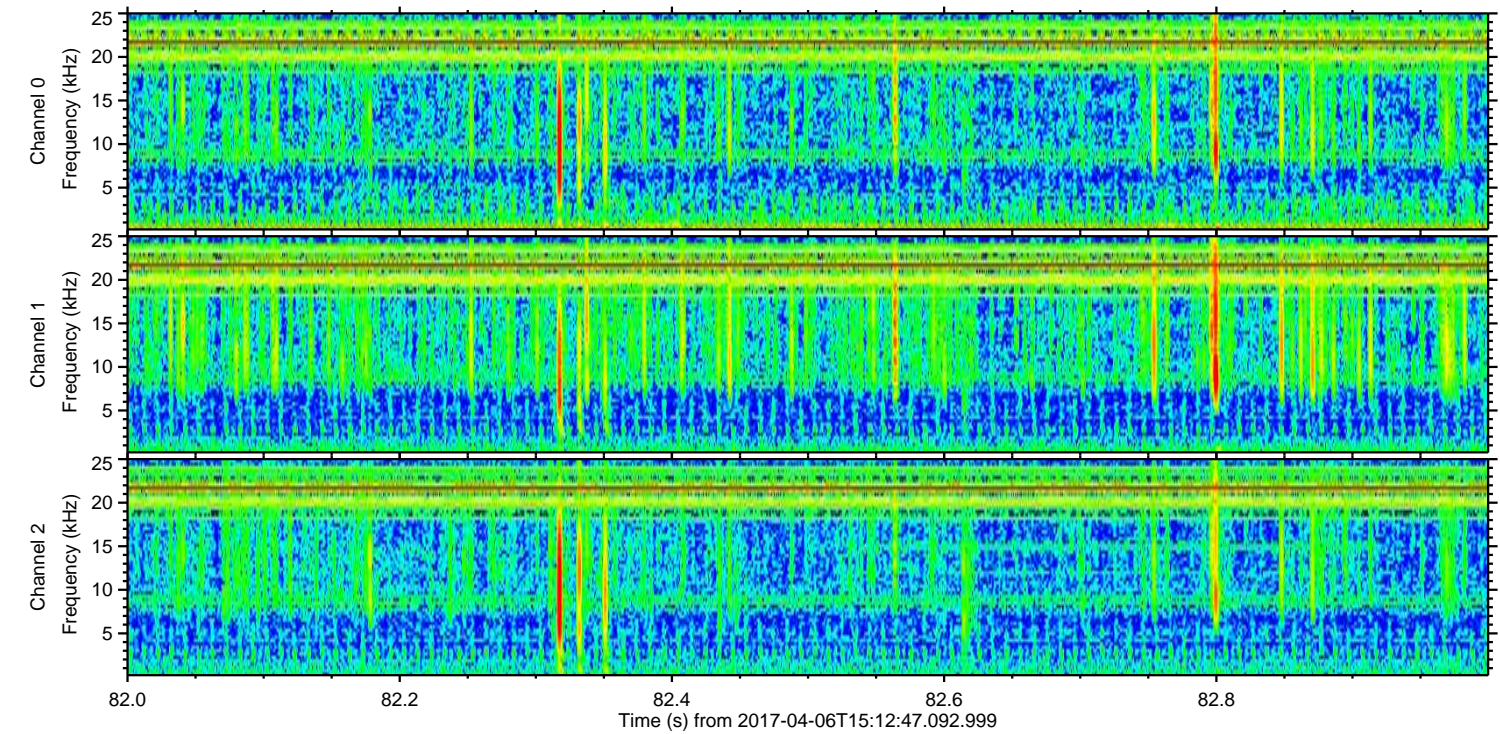
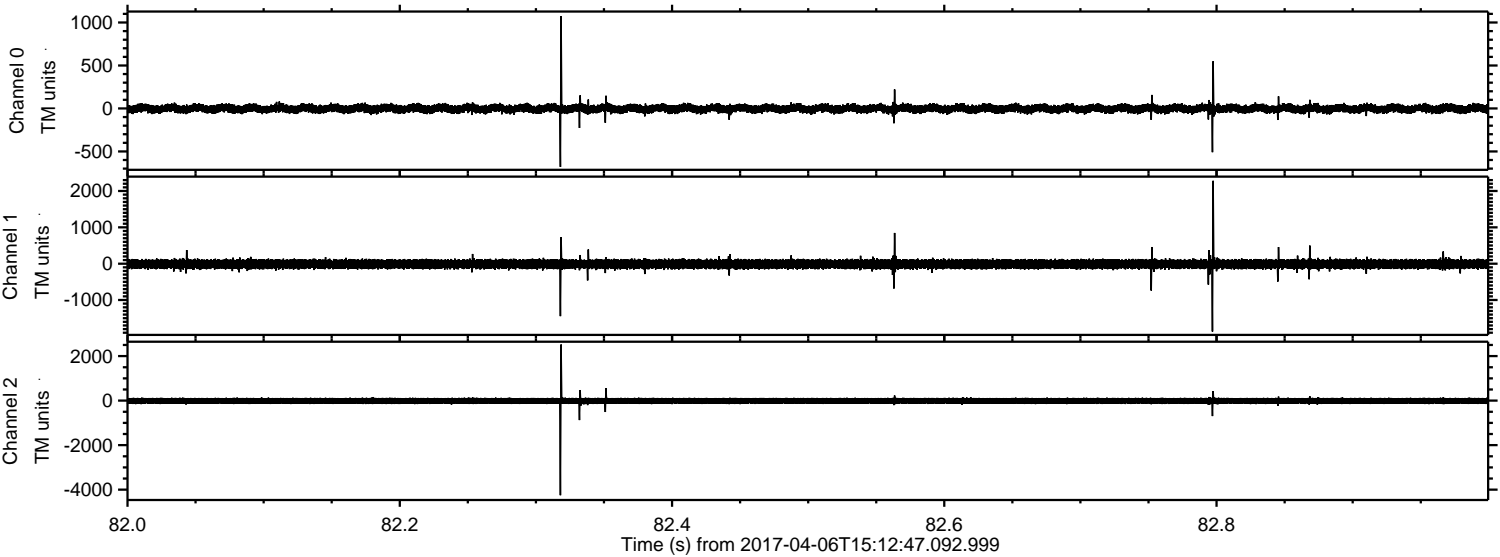


ELMAVAN 3D WAVEFORMS (Measured data sampled at 50 kHz) 51000 packets of 144 samples from 2017-04-06T15:12:47.092.999. Part 131/147

Processed Thu Apr 6 17:21:17 2017 by ELM ver.2012-10-06 from 001__elm20170406_151246__dat00.bin



Processed Thu Apr 6 17:21:18 2017 by ELM ver.2012-10-06 from 001__elm20170406_151246__dat00.bin



Channel 0
mn: -680
mx: 1074
 μ : -2.1
 σ : 29.0

Channel 1
mn: -1867
mx: 2282
 μ : -11.5
 σ : 77.6

Channel 2
mn: -4251
mx: 2520
 μ : -11.4
 σ : 82.2

Processed Thu Apr 6 17:21:19 2017 by ELM ver.2012-10-06 from 001__elm20170406_151246__dat00.bin

