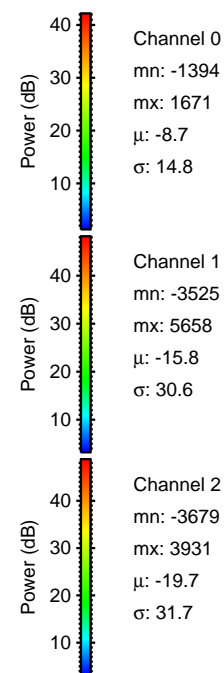
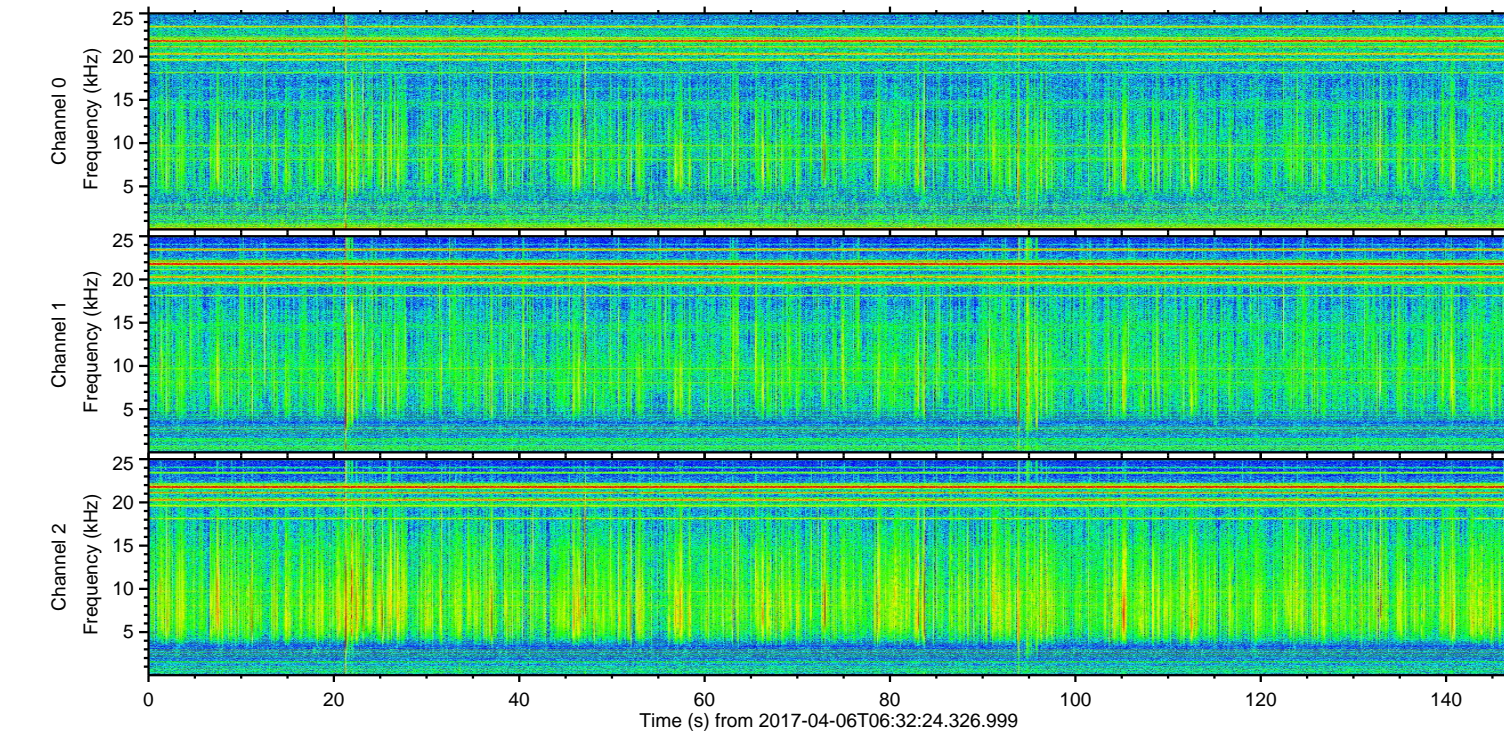
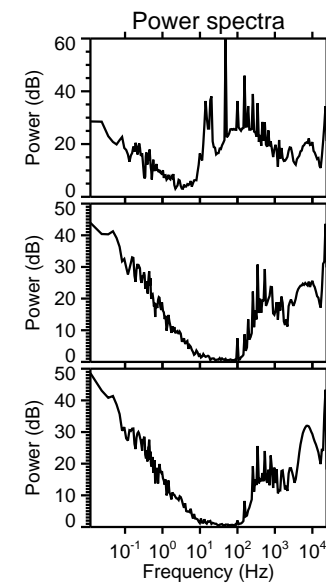
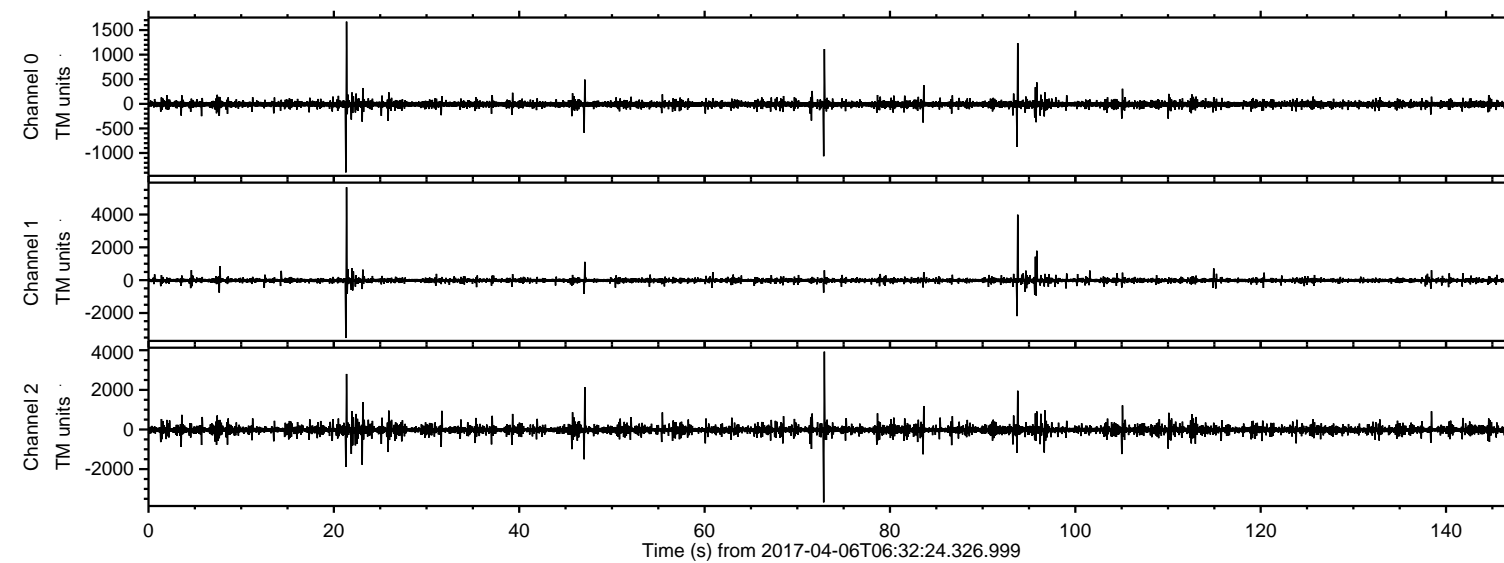
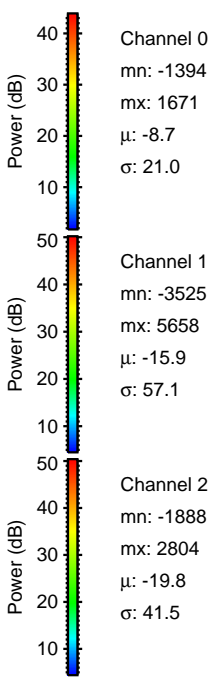
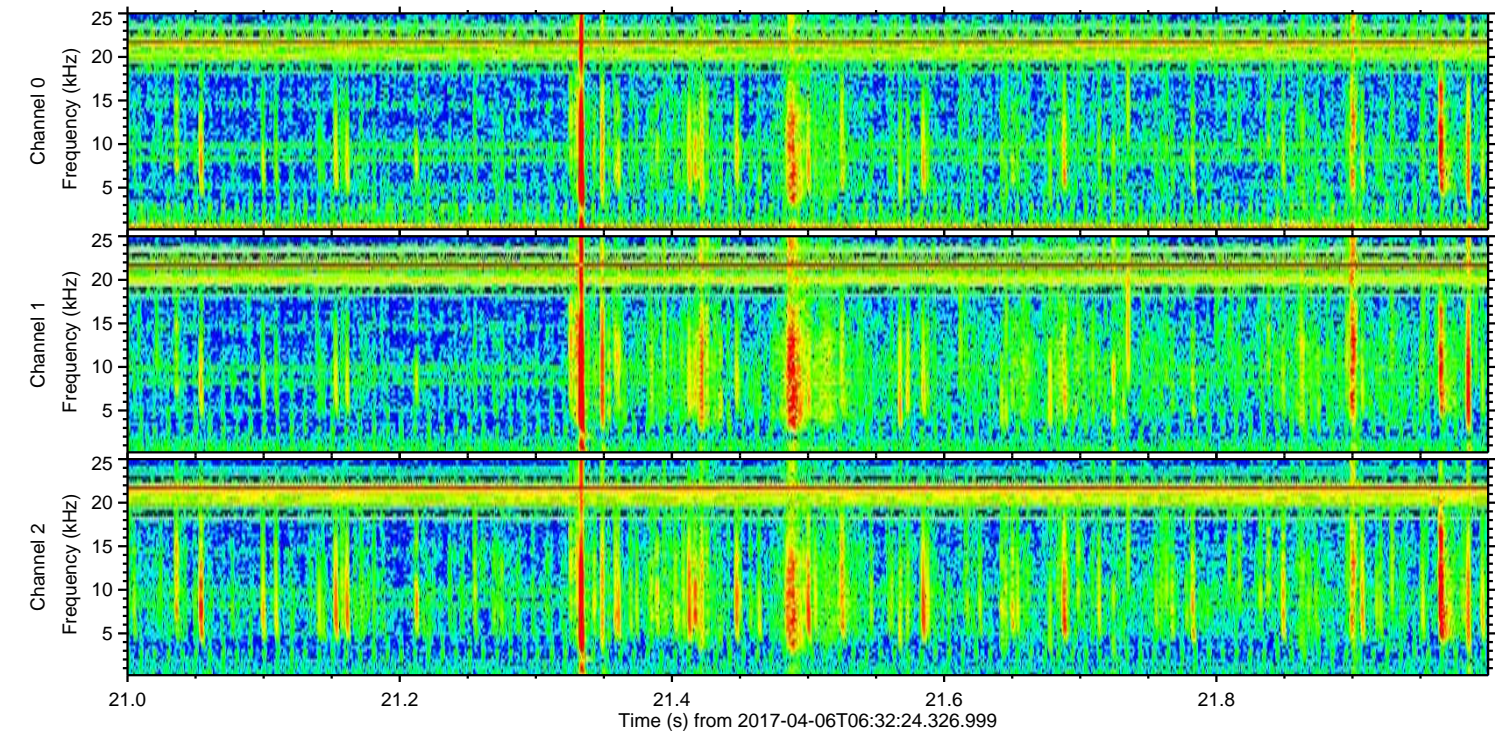
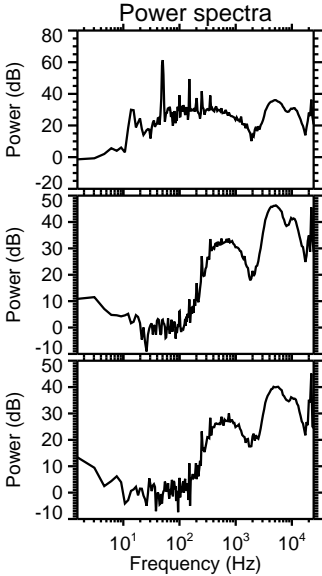
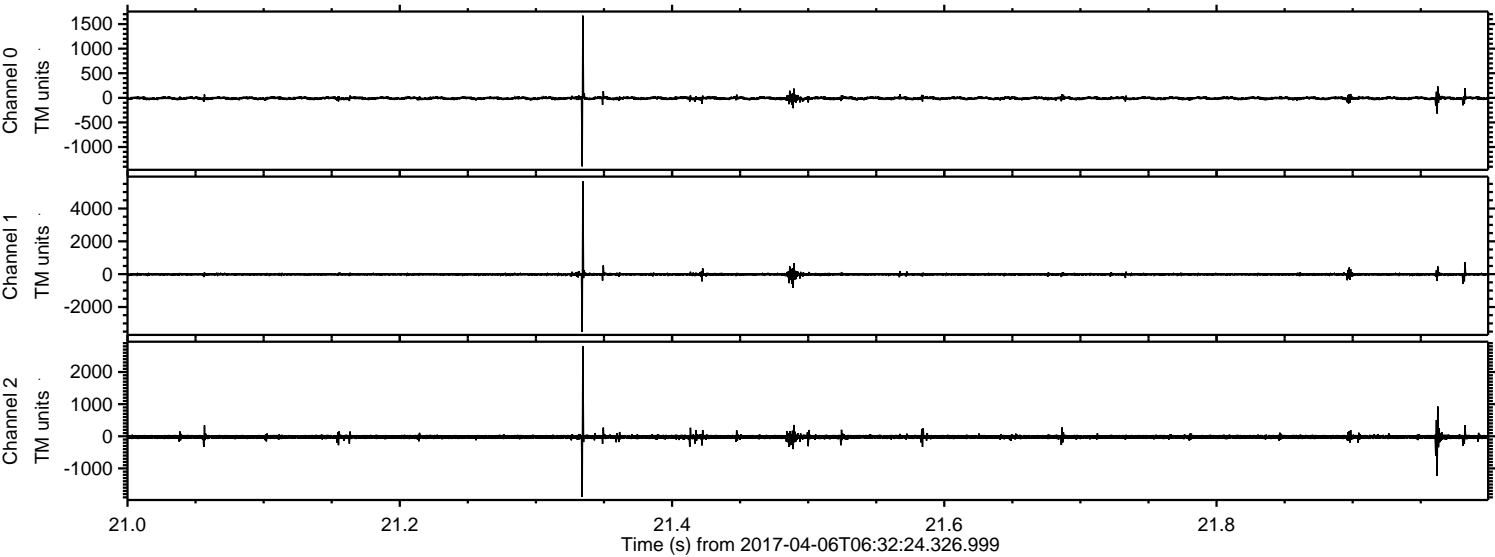


ELMAVAN 3D WAVEFORMS (Measured data sampled at 50 kHz) 51000 packets of 144 samples from 2017-04-06T06:32:24.326.999.

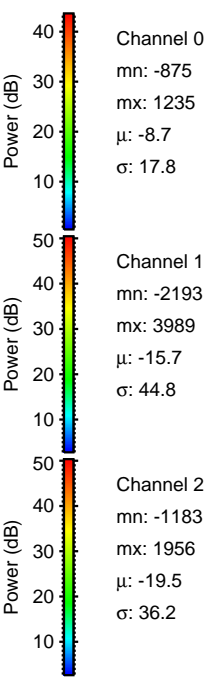
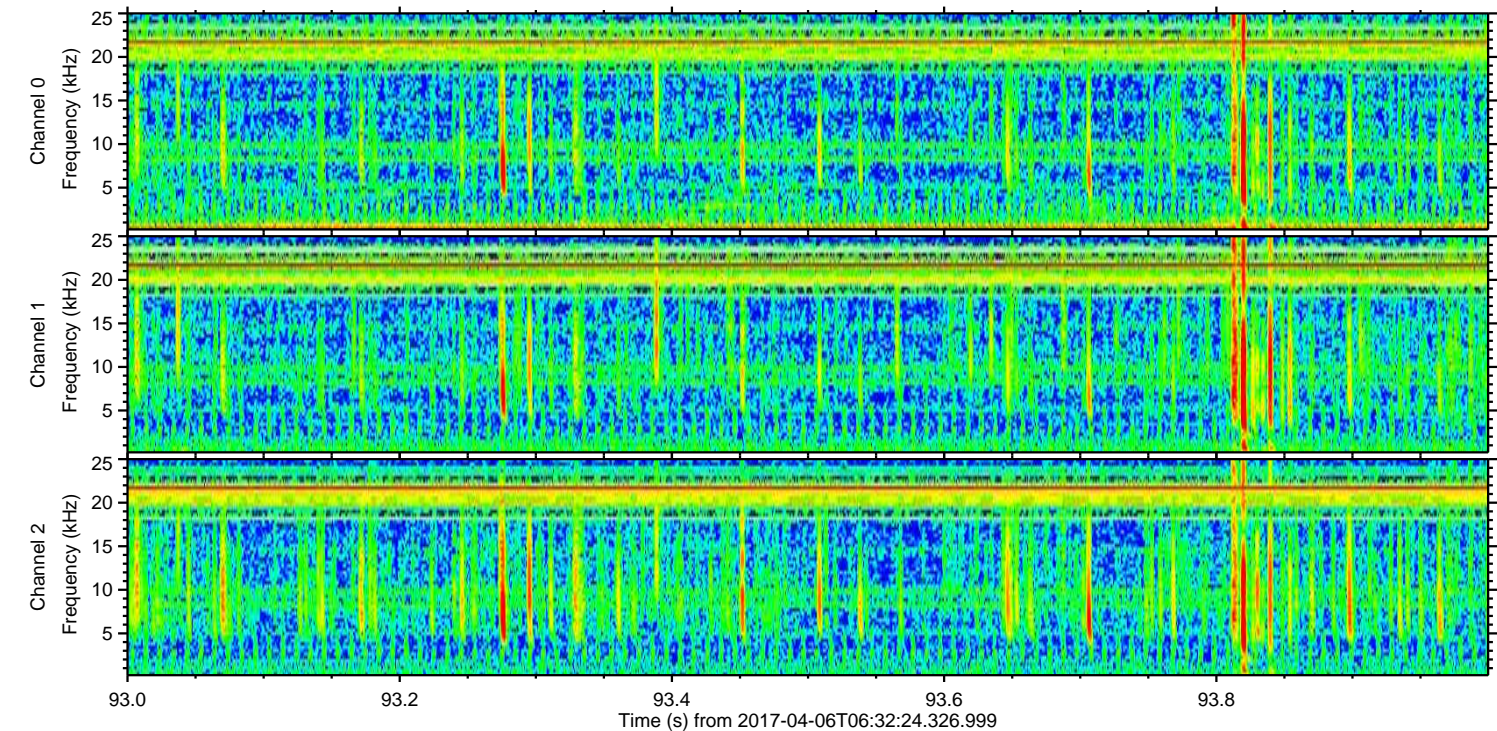
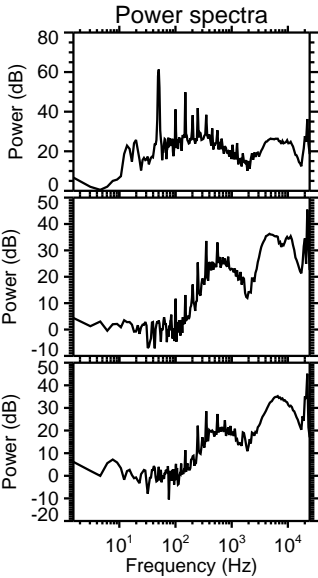
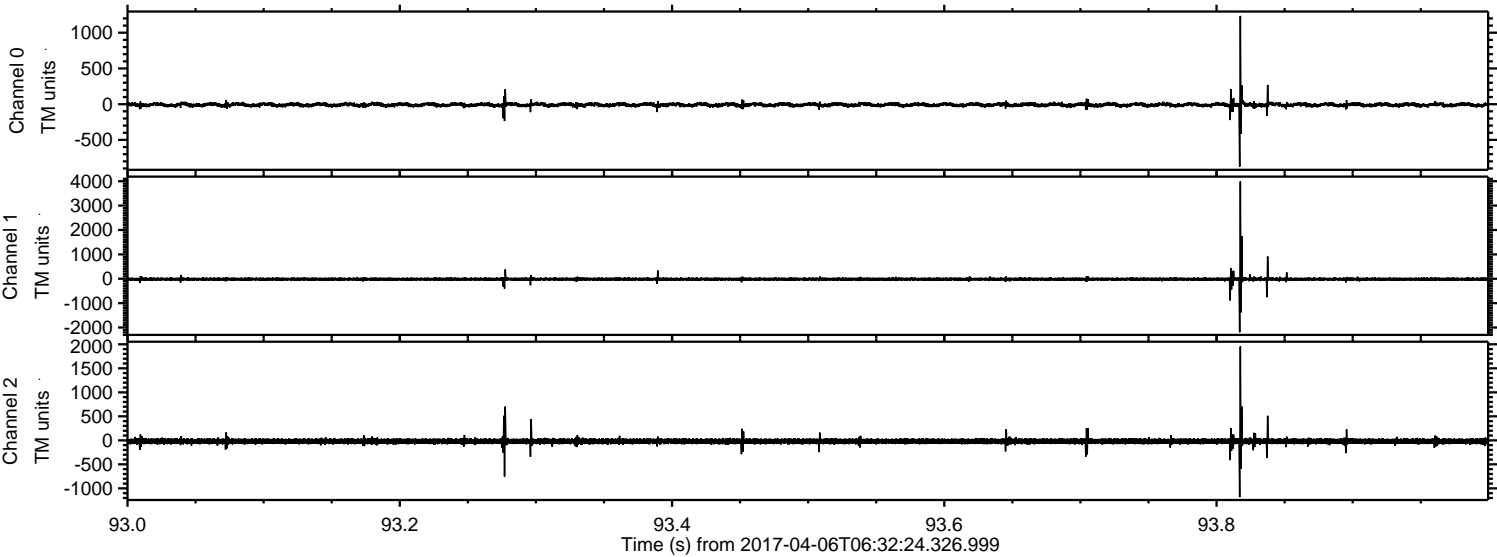
Processed Thu Apr 6 08:40:01 2017 by ELM ver.2012-10-06 from 001__elm20170406_063223__dat00.bin



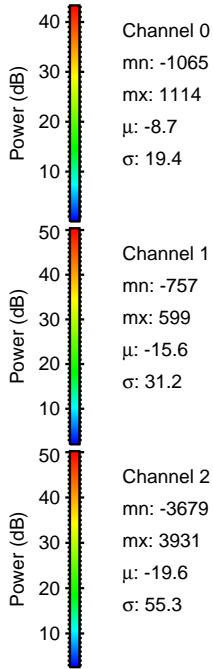
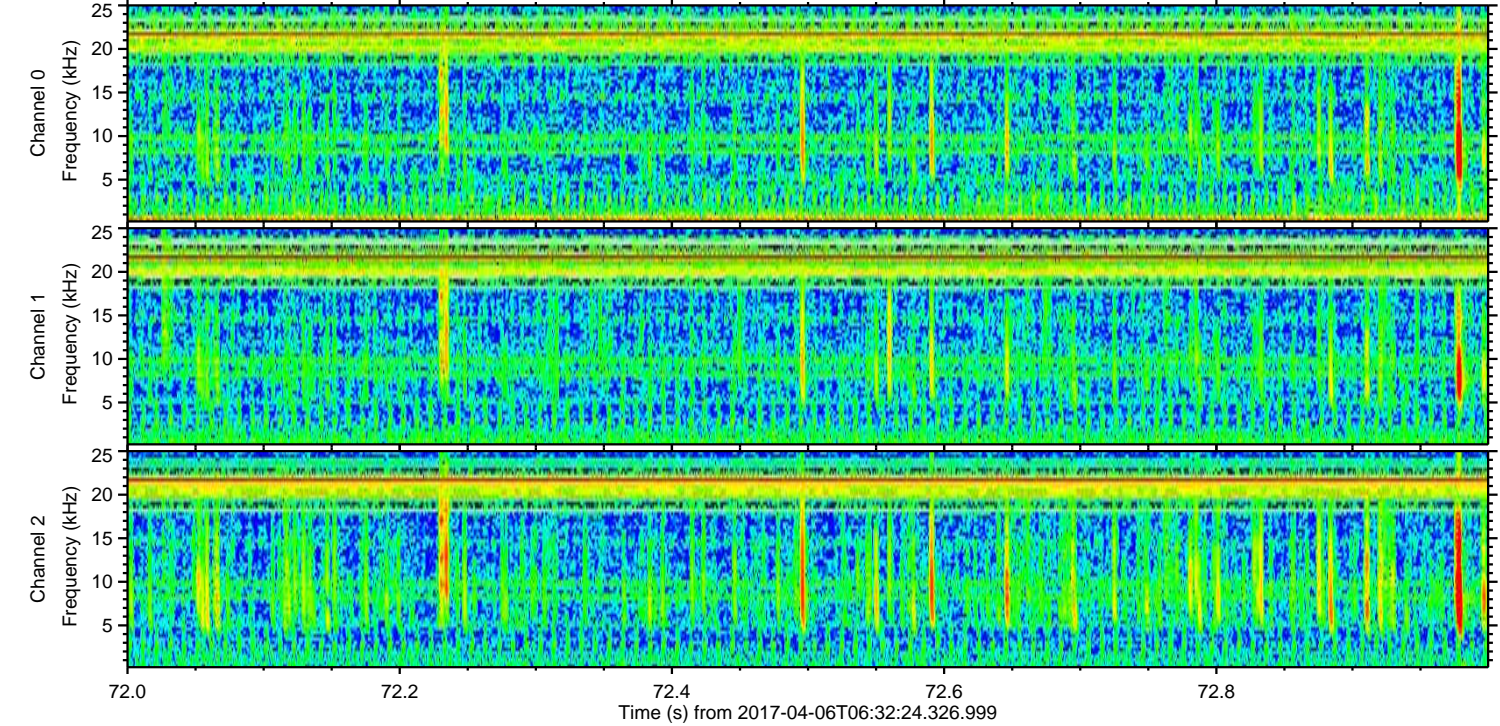
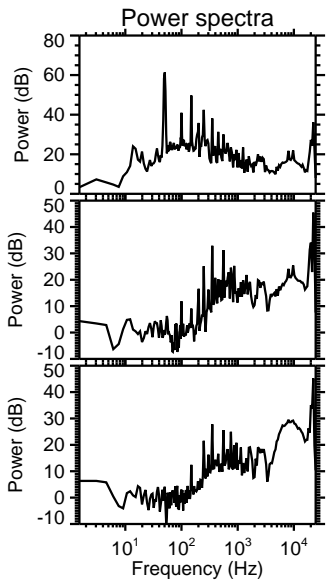
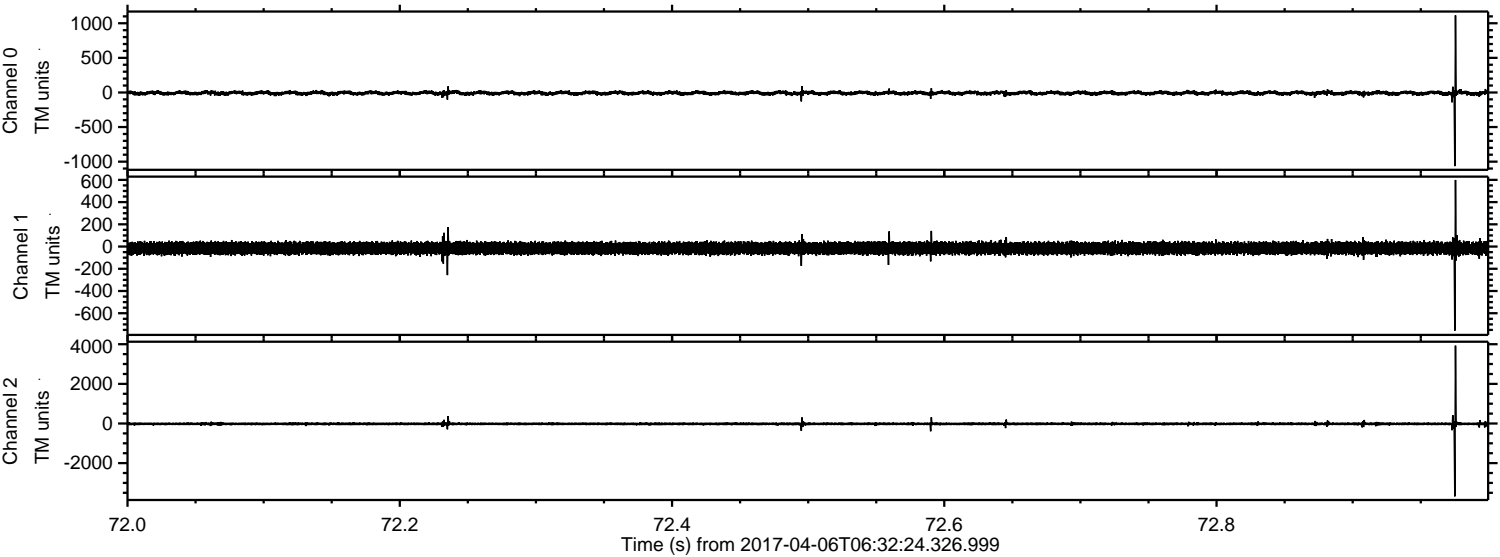
Processed Thu Apr 6 08:40:18 2017 by ELM ver.2012-10-06 from 001__elm20170406_063223__dat00.bin



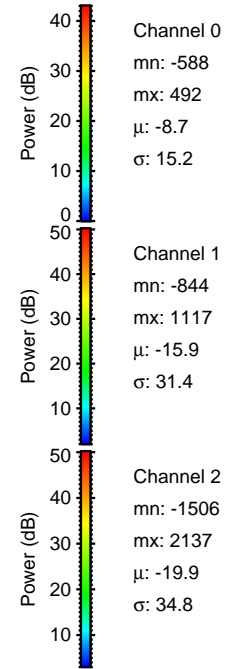
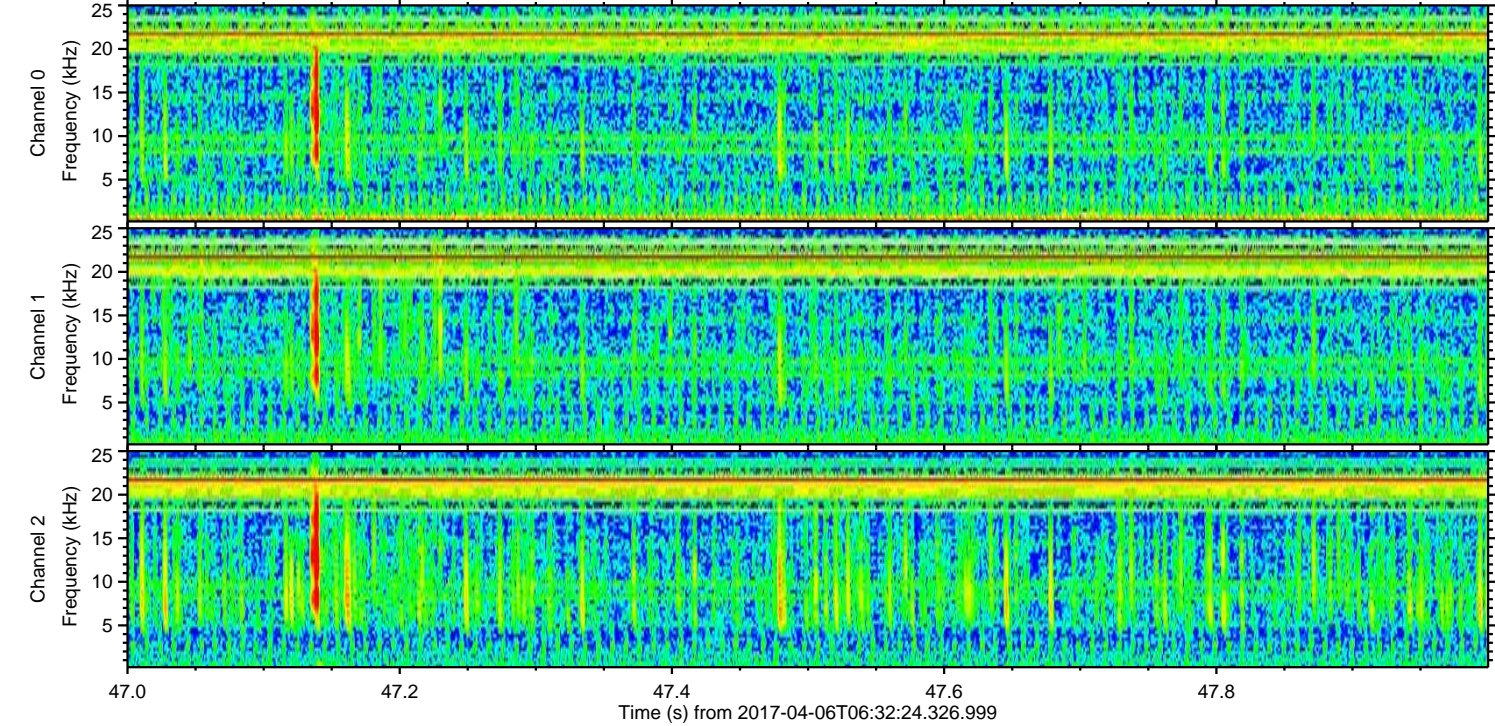
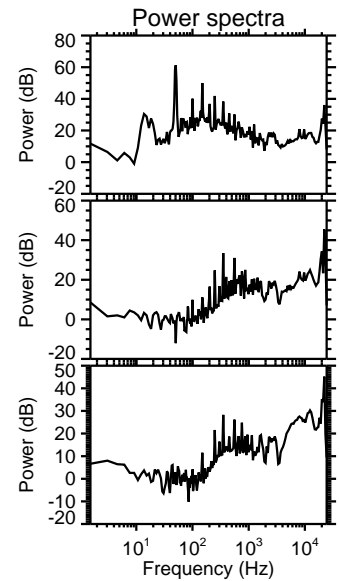
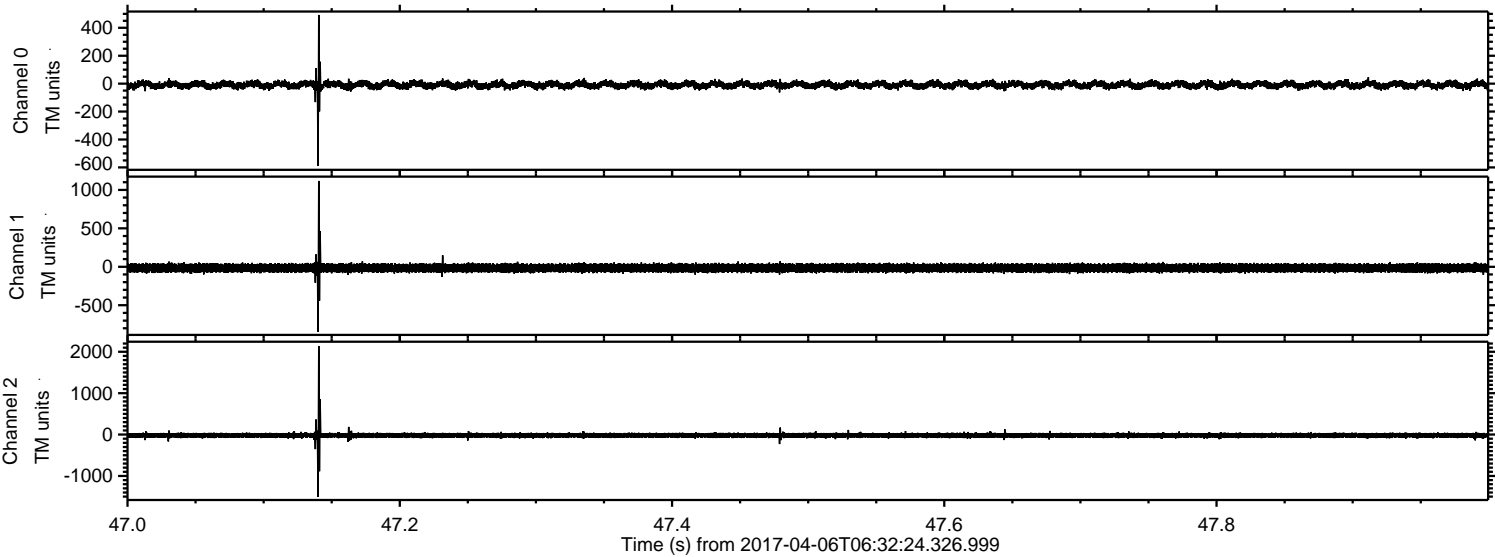
Processed Thu Apr 6 08:40:19 2017 by ELM ver.2012-10-06 from 001__elm20170406_063223__dat00.bin



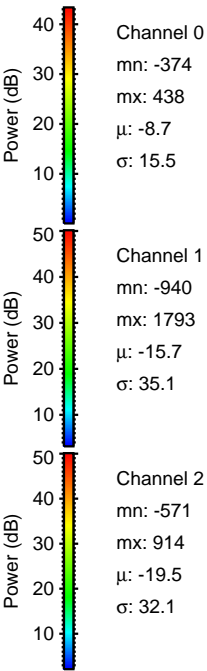
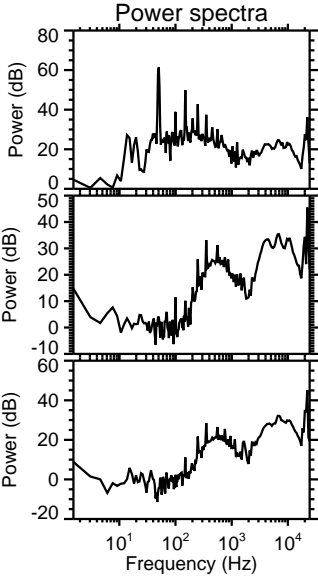
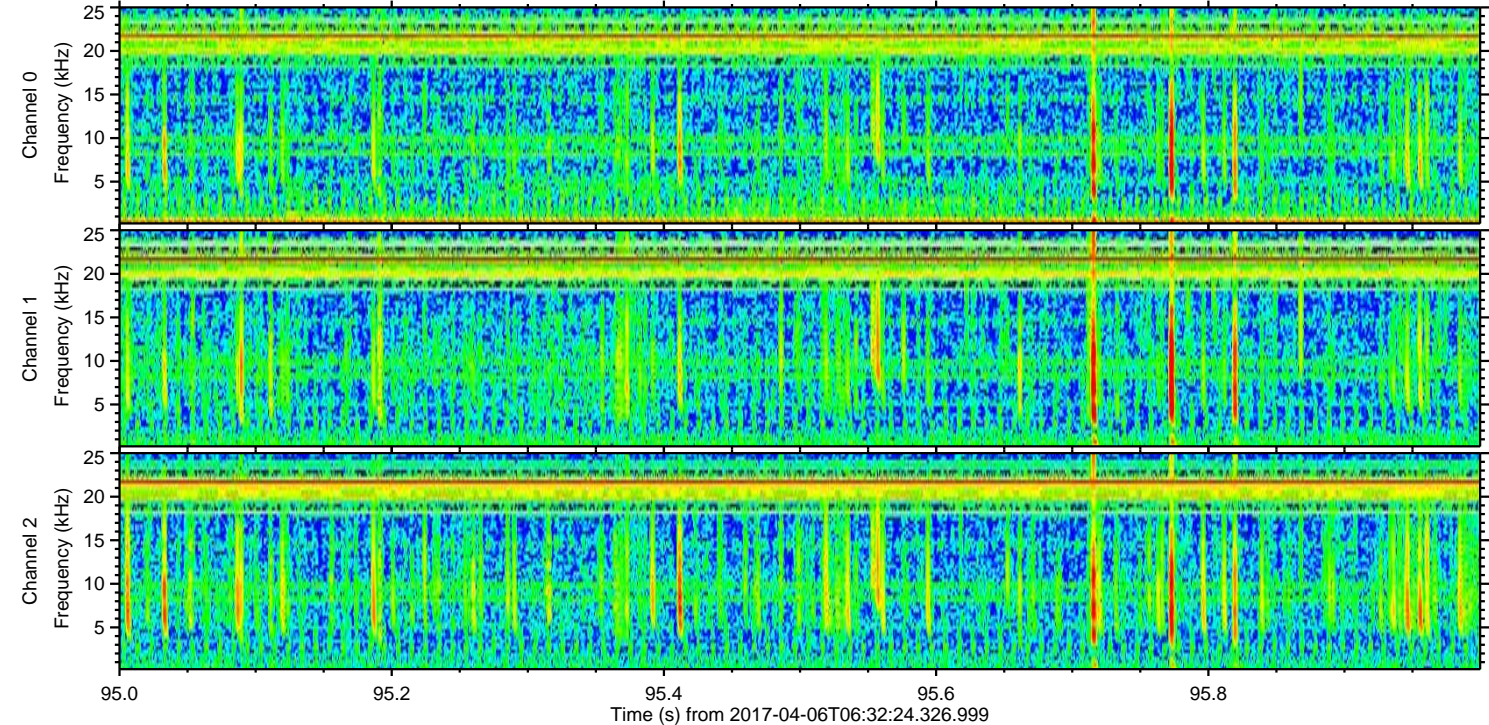
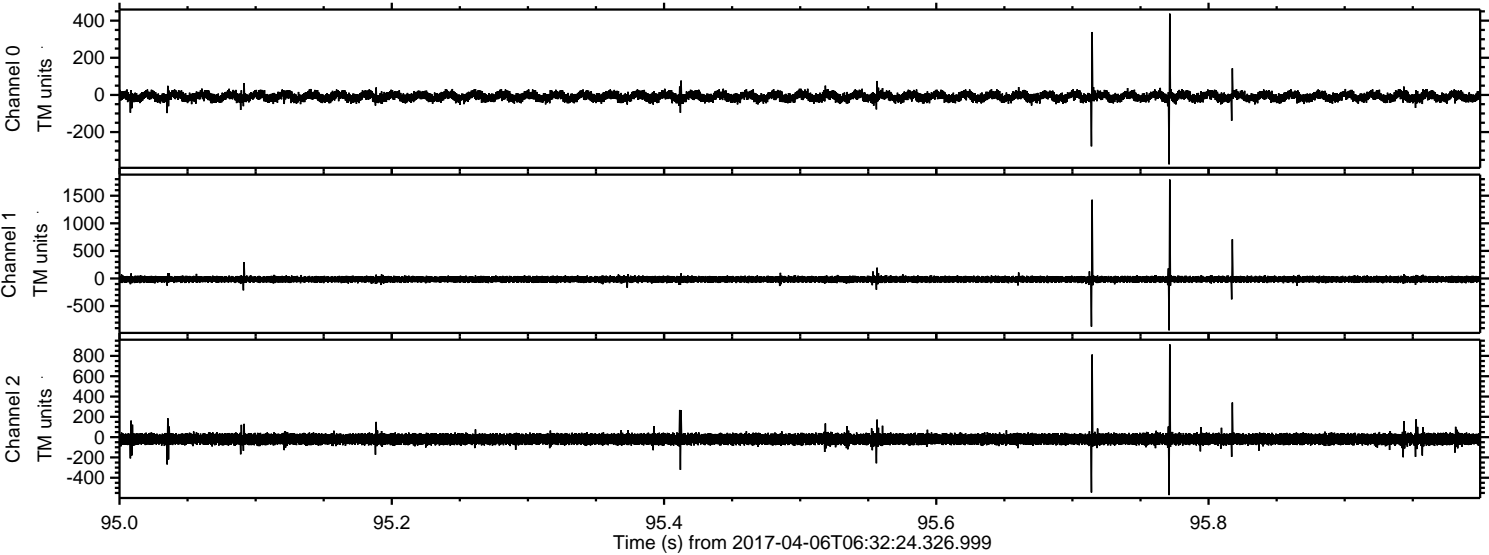
Processed Thu Apr 6 08:40:20 2017 by ELM ver.2012-10-06 from 001__elm20170406_063223__dat00.bin



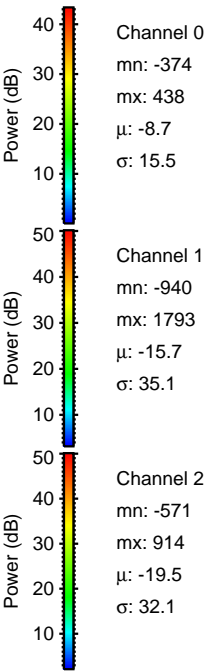
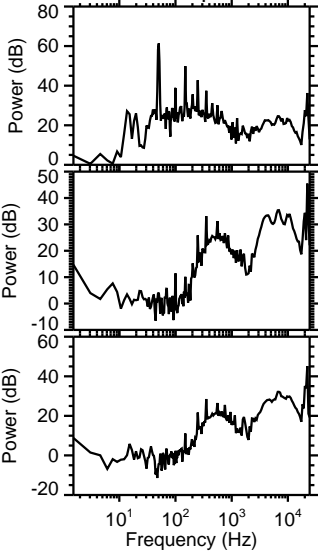
Processed Thu Apr 6 08:40:21 2017 by ELM ver.2012-10-06 from 001__elm20170406_063223__dat00.bin



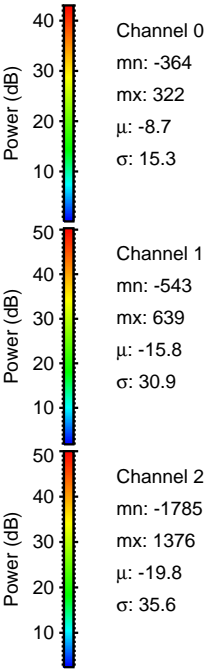
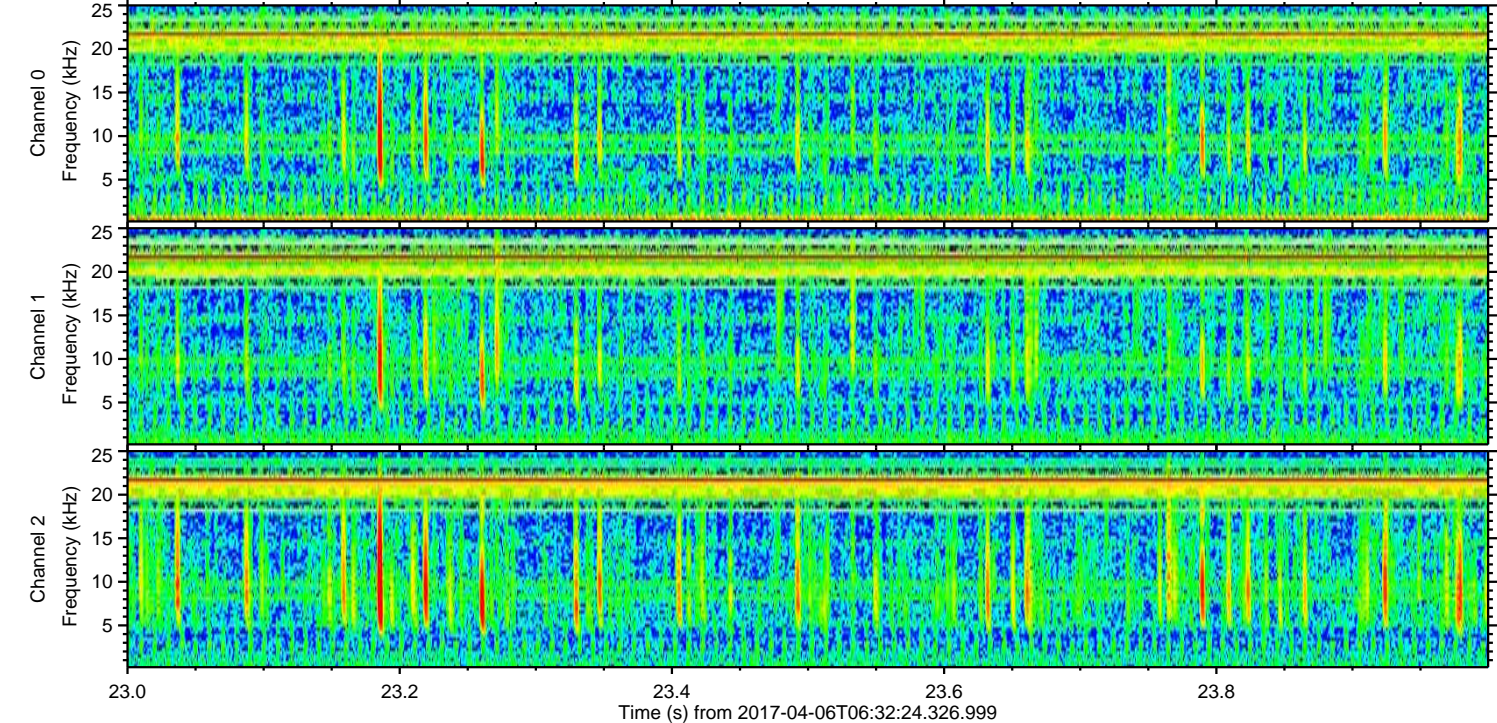
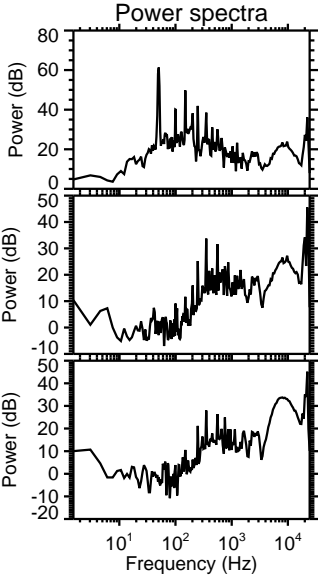
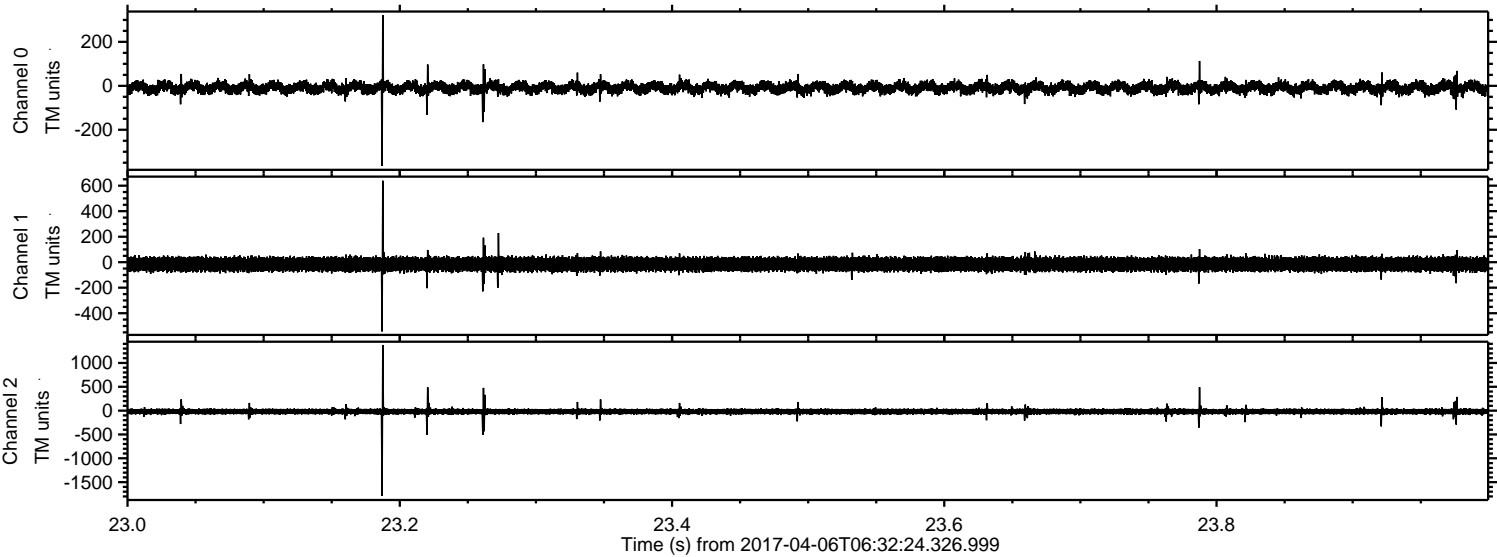
Processed Thu Apr 6 08:40:22 2017 by ELM ver.2012-10-06 from 001__elm20170406_063223__dat00.bin



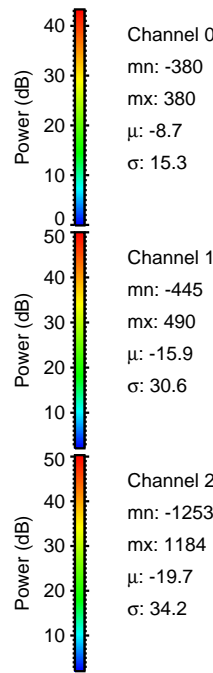
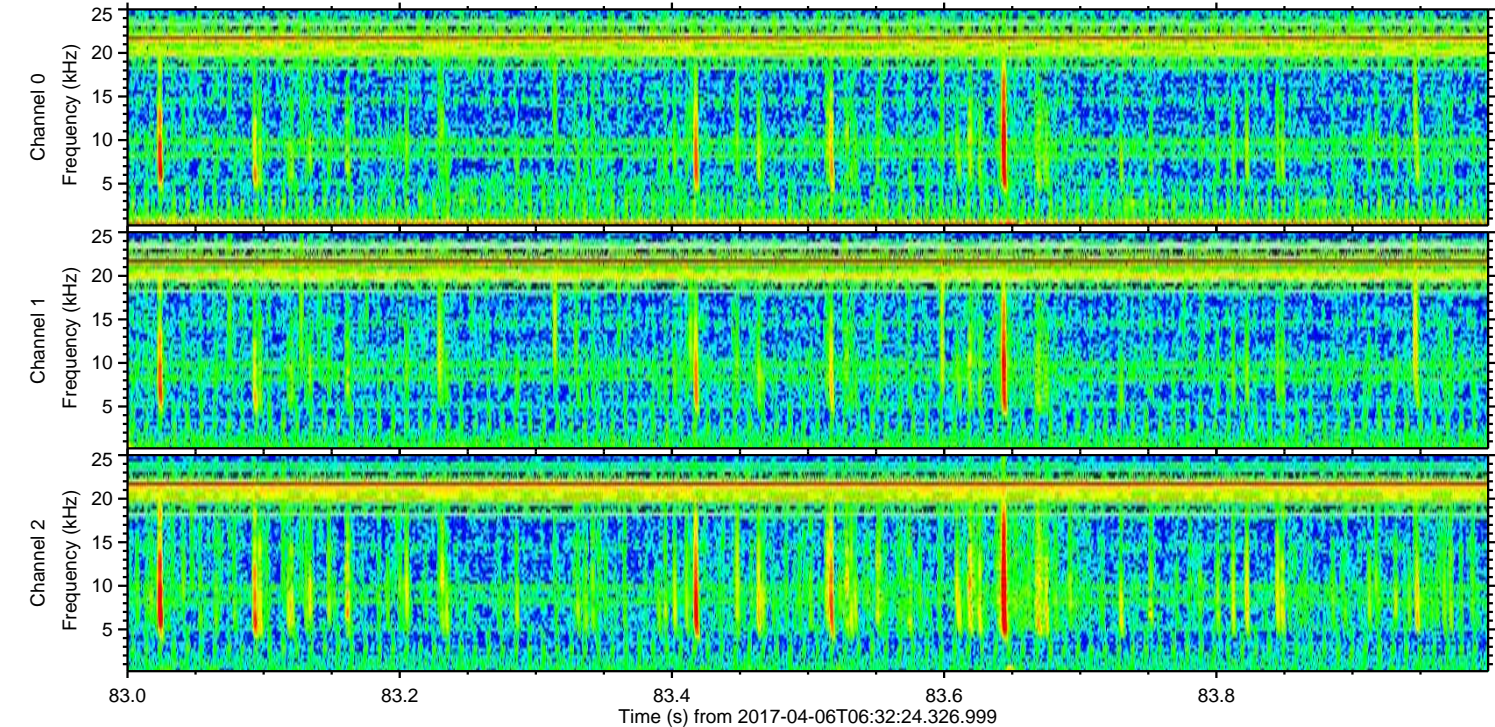
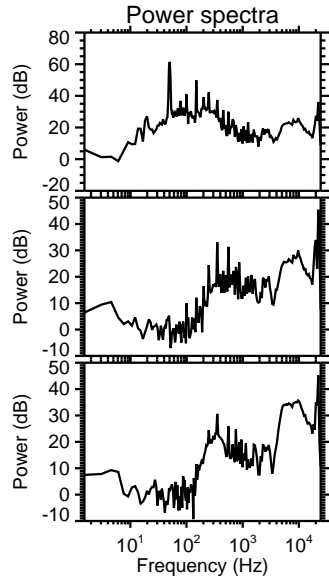
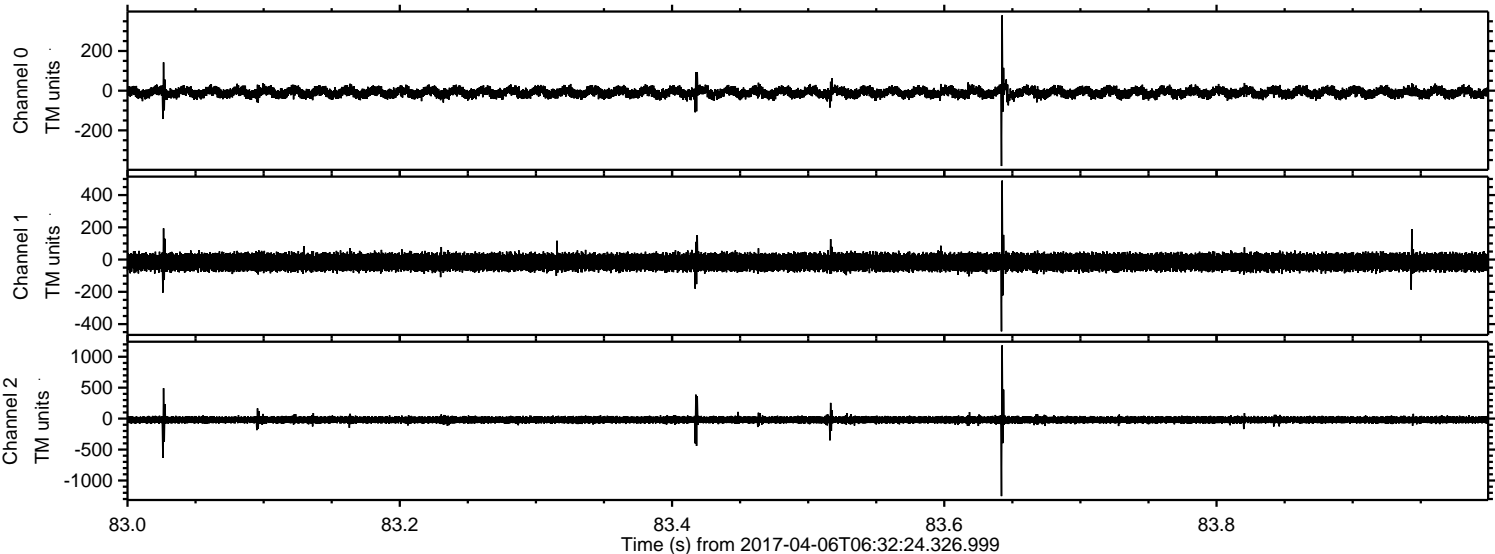
Power spectra



Processed Thu Apr 6 08:40:23 2017 by ELM ver.2012-10-06 from 001__elm20170406_063223__dat00.bin

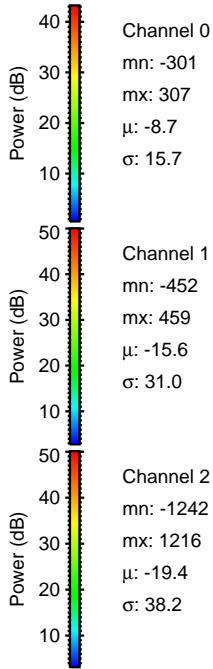
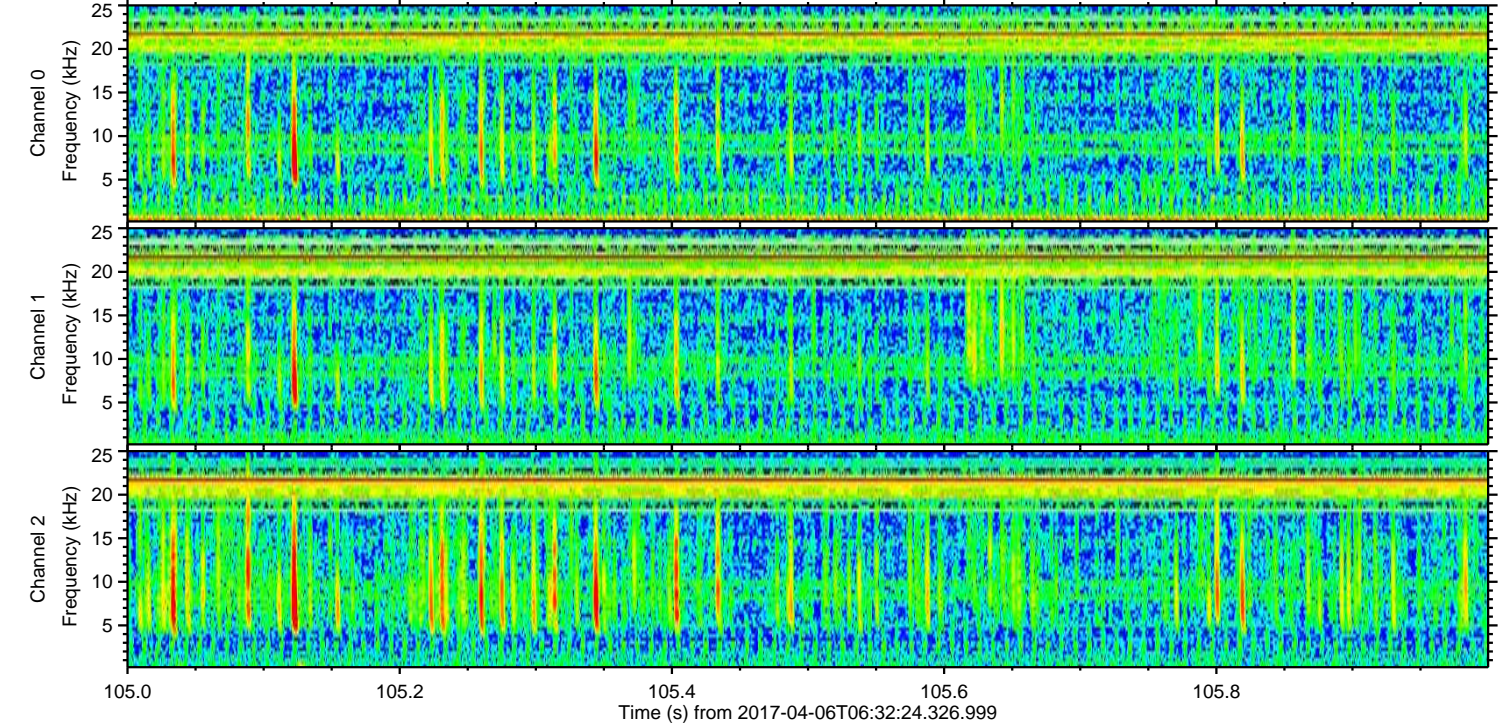
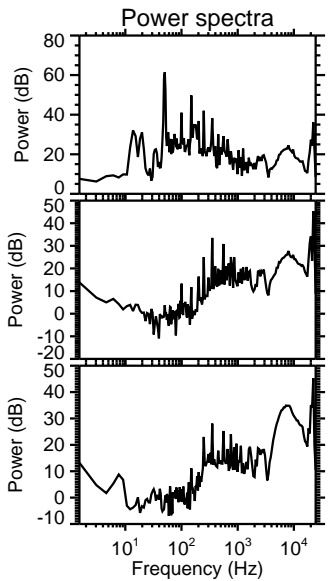
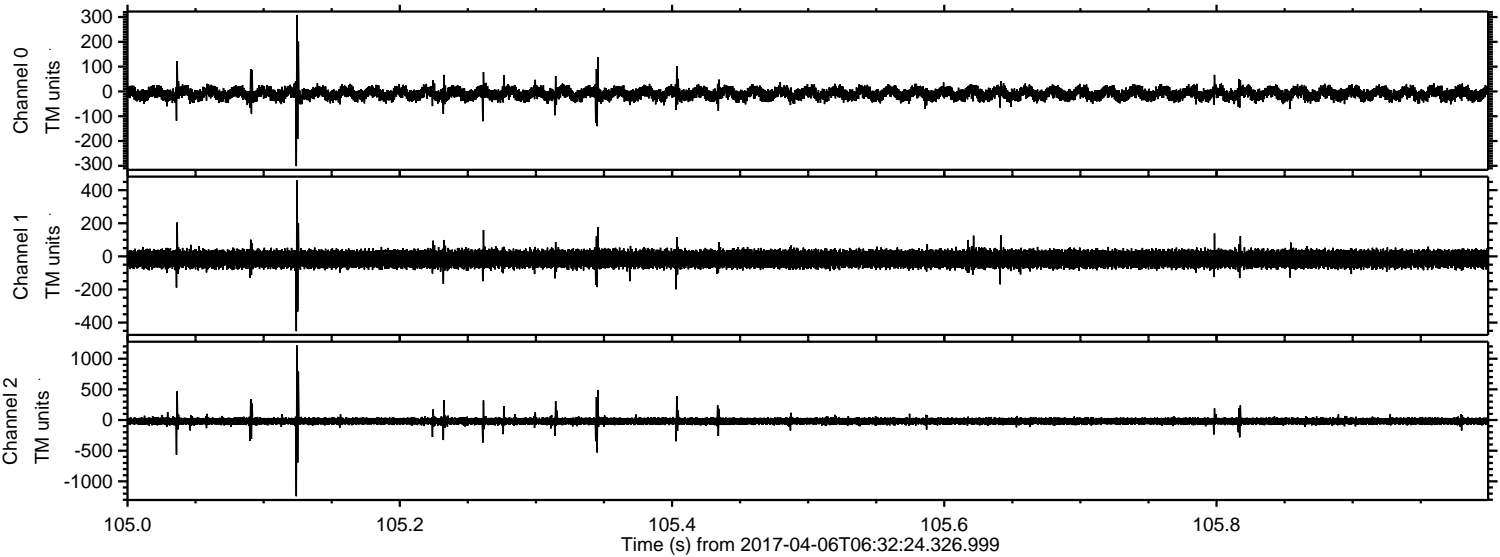


Processed Thu Apr 6 08:40:24 2017 by ELM ver.2012-10-06 from 001__elm20170406_063223__dat00.bin



ELMAVAN 3D WAVEFORMS (Measured data sampled at 50 kHz) 51000 packets of 144 samples from 2017-04-06T06:32:24.326.999. Part 106/147

Processed Thu Apr 6 08:40:25 2017 by ELM ver.2012-10-06 from 001__elm20170406_063223__dat00.bin



Channel 0
mn: -301
mx: 307
 μ : -8.7
 σ : 15.7

Channel 1
mn: -452
mx: 459
 μ : -15.6
 σ : 31.0

Channel 2
mn: -1242
mx: 1216
 μ : -19.4
 σ : 38.2

Processed Thu Apr 6 08:40:26 2017 by ELM ver.2012-10-06 from 001__elm20170406_063223__dat00.bin

