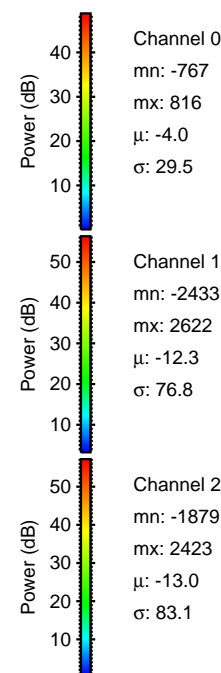
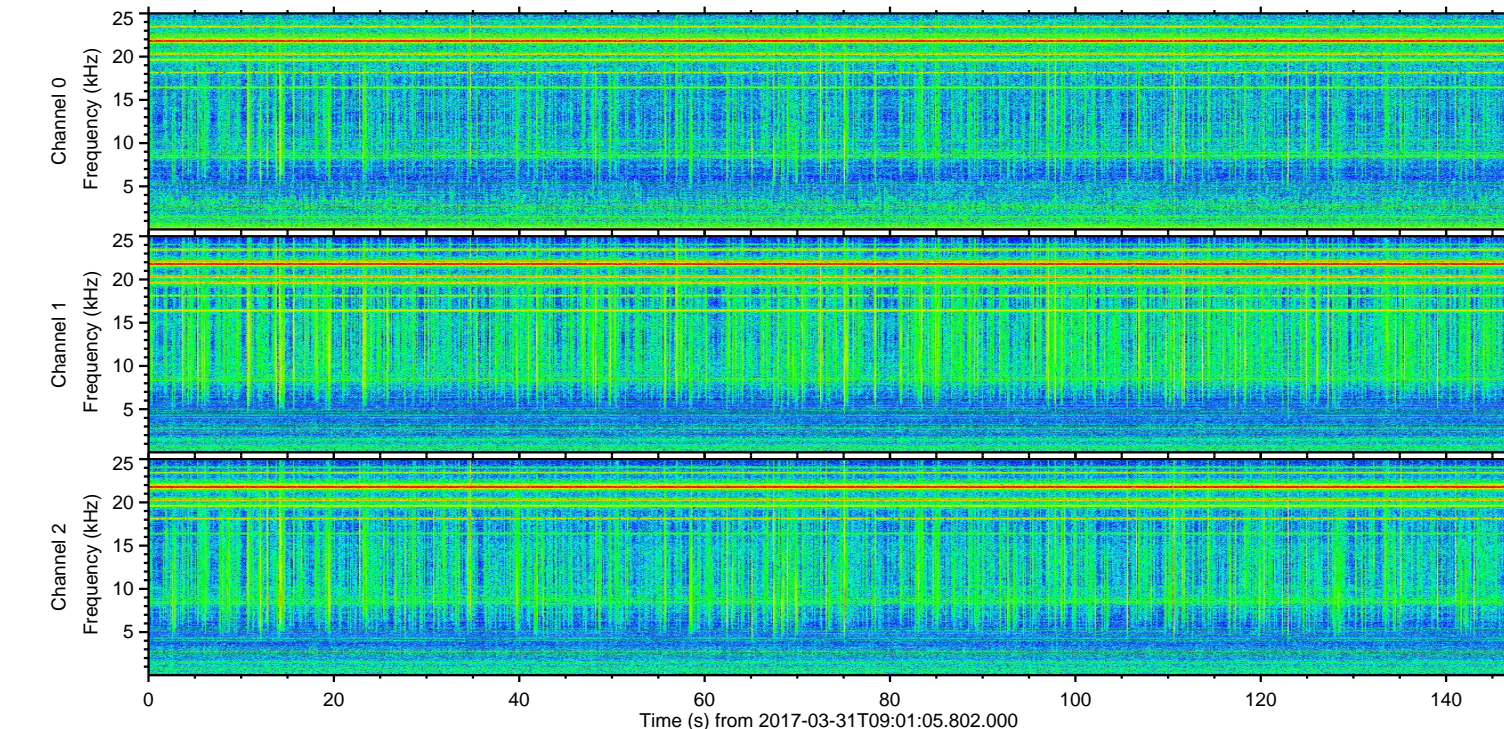
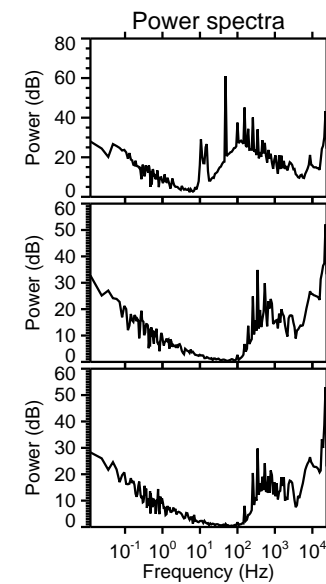
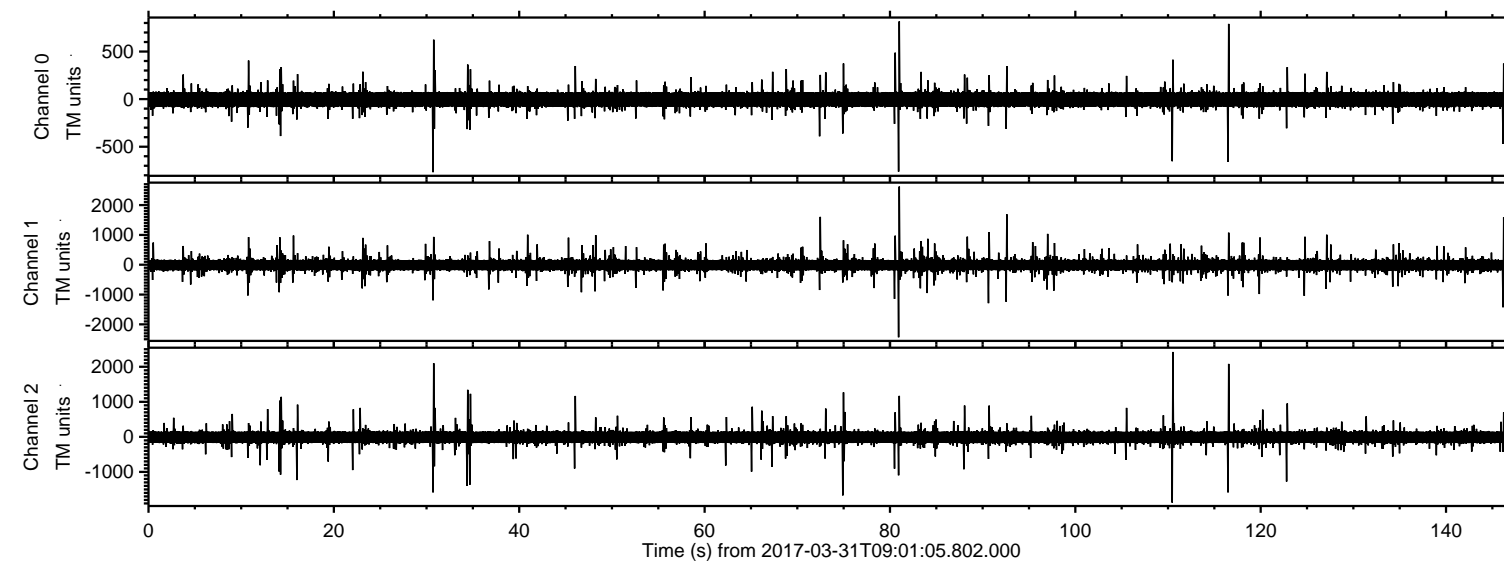
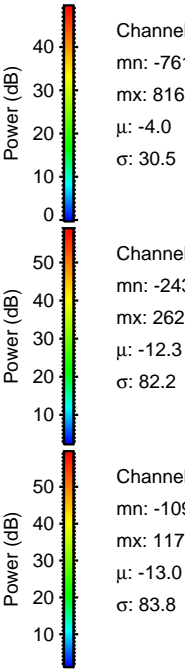
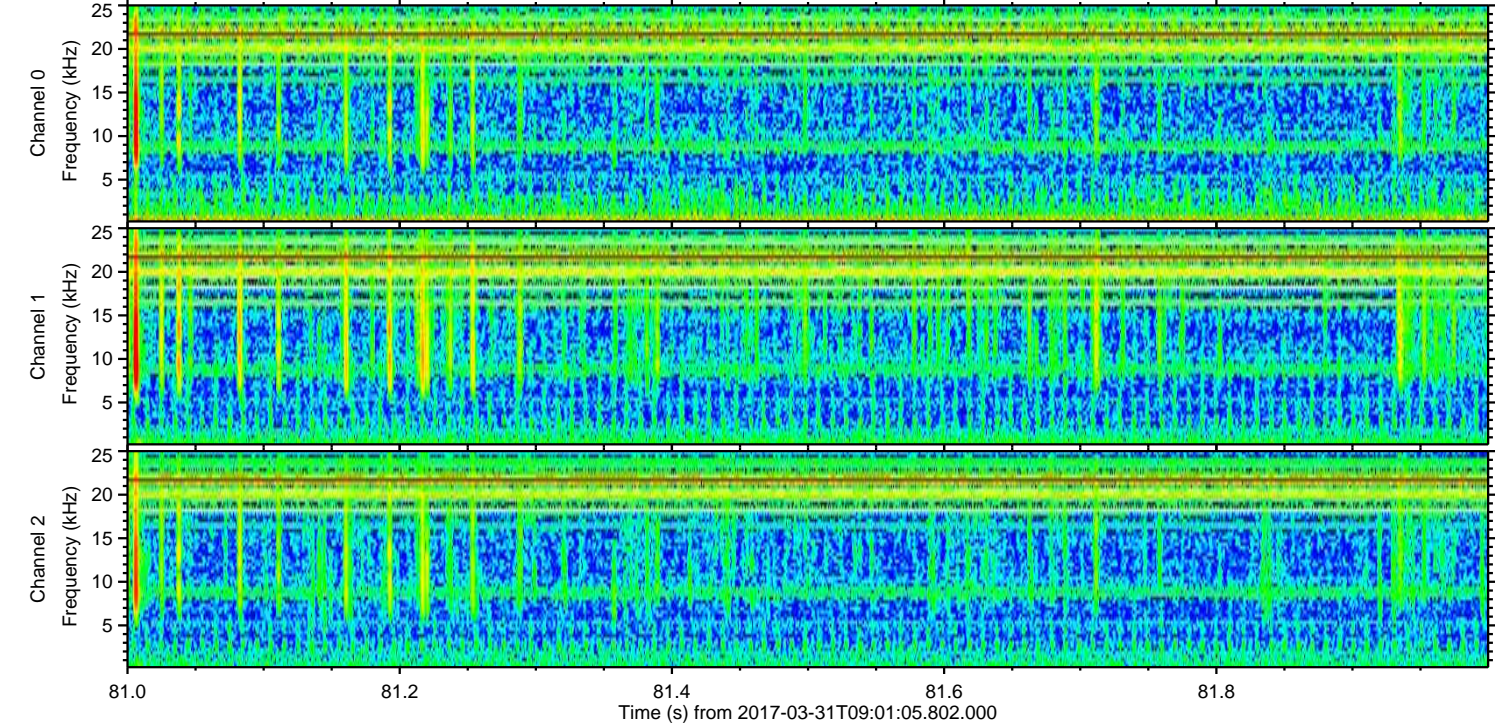
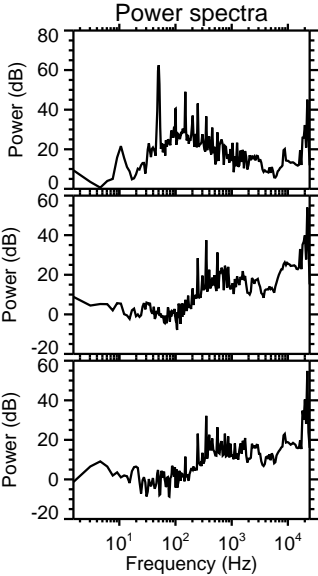
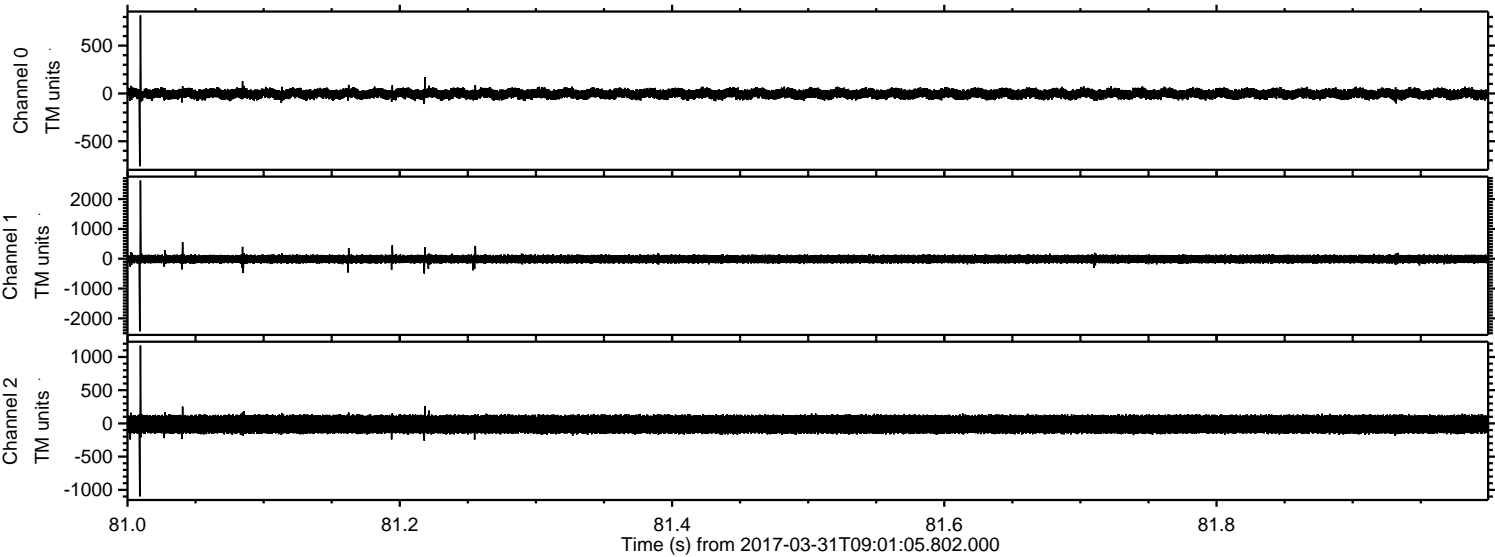


ELMAVAN 3D WAVEFORMS (Measured data sampled at 50 kHz) 51000 packets of 144 samples from 2017-03-31T09:01:05.802.000.

Processed Fri Mar 31 11:09:12 2017 by ELM ver.2012-10-06 from 001__elm20170331_090104__dat00.bin

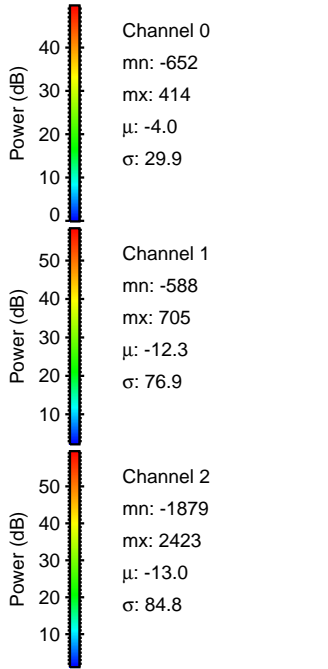
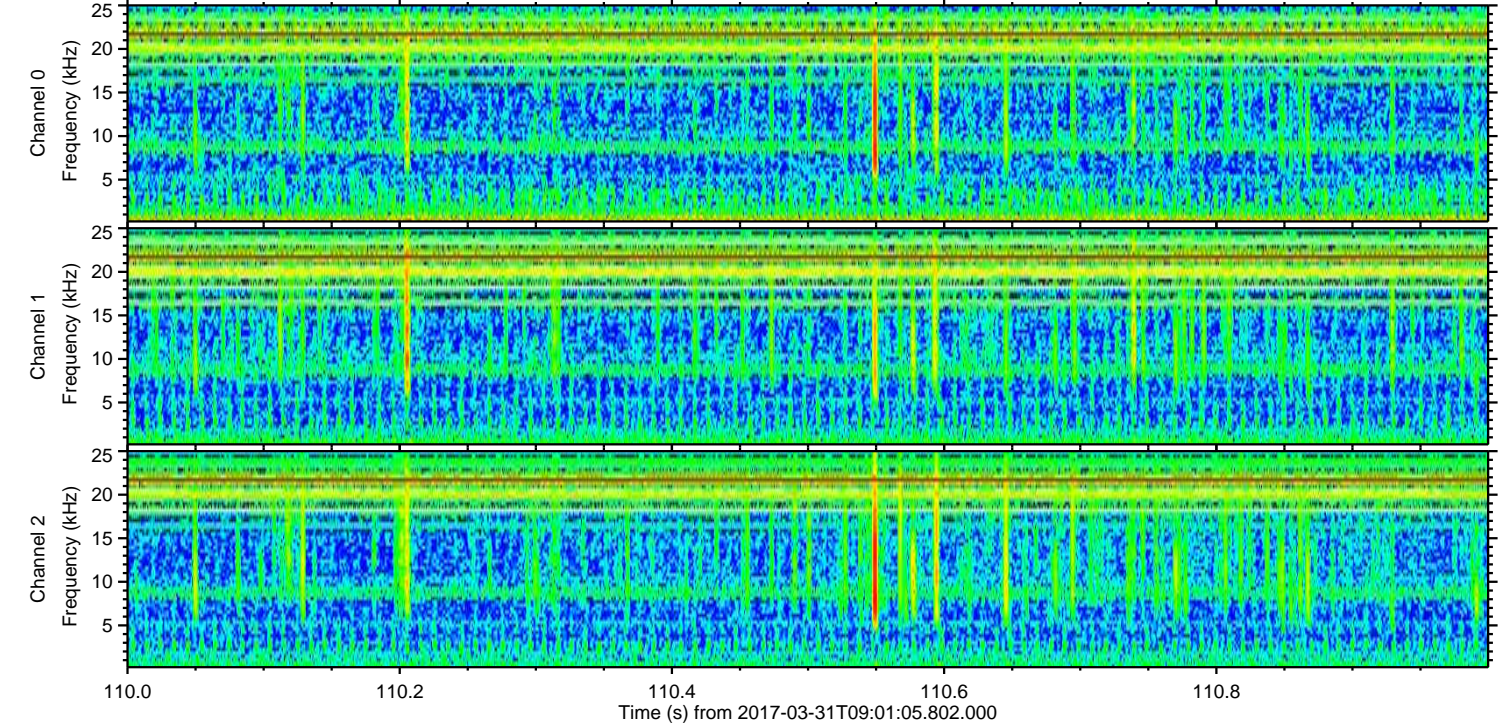
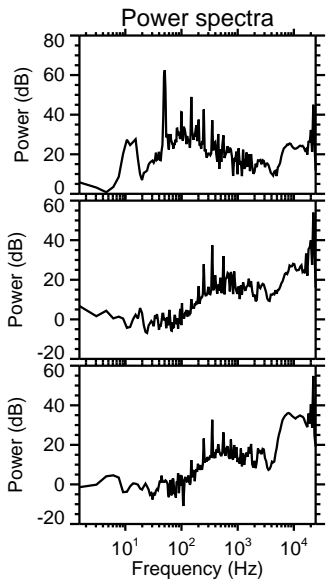
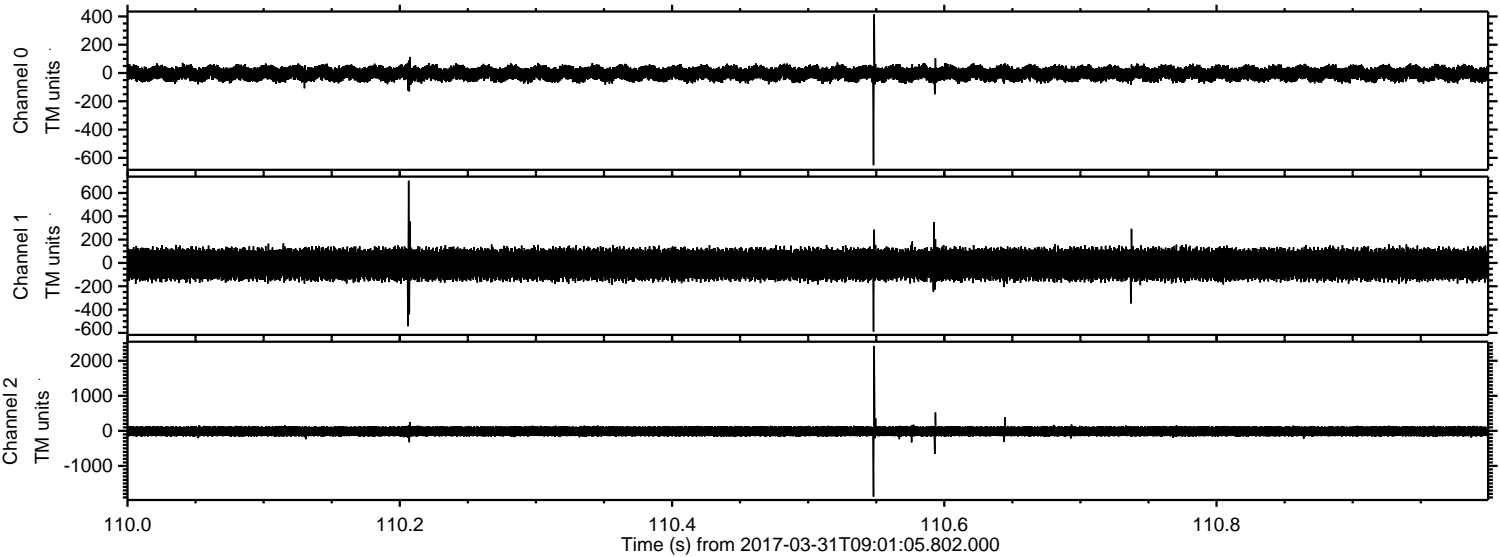


Processed Fri Mar 31 11:09:33 2017 by ELM ver.2012-10-06 from 001__elm20170331_090104__dat00.bin



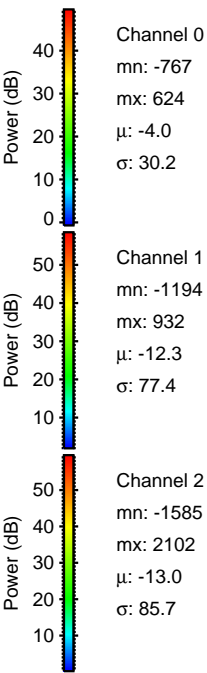
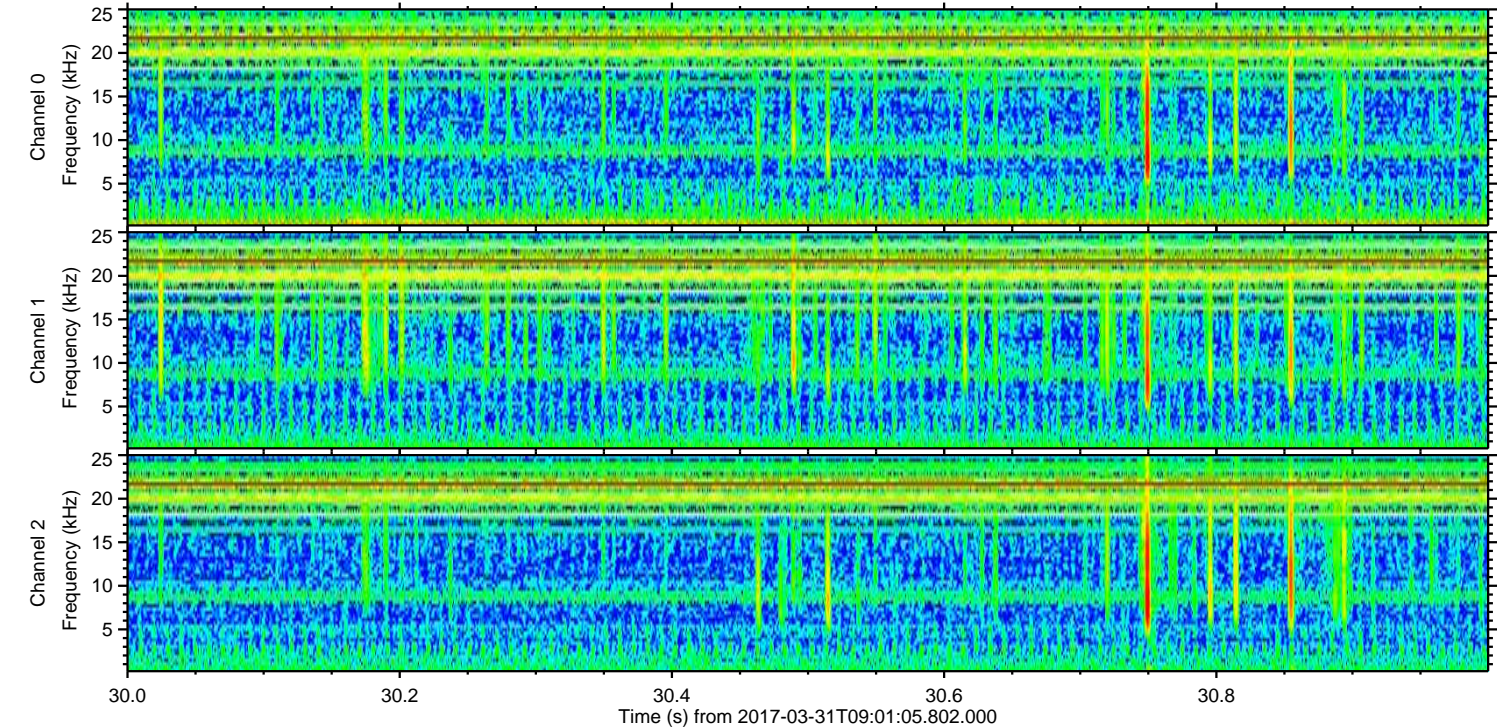
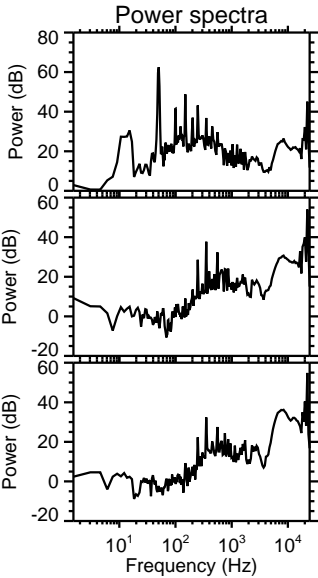
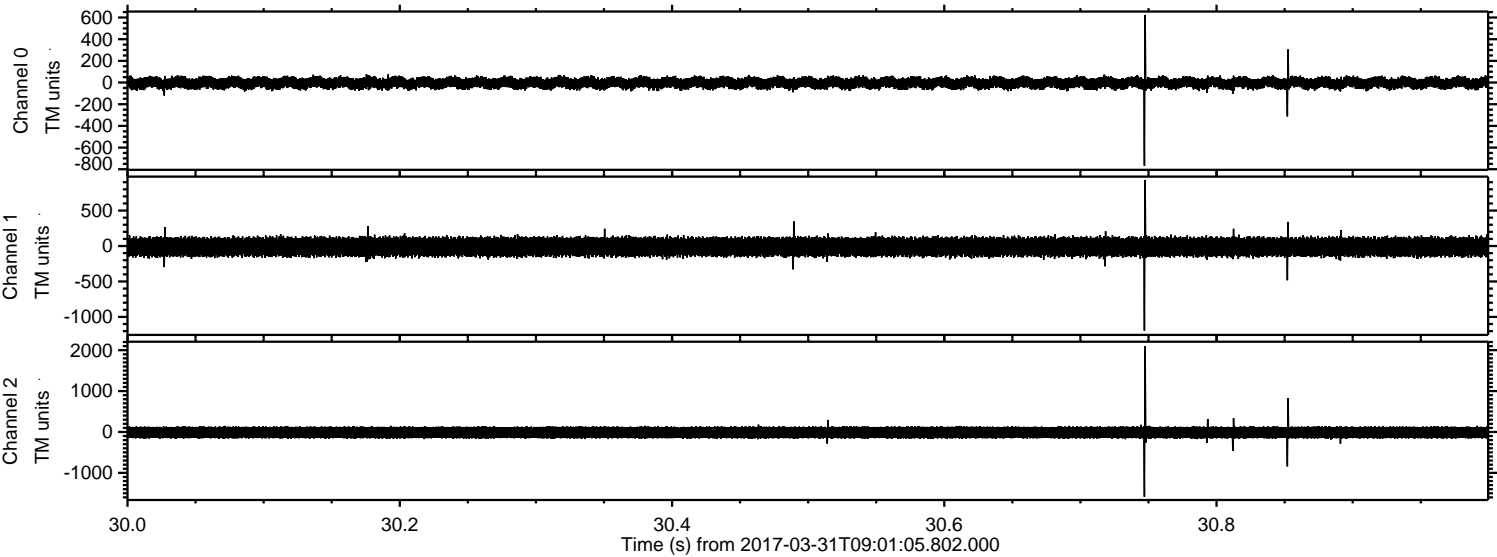
ELMAVAN 3D WAVEFORMS (Measured data sampled at 50 kHz) 51000 packets of 144 samples from 2017-03-31T09:01:05.802.000. Part 111/147

Processed Fri Mar 31 11:09:35 2017 by ELM ver.2012-10-06 from 001__elm20170331_090104__dat00.bin



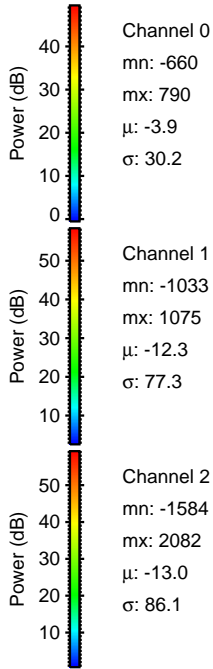
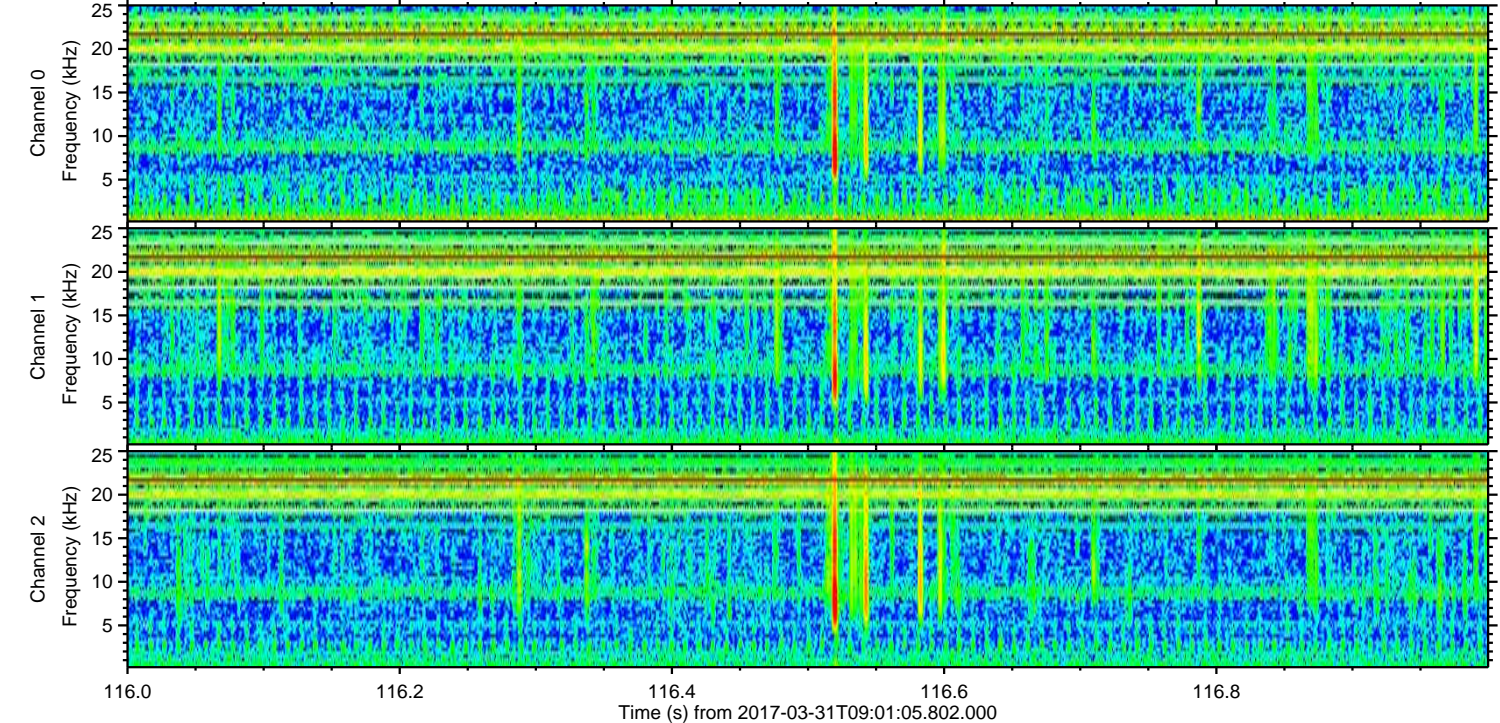
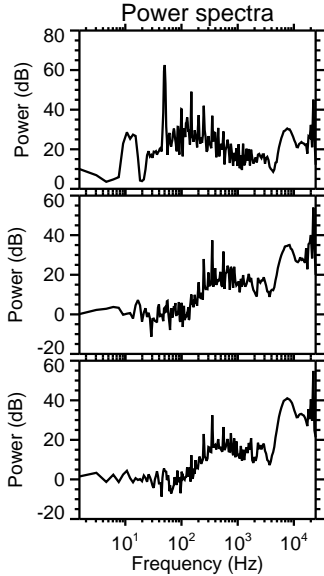
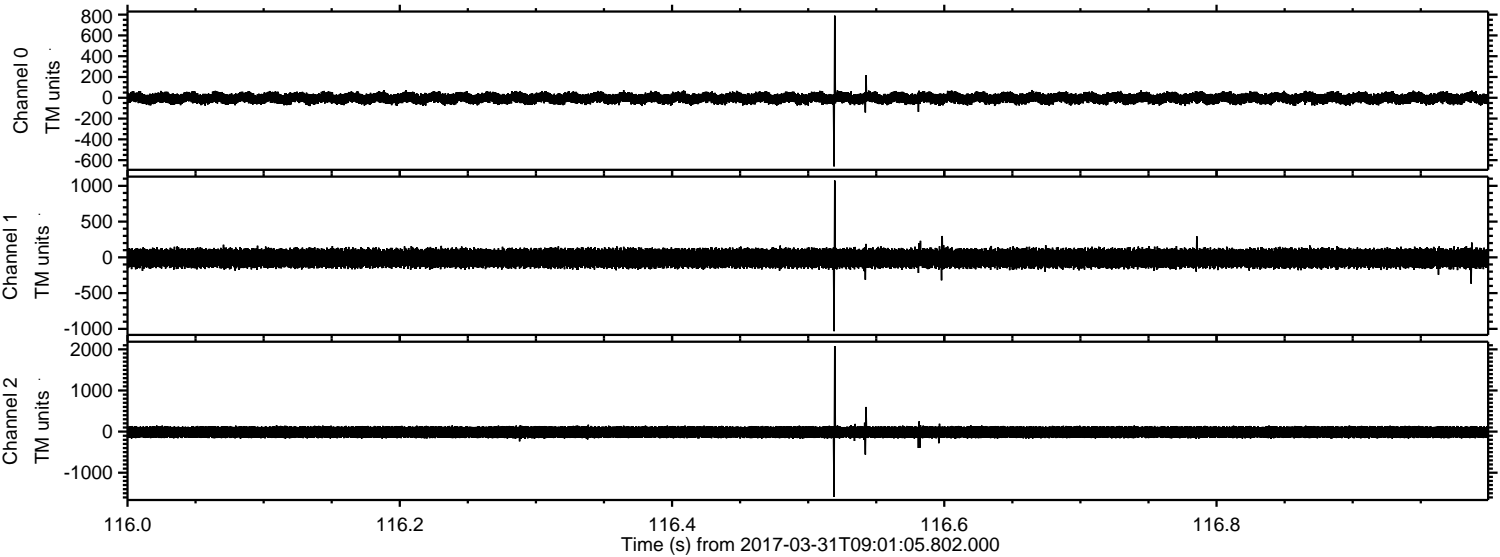
ELMAVAN 3D WAVEFORMS (Measured data sampled at 50 kHz) 51000 packets of 144 samples from 2017-03-31T09:01:05.802.000. Part 31/147

Processed Fri Mar 31 11:09:37 2017 by ELM ver.2012-10-06 from 001__elm20170331_090104__dat00.bin

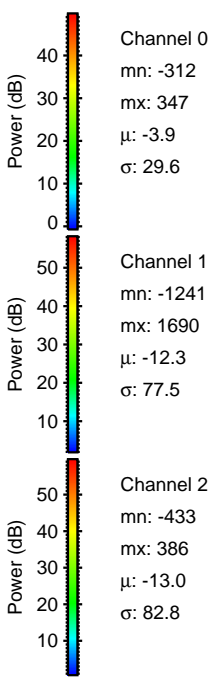
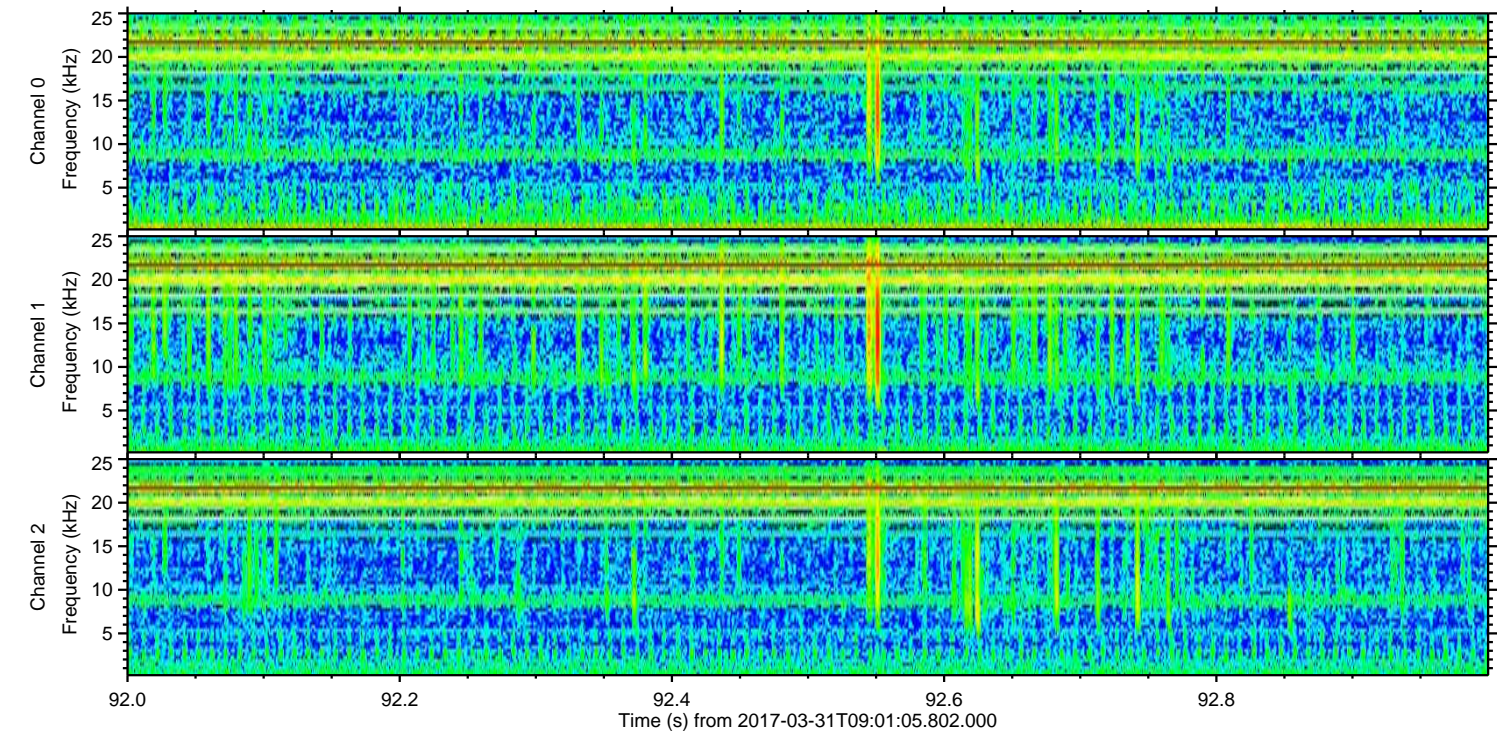
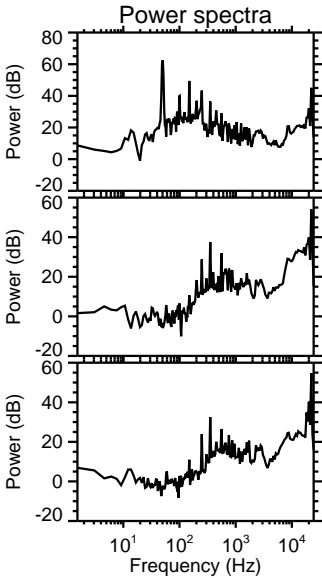
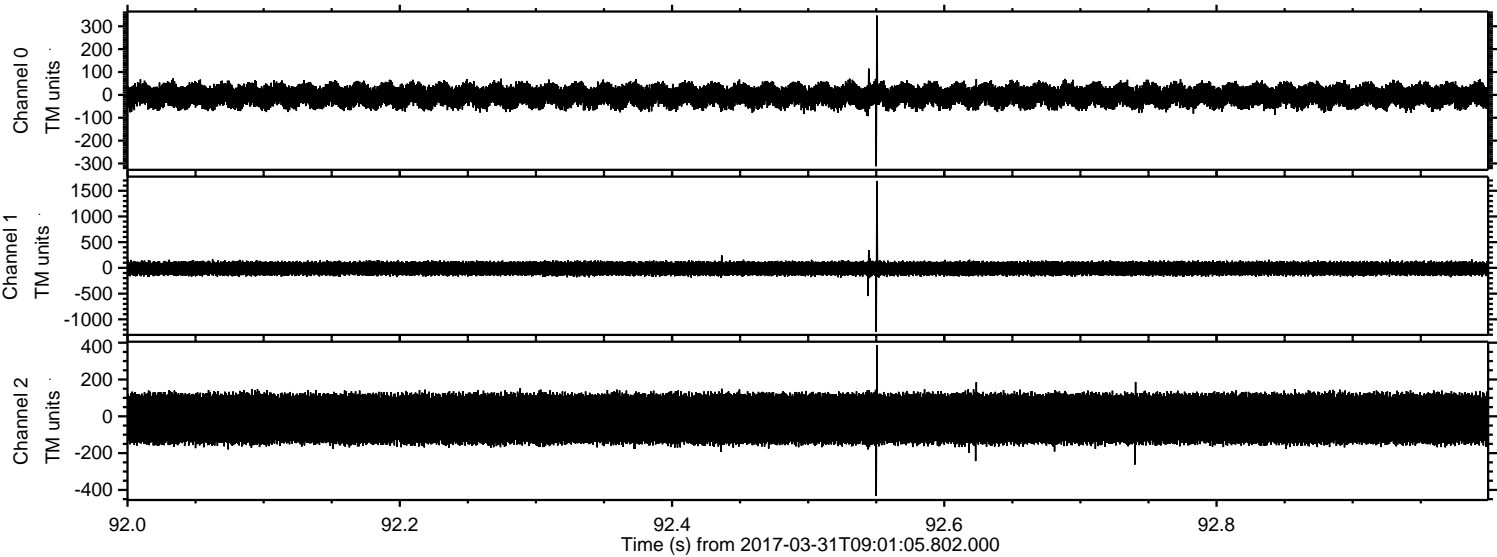


ELMAVAN 3D WAVEFORMS (Measured data sampled at 50 kHz) 51000 packets of 144 samples from 2017-03-31T09:01:05.802.000. Part 117/147

Processed Fri Mar 31 11:09:38 2017 by ELM ver.2012-10-06 from 001__elm20170331_090104__dat00.bin



Processed Fri Mar 31 11:09:40 2017 by ELM ver.2012-10-06 from 001__elm20170331_090104__dat00.bin

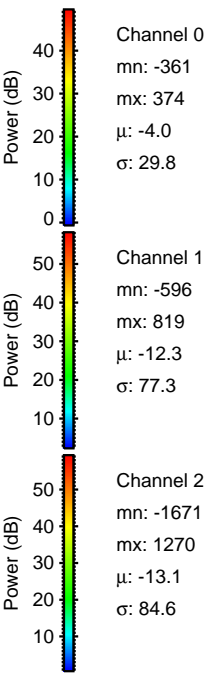
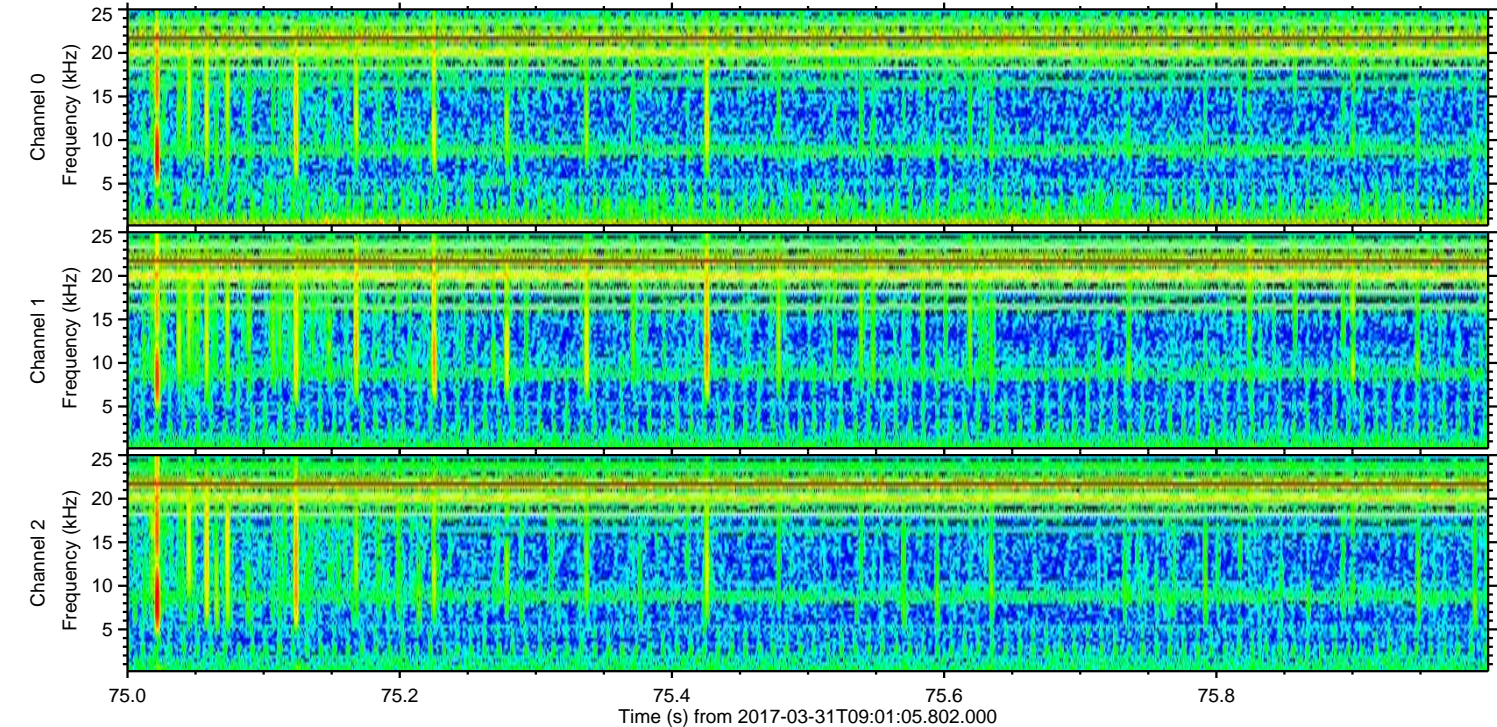
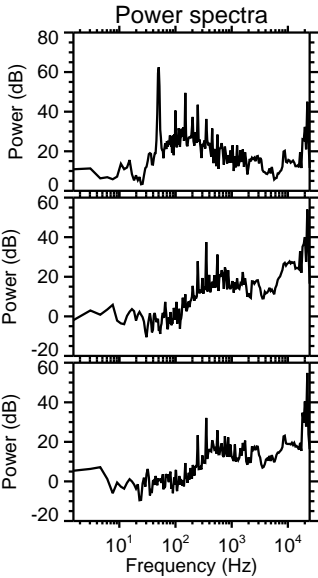
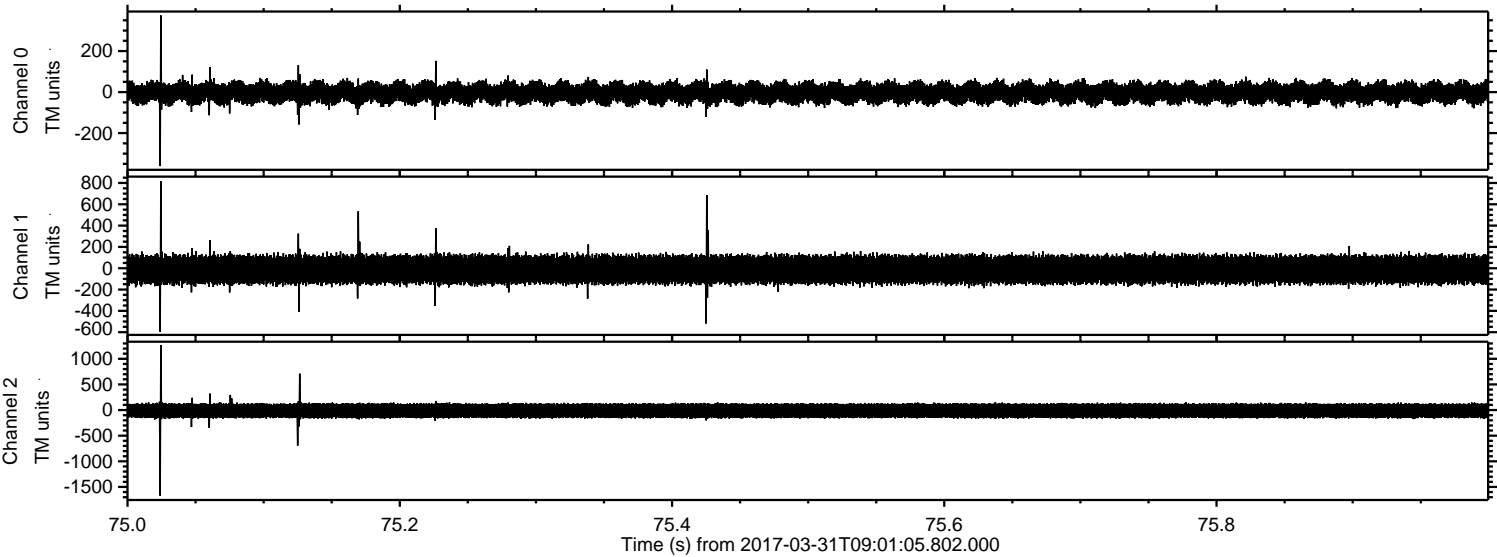


Channel 0
mn: -312
mx: 347
 μ : -3.9
 σ : 29.6

Channel 1
mn: -1241
mx: 1690
 μ : -12.3
 σ : 77.5

Channel 2
mn: -433
mx: 386
 μ : -13.0
 σ : 82.8

Processed Fri Mar 31 11:09:41 2017 by ELM ver.2012-10-06 from 001__elm20170331_090104__dat00.bin

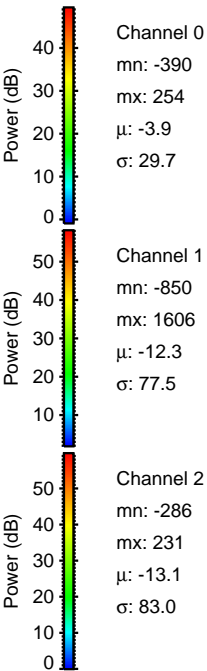
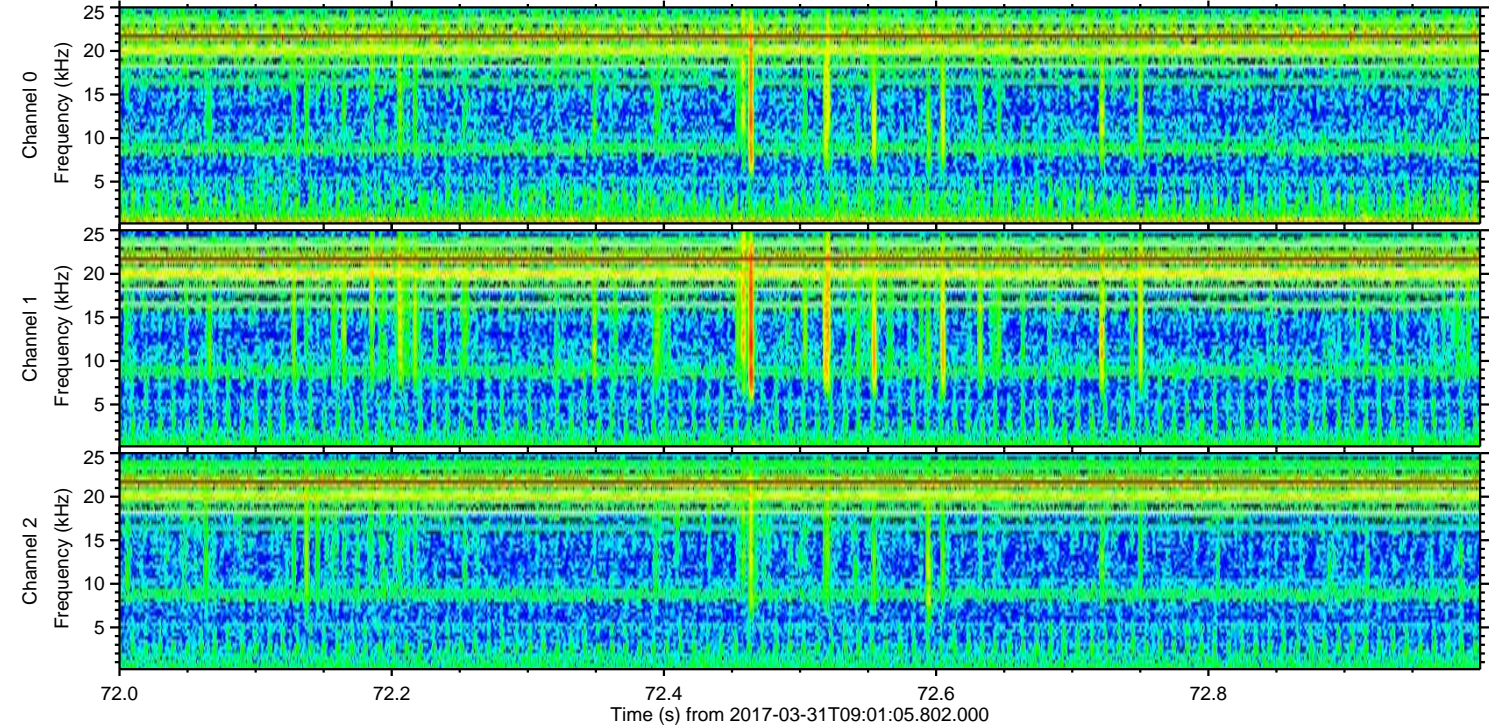
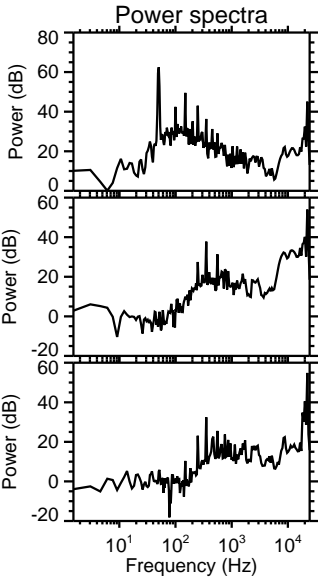
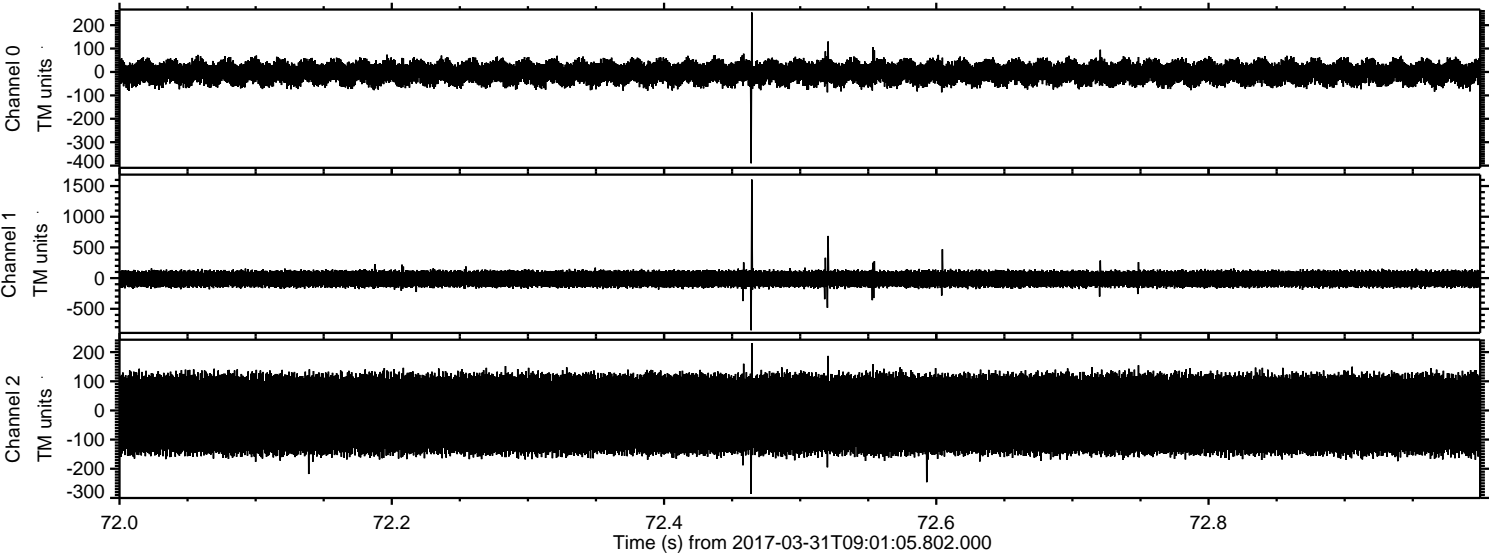


Channel 0
mn: -361
mx: 374
 μ : -4.0
 σ : 29.8

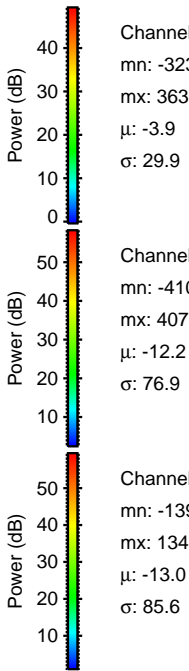
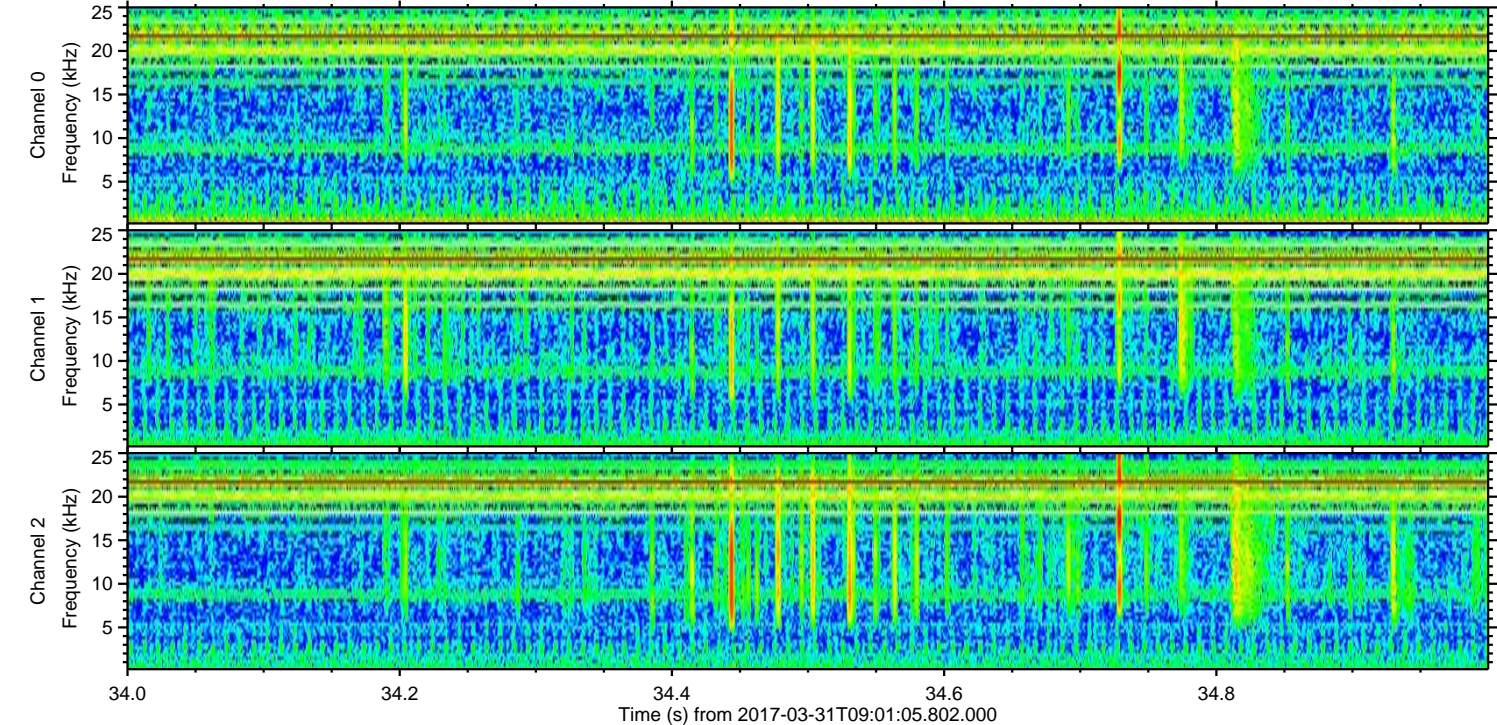
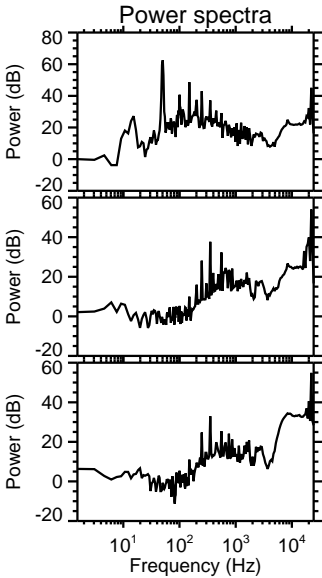
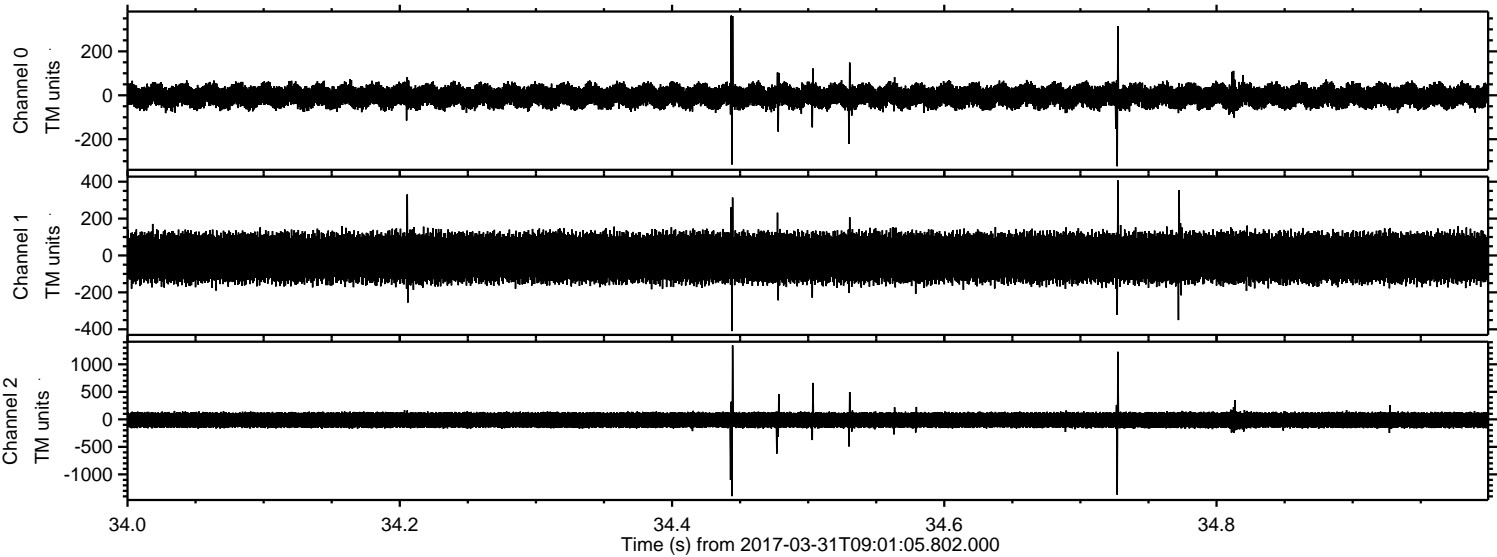
Channel 1
mn: -596
mx: 819
 μ : -12.3
 σ : 77.3

Channel 2
mn: -1671
mx: 1270
 μ : -13.1
 σ : 84.6

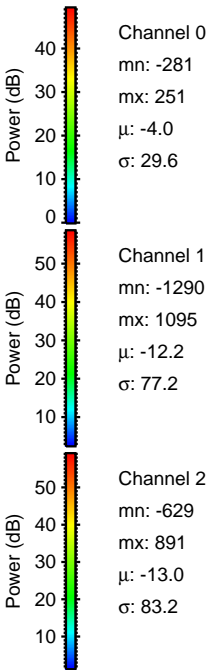
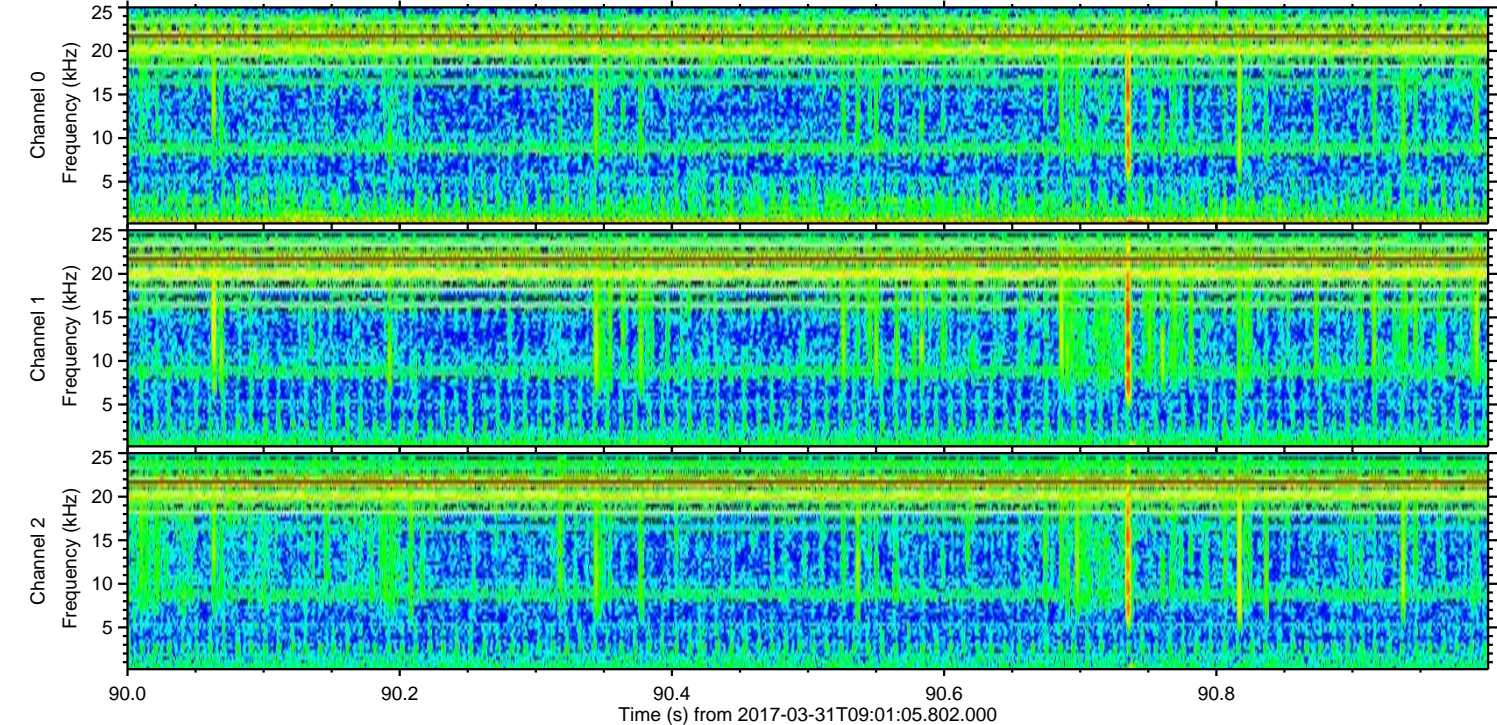
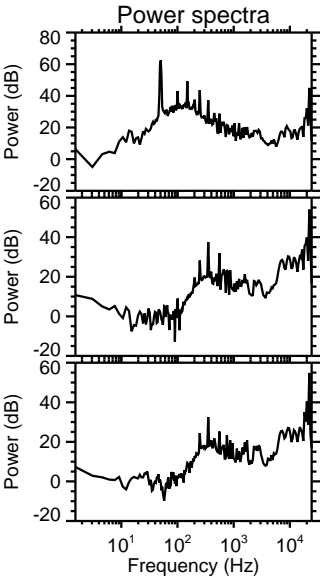
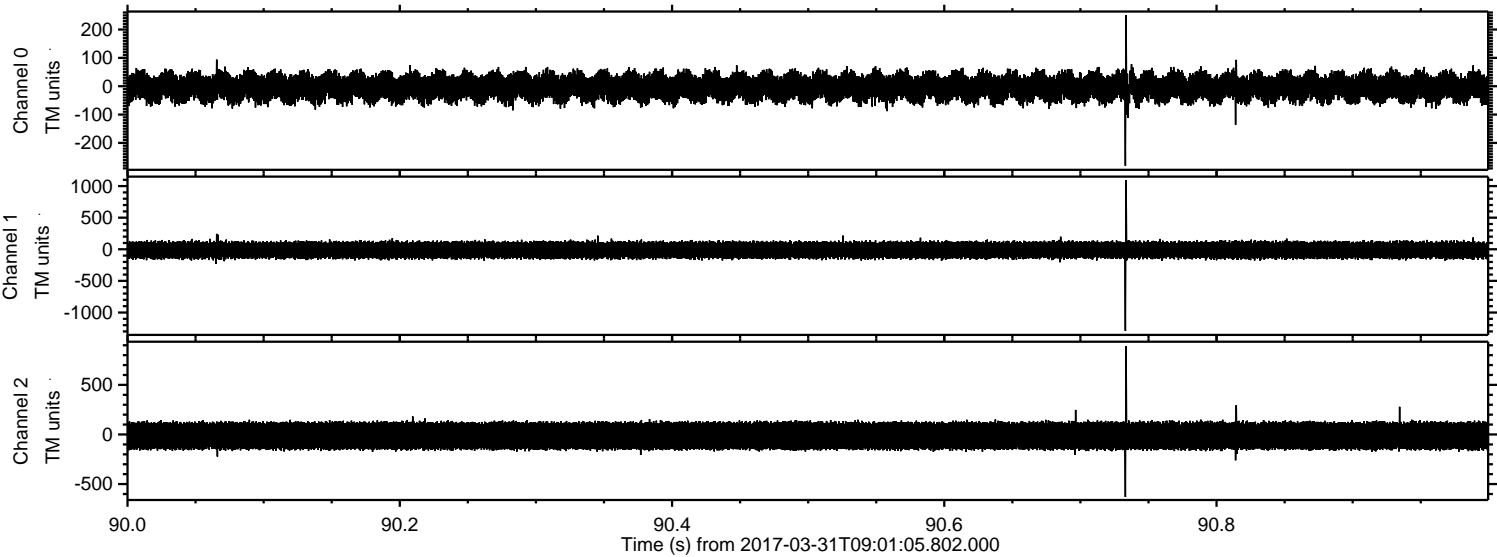
Processed Fri Mar 31 11:09:43 2017 by ELM ver.2012-10-06 from 001__elm20170331_090104__dat00.bin



Processed Fri Mar 31 11:09:46 2017 by ELM ver.2012-10-06 from 001__elm20170331_090104__dat00.bin



Processed Fri Mar 31 11:09:48 2017 by ELM ver.2012-10-06 from 001__elm20170331_090104__dat00.bin



Processed Fri Mar 31 11:09:49 2017 by ELM ver.2012-10-06 from 001__elm20170331_090104__dat00.bin

