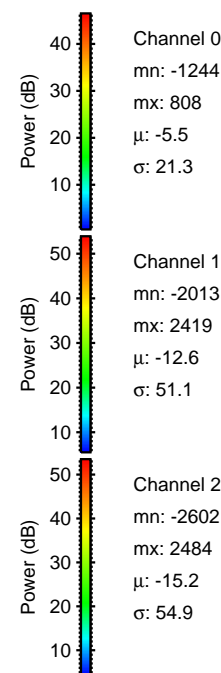
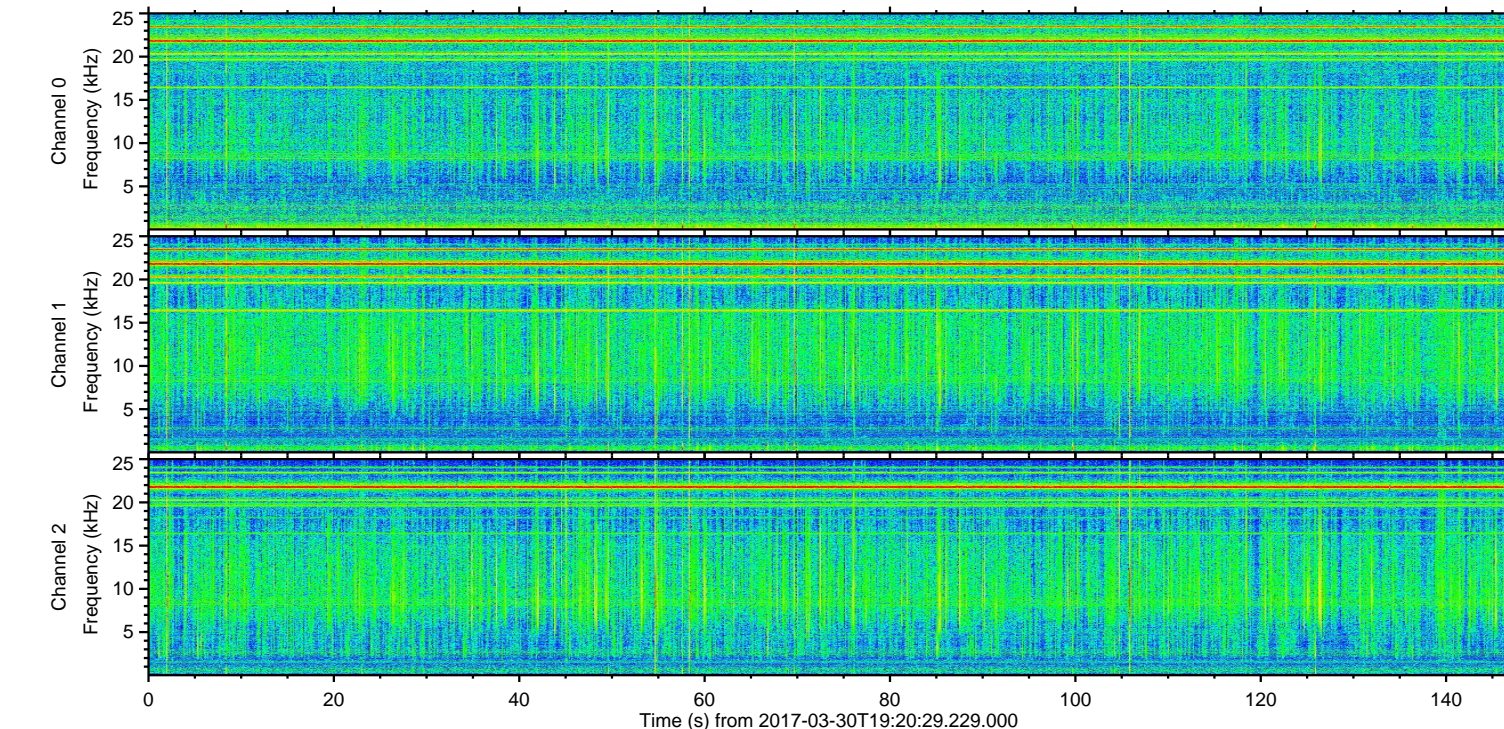
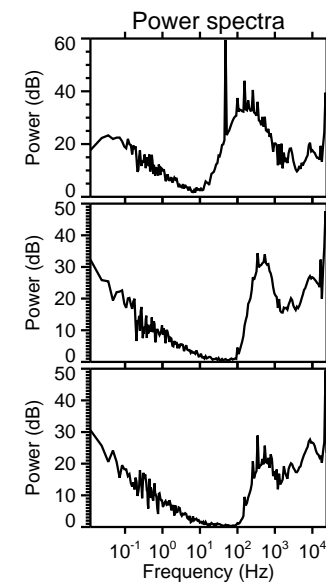
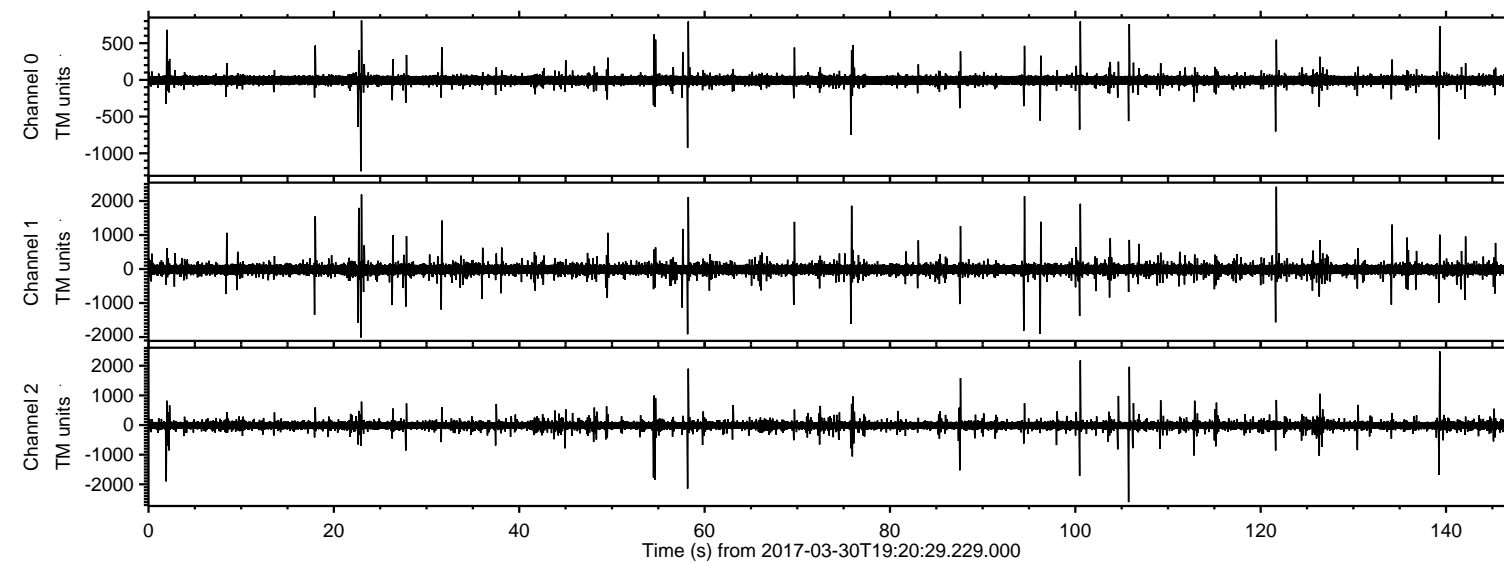
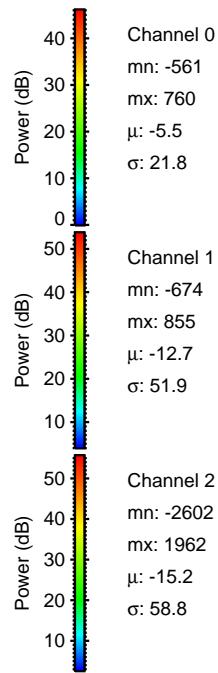
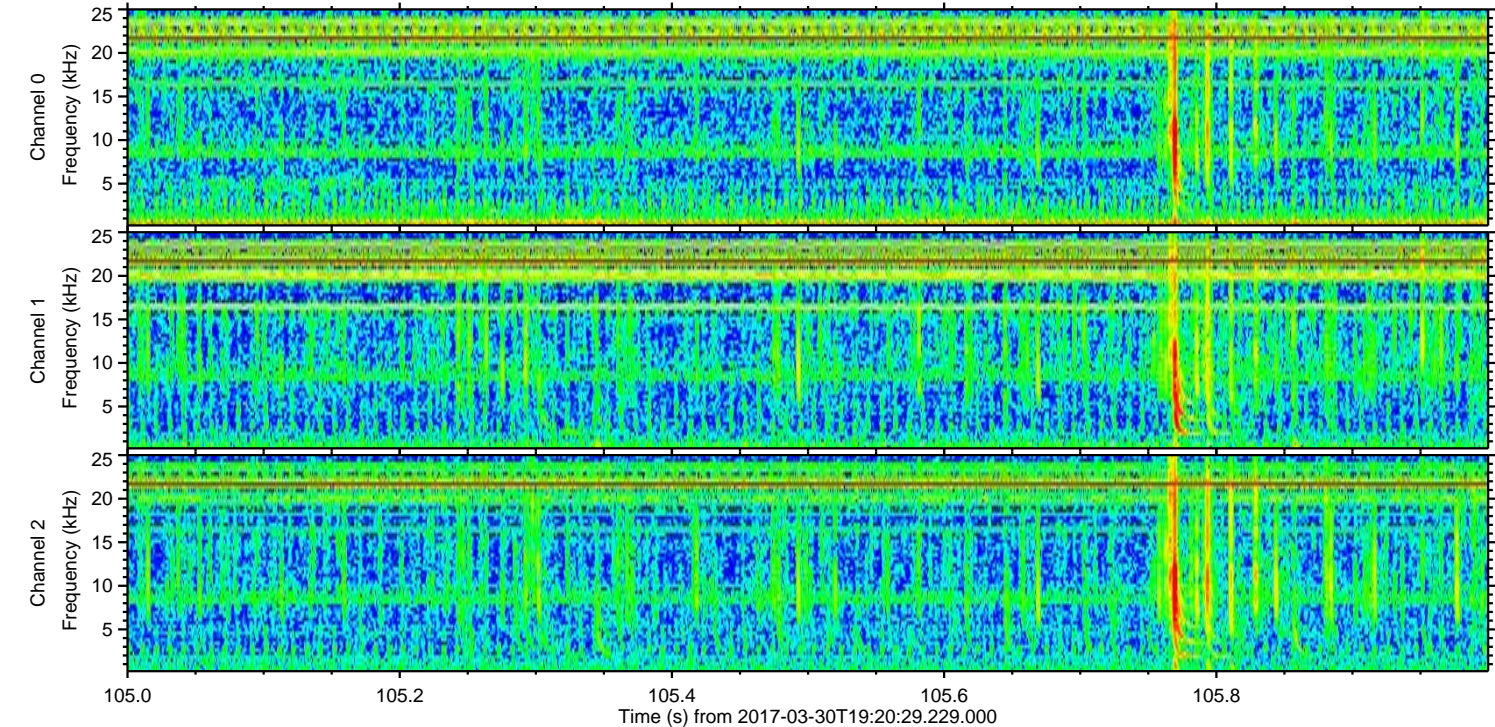
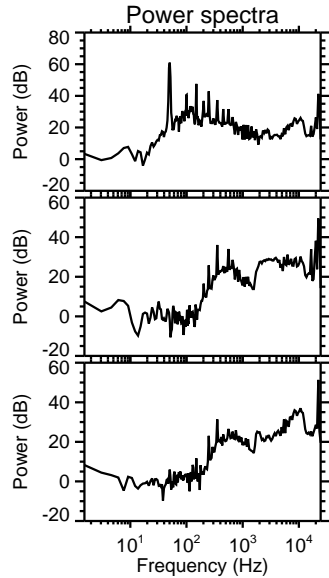
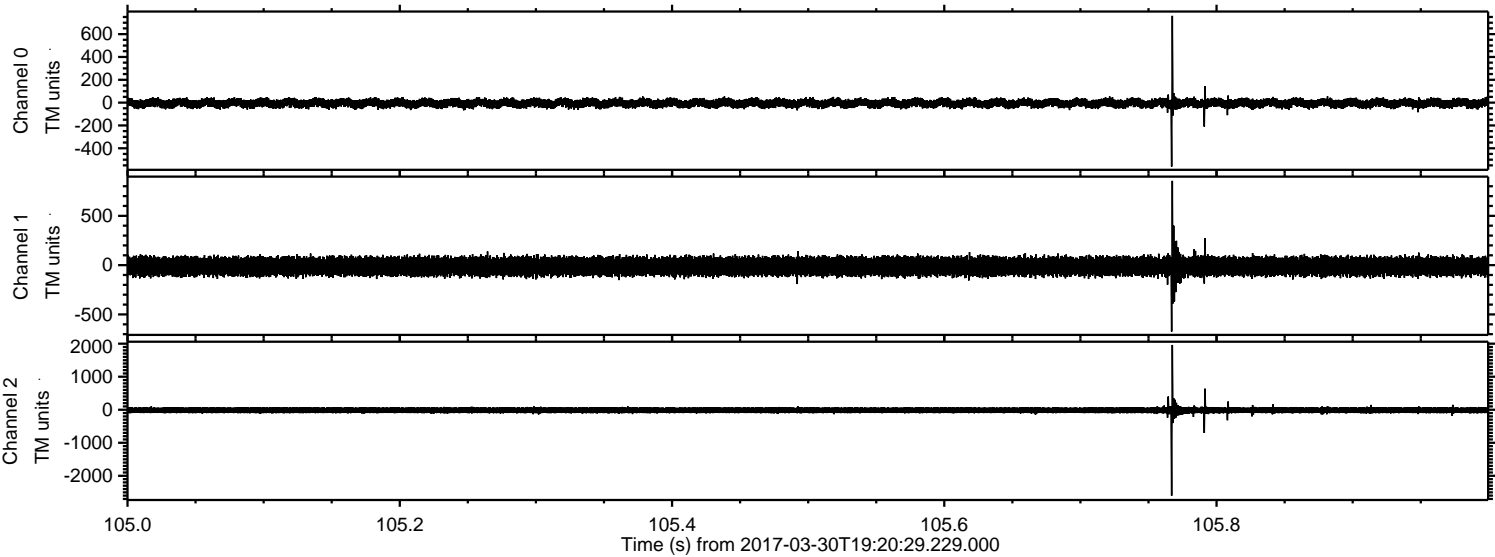


ELMAVAN 3D WAVEFORMS (Measured data sampled at 50 kHz) 51000 packets of 144 samples from 2017-03-30T19:20:29.229.000.

Processed Thu Mar 30 21:28:35 2017 by ELM ver.2012-10-06 from 001__elm20170330_192028__dat00.bin

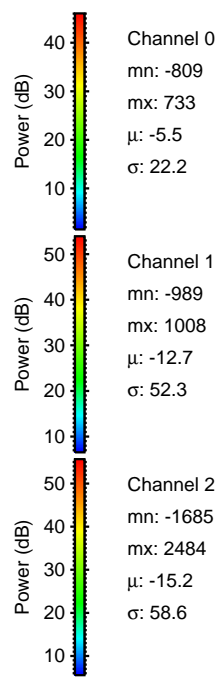
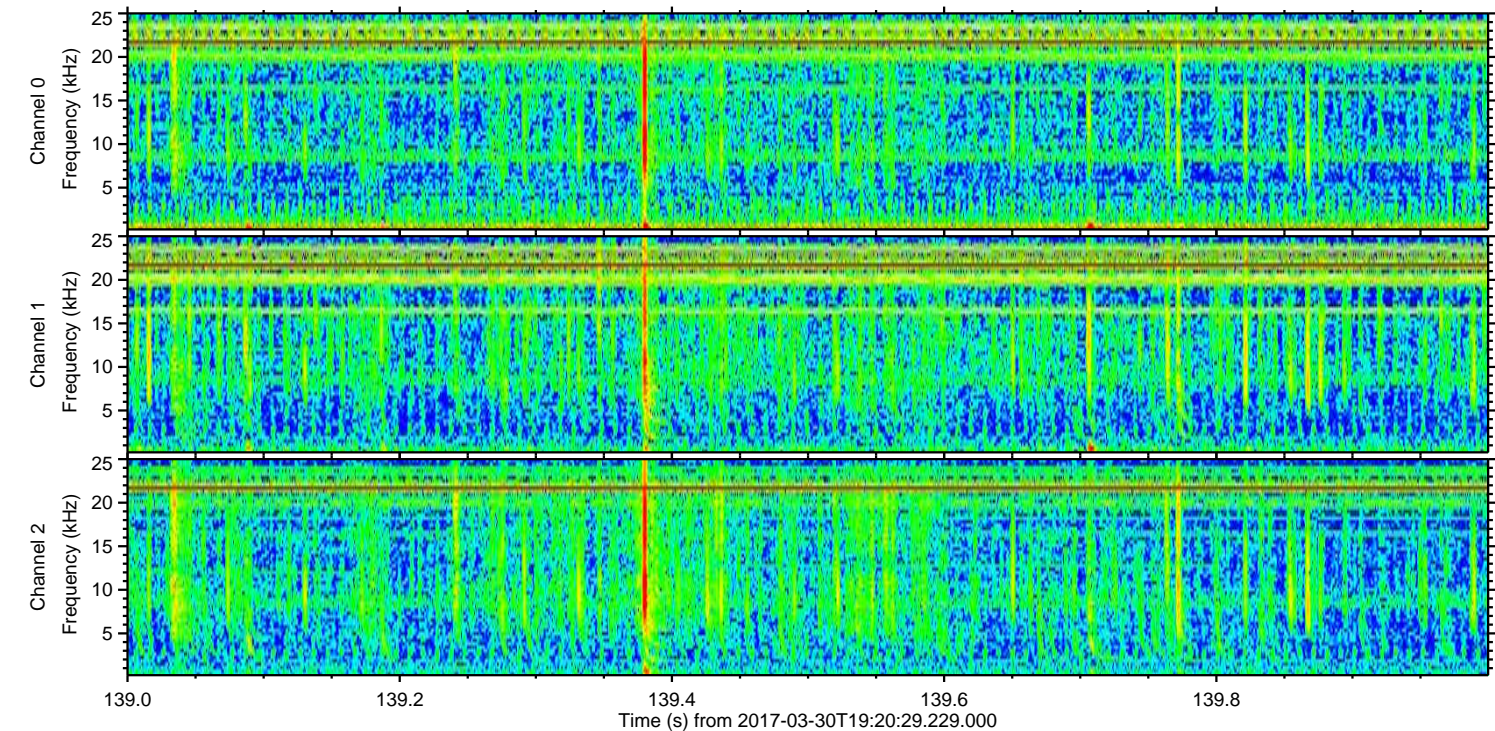
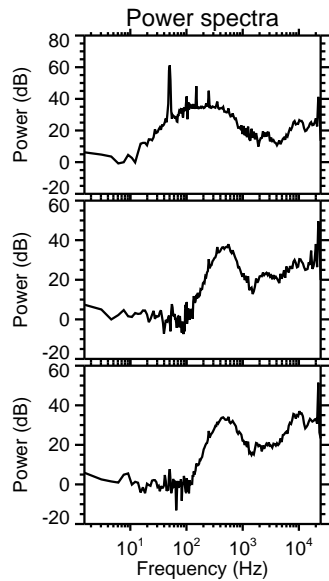
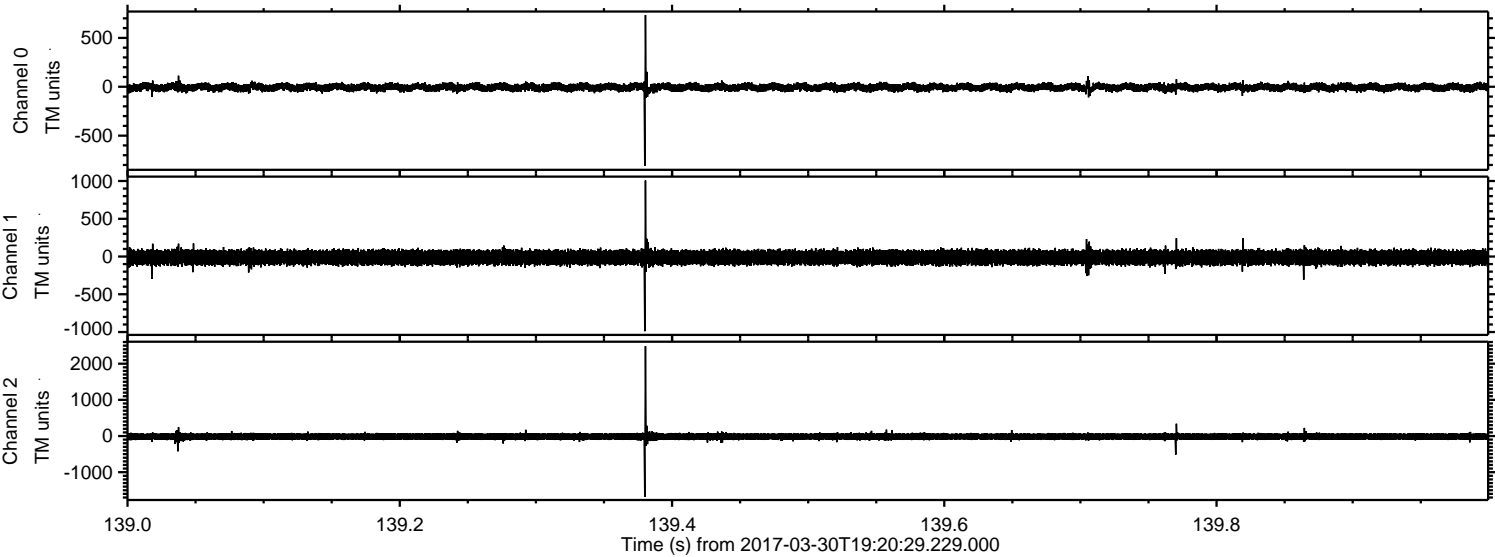


Processed Thu Mar 30 21:28:50 2017 by ELM ver.2012-10-06 from 001__elm20170330_192028__dat00.bin



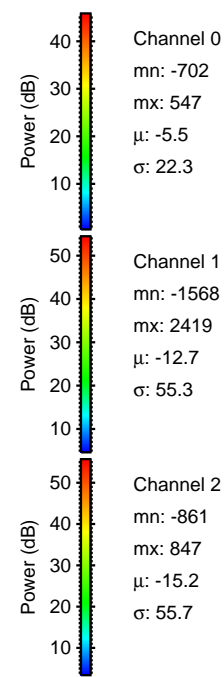
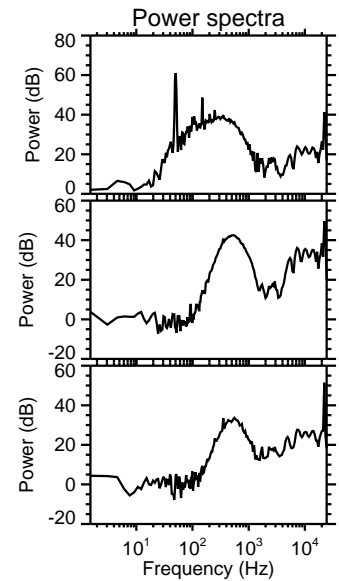
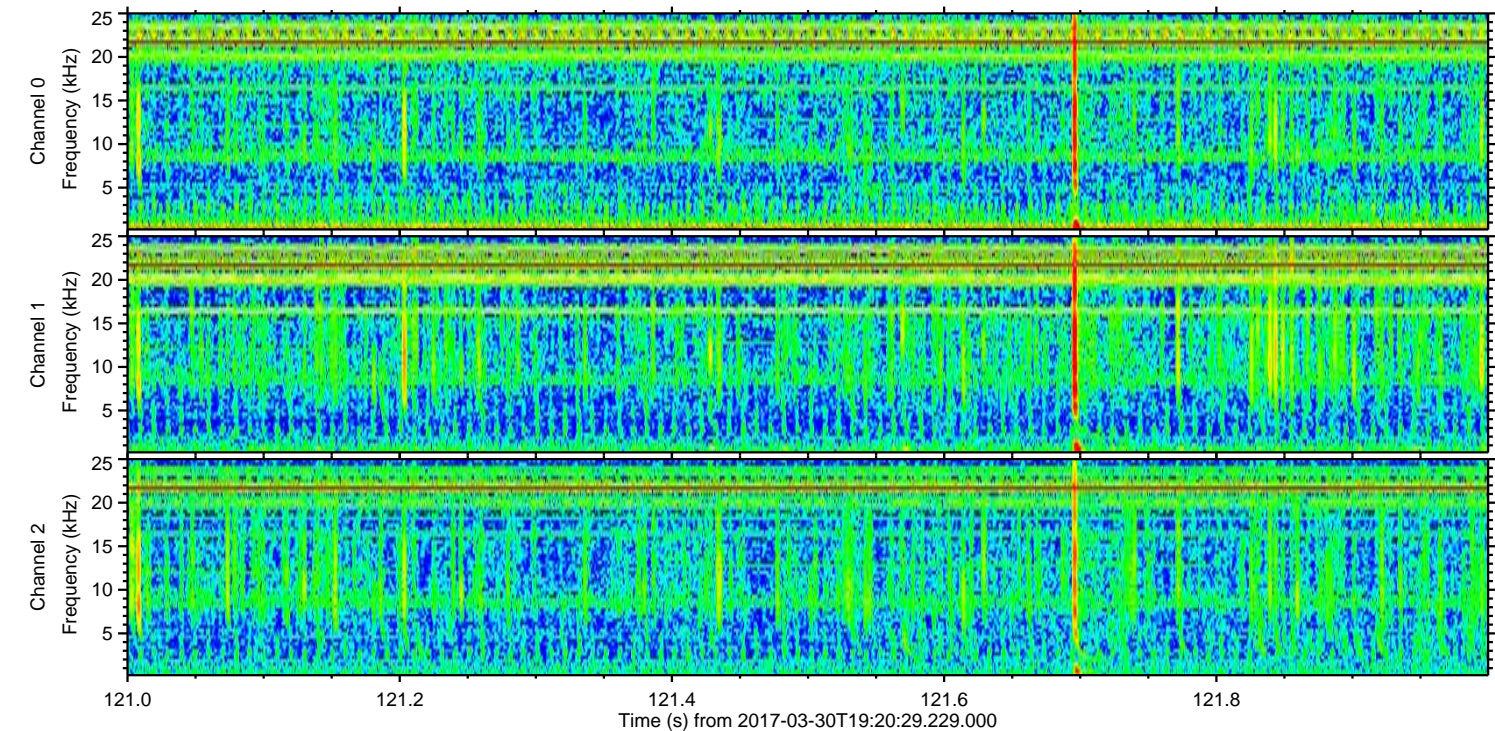
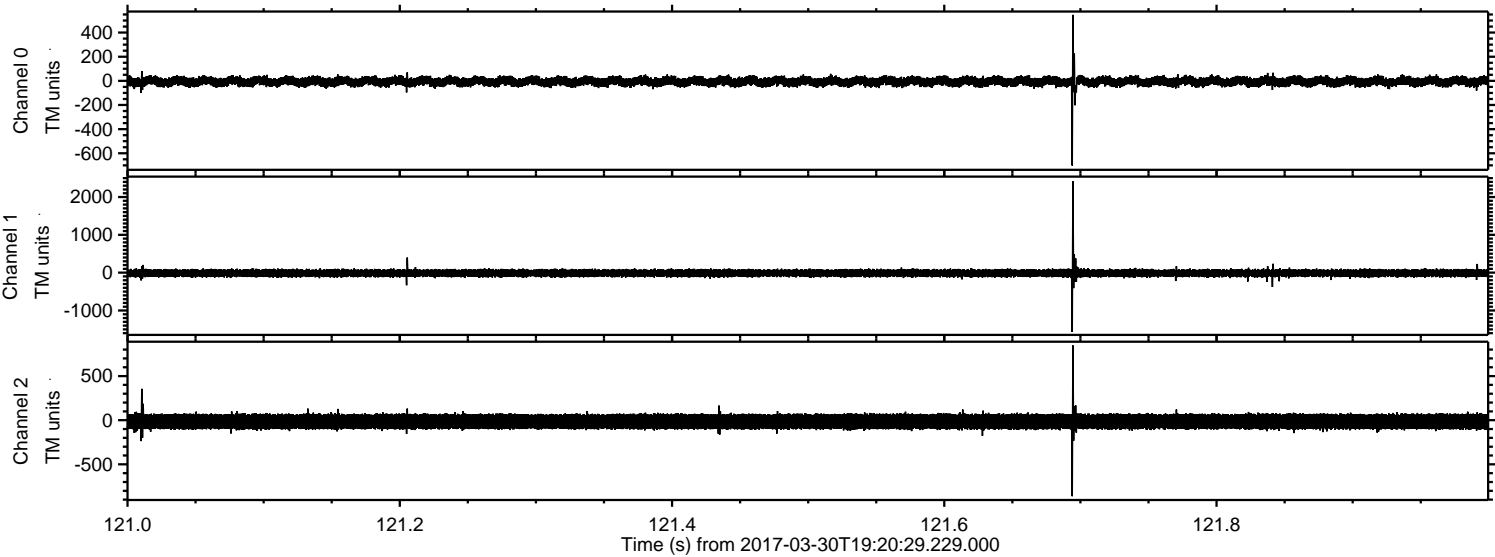
ELMAVAN 3D WAVEFORMS (Measured data sampled at 50 kHz) 51000 packets of 144 samples from 2017-03-30T19:20:29.229.000. Part 140/147

Processed Thu Mar 30 21:28:51 2017 by ELM ver.2012-10-06 from 001__elm20170330_192028__dat00.bin

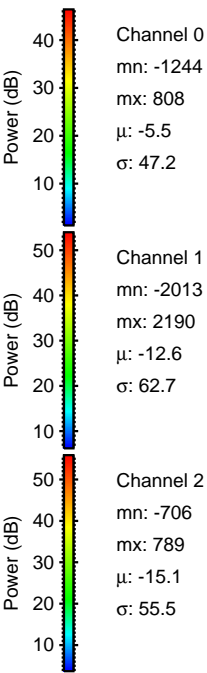
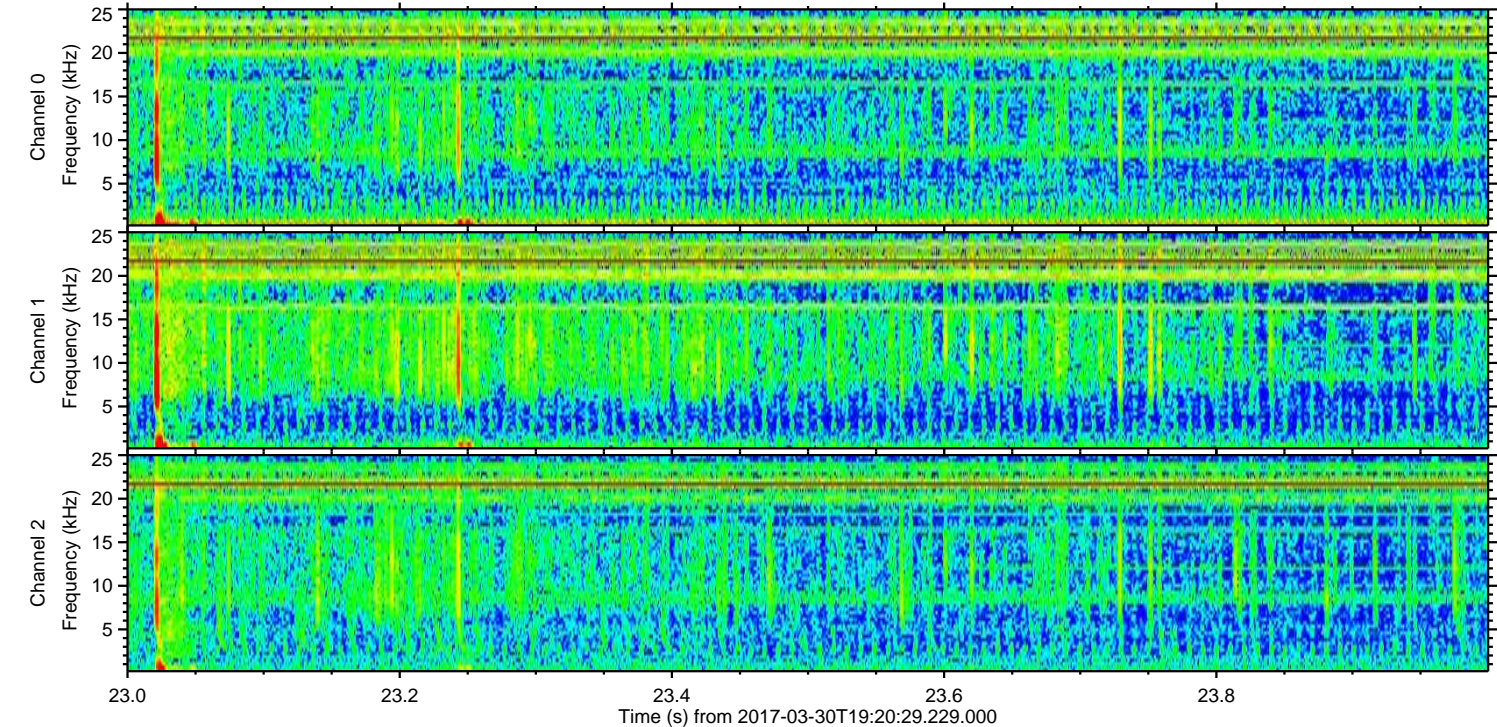
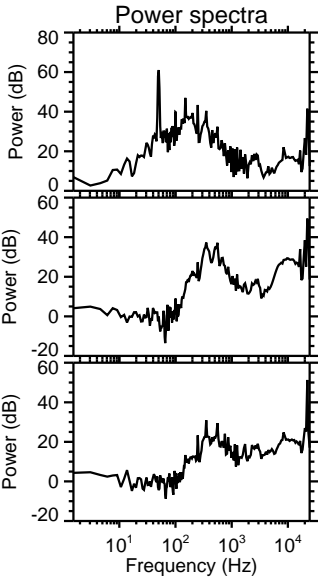
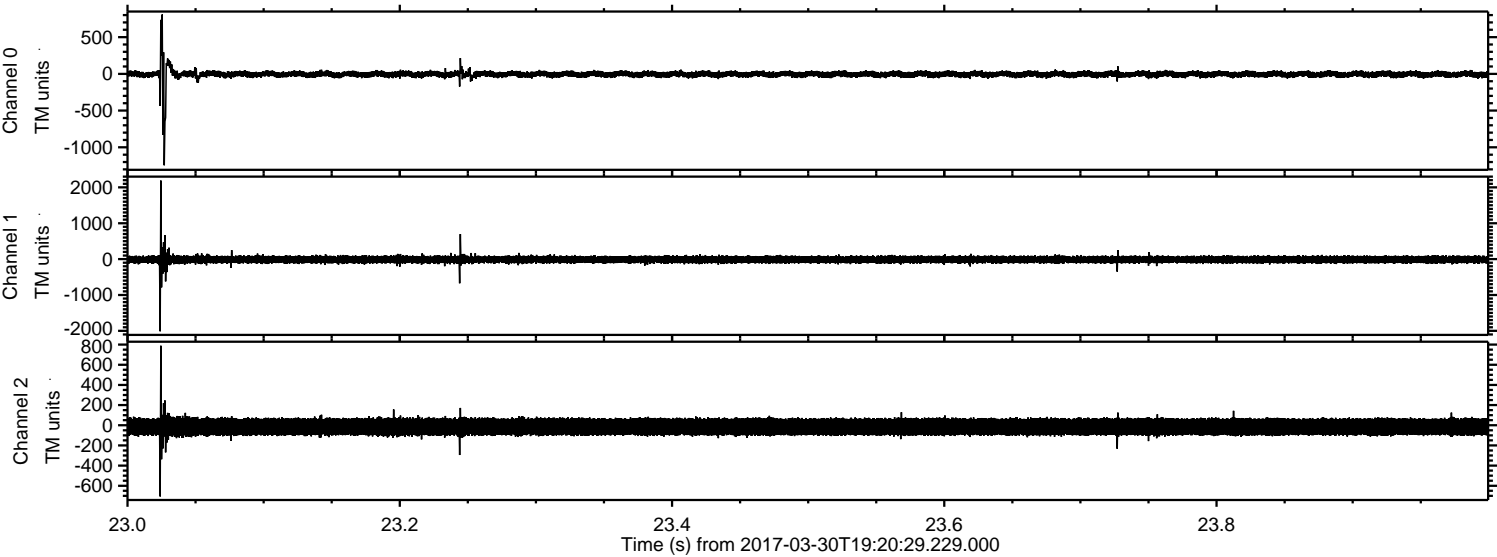


ELMAVAN 3D WAVEFORMS (Measured data sampled at 50 kHz) 51000 packets of 144 samples from 2017-03-30T19:20:29.229.000. Part 122/147

Processed Thu Mar 30 21:28:52 2017 by ELM ver.2012-10-06 from 001__elm20170330_192028__dat00.bin

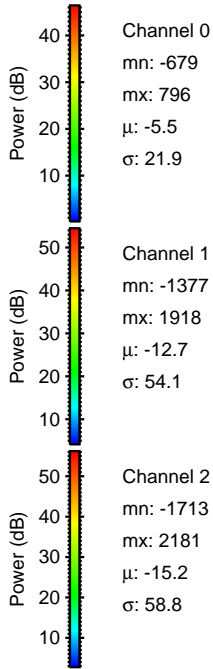
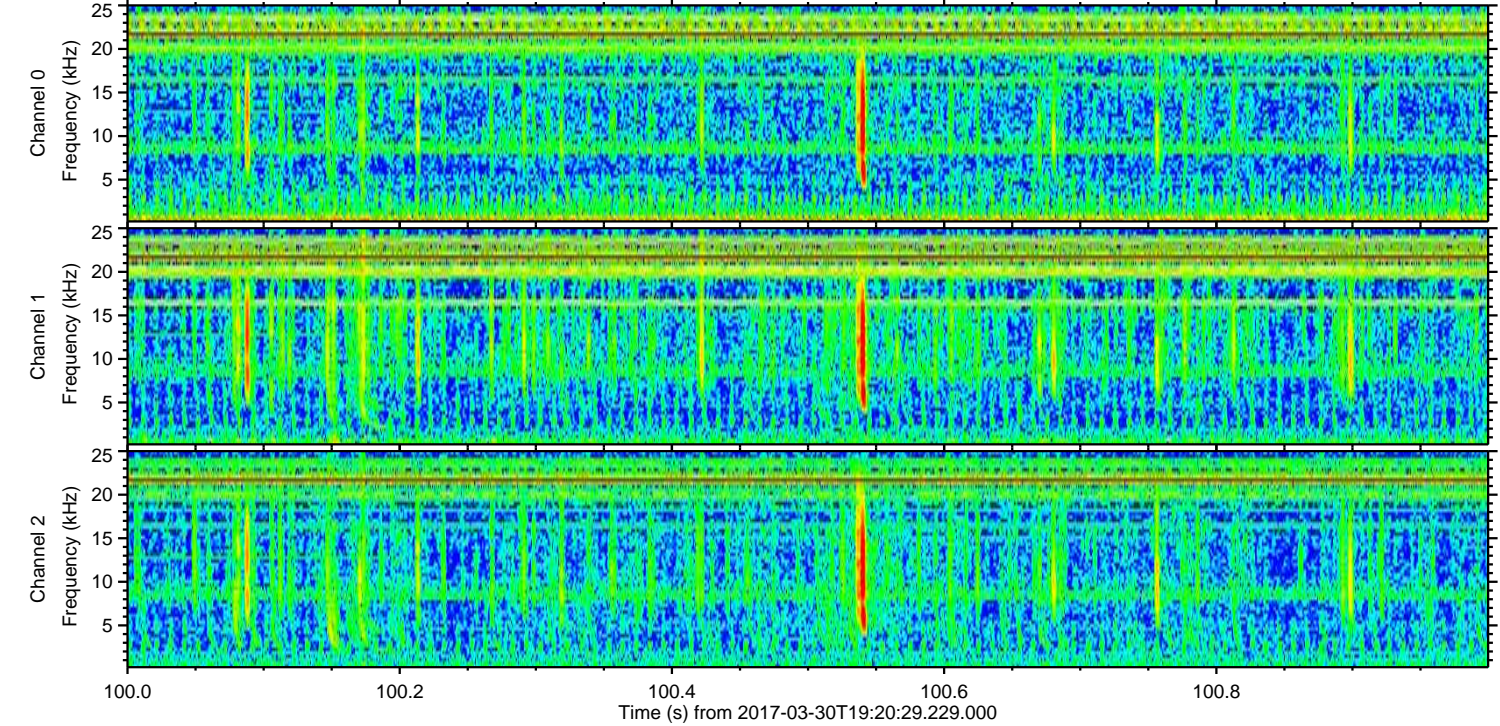
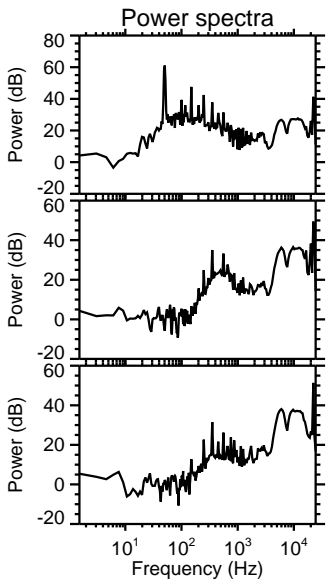
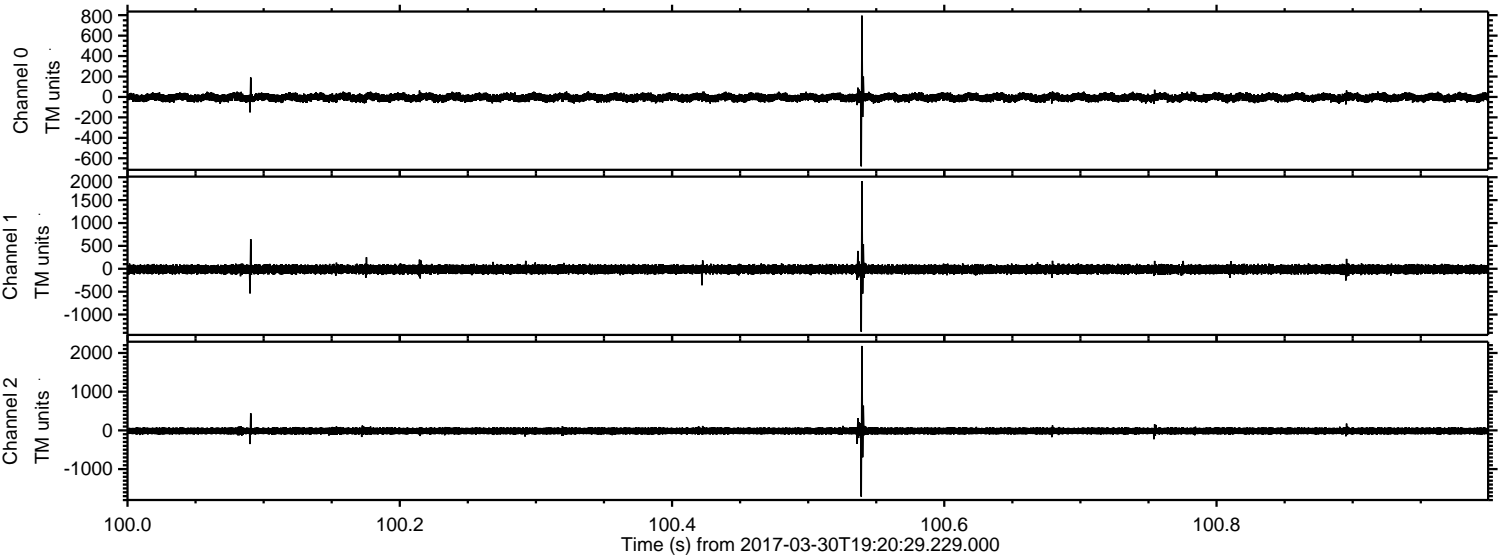


Processed Thu Mar 30 21:28:53 2017 by ELM ver.2012-10-06 from 001__elm20170330_192028__dat00.bin

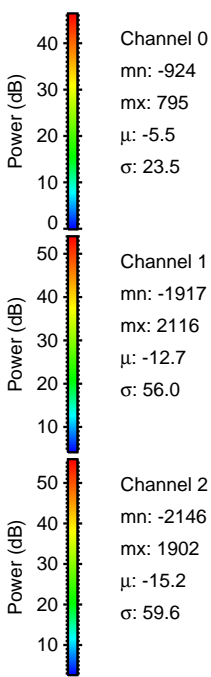
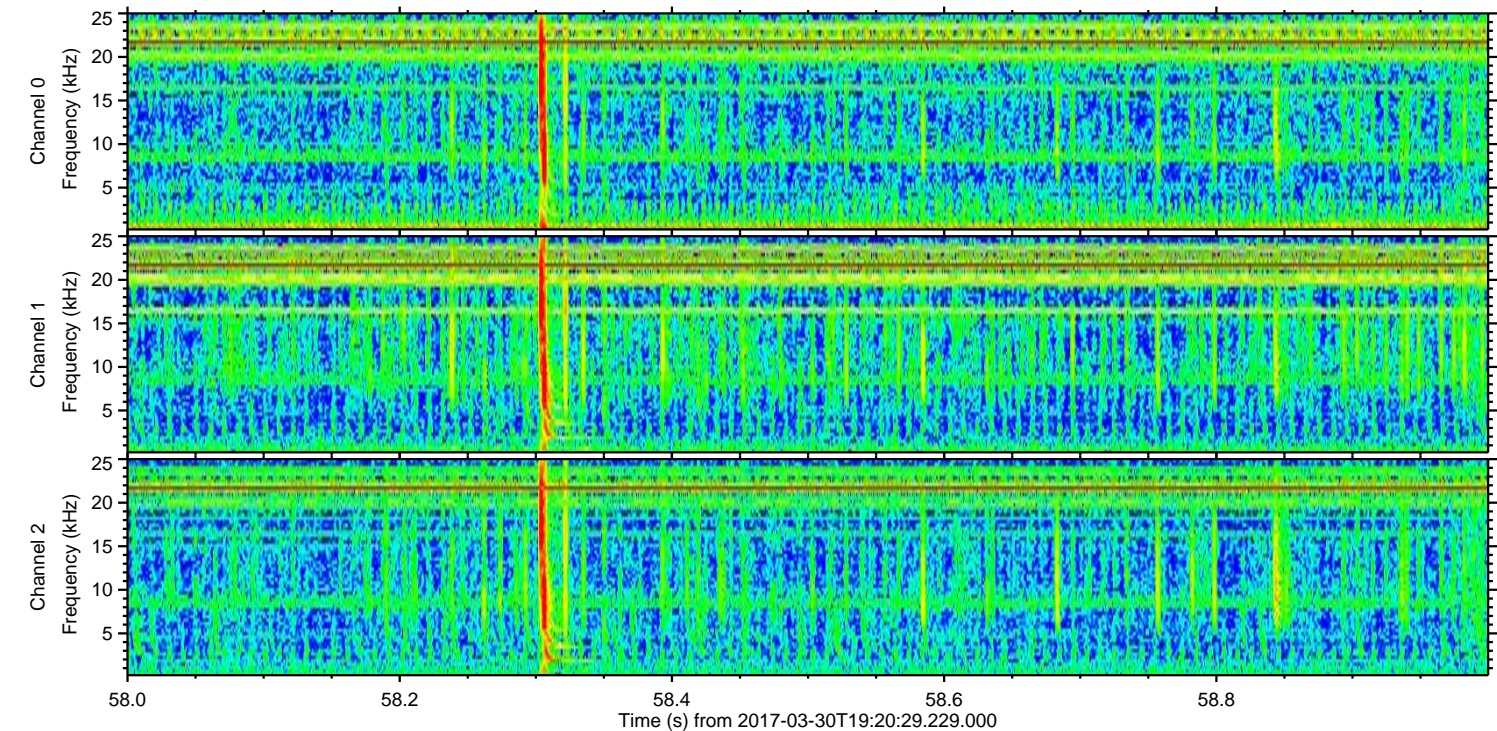
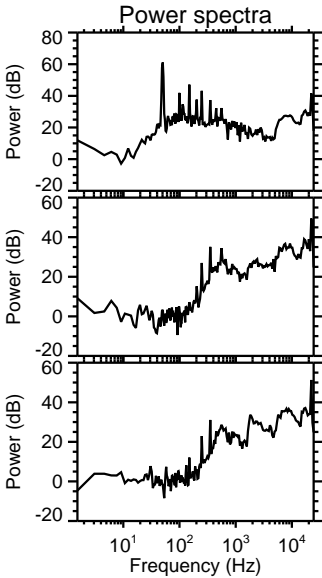
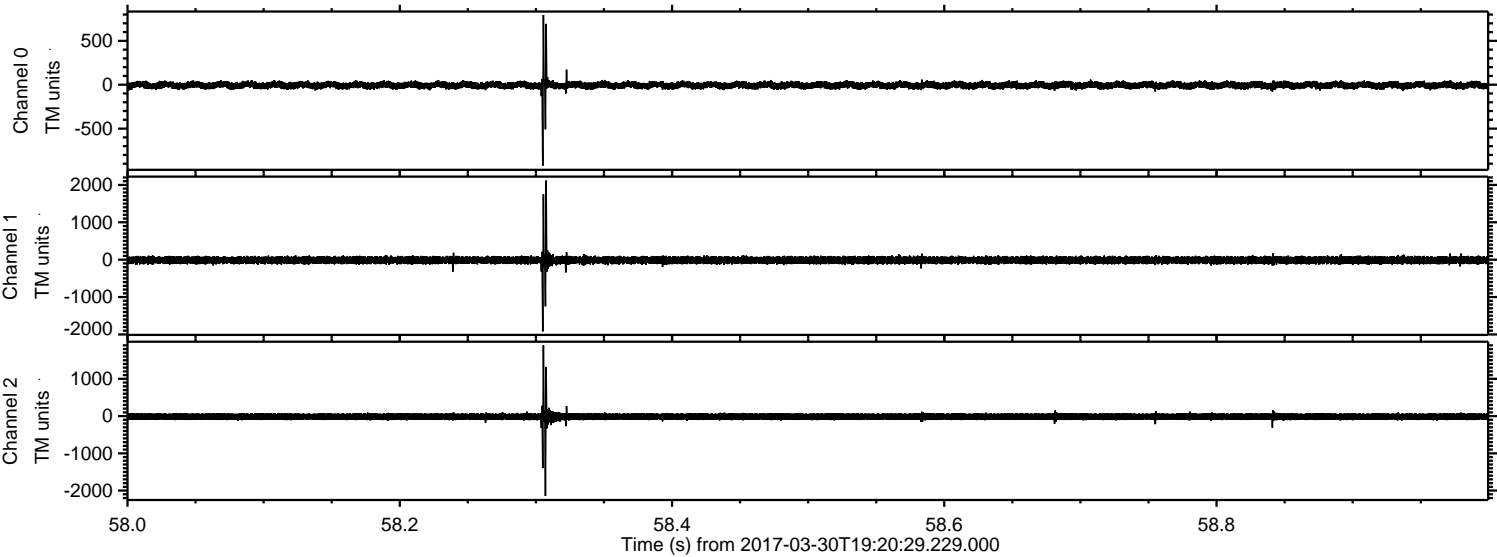


ELMAVAN 3D WAVEFORMS (Measured data sampled at 50 kHz) 51000 packets of 144 samples from 2017-03-30T19:20:29.229.000. Part 101/147

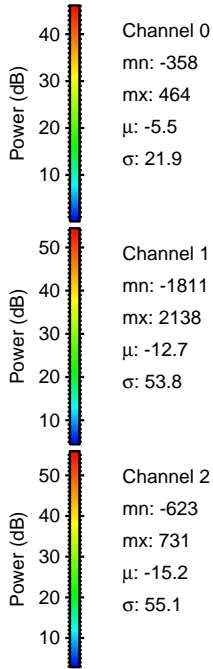
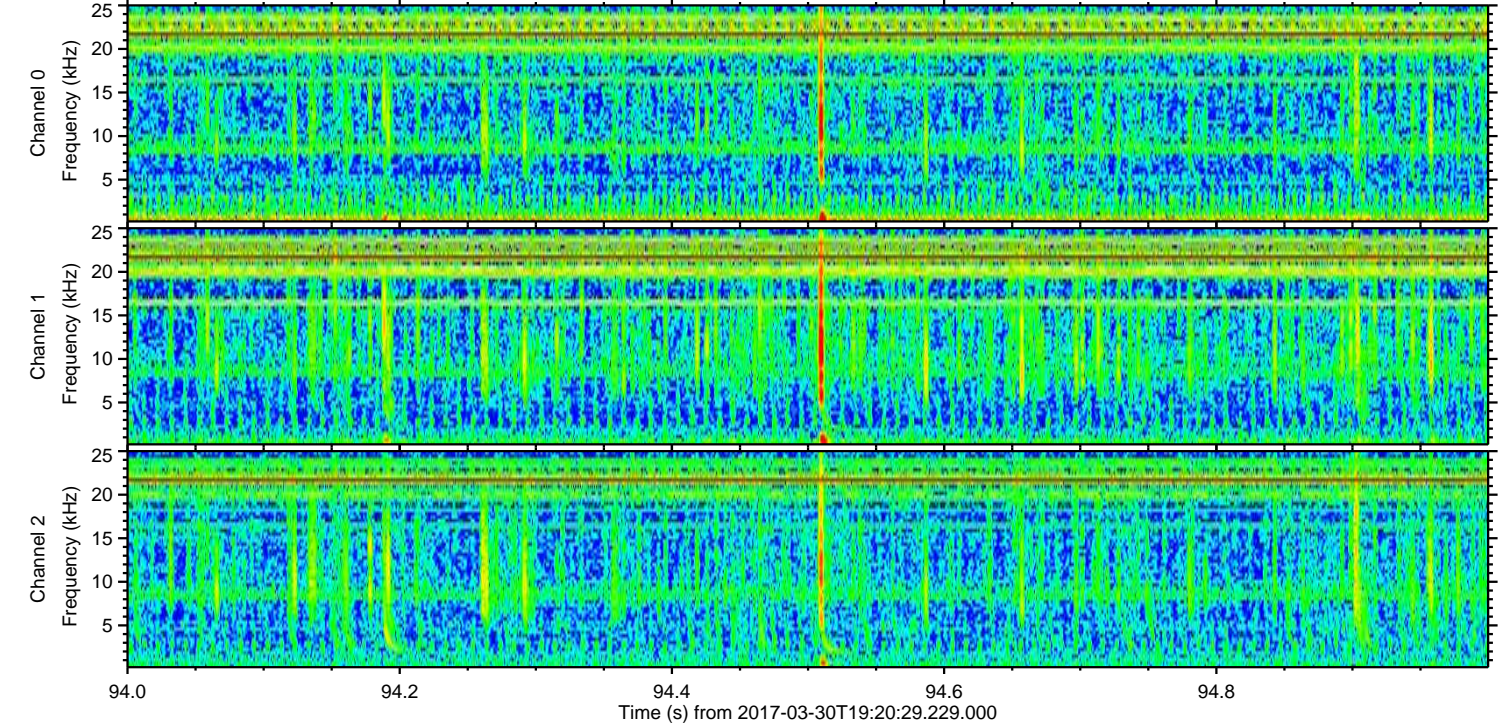
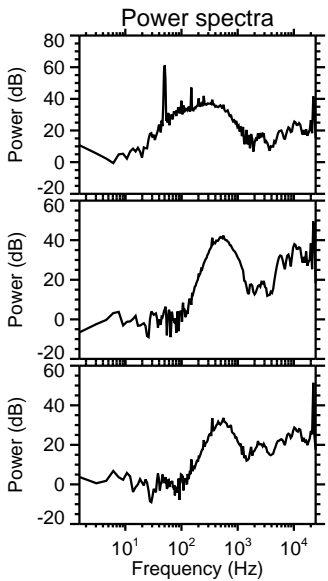
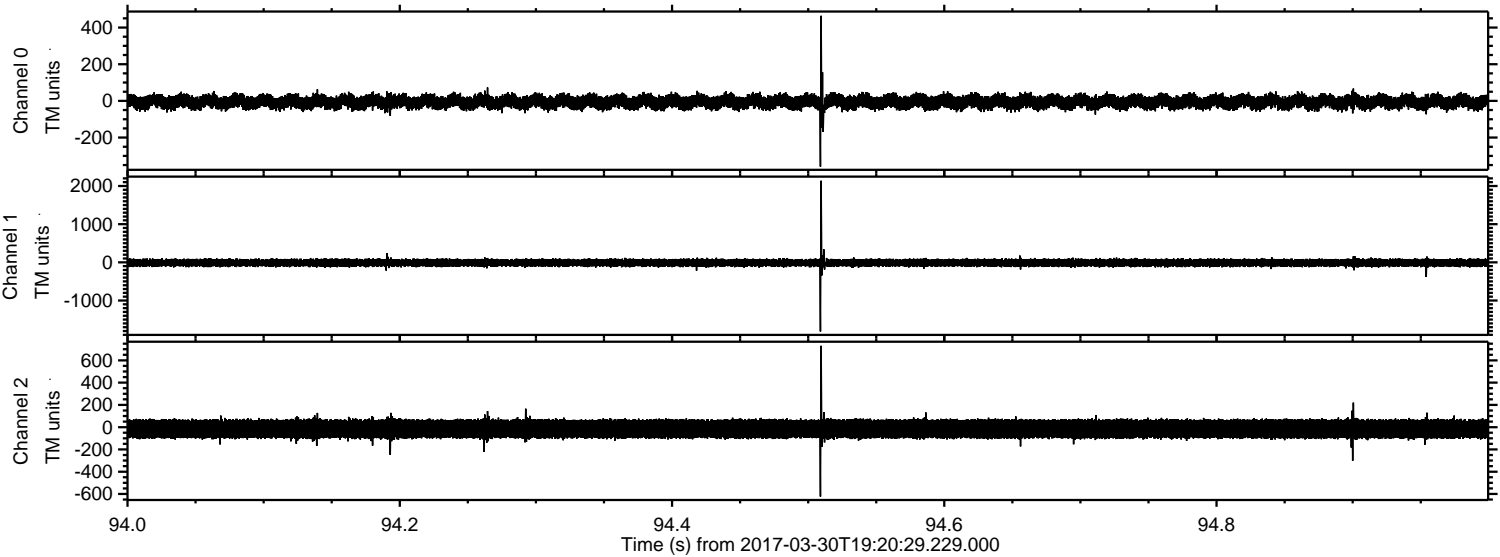
Processed Thu Mar 30 21:28:54 2017 by ELM ver.2012-10-06 from 001__elm20170330_192028__dat00.bin



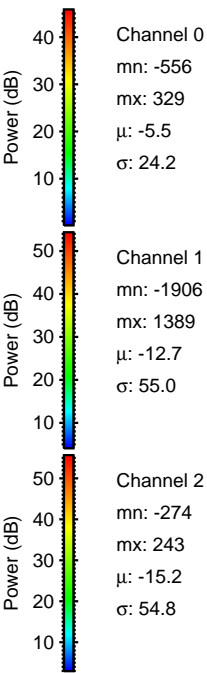
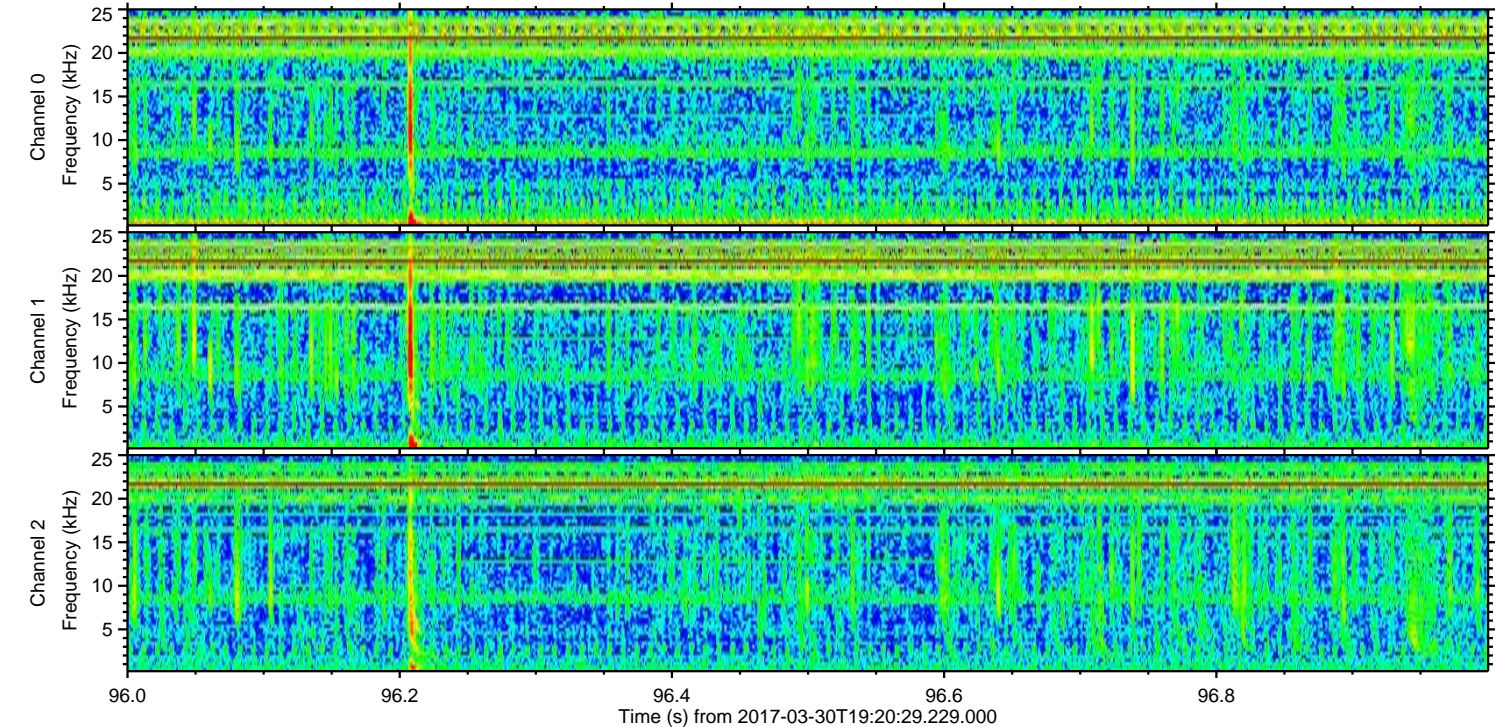
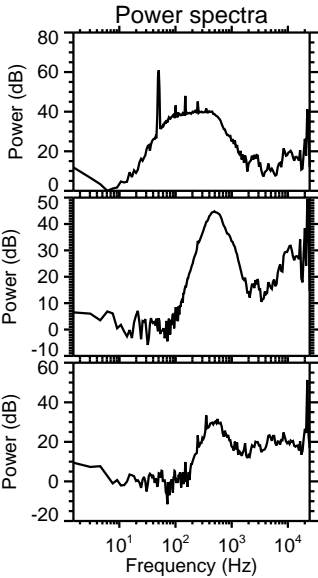
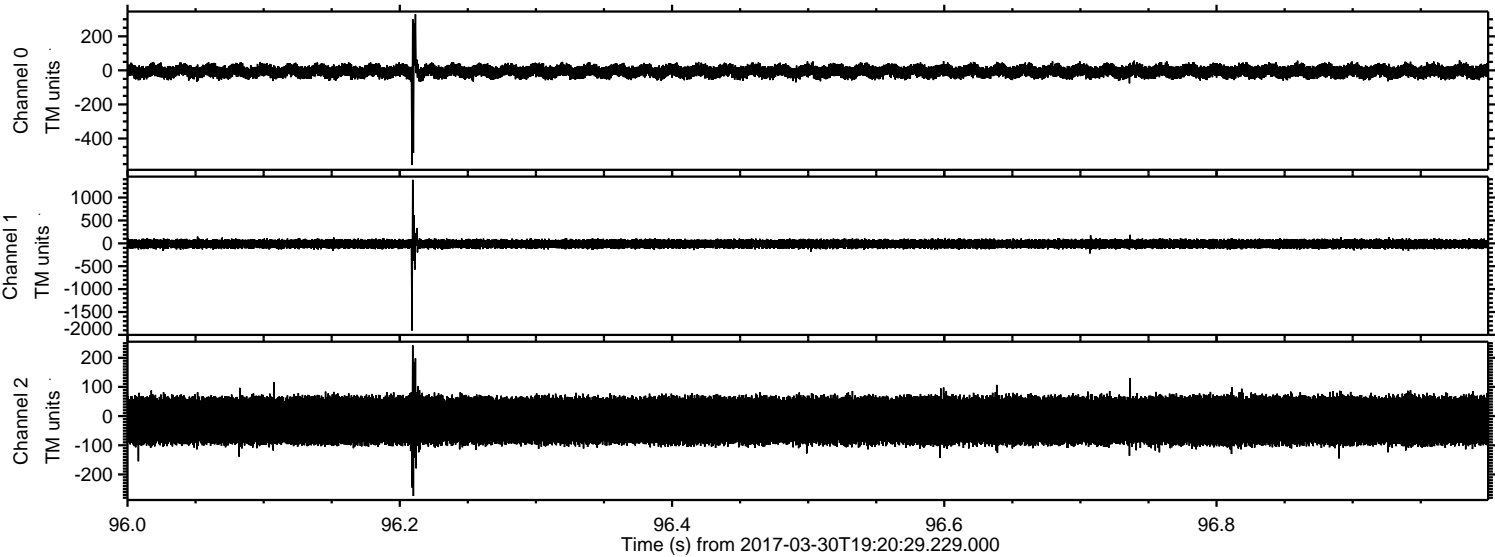
Processed Thu Mar 30 21:28:55 2017 by ELM ver.2012-10-06 from 001__elm20170330_192028__dat00.bin



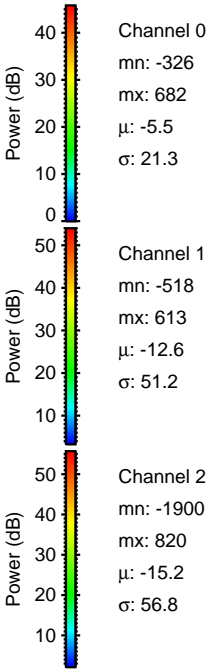
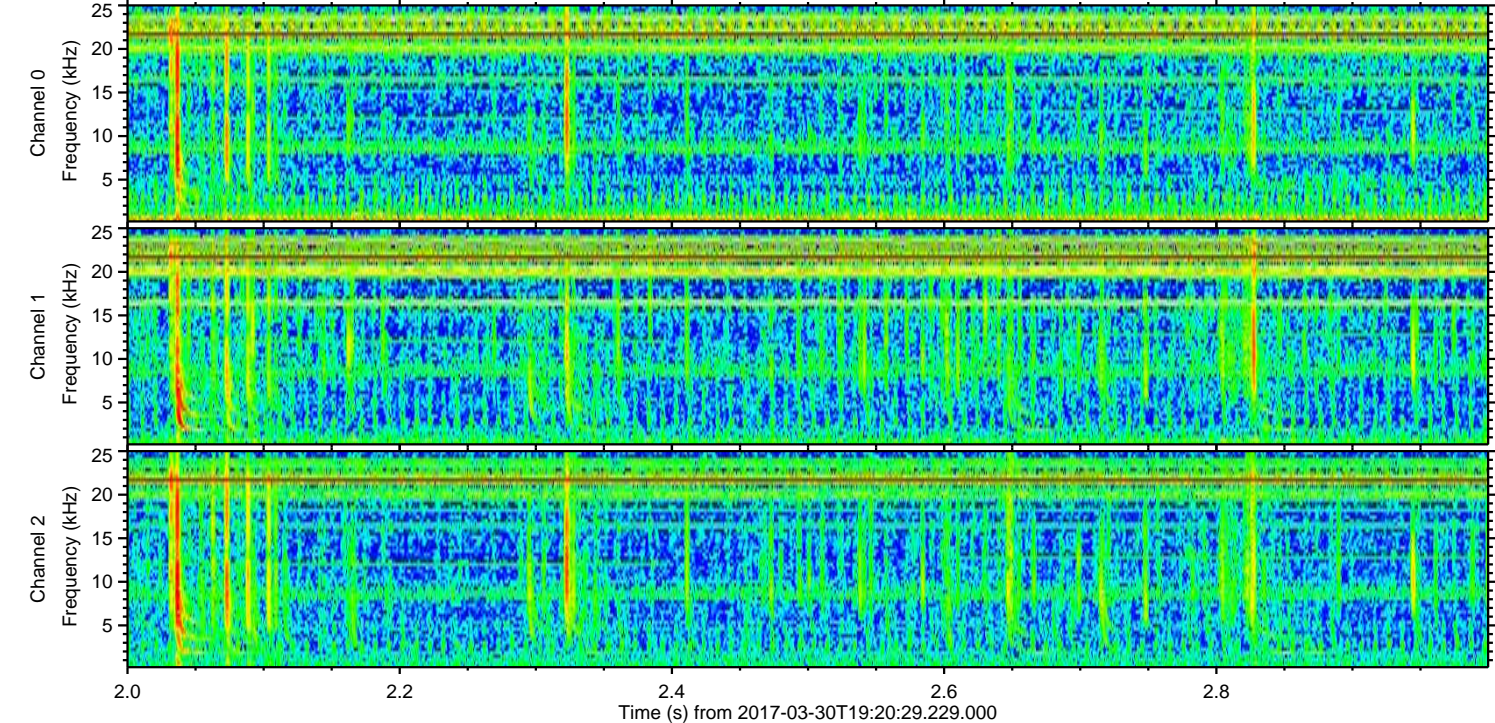
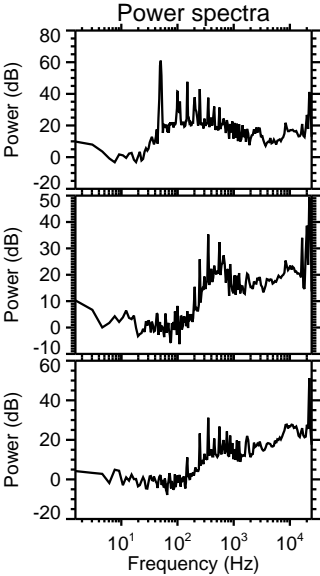
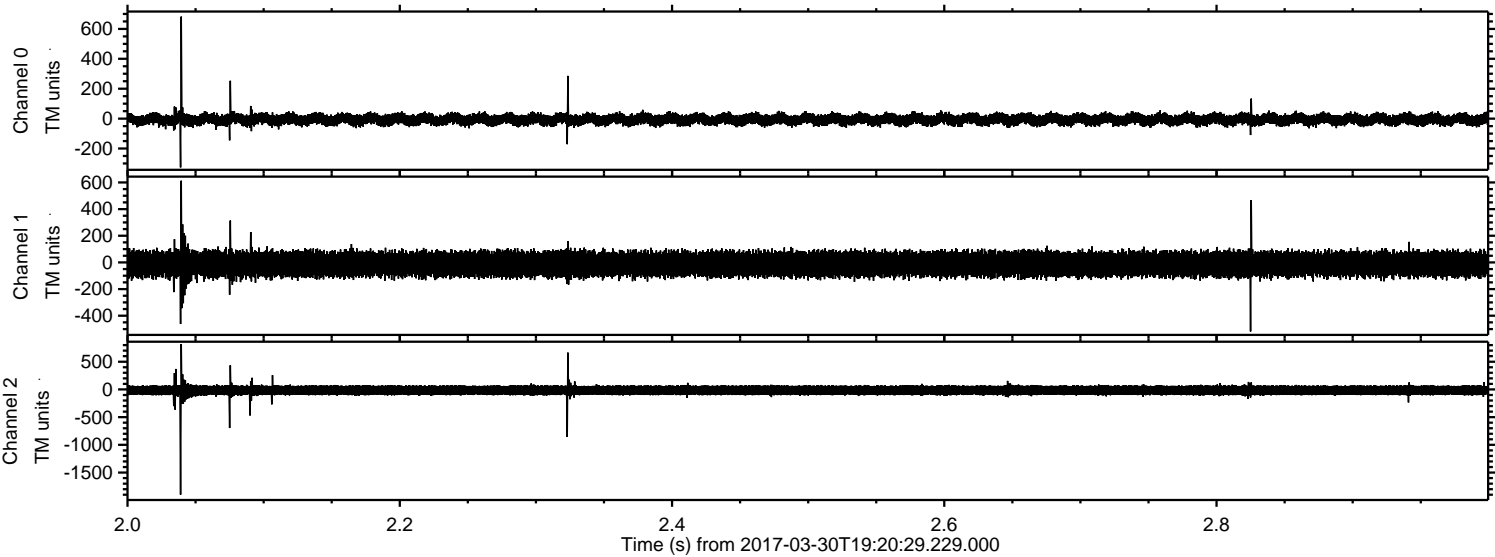
Processed Thu Mar 30 21:28:56 2017 by ELM ver.2012-10-06 from 001__elm20170330_192028__dat00.bin



Processed Thu Mar 30 21:28:57 2017 by ELM ver.2012-10-06 from 001__elm20170330_192028__dat00.bin



Processed Thu Mar 30 21:28:58 2017 by ELM ver.2012-10-06 from 001__elm20170330_192028__dat00.bin



Channel 0
mn: -326
mx: 682
 μ : -5.5
 σ : 21.3

Channel 1
mn: -518
mx: 613
 μ : -12.6
 σ : 51.2

Channel 2
mn: -1900
mx: 820
 μ : -15.2
 σ : 56.8

Processed Thu Mar 30 21:28:59 2017 by ELM ver.2012-10-06 from 001__elm20170330_192028__dat00.bin

