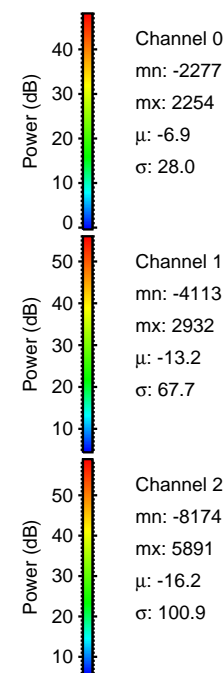
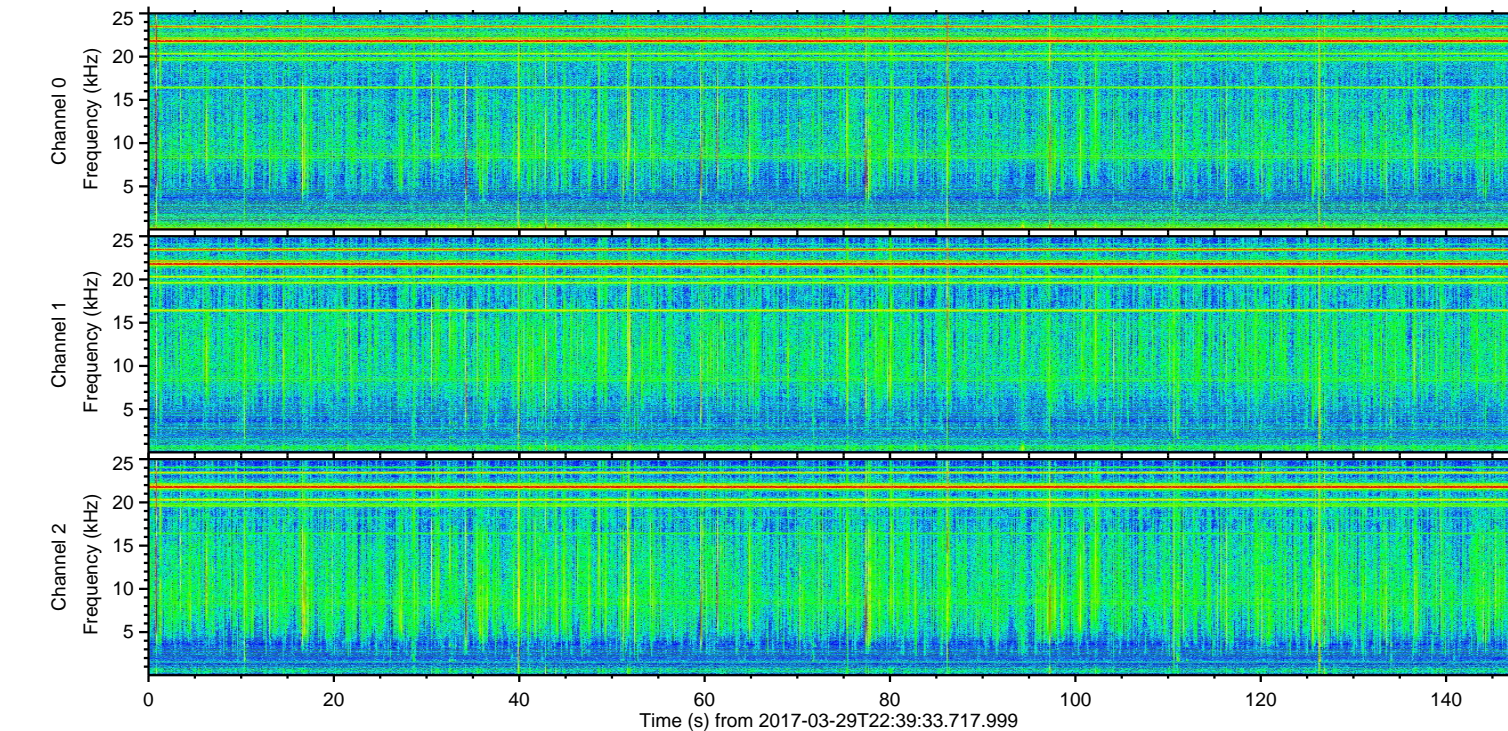
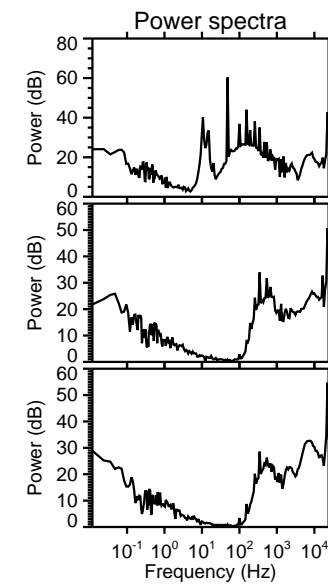
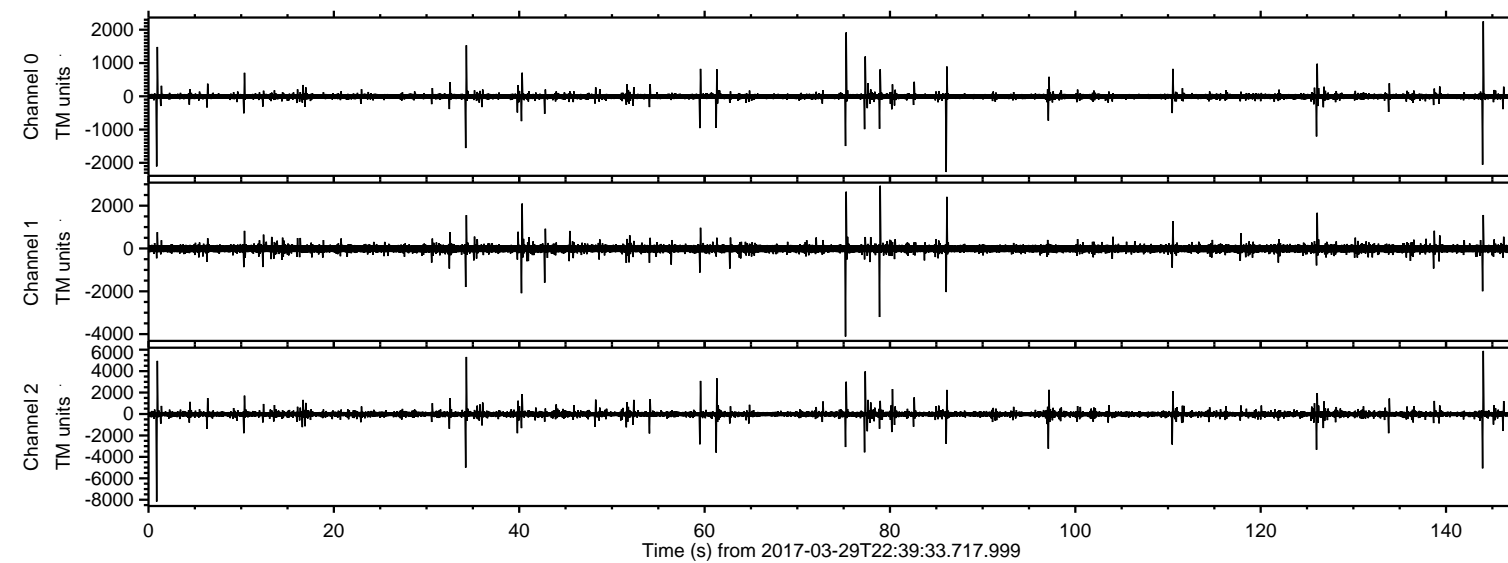


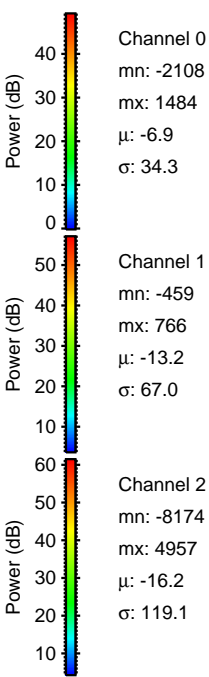
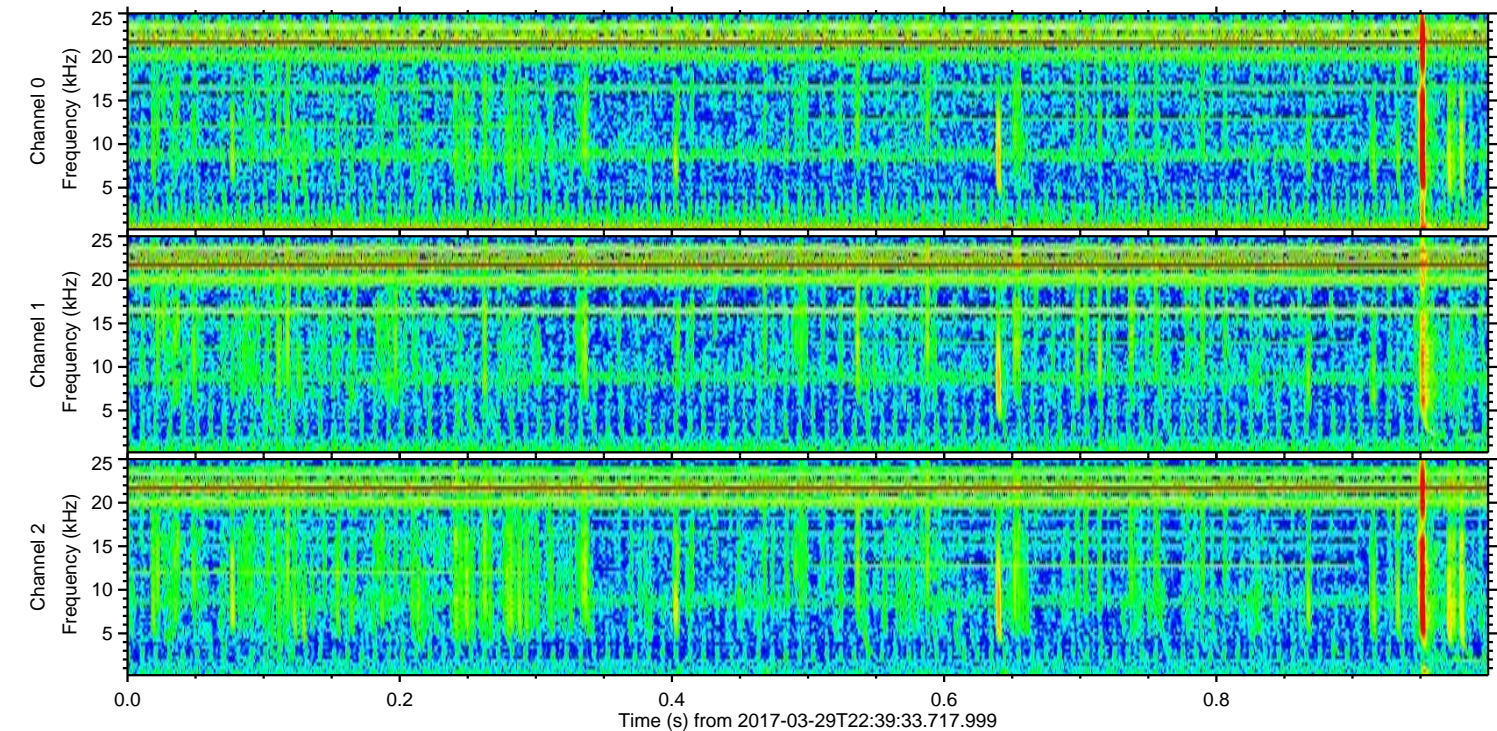
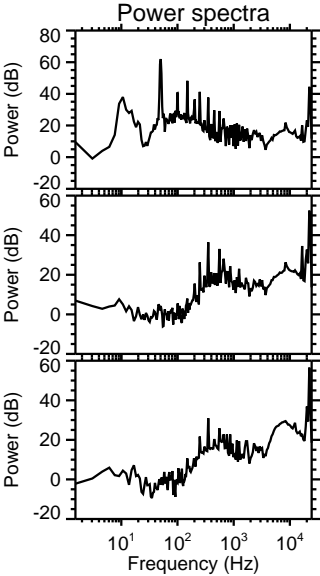
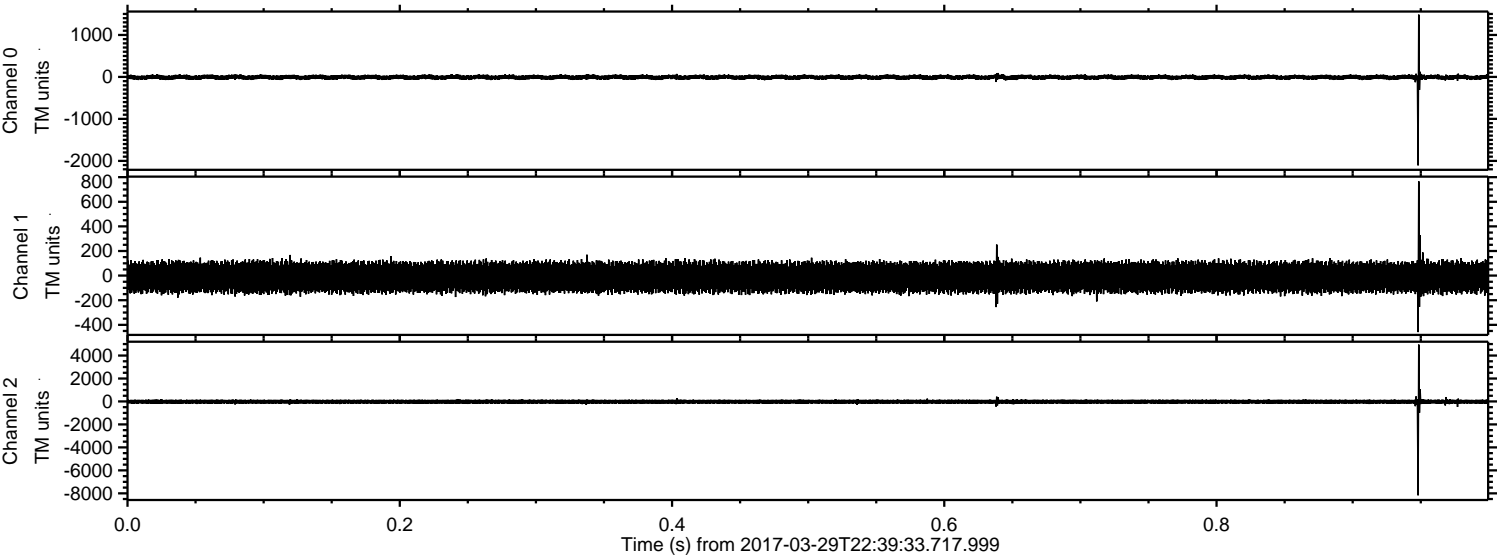
ELMAVAN 3D WAVEFORMS (Measured data sampled at 50 kHz) 51000 packets of 144 samples from 2017-03-29T22:39:33.717.999.

Processed Thu Mar 30 00:46:52 2017 by ELM ver.2012-10-06 from 001__elm20170329_223932__dat00.bin



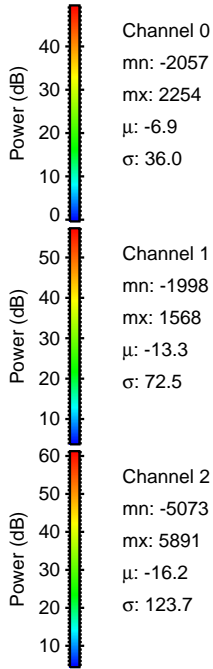
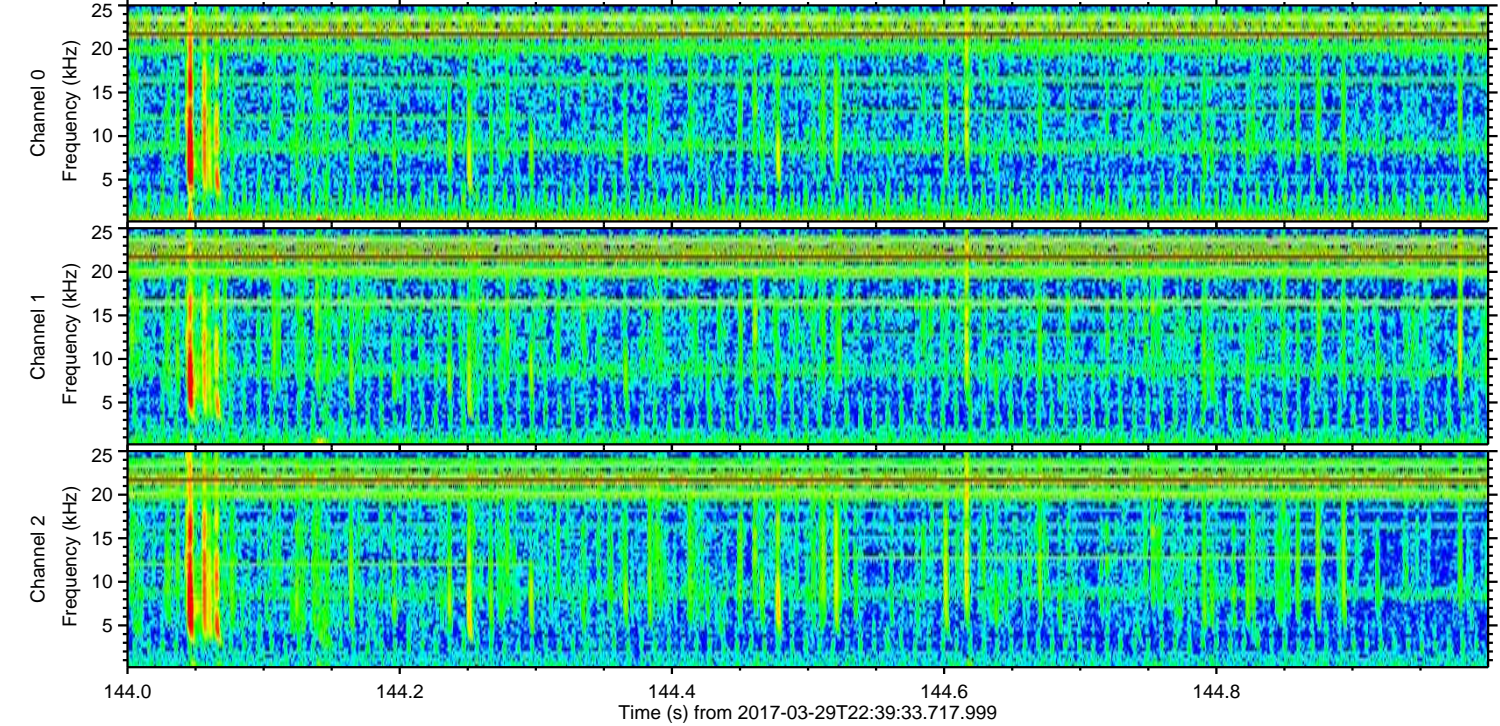
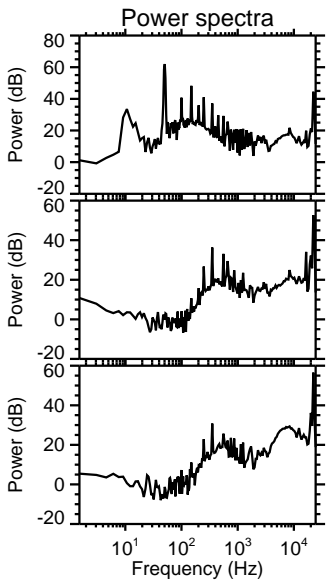
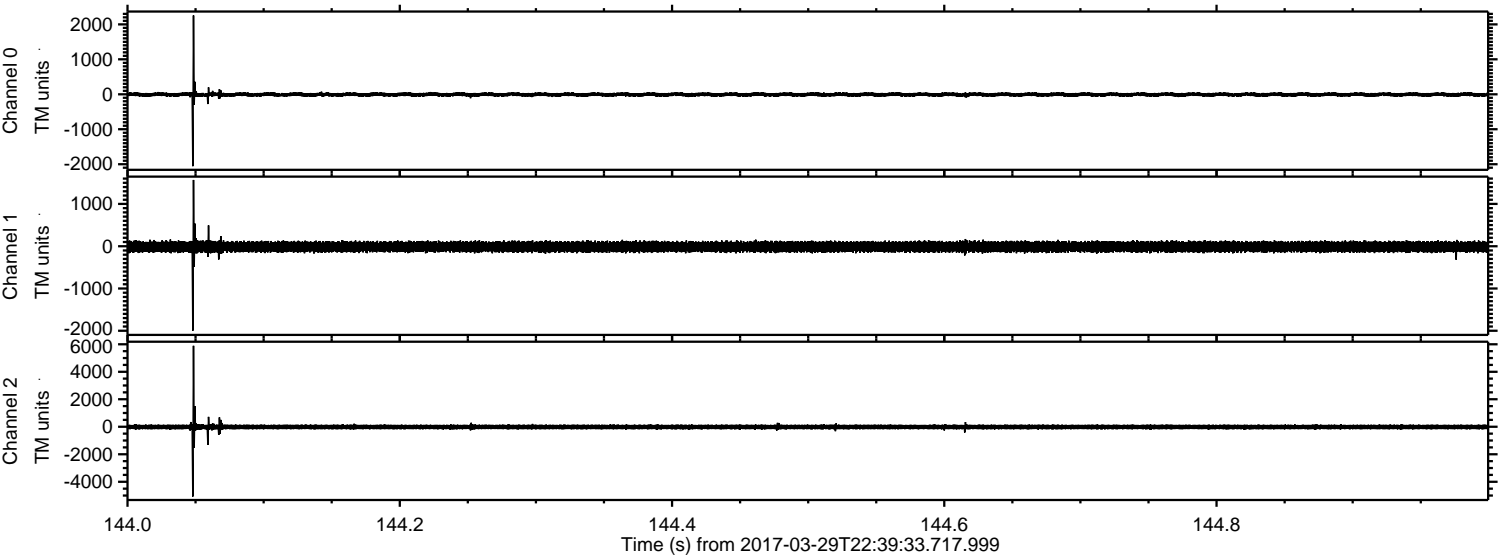
ELMAVAN 3D WAVEFORMS (Measured data sampled at 50 kHz) 51000 packets of 144 samples from 2017-03-29T22:39:33.717.999. Part 1/147

Processed Thu Mar 30 00:47:06 2017 by ELM ver.2012-10-06 from 001__elm20170329_223932__dat00.bin

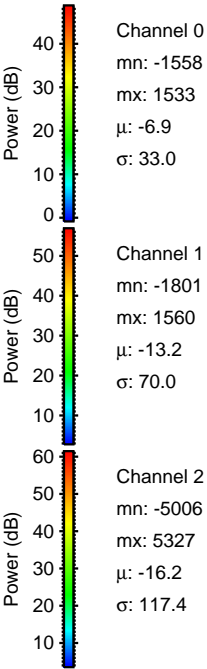
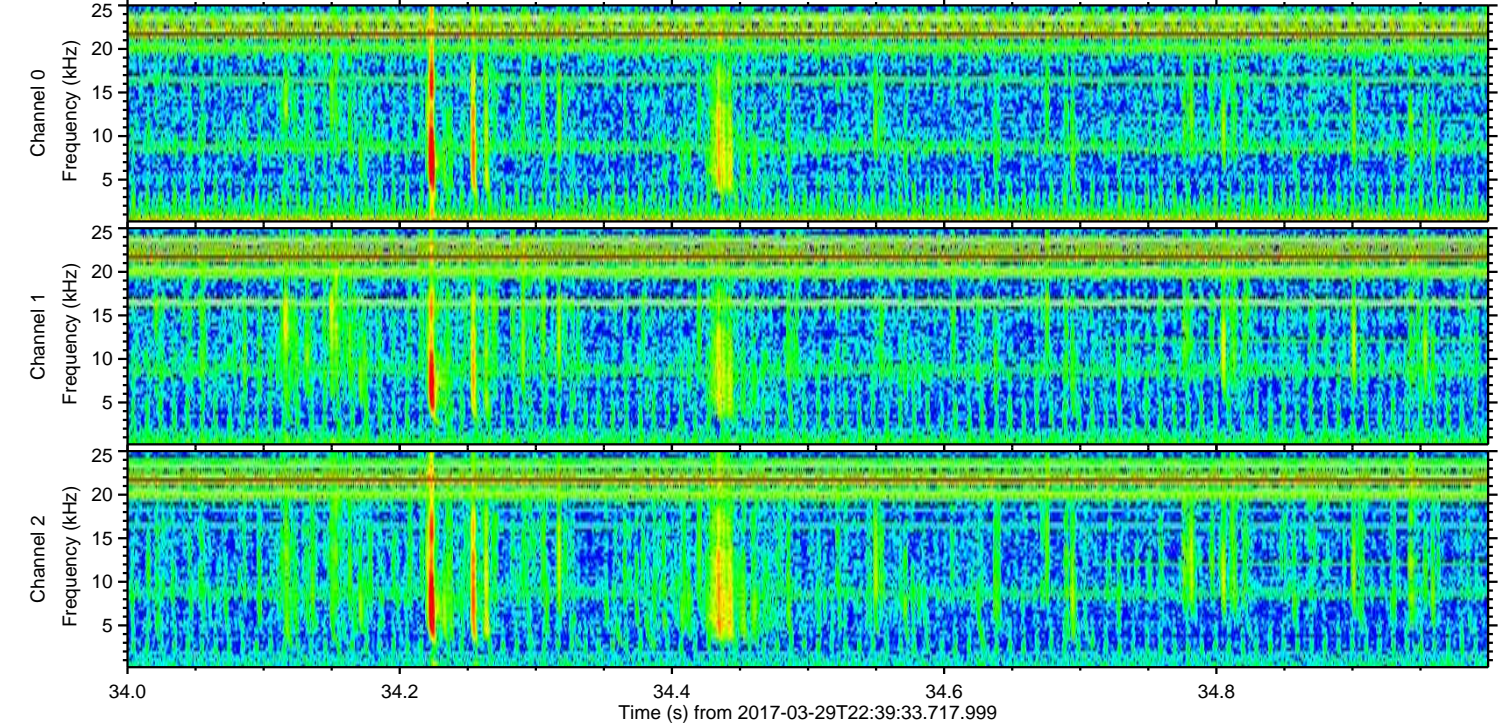
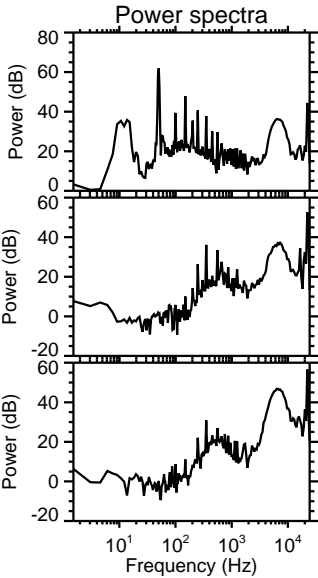
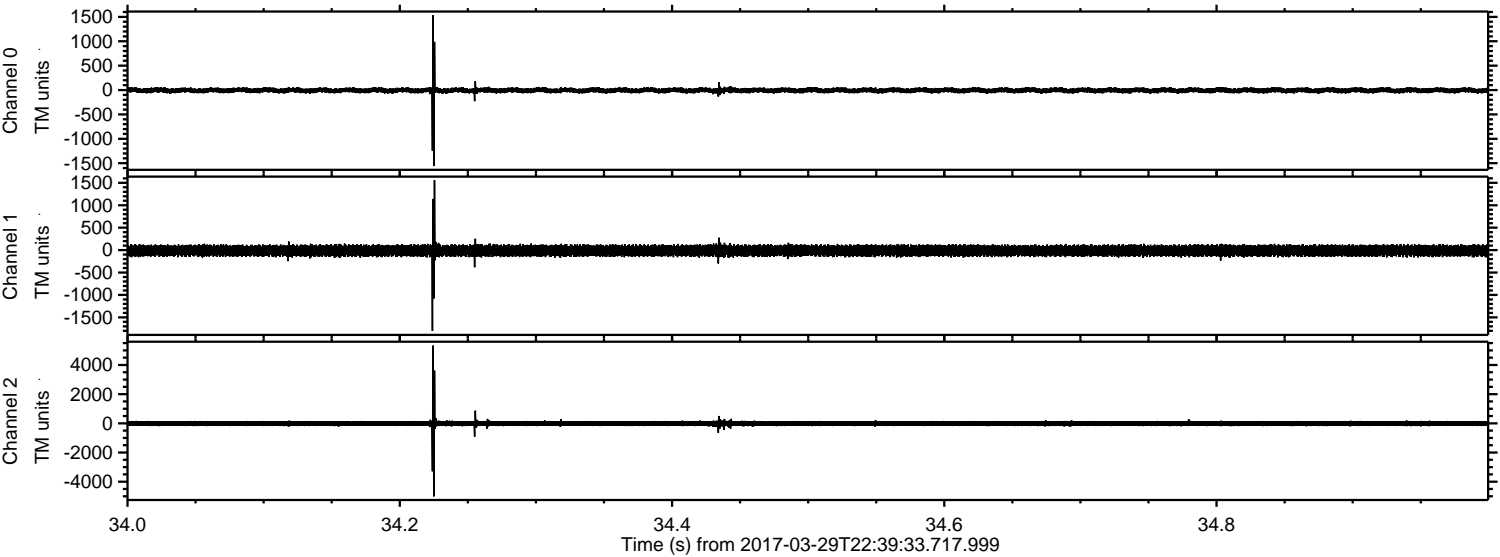


ELMAVAN 3D WAVEFORMS (Measured data sampled at 50 kHz) 51000 packets of 144 samples from 2017-03-29T22:39:33.717.999. Part 145/147

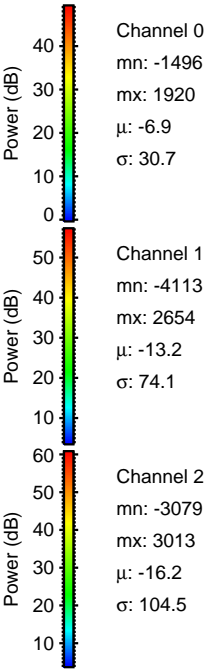
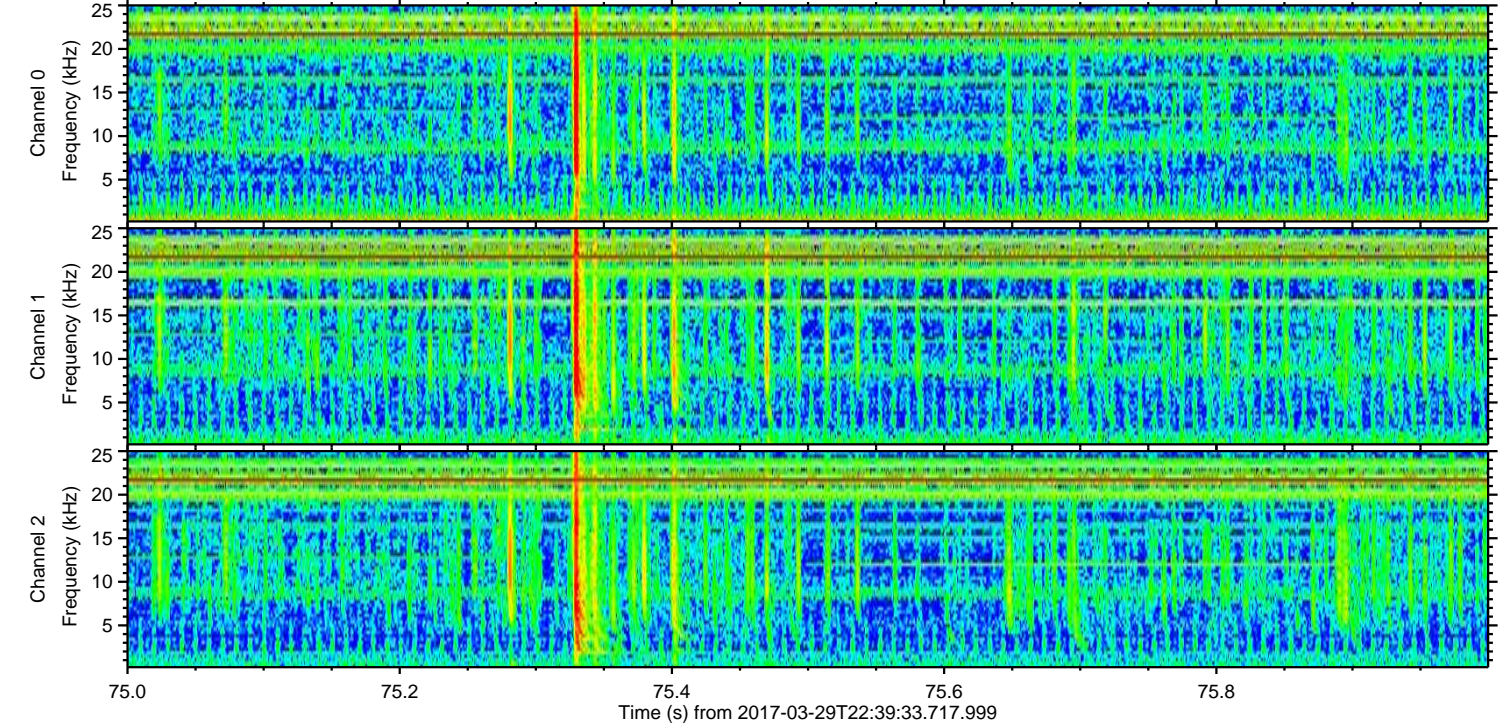
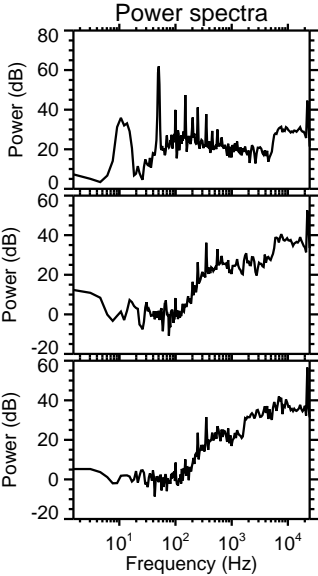
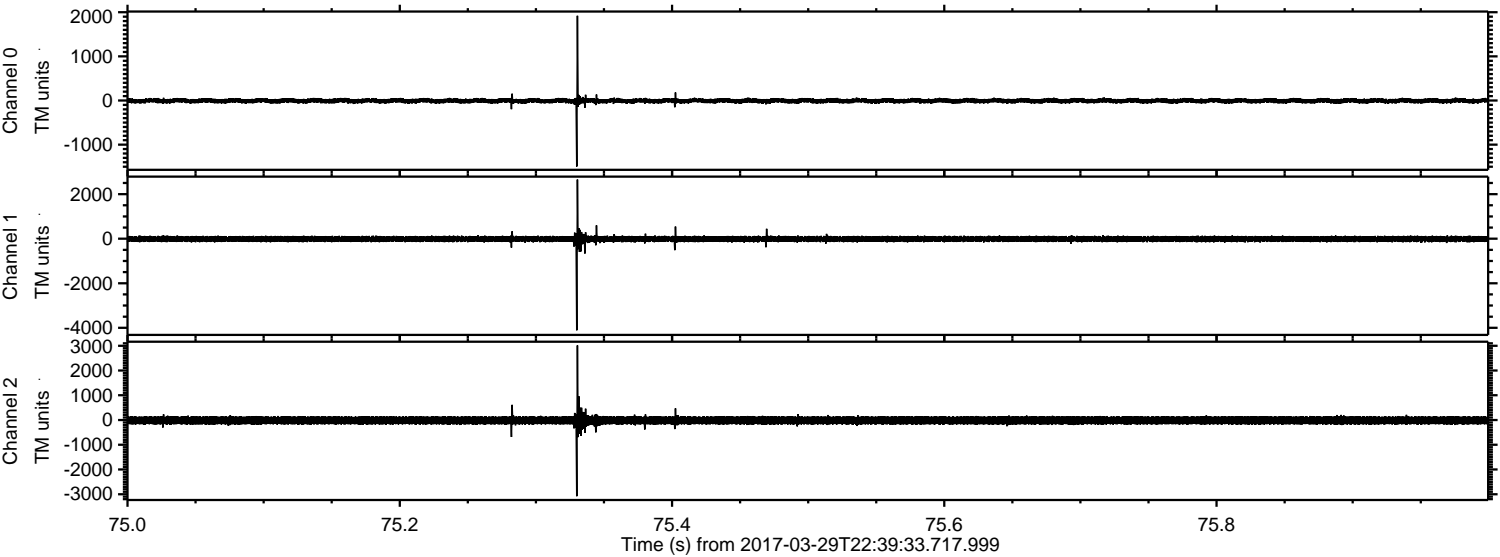
Processed Thu Mar 30 00:47:07 2017 by ELM ver.2012-10-06 from 001__elm20170329_223932__dat00.bin



Processed Thu Mar 30 00:47:08 2017 by ELM ver.2012-10-06 from 001__elm20170329_223932__dat00.bin

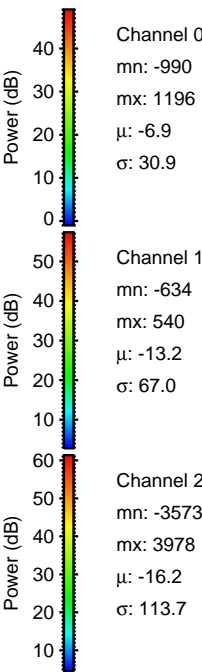
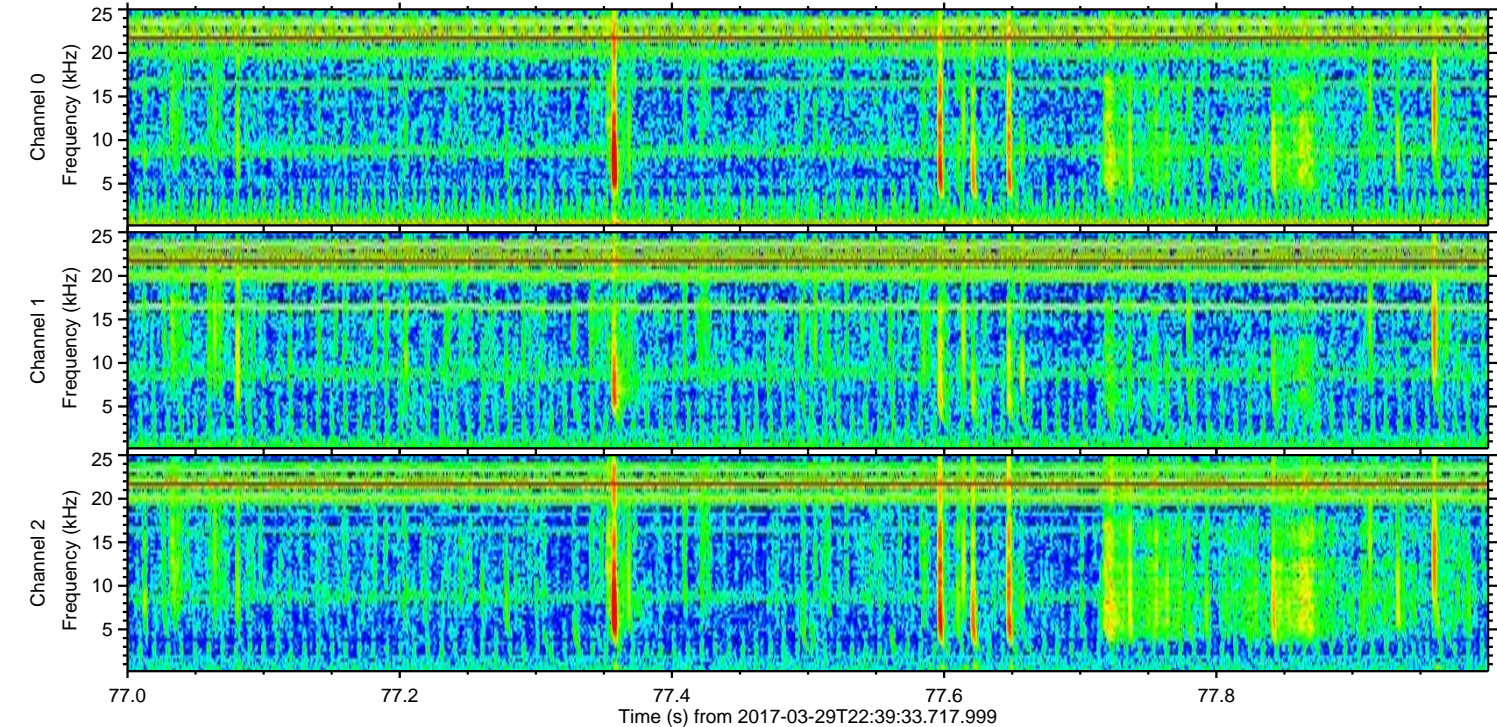
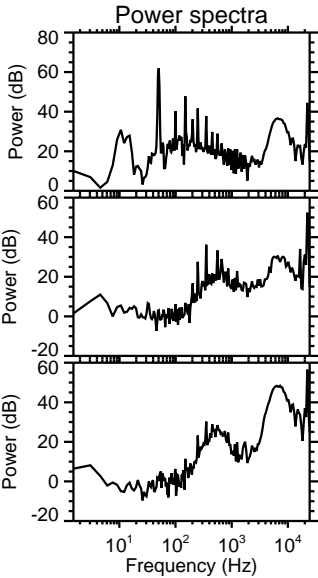
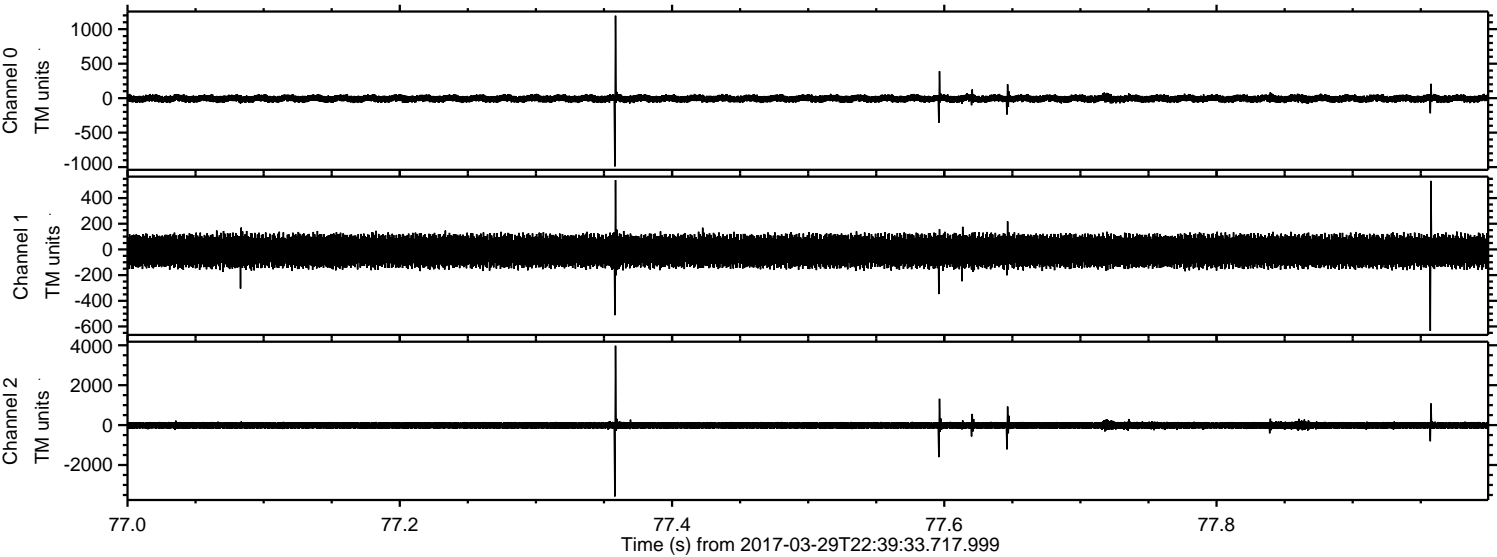


Processed Thu Mar 30 00:47:09 2017 by ELM ver.2012-10-06 from 001__elm20170329_223932__dat00.bin

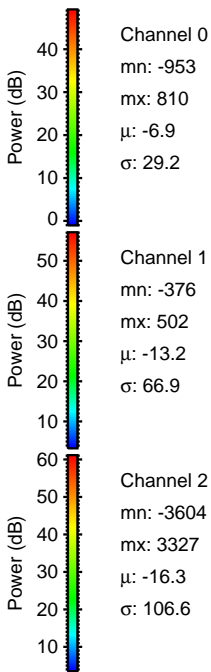
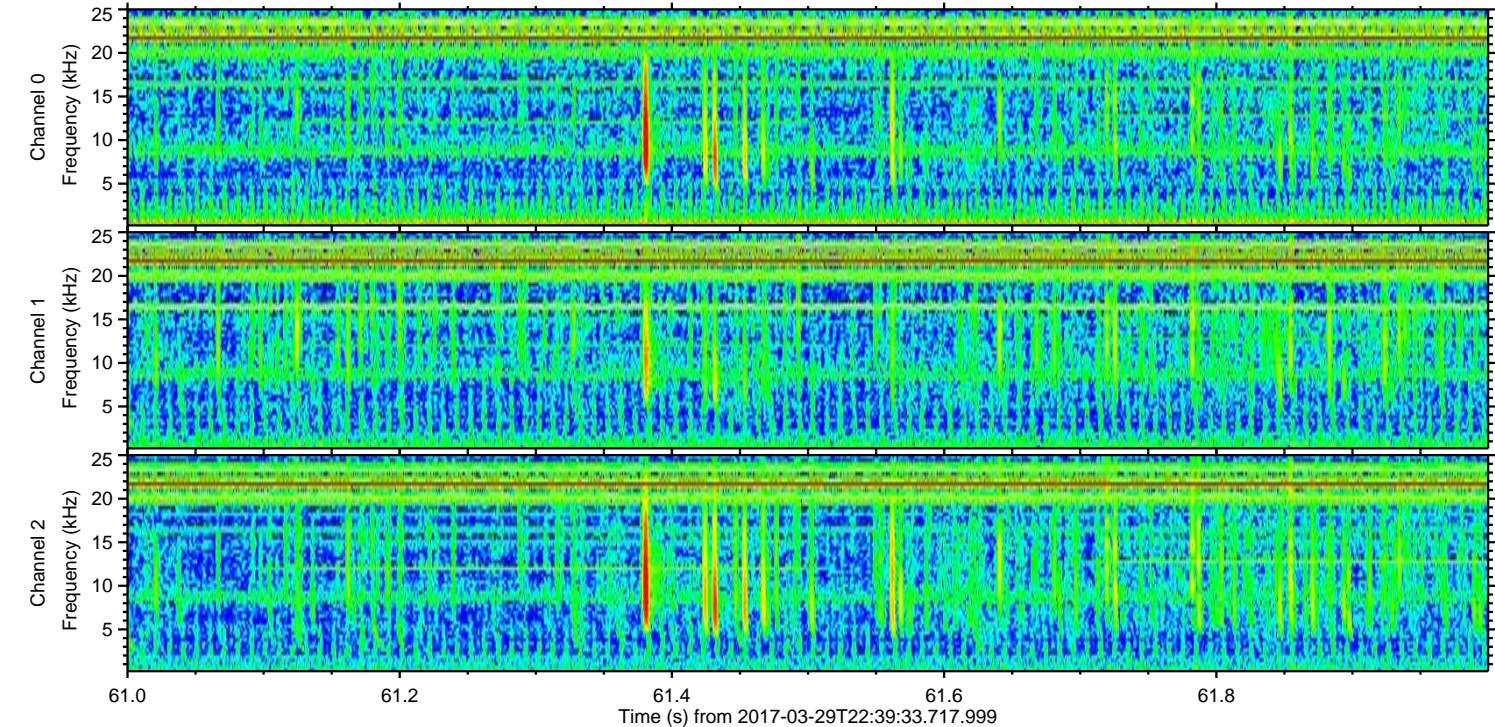
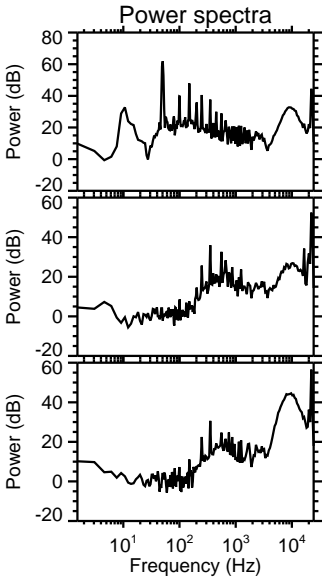
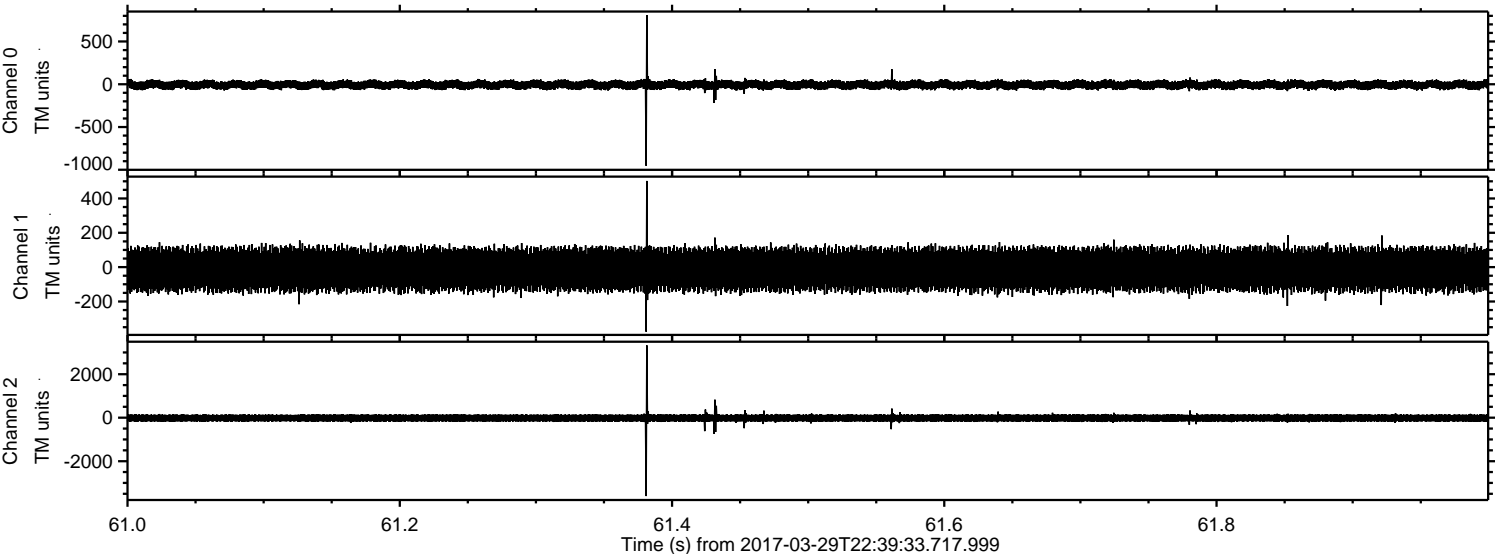


ELMAVAN 3D WAVEFORMS (Measured data sampled at 50 kHz) 51000 packets of 144 samples from 2017-03-29T22:39:33.717.999. Part 78/147

Processed Thu Mar 30 00:47:10 2017 by ELM ver.2012-10-06 from 001__elm20170329_223932__dat00.bin

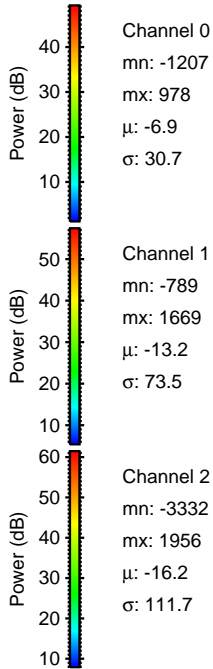
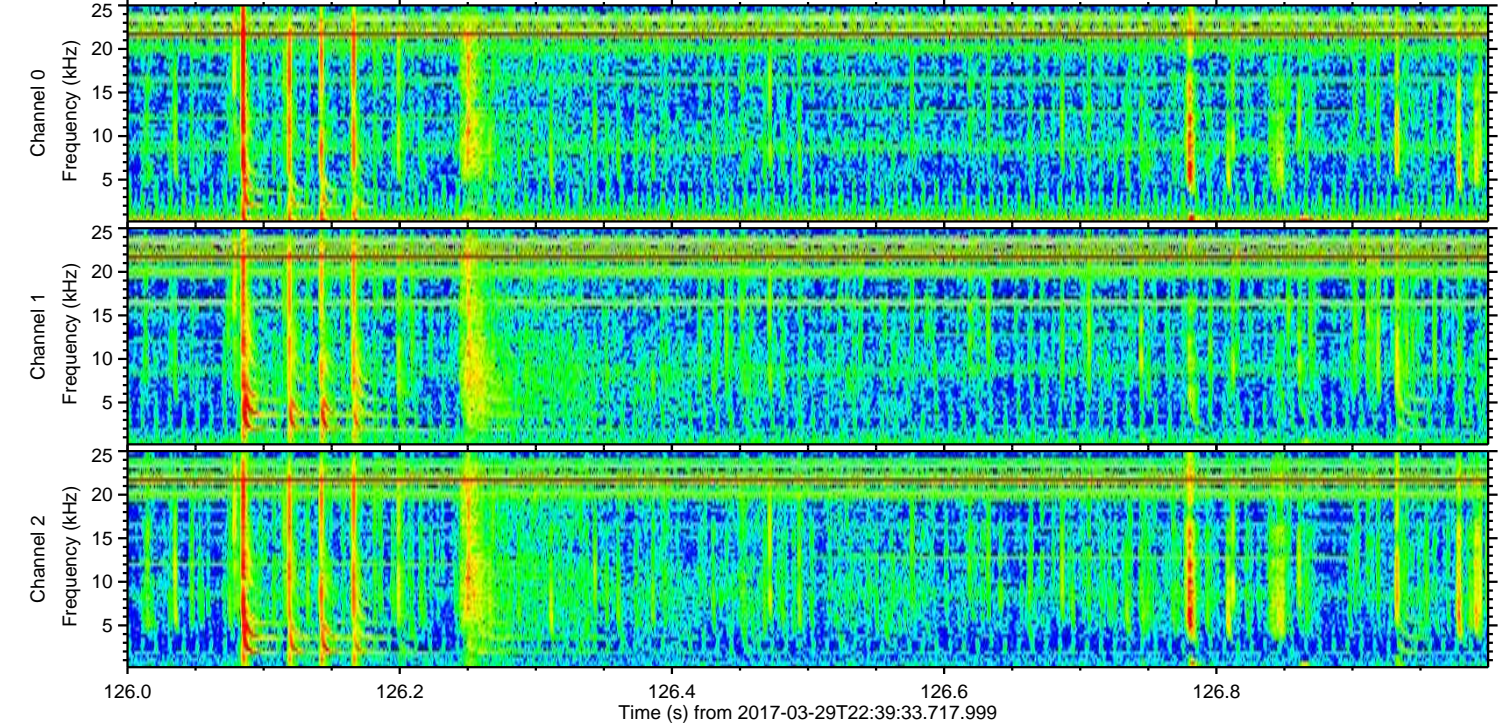
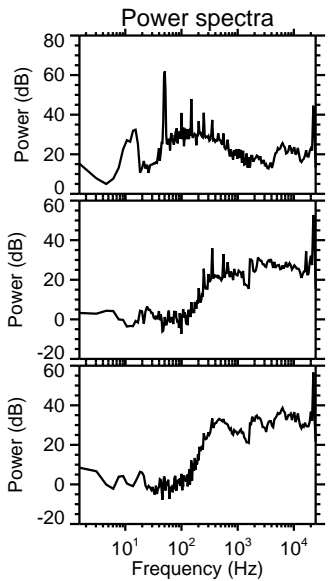
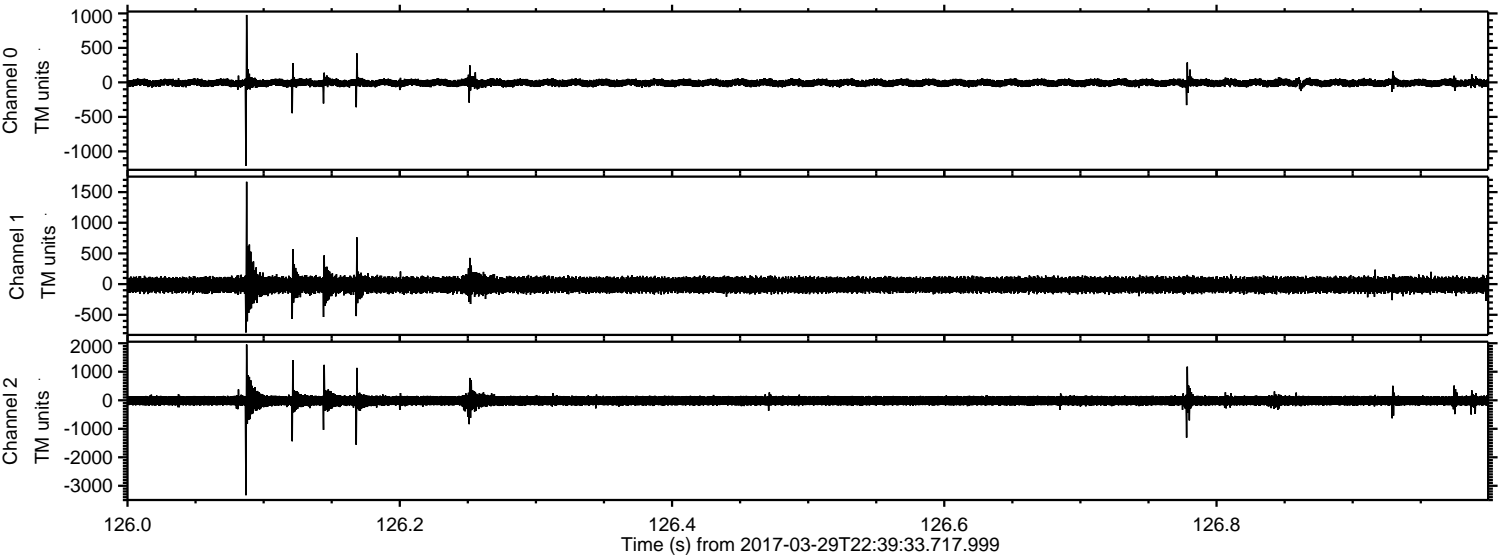


Processed Thu Mar 30 00:47:11 2017 by ELM ver.2012-10-06 from 001__elm20170329_223932__dat00.bin

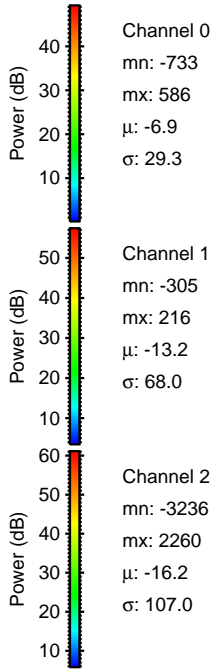
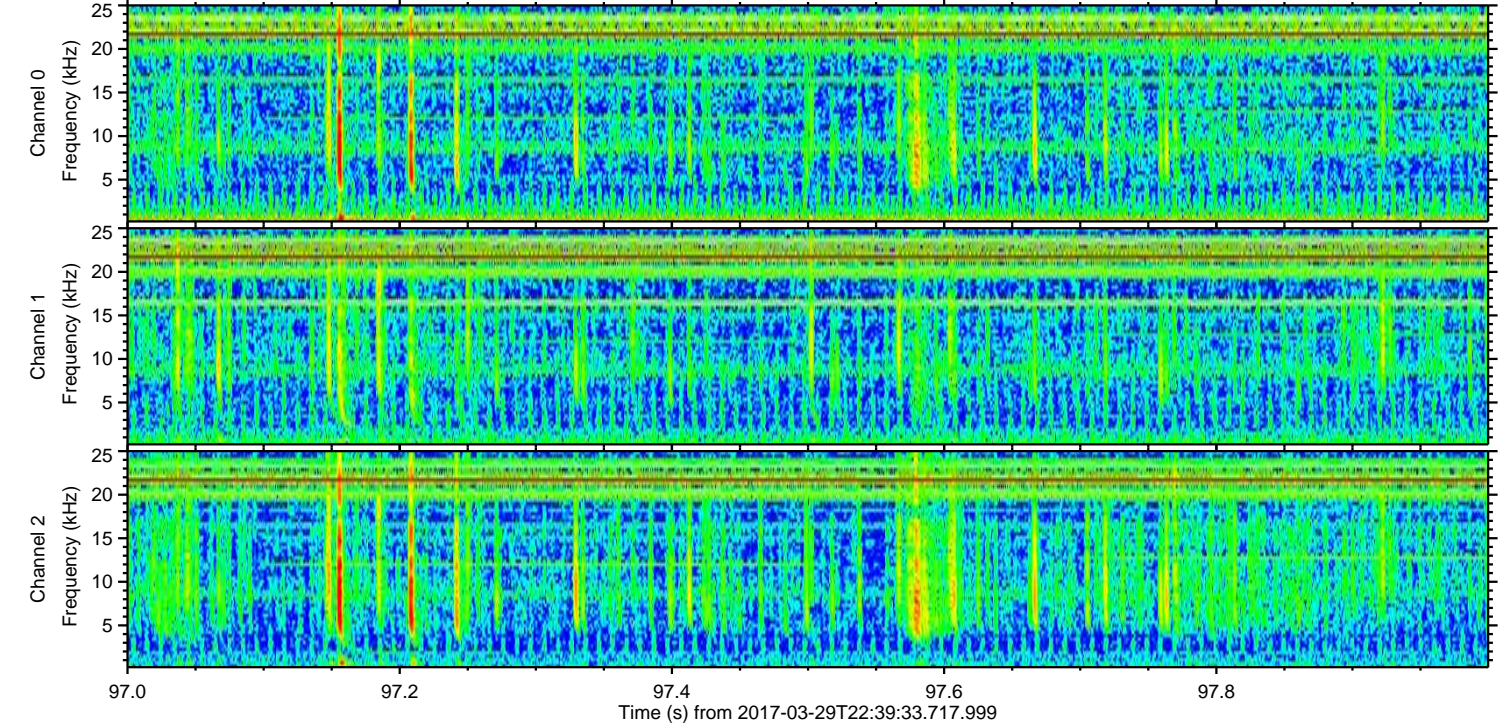
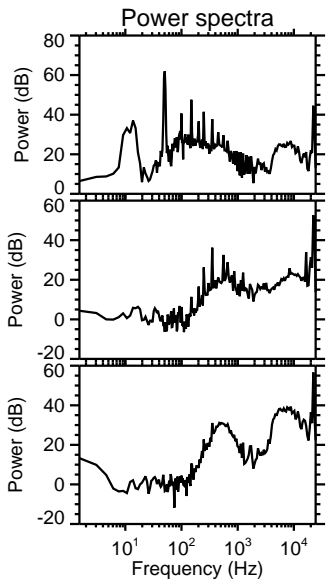
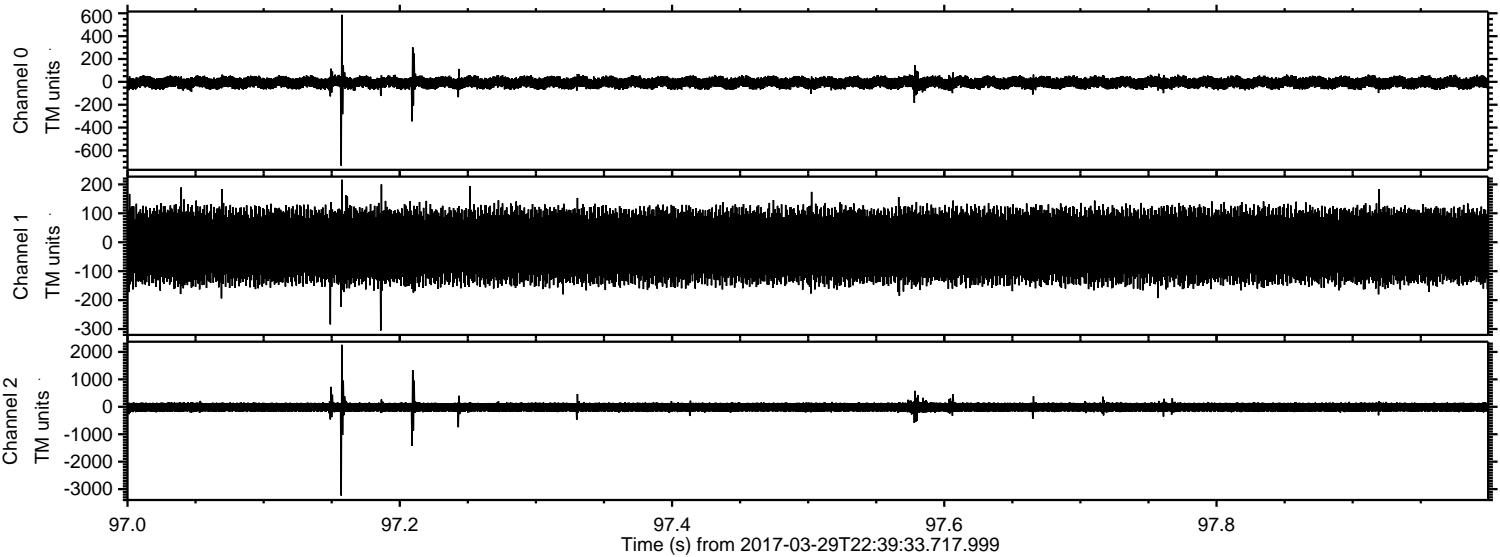


ELMAVAN 3D WAVEFORMS (Measured data sampled at 50 kHz) 51000 packets of 144 samples from 2017-03-29T22:39:33.717.999. Part 127/147

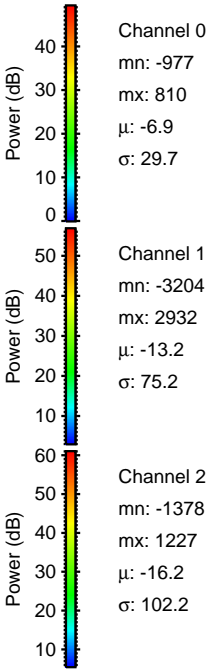
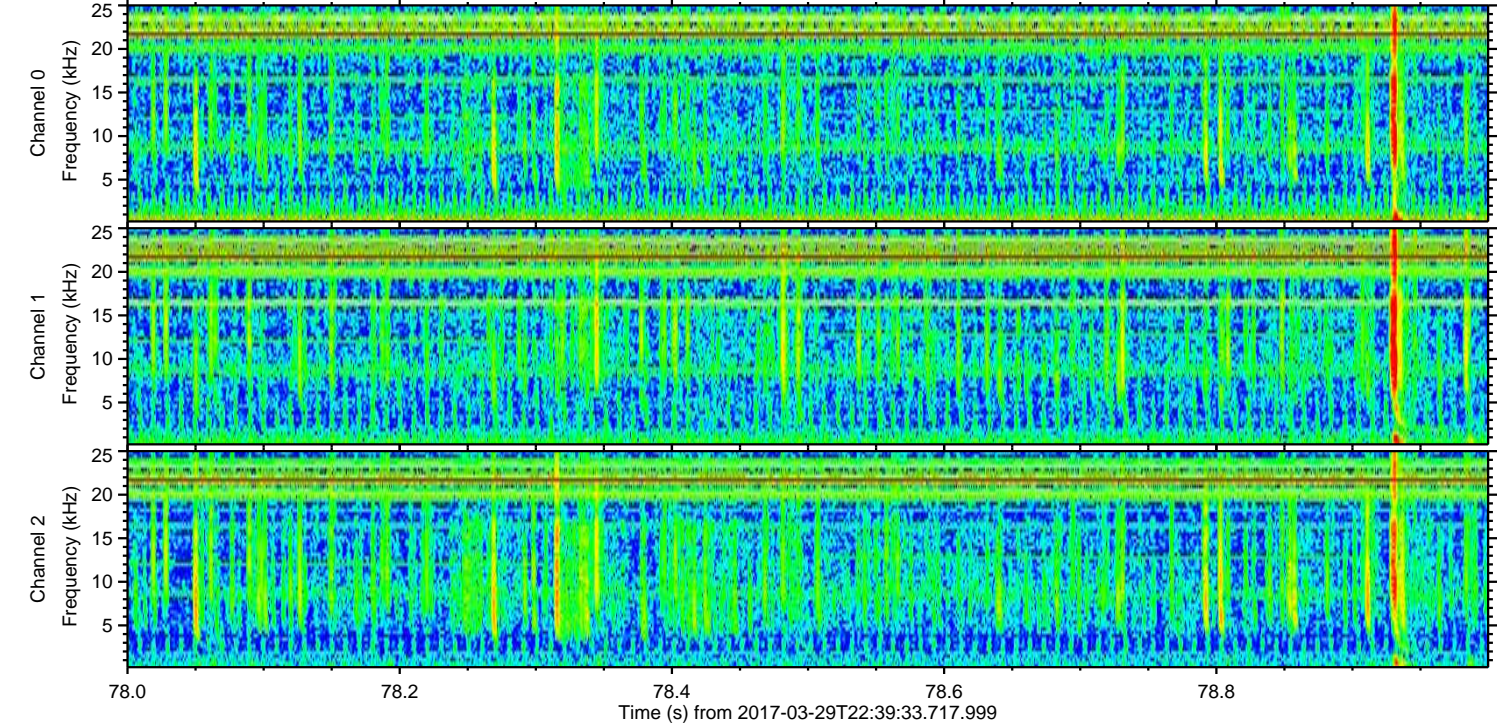
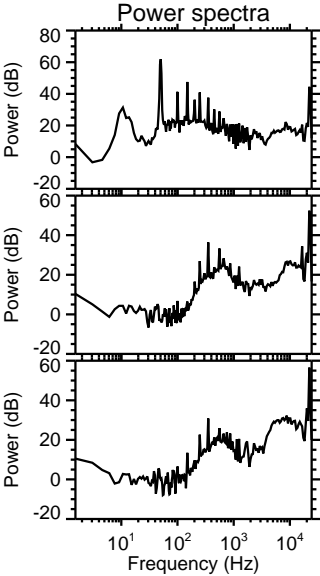
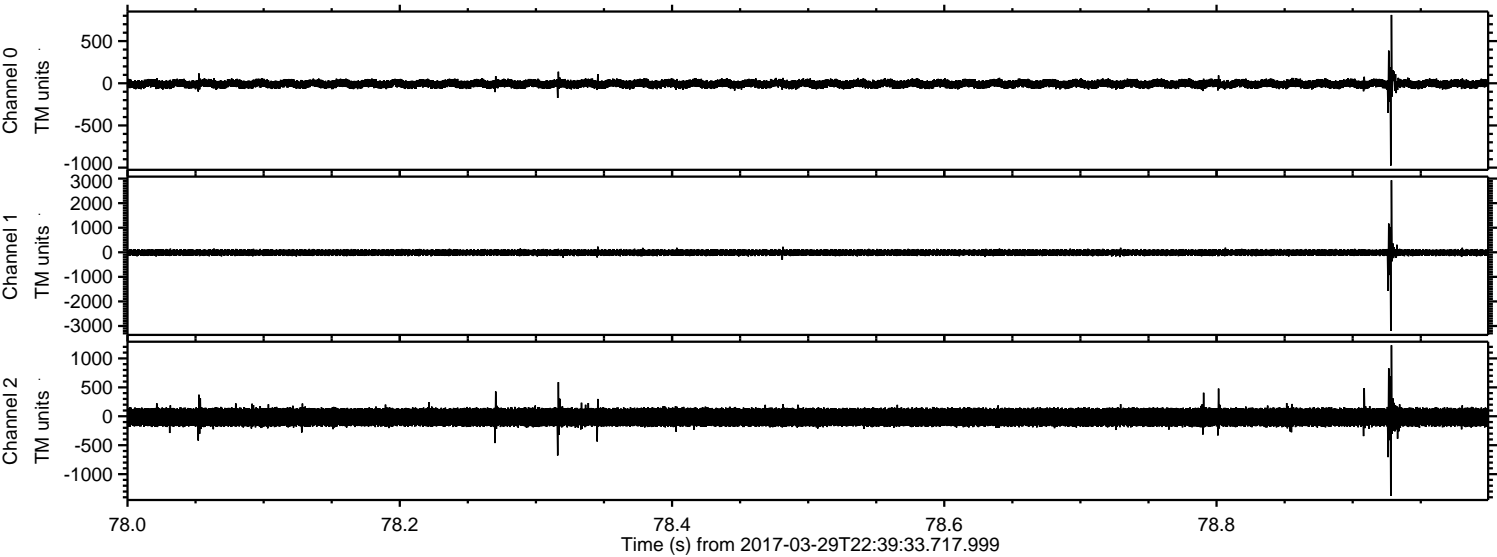
Processed Thu Mar 30 00:47:12 2017 by ELM ver.2012-10-06 from 001__elm20170329_223932__dat00.bin



Processed Thu Mar 30 00:47:13 2017 by ELM ver.2012-10-06 from 001__elm20170329_223932__dat00.bin



Processed Thu Mar 30 00:47:14 2017 by ELM ver.2012-10-06 from 001__elm20170329_223932__dat00.bin



Channel 0
mn: -977
mx: 810
 μ : -6.9
 σ : 29.7

Channel 1
mn: -3204
mx: 2932
 μ : -13.2
 σ : 75.2

Channel 2
mn: -1378
mx: 1227
 μ : -16.2
 σ : 102.2

Processed Thu Mar 30 00:47:15 2017 by ELM ver.2012-10-06 from 001__elm20170329_223932__dat00.bin

